

CHO 8 Employment Report: OCT 2023

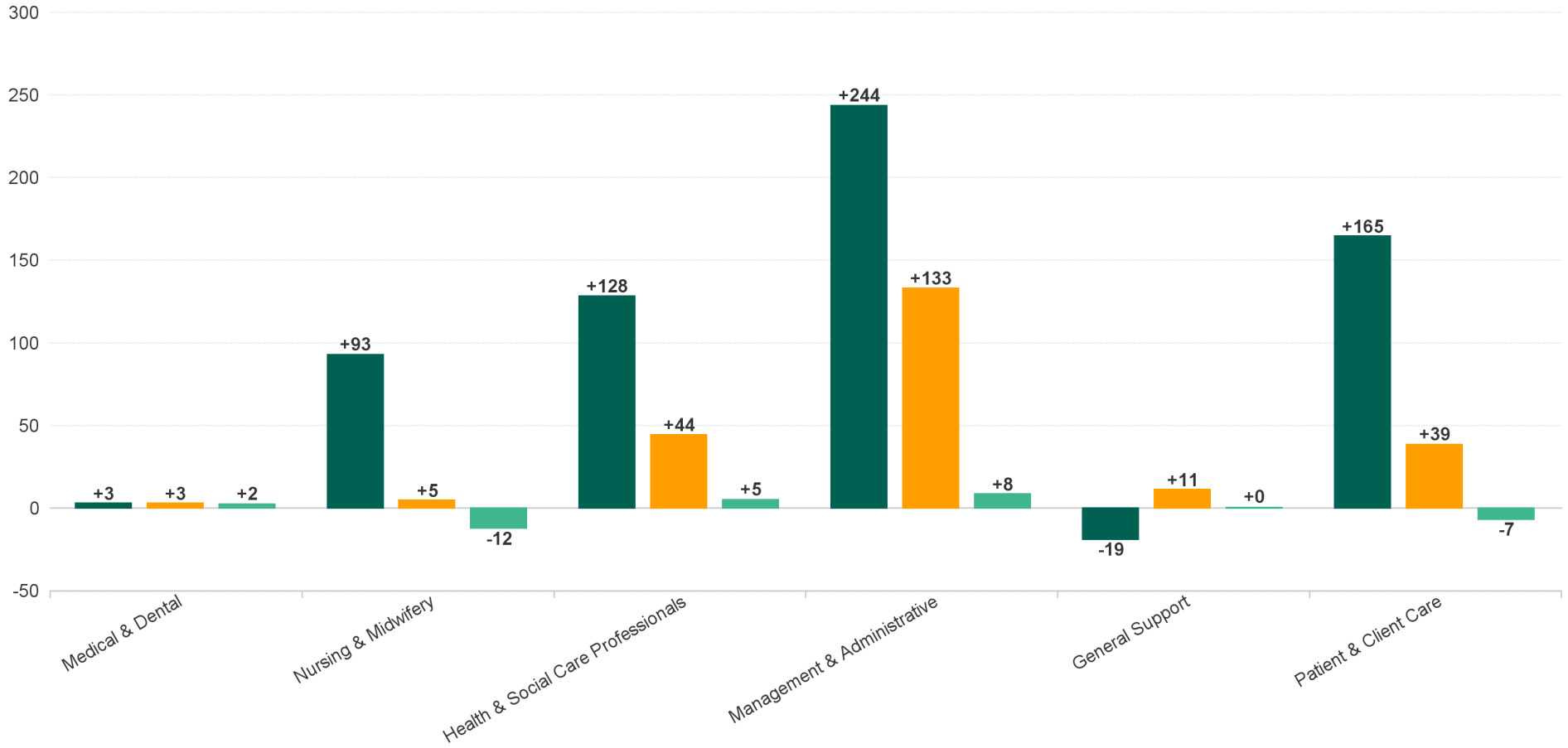
Employment Report : OCT 2023

Employment by Staff Group OCT 2023	WTE DEC 2019	WTE DEC 2022	WTE SEP 2023	WTE OCT 2023	WTE change since DEC 2019	% WTE Change since Dec 2019	WTE change since DEC 2022	% WTE Change since Dec 2022	WTE change since SEP 2023	No. OCT 2023
Overall	6,135	6,514	6,751	6,748	+613	+10.0%	+235	+3.6%	-3	8,009
Consultants	42	42	44	44	+2	+4.7%	+2	+4.7%	+0	47
Registrars	106	122	121	123	+17	+15.8%	+0	+0.2%	+1	127
SHO/ Interns	38	29	35	35	-3	-7.8%	+6	+21.1%	+0	36
Medical/ Dental, other	72	65	59	60	-13	-17.6%	-5	-8.2%	+0	78
Medical & Dental	259	259	259	262	+3	+1.2%	+3	+1.2%	+2	288
Nurse/ Midwife Manager	372	376	374	384	+12	+3.2%	+8	+2.0%	+9	411
Nurse/ Midwife Specialist & AN/MP	100	131	142	142	+42	+42.1%	+11	+8.1%	-1	156
Staff Nurse/ Staff Midwife	998	1,023	1,013	1,009	+11	+1.1%	-14	-1.3%	-4	1,155
Public Health Nurse	199	220	209	210	+11	+5.3%	-11	-4.9%	+0	251
<i>Nursing/ Midwifery awaiting registration</i>	2	9	9	10	+8	+400.0%	+1	+9.2%	+1	13
<i>Post-registration Nurse/ Midwife Student</i>	2		3	5	+3	+142.4%	+5		+2	5
<i>Pre-registration Nurse/ Midwife Intern</i>	1	1	25	5	+5	+946.0%	+5	+946.0%	-20	19
Nursing/ Midwifery Student	4	10	37	20	+16	+347.1%	+10	+107.3%	-17	37
Nursing/ Midwifery other	9	10	11	11	+2	+16.0%	+1	+6.0%	0	12
Nursing & Midwifery	1,682	1,770	1,787	1,775	+93	+5.5%	+5	+0.3%	-12	2,022
Therapy Professions	377	378	416	420	+43	+11.3%	+42	+11.0%	+4	498
Health Science/ Diagnostics	7	13	12	12	+5	+70.3%	-1	-7.2%	+0	13
Social Care	368	421	431	426	+58	+15.8%	+4	+1.1%	-5	514
Pharmacy	7	11	10	10	+3	+37.8%	-1	-10.9%	+0	13
Psychologists	120	111	108	112	-8	-6.9%	+1	+0.9%	+4	121
Social Workers	88	108	107	110	+22	+25.4%	+2	+2.0%	+3	124
H&SC, Other	52	61	58	58	+6	+10.7%	-3	-4.5%	0	67
Health & Social Care Professionals	1,019	1,103	1,142	1,147	+128	+12.6%	+44	+4.0%	+5	1,350
Management (VIII & above)	62	84	84	84	+21	+34.1%	0	-0.5%	0	86
Administrative/ Supervisory (V to VII)	176	240	268	277	+100	+56.8%	+36	+15.1%	+8	291
Clerical (III & IV)	507	532	629	629	+122	+24.1%	+97	+18.2%	+1	724
Management & Administrative	746	856	981	989	+244	+32.7%	+133	+15.5%	+8	1,101
Support	127	105	107	106	-22	-17.0%	+1	+1.0%	-1	133
Maintenance/ Technical	69	61	70	71	+3	+3.9%	+10	+16.4%	+1	72
General Support	196	166	177	177	-19	-9.7%	+11	+6.7%	+0	205
Health Care Assistants	1,577	1,670	1,714	1,708	+130	+8.3%	+38	+2.3%	-6	2,071
Home Help	418	415	420	422	+4	+0.9%	+7	+1.7%	+2	657
Care, other	237	275	271	268	+31	+12.9%	-7	-2.4%	-3	315
Patient & Client Care	2,233	2,359	2,405	2,398	+165	+7.4%	+39	+1.6%	-7	3,043



WTE Change by Staff Category

■ WTE change since DEC 2019 ■ WTE change since DEC 2022 ■ WTE change since SEP 2023



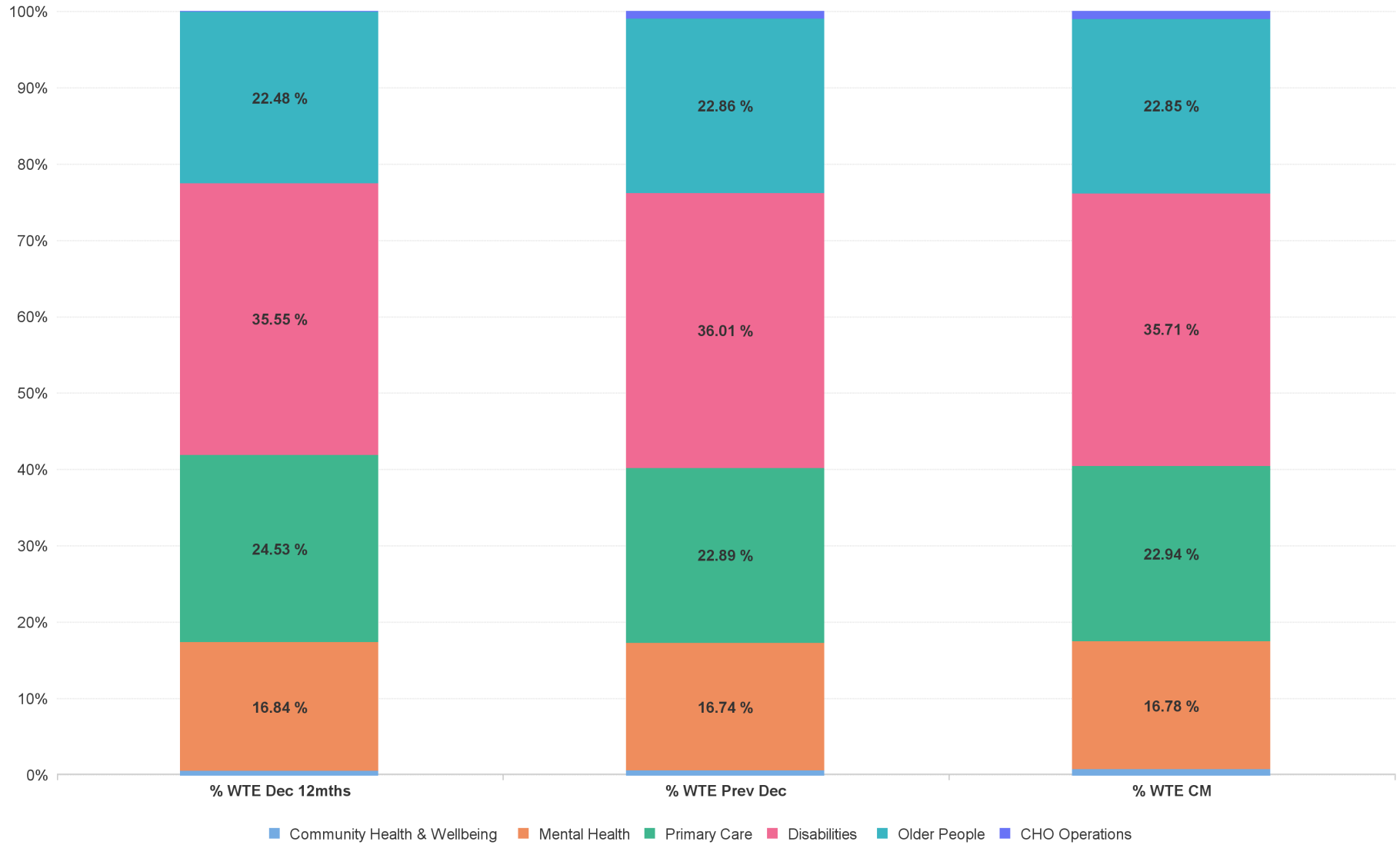
Employment Report by Care Group : OCT 2023

CHO 8 OCT 2023

Care Group OCT 2023	WTE DEC 2019	WTE DEC 2022	WTE SEP 2023	WTE OCT 2023	WTE change since DEC 2019	% WTE Change since Dec 2019	WTE change since DEC 2022	% WTE Change since Dec 2022	WTE change since SEP 2023	No. OCT 2023
Overall	6,135	6,514	6,751	6,748	+613	+10.0%	+235	+3.6%	-3	8,009
Community Health & Wellbeing		33	46	45	+45		+12	+36.9%	-1	48
Mental Health	1,098	1,091	1,143	1,132	+34	+3.1%	+42	+3.8%	-11	1,227
Primary Care	1,378	1,491	1,543	1,548	+170	+12.4%	+57	+3.8%	+6	1,827
Disabilities	2,162	2,345	2,413	2,410	+248	+11.5%	+65	+2.8%	-3	2,916
Older People	1,488	1,489	1,538	1,542	+54	+3.6%	+53	+3.5%	+4	1,918
CHO Operations	9	65	68	71	+62	+732.9%	+6	+9.8%	+3	73
Community Services	6,135	6,514	6,751	6,748	+613	+10.0%	+235	+3.6%	-3	8,009



% Total by Care Group



Employment Report by HSE/S38 : OCT 2023

CHO 8 OCT 2023

Administration OCT 2023	WTE DEC 2019	WTE DEC 2022	WTE SEP 2023	WTE OCT 2023	WTE change since DEC 2019	% WTE Change since Dec 2019	WTE change since DEC 2022	% WTE Change since Dec 2022	WTE change since SEP 2023	No. OCT 2023
Overall	6,135	6,514	6,751	6,748	+613	+10.0%	+235	+3.6%	-3	8,009
Health Service Executive	4,583	4,753	4,941	4,949	+366	+8.0%	+196	+4.1%	+8	5,794
Section 38 Voluntary Agencies	1,552	1,761	1,810	1,799	+247	+15.9%	+38	+2.2%	-11	2,215



Employment Report by HSE.S38: OCT 2023

Health Service Executive

HSE&S38 OCT 2023	WTE DEC 2019	WTE DEC 2022	WTE SEP 2023	WTE OCT 2023	WTE change since DEC 2019	% WTE Change since Dec 2019	WTE change since DEC 2022	% WTE Change since Dec 2022	WTE change since SEP 2023	No. OCT 2023
Total Health Service Executive	4,583	4,753	4,941	4,949	+366	+8.0%	+196	+4.1%	+8	5,794
Consultants	42	42	44	44	+2	+4.7%	+2	+4.7%	+0	47
Registrars	105	121	120	122	+17	+16.0%	+0	+0.2%	+1	126
SHO/ Interns	38	29	35	35	-3	-7.8%	+6	+21.1%	+0	36
Medical/ Dental, other	72	65	59	60	-13	-17.6%	-5	-8.2%	+0	78
Medical & Dental	258	258	258	261	+3	+1.2%	+3	+1.2%	+2	287
Nurse/ Midwife Manager	285	295	296	305	+20	+6.9%	+10	+3.3%	+9	324
Nurse/ Midwife Specialist & AN/MP	95	128	140	139	+45	+47.3%	+12	+9.2%	-1	153
Staff Nurse/ Staff Midwife	790	800	797	794	+4	+0.5%	-6	-0.7%	-3	897
Public Health Nurse	199	220	209	210	+11	+5.3%	-11	-4.9%	+0	251
Post-registration Nurse/ Midwife Student	2		3	5	+3	+142.4%	+5		+2	5
Pre-registration Nurse/ Midwife Intern	1	1	19	3	+2	+452.0%	-1	+452.0%	-16	13
Nursing/ Midwifery awaiting registration	2	8	9	10	+8	+376.0%	-2	+13.7%	+0	12
Nursing/ Midwifery Student	4	9	31	17	+13	+281.3%	+8	+92.6%	-14	30
Nursing/ Midwifery other	4	5	5	5	+1	+20.8%	-0	-2.2%	+0	5
Nursing & Midwifery	1,377	1,457	1,478	1,470	+92	+6.7%	+13	+0.9%	-8	1,660
Therapy Professions	363	368	407	410	+47	+12.9%	+42	+11.5%	+4	487
Health Science/ Diagnostics	7	13	12	12	+5	+70.3%	-1	-7.2%	+0	13
Social Care	12	12	16	15	+3	+26.1%	+4	+31.4%	-1	17
Pharmacy	7	11	10	10	+3	+37.8%	-1	-10.9%	+0	13
Psychologists	114	106	104	108	-6	-5.5%	+2	+1.8%	+4	117
Social Workers	76	96	96	98	+23	+29.9%	+2	+2.4%	+3	111
H&SC, Other	46	52	52	52	+5	+11.9%	-1	-1.6%	-1	59
Health & Social Care Professionals	626	658	696	705	+80	+12.7%	+47	+7.2%	+9	817
Management (VIII & above)	57	74	73	73	+15	+26.6%	-1	-1.9%	-0	75
Administrative/ Supervisory (V to VII)	148	213	237	244	+96	+64.5%	+31	+14.6%	+7	257
Clerical (III & IV)	461	474	568	572	+112	+24.3%	+98	+20.7%	+5	658
Management & Administrative	666	762	878	889	+223	+33.4%	+128	+16.8%	+12	990
Support	87	77	83	82	-5	-5.7%	+5	+5.9%	-1	101
Maintenance/ Technical	56	50	56	58	+2	+3.1%	+7	+14.0%	+1	58
General Support	142	128	139	139	-3	-2.2%	+12	+9.1%	+0	159
Health Care Assistants	949	886	883	877	-72	-7.6%	-9	-1.0%	-6	1,008
Home Help	418	415	420	422	+4	+0.9%	+7	+1.7%	+2	657
Care, other	146	190	188	186	+40	+27.3%	-4	-2.4%	-2	216
Patient & Client Care	1,514	1,491	1,492	1,485	-28	-1.9%	-6	-0.4%	-7	1,881

Section 38 Voluntary Agencies

HSE&S38 OCT 2023	WTE DEC 2019	WTE DEC 2022	WTE SEP 2023	WTE OCT 2023	WTE change since DEC 2019	% WTE Change since Dec 2019	WTE change since DEC 2022	% WTE Change since Dec 2022	WTE change since SEP 2023	No. OCT 2023
Total Section 38 Voluntary Agencies	1,552	1,761	1,810	1,799	+247	+15.9%	+38	+2.2%	-11	2,215
Registrars	1	1	1	1	+0	+0.0%	+0	+0.0%	+0	1
Medical & Dental	1	1	1	1	+0	+0.0%	+0	+0.0%	+0	1
Nurse/ Midwife Manager	86	81	78	79	-8	-8.9%	-2	-2.6%	+1	87
Nurse/ Midwife Specialist & AN/MP	5	4	2	3	-3	-51.7%	-1	-28.3%	+0	3
Staff Nurse/ Staff Midwife	208	223	217	215	+8	+3.7%	-8	-3.5%	-1	258
<i>Pre-registration Nurse/ Midwife Intern</i>			6	2	+2		+2		-3	6
<i>Nursing/ Midwifery awaiting registration</i>		1		0	+0		-2	-39.2%	+0	1
Nursing/ Midwifery Student		1	6	3	+3		+2	+273.4%	-3	7
Nursing/ Midwifery other	5	5	6	6	+1	+12.5%	+1	+13.6%	-0	7
Nursing & Midwifery	305	314	309	306	+1	+0.3%	-8	-2.6%	-4	362
Therapy Professions	14	10	9	9	-4	-31.0%	-1	-7.7%	+0	11
Social Care	356	410	415	411	+55	+15.4%	+1	+0.2%	-4	497
Psychologists	6	5	4	4	-2	-35.5%	-1	-20.0%	+0	4
Social Workers	12	12	12	12	-0	-2.7%	-0	-1.0%	+0	13
H&SC, Other	6	8	6	6	+0	+1.5%	-2	-23.1%	+0	8
Health & Social Care Professionals	393	445	446	442	+48	+12.3%	-3	-0.6%	-4	533
Management (VIII & above)	5	10	11	11	+6	+121.8%	+1	+10.0%	+0	11
Administrative/ Supervisory (V to VII)	28	27	31	32	+4	+15.7%	+5	+19.2%	+1	34
Clerical (III & IV)	46	58	61	57	+10	+22.0%	-1	-2.0%	-4	66
Management & Administrative	79	95	103	100	+21	+26.0%	+5	+5.4%	-3	111
Support	41	27	24	24	-17	-41.0%	-3	-12.6%	-0	32
Maintenance/ Technical	13	11	14	14	+1	+7.0%	+3	+27.5%	+0	14
General Support	54	38	38	38	-16	-29.3%	-0	-1.1%	-0	46
Health Care Assistants	628	784	830	830	+202	+32.2%	+47	+6.0%	+0	1,063
Care, other	91	84	82	82	-9	-10.2%	-2	-2.5%	-0	99
Patient & Client Care	719	868	912	913	+193	+26.8%	+45	+5.1%	+0	1,162

CHO 8 by S38 Agency: OCT 2023

Muiriosa Foundation Laois/Offaly

OCT 2023	WTE DEC 2019	WTE DEC 2022	WTE SEP 2023	WTE OCT 2023	WTE change since DEC 2019	% WTE Change since Dec 2019	WTE change since DEC 2022	% WTE Change since Dec 2022	WTE change since SEP 2023	No. OCT 2023
Total Muiriosa Foundation Laois/Off	302	394	415	415	+113.6	+37.6%	+20.9	+5.3%	+0.0	527
Nurse/ Midwife Manager	16	16	13	13	-2.6	-16.2%	-2.3	-14.8%	+0.6	16
Staff Nurse/ Staff Midwife	26	35	32	30	+4.3	+16.6%	-4.3	-12.4%	-1.6	40
Nursing/ Midwifery Student		1					-0.8	-100.0%		
Nursing & Midwifery	42	51	45	44	+1.7	+4.1%	-7.4	-14.5%	-1.0	56
Social Care	95	126	124	128	+33.0	+34.7%	+1.9	+1.5%	+4.0	154
Psychologists	1	1	1	1	+0.0	+0.0%	+0.0	+0.0%	+0.0	1
Social Workers	4	3	3	3	-1.2	-30.7%	-0.9	-24.6%	-0.2	3
H&SC, Other	1	2	2	2	+1.0	+134.1%	+0.0	+0.0%	+0.0	2
Health & Social Care Professionals	100	132	129	133	+32.8	+32.7%	+1.0	+0.8%	+3.7	160
Management (VIII & above)	1	3	2	2	+1.0	+100.0%	-1.0	-33.3%	+0.0	2
Administrative/ Supervisory (V to VII)	5	4	7	8	+2.8	+58.0%	+3.6	+90.0%	+0.6	8
Clerical (III & IV)	11	13	14	14	+2.6	+23.5%	+0.3	+1.9%	-0.5	16
Management & Administrative	17	20	23	23	+6.4	+37.8%	+2.9	+13.9%	+0.2	26
Support	1	1	2	2	+0.6	+54.3%	+0.6	+54.0%	-0.2	4
Maintenance/ Technical	2	2	2	2	-0.1	-4.9%	+0.0	+0.0%	+0.0	2
General Support	3	3	4	4	+0.5	+15.8%	+0.6	+19.5%	-0.2	6
Health Care Assistants	109	163	192	190	+80.5	+73.6%	+27.1	+16.7%	-2.0	254
Care, other	30	25	22	22	-8.4	-27.8%	-3.3	-13.3%	-0.7	25
Patient & Client Care	139	188	214	211	+72.1	+51.7%	+23.8	+12.7%	-2.7	279

Muiriosa Foundation Longford/Westmeath

OCT 2023	WTE DEC 2019	WTE DEC 2022	WTE SEP 2023	WTE OCT 2023	WTE change since DEC 2019	% WTE Change since Dec 2019	WTE change since DEC 2022	% WTE Change since Dec 2022	WTE change since SEP 2023	No. OCT 2023
Total Muiriosa Foundation Longford	270	359	374	367	+97.4	+36.1%	+8.4	+2.4%	-6.1	470
Nurse/ Midwife Manager	9	5	5	5	-4.6	-49.1%	+0.1	+2.4%	+0.1	5
Staff Nurse/ Staff Midwife	5	9	10	10	+4.2	+79.8%	+1.1	+12.3%	-0.2	12
Nursing & Midwifery	15	13	14	14	-0.4	-2.6%	+1.2	+8.8%	-0.1	17
Therapy Professions	3	2	2	2	-0.5	-20.0%	+0.0	+0.0%	+0.0	2
Social Care	94	117	117	110	+16.5	+17.6%	-6.9	-5.9%	-6.8	136
Psychologists	2	2	1	1	-0.9	-48.6%	-0.9	-47.4%	+0.0	1
Social Workers	4	4	6	6	+2.3	+60.6%	+1.7	+38.1%	+0.4	7
H&SC, Other	3	3	2	2	-0.9	-33.4%	-0.9	-32.9%	+0.1	3
Health & Social Care Professionals	105	128	128	121	+16.5	+15.7%	-7.0	-5.5%	-6.4	149
Management (VIII & above)		1	2	2	+2.0		+1.0	+100.0%	+0.0	2
Administrative/ Supervisory (V to VII)	4	7	6	6	+2.2	+55.5%	-0.7	-10.4%	-0.3	7
Clerical (III & IV)	10	16	17	17	+6.5	+62.5%	+1.3	+8.3%	+0.1	19
Management & Administrative	14	24	25	25	+10.7	+74.5%	+1.6	+6.7%	-0.1	28
Support	1	1	1	1	-0.0	-0.5%	+0.0	+0.0%	+0.0	1
Maintenance/ Technical	3	3	4	4	+1.0	+33.3%	+1.0	+33.3%	+0.0	4
General Support	4	4	5	5	+1.0	+26.6%	+1.0	+26.7%	+0.0	5
Health Care Assistants	115	177	188	189	+74.5	+64.9%	+12.8	+7.3%	+1.0	255
Care, other	17	14	13	13	-4.8	-27.7%	-1.1	-8.0%	-0.5	16
Patient & Client Care	132	190	201	202	+69.7	+52.7%	+11.7	+6.2%	+0.5	271

Muiriosa Foundation South Kildare

OCT 2023	WTE DEC 2019	WTE DEC 2022	WTE SEP 2023	WTE OCT 2023	WTE change since DEC 2019	% WTE Change since Dec 2019	WTE change since DEC 2022	% WTE Change since Dec 2022	WTE change since SEP 2023	No. OCT 2023
Total Muiriosa Foundation South Kil	334	352	363	359	+25.0	+7.5%	+6.4	+1.8%	-4.7	463
Nurse/ Midwife Manager	18	14	15	15	-3.0	-16.6%	+1.2	+8.8%	-0.1	18
Nurse/ Midwife Specialist & AN/MP	1	2	1	1	-0.7	-53.7%	-1.0	-61.0%	+0.1	1
Staff Nurse/ Staff Midwife	24	21	19	20	-3.9	-16.4%	-1.0	-4.7%	+0.4	29
Nursing/ Midwifery Student			4	1	+0.7		+0.7		-2.8	3
Nursing/ Midwifery other	5	5	5	5	-0.1	-2.3%	-0.1	-1.3%	-0.1	6
Nursing & Midwifery	48	42	44	41	-7.0	-14.6%	-0.2	-0.4%	-2.6	57
Therapy Professions	8	6	5	5	-3.7	-44.7%	-1.8	-27.9%	+0.0	6
Social Care	89	98	99	98	+8.7	+9.8%	-0.4	-0.4%	-1.4	122
Psychologists	2	2	2	2	-0.0	-2.0%	+0.0	+0.0%	+0.0	2
Social Workers	2	2	1	1	-1.4	-58.4%	-0.9	-46.2%	+0.0	1
H&SC, Other	3	3	3	3	+0.0	+0.1%	+0.0	+0.0%	+0.1	3
Health & Social Care Professionals	104	111	109	108	+3.5	+3.4%	-3.0	-2.7%	-1.3	134
Management (VIII & above)	3	4	5	5	+2.0	+66.7%	+1.0	+25.0%	+0.0	5
Administrative/ Supervisory (V to VII)	13	10	10	11	-2.6	-19.0%	+0.9	+9.0%	+0.9	11
Clerical (III & IV)	14	17	20	16	+2.6	+19.2%	-1.3	-7.4%	-4.0	19
Management & Administrative	30	31	35	32	+2.0	+6.8%	+0.6	+1.9%	-3.1	35
Support	16	12	10	10	-5.4	-35.0%	-1.7	-14.2%	+0.0	12
Maintenance/ Technical	5	4	6	6	+1.0	+20.0%	+2.0	+50.0%	+0.0	6
General Support	21	16	16	16	-4.4	-21.6%	+0.3	+2.1%	+0.0	18
Health Care Assistants	123	146	152	153	+30.6	+24.9%	+7.6	+5.2%	+1.3	209
Care, other	8	7	7	8	+0.3	+3.4%	+1.1	+15.2%	+1.0	10
Patient & Client Care	131	153	159	161	+30.9	+23.7%	+8.6	+5.6%	+2.3	219

St. John of God Drumcar

OCT 2023	WTE DEC 2019	WTE DEC 2022	WTE SEP 2023	WTE OCT 2023	WTE change since DEC 2019	% WTE Change since Dec 2019	WTE change since DEC 2022	% WTE Change since Dec 2022	WTE change since SEP 2023	No. OCT 2023
Total St. John of God Drumcar	647	655	658	658	+11.3	+1.7%	+2.6	+0.4%	+0.0	755
Registrars	1	1	1	1	+0.0	+0.0%	+0.0	+0.0%	+0.0	1
Medical & Dental	1	1	1	1	+0.0	+0.0%	+0.0	+0.0%	+0.0	1
Nurse/ Midwife Manager	43	47	46	46	+2.5	+5.8%	-1.1	-2.3%	+0.0	48
Nurse/ Midwife Specialist & AN/MP	4	2	2	2	-2.0	-51.0%	+0.0	+0.0%	+0.0	2
Staff Nurse/ Staff Midwife	153	159	156	156	+3.0	+1.9%	-3.7	-2.3%	+0.0	177
Nursing/ Midwifery Student			2	2	+2.3		+2.3		+0.0	4
Nursing/ Midwifery other			1	1	+0.8		+0.8		+0.0	1
Nursing & Midwifery	200	208	206	206	+6.6	+3.3%	-1.7	-0.8%	+0.0	232
Therapy Professions	3	2	3	3	+0.0	+0.0%	+1.0	+55.6%	+0.0	3
Social Care	78	69	75	75	-3.3	-4.2%	+6.3	+9.1%	+0.0	85
Psychologists	1				-1.0	-100.0%				
Social Workers	2	2	2	2	-0.1	-3.6%	-0.1	-5.0%	+0.0	2
H&SC, Other		1					-1.0	-100.0%		
Health & Social Care Professionals	84	74	80	80	-4.4	-5.2%	+6.2	+8.4%	+0.0	90
Management (VIII & above)	1	2	2	2	+1.0	+108.3%	+0.0	+0.0%	+0.0	2
Administrative/ Supervisory (V to VII)	6	6	8	8	+2.0	+34.0%	+1.4	+22.9%	+0.0	8
Clerical (III & IV)	11	11	10	10	-1.5	-13.3%	-1.4	-12.3%	+0.0	12
Management & Administrative	18	19	20	20	+1.5	+8.3%	+0.1	+0.3%	+0.0	22
Support	23	14	11	11	-11.8	-50.9%	-2.4	-17.3%	+0.0	15
Maintenance/ Technical	3	2	2	2	-1.0	-33.8%	+0.0	+0.5%	+0.0	2
General Support	26	16	13	13	-12.8	-49.0%	-2.4	-15.1%	+0.0	17
Health Care Assistants	281	299	298	298	+16.8	+6.0%	-0.8	-0.3%	+0.0	345
Care, other	36	39	40	40	+3.6	+10.0%	+1.3	+3.4%	+0.0	48
Patient & Client Care	317	337	338	338	+20.5	+6.4%	+0.5	+0.2%	+0.0	393

Employment Report by Community Health & Wellbeing OCT 2023

CHO 8 OCT 2023

Community Health & Wellbeing OCT 2023	WTE DEC 2019	WTE DEC 2022	WTE SEP 2023	WTE OCT 2023	WTE change since DEC 2019	% WTE Change since Dec 2019	WTE change since DEC 2022	% WTE Change since Dec 2022	WTE change since SEP 2023	No. OCT 2023
Overall		33	46	45	+45		+12	+36.9%	-1	48
Dietitians		1.3	1.41	1.43	+1.4		-0.04		0.02	2
Therapy Professions		1	1	1	+1		+0	+10.0%	+0	2
Health & Social Care Professionals		1	1	1	+1		+0	+10.0%	+0	2
Executive Management			1				-0.86		-1	
Senior Management (VIII & GM)		0.92	1.23	1	+1.0		0.09		-0.23	1
Management (VIII & above)		1	2	1	+1		+0	+8.7%	-1	1
Middle Management (V-VII)		9.7	8.61	8.6	+8.6		-0.46		-0.01	9
Administrative/ Supervisory (V to VII)		10	9	9	+9		-1	-11.3%	0	9
General Administrative (III & IV)		3.61	6.79	6.79	+6.8		3.08		0	7
Clerical (III & IV)		4	7	7	+7		+3	+88.1%	+0	7
Management & Administrative		14	18	16	+16		+2	+15.2%	-1	17
Other Care Grades		17.03	27	26.74	+26.7		10.09		-0.26	29
Care, other		17	27	27	+27		+10	+57.0%	0	29
Patient & Client Care		17	27	27	+27		+10	+57.0%	0	29



Employment Report by Mental Health OCT 2023

CHO 8 OCT 2023

Mental HealthOCT 2023	WTE DEC 2019	WTE DEC 2022	WTE SEP 2023	WTE OCT 2023	WTE change since DEC 2019	% WTE Change since Dec 2019	WTE change since DEC 2022	% WTE Change since Dec 2022	WTE change since SEP 2023	No. OCT 2023
Overall	1,098	1,091	1,143	1,132	+34	+3.1%	+42	+3.8%	-11	1,227
Consultants	35	36	38	38	+3	+7.9%	+2	+5.0%	+0	40
Registrars	26	29	29	30	+5	+18.2%	+1	+4.3%	+1	32
SHO/ Interns	36	29	34	34	-2	-5.4%	+5	+17.6%	+0	35
Medical & Dental	97	94	101	103	+6	+5.7%	+8	+8.7%	+1	107
Nurse/ Midwife Manager	121	114	117	120	-1	-0.5%	+6	+5.4%	+3	123
Nurse/ Midwife Specialist & AN/MP	56	75	80	79	+23	+41.6%	+5	+6.6%	-1	84
Staff Nurse/ Staff Midwife	332	323	316	315	-16	-5.0%	-8	-2.5%	-1	336
Pre-registration Nurse/ Midwife Intern	1	1	19	3	+2	+452.0%	+2	+452.0%	-16	13
Nursing/ Midwifery awaiting registration	2	8	9	10	+8	+376.0%	+1	+13.7%	+0	12
Nursing/ Midwifery Student	3	9	28	12	+10	+391.2%	+3	+38.4%	-16	25
Nursing/ Midwifery other	4	3	3	3	-1	-26.6%	+0	+0.0%	+0	3
Nursing & Midwifery	515	523	544	530	+15	+2.9%	+6	+1.2%	-15	571
Therapy Professions	44	36	35	36	-8	-18.6%	+0	+0.5%	+1	41
Social Care	7	6	5	5	-2	-31.7%	-1	-21.9%	0	6
Pharmacy	1	2	3	3	+2	+156.0%	+1	+61.0%	+0	4
Psychologists	39	36	39	40	+1	+2.2%	+4	+10.5%	+2	43
Social Workers	41	50	52	54	+13	+31.7%	+5	+9.1%	+2	61
H&SC, Other	20	16	18	18	-3	-14.4%	+1	+8.0%	0	21
Health & Social Care Professionals	154	146	151	156	+2	+1.3%	+9	+6.4%	+5	176
Management (VIII & above)	3	3	4	4	+1	+36.1%	+1	+33.3%	+0	4
Administrative/ Supervisory (V to VII)	22	28	28	29	+7	+30.6%	+1	+3.7%	+2	31
Clerical (III & IV)	88	88	108	107	+19	+21.2%	+19	+22.0%	-1	118
Management & Administrative	114	119	139	140	+27	+23.4%	+21	+18.0%	+1	153
Support	33	27	24	23	-10	-29.4%	-4	-14.9%	-1	25
Maintenance/ Technical	26	25	29	29	+2	+9.2%	+4	+15.7%	+0	29
General Support	59	52	53	52	-7	-12.2%	0	-0.3%	-1	54
Health Care Assistants	157	152	152	149	-7	-4.7%	-2	-1.5%	-3	162
Care, other	4	5	3	3	0	-4.0%	-1	-24.4%	+0	4
Patient & Client Care	160	156	155	153	-8	-4.7%	-3	-2.2%	-2	166



Employment Report by Primary Care OCT 2023

CHO 8 OCT 2023

Primary Care OCT 2023	WTE DEC 2019	WTE DEC 2022	WTE SEP 2023	WTE OCT 2023	WTE change since DEC 2019	% WTE Change since Dec 2019	WTE change since DEC 2022	% WTE Change since Dec 2022	WTE change since SEP 2023	No. OCT 2023
Overall	1,378	1,491	1,543	1,548	+170	+12.4%	+57	+3.8%	+6	1,827
Consultants	6	6	6	6	+0	+3.2%	+0	+2.3%	0	7
Registrars	78	92	91	91	+13	+16.7%	-1	-1.1%	+0	94
SHO/ Interns	2		1	1	-1	-50.0%	+1		+0	1
Medical/ Dental, other	61	53	48	48	-13	-20.7%	-5	-10.0%	+0	59
Medical & Dental	147	152	146	146	0	-0.2%	-5	-3.4%	+1	161
Nurse/ Midwife Manager	51	60	56	58	+7	+13.5%	-2	-3.1%	+2	66
Nurse/ Midwife Specialist & AN/MP	35	47	50	50	+16	+44.8%	+3	+5.8%	0	59
Staff Nurse/ Staff Midwife	98	110	111	107	+9	+9.3%	-2	-2.3%	-4	149
Public Health Nurse	196	217	205	205	+9	+4.8%	-12	-5.4%	+0	246
Post-registration Nurse/ Midwife Student	2		3	5	+3	+142.4%	+5		+2	5
Nursing/ Midwifery Student	2		3	5	+3	+142.4%	+5		+2	5
Nursing & Midwifery	382	434	425	426	+44	+11.5%	-8	-2.0%	+1	525
Therapy Professions	221	222	258	258	+37	+16.9%	+36	+16.2%	0	305
Health Science/ Diagnostics	5	10	9	9	+4	+78.2%	-1	-9.2%	+0	10
Social Care		1	7	7	+7		+6	+584.0%	0	7
Pharmacy	4	7	5	5	+2	+43.2%	-1	-20.8%	+0	6
Psychologists	56	46	44	46	-9	-17.1%	+1	+1.1%	+3	51
Social Workers	15	28	27	27	+12	+82.4%	-1	-3.4%	0	30
H&SC, Other	25	36	34	34	+9	+36.4%	-2	-5.9%	0	38
Health & Social Care Professionals	325	350	385	386	+62	+19.0%	+37	+10.5%	+2	447
Management (VIII & above)	44	35	33	33	-11	-24.8%	-2	-6.3%	+1	35
Administrative/ Supervisory (V to VII)	76	95	103	107	+32	+42.0%	+13	+13.2%	+4	113
Clerical (III & IV)	260	267	302	301	+41	+15.9%	+34	+12.9%	0	360
Management & Administrative	380	397	437	442	+62	+16.4%	+45	+11.2%	+5	508
Support	23	19	26	26	+3	+14.4%	+7	+33.8%	+0	40
Maintenance/ Technical	3	2	2	2	-1	-28.8%	+0	+0.5%	+0	2
General Support	25	21	28	28	+2	+9.6%	+7	+30.7%	+0	42
Health Care Assistants	21	36	26	24	+3	+14.9%	-12	-33.5%	-2	32
Home Help	0				0	-100.0%				
Care, other	98	101	97	96	-2	-2.3%	-5	-5.2%	-1	112
Patient & Client Care	120	137	123	120	+0	+0.4%	-17	-12.6%	-3	144

Employment Report by Disabilities OCT 2023

CHO 8 OCT 2023

Disabilities OCT 2023	WTE DEC 2019	WTE DEC 2022	WTE SEP 2023	WTE OCT 2023	WTE change since DEC 2019	% WTE Change since Dec 2019	WTE change since DEC 2022	% WTE Change since Dec 2022	WTE change since SEP 2023	No. OCT 2023
Overall	2,162	2,345	2,413	2,410	+248	+11.5%	+65	+2.8%	-3	2,916
Consultants	1				-1	-100.0%				
Registrars	2	1	1	1	-1	-50.0%	+0	+0.0%	+0	1
Medical/ Dental, other	1	1	1	1	+0	+0.0%	+0	+0.0%	+0	1
Medical & Dental	4	2	2	2	-2	-50.0%	+0	+0.0%	+0	2
Nurse/ Midwife Manager	123	114	113	116	-7	-5.6%	+2	+2.1%	+3	126
Nurse/ Midwife Specialist & AN/MP	7	4	5	5	-2	-23.3%	+1	+21.9%	+0	6
Staff Nurse/ Staff Midwife	319	335	327	328	+9	+2.9%	-7	-2.0%	+0	381
Public Health Nurse	1	1	1	1	+0	+0.0%	0	-4.0%	+0	1
Pre-registration Nurse/ Midwife Intern			6	2	+2		+2		-3	6
Nursing/ Midwifery awaiting registration		1		0	+0		0	-39.2%	+0	1
Nursing/ Midwifery Student		1	6	3	+3		+2	+273.4%	-3	7
Nursing/ Midwifery other	5	5	6	6	+1	+12.5%	+1	+13.6%	0	7
Nursing & Midwifery	455	460	459	460	+4	+0.9%	-1	-0.1%	+1	528
Therapy Professions	92	92	98	99	+7	+8.0%	+7	+7.1%	+0	119
Health Science/ Diagnostics	2	2	2	2	+0	+0.0%	+0	+0.0%	+0	2
Social Care	361	414	419	414	+53	+14.8%	+0	+0.0%	-4	501
Psychologists	25	29	26	25	+0	+1.7%	-3	-11.7%	0	27
Social Workers	24	24	23	24	0	-1.5%	0	-1.4%	+1	27
H&SC, Other	7	8	6	6	-1	-7.8%	-2	-23.1%	+0	8
Health & Social Care Professionals	510	569	574	570	+60	+11.8%	+1	+0.2%	-3	684
Management (VIII & above)	9	18	17	18	+9	+103.6%	-1	-2.9%	+0	18
Administrative/ Supervisory (V to VII)	56	55	66	68	+12	+20.8%	+13	+22.8%	+2	72
Clerical (III & IV)	84	94	111	108	+24	+28.2%	+14	+15.0%	-2	124
Management & Administrative	149	168	194	194	+45	+29.9%	+26	+15.6%	+0	214
Support	46	33	27	27	-19	-41.2%	-5	-16.1%	0	36
Maintenance/ Technical	16	12	16	16	0	-0.8%	+4	+28.5%	0	16
General Support	62	45	43	43	-19	-30.8%	-2	-3.8%	0	52
Health Care Assistants	844	965	1,013	1,013	+170	+20.1%	+48	+5.0%	+0	1,271
Home Help	22	21	18	17	-5	-22.2%	-4	-18.0%	0	37
Care, other	115	115	110	110	-5	-4.2%	-5	-4.0%	0	128
Patient & Client Care	981	1,101	1,141	1,141	+160	+16.3%	+40	+3.6%	0	1,436



Employment Report by Older People OCT 2023

CHO 8 OCT 2023

Older People OCT 2023	WTE DEC 2019	WTE DEC 2022	WTE SEP 2023	WTE OCT 2023	WTE change since DEC 2019	% WTE Change since Dec 2019	WTE change since DEC 2022	% WTE Change since Dec 2022	WTE change since SEP 2023	No. OCT 2023
Overall	1,488	1,489	1,538	1,542	+54	+3.6%	+53	+3.5%	+4	1,918
Medical/ Dental, other	11	11	11	11	0	-1.8%	+0	+0.0%	+0	18
Medical & Dental	11	11	11	11	0	-1.8%	+0	+0.0%	+0	18
Nurse/ Midwife Manager	77	86	86	87	+11	+13.7%	+1	+1.1%	+1	94
Nurse/ Midwife Specialist & AN/MP	2	4	5	5	+3	+150.0%	+1	+26.6%	+0	5
Staff Nurse/ Staff Midwife	249	255	259	259	+10	+3.8%	+4	+1.4%	+0	289
Public Health Nurse	2	2	3	3	+1	+46.6%	+1	+41.1%	+0	4
Nursing/ Midwifery other		2	2	2	+2		0	-5.5%	+0	2
Nursing & Midwifery	330	350	355	356	+26	+7.9%	+7	+1.9%	+1	394
Therapy Professions	21	26	22	25	+4	+19.3%	-1	-5.1%	+2	30
Health Science/ Diagnostics		1	1	1	+1		0	-1.0%	+0	1
Pharmacy	3	2	2	2	0	-17.6%	+0	+10.2%	+0	3
Social Workers	7	1	1	1	-6	-85.7%	0	-5.1%	-1	2
Health & Social Care Professionals	30	30	27	29	-1	-3.7%	-1	-4.0%	+2	36
Management (VIII & above)	6	9	11	11	+5	+95.8%	+2	+21.0%	+0	11
Administrative/ Supervisory (V to VII)	20	31	37	36	+16	+79.5%	+5	+15.6%	-1	38
Clerical (III & IV)	70	65	85	88	+18	+25.5%	+23	+34.8%	+2	96
Management & Administrative	95	105	133	135	+39	+41.0%	+29	+27.9%	+1	145
Support	26	26	29	30	+4	+15.0%	+4	+14.6%	+0	32
Maintenance/ Technical	24	22	24	25	+1	+5.0%	+3	+11.9%	+1	25
General Support	50	48	53	55	+5	+10.2%	+6	+13.3%	+2	57
Health Care Assistants	556	517	523	521	-35	-6.3%	+4	+0.8%	-2	606
Home Help	395	393	402	404	+9	+2.3%	+11	+2.8%	+2	620
Care, other	20	35	33	32	+11	+54.1%	-3	-9.6%	-1	42
Patient & Client Care	972	946	959	957	-15	-1.6%	+12	+1.2%	-1	1268

Employment Report by CHO Operations OCT 2023

CHO 8 OCT 2023

CHO Operations OCT 2023	WTE DEC 2019	WTE DEC 2022	WTE SEP 2023	WTE OCT 2023	WTE change since DEC 2019	% WTE Change since Dec 2019	WTE change since DEC 2022	% WTE Change since Dec 2022	WTE change since SEP 2023	No. OCT 2023
Overall	9	65	68	71	+62	7.33	+6	+9.8%	+3	73
Nurse/ Midwife Manager		2	2	2	+2		+0	+0.0%	+0	2
Nurse/ Midwife Specialist & AN/MP		1	2	2	+2		+1	+113.6%	+0	2
Nursing & Midwifery		3	4	4	+4		+1	+34.7%	+0	4
Therapy Professions		1	1	1	+1		+0	+0.0%	+0	1
Pharmacy		1					-1	-100.0%		
Social Workers	1	5	4	4	+3	3.44	-1	-20.7%	0	4
Health & Social Care Professionals	1	7	5	5	+4	4.6	-2	-28.9%	0	5
Management (VIII & above)	1	17	17	17	+16	15.76	-1	-3.3%	0	17
Administrative/ Supervisory (V to VII)	2	21	26	27	+25	12.59	+6	+30.8%	+1	28
Clerical (III & IV)	5	15	16	18	+14	2.93	+3	+23.5%	+2	19
Management & Administrative	8	53	59	62	+55	7.13	+9	+17.6%	+3	64
Care, other		2					-2	-100.0%		
Patient & Client Care		2					-2	-100.0%		

Employment Report by Care Group (HSE Only) OCT 2023

CHO 8 OCT 2023

Community Health & Wellbeing

Community Health & Wellbeing HSE Only OCT 2023	WTE DEC 2019	WTE DEC 2022	WTE SEP 2023	WTE OCT 2023	WTE change since DEC 2019	% WTE Change since Dec 2019	WTE change since DEC 2022	% WTE Change since Dec 2022	WTE change since SEP 2023	No. OCT 2023
Overall		33	46	45	+45		+12	+36.9%	-1	48
Therapy Professions		1	1	1	+1		+0	+10.0%	+0	2
Health & Social Care Professionals		1	1	1	+1		+0	+10.0%	+0	2
Management (VIII & above)		1	2	1	+1		+0	+8.7%	-1	1
Administrative/ Supervisory (V to VII)		10	9	9	+9		-1	-11.3%	0	9
Clerical (III & IV)		4	7	7	+7		+3	+88.1%	+0	7
Management & Administrative		14	18	16	+16		+2	+15.2%	-1	17
Care, other		17	27	27	+27		+10	+57.0%	0	29
Patient & Client Care		17	27	27	+27		+10	+57.0%	0	29



Mental Health

Mental Health HSE Only OCT 2023	WTE DEC 2019	WTE DEC 2022	WTE SEP 2023	WTE OCT 2023	WTE change since DEC 2019	% WTE Change since Dec 2019	WTE change since DEC 2022	% WTE Change since Dec 2022	WTE change since SEP 2023	No. OCT 2023
Overall	1,098	1,091	1,143	1,132	+34	+3.1%	+42	+3.8%	-11	1,227
Consultants	35	36	38	38	+3	+7.9%	+2	+5.0%	+0	40
Registrars	26	29	29	30	+5	+18.2%	+1	+4.3%	+1	32
SHO/ Interns	36	29	34	34	-2	-5.4%	+5	+17.6%	+0	35
Medical & Dental	97	94	101	103	+6	+5.7%	+8	+8.7%	+1	107
Nurse/ Midwife Manager	121	114	117	120	-1	-0.5%	+6	+5.4%	+3	123
Nurse/ Midwife Specialist & AN/MP	56	75	80	79	+23	+41.6%	+5	+6.6%	-1	84
Staff Nurse/ Staff Midwife	332	323	316	315	-16	-5.0%	-8	-2.5%	-1	336
Pre-registration Nurse/ Midwife Intern	1	1	19	3	+2	+452.0%	+2	+452.0%	-16	13
Nursing/ Midwifery awaiting registration	2	8	9	10	+8	+376.0%	+1	+13.7%	+0	12
Nursing/ Midwifery Student	3	9	28	12	+10	+391.2%	+3	+38.4%	-16	25
Nursing/ Midwifery other	4	3	3	3	-1	-26.6%	+0	+0.0%	+0	3
Nursing & Midwifery	515	523	544	530	+15	+2.9%	+6	+1.2%	-15	571
Therapy Professions	44	36	35	36	-8	-18.6%	+0	+0.5%	+1	41
Social Care	7	6	5	5	-2	-31.7%	-1	-21.9%	0	6
Pharmacy	1	2	3	3	+2	+156.0%	+1	+61.0%	+0	4
Psychologists	39	36	39	40	+1	+2.2%	+4	+10.5%	+2	43
Social Workers	41	50	52	54	+13	+31.7%	+5	+9.1%	+2	61
H&SC, Other	20	16	18	18	-3	-14.4%	+1	+8.0%	0	21
Health & Social Care Professionals	154	146	151	156	+2	+1.3%	+9	+6.4%	+5	176
Management (VIII & above)	3	3	4	4	+1	+36.1%	+1	+33.3%	+0	4
Administrative/ Supervisory (V to VII)	22	28	28	29	+7	+30.6%	+1	+3.7%	+2	31
Clerical (III & IV)	88	88	108	107	+19	+21.2%	+19	+22.0%	-1	118
Management & Administrative	114	119	139	140	+27	+23.4%	+21	+18.0%	+1	153
Support	33	27	24	23	-10	-29.4%	-4	-14.9%	-1	25
Maintenance/ Technical	26	25	29	29	+2	+9.2%	+4	+15.7%	+0	29
General Support	59	52	53	52	-7	-12.2%	0	-0.3%	-1	54
Health Care Assistants	157	152	152	149	-7	-4.7%	-2	-1.5%	-3	162
Care, other	4	5	3	3	0	-4.0%	-1	-24.4%	+0	4
Patient & Client Care	160	156	155	153	-8	-4.7%	-3	-2.2%	-2	166

Primary Care

Primary Care HSE Only OCT 2023	WTE DEC 2019	WTE DEC 2022	WTE SEP 2023	WTE OCT 2023	WTE change since DEC 2019	% WTE Change since Dec 2019	WTE change since DEC 2022	% WTE Change since Dec 2022	WTE change since SEP 2023	No. OCT 2023
Overall	1,378	1,491	1,543	1,548	+170	+12.4%	+57	+3.8%	+6	1,827
Consultants	6	6	6	6	+0	+3.2%	+0	+2.3%	0	7
Registrars	78	92	91	91	+13	+16.7%	-1	-1.1%	+0	94
SHO/ Interns	2		1	1	-1	-50.0%	+1		+0	1
Medical/ Dental, other	61	53	48	48	-13	-20.7%	-5	-10.0%	+0	59
Medical & Dental	147	152	146	146	0	-0.2%	-5	-3.4%	+1	161
Nurse/ Midwife Manager	51	60	56	58	+7	+13.5%	-2	-3.1%	+2	66
Nurse/ Midwife Specialist & AN/MP	35	47	50	50	+16	+44.8%	+3	+5.8%	0	59
Staff Nurse/ Staff Midwife	98	110	111	107	+9	+9.3%	-2	-2.3%	-4	149
Public Health Nurse	196	217	205	205	+9	+4.8%	-12	-5.4%	+0	246
Post-registration Nurse/ Midwife Student	2		3	5	+3	+142.4%	+5		+2	5
Nursing/ Midwifery Student	2		3	5	+3	+142.4%	+5		+2	5
Nursing & Midwifery	382	434	425	426	+44	+11.5%	-8	-2.0%	+1	525
Therapy Professions	221	222	258	258	+37	+16.9%	+36	+16.2%	0	305
Health Science/ Diagnostics	5	10	9	9	+4	+78.2%	-1	-9.2%	+0	10
Social Care		1	7	7	+7		+6	+584.0%	0	7
Pharmacy	4	7	5	5	+2	+43.2%	-1	-20.8%	+0	6
Psychologists	56	46	44	46	-9	-17.1%	+1	+1.1%	+3	51
Social Workers	15	28	27	27	+12	+82.4%	-1	-3.4%	0	30
H&SC, Other	25	36	34	34	+9	+36.4%	-2	-5.9%	0	38
Health & Social Care Professionals	325	350	385	386	+62	+19.0%	+37	+10.5%	+2	447
Management (VIII & above)	44	35	33	33	-11	-24.8%	-2	-6.3%	+1	35
Administrative/ Supervisory (V to VII)	76	95	103	107	+32	+42.0%	+13	+13.2%	+4	113
Clerical (III & IV)	260	267	302	301	+41	+15.9%	+34	+12.9%	0	360
Management & Administrative	380	397	437	442	+62	+16.4%	+45	+11.2%	+5	508
Support	23	19	26	26	+3	+14.4%	+7	+33.8%	+0	40
Maintenance/ Technical	3	2	2	2	-1	-28.8%	+0	+0.5%	+0	2
General Support	25	21	28	28	+2	+9.6%	+7	+30.7%	+0	42
Health Care Assistants	21	36	26	24	+3	+14.9%	-12	-33.5%	-2	32
Home Help	0				0	-100.0%				
Care, other	98	101	97	96	-2	-2.3%	-5	-5.2%	-1	112
Patient & Client Care	120	137	123	120	+0	+0.4%	-17	-12.6%	-3	144

Disabilities

Disabilities HSE Only OCT 2023	WTE DEC 2019	WTE DEC 2022	WTE SEP 2023	WTE OCT 2023	WTE change since DEC 2019	% WTE Change since Dec 2019	WTE change since DEC 2022	% WTE Change since Dec 2022	WTE change since SEP 2023	No. OCT 2023
Overall	610	585	603	611	+1	+0.1%	+26	+4.5%	+8	701
Consultants	1				-1	-100.0%				
Registrars	1				-1	-100.0%				
Medical/ Dental, other	1	1	1	1	+0	+0.0%	+0	+0.0%	+0	1
Medical & Dental	3	1	1	1	-2	-66.7%	+0	+0.0%	+0	1
Nurse/ Midwife Manager	37	33	35	38	+1	+2.2%	+4	+13.4%	+3	39
Nurse/ Midwife Specialist & AN/MP	2	1	3	3	+1	+57.0%	+2	+210.6%	+0	3
Staff Nurse/ Staff Midwife	111	111	111	112	+2	+1.4%	+1	+1.0%	+2	123
Public Health Nurse	1	1	1	1	+0	+0.0%	0	-4.0%	+0	1
Nursing & Midwifery	150	146	149	154	+3	+2.3%	+7	+5.1%	+4	166
Therapy Professions	78	82	89	89	+12	+14.8%	+7	+8.9%	+0	108
Health Science/ Diagnostics	2	2	2	2	+0	+0.0%	+0	+0.0%	+0	2
Social Care	5	4	4	3	-1	-29.8%	-1	-20.3%	0	4
Psychologists	19	24	22	22	+2	+12.4%	-2	-10.1%	0	23
Social Workers	12	12	11	12	0	-0.3%	0	-1.7%	+1	14
H&SC, Other	1				-1	-100.0%				
Health & Social Care Professionals	117	125	128	129	+12	+10.1%	+4	+3.0%	+0	151
Management (VIII & above)	4	8	6	7	+3	+80.2%	-2	-18.2%	+0	7
Administrative/ Supervisory (V to VII)	28	28	35	35	+7	+25.9%	+7	+26.3%	+1	38
Clerical (III & IV)	38	36	50	52	+14	+35.8%	+15	+41.9%	+2	58
Management & Administrative	70	73	91	94	+24	+34.3%	+21	+28.9%	+3	103
Support	6	5	3	3	-2	-43.1%	-2	-35.2%	+0	4
Maintenance/ Technical	3	1	2	2	-1	-34.3%	+1	+35.9%	0	2
General Support	9	7	5	5	-4	-40.1%	-1	-19.4%	0	6
Health Care Assistants	215	181	183	183	-33	-15.1%	+2	+0.9%	+0	208
Home Help	22	21	18	17	-5	-22.2%	-4	-18.0%	0	37
Care, other	24	31	28	28	+4	+19.0%	-2	-8.1%	0	29
Patient & Client Care	262	233	229	228	-33	-12.6%	-5	-2.0%	0	274

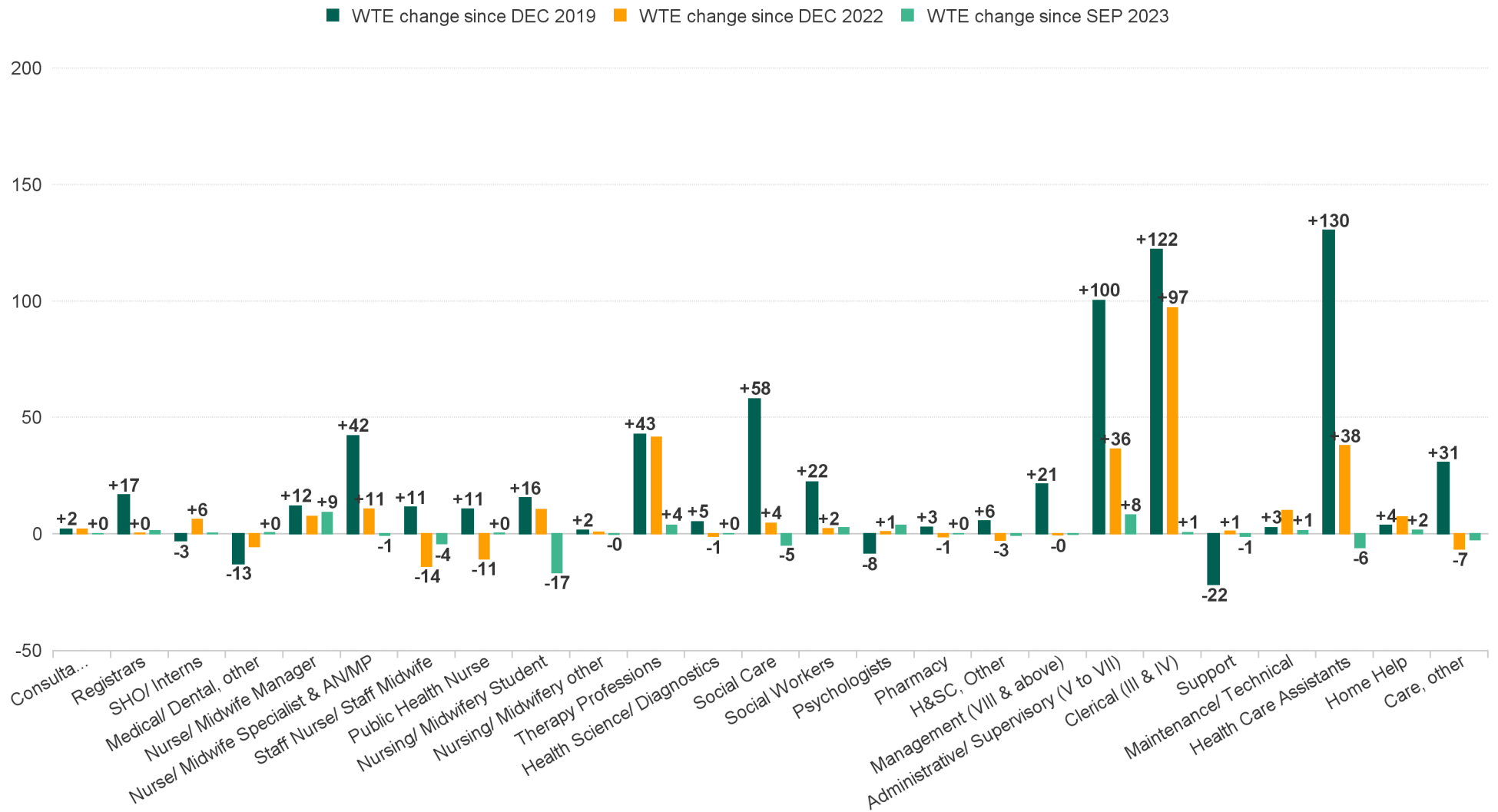
Older People

Older People HSE Only OCT 2023	WTE DEC 2019	WTE DEC 2022	WTE SEP 2023	WTE OCT 2023	WTE change since DEC 2019	% WTE Change since Dec 2019	WTE change since DEC 2022	% WTE Change since Dec 2022	WTE change since SEP 2023	No. OCT 2023
Overall	1,488	1,489	1,538	1,542	+54	+3.6%	+53	+3.5%	+4	1,918
Medical/ Dental, other	11	11	11	11	0	-1.8%	+0	+0.0%	+0	18
Medical & Dental	11	11	11	11	0	-1.8%	+0	+0.0%	+0	18
Nurse/ Midwife Manager	77	86	86	87	+11	+13.7%	+1	+1.1%	+1	94
Nurse/ Midwife Specialist & AN/MP	2	4	5	5	+3	+150.0%	+1	+26.6%	+0	5
Staff Nurse/ Staff Midwife	249	255	259	259	+10	+3.8%	+4	+1.4%	+0	289
Public Health Nurse	2	2	3	3	+1	+46.6%	+1	+41.1%	+0	4
Nursing/ Midwifery other		2	2	2	+2		0	-5.5%	+0	2
Nursing & Midwifery	330	350	355	356	+26	+7.9%	+7	+1.9%	+1	394
Therapy Professions	21	26	22	25	+4	+19.3%	-1	-5.1%	+2	30
Health Science/ Diagnostics		1	1	1	+1		0	-1.0%	+0	1
Pharmacy	3	2	2	2	0	-17.6%	+0	+10.2%	+0	3
Social Workers	7	1	1	1	-6	-85.7%	0	-5.1%	-1	2
Health & Social Care Professionals	30	30	27	29	-1	-3.7%	-1	-4.0%	+2	36
Management (VIII & above)	6	9	11	11	+5	+95.8%	+2	+21.0%	+0	11
Administrative/ Supervisory (V to VII)	20	31	37	36	+16	+79.5%	+5	+15.6%	-1	38
Clerical (III & IV)	70	65	85	88	+18	+25.5%	+23	+34.8%	+2	96
Management & Administrative	95	105	133	135	+39	+41.0%	+29	+27.9%	+1	145
Support	26	26	29	30	+4	+15.0%	+4	+14.6%	+0	32
Maintenance/ Technical	24	22	24	25	+1	+5.0%	+3	+11.9%	+1	25
General Support	50	48	53	55	+5	+10.2%	+6	+13.3%	+2	57
Health Care Assistants	556	517	523	521	-35	-6.3%	+4	+0.8%	-2	606
Home Help	395	393	402	404	+9	+2.3%	+11	+2.8%	+2	620
Care, other	20	35	33	32	+11	+54.1%	-3	-9.6%	-1	42
Patient & Client Care	972	946	959	957	-15	-1.6%	+12	+1.2%	-1	1,268

CHO Operations

CHO Operations HSE Only OCT 2023	WTE DEC 2019	WTE DEC 2022	WTE SEP 2023	WTE OCT 2023	WTE change since DEC 2019	% WTE Change since Dec 2019	WTE change since DEC 2022	% WTE Change since Dec 2022	WTE change since SEP 2023	No. OCT 2023
Overall	9	65	68	71	+62	+732.9%	+6	+9.8%	+3	73
Nurse/ Midwife Manager		2	2	2	+2		+0	+0.0%	+0	2
Nurse/ Midwife Specialist & AN/MP		1	2	2	+2		+1	+113.6%	+0	2
Nursing & Midwifery		3	4	4	+4		+1	+34.7%	+0	4
Therapy Professions		1	1	1	+1		+0	+0.0%	+0	1
Pharmacy		1					-1	-100.0%		
Social Workers	1	5	4	4	+3	+344.2%	-1	-20.7%	0	4
Health & Social Care Professionals	1	7	5	5	+4	+460.5%	-2	-28.9%	0	5
Management (VIII & above)	1	17	17	17	+16	+1,576.0%	-1	-3.3%	0	17
Administrative/ Supervisory (V to VII)	2	21	26	27	+25	+1,259.0%	+6	+30.8%	+1	28
Clerical (III & IV)	5	15	16	18	+14	+293.1%	+3	+23.5%	+2	19
Management & Administrative	8	53	59	62	+55	+712.8%	+9	+17.6%	+3	64
Care, other		2					-2	-100.0%		
Patient & Client Care		2					-2	-100.0%		

WTE Change by Staff Group



Employment Report by WTE, Headcount, Gender, Full-Time / Part-Time etc. OCT 2023

CHO 8 OCT 2023

OCT 2023	WTE OCT 2023	No. OCT 2023	WTE : No	Number Male %	Number Female %	Male WTE : No.	Female WTE : No	Perm Count %	Perm Count Male %	Perm Count Female %	Fulltime Count %	Part time Count %	FT Count Male %	FT Count Female %
Total	6,748	8,009	1:0.8	17.72%	82.28%	1:0.9	1:0.8	91.97%	15.55%	76.43%	60.82%	39.18%	71.46%	58.53%
Consultant Dentistry	1	1	1:1		100.00%	1:	1:1	100.00%		100.00%	100.00%			100.00%
Consultant Medicine	5	6	1:0.9	33.33%	66.67%	1:1	1:0.8	66.67%	33.33%	33.33%	83.33%	16.67%	100.00%	75.00%
Consultant Psychiatry	38	40	1:1	50.00%	50.00%	1:1	1:0.9	85.00%	35.00%	50.00%	87.50%	12.50%	100.00%	75.00%
Consultants	44	47	1:0.9	46.81%	53.19%	1:1	1:0.9	82.98%	34.04%	48.94%	87.23%	12.77%	100.00%	76.00%
Dentists	31	36	1:0.9	41.67%	58.33%	1:0.9	1:0.8	100.00%	41.67%	58.33%	75.00%	25.00%	80.00%	71.43%
Other Medical	29	42	1:0.7	59.52%	40.48%	1:0.6	1:0.7	80.95%	42.86%	38.10%	40.48%	59.52%	44.00%	35.29%
Medical/ Dental, other	60	78	1:0.8	51.28%	48.72%	1:0.7	1:0.8	89.74%	42.31%	47.44%	56.41%	43.59%	57.50%	55.26%
Registrar	110	114	1:1	50.00%	50.00%	1:1	1:1				98.25%	1.75%	100.00%	96.49%
Senior Registrar	12	13	1:0.9	30.77%	69.23%	1:1	1:0.9				84.62%	15.38%	100.00%	77.78%
Registrars	123	127	1:1	48.03%	51.97%	1:1	1:1				96.85%	3.15%	100.00%	93.94%
Senior House Officer	35	36	1:1	44.44%	55.56%	1:1	1:1				100.00%		100.00%	100.00%
SHO/ Interns	35	36	1:1	44.44%	55.56%	1:1	1:1				100.00%		100.00%	100.00%
Medical & Dental	262	288	1:0.9	48.26%	51.74%	1:0.9	1:0.9	37.85%	17.01%	20.83%	84.72%	15.28%	87.77%	81.88%
Clinical Nurse/ Midwife Manager 1	71	76	1:0.9	18.42%	81.58%	1:1	1:0.9	90.79%	14.47%	76.32%	80.26%	19.74%	100.00%	75.81%
Clinical Nurse/ Midwife Manager 2	182	200	1:0.9	14.50%	85.50%	1:1	1:0.9	98.00%	14.50%	83.50%	80.50%	19.50%	100.00%	77.19%
Clinical Nurse/ Midwife Manager 3	34	35	1:1	22.86%	77.14%	1:1	1:1	94.29%	22.86%	71.43%	97.14%	2.86%	100.00%	96.30%
Director Nursing/Midwifery, Assistant	76	80	1:1	13.75%	86.25%	1:1	1:0.9	96.25%	13.75%	82.50%	92.50%	7.50%	100.00%	91.30%
Director of Nursing/Midwifery	19	20	1:1	20.00%	80.00%	1:1	1:1	100.00%	20.00%	80.00%	100.00%		100.00%	100.00%
Nurse/ Midwife Manager	384	411	1:0.9	16.06%	83.94%	1:1	1:0.9	96.11%	15.33%	80.78%	85.16%	14.84%	100.00%	82.32%
Advanced Nurse/ Midwife Practitioner	10	10	1:1	20.00%	80.00%	1:1	1:1	100.00%	20.00%	80.00%	100.00%		100.00%	100.00%
Adv. Nurse/ Midwife, Candidate	8	8	1:1	12.50%	87.50%	1:1	1:1	87.50%	12.50%	75.00%	100.00%		100.00%	100.00%
Clinical Nurse/ Midwife Specialist	124	138	1:0.9	9.42%	90.58%	1:1	1:0.9	99.28%	9.42%	89.86%	79.71%	20.29%	92.31%	78.40%
Nurse/ Midwife Specialist & AN/MP	142	156	1:0.9	10.26%	89.74%	1:1	1:0.9	98.72%	10.26%	88.46%	82.05%	17.95%	93.75%	80.71%
Nursing Education/Clinical	11	12	1:0.9	8.33%	91.67%	1:1	1:0.9	100.00%	8.33%	91.67%	75.00%	25.00%	100.00%	72.73%
Nursing/ Midwifery other	11	12	1:0.9	8.33%	91.67%	1:1	1:0.9	100.00%	8.33%	91.67%	75.00%	25.00%	100.00%	72.73%
Nursing/ Midwifery awaiting registration	10	13	1:0.8	7.69%	92.31%	1:1	1:0.8	7.69%		7.69%	92.31%	7.69%	100.00%	91.67%
Post-registration Nurse/ Midwife Student	5	5	1:1		100.00%	1:	1:1	40.00%		40.00%	100.00%			100.00%
Pre-registration Nurse/ Midwife Intern	5	19	1:0.3	21.05%	78.95%	1:0.2	1:0.3				89.47%	10.53%	75.00%	93.33%
Nursing/ Midwifery Student	20	37	1:0.5	13.51%	86.49%	1:0.4	1:0.6	8.11%		8.11%	91.89%	8.11%	80.00%	93.75%
Public Health Nurse	210	251	1:0.8		100.00%	1:	1:0.8	99.20%		99.20%	72.51%	27.49%		72.51%
Public Health Nurse	210	251	1:0.8		100.00%	1:	1:0.8	99.20%		99.20%	72.51%	27.49%		72.51%
Staff Nurse [Intellectual Disability]	288	333	1:0.9	10.51%	89.49%	1:0.9	1:0.9	98.20%	10.51%	87.69%	62.76%	37.24%	85.71%	60.07%
Staff Nurse [Psychiatric]	318	339	1:0.9	24.48%	75.52%	1:1	1:0.9	94.69%	23.30%	71.39%	90.56%	9.44%	97.59%	88.28%
Staff Nurses [General/ Children's]	403	483	1:0.8	7.45%	92.55%	1:0.9	1:0.8	98.96%	7.25%	91.72%	60.04%	39.96%	91.67%	57.49%
Staff Nurse/ Staff Midwife	1,009	1,155	1:0.9	13.33%	86.67%	1:0.9	1:0.9	97.49%	12.90%	84.59%	69.78%	30.22%	93.51%	66.13%
Nursing & Midwifery	1,775	2,022	1:0.9	11.97%	88.03%	1:0.9	1:0.9	95.90%	11.33%	84.57%	74.63%	25.37%	95.04%	71.85%
Audiology	7	8	1:0.9	25.00%	75.00%	1:1	1:0.9	87.50%	25.00%	62.50%	62.50%	37.50%	50.00%	66.67%
Clinical Engineering	5	5	1:1	100.00%		1:1	1:	80.00%	80.00%		100.00%		100.00%	
Health Science/ Diagnostics	12	13	1:0.9	53.85%	46.15%	1:1	1:0.9	84.62%	46.15%	38.46%	76.92%	23.08%	85.71%	66.67%
Counsellor Therapists	46	53	1:0.9	13.21%	86.79%	1:1	1:0.9	94.34%	13.21%	81.13%	60.38%	39.62%	85.71%	56.52%
Dental Hygienists	9	11	1:0.8		100.00%	1:	1:0.8	100.00%		100.00%	81.82%	18.18%		81.82%
Other Health & Social Care	2	2	1:1	50.00%	50.00%	1:1	1:1	100.00%	50.00%	50.00%	100.00%		100.00%	100.00%
Play Therapists/ Specialists	1	1	1:1	100.00%		1:1	1:	100.00%	100.00%		100.00%		100.00%	
H&SC, Other	58	67	1:0.9	13.43%	86.57%	1:1	1:0.8	95.52%	13.43%	82.09%	65.67%	34.33%	88.89%	62.07%
Pharmacists	9	12	1:0.8	16.67%	83.33%	1:1	1:0.7	83.33%	8.33%	75.00%	58.33%	41.67%	100.00%	50.00%
Pharmacy Technicians	1	1	1:0.5		100.00%	1:	1:0.5	100.00%		100.00%		100.00%		
Pharmacy	10	13	1:0.8	15.38%	84.62%	1:1	1:0.7	84.62%	7.69%	76.92%	53.85%	46.15%	100.00%	45.45%
Psychologists	112	121	1:0.9	30.58%	69.42%	1:0.9	1:0.9	76.86%	27.27%	49.59%	86.78%	13.22%	91.89%	84.52%
Social Care	426	514	1:0.8	15.56%	84.44%	1:0.9	1:0.8	98.83%	15.37%	83.46%	29.57%	70.43%	22.50%	30.88%
Social Workers	110	124	1:0.9	14.52%	85.48%	1:0.9	1:0.9	95.97%	12.90%	83.06%	82.26%	17.74%	83.33%	82.08%
Dietitians	31	37	1:0.8		100.00%	1:	1:0.8	97.30%		97.30%	70.27%	29.73%		70.27%
Occupational Therapists	150	175	1:0.9	5.14%	94.86%	1:1	1:0.9	99.43%	5.14%	94.29%	79.43%	20.57%	100.00%	78.31%
Orthoptists	2	2	1:0.8		100.00%	1:	1:0.8	100.00%		100.00%	50.00%	50.00%		50.00%
Physiotherapists	120	144	1:0.8	18.06%	81.94%	1:0.9	1:0.8	99.31%	18.06%	81.25%	65.28%	34.72%	84.62%	61.02%



OCT 2023	WTE OCT 2023	No. OCT 2023	WTE : No	Number Male %	Number Female %	Male WTE : No.	Female WTE : No	Perm Count %	Perm Count Male %	Perm Count Female %	Fulltime Count %	Part time Count %	FT Count Male %	FT Count Female %
Total	6,748	8,009	1:0.8	17.72%	82.28%	1:0.9	1:0.8	91.97%	15.55%	76.43%	60.82%	39.18%	71.46%	58.53%
Podiatrists & Chiroprodists	5	6	1:0.9		100.00%	1:	1:0.9	100.00%		100.00%	83.33%	16.67%		83.33%
Speech & Language Therapists	111	134	1:0.8	2.24%	97.76%	1:0.7	1:0.8	100.00%	2.24%	97.76%	66.42%	33.58%	100.00%	65.65%
Therapy Professions	420	498	1:0.8	7.63%	92.37%	1:0.9	1:0.8	99.40%	7.63%	91.77%	71.08%	28.92%	89.47%	69.57%
Health & Social Care Professionals	1,147	1,350	1:0.8	14.15%	85.85%	1:0.9	1:0.8	96.37%	13.48%	82.89%	57.33%	42.67%	61.26%	56.69%
Middle Management (V-VII)	277	291	1:1	14.43%	85.57%	1:1	1:0.9	97.94%	13.75%	84.19%	87.29%	12.71%	100.00%	85.14%
Administrative/ Supervisory (V to VII)	277	291	1:1	14.43%	85.57%	1:1	1:0.9	97.94%	13.75%	84.19%	87.29%	12.71%	100.00%	85.14%
General Administrative (III & IV)	629	724	1:0.9	6.91%	93.09%	1:0.9	1:0.9	89.64%	5.80%	83.84%	69.20%	30.80%	92.00%	67.51%
Clerical (III & IV)	629	724	1:0.9	6.91%	93.09%	1:0.9	1:0.9	89.64%	5.80%	83.84%	69.20%	30.80%	92.00%	67.51%
Executive Management	9	9	1:1	22.22%	77.78%	1:1	1:1	100.00%	22.22%	77.78%	100.00%		100.00%	100.00%
Senior Management (VIII & GM)	75	77	1:1	23.38%	76.62%	1:1	1:1	100.00%	23.38%	76.62%	93.51%	6.49%	88.89%	94.92%
Management (VIII & above)	84	86	1:1	23.26%	76.74%	1:1	1:1	100.00%	23.26%	76.74%	94.19%	5.81%	90.00%	95.45%
Management & Administrative	989	1,101	1:0.9	10.17%	89.83%	1:1	1:0.9	92.64%	9.26%	83.38%	75.93%	24.07%	94.64%	73.81%
Maintenance	68	69	1:1	98.55%	1.45%	1:1	1:1	97.10%	95.65%	1.45%	100.00%		100.00%	100.00%
Technical Services	3	3	1:1	100.00%		1:1	1:	100.00%	100.00%		100.00%		100.00%	
Maintenance/ Technical	71	72	1:1	98.61%	1.39%	1:1	1:1	97.22%	95.83%	1.39%	100.00%		100.00%	100.00%
Catering	31	34	1:0.9	20.59%	79.41%	1:0.9	1:0.9	100.00%	20.59%	79.41%	67.65%	32.35%	71.43%	66.67%
Household Services	41	51	1:0.8	31.37%	68.63%	1:0.9	1:0.8	98.04%	29.41%	68.63%	50.98%	49.02%	81.25%	37.14%
Other Support	29	44	1:0.7	59.09%	40.91%	1:0.9	1:0.3	63.64%	54.55%	9.09%	50.00%	50.00%	80.77%	5.56%
Portering	4	4	1:1	100.00%		1:1	1:	100.00%	100.00%		100.00%		100.00%	
Support	106	133	1:0.8	39.85%	60.15%	1:0.9	1:0.7	87.22%	37.59%	49.62%	56.39%	43.61%	81.13%	40.00%
General Support	177	205	1:0.9	60.49%	39.51%	1:1	1:0.7	90.73%	58.05%	32.68%	71.71%	28.29%	91.94%	40.74%
Home Care Services	21	22	1:0.9	4.55%	95.45%	1:1	1:0.9	95.45%	4.55%	90.91%	90.91%	9.09%	100.00%	90.48%
Other Care Grades	162	189	1:0.9	24.87%	75.13%	1:0.8	1:0.9	95.77%	21.69%	74.07%	65.08%	34.92%	65.96%	64.79%
Pastoral Care	4	9	1:0.5	77.78%	22.22%	1:0.3	1:1	22.22%	11.11%	11.11%	11.11%	88.89%		50.00%
Workshop Services	82	95	1:0.9	24.21%	75.79%	1:1	1:0.8	100.00%	24.21%	75.79%	57.89%	42.11%	82.61%	50.00%
Care, other	268	315	1:0.9	24.76%	75.24%	1:0.8	1:0.9	94.92%	20.95%	73.97%	63.17%	36.83%	65.38%	62.45%
Attendant/ Aide	346	413	1:0.8	20.10%	79.90%	1:0.9	1:0.8	91.28%	17.43%	73.85%	55.45%	44.55%	75.90%	50.30%
Health Care Assistant/ Care Assistant	1,345	1,639	1:0.8	24.95%	75.05%	1:0.9	1:0.8	98.78%	24.59%	74.19%	40.70%	59.30%	46.94%	38.62%
Health & Social Care Assistants	16	19	1:0.9	15.79%	84.21%	1:0.8	1:0.9	26.32%		26.32%	73.68%	26.32%	100.00%	68.75%
Health Care Assistants	1,708	2,071	1:0.8	23.90%	76.10%	1:0.9	1:0.8	96.62%	22.94%	73.68%	43.94%	56.06%	52.12%	41.37%
Home Helps	422	657	1:0.6	5.78%	94.22%	1:0.6	1:0.6	77.78%	3.50%	74.28%	38.36%	61.64%	42.11%	38.13%
Home Help	422	657	1:0.6	5.78%	94.22%	1:0.6	1:0.6	77.78%	3.50%	74.28%	38.36%	61.64%	42.11%	38.13%
Patient & Client Care	2,398	3,043	1:0.8	20.08%	79.92%	1:0.9	1:0.8	92.38%	18.53%	73.84%	44.73%	55.27%	53.19%	42.60%

Employment Report by WTE, Headcount, Gender, Full-Time / Part-Time etc. OCT 2023

CHO 8 OCT 2023

OCT 2023	WTE OCT 2023	No. OCT 2023	WTE : No	Number Male %	Number Female %	Male WTE : No.	Female WTE : No	Perm Count %	Number Male %	Number Female %	Fulltime Count %	Part time Count %	FT Count Male %	FT Count Female %
Total	6,748	8,009	1:0.8	17.72%	82.28%	1:0.9	1:0.8	91.97%	15.55%	76.43%	60.82%	39.18%	71.46%	58.53%
Disabilities	2,410	2,916	1:0.8	20.92%	79.08%	1:0.9	1:0.8	97.09%	20.30%	76.78%	46.06%	53.94%	50.16%	44.97%
Mental Health	1,132	1,227	1:0.9	24.78%	75.22%	1:1	1:0.9	86.06%	20.29%	65.77%	86.96%	13.04%	96.38%	83.86%
Older People	1,542	1,918	1:0.8	12.88%	87.12%	1:0.9	1:0.8	90.82%	11.00%	79.82%	57.09%	42.91%	75.71%	54.34%
Primary Care	1,548	1,827	1:0.8	13.30%	86.70%	1:0.9	1:0.8	88.83%	9.85%	78.98%	68.91%	31.09%	88.07%	65.97%
CHO Operations	71	73	1:1	15.07%	84.93%	1:1	1:1	91.78%	12.33%	79.45%	93.15%	6.85%	90.91%	93.55%
Community Health & Wellbeing	45	48	1:0.9	8.33%	91.67%	1:0.9	1:0.9	97.92%	8.33%	89.58%	81.25%	18.75%	100.00%	79.55%



Employment by Grade Group OCT 2023	WTE DEC 2019	WTE DEC 2022	WTE SEP 2023	WTE OCT 2023	WTE change since DEC 2019	% WTE Change since Dec 2019	WTE change since DEC 2022	% WTE Change since Dec 2022	WTE change since SEP 2023	No. OCT 2023
Overall	6,135	6,514	6,751	6,748	+613	+10.0%	+235	+3.6%	-3	8,009
Consultant Medicine	5	5	5	5	+0	+2.0%	+0	+2.6%	0	6
Consultant Psychiatry	36	36	38	38	+2	+4.9%	+2	+5.0%	+0	40
Consultant Dentistry	1	1	1	1	+0	+9.9%	+0	+1.0%	+0	1
Consultants	42	42	44	44	+2	+4.7%	+2	+4.7%	+0	47
Registrar	92	112	109	110	+18	+19.6%	-1	-1.3%	+1	114
Senior Registrar	14	11	12	12	-1	-9.9%	+2	+16.4%	+0	13
Registrars	106	122	121	123	+17	+15.8%	+0	+0.2%	+1	127
Senior House Officer	38	29	35	35	-3	-7.8%	+6	+21.1%	+0	36
SHO/ Interns	38	29	35	35	-3	-7.8%	+6	+21.1%	+0	36
Other Medical	37	31	28	29	-8	-22.7%	-2	-7.3%	+1	42
Dentists	36	34	31	31	-4	-12.3%	-3	-9.0%	0	36
Medical/ Dental, other	72	65	59	60	-13	-17.6%	-5	-8.2%	+0	78
Medical & Dental	259	259	259	262	+3.0	+1.2%	+2.4	+1.2%	2.32	+288
Director Nursing/Midwifery, Assistant	60	74	73	76	+16	+26.7%	+2	+3.1%	+3	80
Director of Nursing/Midwifery	24	23	21	19	-5	-20.4%	-4	-15.5%	-2	20
Clinical Nurse/ Midwife Manager 1	76	65	68	71	-5	-5.9%	+6	+9.5%	+3	76
Clinical Nurse/ Midwife Manager 2	177	180	178	182	+5	+2.7%	+2	+1.2%	+4	200
Clinical Nurse/ Midwife Manager 3	34	34	34	34	+0	+1.4%	+0	+1.1%	+1	35
Nurse/ Midwife Manager	372	376	374	384	+12	+3.2%	+8	+2.0%	+9	411
Advanced Nurse/ Midwife Practitioner	2	7	10	10	+8	+392.0%	+2	+33.3%	+0	10
Clinical Nurse/ Midwife Specialist	96	117	125	124	+28	+29.5%	+7	+6.2%	-1	138
Adv. Nurse/ Midwife, Candidate	2	7	8	8	+6	+301.5%	+1	+14.4%	+0	8
Nurse/ Midwife Specialist & AN/MP	100	131	142	142	+42	+42.1%	+11	+8.1%	-1	156
Staff Nurse [Intellectual Disability]	232	292	286	288	+56	+24.2%	-5	-1.7%	+1	333
Staff Nurse [Psychiatric]	333	326	318	318	-15	-4.5%	-8	-2.5%	+0	339
Staff Nurses [General/ Children's]	433	404	409	403	-30	-6.9%	-1	-0.2%	-6	483
Staff Nurse/ Staff Midwife	998	1,023	1,013	1,009	+11	+1.1%	-14	-1.3%	-4	1,155
Public Health Nurse	199	220	209	210	+11	+5.3%	-11	-4.9%	+0	251
Public Health Nurse	199	220	209	210	+11	+5.3%	-11	-4.9%	+0	251
Post-registration Nurse/ Midwife Student	2		3	5	+3	+142.4%	+5		+2	5
Pre-registration Nurse/ Midwife Intern	1	1	25	5	+5	+946.0%	+5	+946.0%	-20	19
Nursing/ Midwifery awaiting registration	2	9	9	10	+8	+400.0%	+1	+9.2%	+1	13
Nursing/ Midwifery Student	4	10	37	20	+16	+347.1%	+10	+107.3%	-17	37
Nursing Education/Clinical	9	10	11	11	+2	+16.0%	+1	+6.0%	0	12
Nursing/ Midwifery other	9	10	11	11	+2	+16.0%	+1	+6.0%	0	12
Nursing & Midwifery	1,682	1,770	1,787	1,775	+92.9	+5.5%	+44.1	+0.3%	-11.96	+2,022
Dietitians	20	28	30	31	+12	+58.5%	+4	+13.8%	+1	37
Occupational Therapists	139	133	149	150	+11	+7.9%	+17	+12.9%	+1	175
Orthoptists		1	2	2	+2		+0	+7.4%	+0	2
Physiotherapists	107	109	118	120	+13	+12.0%	+11	+9.8%	+1	144
Podiatrists & Chiropodists	5	3	5	5	+1	+19.9%	+2	+57.0%	+0	6
Speech & Language Therapists	106	104	112	111	+5	+4.5%	+8	+7.4%	0	134
Therapy Professions	377	378	416	420	+43	+11.3%	+42	+11.0%	+4	498

Employment by Grade Group OCT 2023	WTE DEC 2019	WTE DEC 2022	WTE SEP 2023	WTE OCT 2023	WTE change since DEC 2019	% WTE Change since Dec 2019	WTE change since DEC 2022	% WTE Change since Dec 2022	WTE change since SEP 2023	No. OCT 2023
Overall	6,135	6,514	6,751	6,748	+613	+10.0%	+235	+3.6%	-3	8,009
Audiology	3	7	7	7	+4	+126.6%	+0	+0.8%	+0	8
Clinical Engineering	4	6	5	5	+1	+24.8%	-1	-16.8%	+0	5
Health Science/ Diagnostics	7	13	12	12	+5	+70.3%	-1	-7.2%	+0	13
Social Care	368	421	388	383	+15	+4.0%	-39	-9.2%	-5	469
Other Health & Social Care			43	43	+43		+43		0	45
Social Care	368	421	431	426	+58	+15.8%	+4	+1.1%	-5	514
Pharmacists	6	10	9	9	+3	+46.9%	0	-2.7%	+0	12
Pharmacy Technicians	1	1	1	1	0	-34.6%	-1	-64.4%	+0	1
Pharmacy	7	11	10	10	+3	+37.8%	-1	-10.9%	+0	13
Psychologists	120	111	108	112	-8	-6.9%	+1	+0.9%	+4	121
Psychologists	120	111	108	112	-8	-6.9%	+1	+0.9%	+4	121
Social Workers	88	108	107	110	+22	+25.4%	+2	+2.0%	+3	124
Social Workers	88	108	107	110	+22	+25.4%	+2	+2.0%	+3	124
Counsellor Therapists	37	47	46	46	+8	+22.5%	-1	-1.9%	+0	53
Dental Hygienists	12	11	10	9	-3	-26.1%	-2	-16.9%	-1	11
Other Health & Social Care	2	1	2	2	+0	+22.7%	+1	+100.0%	+0	2
Play Therapists/ Specialists	1	2	1	1	+0	+0.0%	-1	-50.0%	+0	1
H&SC, Other	52	61	58	58	+6	+10.7%	-3	-4.5%	0	67
Health & Social Care Professionals	1,019	1,103	1,142	1,147	+128.2	+12.6%	+9.8	+4.0%	4.96	+1,350
Executive Management	9	11	10	9	+0	+1.4%	-2	-18.1%	-1	9
Senior Management (VIII & GM)	54	73	74	75	+21	+39.6%	+2	+2.2%	+1	77
Management (VIII & above)	62	84	84	84	+21	+34.1%	0	-0.5%	0	86
Middle Management (V-VII)	176	240	268	277	+100	+56.8%	+36	+15.1%	+8	291
Administrative/ Supervisory (V to VII)	176	240	268	277	+100	+56.8%	+36	+15.1%	+8	291
General Administrative (III & IV)	507	532	629	629	+122	+24.1%	+97	+18.2%	+1	724
Clerical (III & IV)	507	532	629	629	+122	+24.1%	+97	+18.2%	+1	724
Management & Administrative	746	856	981	989	+243.5	+32.7%	+27.4	+15.5%	8.46	+1,101
Catering	33	32	31	31	-2	-6.8%	-1	-2.5%	+0	34
Household Services	58	43	43	41	-16	-28.0%	-2	-4.4%	-1	51
Other Support	32	26	29	29	-2	-7.1%	+3	+11.1%	+0	44
Portering	5	3	4	4	-1	-20.0%	+1	+25.8%	+0	4
Support	127	105	107	106	-22	-17.0%	+1	+1.0%	-1	133
Maintenance	69	60	67	68	0	-0.3%	+8	+13.4%	+1	69
Technical Services	0	1	3	3	+3	+2,812.6%	+2	+200.0%	+0	3
Maintenance/ Technical	69	61	70	71	+3	+3.9%	+10	+16.4%	+1	72
General Support	196	166	177	177	-18.9	-9.7%	-9.3	+6.7%	0.33	+205
Attendant/ Aide	579	352	351	346	-233	-40.2%	-5	-1.6%	-5	413
Health & Social Care Assistants	13	6	17	16	+3	+22.1%	+10	+175.2%	-1	19
Health Care Assistant/ Care Assistant	985	1,312	1,346	1,345	+361	+36.6%	+33	+2.5%	0	1,639
Health Care Assistants	1,577	1,670	1,714	1,708	+130	+8.3%	+38	+2.3%	-6	2,071
Home Helps	418	415	420	422	+4	+0.9%	+7	+1.7%	+2	657
Home Help	418	415	420	422	+4	+0.9%	+7	+1.7%	+2	657
Home Care Services	12	25	23	21	+9	+70.9%	-5	-19.3%	-2	22
Other Care Grades	128	161	163	162	+33	+26.1%	+0	+0.1%	-1	189
Pastoral Care	4	4	4	4	+0	+1.0%	+0	+0.0%	+0	9
Workshop Services	93	84	81	82	-11	-12.3%	-2	-2.2%	+1	95
Care, other	237	275	271	268	+31	+12.9%	-7	-2.4%	-3	315

Employment by Grade Group OCT 2023	WTE DEC 2019	WTE DEC 2022	WTE SEP 2023	WTE OCT 2023	WTE change since DEC 2019	% WTE Change since Dec 2019	WTE change since DEC 2022	% WTE Change since Dec 2022	WTE change since SEP 2023	No. OCT 2023
Overall	6,135	6,514	6,751	6,748	+613	+10.0%	+235	+3.6%	-3	8,009
Patient & Client Care	2,233	2,359	2,405	2,398	+164.6	+7.4%	-8.8	+1.6%	-6.88	+3,043



CHO 8 Employment Report: OCT 2023

Month-on-Month Summary

Month-on-Month Summary	% WTE change since SEP 2023	WTE change since SEP 2023	Community Health & Wellbeing	Mental Health	Primary Care	Disabilities	Older People	CHO Operations
Consultants	+0.3%	+0.1		+0.2	-0.0			
Registrars	+1.2%	+1.4		+1.0	+0.5	+0.0		
SHO/ Interns	+0.9%	+0.3		+0.3	+0.0			
Medical/ Dental, other	+0.8%	+0.5			+0.5	+0.0	+0.0	
Medical & Dental	+0.9%	+2.3		+1.4	+0.9	+0.0	+0.0	
Nurse/ Midwife Manager	+2.5%	+9.2		+2.9	+2.2	+3.3	+0.9	+0.0
Nurse/ Midwife Specialist & AN/MP	-0.4%	-0.6		-0.6	-0.1	+0.1	+0.0	+0.0
Staff Nurse/ Staff Midwife	-0.4%	-4.2		-0.9	-4.0	+0.4	+0.3	
Public Health Nurse	+0.2%	+0.4			+0.4	+0.0	+0.0	
Nursing/ Midwifery Student	-45.4%	-16.7		-16.0	+2.2	-2.8		
Nursing/ Midwifery other	-0.9%	-0.1		+0.0		-0.1	+0.0	
Nursing & Midwifery	-0.7%	-12.0		-14.6	+0.6	+0.8	+1.2	+0.0
Therapy Professions	+0.9%	+3.8	+0.0	+1.2	-0.1	+0.5	+2.2	+0.0
Health Science/ Diagnostics	+0.7%	+0.1			+0.0	+0.0	+0.1	
Social Care	-1.1%	-4.7		-0.2	-0.2	-4.4		
Pharmacy	+0.9%	+0.1		+0.0	+0.0		+0.0	
Psychologists	+3.3%	+3.6		+1.5	+2.5	-0.5		
Social Workers	+2.5%	+2.7		+2.5	-0.1	+0.8	-0.5	-0.0



H&SC, Other	-0.8%	-0.5		-0.3	-0.3	+0.1		
Health & Social Care Professionals	+0.4%	+5.0	+0.0	+4.7	+1.9	-3.5	+1.8	-0.0
Management (VIII & above)	-0.3%	-0.2	-1.2	+0.0	+0.6	+0.5	+0.0	-0.0
Administrative/ Supervisory (V to VII)	+3.0%	+8.1	-0.0	+1.8	+4.3	+2.1	-0.8	+0.8
Clerical (III & IV)	+0.1%	+0.5	+0.0	-0.9	-0.3	-2.4	+2.0	+2.1
Management & Administrative	+0.9%	+8.5	-1.2	+0.9	+4.6	+0.1	+1.3	+2.8
Support	-0.9%	-1.0		-1.3	+0.3	-0.2	+0.3	
Maintenance/ Technical	+1.8%	+1.3		+0.0	+0.0	-0.0	+1.3	
General Support	+0.2%	+0.3		-1.3	+0.3	-0.2	+1.6	
Health Care Assistants	-0.3%	-5.9		-2.5	-1.7	+0.4	-2.1	
Home Help	+0.4%	+1.6				-0.4	+2.0	
Care, other	-0.9%	-2.5	-0.3	+0.4	-0.9	-0.3	-1.5	
Patient & Client Care	-0.3%	-6.9	-0.3	-2.1	-2.7	-0.3	-1.5	



CHO 8 Employment Report: OCT 2023

Year-to-Date Summary

Year-to-Date Summary	% WTE change since DEC 2022	WTE change since DEC 2022	Community Health & Wellbeing	Mental Health	Primary Care	Disabilities	Older People	CHO Operations
Consultants	+4.7%	+2.0		+1.8	+0.1			
Registrars	+0.2%	+0.3		+1.3	-1.0	+0.0		
SHO/ Interns	+21.1%	+6.1		+5.1	+1.0			
Medical/ Dental, other	-8.2%	-5.3			-5.3	+0.0	+0.0	
Medical & Dental	+1.2%	+3.0		+8.2	-5.2	+0.0	+0.0	
Nurse/ Midwife Manager	+2.0%	+7.5		+6.1	-1.9	+2.4	+1.0	+0.0
Nurse/ Midwife Specialist & AN/MP	+8.1%	+10.7		+4.9	+2.8	+1.0	+1.1	+1.0
Staff Nurse/ Staff Midwife	-1.3%	-13.8		-8.1	-2.5	-6.9	+3.7	
Public Health Nurse	-4.9%	-10.7			-11.7	-0.0	+1.0	
Nursing/ Midwifery Student	+107.3%	+10.4		+3.4	+4.8	+2.2		
Nursing/ Midwifery other	+6.0%	+0.6		+0.0		+0.7	-0.1	
Nursing & Midwifery	+0.3%	+4.7		+6.3	-8.5	-0.7	+6.6	+1.0
Therapy Professions	+11.0%	+41.5	+0.1	+0.2	+36.0	+6.5	-1.3	+0.0
Health Science/ Diagnostics	-7.2%	-1.0			-0.9	+0.0	-0.0	
Social Care	+1.1%	+4.5		-1.4	+5.8	+0.0		
Pharmacy	-10.9%	-1.2		+1.0	-1.4		+0.2	-1.0



Psychologists	+0.9%	+1.0		+3.8	+0.5	-3.4		
Social Workers	+2.0%	+2.2		+4.5	-1.0	-0.3	-0.1	-1.0
H&SC, Other	-4.5%	-2.8		+1.3	-2.1	-1.9		
Health & Social Care Professionals	+4.0%	+44.2	+0.1	+9.4	+36.9	+1.0	-1.2	-2.0
Management (VIII & above)	-0.5%	-0.4	+0.1	+1.0	-2.2	-0.5	+1.9	-0.6
Administrative/ Supervisory (V to VII)	+15.1%	+36.4	-1.1	+1.1	+12.5	+12.6	+4.9	+6.4
Clerical (III & IV)	+18.2%	+97.0	+3.2	+19.3	+34.3	+14.1	+22.6	+3.5
Management & Administrative	+15.5%	+132.9	+2.2	+21.4	+44.6	+26.1	+29.4	+9.3
Support	+1.0%	+1.1		-4.0	+6.5	-5.2	+3.8	
Maintenance/ Technical	+16.4%	+10.1		+3.9	+0.0	+3.5	+2.7	
General Support	+6.7%	+11.1		-0.1	+6.5	-1.7	+6.4	
Health Care Assistants	+2.3%	+37.9		-2.3	-12.0	+48.3	+3.9	
Home Help	+1.7%	+7.2				-3.8	+11.0	
Care, other	-2.4%	-6.6	+9.7	-1.1	-5.3	-4.6	-3.4	-2.0
Patient & Client Care	+1.6%	+38.6	+9.7	-3.4	-17.3	+39.9	+11.6	-2.0



CHO 8 Employment Report: OCT 2023

Year-on-Year Summary

Year-on-Year Summary	% WTE change since OCT 2022	WTE change since OCT 2022	Community Health & Wellbeing	Mental Health	Primary Care	Disabilities	Older People	CHO Operations
Consultants	+3.0%	+1.3		+1.2	+0.1			
Registrars	-0.8%	-1.0		+2.1	-3.1	+0.0		
SHO/ Interns	+27.7%	+7.6		+6.6	+1.0			
Medical/ Dental, other	-6.9%	-4.5			-4.4	+0.0	-0.1	
Medical & Dental	+1.3%	+3.4		+9.8	-6.3	+0.0	-0.1	
Nurse/ Midwife Manager	+3.5%	+13.0		+3.8	+3.1	+4.4	+1.8	+0.0
Nurse/ Midwife Specialist & AN/MP	+12.9%	+16.2		+9.8	+3.4	+0.9	+1.1	+1.0
Staff Nurse/ Staff Midwife	+1.2%	+12.2		-0.8	+5.8	+3.0	+4.3	
Public Health Nurse	-4.3%	-9.3			-10.3	+0.0	+1.0	
Nursing/ Midwifery Student	+13.9%	+2.5		-2.9	+4.8	+0.6		
Nursing/ Midwifery other	+6.1%	+0.6		+0.0		+0.7	-0.1	
Nursing & Midwifery	+2.0%	+35.2		+9.8	+6.8	+9.6	+8.0	+1.0
Therapy Professions	+10.8%	+40.9	-0.0	+1.3	+31.2	+6.4	+2.0	+0.2
Health Science/ Diagnostics	-4.5%	-0.6			-0.6	+0.0	-0.0	
Social Care	+3.0%	+12.5		-1.1	+5.8	+7.8		
Pharmacy	-7.1%	-0.8		+0.1	-0.4		+0.6	-1.0
Psychologists	+2.2%	+2.4		+4.5	+1.2	-3.2		
Social Workers	+5.4%	+5.7		+4.0	+1.2	+0.3	+0.9	-0.8

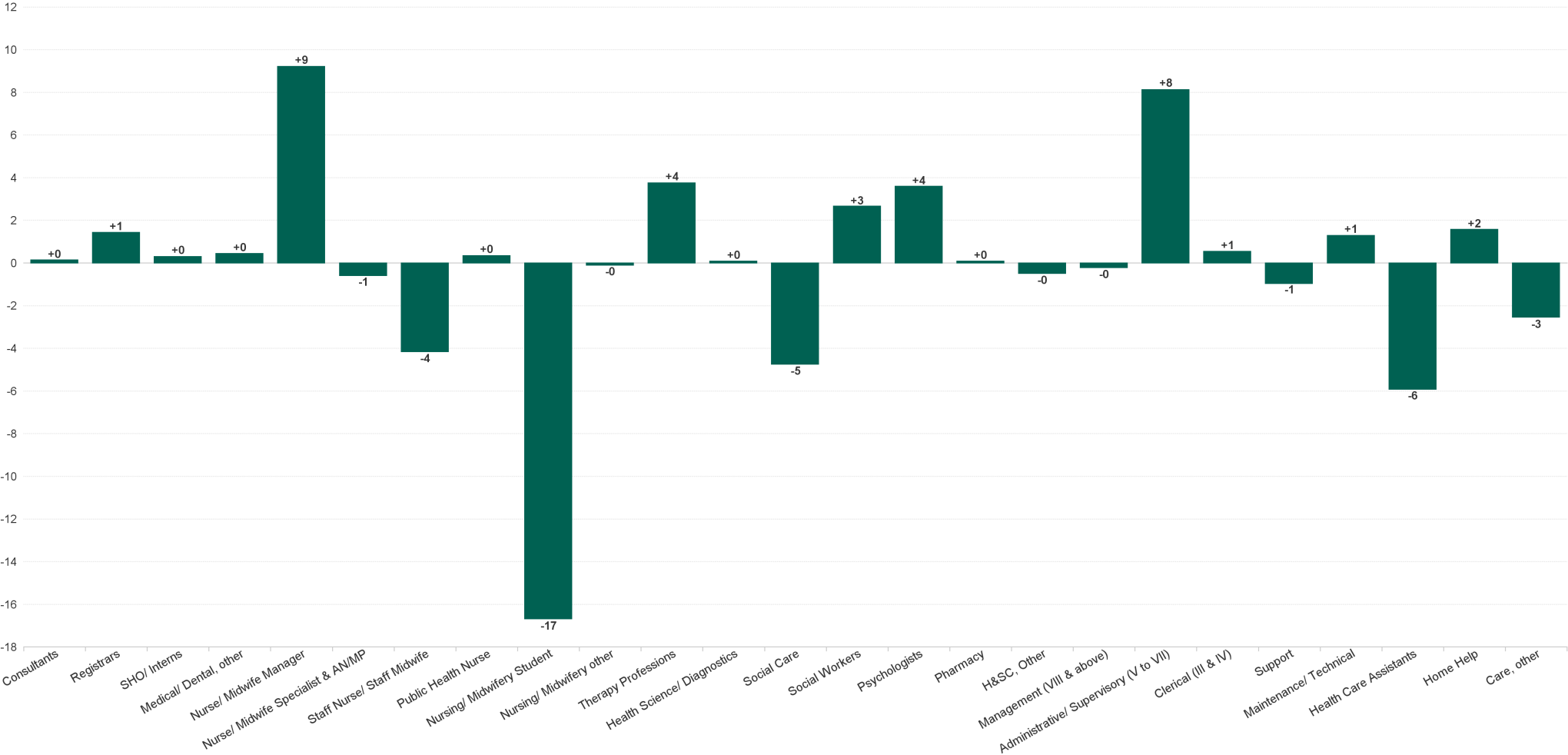


H&SC, Other	-5.8%	-3.6		+0.7	-2.1	-1.8	-0.4	
Health & Social Care Professionals	+5.2%	+56.6	-0.0	+9.4	+36.4	+9.4	+3.1	-1.6
Management (VIII & above)	+2.7%	+2.2	-0.8	+1.0	+0.5	+0.3	+2.9	-1.7
Administrative/ Supervisory (V to VII)	+15.6%	+37.3	-0.5	+4.2	+11.7	+10.7	+5.8	+5.4
Clerical (III & IV)	+17.8%	+95.1	+3.1	+17.8	+35.8	+15.6	+18.3	+4.6
Management & Administrative	+15.7%	+134.5	+1.9	+23.0	+48.0	+26.6	+26.9	+8.3
Support	-0.9%	-1.0		-5.5	+6.8	-6.2	+4.0	
Maintenance/ Technical	+13.3%	+8.4		+3.3	+0.0	+3.5	+1.6	
General Support	+4.4%	+7.4		-2.2	+6.8	-2.8	+5.7	
Health Care Assistants	+4.6%	+75.8		+4.5	-19.1	+66.2	+24.3	
Home Help	+1.2%	+5.1				-3.4	+8.5	
Care, other	+1.0%	+2.6	+10.1	-1.0	-5.4	+0.2	+3.7	-5.0
Patient & Client Care	+3.6%	+83.5	+10.1	+3.5	-24.6	+63.0	+36.5	-5.0



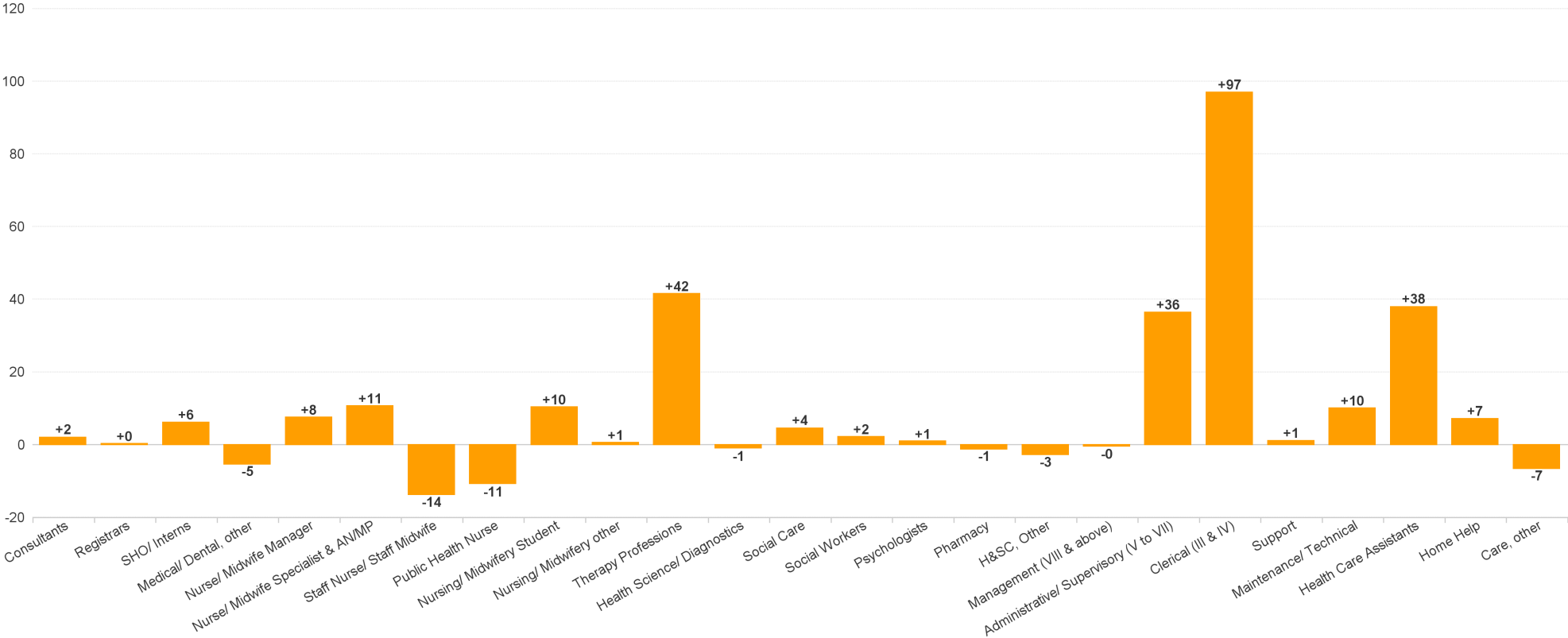
CHO 8 Employment Report: OCT 2023

Month-on-Month Summary Chart: Change since SEP 2023



CHO 8 Employment Report: OCT 2023

Year-to-Date Summary Chart: Change since DEC 2022



CHO 8 Employment Report: OCT 2023

Year-on-Year Summary Chart: Change since OCT 2022

