

## CHO 9 Employment Report: AUG 2023

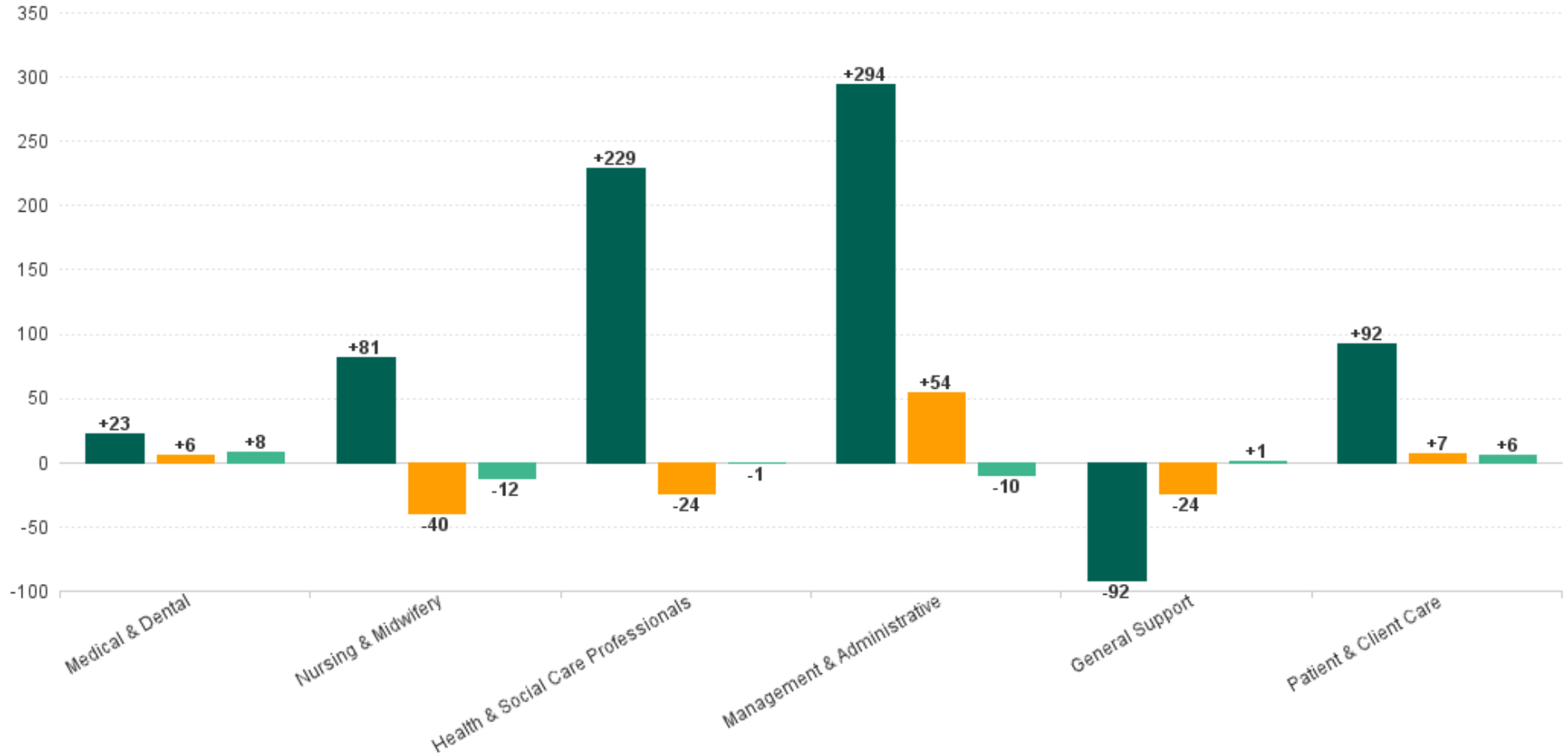
### Employment Report : AUG 2023

Employment by Staff Group AUG 2023	WTE DEC 2019	WTE DEC 2022	WTE JUL 2023	WTE AUG 2023	WTE change since DEC 2019	% WTE Change since Dec 2019	WTE change since DEC 2022	% WTE Change since Dec 2022	WTE change since JUL 2023	No. AUG 2023
<b>Overall</b>	<b>6,582</b>	<b>7,230</b>	<b>7,217</b>	<b>7,210</b>	<b>+628</b>	<b>+9.5%</b>	<b>-20</b>	<b>-0.3%</b>	<b>-8</b>	<b>8,335</b>
Consultants	68	71	71	69	+0	+0.4%	-2	-2.5%	-2	78
Registrars	98	128	120	123	+25	+25.7%	-5	-3.6%	+4	128
SHO/ Interns	66	52	59	68	+2	+2.6%	+16	+31.2%	+9	72
Medical/ Dental, other	57	56	55	52	-4	-7.8%	-4	-6.8%	-2	69
<b>Medical &amp; Dental</b>	<b>290</b>	<b>306</b>	<b>304</b>	<b>312</b>	<b>+23</b>	<b>+7.9%</b>	<b>+6</b>	<b>+2.0%</b>	<b>+8</b>	<b>347</b>
Nurse/ Midwife Manager	435	488	508	504	+69	+15.8%	+15	+3.2%	-4	540
Nurse/ Midwife Specialist & AN/MP	85	149	160	156	+71	+83.4%	+7	+4.5%	-4	172
Staff Nurse/ Staff Midwife	1,196	1,214	1,158	1,142	-54	-4.5%	-72	-6.0%	-16	1,286
Public Health Nurse	176	172	173	181	+5	+3.0%	+9	+5.1%	+8	218
<i>Nursing/ Midwifery awaiting registration</i>	<i>11</i>	<i>16</i>	<i>5</i>	<i>3</i>	<i>-8</i>	<i>-72.2%</i>	<i>-13</i>	<i>-81.0%</i>	<i>-2</i>	<i>3</i>
<i>Post-registration Nurse/ Midwife Student</i>	<i>26</i>	<i>19</i>	<i>1</i>	<i>6</i>	<i>-20</i>	<i>-77.3%</i>	<i>-13</i>	<i>-68.7%</i>	<i>+5</i>	<i>6</i>
<i>Pre-registration Nurse/ Midwife Intern</i>	<i>18</i>	<i>8</i>	<i>38</i>	<i>38</i>	<i>+20</i>	<i>+112.6%</i>	<i>+30</i>	<i>+375.0%</i>	<i>+0</i>	<i>76</i>
Nursing/ Midwifery Student	55	43	44	47	-8	-14.2%	+4	+10.1%	+3	85
Nursing/ Midwifery other	20	20	16	18	-2	-10.1%	-2	-12.0%	+1	20
<b>Nursing &amp; Midwifery</b>	<b>1,966</b>	<b>2,087</b>	<b>2,059</b>	<b>2,047</b>	<b>+81</b>	<b>+4.1%</b>	<b>-40</b>	<b>-1.9%</b>	<b>-12</b>	<b>2,321</b>
Therapy Professions	486	587	575	576	+89	+18.4%	-11	-1.8%	+1	668
Health Science/ Diagnostics	37	26	28	28	-9	-23.6%	+2	+8.4%	+0	29
Social Care	695	804	793	789	+94	+13.6%	-15	-1.8%	-4	965
Pharmacy	25	27	27	27	+3	+11.3%	+1	+2.3%	+0	36
Psychologists	164	187	184	185	+21	+12.7%	-2	-1.2%	+1	201
Social Workers	125	161	158	159	+33	+26.5%	-2	-1.3%	+0	174
H&SC, Other	71	64	67	68	-3	-3.6%	+4	+5.6%	+1	78
<b>Health &amp; Social Care Professionals</b>	<b>1,603</b>	<b>1,856</b>	<b>1,833</b>	<b>1,832</b>	<b>+229</b>	<b>+14.3%</b>	<b>-24</b>	<b>-1.3%</b>	<b>-1</b>	<b>2,151</b>
Management (VIII & above)	79	97	99	99	+20	+25.2%	+3	+2.8%	+1	101
Administrative/ Supervisory (V to VII)	208	360	398	398	+190	+91.3%	+38	+10.5%	0	423
Clerical (III & IV)	451	522	546	536	+84	+18.7%	+14	+2.6%	-10	618
<b>Management &amp; Administrative</b>	<b>739</b>	<b>979</b>	<b>1,043</b>	<b>1,033</b>	<b>+294</b>	<b>+39.8%</b>	<b>+54</b>	<b>+5.5%</b>	<b>-10</b>	<b>1,142</b>
Support	452	383	359	361	-91	-20.2%	-23	-5.9%	+1	444
Maintenance/ Technical	35	36	35	34	-1	-2.4%	-1	-3.0%	0	37
<b>General Support</b>	<b>487</b>	<b>419</b>	<b>394</b>	<b>395</b>	<b>-92</b>	<b>-18.9%</b>	<b>-24</b>	<b>-5.6%</b>	<b>+1</b>	<b>481</b>
Health Care Assistants	1,278	1,315	1,332	1,336	+58	+4.6%	+21	+1.6%	+4	1,601
Care, other	221	269	253	255	+34	+15.3%	-14	-5.3%	+2	292
<b>Patient &amp; Client Care</b>	<b>1,499</b>	<b>1,584</b>	<b>1,585</b>	<b>1,591</b>	<b>+92</b>	<b>+6.1%</b>	<b>+7</b>	<b>+0.4%</b>	<b>+6</b>	<b>1,893</b>



## WTE Change by Staff Category

■ WTE change since DEC 2019 ■ WTE change since DEC 2022 ■ WTE change since JUL 2023



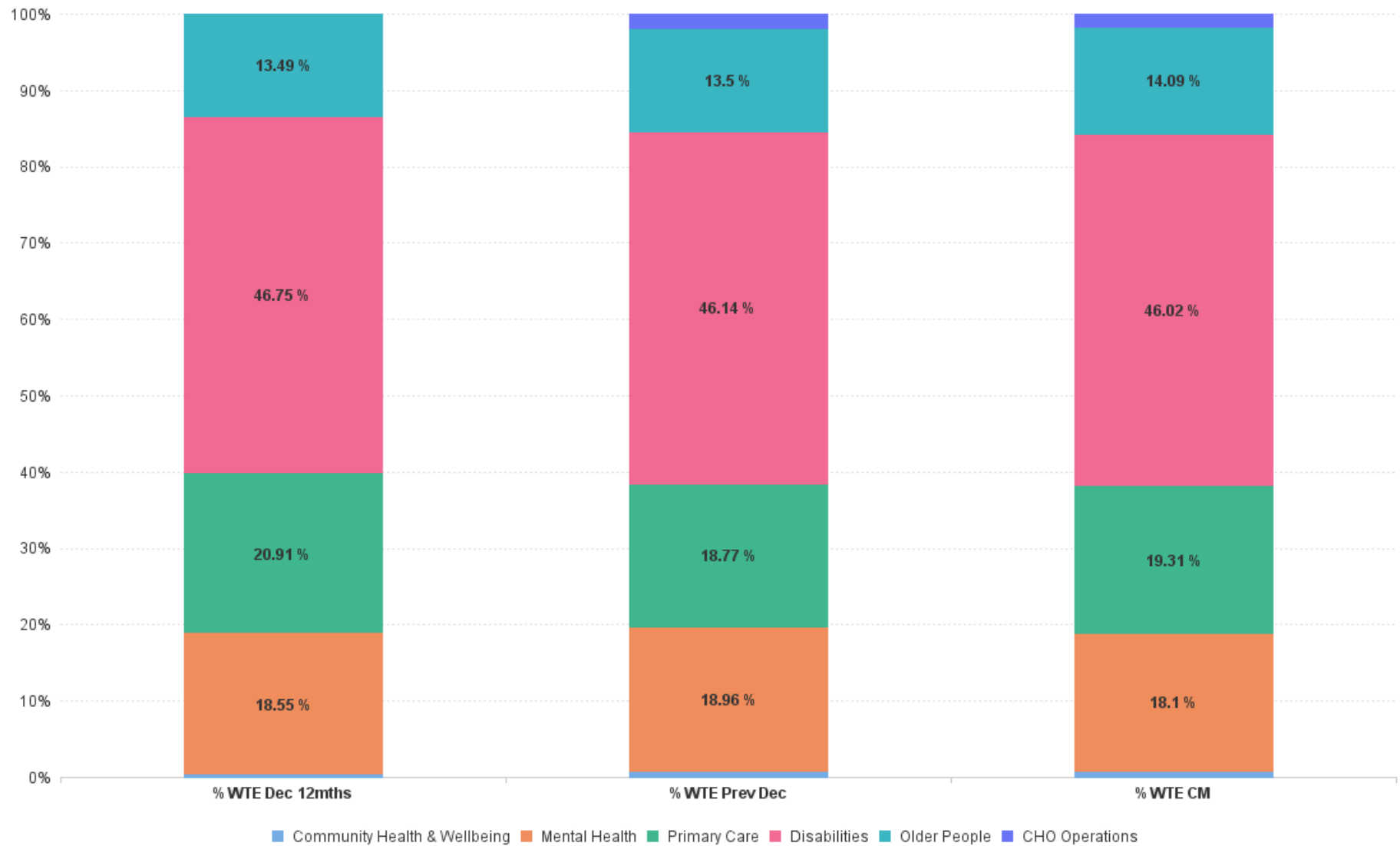
# Employment Report by Care Group : AUG 2023

CHO 9 AUG 2023

Care Group AUG 2023	WTE DEC 2019	WTE DEC 2022	WTE JUL 2023	WTE AUG 2023	WTE change since DEC 2019	% WTE Change since Dec 2019	WTE change since DEC 2022	% WTE Change since Dec 2022	WTE change since JUL 2023	No. AUG 2023
<b>Overall</b>	<b>6,582</b>	<b>7,230</b>	<b>7,217</b>	<b>7,210</b>	<b>+628</b>	<b>+9.5%</b>	<b>-20</b>	<b>-0.3%</b>	<b>-8</b>	<b>8,335</b>
Community Health & Wellbeing		46	49	49	+49		+3	+7.2%	+0	52
Mental Health	1,272	1,371	1,308	1,305	+34	+2.6%	-66	-4.8%	-3	1,454
Primary Care	1,247	1,357	1,389	1,392	+145	+11.7%	+36	+2.6%	+4	1,602
Disabilities	3,194	3,336	3,332	3,318	+125	+3.9%	-18	-0.5%	-14	3,944
Older People	870	976	1,006	1,016	+146	+16.8%	+40	+4.0%	+10	1,143
CHO Operations		144	134	129	+129		-15	-10.3%	-4	140
<b>Community Services</b>	<b>6,582</b>	<b>7,230</b>	<b>7,217</b>	<b>7,210</b>	<b>+628</b>	<b>+9.5%</b>	<b>-20</b>	<b>-0.3%</b>	<b>-8</b>	<b>8,335</b>



## % Total by Care Group



# Employment Report by HSE/S38 : AUG 2023

CHO 9 AUG 2023

Administration AUG 2023	WTE DEC 2019	WTE DEC 2022	WTE JUL 2023	WTE AUG 2023	WTE change since DEC 2019	% WTE Change since Dec 2019	WTE change since DEC 2022	% WTE Change since Dec 2022	WTE change since JUL 2023	No. AUG 2023
<b>Overall</b>	<b>6,582</b>	<b>7,230</b>	<b>7,217</b>	<b>7,210</b>	<b>+628</b>	<b>+9.5%</b>	<b>-20</b>	<b>-0.3%</b>	<b>-8</b>	<b>8,335</b>
Health Service Executive	3,407	3,905	3,952	3,941	+533	+15.7%	+36	+0.9%	-11	4,416
Section 38 Voluntary Agencies	3,175	3,325	3,266	3,269	+94	+3.0%	-56	-1.7%	+3	3,919



# Employment Report by HSE.S38: AUG 2023

## Health Service Executive

HSE&S38 AUG 2023	WTE DEC 2019	WTE DEC 2022	WTE JUL 2023	WTE AUG 2023	WTE change since DEC 2019	% WTE Change since Dec 2019	WTE change since DEC 2022	% WTE Change since Dec 2022	WTE change since JUL 2023	No. AUG 2023
<b>Total Health Service Executive</b>	<b>3,407</b>	<b>3,905</b>	<b>3,952</b>	<b>3,941</b>	<b>+533</b>	<b>+15.7%</b>	<b>+36</b>	<b>+0.9%</b>	<b>-11</b>	<b>4,416</b>
Consultants	56	59	59	57	+1	+0.9%	-3	-4.5%	-2	62
Registrars	90	123	113	117	+27	+29.9%	-6	-4.8%	+4	121
SHO/ Interns	60	47	51	60	-0	-0.4%	+13	+28.1%	+9	64
Medical/ Dental, other	51	50	49	46	-4	-8.3%	-4	-7.1%	-2	61
<b>Medical &amp; Dental</b>	<b>257</b>	<b>279</b>	<b>272</b>	<b>280</b>	<b>+23</b>	<b>+8.9%</b>	<b>+1</b>	<b>+0.4%</b>	<b>+8</b>	<b>308</b>
Nurse/ Midwife Manager	248	287	304	303	+56	+22.5%	+16	+5.7%	-1	322
Nurse/ Midwife Specialist & AN/MP	75	134	146	143	+68	+91.3%	+9	+6.5%	-3	158
Staff Nurse/ Staff Midwife	693	726	730	719	+26	+3.7%	-7	-1.0%	-10	795
Public Health Nurse	176	172	173	181	+5	+3.0%	+9	+5.1%	+8	218
Post-registration Nurse/ Midwife Student	26	19	1	6	-20	-77.3%	+5	-68.7%	+5	6
Pre-registration Nurse/ Midwife Intern	3		19	19	+16	+463.8%	-4		+0	38
Nursing/ Midwifery awaiting registration	11	15	5	3	-8	-72.2%	+1	-79.7%	-2	3
Nursing/ Midwifery Student	40	34	25	28	-12	-30.6%	-6	-17.0%	+3	47
Nursing/ Midwifery other	13	12	12	13	+0	+2.3%	+1	+8.9%	+1	15
<b>Nursing &amp; Midwifery</b>	<b>1,244</b>	<b>1,365</b>	<b>1,389</b>	<b>1,387</b>	<b>+143</b>	<b>+11.5%</b>	<b>+22</b>	<b>+1.6%</b>	<b>-2</b>	<b>1,555</b>
Therapy Professions	300	363	359	350	+50	+16.7%	-13	-3.5%	-9	418
Health Science/ Diagnostics	21	13	14	14	-7	-32.3%	+1	+9.0%	+0	14
Social Care	7	11	10	10	+3	+36.4%	-1	-12.9%	+0	11
Pharmacy	18	20	20	21	+2	+12.8%	+1	+5.7%	+0	28
Psychologists	124	138	138	138	+14	+11.3%	+0	+0.0%	-0	150
Social Workers	78	103	102	104	+26	+33.4%	+1	+1.1%	+2	114
H&SC, Other	57	54	58	58	+2	+3.2%	+4	+8.2%	+0	65
<b>Health &amp; Social Care Professionals</b>	<b>605</b>	<b>701</b>	<b>702</b>	<b>695</b>	<b>+90</b>	<b>+14.9%</b>	<b>-6</b>	<b>-0.9%</b>	<b>-7</b>	<b>800</b>
Management (VIII & above)	44	58	61	61	+17	+39.7%	+4	+6.4%	+0	63
Administrative/ Supervisory (V to VII)	112	241	252	251	+139	+124.0%	+10	+4.1%	-0	266
Clerical (III & IV)	303	374	395	387	+84	+27.8%	+14	+3.7%	-7	435
<b>Management &amp; Administrative</b>	<b>459</b>	<b>673</b>	<b>708</b>	<b>700</b>	<b>+241</b>	<b>+52.4%</b>	<b>+27</b>	<b>+4.1%</b>	<b>-8</b>	<b>764</b>
Support	198	182	175	172	-26	-13.1%	-10	-5.2%	-3	198
Maintenance/ Technical	9	10	10	10	+1	+6.2%	-0	-3.9%	-0	11
<b>General Support</b>	<b>207</b>	<b>192</b>	<b>185</b>	<b>182</b>	<b>-25</b>	<b>-12.2%</b>	<b>-10</b>	<b>-5.2%</b>	<b>-3</b>	<b>209</b>
Health Care Assistants	510	527	525	523	+13	+2.5%	-4	-0.8%	-2	585
Care, other	125	168	171	174	+49	+39.3%	+6	+3.5%	+3	195
<b>Patient &amp; Client Care</b>	<b>635</b>	<b>694</b>	<b>696</b>	<b>696</b>	<b>+62</b>	<b>+9.7%</b>	<b>+2</b>	<b>+0.3%</b>	<b>+0</b>	<b>780</b>

## Section 38 Voluntary Agencies

HSE&S38 AUG 2023	WTE DEC 2019	WTE DEC 2022	WTE JUL 2023	WTE AUG 2023	WTE change since DEC 2019	% WTE Change since Dec 2019	WTE change since DEC 2022	% WTE Change since Dec 2022	WTE change since JUL 2023	No. AUG 2023
<b>Total Section 38 Voluntary Agencies</b>	<b>3,175</b>	<b>3,325</b>	<b>3,266</b>	<b>3,269</b>	<b>+94</b>	<b>+3.0%</b>	<b>-56</b>	<b>-1.7%</b>	<b>+3</b>	<b>3,919</b>
Consultants	12	11	12	12	-0	-1.6%	+1	+8.6%	+0	16
Registrars	8	5	7	6	-2	-21.0%	+1	+26.4%	-0	7
SHO/ Interns	6	5	8	8	+2	+33.3%	+3	+60.0%	+0	8
Medical/ Dental, other	6	6	6	6	-0	-3.2%	-0	-4.0%	+0	8
<b>Medical &amp; Dental</b>	<b>32</b>	<b>27</b>	<b>32</b>	<b>32</b>	<b>-0</b>	<b>-0.2%</b>	<b>+5</b>	<b>+18.4%</b>	<b>+0</b>	<b>39</b>
Nurse/ Midwife Manager	188	201	204	201	+13	+6.9%	-1	-0.5%	-3	218
Nurse/ Midwife Specialist & AN/MP	10	15	14	13	+3	+25.6%	-2	-13.5%	-1	14
Staff Nurse/ Staff Midwife	502	488	428	423	-80	-15.9%	-65	-13.4%	-6	491
<i>Pre-registration Nurse/ Midwife Intern</i>	<i>15</i>	<i>8</i>	<i>19</i>	<i>19</i>	<i>+5</i>	<i>+31.0%</i>	<i>+1</i>	<i>+137.5%</i>	<i>+0</i>	<i>38</i>
<i>Nursing/ Midwifery awaiting registration</i>		<i>1</i>						<i>-100.0%</i>		
Nursing/ Midwifery Student	15	9	19	19	+5	+31.0%	+10	+111.1%	+0	38
Nursing/ Midwifery other	7	8	5	5	-2	-33.5%	-4	-43.5%	+0	5
<b>Nursing &amp; Midwifery</b>	<b>721</b>	<b>721</b>	<b>669</b>	<b>660</b>	<b>-62</b>	<b>-8.6%</b>	<b>-62</b>	<b>-8.6%</b>	<b>-10</b>	<b>766</b>
Therapy Professions	186	224	215	226	+39	+21.1%	+2	+0.8%	+10	250
Health Science/ Diagnostics	16	13	14	14	-2	-12.5%	+1	+7.7%	+0	15
Social Care	688	793	784	780	+92	+13.3%	-13	-1.7%	-4	954
Pharmacy	6	7	7	7	+0	+6.8%	-1	-6.8%	+0	8
Psychologists	40	49	46	47	+7	+17.0%	-2	-4.5%	+1	51
Social Workers	47	58	56	54	+7	+15.2%	-3	-5.6%	-2	60
H&SC, Other	14	10	9	10	-4	-31.2%	-1	-7.7%	+0	13
<b>Health &amp; Social Care Professionals</b>	<b>998</b>	<b>1,154</b>	<b>1,131</b>	<b>1,137</b>	<b>+139</b>	<b>+13.9%</b>	<b>-17</b>	<b>-1.5%</b>	<b>+6</b>	<b>1,351</b>
Management (VIII & above)	35	39	38	38	+3	+7.3%	-1	-2.6%	+0	38
Administrative/ Supervisory (V to VII)	96	119	146	146	+51	+52.9%	+28	+23.5%	+0	157
Clerical (III & IV)	148	149	151	148	+0	+0.2%	-0	-0.1%	-3	183
<b>Management &amp; Administrative</b>	<b>279</b>	<b>306</b>	<b>335</b>	<b>333</b>	<b>+53</b>	<b>+19.1%</b>	<b>+27</b>	<b>+8.7%</b>	<b>-2</b>	<b>378</b>
Support	254	202	185	189	-65	-25.7%	-13	-6.5%	+4	246
Maintenance/ Technical	26	25	24	25	-1	-5.5%	-1	-2.7%	+0	26
<b>General Support</b>	<b>280</b>	<b>227</b>	<b>209</b>	<b>213</b>	<b>-67</b>	<b>-23.8%</b>	<b>-14</b>	<b>-6.0%</b>	<b>+4</b>	<b>272</b>
Health Care Assistants	768	789	807	814	+46	+6.0%	+25	+3.1%	+6	1,016
Care, other	96	101	82	81	-15	-15.9%	-20	-19.9%	-1	97
<b>Patient &amp; Client Care</b>	<b>864</b>	<b>890</b>	<b>889</b>	<b>894</b>	<b>+31</b>	<b>+3.5%</b>	<b>+5</b>	<b>+0.5%</b>	<b>+5</b>	<b>1,113</b>

## CHO 9 by S38 Agency: AUG 2023

### Avista Dublin

AUG 2023	WTE DEC 2019	WTE DEC 2022	WTE JUL 2023	WTE AUG 2023	WTE change since DEC 2019	% WTE Change since Dec 2019	WTE change since DEC 2022	% WTE Change since Dec 2022	WTE change since JUL 2023	No. AUG 2023
<b>Total Avista Dublin</b>	<b>1,034</b>	<b>1,078</b>	<b>1,067</b>	<b>1,054</b>	<b>+19.4</b>	<b>+1.9%</b>	<b>-23.9</b>	<b>-2.2%</b>	<b>-13.0</b>	<b>1,244</b>
Consultants	1	3	3	3	+1.5	+115.8%	+0.0	+0.0%	+0.0	4
Registrars		1	2	1	+1.0		+0.0	+0.0%	-1.0	1
Medical/ Dental, other	2	2	2	2	+0.0	+0.0%	+0.0	+0.0%	+0.0	2
<b>Medical &amp; Dental</b>	<b>3</b>	<b>6</b>	<b>7</b>	<b>6</b>	<b>+2.5</b>	<b>+76.3%</b>	<b>+0.0</b>	<b>+0.0%</b>	<b>-1.0</b>	<b>7</b>
Nurse/ Midwife Manager	62	61	63	61	-0.6	-1.0%	+0.5	+0.8%	-2.0	66
Nurse/ Midwife Specialist & AN/MP	8	13	13	12	+3.5	+43.1%	-1.0	-7.9%	-1.0	12
Staff Nurse/ Staff Midwife	186	186	171	167	-19.3	-10.3%	-19.4	-10.4%	-3.8	188
Nursing/ Midwifery Student	8		11	11	+3.0	+40.0%	+10.5		+0.0	21
Nursing/ Midwifery other	4	5	5	5	+0.2	+4.8%	+0.0	+0.0%	+0.0	5
<b>Nursing &amp; Midwifery</b>	<b>268</b>	<b>264</b>	<b>261</b>	<b>255</b>	<b>-13.1</b>	<b>-4.9%</b>	<b>-9.5</b>	<b>-3.6%</b>	<b>-6.8</b>	<b>292</b>
Therapy Professions	33	44	40	40	+7.5	+22.6%	-4.0	-9.1%	+0.0	43
Social Care	163	191	187	183	+20.7	+12.7%	-7.5	-3.9%	-3.4	221
Pharmacy	2	2	2	2	+0.0	+0.0%	+0.0	+0.0%	+0.0	2
Psychologists	7	12	11	11	+3.3	+45.7%	-1.0	-8.6%	+0.0	11
Social Workers	10	14	14	14	+4.5	+44.6%	+0.0	+0.0%	+0.0	15
H&SC, Other	4	3	3	3	-1.4	-33.8%	+0.0	+0.0%	+0.0	3
<b>Health &amp; Social Care Professionals</b>	<b>219</b>	<b>266</b>	<b>257</b>	<b>254</b>	<b>+34.6</b>	<b>+15.8%</b>	<b>-12.6</b>	<b>-4.7%</b>	<b>-3.4</b>	<b>295</b>
Management (VIII & above)	6	9	9	9	+3.0	+50.0%	+0.0	+0.0%	+0.0	9
Administrative/ Supervisory (V to VII)	25	40	46	46	+20.9	+84.1%	+6.0	+15.0%	+0.0	47
Clerical (III & IV)	33	35	34	30	-3.6	-10.9%	-5.0	-14.5%	-4.5	39
<b>Management &amp; Administrative</b>	<b>64</b>	<b>83</b>	<b>89</b>	<b>84</b>	<b>+20.3</b>	<b>+31.7%</b>	<b>+1.0</b>	<b>+1.2%</b>	<b>-4.5</b>	<b>95</b>
Support	79	72	73	73	-5.3	-6.8%	+1.1	+1.5%	+0.0	96
Maintenance/ Technical	8	7	7	7	-1.0	-12.7%	+0.0	+0.0%	+0.0	7
<b>General Support</b>	<b>87</b>	<b>79</b>	<b>80</b>	<b>80</b>	<b>-6.3</b>	<b>-7.3%</b>	<b>+1.1</b>	<b>+1.4%</b>	<b>+0.0</b>	<b>103</b>
Health Care Assistants	362	358	355	357	-4.2	-1.2%	-1.1	-0.3%	+2.6	432
Care, other	32	20	17	17	-14.4	-45.3%	-2.9	-14.2%	+0.0	20
<b>Patient &amp; Client Care</b>	<b>393</b>	<b>379</b>	<b>372</b>	<b>375</b>	<b>-18.6</b>	<b>-4.7%</b>	<b>-4.0</b>	<b>-1.1%</b>	<b>+2.6</b>	<b>452</b>



Central Remedial Clinic

AUG 2023	WTE DEC 2019	WTE DEC 2022	WTE JUL 2023	WTE AUG 2023	WTE change since DEC 2019	% WTE Change since Dec 2019	WTE change since DEC 2022	% WTE Change since Dec 2022	WTE change since JUL 2023	No. AUG 2023
Total Central Remedial Clinic	278	340	321	321	+42.7	+15.3%	-18.5	-5.4%	+0.0	372
Consultants	1				-1.2	-100.0%				
Medical/ Dental, other	0	0	0	0	+0.1	+12.2%	+0.0	+0.0%	+0.0	1
Medical & Dental	2	0	0	0	-1.2	-71.6%	+0.0	+0.0%	+0.0	1
Nurse/ Midwife Manager	2	5	5	5	+2.7	+117.9%	+0.0	+0.0%	+0.0	6
Nurse/ Midwife Specialist & AN/MP	1	1	1	1	+0.6	+116.0%	+0.0	+0.0%	+0.0	2
Staff Nurse/ Staff Midwife	4	5	4	4	+0.0	+0.6%	-1.2	-24.6%	+0.0	6
Nursing/ Midwifery other		1					-1.0	-100.0%		
Nursing & Midwifery	6	12	10	10	+3.3	+51.9%	-2.2	-18.3%	+0.0	14
Therapy Professions	78	93	84	84	+6.7	+8.7%	-9.3	-9.9%	+0.0	94
Health Science/ Diagnostics	15	12	13	13	-2.0	-13.3%	+1.0	+8.3%	+0.0	13
Social Care		1	1	1	+1.0		+0.0	+0.0%	+0.0	1
Psychologists	11	8	8	8	-2.5	-23.4%	+0.3	+4.2%	+0.0	9
Social Workers	8	11	8	8	+0.2	+1.9%	-2.9	-26.7%	+0.0	9
Health & Social Care Professionals	111	125	114	114	+3.3	+3.0%	-10.8	-8.6%	+0.0	126
Management (VIII & above)	7	9	7	7	+0.0	+0.0%	-2.0	-22.2%	+0.0	7
Administrative/ Supervisory (V to VII)	15	17	31	31	+15.8	+102.5%	+14.5	+86.4%	+0.0	34
Clerical (III & IV)	32	41	40	40	+7.6	+23.6%	-0.8	-1.9%	+0.0	49
Management & Administrative	55	66	78	78	+23.5	+42.8%	+11.7	+17.7%	+0.0	90
Support	14	14	13	13	-0.7	-4.9%	-1.0	-6.9%	+0.0	16
Maintenance/ Technical	1	2	2	2	+1.0	+100.0%	+0.0	+0.0%	+0.0	2
General Support	15	16	15	15	+0.3	+2.1%	-1.0	-6.1%	+0.0	18
Health Care Assistants	51	60	58	58	+7.6	+14.9%	-1.3	-2.2%	+0.0	72
Care, other	39	59	45	45	+5.9	+15.3%	-14.9	-25.1%	+0.0	51
Patient & Client Care	90	119	103	103	+13.5	+15.1%	-16.3	-13.6%	+0.0	123

Incorporated Orthopaedic Hospital

AUG 2023	WTE DEC 2019	WTE DEC 2022	WTE JUL 2023	WTE AUG 2023	WTE change since DEC 2019	% WTE Change since Dec 2019	WTE change since DEC 2022	% WTE Change since Dec 2022	WTE change since JUL 2023	No. AUG 2023
Total Incorporated Orthopaedic Hos	226	273	284	298	+72.5	+32.1%	+24.6	+9.0%	+13.7	347
Consultants	1	2	2	2	+0.9	+150.0%	+0.0	+0.0%	+0.0	2
Registrars	2	2	3	3	+1.0	+50.0%	+1.0	+50.0%	+0.0	3
SHO/ Interns	5	4	7	7	+2.0	+40.0%	+3.0	+75.0%	+0.0	7
Medical & Dental	8	8	12	12	+3.9	+51.3%	+4.0	+53.3%	+0.0	12
Nurse/ Midwife Manager	18	18	19	19	+0.5	+2.8%	+0.7	+3.7%	+0.0	22
Staff Nurse/ Staff Midwife	60	69	65	63	+3.1	+5.2%	-6.4	-9.2%	-2.0	72
Nursing & Midwifery	78	87	83	81	+3.6	+4.7%	-5.7	-6.6%	-2.0	94
Therapy Professions	20	34	38	49	+29.0	+145.1%	+15.2	+44.9%	+11.2	53
Health Science/ Diagnostics	1	1	1	1	+0.0	+0.0%	+0.0	+0.0%	+0.0	2
Pharmacy	3	4	3	3	-0.3	-9.7%	-1.0	-28.6%	+0.0	3
Social Workers	7	9	10	10	+2.1	+28.6%	+0.8	+9.2%	+0.0	11
Health & Social Care Professionals	31	47	51	62	+30.9	+99.0%	+15.0	+31.9%	+11.2	69
Management (VIII & above)	1	2	2	2	+1.0	+100.0%	+0.0	+0.0%	+0.0	2
Administrative/ Supervisory (V to VII)	6	8	10	10	+3.7	+56.7%	+2.5	+33.2%	+0.0	11
Clerical (III & IV)	10	11	9	11	+1.0	+9.8%	-0.7	-6.1%	+2.0	16
Management & Administrative	17	21	21	23	+5.6	+32.7%	+1.8	+8.7%	+2.0	29
Support	34	46	33	35	+1.1	+3.2%	-10.9	-23.9%	+1.5	44
Maintenance/ Technical	2	2	2	2	+0.0	+0.0%	+0.0	+0.0%	+0.0	2
General Support	36	48	35	37	+1.1	+3.0%	-10.9	-22.9%	+1.5	46
Health Care Assistants	56	63	82	83	+27.4	+48.9%	+20.4	+32.4%	+1.0	95
Care, other	0	0	0	0	+0.0	+1.5%	+0.0	+0.0%	+0.0	2
Patient & Client Care	56	63	83	84	+27.4	+48.6%	+20.4	+32.2%	+1.0	97

## St. Michael's House Dublin

AUG 2023	WTE DEC 2019	WTE DEC 2022	WTE JUL 2023	WTE AUG 2023	WTE change since DEC 2019	% WTE Change since Dec 2019	WTE change since DEC 2022	% WTE Change since Dec 2022	WTE change since JUL 2023	No. AUG 2023
<b>Total St. Michael's House Dublin</b>	<b>1,431</b>	<b>1,449</b>	<b>1,459</b>	<b>1,463</b>	<b>+32.0</b>	<b>+2.2%</b>	<b>+13.1</b>	<b>+0.9%</b>	<b>+3.6</b>	<b>1,792</b>
Consultants	8	6	6	7	-1.3	-15.7%	+1.1	+20.5%	+0.4	9
Registrars	4	1	0	1	-3.2	-79.5%	-0.2	-18.0%	+0.7	1
Medical/ Dental, other	4	4	4	4	-0.3	-6.7%	-0.3	-6.7%	+0.0	5
<b>Medical &amp; Dental</b>	<b>16</b>	<b>10</b>	<b>10</b>	<b>11</b>	<b>-4.7</b>	<b>-29.8%</b>	<b>+0.7</b>	<b>+6.9%</b>	<b>+1.2</b>	<b>15</b>
Nurse/ Midwife Manager	84	100	103	101	+17.5	+20.9%	+1.9	+1.9%	-1.3	109
Staff Nurse/ Staff Midwife	162	149	147	148	-13.5	-8.3%	-1.2	-0.8%	+1.1	181
<b>Nursing &amp; Midwifery</b>	<b>246</b>	<b>249</b>	<b>250</b>	<b>250</b>	<b>+4.0</b>	<b>+1.6%</b>	<b>+0.8</b>	<b>+0.3%</b>	<b>-0.2</b>	<b>290</b>
Therapy Professions	51	48	52	51	-0.0	-0.1%	+3.1	+6.5%	-0.9	58
Social Care	525	601	596	595	+69.9	+13.3%	-5.9	-1.0%	-0.7	732
Psychologists	18	27	24	25	+6.9	+37.4%	-1.7	-6.1%	+0.9	28
Social Workers	20	21	23	21	+1.4	+7.1%	-0.1	-0.5%	-1.8	24
H&SC, Other	10	8	6	7	-3.0	-30.2%	-0.8	-10.3%	+0.5	10
<b>Health &amp; Social Care Professionals</b>	<b>625</b>	<b>705</b>	<b>702</b>	<b>700</b>	<b>+75.2</b>	<b>+12.0%</b>	<b>-5.3</b>	<b>-0.7%</b>	<b>-1.9</b>	<b>852</b>
Management (VIII & above)	21	19	19	19	-2.4	-11.3%	+0.0	+0.0%	+0.4	19
Administrative/ Supervisory (V to VII)	43	47	52	52	+9.1	+21.2%	+4.7	+10.0%	+0.0	56
Clerical (III & IV)	54	45	53	53	-1.3	-2.4%	+7.1	+15.5%	-0.2	59
<b>Management &amp; Administrative</b>	<b>118</b>	<b>112</b>	<b>123</b>	<b>123</b>	<b>+5.3</b>	<b>+4.5%</b>	<b>+11.8</b>	<b>+10.5%</b>	<b>+0.2</b>	<b>134</b>
Support	96	40	37	40	-56.5	-58.8%	-0.6	-1.4%	+2.5	53
Maintenance/ Technical	12	11	12	12	-0.4	-3.6%	+0.3	+2.8%	+0.1	13
<b>General Support</b>	<b>108</b>	<b>52</b>	<b>49</b>	<b>51</b>	<b>-56.9</b>	<b>-52.6%</b>	<b>-0.3</b>	<b>-0.5%</b>	<b>+2.6</b>	<b>66</b>
Health Care Assistants	293	302	307	309	+15.9	+5.4%	+7.7	+2.5%	+2.8	412
Care, other	25	20	19	18	-6.9	-28.0%	-2.3	-11.5%	-1.0	23
<b>Patient &amp; Client Care</b>	<b>318</b>	<b>322</b>	<b>325</b>	<b>327</b>	<b>+9.0</b>	<b>+2.8%</b>	<b>+5.4</b>	<b>+1.7%</b>	<b>+1.8</b>	<b>435</b>

## St. Vincent's Fairview

AUG 2023	WTE DEC 2019	WTE DEC 2022	WTE JUL 2023	WTE AUG 2023	WTE change since DEC 2019	% WTE Change since Dec 2019	WTE change since DEC 2022	% WTE Change since Dec 2022	WTE change since JUL 2023	No. AUG 2023
<b>Total St. Vincent's Fairview</b>	<b>206</b>	<b>185</b>	<b>135</b>	<b>134</b>	<b>-72.3</b>	<b>-35.1%</b>	<b>-51.4</b>	<b>-27.7%</b>	<b>-1.0</b>	<b>164</b>
Consultants	1	1	1	1	-0.2	-15.3%	-0.2	-15.3%	+0.0	1
Registrars	2	1	2	2	-0.5	-25.0%	+0.5	+50.0%	+0.0	2
SHO/ Interns	1	1	1	1	+0.0	+0.0%	+0.0	+0.0%	+0.0	1
<b>Medical &amp; Dental</b>	<b>4</b>	<b>3</b>	<b>4</b>	<b>4</b>	<b>-0.7</b>	<b>-16.3%</b>	<b>+0.3</b>	<b>+10.1%</b>	<b>+0.0</b>	<b>4</b>
Nurse/ Midwife Manager	21	18	14	14	-7.1	-33.1%	-4.1	-22.0%	+0.0	15
Nurse/ Midwife Specialist & AN/MP	2	1			-1.5	-100.0%	-1.0	-100.0%		
Staff Nurse/ Staff Midwife	91	78	42	41	-50.1	-54.8%	-37.1	-47.3%	-1.0	44
Nursing/ Midwifery Student	7	9	9	9	+1.5	+21.4%	-0.5	-5.6%	+0.0	17
Nursing/ Midwifery other	3	3			-2.5	-100.0%	-2.5	-100.0%		
<b>Nursing &amp; Midwifery</b>	<b>124</b>	<b>109</b>	<b>65</b>	<b>64</b>	<b>-59.7</b>	<b>-48.2%</b>	<b>-45.1</b>	<b>-41.3%</b>	<b>-1.0</b>	<b>76</b>
Therapy Professions	5	4	1	1	-3.9	-85.8%	-3.2	-83.3%	+0.0	2
Pharmacy	2	2	2	2	+0.7	+43.8%	+0.5	+27.8%	+0.0	3
Psychologists	4	3	3	3	-0.9	-25.7%	+0.1	+4.0%	+0.0	3
Social Workers	2	2	1	1	-1.0	-50.0%	-1.0	-50.0%	+0.0	1
<b>Health &amp; Social Care Professionals</b>	<b>12</b>	<b>10</b>	<b>7</b>	<b>7</b>	<b>-5.1</b>	<b>-43.7%</b>	<b>-3.6</b>	<b>-35.4%</b>	<b>+0.0</b>	<b>9</b>
Management (VIII & above)			1	1	+1.0		+1.0		+0.0	1
Administrative/ Supervisory (V to VII)	6	7	7	7	+1.1	+18.3%	+0.1	+1.8%	+0.0	9
Clerical (III & IV)	19	16	16	16	-3.4	-17.8%	-0.7	-4.4%	+0.0	20
<b>Management &amp; Administrative</b>	<b>25</b>	<b>24</b>	<b>24</b>	<b>24</b>	<b>-1.3</b>	<b>-5.0%</b>	<b>+0.4</b>	<b>+1.7%</b>	<b>+0.0</b>	<b>30</b>
Support	31	29	28	28	-3.8	-12.1%	-1.6	-5.5%	+0.0	37
Maintenance/ Technical	3	3	2	2	-1.0	-33.3%	-1.0	-33.3%	+0.0	2
<b>General Support</b>	<b>34</b>	<b>32</b>	<b>30</b>	<b>30</b>	<b>-4.8</b>	<b>-14.0%</b>	<b>-2.6</b>	<b>-8.1%</b>	<b>+0.0</b>	<b>39</b>
Health Care Assistants	6	6	5	5	-0.8	-13.3%	-0.8	-13.3%	+0.0	5
Care, other	1	1	1	1	+0.0	+0.0%	+0.0	+0.0%	+0.0	1
<b>Patient &amp; Client Care</b>	<b>7</b>	<b>7</b>	<b>6</b>	<b>6</b>	<b>-0.8</b>	<b>-11.4%</b>	<b>-0.8</b>	<b>-11.4%</b>	<b>+0.0</b>	<b>6</b>

# Employment Report by Community Health & Wellbeing AUG 2023

CHO 9 AUG 2023

Community Health & Wellbeing AUG 2023	WTE DEC 2019	WTE DEC 2022	WTE JUL 2023	WTE AUG 2023	WTE change since DEC 2019	% WTE Change since Dec 2019	WTE change since DEC 2022	% WTE Change since Dec 2022	WTE change since JUL 2023	No. AUG 2023
<b>Overall</b>		<b>91</b>	<b>98</b>	<b>98</b>	<b>+98</b>		<b>+7</b>	<b>+7.2%</b>	<b>+0</b>	<b>104</b>
Therapy Professions		4	4	4	+4		+0	+1.1%	+0	4
<b>Health &amp; Social Care Professionals</b>		<b>4</b>	<b>4</b>	<b>4</b>	<b>+4</b>		<b>+0</b>	<b>+1.1%</b>	<b>+0</b>	<b>4</b>
Management (VIII & above)		4	6	5	+5		+2	+48.1%	0	6
Administrative/ Supervisory (V to VII)		13	14	15	+15		+2	+11.3%	+1	16
Clerical (III & IV)		10	12	10	+10		-1	-5.2%	-2	12
<b>Management &amp; Administrative</b>		<b>28</b>	<b>31</b>	<b>30</b>	<b>+30</b>		<b>+3</b>	<b>+9.9%</b>	<b>-1</b>	<b>34</b>
Care, other		60	63	64	+64		+4	+6.3%	+1	66
<b>Patient &amp; Client Care</b>		<b>60</b>	<b>63</b>	<b>64</b>	<b>+64</b>		<b>+4</b>	<b>+6.3%</b>	<b>+1</b>	<b>66</b>



# Employment Report by Mental Health AUG 2023

CHO 9 AUG 2023

Mental HealthAUG 2023	WTE DEC 2019	WTE DEC 2022	WTE JUL 2023	WTE AUG 2023	WTE change since DEC 2019	% WTE Change since Dec 2019	WTE change since DEC 2022	% WTE Change since Dec 2022	WTE change since JUL 2023	No. AUG 2023
<b>Overall</b>	<b>1,272</b>	<b>1,371</b>	<b>1,308</b>	<b>1,305</b>	<b>+34</b>	<b>+2.6%</b>	<b>-66</b>	<b>-4.8%</b>	<b>-3</b>	<b>1,454</b>
Consultants	50	55	53	51	+1	+2.9%	-4	-6.7%	-2	56
Registrars	31	57	51	46	+16	+50.2%	-11	-18.6%	-4	48
SHO/ Interns	53	36	33	43	-10	-18.9%	+7	+20.4%	+10	46
<b>Medical &amp; Dental</b>	<b>134</b>	<b>148</b>	<b>137</b>	<b>141</b>	<b>+7</b>	<b>+5.2%</b>	<b>-7</b>	<b>-4.7%</b>	<b>+4</b>	<b>150</b>
Nurse/ Midwife Manager	132	138	137	139	+7	+5.0%	+1	+0.6%	+2	146
Nurse/ Midwife Specialist & AN/MP	65	99	102	99	+34	+52.5%	+1	+0.6%	-2	109
Staff Nurse/ Staff Midwife	351	351	308	303	-48	-13.8%	-48	-13.7%	-5	331
Pre-registration Nurse/ Midwife Intern	10	8	23	23	+13	+127.3%	+15	+187.5%	+0	46
Nursing/ Midwifery awaiting registration	11	14	3	3	-8	-72.2%	-11	-78.3%	+0	3
Nursing/ Midwifery Student	21	22	26	26	+5	+24.3%	+4	+19.3%	+0	49
Nursing/ Midwifery other	11	9	7	8	-3	-26.7%	-1	-10.6%	+1	9
<b>Nursing &amp; Midwifery</b>	<b>581</b>	<b>619</b>	<b>580</b>	<b>575</b>	<b>-6</b>	<b>-1.0%</b>	<b>-43</b>	<b>-7.0%</b>	<b>-5</b>	<b>644</b>
Therapy Professions	55	60	54	50	-4	-8.0%	-9	-15.8%	-4	57
Social Care	1	1	1	1	+0	+11.1%	+0	+1.0%	+0	1
Pharmacy	8	7	8	8	+1	+6.6%	+1	+21.1%	+1	12
Psychologists	46	56	55	55	+9	+20.3%	-1	-2.0%	+0	61
Social Workers	43	57	55	56	+13	+29.3%	0	-0.6%	+1	62
H&SC, Other	15	17	18	18	+3	+21.4%	+0	+1.3%	0	19
<b>Health &amp; Social Care Professionals</b>	<b>167</b>	<b>198</b>	<b>190</b>	<b>189</b>	<b>+21</b>	<b>+12.8%</b>	<b>-9</b>	<b>-4.7%</b>	<b>-2</b>	<b>212</b>
Management (VIII & above)	5	5	6	6	+1	+20.2%	+1	+21.7%	+0	6
Administrative/ Supervisory (V to VII)	28	38	41	41	+13	+45.9%	+2	+6.0%	0	43
Clerical (III & IV)	104	109	109	108	+4	+3.7%	-1	-0.8%	-2	124
<b>Management &amp; Administrative</b>	<b>137</b>	<b>152</b>	<b>156</b>	<b>154</b>	<b>+18</b>	<b>+12.9%</b>	<b>+2</b>	<b>+1.6%</b>	<b>-2</b>	<b>173</b>
Support	103	95	88	88	-16	-15.2%	-7	-7.6%	-1	104
Maintenance/ Technical	11	11	10	10	-1	-13.0%	-1	-13.0%	0	10
<b>General Support</b>	<b>114</b>	<b>106</b>	<b>98</b>	<b>97</b>	<b>-17</b>	<b>-15.0%</b>	<b>-9</b>	<b>-8.2%</b>	<b>-1</b>	<b>114</b>
Health Care Assistants	126	137	135	138	+12	+9.4%	+1	+0.8%	+3	148
Care, other	13	12	12	11	-2	-11.8%	-1	-8.8%	0	13
<b>Patient &amp; Client Care</b>	<b>139</b>	<b>149</b>	<b>147</b>	<b>149</b>	<b>+10</b>	<b>+7.4%</b>	<b>+0</b>	<b>+0.0%</b>	<b>+2</b>	<b>161</b>



# Employment Report by Primary Care AUG 2023

CHO 9 AUG 2023

Primary Care AUG 2023	WTE DEC 2019	WTE DEC 2022	WTE JUL 2023	WTE AUG 2023	WTE change since DEC 2019	% WTE Change since Dec 2019	WTE change since DEC 2022	% WTE Change since Dec 2022	WTE change since JUL 2023	No. AUG 2023
<b>Overall</b>	<b>1,247</b>	<b>1,357</b>	<b>1,389</b>	<b>1,392</b>	<b>+145</b>	<b>+11.7%</b>	<b>+36</b>	<b>+2.6%</b>	<b>+4</b>	<b>1,602</b>
Consultants	4	3	4	4	0	-3.4%	+1	+23.4%	+0	5
Registrars	56	60	58	68	+12	+21.3%	+7	+11.9%	+9	70
SHO/ Interns	1	7	10	9	+8	+786.0%	+2	+27.8%	-1	10
Medical/ Dental, other	50	50	49	46	-3	-6.5%	-4	-7.1%	-2	61
<b>Medical &amp; Dental</b>	<b>111</b>	<b>121</b>	<b>121</b>	<b>127</b>	<b>+16</b>	<b>+14.8%</b>	<b>+6</b>	<b>+5.3%</b>	<b>+6</b>	<b>146</b>
Nurse/ Midwife Manager	37	53	60	58	+21	+58.3%	+5	+9.5%	-2	66
Nurse/ Midwife Specialist & AN/MP	6	23	28	27	+21	+326.6%	+5	+20.6%	-1	32
Staff Nurse/ Staff Midwife	100	105	119	110	+10	+9.7%	+5	+4.8%	-9	129
Public Health Nurse	175	171	172	180	+5	+2.7%	+9	+5.2%	+8	217
Post-registration Nurse/ Midwife Student	26	19	1	6	-20	-77.3%	-13	-68.7%	+5	6
Nursing/ Midwifery Student	26	19	1	6	-20	-77.3%	-13	-68.7%	+5	6
Nursing/ Midwifery other		2	2	2	+2		+0	+1.0%	+0	2
<b>Nursing &amp; Midwifery</b>	<b>345</b>	<b>373</b>	<b>381</b>	<b>383</b>	<b>+39</b>	<b>+11.2%</b>	<b>+11</b>	<b>+2.9%</b>	<b>+2</b>	<b>452</b>
Therapy Professions	196	229	229	225	+28	+14.5%	-5	-2.1%	-4	273
Health Science/ Diagnostics	20	13	14	14	-6	-30.8%	+1	+9.0%	+0	14
Social Care	4	6	5	5	+1	+26.5%	-1	-14.1%	+0	6
Pharmacy	12	13	14	14	+2	+19.0%	+1	+6.6%	+0	18
Psychologists	65	72	74	74	+9	+13.2%	+2	+2.6%	0	80
Social Workers	17	23	24	26	+10	+57.4%	+3	+12.0%	+2	28
H&SC, Other	37	33	37	37	+1	+1.4%	+4	+12.6%	+0	42
<b>Health &amp; Social Care Professionals</b>	<b>351</b>	<b>390</b>	<b>397</b>	<b>396</b>	<b>+44</b>	<b>+12.6%</b>	<b>+5</b>	<b>+1.3%</b>	<b>-2</b>	<b>461</b>
Management (VIII & above)	28	15	19	19	-9	-32.1%	+4	+25.3%	+0	20
Administrative/ Supervisory (V to VII)	77	93	103	103	+25	+32.4%	+10	+10.5%	-1	107
Clerical (III & IV)	182	185	200	196	+14	+7.6%	+11	+6.0%	-4	220
<b>Management &amp; Administrative</b>	<b>288</b>	<b>293</b>	<b>322</b>	<b>318</b>	<b>+30</b>	<b>+10.4%</b>	<b>+25</b>	<b>+8.5%</b>	<b>-4</b>	<b>347</b>
Support	35	27	30	30	-5	-14.2%	+2	+8.6%	+0	34
<b>General Support</b>	<b>35</b>	<b>27</b>	<b>30</b>	<b>30</b>	<b>-5</b>	<b>-14.2%</b>	<b>+2</b>	<b>+8.6%</b>	<b>+0</b>	<b>34</b>
Health Care Assistants	13	35	24	23	+10	+76.8%	-11	-32.9%	-1	29
Care, other	105	118	113	116	+11	+10.6%	-2	-1.8%	+3	133
<b>Patient &amp; Client Care</b>	<b>118</b>	<b>153</b>	<b>138</b>	<b>139</b>	<b>+21</b>	<b>+17.9%</b>	<b>-14</b>	<b>-8.9%</b>	<b>+1</b>	<b>162</b>



## Employment Report by Disabilities AUG 2023

CHO 9 AUG 2023

Disabilities AUG 2023	WTE DEC 2019	WTE DEC 2022	WTE JUL 2023	WTE AUG 2023	WTE change since DEC 2019	% WTE Change since Dec 2019	WTE change since DEC 2022	% WTE Change since Dec 2022	WTE change since JUL 2023	No. AUG 2023
<b>Overall</b>	<b>3,194</b>	<b>3,336</b>	<b>3,332</b>	<b>3,318</b>	<b>+125</b>	<b>+3.9%</b>	<b>-18</b>	<b>-0.5%</b>	<b>-14</b>	<b>3,944</b>
Consultants	13	9	11	11	-2	-15.4%	+1	+12.1%	-1	14
Registrars	6	3	3	3	-3	-53.0%	0	-5.7%	0	3
SHO/ Interns		1	2	2	+2		+1	+102.0%	+0	2
Medical/ Dental, other	6	6	6	6	0	-3.2%	0	-4.0%	+0	8
<b>Medical &amp; Dental</b>	<b>25</b>	<b>20</b>	<b>22</b>	<b>21</b>	<b>-3</b>	<b>-13.4%</b>	<b>+2</b>	<b>+8.8%</b>	<b>-1</b>	<b>27</b>
Nurse/ Midwife Manager	192	211	217	214	+22	+11.6%	+3	+1.5%	-3	229
Nurse/ Midwife Specialist & AN/MP	9	16	17	16	+7	+81.9%	-1	-4.1%	-1	17
Staff Nurse/ Staff Midwife	517	501	478	479	-38	-7.3%	-21	-4.3%	+1	556
Pre-registration Nurse/ Midwife Intern	8		15	15	+7	+93.5%	+15		+0	30
Nursing/ Midwifery awaiting registration		2	2				-2	-100.0%	-2	
Nursing/ Midwifery Student	8	2	17	15	+7	+93.5%	+13	+657.6%	-2	30
Nursing/ Midwifery other	7	9	7	7	+0	+1.1%	-1	-16.4%	+0	9
<b>Nursing &amp; Midwifery</b>	<b>732</b>	<b>739</b>	<b>736</b>	<b>731</b>	<b>-1</b>	<b>-0.2%</b>	<b>-7</b>	<b>-1.0%</b>	<b>-5</b>	<b>841</b>
Therapy Professions	181	208	201	198	+17	+9.4%	-10	-4.6%	-3	222
Health Science/ Diagnostics	15	12	13	13	-2	-13.3%	+1	+8.3%	+0	13
Social Care	689	796	787	783	+94	+13.6%	-13	-1.7%	-4	957
Pharmacy	2	2	2	2	+0	+0.0%	+0	+0.0%	+0	2
Psychologists	53	57	54	55	+2	+3.5%	-3	-4.7%	+1	59
Social Workers	44	54	52	51	+6	+14.5%	-4	-6.5%	-2	56
H&SC, Other	19	13	12	13	-6	-33.5%	-1	-5.8%	+0	16
<b>Health &amp; Social Care Professionals</b>	<b>1,003</b>	<b>1,142</b>	<b>1,121</b>	<b>1,114</b>	<b>+111</b>	<b>+11.0%</b>	<b>-29</b>	<b>-2.5%</b>	<b>-7</b>	<b>1,325</b>
Management (VIII & above)	37	45	43	43	+6	+14.8%	-2	-4.1%	+0	43
Administrative/ Supervisory (V to VII)	88	129	152	153	+65	+74.6%	+24	+18.7%	+1	163
Clerical (III & IV)	125	137	144	140	+14	+11.3%	+2	+1.6%	-5	167
<b>Management &amp; Administrative</b>	<b>250</b>	<b>311</b>	<b>339</b>	<b>335</b>	<b>+85</b>	<b>+34.0%</b>	<b>+24</b>	<b>+7.9%</b>	<b>-4</b>	<b>373</b>
Support	196	136	132	134	-62	-31.6%	-2	-1.7%	+2	175
Maintenance/ Technical	22	20	20	21	-1	-6.5%	+0	+1.6%	+0	22
<b>General Support</b>	<b>218</b>	<b>156</b>	<b>153</b>	<b>154</b>	<b>-63</b>	<b>-29.0%</b>	<b>-2</b>	<b>-1.3%</b>	<b>+2</b>	<b>197</b>
Health Care Assistants	869	866	872	874	+5	+0.6%	+8	+0.9%	+2	1,078
Care, other	97	102	89	88	-8	-8.7%	-13	-13.0%	-1	103
<b>Patient &amp; Client Care</b>	<b>966</b>	<b>968</b>	<b>962</b>	<b>962</b>	<b>-3</b>	<b>-0.4%</b>	<b>-6</b>	<b>-0.6%</b>	<b>+1</b>	<b>1,181</b>





# Employment Report by Older People AUG 2023

CHO 9 AUG 2023

Older People AUG 2023	WTE DEC 2019	WTE DEC 2022	WTE JUL 2023	WTE AUG 2023	WTE change since DEC 2019	% WTE Change since Dec 2019	WTE change since DEC 2022	% WTE Change since Dec 2022	WTE change since JUL 2023	No. AUG 2023
<b>Overall</b>	<b>870</b>	<b>976</b>	<b>1,006</b>	<b>1,016</b>	<b>+146</b>	<b>+16.8%</b>	<b>+40</b>	<b>+4.0%</b>	<b>+10</b>	<b>1,143</b>
Consultants	2	3	3	3	+1	+56.3%	+0	+0.0%	+0	3
Registrars	6	6	8	7	+1	+18.1%	+0	+0.6%	-2	7
SHO/ Interns	12	8	14	14	+2	+16.3%	+6	+73.2%	+0	14
Medical/ Dental, other	1				-1	-100.0%				
<b>Medical &amp; Dental</b>	<b>20</b>	<b>17</b>	<b>24</b>	<b>23</b>	<b>+3</b>	<b>+14.2%</b>	<b>+6</b>	<b>+34.9%</b>	<b>-1</b>	<b>24</b>
Nurse/ Midwife Manager	75	79	86	85	+11	+14.4%	+6	+8.0%	0	91
Nurse/ Midwife Specialist & AN/MP	5	11	14	14	+9	+183.4%	+2	+19.3%	+0	14
Staff Nurse/ Staff Midwife	227	255	253	250	+23	+9.9%	-5	-2.0%	-4	270
Public Health Nurse	0	1	1	1	+1	+163.2%	+0	+1.0%	+0	1
Nursing/ Midwifery other	1				-1	-100.0%				
<b>Nursing &amp; Midwifery</b>	<b>308</b>	<b>346</b>	<b>353</b>	<b>350</b>	<b>+42</b>	<b>+13.6%</b>	<b>+3</b>	<b>+1.0%</b>	<b>-4</b>	<b>376</b>
Therapy Professions	54	88	89	101	+46	+85.4%	+13	+14.8%	+12	114
Health Science/ Diagnostics	1	1	1	1	0	-31.0%	+0	+0.0%	+0	2
Social Care	1	1	0	0	-1	-62.0%	-1	-61.6%	+0	1
Pharmacy	3	4	3	3	0	-9.7%	-1	-28.6%	+0	3
Psychologists		1	1	1	+1		0	-21.9%	+0	1
Social Workers	21	19	18	17	-4	-20.5%	-2	-11.1%	-1	19
H&SC, Other	0	1	1	1	+0	+58.3%	+0	+1.8%	+0	1
<b>Health &amp; Social Care Professionals</b>	<b>81</b>	<b>114</b>	<b>112</b>	<b>123</b>	<b>+42</b>	<b>+51.7%</b>	<b>+9</b>	<b>+7.9%</b>	<b>+11</b>	<b>141</b>
Management (VIII & above)	9	13	14	14	+5	+56.1%	+1	+9.5%	0	14
Administrative/ Supervisory (V to VII)	15	27	29	29	+14	+92.6%	+2	+6.2%	0	31
Clerical (III & IV)	40	56	55	59	+19	+46.4%	+3	+5.0%	+4	69
<b>Management &amp; Administrative</b>	<b>64</b>	<b>96</b>	<b>98</b>	<b>101</b>	<b>+37</b>	<b>+58.6%</b>	<b>+6</b>	<b>+6.0%</b>	<b>+4</b>	<b>114</b>
Support	118	119	108	108	-10	-8.7%	-11	-9.5%	+0	129
Maintenance/ Technical	2	2	2	2	+0	+0.0%	+0	+0.0%	+0	3
<b>General Support</b>	<b>121</b>	<b>122</b>	<b>110</b>	<b>110</b>	<b>-10</b>	<b>-8.5%</b>	<b>-11</b>	<b>-9.3%</b>	<b>+0</b>	<b>132</b>
Health Care Assistants	270	275	300	301	+32	+11.7%	+26	+9.6%	+1	346
Care, other	6	6	7	7	+1	+9.0%	+0	+6.9%	0	10
<b>Patient &amp; Client Care</b>	<b>276</b>	<b>281</b>	<b>307</b>	<b>308</b>	<b>+32</b>	<b>+11.6%</b>	<b>+27</b>	<b>+9.5%</b>	<b>+1</b>	<b>356</b>



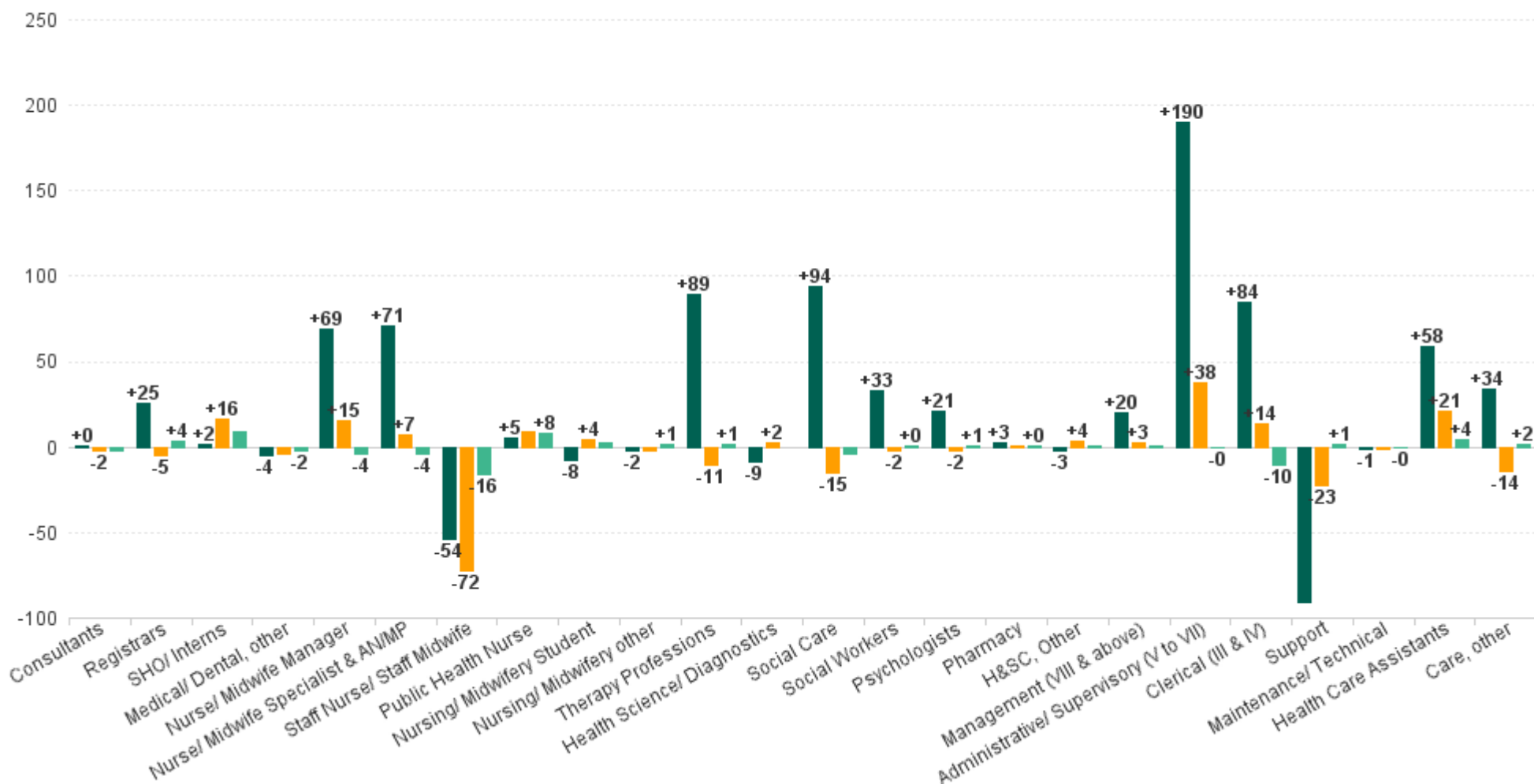
# Employment Report by CHO Operations AUG 2023

CHO 9 AUG 2023

CHO Operations AUG 2023	WTE DEC 2019	WTE DEC 2022	WTE JUL 2023	WTE AUG 2023	WTE change since DEC 2019	% WTE Change since Dec 2019	WTE change since DEC 2022	% WTE Change since Dec 2022	WTE change since JUL 2023	No. AUG 2023
<b>Overall</b>		<b>144</b>	<b>134</b>	<b>129</b>	<b>+129</b>		<b>-15</b>	<b>-10.3%</b>	<b>-4</b>	<b>140</b>
Registrars		1					-1	-100.0%		
<b>Medical &amp; Dental</b>		<b>1</b>					<b>-1</b>	<b>-100.0%</b>		
Nurse/ Midwife Manager		8	8	8	+8		+0	+1.8%	-1	8
Staff Nurse/ Staff Midwife		3					-3	-100.0%		
<b>Nursing &amp; Midwifery</b>		<b>11</b>	<b>8</b>	<b>8</b>	<b>+8</b>		<b>-3</b>	<b>-26.8%</b>	<b>-1</b>	<b>8</b>
Pharmacy		1	1	0	+0		-1	-74.5%	-1	1
Social Workers		8	9	9	+9		+1	+13.7%	0	9
<b>Health &amp; Social Care Professionals</b>		<b>9</b>	<b>10</b>	<b>9</b>	<b>+9</b>		<b>+0</b>	<b>+3.9%</b>	<b>-1</b>	<b>10</b>
Management (VIII & above)		17	15	15	+15		-2	-14.3%	+0	15
Administrative/ Supervisory (V to VII)		66	66	65	+65		-1	-1.4%	-1	71
Clerical (III & IV)		30	32	29	+29		-1	-4.1%	-3	32
<b>Management &amp; Administrative</b>		<b>113</b>	<b>112</b>	<b>109</b>	<b>+109</b>		<b>-5</b>	<b>-4.1%</b>	<b>-3</b>	<b>118</b>
Support		5	2	2	+2		-4	-72.3%	+0	2
Maintenance/ Technical		2	2	2	+2		+0	+1.0%	+0	2
<b>General Support</b>		<b>7</b>	<b>4</b>	<b>4</b>	<b>+4</b>		<b>-4</b>	<b>-52.8%</b>	<b>+0</b>	<b>4</b>
Health Care Assistants		3					-3	-100.0%		
<b>Patient &amp; Client Care</b>		<b>3</b>					<b>-3</b>	<b>-100.0%</b>		

## WTE Change by Staff Group

■ WTE change since DEC 2019 ■ WTE change since DEC 2022 ■ WTE change since JUL 2023



Employment Report by WTE, Headcount, Gender, Full-Time / Part-Time etc. AUG 2023

CHO 9 AUG 2023

AUG 2023	WTE AUG 2023	No. AUG 2023	WTE : No	Number Male %	Number Female %	Male WTE : No.	Female WTE : No	Perm Count %	Perm Count Male %	Perm Count Female %	Fulltime Count %	Part time Count %	FT Count Male %	FT Count Female %
<b>Total</b>	<b>7,210</b>	<b>8,335</b>	<b>1:0.9</b>	<b>18.03%</b>	<b>81.97%</b>	<b>1:0.9</b>	<b>1:0.8</b>	<b>88.78%</b>	<b>15.96%</b>	<b>72.83%</b>	<b>68.03%</b>	<b>31.97%</b>	<b>84.17%</b>	<b>64.48%</b>
Consultant Dentistry	1	1	1:0.8		100.00%	1:	1:0.8	100.00%		100.00%		100.00%		
Consultant Medicine	3	3	1:0.8		100.00%	1:	1:0.8	66.67%		66.67%	66.67%	33.33%		66.67%
Consultant Paediatrics	1	1	1:1		100.00%	1:	1:1	100.00%		100.00%	100.00%			100.00%
Consultant Psychiatry	64	73	1:0.9	34.25%	65.75%	1:1	1:0.8	93.15%	31.51%	61.64%	84.93%	15.07%	92.00%	81.25%
<b>Consultants</b>	<b>69</b>	<b>78</b>	<b>1:0.9</b>	<b>32.05%</b>	<b>67.95%</b>	<b>1:1</b>	<b>1:0.8</b>	<b>92.31%</b>	<b>29.49%</b>	<b>62.82%</b>	<b>83.33%</b>	<b>16.67%</b>	<b>92.00%</b>	<b>79.25%</b>
Dentists	33	41	1:0.8	17.07%	82.93%	1:1	1:0.8	95.12%	17.07%	78.05%	68.29%	31.71%	85.71%	64.71%
Other Medical	19	28	1:0.7	14.29%	85.71%	1:0.6	1:0.7	82.14%	7.14%	75.00%	46.43%	53.57%	25.00%	50.00%
<b>Medical/ Dental, other</b>	<b>52</b>	<b>69</b>	<b>1:0.8</b>	<b>15.94%</b>	<b>84.06%</b>	<b>1:0.8</b>	<b>1:0.7</b>	<b>89.86%</b>	<b>13.04%</b>	<b>76.81%</b>	<b>59.42%</b>	<b>40.58%</b>	<b>63.64%</b>	<b>58.62%</b>
Registrar	100	103	1:1	25.24%	74.76%	1:1	1:1	3.88%	1.94%	1.94%	99.03%	0.97%	100.00%	98.70%
Senior Registrar	22	23	1:0.9	21.74%	78.26%	1:1	1:0.9				95.65%	4.35%	100.00%	94.44%
Specialist Registrar	2	2	1:0.9		100.00%	1:	1:0.9				50.00%	50.00%		50.00%
<b>Registrars</b>	<b>123</b>	<b>128</b>	<b>1:1</b>	<b>24.22%</b>	<b>75.78%</b>	<b>1:1</b>	<b>1:1</b>	<b>3.13%</b>	<b>1.56%</b>	<b>1.56%</b>	<b>97.66%</b>	<b>2.34%</b>	<b>100.00%</b>	<b>96.91%</b>
Interns	1	1	1:1	100.00%		1:1	1:				100.00%		100.00%	
Senior House Officer	67	71	1:0.9	28.17%	71.83%	1:1	1:0.9	1.41%		1.41%	98.59%	1.41%	100.00%	98.04%
<b>SHO/ Interns</b>	<b>68</b>	<b>72</b>	<b>1:0.9</b>	<b>29.17%</b>	<b>70.83%</b>	<b>1:1</b>	<b>1:0.9</b>	<b>1.39%</b>		<b>1.39%</b>	<b>98.61%</b>	<b>1.39%</b>	<b>100.00%</b>	<b>98.04%</b>
<b>Medical &amp; Dental</b>	<b>312</b>	<b>347</b>	<b>1:0.9</b>	<b>25.36%</b>	<b>74.64%</b>	<b>1:1</b>	<b>1:0.9</b>	<b>40.06%</b>	<b>9.80%</b>	<b>30.26%</b>	<b>87.03%</b>	<b>12.97%</b>	<b>93.18%</b>	<b>84.94%</b>
Clinical Nurse/ Midwife Manager 1	95	102	1:0.9	9.80%	90.20%	1:1	1:0.9	96.08%	8.82%	87.25%	77.45%	22.55%	80.00%	77.17%
Clinical Nurse/ Midwife Manager 2	253	276	1:0.9	22.83%	77.17%	1:1	1:0.9	96.74%	22.46%	74.28%	84.06%	15.94%	96.83%	80.28%
Clinical Nurse/ Midwife Manager 3	43	44	1:1	20.45%	79.55%	1:1	1:1	95.45%	20.45%	75.00%	95.45%	4.55%	100.00%	94.29%
Director Nursing/Midwifery, Assistant	82	87	1:0.9	14.94%	85.06%	1:1	1:0.9	97.70%	13.79%	83.91%	91.95%	8.05%	100.00%	90.54%
Director of Nursing/Midwifery	30	31	1:1	19.35%	80.65%	1:1	1:1	96.77%	19.35%	77.42%	96.77%	3.23%	100.00%	96.00%
<b>Nurse/ Midwife Manager</b>	<b>504</b>	<b>540</b>	<b>1:0.9</b>	<b>18.70%</b>	<b>81.30%</b>	<b>1:1</b>	<b>1:0.9</b>	<b>96.67%</b>	<b>18.15%</b>	<b>78.52%</b>	<b>85.74%</b>	<b>14.26%</b>	<b>96.04%</b>	<b>83.37%</b>
Advanced Nurse/ Midwife Practitioner	11	12	1:0.9		100.00%	1:	1:0.9	100.00%		100.00%	100.00%			100.00%
Adv. Nurse/ Midwife, Candidate	14	14	1:1	7.14%	92.86%	1:1	1:1	92.86%	7.14%	85.71%	100.00%		100.00%	100.00%
Clinical Nurse/ Midwife Specialist	131	146	1:0.9	12.33%	87.67%	1:0.9	1:0.9	97.95%	12.33%	85.62%	86.99%	13.01%	100.00%	85.16%
<b>Nurse/ Midwife Specialist &amp; AN/MP</b>	<b>156</b>	<b>172</b>	<b>1:0.9</b>	<b>11.05%</b>	<b>88.95%</b>	<b>1:0.9</b>	<b>1:0.9</b>	<b>97.67%</b>	<b>11.05%</b>	<b>86.63%</b>	<b>88.95%</b>	<b>11.05%</b>	<b>100.00%</b>	<b>87.58%</b>
Nursing Education/Clinical	18	20	1:0.9	5.00%	95.00%	1:1	1:0.9	100.00%	5.00%	95.00%	80.00%	20.00%	100.00%	78.95%
<b>Nursing/ Midwifery other</b>	<b>18</b>	<b>20</b>	<b>1:0.9</b>	<b>5.00%</b>	<b>95.00%</b>	<b>1:1</b>	<b>1:0.9</b>	<b>100.00%</b>	<b>5.00%</b>	<b>95.00%</b>	<b>80.00%</b>	<b>20.00%</b>	<b>100.00%</b>	<b>78.95%</b>
Nursing/ Midwifery awaiting registration	3	3	1:1	33.33%	66.67%	1:1	1:1	100.00%	33.33%	66.67%	100.00%		100.00%	100.00%
Post-registration Nurse/ Midwife Student	6	6	1:1		100.00%	1:	1:1	50.00%		50.00%	100.00%			100.00%
Pre-registration Nurse/ Midwife Intern	38	76	1:0.5	9.21%	90.79%	1:0.5	1:0.5	27.63%		27.63%	72.37%	27.63%	100.00%	69.57%
<b>Nursing/ Midwifery Student</b>	<b>47</b>	<b>85</b>	<b>1:0.6</b>	<b>9.41%</b>	<b>90.59%</b>	<b>1:0.6</b>	<b>1:0.6</b>	<b>31.76%</b>	<b>1.18%</b>	<b>30.59%</b>	<b>75.29%</b>	<b>24.71%</b>	<b>100.00%</b>	<b>72.73%</b>
Public Health Nurse	181	218	1:0.8	1.38%	98.62%	1:1	1:0.8	98.62%	1.38%	97.25%	73.85%	26.15%	100.00%	73.49%
<b>Public Health Nurse</b>	<b>181</b>	<b>218</b>	<b>1:0.8</b>	<b>1.38%</b>	<b>98.62%</b>	<b>1:1</b>	<b>1:0.8</b>	<b>98.62%</b>	<b>1.38%</b>	<b>97.25%</b>	<b>73.85%</b>	<b>26.15%</b>	<b>100.00%</b>	<b>73.49%</b>
Staff Nurse [Intellectual Disability]	301	361	1:0.8	13.30%	86.70%	1:0.9	1:0.8	91.69%	12.19%	79.50%	60.66%	39.34%	83.33%	57.19%
Staff Nurse [Psychiatric]	309	341	1:0.9	23.17%	76.83%	1:0.9	1:0.9	91.50%	20.23%	71.26%	82.70%	17.30%	88.61%	80.92%
Staff Nurses [General/ Children's]	532	584	1:0.9	13.53%	86.47%	1:1	1:0.9	91.78%	12.16%	79.62%	81.85%	18.15%	96.20%	79.60%
<b>Staff Nurse/ Staff Midwife</b>	<b>1,142</b>	<b>1,286</b>	<b>1:0.9</b>	<b>16.02%</b>	<b>83.98%</b>	<b>1:0.9</b>	<b>1:0.9</b>	<b>91.68%</b>	<b>14.31%</b>	<b>77.37%</b>	<b>76.13%</b>	<b>23.87%</b>	<b>90.29%</b>	<b>73.43%</b>
<b>Nursing &amp; Midwifery</b>	<b>2,047</b>	<b>2,321</b>	<b>1:0.9</b>	<b>14.56%</b>	<b>85.44%</b>	<b>1:0.9</b>	<b>1:0.9</b>	<b>91.81%</b>	<b>13.18%</b>	<b>78.63%</b>	<b>79.10%</b>	<b>20.90%</b>	<b>92.90%</b>	<b>76.75%</b>
Audiology	9	9	1:1	11.11%	88.89%	1:1	1:1	88.89%	11.11%	77.78%	100.00%		100.00%	100.00%
Clinical Engineering	15	15	1:1	93.33%	6.67%	1:1	1:1	100.00%	93.33%	6.67%	100.00%		100.00%	100.00%
Medical Science	3	3	1:1	66.67%	33.33%	1:1	1:1	66.67%	33.33%	33.33%	100.00%		100.00%	100.00%
Radiographers	1	2	1:0.5		100.00%	1:	1:0.5	100.00%		100.00%		100.00%		
<b>Health Science/ Diagnostics</b>	<b>28</b>	<b>29</b>	<b>1:1</b>	<b>58.62%</b>	<b>41.38%</b>	<b>1:1</b>	<b>1:0.9</b>	<b>93.10%</b>	<b>55.17%</b>	<b>37.93%</b>	<b>93.10%</b>	<b>6.90%</b>	<b>100.00%</b>	<b>83.33%</b>
Counsellor Therapists	40	42	1:0.9	33.33%	66.67%	1:0.9	1:0.9	95.24%	28.57%	66.67%	88.10%	11.90%	92.86%	85.71%
Dental Hygienists	6	8	1:0.8		100.00%	1:	1:0.8	100.00%		100.00%	25.00%	75.00%		25.00%
Other Health & Social Care	16	21	1:0.8	19.05%	80.95%	1:0.7	1:0.8	95.24%	19.05%	76.19%	47.62%	52.38%	50.00%	47.06%
Play Therapists/ Specialists	2	3	1:0.8		100.00%	1:	1:0.8	100.00%		100.00%	66.67%	33.33%		66.67%
Vaccinators	4	4	1:0.9		100.00%	1:	1:0.9					100.00%		
<b>H&amp;SC, Other</b>	<b>68</b>	<b>78</b>	<b>1:0.9</b>	<b>23.08%</b>	<b>76.92%</b>	<b>1:0.9</b>	<b>1:0.9</b>	<b>91.03%</b>	<b>20.51%</b>	<b>70.51%</b>	<b>65.38%</b>	<b>34.62%</b>	<b>83.33%</b>	<b>60.00%</b>
Pharmacists	23	29	1:0.8	17.24%	82.76%	1:0.8	1:0.8	82.76%	13.79%	68.97%	65.52%	34.48%	60.00%	66.67%
Pharmacy Technicians	5	7	1:0.7		100.00%	1:	1:0.7	100.00%		100.00%	42.86%	57.14%		42.86%
<b>Pharmacy</b>	<b>27</b>	<b>36</b>	<b>1:0.8</b>	<b>13.89%</b>	<b>86.11%</b>	<b>1:0.8</b>	<b>1:0.8</b>	<b>86.11%</b>	<b>11.11%</b>	<b>75.00%</b>	<b>61.11%</b>	<b>38.89%</b>	<b>60.00%</b>	<b>61.29%</b>
<b>Psychologists</b>	<b>185</b>	<b>201</b>	<b>1:0.9</b>	<b>13.43%</b>	<b>86.57%</b>	<b>1:1</b>	<b>1:0.9</b>	<b>70.65%</b>	<b>9.95%</b>	<b>60.70%</b>	<b>82.09%</b>	<b>17.91%</b>	<b>100.00%</b>	<b>79.31%</b>
<b>Social Care</b>	<b>789</b>	<b>965</b>	<b>1:0.8</b>	<b>12.23%</b>	<b>87.77%</b>	<b>1:0.9</b>	<b>1:0.8</b>	<b>91.71%</b>	<b>11.30%</b>	<b>80.41%</b>	<b>38.55%</b>	<b>61.45%</b>	<b>50.85%</b>	<b>36.84%</b>



AUG 2023	WTE AUG 2023	No. AUG 2023	WTE : No	Number Male %	Number Female %	Male WTE : No.	Female WTE : No	Perm Count %	Perm Count Male %	Perm Count Female %	Fulltime Count %	Part time Count %	FT Count Male %	FT Count Female %
<b>Total</b>	<b>7,210</b>	<b>8,335</b>	<b>1:0.9</b>	<b>18.03%</b>	<b>81.97%</b>	<b>1:0.9</b>	<b>1:0.8</b>	<b>88.78%</b>	<b>15.96%</b>	<b>72.83%</b>	<b>68.03%</b>	<b>31.97%</b>	<b>84.17%</b>	<b>64.48%</b>
<b>Social Workers</b>	<b>159</b>	<b>174</b>	<b>1:0.9</b>	<b>20.11%</b>	<b>79.89%</b>	<b>1:1</b>	<b>1:0.9</b>	<b>96.55%</b>	<b>19.54%</b>	<b>77.01%</b>	<b>79.31%</b>	<b>20.69%</b>	<b>97.14%</b>	<b>74.82%</b>
Dietitians	45	57	1:0.8	5.26%	94.74%	1:1	1:0.8	91.23%	5.26%	85.96%	66.67%	33.33%	100.00%	64.81%
Occupational Therapists	221	247	1:0.9	9.31%	90.69%	1:1	1:0.9	96.36%	8.91%	87.45%	83.81%	16.19%	100.00%	82.14%
Orthoptists	2	3	1:0.7		100.00%	1:	1:0.7	66.67%		66.67%	66.67%	33.33%		66.67%
Physiotherapists	154	183	1:0.8	15.30%	84.70%	1:0.9	1:0.8	93.99%	14.21%	79.78%	61.20%	38.80%	78.57%	58.06%
Podiatrists & Chiropodists	9	10	1:0.9		100.00%	1:	1:0.9	100.00%		100.00%	70.00%	30.00%		70.00%
Speech & Language Therapists	144	168	1:0.9	1.19%	98.81%	1:1	1:0.9	96.43%	1.19%	95.24%	76.19%	23.81%	100.00%	75.90%
<b>Therapy Professions</b>	<b>576</b>	<b>668</b>	<b>1:0.9</b>	<b>8.38%</b>	<b>91.62%</b>	<b>1:1</b>	<b>1:0.9</b>	<b>95.21%</b>	<b>7.93%</b>	<b>87.28%</b>	<b>73.95%</b>	<b>26.05%</b>	<b>89.29%</b>	<b>72.55%</b>
<b>Health &amp; Social Care Professionals</b>	<b>1,832</b>	<b>2,151</b>	<b>1:0.9</b>	<b>12.83%</b>	<b>87.17%</b>	<b>1:0.9</b>	<b>1:0.8</b>	<b>91.12%</b>	<b>11.72%</b>	<b>79.40%</b>	<b>59.00%</b>	<b>41.00%</b>	<b>74.64%</b>	<b>56.69%</b>
Middle Management (V-VII)	389	414	1:0.9	19.32%	80.68%	1:1	1:0.9	91.79%	17.63%	74.15%	86.96%	13.04%	100.00%	83.83%
Other Administrative	9	9	1:1	11.11%	88.89%	1:1	1:1	88.89%	11.11%	77.78%	88.89%	11.11%	100.00%	87.50%
<b>Administrative/ Supervisory (V to VII)</b>	<b>398</b>	<b>423</b>	<b>1:0.9</b>	<b>19.15%</b>	<b>80.85%</b>	<b>1:1</b>	<b>1:0.9</b>	<b>91.73%</b>	<b>17.49%</b>	<b>74.23%</b>	<b>87.00%</b>	<b>13.00%</b>	<b>100.00%</b>	<b>83.92%</b>
General Administrative (III & IV)	536	618	1:0.9	12.62%	87.38%	1:0.9	1:0.9	91.42%	11.33%	80.10%	71.20%	28.80%	89.74%	68.52%
<b>Clerical (III &amp; IV)</b>	<b>536</b>	<b>618</b>	<b>1:0.9</b>	<b>12.62%</b>	<b>87.38%</b>	<b>1:0.9</b>	<b>1:0.9</b>	<b>91.42%</b>	<b>11.33%</b>	<b>80.10%</b>	<b>71.20%</b>	<b>28.80%</b>	<b>89.74%</b>	<b>68.52%</b>
Executive Management	14	14	1:1	28.57%	71.43%	1:1	1:1	85.71%	21.43%	64.29%	100.00%		100.00%	100.00%
Senior Management (VIII & GM)	86	87	1:1	33.33%	66.67%	1:1	1:1	91.95%	29.89%	62.07%	98.85%	1.15%	100.00%	98.28%
<b>Management (VIII &amp; above)</b>	<b>99</b>	<b>101</b>	<b>1:1</b>	<b>32.67%</b>	<b>67.33%</b>	<b>1:1</b>	<b>1:1</b>	<b>91.09%</b>	<b>28.71%</b>	<b>62.38%</b>	<b>99.01%</b>	<b>0.99%</b>	<b>100.00%</b>	<b>98.53%</b>
<b>Management &amp; Administrative</b>	<b>1,033</b>	<b>1,142</b>	<b>1:0.9</b>	<b>16.81%</b>	<b>83.19%</b>	<b>1:1</b>	<b>1:0.9</b>	<b>91.51%</b>	<b>15.15%</b>	<b>76.36%</b>	<b>79.51%</b>	<b>20.49%</b>	<b>95.83%</b>	<b>76.21%</b>
Maintenance	29	31	1:0.9	93.55%	6.45%	1:0.9	1:0.9	100.00%	93.55%	6.45%	61.29%	38.71%	62.07%	50.00%
Technical Services	6	6	1:1	83.33%	16.67%	1:1	1:1	50.00%	33.33%	16.67%	66.67%	33.33%	60.00%	100.00%
<b>Maintenance/ Technical</b>	<b>34</b>	<b>37</b>	<b>1:0.9</b>	<b>91.89%</b>	<b>8.11%</b>	<b>1:0.9</b>	<b>1:1</b>	<b>91.89%</b>	<b>83.78%</b>	<b>8.11%</b>	<b>62.16%</b>	<b>37.84%</b>	<b>61.76%</b>	<b>66.67%</b>
Catering	65	77	1:0.8	38.96%	61.04%	1:0.9	1:0.8	97.40%	38.96%	58.44%	66.23%	33.77%	93.33%	48.94%
Household Services	188	247	1:0.8	12.55%	87.45%	1:0.9	1:0.7	93.52%	11.74%	81.78%	42.11%	57.89%	90.32%	35.19%
Other Support	36	44	1:0.8	68.18%	31.82%	1:0.9	1:0.8	81.82%	56.82%	25.00%	40.91%	59.09%	53.33%	14.29%
Portering	71	76	1:0.9	93.42%	6.58%	1:0.9	1:0.8	88.16%	84.21%	3.95%	86.84%	13.16%	88.73%	60.00%
<b>Support</b>	<b>361</b>	<b>444</b>	<b>1:0.8</b>	<b>36.49%</b>	<b>63.51%</b>	<b>1:0.9</b>	<b>1:0.8</b>	<b>92.12%</b>	<b>33.33%</b>	<b>58.78%</b>	<b>53.83%</b>	<b>46.17%</b>	<b>83.33%</b>	<b>36.88%</b>
<b>General Support</b>	<b>395</b>	<b>481</b>	<b>1:0.8</b>	<b>40.75%</b>	<b>59.25%</b>	<b>1:0.9</b>	<b>1:0.8</b>	<b>92.10%</b>	<b>37.21%</b>	<b>54.89%</b>	<b>54.47%</b>	<b>45.53%</b>	<b>79.59%</b>	<b>37.19%</b>
Home Care Services	5	5	1:1		100.00%	1:	1:1	100.00%		100.00%	80.00%	20.00%		80.00%
Other Care Grades	203	229	1:0.9	33.19%	66.81%	1:0.9	1:0.9	93.89%	29.26%	64.63%	72.05%	27.95%	75.00%	70.59%
Pastoral Care	2	4	1:0.5	25.00%	75.00%	1:0.2	1:0.6	100.00%	25.00%	75.00%	25.00%	75.00%		33.33%
Workshop Services	45	54	1:0.8	20.37%	79.63%	1:0.9	1:0.8	75.93%	12.96%	62.96%	42.59%	57.41%	72.73%	34.88%
<b>Care, other</b>	<b>255</b>	<b>292</b>	<b>1:0.9</b>	<b>30.14%</b>	<b>69.86%</b>	<b>1:0.9</b>	<b>1:0.9</b>	<b>90.75%</b>	<b>25.68%</b>	<b>65.07%</b>	<b>66.10%</b>	<b>33.90%</b>	<b>73.86%</b>	<b>62.75%</b>
Attendant/ Aide	49	62	1:0.8	25.81%	74.19%	1:0.9	1:0.8	96.77%	24.19%	72.58%	46.77%	53.23%	75.00%	36.96%
Health Care Assistant/ Care Assistant	1,240	1,485	1:0.8	20.20%	79.80%	1:0.9	1:0.8	89.02%	19.46%	69.56%	55.69%	44.31%	79.00%	49.79%
Health & Social Care Assistants	47	54	1:0.9	16.67%	83.33%	1:0.9	1:0.9	64.81%	12.96%	51.85%	81.48%	18.52%	100.00%	77.78%
<b>Health Care Assistants</b>	<b>1,336</b>	<b>1,601</b>	<b>1:0.8</b>	<b>20.30%</b>	<b>79.70%</b>	<b>1:0.9</b>	<b>1:0.8</b>	<b>88.51%</b>	<b>19.43%</b>	<b>69.08%</b>	<b>56.21%</b>	<b>43.79%</b>	<b>79.38%</b>	<b>50.31%</b>
<b>Patient &amp; Client Care</b>	<b>1,591</b>	<b>1,893</b>	<b>1:0.8</b>	<b>21.82%</b>	<b>78.18%</b>	<b>1:0.9</b>	<b>1:0.8</b>	<b>88.85%</b>	<b>20.39%</b>	<b>68.46%</b>	<b>57.74%</b>	<b>42.26%</b>	<b>78.21%</b>	<b>52.03%</b>

## Employment Report by WTE, Headcount, Gender, Full-Time / Part-Time etc. AUG 2023

CHO 9 AUG 2023

AUG 2023	WTE AUG 2023	No. AUG 2023	WTE : No	Number Male %	Number Female %	Male WTE : No.	Female WTE : No	Perm Count %	Number Male %	Number Female %	Fulltime Count %	Part time Count %	FT Count Male %	FT Count Female %
<b>Total</b>	<b>7,210</b>	<b>8,335</b>	<b>1:0.9</b>	<b>18.03%</b>	<b>81.97%</b>	<b>1:0.9</b>	<b>1:0.8</b>	<b>88.78%</b>	<b>15.96%</b>	<b>72.83%</b>	<b>68.03%</b>	<b>31.97%</b>	<b>84.17%</b>	<b>64.48%</b>
CHO Operations	129	140	1:0.9	20.00%	80.00%	1:1	1:0.9	95.71%	17.86%	77.86%	92.14%	7.86%	96.43%	91.07%
Disabilities	3,318	3,944	1:0.8	15.44%	84.56%	1:0.9	1:0.8	90.01%	14.17%	75.84%	54.28%	45.72%	71.26%	51.18%
Mental Health	1,305	1,454	1:0.9	27.79%	72.21%	1:0.9	1:0.9	85.56%	23.66%	61.90%	85.97%	14.03%	96.04%	82.10%
Older People	1,016	1,143	1:0.9	20.65%	79.35%	1:0.9	1:0.9	91.25%	18.72%	72.53%	76.64%	23.36%	88.98%	73.43%
Primary Care	1,392	1,602	1:0.9	13.42%	86.58%	1:0.9	1:0.9	86.02%	11.05%	74.97%	76.47%	23.53%	90.70%	74.26%
Community Health & Wellbeing	49	52	1:0.9	21.15%	78.85%	1:1	1:0.9	98.08%	21.15%	76.92%	94.23%	5.77%	100.00%	92.68%



Employment by Grade Group AUG 2023	WTE DEC 2019	WTE DEC 2022	WTE JUL 2023	WTE AUG 2023	WTE change since DEC 2019	% WTE Change since Dec 2019	WTE change since DEC 2022	% WTE Change since Dec 2022	WTE change since JUL 2023	No. AUG 2023
<b>Overall</b>	<b>6,582</b>	<b>7,230</b>	<b>7,217</b>	<b>7,210</b>	<b>+628</b>	<b>+9.5%</b>	<b>-20</b>	<b>-0.3%</b>	<b>-8</b>	<b>8,335</b>
Consultant Medicine	2	3	3	3	+1	+56.3%	+0	+0.0%	+0	3
Consultant Psychiatry	66	67	67	64	-1	-1.8%	-3	-3.8%	-2	73
Consultant Paediatrics	1	1	1	1	0	-17.4%	+0	+0.0%	+0	1
Consultant Dentistry			1	1	+1		+1		+0	1
<b>Consultants</b>	<b>68</b>	<b>71</b>	<b>71</b>	<b>69</b>	<b>+0</b>	<b>+0.4%</b>	<b>-2</b>	<b>-2.5%</b>	<b>-2</b>	<b>78</b>
Registrar	78	104	98	100	+22	+27.8%	-5	-4.4%	+1	103
Senior Registrar	16	22	20	22	+6	+35.8%	+0	+0.9%	+1	23
Specialist Registrar	4	2	1	2	-2	-54.5%	0	-8.5%	+1	2
<b>Registrars</b>	<b>98</b>	<b>128</b>	<b>120</b>	<b>123</b>	<b>+25</b>	<b>+25.7%</b>	<b>-5</b>	<b>-3.6%</b>	<b>+4</b>	<b>128</b>
Senior House Officer	64	52	58	67	+3	+4.4%	+15	+29.3%	+9	71
Interns	2		1	1	-1	-52.5%	+1		+0	1
<b>SHO/ Interns</b>	<b>66</b>	<b>52</b>	<b>59</b>	<b>68</b>	<b>+2</b>	<b>+2.6%</b>	<b>+16</b>	<b>+31.2%</b>	<b>+9</b>	<b>72</b>
Other Medical	25	22	19	19	-6	-24.1%	-3	-13.7%	0	28
Dentists	31	34	35	33	+2	+5.3%	-1	-2.3%	-2	41
<b>Medical/ Dental, other</b>	<b>57</b>	<b>56</b>	<b>55</b>	<b>52</b>	<b>-4</b>	<b>-7.8%</b>	<b>-4</b>	<b>-6.8%</b>	<b>-2</b>	<b>69</b>
<b>Medical &amp; Dental</b>	<b>290</b>	<b>306</b>	<b>304</b>	<b>312</b>	<b>+22.9</b>	<b>+7.9%</b>	<b>+16.3</b>	<b>+2.0%</b>	<b>8.07</b>	<b>+347</b>
Director Nursing/Midwifery, Assistant	61	78	80	82	+21	+34.0%	+4	+5.6%	+2	87
Director of Nursing/Midwifery	25	29	31	30	+5	+20.7%	+1	+2.9%	-1	31
Clinical Nurse/ Midwife Manager 1	93	96	99	95	+3	+3.0%	0	-0.3%	-4	102
Clinical Nurse/ Midwife Manager 2	216	244	254	253	+37	+17.1%	+9	+3.6%	-1	276
Clinical Nurse/ Midwife Manager 3	40	41	43	43	+3	+7.2%	+2	+4.3%	0	44
<b>Nurse/ Midwife Manager</b>	<b>435</b>	<b>488</b>	<b>508</b>	<b>504</b>	<b>+69</b>	<b>+15.8%</b>	<b>+15</b>	<b>+3.2%</b>	<b>-4</b>	<b>540</b>
Advanced Nurse/ Midwife Practitioner	6	9	11	11	+5	+89.6%	+2	+25.1%	+0	12
Clinical Nurse/ Midwife Specialist	78	129	137	131	+53	+67.9%	+2	+1.7%	-6	146
Adv. Nurse/ Midwife, Candidate	1	11	12	14	+13	+1,270.7%	+2	+20.3%	+1	14
<b>Nurse/ Midwife Specialist &amp; AN/MP</b>	<b>85</b>	<b>149</b>	<b>160</b>	<b>156</b>	<b>+71</b>	<b>+83.4%</b>	<b>+7</b>	<b>+4.5%</b>	<b>-4</b>	<b>172</b>
Staff Nurse [Intellectual Disability]	421	316	298	301	-120	-28.5%	-16	-4.9%	+3	361
Staff Nurse [Psychiatric]	371	363	313	309	-61	-16.5%	-54	-14.8%	-4	341
Staff Nurses [General/ Children's]	404	535	547	532	+127	+31.5%	-3	-0.6%	-15	584
<b>Staff Nurse/ Staff Midwife</b>	<b>1,196</b>	<b>1,214</b>	<b>1,158</b>	<b>1,142</b>	<b>-54</b>	<b>-4.5%</b>	<b>-72</b>	<b>-6.0%</b>	<b>-16</b>	<b>1,286</b>
Public Health Nurse	176	172	173	181	+5	+3.0%	+9	+5.1%	+8	218
<b>Public Health Nurse</b>	<b>176</b>	<b>172</b>	<b>173</b>	<b>181</b>	<b>+5</b>	<b>+3.0%</b>	<b>+9</b>	<b>+5.1%</b>	<b>+8</b>	<b>218</b>
Post-registration Nurse/ Midwife Student	26	19	1	6	-20	-77.3%	-13	-68.7%	+5	6
Pre-registration Nurse/ Midwife Intern	18	8	38	38	+20	+112.6%	+30	+375.0%	+0	76
Nursing/ Midwifery awaiting registration	11	16	5	3	-8	-72.2%	-13	-81.0%	-2	3
<b>Nursing/ Midwifery Student</b>	<b>55</b>	<b>43</b>	<b>44</b>	<b>47</b>	<b>-8</b>	<b>-14.2%</b>	<b>+4</b>	<b>+10.1%</b>	<b>+3</b>	<b>85</b>
Nursing Education/Clinical	20	20	16	18	-2	-10.1%	-2	-12.0%	+1	20
<b>Nursing/ Midwifery other</b>	<b>20</b>	<b>20</b>	<b>16</b>	<b>18</b>	<b>-2</b>	<b>-10.1%</b>	<b>-2</b>	<b>-12.0%</b>	<b>+1</b>	<b>20</b>
<b>Nursing &amp; Midwifery</b>	<b>1,966</b>	<b>2,087</b>	<b>2,059</b>	<b>2,047</b>	<b>+81.4</b>	<b>+4.1%</b>	<b>+8.4</b>	<b>-1.9%</b>	<b>-11.9</b>	<b>+2,321</b>
Dietitians	21	40	45	45	+24	+114.0%	+5	+12.6%	+0	57
Occupational Therapists	182	229	217	221	+39	+21.4%	-7	-3.2%	+4	247
Orthoptists	5	3	2	2	-3	-57.8%	-1	-20.3%	+0	3
Physiotherapists	144	158	153	154	+11	+7.3%	-4	-2.4%	+1	183

Employment by Grade Group AUG 2023	WTE DEC 2019	WTE DEC 2022	WTE JUL 2023	WTE AUG 2023	WTE change since DEC 2019	% WTE Change since Dec 2019	WTE change since DEC 2022	% WTE Change since Dec 2022	WTE change since JUL 2023	No. AUG 2023
<b>Overall</b>	<b>6,582</b>	<b>7,230</b>	<b>7,217</b>	<b>7,210</b>	<b>+628</b>	<b>+9.5%</b>	<b>-20</b>	<b>-0.3%</b>	<b>-8</b>	<b>8,335</b>
Podiatrists & Chiropractors	1	6	9	9	+8	+793.0%	+3	+57.2%	+0	10
Speech & Language Therapists	133	152	148	144	+11	+8.1%	-8	-5.0%	-4	168
<b>Therapy Professions</b>	<b>486</b>	<b>587</b>	<b>575</b>	<b>576</b>	<b>+89</b>	<b>+18.4%</b>	<b>-11</b>	<b>-1.8%</b>	<b>+1</b>	<b>668</b>
Audiology	15	8	9	9	-6	-40.9%	+1	+14.1%	+0	9
Radiographers	1	1	1	1	0	-31.0%	+0	+0.0%	+0	2
Clinical Engineering	16	13	15	15	-1	-6.3%	+2	+15.8%	+0	15
Medical Science	4	4	3	3	-1	-25.0%	-1	-25.0%	+0	3
<b>Health Science/ Diagnostics</b>	<b>37</b>	<b>26</b>	<b>28</b>	<b>28</b>	<b>-9</b>	<b>-23.6%</b>	<b>+2</b>	<b>+8.4%</b>	<b>+0</b>	<b>29</b>
Social Care	695	804	793	789	+94	+13.6%	-15	-1.8%	-4	965
<b>Social Care</b>	<b>695</b>	<b>804</b>	<b>793</b>	<b>789</b>	<b>+94</b>	<b>+13.6%</b>	<b>-15</b>	<b>-1.8%</b>	<b>-4</b>	<b>965</b>
Pharmacists	22	23	22	23	+1	+4.1%	0	-1.1%	+0	29
Pharmacy Technicians	3	4	5	5	+2	+62.8%	+1	+21.3%	+0	7
<b>Pharmacy</b>	<b>25</b>	<b>27</b>	<b>27</b>	<b>27</b>	<b>+3</b>	<b>+11.3%</b>	<b>+1</b>	<b>+2.3%</b>	<b>+0</b>	<b>36</b>
Psychologists	164	187	184	185	+21	+12.7%	-2	-1.2%	+1	201
<b>Psychologists</b>	<b>164</b>	<b>187</b>	<b>184</b>	<b>185</b>	<b>+21</b>	<b>+12.7%</b>	<b>-2</b>	<b>-1.2%</b>	<b>+1</b>	<b>201</b>
Social Workers	125	161	158	159	+33	+26.5%	-2	-1.3%	+0	174
<b>Social Workers</b>	<b>125</b>	<b>161</b>	<b>158</b>	<b>159</b>	<b>+33</b>	<b>+26.5%</b>	<b>-2</b>	<b>-1.3%</b>	<b>+0</b>	<b>174</b>
Counsellor Therapists	42	36	39	40	-2	-4.8%	+4	+10.5%	+1	42
Dental Hygienists	6	6	6	6	0	-6.5%	0	-3.7%	0	8
Other Health & Social Care	20	17	16	16	-4	-18.5%	-1	-4.3%	+0	21
Play Therapists/ Specialists	2	1	2	2	+0	+0.9%	+1	+54.4%	+0	3
Vaccinators		4	4	4	+4		+0	+0.0%	+0	4
<b>H&amp;SC, Other</b>	<b>71</b>	<b>64</b>	<b>67</b>	<b>68</b>	<b>-3</b>	<b>-3.6%</b>	<b>+4</b>	<b>+5.6%</b>	<b>+1</b>	<b>78</b>
<b>Health &amp; Social Care Professionals</b>	<b>1,603</b>	<b>1,856</b>	<b>1,833</b>	<b>1,832</b>	<b>+229.2</b>	<b>+14.3%</b>	<b>+18.2</b>	<b>-1.3%</b>	<b>-0.76</b>	<b>+2,151</b>
Executive Management	11	13	14	14	+3	+30.7%	+1	+7.3%	0	14
Senior Management (VIII & GM)	69	84	85	86	+17	+24.4%	+2	+2.1%	+1	87
<b>Management (VIII &amp; above)</b>	<b>79</b>	<b>97</b>	<b>99</b>	<b>99</b>	<b>+20</b>	<b>+25.2%</b>	<b>+3</b>	<b>+2.8%</b>	<b>+1</b>	<b>101</b>
Middle Management (V-VII)	199	351	389	389	+190	+95.2%	+38	+10.7%	0	414
Other Administrative	9	9	9	9	+0	+0.4%	+0	+0.5%	+0	9
<b>Administrative/ Supervisory (V to VII)</b>	<b>208</b>	<b>360</b>	<b>398</b>	<b>398</b>	<b>+190</b>	<b>+91.3%</b>	<b>+38</b>	<b>+10.5%</b>	<b>0</b>	<b>423</b>
General Administrative (III & IV)	451	522	546	536	+84	+18.7%	+14	+2.6%	-10	618
<b>Clerical (III &amp; IV)</b>	<b>451</b>	<b>522</b>	<b>546</b>	<b>536</b>	<b>+84</b>	<b>+18.7%</b>	<b>+14</b>	<b>+2.6%</b>	<b>-10</b>	<b>618</b>
<b>Management &amp; Administrative</b>	<b>739</b>	<b>979</b>	<b>1,043</b>	<b>1,033</b>	<b>+294.2</b>	<b>+39.8%</b>	<b>+28.8</b>	<b>+5.5%</b>	<b>-10.02</b>	<b>+1,142</b>
Catering	61	62	66	65	+4	+6.9%	+3	+5.2%	-1	77
Household Services	220	208	188	188	-32	-14.5%	-19	-9.4%	+1	247
Other Support	95	42	35	36	-58	-61.8%	-6	-13.5%	+1	44
Portering	76	71	70	71	-5	-6.5%	-1	-0.9%	+0	76
<b>Support</b>	<b>452</b>	<b>383</b>	<b>359</b>	<b>361</b>	<b>-91</b>	<b>-20.2%</b>	<b>-23</b>	<b>-5.9%</b>	<b>+1</b>	<b>444</b>
Maintenance	33	31	29	29	-5	-14.0%	-2	-6.5%	0	31
Technical Services	2	5	6	6	+4	+190.0%	+1	+18.9%	+0	6
<b>Maintenance/ Technical</b>	<b>35</b>	<b>36</b>	<b>35</b>	<b>34</b>	<b>-1</b>	<b>-2.4%</b>	<b>-1</b>	<b>-3.0%</b>	<b>0</b>	<b>37</b>
<b>General Support</b>	<b>487</b>	<b>419</b>	<b>394</b>	<b>395</b>	<b>-92.0</b>	<b>-18.9%</b>	<b>-13.0</b>	<b>-5.6%</b>	<b>1.19</b>	<b>+481</b>
Attendant/ Aide	102	50	49	49	-53	-51.7%	-1	-1.4%	+0	62
Health & Social Care Assistants	12	42	49	47	+34	+278.7%	+5	+11.1%	-3	54
Health Care Assistant/ Care Assistant	1,163	1,224	1,234	1,240	+77	+6.6%	+17	+1.4%	+6	1,485
<b>Health Care Assistants</b>	<b>1,278</b>	<b>1,315</b>	<b>1,332</b>	<b>1,336</b>	<b>+58</b>	<b>+4.6%</b>	<b>+21</b>	<b>+1.6%</b>	<b>+4</b>	<b>1,601</b>
Home Care Services	13	8	5	5	-8	-61.1%	-3	-37.0%	+0	5



Employment by Grade Group AUG 2023	WTE DEC 2019	WTE DEC 2022	WTE JUL 2023	WTE AUG 2023	WTE change since DEC 2019	% WTE Change since Dec 2019	WTE change since DEC 2022	% WTE Change since Dec 2022	WTE change since JUL 2023	No. AUG 2023
<b>Overall</b>	<b>6,582</b>	<b>7,230</b>	<b>7,217</b>	<b>7,210</b>	<b>+628</b>	<b>+9.5%</b>	<b>-20</b>	<b>-0.3%</b>	<b>-8</b>	<b>8,335</b>
Other Care Grades	136	202	199	203	+67	+49.3%	+1	+0.4%	+4	229
Pastoral Care	3	2	2	2	-1	-33.4%	+0	+0.5%	+0	4
Workshop Services	69	57	46	45	-24	-35.4%	-12	-21.2%	-2	54
<b>Care, other</b>	<b>221</b>	<b>269</b>	<b>253</b>	<b>255</b>	<b>+34</b>	<b>+15.3%</b>	<b>-14</b>	<b>-5.3%</b>	<b>+2</b>	<b>292</b>
<b>Patient &amp; Client Care</b>	<b>1,499</b>	<b>1,584</b>	<b>1,585</b>	<b>1,591</b>	<b>+92.1</b>	<b>+6.1%</b>	<b>+6.0</b>	<b>+0.4%</b>	<b>5.87</b>	<b>+1,893</b>



## CHO 9 Employment Report: AUG 2023

### Month-on-Month Summary

Month-on-Month Summary	% WTE change since JUL 2023	WTE change since JUL 2023	Community Health & Wellbeing	Mental Health	Primary Care	Disabilities	Older People	CHO Operations
Consultants	-2.9%	-2.1		-1.6	+0.1	-0.5	+0.0	
Registrars	+2.9%	+3.5		-4.1	+9.4	-0.3	-1.5	
SHO/ Interns	+15.1%	+8.9		+9.8	-0.9	+0.0	+0.0	
Medical/ Dental, other	-4.2%	-2.3			-2.3	+0.0		
<b>Medical &amp; Dental</b>	<b>+2.7%</b>	<b>+8.1</b>		<b>+4.2</b>	<b>+6.2</b>	<b>-0.8</b>	<b>-1.5</b>	
Nurse/ Midwife Manager	-0.8%	-4.1		+1.7	-2.0	-3.2	-0.2	-0.5
Nurse/ Midwife Specialist & AN/MP	-2.7%	-4.3		-2.4	-0.9	-1.0	+0.0	
Staff Nurse/ Staff Midwife	-1.4%	-16.1		-5.0	-8.5	+1.0	-3.6	
Public Health Nurse	+4.8%	+8.3			+8.3		+0.0	
Nursing/ Midwifery Student	+6.6%	+2.9		+0.0	+4.9	-2.0		
Nursing/ Midwifery other	+8.1%	+1.3		+1.1	+0.0	+0.3		
<b>Nursing &amp; Midwifery</b>	<b>-0.6%</b>	<b>-11.9</b>		<b>-4.6</b>	<b>+1.9</b>	<b>-4.9</b>	<b>-3.8</b>	<b>-0.5</b>
Therapy Professions	+0.2%	+1.2	+0.0	-3.6	-4.1	-2.8	+11.7	
Health Science/ Diagnostics	+0.0%	+0.0			+0.0	+0.0	+0.0	
Social Care	-0.5%	-4.1		+0.0	+0.0	-4.1	+0.0	
Pharmacy	+1.7%	+0.5		+0.9	+0.3	+0.0	+0.0	-0.8
Psychologists	+0.3%	+0.6		+0.0	-0.2	+0.8	+0.0	
Social Workers	+0.2%	+0.2		+0.9	+2.1	-1.8	-1.0	-0.0



H&SC, Other	+1.2%	+0.8		-0.0	+0.4	+0.5	+0.0	
<b>Health &amp; Social Care Professionals</b>	<b>0.0%</b>	<b>-0.8</b>	<b>+0.0</b>	<b>-1.8</b>	<b>-1.5</b>	<b>-7.4</b>	<b>+10.7</b>	<b>-0.8</b>
Management (VIII & above)	+0.6%	+0.6	-0.1	+0.0	+0.2	+0.4	-0.0	+0.0
Administrative/ Supervisory (V to VII)	-0.1%	-0.4	+0.7	-0.4	-0.6	+0.7	-0.3	-0.5
Clerical (III & IV)	-1.9%	-10.2	-1.1	-1.7	-4.0	-4.8	+3.9	-2.5
<b>Management &amp; Administrative</b>	<b>-1.0%</b>	<b>-10.0</b>	<b>-0.5</b>	<b>-2.0</b>	<b>-4.4</b>	<b>-3.7</b>	<b>+3.6</b>	<b>-3.0</b>
Support	+0.4%	+1.4		-0.7	+0.1	+1.7	+0.2	+0.0
Maintenance/ Technical	-0.5%	-0.2		-0.3		+0.1	+0.0	+0.0
<b>General Support</b>	<b>+0.3%</b>	<b>+1.2</b>		<b>-1.0</b>	<b>+0.1</b>	<b>+1.8</b>	<b>+0.2</b>	<b>+0.0</b>
Health Care Assistants	+0.3%	+4.1		+2.8	-1.2	+1.8	+0.7	
Care, other	+0.7%	+1.8	+0.5	-0.3	+2.7	-0.9	-0.1	
<b>Patient &amp; Client Care</b>	<b>+0.4%</b>	<b>+5.9</b>	<b>+0.5</b>	<b>+2.5</b>	<b>+1.5</b>	<b>+0.8</b>	<b>+0.6</b>	



## CHO 9 Employment Report: AUG 2023

### Year-to-Date Summary

Year-to-Date Summary	% WTE change since DEC 2022	WTE change since DEC 2022	Community Health & Wellbeing	Mental Health	Primary Care	Disabilities	Older People	CHO Operations
Consultants	-2.5%	-1.7		-3.7	+0.8	+1.1	+0.0	
Registrars	-3.6%	-4.6		-10.6	+7.2	-0.2	+0.0	-1.0
SHO/ Interns	+31.2%	+16.1		+7.3	+1.9	+1.0	+5.9	
Medical/ Dental, other	-6.8%	-3.8			-3.6	-0.3		
<b>Medical &amp; Dental</b>	<b>+2.0%</b>	<b>+6.0</b>		<b>-7.0</b>	<b>+6.4</b>	<b>+1.7</b>	<b>+5.9</b>	<b>-1.0</b>
Nurse/ Midwife Manager	+3.2%	+15.5		+0.9	+5.0	+3.1	+6.3	+0.1
Nurse/ Midwife Specialist & AN/MP	+4.5%	+6.7		+0.6	+4.6	-0.7	+2.2	
Staff Nurse/ Staff Midwife	-6.0%	-72.5		-48.1	+5.0	-21.3	-5.1	-3.0
Public Health Nurse	+5.1%	+8.8			+8.8		+0.0	
Nursing/ Midwifery Student	+10.1%	+4.3		+4.2	-12.9	+13.0		
Nursing/ Midwifery other	-12.0%	-2.4		-1.0	+0.0	-1.5		
<b>Nursing &amp; Midwifery</b>	<b>-1.9%</b>	<b>-39.6</b>		<b>-43.5</b>	<b>+10.6</b>	<b>-7.3</b>	<b>+3.4</b>	<b>-2.9</b>
Therapy Professions	-1.8%	-10.8	+0.0	-9.5	-4.9	-9.5	+13.0	
Health Science/ Diagnostics	+8.4%	+2.2			+1.2	+1.0	+0.0	
Social Care	-1.8%	-14.9		+0.0	-0.9	-13.4	-0.6	
Pharmacy	+2.3%	+0.6		+1.5	+0.9	+0.0	-1.0	-0.7



Psychologists	-1.2%	-2.2		-1.1	+1.9	-2.7	-0.3	
Social Workers	-1.3%	-2.1		-0.4	+2.8	-3.5	-2.1	+1.1
H&SC, Other	+5.6%	+3.6		+0.2	+4.2	-0.8	+0.0	
<b>Health &amp; Social Care Professionals</b>	<b>-1.3%</b>	<b>-23.6</b>	<b>+0.0</b>	<b>-9.2</b>	<b>+5.1</b>	<b>-28.9</b>	<b>+9.0</b>	<b>+0.4</b>
Management (VIII & above)	+2.8%	+2.7	+0.9	+1.1	+3.9	-1.8	+1.2	-2.5
Administrative/ Supervisory (V to VII)	+10.5%	+37.6	+0.8	+2.3	+9.7	+24.1	+1.7	-0.9
Clerical (III & IV)	+2.6%	+13.8	-0.3	-0.9	+11.2	+2.3	+2.8	-1.2
<b>Management &amp; Administrative</b>	<b>+5.5%</b>	<b>+54.2</b>	<b>+1.4</b>	<b>+2.5</b>	<b>+24.8</b>	<b>+24.5</b>	<b>+5.7</b>	<b>-4.6</b>
Support	-5.9%	-22.5		-7.2	+2.4	-2.4	-11.3	-4.0
Maintenance/ Technical	-3.0%	-1.1		-1.4		+0.3	+0.0	+0.0
<b>General Support</b>	<b>-5.6%</b>	<b>-23.6</b>		<b>-8.6</b>	<b>+2.4</b>	<b>-2.1</b>	<b>-11.3</b>	<b>-3.9</b>
Health Care Assistants	+1.6%	+20.6		+1.1	-11.4	+7.6	+26.3	-2.9
Care, other	-5.3%	-14.1	+1.9	-1.1	-2.2	-13.2	+0.4	
<b>Patient &amp; Client Care</b>	<b>+0.4%</b>	<b>+6.5</b>	<b>+1.9</b>	<b>+0.0</b>	<b>-13.6</b>	<b>-5.7</b>	<b>+26.7</b>	<b>-2.9</b>



## CHO 9 Employment Report: AUG 2023

### Year-on-Year Summary

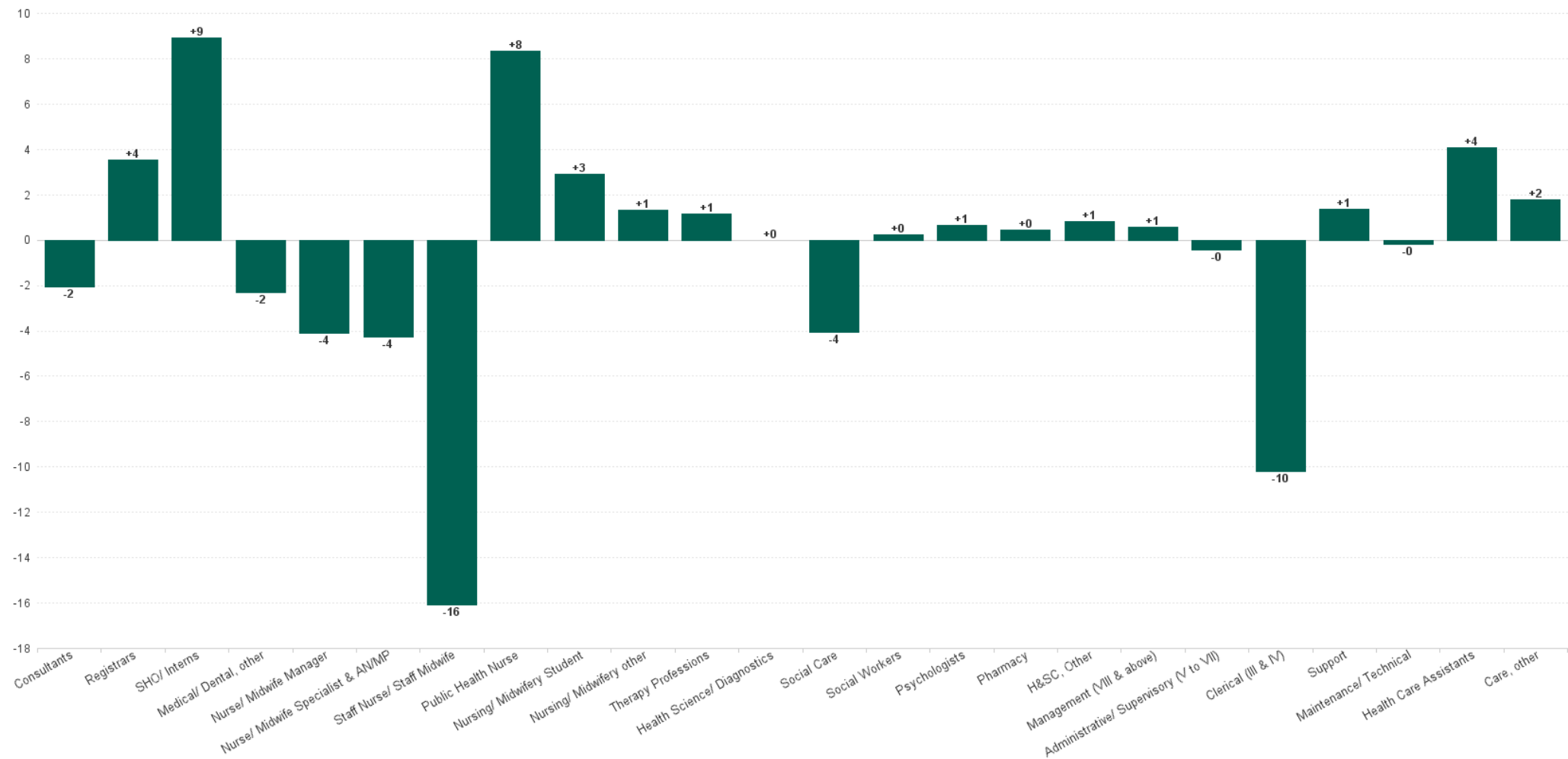
Year-on-Year Summary	% WTE change since AUG 2022	WTE change since AUG 2022	Community Health & Wellbeing	Mental Health	Primary Care	Disabilities	Older People	CHO Operations
Consultants	-0.4%	-0.3		-0.6	+0.8	-1.0	+0.5	
Registrars	+5.4%	+6.4		-3.7	+11.2	-1.2	+1.0	-1.0
SHO/ Interns	+66.5%	+27.1		+19.2	+1.9	+1.0	+5.0	
Medical/ Dental, other	-5.9%	-3.3			-3.1	-0.3		
<b>Medical &amp; Dental</b>	<b>+10.6%</b>	<b>+29.9</b>		<b>+14.9</b>	<b>+10.9</b>	<b>-1.4</b>	<b>+6.5</b>	<b>-1.0</b>
Nurse/ Midwife Manager	+4.3%	+20.7		+0.2	+8.3	+8.7	+3.9	-0.4
Nurse/ Midwife Specialist & AN/MP	+15.0%	+20.4		+6.1	+14.9	-1.7	+1.2	
Staff Nurse/ Staff Midwife	-5.4%	-65.7		-59.3	+5.7	+4.3	-12.8	-3.5
Public Health Nurse	-1.7%	-3.2			-3.2		+0.0	
Nursing/ Midwifery Student	+4.2%	+1.9		+1.5	+4.9	-4.5		
Nursing/ Midwifery other	-1.7%	-0.3		-0.3	+0.0	-0.0		
<b>Nursing &amp; Midwifery</b>	<b>-1.3%</b>	<b>-26.2</b>		<b>-51.8</b>	<b>+30.5</b>	<b>+6.7</b>	<b>-7.7</b>	<b>-3.9</b>
Therapy Professions	+0.1%	+0.5	+1.0	-10.1	-3.7	+1.7	+11.5	
Health Science/ Diagnostics	+3.7%	+1.0			+1.0	+0.0	+0.0	
Social Care	-0.8%	-6.3		+0.0	+2.0	-7.7	-0.6	
Pharmacy	-1.3%	-0.4		-0.1	+1.5	+0.0	-1.0	-0.8
Psychologists	+2.4%	+4.4		-0.5	+4.8	+0.9	-0.8	
Social Workers	+5.4%	+8.1		+6.3	+1.8	-0.3	-2.2	+2.5



H&SC, Other	+5.6%	+3.6		+0.8	+4.1	-1.4	+0.0	
<b>Health &amp; Social Care Professionals</b>	<b>+0.6%</b>	<b>+10.9</b>	<b>+1.0</b>	<b>-3.5</b>	<b>+11.4</b>	<b>-6.7</b>	<b>+6.9</b>	<b>+1.8</b>
Management (VIII & above)	-0.3%	-0.3	+0.9	+2.0	+2.4	-2.6	+1.1	-4.0
Administrative/ Supervisory (V to VII)	+19.6%	+65.1	+0.7	+6.6	+13.6	+36.2	+4.4	+3.7
Clerical (III & IV)	+2.1%	+11.2	-1.2	-2.7	+15.7	+1.0	+2.4	-4.0
<b>Management &amp; Administrative</b>	<b>+7.9%</b>	<b>+76.0</b>	<b>+0.4</b>	<b>+5.9</b>	<b>+31.6</b>	<b>+34.6</b>	<b>+7.8</b>	<b>-4.3</b>
Support	-6.1%	-23.3		-6.8	+0.7	-4.1	-9.0	-4.0
Maintenance/ Technical	+5.7%	+1.9		-0.9		+1.8	+0.0	+1.0
<b>General Support</b>	<b>-5.1%</b>	<b>-21.4</b>		<b>-7.7</b>	<b>+0.7</b>	<b>-2.3</b>	<b>-9.0</b>	<b>-3.0</b>
Health Care Assistants	+2.3%	+29.6		-3.2	-7.9	+20.3	+23.1	-2.8
Care, other	-4.7%	-12.5	+3.8	-3.1	-3.3	-10.4	+0.4	
<b>Patient &amp; Client Care</b>	<b>+1.1%</b>	<b>+17.0</b>	<b>+3.8</b>	<b>-6.3</b>	<b>-11.2</b>	<b>+9.9</b>	<b>+23.5</b>	<b>-2.8</b>



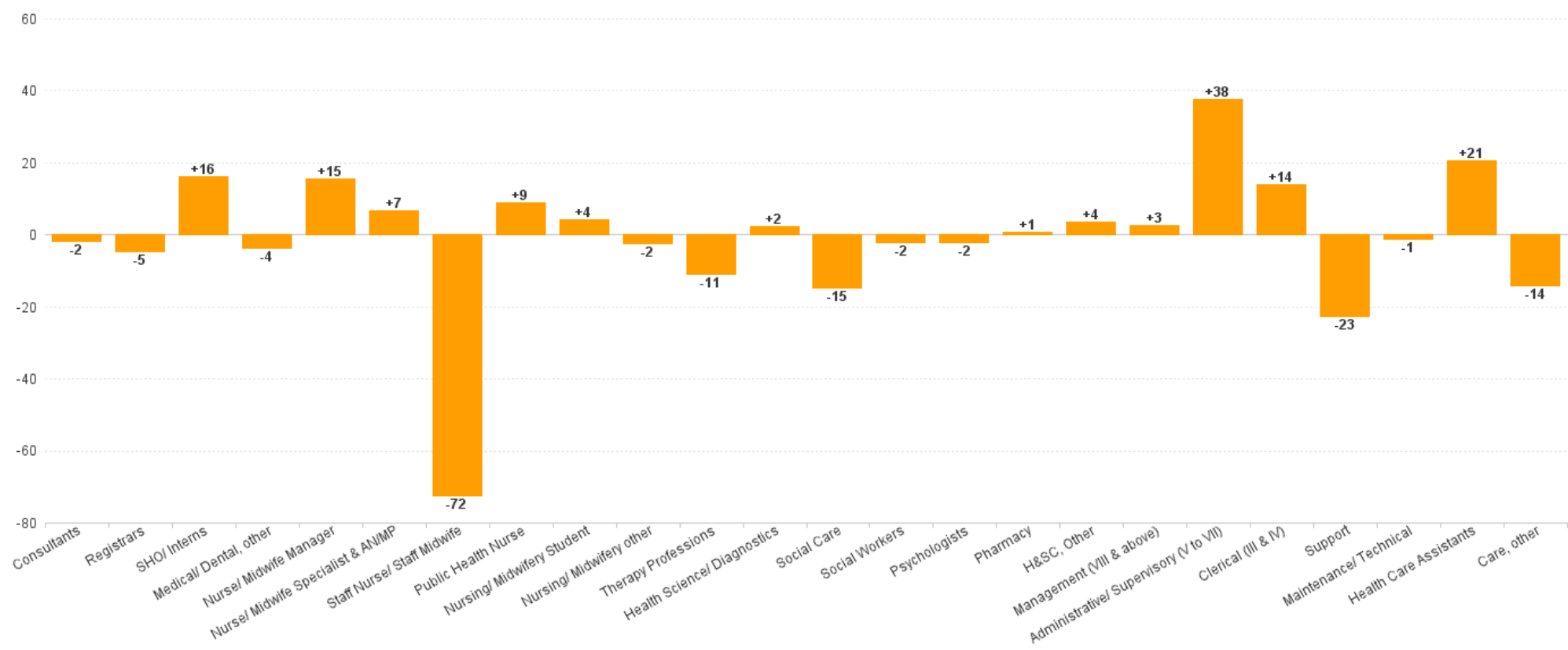
Month-on-Month Summary Chart: Change since JUL 2023





CHO 9 Employment Report: AUG 2023

Year-to-Date Summary Chart: Change since DEC 2022



## CHO 9 Employment Report: AUG 2023

### Year-on-Year Summary Chart: Change since AUG 2022

