

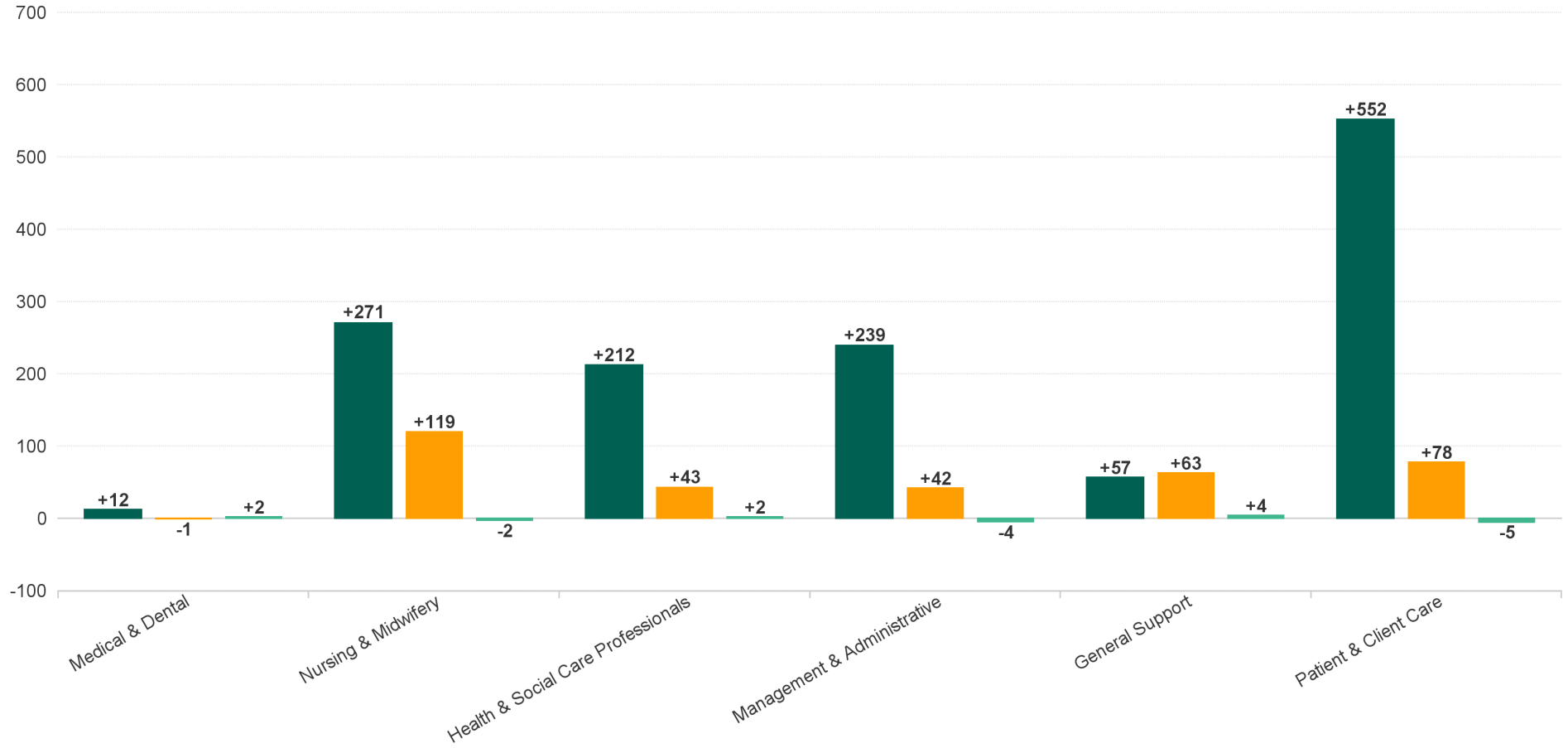
Employment Report : MAR 2024

Employment by Staff Group MAR 2024	WTE DEC 2019	WTE DEC 2022	WTE DEC 2023	WTE FEB 2024	WTE MAR 2024	WTE Change 2023	WTE Change 2024	WTE Change FEB 2024	WTE Change Dec 2022 to MAR 2024	WTE Change Dec 2019 to MAR 2024	% WTE Change Dec 2022 to MAR 2024	No. MAR 2024
Overall	4,357	5,069	5,356	5,703	5,700	+286	+345	-3	+631	+1,344	+0	6,712
Consultants	27	33	34	33	34	+0	+0	+1	+0	+7	+0	40
Registrars	42	47	56	60	62	+9	+6	+2	+15	+20	+0	62
SHO/ Interns	25	35	22	16	16	-13	-6	0	-20	-9	-1	16
Medical/ Dental, other	58	52	53	53	53	+1	0	0	+1	-5	+0	69
Medical & Dental	152	167	165	162	164	-2	-1	+2	-3	+12	0	187
Nurse/ Midwife Manager	246	262	276	298	297	+14	+21	0	+35	+51	+0	312
Nurse/ Midwife Specialist & AN/MP	56	75	98	127	125	+23	+27	-2	+50	+70	+1	141
Staff Nurse/ Staff Midwife	787	842	864	923	926	+22	+61	+2	+83	+138	+0	1,055
Public Health Nurse	127	126	125	121	119	-1	-7	-3	-7	-9	0	146
Post-registration Nurse/ Midwife Student		7	14	16	16	+7	1.6	+0	+9	+16	+1	16
Pre-registration Nurse/ Midwife Intern	20	4	10	23	23	+6	12.65	+0	+18	+2	+4	45
Nursing/ Midwifery Student	20	11	24	39	39	+13	+14	+0	+27	+18	+2	61
Nursing/ Midwifery other	4	4	4	6	6	+0	+2	+0	+2	+2	+1	8
Nursing & Midwifery	1,241	1,320	1,392	1,514	1,511	+72	+119	-2	+191	+271	+0	1,723
Therapy Professions	214	278	322	339	342	+44	+20	+3	+64	+128	+0	392
Health Science/ Diagnostics	5	9	10	10	10	+0	+1	+0	+1	+5	+0	12
Social Care	245	282	273	280	279	-10	+7	-1	-3	+35	0	326
Pharmacy	5	6	7	10	10	+1	+4	+0	+5	+5	+1	14
Psychologists	124	128	142	142	142	+14	+1	+0	+15	+19	+0	149
Social Workers	59	67	66	77	77	-2	+11	0	+9	+17	+0	86
H&SC, Other	32	36	36	35	36	+0	0	+0	0	+3	0	43
Health & Social Care Professionals	684	805	853	894	896	+48	+43	+2	+91	+212	+0	1,022
Management (VIII & above)	38	56	60	69	66	+4	+6	-3	+10	+28	+0	67
Administrative/ Supervisory (V to VII)	132	210	223	234	235	+13	+12	+1	+25	+103	+0	247
Clerical (III & IV)	320	348	404	431	429	+56	+24	-3	+81	+108	+0	481
Management & Administrative	491	614	688	734	730	+74	+42	-4	+116	+239	+0	795
Support	163	142	145	190	191	+3	+46	+0	+49	+28	+0	238
Maintenance/ Technical	77	84	89	102	107	+6	+17	+4	+23	+29	+0	110
General Support	240	226	234	293	297	+9	+63	+4	+72	+57	+0	348
Health Care Assistants	1,140	1,298	1,345	1,413	1,415	+46	+70	+2	+117	+275	+0	1,750
Home Help	176	342	364	366	365	+22	+1	-1	+23	+189	+0	521
Ambulance Staff				3				-3			-1	
Care, other	234	296	315	325	321	+19	+6	-3	+25	+88	+0	366
Patient & Client Care	1,549	1,937	2,024	2,107	2,102	+87	+78	-5	+165	+552	+0	2,637



WTE Change by Staff Category

■ WTE change since DEC 2019 ■ WTE change since DEC 2023 ■ WTE change since FEB 2024



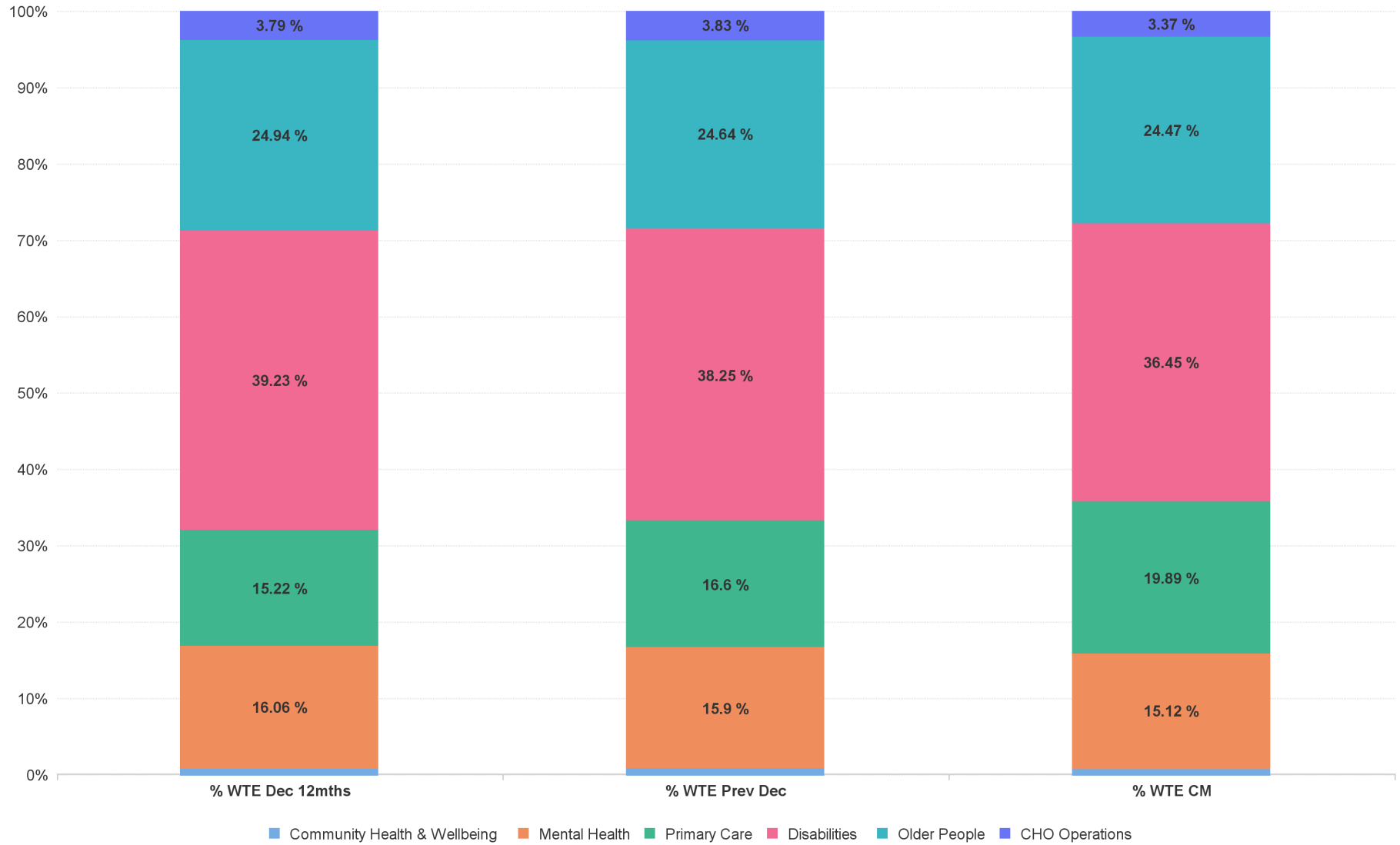
Employment Report by Care Group : MAR 2024

CHO 3 MAR 2024

Care Group MAR 2024	WTE DEC 2019	WTE DEC 2022	WTE DEC 2023	WTE FEB 2024	WTE MAR 2024	WTE Change 2023	WTE Change 2024	WTE Change FEB 2024	WTE Change Dec 2022 to MAR 2024	WTE Change Dec 2019 to MAR 2024	% WTE Change Dec 2022 to MAR 2024	No. MAR 2024
Overall	4,357	5,069	5,356	5,703	5,700	+286	+345	-3	+631	+1,344	+12.4%	6,712
Community Health & Wellbeing		38	41	40	40	+3	-2	-1	+1	+40	+3.4%	44
Mental Health	795	814	852	862	862	+37	+10	+0	+48	+66	+5.9%	936
Primary Care	764	772	889	1,139	1,134	+117	+245	-5	+362	+370	+47.0%	1,361
Disabilities	1,823	1,989	2,048	2,083	2,078	+60	+29	-5	+89	+254	+4.5%	2,495
Older People	974	1,264	1,320	1,385	1,395	+56	+75	+10	+131	+421	+10.4%	1,674
CHO Operations		192	205	194	192	+13	-13	-2	0	+192	-0.1%	202
Community Services	4,357	5,069	5,356	5,703	5,700	+286	+345	-3	+631	+1,344	+12.4%	6,712



% Total by Care Group



Employment Report by HSE/S38 : MAR 2024

CHO 3 MAR 2024

Administration MAR 2024	WTE DEC 2019	WTE DEC 2022	WTE DEC 2023	WTE FEB 2024	WTE MAR 2024	WTE Change 2023	WTE Change 2024	WTE Change FEB 2024	WTE Change Dec 2022 to MAR 2024	WTE Change Dec 2019 to MAR 2024	% WTE Change Dec 2022 to MAR 2024	No. MAR 2024
Overall	4,357	5,069	5,356	5,703	5,700	+286	+345	-3	+631	+1,344	+12.4%	6,712
Health Service Executive	2,655	3,200	3,444	3,437	3,429	+244	-15	-8	+229	+774	+7.2%	3,945
Section 38 Voluntary Agencies	1,701	1,869	1,911	2,266	2,271	+42	+360	+5	+402	+570	+21.5%	2,767



Employment Report by HSE.S38: MAR 2024

Health Service Executive

HSE&S38 MAR 2024	WTE DEC 2019	WTE DEC 2022	WTE DEC 2023	WTE FEB 2024	WTE MAR 2024	WTE Change 2023	WTE Change 2024	WTE Change FEB 2024	WTE Change Dec 2022 to MAR 2024	WTE Change Dec 2019 to MAR 2024	% WTE Change Dec 2022 to MAR 2024	No. MAR 2024
Total Health Service Executive	2,655	3,200	3,444	3,437	3,429	+244	-15	-8	+229	+774	+7.2%	3,945
Consultants	26	33	34	33	34	+0	+0	+1	+0	+7	+1.1%	39
Registrars	42	47	56	60	62	+9	+6	+2	+15	+20	+32.9%	62
SHO/ Interns	25	35	22	16	16	-13	-6	-0	-20	-9	-56.1%	16
Medical/ Dental, other	57	51	53	53	53	+1	-0	-0	+1	-5	+2.1%	68
Medical & Dental	150	167	164	162	164	-2	-1	+2	-3	+14	-1.8%	185
Nurse/ Midwife Manager	170	181	196	194	193	+16	-3	-1	+13	+23	+7.1%	203
Nurse/ Midwife Specialist & AN/MP	43	65	85	89	88	+20	+3	-1	+23	+45	+35.5%	94
Staff Nurse/ Staff Midwife	540	585	611	603	601	+27	-11	-2	+16	+61	+2.8%	679
Public Health Nurse	127	126	125	121	119	-1	-7	-3	-7	-9	-5.8%	146
Post-registration Nursel Midwife Student		7	14	16	16	+7	+2	+0	+9	+16	1.31	16
Pre-registration Nursel Midwife Intern	9	4	1	14	14	-3	+13	+0	+9	+5	2.15	27
Nursing/ Midwifery Student	9	11	15	30	30	+4	+14	+0	+18	+21	+162.9%	43
Nursing/ Midwifery other		1	1	1	1	+0	+0	+0	+0	+1	+1.0%	1
Nursing & Midwifery	890	968	1,034	1,037	1,031	+66	-3	-6	+63	+141	+6.5%	1,166
Therapy Professions	186	251	291	282	285	+39	-6	+2	+33	+99	+13.2%	327
Health Science/ Diagnostics	5	9	10	10	10	+0	+1	+0	+1	+5	+10.6%	12
Social Care	5	4	2	2	1	-2	-1	-1	-3	-4	-73.6%	1
Pharmacy	5	6	7	8	8	+1	+1	+0	+2	+3	+38.3%	9
Psychologists	111	114	130	129	129	+16	-1	+1	+16	+18	+13.9%	134
Social Workers	45	51	49	54	53	-2	+4	-1	+3	+8	+5.1%	58
H&SC, Other	22	26	26	26	26	+0	-1	-0	-0	+4	-1.2%	29
Health & Social Care Professionals	378	460	513	510	511	+53	-2	+2	+51	+133	+11.2%	570
Management (VIII & above)	32	49	48	48	48	-1	-0	-0	-1	+16	-1.5%	49
Administrative/ Supervisory (V to VII)	105	174	188	183	181	+14	-6	-2	+8	+77	+4.4%	192
Clerical (III & IV)	282	315	366	362	358	+51	-8	-4	+43	+76	+13.8%	398
Management & Administrative	419	537	602	593	587	+64	-14	-5	+50	+169	+9.3%	639
Support	110	88	94	95	95	+6	+1	+0	+7	-15	+8.0%	118
Maintenance/ Technical	65	73	78	88	89	+6	+10	+0	+16	+24	+22.1%	90
General Support	175	161	172	183	184	+12	+12	+0	+23	+9	+14.4%	208
Health Care Assistants	381	446	457	450	451	+12	-6	+1	+5	+70	+1.2%	505
Home Help	176	342	364	366	365	+22	+1	-1	+23	+189	+6.8%	521
Care, other	87	120	138	137	136	+18	-2	-1	+16	+49	+13.2%	151
Patient & Client Care	644	908	959	953	952	+52	-7	-1	+44	+308	+4.9%	1,177

Section 38 Voluntary Agencies

HSE&S38 MAR 2024	WTE DEC 2019	WTE DEC 2022	WTE DEC 2023	WTE FEB 2024	WTE MAR 2024	WTE Change 2023	WTE Change 2024	WTE Change FEB 2024	WTE Change Dec 2022 to MAR 2024	WTE Change Dec 2019 to MAR 2024	% WTE Change Dec 2022 to MAR 2024	No. MAR 2024
Total Section 38 Voluntary Agencies	1,701	1,869	1,911	2,266	2,271	+42	+360	+5	+402	+570	+21.5%	2,767
Consultants	1	0	0	0	0	+0	-0	+0	-0	-1	-23.1%	1
Medical/ Dental, other	1	0	0	0	0	+0	+0	+0	+0	-0	+0.0%	1
Medical & Dental	2	1	1	1	1	+0	-0	+0	-0	-1	-5.2%	2
Nurse/ Midwife Manager	76	81	80	104	104	-1	+24	+0	+23	+28	+27.7%	109
Nurse/ Midwife Specialist & AN/MP	13	11	14	38	38	+3	+24	-1	+27	+25	+250.5%	47
Staff Nurse/ Staff Midwife	247	258	253	320	325	-5	+72	+4	+67	+77	+26.0%	376
<i>Pre-registration Nurse/ Midwife Intern</i>	12		9	9	9	+9	+0	+0	+9	-3	-1	18
Nursing/ Midwifery Student	12		9	9	9	+9	+0	+0	+9	-3	-100.0%	18
Nursing/ Midwifery other	4	3	3	5	5	+0	+2	+0	+2	+1	+89.1%	7
Nursing & Midwifery	351	353	358	476	480	+6	+122	+4	+128	+129	+36.3%	557
Therapy Professions	28	26	31	57	57	+5	+26	+1	+31	+29	+118.5%	65
Social Care	240	278	271	279	278	-7	+7	-0	-0	+39	0.0%	325
Pharmacy				3	3		+3	+0	+3	+3	-100.0%	5
Psychologists	12	14	12	13	13	-2	+1	-0	-1	+1	-8.1%	15
Social Workers	15	17	17	23	24	-0	+7	+0	+7	+9	+40.9%	28
H&SC, Other	10	10	10	10	10	-0	+1	+0	+0	-0	+2.9%	14
Health & Social Care Professionals	305	345	340	384	385	-5	+45	+0	+39	+79	+11.4%	452
Management (VIII & above)	6	7	12	21	18	+5	+6	-3	+11	+12	+160.0%	18
Administrative/ Supervisory (V to VII)	27	37	36	51	54	-1	+18	+3	+17	+26	+47.1%	55
Clerical (III & IV)	39	33	38	70	71	+5	+32	+1	+37	+32	+112.7%	83
Management & Administrative	72	77	86	141	142	+9	+56	+1	+66	+70	+85.6%	156
Support	53	54	51	95	96	-3	+45	+0	+42	+43	+77.2%	120
Maintenance/ Technical	12	11	11	14	18	+0	+7	+4	+7	+5	+61.3%	20
General Support	65	65	62	110	113	-3	+52	+4	+48	+48	+74.5%	140
Health Care Assistants	759	853	888	964	964	+35	+77	+1	+112	+205	+13.1%	1,245
<i>Pre-Hospital Care (Ambulance)</i>				3				-3			-1	
Ambulance Staff				3				-3			-100.0%	
Care, other	146	176	177	188	185	+1	+8	-3	+9	+39	+5.1%	215
Patient & Client Care	906	1,029	1,064	1,154	1,150	+35	+85	-4	+121	+244	+11.7%	1,460

CHO 3 by S38 Agency: MAR 2024

Avista Limerick

MAR 2024	WTE DEC 2019	WTE DEC 2022	WTE DEC 2023	WTE FEB 2024	WTE MAR 2024	WTE Change 2023	WTE Change 2024	WTE Change FEB 2024	WTE Change Dec 2022 to MAR 2024	WTE Change Dec 2019 to MAR 2024	% WTE Change Dec 2022 to MAR 2024	No. MAR 2024
Total Avista Limerick	543	547	541	548	547	-5.95	6.65	-0.9	+0.7	+3.8	+0.1%	628
Medical/ Dental, other	1	0	0	0	0	0	0	0	+0.0	-0.5	+0.0%	1
Medical & Dental	1	0	0	0	0	0	0	0	+0.0	-0.5	+0.0%	1
Nurse/ Midwife Manager	35	35	33	34	34	-1.69	1	0	-0.7	-1.4	-2.0%	35
Nurse/ Midwife Specialist & AN/MP	8	8	9	9	8	1	-1	-1	+0.0	+0.2	+0.0%	9
Staff Nurse/ Staff Midwife	144	146	139	138	137	-6.96	-2.87	-1.37	-9.8	-7.0	-6.7%	148
Nursing/ Midwifery Student	12		9	9	9	9	0	0	+9.0	-2.5	-100.0%	18
Nursing/ Midwifery other	3	3	3	3	3	0.25	0	0	+0.3	+0.3	+9.1%	3
Nursing & Midwifery	201	192	193	193	190	1.6	-2.87	-2.37	-1.3	-10.4	-0.7%	213
Therapy Professions	15	13	13	15	15	0	1.6	0	+1.6	-0.3	+12.3%	16
Social Care	54	64	65	67	69	0.67	4.21	1.65	+4.9	+15.3	+7.6%	83
Psychologists	3	5	5	5	4	0	-0.2	-0.2	-0.2	+1.3	-4.4%	5
Social Workers	5	5	6	5	5	1	-0.63	0	+0.4	-0.3	+7.9%	6
H&SC, Other	6	5	5	5	5	0	0	0	+0.0	-0.5	+0.0%	7
Health & Social Care Professionals	83	92	93	97	98	1.67	4.98	1.45	+6.6	+15.5	+7.3%	117
Management (VIII & above)	2	2	5	5	4	3	-1	-1	+2.0	+2.0	+100.0%	4
Administrative/ Supervisory (V to VII)	10	13	13	13	13	0	0	0	+0.0	+3.0	+0.0%	13
Clerical (III & IV)	15	15	18	18	18	2.4	0	0	+2.4	+2.9	+15.6%	21
Management & Administrative	27	30	36	36	35	5.4	-1	-1	+4.4	+7.9	+14.5%	38
Support	41	43	41	42	42	-2	0.82	-0.18	-1.2	+0.5	-2.7%	44
Maintenance/ Technical	4	4	4	4	4	0	0	0	+0.0	+0.0	+0.0%	5
General Support	46	47	45	46	46	-2	0.82	-0.18	-1.2	+0.5	-2.5%	49
Health Care Assistants	165	163	154	156	159	-9.63	5.61	3.04	-4.0	-5.7	-2.5%	188
Care, other	21	22	19	20	18	-2.99	-0.89	-1.84	-3.9	-3.5	-17.8%	22
Patient & Client Care	187	185	173	176	177	-12.62	4.72	1.2	-7.9	-9.1	-4.3%	210

Avista Roscrea

MAR 2024	WTE DEC 2019	WTE DEC 2022	WTE DEC 2023	WTE FEB 2024	WTE MAR 2024	WTE Change 2023	WTE Change 2024	WTE Change FEB 2024	WTE Change Dec 2022 to MAR 2024	WTE Change Dec 2019 to MAR 2024	% WTE Change Dec 2022 to MAR 2024	No. MAR 2024
Total Avista Roscrea	290	298	302	304	307	3.52	5.41	2.59	+8.9	+17.1	+3.0%	400
Nurse/ Midwife Manager	16	16	16	17	17	0	1.03	0	+1.0	+1.5	+6.4%	18
Nurse/ Midwife Specialist & AN/MP			1	1	1	1	0	0	+1.0	+1.0	-100.0%	1
Staff Nurse/ Staff Midwife	18	19	20	20	20	0.51	0	0	+0.5	+1.5	+2.6%	23
Nursing/ Midwifery other	1									-1.0	-100.0%	
Nursing & Midwifery	35	35	37	38	38	1.51	1.03	0	+2.5	+3.0	+7.2%	42
Therapy Professions	2	2	3	3	3	1	0	0	+1.0	+1.5	+50.0%	3
Social Care	19	32	26	26	26	-5.92	0	0	-5.9	+6.8	-18.7%	28
Psychologists	1	1	1	1	1	0	0	0	+0.0	+0.0	+0.0%	1
Social Workers	1	1	1	1	1	0	0	0	+0.0	+0.0	+0.0%	1
Health & Social Care Professionals	23	36	31	31	31	-4.92	0	0	-4.9	+8.3	-13.8%	33
Management (VIII & above)	1	2	3	3	3	1	0	0	+1.0	+2.1	+54.1%	3
Administrative/ Supervisory (V to VII)	7	6	6	6	6	-0.2	0	0	-0.2	-1.1	-3.3%	6
Clerical (III & IV)	7	7	7	7	7	-0.8	0	0	-0.8	-0.2	-10.8%	7
Management & Administrative	14	15	15	15	15	0	0	0	+0.0	+0.8	+0.0%	16
Support	4	4	4	4	4	0	0	0	+0.0	-0.5	+0.0%	5
Maintenance/ Technical	6	5	5	5	5	0	0	0	+0.0	-1.0	+0.0%	6
General Support	10	9	9	9	9	0	0	0	+0.0	-1.5	+0.0%	11
Health Care Assistants	202	202	209	211	213	6.93	4.38	2.59	+11.3	+11.1	+5.6%	297
Care, other	6	1	1	1	1	0	0	0	+0.0	-4.6	+0.0%	1
Patient & Client Care	208	203	210	212	214	6.93	4.38	2.59	+11.3	+6.5	+5.6%	298

Bros. of Charity Clare

MAR 2024	WTE DEC 2019	WTE DEC 2022	WTE DEC 2023	WTE FEB 2024	WTE MAR 2024	WTE Change 2023	WTE Change 2024	WTE Change FEB 2024	WTE Change Dec 2022 to MAR 2024	WTE Change Dec 2019 to MAR 2024	% WTE Change Dec 2022 to MAR 2024	No. MAR 2024
Total Bros. of Charity Clare	348	424	466	477	475	41.7	9.06	-1.47	+50.8	+126.9	+12.0%	599
Consultants		0	0	0	0	0.08	-0.11	0	-0.0	+0.1	-23.1%	1
Medical & Dental		0	0	0	0	0.08	-0.11	0	-0.0	+0.1	-23.1%	1
Staff Nurse/ Staff Midwife	2	3	4	4	4	1.05	-0.1	-0.05	+1.0	+1.7	+36.7%	4
Nursing & Midwifery	2	3	4	4	4	1.05	-0.1	-0.05	+1.0	+1.7	+36.7%	4
Social Care	82	80	84	86	86	4.11	2.49	0.33	+6.6	+4.3	+8.3%	100
Psychologists	3	3	2	2	2	-0.96	0	0	-1.0	-0.8	-32.4%	2
Social Workers	3	3	3	3	3	0	-0.14	0.14	-0.1	-0.1	-4.7%	3
H&SC, Other	4	4	4	4	4	-0.19	0.51	0.11	+0.3	+0.1	+8.4%	6
Health & Social Care Professionals	92	90	93	95	95	2.96	2.86	0.58	+5.8	+3.6	+6.5%	111
Management (VIII & above)	1	1	1	1	1	0	0	0	+0.0	+0.0	+0.0%	1
Administrative/ Supervisory (V to VII)	5	8	9	10	10	1.2	1	0.1	+2.2	+5.2	+28.2%	10
Clerical (III & IV)	4	3	7	8	8	3.7	0.62	-0.01	+4.3	+3.5	+124.1%	9
Management & Administrative	10	12	17	19	19	4.9	1.62	0.09	+6.5	+8.7	+53.1%	20
Health Care Assistants	212	280	315	323	320	35.52	5.03	-2.4	+40.6	+108.2	+14.5%	417
Care, other	32	40	37	36	37	-2.81	-0.24	0.31	-3.1	+4.6	-7.7%	46
Patient & Client Care	244	320	352	359	357	32.71	4.79	-2.09	+37.5	+112.8	+11.7%	463

Bros. of Charity Limerick

MAR 2024	WTE DEC 2019	WTE DEC 2022	WTE DEC 2023	WTE FEB 2024	WTE MAR 2024	WTE Change 2023	WTE Change 2024	WTE Change FEB 2024	WTE Change Dec 2022 to MAR 2024	WTE Change Dec 2019 to MAR 2024	% WTE Change Dec 2022 to MAR 2024	No. MAR 2024
Total Bros. of Charity Limerick	520	600	603	619	612	2.95	9.14	-6.71	+12.1	+92.4	+2.0%	722
Consultants	1									-1.0	-100.0%	
Medical & Dental	1									-1.0	-100.0%	
Nurse/ Midwife Manager	25	31	31	31	31	0.23	0.42	0.3	+0.6	+6.2	+2.1%	33
Nurse/ Midwife Specialist & AN/MP	5	3	4	4	3	0.9	-0.3	-0.2	+0.6	-1.5	+20.8%	4
Staff Nurse/ Staff Midwife	84	89	90	92	94	0.41	3.65	1.48	+4.1	+9.9	+4.5%	108
Nursing & Midwifery	114	123	125	127	128	1.54	3.77	1.58	+5.3	+14.6	+4.3%	145
Therapy Professions	12	11	15	16	16	4.06	0.9	0.1	+5.0	+4.4	+44.4%	17
Social Care	85	103	97	100	97	-6.24	0.61	-2.42	-5.6	+12.2	-5.5%	114
Psychologists	6	6	4	6	6	-1.51	1.53	-0.11	+0.0	+0.0	+0.4%	7
Social Workers	5	8	7	7	7	-1.1	0.1	0.2	-1.0	+1.8	-12.5%	8
H&SC, Other	1	1	1	1	1	-0.04	0	0	-0.0	-0.0	-6.3%	1
Health & Social Care Professionals	108	128	124	129	127	-4.83	3.14	-2.23	-1.7	+18.3	-1.3%	147
Management (VIII & above)	2	2	3	4	3	0.96	0	-1	+1.0	+1.0	+48.0%	3
Administrative/ Supervisory (V to VII)	6	10	8	9	8	-2.01	0.04	-0.97	-2.0	+2.1	-20.1%	8
Clerical (III & IV)	13	7	7	7	7	0	0.06	0	+0.1	-5.6	+0.9%	7
Management & Administrative	20	19	18	20	18	-1.05	0.1	-1.97	-1.0	-2.6	-5.1%	18
Support	7	7	6	8	7	-1.13	1.43	-0.62	+0.3	+0.3	+4.2%	12
Maintenance/ Technical	2	2	2	3	3	0	1	0	+1.0	+0.6	+50.0%	3
General Support	9	9	8	11	10	-1.13	2.43	-0.62	+1.3	+0.9	+14.3%	15
Health Care Assistants	179	207	209	206	204	1.97	-4.89	-2.14	-2.9	+24.9	-1.4%	259
Care, other	87	114	120	126	125	6.45	4.59	-1.33	+11.0	+37.2	+9.7%	138
Patient & Client Care	267	321	329	332	329	8.42	-0.3	-3.47	+8.1	+62.1	+2.5%	397

Milford Care Centre

MAR 2024	WTE DEC 2019	WTE DEC 2022	WTE DEC 2023	WTE FEB 2024	WTE MAR 2024	WTE Change 2023	WTE Change 2024	WTE Change FEB 2024	WTE Change Dec 2022 to MAR 2024	WTE Change Dec 2019 to MAR 2024	% WTE Change Dec 2022 to MAR 2024	No. MAR 2024
Total Milford Care Centre				247	252		252.14	5.18	+252.1	+252.1	-100.0%	325
Nurse/ Midwife Manager				16	16		15.53	0	+15.5	+15.5	-100.0%	17
Nurse/ Midwife Specialist & AN/MP				25	25		25.25	0.5	+25.3	+25.3	-100.0%	33
Staff Nurse/ Staff Midwife				47	46		46.49	-0.77	+46.5	+46.5	-100.0%	65
Nursing/ Midwifery other				2	2		2.2	0	+2.2	+2.2	-100.0%	4
Nursing & Midwifery				90	89		89.47	-0.27	+89.5	+89.5	-100.0%	119
Therapy Professions				23	24		23.51	0.6	+23.5	+23.5	-100.0%	29
Pharmacy				3	3		2.5	0	+2.5	+2.5	-100.0%	5
Social Workers				8	8		7.6	0	+7.6	+7.6	-100.0%	10
Health & Social Care Professionals				33	34		33.61	0.6	+33.6	+33.6	-100.0%	44
Management (VIII & above)				8	7		7	-1	+7.0	+7.0	-100.0%	7
Administrative/ Supervisory (V to VII)				13	17		17.23	4	+17.2	+17.2	-100.0%	18
Clerical (III & IV)				30	31		30.62	1	+30.6	+30.6	-100.0%	38
Management & Administrative				51	55		54.85	4	+54.9	+54.9	-100.0%	63
Support				33	34		33.61	0.85	+33.6	+33.6	-100.0%	46
Maintenance/ Technical				2	6		5.8	3.8	+5.8	+5.8	-100.0%	6
General Support				35	39		39.41	4.65	+39.4	+39.4	-100.0%	52
Health Care Assistants				31	30		29.87	-1.3	+29.9	+29.9	-100.0%	39
Ambulance Staff				3				-2.5			-100.0%	
Care, other				5	5		4.93	0	+4.9	+4.9	-100.0%	8
Patient & Client Care				39	35		34.8	-3.8	+34.8	+34.8	-100.0%	47

Milford Care Centre OP

MAR 2024	WTE DEC 2019	WTE DEC 2022	WTE DEC 2023	WTE FEB 2024	WTE MAR 2024	WTE Change 2023	WTE Change 2024	WTE Change FEB 2024	WTE Change Dec 2022 to MAR 2024	WTE Change Dec 2019 to MAR 2024	% WTE Change Dec 2022 to MAR 2024	No. MAR 2024
Total Milford Care Centre OP				71	77		77.42	6.1	+77.4	+77.4	-100.0%	93
Nurse/ Midwife Manager				6	6		6	0	+6.0	+6.0	-100.0%	6
Staff Nurse/ Staff Midwife				20	25		24.81	5	+24.8	+24.8	-100.0%	28
Nursing & Midwifery				26	31		30.81	5	+30.8	+30.8	-100.0%	34
Clerical (III & IV)				1	1		0.82	0	+0.8	+0.8	-100.0%	1
Management & Administrative				1	1		0.82	0	+0.8	+0.8	-100.0%	1
Support				9	9		8.88	0	+8.9	+8.9	-100.0%	13
General Support				9	9		8.88	0	+8.9	+8.9	-100.0%	13
Health Care Assistants				36	37		36.91	1.1	+36.9	+36.9	-100.0%	45
Patient & Client Care				36	37		36.91	1.1	+36.9	+36.9	-100.0%	45

Employment Report by Community Health & Wellbeing MAR 2024

CHO 3 MAR 2024

Community Health & Wellbeing MAR 2024	WTE DEC 2019	WTE DEC 2022	WTE DEC 2023	WTE FEB 2024	WTE MAR 2024	WTE Change 2023	WTE Change 2024	WTE Change FEB 2024	WTE Change Dec 2022 to MAR 2024	WTE Change Dec 2019 to MAR 2024	% WTE Change Dec 2022 to MAR 2024	No. MAR 2024
Overall		38	41	40	40	+2	-1	-1	+1	+40	+3.4%	44
Nurse/ Midwife Manager		1	1	2	2	0	+1	+0	+1	+2	+79.8%	2
Public Health Nurse		1				-1			-1		-100.0%	
Nursing & Midwifery		2	1	2	2	-1	+1	+0	0	+2	-10.1%	2
Therapy Professions		2	2	2	2	+0	+0	+0	+0	+2	+1.2%	2
H&SC, Other		3	3	3	3	+0	+0	+0	+0	+3	+1.0%	3
Health & Social Care Professionals		5	5	5	5	+0	+0	+0	+0	+5	+1.1%	5
Management (VIII & above)		2	2	2	2	0	0	0	0	+2	-16.2%	2
Administrative/ Supervisory (V to VII)		8	7	8	8	-2	+1	0	-1	+8	-9.4%	8
Clerical (III & IV)		4	7	6	6	+3	-1	+0	+2	+6	+49.9%	7
Management & Administrative		14	16	15	15	+1	0	0	+1	+15	+6.6%	17
Care, other		17	20	18	18	+2	-2	-1	+0	+18	+2.8%	20
Patient & Client Care		17	20	18	18	+2	-2	-1	+0	+18	+2.8%	20

Employment Report by Mental Health MAR 2024

CHO 3 MAR 2024

Mental HealthMAR 2024	WTE DEC 2019	WTE DEC 2022	WTE DEC 2023	WTE FEB 2024	WTE MAR 2024	WTE Change 2023	WTE Change 2024	WTE Change FEB 2024	WTE Change Dec 2022 to MAR 2024	WTE Change Dec 2019 to MAR 2024	% WTE Change Dec 2022 to MAR 2024	No. MAR 2024
Overall	795	814	852	862	862	+37	+10	+0	+48	+66	+5.9%	936
Consultant Medicine	1	1	1	1	1	1	+0	+0	+0	+0	+0.0%	1
Consultant Psychiatry	22	28	28.9	28	29	28.9	+1	+1	+1	+7	+4.9%	32
Consultants	23	29	30	29	30	+30	+1	+1	+1	+7	+4.8%	33
Registrars	18	15	22	27	28	+22	+6	+1	+13	+10	+83.0%	28
SHO/ Interns	19	33	19	15	15	+19	-4	0	-19	-4	-56.5%	15
Medical & Dental	60	78	71	71	73	-7	+2	+1	-5	+13	-6.2%	76
Nurse/ Midwife Manager	88	87	91	90	90	+91	-1	0	+3	+2	+3.3%	94
Nurse/ Midwife Specialist & AN/MP	39	44	52	52	53	+52	+1	+1	+8	+14	+18.5%	57
Staff Nurse/ Staff Midwife	245	243	254	251	251	+254	-3	0	+8	+5	+3.3%	272
Pre-registration Nurse/ Midwife Intern	9	4	0.85	14	14	0.85	+13	+0	+9	+5	+214.7%	27
Nursing/ Midwifery Student	9	4	1	14	14	+1	+13	+0	+9	+5	+214.7%	27
Nursing/ Midwifery other		1	1	1	1	+1	+0	+0	+0	+1	+1.0%	1
Nursing & Midwifery	381	380	399	407	408	+19	+9	+1	+28	+27	+7.4%	451
Therapy Professions	26	30	30	30	30	+30	0	0	0	+3	-1.6%	34
Social Care	3	2	1	1		+1	-1	-1	-2	-3	-100.0%	
Pharmacy	3	3	3	3	3	+3	+0	+0	0	+0	-0.7%	3
Psychologists	92	93	91	92	92	+91	+1	0	-2	0	-1.6%	94
Social Workers	25	28	26	27	27	+26	+1	-1	-1	+1	-5.0%	28
H&SC, Other	10	10	11	11	11	+11	+0	0	+2	+2	+16.1%	12
Health & Social Care Professionals	159	166	161	164	162	-5	+1	-2	-4	+3	-2.2%	171
Management (VIII & above)	2	4	4	4	4	+4	+0	+0	+0	+2	+1.3%	4
Administrative/ Supervisory (V to VII)	17	16	17	18	18	+17	+0	+0	+2	+1	+9.8%	18
Clerical (III & IV)	56	50	60	58	58	+60	-2	+0	+8	+2	+15.6%	63
Management & Administrative	75	70	81	79	80	+11	-1	+0	+9	+5	+13.5%	85
Support	32	30	32	31	31	+32	-1	0	+0	-2	+1.1%	34
Maintenance/ Technical	11	7	9	12	12	+9	+3	+0	+5	+1	+73.0%	12
General Support	43	37	41	42	43	+3	+2	+0	+5	-1	+14.5%	46
Health Care Assistants	75	82	97	95	95	+97	-3	-1	+13	+19	+16.2%	104
Care, other	2	2	2	2	2	+2	0	+0	0	+1	-2.5%	3
Patient & Client Care	77	84	100	98	97	+16	-3	-1	+13	+20	+15.6%	107

Employment Report by Primary Care MAR 2024

CHO 3 MAR 2024

Primary Care MAR 2024	WTE DEC 2019	WTE DEC 2022	WTE DEC 2023	WTE FEB 2024	WTE MAR 2024	WTE Change 2023	WTE Change 2024	WTE Change FEB 2024	WTE Change Dec 2022 to MAR 2024	WTE Change Dec 2019 to MAR 2024	% WTE Change Dec 2022 to MAR 2024	No. MAR 2024
Overall	764	772	889	1,139	1,134	+117	+245	-5	+362	+370	+47.0%	1,361
Consultants	2	1	2	2	2	+1	+0	0	+1	0	+37.9%	3
Registrars	24	29	32	30	30	+3	-2	+0	+1	+6	+2.3%	30
SHO/ Interns	6									-6	-100.0%	
Medical/ Dental, other	52	45	48	48	48	+2	0	0	+2	-5	+4.5%	63
Medical & Dental	84	76	82	80	79	+5	-2	0	+3	-4	+4.2%	96
Nurse/ Midwife Manager	19	23	29	43	43	+6	+14	0	+20	+24	+85.8%	47
Nurse/ Midwife Specialist & AN/MP	2	7	17	45	44	+10	+27	-1	+37	+42	+543.2%	53
Staff Nurse/ Staff Midwife	56	75	81	127	123	+6	+42	-3	+48	+68	+63.7%	166
Public Health Nurse	126	125	125	121	119	+0	-7	-3	-6	-8	-5.1%	146
Post-registration Nurse/ Midwife Student		6	14	16	16	+8	+2	+0	+10	+16	+169.4%	16
Nursing/ Midwifery Student		6	14	16	16	+8	+2	+0	+10	+16	+169.4%	16
Nursing/ Midwifery other				2	2		+2	+0	+2	+2	-100.0%	4
Nursing & Midwifery	203	236	266	354	348	+30	+81	-7	+111	+145	+47.1%	432
Therapy Professions	86	162	189	211	211	+28	+22	0	+49	+125	+30.6%	246
Health Science/ Diagnostics	5	5	5	5	5	+0	+1	+0	+1	+1	+20.6%	6
Social Care	1									-1	-100.0%	
Pharmacy	1	1	2	6	6	+1	+4	+0	+5	+5	+455.6%	9
Psychologists	15	14	33	31	32	+19	-1	+1	+18	+17	+130.9%	34
Social Workers	11	12	11	20	20	-2	+9	+0	+7	+9	+59.9%	25
H&SC, Other	11	12	12	11	11	0	-1	+0	-1	+0	-7.8%	13
Health & Social Care Professionals	129	205	252	284	285	+47	+33	+1	+80	+156	+38.8%	333
Management (VIII & above)	23	10	11	20	19	+1	+8	-1	+9	-5	+93.2%	19
Administrative/ Supervisory (V to VII)	54	28	30	45	48	+2	+18	+3	+20	-6	+69.9%	51
Clerical (III & IV)	156	127	156	189	188	+29	+32	-1	+62	+33	+48.5%	216
Management & Administrative	234	165	197	254	255	+33	+58	+1	+90	+22	+54.8%	286
Support	13	12	10	44	45	-2	+35	+1	+33	+32	+266.6%	70
Maintenance/ Technical	30			2	6		+6	+4	+6	-24	-100.0%	6
General Support	43	12	10	46	51	-2	+40	+5	+38	+8	+314.2%	76
Health Care Assistants	21	26	28	60	58	+2	+30	-2	+32	+37	+125.1%	70
Home Help	1									-1	-100.0%	
Pre-Hospital Care (Ambulance)				3				-3			-100.0%	
Ambulance Staff				3				-3			-100.0%	
Care, other	49	51	53	58	59	+2	+5	+0	+7	+9	+14.6%	68
Patient & Client Care	71	77	81	121	116	+5	+35	-5	+40	+45	+51.6%	138

Employment Report by Disabilities MAR 2024

CHO 3 MAR 2024

Disabilities MAR 2024	WTE DEC 2019	WTE DEC 2022	WTE DEC 2023	WTE FEB 2024	WTE MAR 2024	WTE Change 2023	WTE Change 2024	WTE Change FEB 2024	WTE Change Dec 2022 to MAR 2024	WTE Change Dec 2019 to MAR 2024	% WTE Change Dec 2022 to MAR 2024	No. MAR 2024
Overall	1,823	1,989	2,048	2,083	2,078	+60	+29	-5	+89	+254	+4.5%	2,495
Consultants	1	0	0	0	0	+0	0	+0	0	-1	-23.1%	1
Medical/ Dental, other	1	0	0	0	0	+0	+0	+0	+0	0	+0.0%	1
Medical & Dental	2	1	1	1	1	+0	0	+0	0	-1	-5.2%	2
Nurse/ Midwife Manager	76	81	80	82	82	-1	+2	+0	+1	+6	+1.2%	86
Nurse/ Midwife Specialist & AN/MP	13	11	14	14	12	+3	-1	-1	+2	0	+14.9%	14
Staff Nurse/ Staff Midwife	247	258	253	253	253	-5	+1	+0	-4	+6	-1.7%	283
Pre-registration Nurse/ Midwife Intern	12		9	9	9	+9	+0	+0	+9	-3	-100.0%	18
Nursing/ Midwifery Student	12		9	9	9	+9	+0	+0	+9	-3	-100.0%	18
Nursing/ Midwifery other	4	3	3	3	3	+0	+0	+0	+0	-1	+9.1%	3
Nursing & Midwifery	351	353	358	361	360	+6	+2	-1	+8	+9	+2.1%	404
Therapy Professions	74	41	51	51	52	+10	+1	+1	+11	-22	+27.8%	57
Health Science/ Diagnostics		4	4	4	4	+0	0	+0	+0	+4	+0.8%	4
Social Care	241	280	272	280	279	-9	+8	0	-1	+39	-0.4%	326
Psychologists	16	19	17	18	17	-2	+1	0	-1	+2	-6.1%	20
Social Workers	17	19	19	18	19	-1	+0	+0	-1	+2	-3.1%	21
H&SC, Other	12	11	10	10	10	-1	+1	+0	-1	-1	-6.0%	15
Health & Social Care Professionals	359	374	372	381	382	-2	+10	+0	+8	+23	+2.1%	443
Management (VIII & above)	7	12	17	18	16	+5	-1	-2	+4	+9	+33.6%	16
Administrative/ Supervisory (V to VII)	41	60	59	61	61	-1	+2	0	+1	+21	+2.1%	62
Clerical (III & IV)	59	54	60	61	61	+7	+1	0	+7	+2	+13.2%	67
Management & Administrative	107	126	136	140	138	+11	+2	-2	+12	+31	+9.8%	145
Support	53	54	52	55	54	-2	+2	-1	+0	+1	+0.2%	62
Maintenance/ Technical	14	18	21	22	22	+3	+1	+0	+4	+8	+22.3%	24
General Support	67	72	73	77	76	+1	+3	-1	+4	+9	+5.8%	86
Health Care Assistants	764	857	894	903	904	+36	+10	+1	+46	+140	+5.4%	1,168
Care, other	173	206	215	220	217	+8	+2	-3	+11	+44	+5.2%	247
Patient & Client Care	937	1,064	1,109	1,123	1,121	+45	+12	-2	+57	+184	+5.4%	1,415

Employment Report by Older People MAR 2024

CHO 3 MAR 2024

Older People MAR 2024	WTE DEC 2019	WTE DEC 2022	WTE DEC 2023	WTE FEB 2024	WTE MAR 2024	WTE Change 2023	WTE Change 2024	WTE Change FEB 2024	WTE Change Dec 2022 to MAR 2024	WTE Change Dec 2019 to MAR 2024	% WTE Change Dec 2022 to MAR 2024	No. MAR 2024
Overall	974	1,264	1,320	1,385	1,395	+56	+75	+10	+131	+421	+10.4%	1,674
Consultants	1	3	2	1	2	-1	0	+0	-2	+1	-50.0%	3
Registrars		2	2	4	4	+0	+2	+0	+2	+4	+101.0%	4
SHO/ Interns		2	3	1	1	+1	-2	+0	-1	+1	-49.5%	1
Medical/ Dental, other	5	6	5	5	5	-1	+0	+0	-1	+0	-16.0%	5
Medical & Dental	6	13	12	11	12	-1	0	+1	-1	+6	-11.0%	13
Nurse/ Midwife Manager	64	68	74	78	78	+5	+4	0	+9	+14	+13.3%	80
Nurse/ Midwife Specialist & AN/MP	2	11	13	14	14	+2	+1	0	+4	+12	+34.6%	15
Staff Nurse/ Staff Midwife	239	266	276	292	298	+10	+22	+6	+32	+59	+11.9%	334
Public Health Nurse	1									-1	-100.0%	
Nursing & Midwifery	305	345	363	385	390	+17	+27	+5	+44	+84	+12.9%	429
Therapy Professions	28	44	49	45	48	+5	-1	+3	+4	+20	+9.1%	53
Health Science/ Diagnostics	1	1	1	1	1	+0	+0	+0	+0	0	+1.4%	2
Pharmacy	1	1	1	1	1	+0	+0	+0	+0	+0	+1.0%	1
Psychologists		1	1	1	1	0	+0	0	+0	+1	+1.2%	1
Social Workers	7	2	2	2	2	+0	+0	+0	+0	-5	+1.0%	2
Health & Social Care Professionals	36	48	54	50	52	+5	-1	+3	+4	+16	+8.3%	59
Management (VIII & above)	6	10	9	9	9	-1	+0	+0	-1	+3	-7.3%	9
Administrative/ Supervisory (V to VII)	21	27	28	28	27	+2	-1	-1	+0	+6	+0.8%	30
Clerical (III & IV)	50	63	68	69	68	+5	+0	-1	+5	+19	+8.5%	78
Management & Administrative	76	99	105	106	104	+6	-1	-1	+5	+28	+4.9%	117
Support	64	46	51	61	61	+6	+10	+0	+16	-3	+34.5%	72
Maintenance/ Technical	22	23	22	28	27	0	+4	-1	+4	+5	+17.5%	27
General Support	86	68	74	89	88	+6	+14	-1	+20	+2	+28.8%	99
Health Care Assistants	279	331	324	355	359	-7	+35	+4	+28	+79	+8.5%	408
Home Help	175	342	364	366	365	+22	+1	-1	+23	+190	+6.8%	521
Care, other	10	17	25	25	25	+8	+1	0	+8	+16	+48.3%	28
Patient & Client Care	464	690	712	746	749	+22	+37	+3	+59	+285	+8.6%	957

Employment Report by CHO Operations MAR 2024

CHO 3 MAR 2024

CHO Operations MAR 2024	WTE DEC 2019	WTE DEC 2022	WTE DEC 2023	WTE FEB 2024	WTE MAR 2024	WTE Change 2023	WTE Change 2024	WTE Change FEB 2024	WTE Change Dec 2022 to MAR 2024	WTE Change Dec 2019 to MAR 2024	% WTE Change Dec 2022 to MAR 2024	No. MAR 2024
Overall		192	205	194	192	+13	-13	-2	0	+192	-0.1%	202
Nurse/ Midwife Manager		1	2	3	3	+1	+1	0	+2	+3	+181.8%	3
Nurse/ Midwife Specialist & AN/MP		3	3	2	2	0	-1	-1	-1	+2	-42.0%	2
Post-registration Nurse/ Midwife Student		1				-1					-100.0%	
Nursing/ Midwifery Student		1				-1			-1		-100.0%	
Nursing & Midwifery		5	5	5	4	0	0	-1	0	+4	-7.4%	5
Therapy Professions			1			+1	-1				-100.0%	
Pharmacy		1	1	1	1	+0	+0	+0	+0	+1	+16.4%	1
Psychologists		1				-1			-1		-100.0%	
Social Workers		6	8	10	10	+3	+1	+0	+4	+10	+70.7%	10
Health & Social Care Professionals		7	10	10	10	+3	+0	+0	+3	+10	+42.1%	11
Management (VIII & above)		18	18	17	17	-1	-1	0	-2	+17	-10.1%	17
Administrative/ Supervisory (V to VII)		71	81	75	74	+10	-7	-1	+3	+74	+4.1%	78
Clerical (III & IV)		50	53	48	47	+3	-6	-1	-3	+47	-6.4%	50
Management & Administrative		140	152	140	137	+12	-14	-2	-2	+137	-1.6%	145
Maintenance/ Technical		36	37	39	40	+1	+3	+1	+4	+40	+11.1%	41
General Support		36	37	39	40	+1	+3	+1	+4	+40	+11.1%	41
Health Care Assistants		3	2			-1	-2		-3		-100.0%	
Care, other		2				-2			-2		-100.0%	
Patient & Client Care		5	2			-3	-2		-5		-100.0%	

Employment Report by Care Group (HSE Only) MAR 2024

CHO 3 MAR 2024

Community Health & Wellbeing

Community Health & Wellbeing HSE Only MAR 2024	WTE DEC 2019	WTE DEC 2022	WTE DEC 2023	WTE FEB 2024	WTE MAR 2024	WTE Change 2023	WTE Change 2024	WTE Change FEB 2024	WTE Change Dec 2022 to MAR 2024	WTE Change Dec 2019 to MAR 2024	% WTE Change Dec 2022 to MAR 2024	No. MAR 2024
Overall		38	41	40	40	+3	-2	-1	+1	+40	+3.4%	44
Nurse/ Midwife Manager		1	1	2	2	0	+1	+0	+1	+2	+79.8%	2
Staff Nurse/ Staff Midwife			1			+1	-1				-100.0%	
Public Health Nurse		1				-1			-1		-100.0%	
Nursing & Midwifery		2	1	2	2	-1	+0	+0	0	+2	-10.1%	2
Therapy Professions		2	2	2	2	+0	+0	+0	+0	+2	+1.2%	2
H&SC, Other		3	3	3	3	+0	+0	+0	+0	+3	+1.0%	3
Health & Social Care Professionals		5	5	5	5	+0	+0	+0	+0	+5	+1.1%	5
Management (VIII & above)		2	2	2	2	0	0	0	0	+2	-16.2%	2
Administrative/ Supervisory (V to VII)		8	7	8	8	-2	+1	0	-1	+8	-9.4%	8
Clerical (III & IV)		4	7	6	6	+3	-1	+0	+2	+6	+49.9%	7
Management & Administrative		14	16	15	15	+1	0	0	+1	+15	+6.6%	17
Care, other		17	20	18	18	+2	-2	-1	+0	+18	+2.8%	20
Patient & Client Care		17	20	18	18	+2	-2	-1	+0	+18	+2.8%	20

Mental Health

Mental Health HSE Only MAR 2024	WTE DEC 2019	WTE DEC 2022	WTE DEC 2023	WTE FEB 2024	WTE MAR 2024	WTE Change 2023	WTE Change 2024	WTE Change FEB 2024	WTE Change Dec 2022 to MAR 2024	WTE Change Dec 2019 to MAR 2024	% WTE Change Dec 2022 to MAR 2024	No. MAR 2024
Overall	795	814	852	862	862	+37	+10	+0	+48	+66	+5.9%	936
Consultants	23	29	30	29	30	+1	+1	+1	+1	+7	+4.8%	33
Registrars	18	15	22	27	28	+7	+6	+1	+13	+10	+83.0%	28
SHO/ Interns	19	33	19	15	15	-14	-4	0	-19	-4	-56.5%	15
Medical & Dental	60	78	71	71	73	-7	+2	+1	-5	+13	-6.2%	76
Nurse/ Midwife Manager	88	87	91	90	90	+4	-1	0	+3	+2	+3.3%	94
Nurse/ Midwife Specialist & AN/MP	39	44	52	52	53	+8	+1	+1	+8	+14	+18.5%	57
Staff Nurse/ Staff Midwife	245	243	254	251	251	+11	-3	0	+8	+5	+3.3%	272
Nursing/ Midwifery Student	9	4	1	14	14	-3	+13	+0	+9	+5	+214.7%	27
Nursing/ Midwifery other		1	1	1	1	+0	+0	+0	+0	+1	+1.0%	1
Nursing & Midwifery	381	380	399	407	408	+19	+9	+1	+28	+27	+7.4%	451
Therapy Professions	26	30	30	30	30	0	0	0	0	+3	-1.6%	34
Social Care	3	2	1	1		-1	-1	-1	-2	-3	-100.0%	
Pharmacy	3	3	3	3	3	0	+0	+0	0	+0	-0.7%	3
Psychologists	92	93	91	92	92	-3	+1	0	-2	0	-1.6%	94
Social Workers	25	28	26	27	27	-2	+1	-1	-1	+1	-5.0%	28
H&SC, Other	10	10	11	11	11	+1	+0	0	+2	+2	+16.1%	12
Health & Social Care Professionals	159	166	161	164	162	-5	+1	-2	-4	+3	-2.2%	171
Management (VIII & above)	2	4	4	4	4	+0	+0	+0	+0	+2	+1.3%	4
Administrative/ Supervisory (V to VII)	17	16	17	18	18	+1	+0	+0	+2	+1	+9.8%	18
Clerical (III & IV)	56	50	60	58	58	+9	-2	+0	+8	+2	+15.6%	63
Management & Administrative	75	70	81	79	80	+11	-1	+0	+9	+5	+13.5%	85
Support	32	30	32	31	31	+1	-1	0	+0	-2	+1.1%	34
Maintenance/ Technical	11	7	9	12	12	+2	+3	+0	+5	+1	+73.0%	12
General Support	43	37	41	42	43	+3	+2	+0	+5	-1	+14.5%	46
Health Care Assistants	75	82	97	95	95	+16	-3	-1	+13	+19	+16.2%	104
Care, other	2	2	2	2	2	+0	0	+0	0	+1	-2.5%	3
Patient & Client Care	77	84	100	98	97	+16	-3	-1	+13	+20	+15.6%	107



Primary Care

Primary Care HSE Only MAR 2024	WTE DEC 2019	WTE DEC 2022	WTE DEC 2023	WTE FEB 2024	WTE MAR 2024	WTE Change 2023	WTE Change 2024	WTE Change FEB 2024	WTE Change Dec 2022 to MAR 2024	WTE Change Dec 2019 to MAR 2024	% WTE Change Dec 2022 to MAR 2024	No. MAR 2024
Overall	764	772	889	892	882	+117	-7	-10	+110	+118	+14.3%	1,036
Consultants	2	1	2	2	2	+1	+0	0	+1	0	+37.9%	3
Registrars	24	29	32	30	30	+3	-2	+0	+1	+6	+2.3%	30
SHO/ Interns	6									-6	-100.0%	
Medical/ Dental, other	52	45	48	48	48	+2	0	0	+2	-5	+4.5%	63
Medical & Dental	84	76	82	80	79	+5	-2	0	+3	-4	+4.2%	96
Nurse/ Midwife Manager	19	23	29	28	28	+6	-1	0	+4	+9	+18.8%	30
Nurse/ Midwife Specialist & AN/MP	2	7	17	20	19	+10	+2	-1	+12	+17	+177.2%	20
Staff Nurse/ Staff Midwife	56	75	81	79	77	+6	-4	-3	+2	+21	+2.0%	101
Public Health Nurse	126	125	125	121	119	+0	-7	-3	-6	-8	-5.1%	146
Nursing/ Midwifery Student		6	14	16	16	+8	+2	+0	+10	+16	+169.4%	16
Nursing & Midwifery	203	236	266	265	258	+30	-8	-7	+22	+55	+9.2%	313
Therapy Professions	86	162	189	188	187	+28	-2	-1	+26	+101	+16.0%	217
Health Science/ Diagnostics	5	5	5	5	5	+0	+1	+0	+1	+1	+20.6%	6
Social Care	1									-1	-100.0%	
Pharmacy	1	1	2	3	3	+1	+1	+0	+2	+2	+203.0%	4
Psychologists	15	14	33	31	32	+19	-1	+1	+18	+17	+130.9%	34
Social Workers	11	12	11	12	12	-2	+2	+0	0	+2	-1.0%	15
H&SC, Other	11	12	12	11	11	0	-1	+0	-1	+0	-7.8%	13
Health & Social Care Professionals	129	205	252	251	251	+47	-1	+0	+46	+122	+22.4%	289
Management (VIII & above)	23	10	11	12	12	+1	+1	+0	+2	-12	+21.4%	12
Administrative/ Supervisory (V to VII)	54	28	30	31	31	+2	+0	-1	+2	-23	+8.8%	33
Clerical (III & IV)	156	127	156	160	158	+29	+2	-2	+31	+2	+24.4%	178
Management & Administrative	234	165	197	203	200	+33	+3	-3	+36	-33	+21.6%	223
Support	13	12	10	11	11	-2	+1	0	-1	-2	-8.9%	24
Maintenance/ Technical	30									-30	-100.0%	
General Support	43	12	10	11	11	-2	+1	0	-1	-32	-8.9%	24
Health Care Assistants	21	26	28	29	28	+2	0	-1	+2	+7	+8.7%	31
Home Help	1									-1	-100.0%	
Care, other	49	51	53	53	54	+2	+0	+0	+3	+4	+5.0%	60
Patient & Client Care	71	77	81	83	81	+5	+0	-1	+5	+11	+6.2%	91



Disabilities

Disabilities HSE Only MAR 2024	WTE DEC 2019	WTE DEC 2022	WTE DEC 2023	WTE FEB 2024	WTE MAR 2024	WTE Change 2023	WTE Change 2024	WTE Change FEB 2024	WTE Change Dec 2022 to MAR 2024	WTE Change Dec 2019 to MAR 2024	% WTE Change Dec 2022 to MAR 2024	No. MAR 2024
Overall	122	120	137	135	136	+18	-1	+1	+16	+14	+13.8%	146
Therapy Professions	46	14	19	17	18	+5	-1	+1	+4	-28	+25.8%	21
Health Science/ Diagnostics		4	4	4	4	+0	0	+0	+0	+4	+0.8%	4
Social Care	1	2	1	1	1	-1	+0	+0	-1	+0	-49.5%	1
Psychologists	3	4	5	4	4	+1	-1	+0	+0	+1	+0.0%	5
Social Workers	2	3	2	3	3	-1	+1	+0	+0	+1	+5.9%	3
H&SC, Other	2	1	0	0	0	-1	+0	0	-1	-1	-68.3%	1
Health & Social Care Professionals	54	29	32	30	31	+3	-1	+1	+2	-23	+6.7%	35
Management (VIII & above)	1	5	5	5	5	+0	+0	+0	+0	+4	+0.2%	5
Administrative/ Supervisory (V to VII)	13	23	24	24	25	+0	+1	+1	+1	+11	+5.2%	25
Clerical (III & IV)	20	21	22	22	22	+1	0	+0	+1	+1	+5.4%	23
Management & Administrative	35	49	50	50	51	+2	+1	+1	+2	+17	+4.8%	53
Support			1	1	1	+1	+0	+0	+1	+1	-100.0%	1
Maintenance/ Technical	2	7	10	10	10	+3	0	+0	+3	+8	+43.6%	10
General Support	2	7	11	11	11	+4	0	+0	+4	+9	+58.0%	11
Health Care Assistants	5	5	6	6	6	+2	0	0	+2	+1	+32.8%	7
Care, other	27	30	38	37	37	+8	-1	0	+7	+10	+21.9%	40
Patient & Client Care	32	35	44	43	43	+9	-1	0	+8	+11	+23.3%	47



Older People

	WTE DEC 2019	WTE DEC 2022	WTE DEC 2023	WTE FEB 2024	WTE MAR 2024	WTE Change 2023	WTE Change 2024	WTE Change FEB 2024	WTE Change Dec 2022 to MAR 2024	WTE Change Dec 2019 to MAR 2024	% WTE Change Dec 2022 to MAR 2024	No. MAR 2024
Older People HSE Only MAR 2024												
Overall	974	1,264	1,320	1,314	1,318	+56	-2	+3	+53	+343	+4.2%	1,581
Consultants	1	3	2	1	2	-1	0	+0	-2	+1	-50.0%	3
Registrars		2	2	4	4	+0	+2	+0	+2	+4	+101.0%	4
SHO/ Interns		2	3	1	1	+1	-2	+0	-1	+1	-49.5%	1
Medical/ Dental, other	5	6	5	5	5	-1	+0	+0	-1	+0	-16.0%	5
Medical & Dental	6	13	12	11	12	-1	0	+1	-1	+6	-11.0%	13
Nurse/ Midwife Manager	64	68	74	72	72	+5	-2	0	+3	+8	+4.5%	74
Nurse/ Midwife Specialist & AN/MP	2	11	13	14	14	+2	+1	0	+4	+12	+34.6%	15
Staff Nurse/ Staff Midwife	239	266	276	272	273	+10	-3	+1	+7	+34	+2.6%	306
Public Health Nurse	1									-1	-100.0%	
Nursing & Midwifery	305	345	363	359	359	+17	-4	+0	+14	+54	+3.9%	395
Therapy Professions	28	44	49	45	48	+5	-1	+3	+4	+20	+9.1%	53
Health Science/ Diagnostics	1	1	1	1	1	+0	+0	+0	+0	0	+1.4%	2
Pharmacy	1	1	1	1	1	+0	+0	+0	+0	+0	+1.0%	1
Psychologists		1	1	1	1	0	+0	0	+0	+1	+1.2%	1
Social Workers	7	2	2	2	2	+0	+0	+0	+0	-5	+1.0%	2
Health & Social Care Professionals	36	48	54	50	52	+5	-1	+3	+4	+16	+8.3%	59
Management (VIII & above)	6	10	9	9	9	-1	+0	+0	-1	+3	-7.3%	9
Administrative/ Supervisory (V to VII)	21	27	28	28	27	+2	-1	-1	+0	+6	+0.8%	30
Clerical (III & IV)	50	63	68	68	67	+5	-1	-1	+5	+18	+7.2%	77
Management & Administrative	76	99	105	105	103	+6	-2	-1	+4	+27	+4.1%	116
Support	64	46	51	52	52	+6	+1	+0	+7	-12	+15.0%	59
Maintenance/ Technical	22	23	22	28	27	0	+4	-1	+4	+5	+17.5%	27
General Support	86	68	74	80	79	+6	+5	-1	+11	-7	+15.8%	86
Health Care Assistants	279	331	324	319	322	-7	-2	+3	-9	+43	-2.7%	363
Home Help	175	342	364	366	365	+22	+1	-1	+23	+190	+6.8%	521
Care, other	10	17	25	25	25	+8	+1	0	+8	+16	+48.3%	28
Patient & Client Care	464	690	712	710	712	+22	0	+2	+22	+248	+3.3%	912



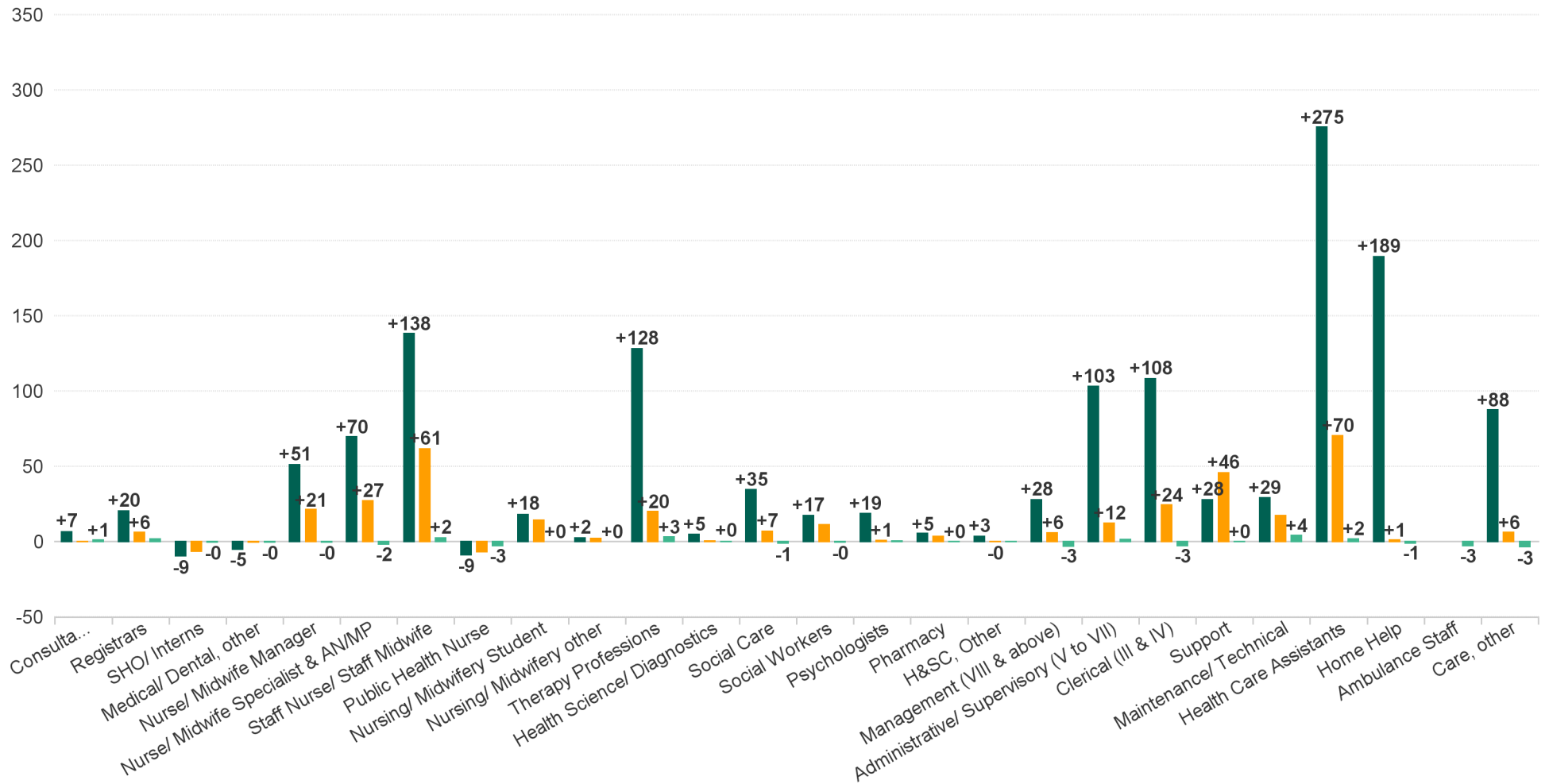
CHO Operations

CHO Operations HSE Only MAR 2024	WTE DEC 2019	WTE DEC 2022	WTE DEC 2023	WTE FEB 2024	WTE MAR 2024	WTE Change 2023	WTE Change 2024	WTE Change FEB 2024	WTE Change Dec 2022 to MAR 2024	WTE Change Dec 2019 to MAR 2024	% WTE Change Dec 2022 to MAR 2024	No. MAR 2024
Overall		192	205	194	192	+13	-13	-2	0	+192	-0.1%	202
Nurse/ Midwife Manager		1	2	3	3	+1	+1	0	+2	+3	+181.8%	3
Nurse/ Midwife Specialist & AN/MP		3	3	2	2	0	-1	-1	-1	+2	-42.0%	2
Nursing/ Midwifery Student		1				-1			-1		-100.0%	
Nursing & Midwifery		5	5	5	4	0	0	-1	0	+4	-7.4%	5
Therapy Professions			1			+1	-1				-100.0%	
Pharmacy		1	1	1	1	+0	+0	+0	+0	+1	+16.4%	1
Psychologists		1				-1			-1		-100.0%	
Social Workers		6	8	10	10	+3	+1	+0	+4	+10	+70.7%	10
Health & Social Care Professionals		7	10	10	10	+3	+0	+0	+3	+10	+42.1%	11
Management (VIII & above)		18	18	17	17	-1	-1	0	-2	+17	-10.1%	17
Administrative/ Supervisory (V to VII)		71	81	75	74	+10	-7	-1	+3	+74	+4.1%	78
Clerical (III & IV)		50	53	48	47	+3	-6	-1	-3	+47	-6.4%	50
Management & Administrative		140	152	140	137	+12	-14	-2	-2	+137	-1.6%	145
Maintenance/ Technical		36	37	39	40	+1	+3	+1	+4	+40	+11.1%	41
General Support		36	37	39	40	+1	+3	+1	+4	+40	+11.1%	41
Health Care Assistants		3	2			-1	-2		-3		-100.0%	
Care, other		2				-2			-2		-100.0%	
Patient & Client Care		5	2			-3	-2		-5		-100.0%	



WTE Change by Staff Group

■ WTE change since DEC 2019 ■ WTE change since DEC 2023 ■ WTE change since FEB 2024



Employment Report by WTE, Headcount, Gender, Full-Time / Part-Time etc. MAR 2024

CHO 7 MAR 2024

MAR 2024	WTE MAR 2024	No. MAR 2024	WTE : No	Number Male %	Number Female %	Male WTE : No.	Female WTE : No	Perm Count %	Perm Count Male %	Perm Count Female	Fulltime Count	Part time Count %	FT Count Male %	FT Count Female %
Total	7,428	8,557	1:0.9	20.78%	79.22%	1:0.9	1:0.9	89.52%	18.32%	71.19%	72.16%	27.84%	84.93%	68.82%
Consultant Medicine	8	9	1:0.9	33.33%	66.67%	1:0.9	1:0.9	88.89%	33.33%	55.56%	66.67%	33.33%	66.67%	66.67%
Consultant Psychiatry	66	68	1:1	35.29%	64.71%	1:1	1:1	61.76%	20.59%	41.18%	95.59%	4.41%	100.00%	93.18%
Dentists	29	36	1:0.8	8.33%	91.67%	1:1	1:0.8	100.00%	8.33%	91.67%	52.78%	47.22%	100.00%	48.48%
Interns	2	2	1:1	50.00%	50.00%	1:1	1:1				100.00%		100.00%	100.00%
Other Medical	37	60	1:0.6	31.67%	68.33%	1:0.6	1:0.6	85.00%	28.33%	56.67%	20.00%	80.00%	10.53%	24.39%
Registrar	72	72	1:1	33.33%	66.67%	1:1	1:1	2.78%	2.78%		100.00%		100.00%	100.00%
Senior House Officer	46	54	1:0.9	35.19%	64.81%	1:0.9	1:0.8	5.56%	3.70%	1.85%	100.00%		100.00%	100.00%
Senior Registrar	20	22	1:0.9	36.36%	63.64%	1:1	1:0.9				81.82%	18.18%	100.00%	71.43%
Specialist Registrar	6	7	1:0.8	14.29%	85.71%	1:0.7	1:0.9				100.00%		100.00%	100.00%
Medical & Dental	286	330	1:0.9	30.91%	69.09%	1:0.9	1:0.9	43.03%	12.42%	30.61%	77.27%	22.73%	82.35%	75.00%
Advanced Nurse/ Midwife Practitioner	19	20	1:1	15.00%	85.00%	1:1	1:1	100.00%	15.00%	85.00%	90.00%	10.00%	100.00%	88.24%
Adv. Nurse/ Midwife, Candidate	12	12	1:1		100.00%	1:	1:1	100.00%		100.00%	100.00%			100.00%
Clinical Nurse/ Midwife Manager 1	83	88	1:0.9	21.59%	78.41%	1:0.9	1:0.9	95.45%	21.59%	73.86%	86.36%	13.64%	89.47%	85.51%
Clinical Nurse/ Midwife Manager 2	230	250	1:0.9	11.20%	88.80%	1:1	1:0.9	95.20%	10.40%	84.80%	87.60%	12.40%	96.43%	86.49%
Clinical Nurse/ Midwife Manager 3	39	42	1:0.9	9.52%	90.48%	1:1	1:0.9	100.00%	9.52%	90.48%	83.33%	16.67%	100.00%	81.58%
Clinical Nurse/ Midwife Specialist	126	141	1:0.9	9.22%	90.78%	1:1	1:0.9	99.29%	9.22%	90.07%	77.30%	22.70%	100.00%	75.00%
Director Nursing/Midwifery, Assistant	72	74	1:1	18.92%	81.08%	1:1	1:1	100.00%	18.92%	81.08%	94.59%	5.41%	100.00%	93.33%
Director of Nursing/Midwifery	26	26	1:1	19.23%	80.77%	1:1	1:1	100.00%	19.23%	80.77%	96.15%	3.85%	100.00%	95.24%
Nursing Education/Clinical	11	14	1:0.8		100.00%	1:	1:0.8	100.00%		100.00%	64.29%	35.71%		64.29%
Nursing/ Midwifery awaiting registration	1	1	1:1	100.00%		1:1	1:	100.00%	100.00%		100.00%		100.00%	
Post-registration Nurse/ Midwife Student	11	11	1:1	9.09%	90.91%	1:1	1:1	9.09%		9.09%	100.00%		100.00%	100.00%
Pre-registration Nurse/ Midwife Intern	20	40	1:0.5	10.00%	90.00%	1:0.5	1:0.5	5.00%		5.00%	70.00%	30.00%	75.00%	69.44%
Public Health Nurse	154	188	1:0.8	1.06%	98.94%	1:1	1:0.8	96.81%	1.06%	95.74%	68.62%	31.38%	100.00%	68.28%
Staff Nurse [Intellectual Disability]	219	262	1:0.8	12.60%	87.40%	1:1	1:0.8	96.18%	12.21%	83.97%	69.85%	30.15%	93.94%	66.38%
Staff Nurse [Psychiatric]	203	222	1:0.9	22.07%	77.93%	1:0.9	1:0.9	92.79%	20.72%	72.07%	87.84%	12.16%	93.88%	86.13%
Staff Nurses [General/ Children's]	619	702	1:0.9	11.25%	88.75%	1:1	1:0.9	96.87%	10.54%	86.32%	73.08%	26.92%	89.87%	70.95%
Nursing & Midwifery	1,844	2,093	1:0.9	12.18%	87.82%	1:1	1:0.9	94.31%	11.42%	82.90%	78.02%	21.98%	93.33%	75.90%
Audiology	6	6	1:0.9	33.33%	66.67%	1:1	1:0.9	83.33%	33.33%	50.00%	83.33%	16.67%	100.00%	75.00%
Counsellor Therapists	37	40	1:0.9	37.50%	62.50%	1:1	1:0.9	100.00%	37.50%	62.50%	65.00%	35.00%	80.00%	56.00%
Dental Hygienists	5	7	1:0.7		100.00%	1:	1:0.7	100.00%		100.00%	28.57%	71.43%		28.57%
Dietitians	44	55	1:0.8	5.45%	94.55%	1:1	1:0.8	96.36%	5.45%	90.91%	65.45%	34.55%	100.00%	63.46%
Environmental Health Officers	1	1	1:1		100.00%	1:	1:1	100.00%		100.00%	100.00%			100.00%
Occupational Therapists	175	199	1:0.9	9.05%	90.95%	1:0.9	1:0.9	96.98%	9.05%	87.94%	77.39%	22.61%	88.89%	76.24%
Orthoptists	3	3	1:0.9	33.33%	66.67%	1:1	1:0.8	100.00%	33.33%	66.67%	100.00%		100.00%	100.00%
Other Health & Social Care	8	10	1:0.8	40.00%	60.00%	1:0.9	1:0.6	100.00%	40.00%	60.00%	50.00%	50.00%	50.00%	50.00%
Pharmacists	38	45	1:0.8	17.78%	82.22%	1:1	1:0.8	64.44%	6.67%	57.78%	51.11%	48.89%	37.50%	54.05%
Pharmacy Technicians	8	9	1:0.9	11.11%	88.89%	1:1	1:0.9	55.56%	11.11%	44.44%	77.78%	22.22%	100.00%	75.00%
Phlebotomists	0	1	1:0.2		100.00%	1:	1:0.2	100.00%		100.00%		100.00%		
Physiotherapists	137	154	1:0.9	25.97%	74.03%	1:1	1:0.9	96.75%	25.32%	71.43%	81.82%	18.18%	95.00%	77.19%
Play Therapists/ Specialists	1	2	1:0.7	100.00%		1:0.7	1:	100.00%	100.00%		50.00%	50.00%	50.00%	
Podiatrists & Chiropodists	9	11	1:0.9		100.00%	1:	1:0.9	100.00%		100.00%	72.73%	27.27%		72.73%
Psychologists	113	127	1:0.9	21.26%	78.74%	1:0.9	1:0.9	94.49%	21.26%	73.23%	80.31%	19.69%	96.30%	76.00%
Radiographers	1	1	1:1		100.00%	1:	1:1	100.00%		100.00%	100.00%			100.00%
Respiratory Physiologists	2	2	1:1	100.00%		1:1	1:	100.00%	100.00%		100.00%		100.00%	
Social Care	492	542	1:0.9	26.01%	73.99%	1:1	1:0.9	97.79%	25.46%	72.32%	72.32%	27.68%	87.23%	67.08%
Social Workers	128	139	1:0.9	17.27%	82.73%	1:1	1:0.9	97.12%	15.83%	81.29%	87.05%	12.95%	95.83%	85.22%
Speech & Language Therapists	115	126	1:0.9	0.79%	99.21%	1:1	1:0.9	94.44%	0.79%	93.65%	86.51%	13.49%	100.00%	86.40%
Health & Social Care Professionals	1,324	1,480	1:0.9	19.53%	80.47%	1:1	1:0.9	95.68%	18.78%	76.89%	75.95%	24.05%	87.89%	73.05%
Executive Management	17	17	1:1	35.29%	64.71%	1:1	1:1	100.00%	35.29%	64.71%	100.00%		100.00%	100.00%
General Administrative (III & IV)	477	527	1:0.9	14.42%	85.58%	1:1	1:0.9	87.67%	12.52%	75.14%	77.61%	22.39%	92.11%	75.17%
Middle Management (V-VII)	323	337	1:1	28.19%	71.81%	1:1	1:0.9	96.14%	27.30%	68.84%	92.28%	7.72%	98.95%	89.67%
Senior Management (VIII & GM)	78	79	1:1	25.32%	74.68%	1:1	1:1	98.73%	24.05%	74.68%	98.73%	1.27%	100.00%	98.31%
Management & Administrative	896	960	1:0.9	20.52%	79.48%	1:1	1:0.9	91.77%	19.06%	72.71%	84.90%	15.10%	96.45%	81.91%
Catering	51	55	1:0.9	32.73%	67.27%	1:1	1:0.9	94.55%	30.91%	63.64%	72.73%	27.27%	88.89%	64.86%
Household Services	247	330	1:0.7	18.79%	81.21%	1:0.8	1:0.7	82.42%	13.94%	68.48%	35.45%	64.55%	61.29%	29.48%
Maintenance	40	46	1:0.9	86.96%	13.04%	1:0.9	1:0.7	89.13%	76.09%	13.04%	71.74%	28.26%	80.00%	16.67%



MAR 2024	WTE MAR 2024	No. MAR 2024	WTE : No	Number Male %	Number Female %	Male WTE : No.	Female WTE : No	Perm Count %	Perm Count Male %	Perm Count Female %	Fulltime Count %	Part time Count %	FT Count Male %	FT Count Female %
Total	7,428	8,557	1:0.9	20.78%	79.22%	1:0.9	1:0.9	89.52%	18.32%	71.19%	72.16%	27.84%	84.93%	68.82%
Other Labs & Associated	1	1	1:1		100.00%	1:	1:1	100.00%		100.00%	100.00%			100.00%
Other Support	18	20	1:0.9	80.00%	20.00%	1:0.9	1:0.8	90.00%	70.00%	20.00%	75.00%	25.00%	81.25%	50.00%
Portering	55	60	1:0.9	88.33%	11.67%	1:0.9	1:0.7	85.00%	73.33%	11.67%	81.67%	18.33%	90.57%	14.29%
Technical Services	6	6	1:1	83.33%	16.67%	1:1	1:1	100.00%	83.33%	16.67%	100.00%		100.00%	100.00%
General Support	417	518	1:0.8	37.45%	62.55%	1:0.9	1:0.8	85.14%	31.08%	54.05%	50.39%	49.61%	78.35%	33.64%
Attendant/ Aide	28	43	1:0.7	23.26%	76.74%	1:0.8	1:0.6	34.88%	4.65%	30.23%	51.16%	48.84%	70.00%	45.45%
Health Care Assistant/ Care Assistant	1,772	2,083	1:0.9	24.44%	75.56%	1:0.9	1:0.8	88.33%	22.47%	65.87%	65.05%	34.95%	78.00%	60.86%
Health Promotion	30	33	1:0.9	15.15%	84.85%	1:1	1:0.9	100.00%	15.15%	84.85%	96.97%	3.03%	100.00%	96.43%
Health & Social Care Assistants	53	57	1:0.9	19.30%	80.70%	1:0.9	1:0.9	61.40%	12.28%	49.12%	89.47%	10.53%	81.82%	91.30%
Home Care Services	6	8	1:0.8		100.00%	1:	1:0.8	87.50%		87.50%	62.50%	37.50%		62.50%
Home Helps	150	243	1:0.6	9.05%	90.95%	1:0.5	1:0.6	82.30%	5.76%	76.54%	30.45%	69.55%	36.36%	29.86%
Other Care Grades	156	175	1:0.9	29.14%	70.86%	1:0.9	1:0.9	96.00%	26.86%	69.14%	78.29%	21.71%	94.12%	71.77%
Pastoral Care	5	5	1:1	60.00%	40.00%	1:1	1:1	80.00%	40.00%	40.00%	100.00%		100.00%	100.00%
Workshop Services	460	529	1:0.9	24.57%	75.43%	1:0.9	1:0.8	95.27%	22.87%	72.40%	76.75%	23.25%	88.46%	72.93%
Patient & Client Care	2,660	3,176	1:0.8	23.33%	76.67%	1:0.9	1:0.8	88.35%	20.97%	67.38%	65.71%	34.29%	79.89%	61.40%



Employment Report by WTE, Headcount, Gender, Full-Time / Part-Time etc. MAR 2024

CHO 7 MAR 2024

MAR 2024	WTE MAR 2024	No. MAR 2024	WTE : No	Number Male %	Number Female %	Male WTE : No.	Female WTE : No	Perm Count %	Number Male %	Number Female %	Fulltime Count %	Part time Count %	FT Count Male %	FT Count Female %
Total	7,428	8,557	1:0.9	20.78%	79.22%	1:0.9	1:0.9	89.52%	18.32%	71.19%	72.16%	27.84%	84.93%	68.82%
Disabilities	3,514	4,158	1:0.8	22.97%	77.03%	1:0.9	1:0.8	89.42%	20.66%	68.76%	68.16%	31.84%	81.26%	64.25%
Mental Health	921	1,001	1:0.9	23.88%	76.12%	1:1	1:0.9	84.22%	19.28%	64.94%	89.91%	10.09%	96.65%	87.80%
Older People	1,015	1,137	1:0.9	17.59%	82.41%	1:1	1:0.9	91.47%	14.95%	76.52%	70.36%	29.64%	88.50%	66.49%
Primary Care	1,816	2,087	1:0.9	17.15%	82.85%	1:0.9	1:0.9	90.90%	15.43%	75.47%	70.92%	29.08%	83.80%	68.25%
CHO Operations	114	122	1:0.9	15.57%	84.43%	1:1	1:0.9	95.08%	14.75%	80.33%	93.44%	6.56%	100.00%	92.23%
Community Health & Wellbeing	48	52	1:0.9	13.46%	86.54%	1:1	1:0.9	88.46%	11.54%	76.92%	90.38%	9.62%	100.00%	88.89%



Employment by Grade Group MAR 2024	WTE DEC 2019	WTE DEC 2022	WTE DEC 2023	WTE FEB 2024	WTE MAR 2024	WTE Change 2023	WTE Change 2024	WTE Change FEB 2024	WTE Change Dec 2022 to MAR 2024	WTE Change Dec 2019 to MAR 2024	% WTE Change Dec 2022 to MAR 2024	No. MAR 2024
Overall	4,357	5,069	5,356	5,703	5,700	+286	+345	-3	+631	+1,344	+12.4%	6,712
Consultant Medicine	2	4	3	2	3	-1	0	+0	-2	+1	-37.5%	4
Consultant Paediatrics	1	1	2	2	2	+1	+0	0	+1	+1	+50.0%	2
Consultant Psychiatry	23	28	29	29	30	+1	+0	+1	+1	+6	+4.8%	33
Consultant Surgery	1	0	0	0	0	+0	+0	+0	+0	-1	+0.0%	1
Consultants	27	33	34	33	34	+0	+0	+1	+0	+7	+1.0%	40
Registrar	35	39	49	54	56	+10	+7	+2	+17	+21	+44.8%	56
Senior Registrar	5	5	4	5	5	-1	+1	+0	+0	+0	+1.0%	5
Specialist Registrar	2	3	3	1	1	+0	-2	0	-2	-1	-67.9%	1
Registrars	42	47	56	60	62	+9	+6	+2	+15	+20	+32.9%	62
Senior House Officer	25	35	22	16	16	-13	-6	0	-20	-9	-56.1%	16
SHO/ Interns	25	35	22	16	16	-13	-6	0	-20	-9	-56.1%	16
Dentists	27	27	25	25	25	-1	0	0	-2	-2	-6.5%	29
Other Medical	31	25	28	28	28	+3	+0	+0	+3	-3	+11.2%	40
Medical/ Dental, other	58	52	53	53	53	+1	0	0	+1	-5	+2.1%	69
Medical & Dental	152	167		162	164	-2	-1	+2	-3	+12	-1.8%	+187
Clinical Nurse/ Midwife Manager 1	67	60	63	70	70	+3	+7	+0	+10	+3	+16.7%	73
Clinical Nurse/ Midwife Manager 2	107	131	136	143	143	+5	+7	0	+12	+36	+8.9%	149
Clinical Nurse/ Midwife Manager 3	11	11	12	16	16	+1	+5	0	+5	+5	+49.0%	18
Director Nursing/Midwifery, Assistant	46	46	52	55	54	+6	+2	-1	+8	+8	+18.0%	58
Director of Nursing/Midwifery	15	14	13	14	14	-1	+1	0	+0	-1	+0.9%	14
Nurse/ Midwife Manager	246	262	276	298	297	+14	+21	0	+35	+51	+13.5%	312
Adv. Nurse/ Midwife, Candidate	1	7	6	7	7	-1	+1	+0	0	+6	-2.5%	7
Advanced Nurse/ Midwife Practitioner	1	6	10	10	10	+4	+0	0	+4	+9	+71.1%	10
Clinical Nurse/ Midwife Specialist	54	63	83	110	109	+20	+26	-2	+46	+55	+73.3%	124
Nurse/ Midwife Specialist & AN/MP	56	75	98	127	125	+23	+27	-2	+50	+70	+66.1%	141
Nursing Bank			1			+1	-1				-100.0%	
Staff Nurse [Intellectual Disability]	209	195	191	190	191	-4	0	+1	-5	-18	-2.4%	217
Staff Nurse [Psychiatric]	237	237	248	245	245	+11	-4	-1	+7	+8	+3.1%	265
Staff Nurses [General/ Children's]	341	409	424	488	490	+15	+66	+2	+81	+149	+19.7%	573
Staff Nurse/ Staff Midwife	787	842	864	923	926	+22	+61	+2	+83	+138	+9.9%	1,055
Public Health Nurse	127	126	125	121	119	-1	-7	-3	-7	-9	-5.8%	146
Public Health Nurse	127	126	125	121	119	-1	-7	-3	-7	-9	-5.8%	146
Post-registration Nurse/ Midwife Student		7	14	16	16	+7	+2	+0	+9	+16	+130.9%	16
Pre-registration Nurse/ Midwife Intern	20	4	10	23	23	+6	+13	+0	+18	+2	+424.5%	45
Nursing/ Midwifery Student	20	11	24	39	39	+13	+14	+0	+27	+18	+243.1%	61
Nursing Education/Clinical	3	4	4	6	6	+0	+2	+0	+2	+3	+65.8%	8
Other Nursing/ Midwifery	1									-1	-100.0%	
Nursing/ Midwifery other	4	4	4	6	6	+0	+2	+0	+2	+2	+65.8%	8
Nursing & Midwifery	1,241	1,320		1,514	1,511	+72	+119	-2	+191	+271	+14.5%	+1,723
Dietitians	3	16	21	21	21	+5	0	+0	+5	+18	+31.6%	24
Occupational Therapists	88	98	120	125	129	+22	+9	+4	+31	+41	+32.1%	146
Orthoptists		1	1	1	1	+0	0	+0	0	+1	-19.2%	1
Physiotherapists	60	79	91	96	94	+12	+4	-1	+16	+35	+19.8%	112
Podiatrists & Chiropodists	5	7	6	9	10	-2	+4	+1	+2	+4	+27.5%	10
Speech & Language Therapists	58	77	84	88	87	+7	+4	0	+10	+29	+13.4%	99
Therapy Professions	214	278	322	339	342	+44	+20	+3	+64	+128	+23.1%	392
Audiology	5	5	5	5	5	+0	+1	+0	+1	+1	+20.6%	6
Clinical Engineering		4	4	4	4	+0	0	+0	+0	+4	+0.8%	4
Radiographers	1	1	1	1	1	+0	+0	+0	+0	+0	+1.9%	1
Vascular Physiologists	0	0	0	0	0	+0	+0	+0	+0	0	+0.0%	1
Health Science/ Diagnostics	5	9	10	10	10	+0	+1	+0	+1	+5	+10.6%	12
Social Care	245	282	273	280	279	-10	+7	-1	-3	+35	-1.0%	326
Social Care	245	282	273	280	279	-10	+7	-1	-3	+35	-1.0%	326

Employment by Grade Group MAR 2024	WTE DEC 2019	WTE DEC 2022	WTE DEC 2023	WTE FEB 2024	WTE MAR 2024	WTE Change 2023	WTE Change 2024	WTE Change FEB 2024	WTE Change Dec 2022 to MAR 2024	WTE Change Dec 2019 to MAR 2024	% WTE Change Dec 2022 to MAR 2024	No. MAR 2024
Overall	4,357	5,069	5,356	5,703	5,700	+286	+345	-3	+631	+1,344	+12.4%	6,712
Pharmacists	3	4	5	7	7	+1	+3	+0	+4	+4	+97.3%	10
Pharmacy Technicians	2	2	2	3	3	+0	+1	+0	+1	+1	+55.7%	4
Pharmacy	5	6	7	10	10	+1	+4	+0	+5	+5	+83.5%	14
Psychologists	124	128	142	142	142	+14	+1	+0	+15	+19	+11.5%	149
Psychologists	124	128	142	142	142	+14	+1	+0	+15	+19	+11.5%	149
Social Workers	59	67	66	77	77	-2	+11	0	+9	+17	+14.0%	86
Social Workers	59	67	66	77	77	-2	+11	0	+9	+17	+14.0%	86
Counsellor Therapists	13	16	17	16	16	+1	-1	0	+1	+4	+3.9%	17
Dental Hygienists	6	7	6	6	6	-1	+0	+0	-1	+0	-13.2%	8
Other Health & Social Care	8	6	5	5	5	-1	0	0	-1	-3	-16.8%	7
Play Therapists/ Specialists	5	7	8	8	8	+1	+1	+0	+1	+3	+19.7%	11
H&SC, Other	32	36	36	35	36	+0	0	+0	0	+3	-0.1%	43
Health & Social Care Professionals	684	805		894	896	+48	+43	+2	+91	+212	+11.3%	+1,022
Executive Management	12	15	14	15	15	-1	+1	0	+0	+3	+0.7%	15
Senior Management (VIII & GM)	26	41	46	54	51	+5	+5	-3	+10	+25	+24.8%	52
Management (VIII & above)	38	56	60	69	66	+4	+6	-3	+10	+28	+18.4%	67
Middle Management (V-VII)	125	205	218	229	230	+13	+12	+1	+25	+105	+12.1%	242
Other Administrative	7	5	5	5	5	+0	+0	+0	+0	-2	+0.0%	5
Administrative/ Supervisory (V to VII)	132	210	223	234	235	+13	+12	+1	+25	+103	+11.8%	247
General Administrative (III & IV)	320	348	404	431	429	+56	+24	-3	+81	+108	+23.2%	481
Clerical (III & IV)	320	348	404	431	429	+56	+24	-3	+81	+108	+23.2%	481
Management & Administrative	491	614		734	730	+74	+42	-4	+116	+239	+18.9%	+795
Catering	31	28	32	38	38	+5	+6	+1	+11	+8	+39.2%	42
Household Services	82	72	72	105	105	+0	+33	+0	+33	+23	+46.1%	131
Other Support	38	37	33	37	37	-3	+3	-1	+0	-2	+0.1%	54
Portering	11	6	7	11	11	+1	+4	+0	+5	-1	+78.8%	11
Support	163	142	145	190	191	+3	+46	+0	+49	+28	+34.3%	238
Maintenance	76	82	87	99	104	+6	+16	+4	+22	+27	+26.8%	107
Technical Services	1	2	2	3	3	+0	+1	+0	+1	+2	+50.0%	3
Maintenance/ Technical	77	84	89	102	107	+6	+17	+4	+23	+29	+27.3%	110
General Support	240	226		293	297	+9	+63	+4	+72	+57	+31.7%	+348
Attendant/ Aide	432	391	377	368	363	-14	-14	-5	-27	-69	-7.0%	412
Health & Social Care Assistants	9	18	32	36	36	+15	+3	+0	+18	+27	+99.6%	38
Health Care Assistant/ Care Assistant	698	890	935	1,010	1,016	+46	+81	+6	+126	+317	+14.2%	1,300
Health Care Assistants	1,140	1,298	1,345	1,413	1,415	+46	+70	+2	+117	+275	+9.0%	1,750
Home Helps	176	342	364	366	365	+22	+1	-1	+23	+189	+6.8%	521
Home Help	176	342	364	366	365	+22	+1	-1	+23	+189	+6.8%	521
Pre-Hospital Care (Ambulance)				3				-3			-100.0%	
Ambulance Staff				3				-3			-100.0%	
Health Promotion		16	19	17	17	+2	-2	-1	+1	+17	+3.2%	19
Home Care Services	13	25	31	32	32	+6	+1	0	+7	+19	+29.0%	36
Other Care Grades	70	87	87	89	89	0	+2	0	+2	+19	+2.0%	102
Workshop Services	150	168	178	183	180	+11	+2	-3	+12	+30	+7.4%	204
Pastoral Care	1	0	0	3	3	+0	+3	+0	+3	+3	+638.3%	5
Care, other	234	296	315	325	321	+19	+6	-3	+25	+88	+8.4%	366
Patient & Client Care	1,549	1,937		2,107	2,102	+87	+78	-5	+165	+552	+8.5%	+2,637



CHO 3 Employment Report: MAR 2024

Month-on-Month Summary

Month-on-Month Summary	% WTE change since FEB 2024	WTE change since FEB 2024	Community Health & Wellbeing	Mental Health	Primary Care	Disabilities	Older People	CHO Operations
Consultants	+3.0%	+1.0		+1.0	-0.4	+0.0	+0.3	
Registrars	+2.7%	+1.6		+1.0	+0.3		+0.3	
SHO/ Interns	-1.0%	-0.2		-0.5			+0.3	
Medical/ Dental, other	-0.5%	-0.3			-0.3	+0.0	+0.0	
Medical & Dental	+1.3%	+2.2		+1.5	-0.3	+0.0	+1.0	
Nurse/ Midwife Manager	-0.1%	-0.4	+0.0	-0.2	-0.1	+0.3	-0.5	-0.0
Nurse/ Midwife Specialist & AN/MP	-1.3%	-1.6		+0.9	-0.6	-1.2	-0.0	-0.7
Staff Nurse/ Staff Midwife	+0.3%	+2.3		-0.0	-3.3	+0.1	+5.6	
Public Health Nurse	-2.3%	-2.8			-2.8			
Nursing/ Midwifery Student	+0.0%	+0.0		+0.0	+0.0	+0.0		
Nursing/ Midwifery other	+0.0%	+0.0		+0.0	+0.0	+0.0		
Nursing & Midwifery	-0.2%	-2.5	+0.0	+0.8	-6.8	-0.8	+5.1	-0.7
Therapy Professions	+0.9%	+3.2	+0.0	-0.1	-0.1	+0.8	+2.5	
Health Science/ Diagnostics	+1.4%	+0.1			+0.1	+0.0	+0.1	
Social Care	-0.4%	-1.1		-0.7		-0.4		
Pharmacy	+0.5%	+0.1		+0.0	+0.0		+0.0	+0.1
Psychologists	+0.2%	+0.3		-0.4	+1.0	-0.3	-0.0	
Social Workers	-0.4%	-0.3		-0.7	+0.0	+0.3	+0.0	+0.0



H&SC, Other	+0.2%	+0.1	+0.0	-0.0	+0.0	+0.1		
Health & Social Care Professionals	+0.3%	+2.3	+0.0	-1.9	+1.1	+0.5	+2.6	+0.1
Management (VIII & above)	-4.4%	-3.0	-0.1	+0.0	-1.0	-2.0	+0.1	-0.0
Administrative/ Supervisory (V to VII)	+0.6%	+1.4	-0.0	+0.1	+3.3	-0.1	-0.6	-1.2
Clerical (III & IV)	-0.6%	-2.6	+0.0	+0.1	-0.8	-0.0	-0.9	-1.0
Management & Administrative	-0.6%	-4.3	-0.1	+0.2	+1.4	-2.1	-1.4	-2.3
Support	+0.0%	+0.1		-0.0	+0.8	-0.8	+0.1	
Maintenance/ Technical	+4.1%	+4.2		+0.2	+3.8	+0.0	-0.8	+0.9
General Support	+1.5%	+4.3		+0.2	+4.6	-0.8	-0.8	+0.9
Health Care Assistants	+0.1%	+1.7		-0.7	-2.5	+1.1	+3.8	
Home Help	-0.2%	-0.8					-0.8	
Ambulance Staff	-100.0%	-2.5			-2.5			
Care, other	-1.1%	-3.5	-0.5	+0.0	+0.1	-3.0	-0.0	
Patient & Client Care	-0.2%	-5.1	-0.5	-0.7	-4.9	-2.0	+2.9	



CHO 3 Employment Report: MAR 2024

Year-to-Date Summary

Year-to-Date Summary	% WTE change since DEC 2023	WTE change since DEC 2023	Community Health & Wellbeing	Mental Health	Primary Care	Disabilities	Older People	CHO Operations
Consultants	+0.2%	+0.1		+0.5	+0.0	-0.1	-0.3	
Registrars	+10.7%	+6.0		+6.0	-2.0		+2.0	
SHO/ Interns	-29.5%	-6.5		-4.5			-2.0	
Medical/ Dental, other	-0.5%	-0.3			-0.3	+0.0	+0.0	
Medical & Dental	-0.4%	-0.7		+2.0	-2.2	-0.1	-0.3	
Nurse/ Midwife Manager	+7.7%	+21.2	+1.0	-1.1	+14.3	+2.5	+3.8	+0.8
Nurse/ Midwife Specialist & AN/MP	+27.6%	+27.1		+0.5	+27.4	-1.3	+1.5	-1.0
Staff Nurse/ Staff Midwife	+7.1%	+61.4	-0.6	-2.8	+42.3	+0.7	+21.8	
Public Health Nurse	-5.4%	-6.7			-6.7			
Nursing/ Midwifery Student	+58.8%	+14.3		+12.7	+1.6	+0.0		
Nursing/ Midwifery other	+55.0%	+2.2		+0.0	+2.2	+0.0		
Nursing & Midwifery	+8.6%	+119.4	+0.4	+9.2	+81.2	+1.8	+27.1	-0.2
Therapy Professions	+6.2%	+20.0	+0.0	-0.2	+21.5	+1.1	-1.5	-1.0
Health Science/ Diagnostics	+5.3%	+0.5			+0.5	-0.0	+0.0	
Social Care	+2.5%	+6.8		-0.9		+7.7		
Pharmacy	+53.8%	+3.6		+0.1	+3.5		+0.0	+0.0



Psychologists	+0.6%	+0.8		+1.2	-1.2	+0.7	+0.0	
Social Workers	+17.2%	+11.3		+0.6	+9.3	+0.2	+0.0	+1.1
H&SC, Other	-0.1%	-0.0	+0.0	+0.3	-0.8	+0.5		
Health & Social Care Professionals	+5.0%	+42.8	+0.0	+1.0	+32.9	+10.2	-1.5	+0.1
Management (VIII & above)	+9.6%	+5.8	-0.2	+0.0	+8.0	-1.0	+0.0	-1.0
Administrative/ Supervisory (V to VII)	+5.4%	+12.1	+0.8	+0.2	+17.7	+2.0	-1.5	-7.1
Clerical (III & IV)	+6.0%	+24.3	-1.0	-1.6	+32.3	+0.5	+0.3	-6.1
Management & Administrative	+6.1%	+42.1	-0.4	-1.4	+57.9	+1.5	-1.2	-14.3
Support	+31.6%	+45.8		-1.0	+34.6	+2.3	+9.9	
Maintenance/ Technical	+19.3%	+17.2		+3.0	+5.8	+1.0	+4.3	+3.2
General Support	+26.9%	+63.0		+2.0	+40.4	+3.2	+14.2	+3.2
Health Care Assistants	+5.2%	+70.4		-2.5	+29.8	+10.1	+35.0	-2.0
Home Help	+0.3%	+1.2					+1.2	
Ambulance Staff								
Care, other	+2.0%	+6.3	-1.8	-0.1	+5.1	+2.3	+0.8	
Patient & Client Care	+3.8%	+77.8	-1.8	-2.6	+34.9	+12.4	+36.9	-2.0



CHO 3 Employment Report: MAR 2024

Year-on-Year Summary

Year-on-Year Summary	% WTE change since MAR 2023	WTE change since MAR 2023	Community Health & Wellbeing	Mental Health	Primary Care	Disabilities	Older People	CHO Operations
Consultants	+2.5%	+0.8		+1.6	+0.5	+0.0	-1.2	
Registrars	+6.7%	+3.9		+0.5	+1.4		+2.0	
SHO/ Interns	+29.2%	+3.5		+4.5			-1.0	
Medical/ Dental, other	+1.0%	+0.5			+1.3	+0.0	-0.8	
Medical & Dental	+5.6%	+8.8		+6.6	+3.2	+0.0	-1.0	
Nurse/ Midwife Manager	+14.4%	+37.5	+0.8	+3.3	+19.3	+2.1	+9.3	+2.8
Nurse/ Midwife Specialist & AN/MP	+49.0%	+41.2		+6.1	+32.8	+0.6	+3.7	-2.0
Staff Nurse/ Staff Midwife	+8.4%	+71.6		+5.9	+49.8	-6.4	+22.3	
Public Health Nurse	-6.7%	-8.5	-1.0		-7.5			
Nursing/ Midwifery Student	+35.3%	+10.1		-2.5	+10.0	+3.5		-1.0
Nursing/ Midwifery other	+65.3%	+2.5		+0.0	+2.2	+0.3		
Nursing & Midwifery	+11.4%	+154.3	-0.2	+12.9	+106.6	+0.0	+35.3	-0.2
Therapy Professions	+14.6%	+43.5	+0.0	-2.8	+33.8	+11.5	+1.9	-1.0
Health Science/ Diagnostics	+9.4%	+0.9			+0.9	+0.0	+0.0	
Social Care	+0.9%	+2.5		-1.8		+4.2		
Pharmacy	+52.6%	+3.5		-0.1	+3.5		+0.0	+0.1
Psychologists	+10.1%	+13.1		-1.4	+15.1	+0.3	+0.0	-1.0
Social Workers	+11.4%	+7.9		-2.8	+6.7	+0.0	+0.0	+4.0

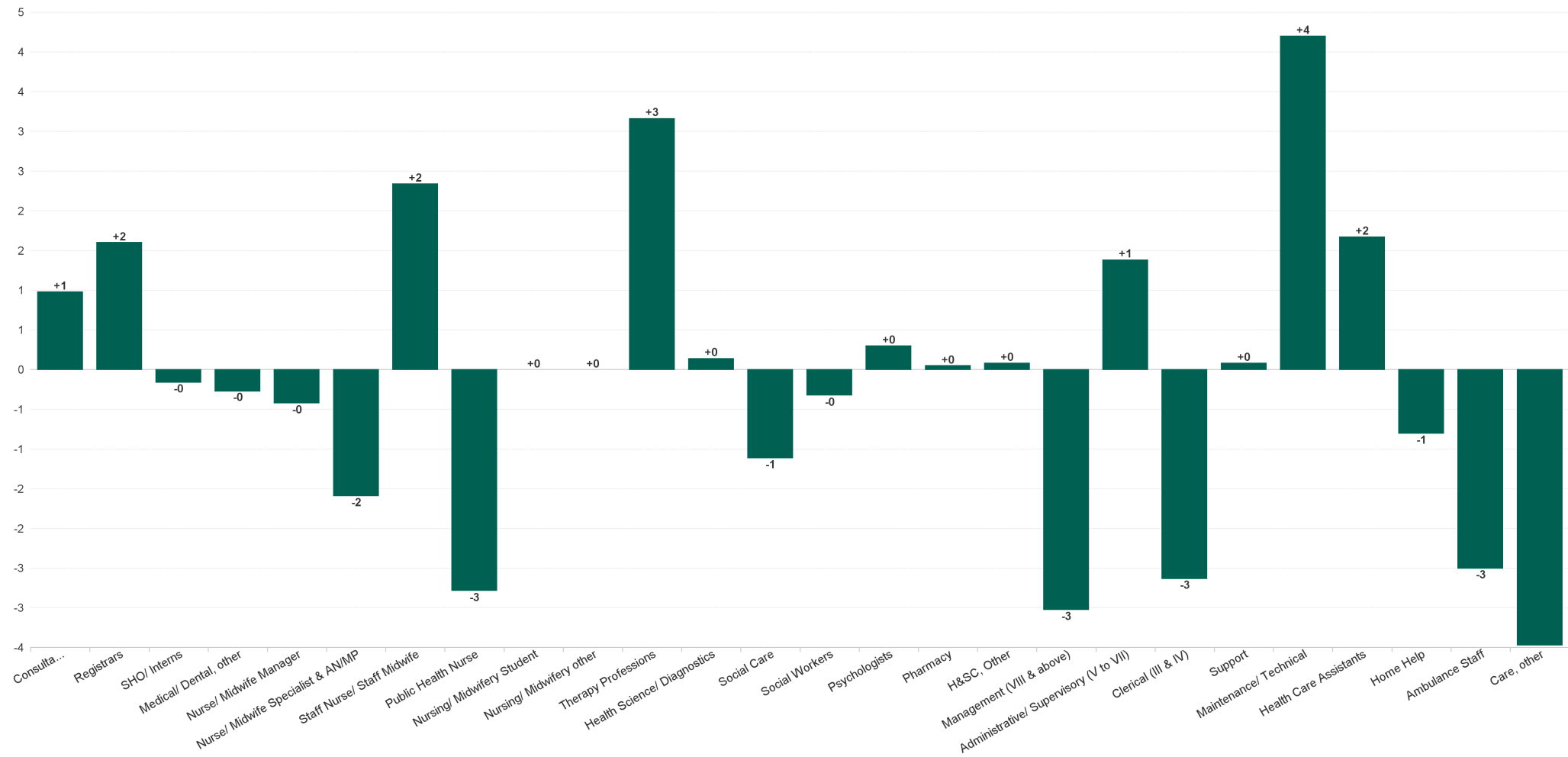


H&SC, Other	+0.3%	+0.1	+0.0	+2.0	-1.8	-0.1		
Health & Social Care Professionals	+8.6%	+71.3	+0.0	-6.8	+58.2	+16.0	+1.9	+2.0
Management (VIII & above)	+9.6%	+5.8	-0.3	+0.0	+9.0	+0.0	-0.9	-2.0
Administrative/ Supervisory (V to VII)	+7.6%	+16.6	-2.1	-1.0	+17.2	+2.8	+0.2	-0.5
Clerical (III & IV)	+15.9%	+58.8	+1.0	+0.4	+54.6	+3.9	+3.3	-4.4
Management & Administrative	+12.5%	+81.1	-1.4	-0.6	+80.8	+6.7	+2.6	-6.9
Support	+19.5%	+31.1		-1.5	+23.0	+0.1	+9.5	
Maintenance/ Technical	+24.9%	+21.2		+5.0	+5.8	+2.0	+3.8	+4.6
General Support	+21.4%	+52.3		+3.5	+28.8	+2.1	+13.4	+4.6
Health Care Assistants	+8.7%	+112.7		+11.0	+33.1	+41.4	+30.1	-2.9
Home Help	+8.1%	+27.3					+27.3	
Ambulance Staff								
Care, other	+3.4%	+10.5	-0.2	-1.0	+5.2	+4.7	+4.6	-2.8
Patient & Client Care	+7.7%	+150.5	-0.2	+10.0	+38.3	+46.1	+61.9	-5.7



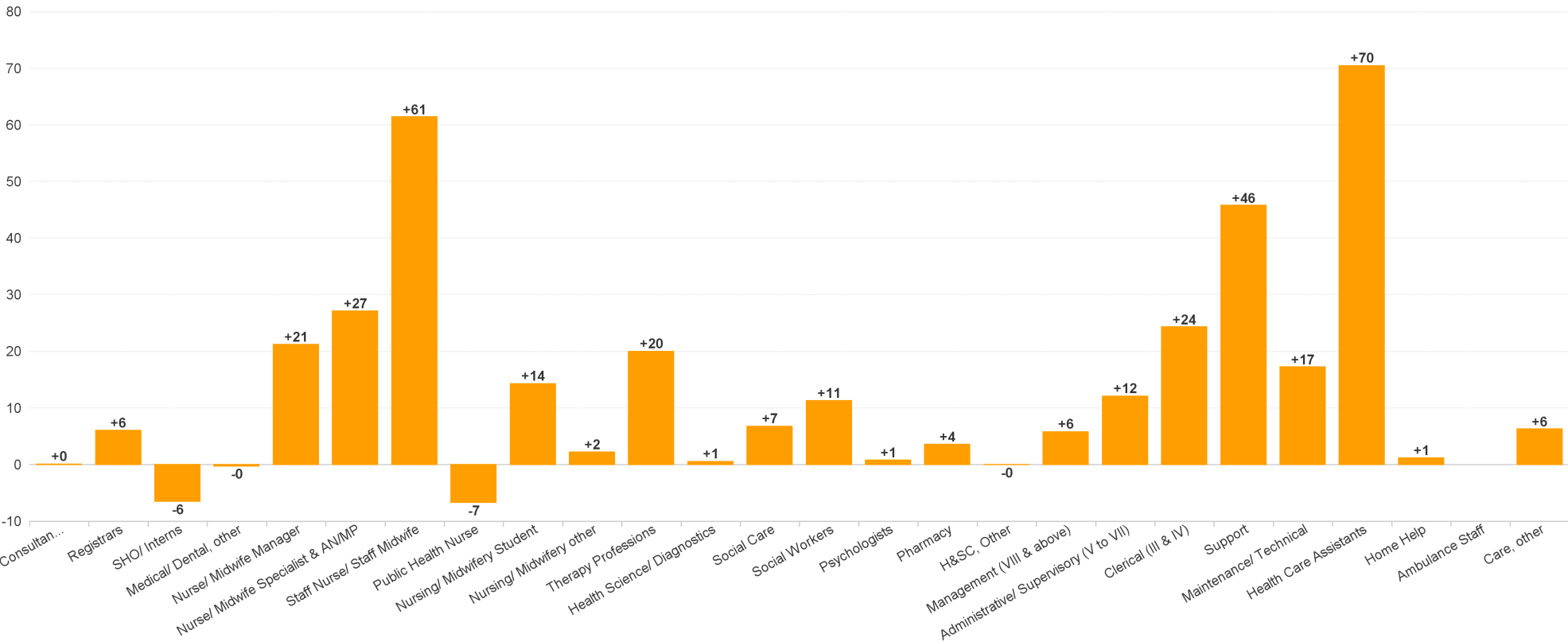
CHO 3 Employment Report: MAR 2024

Month-on-Month Summary Chart: Change since FEB 2024



CHO 3 Employment Report: MAR 2024

Year-to-Date Summary Chart: Change since DEC 2023



CHO 3 Employment Report: MAR 2024

Year-on-Year Summary Chart: Change since MAR 2023

