

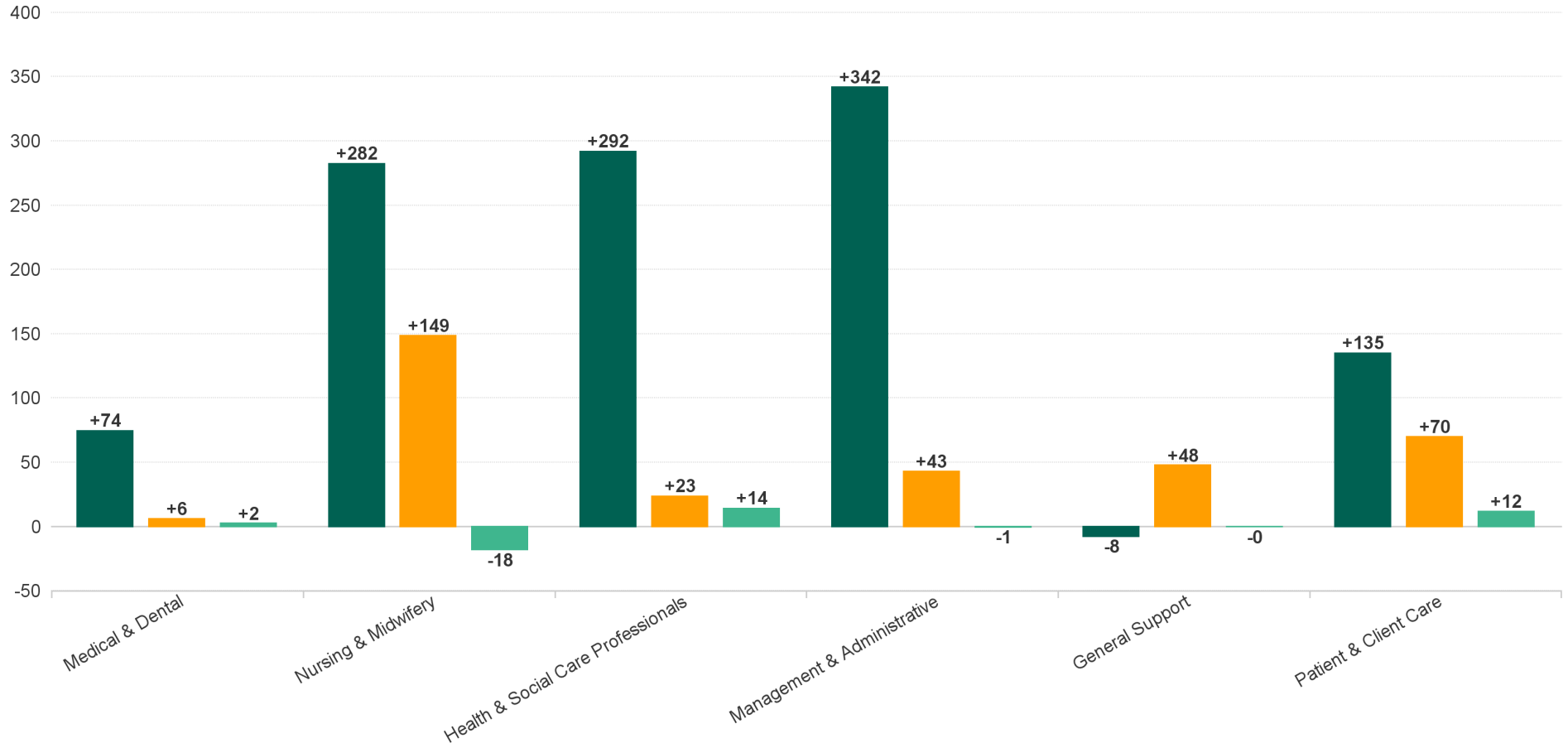
Employment Report : MAR 2024

Employment by Staff Group MAR 2024	WTE DEC 2019	WTE DEC 2022	WTE DEC 2023	WTE FEB 2024	WTE MAR 2024	WTE Change 2023	WTE Change 2024	WTE Change FEB 2024	WTE Change Dec 2022 to MAR 2024	WTE Change Dec 2019 to MAR 2024	% WTE Change Dec 2022 to MAR 2024	No. MAR 2024
Overall	8,189	8,961	8,968	9,296	9,306	+7	+338	+9	+345	+1,117	+0	11,409
Consultants	55	70	75	75	78	+5	+3	+3	+8	+23	+0	91
Registrars	103	96	111	113	111	+15	+0	-2	+15	+8	+0	118
SHO/ Interns	38	46	58	59	62	+11	+4	+3	+15	+24	+0	64
Medical/ Dental, other	111	140	133	133	131	-7	-1	-2	-8	+20	0	236
Medical & Dental	308	352	376	380	382	+24	+6	+2	+30	+74	+0	509
Nurse/ Midwife Manager	433	490	497	503	510	+8	+13	+7	+20	+77	+0	554
Nurse/ Midwife Specialist & AN/MP	81	106	147	167	166	+41	+19	-1	+60	+85	+1	188
Staff Nurse/ Staff Midwife	1,446	1,532	1,488	1,596	1,579	-44	+91	-17	+47	+133	+0	1,887
Public Health Nurse	216	216	209	212	206	-8	-3	-6	-11	-10	0	268
Nursing/ Midwifery awaiting registration	32		6	2	2	+6	-3.5	+0	+2	-30	-1	2
Post-registration Nurse/ Midwife Student	19	11	20	20	20	+9	0	+0	+9	+1	+1	20
Pre-registration Nurse/ Midwife Intern	9	7	2	32	32	-6	30.5	0	+25	+23	+3	64
Nursing/ Midwifery Student	60	18	27	54	54	+9	+27	+0	+36	-6	+2	86
Nursing/ Midwifery other	1	1	1	3	3	+0	+2	+0	+2	+2	+2	3
Nursing & Midwifery	2,235	2,363	2,369	2,536	2,517	+6	+149	-18	+155	+282	+0	2,986
Therapy Professions	448	549	579	586	589	+30	+10	+3	+40	+141	+0	689
Health Science/ Diagnostics	12	14	13	13	14	-1	+1	+1	+0	+3	+0	17
Social Care	240	272	278	276	287	+6	+9	+11	+14	+47	+0	328
Pharmacy	8	9	12	15	15	+4	+3	0	+6	+7	+1	22
Psychologists	138	156	156	154	153	0	-3	-1	-3	+15	0	171
Social Workers	115	147	171	175	175	+24	+4	+0	+28	+60	+0	197
H&SC, Other	60	72	79	79	79	+7	-1	0	+6	+18	+0	102
Health & Social Care Professionals	1,020	1,219	1,288	1,298	1,312	+69	+23	+14	+92	+292	+0	1,526
Management (VIII & above)	73	90	98	99	97	+8	-1	-2	+7	+24	+0	102
Administrative/ Supervisory (V to VII)	161	254	317	316	318	+63	+0	+2	+64	+157	+0	343
Clerical (III & IV)	505	572	622	666	665	+50	+44	0	+93	+161	+0	797
Management & Administrative	738	916	1,037	1,081	1,080	+121	+43	-1	+164	+342	+0	1,242
Support	337	353	286	331	330	-68	+45	0	-23	-6	0	414
Maintenance/ Technical	22	22	18	21	21	-4	+3	+0	-1	-1	0	23
General Support	359	375	304	352	351	-71	+48	0	-24	-8	0	437
Health Care Assistants	1,954	2,135	2,102	2,151	2,161	-32	+59	+10	+26	+207	+0	2,543
Home Help	1,124	1,076	944	942	942	-132	-2	-1	-134	-182	0	1,490
Care, other	450	524	547	558	560	+23	+13	+2	+35	+110	+0	676
Patient & Client Care	3,528	3,735	3,593	3,651	3,662	-142	+70	+12	-72	+135	0	4,709



WTE Change by Staff Category

■ WTE change since DEC 2019 ■ WTE change since DEC 2023 ■ WTE change since FEB 2024



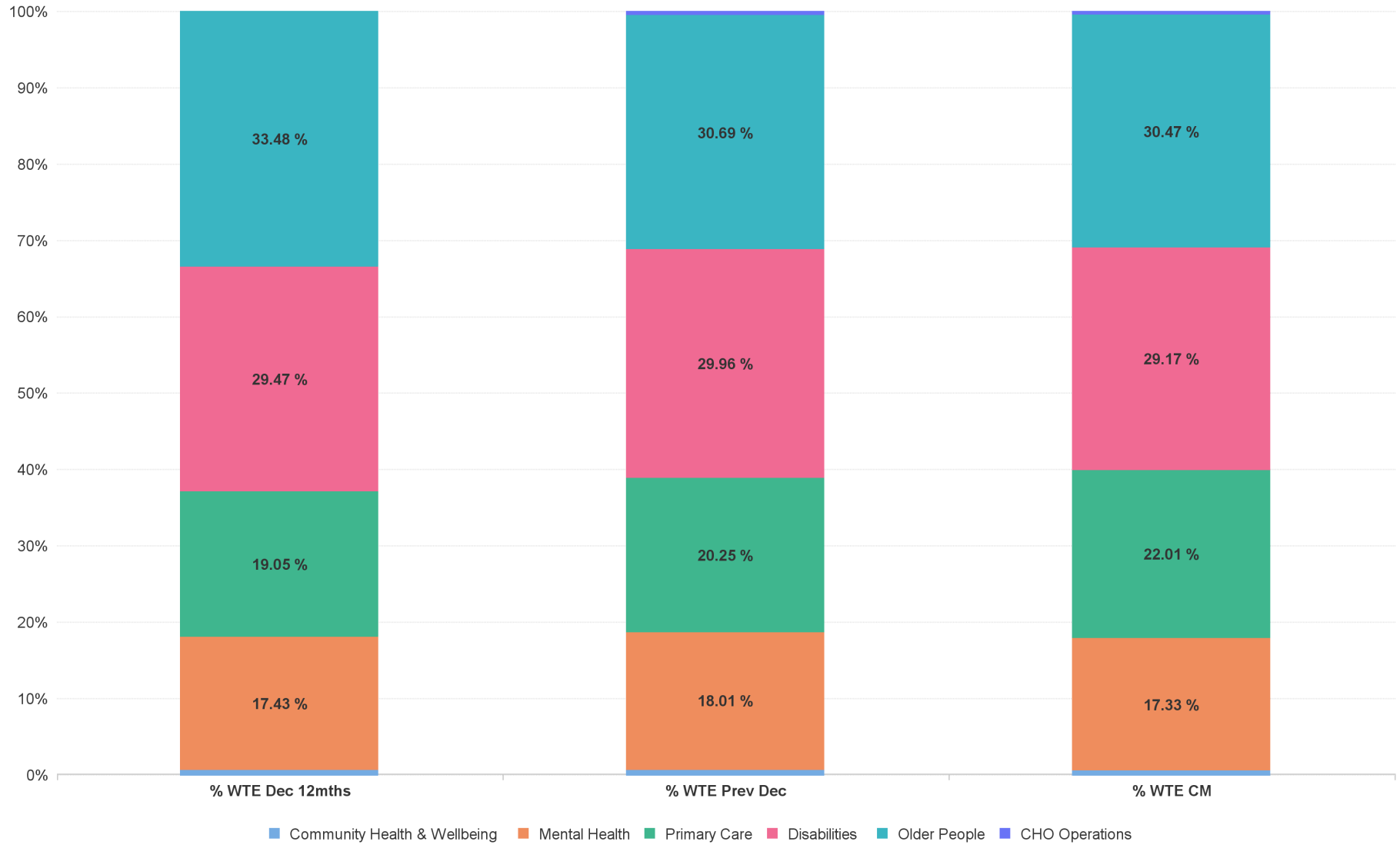
Employment Report by Care Group : MAR 2024

CHO 4 MAR 2024

Care Group MAR 2024	WTE DEC 2019	WTE DEC 2022	WTE DEC 2023	WTE FEB 2024	WTE MAR 2024	WTE Change 2023	WTE Change 2024	WTE Change FEB 2024	WTE Change Dec 2022 to MAR 2024	WTE Change Dec 2019 to MAR 2024	% WTE Change Dec 2022 to MAR 2024	No. MAR 2024
Overall	8,189	8,961	8,968	9,296	9,306	+7	+338	+9	+345	+1,117	+3.9%	11,409
Community Health & Wellbeing		52	51	48	50	0	-2	+1	-2	+50	-3.6%	66
Mental Health	1,499	1,562	1,615	1,615	1,612	+54	-3	-2	+51	+114	+3.2%	1,790
Primary Care	1,346	1,707	1,816	2,062	2,048	+109	+233	-14	+342	+703	+20.0%	2,563
Disabilities	2,425	2,640	2,686	2,690	2,714	+46	+28	+24	+74	+289	+2.8%	3,215
Older People	2,919	3,000	2,752	2,834	2,836	-248	+83	+1	-165	-83	-5.5%	3,726
CHO Operations			47	47	45	+47	-2	-2	+45	+45	-100.0%	49
Community Services	8,189	8,961	8,968	9,296	9,306	+7	+338	+9	+345	+1,117	+3.9%	11,409



% Total by Care Group



Employment Report by HSE/S38 : MAR 2024

CHO 4 MAR 2024

Administration MAR 2024	WTE DEC 2019	WTE DEC 2022	WTE DEC 2023	WTE FEB 2024	WTE MAR 2024	WTE Change 2023	WTE Change 2024	WTE Change FEB 2024	WTE Change Dec 2022 to MAR 2024	WTE Change Dec 2019 to MAR 2024	% WTE Change Dec 2022 to MAR 2024	No. MAR 2024
Overall	8,189	8,961	8,968	9,296	9,306	+7	+338	+9	+345	+1,117	+3.9%	11,409
Health Service Executive	5,939	6,531	6,492	6,486	6,475	-40	-17	-11	-57	+535	-0.9%	7,936
Section 38 Voluntary Agencies	2,249	2,429	2,476	2,811	2,831	+47	+355	+20	+402	+582	+16.5%	3,473



Employment Report by HSE.S38: MAR 2024

Health Service Executive

HSE&S38 MAR 2024	WTE DEC 2019	WTE DEC 2022	WTE DEC 2023	WTE FEB 2024	WTE MAR 2024	WTE Change 2023	WTE Change 2024	WTE Change FEB 2024	WTE Change Dec 2022 to MAR 2024	WTE Change Dec 2019 to MAR 2024	% WTE Change Dec 2022 to MAR 2024	No. MAR 2024
Total Health Service Executive	5,939	6,531	6,492	6,486	6,475	-40	-17	-11	-57	+535	-0.9%	7,936
Consultants	55	66	71	68	71	+5	+1	+3	+6	+16	+8.8%	83
Registrars	98	93	108	104	102	+15	-6	-2	+9	+4	+9.8%	108
SHO/ Interns	32	42	55	54	57	+12	+2	+3	+14	+25	+33.8%	59
Medical/ Dental, other	98	120	115	114	113	-6	-1	-1	-7	+15	-5.6%	187
Medical & Dental	284	321	348	340	343	+27	-5	+3	+22	+60	+7.0%	437
Nurse/ Midwife Manager	358	405	410	398	404	+4	-6	+6	-1	+46	-0.3%	437
Nurse/ Midwife Specialist & AN/MP	68	93	135	132	131	+42	-4	-1	+39	+63	+41.6%	145
Staff Nurse/ Staff Midwife	1,161	1,261	1,226	1,248	1,236	-36	+11	-11	-25	+75	-2.0%	1,457
Public Health Nurse	216	216	209	212	206	-8	-3	-6	-11	-10	-4.9%	268
<i>Nursing/ Midwifery awaiting registration</i>	32		6	2	2	+6	-4	+0	+2	-30	-1	2
<i>Post-registration Nurse/ Midwife Student</i>	19	11	20	20	20	+9	+0	+0	+9	+1	0.83	20
<i>Pre-registration Nurse/ Midwife Intern</i>	3	7	1	22	23	-7	+22	+0	+15	+20	2.05	45
Nursing/ Midwifery Student	54	18	26	44	45	+8	+19	+1	+26	-9	+142.8%	67
Nursing/ Midwifery other				1	1		+1	+0	+1	+1	-100.0%	1
Nursing & Midwifery	1,857	1,993	2,005	2,035	2,023	+11	+18	-12	+29	+165	+1.5%	2,375
Therapy Professions	359	459	471	466	466	+12	-5	+0	+7	+107	+1.6%	547
Health Science/ Diagnostics	10	12	11	11	12	-1	+1	+1	-0	+2	-0.6%	14
Social Care	39	44	37	37	37	-7	+1	+0	-7	-1	-15.1%	42
Pharmacy	8	9	12	12	12	+4	-0	-0	+3	+4	+37.7%	18
Psychologists	107	123	125	122	119	+2	-6	-3	-4	+12	-3.1%	133
Social Workers	88	119	136	134	133	+17	-3	-1	+14	+45	+11.6%	150
H&SC, Other	56	67	76	76	76	+9	-1	-0	+8	+20	+12.6%	97
Health & Social Care Professionals	667	833	868	858	855	+35	-13	-3	+22	+189	+2.7%	1,001
Management (VIII & above)	58	73	79	76	73	+6	-6	-2	+0	+16	+0.2%	76
Administrative/ Supervisory (V to VII)	123	204	257	251	252	+53	-5	+1	+48	+128	+23.6%	271
Clerical (III & IV)	415	479	531	545	541	+52	+10	-3	+62	+126	+13.0%	620
Management & Administrative	596	756	867	871	867	+112	-1	-5	+111	+270	+14.7%	967
Support	207	222	206	202	203	-16	-3	+1	-19	-4	-8.5%	231
Maintenance/ Technical	13	13	8	8	8	-5	+0	+0	-5	-5	-40.2%	8
General Support	220	235	214	209	211	-21	-3	+2	-24	-9	-10.3%	239
Health Care Assistants	1,079	1,166	1,092	1,080	1,085	-73	-7	+5	-80	+7	-6.9%	1,230
Home Help	1,124	1,076	944	942	942	-132	-2	-1	-134	-182	-12.5%	1,490
Care, other	113	151	153	150	149	+1	-4	-1	-3	+35	-1.9%	197
Patient & Client Care	2,316	2,393	2,189	2,172	2,176	-204	-13	+4	-217	-140	-9.1%	2,917

Section 38 Voluntary Agencies

HSE&S38 MAR 2024	WTE DEC 2019	WTE DEC 2022	WTE DEC 2023	WTE FEB 2024	WTE MAR 2024	WTE Change 2023	WTE Change 2024	WTE Change FEB 2024	WTE Change Dec 2022 to MAR 2024	WTE Change Dec 2019 to MAR 2024	% WTE Change Dec 2022 to MAR 2024	No. MAR 2024
Total Section 38 Voluntary Agencies	2,249	2,429	2,476	2,811	2,831	+47	+355	+20	+402	+582	+16.5%	3,473
Consultants		4	4	7	7	+0	+3	+0	+3	+7	+60.5%	8
Registrars	5	3	3	9	9	-0	+7	+0	+6	+4	+203.3%	10
SHO/ Interns	6	4	3	5	5	-1	+2	+0	+1	-1	+25.0%	5
Medical/ Dental, other	13	20	18	19	18	-2	-0	-1	-2	+5	-8.7%	49
Medical & Dental	24	31	28	39	39	-3	+11	-1	+8	+14	+25.8%	72
Nurse/ Midwife Manager	75	85	88	106	106	+3	+18	+1	+22	+32	+25.8%	117
Nurse/ Midwife Specialist & AN/MP	12	13	12	35	35	-1	+23	-0	+22	+22	+165.5%	43
Staff Nurse/ Staff Midwife	284	271	262	349	343	-8	+80	-6	+72	+58	+26.4%	430
<i>Pre-registration Nurse/ Midwife Intern</i>	6		1	10	10	+1	+9	-1	+10	+4	-1	19
Nursing/ Midwifery Student	6		1	10	10	+1	+9	-1	+10	+4	-100.0%	19
Nursing/ Midwifery other	1	1	1	2	2	+0	+1	+0	+1	+1	+98.5%	2
Nursing & Midwifery	378	369	364	501	495	-5	+130	-6	+125	+117	+34.0%	611
Therapy Professions	89	90	108	120	123	+17	+15	+3	+33	+34	+36.0%	142
Health Science/ Diagnostics	2	2	2	2	2	+0	+0	+0	+0	+0	+4.5%	3
Social Care	201	228	241	239	249	+13	+8	+11	+21	+48	+9.3%	286
Pharmacy				3	3		+3	-0	+3	+3	-100.0%	4
Psychologists	31	33	31	32	34	-2	+3	+2	+1	+3	+3.6%	38
Social Workers	27	28	35	41	42	+8	+7	+1	+14	+15	+51.2%	47
H&SC, Other	4	5	3	3	3	-2	+0	+0	-2	-1	-42.0%	5
Health & Social Care Professionals	354	386	420	440	456	+34	+36	+17	+70	+103	+18.2%	525
Management (VIII & above)	15	17	19	24	24	+2	+5	-0	+7	+9	+40.9%	26
Administrative/ Supervisory (V to VII)	38	51	61	65	66	+10	+5	+1	+16	+28	+30.7%	72
Clerical (III & IV)	89	93	90	121	124	-3	+33	+3	+31	+35	+33.0%	177
Management & Administrative	142	161	170	210	214	+10	+44	+4	+53	+72	+33.1%	275
Support	130	131	80	129	127	-52	+48	-2	-4	-3	-3.0%	183
Maintenance/ Technical	9	9	10	13	13	+1	+3	+0	+4	+4	+46.7%	15
General Support	139	140	90	142	141	-50	+50	-2	+0	+1	+0.2%	198
Health Care Assistants	875	969	1,010	1,071	1,076	+41	+66	+5	+107	+200	+11.0%	1,313
Care, other	336	373	394	408	411	+21	+17	+3	+38	+75	+10.3%	479
Patient & Client Care	1,212	1,342	1,404	1,479	1,487	+62	+83	+8	+145	+275	+10.8%	1,792

CHO 4 by S38 Agency: MAR 2024

Bros. of Charity Southern

MAR 2024	WTE DEC 2019	WTE DEC 2022	WTE DEC 2023	WTE FEB 2024	WTE MAR 2024	WTE Change 2023	WTE Change 2024	WTE Change FEB 2024	WTE Change Dec 2022 to MAR 2024	WTE Change Dec 2019 to MAR 2024	% WTE Change Dec 2022 to MAR 2024	No. MAR 2024
Total Bros. of Charity Southern	740	827	871	870	875	43.45	4.74	5.24	+48.2	+134.8	+5.8%	1,086
Nurse/ Midwife Manager	15	16	17	16	16	0.9	-0.96	0.05	-0.1	+1.0	-0.4%	19
Nurse/ Midwife Specialist & AN/MP	3	2	2	2	2	-0.02	0	0	-0.0	-1.0	-1.0%	3
Staff Nurse/ Staff Midwife	59	52	48	47	50	-4.52	1.89	2.68	-2.6	-9.3	-5.0%	69
Nursing & Midwifery	77	71	67	65	68	-3.64	0.93	2.73	-2.7	-9.3	-3.8%	91
Therapy Professions	48	49	60	61	63	10.84	2.9	2	+13.7	+15.2	+27.9%	74
Social Care	124	133	145	144	149	12.36	3.71	4.8	+16.1	+24.3	+12.1%	170
Psychologists	20	19	20	19	21	0.59	1.04	1.9	+1.6	+0.9	+8.5%	24
Social Workers	17	16	18	19	19	1.93	0.8	0.18	+2.7	+2.0	+16.7%	22
Health & Social Care Professionals	209	217	243	243	252	25.72	8.45	8.88	+34.2	+42.4	+15.7%	290
Management (VIII & above)	8	7	9	9	9	2	-0.1	0.04	+1.9	+1.3	+27.1%	9
Administrative/ Supervisory (V to VII)	9	12	15	15	14	2.98	-0.95	-0.87	+2.0	+4.9	+16.8%	16
Clerical (III & IV)	33	35	27	32	33	-7.71	5.32	1.01	-2.4	-0.5	-6.8%	45
Management & Administrative	50	54	51	55	56	-2.73	4.27	0.18	+1.5	+5.7	+2.8%	70
Support	15	12	12	13	12	0.03	0.34	-0.85	+0.4	-2.7	+3.2%	34
Maintenance/ Technical	2	3	3	3	3	0.49	0	0	+0.5	+1.5	+19.5%	3
General Support	16	14	15	16	15	0.52	0.34	-0.85	+0.9	-1.2	+6.1%	37
Health Care Assistants	207	260	286	274	265	26.33	-20.69	-8.91	+5.6	+58.5	+2.2%	340
Care, other	181	211	209	217	220	-2.75	11.44	3.21	+8.7	+38.7	+4.1%	258
Patient & Client Care	388	471	494	491	485	23.58	-9.25	-5.7	+14.3	+97.2	+3.0%	598

Cope Foundation

MAR 2024	WTE DEC 2019	WTE DEC 2022	WTE DEC 2023	WTE FEB 2024	WTE MAR 2024	WTE Change 2023	WTE Change 2024	WTE Change FEB 2024	WTE Change Dec 2022 to MAR 2024	WTE Change Dec 2019 to MAR 2024	% WTE Change Dec 2022 to MAR 2024	No. MAR 2024
Total Cope Foundation	1,091	1,163	1,168	1,183	1,198	4.4	30.62	14.93	+35.0	+107.7	+3.0%	1,393
Nurse/ Midwife Manager	41	50	52	50	51	2.07	-1.09	1.23	+1.0	+9.7	+2.0%	55
Nurse/ Midwife Specialist & AN/MP	10	11	10	9	9	-1	-1	0	-2.0	-0.6	-18.2%	9
Staff Nurse/ Staff Midwife	169	174	169	173	163	-4.54	-6.2	-9.76	-10.7	-6.3	-6.2%	189
Nursing/ Midwifery Student	6		1	10	10	1	8.5	-0.5	+9.5	+3.5	-100.0%	19
Nursing/ Midwifery other	1	1	1	1	1	0	0	0	+0.0	+0.5	+0.0%	1
Nursing & Midwifery	227	236	233	243	234	-2.47	0.21	-9.03	-2.3	+6.8	-1.0%	273
Therapy Professions	37	39	44	45	46	5.32	2.37	1.22	+7.7	+9.1	+19.9%	52
Social Care	32	43	45	48	52	2.05	7.04	4.43	+9.1	+20.7	+21.1%	56
Psychologists	10	13	11	13	14	-2	2.21	0.21	+0.2	+4.0	+1.6%	14
Social Workers	9	10	16	15	16	5.63	-0.07	0.44	+5.6	+7.1	+53.7%	17
H&SC, Other	3	2	1	1	1	-1	0	0	-1.0	-2.0	-50.0%	1
Health & Social Care Professionals	90	108	118	123	129	10	11.55	6.3	+21.5	+38.9	+20.0%	140
Management (VIII & above)	6	7	7	6	6	0.07	-1.07	-0.07	-1.0	+0.3	-14.5%	8
Administrative/ Supervisory (V to VII)	19	26	32	31	32	6.2	-0.2	0.8	+6.0	+13.0	+23.0%	34
Clerical (III & IV)	23	27	27	29	29	0.41	1.8	-0.34	+2.2	+5.3	+8.3%	34
Management & Administrative	48	59	66	66	67	6.68	0.53	0.39	+7.2	+18.6	+12.1%	76
Support	77	81	31	29	28	-49.9	-2.68	-0.93	-52.6	-48.6	-64.9%	46
Maintenance/ Technical	6	5	5	5	5	0	-0.2	0.11	-0.2	-0.5	-3.7%	7
General Support	83	86	37	34	34	-49.9	-2.88	-0.82	-52.8	-49.1	-61.1%	53
Health Care Assistants	563	594	609	613	629	14.4	20.55	16.04	+34.9	+65.7	+5.9%	735
Care, other	79	80	106	104	106	25.69	0.66	2.05	+26.4	+26.9	+33.0%	116
Patient & Client Care	643	674	714	717	735	40.09	21.21	18.09	+61.3	+92.6	+9.1%	851

Cork Dental Hospital

MAR 2024	WTE DEC 2019	WTE DEC 2022	WTE DEC 2023	WTE FEB 2024	WTE MAR 2024	WTE Change 2023	WTE Change 2024	WTE Change FEB 2024	WTE Change Dec 2022 to MAR 2024	WTE Change Dec 2019 to MAR 2024	% WTE Change Dec 2022 to MAR 2024	No. MAR 2024
Total Cork Dental Hospital	103	117	114	118	119	-3.15	5.31	1.34	+2.2	+16.5	+1.8%	198
Consultants		4	4	4	4	0	0	0	+0.0	+4.1	+0.0%	5
Registrars	5	3	3	3	3	-0.4	0	0	-0.4	-2.4	-13.3%	3
SHO/ Interns	6	4	3	3	3	-1	0	0	-1.0	-3.2	-25.0%	3
Medical/ Dental, other	13	20	18	18	17	-1.57	-0.61	-0.85	-2.2	+4.4	-11.2%	48
Medical & Dental	24	31	28	28	27	-2.97	-0.61	-0.85	-3.6	+3.0	-11.7%	59
Nurse/ Midwife Manager	3	3	2	2	3	-0.84	1	1.06	+0.2	+1.0	+4.8%	4
Staff Nurse/ Staff Midwife	7	4	4	3	3	0.18	-0.74	-0.07	-0.6	-3.5	-14.8%	7
Nursing & Midwifery	9	7	6	6	7	-0.66	0.26	0.99	-0.4	-2.6	-5.6%	11
Health Science/ Diagnostics	2	2	2	2	2	0	0	0	+0.0	+0.0	+0.0%	2
H&SC, Other	1	3	2	2	2	-1	0	0	-1.0	+0.8	-36.2%	4
Health & Social Care Professionals	3	5	4	4	4	-1	0	0	-1.0	+0.8	-21.0%	6
Management (VIII & above)	1	1	1	1	1	0	0	0	+0.0	+0.0	+0.0%	1
Administrative/ Supervisory (V to VII)	2	2	4	4	4	1.99	-0.07	-0.05	+1.9	+1.9	+96.0%	4
Clerical (III & IV)	23	24	26	27	28	1.56	2.66	1.11	+4.2	+5.1	+17.5%	55
Management & Administrative	26	27	31	32	33	3.55	2.59	1.06	+6.1	+7.0	+22.6%	60
Support	11	12	13	13	13	0.9	0	0	+0.9	+2.5	+7.3%	15
General Support	11	12	13	13	13	0.9	0	0	+0.9	+2.5	+7.3%	15
Care, other	30	35	32	35	35	-2.97	3.07	0.14	+0.1	+5.9	+0.3%	47
Patient & Client Care	30	35	32	35	35	-2.97	3.07	0.14	+0.1	+5.9	+0.3%	47

Marymount Uni Hosp & Hospice OP

MAR 2024	WTE DEC 2019	WTE DEC 2022	WTE DEC 2023	WTE FEB 2024	WTE MAR 2024	WTE Change 2023	WTE Change 2024	WTE Change FEB 2024	WTE Change Dec 2022 to MAR 2024	WTE Change Dec 2019 to MAR 2024	% WTE Change Dec 2022 to MAR 2024	No. MAR 2024
Total Marymount Uni Hosp & Hospice				73	70		69.93	-3.38	+69.9	+69.9	-100.0%	97
Medical/ Dental, other				1	0		0.49	-0.03	+0.5	+0.5	-100.0%	1
Medical & Dental				1	0		0.49	-0.03	+0.5	+0.5	-100.0%	1
Nurse/ Midwife Manager				8	8		7.58	-0.3	+7.6	+7.6	-100.0%	8
Staff Nurse/ Staff Midwife				26	26		25.5	-0.46	+25.5	+25.5	-100.0%	35
Nursing & Midwifery				34	33		33.08	-0.76	+33.1	+33.1	-100.0%	43
Health Care Assistants				39	36		36.36	-2.59	+36.4	+36.4	-100.0%	53
Patient & Client Care				39	36		36.36	-2.59	+36.4	+36.4	-100.0%	53

Marymount University Hospital & Hosp

MAR 2024	WTE DEC 2019	WTE DEC 2022	WTE DEC 2023	WTE FEB 2024	WTE MAR 2024	WTE Change 2023	WTE Change 2024	WTE Change FEB 2024	WTE Change Dec 2022 to MAR 2024	WTE Change Dec 2019 to MAR 2024	% WTE Change Dec 2022 to MAR 2024	No. MAR 2024
Total Marymount University Hospita				250	247		246.63	-3.13	+246.6	+246.6	-100.0%	312
Consultants				3	3		2.5	0	+2.5	+2.5	-100.0%	3
Registrars				7	7		6.5	0	+6.5	+6.5	-100.0%	7
SHO/ Interns				2	2		2	0	+2.0	+2.0	-100.0%	2
Medical & Dental				11	11		11	0	+11.0	+11.0	-100.0%	12
Nurse/ Midwife Manager				14	12		12.32	-2.03	+12.3	+12.3	-100.0%	14
Nurse/ Midwife Specialist & AN/MP				24	24		23.56	-0.13	+23.6	+23.6	-100.0%	31
Staff Nurse/ Staff Midwife				58	59		58.66	0.63	+58.7	+58.7	-100.0%	77
Nursing/ Midwifery other				1	1		0.99	0.01	+1.0	+1.0	-100.0%	1
Nursing & Midwifery				97	96		95.52	-1.53	+95.5	+95.5	-100.0%	123
Therapy Professions				11	11		10.78	-0.4	+10.8	+10.8	-100.0%	12
Health Science/ Diagnostics				0	0		0.09	0.04	+0.1	+0.1	-100.0%	1
Pharmacy				3	3		3.13	-0.04	+3.1	+3.1	-100.0%	4
Social Workers				5	6		5.9	0.55	+5.9	+5.9	-100.0%	7
Health & Social Care Professionals				20	20		19.9	0.15	+19.9	+19.9	-100.0%	24
Management (VIII & above)				5	5		5	0	+5.0	+5.0	-100.0%	5
Administrative/ Supervisory (V to VII)				6	7		6.57	0.5	+6.6	+6.6	-100.0%	7
Clerical (III & IV)				23	23		22.62	-0.34	+22.6	+22.6	-100.0%	29
Management & Administrative				34	34		34.19	0.16	+34.2	+34.2	-100.0%	41
Support				49	49		48.78	-0.71	+48.8	+48.8	-100.0%	57
Maintenance/ Technical				3	3		2.89	0.04	+2.9	+2.9	-100.0%	3
General Support				52	52		51.67	-0.68	+51.7	+51.7	-100.0%	60
Health Care Assistants				32	32		31.56	-0.27	+31.6	+31.6	-100.0%	48
Care, other				4	3		2.8	-0.96	+2.8	+2.8	-100.0%	4
Patient & Client Care				36	34		34.36	-1.23	+34.4	+34.4	-100.0%	52

St. John of God Kerry

MAR 2024	WTE DEC 2019	WTE DEC 2022	WTE DEC 2023	WTE FEB 2024	WTE MAR 2024	WTE Change 2023	WTE Change 2024	WTE Change FEB 2024	WTE Change Dec 2022 to MAR 2024	WTE Change Dec 2019 to MAR 2024	% WTE Change Dec 2022 to MAR 2024	No. MAR 2024
Total St. John of God Kerry	315	321	324	316	321	2.32	-2.27	5.19	+0.1	+6.3	+0.0%	387
Nurse/ Midwife Manager	16	15	16	15	16	1.28	-0.47	0.79	+0.8	+0.2	+5.4%	17
Staff Nurse/ Staff Midwife	49	41	41	41	42	0.46	0.94	0.83	+1.4	-6.6	+3.4%	53
Nursing & Midwifery	64	56	58	56	58	1.74	0.47	1.62	+2.2	-6.4	+4.0%	70
Therapy Professions	4	3	4	3	3	1.02	-0.71	0.03	+0.3	-0.7	+12.4%	4
Social Care	45	52	51	47	48	-1.29	-2.75	1.43	-4.0	+2.9	-7.7%	60
Psychologists	2	1				-0.66			-0.7	-1.5	-100.0%	
Social Workers	1	1	1	1	1	0	0	0	+0.0	+0.0	+0.0%	1
Health & Social Care Professionals	51	56	56	51	52	-0.93	-3.46	1.46	-4.4	+0.7	-7.8%	65
Management (VIII & above)	1	2	2	3	3	0	1	0	+1.0	+2.0	+50.0%	3
Administrative/ Supervisory (V to VII)	7	10	9	8	9	-1.1	0.1	1	-1.0	+2.0	-9.6%	11
Clerical (III & IV)	10	8	11	10	12	3.1	1.02	1.22	+4.1	+2.1	+54.4%	14
Management & Administrative	18	20	22	22	24	2	2.12	2.22	+4.1	+6.2	+20.6%	28
Support	28	26	24	24	25	-2.73	1.36	0.68	-1.4	-2.8	-5.2%	31
Maintenance/ Technical	2	1	2	2	2	1	0	0	+1.0	+0.0	+100.0%	2
General Support	30	27	26	26	27	-1.73	1.36	0.68	-0.4	-2.8	-1.4%	33
Health Care Assistants	105	115	115	113	113	0.11	-2.11	0.57	-2.0	+7.9	-1.7%	137
Care, other	46	46	48	48	47	1.13	-0.65	-1.36	+0.5	+0.7	+1.0%	54
Patient & Client Care	152	162	163	161	160	1.24	-2.76	-0.79	-1.5	+8.6	-0.9%	191

Employment Report by Community Health & Wellbeing MAR 2024

CHO 4 MAR 2024

Community Health & Wellbeing MAR 2024	WTE DEC 2019	WTE DEC 2022	WTE DEC 2023	WTE FEB 2024	WTE MAR 2024	WTE Change 2023	WTE Change 2024	WTE Change FEB 2024	WTE Change Dec 2022 to MAR 2024	WTE Change Dec 2019 to MAR 2024	% WTE Change Dec 2022 to MAR 2024	No. MAR 2024
Overall		52	51	48	50	0	-2	+1	-2	+50	-3.6%	66
Medical/ Dental, other		2				-2			-2		-100.0%	
Medical & Dental		2				-2			-2		-100.0%	
Nurse/ Midwife Manager		3	3	3	3	0	0	0	0	+3	-14.2%	3
Nursing & Midwifery		3	3	3	3	0	0	0	0	+3	-14.2%	3
Therapy Professions		2	2	2	2	-1	0	+0	-1	+2	-34.6%	2
H&SC, Other		9	5	3	4	-3	-1	+1	-5	+4	-52.4%	14
Health & Social Care Professionals		11	7	4	6	-4	-1	+1	-5	+6	-48.5%	16
Management (VIII & above)		1	2	2	2	+1	+0	+0	+1	+2	+100.0%	2
Administrative/ Supervisory (V to VII)		12	14	13	13	+2	-1	+0	+1	+13	+8.0%	15
Clerical (III & IV)		7	8	8	8	+1	+0	0	+1	+8	+8.7%	8
Management & Administrative		21	24	23	23	+3	0	+0	+3	+23	+12.7%	25
Maintenance/ Technical		1				-1			-1		-100.0%	
General Support		1				-1			-1		-100.0%	
Health Care Assistants		0				0			0		-100.0%	
Care, other		14	17	18	18	+4	+0	+0	+4	+18	+30.9%	22
Patient & Client Care		14	17	18	18	+4	+0	+0	+4	+18	+28.5%	22

Employment Report by Mental Health MAR 2024

CHO 4 MAR 2024

Mental HealthMAR 2024	WTE DEC 2019	WTE DEC 2022	WTE DEC 2023	WTE FEB 2024	WTE MAR 2024	WTE Change 2023	WTE Change 2024	WTE Change FEB 2024	WTE Change Dec 2022 to MAR 2024	WTE Change Dec 2019 to MAR 2024	% WTE Change Dec 2022 to MAR 2024	No. MAR 2024
Overall	1,499	1,562	1,615	1,615	1,612	+54	-3	-2	+51	+114	+3.2%	1,790
Consultant Psychiatry	50	60	64.72	62	65	64.72	+0	+3	+5	+15	+8.0%	72
Consultants	50	60	65	62	65	+65	+0	+3	+5	+15	+8.0%	72
Registrars	46	56	51	47	46	+51	-5	-1	-10	+0	-17.9%	48
SHO/ Interns	31	42	55	54	57	+55	+2	+3	+14	+26	+33.8%	59
Medical/ Dental, other	2	1	1	1	1	+1	+0	+0	+0	-1	+1.0%	4
Medical & Dental	129	160	171	164	169	+11	-2	+5	+9	+41	+5.7%	183
Nurse/ Midwife Manager	171	207	201	202	200	+201	-1	-2	-7	+29	-3.4%	213
Nurse/ Midwife Specialist & AN/MP	60	72	90	85	88	+90	-2	+2	+15	+28	+21.4%	96
Staff Nurse/ Staff Midwife	505	479	484	478	473	+484	-11	-5	-6	-32	-1.2%	513
Nursing/ Midwifery awaiting registration	30		1	2	2	1	+1	+0	+2	-28	-100.0%	2
Post-registration Nurse/ Midwife Student	1									-1	-100.0%	
Pre-registration Nurse/ Midwife Intern	3	7	0.5	22	23	0.5	+22	+0	+16	+20	+236.3%	45
Nursing/ Midwifery Student	34	7	2	24	25	+2	+23	+1	+18	-9	+266.2%	47
Nursing/ Midwifery other				1	1		+1	+0	+1	+1	-100.0%	1
Nursing & Midwifery	770	765	776	790	786	+11	+10	-4	+21	+16	+2.8%	870
Therapy Professions	74	79	88	82	80	+88	-7	-1	+2	+7	+2.1%	92
Social Care	4	6	3	3	3	+3	0	0	-3	-1	-51.1%	4
Pharmacy	2	2	1	1	1	+1	-1	+0	-2	-2	-74.6%	1
Psychologists	83	96	98	99	98	+98	0	-1	+2	+15	+1.9%	109
Social Workers	53	73	74	74	74	+74	+0	+0	+1	+21	+1.5%	85
H&SC, Other	11	18	19	18	18	+19	-1	0	+0	+7	+1.1%	22
Health & Social Care Professionals	227	273	283	276	274	+9	-9	-3	+0	+47	+0.0%	313
Management (VIII & above)	1	3	3	3	3	+3	+0	+0	0	+2	-6.7%	3
Administrative/ Supervisory (V to VII)	22	26	33	33	33	+33	-1	0	+6	+10	+23.3%	34
Clerical (III & IV)	87	87	106	109	109	+106	+3	+0	+23	+22	+26.2%	122
Management & Administrative	111	116	142	145	145	+26	+3	0	+29	+34	+24.7%	159
Support	81	75	65	62	63	+65	-2	+0	-12	-18	-16.0%	71
Maintenance/ Technical	6	5	4	4	4	+4	+0	+0	-1	-2	-24.7%	4
General Support	87	80	68	66	67	-11	-2	+0	-13	-20	-16.6%	75
Health Care Assistants	168	162	169	168	167	+169	-3	-2	+4	-2	+2.8%	178
Care, other	7	5	6	5	6	+6	+0	+1	+0	-2	+8.2%	12
Patient & Client Care	176	167	175	173	172	+8	-3	-1	+5	-3	+2.9%	190

Employment Report by Primary Care MAR 2024

CHO 4 MAR 2024

Primary Care MAR 2024	WTE DEC 2019	WTE DEC 2022	WTE DEC 2023	WTE FEB 2024	WTE MAR 2024	WTE Change 2023	WTE Change 2024	WTE Change FEB 2024	WTE Change Dec 2022 to MAR 2024	WTE Change Dec 2019 to MAR 2024	% WTE Change Dec 2022 to MAR 2024	No. MAR 2024
Overall	1,346	1,707	1,816	2,062	2,048	+109	+233	-14	+342	+703	+20.0%	2,563
Consultants	3	7	8	10	10	+1	+3	+0	+3	+8	+50.7%	15
Registrars	55	40	60	65	65	+20	+5	-1	+25	+10	+64.1%	70
SHO/ Interns	6	4	3	5	5	-1	+2	+0	+1	-1	+25.0%	5
Medical/ Dental, other	88	110	106	105	104	-4	-2	-1	-6	+16	-5.4%	177
Medical & Dental	152	160	177	186	184	+17	+7	-2	+24	+33	+14.8%	267
Nurse/ Midwife Manager	56	72	70	82	81	-3	+11	-1	+8	+24	+11.8%	90
Nurse/ Midwife Specialist & AN/MP	4	14	33	58	57	+18	+24	-1	+42	+53	+292.2%	69
Staff Nurse/ Staff Midwife	119	177	192	250	250	+16	+58	+0	+73	+131	+41.6%	342
Public Health Nurse	211	210	204	207	201	-6	-3	-6	-9	-10	-4.3%	262
Post-registration Nurse/ Midwife Student	17	11	20	20	20	+9	+0	+0	+9	+3	+82.6%	20
Nursing/ Midwifery Student	17	11	20	20	20	+9	+0	+0	+9	+3	+82.6%	20
Nursing/ Midwifery other				1	1		+1	+0	+1	+1	-100.0%	1
Nursing & Midwifery	408	484	518	617	609	+34	+91	-8	+125	+202	+25.9%	784
Therapy Professions	222	327	341	353	356	+14	+15	+3	+29	+134	+8.8%	418
Health Science/ Diagnostics	11	13	12	12	13	-1	+1	+1	+0	+2	+0.1%	15
Social Care	8	7	7	7	7	+1	0	+0	+0	-1	+4.7%	8
Pharmacy	3	2	5	8	8	+3	+3	0	+6	+5	+344.9%	9
Psychologists	20	23	26	22	20	+3	-6	-1	-3	0	-13.6%	23
Social Workers	24	37	44	48	48	+7	+4	0	+11	+24	+30.9%	53
H&SC, Other	41	39	41	44	43	+2	+1	-1	+4	+1	+9.3%	51
Health & Social Care Professionals	329	447	475	493	494	+28	+19	+1	+47	+165	+10.4%	577
Management (VIII & above)	37	44	44	47	46	0	+2	-1	+2	+9	+4.5%	48
Administrative/ Supervisory (V to VII)	68	114	133	128	129	+19	-3	+1	+16	+61	+13.9%	139
Clerical (III & IV)	205	255	284	317	316	+29	+32	-2	+61	+111	+24.0%	390
Management & Administrative	310	412	461	493	491	+48	+30	-1	+79	+181	+19.1%	577
Support	16	16	18	67	66	+1	+48	-1	+50	+51	+303.1%	83
Maintenance/ Technical		1		3	3	-1	+3	+0	+2	+3	+188.8%	3
General Support	16	17	18	70	69	+0	+51	-1	+52	+53	+296.5%	86
Health Care Assistants	17	47	33	65	64	-14	+32	0	+18	+47	+37.4%	87
Home Help	10	8	12	12	12	+3	+0	+0	+3	+2	+41.8%	24
Care, other	105	130	122	128	124	-8	+3	-3	-5	+20	-4.2%	161
Patient & Client Care	132	185	166	204	201	-19	+34	-4	+16	+69	+8.4%	272



Employment Report by Disabilities MAR 2024

CHO 4 MAR 2024

Disabilities MAR 2024	WTE DEC 2019	WTE DEC 2022	WTE DEC 2023	WTE FEB 2024	WTE MAR 2024	WTE Change 2023	WTE Change 2024	WTE Change FEB 2024	WTE Change Dec 2022 to MAR 2024	WTE Change Dec 2019 to MAR 2024	% WTE Change Dec 2022 to MAR 2024	No. MAR 2024
Overall	2,425	2,640	2,686	2,690	2,714	+46	+28	+24	+74	+289	+2.8%	3,215
Consultants	2	2	2	2	2	+0	+0	+0	+0	+0	+0.0%	2
Medical/ Dental, other	0	0	0	0	0	+0	+0	+0	+0	+0	+0.0%	1
Medical & Dental	2	2	2	2	2	+0	+0	+0	+0	+0	+0.0%	3
Nurse/ Midwife Manager	87	98	101	94	99	+3	-2	+5	+1	+11	+0.7%	109
Nurse/ Midwife Specialist & AN/MP	13	13	12	12	11	-1	-1	-1	-2	-3	-15.5%	12
Staff Nurse/ Staff Midwife	306	301	299	302	295	-3	-4	-8	-7	-11	-2.2%	354
Nursing/ Midwifery awaiting registration	1									-1	-100.0%	
Pre-registration Nurse/ Midwife Intern	6	1	1	10	10	+0	+9	-1	+9	+4	+1,276.8%	19
Nursing/ Midwifery Student	7	1	1	10	10	+0	+9	-1	+9	+3	+1,276.8%	19
Nursing/ Midwifery other	1	1	1	1	1	+0	+0	+0	+0	+0	+0.0%	1
Nursing & Midwifery	414	414	414	419	415	0	+1	-4	+1	+1	+0.2%	495
Therapy Professions	108	105	119	120	123	+14	+4	+2	+18	+15	+17.2%	144
Social Care	227	259	266	265	276	+8	+9	+11	+17	+49	+6.6%	314
Psychologists	35	37	32	33	35	-5	+3	+2	-1	+0	-3.6%	39
Social Workers	27	28	35	35	36	+8	+1	+1	+8	+9	+29.9%	40
H&SC, Other	8	7	10	9	10	+2	0	+0	+2	+1	+33.8%	10
Health & Social Care Professionals	405	435	462	463	479	+28	+17	+16	+45	+75	+10.2%	547
Management (VIII & above)	22	23	27	26	26	+4	-1	0	+3	+4	+12.7%	28
Administrative/ Supervisory (V to VII)	53	72	86	82	84	+14	-2	+2	+12	+31	+16.5%	94
Clerical (III & IV)	84	93	90	96	97	-4	+7	+1	+3	+13	+3.6%	120
Management & Administrative	160	189	203	204	207	+14	+4	+3	+18	+47	+9.6%	242
Support	140	138	83	83	82	-56	0	0	-56	-58	-40.4%	129
Maintenance/ Technical	10	10	11	11	11	+1	0	+0	+1	+1	+13.0%	13
General Support	150	148	94	94	94	-54	0	0	-55	-57	-36.9%	142
Health Care Assistants	987	1,111	1,147	1,136	1,142	+36	-5	+7	+32	+155	+2.8%	1,355
Care, other	307	342	365	372	376	+23	+10	+3	+34	+68	+9.8%	431
Patient & Client Care	1,295	1,453	1,512	1,508	1,518	+59	+6	+10	+65	+223	+4.5%	1,786

Employment Report by Older People MAR 2024

CHO 4 MAR 2024

Older People MAR 2024	WTE DEC 2019	WTE DEC 2022	WTE DEC 2023	WTE FEB 2024	WTE MAR 2024	WTE Change 2023	WTE Change 2024	WTE Change FEB 2024	WTE Change Dec 2022 to MAR 2024	WTE Change Dec 2019 to MAR 2024	% WTE Change Dec 2022 to MAR 2024	No. MAR 2024
Overall	2,919	3,000	2,752	2,834	2,836	-248	+83	+1	-165	-83	-5.5%	3,726
Consultants	1	1	1	1	1	+0	+0	+0	+0	+0	+0.0%	2
Registrars	3	0				0			0	-3	-100.0%	
SHO/ Interns	1									-1	-100.0%	
Medical/ Dental, other	21	27	25	26	26	-2	+1	0	-1	+5	-3.2%	54
Medical & Dental	26	28	26	27	27	-2	+1	0	-1	+1	-3.2%	56
Nurse/ Midwife Manager	118	109	119	118	124	+10	+5	+5	+15	+6	+13.6%	134
Nurse/ Midwife Specialist & AN/MP	3	6	11	11	9	+6	-2	-2	+4	+6	+58.7%	10
Staff Nurse/ Staff Midwife	515	575	513	567	561	-62	+48	-5	-14	+46	-2.4%	678
Public Health Nurse	5	6	5	5	5	-2	+0	0	-2	0	-25.2%	6
Nursing/ Midwifery awaiting registration	1		4.5			+5	-5			-1	-100.0%	
Post-registration Nurse/ Midwife Student	1									-1	-100.0%	
Nursing/ Midwifery Student	2		5			+5	-5			-2	-100.0%	
Nursing & Midwifery	643	697	653	701	699	-44	+47	-2	+3	+56	+0.4%	828
Therapy Professions	44	37	30	30	29	-7	-1	-1	-8	-15	-21.5%	33
Health Science/ Diagnostics	1	1	1	1	1	+0	+0	+0	+0	+0	+0.0%	2
Social Care	2	1	1	1	1	+0	+0	+0	+0	0	+0.8%	2
Pharmacy	3	5	4	5	5	0	+0	+0	+0	+2	+3.8%	10
Social Workers	10	9				-9			-9	-10	-100.0%	
H&SC, Other			5	5	5	+5	0	0	+5	+5	-100.0%	5
Health & Social Care Professionals	60	53	41	42	41	-12	-1	-1	-12	-19	-23.3%	52
Management (VIII & above)	13	19	20	19	18	+1	-2	-1	-2	+5	-8.3%	18
Administrative/ Supervisory (V to VII)	17	29	39	47	47	+9	+8	0	+17	+30	+58.6%	49
Clerical (III & IV)	128	130	128	128	128	-2	+0	0	-1	+0	-1.1%	150
Management & Administrative	158	178	186	194	193	+8	+6	-1	+14	+35	+8.0%	217
Support	101	124	120	119	119	-3	-1	+0	-5	+19	-3.8%	131
Maintenance/ Technical	6	5	3	3	3	-2	+0	+0	-2	-3	-40.0%	3
General Support	107	129	123	122	122	-5	-1	+0	-7	+16	-5.2%	134
Health Care Assistants	781	814	753	782	788	-61	+34	+6	-27	+6	-3.3%	923
Home Help	1,113	1,068	932	930	930	-136	-2	-1	-138	-184	-12.9%	1466
Care, other	31	34	37	35	37	+3	0	+1	+3	+6	+8.3%	50
Patient & Client Care	1,925	1,916	1,722	1,748	1,754	-194	+32	+6	-162	-172	-8.5%	2439

Employment Report by CHO Operations MAR 2024

CHO 4 MAR 2024

CHO Operations MAR 2024	WTE DEC 2019	WTE DEC 2022	WTE DEC 2023	WTE FEB 2024	WTE MAR 2024	WTE Change 2023	WTE Change 2024	WTE Change FEB 2024	WTE Change Dec 2022 to MAR 2024	WTE Change Dec 2019 to MAR 2024	% WTE Change Dec 2022 to MAR 2024	No. MAR 2024
Overall			47	47	45	+47	-2	-2	+45	+45	-100.0%	49
Nurse/ Midwife Manager			4	4	4	+4	0	0	+4	+4	-100.0%	5
Nurse/ Midwife Specialist & AN/MP			1	1	1	+1	+0	+0	+1	+1	-100.0%	1
Nursing & Midwifery			5	5	5	+5	0	0	+5	+5	-100.0%	6
Pharmacy			2	2	2	+2	+0	+0	+2	+2	-100.0%	2
Social Workers			18	18	17	+18	-1	-1	+17	+17	-100.0%	19
Health & Social Care Professionals			20	20	19	+20	-1	-1	+19	+19	-100.0%	21
Management (VIII & above)			3	3	3	+3	+0	0	+3	+3	-100.0%	3
Administrative/ Supervisory (V to VII)			13	13	12	+13	-1	-1	+12	+12	-100.0%	12
Clerical (III & IV)			6	7	7	+6	+1	+0	+7	+7	-100.0%	7
Management & Administrative			22	22	22	+22	0	-1	+22	+22	-100.0%	22



Employment Report by Care Group (HSE Only) MAR 2024

CHO 4 MAR 2024

Community Health & Wellbeing

Community Health & Wellbeing HSE Only MAR 2024	WTE DEC 2019	WTE DEC 2022	WTE DEC 2023	WTE FEB 2024	WTE MAR 2024	WTE Change 2023	WTE Change 2024	WTE Change FEB 2024	WTE Change Dec 2022 to MAR 2024	WTE Change Dec 2019 to MAR 2024	% WTE Change Dec 2022 to MAR 2024	No. MAR 2024
Overall		52	51	48	50	0	-2	+1	-2	+50	-3.6%	66
Medical/ Dental, other		2				-2			-2		-100.0%	
Medical & Dental		2				-2			-2		-100.0%	
Nurse/ Midwife Manager		3	3	3	3	0	0	0	0	+3	-14.2%	3
Nursing & Midwifery		3	3	3	3	0	0	0	0	+3	-14.2%	3
Therapy Professions		2	2	2	2	-1	0	+0	-1	+2	-34.6%	2
H&SC, Other		9	5	3	4	-3	-1	+1	-5	+4	-52.4%	14
Health & Social Care Professionals		11	7	4	6	-4	-1	+1	-5	+6	-48.5%	16
Management (VIII & above)		1	2	2	2	+1	+0	+0	+1	+2	+100.0%	2
Administrative/ Supervisory (V to VII)		12	14	13	13	+2	-1	+0	+1	+13	+8.0%	15
Clerical (III & IV)		7	8	8	8	+1	+0	0	+1	+8	+8.7%	8
Management & Administrative		21	24	23	23	+3	0	+0	+3	+23	+12.7%	25
Maintenance/ Technical		1				-1			-1		-100.0%	
General Support		1				-1			-1		-100.0%	
Health Care Assistants		0				0			0		-100.0%	
Care, other		14	17	18	18	+4	+0	+0	+4	+18	+30.9%	22
Patient & Client Care		14	17	18	18	+4	+0	+0	+4	+18	+28.5%	22

Mental Health

Mental Health HSE Only MAR 2024	WTE DEC 2019	WTE DEC 2022	WTE DEC 2023	WTE FEB 2024	WTE MAR 2024	WTE Change 2023	WTE Change 2024	WTE Change FEB 2024	WTE Change Dec 2022 to MAR 2024	WTE Change Dec 2019 to MAR 2024	% WTE Change Dec 2022 to MAR 2024	No. MAR 2024
Overall	1,499	1,562	1,615	1,615	1,612	+54	-3	-2	+51	+114	+3.2%	1,790
Consultants	50	60	65	62	65	+4	+0	+3	+5	+15	+8.0%	72
Registrars	46	56	51	47	46	-5	-5	-1	-10	+0	-17.9%	48
SHO/ Interns	31	42	55	54	57	+12	+2	+3	+14	+26	+33.8%	59
Medical/ Dental, other	2	1	1	1	1	+0	+0	+0	+0	-1	+1.0%	4
Medical & Dental	129	160	171	164	169	+11	-2	+5	+9	+41	+5.7%	183
Nurse/ Midwife Manager	171	207	201	202	200	-6	-1	-2	-7	+29	-3.4%	213
Nurse/ Midwife Specialist & AN/MP	60	72	90	85	88	+17	-2	+2	+15	+28	+21.4%	96
Staff Nurse/ Staff Midwife	505	479	484	478	473	+5	-11	-5	-6	-32	-1.2%	513
Nursing/ Midwifery Student	34	7	2	24	25	-5	+23	+1	+18	-9	+266.2%	47
Nursing/ Midwifery other				1	1		+1	+0	+1	+1	-100.0%	1
Nursing & Midwifery	770	765	776	790	786	+11	+10	-4	+21	+16	+2.8%	870
Therapy Professions	74	79	88	82	80	+9	-7	-1	+2	+7	+2.1%	92
Social Care	4	6	3	3	3	-3	0	0	-3	-1	-51.1%	4
Pharmacy	2	2	1	1	1	-1	-1	+0	-2	-2	-74.6%	1
Psychologists	83	96	98	99	98	+2	0	-1	+2	+15	+1.9%	109
Social Workers	53	73	74	74	74	+1	+0	+0	+1	+21	+1.5%	85
H&SC, Other	11	18	19	18	18	+1	-1	0	+0	+7	+1.1%	22
Health & Social Care Professionals	227	273	283	276	274	+9	-9	-3	+0	+47	+0.0%	313
Management (VIII & above)	1	3	3	3	3	0	+0	+0	0	+2	-6.7%	3
Administrative/ Supervisory (V to VII)	22	26	33	33	33	+7	-1	0	+6	+10	+23.3%	34
Clerical (III & IV)	87	87	106	109	109	+19	+3	+0	+23	+22	+26.2%	122
Management & Administrative	111	116	142	145	145	+26	+3	0	+29	+34	+24.7%	159
Support	81	75	65	62	63	-10	-2	+0	-12	-18	-16.0%	71
Maintenance/ Technical	6	5	4	4	4	-1	+0	+0	-1	-2	-24.7%	4
General Support	87	80	68	66	67	-11	-2	+0	-13	-20	-16.6%	75
Health Care Assistants	168	162	169	168	167	+7	-3	-2	+4	-2	+2.8%	178
Care, other	7	5	6	5	6	+0	+0	+1	+0	-2	+8.2%	12
Patient & Client Care	176	167	175	173	172	+8	-3	-1	+5	-3	+2.9%	190



Primary Care

Primary Care HSE Only MAR 2024	WTE DEC 2019	WTE DEC 2022	WTE DEC 2023	WTE FEB 2024	WTE MAR 2024	WTE Change 2023	WTE Change 2024	WTE Change FEB 2024	WTE Change Dec 2022 to MAR 2024	WTE Change Dec 2019 to MAR 2024	% WTE Change Dec 2022 to MAR 2024	No. MAR 2024
Overall	1,243	1,589	1,701	1,694	1,682	+112	-19	-12	+93	+439	+5.8%	2,053
Consultants	3	3	3	4	4	+1	+0	+0	+1	+1	+35.6%	7
Registrars	50	37	57	56	56	+21	-2	-1	+19	+6	+52.6%	60
Medical/ Dental, other	75	91	88	87	87	-2	-2	-1	-4	+11	-4.2%	129
Medical & Dental	127	130	149	147	146	+20	-3	-1	+16	+19	+12.6%	196
Nurse/ Midwife Manager	54	69	67	65	65	-2	-2	0	-4	+11	-5.8%	72
Nurse/ Midwife Specialist & AN/MP	4	14	33	34	33	+18	+0	-1	+19	+29	+129.4%	38
Staff Nurse/ Staff Midwife	112	173	188	188	188	+15	0	0	+15	+76	+8.8%	258
Public Health Nurse	211	210	204	207	201	-6	-3	-6	-9	-10	-4.3%	262
Nursing/ Midwifery Student	17	11	20	20	20	+9	+0	+0	+9	+3	+82.6%	20
Nursing & Midwifery	399	477	512	514	507	+35	-5	-7	+30	+109	+6.3%	650
Therapy Professions	222	327	341	341	345	+14	+4	+3	+18	+123	+5.5%	406
Health Science/ Diagnostics	9	11	10	10	11	-1	+1	+1	0	+2	-0.7%	12
Social Care	8	7	7	7	7	+1	0	+0	+0	-1	+4.7%	8
Pharmacy	3	2	5	5	5	+3	+0	0	+3	+2	+164.2%	5
Psychologists	20	23	26	22	20	+3	-6	-1	-3	0	-13.6%	23
Social Workers	24	37	44	43	42	+7	-2	-1	+5	+18	+14.7%	46
H&SC, Other	40	36	39	42	41	+3	+1	-1	+5	+1	+12.8%	47
Health & Social Care Professionals	326	442	471	469	470	+29	-1	+1	+28	+144	+6.3%	547
Management (VIII & above)	36	43	43	41	40	0	-3	-1	-3	+4	-7.0%	42
Administrative/ Supervisory (V to VII)	66	112	129	118	119	+17	-10	+1	+7	+53	+6.5%	128
Clerical (III & IV)	182	231	259	267	265	+28	+6	-2	+34	+83	+14.8%	306
Management & Administrative	284	385	430	426	424	+45	-6	-3	+38	+140	+10.0%	476
Support	5	4	5	4	4	+1	0	+0	+0	-1	+2.2%	11
Maintenance/ Technical		1				-1			-1		-100.0%	
General Support	5	5	5	4	4	0	0	+0	-1	-1	-18.1%	11
Health Care Assistants	17	47	33	33	33	-14	+0	0	-14	+16	-29.8%	39
Home Help	10	8	12	12	12	+3	+0	+0	+3	+2	+41.8%	24
Care, other	75	95	90	89	86	-5	-3	-3	-8	+11	-8.8%	110
Patient & Client Care	103	150	134	134	131	-16	-3	-3	-19	+28	-12.6%	173



Disabilities

Disabilities HSE Only MAR 2024	WTE DEC 2019	WTE DEC 2022	WTE DEC 2023	WTE FEB 2024	WTE MAR 2024	WTE Change 2023	WTE Change 2024	WTE Change FEB 2024	WTE Change Dec 2022 to MAR 2024	WTE Change Dec 2019 to MAR 2024	% WTE Change Dec 2022 to MAR 2024	No. MAR 2024
Overall	279	328	324	320	319	-4	-5	-1	-9	+40	-2.8%	349
Consultants	2	2	2	2	2	+0	+0	+0	+0	+0	+0.0%	2
Medical/ Dental, other	0	0	0	0	0	+0	+0	+0	+0	+0	+0.0%	1
Medical & Dental	2	2	2	2	2	+0	+0	+0	+0	+0	+0.0%	3
Nurse/ Midwife Manager	15	17	16	13	16	-1	+0	+3	-1	+0	-6.0%	18
Nurse/ Midwife Specialist & AN/MP	1			1				-1		-1	-100.0%	
Staff Nurse/ Staff Midwife	28	34	40	41	40	+6	-1	-1	+5	+11	+15.9%	43
Nursing/ Midwifery Student	1	1				-1			-1	-1	-100.0%	
Nursing & Midwifery	46	52	56	55	55	+4	-1	+0	+4	+10	+7.2%	61
Therapy Professions	19	14	11	11	11	-3	-1	-1	-4	-9	-25.9%	14
Social Care	25	30	25	26	26	-5	+1	+0	-4	+1	-13.1%	28
Psychologists	4	3	1	1	1	-2	+0	+0	-2	-3	-73.2%	1
H&SC, Other	5	5	9	8	9	+3	0	+0	+3	+3	+66.7%	9
Health & Social Care Professionals	54	53	46	47	46	-7	+0	-1	-7	-7	-12.7%	52
Management (VIII & above)	8	7	9	8	8	+2	-1	+0	+1	+0	+14.3%	8
Administrative/ Supervisory (V to VII)	18	24	29	28	29	+6	-1	+1	+5	+11	+20.7%	33
Clerical (III & IV)	18	24	25	25	24	+0	-1	-1	-1	+6	-2.5%	27
Management & Administrative	44	55	63	60	61	+8	-3	+0	+5	+17	+9.6%	68
Support	21	19	16	16	17	-3	+1	+1	-2	-4	-12.0%	18
Maintenance/ Technical	1	1	1	1	1	+0	+0	+0	+0	+0	+0.0%	1
General Support	22	20	17	17	18	-3	+1	+1	-2	-4	-11.4%	19
Health Care Assistants	112	142	137	136	135	-5	-2	-1	-7	+23	-5.0%	143
Care, other	1	4	3	3	2	-1	-1	-1	-2	+2	-45.9%	3
Patient & Client Care	112	146	140	139	137	-6	-3	-2	-9	+25	-6.2%	146



Older People

Older People HSE Only MAR 2024	WTE DEC 2019	WTE DEC 2022	WTE DEC 2023	WTE FEB 2024	WTE MAR 2024	WTE Change 2023	WTE Change 2024	WTE Change FEB 2024	WTE Change Dec 2022 to MAR 2024	WTE Change Dec 2019 to MAR 2024	% WTE Change Dec 2022 to MAR 2024	No. MAR 2024
Overall	2,919	3,000	2,752	2,761	2,766	-248	+13	+5	-235	-153	-7.8%	3,629
Consultants	1	1	1	1	1	+0	+0	+0	+0	+0	+0.0%	2
Registrars	3	0				0			0	-3	-100.0%	
SHO/ Interns	1									-1	-100.0%	
Medical/ Dental, other	21	27	25	26	25	-2	+1	0	-1	+4	-5.1%	53
Medical & Dental	26	28	26	27	26	-2	+1	0	-1	+1	-5.0%	55
Nurse/ Midwife Manager	118	109	119	110	116	+10	-3	+6	+7	-1	+6.6%	126
Nurse/ Midwife Specialist & AN/MP	3	6	11	11	9	+6	-2	-2	+4	+6	+58.7%	10
Staff Nurse/ Staff Midwife	515	575	513	541	536	-62	+23	-5	-39	+21	-6.8%	643
Public Health Nurse	5	6	5	5	5	-2	+0	0	-2	0	-25.2%	6
Nursing/ Midwifery Student	2		5			+5	-5			-2	-100.0%	
Nursing & Midwifery	643	697	653	668	666	-44	+13	-1	-30	+23	-4.4%	785
Therapy Professions	44	37	30	30	29	-7	-1	-1	-8	-15	-21.5%	33
Health Science/ Diagnostics	1	1	1	1	1	+0	+0	+0	+0	+0	+0.0%	2
Social Care	2	1	1	1	1	+0	+0	+0	+0	0	+0.8%	2
Pharmacy	3	5	4	5	5	0	+0	+0	+0	+2	+3.8%	10
Social Workers	10	9				-9			-9	-10	-100.0%	
H&SC, Other			5	5	5	+5	0	0	+5	+5	-100.0%	5
Health & Social Care Professionals	60	53	41	42	41	-12	-1	-1	-12	-19	-23.3%	52
Management (VIII & above)	13	19	20	19	18	+1	-2	-1	-2	+5	-8.3%	18
Administrative/ Supervisory (V to VII)	17	29	39	47	47	+9	+8	0	+17	+30	+58.6%	49
Clerical (III & IV)	128	130	128	128	128	-2	+0	0	-1	+0	-1.1%	150
Management & Administrative	158	178	186	194	193	+8	+6	-1	+14	+35	+8.0%	217
Support	101	124	120	119	119	-3	-1	+0	-5	+19	-3.8%	131
Maintenance/ Technical	6	5	3	3	3	-2	+0	+0	-2	-3	-40.0%	3
General Support	107	129	123	122	122	-5	-1	+0	-7	+16	-5.2%	134
Health Care Assistants	781	814	753	743	751	-61	-2	+8	-63	-30	-7.8%	870
Home Help	1,113	1,068	932	930	930	-136	-2	-1	-138	-184	-12.9%	1,466
Care, other	31	34	37	35	37	+3	0	+1	+3	+6	+8.3%	50
Patient & Client Care	1,925	1,916	1,722	1,709	1,718	-194	-5	+9	-198	-208	-10.3%	2,386



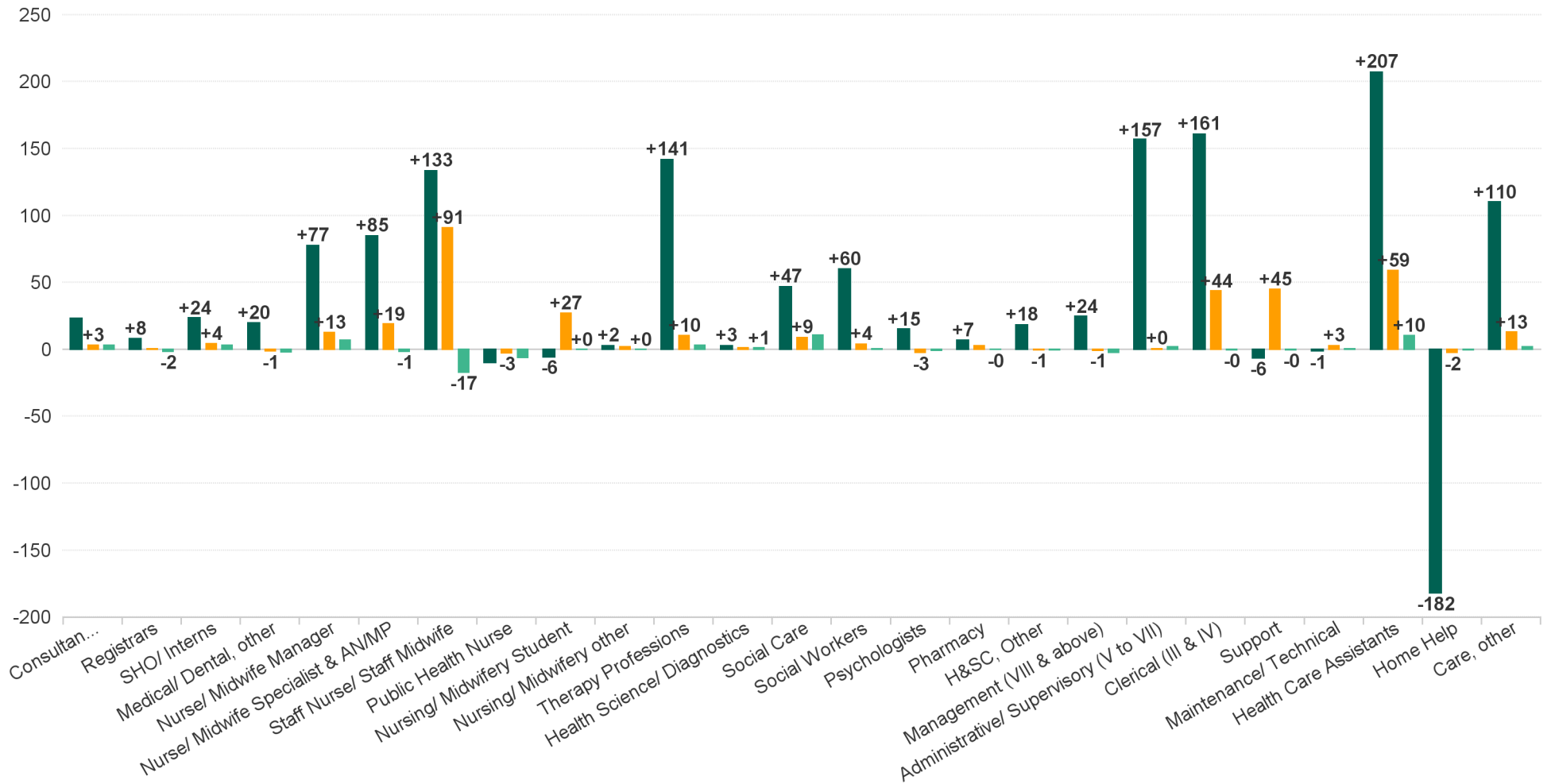
CHO Operations

CHO Operations HSE Only MAR 2024	WTE DEC 2019	WTE DEC 2022	WTE DEC 2023	WTE FEB 2024	WTE MAR 2024	WTE Change 2023	WTE Change 2024	WTE Change FEB 2024	WTE Change Dec 2022 to MAR 2024	WTE Change Dec 2019 to MAR 2024	% WTE Change Dec 2022 to MAR 2024	No. MAR 2024
Overall			47	47	45	+47	-2	-2	+45	+45	-100.0%	49
Nurse/ Midwife Manager			4	4	4	+4	0	0	+4	+4	-100.0%	5
Nurse/ Midwife Specialist & AN/MP			1	1	1	+1	+0	+0	+1	+1	-100.0%	1
Nursing & Midwifery			5	5	5	+5	0	0	+5	+5	-100.0%	6
Pharmacy			2	2	2	+2	+0	+0	+2	+2	-100.0%	2
Social Workers			18	18	17	+18	-1	-1	+17	+17	-100.0%	19
Health & Social Care Professionals			20	20	19	+20	-1	-1	+19	+19	-100.0%	21
Management (VIII & above)			3	3	3	+3	+0	0	+3	+3	-100.0%	3
Administrative/ Supervisory (V to VII)			13	13	12	+13	-1	-1	+12	+12	-100.0%	12
Clerical (III & IV)			6	7	7	+6	+1	+0	+7	+7	-100.0%	7
Management & Administrative			22	22	22	+22	0	-1	+22	+22	-100.0%	22



WTE Change by Staff Group

■ WTE change since DEC 2019 ■ WTE change since DEC 2023 ■ WTE change since FEB 2024



Employment Report by WTE, Headcount, Gender, Full-Time / Part-Time etc. MAR 2024

CHO 7 MAR 2024

MAR 2024	WTE MAR 2024	No. MAR 2024	WTE : No	Number Male %	Number Female %	Male WTE : No.	Female WTE : No	Perm Count %	Perm Count Male %	Perm Count Female	Fulltime Count	Part time Count %	FT Count Male %	FT Count Female %
Total	7,428	8,557	1:0.9	20.78%	79.22%	1:0.9	1:0.9	89.52%	18.32%	71.19%	72.16%	27.84%	84.93%	68.82%
Consultant Medicine	8	9	1:0.9	33.33%	66.67%	1:0.9	1:0.9	88.89%	33.33%	55.56%	66.67%	33.33%	66.67%	66.67%
Consultant Psychiatry	66	68	1:1	35.29%	64.71%	1:1	1:1	61.76%	20.59%	41.18%	95.59%	4.41%	100.00%	93.18%
Dentists	29	36	1:0.8	8.33%	91.67%	1:1	1:0.8	100.00%	8.33%	91.67%	52.78%	47.22%	100.00%	48.48%
Interns	2	2	1:1	50.00%	50.00%	1:1	1:1				100.00%		100.00%	100.00%
Other Medical	37	60	1:0.6	31.67%	68.33%	1:0.6	1:0.6	85.00%	28.33%	56.67%	20.00%	80.00%	10.53%	24.39%
Registrar	72	72	1:1	33.33%	66.67%	1:1	1:1	2.78%	2.78%		100.00%		100.00%	100.00%
Senior House Officer	46	54	1:0.9	35.19%	64.81%	1:0.9	1:0.8	5.56%	3.70%	1.85%	100.00%		100.00%	100.00%
Senior Registrar	20	22	1:0.9	36.36%	63.64%	1:1	1:0.9				81.82%	18.18%	100.00%	71.43%
Specialist Registrar	6	7	1:0.8	14.29%	85.71%	1:0.7	1:0.9				100.00%		100.00%	100.00%
Medical & Dental	286	330	1:0.9	30.91%	69.09%	1:0.9	1:0.9	43.03%	12.42%	30.61%	77.27%	22.73%	82.35%	75.00%
Advanced Nurse/ Midwife Practitioner	19	20	1:1	15.00%	85.00%	1:1	1:1	100.00%	15.00%	85.00%	90.00%	10.00%	100.00%	88.24%
Adv. Nurse/ Midwife, Candidate	12	12	1:1		100.00%	1:	1:1	100.00%		100.00%	100.00%			100.00%
Clinical Nurse/ Midwife Manager 1	83	88	1:0.9	21.59%	78.41%	1:0.9	1:0.9	95.45%	21.59%	73.86%	86.36%	13.64%	89.47%	85.51%
Clinical Nurse/ Midwife Manager 2	230	250	1:0.9	11.20%	88.80%	1:1	1:0.9	95.20%	10.40%	84.80%	87.60%	12.40%	96.43%	86.49%
Clinical Nurse/ Midwife Manager 3	39	42	1:0.9	9.52%	90.48%	1:1	1:0.9	100.00%	9.52%	90.48%	83.33%	16.67%	100.00%	81.58%
Clinical Nurse/ Midwife Specialist	126	141	1:0.9	9.22%	90.78%	1:1	1:0.9	99.29%	9.22%	90.07%	77.30%	22.70%	100.00%	75.00%
Director Nursing/Midwifery, Assistant	72	74	1:1	18.92%	81.08%	1:1	1:1	100.00%	18.92%	81.08%	94.59%	5.41%	100.00%	93.33%
Director of Nursing/Midwifery	26	26	1:1	19.23%	80.77%	1:1	1:1	100.00%	19.23%	80.77%	96.15%	3.85%	100.00%	95.24%
Nursing Education/Clinical	11	14	1:0.8		100.00%	1:	1:0.8	100.00%		100.00%	64.29%	35.71%		64.29%
Nursing/ Midwifery awaiting registration	1	1	1:1	100.00%		1:1	1:	100.00%	100.00%		100.00%		100.00%	
Post-registration Nurse/ Midwife Student	11	11	1:1	9.09%	90.91%	1:1	1:1	9.09%		9.09%	100.00%		100.00%	100.00%
Pre-registration Nurse/ Midwife Intern	20	40	1:0.5	10.00%	90.00%	1:0.5	1:0.5	5.00%		5.00%	70.00%	30.00%	75.00%	69.44%
Public Health Nurse	154	188	1:0.8	1.06%	98.94%	1:1	1:0.8	96.81%	1.06%	95.74%	68.62%	31.38%	100.00%	68.28%
Staff Nurse [Intellectual Disability]	219	262	1:0.8	12.60%	87.40%	1:1	1:0.8	96.18%	12.21%	83.97%	69.85%	30.15%	93.94%	66.38%
Staff Nurse [Psychiatric]	203	222	1:0.9	22.07%	77.93%	1:0.9	1:0.9	92.79%	20.72%	72.07%	87.84%	12.16%	93.88%	86.13%
Staff Nurses [General/ Children's]	619	702	1:0.9	11.25%	88.75%	1:1	1:0.9	96.87%	10.54%	86.32%	73.08%	26.92%	89.87%	70.95%
Nursing & Midwifery	1,844	2,093	1:0.9	12.18%	87.82%	1:1	1:0.9	94.31%	11.42%	82.90%	78.02%	21.98%	93.33%	75.90%
Audiology	6	6	1:0.9	33.33%	66.67%	1:1	1:0.9	83.33%	33.33%	50.00%	83.33%	16.67%	100.00%	75.00%
Counsellor Therapists	37	40	1:0.9	37.50%	62.50%	1:1	1:0.9	100.00%	37.50%	62.50%	65.00%	35.00%	80.00%	56.00%
Dental Hygienists	5	7	1:0.7		100.00%	1:	1:0.7	100.00%		100.00%	28.57%	71.43%		28.57%
Dietitians	44	55	1:0.8	5.45%	94.55%	1:1	1:0.8	96.36%	5.45%	90.91%	65.45%	34.55%	100.00%	63.46%
Environmental Health Officers	1	1	1:1		100.00%	1:	1:1	100.00%		100.00%	100.00%			100.00%
Occupational Therapists	175	199	1:0.9	9.05%	90.95%	1:0.9	1:0.9	96.98%	9.05%	87.94%	77.39%	22.61%	88.89%	76.24%
Orthoptists	3	3	1:0.9	33.33%	66.67%	1:1	1:0.8	100.00%	33.33%	66.67%	100.00%		100.00%	100.00%
Other Health & Social Care	8	10	1:0.8	40.00%	60.00%	1:0.9	1:0.6	100.00%	40.00%	60.00%	50.00%	50.00%	50.00%	50.00%
Pharmacists	38	45	1:0.8	17.78%	82.22%	1:1	1:0.8	64.44%	6.67%	57.78%	51.11%	48.89%	37.50%	54.05%
Pharmacy Technicians	8	9	1:0.9	11.11%	88.89%	1:1	1:0.9	55.56%	11.11%	44.44%	77.78%	22.22%	100.00%	75.00%
Phlebotomists	0	1	1:0.2		100.00%	1:	1:0.2	100.00%		100.00%		100.00%		
Physiotherapists	137	154	1:0.9	25.97%	74.03%	1:1	1:0.9	96.75%	25.32%	71.43%	81.82%	18.18%	95.00%	77.19%
Play Therapists/ Specialists	1	2	1:0.7	100.00%		1:0.7	1:	100.00%	100.00%		50.00%	50.00%	50.00%	
Podiatrists & Chiropodists	9	11	1:0.9		100.00%	1:	1:0.9	100.00%		100.00%	72.73%	27.27%		72.73%
Psychologists	113	127	1:0.9	21.26%	78.74%	1:0.9	1:0.9	94.49%	21.26%	73.23%	80.31%	19.69%	96.30%	76.00%
Radiographers	1	1	1:1		100.00%	1:	1:1	100.00%		100.00%	100.00%			100.00%
Respiratory Physiologists	2	2	1:1	100.00%		1:1	1:	100.00%	100.00%		100.00%		100.00%	
Social Care	492	542	1:0.9	26.01%	73.99%	1:1	1:0.9	97.79%	25.46%	72.32%	72.32%	27.68%	87.23%	67.08%
Social Workers	128	139	1:0.9	17.27%	82.73%	1:1	1:0.9	97.12%	15.83%	81.29%	87.05%	12.95%	95.83%	85.22%
Speech & Language Therapists	115	126	1:0.9	0.79%	99.21%	1:1	1:0.9	94.44%	0.79%	93.65%	86.51%	13.49%	100.00%	86.40%
Health & Social Care Professionals	1,324	1,480	1:0.9	19.53%	80.47%	1:1	1:0.9	95.68%	18.78%	76.89%	75.95%	24.05%	87.89%	73.05%
Executive Management	17	17	1:1	35.29%	64.71%	1:1	1:1	100.00%	35.29%	64.71%	100.00%		100.00%	100.00%
General Administrative (III & IV)	477	527	1:0.9	14.42%	85.58%	1:1	1:0.9	87.67%	12.52%	75.14%	77.61%	22.39%	92.11%	75.17%
Middle Management (V-VII)	323	337	1:1	28.19%	71.81%	1:1	1:0.9	96.14%	27.30%	68.84%	92.28%	7.72%	98.95%	89.67%
Senior Management (VIII & GM)	78	79	1:1	25.32%	74.68%	1:1	1:1	98.73%	24.05%	74.68%	98.73%	1.27%	100.00%	98.31%
Management & Administrative	896	960	1:0.9	20.52%	79.48%	1:1	1:0.9	91.77%	19.06%	72.71%	84.90%	15.10%	96.45%	81.91%
Catering	51	55	1:0.9	32.73%	67.27%	1:1	1:0.9	94.55%	30.91%	63.64%	72.73%	27.27%	88.89%	64.86%
Household Services	247	330	1:0.7	18.79%	81.21%	1:0.8	1:0.7	82.42%	13.94%	68.48%	35.45%	64.55%	61.29%	29.48%
Maintenance	40	46	1:0.9	86.96%	13.04%	1:0.9	1:0.7	89.13%	76.09%	13.04%	71.74%	28.26%	80.00%	16.67%



MAR 2024	WTE MAR 2024	No. MAR 2024	WTE : No	Number Male %	Number Female %	Male WTE : No.	Female WTE : No	Perm Count %	Perm Count Male %	Perm Count Female %	Fulltime Count %	Part time Count %	FT Count Male %	FT Count Female %
Total	7,428	8,557	1:0.9	20.78%	79.22%	1:0.9	1:0.9	89.52%	18.32%	71.19%	72.16%	27.84%	84.93%	68.82%
Other Labs & Associated	1	1	1:1		100.00%	1:	1:1	100.00%		100.00%	100.00%			100.00%
Other Support	18	20	1:0.9	80.00%	20.00%	1:0.9	1:0.8	90.00%	70.00%	20.00%	75.00%	25.00%	81.25%	50.00%
Portering	55	60	1:0.9	88.33%	11.67%	1:0.9	1:0.7	85.00%	73.33%	11.67%	81.67%	18.33%	90.57%	14.29%
Technical Services	6	6	1:1	83.33%	16.67%	1:1	1:1	100.00%	83.33%	16.67%	100.00%		100.00%	100.00%
General Support	417	518	1:0.8	37.45%	62.55%	1:0.9	1:0.8	85.14%	31.08%	54.05%	50.39%	49.61%	78.35%	33.64%
Attendant/ Aide	28	43	1:0.7	23.26%	76.74%	1:0.8	1:0.6	34.88%	4.65%	30.23%	51.16%	48.84%	70.00%	45.45%
Health Care Assistant/ Care Assistant	1,772	2,083	1:0.9	24.44%	75.56%	1:0.9	1:0.8	88.33%	22.47%	65.87%	65.05%	34.95%	78.00%	60.86%
Health Promotion	30	33	1:0.9	15.15%	84.85%	1:1	1:0.9	100.00%	15.15%	84.85%	96.97%	3.03%	100.00%	96.43%
Health & Social Care Assistants	53	57	1:0.9	19.30%	80.70%	1:0.9	1:0.9	61.40%	12.28%	49.12%	89.47%	10.53%	81.82%	91.30%
Home Care Services	6	8	1:0.8		100.00%	1:	1:0.8	87.50%		87.50%	62.50%	37.50%		62.50%
Home Helps	150	243	1:0.6	9.05%	90.95%	1:0.5	1:0.6	82.30%	5.76%	76.54%	30.45%	69.55%	36.36%	29.86%
Other Care Grades	156	175	1:0.9	29.14%	70.86%	1:0.9	1:0.9	96.00%	26.86%	69.14%	78.29%	21.71%	94.12%	71.77%
Pastoral Care	5	5	1:1	60.00%	40.00%	1:1	1:1	80.00%	40.00%	40.00%	100.00%		100.00%	100.00%
Workshop Services	460	529	1:0.9	24.57%	75.43%	1:0.9	1:0.8	95.27%	22.87%	72.40%	76.75%	23.25%	88.46%	72.93%
Patient & Client Care	2,660	3,176	1:0.8	23.33%	76.67%	1:0.9	1:0.8	88.35%	20.97%	67.38%	65.71%	34.29%	79.89%	61.40%



Employment Report by WTE, Headcount, Gender, Full-Time / Part-Time etc. MAR 2024

CHO 7 MAR 2024

MAR 2024	WTE MAR 2024	No. MAR 2024	WTE : No	Number Male %	Number Female %	Male WTE : No.	Female WTE : No	Perm Count %	Number Male %	Number Female %	Fulltime Count %	Part time Count %	FT Count Male %	FT Count Female %
Total	7,428	8,557	1:0.9	20.78%	79.22%	1:0.9	1:0.9	89.52%	18.32%	71.19%	72.16%	27.84%	84.93%	68.82%
Disabilities	3,514	4,158	1:0.8	22.97%	77.03%	1:0.9	1:0.8	89.42%	20.66%	68.76%	68.16%	31.84%	81.26%	64.25%
Mental Health	921	1,001	1:0.9	23.88%	76.12%	1:1	1:0.9	84.22%	19.28%	64.94%	89.91%	10.09%	96.65%	87.80%
Older People	1,015	1,137	1:0.9	17.59%	82.41%	1:1	1:0.9	91.47%	14.95%	76.52%	70.36%	29.64%	88.50%	66.49%
Primary Care	1,816	2,087	1:0.9	17.15%	82.85%	1:0.9	1:0.9	90.90%	15.43%	75.47%	70.92%	29.08%	83.80%	68.25%
CHO Operations	114	122	1:0.9	15.57%	84.43%	1:1	1:0.9	95.08%	14.75%	80.33%	93.44%	6.56%	100.00%	92.23%
Community Health & Wellbeing	48	52	1:0.9	13.46%	86.54%	1:1	1:0.9	88.46%	11.54%	76.92%	90.38%	9.62%	100.00%	88.89%



Employment by Grade Group MAR 2024	WTE DEC 2019	WTE DEC 2022	WTE DEC 2023	WTE FEB 2024	WTE MAR 2024	WTE Change 2023	WTE Change 2024	WTE Change FEB 2024	WTE Change Dec 2022 to MAR 2024	WTE Change Dec 2019 to MAR 2024	% WTE Change Dec 2022 to MAR 2024	No. MAR 2024
Overall	8,189	8,961	8,968	9,296	9,306	+7	+338	+9	+345	+1,117	+3.9%	11,409
Consultant Dentistry	2	5	5	5	5	+0	0	+0	+0	+3	+7.1%	6
Consultant Medicine	1	1	2	4	4	+0	+3	+0	+3	+3	+259.2%	8
Consultant Paediatrics	1	1	1	1	1	+0	+0	+0	+0	+0	+0.0%	2
Consultant Psychiatry	51	61	66	63	66	+4	+0	+3	+5	+15	+7.9%	73
Consultant Surgery		1	1	1	1	+0	+0	+0	+0	+1	+0.0%	2
Consultants	55	70	75	75	78	+5	+3	+3	+8	+23	+11.9%	91
Registrar	85	76	89	91	90	+13	+1	0	+15	+5	+19.2%	94
Senior Registrar	12	17	20	17	16	+2	-4	-1	-1	+4	-7.9%	18
Specialist Registrar	7	3	3	5	5	0	+3	+0	+2	-2	+70.0%	6
Registrars	103	96	111	113	111	+15	+0	-2	+15	+8	+15.9%	118
Interns	3	1	2	2	2	+1	+0	+0	+1	-1	+102.0%	2
Senior House Officer	35	45	56	57	60	+10	+4	+3	+14	+25	+31.6%	62
SHO/ Interns	38	46	58	59	62	+11	+4	+3	+15	+24	+33.1%	64
Dentists	62	69	71	70	69	+1	-1	0	0	+7	0.0%	120
Other Medical	49	70	62	63	62	-9	+0	-2	-8	+13	-12.0%	116
Medical/ Dental, other	111	140	133	133	131	-7	-1	-2	-8	+20	-6.1%	236
Medical & Dental	308	352		380	382	+24	+6	+2	+30	+74	+8.6%	+509
Clinical Nurse/ Midwife Manager 1	66	54	47	55	52	-6	+5	-2	-1	-14	-2.0%	61
Clinical Nurse/ Midwife Manager 2	240	292	291	287	295	-1	+4	+7	+3	+55	+1.0%	321
Clinical Nurse/ Midwife Manager 3	31	36	38	41	42	+2	+3	+1	+6	+10	+16.0%	44
Director Nursing/Midwifery, Assistant	60	69	79	81	80	+10	+1	-1	+11	+20	+16.5%	85
Director of Nursing/Midwifery	35	40	43	40	41	+3	-1	+1	+2	+6	+4.1%	43
Nurse/ Midwife Manager	433	490	497	503	510	+8	+13	+7	+20	+77	+4.2%	554
Adv. Nurse/ Midwife, Candidate		1	14	12	12	+13	-2	0	+11	+12	+1,056.0%	12
Advanced Nurse/ Midwife Practitioner	7	8	9	10	9	+0	+0	-1	+0	+2	+4.3%	9
Clinical Nurse/ Midwife Specialist	74	96	124	145	145	+28	+21	0	+49	+71	+51.1%	167
Nurse/ Midwife Specialist & AN/MP	81	106	147	167	166	+41	+19	-1	+60	+85	+56.9%	188
Staff Midwives	8	4	3	3	3	-1	+0	+0	-1	-5	-28.3%	4
Staff Nurse [Intellectual Disability]	87	152	168	177	168	+16	0	-9	+16	+81	+10.5%	209
Staff Nurse [Psychiatric]	469	447	456	450	445	+9	-11	-5	-2	-24	-0.5%	484
Staff Nurses [General/ Children's]	882	929	861	966	963	-68	+102	-3	+34	+81	+3.7%	1,190
Staff Nurse/ Staff Midwife	1,446	1,532	1,488	1,596	1,579	-44	+91	-17	+47	+133	+3.1%	1,887
Public Health Nurse	216	216	209	212	206	-8	-3	-6	-11	-10	-4.9%	268
Public Health Nurse	216	216	209	212	206	-8	-3	-6	-11	-10	-4.9%	268
Nursing/ Midwifery awaiting registration	32		6	2	2	+6	-4	+0	+2	-30	-100.0%	2
Post-registration Nurse/ Midwife Student	19	11	20	20	20	+9	+0	+0	+9	+1	+82.6%	20
Pre-registration Nurse/ Midwife Intern	9	7	2	32	32	-6	+31	0	+25	+23	+333.6%	64
Nursing/ Midwifery Student	60	18	27	54	54	+9	+27	+0	+36	-6	+194.6%	86
Nursing Education/Clinical	1	1	1	3	3	+0	+2	+0	+2	+2	+198.5%	3
Nursing/ Midwifery other	1	1	1	3	3	+0	+2	+0	+2	+2	+198.5%	3
Nursing & Midwifery	2,235	2,363		2,536	2,517	+6	+149	-18	+155	+282	+6.5%	+2,986
Dietitians	28	36	42	42	44	+6	+2	+2	+8	+16	+21.3%	53
Occupational Therapists	169	227	239	239	240	+12	+1	+1	+13	+70	+5.7%	272
Orthoptists	3	1	1	1	1	-1	+0	+0	-1	-3	-50.0%	1
Physiotherapists	106	126	134	138	139	+8	+6	+2	+13	+33	+10.5%	166
Podiatrists & Chiropodists	6	16	13	12	13	-3	0	+0	-3	+6	-19.7%	15
Speech & Language Therapists	134	144	151	155	153	+7	+2	-2	+10	+19	+6.6%	182
Therapy Professions	448	549	579	586	589	+30	+10	+3	+40	+141	+7.2%	689
Audiology	7	9	8	8	8	-1	+0	+0	-1	+2	-11.2%	9
Cardiac Physiologists					1		+1	+1	+1	+1	-100.0%	1
Physicists	2	2	2	2	2	0	+0	0	0	0	-1.2%	2
Radiographers	3	3	3	3	3	+0	+0	+0	+0	+0	+2.7%	5
Health Science/ Diagnostics	12	14	13	13	14	-1	+1	+1	+0	+3	+0.1%	17

Employment by Grade Group MAR 2024	WTE DEC 2019	WTE DEC 2022	WTE DEC 2023	WTE FEB 2024	WTE MAR 2024	WTE Change 2023	WTE Change 2024	WTE Change FEB 2024	WTE Change Dec 2022 to MAR 2024	WTE Change Dec 2019 to MAR 2024	% WTE Change Dec 2022 to MAR 2024	No. MAR 2024
Overall	8,189	8,961	8,968	9,296	9,306	+7	+338	+9	+345	+1,117	+3.9%	11,409
Social Care	240	272	278	276	287	+6	+9	+11	+14	+47	+5.3%	328
Social Care	240	272	278	276	287	+6	+9	+11	+14	+47	+5.3%	328
Pharmacists	7	8	11	13	13	+3	+3	0	+6	+6	+73.3%	20
Pharmacy Technicians	1	1	2	2	2	+1	+0	0	+1	+1	+80.0%	2
Pharmacy	8	9	12	15	15	+4	+3	0	+6	+7	+74.1%	22
Psychologists	138	156	156	154	153	0	-3	-1	-3	+15	-1.7%	171
Psychologists	138	156	156	154	153	0	-3	-1	-3	+15	-1.7%	171
Social Workers	115	147	171	175	175	+24	+4	+0	+28	+60	+19.1%	197
Social Workers	115	147	171	175	175	+24	+4	+0	+28	+60	+19.1%	197
Counsellor Therapists	41	43	50	52	52	+8	+1	0	+9	+11	+20.9%	57
Dental Hygienists	8	9	9	9	8	-1	-1	-1	-2	-1	-19.3%	12
Other Health & Social Care	11	9	13	13	13	+3	0	0	+3	+2	+36.5%	15
Play Therapists/ Specialists	1	2	2	3	3	+0	+1	+0	+1	+2	+21.2%	4
Vaccinators		9	5	3	4	-3	-1	+1	-5	+4	-52.4%	14
H&SC, Other	60	72	79	79	79	+7	-1	0	+6	+18	+9.0%	102
Health & Social Care Professionals	1,020	1,219		1,298	1,312	+69	+23	+14	+92	+292	+7.6%	+1,526
Executive Management	15	16	20	18	18	+4	-2	0	+2	+3	+11.0%	18
Senior Management (VIII & GM)	58	74	78	82	79	+4	+1	-2	+5	+22	+7.1%	84
Management (VIII & above)	73	90	98	99	97	+8	-1	-2	+7	+24	+7.8%	102
Middle Management (V-VII)	161	254	317	316	318	+63	+0	+2	+64	+157	+25.0%	343
Administrative/ Supervisory (V to VII)	161	254	317	316	318	+63	+0	+2	+64	+157	+25.0%	343
General Administrative (III & IV)	505	572	622	666	665	+50	+44	0	+93	+161	+16.3%	797
Clerical (III & IV)	505	572	622	666	665	+50	+44	0	+93	+161	+16.3%	797
Management & Administrative	738	916		1,081	1,080	+121	+43	-1	+164	+342	+17.9%	+1,242
Catering	60	53	52	57	53	0	+1	-3	+0	-7	+0.8%	57
Household Services	190	213	195	233	235	-18	+40	+2	+22	+45	+10.3%	299
Other Support	74	75	23	23	23	-52	+0	+0	-52	-51	-69.6%	32
Portering	13	12	16	19	19	+3	+4	+1	+7	+6	+57.7%	26
Support	337	353	286	331	330	-68	+45	0	-23	-6	-6.4%	414
Maintenance	21	19	16	19	19	-3	+3	+0	0	-2	-0.4%	21
Technical Services	1	3	2	2	2	-1	+0	+0	-1	+1	-33.3%	2
Maintenance/ Technical	22	22	18	21	21	-4	+3	+0	-1	-1	-4.9%	23
General Support	359	375		352	351	-71	+48	0	-24	-8	-6.4%	+437
Attendant/ Aide	701	554	495	484	495	-60	+0	+11	-60	-206	-10.8%	581
Health & Social Care Assistants	8	16	30	31	35	+14	+5	+4	+19	+27	+124.0%	38
Health Care Assistant/ Care Assistant	1,245	1,565	1,578	1,636	1,631	+13	+54	-5	+67	+386	+4.3%	1,924
Health Care Assistants	1,954	2,135	2,102	2,151	2,161	-32	+59	+10	+26	+207	+1.2%	2,543
Home Helps	1,124	1,076	944	942	942	-132	-2	-1	-134	-182	-12.5%	1,490
Home Help	1,124	1,076	944	942	942	-132	-2	-1	-134	-182	-12.5%	1,490
Health Promotion		15	18	19	19	+4	+0	+0	+4	+19	+28.7%	23
Home Care Services	29	32	35	33	34	+3	-1	+1	+2	+5	+5.8%	39
Other Care Grades	127	163	162	165	162	-1	0	-3	-1	+35	-0.8%	200
Pastoral Care	7	5	5	10	9	+1	+3	-1	+4	+2	+96.1%	25
Workshop Services	287	310	326	332	336	+16	+11	+4	+26	+49	+8.5%	389
Care, other	450	524	547	558	560	+23	+13	+2	+35	+110	+6.8%	676
Patient & Client Care	3,528	3,735		3,651	3,662	-142	+70	+12	-72	+135	-1.9%	+4,709

CHO 4 Employment Report: MAR 2024

Month-on-Month Summary

Month-on-Month Summary	% WTE change since FEB 2024	WTE change since FEB 2024	Community Health & Wellbeing	Mental Health	Primary Care	Disabilities	Older People	CHO Operations
Consultants	+3.8%	+2.8		+2.8	+0.0	+0.0	+0.0	
Registrars	-1.5%	-1.7		-1.2	-0.5			
SHO/ Interns	+5.2%	+3.1		+3.1	+0.0			
Medical/ Dental, other	-1.4%	-1.8		+0.0	-1.4	+0.0	-0.5	
Medical & Dental	+0.6%	+2.4		+4.7	-1.9	+0.0	-0.5	
Nurse/ Midwife Manager	+1.3%	+6.6	-0.1	-2.2	-1.1	+4.7	+5.4	-0.0
Nurse/ Midwife Specialist & AN/MP	-0.9%	-1.5		+2.3	-0.8	-1.0	-2.0	+0.0
Staff Nurse/ Staff Midwife	-1.1%	-17.3		-4.5	+0.3	-7.6	-5.4	
Public Health Nurse	-2.8%	-6.0			-6.0		-0.0	
Nursing/ Midwifery Student	+0.1%	+0.0		+0.5	+0.0	-0.5		
Nursing/ Midwifery other	+0.2%	+0.0		+0.0	+0.0	+0.0		
Nursing & Midwifery	-0.7%	-18.1	-0.1	-3.8	-7.6	-4.5	-2.1	-0.0
Therapy Professions	+0.5%	+3.0	+0.0	-1.3	+3.1	+2.4	-1.2	
Health Science/ Diagnostics	+8.3%	+1.1			+1.0		+0.1	
Social Care	+3.9%	+10.7		-0.1	+0.0	+10.9	+0.0	
Pharmacy	-0.7%	-0.1		+0.0	-0.1		+0.0	+0.0
Psychologists	-0.4%	-0.6		-1.4	-1.4	+2.1		
Social Workers	+0.1%	+0.2		+0.4	-0.0	+0.6		-0.8



H&SC, Other	-0.5%	-0.4	+1.3	-0.4	-1.2	+0.0	-0.1	
Health & Social Care Professionals	+1.1%	+13.9	+1.3	-2.8	+1.3	+16.0	-1.2	-0.8
Management (VIII & above)	-2.2%	-2.2	+0.0	+0.0	-1.2	-0.0	-0.9	-0.0
Administrative/ Supervisory (V to VII)	+0.6%	+2.0	+0.1	-0.1	+1.4	+1.8	-0.3	-0.9
Clerical (III & IV)	-0.1%	-0.5	-0.0	+0.1	-1.7	+1.2	-0.0	+0.0
Management & Administrative	-0.1%	-0.6	+0.1	-0.1	-1.5	+3.0	-1.2	-0.9
Support	-0.1%	-0.4		+0.4	-0.6	-0.3	+0.2	
Maintenance/ Technical	+1.1%	+0.2		+0.1	+0.0	+0.1	+0.0	
General Support	0.0%	-0.1		+0.4	-0.5	-0.2	+0.2	
Health Care Assistants	+0.5%	+10.2		-1.5	-0.3	+6.6	+5.5	
Home Help	-0.1%	-0.5			+0.0		-0.5	
Care, other	+0.4%	+2.0	+0.2	+0.6	-3.3	+3.4	+1.1	
Patient & Client Care	+0.3%	+11.7	+0.2	-0.9	-3.7	+10.0	+6.1	



CHO 4 Employment Report: MAR 2024

Year-to-Date Summary

Year-to-Date Summary	% WTE change since DEC 2023	WTE change since DEC 2023	Community Health & Wellbeing	Mental Health	Primary Care	Disabilities	Older People	CHO Operations
Consultants	+4.0%	+3.0		+0.4	+2.7	+0.0	+0.0	
Registrars	+0.1%	+0.2		-4.8	+4.9			
SHO/ Interns	+7.1%	+4.1		+2.1	+2.0			
Medical/ Dental, other	-1.0%	-1.3		+0.0	-2.3	+0.0	+1.0	
Medical & Dental	+1.6%	+5.9		-2.3	+7.2	+0.0	+1.0	
Nurse/ Midwife Manager	+2.5%	+12.6	-0.2	-0.7	+11.1	-2.5	+4.9	-0.1
Nurse/ Midwife Specialist & AN/MP	+12.8%	+18.8		-2.0	+23.9	-1.0	-2.0	+0.0
Staff Nurse/ Staff Midwife	+6.1%	+90.9		-11.0	+57.8	-3.9	+48.0	
Public Health Nurse	-1.3%	-2.8			-3.0		+0.2	
Nursing/ Midwifery Student	+100.0%	+27.0		+23.0	+0.0	+8.5	-4.5	
Nursing/ Midwifery other	+198.5%	+2.0		+1.0	+1.0	+0.0		
Nursing & Midwifery	+6.3%	+148.5	-0.2	+10.3	+90.8	+1.1	+46.6	-0.1
Therapy Professions	+1.8%	+10.2	-0.1	-7.3	+14.7	+3.8	-0.9	
Health Science/ Diagnostics	+8.2%	+1.1			+1.1		+0.0	
Social Care	+3.1%	+8.6		-0.4	-0.3	+9.3	+0.0	
Pharmacy	+21.6%	+2.7		-0.8	+3.1		+0.3	+0.0



Psychologists	-1.6%	-2.5		-0.1	-5.7	+3.3		
Social Workers	+2.2%	+3.8		+0.1	+4.4	+0.7		-1.4
H&SC, Other	-0.6%	-0.5	-1.1	-0.7	+1.5	-0.1	-0.1	
Health & Social Care Professionals	+1.8%	+23.4	-1.2	-9.1	+18.7	+17.0	-0.7	-1.4
Management (VIII & above)	-1.0%	-1.0	+0.0	+0.0	+2.3	-1.1	-2.2	+0.0
Administrative/ Supervisory (V to VII)	+0.1%	+0.3	-0.6	-0.6	-3.4	-1.8	+8.1	-1.4
Clerical (III & IV)	+7.0%	+43.5	+0.1	+3.3	+31.5	+7.2	+0.3	+1.1
Management & Administrative	+4.1%	+42.9	-0.5	+2.7	+30.5	+4.3	+6.2	-0.3
Support	+15.7%	+44.9		-1.9	+48.3	-0.2	-1.3	
Maintenance/ Technical	+14.7%	+2.7		+0.0	+2.9	-0.2	+0.0	
General Support	+15.7%	+47.6		-1.9	+51.2	-0.4	-1.3	
Health Care Assistants	+2.8%	+59.0		-2.7	+31.9	-4.5	+34.2	
Home Help	-0.2%	-2.3			+0.0		-2.3	
Care, other	+2.4%	+13.0	+0.3	+0.0	+2.5	+10.5	-0.3	
Patient & Client Care	+1.9%	+69.6	+0.3	-2.7	+34.4	+6.0	+31.6	



CHO 4 Employment Report: MAR 2024

Year-on-Year Summary

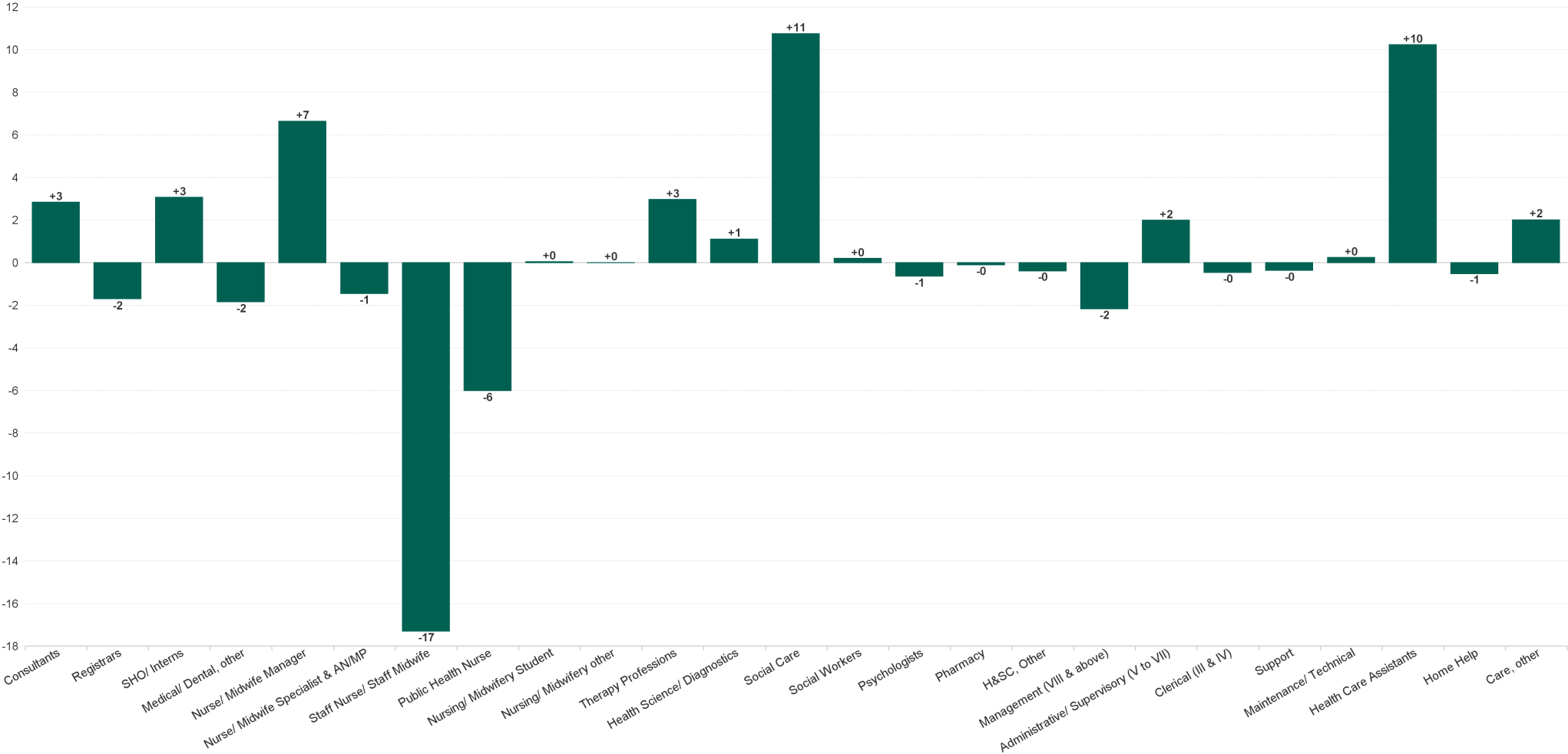
Year-on-Year Summary	% WTE change since MAR 2023	WTE change since MAR 2023	Community Health & Wellbeing	Mental Health	Primary Care	Disabilities	Older People	CHO Operations
Consultants	+13.3%	+9.2		+5.5	+3.7	+0.0	-0.0	
Registrars	+4.1%	+4.4		-2.6	+8.7		-1.7	
SHO/ Interns	+32.2%	+15.0		+15.0	+1.0		-1.0	
Medical/ Dental, other	-3.7%	-5.1	-2.1	+0.0	-3.1	+0.0	+0.1	
Medical & Dental	+6.6%	+23.6	-2.1	+17.9	+10.3	+0.0	-2.6	
Nurse/ Midwife Manager	+2.6%	+13.1	-0.7	-3.2	+5.2	-0.8	+8.6	+4.1
Nurse/ Midwife Specialist & AN/MP	+29.1%	+37.4		+7.9	+30.1	-2.0	+0.4	+0.9
Staff Nurse/ Staff Midwife	+7.0%	+103.3		+0.6	+69.3	-6.9	+40.3	
Public Health Nurse	-0.9%	-1.9			-2.6		+0.7	
Nursing/ Midwifery Student	+8.3%	+4.1		+0.1	+4.5	-0.5		
Nursing/ Midwifery other	+198.5%	+2.0		+1.0	+1.0	+0.0		
Nursing & Midwifery	+6.7%	+158.0	-0.7	+6.4	+107.5	-10.2	+50.0	+4.9
Therapy Professions	+3.7%	+21.1	+0.2	-0.9	+8.5	+17.9	-4.6	
Health Science/ Diagnostics	+12.5%	+1.6			+1.6		+0.0	
Social Care	+5.2%	+14.2		-3.1	-1.5	+18.7	+0.2	
Pharmacy	+26.5%	+3.1		-0.8	+1.6		+0.4	+2.0
Psychologists	-1.0%	-1.5		+5.1	-6.9	+0.3		
Social Workers	+12.3%	+19.1		-1.2	+4.0	+9.2	-9.7	+16.9



H&SC, Other	+2.6%	+2.0	-1.2	+0.5	-3.8	+1.7	+4.8	
Health & Social Care Professionals	+4.8%	+59.8	-1.0	-0.5	+3.6	+47.8	-9.0	+18.9
Management (VIII & above)	+1.7%	+1.7	+1.0	-2.2	+0.8	+3.7	-4.6	+3.0
Administrative/ Supervisory (V to VII)	+14.2%	+39.6	+0.2	+3.3	+9.1	+8.2	+7.2	+11.6
Clerical (III & IV)	+16.3%	+93.1	+0.4	+21.5	+61.5	+3.5	-0.8	+7.0
Management & Administrative	+14.2%	+134.4	+1.6	+22.7	+71.3	+15.5	+1.8	+21.5
Support	-5.1%	-17.6		-12.1	+49.1	-52.9	-1.8	
Maintenance/ Technical	-11.1%	-2.6	-1.0	-1.3	+1.9	-0.7	-1.5	
General Support	-5.4%	-20.2	-1.0	-13.3	+51.0	-53.6	-3.4	
Health Care Assistants	+4.5%	+92.6	-0.3	+3.3	+31.1	+39.1	+19.4	
Home Help	-10.3%	-108.3			+3.6		-112.0	
Care, other	+6.9%	+36.1	+2.7	+0.3	-4.1	+37.2	-0.0	
Patient & Client Care	+0.6%	+20.4	+2.4	+3.6	+30.6	+76.4	-92.6	

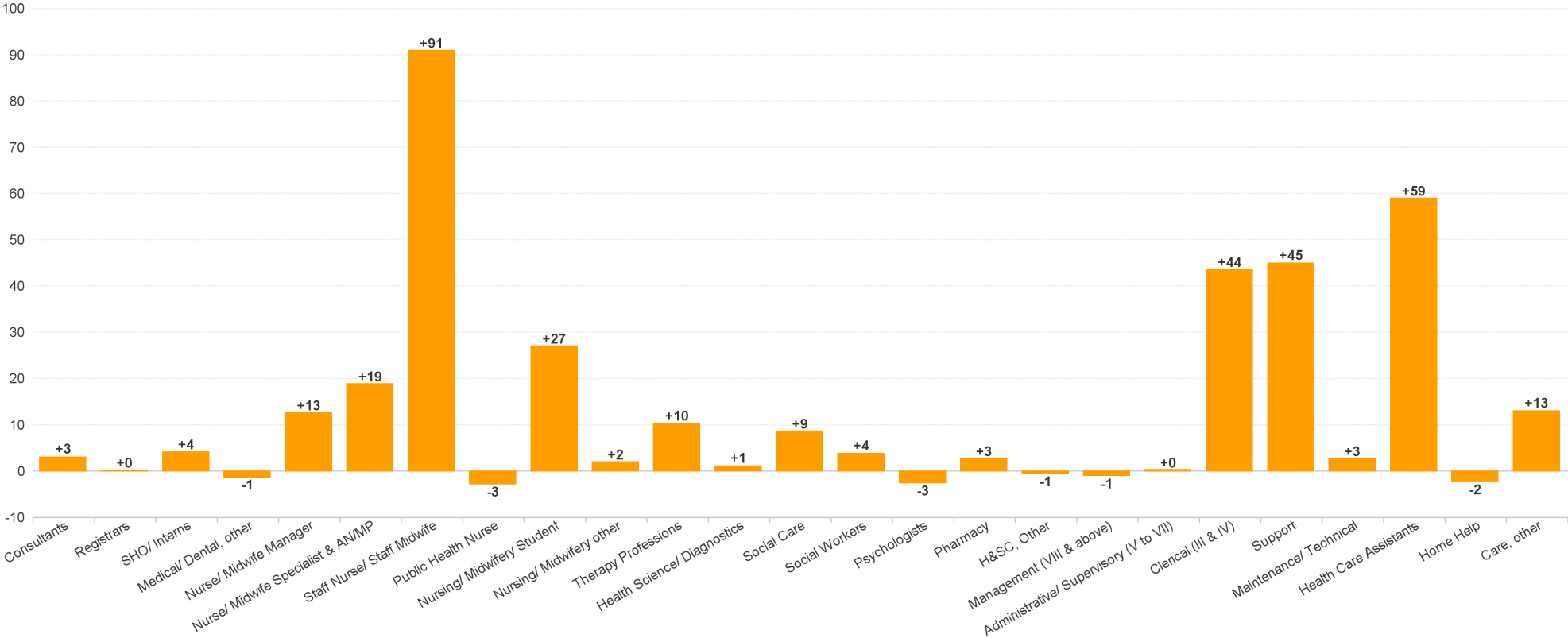


Month-on-Month Summary Chart: Change since FEB 2024



CHO 4 Employment Report: MAR 2024

Year-to-Date Summary Chart: Change since DEC 2023



CHO 4 Employment Report: MAR 2024

Year-on-Year Summary Chart: Change since MAR 2023

