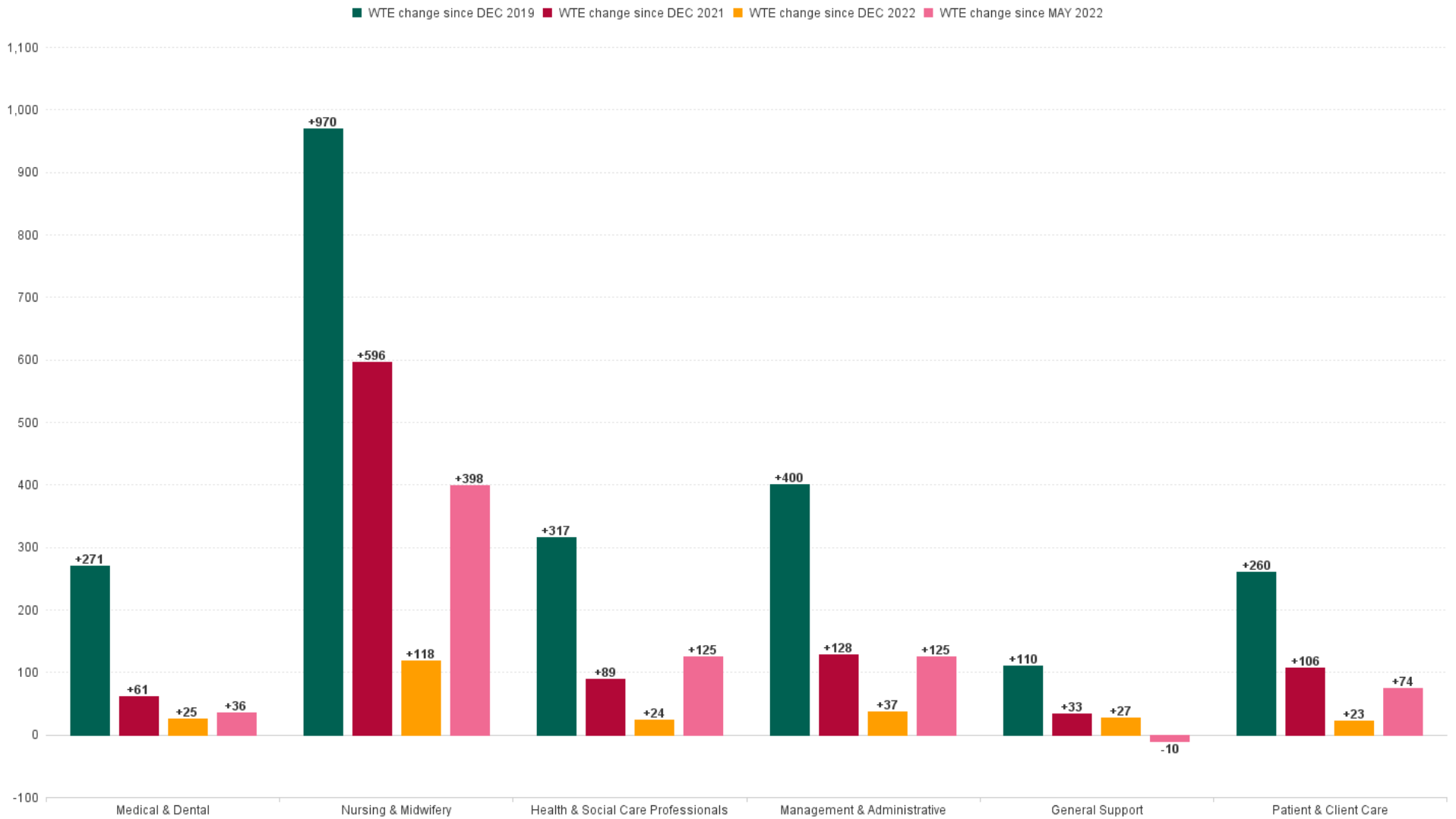


## Saolta University Hospital Care Employment Report: MAY 2023

### Employment by Staff Group MAY 2023

Employment by Staff Group MAY 2023	WTE DEC 2019	WTE DEC 2022	WTE APR 2023	WTE MAY 2023	WTE change since DEC 2019	% WTE Change since Dec 2019	WTE change since DEC 2022	% WTE Change since Dec 2022	WTE change since APR 2023	No. MAY 2023
<b>Overall</b>	<b>9,253</b>	<b>11,327</b>	<b>11,563</b>	<b>11,580</b>	<b>+2,327</b>	<b>+25.1%</b>	<b>+254</b>	<b>+2.2%</b>	<b>+17</b>	<b>12,915</b>
Consultants	463	511	516	521	+58	+12.5%	+9	+1.8%	+5	560
Registrars	445	507	517	516	+71	+15.9%	+9	+1.7%	-1	539
SHO/ Interns	535	668	674	674	+139	+26.0%	+6	+0.9%	-0	690
Medical/ Dental, other	10	12	12	13	+3	+28.7%	+1	+10.7%	+1	20
<b>Medical &amp; Dental</b>	<b>1,452</b>	<b>1,698</b>	<b>1,720</b>	<b>1,723</b>	<b>+271</b>	<b>+18.6%</b>	<b>+25</b>	<b>+1.5%</b>	<b>+4</b>	<b>1,809</b>
Nurse/ Midwife Manager	567	713	739	752	+185	+32.6%	+39	+5.4%	+13	810
Nurse/ Midwife Specialist & AN/MP	218	315	336	338	+120	+54.9%	+23	+7.5%	+2	366
Staff Nurse/ Staff Midwife	2,764	3,303	3,401	3,373	+608	+22.0%	+70	+2.1%	-28	3,897
Public Health Nurse	1				-1	-100.0%				
<i>Nursing/ Midwifery awaiting registration</i>	36	101	19	10	-26	-70.9%	-91	-89.6%	-8	12
<i>Post-registration Nurse/ Midwife Student</i>	12	9	12	12	+0	+0.0%	+3	+34.2%	+0	12
<i>Pre-registration Nurse/ Midwife Intern</i>	2	10	80	84	+83	+5,247.5%	+74	+719.5%	+5	172
Nursing/ Midwifery Student	50	120	110	107	+57	+115.3%	-13	-11.2%	-3	196
Nursing/ Midwifery other	33	34	33	34	+1	+3.1%	+0	+0.1%	+1	40
<b>Nursing &amp; Midwifery</b>	<b>3,633</b>	<b>4,485</b>	<b>4,619</b>	<b>4,603</b>	<b>+970</b>	<b>+26.7%</b>	<b>+118</b>	<b>+2.6%</b>	<b>-15</b>	<b>5,309</b>
Therapy Professions	262	349	358	364	+102	+38.8%	+15	+4.3%	+6	403
Health Science/ Diagnostics	617	738	730	721	+104	+16.8%	-17	-2.3%	-9	803
Social Care	2	2	2	2	-0	-2.1%	-0	-5.7%	+0	3
Social Workers	26	43	45	47	+21	+78.8%	+4	+9.9%	+2	53
Psychologists	1	3	5	5	+4	+522.5%	+2	+60.1%	+0	8
Pharmacy	137	191	197	198	+61	+44.9%	+7	+3.5%	+1	221
H&SC, Other	19	31	42	44	+25	+126.7%	+13	+42.9%	+2	57
<b>Health &amp; Social Care Professionals</b>	<b>1,065</b>	<b>1,357</b>	<b>1,378</b>	<b>1,381</b>	<b>+317</b>	<b>+29.7%</b>	<b>+24</b>	<b>+1.8%</b>	<b>+3</b>	<b>1,548</b>
Management (VIII & above)	51	62	64	65	+14	+28.3%	+3	+5.6%	+1	66
Administrative/ Supervisory (V to VII)	237	384	417	418	+182	+76.8%	+34	+9.0%	+1	435
Clerical (III & IV)	1,048	1,252	1,238	1,251	+204	+19.5%	-1	-0.1%	+13	1,392
<b>Management &amp; Administrative</b>	<b>1,335</b>	<b>1,698</b>	<b>1,720</b>	<b>1,735</b>	<b>+400</b>	<b>+30.0%</b>	<b>+37</b>	<b>+2.2%</b>	<b>+15</b>	<b>1,893</b>
Support	836	919	936	941	+105	+12.6%	+22	+2.4%	+5	1,036
Maintenance/ Technical	103	103	108	108	+5	+4.6%	+5	+4.5%	+0	109
<b>General Support</b>	<b>939</b>	<b>1,022</b>	<b>1,043</b>	<b>1,049</b>	<b>+110</b>	<b>+11.7%</b>	<b>+27</b>	<b>+2.6%</b>	<b>+6</b>	<b>1,145</b>
Health Care Assistants	799	980	993	995	+195	+24.5%	+14	+1.5%	+1	1,107
Care, other	30	86	90	95	+64	+210.7%	+8	+9.7%	+4	104
<b>Patient &amp; Client Care</b>	<b>830</b>	<b>1,066</b>	<b>1,084</b>	<b>1,089</b>	<b>+260</b>	<b>+31.3%</b>	<b>+23</b>	<b>+2.1%</b>	<b>+5</b>	<b>1,211</b>

## WTE Change by Staff Category



## Employment Report by Hospital : MAY 2023

Hospitals MAY 2023	WTE DEC 2019	WTE DEC 2022	WTE APR 2023	WTE MAY 2023	WTE change since DEC 2019	% WTE Change since Dec 2019	WTE change since DEC 2022	% WTE Change since Dec 2022	WTE change since APR 2023	No. MAY 2023
<b>Overall</b>	<b>9,253</b>	<b>11,327</b>	<b>11,563</b>	<b>11,580</b>	<b>+2,327</b>	<b>+25.1%</b>	<b>+254</b>	<b>+2.2%</b>	<b>+17</b>	<b>12,915</b>
Galway University	3,607	4,280	4,332	4,317	+710	+19.7%	+37	+0.9%	-15	4,800
Sligo University	1,688	1,993	2,053	2,069	+381	+22.6%	+76	+3.8%	+16	2,319
Letterkenny University	1,607	2,089	2,145	2,140	+533	+33.1%	+51	+2.5%	-5	2,406
Mayo University	1,150	1,435	1,442	1,443	+294	+25.5%	+9	+0.6%	+2	1,612
Portiuncula University	790	982	1,022	1,031	+241	+30.5%	+49	+5.0%	+9	1,139
Roscommon University	333	438	453	458	+125	+37.4%	+20	+4.5%	+5	512
Saolta HG HQ	79	110	116	122	+44	+55.2%	+12	+10.8%	+6	127





## Employment Report by HSE/S38: MAY 2023

Administration MAY 2023	WTE DEC 2019	WTE DEC 2022	WTE APR 2023	WTE MAY 2023	WTE change since DEC 2019	% WTE Change since Dec 2019	WTE change since DEC 2022	% WTE Change since Dec 2022	WTE change since APR 2023	No. MAY 2023
<b>Overall</b>	<b>9,253</b>	<b>11,327</b>	<b>11,563</b>	<b>11,580</b>	<b>+2,327</b>	<b>+25.1%</b>	<b>+254</b>	<b>+2.2%</b>	<b>+17</b>	<b>12,915</b>
Health Service Executive	9,253	11,327	11,563	11,580	+2,327	+25.1%	+254	+2.2%	+17	12,915



# Employment Report by Administration: MAY 2023

## Health Service Executive

MAY 2023	WTE DEC 2019	WTE DEC 2022	WTE APR 2023	WTE MAY 2023	WTE change since DEC	% WTE Change since Dec	WTE change since DEC	% WTE Change since Dec	WTE change since APR	No. MAY 2023
<b>Total Health Service Executive</b>	<b>9,253</b>	<b>11,327</b>	<b>11,563</b>	<b>11,580</b>	<b>+2,327</b>	<b>+25.1%</b>	<b>+254</b>	<b>+2.2%</b>	<b>+17</b>	<b>12,915</b>
Consultants	463	511	516	521	+58	+12.5%	+9	+1.8%	+5	560
Registrars	445	507	517	516	+71	+15.9%	+9	+1.7%	-1	539
SHO/ Interns	535	668	674	674	+139	+26.0%	+6	+0.9%	-0	690
Medical/ Dental, other	10	12	12	13	+3	+28.7%	+1	+10.7%	+1	20
<b>Medical &amp; Dental</b>	<b>1,452</b>	<b>1,698</b>	<b>1,720</b>	<b>1,723</b>	<b>+271</b>	<b>+18.6%</b>	<b>+25</b>	<b>+1.5%</b>	<b>+4</b>	<b>1,809</b>
Nurse/ Midwife Manager	567	713	739	752	+185	+32.6%	+39	+5.4%	+13	810
Nurse/ Midwife Specialist & AN/MP	218	315	336	338	+120	+54.9%	+23	+7.5%	+2	366
Staff Nurse/ Staff Midwife	2,764	3,303	3,401	3,373	+608	+22.0%	+70	+2.1%	-28	3,897
Public Health Nurse	1				-1	-100.0%				
Nursing/ Midwifery Student	50	120	110	107	+57	+115.3%	-13	-11.2%	-3	196
Nursing/ Midwifery other	33	34	33	34	+1	+3.1%	+0	+0.1%	+1	40
<b>Nursing &amp; Midwifery</b>	<b>3,633</b>	<b>4,485</b>	<b>4,619</b>	<b>4,603</b>	<b>+970</b>	<b>+26.7%</b>	<b>+118</b>	<b>+2.6%</b>	<b>-15</b>	<b>5,309</b>
Therapy Professions	262	349	358	364	+102	+38.8%	+15	+4.3%	+6	403
Health Science/ Diagnostics	617	738	730	721	+104	+16.8%	-17	-2.3%	-9	803
Social Care	2	2	2	2	-0	-2.1%	-0	-5.7%	+0	3
Social Workers	26	43	45	47	+21	+78.8%	+4	+9.9%	+2	53
Psychologists	1	3	5	5	+4	+522.5%	+2	+60.1%	+0	8
Pharmacy	137	191	197	198	+61	+44.9%	+7	+3.5%	+1	221
H&SC, Other	19	31	42	44	+25	+126.7%	+13	+42.9%	+2	57
<b>Health &amp; Social Care Professionals</b>	<b>1,065</b>	<b>1,357</b>	<b>1,378</b>	<b>1,381</b>	<b>+317</b>	<b>+29.7%</b>	<b>+24</b>	<b>+1.8%</b>	<b>+3</b>	<b>1,548</b>
Management (VIII & above)	51	62	64	65	+14	+28.3%	+3	+5.6%	+1	66
Administrative/ Supervisory (V to VII)	237	384	417	418	+182	+76.8%	+34	+9.0%	+1	435
Clerical (III & IV)	1,048	1,252	1,238	1,251	+204	+19.5%	-1	-0.1%	+13	1,392
<b>Management &amp; Administrative</b>	<b>1,335</b>	<b>1,698</b>	<b>1,720</b>	<b>1,735</b>	<b>+400</b>	<b>+30.0%</b>	<b>+37</b>	<b>+2.2%</b>	<b>+15</b>	<b>1,893</b>
Support	836	919	936	941	+105	+12.6%	+22	+2.4%	+5	1,036
Maintenance/ Technical	103	103	108	108	+5	+4.6%	+5	+4.5%	+0	109
<b>General Support</b>	<b>939</b>	<b>1,022</b>	<b>1,043</b>	<b>1,049</b>	<b>+110</b>	<b>+11.7%</b>	<b>+27</b>	<b>+2.6%</b>	<b>+6</b>	<b>1,145</b>
Health Care Assistants	799	980	993	995	+195	+24.5%	+14	+1.5%	+1	1,107
Care, other	30	86	90	95	+64	+210.7%	+8	+9.7%	+4	104
<b>Patient &amp; Client Care</b>	<b>830</b>	<b>1,066</b>	<b>1,084</b>	<b>1,089</b>	<b>+260</b>	<b>+31.3%</b>	<b>+23</b>	<b>+2.1%</b>	<b>+5</b>	<b>1,211</b>

# Employment Report by Grade Group: MAY 2023

Galway University

MAY 2023	WTE DEC 2019	WTE DEC 2022	WTE APR 2023	WTE MAY 2023	WTE change since DEC 2019	% WTE Change since Dec 2019	WTE change since DEC 2022	% WTE Change since Dec 2022	WTE change since APR 2023	No. MAY 2023
<b>Overall</b>	<b>3,607</b>	<b>4,280</b>	<b>4,332</b>	<b>4,317</b>	<b>+710</b>	<b>+19.7%</b>	<b>+37</b>	<b>+0.9%</b>	<b>-15</b>	<b>4,800</b>
Consultants	229	254	260	264	+34	+14.9%	+10	+3.8%	+4	291
Registrars	205	235	234	234	+29	+14.1%	-1	-0.4%	+0	249
SHO/ Interns	222	278	282	278	+56	+25.3%	+0	+0.0%	-4	284
Medical/ Dental, other	4	6	6	6	+2	+37.3%	+1	+10.9%	+0	10
<b>Medical &amp; Dental</b>	<b>661</b>	<b>773</b>	<b>782</b>	<b>782</b>	<b>+121.1</b>	<b>+18.3%</b>	<b>+9.3</b>	<b>+1.2%</b>	<b>+0.2</b>	<b>834</b>
Nurse/ Midwife Manager	189	236	244	247	+57	+30.4%	+10	+4.4%	+2	263
Nurse/ Midwife Specialist & AN/MP	86	122	131	128	+42	+49.4%	+6	+5.2%	-3	138
Staff Nurse/ Staff Midwife	1,107	1,234	1,296	1,289	+182	+16.4%	+55	+4.5%	-7	1,462
Public Health Nurse	1				-1	-100.0%				
Nursing/ Midwifery Student	21	98	62	60	+38	+182.2%	-38	-38.9%	-2	103
Nursing/ Midwifery other	10	11	12	13	+3	+28.4%	+2	+18.6%	+1	17
<b>Nursing &amp; Midwifery</b>	<b>1,415</b>	<b>1,700</b>	<b>1,745</b>	<b>1,737</b>	<b>+321.6</b>	<b>+22.7%</b>	<b>+36.1</b>	<b>+2.1%</b>	<b>-8.5</b>	<b>1,983</b>
Therapy Professions	109	152	156	156	+47	+42.9%	+5	+3.2%	+0	172
Health Science/ Diagnostics	295	340	336	332	+37	+12.6%	-9	-2.5%	-4	370
Social Care	2	2	2	2	-0	-2.1%	-0	-5.7%	+0	3
Social Workers	19	28	29	31	+12	+64.9%	+2	+7.8%	+2	33
Psychologists	1	2	4	4	+3	+397.5%	+2	+87.7%	+0	7
Pharmacy	46	71	73	73	+26	+56.2%	+2	+2.2%	-0	81
H&SC, Other	10	17	22	24	+13	+126.5%	+6	+35.4%	+2	34
<b>Health &amp; Social Care Professionals</b>	<b>483</b>	<b>613</b>	<b>621</b>	<b>621</b>	<b>+138.6</b>	<b>+28.7%</b>	<b>+7.9</b>	<b>+1.3%</b>	<b>+0.5</b>	<b>700</b>
Management (VIII & above)	11	12	13	13	+2	+17.7%	+1	+8.0%	-0	13
Administrative/ Supervisory (V to VII)	96	133	146	141	+46	+47.7%	+8	+5.9%	-5	149
Clerical (III & IV)	390	449	430	429	+39	+10.1%	-20	-4.4%	-1	482
<b>Management &amp; Administrative</b>	<b>496</b>	<b>594</b>	<b>589</b>	<b>583</b>	<b>+86.7</b>	<b>+17.5%</b>	<b>-10.9</b>	<b>-1.8%</b>	<b>-6.0</b>	<b>644</b>
Support	236	253	254	250	+14	+5.9%	-3	-1.4%	-4	267
Maintenance/ Technical	36	36	36	36	+1	+2.0%	+1	+1.8%	-0	37
<b>General Support</b>	<b>271</b>	<b>289</b>	<b>290</b>	<b>286</b>	<b>+14.6</b>	<b>+5.4%</b>	<b>-2.8</b>	<b>-1.0%</b>	<b>-4.1</b>	<b>304</b>
Health Care Assistants	265	295	289	289	+24	+9.1%	-5	-1.8%	+0	315
Care, other	15	16	16	18	+4	+24.8%	+3	+17.5%	+3	20
<b>Patient &amp; Client Care</b>	<b>280</b>	<b>310</b>	<b>305</b>	<b>308</b>	<b>+27.8</b>	<b>+9.9%</b>	<b>-2.5</b>	<b>-0.8%</b>	<b>+3.1</b>	<b>335</b>



MAY 2023	WTE DEC 2019	WTE DEC 2022	WTE APR 2023	WTE MAY 2023	WTE change since DEC 2019	% WTE Change since Dec 2019	WTE change since DEC 2022	% WTE Change since Dec 2022	WTE change since APR 2023	No. MAY 2023
<b>Overall</b>	<b>1,607</b>	<b>2,089</b>	<b>2,145</b>	<b>2,140</b>	<b>+533</b>	<b>+33.1%</b>	<b>+51</b>	<b>+2.5%</b>	<b>-5</b>	<b>2,406</b>
Consultants	58	68	69	69	+11	+18.6%	+1	+1.1%	+0	70
Registrars	63	63	66	68	+5	+8.5%	+5	+7.9%	+2	69
SHO/ Interns	87	106	112	113	+26	+30.2%	+6	+5.9%	+1	115
Medical/ Dental, other		0	0	0	+0		+0	+2.3%	+0	1
<b>Medical &amp; Dental</b>	<b>208</b>	<b>238</b>	<b>247</b>	<b>250</b>	<b>+42.8</b>	<b>+20.6%</b>	<b>+12.1</b>	<b>+5.1%</b>	<b>+2.9</b>	<b>255</b>
Nurse/ Midwife Manager	100	132	131	134	+34	+33.8%	+2	+1.7%	+3	148
Nurse/ Midwife Specialist & AN/MP	38	52	57	57	+19	+50.7%	+5	+9.6%	+1	62
Staff Nurse/ Staff Midwife	448	614	632	620	+172	+38.5%	+6	+1.0%	-12	732
Nursing/ Midwifery Student	7	7	11	11	+4	+47.3%	+4	+50.3%	+0	22
Nursing/ Midwifery other	3	4	3	3	-1	-16.3%	-1	-25.3%	-0	3
<b>Nursing &amp; Midwifery</b>	<b>597</b>	<b>810</b>	<b>833</b>	<b>825</b>	<b>+228.6</b>	<b>+38.3%</b>	<b>+15.9</b>	<b>+2.0%</b>	<b>-7.6</b>	<b>967</b>
Therapy Professions	38	50	49	52	+14	+36.1%	+2	+3.6%	+4	57
Health Science/ Diagnostics	91	110	108	107	+17	+18.4%	-2	-2.1%	-1	118
Social Workers	1	3	3	3	+2	+190.9%	-0	-2.4%	-0	3
Pharmacy	21	33	37	38	+17	+80.3%	+5	+16.1%	+1	41
H&SC, Other	2	3	4	4	+2	+144.7%	+1	+39.4%	+0	4
<b>Health &amp; Social Care Professionals</b>	<b>153</b>	<b>198</b>	<b>201</b>	<b>204</b>	<b>+51.6</b>	<b>+33.8%</b>	<b>+5.8</b>	<b>+2.9%</b>	<b>+3.4</b>	<b>223</b>
Management (VIII & above)	6	7	8	8	+2	+37.0%	+1	+15.8%	+0	8
Administrative/ Supervisory (V to VII)	25	54	56	58	+33	+128.5%	+4	+8.3%	+2	59
Clerical (III & IV)	192	245	246	243	+51	+26.3%	-2	-0.7%	-4	267
<b>Management &amp; Administrative</b>	<b>223</b>	<b>305</b>	<b>311</b>	<b>309</b>	<b>+85.3</b>	<b>+38.2%</b>	<b>+3.8</b>	<b>+1.2%</b>	<b>-1.8</b>	<b>334</b>
Support	233	260	266	266	+33	+14.3%	+6	+2.4%	+0	296
Maintenance/ Technical	14	15	16	16	+2	+15.7%	+1	+4.9%	+0	16
<b>General Support</b>	<b>246</b>	<b>275</b>	<b>282</b>	<b>282</b>	<b>+35.5</b>	<b>+14.4%</b>	<b>+7.0</b>	<b>+2.5%</b>	<b>+0.3</b>	<b>312</b>
Health Care Assistants	178	239	248	246	+68	+38.0%	+7	+2.7%	-3	287
Care, other	2	23	23	24	+21	+941.2%	+0	+0.6%	+0	28
<b>Patient &amp; Client Care</b>	<b>180</b>	<b>262</b>	<b>271</b>	<b>269</b>	<b>+88.9</b>	<b>+49.3%</b>	<b>+6.7</b>	<b>+2.5%</b>	<b>-2.4</b>	<b>315</b>



MAY 2023	WTE DEC 2019	WTE DEC 2022	WTE APR 2023	WTE MAY 2023	WTE change since DEC 2019	% WTE Change since Dec 2019	WTE change since DEC 2022	% WTE Change since Dec 2022	WTE change since APR 2023	No. MAY 2023
<b>Overall</b>	<b>1,150</b>	<b>1,435</b>	<b>1,442</b>	<b>1,443</b>	<b>+294</b>	<b>+25.5%</b>	<b>+9</b>	<b>+0.6%</b>	<b>+2</b>	<b>1,612</b>
Consultants	49	54	55	53	+4	+9.1%	-1	-1.8%	-1	56
Registrars	56	67	63	64	+8	+15.0%	-3	-4.2%	+1	65
SHO/ Interns	74	98	96	97	+22	+29.8%	-1	-1.4%	+1	100
Medical/ Dental, other	0	1	1	1	+1	+354.5%	+0	+0.0%	+0	1
<b>Medical &amp; Dental</b>	<b>179</b>	<b>220</b>	<b>215</b>	<b>215</b>	<b>+35.7</b>	<b>+19.9%</b>	<b>-5.1</b>	<b>-2.3%</b>	<b>+0.1</b>	<b>222</b>
Nurse/ Midwife Manager	74	96	94	98	+24	+31.7%	+3	+2.6%	+4	103
Nurse/ Midwife Specialist & AN/MP	22	31	33	36	+14	+65.3%	+5	+15.7%	+3	40
Staff Nurse/ Staff Midwife	391	458	452	444	+53	+13.6%	-14	-3.1%	-8	518
Nursing/ Midwifery Student	0	10	16	18	+18	#####	+7	+71.3%	+2	33
Nursing/ Midwifery other	2	5	5	5	+3	+155.2%	-0	-2.7%	-0	5
<b>Nursing &amp; Midwifery</b>	<b>489</b>	<b>600</b>	<b>600</b>	<b>600</b>	<b>+111.5</b>	<b>+22.8%</b>	<b>+0.8</b>	<b>+0.1%</b>	<b>+0.7</b>	<b>699</b>
Therapy Professions	37	45	46	46	+9	+25.2%	+2	+3.9%	+0	50
Health Science/ Diagnostics	75	101	100	100	+24	+32.3%	-1	-1.4%	-0	111
Social Workers	3	4	5	5	+3	+94.3%	+2	+52.2%	+0	7
Pharmacy	18	26	28	28	+10	+51.7%	+2	+6.2%	+0	32
H&SC, Other	2	2	4	4	+2	+80.9%	+2	+105.9%	+0	5
<b>Health &amp; Social Care Professionals</b>	<b>136</b>	<b>178</b>	<b>183</b>	<b>184</b>	<b>+47.7</b>	<b>+35.1%</b>	<b>+6.0</b>	<b>+3.4%</b>	<b>+0.6</b>	<b>205</b>
Management (VIII & above)	2	6	4	4	+2	+100.0%	-2	-33.1%	+0	4
Administrative/ Supervisory (V to VII)	21	41	50	51	+30	+147.8%	+10	+24.3%	+1	52
Clerical (III & IV)	131	170	161	160	+29	+22.1%	-9	-5.6%	-1	183
<b>Management &amp; Administrative</b>	<b>154</b>	<b>216</b>	<b>215</b>	<b>215</b>	<b>+61.4</b>	<b>+40.0%</b>	<b>-1.5</b>	<b>-0.7%</b>	<b>-0.3</b>	<b>239</b>
Support	38	41	44	46	+8	+20.9%	+5	+12.3%	+1	48
Maintenance/ Technical	19	19	20	20	+1	+3.5%	+1	+6.2%	+0	20
<b>General Support</b>	<b>57</b>	<b>59</b>	<b>64</b>	<b>65</b>	<b>+8.6</b>	<b>+15.1%</b>	<b>+6.2</b>	<b>+10.4%</b>	<b>+1.6</b>	<b>68</b>
Health Care Assistants	134	151	152	150	+16	+11.8%	-1	-0.4%	-2	165
Care, other	1	11	13	14	+13	#####	+3	+26.0%	+1	14
<b>Patient &amp; Client Care</b>	<b>135</b>	<b>162</b>	<b>165</b>	<b>164</b>	<b>+28.7</b>	<b>+21.2%</b>	<b>+2.2</b>	<b>+1.4%</b>	<b>-1.2</b>	<b>179</b>

MAY 2023	WTE DEC 2019	WTE DEC 2022	WTE APR 2023	WTE MAY 2023	WTE change since DEC 2019	% WTE Change since Dec 2019	WTE change since DEC 2022	% WTE Change since Dec 2022	WTE change since APR 2023	No. MAY 2023
<b>Overall</b>	<b>790</b>	<b>982</b>	<b>1,022</b>	<b>1,031</b>	<b>+241</b>	<b>+30.5%</b>	<b>+49</b>	<b>+5.0%</b>	<b>+9</b>	<b>1,139</b>
Consultants	38	37	37	39	+1	+2.8%	+2	+4.5%	+1	42
Registrars	42	53	57	55	+13	+32.2%	+3	+5.1%	-1	56
SHO/ Interns	58	70	73	75	+17	+29.5%	+4	+6.3%	+2	75
<b>Medical &amp; Dental</b>	<b>137</b>	<b>160</b>	<b>167</b>	<b>169</b>	<b>+31.6</b>	<b>+23.0%</b>	<b>+8.8</b>	<b>+5.5%</b>	<b>+2.3</b>	<b>173</b>
Nurse/ Midwife Manager	66	80	90	91	+25	+37.8%	+11	+13.2%	+1	100
Nurse/ Midwife Specialist & AN/MP	19	31	34	35	+16	+83.6%	+4	+13.5%	+2	39
Staff Nurse/ Staff Midwife	236	288	291	291	+55	+23.4%	+3	+1.2%	+1	337
Nursing/ Midwifery Student		3	3	1	+1		-2	-66.7%	-2	1
Nursing/ Midwifery other	1	2	1	1	+1	+59.3%	-1	-43.4%	+0	2
<b>Nursing &amp; Midwifery</b>	<b>322</b>	<b>404</b>	<b>419</b>	<b>420</b>	<b>+97.6</b>	<b>+30.3%</b>	<b>+15.1</b>	<b>+3.7%</b>	<b>+0.7</b>	<b>479</b>
Therapy Professions	16	23	25	25	+9	+59.0%	+2	+7.7%	-0	28
Health Science/ Diagnostics	48	57	59	57	+9	+19.7%	+1	+0.9%	-2	65
Social Workers	4	5	5	5	+1	+20.8%	-1	-10.9%	+0	5
Pharmacy	12	16	16	16	+5	+39.2%	+0	+2.3%	+0	18
H&SC, Other	2	3	4	4	+1	+62.1%	+1	+26.3%	+0	4
<b>Health &amp; Social Care Professionals</b>	<b>81</b>	<b>104</b>	<b>108</b>	<b>106</b>	<b>+25.3</b>	<b>+31.2%</b>	<b>+2.8</b>	<b>+2.7%</b>	<b>-1.7</b>	<b>120</b>
Management (VIII & above)	6	6	6	6	+0	+2.9%	+0	+0.0%	+0	6
Administrative/ Supervisory (V to VII)	21	34	38	38	+17	+77.4%	+4	+11.2%	-0	40
Clerical (III & IV)	84	104	107	111	+26	+31.4%	+7	+6.9%	+4	121
<b>Management &amp; Administrative</b>	<b>111</b>	<b>144</b>	<b>151</b>	<b>155</b>	<b>+43.1</b>	<b>+38.7%</b>	<b>+11.0</b>	<b>+7.7%</b>	<b>+3.2</b>	<b>167</b>
Support	66	77	75	79	+13	+19.3%	+2	+2.9%	+4	87
Maintenance/ Technical	11	11	12	12	+1	+9.0%	+1	+9.0%	+0	12
<b>General Support</b>	<b>77</b>	<b>88</b>	<b>87</b>	<b>91</b>	<b>+13.7</b>	<b>+17.8%</b>	<b>+3.2</b>	<b>+3.7%</b>	<b>+4.2</b>	<b>99</b>
Health Care Assistants	59	82	90	90	+31	+51.9%	+8	+9.3%	+0	100
Care, other	2		1	1	-1	-53.1%	+1		+0	1
<b>Patient &amp; Client Care</b>	<b>61</b>	<b>82</b>	<b>90</b>	<b>91</b>	<b>+29.8</b>	<b>+48.8%</b>	<b>+8.5</b>	<b>+10.3%</b>	<b>+0.3</b>	<b>101</b>

MAY 2023	WTE DEC 2019	WTE DEC 2022	WTE APR 2023	WTE MAY 2023	WTE change since DEC 2019	% WTE Change since Dec 2019	WTE change since DEC 2022	% WTE Change since Dec 2022	WTE change since APR 2023	No. MAY 2023
<b>Overall</b>	<b>333</b>	<b>438</b>	<b>453</b>	<b>458</b>	<b>+125</b>	<b>+37.4%</b>	<b>+20</b>	<b>+4.5%</b>	<b>+5</b>	<b>512</b>
Consultants	10	10	8	8	-2	-18.7%	-2	-17.7%	+0	11
Registrars	7	10	10	10	+3	+43.7%	+0	+1.0%	-0	10
SHO/ Interns	12	12	11	11	-1	-8.3%	-1	-7.6%	+0	11
<b>Medical &amp; Dental</b>	<b>29</b>	<b>32</b>	<b>29</b>	<b>29</b>	<b>+0.0</b>	<b>+0.1%</b>	<b>-2.6</b>	<b>-8.2%</b>	<b>-0.1</b>	<b>32</b>
Nurse/ Midwife Manager	23	32	34	37	+14	+58.8%	+5	+14.2%	+2	39
Nurse/ Midwife Specialist & AN/MP	14	24	24	25	+12	+85.9%	+1	+6.2%	+1	27
Staff Nurse/ Staff Midwife	88	132	136	133	+45	+51.0%	+2	+1.3%	-2	154
Nursing/ Midwifery Student		1	1				-1	-100.0%	-1	
Nursing/ Midwifery other	1	1	1	1	+0	+0.0%	-0	-1.1%	+0	1
<b>Nursing &amp; Midwifery</b>	<b>126</b>	<b>189</b>	<b>196</b>	<b>196</b>	<b>+70.3</b>	<b>+55.8%</b>	<b>+7.2</b>	<b>+3.8%</b>	<b>-0.2</b>	<b>221</b>
Therapy Professions	9	11	11	11	+2	+20.3%	-0	-1.8%	-0	13
Health Science/ Diagnostics	16	20	20	21	+5	+29.3%	+0	+2.4%	+0	24
Social Workers		1	1	1	+1		+1	+122.2%	+0	2
Pharmacy	1	3	4	4	+3	+416.2%	+1	+16.1%	+0	5
<b>Health &amp; Social Care Professionals</b>	<b>26</b>	<b>35</b>	<b>36</b>	<b>37</b>	<b>+10.8</b>	<b>+41.9%</b>	<b>+1.5</b>	<b>+4.2%</b>	<b>+0.6</b>	<b>44</b>
Management (VIII & above)	1	1	1	2	+1	+90.0%	+1	+90.0%	+1	2
Administrative/ Supervisory (V to VII)	11	16	18	19	+9	+80.1%	+3	+20.9%	+1	20
Clerical (III & IV)	48	54	55	55	+7	+15.3%	+1	+1.4%	+0	61
<b>Management &amp; Administrative</b>	<b>59</b>	<b>71</b>	<b>74</b>	<b>76</b>	<b>+16.7</b>	<b>+28.1%</b>	<b>+5.0</b>	<b>+7.0%</b>	<b>+1.7</b>	<b>83</b>
Support	62	67	67	68	+6	+9.9%	+1	+2.2%	+2	76
Maintenance/ Technical	9	9	9	9	+0	+0.0%	+0	+5.8%	+0	9
<b>General Support</b>	<b>71</b>	<b>75</b>	<b>76</b>	<b>77</b>	<b>+6.1</b>	<b>+8.6%</b>	<b>+2.0</b>	<b>+2.6%</b>	<b>+1.8</b>	<b>85</b>
Health Care Assistants	22	36	41	42	+21	+95.1%	+7	+18.3%	+1	46
Care, other	1	1	1	1	+0	+0.0%	-0	-2.0%	+0	1
<b>Patient &amp; Client Care</b>	<b>22</b>	<b>36</b>	<b>42</b>	<b>43</b>	<b>+20.6</b>	<b>+93.0%</b>	<b>+6.5</b>	<b>+18.0%</b>	<b>+0.9</b>	<b>47</b>

MAY 2023	WTE DEC 2019	WTE DEC 2022	WTE APR 2023	WTE MAY 2023	WTE change since DEC 2019	% WTE Change since Dec 2019	WTE change since DEC 2022	% WTE Change since Dec 2022	WTE change since APR 2023	No. MAY 2023
<b>Overall</b>	<b>79</b>	<b>110</b>	<b>116</b>	<b>122</b>	<b>+44</b>	<b>+55.2%</b>	<b>+12</b>	<b>+10.8%</b>	<b>+6</b>	<b>127</b>
Consultants	1	1	1	1	+0	+0.0%	+0	+0.0%	+0	1
<b>Medical &amp; Dental</b>	<b>1</b>	<b>1</b>	<b>1</b>	<b>1</b>	<b>+0.0</b>	<b>+0.0%</b>	<b>+0.0</b>	<b>+0.0%</b>	<b>+0.0</b>	<b>1</b>
Nurse/ Midwife Manager	8	13	15	16	+8	+101.9%	+2	+17.6%	+1	17
Staff Nurse/ Staff Midwife	1	1	1	1	+0	+0.0%	+0	+0.0%	+0	1
Nursing/ Midwifery other	8				-8	-100.0%				
<b>Nursing &amp; Midwifery</b>	<b>16</b>	<b>14</b>	<b>16</b>	<b>17</b>	<b>+0.4</b>	<b>+2.6%</b>	<b>+2.4</b>	<b>+16.3%</b>	<b>+0.7</b>	<b>18</b>
Therapy Professions	1	1	1	1	+0	+0.0%	+0	+0.0%	+0	1
Health Science/ Diagnostics		1	1	1	+1		+0	+0.0%	+0	1
<b>Health &amp; Social Care Professionals</b>	<b>1</b>	<b>2</b>	<b>2</b>	<b>2</b>	<b>+1.0</b>	<b>+100.0%</b>	<b>+0.0</b>	<b>+0.0%</b>	<b>+0.0</b>	<b>2</b>
Management (VIII & above)	17	21	23	24	+7	+38.8%	+3	+14.5%	+1	24
Administrative/ Supervisory (V to VII)	36	57	57	59	+23	+63.6%	+2	+3.3%	+2	61
Clerical (III & IV)	7	15	18	20	+12	+170.5%	+5	+30.7%	+2	21
<b>Management &amp; Administrative</b>	<b>61</b>	<b>93</b>	<b>97</b>	<b>103</b>	<b>+42.1</b>	<b>+69.5%</b>	<b>+9.5</b>	<b>+10.3%</b>	<b>+5.3</b>	<b>106</b>

MAY 2023	WTE DEC 2019	WTE DEC 2022	WTE APR 2023	WTE MAY 2023	WTE change since DEC 2019	% WTE Change since Dec 2019	WTE change since DEC 2022	% WTE Change since Dec 2022	WTE change since APR 2023	No. MAY 2023
<b>Overall</b>	<b>1,688</b>	<b>1,993</b>	<b>2,053</b>	<b>2,069</b>	<b>+381</b>	<b>+22.6%</b>	<b>+76</b>	<b>+3.8%</b>	<b>+16</b>	<b>2,319</b>
Consultants	77	87	86	87	+9	+12.1%	-0	-0.2%	+0	89
Registrars	72	79	87	84	+12	+16.4%	+5	+6.1%	-2	90
SHO/ Interns	82	103	101	100	+18	+22.4%	-3	-2.7%	-0	105
Medical/ Dental, other	6	5	5	6	+0	+0.9%	+1	+13.5%	+0	8
<b>Medical &amp; Dental</b>	<b>237</b>	<b>274</b>	<b>279</b>	<b>277</b>	<b>+39.6</b>	<b>+16.7%</b>	<b>+2.4</b>	<b>+0.9%</b>	<b>-1.9</b>	<b>292</b>
Nurse/ Midwife Manager	106	124	130	129	+24	+22.3%	+6	+4.7%	-0	140
Nurse/ Midwife Specialist & AN/MP	40	55	57	56	+16	+40.9%	+1	+2.7%	-1	60
Staff Nurse/ Staff Midwife	494	577	595	594	+101	+20.4%	+17	+3.0%	-0	693
Nursing/ Midwifery Student	21	2	17	17	-4	-16.9%	+16	#####	-0	37
Nursing/ Midwifery other	8	11	11	11	+3	+35.7%	+0	+1.4%	+0	12
<b>Nursing &amp; Midwifery</b>	<b>669</b>	<b>768</b>	<b>810</b>	<b>809</b>	<b>+140.1</b>	<b>+21.0%</b>	<b>+40.8</b>	<b>+5.3%</b>	<b>-1.2</b>	<b>942</b>
Therapy Professions	52	67	70	72	+21	+39.8%	+5	+7.6%	+2	82
Health Science/ Diagnostics	93	109	106	103	+11	+11.5%	-6	-5.1%	-3	114
Social Workers		2	2	2	+2		+0	+8.1%	+0	3
Psychologists		1	1	1	+1		+0	+1.0%	+0	1
Pharmacy	38	42	40	40	+1	+3.1%	-3	-6.1%	+0	44
H&SC, Other	3	6	9	9	+6	+201.4%	+3	+53.0%	+0	10
<b>Health &amp; Social Care Professionals</b>	<b>186</b>	<b>227</b>	<b>228</b>	<b>227</b>	<b>+41.5</b>	<b>+22.4%</b>	<b>+0.2</b>	<b>+0.1%</b>	<b>-0.5</b>	<b>254</b>
Management (VIII & above)	8	9	9	8	+1	+6.7%	-1	-6.3%	-1	9
Administrative/ Supervisory (V to VII)	27	49	52	52	+25	+93.1%	+3	+6.5%	+1	54
Clerical (III & IV)	195	217	221	234	+39	+20.0%	+17	+8.0%	+13	257
<b>Management &amp; Administrative</b>	<b>230</b>	<b>275</b>	<b>282</b>	<b>295</b>	<b>+64.8</b>	<b>+28.1%</b>	<b>+20.1</b>	<b>+7.3%</b>	<b>+13.4</b>	<b>320</b>
Support	201	222	230	232	+31	+15.6%	+10	+4.7%	+2	262
Maintenance/ Technical	15	14	15	15	+0	+1.7%	+1	+4.6%	-0	15
<b>General Support</b>	<b>215</b>	<b>236</b>	<b>245</b>	<b>247</b>	<b>+31.6</b>	<b>+14.7%</b>	<b>+11.0</b>	<b>+4.7%</b>	<b>+1.9</b>	<b>277</b>
Health Care Assistants	141	178	173	177	+37	+26.0%	-0	-0.2%	+4	194
Care, other	10	36	37	37	+27	+270.4%	+2	+5.2%	+0	40
<b>Patient &amp; Client Care</b>	<b>151</b>	<b>213</b>	<b>210</b>	<b>215</b>	<b>+63.9</b>	<b>+42.4%</b>	<b>+1.4</b>	<b>+0.7%</b>	<b>+4.6</b>	<b>234</b>

## Employment Report by Grade Group: MAY 2023

Employment by Grade Group MAY 2023	WTE DEC 2019	WTE DEC 2022	WTE APR 2023	WTE MAY 2023	WTE change since DEC 2019	% WTE Change since Dec 2019	WTE change since DEC 2022	% WTE Change since Dec 2022	WTE change since APR 2023	No. MAY 2023
<b>Overall</b>	<b>9,253</b>	<b>11,327</b>	<b>11,563</b>	<b>11,580</b>	<b>+2,327</b>	<b>+25.1%</b>	<b>+254</b>	<b>+2.2%</b>	<b>+17</b>	<b>12,915</b>
Consultant Anaesthesia	67	68	68	70	+4	+5.3%	+2	+2.8%	+2	74
Consultant Dentistry	4	4	5	5	+1	+22.0%	+1	+20.6%	+0	6
Consultant Emergency Medicine	20	23	21	20	+0	+0.5%	-2	-10.6%	-1	22
Consultant Intensive Care Medicine	1	1	1	1	+0	+0.0%	+0	+0.0%	+0	1
Consultant Medicine	129	157	161	161	+32	+24.6%	+5	+2.9%	+0	173
Consultant Obstetrics & Gynaecology	27	28	28	29	+2	+8.0%	+1	+2.9%	+0	31
Consultant Paediatrics	29	36	33	33	+4	+13.1%	-3	-8.1%	+0	37
Consultant Pathology	49	50	53	53	+5	+9.8%	+3	+5.9%	+1	57
Consultant Psychiatry	1	1			-1	-100.0%	-1	-100.0%		
Consultant Radiology	44	45	46	48	+4	+9.3%	+3	+7.5%	+2	49
Consultant Surgery	92	99	100	100	+8	+8.5%	+1	+1.0%	+0	110
<b>Consultants</b>	<b>463</b>	<b>511</b>	<b>516</b>	<b>521</b>	<b>+58</b>	<b>+12.5%</b>	<b>+9</b>	<b>+1.8%</b>	<b>+5</b>	<b>560</b>
Registrar	294	328	337	340	+47	+15.9%	+12	+3.7%	+3	360
Senior Registrar	14	20	25	24	+10	+71.0%	+4	+21.0%	-1	24
Specialist Registrar	137	159	155	151	+14	+10.4%	-7	-4.7%	-3	155
<b>Registrars</b>	<b>445</b>	<b>507</b>	<b>517</b>	<b>516</b>	<b>+71</b>	<b>+15.9%</b>	<b>+9</b>	<b>+1.7%</b>	<b>-1</b>	<b>539</b>
Interns	130	132	131	130	+0	+0.4%	-1	-0.9%	-1	131
Senior House Officer	405	537	543	543	+139	+34.2%	+7	+1.3%	+1	559
<b>SHO/ Interns</b>	<b>535</b>	<b>668</b>	<b>674</b>	<b>674</b>	<b>+139</b>	<b>+26.0%</b>	<b>+6</b>	<b>+0.9%</b>	<b>-0</b>	<b>690</b>
Dentists	8	7	7	7	-0	-6.4%	+0	+2.0%	+0	8
Other Medical	3	5	5	6	+3	+129.4%	+1	+23.1%	+1	12
<b>Medical/ Dental, other</b>	<b>10</b>	<b>12</b>	<b>12</b>	<b>13</b>	<b>+3</b>	<b>+28.7%</b>	<b>+1</b>	<b>+10.7%</b>	<b>+1</b>	<b>20</b>
<b>Medical &amp; Dental</b>	<b>1,452</b>	<b>1,698</b>	<b>1,720</b>	<b>1,723</b>	<b>+271</b>	<b>+18.6%</b>	<b>+25</b>	<b>+1.5%</b>	<b>+4</b>	<b>1,809</b>
Clinical Nurse/ Midwife Manager	496	626	648	659	+163	+32.9%	+33	+5.2%	+11	714
Director Nursing/Midwifery, Assistant	55	68	72	73	+18	+33.2%	+5	+7.3%	+1	76
Director of Nursing/Midwifery	16	19	19	20	+4	+24.0%	+1	+4.6%	+1	20
<b>Nurse/ Midwife Manager</b>	<b>567</b>	<b>713</b>	<b>739</b>	<b>752</b>	<b>+185</b>	<b>+32.6%</b>	<b>+39</b>	<b>+5.4%</b>	<b>+13</b>	<b>810</b>
Advanced Nurse/ Midwife Practitioner	74	128	135	141	+66	+88.6%	+12	+9.5%	+6	146
Clinical Nurse/ Midwife Specialist	144	186	201	198	+54	+37.5%	+11	+6.1%	-3	220
<b>Nurse/ Midwife Specialist &amp; AN/MP</b>	<b>218</b>	<b>315</b>	<b>336</b>	<b>338</b>	<b>+120</b>	<b>+54.9%</b>	<b>+23</b>	<b>+7.5%</b>	<b>+2</b>	<b>366</b>
Staff Midwives	236	289	300	298	+62	+26.4%	+9	+3.1%	-2	362
Staff Nurses [General/ Children's]	2,528	3,014	3,101	3,074	+546	+21.6%	+61	+2.0%	-27	3,535
<b>Staff Nurse/ Staff Midwife</b>	<b>2,764</b>	<b>3,303</b>	<b>3,401</b>	<b>3,373</b>	<b>+608</b>	<b>+22.0%</b>	<b>+70</b>	<b>+2.1%</b>	<b>-28</b>	<b>3,897</b>
Public Health Nurse	1				-1	-100.0%				
<b>Public Health Nurse</b>	<b>1</b>				<b>-1</b>	<b>-100.0%</b>				
Nursing/ Midwifery awaiting registration	36	101	19	10	-26	-70.9%	-91	-89.6%	-8	12
Post-registration Nurse/ Midwife Student	12	9	12	12	+0	+0.0%	+3	+34.2%	+0	12
Pre-registration Nurse/ Midwife Intern	2	10	80	84	+83	+5,247.5%	+74	+719.5%	+5	172
<b>Nursing/ Midwifery Student</b>	<b>50</b>	<b>120</b>	<b>110</b>	<b>107</b>	<b>+57</b>	<b>+115.3%</b>	<b>-13</b>	<b>-11.2%</b>	<b>-3</b>	<b>196</b>
Nursing Education/Clinical	33	34	33	34	+1	+3.1%	+0	+0.1%	+1	40
<b>Nursing/ Midwifery other</b>	<b>33</b>	<b>34</b>	<b>33</b>	<b>34</b>	<b>+1</b>	<b>+3.1%</b>	<b>+0</b>	<b>+0.1%</b>	<b>+1</b>	<b>40</b>
<b>Nursing &amp; Midwifery</b>	<b>3,633</b>	<b>4,485</b>	<b>4,619</b>	<b>4,603</b>	<b>+970</b>	<b>+26.7%</b>	<b>+118</b>	<b>+2.6%</b>	<b>-15</b>	<b>5,309</b>
Dietitians	37	49	53	53	+16	+42.4%	+4	+8.3%	+0	62

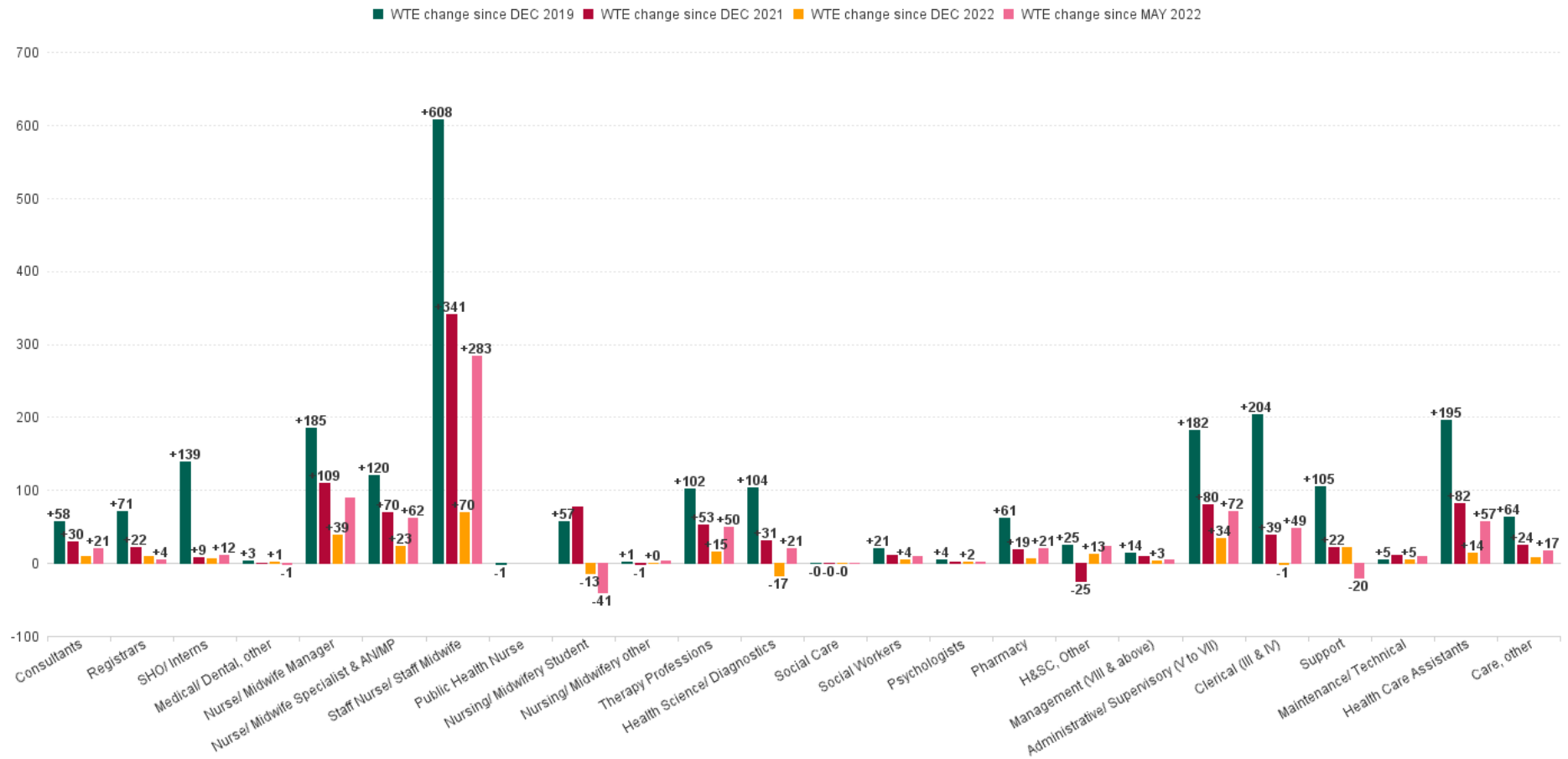


Employment by Grade Group MAY 2023	WTE DEC 2019	WTE DEC 2022	WTE APR 2023	WTE MAY 2023	WTE change since DEC 2019	% WTE Change since Dec 2019	WTE change since DEC 2022	% WTE Change since Dec 2022	WTE change since APR 2023	No. MAY 2023
<b>Overall</b>	<b>9,253</b>	<b>11,327</b>	<b>11,563</b>	<b>11,580</b>	<b>+2,327</b>	<b>+25.1%</b>	<b>+254</b>	<b>+2.2%</b>	<b>+17</b>	<b>12,915</b>
Occupational Therapists	57	79	83	85	+28	+49.7%	+6	+7.8%	+2	93
Orthoptists	6	5	6	6	-0	-0.2%	+1	+15.6%	+0	6
Physiotherapists	141	181	185	187	+46	+32.6%	+6	+3.4%	+2	207
Podiatrists & Chiropodists	5	5	4	5	+0	+9.9%	+0	+2.9%	+1	5
Speech & Language Therapists	16	30	27	27	+11	+69.4%	-2	-7.7%	+0	30
<b>Therapy Professions</b>	<b>262</b>	<b>349</b>	<b>358</b>	<b>364</b>	<b>+102</b>	<b>+38.8%</b>	<b>+15</b>	<b>+4.3%</b>	<b>+6</b>	<b>403</b>
Audiology	6	7	8	7	+1	+20.0%	-0	-0.4%	-1	8
Biochemists	2	1	2	2	+0	+0.0%	+1	+100.0%	+1	2
Cardiac Physiologists	36	37	37	35	-1	-3.6%	-1	-4.0%	-2	40
Clinical Engineering	19	20	21	21	+2	+12.6%	+1	+5.3%	-0	22
Dosimetrists	3	5	4	4	+1	+34.7%	-1	-20.0%	+0	4
E.C.G. Technicians	2	1	1	1	-1	-43.9%	-0	-16.2%	+0	2
Gastrointestinal Physiologists		1	1	1	+1		+0	+1.0%	+0	1
Medical Science	309	358	351	346	+37	+11.8%	-12	-3.3%	-6	376
Neuro-Physiologists	3	3	3	3	+0	+4.1%	+0	+0.3%	+0	4
Perfusionists	4	3	3	3	-1	-37.0%	-1	-16.7%	-1	3
Phlebotomists	21	29	30	28	+8	+37.1%	-1	-2.2%	-2	35
Physicists	16	23	24	24	+8	+50.1%	+1	+3.5%	+0	24
Radiation Therapists	21	35	40	40	+19	+91.9%	+5	+13.0%	+0	43
Radiographers	165	202	192	193	+28	+17.0%	-9	-4.4%	+1	225
Respiratory Physiologists	8	10	10	10	+2	+30.9%	+0	+3.8%	+0	10
Vascular Physiologists	4	4	4	4	+0	+1.3%	-0	-3.3%	+0	4
<b>Health Science/ Diagnostics</b>	<b>617</b>	<b>738</b>	<b>730</b>	<b>721</b>	<b>+104</b>	<b>+16.8%</b>	<b>-17</b>	<b>-2.3%</b>	<b>-9</b>	<b>803</b>
Social Care	2	2	2	2	-0	-2.1%	-0	-5.7%	+0	3
<b>Social Care</b>	<b>2</b>	<b>2</b>	<b>2</b>	<b>2</b>	<b>-0</b>	<b>-2.1%</b>	<b>-0</b>	<b>-5.7%</b>	<b>+0</b>	<b>3</b>
Social Workers	26	43	45	47	+21	+78.8%	+4	+9.9%	+2	53
<b>Social Workers</b>	<b>26</b>	<b>43</b>	<b>45</b>	<b>47</b>	<b>+21</b>	<b>+78.8%</b>	<b>+4</b>	<b>+9.9%</b>	<b>+2</b>	<b>53</b>
Psychologists	1	3	5	5	+4	+522.5%	+2	+60.1%	+0	8
<b>Psychologists</b>	<b>1</b>	<b>3</b>	<b>5</b>	<b>5</b>	<b>+4</b>	<b>+522.5%</b>	<b>+2</b>	<b>+60.1%</b>	<b>+0</b>	<b>8</b>
Pharmacists	75	96	94	95	+21	+28.1%	-1	-0.7%	+1	111
Pharmacy Technicians	62	95	102	103	+40	+65.1%	+7	+7.8%	+0	110
<b>Pharmacy</b>	<b>137</b>	<b>191</b>	<b>197</b>	<b>198</b>	<b>+61</b>	<b>+44.9%</b>	<b>+7</b>	<b>+3.5%</b>	<b>+1</b>	<b>221</b>
Counsellor Therapists	1	1	1	1	-0	-21.3%	-0	-1.6%	+0	1
Dental Hygienists	1	1	1	1	+0	+0.0%	+0	+0.0%	+0	1
HSCP Trainees/Students	14	21	31	33	+19	+134.3%	+12	+58.9%	+2	43
Other Health & Social Care	1	5	6	6	+5	+500.0%	+1	+20.5%	+0	6
Play Therapists/ Specialists	3	4	4	4	+1	+41.6%	+0	+3.7%	-0	6
<b>H&amp;SC, Other</b>	<b>19</b>	<b>31</b>	<b>42</b>	<b>44</b>	<b>+25</b>	<b>+126.7%</b>	<b>+13</b>	<b>+42.9%</b>	<b>+2</b>	<b>57</b>
<b>Health &amp; Social Care Professionals</b>	<b>1,065</b>	<b>1,357</b>	<b>1,378</b>	<b>1,381</b>	<b>+317</b>	<b>+29.7%</b>	<b>+24</b>	<b>+1.8%</b>	<b>+3</b>	<b>1,548</b>
Executive Management	6	9	9	9	+3	+50.0%	+0	+0.1%	+0	9
Senior Management (VIII & GM)	45	53	55	56	+11	+25.4%	+3	+6.5%	+1	57
<b>Management (VIII &amp; above)</b>	<b>51</b>	<b>62</b>	<b>64</b>	<b>65</b>	<b>+14</b>	<b>+28.3%</b>	<b>+3</b>	<b>+5.6%</b>	<b>+1</b>	<b>66</b>
Middle Management (V-VII)	232	377	408	408	+177	+76.3%	+31	+8.2%	+0	425
Other Administrative	5	7	9	10	+5	+100.0%	+3	+50.6%	+1	10
<b>Administrative/ Supervisory (V to VII)</b>	<b>237</b>	<b>384</b>	<b>417</b>	<b>418</b>	<b>+182</b>	<b>+76.8%</b>	<b>+34</b>	<b>+9.0%</b>	<b>+1</b>	<b>435</b>
General Administrative (III & IV)	1,048	1,252	1,238	1,251	+204	+19.5%	-1	-0.1%	+13	1,392
<b>Clerical (III &amp; IV)</b>	<b>1,048</b>	<b>1,252</b>	<b>1,238</b>	<b>1,251</b>	<b>+204</b>	<b>+19.5%</b>	<b>-1</b>	<b>-0.1%</b>	<b>+13</b>	<b>1,392</b>

Employment by Grade Group MAY 2023	WTE DEC 2019	WTE DEC 2022	WTE APR 2023	WTE MAY 2023	WTE change since DEC 2019	% WTE Change since Dec 2019	WTE change since DEC 2022	% WTE Change since Dec 2022	WTE change since APR 2023	No. MAY 2023
<b>Overall</b>	<b>9,253</b>	<b>11,327</b>	<b>11,563</b>	<b>11,580</b>	<b>+2,327</b>	<b>+25.1%</b>	<b>+254</b>	<b>+2.2%</b>	<b>+17</b>	<b>12,915</b>
<b>Management &amp; Administrative</b>	<b>1,335</b>	<b>1,698</b>	<b>1,720</b>	<b>1,735</b>	<b>+400</b>	<b>+30.0%</b>	<b>+37</b>	<b>+2.2%</b>	<b>+15</b>	<b>1,893</b>
Catering	64	62	66	67	+2	+3.7%	+5	+7.9%	+0	74
Household Services	381	451	451	455	+75	+19.6%	+4	+0.9%	+4	520
Other Labs & Associated	56	108	114	116	+60	+107.9%	+8	+7.8%	+2	120
Other Support	145	145	147	150	+4	+3.1%	+5	+3.5%	+3	163
Portering	190	154	158	153	-36	-19.2%	-0	-0.3%	-5	159
<b>Support</b>	<b>836</b>	<b>919</b>	<b>936</b>	<b>941</b>	<b>+105</b>	<b>+12.6%</b>	<b>+22</b>	<b>+2.4%</b>	<b>+5</b>	<b>1,036</b>
Maintenance	102	102	107	107	+5	+4.7%	+5	+4.6%	+0	108
Technical Services	1	1	1	1	+0	+0.0%	+0	+0.0%	+0	1
<b>Maintenance/ Technical</b>	<b>103</b>	<b>103</b>	<b>108</b>	<b>108</b>	<b>+5</b>	<b>+4.6%</b>	<b>+5</b>	<b>+4.5%</b>	<b>+0</b>	<b>109</b>
<b>General Support</b>	<b>939</b>	<b>1,022</b>	<b>1,043</b>	<b>1,049</b>	<b>+110</b>	<b>+11.7%</b>	<b>+27</b>	<b>+2.6%</b>	<b>+6</b>	<b>1,145</b>
Attendant/ Aide	166	196	195	194	+28	+16.7%	-3	-1.3%	-2	207
Health Care Assistant/ Care Assistant	602	727	745	746	+144	+23.9%	+19	+2.6%	+1	836
Health & Social Care Assistants	31	57	53	55	+24	+77.2%	-2	-2.7%	+2	64
<b>Health Care Assistants</b>	<b>799</b>	<b>980</b>	<b>993</b>	<b>995</b>	<b>+195</b>	<b>+24.5%</b>	<b>+14</b>	<b>+1.5%</b>	<b>+1</b>	<b>1,107</b>
Other Care Grades	22	80	83	88	+66	+302.5%	+8	+9.4%	+4	94
Pastoral Care	9	6	7	7	-2	-19.5%	+1	+14.0%	+0	10
<b>Care, other</b>	<b>30</b>	<b>86</b>	<b>90</b>	<b>95</b>	<b>+64</b>	<b>+210.7%</b>	<b>+8</b>	<b>+9.7%</b>	<b>+4</b>	<b>104</b>
<b>Patient &amp; Client Care</b>	<b>830</b>	<b>1,066</b>	<b>1,084</b>	<b>1,089</b>	<b>+260</b>	<b>+31.3%</b>	<b>+23</b>	<b>+2.1%</b>	<b>+5</b>	<b>1,211</b>



## WTE Change by Staff Group



## Employment Report by WTE, Headcount, Gender, Full-Time / Part-Time etc. MAY 2023

Demographic Grade Group MAY 2023	WTE MAY 2023	No. MAY 2023	WTE : No	Number Male %	Number Female %	Male WTE : No.	Female WTE : No	Perm Count %	Perm Count Male %	Perm Count Female %	Fulltime Count %	Part time Count %	FT Count Male %	FT Count Female %
<b>Total</b>	<b>11,580</b>	<b>12,915</b>	<b>1:0.9</b>	<b>22.21%</b>	<b>77.79%</b>	<b>1:1</b>	<b>1:0.9</b>	<b>79.37%</b>	<b>14.36%</b>	<b>65.01%</b>	<b>74.61%</b>	<b>25.39%</b>	<b>92.05%</b>	<b>69.63%</b>
Consultant Anaesthesia	70.11	74	1:0.9	63.51%	36.49%	1:0.9	1:0.9	74.32%	47.30%	27.03%	90.54%	9.46%	93.62%	85.19%
Consultant Emergency Medicine	20.25	22	1:0.9	54.55%	45.45%	1:0.9	1:0.9	77.27%	40.91%	36.36%	81.82%	18.18%	91.67%	70.00%
Consultant Medicine	161.11	173	1:0.9	54.34%	45.66%	1:0.9	1:1	73.99%	39.31%	34.68%	81.50%	18.50%	80.85%	82.28%
Consultant Paediatrics	32.95	37	1:0.9	43.24%	56.76%	1:0.9	1:0.9	72.97%	29.73%	43.24%	78.38%	21.62%	81.25%	76.19%
Consultant Surgery	100.12	110	1:0.9	81.82%	18.18%	1:0.9	1:0.9	75.45%	60.00%	15.45%	86.36%	13.64%	87.78%	80.00%
Consultant Dentistry	5.1	6	1:0.9	16.67%	83.33%	1:1	1:0.8	66.67%	16.67%	50.00%	83.33%	16.67%	100.00%	80.00%
Consultant Obstetrics & Gynaecology	28.76	31	1:0.9	54.84%	45.16%	1:0.9	1:0.9	77.42%	41.94%	35.48%	90.32%	9.68%	94.12%	85.71%
Consultant Pathology	53.29	57	1:0.9	40.35%	59.65%	1:0.9	1:0.9	91.23%	35.09%	56.14%	84.21%	15.79%	86.96%	82.35%
Consultant Radiology	47.92	49	1:1	59.18%	40.82%	1:1	1:1	75.51%	46.94%	28.57%	100.00%		100.00%	100.00%
Consultant Intensive Care Medicine	1	1	1:1		100.00%	1:	1:1	100.00%		100.00%	100.00%			100.00%
<b>Consultants</b>	<b>520.61</b>	<b>560</b>	<b>1:0.9</b>	<b>58.75%</b>	<b>41.25%</b>	<b>1:0.9</b>	<b>1:0.9</b>	<b>76.43%</b>	<b>43.93%</b>	<b>32.50%</b>	<b>85.89%</b>	<b>14.11%</b>	<b>87.84%</b>	<b>83.12%</b>
Registrar	340.44	360	1:0.9	61.67%	38.33%	1:1	1:0.9	5.00%	3.61%	1.39%	92.50%	7.50%	95.50%	87.68%
Specialist Registrar	151.27	155	1:1	36.13%	63.87%	1:1	1:1				96.77%	3.23%	98.21%	95.96%
Senior Registrar	23.8	24	1:1	79.17%	20.83%	1:1	1:1	20.83%	16.67%	4.17%	100.00%		100.00%	100.00%
<b>Registrars</b>	<b>515.51</b>	<b>539</b>	<b>1:1</b>	<b>55.10%</b>	<b>44.90%</b>	<b>1:1</b>	<b>1:0.9</b>	<b>4.27%</b>	<b>3.15%</b>	<b>1.11%</b>	<b>94.06%</b>	<b>5.94%</b>	<b>96.30%</b>	<b>91.32%</b>
Senior House Officer	543.46	559	1:1	49.55%	50.45%	1:1	1:1	0.18%	0.18%		99.11%	0.89%	99.64%	98.58%
Interns	130.41	131	1:1	50.38%	49.62%	1:1	1:1				100.00%		100.00%	100.00%
<b>SHO/ Interns</b>	<b>673.87</b>	<b>690</b>	<b>1:1</b>	<b>49.71%</b>	<b>50.29%</b>	<b>1:1</b>	<b>1:1</b>	<b>0.14%</b>	<b>0.14%</b>		<b>99.28%</b>	<b>0.72%</b>	<b>99.71%</b>	<b>98.85%</b>
Dentists	7.11	8	1:0.9	12.50%	87.50%	1:0.5	1:0.9	87.50%		87.50%	50.00%	50.00%		57.14%
Other Medical	6.08	12	1:0.5	16.67%	83.33%	1:0.5	1:0.5	41.67%	8.33%	33.33%	25.00%	75.00%	100.00%	10.00%
<b>Medical/ Dental, other</b>	<b>13.19</b>	<b>20</b>	<b>1:0.7</b>	<b>15.00%</b>	<b>85.00%</b>	<b>1:0.5</b>	<b>1:0.7</b>	<b>60.00%</b>	<b>5.00%</b>	<b>55.00%</b>	<b>35.00%</b>	<b>65.00%</b>	<b>66.67%</b>	<b>29.41%</b>
<b>Medical &amp; Dental</b>	<b>1,723</b>	<b>1,809</b>	<b>1:1</b>	<b>53.73%</b>	<b>46.27%</b>	<b>1:1</b>	<b>1:0.9</b>	<b>25.65%</b>	<b>14.65%</b>	<b>11.00%</b>	<b>92.87%</b>	<b>7.13%</b>	<b>94.55%</b>	<b>90.92%</b>
Clinical Nurse/ Midwife Manager	658.76	714	1:0.9	7.28%	92.72%	1:1	1:0.9	98.60%	6.86%	91.74%	78.15%	21.85%	84.62%	77.64%
Director Nursing/Midwifery, Assistant	73.32	76	1:1	7.89%	92.11%	1:1	1:1	100.00%	7.89%	92.11%	86.84%	13.16%	83.33%	87.14%
Director of Nursing/Midwifery	19.84	20	1:1	15.00%	85.00%	1:1	1:1	95.00%	10.00%	85.00%	95.00%	5.00%	66.67%	100.00%
<b>Nurse/ Midwife Manager</b>	<b>751.92</b>	<b>810</b>	<b>1:0.9</b>	<b>7.53%</b>	<b>92.47%</b>	<b>1:1</b>	<b>1:0.9</b>	<b>98.64%</b>	<b>7.04%</b>	<b>91.60%</b>	<b>79.38%</b>	<b>20.62%</b>	<b>83.61%</b>	<b>79.04%</b>
Advanced Nurse/ Midwife Practitioner	140.5	146	1:1	10.27%	89.73%	1:1	1:1	93.84%	9.59%	84.25%	89.73%	10.27%	100.00%	88.55%
Clinical Nurse/ Midwife Specialist	197.54	220	1:0.9	2.73%	97.27%	1:1	1:0.9	99.09%	2.73%	96.36%	74.55%	25.45%	100.00%	73.83%



Demographic Grade Group MAY 2023	WTE MAY 2023	No. MAY 2023	WTE : No	Number Male %	Number Female %	Male WTE : No.	Female WTE : No	Perm Count %	Perm Count Male %	Perm Count Female %	Fulltime Count %	Part time Count %	FT Count Male %	FT Count Female %
<b>Total</b>	<b>11,580</b>	<b>12,915</b>	<b>1:0.9</b>	<b>22.21%</b>	<b>77.79%</b>	<b>1:1</b>	<b>1:0.9</b>	<b>79.37%</b>	<b>14.36%</b>	<b>65.01%</b>	<b>74.61%</b>	<b>25.39%</b>	<b>92.05%</b>	<b>69.63%</b>
<b>Nurse/ Midwife Specialist &amp; AN/MP</b>	<b>338.04</b>	<b>366</b>	<b>1:0.9</b>	<b>5.74%</b>	<b>94.26%</b>	<b>1:1</b>	<b>1:0.9</b>	<b>96.99%</b>	<b>5.46%</b>	<b>91.53%</b>	<b>80.60%</b>	<b>19.40%</b>	<b>100.00%</b>	<b>79.42%</b>
Staff Midwives	298.19	362	1:0.8	0.28%	99.72%	1:1	1:0.8	91.71%	0.28%	91.44%	49.72%	50.28%	100.00%	49.58%
Staff Nurses [General/ Children's]	3,074.33	3,535	1:0.9	8.63%	91.37%	1:0.9	1:0.9	93.47%	8.26%	85.21%	64.87%	35.13%	90.16%	62.48%
<b>Staff Nurse/ Staff Midwife</b>	<b>3,372.52</b>	<b>3,897</b>	<b>1:0.9</b>	<b>7.85%</b>	<b>92.15%</b>	<b>1:0.9</b>	<b>1:0.9</b>	<b>93.30%</b>	<b>7.52%</b>	<b>85.78%</b>	<b>63.46%</b>	<b>36.54%</b>	<b>90.20%</b>	<b>61.18%</b>
Pre-registration Nurse/ Midwife Intern	84.49	172	1:0.5	2.33%	97.67%	1:0.5	1:0.5	0.58%		0.58%	36.05%	63.95%	50.00%	35.71%
Post-registration Nurse/ Midwife Student	12	12	1:1		100.00%	1:	1:1	41.67%		41.67%	100.00%			100.00%
Nursing/ Midwifery awaiting registration	10.49	12	1:0.9	16.67%	83.33%	1:1	1:0.9				50.00%	50.00%		60.00%
<b>Nursing/ Midwifery Student</b>	<b>106.98</b>	<b>196</b>	<b>1:0.5</b>	<b>3.06%</b>	<b>96.94%</b>	<b>1:0.7</b>	<b>1:0.5</b>	<b>3.06%</b>		<b>3.06%</b>	<b>40.82%</b>	<b>59.18%</b>	<b>33.33%</b>	<b>41.05%</b>
Nursing Education/Clinical	33.91	40	1:0.8	2.50%	97.50%	1:1	1:0.8	97.50%	2.50%	95.00%	62.50%	37.50%	100.00%	61.54%
<b>Nursing/ Midwifery other</b>	<b>33.91</b>	<b>40</b>	<b>1:0.8</b>	<b>2.50%</b>	<b>97.50%</b>	<b>1:1</b>	<b>1:0.8</b>	<b>97.50%</b>	<b>2.50%</b>	<b>95.00%</b>	<b>62.50%</b>	<b>37.50%</b>	<b>100.00%</b>	<b>61.54%</b>
<b>Nursing &amp; Midwifery</b>	<b>4,603</b>	<b>5,309</b>	<b>1:0.9</b>	<b>7.44%</b>	<b>92.56%</b>	<b>1:0.9</b>	<b>1:0.9</b>	<b>91.07%</b>	<b>6.99%</b>	<b>84.08%</b>	<b>66.23%</b>	<b>33.77%</b>	<b>88.86%</b>	<b>64.41%</b>
Occupational Therapists	84.95	93	1:0.9	6.45%	93.55%	1:0.8	1:0.9	86.02%	5.38%	80.65%	87.10%	12.90%	83.33%	87.36%
Speech & Language Therapists	27.25	30	1:0.9		100.00%	1:	1:0.9	76.67%		76.67%	83.33%	16.67%		83.33%
Dietitians	53.38	62	1:0.9		100.00%	1:	1:0.9	91.94%		91.94%	77.42%	22.58%		77.42%
Physiotherapists	187.15	207	1:0.9	25.60%	74.40%	1:1	1:0.9	89.86%	22.22%	67.63%	81.64%	18.36%	96.23%	76.62%
Orthoptists	5.93	6	1:1	33.33%	66.67%	1:1	1:1	100.00%	33.33%	66.67%	100.00%		100.00%	100.00%
Podiatrists & Chiropodists	5	5	1:1	20.00%	80.00%	1:1	1:1	100.00%	20.00%	80.00%	100.00%		100.00%	100.00%
<b>Therapy Professions</b>	<b>363.66</b>	<b>403</b>	<b>1:0.9</b>	<b>15.38%</b>	<b>84.62%</b>	<b>1:1</b>	<b>1:0.9</b>	<b>88.59%</b>	<b>13.40%</b>	<b>75.19%</b>	<b>82.88%</b>	<b>17.12%</b>	<b>95.16%</b>	<b>80.65%</b>
Medical Science	345.66	376	1:0.9	14.89%	85.11%	1:1	1:0.9	98.40%	14.89%	83.51%	82.98%	17.02%	94.64%	80.94%
Radiographers	193.11	225	1:0.9	18.67%	81.33%	1:1	1:0.8	94.67%	16.89%	77.78%	67.56%	32.44%	90.48%	62.30%
Cardiac Physiologists	35.12	40	1:0.9	17.50%	82.50%	1:0.8	1:0.9	92.50%	17.50%	75.00%	80.00%	20.00%	85.71%	78.79%
Clinical Engineering	20.99	22	1:1	77.27%	22.73%	1:1	1:0.9	100.00%	77.27%	22.73%	95.45%	4.55%	100.00%	80.00%
E.C.G. Technicians	0.88	2	1:0.4		100.00%	1:	1:0.4	100.00%		100.00%		100.00%		
Neuro-Physiologists	3.06	4	1:0.8	25.00%	75.00%	1:1	1:0.7	100.00%	25.00%	75.00%	50.00%	50.00%	100.00%	33.33%
Phlebotomists	28.25	35	1:0.8	14.29%	85.71%	1:1	1:0.8	88.57%	14.29%	74.29%	60.00%	40.00%	80.00%	56.67%
Physicists	23.65	24	1:1	58.33%	41.67%	1:1	1:1	100.00%	58.33%	41.67%	95.83%	4.17%	100.00%	90.00%
Radiation Therapists	39.92	43	1:0.9	16.28%	83.72%	1:1	1:0.9	97.67%	16.28%	81.40%	86.05%	13.95%	100.00%	83.33%
Audiology	6.97	8	1:0.9		100.00%	1:	1:0.9	87.50%		87.50%	100.00%			100.00%
Biochemists	2	2	1:1		100.00%	1:	1:1	100.00%		100.00%	100.00%			100.00%
Dosimetrists	4	4	1:1	25.00%	75.00%	1:1	1:1	100.00%	25.00%	75.00%	100.00%		100.00%	100.00%
Gastrointestinal Physiologists	1	1	1:1	100.00%		1:1	1:	100.00%	100.00%		100.00%		100.00%	
Perfusionists	2.5	3	1:0.8	33.33%	66.67%	1:1	1:0.8	100.00%	33.33%	66.67%	100.00%		100.00%	100.00%
Respiratory Physiologists	10	10	1:1	20.00%	80.00%	1:1	1:1	100.00%	20.00%	80.00%	100.00%		100.00%	100.00%



Demographic Grade Group MAY 2023	WTE MAY 2023	No. MAY 2023	WTE : No	Number Male %	Number Female %	Male WTE : No.	Female WTE : No	Perm Count %	Perm Count Male %	Perm Count Female %	Fulltime Count %	Part time Count %	FT Count Male %	FT Count Female %
<b>Total</b>	<b>11,580</b>	<b>12,915</b>	<b>1:0.9</b>	<b>22.21%</b>	<b>77.79%</b>	<b>1:1</b>	<b>1:0.9</b>	<b>79.37%</b>	<b>14.36%</b>	<b>65.01%</b>	<b>74.61%</b>	<b>25.39%</b>	<b>92.05%</b>	<b>69.63%</b>
Vascular Physiologists	3.86	4	1:1	25.00%	75.00%	1:1	1:1	100.00%	25.00%	75.00%	100.00%		100.00%	100.00%
<b>Health Science/ Diagnostics</b>	<b>720.97</b>	<b>803</b>	<b>1:0.9</b>	<b>19.30%</b>	<b>80.70%</b>	<b>1:1</b>	<b>1:0.9</b>	<b>96.64%</b>	<b>18.80%</b>	<b>77.83%</b>	<b>78.70%</b>	<b>21.30%</b>	<b>94.19%</b>	<b>75.00%</b>
Social Care	2.3	3	1:0.8		100.00%	1:	1:0.8	66.67%		66.67%	33.33%	66.67%		33.33%
<b>Social Care</b>	<b>2.3</b>	<b>3</b>	<b>1:0.8</b>		<b>100.00%</b>	<b>1:</b>	<b>1:0.8</b>	<b>66.67%</b>		<b>66.67%</b>	<b>33.33%</b>	<b>66.67%</b>		<b>33.33%</b>
Social Workers	47.12	53	1:0.9	16.98%	83.02%	1:1	1:0.9	71.70%	13.21%	58.49%	71.70%	28.30%	100.00%	65.91%
<b>Social Workers</b>	<b>47.12</b>	<b>53</b>	<b>1:0.9</b>	<b>16.98%</b>	<b>83.02%</b>	<b>1:1</b>	<b>1:0.9</b>	<b>71.70%</b>	<b>13.21%</b>	<b>58.49%</b>	<b>71.70%</b>	<b>28.30%</b>	<b>100.00%</b>	<b>65.91%</b>
Psychologists	4.98	8	1:0.6	50.00%	50.00%	1:0.5	1:0.8	62.50%	12.50%	50.00%	37.50%	62.50%	25.00%	50.00%
<b>Psychologists</b>	<b>4.98</b>	<b>8</b>	<b>1:0.6</b>	<b>50.00%</b>	<b>50.00%</b>	<b>1:0.5</b>	<b>1:0.8</b>	<b>62.50%</b>	<b>12.50%</b>	<b>50.00%</b>	<b>37.50%</b>	<b>62.50%</b>	<b>25.00%</b>	<b>50.00%</b>
Pharmacists	95.45	111	1:0.9	15.32%	84.68%	1:0.9	1:0.8	92.79%	15.32%	77.48%	72.97%	27.03%	94.12%	69.15%
Pharmacy Technicians	102.54	110	1:0.9	6.36%	93.64%	1:1	1:0.9	85.45%	5.45%	80.00%	83.64%	16.36%	100.00%	82.52%
<b>Pharmacy</b>	<b>197.99</b>	<b>221</b>	<b>1:0.9</b>	<b>10.86%</b>	<b>89.14%</b>	<b>1:1</b>	<b>1:0.9</b>	<b>89.14%</b>	<b>10.41%</b>	<b>78.73%</b>	<b>78.28%</b>	<b>21.72%</b>	<b>95.83%</b>	<b>76.14%</b>
Counsellor Therapists	0.63	1	1:0.6		100.00%	1:	1:0.6	100.00%		100.00%		100.00%		
Play Therapists/ Specialists	3.88	6	1:0.6		100.00%	1:	1:0.6	83.33%		83.33%	16.67%	83.33%		16.67%
Dental Hygienists	1	1	1:1		100.00%	1:	1:1	100.00%		100.00%	100.00%			100.00%
Other Health & Social Care	6	6	1:1		100.00%	1:	1:1	83.33%		83.33%	100.00%			100.00%
HSCP Trainees/Students	32.59	43	1:0.8	34.88%	65.12%	1:0.8	1:0.7				72.09%	27.91%	80.00%	67.86%
<b>H&amp;SC, Other</b>	<b>44.1</b>	<b>57</b>	<b>1:0.8</b>	<b>26.32%</b>	<b>73.68%</b>	<b>1:0.8</b>	<b>1:0.8</b>	<b>21.05%</b>		<b>21.05%</b>	<b>68.42%</b>	<b>31.58%</b>	<b>80.00%</b>	<b>64.29%</b>
<b>Health &amp; Social Care Professionals</b>	<b>1,381</b>	<b>1,548</b>	<b>1:0.9</b>	<b>17.38%</b>	<b>82.62%</b>	<b>1:0.9</b>	<b>1:0.9</b>	<b>89.60%</b>	<b>15.25%</b>	<b>74.35%</b>	<b>78.81%</b>	<b>21.19%</b>	<b>92.94%</b>	<b>75.84%</b>
Executive Management	9	9	1:1	66.67%	33.33%	1:1	1:1	100.00%	66.67%	33.33%	100.00%		100.00%	100.00%
Senior Management (VIII & GM)	56.06	57	1:1	29.82%	70.18%	1:1	1:1	92.98%	29.82%	63.16%	100.00%		100.00%	100.00%
<b>Management (VIII &amp; above)</b>	<b>65.06</b>	<b>66</b>	<b>1:1</b>	<b>34.85%</b>	<b>65.15%</b>	<b>1:1</b>	<b>1:1</b>	<b>93.94%</b>	<b>34.85%</b>	<b>59.09%</b>	<b>100.00%</b>		<b>100.00%</b>	<b>100.00%</b>
Middle Management (V-VII)	408.45	425	1:1	14.82%	85.18%	1:1	1:1	97.41%	13.88%	83.53%	88.94%	11.06%	100.00%	87.02%
Other Administrative	10	10	1:1	20.00%	80.00%	1:1	1:1				100.00%		100.00%	100.00%
<b>Administrative/ Supervisory (V to VII)</b>	<b>418.45</b>	<b>435</b>	<b>1:1</b>	<b>14.94%</b>	<b>85.06%</b>	<b>1:1</b>	<b>1:1</b>	<b>95.17%</b>	<b>13.56%</b>	<b>81.61%</b>	<b>89.20%</b>	<b>10.80%</b>	<b>100.00%</b>	<b>87.30%</b>
General Administrative (III & IV)	1,251.46	1,392	1:0.9	11.85%	88.15%	1:1	1:0.9	84.84%	9.34%	75.50%	75.07%	24.93%	94.55%	72.45%
<b>Clerical (III &amp; IV)</b>	<b>1,251.46</b>	<b>1,392</b>	<b>1:0.9</b>	<b>11.85%</b>	<b>88.15%</b>	<b>1:1</b>	<b>1:0.9</b>	<b>84.84%</b>	<b>9.34%</b>	<b>75.50%</b>	<b>75.07%</b>	<b>24.93%</b>	<b>94.55%</b>	<b>72.45%</b>
<b>Management &amp; Administrative</b>	<b>1,735</b>	<b>1,893</b>	<b>1:0.9</b>	<b>13.37%</b>	<b>86.63%</b>	<b>1:1</b>	<b>1:0.9</b>	<b>87.53%</b>	<b>11.20%</b>	<b>76.33%</b>	<b>79.19%</b>	<b>20.81%</b>	<b>96.44%</b>	<b>76.52%</b>
Household Services	455.15	520	1:0.9	27.88%	72.12%	1:0.9	1:0.9	69.04%	14.42%	54.62%	65.58%	34.42%	83.45%	58.67%
Other Labs & Associated	116.26	120	1:1	30.00%	70.00%	1:1	1:1	75.00%	25.00%	50.00%	94.17%	5.83%	91.67%	95.24%
Catering	66.56	74	1:0.9	35.14%	64.86%	1:1	1:0.9	91.89%	31.08%	60.81%	72.97%	27.03%	96.15%	60.42%
Other Support	149.65	163	1:0.9	63.80%	36.20%	1:0.9	1:0.9	85.89%	55.83%	30.06%	80.37%	19.63%	90.38%	62.71%
Portering	153.24	159	1:1	94.34%	5.66%	1:1	1:0.8	76.73%	71.70%	5.03%	91.82%	8.18%	95.33%	33.33%
<b>Support</b>	<b>940.86</b>	<b>1,036</b>	<b>1:0.9</b>	<b>44.50%</b>	<b>55.50%</b>	<b>1:0.9</b>	<b>1:0.9</b>	<b>75.19%</b>	<b>32.14%</b>	<b>43.05%</b>	<b>75.77%</b>	<b>24.23%</b>	<b>90.24%</b>	<b>64.17%</b>



Demographic Grade Group MAY 2023	WTE MAY 2023	No. MAY 2023	WTE : No	Number Male %	Number Female %	Male WTE : No.	Female WTE : No	Perm Count %	Perm Count Male %	Perm Count Female %	Fulltime Count %	Part time Count %	FT Count Male %	FT Count Female %
<b>Total</b>	<b>11,580</b>	<b>12,915</b>	<b>1:0.9</b>	<b>22.21%</b>	<b>77.79%</b>	<b>1:1</b>	<b>1:0.9</b>	<b>79.37%</b>	<b>14.36%</b>	<b>65.01%</b>	<b>74.61%</b>	<b>25.39%</b>	<b>92.05%</b>	<b>69.63%</b>
Maintenance	106.81	108	1:1	100.00%		1:1	1:	98.15%	98.15%		99.07%	0.93%	99.07%	
Technical Services	1	1	1:1	100.00%		1:1	1:	100.00%	100.00%		100.00%		100.00%	
<b>Maintenance/ Technical</b>	<b>107.81</b>	<b>109</b>	<b>1:1</b>	<b>100.00%</b>		<b>1:1</b>	<b>1:</b>	<b>98.17%</b>	<b>98.17%</b>		<b>99.08%</b>	<b>0.92%</b>	<b>99.08%</b>	
<b>General Support</b>	<b>1,049</b>	<b>1,145</b>	<b>1:0.9</b>	<b>49.78%</b>	<b>50.22%</b>	<b>1:1</b>	<b>1:0.9</b>	<b>77.38%</b>	<b>38.43%</b>	<b>38.95%</b>	<b>77.99%</b>	<b>22.01%</b>	<b>91.93%</b>	<b>64.17%</b>
Health Care Assistant/ Care Assistant	745.51	836	1:0.9	24.28%	75.72%	1:0.9	1:0.9	85.65%	20.22%	65.43%	64.23%	35.77%	79.31%	59.40%
Attendant/ Aide	193.86	207	1:0.9	67.63%	32.37%	1:1	1:0.8	75.36%	48.79%	26.57%	83.09%	16.91%	95.00%	58.21%
Health & Social Care Assistants	55.16	64	1:0.9	20.31%	79.69%	1:0.9	1:0.9	84.38%	15.63%	68.75%	67.19%	32.81%	76.92%	64.71%
<b>Health Care Assistants</b>	<b>994.53</b>	<b>1,107</b>	<b>1:0.9</b>	<b>32.16%</b>	<b>67.84%</b>	<b>1:0.9</b>	<b>1:0.9</b>	<b>83.65%</b>	<b>25.29%</b>	<b>58.36%</b>	<b>67.93%</b>	<b>32.07%</b>	<b>85.39%</b>	<b>59.65%</b>
Pastoral Care	6.99	10	1:0.7	50.00%	50.00%	1:0.7	1:0.7	60.00%	20.00%	40.00%	60.00%	40.00%	60.00%	60.00%
Other Care Grades	87.55	94	1:0.9	52.13%	47.87%	1:1	1:0.9	94.68%	51.06%	43.62%	74.47%	25.53%	93.88%	53.33%
<b>Care, other</b>	<b>94.54</b>	<b>104</b>	<b>1:0.9</b>	<b>51.92%</b>	<b>48.08%</b>	<b>1:0.9</b>	<b>1:0.9</b>	<b>91.35%</b>	<b>48.08%</b>	<b>43.27%</b>	<b>73.08%</b>	<b>26.92%</b>	<b>90.74%</b>	<b>54.00%</b>
<b>Patient &amp; Client Care</b>	<b>1,089</b>	<b>1,211</b>	<b>1:0.9</b>	<b>33.86%</b>	<b>66.14%</b>	<b>1:0.9</b>	<b>1:0.9</b>	<b>84.31%</b>	<b>27.25%</b>	<b>57.06%</b>	<b>68.37%</b>	<b>31.63%</b>	<b>86.10%</b>	<b>59.30%</b>



Saolta University Hospital Care MAY 2023

Demographic Hospital MAY 2023	WTE MAY 2023	No. MAY 2023	WTE : No	Number Male %	Number Female %	Male WTE : No.	Female WTE : No	Perm Count %	Number Male %	Number Female %	Fulltime Count %	Part time Count %	FT Count Male %	FT Count Female %
Total	11,580	12,915	1:0.9	22.21%	77.79%	1:1	1:0.9	79.37%	14.36%	65.01%	74.61%	25.39%	92.05%	69.63%
Galway University	4,317	4,800	1:0.9	22.38%	77.63%	1:0.9	1:0.9	79.02%	14.58%	64.44%	76.71%	23.29%	91.25%	72.52%
Letterkenny University	2,140	2,406	1:0.9	22.69%	77.31%	1:1	1:0.9	75.89%	14.05%	61.85%	69.24%	30.76%	89.38%	63.33%
Mayo University	1,443	1,612	1:0.9	21.22%	78.78%	1:1	1:0.9	82.69%	14.64%	68.05%	74.50%	25.50%	95.61%	68.82%
Portiuncula University	1,031	1,139	1:0.9	21.77%	78.23%	1:1	1:0.9	78.05%	12.38%	65.67%	71.91%	28.09%	93.15%	65.99%
Roscommon University	458	512	1:0.9	19.53%	80.47%	1:0.9	1:0.9	81.05%	13.48%	67.58%	72.27%	27.73%	95.00%	66.75%
Saolta HG HQ	122	127	1:1	18.90%	81.10%	1:1	1:1	83.46%	13.39%	70.08%	93.70%	6.30%	95.83%	93.20%
Sligo University	2,069	2,319	1:0.9	23.07%	76.93%	1:0.9	1:0.9	81.41%	15.22%	66.19%	76.71%	23.29%	92.90%	71.86%



Month-on-Month Summary

WTE change since APR 2023		% WTE change since APR 2023	Overall	Consultants	Registrars	SHO/ Interns	Medical/ Dental/ other	Medical & Dental	Nurse/ Midwife Manager	Nurse/ Midwife Specialist & ANMP	Staff Nurse/ Staff Midwife	Public Health Nurse	Nursing/ Midwifery Student	Nursing/ Midwifery other	Nursing & Midwifery	Therapy Professionals	Health Science/ Diagnostics	Social Care	Social Workers	Psychologists	Pharmacy	H&SC Other	Health & Social Care Professionals	Management (Vn1 & above)	Administrative / Supervisory (V to Vn)	Clinical (III & IV)	Management & Administrative	Support	Maintenance/ Technical	General Support	Health Care Assistants	Care, other	Patient & Client Care
Overall		+0.18%	+17.5	+4.5	-1.2	-6.3	+6.7	+3.6	+12.9	+2.4	-28.4		-3.3	+1.1	-15.3	+5.5	-8.9	+6.6	+2.2	+6.4	+1.5	+2.1	+2.8	+1.2	+1.6	+13.2	+15.4	+5.4	+6.3	+5.6	+1.2	+4.1	+5.3
Galway University	48046	-0.34%	-14.8	+3.6	+0.3	-4.0	+0.3	+0.3	+2.5	-2.6	-6.9		-2.3	+0.9	-8.5	+0.4	-3.8	+0.0	+1.7	+0.4	-0.1	+1.9	+0.5	-0.1	-4.7	-1.3	-6.0	-4.1	-0.1	-4.1	+0.3	+2.9	+3.1
Sligo University	48047	+0.79%	+16.2	+0.4	-2.4	-0.3	+0.4	-1.9	-0.5	-0.9	-0.1		-0.0	+0.3	-1.2	+1.7	-2.6		+0.2	+0.0	+0.1	+0.2	-6.5	-0.6	+0.9	+13.1	+13.4	+1.9	-0.0	+1.9	+4.5	+0.1	+4.6
Letterkenny University	48048	-0.24%	-5.2	+0.3	+2.0	+0.6	+0.0	+2.9	+3.4	+0.8	-11.7		+0.0	-0.1	-7.6	+3.6	-1.1		-0.0		+0.9	+0.0	+3.4	+0.1	+1.6	-3.6	-1.8	+0.1	+0.2	+0.3	-2.5	+0.2	-2.4
Mayo University	48049	+0.11%	+1.5	-1.2	+0.5	+0.8	+0.0	+0.1	+3.9	+2.7	-7.9		+2.1	-0.1	+0.7	+0.1	-0.0		+0.3		+0.3	+0.0	+0.6	+0.0	+0.6	-0.9	-0.3	+1.4	+0.2	+1.6	-2.2	+1.0	-1.2
Portluncula University	48050	+0.88%	+9.0	+1.4	-1.4	+2.3		+2.3	+0.7	+1.5	+0.5		-2.0	+0.0	+0.7	-0.0	-1.8		+0.0		+0.1	+0.0	-1.7	+0.0	-0.4	+3.6	+3.2	+4.2	+0.0	+4.2	+0.3	+0.0	+0.3
Roscommon University	48051	+1.06%	+4.8	+0.0	-0.2	+0.1		-6.1	+2.3	+1.0	-2.3		-1.1	+0.0	-6.3	-0.1	+0.5		+0.0		+0.2		+0.6	+0.9	+0.8	+0.0	+1.7	+1.8	+0.0	+1.8	+0.9	+0.0	+0.9
Saolta HG HQ	48052	+5.13%	+6.0	+0.0				+0.6	+0.7		+0.0				+0.7	+0.0	+0.0						+0.0	+0.8	+2.2	+2.3	+5.3						

Year-to-Date Summary

WTE change since DEC 2022	% WTE change since DEC 2022	Overall	Consultants	Registrars	SHO/ Interns	Medical/ Dental/ other	Medical & Dental	Nurse/ Midwife Manager	Nurse/ Midwife Specialist & ANMP	Staff Nurse/ Staff Midwife	Public Health Nurse	Nursing/ Midwifery Student	Nursing/ Midwifery other	Nursing & Midwifery	Therapy Professions	Health Science/ Diagnostics	Social Care	Social Workers	Psychologists	Pharmacy	H&SC, Other	Health & Social Care Professionals	Management (VIII & above)	Administrative / Supervisory (V to VII)	Clerical (III & IV)	Management & Administrative	Support	Maintenance/ Technical	General Support	Health Care Assistants	Care, other	Patient & Client Care
Overall	+2.24%	+254	+9	+9	+6	+1	+25	+39	+23	+70		-13	+0	+118	+15	-17	-0	+4	+2	+7	+13	+24	+3	+34	-1	+37	+22	+5	+27	+14	+8	+23
Galway University	+0.87%	+37	+10	-1	+0	+1	+9	+10	+6	+55		-38	+2	+36	+5	-9	-0	+2	+2	+2	+6	+8	+1	+8	-20	-11	-3	+1	-3	-5	+3	-3
Sligo University	+3.81%	+76	-0	+5	-3	+1	+2	+6	+1	+17		+16	+0	+41	+5	-6		+0	+0	-3	+3	+0	-1	+3	+17	+20	+10	+1	+11	-0	+2	+1
Letterkenny University	+2.45%	+51	+1	+5	+6	+0	+12	+2	+5	+6		+4	-1	+16	+2	-2		-0		+5	+1	+6	+1	+4	-2	+4	+6	+1	+7	+7	+0	+7
Mayo University	+0.60%	+9	-1	-3	-1	+0	-5	+3	+5	-14		+7	-0	+1	+2	-1		+2		+2	+2	+6	-2	+10	-9	-1	+5	+1	+6	-1	+3	+2
Portluncula University	+5.03%	+49	+2	+3	+4		+8	+11	+4	+3		-2	-1	+15	+2	+1		-1		+0	+1	+3	+0	+4	+7	+11	+2	+1	+3	+8	+1	+8
Roscommon University	+4.46%	+20	-2	+0	-1		-3	+5	+1	+2		-1	-0	+7	-0	+0		+1		+1		+1	+1	+3	+1	+5	+1	+0	+2	+7	-0	+7
Saolta HG HQ	+10.77%	+12	+0				+0	+2		+0				+2	+0	+0						+0	+3	+2	+5	+10						





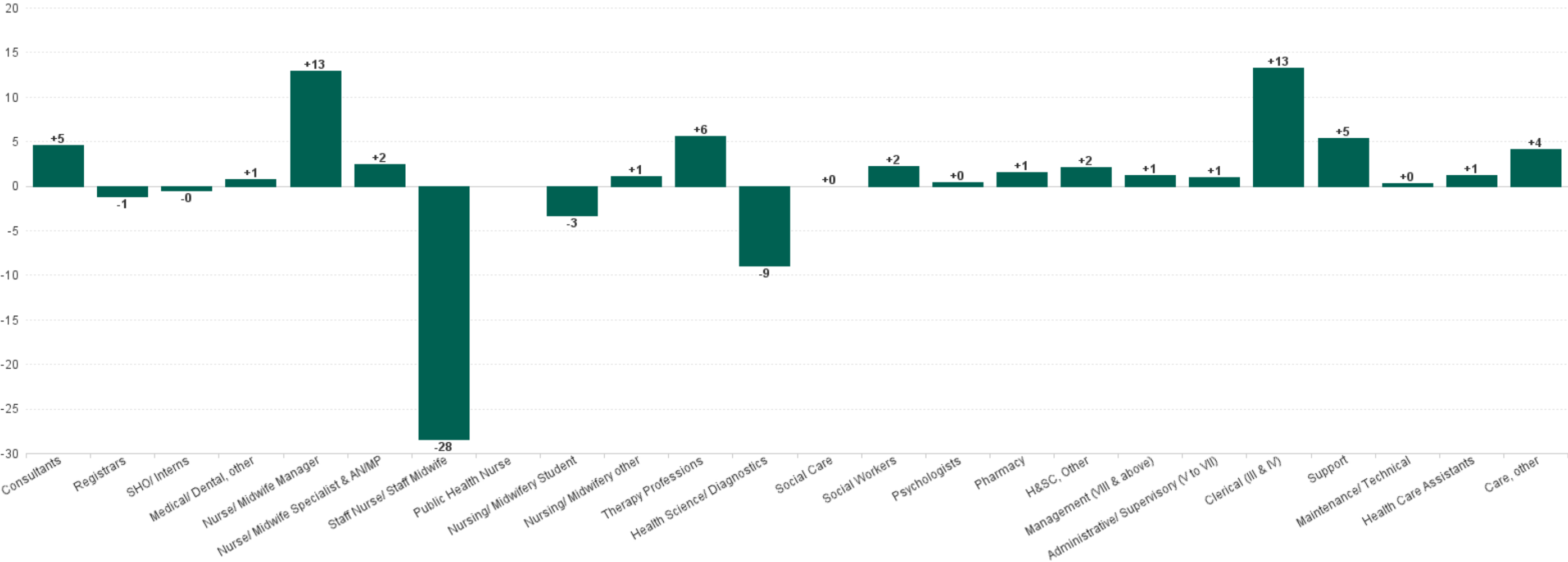
Year-on-Year Summary

WTE change since MAY 2022	% WTE change since MAY 2022																																																																																																																																																																																																																																																																																																																																																																																																																																																																																																																																																																																																																																																																																																																																																																																																																																																																																																																																																																																																																																																																																																																																																																																																																																																																																																																																																																																																																																																																																																																																																																																																																																																																																																																																																																		
------------------------------	-----------------------------------	--	--	--	--	--	--	--	--	--	--	--	--	--	--	--	--	--	--	--	--	--	--	--	--	--	--	--	--	--	--	--	--	--	--	--	--	--	--	--	--	--	--	--	--	--	--	--	--	--	--	--	--	--	--	--	--	--	--	--	--	--	--	--	--	--	--	--	--	--	--	--	--	--	--	--	--	--	--	--	--	--	--	--	--	--	--	--	--	--	--	--	--	--	--	--	--	--	--	--	--	--	--	--	--	--	--	--	--	--	--	--	--	--	--	--	--	--	--	--	--	--	--	--	--	--	--	--	--	--	--	--	--	--	--	--	--	--	--	--	--	--	--	--	--	--	--	--	--	--	--	--	--	--	--	--	--	--	--	--	--	--	--	--	--	--	--	--	--	--	--	--	--	--	--	--	--	--	--	--	--	--	--	--	--	--	--	--	--	--	--	--	--	--	--	--	--	--	--	--	--	--	--	--	--	--	--	--	--	--	--	--	--	--	--	--	--	--	--	--	--	--	--	--	--	--	--	--	--	--	--	--	--	--	--	--	--	--	--	--	--	--	--	--	--	--	--	--	--	--	--	--	--	--	--	--	--	--	--	--	--	--	--	--	--	--	--	--	--	--	--	--	--	--	--	--	--	--	--	--	--	--	--	--	--	--	--	--	--	--	--	--	--	--	--	--	--	--	--	--	--	--	--	--	--	--	--	--	--	--	--	--	--	--	--	--	--	--	--	--	--	--	--	--	--	--	--	--	--	--	--	--	--	--	--	--	--	--	--	--	--	--	--	--	--	--	--	--	--	--	--	--	--	--	--	--	--	--	--	--	--	--	--	--	--	--	--	--	--	--	--	--	--	--	--	--	--	--	--	--	--	--	--	--	--	--	--	--	--	--	--	--	--	--	--	--	--	--	--	--	--	--	--	--	--	--	--	--	--	--	--	--	--	--	--	--	--	--	--	--	--	--	--	--	--	--	--	--	--	--	--	--	--	--	--	--	--	--	--	--	--	--	--	--	--	--	--	--	--	--	--	--	--	--	--	--	--	--	--	--	--	--	--	--	--	--	--	--	--	--	--	--	--	--	--	--	--	--	--	--	--	--	--	--	--	--	--	--	--	--	--	--	--	--	--	--	--	--	--	--	--	--	--	--	--	--	--	--	--	--	--	--	--	--	--	--	--	--	--	--	--	--	--	--	--	--	--	--	--	--	--	--	--	--	--	--	--	--	--	--	--	--	--	--	--	--	--	--	--	--	--	--	--	--	--	--	--	--	--	--	--	--	--	--	--	--	--	--	--	--	--	--	--	--	--	--	--	--	--	--	--	--	--	--	--	--	--	--	--	--	--	--	--	--	--	--	--	--	--	--	--	--	--	--	--	--	--	--	--	--	--	--	--	--	--	--	--	--	--	--	--	--	--	--	--	--	--	--	--	--	--	--	--	--	--	--	--	--	--	--	--	--	--	--	--	--	--	--	--	--	--	--	--	--	--	--	--	--	--	--	--	--	--	--	--	--	--	--	--	--	--	--	--	--	--	--	--	--	--	--	--	--	--	--	--	--	--	--	--	--	--	--	--	--	--	--	--	--	--	--	--	--	--	--	--	--	--	--	--	--	--	--	--	--	--	--	--	--	--	--	--	--	--	--	--	--	--	--	--	--	--	--	--	--	--	--	--	--	--	--	--	--	--	--	--	--	--	--	--	--	--	--	--	--	--	--	--	--	--	--	--	--	--	--	--	--	--	--	--	--	--	--	--	--	--	--	--	--	--	--	--	--	--	--	--	--	--	--	--	--	--	--	--	--	--	--	--	--	--	--	--	--	--	--	--	--	--	--	--	--	--	--	--	--	--	--	--	--	--	--	--	--	--	--	--	--	--	--	--	--	--	--	--	--	--	--	--	--	--	--	--	--	--	--	--	--	--	--	--	--	--	--	--	--	--	--	--	--	--	--	--	--	--	--	--	--	--	--	--	--	--	--	--	--	--	--	--	--	--	--	--	--	--	--	--	--	--	--	--	--	--	--	--	--	--	--	--	--	--	--	--	--	--	--	--	--	--	--	--	--	--	--	--	--	--	--	--	--	--	--	--	--	--	--	--	--	--	--	--	--	--	--	--	--	--	--	--	--	--	--	--	--	--	--	--	--	--	--	--	--	--	--	--	--	--	--	--	--	--	--	--	--	--	--	--	--	--	--	--	--	--	--	--	--	--	--	--	--	--	--	--	--	--	--	--	--	--	--	--	--	--	--	--	--	--	--	--	--	--	--	--	--	--	--	--	--	--	--	--	--	--	--	--	--	--	--	--	--	--	--	--	--	--	--	--	--	--	--	--	--	--	--	--	--	--	--	--	--	--	--	--	--	--	--	--	--	--	--	--	--	--	--	--	--	--	--	--	--	--	--	--	--	--	--	--	--	--	--	--	--	--	--	--	--	--	--	--	--	--	--	--	--	--	--	--	--	--	--	--	--	--	--	--	--	--	--	--	--	--	--	--	--	--	--	--	--	--	--	--	--	--	--	--	--	--	--	--	--	--	--	--	--	--	--	--	--	--	--	--	--	--	--	--	--	--	--	--	--	--	--	--	--	--	--	--	--	--	--	--	--	--	--	--	--	--	--	--	--	--	--	--	--	--	--	--	--	--	--	--	--	--	--	--	--	--	--	--	--	--	--	--	--	--	--	--	--	--	--	--	--	--	--	--	--	--	--	--	--	--	--	--	--	--	--	--	--	--	--	--	--	--	--	--	--	--	--	--	--	--	--	--	--	--	--	--	--	--	--	--	--	--	--	--	--	--	--	--	--	--	--	--	--	--	--	--	--	--	--	--	--	--	--	--	--	--	--	--	--	--	--	--	--	--	--	--	--	--	--	--	--	--	--	--	--	--	--	--	--	--	--	--	--	--	--	--	--	--	--	--	--	--	--	--	--	--	--	--	--	--	--	--	--	--	--	--	--	--	--	--	--	--	--	--	--	--	--	--	--	--	--	--	--	--	--	--	--	--	--	--	--	--	--	--	--	--	--	--	--	--	--	--	--	--	--	--	--	--	--	--	--	--	--	--	--	--	--	--	--	--	--	--	--	--	--	--	--	--	--	--	--	--	--	--	--	--	--	--	--	--	--	--	--	--	--	--	--	--	--	--	--	--	--	--	--	--	--	--	--	--	--	--	--	--	--	--	--	--	--	--	--	--	--	--	--	--	--	--	--	--	--	--	--	--	--	--	--	--	--	--	--	--	--	--	--	--	--	--	--	--	--	--	--	--	--	--	--	--	--	--	--	--	--	--	--	--	--	--	--	--	--	--	--	--	--	--	--	--	--	--	--	--	--	--	--	--	--	--	--	--	--	--	--	--	--	--	--	--	--	--	--	--	--	--	--	--	--	--	--	--	--	--	--	--	--	--	--	--	--	--	--	--	--	--	--	--	--	--	--	--	--	--	--	--	--	--	--	--	--	--	--	--	--	--	--	--	--	--	--	--	--	--	--	--	--	--	--	--	--	--	--	--	--	--	--	--	--	--	--	--	--	--	--	--	--	--	--	--	--	--	--	--	--	--	--	--	--	--	--	--	--	--	--	--	--	--	--	--	--	--	--	--	--	--	--	--	--	--	--	--	--	--	--	--	--	--	--	--	--	--	--	--	--	--	--	--	--	--	--	--	--	--	--	--	--	--	--	--	--	--	--	--	--	--	--	--	--	--	--	--	--	--	--	--	--	--	--	--	--	--	--	--	--	--	--	--	--	--	--	--	--	--	--	--	--	--	--	--	--	--	--	--	--	--	--	--	--	--	--	--	--	--	--	--	--	--	--	--	--	--	--	--	--	--	--	--	--	--	--	--



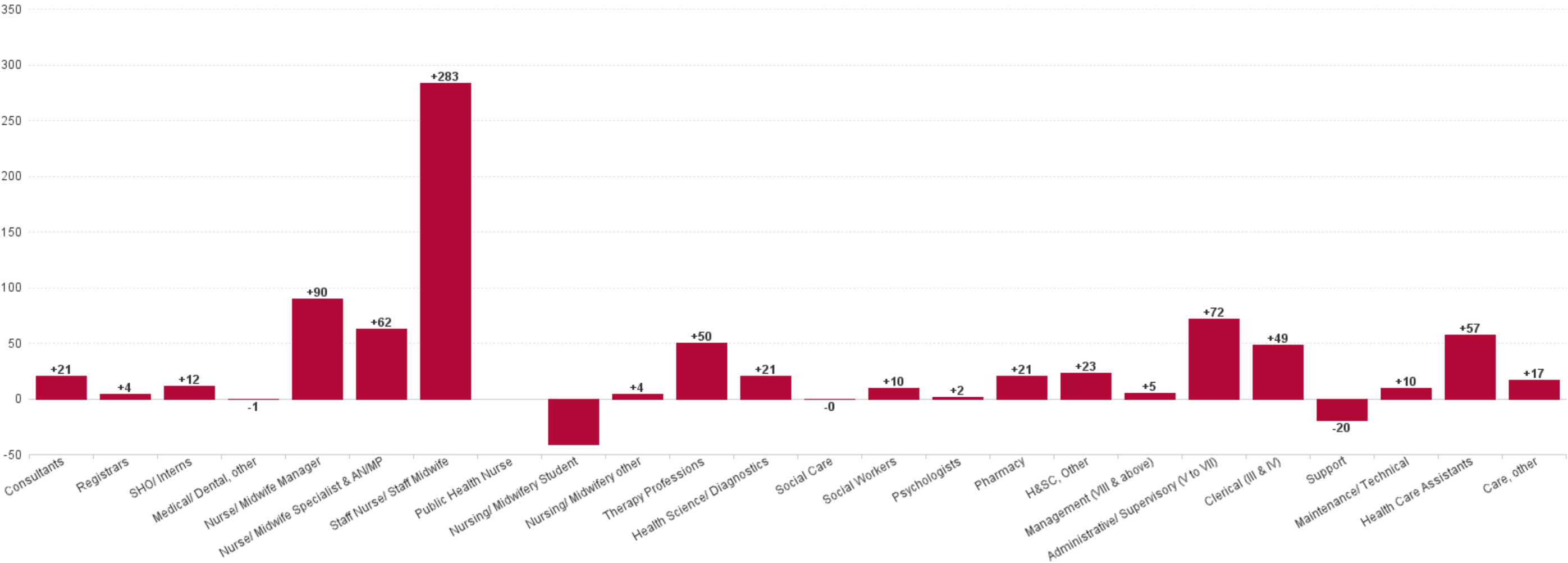
Saolta University Hospital Care Employment Report: MAY 2023

Previous Month Summary Chart: Change since APR 2023



Saolta University Hospital Care Employment Report: MAY 2023

Previous Year Summary Chart: Change since MAY 2022



Saolta University Hospital Care Employment Report: MAY 20

YTD Summary Chart: Change since DEC 2022

