

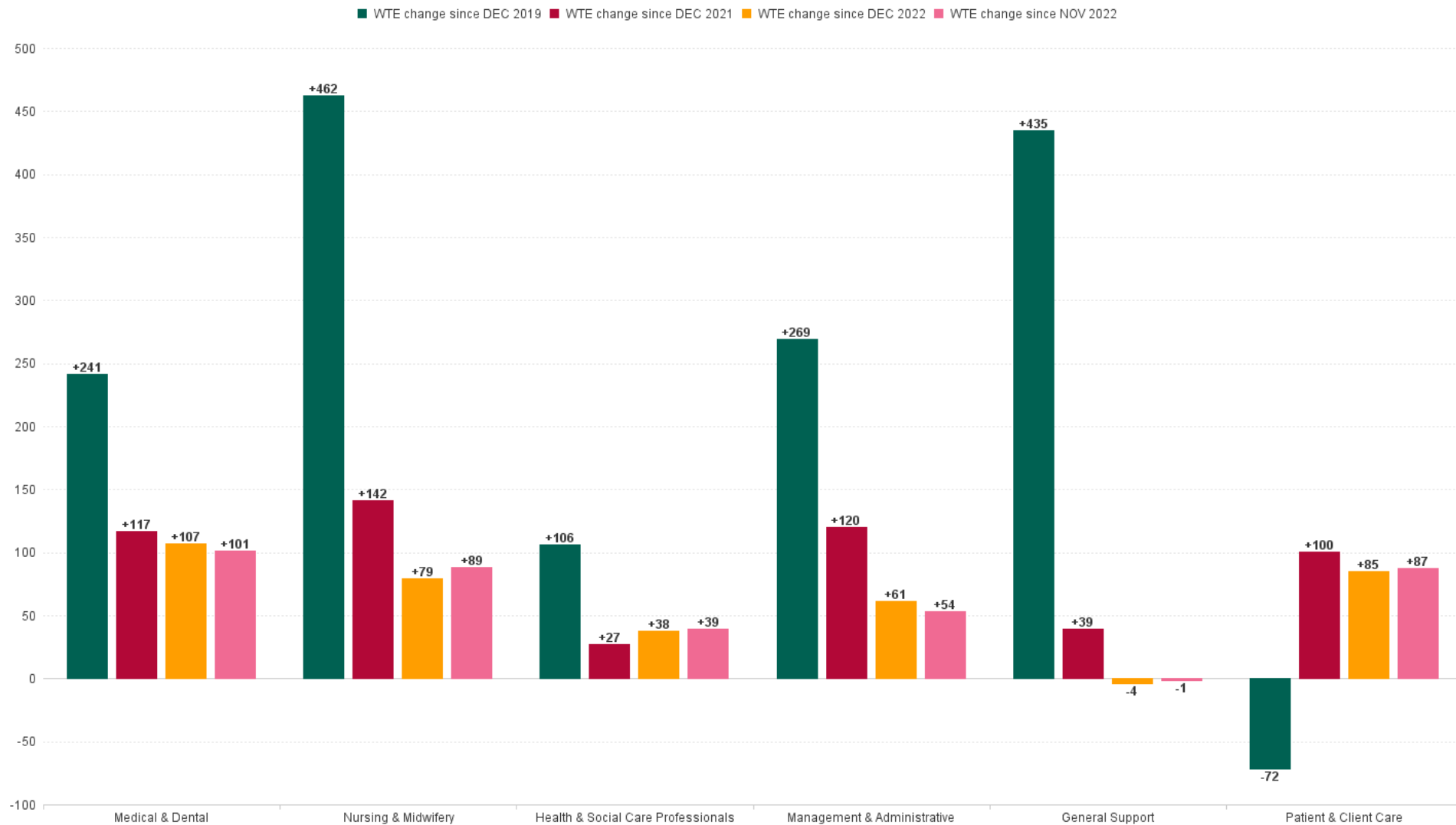
University of Limerick Hospital Group Employment Report: NOV 2023

Employment by Staff Group NOV 2023

Employment by Staff Group NOV 2023	WTE DEC 2019	WTE DEC 2022	WTE OCT 2023	WTE NOV 2023	WTE change since DEC 2019	% WTE Change since Dec 2019	WTE change since DEC 2022	% WTE Change since Dec 2022	WTE change since OCT 2023	No. NOV 2023
Overall	4,146	5,222	5,537	5,589	+1,442	+34.8%	+367	+7.0%	+52	6,124
Consultants	165	198	220	224	+58	+35.4%	+25	+12.8%	+4	237
Registrars	190	236	263	262	+72	+37.7%	+26	+11.0%	-1	270
SHO/ Interns	197	252	308	308	+111	+56.5%	+56	+22.0%	+0	310
Medical/ Dental, other	1	1	1	1	+0	+4.9%	+0	+0.0%	+0	2
Medical & Dental	553	687	791	794	+241	+43.6%	+107	+15.6%	+3	819
Nurse/ Midwife Manager	325	430	456	464	+138	+42.6%	+34	+7.8%	+7	496
Nurse/ Midwife Specialist & AN/MP	76	121	139	143	+67	+87.8%	+21	+17.6%	+3	152
Staff Nurse/ Staff Midwife	1,226	1,471	1,470	1,494	+268	+21.9%	+23	+1.5%	+25	1,702
<i>Nursing/ Midwifery awaiting registration</i>		2	1	2	+2		+0	+1.0%	+1	2
<i>Post-registration Nurse/ Midwife Student</i>	16	2	1	2	-14	-90.1%	-0	-20.7%	+0	6
<i>Pre-registration Nurse/ Midwife Intern</i>	3	1	4	1	-2	-68.3%	+0	+86.8%	-3	2
Nursing/ Midwifery Student	19	4	6	5	-14	-75.9%	+0	+1.6%	-1	10
Nursing/ Midwifery other	11	13	14	14	+3	+31.8%	+1	+9.7%	+0	16
Nursing & Midwifery	1,657	2,040	2,085	2,119	+462	+27.9%	+79	+3.9%	+34	2,376
Therapy Professions	84	120	124	128	+43	+51.6%	+8	+6.7%	+4	144
Health Science/ Diagnostics	252	261	295	294	+42	+16.5%	+33	+12.8%	-1	321
Social Workers	11	13	8	10	-1	-13.4%	-3	-23.7%	+2	11
Psychologists	3	5	6	7	+4	+129.4%	+2	+33.9%	+0	9
Pharmacy	45	61	60	62	+17	+38.7%	+1	+1.9%	+2	74
H&SC, Other	7	12	9	9	+1	+17.1%	-3	-26.1%	-0	9
Health & Social Care Professionals	403	471	502	509	+106	+26.3%	+38	+8.1%	+6	568
Management (VIII & above)	36	46	49	49	+13	+35.9%	+3	+6.6%	-0	49
Administrative/ Supervisory (V to VII)	103	213	242	243	+140	+136.1%	+30	+13.8%	+0	253
Clerical (III & IV)	485	573	594	602	+116	+24.0%	+29	+5.0%	+8	656
Management & Administrative	624	832	885	893	+269	+43.2%	+61	+7.4%	+8	958
Support	286	726	730	720	+434	+151.4%	-6	-0.8%	-10	799
Maintenance/ Technical	39	37	39	40	+1	+3.4%	+3	+6.8%	+1	40
General Support	325	764	769	760	+435	+133.9%	-4	-0.5%	-9	839
Health Care Assistants	577	422	497	506	-71	-12.3%	+84	+19.9%	+9	555
Care, other	8	6	7	7	-1	-9.5%	+1	+9.1%	+0	9
Patient & Client Care	585	429	503	513	-72	-12.2%	+85	+19.7%	+10	564

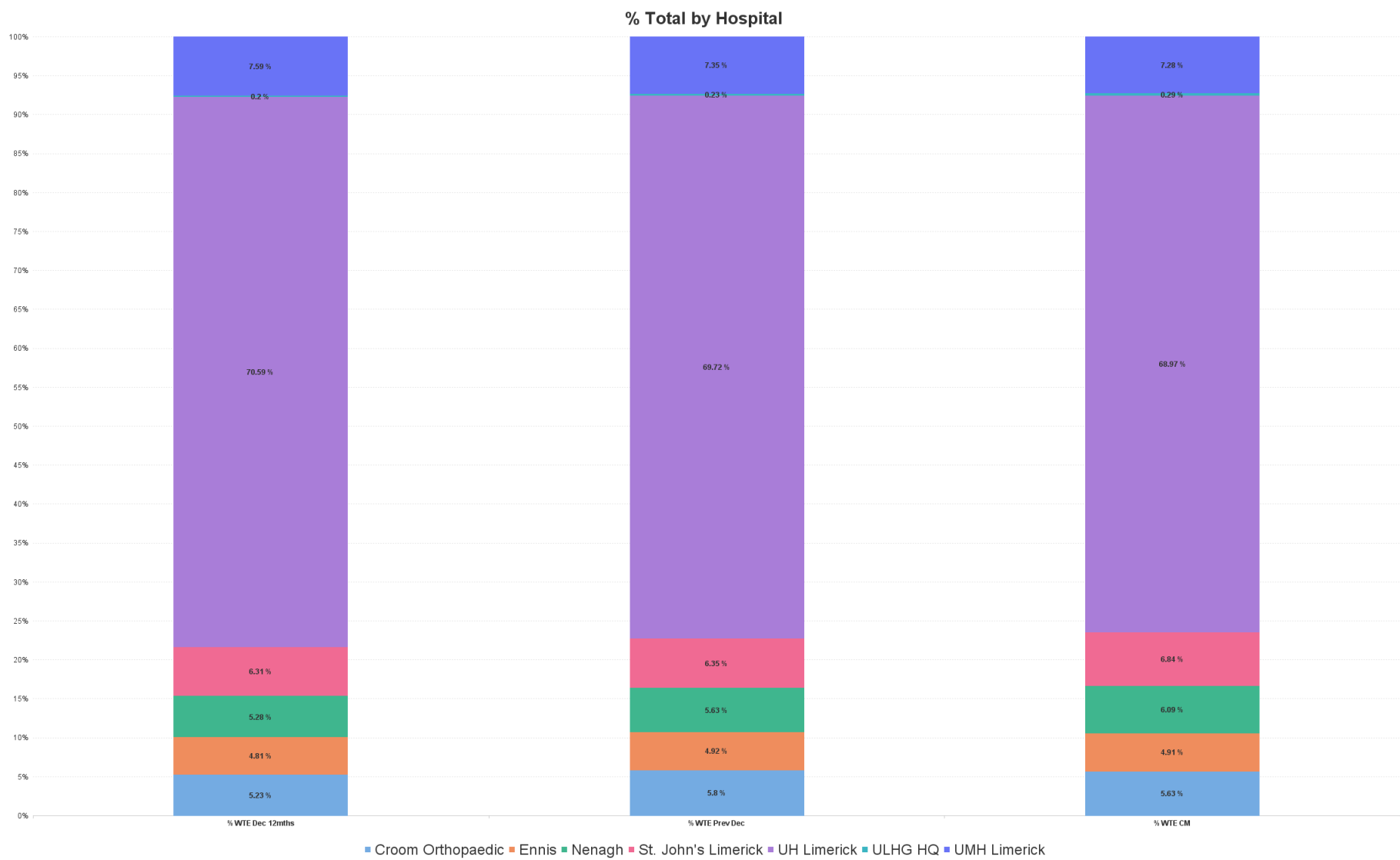


WTE Change by Staff Category



Employment Report by Hospital : NOV 2023

Hospitals NOV 2023	WTE DEC 2019	WTE DEC 2022	WTE OCT 2023	WTE NOV 2023	WTE change since DEC 2019	% WTE Change since Dec 2019	WTE change since DEC 2022	% WTE Change since Dec 2022	WTE change since OCT 2023	No. NOV 2023
Overall	4,146	5,222	5,537	5,589	+1,442	+34.8%	+367	+7.0%	+52	6,124
UH Limerick	2,814	3,641	3,829	3,854	+1,041	+37.0%	+213	+5.9%	+25	4,192
UMH Limerick	375	384	398	407	+33	+8.7%	+23	+6.1%	+9	467
Ennis	235	257	270	274	+39	+16.7%	+18	+6.9%	+5	310
Nenagh	250	294	332	340	+91	+36.3%	+46	+15.8%	+9	378
Croom Orthopaedic	156	303	315	315	+159	+101.7%	+12	+3.8%	-0	343
St. John's Limerick	311	332	378	382	+71	+22.7%	+50	+15.1%	+4	418
ULHG HQ	6	12	16	16	+10	+167.1%	+4	+34.8%	+0	16



Employment Report by HSE/S38: NOV 2023

Administration NOV 2023	WTE DEC 2019	WTE DEC 2022	WTE OCT 2023	WTE NOV 2023	WTE change since DEC 2019	% WTE Change since Dec 2019	WTE change since DEC 2022	% WTE Change since Dec 2022	WTE change since OCT 2023	No. NOV 2023
Overall	4,146	5,222	5,537	5,589	+1,442	+34.8%	+367	+7.0%	+52	6,124
Health Service Executive	3,835	4,890	5,159	5,207	+1,372	+35.8%	+316	+6.5%	+48	5,706
Section 38 Hospitals	311	332	378	382	+71	+22.7%	+50	+15.1%	+4	418



Employment Report by Administration: NOV 2023

Health Service Executive

NOV 2023	WTE DEC 2019	WTE DEC 2022	WTE OCT 2023	WTE NOV 2023	WTE change since DEC	% WTE Change since Dec	WTE change since DEC	% WTE Change since Dec	WTE change since OCT	No. NOV 2023
Total Health Service Executive	3,835	4,890	5,159	5,207	+1,372	+35.8%	+316	+6.5%	+48	5,706
Consultants	158	194	212	216	+58	+37.1%	+22	+11.4%	+4	229
Registrars	181	223	253	251	+70	+38.4%	+28	+12.6%	-2	259
SHO/ Interns	190	245	296	297	+107	+56.5%	+52	+21.0%	+1	299
Medical/ Dental, other	1	1	1	1	+0	+4.9%	+0	+0.0%	+0	2
Medical & Dental	530	663	762	765	+235	+44.4%	+102	+15.3%	+3	789
Nurse/ Midwife Manager	301	398	426	431	+130	+43.4%	+33	+8.2%	+5	460
Nurse/ Midwife Specialist & AN/MP	68	113	130	134	+66	+96.7%	+20	+17.9%	+3	142
Staff Nurse/ Staff Midwife	1,133	1,380	1,372	1,398	+265	+23.4%	+19	+1.4%	+27	1,595
Nursing/ Midwifery Student	19	4	5	3	-16	-86.5%	-2	-43.0%	-2	8
Nursing/ Midwifery other	10	12	13	13	+3	+35.0%	+1	+10.5%	+0	15
Nursing & Midwifery	1,530	1,908	1,946	1,979	+449	+29.3%	+71	+3.7%	+33	2,220
Therapy Professions	79	113	117	120	+41	+51.4%	+7	+6.0%	+4	136
Health Science/ Diagnostics	240	249	283	280	+40	+16.6%	+32	+12.7%	-2	306
Social Workers	11	13	8	10	-1	-13.4%	-3	-23.7%	+2	11
Psychologists	3	5	6	7	+4	+129.4%	+2	+33.9%	+0	9
Pharmacy	40	55	54	56	+15	+37.5%	+1	+1.7%	+2	65
H&SC, Other	7	12	9	9	+1	+17.1%	-3	-26.1%	-0	9
Health & Social Care Professionals	382	446	476	481	+100	+26.1%	+35	+7.8%	+5	536
Management (VIII & above)	29	38	42	42	+13	+44.7%	+4	+10.7%	-0	42
Administrative/ Supervisory (V to VII)	87	192	216	215	+128	+147.2%	+24	+12.3%	-1	225
Clerical (III & IV)	440	530	538	546	+106	+24.2%	+16	+3.0%	+8	595
Management & Administrative	556	759	796	803	+247	+44.5%	+44	+5.8%	+7	862
Support	247	689	686	675	+429	+173.8%	-13	-1.9%	-10	747
Maintenance/ Technical	37	35	37	38	+1	+3.6%	+3	+7.2%	+1	38
General Support	283	724	723	713	+430	+151.8%	-11	-1.5%	-9	785
Health Care Assistants	548	384	451	459	-89	-16.2%	+75	+19.5%	+8	506
Care, other	7	5	6	6	-1	-11.0%	+1	+10.8%	+0	8
Patient & Client Care	555	390	456	465	-89	-16.1%	+76	+19.4%	+9	514



Section 38 Hospitals

NOV 2023	WTE DEC 2019	WTE DEC 2022	WTE OCT 2023	WTE NOV 2023	WTE change since DEC	% WTE Change since Dec	WTE change since DEC	% WTE Change since Dec	WTE change since OCT	No. NOV 2023
Total Section 38 Hospitals	311	332	378	382	+71	+22.7%	+50	+15.1%	+4	418
Consultants	8	4	7	8	-0	-0.5%	+3	+79.0%	+0	8
Registrars	9	13	10	11	+2	+22.2%	-2	-15.4%	+1	11
SHO/ Interns	7	7	12	11	+4	+57.1%	+4	+57.1%	-1	11
Medical & Dental	24	24	29	30	+6	+25.3%	+5	+22.0%	+0	30
Nurse/ Midwife Manager	24	32	30	32	+8	+32.7%	+1	+2.9%	+2	36
Nurse/ Midwife Specialist & AN/MP	8	8	9	9	+1	+12.5%	+1	+12.5%	+0	10
Staff Nurse/ Staff Midwife	93	92	98	96	+3	+2.8%	+4	+4.4%	-2	107
Nursing/ Midwifery Student			1	2	+2		+2		+1	2
Nursing/ Midwifery other	1	1	1	1	+0	+0.0%	+0	+0.0%	+0	1
Nursing & Midwifery	127	132	139	140	+14	+10.7%	+8	+6.0%	+1	156
Therapy Professions	5	6	7	8	+3	+53.5%	+1	+19.0%	+0	8
Health Science/ Diagnostics	12	12	12	13	+2	+14.3%	+2	+15.4%	+1	15
Pharmacy	4	6	7	7	+2	+49.3%	+0	+3.1%	+0	9
Health & Social Care Professionals	21	24	26	28	+6	+30.7%	+3	+13.1%	+1	32
Management (VIII & above)	7	8	7	7	+0	+0.0%	-1	-12.5%	+0	7
Administrative/ Supervisory (V to VII)	16	21	26	27	+12	+73.9%	+6	+28.2%	+1	28
Clerical (III & IV)	45	43	55	56	+10	+22.4%	+13	+29.7%	+0	61
Management & Administrative	68	72	89	90	+22	+31.9%	+18	+24.5%	+1	96
Support	40	38	45	45	+5	+12.8%	+7	+18.6%	+0	52
Maintenance/ Technical	2	2	2	2	+0	+0.0%	+0	+0.0%	+0	2
General Support	42	40	47	47	+5	+12.2%	+7	+17.7%	+0	54
Health Care Assistants	29	38	46	47	+18	+60.6%	+9	+23.6%	+1	49
Care, other	1	1	1	1	+0	+0.0%	+0	+0.0%	+0	1
Patient & Client Care	30	39	47	48	+18	+58.6%	+9	+23.0%	+1	50

Employment Report by Grade Group: NOV 2023

Croom Orthopaedic

NOV 2023	WTE DEC 2019	WTE DEC 2022	WTE OCT 2023	WTE NOV 2023	WTE change since DEC 2019	% WTE Change since Dec 2019	WTE change since DEC 2022	% WTE Change since Dec 2022	WTE change since OCT 2023	No. NOV 2023
Overall	156	303	315	315	+159	+101.7%	+12	+3.8%	-0	343
Consultants	5	12	11	12	+7	+136.9%	+0	+0.1%	+0	12
Registrars	3	12	12	12	+9	+298.4%	+0	+3.1%	+0	14
SHO/ Interns	5	12	11	11	+6	+120.0%	-1	-7.4%	+0	11
Medical & Dental	13	35	34	35	+22.0	+168.9%	-0.5	-1.4%	+0.7	37
Nurse/ Midwife Manager	14	27	27	28	+14	+103.4%	+1	+4.4%	+1	29
Nurse/ Midwife Specialist & AN/MP	6	10	9	10	+4	+68.2%	+0	+1.3%	+1	10
Staff Nurse/ Staff Midwife	50	90	88	85	+35	+69.0%	-5	-5.1%	-2	94
Nursing/ Midwifery Student		1					-1	-100.0%		
Nursing & Midwifery	70	128	124	123	+53.2	+75.8%	-4.3	-3.3%	-0.4	133
Therapy Professions		5	10	10	+10		+4	+81.2%	+0	11
Health Science/ Diagnostics	1	1	1	1	-0	-20.0%	-0	-14.9%	+0	1
Health & Social Care Professionals	1	6	10	10	+9.4	+942.0%	+4.2	+66.7%	+0.0	12
Administrative/ Supervisory (V to VII)	2	5	4	4	+2	+96.0%	-1	-16.8%	+0	4
Clerical (III & IV)	15	29	32	33	+18	+118.2%	+4	+13.8%	+1	39
Management & Administrative	17	34	36	37	+19.7	+115.6%	+3.2	+9.5%	+0.8	43
Support	7	49	39	38	+31	+417.2%	-11	-21.9%	-0	41
Maintenance/ Technical	2	1	1	1	-1	-50.0%	+0	+1.0%	+0	1
General Support	9	50	40	39	+30.0	+318.1%	-10.8	-21.4%	-0.5	42
Health Care Assistants	44	49	69	69	+24	+55.0%	+20	+40.2%	-1	75
Care, other	1	1	1	1	+0	+0.0%	+0	+1.0%	+0	1
Patient & Client Care	45	50	70	70	+24.4	+53.8%	+19.7	+39.5%	-0.8	76

NOV 2023	WTE DEC 2019	WTE DEC 2022	WTE OCT 2023	WTE NOV 2023	WTE change since DEC 2019	% WTE Change since Dec 2019	WTE change since DEC 2022	% WTE Change since Dec 2022	WTE change since OCT 2023	No. NOV 2023
Overall	235	257	270	274	+39	+16.7%	+18	+6.9%	+5	310
Consultants	8	8	7	8	+0	+5.3%	+0	+5.9%	+1	10
Registrars	3	5	7	7	+4	+120.0%	+2	+42.2%	-0	7
SHO/ Interns	5	9	9	10	+5	+98.4%	+1	+9.0%	+1	10
Medical & Dental	16	21	23	25	+8.8	+55.6%	+3.2	+15.0%	+2.0	27
Nurse/ Midwife Manager	27	29	30	30	+3	+12.9%	+1	+2.5%	-0	32
Nurse/ Midwife Specialist & AN/MP	2	7	8	8	+6	+318.4%	+1	+14.7%	-0	8
Staff Nurse/ Staff Midwife	79	76	80	80	+1	+1.0%	+4	+5.4%	+0	96
Nursing & Midwifery	108	112	118	118	+10.3	+9.6%	+5.8	+5.2%	+0.3	136
Therapy Professions	5	5	5	5	+0	+7.0%	+1	+17.2%	+0	7
Health Science/ Diagnostics	15	15	16	16	+1	+7.0%	+1	+8.6%	+0	19
Pharmacy	2	3	1	2	-0	-15.0%	-1	-38.8%	+0	2
Health & Social Care Professionals	22	22	22	23	+1.1	+5.1%	+1.1	+5.0%	+0.8	28
Administrative/ Supervisory (V to VII)	2	4	4	4	+2	+98.0%	-1	-11.2%	+0	4
Clerical (III & IV)	42	40	42	41	-1	-1.9%	+1	+1.8%	-1	45
Management & Administrative	44	45	46	45	+1.2	+2.6%	+0.2	+0.5%	-1.2	49
Support	14	45	49	48	+34	+246.3%	+3	+6.3%	-0	53
General Support	14	45	49	48	+34.4	+246.3%	+2.9	+6.3%	-0.4	53
Health Care Assistants	32	11	12	16	-16	-51.5%	+4	+40.8%	+3	17
Patient & Client Care	32	11	12	16	-16.5	-51.5%	+4.5	+40.8%	+3.3	17

Nenagh

NOV 2023	WTE DEC 2019	WTE DEC 2022	WTE OCT 2023	WTE NOV 2023	WTE change since DEC 2019	% WTE Change since Dec 2019	WTE change since DEC 2022	% WTE Change since Dec 2022	WTE change since OCT 2023	No. NOV 2023
Overall	250	294	332	340	+91	+36.3%	+46	+15.8%	+9	378
Consultants	4	9	7	8	+4	+99.0%	-1	-9.4%	+1	8
Registrars	4	3	6	6	+2	+50.0%	+3	+101.3%	+0	6
SHO/ Interns	8	6	8	11	+3	+37.5%	+5	+85.2%	+3	11
Medical & Dental	16	18	21	25	+9.0	+56.0%	+7.3	+40.9%	+3.8	25
Nurse/ Midwife Manager	28	33	35	35	+7	+24.1%	+2	+5.6%	-0	37
Nurse/ Midwife Specialist & AN/MP	4	12	17	16	+12	+321.7%	+3	+25.2%	-1	16
Staff Nurse/ Staff Midwife	81	89	103	103	+22	+27.3%	+14	+15.4%	+0	122
Nursing & Midwifery	113	135	155	154	+40.8	+36.1%	+18.8	+13.9%	-1.3	175
Therapy Professions	8	9	9	10	+2	+19.6%	+1	+8.3%	+1	13
Health Science/ Diagnostics	6	9	12	12	+5	+82.0%	+3	+33.4%	-0	13
Pharmacy	2	2	2	2	+1	+38.1%	-0	-4.9%	-0	3
Health & Social Care Professionals	16	20	23	24	+7.5	+46.3%	+3.5	+17.6%	+0.7	29
Administrative/ Supervisory (V to VII)	3	6	7	7	+4	+133.8%	+1	+16.9%	+0	7
Clerical (III & IV)	32	37	38	38	+6	+19.7%	+1	+3.6%	-0	41
Management & Administrative	35	43	45	45	+10.2	+29.4%	+2.3	+5.4%	-0.3	48
Support	9	24	28	32	+23	+249.3%	+8	+34.2%	+3	33
Maintenance/ Technical	3	4	4	4	+1	+44.0%	+0	+0.0%	-0	4
General Support	12	28	32	36	+23.8	+201.5%	+8.1	+29.3%	+3.2	37
Health Care Assistants	58	50	54	57	-2	-2.6%	+6	+12.8%	+3	63
Care, other		1	1	1	+1		+0	+1.0%	+0	1
Patient & Client Care	58	51	55	58	-0.5	-0.9%	+6.4	+12.6%	+2.7	64

St. John's Limerick

NOV 2023	WTE DEC 2019	WTE DEC 2022	WTE OCT 2023	WTE NOV 2023	WTE change since DEC 2019	% WTE Change since Dec 2019	WTE change since DEC 2022	% WTE Change since Dec 2022	WTE change since OCT 2023	No. NOV 2023
Overall	311	332	378	382	+71	+22.7%	+50	+15.1%	+4	418
Consultants	8	4	7	8	-0	-0.5%	+3	+79.0%	+0	8
Registrars	9	13	10	11	+2	+22.2%	-2	-15.4%	+1	11
SHO/ Interns	7	7	12	11	+4	+57.1%	+4	+57.1%	-1	11
Medical & Dental	24	24	29	30	+6.0	+25.3%	+5.3	+22.0%	+0.1	30
Nurse/ Midwife Manager	24	32	30	32	+8	+32.7%	+1	+2.9%	+2	36
Nurse/ Midwife Specialist & AN/MP	8	8	9	9	+1	+12.5%	+1	+12.5%	+0	10
Staff Nurse/ Staff Midwife	93	92	98	96	+3	+2.8%	+4	+4.4%	-2	107
Nursing/ Midwifery Student			1	2	+2		+2		+1	2
Nursing/ Midwifery other	1	1	1	1	+0	+0.0%	+0	+0.0%	+0	1
Nursing & Midwifery	127	132	139	140	+13.6	+10.7%	+8.0	+6.0%	+1.0	156
Therapy Professions	5	6	7	8	+3	+53.5%	+1	+19.0%	+0	8
Health Science/ Diagnostics	12	12	12	13	+2	+14.3%	+2	+15.4%	+1	15
Pharmacy	4	6	7	7	+2	+49.3%	+0	+3.1%	+0	9
Health & Social Care Professionals	21	24	26	28	+6.5	+30.7%	+3.2	+13.1%	+1.2	32
Management (VIII & above)	7	8	7	7	+0	+0.0%	-1	-12.5%	+0	7
Administrative/ Supervisory (V to VII)	16	21	26	27	+12	+73.9%	+6	+28.2%	+1	28
Clerical (III & IV)	45	43	55	56	+10	+22.4%	+13	+29.7%	+0	61
Management & Administrative	68	72	89	90	+21.7	+31.9%	+17.7	+24.5%	+1.1	96
Support	40	38	45	45	+5	+12.8%	+7	+18.6%	+0	52
Maintenance/ Technical	2	2	2	2	+0	+0.0%	+0	+0.0%	+0	2
General Support	42	40	47	47	+5.1	+12.2%	+7.0	+17.7%	+0.0	54
Health Care Assistants	29	38	46	47	+18	+60.6%	+9	+23.6%	+1	49
Care, other	1	1	1	1	+0	+0.0%	+0	+0.0%	+0	1
Patient & Client Care	30	39	47	48	+17.8	+58.6%	+9.0	+23.0%	+1.0	50

NOV 2023	WTE DEC 2019	WTE DEC 2022	WTE OCT 2023	WTE NOV 2023	WTE change since DEC 2019	% WTE Change since Dec 2019	WTE change since DEC 2022	% WTE Change since Dec 2022	WTE change since OCT 2023	No. NOV 2023
Overall	2,814	3,641	3,829	3,854	+1,041	+37.0%	+213	+5.9%	+25	4,192
Consultants	125	151	170	170	+45	+36.0%	+20	+13.1%	+1	180
Registrars	155	190	210	208	+53	+34.0%	+18	+9.7%	-2	214
SHO/ Interns	155	205	251	248	+93	+59.9%	+43	+21.2%	-3	249
Medical/ Dental, other	1	1	1	1	+0	+4.9%	+0	+0.0%	+0	2
Medical & Dental	437	546	632	627	+190.9	+43.7%	+81.5	+14.9%	-4.4	645
Nurse/ Midwife Manager	198	266	286	290	+91	+46.1%	+23	+8.8%	+4	309
Nurse/ Midwife Specialist & AN/MP	53	78	89	93	+40	+76.7%	+15	+19.1%	+4	100
Staff Nurse/ Staff Midwife	756	959	945	969	+213	+28.2%	+10	+1.1%	+24	1,089
Nursing/ Midwifery Student	0	2	4	1	+1	+725.0%	-1	-34.9%	-3	2
Nursing/ Midwifery other	6	7	9	9	+2	+36.4%	+2	+26.1%	-0	10
Nursing & Midwifery	1,014	1,312	1,333	1,362	+348.0	+34.3%	+50.0	+3.8%	+28.9	1,510
Therapy Professions	64	94	92	94	+30	+46.7%	+0	+0.1%	+1	103
Health Science/ Diagnostics	217	224	253	251	+34	+15.8%	+27	+12.3%	-2	272
Social Workers	10	13	8	10	-0	-4.8%	-3	-23.7%	+2	11
Psychologists	3	5	6	7	+4	+129.4%	+2	+33.9%	+0	9
Pharmacy	37	50	50	52	+15	+40.0%	+2	+4.1%	+2	60
H&SC, Other	7	12	9	9	+1	+17.1%	-3	-26.1%	-0	9
Health & Social Care Professionals	338	397	419	422	+83.6	+24.7%	+25.3	+6.4%	+3.1	464
Management (VIII & above)	25	29	30	30	+5	+19.5%	+1	+3.1%	-0	30
Administrative/ Supervisory (V to VII)	77	170	194	193	+116	+149.7%	+23	+13.4%	-1	202
Clerical (III & IV)	317	386	389	394	+77	+24.3%	+8	+2.0%	+6	428
Management & Administrative	419	585	612	617	+197.6	+47.1%	+31.4	+5.4%	+4.5	660
Support	196	519	517	506	+311	+158.9%	-12	-2.4%	-11	562
Maintenance/ Technical	32	30	32	33	+1	+3.5%	+3	+8.3%	+1	33
General Support	227	549	549	539	+312.0	+137.2%	-9.9	-1.8%	-9.8	595
Health Care Assistants	374	249	282	284	-90	-24.1%	+34	+13.8%	+2	313
Care, other	5	3	3	3	-1	-26.2%	+1	+19.0%	+0	5
Patient & Client Care	379	252	285	287	-91.4	-24.1%	+35.0	+13.9%	+2.7	318

NOV 2023	WTE DEC 2019	WTE DEC 2022	WTE OCT 2023	WTE NOV 2023	WTE change since DEC 2019	% WTE Change since Dec 2019	WTE change since DEC 2022	% WTE Change since Dec 2022	WTE change since OCT 2023	No. NOV 2023
Overall	6	12	16	16	+10	+167.1%	+4	+34.8%	+0	16
Nurse/ Midwife Manager	1	1	1	1	+0	+0.0%	+0	+1.0%	+0	1
Nursing & Midwifery	1	1	1	1	+0.0	+0.0%	+0.0	+1.0%	+0.0	1
Management (VIII & above)	4	8	11	11	+7	+176.4%	+3	+39.4%	+0	11
Administrative/ Supervisory (V to VII)	1	2	3	3	+2	+197.0%	+1	+50.0%	+0	3
Clerical (III & IV)		1	1	1	+1		+0	+1.0%	+0	1
Management & Administrative	5	11	15	15	+10.0	+200.6%	+4.1	+37.8%	+0.0	15



NOV 2023	WTE DEC 2019	WTE DEC 2022	WTE OCT 2023	WTE NOV 2023	WTE change since DEC 2019	% WTE Change since Dec 2019	WTE change since DEC 2022	% WTE Change since Dec 2022	WTE change since OCT 2023	No. NOV 2023
Overall	375	384	398	407	+33	+8.7%	+23	+6.1%	+9	467
Consultants	16	15	17	18	+2	+14.7%	+3	+18.5%	+1	19
Registrars	16	14	18	18	+2	+12.6%	+4	+31.3%	+0	18
SHO/ Interns	17	14	17	17	+0	+2.2%	+3	+22.2%	-0	18
Medical & Dental	48	43	52	53	+4.7	+9.7%	+10.2	+23.8%	+0.7	55
Nurse/ Midwife Manager	33	41	46	47	+14	+43.7%	+6	+13.5%	+1	52
Nurse/ Midwife Specialist & AN/MP	4	6	7	7	+3	+88.7%	+1	+18.1%	-0	8
Staff Nurse/ Staff Midwife	166	166	157	161	-5	-3.1%	-5	-2.9%	+4	194
Nursing/ Midwifery Student	19	2	1	2	-17	-91.7%	-0	-20.7%	+0	6
Nursing/ Midwifery other	3	5	4	5	+1	+32.4%	-1	-10.7%	+0	5
Nursing & Midwifery	225	221	216	221	-3.6	-1.6%	+0.8	+0.4%	+5.6	265
Therapy Professions	2	1	1	2	-1	-25.7%	+1	+101.2%	+1	2
Health Science/ Diagnostics	1	1	1	1	-0	-40.0%	+0	+1.7%	+0	1
Social Workers	1				-1	-100.0%				
Health & Social Care Professionals	4	1	2	2	-2.0	-46.3%	+0.9	+60.4%	+0.6	3
Management (VIII & above)		1	1	1	+1		+0	+1.0%	+0	1
Administrative/ Supervisory (V to VII)	2	5	5	5	+3	+147.4%	+0	+1.0%	-0	5
Clerical (III & IV)	34	37	36	39	+5	+14.4%	+2	+6.3%	+3	41
Management & Administrative	36	43	42	45	+8.8	+24.4%	+2.4	+5.6%	+3.0	47
Support	21	51	52	51	+30	+145.1%	-1	-1.7%	-2	58
General Support	21	51	52	51	+29.9	+145.1%	-0.9	-1.7%	-1.8	58
Health Care Assistants	39	25	34	35	-5	-12.0%	+10	+40.4%	+1	38
Care, other	1	0	0	0	-1	-51.0%	+0	+2.1%	+0	1
Patient & Client Care	40	25	34	35	-5.3	-13.0%	+10.0	+39.7%	+1.0	39

Employment Report by Grade Group: NOV 2023

Employment by Grade Group NOV 2023	WTE DEC 2019	WTE DEC 2022	WTE OCT 2023	WTE NOV 2023	WTE change since DEC 2019	% WTE Change since Dec 2019	WTE change since DEC 2022	% WTE Change since Dec 2022	WTE change since OCT 2023	No. NOV 2023
Overall	4,146	5,222	5,537	5,589	+1,442	+34.8%	+367	+7.0%	+52	6,124
Consultant Anaesthesia	18	22	23	23	+5	+27.8%	+1	+4.6%	-0	24
Consultant Emergency Medicine	7	12	12	12	+5	+69.6%	+1	+7.6%	+0	13
Consultant Medicine	53	64	72	74	+22	+40.7%	+11	+16.9%	+2	81
Consultant Obstetrics & Gynaecology	14	12	14	15	+1	+9.5%	+3	+23.1%	+1	16
Consultant Paediatrics	11	15	19	18	+7	+63.6%	+3	+22.0%	-0	19
Consultant Pathology	13	14	16	16	+3	+20.5%	+3	+19.5%	+0	17
Consultant Radiology	15	14	17	17	+2	+10.7%	+2	+15.4%	+0	17
Consultant Surgery	34	46	48	48	+14	+41.5%	+2	+4.0%	+0	50
Consultants	165	198	220	224	+58	+35.4%	+25	+12.8%	+4	237
Registrar	127	154	177	177	+50	+39.9%	+23	+14.7%	+0	183
Senior Registrar	5	4	7	7	+2	+48.7%	+3	+68.9%	-0	7
Specialist Registrar	59	78	79	78	+19	+32.0%	+1	+0.7%	-1	80
Registrars	190	236	263	262	+72	+37.7%	+26	+11.0%	-1	270
Interns	56	67	74	75	+19	+33.9%	+8	+11.4%	+1	75
Senior House Officer	141	185	234	233	+92	+65.5%	+48	+25.8%	-1	235
SHO/ Interns	197	252	308	308	+111	+56.5%	+56	+22.0%	+0	310
Other Medical	1	1	1	1	+0	+4.9%	+0	+0.0%	+0	2
Medical/ Dental, other	1	1	1	1	+0	+4.9%	+0	+0.0%	+0	2
Medical & Dental	553	687	791	794	+241	+43.6%	+107	+15.6%	+3	819
Clinical Nurse/ Midwife Manager 1	77	103	114	116	+40	+51.6%	+13	+12.7%	+3	124
Clinical Nurse/ Midwife Manager 2	186	239	253	255	+70	+37.4%	+17	+7.1%	+3	277
Clinical Nurse/ Midwife Manager 3	18	28	24	27	+8	+45.7%	-1	-5.3%	+2	28
Director Nursing/Midwifery, Assistant	37	51	54	55	+18	+48.2%	+4	+8.1%	+1	57
Director of Nursing/Midwifery	7	9	11	10	+3	+41.5%	+1	+11.9%	-1	10
Nurse/ Midwife Manager	325	430	456	464	+138	+42.6%	+34	+7.8%	+7	496
Advanced Nurse/ Midwife Practitioner	15	24	26	28	+13	+86.3%	+4	+17.0%	+2	28
Adv. Nurse/ Midwife, Candidate	7	21	34	34	+27	+380.7%	+12	+56.8%	-0	34
Clinical Nurse/ Midwife Specialist	54	76	79	81	+27	+50.3%	+5	+6.7%	+2	90
Nurse/ Midwife Specialist & AN/MP	76	121	139	143	+67	+87.8%	+21	+17.6%	+3	152
Staff Midwives	145	136	118	123	-22	-15.0%	-13	-9.3%	+5	151
Staff Nurses [General/ Children's]	1,081	1,336	1,351	1,371	+290	+26.8%	+35	+2.6%	+20	1,551
Staff Nurse/ Staff Midwife	1,226	1,471	1,470	1,494	+268	+21.9%	+23	+1.5%	+25	1,702
Nursing/ Midwifery awaiting registration		2	1	2	+2		+0	+1.0%	+1	2
Post-registration Nurse/ Midwife Student	16	2	1	2	-14	-90.1%	-0	-20.7%	+0	6
Pre-registration Nurse/ Midwife Intern	3	1	4	1	-2	-68.3%	+0	+86.8%	-3	2
Nursing/ Midwifery Student	19	4	6	5	-14	-75.9%	+0	+1.6%	-1	10
Nursing Education/Clinical	11	13	14	14	+3	+31.8%	+1	+9.7%	+0	16
Nursing/ Midwifery other	11	13	14	14	+3	+31.8%	+1	+9.7%	+0	16
Nursing & Midwifery	1,657	2,040	2,085	2,119	+462	+27.9%	+79	+3.9%	+34	2,376
Dietitians	17	22	21	21	+4	+22.9%	-1	-3.2%	+1	25
Occupational Therapists	8	21	20	19	+11	+151.1%	-2	-10.7%	-1	20
Orthoptists		1	1	1	+1		+0	+1.0%	+0	1
Physiotherapists	52	61	70	73	+21	+40.8%	+13	+20.7%	+3	83
Podiatrists & Chiropodists	3	3	2	2	-1	-33.3%	-1	-39.8%	-0	2



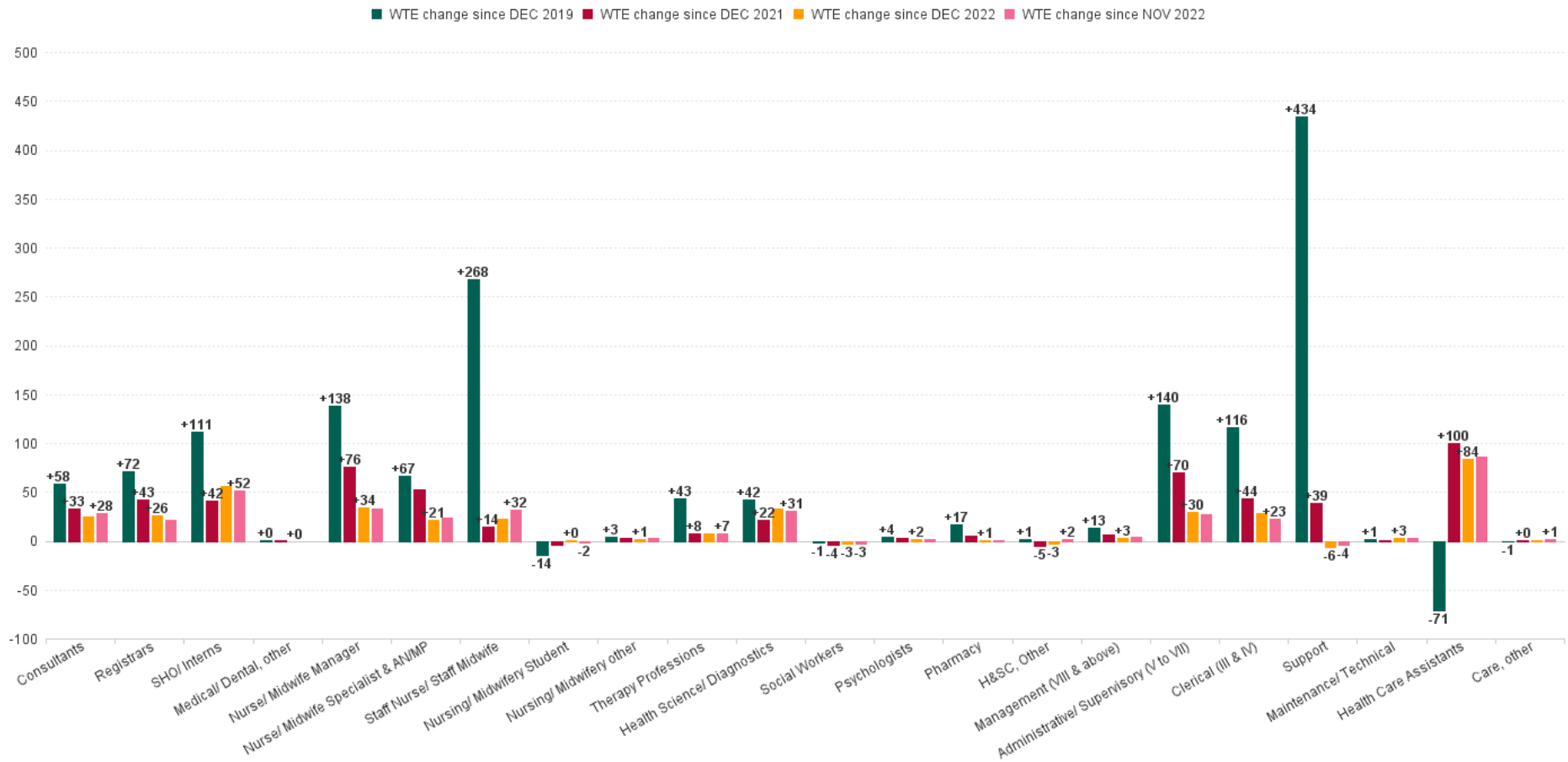
Employment by Grade Group NOV 2023	WTE DEC 2019	WTE DEC 2022	WTE OCT 2023	WTE NOV 2023	WTE change since DEC 2019	% WTE Change since Dec 2019	WTE change since DEC 2022	% WTE Change since Dec 2022	WTE change since OCT 2023	No. NOV 2023
Overall	4,146	5,222	5,537	5,589	+1,442	+34.8%	+367	+7.0%	+52	6,124
Speech & Language Therapists	5	12	11	12	+7	+150.5%	-0	-2.1%	+1	13
Therapy Professions	84	120	124	128	+43	+51.6%	+8	+6.7%	+4	144
Audiology	1	2	2	2	+1	+100.0%	+0	+1.0%	+0	2
Biochemists	7	5	5	5	-2	-25.4%	+0	+6.7%	-0	6
Cardiac Physiologists	16	11	17	17	+2	+10.1%	+6	+54.2%	+1	19
Clinical Engineering	6	11	15	16	+10	+165.4%	+5	+39.7%	+1	17
E.C.G. Technicians	2	2	2	2	-0	-6.0%	+0	+1.1%	-0	2
Medical Science	129	127	137	135	+6	+4.8%	+9	+6.7%	-2	148
Neuro-Physiologists	1	1	1	1	-0	-28.6%	+0	+1.0%	+0	1
Phlebotomists	1		1	1	+0	+29.9%	+1		+0	1
Physicists	2	2	4	4	+2	+92.5%	+2	+123.8%	-0	4
Radiographers	80	95	102	101	+21	+26.3%	+6	+6.8%	-1	112
Respiratory Physiologists	4	2	3	3	-1	-24.9%	+1	+51.0%	-0	3
Vascular Physiologists	3	3	6	6	+3	+106.9%	+3	+112.8%	+0	6
Health Science/ Diagnostics	252	261	295	294	+42	+16.5%	+33	+12.8%	-1	321
Social Workers	11	13	8	10	-1	-13.4%	-3	-23.7%	+2	11
Social Workers	11	13	8	10	-1	-13.4%	-3	-23.7%	+2	11
Psychologists	3	5	6	7	+4	+129.4%	+2	+33.9%	+0	9
Psychologists	3	5	6	7	+4	+129.4%	+2	+33.9%	+0	9
Pharmacists	25	32	30	31	+5	+21.5%	-1	-3.8%	+1	35
Pharmacy Technicians	20	29	31	32	+12	+60.7%	+2	+8.0%	+1	39
Pharmacy	45	61	60	62	+17	+38.7%	+1	+1.9%	+2	74
HSCP Trainees/Students	5	7	5	5	-0	-8.3%	-2	-28.7%	+0	5
Other Health & Social Care		2	2	2	+2		-0	-2.7%	+0	2
Play Therapists/ Specialists	2	2	2	2	-0	-4.5%	-0	-3.5%	-0	2
Vaccinators		1					-1	-100.0%		
H&SC, Other	7	12	9	9	+1	+17.1%	-3	-26.1%	-0	9
Health & Social Care Professionals	403	471	502	509	+106	+26.3%	+38	+8.1%	+6	568
Executive Management	5	9	8	8	+3	+60.0%	-1	-10.0%	+0	8
Senior Management (VIII & GM)	31	37	41	41	+10	+32.0%	+4	+10.7%	-0	41
Management (VIII & above)	36	46	49	49	+13	+35.9%	+3	+6.6%	-0	49
Middle Management (V-VII)	103	213	242	243	+140	+136.1%	+30	+13.8%	+0	253
Administrative/ Supervisory (V to VII)	103	213	242	243	+140	+136.1%	+30	+13.8%	+0	253
General Administrative (III & IV)	485	573	594	602	+116	+24.0%	+29	+5.0%	+8	656
Clerical (III & IV)	485	573	594	602	+116	+24.0%	+29	+5.0%	+8	656
Management & Administrative	624	832	885	893	+269	+43.2%	+61	+7.4%	+8	958
Catering	25	36	38	37	+12	+48.6%	+1	+2.8%	-1	39
Household Services	68	417	413	408	+340	+497.8%	-9	-2.1%	-4	460
Other Labs & Associated	31	39	37	37	+6	+18.6%	-2	-5.1%	-0	43
Other Support	40	52	54	55	+15	+37.7%	+3	+5.1%	+1	61
Portering	123	183	188	184	+61	+49.7%	+1	+0.5%	-5	196
Support	286	726	730	720	+434	+151.4%	-6	-0.8%	-10	799
Maintenance	38	36	38	39	+1	+3.5%	+3	+7.0%	+1	39
Technical Services	1	1	1	1	+0	+0.0%	+0	+1.0%	+0	1
Maintenance/ Technical	39	37	39	40	+1	+3.4%	+3	+6.8%	+1	40
General Support	325	764	769	760	+435	+133.9%	-4	-0.5%	-9	839
Attendant/ Aide	354	105	121	119	-235	-66.3%	+14	+13.8%	-2	133



Employment by Grade Group NOV 2023	WTE DEC 2019	WTE DEC 2022	WTE OCT 2023	WTE NOV 2023	WTE change since DEC 2019	% WTE Change since Dec 2019	WTE change since DEC 2022	% WTE Change since Dec 2022	WTE change since OCT 2023	No. NOV 2023
Overall	4,146	5,222	5,537	5,589	+1,442	+34.8%	+367	+7.0%	+52	6,124
Health Care Assistant/ Care Assistant	214	305	362	373	+159	+74.3%	+68	+22.3%	+11	406
Health & Social Care Assistants	9	12	14	14	+5	+55.0%	+2	+13.5%	+0	16
Health Care Assistants	577	422	497	506	-71	-12.3%	+84	+19.9%	+9	555
Other Care Grades	1	1	1	1	+0	+0.0%	+0	+1.0%	+0	1
Pastoral Care	7	5	6	6	-1	-11.0%	+1	+10.6%	+0	8
Care, other	8	6	7	7	-1	-9.5%	+1	+9.1%	+0	9
Patient & Client Care	585	429	503	513	-72	-12.2%	+85	+19.7%	+10	564



WTE Change by Staff Group



Employment Report by WTE, Headcount, Gender, Full-Time / Part-Time etc. NOV 2023

Demographic Grade Group NOV 2023	WTE NOV 2023	No. NOV 2023	WTE : No	Number Male %	Number Female %	Male WTE : No.	Female WTE : No	Perm Count %	Perm Count Male %	Perm Count Female %	Fulltime Count %	Part time Count %	FT Count Male %	FT Count Female %
Total	5,589	6,124	1:0.9	22.31%	77.69%	1:1	1:0.9	83.26%	15.27%	67.99%	82.15%	17.85%	96.12%	78.14%
Consultant Medicine	74.46	81	1:0.9	64.20%	35.80%	1:0.9	1:0.9	65.43%	40.74%	24.69%	91.36%	8.64%	94.23%	86.21%
Consultant Obstetrics & Gynaecology	14.78	16	1:0.9	31.25%	68.75%	1:0.9	1:0.9	68.75%	18.75%	50.00%	87.50%	12.50%	80.00%	90.91%
Consultant Surgery	47.84	50	1:1	88.00%	12.00%	1:1	1:0.9	72.00%	60.00%	12.00%	94.00%	6.00%	95.45%	83.33%
Consultant Emergency Medicine	12.4	13	1:1	69.23%	30.77%	1:1	1:0.9	61.54%	38.46%	23.08%	84.62%	15.38%	100.00%	50.00%
Consultant Paediatrics	18.4	19	1:1	57.89%	42.11%	1:1	1:0.9	73.68%	42.11%	31.58%	94.74%	5.26%	100.00%	87.50%
Consultant Pathology	16.21	17	1:1	47.06%	52.94%	1:1	1:0.9	76.47%	29.41%	47.06%	100.00%		100.00%	100.00%
Consultant Radiology	16.5	17	1:1	70.59%	29.41%	1:1	1:0.9	94.12%	64.71%	29.41%	94.12%	5.88%	100.00%	80.00%
Consultant Anaesthesia	23	24	1:1	75.00%	25.00%	1:1	1:0.8	83.33%	62.50%	20.83%	95.83%	4.17%	100.00%	83.33%
Consultants	223.59	237	1:0.9	67.09%	32.91%	1:1	1:0.9	72.15%	46.41%	25.74%	92.83%	7.17%	96.23%	85.90%
Registrar	177.07	183	1:1	61.75%	38.25%	1:1	1:1	1.64%	0.55%	1.09%	95.63%	4.37%	96.46%	94.29%
Specialist Registrar	78.23	80	1:1	46.25%	53.75%	1:1	1:1				96.25%	3.75%	97.30%	95.35%
Senior Registrar	6.69	7	1:1	28.57%	71.43%	1:1	1:0.9				100.00%		100.00%	100.00%
Registrars	261.99	270	1:1	56.30%	43.70%	1:1	1:1	1.11%	0.37%	0.74%	95.93%	4.07%	96.71%	94.92%
Interns	74.98	75	1:1	42.67%	57.33%	1:1	1:1				100.00%		100.00%	100.00%
Senior House Officer	232.98	235	1:1	50.64%	49.36%	1:1	1:1				100.00%		100.00%	100.00%
SHO/ Interns	307.96	310	1:1	48.71%	51.29%	1:1	1:1				100.00%		100.00%	100.00%
Other Medical	0.85	2	1:0.4		100.00%	1:	1:0.4					100.00%		
Medical/ Dental, other	0.85	2	1:0.4		100.00%	1:	1:0.4					100.00%		
Medical & Dental	794	819	1:1	56.41%	43.59%	1:1	1:1	21.25%	13.55%	7.69%	96.34%	3.66%	97.62%	94.68%
Clinical Nurse/ Midwife Manager 2	255.45	277	1:0.9	3.25%	96.75%	1:1	1:0.9	99.28%	3.25%	96.03%	79.42%	20.58%	88.89%	79.10%
Clinical Nurse/ Midwife Manager 1	116.31	124	1:0.9	7.26%	92.74%	1:1	1:0.9	99.19%	7.26%	91.94%	75.00%	25.00%	100.00%	73.04%
Clinical Nurse/ Midwife Manager 3	26.57	28	1:0.9	10.71%	89.29%	1:1	1:0.9	100.00%	10.71%	89.29%	96.43%	3.57%	100.00%	96.00%
Director Nursing/Midwifery, Assistant	55.34	57	1:1	8.77%	91.23%	1:0.9	1:1	96.49%	7.02%	89.47%	92.98%	7.02%	80.00%	94.23%
Director of Nursing/Midwifery	9.89	10	1:1	30.00%	70.00%	1:1	1:1	100.00%	30.00%	70.00%	90.00%	10.00%	100.00%	85.71%
Nurse/ Midwife Manager	463.56	496	1:0.9	5.85%	94.15%	1:1	1:0.9	98.99%	5.65%	93.35%	81.05%	18.95%	93.10%	80.30%
Advanced Nurse/ Midwife Practitioner	27.68	28	1:1	7.14%	92.86%	1:1	1:1	100.00%	7.14%	92.86%	96.43%	3.57%	100.00%	96.15%
Clinical Nurse/ Midwife Specialist	81.2	90	1:0.9	2.22%	97.78%	1:1	1:0.9	100.00%	2.22%	97.78%	72.22%	27.78%	100.00%	71.59%
Adv. Nurse/ Midwife, Candidate	33.65	34	1:1	8.82%	91.18%	1:1	1:1	100.00%	8.82%	91.18%	100.00%		100.00%	100.00%



Demographic Grade Group NOV 2023	WTE NOV 2023	No. NOV 2023	WTE : No	Number Male %	Number Female %	Male WTE : No.	Female WTE : No	Perm Count %	Perm Count Male %	Perm Count Female %	Fulltime Count %	Part time Count %	FT Count Male %	FT Count Female %
Total	5,589	6,124	1:0.9	22.31%	77.69%	1:1	1:0.9	83.26%	15.27%	67.99%	82.15%	17.85%	96.12%	78.14%
Nurse/ Midwife Specialist & AN/MP	142.53	152	1:0.9	4.61%	95.39%	1:1	1:0.9	100.00%	4.61%	95.39%	82.89%	17.11%	100.00%	82.07%
Staff Nurses [General/ Children's]	1,371.01	1,551	1:0.9	7.87%	92.13%	1:1	1:0.9	99.16%	7.87%	91.30%	76.14%	23.86%	96.72%	74.39%
Staff Midwives	123.1	151	1:0.8		100.00%	1:	1:0.8	99.34%		99.34%	52.32%	47.68%		52.32%
Staff Nurse/ Staff Midwife	1,494.11	1,702	1:0.9	7.17%	92.83%	1:1	1:0.9	99.18%	7.17%	92.01%	74.03%	25.97%	96.72%	72.28%
Nursing/ Midwifery awaiting registration	2	2	1:1		100.00%	1:	1:1	100.00%		100.00%	100.00%			100.00%
Pre-registration Nurse/ Midwife Intern	0.99	2	1:0.5		100.00%	1:	1:0.5				50.00%	50.00%		50.00%
Post-registration Nurse/ Midwife Student	1.57	6	1:0.3		100.00%	1:	1:0.3				100.00%			100.00%
Nursing/ Midwifery Student	4.56	10	1:0.5		100.00%	1:	1:0.5	20.00%		20.00%	90.00%	10.00%		90.00%
Nursing Education/Clinical	14.43	16	1:0.9		100.00%	1:	1:0.9	100.00%		100.00%	68.75%	31.25%		68.75%
Nursing/ Midwifery other	14.43	16	1:0.9		100.00%	1:	1:0.9	100.00%		100.00%	68.75%	31.25%		68.75%
Nursing & Midwifery	2,119	2,376	1:0.9	6.65%	93.35%	1:1	1:0.9	98.86%	6.61%	92.26%	76.09%	23.91%	96.20%	74.66%
Dietitians	21.05	25	1:0.8	4.00%	96.00%	1:0.1	1:0.9	88.00%		88.00%	84.00%	16.00%	100.00%	83.33%
Physiotherapists	73.15	83	1:0.9	24.10%	75.90%	1:0.9	1:0.9	96.39%	24.10%	72.29%	78.31%	21.69%	85.00%	76.19%
Occupational Therapists	18.83	20	1:0.9	10.00%	90.00%	1:0.7	1:1	95.00%	10.00%	85.00%	95.00%	5.00%	100.00%	94.44%
Speech & Language Therapists	11.6	13	1:0.9		100.00%	1:	1:0.9	100.00%		100.00%	84.62%	15.38%		84.62%
Orthoptists	1	1	1:1		100.00%	1:	1:1	100.00%		100.00%	100.00%			100.00%
Podiatrists & Chiropodists	2	2	1:1		100.00%	1:	1:1	100.00%		100.00%	100.00%			100.00%
Therapy Professions	127.63	144	1:0.9	15.97%	84.03%	1:0.9	1:0.9	95.14%	15.28%	79.86%	82.64%	17.36%	86.96%	81.82%
Radiographers	101.45	112	1:0.9	18.75%	81.25%	1:1	1:0.9	96.43%	18.75%	77.68%	84.82%	15.18%	100.00%	81.32%
Medical Science	135.25	148	1:0.9	18.92%	81.08%	1:1	1:0.9	96.62%	18.24%	78.38%	81.76%	18.24%	89.29%	80.00%
Biochemists	5.11	6	1:0.9	33.33%	66.67%	1:0.9	1:0.8	100.00%	33.33%	66.67%	83.33%	16.67%	100.00%	75.00%
Cardiac Physiologists	17.42	19	1:0.9	21.05%	78.95%	1:1	1:0.9	68.42%	5.26%	63.16%	89.47%	10.53%	100.00%	86.67%
Clinical Engineering	15.87	17	1:0.9	64.71%	35.29%	1:1	1:0.9	100.00%	64.71%	35.29%	94.12%	5.88%	100.00%	83.33%
E.C.G. Technicians	1.88	2	1:0.9		100.00%	1:	1:0.9	100.00%		100.00%	50.00%	50.00%		50.00%
Audiology	2	2	1:1		100.00%	1:	1:1	100.00%		100.00%	100.00%			100.00%
Neuro-Physiologists	1	1	1:1	100.00%		1:1	1:	100.00%	100.00%		100.00%		100.00%	
Phlebotomists	1	1	1:1	100.00%		1:1	1:	100.00%	100.00%		100.00%		100.00%	
Physicists	3.85	4	1:1	75.00%	25.00%	1:1	1:0.9	100.00%	75.00%	25.00%	100.00%		100.00%	100.00%
Respiratory Physiologists	2.99	3	1:1	66.67%	33.33%	1:1	1:1	66.67%	33.33%	33.33%	100.00%		100.00%	100.00%
Vascular Physiologists	6	6	1:1	16.67%	83.33%	1:1	1:1	100.00%	16.67%	83.33%	100.00%		100.00%	100.00%
Health Science/ Diagnostics	293.82	321	1:0.9	23.05%	76.95%	1:1	1:0.9	95.02%	21.50%	73.52%	84.74%	15.26%	95.95%	81.38%
Social Workers	9.67	11	1:0.9	27.27%	72.73%	1:1	1:0.8	90.91%	18.18%	72.73%	100.00%		100.00%	100.00%
Social Workers	9.67	11	1:0.9	27.27%	72.73%	1:1	1:0.8	90.91%	18.18%	72.73%	100.00%		100.00%	100.00%



Demographic Grade Group NOV 2023	WTE NOV 2023	No. NOV 2023	WTE : No	Number Male %	Number Female %	Male WTE : No.	Female WTE : No	Perm Count %	Perm Count Male %	Perm Count Female %	Fulltime Count %	Part time Count %	FT Count Male %	FT Count Female %
Total	5,589	6,124	1:0.9	22.31%	77.69%	1:1	1:0.9	83.26%	15.27%	67.99%	82.15%	17.85%	96.12%	78.14%
Psychologists	6.79	9	1:0.8	11.11%	88.89%	1:0.3	1:0.8	100.00%	11.11%	88.89%	55.56%	44.44%	100.00%	50.00%
Psychologists	6.79	9	1:0.8	11.11%	88.89%	1:0.3	1:0.8	100.00%	11.11%	88.89%	55.56%	44.44%	100.00%	50.00%
Pharmacy Technicians	31.55	39	1:0.8		100.00%	1:	1:0.8	94.87%		94.87%	66.67%	33.33%		66.67%
Pharmacists	30.64	35	1:0.9	8.57%	91.43%	1:1	1:0.9	94.29%	5.71%	88.57%	82.86%	17.14%	100.00%	81.25%
Pharmacy	62.19	74	1:0.8	4.05%	95.95%	1:1	1:0.8	94.59%	2.70%	91.89%	74.32%	25.68%	100.00%	73.24%
HSCP Trainees/Students	4.94	5	1:1	20.00%	80.00%	1:1	1:1	20.00%		20.00%	80.00%	20.00%	100.00%	75.00%
Other Health & Social Care	1.8	2	1:0.9		100.00%	1:	1:0.9	100.00%		100.00%	100.00%			100.00%
Play Therapists/ Specialists	1.91	2	1:1		100.00%	1:	1:1	100.00%		100.00%	100.00%			100.00%
H&SC, Other	8.65	9	1:1	11.11%	88.89%	1:1	1:1	55.56%		55.56%	88.89%	11.11%	100.00%	87.50%
Health & Social Care Professionals	509	568	1:0.9	18.49%	81.51%	1:1	1:0.9	94.37%	16.90%	77.46%	82.75%	17.25%	94.29%	80.13%
Executive Management	8	8	1:1	37.50%	62.50%	1:1	1:1	100.00%	37.50%	62.50%	100.00%		100.00%	100.00%
Senior Management (VIII & GM)	40.56	41	1:1	24.39%	75.61%	1:1	1:1	97.56%	24.39%	73.17%	100.00%		100.00%	100.00%
Management (VIII & above)	48.56	49	1:1	26.53%	73.47%	1:1	1:1	97.96%	26.53%	71.43%	100.00%		100.00%	100.00%
Middle Management (V-VII)	242.63	253	1:1	15.42%	84.58%	1:1	1:1	92.49%	13.83%	78.66%	92.49%	7.51%	100.00%	91.12%
Administrative/ Supervisory (V to VII)	242.63	253	1:1	15.42%	84.58%	1:1	1:1	92.49%	13.83%	78.66%	92.49%	7.51%	100.00%	91.12%
General Administrative (III & IV)	601.77	656	1:0.9	9.15%	90.85%	1:1	1:0.9	68.75%	4.42%	64.33%	82.01%	17.99%	98.33%	80.37%
Clerical (III & IV)	601.77	656	1:0.9	9.15%	90.85%	1:1	1:0.9	68.75%	4.42%	64.33%	82.01%	17.99%	98.33%	80.37%
Management & Administrative	893	958	1:0.9	11.69%	88.31%	1:1	1:0.9	76.51%	8.04%	68.48%	85.70%	14.30%	99.11%	83.92%
Household Services	408.25	460	1:0.9	26.74%	73.26%	1:1	1:0.9	89.13%	23.26%	65.87%	80.43%	19.57%	95.93%	74.78%
Catering	37.21	39	1:1	30.77%	69.23%	1:1	1:0.9	92.31%	23.08%	69.23%	84.62%	15.38%	100.00%	77.78%
Portering	183.7	196	1:0.9	82.65%	17.35%	1:0.9	1:0.9	95.41%	78.57%	16.84%	93.37%	6.63%	96.91%	76.47%
Other Labs & Associated	36.54	43	1:0.8	16.28%	83.72%	1:0.9	1:0.8	97.67%	16.28%	81.40%	67.44%	32.56%	85.71%	63.89%
Other Support	54.58	61	1:0.9	24.59%	75.41%	1:1	1:0.9	98.36%	24.59%	73.77%	65.57%	34.43%	93.33%	56.52%
Support	720.29	799	1:0.9	39.92%	60.08%	1:1	1:0.9	91.99%	36.55%	55.44%	81.98%	18.02%	96.24%	72.50%
Maintenance	38.84	39	1:1	100.00%		1:1	1:	100.00%	100.00%		100.00%		100.00%	
Technical Services	1	1	1:1	100.00%		1:1	1:	100.00%	100.00%		100.00%		100.00%	
Maintenance/ Technical	39.84	40	1:1	100.00%		1:1	1:	100.00%	100.00%		100.00%		100.00%	
General Support	760	839	1:0.9	42.79%	57.21%	1:1	1:0.9	92.37%	39.57%	52.80%	82.84%	17.16%	96.66%	72.50%
Health & Social Care Assistants	14	16	1:0.9	6.25%	93.75%	1:0.8	1:0.9	87.50%	6.25%	81.25%	50.00%	50.00%		53.33%
Health Care Assistant/ Care Assistant	373.06	406	1:0.9	29.06%	70.94%	1:1	1:0.9	96.55%	28.33%	68.23%	81.28%	18.72%	92.37%	76.74%
Attendant/ Aide	119.34	133	1:0.9	32.33%	67.67%	1:0.9	1:0.9	90.98%	31.58%	59.40%	78.95%	21.05%	93.02%	72.22%
Health Care Assistants	506.4	555	1:0.9	29.19%	70.81%	1:1	1:0.9	94.95%	28.47%	66.49%	79.82%	20.18%	91.98%	74.81%
Pastoral Care	5.93	8	1:0.7	100.00%		1:0.7	1:	50.00%	50.00%		50.00%	50.00%	50.00%	



Demographic Grade Group NOV 2023	WTE NOV 2023	No. NOV 2023	WTE : No	Number Male %	Number Female %	Male WTE : No.	Female WTE : No	Perm Count %	Perm Count Male %	Perm Count Female %	Fulltime Count %	Part time Count %	FT Count Male %	FT Count Female %
Total	5,589	6,124	1:0.9	22.31%	77.69%	1:1	1:0.9	83.26%	15.27%	67.99%	82.15%	17.85%	96.12%	78.14%
Other Care Grades	1	1	1:1		100.00%	1:	1:1	100.00%		100.00%	100.00%			100.00%
Care, other	6.93	9	1:0.8	88.89%	11.11%	1:0.7	1:1	55.56%	44.44%	11.11%	55.56%	44.44%	50.00%	100.00%
Patient & Client Care	513	564	1:0.9	30.14%	69.86%	1:0.9	1:0.9	94.33%	28.72%	65.60%	79.43%	20.57%	90.00%	74.87%



University of Limerick Hospital Group NOV 2023

Demographic Hospital NOV 2023	WTE NOV 2023	No. NOV 2023	WTE : No	Number Male %	Number Female %	Male WTE : No.	Female WTE : No	Perm Count %	Number Male %	Number Female %	Fulltime Count %	Part time Count %	FT Count Male %	FT Count Female %
Total	5,589	6,124	1:0.9	22.31%	77.69%	1:1	1:0.9	83.26%	15.27%	67.99%	82.15%	17.85%	96.12%	78.14%
Croom Orthopaedic	315	343	1:0.9	26.24%	73.76%	1:1	1:0.9	83.97%	18.37%	65.60%	79.30%	20.70%	94.44%	73.91%
Ennis	274	310	1:0.9	17.42%	82.58%	1:0.9	1:0.9	88.06%	12.90%	75.16%	70.65%	29.35%	87.04%	67.19%
Nenagh	340	378	1:0.9	15.34%	84.66%	1:1	1:0.9	91.53%	11.90%	79.63%	70.90%	29.10%	100.00%	65.63%
St. John's Limerick	382	418	1:0.9	17.22%	82.78%	1:1	1:0.9	90.19%	11.96%	78.23%	75.36%	24.64%	97.22%	70.81%
UH Limerick	3,854	4,192	1:0.9	24.86%	75.14%	1:1	1:0.9	81.25%	16.79%	64.46%	85.76%	14.24%	96.64%	82.16%
ULHG HQ	16	16	1:1	37.50%	62.50%	1:1	1:1	93.75%	31.25%	62.50%	100.00%		100.00%	100.00%
UMH Limerick	407	467	1:0.9	9.42%	90.58%	1:1	1:0.9	84.37%	6.00%	78.37%	74.09%	25.91%	90.91%	72.34%



Month-on-Month Summary

WTE change since OCT 2023		% WTE change since OCT 2023	Overall	Consultants	Registrars	SHO/ Interns	Medical/ Dental, other	Medical & Dental	Nurse/ Midwife Manager	Nurse/ Midwife Specialist & ANMP	Staff Nurse/ Staff Midwife	Nursing/ Midwifery Student	Nursing/ Midwifery other	Nursing & Midwifery	Therapy Professors	Health Science/ Diagnostics	Social Workers	Psychologists	Pharmacy	H&SC, Other	Health & Social Care Professionals	Management (VIII & above)	Administrative / Supervisory (V to VII)	Clerical (III & IV)	Management & Administrative	Support	Maintenance/ Technical	General Support	Health Care Assistants	Care, other	Patient & Client Care
Overall		+0.94%	+52.0	+3.8	-0.9	+0.0	+0.0	+2.9	+7.5	+3.2	+24.5	-1.2	+0.1	+34.1	+3.8	-1.3	+1.9	+0.4	+1.8	-0.1	+6.5	-0.2	+0.2	+7.9	+7.9	-10.1	+0.9	-9.2	+9.5	+0.4	+9.8
UH Limerick	48029	+0.65%	+25.0	+0.6	-1.9	-3.1	+0.0	-4.4	+3.7	+3.6	+24.2	-2.5	-0.0	+28.9	+1.5	-2.1	+1.9	+0.4	+1.7	-0.1	+3.1	-0.2	-0.8	+5.6	+4.5	-10.8	+1.0	-9.8	+2.3	+0.4	+2.7
UMH Limerick	48030	+2.28%	+9.1	+0.8	+0.1	-0.2		+0.7	+0.9	-0.0	+4.2	+0.3	+0.1	+5.6	+0.6	+0.0					+0.6	+0.0	-0.0	+3.0	+3.0	-1.8		-1.8	+1.0	+0.0	+1.0
Ennis	48031	+1.77%	+4.8	+1.4	-0.4	+1.0		+2.0	-0.1	-0.0	+0.3			+0.3	+0.5	+0.1			+0.3		+0.8		+0.0	-1.2	-1.2	-0.4		-0.4	+3.3		+3.3
Nenagh	48032	+2.65%	+8.8	+0.6	+0.1	+3.1		+3.8	-0.4	-1.0	+0.1			-1.3	+1.0	-0.2			-0.1		+0.7		+0.0	-0.4	-0.3	+3.2	-0.0	+3.2	+2.7	+0.0	+2.7
Croom Orthopaedic	48033	-0.03%	-0.1	+0.3	+0.3	+0.2		+0.7	+1.4	+0.6	-2.3			-0.4	+0.0	+0.0					+0.0		+0.0	+0.8	+0.8	-0.5	+0.0	-0.5	-0.8	+0.0	-0.8
St John's Limerick	48034	+1.18%	+4.4	+0.1	+1.0	-1.0		+0.1	+2.0	+0.0	-2.0	+1.0	+0.0	+1.0	+0.2	+1.0			+0.0		+1.2	+0.0	+1.0	+0.2	+1.1	+0.0	+0.0	+0.0	+1.0	+0.0	+1.0
ULHG HO	48035	+0.19%	+0.0						+0.0					+0.0								+0.0	+0.0	+0.0	+0.0						

Year-to-Date Summary

WTE change since DEC 2022	% WTE change since DEC 2022	Overall	Consultants	Registrars	SHO/ Interns	Medical/ Dental, other	Medical & Dental	Nurse/ Midwife Manager	Nurse/ Midwife Specialist & AN/MP	Staff Nurse/ Staff Midwife	Nursing/ Midwifery Student	Nursing/ Midwifery other	Nursing & Midwifery	Therapy Professions	Health Sciences/ Diagnostics	Social Workers	Psychologists	Pharmacy	H&SC, Other	Health & Social Care Professionals	Management (VIII & above)	Administrative / Supervisory (V to VII)	Clerical (III & IV)	Management & Administrative	Support	Maintenance/ Technical	General Support	Health Care Assistants	Care, other	Patient & Client Care
Overall	+7.02%	+367	+25	+26	+56	+0	+107	+34	+21	+23	+0	+1	+79	+8	+33	-3	+2	+1	-3	+38	+3	+30	+29	+61	-6	+3	-4	+84	+1	+85
UH Limerick	+5.86%	+213	+20	+18	+43	+0	+81	+23	+15	+10	-1	+2	+50	+0	+27	-3	+2	+2	-3	+25	+1	+23	+8	+31	-12	+3	-10	+34	+1	+35
UMH Limerick	+6.09%	+23	+3	+4	+3		+10	+6	+1	-5	-0	-1	+1	+1	+0					+1	+0	+0	+2	+2	-1		-1	+10	+0	+10
Ennis	+6.92%	+18	+0	+2	+1		+3	+1	+1	+4			+6	+1	+1			-1		+1		-1	+1	+0	+3		+3	+4		+4
Nenagh	+15.77%	+46	-1	+3	+5		+7	+2	+3	+14			+19	+1	+3			-0		+4		+1	+1	+2	+8	+0	+8	+6	+0	+6
Croom Orthopaedic	+3.81%	+12	+0	+0	-1		-1	+1	+0	-5	-1		-4	+4	-0					+4		-1	+4	+3	-11	+0	-11	+20	+0	+20
St. John's Limerick	+15.14%	+50	+3	-2	+4		+5	+1	+1	+4	+2	+0	+8	+1	+2			+0		+3	-1	+6	+13	+18	+7	+0	+7	+9	+0	+9
ULHG HQ	+34.77%	+4						+0					+0								+3	+1	+0	+4						



University of Limerick Hospital Group Employment Report: NOV

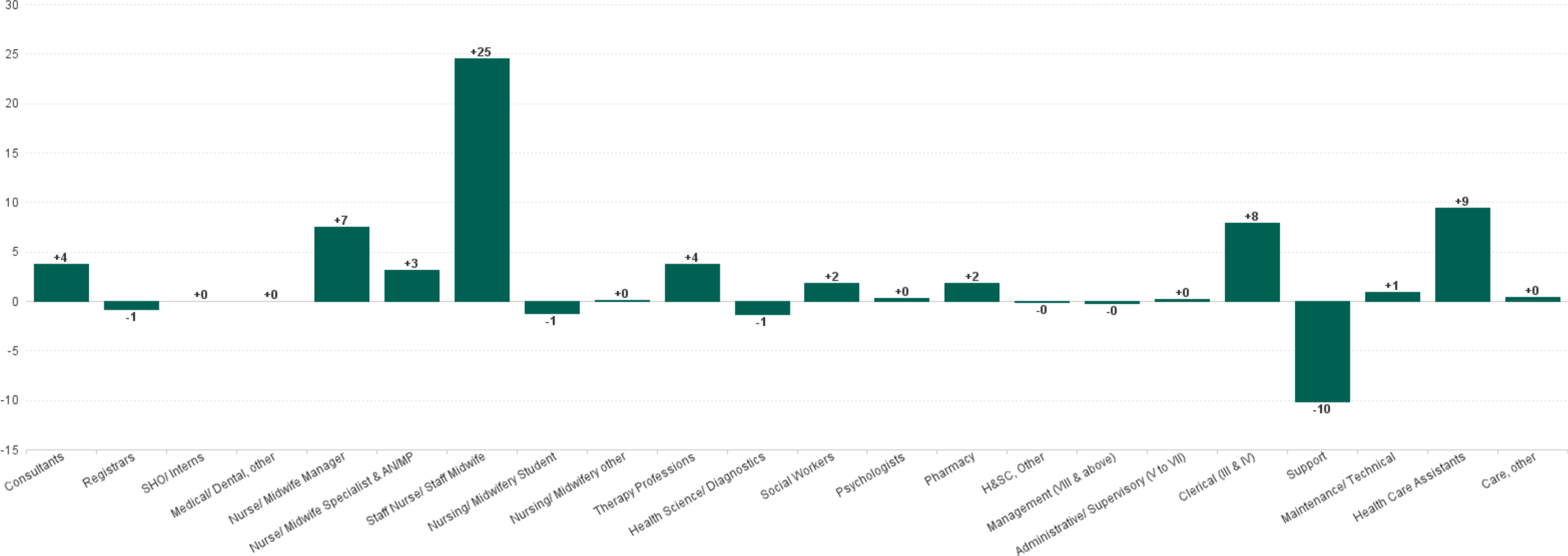
Year-on-Year Summary

WTE change since NOV 2022	% WTE change since NOV 2022	Overall	Consultants	Registrars	SHO/ Interns	Medical/ Dental, other	Medical & Dental	Nurse/ Midwife Manager	Nurse/ Midwife Specialist & AN/MP	Staff Nurse/ Staff Midwife	Nursing/ Midwifery Student	Nursing/ Midwifery other	Nursing & Midwifery	Therapy Professions	Health Sciences/ Diagnostics	Social Workers	Psychologists	Pharmacy	H&SC, Other	Health & Social Care Professionals	Management (VIII & above)	Administrative / Supervisory (V to VII)	Clerical (III & IV)	Management & Administrative	Support	Maintenance/ Technical	General Support	Health Care Assistants	Care, other	Patient & Client Care
Overall	+7.07%	+369	+28	+21	+52	+0	+101	+33	+23	+32	-2	+2	+89	+7	+31	-3	+2	+0	+2	+39	+4	+27	+23	+54	-4	+3	-1	+86	+1	+87
UH Limerick	+5.87%	+214	+21	+14	+42	+0	+77	+26	+16	+15	-1	+3	+59	-1	+23	-3	+2	+1	+2	+24	+2	+19	+5	+26	-11	+3	-9	+35	+1	+36
UMH Limerick	+8.85%	+33	+3	+4	+3		+9	+4	+2	+4	-1	-1	+9	+1	+0					+1	+0	-0	+2	+2	+0		+0	+12	+0	+12
Ennis	+5.58%	+15	+1	+2	-0		+2	-0	+1	+3			+4	+1	+1			-1		+1		-1	+1	+0	+5		+5	+2		+2
Nenagh	+15.68%	+46	+1	+3	+4		+8	+1	+3	+11			+15	+0	+5			-0		+5		+1	+2	+3	+8	-0	+8	+7	+0	+7
Croom Orthopaedic	+2.62%	+8	+0	+0	-0		-0	-0	+0	-7	-1		-8	+4	-0					+4		-0	+2	+2	-12	+0	-12	+21	+0	+21
St. John's Limerick	+14.86%	+49	+3	-2	+4		+5	+2	+1	+5	+1	+0	+9	+1	+2			+0		+3	-1	+7	+11	+17	+6	+0	+6	+9	+0	+9
ULHG HQ	+33.75%	+4						+0					+0								+3	+1	+0	+4						



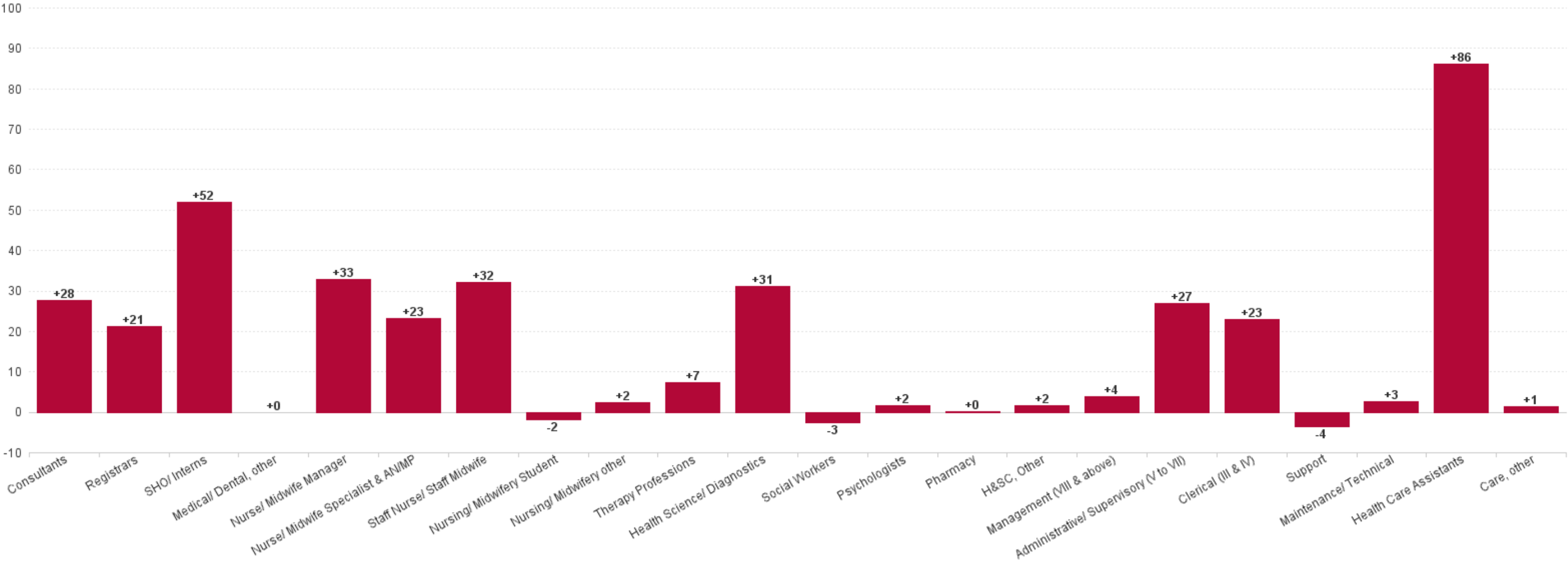
University of Limerick Hospital Group Employment Report:

Previous Month Summary Chart: Change since OCT 2023



University of Limerick Hospital Group Employment Report: NOV 2

Previous Year Summary Chart: Change since NOV 2022



University of Limerick Hospital Group Employment Report: N

YTD Summary Chart: Change since DEC 2022

