

Health Business Services Services Employment Report: November 2021

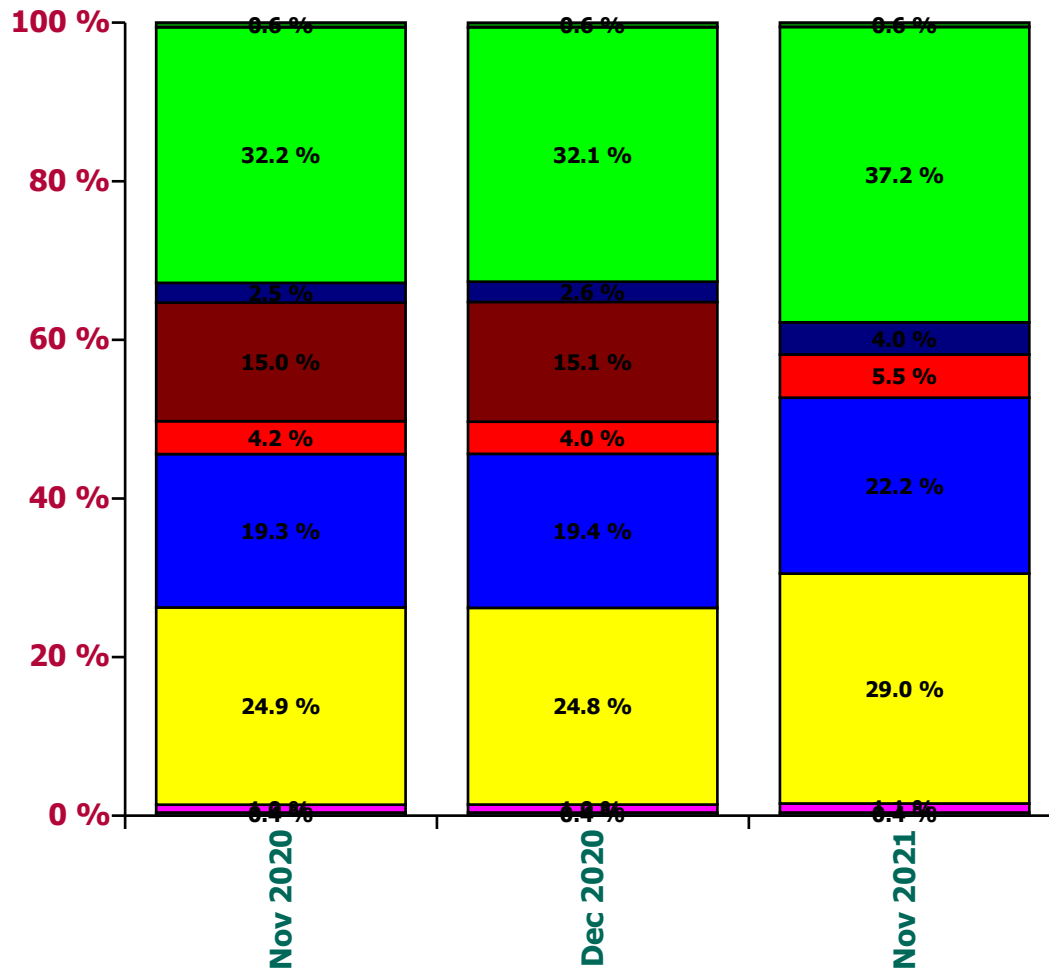
Employment by Staff Group

Nov 2021	WTE Dec 2019	WTE Dec 2020	WTE Oct 2021	WTE Nov 2021	WTE change since Oct 21	WTE change since Dec 20	% change since Dec 20	WTE change since Dec 19	% change since Dec 19	No. Nov 2021
Overall	1,583	1,631	1,360	1,351	-9	-280	-17.2 %	-232	-14.6 %	1,426
Medical & Dental	2						-100.0 %	-2	-100.0 %	
Nurse/ Midwife Manager	6	3	5	5	-0	+2	69.5 %	-1	-13.1 %	5
Nursing/ Midwifery other	1	1				-1	-100.0 %	-1	-100.0 %	
Nursing & Midwifery	6	4	5	5	-0	+1	32.4 %	-2	-24.0 %	5
Health Science/ Diagnostics	1	1	1	1			0.0 %		0.0 %	1
Pharmacy	2	1	1	1			0.0 %	-1	-33.3 %	1
H&SC, Other	1	1	1	1			0.0 %		0.0 %	1
Health & Social Care Professionals	4	3	3	3			0.0 %	-1	-14.3 %	3
Management (VIII & above)	168	168	157	157	+0	-10	-6.1 %	-11	-6.3 %	160
Administrative/ Supervisory (V to VII)	419	450	390	383	-7	-68	-15.0 %	-37	-8.7 %	404
Clerical (III & IV)	651	672	482	482	-0	-190	-28.3 %	-168	-25.9 %	523
Management & Administrative	1,238	1,290	1,029	1,022	-7	-268	-20.8 %	-215	-17.4 %	1,087
Support	101	102	93	91	-2	-11	-10.9 %	-10	-9.9 %	95
Maintenance/ Technical	230	231	229	228	-0	-2	-1.0 %	-2	-0.7 %	234
General Support	331	333	321	319	-2	-13	-4.0 %	-12	-3.5 %	329
Health Care Assistants	2	2	2	2		+0	5.8 %		0.0 %	2
Care, other	1						-100.0 %	-1	-100.0 %	
Patient & Client Care	3	2	2	2		+0	5.8 %	-1	-28.6 %	2

Health Business Services: Nov 2021

Nov 2021	WTE Dec 2019	WTE Dec 2020	WTE Oct 2021	WTE Nov 2021	WTE change since Oct 21	WTE change since Dec 20	% change since Dec 20	WTE change since Dec 19	% change since Dec 19	No. Nov 2021
Overall	1,583	1,631	1,360	1,351	-9	-280	-17.2 %	-232	-14.6 %	1,426
HBS Corporate	4	6	5	5	-0	-1	-16.3 %	+1	20.1 %	6
HBS Customer Relationship Mgt	13	16	15	15	+0	-1	-5.5 %	+2	15.5 %	16
HBS Estates	401	405	394	392	-2	-13	-3.2 %	-10	-2.4 %	405
HBS Finance	321	317	303	300	-4	-17	-5.5 %	-21	-6.6 %	328
HBS HR/Payroll Systems and Analytics	62	66	75	74	-1	+8	11.9 %	+11	18.4 %	78
HBS Human Resources	237	246				-246	-100.0 %	-237	-100.0 %	
HBS NiSRP	32	42	48	55	+7	+13	30.4 %	+23	73.1 %	57
HBS Procurement	502	523	510	503	-6	-20	-3.8 %	+1	0.2 %	528
HBS HQ	10	10	10	7	-2	-2	-21.6 %	-2	-22.1 %	8

Proportion of total by Service



Health Business Services: November 2021

HBS Corporate by staff group

Nov 2021	WTE Dec 2019	WTE Dec 2020	WTE Oct 2021	WTE Nov 2021	WTE change since Oct 21	WTE change since Dec 20	% change since Dec 20	WTE change since Dec 19	% change since Dec 19	No. Nov 2021
Overall	4	6	5	5	-0	-1	#####	+1	20.1 %	6
Management (VIII & above)	1	1	1	1			0.0 %		0.0 %	1
Administrative/ Supervisory (V to VII)	3	3	2	2	-0	-1	-35.2 %	-1	-36.2 %	2
Clerical (III & IV)		2	2	2	-0	-0	-1.0 %	+2	-100.0 %	2
Management & Administrative	4	6	5	5	-0	-1	-17.7 %	+1	22.4 %	5
General Support	1	1	1	1			0.0 %	+0	2.0 %	1

HBS Customer Relationship Mgt by staff group

Nov 2021	WTE Dec 2019	WTE Dec 2020	WTE Oct 2021	WTE Nov 2021	WTE change since Oct 21	WTE change since Dec 20	% change since Dec 20	WTE change since Dec 19	% change since Dec 19	No. Nov 2021
Overall	13	16	15	15	+0	-1	-5.5 %	+2	15.5 %	16
Management (VIII & above)	6	9	8	8	+0	-1	-9.8 %	+2	27.9 %	8
Administrative/ Supervisory (V to VII)	4	6	6	6	-0	-0	-0.3 %	+2	60.1 %	6
Clerical (III & IV)	3	2	2	2	-0	-0	-1.1 %	-1	-36.3 %	2
Management & Administrative	13	16	15	15	+0	-1	-5.5 %	+3	22.8 %	16
Patient & Client Care	1						-100.0 %	-1	-100.0 %	

HBS Estates by staff group

Nov 2021	WTE Dec 2019	WTE Dec 2020	WTE Oct 2021	WTE Nov 2021	WTE change since Oct 21	WTE change since Dec 20	% change since Dec 20	WTE change since Dec 19	% change since Dec 19	No. Nov 2021
Overall	401	405	394	392	-2	-13	-3.2 %	-10	-2.4 %	405
Nurse/ Midwife Manager	3	3	5	5	-0	+2	69.5 %	+2	70.7 %	5
Nursing/ Midwifery other	1	1				-1	-100.0 %	-1	-100.0 %	
Nursing & Midwifery	4	4	5	5	-0	+1	32.4 %	+1	33.1 %	5
Health Science/ Diagnostics	1	1	1	1			0.0 %		0.0 %	1
H&SC, Other	1	1	1	1			0.0 %		0.0 %	1
Health & Social Care Professionals	2	2	2	2			0.0 %		0.0 %	2
Management (VIII & above)	35	35	38	37	-1	+2	6.6 %	+2	5.8 %	38
Administrative/ Supervisory (V to VII)	58	62	58	56	-2	-6	-9.3 %	-2	-3.8 %	58
Clerical (III & IV)	56	58	48	48	+1	-10	-16.7 %	-7	-13.1 %	53
Management & Administrative	149	155	144	142	-2	-13	-8.5 %	-7	-5.0 %	149
Support	19	17	17	17	-0	+0	1.4 %	-2	-9.2 %	17
Maintenance/ Technical	227	227	226	225	-0	-1	-0.6 %	-2	-0.7 %	231
General Support	245	243	243	242	-0	-1	-0.4 %	-3	-1.3 %	248
Patient & Client Care	1	1	1	1			0.0 %		0.0 %	1

HBS Finance by staff group

Nov 2021	WTE Dec 2019	WTE Dec 2020	WTE Oct 2021	WTE Nov 2021	WTE change since Oct 21	WTE change since Dec 20	% change since Dec 20	WTE change since Dec 19	% change since Dec 19	No. Nov 2021
Overall	321	317	303	300	-4	-17	-5.5 %	-21	-6.6 %	328
Management (VIII & above)	30	28	28	30	+2	+2	6.5 %	-0	-1.4 %	31
Administrative/ Supervisory (V to VII)	129	129	127	126	-1	-3	-2.1 %	-3	-2.6 %	134
Clerical (III & IV)	161	160	148	144	-4	-16	-10.3 %	-17	-10.8 %	163
Management & Administrative	321	317	303	300	-4	-17	-5.5 %	-21	-6.6 %	328

HBS HR/Payroll Systems and Analytics by staff group

Nov 2021	WTE Dec 2019	WTE Dec 2020	WTE Oct 2021	WTE Nov 2021	WTE change since Oct 21	WTE change since Dec 20	% change since Dec 20	WTE change since Dec 19	% change since Dec 19	No. Nov 2021
Overall	62	66	75	74	-1	+8	11.9 %	+11	18.4 %	78
Management (VIII & above)	19	20	20	20	-0	-0	-2.0 %	+1	3.2 %	20
Administrative/ Supervisory (V to VII)	39	41	51	50	-1	+8	19.9 %	+11	28.0 %	53
Clerical (III & IV)	4	4	4	4	-0		0.0 %	-0	-0.5 %	5
Management & Administrative	62	66	75	74	-1	+8	11.9 %	+11	18.4 %	78

HBS NiSRP by staff group

Nov 2021	WTE Dec 2019	WTE Dec 2020	WTE Oct 2021	WTE Nov 2021	WTE change since Oct 21	WTE change since Dec 20	% change since Dec 20	WTE change since Dec 19	% change since Dec 19	No. Nov 2021
Overall	32	42	48	55	+7	+13	30.4 %	+23	73.1 %	57
Management (VIII & above)	14	13	16	16	-0	+3	24.5 %	+2	14.4 %	16
Administrative/ Supervisory (V to VII)	10	17	22	24	+2	+6	37.6 %	+13	132.9 %	25
Clerical (III & IV)	8	12	10	15	+5	+3	26.1 %	+8	99.5 %	16
Management & Administrative	32	42	48	55	+7	+13	30.4 %	+23	73.1 %	57

HBS Procurement by staff group

Nov 2021	WTE Dec 2019	WTE Dec 2020	WTE Oct 2021	WTE Nov 2021	WTE change since Oct 21	WTE change since Dec 20	% change since Dec 20	WTE change since Dec 19	% change since Dec 19	No. Nov 2021
Overall	502	523	510	503	-6	-20	-3.8 %	+1	0.2 %	528
Health & Social Care Professionals	2	1	1	1			0.0 %	-1	-33.3 %	1
Management (VIII & above)	43	44	42	43	+1	-2	-3.4 %	-0	-0.4 %	43
Administrative/ Supervisory (V to VII)	110	121	122	117	-5	-5	-3.8 %	+7	6.4 %	123
Clerical (III & IV)	265	269	266	265	-1	-5	-1.7 %	-0	-0.0 %	280
Management & Administrative	418	435	429	425	-5	-11	-2.5 %	+7	1.6 %	446
Support	80	83	75	74	-2	-9	-11.2 %	-6	-7.8 %	77
Maintenance/ Technical	2	3	3	3			0.0 %	+1	50.0 %	3
General Support	82	86	78	77	-2	-9	-10.8 %	-5	-6.4 %	80
Patient & Client Care	1	1	1	1		+0	12.4 %		0.0 %	1

HBS HQ by staff group

Nov 2021	WTE Dec 2019	WTE Dec 2020	WTE Oct 2021	WTE Nov 2021	WTE change since Oct 21	WTE change since Dec 20	% change since Dec 20	WTE change since Dec 19	% change since Dec 19	No. Nov 2021
Overall	10	10	10	7	-2	-2	#####	-2	-22.1 %	8
Management (VIII & above)	4	4	4	3	-1	-1	-24.7 %	-1	-25.1 %	3
Administrative/ Supervisory (V to VII)	4	5	3	3	-0	-2	-44.7 %	-1	-30.0 %	3
Clerical (III & IV)	2	1	3	2	-1	+1	96.0 %	-0	-2.0 %	2
Management & Administrative	10	10	10	7	-2	-2	-21.6 %	-2	-22.1 %	8

Employment by WTE, Headcount, Gender, Full-Time /Part-Time etc.: Nov 2021

Health Business Services	WTE	Headcount	WTE: no.	% Male	% female	Male WTE: no.	Female WTE: no.	% Total Perm	% Male Perm	% Female Perm	% Total Full Time	% Total Part Time	% Male FT	% Female FT
Overall	1,351	1,426	1.06	54.3%	45.7%	1.03	1.09	86.7%	85.5%	88.2%	91.4%	8.6%	97.3%	84.4%
Director Nursing/Midwifery, Assistant	5	5	1.05		100.0%		1.05	100.0%		100.0%	80.0%	20.0%		80.0%
Nurse/ Midwife Manager	5	5	1.05		100.0%		1.05	100.0%		100.0%	80.0%	20.0%		80.0%
Nursing & Midwifery	5	5	1.05		100.0%		1.05	100.0%		100.0%	80.0%	20.0%		80.0%
Clinical Engineering	1	1	1.00	100.0%		1.00		100.0%	100.0%		100.0%	0.0%	100.0%	
Health Science/ Diagnostics	1	1	1.00	100.0%		1.00		100.0%	100.0%		100.0%	0.0%	100.0%	
Pharmacy	1	1	1.00		100.0%		1.00	100.0%		100.0%	100.0%	0.0%		100.0%
Environmental Health Officers	1	1	1.00	100.0%		1.00		100.0%	100.0%		100.0%	0.0%	100.0%	
H&SC, Other	1	1	1.00	100.0%		1.00		100.0%	100.0%		100.0%	0.0%	100.0%	
Health & Social Care	3	3	1.00	66.7%	33.3%	1.00	1.00	100.0%	100.0%	100.0%	100.0%	0.0%	100.0%	100.0%
Executive Management	33	33	1.00	72.7%	27.3%	1.00	1.00	97.0%	100.0%	88.9%	100.0%	0.0%	100.0%	100.0%
Senior Management (VIII & GM)	125	127	1.02	55.1%	44.9%	1.01	1.03	99.2%	100.0%	98.2%	98.4%	1.6%	98.6%	98.2%
Management (VIII & above)	157	160	1.02	58.8%	41.3%	1.01	1.03	98.8%	100.0%	97.0%	98.8%	1.3%	98.9%	98.5%
Middle Management (V-VII)	383	404	1.06	32.7%	67.3%	1.02	1.07	96.8%	97.7%	96.3%	89.1%	10.9%	97.7%	84.9%
Administrative/ Supervisory (V to VII)	383	404	1.06	32.7%	67.3%	1.02	1.07	96.8%	97.7%	96.3%	89.1%	10.9%	97.7%	84.9%
Clerical (III & IV)	482	523	1.08	47.0%	53.0%	1.03	1.13	77.4%	77.2%	77.6%	87.6%	12.4%	97.2%	79.1%
Management & Administrative	1,022	1,087	1.06	43.4%	56.6%	1.03	1.09	87.8%	87.5%	88.0%	89.8%	10.2%	97.7%	83.7%
Household Services	8	8	1.02	25.0%	75.0%	1.04	1.01	87.5%	100.0%	83.3%	100.0%	0.0%	100.0%	100.0%
Portering	72	74	1.03	97.3%	2.7%	1.03	1.01	47.3%	48.6%	0.0%	98.6%	1.4%	98.6%	100.0%
Other Support	12	13	1.13	100.0%		1.13		69.2%	69.2%		76.9%	23.1%	76.9%	
Support	91	95	1.04	91.6%	8.4%	1.05	1.01	53.7%	52.9%	62.5%	95.8%	4.2%	95.4%	100.0%
Maintenance/ Technical	228	234	1.02	90.2%	9.8%	1.02	1.05	94.9%	94.3%	100.0%	97.0%	3.0%	97.2%	95.7%
General Support	319	329	1.03	90.6%	9.4%	1.03	1.04	83.0%	82.2%	90.3%	96.7%	3.3%	96.6%	96.8%
Health Care Assistants	2	2	1.00	100.0%		1.00		100.0%	100.0%		100.0%	0.0%	100.0%	
Patient & Client Care	2	2	1.00	100.0%		1.00		100.0%	100.0%		100.0%	0.0%	100.0%	

Employment by WTE, Headcount, Gender, Full-Time /Part-Time etc.: Nov 2021

Health Business Services	WTE	Headcount	WTE: no.	% Male	% female	Male WTE: no.	Female WTE: no.	% Total Perm	% Male Perm	% Female Perm	% Total Full Time	% Total Part Time	% Male FT	% Female FT
Overall	1,351	1,426	1.06	54.3%	45.7%	1.03	1.09	86.7%	85.5%	88.2%	91.4%	8.6%	97.3%	84.4%
Management (VIII & above)	1	1	1.00		100.0%		1.00	100.0%	100.0%	100.0%	100.0%	0.0%		
Administrative/ Supervisory (V to VII)	2	2	1.05		100.0%		1.05	100.0%	100.0%	100.0%	100.0%	0.0%		
Clerical (III & IV)	2	2	1.02	50.0%	50.0%	1.02	1.01	100.0%	100.0%	100.0%	100.0%	0.0%	100.0%	100.0%
Support	1	1	1.96	100.0%		1.96		0.0%	0.0%		0.0%	100.0%	0.0%	0.0%
HBS Corporate	5	6	1.12	33.3%	66.7%	1.34	1.03	83.3%	83.3%	100.0%	83.3%	16.7%	50.0%	50.0%
Management (VIII & above)	8	8	1.01	12.5%	87.5%	1.00	1.02	100.0%	100.0%	100.0%	100.0%	0.0%	100.0%	100.0%
Administrative/ Supervisory (V to VII)	6	6	1.04	16.7%	83.3%	1.01	1.04	100.0%	100.0%	100.0%	83.3%	16.7%	100.0%	100.0%
Clerical (III & IV)	2	2	1.12		100.0%		1.12	100.0%	100.0%	100.0%	50.0%	50.0%		
HBS Customer Relationship Mgt	15	16	1.03	12.5%	87.5%	1.01	1.04	100.0%	100.0%	100.0%	87.5%	12.5%	100.0%	100.0%
Nurse/ Midwife Manager	5	5	1.05		100.0%		1.05	100.0%	100.0%	100.0%	80.0%	20.0%		
Health Science/ Diagnostics	1	1	1.00	100.0%		1.00		100.0%	100.0%		100.0%	0.0%	100.0%	100.0%
H&SC, Other	1	1	1.00	100.0%		1.00		100.0%	100.0%		100.0%	0.0%	100.0%	100.0%
Management (VIII & above)	37	38	1.02	76.3%	23.7%	1.02	1.03	100.0%	100.0%	100.0%	94.7%	5.3%	96.6%	96.6%
Administrative/ Supervisory (V to VII)	56	58	1.03	37.9%	62.1%	1.01	1.04	98.3%	98.3%	97.2%	94.8%	5.2%	100.0%	100.0%
Clerical (III & IV)	48	53	1.09	26.4%	73.6%	1.08	1.10	94.3%	94.3%	97.4%	84.9%	15.1%	92.9%	92.9%
Support	17	17	1.01	64.7%	35.3%	1.01	1.01	94.1%	94.1%	83.3%	100.0%	0.0%	100.0%	100.0%
Maintenance/ Technical	225	231	1.03	90.0%	10.0%	1.02	1.05	95.2%	95.2%	100.0%	97.0%	3.0%	97.1%	97.1%
Health Care Assistants	1	1	1.00	100.0%		1.00		100.0%	100.0%		100.0%	0.0%	100.0%	100.0%
HBS Estates	392	405	1.03	70.9%	29.1%	1.02	1.06	96.0%	96.0%	97.5%	94.8%	5.2%	97.2%	97.2%
Management (VIII & above)	30	31	1.04	41.9%	58.1%	1.00	1.07	96.8%	96.8%	94.4%	100.0%	0.0%	100.0%	100.0%
Administrative/ Supervisory (V to VII)	126	134	1.06	17.9%	82.1%	1.01	1.08	96.3%	96.3%	96.4%	85.8%	14.2%	100.0%	100.0%
Clerical (III & IV)	144	163	1.13	22.7%	77.3%	1.06	1.16	73.0%	73.0%	75.4%	82.8%	17.2%	97.3%	97.3%
HBS Finance	300	328	1.10	22.6%	77.4%	1.04	1.11	84.8%	84.8%	85.8%	85.7%	14.3%	98.6%	98.6%
Management (VIII & above)	20	20	1.01	60.0%	40.0%	1.00	1.01	100.0%	100.0%	100.0%	100.0%	0.0%	100.0%	100.0%
Administrative/ Supervisory (V to VII)	50	53	1.07	26.4%	73.6%	1.04	1.08	100.0%	100.0%	100.0%	88.7%	11.3%	85.7%	85.7%
Clerical (III & IV)	4	5	1.16		100.0%		1.16	80.0%	80.0%	80.0%	60.0%	40.0%		
HBS HR/Payroll Systems and Analytics	74	78	1.06	33.3%	66.7%	1.02	1.08	98.7%	98.7%	98.1%	89.7%	10.3%	92.3%	92.3%
Management (VIII & above)	16	16	1.02	31.3%	68.8%	1.05	1.00	100.0%	100.0%	100.0%	100.0%	0.0%	100.0%	100.0%
Administrative/ Supervisory (V to VII)	24	25	1.06	32.0%	68.0%	1.04	1.07	88.0%	88.0%	88.2%	100.0%	0.0%	100.0%	100.0%

Clerical (III & IV)	15	16	1.05	37.5%	62.5%	1.02	1.06	25.0%	25.0%	20.0%	100.0%	0.0%	100.0%	100.0%
HBS NiSRP	55	57	1.04	33.3%	66.7%	1.04	1.05	73.7%	73.7%	73.7%	100.0%	0.0%	100.0%	100.0%
Pharmacy	1	1	1.00		100.0%		1.00	100.0%	100.0%	100.0%	100.0%	0.0%		
Management (VIII & above)	43	43	1.00	74.4%	25.6%	1.01	1.00	100.0%	100.0%	100.0%	100.0%	0.0%	100.0%	100.0%
Administrative/ Supervisory (V to VII)	117	123	1.05	51.2%	48.8%	1.03	1.08	96.7%	96.7%	95.0%	88.6%	11.4%	98.4%	98.4%
Clerical (III & IV)	265	280	1.06	66.8%	33.2%	1.03	1.13	79.6%	79.6%	78.5%	90.7%	9.3%	97.3%	97.3%
Support	74	77	1.04	97.4%	2.6%	1.04	1.01	45.5%	45.5%	0.0%	96.1%	3.9%	96.0%	96.0%
Maintenance/ Technical	3	3	1.00	100.0%		1.00		66.7%	66.7%		100.0%	0.0%	100.0%	100.0%
Health Care Assistants	1	1	1.00	100.0%		1.00		100.0%	100.0%		100.0%	0.0%	100.0%	100.0%
HBS Procurement	503	528	1.05	68.4%	31.6%	1.03	1.10	80.3%	80.3%	85.0%	91.9%	8.1%	97.5%	97.5%
Management (VIII & above)	3	3	1.01	66.7%	33.3%	1.01	1.01	66.7%	66.7%	0.0%	100.0%	0.0%	100.0%	100.0%
Administrative/ Supervisory (V to VII)	3	3	1.19		100.0%		1.19	100.0%	100.0%	100.0%	66.7%	33.3%		
Clerical (III & IV)	2	2	1.02	50.0%	50.0%	1.02	1.02	50.0%	50.0%	0.0%	100.0%	0.0%	100.0%	100.0%
HBS HQ	7	8	1.07	37.5%	62.5%	1.01	1.11	75.0%	75.0%	60.0%	87.5%	12.5%	100.0%	100.0%

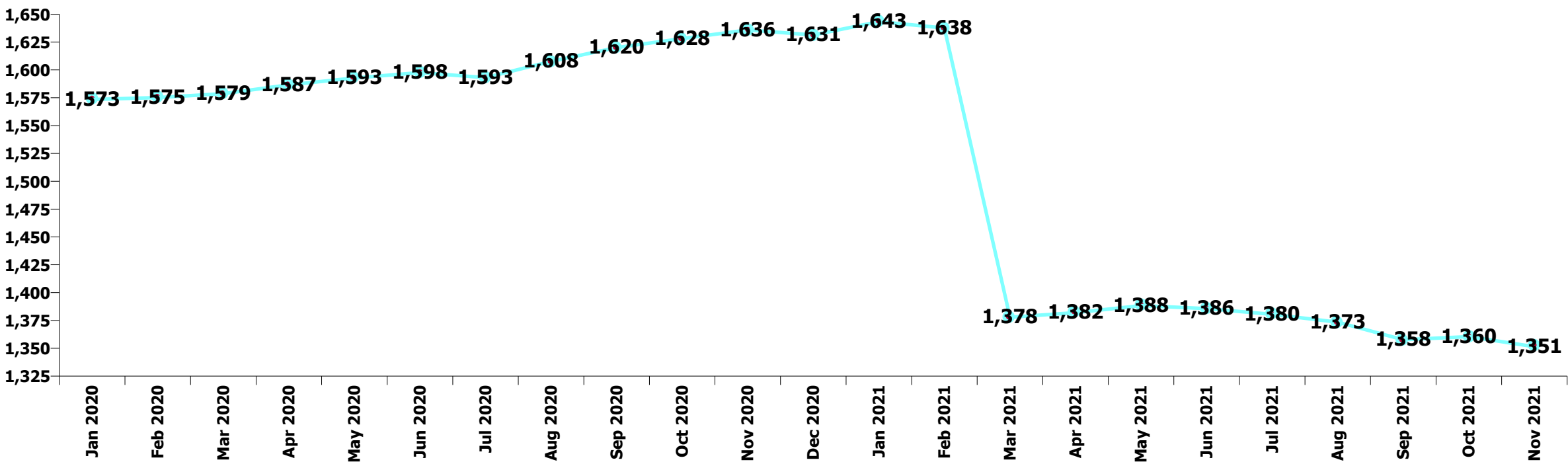
Summary Staff Movement: November 2021

Month-on-month Summary

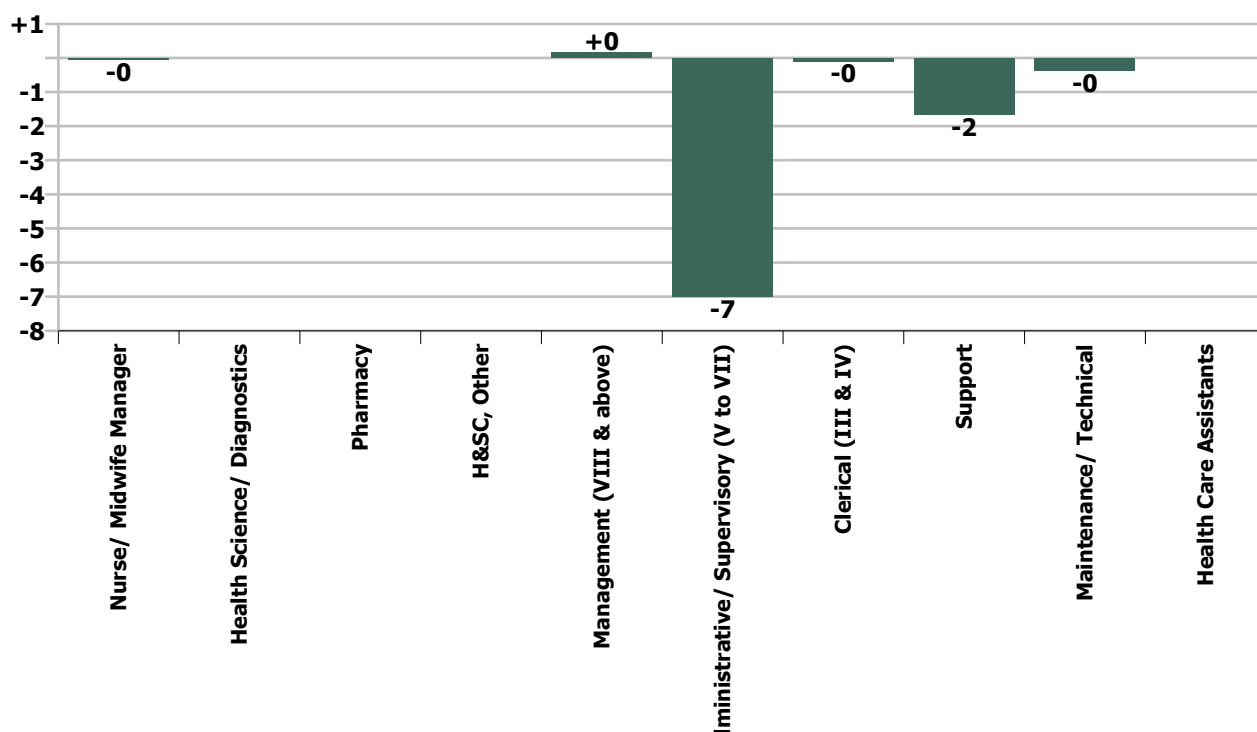
WTE change since Oct 21	% change since Oct 21	overall	Nurse/ Midwife Manager	Nursing & Midwifery	Health Science/ Diagnostics	Pharmacy	H&SC, Other	Health & Social Care Professionals	Management (VIII & above)	Administrative/ Supervisory (V to VII)	Clerical (III & IV)	Management & Administrative	General Support	Health Care Assistants	Patient & Client Care
Overall	-0.7%	-9	-0	-0					+0	-7	-0	-7	-2		
HBS Corporate	-0.9%	-0							0.0	-0.0	-0.0	-0.0	0.0		
HBS Customer Relationship Mgt	+0.2%	+0							+0.1	-0.0	-0.0	+0.0			
HBS Estates	-0.6%	-2	-0.0	-0.0	0.0		0.0	0.0	-1.1	-1.7	+0.9	-1.8	-0.5	0.0	0.0
HBS Finance	-1.2%	-4							+1.9	-1.0	-4.4	-3.6			
HBS HR/Payroll Systems and Analytics	-1.7%	-1							-0.1	-1.2	-0.0	-1.3			
HBS NiSRP	+14.2%	+7							-0.2	+1.8	+5.2	+6.8			
HBS Procurement	-1.3%	-6					0.0	0.0	+0.6	-4.8	-0.7	-4.9	-1.5	0.0	0.0
HBS HQ	-21.8%	-2							-1.0	-0.0	-1.0	-2.1			
			-0.8%	-0.8%					+0.1%	-1.8%	-0.0%	-0.7%	-0.6%		

Year-on-year Summary

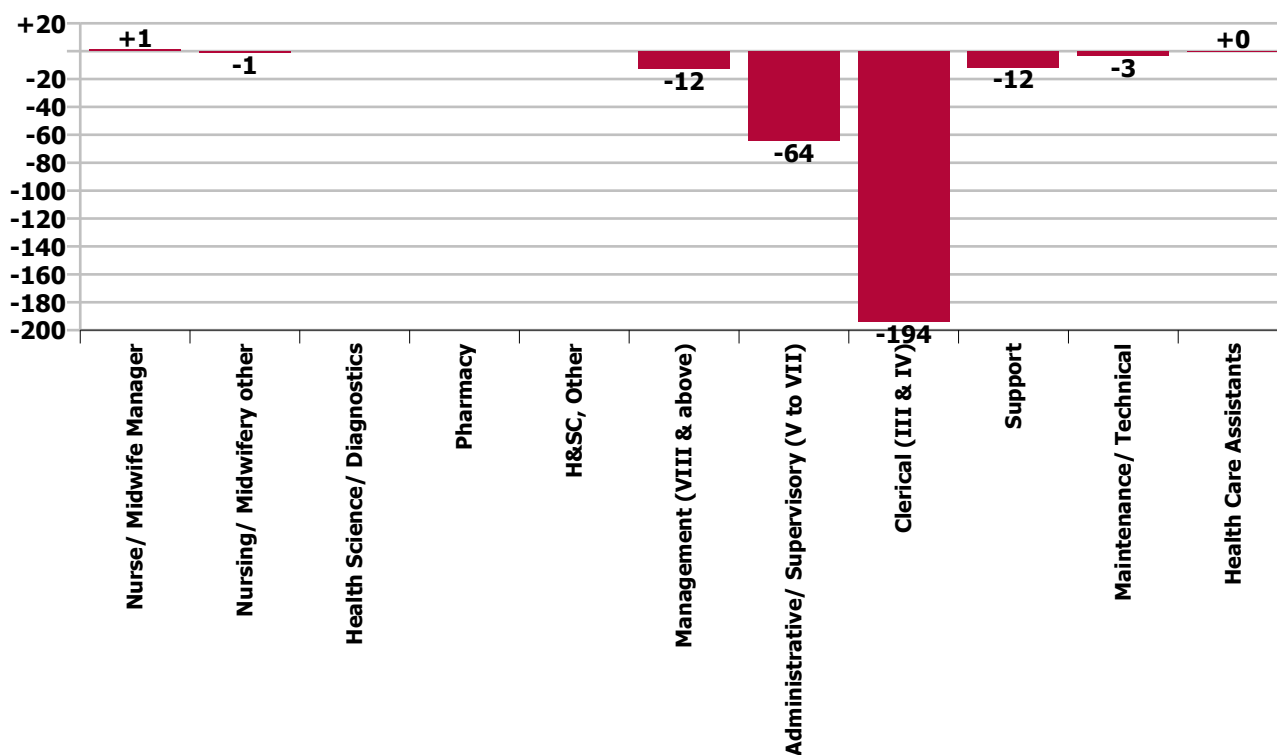
WTE change since Nov 20	% change since Nov 20	overall	Nurse/ Midwife Manager	Nursing/ Midwifery other	Nursing & Midwifery	Health Science/ Diagnostics	Pharmacy	H&SC, Other	Health & Social Care Professionals	Management (VIII & above)	Administrative/ Supervisory (V to VII)	Clerical (III & IV)	Management & Administrative	General Support	Health Care Assistants	Patient & Client Care
Overall	-17.4%	-284	+1.0	-0.8	+0.2	0.0	0.0	0.0	0.0	-12.4	-64.1	-194.0	-270.4	-14.5	+0.3	+0.3
HBS Corporate	-16.2%	-1								0.0	-1.0	-0.0	-1.0	0.0		
HBS Customer Relationship Mgt	-5.4%	-1								-0.9	-0.0	-0.0	-0.9			
HBS Estates	-3.7%	-15	+1.0	-0.8	+0.2	0.0		0.0	0.0	+2.4	-5.5	-10.1	-13.2	-1.9	0.0	0.0
HBS Finance	-5.3%	-17								+1.8	-1.9	-16.8	-16.8			
HBS HR/Payroll Systems and Analytics	+8.6%	+6								-1.3	+7.3	-0.1	+5.8			
HBS Human Resources	-100.0%	-245								-14.6	-64.7	-162.2	-241.5	-3.1		
HBS NiSRP	+34.1%	+14								+3.4	+7.3	+3.3	+13.9			
HBS Procurement	-4.5%	-24					0.0	0.0	0.0	-2.1	-3.5	-9.0	-14.6	-9.6	+0.3	+0.3
HBS HQ	-21.8%	-2								-1.0	-2.0	+1.0	-2.1			
			+25.1%	-100.0%	+3.7%					-7.3%	-14.3%	-28.7%	-20.9%	-4.3%	+15.6%	+15.6%



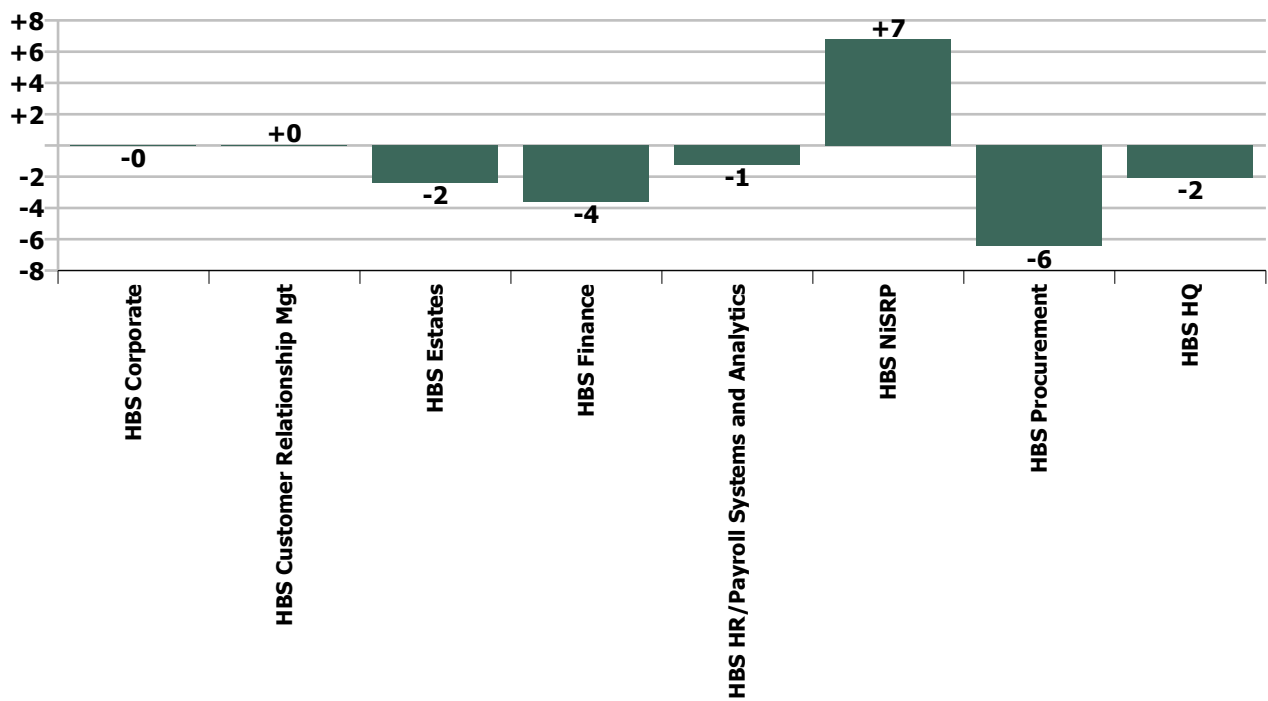
Staff Group change since: Oct 2021



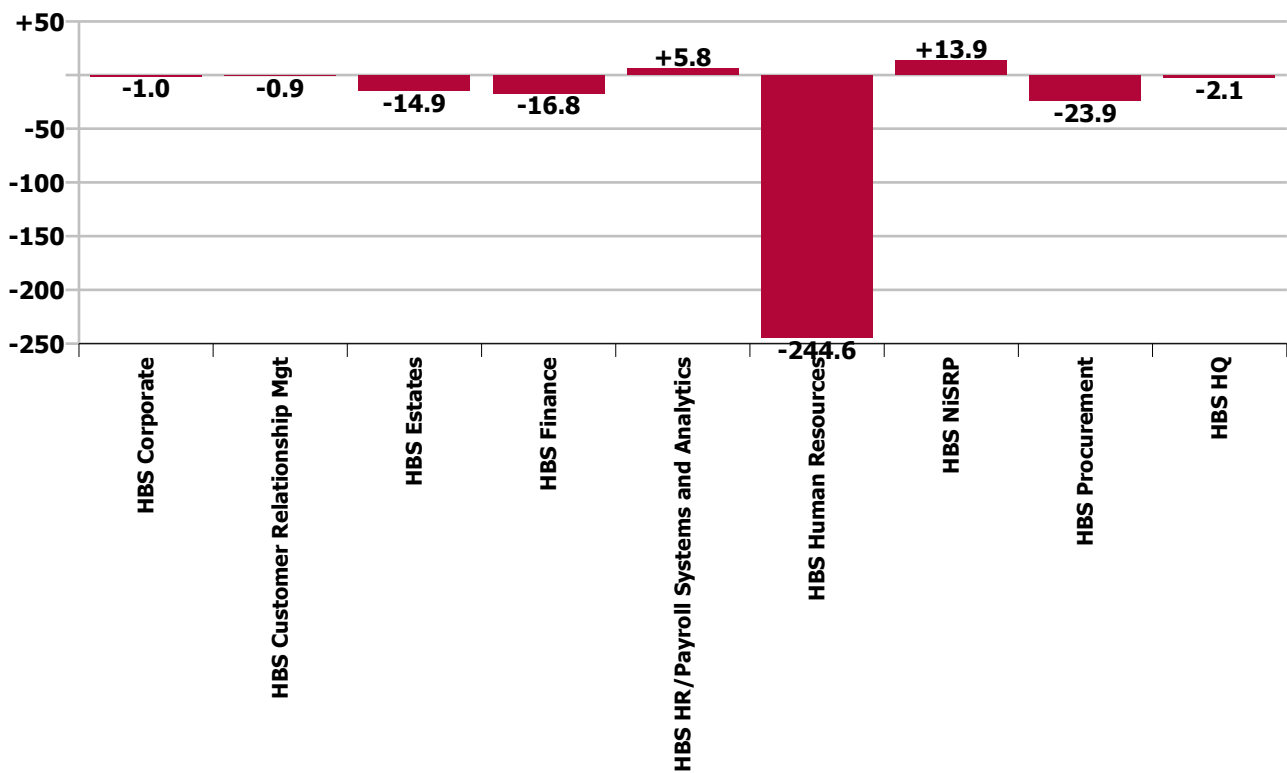
Staff Group change since: Nov 2020



Programme change since: Oct 2021



Programme change since: Nov 2020



Longitudinal Employment Levels by Grade Group - Dec 2016 to Nov 2021

Nov 2021 (Dec 2015 figure: 1,354)	WTE Nov 2021	WTE change since Dec 16	WTE change since Dec 17	WTE change since Dec 18	WTE change since Dec 19	WTE change since Dec 20	WTE change since Oct 21	% change since Dec 16	% change since Dec 17	% change since Dec 18	% change since Dec 19	% change since Dec 20	% change since Oct 21
Overall	1,351	-5	-138	-212	-232	-280	-9	-0.4%	-9.3%	-13.6%	-14.6%	-17.2%	-0.7%
Medical/ Dental, other			-1	-1	-2			-100.0%	-100.0%	-100.0%	-100.0%	-100.0%	-100.0%
Medical & Dental			-1	-1	-2			-100.0%	-100.0%	-100.0%	-100.0%	-100.0%	-100.0%
Clinical Nurse/ Midwife Manager		-4	-3		-3			-100.0%	-100.0%	-100.0%	-100.0%	-100.0%	-100.0%
Director Nursing/Midwifery, Assistant	5	+3	+2	+1	+2	+2	-0	+162.6%	+69.5%	+69.5%	+70.7%	+69.5%	-0.8%
Nurse/ Midwife Manager	5	-1	-1	-1	-1	+2	-0	-13.4%	-13.4%	-13.4%	-13.1%	+69.5%	-0.8%
Nurse/ Midwife Specialist & AN/MP		-1	-1					-100.0%	-100.0%	-100.0%	-100.0%	-100.0%	-100.0%
Nursing/ Midwifery other		-2	-2	-2	-1	-1		-100.0%	-100.0%	-100.0%	-100.0%	-100.0%	-100.0%
Nursing & Midwifery	5	-4	-4	-3	-2	+1	-0	-42.5%	-42.5%	-34.6%	-24.0%	+32.4%	-0.8%
Health Science/ Diagnostics	1												
Pharmacy	1	-1	-1	-1	-1			-50.0%	-33.3%	-47.6%	-33.3%		
H&SC, Other	1												
Health & Social Care Professionals	3	-1	-1	-1	-1			-25.0%	-14.3%	-23.3%	-14.3%		
Executive Management	33	+12	+6	-0	+2	-1	-0	+57.6%	+21.7%	+21.7%	+6.4%	-3.0%	-0.4%
Senior Management (VIII & GM)	125	+14	+11	-12	-13	-9	+0	+13.0%	+9.2%	-8.4%	-9.1%	-6.8%	+0.2%
Management (VIII & above)	157	+26	+16	-6	-11	-10	+0	+20.1%	+11.6%	-3.4%	-6.3%	-6.1%	+0.1%
Middle Management (V-VII)	383	+57	+18	-64	-37	-68	-7	+17.4%	+5.0%	-6.1%	-8.7%	-15.0%	-1.8%
Administrative/ Supervisory (V to VII)	383	+57	+18	-25	-37	-68	-7	+17.4%	+5.0%	-6.1%	-8.7%	-15.0%	-1.8%
Clerical (III & IV)	482	-100	-175	-174	-168	-190	-0	-17.2%	-26.6%	-26.5%	-25.9%	-28.3%	-0.0%
Management & Administrative	1,022	-17	-141	-205	-215	-268	-7	-1.7%	-12.1%	-16.7%	-17.4%	-20.8%	-0.7%
Support	91	+25	+15	+9	-10	-11	-2	+37.5%	+19.8%	+11.6%	-9.9%	-10.9%	-1.8%
Maintenance	130	-45	-38	-10	-19	-9	-0	-25.7%	-22.3%	-18.4%	-12.6%	-6.3%	-0.1%
Technical Services	98	+39	+33	+7	+17	+7	-0	+67.4%	+50.7%	+23.0%	+21.3%	+7.2%	-0.2%
Maintenance/ Technical	228	-6	-5	-11	-2	-2	-0	-2.5%	-2.0%	-4.6%	-0.7%	-1.0%	-0.2%
General Support	319	+19	+10	-2	-12	-13	-2	+6.3%	+3.4%	-0.5%	-3.5%	-4.0%	-0.6%
Health Care Assistants	2	-1	-2			+0		-33.3%	-50.0%			+5.8%	
Care, other		-1	-1	-1	-1			-100.0%	-100.0%	-100.0%	-100.0%	-100.0%	-100.0%
Patient & Client Care	2	-2	-3	-1	-1	+0		-50.0%	-58.3%	-28.6%	-28.6%	+5.8%	

Source: Health Service Personnel Census

Longitudinal Employment Levels by Service - Dec 2016 to Nov 2021

Nov 2021 (Dec 2015 figure: 1,354)	WTE Nov 2021	WTE change since Dec 16	WTE change since Dec 17	WTE change since Dec 18	WTE change since Dec 19	WTE change since Dec 20	WTE change since Oct 21	% change since Dec 16	% change since Dec 17	% change since Dec 18	% change since Dec 19	% change since Dec 20	% change since Oct 21
Overall	1,351	-5	-138	-212	-232	-280	-9	-0.4%	-9.3%	-13.6%	-14.6%	-17.2%	-0.7%
Nurse/ Midwife Specialist & AN/MP		-1	-1					-100.0%	-100.0%	-100.0%	-100.0%	-100.0%	-100.0%
Management (VIII & above)	1	-3	-1	-1				-75.0%	-50.0%	-50.0%			
Administrative/ Supervisory (V to VII)	2	-4	-1	-2	-1	-1	-0	-67.9%	-32.1%	-52.5%	-36.2%	-35.2%	-1.0%
Clerical (III & IV)	2	-4	-1	+1	+2	-0	-0	-68.6%	-25.7%	+97.0%	-100.0%	-1.0%	-1.5%
Support	1				+0						+2.0%		
HBS Corporate	5	-12	-4	-2	+1	-1	-0	-69.6%	-40.0%	-28.4%	+20.1%	-16.3%	-0.9%
Management (VIII & above)	8	+3	+2	+1	+2	-1	+0	+64.4%	+33.7%	+14.5%	+27.9%	-9.8%	+0.9%
Administrative/ Supervisory (V to VII)	6	+2	+1	+1	+2	-0	-0	+64.2%	+30.2%	+25.4%	+60.1%	-0.3%	-0.3%
Clerical (III & IV)	2	-2	-3	-2	-1	-0	-0	-55.3%	-64.2%	-55.3%	-36.3%	-1.1%	-1.1%
Care, other		-1	-1	-1	-1			-100.0%	-100.0%	-100.0%	-100.0%	-100.0%	-100.0%
HBS Customer Relationship Mgt	15	+2	-1	-1	+2	-1	+0	+16.1%	-4.2%	-5.2%	+15.5%	-5.5%	+0.2%
Nurse/ Midwife Manager	5	+2	+2	+2	+2	+2	-0	+69.5%	+69.5%	+69.5%	+70.7%	+69.5%	-0.8%
Nursing/ Midwifery other		-2	-2	-2	-1	-1		-100.0%	-100.0%	-100.0%	-100.0%	-100.0%	-100.0%
Health Science/ Diagnostics	1												
H&SC, Other	1												
Management (VIII & above)	37	+8	+6	+1	+2	+2	-1	+28.5%	+21.1%	+3.3%	+5.8%	+6.6%	-2.9%
Administrative/ Supervisory (V to VII)	56	+15	+16	-0	-2	-6	-2	+34.9%	+41.4%	-0.6%	-3.8%	-9.3%	-2.9%
Clerical (III & IV)	48	-1	-1	-9	-7	-10	+1	-2.5%	-1.2%	-16.1%	-13.1%	-16.7%	+2.0%
Support	17	-5	-3	-3	-2	+0	-0	-22.6%	-14.8%	-14.6%	-9.2%	+1.4%	-0.7%
Maintenance/ Technical	225	-8	-6	-11	-2	-1	-0	-3.4%	-2.4%	-4.7%	-0.7%	-0.6%	-0.2%
Health Care Assistants	1												
HBS Estates	392	+9	+14	-22	-10	-13	-2	+2.3%	+3.7%	-5.4%	-2.4%	-3.2%	-0.6%
Management (VIII & above)	30	+11	+8	+2	-0	+2	+2	+57.3%	+37.1%	+5.4%	-1.4%	+6.5%	+6.6%
Administrative/ Supervisory (V to VII)	126	+34	+10	+5	-3	-3	-1	+36.7%	+8.5%	+4.2%	-2.6%	-2.1%	-0.8%
Clerical (III & IV)	144	-32	-26	-21	-17	-16	-4	-18.3%	-15.1%	-12.5%	-10.8%	-10.3%	-3.0%
Support								-100.0%	-100.0%	-100.0%	-100.0%	-100.0%	-100.0%
HBS Finance	300	+13	-8	-14	-21	-17	-4	+4.4%	-2.5%	-4.4%	-6.6%	-5.5%	-1.2%
Management (VIII & above)	20	+3	+0	+2	+1	-0	-0	+17.2%	+2.5%	+9.6%	+3.2%	-2.0%	-0.3%
Administrative/ Supervisory (V to VII)	50	+15	+17	+8	+11	+8	-1	+43.0%	+50.1%	+18.7%	+28.0%	+19.9%	-2.3%
Clerical (III & IV)	4	-1	-3	-0	-0		-0	-22.1%	-36.9%	-7.5%	-0.5%		-0.2%
HBS HR/Payroll Systems and Analytics	74	+17	+15	+9	+11	+8	-1	+29.1%	+24.5%	+14.3%	+18.4%	+11.9%	-1.7%
Nurse/ Midwife Manager		-3	-3	-3	-3			-100.0%	-100.0%	-100.0%	-100.0%	-100.0%	-100.0%
Medical/ Dental, other			-1	-1	-2			-100.0%	-100.0%	-100.0%	-100.0%	-100.0%	-100.0%

Nov 2021 (Dec 2015 figure: 1,354)	WTE Nov 2021	WTE change since Dec 16	WTE change since Dec 17	WTE change since Dec 18	WTE change since Dec 19	WTE change since Dec 20	WTE change since Oct 21	% change since Dec 16	% change since Dec 17	% change since Dec 18	% change since Dec 19	% change since Dec 20	% change since Oct 21
Overall	1,351	-5	-138	-212	-232	-280	-9	-0.4%	-9.3%	-13.6%	-14.6%	-17.2%	-0.7%
Management (VIII & above)		-19	-17	-16	-15	-14		-100.0%	-100.0%	-100.0%	-100.0%	-100.0%	-100.0%
Administrative/ Supervisory (V to VII)		-56	-53	-60	-62	-66		-100.0%	-100.0%	-100.0%	-100.0%	-100.0%	-100.0%
Clerical (III & IV)		-169	-179	-160	-152	-163		-100.0%	-100.0%	-100.0%	-100.0%	-100.0%	-100.0%
Support		-2	-2	-2	-2	-2		-100.0%	-100.0%	-100.0%	-100.0%	-100.0%	-100.0%
Maintenance/ Technical				-1	-1	-1		-100.0%	-100.0%	-100.0%	-100.0%	-100.0%	-100.0%
Health Care Assistants		-1	-1					-100.0%	-100.0%	-100.0%	-100.0%	-100.0%	-100.0%
HBS Human Resources		-250	-256	-242	-237	-246		-100.0%	-100.0%	-100.0%	-100.0%	-100.0%	-100.0%
Management (VIII & above)	16	+16	+13	+3	+2	+3	-0	-100.0%	+463.8%	+20.5%	+14.4%	+24.5%	-1.1%
Administrative/ Supervisory (V to VII)	24	+24	+24	+17	+13	+6	+2	-100.0%	-100.0%	+237.0%	+132.9%	+37.6%	+8.1%
Clerical (III & IV)	15	+15	+15	+11	+8	+3	+5	-100.0%	-100.0%	+281.5%	+99.5%	+26.1%	+51.4%
HBS NiSRP	55	+55	+52	+31	+23	+13	+7	-100.0%	+1856.3%	+126.9%	+73.1%	+30.4%	+14.2%
Pharmacy	1	-1	-1	-1	-1			-50.0%	-33.3%	-47.6%	-33.3%		
Management (VIII & above)	43	+9	+5	+3	-0	-2	+1	+26.0%	+12.7%	+7.1%	-0.4%	-3.4%	+1.4%
Administrative/ Supervisory (V to VII)	117	+27	+3	+8	+7	-5	-5	+30.7%	+2.9%	+7.3%	+6.4%	-3.8%	-4.0%
Clerical (III & IV)	265	+94	+21	+6	-0	-5	-1	+54.9%	+8.7%	+2.2%	-0.0%	-1.7%	-0.3%
Support	74	+32	+20	+14	-6	-9	-2	+75.0%	+37.0%	+24.4%	-7.8%	-11.2%	-2.1%
Maintenance/ Technical	3	+2	+1	+1	+1			+200.0%	+50.0%	+50.0%	+50.0%		
Health Care Assistants	1		-1			+0			-50.0%			+12.4%	
Care, other								-100.0%	-100.0%	-100.0%	-100.0%	-100.0%	-100.0%
HBS Procurement	503	+163	+49	+31	+1	-20	-6	+47.8%	+10.8%	+6.6%	+0.2%	-3.8%	-1.3%
Management (VIII & above)	3	-1	-0	-0	-1	-1	-1	-25.5%	-0.7%	-0.7%	-25.1%	-24.7%	-25.5%
Administrative/ Supervisory (V to VII)	3	-0	+1	-1	-1	-2	-0	-13.1%	+26.0%	-30.2%	-30.0%	-44.7%	-0.8%
Clerical (III & IV)	2	+1	-0	-0	-0	+1	-1	+96.0%	-2.0%	-2.0%	-2.0%	+96.0%	-34.7%
HBS HQ	7	-0	+0	-1	-2	-2	-2	-5.6%	+6.6%	-13.4%	-22.1%	-21.6%	-21.8%

Source: Health Service Personnel Census