

# Health Service Employment Report: July 2021

## by Service Area

Jul 2021 (Dec 2020 figure: 126,174)	WTE Jun 2021	WTE Jul 2021	WTE change since Jun 21	% change since Jun 21	WTE change since Dec 20	WTE change since Jul 20
<b>Overall</b>	<b>130,164</b>	<b>130,536</b>	<b>+371</b>	<b>+0.3%</b>	<b>+4,361</b>	<b>+6,045</b>
National Ambulance Service	2,042	2,037	-5	-0.2%	+47	+91
Children's Health Ireland	3,887	3,885	-2	-0.1%	+123	+228
Dublin Midlands Hospital Group	11,535	11,553	+18	+0.2%	+265	+204
Ireland East Hospital Group	13,288	13,326	+38	+0.3%	+403	+454
RCSI Hospitals Group	10,540	10,590	+50	+0.5%	+393	+433
Saolta University Hospital Care	10,329	10,353	+24	+0.2%	+524	+533
South/South West Hospital Group	11,778	11,897	+120	+1.0%	+609	+533
University of Limerick Hospital Group	4,850	4,841	-8	-0.2%	+335	+444
other Acute Services	696	704	+7	+1.1%	+48	+105
<b>Acute Services</b>	<b>68,945</b>	<b>69,187</b>	<b>+243</b>	<b>+0.4%</b>	<b>+2,748</b>	<b>+3,024</b>
CHO 1	5,922	5,876	-46	-0.8%	+121	+229
CHO 2	5,733	5,738	+5	+0.1%	+47	+144
CHO 3	4,789	4,857	+68	+1.4%	+248	+337
CHO 4	8,806	8,801	-5	-0.1%	+200	+460
CHO 5	5,575	5,595	+20	+0.4%	+118	+224
CHO 6	3,533	3,522	-11	-0.3%	+57	+132
CHO 7	6,934	6,970	+36	+0.5%	+187	+351
CHO 8	6,428	6,467	+38	+0.6%	+130	+222
CHO 9	7,072	7,071	-1	-0.0%	+122	+395
other Community Services	755	754	-1	-0.2%	+44	+74
<b>Community Services</b>	<b>55,548</b>	<b>55,651</b>	<b>+103</b>	<b>+0.2%</b>	<b>+1,274</b>	<b>+2,570</b>
Health & Wellbeing	600	611	+11	+1.8%	+99	+131
Corporate	3,686	3,706	+20	+0.5%	+491	+534
Health Business Services	1,386	1,380	-5	-0.4%	-251	-213
<b>H&amp;WB, Corporate &amp; National Services</b>	<b>5,671</b>	<b>5,697</b>	<b>+26</b>	<b>+0.5%</b>	<b>+339</b>	<b>+452</b>

## Employment by Staff Group

Jul 2021 (Dec 2020 figure: 126,174)	WTE Jun 2021	WTE Jul 2021	WTE change since Jun 21	% change since Jun 21	WTE change since Dec 20	WTE change since Jul 20
<b>Overall</b>	<b>130,164</b>	<b>130,536</b>	<b>+371</b>	<b>+0.3%</b>	<b>+4,361</b>	<b>+6,045</b>
Consultants	3,495	3,506	+11	+0.3%	+48	+104
Registrars	3,952	4,093	+142	+3.6%	+218	+189
SHO/ Interns	3,528	3,465	-62	-1.8%	-129	-221
Medical/ Dental, other	816	804	-12	-1.5%	-29	-9
<b>Medical &amp; Dental</b>	<b>11,791</b>	<b>11,869</b>	<b>+78</b>	<b>+0.7%</b>	<b>+107</b>	<b>+64</b>
Nurse/ Midwife Manager	8,588	8,648	+61	+0.7%	+304	+414
Nurse/ Midwife Specialist & AN/MP	2,380	2,387	+8	+0.3%	+89	+248
Staff Nurse/ Staff Midwife	27,377	27,370	-7	-0.0%	+607	+1,424
Public Health Nurse	1,506	1,513	+7	+0.5%	-44	+20
<i>Pre-registration Nurse/ Midwife Intern</i>	754	773	+19	+2.5%	+745	+736
<i>Pre-registration Nurse Intern (COVID-19)</i>	12	8	-4	-35.5%	-222	-1,315
<i>Post-registration Nurse/ Midwife Student</i>	235	180	-55	-23.5%	-78	-10
<i>Nursing/ Midwifery awaiting registration</i>	75	37	-38	-50.6%	-39	+7
Nursing/ Midwifery Student	1,077	998	-78	-7.3%	+407	-583
Nursing/ Midwifery other	347	343	-4	-1.2%	-19	-19
<b>Nursing &amp; Midwifery</b>	<b>41,274</b>	<b>41,260</b>	<b>-14</b>	<b>-0.0%</b>	<b>+1,343</b>	<b>+1,504</b>
Therapy Professions	5,797	5,751	-46	-0.8%	+185	+292
Health Science/ Diagnostics	4,814	4,834	+19	+0.4%	+103	+131
Social Care	2,971	3,009	+38	+1.3%	+101	+276
Social Workers	1,272	1,265	-7	-0.5%	+27	+75
Psychologists	1,085	1,085	+0	+0.0%	+19	+59
Pharmacy	1,228	1,229	+1	+0.1%	+66	+104
H&SC, Other	1,363	1,378	+15	+1.1%	+244	+294
<b>Health &amp; Social Care Professionals</b>	<b>18,530</b>	<b>18,552</b>	<b>+22</b>	<b>+0.1%</b>	<b>+745</b>	<b>+1,232</b>
Management (VIII & above)	2,060	2,078	+18	+0.9%	+109	+153
Administrative/ Supervisory (V to VII)	6,218	6,305	+87	+1.4%	+484	+765
Clerical (III & IV)	12,628	12,671	+43	+0.3%	+633	+876
<b>Management &amp; Administrative</b>	<b>20,906</b>	<b>21,054</b>	<b>+147</b>	<b>+0.7%</b>	<b>+1,225</b>	<b>+1,793</b>
Support	8,834	8,860	+26	+0.3%	+184	+142
Maintenance/ Technical	1,211	1,201	-10	-0.9%	+1	-2
<b>General Support</b>	<b>10,045</b>	<b>10,060</b>	<b>+15</b>	<b>+0.2%</b>	<b>+185</b>	<b>+140</b>
Health Care Assistants	19,160	19,213	+53	+0.3%	+660	+778
Home Help	3,416	3,470	+54	+1.6%	-73	+203
Ambulance Staff	1,931	1,925	-6	-0.3%	+48	+90
Care, other	3,111	3,133	+22	+0.7%	+122	+241
<b>Patient &amp; Client Care</b>	<b>27,618</b>	<b>27,741</b>	<b>+123</b>	<b>+0.4%</b>	<b>+756</b>	<b>+1,312</b>

## Employment by Administration (HSE / S38): July 2021

Jul 2021 (Dec 2020 figure: 126,174)	WTE Jun 2021	WTE Jul 2021	WTE change since Jun 21	% change since Jun 21	WTE change since Dec 20	WTE change since Jul 20
<b>Overall</b>	<b>130,164</b>	<b>130,536</b>	<b>+371</b>	<b>+0.3%</b>	<b>+4,361</b>	<b>+6,045</b>
<b>HSE</b>	<b>84,158</b>	<b>84,299</b>	<b>+141</b>	<b>+0.2%</b>	<b>+3,107</b>	<b>+4,240</b>
<b>Section 38 Hospitals</b>	<b>28,988</b>	<b>29,125</b>	<b>+137</b>	<b>+0.5%</b>	<b>+891</b>	<b>+998</b>
<b>Section 38 Voluntary Agencies</b>	<b>17,019</b>	<b>17,112</b>	<b>+93</b>	<b>+0.5%</b>	<b>+364</b>	<b>+807</b>

### HSE

Jul 2021 (Dec 2020 figure: 76,372)	WTE Jun 2021	WTE Jul 2021	WTE change since Jun 21	% change since Jun 21	WTE change since Dec 20	WTE change since Jul 20
<b>Overall</b>	<b>84,158</b>	<b>84,299</b>	<b>+141</b>	<b>+0.2%</b>	<b>+3,107</b>	<b>+4,240</b>
Consultants	2,019	2,020	+1	+0.1%	+26	+69
Registrars	2,501	2,597	+96	+3.8%	+164	+138
SHO/ Interns	2,295	2,253	-42	-1.8%	-81	-118
Medical/ Dental, other	758	750	-8	-1.0%	-34	-17
<b>Medical &amp; Dental</b>	<b>7,573</b>	<b>7,621</b>	<b>+48</b>	<b>+0.6%</b>	<b>+74</b>	<b>+71</b>
Nurse/ Midwife Manager	5,349	5,399	+50	+0.9%	+170	+198
Nurse/ Midwife Specialist & AN/MP	1,532	1,539	+6	+0.4%	+56	+164
Staff Nurse/ Staff Midwife	17,853	17,876	+23	+0.1%	+574	+1,099
Public Health Nurse	1,506	1,513	+7	+0.5%	-44	+20
<i>Pre-registration Nurse/ Midwife Intern</i>	446	454	+8	+1.9%	+445	+416
<i>Pre-registration Nurse Intern (COVID-19)</i>	12	7	-5	-39.3%	-108	-706
<i>Post-registration Nurse/ Midwife Student</i>	140	85	-55	-39.1%	-78	+2
<i>Nursing/ Midwifery awaiting registration</i>	54	16	-38	-70.2%	-18	-8
Nursing/ Midwifery Student	652	563	-89	-13.6%	+240	-295
Nursing/ Midwifery other	191	190	-1	-0.7%	-12	-4
<b>Nursing &amp; Midwifery</b>	<b>27,083</b>	<b>27,079</b>	<b>-4</b>	<b>-0.0%</b>	<b>+985</b>	<b>+1,181</b>
Therapy Professions	4,082	4,046	-36	-0.9%	+144	+224
Health Science/ Diagnostics	2,871	2,878	+7	+0.3%	+76	+106
Social Care	185	184	-1	-0.6%	-8	+2
Social Workers	781	775	-6	-0.8%	+17	+47
Psychologists	813	815	+2	+0.2%	+19	+46
Pharmacy	713	717	+4	+0.6%	+52	+89
H&SC, Other	1,198	1,207	+8	+0.7%	+235	+263
<b>Health &amp; Social Care Professionals</b>	<b>10,644</b>	<b>10,622</b>	<b>-22</b>	<b>-0.2%</b>	<b>+536</b>	<b>+777</b>
Management (VIII & above)	1,574	1,592	+18	+1.2%	+71	+89
Administrative/ Supervisory (V to VII)	4,149	4,222	+73	+1.8%	+426	+621
Clerical (III & IV)	9,075	9,095	+20	+0.2%	+478	+734
<b>Management &amp; Administrative</b>	<b>14,798</b>	<b>14,909</b>	<b>+111</b>	<b>+0.8%</b>	<b>+975</b>	<b>+1,445</b>
Support	5,451	5,460	+9	+0.2%	+133	+83
Maintenance/ Technical	826	816	-10	-1.2%	-5	-10
<b>General Support</b>	<b>6,277</b>	<b>6,276</b>	<b>-1</b>	<b>-0.0%</b>	<b>+128</b>	<b>+73</b>
Health Care Assistants	11,020	10,949	-71	-0.6%	+298	+237
Home Help	3,416	3,470	+54	+1.6%	-73	+203
Ambulance Staff	1,931	1,925	-6	-0.3%	+48	+90
Care, other	1,416	1,448	+32	+2.2%	+135	+163
<b>Patient &amp; Client Care</b>	<b>17,783</b>	<b>17,792</b>	<b>+9</b>	<b>+0.1%</b>	<b>+408</b>	<b>+692</b>

## Section 38 Hospitals

Jul 2021 (Dec 2020 figure: 25,668)	WTE Jun 2021	WTE Jul 2021	WTE change since Jun 21	% change since Jun 21	WTE change since Dec 20	WTE change since Jul 20
<b>Overall</b>	<b>28,988</b>	<b>29,125</b>	<b>+137</b>	<b>+0.5%</b>	<b>+891</b>	<b>+998</b>
Consultants	1,427	1,436	+10	+0.7%	+24	+37
Registrars	1,407	1,448	+40	+2.9%	+44	+42
SHO/ Interns	1,193	1,173	-20	-1.7%	-47	-107
Medical/ Dental, other	30	28	-2	-5.8%	+3	+5
<b>Medical &amp; Dental</b>	<b>4,057</b>	<b>4,085</b>	<b>+28</b>	<b>+0.7%</b>	<b>+23</b>	<b>-24</b>
Nurse/ Midwife Manager	2,457	2,458	+1	+0.1%	+115	+205
Nurse/ Midwife Specialist & AN/MP	753	756	+2	+0.3%	+35	+78
Staff Nurse/ Staff Midwife	7,305	7,289	-16	-0.2%	+65	+286
<i>Pre-registration Nurse/ Midwife Intern</i>	251	262	+11	+4.3%	+253	+262
<i>Pre-registration Nurse Intern (COVID-19)</i>				-100.0%	-91	-480
<i>Post-registration Nurse/ Midwife Student</i>	95	95	-0	-0.3%	+1	-8
<i>Nursing/ Midwifery awaiting registration</i>	21	21	-0	-0.6%	-21	+15
Nursing/ Midwifery Student	367	377	+10	+2.9%	+142	-211
Nursing/ Midwifery other	133	130	-3	-2.3%	-9	-17
<b>Nursing &amp; Midwifery</b>	<b>11,015</b>	<b>11,010</b>	<b>-5</b>	<b>-0.0%</b>	<b>+348</b>	<b>+342</b>
Therapy Professions	1,146	1,140	-6	-0.5%	+34	+66
Health Science/ Diagnostics	1,921	1,934	+13	+0.7%	+27	+24
Social Care	1	1				
Social Workers	287	287	+0	+0.1%	+12	+28
Psychologists	110	108	-1	-1.2%	+8	+10
Pharmacy	493	489	-4	-0.7%	+13	+16
H&SC, Other	110	119	+9	+8.2%	+12	+41
<b>Health &amp; Social Care Professionals</b>	<b>4,067</b>	<b>4,079</b>	<b>+11</b>	<b>+0.3%</b>	<b>+107</b>	<b>+184</b>
Management (VIII & above)	315	316	+0	+0.1%	+28	+43
Administrative/ Supervisory (V to VII)	1,633	1,642	+9	+0.5%	+45	+122
Clerical (III & IV)	2,918	2,934	+16	+0.5%	+141	+133
<b>Management &amp; Administrative</b>	<b>4,866</b>	<b>4,891</b>	<b>+25</b>	<b>+0.5%</b>	<b>+215</b>	<b>+298</b>
Support	2,575	2,597	+22	+0.8%	+63	+119
Maintenance/ Technical	250	251	+0	+0.1%	+6	+4
<b>General Support</b>	<b>2,825</b>	<b>2,847</b>	<b>+22</b>	<b>+0.8%</b>	<b>+70</b>	<b>+123</b>
Health Care Assistants	2,091	2,147	+56	+2.7%	+130	+76
Care, other	66	65	-1	-1.4%	-1	-1
<b>Patient &amp; Client Care</b>	<b>2,157</b>	<b>2,212</b>	<b>+55</b>	<b>+2.6%</b>	<b>+129</b>	<b>+75</b>

## Section 38 Voluntary Agencies

Jul 2021 (Dec 2020 figure: 15,818)	WTE Jun 2021	WTE Jul 2021	WTE change since Jun 21	% change since Jun 21	WTE change since Dec 20	WTE change since Jul 20
<b>Overall</b>	<b>17,019</b>	<b>17,112</b>	<b>+93</b>	<b>+0.5%</b>	<b>+364</b>	<b>+807</b>
Consultants	49	49	+0	+0.6%	-2	-1
Registrars	44	49	+5	+12.0%	+11	+10
SHO/ Interns	40	40	-0	-0.6%	-0	+4
Medical/ Dental, other	28	26	-3	-10.2%	+1	+4
<b>Medical &amp; Dental</b>	<b>161</b>	<b>163</b>	<b>+2</b>	<b>+1.5%</b>	<b>+10</b>	<b>+16</b>
Nurse/ Midwife Manager	782	791	+10	+1.2%	+20	+11
Nurse/ Midwife Specialist & AN/MP	94	93	-1	-1.2%	-3	+6
Staff Nurse/ Staff Midwife	2,219	2,205	-14	-0.6%	-32	+39
<i>Pre-registration Nurse/ Midwife Intern</i>	58	57	-0	-0.6%	+47	+57
<i>Pre-registration Nurse Intern (COVID-19)</i>	0	1	+0	+59.6%	-23	-130
<i>Post-registration Nurse/ Midwife Student</i>				-100.0%		-4
Nursing/ Midwifery Student	58	58	-0	-0.1%	+24	-76
Nursing/ Midwifery other	23	23	+0	+0.7%	+1	+1
<b>Nursing &amp; Midwifery</b>	<b>3,176</b>	<b>3,171</b>	<b>-6</b>	<b>-0.2%</b>	<b>+10</b>	<b>-19</b>
Therapy Professions	569	565	-4	-0.7%	+8	+3
Health Science/ Diagnostics	22	22	-1	-3.6%	-0	+1
Social Care	2,785	2,825	+39	+1.4%	+108	+274
Social Workers	204	203	-1	-0.5%	-3	-0
Psychologists	162	161	-0	-0.1%	-9	+4
Pharmacy	23	23	+1	+3.2%	+1	-1
H&SC, Other	54	52	-2	-3.6%	-3	-10
<b>Health &amp; Social Care Professionals</b>	<b>3,819</b>	<b>3,851</b>	<b>+32</b>	<b>+0.8%</b>	<b>+102</b>	<b>+271</b>
Management (VIII & above)	171	170	-1	-0.3%	+9	+20
Administrative/ Supervisory (V to VII)	436	441	+5	+1.2%	+12	+22
Clerical (III & IV)	635	642	+7	+1.1%	+14	+9
<b>Management &amp; Administrative</b>	<b>1,242</b>	<b>1,253</b>	<b>+11</b>	<b>+0.9%</b>	<b>+35</b>	<b>+50</b>
Support	808	803	-5	-0.6%	-12	-61
Maintenance/ Technical	134	133	-1	-0.5%	-1	+4
<b>General Support</b>	<b>942</b>	<b>937</b>	<b>-5</b>	<b>-0.6%</b>	<b>-13</b>	<b>-57</b>
Health Care Assistants	6,049	6,117	+68	+1.1%	+232	+465
Care, other	1,629	1,619	-9	-0.6%	-13	+80
<b>Patient &amp; Client Care</b>	<b>7,678</b>	<b>7,736</b>	<b>+58</b>	<b>+0.8%</b>	<b>+219</b>	<b>+545</b>

## Employment Acute, Community, HWB, Corporate, HBS: July 2021

Jul 2021 (Dec 2020 figure: 60,906)	WTE Jun 2021	WTE Jul 2021	WTE change since Jun 21	% change since Jun 21	WTE change since Dec 20	WTE change since Jul 20
<b>Acute Services</b>	<b>68,945</b>	<b>69,187</b>	<b>+243</b>	<b>+0.4%</b>	<b>+2,748</b>	<b>+3,024</b>
Consultants	2,998	3,011	+13	+0.4%	+37	+87
Registrars	3,173	3,218	+45	+1.4%	+103	+106
SHO/ Interns	3,217	3,179	-37	-1.2%	-73	-205
Medical/ Dental, other	74	68	-6	-7.5%	+4	+10
<b>Medical &amp; Dental</b>	<b>9,462</b>	<b>9,477</b>	<b>+15</b>	<b>+0.2%</b>	<b>+71</b>	<b>-2</b>
Nurse/ Midwife Manager	5,120	5,150	+30	+0.6%	+227	+326
Nurse/ Midwife Specialist & AN/MP	1,541	1,546	+5	+0.4%	+78	+168
Staff Nurse/ Staff Midwife	17,927	17,955	+29	+0.2%	+429	+1,111
Public Health Nurse	2	2	+0	+12.3%	+0	+0
Pre-registration Nurse/ Midwife Intern	505	526	+21	+4.1%	+511	+524
Pre-registration Nurse Intern (COVID-19)	3	2	-1	-22.7%	-153	-960
Post-registration Nurse/ Midwife Student	153	151	-2	-1.0%	+0	-16
Nursing/ Midwifery awaiting registration	68	31	-37	-55.1%	-26	+22
Nursing/ Midwifery Student	729	710	-19	-2.6%	+332	-430
Nursing/ Midwifery other	219	217	-3	-1.3%	-10	-8
<b>Nursing &amp; Midwifery</b>	<b>25,537</b>	<b>25,580</b>	<b>+43</b>	<b>+0.2%</b>	<b>+1,057</b>	<b>+1,168</b>
Therapy Professions	2,338	2,324	-14	-0.6%	+108	+169
Health Science/ Diagnostics	4,536	4,556	+20	+0.4%	+97	+116
Social Care	4	4			+0	+1
Social Workers	405	406	+0	+0.1%	+22	+47
Psychologists	122	122	-0	-0.2%	+12	+12
Pharmacy	1,059	1,058	-1	-0.1%	+51	+85
H&SC, Other	318	327	+9	+3.0%	+174	+208
<b>Health &amp; Social Care Professionals</b>	<b>8,782</b>	<b>8,797</b>	<b>+15</b>	<b>+0.2%</b>	<b>+464</b>	<b>+639</b>
Management (VIII & above)	613	618	+5	+0.9%	+39	+59
Administrative/ Supervisory (V to VII)	2,813	2,848	+36	+1.3%	+174	+344
Clerical (III & IV)	6,975	7,013	+38	+0.5%	+355	+408
<b>Management &amp; Administrative</b>	<b>10,400</b>	<b>10,480</b>	<b>+79</b>	<b>+0.8%</b>	<b>+568</b>	<b>+812</b>
Support	6,335	6,389	+54	+0.9%	+237	+263
Maintenance/ Technical	548	545	-3	-0.6%	+6	+5
<b>General Support</b>	<b>6,883</b>	<b>6,934</b>	<b>+51</b>	<b>+0.7%</b>	<b>+243</b>	<b>+268</b>
Health Care Assistants	5,744	5,789	+45	+0.8%	+273	+22
Ambulance Staff	1,930	1,924	-6	-0.3%	+48	+92
Care, other	206	207	+1	+0.5%	+25	+25
<b>Patient &amp; Client Care</b>	<b>7,880</b>	<b>7,920</b>	<b>+40</b>	<b>+0.5%</b>	<b>+346</b>	<b>+138</b>

Jul 2021 (Dec 2020 figure: 51,953)	WTE Jun 2021	WTE Jul 2021	WTE change since Jun 21	% change since Jun 21	WTE change since Dec 20	WTE change since Jul 20
<b>Community Services</b>	<b>55,548</b>	<b>55,651</b>	<b>+103</b>	<b>+0.2%</b>	<b>+1,274</b>	<b>+2,570</b>
Consultants	452	451	-1	-0.3%	+11	+17
Registrars	721	817	+96	+13.3%	+115	+66
SHO/ Interns	310	285	-25	-8.0%	-56	-14
Medical/ Dental, other	610	604	-6	-1.0%	-38	-15
<b>Medical &amp; Dental</b>	<b>2,093</b>	<b>2,156</b>	<b>+63</b>	<b>+3.0%</b>	<b>+32</b>	<b>+55</b>
Nurse/ Midwife Manager	3,331	3,354	+23	+0.7%	+64	+73
Nurse/ Midwife Specialist & AN/MP	818	821	+3	+0.4%	+6	+75
Staff Nurse/ Staff Midwife	9,419	9,376	-43	-0.5%	+153	+289
Public Health Nurse	1,503	1,509	+7	+0.4%	-44	+20
Nursing/ Midwifery Student	348	288	-60	-17.2%	+74	-153
Nursing/ Midwifery other	65	64	-1	-2.1%	-2	-4
<b>Nursing &amp; Midwifery</b>	<b>15,484</b>	<b>15,413</b>	<b>-71</b>	<b>-0.5%</b>	<b>+252</b>	<b>+300</b>
Therapy Professions	3,446	3,415	-31	-0.9%	+80	+122
Health Science/ Diagnostics	116	115	-1	-1.1%	-4	+4
Social Care	2,967	3,005	+38	+1.3%	+101	+275
Social Workers	864	857	-7	-0.8%	+5	+28
Psychologists	961	961	+1	+0.1%	+7	+47
Pharmacy	115	117	+2	+1.4%	+10	+14
H&SC, Other	440	448	+8	+1.7%	+54	+50
<b>Health &amp; Social Care Professionals</b>	<b>8,909</b>	<b>8,917</b>	<b>+9</b>	<b>+0.1%</b>	<b>+253</b>	<b>+540</b>
Management (VIII & above)	670	680	+10	+1.5%	+20	+45
Administrative/ Supervisory (V to VII)	1,820	1,852	+32	+1.8%	+156	+240
Clerical (III & IV)	4,058	4,065	+7	+0.2%	+212	+348
<b>Management &amp; Administrative</b>	<b>6,548</b>	<b>6,598</b>	<b>+49</b>	<b>+0.8%</b>	<b>+388</b>	<b>+633</b>
Support	2,388	2,362	-26	-1.1%	-47	-119
Maintenance/ Technical	423	418	-5	-1.1%	-3	-4
<b>General Support</b>	<b>2,811</b>	<b>2,779</b>	<b>-31</b>	<b>-1.1%</b>	<b>-51</b>	<b>-124</b>
Health Care Assistants	13,390	13,398	+9	+0.1%	+377	+748
Home Help	3,416	3,470	+54	+1.6%	-73	+203
Care, other	2,898	2,919	+21	+0.7%	+96	+215
<b>Patient &amp; Client Care</b>	<b>19,704</b>	<b>19,787</b>	<b>+83</b>	<b>+0.4%</b>	<b>+400</b>	<b>+1,166</b>

Jul 2021 (Dec 2020 figure: 4,998)	WTE Jun 2021	WTE Jul 2021	WTE change since Jun 21	% change since Jun 21	WTE change since Dec 20	WTE change since Jul 20
<b>H&amp;WB, Corporate &amp; National Services</b>	<b>5,671</b>	<b>5,697</b>	<b>+26</b>	<b>+0.5%</b>	<b>+339</b>	<b>+452</b>
Consultants	44	44	+0	+0.2%	-0	-0
Registrars	58	59	+1	+1.8%	-1	+17
SHO/ Interns	2	1	-0	-12.2%	-0	-2
Medical/ Dental, other	132	132	-1	-0.4%	+5	-4
<b>Medical &amp; Dental</b>	<b>236</b>	<b>236</b>	<b>+0</b>	<b>+0.2%</b>	<b>+4</b>	<b>+11</b>
Nurse/ Midwife Manager	136	144	+7	+5.5%	+14	+15
Nurse/ Midwife Specialist & AN/MP	21	20	-1	-3.9%	+5	+5
Staff Nurse/ Staff Midwife	31	39	+7	+22.6%	+24	+24
Public Health Nurse	2	2			-1	-0
Nursing/ Midwifery other	62	62	-0	-0.1%	-7	-8
<b>Nursing &amp; Midwifery</b>	<b>253</b>	<b>266</b>	<b>+14</b>	<b>+5.4%</b>	<b>+35</b>	<b>+37</b>
Therapy Professions	13	12	-1	-11.4%	-3	+1
Health Science/ Diagnostics	163	164	+1	+0.5%	+10	+12
Social Workers	3	3			+0	+0
Psychologists	2	2				
Pharmacy	54	55	+0	+0.7%	+4	+5
H&SC, Other	605	603	-2	-0.3%	+16	+36
<b>Health &amp; Social Care Professionals</b>	<b>840</b>	<b>838</b>	<b>-2</b>	<b>-0.2%</b>	<b>+28</b>	<b>+54</b>
Management (VIII & above)	777	780	+2	+0.3%	+50	+48
Administrative/ Supervisory (V to VII)	1,586	1,604	+18	+1.2%	+153	+181
Clerical (III & IV)	1,595	1,592	-2	-0.1%	+66	+119
<b>Management &amp; Administrative</b>	<b>3,958</b>	<b>3,977</b>	<b>+19</b>	<b>+0.5%</b>	<b>+270</b>	<b>+348</b>
Support	111	109	-2	-1.7%	-6	-2
Maintenance/ Technical	240	238	-2	-0.9%	-1	-2
<b>General Support</b>	<b>352</b>	<b>347</b>	<b>-4</b>	<b>-1.2%</b>	<b>-7</b>	<b>-4</b>
Health Care Assistants	27	26	-1	-2.2%	+10	+8
Ambulance Staff	1	1				-2
Care, other	6	6			+0	+2
<b>Patient &amp; Client Care</b>	<b>34</b>	<b>34</b>	<b>-1</b>	<b>-1.8%</b>	<b>+11</b>	<b>+7</b>



## Employment by Hospital Group, CHO etc. Jul 2021

### National Ambulance Service

Jul 2021 (Dec 2020 figure: 1,990)	WTE Jun 2021	WTE Jul 2021	WTE change since Jun 21	% change since Jun 21	WTE change since Dec 20	WTE change since Jul 20
<b>Overall</b>	<b>2,042</b>	<b>2,037</b>	<b>-5</b>	<b>-0.2%</b>	<b>+47</b>	<b>+91</b>
Consultants	1	1				
Registrars	1	1			+1	+1
SHO/ Interns	1	1			+1	+1
<b>Medical &amp; Dental</b>	<b>3</b>	<b>3</b>			<b>+2</b>	<b>+2</b>
Nurse/ Midwife Manager	1	1				
Staff Nurse/ Staff Midwife	1	1				
<b>Nursing &amp; Midwifery</b>	<b>2</b>	<b>2</b>				
Therapy Professions				-100.0%	-1	-1
<b>Health &amp; Social Care Professionals</b>				<b>-100.0%</b>	<b>-1</b>	<b>-1</b>
Management (VIII & above)	12	12	+0	+0.2%	-2	-3
Administrative/ Supervisory (V to VII)	38	41	+3	+7.5%	+8	+8
Clerical (III & IV)	38	37	-1	-2.6%	-4	-4
<b>Management &amp; Administrative</b>	<b>88</b>	<b>90</b>	<b>+2</b>	<b>+2.1%</b>	<b>+1</b>	<b>+2</b>
Support	3	2	-0	-2.4%	-1	-1
Maintenance/ Technical	2	2				
<b>General Support</b>	<b>5</b>	<b>4</b>	<b>-0</b>	<b>-1.3%</b>	<b>-1</b>	<b>-1</b>
Health Care Assistants	1	1			-1	-1
Ambulance Staff	1,930	1,924	-6	-0.3%	+48	+92
Care, other	13	13	-1	-4.4%	-1	-1
<b>Patient &amp; Client Care</b>	<b>1,944</b>	<b>1,938</b>	<b>-6</b>	<b>-0.3%</b>	<b>+46</b>	<b>+89</b>

## Children's Health Ireland

Jul 2021 (Dec 2020 figure: 3,762)	WTE Jun 2021	WTE Jul 2021	WTE change since Jun 21	% change since Jun 21	WTE change since Dec 20	WTE change since Jul 20
<b>Overall</b>	<b>3,887</b>	<b>3,885</b>	<b>-2</b>	<b>-0.1%</b>	<b>+123</b>	<b>+228</b>
Consultants	237	239	+2	+0.7%	+2	+10
Registrars	213	195	-18	-8.4%	-23	-18
SHO/ Interns	94	94	-0	-0.1%	-1	+0
Medical/ Dental, other	1	1			-0	-0
<b>Medical &amp; Dental</b>	<b>545</b>	<b>529</b>	<b>-16</b>	<b>-3.0%</b>	<b>-22</b>	<b>-8</b>
Nurse/ Midwife Manager	358	362	+4	+1.2%	+28	+22
Nurse/ Midwife Specialist & AN/MP	177	178	+2	+1.0%	+6	+15
Staff Nurse/ Staff Midwife	894	892	-3	-0.3%	+41	+93
Pre-registration Nurse/ Midwife Intern	19	28	+9	+49.2%	+28	+28
Pre-registration Nurse Intern (COVID-19)				-100.0%	-13	-14
Post-registration Nurse/ Midwife Student	42	42	-0	-0.8%	-1	-7
Nursing/ Midwifery awaiting registration	6	4	-2	-33.3%	+4	+3
Nursing/ Midwifery Student	67	73	+7	+10.2%	+17	+9
Nursing/ Midwifery other	8	7	-1	-10.5%	-1	-2
<b>Nursing &amp; Midwifery</b>	<b>1,503</b>	<b>1,513</b>	<b>+9</b>	<b>+0.6%</b>	<b>+92</b>	<b>+137</b>
Therapy Professions	153	153	+0	+0.1%	+7	+9
Health Science/ Diagnostics	295	302	+7	+2.5%	+18	+17
Social Workers	64	65	+1	+0.8%	+5	+8
Psychologists	46	45	-1	-2.6%	+3	+2
Pharmacy	54	53	-0	-0.7%	+2	+6
H&SC, Other	25	25	+1	+2.3%	-0	+1
<b>Health &amp; Social Care Professionals</b>	<b>637</b>	<b>644</b>	<b>+7</b>	<b>+1.1%</b>	<b>+35</b>	<b>+43</b>
Management (VIII & above)	64	64	+0	+0.4%	+10	+16
Administrative/ Supervisory (V to VII)	306	313	+7	+2.3%	+14	+30
Clerical (III & IV)	415	410	-5	-1.2%	+1	-2
<b>Management &amp; Administrative</b>	<b>785</b>	<b>787</b>	<b>+2</b>	<b>+0.3%</b>	<b>+25</b>	<b>+44</b>
Support	209	206	-3	-1.4%	-3	+8
Maintenance/ Technical	15	15				
<b>General Support</b>	<b>224</b>	<b>221</b>	<b>-3</b>	<b>-1.3%</b>	<b>-3</b>	<b>+8</b>
Health Care Assistants	180	179	-0	-0.3%	-3	+6
Care, other	13	12	-1	-8.0%	-1	-2
<b>Patient &amp; Client Care</b>	<b>193</b>	<b>191</b>	<b>-2</b>	<b>-0.8%</b>	<b>-4</b>	<b>+4</b>

## Dublin Midlands Hospital Group

Jul 2021 (Dec 2020 figure: 11,288)	WTE Jun 2021	WTE Jul 2021	WTE change since Jun 21	% change since Jun 21	WTE change since Dec 20	WTE change since Jul 20
<b>Overall</b>	<b>11,535</b>	<b>11,553</b>	<b>+18</b>	<b>+0.2%</b>	<b>+266</b>	<b>+204</b>
Consultants	504	504	+0	+0.0%	+5	+2
Registrars	520	526	+6	+1.2%	+4	+13
SHO/ Interns	459	453	-6	-1.2%	-7	-69
Medical/ Dental, other	7	7	+0	+2.7%	+0	+2
<b>Medical &amp; Dental</b>	<b>1,489</b>	<b>1,490</b>	<b>+1</b>	<b>+0.1%</b>	<b>+2</b>	<b>-52</b>
Nurse/ Midwife Manager	925	937	+11	+1.2%	+28	+54
Nurse/ Midwife Specialist & AN/MP	242	243	+1	+0.3%	+7	+20
Staff Nurse/ Staff Midwife	2,965	2,958	-8	-0.3%	+7	+104
Pre-registration Nurse/ Midwife Intern	99	99	+0	+0.4%	+99	+99
Pre-registration Nurse Intern (COVID-19)				-100.0%	-28	-172
Post-registration Nurse/ Midwife Student	12	12			-1	-1
Nursing/ Midwifery awaiting registration	5	6	+1	+20.0%	+2	+2
Nursing/ Midwifery Student	115	117	+1	+1.3%	+73	-71
Nursing/ Midwifery other	36	35	-1	-3.3%	-3	-1
<b>Nursing &amp; Midwifery</b>	<b>4,284</b>	<b>4,289</b>	<b>+5</b>	<b>+0.1%</b>	<b>+112</b>	<b>+105</b>
Therapy Professions	413	405	-8	-1.9%	+8	+21
Health Science/ Diagnostics	988	986	-1	-0.1%	-14	-28
Social Workers	89	87	-2	-2.3%	-1	+3
Psychologists	17	16	-0	-1.4%	+3	+1
Pharmacy	254	252	-2	-0.6%	+9	+16
H&SC, Other	60	59	-1	-2.3%	+13	+31
<b>Health &amp; Social Care Professionals</b>	<b>1,820</b>	<b>1,806</b>	<b>-15</b>	<b>-0.8%</b>	<b>+18</b>	<b>+44</b>
Management (VIII & above)	132	134	+2	+1.3%	+8	+11
Administrative/ Supervisory (V to VII)	537	540	+4	+0.7%	+18	+30
Clerical (III & IV)	1,080	1,089	+10	+0.9%	+44	+39
<b>Management &amp; Administrative</b>	<b>1,748</b>	<b>1,763</b>	<b>+15</b>	<b>+0.9%</b>	<b>+69</b>	<b>+80</b>
Support	782	795	+14	+1.7%	+24	+25
Maintenance/ Technical	131	129	-3	-2.0%	-1	-2
<b>General Support</b>	<b>913</b>	<b>924</b>	<b>+11</b>	<b>+1.2%</b>	<b>+23</b>	<b>+23</b>
Health Care Assistants	1,257	1,258	+1	+0.1%	+41	+5
Care, other	22	23	+0	+0.8%	+1	+0
<b>Patient &amp; Client Care</b>	<b>1,280</b>	<b>1,281</b>	<b>+1</b>	<b>+0.1%</b>	<b>+42</b>	<b>+5</b>

## Ireland East Hospital Group

Jul 2021 (Dec 2020 figure: 12,923)	WTE Jun 2021	WTE Jul 2021	WTE change since Jun 21	% change since Jun 21	WTE change since Dec 20	WTE change since Jul 20
<b>Overall</b>	<b>13,288</b>	<b>13,326</b>	<b>+38</b>	<b>+0.3%</b>	<b>+403</b>	<b>+454</b>
Consultants	586	590	+4	+0.7%	+3	+11
Registrars	691	712	+21	+3.0%	+54	+45
SHO/ Interns	660	640	-20	-3.0%	-29	-53
Medical/ Dental, other	36	33	-2	-6.8%	+6	+9
<b>Medical &amp; Dental</b>	<b>1,972</b>	<b>1,975</b>	<b>+3</b>	<b>+0.1%</b>	<b>+33</b>	<b>+12</b>
Nurse/ Midwife Manager	1,057	1,048	-9	-0.8%	+29	+94
Nurse/ Midwife Specialist & AN/MP	365	362	-3	-0.7%	+25	+50
Staff Nurse/ Staff Midwife	3,383	3,382	-1	-0.0%	+46	+122
Pre-registration Nurse/ Midwife Intern	107	106	-1	-0.5%	+96	+106
Pre-registration Nurse Intern (COVID-19)				-100.0%	-47	-222
Post-registration Nurse/ Midwife Student	28	28			+11	+8
Nursing/ Midwifery awaiting registration	6	8	+2	+33.3%	-26	+8
Nursing/ Midwifery Student	141	142	+1	+1.0%	+33	-100
Nursing/ Midwifery other	70	70	+0	+0.6%	-2	-5
<b>Nursing &amp; Midwifery</b>	<b>5,015</b>	<b>5,004</b>	<b>-11</b>	<b>-0.2%</b>	<b>+131</b>	<b>+162</b>
Therapy Professions	484	473	-11	-2.3%	-5	+15
Health Science/ Diagnostics	802	812	+10	+1.3%	+21	+38
Social Workers	77	77	+0	+0.4%	+3	+8
Psychologists	24	23	-1	-4.4%	+1	+2
Pharmacy	205	207	+2	+1.1%	+15	+16
H&SC, Other	56	51	-5	-9.3%	+24	+21
<b>Health &amp; Social Care Professionals</b>	<b>1,648</b>	<b>1,643</b>	<b>-4</b>	<b>-0.3%</b>	<b>+59</b>	<b>+100</b>
Management (VIII & above)	113	113			+12	+15
Administrative/ Supervisory (V to VII)	623	621	-2	-0.3%	+22	+72
Clerical (III & IV)	1,287	1,294	+6	+0.5%	+70	+42
<b>Management &amp; Administrative</b>	<b>2,023</b>	<b>2,028</b>	<b>+5</b>	<b>+0.2%</b>	<b>+104</b>	<b>+129</b>
Support	1,333	1,339	+6	+0.5%	+26	-43
Maintenance/ Technical	122	121	-0	-0.3%	+3	+2
<b>General Support</b>	<b>1,454</b>	<b>1,460</b>	<b>+6</b>	<b>+0.4%</b>	<b>+29</b>	<b>-41</b>
Health Care Assistants	1,147	1,187	+41	+3.5%	+46	+91
Care, other	28	28	+0	+0.2%	-0	+1
<b>Patient &amp; Client Care</b>	<b>1,175</b>	<b>1,216</b>	<b>+41</b>	<b>+3.5%</b>	<b>+46</b>	<b>+92</b>

## RCSI Hospitals Group

Jul 2021 (Dec 2020 figure: 10,197)	WTE Jun 2021	WTE Jul 2021	WTE change since Jun 21	% change since Jun 21	WTE change since Dec 20	WTE change since Jul 20
<b>Overall</b>	<b>10,540</b>	<b>10,590</b>	<b>+50</b>	<b>+0.5%</b>	<b>+393</b>	<b>+433</b>
Consultants	485	489	+4	+0.8%	+19	+26
Registrars	508	521	+13	+2.5%	+12	+18
SHO/ Interns	515	512	-3	-0.5%	+2	-2
Medical/ Dental, other	5	5	+0	+0.6%	-1	-1
<b>Medical &amp; Dental</b>	<b>1,513</b>	<b>1,527</b>	<b>+14</b>	<b>+0.9%</b>	<b>+32</b>	<b>+41</b>
Nurse/ Midwife Manager	891	887	-4	-0.5%	+67	+81
Nurse/ Midwife Specialist & AN/MP	215	214	-0	-0.1%	+6	+13
Staff Nurse/ Staff Midwife	2,771	2,776	+6	+0.2%	+9	+120
Public Health Nurse		1	+1	-100.0%	+1	+1
Public Health Nurse		1	+1	-100.0%	+1	+1
Pre-registration Nurse/ Midwife Intern	78	80	+3	+3.3%	+80	+80
Pre-registration Nurse Intern (COVID-19)				-100.0%	-13	-157
Post-registration Nurse/ Midwife Student	25	25	-0	-0.3%	-13	-13
Nursing/ Midwifery awaiting registration				-100.0%	-0	-1
Nursing/ Midwifery Student	103	105	+3	+2.5%	+54	-90
Nursing/ Midwifery other	40	39	-1	-1.6%	-2	-3
<b>Nursing &amp; Midwifery</b>	<b>4,019</b>	<b>4,023</b>	<b>+4</b>	<b>+0.1%</b>	<b>+134</b>	<b>+122</b>
Therapy Professions	378	379	+1	+0.2%	+17	+22
Health Science/ Diagnostics	622	618	-3	-0.5%	+9	+13
Social Workers	70	70	+0	+0.1%	+4	+5
Psychologists	12	13	+1	+6.9%	+0	+0
Pharmacy	151	151	+0	+0.2%	+5	+12
H&SC, Other	27	53	+26	+96.9%	+41	+47
<b>Health &amp; Social Care Professionals</b>	<b>1,259</b>	<b>1,283</b>	<b>+24</b>	<b>+1.9%</b>	<b>+77</b>	<b>+99</b>
Management (VIII & above)	96	97	+1	+1.5%	-0	+8
Administrative/ Supervisory (V to VII)	431	434	+3	+0.8%	+20	+60
Clerical (III & IV)	1,059	1,064	+6	+0.5%	+39	+46
<b>Management &amp; Administrative</b>	<b>1,586</b>	<b>1,596</b>	<b>+10</b>	<b>+0.7%</b>	<b>+58</b>	<b>+114</b>
Support	1,010	1,003	-7	-0.7%	+1	+25
Maintenance/ Technical	90	90	+0	+0.3%	-1	+1
<b>General Support</b>	<b>1,100</b>	<b>1,093</b>	<b>-6</b>	<b>-0.6%</b>	<b>+0</b>	<b>+26</b>
Health Care Assistants	1,029	1,033	+4	+0.4%	+91	+30
Care, other	35	34	-0	-0.3%	+0	-0
<b>Patient &amp; Client Care</b>	<b>1,063</b>	<b>1,067</b>	<b>+4</b>	<b>+0.4%</b>	<b>+91</b>	<b>+30</b>

## Saolta University Hospital Care

Jul 2021 (Dec 2020 figure: 9,829)	WTE Jun 2021	WTE Jul 2021	WTE change since Jun 21	% change since Jun 21	WTE change since Dec 20	WTE change since Jul 20
<b>Overall</b>	<b>10,329</b>	<b>10,353</b>	<b>+24</b>	<b>+0.2%</b>	<b>+524</b>	<b>+533</b>
Consultants	472	472	+1	+0.2%	-4	+7
Registrars	485	485	+0	+0.0%	+17	+6
SHO/ Interns	623	630	+7	+1.1%	-7	+3
Medical/ Dental, other	13	11	-2	-15.4%	-1	+0
<b>Medical &amp; Dental</b>	<b>1,593</b>	<b>1,598</b>	<b>+6</b>	<b>+0.4%</b>	<b>+5</b>	<b>+16</b>
Nurse/ Midwife Manager	605	618	+13	+2.2%	+29	+42
Nurse/ Midwife Specialist & AN/MP	247	250	+3	+1.3%	+14	+22
Staff Nurse/ Staff Midwife	2,934	2,937	+3	+0.1%	+66	+179
Public Health Nurse	1	1	-0	-24.6%	-0	-0
Pre-registration Nurse/ Midwife Intern	82	80	-2	-2.9%	+77	+80
Pre-registration Nurse Intern (COVID-19)				-100.0%	-31	-156
Post-registration Nurse/ Midwife Student	19	19	+0	+0.1%	+10	+8
Nursing/ Midwifery awaiting registration	21	2	-19	-89.7%	+1	-0
Nursing/ Midwifery Student	122	101	-21	-17.3%	+57	-69
Nursing/ Midwifery other	36	36	+0	+0.1%	-3	+1
<b>Nursing &amp; Midwifery</b>	<b>3,945</b>	<b>3,943</b>	<b>-2</b>	<b>-0.1%</b>	<b>+162</b>	<b>+175</b>
Therapy Professions	295	297	+2	+0.8%	+25	+23
Health Science/ Diagnostics	674	676	+2	+0.4%	+21	+33
Social Care	3	3			+0	+1
Social Workers	35	36	+1	+1.9%	+6	+8
Psychologists	2	2	+0	+18.7%	+0	+0
Pharmacy	163	162	-1	-0.5%	+3	+10
H&SC, Other	108	98	-9	-8.7%	+83	+76
<b>Health &amp; Social Care Professionals</b>	<b>1,279</b>	<b>1,275</b>	<b>-4</b>	<b>-0.4%</b>	<b>+138</b>	<b>+151</b>
Management (VIII & above)	55	56	+2	+3.2%	+2	+2
Administrative/ Supervisory (V to VII)	305	319	+14	+4.6%	+33	+50
Clerical (III & IV)	1,173	1,179	+7	+0.6%	+96	+141
<b>Management &amp; Administrative</b>	<b>1,532</b>	<b>1,555</b>	<b>+23</b>	<b>+1.5%</b>	<b>+131</b>	<b>+193</b>
Support	937	934	-3	-0.3%	+26	+30
Maintenance/ Technical	95	95	+0	+0.3%	+1	-3
<b>General Support</b>	<b>1,031</b>	<b>1,029</b>	<b>-2</b>	<b>-0.2%</b>	<b>+27</b>	<b>+27</b>
Health Care Assistants	878	880	+2	+0.2%	+35	-54
Care, other	71	74	+2	+3.4%	+27	+23
<b>Patient &amp; Client Care</b>	<b>949</b>	<b>954</b>	<b>+5</b>	<b>+0.5%</b>	<b>+62</b>	<b>-30</b>

## South/South West Hospital Group

Jul 2021 (Dec 2020 figure: 11,288)	WTE Jun 2021	WTE Jul 2021	WTE change since Jun 21	% change since Jun 21	WTE change since Dec 20	WTE change since Jul 20
<b>Overall</b>	<b>11,778</b>	<b>11,897</b>	<b>+120</b>	<b>+1.0%</b>	<b>+609</b>	<b>+533</b>
Consultants	517	518	+1	+0.2%	+10	+23
Registrars	539	550	+11	+2.1%	+20	+25
SHO/ Interns	607	601	-6	-1.0%	-14	-64
Medical/ Dental, other	10	9	-1	-12.2%	+1	+1
<b>Medical &amp; Dental</b>	<b>1,674</b>	<b>1,679</b>	<b>+5</b>	<b>+0.3%</b>	<b>+18</b>	<b>-16</b>
Nurse/ Midwife Manager	869	880	+12	+1.3%	+24	+3
Nurse/ Midwife Specialist & AN/MP	209	210	+2	+0.8%	+16	+37
Staff Nurse/ Staff Midwife	3,445	3,469	+23	+0.7%	+134	+279
Public Health Nurse	0	0			+0	+0
Public Health Nurse	0	0			+0	+0
Pre-registration Nurse/ Midwife Intern	88	100	+12	+14.0%	+100	+100
Pre-registration Nurse Intern (COVID-19)	3	2	-1	-22.7%	-21	-178
Post-registration Nurse/ Midwife Student	20	19	-1	-3.2%	-3	-5
Nursing/ Midwifery awaiting registration	27	6	-21	-76.5%	-11	+6
Nursing/ Midwifery Student	138	128	-10	-7.1%	+66	-76
Nursing/ Midwifery other	15	15	-0	-0.3%	-0	+0
<b>Nursing &amp; Midwifery</b>	<b>4,676</b>	<b>4,703</b>	<b>+27</b>	<b>+0.6%</b>	<b>+240</b>	<b>+243</b>
Therapy Professions	381	382	+1	+0.3%	+25	+29
Health Science/ Diagnostics	883	886	+3	+0.4%	+32	+39
Social Workers	38	39	+1	+2.2%	+2	+8
Psychologists	2	2	+1	+58.7%	+1	+1
Pharmacy	169	168	-1	-0.4%	+18	+22
H&SC, Other	26	29	+4	+15.2%	+8	+24
<b>Health &amp; Social Care Professionals</b>	<b>1,498</b>	<b>1,507</b>	<b>+9</b>	<b>+0.6%</b>	<b>+86</b>	<b>+124</b>
Management (VIII & above)	63	62	-1	-0.8%	+7	+5
Administrative/ Supervisory (V to VII)	343	347	+4	+1.1%	+25	+48
Clerical (III & IV)	1,321	1,340	+19	+1.4%	+70	+84
<b>Management &amp; Administrative</b>	<b>1,727</b>	<b>1,749</b>	<b>+23</b>	<b>+1.3%</b>	<b>+102</b>	<b>+137</b>
Support	1,399	1,455	+56	+4.0%	+134	+124
Maintenance/ Technical	43	42	-1	-2.3%	+1	+6
<b>General Support</b>	<b>1,442</b>	<b>1,497</b>	<b>+55</b>	<b>+3.8%</b>	<b>+135</b>	<b>+129</b>
Health Care Assistants	746	748	+1	+0.2%	+28	-89
Care, other	15	15	+0	+0.8%	+0	+5
<b>Patient &amp; Client Care</b>	<b>761</b>	<b>763</b>	<b>+2</b>	<b>+0.2%</b>	<b>+28</b>	<b>-84</b>

## University of Limerick Hospital Group

Jul 2021 (Dec 2020 figure: 4,506)	WTE Jun 2021	WTE Jul 2021	WTE change since Jun 21	% change since Jun 21	WTE change since Dec 20	WTE change since Jul 20
<b>Overall</b>	<b>4,850</b>	<b>4,841</b>	<b>-8</b>	<b>-0.2%</b>	<b>+335</b>	<b>+444</b>
Consultants	184	186	+1	+0.8%	+2	+7
Registrars	210	217	+7	+3.4%	+13	+13
SHO/ Interns	251	242	-10	-3.9%	-17	-22
Medical/ Dental, other	1	1				
<b>Medical &amp; Dental</b>	<b>646</b>	<b>645</b>	<b>-1</b>	<b>-0.2%</b>	<b>-2</b>	<b>-2</b>
Nurse/ Midwife Manager	361	363	+2	+0.6%	+17	+26
Nurse/ Midwife Specialist & AN/MP	85	86	+1	+1.3%	+5	+11
Staff Nurse/ Staff Midwife	1,409	1,417	+8	+0.6%	+117	+188
Pre-registration Nurse/ Midwife Intern	33	32	-1	-1.9%	+31	+30
Pre-registration Nurse Intern (COVID-19)				-100.0%	-1	-60
Post-registration Nurse/ Midwife Student	8	8	-1	-6.7%	-2	-6
Nursing/ Midwifery awaiting registration	3	4	+1	+36.5%	+4	+4
Nursing/ Midwifery Student	44	44	-0	-0.2%	+32	-32
Nursing/ Midwifery other	14	13	-1	-4.0%	+2	+2
<b>Nursing &amp; Midwifery</b>	<b>1,913</b>	<b>1,923</b>	<b>+10</b>	<b>+0.5%</b>	<b>+172</b>	<b>+195</b>
Therapy Professions	119	121	+1	+1.1%	+23	+33
Health Science/ Diagnostics	263	265	+2	+0.8%	+11	+3
Social Workers	11	10	-1	-9.2%	-1	+0
Psychologists	4	3	-0	-2.6%	-0	-0
Pharmacy	51	49	-1	-2.0%	-2	+1
H&SC, Other	17	12	-5	-27.3%	+6	+8
<b>Health &amp; Social Care Professionals</b>	<b>464</b>	<b>461</b>	<b>-3</b>	<b>-0.7%</b>	<b>+38</b>	<b>+45</b>
Management (VIII & above)	36	37	+1	+2.0%	-0	-0
Administrative/ Supervisory (V to VII)	155	159	+5	+3.0%	+30	+40
Clerical (III & IV)	550	544	-6	-1.0%	+37	+53
<b>Management &amp; Administrative</b>	<b>741</b>	<b>741</b>	<b>-0</b>	<b>-0.1%</b>	<b>+67</b>	<b>+92</b>
Support	622	613	-9	-1.4%	+29	+93
Maintenance/ Technical	40	39	-1	-1.9%	+1	+0
<b>General Support</b>	<b>661</b>	<b>652</b>	<b>-10</b>	<b>-1.5%</b>	<b>+30</b>	<b>+93</b>
Health Care Assistants	419	415	-4	-1.0%	+31	+23
Care, other	5	5	-0	-0.5%	-1	-2
<b>Patient &amp; Client Care</b>	<b>425</b>	<b>420</b>	<b>-4</b>	<b>-1.0%</b>	<b>+31</b>	<b>+21</b>



## other Acute Services

Jul 2021 (Dec 2020 figure: 655)	WTE Jun 2021	WTE Jul 2021	WTE change since Jun 21	% change since Jun 21	WTE change since Dec 20	WTE change since Jul 20
<b>Overall</b>	<b>696</b>	<b>704</b>	<b>+7</b>	<b>+1.1%</b>	<b>+48</b>	<b>+105</b>
Consultants	12	12				+1
Registrars	8	12	+4	+50.0%	+4	+4
SHO/ Interns	7	7			-1	-1
<b>Medical &amp; Dental</b>	<b>27</b>	<b>31</b>	<b>+4</b>	<b>+14.9%</b>	<b>+4</b>	<b>+5</b>
Nurse/ Midwife Manager	53	54	+1	+1.9%	+5	+3
Nurse/ Midwife Specialist & AN/MP	2	2			-1	-1
Staff Nurse/ Staff Midwife	125	125			+10	+27
<b>Nursing &amp; Midwifery</b>	<b>180</b>	<b>181</b>	<b>+1</b>	<b>+0.6%</b>	<b>+13</b>	<b>+30</b>
Therapy Professions	115	115	+0	+0.2%	+8	+19
Health Science/ Diagnostics	10	9	-1	-10.6%	-1	+1
Social Care	1	1				
Social Workers	21	22	+1	+4.8%	+3	+8
Psychologists	16	17	+0	+2.4%	+3	+5
Pharmacy	13	14	+1	+5.9%	+1	+2
H&SC, Other	0		-0	-100.0%	-1	-1
<b>Health &amp; Social Care Professionals</b>	<b>177</b>	<b>178</b>	<b>+1</b>	<b>+0.5%</b>	<b>+14</b>	<b>+34</b>
Management (VIII & above)	43	43	-0	-0.2%	+3	+5
Administrative/ Supervisory (V to VII)	76	74	-2	-2.0%	+5	+6
Clerical (III & IV)	52	54	+2	+4.6%	+3	+10
<b>Management &amp; Administrative</b>	<b>170</b>	<b>171</b>	<b>+1</b>	<b>+0.4%</b>	<b>+11</b>	<b>+22</b>
Support	41	41	-0	-0.7%	+2	+3
Maintenance/ Technical	11	12	+1	+9.1%	+1	+1
<b>General Support</b>	<b>52</b>	<b>53</b>	<b>+1</b>	<b>+1.4%</b>	<b>+3</b>	<b>+4</b>
Health Care Assistants	88	88	+0	+0.1%	+4	+12
Care, other	3	3				-1
<b>Patient &amp; Client Care</b>	<b>90</b>	<b>90</b>	<b>+0</b>	<b>+0.1%</b>	<b>+4</b>	<b>+11</b>

## CHO 1

Jul 2021 (Dec 2020 figure: 5,755)	WTE Jun 2021	WTE Jul 2021	WTE change since Jun 21	% change since Jun 21	WTE change since Dec 20	WTE change since Jul 20
<b>Overall</b>	<b>5,922</b>	<b>5,876</b>	<b>-46</b>	<b>-0.8%</b>	<b>+121</b>	<b>+229</b>
Consultants	39	39	-0	-0.7%	+2	+3
Registrars	75	90	+16	+21.1%	+19	+12
SHO/ Interns	21	17	-4	-18.0%	-7	-7
Medical/ Dental, other	62	64	+1	+2.3%	-17	-2
<b>Medical &amp; Dental</b>	<b>197</b>	<b>210</b>	<b>+13</b>	<b>+6.7%</b>	<b>-3</b>	<b>+5</b>
Nurse/ Midwife Manager	362	361	-1	-0.3%	+7	-2
Nurse/ Midwife Specialist & AN/MP	118	119	+1	+0.8%	+1	+11
Staff Nurse/ Staff Midwife	1,079	1,064	-14	-1.3%	+36	+44
Public Health Nurse	147	145	-2	-1.1%	-7	-5
Pre-registration Nurse/ Midwife Intern	35	35	-0	-0.1%	+35	+29
Pre-registration Nurse Intern (COVID-19)	5	1	-4	-77.8%	-8	-39
Post-registration Nurse/ Midwife Student	3	3				+2
Nursing/ Midwifery awaiting registration				-100.0%	-11	-11
Nursing/ Midwifery Student	42	39	-4	-8.3%	+15	-19
Nursing/ Midwifery other	8	5	-2	-31.4%	-1	-2
<b>Nursing &amp; Midwifery</b>	<b>1,756</b>	<b>1,733</b>	<b>-22</b>	<b>-1.3%</b>	<b>+50</b>	<b>+27</b>
Therapy Professions	329	327	-2	-0.6%	+4	+7
Health Science/ Diagnostics	7	6	-0	-1.7%	-0	-0
Social Care	15	14	-1	-5.6%	-1	+2
Social Workers	92	89	-2	-2.6%	-3	+0
Psychologists	66	65	-0	-0.4%	+3	+4
Pharmacy	5	4	-1	-15.5%	+2	+3
H&SC, Other	37	38	+0	+1.1%	+7	+9
<b>Health &amp; Social Care Professionals</b>	<b>551</b>	<b>545</b>	<b>-6</b>	<b>-1.1%</b>	<b>+12</b>	<b>+25</b>
Management (VIII & above)	63	66	+3	+5.1%	+3	+4
Administrative/ Supervisory (V to VII)	185	186	+1	+0.5%	+19	+25
Clerical (III & IV)	520	527	+7	+1.4%	+48	+71
<b>Management &amp; Administrative</b>	<b>768</b>	<b>779</b>	<b>+11</b>	<b>+1.5%</b>	<b>+71</b>	<b>+100</b>
Support	309	297	-12	-3.9%	-13	-16
Maintenance/ Technical	37	35	-2	-6.1%	-1	-2
<b>General Support</b>	<b>347</b>	<b>332</b>	<b>-14</b>	<b>-4.2%</b>	<b>-14</b>	<b>-18</b>
Health Care Assistants	1,548	1,510	-38	-2.5%	-9	-7
Home Help	608	615	+7	+1.2%	-4	+81
Care, other	148	151	+3	+2.1%	+19	+16
<b>Patient &amp; Client Care</b>	<b>2,304</b>	<b>2,276</b>	<b>-28</b>	<b>-1.2%</b>	<b>+6</b>	<b>+89</b>

## CHO 2

Jul 2021 (Dec 2020 figure: 5,690)	WTE Jun 2021	WTE Jul 2021	WTE change since Jun 21	% change since Jun 21	WTE change since Dec 20	WTE change since Jul 20
<b>Overall</b>	<b>5,733</b>	<b>5,738</b>	<b>+5</b>	<b>+0.1%</b>	<b>+47</b>	<b>+144</b>
Consultants	49	48	-0	-0.8%	+6	+5
Registrars	89	99	+10	+10.9%	+13	+0
SHO/ Interns	40	34	-5	-13.7%	-9	+1
Medical/ Dental, other	54	54	-0	-0.9%	-8	-6
<b>Medical &amp; Dental</b>	<b>231</b>	<b>235</b>	<b>+3</b>	<b>+1.5%</b>	<b>+2</b>	<b>-1</b>
Nurse/ Midwife Manager	326	326	-0	-0.1%	+3	+8
Nurse/ Midwife Specialist & AN/MP	111	108	-3	-3.0%	+0	+10
Staff Nurse/ Staff Midwife	938	924	-13	-1.4%	+17	+34
Public Health Nurse	190	187	-4	-1.9%	-12	-8
Pre-registration Nurse/ Midwife Intern	21	20	-1	-5.7%	+20	+20
Pre-registration Nurse Intern (COVID-19)	1	1			-10	-31
Nursing/ Midwifery Student	21	20	-1	-5.6%	+9	-12
Nursing/ Midwifery other	1	2	+1	+97.0%	+0	-1
<b>Nursing &amp; Midwifery</b>	<b>1,588</b>	<b>1,567</b>	<b>-21</b>	<b>-1.3%</b>	<b>+17</b>	<b>+32</b>
Therapy Professions	378	365	-13	-3.5%	+3	+16
Health Science/ Diagnostics	8	7	-1	-11.8%	-0	+1
Social Care	284	286	+2	+0.8%	+18	+24
Social Workers	82	80	-2	-2.8%	-4	-4
Psychologists	83	84	+0	+0.4%	+6	+8
Pharmacy	5	5	-0	-1.5%	+1	+1
H&SC, Other	60	60	-1	-1.2%	+3	+4
<b>Health &amp; Social Care Professionals</b>	<b>901</b>	<b>887</b>	<b>-15</b>	<b>-1.6%</b>	<b>+27</b>	<b>+50</b>
Management (VIII & above)	62	60	-2	-2.5%	+2	+5
Administrative/ Supervisory (V to VII)	161	171	+10	+6.3%	+11	+26
Clerical (III & IV)	441	428	-13	-2.9%	-20	-22
<b>Management &amp; Administrative</b>	<b>663</b>	<b>659</b>	<b>-4</b>	<b>-0.6%</b>	<b>-7</b>	<b>+9</b>
Support	153	151	-2	-1.5%	-2	+5
Maintenance/ Technical	73	74	+1	+1.1%	+0	+4
<b>General Support</b>	<b>226</b>	<b>225</b>	<b>-2</b>	<b>-0.7%</b>	<b>-1</b>	<b>+8</b>
Health Care Assistants	1,443	1,456	+13	+0.9%	+37	+26
Home Help	389	416	+27	+6.9%	-41	-2
Care, other	291	294	+3	+1.0%	+13	+23
<b>Patient &amp; Client Care</b>	<b>2,123</b>	<b>2,166</b>	<b>+42</b>	<b>+2.0%</b>	<b>+9</b>	<b>+47</b>

### CHO 3

Jul 2021 (Dec 2020 figure: 4,610)	WTE Jun 2021	WTE Jul 2021	WTE change since Jun 21	% change since Jun 21	WTE change since Dec 20	WTE change since Jul 20
<b>Overall</b>	<b>4,789</b>	<b>4,857</b>	<b>+68</b>	<b>+1.4%</b>	<b>+248</b>	<b>+337</b>
Consultants	28	27	-1	-2.6%	-1	-0
Registrars	43	49	+6	+14.9%	+9	+2
SHO/ Interns	22	24	+3	+13.1%	+2	+6
Medical/ Dental, other	51	49	-1	-2.6%	-9	-9
<b>Medical &amp; Dental</b>	<b>143</b>	<b>150</b>	<b>+7</b>	<b>+5.0%</b>	<b>+1</b>	<b>-1</b>
Nurse/ Midwife Manager	248	248	+1	+0.2%	-1	-9
Nurse/ Midwife Specialist & AN/MP	49	51	+2	+3.2%	-3	+2
Staff Nurse/ Staff Midwife	847	856	+9	+1.1%	+25	+65
Public Health Nurse	128	122	-6	-4.6%	-5	-2
Pre-registration Nurse/ Midwife Intern	21	21	+0	+0.1%	+21	+21
Pre-registration Nurse Intern (COVID-19)		0	+0	-100.0%	-5	-43
Post-registration Nurse/ Midwife Student	2		-2	-100.0%	-4	
Nursing/ Midwifery Student	23	22	-2	-7.0%	+13	-21
Nursing/ Midwifery other	4	4				
<b>Nursing &amp; Midwifery</b>	<b>1,299</b>	<b>1,302</b>	<b>+4</b>	<b>+0.3%</b>	<b>+28</b>	<b>+35</b>
Therapy Professions	233	236	+3	+1.3%	+13	+19
Health Science/ Diagnostics	7	8	+1	+13.5%	-0	+2
Social Care	283	290	+7	+2.4%	+2	+25
Social Workers	57	59	+2	+3.8%	+1	+2
Psychologists	127	127	+0	+0.1%	+1	+2
Pharmacy	6	6	-0	-0.4%	+1	+1
H&SC, Other	31	31	+0	+0.5%	-2	-6
<b>Health &amp; Social Care Professionals</b>	<b>743</b>	<b>757</b>	<b>+13</b>	<b>+1.8%</b>	<b>+15</b>	<b>+45</b>
Management (VIII & above)	42	42	+0	+0.3%	+1	+3
Administrative/ Supervisory (V to VII)	167	165	-1	-0.6%	+16	+27
Clerical (III & IV)	350	351	+1	+0.2%	+43	+45
<b>Management &amp; Administrative</b>	<b>559</b>	<b>559</b>	<b>-0</b>	<b>-0.0%</b>	<b>+60</b>	<b>+75</b>
Support	161	161	+1	+0.5%	+2	+1
Maintenance/ Technical	78	78	-0	-0.6%	+2	+0
<b>General Support</b>	<b>239</b>	<b>239</b>	<b>+0</b>	<b>+0.1%</b>	<b>+3</b>	<b>+1</b>
Health Care Assistants	1,323	1,333	+11	+0.8%	+87	+124
Home Help	220	250	+30	+13.6%	+33	+31
Care, other	263	266	+3	+1.1%	+22	+27
<b>Patient &amp; Client Care</b>	<b>1,806</b>	<b>1,850</b>	<b>+44</b>	<b>+2.4%</b>	<b>+141</b>	<b>+183</b>

## CHO 4

Jul 2021 (Dec 2020 figure: 8,602)	WTE Jun 2021	WTE Jul 2021	WTE change since Jun 21	% change since Jun 21	WTE change since Dec 20	WTE change since Jul 20
<b>Overall</b>	<b>8,806</b>	<b>8,801</b>	<b>-5</b>	<b>-0.1%</b>	<b>+200</b>	<b>+460</b>
Consultants	63	63	+0	+0.5%	+2	+5
Registrars	99	114	+15	+15.5%	+12	-8
SHO/ Interns	50	48	-2	-4.8%	-3	+16
Medical/ Dental, other	124	118	-6	-5.2%	+2	+7
<b>Medical &amp; Dental</b>	<b>336</b>	<b>343</b>	<b>+7</b>	<b>+2.0%</b>	<b>+12</b>	<b>+19</b>
Nurse/ Midwife Manager	473	480	+7	+1.5%	+13	+14
Nurse/ Midwife Specialist & AN/MP	94	96	+1	+1.5%	-3	-0
Staff Nurse/ Staff Midwife	1,491	1,487	-5	-0.3%	-12	+3
Public Health Nurse	221	217	-4	-1.8%	-11	+7
Pre-registration Nurse/ Midwife Intern	37	37			+37	+37
Pre-registration Nurse Intern (COVID-19)	1	1			-10	-50
Post-registration Nurse/ Midwife Student	14	6	-9	-60.7%	-9	+4
Nursing/ Midwifery awaiting registration	3	3				-1
Nursing/ Midwifery Student	55	47	-9	-15.5%	+18	-11
Nursing/ Midwifery other				-100.0%		-1
<b>Nursing &amp; Midwifery</b>	<b>2,335</b>	<b>2,326</b>	<b>-9</b>	<b>-0.4%</b>	<b>+7</b>	<b>+13</b>
Therapy Professions	509	512	+2	+0.5%	+48	+50
Health Science/ Diagnostics	12	12	+0	+0.5%	-1	-0
Social Care	258	258	-0	-0.1%	+6	+16
Social Workers	132	128	-3	-2.6%	-4	+4
Psychologists	148	147	-2	-1.1%	-5	+6
Pharmacy	10	10	+0	+2.2%	-0	+0
H&SC, Other	88	89	+1	+0.9%	+25	+23
<b>Health &amp; Social Care Professionals</b>	<b>1,158</b>	<b>1,156</b>	<b>-2</b>	<b>-0.2%</b>	<b>+68</b>	<b>+99</b>
Management (VIII & above)	73	71	-2	-2.1%	-4	-4
Administrative/ Supervisory (V to VII)	178	181	+3	+1.8%	+3	+11
Clerical (III & IV)	615	618	+3	+0.4%	+72	+98
<b>Management &amp; Administrative</b>	<b>866</b>	<b>870</b>	<b>+4</b>	<b>+0.5%</b>	<b>+72</b>	<b>+105</b>
Support	358	356	-1	-0.4%	+4	-5
Maintenance/ Technical	24	24	+0	+0.0%	+1	+2
<b>General Support</b>	<b>382</b>	<b>380</b>	<b>-1</b>	<b>-0.4%</b>	<b>+5</b>	<b>-2</b>
Health Care Assistants	2,189	2,199	+10	+0.5%	+78	+121
Home Help	1,035	1,021	-14	-1.3%	-55	+55
Care, other	507	507	-0	-0.0%	+13	+52
<b>Patient &amp; Client Care</b>	<b>3,730</b>	<b>3,727</b>	<b>-4</b>	<b>-0.1%</b>	<b>+36</b>	<b>+227</b>

## CHO 5

Jul 2021 (Dec 2020 figure: 5,477)	WTE Jun 2021	WTE Jul 2021	WTE change since Jun 21	% change since Jun 21	WTE change since Dec 20	WTE change since Jul 20
<b>Overall</b>	<b>5,575</b>	<b>5,595</b>	<b>+20</b>	<b>+0.4%</b>	<b>+118</b>	<b>+224</b>
Consultants	30	30	+0	+0.4%	+1	+2
Registrars	33	43	+11	+32.5%	+14	+10
SHO/ Interns	36	39	+3	+7.6%	+1	-3
Medical/ Dental, other	75	76	+2	+2.2%	+5	+10
<b>Medical &amp; Dental</b>	<b>174</b>	<b>189</b>	<b>+15</b>	<b>+8.7%</b>	<b>+20</b>	<b>+19</b>
Nurse/ Midwife Manager	366	373	+7	+2.0%	+9	+26
Nurse/ Midwife Specialist & AN/MP	75	75	-0	-0.5%	-3	+11
Staff Nurse/ Staff Midwife	990	985	-5	-0.5%	+13	+22
Public Health Nurse	171	171	+0	+0.0%	-5	+5
Pre-registration Nurse/ Midwife Intern	33	33	-0	-0.4%	+33	+33
Pre-registration Nurse Intern (COVID-19)	2	2			-12	-47
Post-registration Nurse/ Midwife Student	4	4	-0	-4.8%	+0	-1
Nursing/ Midwifery awaiting registration	1		-1	-100.0%		
Nursing/ Midwifery Student	40	38	-1	-3.3%	+21	-15
Nursing/ Midwifery other	4	4	-0	-2.1%	-0	-0
<b>Nursing &amp; Midwifery</b>	<b>1,647</b>	<b>1,647</b>	<b>+0</b>	<b>+0.0%</b>	<b>+35</b>	<b>+49</b>
Therapy Professions	337	331	-6	-1.7%	+6	+10
Health Science/ Diagnostics	7	7	+0	+0.1%	-1	+0
Social Care	146	147	+0	+0.1%	-6	-2
Social Workers	60	59	-1	-2.0%	-4	-2
Psychologists	79	79	+1	+0.8%	+1	+8
Pharmacy	1	2	+1	+60.0%	+0	+0
H&SC, Other	40	44	+4	+10.3%	+12	+9
<b>Health &amp; Social Care Professionals</b>	<b>670</b>	<b>669</b>	<b>-1</b>	<b>-0.2%</b>	<b>+8</b>	<b>+23</b>
Management (VIII & above)	41	45	+4	+10.1%	-2	-0
Administrative/ Supervisory (V to VII)	162	163	+0	+0.1%	+25	+34
Clerical (III & IV)	321	320	-1	-0.5%	-5	+3
<b>Management &amp; Administrative</b>	<b>525</b>	<b>528</b>	<b>+3</b>	<b>+0.5%</b>	<b>+18</b>	<b>+37</b>
Support	289	285	-4	-1.4%	-15	-42
Maintenance/ Technical	28	27	-1	-2.3%	-4	-12
<b>General Support</b>	<b>318</b>	<b>313</b>	<b>-5</b>	<b>-1.5%</b>	<b>-18</b>	<b>-55</b>
Health Care Assistants	1,338	1,345	+7	+0.5%	+27	+74
Home Help	653	658	+6	+0.9%	+12	+53
Care, other	252	248	-4	-1.7%	+16	+24
<b>Patient &amp; Client Care</b>	<b>2,242</b>	<b>2,250</b>	<b>+8</b>	<b>+0.3%</b>	<b>+55</b>	<b>+151</b>

## CHO 6

Jul 2021 (Dec 2020 figure: 3,465)	WTE Jun 2021	WTE Jul 2021	WTE change since Jun 21	% change since Jun 21	WTE change since Dec 20	WTE change since Jul 20
<b>Overall</b>	<b>3,533</b>	<b>3,522</b>	<b>-11</b>	<b>-0.3%</b>	<b>+57</b>	<b>+132</b>
Consultants	53	51	-1	-2.7%	-0	+2
Registrars	47	50	+3	+6.3%	+6	+7
SHO/ Interns	19	18	-1	-2.8%	-1	-2
Medical/ Dental, other	48	45	-3	-6.2%	+0	-3
<b>Medical &amp; Dental</b>	<b>167</b>	<b>165</b>	<b>-2</b>	<b>-1.2%</b>	<b>+5</b>	<b>+4</b>
Nurse/ Midwife Manager	204	204	+0	+0.1%	-2	-6
Nurse/ Midwife Specialist & AN/MP	24	25	+1	+3.8%	+1	+3
Staff Nurse/ Staff Midwife	558	555	-3	-0.5%	+1	+12
Public Health Nurse	107	113	+6	+5.4%	+1	-1
Pre-registration Nurse/ Midwife Intern	4	3	-0	-0.9%	+3	+3
Post-registration Nurse/ Midwife Student	14	4	-10	-71.4%	-11	+1
Nursing/ Midwifery awaiting registration	1	1				+1
Nursing/ Midwifery Student	19	8	-10	-54.2%	-7	+5
Nursing/ Midwifery other	3	3				
<b>Nursing &amp; Midwifery</b>	<b>914</b>	<b>908</b>	<b>-6</b>	<b>-0.7%</b>	<b>-7</b>	<b>+14</b>
Therapy Professions	244	243	-1	-0.6%	+5	+10
Health Science/ Diagnostics	20	19	-0	-2.2%	-1	-1
Social Care	401	402	+1	+0.3%	+10	+53
Social Workers	55	56	+1	+2.1%	+2	-1
Psychologists	66	67	+1	+2.0%	+1	+6
Pharmacy	5	6	+1	+16.8%	+2	+2
H&SC, Other	11	11	-0	-3.8%	+0	+1
<b>Health &amp; Social Care Professionals</b>	<b>802</b>	<b>804</b>	<b>+2</b>	<b>+0.3%</b>	<b>+20</b>	<b>+72</b>
Management (VIII & above)	71	72	+1	+1.4%	+3	+2
Administrative/ Supervisory (V to VII)	188	185	-3	-1.6%	+18	+15
Clerical (III & IV)	264	264	-0	-0.0%	+4	+3
<b>Management &amp; Administrative</b>	<b>523</b>	<b>521</b>	<b>-2</b>	<b>-0.4%</b>	<b>+25</b>	<b>+20</b>
Support	189	190	+1	+0.6%	-2	-24
Maintenance/ Technical	23	22	-1	-3.9%	+0	+0
<b>General Support</b>	<b>212</b>	<b>212</b>	<b>+0</b>	<b>+0.1%</b>	<b>-2</b>	<b>-24</b>
Health Care Assistants	589	580	-10	-1.6%	+14	+21
Care, other	326	332	+6	+1.8%	+2	+25
<b>Patient &amp; Client Care</b>	<b>916</b>	<b>912</b>	<b>-4</b>	<b>-0.4%</b>	<b>+16</b>	<b>+46</b>

## CHO 7

Jul 2021 (Dec 2020 figure: 6,783)	WTE Jun 2021	WTE Jul 2021	WTE change since Jun 21	% change since Jun 21	WTE change since Dec 20	WTE change since Jul 20
<b>Overall</b>	<b>6,934</b>	<b>6,970</b>	<b>+36</b>	<b>+0.5%</b>	<b>+187</b>	<b>+351</b>
Consultants	67	69	+2	+2.8%	+3	+2
Registrars	101	97	-4	-4.2%	-3	+7
SHO/ Interns	38	39	+1	+2.9%	+1	+6
Medical/ Dental, other	75	74	-1	-1.5%	-5	-8
<b>Medical &amp; Dental</b>	<b>282</b>	<b>280</b>	<b>-2</b>	<b>-0.9%</b>	<b>-5</b>	<b>+7</b>
Nurse/ Midwife Manager	439	447	+8	+1.7%	+39	+40
Nurse/ Midwife Specialist & AN/MP	111	111	-0	-0.2%	+1	+8
Staff Nurse/ Staff Midwife	1,053	1,063	+9	+0.9%	+42	+38
Public Health Nurse	170	175	+5	+2.9%	-1	+12
Pre-registration Nurse/ Midwife Intern	22	22	+0	+2.0%	+22	+22
Pre-registration Nurse Intern (COVID-19)	1	1	-0	-38.0%	-3	-31
Post-registration Nurse/ Midwife Student	24	3	-21	-87.8%	-21	-7
Nursing/ Midwifery awaiting registration	1	1	+1	+71.6%	-3	-5
Nursing/ Midwifery Student	48	27	-20	-42.7%	-5	-21
Nursing/ Midwifery other	10	10	+0	+1.0%	+1	-0
<b>Nursing &amp; Midwifery</b>	<b>1,832</b>	<b>1,833</b>	<b>+1</b>	<b>+0.1%</b>	<b>+77</b>	<b>+77</b>
Therapy Professions	455	454	-1	-0.1%	-8	-17
Health Science/ Diagnostics	4	3	-1	-20.7%	-1	-0
Social Care	404	420	+16	+3.8%	+20	+46
Social Workers	113	114	+1	+0.6%	+6	+4
Psychologists	86	90	+4	+4.2%	+3	+4
Pharmacy	38	39	+1	+1.6%	+1	-3
H&SC, Other	41	44	+3	+6.1%	+2	+2
<b>Health &amp; Social Care Professionals</b>	<b>1,141</b>	<b>1,163</b>	<b>+22</b>	<b>+1.9%</b>	<b>+23</b>	<b>+36</b>
Management (VIII & above)	90	90	+0	+0.1%	+5	+12
Administrative/ Supervisory (V to VII)	227	234	+7	+2.9%	+20	+35
Clerical (III & IV)	393	387	-6	-1.6%	+7	+18
<b>Management &amp; Administrative</b>	<b>710</b>	<b>711</b>	<b>+0</b>	<b>+0.0%</b>	<b>+32</b>	<b>+65</b>
Support	395	390	-5	-1.3%	-11	-8
Maintenance/ Technical	47	46	-1	-1.8%	+0	+3
<b>General Support</b>	<b>443</b>	<b>437</b>	<b>-6</b>	<b>-1.3%</b>	<b>-11</b>	<b>-5</b>
Health Care Assistants	1,782	1,794	+12	+0.7%	+71	+149
Home Help	126	125	-2	-1.3%	-7	-9
Care, other	618	629	+11	+1.8%	+8	+30
<b>Patient &amp; Client Care</b>	<b>2,526</b>	<b>2,548</b>	<b>+21</b>	<b>+0.8%</b>	<b>+72</b>	<b>+171</b>



## CHO 8

Jul 2021 (Dec 2020 figure: 6,337)	WTE Jun 2021	WTE Jul 2021	WTE change since Jun 21	% change since Jun 21	WTE change since Dec 20	WTE change since Jul 20
<b>Overall</b>	<b>6,428</b>	<b>6,467</b>	<b>+38</b>	<b>+0.6%</b>	<b>+130</b>	<b>+222</b>
Consultants	44	43	-1	-1.8%	-0	+0
Registrars	112	136	+24	+21.2%	+22	+14
SHO/ Interns	25	18	-7	-27.2%	-9	-14
Medical/ Dental, other	66	67	+1	+1.2%	-6	-4
<b>Medical &amp; Dental</b>	<b>247</b>	<b>264</b>	<b>+17</b>	<b>+6.9%</b>	<b>+7</b>	<b>-4</b>
Nurse/ Midwife Manager	374	379	+4	+1.2%	-1	+2
Nurse/ Midwife Specialist & AN/MP	117	117	+0	+0.1%	+5	+12
Staff Nurse/ Staff Midwife	1,028	1,022	-7	-0.6%	+8	+33
Public Health Nurse	195	195	-1	-0.4%	-6	-11
Pre-registration Nurse/ Midwife Intern	31	30	-0	-1.1%	+30	+24
Pre-registration Nurse Intern (COVID-19)	0	0	-0	-10.6%	-5	-56
Post-registration Nurse/ Midwife Student	10	8	-2	-20.0%	-4	+7
Nursing/ Midwifery Student	41	39	-2	-5.8%	+22	-25
Nursing/ Midwifery other	14	14	+0	+1.0%	+2	+1
<b>Nursing &amp; Midwifery</b>	<b>1,770</b>	<b>1,764</b>	<b>-5</b>	<b>-0.3%</b>	<b>+30</b>	<b>+12</b>
Therapy Professions	394	388	-6	-1.6%	-7	+2
Health Science/ Diagnostics	11	11	+0	+1.3%	+2	+3
Social Care	386	390	+4	+1.0%	+2	+16
Social Workers	97	98	+1	+0.8%	+9	+6
Psychologists	120	118	-2	-1.6%	+3	+5
Pharmacy	12	12	+0	+2.2%	+3	+5
H&SC, Other	56	56	-0	-0.7%	+2	+4
<b>Health &amp; Social Care Professionals</b>	<b>1,075</b>	<b>1,072</b>	<b>-4</b>	<b>-0.3%</b>	<b>+14</b>	<b>+41</b>
Management (VIII & above)	70	73	+3	+4.0%	+6	+7
Administrative/ Supervisory (V to VII)	200	209	+9	+4.4%	+5	+7
Clerical (III & IV)	538	544	+7	+1.2%	+11	+17
<b>Management &amp; Administrative</b>	<b>808</b>	<b>826</b>	<b>+18</b>	<b>+2.3%</b>	<b>+23</b>	<b>+31</b>
Support	114	114	-0	-0.3%	-5	-9
Maintenance/ Technical	70	70	-0	-0.3%	+1	-1
<b>General Support</b>	<b>184</b>	<b>183</b>	<b>-1</b>	<b>-0.3%</b>	<b>-4</b>	<b>-10</b>
Health Care Assistants	1,719	1,728	+10	+0.6%	+66	+150
Home Help	386	386	+1	+0.1%	-11	-5
Care, other	240	243	+2	+1.0%	+4	+6
<b>Patient &amp; Client Care</b>	<b>2,345</b>	<b>2,357</b>	<b>+13</b>	<b>+0.5%</b>	<b>+60</b>	<b>+151</b>

## CHO 9

Jul 2021 (Dec 2020 figure: 6,950)	WTE Jun 2021	WTE Jul 2021	WTE change since Jun 21	% change since Jun 21	WTE change since Dec 20	WTE change since Jul 20
<b>Overall</b>	<b>7,072</b>	<b>7,071</b>	<b>-1</b>	<b>-0.0%</b>	<b>+122</b>	<b>+395</b>
Consultants	62	63	+1	+1.5%	-2	-0
Registrars	94	105	+11	+11.6%	+14	+15
SHO/ Interns	55	41	-14	-25.8%	-31	-18
Medical/ Dental, other	54	57	+2	+4.1%	+1	+1
<b>Medical &amp; Dental</b>	<b>266</b>	<b>266</b>	<b>+0</b>	<b>+0.0%</b>	<b>-17</b>	<b>-2</b>
Nurse/ Midwife Manager	457	456	-1	-0.3%	-1	+2
Nurse/ Midwife Specialist & AN/MP	108	111	+2	+2.2%	+9	+18
Staff Nurse/ Staff Midwife	1,246	1,230	-16	-1.3%	+7	+21
Public Health Nurse	173	184	+12	+6.8%	+3	+23
Pre-registration Nurse/ Midwife Intern	46	45	-1	-1.6%	+32	+21
Pre-registration Nurse Intern (COVID-19)				-100.0%	-16	-58
Post-registration Nurse/ Midwife Student	12	2	-10	-83.3%	-29	
Nursing/ Midwifery awaiting registration	1	1	+0	+7.5%	+1	+1
Nursing/ Midwifery Student	59	48	-11	-18.2%	-12	-35
Nursing/ Midwifery other	19	19	-0	-0.4%	-4	-2
<b>Nursing &amp; Midwifery</b>	<b>2,063</b>	<b>2,049</b>	<b>-14</b>	<b>-0.7%</b>	<b>+3</b>	<b>+27</b>
Therapy Professions	554	547	-7	-1.3%	+17	+25
Health Science/ Diagnostics	34	34	-0	-0.3%	+0	-0
Social Care	786	795	+10	+1.2%	+50	+95
Social Workers	141	139	-1	-0.9%	+1	+9
Psychologists	176	175	-1	-0.8%	-8	+1
Pharmacy	30	29	-1	-2.8%	-1	+4
H&SC, Other	71	72	+1	+1.5%	+3	+3
<b>Health &amp; Social Care Professionals</b>	<b>1,791</b>	<b>1,791</b>	<b>-0</b>	<b>-0.0%</b>	<b>+63</b>	<b>+139</b>
Management (VIII & above)	88	90	+3	+3.2%	+6	+10
Administrative/ Supervisory (V to VII)	267	275	+8	+3.0%	+32	+54
Clerical (III & IV)	537	549	+12	+2.2%	+42	+96
<b>Management &amp; Administrative</b>	<b>892</b>	<b>915</b>	<b>+23</b>	<b>+2.5%</b>	<b>+80</b>	<b>+160</b>
Support	397	396	-1	-0.3%	-7	-23
Maintenance/ Technical	34	34	-0	-0.2%	-2	-1
<b>General Support</b>	<b>432</b>	<b>430</b>	<b>-1</b>	<b>-0.3%</b>	<b>-9</b>	<b>-23</b>
Health Care Assistants	1,393	1,388	-5	-0.3%	+3	+83
Care, other	236	232	-4	-1.5%	-1	+13
<b>Patient &amp; Client Care</b>	<b>1,629</b>	<b>1,620</b>	<b>-8</b>	<b>-0.5%</b>	<b>+2</b>	<b>+95</b>

## other Community Services

Jul 2021 (Dec 2020 figure: 709)	WTE Jun 2021	WTE Jul 2021	WTE change since Jun 21	% change since Jun 21	WTE change since Dec 20	WTE change since Jul 20
<b>Overall</b>	<b>755</b>	<b>754</b>	<b>-1</b>	<b>-0.2%</b>	<b>+44</b>	<b>+74</b>
Consultants	18	17	-1	-5.1%	-1	-1
Registrars	28	33	+5	+16.5%	+10	+8
SHO/ Interns	5	7	+2	+31.2%	+1	+1
Medical/ Dental, other				-100.0%	-0	-0
<b>Medical &amp; Dental</b>	<b>51</b>	<b>56</b>	<b>+5</b>	<b>+10.4%</b>	<b>+9</b>	<b>+9</b>
Nurse/ Midwife Manager	81	80	-1	-1.1%	-2	-3
Nurse/ Midwife Specialist & AN/MP	11	10	-0	-3.9%	-2	-1
Staff Nurse/ Staff Midwife	188	190	+2	+1.1%	+16	+17
Nursing/ Midwifery other	2	2			+0	+1
<b>Nursing &amp; Midwifery</b>	<b>282</b>	<b>283</b>	<b>+1</b>	<b>+0.3%</b>	<b>+12</b>	<b>+14</b>
Therapy Professions	12	12	-0	-0.4%	+0	-1
Health Science/ Diagnostics	7	7			-1	-1
Social Care	4	4	-0	-4.7%	+0	-0
Social Workers	36	34	-1	-3.9%	+1	+8
Psychologists	10	10	-0	-0.1%	+3	+2
Pharmacy	4	5	+1	+15.4%	+1	+1
H&SC, Other	4	4	+0	+1.1%	-0	
<b>Health &amp; Social Care Professionals</b>	<b>76</b>	<b>75</b>	<b>-1</b>	<b>-1.3%</b>	<b>+4</b>	<b>+9</b>
Management (VIII & above)	70	69	-1	-1.7%	-0	+6
Administrative/ Supervisory (V to VII)	86	84	-1	-1.7%	+7	+6
Clerical (III & IV)	79	78	-2	-2.0%	+8	+19
<b>Management &amp; Administrative</b>	<b>235</b>	<b>231</b>	<b>-4</b>	<b>-1.8%</b>	<b>+15</b>	<b>+32</b>
Support	22	21	-2	-7.3%	+1	+2
Maintenance/ Technical	7	7	-0	-3.6%	-0	+2
<b>General Support</b>	<b>29</b>	<b>28</b>	<b>-2</b>	<b>-6.4%</b>	<b>+0</b>	<b>+4</b>
Health Care Assistants	66	65	-0	-0.7%	+3	+7
Care, other	16	16	+0	+0.5%	+1	-0
<b>Patient &amp; Client Care</b>	<b>82</b>	<b>82</b>	<b>-0</b>	<b>-0.5%</b>	<b>+4</b>	<b>+6</b>

## Health & Wellbeing

Jul 2021 (Dec 2020 figure: 511)	WTE Jun 2021	WTE Jul 2021	WTE change since Jun 21	% change since Jun 21	WTE change since Dec 20	WTE change since Jul 20
<b>Overall</b>	<b>600</b>	<b>611</b>	<b>+11</b>	<b>+1.8%</b>	<b>+99</b>	<b>+131</b>
Consultants	1	1			-1	
Registrars	31	31	-0	-1.3%	+1	+7
Medical/ Dental, other	107	106	-1	-1.0%	+4	+3
<b>Medical &amp; Dental</b>	<b>139</b>	<b>137</b>	<b>-1</b>	<b>-1.1%</b>	<b>+4</b>	<b>+10</b>
Nurse/ Midwife Manager	24	28	+4	+17.8%	+14	+15
Nurse/ Midwife Specialist & AN/MP	4	3	-0	-9.7%	-0	-1
Staff Nurse/ Staff Midwife	19	26	+7	+35.7%	+22	+22
Public Health Nurse	2	2			-1	-0
<b>Nursing &amp; Midwifery</b>	<b>49</b>	<b>60</b>	<b>+11</b>	<b>+22.1%</b>	<b>+35</b>	<b>+35</b>
Therapy Professions	7	8	+1	+8.0%	-2	+2
Health Science/ Diagnostics	63	63	+0	+0.2%	+2	+5
Psychologists	1	1				
Pharmacy	4	4			-1	-0
H&SC, Other	39	40	+1	+2.1%	+2	+4
<b>Health &amp; Social Care Professionals</b>	<b>113</b>	<b>115</b>	<b>+1</b>	<b>+1.3%</b>	<b>+1</b>	<b>+10</b>
Management (VIII & above)	46	47	+2	+4.0%	+6	+9
Administrative/ Supervisory (V to VII)	138	136	-2	-1.7%	+27	+31
Clerical (III & IV)	108	109	+1	+0.7%	+25	+32
<b>Management &amp; Administrative</b>	<b>292</b>	<b>292</b>	<b>+0</b>	<b>+0.1%</b>	<b>+58</b>	<b>+72</b>
<b>General Support</b>	<b>1</b>	<b>1</b>				<b>+0</b>
Health Care Assistants	1	1			+1	+1
Care, other	4	4			+0	+2
<b>Patient &amp; Client Care</b>	<b>6</b>	<b>6</b>			<b>+1</b>	<b>+3</b>

## Corporate

Jul 2021 (Dec 2020 figure: 3,216)	WTE Jun 2021	WTE Jul 2021	WTE change since Jun 21	% change since Jun 21	WTE change since Dec 20	WTE change since Jul 20
<b>Overall</b>	<b>3,686</b>	<b>3,706</b>	<b>+20</b>	<b>+0.5%</b>	<b>+491</b>	<b>+534</b>
Consultants	43	43	+0	+0.2%	+1	-0
Registrars	26	28	+1	+5.5%	-2	+10
SHO/ Interns	2	1	-0	-12.2%	-0	-2
Medical/ Dental, other	26	26	+0	+1.9%	+1	-7
<b>Medical &amp; Dental</b>	<b>97</b>	<b>99</b>	<b>+2</b>	<b>+1.9%</b>	<b>-0</b>	<b>+1</b>
Nurse/ Midwife Manager	108	111	+2	+2.1%	-2	-1
Nurse/ Midwife Specialist & AN/MP	17	17	-0	-2.6%	+5	+6
Staff Nurse/ Staff Midwife	11	11	+0	+2.3%	+1	+2
Public Health Nurse	0	0		#DIV/0	-0	-0
Nursing/ Midwifery other	62	62	-0	-0.1%	-7	-7
<b>Nursing &amp; Midwifery</b>	<b>199</b>	<b>201</b>	<b>+2</b>	<b>+1.0%</b>	<b>-2</b>	<b>-1</b>
Therapy Professions	6	4	-2	-34.0%	-1	-0
Health Science/ Diagnostics	99	100	+1	+0.7%	+7	+7
Social Workers	3	3	+0	+0.0%	+0	+0
Psychologists	1	1				
Pharmacy	49	50	+0	+0.8%	+5	+6
H&SC, Other	565	562	-3	-0.4%	+15	+32
<b>Health &amp; Social Care Professionals</b>	<b>723</b>	<b>720</b>	<b>-3</b>	<b>-0.5%</b>	<b>+27</b>	<b>+44</b>
Management (VIII & above)	570	572	+2	+0.3%	+51	+54
Administrative/ Supervisory (V to VII)	1,060	1,083	+23	+2.2%	+190	+194
Clerical (III & IV)	987	984	-2	-0.2%	+215	+235
<b>Management &amp; Administrative</b>	<b>2,617</b>	<b>2,639</b>	<b>+22</b>	<b>+0.9%</b>	<b>+456</b>	<b>+483</b>
Support	14	14	-0	-0.9%	+2	+3
Maintenance/ Technical	10	8	-2	-20.0%	-1	-1
<b>General Support</b>	<b>24</b>	<b>22</b>	<b>-2</b>	<b>-8.9%</b>	<b>+1</b>	<b>+2</b>
Health Care Assistants	23	23	-1	-2.6%	+9	+7
Ambulance Staff	1	1				-2
Care, other	2	2				
<b>Patient &amp; Client Care</b>	<b>26</b>	<b>26</b>	<b>-1</b>	<b>-2.3%</b>	<b>+9</b>	<b>+5</b>

## Health Business Services

Jul 2021 (Dec 2020 figure: 1,631)	WTE Jun 2021	WTE Jul 2021	WTE change since Jun 21	% change since Jun 21	WTE change since Dec 20	WTE change since Jul 20
<b>Overall</b>	<b>1,386</b>	<b>1,380</b>	<b>-5</b>	<b>-0.4%</b>	<b>-251</b>	<b>-213</b>
Nurse/ Midwife Manager	4	5	+1	+21.5%	+2	+2
Staff Nurses [General/ Children's]	1	1			+1	+1
Staff Nurse/ Staff Midwife	1	1			+1	+1
Nursing/ Midwifery other				-100.0%	-1	-1
<b>Nursing &amp; Midwifery</b>	<b>5</b>	<b>6</b>	<b>+1</b>	<b>+17.0%</b>	<b>+2</b>	<b>+2</b>
Health Science/ Diagnostics	1	1				
Pharmacy	1	1				-1
H&SC, Other	1	1				
<b>Health &amp; Social Care Professionals</b>	<b>3</b>	<b>3</b>				<b>-1</b>
Management (VIII & above)	162	161	-1	-0.6%	-7	-15
Administrative/ Supervisory (V to VII)	388	386	-2	-0.6%	-64	-44
Clerical (III & IV)	499	499	-1	-0.1%	-173	-148
<b>Management &amp; Administrative</b>	<b>1,049</b>	<b>1,045</b>	<b>-4</b>	<b>-0.4%</b>	<b>-245</b>	<b>-207</b>
Support	96	94	-2	-1.9%	-8	-5
Maintenance/ Technical	230	230	-0	-0.1%	-0	-1
<b>General Support</b>	<b>326</b>	<b>324</b>	<b>-2</b>	<b>-0.6%</b>	<b>-8</b>	<b>-6</b>
Health Care Assistants	2	2			+0	
Care, other				-100.0%		-1
<b>Patient &amp; Client Care</b>	<b>2</b>	<b>2</b>			<b>+0</b>	<b>-1</b>

## Employment by Hospital, Hospital Group, Community Services etc. Jul 2021

Jul 2021 (Dec 2020 figure: 126,174)	WTE Jun 2021	WTE Jul 2021	WTE change since Jun 21	% change since Jun 21	WTE change since Dec 20	WTE change since Jul 20
<b>Overall</b>	<b>130,164</b>	<b>130,536</b>	<b>+371</b>	<b>+0.3%</b>	<b>+4,361</b>	<b>+6,045</b>
<b>National Ambulance Service</b>	<b>2,042</b>	<b>2,037</b>	<b>-5</b>	<b>-0.2%</b>	<b>+47</b>	<b>+91</b>
CHI at Connolly	141	144	+3	+1.9%	+8	+4
CHI at Crumlin	2,102	2,087	-15	-0.7%	+25	+107
CHI at Tallaght	253	253	+0	+0.0%	-5	-4
CHI at Temple Street	1,289	1,297	+8	+0.6%	+38	+71
CHI Programme	78	79	+0	+0.3%	+34	+29
CHI Corporate	24	26	+2	+6.3%	+24	+23
<b>Children's Health Ireland</b>	<b>3,887</b>	<b>3,885</b>	<b>-2</b>	<b>-0.1%</b>	<b>+123</b>	<b>+228</b>
Coombe Women & Infants University	932	932	-0	-0.0%	+7	+4
MRH Portlaoise	790	789	-1	-0.1%	+9	+16
MRH Tullamore	1,158	1,147	-11	-1.0%	+1	-12
Naas General	781	785	+4	+0.6%	+8	-1
St. James's	4,348	4,345	-2	-0.1%	+79	+61
St. Luke's Rathgar	548	546	-2	-0.4%	+4	-4
Tallaght University	2,911	2,938	+27	+0.9%	+126	+108
Hospital Group HQ	68	72	+3	+5.0%	+32	+32
<b>Dublin Midlands Hospital Group</b>	<b>11,535</b>	<b>11,553</b>	<b>+18</b>	<b>+0.2%</b>	<b>+265</b>	<b>+204</b>
Cappagh National Orthopaedic	452	457	+5	+1.1%	+16	+17
Mater Misericordiae University	3,501	3,549	+47	+1.3%	+120	+145
MRH Mullingar	1,047	1,039	-8	-0.8%	+35	+75
National Maternity	941	950	+9	+1.0%	+34	+22
Our Lady's Navan	598	596	-2	-0.3%	+6	+37
St. Columcille's	465	465	-0	-0.0%	+8	+5
St Luke's General Kilkenny	1,187	1,186	-1	-0.1%	+2	-29
St. Michael's	415	415	-0	-0.0%	+10	-7
St. Vincent's University	3,184	3,172	-12	-0.4%	+85	+99
Wexford General	1,084	1,079	-6	-0.5%	+24	-2
Royal Victoria Eye & Ear	337	336	-1	-0.2%	+23	+39
IEHG Bank	12	12	+0	+0.9%	+4	+10
Hospital Group HQ	65	71	+6	+9.2%	+37	+42
<b>Ireland East Hospital Group</b>	<b>13,288</b>	<b>13,326</b>	<b>+38</b>	<b>+0.3%</b>	<b>+403</b>	<b>+454</b>
Beaumont	4,081	4,128	+47	+1.1%	+99	+86
Cavan General	1,135	1,128	-7	-0.6%	+70	+88
Connolly	1,543	1,534	-9	-0.6%	+72	+102
Louth County	296	294	-1	-0.4%	+5	+23
Monaghan	121	126	+5	+4.4%	+24	+27
Our Lady of Lourdes	2,366	2,373	+7	+0.3%	+86	+83
Rotunda	949	952	+3	+0.4%	+24	+5
Hospital Group HQ	49	54	+5	+11.0%	+13	+18
<b>RCSI Hospitals Group</b>	<b>10,540</b>	<b>10,590</b>	<b>+50</b>	<b>+0.5%</b>	<b>+393</b>	<b>+433</b>
Galway University	3,904	3,911	+6	+0.2%	+123	+68
Letterkenny University	1,898	1,904	+7	+0.4%	+136	+176
Mayo University	1,245	1,257	+12	+0.9%	+53	+59
Portiuncula University	856	851	-5	-0.6%	+8	+41
Roscommon University	366	366	+0	+0.0%	-0	+13
Sligo University	1,877	1,871	-6	-0.3%	+105	+72
Hospital Group HQ	183	194	+11	+6.0%	+100	+105
<b>Saolta University Hospital Care</b>	<b>10,329</b>	<b>10,353</b>	<b>+24</b>	<b>+0.2%</b>	<b>+524</b>	<b>+533</b>
Bantry General	289	293	+4	+1.5%	+16	+7
Cork University	4,484	4,537	+53	+1.2%	+221	+170
Lourdes Orthopaedic Kilcreene	72	71	-1	-1.3%	+1	-1
Mallow General	251	250	-0	-0.1%	+4	-8

Jul 2021 (Dec 2020 figure: 126,174)	WTE Jun 2021	WTE Jul 2021	WTE change since Jun 21	% change since Jun 21	WTE change since Dec 20	WTE change since Jul 20
<b>Overall</b>	<b>130,164</b>	<b>130,536</b>	<b>+371</b>	<b>+0.3%</b>	<b>+4,361</b>	<b>+6,045</b>
Mercy University	1,303	1,302	-2	-0.1%	+59	+67
South Infirmary Victoria University	845	852	+7	+0.8%	+48	+27
South Tipperary General	1,056	1,071	+15	+1.4%	+103	+114
UH Kerry	1,258	1,257	-1	-0.1%	+42	+16
UH Waterford	2,135	2,160	+25	+1.2%	+57	+80
Hospital Group HQ	86	105	+19	+22.1%	+59	+60
<b>South/South West Hospital Group</b>	<b>11,778</b>	<b>11,897</b>	<b>+120</b>	<b>+1.0%</b>	<b>+609</b>	<b>+533</b>
Croom Orthopaedic	211	215	+4	+1.9%	+42	+58
Ennis	225	227	+2	+1.0%	-1	-4
Nenagh	265	266	+0	+0.0%	+7	+17
St. John's Limerick	316	318	+2	+0.8%	-2	+1
UH Limerick	3,425	3,414	-11	-0.3%	+292	+377
UMH Limerick	396	390	-6	-1.5%	-3	-9
Hospital Group HQ	11	11	-0	-2.3%	+1	+4
<b>University of Limerick Hospital Group</b>	<b>4,850</b>	<b>4,841</b>	<b>-8</b>	<b>-0.2%</b>	<b>+335</b>	<b>+444</b>
National Rehabilitation	586	594	+8	+1.4%	+39	+92
Other	110	110	-1	-0.9%	+9	+12
<b>other Acute Services</b>	<b>696</b>	<b>704</b>	<b>+7</b>	<b>+1.1%</b>	<b>+48</b>	<b>+105</b>
<b>Acute Services</b>	<b>68,945</b>	<b>69,187</b>	<b>+243</b>	<b>+0.4%</b>	<b>+2,748</b>	<b>+3,024</b>
CHO 1	5,922	5,876	-46	-0.8%	+121	+229
CHO 2	5,733	5,738	+5	+0.1%	+47	+144
CHO 3	4,789	4,857	+68	+1.4%	+248	+337
CHO 4	8,806	8,801	-5	-0.1%	+200	+460
CHO 5	5,575	5,595	+20	+0.4%	+118	+224
CHO 6	3,533	3,522	-11	-0.3%	+57	+132
CHO 7	6,934	6,970	+36	+0.5%	+187	+351
CHO 8	6,428	6,467	+38	+0.6%	+130	+222
CHO 9	7,072	7,071	-1	-0.0%	+122	+395
<b>other Community Services</b>	<b>755</b>	<b>754</b>	<b>-1</b>	<b>-0.2%</b>	<b>+44</b>	<b>+74</b>
<b>Community Services</b>	<b>55,548</b>	<b>55,651</b>	<b>+103</b>	<b>+0.2%</b>	<b>+1,274</b>	<b>+2,570</b>
Health & Wellbeing	600	611	+11	+1.8%	+99	+131
Corporate	3,686	3,706	+20	+0.5%	+491	+534
Health Business Services	1,386	1,380	-5	-0.4%	-251	-213
<b>H&amp;WB, Corporate &amp; National Services</b>	<b>5,671</b>	<b>5,697</b>	<b>+26</b>	<b>+0.5%</b>	<b>+339</b>	<b>+452</b>



## Employment by CHO & Administration: Jul 2021

Jul 2021 (Dec 2020 figure: 54,377)	WTE Jun 2021	WTE Jul 2021	WTE change since Jun 21	% change since Jun 21	WTE change since Dec 20	WTE change since Jul 20
<b>Overall</b>	<b>55,548</b>	<b>55,651</b>	<b>+103</b>	<b>+0.2%</b>	<b>+1,274</b>	<b>+2,570</b>
<b>Health Service Executive</b>	<b>5,922</b>	<b>5,876</b>	<b>-46</b>	<b>-0.8%</b>	<b>+121</b>	<b>+229</b>
<b>CHO 1</b>	<b>5,922</b>	<b>5,876</b>	<b>-46</b>	<b>-0.8%</b>	<b>+121</b>	<b>+229</b>
<b>Health Service Executive</b>	<b>4,407</b>	<b>4,406</b>	<b>-1</b>	<b>-0.0%</b>	<b>+14</b>	<b>+78</b>
Bros. of Charity, West Region (Social Care)	1,326	1,332	+6	+0.5%	+34	+66
<b>Section 38 Voluntary Agencies</b>	<b>1,326</b>	<b>1,332</b>	<b>+6</b>	<b>+0.5%</b>	<b>+34</b>	<b>+66</b>
<b>CHO 2</b>	<b>5,733</b>	<b>5,738</b>	<b>+5</b>	<b>+0.1%</b>	<b>+47</b>	<b>+144</b>
<b>Health Service Executive</b>	<b>2,970</b>	<b>3,023</b>	<b>+53</b>	<b>+1.8%</b>	<b>+216</b>	<b>+264</b>
Bros. of Charity, Clare (Social Care)	402	399	-2	-0.6%	+27	+58
Bros. of Charity, Limerick (Social Care)	587	597	+10	+1.8%	+5	+22
Daughters of Charity, Limerick (Social Care)	545	545	+0	+0.1%	-4	-10
Daughters of Charity, Roscrea (Social Care)	286	292	+6	+2.2%	+3	+3
<b>Section 38 Voluntary Agencies</b>	<b>1,819</b>	<b>1,834</b>	<b>+15</b>	<b>+0.8%</b>	<b>+32</b>	<b>+73</b>
<b>CHO 3</b>	<b>4,789</b>	<b>4,857</b>	<b>+68</b>	<b>+1.4%</b>	<b>+248</b>	<b>+337</b>
<b>Health Service Executive</b>	<b>6,395</b>	<b>6,397</b>	<b>+2</b>	<b>+0.0%</b>	<b>+149</b>	<b>+354</b>
Bros. of Charity, Southern (Social Care)	802	803	+1	+0.2%	+28	+48
Cope Foundation (Social Care)	1,159	1,157	-2	-0.2%	+10	+32
Cork Dental Hospital (Primary Care)	120	117	-3	-2.8%	+5	+12
St. John of God, Kerry (Social Care)	330	328	-2	-0.7%	+8	+15
<b>Section 38 Voluntary Agencies</b>	<b>2,411</b>	<b>2,405</b>	<b>-7</b>	<b>-0.3%</b>	<b>+50</b>	<b>+106</b>
<b>CHO 4</b>	<b>8,806</b>	<b>8,801</b>	<b>-5</b>	<b>-0.1%</b>	<b>+200</b>	<b>+460</b>
<b>Health Service Executive</b>	<b>4,386</b>	<b>4,404</b>	<b>+18</b>	<b>+0.4%</b>	<b>+96</b>	<b>+164</b>
Bros. of Charity, Waterford (Social Care)	679	688	+9	+1.4%	+20	+52
Carriglea Cairde Services (Social Care)	220	221	+0	+0.1%	+7	+13
St. Patrick's, Kilkenny (Social Care)	290	283	-7	-2.4%	-4	-5
<b>Section 38 Voluntary Agencies</b>	<b>1,189</b>	<b>1,191</b>	<b>+3</b>	<b>+0.2%</b>	<b>+23</b>	<b>+60</b>
<b>CHO 5</b>	<b>5,575</b>	<b>5,595</b>	<b>+20</b>	<b>+0.4%</b>	<b>+118</b>	<b>+224</b>
<b>Health Service Executive</b>	<b>1,750</b>	<b>1,737</b>	<b>-13</b>	<b>-0.7%</b>	<b>+48</b>	<b>+87</b>
Children's Sunshine Home (Social Care)	57	58	+1	+1.8%	+2	+2
Dublin Dental Hospital (Primary Care)	93	93	+0	+0.0%	+0	+0
Leopardstown Park Hospital (Social Care)	206	206	+0	+0.1%	-0	+2
Royal Hospital, Donnybrook, Dublin (Social Care)	266	265	-2	-0.6%	-3	-12
St. John of God (IDS) (Social Care)	455	452	-3	-0.7%	-16	+4
St. John of God (MHS) (Mental Health)	231	234	+3	+1.5%	-2	+4
Sunbeam House Services (Social Care)	476	478	+1	+0.3%	+28	+45
<b>Section 38 Voluntary Agencies</b>	<b>1,784</b>	<b>1,785</b>	<b>+1</b>	<b>+0.1%</b>	<b>+9</b>	<b>+45</b>
<b>CHO 6</b>	<b>3,533</b>	<b>3,522</b>	<b>-11</b>	<b>-0.3%</b>	<b>+57</b>	<b>+132</b>
<b>Health Service Executive</b>	<b>3,373</b>	<b>3,368</b>	<b>-5</b>	<b>-0.1%</b>	<b>+50</b>	<b>+125</b>
Cheeverstown House (Social Care)	414	419	+4	+1.1%	+24	+24
Kare, Newbridge, Co Kildare (Social Care)	394	395	+1	+0.3%	+18	+60
Our Lady's Hospice & Care Services (Primary Care)	512	516	+4	+0.7%	+20	+26
Peamount Hospital (Newcastle) (Social Care)	531	535	+4	+0.8%	+53	+10

Jul 2021 (Dec 2020 figure: 54,377)	WTE Jun 2021	WTE Jul 2021	WTE change since Jun 21	% change since Jun 21	WTE change since Dec 20	WTE change since Jul 20
<b>Overall</b>	<b>55,548</b>	<b>55,651</b>	<b>+103</b>	<b>+0.2%</b>	<b>+1,274</b>	<b>+2,570</b>
Stewart's Hospital, (Palmerstown) (Social Care)	934	939	+5	+0.5%	+25	+76
St. John of God Liffey Services (Social Care)	775	798	+22	+2.9%	-3	+30
<b>Section 38 Voluntary Agencies</b>	<b>3,561</b>	<b>3,602</b>	<b>+41</b>	<b>+1.1%</b>	<b>+138</b>	<b>+227</b>
<b>CHO 7</b>	<b>6,934</b>	<b>6,970</b>	<b>+36</b>	<b>+0.5%</b>	<b>+187</b>	<b>+351</b>
<b>Health Service Executive</b>	<b>4,792</b>	<b>4,805</b>	<b>+13</b>	<b>+0.3%</b>	<b>+63</b>	<b>+110</b>
Muiriosa Foundation, Laois/Offaly (Social Care)	347	352	+5	+1.4%	+32	+62
Muiriosa Foundation, Longford/Westmeath (Social Care)	289	294	+5	+1.8%	+10	+25
Muiriosa Foundation, South Kildare (Social Care)	347	352	+5	+1.5%	+10	+8
St. John of God, Drumcar (Social Care)	652	663	+10	+1.6%	+14	+17
<b>Section 38 Voluntary Agencies</b>	<b>1,636</b>	<b>1,661</b>	<b>+26</b>	<b>+1.6%</b>	<b>+67</b>	<b>+112</b>
<b>CHO 8</b>	<b>6,428</b>	<b>6,467</b>	<b>+38</b>	<b>+0.6%</b>	<b>+130</b>	<b>+222</b>
<b>Health Service Executive</b>	<b>3,779</b>	<b>3,769</b>	<b>-9</b>	<b>-0.2%</b>	<b>+110</b>	<b>+277</b>
Central Remedial Clinic (Social Care)	297	293	-4	-1.5%	-3	+10
Daughters of Charity, Dublin (Social Care)	1,079	1,080	+1	+0.1%	+17	+30
Incorporated Orthopaedic Hospital (Social Care)	271	276	+5	+1.8%	+9	+12
St. Michael's House, Dublin (Social Care)	1,439	1,448	+9	+0.6%	-5	+72
St. Vincent's, Fairview (Mental Health)	207	205	-2	-1.0%	-5	-6
<b>Section 38 Voluntary Agencies</b>	<b>3,294</b>	<b>3,302</b>	<b>+9</b>	<b>+0.3%</b>	<b>+12</b>	<b>+118</b>
<b>CHO 9</b>	<b>7,072</b>	<b>7,071</b>	<b>-1</b>	<b>-0.0%</b>	<b>+122</b>	<b>+395</b>
<b>other Community Services</b>	<b>755</b>	<b>754</b>	<b>-1</b>	<b>-0.2%</b>	<b>+44</b>	<b>+74</b>
<b>Community Services</b>	<b>55,548</b>	<b>55,651</b>	<b>+103</b>	<b>+0.2%</b>	<b>+3,698</b>	<b>+2,570</b>

## Employment by Community Services Division: Jul 2021

### Community Health & Wellbeing

Jul 2021 (Dec 2020 figure: 144)	WTE Jun 2021	WTE Jul 2021	WTE change since Jun 21	% change since Jun 21	WTE change since Dec 20	WTE change since Jul 20
<b>Overall</b>	<b>162</b>	<b>169</b>	<b>+7</b>	<b>+4.4%</b>	<b>+26</b>	<b>+43</b>
<b>Medical &amp; Dental</b>	<b>1</b>	<b>1</b>			<b>+1</b>	<b>+1</b>
Nurse/ Midwife Manager	2	3	+1	+50.0%		+3
Nurse/ Midwife Specialist & AN/MP	2	3	+1	+88.0%	+3	+3
Staff Nurse/ Staff Midwife	1	2	+1	+83.3%	-0	+2
Public Health Nurse				-100.0%		-1
<b>Nursing &amp; Midwifery</b>	<b>5</b>	<b>8</b>	<b>+3</b>	<b>+70.6%</b>	<b>+3</b>	<b>+7</b>
Therapy Professions	11	11	-0	-0.9%	-1	+0
<i>Pharmacy</i>		2	+2	-100.0%	+2	+2
Pharmacy		2	+2	-100.0%	+2	+2
<b>Health &amp; Social Care Professionals</b>	<b>11</b>	<b>13</b>	<b>+2</b>	<b>+16.6%</b>	<b>+1</b>	<b>+2</b>
Management (VIII & above)	11	12	+1	+13.5%	+1	+4
Administrative/ Supervisory (V to VII)	75	76	+1	+1.3%	+13	+22
Clerical (III & IV)	27	28	+1	+3.9%	+7	+10
<b>Management &amp; Administrative</b>	<b>113</b>	<b>117</b>	<b>+4</b>	<b>+3.1%</b>	<b>+20</b>	<b>+36</b>
Care, other	32	31	-2	-4.8%	+1	-3
<b>Patient &amp; Client Care</b>	<b>32</b>	<b>31</b>	<b>-2</b>	<b>-4.8%</b>	<b>+1</b>	<b>-3</b>

## Mental Health

Jul 2021 (Dec 2020 figure: 10,301)	WTE Jun 2021	WTE Jul 2021	WTE change since Jun 21	% change since Jun 21	WTE change since Dec 20	WTE change since Jul 20
<b>Overall</b>	<b>10,486</b>	<b>10,444</b>	<b>-42</b>	<b>-0.4%</b>	<b>+142</b>	<b>+227</b>
Consultants	382	380	-2	-0.5%	+10	+21
Registrars	308	318	+10	+3.4%	+37	+54
SHO/ Interns	248	224	-25	-9.9%	-52	-5
Medical/ Dental, other	4	4			-1	-1
<b>Medical &amp; Dental</b>	<b>942</b>	<b>926</b>	<b>-16</b>	<b>-1.7%</b>	<b>-6</b>	<b>+69</b>
Nurse/ Midwife Manager	1,225	1,233	+8	+0.7%	-6	-4
Nurse/ Midwife Specialist & AN/MP	523	527	+4	+0.8%	-1	+34
Staff Nurse/ Staff Midwife	3,135	3,106	-30	-1.0%	+29	+109
<i>Pre-registration Nurse/ Midwife Intern</i>	171	170	-2	-1.0%	+159	+141
<i>Pre-registration Nurse Intern (COVID-19)</i>	4	4	-0	-9.3%	-39	-191
<i>Post-registration Nurse/ Midwife Student</i>	1		-1	-100.0%	-1	
<i>Nursing/ Midwifery awaiting registration</i>	3	3	+0	+2.4%	-2	-5
Nursing/ Midwifery Student	179	176	-3	-1.7%	+117	-55
Nursing/ Midwifery other	29	31	+2	+6.3%	-1	-3
<b>Nursing &amp; Midwifery</b>	<b>5,092</b>	<b>5,074</b>	<b>-19</b>	<b>-0.4%</b>	<b>+138</b>	<b>+80</b>
Therapy Professions	446	440	-7	-1.5%	+1	+9
Social Care	76	75	-1	-1.1%	-5	-0
Social Workers	379	374	-5	-1.3%	+2	+7
Psychologists	427	431	+4	+0.9%	+7	+24
Pharmacy	20	20	+1	+2.7%	-0	+2
H&SC, Other	108	110	+2	+2.0%	+2	+1
<b>Health &amp; Social Care Professionals</b>	<b>1,456</b>	<b>1,451</b>	<b>-6</b>	<b>-0.4%</b>	<b>+6</b>	<b>+43</b>
Management (VIII & above)	57	60	+2	+4.0%	-7	+1
Administrative/ Supervisory (V to VII)	246	242	-4	-1.7%	-3	-1
Clerical (III & IV)	723	720	-3	-0.5%	-2	+13
<b>Management &amp; Administrative</b>	<b>1,026</b>	<b>1,021</b>	<b>-5</b>	<b>-0.5%</b>	<b>-13</b>	<b>+13</b>
Support	585	585	-0	-0.0%	-9	+1
Maintenance/ Technical	135	135	-0	-0.2%	-2	+1
<b>General Support</b>	<b>720</b>	<b>720</b>	<b>-0</b>	<b>-0.1%</b>	<b>-12</b>	<b>+2</b>
Health Care Assistants	1,040	1,042	+2	+0.2%	+21	+18
Care, other	209	211	+2	+0.8%	+7	+2
<b>Patient &amp; Client Care</b>	<b>1,249</b>	<b>1,253</b>	<b>+4</b>	<b>+0.3%</b>	<b>+28</b>	<b>+19</b>

## Primary Care

Jul 2021 (Dec 2020 figure: 11,572)	WTE Jun 2021	WTE Jul 2021	WTE change since Jun 21	% change since Jun 21	WTE change since Dec 20	WTE change since Jul 20
<b>Overall</b>	<b>12,163</b>	<b>12,258</b>	<b>+95</b>	<b>+0.8%</b>	<b>+686</b>	<b>+1,412</b>
Consultants	45	46	+1	+2.0%	+4	-2
Registrars	393	476	+83	+21.3%	+73	+9
SHO/ Interns	40	40	-0	-0.3%	-2	-9
Medical/ Dental, other	508	502	-6	-1.2%	-18	-13
<b>Medical &amp; Dental</b>	<b>985</b>	<b>1,063</b>	<b>+78</b>	<b>+7.9%</b>	<b>+57</b>	<b>-16</b>
Nurse/ Midwife Manager	434	438	+4	+1.0%	+34	+35
Nurse/ Midwife Specialist & AN/MP	188	185	-3	-1.7%	+1	+28
Staff Nurse/ Staff Midwife	1,010	1,014	+4	+0.4%	+87	+58
Public Health Nurse	1,480	1,487	+7	+0.5%	-45	+19
<i>Pre-registration Nurse Intern (COVID-19)</i>				-100.0%		-11
<i>Post-registration Nurse/ Midwife Student</i>	82	29	-53	-64.5%	-77	+9
Nursing/ Midwifery Student	82	29	-53	-64.5%	-77	-2
Nursing/ Midwifery other	6	5	-1	-9.6%	-1	-0
<b>Nursing &amp; Midwifery</b>	<b>3,200</b>	<b>3,159</b>	<b>-41</b>	<b>-1.3%</b>	<b>-2</b>	<b>+137</b>
Therapy Professions	1,829	1,819	-10	-0.5%	+27	+50
Health Science/ Diagnostics	91	89	-2	-1.9%	-5	+2
Social Care	30	31	+1	+2.5%	-1	-3
Social Workers	154	155	+2	+1.1%	+4	+12
Psychologists	299	297	-2	-0.5%	-3	+4
Pharmacy	70	68	-3	-3.6%	+5	+8
H&SC, Other	259	266	+7	+2.8%	+57	+62
<b>Health &amp; Social Care Professionals</b>	<b>2,732</b>	<b>2,727</b>	<b>-6</b>	<b>-0.2%</b>	<b>+85</b>	<b>+137</b>
Management (VIII & above)	305	309	+4	+1.4%	+10	+6
Administrative/ Supervisory (V to VII)	758	784	+26	+3.4%	+99	+136
Clerical (III & IV)	2,013	2,031	+18	+0.9%	+193	+284
<b>Management &amp; Administrative</b>	<b>3,076</b>	<b>3,124</b>	<b>+48</b>	<b>+1.6%</b>	<b>+302</b>	<b>+426</b>
Support	349	351	+2	+0.6%	-0	-1
Maintenance/ Technical	59	60	+1	+1.2%	+4	+1
<b>General Support</b>	<b>408</b>	<b>411</b>	<b>+3</b>	<b>+0.7%</b>	<b>+4</b>	<b>-0</b>
Health Care Assistants	965	963	-2	-0.2%	+184	+662
Home Help	17	17	-0	-2.3%	-2	-2
Care, other	780	796	+15	+2.0%	+58	+69
<b>Patient &amp; Client Care</b>	<b>1,763</b>	<b>1,775</b>	<b>+13</b>	<b>+0.7%</b>	<b>+240</b>	<b>+729</b>

## Social Care

Jul 2021 (Dec 2020 figure: 32,359)	WTE Jun 2021	WTE Jul 2021	WTE change since Jun 21	% change since Jun 21	WTE change since Dec 20	WTE change since Jul 20
<b>Overall</b>	<b>32,737</b>	<b>32,780</b>	<b>+42</b>	<b>+0.1%</b>	<b>+420</b>	<b>+888</b>
Consultants	25	25	-0	-1.6%	-4	-2
Registrars	20	22	+2	+9.0%	+5	+4
SHO/ Interns	22	22	-0	-0.8%	-1	+0
Medical/ Dental, other	98	98	-0	-0.2%	-20	-1
<b>Medical &amp; Dental</b>	<b>166</b>	<b>167</b>	<b>+1</b>	<b>+0.6%</b>	<b>-20</b>	<b>+1</b>
Nurse/ Midwife Manager	1,670	1,680	+10	+0.6%	+36	+40
Nurse/ Midwife Specialist & AN/MP	105	106	+1	+0.7%	+4	+10
Staff Nurse/ Staff Midwife	5,273	5,254	-18	-0.3%	+37	+120
Public Health Nurse	23	22	-0	-1.0%	+2	+3
<i>Pre-registration Nurse/ Midwife Intern</i>	78	78	-0	-0.4%	+75	+71
<i>Pre-registration Nurse Intern (COVID-19)</i>	5	2	-3	-64.8%	-30	-153
<i>Post-registration Nurse/ Midwife Student</i>				-100.0%		-4
<i>Nursing/ Midwifery awaiting registration</i>	4	3	-0	-11.0%	-11	-10
Nursing/ Midwifery Student	87	83	-4	-4.6%	+34	-96
Nursing/ Midwifery other	30	27	-3	-8.8%	-0	-0
<b>Nursing &amp; Midwifery</b>	<b>7,187</b>	<b>7,173</b>	<b>-15</b>	<b>-0.2%</b>	<b>+113</b>	<b>+76</b>
Therapy Professions	1,159	1,144	-15	-1.3%	+53	+62
Health Science/ Diagnostics	25	26	+0	+1.9%	+1	+2
Social Care	2,860	2,899	+38	+1.3%	+107	+278
Social Workers	331	327	-4	-1.2%	-1	+8
Psychologists	234	233	-2	-0.7%	+3	+18
Pharmacy	25	27	+2	+6.6%	+4	+2
H&SC, Other	74	72	-2	-2.6%	-5	-13
<b>Health &amp; Social Care Professionals</b>	<b>4,708</b>	<b>4,727</b>	<b>+19</b>	<b>+0.4%</b>	<b>+160</b>	<b>+357</b>
Management (VIII & above)	297	299	+2	+0.7%	+16	+35
Administrative/ Supervisory (V to VII)	741	751	+10	+1.3%	+48	+82
Clerical (III & IV)	1,296	1,287	-9	-0.7%	+15	+41
<b>Management &amp; Administrative</b>	<b>2,333</b>	<b>2,336</b>	<b>+3</b>	<b>+0.1%</b>	<b>+79</b>	<b>+158</b>
Support	1,454	1,426	-28	-2.0%	-38	-119
Maintenance/ Technical	228	223	-5	-2.3%	-5	-6
<b>General Support</b>	<b>1,682</b>	<b>1,649</b>	<b>-34</b>	<b>-2.0%</b>	<b>-42</b>	<b>-125</b>
Health Care Assistants	11,385	11,393	+9	+0.1%	+173	+69
Home Help	3,399	3,453	+55	+1.6%	-71	+205
Care, other	1,876	1,882	+5	+0.3%	+29	+148
<b>Patient &amp; Client Care</b>	<b>16,660</b>	<b>16,728</b>	<b>+68</b>	<b>+0.4%</b>	<b>+130</b>	<b>+421</b>

## Employment by Grade Group: Jul 2021

Jul 2021 (Dec 2020 figure: 126,174)	WTE Jun 2021	WTE Jul 2021	WTE change since Jun 21	% change since Jun 21	WTE change since Dec 20	WTE change since Jul 20
<b>Overall</b>	<b>130,164</b>	<b>130,536</b>	<b>+371</b>	<b>+0.3%</b>	<b>+4,361</b>	<b>+6,045</b>
Consultant Anaesthesia	439	442	+3	+0.7%	+11	+18
Consultant Dentistry	17	16	-1	-3.1%	-0	-0
Consultant Emergency Medicine	122	123	+1	+0.4%	+2	+5
Consultant Intensive Care Medicine	18	19	+1	+5.7%	+1	+1
Consultant Medicine	922	926	+4	+0.4%	+12	+40
Consultant Obstetrics & Gynaecology	173	172	-2	-0.9%	+1	+4
Consultant Paediatrics	214	216	+1	+0.7%	-0	+1
Consultant Pathology	276	278	+2	+0.8%	+6	+8
Consultant Psychiatry	435	432	-3	-0.7%	+10	+23
Consultant Radiology	296	297	+2	+0.6%	-3	-2
Consultant Surgery	582	585	+2	+0.4%	+10	+7
<b>Consultants</b>	<b>3,495</b>	<b>3,506</b>	<b>+11</b>	<b>+0.3%</b>	<b>+48</b>	<b>+104</b>
Registrar	2,470	2,544	+75	+3.0%	+166	+51
Senior Registrar	237	242	+5	+2.0%	+4	+22
Specialist Registrar	1,245	1,307	+62	+5.0%	+47	+116
<b>Registrars</b>	<b>3,952</b>	<b>4,093</b>	<b>+142</b>	<b>+3.6%</b>	<b>+218</b>	<b>+189</b>
Interns	951	952	+1	+0.2%	-19	-347
Senior House Officer	2,577	2,513	-64	-2.5%	-110	+126
<b>SHO/ Interns</b>	<b>3,528</b>	<b>3,465</b>	<b>-62</b>	<b>-1.8%</b>	<b>-129</b>	<b>-221</b>
Dentists	316	310	-5	-1.7%	-3	+4
Other Medical	501	494	-7	-1.4%	-27	-13
<b>Medical/ Dental, other</b>	<b>816</b>	<b>804</b>	<b>-12</b>	<b>-1.5%</b>	<b>-29</b>	<b>-9</b>
<b>Medical &amp; Dental</b>	<b>11,791</b>	<b>11,869</b>	<b>+78</b>	<b>+0.7%</b>	<b>+107</b>	<b>+64</b>
Clinical Nurse/ Midwife Manager	7,245	7,304	+60	+0.8%	+266	+369
Director Nursing/Midwifery, Assistant	1,023	1,031	+8	+0.8%	+31	+39
Director of Nursing/Midwifery	320	313	-7	-2.1%	+8	+7
<b>Nurse/ Midwife Manager</b>	<b>8,588</b>	<b>8,648</b>	<b>+61</b>	<b>+0.7%</b>	<b>+304</b>	<b>+414</b>
Advanced Nurse/ Midwife Practitioner	577	582	+5	+0.9%	+63	+138
Clinical Nurse/ Midwife Specialist	1,803	1,805	+2	+0.1%	+25	+110
<b>Nurse/ Midwife Specialist &amp; AN/MP</b>	<b>2,380</b>	<b>2,387</b>	<b>+8</b>	<b>+0.3%</b>	<b>+89</b>	<b>+248</b>
Nursing Bank	17	17	+0	+1.3%	-6	+1
Staff Midwives	1,508	1,489	-19	-1.3%	+2	+19
Staff Nurse [Intellectual Disability]	1,767	1,731	-37	-2.1%	-135	+101
Staff Nurse [Psychiatric]	3,259	3,240	-19	-0.6%	+173	+261
Staff Nurses [General/ Children's]	20,826	20,894	+67	+0.3%	+573	+1,041
<b>Staff Nurse/ Staff Midwife</b>	<b>27,377</b>	<b>27,370</b>	<b>-7</b>	<b>-0.0%</b>	<b>+607</b>	<b>+1,424</b>
<b>Public Health Nurse</b>	<b>1,506</b>	<b>1,513</b>	<b>+7</b>	<b>+0.5%</b>	<b>-44</b>	<b>+20</b>
Pre-registration Nurse/ Midwife Intern	754	773	+19	+2.5%	+745	+736
Pre-registration Nurse Intern (COVID-19)	12	8	-4	-35.5%	-222	-1,315
Post-registration Nurse/ Midwife Student	235	180	-55	-23.5%	-78	-10
Nursing/ Midwifery awaiting registration	75	37	-38	-50.6%	-39	+7
<b>Nursing/ Midwifery Student</b>	<b>1,077</b>	<b>998</b>	<b>-78</b>	<b>-7.3%</b>	<b>+407</b>	<b>-583</b>
Nursing Education/Clinical	299	295	-4	-1.3%	-20	-20
Other Nursing/ Midwifery	48	47	-0	-0.5%	+1	+1
<b>Nursing/ Midwifery other</b>	<b>347</b>	<b>343</b>	<b>-4</b>	<b>-1.2%</b>	<b>-19</b>	<b>-19</b>
<b>Nursing &amp; Midwifery</b>	<b>41,274</b>	<b>41,260</b>	<b>-14</b>	<b>-0.0%</b>	<b>+1,343</b>	<b>+1,504</b>
Dietitians	674	671	-3	-0.5%	+33	+55
Occupational Therapists	1,780	1,771	-10	-0.5%	+68	+110
Orthoptists	37	39	+2	+5.5%	+2	+8
Physiotherapists	2,033	2,015	-18	-0.9%	+57	+74
Podiatrists & Chiropodists	86	82	-4	-4.7%	+2	+2

Jul 2021 (Dec 2020 figure: 126,174)	WTE Jun 2021	WTE Jul 2021	WTE change since Jun 21	% change since Jun 21	WTE change since Dec 20	WTE change since Jul 20
<b>Overall</b>	<b>130,164</b>	<b>130,536</b>	<b>+371</b>	<b>+0.3%</b>	<b>+4,361</b>	<b>+6,045</b>
Speech & Language Therapists	1,186	1,173	-13	-1.1%	+23	+44
<b>Therapy Professions</b>	<b>5,797</b>	<b>5,751</b>	<b>-46</b>	<b>-0.8%</b>	<b>+185</b>	<b>+292</b>
Audiology	87	85	-2	-2.1%	+3	+9
Biochemists	79	79	+0	+0.0%	-5	-1
Clinical Engineering	179	180	+1	+0.3%	+9	+11
Clinical Measurement	421	421	-0	-0.1%	+7	+19
Dosimetrists	16	16	+0	+0.5%	+2	+2
Medical Science	2,066	2,063	-2	-0.1%	+18	-8
Perfusionists	22	23	+1	+2.8%	+1	+3
Phlebotomists	193	195	+1	+0.7%	+10	+9
Physicists	184	183	-2	-0.9%	+5	-7
Radiation Therapists	210	209	-1	-0.4%	-3	+4
Radiographers	1,357	1,380	+24	+1.7%	+56	+91
<b>Health Science/ Diagnostics</b>	<b>4,814</b>	<b>4,834</b>	<b>+19</b>	<b>+0.4%</b>	<b>+103</b>	<b>+131</b>
<b>Social Care</b>	<b>2,971</b>	<b>3,009</b>	<b>+38</b>	<b>+1.3%</b>	<b>+101</b>	<b>+276</b>
<b>Social Workers</b>	<b>1,272</b>	<b>1,265</b>	<b>-7</b>	<b>-0.5%</b>	<b>+27</b>	<b>+75</b>
<b>Psychologists</b>	<b>1,085</b>	<b>1,085</b>	<b>+0</b>	<b>+0.0%</b>	<b>+19</b>	<b>+59</b>
<b>Pharmacy</b>	<b>1,228</b>	<b>1,229</b>	<b>+1</b>	<b>+0.1%</b>	<b>+66</b>	<b>+104</b>
Counsellor Therapists	261	267	+6	+2.3%	+24	+30
Dental Hygienists	62	60	-2	-2.8%	-2	-1
Environmental Health Officers	555	552	-3	-0.5%	+10	+26
HSCP Trainees/ Students	57	34	-23	-40.8%	-22	-7
Other Health & Social Care	182	177	-5	-2.5%	-12	+4
Play Therapists/ Specialists	44	45	+1	+2.0%	+2	+1
Vaccinators	202	243	+41	+20.4%	+243	+243
<b>H&amp;SC, Other</b>	<b>1,363</b>	<b>1,378</b>	<b>+15</b>	<b>+1.1%</b>	<b>+244</b>	<b>+294</b>
<b>Health &amp; Social Care Professionals</b>	<b>18,530</b>	<b>18,552</b>	<b>+22</b>	<b>+0.1%</b>	<b>+745</b>	<b>+1,232</b>
Executive Management	386	389	+3	+0.8%	+16	+39
Senior Management (VIII & GM)	1,674	1,689	+15	+0.9%	+92	+113
<b>Management (VIII &amp; above)</b>	<b>2,060</b>	<b>2,078</b>	<b>+18</b>	<b>+0.9%</b>	<b>+109</b>	<b>+153</b>
Middle Management (V-VII)	6,179	6,261	+81	+1.3%	+474	+763
Other Administrative	39	44	+5	+13.2%	+9	+2
<b>Administrative/ Supervisory (V to VII)</b>	<b>6,218</b>	<b>6,305</b>	<b>+87</b>	<b>+1.4%</b>	<b>+484</b>	<b>+765</b>
<b>Clerical (III &amp; IV)</b>	<b>12,628</b>	<b>12,671</b>	<b>+43</b>	<b>+0.3%</b>	<b>+633</b>	<b>+876</b>
<b>Management &amp; Administrative</b>	<b>20,906</b>	<b>21,054</b>	<b>+147</b>	<b>+0.7%</b>	<b>+1,225</b>	<b>+1,793</b>
Catering	877	868	-9	-1.0%	-19	-17
Household Services	4,652	4,643	-9	-0.2%	+72	+49
Other Labs & Associated	529	572	+43	+8.2%	+124	+139
Other Support	1,092	1,094	+2	+0.2%	-5	+4
Portering	1,684	1,682	-2	-0.1%	+13	-34
<b>Support</b>	<b>8,834</b>	<b>8,860</b>	<b>+26</b>	<b>+0.3%</b>	<b>+184</b>	<b>+142</b>
Maintenance	1,072	1,059	-13	-1.2%	-11	-19
Technical Services	139	142	+2	+1.6%	+12	+17
<b>Maintenance/ Technical</b>	<b>1,211</b>	<b>1,201</b>	<b>-10</b>	<b>-0.9%</b>	<b>+1</b>	<b>-2</b>
<b>General Support</b>	<b>10,045</b>	<b>10,060</b>	<b>+15</b>	<b>+0.2%</b>	<b>+185</b>	<b>+140</b>
HCA, Nurse's Aide, etc.	18,191	18,250	+59	+0.3%	+561	+1,106
Health & Social Care Assistants	337	336	-1	-0.4%	+29	+23
Swabber (COVID-19)	624	617	-7	-1.2%	+133	+617
HCA (Student Nurse/Midwife COVID-19)	8	11	+3	+37.7%	-62	-968
<b>Health Care Assistants</b>	<b>19,160</b>	<b>19,213</b>	<b>+53</b>	<b>+0.3%</b>	<b>+660</b>	<b>+778</b>
<b>Home Help</b>	<b>3,416</b>	<b>3,470</b>	<b>+54</b>	<b>+1.6%</b>	<b>-73</b>	<b>+203</b>
Ambulance Control	172	174	+2	+1.1%	-7	-13



Jul 2021 (Dec 2020 figure: 126,174)	WTE Jun 2021	WTE Jul 2021	WTE change since Jun 21	% change since Jun 21	WTE change since Dec 20	WTE change since Jul 20
<b>Overall</b>	<b>130,164</b>	<b>130,536</b>	<b>+371</b>	<b>+0.3%</b>	<b>+4,361</b>	<b>+6,045</b>
Ambulance Education	194	191	-4	-1.8%	+53	+78
Ambulance Officers	86	85	-1	-1.0%	+0	+2
Pre-Hospital Care (Ambulance)	1,478	1,475	-3	-0.2%	+2	+22
<b>Ambulance Staff</b>	<b>1,931</b>	<b>1,925</b>	<b>-6</b>	<b>-0.3%</b>	<b>+48</b>	<b>+90</b>
<b>Care, other</b>	<b>3,111</b>	<b>3,133</b>	<b>+22</b>	<b>+0.7%</b>	<b>+122</b>	<b>+241</b>
<b>Patient &amp; Client Care</b>	<b>27,618</b>	<b>27,741</b>	<b>+123</b>	<b>+0.4%</b>	<b>+756</b>	<b>+1,312</b>

## Employment by WTE, Headcount, Gender, Full-Time /Part-Time etc.: Jul 2021

Staff Group	WTE	Headcount	WTE: no.	% Male	% female	Male WTE: no.	Female WTE: no.	% Total Perm	% Male Perm	% Female Perm	% Total Full Time	% Total Part Time	% Male FT	% Female FT
<b>Overall</b>	<b>130,536</b>	<b>151,270</b>	<b>1.16</b>	<b>21.6%</b>	<b>78.4%</b>	<b>1.09</b>	<b>1.18</b>	<b>80.1%</b>	<b>71.9%</b>	<b>82.3%</b>	<b>71.1%</b>	<b>28.9%</b>	<b>88.2%</b>	<b>66.3%</b>
Consultant Anaesthesia	442	479	1.08	62.4%	37.6%	1.08	1.09	77.9%	77.9%	74.4%	89.8%	10.2%	90.0%	89.4%
Consultant Dentistry	16	19	1.19	42.1%	57.9%	1.13	1.23	94.7%	94.7%	90.9%	73.7%	26.3%	75.0%	72.7%
Consultant Emergency Medicine	123	135	1.10	68.1%	31.9%	1.09	1.12	70.4%	70.4%	74.4%	83.0%	17.0%	85.9%	76.7%
Consultant Intensive Care Medicine	19	20	1.08	30.0%	70.0%	1.20	1.04	95.0%	95.0%	92.9%	90.0%	10.0%	83.3%	92.9%
Consultant Medicine	926	1,032	1.11	59.2%	40.8%	1.09	1.15	72.5%	72.5%	69.1%	84.5%	15.5%	87.2%	80.5%
Consultant Obstetrics & Gynaecology	172	187	1.09	45.5%	54.5%	1.07	1.11	82.4%	82.4%	80.4%	87.2%	12.8%	91.8%	83.3%
Consultant Paediatrics	216	241	1.12	44.8%	55.2%	1.06	1.17	78.0%	78.0%	78.2%	84.6%	15.4%	92.6%	78.2%
Consultant Pathology	278	302	1.09	38.4%	61.6%	1.07	1.09	81.1%	81.1%	81.2%	88.1%	11.9%	92.2%	85.5%
Consultant Psychiatry	432	481	1.11	39.9%	60.1%	1.07	1.14	67.2%	67.2%	65.1%	84.0%	16.0%	92.2%	78.5%
Consultant Radiology	297	317	1.07	58.4%	41.6%	1.06	1.07	88.0%	88.0%	87.1%	90.9%	9.1%	92.4%	88.6%
Consultant Surgery	585	648	1.11	79.5%	20.5%	1.09	1.18	77.9%	77.9%	76.7%	84.4%	15.6%	87.2%	73.7%
<b>Consultants</b>	<b>3,506</b>	<b>3,861</b>	<b>1.10</b>	<b>57.4%</b>	<b>42.6%</b>	<b>1.08</b>	<b>1.13</b>	<b>76.3%</b>	<b>77.8%</b>	<b>74.3%</b>	<b>85.9%</b>	<b>14.1%</b>	<b>89.0%</b>	<b>81.8%</b>
Registrar	2,544	2,964	1.16	54.7%	45.3%	1.13	1.21	2.9%	2.9%	2.3%	97.3%	2.7%	98.3%	96.1%
Senior Registrar	242	284	1.17	53.9%	46.1%	1.12	1.24	12.0%	12.0%	9.9%	96.1%	3.9%	96.7%	95.4%
Specialist Registrar	1,307	1,694	1.30	46.2%	53.8%	1.26	1.33	0.6%	0.6%	0.7%	95.9%	4.1%	97.3%	94.7%
<b>Registrars</b>	<b>4,093</b>	<b>4,942</b>	<b>1.21</b>	<b>51.7%</b>	<b>48.3%</b>	<b>1.17</b>	<b>1.25</b>	<b>2.6%</b>	<b>3.1%</b>	<b>2.1%</b>	<b>96.8%</b>	<b>3.2%</b>	<b>97.9%</b>	<b>95.6%</b>
Interns	952	1,312	1.38	43.4%	56.6%	1.35	1.40	0.0%	0.0%	0.0%	100.0%	0.0%	100.0%	100.0%
Senior House Officer	2,513	3,005	1.20	42.5%	57.5%	1.16	1.22	0.6%	0.6%	0.4%	98.9%	1.1%	99.3%	98.7%
<b>SHO/ Interns</b>	<b>3,465</b>	<b>4,317</b>	<b>1.25</b>	<b>42.7%</b>	<b>57.3%</b>	<b>1.21</b>	<b>1.27</b>	<b>0.4%</b>	<b>0.5%</b>	<b>0.3%</b>	<b>99.3%</b>	<b>0.7%</b>	<b>99.5%</b>	<b>99.1%</b>
Dentists	310	415	1.34	25.3%	74.7%	1.32	1.34	88.2%	88.2%	87.1%	52.5%	47.5%	60.0%	50.0%
Other Medical	494	715	1.45	37.1%	62.9%	1.54	1.40	66.0%	66.0%	70.2%	47.4%	52.6%	48.3%	46.9%
<b>Medical/ Dental, other</b>	<b>804</b>	<b>1,130</b>	<b>1.41</b>	<b>32.7%</b>	<b>67.3%</b>	<b>1.47</b>	<b>1.38</b>	<b>74.2%</b>	<b>68.1%</b>	<b>77.1%</b>	<b>49.3%</b>	<b>50.7%</b>	<b>51.6%</b>	<b>48.2%</b>
<b>Medical &amp; Dental</b>	<b>11,869</b>	<b>14,250</b>	<b>1.20</b>	<b>49.0%</b>	<b>51.0%</b>	<b>1.16</b>	<b>1.24</b>	<b>27.6%</b>	<b>29.6%</b>	<b>25.7%</b>	<b>90.8%</b>	<b>9.2%</b>	<b>93.1%</b>	<b>88.7%</b>
Clinical Nurse/ Midwife Manager	7,304	8,077	1.11	10.4%	89.6%	1.03	1.12	96.8%	96.8%	96.8%	74.9%	25.1%	95.1%	72.6%
Director Nursing/Midwifery, Assistant	1,031	1,103	1.07	13.1%	86.9%	1.02	1.08	96.6%	96.6%	96.4%	85.1%	14.9%	96.5%	83.4%
Director of Nursing/Midwifery	313	322	1.03	9.6%	90.4%	1.01	1.03	96.0%	96.0%	95.9%	95.0%	5.0%	96.8%	94.8%
<b>Nurse/ Midwife Manager</b>	<b>8,648</b>	<b>9,502</b>	<b>1.10</b>	<b>10.7%</b>	<b>89.3%</b>	<b>1.03</b>	<b>1.11</b>	<b>96.7%</b>	<b>96.7%</b>	<b>96.7%</b>	<b>76.8%</b>	<b>23.2%</b>	<b>95.4%</b>	<b>74.6%</b>
Advanced Nurse/ Midwife Practitioner	582	610	1.05	10.3%	89.7%	1.01	1.05	98.9%	98.9%	98.9%	89.2%	10.8%	98.4%	88.1%
Clinical Nurse/ Midwife Specialist	1,805	2,073	1.15	7.2%	92.8%	1.02	1.16	98.0%	98.0%	97.9%	68.6%	31.4%	97.3%	66.4%

<b>Nurse/ Midwife Specialist &amp; AN/MP</b>	<b>2,387</b>	<b>2,683</b>	<b>1.12</b>	<b>7.9%</b>	<b>92.1%</b>	<b>1.02</b>	<b>1.13</b>	<b>98.2%</b>	<b>98.6%</b>	<b>98.1%</b>	<b>73.3%</b>	<b>26.7%</b>	<b>97.7%</b>	<b>71.2%</b>
Nursing Bank	17	32	1.89	3.1%	96.9%	20.00	1.84	71.9%	71.9%	71.0%	21.9%	78.1%	0.0%	22.6%
Staff Midwives	1,489	1,797	1.21	0.5%	99.5%	1.06	1.21	92.9%	92.9%	93.0%	47.2%	52.8%	77.8%	47.1%
Staff Nurse [Intellectual Disability]	1,731	1,983	1.15	8.3%	91.7%	1.08	1.15	95.4%	95.4%	95.4%	65.7%	34.3%	81.8%	64.2%
Staff Nurse [Psychiatric]	3,240	3,528	1.09	25.0%	75.0%	1.05	1.10	92.0%	92.0%	92.6%	85.7%	14.3%	91.3%	83.8%
Staff Nurses [General/ Children's]	20,894	24,186	1.16	8.8%	91.2%	1.04	1.17	91.0%	91.0%	91.2%	65.0%	35.0%	91.2%	62.5%
<b>Staff Nurse/ Staff Midwife</b>	<b>27,370</b>	<b>31,526</b>	<b>1.15</b>	<b>10.1%</b>	<b>89.9%</b>	<b>1.05</b>	<b>1.17</b>	<b>91.5%</b>	<b>89.6%</b>	<b>91.7%</b>	<b>66.3%</b>	<b>33.7%</b>	<b>90.6%</b>	<b>63.5%</b>
<b>Public Health Nurse</b>	<b>1,513</b>	<b>1,837</b>	<b>1.21</b>	<b>0.5%</b>	<b>99.5%</b>	<b>1.08</b>	<b>1.21</b>	<b>93.8%</b>	<b>88.9%</b>	<b>93.9%</b>	<b>70.1%</b>	<b>29.9%</b>	<b>88.9%</b>	<b>70.0%</b>
Pre-registration Nurse/ Midwife Intern	773	1,532	1.98	7.4%	92.6%	1.99	1.98	7.4%	7.4%	7.7%	85.6%	14.4%	85.0%	85.6%
Pre-registration Nurse Intern (COVID-19)	8	11	1.41	18.2%	81.8%	2.17	1.31	0.0%	0.0%	0.0%	90.9%	9.1%	100.0%	88.9%
Post-registration Nurse/ Midwife Student	180	197	1.09	0.5%	99.5%	1.00	1.09	16.2%	16.2%	15.8%	98.5%	1.5%	100.0%	98.5%
Nursing/ Midwifery awaiting registration	37	39	1.06	12.8%	87.2%	1.00	1.07	56.4%	56.4%	52.9%	94.9%	5.1%	100.0%	94.1%
<b>Nursing/ Midwifery Student</b>	<b>998</b>	<b>1,779</b>	<b>1.78</b>	<b>6.8%</b>	<b>93.2%</b>	<b>1.90</b>	<b>1.77</b>	<b>9.4%</b>	<b>7.4%</b>	<b>9.5%</b>	<b>87.2%</b>	<b>12.8%</b>	<b>86.0%</b>	<b>87.3%</b>
Nursing Education/Clinical	295	345	1.17	5.2%	94.8%	1.03	1.18	96.8%	96.8%	96.6%	67.8%	32.2%	94.4%	66.4%
Other Nursing/ Midwifery	47	50	1.05	8.0%	92.0%	1.00	1.06	98.0%	98.0%	97.8%	86.0%	14.0%	100.0%	84.8%
<b>Nursing/ Midwifery other</b>	<b>343</b>	<b>395</b>	<b>1.15</b>	<b>5.6%</b>	<b>94.4%</b>	<b>1.02</b>	<b>1.16</b>	<b>97.0%</b>	<b>100.0%</b>	<b>96.8%</b>	<b>70.1%</b>	<b>29.9%</b>	<b>95.5%</b>	<b>68.6%</b>
<b>Nursing &amp; Midwifery</b>	<b>41,260</b>	<b>47,722</b>	<b>1.16</b>	<b>9.6%</b>	<b>90.4%</b>	<b>1.05</b>	<b>1.17</b>	<b>90.0%</b>	<b>89.5%</b>	<b>90.1%</b>	<b>69.7%</b>	<b>30.3%</b>	<b>91.9%</b>	<b>67.4%</b>
Dietitians	671	789	1.18	1.8%	98.2%	1.01	1.18	83.8%	83.8%	84.3%	73.5%	26.5%	100.0%	73.0%
Occupational Therapists	1,771	2,004	1.13	8.1%	91.9%	1.05	1.14	87.3%	87.3%	87.1%	78.4%	21.6%	90.8%	77.3%
Orthoptists	39	49	1.24	16.3%	83.7%	1.03	1.29	83.7%	83.7%	87.8%	57.1%	42.9%	100.0%	48.8%
Physiotherapists	2,015	2,355	1.17	18.9%	81.1%	1.06	1.20	83.6%	83.6%	85.2%	71.8%	28.2%	89.0%	67.8%
Podiatrists & Chiropodists	82	105	1.28	12.4%	87.6%	1.20	1.30	81.0%	81.0%	80.4%	58.1%	41.9%	69.2%	56.5%
Speech & Language Therapists	1,173	1,361	1.16	1.4%	98.6%	1.13	1.16	87.1%	87.1%	87.3%	73.5%	26.5%	84.2%	73.3%
<b>Therapy Professions</b>	<b>5,751</b>	<b>6,663</b>	<b>1.16</b>	<b>10.0%</b>	<b>90.0%</b>	<b>1.06</b>	<b>1.17</b>	<b>85.4%</b>	<b>79.3%</b>	<b>86.1%</b>	<b>74.0%</b>	<b>26.0%</b>	<b>89.3%</b>	<b>72.3%</b>
Audiology	85	99	1.16	15.2%	84.8%	1.14	1.16	91.9%	91.9%	90.5%	77.8%	22.2%	80.0%	77.4%
Biochemists	79	82	1.04	30.5%	69.5%	1.02	1.05	86.6%	86.6%	93.0%	89.0%	11.0%	96.0%	86.0%
Clinical Engineering	180	186	1.03	80.1%	19.9%	1.03	1.07	87.6%	87.6%	70.3%	94.6%	5.4%	96.0%	89.2%
Clinical Measurement	421	462	1.10	18.0%	82.0%	1.04	1.11	88.7%	88.7%	88.9%	82.0%	18.0%	94.0%	79.4%
Dosimetrists	16	18	1.13	11.1%	88.9%	1.60	1.09	83.3%	83.3%	87.5%	77.8%	22.2%	100.0%	75.0%
Medical Science	2,063	2,268	1.10	19.2%	80.8%	1.03	1.12	92.1%	92.1%	92.4%	80.6%	19.4%	94.0%	77.3%
Perfusionists	23	25	1.09	44.0%	56.0%	1.12	1.07	84.0%	84.0%	85.7%	76.0%	24.0%	72.7%	78.6%
Phlebotomists	195	261	1.34	21.5%	78.5%	1.22	1.38	78.2%	78.2%	78.5%	46.4%	53.6%	58.9%	42.9%
Physicists	183	202	1.11	47.0%	53.0%	1.04	1.17	93.6%	93.6%	92.5%	85.6%	14.4%	97.9%	74.8%
Radiation Therapists	209	228	1.09	11.8%	88.2%	1.00	1.10	78.5%	78.5%	82.1%	79.8%	20.2%	100.0%	77.1%
Radiographers	1,380	1,548	1.12	19.3%	80.7%	1.03	1.15	92.6%	92.6%	92.3%	77.7%	22.3%	94.0%	73.8%
<b>Health Science/ Diagnostics</b>	<b>4,834</b>	<b>5,379</b>	<b>1.11</b>	<b>22.3%</b>	<b>77.7%</b>	<b>1.04</b>	<b>1.14</b>	<b>90.4%</b>	<b>89.8%</b>	<b>90.6%</b>	<b>78.9%</b>	<b>21.1%</b>	<b>92.7%</b>	<b>74.9%</b>

Social Care	3,009	3,534	1.17	17.2%	82.8%	1.11	1.19	89.4%	89.4%	89.3%	50.4%	49.6%	65.2%	47.3%
<b>Social Care</b>	<b>3,009</b>	<b>3,534</b>	<b>1.17</b>	<b>17.2%</b>	<b>82.8%</b>	<b>1.11</b>	<b>1.19</b>	<b>89.4%</b>	<b>89.8%</b>	<b>89.3%</b>	<b>50.4%</b>	<b>49.6%</b>	<b>65.2%</b>	<b>47.3%</b>
<b>Social Workers</b>	<b>1,265</b>	<b>1,434</b>	<b>1.13</b>	<b>14.7%</b>	<b>85.3%</b>	<b>1.06</b>	<b>1.15</b>	<b>89.8%</b>	<b>89.1%</b>	<b>89.9%</b>	<b>79.2%</b>	<b>20.8%</b>	<b>90.0%</b>	<b>77.4%</b>
<b>Psychologists</b>	<b>1,085</b>	<b>1,224</b>	<b>1.13</b>	<b>19.0%</b>	<b>81.0%</b>	<b>1.05</b>	<b>1.15</b>	<b>79.2%</b>	<b>79.4%</b>	<b>79.1%</b>	<b>76.0%</b>	<b>24.0%</b>	<b>90.1%</b>	<b>72.7%</b>
<b>Pharmacy</b>	<b>1,229</b>	<b>1,381</b>	<b>1.12</b>	<b>11.9%</b>	<b>88.1%</b>	<b>1.05</b>	<b>1.13</b>	<b>81.2%</b>	<b>80.6%</b>	<b>81.3%</b>	<b>77.8%</b>	<b>22.2%</b>	<b>89.1%</b>	<b>76.2%</b>
Counsellor Therapists	267	302	1.13	29.1%	70.9%	1.06	1.16	95.4%	95.4%	95.3%	72.5%	27.5%	86.4%	66.8%
Dental Hygienists	60	75	1.24	1.3%	98.7%	1.00	1.25	97.3%	97.3%	97.3%	45.3%	54.7%	100.0%	44.6%
Environmental Health Officers	552	603	1.09	22.2%	77.8%	1.03	1.11	98.7%	98.7%	98.7%	84.7%	15.3%	99.3%	80.6%
HSCP Trainees/ Students	34	52	1.53	28.8%	71.2%	1.62	1.50	3.8%	3.8%	5.4%	61.5%	38.5%	46.7%	67.6%
Other Health & Social Care	177	211	1.19	29.9%	70.1%	1.08	1.24	90.0%	90.0%	89.2%	65.4%	34.6%	82.5%	58.1%
Play Therapists/ Specialists	45	58	1.29	6.9%	93.1%	1.00	1.32	93.1%	93.1%	92.6%	53.4%	46.6%	100.0%	50.0%
Vaccinators	243	548	2.25	19.0%	81.0%	1.99	2.33	12.4%	12.4%	12.2%	9.5%	90.5%	14.4%	8.3%
<b>H&amp;SC, Other</b>	<b>1,378</b>	<b>1,849</b>	<b>1.34</b>	<b>22.1%</b>	<b>77.9%</b>	<b>1.21</b>	<b>1.38</b>	<b>68.7%</b>	<b>71.6%</b>	<b>67.8%</b>	<b>55.0%</b>	<b>45.0%</b>	<b>70.4%</b>	<b>50.6%</b>
<b>Health &amp; Social Care</b>	<b>18,552</b>	<b>21,464</b>	<b>1.16</b>	<b>16.2%</b>	<b>83.8%</b>	<b>1.08</b>	<b>1.17</b>	<b>85.5%</b>	<b>84.5%</b>	<b>85.7%</b>	<b>70.4%</b>	<b>29.6%</b>	<b>84.2%</b>	<b>67.7%</b>
Executive Management	389	397	1.02	46.3%	53.7%	1.02	1.02	94.0%	94.0%	94.8%	97.7%	2.3%	97.8%	97.7%
Senior Management (VIII & GM)	1,689	1,747	1.03	33.2%	66.8%	1.02	1.04	95.0%	95.0%	95.4%	95.6%	4.4%	98.1%	94.3%
<b>Management (VIII &amp; above)</b>	<b>2,078</b>	<b>2,144</b>	<b>1.03</b>	<b>35.6%</b>	<b>64.4%</b>	<b>1.02</b>	<b>1.04</b>	<b>94.8%</b>	<b>94.0%</b>	<b>95.3%</b>	<b>96.0%</b>	<b>4.0%</b>	<b>98.0%</b>	<b>94.9%</b>
Middle Management (V-VII)	6,261	6,698	1.07	22.8%	77.2%	1.03	1.08	94.1%	94.1%	94.5%	84.3%	15.7%	97.0%	80.6%
Other Administrative	44	48	1.09	39.6%	60.4%	1.14	1.06	58.3%	58.3%	75.9%	89.6%	10.4%	100.0%	82.8%
<b>Administrative/ Supervisory (V to VII)</b>	<b>6,305</b>	<b>6,746</b>	<b>1.07</b>	<b>22.9%</b>	<b>77.1%</b>	<b>1.03</b>	<b>1.08</b>	<b>93.9%</b>	<b>92.2%</b>	<b>94.4%</b>	<b>84.4%</b>	<b>15.6%</b>	<b>97.0%</b>	<b>80.6%</b>
<b>Clerical (III &amp; IV)</b>	<b>12,671</b>	<b>14,543</b>	<b>1.15</b>	<b>13.7%</b>	<b>86.3%</b>	<b>1.05</b>	<b>1.17</b>	<b>78.7%</b>	<b>70.1%</b>	<b>80.1%</b>	<b>70.1%</b>	<b>29.9%</b>	<b>91.5%</b>	<b>66.7%</b>
<b>Management &amp; Administrative</b>	<b>21,054</b>	<b>23,433</b>	<b>1.11</b>	<b>18.4%</b>	<b>81.6%</b>	<b>1.04</b>	<b>1.13</b>	<b>84.6%</b>	<b>82.3%</b>	<b>85.1%</b>	<b>76.6%</b>	<b>23.4%</b>	<b>94.7%</b>	<b>72.5%</b>
Catering	868	953	1.10	31.7%	68.3%	1.03	1.13	93.2%	93.2%	94.6%	73.9%	26.1%	94.4%	64.4%
Household Services	4,643	5,496	1.18	21.8%	78.2%	1.10	1.21	81.7%	81.7%	84.7%	58.4%	41.6%	79.7%	52.5%
Other Labs & Associated	572	612	1.07	30.1%	69.9%	1.04	1.08	62.9%	62.9%	62.9%	89.4%	10.6%	95.7%	86.7%
Other Support	1,094	1,405	1.28	44.1%	55.9%	1.13	1.44	84.8%	84.8%	82.7%	59.9%	40.1%	81.0%	43.3%
Portering	1,682	1,776	1.06	93.5%	6.5%	1.05	1.12	78.9%	78.9%	75.7%	90.0%	10.0%	91.3%	70.4%
<b>Support</b>	<b>8,860</b>	<b>10,242</b>	<b>1.16</b>	<b>38.7%</b>	<b>61.3%</b>	<b>1.08</b>	<b>1.21</b>	<b>81.6%</b>	<b>78.1%</b>	<b>83.8%</b>	<b>67.4%</b>	<b>32.6%</b>	<b>86.6%</b>	<b>55.3%</b>
Maintenance	1,059	1,101	1.04	97.9%	2.1%	1.04	1.15	94.1%	94.1%	100.0%	94.6%	5.4%	95.4%	56.5%
Technical Services	142	143	1.01	81.1%	18.9%	1.01	1.02	95.8%	95.8%	100.0%	97.2%	2.8%	97.4%	96.3%
<b>Maintenance/ Technical</b>	<b>1,201</b>	<b>1,244</b>	<b>1.04</b>	<b>96.0%</b>	<b>4.0%</b>	<b>1.03</b>	<b>1.08</b>	<b>94.3%</b>	<b>94.1%</b>	<b>100.0%</b>	<b>94.9%</b>	<b>5.1%</b>	<b>95.6%</b>	<b>78.0%</b>
<b>General Support</b>	<b>10,060</b>	<b>11,486</b>	<b>1.14</b>	<b>44.9%</b>	<b>55.1%</b>	<b>1.07</b>	<b>1.21</b>	<b>83.0%</b>	<b>81.8%</b>	<b>83.9%</b>	<b>70.4%</b>	<b>29.6%</b>	<b>88.7%</b>	<b>55.4%</b>
HCA, Nurse's Aide, etc.	18,250	20,893	1.14	25.0%	75.0%	1.08	1.17	84.0%	84.0%	83.8%	61.5%	38.5%	77.0%	56.4%
Health & Social Care Assistants	336	372	1.11	22.0%	78.0%	1.09	1.11	64.0%	64.0%	61.7%	77.7%	22.3%	90.2%	74.1%
Swabber (COVID-19)	617	725	1.18	31.2%	68.8%	1.18	1.17	0.8%	0.8%	0.8%	80.4%	19.6%	84.1%	78.8%

HCA (Student Nurse/Midwife COVID-19)	11	18	1.69	16.7%	83.3%	2.44	1.60	5.6%	5.6%	6.7%	38.9%	61.1%	66.7%	33.3%
<b>Health Care Assistants</b>	<b>19,213</b>	<b>22,008</b>	<b>1.15</b>	<b>25.1%</b>	<b>74.9%</b>	<b>1.08</b>	<b>1.17</b>	<b>80.8%</b>	<b>80.8%</b>	<b>80.9%</b>	<b>62.4%</b>	<b>37.6%</b>	<b>77.5%</b>	<b>57.3%</b>
<b>Home Help</b>	<b>3,470</b>	<b>5,180</b>	<b>1.49</b>	<b>4.0%</b>	<b>96.0%</b>	<b>1.53</b>	<b>1.49</b>	<b>70.9%</b>	<b>36.4%</b>	<b>72.3%</b>	<b>40.1%</b>	<b>59.9%</b>	<b>49.0%</b>	<b>39.7%</b>
Ambulance Control	174	180	1.03	50.6%	49.4%	1.03	1.04	98.9%	98.9%	98.9%	98.9%	1.1%	100.0%	97.8%
Ambulance Education	191	192	1.01	66.1%	33.9%	1.01	1.00	0.0%	0.0%	0.0%	100.0%	0.0%	100.0%	100.0%
Ambulance Officers	85	86	1.01	86.0%	14.0%	1.01	1.00	96.5%	96.5%	100.0%	98.8%	1.2%	98.6%	100.0%
Pre-Hospital Care (Ambulance)	1,475	1,514	1.03	76.6%	23.4%	1.02	1.06	99.1%	99.1%	99.4%	99.7%	0.3%	99.8%	99.2%
<b>Ambulance Staff</b>	<b>1,925</b>	<b>1,972</b>	<b>1.02</b>	<b>73.6%</b>	<b>26.4%</b>	<b>1.02</b>	<b>1.05</b>	<b>89.3%</b>	<b>90.2%</b>	<b>86.9%</b>	<b>99.6%</b>	<b>0.4%</b>	<b>99.8%</b>	<b>99.0%</b>
<b>Care, other</b>	<b>3,133</b>	<b>3,755</b>	<b>1.20</b>	<b>26.9%</b>	<b>73.1%</b>	<b>1.17</b>	<b>1.21</b>	<b>87.9%</b>	<b>81.3%</b>	<b>90.3%</b>	<b>63.1%</b>	<b>36.9%</b>	<b>72.4%</b>	<b>59.6%</b>
<b>Patient &amp; Client Care</b>	<b>27,741</b>	<b>32,915</b>	<b>1.19</b>	<b>24.9%</b>	<b>75.1%</b>	<b>1.09</b>	<b>1.22</b>	<b>80.6%</b>	<b>81.4%</b>	<b>80.3%</b>	<b>61.2%</b>	<b>38.8%</b>	<b>80.1%</b>	<b>54.9%</b>

## Employment by WTE, Headcount, Gender, Full-Time /Part-Time etc.: Jul 2021

Hospital Group/ CHO / Service	WTE	Headcount	WTE: no.	% Male	% female	Male WTE: no.	Female WTE: no.	% Total Perm	% Male Perm	% Female Perm	% Total Full Time	% Total Part Time	% Male FT	% Female FT
<b>Overall</b>	<b>130,536</b>	<b>151,270</b>	<b>1.16</b>	<b>21.6%</b>	<b>78.4%</b>	<b>1.09</b>	<b>1.18</b>	<b>80.1%</b>	<b>71.9%</b>	<b>82.3%</b>	<b>71.1%</b>	<b>28.9%</b>	<b>88.2%</b>	<b>66.3%</b>
National Ambulance Service	2,037	2,093	1.03	71.4%	28.6%	1.02	1.05	89.6%	89.6%	88.1%	99.1%	0.9%	99.7%	97.5%
Children's Health Ireland	3,885	4,685	1.21	16.8%	83.2%	1.19	1.21	76.8%	76.8%	79.6%	71.3%	28.7%	93.9%	66.8%
Dublin Midlands Hospital Group	11,553	13,497	1.17	23.7%	76.3%	1.13	1.18	79.3%	79.3%	82.9%	77.8%	22.2%	92.5%	73.2%
Ireland East Hospital Group	13,326	14,895	1.12	24.5%	75.5%	1.06	1.14	81.1%	81.1%	85.0%	76.4%	23.6%	90.1%	72.0%
RCSI Hospitals Group	10,590	11,948	1.13	23.5%	76.5%	1.07	1.15	82.4%	82.4%	85.8%	78.0%	22.0%	93.0%	73.4%
Saolta University Hospital Care	10,353	12,076	1.17	22.2%	77.8%	1.10	1.19	71.5%	71.5%	75.9%	68.9%	31.1%	89.9%	62.9%
South/South West Hospital Group	11,897	13,741	1.15	21.8%	78.2%	1.06	1.18	69.3%	69.3%	73.5%	69.1%	30.9%	91.8%	62.8%
University of Limerick Hospital Group	4,841	5,469	1.13	20.5%	79.5%	1.05	1.15	77.6%	77.6%	80.8%	77.9%	22.1%	95.5%	73.4%
other Acute Services	704	771	1.10	24.8%	75.2%	1.05	1.11	75.0%	75.0%	73.8%	80.4%	19.6%	93.2%	76.2%
<b>Acute Services</b>	<b>69,187</b>	<b>79,175</b>	<b>1.14</b>	<b>23.9%</b>	<b>76.1%</b>	<b>1.08</b>	<b>1.17</b>	<b>77.1%</b>	<b>77.1%</b>	<b>80.6%</b>	<b>74.9%</b>	<b>25.1%</b>	<b>92.5%</b>	<b>69.4%</b>
CHO 1	5,876	6,826	1.16	17.2%	82.8%	1.09	1.18	81.1%	81.1%	81.1%	65.1%	34.9%	84.8%	61.0%
CHO 2	5,738	6,736	1.17	19.2%	80.8%	1.12	1.19	84.6%	84.6%	85.7%	60.0%	40.0%	74.1%	56.6%
CHO 3	4,857	5,758	1.19	14.1%	85.9%	1.09	1.20	83.1%	83.1%	83.7%	56.9%	43.1%	74.1%	54.0%
CHO 4	8,801	10,867	1.23	16.2%	83.8%	1.13	1.26	71.1%	71.1%	72.6%	70.3%	29.7%	80.5%	68.3%
CHO 5	5,595	6,594	1.18	16.2%	83.8%	1.09	1.20	87.7%	87.7%	88.9%	58.8%	41.2%	77.5%	55.2%
CHO 6	3,522	4,149	1.18	22.2%	77.8%	1.13	1.19	85.7%	85.7%	86.1%	72.6%	27.4%	86.0%	68.8%
CHO 7	6,970	8,157	1.17	20.3%	79.7%	1.10	1.19	86.4%	86.4%	87.3%	70.6%	29.4%	82.9%	67.5%
CHO 8	6,467	7,749	1.20	17.5%	82.5%	1.10	1.22	87.7%	87.7%	88.7%	58.4%	41.6%	72.8%	55.3%
CHO 9	7,071	8,243	1.17	18.2%	81.8%	1.09	1.18	84.6%	84.6%	85.7%	67.6%	32.4%	84.5%	63.9%
other Community Services	754	826	1.10	40.9%	59.1%	1.10	1.09	81.5%	81.5%	83.2%	90.2%	9.8%	89.9%	90.4%
<b>Community Services</b>	<b>55,651</b>	<b>65,905</b>	<b>1.18</b>	<b>18.0%</b>	<b>82.0%</b>	<b>1.11</b>	<b>1.20</b>	<b>82.8%</b>	<b>82.8%</b>	<b>83.7%</b>	<b>65.1%</b>	<b>34.9%</b>	<b>80.2%</b>	<b>61.8%</b>
Health & Wellbeing	611	689	1.13	18.0%	82.0%	1.06	1.14	86.9%	86.9%	87.1%	80.7%	19.3%	96.0%	77.3%
Corporate	3,706	4,053	1.09	24.3%	75.7%	1.04	1.11	89.1%	89.1%	89.7%	84.7%	15.3%	95.9%	81.0%
Health Business Services	1,380	1,448	1.05	53.7%	46.3%	1.02	1.08	86.0%	86.0%	88.2%	90.9%	9.1%	97.4%	83.3%
<b>H&amp;WB, Corporate &amp; National Services</b>	<b>5,697</b>	<b>6,190</b>	<b>1.09</b>	<b>30.5%</b>	<b>69.5%</b>	<b>1.03</b>	<b>1.11</b>	<b>88.2%</b>	<b>88.2%</b>	<b>89.1%</b>	<b>85.7%</b>	<b>14.3%</b>	<b>96.6%</b>	<b>80.9%</b>

Summary Staff Movement: July 2021

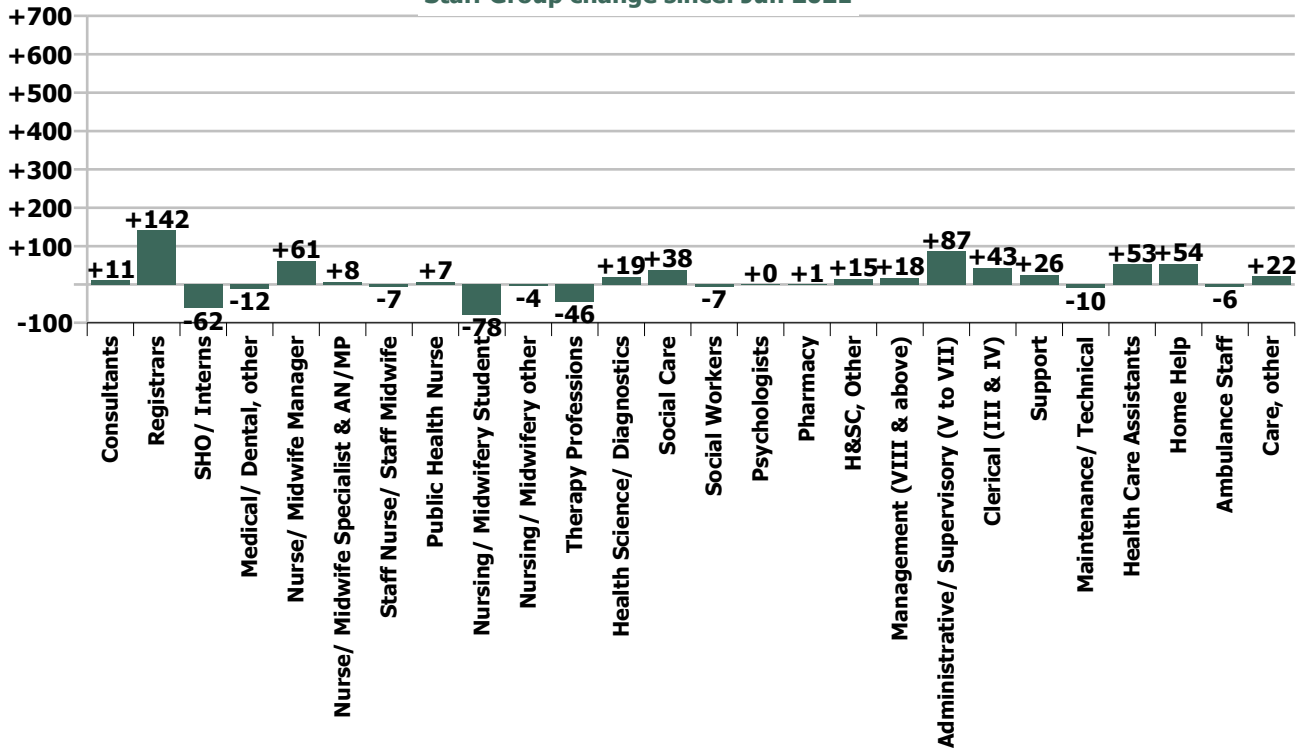
Month-on-month Summary

WTE change since Jun 21	% change since Jun 21	overall	Consultants	Registrars	SHO/ Interns	Medical/ Dental, other	Medical & Dental	Nurse/ Midwife Manager	Nurse/ Midwife Specialist & ANMP	Staff Nurse/ Staff Midwife	Public Health Nurse	Nursing/ Midwifery Student	Nursing/ Midwifery other	Nursing & Midwifery	Therapy Professions	Health Science/ Diagnostics	Social Care	Social Workers	Psychologists	Pharmacy	H&SC, Other	Health & Social Care Professionals	Management (VII & above)	Administrative Supervisory (V to VII)	Clerical (III & IV)	Management & Administrative	Support	Maintenance/ Technical	General Support	Health Care Assistants	Home Help	Ambulance Staff	Care, other	Patient & Client Care			
<b>Overall</b>	<b>+0.3%</b>	<b>+371</b>	<b>+11</b>	<b>+142</b>	<b>-62</b>	<b>-12</b>	<b>+78</b>	<b>+61</b>	<b>+8</b>	<b>-7</b>	<b>+7</b>	<b>-78</b>	<b>-4</b>	<b>-14</b>	<b>-46</b>	<b>+19</b>	<b>+38</b>	<b>-7</b>	<b>+0</b>	<b>+1</b>	<b>+15</b>	<b>+22</b>	<b>+18</b>	<b>+87</b>	<b>+43</b>	<b>+147</b>	<b>+26</b>	<b>-10</b>	<b>+15</b>	<b>+53</b>	<b>+54</b>	<b>-6</b>	<b>+22</b>	<b>+123</b>			
National Ambulance Service	-0.2%	-5																					+0	+3	-1	+2	-0		-0								
Children's Health Ireland	-0.1%	-2	+2	-18	-0		-16	+4	+2	-3		+7	-1	+9	+0	+7		+1	-1	-0	+1	+7	+0	+7	-5	+2	-3		-3	-0							
Dublin Midlands Hospital Group	+0.2%	+18	+0	+6	-6	+0	+1	+4	+1	+1		+1	-1	+4	+0	-8	-1	-2	-0	-2	-1	-15	+2	+4	+10	+15	+14	-3	+11	+1							
Ireland East Hospital Group	+0.3%	+38	+4	+21	-20	-2	+3	-9	-3	-1		+1	+0	-11	-11	+10		+0	-1	+2	-5	-4	+0	-2	+6	+5	+6	-0	+6	+41							
RCSI Hospitals Group	+0.5%	+50	+4	+13	-3	+0	+14	-4	-0	+6	+1	+3	-1	+4	+1	-3		+0	+1	+0	+26	+24	+1	+3	+6	+10	-7	+0	-6	+4							
Saolta University Hospital Care	+0.2%	+24	+1	+0	+7	-2	+6	+13	+3	+3	-0	-21	+0	-2	+2	+2		+1	+0	-1	-9	-4	+2	+14	+7	+23	-3	+0	-2	+2							
South/South West Hospital Group	+1.0%	+120	+1	+11	-6	-1	+5	+12	+2	+23		-10	-0	+27	+1	+3		+1	+1	-1	+4	+9	-1	+4	+19	+23	+56	-1	+55	+1							
University of Limerick Hospital Group	-0.2%	-8	+1	+7	-10		-1	+2	+1	+8		-0	-1	+10	+1	+2		-1	-0	-1	-5	-3	+1	+5	-6	-0	-9	-1	-10	-4							
other Acute Services	+1.1%	+7		+4			+4	+1						+1	+0	-1		+1	+0	+1	-0	+1	-0	-2	+2	+1	-0	+1	+0								
<b>Acute Services</b>	<b>+0.4%</b>	<b>+243</b>	<b>+13</b>	<b>+45</b>	<b>-37</b>	<b>-6</b>	<b>+15</b>	<b>+30</b>	<b>+5</b>	<b>+29</b>	<b>+0</b>	<b>-19</b>	<b>-3</b>	<b>+43</b>	<b>-14</b>	<b>+20</b>		<b>+0</b>	<b>-0</b>	<b>-1</b>	<b>+9</b>	<b>+15</b>	<b>+5</b>	<b>+36</b>	<b>+38</b>	<b>+79</b>	<b>+54</b>	<b>-3</b>	<b>+51</b>	<b>+45</b>			<b>-6</b>	<b>+1</b>	<b>+40</b>		
CHO 1	-0.8%	-46	-0	+16	-4	+1	+13	-1	+1	-14	+2	-4	-2	+13	-2	-0	-1	-2	-0	-1	-2	-6	+3	+1	+7	+11	-12	-2	-14	-38	+7			+3			
CHO 2	+0.1%	+5	-0	+10	-5	-0	+3	-0	-3	-13	-4	-1	+1	-21	-13	-1	+2	-2	+0	-0	-1	-15	-2	+10	-13	-4	-2	+1	-2	+13	+27			+3			
CHO 3	+1.4%	+68	-1	+6	+3	-1	+7	+1	+2	+9		-6	-2	+4	+3	+1	+7	+2	+0	-0	+0	+13	+0	-1	+1	-0	+1	-0	+0	+11	+30			+3			
CHO 4	-0.1%	-5	+0	+15	-2	-6	+7	+7	+1	-5	-4	-9	-0	-9	+2	+0	-0	-3	-2	+0	+1	-2	-2	+3	+3	+4	-1	+0	-1	+10	-14			-0			
CHO 5	+0.4%	+20	+0	+11	+3	+2	+15	+7	-0	-5	+0	-1	-0	+0	-6	+0	+0	-1	+1	+1	+4	-1	+4	+0	-2	+3	-4	-1	-5	+7	+6			-4			
CHO 6	-0.3%	-11	-1	+3	-1	-3	-2	+0	+1	-1	+0	-10	-0	-6	+0	-1	+0	+1	+1	+1	+1	-0	+2	+1	-3	-0	+1	+2	+0	-10			+6				
CHO 7	+0.5%	+36	+2	-4	+1	-1	-2	+8	-0	+9	+5	-20	+0	+1	-1	-1	+16	+1	+4	+1	+3	+22	+0	+7	-6	+0	-5	-1	-6	+12	-2			+11			
CHO 8	+0.6%	+38	-1	+24	-7	+1	+17	+4	+0	-7	-1	-2	+0	+5	+6	+0	+4	+1	-2	+0	+0	-4	+3	+9	+7	+18	-0	-0	-1	+10	+1			+2			
CHO 9	-0.0%	-1	+1	+11	-14	+2	+0	-1	+2	-16	+12	-11	-0	-14	-7	-0	+10	-1	-1	-1	+1	-0	+3	+8	+12	+23	-1	-0	-1	-5							
other Community Services	-0.2%	-1	-1	+5	+2		+5	-1	-0	+2				+1	-0	-1	-0	-1	-0	+1	+0	-1	-1	-1	-2	-4	-2	-0	-2	-0							
<b>Community Services</b>	<b>+0.2%</b>	<b>+103</b>	<b>-1</b>	<b>+96</b>	<b>-25</b>	<b>-6</b>	<b>+63</b>	<b>+23</b>	<b>+3</b>	<b>-43</b>	<b>+7</b>	<b>-60</b>	<b>-1</b>	<b>-71</b>	<b>-31</b>	<b>-1</b>	<b>+38</b>	<b>-7</b>	<b>+0</b>	<b>+2</b>	<b>+8</b>	<b>+9</b>	<b>+10</b>	<b>+32</b>	<b>+7</b>	<b>+49</b>	<b>-26</b>	<b>-5</b>	<b>-31</b>	<b>+9</b>	<b>+54</b>			<b>+21</b>	<b>+83</b>		
Health & Wellbeing	+1.8%	+11		-0		-1	-1	+4	-0	+7				+11	+1	+0					+1	+1	+2	-2	+1	+0											
Corporate	+0.5%	+20	+0	+1	-0	+0	+2	+2	-0	+0				+2	-2	+1					+0	-3	+2	+23	-2	+22	-0	-2	-0	-2	-1						
Health Business Services	-0.4%	-5						+1						+1													-2	-0	-2								
<b>H&amp;WB, Corporate &amp; National S</b>	<b>+0.5%</b>	<b>+26</b>	<b>+0</b>	<b>+1</b>	<b>-0</b>	<b>-1</b>	<b>+0</b>	<b>+7</b>	<b>-1</b>	<b>+7</b>		<b>-0</b>	<b>-0</b>	<b>+14</b>	<b>-1</b>	<b>+1</b>					<b>+0</b>	<b>-2</b>	<b>-2</b>	<b>+2</b>	<b>+18</b>	<b>-2</b>	<b>+19</b>	<b>-2</b>	<b>-2</b>	<b>-4</b>	<b>-1</b>			<b>+21</b>	<b>+83</b>		
			+0.3%	+3.6%	-1.8%	-1.5%	+0.7%	+0.7%	+0.3%	-0.0%	+0.5%	-7.3%	-1.2%	-0.0%	-0.8%	+0.4%	+1.3%	-0.5%	+0.0%	+0.1%	+1.1%	+0.1%	+0.9%	+1.4%	+0.3%	+0.7%	+0.3%	-0.9%	+0.2%	+0.3%	+1.6%	-0.3%	+0.7%	+0.4%			

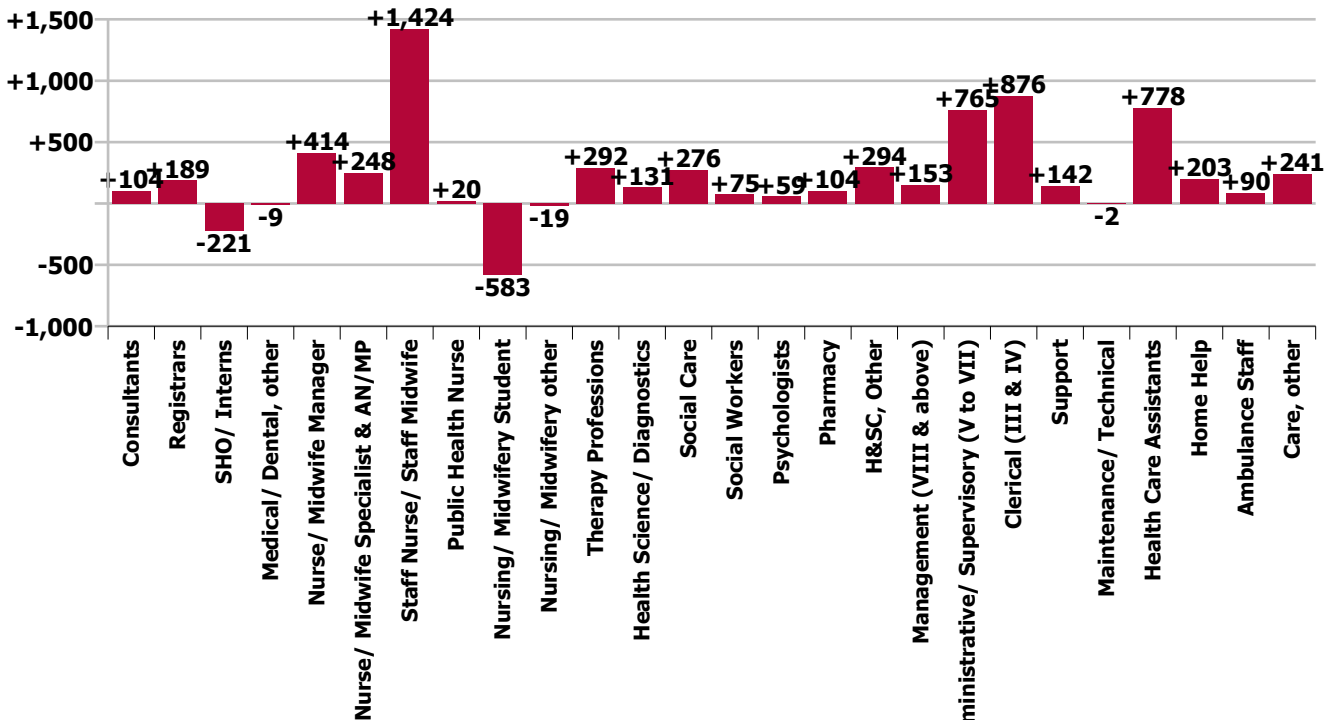
Year-on-year Summary

WTE change since Jul 20	% change since Jul 20	overall	Consultants	Registrars	SHO/ Interns	Medical/ Dental, other	Medical & Dental	Nurse/ Midwife Manager	Nurse/ Midwife Specialist & ANMP	Staff Nurse/ Staff Midwife	Public Health Nurse	Nursing/ Midwifery Student	Nursing/ Midwifery other	Nursing & Midwifery	Therapy Professions	Health Science/ Diagnostics	Social Care	Social Workers	Psychologists	Pharmacy	H&SC, Other	Health & Social Care Professionals	Management (VIII & above)	Administrative Supervisory (V to VII)	Clerical (III & IV)	Management & Administrative	Support	Maintenance/ Technical	General Support	Health Care Assistants	Home Help	Ambulance Staff	Care, other	Patient & Client Care			
<b>Overall</b>	<b>+4.9%</b>	<b>+6,045</b>	<b>+104</b>	<b>+189</b>	<b>-221</b>	<b>-9</b>	<b>+64</b>	<b>+414</b>	<b>+248</b>	<b>+1,424</b>	<b>+20</b>	<b>-583</b>	<b>-19</b>	<b>+1,504</b>	<b>+292</b>	<b>+131</b>	<b>+276</b>	<b>+75</b>	<b>+59</b>	<b>+104</b>	<b>+294</b>	<b>+1,232</b>	<b>+153</b>	<b>+765</b>	<b>+876</b>	<b>+1,793</b>	<b>+142</b>	<b>-2</b>	<b>+140</b>	<b>+778</b>	<b>+203</b>	<b>+90</b>	<b>+241</b>	<b>+1,312</b>			
National Ambulance Service	+4.7%	+91		+1	+1		+2							-1								-1	-3	+8	-4	+2	-1		-1	-1		+92	-1			+89	
Children's Health Ireland	+6.2%	+228	+10	-18	+0	-0	-8	+22	+15	+93		+9	-2	+137	+9	+17			+8	+2	+6	+1	+43	+16	+30	-2	+44	+8	+8	+6							
Dublin Midlands Hospital Group	+1.8%	+204	+2	+13	+9	+2	-52	+54	+20	+104		-71	+2	+105	+21	-28		+3	+1	+16	+31	+44	+11	+30	+39	+79	+25	-2	+23	+5							
Ireland East Hospital Group	+3.5%	+454	+11	+45	-53	+9	+12	+94	+51	+122		-100	-5	+162	+15	+38		+8	+2	+16	+21	+100	+15	+72	+42	+129	-43	+2	-41	+91							
RCSI Hospitals Group	+4.3%	+433	+26	+18	-2	-1	+41	+81	+13	+120	+1	-90	-3	+122	+22	+13		+5	+0	+12	+47	+99	+8	+60	+46	+114	+25	+1	+26	+30							
Saolta University Hospital Care	+5.4%	+533	+7	+6	+3	+0	+16	+42	+22	+179	-0	-69	+1	+175	+42	+33	+179	+1	+8	+0	+10	+76	+151	+2	+50	+141	+193	+30	-3	+27	-54						
South/South West Hospital Group	+4.7%	+533	+23	+25	-64	+1	-16	+3	+37	+279	+0	-76	+0	+243	+29	+39		+8	+1	+22	+24	+124	+5	+48	+84	+137	+124	+6	+129	-89							
University of Limerick Hospital Group	+10.1%	+444	+7	+13	-22		-2	+26	+11	+188		-32	+2	+195	+33	+3		+0	-0	+1	+8	+45	-0	+40	+53	+92	+93	+0	+45	+23							
other Acute Services	+17.5%	+105	+1	+4	-1		+5	+3	-1	+27				+30	+19	+1		+8	+5	+2	-1	+34	+5	+6	+10	+22	+3	+1	+4	+12							
<b>Acute Services</b>	<b>+4.6%</b>	<b>+3,024</b>	<b>+87</b>	<b>+106</b>	<b>-205</b>	<b>+10</b>	<b>-2</b>	<b>+326</b>	<b>+168</b>	<b>+1,111</b>	<b>+0</b>	<b>-430</b>	<b>-8</b>	<b>+1,168</b>	<b>+169</b>	<b>+116</b>	<b>+1</b>	<b>+47</b>	<b>+12</b>	<b>+85</b>	<b>+208</b>	<b>+639</b>	<b>+59</b>	<b>+344</b>	<b>+408</b>	<b>+812</b>	<b>+263</b>	<b>+5</b>	<b>+268</b>	<b>+22</b>			<b>+92</b>	<b>+25</b>	<b>+138</b>		
CHO 1	+4.1%	+229	+3	+12	-7	-2	+5	-2	+11	+44	-5	-19	-2	+27	-7	-0	+2	+0	-19	+4	+2	+3	+25	+4	+25	+71	+100	-16	-2	-18	-7	+81			+16		
CHO 2	+2.6%	+144	+5	+0	+1	-6	-1	+8	+10	+34	-8	-12	-1	+32	+16	+1	+24	-4	+																		

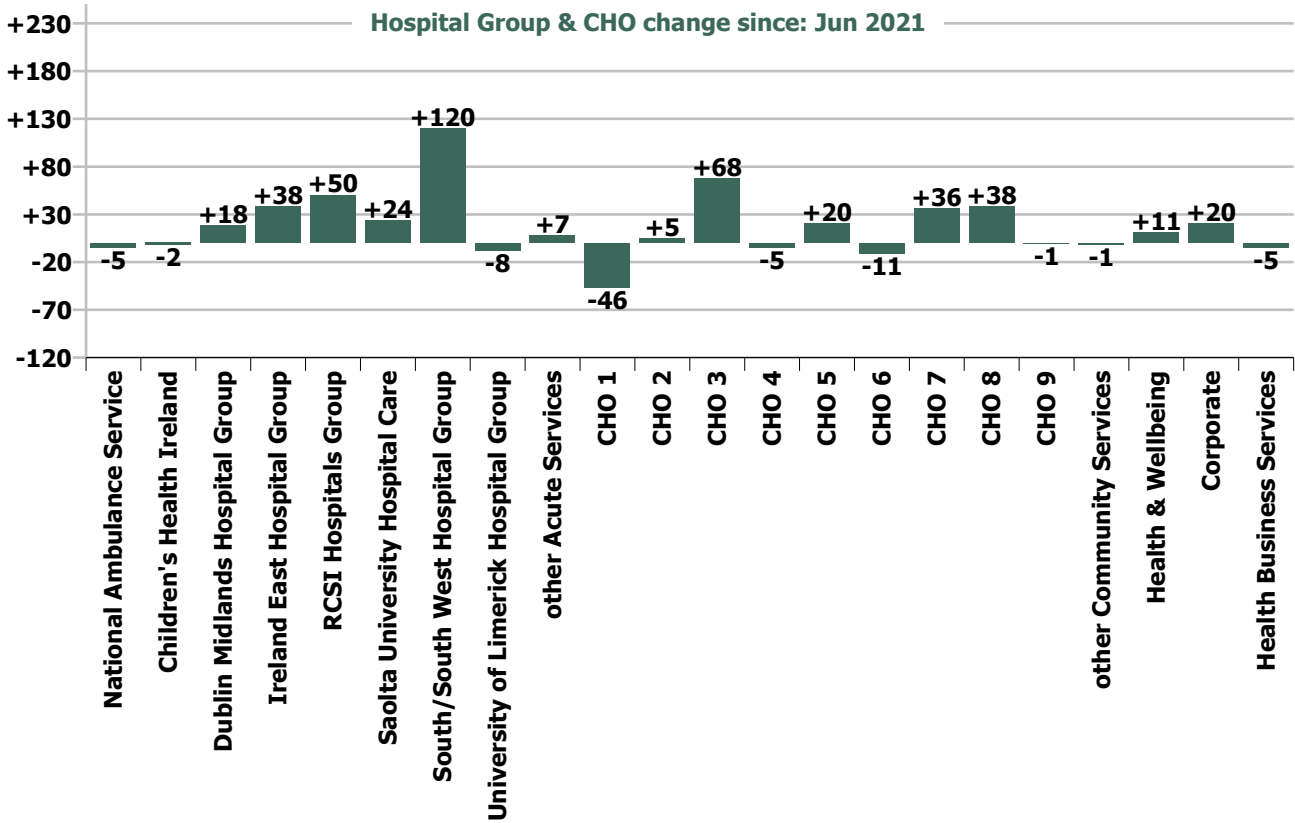
Staff Group change since: Jun 2021



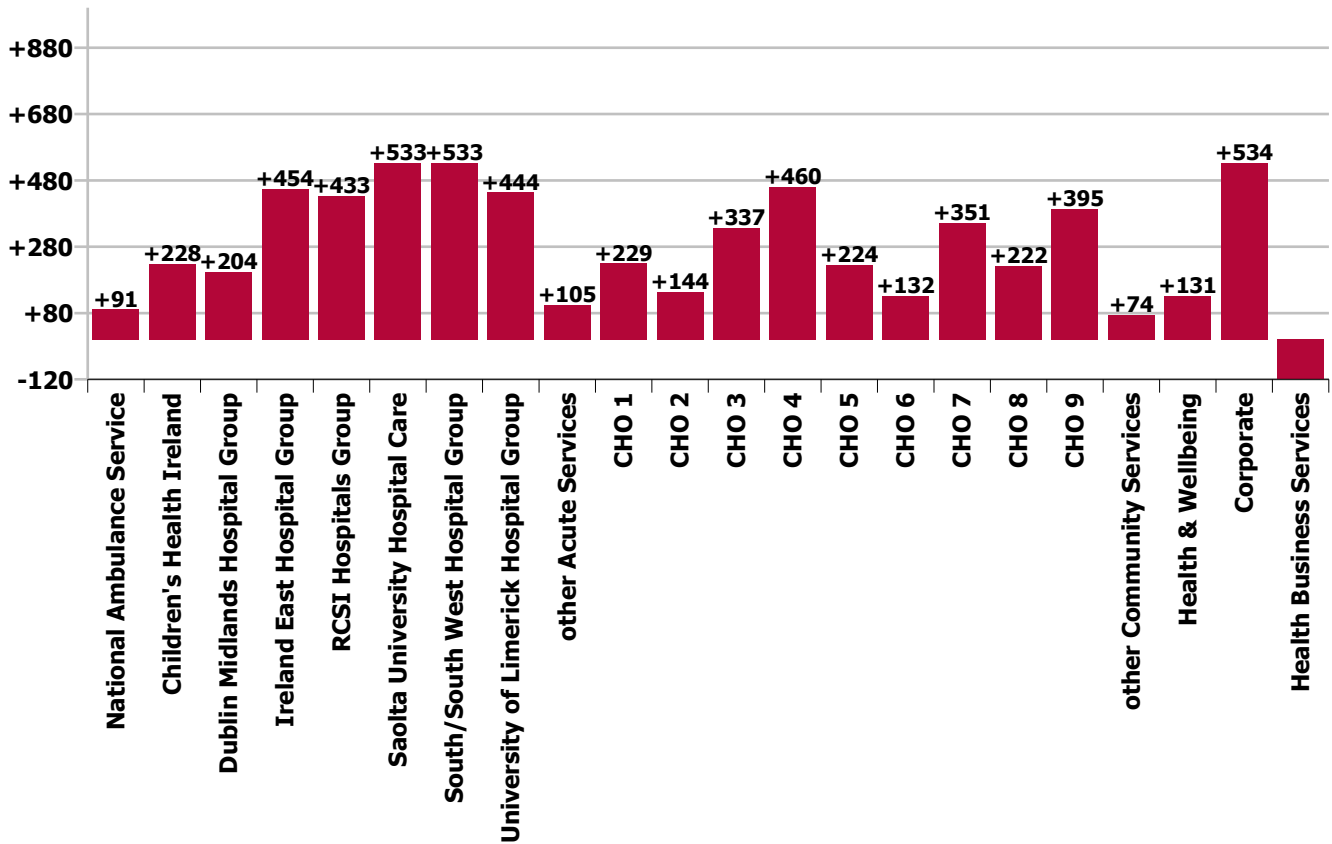
Staff Group change since: Jul 2020







### Hospital Group & CHO change since: Jul 2020



## Longitudinal Employment Levels by Grade Group - Dec 16 to Jul 2021

Jul 2021 (Dec 2020 figure: 126,174)	WTE Jul 2021	WTE change since Dec 16	WTE change since Dec 17	WTE change since Dec 18	WTE change since Dec 18	WTE change since Dec 20	% change since Dec 16	% change since Dec 17	% change since Dec 18	% change since Dec 18	% change since Dec 20
<b>Overall</b>	<b>130,536</b>	<b>+20,278</b>	<b>+16,240</b>	<b>+12,678</b>	<b>+12,678</b>	<b>+4,361</b>	<b>+18.4%</b>	<b>+14.2%</b>	<b>+10.8%</b>	<b>+10.8%</b>	<b>+3.5%</b>
Consultant Anaesthesia	442	+69	+53	+48	+48	+11	+18.5%	+13.6%	+12.3%	+12.3%	+2.6%
Consultant Dentistry	16	+1	-0	-2	-2	-0	+5.2%	-2.0%	-9.5%	-9.5%	-2.7%
Consultant Emergency Medicine	123	+31	+25	+26	+26	+2	+33.6%	+25.4%	+26.3%	+26.3%	+1.3%
Consultant Intensive Care Medicine	19	+16	+13	+4	+4	+1	+516.7%	+208.3%	+24.5%	+24.5%	+3.0%
Consultant Medicine	926	+203	+171	+136	+136	+12	+28.1%	+22.7%	+17.3%	+17.3%	+1.3%
Consultant Obstetrics & Gynaecology	172	+32	+21	+15	+15	+1	+22.9%	+13.9%	+9.4%	+9.4%	+0.6%
Consultant Paediatrics	216	+59	+44	+34	+34	-0	+37.3%	+25.7%	+18.7%	+18.7%	-0.2%
Consultant Pathology	278	+49	+39	+29	+29	+6	+21.2%	+16.5%	+11.6%	+11.6%	+2.1%
Consultant Psychiatry	432	+70	+68	+58	+58	+10	+19.5%	+18.7%	+15.6%	+15.6%	+2.4%
Consultant Radiology	297	+30	+27	+12	+12	-3	+11.1%	+10.1%	+4.1%	+4.1%	-1.0%
Consultant Surgery	585	+86	+74	+50	+50	+10	+17.4%	+14.5%	+9.4%	+9.4%	+1.7%
Consultant, Other		-1					-100.0%	-100.0%	-100.0%	-100.0%	-100.0%
<b>Consultants</b>	<b>3,506</b>	<b>+644</b>	<b>+535</b>	<b>+410</b>	<b>+410</b>	<b>+48</b>	<b>+22.5%</b>	<b>+18.0%</b>	<b>+13.3%</b>	<b>+13.3%</b>	<b>+1.4%</b>
Registrar	2,544	+564	+471	+362	+362	+166	+28.5%	+22.7%	+16.6%	+16.6%	+7.0%
Senior Registrar	242	+55	+66	+40	+40	+4	+29.7%	+37.9%	+19.9%	+19.9%	+1.8%
Specialist Registrar	1,307	+344	+240	+215	+215	+47	+35.7%	+22.5%	+19.7%	+19.7%	+3.8%
<b>Registrars</b>	<b>4,093</b>	<b>+963</b>	<b>+777</b>	<b>+618</b>	<b>+618</b>	<b>+218</b>	<b>+30.8%</b>	<b>+23.4%</b>	<b>+17.8%</b>	<b>+17.8%</b>	<b>+5.6%</b>
Interns	952	+239	+232	+222	+222	-19	+33.6%	+32.3%	+30.4%	+30.4%	-2.0%
Senior House Officer	2,513	+296	+219	+168	+168	-110	+13.4%	+9.5%	+7.2%	+7.2%	-4.2%
<b>SHO/ Interns</b>	<b>3,465</b>	<b>+536</b>	<b>+451</b>	<b>+390</b>	<b>+390</b>	<b>-129</b>	<b>+18.3%</b>	<b>+15.0%</b>	<b>+12.7%</b>	<b>+12.7%</b>	<b>-3.6%</b>
Dentists	310	-7	-2	-5	-5	-3	-2.2%	-0.7%	-1.6%	-1.6%	-0.8%
Other Medical	494	+10	-14	-11	-11	-27	+2.0%	-2.7%	-2.2%	-2.2%	-5.1%
<b>Medical/ Dental, other</b>	<b>804</b>	<b>+3</b>	<b>-16</b>	<b>-16</b>	<b>-16</b>	<b>-29</b>	<b>+0.3%</b>	<b>-2.0%</b>	<b>-1.9%</b>	<b>-1.9%</b>	<b>-3.5%</b>
<b>Medical &amp; Dental</b>	<b>11,869</b>	<b>+2,146</b>	<b>+1,748</b>	<b>+1,402</b>	<b>+1,402</b>	<b>+107</b>	<b>+22.1%</b>	<b>+17.3%</b>	<b>+13.4%</b>	<b>+13.4%</b>	<b>+0.9%</b>
Clinical Nurse/ Midwife Manager	7,304	+1,119	+1,003	+670	+670	+266	+18.1%	+15.9%	+10.1%	+10.1%	+3.8%
Director Nursing/Midwifery, Assistant	1,031	+203	+168	+136	+136	+31	+24.5%	+19.4%	+15.2%	+15.2%	+3.1%
Director of Nursing/Midwifery	313	+48	+44	+43	+43	+8	+18.1%	+16.5%	+15.8%	+15.8%	+2.5%
<b>Nurse/ Midwife Manager</b>	<b>8,648</b>	<b>+1,370</b>	<b>+1,215</b>	<b>+849</b>	<b>+849</b>	<b>+304</b>	<b>+18.8%</b>	<b>+16.3%</b>	<b>+10.9%</b>	<b>+10.9%</b>	<b>+3.6%</b>
Advanced Nurse/ Midwife Practitioner	582	+418	+359	+272	+272	+63	+255.5%	+161.0%	+88.0%	+88.0%	+12.2%
Clinical Nurse/ Midwife Specialist	1,805	+390	+322	+255	+255	+25	+27.6%	+21.7%	+16.4%	+16.4%	+1.4%
<b>Nurse/ Midwife Specialist &amp; AN/MP</b>	<b>2,387</b>	<b>+808</b>	<b>+681</b>	<b>+527</b>	<b>+527</b>	<b>+89</b>	<b>+51.2%</b>	<b>+39.9%</b>	<b>+28.3%</b>	<b>+28.3%</b>	<b>+3.9%</b>
Nursing Bank	17	-28	-31	-21	-21	-6	-62.7%	-64.4%	-55.3%	-55.3%	-26.6%
Staff Midwives	1,489	+28	+44	+3	+3	+2	+1.9%	+3.0%	+0.2%	+0.2%	+0.2%
Staff Nurse [Intellectual Disability]	1,731	+2	+24	+40	+40	-135	+0.1%	+1.4%	+2.3%	+2.3%	-7.2%
Staff Nurse [Psychiatric]	3,240	+55	+93	+169	+169	+173	+1.7%	+2.9%	+5.5%	+5.5%	+5.6%

Jul 2021 (Dec 2020 figure: 126,174)	WTE Jul 2021	WTE change since Dec 16	WTE change since Dec 17	WTE change since Dec 18	WTE change since Dec 18	WTE change since Dec 20	% change since Dec 16	% change since Dec 17	% change since Dec 18	% change since Dec 18	% change since Dec 20
<b>Overall</b>	<b>130,536</b>	<b>+20,278</b>	<b>+16,240</b>	<b>+12,678</b>	<b>+12,678</b>	<b>+4,361</b>	<b>+18.4%</b>	<b>+14.2%</b>	<b>+10.8%</b>	<b>+10.8%</b>	<b>+3.5%</b>
Staff Nurses [General/ Children's]	20,894	+2,546	+1,925	+1,585	+1,585	+573	+13.9%	+10.1%	+8.2%	+8.2%	+2.8%
<b>Staff Nurse/ Staff Midwife</b>	<b>27,370</b>	<b>+2,602</b>	<b>+2,055</b>	<b>+1,775</b>	<b>+1,775</b>	<b>+607</b>	<b>+10.5%</b>	<b>+8.1%</b>	<b>+6.9%</b>	<b>+6.9%</b>	<b>+2.3%</b>
<b>Public Health Nurse</b>	<b>1,513</b>	<b>+14</b>	<b>-1</b>	<b>-27</b>	<b>-27</b>	<b>-44</b>	<b>+1.0%</b>	<b>-0.1%</b>	<b>-1.8%</b>	<b>-1.8%</b>	<b>-2.8%</b>
Pre-registration Nurse/ Midwife Intern	773	+681	+673	+640	+640	+745	+738.2%	+671.0%	+478.0%	+478.0%	+2646.5%
Pre-registration Nurse Intern (COVID-19)	8	+8	+8	+8	+8	-222	-100.0%	-100.0%	-100.0%	-100.0%	-96.6%
Post-registration Nurse/ Midwife Student	180	-90	-100	-85	-85	-78	-33.3%	-35.7%	-32.1%	-32.1%	-30.1%
Nursing/ Midwifery awaiting registration	37	-6	-83	-97	-97	-39	-14.1%	-69.1%	-72.4%	-72.4%	-51.3%
<b>Nursing/ Midwifery Student</b>	<b>998</b>	<b>+593</b>	<b>+498</b>	<b>+465</b>	<b>+465</b>	<b>+407</b>	<b>+146.4%</b>	<b>+99.6%</b>	<b>+87.4%</b>	<b>+87.4%</b>	<b>+68.7%</b>
Nursing Education/Clinical	295	+37	+40	+27	+27	-20	+14.5%	+15.5%	+10.0%	+10.0%	-6.4%
Other Nursing/ Midwifery	47	+0	-4	-1	-1	+1	+0.1%	-8.5%	-1.8%	-1.8%	+1.4%
<b>Nursing/ Midwifery other</b>	<b>343</b>	<b>+38</b>	<b>+35</b>	<b>+26</b>	<b>+26</b>	<b>-19</b>	<b>+12.3%</b>	<b>+11.4%</b>	<b>+8.2%</b>	<b>+8.2%</b>	<b>-5.3%</b>
<b>Nursing &amp; Midwifery</b>	<b>41,260</b>	<b>+5,425</b>	<b>+4,483</b>	<b>+3,616</b>	<b>+3,616</b>	<b>+1,343</b>	<b>+15.1%</b>	<b>+12.2%</b>	<b>+9.6%</b>	<b>+9.6%</b>	<b>+3.4%</b>
Dietitians	671	+177	+156	+89	+89	+33	+36.0%	+30.3%	+15.2%	+15.2%	+5.2%
Occupational Therapists	1,771	+296	+242	+187	+187	+68	+20.1%	+15.9%	+11.8%	+11.8%	+4.0%
Orthoptists	39	+12	+7	+6	+6	+2	+41.3%	+20.8%	+16.8%	+16.8%	+4.0%
Physiotherapists	2,015	+286	+205	+166	+166	+57	+16.5%	+11.3%	+9.0%	+9.0%	+2.9%
Podiatrists & Chiropodists	82	+14	+13	+12	+12	+2	+21.5%	+19.0%	+17.2%	+17.2%	+2.6%
Speech & Language Therapists	1,173	+143	+70	+60	+60	+23	+13.9%	+6.4%	+5.4%	+5.4%	+2.0%
<b>Therapy Professions</b>	<b>5,751</b>	<b>+928</b>	<b>+693</b>	<b>+519</b>	<b>+519</b>	<b>+185</b>	<b>+19.2%</b>	<b>+13.7%</b>	<b>+9.9%</b>	<b>+9.9%</b>	<b>+3.3%</b>
Audiology	85	+12	+7	+8	+8	+3	+16.3%	+8.6%	+11.0%	+11.0%	+3.7%
Biochemists	79	+13	+9	-0	-0	-5	+18.9%	+12.2%	-0.4%	-0.4%	-5.7%
Clinical Engineering	180	+33	+27	+24	+24	+9	+22.8%	+17.6%	+15.6%	+15.6%	+5.2%
Clinical Measurement	421	+66	+64	+52	+52	+7	+18.6%	+17.8%	+14.0%	+14.0%	+1.8%
Dosimetrists	16	+6	+7	+5	+5	+2	+54.2%	+81.0%	+48.9%	+48.9%	+13.0%
Medical Science	2,063	+97	+86	+75	+75	+18	+4.9%	+4.4%	+3.8%	+3.8%	+0.9%
Perfusionists	23	+4	+2	+3	+3	+1	+21.5%	+10.8%	+15.9%	+15.9%	+5.8%
Phlebotomists	195	+40	+33	+34	+34	+10	+25.6%	+20.5%	+20.8%	+20.8%	+5.6%
Physicists	183	+22	+21	-6	-6	+5	+13.5%	+13.3%	-3.4%	-3.4%	+2.7%
Radiation Therapists	209	+22	+24	+17	+17	-3	+11.5%	+12.8%	+8.9%	+8.9%	-1.3%
Radiographers	1,380	+260	+218	+173	+173	+56	+23.2%	+18.7%	+14.4%	+14.4%	+4.2%
<b>Health Science/ Diagnostics</b>	<b>4,834</b>	<b>+574</b>	<b>+497</b>	<b>+385</b>	<b>+385</b>	<b>+103</b>	<b>+13.5%</b>	<b>+11.5%</b>	<b>+8.7%</b>	<b>+8.7%</b>	<b>+2.2%</b>
Social Care	3,009	+689	+542	+402	+402	+101	+29.7%	+22.0%	+15.4%	+15.4%	+3.5%
<b>Social Care</b>	<b>3,009</b>	<b>+689</b>	<b>+542</b>	<b>+402</b>	<b>+402</b>	<b>+101</b>	<b>+29.7%</b>	<b>+22.0%</b>	<b>+15.4%</b>	<b>+15.4%</b>	<b>+3.5%</b>
Social Workers	1,265	+135	+117	+93	+93	+27	+11.9%	+10.2%	+7.9%	+7.9%	+2.2%
<b>Social Workers</b>	<b>1,265</b>	<b>+135</b>	<b>+117</b>	<b>+93</b>	<b>+93</b>	<b>+27</b>	<b>+11.9%</b>	<b>+10.2%</b>	<b>+7.9%</b>	<b>+7.9%</b>	<b>+2.2%</b>
Psychologists	1,085	+164	+121	+100	+100	+19	+17.8%	+12.5%	+10.2%	+10.2%	+1.7%

Jul 2021 (Dec 2020 figure: 126,174)	WTE Jul 2021	WTE change since Dec 16	WTE change since Dec 17	WTE change since Dec 18	WTE change since Dec 18	WTE change since Dec 20	% change since Dec 16	% change since Dec 17	% change since Dec 18	% change since Dec 18	% change since Dec 20
<b>Overall</b>	<b>130,536</b>	<b>+20,278</b>	<b>+16,240</b>	<b>+12,678</b>	<b>+12,678</b>	<b>+4,361</b>	<b>+18.4%</b>	<b>+14.2%</b>	<b>+10.8%</b>	<b>+10.8%</b>	<b>+3.5%</b>
<b>Psychologists</b>	<b>1,085</b>	<b>+164</b>	<b>+121</b>	<b>+100</b>	<b>+100</b>	<b>+19</b>	<b>+17.8%</b>	<b>+12.5%</b>	<b>+10.2%</b>	<b>+10.2%</b>	<b>+1.7%</b>
Pharmacy	1,229	+376	+331	+254	+254	+66	+44.0%	+36.8%	+26.1%	+26.1%	+5.7%
<b>Pharmacy</b>	<b>1,229</b>	<b>+376</b>	<b>+331</b>	<b>+254</b>	<b>+254</b>	<b>+66</b>	<b>+44.0%</b>	<b>+36.8%</b>	<b>+26.1%</b>	<b>+26.1%</b>	<b>+5.7%</b>
Counsellor Therapists	267	+43	+34	+40	+40	+24	+19.4%	+14.4%	+17.8%	+17.8%	+9.8%
Dental Hygienists	60	+4	+5	+2	+2	-2	+7.6%	+8.7%	+3.1%	+3.1%	-3.2%
Environmental Health Officers	552	+82	+78	+77	+77	+10	+17.4%	+16.4%	+16.1%	+16.1%	+1.9%
HSCP Trainees/ Students	34	-47	-53	-57	-57	-22	-58.0%	-60.7%	-62.5%	-62.5%	-38.9%
Other Health & Social Care	177	-4	-9	-3	-3	-12	-2.4%	-4.6%	-1.5%	-1.5%	-6.3%
Play Therapists/ Specialists	45	+2	+2	-1	-1	+2	+4.7%	+3.7%	-2.4%	-2.4%	+4.9%
Vaccinators	243	+243	+243	+243	+243	+243	-100.0%	-100.0%	-100.0%	-100.0%	-100.0%
<b>H&amp;SC, Other</b>	<b>1,378</b>	<b>+323</b>	<b>+300</b>	<b>+302</b>	<b>+302</b>	<b>+244</b>	<b>+30.6%</b>	<b>+27.8%</b>	<b>+28.0%</b>	<b>+28.0%</b>	<b>+21.5%</b>
<b>Health &amp; Social Care Professionals</b>	<b>18,552</b>	<b>+3,188</b>	<b>+2,602</b>	<b>+2,056</b>	<b>+2,056</b>	<b>+745</b>	<b>+20.8%</b>	<b>+16.3%</b>	<b>+12.5%</b>	<b>+12.5%</b>	<b>+4.2%</b>
Executive Management	389	+120	+90	+68	+68	+16	+44.8%	+30.0%	+21.2%	+21.2%	+4.4%
Senior Management (VIII & GM)	1,689	+513	+379	+264	+264	+92	+43.7%	+29.0%	+18.5%	+18.5%	+5.8%
<b>Management (VIII &amp; above)</b>	<b>2,078</b>	<b>+634</b>	<b>+469</b>	<b>+332</b>	<b>+332</b>	<b>+109</b>	<b>+43.9%</b>	<b>+29.2%</b>	<b>+19.0%</b>	<b>+19.0%</b>	<b>+5.5%</b>
Middle Management (V-VII)	6,261	+2,249	+1,850	+1,449	+1,449	+474	+56.1%	+42.0%	+30.1%	+30.1%	+8.2%
Other Administrative	44	+5	+4	-1	-1	+9	+13.2%	+11.3%	-1.6%	-1.6%	+26.3%
<b>Administrative/ Supervisory (V to VII)</b>	<b>6,305</b>	<b>+2,254</b>	<b>+1,855</b>	<b>+1,448</b>	<b>+1,448</b>	<b>+484</b>	<b>+55.7%</b>	<b>+41.7%</b>	<b>+29.8%</b>	<b>+29.8%</b>	<b>+8.3%</b>
<b>Clerical (III &amp; IV)</b>	<b>12,671</b>	<b>+1,400</b>	<b>+1,016</b>	<b>+770</b>	<b>+770</b>	<b>+633</b>	<b>+12.4%</b>	<b>+8.7%</b>	<b>+6.5%</b>	<b>+6.5%</b>	<b>+5.3%</b>
<b>Management &amp; Administrative</b>	<b>21,054</b>	<b>+4,288</b>	<b>+3,340</b>	<b>+2,550</b>	<b>+2,550</b>	<b>+1,225</b>	<b>+25.6%</b>	<b>+18.9%</b>	<b>+13.8%</b>	<b>+13.8%</b>	<b>+6.2%</b>
Catering	868	+13	+8	+10	+10	-19	+1.6%	+0.9%	+1.2%	+1.2%	-2.2%
Household Services	4,643	+340	+367	+380	+380	+72	+7.9%	+8.6%	+8.9%	+8.9%	+1.6%
Other Labs & Associated	572	+243	+225	+209	+209	+124	+74.1%	+64.6%	+57.8%	+57.8%	+27.7%
Other Support	1,094	-54	-67	-74	-74	-5	-4.7%	-5.8%	-6.3%	-6.3%	-0.5%
Portering	1,682	+59	+52	+60	+60	+13	+3.6%	+3.2%	+3.7%	+3.7%	+0.8%
<b>Support</b>	<b>8,860</b>	<b>+602</b>	<b>+583</b>	<b>+585</b>	<b>+585</b>	<b>+184</b>	<b>+7.3%</b>	<b>+7.0%</b>	<b>+7.1%</b>	<b>+7.1%</b>	<b>+2.1%</b>
Maintenance	1,059	-44	-25	-9	-9	-11	-4.0%	-2.3%	-0.9%	-0.9%	-1.1%
Technical Services	142	+55	+48	+30	+30	+12	+63.2%	+51.9%	+27.3%	+27.3%	+9.4%
<b>Maintenance/ Technical</b>	<b>1,201</b>	<b>+11</b>	<b>+23</b>	<b>+21</b>	<b>+21</b>	<b>+1</b>	<b>+0.9%</b>	<b>+2.0%</b>	<b>+1.8%</b>	<b>+1.8%</b>	<b>+0.1%</b>
<b>General Support</b>	<b>10,060</b>	<b>+613</b>	<b>+607</b>	<b>+606</b>	<b>+606</b>	<b>+185</b>	<b>+6.5%</b>	<b>+6.4%</b>	<b>+6.4%</b>	<b>+6.4%</b>	<b>+1.9%</b>
HCA, Nurse's Aide, etc.	18,250	+2,866	+2,199	+1,449	+1,449	+561	+18.6%	+13.7%	+8.6%	+8.6%	+3.2%
Health & Social Care Assistants	336	+177	+164	+46	+46	+29	+111.2%	+95.8%	+15.8%	+15.8%	+9.3%
Swabber (COVID-19)	617	+617	+617	+617	+617	+133	-100.0%	-100.0%	-100.0%	-100.0%	+27.4%
HCA (Student Nurse/Midwife COVID-19)	11	+11	+11	+11	+11	-62	-100.0%	-100.0%	-100.0%	-100.0%	-85.4%
<b>Health Care Assistants</b>	<b>19,213</b>	<b>+3,670</b>	<b>+2,991</b>	<b>+2,122</b>	<b>+2,122</b>	<b>+660</b>	<b>+23.6%</b>	<b>+18.4%</b>	<b>+12.4%</b>	<b>+12.4%</b>	<b>+3.6%</b>

Jul 2021 (Dec 2020 figure: 126,174)	WTE Jul 2021	WTE change since Dec 16	WTE change since Dec 17	WTE change since Dec 18	WTE change since Dec 18	WTE change since Dec 20	% change since Dec 16	% change since Dec 17	% change since Dec 18	% change since Dec 18	% change since Dec 20
<b>Overall</b>	<b>130,536</b>	<b>+20,278</b>	<b>+16,240</b>	<b>+12,678</b>	<b>+12,678</b>	<b>+4,361</b>	<b>+18.4%</b>	<b>+14.2%</b>	<b>+10.8%</b>	<b>+10.8%</b>	<b>+3.5%</b>
<b>Home Help</b>	<b>3,470</b>	<b>+297</b>	<b>-32</b>	<b>-82</b>	<b>-82</b>	<b>-73</b>	<b>+9.3%</b>	<b>-0.9%</b>	<b>-2.3%</b>	<b>-2.3%</b>	<b>-2.1%</b>
Ambulance Control	174	+13	+7	+16	+16	-7	+7.8%	+4.4%	+10.0%	+10.0%	-3.9%
Ambulance Education	191	+31	+6	+6	+6	+53	+19.7%	+3.2%	+3.4%	+3.4%	+38.0%
Ambulance Officers	85	+13	+13	+8	+8	+0	+18.7%	+18.4%	+10.9%	+10.9%	+0.6%
Pre-Hospital Care (Ambulance)	1,475	+227	+154	+113	+113	+2	+18.2%	+11.6%	+8.3%	+8.3%	+0.1%
<b>Ambulance Staff</b>	<b>1,925</b>	<b>+285</b>	<b>+180</b>	<b>+143</b>	<b>+143</b>	<b>+48</b>	<b>+17.4%</b>	<b>+10.3%</b>	<b>+8.0%</b>	<b>+8.0%</b>	<b>+2.6%</b>
Other Care Grades	3,133	+368	+321	+266	+266	+122	+13.3%	+11.4%	+9.3%	+9.3%	+4.0%
<b>Care, other</b>	<b>3,133</b>	<b>+368</b>	<b>+321</b>	<b>+266</b>	<b>+266</b>	<b>+122</b>	<b>+13.3%</b>	<b>+11.4%</b>	<b>+9.3%</b>	<b>+9.3%</b>	<b>+4.0%</b>
<b>Patient &amp; Client Care</b>	<b>27,741</b>	<b>+4,619</b>	<b>+3,460</b>	<b>+2,450</b>	<b>+2,450</b>	<b>+756</b>	<b>+20.0%</b>	<b>+14.3%</b>	<b>+9.7%</b>	<b>+9.7%</b>	<b>+2.8%</b>

Source: Health Service Personnel Census