

Health Service Employment Report: April 2020

by Service Area

Apr 2020 (Dec 2019 figure: 119,817)	WTE Mar 2020	WTE Apr 2020	WTE change since Mar 20	% change since Mar 20	WTE change since Dec 19	WTE change since Apr 19
Overall	120,469	121,702	+1,234	+1.0%	+1,885	+2,324
National Ambulance Service	1,939	1,950	+10	+0.5%	+17	+54
Children's Health Ireland	3,613	3,630	+17	+0.5%	+27	+178
Dublin Midlands Hospital Group	10,941	11,075	+135	+1.2%	+257	+448
Ireland East Hospital Group	12,203	12,435	+232	+1.9%	+390	+521
RCSI Hospitals Group	9,828	9,967	+140	+1.4%	+304	+595
Saolta University Hospital Care	9,294	9,408	+114	+1.2%	+155	+92
South/South West Hospital Group	10,578	10,806	+228	+2.2%	+279	+313
University of Limerick Hospital Group	4,195	4,215	+20	+0.5%	+69	+4
other Acute Services	571	577	+7	+1.2%	+29	+44
Acute Services	63,161	64,064	+903	+1.4%	+1,526	+2,247
CHO 1	5,516	5,534	+18	+0.3%	+66	+9
CHO 2	5,475	5,473	-2	-0.0%	-72	-66
CHO 3	4,362	4,388	+25	+0.6%	+31	+55
CHO 4	8,243	8,290	+47	+0.6%	+101	+53
CHO 5	5,275	5,280	+4	+0.1%	-2	-27
CHO 6	3,352	3,344	-8	-0.2%	-34	-58
CHO 7	6,516	6,580	+64	+1.0%	+65	-49
CHO 8	6,160	6,215	+56	+0.9%	+80	+6
CHO 9	6,589	6,651	+62	+0.9%	+69	-40
other Community Services	655	660	+5	+0.8%	+22	+62
Community Services	52,143	52,414	+271	+0.5%	+326	-57
Health & Wellbeing	478	502	+23	+4.9%	-72	-77
Corporate	3,107	3,136	+28	+0.9%	+101	+254
Health Business Services	1,579	1,587	+8	+0.5%	+4	-43
H&WB, Corporate & National Services	5,164	5,224	+60	+1.2%	+33	+133

Employment by Staff Group

Apr 2020 (Dec 2019 figure: 119,817)	WTE Mar 2020	WTE Apr 2020	WTE change since Mar 20	% change since Mar 20	WTE change since Dec 19	WTE change since Apr 19
Overall	120,469	121,702	+1,234	+1.0%	+1,885	+2,324
Consultants	3,281	3,346	+65	+2.0%	+96	+251
Registrars	3,670	3,717	+47	+1.3%	+37	+223
SHO/ Interns	3,087	3,175	+88	+2.8%	+59	+105
Medical/ Dental, other	795	817	+22	+2.7%	+6	-9
Medical & Dental	10,833	11,055	+222	+2.0%	+198	+570
Nurse/ Midwife Manager	8,047	8,151	+104	+1.3%	+167	+297
Nurse/ Midwife Specialist & AN/MP	2,078	2,110	+32	+1.5%	+114	+173
Staff Nurse/ Staff Midwife	25,777	25,854	+77	+0.3%	+161	+129
Public Health Nurse	1,510	1,522	+12	+0.8%	-15	-20
<i>Pre-registration Nurse/ Midwife Intern</i>	698	875	+177	+25.3%	+736	+238
<i>Post-registration Nurse/ Midwife Student</i>	286	281	-5	-1.6%	-12	+20
<i>Nursing/ Midwifery awaiting registration</i>	72	70	-2	-3.3%	-143	+34
Nursing/ Midwifery Student	1,056	1,226	+170	+16.1%	+581	+293
Nursing/ Midwifery other	356	366	+10	+2.7%	+16	+51
Nursing & Midwifery	38,824	39,229	+405	+1.0%	+1,024	+922
Therapy Professions	5,265	5,332	+67	+1.3%	+98	+21
Health Science/ Diagnostics	4,590	4,675	+85	+1.9%	+117	+172
Social Care	2,712	2,713	+0	+0.0%	+2	+57
Social Workers	1,174	1,186	+12	+1.0%	+21	+13
Psychologists	1,006	1,010	+4	+0.4%	+6	+1
Pharmacy	1,078	1,085	+7	+0.6%	+47	+100
H&SC, Other	1,074	1,055	-19	-1.8%	-10	+24
Health & Social Care Professionals	16,899	17,056	+156	+0.9%	+282	+387
Management (VIII & above)	1,860	1,881	+21	+1.1%	+39	+96
Administrative/ Supervisory (V to VII)	5,306	5,366	+60	+1.1%	+167	+353
Clerical (III & IV)	11,806	11,855	+50	+0.4%	+50	-152
Management & Administrative	18,972	19,102	+131	+0.7%	+256	+296
Support	8,438	8,604	+166	+2.0%	+370	+290
Maintenance/ Technical	1,189	1,195	+6	+0.5%	+12	+22
General Support	9,627	9,799	+172	+1.8%	+383	+311
Health Care Assistants	17,118	17,282	+164	+1.0%	-114	-23
Home Help	3,457	3,445	-12	-0.4%	-124	-156
Ambulance Staff	1,832	1,842	+10	+0.5%	+14	+47
Care, other	2,906	2,893	-14	-0.5%	-34	-31
Patient & Client Care	25,314	25,461	+148	+0.6%	-257	-163

Employment by Administration (HSE / S38): April 2020

Apr 2020 (Dec 2019 figure: 119,817)	WTE Mar 2020	WTE Apr 2020	WTE change since Mar 20	% change since Mar 20	WTE change since Dec 19	WTE change since Apr 19
Overall	120,469	121,702	+1,234	+1.0%	+1,885	+2,324
HSE	77,215	77,934	+719	+0.9%	+1,029	+509
Section 38 Hospitals	27,101	27,532	+430	+1.6%	+845	+1,509
Section 38 Voluntary Agencies	16,152	16,236	+84	+0.5%	+11	+306

HSE

Apr 2020 (Dec 2019 figure: 76,372)	WTE Mar 2020	WTE Apr 2020	WTE change since Mar 20	% change since Mar 20	WTE change since Dec 19	WTE change since Apr 19
Overall	77,215	77,934	+719	+0.9%	+1,029	+509
Consultants	1,901	1,921	+21	+1.1%	+23	+116
Registrars	2,302	2,317	+15	+0.6%	+4	+117
SHO/ Interns	2,005	2,008	+3	+0.1%	-39	+2
Medical/ Dental, other	746	769	+23	+3.1%	+5	-10
Medical & Dental	6,954	7,016	+61	+0.9%	-7	+225
Nurse/ Midwife Manager	5,037	5,120	+83	+1.6%	+135	+204
Nurse/ Midwife Specialist & AN/MP	1,324	1,348	+24	+1.8%	+71	+102
Staff Nurse/ Staff Midwife	16,623	16,656	+32	+0.2%	+69	-168
Public Health Nurse	1,510	1,522	+12	+0.8%	-15	-20
<i>Pre-registration Nurse/ Midwife Intern</i>	414	505	+92	+22.1%	+446	+125
<i>Post-registration Nurse/ Midwife Student</i>	168	164	-4	-2.7%	-10	+17
<i>Nursing/ Midwifery awaiting registration</i>	37	40	+3	+8.0%	-101	+22
Nursing/ Midwifery Student	619	709	+90	+14.5%	+335	+163
Nursing/ Midwifery other	192	197	+6	+2.9%	+14	+29
Nursing & Midwifery	25,306	25,552	+246	+1.0%	+609	+310
Therapy Professions	3,663	3,706	+43	+1.2%	+59	-38
Health Science/ Diagnostics	2,720	2,769	+49	+1.8%	+82	+102
Social Care	176	176	+0	+0.1%	-1	-4
Social Workers	708	716	+8	+1.1%	+14	-4
Psychologists	756	758	+2	+0.3%	-9	-18
Pharmacy	593	596	+2	+0.4%	+25	+45
H&SC, Other	913	904	-10	-1.1%	+1	+33
Health & Social Care Professionals	9,529	9,625	+95	+1.0%	+172	+116
Management (VIII & above)	1,450	1,469	+18	+1.3%	+33	+92
Administrative/ Supervisory (V to VII)	3,413	3,458	+46	+1.3%	+122	+259
Clerical (III & IV)	8,400	8,414	+15	+0.2%	-1	-263
Management & Administrative	13,263	13,341	+79	+0.6%	+155	+87
Support	5,115	5,255	+140	+2.7%	+317	+223
Maintenance/ Technical	807	811	+4	+0.5%	-5	-3
General Support	5,922	6,065	+144	+2.4%	+311	+220
Health Care Assistants	9,687	9,776	+89	+0.9%	-107	-279
Home Help	3,457	3,445	-12	-0.4%	-124	-156
Ambulance Staff	1,832	1,842	+10	+0.5%	+14	+47
Care, other	1,264	1,272	+8	+0.6%	+6	-63
Patient & Client Care	16,241	16,335	+94	+0.6%	-211	-450

Section 38 Hospitals

Apr 2020 (Dec 2019 figure: 25,668)	WTE Mar 2020	WTE Apr 2020	WTE change since Mar 20	% change since Mar 20	WTE change since Dec 19	WTE change since Apr 19
Overall	27,101	27,532	+430	+1.6%	+845	+1,509
Consultants	1,333	1,376	+42	+3.2%	+73	+131
Registrars	1,329	1,361	+32	+2.4%	+37	+107
SHO/ Interns	1,045	1,130	+85	+8.1%	+97	+109
Medical/ Dental, other	24	23	-1	-6.2%	-0	-1
Medical & Dental	3,731	3,889	+158	+4.2%	+206	+346
Nurse/ Midwife Manager	2,231	2,250	+19	+0.8%	+27	+89
Nurse/ Midwife Specialist & AN/MP	670	677	+7	+1.1%	+41	+66
Staff Nurse/ Staff Midwife	6,978	7,020	+42	+0.6%	+104	+294
<i>Pre-registration Nurse/ Midwife Intern</i>	226	278	+52	+23.1%	+231	+79
<i>Post-registration Nurse/ Midwife Student</i>	117	117	-0	-0.0%	-2	+3
<i>Nursing/ Midwifery awaiting registration</i>	35	30	-5	-15.2%	-42	+13
Nursing/ Midwifery Student	378	425	+47	+12.4%	+187	+95
Nursing/ Midwifery other	144	147	+3	+2.1%	-0	+18
Nursing & Midwifery	10,401	10,519	+118	+1.1%	+358	+562
Therapy Professions	1,042	1,062	+20	+1.9%	+34	+40
Health Science/ Diagnostics	1,848	1,884	+36	+1.9%	+36	+71
<i>Social Care</i>	1	1				
Social Care	1	1				
Social Workers	259	261	+2	+0.6%	+4	+13
Psychologists	94	94	-0	-0.0%	+2	+8
Pharmacy	463	468	+5	+1.1%	+24	+55
H&SC, Other	98	91	-7	-7.1%	-7	-10
Health & Social Care Professionals	3,806	3,861	+56	+1.5%	+92	+177
Management (VIII & above)	265	265	+1	+0.3%	+6	+7
Administrative/ Supervisory (V to VII)	1,472	1,474	+1	+0.1%	+22	+70
Clerical (III & IV)	2,785	2,805	+21	+0.7%	+33	+95
Management & Administrative	4,521	4,544	+23	+0.5%	+61	+172
Support	2,431	2,445	+14	+0.6%	+30	+62
Maintenance/ Technical	250	249	-0	-0.0%	+11	+24
General Support	2,680	2,695	+14	+0.5%	+41	+85
Health Care Assistants	1,895	1,958	+62	+3.3%	+85	+166
Care, other	66	66	-1	-1.1%	+0	+1
Patient & Client Care	1,962	2,023	+62	+3.1%	+85	+167

Section 38 Voluntary Agencies

Apr 2020 (Dec 2019 figure: 15,818)	WTE Mar 2020	WTE Apr 2020	WTE change since Mar 20	% change since Mar 20	WTE change since Dec 19	WTE change since Apr 19
Overall	16,152	16,236	+84	+0.5%	+11	+306
Consultants	47	49	+2	+4.9%	+1	+4
Registrars	39	39	-0	-0.8%	-4	-2
SHO/ Interns	37	37	-0	-0.1%	+1	-6
Medical/ Dental, other	25	25	+0	+1.4%	+1	+2
Medical & Dental	147	150	+2	+1.5%	-1	-1
Nurse/ Midwife Manager	778	781	+3	+0.4%	+5	+4
Nurse/ Midwife Specialist & AN/MP	84	85	+1	+1.2%	+1	+4
Staff Nurse/ Staff Midwife	2,175	2,179	+3	+0.2%	-11	+3
<i>Pre-registration Nurse/ Midwife Intern</i>	58	91	+33	+56.6%	+59	+34
Nursing/ Midwifery Student	58	91	+33	+56.6%	+59	+34
Nursing/ Midwifery other	21	22	+1	+5.1%	+3	+4
Nursing & Midwifery	3,116	3,158	+41	+1.3%	+57	+50
Therapy Professions	560	564	+3	+0.6%	+4	+20
Health Science/ Diagnostics	21	21	+0	+1.7%	-1	-1
Social Care	2,535	2,535	+0	+0.0%	+4	+60
Social Workers	207	209	+2	+1.2%	+4	+4
Psychologists	157	159	+2	+1.1%	+14	+10
Pharmacy	22	21	-1	-2.9%	-2	+0
H&SC, Other	62	60	-2	-3.8%	-5	+0
Health & Social Care Professionals	3,564	3,570	+5	+0.1%	+18	+94
Management (VIII & above)	145	147	+2	+1.1%	-1	-3
Administrative/ Supervisory (V to VII)	421	434	+13	+3.2%	+23	+24
Clerical (III & IV)	621	635	+14	+2.3%	+18	+15
Management & Administrative	1,187	1,217	+29	+2.5%	+40	+37
General Support	1,025	1,039	+14	+1.4%	+30	+6
Health Care Assistants	5,536	5,549	+13	+0.2%	-91	+89
Care, other	1,576	1,555	-21	-1.3%	-41	+31
Patient & Client Care	7,112	7,103	-8	-0.1%	-132	+120

Employment Acute, Community, HWB, Corporate, HBS: April 2020

Apr 2020 (Dec 2019 figure: 60,906)	WTE Mar 2020	WTE Apr 2020	WTE change since Mar 20	% change since Mar 20	WTE change since Dec 19	WTE change since Apr 19
Acute Services	63,161	64,064	+903	+1.4%	+1,526	+2,247
Consultants	2,814	2,870	+57	+2.0%	+88	+220
Registrars	2,965	3,003	+38	+1.3%	+61	+184
SHO/ Interns	2,769	2,864	+95	+3.4%	+69	+128
Medical/ Dental, other	59	57	-2	-3.3%	-2	-5
Medical & Dental	8,606	8,794	+188	+2.2%	+216	+526
Nurse/ Midwife Manager	4,745	4,798	+53	+1.1%	+88	+209
Nurse/ Midwife Specialist & AN/MP	1,345	1,363	+18	+1.4%	+71	+117
Staff Nurse/ Staff Midwife	16,713	16,791	+78	+0.5%	+115	+239
Public Health Nurse	1	1	-1	-40.3%	-1	-1
Pre-registration Nurse/ Midwife Intern	480	596	+116	+24.1%	+513	+155
Post-registration Nurse/ Midwife Student	188	185	-4	-1.9%	-11	+12
Nursing/ Midwifery awaiting registration	40	33	-8	-18.6%	-106	+1
Nursing/ Midwifery Student	708	813	+105	+14.8%	+396	+168
Nursing/ Midwifery other	224	228	+4	+1.7%	+4	+25
Nursing & Midwifery	23,737	23,994	+257	+1.1%	+673	+757
Therapy Professions	2,027	2,072	+45	+2.2%	+65	+65
Health Science/ Diagnostics	4,276	4,356	+80	+1.9%	+113	+182
Social Care	3	3			+0	+1
Social Workers	358	361	+2	+0.6%	+6	+16
Psychologists	104	104	-1	-0.8%	+3	+9
Pharmacy	933	940	+7	+0.8%	+39	+84
H&SC, Other	160	134	-25	-15.8%	-16	-38
Health & Social Care Professionals	7,861	7,970	+109	+1.4%	+210	+319
Management (VIII & above)	522	530	+8	+1.5%	+12	+26
Administrative/ Supervisory (V to VII)	2,377	2,386	+9	+0.4%	+60	+160
Clerical (III & IV)	6,613	6,647	+34	+0.5%	+41	-15
Management & Administrative	9,512	9,562	+50	+0.5%	+112	+171
Support	5,829	5,983	+154	+2.6%	+353	+353
Maintenance/ Technical	534	537	+3	+0.5%	+6	+31
General Support	6,363	6,520	+157	+2.5%	+360	+384
Health Care Assistants	5,082	5,217	+135	+2.6%	-57	+51
Ambulance Staff	1,829	1,839	+10	+0.5%	+14	+44
Care, other	171	168	-3	-1.7%	-1	-5
Patient & Client Care	7,082	7,223	+141	+2.0%	-44	+90

Apr 2020 (Dec 2019 figure: 51,953)	WTE Mar 2020	WTE Apr 2020	WTE change since Mar 20	% change since Mar 20	WTE change since Dec 19	WTE change since Apr 19
Community Services	52,143	52,414	+271	+0.5%	+326	-57
Consultants	423	432	+9	+2.0%	+8	+30
Registrars	660	668	+8	+1.3%	-18	+42
SHO/ Interns	316	308	-7	-2.4%	-12	-25
Medical/ Dental, other	621	627	+7	+1.1%	-8	-25
Medical & Dental	2,020	2,036	+16	+0.8%	-30	+22
Nurse/ Midwife Manager	3,181	3,225	+45	+1.4%	+71	+75
Nurse/ Midwife Specialist & AN/MP	718	731	+13	+1.9%	+41	+55
Staff Nurse/ Staff Midwife	9,060	9,057	-3	-0.0%	+43	-113
Public Health Nurse	1,507	1,520	+12	+0.8%	-13	-18
Nursing/ Midwifery Student	348	413	+65	+18.7%	+185	+125
Nursing/ Midwifery other	62	67	+5	+8.6%	+8	+12
Nursing & Midwifery	14,876	15,013	+137	+0.9%	+337	+136
Therapy Professions	3,227	3,248	+21	+0.6%	+42	-38
Health Science/ Diagnostics	131	135	+4	+3.4%	+0	-3
Social Care	2,709	2,709	+1	+0.0%	+2	+56
Social Workers	812	822	+10	+1.2%	+16	-2
Psychologists	900	905	+5	+0.5%	+3	-8
Pharmacy	100	99	-1	-0.7%	+1	+1
H&SC, Other	371	370	-0	-0.1%	-7	-3
Health & Social Care Professionals	8,249	8,288	+39	+0.5%	+58	+3
Management (VIII & above)	624	628	+5	+0.7%	+11	+28
Administrative/ Supervisory (V to VII)	1,563	1,598	+35	+2.3%	+98	+113
Clerical (III & IV)	3,699	3,718	+20	+0.5%	+23	-60
Management & Administrative	5,885	5,945	+60	+1.0%	+133	+80
Support	2,495	2,508	+13	+0.5%	+18	-60
Maintenance/ Technical	415	418	+3	+0.6%	+5	-9
General Support	2,911	2,926	+15	+0.5%	+23	-68
Health Care Assistants	12,025	12,055	+30	+0.2%	-56	-74
Home Help	3,457	3,445	-12	-0.4%	-124	-156
Care, other	2,720	2,707	-13	-0.5%	-14	+0
Patient & Client Care	18,202	18,207	+4	+0.0%	-195	-230

Apr 2020 (Dec 2019 figure: 4,998)	WTE Mar 2020	WTE Apr 2020	WTE change since Mar 20	% change since Mar 20	WTE change since Dec 19	WTE change since Apr 19
H&WB, Corporate & National Services	5,164	5,224	+60	+1.2%	+33	+133
Consultants	44	44	+0	+0.5%	-0	+2
Registrars	46	46	-0	-0.1%	-6	-4
SHO/ Interns	2	3	+1	+25.0%	+2	+3
Medical/ Dental, other	115	133	+17	+15.0%	+16	+21
Medical & Dental	207	225	+18	+8.7%	+11	+22
Nurse/ Midwife Manager	120	127	+7	+6.0%	+8	+13
Nurse/ Midwife Specialist & AN/MP	15	16	+0	+2.8%	+1	+1
Staff Nurse/ Staff Midwife	4	6	+2	+61.3%	+3	+3
Public Health Nurse	2	2			-2	-2
Nursing/ Midwifery other	71	71	+1	+0.8%	+4	+14
Nursing & Midwifery	211	222	+10	+4.9%	+15	+28
Therapy Professions	11	12	+1	+9.0%	-9	-6
Health Science/ Diagnostics	183	184	+0	+0.2%	+4	-7
Social Workers	3	3	+0	+6.3%	-1	-1
Psychologists	2	2				+0
Pharmacy	46	46	+0	+0.4%	+7	+14
H&SC, Other	544	551	+7	+1.2%	+12	+66
Health & Social Care Professionals	789	798	+8	+1.1%	+14	+66
Management (VIII & above)	715	723	+8	+1.1%	+16	+43
Administrative/ Supervisory (V to VII)	1,366	1,383	+16	+1.2%	+9	+80
Clerical (III & IV)	1,494	1,491	-4	-0.2%	-13	-78
Management & Administrative	3,575	3,596	+21	+0.6%	+11	+45
Support	114	113	-1	-0.4%	-1	-4
Maintenance/ Technical	239	240	+1	+0.3%	+1	-0
General Support	353	353	+0	+0.1%	+0	-4
Health Care Assistants	10	10	-0	-0.9%	-0	-0
Ambulance Staff	3	3				+3
Care, other	16	18	+2	+13.5%	-18	-27
Patient & Client Care	29	31	+2	+7.0%	-18	-24

Employment by Hospital Group, CHO etc. Apr 2020

National Ambulance Service

Apr 2020 (Dec 2019 figure: 1,933)	WTE Mar 2020	WTE Apr 2020	WTE change since Mar 20	% change since Mar 20	WTE change since Dec 19	WTE change since Apr 19
Overall	1,939	1,950	+10	+0.5%	+17	+54
Consultants	1	1				
Medical & Dental	1	1				
Nurse/ Midwife Manager	1	1				+0
Staff Nurse/ Staff Midwife	1	1				-1
Nursing & Midwifery	2	2				-1
Therapy Professions	1	1				
Health & Social Care Professionals	1	1				
Management (VIII & above)	13	13	+0	+1.2%	+1	+5
Administrative/ Supervisory (V to VII)	32	33	+0	+1.1%	+4	+8
Clerical (III & IV)	39	39	-0	-0.5%	-3	-2
Management & Administrative	84	84	+0	+0.4%	+2	+10
Support	4	4				+0
Maintenance/ Technical	2	2				
General Support	6	6				+0
Health Care Assistants	2	2				+0
Ambulance Staff	1,829	1,839	+10	+0.5%	+14	+44
Care, other	14	15	+0	+2.7%	+0	+1
Patient & Client Care	1,846	1,856	+10	+0.5%	+14	+45

Children's Health Ireland

Apr 2020 (Dec 2019 figure: 3,602)	WTE Mar 2020	WTE Apr 2020	WTE change since Mar 20	% change since Mar 20	WTE change since Dec 19	WTE change since Apr 19
Overall	3,613	3,630	+17	+0.5%	+27	+178
Consultants	224	232	+8	+3.3%	+12	+17
Registrars	206	203	-4	-1.7%	-1	+16
SHO/ Interns	89	89	-0	-0.5%	+1	+10
Medical/ Dental, other	1	1				-1
Medical & Dental	521	525	+4	+0.7%	+11	+41
Nurse/ Midwife Manager	334	335	+1	+0.2%	+3	+15
Nurse/ Midwife Specialist & AN/MP	160	163	+2	+1.4%	+11	+22
Staff Nurse/ Staff Midwife	786	801	+16	+2.0%	-4	+1
Pre-registration Nurse/ Midwife Intern	1	1	+0	+90.0%	-11	+1
Post-registration Nurse/ Midwife Student	62	62	-0	-0.0%	-1	-6
Nursing/ Midwifery awaiting registration	7	6	-1	-17.1%	+6	+5
Nursing/ Midwifery Student	69	69	-1	-1.2%	-7	-0
Nursing/ Midwifery other	8	9	+0	+1.2%	-2	+1
Nursing & Midwifery	1,358	1,376	+18	+1.3%	+2	+39
Therapy Professions	144	146	+2	+1.6%	+10	+16
Health Science/ Diagnostics	282	283	+1	+0.5%	+3	+15
Social Workers	55	56	+1	+1.6%	-0	-0
Psychologists	40	40	+0	+0.0%	+2	+2
Pharmacy	46	46	+0	+0.6%	+2	+7
H&SC, Other	26	24	-2	-5.9%	-1	-2
Health & Social Care Professionals	593	596	+3	+0.5%	+15	+38
Management (VIII & above)	51	48	-3	-5.7%	-4	-3
Administrative/ Supervisory (V to VII)	279	280	+1	+0.2%	+8	+22
Clerical (III & IV)	419	417	-1	-0.3%	-3	+26
Management & Administrative	749	745	-4	-0.5%	+1	+44
Support	196	194	-2	-1.0%	-1	-1
Maintenance/ Technical	15	15				-1
General Support	211	209	-2	-0.9%	-1	-2
Health Care Assistants	167	165	-3	-1.6%	-0	+16
Care, other	14	14	+1	+5.7%	+0	+1
Patient & Client Care	181	179	-2	-1.0%	+0	+17

Dublin Midlands Hospital Group

Apr 2020 (Dec 2019 figure: 10,819)	WTE Mar 2020	WTE Apr 2020	WTE change since Mar 20	% change since Mar 20	WTE change since Dec 19	WTE change since Apr 19
Overall	10,941	11,075	+135	+1.2%	+257	+448
Consultants	473	490	+17	+3.7%	+26	+57
Registrars	495	508	+13	+2.6%	+18	+42
SHO/ Interns	419	424	+6	+1.3%	+1	+7
Medical/ Dental, other	8	7	-1	-11.0%	+0	-0
Medical & Dental	1,394	1,429	+35	+2.5%	+45	+106
Nurse/ Midwife Manager	876	883	+7	+0.9%	+6	+19
Nurse/ Midwife Specialist & AN/MP	214	220	+6	+2.9%	+15	+22
Staff Nurse/ Staff Midwife	2,837	2,840	+3	+0.1%	+4	+86
Pre-registration Nurse/ Midwife Intern	81	139	+59	+72.6%	+131	+55
Post-registration Nurse/ Midwife Student	13	13				+4
Nursing/ Midwifery awaiting registration	4	3	-1	-28.2%	-18	+2
Nursing/ Midwifery Student	98	155	+57	+58.8%	+113	+61
Nursing/ Midwifery other	36	36	+1	+2.2%	+1	+11
Nursing & Midwifery	4,059	4,134	+75	+1.8%	+139	+199
Therapy Professions	366	376	+9	+2.5%	+9	-1
Health Science/ Diagnostics	989	999	+10	+1.0%	+20	+50
Social Workers	83	84	+1	+0.6%	+4	+3
Psychologists	14	14	-0	-0.1%	+1	+1
Pharmacy	228	231	+3	+1.1%	+10	+21
H&SC, Other	37	36	-1	-2.6%	+2	-7
Health & Social Care Professionals	1,718	1,739	+21	+1.2%	+47	+68
Management (VIII & above)	115	117	+2	+1.5%	-0	+4
Administrative/ Supervisory (V to VII)	489	489	+0	+0.1%	-5	+10
Clerical (III & IV)	1,065	1,065	-1	-0.1%	+10	+5
Management & Administrative	1,669	1,670	+1	+0.1%	+4	+19
Support	766	768	+2	+0.2%	+4	+13
Maintenance/ Technical	131	131	-1	-0.4%	+1	+6
General Support	897	899	+1	+0.1%	+4	+19
Health Care Assistants	1,182	1,183	+1	+0.1%	+16	+37
Care, other	21	21	-0	-0.8%	+1	-0
Patient & Client Care	1,203	1,204	+1	+0.1%	+17	+37

Ireland East Hospital Group

Apr 2020 (Dec 2019 figure: 12,045)	WTE Mar 2020	WTE Apr 2020	WTE change since Mar 20	% change since Mar 20	WTE change since Dec 19	WTE change since Apr 19
Overall	12,203	12,435	+232	+1.9%	+390	+521
Consultants	552	569	+16	+3.0%	+30	+50
Registrars	611	627	+16	+2.7%	+9	+35
SHO/ Interns	566	613	+47	+8.4%	+43	+58
Medical/ Dental, other	24	23	-1	-3.4%	-2	-5
Medical & Dental	1,753	1,833	+79	+4.5%	+80	+137
Nurse/ Midwife Manager	931	940	+9	+0.9%	+10	+31
Nurse/ Midwife Specialist & AN/MP	316	315	-1	-0.3%	+8	+13
Staff Nurse/ Staff Midwife	3,267	3,274	+6	+0.2%	+36	+99
Pre-registration Nurse/ Midwife Intern	109	108	-1	-1.0%	+83	+25
Post-registration Nurse/ Midwife Student	21	21				-2
Nursing/ Midwifery awaiting registration				-100.0%	-11	-15
Nursing/ Midwifery Student	130	129	-1	-0.8%	+72	+8
Nursing/ Midwifery other	76	76	-0	-0.2%	+1	+2
Nursing & Midwifery	4,721	4,733	+13	+0.3%	+126	+153
Therapy Professions	429	438	+9	+2.0%	+16	+20
Health Science/ Diagnostics	744	759	+15	+2.0%	+25	+33
Social Workers	69	69	+1	+1.0%	-1	+9
Psychologists	21	20	-0	-2.2%	-2	+3
Pharmacy	195	193	-2	-0.8%	+5	+13
H&SC, Other	29	31	+3	+8.8%	+5	+3
Health & Social Care Professionals	1,486	1,511	+25	+1.7%	+50	+81
Management (VIII & above)	88	93	+5	+5.7%	+10	+6
Administrative/ Supervisory (V to VII)	523	521	-2	-0.5%	+4	+18
Clerical (III & IV)	1,218	1,243	+25	+2.0%	+29	+35
Management & Administrative	1,829	1,856	+27	+1.5%	+43	+60
Support	1,317	1,364	+46	+3.5%	+40	+39
Maintenance/ Technical	119	118	-1	-0.5%	+6	+11
General Support	1,436	1,482	+46	+3.2%	+46	+50
Health Care Assistants	953	995	+43	+4.5%	+46	+41
Care, other	25	24	-1	-3.8%	-2	-1
Patient & Client Care	978	1,020	+42	+4.3%	+45	+40

RCSI Hospitals Group

Apr 2020 (Dec 2019 figure: 9,663)	WTE Mar 2020	WTE Apr 2020	WTE change since Mar 20	% change since Mar 20	WTE change since Dec 19	WTE change since Apr 19
Overall	9,828	9,967	+140	+1.4%	+304	+595
Consultants	446	450	+4	+0.9%	+9	+23
Registrars	496	496	+0	+0.1%	+15	+23
SHO/ Interns	445	475	+30	+6.8%	+36	+42
Medical/ Dental, other	6	6	+0	+0.0%	+0	+1
Medical & Dental	1,392	1,426	+34	+2.5%	+60	+89
Nurse/ Midwife Manager	791	805	+14	+1.7%	+35	+37
Nurse/ Midwife Specialist & AN/MP	192	194	+2	+0.8%	+8	+26
Staff Nurse/ Staff Midwife	2,644	2,661	+18	+0.7%	+73	+158
Pre-registration Nurse/ Midwife Intern	79	94	+15	+18.8%	+91	+26
Post-registration Nurse/ Midwife Student	39	39	-0	-0.1%	-2	+14
Nursing/ Midwifery awaiting registration	27	21	-6	-22.2%	-41	+18
Nursing/ Midwifery Student	145	154	+9	+6.1%	+48	+58
Nursing/ Midwifery other	41	44	+4	+8.9%	+1	+7
Nursing & Midwifery	3,813	3,858	+45	+1.2%	+166	+286
Therapy Professions	328	336	+8	+2.3%	+4	+4
Health Science/ Diagnostics	580	589	+10	+1.7%	+1	+8
Social Workers	65	65	+0	+0.3%	-1	+2
Psychologists	12	12				+2
Pharmacy	131	133	+2	+1.1%	+6	+22
H&SC, Other	12	11	-1	-8.2%	-3	-1
Health & Social Care Professionals	1,128	1,146	+18	+1.6%	+6	+37
Management (VIII & above)	87	88	+1	+1.1%	+6	+8
Administrative/ Supervisory (V to VII)	362	366	+4	+1.1%	+17	+22
Clerical (III & IV)	1,032	1,022	-10	-1.0%	-10	+1
Management & Administrative	1,481	1,476	-5	-0.3%	+13	+31
Support	973	978	+4	+0.4%	+4	+4
Maintenance/ Technical	89	88	-0	-0.2%	-1	+13
General Support	1,062	1,066	+4	+0.4%	+3	+17
Health Care Assistants	914	960	+46	+5.0%	+57	+139
Care, other	38	35	-3	-8.0%	-2	-4
Patient & Client Care	952	995	+43	+4.5%	+55	+135

Saolta University Hospital Care

Apr 2020 (Dec 2019 figure: 9,253)	WTE Mar 2020	WTE Apr 2020	WTE change since Mar 20	% change since Mar 20	WTE change since Dec 19	WTE change since Apr 19
Overall	9,294	9,408	+114	+1.2%	+155	+92
Consultants	457	460	+3	+0.6%	-3	+43
Registrars	446	458	+12	+2.8%	+13	+34
SHO/ Interns	520	522	+2	+0.5%	-13	-2
Medical/ Dental, other	11	11	-0	-0.6%	+0	-1
Medical & Dental	1,433	1,450	+17	+1.2%	-2	+74
Nurse/ Midwife Manager	560	572	+12	+2.2%	+6	-1
Nurse/ Midwife Specialist & AN/MP	223	225	+2	+0.7%	+6	+15
Staff Nurse/ Staff Midwife	2,740	2,732	-7	-0.3%	-32	-69
Public Health Nurse	1	1	-1	-40.3%	-1	-1
Pre-registration Nurse/ Midwife Intern	78	127	+49	+63.5%	+125	+45
Post-registration Nurse/ Midwife Student	13	11	-2	-18.4%	-1	-3
Nursing/ Midwifery awaiting registration	2	2	+0	+10.3%	-34	-2
Nursing/ Midwifery Student	93	140	+47	+50.6%	+90	+40
Nursing/ Midwifery other	36	35	-1	-2.0%	+2	+4
Nursing & Midwifery	3,653	3,705	+52	+1.4%	+72	-12
Therapy Professions	261	260	-1	-0.3%	-2	-6
Health Science/ Diagnostics	624	636	+13	+2.0%	+18	+15
Social Care	2	2			+0	+1
Social Workers	28	29	+1	+2.0%	+3	+1
Psychologists	2	1	-1	-37.4%	+0	-1
Pharmacy	145	145	+0	+0.3%	+9	+12
H&SC, Other	23	20	-3	-13.1%	+1	-6
Health & Social Care Professionals	1,085	1,094	+9	+0.8%	+30	+14
Management (VIII & above)	49	49	-0	-0.3%	-2	-2
Administrative/ Supervisory (V to VII)	243	246	+3	+1.1%	+9	+42
Clerical (III & IV)	1,056	1,060	+4	+0.4%	+13	-40
Management & Administrative	1,348	1,355	+6	+0.5%	+20	+0
Support	840	868	+29	+3.4%	+33	+30
Maintenance/ Technical	99	97	-2	-2.2%	-6	-3
General Support	939	966	+26	+2.8%	+27	+27
Health Care Assistants	804	806	+3	+0.3%	+7	-11
Care, other	32	32	+0	+0.2%	+1	+0
Patient & Client Care	835	838	+3	+0.3%	+8	-11

South/South West Hospital Group

Apr 2020 (Dec 2019 figure: 10,527)	WTE Mar 2020	WTE Apr 2020	WTE change since Mar 20	% change since Mar 20	WTE change since Dec 19	WTE change since Apr 19
Overall	10,578	10,806	+228	+2.2%	+279	+313
Consultants	478	486	+8	+1.6%	+8	+18
Registrars	512	514	+1	+0.3%	+5	+23
SHO/ Interns	531	544	+13	+2.4%	+7	+11
Medical/ Dental, other	9	8	-0	-2.8%	-1	+1
Medical & Dental	1,530	1,552	+22	+1.4%	+19	+53
Nurse/ Midwife Manager	867	872	+6	+0.6%	+9	+95
Nurse/ Midwife Specialist & AN/MP	161	167	+5	+3.4%	+20	+16
Staff Nurse/ Staff Midwife	3,130	3,169	+39	+1.3%	+42	-14
Pre-registration Nurse/ Midwife Intern	101	94	-6	-6.2%	+64	+7
Post-registration Nurse/ Midwife Student	27	26	-1	-3.7%	-3	+3
Nursing/ Midwifery awaiting registration	0	1	+1	+212.5%	-8	-8
Nursing/ Midwifery Student	127	121	-7	-5.2%	+53	+2
Nursing/ Midwifery other	15	14	-1	-5.0%	-1	+1
Nursing & Midwifery	4,300	4,343	+43	+1.0%	+124	+100
Therapy Professions	317	331	+14	+4.6%	+20	+20
Health Science/ Diagnostics	803	827	+24	+3.0%	+43	+55
Social Workers	34	34	+0	+0.5%	+1	+1
Psychologists	2	2				
Pharmacy	132	134	+2	+1.5%	+5	+8
H&SC, Other	24	4	-21	-85.4%	-21	-23
Health & Social Care Professionals	1,311	1,331	+20	+1.6%	+49	+62
Management (VIII & above)	50	54	+4	+7.3%	+4	+4
Administrative/ Supervisory (V to VII)	273	277	+4	+1.5%	+12	+37
Clerical (III & IV)	1,249	1,260	+10	+0.8%	-9	-27
Management & Administrative	1,572	1,590	+18	+1.2%	+6	+15
Support	1,177	1,251	+74	+6.3%	+32	+23
Maintenance/ Technical	30	36	+6	+20.0%	+4	+2
General Support	1,207	1,287	+80	+6.6%	+36	+25
Health Care Assistants	643	687	+44	+6.9%	+45	+61
Care, other	15	16	+0	+1.8%	+0	-1
Patient & Client Care	658	703	+45	+6.8%	+46	+59

University of Limerick Hospital Group

Apr 2020 (Dec 2019 figure: 4,146)	WTE Mar 2020	WTE Apr 2020	WTE change since Mar 20	% change since Mar 20	WTE change since Dec 19	WTE change since Apr 19
Overall	4,195	4,215	+20	+0.5%	+69	+4
Consultants	170	171	+1	+0.5%	+6	+10
Registrars	194	193	-1	-0.6%	+2	+11
SHO/ Interns	194	191	-3	-1.5%	-6	+5
Medical/ Dental, other	1	1				+0
Medical & Dental	558	555	-3	-0.6%	+2	+26
Nurse/ Midwife Manager	335	339	+4	+1.3%	+14	+7
Nurse/ Midwife Specialist & AN/MP	76	78	+2	+2.8%	+2	+2
Staff Nurse/ Staff Midwife	1,215	1,217	+2	+0.2%	-9	-32
Pre-registration Nurse/ Midwife Intern	33	33	+0	+0.4%	+30	-4
Post-registration Nurse/ Midwife Student	13	13	+0	+0.2%	-3	+3
Nursing/ Midwifery Student	46	46	+0	+0.4%	+27	-1
Nursing/ Midwifery other	11	12	+1	+8.6%	+1	-1
Nursing & Midwifery	1,683	1,693	+10	+0.6%	+36	-25
Therapy Professions	86	88	+3	+3.3%	+4	+8
Health Science/ Diagnostics	246	254	+7	+2.9%	+2	+4
Social Workers	11	10	-1	-7.4%	-1	+1
Psychologists	3	3			+0	+1
Pharmacy	44	45	+1	+2.2%	-0	-1
H&SC, Other	9	8	-1	-8.4%	+1	-4
Health & Social Care Professionals	399	408	+9	+2.4%	+5	+9
Management (VIII & above)	35	35	-0	-0.7%	-1	+1
Administrative/ Supervisory (V to VII)	112	109	-2	-2.0%	+7	-0
Clerical (III & IV)	495	501	+6	+1.3%	+16	-12
Management & Administrative	642	646	+4	+0.6%	+22	-12
Support	523	523	+0	+0.0%	+236	+237
Maintenance/ Technical	38	38	-0	-0.1%	-1	-1
General Support	560	560	+0	+0.0%	+235	+236
Health Care Assistants	346	346	+0	+0.1%	-231	-230
Care, other	7	7	-0	-3.6%	-0	-0
Patient & Client Care	353	353	+0	+0.0%	-232	-230

other Acute Services

Apr 2020 (Dec 2019 figure: 548)	WTE Mar 2020	WTE Apr 2020	WTE change since Mar 20	% change since Mar 20	WTE change since Dec 19	WTE change since Apr 19
Overall	571	577	+7	+1.2%	+29	+44
Consultants	12	12				+2
Registrars	5	5			+1	
SHO/ Interns	6	6				-1
Medical & Dental	23	23			+1	+1
Nurse/ Midwife Manager	51	51	-0	-0.7%	+4	+6
Nurse/ Midwife Specialist & AN/MP	3	3			+0	+1
Staff Nurse/ Staff Midwife	94	96	+2	+2.1%	+5	+11
Nursing/ Midwifery other	1	1				
Nursing & Midwifery	149	150	+2	+1.1%	+9	+18
Therapy Professions	94	95	+1	+1.3%	+3	+4
Health Science/ Diagnostics	7	7	-0	-0.4%	-0	+3
Social Care	1	1				
Social Workers	13	13	+0	+0.1%	+1	+0
Psychologists	11	12	+0	+3.5%	+1	+0
Pharmacy	12	13	+1	+10.4%	+3	+3
H&SC, Other	1	1			-0	+0
Health & Social Care Professionals	140	142	+3	+2.0%	+7	+10
Management (VIII & above)	34	34	-0	-0.5%	-1	+4
Administrative/ Supervisory (V to VII)	64	65	+1	+1.7%	+4	+1
Clerical (III & IV)	40	41	+0	+1.1%	-2	-0
Management & Administrative	138	140	+1	+1.0%	+1	+4
Support	34	35	+1	+2.9%	+6	+8
Maintenance/ Technical	11	11			+3	+4
General Support	45	46	+1	+2.2%	+9	+12
Health Care Assistants	73	73			+2	-1
Care, other	3	3				
Patient & Client Care	76	76			+2	-1

CHO 1

Apr 2020 (Dec 2019 figure: 5,468)	WTE Mar 2020	WTE Apr 2020	WTE change since Mar 20	% change since Mar 20	WTE change since Dec 19	WTE change since Apr 19
Overall	5,516	5,534	+18	+0.3%	+66	+9
Consultants	35	34	-0	-1.4%	+1	+1
Registrars	62	61	-1	-0.9%	-4	+1
SHO/ Interns	25	26	+0	+1.0%	-1	-2
Medical/ Dental, other	69	66	-3	-3.9%	-14	+2
Medical & Dental	191	187	-3	-1.8%	-18	+3
Nurse/ Midwife Manager	352	355	+4	+1.1%	+6	+6
Nurse/ Midwife Specialist & AN/MP	105	108	+3	+2.6%	+6	+12
Staff Nurse/ Staff Midwife	1,019	1,013	-6	-0.6%	-1	-22
Public Health Nurse	153	152	-1	-0.4%	-4	-3
Pre-registration Nurse/ Midwife Intern	29	40	+11	+37.5%	+37	+21
Post-registration Nurse/ Midwife Student	7	7				-0
Nursing/ Midwifery awaiting registration	11	11				+11
Nursing/ Midwifery Student	47	58	+11	+23.2%	+37	+32
Nursing/ Midwifery other	6	7	+1	+11.6%	+1	+3
Nursing & Midwifery	1,681	1,693	+12	+0.7%	+45	+28
Therapy Professions	319	321	+2	+0.6%	+5	-3
Health Science/ Diagnostics	6	6	-0	-1.9%	-1	-0
Social Care	12	12	+0	+0.3%	+1	+0
Social Workers	88	90	+3	+3.1%	+6	+7
Psychologists	59	59	-0	-0.2%	-1	-1
Pharmacy	2	2				
H&SC, Other	34	30	-4	-10.6%	-2	-4
Health & Social Care Professionals	519	520	+1	+0.1%	+7	-1
Management (VIII & above)	61	61	-0	-0.1%	+1	-1
Administrative/ Supervisory (V to VII)	151	159	+8	+5.3%	+23	+36
Clerical (III & IV)	454	454	+0	+0.1%	-1	+0
Management & Administrative	666	674	+8	+1.2%	+23	+36
Support	308	310	+2	+0.6%	+4	-7
Maintenance/ Technical	36	37	+1	+2.9%	+1	+2
General Support	344	347	+3	+0.9%	+5	-4
Health Care Assistants	1,428	1,428	-0	-0.0%	+5	-32
Home Help	556	550	-6	-1.2%	-6	-19
Care, other	131	135	+4	+3.0%	+4	+0
Patient & Client Care	2,115	2,113	-3	-0.1%	+3	-51

CHO 2

Apr 2020 (Dec 2019 figure: 5,545)	WTE Mar 2020	WTE Apr 2020	WTE change since Mar 20	% change since Mar 20	WTE change since Dec 19	WTE change since Apr 19
Overall	5,475	5,473	-2	-0.0%	-72	-66
Consultants	42	43	+1	+1.2%	+0	+6
Registrars	79	78	-1	-1.7%	+3	+11
SHO/ Interns	33	34	+1	+3.9%	-2	-4
Medical/ Dental, other	59	60	+2	+2.6%	+2	-1
Medical & Dental	213	215	+2	+0.9%	+3	+12
Nurse/ Midwife Manager	309	311	+1	+0.5%	+2	-5
Nurse/ Midwife Specialist & AN/MP	99	98	-1	-1.3%	+6	+10
Staff Nurse/ Staff Midwife	901	900	-1	-0.2%	+2	-23
Public Health Nurse	193	196	+3	+1.5%	+4	+10
Pre-registration Nurse/ Midwife Intern	16	24	+8	+52.0%	+23	+11
Post-registration Nurse/ Midwife Student	4	4				-10
Nursing/ Midwifery awaiting registration				-100.0%	-5	
Nursing/ Midwifery Student	20	28	+8	+41.3%	+19	+1
Nursing/ Midwifery other	2	2	+0	+3.3%	+0	+0
Nursing & Midwifery	1,525	1,534	+10	+0.6%	+33	-7
Therapy Professions	349	347	-2	-0.6%	+8	+0
Health Science/ Diagnostics	33	33	+0	+0.3%	+0	-2
Social Care	245	255	+10	+4.1%	+10	+21
Social Workers	83	84	+1	+1.1%	+0	+2
Psychologists	75	75			+2	-5
Pharmacy	4	4	+0	+2.2%	-1	-0
H&SC, Other	32	30	-2	-5.6%	-3	-5
Health & Social Care Professionals	821	828	+7	+0.9%	+17	+11
Management (VIII & above)	55	56	+0	+0.3%	-0	+0
Administrative/ Supervisory (V to VII)	142	142	-0	-0.0%	+9	+11
Clerical (III & IV)	465	462	-3	-0.6%	-6	-22
Management & Administrative	662	660	-3	-0.4%	+2	-11
Support	162	151	-11	-7.0%	-7	-10
Maintenance/ Technical	69	68	-1	-1.3%	+0	-4
General Support	231	219	-12	-5.3%	-7	-13
Health Care Assistants	1,340	1,331	-9	-0.7%	-36	-34
Home Help	411	424	+13	+3.2%	-76	-20
Care, other	272	262	-11	-3.9%	-9	-4
Patient & Client Care	2,024	2,017	-7	-0.3%	-120	-58

CHO 3

Apr 2020 (Dec 2019 figure: 4,357)	WTE Mar 2020	WTE Apr 2020	WTE change since Mar 20	% change since Mar 20	WTE change since Dec 19	WTE change since Apr 19
Overall	4,362	4,388	+25	+0.6%	+31	+55
Consultants	25	26	+1	+4.5%	-1	-1
Registrars	40	39	-0	-1.0%	-2	+4
SHO/ Interns	26	26	-0	-0.2%	+1	-5
Medical/ Dental, other	58	59	+1	+1.7%	+1	+2
Medical & Dental	149	150	+2	+1.1%	-2	-1
Nurse/ Midwife Manager	246	251	+5	+2.0%	+5	+11
Nurse/ Midwife Specialist & AN/MP	52	51	-1	-1.6%	-4	+2
Staff Nurse/ Staff Midwife	803	802	-2	-0.2%	+15	+36
Public Health Nurse	128	131	+3	+2.0%	+3	+5
Pre-registration Nurse/ Midwife Intern	21	34	+12	+56.7%	+13	+15
Post-registration Nurse/ Midwife Student				-100.0%		-4
Nursing/ Midwifery Student	21	34	+12	+56.7%	+13	+11
Nursing/ Midwifery other	4	4				-0
Nursing & Midwifery	1,255	1,273	+17	+1.4%	+32	+64
Therapy Professions	216	215	-1	-0.3%	+2	-4
Health Science/ Diagnostics	5	6	+1	+18.0%	+1	+1
Social Care	251	244	-6	-2.5%	-0	-6
Social Workers	59	59	-0	-0.6%	-1	-4
Psychologists	120	122	+2	+1.3%	-2	-0
Pharmacy	5	5				
H&SC, Other	33	34	+1	+3.2%	+2	-1
Health & Social Care Professionals	689	685	-4	-0.5%	+1	-14
Management (VIII & above)	40	41	+1	+2.3%	+3	+5
Administrative/ Supervisory (V to VII)	139	142	+3	+1.9%	+9	-6
Clerical (III & IV)	318	315	-3	-1.1%	-6	-10
Management & Administrative	497	497	+0	+0.0%	+6	-11
Support	163	163	+0	+0.2%	+1	-4
Maintenance/ Technical	75	75	-0	-0.0%	-3	-3
General Support	238	238	+0	+0.1%	-2	-7
Health Care Assistants	1,117	1,128	+11	+1.0%	-12	-3
Home Help	182	178	-4	-2.2%	+2	+22
Care, other	236	239	+3	+1.3%	+6	+5
Patient & Client Care	1,535	1,545	+10	+0.6%	-5	+24

CHO 4

Apr 2020 (Dec 2019 figure: 8,189)	WTE Mar 2020	WTE Apr 2020	WTE change since Mar 20	% change since Mar 20	WTE change since Dec 19	WTE change since Apr 19
Overall	8,243	8,290	+47	+0.6%	+101	+53
Consultants	58	60	+2	+3.1%	+5	+7
Registrars	102	102	-0	-0.1%	-1	+15
SHO/ Interns	38	38	-0	-0.4%	-0	-4
Medical/ Dental, other	113	117	+4	+3.5%	+5	-2
Medical & Dental	311	316	+6	+1.8%	+9	+16
Nurse/ Midwife Manager	456	457	+1	+0.2%	+24	+67
Nurse/ Midwife Specialist & AN/MP	87	89	+2	+2.2%	+8	+13
Staff Nurse/ Staff Midwife	1,462	1,467	+5	+0.3%	+21	-90
Public Health Nurse	214	216	+2	+0.8%	-0	-4
Pre-registration Nurse/ Midwife Intern	27	27			+18	-3
Post-registration Nurse/ Midwife Student	20	20			+1	+7
Nursing/ Midwifery awaiting registration	13	9	-4	-28.9%	-23	+9
Nursing/ Midwifery Student	60	56	-4	-6.1%	-4	+14
Nursing/ Midwifery other	1	1				
Nursing & Midwifery	2,279	2,285	+6	+0.3%	+49	-1
Therapy Professions	443	446	+3	+0.6%	-2	-11
Health Science/ Diagnostics	13	13	+1	+6.2%	+1	+3
Social Care	241	243	+1	+0.6%	+3	+9
Social Workers	117	120	+3	+2.3%	+5	+0
Psychologists	138	141	+2	+1.7%	+3	+6
Pharmacy	9	10	+0	+3.2%	+2	+2
H&SC, Other	58	63	+5	+8.3%	+2	+3
Health & Social Care Professionals	1,020	1,034	+15	+1.4%	+14	+12
Management (VIII & above)	73	74	+1	+1.2%	+1	+11
Administrative/ Supervisory (V to VII)	162	162	-1	-0.4%	+1	+26
Clerical (III & IV)	503	509	+6	+1.2%	+4	-21
Management & Administrative	738	745	+6	+0.9%	+6	+17
Support	333	342	+9	+2.7%	+5	+4
Maintenance/ Technical	22	22				-1
General Support	356	364	+9	+2.5%	+5	+3
Health Care Assistants	1,976	1,975	-2	-0.1%	+20	+4
Home Help	1,113	1,124	+11	+1.0%	+0	-15
Care, other	451	448	-3	-0.7%	-2	+18
Patient & Client Care	3,540	3,546	+6	+0.2%	+18	+6

CHO 5

Apr 2020 (Dec 2019 figure: 5,282)	WTE Mar 2020	WTE Apr 2020	WTE change since Mar 20	% change since Mar 20	WTE change since Dec 19	WTE change since Apr 19
Overall	5,275	5,280	+4	+0.1%	-2	-27
Consultants	30	30	+0	+0.3%	+0	-0
Registrars	25	35	+10	+40.8%	+7	+4
SHO/ Interns	35	25	-10	-27.8%	-13	-8
Medical/ Dental, other	64	65	+1	+1.0%	-1	-1
Medical & Dental	154	155	+1	+0.7%	-8	-5
Nurse/ Midwife Manager	340	347	+7	+2.1%	+9	-3
Nurse/ Midwife Specialist & AN/MP	54	60	+6	+11.2%	+8	-2
Staff Nurse/ Staff Midwife	963	970	+7	+0.8%	+3	+34
Public Health Nurse	167	171	+4	+2.1%	-4	+2
Pre-registration Nurse/ Midwife Intern	25	29	+3	+12.6%	+25	-1
Post-registration Nurse/ Midwife Student	5	5				-1
Nursing/ Midwifery awaiting registration	4	4			+0	+4
Nursing/ Midwifery Student	34	38	+3	+9.3%	+25	+2
Nursing/ Midwifery other	5	4	-0	-4.3%		+1
Nursing & Midwifery	1,563	1,590	+27	+1.7%	+42	+33
Therapy Professions	329	324	-5	-1.5%	-3	-13
Audiology	3	5	+2	+44.1%	+1	+2
Health Science/ Diagnostics	3	5	+2	+44.1%	+1	+2
Social Care	154	150	-4	-2.8%	-14	-16
Social Workers	61	62	+1	+1.2%	+2	+1
Psychologists	76	74	-2	-2.3%	-5	-4
Pharmacy	2	2	-0	-4.5%	+1	+1
H&SC, Other	35	35	-1	-1.8%	-0	+0
Health & Social Care Professionals	661	652	-10	-1.5%	-18	-29
Management (VIII & above)	45	46	+0	+0.7%	+3	-0
Administrative/ Supervisory (V to VII)	121	124	+4	+3.0%	-1	+0
Clerical (III & IV)	326	327	+1	+0.3%	-3	-3
Management & Administrative	492	497	+5	+1.0%	-1	-3
Support	334	330	-4	-1.1%	-2	-12
Maintenance/ Technical	40	40	+0	+0.5%	+1	+0
General Support	373	370	-4	-1.0%	-1	-12
Health Care Assistants	1,145	1,153	+8	+0.7%	+11	+55
Home Help	654	635	-20	-3.0%	-34	-89
Care, other	233	229	-3	-1.5%	+7	+22
Patient & Client Care	2,032	2,017	-16	-0.8%	-16	-12

CHO 6

Apr 2020 (Dec 2019 figure: 3,378)	WTE Mar 2020	WTE Apr 2020	WTE change since Mar 20	% change since Mar 20	WTE change since Dec 19	WTE change since Apr 19
Overall	3,352	3,344	-8	-0.2%	-34	-58
Consultants	50	51	+1	+3.0%	+3	+7
Registrars	44	42	-1	-3.4%	-6	-4
SHO/ Interns	19	19	+0	+0.5%	+3	-5
Medical/ Dental, other	50	49	-0	-1.0%	-2	-4
Medical & Dental	162	161	-0	-0.2%	-2	-6
Nurse/ Midwife Manager	207	208	+1	+0.4%	-3	-3
Nurse/ Midwife Specialist & AN/MP	21	22	+1	+4.5%	+2	+4
Staff Nurse/ Staff Midwife	547	541	-5	-1.0%	-0	-7
Public Health Nurse	112	113	+1	+0.7%	-4	-9
Post-registration Nurse/ Midwife Student	13	13			-1	+2
Nursing/ Midwifery Student	13	13			-1	+2
Nursing/ Midwifery other	2	4	+2	+90.5%	+2	+1
Nursing & Midwifery	902	901	-1	-0.1%	-4	-13
Therapy Professions	239	234	-4	-1.8%	-4	-13
Health Science/ Diagnostics	17	17	+0	+1.2%	-1	-4
Social Care	353	348	-5	-1.5%	-17	-10
Social Workers	56	55	-1	-1.5%	-2	-4
Psychologists	60	60	+0	+0.3%	+4	+4
Pharmacy	4	4	+0	+1.6%	+0	+0
H&SC, Other	11	10	-0	-3.2%	-4	+1
Health & Social Care Professionals	739	729	-10	-1.4%	-23	-27
Management (VIII & above)	71	69	-1	-2.1%	+1	-1
Administrative/ Supervisory (V to VII)	170	170	+0	+0.1%	-0	-2
Clerical (III & IV)	241	245	+3	+1.4%	+7	+11
Management & Administrative	482	484	+2	+0.4%	+9	+8
Support	201	209	+8	+3.9%	+18	+10
Maintenance/ Technical	24	24			+1	+5
General Support	225	233	+8	+3.5%	+19	+15
Health Care Assistants	522	521	-1	-0.2%	-18	-16
Care, other	320	316	-5	-1.5%	-14	-19
Patient & Client Care	842	836	-6	-0.7%	-32	-35

CHO 7

Apr 2020 (Dec 2019 figure: 6,515)	WTE Mar 2020	WTE Apr 2020	WTE change since Mar 20	% change since Mar 20	WTE change since Dec 19	WTE change since Apr 19
Overall	6,516	6,580	+64	+1.0%	+65	-49
Consultants	59	60	+1	+2.2%	+1	+4
Registrars	89	89	+1	+1.0%	-6	+6
SHO/ Interns	37	37	-0	-0.6%	+1	+3
Medical/ Dental, other	81	82	+1	+1.1%	+2	-10
Medical & Dental	266	269	+3	+1.1%	-2	+4
Nurse/ Midwife Manager	396	405	+9	+2.2%	+9	+0
Nurse/ Midwife Specialist & AN/MP	97	100	+3	+3.3%	+6	+8
Staff Nurse/ Staff Midwife	997	997	+0	+0.0%	+5	-13
Public Health Nurse	166	163	-3	-1.9%	-12	-27
Pre-registration Nurse/ Midwife Intern	23	22	-0	-2.1%	+21	+1
Post-registration Nurse/ Midwife Student	21	21				+16
Nursing/ Midwifery awaiting registration	3	13	+10	+287.9%	+3	+11
Nursing/ Midwifery Student	47	56	+9	+19.7%	+24	+28
Nursing/ Midwifery other	9	10	+0	+0.1%	-1	+0
Nursing & Midwifery	1,712	1,731	+18	+1.1%	+30	-3
Therapy Professions	447	456	+9	+2.1%	+6	-4
Health Science/ Diagnostics	4	4	+0	+9.6%	+1	+1
Social Care	373	370	-2	-0.6%	-1	+10
Social Workers	109	111	+2	+2.0%	+6	+4
Psychologists	80	80	+0	+0.5%	-0	-8
Pharmacy	40	38	-2	-4.8%	-2	+1
H&SC, Other	45	43	-2	-4.3%	-2	+1
Health & Social Care Professionals	1,096	1,102	+6	+0.6%	+8	+6
Management (VIII & above)	75	77	+2	+2.7%	+4	+7
Administrative/ Supervisory (V to VII)	184	201	+17	+9.3%	+19	+13
Clerical (III & IV)	362	372	+10	+2.7%	+21	-3
Management & Administrative	621	650	+29	+4.7%	+44	+17
Support	405	413	+8	+2.0%	+3	-15
Maintenance/ Technical	43	45	+2	+5.3%	+4	-0
General Support	448	458	+10	+2.3%	+7	-16
Health Care Assistants	1,632	1,629	-3	-0.2%	-26	-60
Home Help	137	136	-1	-0.9%	+9	+5
Care, other	603	604	+1	+0.2%	-6	-1
Patient & Client Care	2,372	2,369	-3	-0.1%	-23	-57

CHO 8

Apr 2020 (Dec 2019 figure: 6,135)	WTE Mar 2020	WTE Apr 2020	WTE change since Mar 20	% change since Mar 20	WTE change since Dec 19	WTE change since Apr 19
Overall	6,160	6,215	+56	+0.9%	+80	+6
Consultants	42	43	+0	+0.4%	+0	+1
Registrars	98	98	+0	+0.4%	-7	-3
SHO/ Interns	41	41	-0	-0.4%	+3	+7
Medical/ Dental, other	72	73	+1	+1.5%	+1	+4
Medical & Dental	254	255	+1	+0.6%	-3	+9
Nurse/ Midwife Manager	369	377	+7	+2.0%	+5	-4
Nurse/ Midwife Specialist & AN/MP	104	103	-1	-0.8%	+3	-1
Staff Nurse/ Staff Midwife	992	999	+7	+0.7%	+1	-2
Public Health Nurse	207	210	+3	+1.5%	+11	+10
Pre-registration Nurse/ Midwife Intern	33	40	+7	+21.8%	+40	+10
Post-registration Nurse/ Midwife Student	2	2	-0	-1.2%	-0	-6
Nursing/ Midwifery awaiting registration	1		-1	-100.0%	-2	-1
Nursing/ Midwifery Student	36	42	+6	+17.3%	+37	+3
Nursing/ Midwifery other	12	13	+1	+8.6%	+4	+6
Nursing & Midwifery	1,720	1,744	+24	+1.4%	+62	+13
Therapy Professions	379	386	+7	+1.9%	+9	+1
Health Science/ Diagnostics	8	8	+0	+0.4%	+1	+1
Social Care	368	375	+7	+1.9%	+7	+5
Social Workers	87	88	+1	+1.1%	+0	-1
Psychologists	114	117	+3	+2.6%	-3	+2
Pharmacy	8	8	-0	-1.7%	+0	+1
H&SC, Other	52	52	+1	+1.0%	-0	-0
Health & Social Care Professionals	1,016	1,035	+19	+1.8%	+15	+8
Management (VIII & above)	62	63	+1	+1.9%	+0	-1
Administrative/ Supervisory (V to VII)	199	201	+2	+0.9%	+25	+27
Clerical (III & IV)	525	530	+5	+0.9%	+23	+16
Management & Administrative	786	794	+8	+1.0%	+48	+42
Support	127	127	+0	+0.4%	-0	-4
Maintenance/ Technical	69	69	-0	-0.5%	-0	-4
General Support	196	196	+0	+0.1%	-0	-8
Health Care Assistants	1,546	1,554	+8	+0.5%	-23	-12
Home Help	404	399	-5	-1.2%	-20	-39
Care, other	239	239	+0	+0.2%	+2	-6
Patient & Client Care	2,188	2,192	+4	+0.2%	-41	-58

CHO 9

Apr 2020 (Dec 2019 figure: 6,582)	WTE Mar 2020	WTE Apr 2020	WTE change since Mar 20	% change since Mar 20	WTE change since Dec 19	WTE change since Apr 19
Overall	6,589	6,651	+62	+0.9%	+69	-40
Consultants	65	66	+1	+2.0%	-2	+2
Registrars	95	97	+2	+2.1%	-1	+6
SHO/ Interns	61	62	+1	+1.4%	-4	-7
Medical/ Dental, other	55	56	+1	+1.3%	-1	-15
Medical & Dental	276	281	+5	+1.8%	-8	-13
Nurse/ Midwife Manager	437	441	+4	+1.0%	+6	-5
Nurse/ Midwife Specialist & AN/MP	89	90	+1	+1.4%	+5	+7
Staff Nurse/ Staff Midwife	1,191	1,186	-5	-0.4%	-10	-47
Public Health Nurse	168	170	+2	+1.0%	-6	-2
Pre-registration Nurse/ Midwife Intern	43	63	+20	+45.7%	+45	+29
Post-registration Nurse/ Midwife Student	26	25	-1	-3.8%	-1	+4
Nursing/ Midwifery awaiting registration				-100.0%	-11	-1
Nursing/ Midwifery Student	69	88	+19	+27.1%	+34	+32
Nursing/ Midwifery other	20	22	+2	+9.4%	+2	+2
Nursing & Midwifery	1,974	1,997	+23	+1.2%	+31	-12
Therapy Professions	493	505	+12	+2.4%	+19	+7
Health Science/ Diagnostics	34	34	+1	+1.8%	-2	-5
Social Care	708	708	+0	+0.0%	+13	+43
Social Workers	126	127	+1	+0.8%	+2	-5
Psychologists	171	170	-1	-0.6%	+6	-3
Pharmacy	24	25	+1	+4.2%	+0	-5
H&SC, Other	69	70	+1	+1.4%	-1	+1
Health & Social Care Professionals	1,625	1,639	+14	+0.9%	+36	+34
Management (VIII & above)	80	81	+1	+0.8%	+1	+4
Administrative/ Supervisory (V to VII)	222	221	-0	-0.1%	+13	+10
Clerical (III & IV)	440	442	+2	+0.4%	-10	-28
Management & Administrative	741	744	+2	+0.3%	+5	-14
Support	448	447	-1	-0.2%	-5	-21
Maintenance/ Technical	35	35	+0	+0.1%	-0	-3
General Support	483	482	-1	-0.1%	-5	-24
Health Care Assistants	1,270	1,288	+18	+1.4%	+10	+4
Care, other	220	220	+0	+0.1%	-1	-13
Patient & Client Care	1,489	1,508	+19	+1.2%	+9	-10

other Community Services

Apr 2020 (Dec 2019 figure: 638)	WTE Mar 2020	WTE Apr 2020	WTE change since Mar 20	% change since Mar 20	WTE change since Dec 19	WTE change since Apr 19
Overall	655	660	+5	+0.8%	+22	+62
Consultants	17	18	+1	+7.6%	+1	+3
Registrars	27	26	-1	-3.8%	+1	+2
SHO/ Interns	1	1	+0	+35.1%	-1	-2
Other Medical	0	0	-0	-32.1%	-0	-0
Medical/ Dental, other	0	0	-0	-32.1%	-0	-0
Medical & Dental	45	45	+0	+0.9%	+1	+3
Nurse/ Midwife Manager	69	74	+5	+7.4%	+7	+10
Nurse/ Midwife Specialist & AN/MP	9	9	+0	+2.5%	+1	+2
Staff Nurse/ Staff Midwife	186	182	-4	-2.2%	+8	+21
Nursing/ Midwifery other	1	1	-0	-3.0%	-0	-0
Nursing & Midwifery	265	266	+1	+0.4%	+17	+34
Therapy Professions	13	13	-0	-0.5%	+2	+2
Health Science/ Diagnostics	8	8	+0	+0.5%	-1	+0
Social Care	4	4	+0	+5.3%	+0	+0
Social Workers	27	26	-0	-1.6%	-2	-2
Psychologists	7	7	+0	+5.3%	+0	+1
Pharmacy	3	3	-0	-0.4%	+0	+2
H&SC, Other	3	4	+1	+17.3%	+1	+1
Health & Social Care Professionals	63	64	+1	+1.0%	-0	+4
Management (VIII & above)	63	63	+0	+0.0%	-3	+4
Administrative/ Supervisory (V to VII)	72	75	+3	+4.0%	-0	-2
Clerical (III & IV)	65	64	-1	-1.9%	-6	-1
Management & Administrative	200	202	+2	+0.9%	-10	+1
Support	15	15	+1	+5.3%	+1	-1
Maintenance/ Technical	3	3	+0	+8.4%	+0	+0
General Support	18	19	+1	+5.9%	+1	-1
Health Care Assistants	49	49	+0	+0.2%	+12	+21
Care, other	15	15	+0	+1.0%	-0	+0
Patient & Client Care	64	64	+0	+0.4%	+12	+21

Health & Wellbeing

Apr 2020 (Dec 2019 figure: 574)	WTE Mar 2020	WTE Apr 2020	WTE change since Mar 20	% change since Mar 20	WTE change since Dec 19	WTE change since Apr 19
Overall	478	502	+23	+4.9%	-72	-77
Consultants	1	1				+0
Registrars	25	25	-0	-1.4%	-3	-3
Medical/ Dental, other	88	103	+15	+16.6%	+13	+17
Medical & Dental	114	129	+14	+12.5%	+10	+13
Nurse/ Midwife Manager	13	13	+0	+1.7%	-0	+1
Nurse/ Midwife Specialist & AN/MP	4	4	+0	+3.7%	+0	+1
Staff Nurse/ Staff Midwife	1	3	+1	+103.2%	+1	+1
Public Health Nurse	2	2			-2	-2
Nursing & Midwifery	20	22	+2	+8.2%	-1	
Therapy Professions	8	9	+1	+12.0%	-9	-6
Health Science/ Diagnostics	92	92	-0	-0.2%	+1	-0
Psychologists	1	1				
Pharmacy	3	3			+1	+1
H&SC, Other	4	4	+0	+1.0%	+0	+1
Health & Social Care Professionals	108	109	+1	+0.8%	-7	-4
Management (VIII & above)	39	39	-0	-0.5%	-6	-2
Administrative/ Supervisory (V to VII)	99	102	+3	+3.0%	-35	-35
Clerical (III & IV)	83	84	+2	+1.9%	-15	-22
Management & Administrative	220	224	+4	+2.0%	-56	-60
General Support	2	2	+0	+6.5%	+1	+1
Health Care Assistants	0	0				
Care, other	13	15	+2	+16.3%	-19	-28
Patient & Client Care	13	16	+2	+16.0%	-19	-28

Corporate

Apr 2020 (Dec 2019 figure: 3,035)	WTE Mar 2020	WTE Apr 2020	WTE change since Mar 20	% change since Mar 20	WTE change since Dec 19	WTE change since Apr 19
Overall	3,107	3,136	+28	+0.9%	+101	+254
Consultants	43	43	+0	+0.5%	-0	+2
Registrars	20	21	+0	+1.5%	-3	-0
SHO/ Interns	2	3	+1	+25.0%	+2	+3
Medical/ Dental, other	27	30	+3	+9.8%	+4	+6
Medical & Dental	93	96	+4	+4.0%	+3	+10
Nurse/ Midwife Manager	104	111	+7	+6.7%	+11	+15
Nurse/ Midwife Specialist & AN/MP	11	11	+0	+2.5%	+1	+0
Staff Nurse/ Staff Midwife	2	3	+1	+39.7%	+2	+2
Public Health Nurse	0	0		#DIV/0		
Nursing/ Midwifery other	70	70	+1	+0.8%	+4	+14
Nursing & Midwifery	187	196	+9	+4.7%	+18	+31
Therapy Professions	3	3	-0	-0.8%	+0	+0
Health Science/ Diagnostics	91	91	+1	+0.7%	+3	-7
Social Workers	3	3	+0	+6.3%	-1	-1
Psychologists	1	1				+0
Pharmacy	41	41			+6	+13
H&SC, Other	539	546	+6	+1.2%	+12	+65
Health & Social Care Professionals	678	685	+7	+1.1%	+20	+70
Management (VIII & above)	506	513	+7	+1.3%	+19	+44
Administrative/ Supervisory (V to VII)	847	853	+6	+0.7%	+34	+111
Clerical (III & IV)	763	760	-4	-0.5%	+6	-17
Management & Administrative	2,116	2,125	+9	+0.4%	+59	+137
Support	12	12	-0	-0.1%	+0	+0
Maintenance/ Technical	9	9				+2
General Support	21	21	-0	-0.0%	+0	+2
Health Care Assistants	8	8	-0	-1.1%	-0	-0
Ambulance Staff	3	3				+3
Care, other	2	2			+1	+1
Patient & Client Care	13	13	-0	-0.7%	+1	+4

Health Business Services

Apr 2020 (Dec 2019 figure: 1,583)	WTE Mar 2020	WTE Apr 2020	WTE change since Mar 20	% change since Mar 20	WTE change since Dec 19	WTE change since Apr 19
Overall	1,579	1,587	+8	+0.5%	+4	-43
Medical/ Dental, other				-100.0%	-2	-1
Medical & Dental				-100.0%	-2	-1
Nurse/ Midwife Manager	3	3			-3	-3
Nursing/ Midwifery other	1	1				
Nursing & Midwifery	4	4			-3	-3
Health Science/ Diagnostics	1	1				
Pharmacy	2	2	+0	+10.5%	+1	
H&SC, Other	1	1				
Health & Social Care Professionals	4	4	+0	+5.0%	+1	
Management (VIII & above)	169	171	+2	+1.0%	+3	+2
Administrative/ Supervisory (V to VII)	421	428	+8	+1.8%	+9	+5
Clerical (III & IV)	648	647	-2	-0.3%	-4	-39
Management & Administrative	1,239	1,246	+8	+0.6%	+8	-32
General Support	330	330	+0	+0.1%	-1	-7
Health Care Assistants	2	2				
Care, other	1	1				
Patient & Client Care	3	3				

Employment by Hospital, Hospital Group, Community Services etc. Apr 2020

Apr 2020 (Dec 2019 figure: 119,817)	WTE Mar 2020	WTE Apr 2020	WTE change since Mar 20	% change since Mar 20	WTE change since Dec 19	WTE change since Apr 19
Overall	120,469	121,702	+1,234	+1.0%	+1,885	+2,324
National Ambulance Service	1,939	1,950	+10	+0.5%	+17	+54
CHI at Connolly	141	142	+1	+0.5%	+6	+142
CHI at Crumlin	1,957	1,975	+19	+1.0%	+8	+68
CHI at Tallaght	267	263	-4	-1.5%	+8	+6
CHI at Temple Street	1,193	1,197	+4	+0.4%	+13	-26
CHI Programme	52	50	-2	-4.5%	-7	-7
CHI Corporate	2	2	-0	-0.5%	-1	-5
Children's Health Ireland	3,613	3,630	+17	+0.5%	+27	+178
Coombe Women & Infants University	911	922	+10	+1.1%	+32	+46
MRH Portlaoise	750	749	-1	-0.1%	-1	+2
MRH Tullamore	1,109	1,116	+8	+0.7%	+15	+23
Naas General	760	766	+6	+0.8%	+7	+40
St. James's	4,130	4,192	+62	+1.5%	+134	+246
St. Luke's Rathgar	539	547	+8	+1.5%	+2	+15
Tallaght University Hospital	2,709	2,750	+41	+1.5%	+67	+80
Hospital Group HQ	33	34	+1	+1.9%	+0	-4
Dublin Midlands Hospital Group	10,941	11,075	+135	+1.2%	+257	+448
Cappagh National Orthopaedic	435	432	-2	-0.5%	+6	+13
Mater Misericordiae University	3,233	3,293	+61	+1.9%	+134	+214
MRH Mullingar	921	922	+1	+0.1%	+8	-4
National Maternity	899	933	+34	+3.8%	+53	+63
Our Lady's Navan	514	518	+3	+0.7%	+2	+14
Royal Victoria Eye and Ear	298	295	-3	-1.0%	+4	+1
St. Columcille's	445	442	-4	-0.8%	-10	-15
St Luke's General Kilkenny	1,122	1,172	+50	+4.4%	+53	+42
St. Michael's	413	413	+0	+0.0%	+16	+25
St. Vincent's University	2,872	2,951	+79	+2.8%	+113	+171
Wexford General	1,023	1,037	+14	+1.4%	+13	-1
Hospital Group HQ	29	28	-1	-3.7%	-2	-3
Ireland East Hospital Group	12,203	12,435	+232	+1.9%	+390	+521
Beaumont	3,915	4,015	+100	+2.6%	+170	+300
Cavan General	1,035	1,041	+7	+0.6%	+8	+38
Connolly	1,337	1,346	+9	+0.7%	+13	+7
Louth County	276	271	-5	-1.6%	-6	-4
Monaghan	101	102	+0	+0.4%	+0	-3
Our Lady of Lourdes	2,216	2,239	+22	+1.0%	+90	+186
Rotunda	917	921	+4	+0.5%	+29	+63
Hospital Group HQ	31	31	+0	+1.5%	+1	+7
RCSI Hospitals Group	9,828	9,967	+140	+1.4%	+304	+595
Galway University	3,617	3,647	+30	+0.8%	+40	-7
Letterkenny University	1,618	1,644	+27	+1.6%	+37	+18
Mayo University	1,144	1,160	+16	+1.4%	+10	+5
Portiuncula University	783	791	+8	+1.0%	+1	+14
Roscommon University	336	341	+5	+1.5%	+8	+13
Sligo University	1,711	1,740	+28	+1.6%	+52	+36
Hospital Group HQ	85	86	+0	+0.1%	+7	+13
Saolta University Hospital Care	9,294	9,408	+114	+1.2%	+155	+92
Bantry General	264	270	+6	+2.2%	+4	+3
Cork University	4,051	4,112	+61	+1.5%	+98	+114
Lourdes Orthopaedic Kilcreene	71	69	-1	-1.9%	-1	-3
Mallow General	249	252	+3	+1.0%	-1	+11
Mercy University	1,182	1,206	+24	+2.0%	+33	+37

Apr 2020 (Dec 2019 figure: 119,817)	WTE Mar 2020	WTE Apr 2020	WTE change since Mar 20	% change since Mar 20	WTE change since Dec 19	WTE change since Apr 19
Overall	120,469	121,702	+1,234	+1.0%	+1,885	+2,324
South Infirmary Victoria University	788	785	-3	-0.4%	-1	+18
South Tipperary General	884	908	+24	+2.7%	+40	+75
UH Kerry	1,157	1,168	+11	+0.9%	+54	+22
UH Waterford	1,897	1,997	+100	+5.3%	+48	+29
Hospital Group HQ	35	39	+4	+12.5%	+5	+6
South/South West Hospital Group	10,578	10,806	+228	+2.2%	+279	+313
Croom Orthopaedic	160	160	+0	+0.2%	+4	+3
Ennis	232	232	+0	+0.0%	-3	+0
Nenagh	246	248	+1	+0.4%	-2	-3
St. John's Limerick	310	311	+1	+0.2%	-1	+5
UH Limerick	2,846	2,860	+13	+0.5%	+46	-18
UMH Limerick	395	398	+3	+0.8%	+24	+15
Hospital Group HQ	6	7	+1	+19.4%	+1	+1
University of Limerick Hospital Group	4,195	4,215	+20	+0.5%	+69	+4
National Rehabilitation Hospital	479	485	+6	+1.2%	+28	+42
Other	91	92	+1	+1.5%	+1	+1
other Acute Services	571	577	+7	+1.2%	+29	+44
Acute Services	63,161	64,064	+903	+1.4%	+1,526	+2,247
CHO 1	5,516	5,534	+18	+0.3%	+66	+9
CHO 2	5,475	5,473	-2	-0.0%	-72	-66
CHO 3	4,362	4,388	+25	+0.6%	+31	+55
CHO 4	8,243	8,290	+47	+0.6%	+101	+53
CHO 5	5,275	5,280	+4	+0.1%	-2	-27
CHO 6	3,352	3,344	-8	-0.2%	-34	-58
CHO 7	6,516	6,580	+64	+1.0%	+65	-49
CHO 8	6,160	6,215	+56	+0.9%	+80	+6
CHO 9	6,589	6,651	+62	+0.9%	+69	-40
other Community Services	655	660	+5	+0.8%	+22	+62
Community Services	52,143	52,414	+271	+0.5%	+326	-57
Health & Wellbeing	478	502	+23	+4.9%	-72	-77
Corporate	3,107	3,136	+28	+0.9%	+101	+254
Health Business Services	1,579	1,587	+8	+0.5%	+4	-43
H&WB, Corporate & National Services	5,164	5,224	+60	+1.2%	+33	+133

Employment by CHO & Administration: Apr 2020

Apr 2020 (Dec 2019 figure: 52,089)	WTE Mar 2020	WTE Apr 2020	WTE change since Mar 20	% change since Mar 20	WTE change since Dec 19	WTE change since Apr 19
Overall	52,143	52,414	+271	+0.5%	+326	-57
Health Service Executive	5,516	5,534	+18	+0.3%	+66	+9
CHO 1	5,516	5,534	+18	+0.3%	+66	+9
Health Service Executive	4,201	4,239	+38	+0.9%	-17	-83
Bros. of Charity, West Region (Social Care)	1,275	1,234	-41	-3.2%	-55	+16
Section 38 Voluntary Agencies	1,275	1,234	-41	-3.2%	-55	+16
CHO 2	5,475	5,473	-2	-0.0%	-72	-66
Health Service Executive	2,669	2,678	+8	+0.3%	+22	+9
Bros. of Charity, Clare (Social Care)	332	322	-10	-3.0%	-26	+1
Bros. of Charity, Limerick (Social Care)	528	528	+0	+0.0%	+8	+6
Daughters of Charity, Limerick (Social Care)	544	569	+25	+4.5%	+25	+39
Daughters of Charity, Roscrea (Social Care)	289	291	+2	+0.8%	+1	-0
Section 38 Voluntary Agencies	1,693	1,710	+17	+1.0%	+9	+46
CHO 3	4,362	4,388	+25	+0.6%	+31	+55
Health Service Executive	5,995	6,053	+57	+1.0%	+113	+28
Bros. of Charity, Southern (Social Care)	736	736	+1	+0.1%	-4	+1
Cope Foundation (Social Care)	1,099	1,091	-7	-0.7%	+1	+8
Cork Dental Hospital (Primary Care)	104	102	-2	-2.3%	-1	+3
St. John of God, Kerry (Social Care)	309	309	-1	-0.2%	-6	+13
Section 38 Voluntary Agencies	2,248	2,238	-10	-0.4%	-11	+25
CHO 4	8,243	8,290	+47	+0.6%	+101	+53
Health Service Executive	4,164	4,167	+2	+0.1%	+8	-57
Bros. of Charity, Waterford (Social Care)	622	615	-8	-1.2%	-15	+19
Carriglea Cairde Services (Social Care)	211	212	+0	+0.1%	-3	+8
St. Patrick's, Kilkenny (Social Care)	277	287	+9	+3.4%	+8	+3
Section 38 Voluntary Agencies	1,111	1,113	+2	+0.2%	-11	+29
CHO 5	5,275	5,280	+4	+0.1%	-2	-27
Health Service Executive	1,602	1,608	+5	+0.3%	+3	-33
Children's Sunshine Home (Social Care)	58	58			-1	-2
Dublin Dental Hospital (Primary Care)	93	93			+2	+3
Leopardstown Park Hospital (Social Care)	211	205	-6	-3.0%	-6	-4
Royal Hospital, Donnybrook, Dublin (Social Care)	275	276	+1	+0.2%	+4	-3
St. John of God (IDS) (Social Care)	453	449	-4	-0.9%	-8	+5
St. John of God (MHS) (Mental Health)	231	235	+4	+1.7%	-0	+2
Sunbeam House Services (Social Care)	430	422	-8	-1.8%	-27	-27
Section 38 Voluntary Agencies	1,749	1,736	-13	-0.8%	-37	-26
CHO 6	3,352	3,344	-8	-0.2%	-34	-58
Health Service Executive	3,161	3,184	+23	+0.7%	+33	-97
Cheeverstown House (Social Care)	398	399	+1	+0.2%	+2	-9
Kare, Newbridge, Co Kildare (Social Care)	359	362	+4	+1.0%	+3	+27
Our Lady's Hospice & Care Services (Primary Care)	485	533	+48	+9.8%	+51	+42
Peamount Hospital (Newcastle) (Social Care)	493	485	-9	-1.7%	-1	+3

Apr 2020 (Dec 2019 figure: 52,089)	WTE Mar 2020	WTE Apr 2020	WTE change since Mar 20	% change since Mar 20	WTE change since Dec 19	WTE change since Apr 19
Overall	52,143	52,414	+271	+0.5%	+326	-57
Stewart's Hospital, (Palmerstown) (Social Care)	857	863	+6	+0.7%	+12	-26
St. John of God Liffey Services (Social Care)	763	754	-9	-1.2%	-34	+11
Section 38 Voluntary Agencies	3,355	3,396	+40	+1.2%	+33	+48
CHO 7	6,516	6,580	+64	+1.0%	+65	-49
Health Service Executive	4,629	4,654	+25	+0.5%	+71	-21
Muiriosa Foundation, Laois/Offaly (Social Care)	300	300	+0	+0.0%	-2	+7
Muiriosa Foundation, Longford/Westmeath (Social Care)	269	272	+3	+1.2%	+2	-2
Muiriosa Foundation, South Kildare (Social Care)	331	348	+18	+5.4%	+15	+22
St. John of God, Drumcar (Social Care)	631	641	+10	+1.6%	-5	+0
Section 38 Voluntary Agencies	1,531	1,561	+31	+2.0%	+9	+27
CHO 8	6,160	6,215	+56	+0.9%	+80	+6
Health Service Executive	3,398	3,402	+5	+0.1%	-5	-179
Central Remedial Clinic (Social Care)	284	286	+2	+0.5%	+7	+10
Daughters of Charity, Dublin (Social Care)	1,051	1,072	+21	+2.0%	+38	+62
Incorporated Orthopaedic Hospital (Social Care)	228	264	+36	+15.8%	+38	+38
St. Michael's House, Dublin (Social Care)	1,424	1,414	-10	-0.7%	-17	+36
St. Vincent's, Fairview (Mental Health)	205	213	+9	+4.2%	+7	-6
Section 38 Voluntary Agencies	3,191	3,249	+57	+1.8%	+74	+139
CHO 9	6,589	6,651	+62	+0.9%	+69	-40
other Community Services	655	660	+5	+0.8%	+22	+62
Community Services	52,143	52,414	+271	+0.5%	+462	-57

Employment by Community Services Division: Apr 2020

Community Health & Wellbeing

Apr 2020 (figure:)	WTE Mar 2020	WTE Apr 2020	WTE change since Mar 20	% change since Mar 20	WTE change since	WTE change since
Overall	107	107	+0	+0.1%	+107	+107
Nurse/ Midwife Manager	1	1	+0	+54.0%	+1	+1
Public Health Nurse	2	2			+2	+2
Nursing & Midwifery	2	3	+0	+11.0%	+3	+3
Therapy Professions	9	8	-1	-10.2%	+8	+8
Health & Social Care Professionals	9	8	-1	-10.2%	+8	+8
Management (VIII & above)	9	9			+9	+9
Administrative/ Supervisory (V to VII)	48	49	+0	+0.8%	+49	+49
Clerical (III & IV)	15	15	-0	-3.0%	+15	+15
Management & Administrative	72	72	-0	-0.1%	+72	+72
Care, other	23	24	+1	+3.1%	+24	+24
Patient & Client Care	23	24	+1	+3.1%	+24	+24

Mental Health

Apr 2020 (Dec 2019 figure: 9,954)	WTE Mar 2020	WTE Apr 2020	WTE change since Mar 20	% change since Mar 20	WTE change since Dec 19	WTE change since Apr 19
Overall	10,091	10,161	+70	+0.7%	+207	+58
Consultants	352	361	+9	+2.6%	+9	+27
Registrars	260	260	+0	+0.1%	-9	+24
SHO/ Interns	252	252	+1	+0.2%	-9	-28
Medical/ Dental, other	5	5	-0	-1.8%	-0	-2
Medical & Dental	868	878	+10	+1.2%	-9	+20
Nurse/ Midwife Manager	1,204	1,223	+19	+1.6%	+31	+20
Nurse/ Midwife Specialist & AN/MP	477	485	+9	+1.8%	+26	+39
Staff Nurse/ Staff Midwife	3,053	3,041	-11	-0.4%	+39	-61
<i>Pre-registration Nurse/ Midwife Intern</i>	139	164	+25	+17.9%	+137	+39
<i>Post-registration Nurse/ Midwife Student</i>				-100.0%	-1	
<i>Nursing/ Midwifery awaiting registration</i>	17	13	-4	-22.2%	-46	+9
Nursing/ Midwifery Student	156	177	+21	+13.7%	+90	+48
Nursing/ Midwifery other	32	33	+2	+5.7%	+2	+4
Nursing & Midwifery	4,921	4,960	+40	+0.8%	+187	+51
Therapy Professions	431	435	+3	+0.8%	+12	+3
Social Care	75	77	+1	+1.9%	+3	-0
Social Workers	355	359	+4	+1.1%	+10	+8
Psychologists	389	394	+5	+1.4%	-0	-2
Pharmacy	19	20	+1	+5.9%	+1	+2
H&SC, Other	106	109	+4	+3.6%	+1	+12
Health & Social Care Professionals	1,375	1,394	+19	+1.4%	+28	+23
Management (VIII & above)	61	61	-0	-0.1%	+4	+14
Administrative/ Supervisory (V to VII)	231	236	+5	+2.0%	-1	+12
Clerical (III & IV)	709	707	-2	-0.3%	-10	-10
Management & Administrative	1,002	1,004	+2	+0.2%	-7	+16
Support	580	577	-3	-0.5%	-3	-22
Maintenance/ Technical	132	131	-1	-0.5%	+0	-5
General Support	712	709	-4	-0.5%	-3	-27
Health Care Assistants	1,000	1,003	+2	+0.2%	+15	-5
Care, other	212	212	+0	+0.1%	-4	-19
Patient & Client Care	1,213	1,215	+3	+0.2%	+12	-24

Primary Care

Apr 2020 (Dec 2019 figure: 10,599)	WTE Mar 2020	WTE Apr 2020	WTE change since Mar 20	% change since Mar 20	WTE change since Dec 19	WTE change since Apr 19
Overall	10,562	10,671	+109	+1.0%	+71	-326
Consultants	44	43	-1	-1.2%	-1	+1
Registrars	380	388	+7	+1.9%	-7	+19
SHO/ Interns	44	36	-9	-19.6%	-2	+3
Medical/ Dental, other	514	523	+9	+1.7%	+3	-25
Medical & Dental	983	989	+7	+0.7%	-6	-1
Nurse/ Midwife Manager	372	384	+12	+3.3%	+25	+21
Nurse/ Midwife Specialist & AN/MP	150	153	+4	+2.5%	+11	+9
Staff Nurse/ Staff Midwife	857	860	+3	+0.3%	-2	-26
Public Health Nurse	1,487	1,499	+12	+0.8%	-14	-18
<i>Post-registration Nurse/ Midwife Student</i>	97	96	-1	-1.1%	-0	+7
Nursing/ Midwifery Student	97	96	-1	-1.1%	-0	+7
Nursing/ Midwifery other	5	6	+1	+15.1%	+2	+2
Nursing & Midwifery	2,967	2,997	+30	+1.0%	+21	-6
Therapy Professions	1,732	1,738	+6	+0.4%	+7	-94
Health Science/ Diagnostics	108	111	+4	+3.5%	+3	-2
Social Care	34	34	-1	-1.7%	-2	-3
Social Workers	138	138	+1	+0.4%	-1	-8
Psychologists	295	294	-1	-0.3%	-7	-18
Pharmacy	57	55	-1	-2.6%	-2	-4
H&SC, Other	178	180	+1	+0.7%	-3	-9
Health & Social Care Professionals	2,542	2,551	+9	+0.3%	-5	-140
Management (VIII & above)	296	299	+3	+1.0%	-7	-16
Administrative/ Supervisory (V to VII)	622	644	+22	+3.5%	+25	+10
Clerical (III & IV)	1,730	1,747	+16	+0.9%	+0	-87
Management & Administrative	2,649	2,690	+41	+1.6%	+19	-94
Support	355	368	+13	+3.7%	+22	-3
Maintenance/ Technical	58	60	+2	+3.9%	+1	+0
General Support	413	428	+15	+3.7%	+22	-2
Health Care Assistants	264	267	+3	+1.2%	+13	-62
Home Help	19	19	+1	+3.8%	+1	-0
Care, other	727	730	+3	+0.4%	+6	-20
Patient & Client Care	1,009	1,016	+7	+0.7%	+20	-83

Social Care

Apr 2020 (Dec 2019 figure: 31,535)	WTE Mar 2020	WTE Apr 2020	WTE change since Mar 20	% change since Mar 20	WTE change since Dec 19	WTE change since Apr 19
Overall	31,384	31,476	+92	+0.3%	-59	+104
Consultants	28	27	-0	-0.5%	-0	+1
Registrars	20	21	+1	+4.8%	-2	-1
SHO/ Interns	20	21	+1	+3.0%	-1	-1
Medical/ Dental, other	102	100	-2	-1.9%	-11	+2
Medical & Dental	169	169	-1	-0.3%	-14	+3
Nurse/ Midwife Manager	1,604	1,617	+13	+0.8%	+14	+33
Nurse/ Midwife Specialist & AN/MP	92	93	+1	+1.0%	+4	+8
Staff Nurse/ Staff Midwife	5,151	5,156	+5	+0.1%	+7	-26
Public Health Nurse	18	19	+1	+4.1%	-1	-2
<i>Pre-registration Nurse/ Midwife Intern</i>	79	115	+36	+45.8%	+86	+44
<i>Post-registration Nurse/ Midwife Student</i>	1	1				+1
<i>Nursing/ Midwifery awaiting registration</i>	16	24	+9	+56.6%	+9	+24
Nursing/ Midwifery Student	95	140	+45	+47.0%	+96	+70
Nursing/ Midwifery other	25	28	+3	+10.8%	+5	+6
Nursing & Midwifery	6,985	7,053	+67	+1.0%	+126	+89
Therapy Professions	1,056	1,068	+12	+1.1%	+15	+46
Health Science/ Diagnostics	23	24	+1	+3.1%	-3	-1
Social Care	2,599	2,599	-0	-0.0%	+1	+60
Social Workers	319	324	+5	+1.5%	+7	-2
Psychologists	216	217	+0	+0.2%	+10	+12
Pharmacy	24	24	-0	-1.4%	+2	+4
H&SC, Other	87	81	-5	-6.3%	-5	-6
Health & Social Care Professionals	4,324	4,336	+12	+0.3%	+28	+113
Management (VIII & above)	258	259	+2	+0.6%	+5	+21
Administrative/ Supervisory (V to VII)	661	669	+9	+1.3%	+25	+42
Clerical (III & IV)	1,244	1,250	+6	+0.5%	+18	+22
Management & Administrative	2,162	2,178	+16	+0.7%	+49	+85
Support	1,560	1,562	+3	+0.2%	-1	-35
Maintenance/ Technical	226	227	+1	+0.4%	+4	-4
General Support	1,786	1,789	+4	+0.2%	+3	-39
Health Care Assistants	10,761	10,785	+24	+0.2%	-84	-6
Home Help	3,439	3,425	-13	-0.4%	-125	-156
Care, other	1,757	1,741	-17	-0.9%	-41	+15
Patient & Client Care	15,957	15,951	-6	-0.0%	-250	-147

Employment by Grade Group: Apr 2020

Apr 2020 (Dec 2019 figure: 119,817)	WTE Mar 2020	WTE Apr 2020	WTE change since Mar 20	% change since Mar 20	WTE change since Dec 19	WTE change since Apr 19
Overall	120,469	121,702	+1,234	+1.0%	+1,885	+2,324
Consultant Anaesthesia	403	413	+10	+2.6%	+6	+19
Consultant Dentistry	16	16	+0	+0.2%	-1	+0
Consultant Emergency Medicine	115	118	+3	+2.5%	+10	+20
Consultant Intensive Care Medicine	16	16	+0	+0.3%		+1
Consultant Medicine	842	863	+21	+2.5%	+35	+84
Consultant Obstetrics & Gynaecology	164	166	+2	+1.3%	+5	+9
Consultant Paediatrics	203	207	+4	+2.0%	+10	+14
Consultant Pathology	262	267	+6	+2.1%	+9	+18
Consultant Psychiatry	405	413	+8	+2.0%	+6	+33
Consultant Radiology	295	296	+1	+0.4%	+0	+17
Consultant Surgery	561	570	+9	+1.7%	+17	+35
Consultant, Other				-100.0%	-1	
Consultants	3,281	3,346	+65	+2.0%	+96	+251
Registrar	2,303	2,348	+45	+2.0%	+77	+127
Senior Registrar	205	201	-4	-1.9%	-9	-3
Specialist Registrar	1,162	1,167	+5	+0.5%	-30	+99
Registrars	3,670	3,717	+47	+1.3%	+37	+223
Interns	724	738	+14	+2.0%	+12	+13
Senior House Officer	2,363	2,437	+74	+3.1%	+47	+92
SHO/ Interns	3,087	3,175	+88	+2.8%	+59	+105
Dentists	310	314	+5	+1.5%	+4	-3
Other Medical	486	503	+17	+3.6%	+2	-6
Medical/ Dental, other	795	817	+22	+2.7%	+6	-9
Medical & Dental	10,833	11,055	+222	+2.0%	+198	+570
Clinical Nurse/ Midwife Manager	6,790	6,877	+87	+1.3%	+131	+208
Director Nursing/Midwifery, Assistant	958	977	+20	+2.0%	+37	+76
Director of Nursing/Midwifery	299	297	-2	-0.8%	-1	+12
Nurse/ Midwife Manager	8,047	8,151	+104	+1.3%	+167	+297
Advanced Nurse/ Midwife Practitioner	418	425	+7	+1.7%	+41	+71
Clinical Nurse/ Midwife Specialist	1,660	1,685	+25	+1.5%	+73	+102
Nurse/ Midwife Specialist & AN/MP	2,078	2,110	+32	+1.5%	+114	+173
Nursing Bank	27	26	-1	-3.2%	-5	-13
Staff Midwives	1,479	1,474	-5	-0.3%	+9	+20
Staff Nurse [Intellectual Disability]	1,590	1,596	+7	+0.4%	-5	-34
Staff Nurse [Psychiatric]	3,029	3,008	-22	-0.7%	-10	-87
Staff Nurses [General/ Children's]	19,651	19,749	+98	+0.5%	+172	+243
Staff Nurse/ Staff Midwife	25,777	25,854	+77	+0.3%	+161	+129
Public Health Nurse	1,510	1,522	+12	+0.8%	-15	-20
Nursing/ Midwifery awaiting registration	72	70	-2	-3.3%	-143	+34
Post-registration Nurse/ Midwife Student	286	281	-5	-1.6%	-12	+20
Pre-registration Nurse/ Midwife Intern	698	875	+177	+25.3%	+736	+238
Nursing/ Midwifery Student	1,056	1,226	+170	+16.1%	+581	+293
Nursing Education/Clinical	309	315	+6	+2.0%	+15	+47
Other Nursing/ Midwifery	48	51	+3	+7.1%	+1	+4
Nursing/ Midwifery other	356	366	+10	+2.7%	+16	+51
Nursing & Midwifery	38,824	39,229	+405	+1.0%	+1,024	+922
Dietitians	577	588	+11	+2.0%	+13	+7
Occupational Therapists	1,603	1,616	+13	+0.8%	+16	+18
Orthoptists	35	33	-1	-4.1%	-2	-1
Physiotherapists	1,862	1,901	+39	+2.1%	+50	+23
Podiatrists & Chiropodists	74	79	+5	+6.5%	+8	+5

Apr 2020 (Dec 2019 figure: 119,817)	WTE Mar 2020	WTE Apr 2020	WTE change since Mar 20	% change since Mar 20	WTE change since Dec 19	WTE change since Apr 19
Overall	120,469	121,702	+1,234	+1.0%	+1,885	+2,324
Speech & Language Therapists	1,114	1,115	+1	+0.1%	+13	-30
Therapy Professions	5,265	5,332	+67	+1.3%	+98	+21
Audiology	72	75	+3	+4.3%	+3	-0
Biochemists	77	80	+3	+3.5%	+1	+2
Clinical Engineering	164	169	+5	+3.2%	+5	+7
Clinical Measurement	386	388	+3	+0.7%	+4	+16
Dosimetrists	13	13			+0	+4
Medical Laboratory	2,051	2,097	+46	+2.3%	+63	+61
Perfusionists	21	21	-1	-3.0%	-1	+3
Phlebotomists	179	181	+2	+1.3%	+8	+13
Physicists	183	185	+2	+1.2%	-3	-2
Radiation Therapists	197	199	+2	+1.1%	-0	+14
Radiographers	1,246	1,265	+19	+1.5%	+36	+54
Health Science/ Diagnostics	4,590	4,675	+85	+1.9%	+117	+172
Social Care	2,712	2,713	+0	+0.0%	+2	+57
Social Workers	1,174	1,186	+12	+1.0%	+21	+13
Psychologists	1,006	1,010	+4	+0.4%	+6	+1
Psychologists	1,006	1,010	+4	+0.4%	+6	+1
Pharmacy	1,078	1,085	+7	+0.6%	+47	+100
Pharmacy	1,078	1,085	+7	+0.6%	+47	+100
Counsellor Therapists	239	244	+5	+2.2%	+6	+10
Dental Hygienists	57	59	+2	+3.3%	+1	-1
Environmental Health Officers	534	540	+6	+1.1%	+12	+68
HSCP Trainees/ Students	78	52	-26	-33.6%	-18	-48
Other Health & Social Care	120	117	-3	-2.5%	-8	-1
Play Therapists/ Specialists	46	43	-3	-6.3%	-3	-4
H&SC, Other	1,074	1,055	-19	-1.8%	-10	+24
Health & Social Care Professionals	16,899	17,056	+156	+0.9%	+282	+387
Executive Management	338	340	+2	+0.5%	+9	+10
Senior Management (VIII & GM)	1,522	1,541	+19	+1.2%	+30	+86
Management (VIII & above)	1,860	1,881	+21	+1.1%	+39	+96
Middle Management (V-VII)	5,265	5,325	+60	+1.1%	+163	+357
Other Administrative	41	41	+0	+0.7%	+4	-4
Administrative/ Supervisory (V to VII)	5,306	5,366	+60	+1.1%	+167	+353
Clerical (III & IV)	11,806	11,855	+50	+0.4%	+50	-152
Management & Administrative	18,972	19,102	+131	+0.7%	+256	+296
Catering	876	880	+4	+0.4%	+3	+5
Household Services	4,402	4,489	+87	+2.0%	+291	+212
Other Labs & Associated	392	422	+30	+7.6%	+37	+46
Other Support	1,122	1,126	+4	+0.3%	-10	-11
Portering	1,645	1,687	+42	+2.6%	+49	+38
Support	8,438	8,604	+166	+2.0%	+370	+290
Maintenance	1,070	1,073	+3	+0.3%	+7	+13
Technical Services	119	122	+2	+2.0%	+5	+8
Maintenance/ Technical	1,189	1,195	+6	+0.5%	+12	+22
General Support	9,627	9,799	+172	+1.8%	+383	+311
HCA, Nurse's Aide, etc.	16,874	17,037	+164	+1.0%	-121	+30
Health & Social Care Assistants	244	244	+0	+0.1%	+8	-53
Health Care Assistants	17,118	17,282	+164	+1.0%	-114	-23
Home Help	3,457	3,445	-12	-0.4%	-124	-156
Ambulance Control	174	182	+8	+4.9%	+3	+10
Ambulance Education	164	155	-9	-5.5%	-7	+0

Apr 2020 (Dec 2019 figure: 119,817)	WTE Mar 2020	WTE Apr 2020	WTE change since Mar 20	% change since Mar 20	WTE change since Dec 19	WTE change since Apr 19
Overall	120,469	121,702	+1,234	+1.0%	+1,885	+2,324
Ambulance Officers	79	79	-0	-0.3%	+1	+6
Pre-Hospital Care (Ambulance)	1,415	1,426	+10	+0.7%	+18	+31
Ambulance Staff	1,832	1,842	+10	+0.5%	+14	+47
Community Welfare Officers	3	3	+0	+0.0%	+0	-1
Other Care Grades	2,903	2,890	-14	-0.5%	-34	-31
Care, other	2,906	2,893	-14	-0.5%	-34	-31
Patient & Client Care	25,314	25,461	+148	+0.6%	-257	-163

Employment by WTE, Headcount, Gender, Full-Time /Part-Time etc.: Apr 2020

Staff Group	WTE	Headcount	WTE: no.	% Male	% female	Male WTE: no.	Female WTE: no.	% Total Perm	% Male Perm	% Female Perm	% Total Full Time	% Total Part Time	% Male FT	% Female FT
Overall	121,702	140,746	1.16	20.9%	79.1%	1.06	1.18	85.6%	78.9%	87.4%	66.5%	33.5%	87.2%	61.1%
Consultant Anaesthesia	413	443	1.07	62.1%	37.9%	1.07	1.07	87.4%	87.4%	87.5%	92.6%	7.4%	93.1%	91.7%
Consultant Dentistry	16	19	1.16	42.1%	57.9%	1.13	1.19	94.7%	94.7%	90.9%	73.7%	26.3%	75.0%	72.7%
Consultant Emergency Medicine	118	125	1.06	69.6%	30.4%	1.03	1.12	75.2%	75.2%	73.7%	90.4%	9.6%	94.3%	81.6%
Consultant Intensive Care Medicine	16	17	1.06	35.3%	64.7%	1.20	1.00	82.4%	82.4%	81.8%	88.2%	11.8%	66.7%	100.0%
Consultant Medicine	863	944	1.09	60.5%	39.5%	1.08	1.12	79.1%	79.1%	74.5%	85.0%	15.0%	87.6%	81.0%
Consultant Obstetrics & Gynaecology	166	182	1.10	46.2%	53.8%	1.06	1.13	88.5%	88.5%	84.7%	84.6%	15.4%	89.3%	80.6%
Consultant Paediatrics	207	233	1.12	48.1%	51.9%	1.07	1.17	82.4%	82.4%	81.0%	79.4%	20.6%	86.6%	72.7%
Consultant Pathology	267	293	1.10	38.6%	61.4%	1.10	1.10	84.6%	84.6%	86.1%	85.0%	15.0%	87.6%	83.3%
Consultant Psychiatry	413	459	1.11	41.8%	58.2%	1.08	1.14	78.2%	78.2%	77.5%	81.3%	18.7%	90.1%	74.9%
Consultant Radiology	296	312	1.05	58.7%	41.3%	1.05	1.07	89.1%	89.1%	89.9%	91.7%	8.3%	93.4%	89.1%
Consultant Surgery	570	631	1.11	80.2%	19.8%	1.09	1.18	81.9%	81.9%	77.6%	83.5%	16.5%	86.8%	70.4%
Consultants	3,346	3,658	1.09	58.4%	41.6%	1.08	1.12	82.4%	83.6%	80.7%	85.5%	14.5%	89.0%	80.6%
Registrar	2,348	2,432	1.04	56.1%	43.9%	1.03	1.05	9.3%	9.3%	6.2%	96.3%	3.7%	97.4%	94.9%
Senior Registrar	201	212	1.05	53.8%	46.2%	1.03	1.07	10.4%	10.4%	10.2%	92.0%	8.0%	94.7%	88.8%
Specialist Registrar	1,167	1,197	1.03	44.3%	55.7%	1.01	1.04	5.1%	5.1%	4.8%	96.7%	3.3%	98.7%	95.2%
Registrars	3,717	3,841	1.03	52.3%	47.7%	1.02	1.05	8.1%	10.1%	5.9%	96.2%	3.8%	97.6%	94.7%
Interns	738	744	1.01	39.8%	60.2%	1.01	1.01	0.4%	0.4%	0.4%	99.5%	0.5%	99.0%	99.8%
Senior House Officer	2,437	2,553	1.05	46.1%	53.9%	1.04	1.06	9.8%	9.8%	7.9%	97.0%	3.0%	97.5%	96.6%
SHO/ Interns	3,175	3,297	1.04	44.6%	55.4%	1.03	1.04	7.7%	9.7%	6.1%	97.6%	2.4%	97.8%	97.4%
Dentists	314	404	1.28	26.7%	73.3%	1.26	1.29	90.3%	90.3%	90.5%	51.2%	48.8%	62.0%	47.3%
Other Medical	503	718	1.43	37.3%	62.7%	1.53	1.37	72.4%	72.4%	75.6%	40.9%	59.1%	38.4%	42.4%
Medical/ Dental, other	817	1,122	1.37	33.5%	66.5%	1.44	1.34	78.9%	73.7%	81.5%	44.7%	55.3%	45.2%	44.4%
Medical & Dental	11,055	11,918	1.08	50.3%	49.7%	1.06	1.09	37.5%	40.2%	34.7%	88.5%	11.5%	91.3%	85.6%
Clinical Nurse/ Midwife Manager	6,877	7,602	1.11	10.3%	89.7%	1.02	1.12	97.7%	97.7%	97.7%	71.9%	28.1%	94.0%	69.3%
Director Nursing/Midwifery, Assistant	977	1,044	1.07	13.1%	86.9%	1.01	1.08	98.4%	98.4%	98.1%	84.5%	15.5%	96.4%	82.7%
Director of Nursing/Midwifery	297	302	1.02	10.3%	89.7%	1.00	1.02	97.4%	97.4%	97.4%	97.0%	3.0%	100.0%	96.7%
Nurse/ Midwife Manager	8,151	8,948	1.10	10.6%	89.4%	1.02	1.11	97.7%	97.6%	97.8%	74.2%	25.8%	94.5%	71.8%
Advanced Nurse/ Midwife Practitioner	425	446	1.05	13.2%	86.8%	1.00	1.06	98.9%	98.9%	99.0%	86.1%	13.9%	100.0%	84.0%
Clinical Nurse/ Midwife Specialist	1,685	1,924	1.14	7.1%	92.9%	1.01	1.15	98.9%	98.9%	98.9%	66.5%	33.5%	97.8%	64.1%

Nurse/ Midwife Specialist & AN/MP	2,110	2,370	1.12	8.3%	91.7%	1.01	1.13	98.9%	99.0%	98.9%	70.2%	29.8%	98.5%	67.6%
Nursing Bank	26	69	2.64	2.9%	97.1%	2.53	2.64	78.3%	78.3%	77.6%	1.4%	98.6%	0.0%	1.5%
Staff Midwives	1,474	1,795	1.22	0.2%	99.8%	1.03	1.22	95.0%	95.0%	95.0%	47.2%	52.8%	66.7%	47.2%
Staff Nurse [Intellectual Disability]	1,596	1,871	1.17	8.6%	91.4%	1.10	1.18	95.0%	95.0%	95.0%	62.9%	37.1%	83.2%	61.0%
Staff Nurse [Psychiatric]	3,008	3,266	1.09	26.2%	73.8%	1.06	1.09	94.5%	94.5%	94.9%	83.6%	16.4%	88.9%	81.7%
Staff Nurses [General/ Children's]	19,749	22,998	1.16	8.3%	91.7%	1.03	1.18	95.6%	95.6%	95.8%	60.6%	39.4%	89.8%	57.9%
Staff Nurse/ Staff Midwife	25,854	29,999	1.16	9.8%	90.2%	1.05	1.17	95.4%	93.9%	95.6%	62.3%	37.7%	89.1%	59.4%
Public Health Nurse	1,522	1,819	1.19	0.4%	99.6%	1.03	1.20	96.9%	100.0%	96.9%	63.4%	36.6%	87.5%	63.3%
Nursing/ Midwifery awaiting registration	70	72	1.03	18.1%	81.9%	1.03	1.03	45.8%	45.8%	50.8%	95.8%	4.2%	100.0%	94.9%
Post-registration Nurse/ Midwife Student	281	283	1.01	2.1%	97.9%	1.01	1.01	18.0%	18.0%	18.1%	98.6%	1.4%	100.0%	98.6%
Pre-registration Nurse/ Midwife Intern	875	1,424	1.63	10.2%	89.8%	1.80	1.61	4.7%	4.7%	5.0%	63.5%	36.5%	73.1%	62.4%
Nursing/ Midwifery Student	1,226	1,779	1.45	9.2%	90.8%	1.65	1.43	8.5%	4.3%	8.9%	70.4%	29.6%	76.2%	69.8%
Nursing Education/Clinical	315	356	1.13	4.8%	95.2%	1.03	1.14	97.5%	97.5%	97.3%	71.6%	28.4%	100.0%	70.2%
Other Nursing/ Midwifery	51	54	1.06	7.4%	92.6%	1.00	1.06	100.0%	100.0%	100.0%	81.5%	18.5%	100.0%	80.0%
Nursing/ Midwifery other	366	410	1.12	5.1%	94.9%	1.02	1.13	97.8%	100.0%	97.7%	72.9%	27.1%	100.0%	71.5%
Nursing & Midwifery	39,229	45,325	1.16	9.4%	90.6%	1.05	1.17	92.7%	91.5%	92.8%	65.5%	34.5%	90.3%	62.9%
Dietitians	588	696	1.18	1.1%	98.9%	1.00	1.19	89.1%	89.1%	89.2%	65.4%	34.6%	100.0%	65.0%
Occupational Therapists	1,616	1,835	1.14	8.3%	91.7%	1.07	1.14	91.2%	91.2%	91.0%	73.8%	26.2%	88.2%	72.5%
Orthoptists	33	47	1.42	12.8%	87.2%	1.02	1.50	89.4%	89.4%	90.2%	44.7%	55.3%	100.0%	36.6%
Physiotherapists	1,901	2,207	1.16	18.0%	82.0%	1.06	1.19	88.8%	88.8%	89.6%	67.4%	32.6%	86.4%	63.2%
Podiatrists & Chiropodists	79	104	1.31	15.4%	84.6%	1.30	1.32	87.5%	87.5%	88.6%	50.0%	50.0%	50.0%	50.0%
Speech & Language Therapists	1,115	1,283	1.15	1.2%	98.8%	1.07	1.15	90.9%	90.9%	90.9%	70.1%	29.9%	81.3%	70.0%
Therapy Professions	5,332	6,172	1.16	9.7%	90.3%	1.07	1.17	90.0%	87.1%	90.3%	69.2%	30.8%	86.1%	67.4%
Audiology	75	85	1.14	18.8%	81.2%	1.09	1.15	97.6%	97.6%	97.1%	71.8%	28.2%	81.3%	69.6%
Biochemists	80	86	1.07	27.9%	72.1%	1.01	1.10	91.9%	91.9%	91.9%	84.9%	15.1%	100.0%	79.0%
Clinical Engineering	169	175	1.04	82.9%	17.1%	1.02	1.14	90.3%	90.3%	80.0%	93.1%	6.9%	96.6%	76.7%
Clinical Measurement	388	424	1.09	18.2%	81.8%	1.01	1.11	92.0%	92.0%	91.9%	79.2%	20.8%	94.8%	75.8%
Dosimetrists	13	15	1.15	6.7%	93.3%	1.00	1.16	100.0%	100.0%	100.0%	73.3%	26.7%	100.0%	71.4%
Medical Laboratory	2,097	2,303	1.10	19.9%	80.1%	1.04	1.11	92.7%	92.7%	93.1%	78.7%	21.3%	93.0%	75.2%
Perfusionists	21	23	1.12	47.8%	52.2%	1.11	1.13	87.0%	87.0%	91.7%	69.6%	30.4%	72.7%	66.7%
Phlebotomists	181	254	1.40	21.3%	78.7%	1.27	1.44	82.3%	82.3%	82.5%	39.4%	60.6%	59.3%	34.0%
Physicists	185	198	1.07	40.9%	59.1%	1.03	1.10	92.9%	92.9%	91.5%	86.4%	13.6%	95.1%	80.3%
Radiation Therapists	199	216	1.09	11.6%	88.4%	1.02	1.09	89.8%	89.8%	92.1%	77.8%	22.2%	92.0%	75.9%
Radiographers	1,265	1,425	1.13	17.6%	82.4%	1.04	1.15	95.3%	95.3%	95.8%	74.9%	25.1%	91.2%	71.4%
Health Science/ Diagnostics	4,675	5,204	1.11	22.0%	78.0%	1.04	1.14	92.7%	91.2%	93.2%	76.5%	23.5%	91.5%	72.2%
Social Care	2,713	3,237	1.19	15.6%	84.4%	1.09	1.21	90.1%	90.1%	90.0%	48.9%	51.1%	66.0%	45.8%

Social Care	2,713	3,237	1.19	15.6%	84.4%	1.09	1.21	90.1%	90.5%	90.0%	48.9%	51.1%	66.0%	45.8%
Social Workers	1,186	1,334	1.13	15.2%	84.8%	1.06	1.14	92.9%	90.6%	93.3%	75.6%	24.4%	88.7%	73.2%
Psychologists	1,010	1,146	1.13	18.6%	81.4%	1.04	1.16	80.9%	80.8%	80.9%	72.4%	27.6%	90.1%	68.4%
Pharmacy	1,085	1,215	1.12	11.4%	88.6%	1.04	1.13	84.3%	81.3%	84.7%	75.5%	24.5%	88.5%	73.8%
Counsellor Therapists	244	278	1.14	30.9%	69.1%	1.06	1.18	94.2%	94.2%	94.8%	67.6%	32.4%	80.2%	62.0%
Dental Hygienists	59	75	1.27	1.3%	98.7%	1.00	1.27	98.7%	98.7%	98.6%	46.7%	53.3%	100.0%	45.9%
Environmental Health Officers	540	590	1.09	22.7%	77.3%	1.02	1.12	99.5%	99.5%	99.6%	79.2%	20.8%	98.5%	73.5%
HSCP Trainees/ Students	52	71	1.37	31.0%	69.0%	1.27	1.42	2.8%	2.8%	4.1%	77.5%	22.5%	81.8%	75.5%
Other Health & Social Care	117	145	1.23	29.0%	71.0%	1.14	1.28	89.7%	89.7%	88.3%	57.2%	42.8%	78.6%	48.5%
Play Therapists/ Specialists	43	55	1.29	5.5%	94.5%	1.00	1.31	92.7%	92.7%	92.3%	54.5%	45.5%	100.0%	51.9%
H&SC, Other	1,055	1,214	1.15	23.7%	76.3%	1.06	1.18	91.1%	88.9%	91.8%	70.7%	29.3%	88.9%	65.0%
Health & Social Care	17,056	19,522	1.14	15.8%	84.2%	1.06	1.16	90.1%	88.9%	90.3%	68.9%	31.1%	85.6%	65.7%
Executive Management	340	347	1.02	51.0%	49.0%	1.02	1.03	92.2%	92.2%	91.8%	97.1%	2.9%	98.3%	95.9%
Senior Management (VIII & GM)	1,541	1,589	1.03	35.2%	64.8%	1.02	1.04	96.0%	96.0%	96.1%	94.0%	6.0%	97.1%	92.2%
Management (VIII & above)	1,881	1,936	1.03	38.0%	62.0%	1.02	1.04	95.4%	95.1%	95.5%	94.5%	5.5%	97.4%	92.8%
Middle Management (V-VII)	5,325	5,703	1.07	22.9%	77.1%	1.02	1.09	95.1%	95.1%	95.4%	81.7%	18.3%	96.1%	77.5%
Other Administrative	41	43	1.05	32.6%	67.4%	1.02	1.07	72.1%	72.1%	79.3%	86.0%	14.0%	100.0%	79.3%
Administrative/ Supervisory (V to VII)	5,366	5,746	1.07	23.0%	77.0%	1.02	1.09	94.9%	93.6%	95.3%	81.8%	18.2%	96.1%	77.5%
Clerical (III & IV)	11,855	13,671	1.15	12.3%	87.7%	1.04	1.17	87.8%	82.0%	88.6%	66.7%	33.3%	91.4%	63.2%
Management & Administrative	19,102	21,353	1.12	17.5%	82.5%	1.03	1.14	90.4%	88.6%	90.7%	73.3%	26.7%	94.3%	68.8%
Catering	880	978	1.11	30.9%	69.1%	1.06	1.14	95.9%	95.9%	97.2%	70.2%	29.8%	91.1%	60.9%
Household Services	4,489	5,420	1.21	19.8%	80.2%	1.13	1.23	89.5%	89.5%	91.4%	53.3%	46.7%	75.8%	47.8%
Other Labs & Associated	422	456	1.08	29.2%	70.8%	1.04	1.10	79.2%	79.2%	78.3%	86.0%	14.0%	94.0%	82.7%
Other Support	1,126	1,544	1.37	39.8%	60.2%	1.12	1.61	84.9%	84.9%	82.3%	52.5%	47.5%	79.5%	34.7%
Portering	1,687	1,785	1.06	93.1%	6.9%	1.05	1.15	88.7%	88.7%	85.4%	89.2%	10.8%	91.2%	63.4%
Support	8,604	10,183	1.18	37.2%	62.8%	1.08	1.25	88.8%	87.0%	89.9%	62.6%	37.4%	85.0%	49.3%
Maintenance	1,073	1,112	1.04	97.5%	2.5%	1.03	1.29	93.9%	93.9%	92.9%	93.3%	6.7%	94.5%	50.0%
Technical Services	122	124	1.02	79.8%	20.2%	1.02	1.00	97.6%	97.6%	100.0%	98.4%	1.6%	98.0%	100.0%
Maintenance/ Technical	1,195	1,236	1.03	95.7%	4.3%	1.03	1.14	94.3%	94.2%	96.2%	93.9%	6.1%	94.8%	73.6%
General Support	9,799	11,419	1.17	43.5%	56.5%	1.07	1.25	89.4%	88.7%	89.9%	66.0%	34.0%	87.3%	49.5%
HCA, Nurse's Aide, etc.	17,037	19,944	1.17	24.0%	76.0%	1.09	1.20	86.5%	86.5%	86.5%	60.3%	39.7%	76.7%	55.1%
Health & Social Care Assistants	244	283	1.16	22.3%	77.7%	1.04	1.20	70.7%	70.7%	67.3%	74.6%	25.4%	93.7%	69.1%
Health Care Assistants	17,282	20,227	1.17	24.0%	76.0%	1.09	1.20	86.3%	86.5%	86.2%	60.5%	39.5%	76.9%	55.3%
Home Help	3,445	5,600	1.63	3.6%	96.4%	1.62	1.63	81.1%	71.0%	81.5%	10.2%	89.8%	12.0%	10.1%
Ambulance Control	182	196	1.07	50.0%	50.0%	1.04	1.11	99.0%	99.0%	99.0%	99.5%	0.5%	100.0%	99.0%

Ambulance Education	155	157	1.01	63.1%	36.9%	1.01	1.01	0.0%	0.0%	0.0%	100.0%	0.0%	100.0%	100.0%
Ambulance Officers	79	80	1.02	83.8%	16.3%	1.02	1.00	98.8%	98.8%	100.0%	98.8%	1.3%	98.5%	100.0%
Pre-Hospital Care (Ambulance)	1,426	1,460	1.02	77.7%	22.3%	1.02	1.05	99.3%	99.3%	99.1%	99.0%	1.0%	99.6%	97.2%
Ambulance Staff	1,842	1,893	1.03	73.9%	26.1%	1.02	1.06	91.0%	92.3%	87.5%	99.2%	0.8%	99.6%	98.0%
Community Welfare Officers	3	3	1.12	33.3%	66.7%	1.00	1.18	100.0%	100.0%	100.0%	33.3%	66.7%	100.0%	0.0%
Other Care Grades	2,890	3,486	1.21	27.3%	72.7%	1.15	1.23	90.2%	90.2%	91.7%	60.2%	39.8%	72.9%	55.4%
Care, other	2,893	3,489	1.21	27.3%	72.7%	1.15	1.23	90.2%	86.3%	91.7%	60.2%	39.8%	73.0%	55.4%
Patient & Client Care	25,461	31,209	1.23	23.7%	76.3%	1.09	1.28	86.1%	87.2%	85.7%	53.8%	46.2%	78.9%	45.9%

Employment by WTE, Headcount, Gender, Full-Time /Part-Time etc.: Apr 2020

Hospital Group/ CHO / Service	WTE	Headcount	WTE: no.	% Male	% female	Male WTE: no.	Female WTE: no.	% Total Perm	% Male Perm	% Female Perm	% Total Full Time	% Total Part Time	% Male FT	% Female FT
Overall	121,702	140,746	1.16	20.9%	79.1%	1.06	1.18	85.6%	78.9%	87.4%	66.5%	33.5%	87.2%	61.1%
<i>National Ambulance Service</i>	1,950	2,012	1.03	71.7%	28.3%	1.02	1.07	91.2%	91.2%	88.6%	98.5%	1.5%	99.4%	96.3%
<i>Children's Health Ireland</i>	3,630	4,160	1.15	15.6%	84.4%	1.04	1.17	82.7%	82.7%	84.8%	68.5%	31.5%	93.5%	63.8%
<i>Dublin Midlands Hospital Group</i>	11,075	12,328	1.11	22.3%	77.7%	1.04	1.14	83.0%	83.0%	85.7%	76.4%	23.6%	93.3%	71.5%
<i>Ireland East Hospital Group</i>	12,435	13,963	1.12	24.4%	75.6%	1.05	1.15	83.9%	83.9%	86.8%	75.4%	24.6%	91.1%	70.3%
<i>RCSI Hospitals Group</i>	9,967	11,117	1.12	22.5%	77.5%	1.04	1.14	84.2%	84.2%	87.2%	76.7%	23.3%	93.3%	71.8%
<i>Saolta University Hospital Care</i>	9,408	10,775	1.15	21.5%	78.5%	1.07	1.17	75.5%	75.5%	79.6%	66.3%	33.7%	90.5%	59.7%
<i>South/South West Hospital Group</i>	10,806	12,417	1.15	21.0%	79.0%	1.05	1.18	88.5%	88.5%	91.0%	59.6%	40.4%	86.9%	52.4%
<i>University of Limerick Hospital Group</i>	4,215	4,772	1.13	19.9%	80.1%	1.04	1.16	80.0%	80.0%	83.6%	73.7%	26.3%	94.8%	68.5%
<i>other Acute Services</i>	577	641	1.11	22.9%	77.1%	1.04	1.13	74.1%	74.1%	75.1%	74.7%	25.3%	91.8%	69.6%
Acute Services	64,064	72,185	1.13	23.2%	76.8%	1.04	1.15	83.1%	83.1%	85.9%	71.8%	28.2%	92.1%	65.7%
<i>CHO 1</i>	5,534	6,461	1.17	17.1%	82.9%	1.08	1.19	83.1%	83.1%	82.8%	63.4%	36.6%	84.8%	59.0%
<i>CHO 2</i>	5,473	6,512	1.19	18.5%	81.5%	1.10	1.21	86.2%	86.2%	87.1%	57.7%	42.3%	75.5%	53.6%
<i>CHO 3</i>	4,388	5,392	1.23	13.7%	86.3%	1.10	1.25	86.7%	86.7%	87.6%	53.2%	46.8%	73.7%	50.0%
<i>CHO 4</i>	8,290	10,347	1.25	15.8%	84.2%	1.14	1.27	93.7%	93.7%	94.7%	48.7%	51.3%	71.7%	44.5%
<i>CHO 5</i>	5,280	6,336	1.20	15.3%	84.7%	1.10	1.22	94.8%	94.8%	95.1%	52.4%	47.6%	74.6%	48.4%
<i>CHO 6</i>	3,344	3,948	1.18	21.7%	78.3%	1.11	1.20	86.4%	86.4%	86.7%	71.8%	28.2%	85.0%	68.2%
<i>CHO 7</i>	6,580	7,840	1.19	19.6%	80.4%	1.09	1.22	87.6%	87.6%	88.2%	67.9%	32.1%	83.4%	64.1%
<i>CHO 8</i>	6,215	7,537	1.21	16.9%	83.1%	1.12	1.23	86.8%	86.8%	87.2%	55.9%	44.1%	73.0%	52.4%
<i>CHO 9</i>	6,651	7,829	1.18	17.4%	82.6%	1.08	1.20	84.4%	84.4%	84.9%	64.4%	35.6%	83.0%	60.5%
<i>other Community Services</i>	660	709	1.07	40.6%	59.4%	1.07	1.08	80.3%	80.3%	80.0%	88.9%	11.1%	89.2%	88.6%
Community Services	52,414	62,911	1.20	17.4%	82.6%	1.10	1.22	88.0%	88.0%	88.6%	59.0%	41.0%	78.5%	54.9%
<i>Health & Wellbeing</i>	502	560	1.12	18.4%	81.6%	1.06	1.13	89.8%	89.8%	90.6%	72.9%	27.1%	90.3%	68.9%
<i>Corporate</i>	3,136	3,418	1.09	23.8%	76.2%	1.03	1.11	93.0%	93.0%	93.7%	81.2%	18.8%	93.3%	77.4%
<i>Health Business Services</i>	1,587	1,672	1.05	48.9%	51.1%	1.02	1.09	84.2%	84.2%	85.8%	87.8%	12.2%	95.7%	80.2%
H&WB, Corporate & National Services	5,224	5,650	1.08	30.7%	69.3%	1.03	1.11	90.1%	90.1%	91.6%	82.3%	17.7%	94.3%	77.0%

Summary Staff Movement: April 2020

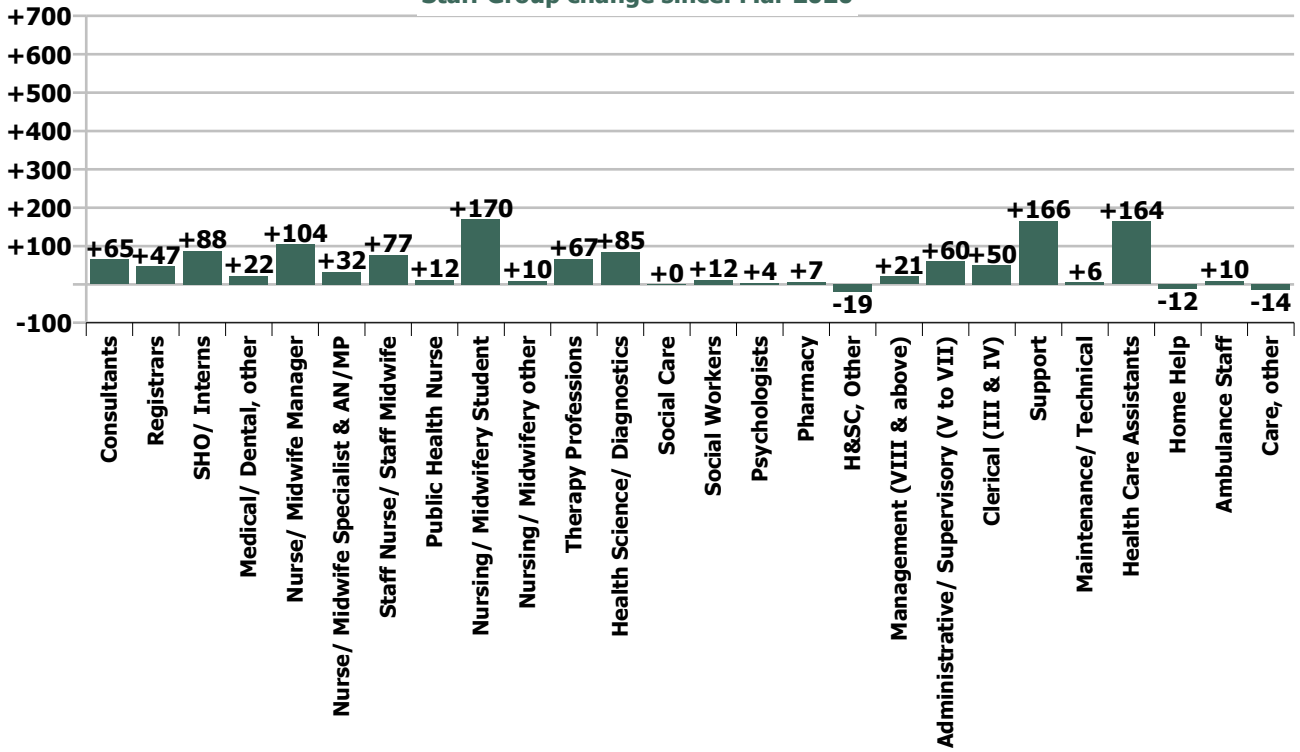
Month-on-month Summary

WTE change since Mar 20	% change since Mar 20	overall	Consultants	Registrars	SHO/ Interns	Medical/ Dental, other	Medical & Dental	Nurse/ Midwife Manager	Nurse/ Midwife Specialist & AN/MP	Staff Nurse/ Staff Midwife	Public Health Nurse	Nursing/ Midwifery Student	Nursing/ Midwifery other	Nursing & Midwifery	Therapy Professions	Health Science/ Diagnostics	Social Care	Social Workers	Psychologists	Pharmacy	H&SC, Other	Health & Social Care Professionals	Management (VII & above)	Administrative Supervisory (V to VII)	Clerical (III & IV)	Management & Administrative	Support	Maintenance/ Technical	General Support	Health Care Assistants	Home Help	Ambulance Staff	Care, other	Patient & Client Care		
Overall	+1.0%	+1,234	+65	+47	+88	+22	+222	+104	+32	+77	+12	+170	+10	+405	+67	+85	+1	+12	+4	+7	-19	+156	+21	+60	+50	+131	+166	+6	+172	+164	-12	+10	-14	+148		
National Ambulance Service	+0.5%	+10																					+0	+0	-0	+0							+10	+0	+10	
Children's Health Ireland	+0.5%	+17	+8	-4	-0		+4	+1	+2	+16		-1	+0	+18	+2	+1		+1	+0	+0	-2	+3	-3	+1	-1	-4	-2		-2	-3				+1	-2	
Dublin Midlands Hospital Group	+1.2%	+135	+17	+13	+6	-1	+35	+7	+6	+17		+57	+1	+75	+9	+10		+1	-0	+3	-1	+21	+2	+0	-1	+1	+2	-1	+1	+1				-0	+1	
Ireland East Hospital Group	+1.9%	+232	+16	+16	+47	-1	+79	+9	-1	+6		-1	-0	+13	+9	+15		+1	-0	-2	+3	+25	+5	-2	+25	+27	+46	-1	+46	+43				-1	+42	
RCSI Hospitals Group	+1.4%	+140	+4	+0	+30		+34	+14	+2	+18		+9	+4	+45	+8	+10		+0		+2	-1	+18	+1	+4	-10	-5	+4	-0	+4	+46				-3	+43	
Saolta University Hospital Care	+1.2%	+114	+3	+12	+2	-0	+17	+2	+2	-7	-1	+47	-1	+52	-1	+13		+1	-1	+0	+3	+9	-0	+3	+4	+6	+29	-2	+26	+3				+0	+3	
South/South West Hospital Group	+2.2%	+228	+8	+1	+13	-0	+22	+6	+5	+39		-7	-1	+43	+14	+24		+0		+2	-21	+20	+4	+4	+10	+18	+74	+6	+80	+44				+0	+45	
University of Limerick Hospital Group	+0.5%	+20	+1	-1	-3		+4	+2	+2			+0	+1	+10	+3	+7		+2		+1	-1	+9	-0	-2	+6	+4	+0	+0	+0				+0	+0	+0	
other Acute Services	+1.2%	+7					-0		+2				+2	+1	-0			+0	+0	+1		+3	-0	+1	+0	+1	+1		+1						+1	
Acute Services	+1.4%	+903	+57	+38	+95	-2	+188	+53	+18	+78	-1	+105	+4	+257	+45	+80		+2	-1	+7	-25	+109	+8	+9	+34	+50	+154	+3	+157	+135			+10	-3	+141	
CHO 1	+0.3%	+18	-0	-1	+0	-3	-3	+4	+3	-6	-1	+11	+1	+12	+2	-0	+0	+3	-0	-0	-4	+1	-0	+8	+0	+8	+2	+1	+3	-0	-6			+4	-3	
CHO 2	-0.0%	-2	+1	-1	+1	+2	+2	+1	-1	-1	+3	+8	+0	+10	-2	+0	+10	+1	+0	+0	-2	+7	+0	-0	-3	-3	-11	-1	-12	-9	+13			-11	-7	
CHO 3	+0.6%	+25	+1	-0	-0	+1	+2	+5	-1	-2	+3	+12	+2	+17	-1	+0		-6	-0	+2	+1	-4	+1	+3	-3	+0	+0	+0	+11	-4				+3	+10	
CHO 4	+0.6%	+47	+2	-0	-0	+4	+6	+1	+2	+5	+2	-4	-0	+6	+3	+1	+1	+3	+2	+0	+5	+15	+1	-1	+6	+6	+9	+9	-2	+11			-3	+6		
CHO 5	+0.1%	+4	+0	+10	-10	+1	+1	+7	+6	+7	+4	+3	-0	+27	-5	+2	-4	+1	-2	-0	-1	-10	+0	+4	+1	+5	-4	+0	-4	+8	-20			-3	-16	
CHO 6	-0.2%	-8	+1	-1	+0	-0	-0	+1	+1	-5	+1	+0	+2	-1	-4	+0	-5	-1	+0	+0	-0	-10	-1	+0	+3	+0	+8	-1	+8	-1			-5	-6		
CHO 7	+1.0%	+64	+1	+1	-0	+1	+3	+9	+3	+0	-3	+9	+0	+18	+9	+0	-2	+2	+0	-2	-2	+6	+2	+17	+10	+29	+8	+2	+10	-3	-1			+1	-3	
CHO 8	+0.9%	+56	+0	+0	-0	+1	+1	+7	-1	+7	+3	+6	+1	+24	+7	+0	+7	+1	+3	-0	+1	+19	+1	+2	+5	+8	+0	+0	+8	-5				+0	+4	
CHO 9	+0.9%	+62	+1	+2	+1	+1	+5	+4	+1	-5	+2	+19	+2	+23	+12	+1	+0	+1	-1	+1	+1	+14	+1	-0	+2	+2	-1	+0	-1	+18				+0	+19	
other Community Services	+0.8%	+5	+1	-1	-0	-0	+0	+5	+0	-4		-0	-0	+1	-0	+0	+0	+0	+0	-0	+0	+1	+0	+3	-1	+2	+1	+0	+1	+0				+0	+0	
Community Services	+0.5%	+271	+9	+8	+7	+7	+16	+45	+13	-3	+12	+65	+5	+137	+21	+4	-1	+10	+5	-1	-0	+39	+5	+35	+20	+60	+13	+3	+15	+30	-12			-13	+4	
Health & Wellbeing	+4.9%	+23		-0		+15	+14	+0	+0	+1				+2	+1	-0					+0	+1	-0	+3	+2	+4	+0		+0					+2	+2	
Corporate	+0.9%	+28	+0	+1	+3	+4	+7	+0	+1				+1	+9	-0	+1		+0			+6	+7	+7	+6	-4	+9	-0	-0	-0	-0					-0	
Health Business Services	+0.5%	+8																			+0	+0	+2	+8	-2	+8	-1	+1	+0						+2	+2
H&WB, Corporate & National S	+1.2%	+60	+0	-0	+1	+17	+18	+7	+0	+2			+1	+10	+1	+0		+0		+0	+7	+8	+8	+16	-4	+21	-1	+1	+0					+2	+2	
			+2.0%	+1.3%	+2.8%	+2.7%	+2.0%	+1.3%	+1.5%	+0.3%	+0.8%	+16.1%	+2.7%	+1.0%	+1.3%	+1.9%	+0.0%	+1.0%	+0.4%	+0.6%	-1.8%	+0.9%	+1.1%	+1.1%	+0.4%	+0.7%	+2.0%	+0.5%	+1.8%	+1.0%	-0.4%	+0.5%	-0.5%	+0.6%		

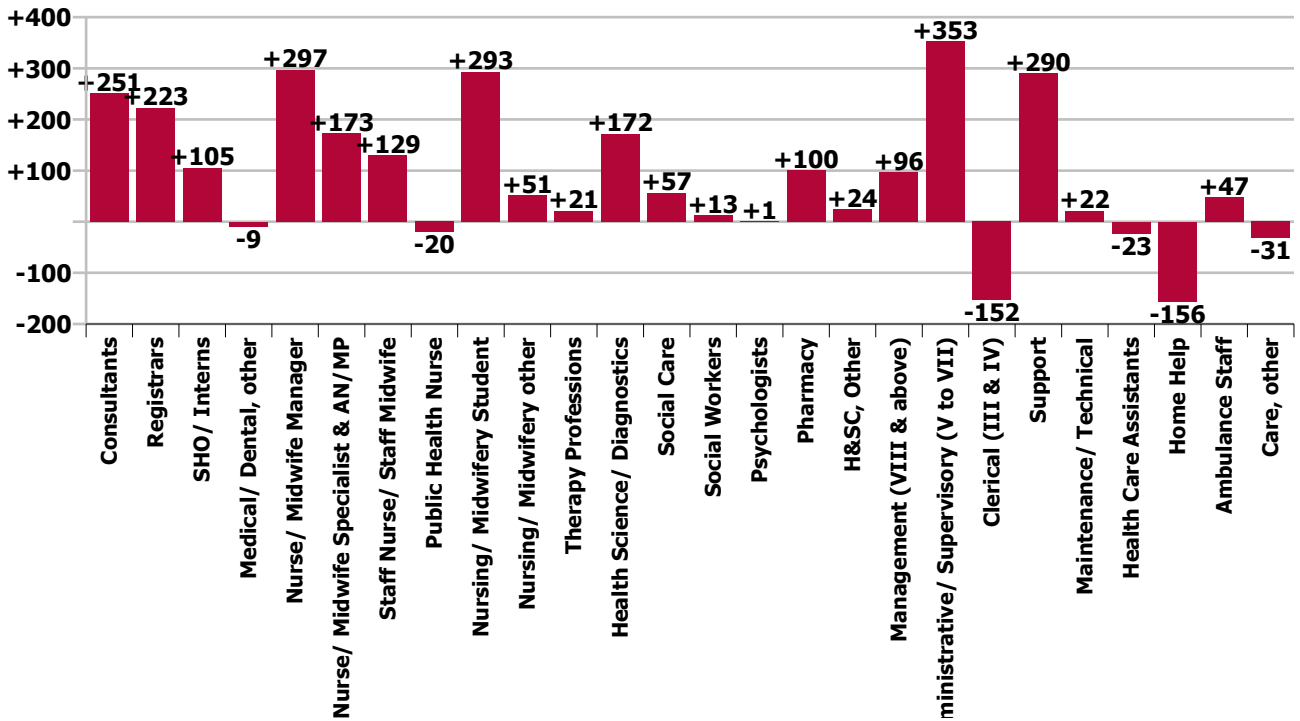
Year-on-year Summary

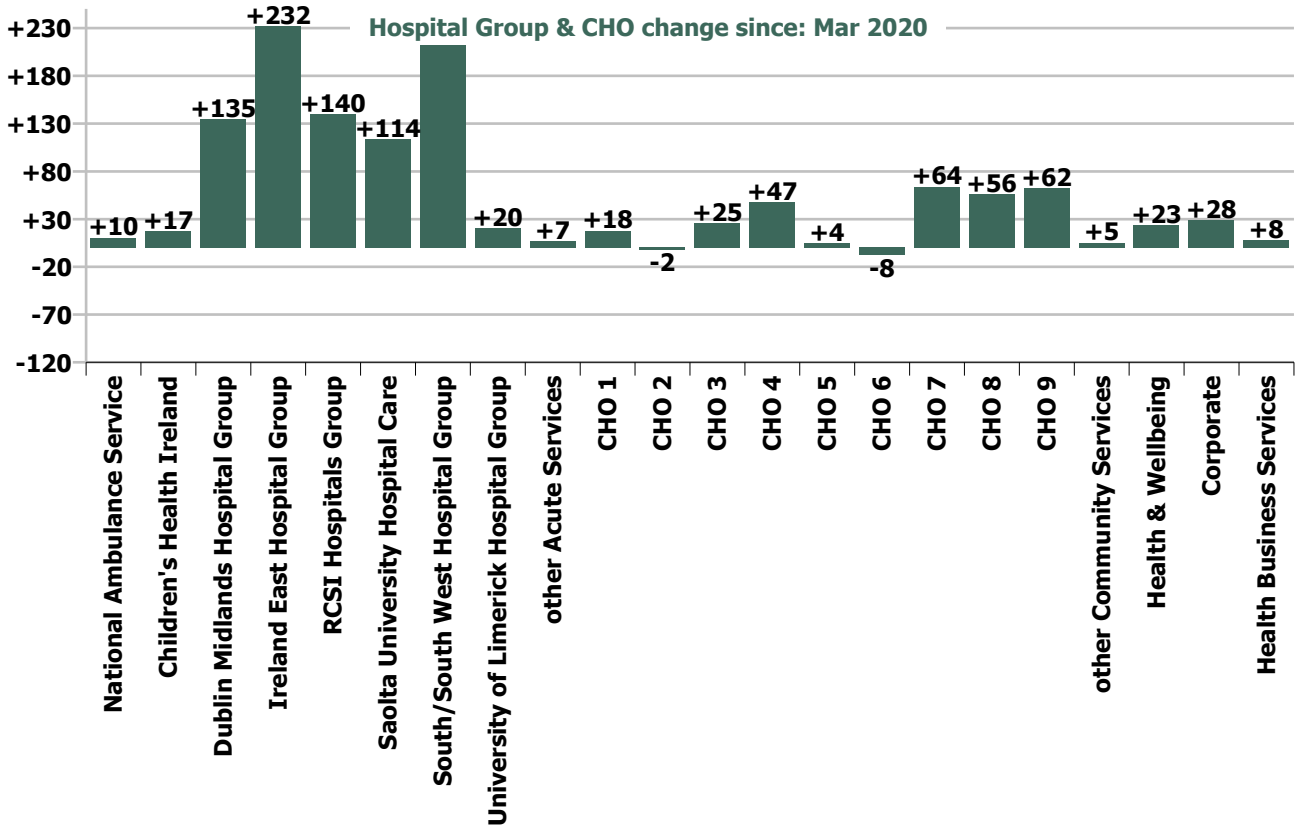
WTE change since Apr 19	% change since Apr 19	overall	Consultants	Registrars	SHO/ Interns	Medical/ Dental, other	Medical & Dental	Nurse/ Midwife Manager	Nurse/ Midwife Specialist & AN/MP	Staff Nurse/ Staff Midwife	Public Health Nurse	Nursing/ Midwifery Student	Nursing/ Midwifery other	Nursing & Midwifery	Therapy Professions	Health Science/ Diagnostics	Social Care	Social Workers	Psychologists	Pharmacy	H&SC, Other	Health & Social Care Professionals	Management (VIII & above)	Administrative Supervisory (V to VII)	Clerical (III & IV)	Management & Administrative	Support	Maintenance/ Technical	General Support	Health Care Assistants	Home Help	Ambulance Staff	Care, other	Patient & Client Care	
Overall	+1.9%	+2,324	+251	+223	+105	-9	+570	+297	+173	+129	-20	+293	+51	+922	+21	+172	+57	+13	+1	+100	+24	+387	+96	+353	-153	+296	+290	+22	+311	-23	-156	+47	-31	-163	
National Ambulance Service	+2.9%	+54						+0		-1				-1								+5	+8	-2	+10	+0	+0		+0				+44	+1	+45
Children's Health Ireland	+5.1%	+178	+17	+16	+10	-1	+41	+15	+22	+1		-0	+1	+39	+16	+15			-0	+2	+7	-2	+38	-3	+22	+26	+44	-1	-1	-2	+16			+1	+17
Dublin Midlands Hospital Group	+4.2%	+448	+57	+42	+7	-0	+106	+19	+22	+86		+61	+11	+199	-1	+50		+3	+1	+21	-7	+68	+4	+10	+5	+19	+13	+6	+19	+37				-0	+37
Ireland East Hospital Group	+4.4%	+521	+50	+35	+58	-5	+137	+31	+13	+99		+8	+2	+153	+20	+33		+9	+3	+13	+3	+81	+6	+18	+35	+60	+39	+11	+50	+41				-1	+40
RCSI Hospitals Group	+6.3%	+595	+23	+23	+42	+1	+89	+37	+26	+158		+58	+7	+286	+4	+8		+2	+2	+22	-1	+37	+8	+22	+1	+31	+4	+13	+17	+139			-4	+135	
Saolta University Hospital Care	+1.0%	+92	+43	+34	-2	-1	+74	-1	+15	-69	-1	+40	+4	+74	-6	+15	+1	+1	-1	+12	-12	+14	-2	+42	-40	+0	+30	-3	+27	-11			+0	-11	
South/South West Hospital Group	+3.0%	+313	+18	+23	+11	+1	+53	+95	+16	-14		+2	+1	+100	+20	+55		+1		+1	+8	-23	+62	+4	+37	+15	+23	+2	+25	+61			-1	+59	
University of Limerick Hospital Group	+0.1%	+4	+10	+5	+0	+26	+7	+2	-32	+11		-1	-1	-25	+8	+4		+1	+1	-1	-4	+9	+1	-0	-12	-12	+237	-1	+236	-230			-0	-230	
other Acute Services	+8.2%	+44	+2		-1		+1	+6	+1	+11				+18	+4	+3		+0	+0	+3	+0	+10	+4	+1	-0	+4	+8	+4	+12	-1				-1	
Acute Services	+3.6%	+2,247	+220	+184	+128	-5	+526	+209	+117	+239	-1	+168	+25	+757	+65	+182	+1	+16	+9	+84	-38	+319	+26	+160	-14	+171	+353	+31	+384	+51			+44	-5	+90
CHO 1	+0.2%	+9	+1	+1	-2	+2	+3	+6	+12	-22	-3	+32	+3	+28	+3	-0	+0	+7	-1	-1	-4	-1	-1	+36	+0	+36	-7	+2	-4	-32	-19			+0	-51
CHO 2	-1.2%	-66	+6	+11	-4	-1	+12	-5	+10	-23	+10	+1	+0	-7	+0	-2	+21	+2	-5	-0	-5	+11	+0	+11	-22	-11	-10	-4	-13	-34	-20			-4	-58
CHO 3	+1.3%	+55	-1																																

Staff Group change since: Mar 2020

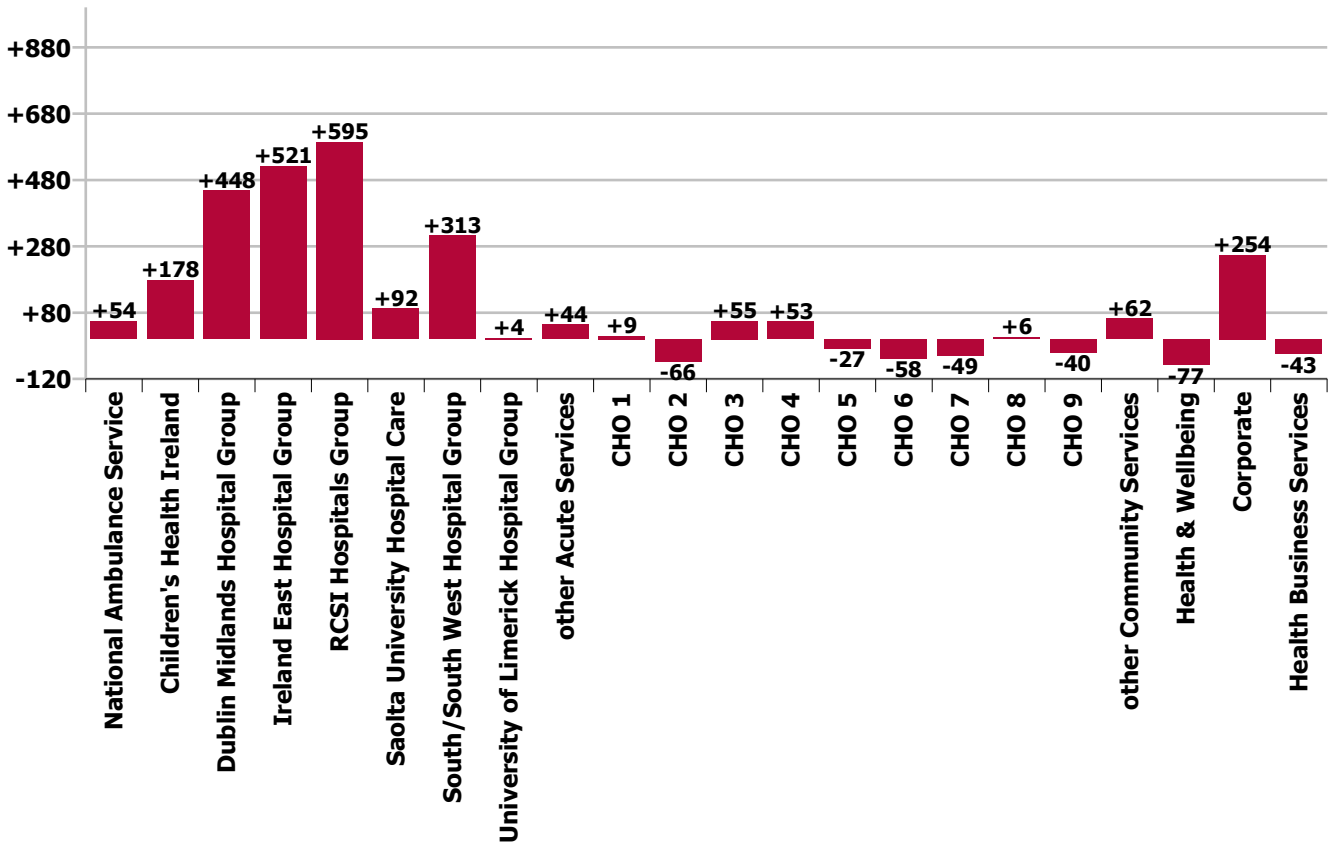


Staff Group change since: Apr 2019





Hospital Group & CHO change since: Apr 2019



Longitudinal Employment Levels by Grade Group - Oct 2013 to Apr 2020

Apr 2020 (Dec 2019 figure: 119,817)	WTE Apr 2020	WTE change since Oct 13	WTE change since Dec 16	WTE change since Dec 17	WTE change since Dec 18	WTE change since Dec 19	% change since Oct 13	% change since Dec 16	% change since Dec 17	% change since Dec 18	% change since Dec 19
Overall	121,702	+21,326	+11,445	+7,407	+3,845	+1,885	+21.2%	+10.4%	+6.5%	+3.3%	+1.6%
Consultant Anaesthesia	413	+63	+40	+24	+19	+6	+18.0%	+10.7%	+6.1%	+4.9%	+1.5%
Consultant Dentistry	16	+2	+1	+0	-1	-1	+10.8%	+7.4%	+0.1%	-7.6%	-5.6%
Consultant Emergency Medicine	118	+43	+26	+20	+21	+10	+56.1%	+28.6%	+20.7%	+21.5%	+9.6%
Consultant Intensive Care Medicine	16	+13	+13	+10	+1		+433.3%	+433.3%	+166.7%	+7.7%	
Consultant Medicine	863	+276	+140	+108	+73	+35	+47.1%	+19.3%	+14.3%	+9.3%	+4.2%
Consultant Obstetrics & Gynaecology	166	+44	+26	+15	+9	+5	+36.1%	+18.9%	+10.2%	+5.8%	+2.9%
Consultant Paediatrics	207	+74	+50	+36	+25	+10	+55.7%	+31.9%	+20.8%	+14.0%	+5.0%
Consultant Pathology	267	+59	+38	+28	+18	+9	+28.2%	+16.4%	+11.8%	+7.2%	+3.3%
Consultant Psychiatry	413	+66	+51	+49	+39	+6	+19.0%	+14.2%	+13.5%	+10.5%	+1.6%
Consultant Radiology	296	+55	+28	+26	+10	+0	+22.9%	+10.5%	+9.5%	+3.5%	+0.1%
Consultant Surgery	570	+122	+72	+59	+35	+17	+27.2%	+14.4%	+11.6%	+6.6%	+3.0%
Consultant, Other		-1	-1			-1	-100.0%	-100.0%	-100.0%	-100.0%	-100.0%
Consultants	3,346	+815	+484	+375	+250	+96	+32.2%	+16.9%	+12.6%	+8.1%	+3.0%
Registrar	2,348	+674	+368	+275	+166	+77	+40.3%	+18.6%	+13.2%	+7.6%	+3.4%
Senior Registrar	201	+103	+15	+26	-0	-9	+103.9%	+8.0%	+14.9%	-0.1%	-4.4%
Specialist Registrar	1,167	+377	+204	+100	+75	-30	+47.7%	+21.1%	+9.4%	+6.9%	-2.5%
Registrars	3,717	+1,154	+587	+401	+241	+37	+45.0%	+18.7%	+12.1%	+6.9%	+1.0%
Interns	738	+118	+25	+18	+8	+12	+19.0%	+3.5%	+2.5%	+1.0%	+1.6%
Senior House Officer	2,437	+659	+220	+142	+91	+47	+37.1%	+9.9%	+6.2%	+3.9%	+2.0%
SHO/ Interns	3,175	+777	+245	+160	+99	+59	+32.4%	+8.4%	+5.3%	+3.2%	+1.9%
Dentists	314	-9	-3	+2	-1	+4	-2.8%	-0.9%	+0.5%	-0.3%	+1.1%
Other Medical	503	+33	+19	-4	-2	+2	+7.0%	+3.9%	-0.9%	-0.3%	+0.4%
Medical/ Dental, other	817	+24	+16	-3	-3	+6	+3.0%	+2.0%	-0.3%	-0.3%	+0.7%
Medical & Dental	11,055	+2,770	+1,332	+934	+588	+198	+33.4%	+13.7%	+9.2%	+5.6%	+1.8%
Clinical Nurse/ Midwife Manager	6,877	+1,552	+692	+575	+243	+131	+29.1%	+11.2%	+9.1%	+3.7%	+1.9%
Director Nursing/Midwifery, Assistant	977	+295	+149	+114	+82	+37	+43.2%	+18.0%	+13.2%	+9.2%	+3.9%
Director of Nursing/Midwifery	297	+83	+32	+28	+27	-1	+38.8%	+11.9%	+10.4%	+9.8%	-0.3%
Nurse/ Midwife Manager	8,151	+1,929	+872	+717	+351	+167	+31.0%	+12.0%	+9.6%	+4.5%	+2.1%
Advanced Nurse/ Midwife Practitioner	425	+330	+262	+202	+116	+41	+344.7%	+159.9%	+90.8%	+37.5%	+10.6%
Clinical Nurse/ Midwife Specialist	1,685	+549	+269	+201	+134	+73	+48.4%	+19.0%	+13.6%	+8.6%	+4.5%
Nurse/ Midwife Specialist & AN/MP	2,110	+879	+531	+404	+250	+114	+71.4%	+33.6%	+23.7%	+13.4%	+5.7%
Graduate Nursing/ Midwifery		-216					-100.0%	-100.0%	-100.0%	-100.0%	-100.0%
Nursing Bank	26	-80	-19	-21	-12	-5	-75.5%	-42.3%	-45.0%	-30.8%	-15.2%
Staff Midwives	1,474	+186	+14	+30	-12	+9	+14.4%	+1.0%	+2.1%	-0.8%	+0.6%
Staff Nurse [Intellectual Disability]	1,596	-163	-133	-111	-95	-5	-9.3%	-7.7%	-6.5%	-5.6%	-0.3%

Apr 2020 (Dec 2019 figure: 119,817)	WTE Apr 2020	WTE change since Oct 13	WTE change since Dec 16	WTE change since Dec 17	WTE change since Dec 18	WTE change since Dec 19	% change since Oct 13	% change since Dec 16	% change since Dec 17	% change since Dec 18	% change since Dec 19
Overall	121,702	+21,326	+11,445	+7,407	+3,845	+1,885	+21.2%	+10.4%	+6.5%	+3.3%	+1.6%
Staff Nurse [Psychiatric]	3,008	-324	-178	-140	-63	-10	-9.7%	-5.6%	-4.4%	-2.1%	-0.3%
Staff Nurses [General/ Children's]	19,749	+2,193	+1,401	+781	+441	+172	+12.5%	+7.6%	+4.1%	+2.3%	+0.9%
Staff Nurse/ Staff Midwife	25,854	+1,595	+1,086	+539	+260	+161	+6.6%	+4.4%	+2.1%	+1.0%	+0.6%
Public Health Nurse	1,522	+34	+23	+8	-18	-15	+2.3%	+1.6%	+0.5%	-1.2%	-1.0%
Nursing/ Midwifery awaiting registration	70	+70	+27	-50	-64	-143	-100.0%	+62.7%	-41.5%	-47.6%	-67.1%
Post-registration Nurse/ Midwife Student	281	+61	+11	+1	+16	-12	+27.5%	+4.2%	+0.3%	+5.9%	-4.1%
Pre-registration Nurse/ Midwife Intern	875	+586	+782	+774	+741	+736	+203.3%	+847.8%	+771.8%	+553.6%	+532.2%
Nursing/ Midwifery Student	1,226	+717	+820	+726	+693	+581	+140.9%	+202.5%	+145.1%	+130.0%	+90.3%
Nursing Education/Clinical	315	+54	+57	+59	+47	+15	+20.6%	+22.2%	+23.2%	+17.4%	+5.1%
Other Nursing/ Midwifery	51	+2	+4	-1	+3	+1	+4.8%	+7.8%	-1.6%	+5.7%	+1.7%
Nursing/ Midwifery other	366	+56	+61	+59	+50	+16	+18.1%	+20.0%	+19.1%	+15.6%	+4.6%
Nursing & Midwifery	39,229	+5,211	+3,394	+2,452	+1,585	+1,024	+15.3%	+9.5%	+6.7%	+4.2%	+2.7%
Dietitians	588	+205	+95	+73	+6	+13	+53.4%	+19.2%	+14.2%	+1.0%	+2.3%
Occupational Therapists	1,616	+377	+141	+88	+32	+16	+30.5%	+9.6%	+5.7%	+2.0%	+1.0%
Orthoptists	33	+8	+5	+0	-1	-2	+32.6%	+18.7%	+1.5%	-1.9%	-5.4%
Physiotherapists	1,901	+407	+172	+91	+52	+50	+27.2%	+9.9%	+5.0%	+2.8%	+2.7%
Podiatrists & Chiropodists	79	+31	+12	+10	+9	+8	+64.8%	+17.4%	+15.0%	+13.2%	+10.6%
Speech & Language Therapists	1,115	+299	+85	+12	+2	+13	+36.6%	+8.3%	+1.1%	+0.2%	+1.2%
Therapy Professions	5,332	+1,327	+509	+275	+101	+98	+33.1%	+10.6%	+5.4%	+1.9%	+1.9%
Audiology	75	+16	+1	-4	-2	+3	+28.2%	+1.9%	-4.9%	-2.8%	+4.5%
Biochemists	80	+2	+14	+10	+1	+1	+2.9%	+20.7%	+13.9%	+1.1%	+1.0%
Clinical Engineering	169	+26	+23	+16	+14	+5	+18.4%	+15.5%	+10.5%	+8.7%	+2.8%
Clinical Measurement	388	+91	+34	+31	+19	+4	+30.7%	+9.5%	+8.7%	+5.3%	+1.1%
Dosimetrists	13	+5	+3	+4	+2	+0	+71.0%	+26.8%	+48.9%	+22.4%	+0.2%
Medical Laboratory	2,097	+269	+74	+64	+54	+63	+14.7%	+3.7%	+3.1%	+2.6%	+3.1%
Perfusionists	21	+1	+2	-0	+1	-1	+7.3%	+8.7%	-0.9%	+3.6%	-5.5%
Phlebotomists	181	+39	+26	+20	+20	+8	+27.2%	+17.1%	+12.3%	+12.6%	+4.9%
Physicists	185	+48	+24	+24	-4	-3	+34.6%	+15.1%	+14.9%	-2.0%	-1.4%
Radiation Therapists	199	+76	+11	+14	+7	-0	+61.8%	+6.0%	+7.3%	+3.6%	-0.1%
Radiographers	1,265	+250	+145	+103	+59	+36	+24.6%	+13.0%	+8.9%	+4.8%	+3.0%
Health Science/ Diagnostics	4,675	+824	+357	+282	+171	+117	+21.4%	+8.3%	+6.4%	+3.8%	+2.6%
Social Care	2,713	+769	+392	+245	+106	+2	+39.5%	+16.9%	+9.9%	+4.0%	+0.1%
Social Care	2,713	+769	+392	+245	+106	+2	+39.5%	+16.9%	+9.9%	+4.0%	+0.1%
Social Workers	1,186	+242	+55	+38	+13	+21	+25.7%	+4.9%	+3.3%	+1.2%	+1.8%
Social Workers	1,186	+242	+55	+38	+13	+21	+25.7%	+4.9%	+3.3%	+1.2%	+1.8%
Psychologists	1,010	+294	+90	+46	+26	+6	+41.0%	+9.7%	+4.8%	+2.6%	+0.6%

Apr 2020 (Dec 2019 figure: 119,817)	WTE Apr 2020	WTE change since Oct 13	WTE change since Dec 16	WTE change since Dec 17	WTE change since Dec 18	WTE change since Dec 19	% change since Oct 13	% change since Dec 16	% change since Dec 17	% change since Dec 18	% change since Dec 19
Overall	121,702	+21,326	+11,445	+7,407	+3,845	+1,885	+21.2%	+10.4%	+6.5%	+3.3%	+1.6%
Psychologists	1,010	+294	+90	+46	+26	+6	+41.0%	+9.7%	+4.8%	+2.6%	+0.6%
Pharmacy	1,085	+406	+231	+187	+110	+47	+59.8%	+27.1%	+20.8%	+11.3%	+4.6%
Pharmacy	1,085	+406	+231	+187	+110	+47	+59.8%	+27.1%	+20.8%	+11.3%	+4.6%
Counsellor Therapists	244	+36	+20	+11	+17	+6	+17.5%	+9.1%	+4.5%	+7.6%	+2.6%
Dental Hygienists	59	+3	+3	+4	+1	+1	+5.8%	+5.8%	+6.9%	+1.3%	+1.4%
Environmental Health Officers	540	+53	+70	+66	+65	+12	+11.0%	+14.9%	+13.9%	+13.6%	+2.2%
HSCP Trainees/ Students	52	-24	-29	-35	-39	-18	-31.7%	-35.9%	-40.0%	-42.7%	-25.8%
Other Health & Social Care	117	-29	-7	-12	-7	-8	-19.6%	-5.5%	-9.3%	-5.8%	-6.1%
Play Therapists/ Specialists	43	+2	-0	-1	-3	-3	+3.8%	-0.3%	-1.3%	-7.1%	-6.4%
H&SC, Other	1,055	+42	+57	+33	+34	-10	+4.1%	+5.8%	+3.2%	+3.3%	-0.9%
Health & Social Care Professionals	17,056	+3,904	+1,692	+1,106	+559	+282	+29.7%	+11.0%	+6.9%	+3.4%	+1.7%
Executive Management	340	+168	+71	+41	+19	+9	+97.7%	+26.4%	+13.6%	+5.8%	+2.8%
Senior Management (VIII & GM)	1,541	+664	+365	+231	+116	+30	+75.8%	+31.1%	+17.7%	+8.1%	+2.0%
Management (VIII & above)	1,881	+832	+436	+272	+134	+39	+79.4%	+30.2%	+16.9%	+7.7%	+2.1%
Middle Management (V-VII)	5,325	+1,739	+1,314	+915	+513	+163	+48.5%	+32.7%	+20.7%	+10.7%	+3.2%
Other Administrative	41	-3	+2	+1	-4	+4	-6.1%	+5.0%	+3.2%	-8.7%	+11.4%
Administrative/ Supervisory (V to VII)	5,366	+1,736	+1,316	+916	+509	+167	+47.8%	+32.5%	+20.6%	+10.5%	+3.2%
Clerical (III & IV)	11,855	+1,459	+584	+201	-45	+50	+14.0%	+5.2%	+1.7%	-0.4%	+0.4%
Management & Administrative	19,102	+4,028	+2,336	+1,389	+598	+256	+26.7%	+13.9%	+7.8%	+3.2%	+1.4%
Catering	880	+24	+25	+20	+22	+3	+2.8%	+3.0%	+2.3%	+2.5%	+0.4%
Household Services	4,489	-15	+185	+212	+225	+291	-0.3%	+4.3%	+5.0%	+5.3%	+6.9%
Other Labs & Associated	422	+133	+94	+75	+60	+37	+45.8%	+28.5%	+21.5%	+16.4%	+9.6%
Other Support	1,126	-2	-22	-35	-42	-10	-0.1%	-1.9%	-3.0%	-3.6%	-0.9%
Portering	1,687	+81	+64	+57	+65	+49	+5.1%	+4.0%	+3.5%	+4.0%	+3.0%
Support	8,604	+220	+346	+328	+330	+370	+2.6%	+4.2%	+4.0%	+4.0%	+4.5%
Maintenance	1,073	-135	-30	-11	+5	+7	-11.2%	-2.7%	-1.0%	+0.4%	+0.7%
Technical Services	122	+44	+35	+29	+11	+5	+56.9%	+40.3%	+30.6%	+9.4%	+4.3%
Maintenance/ Technical	1,195	-91	+5	+17	+15	+12	-7.1%	+0.5%	+1.5%	+1.3%	+1.1%
General Support	9,799	+129	+352	+345	+345	+383	+1.3%	+3.7%	+3.7%	+3.6%	+4.1%
HCA, Nurse's Aide, etc.	17,037	+4,740	+1,653	+987	+236	-121	+38.5%	+10.7%	+6.1%	+1.4%	-0.7%
Health & Social Care Assistants	244	+116	+85	+73	-46	+8	+90.0%	+53.6%	+42.4%	-15.8%	+3.2%
Health Care Assistants	17,282	+4,856	+1,739	+1,060	+191	-114	+39.1%	+11.2%	+6.5%	+1.1%	-0.7%
Home Help	3,445	-93	+271	-57	-107	-124	-2.6%	+8.5%	-1.6%	-3.0%	-3.5%
Ambulance Control	182	+88	+21	+16	+24	+3	+92.5%	+12.9%	+9.4%	+15.2%	+1.5%
Ambulance Education	155	+122	-4	-30	-29	-7	+370.4%	-2.5%	-16.0%	-15.8%	-4.0%

Apr 2020 (Dec 2019 figure: 119,817)	WTE Apr 2020	WTE change since Oct 13	WTE change since Dec 16	WTE change since Dec 17	WTE change since Dec 18	WTE change since Dec 19	% change since Oct 13	% change since Dec 16	% change since Dec 17	% change since Dec 18	% change since Dec 19
Overall	121,702	+21,326	+11,445	+7,407	+3,845	+1,885	+21.2%	+10.4%	+6.5%	+3.3%	+1.6%
Ambulance Officers	79	+4	+7	+7	+2	+1	+5.6%	+9.6%	+9.4%	+2.4%	+0.7%
Pre-Hospital Care (Ambulance)	1,426	+105	+178	+104	+64	+18	+8.0%	+14.3%	+7.9%	+4.7%	+1.2%
Ambulance Staff	1,842	+320	+202	+97	+60	+14	+21.0%	+12.3%	+5.6%	+3.4%	+0.8%
Community Welfare Officers	3	-15	-3	-2	-1	+0	-85.2%	-55.2%	-42.6%	-27.1%	+10.2%
Other Care Grades	2,890	+218	+131	+83	+27	-34	+8.2%	+4.7%	+3.0%	+0.9%	-1.2%
Care, other	2,893	+203	+128	+81	+26	-34	+7.5%	+4.6%	+2.9%	+0.9%	-1.2%
Patient & Client Care	25,461	+5,285	+2,339	+1,181	+170	-257	+26.2%	+10.1%	+4.9%	+0.7%	-1.0%

Source: Health Service Personnel Census