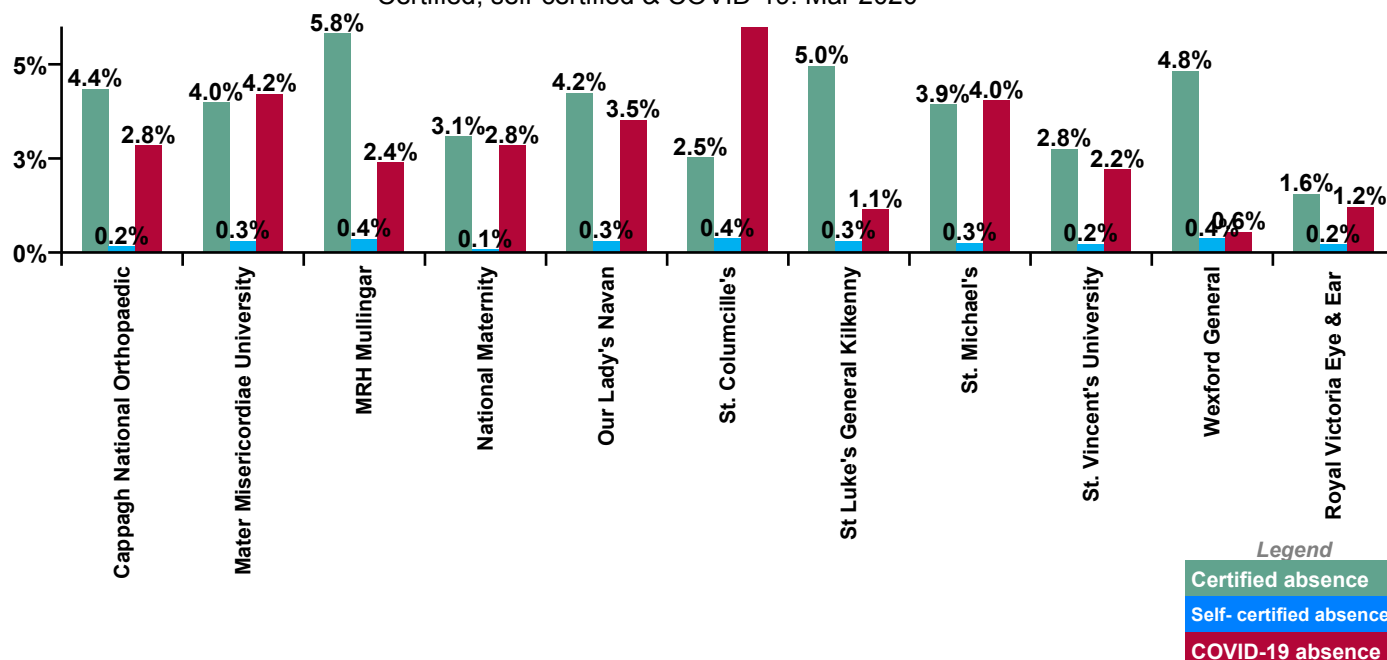


March 2020

Ireland East Hospital Group Absence Rate - by Staff Category: Mar 2020	Certified absence	Self-certified absence	COVID-19 absence	Total absence rate	Certified	Self-certified	COVID-19
Ireland East Hospital Group	3.8%	0.3%	2.9%	6.9%	54.7%	4.0%	41.3%
Medical & Dental	0.7%	0.2%	2.8%	3.6%	18.9%	4.2%	76.9%
Nursing & Midwifery	4.3%	0.3%	3.2%	7.9%	54.9%	3.9%	41.1%
Health & Social Care Professionals	2.8%	0.2%	3.5%	6.4%	43.3%	2.9%	53.8%
Management & Administrative	3.3%	0.2%	2.6%	6.1%	54.6%	3.5%	42.0%
General Support	6.0%	0.4%	1.7%	8.1%	74.2%	4.6%	21.3%
Patient & Client Care	5.5%	0.4%	2.4%	8.4%	66.0%	5.2%	28.8%

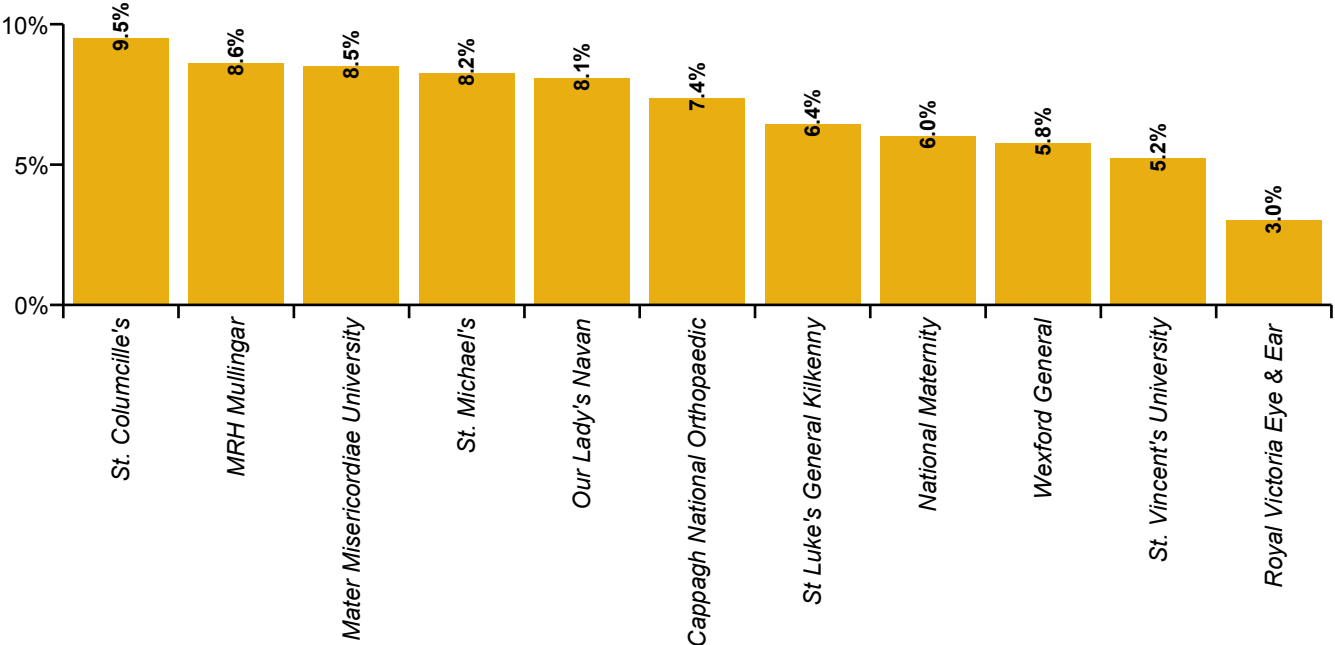
Ireland East Hospital Group Absence Rate - by Hospital: Mar 2020	Certified absence	Self-certified absence	COVID-19 absence	Total absence rate	Certified	Self-certified	COVID-19
Ireland East Hospital Group	3.8%	0.3%	2.9%	6.9%	54.7%	4.0%	41.3%
Cappagh National Orthopaedic	4.4%	0.2%	2.8%	7.4%	59.1%	2.3%	38.6%
Mater Misericordiae University	4.0%	0.3%	4.2%	8.5%	46.9%	3.6%	49.6%
MRH Mullingar	5.8%	0.4%	2.4%	8.6%	67.7%	4.3%	27.9%
National Maternity	3.1%	0.1%	2.8%	6.0%	51.3%	1.3%	47.3%
Our Lady's Navan	4.2%	0.3%	3.5%	8.1%	52.6%	3.8%	43.6%
St. Columcille's	2.5%	0.4%	6.6%	9.5%	26.6%	4.0%	69.4%
St Luke's General Kilkenny	5.0%	0.3%	1.1%	6.4%	77.2%	4.9%	17.9%
St. Michael's	3.9%	0.3%	4.0%	8.2%	47.8%	3.1%	49.0%
St. Vincent's University	2.8%	0.2%	2.2%	5.2%	53.0%	4.5%	42.5%
Wexford General	4.8%	0.4%	0.6%	5.8%	83.7%	6.6%	9.6%
Royal Victoria Eye & Ear	1.6%	0.2%	1.2%	3.0%	52.2%	7.2%	40.5%

Certified, self-certified & COVID-19: Mar 2020

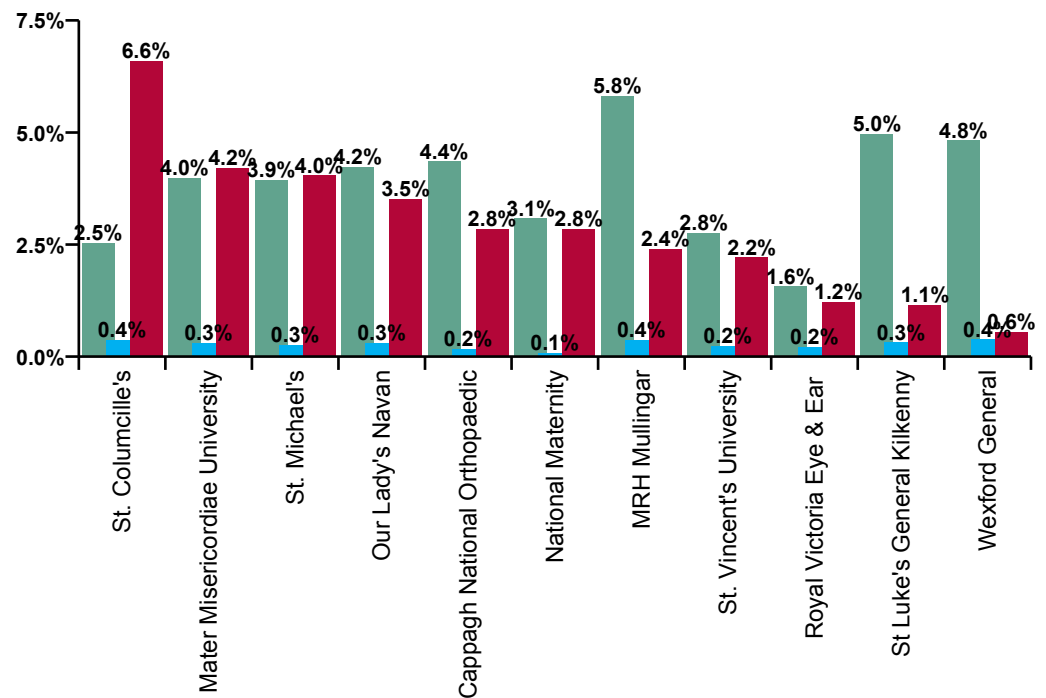
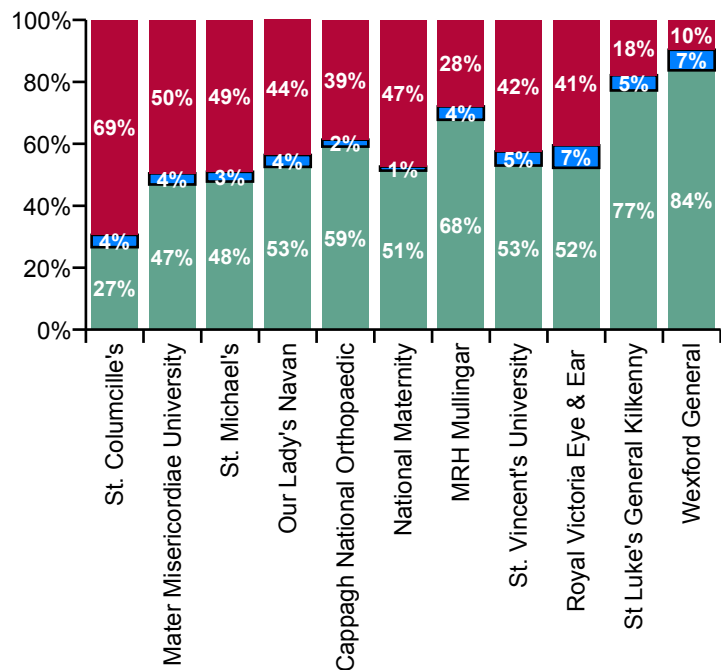


Ireland East Hospital Group Absence type by Hospital: Mar 2020	Certified absence	Self-certified absence	COVID-19 absence	Total absence	Certified	Self-certified	COVID-19
Total (Mar 2020):	3.8%	0.3%	2.9%	6.9%	54.7%	4.0%	41.3%
Cappagh National Orthopaedic	4.4%	0.2%	2.8%	7.4%	59.1%	2.3%	38.6%
Mater Misericordiae University	4.0%	0.3%	4.2%	8.5%	46.9%	3.6%	49.6%
MRH Mullingar	5.8%	0.4%	2.4%	8.6%	67.7%	4.3%	27.9%
National Maternity	3.1%	0.1%	2.8%	6.0%	51.3%	1.3%	47.3%
Our Lady's Navan	4.2%	0.3%	3.5%	8.1%	52.6%	3.8%	43.6%
St. Columcille's	2.5%	0.4%	6.6%	9.5%	26.6%	4.0%	69.4%
St Luke's General Kilkenny	5.0%	0.3%	1.1%	6.4%	77.2%	4.9%	17.9%
St. Michael's	3.9%	0.3%	4.0%	8.2%	47.8%	3.1%	49.0%
St. Vincent's University	2.8%	0.2%	2.2%	5.2%	53.0%	4.5%	42.5%
Wexford General	4.8%	0.4%	0.6%	5.8%	83.7%	6.6%	9.6%
Royal Victoria Eye & Ear	1.6%	0.2%	1.2%	3.0%	52.2%	7.2%	40.5%

Total absence rate by Hospital: Mar 2020



Ireland East Hospital Group Overall Absence Rate - by Hospital & Staff Category: Mar 2020	Medical & Dental	Nursing & Midwifery	Health & Social Care Professionals	Management & Administrative	General Support	Patient & Client Care	Certified absence	Self-certified absence	COVID-19 absence	Total absence
Ireland East Hospital Group	3.6%	7.9%	6.4%	6.1%	8.1%	8.4%	3.8%	0.3%	2.9%	6.9%
<i>Cappagh National Orthopaedic</i>	3.4%	8.0%	2.4%	12.7%	11.0%	0.3%	4.4%	0.2%	2.8%	7.4%
<i>Mater Misericordiae University</i>	4.7%	9.2%	8.9%	7.6%	12.4%	8.7%	4.0%	0.3%	4.2%	8.5%
<i>MRH Mullingar</i>	3.3%	11.3%	9.9%	5.9%	5.5%	9.9%	5.8%	0.4%	2.4%	8.6%
<i>National Maternity</i>	0.0%	6.5%	2.9%	5.0%	10.6%	7.0%	3.1%	0.1%	2.8%	6.0%
<i>Our Lady's Navan</i>	7.4%	8.4%	5.2%	5.6%	8.8%	11.0%	4.2%	0.3%	3.5%	8.1%
<i>St. Columcille's</i>	8.4%	11.9%	6.6%	5.9%	10.6%	9.9%	2.5%	0.4%	6.6%	9.5%
<i>St Luke's General Kilkenny</i>	1.1%	10.3%	4.2%	5.2%	5.4%	5.1%	5.0%	0.3%	1.1%	6.4%
<i>St. Michael's</i>	7.2%	9.1%	11.4%	4.9%	6.1%	9.8%	3.9%	0.3%	4.0%	8.2%
<i>St. Vincent's University</i>	3.3%	5.3%	4.7%	5.3%	6.0%	8.5%	2.8%	0.2%	2.2%	5.2%
<i>Wexford General</i>	1.1%	7.3%	3.9%	5.2%	7.3%	5.0%	4.8%	0.4%	0.6%	5.8%
<i>Royal Victoria Eye & Ear</i>	4.2%	2.2%	7.9%	3.7%	1.4%	0.7%	1.6%	0.2%	1.2%	3.0%



Certified absence

Self-certified absence

COVID-19 absence

Ireland East Hospital Group Absence Rate - by Hospital, Staff Category & Absence type: Mar 2020

Cappagh National Orthopaedic by Staff Category Mar 2020	Certified absence	Self-certified absence	COVID-19 absence	Total absence	Certified	Self-certified	COVID-19
Total	4.4%	0.2%	2.8%	7.4%	59.1%	2.3%	38.6%
Medical & Dental	1.4%	0.0%	2.1%	3.4%	39.7%	0.0%	60.3%
Nursing & Midwifery	5.2%	0.2%	2.6%	8.0%	65.1%	2.6%	32.3%
Health & Social Care Professionals	1.3%	0.4%	0.6%	2.4%	56.0%	17.9%	26.1%
Management & Administrative	4.4%	0.2%	8.1%	12.7%	34.6%	1.3%	64.1%
General Support	8.9%	0.0%	2.1%	11.0%	81.1%	0.0%	18.9%
Patient & Client Care	0.0%	0.0%	0.3%	0.3%	0.0%	0.0%	100.0%

Mater Misericordiae University by Staff Category Mar 2020	Certified absence	Self-certified absence	COVID-19 absence	Total absence	Certified	Self-certified	COVID-19
Total	4.0%	0.3%	4.2%	8.5%	46.9%	3.6%	49.6%
Medical & Dental	0.7%	0.1%	3.8%	4.7%	15.4%	3.0%	81.5%
Nursing & Midwifery	4.0%	0.4%	4.9%	9.2%	43.1%	3.8%	53.1%
Health & Social Care Professionals	3.3%	0.2%	5.4%	8.9%	37.3%	2.3%	60.4%
Management & Administrative	4.1%	0.3%	3.3%	7.6%	53.2%	4.1%	42.7%
General Support	9.3%	0.4%	2.6%	12.4%	75.5%	3.5%	21.0%
Patient & Client Care	5.6%	0.4%	2.7%	8.7%	64.6%	4.3%	31.1%

MRH Mullingar by Staff Category Mar 2020	Certified absence	Self-certified absence	COVID-19 absence	Total absence	Certified	Self-certified	COVID-19
Total	5.8%	0.4%	2.4%	8.6%	67.7%	4.3%	27.9%
Medical & Dental	1.5%	0.3%	1.5%	3.3%	44.8%	9.1%	46.1%
Nursing & Midwifery	8.2%	0.4%	2.8%	11.3%	72.2%	3.4%	24.4%
Health & Social Care Professionals	6.1%	0.1%	3.7%	9.9%	61.2%	1.4%	37.4%
Management & Administrative	3.9%	0.4%	1.6%	5.9%	66.5%	6.9%	26.6%
General Support	4.9%	0.0%	0.6%	5.5%	88.3%	0.0%	11.7%
Patient & Client Care	6.6%	0.6%	2.7%	9.9%	66.6%	6.3%	27.1%

National Maternity by Staff Category Mar 2020	Certified absence	Self-certified absence	COVID-19 absence	Total absence	Certified	Self-certified	COVID-19
Total	3.1%	0.1%	2.8%	6.0%	51.3%	1.3%	47.3%
Medical & Dental				0.0%			
Nursing & Midwifery	3.1%	0.0%	3.4%	6.5%	47.3%	0.0%	52.7%
Health & Social Care Professionals	0.3%	0.0%	2.6%	2.9%	10.1%	0.0%	89.9%
Management & Administrative	2.1%	0.2%	2.8%	5.0%	40.9%	3.5%	55.6%
General Support	7.1%	0.3%	3.2%	10.6%	67.0%	2.9%	30.1%
Patient & Client Care	3.7%	0.0%	3.3%	7.0%	52.7%	0.0%	47.3%

Our Lady's Navan by Staff Category Mar 2020	Certified absence	Self-certified absence	COVID-19 absence	Total absence	Certified	Self-certified	COVID-19
Total	4.2%	0.3%	3.5%	8.1%	52.6%	3.8%	43.6%
Medical & Dental	0.3%	0.3%	6.7%	7.4%	4.7%	4.6%	90.6%
Nursing & Midwifery	5.0%	0.4%	3.0%	8.4%	60.0%	4.4%	35.6%
Health & Social Care Professionals	0.8%	0.3%	4.2%	5.2%	14.3%	5.2%	80.5%
Management & Administrative	4.0%	0.1%	1.6%	5.6%	71.1%	1.3%	27.7%
General Support	3.2%	0.0%	5.6%	8.8%	36.2%	0.0%	63.8%
Patient & Client Care	8.4%	0.4%	2.1%	11.0%	76.9%	3.9%	19.2%

St. Columcille's by Staff Category Mar 2020	Certified absence	Self-certified absence	COVID-19 absence	Total absence	Certified	Self-certified	COVID-19
Total	2.5%	0.4%	6.6%	9.5%	26.6%	4.0%	69.4%
Medical & Dental	0.2%	0.2%	8.0%	8.4%	2.5%	2.4%	95.1%
Nursing & Midwifery	3.5%	0.5%	7.9%	11.9%	29.8%	4.2%	66.0%
Health & Social Care Professionals	0.2%	0.0%	6.4%	6.6%	3.0%	0.0%	97.0%
Management & Administrative	1.8%	0.1%	4.0%	5.9%	30.3%	2.2%	67.5%
General Support	6.0%	0.9%	3.6%	10.6%	57.1%	8.4%	34.5%
Patient & Client Care	1.7%	0.4%	7.8%	9.9%	17.5%	3.9%	78.6%

St Luke's General Kilkenny by Staff Category Mar 2020	Certified absence	Self-certified absence	COVID-19 absence	Total absence	Certified	Self-certified	COVID-19
Total	5.0%	0.3%	1.1%	6.4%	77.2%	4.9%	17.9%
Medical & Dental	0.7%	0.4%	0.0%	1.1%	63.0%	37.0%	0.0%
Nursing & Midwifery	7.9%	0.3%	2.1%	10.3%	76.3%	3.1%	20.5%
Health & Social Care Professionals	3.7%	0.5%	0.0%	4.2%	88.4%	11.6%	0.0%
Management & Administrative	2.5%	0.1%	2.7%	5.2%	47.1%	1.4%	51.6%
General Support	5.0%	0.3%	0.0%	5.4%	93.9%	6.1%	0.0%
Patient & Client Care	4.8%	0.3%	0.0%	5.1%	94.0%	6.0%	0.0%

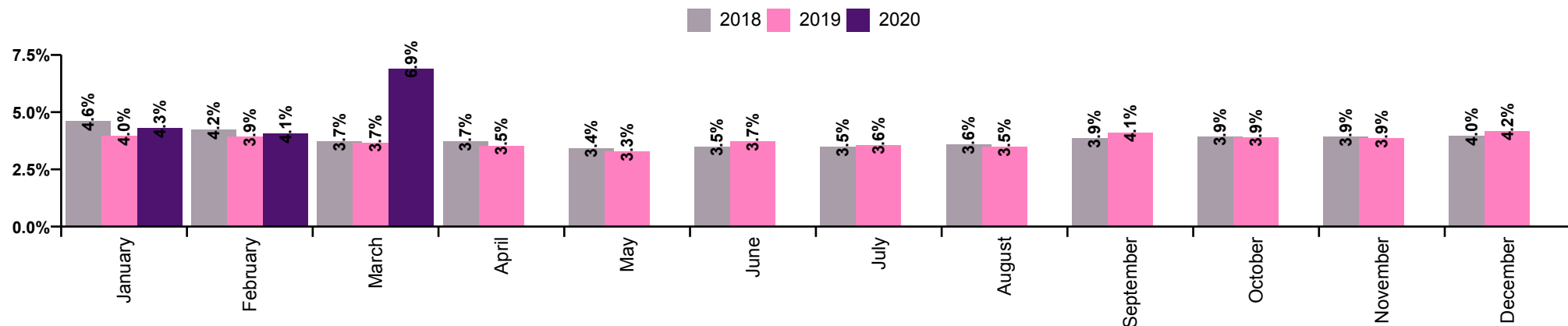
St. Michael's by Staff Category Mar 2020	Certified absence	Self-certified absence	COVID-19 absence	Total absence	Certified	Self-certified	COVID-19
Total	3.9%	0.3%	4.0%	8.2%	47.8%	3.1%	49.0%
Medical & Dental	1.3%	0.4%	5.5%	7.2%	18.2%	5.4%	76.4%
Nursing & Midwifery	4.5%	0.3%	4.3%	9.1%	49.5%	3.6%	46.9%
Health & Social Care Professionals	3.3%	0.0%	8.2%	11.4%	28.6%	0.0%	71.4%
Management & Administrative	2.7%	0.1%	2.2%	4.9%	53.9%	2.3%	43.8%
General Support	4.3%	0.4%	1.4%	6.1%	70.1%	7.2%	22.7%
Patient & Client Care	6.8%	0.0%	3.1%	9.8%	68.7%	0.0%	31.3%

St. Vincent's University by Staff Category Mar 2020	Certified absence	Self- certified absence	COVID-19 absence	Total absence	Certified	Self- certified	COVID-19
Total	2.8%	0.2%	2.2%	5.2%	53.0%	4.5%	42.5%
Medical & Dental	0.3%	0.0%	3.0%	3.3%	8.4%	1.2%	90.4%
Nursing & Midwifery	3.0%	0.3%	2.1%	5.3%	55.8%	5.4%	38.8%
Health & Social Care Professionals	2.2%	0.2%	2.4%	4.7%	46.7%	3.2%	50.0%
Management & Administrative	3.1%	0.1%	2.1%	5.3%	58.3%	2.4%	39.3%
General Support	3.8%	0.3%	1.9%	6.0%	62.4%	5.8%	31.8%
Patient & Client Care	6.1%	0.6%	1.8%	8.5%	71.6%	7.6%	20.7%

Wexford General by Staff Category Mar 2020	Certified absence	Self- certified absence	COVID-19 absence	Total absence	Certified	Self- certified	COVID-19
Total	4.8%	0.4%	0.6%	5.8%	83.7%	6.6%	9.6%
Medical & Dental	1.0%	0.1%	0.0%	1.1%	90.2%	9.8%	0.0%
Nursing & Midwifery	5.6%	0.5%	1.2%	7.3%	76.5%	6.5%	17.0%
Health & Social Care Professionals	3.7%	0.2%	0.0%	3.9%	94.1%	5.9%	0.0%
Management & Administrative	4.3%	0.3%	0.6%	5.2%	82.5%	6.3%	11.2%
General Support	6.8%	0.5%	0.0%	7.3%	93.1%	6.9%	0.0%
Patient & Client Care	4.7%	0.3%	0.0%	5.0%	93.7%	6.3%	0.0%

Royal Victoria Eye & Ear by Staff Category Mar 2020	Certified absence	Self- certified absence	COVID-19 absence	Total absence	Certified	Self- certified	COVID-19
Total	1.6%	0.2%	1.2%	3.0%	52.2%	7.2%	40.5%
Medical & Dental	2.0%	0.0%	2.1%	4.2%	48.6%	0.0%	51.4%
Nursing & Midwifery	0.8%	0.2%	1.3%	2.2%	34.3%	7.9%	57.7%
Health & Social Care Professionals	7.8%	0.0%	0.1%	7.9%	98.2%	0.0%	1.8%
Management & Administrative	2.6%	0.5%	0.6%	3.7%	70.3%	13.4%	16.4%
General Support	0.0%	0.2%	1.1%	1.4%	0.0%	17.9%	82.1%
Patient & Client Care	0.0%	0.7%	0.0%	0.7%	0.0%	100.0%	0.0%

Ireland East Hospital Group Absence Rate - by Staff Category	Medical & Dental	Nursing & Midwifery	Health & Social Care Professionals	Management & Administrative	General Support	Patient & Client Care	Certified absence	Self-certified absence	COVID-19 absence	Total absence
IE HG: 2020	1.9%	5.6%	4.1%	4.9%	7.2%	7.1%	3.7%	0.4%	1.0%	5.1%
March	3.6%	7.9%	6.4%	6.1%	8.1%	8.4%	3.8%	0.3%	2.9%	6.9%
February	0.9%	4.4%	2.9%	4.3%	6.3%	5.6%	3.6%	0.5%	0.0%	4.1%
January	1.2%	4.4%	3.0%	4.4%	7.0%	7.0%	3.8%	0.5%	0.0%	4.3%
IE HG: 2019	0.9%	4.2%	2.8%	3.4%	5.7%	5.9%	3.3%	0.4%	0.0%	3.8%
December	1.4%	4.6%	2.4%	4.0%	6.2%	6.9%	3.6%	0.5%	0.0%	4.2%
November	1.1%	4.3%	2.5%	3.5%	6.2%	6.0%	3.4%	0.5%	0.0%	3.9%
October	1.0%	4.4%	2.7%	3.3%	6.0%	6.4%	3.5%	0.4%	0.0%	3.9%
September	1.0%	4.7%	2.8%	3.8%	5.9%	6.5%	3.6%	0.5%	0.0%	4.1%
August	0.9%	3.8%	2.2%	3.2%	5.4%	5.6%	3.1%	0.3%	0.0%	3.5%
July	0.6%	3.8%	2.7%	3.3%	5.5%	6.2%	3.2%	0.4%	0.0%	3.6%
June	0.6%	4.0%	2.9%	3.2%	5.6%	6.6%	3.2%	0.5%	0.0%	3.7%
May	0.5%	3.5%	3.1%	2.8%	5.3%	4.9%	2.9%	0.4%	0.0%	3.3%
April	0.8%	3.9%	2.9%	3.3%	5.3%	5.1%	3.1%	0.4%	0.0%	3.5%
March	0.9%	4.1%	3.0%	3.2%	5.8%	4.9%	3.2%	0.4%	0.0%	3.7%
February	1.2%	4.4%	3.1%	3.8%	5.7%	5.2%	3.4%	0.5%	0.0%	3.9%
January	1.0%	4.4%	3.4%	3.6%	5.5%	6.1%	3.4%	0.5%	0.0%	4.0%
IE HG: 2018	0.8%	4.3%	2.6%	4.1%	5.3%	5.8%	3.4%	0.4%	0.0%	3.8%



Ireland East Hospital Group Absence Rate - by Hospital	Cappagh National Orthopaedic	Mater Misericordiae University	MRH Mullingar	National Maternity	Our Lady's Navan	St. Columcille's	St Luke's General Kilkenny	St. Michael's	St. Vincent's University	Wexford General	n.a.	Royal Victoria Eye & Ear	Total absence	Certified absence	Self- certified absence	COVID-19 absence
IE HG: 2020 overall	4.7%	5.6%	7.7%	4.8%	6.2%	5.0%	5.8%	5.6%	3.8%	5.1%		3.3%	5.1%	3.7%	0.4%	1.0%
Medical & Dental	1.7%	2.2%	3.5%	0.5%	3.6%	3.0%	1.5%	3.6%	1.4%	1.1%		2.2%	1.9%	0.8%	0.2%	0.9%
Nursing & Midwifery	5.1%	5.7%	9.3%	5.4%	6.5%	6.1%	7.8%	5.8%	3.9%	5.6%		3.9%	5.6%	4.0%	0.4%	1.1%
Health & Social Care Professionals	2.6%	5.0%	8.1%	1.8%	4.1%	2.6%	3.3%	6.5%	3.3%	3.3%		5.0%	4.1%	2.6%	0.3%	1.2%
Management & Administrative	5.9%	5.6%	5.7%	3.9%	5.2%	3.5%	6.0%	4.9%	4.2%	5.6%		3.9%	4.9%	3.7%	0.4%	0.9%
General Support	8.3%	10.9%	7.8%	8.2%	5.3%	7.7%	6.0%	6.6%	5.6%	6.0%		2.0%	7.2%	6.0%	0.5%	0.6%
Patient & Client Care	1.3%	6.9%	9.5%	5.1%	9.6%	5.0%	5.8%	4.9%	6.2%	9.4%		1.5%	7.1%	5.6%	0.6%	0.8%
Total March:	7.4%	8.5%	8.6%	6.0%	8.1%	9.5%	6.4%	8.2%	5.2%	5.8%		3.0%	6.9%	3.8%	0.3%	2.9%
Medical & Dental	3.4%	4.7%	3.3%	0.0%	7.4%	8.4%	1.1%	7.2%	3.3%	1.1%		4.2%	3.6%	4.2%	18.9%	76.9%
Nursing & Midwifery	8.0%	9.2%	11.3%	6.5%	8.4%	11.9%	10.3%	9.1%	5.3%	7.3%		2.2%	7.9%	4.3%	0.3%	3.2%
Health & Social Care Professionals	2.4%	8.9%	9.9%	2.9%	5.2%	6.6%	4.2%	11.4%	4.7%	3.9%		7.9%	6.4%	2.8%	0.2%	3.5%
Management & Administrative	12.7%	7.6%	5.9%	5.0%	5.6%	5.9%	5.2%	4.9%	5.3%	5.2%		3.7%	6.1%	3.3%	0.2%	2.6%
General Support	11.0%	12.4%	5.5%	10.6%	8.8%	10.6%	5.4%	6.1%	6.0%	7.3%		1.4%	8.1%	6.0%	0.4%	1.7%
Patient & Client Care	0.3%	8.7%	9.9%	7.0%	11.0%	9.9%	5.1%	9.8%	8.5%	5.0%		0.7%	8.4%	5.5%	0.4%	2.4%
Total February:	3.4%	4.2%	6.4%	3.9%	4.5%	2.7%	5.2%	3.6%	3.1%	4.6%		3.4%	4.1%	3.6%	0.5%	
Medical & Dental	0.5%	0.9%	2.7%	0.4%	1.5%	0.5%	1.3%	0.4%	0.1%	1.4%		1.6%	0.9%	19.9%	80.1%	
Nursing & Midwifery	4.0%	4.2%	7.3%	4.2%	4.8%	3.0%	7.0%	3.7%	3.4%	4.7%		4.8%	4.4%	3.9%	0.5%	
Health & Social Care Professionals	2.4%	3.1%	7.3%	1.4%	0.5%	0.2%	3.1%	5.4%	2.5%	2.9%		5.6%	2.9%	2.5%	0.4%	
Management & Administrative	2.7%	4.4%	5.5%	4.2%	4.6%	2.7%	6.1%	4.2%	3.7%	5.6%		3.3%	4.3%	3.8%	0.5%	
General Support	6.6%	10.6%	8.2%	6.5%	3.5%	6.7%	4.7%	4.8%	5.4%	4.9%		1.3%	6.3%	5.7%	0.6%	
Patient & Client Care	0.6%	5.6%	7.4%	3.6%	8.6%	2.3%	6.5%	1.1%	4.4%	9.9%		1.1%	5.6%	5.1%	0.6%	
Total January:	3.4%	4.0%	8.0%	4.4%	5.9%	2.9%	5.6%	4.7%	3.1%	4.9%		3.6%	4.3%	3.8%	0.5%	
Medical & Dental	1.2%	0.8%	4.5%	1.0%	1.7%	0.1%	2.0%	2.9%	0.5%	0.9%		0.9%	1.2%	12.0%	88.0%	
Nursing & Midwifery	3.1%	3.7%	9.0%	5.3%	6.2%	3.8%	6.2%	4.5%	2.9%	4.7%		5.0%	4.4%	3.9%	0.5%	
Health & Social Care Professionals	3.1%	2.7%	6.9%	1.1%	6.2%	0.9%	2.7%	2.9%	2.5%	3.1%		1.4%	3.0%	2.6%	0.4%	
Management & Administrative	1.8%	4.6%	5.7%	2.5%	5.4%	1.8%	6.6%	5.4%	3.7%	5.9%		4.6%	4.4%	3.9%	0.4%	
General Support	7.2%	9.7%	9.5%	7.3%	3.5%	6.2%	7.9%	8.6%	5.4%	5.8%		3.4%	7.0%	6.4%	0.6%	
Patient & Client Care	3.0%	6.5%	11.2%	4.5%	9.2%	2.6%	5.7%	3.3%	5.6%	12.7%		2.7%	7.0%	6.2%	0.8%	
IE HG: 2019 overall	3.5%	3.4%	6.5%	3.4%	4.9%	3.1%	4.9%	3.6%	2.8%	4.7%	2.5%	4.0%	3.8%	3.3%	0.4%	
Medical & Dental	0.3%	1.0%	2.5%	0.1%	1.1%	1.3%	1.7%	0.5%	0.3%	0.7%	0.0%	1.5%	0.9%	0.8%	0.1%	
Nursing & Midwifery	3.8%	3.3%	7.2%	3.9%	6.3%	3.9%	6.1%	4.4%	3.2%	5.0%	1.9%	4.8%	4.2%	3.6%	0.6%	
Health & Social Care Professionals	2.9%	2.6%	5.6%	1.5%	3.9%	1.7%	4.0%	3.4%	2.3%	3.3%	4.3%	4.5%	2.8%	2.5%	0.3%	
Management & Administrative	4.4%	4.0%	5.0%	2.1%	3.4%	2.4%	4.8%	2.5%	2.7%	3.1%	1.0%	4.1%	3.4%	3.0%	0.4%	
General Support	4.4%	7.7%	8.3%	5.4%	4.6%	5.4%	5.6%	3.4%	4.4%	6.9%	1.5%	3.8%	5.7%	5.2%	0.5%	
Patient & Client Care	4.6%	4.9%	9.5%	8.1%	6.6%	2.4%	4.8%	5.8%	4.0%	8.9%	11.9%	9.3%	5.9%	5.3%	0.6%	
IE HG: 2018 overall	4.4%	3.5%	5.6%	3.4%	4.0%	3.6%	4.8%	3.8%	3.0%	5.7%	2.5%	3.6%	3.8%	3.4%	0.4%	
Medical & Dental	3.7%	0.8%	1.8%	0.2%	1.7%	0.5%	1.1%	1.7%	0.2%	1.0%	0.4%	1.2%	0.8%	0.7%	0.1%	
Nursing & Midwifery	4.3%	3.6%	6.4%	3.8%	4.7%	5.7%	6.0%	4.2%	3.3%	6.9%	2.7%	4.8%	4.3%	3.8%	0.6%	
Health & Social Care Professionals	2.1%	2.2%	5.1%	1.4%	2.5%	1.3%	4.2%	4.2%	2.4%	4.2%	4.7%	1.9%	2.6%	2.3%	0.3%	
Management & Administrative	3.1%	4.7%	4.5%	3.9%	3.8%	3.0%	4.9%	3.6%	3.5%	4.8%	2.2%	4.4%	4.1%	3.7%	0.4%	
General Support	6.8%	6.6%	6.7%	3.9%	3.3%	5.4%	5.5%	5.1%	4.0%	6.6%	3.1%	2.8%	5.3%	4.7%	0.5%	
Patient & Client Care	8.8%	4.9%	8.3%	6.5%	5.2%	2.3%	4.9%	1.6%	5.4%	10.9%	2.5%	5.5%	5.8%	5.3%	0.6%	