

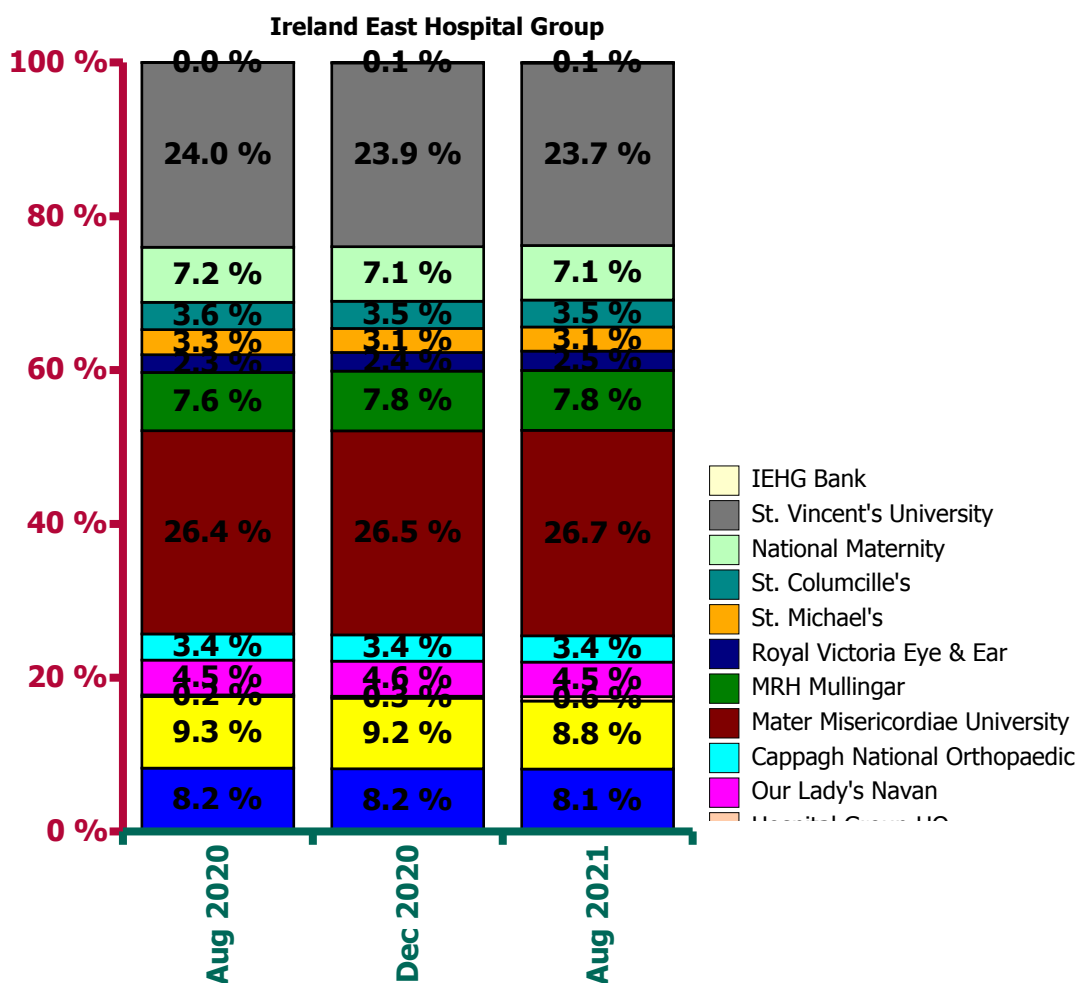
Ireland East Hospital Group Employment Report: August 2021

Employment by Staff Group

Aug 2021 (Dec 2020 figure: 12,923)	WTE Jul 2021	WTE Aug 2021	WTE change since Jul 21	% change since Jul 21	WTE change since Dec 20	WTE change since Aug 20
Overall	13,326	13,319	-7.51	-0.1%	+396	+406
Consultants	590	591	+1	+0.2%	+5	+11
Registrars	712	701	-11	-1.6%	+43	+25
SHO/ Interns	640	651	+12	+1.8%	-18	-22
Medical/ Dental, other	33	34	+0	+0.7%	+6	+8
Medical & Dental	1,975	1,977	+2	+0.1%	+35	+23
Nurse/ Midwife Manager	1,048	1,056	+8	+0.8%	+38	+93
Nurse/ Midwife Specialist & AN/MP	362	350	-12	-3.4%	+12	+36
Staff Nurse/ Staff Midwife	3,382	3,349	-32	-1.0%	+13	+90
Nursing/ Midwifery Student	142	139	-3	-2.2%	+30	-104
Nursing/ Midwifery other	70	69	-1	-2.0%	-4	-11
Nursing & Midwifery	5,004	4,963	-41	-0.8%	+90	+104
Therapy Professions	473	477	+5	+1.0%	-0	+8
Health Science/ Diagnostics	812	839	+27	+3.3%	+48	+56
Social Workers	77	76	-1	-1.6%	+2	+5
Psychologists	23	23	-0	-0.1%	+1	+2
Pharmacy	207	211	+4	+1.9%	+19	+19
H&SC, Other	51	44	-7	-13.6%	+17	+7
Health & Social Care Professionals	1,643	1,671	+27	+1.7%	+87	+98
Management (VIII & above)	113	114	+1	+0.9%	+13	+15
Administrative/ Supervisory (V to VII)	621	621	-0	-0.0%	+22	+66
Clerical (III & IV)	1,294	1,290	-4	-0.3%	+66	+37
Management & Administrative	2,028	2,025	-3	-0.2%	+101	+118
Support	1,339	1,339	-0	-0.0%	+26	-51
Maintenance/ Technical	121	122	+1	+0.5%	+4	+1
General Support	1,460	1,461	+1	+0.0%	+30	-50
Health Care Assistants	1,187	1,194	+7	+0.6%	+53	+113
Care, other	28	29	+0	+0.1%	-0	+1
Patient & Client Care	1,216	1,223	+7	+0.6%	+53	+113

Ireland East Hospital Group Employment by Hospital: Aug 2021

Aug 2021 (Dec 2020 figure: 12,923)	WTE Jul 2021	WTE Aug 2021	WTE change since Jul 21	% change since Jul 21	WTE change since Dec 20	WTE change since Aug 20
Overall	13,326	13,319	-8	-0.1%	+396	+406
Wexford General	1,079	1,083	+4	+0.4%	+28	+18
St Luke's General Kilkenny	1,186	1,178	-9	-0.7%	-7	-23
Hospital Group HQ	71	75	+4	+5.9%	+42	+47
Our Lady's Navan	596	597	+2	+0.3%	+7	+13
Cappagh National Orthopaedic	457	457			+16	+18
Mater Misericordiae University	3,549	3,559	+10	+0.3%	+130	+146
MRH Mullingar	1,039	1,037	-1	-0.1%	+33	+59
Royal Victoria Eye & Ear	336	334	-3	-0.9%	+20	+36
St. Michael's	415	418	+3	+0.7%	+13	-4
St. Columcille's	465	467	+2	+0.5%	+10	+8
National Maternity	950	945	-5	-0.5%	+29	+22
St. Vincent's University	3,172	3,158	-13	-0.4%	+71	+58
IEHG Bank	12	11	-2	-13.0%	+2	+8



**Ireland East Hospital Group Employment by Administration (HSE / S38):
August 2021**

Aug 2021 (Dec 2020 figure: 12,923)	WTE Jul 2021	WTE Aug 2021	WTE change since Jul 21	% change since Jul 21	WTE change since Dec 20	WTE change since Aug 20
Overall	13,326	13,319	-8	-0.1%	+396	+406
HSE	4,448	4,449	+1	+0.0%	+116	+129
Section 38 Hospitals	8,878	8,870	-8	-0.1%	+280	+276

HSE

Aug 2021 (Dec 2020 figure: 4,333)	WTE Jul 2021	WTE Aug 2021	WTE change since Jul 21	% change since Jul 21	WTE change since Dec 20	WTE change since Aug 20
Overall	4,448	4,449	+1	+0.0%	+116	+129
Consultants	157	155	-2	-0.0%	+2	+7
Registrars	219	208	-11	-0.1%	-2	-2
SHO/ Interns	233	238	+6	+0.0%	+4	-3
Medical/ Dental, other	16	17	+0	+0.0%	+2	+4
Medical & Dental	625	618	-7	-1.0%	+6	+5
Nurse/ Midwife Manager	333	334	+2	+0.0%	+6	-2
Nurse/ Midwife Specialist & AN/MP	96	94	-3	-0.0%	+9	+19
Staff Nurse/ Staff Midwife	1,141	1,139	-2	-0.0%	-1	+46
<i>Nursing/ Midwifery awaiting registration</i>				-1.0%	-6	-1
<i>Pre-registration Nurse Intern (COVID-19)</i>				-1.0%		-31
<i>Pre-registration Nurse/ Midwife Intern</i>	16	16	-0	-0.0%	+15	+16
Nursing/ Midwifery Student	16	16	-0	-0.0%	+11	-16
Nursing/ Midwifery other	5	5	+0	+0.0%	+0	-1
Nursing & Midwifery	1,590	1,587	-3	-0.2%	+25	+46
Therapy Professions	167	168	+1	+0.0%	-2	+1
Health Science/ Diagnostics	234	239	+5	+0.0%	+7	+8
Social Workers	8	8	+0	+0.0%	+1	+0
Psychologists	2	2	+0	+0.0%	+1	+1
Pharmacy	71	72	+1	+0.0%	+14	+17
H&SC, Other	25	22	-3	-0.1%	+22	+20
Health & Social Care Professionals	507	512	+5	+1.0%	+43	+46
Management (VIII & above)	33	32	-1	-0.0%	+5	+5
Administrative/ Supervisory (V to VII)	129	129	+0	+0.0%	+9	+18
Clerical (III & IV)	475	474	-0	-0.0%	+11	+8
Management & Administrative	637	635	-1	-0.2%	+26	+32
Support	465	468	+3	+0.0%	+11	-78
Maintenance/ Technical	39	39	-0	-0.0%	-0	-2
General Support	504	507	+3	+0.6%	+11	-80
Health Care Assistants	574	578	+4	+0.0%	+5	+77
Care, other	11	11	-0	-0.0%	+1	+3
Patient & Client Care	585	589	+4	+0.6%	+6	+80

Section 38 Hospitals

Aug 2021 (Dec 2020 figure: 8,590)	WTE Jul 2021	WTE Aug 2021	WTE change since Jul 21	% change since Jul 21	WTE change since Dec 20	WTE change since Aug 20
Overall	8,878	8,870	-8	-0.1%	+280	+276
Consultants	433	436	+3	+0.0%	+2	+4
Registrars	492	492	-0	-0.0%	+45	+28
SHO/ Interns	407	413	+6	+0.0%	-22	-18
Medical/ Dental, other	17	17	-0	-0.0%	+4	+5
Medical & Dental	1,350	1,358	+8	+0.6%	+30	+18
Nurse/ Midwife Manager	715	722	+7	+0.0%	+32	+95
Nurse/ Midwife Specialist & AN/MP	266	256	-10	-0.0%	+4	+17
Staff Nurse/ Staff Midwife	2,241	2,210	-30	-0.0%	+14	+44
<i>Nursing/ Midwifery awaiting registration</i>	8	8		+0.0%	+3	+8
<i>Post-registration Nurse/ Midwife Student</i>	28	26	-2	-0.1%	+5	+6
<i>Pre-registration Nurse Intern (COVID-19)</i>				-1.0%		-191
<i>Pre-registration Nurse/ Midwife Intern</i>	91	90	-1	-0.0%	+65	+90
Nursing/ Midwifery Student	126	123	-3	-0.0%	+19	-88
Nursing/ Midwifery other	66	65	-1	-0.0%	-4	-10
Nursing & Midwifery	3,414	3,376	-38	-1.1%	+66	+58
Therapy Professions	306	309	+3	+0.0%	+2	+7
Health Science/ Diagnostics	578	600	+22	+0.0%	+41	+48
Social Workers	69	68	-1	-0.0%	+1	+5
Psychologists	21	21	-0	-0.0%	+1	+2
Pharmacy	136	139	+3	+0.0%	+4	+2
H&SC, Other	26	22	-4	-0.2%	-6	-13
Health & Social Care Professionals	1,136	1,159	+22	+2.0%	+44	+52
Management (VIII & above)	80	82	+2	+0.0%	+8	+10
Administrative/ Supervisory (V to VII)	492	492	-0	-0.0%	+13	+47
Clerical (III & IV)	819	815	-4	-0.0%	+55	+29
Management & Administrative	1,391	1,389	-2	-0.1%	+75	+86
Support	874	871	-3	-0.0%	+15	+27
Maintenance/ Technical	82	83	+1	+0.0%	+4	+3
General Support	956	954	-2	-0.3%	+19	+30
Health Care Assistants	613	617	+3	+0.0%	+48	+35
Care, other	18	18	+0	+0.0%	-1	-2
Patient & Client Care	631	634	+3	+0.5%	+46	+33

Ireland East Hospital Group Employment by Hospital & Staff Category: August 2021

Wexford General

Aug 2021 (Dec 2020 figure: 1,055)	WTE Jul 2021	WTE Aug 2021	WTE change since Jul 21	% change since Jul 21	WTE change since Dec 19
Overall	1,079	1,083	+4	+0.4%	+28
Consultant Anaesthesia	5	5	0	+0.0%	+1
Consultant Emergency Medicine	2	2	0	+0.0%	
Consultant Medicine	7	7	0	+0.0%	-2
Consultant Obstetrics & Gynaecology	6	6	-0	-0.0%	-0
Consultant Paediatrics	4	4	-0	-0.0%	-0
Consultant Pathology	1	1	0	+0.0%	+0
Consultant Radiology	5	5	0	+0.0%	+2
Consultant Surgery	5	5	0	+0.0%	-0
Consultants	35	35	-0	-0.0%	-2
Registrar	39	34	-5	-0.1%	-10
Senior Registrar	4	4	0	+0.0%	+3
Specialist Registrar	9	11	+2	+0.2%	+4
Registrars	52	49	-3	-0.1%	-2
Interns	19	12	-7	-0.4%	+2
Senior House Officer	47	59	+12	+0.3%	+8
SHO/ Interns	66	71	+5	+0.1%	+11
Other Medical	6	6	0	+0.0%	+1
Medical/ Dental, other	6	6	0	+0.0%	
Medical & Dental	159	161	+1	+1	+7
Clinical Nurse/ Midwife Manager	72	73	+0	+0.0%	-4
Director Nursing/Midwifery, Assistant	7	7	-0	-0.0%	+0
Director of Nursing/Midwifery	2	2	-0	-0.0%	-0
Nurse/ Midwife Manager	81	81	+0	+0.0%	-2
Advanced Nurse/ Midwife Practitioner	5	5	-0	-0.0%	+1
Clinical Nurse/ Midwife Specialist	20	20	-0	-0.0%	+4
Nurse/ Midwife Specialist & AN/MP	26	25	-1	-0.0%	+1
Staff Nurses [General/ Children's]	261	267	+6	+0.0%	+18
Staff Midwives	45	42	-2	-0.0%	+2
Staff Nurse/ Staff Midwife	306	309	+3	+0.0%	+9
Pre-registration Nurse/ Midwife Intern	5	5	-0	-0.0%	+5
Pre-registration Nurse Intern (COVID-19)				-1.0%	
Nursing/ Midwifery awaiting registration				-1.0%	-1
Nursing/ Midwifery Student	5	5	-0	-0.0%	+2
Nursing & Midwifery	417	420	+3	+3	+10
Dietitians	7	7	-0	-0.0%	+3
Occupational Therapists	4	4	0	+0.0%	+1
Physiotherapists	16	15	-1	-0.0%	-0
Speech & Language Therapists	2	2	0	+0.0%	+1
Podiatrists & Chiropodists				-1.0%	-2
Therapy Professions	29	28	-1	-0.0%	-1
Clinical Engineering	1	2	+1	+1.0%	+1
Clinical Measurement	3	5	+1	+0.4%	-0
Phlebotomists	2	2	+0	+0.0%	

<i>Radiographers</i>	18	18	-0	-0.0%	-1
<i>Medical Science</i>	10	11	+1	+0.1%	+1
Health Science/ Diagnostics	35	38	+3	+0.1%	+1
<i>Social Workers</i>	2	2	-0	-0.1%	+1
Social Workers	2	2	-0	-0.1%	+1
<i>Pharmacy</i>	14	14	+0	+0.0%	+3
Pharmacy	14	14	+0	+0.0%	+2
Health & Social Care Professionals	80	82	+2	+2	+3
<i>Executive Management</i>				-1.0%	-1
<i>Senior Management (VIII & GM)</i>	3	3	0	+0.0%	+2
Management (VIII & above)	3	3	0	+0.0%	-1
<i>Middle Management (V-VII)</i>	27	28	+1	+0.0%	+13
Administrative/ Supervisory (V to VII)	27	28	+1	+0.0%	+6
<i>General Administrative (III & IV)</i>	113	109	-4	-0.0%	-7
Clerical (III & IV)	113	109	-4	-0.0%	-7
Management & Administrative	142	140	-3	-3	-2
<i>Catering</i>	9	9	+0	+0.0%	+1
<i>Household Services</i>	124	124	+0	+0.0%	+3
<i>Other Labs & Associated</i>	4	4	-0	-0.0%	+2
<i>Other Support</i>	30	30	-0	-0.0%	-8
<i>Portering</i>	12	12	-0	-0.0%	-26
Support	179	179	-0	-0.0%	+5
<i>Maintenance</i>	7	7	-0	-0.0%	+1
Maintenance/ Technical	7	7	-0	-0.0%	+1
General Support	186	186	-0	-0	+6
<i>HCA, Nurse's Aide, etc.</i>	90	91	+1	+0.0%	+35
<i>Health & Social Care Assistants</i>	1	1	0	+0.0%	+1
<i>HCA (Student Nurse/Midwife COVID-19)</i>				-1.0%	
Health Care Assistants	91	92	+1	+0.0%	+2
<i>Other Care Grades</i>	3	3	0	+0.0%	+0
Care, other	3	3	0	+0.0%	+1
Patient & Client Care	94	95	+1	+1	+3

St Luke's General Kilkenny

Aug 2021 (Dec 2020 figure: 1,185)	WTE Jul 2021	WTE Aug 2021	WTE change since Jul 21	% change since Jul 21	WTE change since Dec 19
Overall	1,186	1,178	-9	-0.7%	-7
Consultant Anaesthesia	7	7	0	+0.0%	+2
Consultant Emergency Medicine	3	3	0	+0.0%	+1
Consultant Medicine	13	13	0	+0.0%	+3
Consultant Obstetrics & Gynaecology	6	6	0	+0.0%	
Consultant Paediatrics	6	6	-0	-0.1%	-0
Consultant Radiology	7	6	-1	-0.1%	
Consultant Surgery	3	3	0	+0.0%	-1
Consultants	44	43	-1	-0.0%	+3
Registrar	47	41	-6	-0.1%	+2
Senior Registrar	13	11	-2	-0.2%	-1
Specialist Registrar	8	6	-2	-0.3%	+1
Registrars	68	58	-11	-0.2%	-7
Interns	15	12	-3	-0.2%	+2
Senior House Officer	41	43	+2	+0.0%	-6
SHO/ Interns	57	55	-2	-0.0%	+1
Other Medical	8	8	+0	+0.1%	+2
Medical/ Dental, other	8	8	+0	+0.1%	+2
Medical & Dental	177	164	-13	-13	-2
Clinical Nurse/ Midwife Manager	74	73	-1	-0.0%	-2
Director Nursing/Midwifery, Assistant	8	8	+0	+0.0%	+0
Director of Nursing/Midwifery	2	2	0	+0.0%	
Nurse/ Midwife Manager	84	83	-1	-0.0%	-1
Advanced Nurse/ Midwife Practitioner	9	9	-0	-0.0%	+3
Clinical Nurse/ Midwife Specialist	20	20	+0	+0.0%	+5
Nurse/ Midwife Specialist & AN/MP	29	29	-0	-0.0%	+4
Staff Nurses [General/ Children's]	271	272	+1	+0.0%	+5
Staff Midwives	29	30	+0	+0.0%	-7
Staff Nurse/ Staff Midwife	301	302	+1	+0.0%	-16
Pre-registration Nurse/ Midwife Intern	5	5	0	+0.0%	+5
Nursing/ Midwifery awaiting registration				-1.0%	
Nursing/ Midwifery Student	5	5	0	+0.0%	+4
Nursing Education/Clinical	1	1	+0	+0.1%	-0
Nursing/ Midwifery other	1	1	+0	+0.1%	
Nursing & Midwifery	420	420	-0	-0	-9
Dietitians	10	12	+2	+0.2%	+2
Occupational Therapists	6	7	+0	+0.0%	+3
Physiotherapists	18	18	+0	+0.0%	-0
Speech & Language Therapists	4	3	-1	-0.2%	+1
Podiatrists & Chiropodists	2	2	0	+0.0%	+1
Therapy Professions	41	42	+1	+0.0%	-1
Clinical Engineering	1	1	0	+0.0%	
Clinical Measurement	10	11	+0	+0.0%	-0
Radiographers	25	26	+1	+0.0%	+0
Medical Science	15	15	-0	-0.0%	+3
Health Science/ Diagnostics	52	53	+1	+0.0%	+1
Pharmacy	23	23	+0	+0.0%	+5

Pharmacy	23	23	+0	+0.0%	+5
Health & Social Care Professionals	116	118	+2	+2	+5
<i>Executive Management</i>	1	1	0	+0.0%	+1
<i>Senior Management (VIII & GM)</i>	6	5	-1	-0.1%	+2
Management (VIII & above)	7	6	-1	-0.1%	+0
<i>Middle Management (V-VII)</i>	23	21	-2	-0.1%	+6
Administrative/ Supervisory (V to VII)	23	21	-2	-0.1%	+1
<i>General Administrative (III & IV)</i>	131	130	-0	-0.0%	-6
Clerical (III & IV)	131	130	-0	-0.0%	-3
Management & Administrative	161	157	-4	-4	-2
<i>Catering</i>	9	9	-0	-0.0%	+1
<i>Household Services</i>	145	148	+3	+0.0%	+14
<i>Other Labs & Associated</i>	3	4	+1	+0.3%	+4
<i>Other Support</i>	6	6	+0	+0.1%	+2
<i>Portering</i>	4	4	-0	-0.0%	-52
Support	167	171	+5	+0.0%	+1
<i>Maintenance</i>	14	14	-0	-0.0%	+1
Maintenance/ Technical	14	14	-0	-0.0%	-1
General Support	181	186	+5	+5	-0
<i>HCA, Nurse's Aide, etc.</i>	129	129	+0	+0.0%	+55
<i>Health & Social Care Assistants</i>	1	2	+1	+0.8%	+1
<i>HCA (Student Nurse/Midwife COVID-19)</i>				-1.0%	
Health Care Assistants	130	131	+1	+0.0%	+0
<i>Other Care Grades</i>	2	2	0	+0.0%	
Care, other	2	2	0	+0.0%	
Patient & Client Care	132	133	+1	+1	+0

Hospital Group HQ

Aug 2021 (Dec 2020 figure: 34)	WTE Jul 2021	WTE Aug 2021	WTE change since Jul 21	% change since Jul 21	WTE change since Dec 19
Overall	71	75	+4	+5.9%	+42
<i>Consultant Medicine</i>		1	+1	-1.0%	+1
Consultants		1	+1	-1.0%	+1
Medical & Dental		1	+1	+1	+1
<i>Clinical Nurse/ Midwife Manager</i>	1	2	+1	+0.4%	+2
<i>Director Nursing/Midwifery, Assistant</i>	1	2	+1	+1.1%	+0
<i>Director of Nursing/Midwifery</i>	2	1	-1	-0.5%	
Nurse/ Midwife Manager	4	5	+1	+0.2%	+2
<i>Nursing Bank</i>				-1.0%	
<i>Staff Nurses [General/ Children's]</i>	1	1	-0	-0.1%	+1
Staff Nurse/ Staff Midwife	1	1	-0	-0.1%	-0
Nursing & Midwifery	5	6	+1	+1	+2
<i>Clinical Engineering</i>	1	1	0	+0.0%	
Health Science/ Diagnostics	1	1	0	+0.0%	
<i>Pharmacy</i>	3	3	-0	-0.1%	+3
Pharmacy	3	3	-0	-0.1%	+3
<i>Vaccinators</i>	23	21	-2	-0.1%	+21
H&SC, Other	23	21	-2	-0.1%	+21
Health & Social Care Professionals	27	25	-2	-2	+24
<i>Executive Management</i>	5	5	-0	-0.0%	+3
<i>Senior Management (VIII & GM)</i>	9	9	-0	-0.0%	+5
Management (VIII & above)	14	14	-0	-0.0%	+4
<i>Middle Management (V-VII)</i>	18	18	+0	+0.0%	+1
Administrative/ Supervisory (V to VII)	18	18	+0	+0.0%	+1
<i>General Administrative (III & IV)</i>	7	11	+5	+0.7%	+9
Clerical (III & IV)	7	11	+5	+0.7%	+9
Management & Administrative	38	43	+5	+5	+15
<i>Technical Services</i>				-1.0%	-1
Maintenance/ Technical				-1.0%	
General Support					

Our Lady's Navan

Aug 2021 (Dec 2020 figure: 590)	WTE Jul 2021	WTE Aug 2021	WTE change since Jul 21	% change since Jul 21	WTE change since Dec 19
Overall	596	597	+2	+0.3%	+7
Consultant Anaesthesia	2	2	0	+0.0%	
Consultant Medicine	8	8	-0	-0.0%	+1
Consultant Radiology	2	2	0	+0.0%	
Consultant Surgery	2	2	0	+0.0%	
Consultants	14	14	-0	-0.0%	-2
Registrar	24	28	+3	+0.1%	+7
Senior Registrar	1	1	-0	-0.3%	-0
Specialist Registrar	5	5	+0	+0.1%	+0
Registrars	30	34	+4	+0.1%	+3
Senior House Officer	40	40	-0	-0.0%	+5
SHO/ Interns	40	40	-0	-0.0%	-4
Medical & Dental	84	88	+4	+4	-3
Clinical Nurse/ Midwife Manager	41	41	+1	+0.0%	+4
Director Nursing/Midwifery, Assistant	5	5	0	+0.0%	
Director of Nursing/Midwifery	1	1	+0	+0.0%	-0
Nurse/ Midwife Manager	47	47	+1	+0.0%	+1
Advanced Nurse/ Midwife Practitioner	6	6	-0	-0.0%	+4
Clinical Nurse/ Midwife Specialist	8	8	-0	-0.0%	-1
Nurse/ Midwife Specialist & AN/MP	13	13	-0	-0.0%	+0
Staff Nurses [General/ Children's]	142	141	-0	-0.0%	+20
Staff Nurse/ Staff Midwife	142	141	-0	-0.0%	+6
Nursing/ Midwifery awaiting registration				-1.0%	-4
Nursing/ Midwifery Student				-1.0%	
Nursing & Midwifery	202	202	-0	-0	+7
Dietitians	2	2	-0	-0.1%	+1
Occupational Therapists	6	7	+1	+0.1%	+3
Physiotherapists	16	16	-0	-0.0%	+4
Speech & Language Therapists	2	2	0	+0.0%	+1
Podiatrists & Chiropodists	1	1	0	+0.0%	
Therapy Professions	27	27	+0	+0.0%	-1
Clinical Engineering	0	1	+1	+4.9%	+1
Clinical Measurement	3	3	+0	+0.0%	-0
Phlebotomists	3	3	-0	-0.0%	-0
Radiographers	13	12	-0	-0.0%	-2
Medical Science	22	21	-0	-0.0%	+6
Health Science/ Diagnostics	41	41	+0	+0.0%	+2
Pharmacy	9	9	+0	+0.0%	+3
Pharmacy	9	9	+0	+0.0%	+2
Health & Social Care Professionals	77	77	+1	+1	+3
Executive Management	1	1	+0	+0.0%	+1
Senior Management (VIII & GM)	1	1	-0	-0.0%	-1
Management (VIII & above)	2	2	0	+0.0%	-0
Middle Management (V-VII)	21	21	-0	-0.0%	+9
Administrative/ Supervisory (V to VII)	21	21	-0	-0.0%	+0
General Administrative (III & IV)	58	57	-1	-0.0%	+1
Clerical (III & IV)	58	57	-1	-0.0%	-1

Management & Administrative	81	80	-1	-1	-1
<i>Catering</i>	6	6	-0	-0.0%	+0
<i>Other Labs & Associated</i>	7	7	+0	+0.0%	+3
<i>Other Support</i>	6	6	-0	-0.0%	+1
<i>Portering</i>	8	8	-0	-0.0%	-0
Support	27	27	-0	-0.0%	+1
<i>Maintenance</i>	5	5	-0	-0.0%	-0
Maintenance/ Technical	5	5	-0	-0.0%	+0
General Support	32	32	-0	-0	+1
<i>HCA, Nurse's Aide, etc.</i>	111	110	-1	-0.0%	+16
<i>Health & Social Care Assistants</i>	8	8	+0	+0.0%	+3
<i>HCA (Student Nurse/Midwife COVID-19)</i>				-1.0%	
Health Care Assistants	118	117	-1	-0.0%	+0
<i>Other Care Grades</i>	2	1	-0	-0.1%	-1
Care, other	2	1	-0	-0.1%	-0
Patient & Client Care	120	119	-1	-1	+0

Cappagh National Orthopaedic

Aug 2021 (Dec 2020 figure: 441)	WTE Jul 2021	WTE Aug 2021	WTE change since Jul 21	% change since Jul 21	WTE change since Dec 19
Overall	457	457	0		+16
Consultant Anaesthesia	12	12	0	+0.0%	+1
Consultant Medicine	2	2	0	+0.0%	
Consultant Radiology	2	2	0	+0.0%	+1
Consultant Surgery	2	2	0	+0.0%	
Consultants	18	18	0	+0.0%	+2
Registrar	6	6	0	+0.0%	-4
Specialist Registrar	14	14	0	+0.0%	+5
Registrars	20	20	0	+0.0%	+2
Interns	3	3	0	+0.0%	-2
Senior House Officer	11	11	0	+0.0%	+4
SHO/ Interns	14	14	0	+0.0%	+2
Medical & Dental	51	51			+6
Clinical Nurse/ Midwife Manager	36	36	0	+0.0%	+1
Director Nursing/Midwifery, Assistant	5	5	0	+0.0%	
Director of Nursing/Midwifery	1	1	0	+0.0%	
Nurse/ Midwife Manager	42	42	0	+0.0%	+1
Clinical Nurse/ Midwife Specialist	10	10	0	+0.0%	+2
Nurse/ Midwife Specialist & AN/MP	10	10	0	+0.0%	+2
Staff Nurses [General/ Children's]	111	111	-0	-0.0%	+8
Staff Nurse/ Staff Midwife	111	111	-0	-0.0%	-0
Nursing Education/Clinical	1	1	0	+0.0%	
Other Nursing/ Midwifery	1	1	0	+0.0%	
Nursing/ Midwifery other	2	2	0	+0.0%	
Nursing & Midwifery	166	166	+0	+0	+3
Dietitians	1	1	0	+0.0%	
Occupational Therapists	10	10	0	+0.0%	
Physiotherapists	24	24	0	+0.0%	+1
Podiatrists & Chiropodists	0	0	0	+0.0%	
Therapy Professions	34	34	0	+0.0%	+1
Phlebotomists	1	1	0	+0.0%	+0
Radiographers	11	11	0	+0.0%	+1
Medical Science	17	17	0	+0.0%	+3
Health Science/ Diagnostics	29	29	0	+0.0%	+3
Social Workers	7	7	0	+0.0%	
Social Workers	7	7	0	+0.0%	
Psychologists	1	1	0	+0.0%	
Psychologists	1	1	0	+0.0%	
Pharmacy	6	6	0	+0.0%	+1
Pharmacy	6	6	0	+0.0%	+1
Health & Social Care Professionals	77	77			+5
Executive Management	1	1	0	+0.0%	
Senior Management (VIII & GM)	3	3	0	+0.0%	
Management (VIII & above)	4	4	0	+0.0%	
Middle Management (V-VII)	26	26	+0	+0.0%	+4
Administrative/ Supervisory (V to VII)	26	26	+0	+0.0%	+1
General Administrative (III & IV)	44	44	0	+0.0%	+4

Clerical (III & IV)	44	44	0	+0.0%	+1
Management & Administrative	74	74			+2
<i>Catering</i>	4	4	0	+0.0%	
<i>Household Services</i>	46	46	+0	+0.0%	+0
<i>Other Support</i>	1	1	0	+0.0%	
<i>Portering</i>	11	11	0	+0.0%	
Support	62	62	+0	+0.0%	+0
<i>Maintenance</i>	1	1	0	+0.0%	
Maintenance/ Technical	1	1	0	+0.0%	
General Support	63	63	-0	-0	
<i>HCA, Nurse's Aide, etc.</i>	26	26	0	+0.0%	
Health Care Assistants	26	26	0	+0.0%	
Patient & Client Care	26	26			

Mater Misericordiae University

Aug 2021 (Dec 2020 figure: 3,429)	WTE Jul 2021	WTE Aug 2021	WTE change since Jul 21	% change since Jul 21	WTE change since Dec 19
Overall	3,549	3,559	+10	+0.3%	+130
Consultant Anaesthesia	24	25	+1	+0.0%	+1
Consultant Emergency Medicine	7	8	+1	+0.1%	+1
Consultant Intensive Care Medicine	4	4	0	+0.0%	+2
Consultant Medicine	70	70	-0	-0.0%	+5
Consultant Obstetrics & Gynaecology	3	3	0	+0.0%	+0
Consultant Paediatrics	1	1	0	+0.0%	+1
Consultant Pathology	19	19	0	+0.0%	+1
Consultant Psychiatry	2	2	0	+0.0%	+1
Consultant Radiology	17	17	0	+0.0%	+1
Consultant Surgery	41	42	+1	+0.0%	+5
Consultants	187	190	+3	+0.0%	-0
Registrar	85	85	0	+0.0%	+16
Senior Registrar	6	6	0	+0.0%	+1
Specialist Registrar	109	109	0	+0.0%	+17
Registrars	200	200	0	+0.0%	+10
Interns	66	66	0	+0.0%	+7
Senior House Officer	113	113	0	+0.0%	+14
SHO/ Interns	179	179	0	+0.0%	-14
Dentists				-1.0%	-1
Other Medical	6	6	-0	-0.0%	+2
Medical/ Dental, other	6	6	-0	-0.0%	-0
Medical & Dental	572	574	+3	+3	-4
Clinical Nurse/ Midwife Manager	211	210	-1	-0.0%	+22
Director Nursing/Midwifery, Assistant	21	21	-0	-0.0%	+3
Director of Nursing/Midwifery	1	1	0	+0.0%	
Nurse/ Midwife Manager	233	232	-1	-0.0%	+11
Advanced Nurse/ Midwife Practitioner	33	33	+0	+0.0%	+7
Clinical Nurse/ Midwife Specialist	75	75	-0	-0.0%	+13
Nurse/ Midwife Specialist & AN/MP	108	108	+0	+0.0%	+10
Staff Nurses [General/ Children's]	941	934	-7	-0.0%	+27
Staff Nurse/ Staff Midwife	941	934	-7	-0.0%	-4
Pre-registration Nurse/ Midwife Intern	35	34	-1	-0.0%	+27
Pre-registration Nurse Intern (COVID-19)				-1.0%	
Nursing/ Midwifery awaiting registration	8	8	0	+0.0%	+3
Nursing/ Midwifery Student	43	42	-1	-0.0%	+22
Nursing Education/Clinical	35	34	-1	-0.0%	+1
Other Nursing/ Midwifery	16	16	0	+0.0%	+4
Nursing/ Midwifery other	51	50	-1	-0.0%	+1
Nursing & Midwifery	1,376	1,366	-10	-10	+40
Dietitians	29	29	0	+0.0%	+7
Occupational Therapists	24	22	-2	-0.1%	+2
Orthoptists	1	1	0	+0.0%	
Physiotherapists	58	59	+2	+0.0%	+3
Speech & Language Therapists	17	17	-0	-0.0%	+4
Podiatrists & Chiropodists	3	3	0	+0.0%	+1
Therapy Professions	131	131	+0	+0.0%	+8
Audiology	2	2	0	+0.0%	+0

Biochemists	10	11	+1	+0.1%	+2
Clinical Engineering	8	8	0	+0.0%	+2
Clinical Measurement	35	36	+1	+0.0%	+8
Perfusionists	7	7	0	+0.0%	+3
Phlebotomists	18	21	+3	+0.2%	+8
Physicists	7	8	+1	+0.1%	+1
Radiographers	67	72	+5	+0.1%	+8
Medical Science	93	98	+5	+0.1%	+5
Health Science/ Diagnostics	246	261	+15	+0.1%	+21
Social Workers	27	27	-1	-0.0%	+0
Social Workers	27	27	-1	-0.0%	+2
Psychologists	9	8	-1	-0.1%	+1
Psychologists	9	8	-1	-0.1%	-0
Pharmacy	56	57	+1	+0.0%	+7
Pharmacy	56	57	+1	+0.0%	+5
Counsellor Therapists	1	2	+0	+0.4%	-0
HSCP Trainees/ Students	6	2	-4	-0.7%	-6
Other Health & Social Care	14	14	0	+0.0%	+2
H&SC, Other	21	18	-3	-0.2%	-6
Health & Social Care Professionals	489	501	+12	+12	+30
Executive Management	8	9	+1	+0.1%	+1
Senior Management (VIII & GM)	35	34	-1	-0.0%	+10
Management (VIII & above)	43	43	0	+0.0%	+7
Middle Management (V-VII)	166	163	-3	-0.0%	+6
Other Administrative	1	1	0	+0.0%	
Administrative/ Supervisory (V to VII)	167	164	-3	-0.0%	+2
General Administrative (III & IV)	311	312	+1	+0.0%	+52
Clerical (III & IV)	311	312	+1	+0.0%	+14
Management & Administrative	521	519	-2	-2	+23
Catering	18	19	+1	+0.1%	+2
Household Services	115	120	+4	+0.0%	+6
Other Labs & Associated	27	24	-3	-0.1%	+7
Other Support	38	38	-0	-0.0%	+5
Portering	76	75	-1	-0.0%	+5
Support	274	276	+2	+0.0%	+9
Maintenance	21	21	0	+0.0%	+1
Technical Services	5	5	0	+0.0%	+1
Maintenance/ Technical	26	26	0	+0.0%	
General Support	300	302	+2	+2	+9
HCA, Nurse's Aide, etc.	273	278	+5	+0.0%	+62
Health & Social Care Assistants	10	11	+1	+0.1%	+3
Health Care Assistants	283	289	+6	+0.0%	+32
Other Care Grades	7	7	+0	+0.0%	+0
Care, other	7	7	+0	+0.0%	+0
Patient & Client Care	290	296	+6	+6	+32

MRH Mullingar

Aug 2021 (Dec 2020 figure: 1,004)	WTE Jul 2021	WTE Aug 2021	WTE change since Jul 21	% change since Jul 21	WTE change since Dec 19
Overall	1,039	1,037	-1	-0.1%	+33
Consultant Anaesthesia	7	7	-0	-0.0%	+2
Consultant Emergency Medicine	3	3	-0	-0.0%	+1
Consultant Medicine	14	13	-1	-0.1%	+5
Consultant Obstetrics & Gynaecology	3	4	+1	+0.3%	+1
Consultant Paediatrics	5	5	-0	-0.0%	
Consultant Pathology	1	1	0	+0.0%	
Consultant Radiology	6	6	+0	+0.0%	
Consultant Surgery	6	6	0	+0.0%	+1
Consultants	45	44	-1	-0.0%	+1
Registrar	49	44	-5	-0.1%	+4
Senior Registrar	3	3	-0	-0.0%	-1
Specialist Registrar	8	11	+3	+0.4%	-0
Registrars	60	58	-2	-0.0%	+3
Interns	9	13	+4	+0.4%	+4
Senior House Officer	47	46	-1	-0.0%	-0
SHO/ Interns	56	59	+3	+0.1%	-2
Other Medical	2	2	+0	+0.0%	+0
Medical/ Dental, other	2	2	+0	+0.0%	
Medical & Dental	163	163	-0	-0	+3
Clinical Nurse/ Midwife Manager	67	69	+2	+0.0%	+10
Director Nursing/Midwifery, Assistant	12	12	+0	+0.0%	+1
Director of Nursing/Midwifery	2	2	0	+0.0%	
Nurse/ Midwife Manager	81	83	+2	+0.0%	+6
Advanced Nurse/ Midwife Practitioner	6	6	+0	+0.0%	+5
Clinical Nurse/ Midwife Specialist	12	11	-1	-0.1%	-1
Nurse/ Midwife Specialist & AN/MP	18	17	-1	-0.0%	+1
Staff Nurses [General/ Children's]	221	218	-3	-0.0%	+25
Staff Midwives	46	44	-1	-0.0%	-3
Staff Nurse/ Staff Midwife	267	263	-4	-0.0%	-2
Pre-registration Nurse/ Midwife Intern	6	6	-0	-0.0%	+5
Pre-registration Nurse Intern (COVID-19)				-1.0%	
Nursing/ Midwifery awaiting registration				-1.0%	-1
Nursing/ Midwifery Student	6	6	-0	-0.0%	+5
Nursing Education/Clinical	3	3	0	+0.0%	+1
Nursing/ Midwifery other	3	3	0	+0.0%	+0
Nursing & Midwifery	375	372	-3	-3	+10
Dietitians	7	6	-1	-0.1%	+1
Occupational Therapists	5	6	+1	+0.2%	+2
Orthoptists	1	1	+0	+0.2%	+1
Physiotherapists	18	18	-0	-0.0%	+5
Speech & Language Therapists	3	3	+0	+0.0%	+0
Podiatrists & Chiropodists	1	1	-0	-0.0%	+0
Therapy Professions	35	36	+1	+0.0%	-1
Clinical Engineering	1	1	0	+0.0%	
Clinical Measurement	9	9	-0	-0.0%	+3
Radiographers	29	30	+1	+0.0%	+9
Medical Science	47	46	-1	-0.0%	+3

Health Science/ Diagnostics	85	85	+0	+0.0%	+2
Pharmacy	17	18	+1	+0.0%	+2
Pharmacy	17	18	+1	+0.0%	+3
HSCP Trainees/ Students	2	1	-1	-0.5%	+1
H&SC, Other	2	1	-1	-0.5%	+1
Health & Social Care Professionals	139	140	+1	+1	+6
Executive Management	1	1	0	+0.0%	
Senior Management (VIII & GM)	4	4	0	+0.0%	
Management (VIII & above)	5	5	0	+0.0%	+2
Middle Management (V-VII)	28	30	+2	+0.1%	+7
Administrative/ Supervisory (V to VII)	28	30	+2	+0.1%	+2
General Administrative (III & IV)	103	103	-0	-0.0%	+2
Clerical (III & IV)	103	103	-0	-0.0%	+7
Management & Administrative	136	138	+2	+2	+11
Catering	8	8	0	+0.0%	+0
Household Services	4	4	0	+0.0%	
Other Labs & Associated	9	9	0	+0.0%	+4
Other Support	11	10	-1	-0.1%	+1
Support	32	31	-1	-0.0%	+4
Maintenance	12	12	-0	-0.0%	-0
Technical Services				-1.0%	-1
Maintenance/ Technical	12	12	-0	-0.0%	-1
General Support	44	43	-1	-1	+3
HCA, Nurse's Aide, etc.	180	180	+0	+0.0%	+22
Health & Social Care Assistants	1	1	0	+0.0%	
Health Care Assistants	181	181	+0	+0.0%	+0
Other Care Grades	1	1	0	+0.0%	
Care, other	1	1	0	+0.0%	
Patient & Client Care	182	182	+0	+0	+0

Royal Victoria Eye & Ear

Aug 2021 (Dec 2020 figure: 313)	WTE Jul 2021	WTE Aug 2021	WTE change since Jul 21	% change since Jul 21	WTE change since Dec 19
Overall	336	334	-3	-0.9%	+20
<i>Consultant Anaesthesia</i>	5	5	0	+0.0%	
<i>Consultant Surgery</i>	22	22	0	+0.0%	+4
Consultants	27	27	0	+0.0%	+1
<i>Registrar</i>	13	12	-1	-0.1%	+2
<i>Specialist Registrar</i>	13	13	0	+0.0%	+3
Registrars	26	25	-1	-0.0%	+3
<i>Senior House Officer</i>	16	16	0	+0.0%	
SHO/ Interns	16	16	0	+0.0%	+1
<i>Other Medical</i>	4	4	0	+0.0%	-0
Medical/ Dental, other	4	4	0	+0.0%	-1
Medical & Dental	72	71	-1	-1	+4
<i>Clinical Nurse/ Midwife Manager</i>	23	23	0	+0.0%	+2
<i>Director Nursing/Midwifery, Assistant</i>	2	2	0	+0.0%	
<i>Director of Nursing/Midwifery</i>	1	1	0	+0.0%	
Nurse/ Midwife Manager	26	26	0	+0.0%	+2
<i>Advanced Nurse/ Midwife Practitioner</i>	3	3	0	+0.0%	-0
<i>Clinical Nurse/ Midwife Specialist</i>	10	10	0	+0.0%	+4
Nurse/ Midwife Specialist & AN/MP	13	13	0	+0.0%	+0
<i>Staff Nurses [General/ Children's]</i>	82	84	+2	+0.0%	+3
Staff Nurse/ Staff Midwife	82	84	+2	+0.0%	+2
<i>Nursing Education/Clinical</i>	1	1	0	+0.0%	-1
Nursing/ Midwifery other	1	1	0	+0.0%	
Nursing & Midwifery	122	124	+2	+2	+4
<i>Dietitians</i>	2	2	0	+0.0%	+1
<i>Orthoptists</i>	1	1	0	+0.0%	-0
<i>Physiotherapists</i>	0	0	0	+0.0%	
<i>Speech & Language Therapists</i>	1	1	0	+0.0%	
Therapy Professions	3	3	+0	+0.0%	+1
<i>Audiology</i>	0	0	0	+0.0%	-1
<i>Radiographers</i>	1	1	0	+0.0%	+1
Health Science/ Diagnostics	1	1	0	+0.0%	-1
<i>Social Workers</i>	2	2	0	+0.0%	
Social Workers	2	2	0	+0.0%	+1
<i>Pharmacy</i>	4	4	0	+0.0%	+1
Pharmacy	4	4	0	+0.0%	
<i>Other Health & Social Care</i>	4	4	0	+0.0%	
H&SC, Other	4	4	0	+0.0%	
Health & Social Care Professionals	14	14	+0	+0	+1
<i>Senior Management (VIII & GM)</i>	4	4	0	+0.0%	+1
Management (VIII & above)	4	4	0	+0.0%	
<i>Middle Management (V-VII)</i>	32	32	0	+0.0%	+8
Administrative/ Supervisory (V to VII)	32	32	0	+0.0%	+4
<i>General Administrative (III & IV)</i>	48	44	-4	-0.1%	+8
Clerical (III & IV)	48	44	-4	-0.1%	+6
Management & Administrative	84	80	-4	-4	+10

<i>Catering</i>	5	5	0	+0.0%	-1
<i>Household Services</i>	9	9	0	+0.0%	-1
<i>Other Labs & Associated</i>	1	1	0	+0.0%	+1
<i>Other Support</i>	3	3	0	+0.0%	+1
<i>Portering</i>	11	11	0	+0.0%	+1
Support	29	29	0	+0.0%	-0
General Support	29	29			-0
<i>HCA, Nurse's Aide, etc.</i>	15	15	0	+0.0%	+6
Health Care Assistants	15	15	0	+0.0%	+2
Patient & Client Care	15	15			+2

St. Michael's

Aug 2021 (Dec 2020 figure: 404)	WTE Jul 2021	WTE Aug 2021	WTE change since Jul 21	% change since Jul 21	WTE change since Dec 19
Overall	415	418	+3	+0.7%	+13
Consultant Anaesthesia	1	1	0	+0.0%	
Consultant Medicine	6	6	0	+0.0%	+1
Consultant Radiology	1	1	0	+0.0%	-1
Consultant Surgery	2	2	0	+0.0%	
Consultants	11	11	0	+0.0%	+0
Registrar	10	10	0	+0.0%	
Specialist Registrar	3	3	0	+0.0%	
Registrars	13	13	0	+0.0%	
Interns	5	5	0	+0.0%	+2
Senior House Officer	10	10	0	+0.0%	-1
SHO/ Interns	15	15	0	+0.0%	
Other Medical	0	0	0	+0.0%	
Medical/ Dental, other	0	0	0	+0.0%	
Medical & Dental	39	39			+0
Clinical Nurse/ Midwife Manager	28	29	+1	+0.0%	+1
Director Nursing/Midwifery, Assistant	4	4	0	+0.0%	-1
Director of Nursing/Midwifery	1	1	0	+0.0%	
Nurse/ Midwife Manager	33	34	+1	+0.0%	-1
Advanced Nurse/ Midwife Practitioner	5	5	0	+0.0%	
Clinical Nurse/ Midwife Specialist	20	20	0	+0.0%	-3
Nurse/ Midwife Specialist & AN/MP	25	25	0	+0.0%	-1
Staff Nurses [General/ Children's]	103	105	+2	+0.0%	+2
Staff Nurse/ Staff Midwife	103	105	+2	+0.0%	-1
Pre-registration Nurse/ Midwife Intern	10	10	0	+0.0%	+10
Nursing/ Midwifery Student	10	10	0	+0.0%	+10
Nursing Education/Clinical	3	3	0	+0.0%	-2
Nursing/ Midwifery other	3	3	0	+0.0%	-1
Nursing & Midwifery	173	176	+3	+3	+5
Dietitians	3	3	0	+0.0%	-1
Occupational Therapists	4	4	0	+0.0%	
Orthoptists	0	0	0	+0.0%	
Physiotherapists	11	11	-1	-0.0%	-3
Podiatrists & Chiropodists	0	0	0	+0.0%	
Therapy Professions	18	18	-0	-0.0%	+1
Clinical Measurement	6	6	0	+0.0%	+3
Phlebotomists	3	3	0	+0.0%	+0
Radiographers	8	8	0	+0.0%	+1
Medical Science	6	6	0	+0.0%	+1
Health Science/ Diagnostics	23	23	0	+0.0%	+2
Social Workers	4	4	0	+0.0%	+2
Social Workers	4	4	0	+0.0%	+0
Pharmacy	7	7	0	+0.0%	-1
Pharmacy	7	7	0	+0.0%	+1
Health & Social Care Professionals	52	51	-1	-1	+4
Executive Management	1	1	0	+0.0%	+1
Senior Management (VIII & GM)	1	1	0	+0.0%	

Management (VIII & above)	2	2	0	+0.0%	-1
<i>Middle Management (V-VII)</i>	26	27	+1	+0.0%	+8
Administrative/ Supervisory (V to VII)	26	27	+1	+0.0%	+3
<i>General Administrative (III & IV)</i>	44	43	-0	-0.0%	+0
Clerical (III & IV)	44	43	-0	-0.0%	+2
Management & Administrative	72	72	+1	+1	+4
<i>Catering</i>	7	7	0	+0.0%	-0
<i>Household Services</i>	17	17	0	+0.0%	-1
<i>Other Labs & Associated</i>	2	2	0	+0.0%	-1
<i>Other Support</i>	6	6	0	+0.0%	+1
<i>Portering</i>	16	16	0	+0.0%	+1
Support	48	48	0	+0.0%	+1
<i>Maintenance</i>	2	2	0	+0.0%	
Maintenance/ Technical	2	2	0	+0.0%	
General Support	50	50			+1
<i>HCA, Nurse's Aide, etc.</i>	27	27	0	+0.0%	+2
<i>Health & Social Care Assistants</i>	1	1	0	+0.0%	+1
Health Care Assistants	28	28	0	+0.0%	+1
<i>Other Care Grades</i>	1	1	0	+0.0%	-1
Care, other	1	1	0	+0.0%	-1
Patient & Client Care	29	29			-0

St. Columcille's

Aug 2021 (Dec 2020 figure: 457)	WTE Jul 2021	WTE Aug 2021	WTE change since Jul 21	% change since Jul 21	WTE change since Dec 19
Overall	465	467	+2	+0.5%	+10
Consultant Anaesthesia	3	3	0	+0.0%	+0
Consultant Medicine	10	9	-1	-0.1%	-1
Consultant Pathology	1	1	0	+0.0%	
Consultant Radiology	3	3	0	+0.0%	+1
Consultant Surgery	1	2	+1	+0.5%	-1
Consultants	18	18	-0	-0.0%	+2
Registrar	6	7	+1	+0.1%	-1
Senior Registrar				-1.0%	-1
Specialist Registrar	2	3	+1	+0.4%	+2
Registrars	8	10	+2	+0.2%	-0
Interns	7	5	-2	-0.2%	-1
Senior House Officer	8	9	+1	+0.2%	+1
SHO/ Interns	14	14	-0	-0.0%	-2
Medical & Dental	41	42	+1	+1	-0
Clinical Nurse/ Midwife Manager	30	28	-1	-0.0%	+3
Director Nursing/Midwifery, Assistant	4	5	+1	+0.2%	-1
Director of Nursing/Midwifery	1	1	0	+0.0%	
Nurse/ Midwife Manager	35	34	-0	-0.0%	-0
Advanced Nurse/ Midwife Practitioner	3	3	+0	+0.0%	-0
Clinical Nurse/ Midwife Specialist	7	6	-1	-0.1%	+1
Nurse/ Midwife Specialist & AN/MP	10	9	-1	-0.1%	+2
Staff Nurses [General/ Children's]	113	112	-1	-0.0%	-6
Staff Nurse/ Staff Midwife	113	112	-1	-0.0%	-0
Nursing Education/Clinical	1	1	0	+0.0%	-1
Nursing/ Midwifery other	1	1	0	+0.0%	
Nursing & Midwifery	159	157	-2	-2	+1
Dietitians	6	7	+1	+0.1%	+1
Occupational Therapists	9	8	-0	-0.0%	+2
Physiotherapists	14	14	-0	-0.0%	-1
Speech & Language Therapists	6	6	-0	-0.0%	+2
Therapy Professions	36	36	+0	+0.0%	+1
Phlebotomists	1	1	+0	+0.0%	+1
Radiographers	14	15	+1	+0.1%	+2
Medical Science	5	5	-0	-0.0%	-0
Health Science/ Diagnostics	20	21	+1	+0.0%	+0
Social Workers	6	6	+0	+0.1%	+1
Social Workers	6	6	+0	+0.1%	-0
Psychologists	2	2	+0	+0.0%	+1
Psychologists	2	2	+0	+0.0%	+1
Pharmacy	5	5	+0	+0.0%	+0
Pharmacy	5	5	+0	+0.0%	+0
Health & Social Care Professionals	69	70	+1	+1	+2
Executive Management	1	1	-0	-0.0%	+1
Senior Management (VIII & GM)	1	1	-0	-0.0%	-0
Management (VIII & above)	2	2	-0	-0.0%	-0
Middle Management (V-VII)	12	12	-1	-0.0%	-2

Administrative/ Supervisory (V to VII)	12	12	-1	-0.0%	-1
<i>General Administrative (III & IV)</i>	64	64	+0	+0.0%	+10
Clerical (III & IV)	64	64	+0	+0.0%	+6
Management & Administrative	78	78	-0	-0	+5
<i>Catering</i>	6	6	0	+0.0%	+1
<i>Household Services</i>	45	46	+1	+0.0%	-1
<i>Other Labs & Associated</i>	3	3	-1	-0.2%	+1
<i>Other Support</i>	1	1	0	+0.0%	-0
<i>Portering</i>	6	6	-1	-0.1%	+4
Support	61	60	-0	-0.0%	+0
<i>Maintenance</i>	1	1	0	+0.0%	
Maintenance/ Technical	1	1	0	+0.0%	
General Support	62	61	-0	-0	+0
<i>HCA, Nurse's Aide, etc.</i>	53	54	+2	+0.0%	-4
<i>Health & Social Care Assistants</i>	1	2	+1	+0.9%	+2
Health Care Assistants	54	56	+3	+0.0%	+2
<i>Other Care Grades</i>	3	3	-0	-0.0%	+3
Care, other	3	3	-0	-0.0%	+0
Patient & Client Care	57	59	+3	+3	+2

National Maternity

Aug 2021 (Dec 2020 figure: 916)	WTE Jul 2021	WTE Aug 2021	WTE change since Jul 21	% change since Jul 21	WTE change since Dec 19
Overall	950	945	-5	-0.5%	+29
Consultant Anaesthesia	7	7	0	+0.0%	+0
Consultant Medicine	0	1	+1	+3.7%	+1
Consultant Obstetrics & Gynaecology	17	17	0	+0.0%	+1
Consultant Paediatrics	10	10	0	+0.0%	+2
Consultant Pathology	3	3	0	+0.0%	+0
Consultant Surgery	0	0	0	+0.0%	+0
Consultants	38	39	+1	+0.0%	+2
Registrar	15	15	0	+0.0%	-1
Senior Registrar	3	3	0	+0.0%	+2
Specialist Registrar	23	23	0	+0.0%	+4
Registrars	41	41	0	+0.0%	+3
Senior House Officer	22	22	0	+0.0%	+1
SHO/ Interns	22	22	0	+0.0%	
Other Medical	1	1	0	+0.0%	+0
Medical/ Dental, other	1	1	0	+0.0%	+0
Medical & Dental	101	102	+1	+1	+5
Clinical Nurse/ Midwife Manager	130	129	-1	-0.0%	+18
Director Nursing/Midwifery, Assistant	8	8	0	+0.0%	-0
Director of Nursing/Midwifery	1	1	0	+0.0%	
Nurse/ Midwife Manager	139	138	-1	-0.0%	+3
Advanced Nurse/ Midwife Practitioner	5	5	0	+0.0%	
Clinical Nurse/ Midwife Specialist	11	11	-0	-0.0%	+1
Nurse/ Midwife Specialist & AN/MP	16	16	-0	-0.0%	+1
Staff Nurses [General/ Children's]	76	76	+0	+0.0%	-6
Staff Midwives	163	156	-6	-0.0%	-7
Staff Nurse/ Staff Midwife	239	232	-6	-0.0%	-7
Pre-registration Nurse/ Midwife Intern	9	9	+1	+0.1%	+9
Pre-registration Nurse Intern (COVID-19)				-1.0%	
Post-registration Nurse/ Midwife Student	28	26	-2	-0.1%	+5
Nursing/ Midwifery Student	36	35	-2	-0.0%	+17
Nursing Education/Clinical	4	4	0	+0.0%	
Nursing/ Midwifery other	4	4	0	+0.0%	
Nursing & Midwifery	434	425	-9	-9	+13
Dietitians	6	7	+1	+0.2%	+1
Physiotherapists	9	9	0	+0.0%	+4
Therapy Professions	15	16	+1	+0.1%	-0
Clinical Engineering	3	3	0	+0.0%	-1
Radiographers	8	8	0	+0.0%	
Medical Science	36	36	0	+0.0%	+6
Health Science/ Diagnostics	47	47	0	+0.0%	-1
Social Workers	9	9	+0	+0.0%	+2
Social Workers	9	9	+0	+0.0%	-0
Psychologists	2	2	0	+0.0%	+0
Psychologists	2	2	0	+0.0%	
Pharmacy	6	7	+1	+0.2%	+0
Pharmacy	6	7	+1	+0.2%	-0

Health & Social Care Professionals	79	81	+2	+2	-2
<i>Executive Management</i>	1	1	0	+0.0%	-1
<i>Senior Management (VIII & GM)</i>	5	5	0	+0.0%	+1
Management (VIII & above)	6	6	0	+0.0%	-1
<i>Middle Management (V-VII)</i>	59	59	+0	+0.0%	+8
Administrative/ Supervisory (V to VII)	59	59	+0	+0.0%	+2
<i>General Administrative (III & IV)</i>	71	75	+3	+0.0%	-6
Clerical (III & IV)	71	75	+3	+0.0%	+4
Management & Administrative	136	139	+3	+3	+6
<i>Catering</i>	14	15	+1	+0.1%	+0
<i>Household Services</i>	86	86	+0	+0.0%	+4
<i>Other Labs & Associated</i>	9	8	-1	-0.1%	+2
<i>Other Support</i>	4	4	0	+0.0%	+1
<i>Portering</i>	27	27	+1	+0.0%	+4
Support	140	141	+1	+0.0%	+8
<i>Maintenance</i>	12	12	0	+0.0%	+4
<i>Technical Services</i>	2	2	0	+0.0%	-1
Maintenance/ Technical	14	14	0	+0.0%	-1
General Support	154	155	+1	+1	+7
<i>HCA, Nurse's Aide, etc.</i>	46	43	-3	-0.1%	+9
Health Care Assistants	46	43	-3	-0.1%	+1
Patient & Client Care	46	43	-3	-3	+1

St. Vincent's University

Aug 2021 (Dec 2020 figure: 3,087)	WTE Jul 2021	WTE Aug 2021	WTE change since Jul 21	% change since Jul 21	WTE change since Dec 19
Overall	3,172	3,158	-13	-0.4%	+71
<i>Consultant Anaesthesia</i>	21	21	0	+0.0%	+3
<i>Consultant Emergency Medicine</i>	7	7	0	+0.0%	+1
<i>Consultant Medicine</i>	60	60	+0	+0.0%	+3
<i>Consultant Pathology</i>	16	16	0	+0.0%	+1
<i>Consultant Psychiatry</i>	4	4	0	+0.0%	+1
<i>Consultant Radiology</i>	15	15	0	+0.0%	-0
<i>Consultant Surgery</i>	31	30	-1	-0.0%	-1
Consultants	153	152	-1	-0.0%	-2
<i>Registrar</i>	82	84	+1	+0.0%	+8
<i>Senior Registrar</i>	6	6	0	+0.0%	+3
<i>Specialist Registrar</i>	106	105	-1	-0.0%	+19
Registrars	194	195	+1	+0.0%	+27
<i>Interns</i>	57	58	+1	+0.0%	+13
<i>Senior House Officer</i>	105	110	+5	+0.0%	+29
SHO/ Interns	162	168	+6	+0.0%	-12
<i>Other Medical</i>	6	6	0	+0.0%	+5
Medical/ Dental, other	6	6	0	+0.0%	+5
Medical & Dental	514	520	+6	+6	+19
<i>Clinical Nurse/ Midwife Manager</i>	223	231	+9	+0.0%	+63
<i>Director Nursing/Midwifery, Assistant</i>	19	18	-1	-0.1%	+4
<i>Director of Nursing/Midwifery</i>	1	1	0	+0.0%	
Nurse/ Midwife Manager	242	250	+8	+0.0%	+17
<i>Advanced Nurse/ Midwife Practitioner</i>	25	15	-10	-0.4%	-3
<i>Clinical Nurse/ Midwife Specialist</i>	69	70	+1	+0.0%	+1
Nurse/ Midwife Specialist & AN/MP	94	84	-9	-0.1%	-8
<i>Nursing Bank</i>				-1.0%	-2
<i>Staff Nurses [General/ Children's]</i>	762	741	-21	-0.0%	+23
<i>Staff Nurse [Psychiatric]</i>	3	3	0	+0.0%	-1
Staff Nurse/ Staff Midwife	765	744	-21	-0.0%	+24
<i>Pre-registration Nurse/ Midwife Intern</i>	38	37	-1	-0.0%	+20
<i>Pre-registration Nurse Intern (COVID-19)</i>				-1.0%	
<i>Nursing/ Midwifery awaiting registration</i>				-1.0%	
Nursing/ Midwifery Student	38	37	-1	-0.0%	-29
<i>Nursing Education/Clinical</i>	5	5	0	+0.0%	-9
Nursing/ Midwifery other	5	5	0	+0.0%	-4
Nursing & Midwifery	1,143	1,120	-23	-23	+1
<i>Dietitians</i>	22	22	+0	+0.0%	+4
<i>Occupational Therapists</i>	31	31	-0	-0.0%	+16
<i>Physiotherapists</i>	39	39	+0	+0.0%	-19
<i>Speech & Language Therapists</i>	10	11	+1	+0.1%	+2
<i>Podiatrists & Chiropodists</i>	3	4	+1	+0.3%	+1
Therapy Professions	105	107	+2	+0.0%	-8
<i>Audiology</i>	1	1	0	+0.0%	+1
<i>Biochemists</i>	16	16	0	+0.0%	-3
<i>Clinical Engineering</i>	8	7	-1	-0.1%	
<i>Clinical Measurement</i>	27	30	+2	+0.1%	+5
<i>Phlebotomists</i>	15	14	-1	-0.0%	-0

<i>Physicists</i>	10	11	+1	+0.1%	+3
<i>Radiographers</i>	71	75	+4	+0.1%	+14
<i>Medical Science</i>	85	86	+1	+0.0%	+8
Health Science/ Diagnostics	233	240	+7	+0.0%	+17
<i>Social Workers</i>	20	19	-1	-0.1%	+0
Social Workers	20	19	-1	-0.1%	-2
<i>Psychologists</i>	9	10	+1	+0.1%	-0
Psychologists	9	10	+1	+0.1%	+1
<i>Pharmacy</i>	57	57	+1	+0.0%	-0
Pharmacy	57	57	+1	+0.0%	-1
<i>Counsellor Therapists</i>	0	0	0	+0.0%	
<i>HSCP Trainees/ Students</i>	1		-1	-1.0%	
H&SC, Other	1	0	-1	-0.7%	
Health & Social Care Professionals	425	434	+9	+9	+7
<i>Executive Management</i>	4	4	0	+0.0%	+3
<i>Senior Management (VIII & GM)</i>	17	19	+2	+0.1%	+2
Management (VIII & above)	21	23	+2	+0.1%	+2
<i>Middle Management (V-VII)</i>	180	182	+1	+0.0%	+37
<i>Other Administrative</i>	3	3	0	+0.0%	-1
Administrative/ Supervisory (V to VII)	183	184	+1	+0.0%	-0
<i>General Administrative (III & IV)</i>	301	297	-4	-0.0%	+9
Clerical (III & IV)	301	297	-4	-0.0%	+28
Management & Administrative	505	505	-0	-0	+30
<i>Catering</i>	18	17	-1	-0.1%	-2
<i>Household Services</i>	98	94	-4	-0.0%	+8
<i>Other Labs & Associated</i>	36	37	+1	+0.0%	+3
<i>Other Support</i>	65	63	-2	-0.0%	+5
<i>Portering</i>	103	103	+1	+0.0%	+8
Support	320	315	-6	-0.0%	-3
<i>Maintenance</i>	35	35	-0	-0.0%	+3
<i>Technical Services</i>	4	5	+1	+0.3%	+2
Maintenance/ Technical	39	40	+1	+0.0%	+5
General Support	359	355	-5	-5	+2
<i>HCA, Nurse's Aide, etc.</i>	203	203	-0	-0.0%	+34
<i>Health & Social Care Assistants</i>	11	11	+0	+0.0%	-0
<i>HCA (Student Nurse/Midwife COVID-19)</i>				-1.0%	
<i>Swabber (COVID-19)</i>				-1.0%	
Health Care Assistants	215	215	-0	-0.0%	+12
<i>Other Care Grades</i>	10	10	0	+0.0%	+1
Care, other	10	10	0	+0.0%	-1
Patient & Client Care	224	224	-0	-0	+12

IEHG Bank

Aug 2021 (Dec 2020 figure: 8)	WTE Jul 2021	WTE Aug 2021	WTE change since Jul 21	% change since Jul 21	WTE change since Dec 19
Overall	12	11	-2	-13.0%	+2
Staff Nurses [General/ Children's]	12	10	-1	-0.1%	+10
Staff Nurse/ Staff Midwife	12	10	-1	-0.1%	+3
Nursing & Midwifery	12	10	-1	-1	+3
HCA, Nurse's Aide, etc.	1	0	-0	-0.4%	+0
Health Care Assistants	1	0	-0	-0.4%	-0
Patient & Client Care	1	0	-0	-0	-0

Ireland East Hospital Group Employment by Grade Group & Staff Category: August 2021

Aug 2021 (Dec 2020 figure: 12,923)	WTE Jul 2021	WTE Aug 2021	WTE change since Jul 21	% change since Jul 21	WTE change since Dec 20	WTE change since Aug 20
Overall	13,326	13,319	-8	-0.1%	+396	+406
Consultant Anaesthesia	94	95	+1	+0.7%	+6	+5
Consultant Emergency Medicine	22	23	+1	+4.6%	-1	+0
Consultant Intensive Care Medicine	4	4			+2	+2
Consultant Medicine	191	191	-0	-0.2%	-8	+3
Consultant Obstetrics & Gynaecology	36	37	+1	+2.3%	+3	+2
Consultant Paediatrics	25	25	-0	-1.9%	+1	-0
Consultant Pathology	41	41	-0	-0.0%	-0	-2
Consultant Psychiatry	6	6			+2	+2
Consultant Radiology	57	56	-1	-1.5%	+1	+3
Consultant Surgery	115	115	+1	+0.5%	+0	-3
Consultants	590	591	+1	+0.2%	+5	+11
Registrar	376	364	-12	-3.1%	-5	-5
Senior Registrar	36	33	-3	-7.2%	-1	+5
Specialist Registrar	300	303	+3	+1.1%	+49	+25
Registrars	712	701	-11	-1.6%	+43	+25
Interns	181	174	-8	-4.2%	-27	-29
Senior House Officer	458	478	+19	+4.2%	+9	+7
SHO/ Interns	640	651	+12	+1.8%	-18	-22
Dentists				-100.0%	-1	-1
Other Medical	33	34	+0	+0.7%	+7	+9
Medical/ Dental, other	33	34	+0	+0.7%	+6	+8
Medical & Dental	1,975	1,977	+2	+0.1%	+35	+23
Clinical Nurse/ Midwife Manager	937	946	+9	+0.9%	+33	+89
Director Nursing/Midwifery, Assistant	95	96	+1	+0.6%	+5	+4
Director of Nursing/Midwifery	16	15	-1	-6.2%	-0	-0
Nurse/ Midwife Manager	1,048	1,056	+8	+0.8%	+38	+93
Advanced Nurse/ Midwife Practitioner	100	89	-10	-10.3%	+0	+11
Clinical Nurse/ Midwife Specialist	262	260	-2	-0.8%	+12	+25
Nurse/ Midwife Specialist & AN/MP	362	350	-12	-3.4%	+12	+36
Nursing Bank				-100.0%	-3	-2
Staff Nurses [General/ Children's]	3,097	3,074	-23	-0.7%	+26	+110
Staff Midwives	282	273	-9	-3.3%	-9	-18
Staff Nurse [Psychiatric]	3	3				-1
Staff Nurse/ Staff Midwife	3,382	3,349	-32	-1.0%	+13	+90
Pre-registration Nurse/ Midwife Intern	106	105	-1	-1.0%	+95	+105
Pre-registration Nurse Intern (COVID-19)				-100.0%	-47	-222
Post-registration Nurse/ Midwife Student	28	26	-2	-7.3%	+9	+6
Nursing/ Midwifery awaiting registration	8	8			-26	+7
Nursing/ Midwifery Student	142	139	-3	-2.2%	+30	-104
Nursing Education/Clinical	54	52	-1	-2.6%	-7	-13
Other Nursing/ Midwifery	17	17			+3	+2

Aug 2021 (Dec 2020 figure: 12,923)	WTE Jul 2021	WTE Aug 2021	WTE change since Jul 21	% change since Jul 21	WTE change since Dec 20	WTE change since Aug 20
Overall	13,326	13,319	-8	-0.1%	+396	+406
Nursing/ Midwifery other	70	69	-1	-2.0%	-4	-11
Nursing & Midwifery	5,004	4,963	-41	-0.8%	+90	+104
Dietitians	94	97	+3	+2.9%	+4	+10
Occupational Therapists	98	98	+0	+0.3%	+17	+21
Orthoptists	3	3	+0	+5.6%	+0	+1
Physiotherapists	223	223	+1	+0.2%	-20	-21
Speech & Language Therapists	45	45	-0	-0.4%	-1	-2
Podiatrists & Chiropodists	10	11	+1	+9.6%	+0	-0
Therapy Professions	473	477	+5	+1.0%	-0	+8
Audiology	3	3	+0	+0.0%	-0	-0
Biochemists	25	26	+1	+4.0%	-3	-4
Clinical Engineering	23	24	+1	+4.4%	+2	+1
Clinical Measurement	93	98	+5	+4.9%	+8	+12
Perfusionists	7	7			+2	+4
Phlebotomists	42	45	+2	+5.5%	+3	+4
Physicists	17	19	+2	+10.0%	+4	+4
Radiographers	264	276	+11	+4.2%	+13	+17
Medical Science	337	342	+5	+1.5%	+18	+18
Health Science/ Diagnostics	812	839	+27	+3.3%	+48	+56
Social Workers	77	76	-1	-1.6%	+2	+5
Psychologists	23	23	-0	-0.1%	+1	+2
Pharmacy	207	211	+4	+1.9%	+19	+19
Counsellor Therapists	2	2	+0	+30.0%	-0	-0
HSCP Trainees/ Students	8	3	-6	-65.7%	-3	-15
Other Health & Social Care	18	18			-1	+1
Vaccinators	23	21	-2	-7.8%	+21	+21
H&SC, Other	51	44	-7	-13.6%	+17	+7
Health & Social Care Professionals	1,643	1,671	+27	+1.7%	+87	+98
Executive Management	24	25	+1	+3.6%	+4	+8
Senior Management (VIII & GM)	89	89	+0	+0.2%	+9	+7
Management (VIII & above)	113	114	+1	+0.9%	+13	+15
Administrative/ Supervisory (V to VII)	621	621	-0	-0.0%	+22	+66
Clerical (III & IV)	1,294	1,290	-4	-0.3%	+66	+37
Management & Administrative	2,028	2,025	-3	-0.2%	+101	+118
Catering	105	105	+1	+0.7%	-4	-0
Household Services	689	694	+5	+0.7%	+16	+2
Other Labs & Associated	102	99	-3	-2.7%	+17	+24
Other Support	170	167	-3	-1.7%	-6	+0
Portering	273	273	+0	+0.0%	+4	-77
Support	1,339	1,339	-0	-0.0%	+26	-51
Maintenance/ Technical	121	122	+1	+0.5%	+4	+1
General Support	1,460	1,461	+1	+0.0%	+30	-50

Aug 2021 (Dec 2020 figure: 12,923)	WTE Jul 2021	WTE Aug 2021	WTE change since Jul 21	% change since Jul 21	WTE change since Dec 20	WTE change since Aug 20
Overall	13,326	13,319	-8	-0.1%	+396	+406
HCA, Nurse's Aide, etc.	1,153	1,157	+4	+0.4%	+68	+206
Health & Social Care Assistants	34	37	+3	+7.8%	-1	-4
HCA (Student Nurse/Midwife COVID-19)				-100.0%	-4	-89
Swabber (COVID-19)				-100.0%	-11	
Health Care Assistants	1,187	1,194	+7	+0.6%	+53	+113
Care, other	28	29	+0	+0.1%	-0	+1
Patient & Client Care	1,216	1,223	+7	+0.6%	+53	+113

Employment by WTE, Headcount, Gender, Full-Time /Part-Time etc.: Aug 2021

Ireland East Hospital Group	WTE	Headcount	WTE: no.	% Male	% female	Male WTE: no.	Female WTE: no.	% Total Perm	% Male Perm	% Female Perm	% Total Full Time	% Total Part Time	% Male FT	% Female FT
Overall	13,319	14,889	1.12	24.7%	75.3%	1.06	1.14	80.9%	68.8%	84.8%	76.6%	23.4%	90.3%	72.2%
Consultant Anaesthesia	95	106	1.12	68.9%	31.1%	1.15	1.05	77.4%	77.4%	69.7%	90.6%	9.4%	89.0%	93.9%
Consultant Emergency Medicine	23	25	1.09	88.0%	12.0%	1.10	1.00	52.0%	52.0%	0.0%	84.0%	16.0%	81.8%	100.0%
Consultant Intensive Care Medicine	4	4	1.14		100.0%		1.14	100.0%	100.0%	100.0%	75.0%	25.0%		75.0%
Consultant Medicine	191	222	1.16	67.1%	32.9%	1.14	1.21	75.2%	75.2%	75.3%	81.1%	18.9%	84.6%	74.0%
Consultant Obstetrics & Gynaecology	37	42	1.15	52.4%	47.6%	1.08	1.24	83.3%	83.3%	80.0%	81.0%	19.0%	95.5%	65.0%
Consultant Paediatrics	25	28	1.14	50.0%	50.0%	1.15	1.13	82.1%	82.1%	85.7%	82.1%	17.9%	85.7%	78.6%
Consultant Pathology	41	48	1.18	39.6%	60.4%	1.11	1.23	87.5%	87.5%	89.7%	79.2%	20.8%	89.5%	72.4%
Consultant Psychiatry	6	7	1.14	57.1%	42.9%	1.13	1.15	71.4%	71.4%	66.7%	71.4%	28.6%	100.0%	33.3%
Consultant Radiology	56	61	1.09	65.6%	34.4%	1.06	1.16	85.2%	85.2%	85.7%	88.5%	11.5%	92.5%	81.0%
Consultant Surgery	115	136	1.18	76.5%	23.5%	1.16	1.25	83.1%	83.1%	81.3%	79.4%	20.6%	83.7%	65.6%
Consultants	591	679	1.15	65.8%	34.2%	1.13	1.18	78.9%	79.2%	78.4%	82.8%	17.2%	86.6%	75.4%
Registrar	364	387	1.06	64.3%	35.7%	1.07	1.04	3.1%	3.1%	4.3%	99.0%	1.0%	99.2%	98.6%
Senior Registrar	33	34	1.02	67.6%	32.4%	1.03	1.00	23.5%	23.5%	18.2%	100.0%	0.0%	100.0%	100.0%
Specialist Registrar	303	319	1.05	49.8%	50.2%	1.03	1.08	0.0%	0.0%	0.0%	96.9%	3.1%	97.5%	96.3%
Registrars	701	740	1.06	58.2%	41.8%	1.05	1.06	2.7%	2.8%	2.6%	98.1%	1.9%	98.6%	97.4%
Interns	174	181	1.04	37.0%	63.0%	1.04	1.05	0.0%	0.0%	0.0%	100.0%	0.0%	100.0%	100.0%
Senior House Officer	478	527	1.10	43.5%	56.5%	1.11	1.10	1.1%	1.1%	1.3%	98.9%	1.1%	100.0%	98.0%
SHO/ Interns	651	708	1.09	41.8%	58.2%	1.09	1.08	0.8%	0.7%	1.0%	99.2%	0.8%	100.0%	98.5%
Other Medical	34	44	1.31	50.0%	50.0%	1.11	1.60	72.7%	72.7%	77.3%	59.1%	40.9%	86.4%	31.8%
Medical/ Dental, other	34	44	1.31	50.0%	50.0%	1.11	1.60	72.7%	68.2%	77.3%	59.1%	40.9%	86.4%	31.8%
Medical & Dental	1,977	2,171	1.10	55.1%	44.9%	1.09	1.10	27.4%	32.0%	21.6%	92.9%	7.1%	94.2%	91.2%
Clinical Nurse/ Midwife Manager	946	1,051	1.11	5.8%	94.2%	1.03	1.12	98.2%	98.2%	98.2%	72.0%	28.0%	91.8%	70.8%
Director Nursing/Midwifery, Assistant	96	106	1.11	10.4%	89.6%	1.07	1.11	97.2%	97.2%	96.8%	77.4%	22.6%	90.9%	75.8%

Director of Nursing/Midwifery	15	15	1.01	6.7%	93.3%	1.00	1.01	93.3%	93.3%	92.9%	93.3%	6.7%	100.0%	92.9%
Nurse/ Midwife Manager	1,056	1,172	1.11	6.2%	93.8%	1.04	1.11	98.0%	98.6%	98.0%	72.8%	27.2%	91.8%	71.5%
Advanced Nurse/ Midwife Practitioner	89	95	1.06	11.6%	88.4%	1.00	1.07	100.0%	100.0%	100.0%	88.4%	11.6%	100.0%	86.9%
Clinical Nurse/ Midwife Specialist	260	300	1.15	3.7%	96.3%	1.09	1.15	97.7%	97.7%	97.9%	65.7%	34.3%	90.9%	64.7%
Nurse/ Midwife Specialist & AN/MP	350	395	1.13	5.6%	94.4%	1.04	1.14	98.2%	95.5%	98.4%	71.1%	28.9%	95.5%	69.7%
Staff Nurses [General/ Children's]	3,074	3,410	1.11	9.6%	90.4%	1.03	1.12	96.8%	96.8%	96.9%	72.3%	27.7%	91.8%	70.2%
Staff Midwives	273	318	1.17	0.3%	99.7%	1.00	1.17	99.1%	99.1%	99.1%	56.0%	44.0%	100.0%	55.8%
Staff Nurse [Psychiatric]	3	3	1.00	33.3%	66.7%	1.00	1.00	100.0%	100.0%	100.0%	100.0%	0.0%	100.0%	100.0%
Staff Nurse/ Staff Midwife	3,349	3,731	1.11	8.9%	91.1%	1.03	1.12	97.0%	96.4%	97.1%	70.9%	29.1%	91.8%	68.9%
Pre-registration Nurse/ Midwife Intern	105	211	2.00	3.8%	96.2%	2.00	2.00	35.1%	35.1%	34.5%	100.0%	0.0%	100.0%	100.0%
Post-registration Nurse/ Midwife Student	26	26	1.02	3.8%	96.2%	1.00	1.02	0.0%	0.0%	0.0%	100.0%	0.0%	100.0%	100.0%
Nursing/ Midwifery awaiting registration	8	8	1.00	50.0%	50.0%	1.00	1.00	75.0%	75.0%	75.0%	100.0%	0.0%	100.0%	100.0%
Nursing/ Midwifery Student	139	245	1.76	5.3%	94.7%	1.44	1.79	32.7%	53.8%	31.5%	100.0%	0.0%	100.0%	100.0%
Nursing Education/Clinical	52	63	1.20	3.2%	96.8%	1.33	1.20	98.4%	98.4%	98.4%	61.9%	38.1%	50.0%	62.3%
Other Nursing/ Midwifery	17	18	1.08	11.1%	88.9%	1.00	1.09	100.0%	100.0%	100.0%	77.8%	22.2%	100.0%	75.0%
Nursing/ Midwifery other	69	81	1.17	4.9%	95.1%	1.14	1.17	98.8%	100.0%	98.7%	65.4%	34.6%	75.0%	64.9%
Nursing & Midwifery	4,963	5,624	1.13	7.9%	92.1%	1.04	1.14	94.5%	95.5%	94.5%	72.5%	27.5%	92.1%	70.8%
Dietitians	97	110	1.14	2.7%	97.3%	1.09	1.14	85.5%	85.5%	86.0%	75.5%	24.5%	100.0%	74.8%
Occupational Therapists	98	105	1.07	7.6%	92.4%	1.00	1.08	81.0%	81.0%	80.4%	86.7%	13.3%	100.0%	85.6%
Orthoptists	3	6	2.26		100.0%		2.26	83.3%	83.3%	83.3%	16.7%	83.3%		16.7%
Physiotherapists	223	253	1.13	16.6%	83.4%	1.06	1.15	82.2%	82.2%	85.8%	76.3%	23.7%	92.9%	73.0%
Speech & Language Therapists	45	52	1.15		100.0%		1.15	75.0%	75.0%	75.0%	76.9%	23.1%		76.9%
Podiatrists & Chiropodists	11	13	1.17	23.1%	76.9%	1.29	1.13	84.6%	84.6%	90.0%	76.9%	23.1%	66.7%	80.0%
Therapy Professions	477	539	1.13	10.4%	89.6%	1.06	1.14	82.0%	67.9%	83.6%	77.6%	22.4%	92.9%	75.8%
Audiology	3	5	1.46	20.0%	80.0%	5.26	1.23	100.0%	100.0%	100.0%	60.0%	40.0%	0.0%	75.0%
Biochemists	26	27	1.03	37.0%	63.0%	1.00	1.05	96.3%	96.3%	94.1%	92.6%	7.4%	100.0%	88.2%
Clinical Engineering	24	24	1.00	83.3%	16.7%	1.00	1.00	100.0%	100.0%	100.0%	100.0%	0.0%	100.0%	100.0%
Clinical Measurement	98	105	1.08	17.1%	82.9%	1.01	1.09	91.4%	91.4%	95.4%	77.1%	22.9%	88.9%	74.7%
Perfusionists	7	8	1.14	50.0%	50.0%	1.33	1.00	75.0%	75.0%	100.0%	75.0%	25.0%	50.0%	100.0%

Phlebotomists	45	56	1.25	28.6%	71.4%	1.15	1.30	80.4%	80.4%	87.5%	30.4%	69.6%	43.8%	25.0%
Physicists	19	23	1.21	39.1%	60.9%	1.00	1.40	91.3%	91.3%	100.0%	65.2%	34.8%	100.0%	42.9%
Radiographers	276	299	1.09	18.1%	81.9%	1.04	1.10	94.6%	94.6%	93.9%	85.3%	14.7%	96.3%	82.9%
Medical Science	342	361	1.06	23.3%	76.7%	1.02	1.07	95.0%	95.0%	94.9%	83.4%	16.6%	95.2%	79.8%
Health Science/ Diagnostics	839	908	1.08	23.8%	76.2%	1.04	1.10	93.5%	90.7%	94.4%	80.1%	19.9%	90.7%	76.7%
Social Workers	76	81	1.07	11.1%	88.9%	1.08	1.07	80.2%	88.9%	79.2%	85.2%	14.8%	77.8%	86.1%
Psychologists	23	28	1.20	14.3%	85.7%	1.19	1.20	96.4%	100.0%	95.8%	57.1%	42.9%	50.0%	58.3%
Pharmacy	211	227	1.08	7.9%	92.1%	1.02	1.08	86.3%	88.9%	86.1%	83.7%	16.3%	100.0%	82.3%
Counsellor Therapists	2	3	1.54		100.0%		1.54	66.7%	66.7%	66.7%	33.3%	66.7%		33.3%
HSCP Trainees/ Students	3	6	2.06	50.0%	50.0%	5.17	1.29	0.0%	0.0%	0.0%	33.3%	66.7%	33.3%	33.3%
Other Health & Social Care	18	20	1.12	50.0%	50.0%	1.04	1.20	75.0%	75.0%	70.0%	65.0%	35.0%	80.0%	50.0%
Vaccinators	21	51	2.39	21.6%	78.4%	1.74	2.66	94.1%	94.1%	97.5%	3.9%	96.1%	9.1%	2.5%
H&SC, Other	44	80	1.81	30.0%	70.0%	1.45	2.03	81.3%	70.8%	85.7%	22.5%	77.5%	41.7%	14.3%
Health & Social Care	1,671	1,863	1.12	17.6%	82.4%	1.07	1.13	88.2%	85.3%	88.9%	77.2%	22.8%	87.2%	75.1%
Executive Management	25	26	1.05	46.2%	53.8%	1.10	1.00	88.5%	88.5%	92.9%	92.3%	7.7%	83.3%	100.0%
Senior Management (VIII & GM)	89	92	1.03	27.2%	72.8%	1.08	1.02	95.7%	95.7%	95.5%	93.5%	6.5%	92.0%	94.0%
Management (VIII & above)	114	118	1.04	31.4%	68.6%	1.08	1.02	94.1%	91.9%	95.1%	93.2%	6.8%	89.2%	95.1%
Administrative/ Supervisory (V to VII)	621	660	1.06	23.9%	76.1%	1.01	1.08	96.4%	94.9%	96.8%	83.5%	16.5%	96.8%	79.3%
Clerical (III & IV)	1,290	1,459	1.13	16.6%	83.4%	1.02	1.16	87.9%	85.1%	88.4%	72.0%	28.0%	94.2%	67.6%
Management & Administrative	2,025	2,237	1.10	19.5%	80.5%	1.02	1.13	90.7%	89.2%	91.1%	76.5%	23.5%	94.7%	72.1%
Catering	105	113	1.07	29.2%	70.8%	1.00	1.10	94.7%	94.7%	95.0%	77.9%	22.1%	100.0%	68.8%
Household Services	694	793	1.14	24.8%	75.2%	1.04	1.18	81.1%	81.1%	82.7%	63.4%	36.6%	83.8%	56.7%
Other Labs & Associated	99	102	1.03	42.2%	57.8%	1.01	1.05	82.4%	82.4%	79.7%	93.1%	6.9%	95.3%	91.5%
Other Support	167	177	1.06	54.2%	45.8%	1.01	1.13	93.2%	93.2%	98.8%	85.9%	14.1%	97.9%	71.6%
Portering	273	294	1.08	96.6%	3.4%	1.07	1.23	84.0%	84.0%	70.0%	81.0%	19.0%	82.4%	40.0%
Support	1,339	1,479	1.10	44.2%	55.8%	1.05	1.16	84.2%	83.2%	85.1%	72.8%	27.2%	86.8%	61.6%
Maintenance	110	112	1.02	99.1%	0.9%	1.02	1.00	91.1%	91.1%	100.0%	98.2%	1.8%	98.2%	100.0%
Technical Services	12	12	1.00	100.0%		1.00		100.0%	100.0%		100.0%	0.0%	100.0%	
Maintenance/ Technical	122	124	1.02	99.2%	0.8%	1.02	1.00	91.9%	91.9%	100.0%	98.4%	1.6%	98.4%	100.0%
General Support	1,461	1,603	1.10	48.4%	51.6%	1.04	1.16	84.8%	84.5%	85.1%	74.7%	25.3%	88.7%	61.7%

HCA, Nurse's Aide, etc.	1,157	1,317	1.14	35.6%	64.4%	1.09	1.17	78.6%	78.6%	77.7%	69.2%	30.8%	80.2%	63.1%
Health & Social Care Assistants	37	40	1.09	37.5%	62.5%	1.06	1.10	87.5%	87.5%	88.0%	77.5%	22.5%	86.7%	72.0%
Health Care Assistants	1,194	1,357	1.14	35.7%	64.3%	1.09	1.17	78.9%	80.4%	78.0%	69.4%	30.6%	80.4%	63.3%
Other Care Grades	29	34	1.19	64.7%	35.3%	1.29	1.04	76.5%	76.5%	91.7%	76.5%	23.5%	68.2%	91.7%
Care, other	29	34	1.19	64.7%	35.3%	1.29	1.04	76.5%	68.2%	91.7%	76.5%	23.5%	68.2%	91.7%
Patient & Client Care	1,223	1,391	1.14	36.4%	63.6%	1.09	1.16	78.8%	79.8%	78.2%	69.6%	30.4%	79.8%	63.7%

Employment by WTE, Headcount, Gender, Full-Time /Part-Time etc.: Aug 2021

Ireland East Hospital Group	WTE	Headcount	WTE: no.	% Male	% female	Male WTE: no.	Female WTE: no.	% Total Perm	% Male Perm	% Female Perm	% Total Full Time	% Total Part Time	% Male FT	% Female FT
Overall	13,319	14,889	1.12	24.7%	75.3%	1.06	1.14	80.9%	68.8%	84.8%	76.6%	23.4%	90.3%	72.2%
Wexford General	1,083	1,226	1.13	22.3%	77.7%	1.04	1.16	83.5%	83.5%	87.8%	71.1%	28.9%	94.1%	94.1%
St Luke's General Kilkenny	1,178	1,351	1.15	21.6%	78.4%	1.04	1.18	75.6%	75.6%	81.8%	66.5%	33.5%	93.5%	93.5%
Hospital Group HQ	75	116	1.54	20.7%	79.3%	1.33	1.61	83.6%	83.6%	85.9%	45.7%	54.3%	50.0%	50.0%
Our Lady's Navan	597	697	1.17	25.5%	74.5%	1.08	1.20	80.9%	80.9%	85.4%	66.6%	33.4%	89.9%	89.9%
Cappagh National Orthopaedic	457	513	1.12	21.6%	78.4%	1.02	1.16	86.7%	86.7%	90.8%	72.7%	27.3%	95.5%	95.5%
Mater Misericordiae University	3,559	3,925	1.10	26.3%	73.7%	1.08	1.11	77.2%	77.2%	81.2%	80.4%	19.6%	85.8%	85.8%
MRH Mullingar	1,037	1,211	1.17	21.6%	78.4%	1.19	1.16	78.4%	78.4%	85.2%	78.0%	22.0%	97.7%	97.7%
Royal Victoria Eye & Ear	334	383	1.15	25.1%	74.9%	1.05	1.19	80.2%	80.2%	84.0%	66.8%	33.2%	87.5%	87.5%
St. Michael's	418	473	1.13	22.8%	77.2%	1.07	1.15	83.9%	83.9%	84.9%	76.1%	23.9%	85.2%	85.2%
St. Columcille's	467	517	1.11	24.2%	75.8%	1.04	1.13	81.2%	81.2%	82.4%	80.5%	19.5%	94.4%	94.4%
National Maternity	945	1,062	1.12	16.9%	83.1%	1.09	1.13	75.2%	75.2%	77.5%	72.2%	27.8%	81.6%	81.6%
St. Vincent's University	3,158	3,397	1.08	29.6%	70.4%	1.03	1.09	87.4%	87.4%	91.3%	83.8%	16.2%	93.3%	93.3%
IEHG Bank	11	18	1.69	11.1%	88.9%	2.04	1.65	100.0%	100.0%	100.0%	5.6%	94.4%	0.0%	0.0%

Ireland East Hospital Group Employment by Grade Group & Staff Category: August 2021

Aug 2021 (Dec 2019 figure: 12,045)	WTE Dec 2016	WTE Dec 2017	WTE Dec 2018	WTE Dec 2019	WTE Dec 2020	WTE Jul 2021	WTE Aug 2021
Overall	10,971	11,382	11,773	12,045	12,923	13,326	13,319
Consultant Anaesthesia	4.9%	4.9%	5.1%	4.8%	4.5%	4.8%	4.8%
Consultant Emergency Medicine	1.0%	1.1%	1.0%	1.1%	1.2%	1.1%	1.2%
Consultant Intensive Care Medicine			0.1%	0.1%	0.1%	0.2%	0.2%
Consultant Medicine	9.1%	9.3%	9.3%	9.9%	10.3%	9.7%	9.7%
Consultant Obstetrics & Gynaecology	2.0%	2.0%	2.0%	2.0%	1.8%	1.8%	1.9%
Consultant Paediatrics	1.2%	1.3%	1.2%	1.2%	1.2%	1.3%	1.2%
Consultant Pathology	2.1%	2.1%	2.3%	2.2%	2.1%	2.1%	2.1%
Consultant Psychiatry	0.2%	0.3%	0.3%	0.2%	0.2%	0.3%	0.3%
Consultant Radiology	3.1%	2.9%	3.2%	3.0%	2.8%	2.9%	2.8%
Consultant Surgery	6.6%	6.5%	6.3%	6.2%	5.9%	5.8%	5.8%
Consultants	30.2%	30.5%	30.7%	30.7%	30.2%	29.9%	29.9%
Registrar	21.1%	19.6%	19.8%	19.5%	19.0%	19.1%	18.4%
Senior Registrar	1.7%	1.3%	1.4%	1.6%	1.8%	1.8%	1.7%
Specialist Registrar	11.9%	13.3%	13.1%	14.2%	13.1%	15.2%	15.3%
Registrars	34.7%	34.2%	34.3%	35.3%	33.9%	35.4%	35.4%
Interns	9.2%	8.7%	8.8%	8.4%	10.4%	9.2%	8.8%
Senior House Officer	24.6%	25.1%	24.5%	24.1%	24.1%	23.2%	24.2%
SHO/ Interns	33.8%	33.8%	33.4%	32.5%	34.5%	33.0%	33.0%
Dentists	0.1%	0.1%	0.1%	0.1%	0.1%		
Other Medical	1.3%	1.5%	1.5%	1.4%	1.4%	1.7%	1.7%
Medical/ Dental, other	1.3%	1.5%	1.6%	1.5%	1.4%	1.7%	1.7%
Medical & Dental	14.3%	14.5%	14.4%	14.6%	15.0%	14.8%	14.8%
Clinical Nurse/ Midwife Manager	16.6%	16.6%	17.8%	17.9%	18.7%	18.7%	19.1%
Director Nursing/Midwifery, Assistant	1.5%	1.7%	1.8%	1.9%	1.9%	1.9%	1.9%
Director of Nursing/Midwifery	0.3%	0.3%	0.3%	0.3%	0.3%	0.3%	0.3%
Nurse/ Midwife Manager	18.4%	18.5%	19.9%	20.2%	20.9%	21.3%	21.3%
Advanced Nurse/ Midwife Practitioner	0.7%	1.3%	1.5%	1.6%	1.8%	2.0%	1.8%
Clinical Nurse/ Midwife Specialist	5.2%	4.9%	5.1%	5.1%	5.1%	5.2%	5.2%
Nurse/ Midwife Specialist & AN/MP	5.9%	6.2%	6.6%	6.7%	6.9%	7.0%	7.0%
Nursing Bank	0.1%	0.2%	0.1%	0.0%	0.1%		
Staff Nurses [General/ Children's]	65.6%	65.8%	63.9%	63.9%	62.5%	61.9%	61.9%
Staff Midwives	7.3%	6.5%	6.7%	6.3%	5.8%	5.6%	5.5%
Staff Nurse [Psychiatric]	0.1%	0.1%	0.1%	0.1%	0.1%	0.1%	0.1%
Staff Nurse/ Staff Midwife	73.2%	72.6%	70.8%	70.3%	68.5%	67.5%	67.5%
Pre-registration Nurse/ Midwife Intern	0.3%	0.4%	0.5%	0.5%	0.2%	2.1%	2.1%
Pre-registration Nurse Intern (COVID-19)					1.0%		
Post-registration Nurse/ Midwife Student	0.5%	0.5%	0.5%	0.5%	0.3%	0.5%	0.5%
Nursing/ Midwifery awaiting registration	0.0%	0.1%	0.1%	0.2%	0.7%	0.2%	0.2%
Nursing/ Midwifery Student	0.9%	1.1%	1.1%	1.2%	2.2%	2.8%	2.8%
Nursing Education/Clinical	1.4%	1.4%	1.4%	1.4%	1.2%	1.1%	1.1%
Other Nursing/ Midwifery	0.3%	0.2%	0.2%	0.3%	0.3%	0.3%	0.3%
Nursing/ Midwifery other	1.7%	1.6%	1.6%	1.6%	1.5%	1.4%	1.4%
Nursing & Midwifery	38.3%	38.3%	38.0%	38.2%	37.7%	37.3%	37.3%
Dietitians	5.2%	4.9%	5.6%	5.3%	5.9%	5.7%	5.8%
Occupational Therapists	5.2%	5.2%	5.0%	4.7%	5.2%	6.0%	5.9%
Orthoptists	0.2%	0.2%	0.2%	0.2%	0.2%	0.2%	0.2%
Physiotherapists	14.2%	14.5%	15.3%	15.7%	15.4%	13.6%	13.4%
Speech & Language Therapists	2.4%	2.7%	2.3%	2.4%	2.9%	2.8%	2.7%
Podiatrists & Chiropodists	0.6%	0.6%	0.6%	0.7%	0.7%	0.6%	0.7%
Therapy Professions	27.9%	28.1%	29.0%	28.9%	30.2%	28.6%	28.6%
Audiology	0.3%	0.2%	0.2%	0.2%	0.2%	0.2%	0.2%

Aug 2021 (Dec 2019 figure: 12,045)	WTE Dec 2016	WTE Dec 2017	WTE Dec 2018	WTE Dec 2019	WTE Dec 2020	WTE Jul 2021	WTE Aug 2021
Overall	10,971	11,382	11,773	12,045	12,923	13,326	13,319
Biochemists	1.6%	2.0%	2.0%	1.8%	1.8%	1.5%	1.6%
Clinical Engineering	1.2%	1.3%	1.3%	1.4%	1.4%	1.4%	1.4%
Clinical Measurement	5.8%	5.5%	5.6%	5.4%	5.7%	5.7%	5.8%
Perfusionists	0.2%	0.3%	0.2%	0.3%	0.3%	0.4%	0.4%
Phlebotomists	2.5%	2.6%	2.6%	2.5%	2.6%	2.6%	2.7%
Physicists	0.9%	0.9%	1.1%	1.1%	0.9%	1.1%	1.1%
Radiographers	17.3%	17.2%	16.8%	16.6%	16.6%	16.1%	16.5%
Medical Science	23.5%	22.7%	21.9%	20.9%	20.5%	20.5%	20.5%
Health Science/ Diagnostics	53.3%	52.7%	51.7%	50.2%	49.9%	50.2%	50.2%
Social Workers	4.4%	4.4%	4.0%	4.8%	4.7%	4.5%	4.5%
Psychologists	0.9%	1.0%	1.0%	1.5%	1.4%	1.4%	1.4%
Pharmacy	11.5%	11.7%	12.2%	12.9%	12.1%	12.6%	12.6%
Counsellor Therapists	0.2%	0.2%	0.2%	0.2%	0.1%	0.1%	0.1%
HSCP Trainees/ Students	0.6%	0.6%	0.7%	0.5%	0.4%	0.5%	0.2%
Other Health & Social Care	1.1%	1.3%	1.2%	1.1%	1.2%	1.1%	1.1%
Vaccinators						1.4%	1.3%
H&SC, Other	2.0%	2.1%	2.1%	1.8%	1.7%	2.6%	2.6%
Health & Social Care Professionals	12.0%	11.9%	12.1%	12.1%	12.3%	12.5%	12.5%
Executive Management	0.6%	0.6%	0.8%	0.8%	1.1%	1.2%	1.2%
Senior Management (VIII & GM)	3.8%	3.9%	3.8%	3.8%	4.1%	4.4%	4.4%
Management (VIII & above)	4.4%	4.5%	4.5%	4.6%	5.2%	5.6%	5.6%
Administrative/ Supervisory (V to VII)	26.4%	27.6%	28.2%	28.5%	31.1%	30.7%	30.7%
General Administrative (III & IV)	69.2%	68.0%	67.3%	66.9%	63.6%	63.8%	63.7%
Clerical (III & IV)	69.2%	68.0%	67.3%	66.9%	63.6%	63.7%	63.7%
Management & Administrative	14.9%	15.1%	15.2%	15.1%	14.9%	15.2%	15.2%
Catering	7.3%	6.8%	6.9%	7.1%	7.7%	7.2%	7.2%
Household Services	45.4%	46.0%	46.9%	46.1%	47.4%	47.2%	47.5%
Other Labs & Associated	4.5%	4.6%	4.7%	5.0%	5.8%	7.0%	6.8%
Other Support	11.0%	11.3%	11.0%	11.0%	12.1%	11.6%	11.4%
Portering	23.4%	23.4%	22.9%	22.9%	18.8%	18.7%	18.7%
Support	91.6%	92.1%	92.5%	92.2%	91.7%	91.6%	91.6%
Maintenance	7.6%	7.1%	6.8%	7.0%	7.6%	7.6%	7.5%
Technical Services	0.8%	0.8%	0.8%	0.8%	0.7%	0.8%	0.8%
Maintenance/ Technical	8.4%	7.9%	7.5%	7.8%	8.3%	8.4%	8.4%
General Support	12.2%	12.3%	12.1%	11.9%	11.1%	11.0%	11.0%
HCA, Nurse's Aide, etc.	94.2%	94.5%	94.5%	94.6%	93.1%	94.8%	94.7%
Health & Social Care Assistants	2.5%	2.6%	2.8%	2.8%	3.2%	2.8%	3.0%
HCA (Student Nurse/Midwife COVID-19)					0.3%		
Swabber (COVID-19)					0.9%		
Health Care Assistants	96.6%	97.1%	97.3%	97.3%	97.6%	97.7%	97.7%
Other Care Grades	3.4%	2.9%	2.7%	2.7%	2.4%	2.3%	2.3%
Care, other	3.4%	2.9%	2.7%	2.7%	2.4%	2.3%	2.3%
Patient & Client Care	8.3%	8.0%	8.2%	8.1%	9.1%	9.2%	9.2%
Total	100%	100%	100%	100%	100%	100%	100%

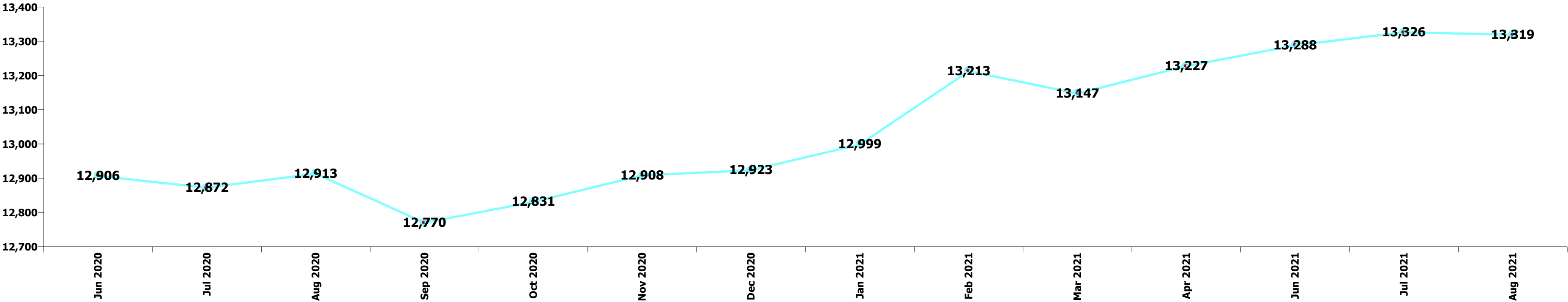
Summary Staff Movement: August 2021

Month-on-month Summary

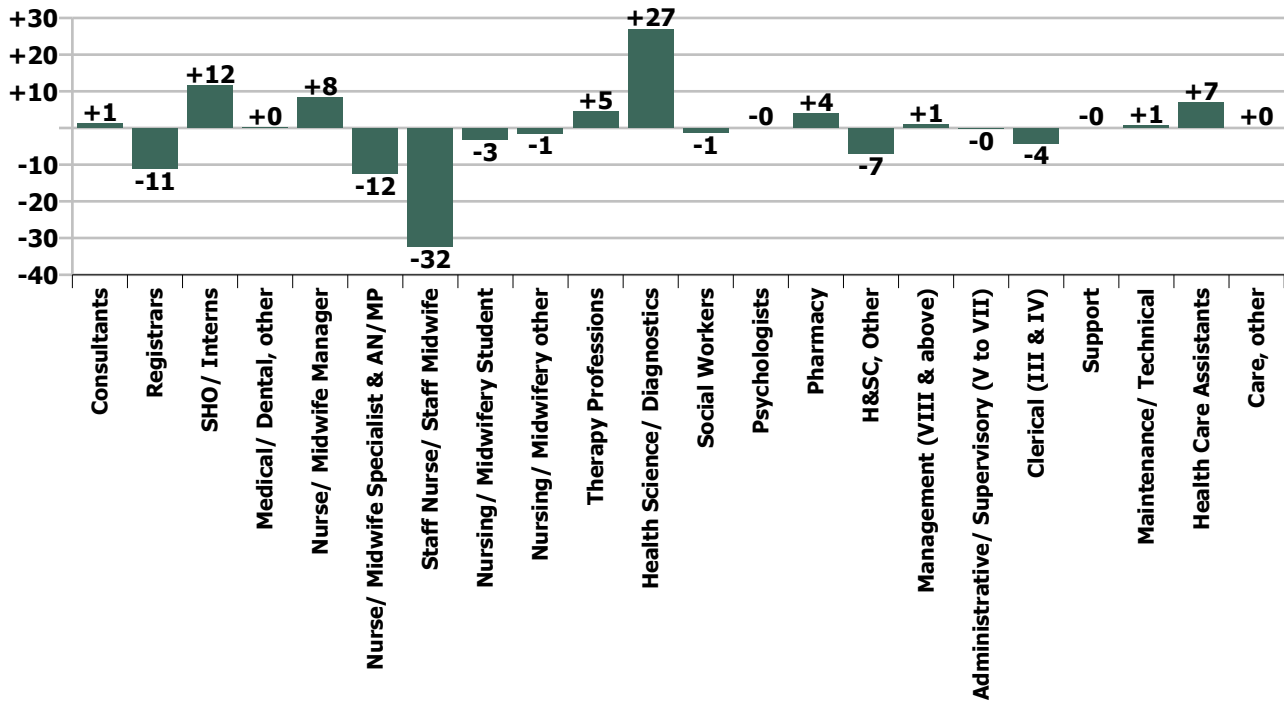
WTE change since Jul 21	% change since Jul 21	overall	Consultants	Registrars	SHO/ Interns	Medical/ Dental, other	Medical & Dental	Nurse/ Midwife Manager	Nurse/ Midwife Specialist & AN/MP	Staff Nurse/ Staff Midwife	Nursing/ Midwifery Student	Nursing/ Midwifery other	Nursing & Midwifery	Therapy Professions	Health Science/ Diagnostics	Social Workers	Psychologists	Pharmacy	H&SC, Other	Health & Social Care Professionals	Management (VII & above)	Administrativ e/ Supervisory (V to VII)	Clerical (III & IV)	Management & Administrativ e	General Support	Health Care Assistants	Care, other	Patient & Client Care
Overall	-0.1%	-8	+1	-11	+12	+0	+2	+8	-12	-32	-3	-1	-41	+5	+27	-1	-0	+4	-7	+27	+1	-0	-4	-3	+1	+7	+0	+7
Wexford General	+0.4%	+4	-0	-3	+5		+1	+0	-1	+3	-0		+3	-1	+3	-0		+0		+2		+1	-4	-3	-0	+1		+1
St Luke's General Kilkenny	-0.7%	-9	-1	-11	-2	+0	-13	-1	-0	+1		+0	-0	+1	+1			+0		+2	-1	-2	-0	-4	+5	+1		+1
Hospital Group HQ	+5.9%	+4	+1				+1	+1		-0			+1					-0	-2	-2	-0	+0	+5	+5				
Our Lady's Navan	+0.3%	+2	-0	+4	-0		+4	+1	-0	-0			-0	+0	+0			+0		+1		-0	-1	-1	-0	-1	-0	-1
Cappagh National Orthopaedic										-0			+0								+0				-0			
Mater Misericordiae University	+0.3%	+10	+3			-0	+3	-1	+0	-7	-1	-1	-10	+0	+15	-1	-1	+1	-3	+12		-3	+1	-2	+2	+6	+0	+6
MRH Mullingar	-0.1%	-1	-1	-2	+3	+0	-0	+2	-1	-4	-0		-3	+1	+0			+1	-1	+1		+2	-0	+2	-1	+0		+0
Royal Victoria Eye & Ear	-0.9%	-3		-1			-1			+2			+2	+0						+0			-4	-4				
St. Michael's	+0.7%	+3						+1		+2			+3	-0						-1		+1	-0	+1				
St. Columcille's	+0.5%	+2	-0	+2	-0		+1	-0	-1	-1			-2	+0	+1	+0	+0	+0		+1	-0	-1	+0	-0	-0	+3	-0	+3
National Maternity	-0.5%	-5	+1				+1	-1	-0	-6	-2		-9	+1		+0		+1		+2		+0	+3	+3	+1	-3		-3
St. Vincent's University	-0.4%	-13	-1	+1	+6		+6	+8	-9	-21	-1		-23	+2		-1		+1	-1	+9	+2	+1	-4	-0	-5	-0		-0
IEHG Bank	-13.0%	-2								-1			-1													-0		-0
			±0.2%	-1.6%	±1.8%	±0.7%	±0.1%	±0.8%	2.1%	1.0%	2.2%	2.0%	-0.8%	±1.0%	±2.2%	1.6%	0.1%	±1.0%	-12.6%	±1.7%	±0.0%	0.0%	-0.2%	-0.2%	±0.0%	±0.6%	±0.1%	±0.6%

Year-on-year Summary

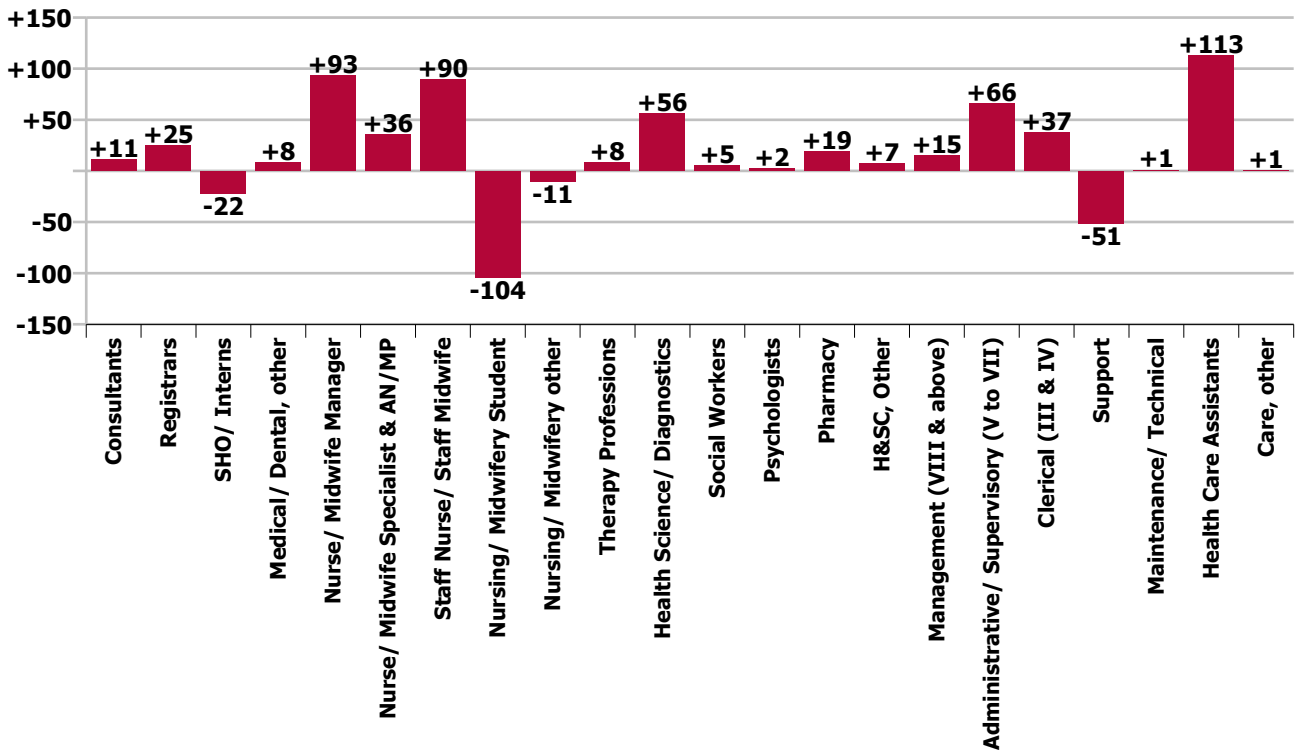
WTE change since Aug 20	% change since Aug 20	overall	Consultants	Registrars	SHO/ Interns	Medical/ Dental, other	Medical & Dental	Nurse/ Midwife Manager	Nurse/ Midwife Specialist & AN/MP	Staff Nurse/ Staff Midwife	Nursing/ Midwifery Student	Nursing/ Midwifery other	Nursing & Midwifery	Therapy Professions	Health Science/ Diagnostics	Social Workers	Psychologists	Pharmacy	H&SC, Other	Health & Social Care Professionals	Management (VIII & above)	Administrative/ Supervisory (V to VII)	Clerical (III & IV)	Management & Administrative	General Support	Health Care Assistants	Care, other	Patient & Client Care
Overall	+3.1%	+406	+11	+25	-22	+8	+23	+93	+36	+90	-104	-11	+104	+8	+56	+5	+2	+19	+7	+98	+15	+66	+37	+118	-50	+113	+1	+113
Wexford General	+1.7%	+18	-1	-0	+9	+1	+8	-5	+4	+20	-3		+16	-0	-2	+1		+5		+3	-2	+10	-10	-2	-28	+19	+1	+20
St Luke's General Kilkenny	-1.9%	-23	+3	-4	-2	+3	-1	-3	+7	-13	-5	-0	-14	-0	+0			+7	-1	+6	+1	+2	-3	+0	-59	+44		+44
Hospital Group HQ	+163.4%	+47	+1				+1	+2		+1			+3					+3	+21	+24	+6	+3	+9	+19				
Our Lady's Navan	+2.3%	+13	-1	-2	-4		-7	-4	+2	+14			+11	+0	+2			+2		+4	-1	+2	+1	+1	+2	+2	-0	+2
Cappagh National Orthopaedic	+4.1%	+18	+3	+1	+2		+6	+1	+2	-0			+3	+2	+3			+1		+6		+1	+3	+4				
Mater Misericordiae University	+4.3%	+146	+3	+12	-17	+0	-1	+19	+12	+44	-29	+2	+47	+5	+24	+2	+2	+3	-13	+22	+7	+1	+26	+34	+13	+32	-1	+31
MRH Mullingar	+6.0%	+59	+5	+5	-3		+7	+7	+4	+19	-8		+22	-0	+6	+19		+1	+0	+6	+0	+3	+5	+8	+4	+12		+12
Royal Victoria Eye & Ear	+11.9%	+36	+4	+4	+1	-1	+7	+1	+4	-2			+3	+1	-1					+0		+8	+10	+18	+2	+5		+5
St. Michael's	-0.9%	-4	-0	+1	-4		-3	-2	+1	+3	-14	-2	-14	+1	+5	+2	+2	-1		+7		+3	+5	+8	+1		-1	-1
St. Columcille's	+1.8%	+8	+0	-1	-3		-4	+1	+3	-2		-1	+1	+1	+2	+2	+1	+0	+1	+3	+1	-1	+7	+6	-0	-0	+2	+2
National Maternity	+2.4%	+22	+2	+2		+0	+4	+11	+0	-5	-4		+3	+3	+1	+2	+0	+1		+7	-1	+5	-2	+3	-1	+6		+6
St. Vincent's University	+1.9%	+58	-6	+8	-1	+5	+6	+65	-1	+3	-42	-9	+16	-4	+16	-1	-0	-1		+10	+3	+29	-13	+20	+15	-8	-1	-9
IEHG Bank	+249.8%	+8								+8			+8													+0		+0
			+2.0%	+3.7%	-3.3%	+31.3%	+1.2%	+9.7%	+11.3%	+2.8%	-42.8%	-13.4%	+2.1%	+1.8%	+7.1%	+7.5%	+11.9%	+9.9%	+19.3%	+6.2%	+15.5%	+11.8%	+3.0%	+6.2%	-3.3%	+10.4%	+2.1%	+10.2%



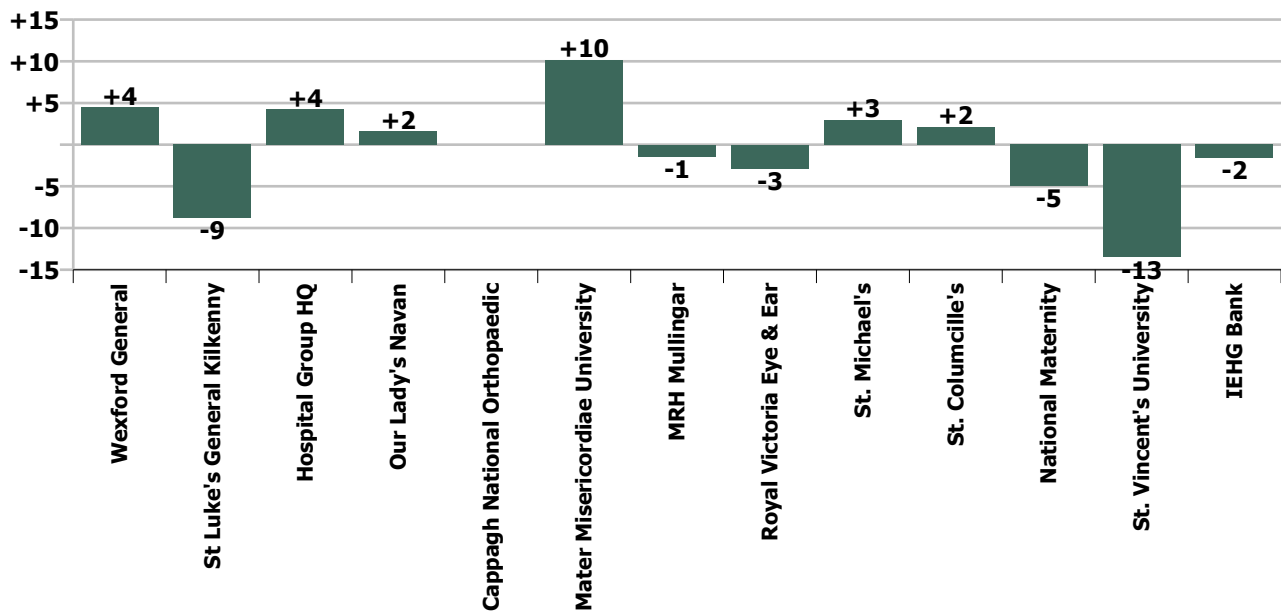
Staff Group change since: Jul 2021



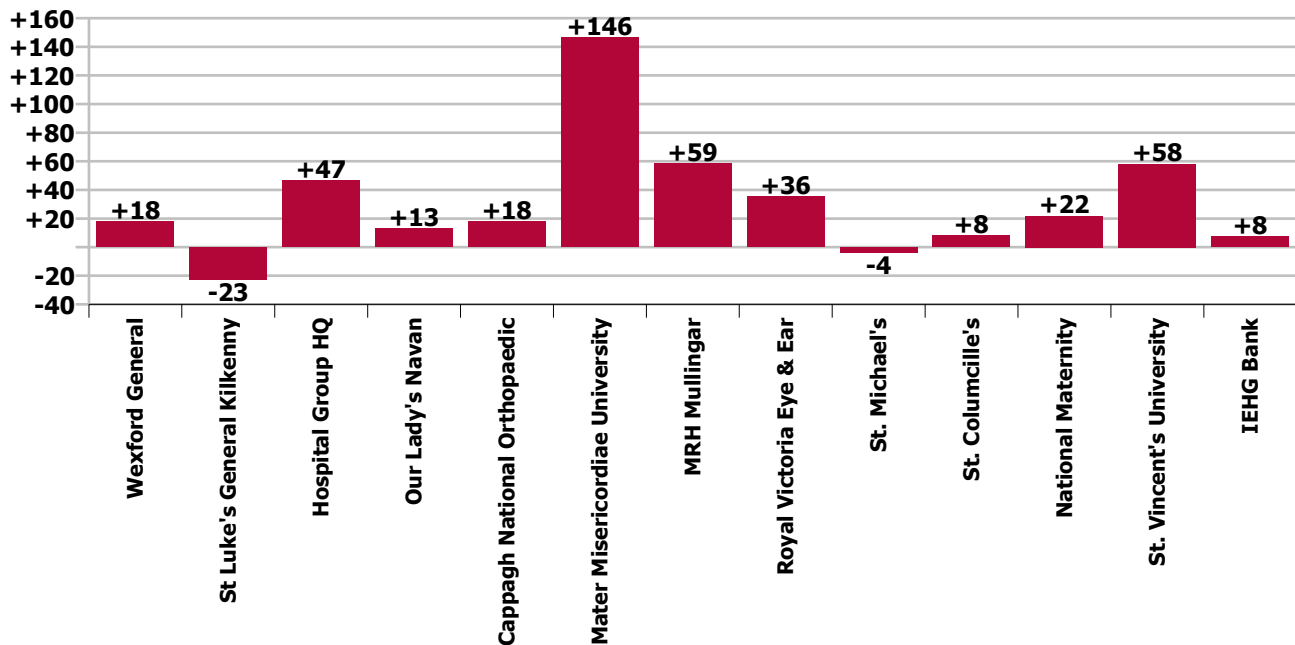
Staff Group change since: Aug 2020



Hospital change since: Jul 2021



Hospital change since: Aug 2020



Longitudinal Employment Levels by Grade Group - Dec 2016 to Aug 2021

Aug 2021 (Dec 2016 figure: 10,971)	WTE Aug 2021	WTE change since Dec 16	WTE change since Dec 17	WTE change since Dec 18	WTE change since Dec 19	WTE change since Dec 20	WTE change since Apr 21	% change since Dec 16	% change since Dec 17	% change since Dec 18	% change since Dec 19	% change since Dec 20	% change since Apr 21
Overall	13,319	+2,348	+1,937	+1,274	+1,274	+396	+91	+21.4%	+17.0%	+13.1%	+10.6%	+3.1%	+0.7%
Consultant Anaesthesia	95	+18	+14	+10	+10	+6	+1	+22.9%	+16.9%	+10.7%	+11.9%	+7.3%	+0.9%
Consultant in Emergency Medicine	23	+7	+5	+4	+4	-1	+0	+41.6%	+27.6%	+35.3%	+19.8%	-4.1%	+0.9%
Consultant Emergency Medicine	23	+7	+5	+4	+4	-1	+0	+41.6%	+27.6%	+35.3%	+19.8%	-4.1%	+0.9%
Consultant Intensivist	4	+4	+4	+2	+2	+2	+1	-100.0%	-100.0%	+75.0%	+75.0%	+75.0%	+40.0%
Consultant Intensive Care Medicine	4	+4	+4	+2	+2	+2	+1	-100.0%	-100.0%	+75.0%	+75.0%	+75.0%	+40.0%
Consultant Cardiologist	18	+2	+1	-2	-2	-2	+0	+13.0%	+4.1%	+4.1%	-9.3%	-9.8%	+0.5%
Consultant Clinical Neurophysiologist	2	+0						+25.4%					
Consultant Dermatologist	11	+2	+1	-1	-1	+1	-4	+20.1%	+12.6%	+38.5%	-6.6%	+12.3%	-25.7%
Consultant Gastroenterologist & General Physician	12	+3	+3	+2	+2	+2	+1	+34.4%	+34.4%	+10.0%	+20.2%	+14.2%	+14.2%
Consultant General Physician	48	+10	+8	+5	+5	-6	-2	+25.7%	+19.9%	+16.6%	+12.9%	-11.9%	-4.1%
Consultant in Clinical Genetics	1	+1	+1	+1	+1	+1	+1	+135.2%	+370.4%	+370.4%	+370.4%	+370.4%	+370.4%
Consultant in Palliative Medicine	2	-0	-0					-15.3%	-3.8%	-13.4%			
Consultant in Rehabilitation Medicine	0		-1	-1	-1	-1			-69.0%	-69.0%	-69.0%	-69.0%	
Consultant Medical Oncologist	9	+2	+1	+1	+1	-2	-2	+35.5%	+17.8%	+64.8%	+10.2%	-16.4%	-16.4%
Consultant Nephrologist & General Physician	5	+3	+1					+127.7%	+23.0%				
Consultant Neurologist	12	+2	+3	+2	+2	+0	-0	+21.1%	+35.8%	+25.8%	+15.6%	+1.9%	-0.0%
Consultant Physician in Endocrinology	11	+2	+2	+0	+0	+0	+0	+20.0%	+20.0%	-4.9%	+0.1%	+0.4%	+0.1%
Consultant Physician in Geriatric Medicine	23	+7	+5	+3	+3	+0	-0	+44.3%	+25.1%	+23.8%	+17.1%	+0.7%	-0.9%
Consultant Physician in Infectious Diseases	10	+6	+6	+4	+4		+3	+197.6%	+197.6%	+234.4%	+69.8%		+44.6%
Consultant Respiratory & General Physician	17	+5	+4	+2	+2	-2	+1	+42.7%	+27.9%	+19.2%	+10.3%	-8.1%	+4.6%
Consultant Rheumatologist & General Physician	8	+3	+2	+1	+1	+0	+2	+52.5%	+33.7%	+55.2%	+7.0%	+3.1%	+32.8%
Consultant Medicine	191	+49	+37	+17	+17	-8	+1	+34.1%	+24.3%	+21.5%	+9.7%	-4.2%	+0.3%
Consultant Obstetrician & Gynaecologist	36	+5	+3	+2	+2	+3	+2	+16.7%	+10.1%	+7.1%	+6.0%	+7.6%	+5.7%
Master (Maternity Hospital)	1												
Consultant Obstetrics & Gynaecology	37	+5	+3	+2	+2	+3	+2	+16.1%	+9.8%	+6.9%	+5.8%	+7.4%	+5.5%
Consultant Paediatrician	25	+6	+4	+3	+3	+1	+1	+32.6%	+16.8%	+23.5%	+12.2%	+2.1%	+2.4%
Consultant Paediatrics	25	+6	+4	+3	+3	+1	+1	+32.6%	+16.8%	+23.5%	+12.2%	+2.1%	+2.4%
Consultant Clinical Biochemist	2	-1	-1	+1	+1			-20.1%	-20.1%	-20.1%	+100.0%		
Consultant Haematologist (Clinical & Laboratory)	10	+4	+4	-1	-1	-1	+1	+64.3%	+64.3%	+24.6%	-4.6%	-4.6%	+5.1%
Consultant Histopathologist	18	+1	+0	+1	+1	+1	-1	+7.8%	+0.6%	+3.6%	+9.1%	+7.7%	-4.0%
Consultant Immunologist (Clinical & Laboratory)	1						-0						-23.9%
Consultant Microbiologist	10	+3	+2	+0	+0	-1	+0	+37.0%	+23.3%		+4.5%	-9.1%	+0.7%

Aug 2021 (Dec 2016 figure: 10,971)	WTE Aug 2021	WTE change since Dec 16	WTE change since Dec 17	WTE change since Dec 18	WTE change since Dec 19	WTE change since Dec 20	WTE change since Apr 21	% change since Dec 16	% change since Dec 17	% change since Dec 18	% change since Dec 19	% change since Dec 20	% change since Apr 21
Overall	13,319	+2,348	+1,937	+1,274	+1,274	+396	+91	+21.4%	+17.0%	+13.1%	+10.6%	+3.1%	+0.7%
Consultant Pathology	41	+7	+5	+2	+2	-0	-0	+22.5%	+15.6%	+5.4%	+6.5%	-0.6%	-0.8%
Consultant Child & Adolescent Psychiatrist		-0	-0					-100.0%	-100.0%	-100.0%	-100.0%	-100.0%	-100.0%
Consultant General Adult Psychiatrist	6	+3	+2	+2	+2	+2		+80.1%	+48.3%	+48.3%	+48.3%	+48.3%	
Consultant Psychiatry	6	+2	+2	+2	+2	+2		+66.8%	+39.2%	+39.2%	+48.3%	+48.3%	
Consultant Radiation Oncologist	0												
Consultant Radiologist	56	+8	+8	+4	+4	+1	+2	+15.7%	+16.2%	+3.8%	+7.9%	+1.8%	+3.5%
Consultant Radiology	56	+8	+8	+4	+4	+1	+2	+15.6%	+16.1%	+3.8%	+7.9%	+1.8%	+3.5%
Consultant Cardio-thoracic Surgeon	9	+1	+1	+1	+1	-1	-0	+11.7%	+11.7%	+11.7%	+19.1%	-5.7%	-0.6%
Consultant General Surgeon	31	-4	-0	-2	-2	-1	+0	-11.7%	-1.2%	-2.6%	-4.9%	-3.2%	+1.6%
Consultant General Surgeon Breast	1		-1	-1	-1	-1			-50.0%	-50.0%	-50.0%	-50.0%	
Consultant General Surgeon Colo-rectal	4		-1			+1			-20.0%	-20.0%		+33.3%	
Consultant General Surgeon s.i. vascular surgery	2												
Consultant Ophthalmic Surgeon	27	+8	+7	+7	+7	+2	+2	+43.1%	+32.4%	+29.1%	+31.0%	+9.2%	+7.9%
Consultant Ophthalmic Surgeon s.i. neuro-ophthalmic surgery	0	+0	+0	+0	+0			-100.0%	-100.0%	-100.0%	-100.0%		
Consultant Oral & Maxillo Facial Surgeon			-0	-0	-0			-100.0%	-100.0%	-100.0%	-100.0%	-100.0%	-100.0%
Consultant Orthopaedic Surgeon	14	-0	-1	-1	-1	-1	-2	-2.7%	-9.2%	-0.1%	-5.2%	-9.2%	-11.3%
Consultant Otolaryngologist	11	+3	+3	+0	+0	+1	+1	+49.6%	+37.8%	+15.1%	+3.1%	+10.5%	+10.5%
Consultant Plastic Surgeon	7	+0	+0	+1	+1	-1	+0	+0.3%	+0.3%	+16.8%	+16.8%	-8.4%	+5.2%
Consultant Urologist	10	+3	+1	+1	+1	+0	+0	+43.3%	+17.2%	+17.2%	+17.2%	+4.4%	+4.4%
Consultant Surgery	115	+11	+8	+7	+7	+0	+2	+10.9%	+7.4%	+7.3%	+6.5%	+0.1%	+2.2%
Consultants	591	+116	+71	+53			+1	+24.5%	+13.7%	+9.8%	+9.8%	+9.8%	+0.2%
Registrar	21	-76	+7	+14	+14	-4	-1	-78.4%	+53.5%	+142.6%	+198.7%	-16.4%	-3.8%
Registrar, Anaesthesia	49	+13	+6	-3	-3	+5	+4	+36.2%	+14.1%	-1.9%	-5.7%	+11.5%	+9.2%
Registrar, Emergency Medicine	37	+14	+1	-0	-0	-6	-8	+64.4%	+1.5%	-10.1%	-0.7%	-14.5%	-18.3%
Registrar, Medicine	149	+47	+17	+16	+16	+8	-4	+45.6%	+13.2%	+18.0%	+11.7%	+5.4%	-2.7%
Registrar, Obstetrics & Gynaecology	27	+15	+5	+5	+5	+0	-3	+126.2%	+23.4%	+6.5%	+21.9%	+0.9%	-9.5%
Registrar, Ophthalmology	7	+3	-1	+1	+1	-1	-1	+60.6%	-9.4%	+20.5%	+7.7%	-9.1%	-12.5%
Registrar, Paediatrics	10	+5	-5	-10	-10	-4	-3	+99.8%	-35.2%	-40.4%	-48.8%	-28.6%	-23.1%
Registrar, Pathology	12	+5	+5	+5	+5	-2	+1	+61.5%	+71.4%	+71.4%	+71.4%	-13.7%	+9.1%
Registrar, Psychiatry	4	-2				-1	-3	-27.3%				-20.0%	-42.9%
Registrar, Surgery	48	+9	+6	-5	-5	+0	-5	+23.9%	+13.9%	-4.4%	-8.8%	+0.1%	-9.4%
Registrar	364	+33	+41	+23	+23	-5	-23	+10.1%	+12.7%	+8.6%	+6.6%	-1.3%	-5.9%
Registrar, Senior	26	+4	+9	+2	+2	-2	-2	+19.4%	+50.1%	+32.2%	+9.8%	-8.3%	-7.2%
Senior Registrar, Psychiatry	7	+3	+3	+3	+3	+1	+1	+75.0%	+75.0%	+75.0%	+75.0%	+16.7%	+16.7%
Senior Registrar	33	+7	+12	+5	+5	-1	-1	+28.0%	+54.7%	+39.4%	+19.1%	-4.0%	-3.1%

Aug 2021 (Dec 2016 figure: 10,971)	WTE Aug 2021	WTE change since Dec 16	WTE change since Dec 17	WTE change since Dec 18	WTE change since Dec 19	WTE change since Dec 20	WTE change since Apr 21	% change since Dec 16	% change since Dec 17	% change since Dec 18	% change since Dec 19	% change since Dec 20	% change since Apr 21
Overall	13,319	+2,348	+1,937	+1,274	+1,274	+396	+91	+21.4%	+17.0%	+13.1%	+10.6%	+3.1%	+0.7%
Registrar, Specialist	19	+14	+13	+7	+7	+3	+1	+288.4%	+198.8%	+61.8%	+55.4%	+21.8%	+7.3%
Specialist Registrar, Anaesthesia	45	+10	+9	+4	+4	+2	+2	+27.1%	+23.6%	+53.4%	+8.5%	+4.7%	+3.5%
Specialist Registrar, Emergency Medicine	12	+7	+6	+2	+2	+1	-1	+130.0%	+91.7%	+91.7%	+15.0%	+4.5%	-4.2%
Specialist Registrar, Medicine	102	+40	+30	+22	+22	+19	+12	+66.0%	+42.5%	+37.5%	+27.2%	+23.7%	+12.7%
Specialist Registrar, Obstetrics & Gynaecology	16	+8	+5	+0	+0	+8	+9	+101.6%	+40.3%	+11.2%	+2.5%	+101.6%	+130.4%
Specialist Registrar, Paediatrics	10	+2	-1	+3	+3	+5	+4	+25.0%	-9.1%	+11.1%	+42.9%	+100.0%	+66.7%
Specialist Registrar, Pathology	18	+12	+8	+4	+4	+3	+4	+200.0%	+71.4%	+63.6%	+26.8%	+24.0%	+26.1%
Specialist Registrar, Radiology	30	+4	+3	+1	+1	+3	+3	+15.4%	+11.1%	+11.1%	+5.1%	+11.1%	+11.1%
Specialist Registrar, Surgery	52	+18	+12	+12	+12	+4	+2	+53.7%	+31.8%	+31.4%	+29.6%	+8.4%	+4.0%
Specialist Registrar	303	+115	+84	+54	+54	+49	+36	+61.2%	+38.3%	+36.6%	+21.7%	+19.3%	+13.4%
Registrars	701	+156	+119	+82			-11	+28.6%	+20.5%	+13.2%	+13.2%	+13.2%	-1.6%
Intern	174	+30	+31	+27	+27	-27	-21	+20.6%	+21.5%	+16.6%	+18.1%	-13.6%	-10.9%
Interns	174	+30	+31	+27	+27	-27	-21	+20.6%	+21.5%	+16.6%	+18.1%	-13.6%	-10.9%
House Officer, Senior	18	-73	+2	+9	+9	-32	-5	-79.9%	+15.1%	+112.2%	+105.8%	-63.7%	-20.2%
Senior House Officer, Anaesthesia	24	+5	-2	+0	+0	+2	-2	+28.2%	-6.3%	-18.8%	+1.5%	+10.7%	-6.3%
Senior House Officer, Emergency Medicine	58	+21	+11	+9	+9	+4	+5	+57.3%	+24.4%	+14.1%	+18.2%	+7.8%	+10.1%
Senior House Officer, Medicine	210	+96	+59	+53	+53	+33	+21	+83.4%	+38.6%	+34.7%	+33.3%	+18.4%	+10.9%
Senior House Officer, Obstetrics & Gynaecology	33	+13	-2	-4	-4	+5	+1	+65.9%	-6.0%	+1.8%	-10.4%	+18.2%	+4.2%
Senior House Officer, Ophthalmology	14	+1	+1	+1	+1		+0	+9.4%	+8.0%	+8.0%	+8.0%		+3.0%
Senior House Officer, Paediatrics	28	+10	-5	-5	-5	+4	-2	+58.2%	-15.1%	-5.4%	-13.9%	+15.7%	-7.1%
Senior House Officer, Pathology	7	-5	-2	-1	-1	-7	-3	-41.7%	-17.6%		-12.5%	-50.0%	-30.0%
Senior House Officer, Psychiatry	15	+4	+4	+2	+2	+3	+1	+36.4%	+36.4%	+7.1%	+15.4%	+25.0%	+7.1%
Senior House Officer, Surgery	70	+18	-3	-10	-10	-2	+1	+34.0%	-4.5%	-5.8%	-12.8%	-3.2%	+0.8%
Senior House Officer	478	+90	+64	+55	+55	+9	+18	+23.3%	+15.4%	+15.0%	+12.9%	+2.0%	+3.9%
SHO/ Interns	651	+120	+87	+81			+12	+22.6%	+15.4%	+14.3%	+14.3%	+14.3%	+1.8%
Dental Surgeon, Senior		-1	-1	-1	-1	-1	-1	-100.0%	-100.0%	-100.0%	-100.0%	-100.0%	-100.0%
Dentists		-1	-1	-1	-1	-1	-1	-100.0%	-100.0%	-100.0%	-100.0%	-100.0%	-100.0%
Area Medical Officer	0	+0	+0	-1	-1	+0	-0	+160.0%	+160.0%	+23.8%	-78.5%	+18.2%	-7.1%
Associate Specialist	15	+10	+4	+4	+4	+4	+1	+209.7%	+36.8%	+7.0%	+41.9%	+31.8%	+6.7%
General Practitioner						-1		-100.0%	-100.0%	-100.0%	-100.0%	-100.0%	-100.0%
Medical & Dental Unclassified	5	+1	+2	+5	+5	+5	+2	+26.1%	+65.7%	-100.0%	-100.0%	-100.0%	+74.5%
Medical Director							-4	-100.0%	-100.0%	-100.0%	-100.0%	-100.0%	-100.0%
Medical Officer	2	+2	+2	+1	+1			-100.0%	-100.0%	-100.0%	+121.0%		
Occupational Health Physician	1	+1	+1	-0	-0	+0	+0	-100.0%	-100.0%	-100.0%	-4.7%	+1.7%	+1.7%
Ophthalmic Physician, Community	11	-0	+1	-1	-1	-1	+1	-2.9%	+6.2%	-8.7%	-7.3%	-8.4%	+12.0%

Aug 2021 (Dec 2016 figure: 10,971)	WTE Aug 2021	WTE change since Dec 16	WTE change since Dec 17	WTE change since Dec 18	WTE change since Dec 19	WTE change since Dec 20	WTE change since Apr 21	% change since Dec 16	% change since Dec 17	% change since Dec 18	% change since Dec 19	% change since Dec 20	% change since Apr 21
Overall	13,319	+2,348	+1,937	+1,274	+1,274	+396	+91	+21.4%	+17.0%	+13.1%	+10.6%	+3.1%	+0.7%
Other Medical	34	+14	+10	+9	+9	+7	+1	+68.9%	+40.3%	+31.7%	+36.6%	+25.8%	+2.4%
Medical/ Dental, other	34	+13	+7	+8			+0	+60.8%	+26.7%	+31.3%	+31.3%	+31.3%	+0.7%
Medical & Dental	1,977	+405	+284	+224			+2	+25.7%	+16.8%	+12.8%	+12.8%	+12.8%	+0.1%
Clinical Midwife Manager 1	46	+12	+7	+5	+5	-3	-1	+33.4%	+17.3%	+22.8%	+12.4%	-6.1%	-2.5%
Clinical Midwife Manager 2	80	+23	+20	+9	+9	+0	-0	+40.8%	+33.2%	+3.9%	+13.4%	+0.4%	-0.3%
Clinical Midwife Manager 3	11	+3	+5	+3	+3	-2	-2	+36.3%	+76.0%	+31.7%	+29.4%	-18.3%	-18.4%
Clinical Nurse Manager 1	223	+48	+50	+7	+7	+10	+9	+27.4%	+28.5%	+10.0%	+3.2%	+4.4%	+4.2%
Clinical Nurse Manager 1 - Theatre	13	+6	+7	+7	+7	+1	+1	+97.0%	+101.6%	+162.6%	+113.1%	+8.3%	+8.3%
Clinical Nurse Manager 2	457	+136	+121	+87	+87	+27	+17	+42.5%	+35.9%	+30.7%	+23.6%	+6.3%	+3.8%
Clinical Nurse Manager 2 (Mental Health)	3					+1	+1					+66.7%	+66.7%
Clinical Nurse Manager 2 - Night	6	-1	-1	-0	-0	-1		-7.2%	-13.5%	-4.9%	-1.2%	-7.2%	
Clinical Nurse Manager 2 - Theatre	37	+0	-3	-8	-8	-3	-4	+0.8%	-7.3%	-14.9%	-16.9%	-7.5%	-10.4%
Clinical Nurse Manager 3	64	+20	+17	+6	+6	+4	+4	+47.0%	+37.4%	+7.6%	+10.2%	+7.1%	+6.0%
Clinical Nurse Manager 3 - Theatre	6	-0	+2	+3	+3	-1	-0	-1.3%	+48.0%	+18.4%	+97.3%	-13.8%	-1.3%
Clinical Nurse/ Midwife Manager	946	+248	+224	+119	+119	+33	+23	+35.6%	+31.0%	+18.6%	+14.4%	+3.6%	+2.5%
Director of Nursing 1, Assistant	73	+35	+31	+16	+16	+12	+6	+89.9%	+74.6%	+42.6%	+26.9%	+18.6%	+9.3%
Director of Nursing 2, Assistant	16	-5	-9	-8	-8	-7	-6	-25.2%	-35.9%	-19.7%	-32.4%	-29.9%	-26.7%
Director of Nursing 3, Assistant	6	+2	+1	-1	-1			+37.5%	+22.2%	-15.4%	-15.4%		
Director of Nursing (Mental Health), Assistant	1	+1						-100.0%					
Director Nursing/Midwifery, Assistant	96	+32	+23	+7	+7	+5	+0	+49.7%	+32.3%	+21.5%	+7.8%	+5.2%	+0.5%
Director of Midwifery 1	1	+1						-100.0%					
Director of Nursing 1	9	+5	+5	+1	+1	-0	-0	+122.3%	+122.3%	+20.1%	+12.1%	-0.1%	-0.1%
Director of Nursing 2	1	-2	-4	-0	-0	-0	-0	-67.0%	-79.8%	-50.5%	-1.0%	-1.0%	-1.0%
Director of Nursing 2A	1												
Director of Nursing 3	2	+0						+1.5%					
Director of Nursing & Midwifery		-1	-1	-1	-1			-100.0%	-100.0%	-100.0%	-100.0%	-100.0%	-100.0%
Director of Nursing & Midwifery, Hospital Group	1	+1	+1					-100.0%	-100.0%				
Director of Nursing/Midwifery	15	+4	+1	-0	-0	-0	-0	+35.6%	+7.1%	+3.3%	-0.3%	-0.1%	-0.1%
Nurse/ Midwife Manager	1,056	+284	+166	+126			+8	+36.8%	+18.6%	+13.6%	+13.6%	+13.6%	+0.8%
Advanced Midwife Practitioner	6	+4	+3	+1	+1	+1	+0	+195.5%	+97.0%	+18.2%	+18.2%	+18.2%	+0.5%
Advanced Midwife Practitioner, Candidate	1	+1	+1	+1	+1	+1	+0	-100.0%	-100.0%	-100.0%	-100.0%	-100.0%	+6.6%
Advanced Nurse Practitioner, Candidate (General)	23	+21	+2	-3	-3	-7	-1	+1048.0%	+9.6%	-11.0%	-11.0%	-22.3%	-6.0%
Advanced Nurse Practitioner (General)	60	+36	+28	+18	+18	+5	-2	+151.1%	+89.7%	+74.3%	+42.3%	+9.2%	-2.5%
Advanced Nurse/ Midwife Practitioner	89	+62	+34	+17	+17	+0	-3	+222.6%	+61.5%	+37.6%	+23.0%	+0.4%	-3.1%

Aug 2021 (Dec 2016 figure: 10,971)	WTE Aug 2021	WTE change since Dec 16	WTE change since Dec 17	WTE change since Dec 18	WTE change since Dec 19	WTE change since Dec 20	WTE change since Apr 21	% change since Dec 16	% change since Dec 17	% change since Dec 18	% change since Dec 19	% change since Dec 20	% change since Apr 21
Overall	13,319	+2,348	+1,937	+1,274	+1,274	+396	+91	+21.4%	+17.0%	+13.1%	+10.6%	+3.1%	+0.7%
Clinical Midwife Specialist	11	+7	+4	+0	+0	+2	+1	+148.0%	+49.7%	+16.4%	+3.5%	+18.5%	+14.8%
Clinical Nurse Specialist (General)	249	+34	+43	+26	+26	+10	-4	+15.5%	+20.9%	+13.1%	+11.4%	+4.3%	-1.8%
Clinical Nurse/ Midwife Specialist	260	+40	+47	+26	+26	+12	-3	+18.2%	+21.9%	+13.2%	+11.1%	+4.9%	-1.2%
Nurse/ Midwife Specialist & AN/MP	350	+102	+55	+43			-12	+41.1%	+18.6%	+13.9%	+13.9%	+13.9%	-3.4%
Staff Nurse (Nursing Bank)		-6	-7	-2	-2	-3	-1	-100.0%	-100.0%	-100.0%	-100.0%	-100.0%	-100.0%
Nursing Bank		-6	-7	-2	-2	-3	-1	-100.0%	-100.0%	-100.0%	-100.0%	-100.0%	-100.0%
Enhanced Nurse (Children's)	9	+9	+9	+9	+9	-0	+1	-100.0%	-100.0%	-100.0%	-100.0%	-0.7%	+16.2%
Enhanced Nurse (General)	790	+790	+790	+790	+790	-5	-3	-100.0%	-100.0%	-100.0%	-100.0%	-0.7%	-0.4%
Enhanced Nurse, Senior (Children's)	14	+14	+14	+14	+14	+2	+0	-100.0%	-100.0%	-100.0%	-100.0%	+16.6%	+0.9%
Enhanced Nurse, Senior (General)	807	+807	+807	+807	+807	+40	-9	-100.0%	-100.0%	-100.0%	-100.0%	+5.2%	-1.1%
Staff Nurse (Adaptation Placement), General				-23	-23			-100.0%	-100.0%	-100.0%	-100.0%	-100.0%	-100.0%
Staff Nurse (Children's)	2	-19	-15	-11	-11	-1	+0	-88.6%	-85.8%	-82.8%	-81.5%	-33.4%	+10.0%
Staff Nurse, Dual Qualified (General)		-9	-5	-3	-3			-100.0%	-100.0%	-100.0%	-100.0%	-100.0%	-100.0%
Staff Nurse - General	1,129	-934	-1,007	-882	-882	-102	-33	-45.3%	-47.1%	-45.4%	-43.9%	-8.3%	-2.8%
Staff Nurse, Senior (Children's)		-5	-7	-9	-9	-1	-1	-100.0%	-100.0%	-100.0%	-100.0%	-100.0%	-100.0%
Staff Nurse, Senior (Dual Qualified)	8	-34	-26	-22	-22	-1	-1	-80.5%	-76.2%	-73.1%	-73.2%	-11.8%	-14.7%
Staff Nurse, Senior (General)	314	-301	-355	-541	-541	+94	-24	-49.0%	-53.0%	-57.1%	-63.2%	+43.0%	-7.0%
Staff Nurses [General/ Children's]	3,074	+318	+205	+130	+130	+26	-69	+11.6%	+7.2%	+7.7%	+4.4%	+0.8%	-2.2%
Enhanced Midwife	112	+112	+112	+112	+112	-17	-17	-100.0%	-100.0%	-100.0%	-100.0%	-13.4%	-13.3%
Enhanced Midwife, Senior	62	+62	+62	+62	+62	-2	-5	-100.0%	-100.0%	-100.0%	-100.0%	-2.9%	-7.7%
Staff Midwife	95	-160	-129	-130	-130	+13	+2	-62.7%	-57.7%	-61.5%	-57.8%	+15.3%	+2.4%
Staff Midwife, Senior	4	-49	-54	-60	-60	-3	-1	-92.9%	-93.6%	-92.8%	-94.2%	-43.5%	-12.1%
Staff Midwife, Senior (dual qualified)		-1	-1					-100.0%	-100.0%	-100.0%	-100.0%	-100.0%	-100.0%
Staff Midwives	273	-35	-11	-15	-15	-9	-21	-11.4%	-3.8%	-8.6%	-5.4%	-3.3%	-7.0%
Staff Nurse, Mental Health	3	-2	-2	-1	-1			-36.6%	-36.6%	-19.6%	-19.6%		
Staff Nurse [Psychiatric]	3	-2	-2	-1	-1			-36.6%	-36.6%	-19.6%	-19.6%		
Staff Nurse/ Staff Midwife	3,349	+275	+187	+112			-32	+9.0%	+5.9%	+3.5%	+3.5%	+3.5%	-1.0%
Student Children's & General Nursing Intern (pre-registration)				-7	-7			-100.0%	-100.0%	-100.0%	-100.0%	-100.0%	-100.0%
Student General Nursing Intern (pre-registration)	96	+82	+77	+79	+79	+86	+7	+588.5%	+394.8%	+323.1%	+443.7%	+834.0%	+8.2%
Student Midwifery Intern (pre-registration)	9	+9	+9	+9	+9	+9		-100.0%	-100.0%	-100.0%	+1700.0%	-100.0%	
Pre-registration Nurse/ Midwife Intern	105	+91	+86	+80	+80	+95	+7	+652.8%	+441.0%	+362.6%	+317.7%	+921.2%	+7.4%
Student Children's & General Nursing Intern (COVID-19 HCA)						-15		-100.0%	-100.0%	-100.0%	-100.0%	-100.0%	-100.0%
Student General Nursing Intern (COVID-19 HCA)						-31		-100.0%	-100.0%	-100.0%	-100.0%	-100.0%	-100.0%
Student Midwifery Intern (COVID-19 HCA)						-1		-100.0%	-100.0%	-100.0%	-100.0%	-100.0%	-100.0%

Aug 2021 (Dec 2016 figure: 10,971)	WTE Aug 2021	WTE change since Dec 16	WTE change since Dec 17	WTE change since Dec 18	WTE change since Dec 19	WTE change since Dec 20	WTE change since Apr 21	% change since Dec 16	% change since Dec 17	% change since Dec 18	% change since Dec 19	% change since Dec 20	% change since Apr 21
Overall	13,319	+2,348	+1,937	+1,274	+1,274	+396	+91	+21.4%	+17.0%	+13.1%	+10.6%	+3.1%	+0.7%
Pre-registration Nurse Intern (COVID-19)						-47		-100.0%	-100.0%	-100.0%	-100.0%	-100.0%	-100.0%
Student Midwifery (post registration)	26	+3	+3	+5	+5	+9	-2	+10.9%	+10.9%	+10.9%	+21.4%	+50.0%	-7.3%
Post-registration Nurse/ Midwife Student	26	+3	+3	+5	+5	+9	-2	+10.9%	+10.9%	+10.9%	+21.4%	+50.0%	-7.3%
Staff Midwife (awaiting-registration)		-1						-100.0%	-100.0%	-100.0%	-100.0%	-100.0%	-100.0%
Staff Nurse, General (awaiting-registration)	8	+8	+3	-3	-3	-26	+6	-100.0%	+60.0%	+101.5%	-25.7%	-76.5%	+300.0%
Nursing/ Midwifery awaiting registration	8	+8	+3	-3	-3	-26	+6	+1500.0%	+60.0%	+101.5%	-25.7%	-76.5%	+300.0%
Nursing/ Midwifery Student	139	+101	+89	+82			-3	+270.4%	+179.2%	+143.7%	+143.7%	+143.7%	-2.2%
Clinical Nurse Instructor/Teacher	0	-2	-2	-2	-2			-100.0%	-100.0%	-100.0%	-100.0%	#DIV/0	#DIV/0
Director, Nursing/ Midwifery Education Centre	2					+1						+50.0%	
Nurse Tutor	7	+3	+3	+4	+4	+4	-1	+86.4%	+86.4%	+96.5%	+102.5%	+142.3%	-11.6%
Nurse Tutor (Psychiatric)	1	-4	-4	-4	-4	-4		-79.7%	-80.0%	-80.0%	-80.0%	-81.3%	
Nursing/ Midwifery Clinical Placement Co-ordinator	17	-7	-8	-11	-11	-5	-2	-30.0%	-31.6%	-37.0%	-38.4%	-23.0%	-10.4%
Nursing/ Midwifery Practice Development Co-ordinator	3												
Specialist Co-ordinator, Nursing	23	+3	+3	+2	+2	-2	+1	+17.8%	+17.6%	+15.1%	+8.8%	-8.0%	+5.8%
Nursing Education/Clinical	52	-6	-7	-11	-11	-7	-2	-10.0%	-11.1%	-14.5%	-16.7%	-11.2%	-3.1%
Nursing Unclassified	17	+6	+6	+4	+4	+3	-0	+51.2%	+56.9%	+53.8%	+30.8%	+21.3%	-1.2%
Other Nursing/ Midwifery	17	+6	+6	+4	+4	+3	-0	+51.2%	+56.9%	+53.8%	+30.8%	+21.3%	-1.2%
Nursing/ Midwifery other	69	-0	-3	-7			-1	-0.3%	-4.3%	-8.7%	-8.7%	-8.7%	-2.0%
Nursing & Midwifery	4,963	+762	+494	+356			-41	+18.1%	+11.0%	+7.7%	+7.7%	+7.7%	-0.8%
Dietitian	24	+7	+4	+1	+1	-5	-3	+43.4%	+20.2%	-1.8%	+4.7%	-16.5%	-12.4%
Dietitian, Clinical Specialist	9	+4	+4	+4	+4	+2	-0	+92.9%	+85.2%	+115.3%	+92.9%	+34.2%	-4.3%
Dietitian Manager	7	+1	+1	+0	+0	+0	-1	+14.8%	+19.3%	+1.5%	+1.5%	+0.9%	-9.7%
Dietitian Manager-in-charge III	3	+1	+1	+1	+1			+40.0%	+40.0%	+40.0%	+40.0%		
Dietitian, Senior	54	+14	+21	+13	+13	+6	+4	+36.4%	+63.0%	+26.7%	+30.3%	+13.6%	+8.1%
Dietitians	97	+28	+31	+19	+19	+4	-0	+40.2%	+47.2%	+21.0%	+24.4%	+4.5%	-0.5%
Occupational Therapist	39	+6	+3	+8	+8	+3	-2	+18.4%	+9.4%	+16.7%	+25.4%	+7.0%	-4.7%
Occupational Therapist, Clinical Specialist	3	+2	+2	+2	+2			+275.0%	+275.0%	+215.8%	+215.8%		
Occupational Therapist-in-charge III	3	+1	+1	+1	+1	+1		+50.0%	+50.0%	+50.0%	+50.0%	+50.0%	
Occupational Therapist Manager	2	+1	+1	+1	+1	-0	-0	+176.8%	+176.8%	+282.0%	+282.0%	-0.5%	-0.5%
Occupational Therapist, Senior	51	+19	+20	+17	+17	+13	+4	+57.1%	+62.4%	+49.0%	+51.9%	+34.3%	+9.3%
Occupational Therapists	98	+29	+27	+30	+30	+17	+2	+42.0%	+38.6%	+37.6%	+43.7%	+20.3%	+2.5%
Orthoptist, Senior	3	-0	-0	+0	+0	+0	-0	-13.9%	-13.9%	+16.2%	+16.2%	+3.9%	-1.5%
Orthoptists	3	-0	-0	+0	+0	+0	-0	-13.9%	-13.9%	+16.2%	+16.2%	+3.9%	-1.5%

Aug 2021 (Dec 2016 figure: 10,971)	WTE Aug 2021	WTE change since Dec 16	WTE change since Dec 17	WTE change since Dec 18	WTE change since Dec 19	WTE change since Dec 20	WTE change since Apr 21	% change since Dec 16	% change since Dec 17	% change since Dec 18	% change since Dec 19	% change since Dec 20	% change since Apr 21
Overall	13,319	+2,348	+1,937	+1,274	+1,274	+396	+91	+21.4%	+17.0%	+13.1%	+10.6%	+3.1%	+0.7%
Physiotherapist	74	+1	+0	-22	-22	-30	-2	+1.2%	+0.4%	-18.4%	-22.8%	-28.8%	-2.8%
Physiotherapist, Clinical Specialist	30	+17	+16	+11	+11	+3	+1	+127.8%	+118.4%	+100.5%	+56.6%	+13.0%	+3.2%
Physiotherapist-in-charge (Grade III)	6	+0	+2	+1	+1	-1	-1	+5.9%	+46.7%	+43.0%	+14.4%	-16.0%	-16.0%
Physiotherapist Manager	10	+3	+3	+3	+3	+4	+3	+35.2%	+41.5%	+24.4%	+35.5%	+55.4%	+37.3%
Physiotherapist, Senior	103	+15	+6	+2	+2	+3	-10	+16.6%	+6.2%	+2.5%	+1.6%	+2.7%	-9.0%
Physiotherapy, Practice Tutor	1	+0	+0	+0	+0	+1		+29.9%	+25.0%	+35.1%	+35.1%	-100.0%	
Physiotherapists	223	+36	+28	-6	-6	-20	-10	+18.9%	+14.1%	+2.2%	-2.5%	-8.3%	-4.1%
Speech & Language Therapist	11	+3	-1	+4	+4	-2	+0	+29.9%	-4.7%	+34.5%	+54.5%	-14.7%	+4.4%
Speech & Language Therapist, Clinical Specialist	8	+6	+7	+4	+4	+1	+1	+276.0%	+652.0%	+652.0%	+106.0%	+21.3%	+17.5%
Speech & Language Therapist Manager	3	-0	-0	-1	-1	-0	+1	-10.7%	-15.5%	-19.0%	-15.7%	-14.6%	+22.9%
Speech & Language Therapist, Senior	24	+6	+3	+3	+3	-0	-2	+33.6%	+15.4%	+17.7%	+16.3%	-0.5%	-6.5%
Speech & Language Therapists	45	+14	+9	+11	+11	-1	+0	+43.7%	+23.5%	+37.7%	+31.0%	-2.6%	+1.0%
Chiropodist, Clinical Specialist	1												
Chiropodist/ Podiatrist	3	+1	+2	-0	-0	+0	+1	+43.5%	+100.0%	+100.0%	-11.0%	+2.4%	+48.5%
Chiropodist/ Podiatrist, Senior	7	+3	+2	+1	+1	+0	-0	+71.5%	+38.3%	+26.1%	+26.1%	+3.6%	-0.3%
Podiatrists & Chiropodists	11	+4	+3	+1	+1	+0	+1	+53.6%	+45.4%	+36.5%	+11.1%	+3.0%	+9.4%
Therapy Professions	477	+110	+64	+55			+5	+29.8%	+15.5%	+13.1%	+13.1%	+13.1%	+1.0%
Audiologist	1	-0	-0	-0	-0	-0	-1	-1.6%	-1.6%	-1.6%	-1.6%	-1.6%	-44.6%
Audiologist, Chief	1		+0	+0	+0				+8.7%	+8.7%	+3.1%		
Audiologist, Senior	1	-0	+0	-0	-0	-0	-1	-18.5%	+4.4%	-10.5%	-10.5%	-10.5%	-45.7%
Audiology	3	-0	+0	-0	-0	-0	-2	-7.8%	+3.3%	-2.3%	-3.7%	-4.5%	-36.8%
Biochemist	8	+1	-2	-3	-3	-4	+2	+8.0%	-20.1%	-30.1%	-24.3%	-31.7%	+33.3%
Biochemist, Principal	8	+2				+1	+1	+36.9%				+15.4%	+15.4%
Biochemist, Senior	11	+3	+1	+2	+2	-0	-2	+39.8%	+9.7%	+7.5%	+19.5%	-2.3%	-15.7%
Biochemists	26	+6	-1	-1	-1	-3	+1	+27.5%	-3.9%	-9.3%	-3.0%	-10.1%	+4.0%
Clinical Engineering Technician	3	+1	+1			-2	-3	+50.0%	+50.0%			-40.0%	-50.0%
Clinical Engineering Technician, Chief	4	+2	+1					+100.0%	+33.3%				
Clinical Engineering Technician, Principal	3	-1				+1		-25.0%				+50.0%	
Clinical Engineering Technician, Senior	14	+6	+5	+3	+3	+3	+3	+75.0%	+55.6%	+55.6%	+27.3%	+27.3%	+27.3%
Clinical Engineering	24	+8	+7	+3	+3	+2		+50.0%	+41.2%	+26.3%	+14.3%	+9.1%	
Cardiac Physiologist	21	-2	+4	+3	+3	+3	+5	-8.6%	+25.9%	+5.9%	+13.9%	+19.0%	+33.9%
Cardiac Physiologist, Chief I	8	+2	+2	+2	+2	+3	+1	+37.0%	+38.2%	+34.4%	+35.1%	+63.3%	+15.5%
Cardiac Physiologist, Chief II	4	+1	+1	+1	+1	+0	+0	+46.4%	+51.5%	+57.0%	+50.2%	+3.6%	+2.6%
Cardiac Physiologist, Senior	32	+16	+11	+8	+8	+5	+1	+93.9%	+51.7%	+54.2%	+33.3%	+17.6%	+4.0%
E.C.G. Technician		-1	-1					-100.0%	-100.0%	-100.0%	-100.0%	-100.0%	-100.0%

Aug 2021 (Dec 2016 figure: 10,971)	WTE Aug 2021	WTE change since Dec 16	WTE change since Dec 17	WTE change since Dec 18	WTE change since Dec 19	WTE change since Dec 20	WTE change since Apr 21	% change since Dec 16	% change since Dec 17	% change since Dec 18	% change since Dec 19	% change since Dec 20	% change since Apr 21
Overall	13,319	+2,348	+1,937	+1,274	+1,274	+396	+91	+21.4%	+17.0%	+13.1%	+10.6%	+3.1%	+0.7%
Gastrointestinal (GI) Physiologist	1	+1						-100.0%					
Neuro-Physiologist	2	+1	+1	+2	+2	-2	-2	+100.0%	+100.0%	+100.0%	-100.0%	-50.0%	-50.0%
Neuro-Physiologist, Chief I	1			+1	+1						-100.0%		
Neuro-Physiologist, Chief II	1	+1	+1	+1	+1	+1		-100.0%	-100.0%	-100.0%	-100.0%	-100.0%	
Neuro-Physiologist, Senior	3	-1	-2	-2	-2	-3	+0	-28.5%	-42.8%	-42.8%	-42.8%	-52.3%	+1.4%
Respiratory Physiologist	8	+3	+2	+1	+1	+1	+3	+58.6%	+32.2%	+15.9%	+13.3%	+13.3%	+58.6%
Respiratory Physiologist, Chief I	1	+1	+1	+1	+1	+1		-100.0%	-100.0%	-100.0%	-100.0%	-100.0%	
Respiratory Physiologist, Chief II	2	-0	+0	+0	+0			-5.5%	+5.6%	+89.0%	+11.2%		
Respiratory Physiologist, Senior	7	-1	+1	-1	-1	-3	+1	-16.0%	+10.4%	-24.1%	-12.2%	-30.8%	+13.4%
Vascular Physiologist	2	-2	-1					-50.0%	-33.3%	-33.3%			
Vascular Physiologist, Chief I	1												
Vascular Physiologist, Chief II	1												
Vascular Physiologist, Senior	4	+3	+3	+2	+2	+2		+300.0%	+300.0%	+300.0%	+100.0%	+100.0%	
Clinical Measurement	98	+20	+23	+19	+19	+8	+9	+26.6%	+30.9%	+23.1%	+23.9%	+8.9%	+10.8%
Perfusionist	6	+4	+3	+3	+3	+2	+1	+200.0%	+100.0%	+200.0%	+100.0%	+63.0%	+31.3%
Perfusionist, in charge	1												
Perfusionists	7	+4	+3	+3	+3	+2	+1	+133.3%	+75.0%	+133.3%	+75.0%	+49.6%	+25.7%
Phlebotomist	40	+11	+9	+8	+8	+4	+2	+37.1%	+29.2%	+26.3%	+24.3%	+12.6%	+6.5%
Phlebotomist, Senior	5	+0	+0	+0	+0	-1	-1	+7.7%	+1.5%	-5.5%	+0.2%	-18.0%	-16.5%
Phlebotomists	45	+11	+9	+8	+8	+3	+2	+33.3%	+25.6%	+22.0%	+21.3%	+8.4%	+3.5%
Physicist	8	+4	+4	+2	+2	+2	+1	+110.5%	+110.5%	+40.3%	+40.3%	+40.3%	+15.2%
Physicist, Chief	2	-0	-0	-0	-0	+1	+1	-10.0%	-10.0%	-10.0%	-10.0%	+80.0%	+125.0%
Physicist, Principal	4	+3	+1	+1	+1	+1	-1	+179.3%	+23.2%	+23.2%	+22.5%	+16.4%	-10.9%
Physicist, Senior	5	+1	+2	+1	+1	+1	-0	+18.2%	+53.7%	+15.2%	+15.2%	+15.2%	-8.0%
Physicists	19	+8	+7	+4	+4	+4	+1	+66.8%	+53.4%	+23.5%	+23.3%	+30.3%	+6.7%
Radiographer	122	+13	+10	+14	+14	+6	+17	+12.3%	+8.9%	+16.6%	+12.5%	+5.2%	+16.0%
Radiographer, Clinical Specialist	47	+7	+6	+1	+1	-0	-1	+16.9%	+14.0%	+2.0%	+1.3%	-0.6%	-2.3%
Radiographer, Senior	91	+25	+27	+19	+19	+8	-1	+37.8%	+42.5%	+24.2%	+26.7%	+9.3%	-1.6%
Radiography Service Manager, I	12	+3	+2	+1	+1	+1	+1	+35.6%	+21.4%	+11.9%	+10.9%	+8.6%	+9.7%
Radiography Service Manager, II	4	-1	-1	-1	-1	-1		-22.8%	-22.8%	-19.6%	-22.8%	-22.8%	
Radiographers	276	+47	+44	+33	+33	+13	+15	+20.5%	+18.8%	+15.2%	+13.7%	+5.1%	+5.9%
Laboratory Manager	4			-1	-1	-1				-20.0%	-20.0%	-20.0%	
Medical Scientist	164	-18	-7	+5	+5	-3	-6	-9.9%	-4.0%	-5.9%	+3.0%	-1.7%	-3.3%
Medical Scientist, Chief	38	+8	+5	+3	+3	-0	+2	+26.7%	+13.5%	+10.6%	+7.8%	-0.8%	+4.8%
Medical Scientist, Senior	119	+34	+31	+23	+23	+17	+7	+39.7%	+35.4%	+31.4%	+24.2%	+16.4%	+6.0%

Aug 2021 (Dec 2016 figure: 10,971)	WTE Aug 2021	WTE change since Dec 16	WTE change since Dec 17	WTE change since Dec 18	WTE change since Dec 19	WTE change since Dec 20	WTE change since Apr 21	% change since Dec 16	% change since Dec 17	% change since Dec 18	% change since Dec 19	% change since Dec 20	% change since Apr 21
Overall	13,319	+2,348	+1,937	+1,274	+1,274	+396	+91	+21.4%	+17.0%	+13.1%	+10.6%	+3.1%	+0.7%
Medical Scientist, Specialist	13	+4	+4	+4	+4	+2	+1	+51.2%	+37.8%	+60.6%	+45.2%	+20.4%	+12.2%
Medical Scientist, Undergraduate	3	+3	+3	+3	+3	+3	+3	-100.0%	-100.0%	-100.0%	-100.0%	-100.0%	-100.0%
Medical Science	342	+31	+35	+37	+37	+18	+7	+10.1%	+11.6%	+9.2%	+12.0%	+5.5%	+2.2%
Health Science/ Diagnostics	839	+135	+101	+105			+27	+19.2%	+13.7%	+14.3%	+14.3%	+14.3%	+3.3%
Social Worker	6	+6	+6	+6	+6	+6	-1	-100.0%	-100.0%	-100.0%	-100.0%	-100.0%	-14.3%
Social Worker, Medical	22	-7	-10	-12	-12	-10	+1	-25.6%	-31.1%	-28.0%	-35.8%	-30.6%	+3.6%
Social Worker, Principal	4	+0	-1	-1	-1	-2	-2	+12.4%	-10.7%	-9.2%	-24.8%	-34.4%	-33.9%
Social Worker, Senior Medical	40	+18	+20	+13	+13	+11	+2	+84.9%	+99.7%	+113.3%	+48.0%	+37.7%	+4.5%
Social Work Practitioner, Senior	4		+1	+0	+0	-3	+1		+33.3%		+5.3%	-44.6%	+33.3%
Social Workers	76	+17	+17	+6	+6	+2	+0	+29.6%	+28.0%	+31.8%	+8.0%	+2.5%	+0.3%
Social Workers	76	+17	+18	+6			-1	+29.6%	+31.8%	+8.0%	+8.0%	+8.0%	-1.6%
Psychologist, Clinical	3	+0	+0	+1	+1	+2	-0	+9.5%	+9.5%	+22.4%	+33.9%	+141.9%	-7.4%
Psychologist, Counselling	2	+1	+1	+0	+0			+327.9%	+327.9%	+327.9%	+5.1%		
Psychologist, Educational	1												
Psychologist, Principal Clinical	3	+2	+2	+1	+1	+1	+1	+225.0%	+225.0%	+225.0%	+38.3%	+38.3%	+38.3%
Psychologist, Senior Clinical	14	+6	+5	-0	-0	-1	-3	+82.5%	+63.6%	+36.9%	-2.3%	-8.4%	-17.5%
Psychologist, Trainee Clinical	1	+1	+1					-100.0%	-100.0%	-100.0%			
Psychologists	23	+11	+10	+1	+1	+1	-2	+91.3%	+78.5%	+61.9%	+6.5%	+6.4%	-8.8%
Psychologists	23	+11	+9	+1			-0	+91.3%	+61.9%	+6.5%	+6.5%	+6.5%	-0.1%
Pharmaceutical Technician	50	+21	+16	+5	+5	+5	+2	+72.1%	+44.9%	+45.7%	+12.0%	+10.0%	+3.5%
Pharmaceutical Technician, Senior	27	+5	+6	+5	+5	+4	+1	+23.7%	+27.0%	+24.0%	+22.4%	+15.0%	+3.5%
Pharmacist	41	+13	+9	+6	+6	+1	+2	+44.9%	+28.5%	+11.6%	+16.3%	+3.6%	+4.0%
Pharmacist, Chief I	5	+3	+2	+2	+2	+2	+2	+139.5%	+59.7%	+59.7%	+59.7%	+59.7%	+59.7%
Pharmacist, Chief II	21	-5	-1	-3	-3	-1	-1	-18.6%	-6.1%	-8.5%	-12.6%	-5.9%	-4.3%
Pharmacist, Senior	67	+23	+22	+8	+8	+9	+7	+51.0%	+48.6%	+22.8%	+14.1%	+15.0%	+10.8%
Pharmacy	211	+60	+53	+23	+23	+19	+12	+39.4%	+33.4%	+21.7%	+12.3%	+9.8%	+5.8%
Pharmacy	211	+60	+38	+23			+4	+39.4%	+21.7%	+12.3%	+12.3%	+12.3%	+1.9%
Counsellor Therapist (Adult Services)	1	-1	-1	-0	-0	-0	-0	-61.8%	-61.8%	-61.8%	-38.1%	-38.1%	-38.1%
Counsellor / Therapist (National Services)	0												
Director of Counselling (National Services)	1												
Counsellor Therapists	2	-1	-1	-0	-0	-0	-0	-33.2%	-33.2%	-33.2%	-15.9%	-15.9%	-15.9%
Medical Scientist, Student	1	-5	-4	-5	-5	-4	-6	-82.3%	-79.4%	-79.5%	-82.9%	-78.8%	-84.9%
Perfusionist, Student		-1	-1	-1	-1			-100.0%	-100.0%	-100.0%	-100.0%	-100.0%	-100.0%
Pharmacist, Student		-1	-1				-1	-100.0%	-100.0%	-100.0%	-100.0%	-100.0%	-100.0%

Aug 2021 (Dec 2016 figure: 10,971)	WTE Aug 2021	WTE change since Dec 16	WTE change since Dec 17	WTE change since Dec 18	WTE change since Dec 19	WTE change since Dec 20	WTE change since Apr 21	% change since Dec 16	% change since Dec 17	% change since Dec 18	% change since Dec 19	% change since Dec 20	% change since Apr 21
Overall	13,319	+2,348	+1,937	+1,274	+1,274	+396	+91	+21.4%	+17.0%	+13.1%	+10.6%	+3.1%	+0.7%
Phlebotomist, Trainee	2	+2	+2	+1	+1	+0	-3	-100.0%	-100.0%	+611.5%	+224.6%	+35.0%	-58.3%
Respiratory Technician, Student			-1					-100.0%	-100.0%	-100.0%	-100.0%	-100.0%	-100.0%
HSCP Trainees/ Students	3	-5	-5	-5	-5	-3	-9	-63.6%	-64.3%	-69.1%	-62.5%	-54.3%	-76.2%
Clinical Photographer	4	-1	-0	-0	-0	-1	-1	-20.0%	-6.5%	+2.8%	-8.5%	-20.0%	-20.0%
Clinical Photographer, Senior	2												
Health & Social Care Professionals Unclassified	9	+1	-2	-0	-0	+0	-1	+20.0%	-18.1%	-18.9%	-0.9%	+3.8%	-10.5%
Optometrist, Clinical	3	+2	+2	+2	+2	-0		+240.0%	+240.0%	+240.0%	+240.0%	-0.6%	
Other Health & Social Care	18	+3	+0	+2	+2	-1	-2	+18.7%	+1.4%	+3.0%	+12.2%	-3.8%	-10.0%
Vaccinator - COVID 19 Vaccination Programme	21	+21	+21	+21	+21	+21	+21	-100.0%	-100.0%	-100.0%	-100.0%	-100.0%	-100.0%
Vaccinators	21	+21	+21	+21	+21	+21	+21	-100.0%	-100.0%	-100.0%	-100.0%	-100.0%	-100.0%
H&SC, Other	44	+18	+14	+18			-7	+69.7%	+48.5%	+69.5%	+69.5%	+69.5%	-13.6%
Health & Social Care Professionals	1,671	+351	+245	+209			+27	+26.6%	+17.2%	+14.3%	+14.3%	+14.3%	+1.7%
CEO (Band H2 Hospital)	1			+1	+1						-100.0%		
CEO (Band H3 Hospital)	1			-1	-1	-1					-37.5%	-37.5%	
Chief Executive, Hospital Group							-1	-100.0%	-100.0%	-100.0%	-100.0%	-100.0%	-100.0%
Chief Executive Officer	3												
Chief Finance Officer (HSE)						-1		-100.0%	-100.0%	-100.0%	-100.0%	-100.0%	-100.0%
Director of Finance	2	+1	+1	+1	+1	+1	-1	+100.0%	+100.0%	+100.0%	+100.0%	+100.0%	-33.3%
Director of HR	2	+1	+1	+1	+1	+1		+100.0%	+100.0%	+100.0%	+100.0%	+100.0%	
Director of ICT	1	+1	+1	+1	+1	+1		-100.0%	-100.0%	-100.0%	-100.0%	-100.0%	
Director of Information Systems	1												
Head of Function /Service, Acute Services	1	+1	+1			-1	-1	-100.0%	-100.0%	-100.0%		-49.7%	-33.3%
Head of Function /Service, Community Services	4	+4	+4	+3	+3	+2	+2	-100.0%	-100.0%	-100.0%	+296.0%	+98.0%	+111.8%
Hospital Group, Chief Finance Officer	1	+1	+1	+1	+1	+1		-100.0%	-100.0%	-100.0%	-100.0%	-100.0%	
National Director, Assistant (Services)	7	+7	+7	+2	+2	+2	+2	-100.0%	-100.0%	+83.3%	+43.5%	+43.5%	+43.5%
National Director, Assistant (Support)	1	-1	-1	+0	+0	-2	-0	-34.0%	-34.0%	-34.0%	+32.0%	-56.0%	-12.0%
Executive Management	25	+15	+15	+10	+10	+4	+2	+148.8%	+148.8%	+82.9%	+63.7%	+17.4%	+7.2%
Chief Executive Officer, Deputy	3	+3	+1	+2	+2	+2	+1	-100.0%	+50.0%	+200.0%	+200.0%	+200.0%	+50.0%
Functional Officer	6	+2	+2	+2	+2	+2		+50.0%	+50.0%	+50.0%	+50.0%	+50.0%	
General Manager	10	+0	+1	+2	+2	+6	+2	+3.7%	+14.1%	+28.6%	+32.9%	+134.5%	+32.4%
Grade VIII	69	+28	+22	+20	+20	+2	-2	+66.6%	+47.0%	+40.6%	+39.5%	+2.5%	-3.2%
Service Manager	1	-6	-4	-5	-5	-2		-85.7%	-80.0%	-83.3%	-83.3%	-66.7%	
Senior Management (VIII & GM)	89	+27	+22	+21	+21	+9	+1	+43.4%	+33.4%	+31.2%	+30.9%	+11.8%	+1.3%
Management (VIII & above)	114	+42	+32	+31			+1	+58.0%	+39.8%	+36.9%	+36.9%	+36.9%	+0.9%

Aug 2021 (Dec 2016 figure: 10,971)	WTE Aug 2021	WTE change since Dec 16	WTE change since Dec 17	WTE change since Dec 18	WTE change since Dec 19	WTE change since Dec 20	WTE change since Apr 21	% change since Dec 16	% change since Dec 17	% change since Dec 18	% change since Dec 19	% change since Dec 20	% change since Apr 21
Overall	13,319	+2,348	+1,937	+1,274	+1,274	+396	+91	+21.4%	+17.0%	+13.1%	+10.6%	+3.1%	+0.7%
Accountant	5					+1	+1					+25.0%	+25.0%
Grade V	333	+117	+92	+81	+81	+18	+4	+54.0%	+37.8%	+33.8%	+31.9%	+5.7%	+1.2%
Grade VI	153	+49	+45	+25	+25	+2	+2	+46.6%	+41.8%	+28.1%	+19.1%	+1.5%	+1.2%
Grade VII	111	+26	+12	+1	+1	+3	-5	+30.1%	+11.9%	+0.6%	+0.5%	+2.3%	-4.2%
Supplies Officer Grade A	1	-3	-2	-1	-1			-75.0%	-66.7%	-66.1%	-50.0%		
Supplies Officer Grade B	14	+2	+2	+1	+1	-1	-1	+19.0%	+19.0%	+1.4%	+9.5%	-5.5%	-6.6%
Middle Management (V-VII)	617	+191	+149	+106	+106	+23	+1	+44.6%	+31.7%	+23.3%	+20.7%	+3.9%	+0.1%
Librarian	1	-1	-1	-1	-1	-1		-42.5%	-42.5%	-42.5%	-42.5%	-59.7%	
Librarian, Assistant	2	+1	+1	+1	+1	+2		+74.0%	+74.0%	+74.0%	+74.0%	-100.0%	
Project Manager		-1	-1	-1	-1	-1		-100.0%	-100.0%	-100.0%	-100.0%	-100.0%	-100.0%
Technical Services Manager	1												
Other Administrative	4	-1	-1	-1	-1	-1		-21.1%	-21.1%	-21.1%	-21.1%	-16.5%	
Administrative/ Supervisory (V to VII)	621	+190	+116	+105			-0	+43.9%	+22.9%	+20.3%	+20.3%	+20.3%	-0.0%
Clerical Officer	483	+32	+33	+10	+10	+19	+9	+7.2%	+7.4%	+0.1%	+2.1%	+4.0%	+2.0%
Grade IV	726	+119	+82	+62	+62	+55	+16	+19.6%	+12.8%	+11.6%	+9.4%	+8.2%	+2.2%
Supplies Officer Grade C	37	+5	+9	+0	+0	-2	-3	+17.0%	+32.0%	+16.3%	+1.0%	-3.9%	-7.2%
Supplies Officer Grade D	18	+2	+1	+1	+1	+1		+15.8%	+5.5%	-4.9%	+6.1%	+6.1%	
Telephonist	20	-3	-3	+1	+1	-7	+0	-13.6%	-11.3%	+3.1%	+7.4%	-25.4%	+0.2%
Telephonist, Night	5	+1	-0	+1	+1	-0		+20.8%	-1.0%	+10.3%	+29.5%	-0.4%	
Telephonist, Supervisor	2					-1						-30.8%	
General Administrative (III & IV)	1,290	+157	+123	+76	+76	+66	+22	+13.8%	+10.5%	+6.7%	+6.2%	+5.4%	+1.7%
Clerical (III & IV)	1,290	+157	+81	+76			-4	+13.8%	+6.7%	+6.2%	+6.2%	+6.2%	-0.3%
Management & Administrative	2,025	+388	+229	+212			-3	+23.7%	+12.8%	+11.7%	+11.7%	+11.7%	-0.2%
Catering	105	+8	+11	+3	+3	-4	-4	+8.6%	+11.6%	+6.8%	+2.8%	-3.9%	-3.6%
Household Services	694	+88	+51	+33	+33	+16	+8	+14.6%	+8.0%	+3.8%	+5.0%	+2.4%	+1.2%
Other Labs & Associated	99	+39	+34	+27	+27	+17	+10	+65.4%	+53.0%	+47.5%	+36.7%	+20.0%	+10.7%
Other Support	167	+20	+8	+9	+9	-6	-2	+13.2%	+5.2%	+6.2%	+5.6%	-3.3%	-1.3%
Portering	273	-40	-54	-56	-56	+4	+5	-12.7%	-16.5%	-16.5%	-17.0%	+1.4%	+2.0%
Support	1,339	+116	+19	+16			-0	+9.5%	+1.5%	+1.2%	+1.2%	+1.2%	-0.0%
Boilerman	1												
Chargehand	3	+2	+2					+200.0%	+200.0%				
Electrician	17	-1	-1	-0	-0	-0	-2	-5.9%	-5.9%	+13.1%	-0.4%	-0.2%	-10.7%
Gardener/ Groundsman	1	-2	-2	-1	-1			-66.7%	-66.7%	-66.7%	-50.0%		

Aug 2021 (Dec 2016 figure: 10,971)	WTE Aug 2021	WTE change since Dec 16	WTE change since Dec 17	WTE change since Dec 18	WTE change since Dec 19	WTE change since Dec 20	WTE change since Apr 21	% change since Dec 16	% change since Dec 17	% change since Dec 18	% change since Dec 19	% change since Dec 20	% change since Apr 21
Overall	13,319	+2,348	+1,937	+1,274	+1,274	+396	+91	+21.4%	+17.0%	+13.1%	+10.6%	+3.1%	+0.7%
Gardener/ Groundsman, Head	1	+1	+1	+1	+1			-100.0%	-100.0%	-100.0%	-100.0%		
General Operative	11	+0	-0	-1	-1	-1	-1	+3.3%	-1.2%	-1.2%	-8.4%	-8.9%	-5.7%
Labourer	2	-0	-0	-0	-0		-0	-4.5%	-4.5%	-4.5%	-4.5%		-1.5%
Maintenance Craftsman/Technician	25	+4	+3	+1	+1	+0	-0	+19.0%	+13.7%	+8.7%	+4.1%	+0.0%	-0.0%
Maintenance Foreman	12	+3	+1	+3	+3	+0	+0	+33.3%	+9.5%	+21.2%	+27.8%	+0.4%	+0.4%
Maintenance Foreman, Assistant	2	+1	+1					+100.0%	+100.0%				
Maintenance Helper	6												
Maintenance Manager	1	-1	-0	-1	-1	-1	-1	-34.0%	-23.3%	-34.0%	-34.0%	-32.7%	-34.0%
Maintenance Officer	4	+1	+2	+2	+2			+33.3%	+100.0%	+166.7%	+100.0%		
Painter	7	-1				+1	+1	-12.5%				+16.7%	+9.7%
Plasterer		-1	-1					-100.0%	-100.0%	-100.0%	-100.0%	-100.0%	-100.0%
Plumber	17	+2	+5	+6	+6	+2		+13.3%	+39.0%	+88.9%	+54.5%	+15.7%	
Maintenance	110	+9	+10	+10	+10	+2	-3	+8.4%	+10.2%	+14.2%	+9.7%	+1.5%	-2.4%
Draughtsman/Technician I	0	-2	-2	-2	-2			-100.0%	-100.0%	-100.0%	-100.0%	#DIV/0	#DIV/0
Draughtsman/Technician II		-1	-1					-100.0%	-100.0%	-100.0%	-100.0%	-100.0%	-100.0%
Engineer/ Engineering Officer	2					+1						+100.0%	
Fire Prevention Officer	2												
Technical Services Officer	1	+1	+1					+400.0%	+400.0%	+400.0%			
Technical Services Officer, Assistant		-1	-1					-100.0%	-100.0%	-100.0%	-100.0%	-100.0%	-100.0%
Technical Services Officer, Chief Asst.	5	+3	+2	+2	+2		-1	+150.0%	+66.7%	+400.0%	+66.7%		-16.7%
Technical Services Officer, Senior Asst.	2	+2	+2	+0	+0	+1	+1	-100.0%	-100.0%	-20.0%	+1.0%	+100.0%	+100.0%
Technical Services	12	+2	+1	+0	+0	+2		+17.6%	+7.1%	+12.1%	+0.2%	+20.0%	
Maintenance/ Technical	122	+10	+15	+10			+1	+9.2%	+14.0%	+8.7%	+8.7%	+8.7%	+0.5%
General Support	1,461	+126	+34	+25			+1	+9.4%	+2.4%	+1.8%	+1.8%	+1.8%	+0.0%
HCA, Nurse's Aide, etc.	1,157	+304	+298	+236	+236	+68	+49	+35.5%	+34.6%	+27.2%	+25.5%	+6.2%	+4.4%
Occupational Therapy Assistant	7	+2	+2	+3	+3	-0	+2	+49.5%	+47.4%	+92.9%	+70.6%	-5.8%	+34.2%
Physiotherapy Assistant	9	+5	+5	+5	+5	+2	+0	+114.3%	+120.9%	+91.0%	+123.5%	+21.5%	+0.5%
Radiography Aide	20	+7	+6	+2	+2	-2	+0	+52.7%	+38.0%	+8.3%	+8.6%	-8.7%	+1.2%
Health & Social Care Assistants	37	+14	+13	+10	+10	-1	+2	+63.9%	+54.6%	+34.9%	+36.2%	-1.9%	+6.2%
Health Care Assistant (Student Nurse/Midwife COVID-19)						-4	-1	-100.0%	-100.0%	-100.0%	-100.0%	-100.0%	-100.0%
HCA (Student Nurse/Midwife COVID-19)						-4	-1	-100.0%	-100.0%	-100.0%	-100.0%	-100.0%	-100.0%
Community Swabber (COVID-19)						-11		-100.0%	-100.0%	-100.0%	-100.0%	-100.0%	-100.0%
Swabber (COVID-19)						-11		-100.0%	-100.0%	-100.0%	-100.0%	-100.0%	-100.0%
Health Care Assistants	1,194	+318	+257	+245			+7	+36.3%	+27.4%	+25.9%	+25.9%	+25.9%	+0.6%

Aug 2021 (Dec 2016 figure: 10,971)	WTE Aug 2021	WTE change since Dec 16	WTE change since Dec 17	WTE change since Dec 18	WTE change since Dec 19	WTE change since Dec 20	WTE change since Apr 21	% change since Dec 16	% change since Dec 17	% change since Dec 18	% change since Dec 19	% change since Dec 20	% change since Apr 21
Overall	13,319	+2,348	+1,937	+1,274	+1,274	+396	+91	+21.4%	+17.0%	+13.1%	+10.6%	+3.1%	+0.7%
Cardiac Aide	1	-0	-0	+0	+0	+1	+1	-18.8%	-11.2%	+106.5%	+3.3%	-100.0%	-100.0%
Chaplain	19	-2	-1	-2	-2	-3	-2	-10.6%	-5.0%	-7.7%	-9.3%	-13.6%	-8.7%
Driver (Patients/Clients Public Roads)	1	-1						-50.0%					
Education Officer		-1	-1	-1	-1			-100.0%	-100.0%	-100.0%	-100.0%	-100.0%	-100.0%
Endoscopy Operative (Band 1)							-1	-100.0%	-100.0%	-100.0%	-100.0%	-100.0%	-100.0%
Endoscopy Operative (Band 2)	2	+2	+2	+2	+2	+0	+1	-100.0%	-100.0%	-100.0%	-100.0%	+17.8%	+99.0%
Head of Bed Management (Category A)	1												
Health Promotion Officer	3	+2	+2	+3	+3	+1	+0	+200.0%	+200.0%	+200.0%	-100.0%	+64.8%	+1.7%
Health Promotion Officer, Senior	1	+1	+1	+1	+1	+1		-100.0%	-100.0%	-100.0%	-100.0%	-100.0%	
Other Patient & Client Care Unclassified		-2						-100.0%	-100.0%	-100.0%	-100.0%	-100.0%	-100.0%
Pastoral Care Worker	1												
Other Care Grades	29	-2	+2	+3	+3	-0	-1	-6.6%	+9.1%	+9.1%	+9.9%	-0.3%	-2.8%
Care, other	29	-2	+2	+3			+0	-6.6%	+9.1%	+9.9%	+9.9%	+9.9%	+0.1%
Patient & Client Care	1,223	+316	+259	+248			+7	+34.8%	+26.9%	+25.4%	+25.4%	+25.4%	+0.6%

Source: Health Service Personnel Census

Longitudinal Employment Levels by Staff Group - Dec 2016 to Aug 2021

Aug 2021 (Dec 2016 figure: 10,971)	WTE Aug 2021	WTE change since Dec 16	WTE change since Dec 17	WTE change since Dec 18	WTE change since Dec 19	WTE change since Dec 20	WTE change since Apr 21	% change since Dec 16	% change since Dec 17	% change since Dec 18	% change since Dec 19	% change since Dec 20	% change since Apr 21
Overall	13,319	+2,348	+1,937	+1,546	+1,274	+396	+91	+21.4%	+17.0%	+13.1%	+10.6%	+3.1%	+0.7%
Consultants	35	+7	+3	+1	+1	-2	+0	+23.2%	+9.8%	+2.3%	+4.1%	-6.3%	+0.1%
Registrars	49	+1	+1	-1	-4	-2	-6	+1.4%	+1.4%	-2.7%	-7.3%	-3.2%	-10.7%
SHO/ Interns	71	+23	+15	+15	+10	+11	+6	+48.9%	+26.7%	+27.2%	+15.9%	+18.4%	+9.3%
Medical/ Dental, other	6	+4	+3	+2	+1		+0	+181.0%	+93.5%	+47.5%	+19.2%		+7.6%
Nurse/ Midwife Manager	81	+27	+21	-2	-4	-2	-4	+50.7%	+35.6%	-2.2%	-4.4%	-2.0%	-4.2%
Nurse/ Midwife Specialist & AN/MP	25	+10	+4	+5	+6	+1	-2	+63.4%	+19.8%	+25.2%	+29.2%	+3.3%	-7.4%
Staff Nurse/ Staff Midwife	309	+29	+31	+16	+19	+9	+11	+10.5%	+11.2%	+5.5%	+6.7%	+3.0%	+3.7%
Nursing/ Midwifery Student	5	+5	+5	+5	+4	+2	-0	-100.0%	-100.0%	-100.0%	+393.0%	+74.8%	-1.4%
Therapy Professions	28	+11	+9	+5	+3	-1	-0	+64.2%	+50.9%	+23.0%	+11.8%	-2.3%	-1.4%
Health Science/ Diagnostics	38	+9	+8	+2	+1	+1	+1	+31.0%	+25.3%	+5.9%	+1.6%	+2.8%	+3.3%
Social Workers	2	+2	+2	+2	+1	+1	+1	-100.0%	-100.0%	-100.0%	+80.0%	+80.0%	+80.0%
Pharmacy	14	+7	+6	+5	+3	+2	+1	+93.7%	+75.8%	+56.7%	+31.1%	+11.8%	+4.3%
Management (VIII & above)	3	+1		+0	+1	-1	-1	+50.0%		+3.1%	+50.0%	-25.0%	-14.3%
Administrative/ Supervisory (V to VII)	28	+16	+13	+12	+13	+6	+1	+130.5%	+84.5%	+82.0%	+90.5%	+26.5%	+4.2%
Clerical (III & IV)	109	-7	-7	-8	-7	-7	-5	-5.8%	-5.8%	-6.6%	-6.0%	-5.9%	-4.7%
Support	179	-12	-22	-28	-27	+5	+7	-6.2%	-10.9%	-13.4%	-13.2%	+3.0%	+4.1%
Maintenance/ Technical	7	+1	+2	+2	+1	+1	-0	+27.1%	+40.2%	+43.2%	+16.2%	+23.1%	-0.1%
Health Care Assistants	92	+34	+42	+41	+36	+2	+2	+58.5%	+84.1%	+79.3%	+64.8%	+2.8%	+2.6%
Care, other	3	-0	-0	+0	+0	+1	+1	-6.9%	-3.9%	+19.9%	+1.0%	+47.5%	+47.5%
Wexford General	1,083	+168	+136	+76	+59	+28	+14	+18.3%	+14.4%	+7.5%	+5.7%	+2.7%	+1.3%
Consultants	43	+10	+10	+7	+4	+3	-1	+28.7%	+29.1%	+20.1%	+10.9%	+6.3%	-1.8%
Registrars	58	+10	+8	+8	+1	-7	-12	+19.9%	+16.2%	+15.3%	+1.9%	-10.7%	-17.0%
SHO/ Interns	55	+1	-3	-3	-4	+1	-2	+2.4%	-4.4%	-5.7%	-6.0%	+2.2%	-3.1%
Medical/ Dental, other	8	+6	+1	-1	+2	+2	+0	+297.1%	+17.5%	-9.4%	+22.1%	+21.9%	+5.8%
Nurse/ Midwife Manager	83	+31	+20	+7	-1	-1	-5	+60.1%	+31.0%	+8.8%	-1.5%	-1.3%	-5.4%
Nurse/ Midwife Specialist & AN/MP	29	+14	+11	+10	+9	+4	-2	+91.5%	+63.0%	+48.9%	+41.7%	+18.3%	-5.7%
Staff Nurse/ Staff Midwife	302	-21	-6	-21	-2	-16	-5	-6.6%	-2.1%	-6.6%	-0.8%	-5.2%	-1.7%
Nursing/ Midwifery Student	5	+5	+2	+5	+5	+4		-100.0%	+66.7%	+900.0%	-100.0%	+400.0%	
Nursing/ Midwifery other	1	+1	-0	-0	-0		-0	-100.0%	-10.0%	-10.0%	-4.3%		-5.3%
Therapy Professions	42	+12	+12	+11	+7	-1	-0	+39.4%	+38.8%	+37.5%	+21.1%	-2.8%	-0.6%
Health Science/ Diagnostics	53	+11	+8	+7	+4	+1	+4	+25.3%	+18.3%	+15.2%	+7.8%	+2.7%	+9.0%
Pharmacy	23	+9	+8	+8	+5	+5	+2	+59.3%	+52.6%	+54.9%	+26.7%	+28.4%	+10.8%
Management (VIII & above)	6	+3	+3	+3	+3	+0	-1	+107.3%	+107.3%	+107.3%	+107.3%	+4.4%	-11.1%
Administrative/ Supervisory (V to VII)	21	+12	+9	+7	+6	+1	-1	+149.0%	+84.9%	+47.2%	+44.2%	+4.9%	-5.0%
Clerical (III & IV)	130	+17	+4	-10	-6	-3	-2	+14.5%	+3.6%	-7.1%	-4.4%	-2.1%	-1.6%
Support	171	-6	-19	-36	-30	+1	+5	-3.2%	-10.1%	-17.3%	-15.1%	+0.5%	+3.2%
Maintenance/ Technical	14	+3	+3	+2	+1	-1	-1	+26.2%	+26.2%	+16.0%	+6.7%	-6.8%	-3.8%
Health Care Assistants	131	+71	+72	+53	+56	+0	+1	+119.1%	+121.9%	+69.1%	+74.4%	+0.1%	+1.1%
Care, other	2												
St Luke's General Kilkenny	1,178	+188	+144	+56	+59	-7	-17	+19.0%	+13.9%	+5.0%	+5.3%	-0.6%	-1.4%
Consultants	1	+1	+1	+1	+1	+1	+1	-100.0%	-100.0%	-100.0%	-100.0%	-100.0%	-100.0%
Nurse/ Midwife Manager	5	+4	+4	+2	+2	+2	+2	+412.0%	+412.0%	+70.7%	+70.7%	+70.7%	+70.7%
Staff Nurse/ Staff Midwife	1	+1	+1	+1	+1	-0	-0	-100.0%	-100.0%	-100.0%	-100.0%	-6.0%	-6.0%
Health Science/ Diagnostics	1	+1	+1					-100.0%	-100.0%				
Pharmacy	3	+3	+3	+3	+3	+3	+3	-100.0%	-100.0%	-100.0%	-100.0%	-100.0%	-100.0%
H&SC, Other	21	+21	+21	+21	+21	+21	+21	-100.0%	-100.0%	-100.0%	-100.0%	-100.0%	-100.0%
Management (VIII & above)	14	+9	+8	+9	+8	+4	+2	+177.8%	+131.5%	+177.8%	+141.6%	+39.3%	+12.6%
Administrative/ Supervisory (V to VII)	18	+16	+8	-1	+1	+1	+1	+912.9%	+84.4%	-6.8%	+8.7%	+8.9%	+3.1%
Clerical (III & IV)	11	+11	+8	+8	+9	+9	+8	-100.0%	+216.1%	+211.7%	+354.3%	+461.0%	+274.0%
Maintenance/ Technical				-1	-1			-100.0%	-100.0%	-100.0%	-100.0%	-100.0%	-100.0%
Hospital Group HQ	75	+67	+55	+43	+45	+42	+37	+867.0%	+270.0%	+131.9%	+152.5%	+124.4%	+98.9%
Consultants	14	-3	-1	-1	+1	-2	-1	-17.9%	-7.0%	-3.7%	+7.4%	-12.8%	-5.4%
Registrars	34	+11	+12	+7	+8	+3	+2	+50.0%	+55.7%	+23.7%	+28.3%	+8.8%	+5.3%
SHO/ Interns	40	+9	+5	+8	+5	-4	+1	+30.9%	+14.9%	+24.2%	+14.6%	-9.5%	+1.7%
Nurse/ Midwife Manager	47	+14	+10	+2	+4	+1	+0	+42.4%	+25.9%	+5.3%	+8.3%	+1.6%	+1.0%
Nurse/ Midwife Specialist & AN/MP	13	-3	+2	+3	+2	+0	+0	-17.5%	+14.0%	+23.7%	+19.8%	+3.4%	+0.8%
Staff Nurse/ Staff Midwife	141	+11	+16	+18	+20	+6	+3	+8.3%	+12.7%	+14.5%	+16.6%	+4.5%	+2.1%

Aug 2021 (Dec 2016 figure: 10,971)	WTE Aug 2021	WTE change since Dec 16	WTE change since Dec 17	WTE change since Dec 18	WTE change since Dec 19	WTE change since Dec 20	WTE change since Apr 21	% change since Dec 16	% change since Dec 17	% change since Dec 18	% change since Dec 19	% change since Dec 20	% change since Apr 21
Overall	13,319	+2,348	+1,937	+1,546	+1,274	+396	+91	+21.4%	+17.0%	+13.1%	+10.6%	+3.1%	+0.7%
Nursing/ Midwifery Student			-2	-4	-4			-100.0%	-100.0%	-100.0%	-100.0%	-100.0%	-100.0%
Therapy Professions	27	+10	+11	+12	+8	-1	+2	+60.4%	+63.7%	+77.0%	+44.3%	-2.3%	+6.8%
Health Science/ Diagnostics	41	+9	+9	+7	+4	+2	+0	+27.7%	+29.1%	+20.6%	+11.1%	+5.0%	+1.0%
Pharmacy	9	+6	+6	+4	+3	+2	+2	+173.2%	+155.1%	+80.9%	+50.3%	+25.3%	+25.3%
Management (VIII & above)	2	+1	-0	-0	-0	-0	+0	+96.0%	-2.0%	-2.0%	-2.0%	-2.0%	+30.7%
Administrative/ Supervisory (V to VII)	21	+13	+13	+12	+9	+0	-0	+152.5%	+148.3%	+123.9%	+69.3%	+0.4%	-2.1%
Clerical (III & IV)	57	+2	-2	+0	+1	-1	-2	+3.5%	-3.4%	+0.7%	+1.4%	-2.5%	-4.1%
Support	27	+10	+4	+3	+3	+1	+2	+62.8%	+18.1%	+13.7%	+14.4%	+5.9%	+6.4%
Maintenance/ Technical	5	-0	+0	-1	-0	+0	-0	-0.2%	+6.2%	-9.3%	-0.2%	+0.2%	-0.2%
Health Care Assistants	117	+13	+20	+19	+19	+0	-2	+12.4%	+20.1%	+18.8%	+19.4%	+0.4%	-1.3%
Care, other	1	-1	-0	-1	-1	-0	-0	-31.7%	-16.6%	-31.7%	-40.1%	-15.0%	-15.5%
Our Lady's Navan	597	+103	+101	+88	+82	+7	+6	+20.8%	+20.4%	+17.3%	+15.9%	+1.2%	+1.1%
Consultants	18	+3	+1	+2	+2	+2	+1	+20.6%	+6.0%	+12.9%	+9.4%	+12.9%	+6.0%
Registrars	20	+3	+3	+2	+2	+2	+3	+14.7%	+14.7%	+8.3%	+8.3%	+11.4%	+18.2%
SHO/ Interns	14	+3	+3	+4	+2	+2	+2	+27.3%	+27.3%	+40.0%	+16.7%	+16.7%	+16.7%
Nurse/ Midwife Manager	42	+8	+10	+6	+1	+1	-1	+22.9%	+29.4%	+17.9%	+2.4%	+2.4%	-2.3%
Nurse/ Midwife Specialist & AN/MP	10	+6	+5	+3	+2	+2		+134.8%	+110.7%	+36.8%	+17.1%	+17.1%	
Staff Nurse/ Staff Midwife	111	+18	+16	+8	+8	-0	-0	+19.4%	+16.3%	+7.5%	+8.2%	-0.0%	-0.0%
Nursing/ Midwifery other	2												
Therapy Professions	34	+7	+3	+2	+1	+1		+23.3%	+9.5%	+6.2%	+3.0%	+3.0%	
Health Science/ Diagnostics	29	+10	+7	+6	+4	+3	+2	+49.6%	+29.4%	+23.9%	+16.4%	+11.6%	+7.4%
Social Workers	7	+2	+1	+3				+54.2%	+15.1%	+75.0%			
Psychologists	1												
Pharmacy	6	+3	+3	+2	+1	+1		+100.0%	+100.0%	+50.0%	+20.0%	+20.0%	
Management (VIII & above)	4	+1						+33.3%					
Administrative/ Supervisory (V to VII)	26	+7	+2	+3	+4	+1	+0	+39.5%	+8.5%	+13.3%	+18.5%	+4.1%	+0.0%
Clerical (III & IV)	44	+12	+10	+7	+4	+1		+38.9%	+29.7%	+18.6%	+9.6%	+2.3%	
Support	62	+12	+1	+2	+0			+24.4%	+2.4%	+2.9%	+0.7%		
Maintenance/ Technical	1												
Health Care Assistants	26	-1	-3					-2.1%	-8.6%				
Care, other		-1						-100.0%	-100.0%	-100.0%	-100.0%	-100.0%	-100.0%
Cappagh National Orthopaedic	457	+93	+62	+49	+30	+16	+7	+25.6%	+15.6%	+11.9%	+7.1%	+3.5%	+1.6%
Consultants	190	+46	+38	+32	+19	-0	+6	+32.3%	+24.8%	+20.0%	+10.8%	-0.1%	+3.0%
Registrars	200	+52	+37	+42	+33	+10	+10	+35.5%	+22.5%	+26.3%	+20.1%	+5.2%	+5.4%
SHO/ Interns	179	+33	+29	+27	+21	-14	-6	+22.2%	+18.9%	+18.1%	+13.4%	-7.0%	-3.2%
Medical/ Dental, other	6	+0	+2	+1	+1	-0	-1	+4.7%	+42.2%	+36.3%	+12.3%	-5.9%	-17.5%
Nurse/ Midwife Manager	232	+52	+53	+41	+25	+11	+6	+29.1%	+29.5%	+21.7%	+11.9%	+4.9%	+2.4%
Nurse/ Midwife Specialist & AN/MP	108	+48	+39	+21	+20	+10	+1	+80.6%	+57.7%	+24.7%	+23.5%	+10.5%	+0.5%
Staff Nurse/ Staff Midwife	934	+100	+76	+73	+27	-4	-26	+12.0%	+8.9%	+8.5%	+3.0%	-0.5%	-2.7%
Nursing/ Midwifery Student	42	+34	+33	+34	+30	+22	+9	+394.1%	+366.7%	+425.0%	+250.0%	+110.0%	+27.3%
Nursing/ Midwifery other	50	+9	+10	+9	+5	+1	-1	+22.3%	+26.8%	+22.1%	+11.9%	+2.5%	-1.5%
Therapy Professions	131	+34	+26	+16	+18	+8	-6	+34.5%	+25.3%	+14.3%	+15.5%	+6.4%	-4.1%
Health Science/ Diagnostics	261	+43	+42	+41	+37	+21	+23	+19.7%	+19.4%	+18.4%	+16.5%	+8.6%	+9.8%
Social Workers	27	+5	+5	+7	+0	+2	-1	+24.6%	+20.1%	+34.5%	+1.2%	+9.4%	-2.5%
Psychologists	8	+3	+3	+3	+1	-0	-1	+72.2%	+72.2%	+72.2%	+13.1%	-1.3%	-12.4%
Pharmacy	57	+13	+14	+7	+7	+5	+3	+30.4%	+32.3%	+14.5%	+13.2%	+8.7%	+4.7%
H&SC, Other	18	-4	-6	-7	-4	-6	-10	-19.7%	-24.2%	-27.2%	-19.1%	-24.2%	-36.2%
Management (VIII & above)	43	+20	+16	+13	+11	+7	+5	+83.8%	+57.0%	+44.6%	+34.3%	+20.8%	+12.1%
Administrative/ Supervisory (V to VII)	164	+41	+29	+14	+6	+2	-4	+33.8%	+21.4%	+9.1%	+3.9%	+1.5%	-2.2%
Clerical (III & IV)	312	+59	+65	+62	+52	+14	+3	+23.2%	+26.4%	+24.6%	+20.1%	+4.5%	+0.8%
Support	276	+27	+29	+24	+25	+9	+6	+10.9%	+11.5%	+9.5%	+10.0%	+3.5%	+2.3%
Maintenance/ Technical	26	+2	+2	+4	+2			+7.4%	+7.4%	+17.1%	+8.3%		
Health Care Assistants	289	+90	+84	+59	+64	+32	+31	+45.1%	+41.0%	+25.6%	+28.4%	+12.3%	+12.1%
Care, other	7	-3	-1	+0	+0	+0	+0	-32.1%	-8.2%	+1.7%	+0.6%	+6.4%	+3.0%
Mater Misericordiae University	3,559	+704	+625	+524	+400	+130	+46	+24.6%	+21.3%	+17.3%	+12.7%	+3.8%	+1.3%
Consultants	44	+10	+7	+9	+10	+1	+2	+29.8%	+20.3%	+26.7%	+29.8%	+3.1%	+4.8%
Registrars	58	+19	+20	+13	+3	+3	-0	+48.8%	+53.5%	+30.3%	+4.5%	+6.3%	-0.6%
SHO/ Interns	59	+1	-1	+0	+4	-2	-2	+1.3%	-1.7%	+0.6%	+6.7%	-2.9%	-3.9%
Medical/ Dental, other	2			+0	+0					+1.0%	+6.4%		
Nurse/ Midwife Manager	83	+19	+15	+9	+12	+6	+6	+29.7%	+22.2%	+12.7%	+16.2%	+7.4%	+7.9%

Aug 2021 (Dec 2016 figure: 10,971)	WTE Aug 2021	WTE change since Dec 16	WTE change since Dec 17	WTE change since Dec 18	WTE change since Dec 19	WTE change since Dec 20	WTE change since Apr 21	% change since Dec 16	% change since Dec 17	% change since Dec 18	% change since Dec 19	% change since Dec 20	% change since Apr 21
Overall	13,319	+2,348	+1,937	+1,546	+1,274	+396	+91	+21.4%	+17.0%	+13.1%	+10.6%	+3.1%	+0.7%
Nurse/ Midwife Specialist & AN/MP	17	+2	+3	+5	+4	+1	+0	+15.9%	+17.7%	+45.6%	+32.9%	+8.8%	+2.8%
Staff Nurse/ Staff Midwife	263	+32	+28	+25	+23	-2	-2	+13.7%	+11.8%	+10.5%	+9.4%	-0.7%	-0.6%
Nursing/ Midwifery Student	6	+6	+6	+6	+5	+5	-0	-100.0%	-100.0%	-100.0%	+376.8%	+496.0%	-2.5%
Nursing/ Midwifery other	3	+1	+1	+1	+1	+0	-0	+55.2%	+59.8%	+55.2%	+57.9%	+1.5%	-0.4%
Therapy Professions	36	+6	+7	+4	+10	-1	-1	+20.2%	+26.0%	+14.1%	+40.3%	-2.1%	-1.4%
Health Science/ Diagnostics	85	+10	+15	+16	+15	+2	+0	+13.3%	+21.9%	+23.4%	+21.3%	+2.7%	+0.2%
Pharmacy	18	+5	+4	+2	+2	+3	+2	+35.6%	+26.7%	+10.0%	+10.3%	+21.5%	+12.3%
H&SC, Other	1	+1	-0	-0	+1	+1	-1	-100.0%	-7.0%	-9.4%	+430.0%	-100.0%	-47.0%
Management (VIII & above)	5	+1	+1			+2	+1	+25.0%	+25.0%			+66.7%	+14.4%
Administrative/ Supervisory (V to VII)	30	+12	+11	+11	+7	+2	+1	+70.3%	+62.4%	+61.8%	+33.1%	+6.5%	+3.7%
Clerical (III & IV)	103	-11	-7	-6	+2	+7	+3	-9.9%	-6.3%	-5.3%	+1.9%	+7.7%	+3.5%
Support	31	+6	+5	+7	+5	+4	+1	+24.3%	+18.9%	+31.8%	+20.8%	+13.5%	+3.8%
Maintenance/ Technical	12	-7	-4	-1	-1	-1	-1	-36.2%	-24.8%	-6.4%	-8.1%	-5.0%	-6.3%
Health Care Assistants	181	+52	+34	+14	+22	+0	-6	+40.8%	+22.9%	+8.3%	+13.6%	+0.1%	-3.4%
Care, other	1												
MRH Mullingar	1,037	+165	+146	+118	+124	+33	+4	+19.0%	+16.3%	+12.8%	+13.5%	+3.3%	+0.4%
Consultants	27	+7	+4	+3	+4	+1	+1	+35.2%	+15.8%	+11.3%	+18.0%	+3.3%	+3.8%
Registrars	25	+9	+9	+7	+5	+3	+1	+54.5%	+61.9%	+39.1%	+24.4%	+12.9%	+2.1%
SHO/ Interns	16	+3				+1	+0	+25.6%				+6.9%	+2.6%
Medical/ Dental, other	4	+1	+1	-1	-0	-1	+1	+47.6%	+15.8%	-13.8%	-6.6%	-12.6%	+18.1%
Nurse/ Midwife Manager	26	+6	+5	+0	+2	+2	+0	+30.5%	+21.4%	+1.2%	+10.4%	+6.5%	+1.6%
Nurse/ Midwife Specialist & AN/MP	13	+8	+7	+8	+4	+0	-1	+137.1%	+128.7%	+161.0%	+44.6%	+2.0%	-6.5%
Staff Nurse/ Staff Midwife	84	+14	+7	+2	+3	+2	-4	+19.7%	+8.5%	+2.3%	+3.7%	+2.3%	-4.6%
Nursing/ Midwifery other	1	-1	-1	-1	-1			-33.3%	-33.3%	-33.3%	-33.3%		
Therapy Professions	3	+1	+1	+0	+0	+1		+32.0%	+19.6%	+11.5%	+17.0%	+32.0%	
Health Science/ Diagnostics	1	-4	-2	-4	-1	-1	-1	-76.0%	-67.3%	-75.4%	-35.0%	-48.9%	-39.0%
Social Workers	2	+1	+1	+1		+1		+132.6%	+132.6%	+100.0%		+100.0%	
Pharmacy	4	+1	+1	+1	+1			+33.3%	+33.3%	+33.3%	+33.3%		
H&SC, Other	4	+1	+1	+1				+35.7%	+23.4%	+23.4%			
Management (VIII & above)	4	+2	+1	+2	+1			+100.0%	+33.3%	+100.0%	+33.3%		
Administrative/ Supervisory (V to VII)	32	+12	+9	+8	+8	+4	+1	+64.3%	+39.2%	+31.1%	+32.4%	+14.1%	+3.0%
Clerical (III & IV)	44	+11	+12	+7	+8	+6	+3	+34.5%	+36.6%	+18.8%	+22.8%	+16.8%	+8.0%
Support	29	+2	+1	+1	+1	-0	-1	+8.2%	+4.7%	+3.9%	+5.1%	-0.8%	-1.9%
Health Care Assistants	15	+7	+5	+6	+6	+2	+1	+82.5%	+42.8%	+71.7%	+62.4%	+14.2%	+6.1%
Royal Victoria Eye & Ear	334	+82	+60	+42	+43	+20	+2	+32.6%	+22.0%	+14.4%	+14.6%	+6.5%	+0.5%
Consultants	11	+1	+1	-1	+0	+0	+0	+12.2%	+11.1%	-8.4%	+0.4%	+0.4%	+0.4%
Registrars	13												
SHO/ Interns	15			+1	+1					+7.1%	+7.1%		
Medical/ Dental, other	0												
Nurse/ Midwife Manager	34	-0	+2	-4	-0	-1	-1	-0.1%	+5.2%	-10.7%	-1.1%	-4.0%	-2.9%
Nurse/ Midwife Specialist & AN/MP	25	+8	+4	+0	-3	-1	-2	+48.0%	+16.8%	+0.3%	-10.0%	-4.2%	-7.8%
Staff Nurse/ Staff Midwife	105	+3	-1	+2	+2	-1	+3	+3.4%	-1.0%	+1.6%	+2.2%	-0.7%	+3.0%
Nursing/ Midwifery Student	10	+10	+10	+10	+10	+10		-100.0%	-100.0%	-100.0%	-100.0%	-100.0%	
Nursing/ Midwifery other	3	-2	-2	-2	-2	-1	-1	-40.0%	-40.0%	-40.0%	-40.0%	-25.0%	-25.0%
Therapy Professions	18	+2	-0	-1	-4	+1	-1	+12.1%	-2.2%	-3.8%	-19.2%	+2.9%	-5.4%
Health Science/ Diagnostics	23	+2	+5	+5	+5	+2	+2	+9.9%	+28.9%	+29.4%	+30.1%	+10.9%	+10.9%
Social Workers	4	+2	+2	+2	+2	+0	+0	+100.0%	+100.0%	+100.0%	+100.0%	+5.3%	+5.3%
Pharmacy	7	+3	+2	+2	-1	+1	+1	+78.0%	+43.1%	+49.0%	-14.1%	+10.6%	+10.6%
Management (VIII & above)	2				+1	-1	-1				+100.0%	-33.3%	-33.3%
Administrative/ Supervisory (V to VII)	27	+7	+6	+8	+8	+3	+3	+34.9%	+31.6%	+45.8%	+41.9%	+13.8%	+11.4%
Clerical (III & IV)	43	+3	+5	-2	+0	+2	+0	+7.1%	+11.7%	-4.7%	+0.6%	+3.6%	+0.1%
Support	48	-3	-1	+1	+0	+1	+1	-5.1%	-1.9%	+2.2%	+0.7%	+1.7%	+1.7%
Maintenance/ Technical	2	-1	-1					-33.3%	-33.3%				
Health Care Assistants	28	+2	+1	+1	+3	+1	+0	+7.2%	+3.2%	+3.2%	+10.5%	+3.2%	+0.7%
Care, other	1	+0	+0	-1	-1	-1	-1	+10.0%	+10.0%	-45.0%	-45.0%	-45.0%	-45.0%
St. Michael's	418	+38	+32	+21	+21	+13	+3	+9.9%	+8.2%	+5.4%	+5.2%	+3.3%	+0.7%
Consultants	18	+2	-0	-0	-1	+2	-1	+12.9%	-1.9%	-1.1%	-4.9%	+10.8%	-3.2%
Registrars	10	-0	-1	-1	-0	-0	+1	-0.7%	-9.8%	-5.5%	-0.1%	-0.8%	+16.7%
SHO/ Interns	14					-2	+0					-12.4%	+0.2%
Nurse/ Midwife Manager	34	+10	+5	+2	+1	-0	-1	+39.9%	+18.4%	+7.5%	+4.2%	-0.3%	-1.7%

Aug 2021 (Dec 2016 figure: 10,971)	WTE Aug 2021	WTE change since Dec 16	WTE change since Dec 17	WTE change since Dec 18	WTE change since Dec 19	WTE change since Dec 20	WTE change since Apr 21	% change since Dec 16	% change since Dec 17	% change since Dec 18	% change since Dec 19	% change since Dec 20	% change since Apr 21
Overall	13,319	+2,348	+1,937	+1,546	+1,274	+396	+91	+21.4%	+17.0%	+13.1%	+10.6%	+3.1%	+0.7%
Nurse/ Midwife Specialist & AN/MP	9	+0	+1	-0	+1	+2	+2	+1.2%	+7.6%	-3.7%	+7.6%	+22.3%	+21.1%
Staff Nurse/ Staff Midwife	112	+4	+7	+2	-6	-0	-0	+3.5%	+6.3%	+1.6%	-5.5%	-0.4%	-0.2%
Nursing/ Midwifery other	1			-1	-1					-50.0%	-46.8%		
Therapy Professions	36	+13	+10	+6	+4	+1	-0	+53.8%	+41.5%	+22.2%	+14.1%	+2.9%	-1.2%
Health Science/ Diagnostics	21	+2	+3	+1	+3	+0	+0	+9.3%	+16.3%	+3.0%	+16.0%	+2.2%	+0.2%
Social Workers	6	+0	+1	+1	+1	-0	+0	+6.3%	+31.1%	+11.6%	+13.3%	-3.1%	+3.7%
Psychologists	2	+1	+1	+1	+1	+1	+0	+133.0%	+51.3%	+39.5%	+29.4%	+42.1%	+0.4%
Pharmacy	5	+2	+3	+1	+0	+0	+0	+44.6%	+100.0%	+24.0%	+5.2%	+0.2%	+0.2%
Management (VIII & above)	2	+0	+1	+1	+1	-0	-0	+12.6%	+97.0%	+97.0%	+97.0%	-1.5%	-1.5%
Administrative/ Supervisory (V to VII)	12	+1	+1	-2	-2	-1	-1	+8.3%	+8.6%	-12.5%	-13.8%	-5.9%	-6.8%
Clerical (III & IV)	64	+10	+10	+8	+10	+6	+1	+19.3%	+17.5%	+14.0%	+18.1%	+9.9%	+0.9%
Support	60	+10	+4	+4	+4	+0	-5	+18.7%	+6.3%	+7.2%	+6.8%	+0.4%	-8.2%
Maintenance/ Technical	1												
Health Care Assistants	56	+9	+10	+2	-3	+2	+3	+19.8%	+22.1%	+4.0%	-4.3%	+3.7%	+5.8%
Care, other	3	+2	+2	+2	+3	+0		+199.0%	+199.0%	+199.0%	-100.0%	+11.2%	
St. Columcille's	467	+65	+57	+27	+16	+10	-1	+16.3%	+13.8%	+6.1%	+3.5%	+2.2%	-0.3%
Consultants	39	+3	+4	+4	+4	+2	+2	+9.6%	+10.6%	+12.0%	+12.1%	+4.3%	+4.9%
Registrars	41	+9	+7	+5	+5	+3	+2	+28.1%	+18.8%	+12.3%	+13.9%	+7.9%	+5.1%
SHO/ Interns	22	+1		+1	+1		+1	+4.8%		+4.8%	+4.8%		+4.8%
Medical/ Dental, other	1	+0	+0	+0	+0	+0		+16.7%	+16.7%	+16.7%	+16.7%	+16.7%	
Nurse/ Midwife Manager	138	+28	+26	+21	+18	+3	-0	+26.0%	+23.5%	+17.6%	+14.8%	+2.0%	-0.0%
Nurse/ Midwife Specialist & AN/MP	16	+5	+5	+1	+1	+1	+0	+51.1%	+40.8%	+4.4%	+7.2%	+3.4%	+3.1%
Staff Nurse/ Staff Midwife	232	-8	+4	-11	-13	-7	-15	-3.2%	+1.7%	-4.7%	-5.3%	-2.9%	-6.2%
Nursing/ Midwifery Student	35	+11	+12	+12	+13	+17	-2	+46.8%	+50.0%	+50.0%	+60.5%	+91.7%	-5.5%
Nursing/ Midwifery other	4	+1	+0					+21.8%	+1.0%				
Therapy Professions	16	+7	+8	+7	+4	-0	+0	+86.4%	+112.0%	+76.5%	+38.1%	-1.5%	+0.4%
Health Science/ Diagnostics	47	+8	+8	+4	+5	-1	+2	+19.2%	+22.0%	+8.1%	+13.0%	-1.5%	+3.3%
Social Workers	9	+5	+4	+3	+2	-0	+1	+112.4%	+65.1%	+42.6%	+20.6%	-5.1%	+17.4%
Psychologists	2	+1	+1	+1	+0			+151.6%	+151.6%	+151.6%	+4.0%		
Pharmacy	7	+1	+1	+2	+0	-0	+1	+17.5%	+21.3%	+25.4%	+2.8%	-5.1%	+8.8%
Management (VIII & above)	6	+1	+1	+1	-0	-1		+10.0%	+10.0%	+10.0%	-1.8%	-9.8%	
Administrative/ Supervisory (V to VII)	59	+16	+15	+11	+8	+2		+37.4%	+34.3%	+23.2%	+15.4%	+4.4%	
Clerical (III & IV)	75	+1	-7	-3	-6	+4	+2	+0.8%	-8.4%	-3.8%	-7.3%	+5.7%	+2.5%
Support	141	+26	+18	+13	+11	+8	+2	+22.9%	+14.5%	+10.3%	+8.9%	+5.7%	+1.5%
Maintenance/ Technical	14	+7	+4	+4	+3	-1	-1	+100.0%	+40.0%	+40.0%	+27.3%	-6.7%	-6.7%
Health Care Assistants	43	+16	+15	+13	+9	+1	+3	+60.0%	+53.6%	+41.1%	+24.6%	+2.4%	+6.5%
National Maternity	945	+140	+125	+85	+65	+29	-3	+17.4%	+15.3%	+9.9%	+7.4%	+3.2%	-0.3%
Consultants	152	+29	+22	+14	+7	-2	-1	+23.5%	+17.0%	+10.0%	+5.1%	-1.3%	-0.8%
Registrars	195	+43	+42	+39	+30	+27	+11	+28.1%	+27.3%	+25.2%	+18.2%	+16.3%	+5.9%
SHO/ Interns	168	+46	+47	+34	+41	-12	-4	+37.3%	+38.4%	+25.0%	+32.6%	-6.4%	-2.0%
Medical/ Dental, other	6	+1	+2	+5	+5	+5	-1	+13.8%	+50.0%	+413.9%	+386.0%	+527.0%	-8.5%
Nurse/ Midwife Manager	250	+84	+78	+80	+67	+17	+20	+50.2%	+45.1%	+47.0%	+36.6%	+7.5%	+8.6%
Nurse/ Midwife Specialist & AN/MP	84	+4	+0	-0	-3	-8	-2	+4.5%	+0.4%	-0.2%	-3.3%	-8.5%	-2.7%
Staff Nurse/ Staff Midwife	744	+82	-2	+63	+20	+24	-52	+12.4%	-0.3%	+9.3%	+2.7%	+3.4%	-6.5%
Nursing/ Midwifery Student	37	+32	+27	+23	+20	-29	+5	+572.7%	+253.1%	+159.1%	+114.5%	-43.7%	+13.8%
Nursing/ Midwifery other	5	-9	-9	-9	-9	-4	-0	-66.3%	-66.5%	-66.5%	-66.5%	-45.3%	-1.0%
Therapy Professions	107	+8	+10	+0	+3	-8	+0	+8.3%	+10.8%	+0.1%	+3.0%	-6.9%	+0.0%
Health Science/ Diagnostics	240	+35	+23	+17	+28	+17	+1	+17.3%	+10.5%	+7.7%	+13.1%	+7.6%	+0.4%
Social Workers	19	-1	+1	+0	+0	-2	-2	-2.6%	+7.2%	+1.5%	+1.5%	-8.6%	-7.8%
Psychologists	10	+5	+5	+4	-0	+1	-1	+97.7%	+86.0%	+52.8%	-0.9%	+8.6%	-10.0%
Pharmacy	57	+8	+3	+1	-0	-1	-2	+15.7%	+4.9%	+1.2%	-0.7%	-2.3%	-2.6%
H&SC, Other	0	-1	-1	-1			-1	-74.1%	-74.1%	-74.1%			-69.8%
Management (VIII & above)	23	+3	+7	+4	+5	+2	-2	+17.1%	+43.1%	+17.9%	+24.1%	+10.3%	-8.4%
Administrative/ Supervisory (V to VII)	184	+35	+31	+33	+36	-0	+1	+23.6%	+20.2%	+21.6%	+24.4%	-0.1%	+0.3%
Clerical (III & IV)	297	+49	+32	+18	+9	+28	+12	+19.6%	+11.9%	+6.6%	+3.1%	+10.5%	+4.2%
Support	315	+42	+31	+27	+22	-3	-1	+15.5%	+11.0%	+9.5%	+7.6%	-0.8%	-0.3%
Maintenance/ Technical	40	+5	+5	+5	+5	+5	-0	+14.3%	+14.3%	+14.3%	+14.3%	+14.3%	-0.8%
Health Care Assistants	215	+24	+31	+49	+34	+12	+17	+12.4%	+16.8%	+29.6%	+18.7%	+6.0%	+8.7%
Care, other	10	+1	+1	+1	+1	-1	-1	+13.9%	+16.0%	+16.0%	+16.0%	-6.1%	-8.1%
St. Vincent's University	3,158	+524	+384	+406	+320	+71	-3	+19.9%	+13.9%	+14.7%	+11.3%	+2.3%	-0.1%

Aug 2021 (Dec 2016 figure: 10,971)	WTE Aug 2021	WTE change since Dec 16	WTE change since Dec 17	WTE change since Dec 18	WTE change since Dec 19	WTE change since Dec 20	WTE change since Apr 21	% change since Dec 16	% change since Dec 17	% change since Dec 18	% change since Dec 19	% change since Dec 20	% change since Apr 21
Overall	13,319	+2,348	+1,937	+1,546	+1,274	+396	+91	+21.4%	+17.0%	+13.1%	+10.6%	+3.1%	+0.7%
Staff Nurse/ Staff Midwife	10	+10	+10	+10	+10	+3	-3	-100.0%	-100.0%	-100.0%	-100.0%	+32.2%	-22.4%
Health Care Assistants	0	+0	+0	+0	+0	-0	-0	-100.0%	-100.0%	-100.0%	-100.0%	-31.0%	-50.0%
IEHG Bank	11	+11	+11	+11	+11	+2	-3	-100.0%	-100.0%	-100.0%	-100.0%	+29.0%	-23.5%

Source: Health Service Personnel Census