

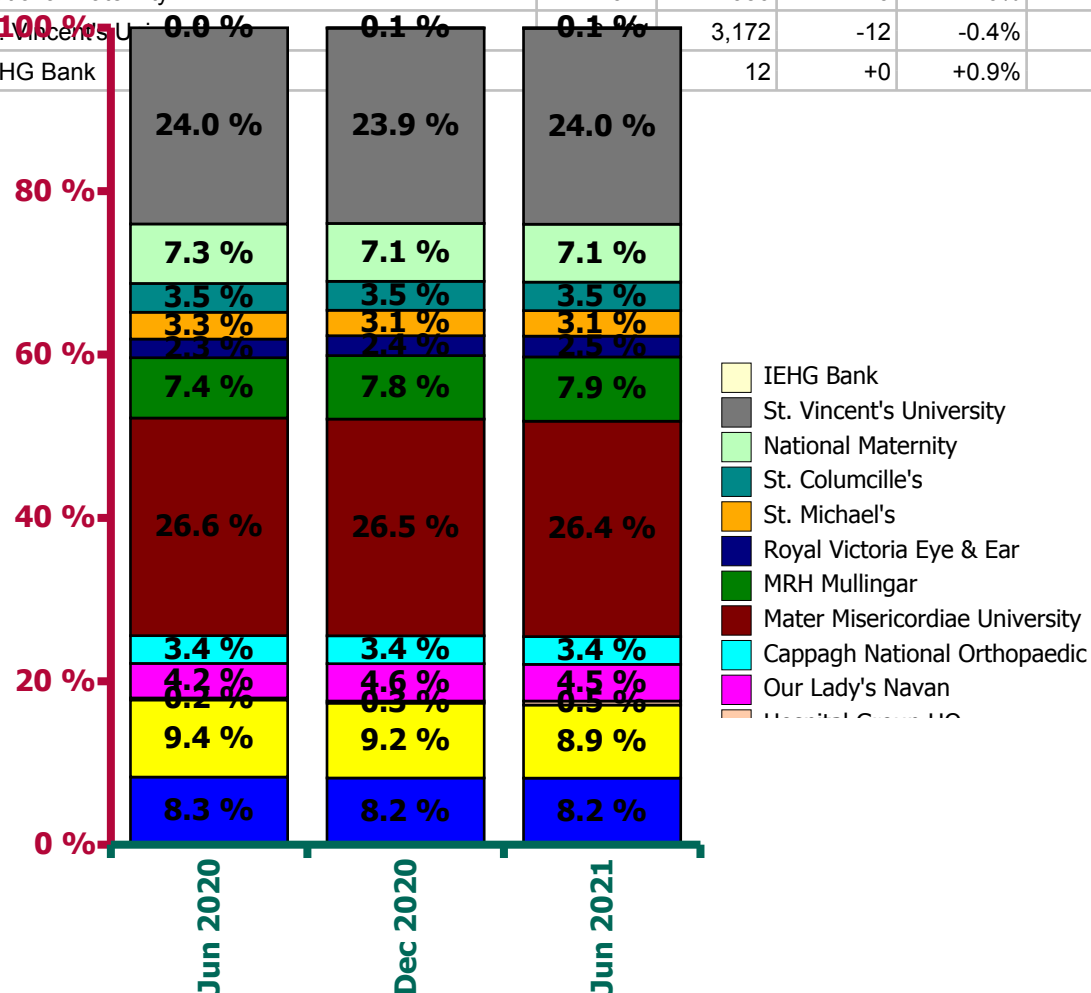
Ireland East Hospital Group Employment Report: July 2021

Employment by Staff Group

Jul 2021 (Dec 2020 figure: 12,923)	WTE Jun 2021	WTE Jul 2021	WTE change since Jun 21	% change since Jun 21	WTE change since Dec 20	WTE change since Jul 20
Overall	13,288	13,326	+38.42	+0.3%	+403	+454
Consultants	586	590	+4	+0.7%	+3	+11
Registrars	691	712	+21	+3.0%	+54	+45
SHO/ Interns	660	640	-20	-3.0%	-29	-53
Medical/ Dental, other	36	33	-2	-6.8%	+6	+9
Medical & Dental	1,972	1,975	+3	+0.1%	+33	+12
Nurse/ Midwife Manager	1,057	1,048	-9	-0.8%	+29	+94
Nurse/ Midwife Specialist & AN/MP	365	362	-3	-0.7%	+25	+51
Staff Nurse/ Staff Midwife	3,383	3,382	-1	-0.0%	+46	+122
Nursing/ Midwifery Student	141	142	+1	+1.0%	+33	-100
Nursing/ Midwifery other	70	70	+0	+0.6%	-2	-5
Nursing & Midwifery	5,015	5,004	-11	-0.2%	+131	+162
Therapy Professions	484	473	-11	-2.3%	-5	+15
Health Science/ Diagnostics	802	812	+10	+1.3%	+21	+38
Social Workers	77	77	+0	+0.4%	+3	+8
Psychologists	24	23	-1	-4.4%	+1	+2
Pharmacy	205	207	+2	+1.1%	+15	+16
H&SC, Other	56	51	-5	-9.3%	+24	+21
Health & Social Care Professionals	1,648	1,643	-4	-0.3%	+59	+100
Management (VIII & above)	113	113	+0	+0.0%	+12	+15
Administrative/ Supervisory (V to VII)	623	621	-2	-0.3%	+22	+72
Clerical (III & IV)	1,287	1,294	+6	+0.5%	+70	+42
Management & Administrative	2,023	2,028	+5	+0.2%	+104	+129
Support	1,333	1,339	+6	+0.5%	+26	-43
Maintenance/ Technical	122	121	-0	-0.3%	+3	+2
General Support	1,454	1,460	+6	+0.4%	+29	-41
Health Care Assistants	1,147	1,187	+41	+3.5%	+46	+91
Care, other	28	28	+0	+0.2%	-0	+1
Patient & Client Care	1,175	1,216	+41	+3.5%	+46	+92

Ireland East Hospital Group Employment by Hospital: Jul 2021

Jul 2021 (Dec 2020 figure: 12,923)	WTE Jun 2021	WTE Jul 2021	WTE change since Jun 21	% change since Jun 21	WTE change since Dec 20	WTE change since Jul 20
Overall	13,288	13,326	+38	+0.3%	+403	+454
Wexford General	1,084	1,079	-6	-0.5%	+24	-2
St Luke's General Kilkenny	1,187	1,186	-1	-0.1%	+2	-29
Hospital Group HQ	65	71	+6	+9.2%	+37	+42
Our Lady's Navan	598	596	-2	-0.3%	+6	+37
Cappagh National Orthopaedic	452	457	+5	+1.1%	+16	+17
Mater Misericordiae University	3,501	3,549	+47	+1.3%	+120	+145
MRH Mullingar	1,047	1,039	-8	-0.8%	+35	+75
Royal Victoria Eye & Ear	337	336	-1	-0.2%	+23	+39
St. Michael's	115	115	-0	-0.0%	+10	-7
St. Columcille's	100	100	-0	-0.0%	+8	+5
National Maternity	941	950	+9	+1.0%	+34	+22
St. Vincent's University	3,172	3,172	-12	-0.4%	+85	+99
IEHG Bank	12	12	+0	+0.9%	+4	+10



Ireland East Hospital Group Employment by Administration (HSE / S38): July 2021

Jul 2021 (Dec 2020 figure: 12,923)	WTE Jun 2021	WTE Jul 2021	WTE change since Jun 21	% change since Jun 21	WTE change since Dec 20	WTE change since Jul 20
Overall	13,288	13,326	+38	+0.3%	+403	+454
HSE	4,458	4,448	-10	-0.2%	+115	+139
Section 38 Hospitals	8,829	8,878	+49	+0.6%	+288	+315

HSE

Jul 2021 (Dec 2020 figure: 4,333)	WTE Jun 2021	WTE Jul 2021	WTE change since Jun 21	% change since Jun 21	WTE change since Dec 20	WTE change since Jul 20
Overall	4,458	4,448	-10	-0.2%	+115	+139
Consultants	156	157	+0	+0.0%	+4	+8
Registrars	227	219	-8	-0.0%	+9	+13
SHO/ Interns	241	233	-9	-0.0%	-1	-29
Medical/ Dental, other	17	16	-0	-0.0%	+1	+4
Medical & Dental	642	625	-17	-2.6%	+12	-4
Nurse/ Midwife Manager	335	333	-2	-0.0%	+4	+2
Nurse/ Midwife Specialist & AN/MP	97	96	-1	-0.0%	+11	+21
Staff Nurse/ Staff Midwife	1,133	1,141	+8	+0.0%	+1	+56
<i>Nursing/ Midwifery awaiting registration</i>				-1.0%	-6	
<i>Pre-registration Nurse Intern (COVID-19)</i>				-1.0%		-31
<i>Pre-registration Nurse/ Midwife Intern</i>	16	16	-0	-0.0%	+15	+16
Nursing/ Midwifery Student	16	16	-0	-0.0%	+11	-15
Nursing/ Midwifery other	5	5	-0	-0.0%	-0	+0
Nursing & Midwifery	1,586	1,590	+5	+0.3%	+28	+64
Therapy Professions	171	167	-4	-0.0%	-4	+6
Health Science/ Diagnostics	232	234	+2	+0.0%	+2	+8
Social Workers	8	8	-1	-0.1%	+0	+1
Psychologists	2	2	-0	-0.0%	+1	+1
Pharmacy	67	71	+4	+0.1%	+13	+17
H&SC, Other	24	25	+2	+0.1%	+25	+23
Health & Social Care Professionals	504	507	+3	+0.6%	+38	+56
Management (VIII & above)	32	33	+1	+0.0%	+6	+6
Administrative/ Supervisory (V to VII)	130	129	-1	-0.0%	+9	+25
Clerical (III & IV)	470	475	+5	+0.0%	+12	+3
Management & Administrative	633	637	+4	+0.6%	+27	+35
Support	467	465	-2	-0.0%	+8	-84
Maintenance/ Technical	40	39	-0	-0.0%	-0	+0
General Support	507	504	-2	-0.5%	+8	-84
Health Care Assistants	577	574	-3	-0.0%	+1	+68
Care, other	11	11	+0	+0.0%	+1	+3
Patient & Client Care	588	585	-3	-0.4%	+3	+71

Section 38 Hospitals

Jul 2021 (Dec 2020 figure: 8,590)	WTE Jun 2021	WTE Jul 2021	WTE change since Jun 21	% change since Jun 21	WTE change since Dec 20	WTE change since Jul 20
Overall	8,829	8,878	+49	+0.6%	+288	+315
Consultants	429	433	+4	+0.0%	-0	+3
Registrars	463	492	+29	+0.1%	+45	+33
SHO/ Interns	419	407	-12	-0.0%	-28	-25
Medical/ Dental, other	19	17	-2	-0.1%	+5	+5
Medical & Dental	1,330	1,350	+19	+1.5%	+21	+16
Nurse/ Midwife Manager	722	715	-6	-0.0%	+25	+92
Nurse/ Midwife Specialist & AN/MP	267	266	-1	-0.0%	+13	+29
Staff Nurse/ Staff Midwife	2,251	2,241	-10	-0.0%	+45	+66
<i>Nursing/ Midwifery awaiting registration</i>	6	8	+2	+0.3%	+3	+8
<i>Post-registration Nurse/ Midwife Student</i>	28	28		+0.0%	+7	+8
<i>Pre-registration Nurse Intern (COVID-19)</i>				-1.0%		-191
<i>Pre-registration Nurse/ Midwife Intern</i>	91	91	-1	-0.0%	+66	+91
Nursing/ Midwifery Student	125	126	+2	+0.0%	+22	-85
Nursing/ Midwifery other	65	66	+1	+0.0%	-2	-5
Nursing & Midwifery	3,429	3,414	-15	-0.4%	+103	+97
Therapy Professions	313	306	-7	-0.0%	-1	+9
Health Science/ Diagnostics	570	578	+8	+0.0%	+19	+30
Social Workers	68	69	+1	+0.0%	+3	+6
Psychologists	22	21	-1	-0.0%	+1	+2
Pharmacy	138	136	-2	-0.0%	+2	-2
H&SC, Other	33	26	-7	-0.2%	-1	-2
Health & Social Care Professionals	1,144	1,136	-7	-0.6%	+21	+44
Management (VIII & above)	81	80	-1	-0.0%	+6	+9
Administrative/ Supervisory (V to VII)	493	492	-0	-0.0%	+13	+47
Clerical (III & IV)	817	819	+2	+0.0%	+58	+38
Management & Administrative	1,391	1,391	+0	+0.0%	+77	+94
Support	866	874	+8	+0.0%	+18	+41
Maintenance/ Technical	82	82		+0.0%	+3	+2
General Support	948	956	+8	+0.9%	+21	+43
Health Care Assistants	570	613	+44	+0.1%	+44	+22
Care, other	18	18	-0	-0.0%	-1	-1
Patient & Client Care	588	631	+43	+7.4%	+43	+21

Ireland East Hospital Group Employment by Hospital & Staff Category: July 2021

Wexford General

Jul 2021 (Dec 2020 figure: 1,055)	WTE Jun 2021	WTE Jul 2021	WTE change since Jun 21	% change since Jun 21	WTE change since Dec 19
Overall	1,084	1,079	-6	-0.5%	+24
Consultant Anaesthesia	5	5	0	+0.0%	+1
Consultant Emergency Medicine	2	2	0	+0.0%	
Consultant Medicine	7	7	0	+0.0%	-2
Consultant Obstetrics & Gynaecology	6	6	-0	-0.0%	-0
Consultant Paediatrics	4	4	0	+0.0%	
Consultant Pathology	1	1	0	+0.0%	+0
Consultant Radiology	5	5	0	+0.0%	+2
Consultant Surgery	5	5	0	+0.0%	-0
Consultants	35	35	-0	-0.0%	-2
Registrar	43	39	-4	-0.1%	-6
Senior Registrar	4	4	+0	+0.0%	+3
Specialist Registrar	9	9	-0	-0.0%	+2
Registrars	56	52	-4	-0.1%	+2
Interns	14	19	+5	+0.4%	+9
Senior House Officer	55	47	-8	-0.1%	-4
SHO/ Interns	69	66	-2	-0.0%	+7
Other Medical	7	6	-0	-0.1%	+1
Medical/ Dental, other	7	6	-0	-0.1%	
Medical & Dental	166	159	-7	-7	+6
Clinical Nurse/ Midwife Manager	76	72	-3	-0.0%	-4
Director Nursing/Midwifery, Assistant	7	7	+0	+0.0%	+0
Director of Nursing/Midwifery	2	2	0	+0.0%	-0
Nurse/ Midwife Manager	84	81	-3	-0.0%	-2
Advanced Nurse/ Midwife Practitioner	6	5	-0	-0.1%	+2
Clinical Nurse/ Midwife Specialist	22	20	-1	-0.1%	+5
Nurse/ Midwife Specialist & AN/MP	27	26	-2	-0.1%	+1
Staff Nurses [General/ Children's]	252	261	+9	+0.0%	+12
Staff Midwives	45	45	-1	-0.0%	+4
Staff Nurse/ Staff Midwife	297	306	+9	+0.0%	+6
Pre-registration Nurse/ Midwife Intern	5	5	0	+0.0%	+5
Pre-registration Nurse Intern (COVID-19)				-1.0%	
Nursing/ Midwifery awaiting registration				-1.0%	-1
Nursing/ Midwifery Student	5	5	0	+0.0%	+2
Nursing & Midwifery	414	417	+4	+4	+7
Dietitians	7	7	0	+0.0%	+3
Occupational Therapists	4	4	+0	+0.0%	+1
Physiotherapists	17	16	-1	-0.1%	+0
Speech & Language Therapists	2	2	+1	+0.3%	+1
Podiatrists & Chiropodists				-1.0%	-2
Therapy Professions	29	29	-0	-0.0%	+0
Clinical Engineering	1	1	0	+0.0%	
Clinical Measurement	3	3	-0	-0.0%	-1
Phlebotomists	2	2	-0	-0.0%	-0

<i>Radiographers</i>	18	18	+0	+0.0%	-1
<i>Medical Science</i>	12	10	-2	-0.2%	+1
Health Science/ Diagnostics	37	35	-2	-0.1%	-2
<i>Social Workers</i>	2	2	+0	+0.0%	+1
Social Workers	2	2	+0	+0.0%	+1
<i>Pharmacy</i>	14	14	+1	+0.0%	+3
Pharmacy	14	14	+1	+0.0%	+1
Health & Social Care Professionals	81	80	-2	-2	+1
<i>Executive Management</i>	1		-1	-1.0%	-1
<i>Senior Management (VIII & GM)</i>	3	3	0	+0.0%	+2
Management (VIII & above)	4	3	-1	-0.1%	-1
<i>Middle Management (V-VII)</i>	27	27	-1	-0.0%	+12
Administrative/ Supervisory (V to VII)	27	27	-1	-0.0%	+5
<i>General Administrative (III & IV)</i>	112	113	+0	+0.0%	-3
Clerical (III & IV)	112	113	+0	+0.0%	-3
Management & Administrative	143	142	-1	-1	+0
<i>Catering</i>	9	9	+0	+0.0%	+1
<i>Household Services</i>	124	124	-1	-0.0%	+3
<i>Other Labs & Associated</i>	3	4	+1	+0.3%	+3
<i>Other Support</i>	30	30	0	+0.0%	-7
<i>Portering</i>	12	12	+0	+0.0%	-26
Support	178	179	+1	+0.0%	+5
<i>Maintenance</i>	7	7	+0	+0.0%	+1
Maintenance/ Technical	7	7	+0	+0.0%	+1
General Support	185	186	+1	+1	+7
<i>HCA, Nurse's Aide, etc.</i>	91	90	-1	-0.0%	+34
<i>Health & Social Care Assistants</i>	1	1	0	+0.0%	+1
<i>HCA (Student Nurse/Midwife COVID-19)</i>				-1.0%	
Health Care Assistants	92	91	-1	-0.0%	+2
<i>Other Care Grades</i>	3	3	+0	+0.1%	+0
Care, other	3	3	+0	+0.1%	+1
Patient & Client Care	95	94	-1	-1	+3

St Luke's General Kilkenny

Jul 2021 (Dec 2020 figure: 1,185)	WTE Jun 2021	WTE Jul 2021	WTE change since Jun 21	% change since Jun 21	WTE change since Dec 19
Overall	1,187	1,186	-1	-0.1%	+2
Consultant Anaesthesia	7	7	0	+0.0%	+2
Consultant Emergency Medicine	3	3	0	+0.0%	+1
Consultant Medicine	13	13	-0	-0.0%	+3
Consultant Obstetrics & Gynaecology	6	6	0	+0.0%	
Consultant Paediatrics	6	6	-0	-0.0%	+0
Consultant Radiology	7	7	-0	-0.0%	+1
Consultant Surgery	3	3	0	+0.0%	-1
Consultants	45	44	-0	-0.0%	+4
Registrar	49	47	-2	-0.0%	+8
Senior Registrar	13	13	0	+0.0%	+1
Specialist Registrar	8	8	0	+0.0%	+3
Registrars	70	68	-2	-0.0%	+4
Interns	10	15	+5	+0.5%	+5
Senior House Officer	47	41	-6	-0.1%	-7
SHO/ Interns	57	57	-0	-0.0%	+3
Other Medical	8	8	+0	+0.0%	+1
Medical/ Dental, other	8	8	+0	+0.0%	+1
Medical & Dental	180	177	-3	-3	+12
Clinical Nurse/ Midwife Manager	77	74	-3	-0.0%	-0
Director Nursing/Midwifery, Assistant	8	8	+1	+0.1%	+0
Director of Nursing/Midwifery	2	2	0	+0.0%	
Nurse/ Midwife Manager	86	84	-2	-0.0%	+0
Advanced Nurse/ Midwife Practitioner	10	9	-1	-0.1%	+3
Clinical Nurse/ Midwife Specialist	20	20	+0	+0.0%	+5
Nurse/ Midwife Specialist & AN/MP	30	29	-1	-0.0%	+4
Staff Nurses [General/ Children's]	272	271	-0	-0.0%	+4
Staff Midwives	29	29	+0	+0.0%	-8
Staff Nurse/ Staff Midwife	300	301	+0	+0.0%	-17
Pre-registration Nurse/ Midwife Intern	5	5	0	+0.0%	+5
Nursing/ Midwifery awaiting registration				-1.0%	
Nursing/ Midwifery Student	5	5	0	+0.0%	+4
Nursing Education/Clinical	1	1	-0	-0.1%	-0
Nursing/ Midwifery other	1	1	-0	-0.1%	-0
Nursing & Midwifery	423	420	-3	-3	-9
Dietitians	11	10	-0	-0.0%	+1
Occupational Therapists	7	6	-0	-0.0%	+3
Physiotherapists	19	18	-1	-0.1%	-0
Speech & Language Therapists	4	4	+0	+0.0%	+2
Podiatrists & Chiropodists	2	2	0	+0.0%	+1
Therapy Professions	43	41	-2	-0.0%	-2
Clinical Engineering	1	1	0	+0.0%	
Clinical Measurement	10	10	+1	+0.1%	-0
Radiographers	23	25	+2	+0.1%	-0
Medical Science	16	15	-0	-0.0%	+3
Health Science/ Diagnostics	49	52	+3	+0.1%	+0
Pharmacy	22	23	+1	+0.1%	+5

Pharmacy	22	23	+1	+0.1%	+5
Health & Social Care Professionals	114	116	+2	+2	+3
<i>Executive Management</i>	1	1	0	+0.0%	+1
<i>Senior Management (VIII & GM)</i>	6	6	-0	-0.0%	+3
Management (VIII & above)	7	7	-0	-0.0%	+1
<i>Middle Management (V-VII)</i>	22	23	+1	+0.1%	+9
Administrative/ Supervisory (V to VII)	22	23	+1	+0.1%	+3
<i>General Administrative (III & IV)</i>	128	131	+2	+0.0%	-6
Clerical (III & IV)	128	131	+2	+0.0%	-2
Management & Administrative	157	161	+4	+4	+2
<i>Catering</i>	9	9	+0	+0.0%	+1
<i>Household Services</i>	145	145	-0	-0.0%	+11
<i>Other Labs & Associated</i>	3	3	0	+0.0%	+3
<i>Other Support</i>	5	6	+0	+0.0%	+2
<i>Portering</i>	4	4	-0	-0.1%	-52
Support	167	167	-0	-0.0%	-4
<i>Maintenance</i>	14	14	0	+0.0%	+1
Maintenance/ Technical	14	14	0	+0.0%	-1
General Support	181	181	-0	-0	-5
<i>HCA, Nurse's Aide, etc.</i>	129	129	-1	-0.0%	+54
<i>Health & Social Care Assistants</i>	1	1	0	+0.0%	+0
<i>HCA (Student Nurse/Midwife COVID-19)</i>				-1.0%	
Health Care Assistants	130	130	-1	-0.0%	-1
<i>Other Care Grades</i>	2	2	0	+0.0%	
Care, other	2	2	0	+0.0%	
Patient & Client Care	133	132	-1	-1	-1

Hospital Group HQ

Jul 2021 (Dec 2020 figure: 34)	WTE Jun 2021	WTE Jul 2021	WTE change since Jun 21	% change since Jun 21	WTE change since Dec 19
Overall	65	71	+6	+9.2%	+37
<i>Clinical Nurse/ Midwife Manager</i>	1	1	+0	+0.4%	+1
<i>Director Nursing/Midwifery, Assistant</i>	1	1	+0	+0.1%	-1
<i>Director of Nursing/Midwifery</i>	2	2	0	+0.0%	+1
Nurse/ Midwife Manager	4	4	+0	+0.1%	+1
<i>Nursing Bank</i>				-1.0%	
<i>Staff Nurses [General/ Children's]</i>	1	1	+0	+0.0%	+1
Staff Nurse/ Staff Midwife	1	1	+0	+0.0%	
Nursing & Midwifery	5	5	+0	+0	+1
<i>Clinical Engineering</i>	1	1	0	+0.0%	
Health Science/ Diagnostics	1	1	0	+0.0%	
<i>Pharmacy</i>	1	3	+2	+1.9%	+3
Pharmacy	1	3	+2	+1.9%	+3
<i>Vaccinators</i>	22	23	+2	+0.1%	+23
H&SC, Other	22	23	+2	+0.1%	+23
Health & Social Care Professionals	24	27	+3	+3	+26
<i>Executive Management</i>	6	5	-0	-0.0%	+3
<i>Senior Management (VIII & GM)</i>	8	9	+1	+0.1%	+5
Management (VIII & above)	14	14	+0	+0.0%	+4
<i>Middle Management (V-VII)</i>	19	18	-1	-0.1%	+1
Administrative/ Supervisory (V to VII)	19	18	-1	-0.1%	+1
<i>General Administrative (III & IV)</i>	4	7	+3	+0.7%	+4
Clerical (III & IV)	4	7	+3	+0.7%	+5
Management & Administrative	36	38	+2	+2	+10
<i>Technical Services</i>				-1.0%	-1
Maintenance/ Technical				-1.0%	
General Support					

Our Lady's Navan

Jul 2021 (Dec 2020 figure: 590)	WTE Jun 2021	WTE Jul 2021	WTE change since Jun 21	% change since Jun 21	WTE change since Dec 19
Overall	598	596	-2	-0.3%	+6
Consultant Anaesthesia	2	2	0	+0.0%	
Consultant Medicine	8	8	0	+0.0%	+1
Consultant Radiology	2	2	0	+0.0%	
Consultant Surgery	2	2	0	+0.0%	
Consultants	14	14	0	+0.0%	-2
Registrar	28	24	-4	-0.1%	+4
Senior Registrar	1	1	0	+0.0%	
Specialist Registrar	5	5	0	+0.0%	
Registrars	34	30	-4	-0.1%	-1
Senior House Officer	40	40	-0	-0.0%	+5
SHO/ Interns	40	40	-0	-0.0%	-4
Medical & Dental	89	84	-4	-4	-7
Clinical Nurse/ Midwife Manager	41	41	-0	-0.0%	+3
Director Nursing/Midwifery, Assistant	5	5	0	+0.0%	
Director of Nursing/Midwifery	1	1	-0	-0.0%	-0
Nurse/ Midwife Manager	47	47	-0	-0.0%	+0
Advanced Nurse/ Midwife Practitioner	6	6	0	+0.0%	+4
Clinical Nurse/ Midwife Specialist	8	8	-0	-0.0%	-1
Nurse/ Midwife Specialist & AN/MP	14	13	-0	-0.0%	+1
Staff Nurses [General/ Children's]	140	142	+2	+0.0%	+21
Staff Nurse/ Staff Midwife	140	142	+2	+0.0%	+7
Nursing/ Midwifery awaiting registration				-1.0%	-4
Nursing/ Midwifery Student				-1.0%	
Nursing & Midwifery	200	202	+2	+2	+8
Dietitians	2	2	-0	-0.1%	+1
Occupational Therapists	5	6	+1	+0.2%	+2
Physiotherapists	18	16	-1	-0.1%	+4
Speech & Language Therapists	2	2	0	+0.0%	+1
Podiatrists & Chiropodists	1	1	0	+0.0%	
Therapy Professions	27	27	-0	-0.0%	-1
Clinical Engineering		0	+0	-1.0%	+0
Clinical Measurement	2	3	+0	+0.1%	-0
Phlebotomists	3	3	+0	+0.1%	-0
Radiographers	13	13	-1	-0.0%	-2
Medical Science	21	22	+1	+0.0%	+6
Health Science/ Diagnostics	40	41	+1	+0.0%	+2
Pharmacy	9	9	-0	-0.0%	+3
Pharmacy	9	9	-0	-0.0%	+2
Health & Social Care Professionals	76	77	+0	+0	+3
Executive Management	1	1	-0	-0.0%	+1
Senior Management (VIII & GM)	1	1	0	+0.0%	-1
Management (VIII & above)	2	2	-0	-0.0%	-0
Middle Management (V-VII)	21	21	-0	-0.0%	+9
Administrative/ Supervisory (V to VII)	21	21	-0	-0.0%	+0
General Administrative (III & IV)	58	58	+0	+0.0%	+1
Clerical (III & IV)	58	58	+0	+0.0%	-1

Management & Administrative	81	81	+0	+0	-0
<i>Catering</i>	6	6	-0	-0.0%	+1
<i>Other Labs & Associated</i>	7	7	-0	-0.0%	+2
<i>Other Support</i>	6	6	+0	+0.0%	+1
<i>Portering</i>	8	8	+0	+0.0%	
Support	27	27	-0	-0.0%	+2
<i>Maintenance</i>	5	5	+0	+0.0%	
Maintenance/ Technical	5	5	+0	+0.0%	+0
General Support	32	32	+0	+0	+2
<i>HCA, Nurse's Aide, etc.</i>	111	111	-0	-0.0%	+17
<i>Health & Social Care Assistants</i>	8	8	+0	+0.0%	+3
<i>HCA (Student Nurse/Midwife COVID-19)</i>				-1.0%	
Health Care Assistants	118	118	-0	-0.0%	+1
<i>Other Care Grades</i>	2	2	-0	-0.0%	-1
Care, other	2	2	-0	-0.0%	-0
Patient & Client Care	120	120	-0	-0	+1

Cappagh National Orthopaedic

Jul 2021 (Dec 2020 figure: 441)	WTE Jun 2021	WTE Jul 2021	WTE change since Jun 21	% change since Jun 21	WTE change since Dec 19
Overall	452	457	+5	+1.1%	+16
Consultant Anaesthesia	12	12	0	+0.0%	+1
Consultant Medicine	2	2	0	+0.0%	
Consultant Radiology	1	2	+1	+1.0%	+1
Consultant Surgery	2	2	0	+0.0%	
Consultants	17	18	+1	+0.1%	+2
Registrar	6	6	0	+0.0%	-4
Specialist Registrar	11	14	+3	+0.3%	+5
Registrars	17	20	+3	+0.2%	+2
Interns	4	3	-1	-0.3%	-2
Senior House Officer	8	11	+3	+0.4%	+4
SHO/ Interns	12	14	+2	+0.2%	+2
Medical & Dental	45	51	+6	+6	+6
Clinical Nurse/ Midwife Manager	36	36	0	+0.0%	+1
Director Nursing/Midwifery, Assistant	5	5	0	+0.0%	
Director of Nursing/Midwifery	2	1	-1	-0.5%	
Nurse/ Midwife Manager	43	42	-1	-0.0%	+1
Clinical Nurse/ Midwife Specialist	10	10	0	+0.0%	+2
Nurse/ Midwife Specialist & AN/MP	10	10	0	+0.0%	+2
Staff Nurses [General/ Children's]	111	111	0	+0.0%	+8
Staff Nurse/ Staff Midwife	111	111	0	+0.0%	-0
Nursing Education/Clinical	1	1	0	+0.0%	
Other Nursing/ Midwifery	1	1	0	+0.0%	
Nursing/ Midwifery other	2	2	0	+0.0%	
Nursing & Midwifery	167	166	-1	-1	+3
Dietitians	1	1	0	+0.0%	
Occupational Therapists	10	10	0	+0.0%	
Physiotherapists	24	24	0	+0.0%	+1
Podiatrists & Chiropodists	0	0	0	+0.0%	
Therapy Professions	34	34	0	+0.0%	+1
Phlebotomists	1	1	0	+0.0%	+0
Radiographers	11	11	0	+0.0%	+1
Medical Science	17	17	0	+0.0%	+3
Health Science/ Diagnostics	29	29	0	+0.0%	+3
Social Workers	7	7	0	+0.0%	
Social Workers	7	7	0	+0.0%	
Psychologists	1	1	0	+0.0%	
Psychologists	1	1	0	+0.0%	
Pharmacy	6	6	0	+0.0%	+1
Pharmacy	6	6	0	+0.0%	+1
Health & Social Care Professionals	77	77	+0	+0	+5
Executive Management	1	1	0	+0.0%	
Senior Management (VIII & GM)	3	3	0	+0.0%	
Management (VIII & above)	4	4	0	+0.0%	
Middle Management (V-VII)	26	26	0	+0.0%	+4
Administrative/ Supervisory (V to VII)	26	26	-0	-0.0%	+1
General Administrative (III & IV)	44	44	0	+0.0%	+4

Clerical (III & IV)	44	44	0	+0.0%	+1
Management & Administrative	74	74			+2
<i>Catering</i>	4	4	0	+0.0%	
<i>Household Services</i>	46	46	0	+0.0%	+0
<i>Other Support</i>	1	1	0	+0.0%	
<i>Portering</i>	11	11	0	+0.0%	
Support	62	62	+0	+0.0%	+0
<i>Maintenance</i>	1	1	0	+0.0%	
Maintenance/ Technical	1	1	0	+0.0%	
General Support	63	63	+0	+0	+0
<i>HCA, Nurse's Aide, etc.</i>	26	26	0	+0.0%	
Health Care Assistants	26	26	0	+0.0%	
Patient & Client Care	26	26			

Mater Misericordiae University

Jul 2021 (Dec 2020 figure: 3,429)	WTE Jun 2021	WTE Jul 2021	WTE change since Jun 21	% change since Jun 21	WTE change since Dec 19
Overall	3,501	3,549	+47	+1.3%	+120
Consultant Anaesthesia	26	24	-2	-0.1%	+0
Consultant Emergency Medicine	7	7	0	+0.0%	+0
Consultant Intensive Care Medicine	3	4	+1	+0.4%	+2
Consultant Medicine	68	70	+2	+0.0%	+5
Consultant Obstetrics & Gynaecology	3	3	0	+0.0%	+0
Consultant Paediatrics	1	1	0	+0.0%	+1
Consultant Pathology	18	19	+0	+0.0%	+1
Consultant Psychiatry	2	2	0	+0.0%	+1
Consultant Radiology	17	17	0	+0.0%	+1
Consultant Surgery	40	41	+1	+0.0%	+5
Consultants	185	187	+2	+0.0%	-3
Registrar	84	85	+1	+0.0%	+16
Senior Registrar	6	6	0	+0.0%	+1
Specialist Registrar	96	109	+14	+0.1%	+17
Registrars	185	200	+15	+0.1%	+10
Interns	75	66	-9	-0.1%	+7
Senior House Officer	107	113	+6	+0.1%	+14
SHO/ Interns	182	179	-3	-0.0%	-14
Dentists	1		-1	-1.0%	-1
Other Medical	7	6	-1	-0.1%	+2
Medical/ Dental, other	8	6	-2	-0.3%	-0
Medical & Dental	561	572	+11	+11	-7
Clinical Nurse/ Midwife Manager	210	211	+1	+0.0%	+22
Director Nursing/Midwifery, Assistant	24	21	-3	-0.1%	+3
Director of Nursing/Midwifery	1	1	0	+0.0%	
Nurse/ Midwife Manager	234	233	-1	-0.0%	+12
Advanced Nurse/ Midwife Practitioner	33	33	-1	-0.0%	+7
Clinical Nurse/ Midwife Specialist	75	75	+0	+0.0%	+14
Nurse/ Midwife Specialist & AN/MP	108	108	-0	-0.0%	+10
Staff Nurses [General/ Children's]	936	941	+6	+0.0%	+34
Staff Nurse/ Staff Midwife	936	941	+6	+0.0%	+3
Pre-registration Nurse/ Midwife Intern	36	35	-1	-0.0%	+28
Pre-registration Nurse Intern (COVID-19)				-1.0%	
Nursing/ Midwifery awaiting registration	6	8	+2	+0.3%	+3
Nursing/ Midwifery Student	42	43	+2	+0.0%	+23
Nursing Education/Clinical	35	35	+0	+0.0%	+3
Other Nursing/ Midwifery	15	16	+0	+0.0%	+4
Nursing/ Midwifery other	51	51	+1	+0.0%	+3
Nursing & Midwifery	1,370	1,376	+6	+6	+50
Dietitians	29	29	+0	+0.0%	+7
Occupational Therapists	25	24	-1	-0.1%	+4
Orthoptists	1	1	0	+0.0%	
Physiotherapists	59	58	-2	-0.0%	+2
Speech & Language Therapists	17	17	-0	-0.0%	+5
Podiatrists & Chiropodists	3	3	0	+0.0%	+1
Therapy Professions	134	131	-3	-0.0%	+8
Audiology	2	2	0	+0.0%	+0

Biochemists	10	10	0	+0.0%	+1
Clinical Engineering	8	8	0	+0.0%	+2
Clinical Measurement	34	35	+1	+0.0%	+8
Perfusionists	6	7	+1	+0.3%	+3
Phlebotomists	17	18	+1	+0.0%	+5
Physicists	8	7	-0	-0.0%	-0
Radiographers	63	67	+4	+0.1%	+3
Medical Science	92	93	+1	+0.0%	+0
Health Science/ Diagnostics	239	246	+7	+0.0%	+5
Social Workers	27	27	+1	+0.0%	+1
Social Workers	27	27	+1	+0.0%	+3
Psychologists	9	9	-0	-0.0%	+2
Psychologists	9	9	-0	-0.0%	+1
Pharmacy	56	56	-1	-0.0%	+6
Pharmacy	56	56	-1	-0.0%	+4
Counsellor Therapists	2	1	-1	-0.4%	-1
HSCP Trainees/ Students	11	6	-5	-0.5%	-2
Other Health & Social Care	15	14	-1	-0.0%	+2
H&SC, Other	28	21	-7	-0.2%	-2
Health & Social Care Professionals	491	489	-2	-2	+18
Executive Management	8	8	0	+0.0%	
Senior Management (VIII & GM)	34	35	+1	+0.0%	+11
Management (VIII & above)	42	43	+1	+0.0%	+7
Middle Management (V-VII)	165	166	+1	+0.0%	+9
Other Administrative	1	1	0	+0.0%	
Administrative/ Supervisory (V to VII)	166	167	+1	+0.0%	+5
General Administrative (III & IV)	310	311	+0	+0.0%	+51
Clerical (III & IV)	310	311	+0	+0.0%	+12
Management & Administrative	518	521	+3	+3	+25
Catering	19	18	-1	-0.0%	+1
Household Services	114	115	+1	+0.0%	+2
Other Labs & Associated	22	27	+5	+0.2%	+10
Other Support	38	38	+0	+0.0%	+6
Portering	72	76	+3	+0.0%	+5
Support	266	274	+9	+0.0%	+8
Maintenance	21	21	0	+0.0%	+1
Technical Services	5	5	0	+0.0%	+1
Maintenance/ Technical	26	26	0	+0.0%	
General Support	292	300	+9	+9	+8
HCA, Nurse's Aide, etc.	252	273	+21	+0.1%	+56
Health & Social Care Assistants	10	10	0	+0.0%	+2
Health Care Assistants	262	283	+21	+0.1%	+25
Other Care Grades	7	7	-0	-0.0%	-0
Care, other	7	7	-0	-0.0%	+0
Patient & Client Care	269	290	+21	+21	+26

MRH Mullingar

Jul 2021 (Dec 2020 figure: 1,004)	WTE Jun 2021	WTE Jul 2021	WTE change since Jun 21	% change since Jun 21	WTE change since Dec 19
Overall	1,047	1,039	-8	-0.8%	+35
Consultant Anaesthesia	8	7	-1	-0.1%	+3
Consultant Emergency Medicine	3	3	0	+0.0%	+1
Consultant Medicine	13	14	+1	+0.1%	+6
Consultant Obstetrics & Gynaecology	3	3	0	+0.0%	
Consultant Paediatrics	5	5	+0	+0.0%	+0
Consultant Pathology	1	1	0	+0.0%	
Consultant Radiology	6	6	-0	-0.0%	-0
Consultant Surgery	6	6	0	+0.0%	+1
Consultants	45	45	+0	+0.0%	+2
Registrar	46	49	+3	+0.1%	+9
Senior Registrar	3	3	0	+0.0%	-1
Specialist Registrar	10	8	-2	-0.2%	-3
Registrars	59	60	+1	+0.0%	+6
Interns	9	9	0	+0.0%	
Senior House Officer	53	47	-6	-0.1%	+1
SHO/ Interns	62	56	-6	-0.1%	-5
Other Medical	2	2	-0	-0.0%	+0
Medical/ Dental, other	2	2	-0	-0.0%	-0
Medical & Dental	168	163	-4	-4	+3
Clinical Nurse/ Midwife Manager	65	67	+2	+0.0%	+8
Director Nursing/Midwifery, Assistant	12	12	-0	-0.0%	+1
Director of Nursing/Midwifery	2	2	0	+0.0%	
Nurse/ Midwife Manager	79	81	+2	+0.0%	+4
Advanced Nurse/ Midwife Practitioner	6	6	+0	+0.0%	+5
Clinical Nurse/ Midwife Specialist	12	12	+0	+0.0%	-0
Nurse/ Midwife Specialist & AN/MP	18	18	+0	+0.0%	+2
Staff Nurses [General/ Children's]	222	221	-1	-0.0%	+28
Staff Midwives	45	46	+0	+0.0%	-2
Staff Nurse/ Staff Midwife	268	267	-1	-0.0%	+2
Pre-registration Nurse/ Midwife Intern	6	6	-0	-0.0%	+5
Pre-registration Nurse Intern (COVID-19)				-1.0%	
Nursing/ Midwifery awaiting registration				-1.0%	-1
Nursing/ Midwifery Student	6	6	-0	-0.0%	+5
Nursing Education/Clinical	3	3	+0	+0.0%	+1
Nursing/ Midwifery other	3	3	+0	+0.0%	+0
Nursing & Midwifery	373	375	+1	+1	+13
Dietitians	7	7	-0	-0.0%	+1
Occupational Therapists	6	5	-1	-0.1%	+1
Orthoptists	1	1	-0	-0.2%	+1
Physiotherapists	18	18	-0	-0.0%	+5
Speech & Language Therapists	3	3	-0	-0.0%	-0
Podiatrists & Chiropodists	1	1	0	+0.0%	+1
Therapy Professions	36	35	-1	-0.0%	-2
Clinical Engineering	1	1	0	+0.0%	
Clinical Measurement	9	9	-0	-0.0%	+3
Radiographers	29	29	-0	-0.0%	+8
Medical Science	46	47	+1	+0.0%	+4

Health Science/ Diagnostics	85	85	+0	+0.0%	+2
Pharmacy	16	17	+0	+0.0%	+1
Pharmacy	16	17	+0	+0.0%	+2
HSCP Trainees/ Students	2	2	0	+0.0%	+2
H&SC, Other	2	2	0	+0.0%	+2
Health & Social Care Professionals	140	139	-0	-0	+5
Executive Management	1	1	0	+0.0%	
Senior Management (VIII & GM)	3	4	+1	+0.3%	
Management (VIII & above)	4	5	+1	+0.3%	+2
Middle Management (V-VII)	29	28	-1	-0.0%	+5
Administrative/ Supervisory (V to VII)	29	28	-1	-0.0%	-0
General Administrative (III & IV)	104	103	-1	-0.0%	+2
Clerical (III & IV)	104	103	-1	-0.0%	+8
Management & Administrative	136	136	-0	-0	+10
Catering	8	8	+0	+0.0%	+0
Household Services	4	4	0	+0.0%	
Other Labs & Associated	9	9	+0	+0.0%	+4
Other Support	11	11	-0	-0.0%	+2
Support	32	32	+0	+0.0%	+5
Maintenance	13	12	-0	-0.0%	+0
Technical Services				-1.0%	-1
Maintenance/ Technical	13	12	-0	-0.0%	-0
General Support	44	44	-0	-0	+4
HCA, Nurse's Aide, etc.	184	180	-4	-0.0%	+22
Health & Social Care Assistants	1	1	0	+0.0%	
Health Care Assistants	185	181	-4	-0.0%	+0
Other Care Grades	1	1	0	+0.0%	
Care, other	1	1	0	+0.0%	
Patient & Client Care	186	182	-4	-4	+0

Royal Victoria Eye & Ear

Jul 2021 (Dec 2020 figure: 313)	WTE Jun 2021	WTE Jul 2021	WTE change since Jun 21	% change since Jun 21	WTE change since Dec 19
Overall	337	336	-1	-0.2%	+23
Consultant Anaesthesia	5	5	0	+0.0%	
Consultant Surgery	22	22	0	+0.0%	+4
Consultants	27	27	0	+0.0%	+1
Registrar	13	13	0	+0.0%	+3
Specialist Registrar	11	13	+2	+0.1%	+3
Registrars	24	26	+2	+0.1%	+4
Senior House Officer	15	16	+0	+0.0%	
SHO/ Interns	15	16	+0	+0.0%	+1
Other Medical	4	4	0	+0.0%	-0
Medical/ Dental, other	4	4	0	+0.0%	-1
Medical & Dental	70	72	+2	+2	+5
Clinical Nurse/ Midwife Manager	23	23	-0	-0.0%	+2
Director Nursing/Midwifery, Assistant	2	2	0	+0.0%	
Director of Nursing/Midwifery	1	1	0	+0.0%	
Nurse/ Midwife Manager	26	26	-0	-0.0%	+2
Advanced Nurse/ Midwife Practitioner	3	3	0	+0.0%	-0
Clinical Nurse/ Midwife Specialist	10	10	0	+0.0%	+4
Nurse/ Midwife Specialist & AN/MP	13	13	0	+0.0%	+0
Staff Nurses [General/ Children's]	85	82	-3	-0.0%	+1
Staff Nurse/ Staff Midwife	85	82	-3	-0.0%	-0
Nursing Education/Clinical	1	1	0	+0.0%	-1
Nursing/ Midwifery other	1	1	0	+0.0%	
Nursing & Midwifery	125	122	-3	-3	+2
Dietitians	2	2	0	+0.0%	+1
Orthoptists	1	1	0	+0.0%	-0
Physiotherapists	0	0	0	+0.0%	
Speech & Language Therapists	1	1	0	+0.0%	
Therapy Professions	3	3	0	+0.0%	+1
Audiology	1	0	-1	-0.8%	-1
Radiographers	1	1	0	+0.0%	+1
Health Science/ Diagnostics	2	1	-1	-0.4%	-1
Social Workers	2	2	0	+0.0%	
Social Workers	2	2	0	+0.0%	+1
Pharmacy	4	4	0	+0.0%	+1
Pharmacy	4	4	0	+0.0%	
Other Health & Social Care	4	4	0	+0.0%	
H&SC, Other	4	4	0	+0.0%	
Health & Social Care Professionals	15	14	-1	-1	+1
Senior Management (VIII & GM)	4	4	0	+0.0%	+1
Management (VIII & above)	4	4	0	+0.0%	
Middle Management (V-VII)	31	32	+1	+0.0%	+8
Administrative/ Supervisory (V to VII)	31	32	+1	+0.0%	+4
General Administrative (III & IV)	48	48	-0	-0.0%	+12
Clerical (III & IV)	48	48	-0	-0.0%	+10
Management & Administrative	84	84	+0	+0	+14

<i>Catering</i>	6	5	-1	-0.2%	-1
<i>Household Services</i>	10	9	-0	-0.0%	-1
<i>Other Labs & Associated</i>	1	1	0	+0.0%	+1
<i>Other Support</i>	3	3	0	+0.0%	+1
<i>Portering</i>	11	11	0	+0.0%	+1
Support	30	29	-1	-0.0%	-0
General Support	30	29	-1	-1	-0
<i>HCA, Nurse's Aide, etc.</i>	13	15	+2	+0.1%	+6
Health Care Assistants	13	15	+2	+0.1%	+2
Patient & Client Care	13	15	+2	+2	+2

St. Michael's

Jul 2021 (Dec 2020 figure: 404)	WTE Jun 2021	WTE Jul 2021	WTE change since Jun 21	% change since Jun 21	WTE change since Dec 19
Overall	415	415	-0	-0.0%	+10
Consultant Anaesthesia	1	1	0	+0.0%	
Consultant Medicine	6	6	+0	+0.0%	+1
Consultant Radiology	1	1	0	+0.0%	-1
Consultant Surgery	2	2	0	+0.0%	
Consultants	10	11	+0	+0.0%	+0
Registrar	10	10	0	+0.0%	
Specialist Registrar	3	3	0	+0.0%	
Registrars	13	13	0	+0.0%	
Interns	5	5	0	+0.0%	+2
Senior House Officer	10	10	0	+0.0%	-1
SHO/ Interns	15	15	0	+0.0%	
Other Medical	0	0	0	+0.0%	
Medical/ Dental, other	0	0	0	+0.0%	
Medical & Dental	39	39	+0	+0	+0
Clinical Nurse/ Midwife Manager	29	28	-1	-0.0%	-0
Director Nursing/Midwifery, Assistant	4	4	0	+0.0%	-1
Director of Nursing/Midwifery	1	1	0	+0.0%	
Nurse/ Midwife Manager	34	33	-1	-0.0%	-2
Advanced Nurse/ Midwife Practitioner	5	5	0	+0.0%	
Clinical Nurse/ Midwife Specialist	20	20	-0	-0.0%	-3
Nurse/ Midwife Specialist & AN/MP	25	25	-0	-0.0%	-1
Staff Nurses [General/ Children's]	103	103	0	+0.0%	+0
Staff Nurse/ Staff Midwife	103	103	-0	-0.0%	-3
Pre-registration Nurse/ Midwife Intern	10	10	0	+0.0%	+10
Nursing/ Midwifery Student	10	10	0	+0.0%	+10
Nursing Education/Clinical	3	3	0	+0.0%	-2
Nursing/ Midwifery other	3	3	0	+0.0%	-1
Nursing & Midwifery	174	173	-1	-1	+2
Dietitians	3	3	0	+0.0%	-1
Occupational Therapists	4	4	0	+0.0%	
Orthoptists	0	0	0	+0.0%	
Physiotherapists	10	11	+1	+0.1%	-3
Podiatrists & Chiropodists	0	0	0	+0.0%	
Therapy Professions	17	18	+1	+0.1%	+1
Clinical Measurement	6	6	0	+0.0%	+3
Phlebotomists	3	3	0	+0.0%	+0
Radiographers	8	8	0	+0.0%	+1
Medical Science	5	6	+1	+0.2%	+1
Health Science/ Diagnostics	22	23	+1	+0.0%	+2
Social Workers	4	4	0	+0.0%	+2
Social Workers	4	4	0	+0.0%	+0
Pharmacy	7	7	0	+0.0%	-1
Pharmacy	7	7	0	+0.0%	+1
Health & Social Care Professionals	50	52	+2	+2	+4
Executive Management	1	1	0	+0.0%	+1
Senior Management (VIII & GM)	2	1	-1	-0.5%	

Management (VIII & above)	3	2	-1	-0.3%	-1
<i>Middle Management (V-VII)</i>	26	26	0	+0.0%	+7
Administrative/ Supervisory (V to VII)	26	26	0	+0.0%	+2
<i>General Administrative (III & IV)</i>	44	44	-0	-0.0%	+1
Clerical (III & IV)	44	44	-0	-0.0%	+2
Management & Administrative	73	72	-1	-1	+3
<i>Catering</i>	7	7	0	+0.0%	-0
<i>Household Services</i>	17	17	0	+0.0%	-1
<i>Other Labs & Associated</i>	2	2	0	+0.0%	-1
<i>Other Support</i>	6	6	0	+0.0%	+1
<i>Portering</i>	16	16	0	+0.0%	+1
Support	48	48	0	+0.0%	+1
<i>Maintenance</i>	2	2	0	+0.0%	
Maintenance/ Technical	2	2	0	+0.0%	
General Support	50	50			+1
<i>HCA, Nurse's Aide, etc.</i>	27	27	0	+0.0%	+2
<i>Health & Social Care Assistants</i>	1	1	0	+0.0%	+1
Health Care Assistants	28	28	0	+0.0%	+1
<i>Other Care Grades</i>	1	1	0	+0.0%	-1
Care, other	1	1	0	+0.0%	-1
Patient & Client Care	29	29			-0

St. Columcille's

Jul 2021 (Dec 2020 figure: 457)	WTE Jun 2021	WTE Jul 2021	WTE change since Jun 21	% change since Jun 21	WTE change since Dec 19
Overall	465	465	-0	-0.0%	+8
Consultant Anaesthesia	3	3	0	+0.0%	+0
Consultant Medicine	10	10	-0	-0.0%	-0
Consultant Pathology	1	1	0	+0.0%	
Consultant Radiology	3	3	0	+0.0%	+1
Consultant Surgery	1	1	+0	+0.3%	-1
Consultants	18	18	+0	+0.0%	+2
Registrar	6	6	+0	+0.0%	-2
Senior Registrar				-1.0%	-1
Specialist Registrar	2	2	+0	+0.1%	+1
Registrars	8	8	+0	+0.0%	-2
Interns	5	7	+2	+0.3%	+1
Senior House Officer	9	8	-1	-0.1%	-0
SHO/ Interns	14	14	+0	+0.0%	-2
Medical & Dental	40	41	+1	+1	-1
Clinical Nurse/ Midwife Manager	28	30	+1	+0.0%	+4
Director Nursing/Midwifery, Assistant	5	4	-1	-0.2%	-2
Director of Nursing/Midwifery	1	1	0	+0.0%	
Nurse/ Midwife Manager	34	35	+0	+0.0%	+0
Advanced Nurse/ Midwife Practitioner	3	3	0	+0.0%	-0
Clinical Nurse/ Midwife Specialist	6	7	+2	+0.3%	+2
Nurse/ Midwife Specialist & AN/MP	8	10	+2	+0.2%	+3
Staff Nurses [General/ Children's]	115	113	-2	-0.0%	-6
Staff Nurse/ Staff Midwife	115	113	-2	-0.0%	+0
Nursing Education/Clinical	1	1	0	+0.0%	-1
Nursing/ Midwifery other	1	1	0	+0.0%	
Nursing & Midwifery	159	159	+0	+0	+3
Dietitians	7	6	-1	-0.1%	+1
Occupational Therapists	8	9	+0	+0.1%	+3
Physiotherapists	14	14	+0	+0.0%	-1
Speech & Language Therapists	6	6	0	+0.0%	+2
Therapy Professions	36	36	-0	-0.0%	+1
Phlebotomists	2	1	-0	-0.2%	+0
Radiographers	14	14	+0	+0.0%	+2
Medical Science	5	5	+0	+0.0%	
Health Science/ Diagnostics	20	20	+0	+0.0%	-0
Social Workers	6	6	-1	-0.1%	+0
Social Workers	6	6	-1	-0.1%	-1
Psychologists	2	2	-0	-0.0%	+1
Psychologists	2	2	-0	-0.0%	+1
Pharmacy	5	5	-0	-0.0%	+0
Pharmacy	5	5	-0	-0.0%	-0
Health & Social Care Professionals	70	69	-1	-1	+1
Executive Management	1	1	0	+0.0%	+1
Senior Management (VIII & GM)	1	1	0	+0.0%	
Management (VIII & above)	2	2	0	+0.0%	
Middle Management (V-VII)	13	12	-0	-0.0%	-1

Administrative/ Supervisory (V to VII)	13	12	-0	-0.0%	-0
<i>General Administrative (III & IV)</i>	64	64	-1	-0.0%	+10
Clerical (III & IV)	64	64	-1	-0.0%	+6
Management & Administrative	79	78	-1	-1	+5
<i>Catering</i>	6	6	0	+0.0%	+1
<i>Household Services</i>	47	45	-2	-0.0%	-2
<i>Other Labs & Associated</i>	3	3	+0	+0.1%	+1
<i>Other Support</i>	1	1	0	+0.0%	-0
<i>Portering</i>	6	6	-0	-0.1%	+4
Support	63	61	-2	-0.0%	+0
<i>Maintenance</i>	1	1	0	+0.0%	
Maintenance/ Technical	1	1	0	+0.0%	
General Support	64	62	-2	-2	+0
<i>HCA, Nurse's Aide, etc.</i>	50	53	+2	+0.0%	-6
<i>Health & Social Care Assistants</i>	1	1	0	+0.0%	+1
Health Care Assistants	51	54	+2	+0.0%	-1
<i>Other Care Grades</i>	3	3	0	+0.0%	+3
Care, other	3	3	0	+0.0%	+0
Patient & Client Care	54	57	+2	+2	-0

National Maternity

Jul 2021 (Dec 2020 figure: 916)	WTE Jun 2021	WTE Jul 2021	WTE change since Jun 21	% change since Jun 21	WTE change since Dec 19
Overall	941	950	+9	+1.0%	+34
Consultant Anaesthesia	6	7	+1	+0.2%	+0
Consultant Medicine	0	0	0	+0.0%	
Consultant Obstetrics & Gynaecology	18	17	-0	-0.0%	+1
Consultant Paediatrics	10	10	0	+0.0%	+2
Consultant Pathology	3	3	0	+0.0%	+0
Consultant Surgery	0	0	0	+0.0%	+0
Consultants	37	38	+1	+0.0%	+1
Registrar	21	15	-6	-0.3%	-1
Senior Registrar	2	3	+1	+0.5%	+2
Specialist Registrar	16	23	+7	+0.4%	+4
Registrars	39	41	+2	+0.1%	+3
Senior House Officer	21	22	+1	+0.0%	+1
SHO/ Interns	21	22	+1	+0.0%	
Other Medical	1	1	0	+0.0%	+0
Medical/ Dental, other	1	1	0	+0.0%	+0
Medical & Dental	98	101	+4	+4	+4
Clinical Nurse/ Midwife Manager	131	130	-1	-0.0%	+19
Director Nursing/Midwifery, Assistant	8	8	0	+0.0%	-0
Director of Nursing/Midwifery	1	1	0	+0.0%	
Nurse/ Midwife Manager	140	139	-1	-0.0%	+4
Advanced Nurse/ Midwife Practitioner	5	5	0	+0.0%	
Clinical Nurse/ Midwife Specialist	11	11	0	+0.0%	+1
Nurse/ Midwife Specialist & AN/MP	16	16	0	+0.0%	+1
Staff Nurses [General/ Children's]	74	76	+2	+0.0%	-6
Staff Midwives	166	163	-4	-0.0%	-1
Staff Nurse/ Staff Midwife	241	239	-2	-0.0%	-1
Pre-registration Nurse/ Midwife Intern	9	9	0	+0.0%	+8
Pre-registration Nurse Intern (COVID-19)				-1.0%	
Post-registration Nurse/ Midwife Student	28	28	0	+0.0%	+7
Nursing/ Midwifery Student	36	36	0	+0.0%	+18
Nursing Education/Clinical	4	4	0	+0.0%	
Nursing/ Midwifery other	4	4	0	+0.0%	
Nursing & Midwifery	437	434	-3	-3	+22
Dietitians	6	6	0	+0.0%	-1
Physiotherapists	9	9	+0	+0.0%	+4
Therapy Professions	15	15	+0	+0.0%	-1
Clinical Engineering	4	3	-1	-0.3%	-1
Radiographers	8	8	0	+0.0%	
Medical Science	34	36	+3	+0.1%	+6
Health Science/ Diagnostics	45	47	+2	+0.0%	-1
Social Workers	8	9	+1	+0.1%	+1
Social Workers	8	9	+1	+0.1%	-1
Psychologists	2	2	0	+0.0%	+0
Psychologists	2	2	0	+0.0%	
Pharmacy	7	6	-0	-0.1%	-1
Pharmacy	7	6	-0	-0.1%	-1

Health & Social Care Professionals	76	79	+2	+2	-4
<i>Executive Management</i>	1	1	0	+0.0%	-1
<i>Senior Management (VIII & GM)</i>	5	5	0	+0.0%	+1
Management (VIII & above)	6	6	0	+0.0%	-1
<i>Middle Management (V-VII)</i>	61	59	-2	-0.0%	+8
Administrative/ Supervisory (V to VII)	61	59	-2	-0.0%	+2
<i>General Administrative (III & IV)</i>	72	71	-1	-0.0%	-9
Clerical (III & IV)	72	71	-1	-0.0%	+1
Management & Administrative	139	136	-3	-3	+2
<i>Catering</i>	14	14	0	+0.0%	-1
<i>Household Services</i>	85	86	+1	+0.0%	+4
<i>Other Labs & Associated</i>	9	9	0	+0.0%	+3
<i>Other Support</i>	4	4	0	+0.0%	+1
<i>Portering</i>	27	27	+0	+0.0%	+4
Support	139	140	+2	+0.0%	+7
<i>Maintenance</i>	12	12	0	+0.0%	+4
<i>Technical Services</i>	2	2	0	+0.0%	-1
Maintenance/ Technical	14	14	0	+0.0%	-1
General Support	153	154	+2	+2	+6
<i>HCA, Nurse's Aide, etc.</i>	39	46	+7	+0.2%	+11
Health Care Assistants	39	46	+7	+0.2%	+4
Patient & Client Care	39	46	+7	+7	+4

St. Vincent's University

Jul 2021 (Dec 2020 figure: 3,087)	WTE Jun 2021	WTE Jul 2021	WTE change since Jun 21	% change since Jun 21	WTE change since Dec 19
Overall	3,184	3,172	-12	-0.4%	+85
<i>Consultant Anaesthesia</i>	21	21	0	+0.0%	+3
<i>Consultant Emergency Medicine</i>	7	7	0	+0.0%	+1
<i>Consultant Medicine</i>	60	60	0	+0.0%	+3
<i>Consultant Pathology</i>	16	16	0	+0.0%	+1
<i>Consultant Psychiatry</i>	4	4	0	+0.0%	+1
<i>Consultant Radiology</i>	15	15	0	+0.0%	-0
<i>Consultant Surgery</i>	31	31	0	+0.0%	-0
Consultants	153	153	-0	-0.0%	-1
<i>Registrar</i>	89	82	-7	-0.1%	+6
<i>Senior Registrar</i>	5	6	+1	+0.2%	+3
<i>Specialist Registrar</i>	92	106	+14	+0.1%	+20
Registrars	186	194	+8	+0.0%	+26
<i>Interns</i>	74	57	-17	-0.2%	+12
<i>Senior House Officer</i>	99	105	+6	+0.1%	+24
SHO/ Interns	173	162	-12	-0.1%	-18
<i>Other Medical</i>	6	6	0	+0.0%	+5
Medical/ Dental, other	6	6	0	+0.0%	+5
Medical & Dental	518	514	-3	-3	+13
<i>Clinical Nurse/ Midwife Manager</i>	224	223	-1	-0.0%	+54
<i>Director Nursing/Midwifery, Assistant</i>	20	19	-1	-0.1%	+5
<i>Director of Nursing/Midwifery</i>	1	1	0	+0.0%	
Nurse/ Midwife Manager	244	242	-2	-0.0%	+10
<i>Advanced Nurse/ Midwife Practitioner</i>	25	25	0	+0.0%	+7
<i>Clinical Nurse/ Midwife Specialist</i>	70	69	-1	-0.0%	-0
Nurse/ Midwife Specialist & AN/MP	95	94	-1	-0.0%	+2
<i>Nursing Bank</i>				-1.0%	-2
<i>Staff Nurses [General/ Children's]</i>	773	762	-11	-0.0%	+44
<i>Staff Nurse [Psychiatric]</i>	3	3	0	+0.0%	-1
Staff Nurse/ Staff Midwife	776	765	-11	-0.0%	+46
<i>Pre-registration Nurse/ Midwife Intern</i>	38	38	0	+0.0%	+20
<i>Pre-registration Nurse Intern (COVID-19)</i>				-1.0%	
<i>Nursing/ Midwifery awaiting registration</i>				-1.0%	
Nursing/ Midwifery Student	38	38	0	+0.0%	-28
<i>Nursing Education/Clinical</i>	5	5	0	+0.0%	-9
Nursing/ Midwifery other	5	5	0	+0.0%	-4
Nursing & Midwifery	1,157	1,143	-14	-14	+25
<i>Dietitians</i>	23	22	-1	-0.0%	+4
<i>Occupational Therapists</i>	32	31	-1	-0.0%	+16
<i>Physiotherapists</i>	41	39	-2	-0.0%	-19
<i>Speech & Language Therapists</i>	10	10	0	+0.0%	+1
<i>Podiatrists & Chiropodists</i>	4	3	-1	-0.3%	-0
Therapy Professions	110	105	-5	-0.0%	-10
<i>Audiology</i>	1	1	0	+0.0%	+1
<i>Biochemists</i>	16	16	0	+0.0%	-3
<i>Clinical Engineering</i>	8	8	0	+0.0%	+1
<i>Clinical Measurement</i>	27	27	-0	-0.0%	+2
<i>Phlebotomists</i>	15	15	+0	+0.0%	+0

<i>Physicists</i>	10	10	0	+0.0%	+2
<i>Radiographers</i>	71	71	0	+0.0%	+11
<i>Medical Science</i>	86	85	-1	-0.0%	+7
Health Science/ Diagnostics	234	233	-1	-0.0%	+10
<i>Social Workers</i>	21	20	-1	-0.0%	+1
Social Workers	21	20	-1	-0.0%	-1
<i>Psychologists</i>	10	9	-1	-0.1%	-1
Psychologists	10	9	-1	-0.1%	-0
<i>Pharmacy</i>	58	57	-1	-0.0%	-1
Pharmacy	58	57	-1	-0.0%	-2
<i>Counsellor Therapists</i>	0	0	0	+0.0%	
<i>HSCP Trainees/ Students</i>	1	1	0	+0.0%	+1
H&SC, Other	1	1	0	+0.0%	+1
Health & Social Care Professionals	434	425	-9	-9	-2
<i>Executive Management</i>	4	4	0	+0.0%	+3
<i>Senior Management (VIII & GM)</i>	18	17	-1	-0.1%	-0
Management (VIII & above)	22	21	-1	-0.0%	+0
<i>Middle Management (V-VII)</i>	180	180	0	+0.0%	+36
<i>Other Administrative</i>	3	3	0	+0.0%	-1
Administrative/ Supervisory (V to VII)	183	183	0	+0.0%	-2
<i>General Administrative (III & IV)</i>	298	301	+3	+0.0%	+13
Clerical (III & IV)	298	301	+3	+0.0%	+32
Management & Administrative	503	505	+2	+2	+30
<i>Catering</i>	19	18	-1	-0.1%	-1
<i>Household Services</i>	98	98	-0	-0.0%	+12
<i>Other Labs & Associated</i>	36	36	0	+0.0%	+3
<i>Other Support</i>	65	65	0	+0.0%	+7
<i>Portering</i>	103	103	0	+0.0%	+7
Support	321	320	-1	-0.0%	+3
<i>Maintenance</i>	35	35	0	+0.0%	+3
<i>Technical Services</i>	4	4	0	+0.0%	+1
Maintenance/ Technical	39	39	0	+0.0%	+4
General Support	360	359	-1	-1	+7
<i>HCA, Nurse's Aide, etc.</i>	190	203	+14	+0.1%	+34
<i>Health & Social Care Assistants</i>	11	11	0	+0.0%	-0
<i>HCA (Student Nurse/Midwife COVID-19)</i>				-1.0%	
<i>Swabber (COVID-19)</i>				-1.0%	
Health Care Assistants	201	215	+14	+0.1%	+12
<i>Other Care Grades</i>	10	10	0	+0.0%	+1
Care, other	10	10	0	+0.0%	-1
Patient & Client Care	211	224	+14	+14	+12

IEHG Bank

Jul 2021 (Dec 2020 figure: 8)	WTE Jun 2021	WTE Jul 2021	WTE change since Jun 21	% change since Jun 21	WTE change since Dec 19
Overall	12	12	+0	+0.9%	+4
Staff Nurses [General/ Children's]	12	12	+0	+0.0%	+12
Staff Nurse/ Staff Midwife	12	12	+0	+0.0%	+4
Nursing & Midwifery	12	12	+0	+0	+4
HCA, Nurse's Aide, etc.	0	1	+0	+0.2%	+1
Health Care Assistants	0	1	+0	+0.2%	+0
Patient & Client Care	0	1	+0	+0	+0

Ireland East Hospital Group Employment by Grade Group & Staff Category: July 2021

Jul 2021 (Dec 2020 figure: 12,923)	WTE Jun 2021	WTE Jul 2021	WTE change since Jun 21	% change since Jun 21	WTE change since Dec 20	WTE change since Jul 20
Overall	13,288	13,326	+38	+0.3%	+403	+454
Consultant Anaesthesia	96	94	-2	-1.9%	+6	+5
Consultant Emergency Medicine	22	22			-2	-1
Consultant Intensive Care Medicine	3	4	+1	+40.0%	+2	+2
Consultant Medicine	189	191	+3	+1.5%	-8	+2
Consultant Obstetrics & Gynaecology	36	36	-0	-0.8%	+2	+1
Consultant Paediatrics	25	25	-0	-0.3%	+1	+0
Consultant Pathology	40	41	+0	+0.6%	-0	-2
Consultant Psychiatry	6	6			+2	+3
Consultant Radiology	56	57	+1	+1.5%	+2	+3
Consultant Surgery	113	115	+1	+1.1%	-0	-2
Consultants	586	590	+4	+0.7%	+3	+11
Registrar	394	376	-18	-4.5%	+7	+5
Senior Registrar	34	36	+2	+6.2%	+1	+6
Specialist Registrar	263	300	+37	+14.0%	+46	+35
Registrars	691	712	+21	+3.0%	+54	+45
Interns	196	181	-15	-7.5%	-20	-52
Senior House Officer	464	458	-5	-1.2%	-10	-1
SHO/ Interns	660	640	-20	-3.0%	-29	-53
Dentists	1		-1	-100.0%	-1	-1
Other Medical	35	33	-1	-4.2%	+7	+10
Medical/ Dental, other	36	33	-2	-6.8%	+6	+9
Medical & Dental	1,972	1,975	+3	+0.1%	+33	+12
Clinical Nurse/ Midwife Manager	940	937	-3	-0.3%	+24	+93
Director Nursing/Midwifery, Assistant	100	95	-4	-4.4%	+4	+2
Director of Nursing/Midwifery	17	16	-1	-6.1%	+1	+0
Nurse/ Midwife Manager	1,057	1,048	-9	-0.8%	+29	+94
Advanced Nurse/ Midwife Practitioner	101	100	-2	-1.8%	+11	+21
Clinical Nurse/ Midwife Specialist	263	262	-1	-0.3%	+14	+30
Nurse/ Midwife Specialist & AN/MP	365	362	-3	-0.7%	+25	+51
Nursing Bank				-100.0%	-3	-2
Staff Nurses [General/ Children's]	3,094	3,097	+3	+0.1%	+49	+136
Staff Midwives	286	282	-4	-1.4%	-0	-11
Staff Nurse [Psychiatric]	3	3				-1
Staff Nurse/ Staff Midwife	3,383	3,382	-1	-0.0%	+46	+122
Pre-registration Nurse/ Midwife Intern	107	106	-1	-0.5%	+96	+106
Pre-registration Nurse Intern (COVID-19)				-100.0%	-47	-222
Post-registration Nurse/ Midwife Student	28	28			+11	+8
Nursing/ Midwifery awaiting registration	6	8	+2	+33.3%	-26	+8
Nursing/ Midwifery Student	141	142	+1	+1.0%	+33	-100
Nursing Education/Clinical	54	54	+0	+0.3%	-5	-9
Other Nursing/ Midwifery	16	17	+0	+1.6%	+3	+3

Jul 2021 (Dec 2020 figure: 12,923)	WTE Jun 2021	WTE Jul 2021	WTE change since Jun 21	% change since Jun 21	WTE change since Dec 20	WTE change since Jul 20
Overall	13,288	13,326	+38	+0.3%	+403	+454
Nursing/ Midwifery other	70	70	+0	+0.6%	-2	-5
Nursing & Midwifery	5,015	5,004	-11	-0.2%	+131	+162
Dietitians	97	94	-3	-2.6%	+1	+8
Occupational Therapists	100	98	-2	-1.8%	+16	+27
Orthoptists	3	3	-0	-6.7%	-0	+1
Physiotherapists	229	223	-6	-2.7%	-21	-19
Speech & Language Therapists	45	45	+0	+0.8%	-1	-1
Podiatrists & Chiropodists	11	10	-1	-9.0%	-1	-1
Therapy Professions	484	473	-11	-2.3%	-5	+15
Audiology	4	3	-1	-18.1%	-0	-0
Biochemists	25	25			-4	-3
Clinical Engineering	24	23	-1	-3.5%	+1	+1
Clinical Measurement	91	93	+2	+2.0%	+3	+8
Perfusionists	6	7	+1	+26.8%	+2	+4
Phlebotomists	42	42	+1	+1.7%	+1	-0
Physicists	18	17	-0	-1.8%	+3	+2
Radiographers	258	264	+6	+2.3%	+2	+15
Medical Science	334	337	+2	+0.7%	+13	+11
Health Science/ Diagnostics	802	812	+10	+1.3%	+21	+38
Social Workers	77	77	+0	+0.4%	+3	+8
Psychologists	24	23	-1	-4.4%	+1	+2
Pharmacy	205	207	+2	+1.1%	+15	+16
Counsellor Therapists	2	2	-1	-35.3%	-1	+0
HSCP Trainees/ Students	14	8	-5	-38.6%	+2	-4
Other Health & Social Care	19	18	-1	-3.2%	-1	+1
Vaccinators	22	23	+2	+7.0%	+23	+23
H&SC, Other	56	51	-5	-9.3%	+24	+21
Health & Social Care Professionals	1,648	1,643	-4	-0.3%	+59	+100
Executive Management	25	24	-1	-2.4%	+3	+9
Senior Management (VIII & GM)	88	89	+1	+0.7%	+9	+6
Management (VIII & above)	113	113	+0	+0.0%	+12	+15
Administrative/ Supervisory (V to VII)	623	621	-2	-0.3%	+22	+72
Clerical (III & IV)	1,287	1,294	+6	+0.5%	+70	+42
Management & Administrative	2,023	2,028	+5	+0.2%	+104	+129
Catering	107	105	-3	-2.5%	-5	+2
Household Services	690	689	-1	-0.1%	+11	+1
Other Labs & Associated	96	102	+6	+6.4%	+19	+24
Other Support	169	170	+1	+0.3%	-3	+4
Portering	270	273	+3	+1.0%	+4	-74
Support	1,333	1,339	+6	+0.5%	+26	-43
Maintenance/ Technical	122	121	-0	-0.3%	+3	+2
General Support	1,454	1,460	+6	+0.4%	+29	-41

Jul 2021 (Dec 2020 figure: 12,923)	WTE Jun 2021	WTE Jul 2021	WTE change since Jun 21	% change since Jun 21	WTE change since Dec 20	WTE change since Jul 20
Overall	13,288	13,326	+38	+0.3%	+403	+454
HCA, Nurse's Aide, etc.	1,113	1,153	+41	+3.7%	+64	+201
Health & Social Care Assistants	34	34	+0	+0.1%	-3	-8
HCA (Student Nurse/Midwife COVID-19)				-100.0%	-4	-103
Swabber (COVID-19)				-100.0%	-11	
Health Care Assistants	1,147	1,187	+41	+3.5%	+46	+91
Care, other	28	28	+0	+0.2%	-0	+1
Patient & Client Care	1,175	1,216	+41	+3.5%	+46	+92

Employment by WTE, Headcount, Gender, Full-Time /Part-Time etc.: Jul 2021

Ireland East Hospital Group	WTE	Headcount	WTE: no.	% Male	% female	Male WTE: no.	Female WTE: no.	% Total Perm	% Male Perm	% Female Perm	% Total Full Time	% Total Part Time	% Male FT	% Female FT
Overall	13,326	14,895	1.12	24.5%	75.5%	1.06	1.14	81.1%	69.1%	85.0%	76.4%	23.6%	90.1%	72.0%
Consultant Anaesthesia	94	105	1.12	68.6%	31.4%	1.15	1.05	78.1%	78.1%	69.7%	90.5%	9.5%	88.9%	93.9%
Consultant Emergency Medicine	22	24	1.09	87.5%	12.5%	1.11	1.00	54.2%	54.2%	0.0%	87.5%	12.5%	85.7%	100.0%
Consultant Intensive Care Medicine	4	4	1.14		100.0%		1.14	100.0%	100.0%	100.0%	75.0%	25.0%		75.0%
Consultant Medicine	191	222	1.16	66.2%	33.8%	1.14	1.20	74.8%	74.8%	73.3%	81.1%	18.9%	84.4%	74.7%
Consultant Obstetrics & Gynaecology	36	41	1.15	51.2%	48.8%	1.07	1.24	85.4%	85.4%	80.0%	80.5%	19.5%	95.2%	65.0%
Consultant Paediatrics	25	27	1.08	48.1%	51.9%	1.04	1.12	85.2%	85.2%	85.7%	85.2%	14.8%	92.3%	78.6%
Consultant Pathology	41	48	1.18	41.7%	58.3%	1.12	1.23	87.5%	87.5%	92.9%	79.2%	20.8%	85.0%	75.0%
Consultant Psychiatry	6	7	1.14	57.1%	42.9%	1.13	1.15	71.4%	71.4%	66.7%	71.4%	28.6%	100.0%	33.3%
Consultant Radiology	57	62	1.09	66.1%	33.9%	1.06	1.16	83.9%	83.9%	85.7%	88.7%	11.3%	92.7%	81.0%
Consultant Surgery	115	136	1.19	77.9%	22.1%	1.17	1.27	83.1%	83.1%	86.7%	79.4%	20.6%	83.0%	66.7%
Consultants	590	676	1.15	65.8%	34.2%	1.13	1.18	79.1%	79.3%	78.8%	83.0%	17.0%	86.5%	76.2%
Registrar	376	384	1.02	64.1%	35.9%	1.02	1.02	3.1%	3.1%	4.3%	99.0%	1.0%	98.8%	99.3%
Senior Registrar	36	36	1.00	69.4%	30.6%	1.01	1.00	22.2%	22.2%	18.2%	100.0%	0.0%	100.0%	100.0%
Specialist Registrar	300	308	1.03	50.6%	49.4%	1.02	1.04	0.0%	0.0%	0.0%	96.4%	3.6%	96.8%	96.1%
Registrars	712	728	1.02	58.7%	41.3%	1.02	1.03	2.7%	2.8%	2.7%	97.9%	2.1%	98.1%	97.7%
Interns	181	196	1.08	37.2%	62.8%	1.05	1.10	0.0%	0.0%	0.0%	100.0%	0.0%	100.0%	100.0%
Senior House Officer	458	472	1.03	42.6%	57.4%	1.02	1.04	1.3%	1.3%	1.5%	98.7%	1.3%	100.0%	97.8%
SHO/ Interns	640	668	1.04	41.0%	59.0%	1.02	1.06	0.9%	0.7%	1.0%	99.1%	0.9%	100.0%	98.5%
Other Medical	33	43	1.29	48.8%	51.2%	1.08	1.57	72.1%	72.1%	77.3%	58.1%	41.9%	85.7%	31.8%
Medical/ Dental, other	33	43	1.29	48.8%	51.2%	1.08	1.57	72.1%	66.7%	77.3%	58.1%	41.9%	85.7%	31.8%
Medical & Dental	1,975	2,115	1.07	55.2%	44.8%	1.06	1.08	28.0%	32.6%	22.3%	92.7%	7.3%	93.9%	91.2%
Clinical Nurse/ Midwife Manager	937	1,043	1.11	5.6%	94.4%	1.03	1.12	98.2%	98.2%	98.1%	71.0%	29.0%	93.1%	69.7%
Director Nursing/Midwifery, Assistant	95	105	1.10	9.5%	90.5%	1.00	1.12	95.2%	95.2%	94.7%	77.1%	22.9%	100.0%	74.7%

Director of Nursing/Midwifery	16	16	1.01	6.3%	93.8%	1.00	1.01	93.8%	93.8%	93.3%	93.8%	6.3%	100.0%	93.3%
Nurse/ Midwife Manager	1,048	1,164	1.11	5.9%	94.1%	1.02	1.12	97.9%	100.0%	97.7%	71.9%	28.1%	94.2%	70.5%
Advanced Nurse/ Midwife Practitioner	100	105	1.05	10.5%	89.5%	1.00	1.06	100.0%	100.0%	100.0%	90.5%	9.5%	100.0%	89.4%
Clinical Nurse/ Midwife Specialist	262	300	1.14	3.7%	96.3%	1.01	1.15	97.7%	97.7%	97.9%	65.7%	34.3%	90.9%	64.7%
Nurse/ Midwife Specialist & AN/MP	362	405	1.12	5.4%	94.6%	1.01	1.13	98.3%	95.5%	98.4%	72.1%	27.9%	95.5%	70.8%
Staff Nurses [General/ Children's]	3,097	3,461	1.12	9.1%	90.9%	1.04	1.13	96.8%	96.8%	96.8%	71.9%	28.1%	91.4%	69.9%
Staff Midwives	282	325	1.15	0.3%	99.7%	1.00	1.15	99.1%	99.1%	99.1%	57.8%	42.2%	100.0%	57.7%
Staff Nurse [Psychiatric]	3	3	1.00	33.3%	66.7%	1.00	1.00	100.0%	100.0%	100.0%	100.0%	0.0%	100.0%	100.0%
Staff Nurse/ Staff Midwife	3,382	3,789	1.12	8.4%	91.6%	1.04	1.13	97.0%	96.8%	97.0%	70.7%	29.3%	91.5%	68.8%
Pre-registration Nurse/ Midwife Intern	106	214	2.01	3.7%	96.3%	2.00	2.01	35.0%	35.0%	34.5%	100.0%	0.0%	100.0%	100.0%
Post-registration Nurse/ Midwife Student	28	28	1.02		100.0%		1.02	0.0%	0.0%	0.0%	100.0%	0.0%		100.0%
Nursing/ Midwifery awaiting registration	8	8	1.00	50.0%	50.0%	1.00	1.00	75.0%	75.0%	75.0%	100.0%	0.0%	100.0%	100.0%
Nursing/ Midwifery Student	142	250	1.76	4.8%	95.2%	1.50	1.78	32.4%	58.3%	31.1%	100.0%	0.0%	100.0%	100.0%
Nursing Education/Clinical	54	64	1.19	3.1%	96.9%	1.33	1.18	98.4%	98.4%	98.4%	64.1%	35.9%	50.0%	64.5%
Other Nursing/ Midwifery	17	18	1.08	11.1%	88.9%	1.00	1.09	100.0%	100.0%	100.0%	77.8%	22.2%	100.0%	75.0%
Nursing/ Midwifery other	70	82	1.16	4.9%	95.1%	1.14	1.16	98.8%	100.0%	98.7%	67.1%	32.9%	75.0%	66.7%
Nursing & Midwifery	5,004	5,690	1.14	7.5%	92.5%	1.05	1.14	94.4%	96.2%	94.3%	72.3%	27.7%	92.2%	70.7%
Dietitians	94	106	1.13	1.9%	98.1%	1.00	1.13	84.0%	84.0%	84.6%	78.3%	21.7%	100.0%	77.9%
Occupational Therapists	98	105	1.07	6.7%	93.3%	1.00	1.08	82.9%	82.9%	82.7%	86.7%	13.3%	100.0%	85.7%
Orthoptists	3	6	2.38		100.0%		2.38	83.3%	83.3%	83.3%	16.7%	83.3%		16.7%
Physiotherapists	223	254	1.14	18.1%	81.9%	1.05	1.16	81.9%	81.9%	85.6%	76.4%	23.6%	93.5%	72.6%
Speech & Language Therapists	45	52	1.15		100.0%		1.15	73.1%	73.1%	73.1%	80.8%	19.2%		80.8%
Podiatrists & Chiropodists	10	12	1.18	25.0%	75.0%	1.28	1.15	83.3%	83.3%	88.9%	75.0%	25.0%	66.7%	77.8%
Therapy Professions	473	535	1.13	10.8%	89.2%	1.05	1.14	81.7%	67.2%	83.4%	78.5%	21.5%	93.1%	76.7%
Audiology	3	5	1.46	20.0%	80.0%	5.26	1.23	100.0%	100.0%	100.0%	60.0%	40.0%	0.0%	75.0%
Biochemists	25	26	1.03	34.6%	65.4%	1.00	1.05	92.3%	92.3%	94.1%	92.3%	7.7%	100.0%	88.2%
Clinical Engineering	23	24	1.04	79.2%	20.8%	1.06	1.00	95.8%	95.8%	80.0%	95.8%	4.2%	94.7%	100.0%
Clinical Measurement	93	102	1.10	16.7%	83.3%	1.02	1.11	92.2%	92.2%	95.3%	77.5%	22.5%	88.2%	75.3%
Perfusionists	7	8	1.14	50.0%	50.0%	1.33	1.00	75.0%	75.0%	100.0%	75.0%	25.0%	50.0%	100.0%

Phlebotomists	42	54	1.28	27.8%	72.2%	1.21	1.30	83.3%	83.3%	89.7%	31.5%	68.5%	46.7%	25.6%
Physicists	17	22	1.27	40.9%	59.1%	1.07	1.46	95.5%	95.5%	100.0%	59.1%	40.9%	88.9%	38.5%
Radiographers	264	289	1.09	18.7%	81.3%	1.02	1.11	95.2%	95.2%	94.0%	85.8%	14.2%	98.1%	83.0%
Medical Science	337	358	1.06	23.2%	76.8%	1.02	1.08	94.7%	94.7%	94.5%	83.0%	17.0%	95.2%	79.3%
Health Science/ Diagnostics	812	888	1.09	23.8%	76.2%	1.05	1.11	93.7%	91.9%	94.2%	80.0%	20.0%	90.5%	76.7%
Social Workers	77	82	1.07	11.0%	89.0%	1.13	1.06	79.3%	88.9%	78.1%	82.9%	17.1%	77.8%	83.6%
Psychologists	23	29	1.24	13.8%	86.2%	1.19	1.25	93.1%	100.0%	92.0%	55.2%	44.8%	50.0%	56.0%
Pharmacy	207	221	1.07	8.6%	91.4%	1.00	1.07	87.8%	89.5%	87.6%	84.6%	15.4%	100.0%	83.2%
Counsellor Therapists	2	3	2.00		100.0%		2.00	66.7%	66.7%	66.7%	33.3%	66.7%		33.3%
HSCP Trainees/ Students	8	12	1.41	33.3%	66.7%	1.38	1.43	0.0%	0.0%	0.0%	16.7%	83.3%	25.0%	12.5%
Other Health & Social Care	18	20	1.12	50.0%	50.0%	1.04	1.20	75.0%	75.0%	70.0%	65.0%	35.0%	80.0%	50.0%
Vaccinators	23	55	2.37	23.6%	76.4%	1.87	2.59	94.5%	94.5%	97.6%	3.6%	96.4%	7.7%	2.4%
H&SC, Other	51	90	1.76	30.0%	70.0%	1.39	1.99	76.7%	70.4%	79.4%	20.0%	80.0%	37.0%	12.7%
Health & Social Care	1,643	1,845	1.12	17.8%	82.2%	1.07	1.13	88.0%	85.7%	88.5%	76.9%	23.1%	86.3%	74.9%
Executive Management	24	25	1.04	48.0%	52.0%	1.08	1.01	88.0%	88.0%	92.3%	92.0%	8.0%	83.3%	100.0%
Senior Management (VIII & GM)	89	91	1.02	26.4%	73.6%	1.04	1.02	95.6%	95.6%	95.5%	94.5%	5.5%	91.7%	95.5%
Management (VIII & above)	113	116	1.03	31.0%	69.0%	1.06	1.02	94.0%	91.7%	95.0%	94.0%	6.0%	88.9%	96.3%
Administrative/ Supervisory (V to VII)	621	663	1.07	24.0%	76.0%	1.01	1.09	96.4%	95.0%	96.8%	83.1%	16.9%	96.9%	78.8%
Clerical (III & IV)	1,294	1,460	1.13	16.8%	83.2%	1.02	1.15	88.2%	83.7%	89.0%	72.3%	27.7%	93.9%	67.9%
Management & Administrative	2,028	2,239	1.10	19.7%	80.3%	1.02	1.13	90.9%	88.4%	91.5%	76.6%	23.4%	94.6%	72.2%
Catering	105	112	1.07	28.6%	71.4%	1.00	1.10	94.6%	94.6%	95.0%	77.7%	22.3%	100.0%	68.8%
Household Services	689	786	1.14	25.1%	74.9%	1.05	1.18	81.7%	81.7%	83.5%	64.0%	36.0%	84.3%	57.2%
Other Labs & Associated	102	105	1.03	41.0%	59.0%	1.01	1.05	81.9%	81.9%	77.4%	92.4%	7.6%	95.3%	90.3%
Other Support	170	181	1.07	54.7%	45.3%	1.01	1.14	92.8%	92.8%	98.8%	87.3%	12.7%	98.0%	74.4%
Portering	273	295	1.08	96.3%	3.7%	1.08	1.21	83.1%	83.1%	63.6%	81.4%	18.6%	83.1%	36.4%
Support	1,339	1,479	1.10	44.3%	55.7%	1.05	1.15	84.3%	82.9%	85.4%	73.4%	26.6%	87.3%	62.3%
Maintenance	110	113	1.02	99.1%	0.9%	1.02	1.00	91.2%	91.2%	100.0%	97.3%	2.7%	97.3%	100.0%
Technical Services	11	11	1.00	100.0%		1.00		100.0%	100.0%		100.0%	0.0%	100.0%	
Maintenance/ Technical	121	124	1.02	99.2%	0.8%	1.02	1.00	91.9%	91.9%	100.0%	97.6%	2.4%	97.6%	100.0%
General Support	1,460	1,603	1.10	48.5%	51.5%	1.04	1.15	84.9%	84.3%	85.5%	75.2%	24.8%	88.9%	62.3%

HCA, Nurse's Aide, etc.	1,153	1,331	1.15	35.4%	64.6%	1.09	1.19	77.7%	77.7%	76.7%	68.7%	31.3%	80.5%	62.3%
Health & Social Care Assistants	34	37	1.08	37.8%	62.2%	1.06	1.10	91.9%	91.9%	95.7%	75.7%	24.3%	85.7%	69.6%
Health Care Assistants	1,187	1,368	1.15	35.5%	64.5%	1.09	1.19	78.1%	79.6%	77.2%	68.9%	31.1%	80.6%	62.5%
Other Care Grades	28	35	1.23	65.7%	34.3%	1.35	1.04	80.0%	80.0%	100.0%	74.3%	25.7%	65.2%	91.7%
Care, other	28	35	1.23	65.7%	34.3%	1.35	1.04	80.0%	69.6%	100.0%	74.3%	25.7%	65.2%	91.7%
Patient & Client Care	1,216	1,403	1.15	36.2%	63.8%	1.10	1.19	78.1%	79.1%	77.5%	69.1%	30.9%	79.9%	62.9%

Employment by WTE, Headcount, Gender, Full-Time /Part-Time etc.: Jul 2021

Ireland East Hospital Group	WTE	Headcount	WTE: no.	% Male	% female	Male WTE: no.	Female WTE: no.	% Total Perm	% Male Perm	% Female Perm	% Total Full Time	% Total Part Time	% Male FT	% Female FT
Overall	13,326	14,895	1.12	24.5%	75.5%	1.06	1.14	81.1%	69.1%	85.0%	76.4%	23.6%	90.1%	72.0%
Wexford General	1,079	1,224	1.13	22.7%	77.3%	1.02	1.17	83.3%	83.3%	88.6%	70.8%	29.2%	94.6%	94.6%
St Luke's General Kilkenny	1,186	1,368	1.15	21.9%	78.1%	1.04	1.19	75.1%	75.1%	81.7%	67.1%	32.9%	93.6%	93.6%
Hospital Group HQ	71	110	1.55	21.8%	78.2%	1.40	1.60	84.5%	84.5%	87.2%	44.5%	55.5%	45.8%	45.8%
Our Lady's Navan	596	691	1.16	24.6%	75.4%	1.06	1.19	82.5%	82.5%	86.4%	65.1%	34.9%	88.8%	88.8%
Cappagh National Orthopaedic	457	513	1.12	21.6%	78.4%	1.02	1.16	86.7%	86.7%	90.8%	72.7%	27.3%	95.5%	95.5%
Mater Misericordiae University	3,549	3,942	1.11	26.0%	74.0%	1.08	1.12	77.1%	77.1%	81.0%	80.1%	19.9%	85.7%	85.7%
MRH Mullingar	1,039	1,141	1.10	19.5%	80.5%	1.02	1.12	82.8%	82.8%	87.7%	76.5%	23.5%	97.3%	97.3%
Royal Victoria Eye & Ear	336	386	1.15	25.9%	74.1%	1.05	1.19	79.0%	79.0%	83.6%	66.8%	33.2%	88.0%	88.0%
St. Michael's	415	471	1.14	23.1%	76.9%	1.07	1.16	84.1%	84.1%	85.1%	75.6%	24.4%	85.3%	85.3%
St. Columcille's	465	532	1.14	24.2%	75.8%	1.10	1.16	79.1%	79.1%	80.1%	80.8%	19.2%	94.6%	94.6%
National Maternity	950	1,066	1.12	16.0%	84.0%	1.10	1.13	74.8%	74.8%	76.9%	71.3%	28.7%	81.9%	81.9%
St. Vincent's University	3,172	3,432	1.08	29.3%	70.7%	1.04	1.10	87.5%	87.5%	91.5%	84.2%	15.8%	92.9%	92.9%
IEHG Bank	12	19	1.55	5.3%	94.7%	1.64	1.55	100.0%	100.0%	100.0%	5.3%	94.7%	0.0%	0.0%

Ireland East Hospital Group Employment by Grade Group & Staff Category: July 2021

Jul 2021 (Dec 2019 figure: 12,045)	WTE Dec 2016	WTE Dec 2017	WTE Dec 2018	WTE Dec 2019	WTE Dec 2020	WTE Jun 2021	WTE Jul 2021
Overall	10,971	11,382	11,773	12,045	12,923	13,288	13,326
Consultant Anaesthesia	4.9%	4.9%	5.1%	4.8%	4.5%	4.9%	4.8%
Consultant Emergency Medicine	1.0%	1.1%	1.0%	1.1%	1.2%	1.1%	1.1%
Consultant Intensive Care Medicine			0.1%	0.1%	0.1%	0.1%	0.2%
Consultant Medicine	9.1%	9.3%	9.3%	9.9%	10.3%	9.6%	9.7%
Consultant Obstetrics & Gynaecology	2.0%	2.0%	2.0%	2.0%	1.8%	1.8%	1.8%
Consultant Paediatrics	1.2%	1.3%	1.2%	1.2%	1.2%	1.3%	1.3%
Consultant Pathology	2.1%	2.1%	2.3%	2.2%	2.1%	2.0%	2.1%
Consultant Psychiatry	0.2%	0.3%	0.3%	0.2%	0.2%	0.3%	0.3%
Consultant Radiology	3.1%	2.9%	3.2%	3.0%	2.8%	2.8%	2.9%
Consultant Surgery	6.6%	6.5%	6.3%	6.2%	5.9%	5.7%	5.8%
Consultants	30.2%	30.5%	30.7%	30.7%	30.2%	29.9%	29.9%
Registrar	21.1%	19.6%	19.8%	19.5%	19.0%	20.0%	19.1%
Senior Registrar	1.7%	1.3%	1.4%	1.6%	1.8%	1.7%	1.8%
Specialist Registrar	11.9%	13.3%	13.1%	14.2%	13.1%	13.3%	15.2%
Registrars	34.7%	34.2%	34.3%	35.3%	33.9%	36.0%	36.0%
Interns	9.2%	8.7%	8.8%	8.4%	10.4%	9.9%	9.2%
Senior House Officer	24.6%	25.1%	24.5%	24.1%	24.1%	23.5%	23.2%
SHO/ Interns	33.8%	33.8%	33.4%	32.5%	34.5%	32.4%	32.4%
Dentists	0.1%	0.1%	0.1%	0.1%	0.1%	0.1%	
Other Medical	1.3%	1.5%	1.5%	1.4%	1.4%	1.8%	1.7%
Medical/ Dental, other	1.3%	1.5%	1.6%	1.5%	1.4%	1.7%	1.7%
Medical & Dental	14.3%	14.5%	14.4%	14.6%	15.0%	14.8%	14.8%
Clinical Nurse/ Midwife Manager	16.6%	16.6%	17.8%	17.9%	18.7%	18.8%	18.7%
Director Nursing/Midwifery, Assistant	1.5%	1.7%	1.8%	1.9%	1.9%	2.0%	1.9%
Director of Nursing/Midwifery	0.3%	0.3%	0.3%	0.3%	0.3%	0.3%	0.3%
Nurse/ Midwife Manager	18.4%	18.5%	19.9%	20.2%	20.9%	20.9%	20.9%
Advanced Nurse/ Midwife Practitioner	0.7%	1.3%	1.5%	1.6%	1.8%	2.0%	2.0%
Clinical Nurse/ Midwife Specialist	5.2%	4.9%	5.1%	5.1%	5.1%	5.2%	5.2%
Nurse/ Midwife Specialist & AN/MP	5.9%	6.2%	6.6%	6.7%	6.9%	7.2%	7.2%
Nursing Bank	0.1%	0.2%	0.1%	0.0%	0.1%		
Staff Nurses [General/ Children's]	65.6%	65.8%	63.9%	63.9%	62.5%	61.7%	61.9%
Staff Midwives	7.3%	6.5%	6.7%	6.3%	5.8%	5.7%	5.6%
Staff Nurse [Psychiatric]	0.1%	0.1%	0.1%	0.1%	0.1%	0.1%	0.1%
Staff Nurse/ Staff Midwife	73.2%	72.6%	70.8%	70.3%	68.5%	67.6%	67.6%
Pre-registration Nurse/ Midwife Intern	0.3%	0.4%	0.5%	0.5%	0.2%	2.1%	2.1%
Pre-registration Nurse Intern (COVID-19)					1.0%		
Post-registration Nurse/ Midwife Student	0.5%	0.5%	0.5%	0.5%	0.3%	0.5%	0.5%
Nursing/ Midwifery awaiting registration	0.0%	0.1%	0.1%	0.2%	0.7%	0.1%	0.2%
Nursing/ Midwifery Student	0.9%	1.1%	1.1%	1.2%	2.2%	2.8%	2.8%
Nursing Education/Clinical	1.4%	1.4%	1.4%	1.4%	1.2%	1.1%	1.1%
Other Nursing/ Midwifery	0.3%	0.2%	0.2%	0.3%	0.3%	0.3%	0.3%
Nursing/ Midwifery other	1.7%	1.6%	1.6%	1.6%	1.5%	1.4%	1.4%
Nursing & Midwifery	38.3%	38.3%	38.0%	38.2%	37.7%	37.6%	37.6%
Dietitians	5.2%	4.9%	5.6%	5.3%	5.9%	5.9%	5.7%
Occupational Therapists	5.2%	5.2%	5.0%	4.7%	5.2%	6.0%	6.0%
Orthoptists	0.2%	0.2%	0.2%	0.2%	0.2%	0.2%	0.2%
Physiotherapists	14.2%	14.5%	15.3%	15.7%	15.4%	13.9%	13.6%
Speech & Language Therapists	2.4%	2.7%	2.3%	2.4%	2.9%	2.7%	2.8%
Podiatrists & Chiropodists	0.6%	0.6%	0.6%	0.7%	0.7%	0.7%	0.6%
Therapy Professions	27.9%	28.1%	29.0%	28.9%	30.2%	28.8%	28.8%
Audiology	0.3%	0.2%	0.2%	0.2%	0.2%	0.3%	0.2%

Jul 2021 (Dec 2019 figure: 12,045)	WTE Dec 2016	WTE Dec 2017	WTE Dec 2018	WTE Dec 2019	WTE Dec 2020	WTE Jun 2021	WTE Jul 2021
Overall	10,971	11,382	11,773	12,045	12,923	13,288	13,326
Biochemists	1.6%	2.0%	2.0%	1.8%	1.8%	1.5%	1.5%
Clinical Engineering	1.2%	1.3%	1.3%	1.4%	1.4%	1.4%	1.4%
Clinical Measurement	5.8%	5.5%	5.6%	5.4%	5.7%	5.5%	5.7%
Perfusionists	0.2%	0.3%	0.2%	0.3%	0.3%	0.3%	0.4%
Phlebotomists	2.5%	2.6%	2.6%	2.5%	2.6%	2.5%	2.6%
Physicists	0.9%	0.9%	1.1%	1.1%	0.9%	1.1%	1.1%
Radiographers	17.3%	17.2%	16.8%	16.6%	16.6%	15.7%	16.1%
Medical Science	23.5%	22.7%	21.9%	20.9%	20.5%	20.3%	20.5%
Health Science/ Diagnostics	53.3%	52.7%	51.7%	50.2%	49.9%	49.4%	49.4%
Social Workers	4.4%	4.4%	4.0%	4.8%	4.7%	4.7%	4.7%
Psychologists	0.9%	1.0%	1.0%	1.5%	1.4%	1.4%	1.4%
Pharmacy	11.5%	11.7%	12.2%	12.9%	12.1%	12.6%	12.6%
Counsellor Therapists	0.2%	0.2%	0.2%	0.2%	0.1%	0.1%	0.1%
HSCP Trainees/ Students	0.6%	0.6%	0.7%	0.5%	0.4%	0.8%	0.5%
Other Health & Social Care	1.1%	1.3%	1.2%	1.1%	1.2%	1.1%	1.1%
Vaccinators						1.3%	1.4%
H&SC, Other	2.0%	2.1%	2.1%	1.8%	1.7%	3.1%	3.1%
Health & Social Care Professionals	12.0%	11.9%	12.1%	12.1%	12.3%	12.3%	12.3%
Executive Management	0.6%	0.6%	0.8%	0.8%	1.1%	1.2%	1.2%
Senior Management (VIII & GM)	3.8%	3.9%	3.8%	3.8%	4.1%	4.4%	4.4%
Management (VIII & above)	4.4%	4.5%	4.5%	4.6%	5.2%	5.6%	5.6%
Administrative/ Supervisory (V to VII)	26.4%	27.6%	28.2%	28.5%	31.1%	30.6%	30.6%
General Administrative (III & IV)	69.2%	68.0%	67.3%	66.9%	63.6%	63.6%	63.8%
Clerical (III & IV)	69.2%	68.0%	67.3%	66.9%	63.6%	63.8%	63.8%
Management & Administrative	14.9%	15.1%	15.2%	15.1%	14.9%	15.2%	15.2%
Catering	7.3%	6.8%	6.9%	7.1%	7.7%	7.4%	7.2%
Household Services	45.4%	46.0%	46.9%	46.1%	47.4%	47.4%	47.2%
Other Labs & Associated	4.5%	4.6%	4.7%	5.0%	5.8%	6.6%	7.0%
Other Support	11.0%	11.3%	11.0%	11.0%	12.1%	11.6%	11.6%
Portering	23.4%	23.4%	22.9%	22.9%	18.8%	18.6%	18.7%
Support	91.6%	92.1%	92.5%	92.2%	91.7%	91.7%	91.7%
Maintenance	7.6%	7.1%	6.8%	7.0%	7.6%	7.6%	7.6%
Technical Services	0.8%	0.8%	0.8%	0.8%	0.7%	0.8%	0.8%
Maintenance/ Technical	8.4%	7.9%	7.5%	7.8%	8.3%	8.3%	8.3%
General Support	12.2%	12.3%	12.1%	11.9%	11.1%	11.0%	11.0%
HCA, Nurse's Aide, etc.	94.2%	94.5%	94.5%	94.6%	93.1%	94.7%	94.8%
Health & Social Care Assistants	2.5%	2.6%	2.8%	2.8%	3.2%	2.9%	2.8%
HCA (Student Nurse/Midwife COVID-19)					0.3%		
Swabber (COVID-19)					0.9%		
Health Care Assistants	96.6%	97.1%	97.3%	97.3%	97.6%	97.7%	97.7%
Other Care Grades	3.4%	2.9%	2.7%	2.7%	2.4%	2.4%	2.3%
Care, other	3.4%	2.9%	2.7%	2.7%	2.4%	2.3%	2.3%
Patient & Client Care	8.3%	8.0%	8.2%	8.1%	9.1%	9.1%	9.1%
Total	100%	100%	100%	100%	100%	100%	100%

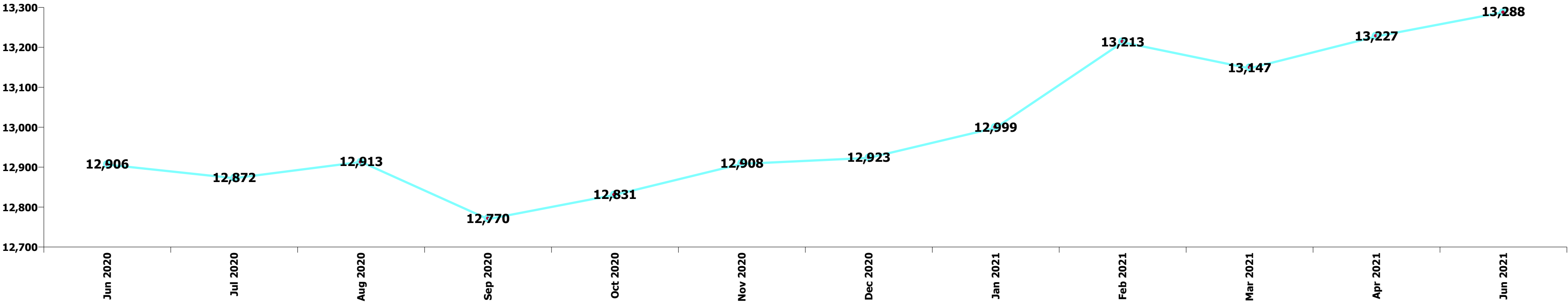
Summary Staff Movement: July 2021

Month-on-month Summary

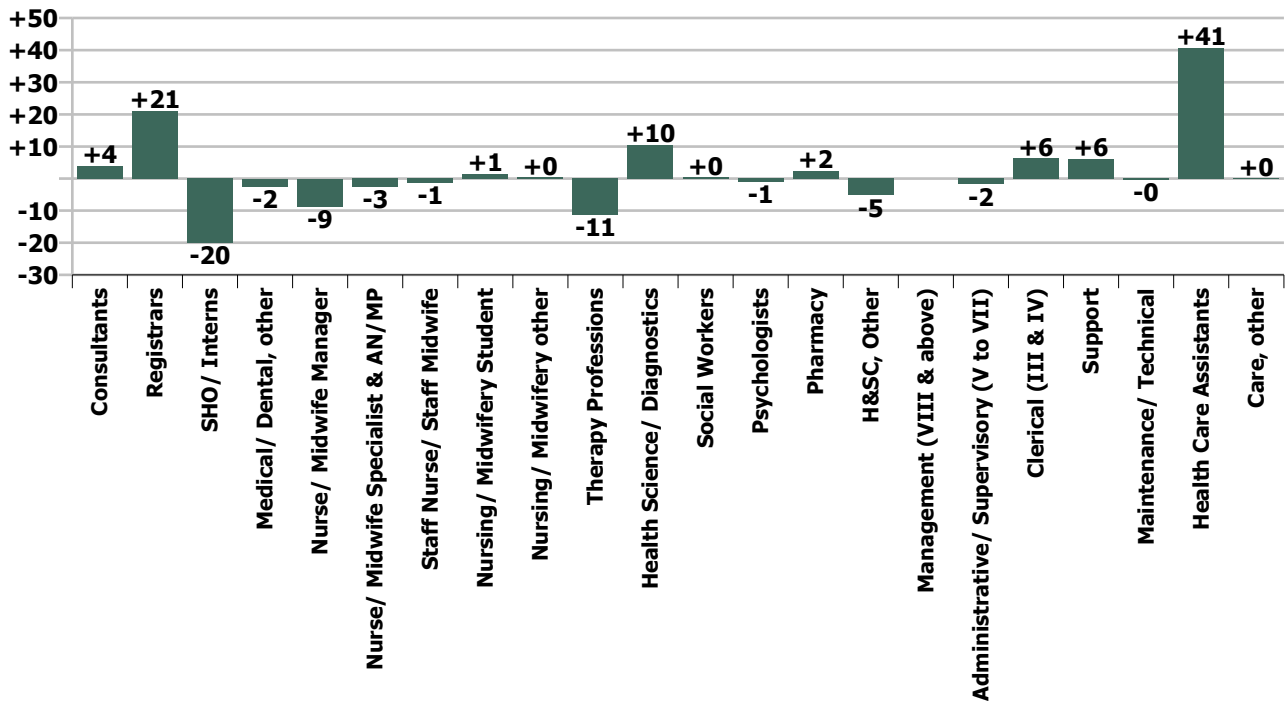
WTE change since Jun 21	% change since Jun 21	overall	Consultants	Registrars	SHO/ Interns	Medical/ Dental, other	Medical & Dental	Nurse/ Midwife Manager	Nurse/ Midwife Specialist & AN/MP	Staff Nurse/ Staff Midwife	Nursing/ Midwifery Student	Nursing/ Midwifery other	Nursing & Midwifery	Therapy Professions	Health Science/ Diagnostics	Social Workers	Psychologists	Pharmacy	H&SC, Other	Health & Social Care Professionals	Management (VIII & above)	Administrative/ Supervisory (V to VII)	Clerical (III & IV)	Management & Administrative	General Support	Health Care Assistants	Care, other	Patient & Client Care
Overall	+0.3%	+38	+4	+21	-20	-2	+3	-9	-3	-1	+1	+0	-11	-11	+10	+0	-1	+2	-5	-4		-2	+6	+5	+6	+41	+0	+41
Wexford General	-0.5%	-6	-0	-4	-2	-0	-7	-3	-2	+9			+4	-0	-2	+0		+1		-2	-1	-1	+0	-1	+1	-1	+0	-1
St Luke's General Kilkenny	-0.1%	-1	-0	-2	-0	+0	-3	-2	-1	+0		-0	-3	-2	+3			+1		+2	-0	+1	+2	+4	-0	-1		-1
Hospital Group HQ	+9.2%	+6						+0		+0			+0					+2	+2	+3	+0	-1	+3	+2				
Our Lady's Navan	-0.3%	-2		-4	-0		-4	-0	-0	+2			+2	-0	+1			-0		+0	-0	-0	+0	+0	+0	-0	-0	-0
Cappagh National Orthopaedic	+1.1%	+5	+1	+3	+2		+6	-1					-1							+0		-0		+0				
Mater Misericordiae University	+1.3%	+47	+2	+15	-3	-2	+11	-1	-0	+6	+2	+1	+6	-3	+7	+1	-0	-1	-7	-2	+1	+1	+0	+3	+9	+21	-0	+21
MRH Mullingar	-0.8%	-8	+0	+1	-6	-0	-4	+2	+0	-1	-0	+0	+1	-1	+0			+0		-0	+1	-1	-1	-0	-0	-4		-4
Royal Victoria Eye & Ear	-0.2%	-1		+2	+0		+2	-0		-3			-3		-1					-1		+1	-0	+0	-1	+2		+2
St. Michael's	-0.0%	-0	+0				+0	-1	-0	-0			-1	+1	+1					+2	-1		-0	-1				
St. Columcille's	-0.0%	-0	+0	+0	+0		+1	+0	+2	-2			+0	-0	+0	-1	-0	-0	-0	-1		-0	-1	-1	-2	+2		+2
National Maternity	+1.0%	+9	+1	+2	+1		+4	-1		-2			-3	+0	+2	+1		-0		+2		-2	-1	-3	+2	+7		+7
St. Vincent's University	-0.4%	-12	-0	+8	-12		-3	-2	-1	-11			-14	-5	-1	-1	-1	-1		-9	-1		+3	+2	-1	+14		+14
IEHG Bank	+0.9%	+0								+0			+0													+0		+0
			+0.7%	+2.0%	2.0%	6.8%	+0.4%	0.8%	0.7%	0.0%	+1.0%	+0.6%	-0.3%	2.3%	+1.3%	+0.4%	-1.4%	+1.4%	0.3%	-0.3%	0.3%	+0.5%	+0.3%	+0.4%	+0.4%	+2.5%	+0.3%	+2.5%

Year-on-year Summary

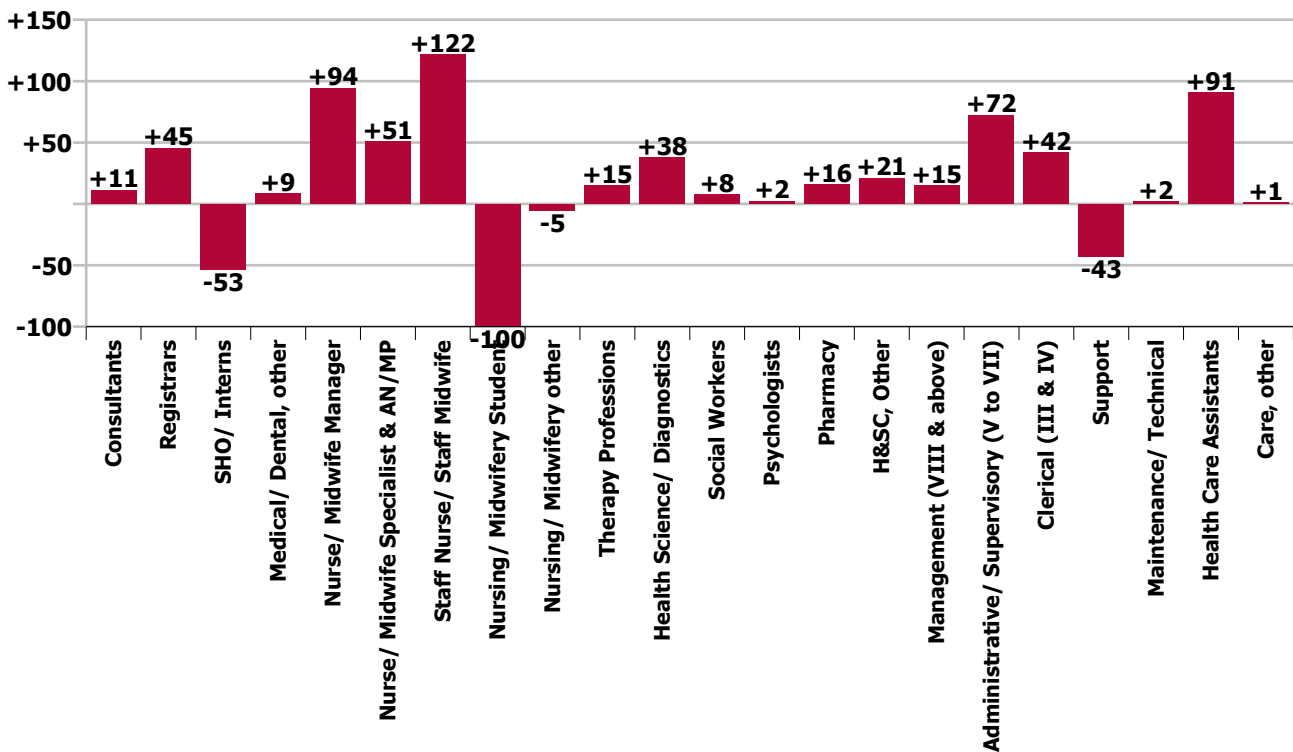
WTE change since Jul 20	% change since Jul 20	overall	Consultants	Registrars	SHO/ Interns	Medical/ Dental, other	Medical & Dental	Nurse/ Midwife Manager	Nurse/ Midwife Specialist & AN/MP	Staff Nurse/ Staff Midwife	Nursing/ Midwifery Student	Nursing/ Midwifery other	Nursing & Midwifery	Therapy Professions	Health Science/ Diagnostics	Social Workers	Psychologists	Pharmacy	H&SC, Other	Health & Social Care Professionals	Management (VIII & above)	Administrative/ Supervisory (V to VII)	Clerical (III & IV)	Management & Administrative	General Support	Health Care Assistants	Care, other	Patient & Client Care
Overall	+3.5%	+454	+11	+45	-53	+9	+12	+94	+51	+122	-100	-5	+162	+15	+38	+8	+2	+16	+21	+100	+15	+72	+42	+129	-41	+91	+1	+92
Wexford General	-0.1%	-2	-1	-1	-8	+2	-9	-6	+5	+17	-3		+13	-0	-4	+1		+5		+2	-2	+12	-10	-0	-27	+18	+1	+19
St Luke's General Kilkenny	-2.4%	-29	+5	+9	-12	+2	+3	-1	+6	-11	-4	+0	-10	-2	+0			+7	-1	+4	+2	+4	-3	+4	-67	+36		+36
Hospital Group HQ	+145.0%	+42						+1		+1			+2					+3	+23	+26	+6	+5	+3	+14				
Our Lady's Navan	+6.6%	+37	-1	-1	+9		+7	-0	+2	+13			+15	+1	+2			+3		+5	-1	+4	+1	+4	+3	+3	-0	+3
Cappagh National Orthopaedic	+3.9%	+17	+2	+1	+2		+5	+1	+2	-0			+3	+2	+3			+1		+6		+1	+3	+4	+0			
Mater Misericordiae University	+4.3%	+145	+3	+14	-19	+0	-2	+22	+13	+33	-28	+6	+46	+7	+9	+2	+3	+1	-3	+20	+7	+4	+25	+37	+19	+25	+0	+26
MRH Mullingar	+7.8%	+75	+6	+9	-11	-0	+4	+7	+5	+25	-8	+1	+30	+3	+9			+1	+1	+13		+2	+5	+7	+7	+13		+13
Royal Victoria Eye & Ear	+13.1%	+39	+4	+6	+1	-1	+9	+1	+4	-2			+3	+1	-1					+0		+8	+14	+21	+1	+4		+4
St. Michael's	-1.6%	-7	-0	+1	-4		-3	-3	+1	+3	-14	-2	-15	-1	+4	+2		+0		+5	+1	+0	+4	+6	+1		-1	-1
St. Columcille's	+1.1%	+5	+0	-3	-5		-9	+1	+3	-0		-1	+3	+4	+1	+0	+1	-0	-0	+6	+1	-1	+7	+6	+0	-4	+2	-2
National Maternity	+2.4%	+22	+1	+2		+0	+3	+12	+2	-1	-2		+11	+2	+1	+1	+0	-0		+4	-1	+4	-5	-2	+2	+4		+4
St. Vincent's University	+3.2%	+99	-6	+10	-5	+5	+5	+59	+8	+33	-41	-9	+50	-2	+14	+0	-1	-3	+1	+8	+1	+30	-2	+29	+20	-12	-1	-12
IEHG Bank	+522.3%	+10								+10			+10													+1		+1
			+2.0%	+6.8%	-7.7%	+35.7%	+0.6%	+9.9%	+16.2%	+3.7%	-41.3%	-7.0%	+3.3%	+3.2%	+4.9%	+11.1%	+11.6%	+8.2%	+70.1%	+6.4%	+15.3%	+13.2%	+3.3%	+6.8%	-2.7%	+8.3%	+5.4%	+8.2%



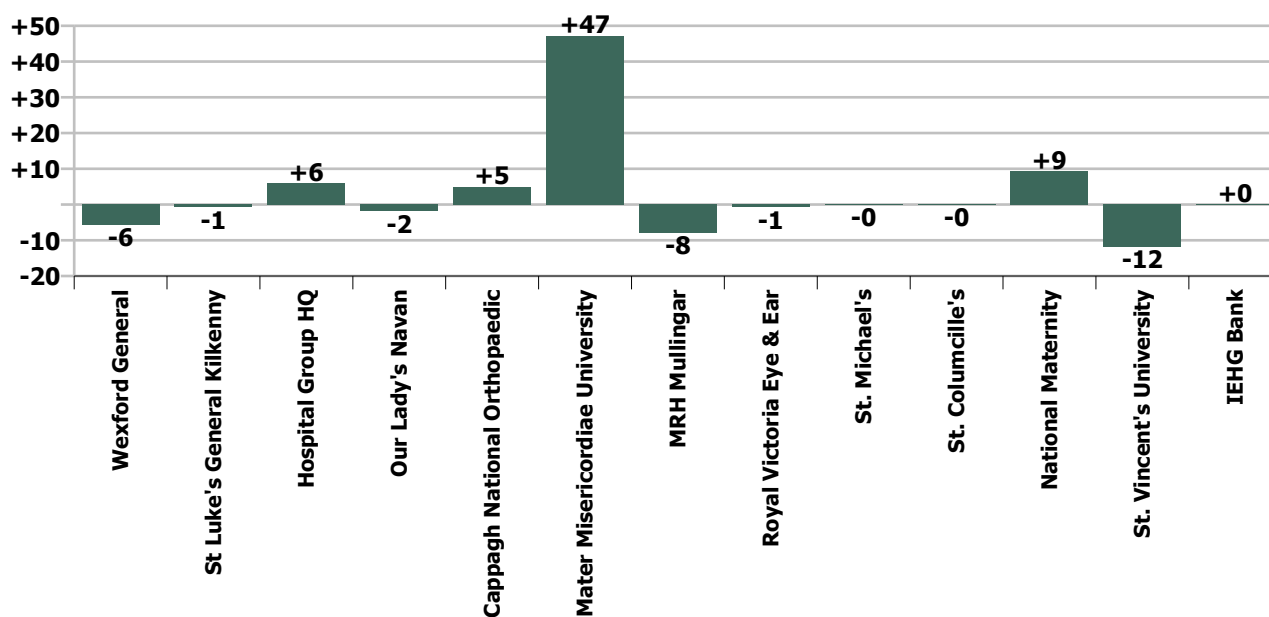
Staff Group change since: Jun 2021



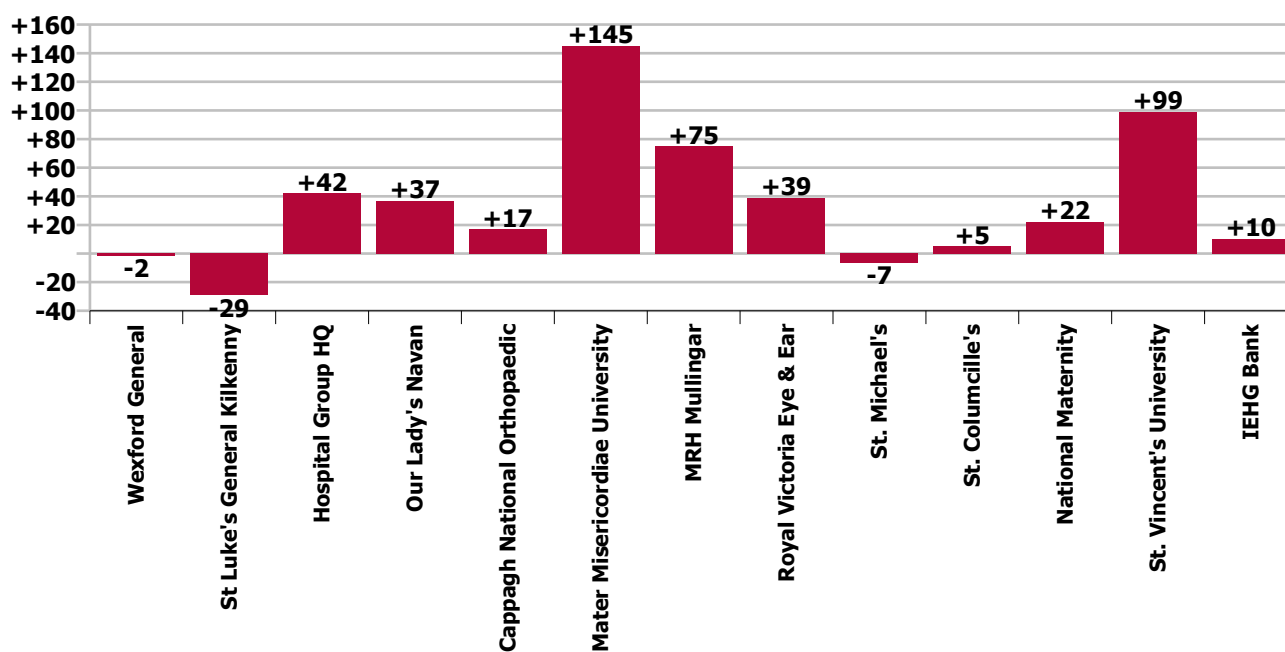
Staff Group change since: Jul 2020



Hospital change since: Jun 2021



Hospital change since: Jul 2020



Longitudinal Employment Levels by Grade Group - Dec 2016 to Jul 2021

Jul 2021 (Dec 2016 figure: 10,971)	WTE Jul 2021	WTE change since Dec 16	WTE change since Dec 17	WTE change since Dec 18	WTE change since Dec 19	WTE change since Dec 20	WTE change since Apr 21	% change since Dec 16	% change since Dec 17	% change since Dec 18	% change since Dec 19	% change since Dec 20	% change since Apr 21
Overall	13,326	+2,355	+1,944	+1,282	+1,282	+403	+99	+21.5%	+17.1%	+13.2%	+10.6%	+3.1%	+0.7%
Consultant Anaesthesia	94	+17	+13	+9	+9	+6	+0	+22.0%	+16.1%	+10.0%	+11.2%	+6.5%	+0.2%
Consultant in Emergency Medicine	22	+6	+4	+3	+3	-2	-1	+35.4%	+22.0%	+29.3%	+14.5%	-8.3%	-3.6%
Consultant Emergency Medicine	22	+6	+4	+3	+3	-2	-1	+35.4%	+22.0%	+29.3%	+14.5%	-8.3%	-3.6%
Consultant Intensivist	4	+4	+4	+2	+2	+2	+1	-100.0%	-100.0%	+75.0%	+75.0%	+75.0%	+40.0%
Consultant Intensive Care Medicine	4	+4	+4	+2	+2	+2	+1	-100.0%	-100.0%	+75.0%	+75.0%	+75.0%	+40.0%
Consultant Cardiologist	18	+2	+1	-2	-2	-2	+0	+13.4%	+4.4%	+4.4%	-9.1%	-9.5%	+0.8%
Consultant Clinical Neurophysiologist	2	+0						+25.4%					
Consultant Dermatologist	10	+1	+0	-2	-2	+0	-5	+8.1%	+1.3%	+24.6%	-16.0%	+1.0%	-33.2%
Consultant Gastroenterologist & General Physician	12	+3	+3	+2	+2	+1	+1	+33.6%	+33.6%	+9.3%	+19.4%	+13.4%	+13.4%
Consultant General Physician	49	+11	+9	+7	+7	-5	-1	+29.2%	+23.2%	+19.8%	+16.0%	-9.4%	-1.4%
Consultant in Clinical Genetics	0	-0						-50.0%					
Consultant in Palliative Medicine	2	-0	-0					-15.3%	-3.8%	-13.4%			
Consultant in Rehabilitation Medicine	0		-1	-1	-1	-1			-69.0%	-69.0%	-69.0%	-69.0%	
Consultant Medical Oncologist	9	+2	+1	+1	+1	-2	-2	+35.5%	+17.8%	+64.8%	+10.2%	-16.4%	-16.4%
Consultant Nephrologist & General Physician	5	+3	+1					+127.7%	+23.0%				
Consultant Neurologist	12	+2	+3	+2	+2	+0	-0	+21.1%	+35.8%	+25.8%	+15.6%	+1.9%	-0.0%
Consultant Physician in Endocrinology	11	+2	+2	+0	+0	+0	+0	+20.0%	+20.0%	-4.9%	+0.1%	+0.4%	+0.1%
Consultant Physician in Geriatric Medicine	24	+8	+6	+5	+5	+1	+1	+52.5%	+32.2%	+30.8%	+23.7%	+6.4%	+4.7%
Consultant Physician in Infectious Diseases	10	+6	+6	+4	+4		+3	+197.6%	+197.6%	+234.4%	+69.8%		+44.6%
Consultant Respiratory & General Physician	18	+6	+5	+3	+3	-1	+2	+50.7%	+35.1%	+25.8%	+16.4%	-3.0%	+10.4%
Consultant Rheumatologist & General Physician	7	+2	+1	-0	-0	-1	+1	+33.7%	+17.2%	+36.0%	-6.2%	-9.7%	+16.4%
Consultant Medicine	191	+49	+38	+17	+17	-8	+1	+34.4%	+24.6%	+21.8%	+10.0%	-3.9%	+0.5%
Consultant Obstetrician & Gynaecologist	35	+4	+2	+1	+1	+2	+1	+13.9%	+7.5%	+4.6%	+3.5%	+5.1%	+3.2%
Master (Maternity Hospital)	1												
Consultant Obstetrics & Gynaecology	36	+4	+2	+1	+1	+2	+1	+13.5%	+7.3%	+4.5%	+3.4%	+4.9%	+3.1%
Consultant Paediatrician	25	+7	+4	+3	+3	+1	+1	+35.2%	+19.1%	+25.9%	+14.4%	+4.1%	+4.4%
Consultant Paediatrics	25	+7	+4	+3	+3	+1	+1	+35.2%	+19.1%	+25.9%	+14.4%	+4.1%	+4.4%
Consultant Clinical Biochemist	2	-1	-1	+1	+1			-20.1%	-20.1%	-20.1%	+100.0%		
Consultant Haematologist (Clinical & Laboratory)	10	+4	+4	-1	-1	-1	+1	+64.3%	+64.3%	+24.6%	-4.6%	-4.6%	+5.1%
Consultant Histopathologist	18	+1	+0	+1	+1	+1	-1	+7.8%	+0.6%	+3.6%	+9.1%	+7.7%	-4.0%
Consultant Immunologist (Clinical & Laboratory)	1						-0						-23.9%
Consultant Microbiologist	10	+3	+2	+0	+0	-1	+0	+37.0%	+23.3%		+4.5%	-9.1%	+0.7%

Jul 2021 (Dec 2016 figure: 10,971)	WTE Jul 2021	WTE change since Dec 16	WTE change since Dec 17	WTE change since Dec 18	WTE change since Dec 19	WTE change since Dec 20	WTE change since Apr 21	% change since Dec 16	% change since Dec 17	% change since Dec 18	% change since Dec 19	% change since Dec 20	% change since Apr 21
Overall	13,326	+2,355	+1,944	+1,282	+1,282	+403	+99	+21.5%	+17.1%	+13.2%	+10.6%	+3.1%	+0.7%
Consultant Pathology	41	+7	+5	+2	+2	-0	-0	+22.5%	+15.6%	+5.4%	+6.5%	-0.6%	-0.8%
Consultant Child & Adolescent Psychiatrist		-0	-0					-100.0%	-100.0%	-100.0%	-100.0%	-100.0%	-100.0%
Consultant General Adult Psychiatrist	6	+3	+2	+2	+2	+2		+80.1%	+48.3%	+48.3%	+48.3%	+48.3%	
Consultant Psychiatry	6	+2	+2	+2	+2	+2		+66.8%	+39.2%	+39.2%	+48.3%	+48.3%	
Consultant Radiation Oncologist	0												
Consultant Radiologist	57	+8	+9	+5	+5	+2	+3	+17.4%	+17.9%	+5.3%	+9.5%	+3.3%	+5.1%
Consultant Radiology	57	+8	+9	+5	+5	+2	+3	+17.3%	+17.9%	+5.3%	+9.4%	+3.3%	+5.0%
Consultant Cardio-thoracic Surgeon	8	+0	+0	+1	+1	-1	-1	+4.1%	+4.1%	+4.1%	+10.9%	-12.2%	-7.4%
Consultant General Surgeon	30	-5	-1	-3	-3	-2	-1	-14.6%	-4.5%	-5.8%	-8.0%	-6.4%	-1.7%
Consultant General Surgeon Breast	1		-1	-1	-1	-1			-50.0%	-50.0%	-50.0%	-50.0%	
Consultant General Surgeon Colo-rectal	4		-1			+1			-20.0%	-20.0%		+33.3%	
Consultant General Surgeon s.i. vascular surgery	2												
Consultant Ophthalmic Surgeon	27	+8	+7	+7	+7	+2	+2	+43.1%	+32.4%	+29.1%	+31.0%	+9.2%	+7.9%
Consultant Ophthalmic Surgeon s.i. neuro-ophthalmic surgery	0	+0	+0	+0	+0			-100.0%	-100.0%	-100.0%	-100.0%		
Consultant Oral & Maxillo Facial Surgeon			-0	-0	-0			-100.0%	-100.0%	-100.0%	-100.0%	-100.0%	-100.0%
Consultant Orthopaedic Surgeon	15	+1	-0	+0	+0	-0	-1	+4.5%	-2.5%	+7.3%	+1.8%	-2.5%	-4.8%
Consultant Otolaryngologist	11	+3	+3	+0	+0	+1	+1	+49.6%	+37.8%	+15.1%	+3.1%	+10.5%	+10.5%
Consultant Plastic Surgeon	7	-0	-0	+1	+1	-1	-0	-5.4%	-5.4%	+10.2%	+10.2%	-13.5%	-0.7%
Consultant Urologist	10	+3	+2	+2	+2	+1	+1	+50.7%	+23.2%	+23.2%	+23.2%	+9.9%	+9.9%
Consultant Surgery	115	+11	+7	+7	+7	-0	+2	+10.4%	+6.9%	+6.8%	+6.1%	-0.3%	+1.7%
Consultants	590	+115	+70	+51			+4	+24.2%	+13.4%	+9.5%	+9.5%	+9.5%	+0.7%
Registrar	24	-73	+10	+17	+17	-1	+2	-75.5%	+74.4%	+175.5%	+239.3%	-5.0%	+9.3%
Registrar, Anaesthesia	51	+15	+8	-1	-1	+7	+6	+41.7%	+18.6%	+2.0%	-1.9%	+15.9%	+13.6%
Registrar, Emergency Medicine	39	+17	+3	+2	+2	-4	-6	+75.3%	+8.2%	-4.2%	+5.9%	-8.8%	-12.9%
Registrar, Medicine	149	+47	+17	+16	+16	+8	-4	+45.6%	+13.2%	+18.0%	+11.7%	+5.4%	-2.7%
Registrar, Obstetrics & Gynaecology	27	+15	+5	+4	+4	-0	-3	+122.3%	+21.2%	+4.6%	+19.8%	-0.9%	-11.1%
Registrar, Ophthalmology	8	+4	+0	+2	+2	+0		+83.5%	+3.5%	+37.7%	+23.1%	+3.9%	
Registrar, Paediatrics	13	+8	-2	-7	-7	-1	-0	+159.4%	-15.8%	-22.7%	-33.5%	-7.3%	-0.2%
Registrar, Pathology	13	+6	+6	+6	+6	-1	+2	+75.0%	+85.7%	+85.7%	+85.7%	-6.5%	+18.2%
Registrar, Psychiatry	4	-2				-1	-3	-27.3%				-20.0%	-42.9%
Registrar, Surgery	48	+9	+6	-5	-5	+0	-5	+24.1%	+14.1%	-4.2%	-8.7%	+0.3%	-9.3%
Registrar	376	+45	+53	+34	+34	+7	-11	+13.7%	+16.4%	+12.1%	+10.0%	+1.9%	-2.9%
Registrar, Senior	29	+7	+11	+5	+5	+0	+1	+31.2%	+65.0%	+45.3%	+20.6%	+0.7%	+1.9%
Senior Registrar, Psychiatry	7	+3	+3	+3	+3	+1	+1	+75.0%	+75.0%	+75.0%	+75.0%	+16.7%	+16.7%

Jul 2021 (Dec 2016 figure: 10,971)	WTE Jul 2021	WTE change since Dec 16	WTE change since Dec 17	WTE change since Dec 18	WTE change since Dec 19	WTE change since Dec 20	WTE change since Apr 21	% change since Dec 16	% change since Dec 17	% change since Dec 18	% change since Dec 19	% change since Dec 20	% change since Apr 21
Overall	13,326	+2,355	+1,944	+1,282	+1,282	+403	+99	+21.5%	+17.1%	+13.2%	+10.6%	+3.1%	+0.7%
Senior Registrar	36	+10	+14	+8	+8	+1	+2	+38.0%	+66.8%	+50.3%	+28.4%	+3.5%	+4.5%
Registrar, Specialist	22	+17	+15	+9	+9	+6	+3	+330.4%	+231.1%	+79.3%	+72.2%	+34.9%	+18.9%
Specialist Registrar, Anaesthesia	45	+10	+9	+4	+4	+2	+2	+27.1%	+23.6%	+53.4%	+8.5%	+4.7%	+3.5%
Specialist Registrar, Emergency Medicine	12	+7	+6	+2	+2	+1	-1	+130.0%	+91.7%	+91.7%	+15.0%	+4.5%	-4.2%
Specialist Registrar, Medicine	100	+39	+29	+20	+20	+18	+10	+63.0%	+39.9%	+35.1%	+24.9%	+21.4%	+10.7%
Specialist Registrar, Obstetrics & Gynaecology	12	+4	+1	-4	-4	+4	+5	+50.0%	+4.3%	-17.2%	-23.7%	+50.0%	+71.4%
Specialist Registrar, Paediatrics	9	+1	-2	+2	+2	+4	+3	+12.5%	-18.2%		+28.6%	+80.0%	+50.0%
Specialist Registrar, Pathology	18	+12	+8	+4	+4	+3	+4	+200.0%	+71.4%	+63.6%	+26.8%	+24.0%	+26.1%
Specialist Registrar, Radiology	31	+5	+4	+2	+2	+4	+4	+17.5%	+13.1%	+13.1%	+7.0%	+13.1%	+13.1%
Specialist Registrar, Surgery	53	+19	+13	+13	+13	+5	+3	+56.7%	+34.3%	+34.0%	+32.1%	+10.5%	+6.1%
Specialist Registrar	300	+112	+81	+51	+51	+46	+32	+59.5%	+36.8%	+35.1%	+20.4%	+18.0%	+12.1%
Registrars	712	+167	+131	+93			+21	+30.6%	+22.5%	+15.0%	+15.0%	+15.0%	+3.0%
Intern	181	+37	+38	+34	+34	-20	-14	+26.0%	+26.8%	+21.7%	+23.3%	-9.8%	-7.0%
Interns	181	+37	+38	+34	+34	-20	-14	+26.0%	+26.8%	+21.7%	+23.3%	-9.8%	-7.0%
House Officer, Senior	24	-68	+8	+15	+15	-27	+1	-74.3%	+47.5%	+171.9%	+163.7%	-53.5%	+2.3%
Senior House Officer, Anaesthesia	23	+4	-3	-1	-1	+1	-3	+21.1%	-11.5%	-23.3%	-4.2%	+4.5%	-11.5%
Senior House Officer, Emergency Medicine	57	+20	+11	+8	+8	+3	+5	+55.2%	+22.7%	+12.6%	+16.7%	+6.4%	+8.6%
Senior House Officer, Medicine	198	+84	+47	+41	+41	+21	+9	+73.0%	+30.7%	+27.0%	+25.7%	+11.6%	+4.5%
Senior House Officer, Obstetrics & Gynaecology	28	+8	-8	-9	-9	-0	-4	+37.9%	-21.9%	-15.4%	-25.5%	-1.7%	-13.4%
Senior House Officer, Ophthalmology	13	+0				-1	-1	+1.3%				-7.4%	-4.6%
Senior House Officer, Paediatrics	26	+8	-7	-6	-6	+2	-4	+48.1%	-20.6%	-11.5%	-19.4%	+8.3%	-13.0%
Senior House Officer, Pathology	7	-5	-2	-1	-1	-7	-3	-41.7%	-17.6%		-12.5%	-50.0%	-30.0%
Senior House Officer, Psychiatry	13	+2	+2	-0	-0	+1	-1	+17.8%	+17.8%	-7.4%	-0.3%	+8.0%	-7.4%
Senior House Officer, Surgery	70	+18	-3	-10	-10	-2	+1	+34.4%	-4.3%	-5.6%	-12.6%	-3.0%	+1.0%
Senior House Officer	458	+71	+45	+36	+36	-10	-1	+18.3%	+10.8%	+10.4%	+8.4%	-2.1%	-0.3%
SHO/ Interns	640	+108	+75	+70			-20	+20.4%	+13.4%	+12.3%	+12.3%	+12.3%	-3.0%
Dental Surgeon, Senior		-1	-1	-1	-1	-1	-1	-100.0%	-100.0%	-100.0%	-100.0%	-100.0%	-100.0%
Dentists		-1	-1	-1	-1	-1	-1	-100.0%	-100.0%	-100.0%	-100.0%	-100.0%	-100.0%
Area Medical Officer	0	+0	+0	-1	-1	+0	+0	+200.0%	+200.0%	+42.9%	-75.2%	+36.4%	+7.1%
Associate Specialist	14	+10	+4	+4	+4	+3	+0	+200.0%	+32.6%	+3.6%	+37.4%	+27.7%	+3.3%
General Practitioner						-1		-100.0%	-100.0%	-100.0%	-100.0%	-100.0%	-100.0%
Medical & Dental Unclassified	5	+1	+2	+5	+5	+5	+2	+26.1%	+65.7%	-100.0%	-100.0%	-100.0%	+74.5%
Medical Director							-4	-100.0%	-100.0%	-100.0%	-100.0%	-100.0%	-100.0%
Medical Officer	2	+2	+2	+1	+1			-100.0%	-100.0%	-100.0%	+121.0%		

Jul 2021 (Dec 2016 figure: 10,971)	WTE Jul 2021	WTE change since Dec 16	WTE change since Dec 17	WTE change since Dec 18	WTE change since Dec 19	WTE change since Dec 20	WTE change since Apr 21	% change since Dec 16	% change since Dec 17	% change since Dec 18	% change since Dec 19	% change since Dec 20	% change since Apr 21
Overall	13,326	+2,355	+1,944	+1,282	+1,282	+403	+99	+21.5%	+17.1%	+13.2%	+10.6%	+3.1%	+0.7%
Occupational Health Physician	1	+1	+1	-0	-0	+0	+0	-100.0%	-100.0%	-100.0%	-4.7%	+1.7%	+1.7%
Ophthalmic Physician, Community	11	-0	+1	-1	-1	-1	+1	-1.3%	+8.0%	-7.2%	-5.7%	-6.9%	+13.9%
Other Medical	33	+13	+9	+9	+9	+7	+1	+67.7%	+39.3%	+30.7%	+35.6%	+24.9%	+1.7%
Medical/ Dental, other	33	+12	+7	+8			-2	+59.6%	+25.8%	+30.3%	+30.3%	+30.3%	-6.8%
Medical & Dental	1,975	+403	+283	+222			+3	+25.6%	+16.7%	+12.7%	+12.7%	+12.7%	+0.1%
Clinical Midwife Manager 1	50	+15	+11	+9	+9	+1	+3	+44.4%	+27.0%	+33.0%	+21.7%	+1.7%	+5.6%
Clinical Midwife Manager 2	77	+20	+17	+6	+6	-3	-3	+35.3%	+28.0%	-0.2%	+9.0%	-3.6%	-4.2%
Clinical Midwife Manager 3	11	+3	+5	+3	+3	-2	-2	+42.4%	+83.8%	+37.6%	+35.2%	-14.7%	-14.8%
Clinical Nurse Manager 1	220	+45	+46	+4	+4	+6	+5	+25.4%	+26.6%	+8.3%	+1.6%	+2.8%	+2.6%
Clinical Nurse Manager 1 - Theatre	12	+5	+6	+6	+6			+81.8%	+86.0%	+142.4%	+96.7%		
Clinical Nurse Manager 2	458	+137	+122	+88	+88	+28	+18	+42.8%	+36.2%	+31.0%	+23.8%	+6.5%	+4.0%
Clinical Nurse Manager 2 (Mental Health)	3					+1	+1					+66.7%	+66.7%
Clinical Nurse Manager 2 - Night	6	-1	-1	-0	-0	-1		-7.2%	-13.5%	-4.9%	-1.2%	-7.2%	
Clinical Nurse Manager 2 - Theatre	38	+1	-2	-6	-6	-2	-3	+3.6%	-4.7%	-12.5%	-14.5%	-4.9%	-7.9%
Clinical Nurse Manager 3	56	+13	+10	-1	-1	-3	-4	+30.0%	+21.5%	-4.9%	-2.6%	-5.3%	-6.3%
Clinical Nurse Manager 3 - Theatre	6	-0	+2	+3	+3	-1	-0	-2.0%	+47.0%	+17.6%	+96.0%	-14.4%	-2.0%
Clinical Nurse/ Midwife Manager	937	+240	+215	+111	+111	+24	+14	+34.4%	+29.8%	+17.5%	+13.4%	+2.7%	+1.5%
Director of Nursing 1, Assistant	68	+29	+26	+10	+10	+6	+1	+75.8%	+61.7%	+32.0%	+17.5%	+9.8%	+1.2%
Director of Nursing 2, Assistant	21	-1	-4	-3	-3	-2	-1	-2.4%	-16.3%	+4.7%	-11.8%	-8.6%	-4.3%
Director of Nursing 3, Assistant	6	+2	+1	-1	-1			+37.5%	+22.2%	-15.4%	-15.4%		
Director of Nursing (Mental Health), Assistant	1	+1						-100.0%					
Director Nursing/Midwifery, Assistant	95	+31	+23	+6	+6	+4	-0	+48.8%	+31.5%	+20.8%	+7.1%	+4.5%	-0.1%
Director of Midwifery 1	1	+1						-100.0%					
Director of Nursing 1	9	+5	+5	+1	+1			+122.5%	+122.5%	+20.3%	+12.2%		
Director of Nursing 2	2	-1	-3	+1	+1	+1	+1	-34.3%	-59.8%	-1.5%	+97.0%	+97.0%	+97.0%
Director of Nursing 2A	1												
Director of Nursing 3	2	+0						+1.5%					
Director of Nursing & Midwifery		-1	-1	-1	-1			-100.0%	-100.0%	-100.0%	-100.0%	-100.0%	-100.0%
Director of Nursing & Midwifery, Hospital Group	1	+1	+1					-100.0%	-100.0%				
Director of Nursing/Midwifery	16	+5	+2	+1	+1	+1	+1	+44.7%	+14.2%	+10.2%	+6.3%	+6.5%	+6.5%
Nurse/ Midwife Manager	1,048	+276	+158	+118			-9	+35.7%	+17.7%	+12.7%	+12.7%	+12.7%	-0.8%
Advanced Midwife Practitioner	6	+4	+3	+1	+1	+1	+0	+194.5%	+96.3%	+17.8%	+17.8%	+17.8%	+0.2%
Advanced Midwife Practitioner, Candidate	1	+1	+1	+1	+1	+1	+0	-100.0%	-100.0%	-100.0%	-100.0%	-100.0%	+3.3%
Advanced Nurse Practitioner, Candidate (General)	32	+30	+11	+7	+7	+3	+8	+1521.5%	+54.8%	+25.7%	+25.7%	+9.8%	+32.8%

Jul 2021 (Dec 2016 figure: 10,971)	WTE Jul 2021	WTE change since Dec 16	WTE change since Dec 17	WTE change since Dec 18	WTE change since Dec 19	WTE change since Dec 20	WTE change since Apr 21	% change since Dec 16	% change since Dec 17	% change since Dec 18	% change since Dec 19	% change since Dec 20	% change since Apr 21
Overall	13,326	+2,355	+1,944	+1,282	+1,282	+403	+99	+21.5%	+17.1%	+13.2%	+10.6%	+3.1%	+0.7%
Advanced Nurse Practitioner (General)	60	+37	+29	+19	+19	+6	-1	+154.6%	+92.3%	+76.7%	+44.3%	+10.7%	-1.1%
Advanced Nurse/ Midwife Practitioner	100	+72	+44	+27	+27	+11	+7	+259.5%	+80.0%	+53.4%	+37.1%	+11.9%	+8.0%
Clinical Midwife Specialist	11	+7	+4	+1	+1	+2	+2	+155.2%	+54.0%	+19.8%	+6.5%	+22.0%	+18.2%
Clinical Nurse Specialist (General)	251	+35	+45	+27	+27	+12	-3	+16.4%	+21.8%	+13.9%	+12.2%	+5.1%	-1.1%
Clinical Nurse/ Midwife Specialist	262	+42	+49	+28	+28	+14	-1	+19.2%	+22.9%	+14.1%	+12.0%	+5.7%	-0.4%
Nurse/ Midwife Specialist & AN/MP	362	+114	+67	+55			-3	+46.0%	+22.7%	+17.9%	+17.9%	+17.9%	-0.7%
Staff Nurse (Nursing Bank)		-6	-7	-2	-2	-3	-1	-100.0%	-100.0%	-100.0%	-100.0%	-100.0%	-100.0%
Nursing Bank		-6	-7	-2	-2	-3	-1	-100.0%	-100.0%	-100.0%	-100.0%	-100.0%	-100.0%
Enhanced Nurse (Children's)	10	+10	+10	+10	+10	+1	+2	-100.0%	-100.0%	-100.0%	-100.0%	+7.9%	+26.2%
Enhanced Nurse (General)	798	+798	+798	+798	+798	+2	+4	-100.0%	-100.0%	-100.0%	-100.0%	+0.3%	+0.6%
Enhanced Nurse, Senior (Children's)	14	+14	+14	+14	+14	+2	-0	-100.0%	-100.0%	-100.0%	-100.0%	+13.6%	-1.8%
Enhanced Nurse, Senior (General)	805	+805	+805	+805	+805	+38	-11	-100.0%	-100.0%	-100.0%	-100.0%	+5.0%	-1.4%
Staff Nurse (Adaptation Placement), General				-23	-23			-100.0%	-100.0%	-100.0%	-100.0%	-100.0%	-100.0%
Staff Nurse (Children's)	2	-19	-15	-11	-11	-2	-0	-91.3%	-89.1%	-86.8%	-85.8%	-49.0%	-15.8%
Staff Nurse, Dual Qualified (General)		-9	-5	-3	-3			-100.0%	-100.0%	-100.0%	-100.0%	-100.0%	-100.0%
Staff Nurse - General	1,127	-936	-1,008	-883	-883	-104	-34	-45.4%	-47.2%	-45.5%	-43.9%	-8.4%	-3.0%
Staff Nurse, Senior (Children's)		-5	-7	-9	-9	-1	-1	-100.0%	-100.0%	-100.0%	-100.0%	-100.0%	-100.0%
Staff Nurse, Senior (Dual Qualified)	9	-34	-26	-22	-22	-1	-1	-79.6%	-75.1%	-71.9%	-72.0%	-7.7%	-10.8%
Staff Nurse, Senior (General)	333	-283	-336	-522	-522	+113	-5	-45.9%	-50.2%	-54.5%	-61.0%	+51.5%	-1.4%
Staff Nurses [General/ Children's]	3,097	+341	+229	+153	+153	+49	-46	+12.4%	+8.0%	+8.5%	+5.2%	+1.6%	-1.5%
Enhanced Midwife	128	+128	+128	+128	+128	-1	-1	-100.0%	-100.0%	-100.0%	-100.0%	-0.9%	-0.8%
Enhanced Midwife, Senior	64	+64	+64	+64	+64	-0	-3	-100.0%	-100.0%	-100.0%	-100.0%	-0.0%	-5.0%
Staff Midwife	85	-169	-139	-139	-139	+3	-7	-66.5%	-62.0%	-65.4%	-62.1%	+3.6%	-8.0%
Staff Midwife, Senior	5	-48	-53	-59	-59	-2	+0	-91.0%	-91.9%	-90.8%	-92.6%	-28.4%	+11.4%
Staff Midwife, Senior (dual qualified)		-1	-1					-100.0%	-100.0%	-100.0%	-100.0%	-100.0%	-100.0%
Staff Midwives	282	-26	-1	-6	-6	-0	-11	-8.4%	-0.5%	-5.5%	-2.1%	-0.0%	-3.8%
Staff Nurse, Mental Health	3	-2	-2	-1	-1			-36.6%	-36.6%	-19.6%	-19.6%		
Staff Nurse [Psychiatric]	3	-2	-2	-1	-1			-36.6%	-36.6%	-19.6%	-19.6%		
Staff Nurse/ Staff Midwife	3,382	+308	+220	+144			-1	+10.0%	+6.9%	+4.5%	+4.5%	+4.5%	-0.0%
Student Children's & General Nursing Intern (pre-registration)				-7	-7			-100.0%	-100.0%	-100.0%	-100.0%	-100.0%	-100.0%
Student General Nursing Intern (pre-registration)	98	+84	+78	+80	+80	+88	+9	+599.8%	+402.9%	+330.1%	+452.6%	+849.3%	+9.9%
Student Midwifery Intern (pre-registration)	9	+9	+9	+8	+8	+9	-1	-100.0%	-100.0%	-100.0%	+1600.0%	-100.0%	-5.6%
Pre-registration Nurse/ Midwife Intern	106	+92	+87	+81	+81	+96	+8	+660.5%	+446.6%	+367.4%	+322.0%	+931.7%	+8.5%
Student Children's & General Nursing Intern (COVID-19 HCA)						-15		-100.0%	-100.0%	-100.0%	-100.0%	-100.0%	-100.0%

Jul 2021 (Dec 2016 figure: 10,971)	WTE Jul 2021	WTE change since Dec 16	WTE change since Dec 17	WTE change since Dec 18	WTE change since Dec 19	WTE change since Dec 20	WTE change since Apr 21	% change since Dec 16	% change since Dec 17	% change since Dec 18	% change since Dec 19	% change since Dec 20	% change since Apr 21
Overall	13,326	+2,355	+1,944	+1,282	+1,282	+403	+99	+21.5%	+17.1%	+13.2%	+10.6%	+3.1%	+0.7%
Student General Nursing Intern (COVID-19 HCA)						-31		-100.0%	-100.0%	-100.0%	-100.0%	-100.0%	-100.0%
Student Midwifery Intern (COVID-19 HCA)						-1		-100.0%	-100.0%	-100.0%	-100.0%	-100.0%	-100.0%
Pre-registration Nurse Intern (COVID-19)						-47		-100.0%	-100.0%	-100.0%	-100.0%	-100.0%	-100.0%
Student Midwifery (post registration)	28	+5	+5	+7	+7	+11		+19.6%	+19.6%	+19.6%	+31.0%	+61.8%	
Post-registration Nurse/ Midwife Student	28	+5	+5	+7	+7	+11		+19.6%	+19.6%	+19.6%	+31.0%	+61.8%	
Staff Midwife (awaiting-registration)		-1						-100.0%	-100.0%	-100.0%	-100.0%	-100.0%	-100.0%
Staff Nurse, General (awaiting-registration)	8	+8	+3	-3	-3	-26	+6	-100.0%	+60.0%	+101.5%	-25.7%	-76.5%	+300.0%
Nursing/ Midwifery awaiting registration	8	+8	+3	-3	-3	-26	+6	+1500.0%	+60.0%	+101.5%	-25.7%	-76.5%	+300.0%
Nursing/ Midwifery Student	142	+104	+92	+85			+1	+278.6%	+185.4%	+149.1%	+149.1%	+149.1%	+1.0%
Clinical Nurse Instructor/Teacher	0	-2	-2	-2	-2			-100.0%	-100.0%	-100.0%	-100.0%	#DIV/0	#DIV/0
Director, Nursing/ Midwifery Education Centre	2					+1						+50.0%	
Nurse Tutor	7	+3	+3	+4	+4	+4	-1	+86.4%	+86.4%	+96.5%	+102.5%	+142.3%	-11.6%
Nurse Tutor (Psychiatric)	1	-4	-4	-4	-4	-4		-79.7%	-80.0%	-80.0%	-80.0%	-81.3%	
Nursing/ Midwifery Clinical Placement Co-ordinator	18	-6	-7	-10	-10	-4	-1	-25.8%	-27.5%	-33.3%	-34.7%	-18.4%	-5.1%
Nursing/ Midwifery Practice Development Co-ordinator	3												
Specialist Co-ordinator, Nursing	23	+4	+4	+2	+2	-2	+2	+19.8%	+19.6%	+17.0%	+10.7%	-6.5%	+7.6%
Nursing Education/Clinical	54	-4	-5	-9	-9	-5	-0	-7.7%	-8.7%	-12.3%	-14.5%	-8.9%	-0.5%
Nursing Unclassified	17	+6	+6	+4	+4	+3	-0	+51.2%	+56.9%	+53.8%	+30.8%	+21.3%	-1.2%
Other Nursing/ Midwifery	17	+6	+6	+4	+4	+3	-0	+51.2%	+56.9%	+53.8%	+30.8%	+21.3%	-1.2%
Nursing/ Midwifery other	70	+1	-2	-5			+0	+1.7%	-2.4%	-6.9%	-6.9%	-6.9%	+0.6%
Nursing & Midwifery	5,004	+803	+535	+397			-11	+19.1%	+12.0%	+8.6%	+8.6%	+8.6%	-0.2%
Dietitian	24	+7	+4	+1	+1	-5	-3	+44.7%	+21.4%	-0.9%	+5.7%	-15.7%	-11.6%
Dietitian, Clinical Specialist	10	+5	+5	+5	+5	+3	+0	+106.2%	+98.0%	+130.2%	+106.2%	+43.5%	+2.3%
Dietitian Manager	7	+1	+2	+1	+1	+1	-0	+22.3%	+27.1%	+8.1%	+8.1%	+7.4%	-3.8%
Dietitian Manager-in-charge III	3	+1	+1	+1	+1			+40.0%	+40.0%	+40.0%	+40.0%		
Dietitian, Senior	50	+10	+17	+9	+9	+2	+0	+26.2%	+50.8%	+17.2%	+20.6%	+5.1%	+0.1%
Dietitians	94	+25	+28	+16	+16	+1	-3	+36.3%	+43.1%	+17.6%	+20.9%	+1.6%	-3.3%
Occupational Therapist	41	+8	+5	+10	+10	+4	-0	+23.3%	+13.9%	+21.5%	+30.6%	+11.4%	-0.8%
Occupational Therapist, Clinical Specialist	3	+2	+2	+2	+2			+275.0%	+275.0%	+215.8%	+215.8%		
Occupational Therapist-in-charge III	3	+1	+1	+1	+1	+1		+50.0%	+50.0%	+50.0%	+50.0%	+50.0%	
Occupational Therapist Manager	2	+1	+1	+1	+1			+178.3%	+178.3%	+284.0%	+284.0%		
Occupational Therapist, Senior	49	+17	+18	+15	+15	+11	+2	+51.0%	+56.1%	+43.2%	+46.0%	+29.1%	+5.1%
Occupational Therapists	98	+29	+27	+29	+29	+16	+2	+41.5%	+38.2%	+37.1%	+43.2%	+19.9%	+2.1%

Jul 2021 (Dec 2016 figure: 10,971)	WTE Jul 2021	WTE change since Dec 16	WTE change since Dec 17	WTE change since Dec 18	WTE change since Dec 19	WTE change since Dec 20	WTE change since Apr 21	% change since Dec 16	% change since Dec 17	% change since Dec 18	% change since Dec 19	% change since Dec 20	% change since Apr 21
Overall	13,326	+2,355	+1,944	+1,282	+1,282	+403	+99	+21.5%	+17.1%	+13.2%	+10.6%	+3.1%	+0.7%
Orthoptist, Senior	3	-1	-1	+0	+0	-0	-0	-18.4%	-18.4%	+10.0%	+10.0%	-1.6%	-6.7%
Orthoptists	3	-1	-1	+0	+0	-0	-0	-18.4%	-18.4%	+10.0%	+10.0%	-1.6%	-6.7%
Physiotherapist	71	-2	-3	-25	-25	-33	-5	-2.8%	-3.6%	-21.7%	-25.9%	-31.7%	-6.7%
Physiotherapist, Clinical Specialist	30	+17	+16	+11	+11	+3	+1	+125.9%	+116.5%	+98.9%	+55.3%	+12.1%	+2.3%
Physiotherapist-in-charge (Grade III)	6	+1	+2	+1	+1	-1	-1	+9.3%	+51.3%	+47.5%	+18.0%	-13.4%	-13.4%
Physiotherapist Manager	9	+1	+2	+1	+1	+2	+1	+16.0%	+21.4%	+6.8%	+16.3%	+33.3%	+17.9%
Physiotherapist, Senior	107	+19	+10	+6	+6	+7	-6	+21.1%	+10.3%	+6.5%	+5.5%	+6.6%	-5.5%
Physiotherapy, Practice Tutor	1	+0	+0	+0	+0	+1		+29.9%	+25.0%	+35.1%	+35.1%	-100.0%	
Physiotherapists	223	+35	+27	-6	-6	-21	-10	+18.6%	+13.8%	+2.0%	-2.7%	-8.5%	-4.4%
Speech & Language Therapist	13	+4	+1	+5	+5	-1	+2	+45.1%	+6.4%	+50.2%	+72.6%	-4.7%	+16.6%
Speech & Language Therapist, Clinical Specialist	6	+4	+5	+2	+2	-0	-0	+205.0%	+510.0%	+510.0%	+67.1%	-1.6%	-4.7%
Speech & Language Therapist Manager	3	+0	-0	-0	-0	-0	+1	+2.3%	-3.2%	-7.3%	-3.5%	-2.2%	+40.8%
Speech & Language Therapist, Senior	23	+6	+3	+3	+3	-0	-2	+32.7%	+14.7%	+17.0%	+15.5%	-1.1%	-7.1%
Speech & Language Therapists	45	+14	+9	+11	+11	-1	+1	+44.2%	+24.0%	+38.1%	+31.5%	-2.3%	+1.4%
Chiropodist, Clinical Specialist	1												
Chiropodist/ Podiatrist	3	+1	+2	-0	-0	+0	+1	+43.5%	+100.0%	+100.0%	-11.0%	+2.4%	+48.5%
Chiropodist/ Podiatrist, Senior	6	+2	+1	+1	+1	-1	-1	+48.0%	+19.3%	+8.8%	+8.8%	-10.6%	-13.9%
Podiatrists & Chiropodists	10	+3	+2	+0	+0	-1	-0	+40.1%	+32.6%	+24.5%	+1.3%	-6.1%	-0.2%
Therapy Professions	473	+105	+60	+51			-11	+28.6%	+14.5%	+12.1%	+12.1%	+12.1%	-2.3%
Audiologist	2	+1	+1	+1	+1	+1		+77.8%	+77.8%	+77.8%	+77.8%	+77.8%	
Audiologist, Chief	1		+0	+0	+0				+8.7%	+8.7%	+3.1%		
Audiologist, Senior	0	-1	-1	-1	-1	-1	-2	-87.0%	-83.3%	-85.7%	-85.7%	-85.7%	-91.3%
Audiology	3	-0	+0	-0	-0	-0	-2	-7.8%	+3.3%	-2.3%	-3.7%	-4.5%	-36.8%
Biochemist	6	-1	-4	-5	-5	-6		-19.0%	-40.1%	-47.6%	-43.2%	-48.8%	
Biochemist, Principal	7	+1	-1	-1	-1			+18.6%	-13.3%	-13.3%	-13.3%		
Biochemist, Senior	13	+5	+3	+4	+4	+2		+65.8%	+30.2%	+27.6%	+41.8%	+16.0%	
Biochemists	25	+5	-2	-2	-2	-4		+22.7%	-7.6%	-12.8%	-6.7%	-13.6%	
Clinical Engineering Technician	5	+3	+3	+2	+2		-1	+150.0%	+150.0%	+66.7%	+66.7%		-16.7%
Clinical Engineering Technician, Chief	4	+2	+1	-0	-0	-0	-0	+91.0%	+27.3%	-4.5%	-4.5%	-4.5%	-4.5%
Clinical Engineering Technician, Principal	3	-1				+1		-25.0%				+50.0%	
Clinical Engineering Technician, Senior	11	+3	+2	+0	+0	+0	+0	+39.6%	+24.1%	+24.1%	+1.5%	+1.5%	+1.5%
Clinical Engineering	23	+7	+6	+2	+2	+1	-1	+43.7%	+35.2%	+21.0%	+9.5%	+4.5%	-4.2%
Cardiac Physiologist	18	-5	+1	-1	-1	+0	+2	-22.3%	+7.1%	-9.9%	-3.1%	+1.2%	+13.9%
Cardiac Physiologist, Chief I	7	+1	+2	+1	+1	+2	+0	+25.7%	+26.9%	+23.4%	+24.0%	+49.9%	+6.1%

Jul 2021 (Dec 2016 figure: 10,971)	WTE Jul 2021	WTE change since Dec 16	WTE change since Dec 17	WTE change since Dec 18	WTE change since Dec 19	WTE change since Dec 20	WTE change since Apr 21	% change since Dec 16	% change since Dec 17	% change since Dec 18	% change since Dec 19	% change since Dec 20	% change since Apr 21
Overall	13,326	+2,355	+1,944	+1,282	+1,282	+403	+99	+21.5%	+17.1%	+13.2%	+10.6%	+3.1%	+0.7%
Cardiac Physiologist, Chief II	3	+1	+1	+1	+1	+0	-0	+42.7%	+47.6%	+52.9%	+46.4%	+0.9%	-0.0%
Cardiac Physiologist, Senior	32	+15	+11	+8	+8	+4	+1	+91.8%	+50.1%	+52.6%	+31.9%	+16.3%	+2.9%
E.C.G. Technician		-1	-1					-100.0%	-100.0%	-100.0%	-100.0%	-100.0%	-100.0%
Gastrointestinal (GI) Physiologist	1	+1						-100.0%					
Neuro-Physiologist	2	+1	+1	+2	+2	-2	-2	+100.0%	+100.0%	+100.0%	-100.0%	-50.0%	-50.0%
Neuro-Physiologist, Chief I	1			+1	+1						-100.0%		
Neuro-Physiologist, Chief II	1	+1	+1	+1	+1	+1		-100.0%	-100.0%	-100.0%	-100.0%	-100.0%	
Neuro-Physiologist, Senior	3	-1	-2	-2	-2	-3	+0	-18.3%	-34.6%	-34.6%	-34.6%	-45.5%	+16.0%
Respiratory Physiologist	7	+2	+1	-0	-0	-0	+2	+39.8%	+16.5%	+2.2%	-0.1%	-0.1%	+39.8%
Respiratory Physiologist, Chief I	1	+1	+1	+1	+1	+1		-100.0%	-100.0%	-100.0%	-100.0%	-100.0%	
Respiratory Physiologist, Chief II	2	-0	+0	+0	+0			-5.5%	+5.6%	+89.0%	+11.2%		
Respiratory Physiologist, Senior	7	-1	+1	-1	-1	-3	+1	-13.9%	+13.2%	-22.1%	-9.9%	-29.0%	+16.3%
Vascular Physiologist	2	-2	-1					-50.0%	-33.3%	-33.3%			
Vascular Physiologist, Chief I	1												
Vascular Physiologist, Chief II	1												
Vascular Physiologist, Senior	4	+3	+3	+2	+2	+2		+300.0%	+300.0%	+300.0%	+100.0%	+100.0%	
Clinical Measurement	93	+16	+18	+14	+14	+3	+5	+20.7%	+24.8%	+17.4%	+18.1%	+3.8%	+5.6%
Perfusionist	6	+4	+3	+3	+3	+2	+1	+200.0%	+100.0%	+200.0%	+100.0%	+63.0%	+31.3%
Perfusionist, in charge	1												
Perfusionists	7	+4	+3	+3	+3	+2	+1	+133.3%	+75.0%	+133.3%	+75.0%	+49.6%	+25.7%
Phlebotomist	38	+9	+7	+6	+6	+2	+0	+29.2%	+21.8%	+19.0%	+17.2%	+6.1%	+0.4%
Phlebotomist, Senior	5	+0	+0	-0	-0	-1	-1	+7.0%	+0.9%	-6.1%	-0.4%	-18.6%	-17.1%
Phlebotomists	42	+9	+7	+6	+6	+1	-1	+26.3%	+19.1%	+15.7%	+14.9%	+2.7%	-1.9%
Physicist	7	+3	+3	+1	+1	+1		+82.8%	+82.8%	+21.8%	+21.8%	+21.8%	
Physicist, Chief	1	-1	-1	-1	-1	-0		-60.0%	-60.0%	-60.0%	-60.0%	-20.0%	
Physicist, Principal	4	+3	+1	+1	+1	+1	-1	+178.0%	+22.6%	+22.6%	+21.9%	+15.8%	-11.3%
Physicist, Senior	5	+1	+2	+1	+1	+1		+28.5%	+67.0%	+25.2%	+25.2%	+25.2%	
Physicists	17	+6	+5	+2	+2	+3	-1	+51.7%	+39.4%	+12.3%	+12.1%	+18.4%	-3.0%
Radiographer	112	+3	-1	+3	+3	-5	+6	+2.6%	-0.5%	+6.5%	+2.8%	-3.9%	+6.0%
Radiographer, Clinical Specialist	47	+7	+6	+0	+0	-0	-1	+16.6%	+13.6%	+1.7%	+1.0%	-0.9%	-2.6%
Radiographer, Senior	91	+25	+27	+19	+19	+8	-2	+37.5%	+42.1%	+23.9%	+26.4%	+9.1%	-1.8%
Radiography Service Manager, I	11	+3	+2	+1	+1	+1	+1	+32.9%	+18.9%	+9.7%	+8.7%	+6.4%	+7.5%
Radiography Service Manager, II	4	-1	-1	-1	-1	-1		-22.8%	-22.8%	-19.6%	-22.8%	-22.8%	
Radiographers	264	+36	+33	+22	+22	+2	+4	+15.7%	+14.0%	+10.5%	+9.1%	+0.8%	+1.6%
Laboratory Manager	4			-1	-1	-1				-20.0%	-20.0%	-20.0%	

Jul 2021 (Dec 2016 figure: 10,971)	WTE Jul 2021	WTE change since Dec 16	WTE change since Dec 17	WTE change since Dec 18	WTE change since Dec 19	WTE change since Dec 20	WTE change since Apr 21	% change since Dec 16	% change since Dec 17	% change since Dec 18	% change since Dec 19	% change since Dec 20	% change since Apr 21
Overall	13,326	+2,355	+1,944	+1,282	+1,282	+403	+99	+21.5%	+17.1%	+13.2%	+10.6%	+3.1%	+0.7%
Medical Scientist	161	-22	-10	+1	+1	-6	-9	-11.8%	-6.1%	-8.0%	+0.7%	-3.9%	-5.4%
Medical Scientist, Chief	39	+8	+5	+3	+3	-0	+2	+26.9%	+13.7%	+10.8%	+8.0%	-0.6%	+5.0%
Medical Scientist, Senior	118	+33	+30	+22	+22	+16	+6	+38.7%	+34.4%	+30.4%	+23.3%	+15.5%	+5.2%
Medical Scientist, Specialist	12	+4	+3	+3	+3	+1	+1	+41.5%	+28.9%	+50.2%	+35.9%	+12.7%	+5.0%
Medical Scientist, Undergraduate	3	+3	+3	+3	+3	+3	+3	-100.0%	-100.0%	-100.0%	-100.0%	-100.0%	-100.0%
Medical Science	337	+26	+30	+32	+32	+13	+2	+8.4%	+9.9%	+7.5%	+10.3%	+3.9%	+0.6%
Health Science/ Diagnostics	812	+108	+74	+78			+10	+15.3%	+10.1%	+10.7%	+10.7%	+10.7%	+1.3%
Social Worker	7	+7	+7	+7	+7	+7		-100.0%	-100.0%	-100.0%	-100.0%	-100.0%	
Social Worker, Medical	23	-6	-8	-10	-10	-8	+2	-20.2%	-26.0%	-22.6%	-31.0%	-25.5%	+11.3%
Social Worker, Principal	4	+0	-1	-1	-1	-2	-2	+12.4%	-10.7%	-9.2%	-24.8%	-34.4%	-33.9%
Social Worker, Senior Medical	38	+17	+18	+12	+12	+10	+0	+78.6%	+92.9%	+106.1%	+43.0%	+33.0%	+0.9%
Social Worker, Team Leader								-100.0%	-100.0%	-100.0%	-100.0%	-100.0%	-100.0%
Social Work Practitioner, Senior	4		+1	+0	+0	-3	+1		+33.3%		+5.3%	-44.6%	+33.3%
Social Workers	77	+19	+18	+7	+7	+3	+1	+31.7%	+30.1%	+34.0%	+9.8%	+4.2%	+1.9%
Social Workers	77	+19	+20	+7			+0	+31.7%	+34.0%	+9.8%	+9.8%	+9.8%	+0.4%
Psychologist, Clinical	3	+1	+1	+1	+1	+2		+18.2%	+18.2%	+32.2%	+44.6%	+161.3%	
Psychologist, Counselling	2	+1	+1	+0	+0			+327.9%	+327.9%	+327.9%	+5.1%		
Psychologist, Educational	1												
Psychologist, Principal Clinical	3	+2	+2	+1	+1	+1	+1	+225.0%	+225.0%	+225.0%	+38.3%	+38.3%	+38.3%
Psychologist, Senior Clinical	14	+7	+6	+0	+0	-0	-2	+93.1%	+73.0%	+44.8%	+3.4%	-3.1%	-12.7%
Psychologist, Trainee Clinical				-1	-1	-1	-1	-100.0%	-100.0%	-100.0%	-100.0%	-100.0%	-100.0%
Psychologists	23	+11	+10	+1	+1	+1	-2	+91.5%	+78.8%	+62.1%	+6.7%	+6.6%	-8.7%
Psychologists	23	+11	+9	+1			-1	+91.5%	+62.1%	+6.7%	+6.7%	+6.7%	-4.4%
Pharmaceutical Technician	50	+21	+15	+5	+5	+4	+2	+71.6%	+44.5%	+45.3%	+11.7%	+9.8%	+3.2%
Pharmaceutical Technician, Senior	27	+5	+6	+5	+5	+3	+1	+23.5%	+26.8%	+23.8%	+22.1%	+14.8%	+3.3%
Pharmacist	38	+10	+7	+3	+3	-1	-1	+36.5%	+21.0%	+5.1%	+9.6%	-2.4%	-2.0%
Pharmacist, Chief I	3	+1	-0	-0	-0	-0	-0	+37.5%	-8.3%	-8.3%	-8.3%	-8.3%	-8.3%
Pharmacist, Chief II	22	-4	-0	-2	-2	-0	-0	-15.1%	-2.0%	-4.6%	-8.8%	-1.8%	-0.1%
Pharmacist, Senior	67	+22	+22	+8	+8	+8	+6	+50.3%	+47.9%	+22.1%	+13.5%	+14.4%	+10.3%
Pharmacy	207	+56	+49	+19	+19	+15	+8	+36.7%	+30.9%	+19.4%	+10.2%	+7.7%	+3.8%
Pharmacy	207	+56	+34	+19			+2	+36.7%	+19.4%	+10.2%	+10.2%	+10.2%	+1.1%
Counsellor Therapist (Adult Services)	0	-1	-1	-1	-1	-1	-1	-74.5%	-74.5%	-74.5%	-58.8%	-58.8%	-58.8%
Counsellor / Therapist (National Services)	0												
Director of Counselling (National Services)	1	-0	-0	-0	-0	-0	-0	-25.0%	-25.0%	-25.0%	-25.0%	-25.0%	-25.0%

Jul 2021 (Dec 2016 figure: 10,971)	WTE Jul 2021	WTE change since Dec 16	WTE change since Dec 17	WTE change since Dec 18	WTE change since Dec 19	WTE change since Dec 20	WTE change since Apr 21	% change since Dec 16	% change since Dec 17	% change since Dec 18	% change since Dec 19	% change since Dec 20	% change since Apr 21
Overall	13,326	+2,355	+1,944	+1,282	+1,282	+403	+99	+21.5%	+17.1%	+13.2%	+10.6%	+3.1%	+0.7%
Counsellor Therapists	2	-1	-1	-1	-1	-1	-1	-48.6%	-48.6%	-48.6%	-35.3%	-35.3%	-35.3%
Medical Scientist, Student	2	-4	-3	-4	-4	-3	-5	-66.7%	-61.1%	-61.3%	-67.7%	-60.0%	-71.4%
Perfusionist, Student		-1	-1	-1	-1			-100.0%	-100.0%	-100.0%	-100.0%	-100.0%	-100.0%
Pharmacist, Student	1	-0	-0	+1	+1	+1		-19.0%	-19.0%	-19.0%	-100.0%	-100.0%	
Phlebotomist, Trainee	6	+6	+6	+5	+5	+4	+1	-100.0%	-100.0%	+2084.6%	+896.5%	+314.6%	+27.9%
Respiratory Technician, Student			-1					-100.0%	-100.0%	-100.0%	-100.0%	-100.0%	-100.0%
HSCP Trainees/ Students	8	+0	+0	+1	+1	+2	-4	+6.1%	+4.3%	-10.0%	+9.3%	+33.3%	-30.7%
Clinical Photographer	4	-1	-0	-0	-0	-1	-1	-20.0%	-6.5%	+2.8%	-8.5%	-20.0%	-20.0%
Clinical Photographer, Senior	2												
Health & Social Care Professionals Unclassified	9	+1	-2	-0	-0	+0	-1	+20.0%	-18.1%	-18.9%	-0.9%	+3.8%	-10.5%
Optometrist, Clinical	3	+2	+2	+2	+2	-0		+240.0%	+240.0%	+240.0%	+240.0%	-0.6%	
Other Health & Social Care	18	+3	+0	+2	+2	-1	-2	+18.7%	+1.4%	+3.0%	+12.2%	-3.8%	-10.0%
Vaccinator - COVID 19 Vaccination Programme	23	+23	+23	+23	+23	+23	+23	-100.0%	-100.0%	-100.0%	-100.0%	-100.0%	-100.0%
Vaccinators	23	+23	+23	+23	+23	+23	+23	-100.0%	-100.0%	-100.0%	-100.0%	-100.0%	-100.0%
H&SC, Other	51	+25	+21	+25			-5	+96.3%	+71.8%	+96.0%	+96.0%	+96.0%	-9.3%
Health & Social Care Professionals	1,643	+323	+217	+182			-4	+24.5%	+15.2%	+12.4%	+12.4%	+12.4%	-0.3%
CEO (Band H2 Hospital)	1			+1	+1						-100.0%		
CEO (Band H3 Hospital)	1			-1	-1	-1					-37.5%	-37.5%	
Chief Executive, Hospital Group							-1	-100.0%	-100.0%	-100.0%	-100.0%	-100.0%	-100.0%
Chief Executive Officer	3												
Chief Finance Officer (HSE)						-1		-100.0%	-100.0%	-100.0%	-100.0%	-100.0%	-100.0%
Director of Finance	2	+1	+1	+1	+1	+1	-1	+100.0%	+100.0%	+100.0%	+100.0%	+100.0%	-33.3%
Director of HR	2	+1	+1	+1	+1	+1		+100.0%	+100.0%	+100.0%	+100.0%	+100.0%	
Director of ICT	1	+1	+1	+1	+1	+1		-100.0%	-100.0%	-100.0%	-100.0%	-100.0%	
Director of Information Systems	1												
Head of Function /Service, Acute Services	1	+1	+1			-1	-1	-100.0%	-100.0%	-100.0%		-49.7%	-33.3%
Head of Function /Service, Community Services	4	+4	+4	+3	+3	+2	+2	-100.0%	-100.0%	-100.0%	+296.0%	+98.0%	+111.8%
Hospital Group, Chief Finance Officer	1	+1	+1	+1	+1	+1	-0	-100.0%	-100.0%	-100.0%	-100.0%	-100.0%	-4.0%
National Director, Assistant (Services)	6	+6	+6	+1	+1	+1	+1	-100.0%	-100.0%	+55.6%	+21.7%	+21.7%	+21.7%
National Director, Assistant (Support)	2	-1	-1	+1	+1	-2		-25.0%	-25.0%	-25.0%	+50.0%	-50.0%	
Executive Management	24	+14	+14	+9	+9	+3	+1	+140.2%	+140.2%	+76.6%	+58.0%	+13.4%	+3.5%
Chief Executive Officer, Deputy	3	+3	+1	+2	+2	+2	+1	-100.0%	+50.0%	+200.0%	+200.0%	+200.0%	+50.0%
Functional Officer	6	+2	+2	+2	+2	+2		+50.0%	+50.0%	+50.0%	+50.0%	+50.0%	
General Manager	8	-2	-1	+1	+1	+4	+1	-16.5%	-8.2%	+3.6%	+7.0%	+88.8%	+6.6%

Jul 2021 (Dec 2016 figure: 10,971)	WTE Jul 2021	WTE change since Dec 16	WTE change since Dec 17	WTE change since Dec 18	WTE change since Dec 19	WTE change since Dec 20	WTE change since Apr 21	% change since Dec 16	% change since Dec 17	% change since Dec 18	% change since Dec 19	% change since Dec 20	% change since Apr 21
Overall	13,326	+2,355	+1,944	+1,282	+1,282	+403	+99	+21.5%	+17.1%	+13.2%	+10.6%	+3.1%	+0.7%
Grade VIII	71	+29	+24	+21	+21	+3	-1	+70.9%	+50.8%	+44.2%	+43.1%	+5.1%	-0.7%
Service Manager	1	-6	-4	-5	-5	-2		-85.7%	-80.0%	-83.3%	-83.3%	-66.7%	
Senior Management (VIII & GM)	89	+27	+22	+21	+21	+9	+1	+43.1%	+33.2%	+30.9%	+30.7%	+11.6%	+1.1%
Management (VIII & above)	113	+41	+31	+30				+56.5%	+38.5%	+35.7%	+35.7%	+35.7%	
Accountant	5					+1	+1					+25.0%	+25.0%
Grade V	333	+116	+91	+80	+80	+17	+3	+53.7%	+37.5%	+33.5%	+31.6%	+5.5%	+1.0%
Grade VI	156	+51	+48	+27	+27	+5	+4	+48.8%	+44.0%	+30.0%	+21.0%	+3.0%	+2.7%
Grade VII	110	+24	+11	-1	-1	+1	-6	+28.6%	+10.6%	-0.7%	-0.8%	+1.1%	-5.4%
Supplies Officer Grade A	1	-3	-2	-1	-1			-75.0%	-66.7%	-66.1%	-50.0%		
Supplies Officer Grade B	14	+2	+2	+1	+1	-1	-1	+19.0%	+19.0%	+1.4%	+9.5%	-5.5%	-6.6%
Middle Management (V-VII)	618	+191	+149	+106	+106	+23	+1	+44.7%	+31.8%	+23.3%	+20.8%	+3.9%	+0.2%
Librarian	1	-1	-1	-1	-1	-1		-42.5%	-42.5%	-42.5%	-42.5%	-59.7%	
Librarian, Assistant	2	+1	+1	+1	+1	+2		+74.0%	+74.0%	+74.0%	+74.0%	-100.0%	
Project Manager		-1	-1	-1	-1	-1		-100.0%	-100.0%	-100.0%	-100.0%	-100.0%	-100.0%
Technical Services Manager	1												
Other Administrative	4	-1	-1	-1	-1	-1		-21.1%	-21.1%	-21.1%	-21.1%	-16.5%	
Administrative/ Supervisory (V to VII)	621	+190	+116	+105			-2	+44.0%	+22.9%	+20.4%	+20.4%	+20.4%	-0.3%
Clerical Officer	490	+40	+41	+17	+17	+26	+17	+8.8%	+9.0%	+1.7%	+3.6%	+5.6%	+3.5%
Grade IV	723	+116	+79	+59	+59	+52	+13	+19.1%	+12.3%	+11.2%	+8.9%	+7.8%	+1.8%
Supplies Officer Grade C	37	+5	+9	+0	+0	-2	-3	+16.5%	+31.5%	+15.8%	+0.6%	-4.3%	-7.6%
Supplies Officer Grade D	18	+2	+1	+1	+1	+1		+15.8%	+5.5%	-4.9%	+6.1%	+6.1%	
Telephonist	20	-3	-3	+1	+1	-7	-0	-14.8%	-12.5%	+1.8%	+6.0%	-26.4%	-1.1%
Telephonist, Night	5	+1	-0	+1	+1	-0		+20.8%	-1.0%	+10.3%	+29.5%	-0.4%	
Telephonist, Supervisor	2					-1						-30.8%	
General Administrative (III & IV)	1,294	+161	+127	+80	+80	+70	+26	+14.2%	+10.9%	+7.1%	+6.6%	+5.7%	+2.1%
Clerical (III & IV)	1,294	+161	+85	+80			+6	+14.2%	+7.1%	+6.6%	+6.6%	+6.6%	+0.5%
Management & Administrative	2,028	+391	+233	+215			+5	+23.9%	+13.0%	+11.9%	+11.9%	+11.9%	+0.2%
Catering	105	+8	+10	+2	+2	-5	-5	+7.9%	+10.8%	+6.0%	+2.1%	-4.6%	-4.3%
Household Services	689	+83	+46	+28	+28	+11	+3	+13.8%	+7.2%	+3.0%	+4.3%	+1.6%	+0.5%
Other Labs & Associated	102	+42	+37	+29	+29	+19	+12	+70.1%	+57.3%	+51.6%	+40.5%	+23.4%	+13.8%
Other Support	170	+22	+11	+12	+12	-3	+1	+15.2%	+7.0%	+8.1%	+7.5%	-1.6%	+0.4%
Portering	273	-40	-54	-56	-56	+4	+5	-12.7%	-16.5%	-16.5%	-17.0%	+1.4%	+2.0%

Jul 2021 (Dec 2016 figure: 10,971)	WTE Jul 2021	WTE change since Dec 16	WTE change since Dec 17	WTE change since Dec 18	WTE change since Dec 19	WTE change since Dec 20	WTE change since Apr 21	% change since Dec 16	% change since Dec 17	% change since Dec 18	% change since Dec 19	% change since Dec 20	% change since Apr 21
Overall	13,326	+2,355	+1,944	+1,282	+1,282	+403	+99	+21.5%	+17.1%	+13.2%	+10.6%	+3.1%	+0.7%
Support	1,339	+116	+19	+16			+6	+9.5%	+1.5%	+1.2%	+1.2%	+1.2%	+0.5%
Boilerman	1												
Chargehand	3	+2	+2					+200.0%	+200.0%				
Electrician	18	-0	-0	+1	+1	+1	-1	-0.3%	-0.3%	+19.9%	+5.6%	+5.8%	-5.3%
Gardener/ Groundsman	1	-2	-2	-1	-1			-66.7%	-66.7%	-66.7%	-50.0%		
Gardener/ Groundsman, Head	1	+1	+1	+1	+1			-100.0%	-100.0%	-100.0%	-100.0%		
General Operative	11	+1		-1	-1	-1	-1	+4.6%			-7.2%	-7.8%	-4.5%
Labourer	2	-0	-0	-0	-0		-0	-4.5%	-4.5%	-4.5%	-4.5%		-1.5%
Maintenance Craftsman/Technician	25	+4	+3	+1	+1	+0		+19.0%	+13.7%	+8.7%	+4.2%	+0.1%	
Maintenance Foreman	12	+3	+1	+3	+3	+0	+0	+33.3%	+9.5%	+21.2%	+27.8%	+0.4%	+0.4%
Maintenance Foreman, Assistant	2	+1	+1					+100.0%	+100.0%				
Maintenance Helper	6												
Maintenance Manager	2	-0	-0	-0	-0	-0	-0	-24.5%	-12.2%	-24.5%	-24.5%	-23.0%	-24.5%
Maintenance Officer	4	+1	+2	+2	+2			+33.3%	+100.0%	+166.7%	+100.0%		
Painter	6	-2	-1	-1	-1	+0	-0	-23.3%	-12.3%	-12.3%	-12.3%	+2.3%	-3.8%
Plasterer		-1	-1					-100.0%	-100.0%	-100.0%	-100.0%	-100.0%	-100.0%
Plumber	17	+2	+5	+6	+6	+2	-0	+12.4%	+37.9%	+87.3%	+53.3%	+14.8%	-0.8%
Maintenance	110	+9	+11	+10	+10	+2	-2	+8.7%	+10.5%	+14.5%	+10.1%	+1.8%	-2.1%
Draughtsman/Technician I	0	-2	-2	-2	-2			-100.0%	-100.0%	-100.0%	-100.0%	#DIV/0	#DIV/0
Draughtsman/Technician II		-1	-1					-100.0%	-100.0%	-100.0%	-100.0%	-100.0%	-100.0%
Engineer/ Engineering Officer	1	-1	-1	-1	-1		-1	-50.0%	-50.0%	-50.0%	-50.0%		-50.0%
Fire Prevention Officer	2												
Technical Services Officer	1	+1	+1					+400.0%	+400.0%	+400.0%			
Technical Services Officer, Assistant		-1	-1					-100.0%	-100.0%	-100.0%	-100.0%	-100.0%	-100.0%
Technical Services Officer, Chief Asst.	5	+3	+2	+2	+2		-1	+150.0%	+66.7%	+400.0%	+66.7%		-16.7%
Technical Services Officer, Senior Asst.	2	+2	+2	+0	+0	+1	+1	-100.0%	-100.0%	-20.0%	+1.0%	+100.0%	+100.0%
Technical Services	11	+1	-0	-1	-1	+1	-1	+7.8%	-1.8%	+2.8%	-8.2%	+10.0%	-8.3%
Maintenance/ Technical	121	+10	+14	+9			-0	+8.6%	+13.4%	+8.1%	+8.1%	+8.1%	-0.3%
General Support	1,460	+125	+34	+25			+6	+9.4%	+2.4%	+1.7%	+1.7%	+1.7%	+0.4%
HCA, Nurse's Aide, etc.	1,153	+299	+294	+231	+231	+64	+45	+35.1%	+34.1%	+26.7%	+25.1%	+5.9%	+4.0%
Occupational Therapy Assistant	5	-0	-0	+0	+0	-3	-1	-4.3%	-5.6%	+23.6%	+9.3%	-39.6%	-14.0%
Physiotherapy Assistant	9	+5	+5	+5	+5	+2	+0	+114.0%	+120.6%	+90.8%	+123.3%	+21.4%	+0.4%
Radiography Aide	20	+7	+6	+2	+2	-2	+0	+52.7%	+37.9%	+8.2%	+8.6%	-8.8%	+1.1%
Health & Social Care Assistants	34	+12	+10	+7	+7	-3	-1	+52.0%	+43.4%	+25.1%	+26.4%	-9.0%	-1.5%

Jul 2021 (Dec 2016 figure: 10,971)	WTE Jul 2021	WTE change since Dec 16	WTE change since Dec 17	WTE change since Dec 18	WTE change since Dec 19	WTE change since Dec 20	WTE change since Apr 21	% change since Dec 16	% change since Dec 17	% change since Dec 18	% change since Dec 19	% change since Dec 20	% change since Apr 21
Overall	13,326	+2,355	+1,944	+1,282	+1,282	+403	+99	+21.5%	+17.1%	+13.2%	+10.6%	+3.1%	+0.7%
Health Care Assistant (Student Nurse/Midwife COVID-19)						-4	-1	-100.0%	-100.0%	-100.0%	-100.0%	-100.0%	-100.0%
HCA (Student Nurse/Midwife COVID-19)						-4	-1	-100.0%	-100.0%	-100.0%	-100.0%	-100.0%	-100.0%
Community Swabber (COVID-19)						-11		-100.0%	-100.0%	-100.0%	-100.0%	-100.0%	-100.0%
Swabber (COVID-19)						-11		-100.0%	-100.0%	-100.0%	-100.0%	-100.0%	-100.0%
Health Care Assistants	1,187	+311	+250	+239			+41	+35.5%	+26.7%	+25.1%	+25.1%	+25.1%	+3.5%
Cardiac Aide	1	-0	-0	+0	+0	+1	+1	-18.8%	-11.2%	+106.5%	+3.3%	-100.0%	-100.0%
Chaplain	19	-2	-1	-2	-2	-3	-2	-10.8%	-5.2%	-7.9%	-9.5%	-13.8%	-8.9%
Driver (Patients/Clients Public Roads)	1	-1						-50.0%					
Education Officer		-1	-1	-1	-1			-100.0%	-100.0%	-100.0%	-100.0%	-100.0%	-100.0%
Endoscopy Operative (Band 1)							-1	-100.0%	-100.0%	-100.0%	-100.0%	-100.0%	-100.0%
Endoscopy Operative (Band 2)	2	+2	+2	+2	+2	+0	+1	-100.0%	-100.0%	-100.0%	-100.0%	+18.3%	+100.0%
Head of Bed Management (Category A)	1												
Health Promotion Officer	3	+2	+2	+3	+3	+1	+0	+200.0%	+200.0%	+200.0%	-100.0%	+64.8%	+1.7%
Health Promotion Officer, Senior	1	+1	+1	+1	+1	+1		-100.0%	-100.0%	-100.0%	-100.0%	-100.0%	
Other Patient & Client Care Unclassified		-2						-100.0%	-100.0%	-100.0%	-100.0%	-100.0%	-100.0%
Pastoral Care Worker	1												
Other Care Grades	28	-2	+2	+3	+3	-0	-1	-6.7%	+9.0%	+9.0%	+9.7%	-0.4%	-2.9%
Care, other	28	-2	+2	+3			+0	-6.7%	+9.0%	+9.7%	+9.7%	+9.7%	+0.2%
Patient & Client Care	1,216	+309	+252	+241			+41	+34.1%	+26.2%	+24.7%	+24.7%	+24.7%	+3.5%

Source: Health Service Personnel Census

Longitudinal Employment Levels by Staff Group - Dec 2016 to Jul 2021

Jul 2021 (Dec 2016 figure: 10,971)	WTE Jul 2021	WTE change since Dec 16	WTE change since Dec 17	WTE change since Dec 18	WTE change since Dec 19	WTE change since Dec 20	WTE change since Apr 21	% change since Dec 16	% change since Dec 17	% change since Dec 18	% change since Dec 19	% change since Dec 20	% change since Apr 21
Overall	13,326	+2,355	+1,944	+1,553	+1,282	+403	+99	+21.5%	+17.1%	+13.2%	+10.6%	+3.1%	+0.7%
Consultants	35	+7	+3	+1	+1	-2	+0	+23.4%	+9.9%	+2.4%	+4.2%	-6.2%	+0.2%
Registrars	52	+4	+4	+2	-1	+2	-3	+8.0%	+8.0%	+3.7%	-1.3%	+3.2%	-4.9%
SHO/ Interns	66	+19	+10	+11	+5	+7	+2	+39.4%	+18.6%	+19.1%	+8.5%	+10.9%	+2.4%
Medical/ Dental, other	6	+4	+3	+2	+1		+0	+181.0%	+93.5%	+47.5%	+19.2%		+7.6%
Nurse/ Midwife Manager	81	+27	+21	-2	-4	-2	-4	+50.3%	+35.2%	-2.5%	-4.7%	-2.3%	-4.5%
Nurse/ Midwife Specialist & AN/MP	26	+10	+5	+6	+6	+1	-1	+67.1%	+22.5%	+28.0%	+32.1%	+5.6%	-5.3%
Staff Nurse/ Staff Midwife	306	+26	+28	+13	+16	+6	+8	+9.4%	+10.0%	+4.4%	+5.6%	+1.9%	+2.6%
Nursing/ Midwifery Student	5	+5	+5	+5	+4	+2		-100.0%	-100.0%	-100.0%	+400.0%	+77.3%	
Therapy Professions	29	+12	+10	+6	+4	+0	+0	+68.7%	+55.1%	+26.4%	+14.9%	+0.4%	+1.3%
Health Science/ Diagnostics	35	+6	+5	-1	-2	-2	-1	+21.7%	+16.4%	-1.6%	-5.6%	-4.5%	-4.0%
Social Workers	2	+2	+2	+2	+1	+1	+1	-100.0%	-100.0%	-100.0%	+90.0%	+90.0%	+90.0%
Pharmacy	14	+7	+6	+5	+3	+1	+0	+90.6%	+73.0%	+54.2%	+29.0%	+10.0%	+2.7%
Management (VIII & above)	3	+1		+0	+1	-1	-1	+50.0%		+3.1%	+50.0%	-25.0%	-14.3%
Administrative/ Supervisory (V to VII)	27	+15	+12	+11	+12	+5	-0	+120.9%	+76.8%	+74.3%	+82.5%	+21.2%	-0.2%
Clerical (III & IV)	113	-3	-3	-4	-3	-3	-2	-2.6%	-2.6%	-3.5%	-2.8%	-2.7%	-1.4%
Support	179	-12	-22	-28	-27	+5	+7	-6.2%	-10.9%	-13.4%	-13.2%	+3.0%	+4.2%
Maintenance/ Technical	7	+1	+2	+2	+1	+1		+27.3%	+40.5%	+43.4%	+16.3%	+23.3%	
Health Care Assistants	91	+33	+41	+40	+35	+2	+2	+57.1%	+82.5%	+77.8%	+63.3%	+1.9%	+1.7%
Care, other	3	-0	-0	+0	+0	+1	+1	-6.9%	-3.9%	+19.9%	+1.0%	+47.5%	+47.5%
Wexford General	1,079	+163	+132	+71	+54	+24	+9	+17.9%	+13.9%	+7.1%	+5.3%	+2.2%	+0.9%
Consultants	44	+11	+11	+9	+6	+4	+0	+32.5%	+32.9%	+23.7%	+14.1%	+9.5%	+1.1%
Registrars	68	+20	+19	+18	+12	+4	-1	+42.1%	+37.7%	+36.6%	+20.7%	+5.8%	-1.7%
SHO/ Interns	57	+3	-1	-2	-2	+3	-0	+5.6%	-1.4%	-2.7%	-3.1%	+5.3%	-0.1%
Medical/ Dental, other	8	+6	+1	-1	+1	+1	+0	+277.1%	+11.5%	-14.0%	+16.0%	+15.8%	+0.5%
Nurse/ Midwife Manager	84	+32	+21	+8	-0	+0	-4	+62.3%	+32.8%	+10.3%	-0.1%	+0.1%	-4.1%
Nurse/ Midwife Specialist & AN/MP	29	+14	+11	+10	+9	+4	-2	+91.7%	+63.2%	+49.0%	+41.8%	+18.4%	-5.6%
Staff Nurse/ Staff Midwife	301	-23	-8	-22	-4	-17	-6	-7.0%	-2.4%	-6.9%	-1.2%	-5.5%	-2.1%
Nursing/ Midwifery Student	5	+5	+2	+5	+5	+4		-100.0%	+66.7%	+900.0%	-100.0%	+400.0%	
Nursing/ Midwifery other	1	+1	-0	-0	-0	-0	-0	-100.0%	-15.0%	-15.0%	-9.6%	-5.6%	-10.5%
Therapy Professions	41	+11	+11	+10	+6	-2	-1	+35.8%	+35.3%	+33.9%	+18.0%	-5.3%	-3.2%
Health Science/ Diagnostics	52	+9	+7	+6	+3	+0	+3	+22.4%	+15.6%	+12.6%	+5.4%	+0.4%	+6.5%
Pharmacy	23	+9	+8	+8	+5	+5	+2	+59.2%	+52.5%	+54.9%	+26.7%	+28.3%	+10.8%
Management (VIII & above)	7	+4	+4	+4	+4	+1	-0	+132.7%	+132.7%	+132.7%	+132.7%	+17.1%	-0.3%
Administrative/ Supervisory (V to VII)	23	+15	+12	+9	+9	+3	+1	+178.9%	+107.1%	+64.8%	+61.5%	+17.5%	+6.4%
Clerical (III & IV)	131	+17	+5	-10	-6	-2	-2	+14.8%	+3.8%	-6.8%	-4.2%	-1.9%	-1.3%
Support	167	-10	-24	-40	-35	-4	+1	-5.7%	-12.5%	-19.5%	-17.4%	-2.2%	+0.4%
Maintenance/ Technical	14	+3	+3	+2	+1	-1	-1	+26.6%	+26.6%	+16.3%	+7.0%	-6.5%	-3.6%
Health Care Assistants	130	+70	+71	+52	+55	-1	+0	+117.0%	+119.8%	+67.5%	+72.7%	-0.8%	+0.1%
Care, other	2												
St Luke's General Kilkenny	1,186	+197	+152	+65	+68	+2	-8	+19.9%	+14.7%	+5.8%	+6.0%	+0.1%	-0.7%
Nurse/ Midwife Manager	4	+3	+3	+1	+1	+1	+1	+345.0%	+345.0%	+48.3%	+48.3%	+48.3%	+48.3%
Staff Nurse/ Staff Midwife	1	+1	+1	+1	+1			-100.0%	-100.0%	-100.0%	-100.0%		
Health Science/ Diagnostics	1	+1	+1					-100.0%	-100.0%				
Pharmacy	3	+3	+3	+3	+3	+3	+3	-100.0%	-100.0%	-100.0%	-100.0%	-100.0%	-100.0%
H&SC, Other	23	+23	+23	+23	+23	+23	+23	-100.0%	-100.0%	-100.0%	-100.0%	-100.0%	-100.0%
Management (VIII & above)	14	+9	+8	+9	+8	+4	+2	+181.2%	+134.3%	+181.2%	+144.5%	+41.0%	+13.9%
Administrative/ Supervisory (V to VII)	18	+16	+8	-1	+1	+1	+0	+902.2%	+82.4%	-7.8%	+7.5%	+7.7%	+2.0%
Clerical (III & IV)	7	+7	+3	+3	+4	+5	+4	-100.0%	+85.6%	+83.1%	+166.8%	+229.5%	+119.7%
Maintenance/ Technical				-1	-1			-100.0%	-100.0%	-100.0%	-100.0%	-100.0%	-100.0%
Hospital Group HQ	71	+63	+51	+39	+41	+37	+33	+812.7%	+249.3%	+118.9%	+138.4%	+111.8%	+87.7%
Consultants	14	-3	-1	-0	+1	-2	-1	-17.6%	-6.7%	-3.3%	+7.8%	-12.5%	-5.0%
Registrars	30	+8	+9	+3	+4	-1	-2	+34.2%	+39.4%	+10.7%	+14.9%	-2.6%	-5.8%
SHO/ Interns	40	+9	+5	+8	+5	-4	+1	+31.0%	+14.9%	+24.2%	+14.6%	-9.5%	+1.7%
Nurse/ Midwife Manager	47	+14	+9	+2	+3	+0	-0	+40.8%	+24.5%	+4.1%	+7.1%	+0.5%	-0.1%
Nurse/ Midwife Specialist & AN/MP	13	-2	+2	+3	+2	+1	+0	-15.6%	+16.6%	+26.5%	+22.5%	+5.7%	+3.1%
Staff Nurse/ Staff Midwife	142	+11	+16	+18	+21	+7	+3	+8.7%	+13.0%	+14.8%	+17.0%	+4.9%	+2.4%
Nursing/ Midwifery Student			-2	-4	-4			-100.0%	-100.0%	-100.0%	-100.0%	-100.0%	-100.0%

Jul 2021 (Dec 2016 figure: 10,971)	WTE Jul 2021	WTE change since Dec 16	WTE change since Dec 17	WTE change since Dec 18	WTE change since Dec 19	WTE change since Dec 20	WTE change since Apr 21	% change since Dec 16	% change since Dec 17	% change since Dec 18	% change since Dec 19	% change since Dec 20	% change since Apr 21
Overall	13,326	+2,355	+1,944	+1,553	+1,282	+403	+99	+21.5%	+17.1%	+13.2%	+10.6%	+3.1%	+0.7%
Therapy Professions	27	+10	+10	+12	+8	-1	+1	+58.7%	+61.9%	+75.1%	+42.7%	-3.3%	+5.6%
Health Science/ Diagnostics	41	+9	+9	+7	+4	+2	+0	+27.6%	+29.0%	+20.5%	+11.0%	+4.9%	+0.9%
Pharmacy	9	+6	+5	+4	+3	+2	+2	+167.8%	+150.1%	+77.3%	+47.4%	+22.9%	+22.9%
Management (VIII & above)	2	+1	-0	-0	-0	-0	+0	+96.0%	-2.0%	-2.0%	-2.0%	-2.0%	+30.7%
Administrative/ Supervisory (V to VII)	21	+13	+13	+12	+9	+0	-0	+156.2%	+152.0%	+127.2%	+71.8%	+1.9%	-0.6%
Clerical (III & IV)	58	+3	-1	+1	+1	-1	-2	+4.8%	-2.2%	+1.9%	+2.6%	-1.3%	-3.0%
Support	27	+10	+4	+3	+4	+2	+2	+63.9%	+18.9%	+14.5%	+15.2%	+6.7%	+7.1%
Maintenance/ Technical	5		+0	-1		+0			+6.4%	-9.1%		+0.4%	
Health Care Assistants	118	+14	+20	+19	+20	+1	-1	+13.1%	+20.9%	+19.6%	+20.2%	+1.1%	-0.6%
Care, other	2	-0	-0	-0	-1	-0	-0	-23.1%	-6.1%	-23.1%	-32.6%	-4.4%	-5.0%
Our Lady's Navan	596	+101	+99	+86	+80	+6	+5	+20.5%	+20.0%	+17.0%	+15.5%	+1.0%	+0.8%
Consultants	18	+3	+1	+2	+2	+2	+1	+20.6%	+6.0%	+12.9%	+9.4%	+12.9%	+6.0%
Registrars	20	+3	+3	+2	+2	+2	+3	+14.7%	+14.7%	+8.3%	+8.3%	+11.4%	+18.2%
SHO/ Interns	14	+3	+3	+4	+2	+2	+2	+27.3%	+27.3%	+40.0%	+16.7%	+16.7%	+16.7%
Nurse/ Midwife Manager	42	+8	+10	+6	+1	+1	-1	+22.9%	+29.4%	+17.9%	+2.4%	+2.4%	-2.3%
Nurse/ Midwife Specialist & AN/MP	10	+6	+5	+3	+2	+2		+134.8%	+110.7%	+36.8%	+17.1%	+17.1%	
Staff Nurse/ Staff Midwife	111	+18	+16	+8	+8			+19.4%	+16.3%	+7.5%	+8.2%		
Nursing/ Midwifery other	2												
Therapy Professions	34	+7	+3	+2	+1	+1		+23.3%	+9.5%	+6.2%	+3.0%	+3.0%	
Health Science/ Diagnostics	29	+10	+7	+6	+4	+3	+2	+49.6%	+29.4%	+23.9%	+16.4%	+11.6%	+7.4%
Social Workers	7	+2	+1	+3				+54.2%	+15.1%	+75.0%			
Psychologists	1												
Pharmacy	6	+3	+3	+2	+1	+1		+100.0%	+100.0%	+50.0%	+20.0%	+20.0%	
Management (VIII & above)	4	+1						+33.3%					
Administrative/ Supervisory (V to VII)	26	+7	+2	+3	+4	+1		+39.5%	+8.5%	+13.3%	+18.5%	+4.1%	
Clerical (III & IV)	44	+12	+10	+7	+4	+1		+38.9%	+29.7%	+18.6%	+9.6%	+2.3%	
Support	62	+12	+1	+2	+0			+24.4%	+2.4%	+2.9%	+0.7%		
Maintenance/ Technical	1												
Health Care Assistants	26	-1	-3					-2.1%	-8.6%				
Care, other		-1						-100.0%	-100.0%	-100.0%	-100.0%	-100.0%	-100.0%
Cappagh National Orthopaedic	457	+93	+62	+49	+30	+16	+7	+25.6%	+15.6%	+11.9%	+7.1%	+3.5%	+1.6%
Consultants	187	+44	+35	+29	+16	-3	+3	+30.4%	+23.0%	+18.3%	+9.2%	-1.6%	+1.6%
Registrars	200	+52	+37	+42	+33	+10	+10	+35.5%	+22.5%	+26.3%	+20.1%	+5.2%	+5.4%
SHO/ Interns	179	+33	+29	+27	+21	-14	-6	+22.2%	+18.9%	+18.1%	+13.4%	-7.0%	-3.2%
Medical/ Dental, other	6	+0	+2	+2	+1	-0	-1	+8.3%	+47.1%	+40.9%	+16.2%	-2.7%	-14.7%
Nurse/ Midwife Manager	233	+53	+54	+42	+26	+12	+7	+29.7%	+30.1%	+22.2%	+12.3%	+5.3%	+2.9%
Nurse/ Midwife Specialist & AN/MP	108	+48	+39	+21	+20	+10	+0	+80.3%	+57.5%	+24.5%	+23.3%	+10.4%	+0.4%
Staff Nurse/ Staff Midwife	941	+107	+84	+81	+34	+3	-19	+12.8%	+9.7%	+9.4%	+3.8%	+0.3%	-2.0%
Nursing/ Midwifery Student	43	+35	+34	+35	+31	+23	+10	+405.9%	+377.8%	+437.5%	+258.3%	+115.0%	+30.3%
Nursing/ Midwifery other	51	+10	+12	+10	+7	+3	+1	+25.8%	+30.4%	+25.7%	+15.1%	+5.4%	+1.3%
Therapy Professions	131	+33	+26	+16	+17	+8	-6	+34.3%	+25.1%	+14.2%	+15.3%	+6.3%	-4.2%
Health Science/ Diagnostics	246	+28	+27	+25	+22	+5	+8	+12.7%	+12.3%	+11.4%	+9.7%	+2.2%	+3.3%
Social Workers	27	+6	+5	+7	+1	+3	-0	+27.0%	+22.4%	+37.1%	+3.2%	+11.5%	-0.6%
Psychologists	9	+4	+4	+4	+2	+1	-0	+94.4%	+94.4%	+94.4%	+27.7%	+11.5%	-1.1%
Pharmacy	56	+12	+13	+6	+6	+4	+2	+27.9%	+29.9%	+12.4%	+11.1%	+6.7%	+2.8%
H&SC, Other	21	-1	-2	-3	-1	-2	-7	-4.2%	-9.6%	-13.2%	-3.5%	-9.6%	-23.9%
Management (VIII & above)	43	+20	+16	+13	+11	+7	+5	+83.8%	+57.0%	+44.6%	+34.3%	+20.8%	+12.1%
Administrative/ Supervisory (V to VII)	167	+44	+32	+16	+9	+5	-1	+36.0%	+23.4%	+10.9%	+5.6%	+3.2%	-0.6%
Clerical (III & IV)	311	+58	+64	+60	+51	+12	+2	+22.8%	+25.9%	+24.1%	+19.7%	+4.2%	+0.5%
Support	274	+25	+27	+22	+23	+8	+5	+10.2%	+10.9%	+8.9%	+9.4%	+2.9%	+1.7%
Maintenance/ Technical	26	+2	+2	+4	+2			+7.4%	+7.4%	+17.1%	+8.3%		
Health Care Assistants	283	+84	+78	+53	+58	+25	+25	+42.0%	+38.0%	+22.9%	+25.7%	+9.9%	+9.7%
Care, other	7	-4	-1	-0	-0	+0		-34.1%	-10.8%	-1.3%	-2.4%	+3.2%	
Mater Misericordiae University	3,549	+693	+615	+514	+390	+120	+36	+24.3%	+21.0%	+16.9%	+12.3%	+3.5%	+1.0%
Consultants	45	+11	+8	+10	+11	+2	+3	+32.2%	+22.5%	+29.0%	+32.2%	+5.0%	+6.7%
Registrars	60	+21	+23	+16	+5	+6	+2	+54.8%	+59.7%	+35.5%	+8.8%	+10.6%	+3.4%
SHO/ Interns	56	-2	-4	-3	+1	-5	-5	-3.7%	-6.6%	-4.4%	+1.3%	-7.8%	-8.7%
Medical/ Dental, other	2	-0	-0	+0	+0	-0	-0	-0.5%	-0.5%	+0.5%	+5.9%	-0.5%	-0.5%
Nurse/ Midwife Manager	81	+17	+13	+8	+10	+4	+4	+27.0%	+19.6%	+10.4%	+13.8%	+5.1%	+5.6%
Nurse/ Midwife Specialist & AN/MP	18	+3	+3	+6	+5	+2	+1	+20.6%	+22.4%	+51.5%	+38.3%	+13.1%	+6.9%

Jul 2021 (Dec 2016 figure: 10,971)	WTE Jul 2021	WTE change since Dec 16	WTE change since Dec 17	WTE change since Dec 18	WTE change since Dec 19	WTE change since Dec 20	WTE change since Apr 21	% change since Dec 16	% change since Dec 17	% change since Dec 18	% change since Dec 19	% change since Dec 20	% change since Apr 21
Overall	13,326	+2,355	+1,944	+1,553	+1,282	+403	+99	+21.5%	+17.1%	+13.2%	+10.6%	+3.1%	+0.7%
Staff Nurse/ Staff Midwife	267	+35	+31	+29	+26	+2	+2	+15.3%	+13.4%	+12.0%	+10.9%	+0.7%	+0.7%
Nursing/ Midwifery Student	6	+6	+6	+6	+5	+5	-0	-100.0%	-100.0%	-100.0%	+377.6%	+497.0%	-2.3%
Nursing/ Midwifery other	3	+1	+1	+1	+1	+0	-0	+55.2%	+59.8%	+55.2%	+57.9%	+1.5%	-0.4%
Therapy Professions	35	+5	+7	+4	+10	-2	-1	+17.8%	+23.4%	+11.8%	+37.4%	-4.1%	-3.4%
Health Science/ Diagnostics	85	+10	+15	+16	+15	+2	+0	+13.2%	+21.8%	+23.3%	+21.2%	+2.6%	+0.1%
Pharmacy	17	+4	+3	+1	+1	+2	+1	+29.5%	+21.0%	+5.0%	+5.3%	+16.0%	+7.2%
H&SC, Other	2	+2	+1	+1	+2	+2		-100.0%	+75.4%	+70.9%	+900.0%	-100.0%	
Management (VIII & above)	5	+1	+1			+2	+1	+25.0%	+25.0%			+66.7%	+14.4%
Administrative/ Supervisory (V to VII)	28	+10	+9	+9	+5	-0	-1	+58.9%	+51.5%	+50.9%	+24.2%	-0.6%	-3.2%
Clerical (III & IV)	103	-11	-6	-5	+2	+8	+4	-9.6%	-5.9%	-4.9%	+2.3%	+8.1%	+3.9%
Support	32	+7	+6	+8	+6	+5	+2	+27.9%	+22.3%	+35.6%	+24.3%	+16.8%	+6.8%
Maintenance/ Technical	12	-7	-4	-1	-1	-0	-1	-35.4%	-23.9%	-5.2%	-7.0%	-3.8%	-5.1%
Health Care Assistants	181	+52	+34	+14	+22	+0	-7	+40.6%	+22.8%	+8.2%	+13.5%	+0.0%	-3.5%
Care, other	1												
MRH Mullingar	1,039	+167	+147	+119	+125	+35	+5	+19.1%	+16.5%	+13.0%	+13.7%	+3.5%	+0.5%
Consultants	27	+7	+4	+3	+4	+1	+1	+35.2%	+15.8%	+11.3%	+18.0%	+3.3%	+3.8%
Registrars	26	+10	+10	+8	+6	+4	+2	+60.8%	+68.5%	+44.8%	+29.4%	+17.5%	+6.3%
SHO/ Interns	16	+3				+1	+0	+25.6%				+6.9%	+2.6%
Medical/ Dental, other	4	+1	+1	-1	-0	-1	+1	+47.6%	+15.8%	-13.8%	-6.6%	-12.6%	+18.1%
Nurse/ Midwife Manager	26	+6	+5	+0	+2	+2	+0	+30.5%	+21.4%	+1.2%	+10.4%	+6.5%	+1.6%
Nurse/ Midwife Specialist & AN/MP	13	+8	+7	+8	+4	+0	-1	+137.1%	+128.7%	+161.0%	+44.6%	+2.0%	-6.5%
Staff Nurse/ Staff Midwife	82	+12	+4	-0	+1	-0	-6	+16.7%	+5.8%	-0.3%	+1.1%	-0.3%	-7.0%
Nursing/ Midwifery other	1	-1	-1	-1	-1			-33.3%	-33.3%	-33.3%	-33.3%		
Therapy Professions	3	+1	+1	+0	+0	+1	+0	+32.0%	+19.6%	+11.5%	+17.0%	+32.0%	+0.0%
Health Science/ Diagnostics	1	-4	-2	-4	-1	-1	-1	-76.0%	-67.3%	-75.4%	-35.0%	-48.9%	-39.0%
Social Workers	2	+1	+1	+1		+1		+132.6%	+132.6%	+100.0%		+100.0%	
Pharmacy	4	+1	+1	+1	+1			+33.3%	+33.3%	+33.3%	+33.3%		
H&SC, Other	4	+1	+1	+1				+35.7%	+23.4%	+23.4%			
Management (VIII & above)	4	+2	+1	+2	+1			+100.0%	+33.3%	+100.0%	+33.3%		
Administrative/ Supervisory (V to VII)	32	+12	+9	+8	+8	+4	+1	+64.3%	+39.2%	+31.1%	+32.4%	+14.1%	+3.0%
Clerical (III & IV)	48	+15	+16	+11	+12	+10	+7	+46.6%	+48.9%	+29.5%	+33.9%	+27.3%	+17.7%
Support	29	+2	+1	+1	+1	-0	-1	+8.2%	+4.7%	+3.9%	+5.1%	-0.8%	-1.9%
Health Care Assistants	15	+7	+5	+6	+6	+2	+1	+82.5%	+42.8%	+71.7%	+62.4%	+14.2%	+6.1%
Royal Victoria Eye & Ear	336	+85	+63	+45	+45	+23	+5	+33.8%	+23.1%	+15.4%	+15.6%	+7.4%	+1.4%
Consultants	11	+1	+1	-1	+0	+0	+0	+12.2%	+11.1%	-8.4%	+0.4%	+0.4%	+0.4%
Registrars	13												
SHO/ Interns	15			+1	+1					+7.1%	+7.1%		
Medical/ Dental, other	0												
Nurse/ Midwife Manager	33	-1	+1	-5	-1	-2	-2	-3.1%	+2.1%	-13.3%	-4.1%	-6.8%	-5.8%
Nurse/ Midwife Specialist & AN/MP	25	+8	+4	+0	-3	-1	-2	+48.0%	+16.8%	+0.3%	-10.0%	-4.2%	-7.8%
Staff Nurse/ Staff Midwife	103	+1	-3	-0	+0	-3	+1	+1.5%	-2.9%	-0.4%	+0.2%	-2.6%	+1.0%
Nursing/ Midwifery Student	10	+10	+10	+10	+10	+10		-100.0%	-100.0%	-100.0%	-100.0%	-100.0%	
Nursing/ Midwifery other	3	-2	-2	-2	-2	-1	-1	-40.0%	-40.0%	-40.0%	-40.0%	-25.0%	-25.0%
Therapy Professions	18	+2	+0	-0	-4	+1	-1	+15.3%	+0.6%	-1.1%	-16.9%	+5.8%	-2.7%
Health Science/ Diagnostics	23	+2	+5	+5	+5	+2	+2	+9.9%	+28.9%	+29.4%	+30.1%	+10.9%	+10.9%
Social Workers	4	+2	+2	+2	+2	+0	+0	+100.0%	+100.0%	+100.0%	+100.0%	+5.3%	+5.3%
Pharmacy	7	+3	+2	+2	-1	+1	+1	+78.0%	+43.1%	+49.0%	-14.1%	+10.6%	+10.6%
Management (VIII & above)	2				+1	-1	-1				+100.0%	-33.3%	-33.3%
Administrative/ Supervisory (V to VII)	26	+6	+6	+8	+7	+2	+2	+30.1%	+26.9%	+40.5%	+36.8%	+9.7%	+7.4%
Clerical (III & IV)	44	+3	+5	-2	+1	+2	+1	+8.3%	+12.9%	-3.7%	+1.6%	+4.7%	+1.2%
Support	48	-3	-1	+1	+0	+1	+1	-5.1%	-1.9%	+2.2%	+0.7%	+1.7%	+1.7%
Maintenance/ Technical	2	-1	-1					-33.3%	-33.3%				
Health Care Assistants	28	+2	+1	+1	+3	+1	+0	+7.2%	+3.2%	+3.2%	+10.5%	+3.2%	+0.7%
Care, other	1	+0	+0	-1	-1	-1	-1	+10.0%	+10.0%	-45.0%	-45.0%	-45.0%	-45.0%
St. Michael's	415	+35	+29	+18	+18	+10	-0	+9.1%	+7.4%	+4.6%	+4.5%	+2.6%	-0.0%
Consultants	18	+2	-0	+0	-1	+2	-0	+15.0%	-0.1%	+0.8%	-3.1%	+12.9%	-1.4%
Registrars	8	-2	-3	-2	-2	-2	-0	-16.8%	-24.5%	-20.9%	-16.3%	-16.9%	-2.2%
SHO/ Interns	14	+0	+0	+0	+0	-2	+0	+1.6%	+1.6%	+1.6%	+1.6%	-11.0%	+1.9%
Nurse/ Midwife Manager	35	+10	+6	+3	+2	+0	-0	+41.5%	+19.7%	+8.6%	+5.4%	+0.8%	-0.6%
Nurse/ Midwife Specialist & AN/MP	10	+1	+2	+1	+2	+3	+3	+12.2%	+19.2%	+6.8%	+19.2%	+35.5%	+34.3%

Jul 2021 (Dec 2016 figure: 10,971)	WTE Jul 2021	WTE change since Dec 16	WTE change since Dec 17	WTE change since Dec 18	WTE change since Dec 19	WTE change since Dec 20	WTE change since Apr 21	% change since Dec 16	% change since Dec 17	% change since Dec 18	% change since Dec 19	% change since Dec 20	% change since Apr 21
Overall	13,326	+2,355	+1,944	+1,553	+1,282	+403	+99	+21.5%	+17.1%	+13.2%	+10.6%	+3.1%	+0.7%
Staff Nurse/ Staff Midwife	113	+5	+7	+3	-6	+0	+1	+4.3%	+7.0%	+2.4%	-4.7%	+0.3%	+0.5%
Nursing/ Midwifery other	1			-1	-1					-50.0%	-46.8%		
Therapy Professions	36	+12	+10	+6	+4	+1	-0	+53.6%	+41.3%	+22.0%	+14.0%	+2.8%	-1.4%
Health Science/ Diagnostics	20	+1	+2	-0	+2	-0	-1	+4.8%	+11.6%	-1.2%	+11.2%	-1.9%	-3.8%
Social Workers	6	+0	+1	+0	+0	-1	-0	+0.2%	+23.6%	+5.3%	+6.9%	-8.6%	-2.3%
Psychologists	2	+1	+1	+1	+1	+1	-0	+130.0%	+49.4%	+37.7%	+27.8%	+40.2%	-0.9%
Pharmacy	5	+2	+3	+1	+0	-0	-0	+41.6%	+95.8%	+21.4%	+3.0%	-1.9%	-1.9%
Management (VIII & above)	2	+0	+1	+1	+1			+14.3%	+100.0%	+100.0%	+100.0%		
Administrative/ Supervisory (V to VII)	12	+1	+1	-1	-1	-0	-0	+12.8%	+13.1%	-8.8%	-10.1%	-2.0%	-2.9%
Clerical (III & IV)	64	+10	+9	+8	+10	+6	+0	+19.1%	+17.3%	+13.8%	+17.9%	+9.7%	+0.7%
Support	61	+10	+4	+4	+4	+0	-5	+19.1%	+6.7%	+7.6%	+7.1%	+0.7%	-7.9%
Maintenance/ Technical	1												
Health Care Assistants	54	+7	+8	-0	-5	-1	+0	+14.4%	+16.5%	-0.7%	-8.7%	-1.1%	+0.9%
Care, other	3	+2	+2	+2	+3	+0	+0	+200.0%	+200.0%	+200.0%	-100.0%	+11.5%	+0.3%
St. Columcille's	465	+63	+54	+25	+14	+8	-3	+15.8%	+13.3%	+5.6%	+3.0%	+1.8%	-0.7%
Consultants	38	+2	+3	+3	+3	+1	+1	+6.7%	+7.8%	+9.1%	+9.2%	+1.6%	+2.2%
Registrars	41	+9	+7	+5	+5	+3	+2	+28.1%	+18.8%	+12.3%	+13.9%	+7.9%	+5.1%
SHO/ Interns	22	+1		+1	+1		+1	+4.8%		+4.8%	+4.8%		+4.8%
Medical/ Dental, other	1	+0	+0	+0	+0	+0		+16.7%	+16.7%	+16.7%	+16.7%	+16.7%	
Nurse/ Midwife Manager	139	+30	+28	+22	+19	+4	+1	+27.1%	+24.6%	+18.7%	+15.8%	+2.9%	+0.9%
Nurse/ Midwife Specialist & AN/MP	16	+6	+5	+1	+1	+1	+1	+55.2%	+44.6%	+7.2%	+10.1%	+6.2%	+6.0%
Staff Nurse/ Staff Midwife	239	-1	+10	-5	-7	-1	-9	-0.6%	+4.5%	-2.1%	-2.7%	-0.2%	-3.6%
Nursing/ Midwifery Student	36	+13	+13	+13	+15	+18	-1	+53.2%	+56.5%	+56.5%	+67.4%	+100.0%	-1.4%
Nursing/ Midwifery other	4	+1	+0					+21.8%	+1.0%				
Therapy Professions	15	+6	+7	+6	+3	-1	-1	+74.4%	+98.4%	+65.2%	+29.2%	-7.8%	-6.0%
Health Science/ Diagnostics	47	+8	+8	+4	+5	-1	+2	+19.2%	+22.0%	+8.1%	+13.0%	-1.5%	+3.3%
Social Workers	9	+5	+3	+2	+1	-1	+1	+107.6%	+61.4%	+39.4%	+17.9%	-7.2%	+14.8%
Psychologists	2	+1	+1	+1	+0			+151.6%	+151.6%	+151.6%	+4.0%		
Pharmacy	6	+0	+0	+1	-1	-1	-0	+1.6%	+4.9%	+8.5%	-11.1%	-17.9%	-5.9%
Management (VIII & above)	6	+1	+1	+1	-0	-1		+10.0%	+10.0%	+10.0%	-1.8%	-9.8%	
Administrative/ Supervisory (V to VII)	59	+16	+15	+11	+8	+2	-0	+37.4%	+34.3%	+23.2%	+15.4%	+4.4%	-0.0%
Clerical (III & IV)	71	-3	-10	-6	-9	+1	-2	-3.8%	-12.6%	-8.2%	-11.6%	+0.8%	-2.2%
Support	140	+26	+17	+12	+11	+7	+1	+22.2%	+13.9%	+9.7%	+8.3%	+5.1%	+0.9%
Maintenance/ Technical	14	+7	+4	+4	+3	-1	-1	+100.0%	+40.0%	+40.0%	+27.3%	-6.7%	-6.7%
Health Care Assistants	46	+19	+18	+15	+11	+4	+5	+70.5%	+63.8%	+50.4%	+32.9%	+9.1%	+13.5%
National Maternity	950	+145	+130	+90	+70	+34	+2	+18.0%	+15.9%	+10.5%	+8.0%	+3.7%	+0.2%
Consultants	153	+30	+23	+15	+8	-1	-0	+24.3%	+17.7%	+10.7%	+5.8%	-0.6%	-0.2%
Registrars	194	+42	+41	+38	+29	+26	+10	+27.5%	+26.7%	+24.7%	+17.7%	+15.8%	+5.4%
SHO/ Interns	162	+40	+41	+28	+35	-18	-10	+32.4%	+33.5%	+20.5%	+27.9%	-9.8%	-5.6%
Medical/ Dental, other	6	+1	+2	+5	+5	+5	-1	+13.8%	+50.0%	+413.9%	+386.0%	+527.0%	-8.5%
Nurse/ Midwife Manager	242	+76	+70	+72	+59	+10	+12	+45.5%	+40.5%	+42.3%	+32.2%	+4.1%	+5.2%
Nurse/ Midwife Specialist & AN/MP	94	+13	+10	+9	+7	+2	+7	+16.2%	+11.7%	+11.0%	+7.5%	+1.8%	+8.2%
Staff Nurse/ Staff Midwife	765	+103	+19	+84	+41	+46	-31	+15.6%	+2.6%	+12.4%	+5.7%	+6.3%	-3.8%
Nursing/ Midwifery Student	38	+32	+27	+23	+20	-28	+5	+581.8%	+257.8%	+162.6%	+117.4%	-42.9%	+15.4%
Nursing/ Midwifery other	5	-9	-9	-9	-9	-4	-0	-66.3%	-66.5%	-66.5%	-66.5%	-45.3%	-1.0%
Therapy Professions	105	+6	+8	-2	+1	-10	-2	+5.8%	+8.2%	-2.2%	+0.6%	-9.0%	-2.3%
Health Science/ Diagnostics	233	+29	+16	+10	+21	+10	-6	+14.0%	+7.3%	+4.6%	+9.9%	+4.6%	-2.5%
Social Workers	20	+1	+2	+1	+1	-1	-0	+3.3%	+13.7%	+7.7%	+7.7%	-3.1%	-2.3%
Psychologists	9	+4	+4	+3	-1	-0	-2	+79.8%	+69.1%	+38.9%	-9.9%	-1.3%	-18.2%
Pharmacy	57	+7	+2	-0	-1	-2	-2	+14.0%	+3.3%	-0.3%	-2.2%	-3.8%	-4.1%
H&SC, Other	1	-0	-0	-0	+1	+1		-14.1%	-14.1%	-14.1%	+231.4%	+231.4%	
Management (VIII & above)	21	+1	+5	+2	+3	+0	-4	+7.1%	+30.9%	+7.8%	+13.5%	+0.8%	-16.2%
Administrative/ Supervisory (V to VII)	183	+34	+29	+31	+35	-2	-1	+22.6%	+19.2%	+20.6%	+23.4%	-0.9%	-0.5%
Clerical (III & IV)	301	+53	+36	+22	+13	+32	+16	+21.2%	+13.4%	+8.0%	+4.4%	+11.9%	+5.6%
Support	320	+48	+37	+33	+28	+3	+5	+17.6%	+13.0%	+11.5%	+9.5%	+0.9%	+1.5%
Maintenance/ Technical	39	+4	+4	+4	+4	+4	-1	+11.8%	+11.8%	+11.8%	+11.8%	+11.8%	-3.0%
Health Care Assistants	215	+24	+31	+49	+34	+12	+17	+12.5%	+16.9%	+29.7%	+18.8%	+6.1%	+8.8%
Care, other	10	+1	+1	+1	+1	-1	-1	+13.9%	+16.0%	+16.0%	+16.0%	-6.1%	-8.1%
St. Vincent's University	3,172	+537	+398	+419	+334	+85	+10	+20.4%	+14.3%	+15.2%	+11.8%	+2.7%	+0.3%
Staff Nurse/ Staff Midwife	12	+12	+12	+12	+12	+4	-2	-100.0%	-100.0%	-100.0%	-100.0%	+49.6%	-12.2%

Jul 2021 (Dec 2016 figure: 10,971)	WTE Jul 2021	WTE change since Dec 16	WTE change since Dec 17	WTE change since Dec 18	WTE change since Dec 19	WTE change since Dec 20	WTE change since Apr 21	% change since Dec 16	% change since Dec 17	% change since Dec 18	% change since Dec 19	% change since Dec 20	% change since Apr 21
Overall	13,326	+2,355	+1,944	+1,553	+1,282	+403	+99	+21.5%	+17.1%	+13.2%	+10.6%	+3.1%	+0.7%
Health Care Assistants	1	+1	+1	+1	+1	+0	-0	-100.0%	-100.0%	-100.0%	-100.0%	+23.8%	-10.3%
IEHG Bank	12	+12	+12	+12	+12	+4	-2	-100.0%	-100.0%	-100.0%	-100.0%	+48.2%	-12.1%

Source: Health Service Personnel Census