

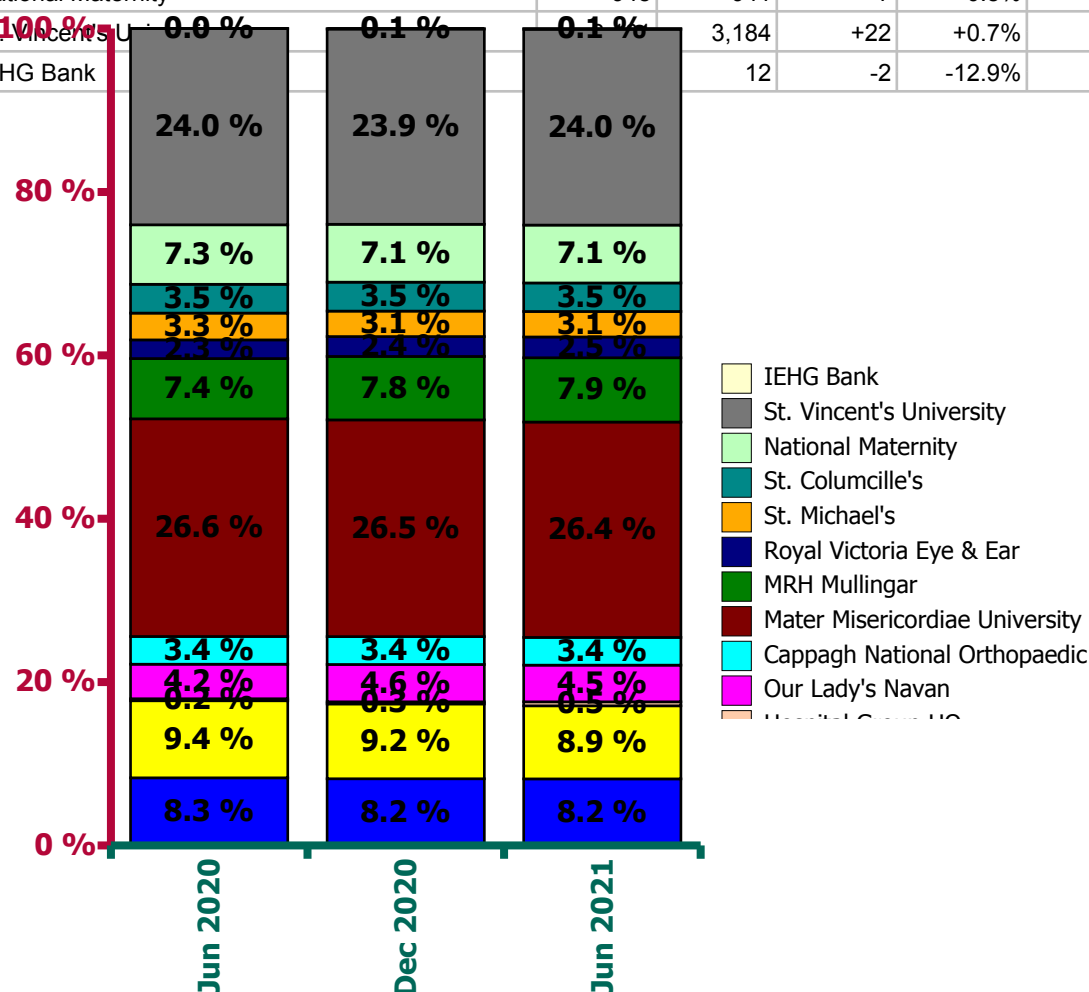
Ireland East Hospital Group Employment Report: June 2021

Employment by Staff Group

Jun 2021 (Dec 2020 figure: 12,923)	WTE Apr 2021	WTE Jun 2021	WTE change since Apr 21	% change since Apr 21	WTE change since Dec 20	WTE change since Jun 20
Overall	13,227	13,288	+60.53	+0.5%	+365	+382
Consultants	582	586	+4	+0.7%	-1	+10
Registrars	689	691	+2	+0.2%	+33	+63
SHO/ Interns	655	660	+5	+0.8%	-9	-138
Medical/ Dental, other	34	36	+2	+5.9%	+8	+11
Medical & Dental	1,959	1,972	+13	+0.6%	+31	-54
Nurse/ Midwife Manager	1,033	1,057	+24	+2.3%	+38	+110
Nurse/ Midwife Specialist & AN/MP	356	365	+9	+2.5%	+27	+52
Staff Nurse/ Staff Midwife	3,440	3,383	-57	-1.7%	+47	+134
Nursing/ Midwifery Student	128	141	+13	+10.1%	+32	-101
Nursing/ Midwifery other	71	70	-1	-1.3%	-3	-6
Nursing & Midwifery	5,027	5,015	-12	-0.2%	+142	+189
Therapy Professions	484	484	+0	+0.1%	+6	+25
Health Science/ Diagnostics	804	802	-2	-0.3%	+11	+33
Social Workers	75	77	+1	+1.5%	+3	+7
Psychologists	26	24	-1	-4.5%	+3	+4
Pharmacy	199	205	+5	+2.7%	+12	+10
H&SC, Other	34	56	+22	+63.3%	+29	+26
Health & Social Care Professionals	1,623	1,648	+25	+1.6%	+64	+104
Management (VIII & above)	111	113	+2	+1.6%	+12	+16
Administrative/ Supervisory (V to VII)	620	623	+3	+0.5%	+24	+85
Clerical (III & IV)	1,267	1,287	+20	+1.6%	+64	+42
Management & Administrative	1,999	2,023	+25	+1.2%	+100	+143
Support	1,322	1,333	+11	+0.8%	+20	-49
Maintenance/ Technical	125	122	-3	-2.4%	+3	+3
General Support	1,446	1,454	+8	+0.6%	+23	-46
Health Care Assistants	1,144	1,147	+3	+0.3%	+5	+44
Care, other	29	28	-1	-3.2%	-0	+1
Patient & Client Care	1,173	1,175	+2	+0.2%	+5	+45

Ireland East Hospital Group Employment by Hospital: Jun 2021

Jun 2021 (Dec 2020 figure: 12,923)	WTE Apr 2021	WTE Jun 2021	WTE change since Apr 21	% change since Apr 21	WTE change since Dec 20	WTE change since Jun 20
Overall	13,227	13,288	+61	+0.5%	+365	+382
Wexford General	1,069	1,084	+15	+1.4%	+29	+15
St Luke's General Kilkenny	1,195	1,187	-8	-0.6%	+3	-31
Hospital Group HQ	38	65	+27	+71.8%	+31	+35
Our Lady's Navan	591	598	+7	+1.1%	+8	+50
Cappagh National Orthopaedic	450	452	+2	+0.4%	+11	+15
Mater Misericordiae University	3,513	3,501	-11	-0.3%	+73	+63
MRH Mullingar	1,034	1,047	+13	+1.3%	+43	+94
Royal Victoria Eye & Ear	332	337	+5	+1.7%	+24	+43
St. Michael's	115	115	+0	+0.0%	+11	-10
St. Columcille's	133	133	-3	-0.7%	+8	+10
National Maternity	948	941	-7	-0.8%	+25	+2
St. Vincent's University	3,184	3,184	+22	+0.7%	+97	+84
IEHG Bank	12	12	-2	-12.9%	+4	+11



Ireland East Hospital Group Employment by Administration (HSE / S38): June 2021

Jun 2021 (Dec 2020 figure: 12,923)	WTE Apr 2021	WTE Jun 2021	WTE change since Apr 21	% change since Apr 21	WTE change since Dec 20	WTE change since Jun 20
Overall	13,227	13,288	+61	+0.5%	+365	+382
HSE	4,409	4,458	+50	+1.1%	+126	+184
Section 38 Hospitals	8,819	8,829	+11	+0.1%	+239	+197

HSE

Jun 2021 (Dec 2020 figure: 4,333)	WTE Apr 2021	WTE Jun 2021	WTE change since Apr 21	% change since Apr 21	WTE change since Dec 20	WTE change since Jun 20
Overall	4,409	4,458	+50	+1.1%	+126	+184
Consultants	154	156	+2	+0.0%	+4	+8
Registrars	223	227	+4	+0.0%	+17	+23
SHO/ Interns	236	241	+6	+0.0%	+7	-17
Medical/ Dental, other	16	17	+1	+0.1%	+2	+5
Medical & Dental	629	642	+13	+2.1%	+29	+19
Nurse/ Midwife Manager	335	335	+0	+0.0%	+7	+4
Nurse/ Midwife Specialist & AN/MP	95	97	+2	+0.0%	+12	+22
Staff Nurse/ Staff Midwife	1,135	1,133	-3	-0.0%	-7	+60
<i>Nursing/ Midwifery awaiting registration</i>				-1.0%	-6	
<i>Pre-registration Nurse Intern (COVID-19)</i>				-1.0%		-30
<i>Pre-registration Nurse/ Midwife Intern</i>	16	16	-0	-0.0%	+16	+16
Nursing/ Midwifery Student	16	16	-0	-0.0%	+11	-14
Nursing/ Midwifery other	5	5		+0.0%	+0	+0
Nursing & Midwifery	1,586	1,586	-0	-0.0%	+23	+72
Therapy Professions	168	171	+3	+0.0%	+1	+15
Health Science/ Diagnostics	233	232	-1	-0.0%	+0	+5
Social Workers	7	8	+1	+0.2%	+1	+2
Psychologists	2	2		+0.0%	+1	+1
Pharmacy	63	67	+4	+0.1%	+9	+11
H&SC, Other	2	24	+22	+10.8%	+24	+22
Health & Social Care Professionals	475	504	+29	+6.2%	+35	+56
Management (VIII & above)	31	32	+1	+0.0%	+5	+7
Administrative/ Supervisory (V to VII)	129	130	+2	+0.0%	+11	+31
Clerical (III & IV)	472	470	-2	-0.0%	+7	+3
Management & Administrative	631	633	+1	+0.2%	+23	+41
Support	458	467	+9	+0.0%	+10	-84
Maintenance/ Technical	41	40	-1	-0.0%	+0	+1
General Support	499	507	+8	+1.6%	+10	-83
Health Care Assistants	579	577	-2	-0.0%	+4	+77
Care, other	10	11	+1	+0.1%	+1	+3
Patient & Client Care	589	588	-2	-0.3%	+5	+79

Section 38 Hospitals

Jun 2021 (Dec 2020 figure: 8,590)	WTE Apr 2021	WTE Jun 2021	WTE change since Apr 21	% change since Apr 21	WTE change since Dec 20	WTE change since Jun 20
Overall	8,819	8,829	+11	+0.1%	+239	+197
Consultants	428	429	+2	+0.0%	-4	+2
Registrars	466	463	-3	-0.0%	+16	+40
SHO/ Interns	419	419	-1	-0.0%	-17	-122
Medical/ Dental, other	18	19	+1	+0.1%	+7	+6
Medical & Dental	1,331	1,330	-0	-0.0%	+2	-73
Nurse/ Midwife Manager	698	722	+23	+0.0%	+32	+105
Nurse/ Midwife Specialist & AN/MP	260	267	+7	+0.0%	+15	+29
Staff Nurse/ Staff Midwife	2,305	2,251	-54	-0.0%	+54	+74
<i>Nursing/ Midwifery awaiting registration</i>	2	6	+4	+2.0%	+1	+6
<i>Post-registration Nurse/ Midwife Student</i>	28	28		+0.0%	+7	+8
<i>Pre-registration Nurse Intern (COVID-19)</i>				-1.0%		-191
<i>Pre-registration Nurse/ Midwife Intern</i>	82	91	+9	+0.1%	+66	+91
Nursing/ Midwifery Student	112	125	+13	+0.1%	+21	-86
Nursing/ Midwifery other	66	65	-1	-0.0%	-3	-6
Nursing & Midwifery	3,441	3,429	-12	-0.4%	+119	+117
Therapy Professions	316	313	-3	-0.0%	+6	+10
Health Science/ Diagnostics	571	570	-1	-0.0%	+10	+28
Social Workers	69	68	-0	-0.0%	+2	+5
Psychologists	23	22	-1	-0.0%	+2	+3
Pharmacy	136	138	+1	+0.0%	+3	-2
H&SC, Other	32	33	+0	+0.0%	+5	+4
Health & Social Care Professionals	1,148	1,144	-4	-0.4%	+29	+48
Management (VIII & above)	80	81	+0	+0.0%	+7	+8
Administrative/ Supervisory (V to VII)	491	493	+1	+0.0%	+13	+55
Clerical (III & IV)	795	817	+22	+0.0%	+57	+39
Management & Administrative	1,367	1,391	+23	+1.7%	+77	+102
Support	863	866	+2	+0.0%	+10	+35
Maintenance/ Technical	84	82	-2	-0.0%	+3	+2
General Support	948	948	+0	+0.0%	+13	+38
Health Care Assistants	565	570	+5	+0.0%	+1	-32
Care, other	19	18	-2	-0.1%	-1	-2
Patient & Client Care	584	588	+4	+0.6%	-0	-34

Ireland East Hospital Group Employment by Hospital & Staff Category: June 2021

Wexford General

Jun 2021 (Dec 2020 figure: 1,055)	WTE Apr 2021	WTE Jun 2021	WTE change since Apr 21	% change since Apr 21	WTE change since Dec 19
Overall	1,069	1,084	+15	+1.4%	+29
Consultant Anaesthesia	5	5	0	+0.0%	+1
Consultant Emergency Medicine	2	2	0	+0.0%	
Consultant Medicine	7	7	0	+0.0%	-2
Consultant Obstetrics & Gynaecology	6	6	0	+0.0%	
Consultant Paediatrics	4	4	+0	+0.0%	
Consultant Pathology	1	1	0	+0.0%	+0
Consultant Radiology	5	5	0	+0.0%	+2
Consultant Surgery	5	5	0	+0.0%	-0
Consultants	35	35	+0	+0.0%	-2
Registrar	42	43	+1	+0.0%	-2
Senior Registrar	4	4	-0	-0.0%	+3
Specialist Registrar	9	9	0	+0.0%	+2
Registrars	55	56	+1	+0.0%	+5
Interns	14	14	+0	+0.0%	+4
Senior House Officer	51	55	+4	+0.1%	+4
SHO/ Interns	65	69	+4	+0.1%	+9
Other Medical	6	7	+1	+0.2%	+1
Medical/ Dental, other	6	7	+1	+0.2%	+0
Medical & Dental	160	166	+6	+6	+12
Clinical Nurse/ Midwife Manager	76	76	-1	-0.0%	-1
Director Nursing/Midwifery, Assistant	7	7	-0	-0.0%	+0
Director of Nursing/Midwifery	2	2	0	+0.0%	-0
Nurse/ Midwife Manager	85	84	-1	-0.0%	+1
Advanced Nurse/ Midwife Practitioner	6	6	+0	+0.0%	+2
Clinical Nurse/ Midwife Specialist	22	22	+0	+0.0%	+6
Nurse/ Midwife Specialist & AN/MP	27	27	+0	+0.0%	+3
Staff Nurses [General/ Children's]	253	252	-1	-0.0%	+3
Staff Midwives	45	45	+0	+0.0%	+5
Staff Nurse/ Staff Midwife	298	297	-1	-0.0%	-3
Pre-registration Nurse/ Midwife Intern	5	5	0	+0.0%	+5
Pre-registration Nurse Intern (COVID-19)				-1.0%	
Nursing/ Midwifery awaiting registration				-1.0%	-1
Nursing/ Midwifery Student	5	5	0	+0.0%	+2
Nursing & Midwifery	415	414	-1	-1	+4
Dietitians	7	7	+0	+0.0%	+3
Occupational Therapists	4	4	0	+0.0%	+1
Physiotherapists	17	17	+0	+0.0%	+1
Speech & Language Therapists	1	2	+1	+0.5%	+1
Podiatrists & Chiropodists	0		-0	-1.0%	-2
Therapy Professions	28	29	+1	+0.0%	+0
Clinical Engineering	1	1	0	+0.0%	
Clinical Measurement	3	3	0	+0.0%	-1
Phlebotomists	2	2	0	+0.0%	

<i>Radiographers</i>	18	18	-0	-0.0%	-1
<i>Medical Science</i>	11	12	+1	+0.1%	+3
Health Science/ Diagnostics	36	37	+1	+0.0%	+0
<i>Social Workers</i>	1	2	+1	+0.8%	+1
Social Workers	1	2	+1	+0.8%	+1
<i>Pharmacy</i>	14	14	-0	-0.0%	+3
Pharmacy	14	14	-0	-0.0%	+1
Health & Social Care Professionals	80	81	+2	+2	+2
<i>Executive Management</i>	1	1	0	+0.0%	-1
<i>Senior Management (VIII & GM)</i>	3	3	0	+0.0%	+2
Management (VIII & above)	4	4	0	+0.0%	-1
<i>Middle Management (V-VII)</i>	27	27	+1	+0.0%	+13
Administrative/ Supervisory (V to VII)	27	27	+1	+0.0%	+5
<i>General Administrative (III & IV)</i>	114	112	-2	-0.0%	-4
Clerical (III & IV)	114	112	-2	-0.0%	-3
Management & Administrative	144	143	-1	-1	+1
<i>Catering</i>	10	9	-0	-0.0%	+0
<i>Household Services</i>	117	124	+7	+0.1%	+4
<i>Other Labs & Associated</i>	3	3	0	+0.0%	+2
<i>Other Support</i>	29	30	+0	+0.0%	-7
<i>Portering</i>	12	12	-0	-0.0%	-26
Support	172	178	+7	+0.0%	+5
<i>Maintenance</i>	7	7	-0	-0.0%	+1
Maintenance/ Technical	7	7	-0	-0.0%	+1
General Support	179	185	+7	+7	+6
<i>HCA, Nurse's Aide, etc.</i>	89	91	+2	+0.0%	+35
<i>Health & Social Care Assistants</i>	1	1	0	+0.0%	+1
Health Care Assistants	90	92	+2	+0.0%	+3
<i>Other Care Grades</i>	2	3	+1	+0.3%	-0
Care, other	2	3	+1	+0.3%	+1
Patient & Client Care	92	95	+3	+3	+3

St Luke's General Kilkenny

Jun 2021 (Dec 2020 figure: 1,185)	WTE Apr 2021	WTE Jun 2021	WTE change since Apr 21	% change since Apr 21	WTE change since Dec 19
Overall	1,195	1,187	-8	-0.6%	+3
Consultant Anaesthesia	7	7	0	+0.0%	+2
Consultant Emergency Medicine	2	3	+1	+0.3%	+1
Consultant Medicine	13	13	+0	+0.0%	+3
Consultant Obstetrics & Gynaecology	6	6	0	+0.0%	
Consultant Paediatrics	6	6	+0	+0.0%	+0
Consultant Radiology	7	7	0	+0.0%	+1
Consultant Surgery	3	3	0	+0.0%	-1
Consultants	44	45	+1	+0.0%	+4
Registrar	49	49	+0	+0.0%	+10
Senior Registrar	12	13	+1	+0.0%	+1
Specialist Registrar	8	8	+0	+0.0%	+3
Registrars	69	70	+1	+0.0%	+6
Interns	10	10	0	+0.0%	+0
Senior House Officer	47	47	+0	+0.0%	-2
SHO/ Interns	57	57	+0	+0.0%	+3
Other Medical	8	8	+0	+0.0%	+1
Medical/ Dental, other	8	8	+0	+0.0%	+1
Medical & Dental	178	180	+2	+2	+14
Clinical Nurse/ Midwife Manager	79	77	-2	-0.0%	+2
Director Nursing/Midwifery, Assistant	8	8	-0	-0.0%	-0
Director of Nursing/Midwifery	1	2	+1	+1.0%	
Nurse/ Midwife Manager	88	86	-2	-0.0%	+2
Advanced Nurse/ Midwife Practitioner	10	10	+1	+0.1%	+4
Clinical Nurse/ Midwife Specialist	21	20	-2	-0.1%	+5
Nurse/ Midwife Specialist & AN/MP	31	30	-1	-0.0%	+5
Staff Nurses [General/ Children's]	276	272	-5	-0.0%	+4
Staff Midwives	31	29	-2	-0.1%	-8
Staff Nurse/ Staff Midwife	307	300	-7	-0.0%	-18
Pre-registration Nurse/ Midwife Intern	5	5	0	+0.0%	+5
Nursing/ Midwifery awaiting registration				-1.0%	
Nursing/ Midwifery Student	5	5	0	+0.0%	+4
Nursing Education/Clinical	1	1	+0	+0.0%	+0
Nursing/ Midwifery other	1	1	+0	+0.0%	+0
Nursing & Midwifery	432	423	-9	-9	-6
Dietitians	10	11	+1	+0.1%	+1
Occupational Therapists	7	7	-0	-0.0%	+3
Physiotherapists	19	19	-0	-0.0%	+1
Speech & Language Therapists	4	4	-0	-0.0%	+2
Podiatrists & Chiropodists	2	2	0	+0.0%	+1
Therapy Professions	42	43	+1	+0.0%	-0
Clinical Engineering	1	1	0	+0.0%	
Clinical Measurement	9	10	+0	+0.0%	-1
Radiographers	23	23	+0	+0.0%	-2
Medical Science	15	16	+0	+0.0%	+4
Health Science/ Diagnostics	48	49	+1	+0.0%	-2
Pharmacy	21	22	+1	+0.0%	+4

Pharmacy	21	22	+1	+0.0%	+4
Health & Social Care Professionals	111	114	+2	+2	+1
<i>Executive Management</i>	1	1	0	+0.0%	+1
<i>Senior Management (VIII & GM)</i>	6	6	0	+0.0%	+3
Management (VIII & above)	7	7	0	+0.0%	+1
<i>Middle Management (V-VII)</i>	22	22	+0	+0.0%	+7
Administrative/ Supervisory (V to VII)	22	22	+0	+0.0%	+2
<i>General Administrative (III & IV)</i>	132	128	-4	-0.0%	-8
Clerical (III & IV)	132	128	-4	-0.0%	-5
Management & Administrative	161	157	-4	-4	-2
<i>Catering</i>	10	9	-1	-0.1%	+1
<i>Household Services</i>	143	145	+2	+0.0%	+11
<i>Other Labs & Associated</i>	3	3	+0	+0.1%	+3
<i>Other Support</i>	6	5	-1	-0.1%	+2
<i>Portering</i>	4	4	+0	+0.1%	-51
Support	166	167	+1	+0.0%	-3
<i>Maintenance</i>	15	14	-1	-0.0%	+1
Maintenance/ Technical	15	14	-1	-0.0%	-1
General Support	181	181	+0	+0	-4
<i>HCA, Nurse's Aide, etc.</i>	128	129	+1	+0.0%	+55
<i>Health & Social Care Assistants</i>	1	1	0	+0.0%	+0
Health Care Assistants	129	130	+1	+0.0%	-0
<i>Other Care Grades</i>	2	2	0	+0.0%	
Care, other	2	2	0	+0.0%	
Patient & Client Care	132	133	+1	+1	-0

Hospital Group HQ

Jun 2021 (Dec 2020 figure: 34)	WTE Apr 2021	WTE Jun 2021	WTE change since Apr 21	% change since Apr 21	WTE change since Dec 19
Overall	38	65	+27	+71.8%	+31
<i>Clinical Nurse/ Midwife Manager</i>		1	+1	-1.0%	+1
<i>Director Nursing/Midwifery, Assistant</i>	2	1	-1	-0.5%	-1
<i>Director of Nursing/Midwifery</i>	1	2	+1	+1.0%	+1
<i>Nurse/ Midwife Manager</i>	3	4	+1	+0.3%	+1
<i>Nursing Bank</i>	1		-1	-1.0%	
<i>Staff Nurses [General/ Children's]</i>		1	+1	-1.0%	+1
<i>Staff Nurse/ Staff Midwife</i>	1	1	-0	-0.0%	-0
Nursing & Midwifery	4	5	+1	+1	+1
<i>Clinical Engineering</i>	1	1	0	+0.0%	
<i>Health Science/ Diagnostics</i>	1	1	0	+0.0%	
<i>Pharmacy</i>		1	+1	-1.0%	+1
<i>Pharmacy</i>		1	+1	-1.0%	+1
<i>Vaccinators</i>		22	+22	-1.0%	+22
<i>H&SC, Other</i>		22	+22	-1.0%	+22
Health & Social Care Professionals	1	24	+23	+23	+23
<i>Executive Management</i>	5	6	+1	+0.2%	+4
<i>Senior Management (VIII & GM)</i>	8	8	+1	+0.1%	+4
<i>Management (VIII & above)</i>	12	14	+1	+0.1%	+4
<i>Middle Management (V-VII)</i>	17	19	+1	+0.1%	+2
<i>Administrative/ Supervisory (V to VII)</i>	17	19	+1	+0.1%	+2
<i>General Administrative (III & IV)</i>	3	4	+1	+0.3%	+2
<i>Clerical (III & IV)</i>	3	4	+1	+0.3%	+2
Management & Administrative	33	36	+4	+4	+8
<i>Technical Services</i>				-1.0%	-1
<i>Maintenance/ Technical</i>				-1.0%	
General Support					

Our Lady's Navan

Jun 2021 (Dec 2020 figure: 590)	WTE Apr 2021	WTE Jun 2021	WTE change since Apr 21	% change since Apr 21	WTE change since Dec 19
Overall	591	598	+7	+1.1%	+8
Consultant Anaesthesia	2	2	0	+0.0%	
Consultant Medicine	9	8	-1	-0.1%	+1
Consultant Radiology	2	2	0	+0.0%	
Consultant Surgery	2	2	0	+0.0%	
Consultants	15	14	-1	-0.1%	-2
Registrar	26	28	+2	+0.1%	+8
Senior Registrar	1	1	0	+0.0%	
Specialist Registrar	5	5	0	+0.0%	
Registrars	32	34	+2	+0.1%	+3
Senior House Officer	39	40	+1	+0.0%	+5
SHO/ Interns	39	40	+1	+0.0%	-4
Medical & Dental	86	89	+2	+2	-3
Clinical Nurse/ Midwife Manager	41	41	+0	+0.0%	+3
Director Nursing/Midwifery, Assistant	5	5	+0	+0.0%	
Director of Nursing/Midwifery	1	1	0	+0.0%	
Nurse/ Midwife Manager	47	47	+0	+0.0%	+0
Advanced Nurse/ Midwife Practitioner	5	6	+1	+0.1%	+4
Clinical Nurse/ Midwife Specialist	8	8	+0	+0.0%	-1
Nurse/ Midwife Specialist & AN/MP	13	14	+1	+0.1%	+1
Staff Nurses [General/ Children's]	138	140	+1	+0.0%	+18
Staff Nurse/ Staff Midwife	138	140	+1	+0.0%	+4
Nursing/ Midwifery awaiting registration				-1.0%	-4
Nursing/ Midwifery Student				-1.0%	
Nursing & Midwifery	198	200	+2	+2	+6
Dietitians	2	2	+0	+0.1%	+1
Occupational Therapists	5	5	-1	-0.1%	+1
Physiotherapists	16	18	+1	+0.1%	+6
Speech & Language Therapists	1	2	+1	+1.0%	+1
Podiatrists & Chiropodists	1	1	0	+0.0%	
Therapy Professions	25	27	+2	+0.1%	-0
Clinical Measurement	2	2	+0	+0.2%	-0
Phlebotomists	4	3	-0	-0.1%	-1
Radiographers	14	13	-1	-0.0%	-1
Medical Science	21	21	+0	+0.0%	+5
Health Science/ Diagnostics	40	40	-1	-0.0%	+1
Pharmacy	7	9	+2	+0.2%	+3
Pharmacy	7	9	+2	+0.2%	+2
Health & Social Care Professionals	73	76	+3	+3	+2
Executive Management		1	+1	-1.0%	+1
Senior Management (VIII & GM)	2	1	-1	-0.3%	-1
Management (VIII & above)	2	2	+1	+0.3%	
Middle Management (V-VII)	21	21	-0	-0.0%	+9
Administrative/ Supervisory (V to VII)	21	21	-0	-0.0%	+0
General Administrative (III & IV)	60	58	-2	-0.0%	+1
Clerical (III & IV)	60	58	-2	-0.0%	-1
Management & Administrative	83	81	-2	-2	-1

Catering	6	6	0	+0.0%	+1
Other Labs & Associated	6	7	+1	+0.1%	+3
Other Support	5	6	+0	+0.0%	+1
Portering	7	8	+1	+0.1%	-0
Support	25	27	+2	+0.1%	+2
Maintenance	5	5	-0	-0.0%	-0
Maintenance/ Technical	5	5	-0	-0.0%	-0
General Support	30	32	+2	+2	+2
HCA, Nurse's Aide, etc.	111	111	-0	-0.0%	+17
Health & Social Care Assistants	7	8	+0	+0.0%	+3
Health Care Assistants	119	118	-0	-0.0%	+2
Other Care Grades	2	2	0	+0.0%	-1
Care, other	2	2	0	+0.0%	+0
Patient & Client Care	120	120	-0	-0	+2

Cappagh National Orthopaedic

Jun 2021 (Dec 2020 figure: 441)	WTE Apr 2021	WTE Jun 2021	WTE change since Apr 21	% change since Apr 21	WTE change since Dec 19
Overall	450	452	+2	+0.4%	+11
Consultant Anaesthesia	12	12	0	+0.0%	+1
Consultant Medicine	2	2	0	+0.0%	
Consultant Radiology	1	1	0	+0.0%	
Consultant Surgery	2	2	0	+0.0%	
Consultants	17	17	0	+0.0%	+1
Registrar	6	6	0	+0.0%	-4
Specialist Registrar	11	11	0	+0.0%	+2
Registrars	17	17	0	+0.0%	-1
Interns	4	4	0	+0.0%	-1
Senior House Officer	8	8	0	+0.0%	+1
SHO/ Interns	12	12	0	+0.0%	
Medical & Dental	45	45			
Clinical Nurse/ Midwife Manager	36	36	0	+0.0%	+1
Director Nursing/Midwifery, Assistant	5	5	0	+0.0%	
Director of Nursing/Midwifery	2	2	0	+0.0%	+1
Nurse/ Midwife Manager	43	43	0	+0.0%	+2
Clinical Nurse/ Midwife Specialist	10	10	0	+0.0%	+2
Nurse/ Midwife Specialist & AN/MP	10	10	0	+0.0%	+2
Staff Nurses [General/ Children's]	111	111	0	+0.0%	+8
Staff Nurse/ Staff Midwife	111	111	0	+0.0%	
Nursing Education/Clinical	1	1	0	+0.0%	
Other Nursing/ Midwifery	1	1	0	+0.0%	
Nursing/ Midwifery other	2	2	0	+0.0%	
Nursing & Midwifery	167	167			+4
Dietitians	1	1	0	+0.0%	
Occupational Therapists	10	10	0	+0.0%	
Physiotherapists	24	24	0	+0.0%	+1
Podiatrists & Chiropodists	0	0	0	+0.0%	
Therapy Professions	34	34	0	+0.0%	+1
Phlebotomists	1	1	0	+0.0%	+0
Radiographers	10	11	+1	+0.1%	+1
Medical Science	16	17	+1	+0.1%	+3
Health Science/ Diagnostics	27	29	+2	+0.1%	+3
Social Workers	7	7	0	+0.0%	
Social Workers	7	7	0	+0.0%	
Psychologists	1	1	0	+0.0%	
Psychologists	1	1	0	+0.0%	
Pharmacy	6	6	0	+0.0%	+1
Pharmacy	6	6	0	+0.0%	+1
Health & Social Care Professionals	75	77	+2	+2	+5
Executive Management	1	1	0	+0.0%	
Senior Management (VIII & GM)	3	3	0	+0.0%	
Management (VIII & above)	4	4	0	+0.0%	
Middle Management (V-VII)	26	26	0	+0.0%	+4
Administrative/ Supervisory (V to VII)	26	26	0	+0.0%	+1
General Administrative (III & IV)	44	44	0	+0.0%	+4

Clerical (III & IV)	44	44	0	+0.0%	+1
Management & Administrative	74	74			+2
<i>Catering</i>	4	4	0	+0.0%	
<i>Household Services</i>	46	46	0	+0.0%	+0
<i>Other Support</i>	1	1	0	+0.0%	
<i>Portering</i>	11	11	0	+0.0%	
Support	62	62	0	+0.0%	
<i>Maintenance</i>	1	1	0	+0.0%	
Maintenance/ Technical	1	1	0	+0.0%	
General Support	63	63			
<i>HCA, Nurse's Aide, etc.</i>	26	26	0	+0.0%	
Health Care Assistants	26	26	0	+0.0%	
Patient & Client Care	26	26			

Mater Misericordiae University

Jun 2021 (Dec 2020 figure: 3,429)	WTE Apr 2021	WTE Jun 2021	WTE change since Apr 21	% change since Apr 21	WTE change since Dec 19
Overall	3,513	3,501	-11	-0.3%	+73
Consultant Anaesthesia	26	26	+1	+0.0%	+2
Consultant Emergency Medicine	8	7	-1	-0.1%	+0
Consultant Intensive Care Medicine	3	3	0	+0.0%	+1
Consultant Medicine	69	68	-1	-0.0%	+3
Consultant Obstetrics & Gynaecology	3	3	+0	+0.1%	+0
Consultant Paediatrics	1	1	0	+0.0%	+1
Consultant Pathology	18	18	0	+0.0%	+1
Consultant Psychiatry	2	2	0	+0.0%	+1
Consultant Radiology	16	17	+0	+0.0%	+1
Consultant Surgery	39	40	+1	+0.0%	+4
Consultants	184	185	+1	+0.0%	-5
Registrar	85	84	-2	-0.0%	+15
Senior Registrar	7	6	-1	-0.1%	+1
Specialist Registrar	97	96	-2	-0.0%	+3
Registrars	190	185	-4	-0.0%	-5
Interns	76	75	-1	-0.0%	+16
Senior House Officer	109	107	-2	-0.0%	+9
SHO/ Interns	185	182	-3	-0.0%	-10
Dentists	1	1	0	+0.0%	
Other Medical	6	7	+1	+0.2%	+3
Medical/ Dental, other	7	8	+1	+0.1%	+2
Medical & Dental	566	561	-5	-5	-18
Clinical Nurse/ Midwife Manager	205	210	+4	+0.0%	+21
Director Nursing/Midwifery, Assistant	20	24	+4	+0.2%	+6
Director of Nursing/Midwifery	1	1	0	+0.0%	
Nurse/ Midwife Manager	226	234	+8	+0.0%	+13
Advanced Nurse/ Midwife Practitioner	32	33	+1	+0.0%	+7
Clinical Nurse/ Midwife Specialist	75	75	-0	-0.0%	+13
Nurse/ Midwife Specialist & AN/MP	107	108	+1	+0.0%	+10
Staff Nurses [General/ Children's]	961	936	-25	-0.0%	+28
Staff Nurse/ Staff Midwife	961	936	-25	-0.0%	-3
Pre-registration Nurse/ Midwife Intern	31	36	+5	+0.1%	+29
Pre-registration Nurse Intern (COVID-19)				-1.0%	
Nursing/ Midwifery awaiting registration	2	6	+4	+2.0%	+1
Nursing/ Midwifery Student	33	42	+9	+0.3%	+22
Nursing Education/Clinical	35	35	+1	+0.0%	+3
Other Nursing/ Midwifery	16	15	-0	-0.0%	+4
Nursing/ Midwifery other	50	51	+0	+0.0%	+2
Nursing & Midwifery	1,378	1,370	-8	-8	+44
Dietitians	28	29	+2	+0.1%	+6
Occupational Therapists	26	25	-1	-0.0%	+5
Orthoptists	1	1	0	+0.0%	
Physiotherapists	62	59	-3	-0.0%	+3
Speech & Language Therapists	17	17	-0	-0.0%	+5
Podiatrists & Chiropodists	3	3	0	+0.0%	+1
Therapy Professions	136	134	-3	-0.0%	+11
Audiology	2	2	0	+0.0%	+0

Biochemists	10	10	0	+0.0%	+1
Clinical Engineering	8	8	0	+0.0%	+2
Clinical Measurement	35	34	-1	-0.0%	+7
Perfusionists	6	6	-0	-0.0%	+2
Phlebotomists	17	17	+0	+0.0%	+4
Physicists	8	8	-0	-0.0%	+0
Radiographers	62	63	+1	+0.0%	-1
Medical Science	92	92	+0	+0.0%	-0
Health Science/ Diagnostics	238	239	+1	+0.0%	-2
Social Workers	28	27	-1	-0.0%	
Social Workers	28	27	-1	-0.0%	+2
Psychologists	9	9	-0	-0.0%	+2
Psychologists	9	9	-0	-0.0%	+1
Pharmacy	54	56	+2	+0.0%	+6
Pharmacy	54	56	+2	+0.0%	+4
Counsellor Therapists	2	2	0	+0.0%	
HSCP Trainees/ Students	9	11	+2	+0.2%	+3
Other Health & Social Care	16	15	-1	-0.1%	+3
H&SC, Other	28	28	+0	+0.0%	+5
Health & Social Care Professionals	492	491	-1	-1	+20
Executive Management	8	8	0	+0.0%	
Senior Management (VIII & GM)	31	34	+4	+0.1%	+10
Management (VIII & above)	38	42	+4	+0.1%	+6
Middle Management (V-VII)	167	165	-2	-0.0%	+8
Other Administrative	1	1	0	+0.0%	
Administrative/ Supervisory (V to VII)	168	166	-2	-0.0%	+4
General Administrative (III & IV)	309	310	+1	+0.0%	+51
Clerical (III & IV)	309	310	+1	+0.0%	+12
Management & Administrative	516	518	+3	+3	+22
Catering	19	19	-0	-0.0%	+2
Household Services	116	114	-2	-0.0%	+0
Other Labs & Associated	24	22	-2	-0.1%	+5
Other Support	39	38	-1	-0.0%	+5
Portering	73	72	-0	-0.0%	+2
Support	270	266	-4	-0.0%	-1
Maintenance	21	21	0	+0.0%	+1
Technical Services	5	5	0	+0.0%	+1
Maintenance/ Technical	26	26	0	+0.0%	
General Support	296	292	-4	-4	-1
HCA, Nurse's Aide, etc.	249	252	+3	+0.0%	+35
Health & Social Care Assistants	9	10	+1	+0.1%	+2
Health Care Assistants	258	262	+4	+0.0%	+4
Other Care Grades	7	7	+0	+0.0%	-0
Care, other	7	7	+0	+0.0%	+0
Patient & Client Care	265	269	+4	+4	+5

MRH Mullingar

Jun 2021 (Dec 2020 figure: 1,004)	WTE Apr 2021	WTE Jun 2021	WTE change since Apr 21	% change since Apr 21	WTE change since Dec 19
Overall	1,034	1,047	+13	+1.3%	+43
Consultant Anaesthesia	7	8	+1	+0.2%	+3
Consultant Emergency Medicine	3	3	0	+0.0%	+1
Consultant Medicine	14	13	-1	-0.1%	+5
Consultant Obstetrics & Gynaecology	3	3	0	+0.0%	
Consultant Paediatrics	4	5	+1	+0.3%	-0
Consultant Pathology	1	1	0	+0.0%	
Consultant Radiology	5	6	+1	+0.2%	
Consultant Surgery	6	6	0	+0.0%	+1
Consultants	42	45	+2	+0.1%	+2
Registrar	45	46	+1	+0.0%	+6
Senior Registrar	3	3	0	+0.0%	-1
Specialist Registrar	10	10	0	+0.0%	-1
Registrars	58	59	+1	+0.0%	+5
Interns	9	9	0	+0.0%	
Senior House Officer	52	53	+1	+0.0%	+7
SHO/ Interns	61	62	+1	+0.0%	+1
Other Medical	2	2	0	+0.0%	+0
Medical/ Dental, other	2	2	0	+0.0%	
Medical & Dental	164	168	+4	+4	+8
Clinical Nurse/ Midwife Manager	64	65	+1	+0.0%	+6
Director Nursing/Midwifery, Assistant	11	12	+1	+0.1%	+2
Director of Nursing/Midwifery	2	2	0	+0.0%	
Nurse/ Midwife Manager	77	79	+2	+0.0%	+2
Advanced Nurse/ Midwife Practitioner	5	6	+1	+0.2%	+5
Clinical Nurse/ Midwife Specialist	12	12	+0	+0.0%	-0
Nurse/ Midwife Specialist & AN/MP	17	18	+1	+0.1%	+2
Staff Nurses [General/ Children's]	220	222	+2	+0.0%	+29
Staff Midwives	44	45	+1	+0.0%	-2
Staff Nurse/ Staff Midwife	265	268	+3	+0.0%	+3
Pre-registration Nurse/ Midwife Intern	6	6	-0	-0.0%	+6
Pre-registration Nurse Intern (COVID-19)				-1.0%	
Nursing/ Midwifery awaiting registration				-1.0%	-1
Nursing/ Midwifery Student	6	6	-0	-0.0%	+5
Nursing Education/Clinical	3	3	-0	-0.0%	+1
Nursing/ Midwifery other	3	3	-0	-0.0%	+0
Nursing & Midwifery	367	373	+6	+6	+12
Dietitians	8	7	-1	-0.1%	+2
Occupational Therapists	5	6	+1	+0.2%	+2
Orthoptists	1	1	0	+0.0%	+1
Physiotherapists	18	18	-0	-0.0%	+5
Speech & Language Therapists	3	3	-0	-0.0%	+0
Podiatrists & Chiropodists	1	1	0	+0.0%	+1
Therapy Professions	36	36	-0	-0.0%	-0
Clinical Engineering	1	1	0	+0.0%	
Clinical Measurement	8	9	+1	+0.1%	+3
Radiographers	30	29	-0	-0.0%	+8
Medical Science	47	46	-1	-0.0%	+4

Health Science/ Diagnostics	85	85	-0	-0.0%	+2
Pharmacy	16	16	+1	+0.0%	+0
Pharmacy	16	16	+1	+0.0%	+2
HSCP Trainees/ Students	2	2	0	+0.0%	+2
H&SC, Other	2	2	0	+0.0%	+2
Health & Social Care Professionals	139	140	+0	+0	+5
Executive Management	0	1	+1	+1.7%	
Senior Management (VIII & GM)	4	3	-1	-0.3%	-1
Management (VIII & above)	4	4	-0	-0.1%	+1
Middle Management (V-VII)	29	29	-0	-0.0%	+6
Administrative/ Supervisory (V to VII)	29	29	-0	-0.0%	+1
General Administrative (III & IV)	99	104	+4	+0.0%	+3
Clerical (III & IV)	99	104	+4	+0.0%	+8
Management & Administrative	132	136	+4	+4	+10
Catering	8	8	+0	+0.0%	+0
Household Services	4	4	+0	+0.0%	
Other Labs & Associated	7	9	+2	+0.3%	+4
Other Support	11	11	-0	-0.0%	+2
Support	30	32	+2	+0.1%	+5
Maintenance	13	13	-0	-0.0%	+1
Technical Services				-1.0%	-1
Maintenance/ Technical	13	13	-0	-0.0%	-0
General Support	43	44	+2	+2	+5
HCA, Nurse's Aide, etc.	187	184	-3	-0.0%	+25
Health & Social Care Assistants	1	1	0	+0.0%	
Health Care Assistants	188	185	-3	-0.0%	+4
Other Care Grades	1	1	0	+0.0%	
Care, other	1	1	0	+0.0%	
Patient & Client Care	189	186	-3	-3	+4

Royal Victoria Eye & Ear

Jun 2021 (Dec 2020 figure: 313)	WTE Apr 2021	WTE Jun 2021	WTE change since Apr 21	% change since Apr 21	WTE change since Dec 19
Overall	332	337	+5	+1.7%	+24
<i>Consultant Anaesthesia</i>	5	5	0	+0.0%	
<i>Consultant Surgery</i>	21	22	+1	+0.0%	+4
Consultants	26	27	+1	+0.0%	+1
<i>Registrar</i>	13	13	0	+0.0%	+3
<i>Specialist Registrar</i>	11	11	0	+0.0%	+1
Registrars	24	24	0	+0.0%	+2
<i>Senior House Officer</i>	15	15	0	+0.0%	-0
SHO/ Interns	15	15	0	+0.0%	+1
<i>Other Medical</i>	4	4	+1	+0.2%	-0
Medical/ Dental, other	4	4	+1	+0.2%	-1
Medical & Dental	69	70	+2	+2	+3
<i>Clinical Nurse/ Midwife Manager</i>	23	23	+1	+0.0%	+3
<i>Director Nursing/Midwifery, Assistant</i>	2	2	0	+0.0%	
<i>Director of Nursing/Midwifery</i>	1	1	0	+0.0%	
Nurse/ Midwife Manager	26	26	+1	+0.0%	+2
<i>Advanced Nurse/ Midwife Practitioner</i>	5	3	-2	-0.4%	-0
<i>Clinical Nurse/ Midwife Specialist</i>	9	10	+1	+0.1%	+4
Nurse/ Midwife Specialist & AN/MP	14	13	-1	-0.1%	+0
<i>Staff Nurses [General/ Children's]</i>	88	85	-3	-0.0%	+4
Staff Nurse/ Staff Midwife	88	85	-3	-0.0%	+3
<i>Nursing Education/Clinical</i>	1	1	0	+0.0%	-1
Nursing/ Midwifery other	1	1	0	+0.0%	
Nursing & Midwifery	129	125	-4	-4	+5
<i>Dietitians</i>	2	2	0	+0.0%	+1
<i>Orthoptists</i>	1	1	0	+0.0%	-0
<i>Physiotherapists</i>	0	0	0	+0.0%	
<i>Speech & Language Therapists</i>	1	1	0	+0.0%	
Therapy Professions	3	3	0	+0.0%	+1
<i>Audiology</i>	1	1	0	+0.0%	-0
<i>Radiographers</i>	1	1	0	+0.0%	+1
Health Science/ Diagnostics	2	2	0	+0.0%	-0
<i>Social Workers</i>	2	2	0	+0.0%	
Social Workers	2	2	0	+0.0%	+1
<i>Pharmacy</i>	4	4	0	+0.0%	+1
Pharmacy	4	4	0	+0.0%	
<i>Other Health & Social Care</i>	4	4	0	+0.0%	
H&SC, Other	4	4	0	+0.0%	
Health & Social Care Professionals	15	15	-0	-0	+1
<i>Senior Management (VIII & GM)</i>	4	4	0	+0.0%	+1
Management (VIII & above)	4	4	0	+0.0%	
<i>Middle Management (V-VII)</i>	31	31	+0	+0.0%	+7
Administrative/ Supervisory (V to VII)	31	31	+0	+0.0%	+3
<i>General Administrative (III & IV)</i>	41	48	+7	+0.2%	+12
Clerical (III & IV)	41	48	+7	+0.2%	+11
Management & Administrative	76	84	+8	+8	+14

<i>Catering</i>	6	6	0	+0.0%	+0
<i>Household Services</i>	10	10	-0	-0.0%	-0
<i>Other Labs & Associated</i>	1	1	0	+0.0%	+1
<i>Other Support</i>	3	3	0	+0.0%	+1
<i>Portering</i>	10	11	+1	+0.1%	+1
Support	29	30	+1	+0.0%	+1
General Support	29	30	+1	+1	+1
<i>HCA, Nurse's Aide, etc.</i>	14	13	-1	-0.1%	+4
Health Care Assistants	14	13	-1	-0.1%	
Patient & Client Care	14	13	-1	-1	

St. Michael's

Jun 2021 (Dec 2020 figure: 404)	WTE Apr 2021	WTE Jun 2021	WTE change since Apr 21	% change since Apr 21	WTE change since Dec 19
Overall	415	415	+0	+0.0%	+11
Consultant Anaesthesia	1	1	0	+0.0%	
Consultant Medicine	6	6	-0	-0.0%	+1
Consultant Radiology	1	1	0	+0.0%	-1
Consultant Surgery	2	2	0	+0.0%	
Consultants	10	10	-0	-0.0%	-0
Registrar	10	10	0	+0.0%	
Specialist Registrar	3	3	0	+0.0%	
Registrars	13	13	0	+0.0%	
Interns	5	5	0	+0.0%	+2
Senior House Officer	10	10	0	+0.0%	-1
SHO/ Interns	15	15	0	+0.0%	
Other Medical	0	0	0	+0.0%	
Medical/ Dental, other	0	0	0	+0.0%	
Medical & Dental	39	39	-0	-0	-0
Clinical Nurse/ Midwife Manager	30	29	-1	-0.0%	+1
Director Nursing/Midwifery, Assistant	4	4	0	+0.0%	-1
Director of Nursing/Midwifery	1	1	0	+0.0%	
Nurse/ Midwife Manager	35	34	-1	-0.0%	-1
Advanced Nurse/ Midwife Practitioner	5	5	0	+0.0%	
Clinical Nurse/ Midwife Specialist	22	20	-2	-0.1%	-3
Nurse/ Midwife Specialist & AN/MP	27	25	-2	-0.1%	-1
Staff Nurses [General/ Children's]	102	103	+1	+0.0%	+0
Staff Nurse/ Staff Midwife	102	103	+1	+0.0%	-3
Pre-registration Nurse/ Midwife Intern	10	10	0	+0.0%	+10
Nursing/ Midwifery Student	10	10	0	+0.0%	+10
Nursing Education/Clinical	4	3	-1	-0.3%	-2
Nursing/ Midwifery other	4	3	-1	-0.3%	-1
Nursing & Midwifery	177	174	-3	-3	+3
Dietitians	3	3	0	+0.0%	-1
Occupational Therapists	4	4	0	+0.0%	
Orthoptists	0	0	0	+0.0%	
Physiotherapists	12	10	-1	-0.1%	-4
Podiatrists & Chiropodists	0	0	0	+0.0%	
Therapy Professions	19	17	-2	-0.1%	
Clinical Measurement	5	6	+1	+0.3%	+3
Phlebotomists	3	3	+0	+0.0%	+0
Radiographers	8	8	0	+0.0%	+1
Medical Science	5	5	0	+0.0%	
Health Science/ Diagnostics	20	22	+1	+0.1%	+1
Social Workers	4	4	+0	+0.1%	+2
Social Workers	4	4	+0	+0.1%	+0
Pharmacy	7	7	+1	+0.1%	-1
Pharmacy	7	7	+1	+0.1%	+1
Health & Social Care Professionals	49	50	+1	+1	+2
Executive Management	1	1	0	+0.0%	+1
Senior Management (VIII & GM)	2	2	0	+0.0%	+1

Management (VIII & above)	3	3	0	+0.0%	
<i>Middle Management (V-VII)</i>	24	26	+2	+0.1%	+7
Administrative/ Supervisory (V to VII)	24	26	+2	+0.1%	+2
<i>General Administrative (III & IV)</i>	43	44	+1	+0.0%	+1
Clerical (III & IV)	43	44	+1	+0.0%	+2
Management & Administrative	71	73	+2	+2	+4
<i>Catering</i>	7	7	0	+0.0%	-0
<i>Household Services</i>	17	17	-0	-0.0%	-1
<i>Other Labs & Associated</i>	2	2	0	+0.0%	-1
<i>Other Support</i>	5	6	+1	+0.2%	+1
<i>Portering</i>	16	16	0	+0.0%	+1
Support	48	48	+1	+0.0%	+1
<i>Maintenance</i>	2	2	0	+0.0%	
Maintenance/ Technical	2	2	0	+0.0%	
General Support	50	50	+1	+1	+1
<i>HCA, Nurse's Aide, etc.</i>	27	27	0	+0.0%	+2
<i>Health & Social Care Assistants</i>	1	1	+0	+0.2%	+1
Health Care Assistants	28	28	+0	+0.0%	+1
<i>Other Care Grades</i>	2	1	-1	-0.4%	-1
Care, other	2	1	-1	-0.4%	-1
Patient & Client Care	30	29	-1	-1	-0

St. Columcille's

Jun 2021 (Dec 2020 figure: 457)	WTE Apr 2021	WTE Jun 2021	WTE change since Apr 21	% change since Apr 21	WTE change since Dec 19
Overall	469	465	-3	-0.7%	+8
Consultant Anaesthesia	3	3	0	+0.0%	+0
Consultant Medicine	10	10	+1	+0.1%	-0
Consultant Pathology	1	1	0	+0.0%	
Consultant Radiology	3	3	0	+0.0%	+1
Consultant Surgery	2	1	-1	-0.5%	-2
Consultants	19	18	-1	-0.0%	+2
Registrar	7	6	-1	-0.1%	-2
Senior Registrar				-1.0%	-1
Specialist Registrar	2	2	0	+0.0%	+1
Registrars	9	8	-1	-0.1%	-2
Interns	5	5	0	+0.0%	-1
Senior House Officer	9	9	-0	-0.0%	+1
SHO/ Interns	14	14	-0	-0.0%	-2
Medical & Dental	41	40	-1	-1	-2
Clinical Nurse/ Midwife Manager	29	28	-1	-0.0%	+3
Director Nursing/Midwifery, Assistant	5	5	+0	+0.0%	-1
Director of Nursing/Midwifery	1	1	0	+0.0%	
Nurse/ Midwife Manager	35	34	-0	-0.0%	+0
Advanced Nurse/ Midwife Practitioner	3	3	-0	-0.0%	-0
Clinical Nurse/ Midwife Specialist	5	6	+1	+0.2%	+0
Nurse/ Midwife Specialist & AN/MP	8	8	+1	+0.1%	+1
Staff Nurses [General/ Children's]	113	115	+2	+0.0%	-4
Staff Nurse/ Staff Midwife	113	115	+2	+0.0%	+2
Nursing Education/Clinical	1	1	0	+0.0%	-1
Nursing/ Midwifery other	1	1	0	+0.0%	
Nursing & Midwifery	156	159	+3	+3	+3
Dietitians	7	7	+0	+0.0%	+1
Occupational Therapists	8	8	+0	+0.0%	+2
Physiotherapists	14	14	+0	+0.0%	-1
Speech & Language Therapists	7	6	-1	-0.1%	+2
Therapy Professions	36	36	-0	-0.0%	+1
Phlebotomists	2	2	-1	-0.3%	+1
Radiographers	14	14	-0	-0.0%	+1
Medical Science	5	5	-0	-0.0%	-0
Health Science/ Diagnostics	21	20	-1	-0.0%	-1
Social Workers	6	6	+1	+0.1%	+1
Social Workers	6	6	+1	+0.1%	+0
Psychologists	2	2	0	+0.0%	+1
Psychologists	2	2	0	+0.0%	+1
Pharmacy	5	5	0	+0.0%	+0
Pharmacy	5	5	0	+0.0%	
Health & Social Care Professionals	71	70	-1	-1	+1
Executive Management	1	1	0	+0.0%	+1
Senior Management (VIII & GM)	1	1	0	+0.0%	
Management (VIII & above)	2	2	0	+0.0%	
Middle Management (V-VII)	13	13	-0	-0.0%	-1

Administrative/ Supervisory (V to VII)	13	13	-0	-0.0%	-0
<i>General Administrative (III & IV)</i>	63	64	+1	+0.0%	+10
Clerical (III & IV)	63	64	+1	+0.0%	+6
Management & Administrative	78	79	+1	+1	+6
<i>Catering</i>	6	6	-0	-0.0%	+1
<i>Household Services</i>	49	47	-2	-0.0%	+0
<i>Other Labs & Associated</i>	3	3	-0	-0.1%	+1
<i>Other Support</i>	1	1	0	+0.0%	-0
<i>Portering</i>	7	6	-0	-0.0%	+4
Support	66	63	-3	-0.0%	+3
<i>Maintenance</i>	1	1	0	+0.0%	
Maintenance/ Technical	1	1	0	+0.0%	
General Support	67	64	-3	-3	+3
<i>HCA, Nurse's Aide, etc.</i>	51	50	-1	-0.0%	-8
<i>Health & Social Care Assistants</i>	2	1	-1	-0.4%	+1
Health Care Assistants	53	51	-2	-0.0%	-3
<i>Other Care Grades</i>	3	3	+0	+0.0%	+3
Care, other	3	3	+0	+0.0%	+0
Patient & Client Care	56	54	-2	-2	-3

National Maternity

Jun 2021 (Dec 2020 figure: 916)	WTE Apr 2021	WTE Jun 2021	WTE change since Apr 21	% change since Apr 21	WTE change since Dec 19
Overall	948	941	-7	-0.8%	+25
Consultant Anaesthesia	7	6	-1	-0.1%	-1
Consultant Medicine	0	0	0	+0.0%	
Consultant Obstetrics & Gynaecology	17	18	+1	+0.1%	+1
Consultant Paediatrics	10	10	0	+0.0%	+2
Consultant Pathology	3	3	0	+0.0%	+0
Consultant Surgery	0	0	0	+0.0%	+0
Consultants	37	37	+0	+0.0%	-0
Registrar	21	21	0	+0.0%	+5
Senior Registrar	2	2	0	+0.0%	+1
Specialist Registrar	16	16	0	+0.0%	-3
Registrars	39	39	0	+0.0%	+1
Senior House Officer	21	21	0	+0.0%	
SHO/ Interns	21	21	0	+0.0%	-1
Other Medical	1	1	0	+0.0%	+0
Medical/ Dental, other	1	1	0	+0.0%	+0
Medical & Dental	97	98	+0	+0	-0
Clinical Nurse/ Midwife Manager	129	131	+2	+0.0%	+20
Director Nursing/Midwifery, Assistant	8	8	0	+0.0%	-0
Director of Nursing/Midwifery	1	1	0	+0.0%	
Nurse/ Midwife Manager	138	140	+2	+0.0%	+5
Advanced Nurse/ Midwife Practitioner	5	5	0	+0.0%	
Clinical Nurse/ Midwife Specialist	10	11	+1	+0.1%	+1
Nurse/ Midwife Specialist & AN/MP	15	16	+1	+0.1%	+1
Staff Nurses [General/ Children's]	74	74	-0	-0.0%	-8
Staff Midwives	173	166	-7	-0.0%	+3
Staff Nurse/ Staff Midwife	248	241	-7	-0.0%	+1
Pre-registration Nurse/ Midwife Intern	9	9	-1	-0.1%	+8
Pre-registration Nurse Intern (COVID-19)				-1.0%	
Post-registration Nurse/ Midwife Student	28	28	0	+0.0%	+7
Nursing/ Midwifery Student	37	36	-1	-0.0%	+18
Nursing Education/Clinical	4	4	0	+0.0%	
Nursing/ Midwifery other	4	4	0	+0.0%	
Nursing & Midwifery	442	437	-5	-5	+25
Dietitians	8	6	-2	-0.3%	-1
Physiotherapists	8	9	+1	+0.1%	+4
Therapy Professions	16	15	-1	-0.1%	-1
Clinical Engineering	4	4	0	+0.0%	
Radiographers	9	8	-1	-0.1%	
Medical Science	33	34	+1	+0.0%	+4
Health Science/ Diagnostics	45	45	0	+0.0%	-2
Social Workers	8	8	0	+0.0%	+0
Social Workers	8	8	0	+0.0%	-2
Psychologists	2	2	0	+0.0%	+0
Psychologists	2	2	0	+0.0%	
Pharmacy	7	7	-0	-0.0%	-0
Pharmacy	7	7	-0	-0.0%	-1

Health & Social Care Professionals	77	76	-1	-1	-6
<i>Executive Management</i>	1	1	0	+0.0%	-1
<i>Senior Management (VIII & GM)</i>	5	5	0	+0.0%	+1
Management (VIII & above)	6	6	0	+0.0%	-1
<i>Middle Management (V-VII)</i>	59	61	+2	+0.0%	+10
Administrative/ Supervisory (V to VII)	59	61	+2	+0.0%	+4
<i>General Administrative (III & IV)</i>	73	72	-1	-0.0%	-8
Clerical (III & IV)	73	72	-1	-0.0%	+2
Management & Administrative	138	139	+1	+1	+5
<i>Catering</i>	14	14	0	+0.0%	-1
<i>Household Services</i>	86	85	-2	-0.0%	+2
<i>Other Labs & Associated</i>	8	9	+1	+0.1%	+3
<i>Other Support</i>	4	4	0	+0.0%	+1
<i>Portering</i>	26	27	+0	+0.0%	+3
Support	139	139	-0	-0.0%	+5
<i>Maintenance</i>	13	12	-1	-0.1%	+4
<i>Technical Services</i>	2	2	0	+0.0%	-1
Maintenance/ Technical	15	14	-1	-0.1%	-1
General Support	154	153	-1	-1	+4
<i>HCA, Nurse's Aide, etc.</i>	41	39	-2	-0.0%	+4
Health Care Assistants	41	39	-2	-0.0%	-3
Patient & Client Care	41	39	-2	-2	-3

St. Vincent's University

Jun 2021 (Dec 2020 figure: 3,087)	WTE Apr 2021	WTE Jun 2021	WTE change since Apr 21	% change since Apr 21	WTE change since Dec 19
Overall	3,161	3,184	+22	+0.7%	+97
<i>Consultant Anaesthesia</i>	20	21	+1	+0.1%	+3
<i>Consultant Emergency Medicine</i>	8	7	-1	-0.1%	+1
<i>Consultant Medicine</i>	61	60	-0	-0.0%	+3
<i>Consultant Pathology</i>	17	16	-1	-0.0%	+1
<i>Consultant Psychiatry</i>	4	4	0	+0.0%	+1
<i>Consultant Radiology</i>	14	15	+1	+0.0%	-0
<i>Consultant Surgery</i>	31	31	-1	-0.0%	-0
Consultants	153	153	-0	-0.0%	-1
<i>Registrar</i>	84	89	+5	+0.1%	+13
<i>Senior Registrar</i>	5	5	0	+0.0%	+2
<i>Specialist Registrar</i>	95	92	-3	-0.0%	+6
Registrars	184	186	+2	+0.0%	+18
<i>Interns</i>	72	74	+2	+0.0%	+29
<i>Senior House Officer</i>	99	99	0	+0.0%	+18
SHO/ Interns	171	173	+2	+0.0%	-6
<i>Other Medical</i>	7	6	-1	-0.1%	+5
Medical/ Dental, other	7	6	-1	-0.1%	+5
Medical & Dental	515	518	+3	+3	+17
<i>Clinical Nurse/ Midwife Manager</i>	211	224	+13	+0.1%	+55
<i>Director Nursing/Midwifery, Assistant</i>	19	20	+1	+0.1%	+6
<i>Director of Nursing/Midwifery</i>	1	1	0	+0.0%	
Nurse/ Midwife Manager	230	244	+14	+0.1%	+12
<i>Advanced Nurse/ Midwife Practitioner</i>	17	25	+8	+0.5%	+7
<i>Clinical Nurse/ Midwife Specialist</i>	70	70	+0	+0.0%	+1
Nurse/ Midwife Specialist & AN/MP	87	95	+8	+0.1%	+3
<i>Nursing Bank</i>				-1.0%	-2
<i>Staff Nurses [General/ Children's]</i>	793	773	-20	-0.0%	+55
<i>Staff Nurse [Psychiatric]</i>	3	3	0	+0.0%	-1
Staff Nurse/ Staff Midwife	796	776	-20	-0.0%	+56
<i>Pre-registration Nurse/ Midwife Intern</i>	33	38	+5	+0.2%	+20
<i>Pre-registration Nurse Intern (COVID-19)</i>				-1.0%	
<i>Nursing/ Midwifery awaiting registration</i>				-1.0%	
Nursing/ Midwifery Student	33	38	+5	+0.2%	-28
<i>Nursing Education/Clinical</i>	5	5	-0	-0.0%	-9
Nursing/ Midwifery other	5	5	-0	-0.0%	-4
Nursing & Midwifery	1,150	1,157	+7	+7	+38
<i>Dietitians</i>	23	23	-1	-0.0%	+5
<i>Occupational Therapists</i>	28	32	+4	+0.1%	+17
<i>Physiotherapists</i>	43	41	-2	-0.0%	-17
<i>Speech & Language Therapists</i>	10	10	-0	-0.0%	+1
<i>Podiatrists & Chiropodists</i>	3	4	+1	+0.3%	+1
Therapy Professions	107	110	+3	+0.0%	-5
<i>Audiology</i>	2	1	-1	-0.5%	+1
<i>Biochemists</i>	16	16	0	+0.0%	-3
<i>Clinical Engineering</i>	8	8	-0	-0.0%	+1
<i>Clinical Measurement</i>	26	27	+1	+0.0%	+2
<i>Phlebotomists</i>	15	15	-1	-0.0%	+0

<i>Physicists</i>	10	10	-0	-0.0%	+2
<i>Radiographers</i>	72	71	-1	-0.0%	+11
<i>Medical Science</i>	89	86	-3	-0.0%	+8
Health Science/ Diagnostics	239	234	-5	-0.0%	+11
<i>Social Workers</i>	21	21	+1	+0.0%	+2
Social Workers	21	21	+1	+0.0%	+0
<i>Psychologists</i>	12	10	-1	-0.1%	-0
Psychologists	12	10	-1	-0.1%	+1
<i>Pharmacy</i>	59	58	-1	-0.0%	-0
Pharmacy	59	58	-1	-0.0%	-1
<i>Counsellor Therapists</i>	0	0	0	+0.0%	
<i>HSCP Trainees/ Students</i>	1	1	0	+0.0%	+1
H&SC, Other	1	1	0	+0.0%	+1
Health & Social Care Professionals	439	434	-5	-5	+6
<i>Executive Management</i>	5	4	-1	-0.2%	+3
<i>Senior Management (VIII & GM)</i>	21	18	-2	-0.1%	+1
Management (VIII & above)	26	22	-3	-0.1%	+1
<i>Middle Management (V-VII)</i>	181	180	-1	-0.0%	+36
<i>Other Administrative</i>	3	3	0	+0.0%	-1
Administrative/ Supervisory (V to VII)	184	183	-1	-0.0%	-2
<i>General Administrative (III & IV)</i>	285	298	+13	+0.0%	+10
Clerical (III & IV)	285	298	+13	+0.0%	+30
Management & Administrative	494	503	+9	+9	+29
<i>Catering</i>	20	19	-1	-0.1%	+0
<i>Household Services</i>	97	98	+2	+0.0%	+12
<i>Other Labs & Associated</i>	32	36	+4	+0.1%	+3
<i>Other Support</i>	65	65	-0	-0.0%	+7
<i>Portering</i>	102	103	+1	+0.0%	+7
Support	316	321	+6	+0.0%	+4
<i>Maintenance</i>	35	35	-0	-0.0%	+3
<i>Technical Services</i>	5	4	-1	-0.2%	+1
Maintenance/ Technical	40	39	-1	-0.0%	+4
General Support	356	360	+5	+5	+8
<i>HCA, Nurse's Aide, etc.</i>	185	190	+5	+0.0%	+21
<i>Health & Social Care Assistants</i>	12	11	-1	-0.1%	-0
<i>Swabber (COVID-19)</i>				-1.0%	
Health Care Assistants	197	201	+4	+0.0%	-1
<i>Other Care Grades</i>	10	10	-1	-0.1%	+1
Care, other	10	10	-1	-0.1%	-1
Patient & Client Care	208	211	+3	+3	-2

IEHG Bank

Jun 2021 (Dec 2020 figure: 8)	WTE Apr 2021	WTE Jun 2021	WTE change since Apr 21	% change since Apr 21	WTE change since Dec 19
Overall	14	12	-2	-12.9%	+4
Staff Nurses [General/ Children's]	13	12	-2	-0.1%	+12
Staff Nurse/ Staff Midwife	13	12	-2	-0.1%	+4
Nursing & Midwifery	13	12	-2	-2	+4
HCA, Nurse's Aide, etc.	1	0	-0	-0.2%	+0
Health Care Assistants	1	0	-0	-0.2%	+0
Patient & Client Care	1	0	-0	-0	+0

Ireland East Hospital Group Employment by Grade Group & Staff Category: June 2021

Jun 2021 (Dec 2020 figure: 12,923)	WTE Apr 2021	WTE Jun 2021	WTE change since Apr 21	% change since Apr 21	WTE change since Dec 20	WTE change since Jun 20
Overall	13,227	13,288	+61	+0.5%	+365	+382
Consultant Anaesthesia	94	96	+2	+2.2%	+8	+7
Consultant Emergency Medicine	23	22	-1	-3.6%	-2	-1
Consultant Intensive Care Medicine	3	3			+1	+1
Consultant Medicine	190	189	-2	-1.0%	-11	+0
Consultant Obstetrics & Gynaecology	35	36	+1	+4.0%	+2	+1
Consultant Paediatrics	24	25	+1	+4.7%	+1	+1
Consultant Pathology	41	40	-1	-1.4%	-0	-3
Consultant Psychiatry	6	6			+2	+3
Consultant Radiology	54	56	+2	+3.5%	+1	+5
Consultant Surgery	113	113	+1	+0.6%	-2	-3
Consultants	582	586	+4	+0.7%	-1	+10
Registrar	387	394	+7	+1.7%	+25	+38
Senior Registrar	34	34	-1	-1.6%	-1	+7
Specialist Registrar	267	263	-5	-1.7%	+9	+18
Registrars	689	691	+2	+0.2%	+33	+63
Interns	195	196	+1	+0.5%	-5	-128
Senior House Officer	460	464	+4	+0.9%	-4	-10
SHO/ Interns	655	660	+5	+0.8%	-9	-138
Dentists	1	1				
Other Medical	33	35	+2	+6.1%	+8	+11
Medical/ Dental, other	34	36	+2	+5.9%	+8	+11
Medical & Dental	1,959	1,972	+13	+0.6%	+31	-54
Clinical Nurse/ Midwife Manager	923	940	+17	+1.9%	+28	+101
Director Nursing/Midwifery, Assistant	95	100	+4	+4.5%	+9	+8
Director of Nursing/Midwifery	15	17	+2	+13.4%	+2	+1
Nurse/ Midwife Manager	1,033	1,057	+24	+2.3%	+38	+110
Advanced Nurse/ Midwife Practitioner	92	101	+9	+9.9%	+12	+22
Clinical Nurse/ Midwife Specialist	263	263	-0	-0.1%	+15	+29
Nurse/ Midwife Specialist & AN/MP	356	365	+9	+2.5%	+27	+52
Nursing Bank	1		-1	-100.0%	-3	-2
Staff Nurses [General/ Children's]	3,143	3,094	-49	-1.5%	+46	+146
Staff Midwives	293	286	-7	-2.5%	+4	-9
Staff Nurse [Psychiatric]	3	3				-1
Staff Nurse/ Staff Midwife	3,440	3,383	-57	-1.7%	+47	+134
Pre-registration Nurse/ Midwife Intern	98	107	+9	+9.1%	+97	+107
Pre-registration Nurse Intern (COVID-19)				-100.0%	-47	-221
Post-registration Nurse/ Midwife Student	28	28			+11	+8
Nursing/ Midwifery awaiting registration	2	6	+4	+200.0%	-28	+6
Nursing/ Midwifery Student	128	141	+13	+10.1%	+32	-101
Nursing Education/Clinical	54	54	-0	-0.8%	-5	-7
Other Nursing/ Midwifery	17	16	-0	-2.8%	+3	+2

Jun 2021 (Dec 2020 figure: 12,923)	WTE Apr 2021	WTE Jun 2021	WTE change since Apr 21	% change since Apr 21	WTE change since Dec 20	WTE change since Jun 20
Overall	13,227	13,288	+61	+0.5%	+365	+382
Nursing/ Midwifery other	71	70	-1	-1.3%	-3	-6
Nursing & Midwifery	5,027	5,015	-12	-0.2%	+142	+189
Dietitians	97	97	-1	-0.7%	+4	+11
Occupational Therapists	96	100	+4	+4.0%	+18	+26
Orthoptists	3	3			+0	+1
Physiotherapists	233	229	-4	-1.7%	-15	-13
Speech & Language Therapists	45	45	+0	+0.5%	-1	+1
Podiatrists & Chiropodists	10	11	+1	+9.6%	+0	+0
Therapy Professions	484	484	+0	+0.1%	+6	+25
Audiology	5	4	-1	-22.8%	+1	+1
Biochemists	25	25			-4	-3
Clinical Engineering	24	24	-0	-0.7%	+2	+2
Clinical Measurement	88	91	+3	+3.5%	+2	+10
Perfusionists	6	6	-0	-0.9%	+1	+2
Phlebotomists	43	42	-2	-3.5%	+0	+0
Physicists	18	18	-0	-1.2%	+3	+2
Radiographers	260	258	-2	-0.7%	-4	+11
Medical Science	334	334	-0	-0.1%	+10	+8
Health Science/ Diagnostics	804	802	-2	-0.3%	+11	+33
Social Workers	75	77	+1	+1.5%	+3	+7
Psychologists	26	24	-1	-4.5%	+3	+4
Pharmacy	199	205	+5	+2.7%	+12	+10
Counsellor Therapists	2	2	-0	-0.0%	-0	-0
HSCP Trainees/ Students	12	14	+2	+12.8%	+7	+2
Other Health & Social Care	20	19	-1	-7.0%	-0	+2
Vaccinators		22	+22	-100.0%	+22	+22
H&SC, Other	34	56	+22	+63.3%	+29	+26
Health & Social Care Professionals	1,623	1,648	+25	+1.6%	+64	+104
Executive Management	23	25	+1	+6.0%	+3	+9
Senior Management (VIII & GM)	88	88	+0	+0.5%	+9	+6
Management (VIII & above)	111	113	+2	+1.6%	+12	+16
Administrative/ Supervisory (V to VII)	620	623	+3	+0.5%	+24	+85
Clerical (III & IV)	1,267	1,287	+20	+1.6%	+64	+42
Management & Administrative	1,999	2,023	+25	+1.2%	+100	+143
Catering	109	107	-2	-1.9%	-2	+4
Household Services	686	690	+4	+0.6%	+12	-3
Other Labs & Associated	89	96	+6	+7.0%	+13	+18
Other Support	169	169	+0	+0.1%	-3	+7
Portering	268	270	+3	+0.9%	+1	-75
Support	1,322	1,333	+11	+0.8%	+20	-49
Maintenance/ Technical	125	122	-3	-2.4%	+3	+3
General Support	1,446	1,454	+8	+0.6%	+23	-46

Jun 2021 (Dec 2020 figure: 12,923)	WTE Apr 2021	WTE Jun 2021	WTE change since Apr 21	% change since Apr 21	WTE change since Dec 20	WTE change since Jun 20
Overall	13,227	13,288	+61	+0.5%	+365	+382
HCA, Nurse's Aide, etc.	1,109	1,113	+4	+0.3%	+20	+56
Health & Social Care Assistants	35	34	-1	-1.5%	-3	-12
Swabber (COVID-19)				-100.0%	-11	
Health Care Assistants	1,144	1,147	+3	+0.3%	+5	+44
Care, other	29	28	-1	-3.2%	-0	+1
Patient & Client Care	1,173	1,175	+2	+0.2%	+5	+45

Employment by WTE, Headcount, Gender, Full-Time /Part-Time etc.: Jun 2021

Ireland East Hospital Group	WTE	Headcount	WTE: no.	% Male	% female	Male WTE: no.	Female WTE: no.	% Total Perm	% Male Perm	% Female Perm	% Total Full Time	% Total Part Time	% Male FT	% Female FT
Overall	13,288	14,781	1.11	24.7%	75.3%	1.05	1.13	81.6%	69.0%	85.7%	76.6%	23.4%	90.4%	72.1%
Consultant Anaesthesia	96	106	1.11	66.0%	34.0%	1.13	1.06	81.1%	81.1%	75.0%	90.6%	9.4%	90.0%	91.7%
Consultant Emergency Medicine	22	24	1.09	87.5%	12.5%	1.11	1.00	54.2%	54.2%	0.0%	87.5%	12.5%	85.7%	100.0%
Consultant Intensive Care Medicine	3	3	1.20		100.0%		1.20	100.0%	100.0%	100.0%	66.7%	33.3%		66.7%
Consultant Medicine	189	223	1.18	66.8%	33.2%	1.15	1.25	74.0%	74.0%	70.3%	78.9%	21.1%	82.6%	71.6%
Consultant Obstetrics & Gynaecology	36	42	1.17	50.0%	50.0%	1.07	1.28	83.3%	83.3%	76.2%	81.0%	19.0%	95.2%	66.7%
Consultant Paediatrics	25	28	1.12	46.4%	53.6%	1.04	1.19	82.1%	82.1%	80.0%	82.1%	17.9%	92.3%	73.3%
Consultant Pathology	40	48	1.19	41.7%	58.3%	1.13	1.23	87.5%	87.5%	92.9%	79.2%	20.8%	85.0%	75.0%
Consultant Psychiatry	6	7	1.14	57.1%	42.9%	1.13	1.15	71.4%	71.4%	66.7%	71.4%	28.6%	100.0%	33.3%
Consultant Radiology	56	61	1.09	67.2%	32.8%	1.05	1.16	83.6%	83.6%	85.0%	88.5%	11.5%	92.7%	80.0%
Consultant Surgery	113	134	1.18	78.4%	21.6%	1.17	1.24	83.6%	83.6%	89.7%	79.1%	20.9%	82.9%	65.5%
Consultants	586	676	1.15	65.7%	34.3%	1.13	1.20	79.1%	79.7%	78.0%	82.1%	17.9%	86.0%	74.6%
Registrar	394	401	1.02	67.3%	32.7%	1.02	1.01	2.7%	2.7%	4.6%	98.8%	1.2%	98.5%	99.2%
Senior Registrar	34	34	1.01	67.6%	32.4%	1.01	1.01	23.5%	23.5%	18.2%	100.0%	0.0%	100.0%	100.0%
Specialist Registrar	263	267	1.02	53.9%	46.1%	1.02	1.01	0.4%	0.4%	0.8%	97.0%	3.0%	95.8%	98.4%
Registrars	691	702	1.02	62.3%	37.7%	1.02	1.01	2.8%	2.5%	3.4%	98.1%	1.9%	97.7%	98.9%
Interns	196	196	1.00	39.8%	60.2%	1.00	1.00	0.0%	0.0%	0.0%	100.0%	0.0%	100.0%	100.0%
Senior House Officer	464	470	1.01	44.0%	56.0%	1.01	1.01	1.5%	1.5%	1.9%	98.5%	1.5%	99.5%	97.7%
SHO/ Interns	660	666	1.01	42.8%	57.2%	1.01	1.01	1.1%	0.7%	1.3%	98.9%	1.1%	99.6%	98.4%
Dentists	1	1	1.00	100.0%		1.00		0.0%	0.0%		100.0%	0.0%	100.0%	
Other Medical	35	45	1.29	51.1%	48.9%	1.10	1.57	71.1%	71.1%	77.3%	60.0%	40.0%	87.0%	31.8%
Medical/ Dental, other	36	46	1.28	52.2%	47.8%	1.10	1.57	69.6%	62.5%	77.3%	60.9%	39.1%	87.5%	31.8%
Medical & Dental	1,972	2,090	1.06	56.9%	43.1%	1.06	1.06	28.4%	32.1%	23.6%	92.4%	7.6%	93.6%	90.8%
Clinical Nurse/ Midwife Manager	940	1,041	1.11	5.5%	94.5%	1.02	1.11	98.1%	98.1%	98.0%	71.7%	28.3%	94.7%	70.3%

Director Nursing/Midwifery, Assistant	100	109	1.10	9.2%	90.8%	1.00	1.11	95.4%	95.4%	94.9%	78.0%	22.0%	100.0%	75.8%
Director of Nursing/Midwifery	17	17	1.01	5.9%	94.1%	1.00	1.01	94.1%	94.1%	93.8%	94.1%	5.9%	100.0%	93.8%
Nurse/ Midwife Manager	1,057	1,167	1.10	5.8%	94.2%	1.02	1.11	97.8%	100.0%	97.6%	72.6%	27.4%	95.6%	71.2%
Advanced Nurse/ Midwife Practitioner	101	106	1.05	10.4%	89.6%	1.00	1.05	100.0%	100.0%	100.0%	90.6%	9.4%	100.0%	89.5%
Clinical Nurse/ Midwife Specialist	263	300	1.14	3.7%	96.3%	1.03	1.14	97.7%	97.7%	97.9%	66.0%	34.0%	90.9%	65.1%
Nurse/ Midwife Specialist & AN/MP	365	406	1.11	5.4%	94.6%	1.01	1.12	98.3%	95.5%	98.4%	72.4%	27.6%	95.5%	71.1%
Staff Nurses [General/ Children's]	3,094	3,442	1.11	9.1%	90.9%	1.04	1.12	97.0%	97.0%	97.0%	71.9%	28.1%	91.7%	70.0%
Staff Midwives	286	329	1.15	0.3%	99.7%	1.00	1.15	98.8%	98.8%	98.8%	57.4%	42.6%	100.0%	57.3%
Staff Nurse [Psychiatric]	3	3	1.00	33.3%	66.7%	1.00	1.00	100.0%	100.0%	100.0%	100.0%	0.0%	100.0%	100.0%
Staff Nurse/ Staff Midwife	3,383	3,774	1.12	8.3%	91.7%	1.04	1.12	97.2%	97.5%	97.1%	70.7%	29.3%	91.7%	68.8%
Pre-registration Nurse/ Midwife Intern	107	214	2.00	4.2%	95.8%	2.00	2.00	35.0%	35.0%	34.6%	100.0%	0.0%	100.0%	100.0%
Post-registration Nurse/ Midwife Student	28	28	1.02		100.0%		1.02	0.0%	0.0%	0.0%	100.0%	0.0%		100.0%
Nursing/ Midwifery awaiting registration	6	6	1.00	50.0%	50.0%	1.00	1.00	66.7%	66.7%	66.7%	100.0%	0.0%	100.0%	100.0%
Nursing/ Midwifery Student	141	248	1.77	4.8%	95.2%	1.60	1.77	31.9%	50.0%	30.9%	100.0%	0.0%	100.0%	100.0%
Nursing Education/Clinical	54	64	1.19	3.1%	96.9%	1.33	1.19	98.4%	98.4%	98.4%	62.5%	37.5%	50.0%	62.9%
Other Nursing/ Midwifery	16	17	1.04	11.8%	88.2%	1.00	1.04	100.0%	100.0%	100.0%	82.4%	17.6%	100.0%	80.0%
Nursing/ Midwifery other	70	81	1.16	4.9%	95.1%	1.14	1.16	98.8%	100.0%	98.7%	66.7%	33.3%	75.0%	66.2%
Nursing & Midwifery	5,015	5,676	1.13	7.4%	92.6%	1.05	1.14	94.5%	96.4%	94.4%	72.4%	27.6%	92.6%	70.8%
Dietitians	97	108	1.12	1.9%	98.1%	1.00	1.12	81.5%	81.5%	82.1%	79.6%	20.4%	100.0%	79.2%
Occupational Therapists	100	107	1.07	6.5%	93.5%	1.00	1.08	82.2%	82.2%	82.0%	87.9%	12.1%	100.0%	87.0%
Orthoptists	3	6	2.22		100.0%		2.22	83.3%	83.3%	83.3%	16.7%	83.3%		16.7%
Physiotherapists	229	257	1.12	18.3%	81.7%	1.04	1.14	82.5%	82.5%	86.7%	77.0%	23.0%	95.7%	72.9%
Speech & Language Therapists	45	53	1.18		100.0%		1.18	73.6%	73.6%	73.6%	79.2%	20.8%		79.2%
Podiatrists & Chiropodists	11	13	1.16	23.1%	76.9%	1.28	1.13	84.6%	84.6%	90.0%	76.9%	23.1%	66.7%	80.0%
Therapy Professions	484	544	1.12	10.8%	89.2%	1.05	1.13	81.4%	66.1%	83.3%	79.2%	20.8%	94.9%	77.3%
Audiology	4	6	1.43	16.7%	83.3%	5.26	1.25	100.0%	100.0%	100.0%	50.0%	50.0%	0.0%	60.0%
Biochemists	25	26	1.03	34.6%	65.4%	1.00	1.05	92.3%	92.3%	94.1%	92.3%	7.7%	100.0%	88.2%
Clinical Engineering	24	24	1.01	75.0%	25.0%	1.01	1.00	91.7%	91.7%	66.7%	95.8%	4.2%	94.4%	100.0%
Clinical Measurement	91	101	1.11	15.8%	84.2%	1.02	1.13	92.1%	92.1%	94.1%	76.2%	23.8%	87.5%	74.1%

Perfusionists	6	7	1.27	57.1%	42.9%	1.33	1.19	71.4%	71.4%	100.0%	57.1%	42.9%	50.0%	66.7%
Phlebotomists	42	54	1.30	27.8%	72.2%	1.24	1.32	83.3%	83.3%	89.7%	31.5%	68.5%	46.7%	25.6%
Physicists	18	22	1.25	40.9%	59.1%	1.07	1.41	95.5%	95.5%	100.0%	59.1%	40.9%	88.9%	38.5%
Radiographers	258	282	1.09	17.7%	82.3%	1.02	1.11	95.4%	95.4%	94.4%	85.1%	14.9%	98.0%	82.3%
Medical Science	334	357	1.07	23.2%	76.8%	1.02	1.09	95.0%	95.0%	94.9%	82.9%	17.1%	95.2%	79.2%
Health Science/ Diagnostics	802	879	1.10	23.3%	76.7%	1.04	1.11	93.7%	92.2%	94.2%	79.3%	20.7%	90.2%	76.0%
Social Workers	77	81	1.06	11.1%	88.9%	1.08	1.05	81.5%	88.9%	80.6%	84.0%	16.0%	77.8%	84.7%
Psychologists	24	30	1.23	13.3%	86.7%	1.19	1.24	93.3%	100.0%	92.3%	56.7%	43.3%	50.0%	57.7%
Pharmacy	205	219	1.07	7.8%	92.2%	1.00	1.08	87.7%	94.1%	87.1%	84.5%	15.5%	100.0%	83.2%
Counsellor Therapists	2	4	1.72		100.0%		1.72	100.0%	100.0%	100.0%	25.0%	75.0%		25.0%
HSCP Trainees/ Students	14	18	1.30	33.3%	66.7%	1.52	1.21	0.0%	0.0%	0.0%	38.9%	61.1%	33.3%	41.7%
Other Health & Social Care	19	20	1.08	50.0%	50.0%	1.04	1.12	75.0%	75.0%	70.0%	65.0%	35.0%	80.0%	50.0%
Vaccinators	22	59	2.72	27.1%	72.9%	2.19	2.99	94.9%	94.9%	97.7%	3.4%	96.6%	6.3%	2.3%
H&SC, Other	56	101	1.79	31.7%	68.3%	1.54	1.94	74.3%	68.8%	76.8%	22.8%	77.2%	34.4%	17.4%
Health & Social Care	1,648	1,854	1.13	17.6%	82.4%	1.08	1.14	87.8%	85.3%	88.4%	76.6%	23.4%	85.3%	74.8%
Executive Management	25	26	1.06	46.2%	53.8%	1.08	1.04	88.5%	88.5%	92.9%	92.3%	7.7%	83.3%	100.0%
Senior Management (VIII & GM)	88	91	1.03	28.6%	71.4%	1.04	1.03	93.4%	93.4%	93.8%	95.6%	4.4%	96.2%	95.4%
Management (VIII & above)	113	117	1.04	32.5%	67.5%	1.05	1.03	92.3%	89.5%	93.7%	94.9%	5.1%	92.1%	96.2%
Administrative/ Supervisory (V to VII)	623	662	1.06	24.8%	75.2%	1.01	1.08	96.8%	95.7%	97.2%	83.2%	16.8%	96.3%	78.9%
Clerical (III & IV)	1,287	1,451	1.13	16.7%	83.3%	1.02	1.15	88.6%	85.5%	89.2%	72.4%	27.6%	94.2%	68.0%
Management & Administrative	2,023	2,230	1.10	19.9%	80.1%	1.02	1.12	91.3%	89.6%	91.7%	76.8%	23.2%	94.8%	72.3%
Catering	107	116	1.08	29.3%	70.7%	1.03	1.10	94.8%	94.8%	95.1%	78.4%	21.6%	100.0%	69.5%
Household Services	690	785	1.14	25.0%	75.0%	1.03	1.18	82.3%	82.3%	84.4%	64.3%	35.7%	84.7%	57.6%
Other Labs & Associated	96	99	1.03	42.4%	57.6%	1.01	1.06	83.8%	83.8%	78.9%	91.9%	8.1%	95.2%	89.5%
Other Support	169	180	1.06	54.4%	45.6%	1.01	1.14	92.8%	92.8%	98.8%	87.2%	12.8%	98.0%	74.4%
Portering	270	289	1.07	96.9%	3.1%	1.07	1.14	85.1%	85.1%	88.9%	83.7%	16.3%	84.6%	55.6%
Support	1,333	1,469	1.10	44.2%	55.8%	1.04	1.16	85.2%	83.5%	86.6%	73.9%	26.1%	88.2%	62.6%
Maintenance	111	113	1.02	99.1%	0.9%	1.02	1.00	91.2%	91.2%	100.0%	97.3%	2.7%	97.3%	100.0%
Technical Services	11	11	1.00	100.0%		1.00		100.0%	100.0%		100.0%	0.0%	100.0%	
Maintenance/ Technical	122	124	1.02	99.2%	0.8%	1.02	1.00	91.9%	91.9%	100.0%	97.6%	2.4%	97.6%	100.0%

General Support	1,454	1,593	1.10	48.5%	51.5%	1.04	1.15	85.8%	84.9%	86.6%	75.8%	24.2%	89.7%	62.7%
HCA, Nurse's Aide, etc.	1,113	1,266	1.14	36.1%	63.9%	1.07	1.18	79.8%	79.8%	79.2%	70.1%	29.9%	82.1%	63.4%
Health & Social Care Assistants	34	37	1.08	37.8%	62.2%	1.06	1.10	91.9%	91.9%	95.7%	75.7%	24.3%	85.7%	69.6%
Health Care Assistants	1,147	1,303	1.14	36.1%	63.9%	1.07	1.18	80.1%	80.9%	79.7%	70.3%	29.7%	82.2%	63.6%
Other Care Grades	28	35	1.23	65.7%	34.3%	1.36	1.04	80.0%	80.0%	100.0%	74.3%	25.7%	65.2%	91.7%
Care, other	28	35	1.23	65.7%	34.3%	1.36	1.04	80.0%	69.6%	100.0%	74.3%	25.7%	65.2%	91.7%
Patient & Client Care	1,175	1,338	1.14	36.9%	63.1%	1.08	1.17	80.1%	80.4%	80.0%	70.4%	29.6%	81.4%	64.0%

Employment by WTE, Headcount, Gender, Full-Time /Part-Time etc.: Jun 2021

Ireland East Hospital Group	WTE	Headcount	WTE: no.	% Male	% female	Male WTE: no.	Female WTE: no.	% Total Perm	% Male Perm	% Female Perm	% Total Full Time	% Total Part Time	% Male FT	% Female FT
Overall	13,288	14,781	1.11	24.7%	75.3%	1.05	1.13	81.6%	69.0%	85.7%	76.6%	23.4%	90.4%	72.1%
Wexford General	1,084	1,220	1.13	23.8%	76.2%	1.03	1.16	82.5%	82.5%	88.8%	70.9%	29.1%	94.8%	94.8%
St Luke's General Kilkenny	1,187	1,360	1.15	22.1%	77.9%	1.03	1.18	75.5%	75.5%	82.4%	66.6%	33.4%	93.7%	93.7%
Hospital Group HQ	65	104	1.60	24.0%	76.0%	1.58	1.61	90.4%	90.4%	91.1%	40.4%	59.6%	36.0%	36.0%
Our Lady's Navan	598	689	1.15	25.0%	75.0%	1.07	1.18	82.1%	82.1%	86.5%	65.5%	34.5%	89.0%	89.0%
Cappagh National Orthopaedic	452	508	1.12	20.7%	79.3%	1.02	1.16	87.6%	87.6%	90.6%	72.4%	27.6%	95.2%	95.2%
Mater Misericordiae University	3,501	3,859	1.10	26.0%	74.0%	1.08	1.11	78.2%	78.2%	82.3%	81.0%	19.0%	86.9%	86.9%
MRH Mullingar	1,047	1,148	1.10	19.9%	80.1%	1.02	1.12	82.1%	82.1%	87.3%	76.7%	23.3%	97.4%	97.4%
Royal Victoria Eye & Ear	337	385	1.14	25.7%	74.3%	1.04	1.18	79.7%	79.7%	84.3%	67.3%	32.7%	88.9%	88.9%
St. Michael's	415	472	1.14	23.3%	76.7%	1.08	1.16	84.3%	84.3%	85.4%	75.4%	24.6%	84.5%	84.5%
St. Columcille's	465	514	1.10	24.1%	75.9%	1.04	1.13	82.1%	82.1%	82.8%	80.0%	20.0%	93.5%	93.5%
National Maternity	941	1,058	1.12	16.7%	83.3%	1.10	1.13	76.0%	76.0%	78.7%	71.1%	28.9%	82.5%	82.5%
St. Vincent's University	3,184	3,446	1.08	29.4%	70.6%	1.04	1.10	87.4%	87.4%	91.5%	84.4%	15.6%	93.1%	93.1%
IEHG Bank	12	18	1.48	5.6%	94.4%	2.17	1.45	100.0%	100.0%	100.0%	5.6%	94.4%	0.0%	0.0%

Ireland East Hospital Group Employment by Grade Group & Staff Category: June 2021

Jun 2021 (Dec 2019 figure: 12,045)	WTE Dec 2016	WTE Dec 2017	WTE Dec 2018	WTE Dec 2019	WTE Dec 2020	WTE Apr 2021	WTE Jun 2021
Overall	10,971	11,382	11,773	12,045	12,923	13,227	13,288
Consultant Anaesthesia	4.9%	4.9%	5.1%	4.8%	4.5%	4.8%	4.9%
Consultant Emergency Medicine	1.0%	1.1%	1.0%	1.1%	1.2%	1.2%	1.1%
Consultant Intensive Care Medicine			0.1%	0.1%	0.1%	0.1%	0.1%
Consultant Medicine	9.1%	9.3%	9.3%	9.9%	10.3%	9.7%	9.6%
Consultant Obstetrics & Gynaecology	2.0%	2.0%	2.0%	2.0%	1.8%	1.8%	1.8%
Consultant Paediatrics	1.2%	1.3%	1.2%	1.2%	1.2%	1.2%	1.3%
Consultant Pathology	2.1%	2.1%	2.3%	2.2%	2.1%	2.1%	2.0%
Consultant Psychiatry	0.2%	0.3%	0.3%	0.2%	0.2%	0.3%	0.3%
Consultant Radiology	3.1%	2.9%	3.2%	3.0%	2.8%	2.8%	2.8%
Consultant Surgery	6.6%	6.5%	6.3%	6.2%	5.9%	5.7%	5.7%
Consultants	30.2%	30.5%	30.7%	30.7%	30.2%	29.7%	29.7%
Registrar	21.1%	19.6%	19.8%	19.5%	19.0%	19.8%	20.0%
Senior Registrar	1.7%	1.3%	1.4%	1.6%	1.8%	1.8%	1.7%
Specialist Registrar	11.9%	13.3%	13.1%	14.2%	13.1%	13.6%	13.3%
Registrars	34.7%	34.2%	34.3%	35.3%	33.9%	35.0%	35.0%
Interns	9.2%	8.7%	8.8%	8.4%	10.4%	10.0%	9.9%
Senior House Officer	24.6%	25.1%	24.5%	24.1%	24.1%	23.5%	23.5%
SHO/ Interns	33.8%	33.8%	33.4%	32.5%	34.5%	33.5%	33.5%
Dentists	0.1%	0.1%	0.1%	0.1%	0.1%	0.1%	0.1%
Other Medical	1.3%	1.5%	1.5%	1.4%	1.4%	1.7%	1.8%
Medical/ Dental, other	1.3%	1.5%	1.6%	1.5%	1.4%	1.8%	1.8%
Medical & Dental	14.3%	14.5%	14.4%	14.6%	15.0%	14.8%	14.8%
Clinical Nurse/ Midwife Manager	16.6%	16.6%	17.8%	17.9%	18.7%	18.4%	18.8%
Director Nursing/Midwifery, Assistant	1.5%	1.7%	1.8%	1.9%	1.9%	1.9%	2.0%
Director of Nursing/Midwifery	0.3%	0.3%	0.3%	0.3%	0.3%	0.3%	0.3%
Nurse/ Midwife Manager	18.4%	18.5%	19.9%	20.2%	20.9%	21.1%	21.1%
Advanced Nurse/ Midwife Practitioner	0.7%	1.3%	1.5%	1.6%	1.8%	1.8%	2.0%
Clinical Nurse/ Midwife Specialist	5.2%	4.9%	5.1%	5.1%	5.1%	5.2%	5.2%
Nurse/ Midwife Specialist & AN/MP	5.9%	6.2%	6.6%	6.7%	6.9%	7.3%	7.3%
Nursing Bank	0.1%	0.2%	0.1%	0.0%	0.1%	0.0%	
Staff Nurses [General/ Children's]	65.6%	65.8%	63.9%	63.9%	62.5%	62.5%	61.7%
Staff Midwives	7.3%	6.5%	6.7%	6.3%	5.8%	5.8%	5.7%
Staff Nurse [Psychiatric]	0.1%	0.1%	0.1%	0.1%	0.1%	0.1%	0.1%
Staff Nurse/ Staff Midwife	73.2%	72.6%	70.8%	70.3%	68.5%	67.5%	67.5%
Pre-registration Nurse/ Midwife Intern	0.3%	0.4%	0.5%	0.5%	0.2%	2.0%	2.1%
Pre-registration Nurse Intern (COVID-19)					1.0%		
Post-registration Nurse/ Midwife Student	0.5%	0.5%	0.5%	0.5%	0.3%	0.5%	0.5%
Nursing/ Midwifery awaiting registration	0.0%	0.1%	0.1%	0.2%	0.7%	0.0%	0.1%
Nursing/ Midwifery Student	0.9%	1.1%	1.1%	1.2%	2.2%	2.8%	2.8%
Nursing Education/Clinical	1.4%	1.4%	1.4%	1.4%	1.2%	1.1%	1.1%
Other Nursing/ Midwifery	0.3%	0.2%	0.2%	0.3%	0.3%	0.3%	0.3%
Nursing/ Midwifery other	1.7%	1.6%	1.6%	1.6%	1.5%	1.4%	1.4%
Nursing & Midwifery	38.3%	38.3%	38.0%	38.2%	37.7%	37.7%	37.7%
Dietitians	5.2%	4.9%	5.6%	5.3%	5.9%	6.0%	5.9%
Occupational Therapists	5.2%	5.2%	5.0%	4.7%	5.2%	5.9%	6.0%
Orthoptists	0.2%	0.2%	0.2%	0.2%	0.2%	0.2%	0.2%
Physiotherapists	14.2%	14.5%	15.3%	15.7%	15.4%	14.4%	13.9%
Speech & Language Therapists	2.4%	2.7%	2.3%	2.4%	2.9%	2.8%	2.7%
Podiatrists & Chiropodists	0.6%	0.6%	0.6%	0.7%	0.7%	0.6%	0.7%
Therapy Professions	27.9%	28.1%	29.0%	28.9%	30.2%	29.4%	29.4%
Audiology	0.3%	0.2%	0.2%	0.2%	0.2%	0.3%	0.3%

Jun 2021 (Dec 2019 figure: 12,045)	WTE Dec 2016	WTE Dec 2017	WTE Dec 2018	WTE Dec 2019	WTE Dec 2020	WTE Apr 2021	WTE Jun 2021
Overall	10,971	11,382	11,773	12,045	12,923	13,227	13,288
Biochemists	1.6%	2.0%	2.0%	1.8%	1.8%	1.6%	1.5%
Clinical Engineering	1.2%	1.3%	1.3%	1.4%	1.4%	1.5%	1.4%
Clinical Measurement	5.8%	5.5%	5.6%	5.4%	5.7%	5.4%	5.5%
Perfusionists	0.2%	0.3%	0.2%	0.3%	0.3%	0.3%	0.3%
Phlebotomists	2.5%	2.6%	2.6%	2.5%	2.6%	2.7%	2.5%
Physicists	0.9%	0.9%	1.1%	1.1%	0.9%	1.1%	1.1%
Radiographers	17.3%	17.2%	16.8%	16.6%	16.6%	16.0%	15.7%
Medical Science	23.5%	22.7%	21.9%	20.9%	20.5%	20.6%	20.3%
Health Science/ Diagnostics	53.3%	52.7%	51.7%	50.2%	49.9%	48.7%	48.7%
Social Workers	4.4%	4.4%	4.0%	4.8%	4.7%	4.6%	4.6%
Psychologists	0.9%	1.0%	1.0%	1.5%	1.4%	1.5%	1.5%
Pharmacy	11.5%	11.7%	12.2%	12.9%	12.1%	12.4%	12.4%
Counsellor Therapists	0.2%	0.2%	0.2%	0.2%	0.1%	0.1%	0.1%
HSCP Trainees/ Students	0.6%	0.6%	0.7%	0.5%	0.4%	0.8%	0.8%
Other Health & Social Care	1.1%	1.3%	1.2%	1.1%	1.2%	1.2%	1.1%
Vaccinators							1.3%
H&SC, Other	2.0%	2.1%	2.1%	1.8%	1.7%	3.4%	3.4%
Health & Social Care Professionals	12.0%	11.9%	12.1%	12.1%	12.3%	12.4%	12.4%
Executive Management	0.6%	0.6%	0.8%	0.8%	1.1%	1.2%	1.2%
Senior Management (VIII & GM)	3.8%	3.9%	3.8%	3.8%	4.1%	4.4%	4.4%
Management (VIII & above)	4.4%	4.5%	4.5%	4.6%	5.2%	5.6%	5.6%
Administrative/ Supervisory (V to VII)	26.4%	27.6%	28.2%	28.5%	31.1%	30.8%	30.8%
General Administrative (III & IV)	69.2%	68.0%	67.3%	66.9%	63.6%	63.4%	63.6%
Clerical (III & IV)	69.2%	68.0%	67.3%	66.9%	63.6%	63.6%	63.6%
Management & Administrative	14.9%	15.1%	15.2%	15.1%	14.9%	15.2%	15.2%
Catering	7.3%	6.8%	6.9%	7.1%	7.7%	7.6%	7.4%
Household Services	45.4%	46.0%	46.9%	46.1%	47.4%	47.4%	47.4%
Other Labs & Associated	4.5%	4.6%	4.7%	5.0%	5.8%	6.2%	6.6%
Other Support	11.0%	11.3%	11.0%	11.0%	12.1%	11.7%	11.6%
Portering	23.4%	23.4%	22.9%	22.9%	18.8%	18.5%	18.6%
Support	91.6%	92.1%	92.5%	92.2%	91.7%	91.6%	91.6%
Maintenance	7.6%	7.1%	6.8%	7.0%	7.6%	7.8%	7.6%
Technical Services	0.8%	0.8%	0.8%	0.8%	0.7%	0.8%	0.8%
Maintenance/ Technical	8.4%	7.9%	7.5%	7.8%	8.3%	8.4%	8.4%
General Support	12.2%	12.3%	12.1%	11.9%	11.1%	10.9%	10.9%
HCA, Nurse's Aide, etc.	94.2%	94.5%	94.5%	94.6%	93.4%	94.5%	94.7%
Health & Social Care Assistants	2.5%	2.6%	2.8%	2.8%	3.2%	3.0%	2.9%
Swabber (COVID-19)					0.9%		
Health Care Assistants	96.6%	97.1%	97.3%	97.3%	97.6%	97.6%	97.6%
Other Care Grades	3.4%	2.9%	2.7%	2.7%	2.4%	2.5%	2.4%
Care, other	3.4%	2.9%	2.7%	2.7%	2.4%	2.4%	2.4%
Patient & Client Care	8.3%	8.0%	8.2%	8.1%	9.1%	8.8%	8.8%
Total	100%	100%	100%	100%	100%	100%	100%

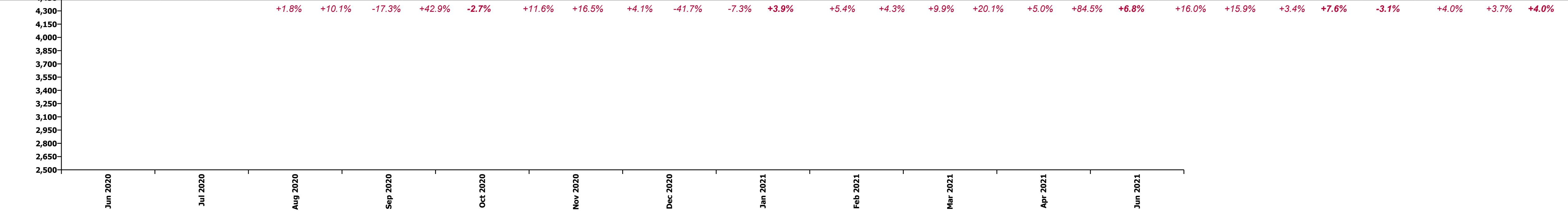
Summary Staff Movement: June 2021

Month-on-month Summary

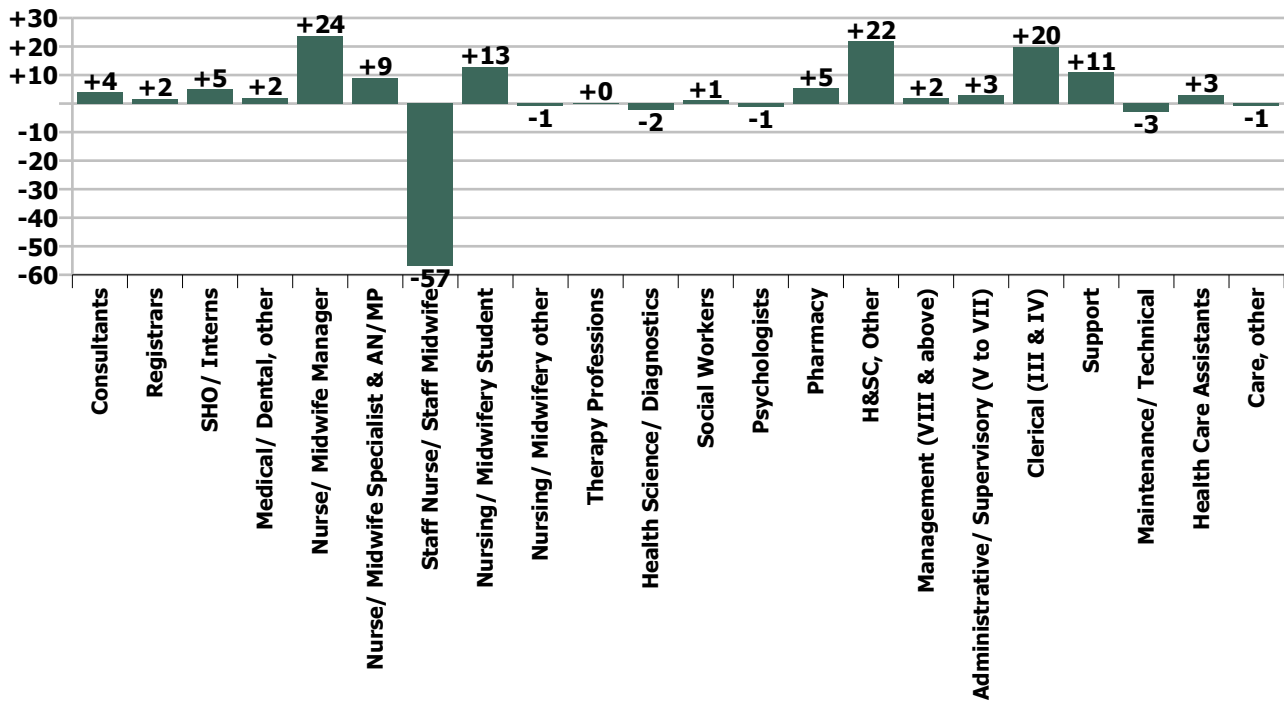
WTE change since Apr 21	% change since Apr 21	overall	Consultants	Registrars	SHO/ Interns	Medical/ Dental, other	Medical & Dental	Nurse/ Midwife Manager	Nurse/ Midwife Specialist & AN/MP	Staff Nurse/ Staff Midwife	Nursing/ Midwifery Student	Nursing/ Midwifery other	Nursing & Midwifery	Therapy Professions	Health Science/ Diagnostics	Social Workers	Psychologists	Pharmacy	H&SC, Other	Health & Social Care Professionals	Management (VII & above)	Administrativ e/ Supervisory (V to VII)	Clerical (III & IV)	Management & Administrativ e	General Support	Health Care Assistants	Care, other	Patient & Client Care
Overall	+0.5%	+61	+4	+2	+5	+2	+13	+24	+9	-57	+13	-1	-12	+0	-2	+1	-1	+5	+22	+25	+2	+3	+20	+25	+8	+3	-1	+2
Wexford General	+1.4%	+15	+0	+1	+4	+1	+6	-1	+0	-1			-1	+1	+1	+1		-0		+2		+1	-2	-1	+7	+2	+1	+3
St Luke's General Kilkenny	-0.6%	-8	+1	+1	+0	+0	+2	-2	-1	-7		+0	-9	+1	+1			+1		+2		+0	-4	-4	+0	+1		+1
Hospital Group HQ	+71.8%	+27						+1		-0			+1					+1	+22	+23	+1	+1	+1	+4				
Our Lady's Navan	+1.1%	+7	-1	+2	+1		+2	+0	+1	+1			+2	+2	-1			+2		+3	+1	-0	-2	-2	+2	-0		-0
Cappagh National Orthopaedic	+0.4%	+2													+2					+2								
Mater Misericordiae University	-0.3%	-11	+1	-4	-3	+1	-5	+8	+1	-25	+9	+0	-8	-3	-1	-1	-0	+2	+0	-1	+4	-2	+1	+3	-4	+4	+0	+4
MRH Mullingar	+1.3%	+13	+2	+1	+1		+4	+2	+1	+3	-0	-0	+6	-0	-0			+1		+0	-0	-0	+4	+4	+2	-3		-3
Royal Victoria Eye & Ear	+1.7%	+5	+1			+1	+2	+1	-1	-3			-4	-0						-0		+0	+7	+8	+1	-1		-1
St. Michael's	+0.0%	+0	-0				-0	-1	-2	+1		-1	-3	-1	+1	+0		+1		+1		+2	+1	+2	+1	+0	-1	-1
St. Columcille's	-0.7%	-3	-1	-1	-0		-1	-0	+1	+2			+3	-0	-1	+1				-1		-0	+1	+1	-3	-2	+0	-2
National Maternity	-0.8%	-7	+0				+0	+2	+1	-7	-1		-5	-1				-0		-1		+2	-1	+1	-1	-2		-2
St. Vincent's University	+0.7%	+22	-0	+2	+2	-1	+3	+14	+8	-20	+5	-0	+7	+3	-5	+1	-1	-1		-5	-3	-1	+13	+9	+5	+4	-1	+3
IEHG Bank	-12.9%	-2								-2			-2													-0		-0
			+0.7%	+0.2%	+0.8%	+5.0%	+0.6%	+2.2%	+2.5%	+1.7%	+10.1%	+1.2%	+0.2%	+0.1%	+0.2%	+1.5%	+1.5%	+2.7%	+6.2%	+1.6%	+1.6%	+0.5%	+1.6%	+1.2%	+0.6%	+0.2%	+2.2%	+0.2%

Year-on-year Summary

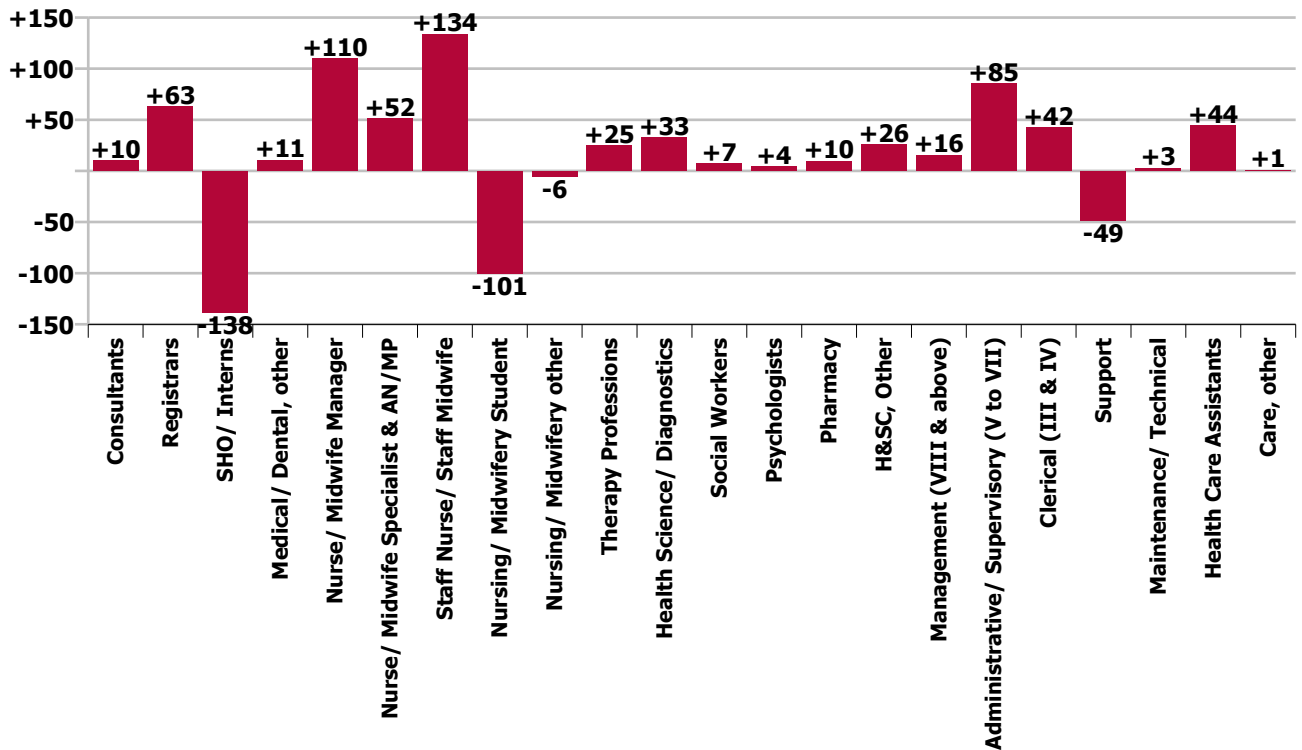
WTE change since Jun 20	% change since Jun 20	overall	Consultants	Registrars	SHO/ Interns	Medical/ Dental, other	Medical & Dental	Nurse/ Midwife Manager	Nurse/ Midwife Specialist & AN/MP	Staff Nurse/ Staff Midwife	Nursing/ Midwifery Student	Nursing/ Midwifery other	Nursing & Midwifery	Therapy Professions	Health Science/ Diagnostics	Social Workers	Psychologists	Pharmacy	H&SC, Other	Health & Social Care Professionals	Management (VIII & above)	Administrativ e/ Supervisory (V to VII)	Clerical (III & IV)	Management & Administrativ e	General Support	Health Care Assistants	Care, other	Patient & Client Care
Overall	+3.0%	+382	+10	+63	-138	+11	-54	+110	+52	+134	-101	-6	+189	+25	+33	+7	+4	+10	+26	+104	+16	+85	+42	+143	-46	+44	+1	+45
Wexford General	+1.4%	+15	-3	+7	-6	+2	-0	-2	+6	+5	-3		+6	+0	-2	+1		+3		+2	-2	+15	-1	+12	-27	+20	+1	+21
St Luke's General Kilkenny	-2.5%	-31	+5	+9	-12	+2	+5	+2	+8	-7	-4	-0	-1	+1	-2			+5	-1	+3	+3	+8	-12	-1	-70	+34		+34
Hospital Group HQ	+117.4%	+35						+0		+1			+1					+1	+22	+23	+7	+3	+1	+11				
Our Lady's Navan	+9.2%	+50	-1	+5	+7		+11	-0	+2	+16			+18	+2	+1			+3		+6	-1	+4	+2	+5	+2	+8	+0	+8
Cappagh National Orthopaedic	+3.4%	+15	+1	-1			+1	+2	+2				+4	+2	+3			+1		+6		+2	+3	+5				
Mater Misericordiae University	+1.8%	+63	-0	+13	-70	+1	-57	+27	+12	+25	-30	+6	+40	+7	+3	+0	+3	+0	+3	+18	+5	+4	+32	+41	+16	+5	+0	+5
MRH Mullingar	+9.9%	+94	+6	+6	-1	+0	+11	+5	+5	+32	-7	+1	+35	+6	+8			-0	+1	+15	-1	+2	+6	+7	+6	+20		+20
Royal Victoria Eye & Ear	+14.5%	+43	+4	+4	+1	-0	+8	+1	+4	+2			+7	+1	+0					+1		+7	+13	+20	+2	+4		+4
St. Michael's	-2.3%	-10	-1	+1	-4		-4	-2	+0	+3	-14	-2	-15	-3	+3	+2		+0		+2	+2	+2	+2	+7	+0		-1	-1
St. Columcille's	+2.2%	+10		-3	-4		-7	-0	+1	+2		-1	+2	+6	+0	+1	+1		+2	+8	+1	+1	-1	+7	+7	+5	-7	+2
National Maternity	+0.2%	+2	-0	+1	-7	+0	-6	+13	+3	-6	-2		+8	+3	-1	+0	+0	-0		+2	-1	+6	-3	+3	-1	-3		-3
St. Vincent's University	+2.7%	+84	-1	+21	-41	+5	-16	+64	+9	+50	-41	-9	+72	-1	+20	+2	-0	-3	+1	+19	+2	+33	-8	+27	+20	-39	-1	-40
IEHG Bank	+1115.0%	+11								+11			+11													+0		+0



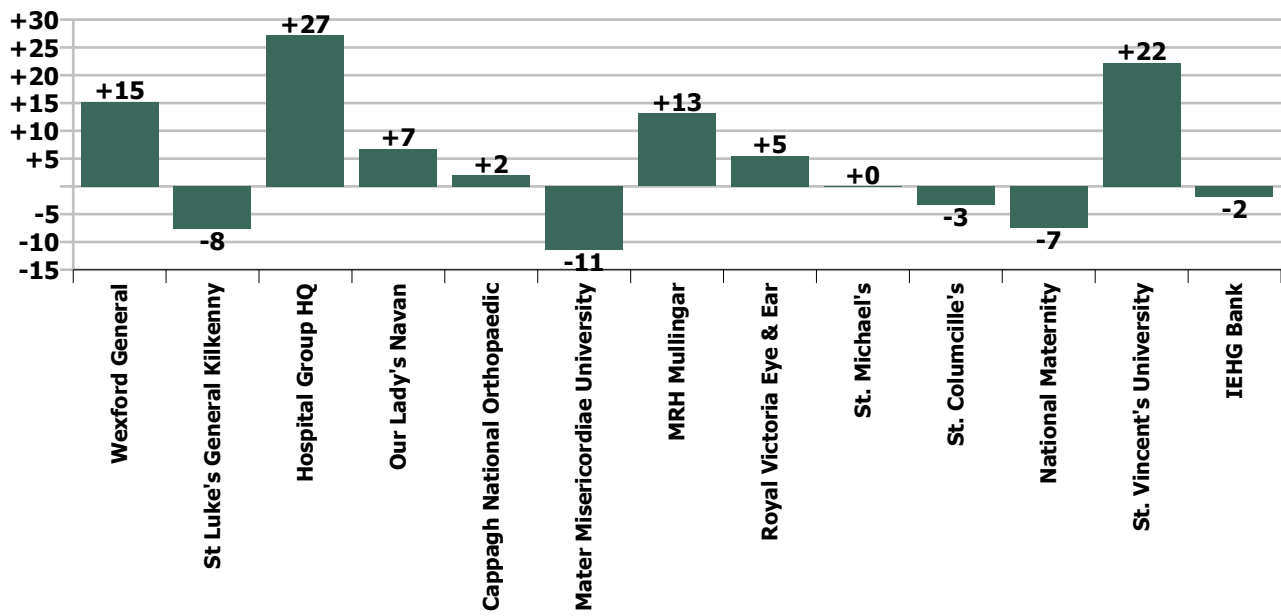
Staff Group change since: Apr 2021



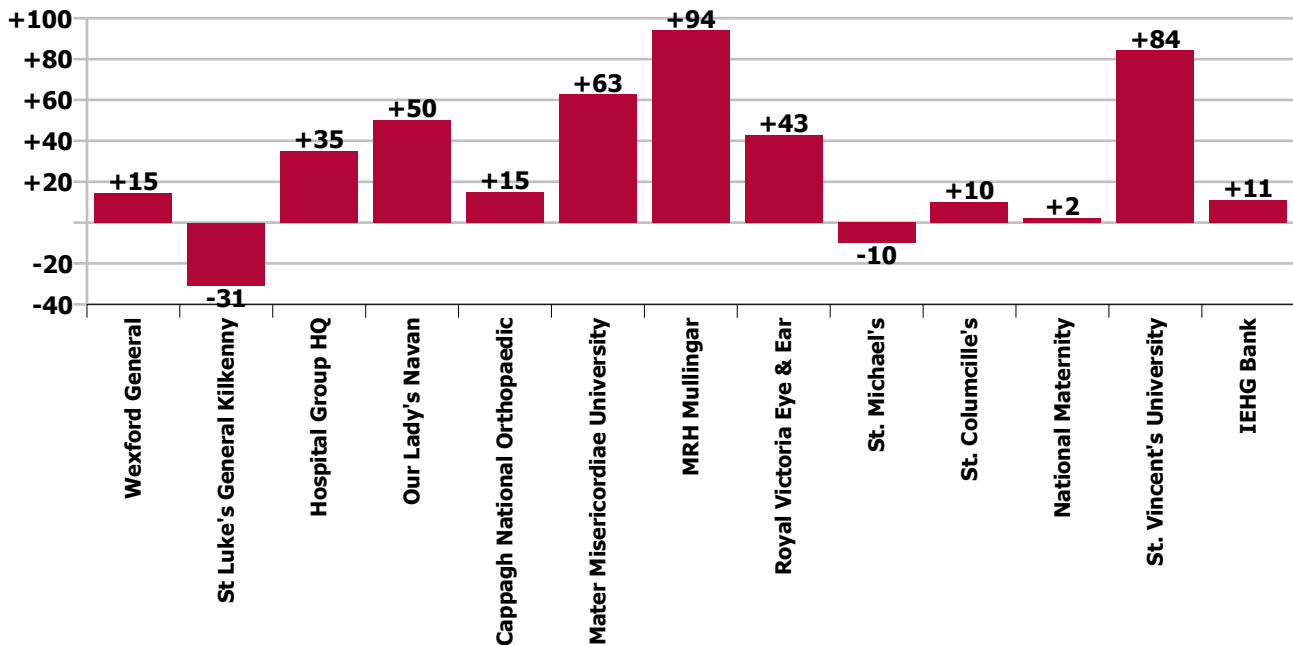
Staff Group change since: Jun 2020



Hospital change since: Apr 2021



Hospital change since: Jun 2020



Longitudinal Employment Levels by Grade Group - Dec 2016 to Jun 2021

Jun 2021 (Dec 2016 figure: 10,971)	WTE Jun 2021	WTE change since Dec 16	WTE change since Dec 17	WTE change since Dec 18	WTE change since Dec 19	WTE change since Dec 20	WTE change since Apr 21	% change since Dec 16	% change since Dec 17	% change since Dec 18	% change since Dec 19	% change since Dec 20	% change since Apr 21
Overall	13,288	+2,317	+1,906	+1,243	+1,243	+365	+61	+21.1%	+16.7%	+12.9%	+10.3%	+2.8%	+0.5%
Consultant Anaesthesia	96	+19	+15	+11	+11	+8	+2	+24.4%	+18.4%	+12.1%	+13.3%	+8.6%	+2.2%
Consultant in Emergency Medicine	22	+6	+4	+3	+3	-2	-1	+35.4%	+22.0%	+29.3%	+14.5%	-8.3%	-3.6%
Consultant Emergency Medicine	22	+6	+4	+3	+3	-2	-1	+35.4%	+22.0%	+29.3%	+14.5%	-8.3%	-3.6%
Consultant Intensivist	3	+3	+3	+1	+1	+1		-100.0%	-100.0%	+25.0%	+25.0%	+25.0%	
Consultant Intensive Care Medicine	3	+3	+3	+1	+1	+1		-100.0%	-100.0%	+25.0%	+25.0%	+25.0%	
Consultant Cardiologist	18	+2	+1	-2	-2	-2		+12.5%	+3.6%	+3.5%	-9.8%	-10.3%	
Consultant Clinical Neurophysiologist	2	+0						+25.4%					
Consultant Dermatologist	10	+1	+1	-1	-1	+1	-4	+13.6%	+6.5%	+30.9%	-11.7%	+6.1%	-29.8%
Consultant Gastroenterologist & General Physician	12	+3	+3	+2	+2	+2	+1	+34.4%	+34.4%	+10.0%	+20.2%	+14.2%	+14.2%
Consultant General Physician	47	+9	+7	+4	+4	-8	-3	+22.7%	+17.0%	+13.8%	+10.1%	-14.0%	-6.4%
Consultant in Clinical Genetics	0	-0						-50.0%					
Consultant in Palliative Medicine	2	-0	-0					-15.3%	-3.8%	-13.4%			
Consultant in Rehabilitation Medicine	0		-1	-1	-1	-1			-69.0%	-69.0%	-69.0%	-69.0%	
Consultant Medical Oncologist	10	+3	+2	+2	+2	-1	-1	+50.9%	+31.2%	+83.5%	+22.6%	-6.9%	-6.9%
Consultant Nephrologist & General Physician	5	+3	+1					+127.7%	+23.0%				
Consultant Neurologist	13	+2	+3	+2	+2	+0	+0	+23.1%	+38.0%	+27.9%	+17.4%	+3.6%	+1.6%
Consultant Physician in Endocrinology	11	+2	+2	+0	+0	+0	+0	+20.0%	+20.0%	-4.9%	+0.1%	+0.4%	+0.1%
Consultant Physician in Geriatric Medicine	25	+9	+7	+6	+6	+2	+2	+58.8%	+37.6%	+36.2%	+28.8%	+10.8%	+9.0%
Consultant Physician in Infectious Diseases	8	+4	+4	+2	+2	-2	+1	+136.4%	+136.4%	+165.6%	+34.9%	-20.6%	+14.9%
Consultant Respiratory & General Physician	17	+5	+4	+2	+2	-2	+1	+42.5%	+27.7%	+19.0%	+10.1%	-8.2%	+4.4%
Consultant Rheumatologist & General Physician	7	+2	+1	-0	-0	-1	+1	+33.7%	+17.2%	+36.0%	-6.2%	-9.7%	+16.4%
Consultant Medicine	189	+46	+35	+15	+15	-11	-2	+32.4%	+22.8%	+20.0%	+8.4%	-5.3%	-1.0%
Consultant Obstetrician & Gynaecologist	35	+5	+3	+1	+1	+2	+1	+14.9%	+8.4%	+5.5%	+4.3%	+6.0%	+4.1%
Master (Maternity Hospital)	1												
Consultant Obstetrics & Gynaecology	36	+5	+3	+1	+1	+2	+1	+14.4%	+8.2%	+5.3%	+4.2%	+5.8%	+4.0%
Consultant Paediatrician	25	+7	+4	+3	+3	+1	+1	+35.6%	+19.4%	+26.2%	+14.7%	+4.4%	+4.7%
Consultant Paediatrics	25	+7	+4	+3	+3	+1	+1	+35.6%	+19.4%	+26.2%	+14.7%	+4.4%	+4.7%
Consultant Clinical Biochemist	2	-1	-1	+1	+1			-20.1%	-20.1%	-20.1%	+100.0%		
Consultant Haematologist (Clinical & Laboratory)	10	+4	+4	-1	-1	-1	+1	+64.3%	+64.3%	+24.6%	-4.6%	-4.6%	+5.1%
Consultant Histopathologist	17	+1	-0	+1	+1	+1	-1	+6.2%	-0.9%	+2.1%	+7.5%	+6.1%	-5.4%
Consultant Immunologist (Clinical & Laboratory)	1						-0						-23.9%
Consultant Microbiologist	10	+3	+2	+0	+0	-1	+0	+37.0%	+23.3%		+4.5%	-9.1%	+0.7%

Jun 2021 (Dec 2016 figure: 10,971)	WTE Jun 2021	WTE change since Dec 16	WTE change since Dec 17	WTE change since Dec 18	WTE change since Dec 19	WTE change since Dec 20	WTE change since Apr 21	% change since Dec 16	% change since Dec 17	% change since Dec 18	% change since Dec 19	% change since Dec 20	% change since Apr 21
Overall	13,288	+2,317	+1,906	+1,243	+1,243	+365	+61	+21.1%	+16.7%	+12.9%	+10.3%	+2.8%	+0.5%
Consultant Pathology	40	+7	+5	+2	+2	-0	-1	+21.7%	+14.8%	+4.8%	+5.8%	-1.2%	-1.4%
Consultant Child & Adolescent Psychiatrist		-0	-0					-100.0%	-100.0%	-100.0%	-100.0%	-100.0%	-100.0%
Consultant General Adult Psychiatrist	6	+3	+2	+2	+2	+2		+80.1%	+48.3%	+48.3%	+48.3%	+48.3%	
Consultant Psychiatry	6	+2	+2	+2	+2	+2		+66.8%	+39.2%	+39.2%	+48.3%	+48.3%	
Consultant Radiation Oncologist	0												
Consultant Radiologist	56	+8	+8	+4	+4	+1	+2	+15.7%	+16.2%	+3.8%	+7.9%	+1.8%	+3.5%
Consultant Radiology	56	+8	+8	+4	+4	+1	+2	+15.6%	+16.1%	+3.8%	+7.9%	+1.8%	+3.5%
Consultant Cardio-thoracic Surgeon	8			+1	+1	-2	-1				+6.6%	-15.6%	-11.0%
Consultant General Surgeon	30	-5	-1	-3	-3	-2	-1	-14.6%	-4.5%	-5.8%	-8.0%	-6.4%	-1.7%
Consultant General Surgeon Breast	1		-1	-1	-1	-1			-50.0%	-50.0%	-50.0%	-50.0%	
Consultant General Surgeon Colo-rectal	4		-1			+1			-20.0%	-20.0%		+33.3%	
Consultant General Surgeon s.i. vascular surgery	2												
Consultant Ophthalmic Surgeon	27	+8	+7	+7	+7	+2	+2	+43.1%	+32.4%	+29.1%	+31.0%	+9.2%	+7.9%
Consultant Ophthalmic Surgeon s.i. neuro-ophthalmic surgery	0	+0	+0	+0	+0			-100.0%	-100.0%	-100.0%	-100.0%		
Consultant Oral & Maxillo Facial Surgeon			-0	-0	-0			-100.0%	-100.0%	-100.0%	-100.0%	-100.0%	-100.0%
Consultant Orthopaedic Surgeon	15	+1	-0	+0	+0	-0	-1	+4.5%	-2.5%	+7.3%	+1.8%	-2.5%	-4.8%
Consultant Otolaryngologist	11	+3	+3	+0	+0	+1	+1	+49.6%	+37.8%	+15.1%	+3.1%	+10.5%	+10.5%
Consultant Plastic Surgeon	7	-0	-0	+1	+1	-1	-0	-5.4%	-5.4%	+10.2%	+10.2%	-13.5%	-0.7%
Consultant Urologist	9	+3	+1	+1	+1			+37.2%	+12.2%	+12.2%	+12.2%		
Consultant Surgery	113	+10	+6	+5	+5	-2	+1	+9.2%	+5.7%	+5.6%	+4.9%	-1.4%	+0.6%
Consultants	586	+111	+66	+47			+4	+23.4%	+12.7%	+8.8%	+8.8%	+8.8%	+0.7%
Registrar	28	-69	+14	+21	+21	+3	+6	-71.5%	+102.6%	+220.2%	+294.3%	+10.4%	+27.0%
Registrar, Anaesthesia	48	+12	+5	-4	-4	+4	+3	+33.3%	+11.6%	-4.0%	-7.7%	+9.1%	+6.9%
Registrar, Emergency Medicine	47	+24	+11	+10	+10	+4	+2	+109.2%	+29.1%	+14.4%	+26.4%	+8.8%	+4.0%
Registrar, Medicine	150	+47	+18	+16	+16	+8	-4	+46.1%	+13.6%	+18.4%	+12.1%	+5.8%	-2.4%
Registrar, Obstetrics & Gynaecology	30	+18	+8	+8	+8	+3	-0	+149.8%	+36.2%	+17.5%	+34.6%	+11.4%	-0.1%
Registrar, Ophthalmology	8	+4	+0	+2	+2	+0		+83.5%	+3.5%	+37.7%	+23.1%	+3.9%	
Registrar, Paediatrics	13	+8	-2	-7	-7	-1	+0	+160.0%	-15.6%	-22.5%	-33.3%	-7.1%	+0.1%
Registrar, Pathology	11	+4	+4	+4	+4	-3		+48.0%	+57.1%	+57.1%	+57.1%	-20.9%	
Registrar, Psychiatry	7	+2	+3	+3	+3	+2		+27.3%	+75.0%	+75.0%	+75.0%	+40.0%	
Registrar, Surgery	53	+14	+11	+0	+0	+5	-0	+36.1%	+25.1%	+5.0%	+0.1%	+9.9%	-0.5%
Registrar	394	+63	+71	+52	+52	+25	+7	+19.1%	+21.9%	+17.5%	+15.3%	+6.7%	+1.7%
Registrar, Senior	28	+6	+10	+4	+4	-1	-1	+26.2%	+58.7%	+39.8%	+16.0%	-3.1%	-1.9%
Senior Registrar, Psychiatry	6	+2	+2	+2	+2			+50.0%	+50.0%	+50.0%	+50.0%		
Senior Registrar	34	+8	+12	+6	+6	-1	-1	+29.9%	+57.1%	+41.5%	+20.9%	-2.6%	-1.6%

Jun 2021 (Dec 2016 figure: 10,971)	WTE Jun 2021	WTE change since Dec 16	WTE change since Dec 17	WTE change since Dec 18	WTE change since Dec 19	WTE change since Dec 20	WTE change since Apr 21	% change since Dec 16	% change since Dec 17	% change since Dec 18	% change since Dec 19	% change since Dec 20	% change since Apr 21
Overall	13,288	+2,317	+1,906	+1,243	+1,243	+365	+61	+21.1%	+16.7%	+12.9%	+10.3%	+2.8%	+0.5%
Registrar, Specialist	16	+11	+10	+4	+4	+0	-2	+220.0%	+146.2%	+33.3%	+28.0%	+0.3%	-11.6%
Specialist Registrar, Anaesthesia	44	+9	+8	+3	+3	+2	+1	+25.7%	+22.2%	+51.7%	+7.3%	+3.5%	+2.3%
Specialist Registrar, Emergency Medicine	11	+6	+5	+1	+1		-1	+120.0%	+83.3%	+83.3%	+10.0%		-8.3%
Specialist Registrar, Medicine	89	+28	+18	+9	+9	+7	-1	+45.2%	+24.6%	+20.3%	+11.2%	+8.1%	-1.4%
Specialist Registrar, Obstetrics & Gynaecology	8	-0	-4	-8	-8	-0	+1	-0.6%	-30.9%	-45.2%	-49.5%	-0.6%	+13.6%
Specialist Registrar, Paediatrics	6	-2	-5	-1	-1	+1		-25.0%	-45.5%	-33.3%	-14.3%	+20.0%	
Specialist Registrar, Pathology	14	+8	+4	+0	+0	-0	+0	+140.0%	+37.1%	+30.9%	+1.4%	-0.8%	+0.8%
Specialist Registrar, Radiology	26		-1	-3	-3	-1	-1		-3.7%	-3.7%	-8.9%	-3.7%	-3.7%
Specialist Registrar, Surgery	48	+15	+9	+9	+9	+1	-1	+44.2%	+23.6%	+23.2%	+21.6%	+1.7%	-2.4%
Specialist Registrar	263	+75	+44	+14	+14	+9	-5	+39.8%	+19.9%	+18.5%	+5.6%	+3.5%	-1.7%
Registrars	691	+146	+109	+72			+2	+26.8%	+18.8%	+11.6%	+11.6%	+11.6%	+0.2%
Intern	196	+52	+53	+49	+49	-5	+1	+36.1%	+37.1%	+31.5%	+33.2%	-2.5%	+0.5%
Interns	196	+52	+53	+49	+49	-5	+1	+36.1%	+37.1%	+31.5%	+33.2%	-2.5%	+0.5%
House Officer, Senior	22	-70	+6	+13	+13	-29	-1	-76.1%	+37.2%	+152.9%	+145.3%	-56.7%	-4.9%
Senior House Officer, Anaesthesia	26	+7		+2	+2	+4		+36.8%		-13.3%	+8.3%	+18.2%	
Senior House Officer, Emergency Medicine	57	+20	+10	+8	+8	+3	+4	+54.6%	+22.3%	+12.1%	+16.2%	+5.9%	+8.2%
Senior House Officer, Medicine	188	+73	+36	+30	+30	+10	-2	+63.9%	+23.8%	+20.4%	+19.1%	+5.8%	-0.9%
Senior House Officer, Obstetrics & Gynaecology	33	+13	-2	-4	-4	+5	+1	+64.7%	-6.7%	+1.0%	-11.0%	+17.3%	+3.5%
Senior House Officer, Ophthalmology	13	+1	+1	+1	+1	-0		+6.1%	+4.8%	+4.8%	+4.8%	-3.0%	
Senior House Officer, Paediatrics	30	+12	-3	-2	-2	+6	+0	+70.7%	-8.4%	+2.0%	-7.1%	+24.8%	+0.3%
Senior House Officer, Pathology	12		+4	+4	+4	-2	+2		+41.2%	+71.4%	+50.0%	-14.3%	+20.0%
Senior House Officer, Psychiatry	13	+2	+2			+1	-1	+18.2%	+18.2%	-7.1%		+8.3%	-7.1%
Senior House Officer, Surgery	70	+18	-3	-10	-10	-2	+0	+33.8%	-4.7%	-6.0%	-13.0%	-3.4%	+0.6%
Senior House Officer	464	+76	+50	+41	+41	-4	+4	+19.7%	+12.1%	+11.7%	+9.7%	-0.9%	+0.9%
SHO/ Interns	660	+128	+95	+90			+5	+24.2%	+16.9%	+15.8%	+15.8%	+15.8%	+0.8%
Dental Surgeon, Senior	1												
Dentists	1												
Area Medical Officer	0	+0	+0	-1	-1	+0		+180.0%	+180.0%	+33.3%	-76.9%	+27.3%	
Associate Specialist	16	+11	+5	+5	+5	+5	+2	+230.9%	+46.2%	+14.3%	+51.6%	+40.9%	+14.0%
General Practitioner						-1		-100.0%	-100.0%	-100.0%	-100.0%	-100.0%	-100.0%
Medical & Dental Unclassified	5	+1	+2	+5	+5	+5	+2	+26.1%	+65.7%	-100.0%	-100.0%	-100.0%	+74.5%
Medical Director							-4	-100.0%	-100.0%	-100.0%	-100.0%	-100.0%	-100.0%
Medical Officer	2	+2	+2	+1	+1			-100.0%	-100.0%	-100.0%	+121.0%		
Occupational Health Physician	1	+1	+1	-0	-0			-100.0%	-100.0%	-100.0%	-6.3%		
Ophthalmic Physician, Community	11	-0	+1	-1	-1	-1	+1	-1.2%	+8.1%	-7.1%	-5.6%	-6.8%	+14.0%

Jun 2021 (Dec 2016 figure: 10,971)	WTE Jun 2021	WTE change since Dec 16	WTE change since Dec 17	WTE change since Dec 18	WTE change since Dec 19	WTE change since Dec 20	WTE change since Apr 21	% change since Dec 16	% change since Dec 17	% change since Dec 18	% change since Dec 19	% change since Dec 20	% change since Apr 21
Overall	13,288	+2,317	+1,906	+1,243	+1,243	+365	+61	+21.1%	+16.7%	+12.9%	+10.3%	+2.8%	+0.5%
Other Medical	35	+15	+11	+10	+10	+8	+2	+74.9%	+45.3%	+36.4%	+41.5%	+30.4%	+6.1%
Medical/ Dental, other	36	+15	+9	+10			+2	+71.4%	+35.1%	+39.9%	+39.9%	+39.9%	+5.9%
Medical & Dental	1,972	+400	+280	+220			+13	+25.5%	+16.6%	+12.5%	+12.5%	+12.5%	+0.6%
Clinical Midwife Manager 1	51	+17	+12	+10	+10	+2	+4	+48.2%	+30.3%	+36.4%	+24.9%	+4.4%	+8.3%
Clinical Midwife Manager 2	77	+20	+17	+6	+6	-3	-3	+35.2%	+27.9%	-0.2%	+9.0%	-3.6%	-4.2%
Clinical Midwife Manager 3	11	+3	+5	+3	+3	-2	-2	+42.3%	+83.7%	+37.5%	+35.1%	-14.8%	-14.8%
Clinical Nurse Manager 1	222	+47	+48	+6	+6	+8	+7	+26.5%	+27.7%	+9.3%	+2.5%	+3.7%	+3.5%
Clinical Nurse Manager 1 - Theatre	12	+5	+6	+6	+6			+81.8%	+86.0%	+142.4%	+96.7%		
Clinical Nurse Manager 2	454	+133	+118	+84	+84	+24	+14	+41.5%	+35.0%	+29.8%	+22.7%	+5.5%	+3.1%
Clinical Nurse Manager 2 (Mental Health)	3					+1	+1					+66.7%	+66.7%
Clinical Nurse Manager 2 - Night	6	-1	-1	-0	-0	-1		-7.2%	-13.5%	-4.9%	-1.2%	-7.2%	
Clinical Nurse Manager 2 - Theatre	40	+3	+0	-5	-5	-0	-1	+8.8%	+0.1%	-8.1%	-10.2%	-0.1%	-3.2%
Clinical Nurse Manager 3	59	+15	+12	+1	+1	-1	-2	+35.2%	+26.3%	-1.1%	+1.3%	-1.5%	-2.5%
Clinical Nurse Manager 3 - Theatre	6	-0	+2	+3	+3	-1	-0	-2.5%	+46.2%	+17.0%	+95.0%	-14.8%	-2.5%
Clinical Nurse/ Midwife Manager	940	+243	+218	+114	+114	+28	+17	+34.8%	+30.2%	+17.9%	+13.8%	+3.0%	+1.9%
Director of Nursing 1, Assistant	71	+33	+29	+14	+14	+10	+4	+84.8%	+70.0%	+38.8%	+23.6%	+15.5%	+6.4%
Director of Nursing 2, Assistant	22	+0	-3	-2	-2	-1	-0	+1.9%	-12.6%	+9.4%	-7.8%	-4.5%	-0.0%
Director of Nursing 3, Assistant	6	+2	+1	-1	-1			+37.5%	+22.2%	-15.4%	-15.4%		
Director of Nursing (Mental Health), Assistant	1	+1						-100.0%					
Director Nursing/Midwifery, Assistant	100	+36	+27	+11	+11	+9	+4	+55.8%	+37.7%	+26.4%	+12.1%	+9.4%	+4.5%
Director of Midwifery 1	1	+1						-100.0%					
Director of Nursing 1	10	+6	+6	+2	+2	+1	+1	+147.5%	+147.5%	+33.8%	+24.8%	+11.2%	+11.2%
Director of Nursing 2	2	-1	-3	+1	+1	+1	+1	-33.3%	-59.2%		+100.0%	+100.0%	+100.0%
Director of Nursing 2A	1												
Director of Nursing 3	2	+0						+1.5%					
Director of Nursing & Midwifery		-1	-1	-1	-1			-100.0%	-100.0%	-100.0%	-100.0%	-100.0%	-100.0%
Director of Nursing & Midwifery, Hospital Group	1	+1	+1					-100.0%	-100.0%				
Director of Nursing/Midwifery	17	+6	+3	+2	+2	+2	+2	+54.1%	+21.6%	+17.4%	+13.2%	+13.4%	+13.4%
Nurse/ Midwife Manager	1,057	+284	+166	+127			+24	+36.8%	+18.7%	+13.6%	+13.6%	+13.6%	+2.3%
Advanced Midwife Practitioner	6	+4	+3	+1	+1	+1	+0	+195.5%	+97.0%	+18.2%	+18.2%	+18.2%	+0.5%
Advanced Midwife Practitioner, Candidate	1	+1	+1	+1	+1	+1	+0	-100.0%	-100.0%	-100.0%	-100.0%	-100.0%	+3.3%
Advanced Nurse Practitioner, Candidate (General)	32	+30	+11	+7	+7	+3	+8	+1521.0%	+54.7%	+25.7%	+25.7%	+9.7%	+32.8%
Advanced Nurse Practitioner (General)	62	+38	+31	+20	+20	+8	+1	+162.0%	+98.0%	+81.9%	+48.5%	+14.0%	+1.8%
Advanced Nurse/ Midwife Practitioner	101	+74	+46	+29	+29	+12	+9	+266.0%	+83.2%	+56.1%	+39.6%	+13.9%	+9.9%

Jun 2021 (Dec 2016 figure: 10,971)	WTE Jun 2021	WTE change since Dec 16	WTE change since Dec 17	WTE change since Dec 18	WTE change since Dec 19	WTE change since Dec 20	WTE change since Apr 21	% change since Dec 16	% change since Dec 17	% change since Dec 18	% change since Dec 19	% change since Dec 20	% change since Apr 21
Overall	13,288	+2,317	+1,906	+1,243	+1,243	+365	+61	+21.1%	+16.7%	+12.9%	+10.3%	+2.8%	+0.5%
Clinical Midwife Specialist	11	+7	+4	+1	+1	+2	+2	+154.0%	+53.3%	+19.3%	+6.0%	+21.4%	+17.7%
Clinical Nurse Specialist (General)	252	+36	+46	+28	+28	+13	-2	+16.7%	+22.2%	+14.2%	+12.6%	+5.4%	-0.8%
Clinical Nurse/ Midwife Specialist	263	+43	+50	+29	+29	+15	-0	+19.5%	+23.2%	+14.4%	+12.3%	+6.0%	-0.1%
Nurse/ Midwife Specialist & AN/MP	365	+117	+70	+58			+9	+47.1%	+23.6%	+18.7%	+18.7%	+18.7%	+2.5%
Staff Nurse (Nursing Bank)		-6	-7	-2	-2	-3	-1	-100.0%	-100.0%	-100.0%	-100.0%	-100.0%	-100.0%
Nursing Bank		-6	-7	-2	-2	-3	-1	-100.0%	-100.0%	-100.0%	-100.0%	-100.0%	-100.0%
Enhanced Nurse (Children's)	9	+9	+9	+9	+9	-0	+1	-100.0%	-100.0%	-100.0%	-100.0%	-0.8%	+16.1%
Enhanced Nurse (General)	791	+791	+791	+791	+791	-5	-2	-100.0%	-100.0%	-100.0%	-100.0%	-0.6%	-0.3%
Enhanced Nurse, Senior (Children's)	14	+14	+14	+14	+14	+2	+0	-100.0%	-100.0%	-100.0%	-100.0%	+16.0%	+0.3%
Enhanced Nurse, Senior (General)	809	+809	+809	+809	+809	+42	-7	-100.0%	-100.0%	-100.0%	-100.0%	+5.5%	-0.8%
Staff Nurse (Adaptation Placement), General				-23	-23			-100.0%	-100.0%	-100.0%	-100.0%	-100.0%	-100.0%
Staff Nurse (Children's)	2	-20	-15	-11	-11	-2	-0	-91.6%	-89.5%	-87.3%	-86.3%	-51.0%	-19.0%
Staff Nurse, Dual Qualified (General)		-9	-5	-3	-3			-100.0%	-100.0%	-100.0%	-100.0%	-100.0%	-100.0%
Staff Nurse - General	1,126	-936	-1,009	-884	-884	-104	-35	-45.4%	-47.2%	-45.5%	-44.0%	-8.5%	-3.0%
Staff Nurse, Senior (Children's)		-5	-7	-9	-9	-1	-1	-100.0%	-100.0%	-100.0%	-100.0%	-100.0%	-100.0%
Staff Nurse, Senior (Dual Qualified)	9	-33	-26	-22	-22	-0	-1	-79.0%	-74.3%	-71.0%	-71.1%	-4.8%	-8.0%
Staff Nurse, Senior (General)	334	-282	-335	-521	-521	+114	-4	-45.8%	-50.1%	-54.4%	-60.9%	+51.9%	-1.2%
Staff Nurses [General/ Children's]	3,094	+339	+226	+151	+151	+46	-49	+12.3%	+7.9%	+8.4%	+5.1%	+1.5%	-1.5%
Enhanced Midwife	129	+129	+129	+129	+129	-1	-0	-100.0%	-100.0%	-100.0%	-100.0%	-0.4%	-0.3%
Enhanced Midwife, Senior	63	+63	+63	+63	+63	-0	-4	-100.0%	-100.0%	-100.0%	-100.0%	-0.5%	-5.4%
Staff Midwife	89	-165	-135	-135	-135	+7	-3	-64.9%	-60.1%	-63.7%	-60.2%	+8.7%	-3.5%
Staff Midwife, Senior	4	-48	-54	-59	-59	-2		-92.0%	-92.8%	-91.8%	-93.4%	-35.7%	
Staff Midwife, Senior (dual qualified)		-1	-1					-100.0%	-100.0%	-100.0%	-100.0%	-100.0%	-100.0%
Staff Midwives	286	-22	+3	-2	-2	+4	-7	-7.1%	+0.9%	-4.2%	-0.7%	+1.4%	-2.5%
Staff Nurse, Mental Health	3	-2	-2	-1	-1			-36.6%	-36.6%	-19.6%	-19.6%		
Staff Nurse [Psychiatric]	3	-2	-2	-1	-1			-36.6%	-36.6%	-19.6%	-19.6%		
Staff Nurse/ Staff Midwife	3,383	+309	+221	+146			-57	+10.1%	+7.0%	+4.5%	+4.5%	+4.5%	-1.7%
Student Children's & General Nursing Intern (pre-registration)				-7	-7			-100.0%	-100.0%	-100.0%	-100.0%	-100.0%	-100.0%
Student General Nursing Intern (pre-registration)	99	+85	+79	+81	+81	+88	+9	+603.6%	+405.6%	+332.4%	+455.6%	+854.5%	+10.5%
Student Midwifery Intern (pre-registration)	9	+9	+9	+8	+8	+9	-1	-100.0%	-100.0%	-100.0%	+1600.0%	-100.0%	-5.6%
Pre-registration Nurse/ Midwife Intern	107	+93	+88	+82	+82	+97	+9	+664.3%	+449.3%	+369.7%	+324.1%	+936.8%	+9.1%
Student Children's & General Nursing Intern (COVID-19 HCA)						-15		-100.0%	-100.0%	-100.0%	-100.0%	-100.0%	-100.0%
Student General Nursing Intern (COVID-19 HCA)						-31		-100.0%	-100.0%	-100.0%	-100.0%	-100.0%	-100.0%
Student Midwifery Intern (COVID-19 HCA)						-1		-100.0%	-100.0%	-100.0%	-100.0%	-100.0%	-100.0%

Jun 2021 (Dec 2016 figure: 10,971)	WTE Jun 2021	WTE change since Dec 16	WTE change since Dec 17	WTE change since Dec 18	WTE change since Dec 19	WTE change since Dec 20	WTE change since Apr 21	% change since Dec 16	% change since Dec 17	% change since Dec 18	% change since Dec 19	% change since Dec 20	% change since Apr 21
Overall	13,288	+2,317	+1,906	+1,243	+1,243	+365	+61	+21.1%	+16.7%	+12.9%	+10.3%	+2.8%	+0.5%
Pre-registration Nurse Intern (COVID-19)						-47		-100.0%	-100.0%	-100.0%	-100.0%	-100.0%	-100.0%
Student Midwifery (post registration)	28	+5	+5	+7	+7	+11		+19.6%	+19.6%	+19.6%	+31.0%	+61.8%	
Post-registration Nurse/ Midwife Student	28	+5	+5	+7	+7	+11		+19.6%	+19.6%	+19.6%	+31.0%	+61.8%	
Staff Midwife (awaiting-registration)		-1						-100.0%	-100.0%	-100.0%	-100.0%	-100.0%	-100.0%
Staff Nurse, General (awaiting-registration)	6	+6	+1	-5	-5	-28	+4	-100.0%	+20.0%	+51.1%	-44.3%	-82.4%	+200.0%
Nursing/ Midwifery awaiting registration	6	+6	+1	-5	-5	-28	+4	+1100.0%	+20.0%	+51.1%	-44.3%	-82.4%	+200.0%
Nursing/ Midwifery Student	141	+103	+91	+84			+13	+274.7%	+182.4%	+146.5%	+146.5%	+146.5%	+10.1%
Clinical Nurse Instructor/Teacher	0	-2	-2	-2	-2			-100.0%	-100.0%	-100.0%	-100.0%	#DIV/0	#DIV/0
Director, Nursing/ Midwifery Education Centre	2					+1						+50.0%	
Nurse Tutor	8	+4	+4	+5	+5	+5	-0	+108.2%	+108.2%	+119.5%	+126.2%	+170.7%	-1.2%
Nurse Tutor (Psychiatric)	1	-4	-4	-4	-4	-4		-79.7%	-80.0%	-80.0%	-80.0%	-81.3%	
Nursing/ Midwifery Clinical Placement Co-ordinator	18	-6	-7	-9	-9	-4	-1	-25.3%	-27.1%	-32.9%	-34.3%	-17.9%	-4.4%
Nursing/ Midwifery Practice Development Co-ordinator	3												
Specialist Co-ordinator, Nursing	22	+3	+3	+1	+1	-3	+1	+14.0%	+13.7%	+11.3%	+5.3%	-11.0%	+2.3%
Nursing Education/Clinical	54	-5	-5	-9	-9	-5	-0	-7.9%	-9.0%	-12.5%	-14.7%	-9.1%	-0.8%
Nursing Unclassified	16	+5	+6	+4	+4	+3	-0	+48.8%	+54.4%	+51.4%	+28.8%	+19.4%	-2.8%
Other Nursing/ Midwifery	16	+5	+6	+4	+4	+3	-0	+48.8%	+54.4%	+51.4%	+28.8%	+19.4%	-2.8%
Nursing/ Midwifery other	70	+1	-2	-6			-1	+1.1%	-3.0%	-7.4%	-7.4%	-7.4%	-1.3%
Nursing & Midwifery	5,015	+814	+545	+408			-12	+19.4%	+12.2%	+8.9%	+8.9%	+8.9%	-0.2%
Dietitian	27	+10	+7	+4	+4	-2	-0	+61.8%	+35.7%	+10.8%	+18.2%	-5.8%	-1.1%
Dietitian, Clinical Specialist	10	+5	+5	+5	+5	+3	+0	+105.2%	+97.0%	+129.1%	+105.2%	+42.8%	+1.8%
Dietitian Manager	8	+2	+2	+1	+1	+1	+0	+30.1%	+35.2%	+15.0%	+15.0%	+14.3%	+2.4%
Dietitian Manager-in-charge III	3	+1	+1	+1	+1			+40.0%	+40.0%	+40.0%	+40.0%		
Dietitian, Senior	49	+10	+16	+8	+8	+2	-1	+24.5%	+48.7%	+15.5%	+18.9%	+3.6%	-1.4%
Dietitians	97	+28	+31	+19	+19	+4	-1	+40.0%	+47.0%	+20.8%	+24.2%	+4.3%	-0.7%
Occupational Therapist	45	+11	+9	+13	+13	+8	+3	+34.3%	+24.1%	+32.4%	+42.3%	+21.4%	+8.1%
Occupational Therapist, Clinical Specialist	3	+2	+2	+2	+2			+275.0%	+275.0%	+215.8%	+215.8%		
Occupational Therapist-in-charge III	4	+2	+2	+2	+2	+2	+1	+100.0%	+100.0%	+100.0%	+100.0%	+100.0%	+33.3%
Occupational Therapist Manager	2	+1	+1	+1	+1			+178.3%	+178.3%	+284.0%	+284.0%		
Occupational Therapist, Senior	46	+14	+15	+13	+13	+8	-1	+42.2%	+47.0%	+34.8%	+37.5%	+21.5%	-1.1%
Occupational Therapists	100	+31	+29	+31	+31	+18	+4	+44.1%	+40.7%	+39.7%	+45.8%	+22.1%	+4.0%
Orthoptist, Senior	3	-0	-0	+0	+0	+0		-12.6%	-12.6%	+17.9%	+17.9%	+5.5%	
Orthoptists	3	-0	-0	+0	+0	+0		-12.6%	-12.6%	+17.9%	+17.9%	+5.5%	

Jun 2021 (Dec 2016 figure: 10,971)	WTE Jun 2021	WTE change since Dec 16	WTE change since Dec 17	WTE change since Dec 18	WTE change since Dec 19	WTE change since Dec 20	WTE change since Apr 21	% change since Dec 16	% change since Dec 17	% change since Dec 18	% change since Dec 19	% change since Dec 20	% change since Apr 21
Overall	13,288	+2,317	+1,906	+1,243	+1,243	+365	+61	+21.1%	+16.7%	+12.9%	+10.3%	+2.8%	+0.5%
Physiotherapist	73	-0	-1	-23	-23	-31	-3	-0.4%	-1.1%	-19.7%	-24.0%	-29.9%	-4.3%
Physiotherapist, Clinical Specialist	31	+18	+17	+12	+12	+4	+2	+134.4%	+124.7%	+106.4%	+61.2%	+16.3%	+6.2%
Physiotherapist-in-charge (Grade III)	7	+1	+3	+2	+2	-0	-0	+25.2%	+73.3%	+69.0%	+35.2%	-0.7%	-0.7%
Physiotherapist Manager	7	-0	+0	-0	-0	+1	-0	-2.8%	+1.8%	-10.5%	-2.5%	+11.8%	-1.2%
Physiotherapist, Senior	110	+22	+14	+9	+9	+10	-2	+25.3%	+14.2%	+10.2%	+9.2%	+10.3%	-2.2%
Physiotherapy, Practice Tutor	1	+0	+0	+0	+0	+1		+29.9%	+25.0%	+35.1%	+35.1%	-100.0%	
Physiotherapists	229	+41	+33	-0	-0	-15	-4	+21.9%	+17.0%	+4.8%	-0.0%	-6.0%	-1.7%
Speech & Language Therapist	12	+3	-0	+4	+4	-2	+1	+32.3%	-3.0%	+36.9%	+57.3%	-13.1%	+6.3%
Speech & Language Therapist, Clinical Specialist	7	+5	+6	+3	+3	+1	+0	+237.5%	+575.0%	+575.0%	+84.9%	+8.9%	+5.5%
Speech & Language Therapist Manager	2	-1	-1	-1	-1	-1	-0	-32.3%	-36.0%	-38.7%	-36.2%	-35.4%	-6.9%
Speech & Language Therapist, Senior	25	+7	+4	+4	+4	+1	-1	+39.2%	+20.3%	+22.7%	+21.1%	+3.7%	-2.6%
Speech & Language Therapists	45	+14	+8	+10	+10	-1	+0	+43.0%	+22.9%	+37.0%	+30.4%	-3.1%	+0.5%
Chiropodist, Clinical Specialist	1												
Chiropodist/ Podiatrist	3	+1	+2	-0	-0	+0	+1	+43.5%	+100.0%	+100.0%	-11.0%	+2.4%	+48.5%
Chiropodist/ Podiatrist, Senior	7	+3	+2	+2	+2	+0		+71.9%	+38.7%	+26.5%	+26.5%	+3.9%	
Podiatrists & Chiropodists	11	+4	+3	+1	+1	+0	+1	+53.9%	+45.6%	+36.7%	+11.3%	+3.1%	+9.6%
Therapy Professions	484	+116	+71	+62			+0	+31.6%	+17.2%	+14.7%	+14.7%	+14.7%	+0.1%
Audiologist	2	+1	+1	+1	+1	+1		+77.8%	+77.8%	+77.8%	+77.8%	+77.8%	
Audiologist, Chief	1		+0	+0	+0				+8.7%	+8.7%	+3.1%		
Audiologist, Senior	1	-1	-0	-0	-0	-0	-1	-34.9%	-16.7%	-28.6%	-28.6%	-28.6%	-56.6%
Audiology	4	+0	+1	+1	+1	+1	-1	+12.6%	+26.2%	+19.4%	+17.7%	+16.7%	-22.8%
Biochemist	6	-1	-4	-5	-5	-6		-19.0%	-40.1%	-47.6%	-43.2%	-48.8%	
Biochemist, Principal	7	+1	-1	-1	-1			+18.6%	-13.3%	-13.3%	-13.3%		
Biochemist, Senior	13	+5	+3	+4	+4	+2		+65.8%	+30.2%	+27.6%	+41.8%	+16.0%	
Biochemists	25	+5	-2	-2	-2	-4		+22.7%	-7.6%	-12.8%	-6.7%	-13.6%	
Clinical Engineering Technician	6	+4	+4	+3	+3	+1		+200.0%	+200.0%	+100.0%	+100.0%	+20.0%	
Clinical Engineering Technician, Chief	4	+2	+1	-0	-0	-0	-0	+91.0%	+27.3%	-4.5%	-4.5%	-4.5%	-4.5%
Clinical Engineering Technician, Principal	3	-1				+1		-25.0%				+50.0%	
Clinical Engineering Technician, Senior	11	+3	+2					+37.5%	+22.2%	+22.2%			
Clinical Engineering	24	+8	+7	+3	+3	+2	-0	+48.9%	+40.1%	+25.4%	+13.4%	+8.3%	-0.7%
Cardiac Physiologist	16	-7	-1	-3	-3	-2	+0	-31.7%	-5.9%	-20.8%	-14.8%	-11.0%	+0.1%
Cardiac Physiologist, Chief I	7	+1	+2	+1	+1	+2	+0	+25.7%	+26.9%	+23.4%	+24.0%	+49.9%	+6.1%
Cardiac Physiologist, Chief II	3	+1	+1	+1	+1	+0		+42.7%	+47.6%	+52.9%	+46.4%	+0.9%	
Cardiac Physiologist, Senior	31	+14	+10	+7	+7	+4	-0	+86.1%	+45.7%	+48.1%	+28.0%	+12.9%	-0.2%
E.C.G. Technician	0	-1	-1	+0	+0	+0	+0	-80.0%	-80.0%	-100.0%	-100.0%	-100.0%	-100.0%

Jun 2021 (Dec 2016 figure: 10,971)	WTE Jun 2021	WTE change since Dec 16	WTE change since Dec 17	WTE change since Dec 18	WTE change since Dec 19	WTE change since Dec 20	WTE change since Apr 21	% change since Dec 16	% change since Dec 17	% change since Dec 18	% change since Dec 19	% change since Dec 20	% change since Apr 21
Overall	13,288	+2,317	+1,906	+1,243	+1,243	+365	+61	+21.1%	+16.7%	+12.9%	+10.3%	+2.8%	+0.5%
Gastrointestinal (GI) Physiologist	1	+1						-100.0%					
Neuro-Physiologist	3	+2	+2	+3	+3	-1	-1	+200.0%	+200.0%	+200.0%	-100.0%	-25.0%	-25.0%
Neuro-Physiologist, Chief I	1			+1	+1						-100.0%		
Neuro-Physiologist, Chief II	1	+1	+1	+1	+1	+1		-100.0%	-100.0%	-100.0%	-100.0%	-100.0%	
Neuro-Physiologist, Senior	3	-1	-2	-2	-2	-3	+0	-18.3%	-34.6%	-34.6%	-34.6%	-45.5%	+16.0%
Respiratory Physiologist	7	+2	+1				+2	+40.0%	+16.7%	+2.3%			+40.0%
Respiratory Physiologist, Chief I	1	+1	+1	+1	+1	+1		-100.0%	-100.0%	-100.0%	-100.0%	-100.0%	
Respiratory Physiologist, Chief II	2	-0	+0	+0	+0			-5.5%	+5.6%	+89.0%	+11.2%		
Respiratory Physiologist, Senior	7	-1	+1	-1	-1	-3	+1	-13.2%	+14.2%	-21.5%	-9.1%	-28.4%	+17.3%
Vascular Physiologist	2	-2	-1					-50.0%	-33.3%	-33.3%			
Vascular Physiologist, Chief I	1												
Vascular Physiologist, Chief II	1												
Vascular Physiologist, Senior	4	+3	+3	+2	+2	+2		+300.0%	+300.0%	+300.0%	+100.0%	+100.0%	
Clinical Measurement	91	+14	+17	+12	+12	+2	+3	+18.3%	+22.4%	+15.1%	+15.8%	+1.8%	+3.5%
Perfusionist	5	+3	+2	+2	+2	+1	-0	+126.0%	+50.7%	+126.0%	+50.7%	+22.8%	-1.1%
Perfusionist, in charge	1												
Perfusionists	6	+3	+2	+2	+2	+1	-0	+84.0%	+38.0%	+84.0%	+38.0%	+17.9%	-0.9%
Phlebotomist	38	+9	+7	+6	+6	+2	+0	+29.2%	+21.8%	+19.1%	+17.2%	+6.1%	+0.4%
Phlebotomist, Senior	4	-0	-1	-1	-1	-2	-2	-9.7%	-14.9%	-20.8%	-16.0%	-31.3%	-30.0%
Phlebotomists	42	+8	+6	+5	+5	+0	-2	+24.2%	+17.1%	+13.7%	+13.0%	+1.0%	-3.5%
Physicist	7	+3	+3	+1	+1	+1		+82.8%	+82.8%	+21.8%	+21.8%	+21.8%	
Physicist, Chief	1	-1	-1	-1	-1	-0		-60.0%	-60.0%	-60.0%	-60.0%	-20.0%	
Physicist, Principal	4	+3	+1	+1	+1	+1	-0	+199.3%	+32.1%	+32.1%	+31.3%	+24.7%	-4.5%
Physicist, Senior	5	+1	+2	+1	+1	+1		+28.5%	+67.0%	+25.2%	+25.2%	+25.2%	
Physicists	18	+6	+5	+2	+2	+3	-0	+54.5%	+42.0%	+14.4%	+14.2%	+20.6%	-1.2%
Radiographer	105	-4	-7	-4	-4	-11	-0	-3.4%	-6.3%	+0.3%	-3.2%	-9.5%	-0.2%
Radiographer, Clinical Specialist	48	+8	+7	+2	+2	+1	-0	+19.6%	+16.6%	+4.4%	+3.6%	+1.7%	-0.1%
Radiographer, Senior	90	+24	+26	+18	+18	+7	-2	+36.5%	+41.1%	+23.0%	+25.5%	+8.3%	-2.5%
Radiography Service Manager, I	11	+3	+2	+1	+1	+1	+1	+32.9%	+18.9%	+9.7%	+8.7%	+6.4%	+7.5%
Radiography Service Manager, II	4	-1	-1	-1	-1	-1		-22.8%	-22.8%	-19.6%	-22.8%	-22.8%	
Radiographers	258	+30	+27	+16	+16	-4	-2	+13.1%	+11.5%	+8.0%	+6.7%	-1.4%	-0.7%
Laboratory Manager	4			-1	-1	-1				-20.0%	-20.0%	-20.0%	
Medical Scientist	161	-21	-10	+1	+1	-6	-9	-11.7%	-5.9%	-7.8%	+0.9%	-3.7%	-5.3%
Medical Scientist, Chief	39	+8	+5	+3	+3	-0	+2	+27.2%	+14.0%	+11.1%	+8.3%	-0.4%	+5.3%
Medical Scientist, Senior	117	+32	+29	+21	+21	+15	+5	+37.6%	+33.3%	+29.4%	+22.3%	+14.6%	+4.4%

Jun 2021 (Dec 2016 figure: 10,971)	WTE Jun 2021	WTE change since Dec 16	WTE change since Dec 17	WTE change since Dec 18	WTE change since Dec 19	WTE change since Dec 20	WTE change since Apr 21	% change since Dec 16	% change since Dec 17	% change since Dec 18	% change since Dec 19	% change since Dec 20	% change since Apr 21
Overall	13,288	+2,317	+1,906	+1,243	+1,243	+365	+61	+21.1%	+16.7%	+12.9%	+10.3%	+2.8%	+0.5%
Medical Scientist, Specialist	12	+4	+3	+3	+3	+2	+1	+43.7%	+30.9%	+52.6%	+38.0%	+14.5%	+6.6%
Medical Scientist, Undergraduate	1	+1	+1	+1	+1	+1	+1	-100.0%	-100.0%	-100.0%	-100.0%	-100.0%	-100.0%
Medical Science	334	+24	+28	+29	+29	+10	-0	+7.7%	+9.1%	+6.7%	+9.5%	+3.1%	-0.1%
Health Science/ Diagnostics	802	+98	+64	+68			-2	+13.9%	+8.6%	+9.2%	+9.2%	+9.2%	-0.3%
Social Worker	7	+7	+7	+7	+7	+7		-100.0%	-100.0%	-100.0%	-100.0%	-100.0%	
Social Worker, Medical	21	-9	-11	-13	-13	-11	-0	-29.3%	-34.4%	-31.5%	-38.9%	-34.0%	-1.4%
Social Worker, Principal	6	+2	+1	-0	-0	-1	-1	+45.9%	+16.0%	+17.9%	-2.4%	-14.9%	-14.2%
Social Worker, Senior Medical	39	+17	+19	+12	+12	+10	+1	+79.4%	+93.7%	+106.9%	+43.6%	+33.6%	+1.3%
Social Worker, Team Leader	1	+1	+1	+1	+1	+1	+1	-100.0%	-100.0%	-100.0%	-100.0%	-100.0%	-100.0%
Social Work Practitioner, Senior	4		+1	+0	+0	-3	+1		+33.3%		+5.3%	-44.6%	+33.3%
Social Workers	77	+18	+17	+7	+7	+3	+1	+31.1%	+29.6%	+33.4%	+9.3%	+3.7%	+1.5%
Social Workers	77	+18	+19	+7			+1	+31.1%	+33.4%	+9.3%	+9.3%	+9.3%	+1.5%
Psychologist, Clinical	3	+1	+1	+1	+1	+2		+18.2%	+18.2%	+32.2%	+44.6%	+161.3%	
Psychologist, Counselling	2	+1	+1	+0	+0			+327.9%	+327.9%	+327.9%	+5.1%		
Psychologist, Educational	1												
Psychologist, Principal Clinical	3	+2	+2	+1	+1	+1	+1	+230.0%	+230.0%	+230.0%	+40.4%	+40.4%	+40.4%
Psychologist, Senior Clinical	16	+8	+7	+1	+1	+1	-1	+106.7%	+85.2%	+55.0%	+10.6%	+3.7%	-6.6%
Psychologist, Trainee Clinical				-1	-1	-1	-1	-100.0%	-100.0%	-100.0%	-100.0%	-100.0%	-100.0%
Psychologists	24	+12	+11	+3	+3	+3	-1	+100.3%	+87.0%	+69.5%	+11.6%	+11.5%	-4.5%
Psychologists	24	+12	+10	+3			-1	+100.3%	+69.5%	+11.6%	+11.6%	+11.6%	-4.5%
Pharmaceutical Technician	50	+20	+15	+5	+5	+4	+1	+69.2%	+42.5%	+43.2%	+10.1%	+8.2%	+1.8%
Pharmaceutical Technician, Senior	27	+5	+6	+5	+5	+4	+1	+23.6%	+26.9%	+23.9%	+22.3%	+14.9%	+3.5%
Pharmacist	38	+10	+6	+3	+3	-2	-1	+34.4%	+19.2%	+3.5%	+7.9%	-3.9%	-3.5%
Pharmacist, Chief I	3	+1						+50.0%					
Pharmacist, Chief II	22	-4	-0	-2	-2	-0	+0	-14.2%	-1.0%	-3.6%	-7.9%	-0.8%	+0.9%
Pharmacist, Senior	65	+21	+20	+6	+6	+7	+5	+46.9%	+44.6%	+19.4%	+10.9%	+11.8%	+7.8%
Pharmacy	205	+53	+47	+17	+17	+12	+5	+35.2%	+29.4%	+18.0%	+8.9%	+6.5%	+2.7%
Pharmacy	205	+53	+31	+17			+5	+35.2%	+18.0%	+8.9%	+8.9%	+8.9%	+2.7%
Counsellor Therapist (Adult Services)	1	-1	-1					-38.2%	-38.2%	-38.2%			
Counsellor / Therapist (National Services)	0												
Director of Counselling (National Counselling Services)	1												
Counsellor Therapists	2	-1	-1	-0	-0	-0		-20.5%	-20.5%	-20.5%	-0.0%	-0.0%	
Medical Scientist, Student	7	+1	+2	+1	+1	+2		+16.7%	+36.2%	+35.4%	+12.9%	+40.0%	
Perfusionist, Student		-1	-1	-1	-1			-100.0%	-100.0%	-100.0%	-100.0%	-100.0%	-100.0%

Jun 2021 (Dec 2016 figure: 10,971)	WTE Jun 2021	WTE change since Dec 16	WTE change since Dec 17	WTE change since Dec 18	WTE change since Dec 19	WTE change since Dec 20	WTE change since Apr 21	% change since Dec 16	% change since Dec 17	% change since Dec 18	% change since Dec 19	% change since Dec 20	% change since Apr 21
Overall	13,288	+2,317	+1,906	+1,243	+1,243	+365	+61	+21.1%	+16.7%	+12.9%	+10.3%	+2.8%	+0.5%
Pharmacist, Student	1	-0	-0	+1	+1	+1		-19.0%	-19.0%	-19.0%	-100.0%	-100.0%	
Phlebotomist, Trainee	6	+6	+6	+5	+5	+5	+2	-100.0%	-100.0%	+2211.5%	+954.4%	+338.7%	+35.4%
Respiratory Technician, Student			-1					-100.0%	-100.0%	-100.0%	-100.0%	-100.0%	-100.0%
HSCP Trainees/ Students	14	+6	+6	+6	+6	+7	+2	+72.8%	+69.8%	+46.6%	+77.9%	+117.0%	+12.8%
Clinical Photographer	4	-1	-0	-0	-0	-1	-1	-20.0%	-6.5%	+2.8%	-8.5%	-20.0%	-20.0%
Clinical Photographer, Senior	2												
Health & Social Care Professionals Unclassified	9	+1	-2	-0	-0	+0	-1	+20.0%	-18.1%	-18.9%	-0.9%	+3.8%	-10.5%
Optometrist, Clinical	4	+3	+3	+3	+3	+1	+1	+300.0%	+300.0%	+300.0%	+300.0%	+17.0%	+17.6%
Other Health & Social Care	19	+3	+1	+3	+3	-0	-1	+22.6%	+4.8%	+6.5%	+16.0%	-0.6%	-7.0%
Vaccinator - COVID 19 Vaccination Programme	22	+22	+22	+22	+22	+22	+22	-100.0%	-100.0%	-100.0%	-100.0%	-100.0%	-100.0%
Vaccinators	22	+22	+22	+22	+22	+22	+22	-100.0%	-100.0%	-100.0%	-100.0%	-100.0%	-100.0%
H&SC, Other	56	+30	+27	+30			+22	+116.4%	+89.4%	+116.1%	+116.1%	+116.1%	+63.3%
Health & Social Care Professionals	1,648	+328	+222	+186			+25	+24.8%	+15.6%	+12.7%	+12.7%	+12.7%	+1.6%
CEO (Band H2 Hospital)	1			+1	+1						-100.0%		
CEO (Band H3 Hospital)	1			-1	-1	-1					-37.5%	-37.5%	
Chief Executive, Hospital Group	1	+1	+1	+1	+1	+1	+0	-100.0%	-100.0%	-100.0%	-100.0%	-100.0%	+35.1%
Chief Executive Officer	3												
Chief Finance Officer (HSE)						-1		-100.0%	-100.0%	-100.0%	-100.0%	-100.0%	-100.0%
Director of Finance	2	+1	+1	+1	+1	+1	-1	+100.0%	+100.0%	+100.0%	+100.0%	+100.0%	-33.3%
Director of HR	2	+1	+1	+1	+1	+1		+100.0%	+100.0%	+100.0%	+100.0%	+100.0%	
Director of ICT	1	+1	+1	+1	+1	+1		-100.0%	-100.0%	-100.0%	-100.0%	-100.0%	
Director of Information Systems	1												
Head of Function /Service, Acute Services	2	+2	+2	+1	+1	-0		-100.0%	-100.0%	-100.0%	+50.0%	-24.6%	
Head of Function /Service, Community Services	4	+4	+4	+3	+3	+2	+2	-100.0%	-100.0%	-100.0%	+300.0%	+100.0%	+113.9%
Hospital Group, Chief Finance Officer	1	+1	+1	+1	+1	+1		-100.0%	-100.0%	-100.0%	-100.0%	-100.0%	
National Director, Assistant (Services)	5	+5	+5					-100.0%	-100.0%	+27.8%			
National Director, Assistant (Support)	2	-1	-1	+1	+1	-2		-25.0%	-25.0%	-25.0%	+50.0%	-50.0%	
Executive Management	25	+15	+15	+9	+9	+3	+1	+146.0%	+146.0%	+80.9%	+61.8%	+16.1%	+6.0%
Chief Executive Officer, Deputy	3	+3	+1	+2	+2	+2	+1	-100.0%	+50.0%	+200.0%	+200.0%	+200.0%	+50.0%
Functional Officer	6	+2	+2	+2	+2	+2		+50.0%	+50.0%	+50.0%	+50.0%	+50.0%	
General Manager	7	-3	-2	-0	-0	+3	-1	-26.8%	-19.5%	-9.2%	-6.2%	+65.5%	-6.6%
Grade VIII	71	+30	+24	+22	+22	+4	-0	+71.9%	+51.7%	+45.1%	+44.0%	+5.7%	-0.1%
Service Manager	1	-6	-4	-5	-5	-2		-85.7%	-80.0%	-83.3%	-83.3%	-66.7%	
Senior Management (VIII & GM)	88	+26	+22	+20	+20	+9	+0	+42.1%	+32.3%	+30.1%	+29.8%	+10.9%	+0.5%

Jun 2021 (Dec 2016 figure: 10,971)	WTE Jun 2021	WTE change since Dec 16	WTE change since Dec 17	WTE change since Dec 18	WTE change since Dec 19	WTE change since Dec 20	WTE change since Apr 21	% change since Dec 16	% change since Dec 17	% change since Dec 18	% change since Dec 19	% change since Dec 20	% change since Apr 21
Overall	13,288	+2,317	+1,906	+1,243	+1,243	+365	+61	+21.1%	+16.7%	+12.9%	+10.3%	+2.8%	+0.5%
Management (VIII & above)	113	+41	+31	+30			+2	+56.5%	+38.5%	+35.7%	+35.7%	+35.7%	+1.6%
Accountant	4	-1	-1	-1	-1			-20.0%	-20.0%	-20.0%	-20.0%		
Grade V	331	+115	+90	+79	+79	+16	+2	+53.2%	+37.1%	+33.0%	+31.2%	+5.1%	+0.6%
Grade VI	155	+51	+47	+27	+27	+4	+4	+48.7%	+43.9%	+29.9%	+20.8%	+2.9%	+2.6%
Grade VII	115	+29	+16	+4	+4	+6	-1	+34.5%	+15.7%	+3.9%	+3.8%	+5.7%	-1.1%
Supplies Officer Grade A		-4	-3	-2	-2	-1	-1	-100.0%	-100.0%	-100.0%	-100.0%	-100.0%	-100.0%
Supplies Officer Grade B	14	+2	+2	+1	+1	-1	-1	+19.0%	+19.0%	+1.4%	+9.5%	-5.5%	-6.6%
Middle Management (V-VII)	619	+193	+151	+108	+108	+25	+3	+45.1%	+32.2%	+23.7%	+21.1%	+4.2%	+0.5%
Librarian	1	-1	-1	-1	-1	-1		-42.5%	-42.5%	-42.5%	-42.5%	-59.7%	
Librarian, Assistant	2	+1	+1	+1	+1	+2		+74.0%	+74.0%	+74.0%	+74.0%	-100.0%	
Project Manager		-1	-1	-1	-1	-1		-100.0%	-100.0%	-100.0%	-100.0%	-100.0%	-100.0%
Technical Services Manager	1												
Other Administrative	4	-1	-1	-1	-1	-1		-21.1%	-21.1%	-21.1%	-21.1%	-16.5%	
Administrative/ Supervisory (V to VII)	623	+192	+118	+107			+3	+44.4%	+23.3%	+20.7%	+20.7%	+20.7%	+0.5%
Clerical Officer	476	+25	+26	+3	+3	+12	+2	+5.6%	+5.8%	-1.4%	+0.5%	+2.5%	+0.4%
Grade IV	730	+123	+86	+66	+66	+59	+20	+20.2%	+13.4%	+12.2%	+10.0%	+8.8%	+2.8%
Supplies Officer Grade C	38	+7	+10	+2	+2	+0	-1	+21.8%	+37.5%	+21.1%	+5.2%	+0.1%	-3.4%
Supplies Officer Grade D	17	+2	+1	+1	+1	+1	-0	+15.6%	+5.2%	-5.2%	+5.8%	+5.8%	-0.2%
Telephonist	19	-4	-3	+1	+1	-7	-1	-16.0%	-13.8%	+0.3%	+4.5%	-27.5%	-2.5%
Telephonist, Night	5	+1	+0	+1	+1	+0	+0	+22.5%	+0.4%	+11.9%	+31.4%	+1.0%	+1.4%
Telephonist, Supervisor	2					-1						-30.8%	
General Administrative (III & IV)	1,287	+154	+120	+74	+74	+64	+20	+13.6%	+10.3%	+6.5%	+6.1%	+5.2%	+1.6%
Clerical (III & IV)	1,287	+154	+79	+74			+20	+13.6%	+6.5%	+6.1%	+6.1%	+6.1%	+1.6%
Management & Administrative	2,023	+387	+228	+210			+25	+23.6%	+12.7%	+11.6%	+11.6%	+11.6%	+1.2%
Catering	107	+10	+13	+5	+5	-2	-2	+10.6%	+13.6%	+8.7%	+4.7%	-2.2%	-1.9%
Household Services	690	+84	+47	+29	+29	+12	+4	+13.9%	+7.3%	+3.1%	+4.4%	+1.7%	+0.6%
Other Labs & Associated	96	+36	+31	+23	+23	+13	+6	+59.9%	+47.9%	+42.6%	+32.1%	+16.0%	+7.0%
Other Support	169	+22	+11	+11	+11	-3	+0	+14.9%	+6.7%	+7.8%	+7.1%	-1.9%	+0.1%
Portering	270	-43	-57	-59	-59	+1	+3	-13.6%	-17.4%	-17.4%	-17.9%	+0.3%	+0.9%
Support	1,333	+110	+13	+10			+11	+9.0%	+1.0%	+0.7%	+0.7%	+0.7%	+0.8%
Boilerman	1												
Chargehand	3	+2	+2					+200.0%	+200.0%				
Electrician	18	-0	-0	+1	+1	+1	-1	-0.3%	-0.3%	+19.9%	+5.6%	+5.8%	-5.3%

Jun 2021 (Dec 2016 figure: 10,971)	WTE Jun 2021	WTE change since Dec 16	WTE change since Dec 17	WTE change since Dec 18	WTE change since Dec 19	WTE change since Dec 20	WTE change since Apr 21	% change since Dec 16	% change since Dec 17	% change since Dec 18	% change since Dec 19	% change since Dec 20	% change since Apr 21
Overall	13,288	+2,317	+1,906	+1,243	+1,243	+365	+61	+21.1%	+16.7%	+12.9%	+10.3%	+2.8%	+0.5%
Gardener/ Groundsman	1	-2	-2	-1	-1			-66.7%	-66.7%	-66.7%	-50.0%		
Gardener/ Groundsman, Head	1	+1	+1	+1	+1			-100.0%	-100.0%	-100.0%	-100.0%		
General Operative	11	+0	-0	-1	-1	-1	-1	+4.3%	-0.4%	-0.4%	-7.6%	-8.1%	-4.8%
Labourer	2	-0	-0	-0	-0		-0	-4.5%	-4.5%	-4.5%	-4.5%		-1.5%
Maintenance Craftsman/Technician	25	+4	+3	+1	+1	-0	-0	+18.7%	+13.4%	+8.3%	+3.8%	-0.2%	-0.3%
Maintenance Foreman	12	+3	+1	+3	+3	+0	+0	+33.1%	+9.3%	+21.0%	+27.6%	+0.3%	+0.3%
Maintenance Foreman, Assistant	2	+1	+1					+100.0%	+100.0%				
Maintenance Helper	6												
Maintenance Manager	2	-0	+0	-0	-0	-0	-0	-5.0%	+10.5%	-5.0%	-5.0%	-3.1%	-5.0%
Maintenance Officer	4	+1	+2	+2	+2			+33.3%	+100.0%	+166.7%	+100.0%		
Painter	6	-2	-1	-1	-1	+0	-0	-23.3%	-12.3%	-12.3%	-12.3%	+2.3%	-3.8%
Plasterer		-1	-1					-100.0%	-100.0%	-100.0%	-100.0%	-100.0%	-100.0%
Plumber	17	+2	+5	+6	+6	+2		+13.3%	+39.0%	+88.9%	+54.5%	+15.7%	
Maintenance	111	+9	+11	+10	+10	+2	-2	+9.1%	+10.9%	+14.9%	+10.5%	+2.2%	-1.8%
Draughtsman/Technician I	0	-2	-2	-2	-2			-100.0%	-100.0%	-100.0%	-100.0%	#DIV/0	#DIV/0
Draughtsman/Technician II		-1	-1					-100.0%	-100.0%	-100.0%	-100.0%	-100.0%	-100.0%
Engineer/ Engineering Officer	1	-1	-1	-1	-1		-1	-50.0%	-50.0%	-50.0%	-50.0%		-50.0%
Fire Prevention Officer	2												
Technical Services Officer	1	+1	+1					+400.0%	+400.0%	+400.0%			
Technical Services Officer, Assistant		-1	-1					-100.0%	-100.0%	-100.0%	-100.0%	-100.0%	-100.0%
Technical Services Officer, Chief Asst.	5	+3	+2	+2	+2		-1	+150.0%	+66.7%	+400.0%	+66.7%		-16.7%
Technical Services Officer, Senior Asst.	2	+2	+2	+0	+0	+1	+1	-100.0%	-100.0%	-20.0%	+1.0%	+100.0%	+100.0%
Technical Services	11	+1	-0	-1	-1	+1	-1	+7.8%	-1.8%	+2.8%	-8.2%	+10.0%	-8.3%
Maintenance/ Technical	122	+10	+15	+10			-3	+9.0%	+13.7%	+8.5%	+8.5%	+8.5%	-2.4%
General Support	1,454	+120	+28	+19			+8	+9.0%	+2.0%	+1.3%	+1.3%	+1.3%	+0.6%
HCA, Nurse's Aide, etc.	1,113	+259	+253	+191	+191	+20	+4	+30.3%	+29.4%	+22.2%	+20.7%	+1.8%	+0.3%
Occupational Therapy Assistant	5	-0	-0	+0	+0	-3	-1	-4.3%	-5.6%	+23.6%	+9.3%	-39.6%	-14.0%
Physiotherapy Assistant	9	+5	+5	+5	+5	+2	+0	+113.6%	+120.1%	+90.4%	+122.8%	+21.1%	+0.2%
Radiography Aide	20	+7	+6	+2	+2	-2	+0	+52.7%	+37.9%	+8.2%	+8.6%	-8.8%	+1.1%
Health & Social Care Assistants	34	+12	+10	+7	+7	-3	-1	+52.0%	+43.3%	+25.0%	+26.3%	-9.1%	-1.5%
Community Swabber (COVID-19)						-11		-100.0%	-100.0%	-100.0%	-100.0%	-100.0%	-100.0%
Swabber (COVID-19)						-11		-100.0%	-100.0%	-100.0%	-100.0%	-100.0%	-100.0%
Health Care Assistants	1,147	+270	+209	+198			+3	+30.9%	+22.3%	+20.8%	+20.8%	+20.8%	+0.3%
Cardiac Aide	1	-1	-0	-0	-0	+1	+1	-43.6%	-38.3%	+43.5%	-28.3%	-100.0%	-100.0%

Jun 2021 (Dec 2016 figure: 10,971)	WTE Jun 2021	WTE change since Dec 16	WTE change since Dec 17	WTE change since Dec 18	WTE change since Dec 19	WTE change since Dec 20	WTE change since Apr 21	% change since Dec 16	% change since Dec 17	% change since Dec 18	% change since Dec 19	% change since Dec 20	% change since Apr 21
Overall	13,288	+2,317	+1,906	+1,243	+1,243	+365	+61	+21.1%	+16.7%	+12.9%	+10.3%	+2.8%	+0.5%
Chaplain	19	-2	-1	-2	-2	-3	-2	-9.8%	-4.1%	-6.9%	-8.5%	-12.8%	-7.9%
Driver (Patients/Clients Public Roads)	1	-1						-50.0%					
Education Officer		-1	-1	-1	-1			-100.0%	-100.0%	-100.0%	-100.0%	-100.0%	-100.0%
Endoscopy Operative (Band 1)							-1	-100.0%	-100.0%	-100.0%	-100.0%	-100.0%	-100.0%
Endoscopy Operative (Band 2)	2	+2	+2	+2	+2	+0	+1	-100.0%	-100.0%	-100.0%	-100.0%	+18.3%	+100.0%
Head of Bed Management (Category A)	1												
Health Promotion Officer	3	+2	+2	+3	+3	+1	+0	+200.0%	+200.0%	+200.0%	-100.0%	+64.8%	+1.7%
Health Promotion Officer, Senior	1	+1	+1	+1	+1	+1		-100.0%	-100.0%	-100.0%	-100.0%	-100.0%	
Other Patient & Client Care Unclassified		-2						-100.0%	-100.0%	-100.0%	-100.0%	-100.0%	-100.0%
Pastoral Care Worker	1												
Other Care Grades	28	-2	+2	+2	+2	-0	-1	-6.9%	+8.7%	+8.7%	+9.5%	-0.6%	-3.2%
Care, other	28	-2	+2	+2			-1	-6.9%	+8.7%	+9.5%	+9.5%	+9.5%	-3.2%
Patient & Client Care	1,175	+268	+211	+200			+2	+29.6%	+21.9%	+20.5%	+20.5%	+20.5%	+0.2%

Source: Health Service Personnel Census

Longitudinal Employment Levels by Staff Group - Dec 2016 to Jun 2021

Jun 2021 (Dec 2016 figure: 10,971)	WTE Jun 2021	WTE change since Dec 16	WTE change since Dec 17	WTE change since Dec 18	WTE change since Dec 19	WTE change since Dec 20	WTE change since Apr 21	% change since Dec 16	% change since Dec 17	% change since Dec 18	% change since Dec 19	% change since Dec 20	% change since Apr 21
Overall	13,288	+2,317	+1,906	+1,515	+1,243	+365	+61	+21.1%	+16.7%	+12.9%	+10.3%	+2.8%	+0.5%
Consultants	35	+7	+3	+1	+1	-2	+0	+23.5%	+10.0%	+2.5%	+4.3%	-6.2%	+0.3%
Registrars	56	+8	+8	+6	+3	+5	+1	+15.9%	+15.9%	+11.3%	+6.0%	+10.7%	+2.1%
SHO/ Interns	69	+21	+13	+13	+8	+9	+4	+44.5%	+23.0%	+23.4%	+12.5%	+14.9%	+6.1%
Medical/ Dental, other	7	+4	+3	+2	+1	+0	+1	+202.3%	+108.1%	+58.7%	+28.2%	+7.6%	+15.8%
Nurse/ Midwife Manager	84	+30	+24	+1	-1	+1	-1	+56.2%	+40.5%	+1.3%	-0.9%	+1.6%	-0.8%
Nurse/ Midwife Specialist & AN/MP	27	+12	+6	+7	+8	+3	+0	+77.7%	+30.3%	+36.1%	+40.5%	+12.3%	+0.7%
Staff Nurse/ Staff Midwife	297	+18	+19	+4	+8	-3	-1	+6.3%	+6.9%	+1.4%	+2.6%	-0.9%	-0.3%
Nursing/ Midwifery Student	5	+5	+5	+5	+4	+2		-100.0%	-100.0%	-100.0%	+400.0%	+77.3%	
Therapy Professions	29	+12	+11	+6	+4	+0	+1	+70.9%	+57.1%	+28.0%	+16.4%	+1.7%	+2.7%
Health Science/ Diagnostics	37	+8	+7	+1	-0	+0	+1	+28.6%	+23.1%	+4.0%	-0.2%	+1.0%	+1.4%
Social Workers	2	+2	+2	+2	+1	+1	+1	-100.0%	-100.0%	-100.0%	+84.0%	+84.0%	+84.0%
Pharmacy	14	+6	+5	+4	+3	+1	-0	+82.2%	+65.3%	+47.4%	+23.3%	+5.1%	-1.9%
Management (VIII & above)	4	+2	+1	+1	+2	-1		+75.0%	+16.7%	+20.3%	+75.0%	-12.5%	
Administrative/ Supervisory (V to VII)	27	+15	+12	+12	+13	+5	+1	+127.3%	+81.9%	+79.4%	+87.8%	+24.7%	+2.7%
Clerical (III & IV)	112	-3	-3	-4	-4	-3	-2	-2.9%	-2.9%	-3.7%	-3.0%	-3.0%	-1.7%
Support	178	-12	-22	-28	-28	+5	+7	-6.5%	-11.1%	-13.6%	-13.5%	+2.7%	+3.9%
Maintenance/ Technical	7	+1	+2	+2	+1	+1	-0	+26.9%	+40.0%	+43.0%	+16.0%	+23.0%	-0.3%
Health Care Assistants	92	+34	+42	+41	+36	+3	+2	+58.6%	+84.3%	+79.5%	+64.9%	+2.8%	+2.7%
Care, other	3	-1	-0	+0	-0	+1	+1	-16.1%	-13.4%	+8.1%	-8.9%	+33.0%	+33.0%
Wexford General	1,084	+169	+137	+77	+60	+29	+15	+18.5%	+14.5%	+7.6%	+5.8%	+2.8%	+1.4%
Consultants	45	+11	+11	+9	+6	+4	+1	+33.9%	+34.3%	+24.9%	+15.3%	+10.6%	+2.1%
Registrars	70	+22	+21	+20	+14	+6	+1	+45.9%	+41.4%	+40.4%	+24.0%	+8.7%	+1.0%
SHO/ Interns	57	+3	-0	-1	-1	+3	+0	+6.5%	-0.6%	-2.0%	-2.3%	+6.2%	+0.7%
Medical/ Dental, other	8	+6	+1	-1	+1	+1	+0	+276.2%	+11.3%	-14.2%	+15.7%	+15.5%	+0.3%
Nurse/ Midwife Manager	86	+34	+23	+10	+2	+2	-2	+66.1%	+36.0%	+12.9%	+2.3%	+2.4%	-1.8%
Nurse/ Midwife Specialist & AN/MP	30	+15	+12	+10	+9	+5	-1	+97.4%	+68.0%	+53.5%	+46.0%	+21.9%	-2.8%
Staff Nurse/ Staff Midwife	300	-23	-8	-23	-4	-18	-7	-7.0%	-2.5%	-7.0%	-1.2%	-5.6%	-2.1%
Nursing/ Midwifery Student	5	+5	+2	+5	+5	+4		-100.0%	+66.7%	+900.0%	-100.0%	+400.0%	
Nursing/ Midwifery other	1	+1	-0	-0	+0	+0	+0	-100.0%	-2.0%	-2.0%	+4.3%	+8.9%	+3.2%
Therapy Professions	43	+13	+13	+12	+8	-0	+1	+42.9%	+42.3%	+40.9%	+24.1%	-0.3%	+1.9%
Health Science/ Diagnostics	49	+7	+4	+3	+0	-2	+1	+16.3%	+9.7%	+6.9%	+0.0%	-4.7%	+1.2%
Pharmacy	22	+7	+7	+7	+4	+4	+1	+50.1%	+43.7%	+45.9%	+19.4%	+20.9%	+4.4%
Management (VIII & above)	7	+4	+4	+4	+4	+1		+133.3%	+133.3%	+133.3%	+133.3%	+17.4%	
Administrative/ Supervisory (V to VII)	22	+14	+11	+8	+7	+2	+0	+163.2%	+95.4%	+55.5%	+52.4%	+10.9%	+0.4%
Clerical (III & IV)	128	+14	+2	-12	-8	-5	-4	+12.7%	+1.9%	-8.6%	-6.0%	-3.7%	-3.1%
Support	167	-10	-24	-40	-35	-3	+1	-5.6%	-12.3%	-19.4%	-17.2%	-2.0%	+0.6%
Maintenance/ Technical	14	+3	+3	+2	+1	-1	-1	+26.6%	+26.6%	+16.3%	+7.0%	-6.5%	-3.6%
Health Care Assistants	130	+70	+71	+53	+55	-0	+1	+118.0%	+120.8%	+68.2%	+73.5%	-0.4%	+0.6%
Care, other	2												
St Luke's General Kilkenny	1,187	+198	+153	+66	+68	+3	-8	+20.0%	+14.8%	+5.9%	+6.1%	+0.2%	-0.6%
Nurse/ Midwife Manager	4	+3	+3	+1	+1	+1	+1	+300.0%	+300.0%	+33.3%	+33.3%	+33.3%	+33.3%
Staff Nurse/ Staff Midwife	1	+1	+1	+1	+1	-0	-0	-100.0%	-100.0%	-100.0%	-100.0%	-3.0%	-3.0%
Health Science/ Diagnostics	1	+1	+1					-100.0%	-100.0%				
Pharmacy	1	+1	+1	+1	+1	+1	+1	-100.0%	-100.0%	-100.0%	-100.0%	-100.0%	-100.0%
H&SC, Other	22	+22	+22	+22	+22	+22	+22	-100.0%	-100.0%	-100.0%	-100.0%	-100.0%	-100.0%
Management (VIII & above)	14	+9	+8	+9	+8	+4	+1	+172.0%	+126.7%	+172.0%	+136.5%	+36.4%	+10.2%
Administrative/ Supervisory (V to VII)	19	+17	+9	-1	+2	+2	+1	+956.7%	+92.3%	-2.7%	+13.4%	+13.6%	+7.5%
Clerical (III & IV)	4	+4	+0	+0	+2	+2	+1	-100.0%	+11.8%	+10.3%	+60.7%	+98.5%	+32.3%
Maintenance/ Technical				-1	-1			-100.0%	-100.0%	-100.0%	-100.0%	-100.0%	-100.0%
Hospital Group HQ	65	+57	+45	+33	+35	+31	+27	+735.6%	+219.8%	+100.4%	+118.2%	+93.9%	+71.8%
Consultants	14	-3	-1	-0	+1	-2	-1	-17.6%	-6.7%	-3.3%	+7.8%	-12.5%	-5.0%
Registrars	34	+12	+13	+7	+8	+3	+2	+51.9%	+57.7%	+25.3%	+29.9%	+10.2%	+6.6%
SHO/ Interns	40	+10	+5	+8	+5	-4	+1	+31.2%	+15.1%	+24.4%	+14.8%	-9.3%	+1.9%
Nurse/ Midwife Manager	47	+14	+9	+2	+3	+0	+0	+41.4%	+25.0%	+4.5%	+7.5%	+0.8%	+0.2%
Nurse/ Midwife Specialist & AN/MP	14	-2	+2	+3	+3	+1	+1	-13.1%	+20.0%	+30.3%	+26.1%	+8.9%	+6.2%
Staff Nurse/ Staff Midwife	140	+9	+14	+16	+18	+4	+1	+6.9%	+11.2%	+13.0%	+15.1%	+3.2%	+0.8%
Nursing/ Midwifery Student			-2	-4	-4			-100.0%	-100.0%	-100.0%	-100.0%	-100.0%	-100.0%

Jun 2021 (Dec 2016 figure: 10,971)	WTE Jun 2021	WTE change since Dec 16	WTE change since Dec 17	WTE change since Dec 18	WTE change since Dec 19	WTE change since Dec 20	WTE change since Apr 21	% change since Dec 16	% change since Dec 17	% change since Dec 18	% change since Dec 19	% change since Dec 20	% change since Apr 21
Overall	13,288	+2,317	+1,906	+1,515	+1,243	+365	+61	+21.1%	+16.7%	+12.9%	+10.3%	+2.8%	+0.5%
Therapy Professions	27	+10	+11	+12	+8	-0	+2	+61.4%	+64.7%	+78.1%	+45.2%	-1.7%	+7.4%
Health Science/ Diagnostics	40	+8	+8	+6	+3	+1	-1	+24.9%	+26.3%	+18.0%	+8.6%	+2.6%	-1.3%
Pharmacy	9	+6	+5	+4	+3	+2	+2	+168.1%	+150.4%	+77.5%	+47.6%	+23.0%	+23.0%
Management (VIII & above)	2	+1					+1	+100.0%					+33.3%
Administrative/ Supervisory (V to VII)	21	+13	+13	+12	+9	+0	-0	+156.8%	+152.6%	+127.7%	+72.2%	+2.1%	-0.4%
Clerical (III & IV)	58	+2	-2	+1	+1	-1	-2	+4.1%	-2.9%	+1.2%	+1.9%	-2.0%	-3.6%
Support	27	+10	+4	+3	+4	+2	+2	+64.1%	+19.1%	+14.7%	+15.4%	+6.8%	+7.3%
Maintenance/ Technical	5	-0	+0	-1	-0	-0	-0	-1.4%	+4.9%	-10.4%	-1.4%	-1.0%	-1.4%
Health Care Assistants	118	+14	+21	+20	+20	+2	-0	+13.4%	+21.2%	+19.8%	+20.5%	+1.3%	-0.4%
Care, other	2	-0	-0	-0	-0	+0		-19.1%	-1.2%	-19.1%	-29.1%	+0.6%	
Our Lady's Navan	598	+103	+101	+88	+82	+8	+7	+20.9%	+20.4%	+17.3%	+15.9%	+1.3%	+1.1%
Consultants	17	+2		+1	+1	+1		+13.8%		+6.4%	+3.1%	+6.4%	
Registrars	17	-1	-1	-2	-2	-1		-2.9%	-2.9%	-8.3%	-8.3%	-5.7%	
SHO/ Interns	12	+1	+1	+2				+9.1%	+9.1%	+20.0%			
Nurse/ Midwife Manager	43	+9	+11	+7	+2	+2		+25.8%	+32.5%	+20.7%	+4.8%	+4.8%	
Nurse/ Midwife Specialist & AN/MP	10	+6	+5	+3	+2	+2		+134.8%	+110.7%	+36.8%	+17.1%	+17.1%	
Staff Nurse/ Staff Midwife	111	+18	+16	+8	+8		-0	+19.4%	+16.3%	+7.5%	+8.2%		-0.0%
Nursing/ Midwifery other	2												
Therapy Professions	34	+7	+3	+2	+1	+1		+23.3%	+9.5%	+6.2%	+3.0%	+3.0%	
Health Science/ Diagnostics	29	+10	+7	+6	+4	+3	+2	+49.6%	+29.4%	+23.9%	+16.4%	+11.6%	+7.4%
Social Workers	7	+2	+1	+3				+54.2%	+15.1%	+75.0%			
Psychologists	1												
Pharmacy	6	+3	+3	+2	+1	+1		+100.0%	+100.0%	+50.0%	+20.0%	+20.0%	
Management (VIII & above)	4	+1						+33.3%					
Administrative/ Supervisory (V to VII)	26	+7	+2	+3	+4	+1	+0	+39.5%	+8.5%	+13.3%	+18.5%	+4.1%	+0.0%
Clerical (III & IV)	44	+12	+10	+7	+4	+1		+38.9%	+29.7%	+18.6%	+9.6%	+2.3%	
Support	62	+12	+1	+2	+0			+24.4%	+2.4%	+2.9%	+0.7%		
Maintenance/ Technical	1												
Health Care Assistants	26	-1	-3					-2.1%	-8.6%				
Care, other		-1						-100.0%	-100.0%	-100.0%	-100.0%	-100.0%	-100.0%
Cappagh National Orthopaedic	452	+88	+57	+44	+25	+11	+2	+24.2%	+14.3%	+10.7%	+5.9%	+2.4%	+0.4%
Consultants	185	+42	+33	+27	+14	-5	+1	+29.1%	+21.8%	+17.1%	+8.1%	-2.6%	+0.5%
Registrars	185	+38	+22	+27	+19	-5	-4	+25.7%	+13.6%	+17.1%	+11.4%	-2.4%	-2.3%
SHO/ Interns	182	+36	+32	+31	+25	-10	-3	+24.5%	+21.2%	+20.3%	+15.6%	-5.3%	-1.4%
Medical/ Dental, other	8	+2	+4	+4	+3	+2	+1	+45.8%	+98.0%	+89.7%	+56.4%	+31.0%	+14.8%
Nurse/ Midwife Manager	234	+55	+55	+44	+27	+13	+8	+30.5%	+30.9%	+23.0%	+13.1%	+6.0%	+3.5%
Nurse/ Midwife Specialist & AN/MP	108	+48	+40	+22	+21	+10	+1	+80.9%	+58.0%	+24.9%	+23.7%	+10.8%	+0.7%
Staff Nurse/ Staff Midwife	936	+101	+78	+75	+28	-3	-25	+12.1%	+9.1%	+8.7%	+3.1%	-0.3%	-2.6%
Nursing/ Midwifery Student	42	+33	+33	+34	+30	+22	+9	+388.2%	+361.1%	+418.8%	+245.8%	+107.5%	+25.8%
Nursing/ Midwifery other	51	+10	+11	+10	+6	+2	+0	+24.5%	+29.1%	+24.3%	+14.0%	+4.4%	+0.3%
Therapy Professions	134	+36	+29	+19	+20	+11	-3	+37.3%	+27.9%	+16.8%	+17.9%	+8.7%	-2.1%
Health Science/ Diagnostics	239	+20	+20	+18	+14	-2	+1	+9.3%	+9.0%	+8.1%	+6.4%	-0.9%	+0.2%
Social Workers	27	+5	+4	+7		+2	-1	+23.1%	+18.7%	+32.9%		+8.1%	-3.6%
Psychologists	9	+4	+4	+4	+2	+1	-0	+95.6%	+95.6%	+95.6%	+28.5%	+12.1%	-0.6%
Pharmacy	56	+13	+13	+7	+6	+4	+2	+29.1%	+31.1%	+13.4%	+12.1%	+7.7%	+3.7%
H&SC, Other	28	+6	+5	+4	+6	+5	+0	+26.7%	+19.6%	+14.7%	+27.6%	+19.6%	+0.6%
Management (VIII & above)	42	+19	+15	+12	+10	+6	+4	+79.1%	+52.9%	+40.9%	+30.8%	+17.8%	+9.3%
Administrative/ Supervisory (V to VII)	166	+43	+31	+15	+8	+4	-2	+35.1%	+22.6%	+10.2%	+4.9%	+2.5%	-1.2%
Clerical (III & IV)	310	+57	+64	+60	+51	+12	+1	+22.6%	+25.7%	+23.9%	+19.5%	+4.0%	+0.3%
Support	266	+17	+18	+14	+15	-1	-4	+6.7%	+7.4%	+5.4%	+5.9%	-0.4%	-1.6%
Maintenance/ Technical	26	+2	+2	+4	+2			+7.4%	+7.4%	+17.1%	+8.3%		
Health Care Assistants	262	+63	+57	+32	+37	+4	+4	+31.5%	+27.8%	+13.8%	+16.4%	+1.7%	+1.6%
Care, other	7	-3	-1	+0	-0	+0	+0	-32.7%	-9.1%	+0.7%	-0.4%	+5.3%	+2.0%
Mater Misericordiae University	3,501	+646	+568	+467	+343	+73	-11	+22.6%	+19.4%	+15.4%	+10.8%	+2.1%	-0.3%
Consultants	45	+11	+8	+10	+11	+2	+2	+30.9%	+21.4%	+27.8%	+30.9%	+4.0%	+5.7%
Registrars	59	+20	+21	+15	+4	+5	+1	+51.9%	+56.8%	+33.0%	+6.7%	+8.5%	+1.5%
SHO/ Interns	62	+4	+2	+3	+7	+1	+1	+6.7%	+3.5%	+5.9%	+12.3%	+2.2%	+1.2%
Medical/ Dental, other	2			+0	+0					+1.0%	+6.4%		
Nurse/ Midwife Manager	79	+15	+11	+5	+8	+2	+2	+23.6%	+16.4%	+7.4%	+10.7%	+2.3%	+2.7%
Nurse/ Midwife Specialist & AN/MP	18	+3	+3	+6	+5	+2	+1	+20.1%	+21.9%	+50.8%	+37.7%	+12.6%	+6.4%

Jun 2021 (Dec 2016 figure: 10,971)	WTE Jun 2021	WTE change since Dec 16	WTE change since Dec 17	WTE change since Dec 18	WTE change since Dec 19	WTE change since Dec 20	WTE change since Apr 21	% change since Dec 16	% change since Dec 17	% change since Dec 18	% change since Dec 19	% change since Dec 20	% change since Apr 21
Overall	13,288	+2,317	+1,906	+1,515	+1,243	+365	+61	+21.1%	+16.7%	+12.9%	+10.3%	+2.8%	+0.5%
Staff Nurse/ Staff Midwife	268	+36	+33	+30	+27	+3	+3	+15.8%	+13.8%	+12.5%	+11.4%	+1.1%	+1.2%
Nursing/ Midwifery Student	6	+6	+6	+6	+5	+5	-0	-100.0%	-100.0%	-100.0%	+380.0%	+500.0%	-1.8%
Nursing/ Midwifery other	3	+1	+1	+1	+1	+0	-0	+54.0%	+58.6%	+54.0%	+56.7%	+0.8%	-1.1%
Therapy Professions	36	+6	+8	+5	+11	-0	-0	+21.8%	+27.6%	+15.6%	+42.1%	-0.9%	-0.1%
Health Science/ Diagnostics	85	+10	+15	+16	+15	+2	-0	+12.7%	+21.2%	+22.8%	+20.7%	+2.2%	-0.4%
Pharmacy	16	+3	+2	+0	+0	+2	+1	+25.7%	+17.5%	+2.0%	+2.3%	+12.7%	+4.1%
H&SC, Other	2	+2	+1	+1	+2	+2		-100.0%	+75.4%	+70.9%	+900.0%	-100.0%	
Management (VIII & above)	4			-1	-1	+1	-0			-20.0%	-20.0%	+33.3%	-8.5%
Administrative/ Supervisory (V to VII)	29	+11	+10	+10	+6	+1	-0	+63.5%	+56.0%	+55.4%	+27.8%	+2.3%	-0.4%
Clerical (III & IV)	104	-10	-6	-5	+3	+8	+4	-9.1%	-5.4%	-4.5%	+2.8%	+8.7%	+4.4%
Support	32	+7	+6	+8	+6	+5	+2	+27.7%	+22.1%	+35.4%	+24.1%	+16.6%	+6.6%
Maintenance/ Technical	13	-6	-3	-0	-0	-0	-0	-32.8%	-20.9%	-1.5%	-3.3%	-0.1%	-1.4%
Health Care Assistants	185	+56	+37	+17	+25	+4	-3	+43.4%	+25.3%	+10.3%	+15.8%	+2.0%	-1.6%
Care, other	1												
MRH Mullingar	1,047	+175	+155	+127	+133	+43	+13	+20.0%	+17.4%	+13.9%	+14.6%	+4.3%	+1.3%
Consultants	27	+7	+4	+3	+4	+1	+1	+35.2%	+15.8%	+11.3%	+18.0%	+3.3%	+3.8%
Registrars	24	+8	+9	+6	+4	+2		+51.3%	+58.6%	+36.3%	+21.8%	+10.6%	
SHO/ Interns	15	+3	-0	-0	-0	+1		+22.3%	-2.6%	-2.6%	-2.6%	+4.1%	
Medical/ Dental, other	4	+1	+1	-1	-0	-1	+1	+47.6%	+15.8%	-13.8%	-6.6%	-12.6%	+18.1%
Nurse/ Midwife Manager	26	+6	+5	+0	+3	+2	+1	+31.0%	+21.9%	+1.6%	+10.7%	+6.9%	+1.9%
Nurse/ Midwife Specialist & AN/MP	13	+8	+7	+8	+4	+0	-1	+137.1%	+128.7%	+161.0%	+44.6%	+2.0%	-6.5%
Staff Nurse/ Staff Midwife	85	+15	+7	+3	+4	+3	-3	+20.8%	+9.5%	+3.2%	+4.7%	+3.2%	-3.7%
Nursing/ Midwifery other	1	-1	-1	-1	-1			-33.3%	-33.3%	-33.3%	-33.3%		
Therapy Professions	3	+1	+1	+0	+0	+1		+32.0%	+19.6%	+11.5%	+17.0%	+32.0%	
Health Science/ Diagnostics	2	-3	-2	-3	+0	-0		-60.7%	-46.4%	-59.6%	+6.6%	-16.3%	
Social Workers	2	+1	+1	+1		+1		+132.6%	+132.6%	+100.0%		+100.0%	
Pharmacy	4	+1	+1	+1	+1			+33.3%	+33.3%	+33.3%	+33.3%		
H&SC, Other	4	+1	+1	+1				+35.7%	+23.4%	+23.4%			
Management (VIII & above)	4	+2	+1	+2	+1			+100.0%	+33.3%	+100.0%	+33.3%		
Administrative/ Supervisory (V to VII)	31	+12	+8	+7	+7	+3	+0	+61.5%	+36.8%	+28.8%	+30.2%	+12.2%	+1.3%
Clerical (III & IV)	48	+16	+16	+11	+12	+11	+7	+47.2%	+49.6%	+30.1%	+34.4%	+27.9%	+18.2%
Support	30	+3	+2	+2	+3	+1	+1	+12.6%	+9.0%	+8.1%	+9.3%	+3.3%	+2.1%
Health Care Assistants	13	+5	+3	+4	+4		-1	+59.8%	+25.1%	+50.3%	+42.2%		-7.1%
Royal Victoria Eye & Ear	337	+86	+64	+46	+46	+24	+5	+34.1%	+23.4%	+15.6%	+15.9%	+7.7%	+1.7%
Consultants	10	+1	+1	-1	-0	-0	-0	+10.7%	+9.6%	-9.6%	-1.0%	-1.0%	-1.0%
Registrars	13												
SHO/ Interns	15			+1	+1					+7.1%	+7.1%		
Medical/ Dental, other	0												
Nurse/ Midwife Manager	34	-0	+2	-4	-0	-1	-1	-0.1%	+5.2%	-10.7%	-1.1%	-4.0%	-2.9%
Nurse/ Midwife Specialist & AN/MP	25	+8	+4	+0	-3	-1	-2	+48.6%	+17.2%	+0.7%	-9.7%	-3.9%	-7.4%
Staff Nurse/ Staff Midwife	103	+1	-3	-0	+0	-3	+1	+1.5%	-2.9%	-0.4%	+0.2%	-2.6%	+1.0%
Nursing/ Midwifery Student	10	+10	+10	+10	+10	+10		-100.0%	-100.0%	-100.0%	-100.0%	-100.0%	
Nursing/ Midwifery other	3	-2	-2	-2	-2	-1	-1	-40.0%	-40.0%	-40.0%	-40.0%	-25.0%	-25.0%
Therapy Professions	17	+1	-1	-1	-5		-2	+8.9%	-5.0%	-6.5%	-21.5%		-8.1%
Health Science/ Diagnostics	22	+1	+4	+4	+4	+1	+1	+5.0%	+23.2%	+23.7%	+24.3%	+6.0%	+6.0%
Social Workers	4	+2	+2	+2	+2	+0	+0	+100.0%	+100.0%	+100.0%	+100.0%	+5.3%	+5.3%
Pharmacy	7	+3	+2	+2	-1	+1	+1	+78.0%	+43.1%	+49.0%	-14.1%	+10.6%	+10.6%
Management (VIII & above)	3	+1	+1	+1	+2			+50.0%	+50.0%	+50.0%	+200.0%		
Administrative/ Supervisory (V to VII)	26	+6	+6	+8	+7	+2	+2	+30.1%	+26.9%	+40.5%	+36.8%	+9.7%	+7.4%
Clerical (III & IV)	44	+3	+5	-2	+1	+2	+1	+8.5%	+13.2%	-3.5%	+1.9%	+5.0%	+1.4%
Support	48	-3	-1	+1	+0	+1	+1	-5.1%	-1.9%	+2.2%	+0.7%	+1.7%	+1.7%
Maintenance/ Technical	2	-1	-1					-33.3%	-33.3%				
Health Care Assistants	28	+2	+1	+1	+3	+1	+0	+7.2%	+3.2%	+3.2%	+10.5%	+3.2%	+0.7%
Care, other	1	+0	+0	-1	-1	-1	-1	+10.0%	+10.0%	-45.0%	-45.0%	-45.0%	-45.0%
St. Michael's	415	+35	+29	+18	+18	+11	+0	+9.1%	+7.4%	+4.7%	+4.5%	+2.6%	+0.0%
Consultants	18	+2	-0	-0	-1	+2	-1	+13.5%	-1.4%	-0.5%	-4.4%	+11.5%	-2.7%
Registrars	8	-2	-3	-3	-2	-2	-1	-20.7%	-28.0%	-24.6%	-20.2%	-20.8%	-6.8%
SHO/ Interns	14	-0	-0	-0	-0	-2	-0	-1.5%	-1.5%	-1.5%	-1.5%	-13.7%	-1.3%
Nurse/ Midwife Manager	34	+10	+5	+2	+2	+0	-0	+40.5%	+18.8%	+7.9%	+4.6%	+0.1%	-1.4%
Nurse/ Midwife Specialist & AN/MP	8	-1	-0	-1	-0	+1	+1	-6.9%	-1.0%	-11.4%	-1.0%	+12.5%	+11.4%

Jun 2021 (Dec 2016 figure: 10,971)	WTE Jun 2021	WTE change since Dec 16	WTE change since Dec 17	WTE change since Dec 18	WTE change since Dec 19	WTE change since Dec 20	WTE change since Apr 21	% change since Dec 16	% change since Dec 17	% change since Dec 18	% change since Dec 19	% change since Dec 20	% change since Apr 21
Overall	13,288	+2,317	+1,906	+1,515	+1,243	+365	+61	+21.1%	+16.7%	+12.9%	+10.3%	+2.8%	+0.5%
Staff Nurse/ Staff Midwife	115	+6	+9	+4	-4	+2	+2	+5.8%	+8.7%	+3.9%	-3.3%	+1.9%	+2.0%
Nursing/ Midwifery other	1			-1	-1					-50.0%	-46.8%		
Therapy Professions	36	+13	+11	+7	+5	+1	-0	+54.4%	+42.0%	+22.6%	+14.5%	+3.3%	-0.9%
Health Science/ Diagnostics	20	+1	+2	-0	+2	-1	-1	+4.0%	+10.7%	-2.0%	+10.4%	-2.7%	-4.6%
Social Workers	6	+1	+2	+1	+1	+0	+1	+12.3%	+38.5%	+18.0%	+19.8%	+2.4%	+9.6%
Psychologists	2	+1	+1	+1	+1	+1		+132.0%	+50.6%	+38.9%	+28.9%	+41.5%	
Pharmacy	5	+2	+3	+1	+0			+44.3%	+99.6%	+23.8%	+5.0%		
Management (VIII & above)	2	+0	+1	+1	+1			+14.3%	+100.0%	+100.0%	+100.0%		
Administrative/ Supervisory (V to VII)	13	+2	+2	-1	-1	-0	-0	+13.7%	+14.0%	-8.1%	-9.4%	-1.2%	-2.1%
Clerical (III & IV)	64	+11	+10	+8	+10	+6	+1	+20.1%	+18.4%	+14.8%	+19.0%	+10.7%	+1.7%
Support	63	+12	+6	+7	+6	+3	-3	+23.7%	+10.7%	+11.7%	+11.2%	+4.6%	-4.4%
Maintenance/ Technical	1												
Health Care Assistants	51	+4	+5	-3	-7	-3	-2	+9.2%	+11.3%	-5.2%	-12.7%	-5.5%	-3.6%
Care, other	3	+2	+2	+2	+3	+0	+0	+200.0%	+200.0%	+200.0%	-100.0%	+11.5%	+0.3%
St. Columcille's	465	+63	+55	+25	+14	+8	-3	+15.8%	+13.3%	+5.6%	+3.0%	+1.8%	-0.7%
Consultants	37	+2	+2	+2	+2	-0	+0	+4.7%	+5.7%	+7.0%	+7.1%	-0.4%	+0.3%
Registrars	39	+7	+5	+3	+3	+1		+21.9%	+13.0%	+6.8%	+8.3%	+2.6%	
SHO/ Interns	21		-1			-1			-4.5%			-4.5%	
Medical/ Dental, other	1	+0	+0	+0	+0	+0		+16.7%	+16.7%	+16.7%	+16.7%	+16.7%	
Nurse/ Midwife Manager	140	+30	+28	+23	+20	+5	+2	+27.8%	+25.3%	+19.3%	+16.4%	+3.4%	+1.4%
Nurse/ Midwife Specialist & AN/MP	16	+6	+5	+1	+1	+1	+1	+55.2%	+44.6%	+7.2%	+10.1%	+6.2%	+6.0%
Staff Nurse/ Staff Midwife	241	+0	+12	-3	-5	+1	-7	+0.2%	+5.3%	-1.3%	-2.0%	+0.5%	-2.9%
Nursing/ Midwifery Student	36	+13	+13	+13	+15	+18	-1	+53.2%	+56.5%	+56.5%	+67.4%	+100.0%	-1.4%
Nursing/ Midwifery other	4	+1	+0					+21.8%	+1.0%				
Therapy Professions	15	+6	+7	+6	+3	-1	-1	+73.7%	+97.6%	+64.5%	+28.7%	-8.2%	-6.4%
Health Science/ Diagnostics	45	+6	+7	+2	+4	-2		+15.3%	+18.1%	+4.6%	+9.3%	-4.7%	
Social Workers	8	+3	+2	+1	+0	-2		+80.9%	+40.6%	+21.5%	+2.7%	-19.2%	
Psychologists	2	+1	+1	+1	+0			+151.6%	+151.6%	+151.6%	+4.0%		
Pharmacy	7	+0	+1	+1	-0	-1	-0	+7.9%	+11.5%	+15.3%	-5.6%	-12.8%	-0.0%
Management (VIII & above)	6	+1	+1	+1	-0	-1		+10.0%	+10.0%	+10.0%	-1.8%	-9.8%	
Administrative/ Supervisory (V to VII)	61	+18	+17	+13	+10	+4	+2	+42.0%	+38.9%	+27.4%	+19.3%	+7.9%	+3.4%
Clerical (III & IV)	72	-2	-9	-5	-8	+2	-1	-2.5%	-11.4%	-6.9%	-10.3%	+2.2%	-0.9%
Support	139	+24	+15	+11	+9	+5	-0	+20.7%	+12.5%	+8.4%	+6.9%	+3.8%	-0.3%
Maintenance/ Technical	14	+7	+4	+4	+3	-1	-1	+100.0%	+40.0%	+40.0%	+27.3%	-6.7%	-6.7%
Health Care Assistants	39	+12	+11	+8	+4	-3	-2	+44.4%	+38.7%	+27.4%	+12.5%	-7.6%	-3.9%
National Maternity	941	+135	+121	+81	+61	+25	-7	+16.8%	+14.7%	+9.4%	+7.0%	+2.7%	-0.8%
Consultants	153	+30	+23	+15	+8	-1	-0	+24.3%	+17.7%	+10.7%	+5.8%	-0.6%	-0.2%
Registrars	186	+34	+33	+30	+21	+18	+2	+22.2%	+21.4%	+19.4%	+12.7%	+10.9%	+1.0%
SHO/ Interns	173	+51	+52	+39	+47	-6	+2	+41.8%	+43.0%	+29.1%	+37.0%	-3.4%	+1.2%
Medical/ Dental, other	6	+1	+2	+5	+5	+5	-1	+13.8%	+50.0%	+413.9%	+386.0%	+527.0%	-8.5%
Nurse/ Midwife Manager	244	+78	+72	+74	+61	+12	+14	+46.7%	+41.6%	+43.5%	+33.3%	+4.9%	+6.0%
Nurse/ Midwife Specialist & AN/MP	95	+14	+11	+10	+8	+3	+8	+17.4%	+12.8%	+12.1%	+8.7%	+2.8%	+9.3%
Staff Nurse/ Staff Midwife	776	+114	+30	+95	+52	+56	-20	+17.3%	+4.0%	+13.9%	+7.1%	+7.8%	-2.5%
Nursing/ Midwifery Student	38	+32	+27	+23	+20	-28	+5	+581.8%	+257.8%	+162.6%	+117.4%	-42.9%	+15.4%
Nursing/ Midwifery other	5	-9	-9	-9	-9	-4	-0	-66.3%	-66.5%	-66.5%	-66.5%	-45.3%	-1.0%
Therapy Professions	110	+11	+13	+3	+6	-5	+3	+10.8%	+13.4%	+2.5%	+5.4%	-4.7%	+2.4%
Health Science/ Diagnostics	234	+29	+17	+11	+22	+11	-5	+14.3%	+7.7%	+5.0%	+10.3%	+4.9%	-2.2%
Social Workers	21	+2	+3	+2	+2	+0	+1	+8.4%	+19.3%	+13.0%	+13.0%	+1.7%	+2.6%
Psychologists	10	+5	+5	+4	-0	+1	-1	+98.9%	+87.1%	+53.7%	-0.3%	+9.2%	-9.5%
Pharmacy	58	+8	+3	+1	-0	-1	-1	+16.0%	+5.2%	+1.4%	-0.5%	-2.1%	-2.4%
H&SC, Other	1	-0	-0	-0	+1	+1		-14.1%	-14.1%	-14.1%	+231.4%	+231.4%	
Management (VIII & above)	22	+2	+6	+3	+4	+1	-3	+12.1%	+37.0%	+12.8%	+18.8%	+5.6%	-12.3%
Administrative/ Supervisory (V to VII)	183	+34	+29	+31	+35	-2	-1	+22.6%	+19.2%	+20.6%	+23.4%	-0.9%	-0.5%
Clerical (III & IV)	298	+50	+33	+20	+10	+30	+13	+20.2%	+12.5%	+7.1%	+3.5%	+11.0%	+4.7%
Support	321	+49	+38	+34	+29	+4	+6	+18.0%	+13.4%	+11.9%	+9.9%	+1.3%	+1.8%
Maintenance/ Technical	39	+4	+4	+4	+4	+4	-1	+11.8%	+11.8%	+11.8%	+11.8%	+11.8%	-3.0%
Health Care Assistants	201	+10	+17	+36	+20	-1	+4	+5.3%	+9.5%	+21.5%	+11.3%	-0.6%	+1.9%
Care, other	10	+1	+1	+1	+1	-1	-1	+13.9%	+16.0%	+16.0%	+16.0%	-6.1%	-8.1%
St. Vincent's University	3,184	+549	+410	+431	+346	+97	+22	+20.8%	+14.8%	+15.7%	+12.2%	+3.1%	+0.7%
Staff Nurse/ Staff Midwife	12	+12	+12	+12	+12	+4	-2	-100.0%	-100.0%	-100.0%	-100.0%	+49.2%	-12.4%

Jun 2021 (Dec 2016 figure: 10,971)	WTE Jun 2021	WTE change since Dec 16	WTE change since Dec 17	WTE change since Dec 18	WTE change since Dec 19	WTE change since Dec 20	WTE change since Apr 21	% change since Dec 16	% change since Dec 17	% change since Dec 18	% change since Dec 19	% change since Dec 20	% change since Apr 21
Overall	13,288	+2,317	+1,906	+1,515	+1,243	+365	+61	+21.1%	+16.7%	+12.9%	+10.3%	+2.8%	+0.5%
Health Care Assistants	0	+0	+0	+0	+0	+0	-0	-100.0%	-100.0%	-100.0%	-100.0%	+4.8%	-24.1%
IEHG Bank	12	+12	+12	+12	+12	+4	-2	-100.0%	-100.0%	-100.0%	-100.0%	+46.9%	-12.9%

Source: Health Service Personnel Census