

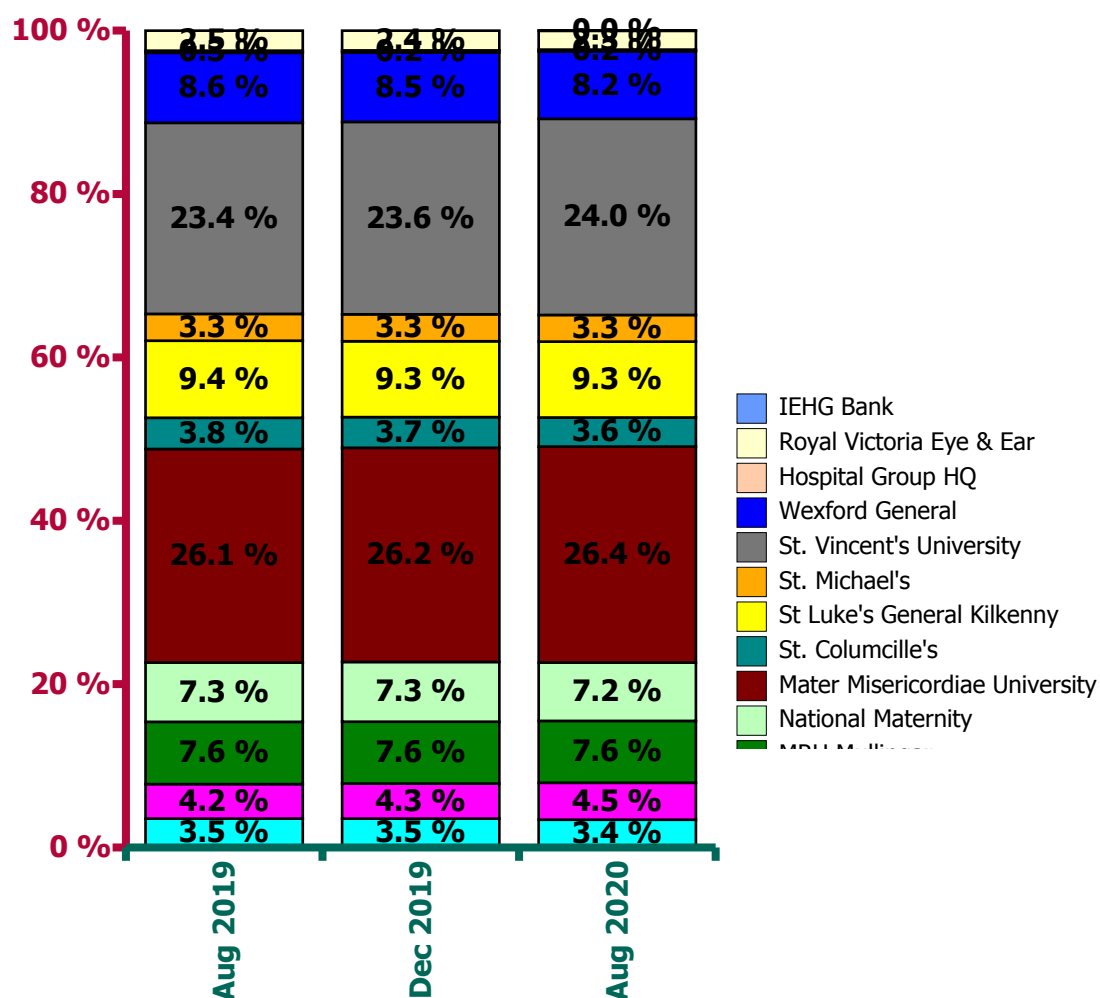
Ireland East Hospital Group Employment Report: November 2020

Employment by Staff Group

Nov 2020 (Dec 2019 figure: 12,045)	WTE Oct 2020	WTE Nov 2020	WTE change since Oct 20	% change since Oct 20	WTE change since Dec 19	WTE change since Nov 19
Overall	12,831	12,908	+77.40	+0.6%	+863	+859
Consultants	586	587	+1	+0.2%	+49	+47
Registrars	678	663	-15	-2.2%	+44	+43
SHO/ Interns	667	673	+6	+0.8%	+103	+99
Medical/ Dental, other	27	28	+0	+0.4%	+2	+1
Medical & Dental	1,958	1,950	-8	-0.4%	+198	+191
Nurse/ Midwife Manager	1,008	1,024	+16	+1.6%	+94	+95
Nurse/ Midwife Specialist & AN/MP	334	337	+3	+0.8%	+30	+29
Staff Nurse/ Staff Midwife	3,269	3,333	+64	+2.0%	+96	+128
<i>Pre-registration Nurse/ Midwife Intern</i>		12	+12	-100.0%	-11	-18
<i>Pre-registration Nurse Intern (COVID-19)</i>	97	52	-44	-46.0%	+52	+52
<i>Post-registration Nurse/ Midwife Student</i>	20	17	-3	-15.0%	-6	-5
<i>Nursing/ Midwifery awaiting registration</i>	31	34	+3	+10.3%	+30	-12
Nursing/ Midwifery Student	147	115	-32	-21.9%	+58	+18
Nursing/ Midwifery other	74	75	+0	+0.6%	-1	-2
Nursing & Midwifery	4,832	4,884	+51	+1.1%	+277	+267
Therapy Professions	474	478	+4	+0.9%	+56	+56
Health Science/ Diagnostics	787	790	+3	+0.4%	+56	+54
Social Workers	75	75	-0	-0.0%	+5	+6
Psychologists	22	22	+0	+1.2%	+0	+2
Pharmacy	189	187	-2	-1.3%	-1	+1
H&SC, Other	24	29	+5	+21.2%	+3	+3
Health & Social Care Professionals	1,571	1,581	+10	+0.6%	+119	+123
Management (VIII & above)	94	98	+4	+4.3%	+15	+13
Administrative/ Supervisory (V to VII)	593	600	+7	+1.2%	+84	+91
Clerical (III & IV)	1,219	1,217	-1	-0.1%	+4	+4
Management & Administrative	1,906	1,915	+10	+0.5%	+102	+108
Support	1,297	1,302	+5	+0.4%	-21	-19
Maintenance/ Technical	121	120	-1	-0.8%	+7	+7
General Support	1,418	1,422	+4	+0.3%	-14	-11
Health Care Assistants	1,119	1,128	+9	+0.8%	+179	+176
Care, other	27	28	+1	+3.8%	+2	+4
Patient & Client Care	1,146	1,156	+10	+0.9%	+181	+180

Ireland East Hospital Group Employment by Hospital: Nov 2020

Nov 2020 (Dec 2019 figure: 12,045)	WTE Oct 2020	WTE Nov 2020	WTE change since Oct 20	% change since Oct 20	WTE change since Dec 19	WTE change since Nov 19
Overall	12,831	12,908	+77	+0.6%	+863	+859
Cappagh National Orthopaedic	438	441	+4	+0.8%	+15	+15
Our Lady's Navan	582	584	+2	+0.3%	+68	+69
MRH Mullingar	984	992	+8	+0.8%	+78	+80
National Maternity	919	920	+2	+0.2%	+41	+43
Mater Misericordiae University	3,385	3,430	+45	+1.3%	+271	+260
St. Columcille's	458	457	-2	-0.4%	+5	+5
St Luke's General Kilkenny	1,179	1,184	+5	+0.4%	+65	+64
St. Michael's	399	400	+1	+0.4%	+3	+3
St. Vincent's University	3,101	3,099	-2	-0.1%	+261	+263
Wexford General	1,048	1,054	+6	+0.6%	+30	+30
Hospital Group HQ	30	34	+4	+12.5%	+4	+3
Royal Victoria Eye & Ear	304	307	+3	+1.0%	+16	+16
IEHG Bank	5	7	+2	+38.5%	+7	+7



**Ireland East Hospital Group Employment by Administration (HSE / S38):
November 2020**

Nov 2020 (Dec 2019 figure: 12,045)	WTE Oct 2020	WTE Nov 2020	WTE change since Oct 20	% change since Oct 20	WTE change since Dec 19	WTE change since Nov 19
Overall	12,831	12,908	+77	+0.6%	+863	+859
HSE	4,286	4,311	+25	+0.6%	+257	+258
Section 38 Hospitals	8,545	8,597	+52	+0.6%	+607	+601

HSE

Nov 2020 (Dec 2019 figure: 4,054)	WTE Oct 2020	WTE Nov 2020	WTE change since Oct 20	% change since Oct 20	WTE change since Dec 19	WTE change since Nov 19
Overall	4,286	4,311	+25	+0.6%	+257	+258
Consultants	152	150	-2	-0.0%	+12	+10
Registrars	210	210	+0	+0.0%	+9	+10
SHO/ Interns	234	235	+1	+0.0%	+11	+9
Medical/ Dental, other	14	15	+1	+0.1%	+1	+0
Medical & Dental	610	610	+0	+0.0%	+34	+30
Nurse/ Midwife Manager	327	330	+3	+0.0%	+10	+4
Nurse/ Midwife Specialist & AN/MP	84	85	+1	+0.0%	+12	+13
Staff Nurse/ Staff Midwife	1,107	1,129	+22	+0.0%	+55	+65
<i>Pre-registration Nurse/ Midwife Intern</i>				-1.0%	-1	-1
<i>Pre-registration Nurse Intern (COVID-19)</i>	10	2	-8	-0.8%	+2	+2
<i>Nursing/ Midwifery awaiting registration</i>	4	1	-3	-0.8%	-3	-9
Nursing/ Midwifery Student	14	3	-11	-0.8%	-3	-8
Nursing/ Midwifery other	5	5	+0	+0.0%	+0	+0
Nursing & Midwifery	1,536	1,551	+16	+1.0%	+73	+74
Therapy Professions	171	170	-1	-0.0%	+35	+34
Health Science/ Diagnostics	230	231	+1	+0.0%	+18	+22
Social Workers	7	7	-0	-0.0%	+1	+1
Psychologists	1	2	+0	+0.2%	-0	-0
Pharmacy	55	56	+1	+0.0%	-1	-0
H&SC, Other				-1.0%	-0	
Health & Social Care Professionals	465	465	+1	+0.2%	+53	+56
Management (VIII & above)	24	26	+2	+0.1%	+7	+7
Administrative/ Supervisory (V to VII)	118	120	+3	+0.0%	+26	+31
Clerical (III & IV)	460	465	+5	+0.0%	-1	-2
Management & Administrative	601	611	+10	+1.6%	+32	+36
Support	459	453	-6	-0.0%	-60	-62
Maintenance/ Technical	40	40	+0	+0.0%	+0	+0
General Support	498	493	-5	-1.1%	-60	-62
Health Care Assistants	567	572	+5	+0.0%	+125	+124
Care, other	9	8	-1	-0.1%	-1	+1
Patient & Client Care	576	580	+5	+0.8%	+124	+124

Section 38 Hospitals

Nov 2020 (Dec 2019 figure: 7,991)	WTE Oct 2020	WTE Nov 2020	WTE change since Oct 20	% change since Oct 20	WTE change since Dec 19	WTE change since Nov 19
Overall	8,545	8,597	+52	+0.6%	+607	+601
Consultants	434	437	+3	+0.0%	+37	+37
Registrars	468	452	-15	-0.0%	+35	+33
SHO/ Interns	433	438	+5	+0.0%	+91	+90
Medical/ Dental, other	13	13	-1	-0.1%	+1	+1
Medical & Dental	1,348	1,340	-8	-0.6%	+164	+161
Nurse/ Midwife Manager	681	694	+13	+0.0%	+84	+91
Nurse/ Midwife Specialist & AN/MP	250	252	+2	+0.0%	+18	+16
Staff Nurse/ Staff Midwife	2,162	2,204	+42	+0.0%	+41	+62
<i>Pre-registration Nurse/ Midwife Intern</i>		12	+12	-1.0%	-10	-17
<i>Pre-registration Nurse Intern (COVID-19)</i>	87	50	-37	-0.4%	+50	+50
<i>Post-registration Nurse/ Midwife Student</i>	20	17	-3	-0.2%	-6	-5
<i>Nursing/ Midwifery awaiting registration</i>	27	33	+6	+0.2%	+33	-3
Nursing/ Midwifery Student	134	112	-22	-0.2%	+61	+26
Nursing/ Midwifery other	70	70	+0	+0.0%	-1	-2
Nursing & Midwifery	3,297	3,332	+36	+1.1%	+204	+193
Therapy Professions	303	309	+5	+0.0%	+22	+23
Health Science/ Diagnostics	557	559	+2	+0.0%	+38	+32
Social Workers	68	68	-0	-0.0%	+4	+5
Psychologists	20	20		+0.0%	+0	+2
Pharmacy	134	131	-3	-0.0%	-0	+2
H&SC, Other	24	29	+5	+0.2%	+3	+3
Health & Social Care Professionals	1,107	1,116	+9	+0.8%	+66	+67
Management (VIII & above)	70	72	+2	+0.0%	+7	+5
Administrative/ Supervisory (V to VII)	475	480	+5	+0.0%	+58	+60
Clerical (III & IV)	759	753	-6	-0.0%	+5	+7
Management & Administrative	1,304	1,305	+0	+0.0%	+70	+72
Support	838	849	+11	+0.0%	+39	+44
Maintenance/ Technical	81	80	-1	-0.0%	+7	+7
General Support	919	929	+10	+1.1%	+46	+51
<i>HCA, Nurse's Aide, etc.</i>	528	531	+3	+0.0%	+62	+48
<i>Health & Social Care Assistants</i>	24	25	+1	+0.0%	+5	+4
Health Care Assistants	552	556	+4	+0.0%	+54	+52
<i>Other Care Grades</i>	18	20	+2	+0.1%	+3	+4
Care, other	18	20	+2	+0.1%	+3	+4
Patient & Client Care	570	575	+5	+0.9%	+56	+56

Cappagh National Orthopaedic

Nov 2020 (Dec 2019 figure: 426)	WTE Oct 2020	WTE Nov 2020	WTE change since Oct 20	% change since Oct 20	WTE change since Dec 19
Overall	438	441	+3	+0.8%	+15
Consultants	16	16	0	+0.0%	-1
Registrars	18	19	+1	+0.0%	+1
SHO/ Interns	11	12	+1	+0.1%	
Medical & Dental	45	46	+2	+2	
Nurse/ Midwife Manager	41	41	0	+0.0%	
Nurse/ Midwife Specialist & AN/MP	9	9	0	+0.0%	
Staff Nurse/ Staff Midwife	111	111	0	+0.0%	+8
Nursing/ Midwifery other	2	2	0	+0.0%	
Nursing & Midwifery	163	163			+8
Therapy Professions	32	33	+1	+0.0%	
Health Science/ Diagnostics	26	26	-0	-0.0%	+1
Social Workers	7	7	0	+0.0%	
Psychologists	1	1	0	+0.0%	
Pharmacy	5	5	0	+0.0%	
Health & Social Care Professionals	71	72	+1	+1	+1
Management (VIII & above)	4	4	0	+0.0%	
Administrative/ Supervisory (V to VII)	25	25	0	+0.0%	+3
Clerical (III & IV)	41	42	+1	+0.0%	+2
Management & Administrative	70	71	+1	+1	+5
Support	62	62	-0	-0.0%	+0
Maintenance/ Technical	1	1	0	+0.0%	
General Support	63	63			+0
Health Care Assistants	26	26	0	+0.0%	
Patient & Client Care	26	26			

Our Lady's Navan

Nov 2020 (Dec 2019 figure: 516)	WTE Oct 2020	WTE Nov 2020	WTE change since Oct 20	% change since Oct 20	WTE change since Dec 19
Overall	582	584	+2	+0.3%	+68
Consultants	15	15	+0	+0.0%	+2
Registrars	31	32	+1	+0.0%	+5
SHO/ Interns	45	44	-1	-0.0%	+9
Medical & Dental	90	91	+0	+0	+16
Nurse/ Midwife Manager	48	47	-1	-0.0%	+3
Nurse/ Midwife Specialist & AN/MP	13	13	+0	+0.0%	+2
Staff Nurse/ Staff Midwife	133	133	+1	+0.0%	+12
Nursing/ Midwifery Student	1		-1	-1.0%	-4
Nursing & Midwifery	195	193	-1	-1	+13
Therapy Professions	27	26	-1	-0.0%	+8
Health Science/ Diagnostics	39	39	-0	-0.0%	+2
Pharmacy	7	7	-0	-0.0%	+1
Health & Social Care Professionals	74	73	-1	-1	+11
Management (VIII & above)	2	2	+0	+0.0%	
Administrative/ Supervisory (V to VII)	20	20	+0	+0.0%	+8
Clerical (III & IV)	57	58	+2	+0.0%	+2
Management & Administrative	79	81	+2	+2	+10
Support	24	24	+0	+0.0%	+1
Maintenance/ Technical	5	5	0	+0.0%	-0
General Support	29	29	+0	+0	+1
Health Care Assistants	114	115	+2	+0.0%	+17
Care, other	2	2	-1	-0.2%	-1
Patient & Client Care	116	117	+1	+1	+17

MRH Mullingar

Nov 2020 (Dec 2019 figure: 914)	WTE Oct 2020	WTE Nov 2020	WTE change since Oct 20	% change since Oct 20	WTE change since Dec 19
Overall	984	992	+8	+0.8%	+78
Consultants	42	41	-1	-0.0%	+7
Registrars	56	54	-1	-0.0%	-1
SHO/ Interns	59	60	+1	+0.0%	+5
Medical/ Dental, other	2	2	0	+0.0%	+0
Medical & Dental	159	157	-2	-2	+11
Nurse/ Midwife Manager	76	78	+1	+0.0%	+6
Nurse/ Midwife Specialist & AN/MP	15	16	+1	+0.1%	+3
Staff Nurse/ Staff Midwife	256	259	+3	+0.0%	+19
Nursing/ Midwifery Student	2	1	-1	-0.5%	-0
Nursing/ Midwifery other	3	3	0	+0.0%	+1
Nursing & Midwifery	352	356	+5	+5	+29
Therapy Professions	38	37	-1	-0.0%	+12
Health Science/ Diagnostics	82	82	-0	-0.0%	+11
Pharmacy	14	13	-1	-0.1%	-3
H&SC, Other				-1.0%	-0
Health & Social Care Professionals	134	132	-2	-2	+20
Management (VIII & above)	3	3	0	+0.0%	-2
Administrative/ Supervisory (V to VII)	27	28	+1	+0.0%	+5
Clerical (III & IV)	97	98	+1	+0.0%	-3
Management & Administrative	127	129	+1	+1	+0
Support	27	27	-0	-0.0%	+1
Maintenance/ Technical	13	13	+0	+0.0%	-0
General Support	39	39	-0	-0	+1
Health Care Assistants	172	177	+5	+0.0%	+18
Care, other	1	1	0	+0.0%	
Patient & Client Care	173	178	+5	+5	+18

National Maternity

Nov 2020 (Dec 2019 figure: 880)	WTE Oct 2020	WTE Nov 2020	WTE change since Oct 20	% change since Oct 20	WTE change since Dec 19
Overall	919	921	+2	+0.2%	+41
Consultant Surgery	0	0	0	+0.0%	+0
Consultant Radiology				-1.0%	-0
Consultant Pathology	3	3	0	+0.0%	+0
Consultant Paediatrics	9	9	0	+0.0%	+2
Consultant Obstetrics & Gynaecology	17	17	0	+0.0%	-1
Consultant Medicine	0	0	0	+0.0%	
Consultant Anaesthesia	8	8	0	+0.0%	+2
Consultants	37	37	0	+0.0%	+3
Specialist Registrar	16	16	0	+0.0%	-2
Senior Registrar	2	2	0	+0.0%	+1
Registrar	22	21	-1	-0.0%	+3
Registrars	40	39	-1	-0.0%	+3
Senior House Officer	21	22	+1	+0.0%	+1
SHO/ Interns	21	22	+1	+0.0%	+1
Other Medical	1	1	0	+0.0%	
Medical/ Dental, other	1	1	0	+0.0%	
Medical & Dental	99	99			+7
Director of Nursing/Midwifery	1	1	0	+0.0%	
Director Nursing/Midwifery, Assistant	8	8	0	+0.0%	-0
Clinical Nurse/ Midwife Manager	120	128	+8	+0.1%	+20
Nurse/ Midwife Manager	129	137	+8	+0.1%	+17
Clinical Nurse/ Midwife Specialist	10	10	-0	-0.0%	+0
Advanced Nurse/ Midwife Practitioner	5	5	0	+0.0%	
Nurse/ Midwife Specialist & AN/MP	15	15	-0	-0.0%	+1
Staff Nurses [General/ Children's]	78	76	-2	-0.0%	-3
Staff Midwives	162	166	+3	+0.0%	+0
Staff Nurse/ Staff Midwife	240	242	+1	+0.0%	-4
Post-registration Nurse/ Midwife Student	20	17	-3	-0.2%	-6
Pre-registration Nurse Intern (COVID-19)	3	1	-2	-0.6%	+1
Pre-registration Nurse/ Midwife Intern				-1.0%	
Nursing/ Midwifery Student	23	18	-5	-0.2%	-4
Nursing Education/Clinical	4	4	0	+0.0%	
Nursing/ Midwifery other	4	4	0	+0.0%	
Nursing & Midwifery	411	416	+5	+5	+10
Physiotherapists	7	7	0	+0.0%	+2
Dietitians	7	7	0	+0.0%	+3
Therapy Professions	14	14	0	+0.0%	+3
Radiographers	9	9	0	+0.0%	+2
Medical Laboratory	35	35	0	+0.0%	+2
Clinical Engineering	4	4	0	+0.0%	
Health Science/ Diagnostics	47	47	0	+0.0%	+6
Social Workers	8	9	+1	+0.1%	+3
Social Workers	8	9	+1	+0.1%	+2
Psychologists	2	2	0	+0.0%	+1
Psychologists	2	2	0	+0.0%	+0
Pharmacy	9	8	-1	-0.1%	+2

Pharmacy	9	8	-1	-0.1%	+1
Health & Social Care Professionals	81	81			+11
Senior Management (VIII & GM)	5	5	0	+0.0%	+1
Executive Management	2	2	0	+0.0%	+1
Management (VIII & above)	6	6	0	+0.0%	+1
Middle Management (V-VII)	55	56	+1	+0.0%	+8
Administrative/ Supervisory (V to VII)	55	56	+1	+0.0%	+4
General Administrative (III & IV)	72	72	+0	+0.0%	-6
Clerical (III & IV)	72	72	+0	+0.0%	-9
Management & Administrative	132	134	+1	+1	-4
Portering	25	25	+0	+0.0%	+4
Other Support	3	4	+1	+0.3%	+1
Other Labs & Associated	7	7	0	+0.0%	+1
Household Services	84	82	-2	-0.0%	-2
Catering	15	15	-0	-0.0%	+1
Support	134	133	-0	-0.0%	+4
Technical Services	3	3	0	+0.0%	+1
Maintenance	14	13	-1	-0.1%	+5
Maintenance/ Technical	17	16	-1	-0.1%	+5
General Support	151	149	-1	-1	+9
Health & Social Care Assistants	1		-1	-1.0%	
HCA, Nurse's Aide, etc.	45	42	-2	-0.0%	+12
Health Care Assistants	45	42	-3	-0.1%	+8
Patient & Client Care	45	42	-3	-3	+8

Mater Misericordiae University

Nov 2020 (Dec 2019 figure: 3,159)	WTE Oct 2020	WTE Nov 2020	WTE change since Oct 20	% change since Oct 20	WTE change since Dec 19
Overall	3,385	3,430	+45	+1.3%	+271
Consultant Surgery	42	42	+0	+0.0%	+9
Consultant Radiology	16	16	0	+0.0%	-0
Consultant Psychiatry	2	2	0	+0.0%	+0
Consultant Pathology	19	19	+0	+0.0%	+1
Consultant Paediatrics	1	1	0	+0.0%	+1
Consultant Obstetrics & Gynaecology	3	3	0	+0.0%	
Consultant Medicine	70	73	+3	+0.0%	+16
Consultant Intensive Care Medicine	2	2	0	+0.0%	
Consultant Emergency Medicine	9	9	0	+0.0%	+3
Consultant Anaesthesia	25	25	0	+0.0%	+4
Consultants	189	192	+3	+0.0%	+21
Specialist Registrar	98	99	+1	+0.0%	+17
Senior Registrar	7	8	+1	+0.1%	+3
Registrar	84	85	+0	+0.0%	+13
Registrars	189	192	+3	+0.0%	+26
Senior House Officer	115	116	+1	+0.0%	+23
Interns	79	79	0	+0.0%	+20
SHO/ Interns	194	195	+1	+0.0%	+37
Other Medical	5	5	-0	-0.1%	+2
Dentists	1	1	0	+0.0%	
Medical/ Dental, other	6	6	-0	-0.1%	+1
Medical & Dental	579	585	+6	+6	+84
Director of Nursing/Midwifery	1	1	0	+0.0%	+1
Director Nursing/Midwifery, Assistant	18	19	+1	+0.1%	+3
Clinical Nurse/ Midwife Manager	202	202	+0	+0.0%	+27
Nurse/ Midwife Manager	220	222	+1	+0.0%	+14
Clinical Nurse/ Midwife Specialist	71	70	-1	-0.0%	+8
Advanced Nurse/ Midwife Practitioner	29	29	-0	-0.0%	+5
Nurse/ Midwife Specialist & AN/MP	100	99	-1	-0.0%	+12
Staff Nurses [General/ Children's]	870	934	+64	+0.1%	+73
Staff Nurse/ Staff Midwife	870	934	+64	+0.1%	+26
Nursing/ Midwifery awaiting registration				-1.0%	
Pre-registration Nurse Intern (COVID-19)	60	25	-35	-0.6%	+25
Pre-registration Nurse/ Midwife Intern				-1.0%	-8
Nursing/ Midwifery Student	60	25	-35	-0.6%	+13
Other Nursing/ Midwifery	14	14	-0	-0.0%	+4
Nursing Education/Clinical	36	37	+1	+0.0%	+6
Nursing/ Midwifery other	50	50	+0	+0.0%	+6
Nursing & Midwifery	1,300	1,330	+30	+30	+72
Speech & Language Therapists	17	18	+1	+0.1%	+4
Podiatrists & Chiropodists	2	2	0	+0.0%	
Physiotherapists	56	57	+1	+0.0%	+3
Orthoptists	1	1	0	+0.0%	
Occupational Therapists	23	23	-1	-0.0%	+2
Dietitians	24	26	+2	+0.1%	+2
Therapy Professions	123	126	+3	+0.0%	+13
Radiographers	68	70	+2	+0.0%	+10

Physicists	7	7	0	+0.0%	-1
Phlebotomists	17	17	+0	+0.0%	+5
Perfusionists	4	4	-0	-0.0%	+1
Medical Laboratory	91	94	+3	+0.0%	+0
Clinical Measurement	33	33	0	+0.0%	+6
Clinical Engineering	7	7	0	+0.0%	+2
Biochemists	10	10	0	+0.0%	-1
Audiology	2	2	0	+0.0%	+0
Health Science/ Diagnostics	237	242	+5	+0.0%	+18
Social Workers	27	26	-1	-0.0%	+6
Social Workers	27	26	-1	-0.0%	-1
Psychologists	8	8	0	+0.0%	+3
Psychologists	8	8	0	+0.0%	+1
Pharmacy	53	50	-3	-0.1%	+1
Pharmacy	53	50	-3	-0.1%	+0
Other Health & Social Care	13	14	+1	+0.1%	-0
HSCP Trainees/ Students	5	9	+4	+0.8%	+2
Counsellor Therapists	2	2	0	+0.0%	-1
H&SC, Other	20	25	+5	+0.3%	+3
Health & Social Care Professionals	468	477	+9	+9	+34
Senior Management (VIII & GM)	28	26	-2	-0.1%	+4
Executive Management	8	8	0	+0.0%	
Management (VIII & above)	36	34	-2	-0.1%	+2
Other Administrative	1	1	0	+0.0%	
Middle Management (V-VII)	163	163	+1	+0.0%	+14
Administrative/ Supervisory (V to VII)	164	164	+1	+0.0%	+6
General Administrative (III & IV)	288	292	+4	+0.0%	+42
Clerical (III & IV)	288	292	+4	+0.0%	+32
Management & Administrative	487	490	+3	+3	+40
Portering	72	72	+0	+0.0%	+2
Other Support	37	36	-1	-0.0%	+2
Other Labs & Associated	19	19	0	+0.0%	+5
Household Services	115	117	+1	+0.0%	-2
Catering	19	19	0	+0.0%	+4
Support	263	263	+0	+0.0%	+12
Technical Services	5	5	0	+0.0%	+1
Maintenance	21	21	0	+0.0%	+3
Maintenance/ Technical	26	26	0	+0.0%	+2
General Support	289	289	+0	+0	+14
Health & Social Care Assistants	12	11	-1	-0.1%	+2
HCA, Nurse's Aide, etc.	244	241	-3	-0.0%	+19
Health Care Assistants	255	252	-4	-0.0%	+26
Other Care Grades	8	8	+0	+0.0%	+1
Care, other	8	8	+0	+0.0%	+1
Patient & Client Care	263	259	-4	-4	+27

St. Columcille's

Nov 2020 (Dec 2019 figure: 452)	WTE Oct 2020	WTE Nov 2020	WTE change since Oct 20	% change since Oct 20	WTE change since Dec 19
Overall	458	457	-2	-0.4%	+5
Consultant Surgery	3	2	-1	-0.3%	-1
Consultant Radiology	2	2	0	+0.0%	
Consultant Pathology	1	1	0	+0.0%	
Consultant Medicine	10	10	-1	-0.1%	+0
Consultant Anaesthesia	2	2	0	+0.0%	-1
Consultants	18	17	-1	-0.1%	-2
Specialist Registrar	2	2	0	+0.0%	-1
Senior Registrar				-1.0%	-1
Registrar	8	8	0	+0.0%	+2
Registrars	10	10	0	+0.0%	+0
Senior House Officer	10	10	-0	-0.0%	+1
Interns	5	6	+1	+0.2%	+1
SHO/ Interns	15	16	+1	+0.1%	+2
Medical & Dental	43	42	-0	-0	-0
Director of Nursing/Midwifery	1	1	0	+0.0%	
Director Nursing/Midwifery, Assistant	6	6	0	+0.0%	+2
Clinical Nurse/ Midwife Manager	27	29	+2	+0.1%	+2
Nurse/ Midwife Manager	34	36	+2	+0.1%	+3
Clinical Nurse/ Midwife Specialist	5	5	-0	-0.1%	-2
Advanced Nurse/ Midwife Practitioner	2	3	+1	+0.3%	-1
Nurse/ Midwife Specialist & AN/MP	7	7	+0	+0.0%	-1
Staff Nurses [General/ Children's]	114	111	-2	-0.0%	+0
Staff Nurse/ Staff Midwife	114	111	-2	-0.0%	-8
Nursing Education/Clinical	1	1	-0	-0.0%	-1
Nursing/ Midwifery other	1	1	-0	-0.0%	-1
Nursing & Midwifery	155	155	-0	-0	-7
Speech & Language Therapists	7	7	-0	-0.0%	+3
Physiotherapists	14	14	+0	+0.0%	-0
Occupational Therapists	6	6	-0	-0.1%	+1
Dietitians	7	7	-0	-0.0%	+1
Therapy Professions	34	34	-0	-0.0%	+3
Radiographers	14	14	+0	+0.0%	+0
Phlebotomists	2	2	+0	+0.1%	+1
Medical Laboratory	4	4	0	+0.0%	-1
Health Science/ Diagnostics	20	21	+1	+0.0%	+3
Social Workers	6	6	0	+0.0%	+1
Social Workers	6	6	0	+0.0%	+1
Psychologists	1	2	+0	+0.2%	-0
Psychologists	1	2	+0	+0.2%	-0
Pharmacy	5	5	-0	-0.0%	+1
Pharmacy	5	5	-0	-0.0%	+0
Health & Social Care Professionals	68	68	+1	+1	+7
Senior Management (VIII & GM)	1	1	0	+0.0%	
Executive Management	1	1	0	+0.0%	+1
Management (VIII & above)	2	2	0	+0.0%	+1
Middle Management (V-VII)	13	13	-0	-0.0%	-1

Administrative/ Supervisory (V to VII)	13	13	-0	-0.0%	-1
<i>General Administrative (III & IV)</i>	57	58	+1	+0.0%	+2
Clerical (III & IV)	57	58	+1	+0.0%	+4
Management & Administrative	72	73	+1	+1	+4
<i>Portering</i>	2	1	-1	-0.3%	-1
<i>Other Support</i>	1	1	0	+0.0%	
<i>Other Labs & Associated</i>	3	3	0	+0.0%	-0
<i>Household Services</i>	49	48	-1	-0.0%	+3
<i>Catering</i>	6	6	-0	-0.0%	-0
Support	61	59	-2	-0.0%	+2
<i>Maintenance</i>	1	1	0	+0.0%	
Maintenance/ Technical	1	1	0	+0.0%	
General Support	62	60	-2	-2	+2
<i>Health & Social Care Assistants</i>	2	2	0	+0.0%	+2
<i>HCA, Nurse's Aide, etc.</i>	56	55	-0	-0.0%	+1
Health Care Assistants	58	57	-0	-0.0%	-2
<i>Other Care Grades</i>	1	1	0	+0.0%	
Care, other	1	1	0	+0.0%	+1
Patient & Client Care	59	58	-0	-0	-1

St Luke's General Kilkenny

Nov 2020 (Dec 2019 figure: 1,119)	WTE Oct 2020	WTE Nov 2020	WTE change since Oct 20	% change since Oct 20	WTE change since Dec 19
Overall	1,179	1,184	+5	+0.4%	+65
Consultant Surgery	4	3	-1	-0.2%	-1
Consultant Radiology	6	6	+0	+0.0%	+1
Consultant Paediatrics	6	6	-0	-0.0%	+0
Consultant Obstetrics & Gynaecology	6	6	0	+0.0%	+2
Consultant Medicine	12	12	-0	-0.0%	+2
Consultant Emergency Medicine	2	2	0	+0.0%	
Consultant Anaesthesia	6	6	-0	-0.0%	+1
Consultants	42	40	-1	-0.0%	+1
Specialist Registrar	8	8	0	+0.0%	+4
Senior Registrar	11	11	-1	-0.0%	+2
Registrar	45	45	+0	+0.0%	+8
Registrars	64	63	-0	-0.0%	+7
Senior House Officer	43	44	+0	+0.0%	-4
Interns	11	11	+0	+0.0%	+1
SHO/ Interns	54	55	+0	+0.0%	-3
Other Medical	6	7	+1	+0.1%	-2
Medical/ Dental, other	6	7	+1	+0.1%	-0
Medical & Dental	166	166	-0	-0	+5
Director of Nursing/Midwifery	2	2	0	+0.0%	
Director Nursing/Midwifery, Assistant	8	8	+0	+0.0%	-0
Clinical Nurse/ Midwife Manager	72	74	+2	+0.0%	+7
Nurse/ Midwife Manager	82	84	+2	+0.0%	-1
Clinical Nurse/ Midwife Specialist	17	16	-0	-0.0%	+3
Advanced Nurse/ Midwife Practitioner	8	8	+0	+0.0%	+2
Nurse/ Midwife Specialist & AN/MP	24	24	-0	-0.0%	+4
Staff Nurses [General/ Children's]	282	286	+4	+0.0%	+1
Staff Midwives	32	33	+1	+0.0%	-5
Staff Nurse/ Staff Midwife	313	319	+5	+0.0%	+15
Nursing/ Midwifery awaiting registration	4	1	-3	-0.8%	+1
Pre-registration Nurse/ Midwife Intern				-1.0%	-1
Nursing/ Midwifery Student	4	1	-3	-0.8%	+1
Nursing Education/Clinical	1	1	+0	+0.1%	-0
Nursing/ Midwifery other	1	1	+0	+0.1%	
Nursing & Midwifery	424	429	+5	+5	+18
Speech & Language Therapists	4	4	-1	-0.2%	+4
Podiatrists & Chiropodists	2	2	0	+0.0%	+1
Physiotherapists	20	19	-1	-0.1%	+2
Occupational Therapists	7	8	+1	+0.2%	+3
Dietitians	11	11	+1	+0.1%	+3
Therapy Professions	43	43	-0	-0.0%	+8
Radiographers	26	27	+1	+0.0%	+4
Medical Laboratory	14	14	+0	+0.0%	+3
Clinical Measurement	10	9	-1	-0.1%	-2
Clinical Engineering	1	1	0	+0.0%	+1
Health Science/ Diagnostics	50	51	+1	+0.0%	+2
Pharmacy	17	17	+0	+0.0%	+2

Pharmacy	17	17	+0	+0.0%	-1
Health & Social Care Professionals	110	112	+1	+1	+10
Senior Management (VIII & GM)	4	4	0	+0.0%	+1
Executive Management	1	1	-0	-0.0%	+1
Management (VIII & above)	5	5	-0	-0.0%	+2
Middle Management (V-VII)	20	21	+0	+0.0%	+7
Administrative/ Supervisory (V to VII)	20	21	+0	+0.0%	+6
General Administrative (III & IV)	131	133	+1	+0.0%	-7
Clerical (III & IV)	131	133	+1	+0.0%	-3
Management & Administrative	157	158	+2	+2	+5
Portering	5	5	+1	+0.1%	-52
Other Support	8	6	-2	-0.2%	+4
Other Labs & Associated	2	2	0	+0.0%	+1
Household Services	147	147	-0	-0.0%	+9
Catering	10	10	+0	+0.0%	+2
Support	172	171	-1	-0.0%	-30
Maintenance	15	15	-0	-0.0%	+3
Maintenance/ Technical	15	15	-0	-0.0%	+2
General Support	188	187	-1	-1	-28
Health & Social Care Assistants	1	1	-0	-0.1%	+0
HCA, Nurse's Aide, etc.	131	130	-1	-0.0%	+53
Health Care Assistants	132	131	-1	-0.0%	+56
Other Care Grades	2	2	-0	-0.0%	-0
Care, other	2	2	-0	-0.0%	-0
Patient & Client Care	134	133	-1	-1	+56

St. Michael's

Nov 2020 (Dec 2019 figure: 397)	WTE Oct 2020	WTE Nov 2020	WTE change since Oct 20	% change since Oct 20	WTE change since Dec 19
Overall	399	400	+1	+0.4%	+3
Consultant Surgery	2	2	0	+0.0%	
Consultant Radiology	1	1	0	+0.0%	
Consultant Medicine	7	7	0	+0.0%	-0
Consultant Anaesthesia	1	1	0	+0.0%	
Consultants	11	11	0	+0.0%	+0
Specialist Registrar	3	3	0	+0.0%	
Registrar	10	10	0	+0.0%	
Registrars	13	13	0	+0.0%	
Senior House Officer	10	10	0	+0.0%	-1
Interns	5	5	0	+0.0%	+2
SHO/ Interns	15	15	0	+0.0%	+1
Other Medical	0	0	0	+0.0%	
Medical/ Dental, other	0	0	0	+0.0%	
Medical & Dental	39	39			+2
Director of Nursing/Midwifery	1	1	0	+0.0%	
Director Nursing/Midwifery, Assistant	4	4	0	+0.0%	-1
Clinical Nurse/ Midwife Manager	30	30	0	+0.0%	-2
Nurse/ Midwife Manager	35	35	0	+0.0%	+1
Clinical Nurse/ Midwife Specialist	21	21	0	+0.0%	+1
Advanced Nurse/ Midwife Practitioner	5	5	0	+0.0%	
Nurse/ Midwife Specialist & AN/MP	26	26	0	+0.0%	-2
Staff Nurses [General/ Children's]	105	105	+0	+0.0%	+2
Staff Nurse/ Staff Midwife	105	105	+0	+0.0%	+3
Nursing Education/Clinical	4	4	0	+0.0%	-1
Nursing/ Midwifery other	4	4	0	+0.0%	-1
Nursing & Midwifery	170	170			+1
Podiatrists & Chiropodists	0	0	0	+0.0%	
Physiotherapists	10	10	-0	-0.0%	-0
Orthoptists	0	0	0	+0.0%	
Occupational Therapists	4	4	0	+0.0%	
Dietitians	3	3	0	+0.0%	-1
Therapy Professions	17	17	+0	+0.0%	-5
Radiographers	8	8	0	+0.0%	+2
Phlebotomists	3	3	0	+0.0%	
Medical Laboratory	5	5	0	+0.0%	+0
Clinical Measurement	3	4	+1	+0.4%	-0
Health Science/ Diagnostics	18	19	+1	+0.1%	+2
Social Workers	3	3	0	+0.0%	+1
Social Workers	3	3	0	+0.0%	+1
Pharmacy	7	7	+0	+0.0%	+2
Pharmacy	7	7	+0	+0.0%	-2
Health & Social Care Professionals	45	46	+1	+1	-4
Senior Management (VIII & GM)	2	2	0	+0.0%	+1
Executive Management	1	1	0	+0.0%	
Management (VIII & above)	3	3	0	+0.0%	+2
Middle Management (V-VII)	24	24	0	+0.0%	+5

Administrative/ Supervisory (V to VII)	24	24	0	+0.0%	+5
<i>General Administrative (III & IV)</i>	38	39	+0	+0.0%	-7
Clerical (III & IV)	38	39	+0	+0.0%	-5
Management & Administrative	65	65	+0	+0	+2
<i>Portering</i>	15	15	0	+0.0%	
<i>Other Support</i>	5	6	+1	+0.2%	+1
<i>Other Labs & Associated</i>	2	2	0	+0.0%	-1
<i>Household Services</i>	17	17	0	+0.0%	-0
<i>Catering</i>	8	8	0	+0.0%	+1
Support	48	49	+1	+0.0%	+1
<i>Maintenance</i>	2	2	0	+0.0%	
Maintenance/ Technical	2	2	0	+0.0%	
General Support	50	51	+1	+1	+1
<i>Health & Social Care Assistants</i>	0	0	0	+0.0%	
<i>HCA, Nurse's Aide, etc.</i>	28	27	-1	-0.0%	
Health Care Assistants	28	27	-1	-0.0%	+2
<i>Other Care Grades</i>	2	2	0	+0.0%	
Care, other	2	2	0	+0.0%	
Patient & Client Care	30	29	-1	-1	+2

St. Vincent's University

Nov 2020 (Dec 2019 figure: 2,838)	WTE Oct 2020	WTE Nov 2020	WTE change since Oct 20	% change since Oct 20	WTE change since Dec 19
Overall	3,101	3,099	-2	-0.1%	+261
Consultant Surgery	31	31	-0	-0.0%	+1
Consultant Radiology	15	16	+1	+0.1%	+1
Consultant Psychiatry	3	2	-1	-0.2%	-1
Consultant Pathology	16	16	-0	-0.0%	-0
Consultant Medicine	66	65	-0	-0.0%	+18
Consultant Emergency Medicine	8	8	-1	-0.1%	+2
Consultant Anaesthesia	17	17	0	+0.0%	-4
Consultants	156	155	-1	-0.0%	+10
Specialist Registrar	96	77	-19	-0.2%	+3
Senior Registrar	5	5	0	+0.0%	+1
Registrar	85	86	+1	+0.0%	+9
Registrars	186	168	-17	-0.1%	+4
Senior House Officer	104	105	+1	+0.0%	+19
Interns	74	75	+1	+0.0%	+27
SHO/ Interns	178	180	+2	+0.0%	+54
Other Medical	1	1	0	+0.0%	-0
Medical/ Dental, other	1	1	0	+0.0%	-0
Medical & Dental	521	504	-17	-17	+67
Director of Nursing/Midwifery	2	2	0	+0.0%	+1
Director Nursing/Midwifery, Assistant	16	16	0	+0.0%	+5
Clinical Nurse/ Midwife Manager	212	215	+3	+0.0%	+57
Nurse/ Midwife Manager	230	233	+3	+0.0%	+50
Clinical Nurse/ Midwife Specialist	69	70	+1	+0.0%	-1
Advanced Nurse/ Midwife Practitioner	22	22	0	+0.0%	+9
Nurse/ Midwife Specialist & AN/MP	91	92	+1	+0.0%	+5
Staff Nurses [General/ Children's]	745	724	-20	-0.0%	+52
Staff Nurse [Psychiatric]	3	3	0	+0.0%	-1
Nursing Bank	2	2	0	+0.0%	-3
Staff Nurse/ Staff Midwife	750	729	-20	-0.0%	+5
Nursing/ Midwifery awaiting registration	27	33	+6	+0.2%	+33
Pre-registration Nurse Intern (COVID-19)	24	24	0	+0.0%	+24
Pre-registration Nurse/ Midwife Intern		12	+12	-1.0%	-2
Nursing/ Midwifery Student	51	69	+18	+0.4%	+52
Nursing Education/Clinical	9	9	0	+0.0%	-6
Nursing/ Midwifery other	9	9	0	+0.0%	-6
Nursing & Midwifery	1,131	1,132	+2	+2	+106
Speech & Language Therapists	11	11	0	+0.0%	+1
Podiatrists & Chiropodists	4	4	0	+0.0%	+2
Physiotherapists	63	63	0	+0.0%	+6
Occupational Therapists	16	17	+1	+0.1%	
Dietitians	21	21	0	+0.0%	-0
Therapy Professions	114	115	+1	+0.0%	+11
Radiographers	64	64	0	+0.0%	-1
Physicists	7	8	+1	+0.1%	
Phlebotomists	13	13	0	+0.0%	-2
Medical Laboratory	86	81	-4	-0.1%	-3
Clinical Measurement	30	30	0	+0.0%	+4

<i>Clinical Engineering</i>	8	8	0	+0.0%	+1
<i>Biochemists</i>	19	19	0	+0.0%	+1
<i>Audiology</i>	0	0	0	+0.0%	
Health Science/ Diagnostics	227	223	-3	-0.0%	+11
<i>Social Workers</i>	22	22	0	+0.0%	+3
Social Workers	22	22	0	+0.0%	+3
<i>Psychologists</i>	10	10	0	+0.0%	+3
Psychologists	10	10	0	+0.0%	-1
<i>Pharmacy</i>	57	58	+1	+0.0%	+1
Pharmacy	57	58	+1	+0.0%	-0
<i>HSCP Trainees/ Students</i>				-1.0%	-1
<i>Counsellor Therapists</i>	0	0	0	+0.0%	
H&SC, Other	0	0	0	+0.0%	
Health & Social Care Professionals	430	428	-1	-1	+24
<i>Senior Management (VIII & GM)</i>	16	18	+2	+0.1%	-1
<i>Executive Management</i>	1	3	+2	+2.0%	+2
Management (VIII & above)	17	21	+4	+0.2%	+2
<i>Other Administrative</i>	4	3	-0	-0.1%	-0
<i>Middle Management (V-VII)</i>	181	182	+1	+0.0%	+34
Administrative/ Supervisory (V to VII)	184	185	+1	+0.0%	+37
<i>General Administrative (III & IV)</i>	284	273	-11	-0.0%	-6
Clerical (III & IV)	284	273	-11	-0.0%	-15
Management & Administrative	485	479	-6	-6	+24
<i>Portering</i>	103	103	0	+0.0%	+11
<i>Other Support</i>	60	67	+7	+0.1%	+9
<i>Other Labs & Associated</i>	33	33	0	+0.0%	+2
<i>Household Services</i>	90	91	+2	+0.0%	+4
<i>Catering</i>	19	19	+0	+0.0%	+0
Support	304	313	+9	+0.0%	+21
<i>Technical Services</i>	3	3	0	+0.0%	
<i>Maintenance</i>	32	32	0	+0.0%	
Maintenance/ Technical	35	35	0	+0.0%	
General Support	339	348	+9	+9	+21
<i>Health & Social Care Assistants</i>	11	13	+2	+0.2%	+3
<i>HCA, Nurse's Aide, etc.</i>	176	183	+8	+0.0%	+28
Health Care Assistants	187	197	+10	+0.1%	+16
<i>Other Care Grades</i>	9	10	+1	+0.2%	+2
Care, other	9	10	+1	+0.2%	+2
Patient & Client Care	195	207	+11	+11	+18

Wexford General

Nov 2020 (Dec 2019 figure: 1,024)	WTE Oct 2020	WTE Nov 2020	WTE change since Oct 20	% change since Oct 20	WTE change since Dec 19
Overall	1,048	1,054	+6	+0.6%	+30
Consultant Surgery	5	5	0	+0.0%	
Consultant Radiology	5	5	0	+0.0%	+1
Consultant Pathology	1	1	+0	+0.1%	+1
Consultant Paediatrics	5	6	+1	+0.1%	+2
Consultant Obstetrics & Gynaecology	5	5	0	+0.0%	-1
Consultant Medicine	8	9	+1	+0.1%	-1
Consultant Emergency Medicine	2	2	0	+0.0%	
Consultant Anaesthesia	5	5	0	+0.0%	+1
Consultants	36	37	+1	+0.0%	+4
Specialist Registrar	9	9	0	+0.0%	+2
Senior Registrar	4	4	0	+0.0%	+3
Registrar	37	38	+1	+0.0%	-4
Registrars	50	51	+1	+0.0%	-1
Senior House Officer	49	47	-2	-0.0%	+1
Interns	12	13	+1	+0.1%	+3
SHO/ Interns	60	60	-0	-0.0%	-1
Other Medical	6	6	-0	-0.0%	+2
Medical/ Dental, other	6	6	-0	-0.0%	+1
Medical & Dental	152	155	+2	+2	+2
Director of Nursing/Midwifery	2	2	-0	-0.0%	-0
Director Nursing/Midwifery, Assistant	6	6	-0	-0.0%	+0
Clinical Nurse/ Midwife Manager	76	75	-1	-0.0%	-0
Nurse/ Midwife Manager	84	83	-1	-0.0%	-2
Clinical Nurse/ Midwife Specialist	20	20	-0	-0.0%	+4
Advanced Nurse/ Midwife Practitioner	5	5	-0	-0.0%	+1
Nurse/ Midwife Specialist & AN/MP	25	24	-0	-0.0%	+5
Staff Nurses [General/ Children's]	243	255	+12	+0.0%	+8
Staff Midwives	43	45	+1	+0.0%	-2
Staff Nurse/ Staff Midwife	286	299	+13	+0.0%	+10
Nursing/ Midwifery awaiting registration				-1.0%	
Pre-registration Nurse Intern (COVID-19)	7	1	-6	-0.9%	+1
Nursing/ Midwifery Student	7	1	-6	-0.9%	
Nursing & Midwifery	402	407	+5	+5	+12
Speech & Language Therapists	1	1	0	+0.0%	+1
Podiatrists & Chiropodists	1	1	+0	+0.3%	
Physiotherapists	18	17	-1	-0.0%	+2
Occupational Therapists	4	4	0	+0.0%	+1
Dietitians	5	6	+1	+0.3%	+2
Therapy Professions	28	29	+1	+0.0%	+4
Radiographers	19	18	-2	-0.1%	-2
Phlebotomists	2	2	0	+0.0%	
Medical Laboratory	10	11	+1	+0.1%	+2
Clinical Measurement	5	5	0	+0.0%	+1
Clinical Engineering	1	1	0	+0.0%	
Health Science/ Diagnostics	37	37	-0	-0.0%	-0
Social Workers	1	1	0	+0.0%	+1
Social Workers	1	1	0	+0.0%	

<i>Pharmacy</i>	11	13	+1	+0.1%	+4
Pharmacy	11	13	+1	+0.1%	+2
Health & Social Care Professionals	77	79	+2	+2	+5
<i>Senior Management (VIII & GM)</i>	3	3	0	+0.0%	+0
<i>Executive Management</i>	1	1	0	+0.0%	+1
Management (VIII & above)	4	4	0	+0.0%	+2
<i>Middle Management (V-VII)</i>	22	22	+0	+0.0%	+7
Administrative/ Supervisory (V to VII)	22	22	+0	+0.0%	+7
<i>General Administrative (III & IV)</i>	115	115	+0	+0.0%	-1
Clerical (III & IV)	115	115	+0	+0.0%	-0
Management & Administrative	141	141	+0	+0	+9
<i>Portering</i>	13	13	-0	-0.0%	-26
<i>Other Support</i>	33	32	-1	-0.0%	-5
<i>Other Labs & Associated</i>	3	3	-0	-0.1%	+1
<i>Household Services</i>	117	116	-1	-0.0%	-7
<i>Catering</i>	9	9	+0	+0.0%	+3
Support	175	173	-3	-0.0%	-34
<i>Maintenance</i>	6	6	-0	-0.0%	+1
Maintenance/ Technical	6	6	-0	-0.0%	-0
General Support	181	178	-3	-3	-34
<i>Health & Social Care Assistants</i>	1	1	0	+0.0%	+1
<i>HCA, Nurse's Aide, etc.</i>	91	91	-0	-0.0%	+39
Health Care Assistants	92	91	-0	-0.0%	+36
<i>Other Care Grades</i>	2	2	-0	-0.0%	-0
Care, other	2	2	-0	-0.0%	-1
Patient & Client Care	94	93	-0	-0	+35

Hospital Group HQ

Nov 2020 (Dec 2019 figure: 30)	WTE Oct 2020	WTE Nov 2020	WTE change since Oct 20	% change since Oct 20	WTE change since Dec 19
Overall	30	34	+4	+12.5%	+4
<i>Director of Nursing/Midwifery</i>	1	1	0	+0.0%	
<i>Director Nursing/Midwifery, Assistant</i>	2	2	0	+0.0%	
Nurse/ Midwife Manager	3	3	0	+0.0%	
<i>Nursing Bank</i>	0	1	+1	+3.0%	+1
Staff Nurse/ Staff Midwife	0	1	+1	+3.0%	+1
Nursing & Midwifery	3	4	+1	+1	+1
<i>Clinical Engineering</i>	1	1	+0	+0.0%	
Health Science/ Diagnostics	1	1	+0	+0.0%	
Health & Social Care Professionals	1	1	+0	+0	
<i>Senior Management (VIII & GM)</i>	6	7	+1	+0.2%	+4
<i>Executive Management</i>	2	3	+1	+0.5%	+1
Management (VIII & above)	8	10	+2	+0.3%	+4
<i>Middle Management (V-VII)</i>	16	17	+1	+0.1%	-3
Administrative/ Supervisory (V to VII)	16	17	+1	+0.1%	+0
<i>General Administrative (III & IV)</i>	2	2	0	+0.0%	-2
Clerical (III & IV)	2	2	0	+0.0%	-0
Management & Administrative	26	29	+3	+3	+4
<i>Technical Services</i>				-1.0%	-1
Maintenance/ Technical				-1.0%	-1
General Support					-1

Royal Victoria Eye & Ear

Nov 2020 (Dec 2019 figure: 291)	WTE Oct 2020	WTE Nov 2020	WTE change since Oct 20	% change since Oct 20	WTE change since Dec 19
Overall	304	307	+3	+1.0%	+16
Consultant Surgery	20	21	+2	+0.1%	+2
Consultant Anaesthesia	5	5	0	+0.0%	
Consultants	25	26	+2	+0.1%	+3
Specialist Registrar	13	13	0	+0.0%	+4
Registrar	9	9	0	+0.0%	-0
Registrars	22	22	0	+0.0%	+2
Senior House Officer	15	15	0	+0.0%	-1
SHO/ Interns	15	15	0	+0.0%	-1
Other Medical	5	5	-0	-0.1%	-0
Medical/ Dental, other	5	5	-0	-0.1%	+0
Medical & Dental	66	67	+1	+1	+4
Director of Nursing/Midwifery	1	1	0	+0.0%	
Director Nursing/Midwifery, Assistant	2	2	0	+0.0%	
Clinical Nurse/ Midwife Manager	22	23	+1	+0.0%	+1
Nurse/ Midwife Manager	25	26	+1	+0.0%	+3
Clinical Nurse/ Midwife Specialist	4	6	+2	+0.4%	+2
Advanced Nurse/ Midwife Practitioner	5	5	0	+0.0%	+4
Nurse/ Midwife Specialist & AN/MP	9	11	+2	+0.2%	+2
Staff Nurses [General/ Children's]	86	83	-3	-0.0%	+1
Staff Nurse/ Staff Midwife	86	83	-3	-0.0%	+2
Nursing Education/Clinical	1	1	0	+0.0%	-1
Nursing/ Midwifery other	1	1	0	+0.0%	-1
Nursing & Midwifery	122	121	-1	-1	+6
Speech & Language Therapists	1	1	0	+0.0%	
Physiotherapists	0	0	0	+0.0%	
Orthoptists	1	1	0	+0.0%	-0
Dietitians	1	1	0	+0.0%	+0
Therapy Professions	3	3	0	+0.0%	-0
Radiographers	1		-1	-1.0%	-1
Medical Laboratory				-1.0%	-3
Audiology	1	1	0	+0.0%	
Health Science/ Diagnostics	2	1	-1	-0.3%	-1
Social Workers	1	1	0	+0.0%	
Social Workers	1	1	0	+0.0%	-1
Pharmacy	4	4	0	+0.0%	+1
Pharmacy	4	4	0	+0.0%	+1
Other Health & Social Care	4	4	0	+0.0%	+1
H&SC, Other	4	4	0	+0.0%	
Health & Social Care Professionals	13	13	-1	-1	-1
Senior Management (VIII & GM)	4	4	0	+0.0%	+2
Management (VIII & above)	4	4	0	+0.0%	+1
Middle Management (V-VII)	24	26	+2	+0.1%	+2
Administrative/ Supervisory (V to VII)	24	26	+2	+0.1%	+2
General Administrative (III & IV)	37	35	-1	-0.0%	-2
Clerical (III & IV)	37	35	-1	-0.0%	-1

Management & Administrative	65	65	+1	+1	+2
Portering	10	10	0	+0.0%	
Other Support	2	2	0	+0.0%	+0
Other Labs & Associated	1	1	0	+0.0%	+1
Household Services	10	10	0	+0.0%	-0
Catering	5	6	+1	+0.2%	+0
Support	28	29	+1	+0.0%	+1
General Support	28	29	+1	+1	+1
HCA, Nurse's Aide, etc.	10	11	+1	+0.1%	+2
Health Care Assistants	10	11	+1	+0.1%	+2
Patient & Client Care	10	11	+1	+1	+2

IEHG Bank

Nov 2020 (figure:)	WTE Oct 2020	WTE Nov 2020	WTE change since Oct 20	% change since Oct 20	WTE change since Dec 19
Overall	5	7	+2	+38.5%	+7
Staff Nurses [General/ Children's]	5	7	+2	+0.4%	+7
Staff Nurse/ Staff Midwife	5	7	+2	+0.4%	+7
Nursing & Midwifery	5	7	+2	+2	+7
HCA, Nurse's Aide, etc.	0	0	+0	+0.1%	+0
Health Care Assistants	0	0	+0	+0.1%	+0
Patient & Client Care	0	0	+0	+0	+0

Ireland East Hospital Group Employment by Grade Group & Staff Category: November 2020

Nov 2020 (Dec 2019 figure: 12,045)	WTE Oct 2020	WTE Nov 2020	WTE change since Oct 20	% change since Oct 20	WTE change since Dec 19	WTE change since Nov 19
Overall	12,831	12,908	+77	+0.6%	+863	+859
Consultant Anaesthesia	88	88	-0	-0.1%	+4	+3
Consultant Emergency Medicine	24	23	-1	-3.1%	+4	+4
Consultant Intensive Care Medicine	2	2				
Consultant Medicine	197	199	+2	+1.2%	+25	+25
Consultant Obstetrics & Gynaecology	34	34			-1	-1
Consultant Paediatrics	25	25	-0	-1.2%	+3	+3
Consultant Pathology	41	41	-0	-0.1%	+3	+3
Consultant Psychiatry	5	4	-1	-12.7%		
Consultant Radiology	53	54	+1	+2.3%	+2	+2
Consultant Surgery	118	117	-0	-0.3%	+9	+8
Consultants	586	587	+1	+0.2%	+49	+47
Registrar	372	375	+3	+0.7%	+33	+32
Senior Registrar	34	33	-0	-0.7%	+6	+6
Specialist Registrar	272	255	-17	-6.4%	+6	+6
Registrars	678	663	-15	-2.2%	+44	+43
Interns	197	200	+3	+1.5%	+53	+53
Senior House Officer	470	472	+3	+0.6%	+50	+46
SHO/ Interns	667	673	+6	+0.8%	+103	+99
Dentists	1	1				
Other Medical	26	27	+0	+0.4%	+2	+1
Medical/ Dental, other	27	28	+0	+0.4%	+2	+1
Medical & Dental	1,958	1,950	-8	-0.4%	+198	+191
Clinical Nurse/ Midwife Manager	902	917	+15	+1.7%	+91	+90
Director Nursing/Midwifery, Assistant	90	91	+1	+1.5%	+2	+4
Director of Nursing/Midwifery	16	16	-0	-0.1%	+1	+1
Nurse/ Midwife Manager	1,008	1,024	+16	+1.6%	+94	+95
Advanced Nurse/ Midwife Practitioner	86	88	+1	+1.4%	+15	+15
Clinical Nurse/ Midwife Specialist	248	249	+1	+0.6%	+15	+13
Nurse/ Midwife Specialist & AN/MP	334	337	+3	+0.8%	+30	+29
Nursing Bank	2	3	+1	+32.2%	+1	+1
Staff Midwives	279	284	+5	+1.8%	-4	-4
Staff Nurse [Psychiatric]	3	3			-1	-1
Staff Nurses [General/ Children's]	2,985	3,043	+58	+1.9%	+99	+132
Staff Nurse/ Staff Midwife	3,269	3,333	+64	+2.0%	+96	+128
Pre-registration Nurse/ Midwife Intern		12	+12	-100.0%	-13	-18
Pre-registration Nurse Intern (COVID-19)	97	52	-44	-46.0%	+52	+52
Post-registration Nurse/ Midwife Student	20	17	-3	-15.0%	-4	-5
Nursing/ Midwifery awaiting registration	31	34	+3	+10.3%	+23	-12
Nursing/ Midwifery Student	147	115	-32	-21.9%	+58	+18
Nursing Education/Clinical	60	60	+1	+1.0%	-3	-4
Other Nursing/ Midwifery	15	15	-0	-0.8%	+2	+2

Nov 2020 (Dec 2019 figure: 12,045)	WTE Oct 2020	WTE Nov 2020	WTE change since Oct 20	% change since Oct 20	WTE change since Dec 19	WTE change since Nov 19
Overall	12,831	12,908	+77	+0.6%	+863	+859
Nursing/ Midwifery other	74	75	+0	+0.6%	-1	-2
Nursing & Midwifery	4,832	4,884	+51	+1.1%	+277	+267
Dietitians	88	92	+4	+4.5%	+14	+15
Occupational Therapists	81	80	-1	-1.3%	+12	+15
Orthoptists	3	2	-0	-15.1%	+0	+0
Physiotherapists	243	244	+1	+0.6%	+15	+12
Podiatrists & Chiropodists	11	11	+0	+2.3%	+1	+1
Speech & Language Therapists	48	48	+0	+0.1%	+14	+13
Therapy Professions	474	478	+4	+0.9%	+56	+56
Audiology	4	4			+0	+0
Biochemists	29	29			+2	+1
Clinical Engineering	23	23	+0	+0.1%	+2	+2
Clinical Measurement	89	89	+0	+0.5%	+11	+11
Medical Laboratory	324	324	-0	-0.1%	+19	+17
Perfusionists	4	4	-0	-1.1%	-0	-0
Phlebotomists	41	41	+0	+1.2%	+5	+4
Physicists	14	15	+1	+7.4%	-1	-1
Radiographers	260	262	+1	+0.5%	+19	+21
Health Science/ Diagnostics	787	790	+3	+0.4%	+56	+54
Social Workers	75	75	-0	-0.0%	+5	+6
Psychologists	22	22	+0	+1.2%	+0	+2
Pharmacy	189	187	-2	-1.3%	-1	+1
Counsellor Therapists	2	2				+0
HSCP Trainees/ Students	5	9	+4	+81.0%	+1	+2
Other Health & Social Care	17	18	+1	+6.3%	+2	+2
H&SC, Other	24	29	+5	+21.2%	+3	+3
Health & Social Care Professionals	1,571	1,581	+10	+0.6%	+119	+123
Executive Management	18	21	+3	+16.3%	+6	+6
Senior Management (VIII & GM)	76	77	+1	+1.4%	+9	+7
Management (VIII & above)	94	98	+4	+4.3%	+15	+13
Administrative/ Supervisory (V to VII)	593	600	+7	+1.2%	+84	+91
Clerical (III & IV)	1,219	1,217	-1	-0.1%	+4	+4
Management & Administrative	1,906	1,915	+10	+0.5%	+102	+108
Catering	109	110	+1	+1.4%	+8	+10
Household Services	679	677	-2	-0.3%	+16	+16
Other Labs & Associated	80	80	-0	-0.1%	+7	+9
Other Support	165	170	+5	+3.1%	+12	+10
Portering	264	265	+0	+0.1%	-64	-63
Support	1,297	1,302	+5	+0.4%	-21	-19
Maintenance/ Technical	121	120	-1	-0.8%	+7	+7
General Support	1,418	1,422	+4	+0.3%	-14	-11
HCA, Nurse's Aide, etc.	1,083	1,091	+8	+0.7%	+169	+166

Nov 2020 (Dec 2019 figure: 12,045)	WTE Oct 2020	WTE Nov 2020	WTE change since Oct 20	% change since Oct 20	WTE change since Dec 19	WTE change since Nov 19
Overall	12,831	12,908	+77	+0.6%	+863	+859
Health & Social Care Assistants	36	37	+1	+2.6%	+10	+10
Health Care Assistants	1,119	1,128	+9	+0.8%	+179	+176
Care, other	27	28	+1	+3.8%	+2	+4
Patient & Client Care	1,146	1,156	+10	+0.9%	+181	+180

Employment by WTE, Headcount, Gender, Full-Time /Part-Time etc.: Nov 2020

Ireland East Hospital Group	WTE	Headcount	WTE: no.	% Male	% female	Male WTE: no.	Female WTE: no.	% Total Perm	% Male Perm	% Female Perm	% Total Full Time	% Total Part Time	% Male FT	% Female FT
Overall	12,908	14,273	1.11	24.6%	75.4%	1.04	1.13	80.7%	67.1%	85.2%	77.1%	22.9%	92.0%	72.3%
Consultant Anaesthesia	88	98	1.11	64.3%	35.7%	1.06	1.22	84.7%	84.7%	80.0%	94.9%	5.1%	96.8%	91.4%
Consultant Emergency Medicine	23	24	1.04	95.8%	4.2%	1.05	1.00	58.3%	58.3%	0.0%	95.8%	4.2%	95.7%	100.0%
Consultant Intensive Care Medicine	2	2	1.00		100.0%		1.00	50.0%	50.0%	50.0%	100.0%	0.0%		100.0%
Consultant Medicine	199	226	1.14	68.6%	31.4%	1.11	1.19	76.1%	76.1%	74.6%	83.2%	16.8%	87.7%	73.2%
Consultant Obstetrics & Gynaecology	34	39	1.14	51.3%	48.7%	1.04	1.29	82.1%	82.1%	78.9%	79.5%	20.5%	95.0%	63.2%
Consultant Paediatrics	25	27	1.10	48.1%	51.9%	1.04	1.16	66.7%	66.7%	64.3%	81.5%	18.5%	92.3%	71.4%
Consultant Pathology	41	47	1.15	40.4%	59.6%	1.11	1.18	89.4%	89.4%	96.4%	85.1%	14.9%	89.5%	82.1%
Consultant Psychiatry	4	5	1.21	60.0%	40.0%	1.18	1.25	80.0%	80.0%	50.0%	80.0%	20.0%	100.0%	50.0%
Consultant Radiology	54	60	1.11	65.0%	35.0%	1.06	1.22	83.3%	83.3%	85.7%	86.7%	13.3%	92.3%	76.2%
Consultant Surgery	117	138	1.18	79.0%	21.0%	1.15	1.26	79.0%	79.0%	82.8%	82.6%	17.4%	86.2%	69.0%
Consultants	587	666	1.13	66.7%	33.3%	1.10	1.21	78.8%	78.6%	79.3%	85.4%	14.6%	90.1%	76.1%
Registrar	375	385	1.03	65.2%	34.8%	1.03	1.03	2.6%	2.6%	3.7%	99.2%	0.8%	99.2%	99.3%
Senior Registrar	33	34	1.02	70.6%	29.4%	1.02	1.00	2.9%	2.9%	0.0%	100.0%	0.0%	100.0%	100.0%
Specialist Registrar	255	260	1.02	47.7%	52.3%	1.01	1.03	0.4%	0.4%	0.7%	98.8%	1.2%	100.0%	97.8%
Registrars	663	679	1.02	58.8%	41.2%	1.02	1.03	1.8%	1.5%	2.1%	99.1%	0.9%	99.5%	98.6%
Interns	200	203	1.01	44.8%	55.2%	1.00	1.02	0.5%	0.5%	0.0%	100.0%	0.0%	100.0%	100.0%
Senior House Officer	472	486	1.03	48.8%	51.2%	1.03	1.03	2.9%	2.9%	2.8%	98.8%	1.2%	100.0%	97.6%
SHO/ Interns	673	689	1.02	47.6%	52.4%	1.02	1.03	2.2%	2.4%	1.9%	99.1%	0.9%	100.0%	98.3%
Dentists	1	1	1.00	100.0%		1.00		0.0%	0.0%		100.0%	0.0%	100.0%	
Other Medical	27	36	1.36	38.9%	61.1%	1.09	1.60	44.4%	44.4%	59.1%	50.0%	50.0%	85.7%	27.3%
Medical/ Dental, other	28	37	1.34	40.5%	59.5%	1.09	1.60	43.2%	20.0%	59.1%	51.4%	48.6%	86.7%	27.3%
Medical & Dental	1,950	2,071	1.06	57.3%	42.7%	1.05	1.08	27.4%	30.9%	22.8%	93.9%	6.1%	96.0%	91.1%
Clinical Nurse/ Midwife Manager	917	1,020	1.11	5.2%	94.8%	1.01	1.12	94.2%	94.2%	94.0%	68.8%	31.2%	96.2%	67.3%

Director Nursing/Midwifery, Assistant	91	98	1.08	6.1%	93.9%	1.00	1.08	95.9%	95.9%	95.7%	76.5%	23.5%	100.0%	75.0%
Director of Nursing/Midwifery	16	16	1.01	6.3%	93.8%	1.00	1.01	87.5%	87.5%	93.3%	93.8%	6.3%	100.0%	93.3%
Nurse/ Midwife Manager	1,024	1,134	1.11	5.3%	94.7%	1.01	1.11	94.3%	96.7%	94.1%	69.8%	30.2%	96.7%	68.3%
Advanced Nurse/ Midwife Practitioner	88	91	1.04	13.2%	86.8%	1.00	1.04	98.9%	98.9%	98.7%	93.4%	6.6%	100.0%	92.4%
Clinical Nurse/ Midwife Specialist	249	291	1.17	3.4%	96.6%	1.02	1.17	99.0%	99.0%	99.3%	63.2%	36.8%	90.0%	62.3%
Nurse/ Midwife Specialist & AN/MP	337	382	1.13	5.8%	94.2%	1.01	1.14	99.0%	95.5%	99.2%	70.4%	29.6%	95.5%	68.9%
Nursing Bank	3	4	1.30		100.0%		1.30	100.0%	100.0%	100.0%	25.0%	75.0%		25.0%
Staff Midwives	284	331	1.16	0.3%	99.7%	1.00	1.17	97.0%	97.0%	97.0%	57.4%	42.6%	100.0%	57.3%
Staff Nurse [Psychiatric]	3	3	1.00	33.3%	66.7%	1.00	1.00	100.0%	100.0%	100.0%	100.0%	0.0%	100.0%	100.0%
Staff Nurses [General/ Children's]	3,043	3,448	1.13	9.2%	90.8%	1.03	1.15	96.3%	96.3%	96.2%	72.7%	27.3%	94.3%	70.5%
Staff Nurse/ Staff Midwife	3,333	3,786	1.14	8.5%	91.5%	1.03	1.15	96.4%	97.5%	96.2%	71.3%	28.7%	94.4%	69.2%
Pre-registration Nurse/ Midwife Intern	12	12	1.00		100.0%		1.00	100.0%	100.0%	100.0%	100.0%	0.0%		100.0%
Pre-registration Nurse Intern (COVID-19)	52	53	1.02	3.8%	96.2%	1.00	1.02	18.9%	18.9%	17.6%	100.0%	0.0%	100.0%	100.0%
Post-registration Nurse/ Midwife Student	17	17	1.00		100.0%		1.00	0.0%	0.0%	0.0%	100.0%	0.0%		100.0%
Nursing/ Midwifery awaiting registration	34	34	1.00	2.9%	97.1%	1.00	1.00	97.1%	97.1%	97.0%	100.0%	0.0%	100.0%	100.0%
Nursing/ Midwifery Student	115	116	1.01	2.6%	97.4%	1.00	1.01	47.4%	66.7%	46.9%	100.0%	0.0%	100.0%	100.0%
Nursing Education/Clinical	60	67	1.11	1.5%	98.5%	1.00	1.11	98.5%	98.5%	98.5%	76.1%	23.9%	100.0%	75.8%
Other Nursing/ Midwifery	15	15	1.03	13.3%	86.7%	1.00	1.04	100.0%	100.0%	100.0%	80.0%	20.0%	100.0%	76.9%
Nursing/ Midwifery other	75	82	1.10	3.7%	96.3%	1.00	1.10	98.8%	100.0%	98.7%	76.8%	23.2%	100.0%	75.9%
Nursing & Midwifery	4,884	5,500	1.13	7.4%	92.6%	1.02	1.14	95.1%	97.1%	95.0%	71.6%	28.4%	94.9%	69.8%
Dietitians	92	100	1.09	2.0%	98.0%	1.00	1.09	81.0%	81.0%	81.6%	80.0%	20.0%	100.0%	79.6%
Occupational Therapists	80	88	1.09	6.8%	93.2%	1.00	1.10	79.5%	79.5%	79.3%	85.2%	14.8%	100.0%	84.1%
Orthoptists	2	6	2.53		100.0%		2.53	83.3%	83.3%	83.3%	16.7%	83.3%		16.7%
Physiotherapists	244	276	1.13	18.8%	81.2%	1.08	1.14	84.4%	84.4%	87.9%	77.2%	22.8%	90.4%	74.1%
Podiatrists & Chiropodists	11	13	1.16	23.1%	76.9%	1.28	1.13	76.9%	76.9%	80.0%	69.2%	30.8%	33.3%	80.0%
Speech & Language Therapists	48	54	1.12	1.9%	98.1%	1.00	1.12	75.9%	75.9%	77.4%	77.8%	22.2%	100.0%	77.4%
Therapy Professions	478	537	1.12	11.9%	88.1%	1.07	1.13	81.9%	68.8%	83.7%	78.2%	21.8%	89.1%	76.7%
Audiology	4	5	1.39	20.0%	80.0%	2.63	1.25	100.0%	100.0%	100.0%	20.0%	80.0%	0.0%	25.0%
Biochemists	29	32	1.10	34.4%	65.6%	1.03	1.14	100.0%	100.0%	100.0%	81.3%	18.8%	100.0%	71.4%

Clinical Engineering	23	23	1.00	78.3%	21.7%	1.00	1.00	95.7%	95.7%	80.0%	100.0%	0.0%	100.0%	100.0%
Clinical Measurement	89	95	1.06	13.7%	86.3%	1.03	1.07	90.5%	90.5%	90.2%	78.9%	21.1%	84.6%	78.0%
Medical Laboratory	324	348	1.07	23.9%	76.1%	1.02	1.09	92.2%	92.2%	94.0%	83.6%	16.4%	94.0%	80.4%
Perfusionists	4	5	1.42	60.0%	40.0%	1.50	1.32	60.0%	60.0%	100.0%	40.0%	60.0%	33.3%	50.0%
Phlebotomists	41	55	1.33	27.3%	72.7%	1.17	1.40	78.2%	78.2%	82.5%	29.1%	70.9%	60.0%	17.5%
Physicists	15	15	1.03	26.7%	73.3%	1.00	1.04	93.3%	93.3%	90.9%	86.7%	13.3%	100.0%	81.8%
Radiographers	262	280	1.07	14.6%	85.4%	1.02	1.08	93.6%	93.6%	93.3%	85.4%	14.6%	97.6%	83.3%
Health Science/ Diagnostics	790	858	1.09	22.0%	78.0%	1.04	1.10	91.8%	88.9%	92.7%	80.0%	20.0%	91.0%	76.8%
Social Workers	75	79	1.05	11.4%	88.6%	1.14	1.04	86.1%	88.9%	85.7%	82.3%	17.7%	66.7%	84.3%
Psychologists	22	27	1.23	14.8%	85.2%	1.19	1.24	81.5%	100.0%	78.3%	55.6%	44.4%	50.0%	56.5%
Pharmacy	187	202	1.08	9.4%	90.6%	1.00	1.09	86.1%	84.2%	86.3%	83.7%	16.3%	100.0%	82.0%
Counsellor Therapists	2	4	1.72		100.0%		1.72	75.0%	75.0%	75.0%	50.0%	50.0%		50.0%
HSCP Trainees/ Students	9	13	1.44	38.5%	61.5%	1.58	1.36	0.0%	0.0%	0.0%	46.2%	53.8%	40.0%	50.0%
Other Health & Social Care	18	20	1.13	45.0%	55.0%	1.02	1.23	80.0%	80.0%	81.8%	70.0%	30.0%	88.9%	54.5%
H&SC, Other	29	37	1.27	37.8%	62.2%	1.17	1.34	51.4%	50.0%	52.2%	59.5%	40.5%	71.4%	52.2%
Health & Social Care	1,581	1,740	1.10	17.2%	82.8%	1.05	1.11	86.8%	82.6%	87.7%	79.1%	20.9%	89.0%	77.1%
Executive Management	21	22	1.04	36.4%	63.6%	1.05	1.03	86.4%	86.4%	85.7%	90.9%	9.1%	87.5%	92.9%
Senior Management (VIII & GM)	77	78	1.02	35.9%	64.1%	1.02	1.02	97.4%	97.4%	98.0%	97.4%	2.6%	92.9%	100.0%
Management (VIII & above)	98	100	1.02	36.0%	64.0%	1.03	1.02	95.0%	94.4%	95.3%	96.0%	4.0%	91.7%	98.4%
Administrative/ Supervisory (V to VII)	600	640	1.07	23.1%	76.9%	1.03	1.08	97.7%	98.0%	97.6%	84.1%	15.9%	97.3%	80.1%
Clerical (III & IV)	1,217	1,363	1.12	17.0%	83.0%	1.02	1.14	89.7%	88.4%	89.9%	73.7%	26.3%	94.0%	69.6%
Management & Administrative	1,915	2,103	1.10	19.8%	80.2%	1.02	1.12	92.3%	92.3%	92.4%	77.9%	22.1%	95.0%	73.7%
Catering	110	118	1.07	27.1%	72.9%	1.01	1.09	93.2%	93.2%	94.2%	77.1%	22.9%	100.0%	68.6%
Household Services	677	772	1.14	22.8%	77.2%	1.04	1.17	77.3%	77.3%	80.4%	62.2%	37.8%	80.1%	56.9%
Other Labs & Associated	80	84	1.05	46.4%	53.6%	1.01	1.09	84.5%	84.5%	86.7%	90.5%	9.5%	94.9%	86.7%
Other Support	170	180	1.06	55.0%	45.0%	1.01	1.13	93.3%	93.3%	98.8%	86.7%	13.3%	99.0%	71.6%
Portering	265	285	1.08	96.5%	3.5%	1.07	1.12	87.7%	87.7%	100.0%	85.6%	14.4%	86.5%	60.0%
Support	1,302	1,439	1.11	43.2%	56.8%	1.05	1.15	83.1%	81.6%	84.2%	72.8%	27.2%	87.9%	61.2%
Maintenance	108	109	1.01	99.1%	0.9%	1.01	1.00	89.0%	89.0%	100.0%	98.2%	1.8%	98.1%	100.0%
Technical Services	12	12	1.01	100.0%		1.01		100.0%	100.0%		100.0%	0.0%	100.0%	

Maintenance/ Technical	120	121	1.01	99.2%	0.8%	1.01	1.00	90.1%	90.0%	100.0%	98.3%	1.7%	98.3%	100.0%
General Support	1,422	1,560	1.10	47.5%	52.5%	1.04	1.15	83.7%	83.0%	84.2%	74.7%	25.3%	89.6%	61.3%
HCA, Nurse's Aide, etc.	1,091	1,225	1.12	34.8%	65.2%	1.06	1.16	74.1%	74.1%	73.3%	72.0%	28.0%	82.4%	66.5%
Health & Social Care Assistants	37	40	1.09	20.0%	80.0%	1.01	1.11	80.0%	80.0%	81.3%	90.0%	10.0%	100.0%	87.5%
Health Care Assistants	1,128	1,265	1.12	34.3%	65.7%	1.06	1.16	74.3%	75.6%	73.6%	72.6%	27.4%	82.7%	67.3%
Other Care Grades	28	34	1.22	67.6%	32.4%	1.26	1.15	76.5%	76.5%	90.9%	70.6%	29.4%	69.6%	72.7%
Care, other	28	34	1.22	67.6%	32.4%	1.26	1.15	76.5%	69.6%	90.9%	70.6%	29.4%	69.6%	72.7%
Patient & Client Care	1,156	1,299	1.12	35.2%	64.8%	1.07	1.16	74.4%	75.3%	73.9%	72.5%	27.5%	82.1%	67.3%

Employment by WTE, Headcount, Gender, Full-Time /Part-Time etc.: Nov 2020

Ireland East Hospital Group	WTE	Headcount	WTE: no.	% Male	% female	Male WTE: no.	Female WTE: no.	% Total Perm	% Male Perm	% Female Perm	% Total Full Time	% Total Part Time	% Male FT	% Female FT
Overall	12,908	14,273	1.11	24.6%	75.4%	1.04	1.13	80.7%	67.1%	85.2%	77.1%	22.9%	92.0%	72.3%
Cappagh National Orthopaedic	441	496	1.12	21.2%	78.8%	1.02	1.16	87.7%	87.7%	91.3%	72.0%	28.0%	95.2%	95.2%
Our Lady's Navan	584	675	1.16	26.2%	73.8%	1.08	1.19	79.9%	79.9%	84.7%	65.9%	34.1%	88.7%	88.7%
MRH Mullingar	992	1,097	1.11	20.4%	79.6%	1.03	1.13	80.6%	80.6%	86.1%	75.1%	24.9%	96.4%	96.4%
National Maternity	921	1,027	1.12	16.1%	83.9%	1.08	1.12	79.2%	79.2%	81.2%	70.3%	29.7%	84.8%	84.8%
Mater Misericordiae University	3,430	3,756	1.10	26.5%	73.5%	1.07	1.11	77.7%	77.7%	82.1%	79.7%	20.3%	87.5%	87.5%
St. Columcille's	457	503	1.10	25.2%	74.8%	1.04	1.12	79.1%	79.1%	82.2%	78.1%	21.9%	92.9%	92.9%
St Luke's General Kilkenny	1,184	1,342	1.13	22.9%	77.1%	1.03	1.17	73.5%	73.5%	83.2%	66.4%	33.6%	94.8%	94.8%
St. Michael's	400	447	1.12	23.7%	76.3%	1.06	1.13	90.6%	90.6%	92.1%	73.8%	26.2%	84.0%	84.0%
St. Vincent's University	3,099	3,340	1.08	27.9%	72.1%	1.02	1.10	86.7%	86.7%	89.6%	89.2%	10.8%	96.8%	96.8%
Wexford General	1,054	1,184	1.12	22.7%	77.3%	1.02	1.16	76.8%	76.8%	84.0%	68.6%	31.4%	94.4%	94.4%
Hospital Group HQ	34	35	1.04	22.9%	77.1%	1.01	1.04	85.7%	85.7%	85.2%	94.3%	5.7%	100.0%	100.0%
Royal Victoria Eye & Ear	307	358	1.17	25.1%	74.9%	1.05	1.21	82.7%	82.7%	85.8%	63.7%	36.3%	86.7%	86.7%
IEHG Bank	7	13	1.85	7.7%	92.3%	6.67	1.75	100.0%	100.0%	100.0%	7.7%	92.3%	0.0%	0.0%

Ireland East Hospital Group Employment by Grade Group & Staff Category: November 2020

Nov 2020 (Dec 2018 figure: 11,773)	WTE Dec 2015	WTE Dec 2016	WTE Dec 2017	WTE Dec 2018	WTE Dec 2019	WTE Oct 2020	WTE Nov 2020
Overall	10,662	10,971	11,382	11,773	12,045	12,831	12,908
Consultant Anaesthesia	4.9%	4.9%	4.9%	5.1%	4.8%	4.5%	4.5%
Consultant Emergency Medicine	0.9%	1.0%	1.1%	1.0%	1.1%	1.2%	1.2%
Consultant Intensive Care Medicine				0.1%	0.1%	0.1%	0.1%
Consultant Medicine	9.2%	9.1%	9.3%	9.3%	9.9%	10.0%	10.2%
Consultant Obstetrics & Gynaecology	1.9%	2.0%	2.0%	2.0%	2.0%	1.7%	1.7%
Consultant Paediatrics	1.4%	1.2%	1.3%	1.2%	1.2%	1.3%	1.3%
Consultant Pathology	2.0%	2.1%	2.1%	2.3%	2.2%	2.1%	2.1%
Consultant Psychiatry	0.3%	0.2%	0.3%	0.3%	0.2%	0.2%	0.2%
Consultant Radiology	3.2%	3.1%	2.9%	3.2%	3.0%	2.7%	2.8%
Consultant Surgery	6.5%	6.6%	6.5%	6.3%	6.2%	6.0%	6.0%
Consultants	30.5%	30.2%	30.5%	30.7%	30.7%	30.1%	30.1%
Registrar	20.6%	21.1%	19.6%	19.8%	19.5%	19.0%	19.2%
Senior Registrar	0.9%	1.7%	1.3%	1.4%	1.6%	1.7%	1.7%
Specialist Registrar	13.2%	11.9%	13.3%	13.1%	14.2%	13.9%	13.1%
Registrars	34.7%	34.7%	34.2%	34.3%	35.3%	34.0%	34.0%
Interns	9.3%	9.2%	8.7%	8.8%	8.4%	10.1%	10.3%
Senior House Officer	24.3%	24.6%	25.1%	24.5%	24.1%	24.0%	24.2%
SHO/ Interns	33.6%	33.8%	33.8%	33.4%	32.5%	34.5%	34.5%
Dentists	0.1%	0.1%	0.1%	0.1%	0.1%	0.1%	0.1%
Other Medical	1.2%	1.3%	1.5%	1.5%	1.4%	1.3%	1.4%
Medical/ Dental, other	1.2%	1.3%	1.5%	1.6%	1.5%	1.4%	1.4%
Medical & Dental	14.1%	14.3%	14.5%	14.4%	14.6%	15.1%	15.1%
Clinical Nurse/ Midwife Manager	15.9%	16.6%	16.6%	17.8%	17.9%	18.7%	18.8%
Director Nursing/Midwifery, Assistant	1.7%	1.5%	1.7%	1.8%	1.9%	1.9%	1.9%
Director of Nursing/Midwifery	0.2%	0.3%	0.3%	0.3%	0.3%	0.3%	0.3%
Nurse/ Midwife Manager	17.9%	18.4%	18.5%	19.9%	20.2%	21.0%	21.0%
Advanced Nurse/ Midwife Practitioner	0.5%	0.7%	1.3%	1.5%	1.6%	1.8%	1.8%
Clinical Nurse/ Midwife Specialist	5.0%	5.2%	4.9%	5.1%	5.1%	5.1%	5.1%
Nurse/ Midwife Specialist & AN/MP	5.5%	5.9%	6.2%	6.6%	6.7%	6.9%	6.9%
Nursing Bank	0.0%	0.1%	0.2%	0.1%	0.0%	0.0%	0.1%
Staff Midwives	7.6%	7.3%	6.5%	6.7%	6.3%	5.8%	5.8%
Staff Nurse [Psychiatric]	0.1%	0.1%	0.1%	0.1%	0.1%	0.1%	0.1%
Staff Nurses [General/ Children's]	66.0%	65.6%	65.8%	63.9%	63.9%	61.8%	62.3%
Staff Nurse/ Staff Midwife	73.8%	73.2%	72.6%	70.8%	70.3%	68.2%	68.2%
Pre-registration Nurse/ Midwife Intern	0.6%	0.3%	0.4%	0.5%	0.5%		0.2%
Pre-registration Nurse Intern (COVID-19)						2.0%	1.1%
Post-registration Nurse/ Midwife Student	0.6%	0.5%	0.5%	0.5%	0.5%	0.4%	0.3%
Nursing/ Midwifery awaiting registration		0.0%	0.1%	0.1%	0.2%	0.6%	0.7%
Nursing/ Midwifery Student	1.2%	0.9%	1.1%	1.1%	1.2%	2.4%	2.4%
Nursing Education/Clinical	1.4%	1.4%	1.4%	1.4%	1.4%	1.2%	1.2%
Other Nursing/ Midwifery	0.3%	0.3%	0.2%	0.2%	0.3%	0.3%	0.3%
Nursing/ Midwifery other	1.7%	1.7%	1.6%	1.6%	1.6%	1.5%	1.5%
Nursing & Midwifery	38.6%	38.3%	38.3%	38.0%	38.2%	37.8%	37.8%
Dietitians	4.4%	5.2%	4.9%	5.6%	5.3%	5.6%	5.8%
Occupational Therapists	5.0%	5.2%	5.2%	5.0%	4.7%	5.2%	5.1%
Orthoptists	0.2%	0.2%	0.2%	0.2%	0.2%	0.2%	0.1%
Physiotherapists	14.2%	14.2%	14.5%	15.3%	15.7%	15.5%	15.4%
Podiatrists & Chiropodists	0.4%	0.5%	0.6%	0.6%	0.7%	0.7%	0.7%
Speech & Language Therapists	2.2%	2.4%	2.7%	2.3%	2.4%	3.1%	3.1%
Therapy Professions	26.5%	27.9%	28.1%	29.0%	28.9%	30.3%	30.3%
Audiology	0.2%	0.3%	0.2%	0.2%	0.2%	0.2%	0.2%

Nov 2020 (Dec 2018 figure: 11,773)	WTE Dec 2015	WTE Dec 2016	WTE Dec 2017	WTE Dec 2018	WTE Dec 2019	WTE Oct 2020	WTE Nov 2020
Overall	10,662	10,971	11,382	11,773	12,045	12,831	12,908
Biochemists	1.7%	1.6%	2.0%	2.0%	1.8%	1.9%	1.8%
Clinical Engineering	1.2%	1.2%	1.3%	1.3%	1.4%	1.5%	1.5%
Clinical Measurement	6.0%	5.8%	5.5%	5.6%	5.4%	5.7%	5.6%
Medical Laboratory	24.2%	23.5%	22.7%	21.9%	20.9%	20.6%	20.5%
Perfusionists	0.2%	0.2%	0.3%	0.2%	0.3%	0.2%	0.2%
Phlebotomists	2.7%	2.5%	2.6%	2.6%	2.5%	2.6%	2.6%
Physicists	1.0%	0.9%	0.9%	1.1%	1.1%	0.9%	0.9%
Radiographers	18.1%	17.3%	17.2%	16.8%	16.6%	16.6%	16.5%
Health Science/ Diagnostics	55.3%	53.3%	52.7%	51.7%	50.2%	50.0%	50.0%
Social Workers	4.3%	4.4%	4.4%	4.0%	4.8%	4.7%	4.7%
Psychologists	0.9%	0.9%	1.0%	1.0%	1.5%	1.4%	1.4%
Pharmacy	11.1%	11.5%	11.7%	12.2%	12.9%	11.8%	11.8%
Counsellor Therapists	0.2%	0.2%	0.2%	0.2%	0.2%	0.1%	0.1%
HSCP Trainees/ Students	0.6%	0.6%	0.6%	0.7%	0.5%	0.3%	0.6%
Other Health & Social Care	1.2%	1.1%	1.3%	1.2%	1.1%	1.1%	1.1%
H&SC, Other	1.9%	2.0%	2.1%	2.1%	1.8%	1.8%	1.8%
Health & Social Care Professionals	12.0%	12.0%	11.9%	12.1%	12.1%	12.2%	12.2%
Executive Management	0.5%	0.6%	0.6%	0.8%	0.8%	1.0%	1.1%
Senior Management (VIII & GM)	3.2%	3.8%	3.9%	3.8%	3.8%	4.0%	4.0%
Management (VIII & above)	3.7%	4.4%	4.5%	4.5%	4.6%	5.1%	5.1%
Administrative/ Supervisory (V to VII)	26.5%	26.4%	27.6%	28.2%	28.5%	31.3%	31.3%
General Administrative (III & IV)	69.8%	69.2%	68.0%	67.3%	66.9%	64.0%	63.6%
Clerical (III & IV)	69.8%	69.2%	68.0%	67.3%	66.9%	63.6%	63.6%
Management & Administrative	15.0%	14.9%	15.1%	15.2%	15.1%	14.8%	14.8%
Catering	7.3%	7.3%	6.8%	6.9%	7.1%	7.7%	7.8%
Household Services	43.8%	45.4%	46.0%	46.9%	46.1%	47.9%	47.6%
Other Labs & Associated	4.8%	4.5%	4.6%	4.7%	5.0%	5.6%	5.6%
Other Support	11.0%	11.0%	11.3%	11.0%	11.0%	11.6%	11.9%
Portering	24.0%	23.4%	23.4%	22.9%	22.9%	18.7%	18.6%
Support	90.9%	91.6%	92.1%	92.5%	92.2%	91.6%	91.6%
Maintenance	8.3%	7.6%	7.1%	6.8%	7.0%	7.7%	7.6%
Technical Services	0.8%	0.8%	0.8%	0.8%	0.8%	0.8%	0.8%
Maintenance/ Technical	9.1%	8.4%	7.9%	7.5%	7.8%	8.4%	8.4%
General Support	12.1%	12.2%	12.3%	12.1%	11.9%	11.0%	11.0%
HCA, Nurse's Aide, etc.	94.3%	94.2%	94.5%	94.5%	94.6%	94.5%	94.4%
Health & Social Care Assistants	2.4%	2.5%	2.6%	2.8%	2.8%	3.1%	3.2%
Health Care Assistants	96.8%	96.6%	97.1%	97.3%	97.3%	97.6%	97.6%
Other Care Grades	3.2%	3.4%	2.9%	2.7%	2.7%	2.3%	2.4%
Care, other	3.2%	3.4%	2.9%	2.7%	2.7%	2.4%	2.4%
Patient & Client Care	8.3%	8.3%	8.0%	8.2%	8.1%	9.0%	9.0%
Total	100%	100%	100%	100%	100%	100%	100%

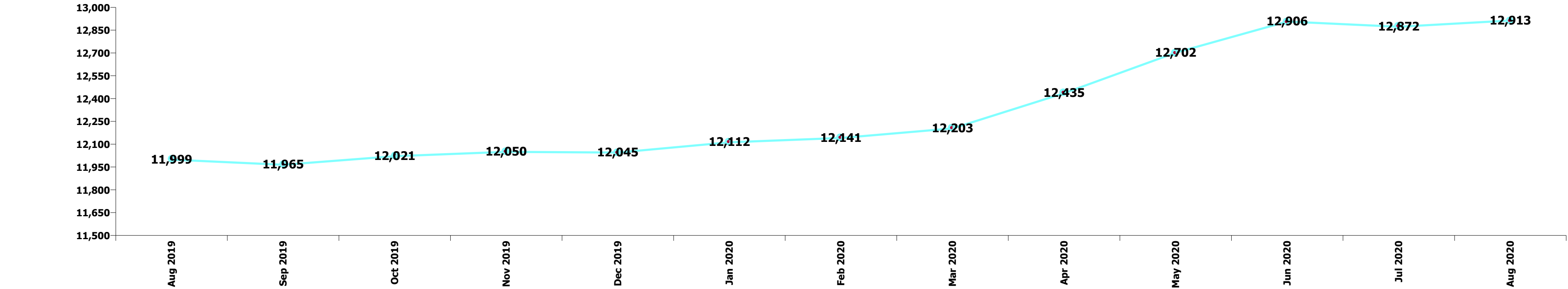
Summary Staff Movement: November 2020

Month-on-month Summary

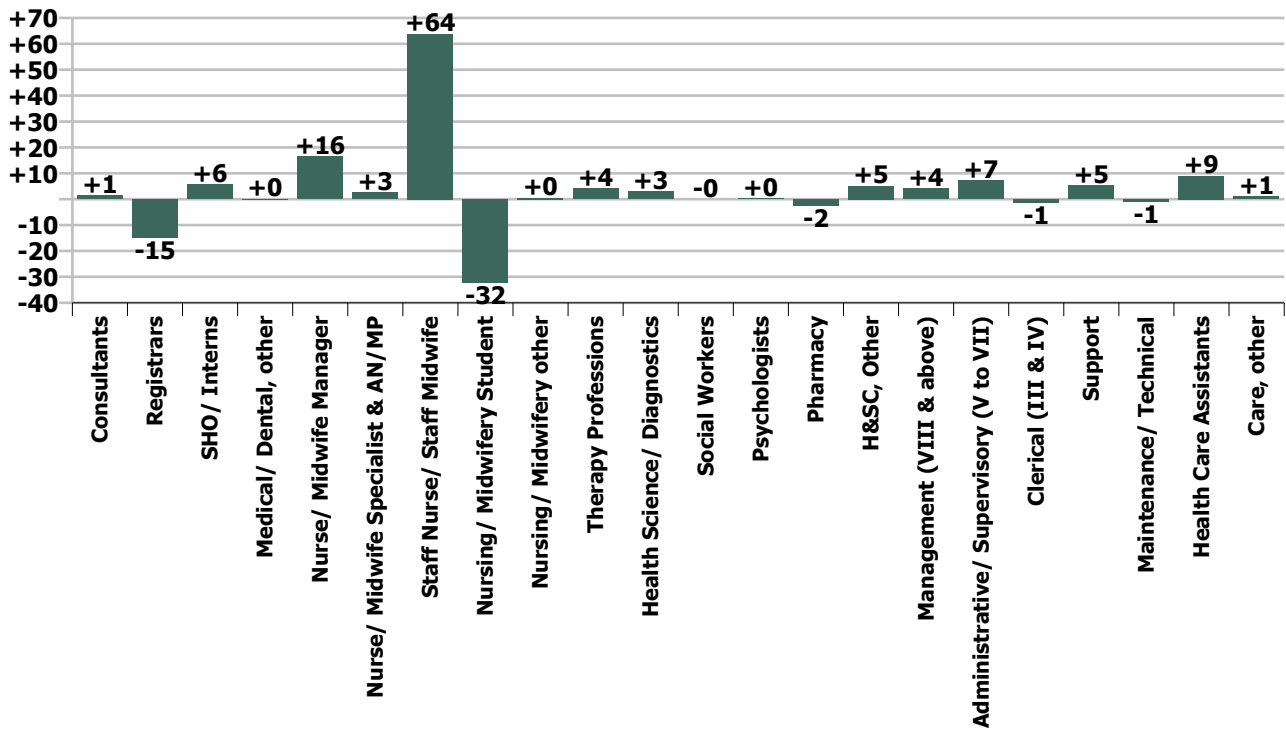
WTE change since Oct 20	% change since Oct 20	overall	Consultants	Registrars	SHO/ Interns	Medical/ Dental, other	Medical & Dental	Nurse/ Midwife Manager	Nurse/ Midwife Specialist & AN/MP	Staff Nurse/ Staff Midwife	Nursing/ Midwifery Student	Nursing/ Midwifery other	Nursing & Midwifery	Therapy Professions	Health Science/ Diagnostics	Social Workers	Psychologists	Pharmacy	H&SC, Other	Health & Social Care Professionals	Management (VIII & above)	Administrative/ Supervisory (V to VII)	Clerical (III & IV)	Management & Administrative	General Support	Health Care Assistants	Care, other	Patient & Client Care	
Overall	+0.6%	+77	+1	-15	+6	+0	-8	+16	+3	+64	-32	+0	+51	+4	+3	-0	+0	-2	+5	+10	+4	+7	-1	+10	+4	+9	+1	+10	
Cappagh National Orthopaedic	+0.8%	+4		+1	+1		+2							+1	-0					+1		+1	+1						
Our Lady's Navan	+0.3%	+2	+0	+1	-1		+0	-1	+0	+1	-1		-1	-1	-0			-0		-1	+0	+0	+2	+2	+0	+2	-1	+1	
MRH Mullingar	+0.8%	+8	-1	-1	+1		-2	+1	+1	+3	-1		+5	-1	-0			-1		-2		+1	+1	+1	-0	+5		+5	
National Maternity	+0.2%	+2		-1	+1			+8	-0	+1	-5		+5			+1		-1				+1	+0	+1	-1	-3		-3	
Mater Misericordiae University	+1.3%	+45	+3	+3	+1	-0	+6	+1	-1	+64	-35	+0	+30	+3	+5	-1		-3	+5	+9	-2	+1	+4	+3	+0	-4	+0	-4	
St. Columcille's	-0.4%	-2	-1		+1		-0	+2	+0	-2		-0	-0	-0	+1		+0			+1		-0	+1	+1	-2	-0		-0	
St Luke's General Kilkenny	+0.4%	+5	-1	-0	+0	+1	-0	+2	-0	+5	-3	+0	+5	-0	+1			+0		+1	-0	+0	+1	+2	-1	-1	-0	-1	
St. Michael's	+0.4%	+1								+0					+1			+0		+1			+0	+0	+1	-1		-1	
St. Vincent's University	-0.1%	-2	-1	-17	+2		-17	+3	+1	-20	+18		+2	+1	-3			+1		-1	+4	+1	-11	-6	+9	+10	+1	+11	
Wexford General	+0.6%	+6	+1	+1	-0	-0	+2	-1	-0	+13	-6		+5	+1	-0			+1		+2		+0	+0	+0	-3	-0	-0	-0	
Hospital Group HQ	+12.5%	+4								+1			+1		+0					+0	+2	+1		+3					
Royal Victoria Eye & Ear	+1.0%	+3	+2			-0	+1	+1	+2	-3			-1		-1					-1		+2	-1	+1	+1	+1		+1	
IEHG Bank	+38.5%	+2								+2			+2													+0		+0	
			±0.0%	0.0%	±0.8%	±0.1%	-0.1%	±1.6%	±0.8%	±0.0%	0.1%	±0.6%	±1.1%	±0.8%	±0.1%	0.0%	±1.0%	1.0%	±0.1%	±0.6%	±1.0%	±1.0%	0.1%	±0.5%	±0.0%	±0.8%	±0.8%	±0.8%	±0.8%

Year-on-year Summary

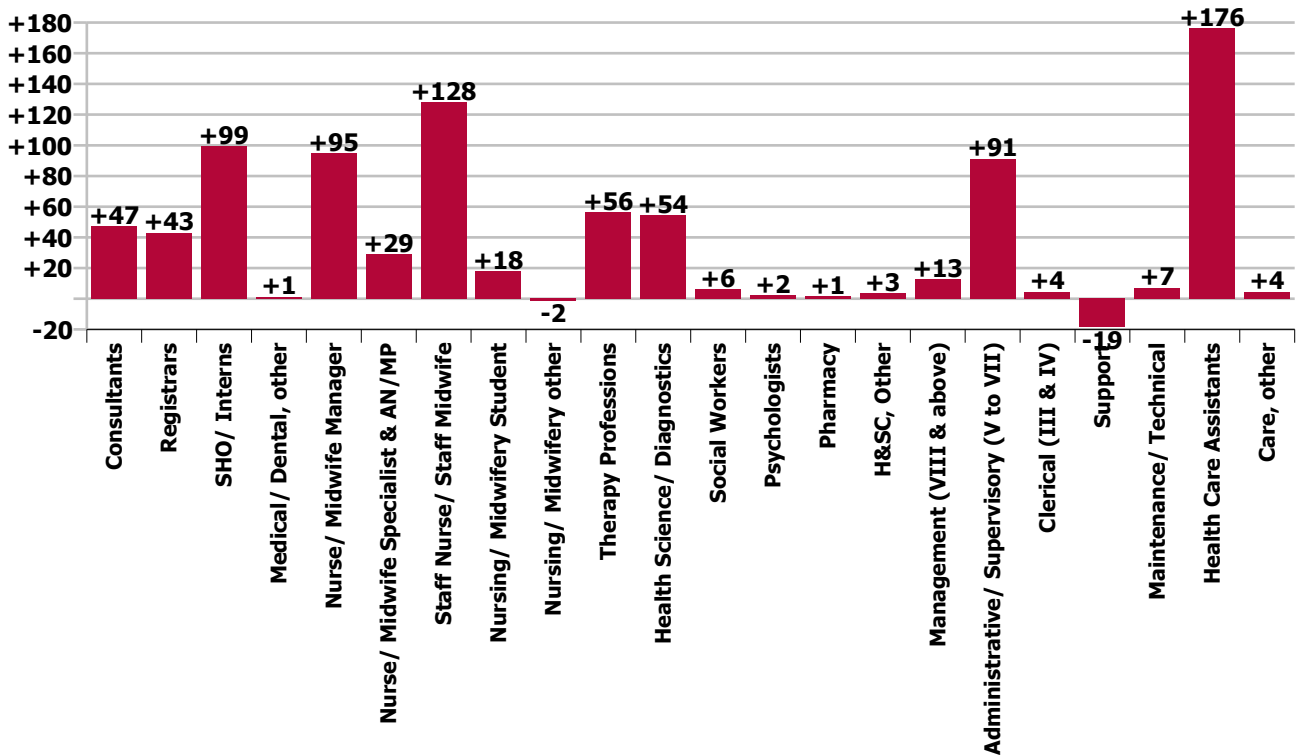
WTE change since Nov 19	% change since Nov 19	overall	Consultants	Registrars	SHO/ Interns	Medical/ Dental, other	Medical & Dental	Nurse/ Midwife Manager	Nurse/ Midwife Specialist & AN/MP	Staff Nurse/ Staff Midwife	Nursing/ Midwifery Student	Nursing/ Midwifery other	Nursing & Midwifery	Therapy Professions	Health Science/ Diagnostics	Social Workers	Psychologists	Pharmacy	H&SC, Other	Health & Social Care Professionals	Management (VIII & above)	Administrativ e/ Supervisory (V to VII)	Clerical (III & IV)	Management & Administrativ e	General Support	Health Care Assistants	Care, other	Patient & Client Care
Overall	+7.1%	+859	+47	+43	+99	+1	+191	+95	+29	+128	+18	-2	+267	+56	+54	+6	+2	+1	+3	+123	+13	+91	+4	+108	-11	+176	+4	+180
Cappagh National Orthopaedic	+3.5%	+15	-1	+1						+8			+8	+0	+1					+1		+3	+2	+5	+0			
Our Lady's Navan	+13.4%	+69	+2	+5	+9		+16	+2	+2	+13	-3		+14	+7	+5			+1		+13	+0	+10	+1	+11	-1	+15	+0	+16
MRH Mullingar	+8.8%	+80	+6	-1	+4	+0	+10	+3	+4	+26	-1	+1	+33	+10	+12			-3	+3	+18	-2	+5	-4	-1	+0	+19		+19
National Maternity	+4.9%	+43	+3	+3	+1		+7	+18	+1	-4	-5		+9	+2	+4	+2	+1	+1		+10	+1	+5	-8	-2	+10	+9		+9
Mater Misericordiae University	+8.2%	+260	+20	+26	+36	+1	+82	+14	+11	+36	-7	+5	+59	+14	+14	+0	+1	+2	+3	+34	+1	+9	+35	+45	+17	+23	+1	+24
St. Columcille's	+1.0%	+5	-4	+0	+2		-1	+2	-1	-9		-1	-9	+4	+3	+1	-0	+1		+9	+1	-1	+5	+5	+1	-1	+1	-0
St Luke's General Kilkenny	+5.7%	+64	+1	+8	-6	-0	+3	-0	+3	+18	-3	+0	+18	+9	+3	+3		-1	+18	+11	+2	+7	-3	+6	-28	+55	-0	+55
St. Michael's	+0.9%	+3	+1		+1		+2		-2	+3		-1	+0	-5	+2	+1		-2		-4	+2	+5	-5	+2	+1	+3		+3
St. Vincent's University	+9.3%	+263	+11	+2	+54	-0	+66	+56	+4	+16	+38	-6	+108	+12	+12	+3	+0	-0		+27	+1	+37	-17	+22	+21	+15	+3	+18
Wexford General	+2.9%	+30	+4	-3	+0	+1	+2	+3	+5	+9	-1	+1	+10	+4	-0			+2		+6	+2	+9	+0	+11	-34	+35	-1	+35
Hospital Group HQ	+10.3%	+3				-1	-1			+1			+1								+4	+0	-0	+4	-1			
Royal Victoria Eye & Ear	+5.5%	+16	+3	+2	-1	+0	+5	+3	+2	+3		-1	+8	-0	-1	-1		+1		-1	+1	+1	-2	+0	+1	+2		+2
IEHG Bank	-100.0%	+7								+7			+7													+0		+0
			+8.7%	+6.9%	+17.3%	+4.8%	+10.8%	+10.2%	+9.3%	+4.0%	+18.3%	-2.0%	+5.8%	+13.3%	+7.4%	+8.6%	+10.5%	+0.8%	+13.2%	+8.5%	+14.8%	+17.9%	+0.4%	+6.0%	-0.8%	+18.5%	+18.5%	+18.5%



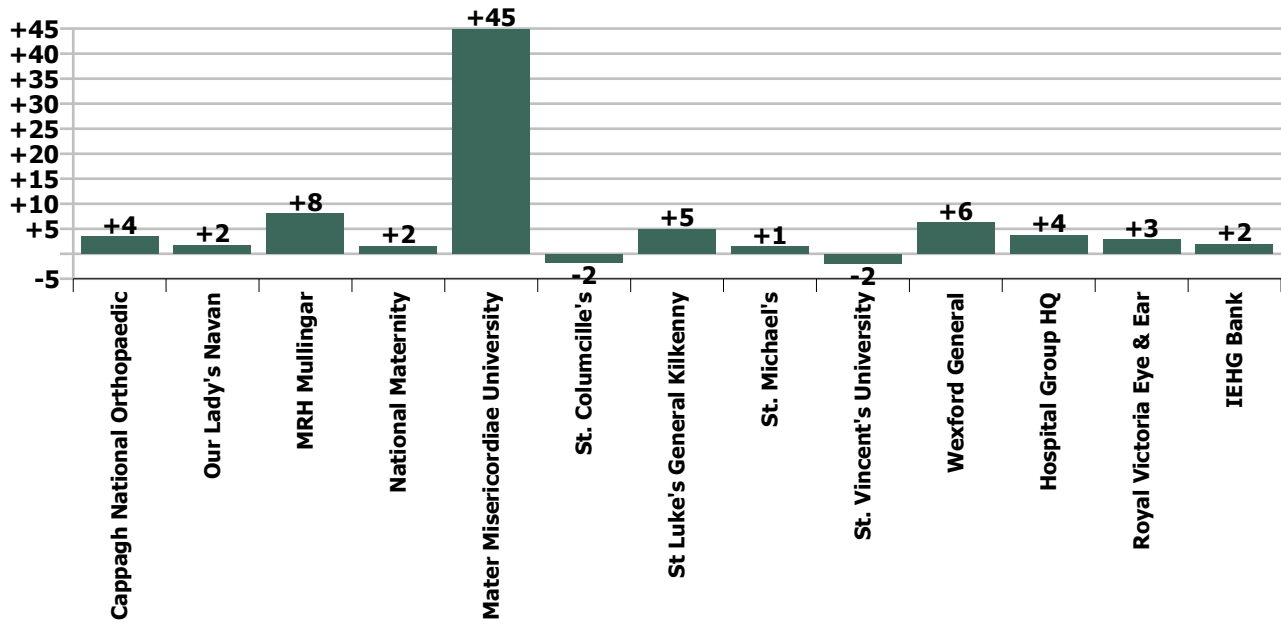
Staff Group change since: Oct 2020



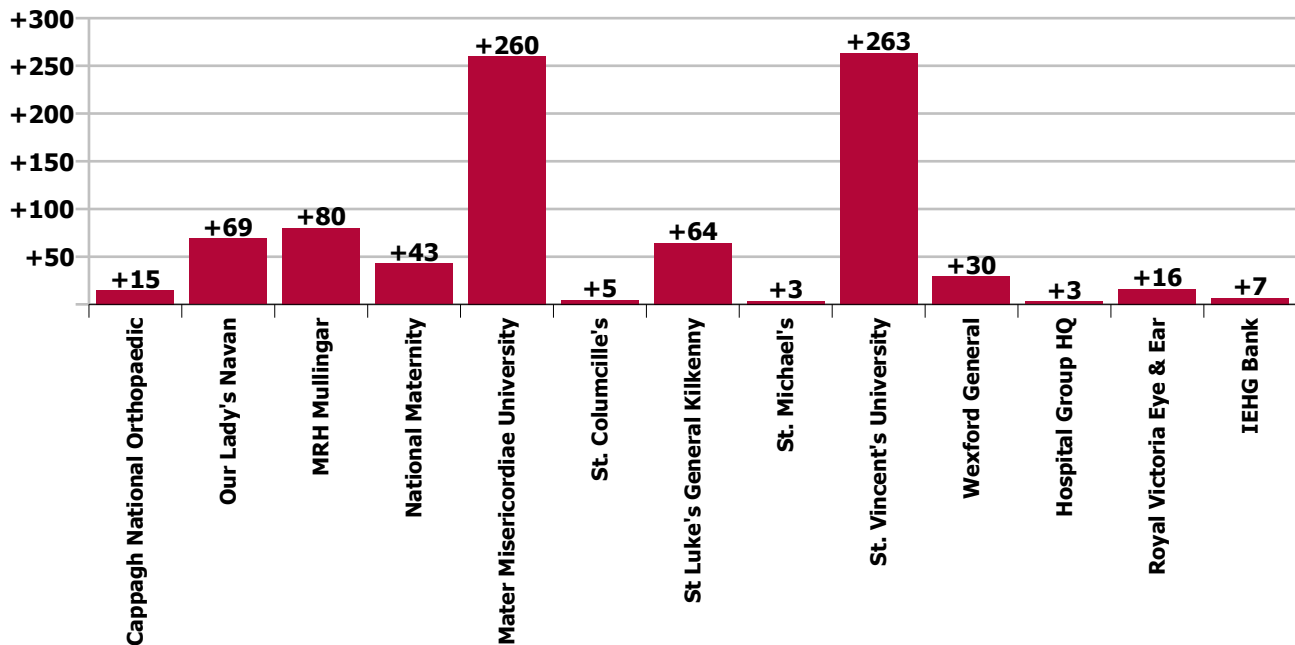
Staff Group change since: Nov 2019



Hospital change since: Oct 2020



Hospital change since: Nov 2019



Longitudinal Employment Levels by Grade Group - Dec 15 to Nov 2020

Nov 2020 (Dec 2015 figure: 10,662)	WTE Nov 2020	WTE change since Dec 15	WTE change since Dec 16	WTE change since Dec 17	WTE change since Dec 18	WTE change since Dec 19	WTE change since Oct 20	% change since Dec 15	% change since Dec 16	% change since Dec 17	% change since Dec 18	% change since Dec 19	% change since Oct 20
Overall	12,908	+2,246	+1,937	+1,526	+1,135	+863	+77	+21.1%	+17.7%	+13.4%	+9.6%	+7.2%	+0.6%
Consultant Anaesthesia	88	+14	+11	+7	+3	+4	-0	+19.4%	+14.6%	+9.0%	+3.2%	+4.4%	-0.1%
Consultant in Emergency Medicine	23	+9	+7	+5	+6	+4	-1	+63.7%	+41.5%	+27.6%	+35.2%	+19.7%	-3.1%
Consultant Emergency Medicine	23	+9	+7	+5	+6	+4	-1	+63.7%	+41.5%	+27.6%	+35.2%	+19.7%	-3.1%
Consultant Intensivist	2	+2	+2	+2				-100.0%	-100.0%	-100.0%			
Consultant Intensive Care Medicine	2	+2	+2	+2				-100.0%	-100.0%	-100.0%			
Consultant Cardiologist	19	+5	+3	+2	+2	-0	-1	+38.1%	+22.1%	+12.5%	+12.4%	-2.1%	-2.6%
Consultant Clinical Neurophysiologist	2	+0	+0					+25.4%	+25.4%				
Consultant Dermatologist	10	+2	+1	+0	+2	-2	-1	+26.4%	+7.0%	+0.3%	+23.3%	-16.8%	-7.4%
Consultant Gastroenterologist & General Physician	12	+2	+3	+3	+1	+2		+16.0%	+28.9%	+28.9%	+5.5%	+15.2%	
Consultant General Physician	53	+14	+15	+13	+12	+11	+1	+36.4%	+39.0%	+32.5%	+28.9%	+24.8%	+2.7%
Consultant in Clinical Genetics	0	-0	-0					-50.0%	-50.0%				
Consultant in Palliative Medicine	2	+0	-0	-0	-0			+7.0%	-15.3%	-3.8%	-13.4%		
Consultant in Rehabilitation Medicine	1	+1	+1					+222.2%	+222.2%				
Consultant Medical Oncologist	11	+4	+4	+3	+5	+2	+1	+50.9%	+58.1%	+37.4%	+92.3%	+28.5%	+10.5%
Consultant Nephrologist & General Physician	5	+3	+3	+1				+127.7%	+127.7%	+23.0%			
Consultant Neurologist	12	+3	+2	+3	+2	+1	-0	+39.3%	+17.4%	+31.6%	+21.9%	+12.0%	-2.3%
Consultant Physician in Endocrinology	11	+2	+2	+2	-1	-0	-1	+19.6%	+19.6%	+19.6%	-5.2%	-0.3%	-4.3%
Consultant Physician in Geriatric Medicine	23	+8	+7	+5	+5	+4	+1	+52.0%	+46.4%	+26.9%	+25.6%	+18.8%	+4.5%
Consultant Physician in Infectious Diseases	10	+7	+6	+6	+7	+4	+1	+328.6%	+197.6%	+197.6%	+234.4%	+69.8%	+11.5%
Consultant Respiratory & General Physician	19	+8	+7	+6	+5	+4		+66.2%	+59.4%	+42.9%	+33.1%	+23.1%	
Consultant Rheumatologist & General Physician	8	+2	+3	+2	+3	+0		+30.1%	+48.0%	+29.7%	+50.6%	+3.8%	
Consultant Medicine	199	+61	+57	+45	+42	+25	+2	+44.3%	+39.7%	+29.5%	+26.5%	+14.3%	+1.2%
Consultant Obstetrician & Gynaecologist	33	+5	+3	+1	-0	-1		+17.6%	+8.5%	+2.4%	-0.4%	-1.5%	
Master (Maternity Hospital)	1												
Consultant Obstetrics & Gynaecology	34	+5	+3	+1	-0	-1		+17.0%	+8.2%	+2.3%	-0.4%	-1.4%	
Consultant Paediatrician	25	+3	+6	+4	+5	+3	-0	+14.5%	+33.1%	+17.2%	+23.9%	+12.6%	-1.2%
Consultant Paediatrics	25	+3	+6	+4	+5	+3	-0	+14.5%	+33.1%	+17.2%	+23.9%	+12.6%	-1.2%
Consultant Clinical Biochemist	2	+1	-1	-1	-1	+1		+198.6%	-20.1%	-20.1%	-20.1%	+100.0%	
Consultant Haematologist (Clinical and Laboratory)	11	+5	+5	+5	+3			+72.8%	+72.3%	+72.3%	+30.7%		
Consultant Histopathologist	16	-0	+0	-1	-1	+0		-2.2%	+0.1%	-6.6%	-3.8%	+1.3%	
Consultant Immunologist (Clinical & Laboratory)	1												
Consultant Microbiologist	11	+5	+4	+3	+1	+1	-0	+74.6%	+50.7%	+35.6%	+10.0%	+14.9%	-0.3%
Consultant Pathology	41	+10	+8	+6	+2	+3	-0	+33.9%	+23.2%	+16.3%	+6.1%	+7.2%	-0.1%

Nov 2020 (Dec 2015 figure: 10,662)	WTE Nov 2020	WTE change since Dec 15	WTE change since Dec 16	WTE change since Dec 17	WTE change since Dec 18	WTE change since Dec 19	WTE change since Oct 20	% change since Dec 15	% change since Dec 16	% change since Dec 17	% change since Dec 18	% change since Dec 19	% change since Oct 20
Overall	12,908	+2,246	+1,937	+1,526	+1,135	+863	+77	+21.1%	+17.7%	+13.4%	+9.6%	+7.2%	+0.6%
Consultant Child & Adolescent Psychiatrist		-0	-0	-0	-0			-100.0%	-100.0%	-100.0%	-100.0%	-100.0%	-100.0%
Consultant General Adult Psychiatrist	4	+0	+1				-1	+8.7%	+21.4%				-12.7%
Consultant Psychiatry	4	+0	+0	-0	-0		-1	+1.5%	+12.5%	-6.1%	-6.1%		-12.7%
Consultant Radiation Oncologist	0												
Consultant Radiologist	54	+6	+6	+6	+0	+2	+1	+11.7%	+11.6%	+12.1%	+0.1%	+4.1%	+2.3%
Consultant Radiology	54	+6	+6	+6	+0	+2	+1	+11.7%	+11.5%	+12.0%	+0.1%	+4.0%	+2.3%
Consultant Cardio-thoracic Surgeon	11	+3	+3	+3	+3	+3		+30.9%	+30.9%	+30.9%	+30.9%	+39.5%	
Consultant General Surgeon	32	-0	-3	+0	+0	-1	-2	-1.2%	-9.2%	+1.6%	+0.1%	-2.2%	-4.7%
Consultant General Surgeon Breast	2	+1	+1					+100.0%	+100.0%				
Consultant General Surgeon Colo-rectal	3		-1	-2	-2	-1			-25.0%	-40.0%	-40.0%	-25.0%	
Consultant General Surgeon s.i. in vascular surgery	2												
Consultant Ophthalmic Surgeon	25	+8	+6	+4	+4	+4	+2	+44.3%	+31.1%	+21.2%	+18.2%	+20.0%	+6.6%
Consultant Ophthalmic Surgeon s.i. neuro-ophthal	0	+0	+0	+0	+0	+0		-100.0%	-100.0%	-100.0%	-100.0%	-100.0%	
Consultant Oral & Maxillo Facial Surgeon				-0	-0	-0		-100.0%	-100.0%	-100.0%	-100.0%	-100.0%	-100.0%
Consultant Orthopaedic Surgeon	16	+4	+2	+1	+2	+2		+34.5%	+14.3%	+6.7%	+17.4%	+11.4%	
Consultant Otolaryngologist	10	+2	+3	+3	+1	-0	-0	+32.3%	+44.2%	+32.9%	+10.9%	-0.6%	-3.5%
Consultant Plastic Surgeon	8		+1	+1	+2	+2			+9.5%	+9.5%	+27.5%	+27.5%	
Consultant Urologist	9	+3	+3	+1	+1	+1		+37.2%	+37.2%	+12.2%	+12.2%	+12.2%	
Consultant Surgery	117	+20	+14	+10	+10	+9	-0	+20.5%	+13.1%	+9.6%	+9.4%	+8.7%	-0.3%
Consultants	587	+131		+85	+67	+49	+1	+28.6%	+23.7%	+17.0%	+13.0%	+9.1%	+0.2%
Registrar	27	-67	-70	+13	+18	+20	+2	-71.6%	-72.6%	+94.6%	+207.4%	+278.6%	+9.4%
Registrar, Anaesthesia	47	+8	+11	+4	-3	-5	+1	+21.5%	+31.6%	+10.2%	-5.3%	-8.9%	+1.2%
Registrar, Emergency Medicine	42	+21	+20	+6	+1	+5	-2	+95.6%	+89.2%	+16.8%	+3.4%	+14.3%	-5.2%
Registrar, Medicine	143	+68	+40	+11	+16	+9	+1	+91.4%	+39.1%	+8.1%	+12.8%	+6.7%	+0.8%
Registrar, Obstetrics & Gynaecology	27	+13	+15	+5	+1	+5	+0	+91.6%	+123.5%	+21.9%	+5.2%	+20.4%	+0.7%
Registrar, Ophthalmology	7	+3	+2	-1	+1	+0	+0	+91.4%	+53.7%	-13.3%	+15.3%	+3.1%	+3.1%
Registrar, Paediatrics	14	+8	+9	-2	-3	-6	-0	+129.8%	+175.8%	-10.5%	-17.8%	-29.3%	-1.5%
Registrar, Pathology	15	+8	+7	+8	+8	+8		+112.9%	+100.5%	+112.9%	+112.9%	+112.9%	
Registrar, Psychiatry	5	-5	-1	+1	+1	+1		-47.9%	-9.1%	+25.0%	+25.0%	+25.0%	
Registrar, Surgery	49	+9	+10	+6	-2	-4	+1	+21.4%	+24.6%	+14.5%	-3.9%	-8.3%	+1.9%
Registrar	375	+66	+44	+51	+39	+33	+3	+21.4%	+13.2%	+15.9%	+11.6%	+9.5%	+0.7%
Registrar, Senior	27	+17	+5	+10	+8	+4	-0	+174.9%	+25.0%	+57.1%	+38.3%	+14.9%	-0.8%
Senior Registrar, Psychiatry	6	+2	+2	+2	+2	+2		+50.0%	+50.0%	+50.0%	+50.0%	+50.0%	
Senior Registrar	33	+19	+7	+12	+10	+6	-0	+139.2%	+28.8%	+55.8%	+40.3%	+19.9%	-0.7%
Registrar, Specialist	16	+1	+11	+10	+4	+4	-2	+3.2%	+220.0%	+146.2%	+33.3%	+28.0%	-8.6%
Specialist Registrar, Anaesthesia	44	+10	+9	+8	+15	+3	-4	+29.9%	+24.3%	+20.8%	+50.0%	+6.1%	-8.4%

Nov 2020 (Dec 2015 figure: 10,662)	WTE Nov 2020	WTE change since Dec 15	WTE change since Dec 16	WTE change since Dec 17	WTE change since Dec 18	WTE change since Dec 19	WTE change since Oct 20	% change since Dec 15	% change since Dec 16	% change since Dec 17	% change since Dec 18	% change since Dec 19	% change since Oct 20
Overall	12,908	+2,246	+1,937	+1,526	+1,135	+863	+77	+21.1%	+17.7%	+13.4%	+9.6%	+7.2%	+0.6%
Specialist Registrar, Emergency Medicine	11	+5	+6	+5	+5	+1		+69.2%	+120.0%	+83.3%	+83.3%	+10.0%	
Specialist Registrar, Medicine	83	+25	+22	+12	+9	+3	-10	+42.1%	+35.9%	+16.6%	+12.6%	+4.1%	-10.4%
Specialist Registrar, Obstetrics & Gynaecology	8			-4	-7	-8				-30.4%	-44.8%	-49.1%	
Specialist Registrar, Paediatrics	5	-3	-3	-6	-4	-2		-37.5%	-37.5%	-54.5%	-44.4%	-28.6%	
Specialist Registrar, Pathology	13	+4	+7	+3	+2	-1	-1	+49.6%	+124.3%	+28.2%	+22.4%	-5.2%	-7.6%
Specialist Registrar, Radiology	27	+1	+1			-2	-0	+3.8%	+3.8%			-5.4%	-1.3%
Specialist Registrar, Surgery	48	+15	+14	+8	+8	+8	-1	+45.3%	+41.8%	+21.5%	+21.2%	+19.6%	-1.5%
Specialist Registrar	255	+57	+67	+36	+33	+6	-17	+28.8%	+35.6%	+16.3%	+14.9%	+2.4%	-6.4%
Registrars	663	+142		+99	+82	+44	-15	+27.4%	+21.7%	+17.6%	+14.1%	+7.2%	-2.2%
Intern	200	+61	+56	+57	+51	+53	+3	+44.1%	+39.1%	+40.1%	+34.5%	+36.2%	+1.5%
Interns	200	+61	+56	+57	+51	+53	+3	+44.1%	+39.1%	+40.1%	+34.5%	+36.2%	+1.5%
House Officer, Senior	51	-59	-41	+35	+42	+42	-1	-53.7%	-44.4%	+218.5%	+487.1%	+469.4%	-2.3%
Senior House Officer, Anaesthesia	22	+3	+3	-4	-8	-2		+15.8%	+15.8%	-15.4%	-26.7%	-8.3%	
Senior House Officer, Emergency Medicine	56	+21	+19	+9	+5	+7	+3	+59.8%	+51.2%	+19.6%	+9.7%	+13.7%	+5.9%
Senior House Officer, Medicine	179	+91	+64	+27	+23	+21	-0	+103.4%	+55.9%	+17.8%	+14.5%	+13.3%	-0.0%
Senior House Officer, Obstetrics & Gynaecology	28	+7	+8	-7	-4	-9	+2	+35.6%	+42.2%	-19.4%	-12.7%	-23.1%	+8.5%
Senior House Officer, Ophthalmology	14	+4	+1	+1	+1	+1		+35.2%	+9.4%	+8.0%	+8.0%	+8.0%	
Senior House Officer, Paediatrics	25	+7	+7	-8	-5	-7	+1	+37.8%	+41.2%	-24.3%	-15.6%	-23.2%	+2.6%
Senior House Officer, Pathology	14	+5	+2	+6	+7	+6		+55.6%	+16.7%	+64.7%	+100.0%	+75.0%	
Senior House Officer, Psychiatry	12	+9	+1	+1	-2	-1		+300.0%	+9.1%	+9.1%	-14.3%	-7.7%	
Senior House Officer, Surgery	72	+21	+20	-1	-2	-8	-2	+40.9%	+38.2%	-1.6%	-2.9%	-10.1%	-2.8%
Senior House Officer	472	+108	+85	+59	+57	+50	+3	+29.8%	+21.9%	+14.2%	+13.7%	+11.7%	+0.6%
SHO/ Interns	673	+170		+116	+108	+103	+6	+33.8%	+26.6%	+20.8%	+19.2%	+18.0%	+0.8%
Dental Surgeon, Senior	1												
Dentists	1												
Area Medical Officer	0	+0	+0	+0	+0	-1		+120.0%	+120.0%	+120.0%	+4.8%	-81.8%	
Area Medical Officer, Senior		-1						-100.0%	-100.0%	-100.0%	-100.0%	-100.0%	-100.0%
Associate Specialist	11	+11	+6	+0	-3	+1	+1	+1951.9%	+133.3%	+3.1%	-19.4%	+6.8%	+7.9%
General Practitioner	1	+1	+1	+1	+1	+1		-100.0%	-100.0%	-100.0%	-100.0%	-100.0%	
Medical & Dental Unclassified		-5	-4	-3				-100.0%	-100.0%	-100.0%	-100.0%	-100.0%	-100.0%
Medical Officer	2	+2	+2	+2	+2	+1	-0	-100.0%	-100.0%	-100.0%	-100.0%	+119.0%	-0.9%
Occupational Health Physician	1	-0	+1	+1	+1	-0	-0	-40.0%	-100.0%	-100.0%	-100.0%	-6.3%	-40.0%
Ophthalmic Physician, Community	11	+1	+1	+2	-0	+0	-0	+12.2%	+5.1%	+15.1%	-1.1%	+0.4%	-2.5%
Other Medical	27	+9	+7	+3	+1	+2	+0	+51.5%	+33.2%	+10.7%	+3.9%	+7.8%	+0.4%
Medical/ Dental, other	28	+9		+3	+1	+2	+0	+48.7%	+31.7%	+10.3%	+3.8%	+7.5%	+0.4%

Nov 2020 (Dec 2015 figure: 10,662)	WTE Nov 2020	WTE change since Dec 15	WTE change since Dec 16	WTE change since Dec 17	WTE change since Dec 18	WTE change since Dec 19	WTE change since Oct 20	% change since Dec 15	% change since Dec 16	% change since Dec 17	% change since Dec 18	% change since Dec 19	% change since Oct 20
Overall	12,908	+2,246	+1,937	+1,526	+1,135	+863	+77	+21.1%	+17.7%	+13.4%	+9.6%	+7.2%	+0.6%
Medical & Dental	1,950	+452	+378	+303	+258	+198	-8	+30.1%	+24.1%	+18.4%	+15.3%	+11.3%	-0.4%
Clinical Midwife Manager 1	49	+20	+15	+10	+12	+8	+4	+66.3%	+42.7%	+25.5%	+31.4%	+20.3%	+7.8%
Clinical Midwife Manager 2	80	+30	+23	+20	+3	+10	+0	+61.3%	+41.1%	+33.5%	+4.1%	+13.7%	+0.4%
Clinical Midwife Manager 3	12	+5	+4	+6	+4	+4	+1	+71.5%	+53.4%	+98.1%	+48.3%	+45.6%	+8.2%
Clinical Nurse Manager 1	220	+76	+44	+46	+17	+3	+4	+53.1%	+25.2%	+26.3%	+8.1%	+1.5%	+1.7%
Clinical Nurse Manager 1 - Theatre	12	+5	+5	+6	+7	+6		+77.8%	+81.8%	+86.0%	+142.4%	+96.7%	
Clinical Nurse Manager 2	431	+106	+110	+95	+82	+61	+7	+32.6%	+34.4%	+28.3%	+23.3%	+16.6%	+1.7%
Clinical Nurse Manager 2 (Mental Health)	2	-1	-1	-1	-1	-1		-40.0%	-40.0%	-40.0%	-40.0%	-40.0%	
Clinical Nurse Manager 2 - Night	7	-1		-1	+0	+0		-16.4%		-6.7%	+2.5%	+6.5%	
Clinical Nurse Manager 2 - Theatre	40	+7	+3	+0	-3	-4	+0	+22.0%	+9.5%	+0.7%	-7.5%	-9.7%	+0.2%
Clinical Nurse Manager 3	58	+14	+14	+11	-2	-0	-1	+32.1%	+32.6%	+24.0%	-2.9%	-0.6%	-1.4%
Clinical Nurse Manager 3 - Theatre	7	+2	+1	+3	+2	+4	-0	+37.4%	+14.5%	+71.8%	+37.4%	+129.0%	-0.6%
Clinical Nurse/ Midwife Manager	917	+263	+220	+195	+120	+91	+15	+40.3%	+31.5%	+27.0%	+15.1%	+11.0%	+1.7%
Director of Nursing 1, Assistant	62	+22	+23	+20	+10	+4	+0	+53.6%	+60.0%	+47.2%	+20.2%	+7.0%	+0.6%
Director of Nursing 2, Assistant	23	-0	+1	-2	+3	-1		-1.4%	+6.3%	-8.9%	+14.1%	-3.9%	
Director of Nursing 3, Assistant	6	-2	+2	+1	-1	-1		-21.4%	+37.5%	+22.2%	-15.4%	-15.4%	
Director of Nursing (Mental Health), Assistant	1		+1				+1		-100.0%				-100.0%
Director Nursing/Midwifery, Assistant	91	+20	+27	+19	+12	+2	+1	+27.7%	+42.3%	+25.7%	+15.4%	+2.4%	+1.5%
Director of Midwifery 1	1	+1	+1					-100.0%	-100.0%				
Director of Nursing 1	10	+6	+6	+6	+3	+2	-0	+147.5%	+147.5%	+147.5%	+33.8%	+24.8%	-0.2%
Director of Nursing 2	1	-1	-2	-4	-1			-50.0%	-66.7%	-79.6%	-50.0%		
Director of Nursing 2A	1	+1						-100.0%					
Director of Nursing 3	2		+0						+1.5%				
Director of Nursing & Midwifery		-1	-1	-1		-1		-100.0%	-100.0%	-100.0%	-100.0%	-100.0%	-100.0%
Director of Nursing & Midwifery, Hospital Group	1	+1	+1	+1				-100.0%	-100.0%	-100.0%			
Director of Nursing/Midwifery	16	+7	+5	+2	+2	+1	-0	+76.7%	+44.9%	+14.4%	+10.4%	+6.5%	-0.1%
Nurse/ Midwife Manager	1,024	+290		+216	+134	+94	+16	+39.5%	+32.6%	+26.7%	+15.0%	+10.1%	+1.6%
Advanced Midwife Practitioner	5	+4	+3	+2				+400.0%	+150.0%	+66.7%			
Advanced Nurse Practitioner, Candidate (General)	28	+28	+26	+7	+2	+2	+2	-100.0%	+1292.5%	+32.9%	+7.9%	+7.9%	+7.7%
Advanced Nurse Practitioner (General)	55	+37	+31	+23	+21	+13	-1	+206.3%	+131.4%	+74.8%	+60.6%	+31.1%	-1.3%
Advanced Nurse/ Midwife Practitioner	88	+69	+60	+32	+23	+15	+1	+363.9%	+216.5%	+58.5%	+35.0%	+20.7%	+1.4%
Clinical Midwife Specialist	9	+3	+5	+2	-0	-1	-0	+48.0%	+112.3%	+28.1%	-0.3%	-11.4%	-0.3%
Clinical Nurse Specialist (General)	240	+39	+24	+34	+19	+16	+1	+19.5%	+11.1%	+16.3%	+8.7%	+7.2%	+0.6%
Clinical Nurse/ Midwife Specialist	249	+42	+29	+36	+19	+15	+1	+20.4%	+13.2%	+16.7%	+8.3%	+6.3%	+0.6%
Nurse/ Midwife Specialist & AN/MP	337	+111		+68	+42	+30	+3	+49.1%	+35.9%	+25.3%	+14.2%	+9.7%	+0.8%

Nov 2020 (Dec 2015 figure: 10,662)	WTE Nov 2020	WTE change since Dec 15	WTE change since Dec 16	WTE change since Dec 17	WTE change since Dec 18	WTE change since Dec 19	WTE change since Oct 20	% change since Dec 15	% change since Dec 16	% change since Dec 17	% change since Dec 18	% change since Dec 19	% change since Oct 20
Overall	12,908	+2,246	+1,937	+1,526	+1,135	+863	+77	+21.1%	+17.7%	+13.4%	+9.6%	+7.2%	+0.6%
Staff Nurse (Nursing Bank)	3	+1	-3	-4	-2	+1	+1	+73.0%	-49.6%	-57.6%	-38.2%	+38.1%	+32.2%
Nursing Bank	3	+1	-3	-4	-2	+1	+1	+73.0%	-49.6%	-57.6%	-38.2%	+38.1%	+32.2%
Enhanced Midwife	129	+129	+129	+129	+129	+129	+86	-100.0%	-100.0%	-100.0%	-100.0%	-100.0%	+202.0%
Enhanced Midwife, Senior	63	+63	+63	+63	+63	+63	+31	-100.0%	-100.0%	-100.0%	-100.0%	-100.0%	+100.1%
Staff Midwife	84	-177	-170	-140	-162	-140	-87	-67.7%	-66.8%	-62.3%	-65.7%	-62.4%	-50.7%
Staff Midwife, Senior	8	-41	-44	-50	-43	-56	-26	-84.0%	-85.0%	-86.5%	-84.6%	-87.6%	-76.6%
Staff Midwife, Senior (dual qualified)		-1	-1	-1	-1			-100.0%	-100.0%	-100.0%	-100.0%	-100.0%	-100.0%
Staff Midwives	284	-28	-24	+1	-14	-4	+5	-8.9%	-7.7%	+0.3%	-4.8%	-1.3%	+1.8%
Staff Nurse, Mental Health	3	-2	-2	-2	-1	-1		-36.6%	-36.6%	-36.6%	-19.6%	-19.6%	
Staff Nurse [Psychiatric]	3	-2	-2	-2	-1	-1		-36.6%	-36.6%	-36.6%	-19.6%	-19.6%	
Enhanced Nurse (Children's)	10	+10	+10	+10	+10	+10	+1	-100.0%	-100.0%	-100.0%	-100.0%	-100.0%	+12.1%
Enhanced Nurse (General)	786	+786	+786	+786	+786	+786	+11	-100.0%	-100.0%	-100.0%	-100.0%	-100.0%	+1.4%
Enhanced Nurse, Senior (Children's)	12	+12	+12	+12	+12	+12	-0	-100.0%	-100.0%	-100.0%	-100.0%	-100.0%	-0.7%
Enhanced Nurse, Senior (General)	757	+757	+757	+757	+757	+757	+129	-100.0%	-100.0%	-100.0%	-100.0%	-100.0%	+20.5%
Staff Nurse (Adaptation Placement), General						-23		-100.0%	-100.0%	-100.0%	-100.0%	-100.0%	-100.0%
Staff Nurse (Children's)	4	-19	-18	-14	-11	-10	-1	-84.1%	-83.2%	-79.0%	-74.6%	-72.6%	-17.8%
Staff Nurse, Dual Qualified (General)		-13	-9	-5	-4	-3		-100.0%	-100.0%	-100.0%	-100.0%	-100.0%	-100.0%
Staff Nurse - General	1,220	-880	-842	-915	-846	-790	-14	-41.9%	-40.8%	-42.8%	-40.9%	-39.3%	-1.1%
Staff Nurse, Senior (Children's)	1	-3	-4	-6	-7	-8		-78.0%	-81.8%	-87.2%	-88.8%	-90.0%	
Staff Nurse, Senior (Dual Qualified)	9	-31	-33	-25	-21	-21	-2	-76.6%	-77.8%	-72.9%	-69.5%	-69.5%	-21.0%
Staff Nurse, Senior (General)	243	-292	-372	-426	-489	-612	-65	-54.6%	-60.5%	-63.6%	-66.8%	-71.5%	-21.2%
Staff Nurses [General/ Children's]	3,043	+328	+287	+174	+187	+99	+58	+12.1%	+10.4%	+6.1%	+6.6%	+3.4%	+1.9%
Staff Nurse/ Staff Midwife	3,333	+300		+169	+171	+96	+64	+9.9%	+8.4%	+5.3%	+5.4%	+3.0%	+2.0%
Student Children's & General Nursing Intern (pre-r						-7		-100.0%	-100.0%	-100.0%	-100.0%	-100.0%	-100.0%
Student General Nursing Intern (pre-registration)	12	-13	-2	-7	-11	-6	+12	-51.5%	-14.3%	-38.4%	-47.3%	-32.3%	-100.0%
Student Midwifery Intern (pre-registration)						-1		-100.0%	-100.0%	-100.0%	-100.0%	-100.0%	-100.0%
Pre-registration Nurse/ Midwife Intern	12	-13	-2	-7	-11	-13	+12	-51.5%	-14.3%	-38.4%	-47.3%	-52.4%	-100.0%
Student Children's & General Nursing Intern (COVI	15	+15	+15	+15	+15	+15		-100.0%	-100.0%	-100.0%	-100.0%	-100.0%	
Student General Nursing Intern (COVID-19 HCA)	36	+36	+36	+36	+36	+36	-43	-100.0%	-100.0%	-100.0%	-100.0%	-100.0%	-54.2%
Student Midwifery Intern (COVID-19 HCA)	1	+1	+1	+1	+1	+1	-2	-100.0%	-100.0%	-100.0%	-100.0%	-100.0%	-60.0%
Pre-registration Nurse Intern (COVID-19)	52	+52	+52	+52	+52	+52	-44	-100.0%	-100.0%	-100.0%	-100.0%	-100.0%	-46.0%
Student Midwifery (post registration)	17	-6	-6	-6	-6	-4	-3	-26.1%	-26.1%	-26.1%	-26.1%	-19.0%	-15.0%
Post-registration Nurse/ Midwife Student	17	-6	-6	-6	-6	-4	-3	-26.1%	-26.1%	-26.1%	-26.1%	-19.0%	-15.0%
Staff Midwife (awaiting-registration)			-1					-100.0%	-100.0%	-100.0%	-100.0%	-100.0%	-100.0%
Staff Nurse, General (awaiting-registration)	34	+34	+34	+29	+30	+23	+3	-100.0%	-100.0%	+577.0%	+752.6%	+214.3%	+10.3%

Nov 2020 (Dec 2015 figure: 10,662)	WTE Nov 2020	WTE change since Dec 15	WTE change since Dec 16	WTE change since Dec 17	WTE change since Dec 18	WTE change since Dec 19	WTE change since Oct 20	% change since Dec 15	% change since Dec 16	% change since Dec 17	% change since Dec 18	% change since Dec 19	% change since Oct 20
Overall	12,908	+2,246	+1,937	+1,526	+1,135	+863	+77	+21.1%	+17.7%	+13.4%	+9.6%	+7.2%	+0.6%
Nursing/ Midwifery awaiting registration	34	+34	+33	+29	+30	+23	+3	-100.0%	+6670.0%	+577.0%	+752.6%	+214.3%	+10.3%
Nursing/ Midwifery Student	115	+67		+68	+65	+58	-32	+140.9%	+206.7%	+142.3%	+131.2%	+101.8%	-21.9%
Clinical Nurse Instructor/Teacher	0	-2	-2	-2	-2	-2	-1	-100.0%	-100.0%	-100.0%	-100.0%	-100.0%	-100.0%
Director, Nursing/ Midwifery Education Centre	1	-1	-1	-1	-1	-1		-33.3%	-33.3%	-33.3%	-33.3%	-33.3%	
Nurse Tutor	3	+2	-1	-1	-1	-1	-1	+200.0%	-23.1%	-23.1%	-18.9%	-16.4%	-21.1%
Nurse Tutor (Psychiatric)	5	-1	+0	+0	+0	+0		-8.8%	+8.9%	+7.2%	+7.2%	+7.2%	
Nursing/ Midwifery Clinical Placement Co-ordinator	23	-0	-1	-1	-3	-4	+0	-0.8%	-3.0%	-5.2%	-12.8%	-14.6%	+1.7%
Nursing/ Midwifery Practice Development Co-ordinator	3						+1						+50.0%
Specialist Co-ordinator, Nursing	25	+4	+5	+5	+5	+4	+1	+19.5%	+26.8%	+26.5%	+23.9%	+17.2%	+4.3%
Nursing Education/Clinical	60	+3	+2	+1	-1	-3	+1	+4.8%	+3.4%	+2.2%	-1.7%	-4.2%	+1.0%
Nursing Unclassified	15	+1	+4	+4	+4	+2	-0	+4.7%	+31.8%	+36.8%	+34.1%	+14.1%	-0.8%
Other Nursing/ Midwifery	15	+1	+4	+4	+4	+2	-0	+4.7%	+31.8%	+36.8%	+34.1%	+14.1%	-0.8%
Nursing/ Midwifery other	75	+3		+5	+3	-1	+0	+4.8%	+7.9%	+7.5%	+3.6%	-1.1%	+0.6%
Nursing & Midwifery	4,884	+772	+683	+526	+414	+277	+51	+18.8%	+16.2%	+12.1%	+9.3%	+6.0%	+1.1%
Dietitian	28	+17	+12	+8	+4	+5	+1	+150.3%	+69.3%	+42.0%	+16.0%	+23.7%	+5.1%
Dietitian, Clinical Specialist	8	+3	+3	+3	+3	+3		+60.4%	+60.4%	+54.0%	+79.1%	+60.4%	
Dietitian Manager	7	+4	+1	+1	+0	+0	-0	+144.4%	+13.3%	+17.8%	+0.1%	+0.1%	-1.7%
Dietitian Manager-in-charge III	2												
Dietitian, Senior	47	+11	+8	+14	+5	+6	+3	+30.6%	+19.1%	+42.3%	+10.6%	+13.8%	+6.1%
Dietitians	92	+35	+23	+26	+12	+14	+4	+61.4%	+33.1%	+39.7%	+14.8%	+18.0%	+4.5%
Occupational Therapist	35	+8	+2	-1	+2	+4	-0	+27.7%	+6.0%	-2.1%	+4.5%	+12.3%	-0.7%
Occupational Therapist, Clinical Specialist	3	+2	+2	+2	+2	+2		+200.0%	+275.0%	+275.0%	+215.8%	+215.8%	
Occupational Therapist-in-charge III	2												
Occupational Therapist Manager	2	+2	+1	+1	+1	+1	+0	-100.0%	+178.3%	+178.3%	+284.0%	+284.0%	+11.0%
Occupational Therapist, Senior	38	+4	+6	+7	+4	+5	-1	+12.3%	+18.0%	+21.9%	+11.9%	+14.1%	-2.6%
Occupational Therapists	80	+16	+11	+10	+9	+12	-1	+24.3%	+16.3%	+13.5%	+12.7%	+17.6%	-1.3%
Orthoptist, Senior	2	-1	-1	-1	+0	+0	-0	-23.3%	-23.3%	-23.3%	+3.5%	+3.5%	-15.1%
Orthoptists	2	-1	-1	-1	+0	+0	-0	-23.3%	-23.3%	-23.3%	+3.5%	+3.5%	-15.1%
Physiotherapist	103	+35	+30	+30	+13	+8	-2	+51.3%	+41.5%	+40.4%	+14.0%	+7.9%	-1.5%
Physiotherapist, Clinical Specialist	27	+14	+14	+13	+12	+8	+4	+104.8%	+106.7%	+98.1%	+81.9%	+42.1%	+17.4%
Physiotherapist-in-charge (Grade III)	7	+0	+1	+3	+3	+2	-0	+6.2%	+26.1%	+74.6%	+70.3%	+36.2%	-0.1%
Physiotherapist Manager	7	+0	-1	-1	-2	-1	-1	+0.9%	-12.3%	-8.2%	-19.3%	-12.1%	-12.3%
Physiotherapist, Senior	101	+14	+13	+4	+0	-0	-0	+16.0%	+14.2%	+4.0%	+0.4%	-0.4%	-0.1%
Physiotherapy, Practice Tutor		-1	-1	-1	-1	-1		-100.0%	-100.0%	-100.0%	-100.0%	-100.0%	-100.0%

Nov 2020 (Dec 2015 figure: 10,662)	WTE Nov 2020	WTE change since Dec 15	WTE change since Dec 16	WTE change since Dec 17	WTE change since Dec 18	WTE change since Dec 19	WTE change since Oct 20	% change since Dec 15	% change since Dec 16	% change since Dec 17	% change since Dec 18	% change since Dec 19	% change since Oct 20
Overall	12,908	+2,246	+1,937	+1,526	+1,135	+863	+77	+21.1%	+17.7%	+13.4%	+9.6%	+7.2%	+0.6%
Physiotherapists	244	+62	+56	+49	+26	+15	+1	+34.3%	+30.1%	+24.8%	+11.8%	+6.7%	+0.6%
Chiroprapist, Clinical Specialist	1												
Chiroprapist/ Podiatrist	3	+2	+1	+2	+2	-0	+0	+100.0%	+43.5%	+100.0%	+100.0%	-11.0%	+7.1%
Chiroprapist/ Podiatrist, Senior	7	+5	+3	+2	+2	+2	+0	+177.9%	+71.9%	+38.7%	+26.5%	+26.5%	+0.7%
Podiatrists & Chiroprapists	11	+6	+4	+3	+3	+1	+0	+119.9%	+53.9%	+45.6%	+36.7%	+11.3%	+2.3%
Speech & Language Therapist	15	+5	+6	+3	+7	+8	-1	+51.0%	+73.2%	+27.0%	+79.3%	+105.9%	-4.2%
Speech & Language Therapist, Clinical Specialist	6	+4	+4	+5	+5	+2	+0	+223.7%	+207.5%	+515.0%	+515.0%	+68.5%	+0.5%
Speech & Language Therapist Manager	3	+0	+0	+0	-0		+0	+6.0%	+6.0%	+0.3%	-3.9%		+1.0%
Speech & Language Therapist, Senior	24	+10	+6	+3	+4	+3	+1	+72.7%	+34.4%	+16.1%	+18.4%	+17.0%	+3.0%
Speech & Language Therapists	48	+20	+17	+12	+15	+14	+0	+68.1%	+53.5%	+31.9%	+47.0%	+39.9%	+0.1%
Therapy Professions	478	+138		+99	+65	+56	+4	+40.6%	+30.1%	+26.0%	+15.8%	+13.4%	+0.9%
Audiologist	1												
Audiologist, Chief	1			+0	+0	+0				+8.7%	+8.7%	+3.1%	
Audiologist, Senior	1	+0	-0	+0				+40.0%	-8.9%	+16.7%			
Audiology	4	+0	-0	+0	+0	+0		+11.8%	-3.5%	+8.1%	+2.3%	+0.8%	
Biochemist	12	+5	+4	+2	+0	+1		+67.8%	+58.0%	+17.0%	+2.3%	+10.8%	
Biochemist, Principal	7	+0	+1	-1	-1	-1		+0.6%	+18.6%	-13.3%	-13.3%	-13.3%	
Biochemist, Senior	11	+3	+3	+1	+1	+2		+33.5%	+43.0%	+12.3%	+10.0%	+22.3%	
Biochemists	29	+8	+9	+2	+0	+2		+34.7%	+41.9%	+7.0%	+0.9%	+7.9%	
Clinical Engineering Technician	5	+3	+3	+3	+2	+2	+1	+150.0%	+150.0%	+150.0%	+66.7%	+66.7%	+25.0%
Clinical Engineering Technician, Chief	4	+2	+2	+1			+0	+100.0%	+100.0%	+33.3%			+0.5%
Clinical Engineering Technician, Principal	3	-1	-1					-25.0%	-25.0%				
Clinical Engineering Technician, Senior	11	+3	+3	+2	+2		-1	+38.9%	+37.5%	+22.2%	+22.2%		-8.3%
Clinical Engineering	23	+7	+7	+6	+4	+2	+0	+44.5%	+43.8%	+35.3%	+21.1%	+9.5%	+0.1%
Cardiac Physiologist	20	-4	-3	+3	-0	+1	+0	-15.1%	-14.3%	+18.1%	-0.6%	+6.9%	+0.1%
Cardiac Physiologist, Chief I	5	+0	-1	-1	-1	-1		+2.1%	-16.1%	-15.4%	-17.7%	-17.3%	
Cardiac Physiologist, Chief II	3	+1	+1	+1	+1	+1		+49.3%	+39.3%	+44.2%	+49.3%	+42.9%	
Cardiac Physiologist, Senior	26	+8	+9	+5	+5	+2	-1	+44.4%	+57.2%	+23.0%	+25.0%	+8.1%	-2.3%
E.C.G. Technician		-1	-1	-1				-100.0%	-100.0%	-100.0%	-100.0%	-100.0%	-100.0%
Gastrointestinal (GI) Physiologist	1	+1	+1					-100.0%	-100.0%				
Neuro-Physiologist	4	+1	+3	+3	+3	+4		+33.3%	+300.0%	+300.0%	+300.0%	-100.0%	
Neuro-Physiologist, Chief I	1					+1						-100.0%	
Neuro-Physiologist, Senior	6	+2	+2	+1	+1	+1		+50.0%	+50.0%	+20.0%	+20.0%	+20.0%	
Respiratory Physiologist	6	-2	+1	-0	-1	-1	-0	-25.4%	+19.4%	-0.5%	-12.7%	-14.7%	-0.5%
Respiratory Physiologist, Chief II	2	+1	-0	+0	+1	+0	+0	+84.0%	-8.0%	+2.8%	+84.0%	+8.2%	+2.2%

Nov 2020 (Dec 2015 figure: 10,662)	WTE Nov 2020	WTE change since Dec 15	WTE change since Dec 16	WTE change since Dec 17	WTE change since Dec 18	WTE change since Dec 19	WTE change since Oct 20	% change since Dec 15	% change since Dec 16	% change since Dec 17	% change since Dec 18	% change since Dec 19	% change since Oct 20
Overall	12,908	+2,246	+1,937	+1,526	+1,135	+863	+77	+21.1%	+17.7%	+13.4%	+9.6%	+7.2%	+0.6%
Respiratory Physiologist, Senior	10	+6	+2	+4	+1	+2	+1	+139.4%	+21.6%	+59.8%	+10.0%	+27.2%	+10.9%
Vascular Physiologist	2	-2	-2	-1	-1			-50.0%	-50.0%	-33.3%	-33.3%		
Vascular Physiologist, Chief I	1												
Vascular Physiologist, Chief II	1	+1						-100.0%					
Vascular Physiologist, Senior	2	+1	+1	+1	+1			+100.0%	+100.0%	+100.0%	+100.0%		
Clinical Measurement	89	+13	+12	+15	+10	+11	+0	+16.7%	+15.8%	+19.8%	+12.7%	+13.3%	+0.5%
Laboratory Manager	5	+1	+1	+1				+26.6%	+25.0%	+25.0%			
Medical Scientist	167	-15	-15	-4	-7	+8	+0	-8.1%	-8.2%	-2.2%	-4.2%	+4.9%	+0.2%
Medical Scientist, Chief	40	+7	+9	+6	+5	+4	+2	+19.8%	+31.2%	+17.6%	+14.5%	+11.6%	+5.2%
Medical Scientist, Senior	101	+18	+16	+13	+11	+5	+1	+21.7%	+18.7%	+15.0%	+11.6%	+5.5%	+1.3%
Medical Scientist, Specialist	11	+2	+2	+1	+3	+2		+24.9%	+23.4%	+12.5%	+31.1%	+18.6%	
Medical Scientist, Undergraduate							-4	-100.0%	-100.0%	-100.0%	-100.0%	-100.0%	-100.0%
Medical Laboratory	324	+13	+13	+18	+11	+19	-0	+4.2%	+4.3%	+5.7%	+3.5%	+6.2%	-0.1%
Perfusionist	3	+1	+1	-0	+1	-0	-0	+25.5%	+25.5%	-16.3%	+25.5%	-16.3%	-1.6%
Perfusionist, in charge	1												
Perfusionists	4	+1	+1	-0	+1	-0	-0	+17.0%	+17.0%	-12.2%	+17.0%	-12.2%	-1.1%
Phlebotomist	36	+5	+7	+5	+4	+4	+0	+18.0%	+22.8%	+15.7%	+13.1%	+11.3%	+0.6%
Phlebotomist, Senior	5	+1	+1	+1	+1	+1	+0	+29.2%	+27.4%	+20.1%	+11.8%	+18.6%	+5.0%
Phlebotomists	41	+7	+8	+6	+5	+5	+0	+19.4%	+23.4%	+16.3%	+12.9%	+12.2%	+1.2%
Physicist	6	+1	+2	+2			+1	+22.7%	+50.0%	+50.0%			+20.0%
Physicist, Chief	1		-1	-1	-1	-1			-50.0%	-50.0%	-50.0%	-50.0%	
Physicist, Principal	4	+1	+2	+0	+0	+0		+44.0%	+140.0%	+5.9%	+5.9%	+5.3%	
Physicist, Senior	4	+0	+0	+1				+2.6%	+2.6%	+33.3%			
Physicists	15	+2	+3	+2	-1	-1	+1	+18.8%	+28.1%	+17.7%	-5.2%	-5.3%	+7.4%
Radiographer	117	+2	+8	+4	+12	+8	+1	+1.4%	+7.2%	+3.9%	+11.2%	+7.3%	+1.0%
Radiographer, Clinical Specialist	48	+14	+8	+7	+2	+2	+0	+41.0%	+20.4%	+17.4%	+5.1%	+4.4%	+0.4%
Radiographer, Senior	82	+13	+16	+18	+9	+10	-0	+18.6%	+24.0%	+28.2%	+11.7%	+14.0%	-0.3%
Radiography Service Manager, I	11	+2	+2	+1	+0	+0	+0	+21.6%	+26.5%	+13.2%	+4.4%	+3.4%	+3.5%
Radiography Service Manager, II	4	-1	-1	-1	-1	-1		-20.0%	-20.0%	-20.0%	-16.7%	-20.0%	
Radiographers	262	+29	+33	+30	+22	+19	+1	+12.7%	+14.5%	+12.9%	+9.4%	+8.0%	+0.5%
Health Science/ Diagnostics	790	+80		+78	+52	+56	+3	+11.2%	+12.2%	+10.9%	+7.0%	+7.6%	+0.4%
Social Worker, Medical	32	+5	+3	+1	+2	-1		+17.7%	+11.3%	+3.2%	+7.8%	-3.9%	
Social Worker, Principal	6	+3	+2	+1	+1			+101.4%	+49.5%	+18.9%	+20.8%		
Social Worker, Senior Medical	30	+8	+8	+10	+11	+3		+38.7%	+37.9%	+48.9%	+59.1%	+10.4%	
Social Work Practitioner, Senior	7	+3	+3	+4	+3	+3		+80.5%	+80.5%	+140.7%	+80.5%	+90.0%	

Nov 2020 (Dec 2015 figure: 10,662)	WTE Nov 2020	WTE change since Dec 15	WTE change since Dec 16	WTE change since Dec 17	WTE change since Dec 18	WTE change since Dec 19	WTE change since Oct 20	% change since Dec 15	% change since Dec 16	% change since Dec 17	% change since Dec 18	% change since Dec 19	% change since Oct 20
Overall	12,908	+2,246	+1,937	+1,526	+1,135	+863	+77	+21.1%	+17.7%	+13.4%	+9.6%	+7.2%	+0.6%
Social Workers	75	+19	+17	+16	+18	+5		+34.6%	+28.3%	+26.8%	+30.6%	+7.0%	
Social Workers	75	+19		+16	+18	+5		+34.6%	+28.3%	+26.8%	+30.6%	+7.0%	
Psychologist, Clinical	1	-2	-2	-2	-1	-1		-59.9%	-54.7%	-54.7%	-49.4%	-44.6%	
Psychologist, Counselling	2	+1	+1	+1	+1	+0		+327.9%	+327.9%	+327.9%	+327.9%	+5.1%	
Psychologist, Educational	1												
Psychologist, Principal Clinical	2	+1	+1	+1	+1			+135.0%	+135.0%	+135.0%	+135.0%		
Psychologist, Senior Clinical	15	+8	+7	+7	+5	+1	+0	+117.5%	+99.2%	+78.5%	+49.4%	+6.6%	+1.8%
Psychologist, Trainee Clinical	1	+1	+1	+1	+1			-100.0%	-100.0%	-100.0%	-100.0%		
Psychologists	22	+10	+10	+9	+7	+0	+0	+83.9%	+79.7%	+67.7%	+52.1%	+0.1%	+1.2%
Psychologists	22	+10		+9	+7	+0	+0	+83.9%	+79.7%	+67.7%	+52.1%	+0.1%	+1.2%
Pharmaceutical Technician	43	+16	+14	+9	+9	-2	-0	+58.4%	+47.8%	+24.5%	+25.2%	-3.8%	-0.8%
Pharmaceutical Technician, Senior	24	+0	+2	+2	+2	+1	-1	+0.0%	+7.6%	+10.5%	+7.9%	+6.5%	-4.5%
Pharmacist	37	+12	+9	+6	+1	+2	-2	+46.3%	+33.2%	+18.0%	+2.5%	+6.9%	-4.8%
Pharmacist, Chief I	3	+1	+1					+50.0%	+50.0%				
Pharmacist, Chief II	22	+0	-4	-0	-1	-2	+0	+0.1%	-13.8%	-0.5%	-3.1%	-7.4%	+1.2%
Pharmacist, Senior	57	+16	+13	+12	+3	-1	+1	+38.9%	+29.4%	+27.4%	+5.2%	-2.3%	+1.1%
Pharmacy	187	+45	+36	+29	+13	-1	-2	+31.6%	+23.5%	+18.2%	+7.8%	-0.5%	-1.3%
Pharmacy	187	+45		+29	+13	-1	-2	+31.6%	+23.5%	+18.2%	+7.8%	-0.5%	-1.3%
Counsellor Therapist (Adult Services)	1	-0	-1	-1	-1			-9.3%	-38.2%	-38.2%	-38.2%		
Counsellor / Therapist (National Services)	0	+0						-100.0%					
Director of Counselling (National Counselling Services)	1												
Counsellor Therapists	2	+0	-1	-1	-1	-0	-0	+12.1%	-20.5%	-20.5%	-20.5%	-0.0%	-0.0%
Medical Scientist, Student	5	-0	-1	-0	-0	-1	+5	-5.1%	-16.7%	-2.7%	-3.3%	-19.4%	-100.0%
Perfusionist, Student	1				-1						-50.0%		
Pharmacist, Student		-1	-1	-1	-1			-100.0%	-100.0%	-100.0%	-100.0%	-100.0%	-100.0%
Phlebotomist, Trainee	3	+3	+3	+3	+3	+2	-1	-100.0%	-100.0%	-100.0%	+1073.1%	+435.1%	-23.7%
Respiratory Technician, Student				-1	-1			-100.0%	-100.0%	-100.0%	-100.0%	-100.0%	-100.0%
HSCP Trainees/ Students	9	+2	+1	+1	-0	+1	+4	+24.5%	+13.1%	+11.2%	-4.0%	+16.5%	+81.0%
Clinical Photographer	5			+1	+1	+1				+16.8%	+28.5%	+14.4%	
Clinical Photographer, Senior	2												
Health & Social Care Professionals Unclassified	8	+1	+1	-2	-2	-0	+1	+15.6%	+15.6%	-21.1%	-21.8%	-4.5%	+13.9%
Optometrist, Clinical	3	+2	+2	+2	+2	+2	+0	+155.0%	+155.0%	+155.0%	+155.0%	+155.0%	+2.0%
Other Health & Social Care	18	+3	+3	+0	+0	+2	+1	+17.6%	+17.6%	+0.5%	+2.1%	+11.2%	+6.3%
H&SC, Other	29	+5		+0	-1	+3	+5	+19.2%	+12.0%	+1.4%	-2.1%	+11.8%	+21.2%

Nov 2020 (Dec 2015 figure: 10,662)	WTE Nov 2020	WTE change since Dec 15	WTE change since Dec 16	WTE change since Dec 17	WTE change since Dec 18	WTE change since Dec 19	WTE change since Oct 20	% change since Dec 15	% change since Dec 16	% change since Dec 17	% change since Dec 18	% change since Dec 19	% change since Oct 20
Overall	12,908	+2,246	+1,937	+1,526	+1,135	+863	+77	+21.1%	+17.7%	+13.4%	+9.6%	+7.2%	+0.6%
Health & Social Care Professionals	1,581	+297	+261	+230	+155	+119	+10	+23.1%	+19.8%	+17.0%	+10.9%	+8.2%	+0.6%
CEO (Band H2 Hospital)	1					+1						-100.0%	
CEO (Band H3 Hospital)	2	+1	+1	+1	+1			+60.0%	+60.0%	+60.0%	+60.0%		
Chief Executive, Hospital Group	1	+1	+1	+1	+1	+1	+1	-100.0%	-100.0%	-100.0%	-100.0%	-100.0%	-100.0%
Chief Executive Officer	3												
Director of Finance	1												
Director of HR	1												
Director of Information Systems	1												
Head of Function /Service, Acute Services	2	+2	+2	+2	+2	+1	-0	-100.0%	-100.0%	-100.0%	-100.0%	+96.0%	-2.0%
Head of Function /Service, Community Services	2	+2	+2	+2	+2	+1		-100.0%	-100.0%	-100.0%	-100.0%	+100.0%	
Hospital Group, Chief Finance Officer	1	+1	+1	+1	+1	+1	+1	-100.0%	-100.0%	-100.0%	-100.0%	-100.0%	-100.0%
National Director, Assistant (Services)	4	+4	+4	+4		-1	-1	-100.0%	-100.0%	-100.0%		-21.7%	-21.7%
National Director, Assistant (Support)	3	+3	+1	+1	+1	+2	+2	-100.0%	+50.0%	+50.0%	+50.0%	+200.0%	+200.0%
Executive Management	21	+13	+11	+11	+8	+6	+3	+164.5%	+111.6%	+111.6%	+55.6%	+39.2%	+16.3%
Chief Executive Officer, Deputy	1	+1	+1	-1				-100.0%	-100.0%	-50.0%			
Functional Officer	4	-1						-20.0%					
General Manager	4	-1	-5	-5	-4	-3	-1	-17.7%	-55.9%	-51.5%	-45.3%	-43.5%	-18.3%
Grade VIII	64	+30	+23	+17	+15	+15	+1	+88.7%	+55.4%	+37.2%	+31.2%	+30.2%	+1.6%
Service Manager	3	-4	-4	-2	-3	-3	+1	-57.1%	-57.1%	-40.0%	-50.0%	-50.0%	+50.0%
Senior Management (VIII & GM)	77	+25	+15	+10	+9	+9	+1	+49.4%	+23.4%	+14.9%	+12.9%	+12.7%	+1.4%
Management (VIII & above)	98	+39		+21	+16	+15	+4	+64.9%	+35.6%	+27.5%	+20.0%	+17.5%	+4.3%
Accountant	4	-2	-1	-1	-1	-1		-33.3%	-20.0%	-20.0%	-20.0%	-20.0%	
Grade V	315	+99	+98	+73	+66	+62	+6	+45.8%	+45.5%	+30.2%	+26.4%	+24.6%	+1.8%
Grade VI	151	+40	+46	+43	+31	+22	-1	+35.9%	+44.1%	+39.4%	+25.8%	+17.1%	-0.5%
Grade VII	111	+40	+25	+11	+0	+0	+2	+56.6%	+29.7%	+11.6%	+0.2%	+0.1%	+1.8%
Supplies Officer Grade A	1	-4	-3	-2	-2	-1		-80.0%	-75.0%	-66.7%	-66.1%	-50.0%	
Supplies Officer Grade B	14	+4	+3	+3	+1	+2	+1	+38.0%	+26.0%	+26.0%	+7.3%	+15.9%	+5.0%
Middle Management (V-VII)	596	+177	+169	+127	+95	+84	+7	+42.2%	+39.6%	+27.1%	+19.0%	+16.5%	+1.3%
Librarian	2	+1	+1	+1	+1	+1	+1	+42.5%	+42.5%	+42.5%	+42.5%	+42.5%	+42.5%
Librarian, Assistant		-1	-1	-1	-1	-1	-1	-100.0%	-100.0%	-100.0%	-100.0%	-100.0%	-100.0%
Project Manager	1												
Technical Services Manager	1												
Other Administrative	4	-0	-0	-0	-0	-0	-0	-5.5%	-5.5%	-5.5%	-5.5%	-5.5%	-5.5%
Administrative/ Supervisory (V to VII)	600	+176		+127	+95	+84	+7	+41.7%	+39.1%	+26.8%	+18.7%	+16.3%	+1.2%
Clerical Officer	465	+29	+14	+15	-17	-8	+5	+6.7%	+3.2%	+3.4%	-3.6%	-1.7%	+1.1%

Nov 2020 (Dec 2015 figure: 10,662)	WTE Nov 2020	WTE change since Dec 15	WTE change since Dec 16	WTE change since Dec 17	WTE change since Dec 18	WTE change since Dec 19	WTE change since Oct 20	% change since Dec 15	% change since Dec 16	% change since Dec 17	% change since Dec 18	% change since Dec 19	% change since Oct 20
Overall	12,908	+2,246	+1,937	+1,526	+1,135	+863	+77	+21.1%	+17.7%	+13.4%	+9.6%	+7.2%	+0.6%
Grade IV	663	+58	+56	+20	+13	-0	-10	+9.5%	+9.3%	+3.0%	+2.0%	-0.0%	-1.6%
Supplies Officer Grade C	39	+5	+7	+11	+7	+2	+3	+15.9%	+23.3%	+39.1%	+22.6%	+6.4%	+8.3%
Supplies Officer Grade D	17	+2	+1	-0	-2		-2	+15.3%	+9.2%	-0.5%	-10.4%		-8.6%
Telephonist	27	+4	+4	+4	+7	+8	-1	+15.7%	+15.4%	+18.5%	+37.8%	+43.5%	-4.2%
Telephonist, Night	5	+1	+1	-0	+0	+1	+3	+19.8%	+19.8%	-1.8%	+9.4%	+28.4%	+176.9%
Telephonist, Supervisor	3	+1	+1	+1	+1	+1	+1	+44.4%	+44.4%	+44.4%	+44.4%	+44.4%	+44.4%
General Administrative (III & IV)	1,217	+99	+85	+51	+9	+4	-1	+8.9%	+7.5%	+4.3%	+0.8%	+0.3%	-0.1%
Clerical (III & IV)	1,217	+99		+51	+9	+4	-1	+8.9%	+7.5%	+4.3%	+0.8%	+0.3%	-0.1%
Management & Administrative	1,915	+314	+279	+198	+120	+102	+10	+19.6%	+17.0%	+11.6%	+6.7%	+5.7%	+0.5%
Catering	110	+16	+13	+16	+12	+8	+1	+17.3%	+13.8%	+17.0%	+11.9%	+7.7%	+1.4%
Household Services	677	+115	+71	+34	+8	+16	-2	+20.4%	+11.8%	+5.3%	+1.2%	+2.4%	-0.3%
Other Labs & Associated	80	+18	+20	+15	+13	+7	-0	+29.2%	+33.5%	+23.4%	+19.0%	+10.2%	-0.1%
Other Support	170	+28	+22	+11	+13	+12	+5	+19.6%	+15.2%	+7.0%	+8.0%	+7.4%	+3.1%
Portering	265	-44	-48	-62	-62	-64	+0	-14.1%	-15.4%	-19.0%	-19.0%	-19.5%	+0.1%
Support	1,302	+133		+14	-17	-21	+5	+11.4%	+6.5%	+1.1%	-1.3%	-1.6%	+0.4%
Boilerman	1												
Chargehand	3	+2	+2	+2				+200.0%	+200.0%	+200.0%			
Electrician	18	-3	+0	+0	+3	+1	+0	-13.9%	+0.6%	+0.6%	+21.0%	+6.6%	+0.6%
Gardener/ Groundsman	1	-2	-2	-2	-2	-1		-66.7%	-66.7%	-66.7%	-66.7%	-50.0%	
Gardener/ Groundsman, Head	1	+1	+1	+1	+1	+1		-100.0%	-100.0%	-100.0%	-100.0%	-100.0%	
General Operative	12	+3	+1	+1	+1	+0		+35.7%	+13.3%	+8.2%	+8.2%	+0.4%	
Labourer	2	-0	-0	-0	-0	-0		-4.5%	-4.5%	-4.5%	-4.5%	-4.5%	
Maintenance Craftsman/Technician	24	+1	+3	+2	+1	-0	-1	+4.5%	+14.2%	+9.1%	+4.3%	-0.0%	-4.0%
Maintenance Foreman	11		+2	+0	+1	+2	+0		+22.2%	+0.4%	+11.1%	+17.1%	+0.5%
Maintenance Foreman, Assistant	2	+1	+1	+1				+100.0%	+100.0%	+100.0%			
Maintenance Helper	6	-2						-25.0%					
Maintenance Manager	2			+0			+0			+16.3%			+0.5%
Maintenance Officer	4	+2	+1	+2	+2	+2	-0	+99.5%	+33.0%	+99.5%	+166.0%	+99.5%	-0.2%
Painter	6	-1	-2	-1	-1	-1		-14.3%	-25.0%	-14.3%	-14.3%	-14.3%	
Plasterer		-1	-1	-1	-1			-100.0%	-100.0%	-100.0%	-100.0%	-100.0%	-100.0%
Plumber	15	-0	-0	+3	+6	+4	-0	-1.4%	-1.4%	+20.9%	+64.3%	+34.5%	-1.3%
Maintenance	108	+1	+6	+8	+11	+7	-1	+1.0%	+6.1%	+7.9%	+11.8%	+7.4%	-0.9%
Draughtsman/Technician I	2	+1	-0	-0	-0	-0	+0	+88.0%	-6.0%	-6.0%	-6.0%	-6.0%	+3.9%
Draughtsman/Technician II			-1	-1	-1			-100.0%	-100.0%	-100.0%	-100.0%	-100.0%	-100.0%

Nov 2020 (Dec 2015 figure: 10,662)	WTE Nov 2020	WTE change since Dec 15	WTE change since Dec 16	WTE change since Dec 17	WTE change since Dec 18	WTE change since Dec 19	WTE change since Oct 20	% change since Dec 15	% change since Dec 16	% change since Dec 17	% change since Dec 18	% change since Dec 19	% change since Oct 20
Overall	12,908	+2,246	+1,937	+1,526	+1,135	+863	+77	+21.1%	+17.7%	+13.4%	+9.6%	+7.2%	+0.6%
Engineer/ Engineering Officer	1	-1	-1	-1	-1	-1		-50.0%	-50.0%	-50.0%	-50.0%	-50.0%	
Fire Prevention Officer	2												
Technical Services Officer	1		+1	+1	+1				+400.0%	+400.0%	+400.0%		
Technical Services Officer, Assistant		-1	-1	-1				-100.0%	-100.0%	-100.0%	-100.0%	-100.0%	-100.0%
Technical Services Officer, Chief Asst.	5	+2	+3	+2	+4	+2		+66.7%	+150.0%	+66.7%	+400.0%	+66.7%	
Technical Services Officer, Senior Asst.	1	+1	+1	+1	-2	-1		-100.0%	-100.0%	-100.0%	-60.0%	-49.5%	
Technical Services	12	+2	+2	+1	+1	-0	+0	+18.8%	+16.5%	+6.1%	+11.0%	-0.8%	+0.6%
Maintenance/ Technical	120	+3		+9	+13	+7	-1	+2.5%	+7.1%	+7.7%	+11.7%	+6.5%	-0.8%
General Support	1,422	+136	+87	+23	-5	-14	+4	+10.6%	+6.5%	+1.6%	-0.3%	-0.9%	+0.3%
HCA, Nurse's Aide, etc.	1,091	+260	+237	+231	+181	+169	+8	+31.3%	+27.8%	+26.9%	+19.8%	+18.3%	+0.7%
Occupational Therapy Assistant	8	+4	+3	+3	+4	+4	+2	+95.5%	+58.6%	+56.4%	+104.7%	+81.0%	+24.7%
Physiotherapy Assistant	7	+3	+2	+3	+2	+3	-1	+63.5%	+56.8%	+61.6%	+39.8%	+63.5%	-9.2%
Radiography Aide	22	+9	+9	+8	+4	+4	+0	+67.7%	+68.3%	+52.0%	+19.3%	+19.7%	+0.4%
Health & Social Care Assistants	37	+15	+14	+13	+10	+10	+1	+72.1%	+63.9%	+54.6%	+34.9%	+36.2%	+2.6%
Health Care Assistants	1,128	+276		+244	+190	+179	+9	+32.4%	+28.7%	+27.6%	+20.3%	+18.8%	+0.8%
Cardiac Aide		-1	-1	-1	-0	-1		-100.0%	-100.0%	-100.0%	-100.0%	-100.0%	-100.0%
Chaplain	23	+4	+2	+3	+2	+2	+1	+19.2%	+7.9%	+14.7%	+11.4%	+9.5%	+4.6%
Driver (Patients/Clients Public Roads)	1	-1	-1					-50.0%	-50.0%				
Education Officer		-1	-1	-1	-1	-1		-100.0%	-100.0%	-100.0%	-100.0%	-100.0%	-100.0%
Head of Bed Management (Category A)	1												
Health Promotion Officer	2	-1	+1	+1	+1	+2		-35.0%	+82.0%	+82.0%	+82.0%	-100.0%	
Other Patient & Client Care Unclassified			-2					-100.0%	-100.0%	-100.0%	-100.0%	-100.0%	-100.0%
Pastoral Care Worker	1												
Other Care Grades	28	-1	-3	+2	+2	+2	+1	-1.9%	-8.8%	+6.5%	+6.5%	+7.3%	+3.8%
Care, other	28	-1		+2	+2	+2	+1	-1.9%	-8.8%	+6.5%	+6.5%	+7.3%	+3.8%
Patient & Client Care	1,156	+275	+249	+246	+192	+181	+10	+31.3%	+27.4%	+27.0%	+19.9%	+18.5%	+0.9%

Source: Health Service Personnel Census

Longitudinal Employment Levels by Staff Group - Oct 2013 to Nov 2020

Nov 2020 (Dec 2015 figure: 10,662)	WTE Nov 2020	WTE change since Dec 15	WTE change since Dec 16	WTE change since Dec 17	WTE change since Dec 18	WTE change since Dec 19	WTE change since Oct 20	% change since Dec 15	% change since Dec 16	% change since Dec 17	% change since Dec 18	% change since Dec 19	% change since Oct 20
Overall	12,908	+2,246	+1,937	+1,526	+1,135	+863	+77	+21.1%	+17.7%	+13.4%	+9.6%	+7.2%	+0.6%
Consultants	16	+1	+1	-1		-1		+6.9%	+6.9%	-6.0%		-3.1%	
Registrars	19	+2	+2	+2	+1	+1	+1	+8.8%	+8.8%	+8.8%	+2.8%	+2.8%	+2.8%
SHO/ Interns	12	+1	+1	+1	+2		+1	+9.1%	+9.1%	+9.1%	+20.0%		+9.1%
Nurse/ Midwife Manager	41	+7	+7	+9	+5			+21.7%	+20.0%	+26.4%	+15.1%		
Nurse/ Midwife Specialist & AN/MP	9	+3	+4	+4	+1			+47.5%	+100.5%	+79.9%	+16.8%		
Staff Nurse/ Staff Midwife	111	+28	+18	+16	+8	+8		+33.9%	+19.4%	+16.3%	+7.5%	+8.2%	
Nursing/ Midwifery other	2												
Therapy Professions	33	+9	+6	+2	+1		+1	+34.1%	+19.7%	+6.4%	+3.1%		+3.1%
Health Science/ Diagnostics	26	+6	+7	+4	+3	+1	-0	+27.4%	+34.0%	+16.0%	+11.0%	+4.3%	-0.0%
Social Workers	7	+3	+2	+1	+3			+75.0%	+54.2%	+15.1%	+75.0%		
Psychologists	1	+1						-100.0%					
Pharmacy	5	+2	+2	+2	+1			+74.8%	+66.7%	+66.7%	+25.0%		
Management (VIII & above)	4	+1	+1					+33.3%	+33.3%				
Administrative/ Supervisory (V to VII)	25	+4	+6	+1	+2	+3		+20.8%	+34.0%	+4.2%	+8.9%	+13.9%	
Clerical (III & IV)	42	+11	+10	+8	+5	+2	+1	+36.8%	+32.6%	+23.8%	+13.2%	+4.7%	+2.4%
Support	62	+17	+12	+1	+2	+0	-0	+38.2%	+24.4%	+2.4%	+2.9%	+0.7%	-0.0%
Maintenance/ Technical	1	-1						-50.0%					
Health Care Assistants	26	-3	-1	-3				-8.9%	-2.1%	-8.6%			
Care, other		-1	-1					-100.0%	-100.0%	-100.0%	-100.0%	-100.0%	-100.0%
Cappagh National Orthopaedic	441	+91	+78	+46	+33	+15	+4	+25.8%	+21.3%	+11.7%	+8.1%	+3.5%	+0.8%
Consultants	15	-2	-2	+0	+1	+2	+0	-10.3%	-10.3%	+1.7%	+5.3%	+17.4%	+1.8%
Registrars	32	+12	+9	+10	+4	+5	+1	+61.4%	+39.7%	+45.1%	+15.3%	+19.6%	+3.5%
SHO/ Interns	44	+18	+13	+9	+11	+9	-1	+71.8%	+42.9%	+25.4%	+35.6%	+25.1%	-2.3%
Nurse/ Midwife Manager	47	+17	+14	+10	+2	+3	-1	+56.8%	+42.0%	+25.5%	+4.9%	+8.0%	-2.4%
Nurse/ Midwife Specialist & AN/MP	13	-0	-3	+1	+2	+2	+0	-3.1%	-18.5%	+12.6%	+22.2%	+18.3%	+2.9%
Staff Nurse/ Staff Midwife	133	-1	+3	+8	+10	+12	+1	-1.1%	+2.0%	+6.1%	+7.8%	+9.8%	+0.5%
Nursing/ Midwifery Student				-2	-4	-4	-1	-100.0%	-100.0%	-100.0%	-100.0%	-100.0%	-100.0%
Therapy Professions	26	+15	+10	+10	+11	+8	-1	+138.9%	+56.3%	+59.5%	+72.5%	+40.6%	-3.4%
Health Science/ Diagnostics	39	+9	+7	+7	+5	+2	-0	+28.0%	+21.7%	+23.0%	+14.9%	+5.8%	-0.8%
Pharmacy	7	+5	+4	+4	+2	+1	-0	+184.2%	+118.0%	+103.6%	+44.3%	+20.0%	-0.1%
Management (VIII & above)	2	+1	+1				+0	+100.0%	+100.0%				+2.0%

Nov 2020 (Dec 2015 figure: 10,662)	WTE Nov 2020	WTE change since Dec 15	WTE change since Dec 16	WTE change since Dec 17	WTE change since Dec 18	WTE change since Dec 19	WTE change since Oct 20	% change since Dec 15	% change since Dec 16	% change since Dec 17	% change since Dec 18	% change since Dec 19	% change since Oct 20
Overall	12,908	+2,246	+1,937	+1,526	+1,135	+863	+77	+21.1%	+17.7%	+13.4%	+9.6%	+7.2%	+0.6%
Administrative/ Supervisory (V to VII)	20	+11	+12	+12	+11	+8	+0	+119.4%	+145.8%	+141.8%	+118.0%	+64.9%	+1.2%
Clerical (III & IV)	58	+2	+3	-1	+2	+2	+2	+3.1%	+5.6%	-1.5%	+2.7%	+3.4%	+3.3%
Support	24	+8	+8	+2	+1	+1	+0	+46.7%	+47.4%	+6.9%	+2.9%	+3.6%	+1.8%
Maintenance/ Technical	5	-0	-0	+0	-1	-0		-0.2%	-0.2%	+6.2%	-9.3%	-0.2%	
Health Care Assistants	115	+14	+11	+18	+17	+17	+2	+13.5%	+10.7%	+18.3%	+17.0%	+17.6%	+1.6%
Care, other	2	-0	-0	-0	-0	-1	-1	-3.6%	-19.6%	-1.8%	-19.6%	-29.5%	-24.2%
Our Lady's Navan	584	+108	+89	+87	+74	+68	+2	+22.6%	+18.0%	+17.6%	+14.6%	+13.2%	+0.3%
Consultants	41	+7	+7	+4	+6	+7	-1	+20.5%	+20.3%	+11.5%	+17.4%	+20.3%	-3.0%
Registrars	54	+13	+15	+17	+10	-1	-1	+30.5%	+39.3%	+43.7%	+21.9%	-2.2%	-2.4%
SHO/ Interns	60	+5	+2	+0	+2	+5	+1	+9.2%	+3.4%	+0.4%	+2.7%	+8.9%	+1.0%
Medical/ Dental, other	2				+0	+0					+1.0%	+6.4%	
Nurse/ Midwife Manager	78	+21	+14	+10	+4	+6	+1	+36.4%	+21.2%	+14.1%	+5.3%	+8.6%	+1.6%
Nurse/ Midwife Specialist & AN/MP	16	+3	+1	+1	+4	+3	+1	+24.3%	+8.4%	+10.0%	+36.2%	+24.3%	+9.1%
Staff Nurse/ Staff Midwife	259	+14	+28	+24	+21	+19	+3	+5.9%	+12.0%	+10.1%	+8.8%	+7.7%	+1.2%
Nursing/ Midwifery Student	1	+1	+1	+1	+1	-0	-1	+300.0%	-100.0%	-100.0%	-100.0%	-20.0%	-45.7%
Nursing/ Midwifery other	3	+1	+1	+1	+1	+1		+52.9%	+52.9%	+57.4%	+52.9%	+55.6%	
Therapy Professions	37	+10	+8	+9	+6	+12	-1	+38.0%	+25.9%	+31.9%	+19.5%	+46.9%	-1.4%
Health Science/ Diagnostics	82	+6	+6	+12	+13	+11	-0	+8.5%	+8.5%	+16.7%	+18.2%	+16.2%	-0.3%
Pharmacy	13	-0	+0	-1	-3	-3	-1	-0.2%	+1.8%	-4.9%	-17.5%	-17.2%	-6.3%
H&SC, Other		-0		-1	-1	-0		-100.0%	-100.0%	-100.0%	-100.0%	-100.0%	-100.0%
Management (VIII & above)	3		-1	-1	-2	-2			-25.0%	-25.0%	-40.0%	-40.0%	
Administrative/ Supervisory (V to VII)	28	+14	+10	+9	+9	+5	+1	+102.2%	+58.9%	+51.5%	+50.9%	+24.2%	+3.2%
Clerical (III & IV)	98	-16	-16	-12	-11	-3	+1	-13.8%	-14.2%	-10.7%	-9.8%	-2.9%	+0.6%
Support	27	+5	+2	+1	+3	+1	-0	+21.5%	+6.9%	+2.3%	+13.4%	+3.9%	-0.5%
Maintenance/ Technical	13	-6	-6	-3	-0	-0	+0	-33.1%	-33.1%	-21.2%	-1.9%	-3.6%	+1.0%
Health Care Assistants	177	+47	+48	+30	+10	+18	+5	+35.7%	+37.5%	+20.1%	+5.8%	+11.0%	+3.2%
Care, other	1												
MRH Mullingar	992	+124	+120	+100	+73	+78	+8	+14.3%	+13.7%	+11.2%	+7.9%	+8.6%	+0.8%
Consultants	37	+3	+2	+2	+3	+3	+0	+10.1%	+5.0%	+6.1%	+7.4%	+7.5%	+0.0%
Registrars	39	+7	+7	+5	+3	+3	-1	+21.9%	+21.9%	+13.0%	+6.8%	+8.3%	-2.5%
SHO/ Interns	22	+2	+1		+1	+1	+1	+10.0%	+4.8%		+4.8%	+4.8%	+4.8%
Medical/ Dental, other	1												
Nurse/ Midwife Manager	137	+38	+28	+25	+20	+17	+8	+38.2%	+25.1%	+22.7%	+16.8%	+14.0%	+6.1%

Nov 2020 (Dec 2015 figure: 10,662)	WTE Nov 2020	WTE change since Dec 15	WTE change since Dec 16	WTE change since Dec 17	WTE change since Dec 18	WTE change since Dec 19	WTE change since Dec 20	% change since Dec 15	% change since Dec 16	% change since Dec 17	% change since Dec 18	% change since Dec 19	% change since Dec 20
Overall	12,908	+2,246	+1,937	+1,526	+1,135	+863	+77	+21.1%	+17.7%	+13.4%	+9.6%	+7.2%	+0.6%
Nurse/ Midwife Specialist & AN/MP	15	+3	+5	+4	+0	+1	-0	+23.0%	+45.9%	+36.0%	+0.8%	+3.5%	-1.3%
Staff Nurse/ Staff Midwife	242	+10	+1	+13	-2	-4	+1	+4.4%	+0.5%	+5.7%	-1.0%	-1.6%	+0.5%
Nursing/ Midwifery Student	18	-5	-6	-5	-5	-4	-5	-21.7%	-23.4%	-21.7%	-21.7%	-16.3%	-20.0%
Nursing/ Midwifery other	4	+1	+1	+0				+22.9%	+21.8%	+1.0%			
Therapy Professions	14	+7	+5	+6	+5	+3		+89.6%	+65.4%	+88.0%	+56.6%	+22.5%	
Health Science/ Diagnostics	47	+11	+8	+9	+4	+6		+30.3%	+21.0%	+23.8%	+9.7%	+14.7%	
Social Workers	9	+3	+5	+4	+3	+2	+1	+44.8%	+123.9%	+74.0%	+50.3%	+27.1%	+11.9%
Psychologists	2	+1	+1	+1	+1	+0		+151.6%	+151.6%	+151.6%	+151.6%	+4.0%	
Pharmacy	8	+2	+2	+2	+2	+1	-1	+27.9%	+23.8%	+27.9%	+32.2%	+8.3%	-11.4%
Management (VIII & above)	6	+1	+1	+1	+1	+1		+22.0%	+22.0%	+22.0%	+22.0%	+8.9%	
Administrative/ Supervisory (V to VII)	56	+13	+13	+12	+8	+4	+1	+30.3%	+29.3%	+26.4%	+15.9%	+8.6%	+1.8%
Clerical (III & IV)	72	-1	-2	-10	-6	-9	+0	-1.5%	-3.0%	-11.8%	-7.4%	-10.8%	+0.2%
Support	133	+37	+19	+10	+6	+4	-0	+37.8%	+16.2%	+8.3%	+4.3%	+3.0%	-0.3%
Maintenance/ Technical	16	+11	+9	+6	+6	+5	-1	+220.0%	+128.6%	+60.0%	+60.0%	+45.5%	-5.9%
Health Care Assistants	42	+13	+15	+14	+12	+8	-3	+42.8%	+57.1%	+50.9%	+38.6%	+22.5%	-5.9%
National Maternity	921	+156	+115	+100	+61	+41	+2	+20.4%	+14.3%	+12.2%	+7.0%	+4.6%	+0.2%
Consultants	192	+62	+49	+40	+34	+21	+3	+47.8%	+33.8%	+26.2%	+21.4%	+12.0%	+1.5%
Registrars	192	+55	+45	+29	+34	+26	+3	+40.2%	+30.2%	+17.7%	+21.3%	+15.4%	+1.4%
SHO/ Interns	195	+61	+48	+44	+43	+37	+1	+45.2%	+32.8%	+29.3%	+28.4%	+23.3%	+0.4%
Medical/ Dental, other	6	+1	+1	+2	+2	+1	-0	+14.1%	+11.3%	+51.2%	+44.9%	+19.4%	-6.3%
Nurse/ Midwife Manager	222	+48	+42	+43	+31	+14	+1	+27.6%	+23.4%	+23.8%	+16.4%	+6.9%	+0.7%
Nurse/ Midwife Specialist & AN/MP	99	+44	+39	+31	+13	+12	-1	+79.8%	+66.0%	+44.9%	+14.6%	+13.5%	-0.9%
Staff Nurse/ Staff Midwife	934	+113	+99	+76	+73	+26	+64	+13.8%	+11.9%	+8.8%	+8.5%	+2.9%	+7.4%
Nursing/ Midwifery Student	25	+16	+17	+16	+17	+13	-35	+163.2%	+194.1%	+177.8%	+212.5%	+108.3%	-58.3%
Nursing/ Midwifery other	50	+8	+10	+11	+10	+6	+0	+19.4%	+24.2%	+28.8%	+24.1%	+13.7%	+0.9%
Therapy Professions	126	+28	+29	+22	+12	+13	+3	+29.1%	+29.8%	+21.0%	+10.4%	+11.5%	+2.5%
Health Science/ Diagnostics	242	+24	+24	+23	+21	+18	+5	+11.0%	+11.0%	+10.6%	+9.7%	+8.0%	+2.1%
Social Workers	26	+5	+4	+3	+6	-1	-1	+21.4%	+18.5%	+14.2%	+27.9%	-3.8%	-3.8%
Psychologists	8	+4	+3	+3	+3	+1		+96.2%	+74.4%	+74.4%	+74.4%	+14.6%	
Pharmacy	50	+11	+7	+7	+1	+0	-3	+29.3%	+15.3%	+17.0%	+1.3%	+0.1%	-5.7%
H&SC, Other	25	+5	+3	+2	+1	+3	+5	+22.6%	+14.2%	+7.8%	+3.5%	+15.1%	+25.7%
Management (VIII & above)	34	+10	+10	+6	+4	+2	-2	+39.4%	+43.5%	+22.6%	+12.9%	+4.9%	-5.6%
Administrative/ Supervisory (V to VII)	164	+37	+42	+29	+14	+6	+1	+28.9%	+34.0%	+21.6%	+9.2%	+4.1%	+0.4%

Nov 2020 (Dec 2015 figure: 10,662)	WTE Nov 2020	WTE change since Dec 15	WTE change since Dec 16	WTE change since Dec 17	WTE change since Dec 18	WTE change since Dec 19	WTE change since Oct 20	% change since Dec 15	% change since Dec 16	% change since Dec 17	% change since Dec 18	% change since Dec 19	% change since Oct 20
Overall	12,908	+2,246	+1,937	+1,526	+1,135	+863	+77	+21.1%	+17.7%	+13.4%	+9.6%	+7.2%	+0.6%
Clerical (III & IV)	292	+55	+39	+45	+42	+32	+4	+23.0%	+15.3%	+18.3%	+16.6%	+12.4%	+1.5%
Support	263	+15	+14	+16	+11	+12	+0	+6.0%	+5.6%	+6.3%	+4.3%	+4.8%	+0.2%
Maintenance/ Technical	26	-3	+2	+2	+4	+2		-10.3%	+7.4%	+7.4%	+17.1%	+8.3%	
Health Care Assistants	252	+70	+52	+47	+21	+26	-4	+38.3%	+26.3%	+22.7%	+9.3%	+11.8%	-1.4%
Care, other	8	+1	-3	-0	+1	+1	+0	+8.1%	-27.1%	-1.4%	+9.2%	+8.0%	+2.5%
Mater Misericordiae University	3,430	+667	+575	+496	+396	+271	+45	+24.1%	+20.1%	+16.9%	+13.0%	+8.6%	+1.3%
Consultants	17	+3	+1	-2	-2	-2	-1	+22.2%	+4.0%	-9.6%	-8.8%	-12.4%	-7.0%
Registrars	10		+0	-1	-1	+0			+0.1%	-9.1%	-4.8%	+0.7%	
SHO/ Interns	16	+0	+2	+2	+2	+2	+1	+3.2%	+13.9%	+13.9%	+13.9%	+13.9%	+7.3%
Medical/ Dental, other		-1						-100.0%	-100.0%	-100.0%	-100.0%	-100.0%	-100.0%
Nurse/ Midwife Manager	36	+12	+11	+7	+4	+3	+2	+52.7%	+45.7%	+23.3%	+11.9%	+8.6%	+5.6%
Nurse/ Midwife Specialist & AN/MP	7	-2	-2	-1	-2	-1	+0	-18.9%	-20.1%	-15.0%	-23.9%	-15.0%	+1.7%
Staff Nurse/ Staff Midwife	111	+2	+2	+5	+0	-8	-2	+2.2%	+2.2%	+4.9%	+0.3%	-6.6%	-2.2%
Nursing/ Midwifery other	1	-0	-0	-0	-1	-1	-0	-1.0%	-1.0%	-1.0%	-50.5%	-47.3%	-1.0%
Therapy Professions	34	+13	+11	+9	+5	+3	-0	+62.5%	+47.3%	+35.5%	+17.0%	+9.3%	-0.5%
Health Science/ Diagnostics	21	+2	+2	+3	+0	+3	+1	+9.5%	+8.6%	+15.7%	+2.4%	+15.3%	+2.9%
Social Workers	6	+3	+1	+2	+1	+1		+79.1%	+12.0%	+38.1%	+17.6%	+19.4%	
Psychologists	2	+0	+1	+0	-0	-0	+0	+7.9%	+64.0%	+6.5%	-1.8%	-8.9%	+18.8%
Pharmacy	5	+0	+2	+3	+1	+0	-0	+1.4%	+44.3%	+99.6%	+23.8%	+5.0%	-3.0%
Management (VIII & above)	2	+2	+0	+1	+1	+1		+900.0%	+14.3%	+100.0%	+100.0%	+100.0%	
Administrative/ Supervisory (V to VII)	13	+2	+2	+2	-1	-1	-0	+20.7%	+16.2%	+16.5%	-6.1%	-7.5%	-0.1%
Clerical (III & IV)	58	+5	+5	+4	+2	+4	+1	+8.6%	+8.8%	+7.2%	+3.9%	+7.7%	+1.7%
Support	59	+7	+8	+2	+2	+2	-2	+14.5%	+15.3%	+3.2%	+4.1%	+3.7%	-3.5%
Maintenance/ Technical	1												
Health Care Assistants	57	+19	+10	+11	+3	-2	-0	+51.5%	+21.9%	+24.3%	+5.9%	-2.6%	-0.9%
Care, other	1					+1						-100.0%	
St. Columcille's	457	+69	+55	+46	+16	+5	-2	+17.8%	+13.6%	+11.1%	+3.6%	+1.1%	-0.4%
Consultants	40	+6	+7	+7	+4	+1	-1	+16.9%	+20.4%	+20.7%	+12.3%	+3.6%	-2.7%
Registrars	63	+20	+15	+14	+13	+7	-0	+46.0%	+32.1%	+28.0%	+27.0%	+12.2%	-0.8%
SHO/ Interns	55	+5	+1	-2	-3	-3	+0	+9.7%	+2.7%	-4.1%	-5.4%	-5.8%	+0.9%
Medical/ Dental, other	7	+7	+5	-0	-2	-0	+1	+6700.0%	+223.8%	-4.2%	-26.2%	-0.4%	+14.3%
Nurse/ Midwife Manager	84	+38	+32	+20	+7	-1	+2	+83.9%	+61.1%	+31.9%	+9.5%	-0.8%	+2.8%
Nurse/ Midwife Specialist & AN/MP	24	+9	+9	+6	+5	+4	-0	+59.4%	+59.2%	+35.5%	+23.8%	+17.7%	-1.4%

Nov 2020 (Dec 2015 figure: 10,662)	WTE Nov 2020	WTE change since Dec 15	WTE change since Dec 16	WTE change since Dec 17	WTE change since Dec 18	WTE change since Dec 19	WTE change since Dec 20	% change since Dec 15	% change since Dec 16	% change since Dec 17	% change since Dec 18	% change since Dec 19	% change since Dec 20
Overall	12,908	+2,246	+1,937	+1,526	+1,135	+863	+77	+21.1%	+17.7%	+13.4%	+9.6%	+7.2%	+0.6%
Staff Nurse/ Staff Midwife	319	+0	-4	+11	-4	+15	+5	+0.1%	-1.4%	+3.4%	-1.3%	+4.8%	+1.7%
Nursing/ Midwifery Student	1	+1	+1	-2	+0	+1	-3	-100.0%	-100.0%	-71.7%	+70.0%	-100.0%	-77.0%
Nursing/ Midwifery other	1	+1	+1	-0	-0		+0	-100.0%	-100.0%	-6.0%	-6.0%		+5.6%
Therapy Professions	43	+19	+13	+13	+13	+8	-0	+81.3%	+43.1%	+42.5%	+41.1%	+24.3%	-0.0%
Health Science/ Diagnostics	51	+15	+9	+7	+6	+2	+1	+41.3%	+22.0%	+15.1%	+12.2%	+5.0%	+1.9%
Pharmacy	17	+2	+3	+2	+2	-1	+0	+15.0%	+18.0%	+13.0%	+14.7%	-6.1%	+1.7%
Management (VIII & above)	5	+2	+2	+2	+2	+2	-0	+65.3%	+65.3%	+65.3%	+65.3%	+65.3%	-0.8%
Administrative/ Supervisory (V to VII)	21	+11	+12	+9	+7	+6	+0	+107.5%	+149.2%	+85.0%	+47.3%	+44.3%	+1.4%
Clerical (III & IV)	133	+19	+19	+7	-7	-3	+1	+16.6%	+16.7%	+5.6%	-5.3%	-2.6%	+1.1%
Support	171	-4	-6	-19	-36	-30	-1	-2.2%	-3.1%	-10.1%	-17.3%	-15.1%	-0.6%
Maintenance/ Technical	15	+5	+4	+4	+3	+2	-0	+52.5%	+35.2%	+35.2%	+24.2%	+14.2%	-0.2%
Health Care Assistants	131	+86	+71	+72	+53	+56	-1	+195.0%	+119.0%	+121.9%	+69.0%	+74.3%	-0.9%
Care, other	2	-0	-0	-0	-0	-0	-0	-0.4%	-0.4%	-0.4%	-0.4%	-0.4%	-0.4%
St Luke's General Kilkenny	1,184	+242	+194	+150	+62	+65	+5	+25.8%	+19.6%	+14.5%	+5.6%	+5.8%	+0.4%
Consultants	11	+2	+2	+2	-0	+1	+0	+26.3%	+17.1%	+16.0%	-4.4%	+4.8%	+0.0%
Registrars	13												
SHO/ Interns	15	+1			+1	+1		+7.1%			+7.1%	+7.1%	
Medical/ Dental, other	0												
Nurse/ Midwife Manager	35	-3	+1	+3	-3	+1		-8.3%	+4.0%	+9.5%	-7.0%	+3.0%	
Nurse/ Midwife Specialist & AN/MP	26	+11	+9	+5	+1	-2		+71.9%	+54.6%	+21.9%	+4.7%	-6.0%	
Staff Nurse/ Staff Midwife	105	+4	+4	-0	+2	+3	+0	+3.6%	+4.2%	-0.3%	+2.3%	+2.9%	+0.0%
Nursing/ Midwifery Student		-11						-100.0%	-100.0%	-100.0%	-100.0%	-100.0%	-100.0%
Nursing/ Midwifery other	4	-2	-1	-1	-1	-1		-33.3%	-20.0%	-20.0%	-20.0%	-20.0%	
Therapy Professions	17	+2	+1	-1	-1	-5		+14.6%	+8.9%	-5.0%	-6.5%	-21.5%	
Health Science/ Diagnostics	19	-2	-1	+2	+2	+2	+1	-10.3%	-5.8%	+10.6%	+11.0%	+11.5%	+5.5%
Social Workers	3	+1	+1	+1	+1	+1		+40.0%	+40.0%	+40.0%	+40.0%	+40.0%	
Pharmacy	7	+2	+3	+2	+2	-2	+0	+43.5%	+61.0%	+29.4%	+34.7%	-22.4%	+0.0%
Management (VIII & above)	3	+1	+1	+1	+1	+2		+50.0%	+50.0%	+50.0%	+50.0%	+200.0%	
Administrative/ Supervisory (V to VII)	24	+6	+4	+3	+5	+5		+32.5%	+18.6%	+15.7%	+28.1%	+24.7%	
Clerical (III & IV)	39	-4	-2	-0	-7	-5	+0	-10.4%	-4.8%	-0.7%	-15.3%	-10.6%	+0.9%
Support	49	+2	-2	-1	+1	+1	+1	+4.3%	-4.7%	-1.5%	+2.6%	+1.1%	+2.1%
Maintenance/ Technical	2	-1	-1	-1				-33.3%	-33.3%	-33.3%			
Health Care Assistants	27	+6	+1			+2	-1	+29.8%	+3.9%			+7.1%	-3.1%

Nov 2020 (Dec 2015 figure: 10,662)	WTE Nov 2020	WTE change since Dec 15	WTE change since Dec 16	WTE change since Dec 17	WTE change since Dec 18	WTE change since Dec 19	WTE change since Oct 20	% change since Dec 15	% change since Dec 16	% change since Dec 17	% change since Dec 18	% change since Dec 19	% change since Oct 20
Overall	12,908	+2,246	+1,937	+1,526	+1,135	+863	+77	+21.1%	+17.7%	+13.4%	+9.6%	+7.2%	+0.6%
Care, other	2	+1	+1	+1				+100.0%	+100.0%	+100.0%			
St. Michael's	400	+16	+20	+14	+4	+3	+1	+4.0%	+5.3%	+3.7%	+1.0%	+0.9%	+0.4%
Consultants	155	+34	+32	+25	+17	+10	-1	+28.2%	+25.9%	+19.3%	+12.2%	+7.2%	-0.8%
Registrars	168	+13	+16	+15	+13	+4	-17	+8.3%	+10.8%	+10.0%	+8.3%	+2.2%	-9.4%
SHO/ Interns	180	+62	+58	+59	+46	+54	+2	+52.5%	+47.5%	+48.8%	+34.3%	+42.5%	+1.1%
Medical/ Dental, other	1	-5	-5	-3	-0	-0		-82.4%	-81.9%	-76.1%	-18.0%	-22.5%	
Nurse/ Midwife Manager	233	+69	+66	+60	+63	+50	+3	+42.2%	+39.8%	+35.0%	+36.8%	+27.1%	+1.3%
Nurse/ Midwife Specialist & AN/MP	92	+26	+11	+8	+8	+5	+1	+38.5%	+14.2%	+9.7%	+9.0%	+5.7%	+1.1%
Staff Nurse/ Staff Midwife	729	+99	+68	-17	+48	+5	-20	+15.6%	+10.2%	-2.2%	+7.1%	+0.7%	-2.7%
Nursing/ Midwifery Student	69	+65	+64	+59	+55	+52	+18	+1437.3%	+1157.8%	+560.1%	+384.5%	+301.0%	+35.2%
Nursing/ Midwifery other	9	-5	-5	-6	-6	-6		-38.2%	-38.3%	-38.7%	-38.7%	-38.7%	
Therapy Professions	115	+22	+16	+18	+8	+11	+1	+24.0%	+16.3%	+19.0%	+7.5%	+10.6%	+0.9%
Health Science/ Diagnostics	223	+4	+19	+6	+1	+11	-3	+1.8%	+9.2%	+2.9%	+0.3%	+5.3%	-1.5%
Social Workers	22	+4	+2	+4	+3	+3		+21.3%	+11.7%	+23.0%	+16.4%	+16.4%	
Psychologists	10	+4	+4	+4	+3	-1		+75.4%	+82.1%	+71.3%	+40.7%	-8.7%	
Pharmacy	58	+14	+8	+3	+1	-0	+1	+32.6%	+16.4%	+5.6%	+1.9%	-0.1%	+1.8%
H&SC, Other	0	-1	-1	-1	-1			-65.0%	-74.1%	-74.1%	-74.1%		
Management (VIII & above)	21	+7	+1	+5	+1	+2	+4	+51.3%	+6.2%	+29.8%	+6.9%	+12.5%	+23.4%
Administrative/ Supervisory (V to VII)	185	+44	+36	+32	+34	+37	+1	+31.5%	+24.4%	+20.9%	+22.4%	+25.2%	+0.5%
Clerical (III & IV)	273	+25	+25	+8	-6	-15	-11	+10.3%	+9.9%	+2.8%	-2.0%	-5.3%	-3.8%
Support	313	+59	+41	+30	+26	+21	+9	+23.3%	+15.0%	+10.5%	+9.0%	+7.1%	+2.9%
Maintenance/ Technical	35	-3						-7.8%					
Health Care Assistants	197	-20	+6	+13	+31	+16	+10	-9.1%	+3.0%	+7.0%	+18.7%	+8.8%	+5.4%
Care, other	10	+0	+2	+2	+2	+2	+1	+2.3%	+21.3%	+23.6%	+23.6%	+23.6%	+15.5%
St. Vincent's University	3,099	+519	+465	+325	+347	+261	-2	+20.1%	+17.6%	+11.7%	+12.6%	+9.2%	-0.1%
Consultants	37	+8	+9	+5	+3	+4	+1	+25.8%	+31.4%	+17.0%	+9.0%	+11.0%	+4.0%
Registrars	51	+15	+3	+3	+1	-1	+1	+41.8%	+6.3%	+6.3%	+2.1%	-2.8%	+2.4%
SHO/ Interns	60	+12	+13	+4	+4	-1	-0	+25.1%	+26.4%	+7.6%	+8.0%	-1.6%	-0.6%
Medical/ Dental, other	6	+6	+4	+3	+2	+1	-0	-100.0%	+178.3%	+91.6%	+46.1%	+18.0%	-1.0%
Nurse/ Midwife Manager	83	+36	+29	+23	-0	-2	-1	+75.1%	+53.7%	+38.2%	-0.3%	-2.5%	-1.4%
Nurse/ Midwife Specialist & AN/MP	24	+8	+9	+3	+4	+5	-0	+50.2%	+57.4%	+15.4%	+20.5%	+24.4%	-1.9%
Staff Nurse/ Staff Midwife	299	+11	+20	+21	+6	+10	+13	+3.7%	+7.0%	+7.6%	+2.1%	+3.3%	+4.4%
Nursing/ Midwifery Student	1	+1	+1	+1	+1	+1	-6	-100.0%	-100.0%	-100.0%	-100.0%		-85.8%

Nov 2020 (Dec 2015 figure: 10,662)	WTE Nov 2020	WTE change since Dec 15	WTE change since Dec 16	WTE change since Dec 17	WTE change since Dec 18	WTE change since Dec 19	WTE change since Dec 20	% change since Dec 15	% change since Dec 16	% change since Dec 17	% change since Dec 18	% change since Dec 19	% change since Dec 20
Overall	12,908	+2,246	+1,937	+1,526	+1,135	+863	+77	+21.1%	+17.7%	+13.4%	+9.6%	+7.2%	+0.6%
Therapy Professions	29	+12	+12	+10	+6	+4	+1	+71.5%	+70.0%	+56.3%	+27.3%	+15.8%	+2.8%
Health Science/ Diagnostics	37	+9	+8	+7	+1	-0	-0	+33.9%	+27.4%	+21.9%	+3.0%	-1.2%	-0.6%
Social Workers	1	+1	+1	+1	+1			-100.0%	-100.0%	-100.0%	-100.0%		
Pharmacy	13	+5	+5	+5	+4	+2	+1	+64.8%	+71.4%	+55.6%	+38.7%	+16.1%	+11.4%
Management (VIII & above)	4	+2	+2	+1	+1	+2		+100.0%	+100.0%	+33.3%	+37.5%	+100.0%	
Administrative/ Supervisory (V to VII)	22	+10	+10	+7	+7	+7	+0	+83.8%	+80.9%	+44.8%	+42.8%	+49.5%	+1.2%
Clerical (III & IV)	115	-1	-0	-0	-1	-0	+0	-0.5%	-0.1%	-0.1%	-1.0%	-0.3%	+0.1%
Support	173	-9	-18	-28	-34	-34	-3	-5.2%	-9.5%	-14.0%	-16.5%	-16.3%	-1.5%
Maintenance/ Technical	6	+1	+0	+1	+1	-0	-0	+19.1%	+7.9%	+19.1%	+21.6%	-1.4%	-1.0%
Health Care Assistants	91	+40	+33	+41	+40	+36	-0	+77.4%	+57.3%	+82.8%	+78.0%	+63.6%	-0.5%
Care, other	2	-1	-1	-1	-0	-1	-0	-39.3%	-37.2%	-35.2%	-19.1%	-31.8%	-0.5%
Wexford General	1,054	+165	+139	+107	+47	+30	+6	+18.6%	+15.2%	+11.3%	+4.6%	+2.9%	+0.6%
Nurse/ Midwife Manager	3	+3	+2	+2				-100.0%	+200.0%	+200.0%			
Staff Nurse/ Staff Midwife	1	+1	+1	+1	+1	+1	+1	-100.0%	-100.0%	-100.0%	-100.0%	-100.0%	+300.0%
Health Science/ Diagnostics	1	+1	+1	+1			+0	-100.0%	-100.0%	-100.0%			+2.0%
Management (VIII & above)	10	+10	+5	+4	+5	+4	+2	-100.0%	+99.2%	+66.0%	+99.2%	+73.2%	+25.3%
Administrative/ Supervisory (V to VII)	17	+17	+15	+7	-3	+0	+1	-100.0%	+846.1%	+72.2%	-12.9%	+1.5%	+6.1%
Clerical (III & IV)	2	+2	+2	-2	-2	-0		-100.0%	-100.0%	-43.7%	-44.4%	-19.0%	
Maintenance/ Technical					-1	-1		-100.0%	-100.0%	-100.0%	-100.0%	-100.0%	-100.0%
Hospital Group HQ	34	+34	+26	+13	+1	+4	+4	-100.0%	+334.4%	+66.3%	+4.2%	+13.5%	+12.5%
Consultants	26	+6	+6	+3	+2	+3	+2	+28.8%	+30.8%	+12.1%	+7.8%	+14.2%	+6.6%
Registrars	22	+6	+6	+7	+4	+2		+40.0%	+36.8%	+43.4%	+23.2%	+10.2%	
SHO/ Interns	15	+3	+2	-1	-1	-1		+21.0%	+17.5%	-6.4%	-6.4%	-6.4%	
Medical/ Dental, other	5	+1	+2	+1	-0	+0	-0	+30.3%	+65.6%	+30.0%	-3.2%	+4.8%	-5.7%
Nurse/ Midwife Manager	26	+4	+6	+5	+1	+3	+1	+17.4%	+31.6%	+22.4%	+2.0%	+11.2%	+4.2%
Nurse/ Midwife Specialist & AN/MP	11	+7	+6	+5	+6	+2	+2	+157.6%	+101.1%	+94.0%	+121.3%	+22.6%	+19.6%
Staff Nurse/ Staff Midwife	83	+13	+13	+6	+1	+2	-3	+18.1%	+18.3%	+7.3%	+1.1%	+2.5%	-3.9%
Nursing/ Midwifery other	1		-1	-1	-1	-1			-33.3%	-33.3%	-33.3%	-33.3%	
Therapy Professions	3	-0		-0	-0	-0		-2.7%		-9.4%	-15.5%	-11.3%	
Health Science/ Diagnostics	1	-5	-4	-2	-4	-1	-1	-77.3%	-73.2%	-63.5%	-72.5%	-27.3%	-27.3%
Social Workers	1	+0	+0	+0		-1		+75.4%	+16.3%	+16.3%		-50.0%	
Pharmacy	4	+1	+1	+1	+1	+1		+57.5%	+33.3%	+33.3%	+33.3%	+33.3%	
H&SC, Other	4	+1	+1	+1	+1			+35.7%	+35.7%	+23.4%	+23.4%		

Nov 2020 (Dec 2015 figure: 10,662)	WTE Nov 2020	WTE change since Dec 15	WTE change since Dec 16	WTE change since Dec 17	WTE change since Dec 18	WTE change since Dec 19	WTE change since Oct 20	% change since Dec 15	% change since Dec 16	% change since Dec 17	% change since Dec 18	% change since Dec 19	% change since Oct 20
Overall	12,908	+2,246	+1,937	+1,526	+1,135	+863	+77	+21.1%	+17.7%	+13.4%	+9.6%	+7.2%	+0.6%
Management (VIII & above)	4	+2	+2	+1	+2	+1		+100.0%	+100.0%	+33.3%	+100.0%	+33.3%	
Administrative/ Supervisory (V to VII)	26	+7	+7	+3	+2	+2	+2	+40.2%	+34.4%	+13.8%	+7.2%	+8.3%	+8.3%
Clerical (III & IV)	35	+2	+3	+3	-2	-1	-1	+7.5%	+7.8%	+9.5%	-4.8%	-1.6%	-3.9%
Support	29	-3	+2	+1	+1	+1	+1	-9.9%	+8.5%	+5.1%	+4.2%	+5.4%	+3.6%
Health Care Assistants	11	+3	+3	+1	+2	+2	+1	+35.4%	+35.6%	+6.1%	+27.5%	+20.6%	+9.8%
Royal Victoria Eye & Ear	307	+49	+55	+33	+15	+16	+3	+19.0%	+21.9%	+12.2%	+5.2%	+5.4%	+1.0%
Staff Nurse/ Staff Midwife	7	+7	+7	+7	+7	+7	+2	-100.0%	-100.0%	-100.0%	-100.0%	-100.0%	+40.5%
Health Care Assistants	0	+0	+0	+0	+0	+0	+0	-100.0%	-100.0%	-100.0%	-100.0%	-100.0%	+6.7%
IEHG Bank	7	+7	+7	+7	+7	+7	+2	-100.0%	-100.0%	-100.0%	-100.0%	-100.0%	+38.5%

Source: Health Service Personnel Census