

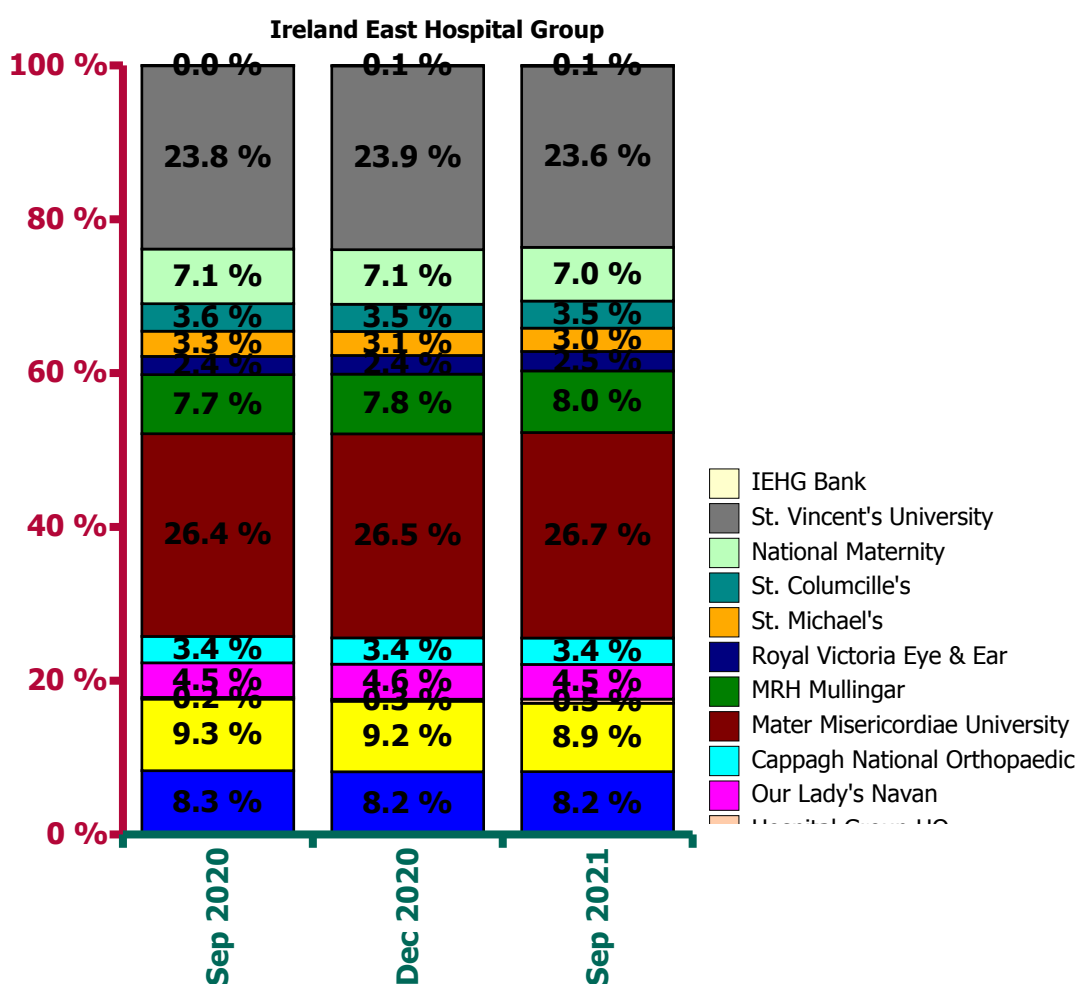
Ireland East Hospital Group Employment Report: September 2021

Employment by Staff Group

Sep 2021 (Dec 2020 figure: 12,923)	WTE Aug 2021	WTE Sep 2021	WTE change since Aug 21	% change since Aug 21	WTE change since Dec 20	WTE change since Sep 20
Overall	13,319	13,297	-21.91	-0.2%	+374	+527
Consultants	591	595	+4	+0.7%	+9	+9
Registrars	701	708	+8	+1.1%	+51	+37
SHO/ Interns	651	669	+17	+2.7%	-1	+5
Medical/ Dental, other	34	33	-0	-0.9%	+6	+4
Medical & Dental	1,977	2,006	+29	+1.5%	+64	+55
Nurse/ Midwife Manager	1,056	1,070	+14	+1.3%	+51	+61
Nurse/ Midwife Specialist & AN/MP	350	349	-1	-0.2%	+12	+27
Staff Nurse/ Staff Midwife	3,349	3,326	-23	-0.7%	-10	+87
Nursing/ Midwifery Student	139	80	-59	-42.4%	-29	-59
Nursing/ Midwifery other	69	71	+2	+3.3%	-1	-3
Nursing & Midwifery	4,963	4,896	-67	-1.4%	+23	+114
Therapy Professions	477	479	+2	+0.4%	+2	+7
Health Science/ Diagnostics	839	855	+16	+1.9%	+64	+73
Social Workers	76	74	-2	-2.1%	+0	+2
Psychologists	23	25	+1	+6.1%	+3	+4
Pharmacy	211	209	-2	-1.1%	+17	+21
H&SC, Other	44	38	-6	-13.3%	+11	+8
Health & Social Care Professionals	1,671	1,680	+9	+0.6%	+96	+115
Management (VIII & above)	114	119	+5	+4.1%	+18	+29
Administrative/ Supervisory (V to VII)	621	636	+15	+2.4%	+37	+46
Clerical (III & IV)	1,290	1,293	+3	+0.2%	+69	+69
Management & Administrative	2,025	2,047	+23	+1.1%	+124	+144
Support	1,339	1,334	-5	-0.4%	+21	+32
Maintenance/ Technical	122	115	-7	-5.6%	-3	-2
General Support	1,461	1,449	-12	-0.8%	+18	+31
Health Care Assistants	1,194	1,191	-3	-0.3%	+49	+68
Care, other	29	27	-1	-4.2%	-1	+1
Patient & Client Care	1,223	1,218	-4	-0.4%	+48	+69

Ireland East Hospital Group Employment by Hospital: Sep 2021

Sep 2021 (Dec 2020 figure: 12,923)	WTE Aug 2021	WTE Sep 2021	WTE change since Aug 21	% change since Aug 21	WTE change since Dec 20	WTE change since Sep 20
Overall	13,319	13,297	-22	-0.2%	+374	+527
Wexford General	1,083	1,088	+5	+0.5%	+33	+28
St Luke's General Kilkenny	1,178	1,182	+4	+0.4%	-3	-6
Hospital Group HQ	75	71	-4	-5.6%	+38	+41
Our Lady's Navan	597	600	+2	+0.4%	+10	+28
Cappagh National Orthopaedic	457	456	-1	-0.2%	+15	+16
Mater Misericordiae University	3,559	3,555	-4	-0.1%	+126	+190
MRH Mullingar	1,037	1,063	+26	+2.5%	+59	+82
Royal Victoria Eye & Ear	334	337	+3	+1.0%	+24	+33
St. Michael's	418	405	-13	-3.0%	+1	-12
St. Columcille's	467	467	-1	-0.2%	+9	+11
National Maternity	945	930	-15	-1.6%	+14	+22
St. Vincent's University	3,158	3,134	-24	-0.8%	+47	+91
IEHG Bank	11	10	-1	-10.8%	+1	+4



**Ireland East Hospital Group Employment by Administration (HSE / S38):
September 2021**

Sep 2021 (Dec 2020 figure: 12,923)	WTE Aug 2021	WTE Sep 2021	WTE change since Aug 21	% change since Aug 21	WTE change since Dec 20	WTE change since Sep 20
Overall	13,319	13,297	-22	-0.2%	+374	+527
HSE	4,449	4,480	+32	+0.7%	+147	+188
Section 38 Hospitals	8,870	8,817	-53	-0.6%	+226	+339

HSE

Sep 2021 (Dec 2020 figure: 4,333)	WTE Aug 2021	WTE Sep 2021	WTE change since Aug 21	% change since Aug 21	WTE change since Dec 20	WTE change since Sep 20
Overall	4,449	4,480	+32	+0.7%	+147	+188
Consultants	155	155	+0	+0.0%	+3	+4
Registrars	208	208	-0	-0.0%	-3	+2
SHO/ Interns	238	255	+16	+0.1%	+21	+19
Medical/ Dental, other	17	17	+1	+0.0%	+2	+1
Medical & Dental	618	635	+17	+2.7%	+23	+27
Nurse/ Midwife Manager	334	343	+9	+0.0%	+15	+8
Nurse/ Midwife Specialist & AN/MP	94	92	-1	-0.0%	+7	+14
Staff Nurse/ Staff Midwife	1,139	1,132	-7	-0.0%	-8	+41
<i>Nursing/ Midwifery awaiting registration</i>		20	+20	-1.0%	+14	+15
<i>Pre-registration Nurse Intern (COVID-19)</i>				-1.0%		-24
<i>Pre-registration Nurse/ Midwife Intern</i>	16	9	-7	-0.4%	+8	+9
Nursing/ Midwifery Student	16	28	+13	+0.8%	+24	+1
Nursing/ Midwifery other	5	5	-0	-0.0%	-0	-0
Nursing & Midwifery	1,587	1,601	+13	+0.8%	+38	+64
Therapy Professions	168	169	+1	+0.0%	-1	+0
Health Science/ Diagnostics	239	238	-1	-0.0%	+6	+10
Social Workers	8	8	+0	+0.0%	+1	+1
Psychologists	2	3	+0	+0.1%	+1	+1
Pharmacy	72	73	+0	+0.0%	+15	+18
H&SC, Other	22	18	-5	-0.2%	+18	+16
Health & Social Care Professionals	512	508	-4	-0.7%	+39	+46
Management (VIII & above)	32	32	-0	-0.0%	+5	+9
Administrative/ Supervisory (V to VII)	129	132	+3	+0.0%	+12	+15
Clerical (III & IV)	474	480	+6	+0.0%	+17	+20
Management & Administrative	635	644	+9	+1.4%	+34	+44
Support	468	469	+1	+0.0%	+13	+10
Maintenance/ Technical	39	38	-1	-0.0%	-1	+2
General Support	507	508	+1	+0.1%	+12	+12
Health Care Assistants	578	574	-4	-0.0%	+1	-7
Care, other	11	11	+0	+0.0%	+1	+3
Patient & Client Care	589	584	-4	-0.7%	+2	-4

Section 38 Hospitals

Sep 2021 (Dec 2020 figure: 8,590)	WTE Aug 2021	WTE Sep 2021	WTE change since Aug 21	% change since Aug 21	WTE change since Dec 20	WTE change since Sep 20
Overall	8,870	8,817	-53	-0.6%	+226	+339
Consultants	436	440	+4	+0.0%	+6	+5
Registrars	492	500	+8	+0.0%	+53	+35
SHO/ Interns	413	414	+1	+0.0%	-21	-15
Medical/ Dental, other	17	16	-1	-0.0%	+4	+3
Medical & Dental	1,358	1,371	+12	+0.9%	+42	+28
Nurse/ Midwife Manager	722	726	+4	+0.0%	+36	+54
Nurse/ Midwife Specialist & AN/MP	256	256	+1	+0.0%	+4	+13
Staff Nurse/ Staff Midwife	2,210	2,194	-16	-0.0%	-2	+46
<i>Nursing/ Midwifery awaiting registration</i>	8	5	-3	-0.4%		-9
<i>Post-registration Nurse/ Midwife Student</i>	26	26		+0.0%	+5	+6
<i>Pre-registration Nurse Intern (COVID-19)</i>				-1.0%		-78
<i>Pre-registration Nurse/ Midwife Intern</i>	90	21	-69	-0.8%	-4	+21
Nursing/ Midwifery Student	123	52	-72	-0.6%	-52	-60
Nursing/ Midwifery other	65	67	+2	+0.0%	-1	-3
Nursing & Midwifery	3,376	3,296	-80	-2.4%	-15	+50
Therapy Professions	309	310	+1	+0.0%	+3	+7
Health Science/ Diagnostics	600	618	+17	+0.0%	+58	+63
Social Workers	68	66	-2	-0.0%	-1	+1
Psychologists	21	22	+1	+0.1%	+2	+3
Pharmacy	139	136	-3	-0.0%	+2	+3
H&SC, Other	22	20	-1	-0.1%	-7	-8
Health & Social Care Professionals	1,159	1,172	+13	+1.1%	+57	+70
Management (VIII & above)	82	87	+5	+0.1%	+13	+20
Administrative/ Supervisory (V to VII)	492	504	+12	+0.0%	+25	+32
Clerical (III & IV)	815	812	-3	-0.0%	+52	+48
Management & Administrative	1,389	1,403	+14	+1.0%	+89	+100
Support	871	865	-6	-0.0%	+9	+22
Maintenance/ Technical	83	77	-6	-0.1%	-2	-3
General Support	954	941	-12	-1.3%	+7	+19
Health Care Assistants	617	617	+1	+0.0%	+48	+75
Care, other	18	17	-1	-0.1%	-2	-2
Patient & Client Care	634	634	-0	-0.0%	+46	+73

Ireland East Hospital Group Employment by Hospital & Staff Category: September 2021

Wexford General

Sep 2021 (Dec 2020 figure: 1,055)	WTE Aug 2021	WTE Sep 2021	WTE change since Aug 21	% change since Aug 21	WTE change since Dec 19
Overall	1,083	1,088	+5	+0.5%	+33
Consultant Anaesthesia	5	5	-0	-0.0%	+1
Consultant Emergency Medicine	2	2	0	+0.0%	
Consultant Medicine	7	7	-0	-0.0%	-2
Consultant Obstetrics & Gynaecology	6	6	+0	+0.0%	-0
Consultant Paediatrics	4	4	-0	-0.0%	-0
Consultant Pathology	1	1	0	+0.0%	+0
Consultant Radiology	5	5	0	+0.0%	+2
Consultant Surgery	5	5	0	+0.0%	-0
Consultants	35	35	-0	-0.0%	-2
Registrar	34	35	+1	+0.0%	-9
Senior Registrar	4	4	-0	-0.0%	+3
Specialist Registrar	11	10	-1	-0.1%	+3
Registrars	49	49	+1	+0.0%	-1
Interns	12	12	0	+0.0%	+2
Senior House Officer	59	64	+6	+0.1%	+13
SHO/ Interns	71	76	+6	+0.1%	+17
Other Medical	6	6	0	+0.0%	+1
Medical/ Dental, other	6	6	0	+0.0%	
Medical & Dental	161	167	+6	+6	+13
Clinical Nurse/ Midwife Manager	73	77	+4	+0.1%	+1
Director Nursing/Midwifery, Assistant	7	8	+1	+0.2%	+1
Director of Nursing/Midwifery	2	2	+0	+0.0%	-0
Nurse/ Midwife Manager	81	87	+5	+0.1%	+4
Advanced Nurse/ Midwife Practitioner	5	5	+0	+0.0%	+2
Clinical Nurse/ Midwife Specialist	20	19	-1	-0.1%	+3
Nurse/ Midwife Specialist & AN/MP	25	24	-1	-0.0%	-0
Staff Nurses [General/ Children's]	267	262	-5	-0.0%	+13
Staff Midwives	42	41	-2	-0.0%	+0
Staff Nurse/ Staff Midwife	309	303	-6	-0.0%	+3
Pre-registration Nurse/ Midwife Intern	5	2	-3	-0.6%	+2
Pre-registration Nurse Intern (COVID-19)				-1.0%	
Nursing/ Midwifery awaiting registration		6	+6	-1.0%	+5
Nursing/ Midwifery Student	5	8	+3	+0.5%	+5
Nursing & Midwifery	420	421	+1	+1	+11
Dietitians	7	7	+0	+0.0%	+3
Occupational Therapists	4	4	-0	-0.0%	+1
Physiotherapists	15	14	-1	-0.1%	-2
Speech & Language Therapists	2	2	-0	-0.0%	+1
Podiatrists & Chiropodists				-1.0%	-2
Therapy Professions	28	27	-1	-0.0%	-2
Clinical Engineering	2	2	0	+0.0%	+1
Clinical Measurement	5	5	+1	+0.1%	+1
Phlebotomists	2	2	-0	-0.0%	-0

<i>Radiographers</i>	18	17	-1	-0.0%	-2
<i>Medical Science</i>	11	11	+0	+0.0%	+2
Health Science/ Diagnostics	38	38	+1	+0.0%	+2
<i>Social Workers</i>	2	2	0	+0.0%	+1
Social Workers	2	2	0	+0.0%	+1
<i>Pharmacy</i>	14	14	+0	+0.0%	+3
Pharmacy	14	14	+0	+0.0%	+2
Health & Social Care Professionals	82	81	-1	-1	+2
<i>Executive Management</i>				-1.0%	-1
<i>Senior Management (VIII & GM)</i>	3	3	0	+0.0%	+2
Management (VIII & above)	3	3	0	+0.0%	-1
<i>Middle Management (V-VII)</i>	28	30	+2	+0.1%	+16
Administrative/ Supervisory (V to VII)	28	30	+2	+0.1%	+8
<i>General Administrative (III & IV)</i>	109	108	-1	-0.0%	-8
Clerical (III & IV)	109	108	-1	-0.0%	-8
Management & Administrative	140	141	+1	+1	-1
<i>Catering</i>	9	9	-0	-0.0%	+1
<i>Household Services</i>	124	123	-1	-0.0%	+3
<i>Other Labs & Associated</i>	4	4	+0	+0.0%	+3
<i>Other Support</i>	30	31	+1	+0.0%	-7
<i>Portering</i>	12	12	-0	-0.0%	-26
Support	179	179	+0	+0.0%	+5
<i>Maintenance</i>	7	6	-0	-0.0%	+1
Maintenance/ Technical	7	6	-0	-0.0%	+1
General Support	186	185	-0	-0	+6
<i>HCA, Nurse's Aide, etc.</i>	91	89	-2	-0.0%	+33
<i>Health & Social Care Assistants</i>	1	1	0	+0.0%	+1
<i>HCA (Student Nurse/Midwife COVID-19)</i>				-1.0%	
Health Care Assistants	92	90	-2	-0.0%	+0
<i>Other Care Grades</i>	3	3	0	+0.0%	+0
Care, other	3	3	0	+0.0%	+1
Patient & Client Care	95	93	-2	-2	+1

St Luke's General Kilkenny

Sep 2021 (Dec 2020 figure: 1,185)	WTE Aug 2021	WTE Sep 2021	WTE change since Aug 21	% change since Aug 21	WTE change since Dec 19
Overall	1,178	1,182	+4	+0.4%	-3
Consultant Anaesthesia	7	6	-1	-0.1%	+1
Consultant Emergency Medicine	3	3	-0	-0.0%	+1
Consultant Medicine	13	13	-0	-0.0%	+3
Consultant Obstetrics & Gynaecology	6	6	-0	-0.1%	-0
Consultant Paediatrics	6	6	+0	+0.0%	+0
Consultant Radiology	6	6	-0	-0.0%	-0
Consultant Surgery	3	3	0	+0.0%	-1
Consultants	43	42	-1	-0.0%	+2
Registrar	41	40	-1	-0.0%	+0
Senior Registrar	11	12	+2	+0.2%	+0
Specialist Registrar	6	6	-0	-0.0%	+1
Registrars	58	58	+0	+0.0%	-7
Interns	12	12	0	+0.0%	+2
Senior House Officer	43	50	+7	+0.2%	+1
SHO/ Interns	55	62	+7	+0.1%	+8
Other Medical	8	9	+1	+0.1%	+2
Medical/ Dental, other	8	9	+1	+0.1%	+2
Medical & Dental	164	171	+7	+7	+5
Clinical Nurse/ Midwife Manager	73	73	-0	-0.0%	-2
Director Nursing/Midwifery, Assistant	8	10	+1	+0.1%	+2
Director of Nursing/Midwifery	2	2	0	+0.0%	
Nurse/ Midwife Manager	83	84	+1	+0.0%	-0
Advanced Nurse/ Midwife Practitioner	9	9	-0	-0.0%	+3
Clinical Nurse/ Midwife Specialist	20	19	-1	-0.1%	+4
Nurse/ Midwife Specialist & AN/MP	29	28	-1	-0.0%	+3
Staff Nurses [General/ Children's]	272	272	-0	-0.0%	+5
Staff Midwives	30	29	-0	-0.0%	-7
Staff Nurse/ Staff Midwife	302	301	-0	-0.0%	-17
Pre-registration Nurse/ Midwife Intern	5	5	-0	-0.0%	+5
Nursing/ Midwifery awaiting registration				-1.0%	
Nursing/ Midwifery Student	5	5	-0	-0.0%	+4
Nursing Education/Clinical	1	1	-0	-0.1%	-0
Nursing/ Midwifery other	1	1	-0	-0.1%	-0
Nursing & Midwifery	420	419	-1	-1	-10
Dietitians	12	11	-1	-0.0%	+2
Occupational Therapists	7	7	+0	+0.0%	+3
Physiotherapists	18	17	-1	-0.0%	-1
Speech & Language Therapists	3	2	-1	-0.3%	-0
Podiatrists & Chiropodists	2	2	0	+0.0%	+1
Therapy Professions	42	40	-2	-0.1%	-3
Clinical Engineering	1	1	0	+0.0%	
Clinical Measurement	11	12	+1	+0.1%	+1
Radiographers	26	25	-1	-0.0%	-0
Medical Science	15	14	-1	-0.1%	+2
Health Science/ Diagnostics	53	52	-1	-0.0%	+1
Social Workers		1	+1	-1.0%	+1

Social Workers		1	+1	-1.0%	+1
Pharmacy	23	22	-1	-0.0%	+4
Pharmacy	23	22	-1	-0.0%	+4
Health & Social Care Professionals	118	115	-3	-3	+2
Executive Management	1	1	-0	-0.0%	+1
Senior Management (VIII & GM)	5	5	-0	-0.0%	+2
Management (VIII & above)	6	6	-0	-0.0%	+0
Middle Management (V-VII)	21	22	+1	+0.0%	+7
Administrative/ Supervisory (V to VII)	21	22	+1	+0.0%	+2
General Administrative (III & IV)	130	129	-2	-0.0%	-8
Clerical (III & IV)	130	129	-2	-0.0%	-5
Management & Administrative	157	156	-1	-1	-3
Catering	9	9	-0	-0.0%	+0
Household Services	148	150	+2	+0.0%	+16
Other Labs & Associated	4	4	+0	+0.0%	+4
Other Support	6	6	+0	+0.0%	+3
Portering	4	4	+0	+0.0%	-52
Support	171	173	+2	+0.0%	+3
Maintenance	14	14	-0	-0.0%	+1
Maintenance/ Technical	14	14	-0	-0.0%	-1
General Support	186	187	+2	+2	+2
HCA, Nurse's Aide, etc.	129	131	+2	+0.0%	+56
Health & Social Care Assistants	2	1	-0	-0.2%	+1
HCA (Student Nurse/Midwife COVID-19)				-1.0%	
Health Care Assistants	131	132	+1	+0.0%	+1
Other Care Grades	2	2	0	+0.0%	
Care, other	2	2	0	+0.0%	
Patient & Client Care	133	134	+1	+1	+1

Hospital Group HQ

Sep 2021 (Dec 2020 figure: 34)	WTE Aug 2021	WTE Sep 2021	WTE change since Aug 21	% change since Aug 21	WTE change since Dec 19
Overall	75	71	-4	-5.6%	+38
<i>Consultant Medicine</i>	1	1	0	+0.0%	+1
Consultants	1	1	0	+0.0%	+1
Medical & Dental	1	1			+1
<i>Clinical Nurse/ Midwife Manager</i>	2	2	-0	-0.1%	+2
<i>Director Nursing/Midwifery, Assistant</i>	2	2	+0	+0.1%	+0
<i>Director of Nursing/Midwifery</i>	1	1	0	+0.0%	
Nurse/ Midwife Manager	5	5	-0	-0.0%	+2
<i>Nursing Bank</i>				-1.0%	
<i>Staff Nurses [General/ Children's]</i>	1		-1	-1.0%	
Staff Nurse/ Staff Midwife	1		-1	-1.0%	-1
Nursing & Midwifery	6	5	-1	-1	+1
<i>Clinical Engineering</i>	1	1	-0	-0.0%	-0
Health Science/ Diagnostics	1	1	-0	-0.0%	-0
<i>Pharmacy</i>	3	4	+1	+0.5%	+4
Pharmacy	3	4	+1	+0.5%	+4
<i>Vaccinators</i>	21	17	-5	-0.2%	+17
H&SC, Other	21	17	-5	-0.2%	+17
Health & Social Care Professionals	25	22	-3	-3	+21
<i>Executive Management</i>	5	5	-0	-0.1%	+3
<i>Senior Management (VIII & GM)</i>	9	9	+0	+0.0%	+5
Management (VIII & above)	14	14	-0	-0.0%	+4
<i>Middle Management (V-VII)</i>	18	17	-1	-0.1%	+0
Administrative/ Supervisory (V to VII)	18	17	-1	-0.1%	+0
<i>General Administrative (III & IV)</i>	11	13	+1	+0.1%	+10
Clerical (III & IV)	11	13	+1	+0.1%	+11
Management & Administrative	43	43			+15
<i>Technical Services</i>				-1.0%	-1
Maintenance/ Technical				-1.0%	
General Support					

Our Lady's Navan

Sep 2021 (Dec 2020 figure: 590)	WTE Aug 2021	WTE Sep 2021	WTE change since Aug 21	% change since Aug 21	WTE change since Dec 19
Overall	597	600	+2	+0.4%	+10
Consultant Anaesthesia	2	2	0	+0.0%	
Consultant Medicine	8	8	+0	+0.0%	+1
Consultant Radiology	2	2	0	+0.0%	
Consultant Surgery	2	2	0	+0.0%	
Consultants	14	14	+0	+0.0%	-2
Registrar	28	29	+1	+0.0%	+8
Senior Registrar	1		-1	-1.0%	-1
Specialist Registrar	5	5	-0	-0.1%	-0
Registrars	34	34	-0	-0.0%	+2
Senior House Officer	40	41	+1	+0.0%	+6
SHO/ Interns	40	41	+1	+0.0%	-3
Medical & Dental	88	89	+1	+1	-3
Clinical Nurse/ Midwife Manager	41	41	+0	+0.0%	+4
Director Nursing/Midwifery, Assistant	5	6	+1	+0.2%	+1
Director of Nursing/Midwifery	1	1	+0	+0.0%	
Nurse/ Midwife Manager	47	48	+1	+0.0%	+2
Advanced Nurse/ Midwife Practitioner	6	6	+1	+0.1%	+4
Clinical Nurse/ Midwife Specialist	8	7	-0	-0.0%	-1
Nurse/ Midwife Specialist & AN/MP	13	14	+0	+0.0%	+1
Staff Nurses [General/ Children's]	141	143	+1	+0.0%	+21
Staff Nurse/ Staff Midwife	141	143	+1	+0.0%	+7
Nursing/ Midwifery awaiting registration				-1.0%	-4
Nursing/ Midwifery Student				-1.0%	
Nursing & Midwifery	202	205	+3	+3	+10
Dietitians	2	2	+0	+0.0%	+1
Occupational Therapists	7	7	-0	-0.0%	+3
Physiotherapists	16	17	+1	+0.0%	+4
Speech & Language Therapists	2	2	0	+0.0%	+1
Podiatrists & Chiropodists	1	1	-0	-0.0%	-0
Therapy Professions	27	28	+0	+0.0%	-0
Clinical Engineering	1	1	0	+0.0%	+1
Clinical Measurement	3	3	-0	-0.0%	-0
Phlebotomists	3	3	+0	+0.0%	-0
Radiographers	12	12	-0	-0.0%	-2
Medical Science	21	22	+0	+0.0%	+6
Health Science/ Diagnostics	41	41	+0	+0.0%	+2
Pharmacy	9	9	-0	-0.0%	+3
Pharmacy	9	9	-0	-0.0%	+1
Health & Social Care Professionals	77	77	+0	+0	+3
Executive Management	1	1	+0	+0.0%	+1
Senior Management (VIII & GM)	1	1	+0	+0.0%	-1
Management (VIII & above)	2	2	+0	+0.0%	-0
Middle Management (V-VII)	21	21	+0	+0.0%	+9
Administrative/ Supervisory (V to VII)	21	21	+0	+0.0%	+0
General Administrative (III & IV)	57	58	+0	+0.0%	+1
Clerical (III & IV)	57	58	+0	+0.0%	-1

Management & Administrative	80	81	+0	+0	-1
<i>Catering</i>	6	6	+0	+0.0%	+0
<i>Other Labs & Associated</i>	7	7	+0	+0.0%	+3
<i>Other Support</i>	6	5	-0	-0.0%	+0
<i>Portering</i>	8	8	+0	+0.0%	-0
Support	27	27	+0	+0.0%	+2
<i>Maintenance</i>	5	5	+0	+0.0%	
Maintenance/ Technical	5	5	+0	+0.0%	+0
General Support	32	32	+0	+0	+2
<i>HCA, Nurse's Aide, etc.</i>	110	108	-2	-0.0%	+15
<i>Health & Social Care Assistants</i>	8	8	-0	-0.0%	+3
<i>HCA (Student Nurse/Midwife COVID-19)</i>				-1.0%	
Health Care Assistants	117	116	-2	-0.0%	-1
<i>Other Care Grades</i>	1	1	0	+0.0%	-1
Care, other	1	1	0	+0.0%	-0
Patient & Client Care	119	117	-2	-2	-1

Cappagh National Orthopaedic

Sep 2021 (Dec 2020 figure: 441)	WTE Aug 2021	WTE Sep 2021	WTE change since Aug 21	% change since Aug 21	WTE change since Dec 19
Overall	457	456	-1	-0.2%	+15
Consultant Anaesthesia	12	12	0	+0.0%	+1
Consultant Medicine	2	2	0	+0.0%	
Consultant Radiology	2	2	0	+0.0%	+1
Consultant Surgery	2	2	0	+0.0%	
Consultants	18	18	0	+0.0%	+2
Registrar	6	6	0	+0.0%	-4
Specialist Registrar	14	13	-1	-0.1%	+4
Registrars	20	19	-1	-0.1%	+1
Interns	3	3	0	+0.0%	-2
Senior House Officer	11	11	0	+0.0%	+4
SHO/ Interns	14	14	0	+0.0%	+2
Medical & Dental	51	50	-1	-1	+5
Clinical Nurse/ Midwife Manager	36	36	0	+0.0%	+1
Director Nursing/Midwifery, Assistant	5	5	0	+0.0%	
Director of Nursing/Midwifery	1	1	0	+0.0%	
Nurse/ Midwife Manager	42	42	0	+0.0%	+1
Clinical Nurse/ Midwife Specialist	10	10	0	+0.0%	+2
Nurse/ Midwife Specialist & AN/MP	10	10	0	+0.0%	+2
Staff Nurses [General/ Children's]	111	111	0	+0.0%	+8
Staff Nurse/ Staff Midwife	111	111	-0	-0.0%	-0
Nursing Education/Clinical	1	1	0	+0.0%	
Other Nursing/ Midwifery	1	1	0	+0.0%	
Nursing/ Midwifery other	2	2	0	+0.0%	
Nursing & Midwifery	166	166			+3
Dietitians	1	1	0	+0.0%	
Occupational Therapists	10	10	0	+0.0%	
Physiotherapists	24	24	0	+0.0%	+1
Podiatrists & Chiropodists	0	0	0	+0.0%	
Therapy Professions	34	34	+0	+0.0%	+1
Phlebotomists	1	1	0	+0.0%	+0
Radiographers	11	11	0	+0.0%	+1
Medical Science	17	17	0	+0.0%	+3
Health Science/ Diagnostics	29	29	-0	-0.0%	+3
Social Workers	7	7	0	+0.0%	
Social Workers	7	7	0	+0.0%	
Psychologists	1	1	0	+0.0%	
Psychologists	1	1	0	+0.0%	
Pharmacy	6	6	0	+0.0%	+1
Pharmacy	6	6	0	+0.0%	+1
Health & Social Care Professionals	77	77			+5
Executive Management	1	1	0	+0.0%	
Senior Management (VIII & GM)	3	3	0	+0.0%	
Management (VIII & above)	4	4	0	+0.0%	
Middle Management (V-VII)	26	26	0	+0.0%	+4
Administrative/ Supervisory (V to VII)	26	26	0	+0.0%	+1
General Administrative (III & IV)	44	44	0	+0.0%	+4

Clerical (III & IV)	44	44	0	+0.0%	+1
Management & Administrative	74	74			+2
<i>Catering</i>	4	4	0	+0.0%	
<i>Household Services</i>	46	46	0	+0.0%	+0
<i>Other Support</i>	1	1	0	+0.0%	
<i>Portering</i>	11	11	0	+0.0%	
Support	62	62	0	+0.0%	
<i>Maintenance</i>	1	1	0	+0.0%	
Maintenance/ Technical	1	1	0	+0.0%	
General Support	63	63			
<i>HCA, Nurse's Aide, etc.</i>	26	26	0	+0.0%	
Health Care Assistants	26	26	0	+0.0%	
Patient & Client Care	26	26			

Mater Misericordiae University

Sep 2021 (Dec 2020 figure: 3,429)	WTE Aug 2021	WTE Sep 2021	WTE change since Aug 21	% change since Aug 21	WTE change since Dec 19
Overall	3,559	3,555	-4	-0.1%	+126
Consultant Anaesthesia	25	25	0	+0.0%	+1
Consultant Emergency Medicine	8	8	0	+0.0%	+1
Consultant Intensive Care Medicine	4	4	0	+0.0%	+2
Consultant Medicine	70	71	+1	+0.0%	+6
Consultant Obstetrics & Gynaecology	3	3	0	+0.0%	+0
Consultant Paediatrics	1	1	0	+0.0%	+1
Consultant Pathology	19	19	0	+0.0%	+1
Consultant Psychiatry	2	2	0	+0.0%	+1
Consultant Radiology	17	17	+1	+0.1%	+2
Consultant Surgery	42	42	+1	+0.0%	+6
Consultants	190	193	+3	+0.0%	+3
Registrar	85	90	+5	+0.1%	+21
Senior Registrar	6	9	+3	+0.5%	+4
Specialist Registrar	109	108	-1	-0.0%	+15
Registrars	200	206	+7	+0.0%	+17
Interns	66	66	0	+0.0%	+7
Senior House Officer	113	114	+1	+0.0%	+15
SHO/ Interns	179	180	+1	+0.0%	-13
Dentists				-1.0%	-1
Other Medical	6	5	-1	-0.1%	+1
Medical/ Dental, other	6	5	-1	-0.1%	-1
Medical & Dental	574	584	+10	+10	+5
Clinical Nurse/ Midwife Manager	210	213	+3	+0.0%	+24
Director Nursing/Midwifery, Assistant	21	21	+0	+0.0%	+3
Director of Nursing/Midwifery	1	1	0	+0.0%	
Nurse/ Midwife Manager	232	235	+3	+0.0%	+14
Advanced Nurse/ Midwife Practitioner	33	37	+4	+0.1%	+12
Clinical Nurse/ Midwife Specialist	75	71	-4	-0.0%	+10
Nurse/ Midwife Specialist & AN/MP	108	108	+1	+0.0%	+11
Staff Nurses [General/ Children's]	934	929	-6	-0.0%	+21
Staff Nurse/ Staff Midwife	934	929	-6	-0.0%	-10
Pre-registration Nurse/ Midwife Intern	34	10	-24	-0.7%	+3
Pre-registration Nurse Intern (COVID-19)				-1.0%	
Nursing/ Midwifery awaiting registration	8	5	-3	-0.4%	
Nursing/ Midwifery Student	42	15	-27	-0.6%	-5
Nursing Education/Clinical	34	34	+0	+0.0%	+2
Other Nursing/ Midwifery	16	18	+2	+0.1%	+6
Nursing/ Midwifery other	50	52	+2	+0.0%	+4
Nursing & Midwifery	1,366	1,339	-27	-27	+13
Dietitians	29	27	-3	-0.1%	+4
Occupational Therapists	22	25	+3	+0.1%	+5
Orthoptists	1	1	0	+0.0%	
Physiotherapists	59	60	+1	+0.0%	+4
Speech & Language Therapists	17	17	+0	+0.0%	+5
Podiatrists & Chiropodists	3	3	0	+0.0%	+1
Therapy Professions	131	132	+1	+0.0%	+9
Audiology	2	2	0	+0.0%	+0

Biochemists	11	11	0	+0.0%	+2
Clinical Engineering	8	8	0	+0.0%	+2
Clinical Measurement	36	36	0	+0.0%	+8
Perfusionists	7	7	0	+0.0%	+3
Phlebotomists	21	20	-1	-0.0%	+7
Physicists	8	9	+0	+0.0%	+1
Radiographers	72	83	+11	+0.1%	+19
Medical Science	98	96	-2	-0.0%	+3
Health Science/ Diagnostics	261	270	+8	+0.0%	+29
Social Workers	27	25	-2	-0.1%	-1
Social Workers	27	25	-2	-0.1%	+1
Psychologists	8	9	+1	+0.1%	+2
Psychologists	8	9	+1	+0.1%	+1
Pharmacy	57	55	-1	-0.0%	+5
Pharmacy	57	55	-1	-0.0%	+3
Counsellor Therapists	2	2	0	+0.0%	-0
HSCP Trainees/ Students	2	1	-1	-0.3%	-6
Other Health & Social Care	14	12	-2	-0.1%	+0
H&SC, Other	18	15	-2	-0.1%	-8
Health & Social Care Professionals	501	506	+5	+5	+35
Executive Management	9	9	0	+0.0%	+1
Senior Management (VIII & GM)	34	37	+3	+0.1%	+13
Management (VIII & above)	43	46	+3	+0.1%	+10
Middle Management (V-VII)	163	170	+7	+0.0%	+13
Other Administrative	1	1	0	+0.0%	
Administrative/ Supervisory (V to VII)	164	171	+7	+0.0%	+9
General Administrative (III & IV)	312	311	-1	-0.0%	+51
Clerical (III & IV)	312	311	-1	-0.0%	+13
Management & Administrative	519	529	+9	+9	+33
Catering	19	19	+0	+0.0%	+2
Household Services	120	118	-2	-0.0%	+4
Other Labs & Associated	24	28	+3	+0.1%	+11
Other Support	38	40	+1	+0.0%	+7
Portering	75	76	+1	+0.0%	+5
Support	276	279	+3	+0.0%	+13
Maintenance	21	21	0	+0.0%	+1
Technical Services	5	5	0	+0.0%	+1
Maintenance/ Technical	26	26	0	+0.0%	
General Support	302	305	+3	+3	+13
HCA, Nurse's Aide, etc.	278	276	-3	-0.0%	+59
Health & Social Care Assistants	11	10	-1	-0.1%	+2
Health Care Assistants	289	286	-4	-0.0%	+28
Other Care Grades	7	6	-1	-0.2%	-1
Care, other	7	6	-1	-0.2%	-1
Patient & Client Care	296	292	-5	-5	+27

MRH Mullingar

Sep 2021 (Dec 2020 figure: 1,004)	WTE Aug 2021	WTE Sep 2021	WTE change since Aug 21	% change since Aug 21	WTE change since Dec 19
Overall	1,037	1,063	+26	+2.5%	+59
Consultant Anaesthesia	7	7	-0	-0.0%	+2
Consultant Emergency Medicine	3	3	-0	-0.0%	+1
Consultant Medicine	13	14	+1	+0.1%	+6
Consultant Obstetrics & Gynaecology	4	4	+0	+0.0%	+1
Consultant Paediatrics	5	5	+0	+0.0%	+0
Consultant Pathology	1	1	0	+0.0%	
Consultant Radiology	6	6	0	+0.0%	
Consultant Surgery	6	6	0	+0.0%	+1
Consultants	44	45	+1	+0.0%	+3
Registrar	44	43	-1	-0.0%	+2
Senior Registrar	3	2	-1	-0.3%	-2
Specialist Registrar	11	13	+1	+0.1%	+1
Registrars	58	57	-1	-0.0%	+3
Interns	13	11	-2	-0.1%	+2
Senior House Officer	46	51	+5	+0.1%	+5
SHO/ Interns	59	62	+3	+0.1%	+1
Other Medical	2	2	0	+0.0%	+0
Medical/ Dental, other	2	2	0	+0.0%	
Medical & Dental	163	166	+3	+3	+6
Clinical Nurse/ Midwife Manager	69	72	+3	+0.0%	+13
Director Nursing/Midwifery, Assistant	12	12	+0	+0.0%	+1
Director of Nursing/Midwifery	2	2	0	+0.0%	
Nurse/ Midwife Manager	83	86	+3	+0.0%	+8
Advanced Nurse/ Midwife Practitioner	6	6	-0	-0.0%	+5
Clinical Nurse/ Midwife Specialist	11	13	+1	+0.1%	+0
Nurse/ Midwife Specialist & AN/MP	17	18	+1	+0.1%	+3
Staff Nurses [General/ Children's]	218	221	+3	+0.0%	+28
Staff Midwives	44	43	-1	-0.0%	-4
Staff Nurse/ Staff Midwife	263	264	+1	+0.0%	-1
Pre-registration Nurse/ Midwife Intern	6	2	-4	-0.7%	+1
Pre-registration Nurse Intern (COVID-19)				-1.0%	
Nursing/ Midwifery awaiting registration		14	+14	-1.0%	+13
Nursing/ Midwifery Student	6	16	+10	+1.7%	+15
Nursing Education/Clinical	3	3	+0	+0.0%	+1
Nursing/ Midwifery other	3	3	+0	+0.0%	+0
Nursing & Midwifery	372	387	+15	+15	+25
Dietitians	6	7	+1	+0.1%	+2
Occupational Therapists	6	7	+1	+0.1%	+3
Orthoptists	1	1	+0	+0.1%	+1
Physiotherapists	18	18	-0	-0.0%	+5
Speech & Language Therapists	3	3	0	+0.0%	+0
Podiatrists & Chiropodists	1	1	+0	+0.0%	+1
Therapy Professions	36	37	+1	+0.0%	+0
Clinical Engineering	1	1	0	+0.0%	
Clinical Measurement	9	8	-1	-0.1%	+2
Radiographers	30	30	-0	-0.0%	+8
Medical Science	46	46	+0	+0.0%	+4

Health Science/ Diagnostics	85	85	-1	-0.0%	+2
Pharmacy	18	18	-0	-0.0%	+2
Pharmacy	18	18	-0	-0.0%	+3
HSCP Trainees/ Students	1	1	-0	-0.1%	+1
H&SC, Other	1	1	-0	-0.1%	+1
Health & Social Care Professionals	140	140	+0	+0	+6
Executive Management	1	1	0	+0.0%	
Senior Management (VIII & GM)	4	4	0	+0.0%	
Management (VIII & above)	5	5	0	+0.0%	+2
Middle Management (V-VII)	30	30	-0	-0.0%	+7
Administrative/ Supervisory (V to VII)	30	30	-0	-0.0%	+2
General Administrative (III & IV)	103	111	+8	+0.1%	+10
Clerical (III & IV)	103	111	+8	+0.1%	+16
Management & Administrative	138	146	+8	+8	+19
Catering	8	8	-0	-0.0%	+0
Household Services	4	4	0	+0.0%	
Other Labs & Associated	9	10	+1	+0.1%	+5
Other Support	10	10	0	+0.0%	+1
Support	31	32	+1	+0.0%	+4
Maintenance	12	12	-0	-0.0%	-0
Technical Services				-1.0%	-1
Maintenance/ Technical	12	12	-0	-0.0%	-1
General Support	43	43	+0	+0	+4
HCA, Nurse's Aide, etc.	180	179	-2	-0.0%	+20
Health & Social Care Assistants	1	1	0	+0.0%	
Health Care Assistants	181	180	-2	-0.0%	-1
Other Care Grades	1	1	0	+0.0%	
Care, other	1	1	0	+0.0%	
Patient & Client Care	182	181	-2	-2	-1

Royal Victoria Eye & Ear

Sep 2021 (Dec 2020 figure: 313)	WTE Aug 2021	WTE Sep 2021	WTE change since Aug 21	% change since Aug 21	WTE change since Dec 19
Overall	334	337	+3	+1.0%	+24
Consultant Anaesthesia	5	5	0	+0.0%	
Consultant Surgery	22	22	0	+0.0%	+4
Consultants	27	27	0	+0.0%	+1
Registrar	12	13	+1	+0.1%	+3
Specialist Registrar	13	13	0	+0.0%	+3
Registrars	25	26	+1	+0.0%	+4
Senior House Officer	16	16	0	+0.0%	
SHO/ Interns	16	16	0	+0.0%	+1
Other Medical	4	4	0	+0.0%	-0
Medical/ Dental, other	4	4	0	+0.0%	-1
Medical & Dental	71	72	+1	+1	+5
Clinical Nurse/ Midwife Manager	23	23	0	+0.0%	+2
Director Nursing/Midwifery, Assistant	2	2	0	+0.0%	
Director of Nursing/Midwifery	1	1	0	+0.0%	
Nurse/ Midwife Manager	26	26	0	+0.0%	+2
Advanced Nurse/ Midwife Practitioner	3	4	+1	+0.4%	+1
Clinical Nurse/ Midwife Specialist	10	10	0	+0.0%	+4
Nurse/ Midwife Specialist & AN/MP	13	14	+1	+0.1%	+1
Staff Nurses [General/ Children's]	84	86	+2	+0.0%	+5
Staff Nurse/ Staff Midwife	84	86	+2	+0.0%	+4
Nursing Education/Clinical	1	1	0	+0.0%	-1
Nursing/ Midwifery other	1	1	0	+0.0%	
Nursing & Midwifery	124	127	+3	+3	+7
Dietitians	2	2	0	+0.0%	+1
Orthoptists	1	1	0	+0.0%	-0
Physiotherapists	0	0	0	+0.0%	
Speech & Language Therapists	1	1	0	+0.0%	
Therapy Professions	3	3	-0	-0.0%	+1
Audiology	0	1	+1	+5.3%	-0
Radiographers	1	1	0	+0.0%	+1
Health Science/ Diagnostics	1	2	+1	+0.8%	-0
Social Workers	2	1	-1	-0.5%	-1
Social Workers	2	1	-1	-0.5%	
Pharmacy	4	4	0	+0.0%	+1
Pharmacy	4	4	0	+0.0%	
Other Health & Social Care	4	4	0	+0.0%	
H&SC, Other	4	4	0	+0.0%	
Health & Social Care Professionals	14	14	-0	-0	+1
Senior Management (VIII & GM)	4	4	0	+0.0%	+1
Management (VIII & above)	4	4	0	+0.0%	
Middle Management (V-VII)	32	32	0	+0.0%	+8
Administrative/ Supervisory (V to VII)	32	32	0	+0.0%	+4
General Administrative (III & IV)	44	43	-1	-0.0%	+7
Clerical (III & IV)	44	43	-1	-0.0%	+5
Management & Administrative	80	79	-1	-1	+9

<i>Catering</i>	5	5	0	+0.0%	-1
<i>Household Services</i>	9	9	0	+0.0%	-1
<i>Other Labs & Associated</i>	1	1	0	+0.0%	+1
<i>Other Support</i>	3	4	+1	+0.4%	+2
<i>Portering</i>	11	11	0	+0.0%	+1
Support	29	30	+1	+0.0%	+1
General Support	29	30	+1	+1	+1
<i>HCA, Nurse's Aide, etc.</i>	15	15	0	+0.0%	+6
Health Care Assistants	15	15	0	+0.0%	+2
Patient & Client Care	15	15			+2

St. Michael's

Sep 2021 (Dec 2020 figure: 404)	WTE Aug 2021	WTE Sep 2021	WTE change since Aug 21	% change since Aug 21	WTE change since Dec 19
Overall	418	405	-13	-3.0%	+1
Consultant Anaesthesia	1	1	0	+0.0%	
Consultant Medicine	6	7	+0	+0.0%	+1
Consultant Radiology	1	1	0	+0.0%	-1
Consultant Surgery	2	2	-0	-0.0%	-0
Consultants	11	11	0	+0.0%	+0
Registrar	10	11	+1	+0.1%	+1
Specialist Registrar	3	3	0	+0.0%	
Registrars	13	14	+1	+0.1%	+1
Interns	5	4	-1	-0.2%	+1
Senior House Officer	10	12	+2	+0.2%	+1
SHO/ Interns	15	16	+1	+0.1%	+1
Other Medical	0	0	-0	-0.1%	-0
Medical/ Dental, other	0	0	-0	-0.1%	-0
Medical & Dental	39	41	+2	+2	+2
Clinical Nurse/ Midwife Manager	29	29	+0	+0.0%	+1
Director Nursing/Midwifery, Assistant	4	4	0	+0.0%	-1
Director of Nursing/Midwifery	1	1	0	+0.0%	
Nurse/ Midwife Manager	34	34	+0	+0.0%	-1
Advanced Nurse/ Midwife Practitioner	5	5	0	+0.0%	
Clinical Nurse/ Midwife Specialist	20	19	-1	-0.1%	-4
Nurse/ Midwife Specialist & AN/MP	25	24	-1	-0.0%	-2
Staff Nurses [General/ Children's]	105	102	-3	-0.0%	-1
Staff Nurse/ Staff Midwife	105	102	-3	-0.0%	-4
Pre-registration Nurse/ Midwife Intern	10	1	-9	-0.9%	+1
Nursing/ Midwifery Student	10	1	-9	-0.9%	+1
Nursing Education/Clinical	3	3	0	+0.0%	-2
Nursing/ Midwifery other	3	3	0	+0.0%	-1
Nursing & Midwifery	176	163	-12	-12	-7
Dietitians	3	3	0	+0.0%	-1
Occupational Therapists	4	4	0	+0.0%	
Orthoptists	0	0	+0	+0.7%	+0
Physiotherapists	11	11	+0	+0.0%	-3
Podiatrists & Chiropodists	0	0	0	+0.0%	
Therapy Professions	18	18	+0	+0.0%	+1
Clinical Measurement	6	7	+1	+0.2%	+4
Phlebotomists	3	3	-0	-0.0%	-0
Radiographers	8	8	0	+0.0%	+1
Medical Science	6	5	-1	-0.2%	
Health Science/ Diagnostics	23	23	+0	+0.0%	+2
Social Workers	4	2	-2	-0.5%	
Social Workers	4	2	-2	-0.5%	-2
Pharmacy	7	7	-1	-0.1%	-2
Pharmacy	7	7	-1	-0.1%	+0
Other Health & Social Care		1	+1	-1.0%	+1
H&SC, Other		1	+1	-1.0%	+1
Health & Social Care Professionals	51	50	-1	-1	+3

<i>Executive Management</i>	1	1	0	+0.0%	+1
<i>Senior Management (VIII & GM)</i>	1	1	0	+0.0%	
Management (VIII & above)	2	2	0	+0.0%	-1
<i>Middle Management (V-VII)</i>	27	30	+3	+0.1%	+11
Administrative/ Supervisory (V to VII)	27	30	+3	+0.1%	+7
<i>General Administrative (III & IV)</i>	43	35	-8	-0.2%	-8
Clerical (III & IV)	43	35	-8	-0.2%	-6
Management & Administrative	72	68	-4	-4	-1
<i>Catering</i>	7	7	+0	+0.0%	
<i>Household Services</i>	17	17	-0	-0.0%	-1
<i>Other Labs & Associated</i>	2	1	-1	-0.5%	-2
<i>Other Support</i>	6	7	+1	+0.2%	+2
<i>Portering</i>	16	19	+3	+0.2%	+4
Support	48	51	+3	+0.1%	+4
<i>Maintenance</i>	2	2	0	+0.0%	
Maintenance/ Technical	2	2	0	+0.0%	
General Support	50	53	+3	+3	+4
<i>HCA, Nurse's Aide, etc.</i>	27	27	0	+0.0%	+2
<i>Health & Social Care Assistants</i>	1	1	+0	+0.1%	+1
Health Care Assistants	28	28	+0	+0.0%	+1
<i>Other Care Grades</i>	1	1	0	+0.0%	-1
Care, other	1	1	0	+0.0%	-1
Patient & Client Care	29	29	+0	+0	+0

St. Columcille's

Sep 2021 (Dec 2020 figure: 457)	WTE Aug 2021	WTE Sep 2021	WTE change since Aug 21	% change since Aug 21	WTE change since Dec 19
Overall	467	467	-1	-0.2%	+9
Consultant Anaesthesia	3	3	0	+0.0%	+0
Consultant Medicine	9	9	+0	+0.0%	-1
Consultant Pathology	1	1	0	+0.0%	
Consultant Radiology	3	3	0	+0.0%	+1
Consultant Surgery	2	2	+0	+0.0%	-1
Consultants	18	18	+0	+0.0%	+2
Registrar	7	7	+0	+0.0%	-1
Senior Registrar				-1.0%	-1
Specialist Registrar	3	3	+0	+0.0%	+2
Registrars	10	10	+0	+0.0%	
Interns	5	5	0	+0.0%	-1
Senior House Officer	9	9	0	+0.0%	+1
SHO/ Interns	14	14	0	+0.0%	-2
Medical & Dental	42	42	+0	+0	-0
Clinical Nurse/ Midwife Manager	28	25	-4	-0.1%	-1
Director Nursing/Midwifery, Assistant	5	8	+3	+0.7%	+2
Director of Nursing/Midwifery	1	1	0	+0.0%	
Nurse/ Midwife Manager	34	34	-1	-0.0%	-1
Advanced Nurse/ Midwife Practitioner	3	3	-0	-0.0%	-0
Clinical Nurse/ Midwife Specialist	6	6	-0	-0.1%	+0
Nurse/ Midwife Specialist & AN/MP	9	9	-0	-0.0%	+1
Staff Nurses [General/ Children's]	112	112	-1	-0.0%	-7
Staff Nurse/ Staff Midwife	112	112	-1	-0.0%	-1
Nursing Education/Clinical	1	1	0	+0.0%	-1
Nursing/ Midwifery other	1	1	0	+0.0%	
Nursing & Midwifery	157	155	-2	-2	-1
Dietitians	7	7	-0	-0.0%	+1
Occupational Therapists	8	9	+1	+0.1%	+3
Physiotherapists	14	15	+1	+0.1%	+0
Speech & Language Therapists	6	8	+1	+0.2%	+3
Therapy Professions	36	39	+3	+0.1%	+4
Phlebotomists	1	1	-0	-0.2%	+0
Radiographers	15	15	+0	+0.0%	+3
Medical Science	5	5	-0	-0.0%	-0
Health Science/ Diagnostics	21	21	-0	-0.0%	+0
Social Workers	6	5	-0	-0.1%	+0
Social Workers	6	5	-0	-0.1%	-1
Psychologists	2	3	+0	+0.1%	+1
Psychologists	2	3	+0	+0.1%	+1
Pharmacy	5	6	+0	+0.1%	+1
Pharmacy	5	6	+0	+0.1%	+0
Health & Social Care Professionals	70	73	+3	+3	+5
Executive Management	1	1	0	+0.0%	+1
Senior Management (VIII & GM)	1	1	+0	+0.0%	
Management (VIII & above)	2	2	+0	+0.0%	-0
Middle Management (V-VII)	12	13	+1	+0.1%	-1

Administrative/ Supervisory (V to VII)	12	13	+1	+0.1%	+0
<i>General Administrative (III & IV)</i>	64	63	-1	-0.0%	+9
Clerical (III & IV)	64	63	-1	-0.0%	+5
Management & Administrative	78	78	-0	-0	+5
<i>Catering</i>	6	6	0	+0.0%	+1
<i>Household Services</i>	46	44	-2	-0.0%	-2
<i>Other Labs & Associated</i>	3	3	-0	-0.0%	+1
<i>Other Support</i>	1	0	-0	-0.5%	-1
<i>Portering</i>	6	6	+0	+0.0%	+4
Support	60	59	-2	-0.0%	-1
<i>Maintenance</i>	1	1	0	+0.0%	
Maintenance/ Technical	1	1	0	+0.0%	
General Support	61	60	-2	-2	-1
<i>HCA, Nurse's Aide, etc.</i>	54	54	-0	-0.0%	-5
<i>Health & Social Care Assistants</i>	2	2	+0	+0.1%	+2
Health Care Assistants	56	56	-0	-0.0%	+2
<i>Other Care Grades</i>	3	3	+0	+0.0%	+3
Care, other	3	3	+0	+0.0%	+0
Patient & Client Care	59	59	-0	-0	+2

National Maternity

Sep 2021 (Dec 2020 figure: 916)	WTE Aug 2021	WTE Sep 2021	WTE change since Aug 21	% change since Aug 21	WTE change since Dec 19
Overall	945	930	-15	-1.6%	+14
Consultant Anaesthesia	7	6	-1	-0.1%	-1
Consultant Medicine	1	1	0	+0.0%	+1
Consultant Obstetrics & Gynaecology	17	17	0	+0.0%	+1
Consultant Paediatrics	10	11	+1	+0.1%	+3
Consultant Pathology	3	3	0	+0.0%	+0
Consultant Surgery	0	0	0	+0.0%	+0
Consultants	39	39	0	+0.0%	+2
Registrar	15	15	0	+0.0%	-1
Senior Registrar	3	3	0	+0.0%	+2
Specialist Registrar	23	24	+1	+0.0%	+5
Registrars	41	42	+1	+0.0%	+4
Senior House Officer	22	22	0	+0.0%	+1
SHO/ Interns	22	22	0	+0.0%	
Other Medical	1	1	0	+0.0%	+0
Medical/ Dental, other	1	1	0	+0.0%	+0
Medical & Dental	102	103	+1	+1	+6
Clinical Nurse/ Midwife Manager	129	131	+2	+0.0%	+20
Director Nursing/Midwifery, Assistant	8	8	0	+0.0%	-0
Director of Nursing/Midwifery	1	1	0	+0.0%	
Nurse/ Midwife Manager	138	140	+2	+0.0%	+5
Advanced Nurse/ Midwife Practitioner	5	5	0	+0.0%	
Clinical Nurse/ Midwife Specialist	11	12	+1	+0.1%	+2
Nurse/ Midwife Specialist & AN/MP	16	17	+1	+0.1%	+2
Staff Nurses [General/ Children's]	76	76	0	+0.0%	-6
Staff Midwives	156	152	-4	-0.0%	-11
Staff Nurse/ Staff Midwife	232	228	-4	-0.0%	-11
Pre-registration Nurse/ Midwife Intern	9	3	-6	-0.7%	+3
Pre-registration Nurse Intern (COVID-19)				-1.0%	
Post-registration Nurse/ Midwife Student	26	26	0	+0.0%	+5
Nursing/ Midwifery Student	35	29	-6	-0.2%	+11
Nursing Education/Clinical	4	4	0	+0.0%	
Nursing/ Midwifery other	4	4	0	+0.0%	
Nursing & Midwifery	425	418	-7	-7	+6
Dietitians	7	7	0	+0.0%	+1
Physiotherapists	9	8	-1	-0.1%	+3
Therapy Professions	16	15	-1	-0.1%	-1
Clinical Engineering	3	3	0	+0.0%	-1
Radiographers	8	9	+1	+0.1%	+1
Medical Science	36	37	+1	+0.0%	+7
Health Science/ Diagnostics	47	49	+2	+0.0%	+1
Social Workers	9	9	0	+0.0%	+2
Social Workers	9	9	0	+0.0%	-0
Psychologists	2	2	+0	+0.1%	+0
Psychologists	2	2	+0	+0.1%	+0
Pharmacy	7	6	-1	-0.1%	-1
Pharmacy	7	6	-1	-0.1%	-1

Health & Social Care Professionals	81	81	+0	+0	-2
<i>Executive Management</i>	1	1	0	+0.0%	-1
<i>Senior Management (VIII & GM)</i>	5	5	0	+0.0%	+1
Management (VIII & above)	6	6	0	+0.0%	-1
<i>Middle Management (V-VII)</i>	59	59	+0	+0.0%	+8
Administrative/ Supervisory (V to VII)	59	59	+0	+0.0%	+3
<i>General Administrative (III & IV)</i>	75	74	-0	-0.0%	-6
Clerical (III & IV)	75	74	-0	-0.0%	+4
Management & Administrative	139	139	-0	-0	+6
<i>Catering</i>	15	14	-1	-0.1%	-1
<i>Household Services</i>	86	84	-3	-0.0%	+1
<i>Other Labs & Associated</i>	8	8	0	+0.0%	+2
<i>Other Support</i>	4	5	+1	+0.3%	+2
<i>Portering</i>	27	27	0	+0.0%	+4
Support	141	138	-3	-0.0%	+5
<i>Maintenance</i>	12	6	-6	-0.5%	-2
<i>Technical Services</i>	2	2	0	+0.0%	-1
Maintenance/ Technical	14	8	-6	-0.4%	-7
General Support	155	146	-9	-9	-2
<i>HCA, Nurse's Aide, etc.</i>	43	43	-1	-0.0%	+8
Health Care Assistants	43	43	-1	-0.0%	+0
Patient & Client Care	43	43	-1	-1	+0

St. Vincent's University

Sep 2021 (Dec 2020 figure: 3,087)	WTE Aug 2021	WTE Sep 2021	WTE change since Aug 21	% change since Aug 21	WTE change since Dec 19
Overall	3,158	3,134	-24	-0.8%	+47
Consultant Anaesthesia	21	21	0	+0.0%	+3
Consultant Emergency Medicine	7	7	0	+0.0%	+1
Consultant Medicine	60	61	+1	+0.0%	+4
Consultant Pathology	16	16	0	+0.0%	+1
Consultant Psychiatry	4	4	0	+0.0%	+1
Consultant Radiology	15	15	0	+0.0%	-0
Consultant Surgery	30	30	+0	+0.0%	-1
Consultants	152	153	+1	+0.0%	-1
Registrar	84	84	0	+0.0%	+8
Senior Registrar	6	6	0	+0.0%	+3
Specialist Registrar	105	105	-1	-0.0%	+19
Registrars	195	194	-1	-0.0%	+27
Interns	58	58	0	+0.0%	+13
Senior House Officer	110	109	-1	-0.0%	+28
SHO/ Interns	168	167	-1	-0.0%	-13
Other Medical	6	6	0	+0.0%	+5
Medical/ Dental, other	6	6	0	+0.0%	+5
Medical & Dental	520	520	-0	-0	+19
Clinical Nurse/ Midwife Manager	231	230	-1	-0.0%	+61
Director Nursing/Midwifery, Assistant	18	18	0	+0.0%	+4
Director of Nursing/Midwifery	1	1	0	+0.0%	
Nurse/ Midwife Manager	250	249	-1	-0.0%	+16
Advanced Nurse/ Midwife Practitioner	15	15	0	+0.0%	-3
Clinical Nurse/ Midwife Specialist	70	69	-1	-0.0%	-0
Nurse/ Midwife Specialist & AN/MP	84	83	-1	-0.0%	-9
Nursing Bank				-1.0%	-2
Staff Nurses [General/ Children's]	741	737	-4	-0.0%	+19
Staff Nurse [Psychiatric]	3	2	-1	-0.3%	-2
Staff Nurse/ Staff Midwife	744	739	-5	-0.0%	+19
Pre-registration Nurse/ Midwife Intern	37	7	-30	-0.8%	-10
Pre-registration Nurse Intern (COVID-19)				-1.0%	
Nursing/ Midwifery awaiting registration				-1.0%	
Nursing/ Midwifery Student	37	7	-30	-0.8%	-59
Nursing Education/Clinical	5	5	0	+0.0%	-9
Nursing/ Midwifery other	5	5	0	+0.0%	-4
Nursing & Midwifery	1,120	1,083	-37	-37	-36
Dietitians	22	22	0	+0.0%	+4
Occupational Therapists	31	31	0	+0.0%	+16
Physiotherapists	39	39	0	+0.0%	-19
Speech & Language Therapists	11	11	0	+0.0%	+2
Podiatrists & Chiropodists	4	4	0	+0.0%	+1
Therapy Professions	107	107	+0	+0.0%	-8
Audiology	1	1	0	+0.0%	+1
Biochemists	16	16	0	+0.0%	-3
Clinical Engineering	7	7	0	+0.0%	
Clinical Measurement	30	30	0	+0.0%	+5
Phlebotomists	14	15	+1	+0.1%	+1

<i>Physicists</i>	11	10	-1	-0.1%	+2
<i>Radiographers</i>	75	76	+1	+0.0%	+15
<i>Medical Science</i>	86	91	+5	+0.1%	+12
Health Science/ Diagnostics	240	246	+6	+0.0%	+23
<i>Social Workers</i>	19	22	+3	+0.2%	+3
Social Workers	19	22	+3	+0.2%	+1
<i>Psychologists</i>	10	10	0	+0.0%	-0
Psychologists	10	10	0	+0.0%	+1
<i>Pharmacy</i>	57	57	-0	-0.0%	-0
Pharmacy	57	57	0	+0.0%	-1
<i>Counsellor Therapists</i>	0	0	0	+0.0%	
H&SC, Other	0	0	0	+0.0%	
Health & Social Care Professionals	434	443	+9	+9	+16
<i>Executive Management</i>	4	4	0	+0.0%	+3
<i>Senior Management (VIII & GM)</i>	19	21	+2	+0.1%	+4
Management (VIII & above)	23	25	+2	+0.1%	+4
<i>Middle Management (V-VII)</i>	182	183	+1	+0.0%	+38
<i>Other Administrative</i>	3	3	0	+0.0%	-1
Administrative/ Supervisory (V to VII)	184	186	+1	+0.0%	+1
<i>General Administrative (III & IV)</i>	297	304	+8	+0.0%	+16
Clerical (III & IV)	297	304	+8	+0.0%	+36
Management & Administrative	505	515	+11	+11	+41
<i>Catering</i>	17	16	-1	-0.1%	-3
<i>Household Services</i>	94	92	-2	-0.0%	+5
<i>Other Labs & Associated</i>	37	34	-3	-0.1%	+0
<i>Other Support</i>	63	59	-4	-0.1%	+1
<i>Portering</i>	103	102	-1	-0.0%	+7
Support	315	304	-11	-0.0%	-14
<i>Maintenance</i>	35	35	-0	-0.0%	+3
<i>Technical Services</i>	5	5	0	+0.0%	+2
Maintenance/ Technical	40	40	-0	-0.0%	+5
General Support	355	343	-11	-11	-9
<i>HCA, Nurse's Aide, etc.</i>	203	208	+5	+0.0%	+39
<i>Health & Social Care Assistants</i>	11	11	0	+0.0%	-0
<i>HCA (Student Nurse/Midwife COVID-19)</i>				-1.0%	
<i>Swabber (COVID-19)</i>				-1.0%	
Health Care Assistants	215	220	+5	+0.0%	+17
<i>Other Care Grades</i>	10	10	0	+0.0%	+1
Care, other	10	10	0	+0.0%	-1
Patient & Client Care	224	229	+5	+5	+17

IEHG Bank

Sep 2021 (Dec 2020 figure: 8)	WTE Aug 2021	WTE Sep 2021	WTE change since Aug 21	% change since Aug 21	WTE change since Dec 19
Overall	11	10	-1	-10.8%	+1
Staff Nurses [General/ Children's]	10	9	-1	-0.1%	+9
Staff Nurse/ Staff Midwife	10	9	-1	-0.1%	+1
Nursing & Midwifery	10	9	-1	-1	+1
HCA, Nurse's Aide, etc.	0	0	+0	+0.5%	+0
Health Care Assistants	0	0	+0	+0.5%	+0
Patient & Client Care	0	0	+0	+0	+0

Ireland East Hospital Group Employment by Grade Group & Staff Category: September 2021

Sep 2021 (Dec 2020 figure: 12,923)	WTE Aug 2021	WTE Sep 2021	WTE change since Aug 21	% change since Aug 21	WTE change since Dec 20	WTE change since Sep 20
Overall	13,319	13,297	-22	-0.2%	+374	+527
Consultant Anaesthesia	95	93	-2	-2.0%	+5	+5
Consultant Emergency Medicine	23	23	-0	-0.3%	-1	-1
Consultant Intensive Care Medicine	4	4			+2	+2
Consultant Medicine	191	195	+4	+2.0%	-4	-1
Consultant Obstetrics & Gynaecology	37	36	-0	-0.9%	+2	+2
Consultant Paediatrics	25	26	+1	+4.9%	+2	-0
Consultant Pathology	41	41	+0	+0.0%	-0	-0
Consultant Psychiatry	6	6			+2	+2
Consultant Radiology	56	57	+1	+1.6%	+2	+4
Consultant Surgery	115	116	+1	+0.4%	+1	-4
Consultants	591	595	+4	+0.7%	+9	+9
Registrar	364	371	+6	+1.8%	+1	+1
Senior Registrar	33	36	+3	+8.8%	+2	+5
Specialist Registrar	303	301	-1	-0.5%	+48	+31
Registrars	701	708	+8	+1.1%	+51	+37
Interns	174	171	-3	-1.6%	-30	-27
Senior House Officer	478	498	+20	+4.2%	+29	+32
SHO/ Interns	651	669	+17	+2.7%	-1	+5
Dentists				-100.0%	-1	-1
Other Medical	34	33	-0	-0.9%	+7	+5
Medical/ Dental, other	34	33	-0	-0.9%	+6	+4
Medical & Dental	1,977	2,006	+29	+1.5%	+64	+55
Clinical Nurse/ Midwife Manager	946	952	+7	+0.7%	+40	+51
Director Nursing/Midwifery, Assistant	96	103	+7	+7.2%	+12	+12
Director of Nursing/Midwifery	15	15	+0	+0.1%		-1
Nurse/ Midwife Manager	1,056	1,070	+14	+1.3%	+51	+61
Advanced Nurse/ Midwife Practitioner	89	95	+6	+6.2%	+6	+13
Clinical Nurse/ Midwife Specialist	260	254	-6	-2.4%	+6	+14
Nurse/ Midwife Specialist & AN/MP	350	349	-1	-0.2%	+12	+27
Nursing Bank				-100.0%	-3	-2
Staff Nurses [General/ Children's]	3,074	3,059	-15	-0.5%	+11	+104
Staff Midwives	273	265	-7	-2.7%	-17	-14
Staff Nurse [Psychiatric]	3	2	-1	-33.3%	-1	-1
Staff Nurse/ Staff Midwife	3,349	3,326	-23	-0.7%	-10	+87
Pre-registration Nurse/ Midwife Intern	105	30	-76	-71.6%	+20	+30
Pre-registration Nurse Intern (COVID-19)				-100.0%	-47	-101
Post-registration Nurse/ Midwife Student	26	26			+9	+6
Nursing/ Midwifery awaiting registration	8	25	+17	+207.5%	-9	+6
Nursing/ Midwifery Student	139	80	-59	-42.4%	-29	-59
Nursing Education/Clinical	52	53	+0	+0.6%	-6	-6
Other Nursing/ Midwifery	17	19	+2	+11.5%	+5	+3

Sep 2021 (Dec 2020 figure: 12,923)	WTE Aug 2021	WTE Sep 2021	WTE change since Aug 21	% change since Aug 21	WTE change since Dec 20	WTE change since Sep 20
Overall	13,319	13,297	-22	-0.2%	+374	+527
Nursing/ Midwifery other	69	71	+2	+3.3%	-1	-3
Nursing & Midwifery	4,963	4,896	-67	-1.4%	+23	+114
Dietitians	97	95	-2	-2.4%	+2	+7
Occupational Therapists	98	103	+4	+4.6%	+21	+23
Orthoptists	3	3	+0	+7.1%	+0	+1
Physiotherapists	223	222	-1	-0.5%	-21	-22
Speech & Language Therapists	45	46	+1	+1.3%	-1	-1
Podiatrists & Chiropodists	11	11	-0	-0.1%	+0	+0
Therapy Professions	477	479	+2	+0.4%	+2	+7
Audiology	3	4	+1	+29.2%	+1	+1
Biochemists	26	26			-3	-4
Clinical Engineering	24	24	-0	-0.1%	+2	+2
Clinical Measurement	98	100	+3	+2.7%	+11	+13
Perfusionists	7	7			+2	+4
Phlebotomists	45	44	-0	-0.9%	+3	+6
Physicists	19	19	-0	-1.3%	+4	+4
Radiographers	276	287	+11	+4.0%	+24	+24
Medical Science	342	344	+2	+0.6%	+20	+23
Health Science/ Diagnostics	839	855	+16	+1.9%	+64	+73
Social Workers	76	74	-2	-2.1%	+0	+2
Psychologists	23	25	+1	+6.1%	+3	+4
Pharmacy	211	209	-2	-1.1%	+17	+21
Counsellor Therapists	2	2	-0	-0.0%	-0	-0
HSCP Trainees/ Students	3	2	-1	-19.2%	-4	-9
Other Health & Social Care	18	17	-1	-4.5%	-2	+0
Vaccinators	21	17	-5	-21.1%	+17	+17
H&SC, Other	44	38	-6	-13.3%	+11	+8
Health & Social Care Professionals	1,671	1,680	+9	+0.6%	+96	+115
Executive Management	25	25	-0	-1.4%	+3	+7
Senior Management (VIII & GM)	89	94	+5	+5.6%	+14	+21
Management (VIII & above)	114	119	+5	+4.1%	+18	+29
Administrative/ Supervisory (V to VII)	621	636	+15	+2.4%	+37	+46
Clerical (III & IV)	1,290	1,293	+3	+0.2%	+69	+69
Management & Administrative	2,025	2,047	+23	+1.1%	+124	+144
Catering	105	103	-2	-1.8%	-6	-4
Household Services	694	687	-8	-1.1%	+8	+2
Other Labs & Associated	99	99	+0	+0.2%	+17	+21
Other Support	167	168	+1	+0.8%	-4	+7
Portering	273	276	+3	+1.1%	+7	+5
Support	1,339	1,334	-5	-0.4%	+21	+32
Maintenance/ Technical	122	115	-7	-5.6%	-3	-2
General Support	1,461	1,449	-12	-0.8%	+18	+31

Sep 2021 (Dec 2020 figure: 12,923)	WTE Aug 2021	WTE Sep 2021	WTE change since Aug 21	% change since Aug 21	WTE change since Dec 20	WTE change since Sep 20
Overall	13,319	13,297	-22	-0.2%	+374	+527
HCA, Nurse's Aide, etc.	1,157	1,155	-2	-0.2%	+66	+89
Health & Social Care Assistants	37	36	-1	-3.4%	-2	+1
HCA (Student Nurse/Midwife COVID-19)				-100.0%	-4	-22
Swabber (COVID-19)				-100.0%	-11	
Health Care Assistants	1,194	1,191	-3	-0.3%	+49	+68
Care, other	29	27	-1	-4.2%	-1	+1
Patient & Client Care	1,223	1,218	-4	-0.4%	+48	+69

Employment by WTE, Headcount, Gender, Full-Time /Part-Time etc.: Sep 2021

Ireland East Hospital Group	WTE	Headcount	WTE: no.	% Male	% female	Male WTE: no.	Female WTE: no.	% Total Perm	% Male Perm	% Female Perm	% Total Full Time	% Total Part Time	% Male FT	% Female FT
Overall	13,297	14,755	1.11	24.9%	75.1%	1.05	1.13	81.5%	69.1%	85.7%	76.4%	23.6%	90.5%	71.7%
Consultant Anaesthesia	93	104	1.12	69.2%	30.8%	1.15	1.05	76.9%	76.9%	68.8%	90.4%	9.6%	88.9%	93.8%
Consultant Emergency Medicine	23	25	1.09	88.0%	12.0%	1.10	1.00	52.0%	52.0%	0.0%	84.0%	16.0%	81.8%	100.0%
Consultant Intensive Care Medicine	4	4	1.14		100.0%		1.14	100.0%	100.0%	100.0%	75.0%	25.0%		75.0%
Consultant Medicine	195	224	1.15	66.1%	33.9%	1.14	1.17	75.0%	75.0%	75.0%	80.8%	19.2%	84.5%	73.7%
Consultant Obstetrics & Gynaecology	36	42	1.16	52.4%	47.6%	1.10	1.24	83.3%	83.3%	80.0%	81.0%	19.0%	95.5%	65.0%
Consultant Paediatrics	26	29	1.13	48.3%	51.7%	1.11	1.15	79.3%	79.3%	80.0%	79.3%	20.7%	85.7%	73.3%
Consultant Pathology	41	48	1.18	39.6%	60.4%	1.11	1.23	87.5%	87.5%	89.7%	79.2%	20.8%	89.5%	72.4%
Consultant Psychiatry	6	7	1.14	57.1%	42.9%	1.13	1.15	71.4%	71.4%	66.7%	71.4%	28.6%	100.0%	33.3%
Consultant Radiology	57	61	1.07	65.6%	34.4%	1.03	1.16	85.2%	85.2%	85.7%	90.2%	9.8%	95.0%	81.0%
Consultant Surgery	116	136	1.18	77.2%	22.8%	1.17	1.21	82.4%	82.4%	80.6%	79.4%	20.6%	82.9%	67.7%
Consultants	595	680	1.14	65.6%	34.4%	1.13	1.16	78.5%	78.9%	77.8%	82.6%	17.4%	86.5%	75.2%
Registrar	371	377	1.02	63.1%	36.9%	1.02	1.01	3.2%	3.2%	4.3%	98.9%	1.1%	99.2%	98.6%
Senior Registrar	36	39	1.08	69.2%	30.8%	1.12	1.00	23.1%	23.1%	16.7%	100.0%	0.0%	100.0%	100.0%
Specialist Registrar	301	306	1.02	51.3%	48.7%	1.01	1.02	0.0%	0.0%	0.0%	97.1%	2.9%	97.5%	96.6%
Registrars	708	722	1.02	58.4%	41.6%	1.02	1.01	2.9%	3.1%	2.7%	98.2%	1.8%	98.6%	97.7%
Interns	171	171	1.00	36.8%	63.2%	1.00	1.00	0.0%	0.0%	0.0%	100.0%	0.0%	100.0%	100.0%
Senior House Officer	498	507	1.02	45.0%	55.0%	1.02	1.02	1.0%	1.0%	1.1%	98.8%	1.2%	100.0%	97.8%
SHO/ Interns	669	678	1.01	42.9%	57.1%	1.02	1.01	0.7%	0.7%	0.8%	99.1%	0.9%	100.0%	98.4%
Other Medical	33	43	1.29	48.8%	51.2%	1.08	1.58	74.4%	74.4%	77.3%	58.1%	41.9%	85.7%	31.8%
Medical/ Dental, other	33	43	1.29	48.8%	51.2%	1.08	1.58	74.4%	71.4%	77.3%	58.1%	41.9%	85.7%	31.8%
Medical & Dental	2,006	2,123	1.06	55.6%	44.4%	1.06	1.06	27.9%	32.4%	22.3%	92.7%	7.3%	94.2%	90.9%
Clinical Nurse/ Midwife Manager	952	1,061	1.11	5.8%	94.2%	1.04	1.12	98.1%	98.1%	98.1%	71.1%	28.9%	91.9%	69.8%
Director Nursing/Midwifery, Assistant	103	113	1.10	10.6%	89.4%	1.06	1.11	97.3%	97.3%	97.0%	77.9%	22.1%	91.7%	76.2%

Director of Nursing/Midwifery	15	15	1.01	6.7%	93.3%	1.00	1.01	93.3%	93.3%	92.9%	93.3%	6.7%	100.0%	92.9%
Nurse/ Midwife Manager	1,070	1,189	1.11	6.3%	93.7%	1.04	1.12	98.0%	98.7%	97.9%	72.0%	28.0%	92.0%	70.6%
Advanced Nurse/ Midwife Practitioner	95	101	1.06	12.9%	87.1%	1.00	1.07	100.0%	100.0%	100.0%	88.1%	11.9%	100.0%	86.4%
Clinical Nurse/ Midwife Specialist	254	296	1.16	3.7%	96.3%	1.10	1.17	97.6%	97.6%	97.9%	65.2%	34.8%	90.9%	64.2%
Nurse/ Midwife Specialist & AN/MP	349	397	1.14	6.0%	94.0%	1.04	1.14	98.2%	95.8%	98.4%	71.0%	29.0%	95.8%	69.4%
Staff Nurses [General/ Children's]	3,059	3,397	1.11	9.8%	90.2%	1.03	1.12	96.8%	96.8%	96.9%	72.3%	27.7%	92.2%	70.1%
Staff Midwives	265	313	1.18	0.3%	99.7%	1.00	1.18	98.7%	98.7%	98.7%	55.6%	44.4%	100.0%	55.4%
Staff Nurse [Psychiatric]	2	2	1.00	50.0%	50.0%	1.00	1.00	100.0%	100.0%	100.0%	100.0%	0.0%	100.0%	100.0%
Staff Nurse/ Staff Midwife	3,326	3,712	1.12	9.0%	91.0%	1.03	1.13	97.0%	96.1%	97.1%	70.9%	29.1%	92.2%	68.8%
Pre-registration Nurse/ Midwife Intern	30	60	2.01	6.7%	93.3%	2.00	2.01	23.3%	23.3%	25.0%	100.0%	0.0%	100.0%	100.0%
Post-registration Nurse/ Midwife Student	26	26	1.02	3.8%	96.2%	1.00	1.02	0.0%	0.0%	0.0%	100.0%	0.0%	100.0%	100.0%
Nursing/ Midwifery awaiting registration	25	28	1.14	14.3%	85.7%	1.02	1.16	10.7%	10.7%	8.3%	100.0%	0.0%	100.0%	100.0%
Nursing/ Midwifery Student	80	114	1.43	7.9%	92.1%	1.30	1.44	14.9%	11.1%	15.2%	100.0%	0.0%	100.0%	100.0%
Nursing Education/Clinical	53	63	1.19	3.2%	96.8%	1.33	1.19	98.4%	98.4%	98.4%	63.5%	36.5%	50.0%	63.9%
Other Nursing/ Midwifery	19	19	1.02	10.5%	89.5%	1.00	1.03	100.0%	100.0%	100.0%	84.2%	15.8%	100.0%	82.4%
Nursing/ Midwifery other	71	82	1.15	4.9%	95.1%	1.14	1.15	98.8%	100.0%	98.7%	68.3%	31.7%	75.0%	67.9%
Nursing & Midwifery	4,896	5,494	1.12	8.1%	91.9%	1.04	1.13	95.6%	94.8%	95.7%	71.7%	28.3%	92.4%	69.9%
Dietitians	95	106	1.12	2.8%	97.2%	1.00	1.12	85.8%	85.8%	86.4%	77.4%	22.6%	100.0%	76.7%
Occupational Therapists	103	111	1.08	9.0%	91.0%	1.09	1.08	78.4%	78.4%	79.2%	87.4%	12.6%	100.0%	86.1%
Orthoptists	3	6	2.11		100.0%		2.11	83.3%	83.3%	83.3%	16.7%	83.3%		16.7%
Physiotherapists	222	253	1.14	17.0%	83.0%	1.09	1.15	82.6%	82.6%	85.7%	76.3%	23.7%	93.0%	72.9%
Speech & Language Therapists	46	52	1.14		100.0%		1.14	78.8%	78.8%	78.8%	80.8%	19.2%		80.8%
Podiatrists & Chiropodists	11	13	1.17	23.1%	76.9%	1.30	1.13	84.6%	84.6%	90.0%	76.9%	23.1%	66.7%	80.0%
Therapy Professions	479	541	1.13	10.9%	89.1%	1.09	1.13	82.1%	67.8%	83.8%	78.6%	21.4%	93.2%	76.8%
Audiology	4	6	1.35	33.3%	66.7%	1.68	1.23	100.0%	100.0%	100.0%	66.7%	33.3%	50.0%	75.0%
Biochemists	26	27	1.03	37.0%	63.0%	1.00	1.05	96.3%	96.3%	94.1%	92.6%	7.4%	100.0%	88.2%
Clinical Engineering	24	24	1.00	79.2%	20.8%	1.00	1.00	100.0%	100.0%	100.0%	100.0%	0.0%	100.0%	100.0%
Clinical Measurement	100	109	1.09	17.4%	82.6%	1.01	1.11	89.0%	89.0%	93.3%	78.9%	21.1%	94.7%	75.6%
Perfusionists	7	8	1.14	50.0%	50.0%	1.33	1.00	75.0%	75.0%	100.0%	75.0%	25.0%	50.0%	100.0%

Phlebotomists	44	56	1.27	28.6%	71.4%	1.20	1.29	80.4%	80.4%	87.5%	30.4%	69.6%	43.8%	25.0%
Physicists	19	22	1.17	45.5%	54.5%	1.00	1.37	90.9%	90.9%	100.0%	68.2%	31.8%	100.0%	41.7%
Radiographers	287	311	1.08	17.4%	82.6%	1.02	1.10	94.9%	94.9%	94.2%	85.9%	14.1%	98.1%	83.3%
Medical Science	344	365	1.06	23.6%	76.4%	1.04	1.07	95.1%	95.1%	95.3%	82.5%	17.5%	91.9%	79.6%
Health Science/ Diagnostics	855	928	1.09	23.7%	76.3%	1.04	1.10	93.3%	90.0%	94.4%	80.3%	19.7%	90.5%	77.1%
Social Workers	74	80	1.08	10.0%	90.0%	1.10	1.08	85.0%	87.5%	84.7%	83.8%	16.3%	75.0%	84.7%
Psychologists	25	31	1.25	12.9%	87.1%	1.19	1.26	90.3%	100.0%	88.9%	54.8%	45.2%	50.0%	55.6%
Pharmacy	209	227	1.09	8.4%	91.6%	1.02	1.09	87.2%	84.2%	87.5%	82.8%	17.2%	94.7%	81.7%
Counsellor Therapists	2	3	1.54		100.0%		1.54	66.7%	66.7%	66.7%	33.3%	66.7%		33.3%
HSCP Trainees/ Students	2	3	1.28	33.3%	66.7%	1.49	1.19	0.0%	0.0%	0.0%	33.3%	66.7%	0.0%	50.0%
Other Health & Social Care	17	19	1.11	36.8%	63.2%	1.03	1.16	73.7%	73.7%	66.7%	68.4%	31.6%	85.7%	58.3%
Vaccinators	17	46	2.73	21.7%	78.3%	1.94	3.07	93.5%	93.5%	97.2%	4.3%	95.7%	10.0%	2.8%
H&SC, Other	38	71	1.85	25.4%	74.6%	1.43	2.06	83.1%	77.8%	84.9%	23.9%	76.1%	38.9%	18.9%
Health & Social Care	1,680	1,878	1.12	17.5%	82.5%	1.07	1.13	88.6%	85.1%	89.3%	77.7%	22.3%	87.5%	75.6%
Executive Management	25	25	1.02	44.0%	56.0%	1.04	1.00	92.0%	92.0%	92.9%	96.0%	4.0%	90.9%	100.0%
Senior Management (VIII & GM)	94	97	1.03	25.8%	74.2%	1.04	1.03	94.8%	94.8%	94.4%	93.8%	6.2%	92.0%	94.4%
Management (VIII & above)	119	122	1.03	29.5%	70.5%	1.04	1.02	94.3%	94.4%	94.2%	94.3%	5.7%	91.7%	95.3%
Administrative/ Supervisory (V to VII)	636	674	1.06	24.0%	76.0%	1.01	1.08	96.7%	95.1%	97.3%	83.4%	16.6%	98.1%	78.7%
Clerical (III & IV)	1,293	1,463	1.13	16.7%	83.3%	1.02	1.16	88.1%	84.5%	88.8%	72.4%	27.6%	93.9%	68.1%
Management & Administrative	2,047	2,259	1.10	19.6%	80.4%	1.02	1.13	91.0%	89.2%	91.5%	76.8%	23.2%	95.3%	72.4%
Catering	103	111	1.07	28.8%	71.2%	1.00	1.10	96.4%	96.4%	96.2%	78.4%	21.6%	100.0%	69.6%
Household Services	687	800	1.16	25.9%	74.1%	1.05	1.21	80.5%	80.5%	83.3%	63.2%	36.8%	84.5%	55.8%
Other Labs & Associated	99	103	1.04	39.8%	60.2%	1.03	1.05	78.6%	78.6%	77.4%	92.2%	7.8%	92.7%	91.9%
Other Support	168	180	1.07	55.0%	45.0%	1.02	1.14	92.2%	92.2%	96.3%	86.1%	13.9%	98.0%	71.6%
Portering	276	299	1.08	96.3%	3.7%	1.08	1.28	84.9%	84.9%	63.6%	81.6%	18.4%	83.3%	36.4%
Support	1,334	1,493	1.12	44.7%	55.3%	1.05	1.18	83.9%	82.3%	85.1%	72.8%	27.2%	87.3%	61.1%
Maintenance	103	105	1.02	99.0%	1.0%	1.02	1.00	95.2%	95.2%	100.0%	97.1%	2.9%	97.1%	100.0%
Technical Services	12	12	1.00	100.0%		1.00		100.0%	100.0%		100.0%	0.0%	100.0%	
Maintenance/ Technical	115	117	1.02	99.1%	0.9%	1.02	1.00	95.7%	95.7%	100.0%	97.4%	2.6%	97.4%	100.0%
General Support	1,449	1,610	1.11	48.6%	51.4%	1.05	1.18	84.7%	84.3%	85.1%	74.6%	25.4%	88.8%	61.2%

HCA, Nurse's Aide, etc.	1,155	1,320	1.14	35.3%	64.7%	1.09	1.18	78.7%	78.7%	77.8%	69.2%	30.8%	80.9%	62.9%
Health & Social Care Assistants	36	39	1.10	38.5%	61.5%	1.06	1.12	87.2%	87.2%	87.5%	76.9%	23.1%	86.7%	70.8%
Health Care Assistants	1,191	1,359	1.14	35.4%	64.6%	1.08	1.17	79.0%	80.7%	78.0%	69.5%	30.5%	81.1%	63.1%
Other Care Grades	27	32	1.17	62.5%	37.5%	1.26	1.04	81.3%	81.3%	91.7%	81.3%	18.8%	75.0%	91.7%
Care, other	27	32	1.17	62.5%	37.5%	1.26	1.04	81.3%	75.0%	91.7%	81.3%	18.8%	75.0%	91.7%
Patient & Client Care	1,218	1,391	1.14	36.0%	64.0%	1.09	1.17	79.0%	80.4%	78.2%	69.7%	30.3%	80.8%	63.5%

Employment by WTE, Headcount, Gender, Full-Time /Part-Time etc.: Sep 2021

Ireland East Hospital Group	WTE	Headcount	WTE: no.	% Male	% female	Male WTE: no.	Female WTE: no.	% Total Perm	% Male Perm	% Female Perm	% Total Full Time	% Total Part Time	% Male FT	% Female FT
Overall	13,297	14,755	1.11	24.9%	75.1%	1.05	1.13	81.5%	69.1%	85.7%	76.4%	23.6%	90.5%	71.7%
Wexford General	1,088	1,228	1.13	22.6%	77.4%	1.04	1.16	83.7%	83.7%	88.1%	71.4%	28.6%	94.2%	94.2%
St Luke's General Kilkenny	1,182	1,357	1.15	22.3%	77.7%	1.05	1.18	74.6%	74.6%	81.4%	66.5%	33.5%	93.7%	93.7%
Hospital Group HQ	71	112	1.58	21.4%	78.6%	1.34	1.66	80.4%	80.4%	83.0%	48.2%	51.8%	54.2%	54.2%
Our Lady's Navan	600	690	1.15	25.4%	74.6%	1.05	1.19	81.9%	81.9%	86.4%	65.9%	34.1%	90.9%	90.9%
Cappagh National Orthopaedic	456	512	1.12	21.5%	78.5%	1.02	1.16	86.9%	86.9%	90.8%	72.7%	27.3%	95.5%	95.5%
Mater Misericordiae University	3,555	3,907	1.10	26.5%	73.5%	1.08	1.11	77.8%	77.8%	82.0%	80.0%	20.0%	86.2%	86.2%
MRH Mullingar	1,063	1,174	1.10	19.9%	80.1%	1.03	1.12	82.5%	82.5%	88.1%	77.3%	22.7%	97.4%	97.4%
Royal Victoria Eye & Ear	337	387	1.15	25.1%	74.9%	1.05	1.19	80.6%	80.6%	84.5%	67.2%	32.8%	87.6%	87.6%
St. Michael's	405	452	1.12	26.1%	73.9%	1.06	1.14	88.7%	88.7%	92.5%	76.8%	23.2%	88.1%	88.1%
St. Columcille's	467	522	1.12	23.6%	76.4%	1.03	1.15	81.2%	81.2%	82.5%	80.5%	19.5%	95.1%	95.1%
National Maternity	930	1,055	1.13	17.3%	82.7%	1.11	1.14	76.7%	76.7%	79.0%	71.8%	28.2%	82.0%	82.0%
St. Vincent's University	3,134	3,341	1.07	30.0%	70.0%	1.03	1.08	87.2%	87.2%	91.2%	83.7%	16.3%	93.3%	93.3%
IEHG Bank	10	18	1.89	5.6%	94.4%	1.22	1.95	100.0%	100.0%	100.0%	11.1%	88.9%	0.0%	0.0%

Ireland East Hospital Group Employment by Grade Group & Staff Category: September 2021

Sep 2021 (Dec 2019 figure: 12,045)	WTE Dec 2016	WTE Dec 2017	WTE Dec 2018	WTE Dec 2019	WTE Dec 2020	WTE Aug 2021	WTE Sep 2021
Overall	10,971	11,382	11,773	12,045	12,923	13,319	13,297
Consultant Anaesthesia	4.9%	4.9%	5.1%	4.8%	4.5%	4.8%	4.6%
Consultant Emergency Medicine	1.0%	1.1%	1.0%	1.1%	1.2%	1.2%	1.1%
Consultant Intensive Care Medicine			0.1%	0.1%	0.1%	0.2%	0.2%
Consultant Medicine	9.1%	9.3%	9.3%	9.9%	10.3%	9.7%	9.7%
Consultant Obstetrics & Gynaecology	2.0%	2.0%	2.0%	2.0%	1.8%	1.9%	1.8%
Consultant Paediatrics	1.2%	1.3%	1.2%	1.2%	1.2%	1.2%	1.3%
Consultant Pathology	2.1%	2.1%	2.3%	2.2%	2.1%	2.1%	2.0%
Consultant Psychiatry	0.2%	0.3%	0.3%	0.2%	0.2%	0.3%	0.3%
Consultant Radiology	3.1%	2.9%	3.2%	3.0%	2.8%	2.8%	2.8%
Consultant Surgery	6.6%	6.5%	6.3%	6.2%	5.9%	5.8%	5.8%
Consultants	30.2%	30.5%	30.7%	30.7%	30.2%	29.7%	29.7%
Registrar	21.1%	19.6%	19.8%	19.5%	19.0%	18.4%	18.5%
Senior Registrar	1.7%	1.3%	1.4%	1.6%	1.8%	1.7%	1.8%
Specialist Registrar	11.9%	13.3%	13.1%	14.2%	13.1%	15.3%	15.0%
Registrars	34.7%	34.2%	34.3%	35.3%	33.9%	35.3%	35.3%
Interns	9.2%	8.7%	8.8%	8.4%	10.4%	8.8%	8.5%
Senior House Officer	24.6%	25.1%	24.5%	24.1%	24.1%	24.2%	24.8%
SHO/ Interns	33.8%	33.8%	33.4%	32.5%	34.5%	33.3%	33.3%
Dentists	0.1%	0.1%	0.1%	0.1%	0.1%		
Other Medical	1.3%	1.5%	1.5%	1.4%	1.4%	1.7%	1.7%
Medical/ Dental, other	1.3%	1.5%	1.6%	1.5%	1.4%	1.7%	1.7%
Medical & Dental	14.3%	14.5%	14.4%	14.6%	15.0%	15.1%	15.1%
Clinical Nurse/ Midwife Manager	16.6%	16.6%	17.8%	17.9%	18.7%	19.1%	19.5%
Director Nursing/Midwifery, Assistant	1.5%	1.7%	1.8%	1.9%	1.9%	1.9%	2.1%
Director of Nursing/Midwifery	0.3%	0.3%	0.3%	0.3%	0.3%	0.3%	0.3%
Nurse/ Midwife Manager	18.4%	18.5%	19.9%	20.2%	20.9%	21.9%	21.9%
Advanced Nurse/ Midwife Practitioner	0.7%	1.3%	1.5%	1.6%	1.8%	1.8%	1.9%
Clinical Nurse/ Midwife Specialist	5.2%	4.9%	5.1%	5.1%	5.1%	5.2%	5.2%
Nurse/ Midwife Specialist & AN/MP	5.9%	6.2%	6.6%	6.7%	6.9%	7.1%	7.1%
Nursing Bank	0.1%	0.2%	0.1%	0.0%	0.1%		
Staff Nurses [General/ Children's]	65.6%	65.8%	63.9%	63.9%	62.5%	61.9%	62.5%
Staff Midwives	7.3%	6.5%	6.7%	6.3%	5.8%	5.5%	5.4%
Staff Nurse [Psychiatric]	0.1%	0.1%	0.1%	0.1%	0.1%	0.1%	0.0%
Staff Nurse/ Staff Midwife	73.2%	72.6%	70.8%	70.3%	68.5%	67.9%	67.9%
Pre-registration Nurse/ Midwife Intern	0.3%	0.4%	0.5%	0.5%	0.2%	2.1%	0.6%
Pre-registration Nurse Intern (COVID-19)					1.0%		
Post-registration Nurse/ Midwife Student	0.5%	0.5%	0.5%	0.5%	0.3%	0.5%	0.5%
Nursing/ Midwifery awaiting registration	0.0%	0.1%	0.1%	0.2%	0.7%	0.2%	0.5%
Nursing/ Midwifery Student	0.9%	1.1%	1.1%	1.2%	2.2%	1.6%	1.6%
Nursing Education/Clinical	1.4%	1.4%	1.4%	1.4%	1.2%	1.1%	1.1%
Other Nursing/ Midwifery	0.3%	0.2%	0.2%	0.3%	0.3%	0.3%	0.4%
Nursing/ Midwifery other	1.7%	1.6%	1.6%	1.6%	1.5%	1.5%	1.5%
Nursing & Midwifery	38.3%	38.3%	38.0%	38.2%	37.7%	36.8%	36.8%
Dietitians	5.2%	4.9%	5.6%	5.3%	5.9%	5.8%	5.6%
Occupational Therapists	5.2%	5.2%	5.0%	4.7%	5.2%	5.9%	6.1%
Orthoptists	0.2%	0.2%	0.2%	0.2%	0.2%	0.2%	0.2%
Physiotherapists	14.2%	14.5%	15.3%	15.7%	15.4%	13.4%	13.2%
Speech & Language Therapists	2.4%	2.7%	2.3%	2.4%	2.9%	2.7%	2.7%
Podiatrists & Chiropodists	0.6%	0.6%	0.6%	0.7%	0.7%	0.7%	0.7%
Therapy Professions	27.9%	28.1%	29.0%	28.9%	30.2%	28.5%	28.5%
Audiology	0.3%	0.2%	0.2%	0.2%	0.2%	0.2%	0.3%

Sep 2021 (Dec 2019 figure: 12,045)	WTE Dec 2016	WTE Dec 2017	WTE Dec 2018	WTE Dec 2019	WTE Dec 2020	WTE Aug 2021	WTE Sep 2021
Overall	10,971	11,382	11,773	12,045	12,923	13,319	13,297
Biochemists	1.6%	2.0%	2.0%	1.8%	1.8%	1.6%	1.6%
Clinical Engineering	1.2%	1.3%	1.3%	1.4%	1.4%	1.4%	1.4%
Clinical Measurement	5.8%	5.5%	5.6%	5.4%	5.7%	5.8%	6.0%
Perfusionists	0.2%	0.3%	0.2%	0.3%	0.3%	0.4%	0.4%
Phlebotomists	2.5%	2.6%	2.6%	2.5%	2.6%	2.7%	2.6%
Physicists	0.9%	0.9%	1.1%	1.1%	0.9%	1.1%	1.1%
Radiographers	17.3%	17.2%	16.8%	16.6%	16.6%	16.5%	17.1%
Medical Science	23.5%	22.7%	21.9%	20.9%	20.5%	20.5%	20.5%
Health Science/ Diagnostics	53.3%	52.7%	51.7%	50.2%	49.9%	50.9%	50.9%
Social Workers	4.4%	4.4%	4.0%	4.8%	4.7%	4.4%	4.4%
Psychologists	0.9%	1.0%	1.0%	1.5%	1.4%	1.5%	1.5%
Pharmacy	11.5%	11.7%	12.2%	12.9%	12.1%	12.4%	12.4%
Counsellor Therapists	0.2%	0.2%	0.2%	0.2%	0.1%	0.1%	0.1%
HSCP Trainees/ Students	0.6%	0.6%	0.7%	0.5%	0.4%	0.2%	0.1%
Other Health & Social Care	1.1%	1.3%	1.2%	1.1%	1.2%	1.1%	1.0%
Vaccinators						1.3%	1.0%
H&SC, Other	2.0%	2.1%	2.1%	1.8%	1.7%	2.3%	2.3%
Health & Social Care Professionals	12.0%	11.9%	12.1%	12.1%	12.3%	12.6%	12.6%
Executive Management	0.6%	0.6%	0.8%	0.8%	1.1%	1.2%	1.2%
Senior Management (VIII & GM)	3.8%	3.9%	3.8%	3.8%	4.1%	4.4%	4.6%
Management (VIII & above)	4.4%	4.5%	4.5%	4.6%	5.2%	5.8%	5.8%
Administrative/ Supervisory (V to VII)	26.4%	27.6%	28.2%	28.5%	31.1%	31.1%	31.1%
General Administrative (III & IV)	69.2%	68.0%	67.3%	66.9%	63.6%	63.7%	63.1%
Clerical (III & IV)	69.2%	68.0%	67.3%	66.9%	63.6%	63.1%	63.1%
Management & Administrative	14.9%	15.1%	15.2%	15.1%	14.9%	15.4%	15.4%
Catering	7.3%	6.8%	6.9%	7.1%	7.7%	7.2%	7.1%
Household Services	45.4%	46.0%	46.9%	46.1%	47.4%	47.5%	47.4%
Other Labs & Associated	4.5%	4.6%	4.7%	5.0%	5.8%	6.8%	6.8%
Other Support	11.0%	11.3%	11.0%	11.0%	12.1%	11.4%	11.6%
Portering	23.4%	23.4%	22.9%	22.9%	18.8%	18.7%	19.1%
Support	91.6%	92.1%	92.5%	92.2%	91.7%	92.0%	92.0%
Maintenance	7.6%	7.1%	6.8%	7.0%	7.6%	7.5%	7.1%
Technical Services	0.8%	0.8%	0.8%	0.8%	0.7%	0.8%	0.8%
Maintenance/ Technical	8.4%	7.9%	7.5%	7.8%	8.3%	8.0%	8.0%
General Support	12.2%	12.3%	12.1%	11.9%	11.1%	10.9%	10.9%
HCA, Nurse's Aide, etc.	94.2%	94.5%	94.5%	94.6%	93.1%	94.7%	94.8%
Health & Social Care Assistants	2.5%	2.6%	2.8%	2.8%	3.2%	3.0%	2.9%
HCA (Student Nurse/Midwife COVID-19)					0.3%		
Swabber (COVID-19)					0.9%		
Health Care Assistants	96.6%	97.1%	97.3%	97.3%	97.6%	97.8%	97.8%
Other Care Grades	3.4%	2.9%	2.7%	2.7%	2.4%	2.3%	2.2%
Care, other	3.4%	2.9%	2.7%	2.7%	2.4%	2.2%	2.2%
Patient & Client Care	8.3%	8.0%	8.2%	8.1%	9.1%	9.2%	9.2%
Total	100%	100%	100%	100%	100%	100%	100%

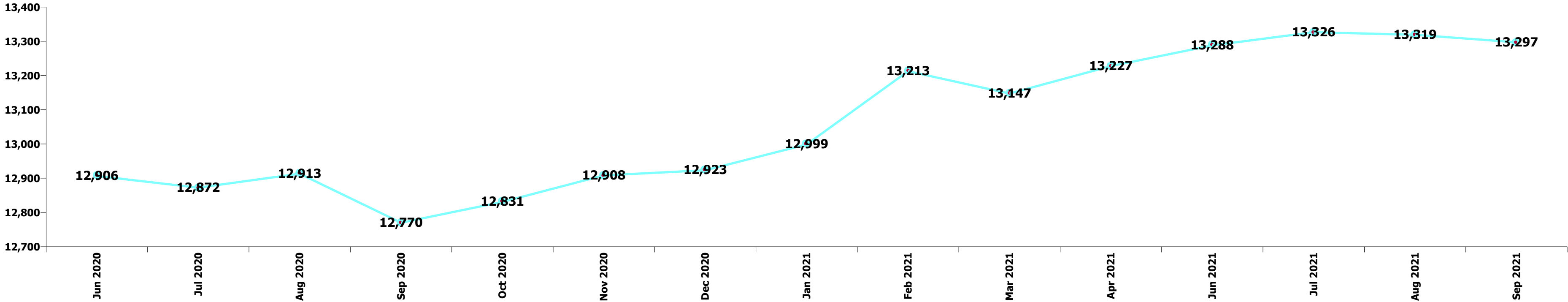
Summary Staff Movement: September 2021

Month-on-month Summary

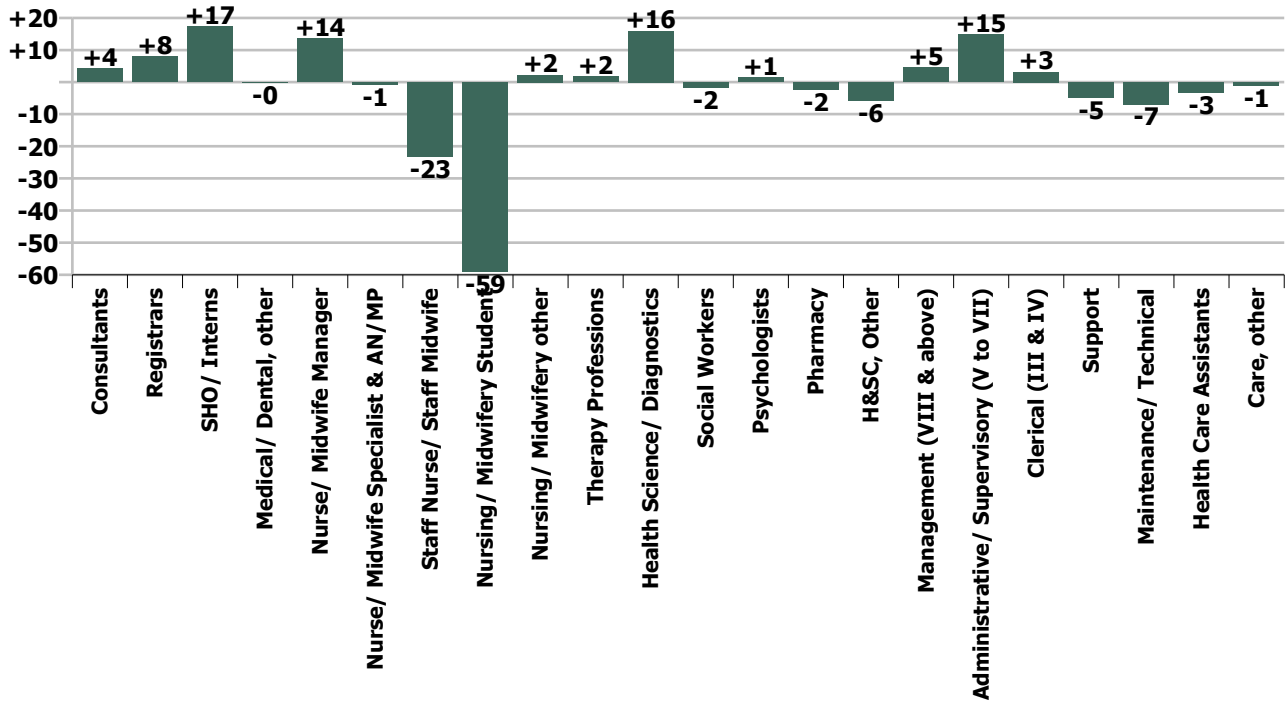
WTE change since Aug 21	% change since Aug 21	overall	Consultants	Registrars	SHO/ Interns	Medical/ Dental, other	Medical & Dental	Nurse/ Midwife Manager	Nurse/ Midwife Specialist & AN/MP	Staff Nurse/ Staff Midwife	Nursing/ Midwifery Student	Nursing/ Midwifery other	Nursing & Midwifery	Therapy Professions	Health Science/ Diagnostics	Social Workers	Psychologists	Pharmacy	H&SC, Other	Health & Social Care Professionals	Management (VIII & above)	Administrativ e/ Supervisory (V to VII)	Clerical (III & IV)	Management & Administrative	General Support	Health Care Assistants	Care, other	Patient & Client Care
Overall	-0.2%	-22	+4	+8	+17	-0	+29	+14	-1	-23	-59	+2	-67	+2	+16	-2	+1	-2	-6	+9	+5	+15	+3	+23	-12	-3	-1	-4
Wexford General	+0.5%	+5	-0	+1	+6		+6	+5	-1	-6	+3		+1	-1	+1			+0		-1	+2	-1	+1	-0	-2		-2	
St Luke's General Kilkenny	+0.4%	+4	-1	+0	+7	+1	+7	+1	-1	-0	-0	-0	-1	-2	-1	+1		-1		-3	-0	+1	-2	-1	+2	+1	+1	
Hospital Group HQ	-5.6%	-4						-0		-1			-1		-0			+1	-5	-3	-0	-1	+1					
Our Lady's Navan	+0.4%	+2	+0	-0	+1		+1	+1	+0	+1			+3	+0	+0			-0		+0	+0	+0	+0	+0	+0	-2	-2	
Cappagh National Orthopaedic	-0.2%	-1		-1			-1			-0																		
Mater Misericordiae University	-0.1%	-4	+3	+7	+1	-1	+10	+3	+1	-6	-27	+2	-27	+1	+8	-2	+1	-1	-2	+5	+3	+7	-1	+9	+3	-4	-1	-5
MRH Mullingar	+2.5%	+26	+1	-1	+3		+3	+3	+1	+1	+10	+0	+15	+1	-1			-0	-0	+0		-0	+8	+8	+0	-2	-2	
Royal Victoria Eye & Ear	+1.0%	+3		+1			+1		+1	+2			+3	-0	+1	-1				-0			-1	-1	+1			
St. Michael's	-3.0%	-13		+1	+1	-0	+2	+0	-1	-3	-9		-12	+0	+0	-2		-1	+1	-1	+3		-8	-4	+3	+0	+0	
St. Columcille's	-0.2%	-1	+0	+0			+0	-1	-0	-1			-2	+3	-0	-0	+0	+0		+3	+0	+1	-1	-0	-2	-0	+0	-0
National Maternity	-1.6%	-15		+1			+1	+2	+1	-4	-6		-7	-1	+2		+0	-1		+0		+0	-0	-0	-9	-1		-1
St. Vincent's University	-0.8%	-24	+1	-1	-1		-0	-1	-1	-5	-30		-37	+0	+6	+3				+9	+2	+1	+8	+11	-11	+5		+5
IEHG Bank	-10.8%	-1								-1			-1													+0		+0
			+0.7%	+1.1%	+2.7%	-0.9%	+1.5%	+1.3%	-0.2%	-0.7%	-42.4%	+3.3%	-1.4%	+0.4%	+1.9%	-2.1%	+6.1%	-1.1%	-13.3%	+0.6%	+4.1%	+2.4%	+0.2%	+1.1%	-0.8%	-0.3%	-4.2%	-0.4%

Year-on-year Summary

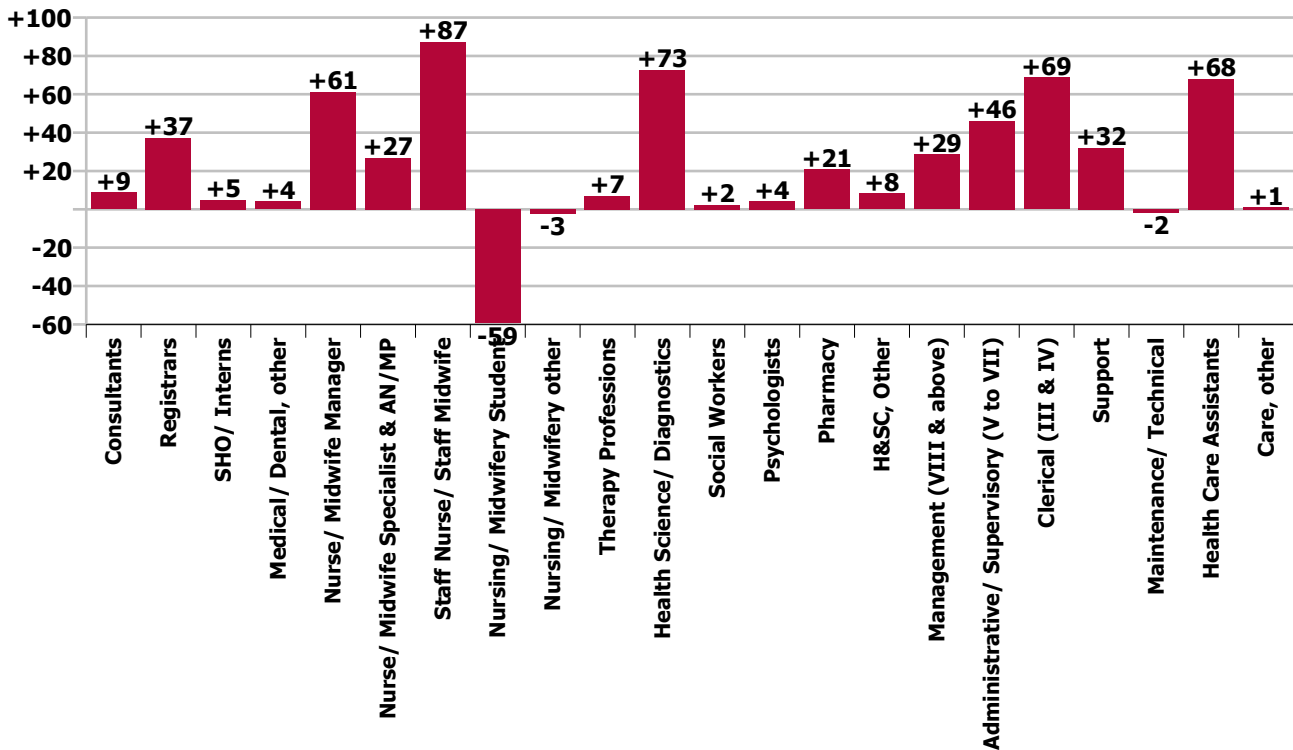
WTE change since Sep 20	% change since Sep 20	overall	Consultants	Registrars	SHO/ Interns	Medical/ Dental, other	Medical & Dental	Nurse/ Midwife Manager	Nurse/ Midwife Specialist & AN/MP	Staff Nurse/ Staff Midwife	Nursing/ Midwifery Student	Nursing/ Midwifery other	Nursing & Midwifery	Therapy Professions	Health Science/ Diagnostics	Social Workers	Psychologists	Pharmacy	H&SC, Other	Health & Social Care Professionals	Management (VIII & above)	Administrative/ Supervisory (V to VII)	Clerical (III & IV)	Management & Administrative	General Support	Health Care Assistants	Care, other	Patient & Client Care
Overall	+4.1%	+527	+9	+37	+5	+4	+55	+61	+27	+87	-59	-3	+114	+7	+73	+2	+4	+21	+8	+115	+29	+46	+69	+144	+31	+68	+1	+69
Wexford General	+2.6%	+28	-2	-0	+16	-1	+13	+0	+0	+14	+1		+16	-2	+0	+1		+3		+2	-1	+10	-8	+1	+6	-11	+1	-10
St Luke's General Kilkenny	-0.5%	-6	+1	-3	+4	+2	+4	-1	+6	-8	-6	-0	-9	-3	+2	+1		+6	-1	+4	+3	-1	-4	-2	+0	-3		-3
Hospital Group HQ	+136.4%	+41	+1				+1	+2		-0			+2					+4	+17	+21	+6	+1	+11	+17				
Our Lady's Navan	+4.9%	+28	-1	+4	-2		+2	-3	+1	+14			+13	+1	+2			+2		+4	-1	+2	+3	+3	+3	+3	+0	+3
Cappagh National Orthopaedic	+3.6%	+16	+2	-1	+2		+4	+1	+2				+3	+2	+3			+1		+6		+1	+3	+4				
Mater Misericordiae University	+5.6%	+190	+4	+18	-15	-2	+6	+14	+14	+39	-12	+3	+59	+6	+30	+1	+3	+2	-9	+33	+13	+7	+22	+41	+15	+38	-2	+36
MRH Mullingar	+8.4%	+82	+5	+1	+2		+8	+10	+4	+18	+6	+0	+38	-1	+5			+3		+7	+2	+3	+14	+18	+4	+6		+6
Royal Victoria Eye & Ear	+10.9%	+33	+3	+4	+1	-1	+6	+1	+5	-1			+5	+1	+0					+1		+8	+6	+14	+2	+5		+5
St. Michael's	-3.0%	-12	-0	+1	+1	-0	+2	-1	-2	-0	-22	-2	-27	+1	+5	-1		+0	+1	+7		+5	-2	+3	+4	+0	-1	-1
St. Columcille's	+2.3%	+11	+0		-1		-1	-1	+3	-2			+0	+5	+1	-1	+1	+0		+7	+0	+0	+5	+6	-2	-2	+2	+0
National Maternity	+2.4%	+22	+2	+4	+1	+0	+7	+15	+1	-7	+5		+14	+2	+2	+2	+0	-0		+6	-1	+4	+0	+4	-7	-2		-2
St. Vincent's University	+3.0%	+91	-5	+8	-5	+5	+4	+24	-8	+15	-31	-4	-4	-5	+22	+0	-0	-0		+17	+8	+6	+20	+34	+5	+34	+1	+35
IEHG Bank	+88.1%	+4								+4			+4													+0		+0
			+1.5%	+5.6%	+0.7%	+13.9%	+2.8%	+6.1%	+8.3%	+2.7%	-42.6%	-3.5%	+2.4%	+1.5%	+9.3%	+3.3%	+21.1%	+11.0%	+27.5%	+7.4%	+31.8%	+7.8%	+5.6%	+7.5%	+2.2%	+6.1%	+4.5%	+6.0%



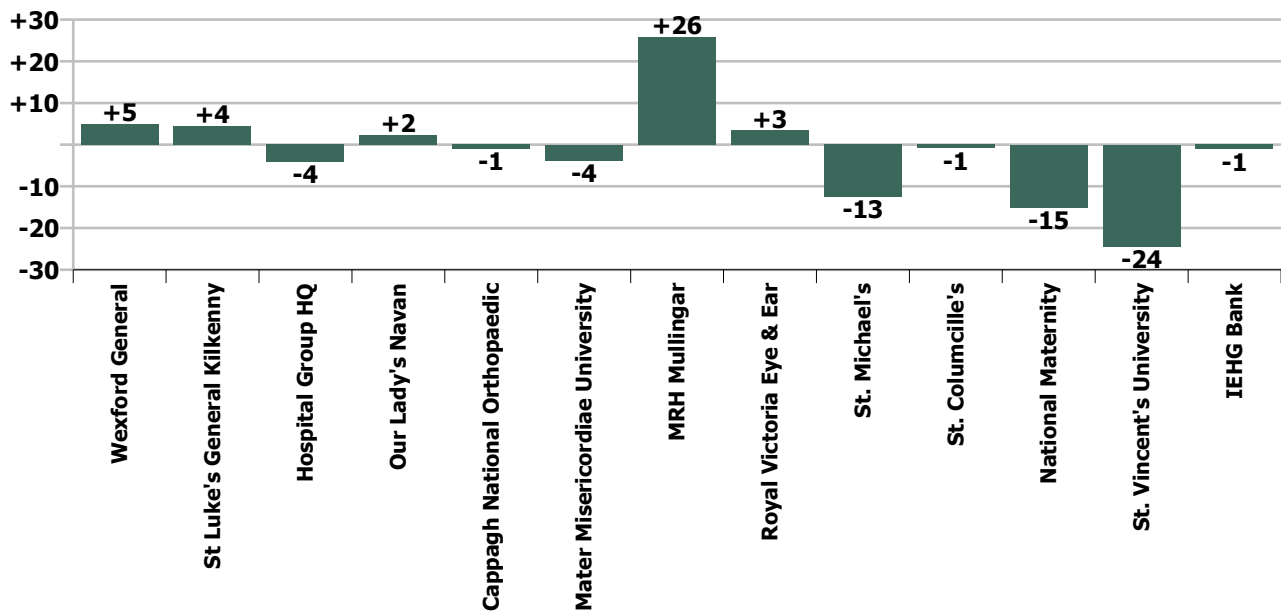
Staff Group change since: Aug 2021



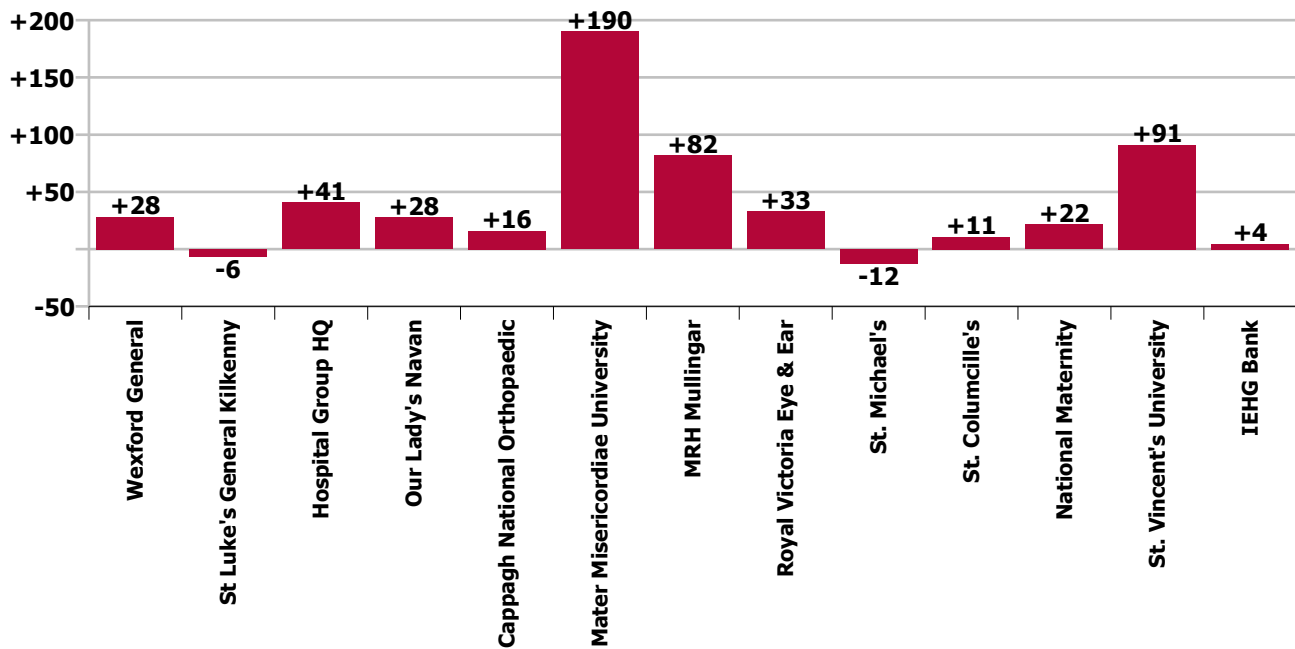
Staff Group change since: Sep 2020



Hospital change since: Aug 2021



Hospital change since: Sep 2020



Longitudinal Employment Levels by Grade Group - Dec 2016 to Sep 2021

Sep 2021 (Dec 2016 figure: 10,971)	WTE Sep 2021	WTE change since Dec 16	WTE change since Dec 17	WTE change since Dec 18	WTE change since Dec 19	WTE change since Dec 20	WTE change since Aug 21	% change since Dec 16	% change since Dec 17	% change since Dec 18	% change since Dec 19	% change since Dec 20	% change since Apr 21
Overall	13,297	+2,326	+1,915	+1,252	+1,252	+374	-22	+21.2%	+16.8%	+12.9%	+10.4%	+2.9%	+0.5%
Consultant Anaesthesia	93	+16	+12	+8	+8	+5	-2	+20.5%	+14.6%	+8.6%	+9.7%	+5.2%	-1.1%
Consultant in Emergency Medicine	23	+7	+5	+4	+4	-1	-0	+41.2%	+27.3%	+34.9%	+19.5%	-4.4%	+0.6%
Consultant Emergency Medicine	23	+7	+5	+4	+4	-1	-0	+41.2%	+27.3%	+34.9%	+19.5%	-4.4%	+0.6%
Consultant Intensivist	4	+4	+4	+2	+2	+2		-100.0%	-100.0%	+75.0%	+75.0%	+75.0%	+40.0%
Consultant Intensive Care Medicine	4	+4	+4	+2	+2	+2		-100.0%	-100.0%	+75.0%	+75.0%	+75.0%	+40.0%
Consultant Cardiologist	18	+2	+1	-2	-2	-2	+0	+13.3%	+4.4%	+4.3%	-9.1%	-9.6%	+0.7%
Consultant Clinical Neurophysiologist	2	+0						+25.4%					
Consultant Dermatologist	11	+1	+1	-1	-1	+1	-0	+16.2%	+8.9%	+33.9%	-9.7%	+8.6%	-28.1%
Consultant Gastroenterologist & General Physician	12	+3	+3	+2	+2	+2		+34.4%	+34.4%	+10.0%	+20.2%	+14.2%	+14.2%
Consultant General Physician	50	+12	+10	+8	+8	-4	+2	+31.3%	+25.2%	+21.8%	+17.8%	-8.0%	+0.2%
Consultant in Clinical Genetics	1	+1	+1	+1	+1	+1		+135.2%	+370.4%	+370.4%	+370.4%	+370.4%	+370.4%
Consultant in Palliative Medicine	2	-0	-0					-15.3%	-3.8%	-13.4%			
Consultant in Rehabilitation Medicine	0		-1	-1	-1	-1			-69.0%	-69.0%	-69.0%	-69.0%	
Consultant Medical Oncologist	9	+2	+1	+1	+1	-2		+35.5%	+17.8%	+64.8%	+10.2%	-16.4%	-16.4%
Consultant Nephrologist & General Physician	5	+3	+1					+127.7%	+23.0%				
Consultant Neurologist	13	+3	+4	+3	+3	+1	+1	+30.9%	+46.8%	+36.0%	+24.9%	+10.2%	+8.1%
Consultant Physician in Endocrinology	12	+3	+3	+1	+1	+1	+1	+30.5%	+30.5%	+3.4%	+8.8%	+9.2%	+8.8%
Consultant Physician in Geriatric Medicine	23	+7	+5	+3	+3	+0		+44.3%	+25.1%	+23.8%	+17.1%	+0.7%	-0.9%
Consultant Physician in Infectious Diseases	10	+6	+6	+4	+4			+197.6%	+197.6%	+234.4%	+69.8%		+44.6%
Consultant Respiratory & General Physician	18	+5	+4	+2	+2	-1	+0	+43.6%	+28.7%	+19.9%	+10.9%	-7.6%	+5.2%
Consultant Rheumatologist & General Physician	8	+3	+2	+1	+1	+0		+52.5%	+33.7%	+55.2%	+7.0%	+3.1%	+32.8%
Consultant Medicine	195	+52	+41	+21	+21	-4	+4	+36.8%	+26.8%	+24.0%	+11.9%	-2.2%	+2.3%
Consultant Obstetrician & Gynaecologist	35	+5	+3	+2	+2	+2	-0	+15.6%	+9.1%	+6.1%	+5.0%	+6.6%	+4.7%
Master (Maternity Hospital)	1												
Consultant Obstetrics & Gynaecology	36	+5	+3	+2	+2	+2	-0	+15.1%	+8.8%	+6.0%	+4.8%	+6.4%	+4.6%
Consultant Paediatrician	26	+7	+5	+4	+4	+2	+1	+39.1%	+22.5%	+29.5%	+17.6%	+7.1%	+7.4%
Consultant Paediatrics	26	+7	+5	+4	+4	+2	+1	+39.1%	+22.5%	+29.5%	+17.6%	+7.1%	+7.4%
Consultant Clinical Biochemist	2	-1	-1	+1	+1			-20.1%	-20.1%	-20.1%	+100.0%		
Consultant Haematologist (Clinical & Laboratory)	10	+4	+4	-1	-1	-1		+64.3%	+64.3%	+24.6%	-4.6%	-4.6%	+5.1%
Consultant Histopathologist	18	+1	+0	+1	+1	+1		+7.8%	+0.6%	+3.6%	+9.1%	+7.7%	-4.0%
Consultant Immunologist (Clinical & Laboratory)	1												-23.9%
Consultant Microbiologist	10	+3	+2	+0	+0	-1		+37.0%	+23.3%		+4.5%	-9.1%	+0.7%

Sep 2021 (Dec 2016 figure: 10,971)	WTE Sep 2021	WTE change since Dec 16	WTE change since Dec 17	WTE change since Dec 18	WTE change since Dec 19	WTE change since Dec 20	WTE change since Aug 21	% change since Dec 16	% change since Dec 17	% change since Dec 18	% change since Dec 19	% change since Dec 20	% change since Apr 21
Overall	13,297	+2,326	+1,915	+1,252	+1,252	+374	-22	+21.2%	+16.8%	+12.9%	+10.4%	+2.9%	+0.5%
Consultant Pathology	41	+7	+5	+2	+2	-0		+22.5%	+15.6%	+5.4%	+6.5%	-0.6%	-0.8%
Consultant Child & Adolescent Psychiatrist		-0	-0					-100.0%	-100.0%	-100.0%	-100.0%	-100.0%	-100.0%
Consultant General Adult Psychiatrist	6	+3	+2	+2	+2	+2		+80.1%	+48.3%	+48.3%	+48.3%	+48.3%	
Consultant Psychiatry	6	+2	+2	+2	+2	+2		+66.8%	+39.2%	+39.2%	+48.3%	+48.3%	
Consultant Radiation Oncologist	0												
Consultant Radiologist	57	+8	+9	+5	+5	+2	+1	+17.5%	+18.1%	+5.4%	+9.6%	+3.4%	+5.2%
Consultant Radiology	57	+8	+9	+5	+5	+2	+1	+17.5%	+18.0%	+5.4%	+9.6%	+3.4%	+5.2%
Consultant Cardio-thoracic Surgeon	9	+1	+1	+2	+2	-1	+0	+12.4%	+12.4%	+12.4%	+19.8%	-5.2%	
Consultant General Surgeon	31	-4	-0	-2	-2	-1	-0	-12.0%	-1.5%	-3.0%	-5.2%	-3.5%	+1.3%
Consultant General Surgeon Breast	1		-1	-1	-1	-1			-50.0%	-50.0%	-50.0%	-50.0%	
Consultant General Surgeon Colo-rectal	4		-1			+1			-20.0%	-20.0%		+33.3%	
Consultant General Surgeon s.i. vascular surgery	2												
Consultant Ophthalmic Surgeon	27	+8	+7	+7	+7	+2	+0	+43.3%	+32.5%	+29.2%	+31.2%	+9.3%	+8.0%
Consultant Ophthalmic Surgeon s.i. neuro-ophthalmic surgery	0	+0	+0	+0	+0			-100.0%	-100.0%	-100.0%	-100.0%		
Consultant Oral & Maxillo Facial Surgeon			-0	-0	-0			-100.0%	-100.0%	-100.0%	-100.0%	-100.0%	-100.0%
Consultant Orthopaedic Surgeon	14	+0	-1	-0	-0	-1	+1	+1.0%	-5.8%	+3.7%	-1.6%	-5.8%	-8.0%
Consultant Otolaryngologist	11	+3	+3	+0	+0	+1		+49.6%	+37.8%	+15.1%	+3.1%	+10.5%	+10.5%
Consultant Plastic Surgeon	7	+0	+0	+1	+1	-1		+0.3%	+0.3%	+16.8%	+16.8%	-8.4%	+5.2%
Consultant Urologist	10	+3	+1	+1	+1	+0		+43.3%	+17.2%	+17.2%	+17.2%	+4.4%	+4.4%
Consultant Surgery	116	+12	+8	+8	+8	+1	+1	+11.4%	+7.9%	+7.7%	+7.0%	+0.5%	+2.6%
Consultants	595	+121	+75	+57			+4	+25.4%	+14.5%	+10.6%	+10.6%	+10.6%	+0.7%
Registrar	21	-76	+7	+14	+14	-4	+0	-78.4%	+53.8%	+143.0%	+199.3%	-16.2%	-3.6%
Registrar, Anaesthesia	48	+12	+5	-4	-4	+4	-1	+32.2%	+10.7%	-4.8%	-8.5%	+8.1%	+5.9%
Registrar, Emergency Medicine	39	+16	+2	+2	+2	-4	+2	+72.5%	+6.5%	-5.6%	+4.2%	-10.2%	-14.2%
Registrar, Medicine	155	+53	+24	+22	+22	+14	+6	+51.6%	+17.8%	+22.9%	+16.3%	+9.7%	+1.3%
Registrar, Obstetrics & Gynaecology	26	+14	+4	+4	+4	-1	-1	+116.6%	+18.1%	+1.9%	+16.7%	-3.4%	-13.4%
Registrar, Ophthalmology	8	+4	+0	+2	+2	+0	+1	+83.5%	+3.5%	+37.7%	+23.1%	+3.9%	
Registrar, Paediatrics	11	+6	-4	-8	-8	-3	+1	+127.0%	-26.3%	-32.3%	-41.8%	-18.9%	-12.6%
Registrar, Pathology	12	+5	+5	+5	+5	-2		+61.5%	+71.4%	+71.4%	+71.4%	-13.7%	+9.1%
Registrar, Psychiatry	4	-2				-1		-27.3%				-20.0%	-42.9%
Registrar, Surgery	47	+8	+5	-6	-6	-1	-1	+20.5%	+10.8%	-7.0%	-11.3%	-2.6%	-11.9%
Registrar	371	+40	+48	+29	+29	+1	+6	+12.0%	+14.7%	+10.5%	+8.5%	+0.4%	-4.3%
Registrar, Senior	29	+7	+12	+5	+5	+1	+3	+32.7%	+66.8%	+46.9%	+22.0%	+1.8%	+3.1%
Senior Registrar, Psychiatry	7	+3	+3	+3	+3	+1		+75.0%	+75.0%	+75.0%	+75.0%	+16.7%	+16.7%
Senior Registrar	36	+10	+15	+8	+8	+2	+3	+39.2%	+68.3%	+51.6%	+29.6%	+4.4%	+5.4%

Sep 2021 (Dec 2016 figure: 10,971)	WTE Sep 2021	WTE change since Dec 16	WTE change since Dec 17	WTE change since Dec 18	WTE change since Dec 19	WTE change since Dec 20	WTE change since Aug 21	% change since Dec 16	% change since Dec 17	% change since Dec 18	% change since Dec 19	% change since Dec 20	% change since Apr 21
Overall	13,297	+2,326	+1,915	+1,252	+1,252	+374	-22	+21.2%	+16.8%	+12.9%	+10.4%	+2.9%	+0.5%
Registrar, Specialist	20	+15	+13	+7	+7	+4	+1	+299.4%	+207.2%	+66.4%	+59.8%	+25.2%	+10.3%
Specialist Registrar, Anaesthesia	45	+10	+9	+4	+4	+2	+0	+27.7%	+24.1%	+54.1%	+9.0%	+5.2%	+3.9%
Specialist Registrar, Emergency Medicine	13	+8	+7	+3	+3	+2	+1	+154.8%	+112.3%	+112.3%	+27.4%	+15.8%	+6.2%
Specialist Registrar, Medicine	99	+38	+28	+19	+19	+17	-3	+61.4%	+38.5%	+33.7%	+23.6%	+20.2%	+9.6%
Specialist Registrar, Obstetrics & Gynaecology	16	+8	+4	-0	-0	+8	-1	+95.0%	+35.7%	+7.6%	-0.8%	+95.0%	+122.9%
Specialist Registrar, Paediatrics	10	+2	-1	+3	+3	+5	-0	+24.9%	-9.2%	+11.0%	+42.7%	+99.8%	+66.5%
Specialist Registrar, Pathology	18	+12	+8	+4	+4	+3		+200.0%	+71.4%	+63.6%	+26.8%	+24.0%	+26.1%
Specialist Registrar, Radiology	31	+5	+4	+2	+2	+4	+1	+19.2%	+14.8%	+14.8%	+8.6%	+14.8%	+14.8%
Specialist Registrar, Surgery	50	+17	+11	+11	+11	+3	-1	+50.7%	+29.2%	+28.8%	+27.1%	+6.3%	+2.0%
Specialist Registrar	301	+114	+82	+53	+53	+48	-1	+60.5%	+37.6%	+36.0%	+21.2%	+18.8%	+12.8%
Registrars	708	+164	+127	+90			+8	+30.0%	+21.9%	+14.5%	+14.5%	+14.5%	+1.1%
Intern	171	+27	+28	+24	+24	-30	-3	+18.8%	+19.6%	+14.8%	+16.2%	-14.9%	-12.3%
Interns	171	+27	+28	+24	+24	-30	-3	+18.8%	+19.6%	+14.8%	+16.2%	-14.9%	-12.3%
House Officer, Senior	19	-73	+3	+10	+10	-32	+0	-79.4%	+18.0%	+117.5%	+110.9%	-62.8%	-18.2%
Senior House Officer, Anaesthesia	23	+4	-3	-1	-1	+1	-1	+22.1%	-10.8%	-22.7%	-3.4%	+5.4%	-10.8%
Senior House Officer, Emergency Medicine	63	+26	+17	+14	+14	+9	+5	+71.1%	+35.4%	+24.2%	+28.7%	+17.3%	+19.8%
Senior House Officer, Medicine	213	+98	+61	+55	+55	+35	+3	+85.8%	+40.4%	+36.5%	+35.0%	+19.9%	+12.3%
Senior House Officer, Obstetrics & Gynaecology	37	+17	+2	-0	-0	+9	+4	+84.6%	+4.6%	+13.3%	-0.2%	+31.5%	+16.0%
Senior House Officer, Ophthalmology	14	+1	+1	+1	+1			+9.4%	+8.0%	+8.0%	+8.0%		+3.0%
Senior House Officer, Paediatrics	32	+14	-1	-1	-1	+7	+4	+79.5%	-3.8%	+7.2%	-2.4%	+31.2%	+5.4%
Senior House Officer, Pathology	8	-4	-1			-6	+1	-33.3%	-5.9%	+14.3%		-42.9%	-20.0%
Senior House Officer, Psychiatry	15	+4	+4	+2	+2	+3		+36.4%	+36.4%	+7.1%	+15.4%	+25.0%	+7.1%
Senior House Officer, Surgery	74	+22	+1	-6	-6	+2	+4	+42.3%	+1.4%	+0.0%	-7.4%	+2.8%	+7.0%
Senior House Officer	498	+110	+84	+75	+75	+29	+20	+28.4%	+20.3%	+19.8%	+17.7%	+6.3%	+8.2%
SHO/ Interns	669	+137	+104	+99			+17	+25.8%	+18.5%	+17.3%	+17.3%	+17.3%	+2.7%
Dental Surgeon, Senior		-1	-1	-1	-1	-1		-100.0%	-100.0%	-100.0%	-100.0%	-100.0%	-100.0%
Dentists		-1	-1	-1	-1	-1		-100.0%	-100.0%	-100.0%	-100.0%	-100.0%	-100.0%
Area Medical Officer	0	+0	+0	-1	-1	+0		+160.0%	+160.0%	+23.8%	-78.5%	+18.2%	-7.1%
Associate Specialist	14	+10	+4	+4	+4	+3	-0	+200.0%	+32.6%	+3.6%	+37.4%	+27.7%	+3.3%
General Practitioner						-1		-100.0%	-100.0%	-100.0%	-100.0%	-100.0%	-100.0%
Medical & Dental Unclassified	5	+1	+2	+5	+5	+5		+26.1%	+65.7%	-100.0%	-100.0%	-100.0%	+74.5%
Medical Director								-100.0%	-100.0%	-100.0%	-100.0%	-100.0%	-100.0%
Medical Officer	2	+2	+2	+1	+1			-100.0%	-100.0%	-100.0%	+121.0%		
Occupational Health Physician	1	+1	+1	-0	-0	+0		-100.0%	-100.0%	-100.0%	-4.7%	+1.7%	+1.7%
Ophthalmic Physician, Community	11	-0	+1	-1	-1	-1	+0	-1.4%	+7.9%	-7.3%	-5.8%	-6.9%	+13.8%

Sep 2021 (Dec 2016 figure: 10,971)	WTE Sep 2021	WTE change since Dec 16	WTE change since Dec 17	WTE change since Dec 18	WTE change since Dec 19	WTE change since Dec 20	WTE change since Aug 21	% change since Dec 16	% change since Dec 17	% change since Dec 18	% change since Dec 19	% change since Dec 20	% change since Apr 21
Overall	13,297	+2,326	+1,915	+1,252	+1,252	+374	-22	+21.2%	+16.8%	+12.9%	+10.4%	+2.9%	+0.5%
Other Medical	33	+13	+9	+9	+9	+7	-0	+67.4%	+39.0%	+30.6%	+35.4%	+24.7%	+1.5%
Medical/ Dental, other	33	+12	+7	+8			-0	+59.4%	+25.6%	+30.1%	+30.1%	+30.1%	-0.9%
Medical & Dental	2,006	+434	+314	+253			+29	+27.6%	+18.5%	+14.4%	+14.4%	+14.4%	+1.5%
Clinical Midwife Manager 1	48	+13	+8	+7	+7	-1	+2	+38.1%	+21.4%	+27.1%	+16.4%	-2.8%	+1.0%
Clinical Midwife Manager 2	81	+24	+21	+11	+11	+1	+1	+42.7%	+35.0%	+5.3%	+15.0%	+1.7%	+1.0%
Clinical Midwife Manager 3	9	+1	+3	+1	+1	-4	-2	+11.5%	+44.0%	+7.8%	+5.9%	-33.2%	-33.2%
Clinical Nurse Manager 1	227	+51	+53	+10	+10	+13	+3	+29.3%	+30.5%	+11.7%	+4.8%	+6.0%	+5.7%
Clinical Nurse Manager 1 - Theatre	13	+6	+7	+7	+7	+1		+97.0%	+101.6%	+162.6%	+113.1%	+8.3%	+8.3%
Clinical Nurse Manager 2	456	+136	+120	+87	+87	+27	-0	+42.4%	+35.8%	+30.6%	+23.5%	+6.2%	+3.7%
Clinical Nurse Manager 2 (Mental Health)	3					+1						+66.7%	+66.7%
Clinical Nurse Manager 2 - Night	6	-1	-1	-0	-0	-1		-7.2%	-13.5%	-4.9%	-1.2%	-7.2%	
Clinical Nurse Manager 2 - Theatre	39	+2	-1	-6	-6	-1	+2	+5.3%	-3.2%	-11.0%	-13.1%	-3.3%	-6.3%
Clinical Nurse Manager 3	65	+22	+19	+7	+7	+5	+1	+49.9%	+40.1%	+9.7%	+12.3%	+9.2%	+8.1%
Clinical Nurse Manager 3 - Theatre	6	-0	+2	+3	+3	-1	-0	-2.0%	+47.0%	+17.6%	+96.0%	-14.4%	-2.0%
Clinical Nurse/ Midwife Manager	952	+255	+230	+126	+126	+40	+7	+36.6%	+31.9%	+19.5%	+15.2%	+4.4%	+3.2%
Director of Midwifery 1, Assistant	1	+1	+1	+1	+1	+1	+1	-100.0%	-100.0%	-100.0%	-100.0%	-100.0%	-100.0%
Director of Nursing 1, Assistant	74	+35	+32	+16	+16	+12	+1	+91.8%	+76.4%	+44.0%	+28.2%	+19.9%	+10.5%
Director of Nursing 2, Assistant	21	-0	-4	-2	-2	-2	+5	-0.9%	-15.1%	+6.3%	-10.4%	-7.2%	-2.9%
Director of Nursing 3, Assistant	6	+2	+1	-1	-1			+37.5%	+22.2%	-15.4%	-15.4%		
Director of Nursing (Mental Health), Assistant	1	+1						-100.0%					
Director Nursing/Midwifery, Assistant	103	+39	+30	+14	+14	+12	+7	+60.6%	+41.9%	+30.3%	+15.6%	+12.8%	+7.8%
Director of Midwifery 1	1	+1						-100.0%					
Director of Nursing 1	9	+5	+5	+1	+1		+0	+122.5%	+122.5%	+20.3%	+12.2%		
Director of Nursing 2	1	-2	-4				+0	-66.7%	-79.6%	-50.0%			
Director of Nursing 2A	1												
Director of Nursing 3	2	+0						+1.5%					
Director of Nursing & Midwifery		-1	-1	-1	-1			-100.0%	-100.0%	-100.0%	-100.0%	-100.0%	-100.0%
Director of Nursing & Midwifery, Hospital Group	1	+1	+1					-100.0%	-100.0%				
Director of Nursing/Midwifery	15	+4	+1	-0	-0		+0	+35.8%	+7.2%	+3.5%	-0.2%		
Nurse/ Midwife Manager	1,070	+298	+180	+140			+14	+38.5%	+20.2%	+15.0%	+15.0%	+15.0%	+1.3%
Advanced Midwife Practitioner	6	+4	+3	+1	+1	+1		+195.5%	+97.0%	+18.2%	+18.2%	+18.2%	+0.5%
Advanced Midwife Practitioner, Candidate	1	+1	+1	+1	+1	+1	-0	-100.0%	-100.0%	-100.0%	-100.0%	-100.0%	+4.4%
Advanced Nurse Practitioner, Candidate (General)	28	+26	+7	+2	+2	-2	+5	+1288.0%	+32.5%	+7.6%	+7.6%	-6.0%	+13.7%
Advanced Nurse Practitioner (General)	60	+37	+29	+18	+18	+6	+1	+154.3%	+92.2%	+76.6%	+44.1%	+10.6%	-1.2%

Sep 2021 (Dec 2016 figure: 10,971)	WTE Sep 2021	WTE change since Dec 16	WTE change since Dec 17	WTE change since Dec 18	WTE change since Dec 19	WTE change since Dec 20	WTE change since Aug 21	% change since Dec 16	% change since Dec 17	% change since Dec 18	% change since Dec 19	% change since Dec 20	% change since Apr 21
Overall	13,297	+2,326	+1,915	+1,252	+1,252	+374	-22	+21.2%	+16.8%	+12.9%	+10.4%	+2.9%	+0.5%
Advanced Nurse/ Midwife Practitioner	95	+67	+40	+22	+22	+6	+6	+242.6%	+71.5%	+46.1%	+30.7%	+6.6%	+2.9%
Clinical Midwife Specialist	11	+6	+4	+0	+0	+2	-0	+144.6%	+47.6%	+14.8%	+2.1%	+16.9%	+13.3%
Clinical Nurse Specialist (General)	243	+27	+37	+19	+19	+4	-6	+12.7%	+17.9%	+10.3%	+8.7%	+1.8%	-4.2%
Clinical Nurse/ Midwife Specialist	254	+34	+41	+20	+20	+6	-6	+15.4%	+19.0%	+10.5%	+8.4%	+2.3%	-3.5%
Nurse/ Midwife Specialist & AN/MP	349	+101	+54	+42			-1	+40.8%	+18.3%	+13.7%	+13.7%	+13.7%	-0.2%
Staff Nurse (Nursing Bank)		-6	-7	-2	-2	-3		-100.0%	-100.0%	-100.0%	-100.0%	-100.0%	-100.0%
Nursing Bank		-6	-7	-2	-2	-3		-100.0%	-100.0%	-100.0%	-100.0%	-100.0%	-100.0%
Enhanced Nurse (Children's)	9	+9	+9	+9	+9	-0	-0	-100.0%	-100.0%	-100.0%	-100.0%	-1.1%	+15.7%
Enhanced Nurse (General)	800	+800	+800	+800	+800	+5	+10	-100.0%	-100.0%	-100.0%	-100.0%	+0.6%	+0.9%
Enhanced Nurse, Senior (Children's)	14	+14	+14	+14	+14	+2	-0	-100.0%	-100.0%	-100.0%	-100.0%	+13.2%	-2.1%
Enhanced Nurse, Senior (General)	802	+802	+802	+802	+802	+35	-5	-100.0%	-100.0%	-100.0%	-100.0%	+4.6%	-1.7%
Staff Nurse (Adaptation Placement), General				-23	-23			-100.0%	-100.0%	-100.0%	-100.0%	-100.0%	-100.0%
Staff Nurse (Children's)	3	-18	-14	-10	-10	-1	+0	-86.6%	-83.3%	-79.8%	-78.2%	-21.6%	+29.4%
Staff Nurse, Dual Qualified (General)		-9	-5	-3	-3			-100.0%	-100.0%	-100.0%	-100.0%	-100.0%	-100.0%
Staff Nurse - General	1,113	-950	-1,023	-898	-898	-118	-16	-46.1%	-47.9%	-46.1%	-44.6%	-9.6%	-4.2%
Staff Nurse, Senior (Children's)		-5	-7	-9	-9	-1		-100.0%	-100.0%	-100.0%	-100.0%	-100.0%	-100.0%
Staff Nurse, Senior (Dual Qualified)	7	-35	-27	-23	-23	-2	-1	-82.3%	-78.3%	-75.6%	-75.6%	-19.7%	-22.4%
Staff Nurse, Senior (General)	311	-305	-358	-544	-544	+91	-4	-49.5%	-53.6%	-57.6%	-63.7%	+41.3%	-8.0%
Staff Nurses [General/ Children's]	3,059	+304	+191	+116	+116	+11	-15	+11.0%	+6.6%	+7.1%	+3.9%	+0.4%	-2.7%
Enhanced Midwife	109	+109	+109	+109	+109	-21	-4	-100.0%	-100.0%	-100.0%	-100.0%	-16.2%	-16.1%
Enhanced Midwife, Senior	60	+60	+60	+60	+60	-3	-1	-100.0%	-100.0%	-100.0%	-100.0%	-5.2%	-9.9%
Staff Midwife	93	-162	-131	-132	-132	+11	-2	-63.5%	-58.6%	-62.3%	-58.7%	+12.9%	+0.2%
Staff Midwife, Senior	3	-49	-55	-60	-60	-3	-0	-93.4%	-94.1%	-93.2%	-94.6%	-47.3%	-18.1%
Staff Midwife, Senior (dual qualified)		-1	-1					-100.0%	-100.0%	-100.0%	-100.0%	-100.0%	-100.0%
Staff Midwives	265	-43	-18	-23	-23	-17	-7	-13.8%	-6.4%	-11.1%	-7.9%	-6.0%	-9.6%
Staff Nurse, Mental Health	2	-3	-3	-2	-2	-1	-1	-57.7%	-57.7%	-46.4%	-46.4%	-33.3%	-33.3%
Staff Nurse [Psychiatric]	2	-3	-3	-2	-2	-1	-1	-57.7%	-57.7%	-46.4%	-46.4%	-33.3%	-33.3%
Staff Nurse/ Staff Midwife	3,326	+252	+164	+89			-23	+8.2%	+5.2%	+2.7%	+2.7%	+2.7%	-0.7%
Student Children's & General Nursing Intern (pre-registration)				-7	-7			-100.0%	-100.0%	-100.0%	-100.0%	-100.0%	-100.0%
Student General Nursing Intern (pre-registration)	27	+13	+7	+9	+9	+17	-70	+92.0%	+38.0%	+18.0%	+51.6%	+160.5%	-69.8%
Student Midwifery Intern (pre-registration)	3	+3	+3	+3	+3	+3	-6	-100.0%	-100.0%	-100.0%	+500.0%	-100.0%	-66.7%
Pre-registration Nurse/ Midwife Intern	30	+16	+10	+5	+5	+20	-76	+113.4%	+53.4%	+31.2%	+18.4%	+189.5%	-69.5%
Student Children's & General Nursing Intern (COVID-19 HCA)						-15		-100.0%	-100.0%	-100.0%	-100.0%	-100.0%	-100.0%
Student General Nursing Intern (COVID-19 HCA)						-31		-100.0%	-100.0%	-100.0%	-100.0%	-100.0%	-100.0%

Sep 2021 (Dec 2016 figure: 10,971)	WTE Sep 2021	WTE change since Dec 16	WTE change since Dec 17	WTE change since Dec 18	WTE change since Dec 19	WTE change since Dec 20	WTE change since Aug 21	% change since Dec 16	% change since Dec 17	% change since Dec 18	% change since Dec 19	% change since Dec 20	% change since Apr 21
Overall	13,297	+2,326	+1,915	+1,252	+1,252	+374	-22	+21.2%	+16.8%	+12.9%	+10.4%	+2.9%	+0.5%
Student Midwifery Intern (COVID-19 HCA)						-1		-100.0%	-100.0%	-100.0%	-100.0%	-100.0%	-100.0%
Pre-registration Nurse Intern (COVID-19)						-47		-100.0%	-100.0%	-100.0%	-100.0%	-100.0%	-100.0%
Student Midwifery (post registration)	26	+3	+3	+5	+5	+9		+10.9%	+10.9%	+10.9%	+21.4%	+50.0%	-7.3%
Post-registration Nurse/ Midwife Student	26	+3	+3	+5	+5	+9		+10.9%	+10.9%	+10.9%	+21.4%	+50.0%	-7.3%
Staff Midwife (awaiting-registration)		-1						-100.0%	-100.0%	-100.0%	-100.0%	-100.0%	-100.0%
Staff Nurse, General (awaiting-registration)	25	+25	+20	+14	+14	-9	+17	-100.0%	+392.0%	+519.6%	+128.4%	-27.6%	+1130.0%
Nursing/ Midwifery awaiting registration	25	+24	+20	+14	+14	-9	+17	+4820.0%	+392.0%	+519.6%	+128.4%	-27.6%	+1130.0%
Nursing/ Midwifery Student	80	+42	+30	+23			-59	+113.3%	+60.8%	+40.3%	+40.3%	+40.3%	-42.4%
Clinical Nurse Instructor/Teacher	0	-2	-2	-2	-2			-100.0%	-100.0%	-100.0%	-100.0%	#DIV/0	#DIV/0
Director, Nursing/ Midwifery Education Centre	2					+1						+50.0%	
Nurse Tutor	7	+3	+3	+4	+4	+4		+86.4%	+86.4%	+96.5%	+102.5%	+142.3%	-11.6%
Nurse Tutor (Psychiatric)	1	-4	-4	-4	-4	-4		-79.7%	-80.0%	-80.0%	-80.0%	-81.3%	
Nursing/ Midwifery Clinical Placement Co-ordinator	18	-6	-7	-10	-10	-4	+1	-26.1%	-27.8%	-33.6%	-35.0%	-18.7%	-5.4%
Nursing/ Midwifery Practice Development Co-ordinator	3												
Specialist Co-ordinator, Nursing	22	+3	+3	+1	+1	-3	-1	+14.7%	+14.5%	+12.0%	+6.0%	-10.5%	+3.0%
Nursing Education/Clinical	53	-6	-6	-10	-10	-6	+0	-9.5%	-10.5%	-14.0%	-16.2%	-10.6%	-2.5%
Nursing Unclassified	19	+8	+8	+6	+6	+5	+2	+68.5%	+74.9%	+71.5%	+45.9%	+35.2%	+10.1%
Other Nursing/ Midwifery	19	+8	+8	+6	+6	+5	+2	+68.5%	+74.9%	+71.5%	+45.9%	+35.2%	+10.1%
Nursing/ Midwifery other	71	+2	-1	-4			+2	+2.9%	-1.2%	-5.7%	-5.7%	-5.7%	+3.3%
Nursing & Midwifery	4,896	+695	+427	+289			-67	+16.6%	+9.5%	+6.3%	+6.3%	+6.3%	-1.4%
Dietitian	25	+8	+5	+2	+2	-4	+1	+48.1%	+24.2%	+1.4%	+8.2%	-13.7%	-9.5%
Dietitian, Clinical Specialist	8	+3	+3	+3	+3	+1	-1	+72.1%	+65.2%	+92.1%	+72.1%	+19.7%	-14.7%
Dietitian Manager	7	+1	+1			-0	-0	+13.1%	+17.6%			-0.6%	-11.0%
Dietitian Manager-in-charge III	3	+1	+1	+1	+1			+40.0%	+40.0%	+40.0%	+40.0%		
Dietitian, Senior	52	+12	+19	+11	+11	+4	-2	+31.4%	+56.9%	+22.0%	+25.5%	+9.4%	+4.1%
Dietitians	95	+25	+29	+17	+17	+2	-2	+36.9%	+43.7%	+18.1%	+21.4%	+2.0%	-2.9%
Occupational Therapist	45	+11	+9	+13	+13	+8	+5	+34.2%	+24.0%	+32.3%	+42.1%	+21.3%	+8.0%
Occupational Therapist, Clinical Specialist	3	+2	+2	+2	+2			+275.0%	+275.0%	+215.8%	+215.8%		
Occupational Therapist-in-charge III	3	+1	+1	+1	+1	+1		+50.0%	+50.0%	+50.0%	+50.0%	+50.0%	
Occupational Therapist Manager	2	+1	+1	+1	+1	-0	-0	+172.5%	+172.5%	+276.0%	+276.0%	-2.1%	-2.1%
Occupational Therapist, Senior	50	+18	+19	+17	+17	+12	-1	+54.9%	+60.1%	+46.9%	+49.7%	+32.4%	+7.7%
Occupational Therapists	103	+34	+32	+34	+34	+21	+4	+48.5%	+45.0%	+43.9%	+50.2%	+25.8%	+7.1%
Orthoptist, Senior	3	-0	-0	+1	+1	+0	+0	-7.8%	-7.8%	+24.5%	+24.5%	+11.3%	+5.6%

Sep 2021 (Dec 2016 figure: 10,971)	WTE Sep 2021	WTE change since Dec 16	WTE change since Dec 17	WTE change since Dec 18	WTE change since Dec 19	WTE change since Dec 20	WTE change since Aug 21	% change since Dec 16	% change since Dec 17	% change since Dec 18	% change since Dec 19	% change since Dec 20	% change since Apr 21
Overall	13,297	+2,326	+1,915	+1,252	+1,252	+374	-22	+21.2%	+16.8%	+12.9%	+10.4%	+2.9%	+0.5%
Orthoptists	3	-0	-0	+1	+1	+0	+0	-7.8%	-7.8%	+24.5%	+24.5%	+11.3%	+5.6%
Physiotherapist	74	+1	+1	-21	-21	-29	+0	+1.8%	+1.1%	-17.9%	-22.3%	-28.4%	-2.2%
Physiotherapist, Clinical Specialist	29	+16	+15	+10	+10	+2	-1	+119.7%	+110.6%	+93.4%	+51.0%	+9.0%	-0.5%
Physiotherapist-in-charge (Grade III)	6	+0	+2	+1	+1	-1	-0	+5.7%	+46.4%	+42.8%	+14.2%	-16.2%	-16.2%
Physiotherapist Manager	10	+3	+3	+3	+3	+4	+0	+37.1%	+43.5%	+26.2%	+37.5%	+57.6%	+39.3%
Physiotherapist, Senior	102	+14	+5	+1	+1	+2	-1	+15.8%	+5.5%	+1.8%	+0.9%	+2.0%	-9.6%
Physiotherapy, Practice Tutor	1	+0	+0	+0	+0	+1		+29.9%	+25.0%	+35.1%	+35.1%	-100.0%	
Physiotherapists	222	+34	+26	-7	-7	-21	-1	+18.3%	+13.5%	+1.7%	-3.0%	-8.8%	-4.6%
Speech & Language Therapist	13	+4	+1	+6	+6	-0	+2	+49.3%	+9.5%	+54.6%	+77.6%	-1.9%	+20.0%
Speech & Language Therapist, Clinical Specialist	7	+5	+6	+4	+4	+1	-0	+273.5%	+647.0%	+647.0%	+104.7%	+20.5%	+16.7%
Speech & Language Therapist Manager	3	+0	-0	-0	-0	-0	+0	+4.0%	-1.6%	-5.7%	-1.9%	-0.6%	+43.1%
Speech & Language Therapist, Senior	22	+4	+2	+2	+2	-2	-2	+25.0%	+8.0%	+10.2%	+8.8%	-6.8%	-12.5%
Speech & Language Therapists	46	+14	+9	+11	+11	-1	+1	+45.6%	+25.1%	+39.5%	+32.7%	-1.4%	+2.3%
Chiropodist, Clinical Specialist	3	+2	+2	+2	+2	+2	+2	+160.0%	+160.0%	+160.0%	+160.0%	+160.0%	+160.0%
Chiropodist/ Podiatrist	3	+1	+2	-0	-0	+0		+43.5%	+100.0%	+100.0%	-11.0%	+2.4%	+48.5%
Chiropodist/ Podiatrist, Senior	6	+1	+0	-0	-0	-1	-2	+32.9%	+7.2%	-2.3%	-2.3%	-19.7%	-22.7%
Podiatrists & Chiropodists	11	+4	+3	+1	+1	+0	-0	+53.4%	+45.2%	+36.4%	+11.0%	+2.9%	+9.3%
Therapy Professions	479	+111	+66	+57			+2	+30.3%	+16.0%	+13.5%	+13.5%	+13.5%	+0.4%
Audiologist	1	-0	-0	-0	-0	-0		-1.6%	-1.6%	-1.6%	-1.6%	-1.6%	-44.6%
Audiologist, Chief	1		+0	+0	+0				+8.7%	+8.7%	+3.1%		
Audiologist, Senior	2	+1	+1	+1	+1	+1	+1	+50.0%	+92.1%	+64.7%	+64.7%	+64.7%	
Audiology	4	+1	+1	+1	+1	+1	+1	+19.1%	+33.4%	+26.2%	+24.4%	+23.4%	-18.4%
Biochemist	8	+1	-2	-3	-3	-4		+8.0%	-20.1%	-30.1%	-24.3%	-31.7%	+33.3%
Biochemist, Principal	8	+2				+1		+36.9%				+15.4%	+15.4%
Biochemist, Senior	11	+3	+1	+2	+2	-0		+39.8%	+9.7%	+7.5%	+19.5%	-2.3%	-15.7%
Biochemists	26	+6	-1	-1	-1	-3		+27.5%	-3.9%	-9.3%	-3.0%	-10.1%	+4.0%
Clinical Engineering Technician	4	+2	+2	+1	+1	-1	+1	+100.0%	+100.0%	+33.3%	+33.3%	-20.0%	-33.3%
Clinical Engineering Technician, Chief	4	+2	+1	-0	-0	-0	-0	+99.0%	+32.7%	-0.5%	-0.5%	-0.5%	-0.5%
Clinical Engineering Technician, Principal	3	-1				+1		-25.0%				+50.0%	
Clinical Engineering Technician, Senior	13	+5	+4	+2	+2	+2	-1	+62.5%	+44.4%	+44.4%	+18.2%	+18.2%	+18.2%
Clinical Engineering	24	+8	+7	+3	+3	+2	-0	+49.9%	+41.1%	+26.2%	+14.2%	+9.0%	-0.1%
Cardiac Physiologist	21	-2	+5	+3	+3	+4	+0	-7.9%	+26.9%	+6.8%	+14.9%	+20.0%	+35.0%
Cardiac Physiologist, Chief I	8	+2	+2	+2	+2	+3		+37.0%	+38.2%	+34.4%	+35.1%	+63.3%	+15.5%
Cardiac Physiologist, Chief II	4	+1	+1	+1	+1	+0		+46.4%	+51.5%	+57.0%	+50.2%	+3.6%	+2.6%

Sep 2021 (Dec 2016 figure: 10,971)	WTE Sep 2021	WTE change since Dec 16	WTE change since Dec 17	WTE change since Dec 18	WTE change since Dec 19	WTE change since Dec 20	WTE change since Aug 21	% change since Dec 16	% change since Dec 17	% change since Dec 18	% change since Dec 19	% change since Dec 20	% change since Apr 21
Overall	13,297	+2,326	+1,915	+1,252	+1,252	+374	-22	+21.2%	+16.8%	+12.9%	+10.4%	+2.9%	+0.5%
Cardiac Physiologist, Senior	33	+17	+12	+9	+9	+6	+1	+101.5%	+57.7%	+60.2%	+38.6%	+22.2%	+8.1%
E.C.G. Technician		-1	-1					-100.0%	-100.0%	-100.0%	-100.0%	-100.0%	-100.0%
Gastrointestinal (GI) Physiologist	1	+1						-100.0%					
Neuro-Physiologist	2	+1	+1	+2	+2	-2		+100.0%	+100.0%	+100.0%	-100.0%	-50.0%	-50.0%
Neuro-Physiologist, Chief I	1			+1	+1						-100.0%		
Neuro-Physiologist, Chief II	1	+1	+1	+1	+1	+1		-100.0%	-100.0%	-100.0%	-100.0%	-100.0%	
Neuro-Physiologist, Senior	3	-1	-2	-2	-2	-3		-28.5%	-42.8%	-42.8%	-42.8%	-52.3%	+1.4%
Respiratory Physiologist	8	+3	+2	+1	+1	+1	+0	+58.8%	+32.3%	+16.1%	+13.4%	+13.4%	+58.8%
Respiratory Physiologist, Chief I	1	+1	+1	+1	+1	+1		-100.0%	-100.0%	-100.0%	-100.0%	-100.0%	
Respiratory Physiologist, Chief II	2	-0	-0	+0	+0	-0	-0	-12.0%	-1.7%	+76.0%	+3.5%	-6.9%	-6.9%
Respiratory Physiologist, Senior	8	-0	+2	+0	+0	-2	+1	-0.7%	+30.6%	-10.2%	+3.9%	-18.2%	+34.1%
Vascular Physiologist	2	-2	-1					-50.0%	-33.3%	-33.3%			
Vascular Physiologist, Chief I	1												
Vascular Physiologist, Chief II	1												
Vascular Physiologist, Senior	4	+3	+3	+2	+2	+2		+300.0%	+300.0%	+300.0%	+100.0%	+100.0%	
Clinical Measurement	100	+23	+26	+21	+21	+11	+3	+29.9%	+34.4%	+26.4%	+27.1%	+11.8%	+13.7%
Perfusionist	6	+4	+3	+3	+3	+2		+200.0%	+100.0%	+200.0%	+100.0%	+63.0%	+31.3%
Perfusionist, in charge	1												
Perfusionists	7	+4	+3	+3	+3	+2		+133.3%	+75.0%	+133.3%	+75.0%	+49.6%	+25.7%
Phlebotomist	40	+10	+9	+7	+7	+4	-0	+35.7%	+27.9%	+25.0%	+23.0%	+11.4%	+5.4%
Phlebotomist, Senior	5	+0	+0	+0	+0	-1		+7.7%	+1.5%	-5.5%	+0.2%	-18.0%	-16.5%
Phlebotomists	44	+11	+9	+7	+7	+3	-0	+32.0%	+24.5%	+20.9%	+20.1%	+7.4%	+2.6%
Physicist	8	+4	+4	+2	+2	+2		+110.5%	+110.5%	+40.3%	+40.3%	+40.3%	+15.2%
Physicist, Chief	2	-0	-0	-0	-0	+1		-10.0%	-10.0%	-10.0%	-10.0%	+80.0%	+125.0%
Physicist, Principal	5	+3	+1	+1	+1	+1	+0	+204.0%	+34.1%	+34.1%	+33.3%	+26.7%	-3.0%
Physicist, Senior	4	+0	+1				-1	+2.6%	+33.3%				-20.2%
Physicists	19	+7	+6	+3	+3	+4	-0	+64.7%	+51.5%	+21.9%	+21.8%	+28.6%	+5.4%
Radiographer	129	+20	+17	+21	+21	+13	+7	+18.7%	+15.1%	+23.2%	+18.9%	+11.2%	+22.6%
Radiographer, Clinical Specialist	50	+10	+9	+3	+3	+3	+3	+24.0%	+20.9%	+8.2%	+7.5%	+5.5%	+3.7%
Radiographer, Senior	91	+25	+28	+20	+20	+8	+1	+38.6%	+43.3%	+24.9%	+27.4%	+9.9%	-1.0%
Radiography Service Manager, I	11	+3	+2	+1	+1	+1	-0	+33.8%	+19.7%	+10.4%	+9.3%	+7.1%	+8.2%
Radiography Service Manager, II	5	-0	-0	-0	-0	-0	+1	-3.8%	-3.8%	+0.2%	-3.8%	-3.8%	+24.6%
Radiographers	287	+58	+55	+44	+44	+24	+11	+25.4%	+23.7%	+19.8%	+18.3%	+9.3%	+10.2%
Laboratory Manager	4			-1	-1	-1				-20.0%	-20.0%	-20.0%	
Medical Scientist	169	-13	-2	+10	+10	+2	+5	-7.0%	-0.9%	-2.9%	+6.3%	+1.4%	-0.2%

Sep 2021 (Dec 2016 figure: 10,971)	WTE Sep 2021	WTE change since Dec 16	WTE change since Dec 17	WTE change since Dec 18	WTE change since Dec 19	WTE change since Dec 20	WTE change since Aug 21	% change since Dec 16	% change since Dec 17	% change since Dec 18	% change since Dec 19	% change since Dec 20	% change since Apr 21
Overall	13,297	+2,326	+1,915	+1,252	+1,252	+374	-22	+21.2%	+16.8%	+12.9%	+10.4%	+2.9%	+0.5%
Medical Scientist, Chief	39	+9	+5	+3	+3	+0	+1	+28.7%	+15.3%	+12.4%	+9.5%	+0.8%	+6.5%
Medical Scientist, Senior	115	+30	+27	+19	+19	+13	-4	+34.8%	+30.6%	+26.8%	+19.8%	+12.3%	+2.3%
Medical Scientist, Specialist	13	+5	+4	+4	+4	+2	+0	+53.4%	+39.8%	+62.9%	+47.4%	+22.2%	+13.8%
Medical Scientist, Undergraduate	3	+3	+3	+3	+3	+3		-100.0%	-100.0%	-100.0%	-100.0%	-100.0%	-100.0%
Medical Science	344	+33	+37	+39	+39	+20	+2	+10.7%	+12.2%	+9.8%	+12.7%	+6.1%	+2.7%
Health Science/ Diagnostics	855	+151	+117	+121			+16	+21.4%	+15.9%	+16.5%	+16.5%	+16.5%	+1.9%
Social Worker	9	+9	+9	+9	+9	+9	+3	-100.0%	-100.0%	-100.0%	-100.0%	-100.0%	+28.6%
Social Worker, Medical	18	-11	-13	-15	-15	-13	-3	-36.8%	-41.4%	-38.8%	-45.4%	-41.0%	-11.9%
Social Worker, Principal	5	+1	+0	-1	-1	-2	+1	+28.6%	+2.3%	+4.0%	-14.0%	-25.0%	-24.4%
Social Worker, Senior Medical	37	+15	+17	+10	+10	+8	-3	+70.9%	+84.6%	+97.2%	+36.8%	+27.3%	-3.4%
Social Work Practitioner, Senior	5	+1	+2	+1	+1	-2	+1	+25.0%	+66.7%	+25.0%	+31.6%	-30.7%	+66.7%
Social Workers	74	+16	+15	+4	+4	+0	-2	+26.8%	+25.3%	+29.0%	+5.7%	+0.3%	-1.9%
Social Workers	74	+16	+17	+4			-2	+26.8%	+29.0%	+5.7%	+5.7%	+5.7%	-2.1%
Psychologist, Clinical	3	+1	+1	+1	+1	+2	+0	+23.4%	+23.4%	+38.0%	+50.9%	+172.6%	+4.3%
Psychologist, Counselling	2	+2	+2	+1	+1	+1	+1	+474.4%	+474.4%	+474.4%	+41.1%	+34.2%	+34.2%
Psychologist, Educational		-1	-1	-1	-1	-1	-1	-100.0%	-100.0%	-100.0%	-100.0%	-100.0%	-100.0%
Psychologist, Principal Clinical	3	+2	+2	+1	+1	+1		+225.0%	+225.0%	+225.0%	+38.3%	+38.3%	+38.3%
Psychologist, Senior Clinical	15	+7	+6	+1	+1	-0	+1	+94.8%	+74.6%	+46.1%	+4.3%	-2.2%	-11.9%
Psychologist, Trainee Clinical	1	+1	+1					-100.0%	-100.0%	-100.0%			
Psychologists	25	+13	+12	+3	+3	+3	+1	+103.0%	+89.5%	+71.8%	+13.1%	+13.0%	-3.2%
Psychologists	25	+13	+10	+3			+1	+103.0%	+71.8%	+13.1%	+13.1%	+13.1%	+6.1%
Pharmaceutical Technician	48	+18	+13	+2	+2	+2	-3	+62.1%	+36.5%	+37.3%	+5.5%	+3.7%	-2.5%
Pharmaceutical Technician, Senior	30	+8	+9	+8	+8	+7	+3	+38.2%	+41.9%	+38.6%	+36.7%	+28.4%	+15.7%
Pharmacist	39	+11	+7	+4	+4	-0	-2	+38.8%	+23.0%	+6.8%	+11.4%	-0.8%	-0.4%
Pharmacist, Chief I	5	+3	+2	+2	+2	+2		+139.5%	+59.7%	+59.7%	+59.7%	+59.7%	+59.7%
Pharmacist, Chief II	21	-4	-1	-3	-3	-1	+0	-17.0%	-4.2%	-6.8%	-10.9%	-4.0%	-2.4%
Pharmacist, Senior	66	+21	+21	+7	+7	+8	-1	+48.4%	+46.0%	+20.6%	+12.1%	+12.9%	+8.9%
Pharmacy	209	+57	+51	+21	+21	+17	-2	+37.9%	+32.0%	+20.4%	+11.1%	+8.6%	+4.7%
Pharmacy	209	+57	+35	+21			-2	+37.9%	+20.4%	+11.1%	+11.1%	+11.1%	-1.1%
Counsellor Therapist (Adult Services)	1	-1	-1	-0	-0	-0		-61.8%	-61.8%	-61.8%	-38.1%	-38.1%	-38.1%
Counsellor / Therapist (National Services)	0												
Director of Counselling (National Services)	1												
Counsellor Therapists	2	-1	-1	-0	-0	-0		-33.2%	-33.2%	-33.2%	-15.9%	-15.9%	-15.9%
Medical Scientist, Student	1	-5	-4	-5	-5	-4	-0	-83.3%	-80.5%	-80.7%	-83.9%	-80.0%	-85.7%

Sep 2021 (Dec 2016 figure: 10,971)	WTE Sep 2021	WTE change since Dec 16	WTE change since Dec 17	WTE change since Dec 18	WTE change since Dec 19	WTE change since Dec 20	WTE change since Aug 21	% change since Dec 16	% change since Dec 17	% change since Dec 18	% change since Dec 19	% change since Dec 20	% change since Apr 21
Overall	13,297	+2,326	+1,915	+1,252	+1,252	+374	-22	+21.2%	+16.8%	+12.9%	+10.4%	+2.9%	+0.5%
Perfusionist, Student		-1	-1	-1	-1			-100.0%	-100.0%	-100.0%	-100.0%	-100.0%	-100.0%
Pharmacist, Student		-1	-1					-100.0%	-100.0%	-100.0%	-100.0%	-100.0%	-100.0%
Phlebotomist, Trainee	1	+1	+1	+1	+1	-0	-1	-100.0%	-100.0%	+419.2%	+136.8%	-1.5%	-69.6%
Respiratory Technician, Student			-1					-100.0%	-100.0%	-100.0%	-100.0%	-100.0%	-100.0%
HSCP Trainees/ Students	2	-6	-6	-5	-5	-4	-1	-70.6%	-71.1%	-75.1%	-69.8%	-63.1%	-80.8%
Clinical Photographer	4	-1	-0	-0	-0	-1		-20.0%	-6.5%	+2.8%	-8.5%	-20.0%	-20.0%
Clinical Photographer, Senior	3	+1	+1	+1	+1	+1	+1	+50.0%	+50.0%	+50.0%	+50.0%	+50.0%	+50.0%
Health & Social Care Professionals Unclassified	7	-0	-4	-2	-2	-1	-2	-5.4%	-35.4%	-36.0%	-21.9%	-18.1%	-29.4%
Optometrist, Clinical	2	+1	+1	+1	+1	-1	-1	+140.0%	+140.0%	+140.0%	+140.0%	-29.8%	-29.4%
Social Worker (Non-professionally qualified)	1	+1	+1	+1	+1	+1	+1	-100.0%	-100.0%	-100.0%	-100.0%	-100.0%	-100.0%
Other Health & Social Care	17	+2	-1	+1	+1	-2	-1	+13.4%	-3.2%	-1.6%	+7.2%	-8.1%	-14.1%
Vaccinator - COVID 19 Vaccination Programme	17	+17	+17	+17	+17	+17	-5	-100.0%	-100.0%	-100.0%	-100.0%	-100.0%	-100.0%
Vaccinators	17	+17	+17	+17	+17	+17	-5	-100.0%	-100.0%	-100.0%	-100.0%	-100.0%	-100.0%
H&SC, Other	38	+12	+9	+12			-6	+47.2%	+28.7%	+46.9%	+46.9%	+46.9%	-13.3%
Health & Social Care Professionals	1,680	+360	+254	+218			+9	+27.3%	+17.8%	+14.9%	+14.9%	+14.9%	+0.6%
CEO (Band H2 Hospital)	1			+1	+1						-100.0%		
CEO (Band H3 Hospital)	1			-1	-1	-1					-37.5%	-37.5%	
Chief Executive, Hospital Group	1	+1	+1	+1	+1	+1	+1	-100.0%	-100.0%	-100.0%	-100.0%	-100.0%	+35.1%
Chief Executive Officer	3												
Chief Finance Officer (HSE)						-1		-100.0%	-100.0%	-100.0%	-100.0%	-100.0%	-100.0%
Director of Finance	2	+1	+1	+1	+1	+1		+100.0%	+100.0%	+100.0%	+100.0%	+100.0%	-33.3%
Director of HR	2	+1	+1	+1	+1	+1		+100.0%	+100.0%	+100.0%	+100.0%	+100.0%	
Director of ICT	1	+1	+1	+1	+1	+1		-100.0%	-100.0%	-100.0%	-100.0%	-100.0%	
Director of Information Systems	1												
Head of Function /Service, Acute Services	1	+1	+1	-0	-0	-1	-0	-100.0%	-100.0%	-100.0%	-1.0%	-50.3%	-34.0%
Head of Function /Service, Community Services	4	+4	+4	+3	+3	+2	-0	-100.0%	-100.0%	-100.0%	+294.0%	+97.0%	+110.7%
Hospital Group, Chief Finance Officer	1	+1	+1	+1	+1	+1		-100.0%	-100.0%	-100.0%	-100.0%	-100.0%	
National Director, Assistant (Services)	6	+6	+6	+1	+1	+1	-1	-100.0%	-100.0%	+55.6%	+21.7%	+21.7%	+21.7%
National Director, Assistant (Support)	1	-1	-1				-2	-50.0%	-50.0%	-50.0%		-66.7%	-33.3%
Executive Management	25	+15	+15	+9	+9	+3	-0	+145.3%	+145.3%	+80.4%	+61.4%	+15.8%	+5.7%
Chief Executive Officer, Deputy	3	+3	+1	+2	+2	+2		-100.0%	+50.0%	+200.0%	+200.0%	+200.0%	+50.0%
Functional Officer	6	+2	+2	+2	+2	+2		+50.0%	+50.0%	+50.0%	+50.0%	+50.0%	
General Manager	10	+0	+1	+2	+2	+6	-0	+3.5%	+13.8%	+28.4%	+32.6%	+134.0%	+32.1%
Grade VIII	74	+33	+27	+25	+25	+7	+5	+78.6%	+57.7%	+50.8%	+49.6%	+9.9%	+3.8%
Service Manager	1	-6	-4	-5	-5	-2		-85.7%	-80.0%	-83.3%	-83.3%	-66.7%	

Sep 2021 (Dec 2016 figure: 10,971)	WTE Sep 2021	WTE change since Dec 16	WTE change since Dec 17	WTE change since Dec 18	WTE change since Dec 19	WTE change since Dec 20	WTE change since Aug 21	% change since Dec 16	% change since Dec 17	% change since Dec 18	% change since Dec 19	% change since Dec 20	% change since Apr 21
Overall	13,297	+2,326	+1,915	+1,252	+1,252	+374	-22	+21.2%	+16.8%	+12.9%	+10.4%	+2.9%	+0.5%
Senior Management (VIII & GM)	94	+32	+27	+26	+26	+14	+5	+51.4%	+40.9%	+38.5%	+38.2%	+18.1%	+7.0%
Management (VIII & above)	119	+46	+37	+35			+5	+64.4%	+45.5%	+42.5%	+42.5%	+42.5%	+4.1%
Accountant	5					+1						+25.0%	+25.0%
Grade V	348	+132	+106	+95	+95	+33	+15	+60.8%	+43.9%	+39.7%	+37.7%	+10.4%	+5.7%
Grade VI	152	+48	+44	+24	+24	+1	-1	+45.6%	+40.8%	+27.2%	+18.3%	+0.7%	+0.4%
Grade VII	112	+27	+13	+2	+2	+4	+1	+31.4%	+13.0%	+1.5%	+1.4%	+3.3%	-3.3%
Supplies Officer Grade A	1	-3	-2	-1	-1			-75.0%	-66.7%	-66.1%	-50.0%		
Supplies Officer Grade B	14	+3	+3	+2	+2	-0	+0	+21.7%	+21.7%	+3.7%	+12.0%	-3.4%	-4.5%
Middle Management (V-VII)	632	+205	+164	+121	+121	+38	+15	+48.1%	+34.9%	+26.3%	+23.7%	+6.4%	+2.6%
Librarian	1	-1	-1	-1	-1	-1		-42.5%	-42.5%	-42.5%	-42.5%	-59.7%	
Librarian, Assistant	2	+1	+1	+1	+1	+2		+74.0%	+74.0%	+74.0%	+74.0%	-100.0%	
Project Manager		-1	-1	-1	-1	-1		-100.0%	-100.0%	-100.0%	-100.0%	-100.0%	-100.0%
Technical Services Manager	1												
Other Administrative	4	-1	-1	-1	-1	-1		-21.1%	-21.1%	-21.1%	-21.1%	-16.5%	
Administrative/ Supervisory (V to VII)	636	+204	+131	+120			+15	+47.4%	+25.8%	+23.2%	+23.2%	+23.2%	+2.4%
Clerical Officer	487	+37	+38	+14	+14	+23	+5	+8.2%	+8.4%	+1.1%	+3.0%	+5.0%	+2.9%
Grade IV	724	+117	+80	+61	+61	+54	-2	+19.3%	+12.5%	+11.3%	+9.1%	+8.0%	+2.0%
Supplies Officer Grade C	37	+5	+9	+0	+0	-2	-0	+16.9%	+32.0%	+16.2%	+1.0%	-4.0%	-7.3%
Supplies Officer Grade D	17	+2	+1	+1	+1	+1	-0	+15.8%	+5.4%	-5.0%	+6.0%	+6.0%	-0.1%
Telephonist	20	-3	-2	+2	+2	-6	+0	-12.2%	-9.9%	+4.8%	+9.2%	-24.2%	+1.9%
Telephonist, Night	5	+1	-0	+1	+1	-0		+20.8%	-1.0%	+10.3%	+29.5%	-0.4%	
Telephonist, Supervisor	2					-1						-30.8%	
General Administrative (III & IV)	1,293	+160	+126	+79	+79	+69	+3	+14.1%	+10.8%	+7.0%	+6.5%	+5.6%	+2.0%
Clerical (III & IV)	1,293	+160	+84	+79			+3	+14.1%	+7.0%	+6.5%	+6.5%	+6.5%	+0.2%
Management & Administrative	2,047	+411	+252	+234			+23	+25.1%	+14.0%	+12.9%	+12.9%	+12.9%	+1.1%
Catering	103	+6	+9	+1	+1	-6	-2	+6.6%	+9.6%	+4.8%	+1.0%	-5.7%	-5.3%
Household Services	687	+81	+44	+26	+26	+8	-8	+13.3%	+6.8%	+2.6%	+3.9%	+1.2%	+0.1%
Other Labs & Associated	99	+39	+35	+27	+27	+17	+0	+65.8%	+53.4%	+47.8%	+37.0%	+20.3%	+11.0%
Other Support	168	+21	+10	+10	+10	-4	+1	+14.2%	+6.0%	+7.1%	+6.4%	-2.5%	-0.5%
Portering	276	-37	-51	-53	-53	+7	+3	-11.7%	-15.5%	-15.6%	-16.0%	+2.5%	+3.2%
Support	1,334	+111	+15	+11			-5	+9.1%	+1.1%	+0.8%	+0.8%	+0.8%	-0.4%
Boilerman	1	-0	-0	-0	-0	-0	-0	-33.0%	-33.0%	-33.0%	-33.0%	-33.0%	-33.0%

Sep 2021 (Dec 2016 figure: 10,971)	WTE Sep 2021	WTE change since Dec 16	WTE change since Dec 17	WTE change since Dec 18	WTE change since Dec 19	WTE change since Dec 20	WTE change since Aug 21	% change since Dec 16	% change since Dec 17	% change since Dec 18	% change since Dec 19	% change since Dec 20	% change since Apr 21
Overall	13,297	+2,326	+1,915	+1,252	+1,252	+374	-22	+21.2%	+16.8%	+12.9%	+10.4%	+2.9%	+0.5%
Chargehand	3	+2	+2					+200.0%	+200.0%				
Electrician	16	-2	-2	-1	-1	-1	-1	-11.5%	-11.5%	+6.4%	-6.2%	-6.1%	-16.0%
Gardener/ Groundsman	1	-2	-2	-1	-1			-66.7%	-66.7%	-66.7%	-50.0%		
Gardener/ Groundsman, Head	1	+1	+1	+1	+1			-100.0%	-100.0%	-100.0%	-100.0%		
General Operative	11	+0	-0	-1	-1	-1	-0	+3.1%	-1.5%	-1.5%	-8.6%	-9.2%	-5.9%
Labourer	2	-0	-0	-0	-0			-4.5%	-4.5%	-4.5%	-4.5%		-1.5%
Maintenance Craftsman/Technician	22	+1	+0	-2	-2	-3	-3	+4.8%	+0.1%	-4.3%	-8.3%	-11.9%	-12.0%
Maintenance Foreman	12	+3	+1	+3	+3	+0		+33.3%	+9.5%	+21.2%	+27.8%	+0.4%	+0.4%
Maintenance Foreman, Assistant	2	+1	+1					+100.0%	+100.0%				
Maintenance Helper	6												
Maintenance Manager	1	-1	-1	-1	-1	-1	-0	-50.0%	-41.9%	-50.0%	-50.0%	-49.0%	-50.0%
Maintenance Officer	4	+1	+2	+2	+2	-0	-0	+32.7%	+99.0%	+165.3%	+99.0%	-0.5%	-0.5%
Painter	7	-1				+1		-12.5%				+16.7%	+9.7%
Plasterer		-1	-1					-100.0%	-100.0%	-100.0%	-100.0%	-100.0%	-100.0%
Plumber	15	-0	+3	+4	+4	+0	-2	-1.3%	+21.0%	+64.4%	+34.5%	+0.7%	-12.9%
Maintenance	103	+2	+3	+3	+3	-5	-7	+1.6%	+3.3%	+7.0%	+2.9%	-4.9%	-8.5%
Draughtsman/Technician I		-2	-2	-2	-2			-100.0%	-100.0%	-100.0%	-100.0%	-100.0%	-100.0%
Draughtsman/Technician II		-1	-1					-100.0%	-100.0%	-100.0%	-100.0%	-100.0%	-100.0%
Engineer/ Engineering Officer	2					+1						+100.0%	
Fire Prevention Officer	2												
Technical Services Officer	1	+1	+1					+400.0%	+400.0%	+400.0%			
Technical Services Officer, Assistant		-1	-1					-100.0%	-100.0%	-100.0%	-100.0%	-100.0%	-100.0%
Technical Services Officer, Chief Asst.	5	+3	+2	+2	+2			+150.0%	+66.7%	+400.0%	+66.7%		-16.7%
Technical Services Officer, Senior Asst.	2	+2	+2	+0	+0	+1		-100.0%	-100.0%	-20.0%	+1.0%	+100.0%	+100.0%
Technical Services	12	+2	+1	+0	+0	+2		+17.6%	+7.1%	+12.1%	+0.2%	+20.0%	
Maintenance/ Technical	115	+3	+8	+3			-7	+3.1%	+7.5%	+2.6%	+2.6%	+2.6%	-5.6%
General Support	1,449	+114	+23	+14			-12	+8.6%	+1.6%	+1.0%	+1.0%	+1.0%	-0.8%
HCA, Nurse's Aide, etc.	1,155	+302	+296	+234	+234	+66	-2	+35.3%	+34.4%	+26.9%	+25.3%	+6.1%	+4.2%
Occupational Therapy Assistant	7	+2	+2	+3	+3	-1	-0	+43.0%	+41.0%	+84.6%	+63.2%	-9.8%	+28.4%
Physiotherapy Assistant	9	+5	+5	+5	+5	+2	+0	+115.6%	+122.3%	+92.2%	+124.9%	+22.3%	+1.2%
Radiography Aide	19	+6	+5	+1	+1	-3	-1	+45.2%	+31.1%	+2.9%	+3.2%	-13.3%	-3.9%
Health & Social Care Assistants	36	+13	+12	+9	+9	-2	-1	+58.3%	+49.3%	+30.3%	+31.6%	-5.3%	+2.6%
Health Care Assistant (Student Nurse/Midwife COVID-19)						-4		-100.0%	-100.0%	-100.0%	-100.0%	-100.0%	-100.0%
HCA (Student Nurse/Midwife COVID-19)						-4		-100.0%	-100.0%	-100.0%	-100.0%	-100.0%	-100.0%

Sep 2021 (Dec 2016 figure: 10,971)	WTE Sep 2021	WTE change since Dec 16	WTE change since Dec 17	WTE change since Dec 18	WTE change since Dec 19	WTE change since Dec 20	WTE change since Aug 21	% change since Dec 16	% change since Dec 17	% change since Dec 18	% change since Dec 19	% change since Dec 20	% change since Apr 21
Overall	13,297	+2,326	+1,915	+1,252	+1,252	+374	-22	+21.2%	+16.8%	+12.9%	+10.4%	+2.9%	+0.5%
Community Swabber (COVID-19)						-11		-100.0%	-100.0%	-100.0%	-100.0%	-100.0%	-100.0%
Swabber (COVID-19)						-11		-100.0%	-100.0%	-100.0%	-100.0%	-100.0%	-100.0%
Health Care Assistants	1,191	+315	+253	+242			-3	+35.9%	+27.0%	+25.5%	+25.5%	+25.5%	-0.3%
Cardiac Aide	1	-0	-0	+0	+0	+1		-18.8%	-11.2%	+106.5%	+3.3%	-100.0%	-100.0%
Chaplain	18	-3	-2	-3	-3	-4	-1	-16.3%	-11.0%	-13.5%	-15.0%	-19.1%	-14.5%
Driver (Patients/Clients Public Roads)	1	-1						-50.0%					
Education Officer		-1	-1	-1	-1			-100.0%	-100.0%	-100.0%	-100.0%	-100.0%	-100.0%
Endoscopy Operative (Band 1)								-100.0%	-100.0%	-100.0%	-100.0%	-100.0%	-100.0%
Endoscopy Operative (Band 2)	2	+2	+2	+2	+2	+0	+0	-100.0%	-100.0%	-100.0%	-100.0%	+18.3%	+100.0%
Head of Bed Management (Category A)	1												
Health Promotion Officer	3	+2	+2	+3	+3	+1		+200.0%	+200.0%	+200.0%	-100.0%	+64.8%	+1.7%
Health Promotion Officer, Senior	1	+1	+1	+1	+1	+1		-100.0%	-100.0%	-100.0%	-100.0%	-100.0%	
Other Patient & Client Care Unclassified		-2						-100.0%	-100.0%	-100.0%	-100.0%	-100.0%	-100.0%
Pastoral Care Worker	1												
Other Care Grades	27	-3	+1	+1	+1	-1	-1	-10.5%	+4.5%	+4.6%	+5.3%	-4.4%	-6.9%
Care, other	27	-3	+1	+1			-1	-10.5%	+4.6%	+5.3%	+5.3%	+5.3%	-4.2%
Patient & Client Care	1,218	+311	+255	+243			-4	+34.3%	+26.4%	+25.0%	+25.0%	+25.0%	-0.4%

Source: Health Service Personnel Census

Longitudinal Employment Levels by Staff Group - Dec 2016 to Sep 2021

Sep 2021 (Dec 2016 figure: 10,971)	WTE Sep 2021	WTE change since Dec 16	WTE change since Dec 17	WTE change since Dec 18	WTE change since Dec 19	WTE change since Dec 20	WTE change since Apr 21	% change since Dec 16	% change since Dec 17	% change since Dec 18	% change since Dec 19	% change since Dec 20	% change since Apr 21
Overall	13,297	+2,326	+1,915	+1,524	+1,252	+374	+70	+21.2%	+16.8%	+12.9%	+10.4%	+2.9%	+0.5%
Consultants	35	+7	+3	+1	+1	-2	+0	+23.1%	+9.7%	+2.2%	+4.0%	-6.4%	+0.0%
Registrars	49	+1	+1	-1	-3	-1	-5	+2.5%	+2.5%	-1.6%	-6.3%	-2.1%	-9.8%
SHO/ Interns	76	+29	+21	+21	+15	+17	+12	+60.8%	+36.9%	+37.4%	+25.2%	+28.0%	+18.1%
Medical/ Dental, other	6	+4	+3	+2	+1		+0	+181.0%	+93.5%	+47.5%	+19.2%		+7.6%
Nurse/ Midwife Manager	87	+33	+27	+4	+2	+4	+2	+60.8%	+44.7%	+4.3%	+2.0%	+4.6%	+2.1%
Nurse/ Midwife Specialist & AN/MP	24	+9	+3	+4	+5	-0	-3	+56.1%	+14.4%	+19.6%	+23.4%	-1.4%	-11.6%
Staff Nurse/ Staff Midwife	303	+23	+25	+10	+13	+3	+5	+8.2%	+8.9%	+3.3%	+4.5%	+0.9%	+1.6%
Nursing/ Midwifery Student	8	+8	+8	+8	+7	+5	+3	-100.0%	-100.0%	-100.0%	+660.0%	+169.5%	+52.0%
Therapy Professions	27	+10	+8	+4	+2	-2	-2	+56.2%	+43.6%	+17.0%	+6.4%	-7.1%	-6.2%
Health Science/ Diagnostics	38	+9	+8	+3	+1	+2	+2	+32.7%	+27.0%	+7.3%	+2.9%	+4.2%	+4.6%
Social Workers	2	+2	+2	+2	+1	+1	+1	-100.0%	-100.0%	-100.0%	+80.0%	+80.0%	+80.0%
Pharmacy	14	+7	+6	+5	+3	+2	+1	+93.8%	+75.9%	+56.8%	+31.2%	+11.8%	+4.4%
Management (VIII & above)	3	+1		+0	+1	-1	-1	+50.0%		+3.1%	+50.0%	-25.0%	-14.3%
Administrative/ Supervisory (V to VII)	30	+18	+15	+15	+16	+8	+3	+150.0%	+100.1%	+97.3%	+106.5%	+37.2%	+13.0%
Clerical (III & IV)	108	-8	-8	-9	-8	-8	-6	-6.6%	-6.6%	-7.4%	-6.7%	-6.7%	-5.4%
Support	179	-12	-22	-28	-27	+5	+7	-6.2%	-10.8%	-13.4%	-13.2%	+3.1%	+4.2%
Maintenance/ Technical	6	+1	+2	+2	+1	+1	-0	+21.1%	+33.6%	+36.4%	+10.7%	+17.3%	-4.9%
Health Care Assistants	90	+32	+40	+39	+34	+0	+0	+55.0%	+80.0%	+75.4%	+61.1%	+0.5%	+0.3%
Care, other	3	-0	-0	+0	+0	+1	+1	-6.9%	-3.9%	+19.9%	+1.0%	+47.5%	+47.5%
Wexford General	1,088	+173	+141	+81	+64	+33	+19	+18.9%	+14.9%	+8.0%	+6.2%	+3.1%	+1.8%
Consultants	42	+9	+9	+6	+3	+2	-2	+25.8%	+26.1%	+17.4%	+8.3%	+3.9%	-4.1%
Registrars	58	+10	+8	+8	+1	-7	-11	+20.7%	+16.9%	+16.0%	+2.5%	-10.1%	-16.5%
SHO/ Interns	62	+8	+4	+4	+3	+8	+5	+15.2%	+7.6%	+6.1%	+5.7%	+14.9%	+9.0%
Medical/ Dental, other	9	+7	+2	-0	+2	+2	+1	+322.9%	+25.1%	-3.6%	+30.0%	+29.8%	+12.7%
Nurse/ Midwife Manager	84	+32	+20	+8	-0	-0	-4	+61.5%	+32.2%	+9.8%	-0.6%	-0.4%	-4.6%
Nurse/ Midwife Specialist & AN/MP	28	+12	+10	+8	+7	+3	-3	+82.5%	+55.3%	+41.9%	+34.9%	+12.7%	-10.1%
Staff Nurse/ Staff Midwife	301	-22	-7	-22	-3	-17	-6	-6.8%	-2.2%	-6.7%	-0.9%	-5.3%	-1.8%
Nursing/ Midwifery Student	5	+5	+2	+4	+5	+4	-0	-100.0%	+65.3%	+892.0%	-100.0%	+396.0%	-0.8%
Nursing/ Midwifery other	1	+1	-0	-0	-0	-0	-0	-100.0%	-17.0%	-17.0%	-11.7%	-7.8%	-12.6%
Therapy Professions	40	+10	+10	+9	+5	-3	-2	+32.1%	+31.6%	+30.3%	+14.8%	-7.9%	-5.8%
Health Science/ Diagnostics	52	+10	+7	+6	+3	+1	+4	+23.7%	+16.8%	+13.7%	+6.5%	+1.4%	+7.6%
Social Workers	1	+1	+1	+1	+1	+1	+1	-100.0%	-100.0%	-100.0%	-100.0%	-100.0%	-100.0%
Pharmacy	22	+8	+7	+7	+4	+4	+1	+54.0%	+47.5%	+49.8%	+22.5%	+24.1%	+7.1%
Management (VIII & above)	6	+3	+3	+3	+3	+0	-1	+99.3%	+99.3%	+99.3%	+99.3%	+0.3%	-14.6%
Administrative/ Supervisory (V to VII)	22	+13	+10	+8	+7	+2	-0	+160.0%	+93.1%	+53.7%	+50.6%	+9.6%	-0.8%
Clerical (III & IV)	129	+15	+3	-12	-8	-5	-4	+12.9%	+2.1%	-8.4%	-5.7%	-3.4%	-2.9%
Support	173	-4	-17	-34	-28	+3	+7	-2.0%	-9.0%	-16.3%	-14.1%	+1.7%	+4.4%
Maintenance/ Technical	14	+3	+3	+2	+1	-1	-1	+24.9%	+24.9%	+14.7%	+5.5%	-7.8%	-4.9%
Health Care Assistants	132	+72	+73	+55	+57	+1	+2	+120.9%	+123.7%	+70.5%	+75.8%	+1.0%	+1.9%
Care, other	2												
St Luke's General Kilkenny	1,182	+192	+148	+61	+63	-3	-13	+19.4%	+14.3%	+5.4%	+5.7%	-0.2%	-1.1%
Consultants	1	+1	+1	+1	+1	+1	+1	-100.0%	-100.0%	-100.0%	-100.0%	-100.0%	-100.0%
Nurse/ Midwife Manager	5	+4	+4	+2	+2	+2	+2	+406.0%	+406.0%	+68.7%	+68.7%	+68.7%	+68.7%
Staff Nurse/ Staff Midwife						-1	-1	-100.0%	-100.0%	-100.0%	-100.0%	-100.0%	-100.0%
Health Science/ Diagnostics	1	+1	+1	-0	-0	-0	-0	-100.0%	-100.0%	-2.0%	-2.0%	-2.0%	-2.0%
Pharmacy	4	+4	+4	+4	+4	+4	+4	-100.0%	-100.0%	-100.0%	-100.0%	-100.0%	-100.0%
H&SC, Other	17	+17	+17	+17	+17	+17	+17	-100.0%	-100.0%	-100.0%	-100.0%	-100.0%	-100.0%
Management (VIII & above)	14	+9	+8	+9	+8	+4	+1	+174.4%	+128.7%	+174.4%	+138.6%	+37.6%	+11.2%
Administrative/ Supervisory (V to VII)	17	+15	+7	-3	+0	+0	-1	+843.8%	+71.8%	-13.1%	+1.3%	+1.4%	-3.9%
Clerical (III & IV)	13	+13	+9	+9	+10	+11	+10	-100.0%	+255.5%	+250.6%	+410.9%	+531.0%	+320.7%
Maintenance/ Technical				-1	-1			-100.0%	-100.0%	-100.0%	-100.0%	-100.0%	-100.0%
Hospital Group HQ	71	+63	+51	+39	+41	+38	+33	+813.2%	+249.5%	+119.0%	+138.5%	+111.9%	+87.8%
Consultants	14	-3	-1	-0	+1	-2	-1	-17.7%	-6.7%	-3.4%	+7.7%	-12.6%	-5.1%
Registrars	34	+11	+12	+6	+7	+2	+1	+48.7%	+54.4%	+22.7%	+27.3%	+7.9%	+4.4%
SHO/ Interns	41	+10	+6	+9	+6	-3	+1	+33.5%	+17.1%	+26.6%	+16.8%	-7.7%	+3.6%
Nurse/ Midwife Manager	48	+15	+11	+3	+5	+2	+1	+45.5%	+28.6%	+7.6%	+10.7%	+3.8%	+3.2%
Nurse/ Midwife Specialist & AN/MP	14	-2	+2	+3	+3	+1	+1	-14.5%	+18.1%	+28.2%	+24.1%	+7.2%	+4.5%

Sep 2021 (Dec 2016 figure: 10,971)	WTE Sep 2021	WTE change since Dec 16	WTE change since Dec 17	WTE change since Dec 18	WTE change since Dec 19	WTE change since Dec 20	WTE change since Apr 21	% change since Dec 16	% change since Dec 17	% change since Dec 18	% change since Dec 19	% change since Dec 20	% change since Apr 21
Overall	13,297	+2,326	+1,915	+1,524	+1,252	+374	+70	+21.2%	+16.8%	+12.9%	+10.4%	+2.9%	+0.5%
Staff Nurse/ Staff Midwife	143	+12	+17	+19	+21	+7	+4	+9.3%	+13.7%	+15.5%	+17.6%	+5.5%	+3.0%
Nursing/ Midwifery Student			-2	-4	-4			-100.0%	-100.0%	-100.0%	-100.0%	-100.0%	-100.0%
Therapy Professions	28	+11	+11	+12	+9	-0	+2	+63.1%	+66.4%	+80.0%	+46.7%	-0.7%	+8.5%
Health Science/ Diagnostics	41	+9	+9	+7	+4	+2	+0	+27.8%	+29.2%	+20.7%	+11.2%	+5.0%	+1.0%
Pharmacy	9	+5	+5	+4	+3	+1	+1	+161.9%	+144.6%	+73.4%	+44.2%	+20.2%	+20.2%
Management (VIII & above)	2	+1	-0	-0	-0	-0	+0	+98.0%	-1.0%	-1.0%	-1.0%	-1.0%	+32.0%
Administrative/ Supervisory (V to VII)	21	+13	+13	+12	+9	+0	-0	+153.1%	+148.9%	+124.4%	+69.7%	+0.6%	-1.8%
Clerical (III & IV)	58	+2	-2	+1	+1	-1	-2	+4.3%	-2.7%	+1.4%	+2.1%	-1.8%	-3.5%
Support	27	+10	+4	+3	+3	+2	+2	+63.3%	+18.5%	+14.1%	+14.8%	+6.3%	+6.8%
Maintenance/ Technical	5		+0	-1		+0			+6.4%	-9.1%		+0.4%	
Health Care Assistants	116	+11	+18	+17	+17	-1	-3	+10.9%	+18.5%	+17.2%	+17.8%	-1.0%	-2.6%
Care, other	1	-1	-0	-1	-1	-0	-0	-31.7%	-16.6%	-31.7%	-40.1%	-15.0%	-15.5%
Our Lady's Navan	600	+105	+104	+90	+84	+10	+9	+21.3%	+20.9%	+17.7%	+16.3%	+1.6%	+1.5%
Consultants	18	+3	+1	+2	+2	+2	+1	+20.6%	+6.0%	+12.9%	+9.4%	+12.9%	+6.0%
Registrars	19	+2	+2	+1	+1	+1	+2	+8.8%	+8.8%	+2.8%	+2.8%	+5.7%	+12.1%
SHO/ Interns	14	+3	+3	+4	+2	+2	+2	+27.3%	+27.3%	+40.0%	+16.7%	+16.7%	+16.7%
Nurse/ Midwife Manager	42	+8	+10	+6	+1	+1	-1	+22.9%	+29.4%	+17.9%	+2.4%	+2.4%	-2.3%
Nurse/ Midwife Specialist & AN/MP	10	+6	+5	+3	+2	+2		+134.8%	+110.7%	+36.8%	+17.1%	+17.1%	
Staff Nurse/ Staff Midwife	111	+18	+16	+8	+8			+19.4%	+16.3%	+7.5%	+8.2%		
Nursing/ Midwifery other	2												
Therapy Professions	34	+7	+3	+2	+1	+1		+23.3%	+9.5%	+6.2%	+3.0%	+3.0%	
Health Science/ Diagnostics	29	+10	+7	+6	+4	+3	+2	+49.6%	+29.4%	+23.9%	+16.4%	+11.6%	+7.4%
Social Workers	7	+2	+1	+3				+54.2%	+15.1%	+75.0%			
Psychologists	1												
Pharmacy	6	+3	+3	+2	+1	+1		+100.0%	+100.0%	+50.0%	+20.0%	+20.0%	
Management (VIII & above)	4	+1						+33.3%					
Administrative/ Supervisory (V to VII)	26	+7	+2	+3	+4	+1		+39.5%	+8.5%	+13.3%	+18.5%	+4.1%	
Clerical (III & IV)	44	+12	+10	+7	+4	+1		+38.9%	+29.7%	+18.6%	+9.6%	+2.3%	
Support	62	+12	+1	+2	+0			+24.4%	+2.4%	+2.9%	+0.7%		
Maintenance/ Technical	1												
Health Care Assistants	26	-1	-3					-2.1%	-8.6%				
Care, other		-1						-100.0%	-100.0%	-100.0%	-100.0%	-100.0%	-100.0%
Cappagh National Orthopaedic	456	+92	+61	+48	+29	+15	+6	+25.3%	+15.3%	+11.7%	+6.9%	+3.3%	+1.3%
Consultants	193	+49	+41	+35	+21	+3	+8	+34.3%	+26.7%	+21.9%	+12.5%	+1.4%	+4.6%
Registrars	206	+59	+43	+48	+40	+17	+17	+40.0%	+26.5%	+30.5%	+24.1%	+8.7%	+8.9%
SHO/ Interns	180	+34	+30	+28	+22	-13	-5	+22.9%	+19.6%	+18.7%	+14.1%	-6.5%	-2.7%
Medical/ Dental, other	5	-1	+1	+1	-0	-1	-2	-10.5%	+21.5%	+16.4%	-4.0%	-19.6%	-29.5%
Nurse/ Midwife Manager	235	+55	+56	+45	+28	+14	+9	+30.9%	+31.2%	+23.4%	+13.4%	+6.3%	+3.8%
Nurse/ Midwife Specialist & AN/MP	108	+49	+40	+22	+21	+11	+1	+81.5%	+58.5%	+25.3%	+24.1%	+11.1%	+1.0%
Staff Nurse/ Staff Midwife	929	+94	+71	+68	+21	-10	-32	+11.3%	+8.3%	+7.9%	+2.4%	-1.1%	-3.3%
Nursing/ Midwifery Student	15	+7	+6	+7	+3	-5	-18	+76.5%	+66.7%	+87.5%	+25.0%	-25.0%	-54.5%
Nursing/ Midwifery other	52	+11	+13	+11	+8	+4	+2	+28.0%	+32.7%	+27.8%	+17.1%	+7.2%	+3.1%
Therapy Professions	132	+35	+28	+18	+19	+9	-4	+35.8%	+26.5%	+15.5%	+16.6%	+7.5%	-3.2%
Health Science/ Diagnostics	270	+51	+51	+49	+45	+29	+31	+23.5%	+23.1%	+22.1%	+20.2%	+12.0%	+13.2%
Social Workers	25	+4	+3	+5	-1	+1	-2	+16.5%	+12.3%	+25.7%	-5.4%	+2.3%	-8.8%
Psychologists	9	+4	+4	+4	+2	+1	-0	+94.4%	+94.4%	+94.4%	+27.7%	+11.5%	-1.1%
Pharmacy	55	+12	+13	+6	+5	+3	+1	+27.7%	+29.7%	+12.2%	+10.9%	+6.5%	+2.6%
H&SC, Other	15	-7	-8	-9	-6	-8	-12	-30.2%	-34.1%	-36.7%	-29.7%	-34.1%	-44.5%
Management (VIII & above)	46	+23	+19	+16	+14	+10	+8	+96.6%	+67.9%	+54.7%	+43.6%	+29.3%	+19.9%
Administrative/ Supervisory (V to VII)	171	+48	+36	+21	+13	+9	+3	+39.5%	+26.6%	+13.7%	+8.3%	+5.8%	+2.0%
Clerical (III & IV)	311	+58	+64	+61	+51	+13	+2	+22.9%	+26.1%	+24.3%	+19.8%	+4.3%	+0.6%
Support	279	+31	+32	+27	+29	+13	+10	+12.3%	+12.9%	+10.9%	+11.4%	+4.8%	+3.5%
Maintenance/ Technical	26	+2	+2	+4	+2			+7.4%	+7.4%	+17.1%	+8.3%		
Health Care Assistants	286	+86	+81	+55	+60	+28	+28	+43.3%	+39.3%	+24.1%	+26.8%	+10.9%	+10.7%
Care, other	6	-5	-2	-1	-1	-1	-1	-43.4%	-23.5%	-15.3%	-16.2%	-11.4%	-14.2%
Mater Misericordiae University	3,555	+700	+621	+521	+396	+126	+42	+24.5%	+21.2%	+17.2%	+12.5%	+3.7%	+1.2%
Consultants	45	+11	+9	+11	+11	+3	+3	+33.4%	+23.6%	+30.2%	+33.4%	+6.0%	+7.7%
Registrars	57	+18	+19	+13	+2	+3	-1	+46.6%	+51.3%	+28.4%	+3.0%	+4.7%	-2.1%
SHO/ Interns	62	+4	+2	+3	+7	+1	+1	+6.5%	+3.3%	+5.7%	+12.1%	+2.0%	+1.0%
Medical/ Dental, other	2			+0	+0					+1.0%	+6.4%		

Sep 2021 (Dec 2016 figure: 10,971)	WTE Sep 2021	WTE change since Dec 16	WTE change since Dec 17	WTE change since Dec 18	WTE change since Dec 19	WTE change since Dec 20	WTE change since Apr 21	% change since Dec 16	% change since Dec 17	% change since Dec 18	% change since Dec 19	% change since Dec 20	% change since Apr 21
Overall	13,297	+2,326	+1,915	+1,524	+1,252	+374	+70	+21.2%	+16.8%	+12.9%	+10.4%	+2.9%	+0.5%
Nurse/ Midwife Manager	86	+22	+18	+12	+14	+8	+9	+33.8%	+26.0%	+16.2%	+19.8%	+10.7%	+11.2%
Nurse/ Midwife Specialist & AN/MP	18	+4	+4	+7	+5	+3	+2	+23.8%	+25.7%	+55.5%	+42.0%	+16.2%	+9.8%
Staff Nurse/ Staff Midwife	264	+33	+29	+26	+24	-1	-0	+14.3%	+12.4%	+11.1%	+9.9%	-0.2%	-0.1%
Nursing/ Midwifery Student	16	+16	+16	+16	+15	+15	+10	-100.0%	-100.0%	-100.0%	#####	#####	+160.6%
Nursing/ Midwifery other	3	+1	+1	+1	+1	+0		+55.7%	+60.4%	+55.7%	+58.5%	+1.9%	
Therapy Professions	37	+7	+8	+5	+11	+0	+1	+23.8%	+29.7%	+17.5%	+44.4%	+0.7%	+1.5%
Health Science/ Diagnostics	85	+9	+15	+16	+14	+2	-0	+12.5%	+21.1%	+22.6%	+20.5%	+2.0%	-0.5%
Pharmacy	18	+5	+4	+1	+2	+3	+2	+34.7%	+25.8%	+9.2%	+9.6%	+20.7%	+11.5%
H&SC, Other	1	+1	-0	-0	+1	+1	-1	-100.0%	-12.3%	-14.5%	+400.0%	-100.0%	-50.0%
Management (VIII & above)	5	+1	+1			+2	+1	+25.0%	+25.0%			+66.7%	+14.4%
Administrative/ Supervisory (V to VII)	30	+12	+11	+11	+7	+2	+1	+70.2%	+62.3%	+61.7%	+33.0%	+6.5%	+3.7%
Clerical (III & IV)	111	-3	+1	+2	+10	+16	+12	-2.7%	+1.2%	+2.3%	+10.1%	+16.3%	+11.8%
Support	32	+7	+6	+8	+6	+4	+2	+27.1%	+21.6%	+34.8%	+23.5%	+16.1%	+6.2%
Maintenance/ Technical	12	-7	-4	-1	-1	-1	-1	-37.3%	-26.2%	-8.1%	-9.8%	-6.7%	-8.0%
Health Care Assistants	180	+51	+32	+12	+20	-1	-8	+39.6%	+21.9%	+7.4%	+12.7%	-0.7%	-4.2%
Care, other	1												
MRH Mullingar	1,063	+191	+172	+144	+150	+59	+30	+21.9%	+19.2%	+15.7%	+16.4%	+5.9%	+2.9%
Consultants	27	+7	+4	+3	+4	+1	+1	+35.2%	+15.8%	+11.3%	+18.0%	+3.3%	+3.8%
Registrars	26	+10	+10	+8	+6	+4	+2	+60.8%	+68.5%	+44.8%	+29.4%	+17.5%	+6.3%
SHO/ Interns	16	+3				+1	+0	+25.6%				+6.9%	+2.6%
Medical/ Dental, other	4	+1	+1	-1	-0	-1	+1	+47.6%	+15.8%	-13.8%	-6.6%	-12.6%	+18.1%
Nurse/ Midwife Manager	26	+6	+5	+0	+2	+2	+0	+30.5%	+21.4%	+1.2%	+10.4%	+6.5%	+1.6%
Nurse/ Midwife Specialist & AN/MP	14	+9	+8	+9	+5	+1	+0	+155.4%	+146.4%	+181.1%	+55.7%	+9.9%	+0.7%
Staff Nurse/ Staff Midwife	86	+16	+8	+4	+5	+4	-2	+22.3%	+10.9%	+4.5%	+6.0%	+4.5%	-2.5%
Nursing/ Midwifery other	1	-1	-1	-1	-1			-33.3%	-33.3%	-33.3%	-33.3%		
Therapy Professions	3	+1	+1	+0	+0	+1		+32.0%	+19.6%	+11.5%	+17.0%	+32.0%	
Health Science/ Diagnostics	2	-3	-1	-3	+0	-0	+0	-55.8%	-39.8%	-54.7%	+19.7%	-6.0%	+12.3%
Social Workers	1	+0	+0		-1		-1	+16.3%	+16.3%		-50.0%		-50.0%
Pharmacy	4	+1	+1	+1	+1			+33.3%	+33.3%	+33.3%	+33.3%		
H&SC, Other	4	+1	+1	+1				+35.7%	+23.4%	+23.4%			
Management (VIII & above)	4	+2	+1	+2	+1			+100.0%	+33.3%	+100.0%	+33.3%		
Administrative/ Supervisory (V to VII)	32	+12	+9	+8	+8	+4	+1	+64.3%	+39.2%	+31.1%	+32.4%	+14.1%	+3.0%
Clerical (III & IV)	43	+10	+10	+6	+7	+5	+2	+30.0%	+32.1%	+14.9%	+18.7%	+12.9%	+4.4%
Support	30	+3	+2	+2	+2	+1	+0	+11.9%	+8.3%	+7.5%	+8.7%	+2.6%	+1.5%
Health Care Assistants	15	+7	+5	+6	+6	+2	+1	+82.5%	+42.8%	+71.7%	+62.4%	+14.2%	+6.1%
Royal Victoria Eye & Ear	337	+85	+64	+45	+46	+24	+5	+34.0%	+23.3%	+15.5%	+15.8%	+7.6%	+1.6%
Consultants	11	+1	+1	-1	+0	+0	+0	+12.2%	+11.1%	-8.4%	+0.4%	+0.4%	+0.4%
Registrars	14	+1	+1	+1	+1	+1	+1	+7.7%	+7.7%	+7.7%	+7.7%	+7.7%	+7.7%
SHO/ Interns	16	+1	+1	+2	+2	+1	+1	+6.7%	+6.7%	+14.3%	+14.3%	+6.7%	+6.7%
Medical/ Dental, other	0	-0	-0	-0	-0	-0	-0	-5.6%	-5.6%	-5.6%	-5.6%	-5.6%	-5.6%
Nurse/ Midwife Manager	34	+0	+2	-4		-1	-1	+1.0%	+6.4%	-9.7%		-2.9%	-1.8%
Nurse/ Midwife Specialist & AN/MP	24	+7	+3	-1	-4	-2	-3	+42.1%	+12.1%	-3.7%	-13.6%	-8.1%	-11.5%
Staff Nurse/ Staff Midwife	102	+0	-4	-1	-1	-4	+0	+0.5%	-3.9%	-1.3%	-0.7%	-3.5%	+0.0%
Nursing/ Midwifery Student	1	+1	+1	+1	+1	+1	-9	-100.0%	-100.0%	-100.0%	-100.0%	-100.0%	-89.5%
Nursing/ Midwifery other	3	-2	-2	-2	-2	-1	-1	-40.0%	-40.0%	-40.0%	-40.0%	-25.0%	-25.0%
Therapy Professions	18	+2	-0	-0	-4	+1	-1	+14.4%	-0.2%	-1.9%	-17.6%	+5.0%	-3.4%
Health Science/ Diagnostics	23	+2	+5	+5	+5	+2	+2	+10.4%	+29.5%	+30.0%	+30.6%	+11.4%	+11.4%
Social Workers	2					-2	-2					-47.4%	-47.4%
Pharmacy	7	+3	+2	+2	-2	+0	+0	+65.9%	+33.3%	+38.8%	-20.0%	+3.0%	+3.0%
H&SC, Other	1	+1	+1	+1	+1	+1	+1	-100.0%	-100.0%	-100.0%	-100.0%	-100.0%	-100.0%
Management (VIII & above)	2				+1	-1	-1				+100.0%	-33.3%	-33.3%
Administrative/ Supervisory (V to VII)	30	+10	+10	+12	+11	+7	+6	+52.3%	+48.6%	+64.5%	+60.2%	+28.4%	+25.8%
Clerical (III & IV)	35	-5	-3	-10	-8	-6	-8	-12.6%	-8.8%	-22.2%	-17.9%	-15.4%	-18.3%
Support	51	+1	+2	+4	+3	+4	+4	+1.0%	+4.3%	+8.7%	+7.1%	+8.2%	+8.2%
Maintenance/ Technical	2	-1	-1					-33.3%	-33.3%				
Health Care Assistants	28	+2	+1	+1	+3	+1	+0	+7.5%	+3.5%	+3.5%	+10.8%	+3.5%	+1.0%
Care, other	1	+0	+0	-1	-1	-1	-1	+10.0%	+10.0%	-45.0%		-45.0%	-45.0%
St. Michael's	405	+25	+19	+9	+8	+1	-10	+6.6%	+4.9%	+2.2%	+2.1%	+0.2%	-2.3%
Consultants	18	+2	-0	-0	-1	+2	-1	+13.5%	-1.4%	-0.5%	-4.4%	+11.5%	-2.7%
Registrars	10	+0	-1	-1	+0		+2	+0.1%	-9.1%	-4.8%	+0.7%		+17.6%

Sep 2021 (Dec 2016 figure: 10,971)	WTE Sep 2021	WTE change since Dec 16	WTE change since Dec 17	WTE change since Dec 18	WTE change since Dec 19	WTE change since Dec 20	WTE change since Apr 21	% change since Dec 16	% change since Dec 17	% change since Dec 18	% change since Dec 19	% change since Dec 20	% change since Apr 21
Overall	13,297	+2,326	+1,915	+1,524	+1,252	+374	+70	+21.2%	+16.8%	+12.9%	+10.4%	+2.9%	+0.5%
SHO/ Interns	14					-2	+0					-12.4%	+0.2%
Nurse/ Midwife Manager	34	+9	+5	+2	+1	-1	-1	+37.7%	+16.5%	+5.7%	+2.6%	-1.9%	-3.3%
Nurse/ Midwife Specialist & AN/MP	9	-0	+0	-1	+0	+1	+1	-3.5%	+2.6%	-8.1%	+2.6%	+16.6%	+15.5%
Staff Nurse/ Staff Midwife	112	+3	+6	+1	-7	-1	-1	+2.7%	+5.5%	+0.9%	-6.1%	-1.1%	-0.9%
Nursing/ Midwifery other	1			-1	-1					-50.0%	-46.8%		
Therapy Professions	39	+16	+14	+10	+8	+4	+3	+67.5%	+54.1%	+33.1%	+24.3%	+12.1%	+7.6%
Health Science/ Diagnostics	21	+1	+3	+0	+2	+0	-0	+6.9%	+13.9%	+0.8%	+13.5%	+0.0%	-1.9%
Social Workers	5	-0	+1	+0	+0	-1	-0	-2.1%	+20.7%	+2.8%	+4.4%	-10.7%	-4.5%
Psychologists	3	+2	+1	+1	+1	+1	+0	+163.0%	+70.8%	+57.5%	+46.1%	+60.4%	+13.4%
Pharmacy	6	+2	+3	+1	+1	+0	+0	+53.7%	+112.6%	+31.8%	+11.9%	+6.5%	+6.5%
Management (VIII & above)	2	+0	+1	+1	+1	-0	-0	+13.1%	+98.0%	+98.0%	+98.0%	-1.0%	-1.0%
Administrative/ Supervisory (V to VII)	13	+2	+2	-1	-1	+0	+0	+16.8%	+17.1%	-5.6%	-7.0%	+1.5%	+0.5%
Clerical (III & IV)	63	+9	+8	+7	+9	+5	-1	+16.9%	+15.2%	+11.7%	+15.8%	+7.7%	-1.1%
Support	59	+8	+2	+2	+2	-1	-7	+15.5%	+3.4%	+4.3%	+3.9%	-2.3%	-10.7%
Maintenance/ Technical	1												
Health Care Assistants	56	+9	+10	+2	-3	+2	+3	+19.3%	+21.6%	+3.6%	-4.7%	+3.2%	+5.3%
Care, other	3	+2	+2	+2	+3	+0	+0	+200.0%	+200.0%	+200.0%	-100.0%	+11.5%	+0.3%
St. Columcille's	467	+65	+56	+26	+15	+9	-2	+16.1%	+13.6%	+5.9%	+3.3%	+2.1%	-0.4%
Consultants	39	+3	+4	+4	+4	+2	+2	+9.6%	+10.6%	+12.0%	+12.1%	+4.3%	+4.9%
Registrars	42	+10	+8	+6	+6	+4	+3	+31.3%	+21.7%	+15.1%	+16.7%	+10.5%	+7.7%
SHO/ Interns	22	+1		+1	+1		+1	+4.8%		+4.8%	+4.8%		+4.8%
Medical/ Dental, other	1	+0	+0	+0	+0	+0		+16.7%	+16.7%	+16.7%	+16.7%	+16.7%	
Nurse/ Midwife Manager	140	+31	+29	+23	+20	+5	+2	+28.0%	+25.5%	+19.5%	+16.6%	+3.6%	+1.6%
Nurse/ Midwife Specialist & AN/MP	17	+6	+6	+2	+2	+2	+1	+60.7%	+49.7%	+11.0%	+14.0%	+10.0%	+9.7%
Staff Nurse/ Staff Midwife	228	-12	-0	-16	-17	-11	-19	-5.0%	-0.1%	-6.4%	-7.0%	-4.6%	-7.9%
Nursing/ Midwifery Student	29	+5	+6	+6	+7	+11	-8	+21.3%	+23.9%	+23.9%	+32.6%	+58.3%	-21.9%
Nursing/ Midwifery other	4	+1	+0					+21.8%	+1.0%				
Therapy Professions	15	+6	+7	+6	+3	-1	-1	+74.4%	+98.4%	+65.2%	+29.2%	-7.8%	-6.0%
Health Science/ Diagnostics	49	+10	+10	+6	+7	+1	+4	+24.3%	+27.2%	+12.8%	+17.8%	+2.7%	+7.8%
Social Workers	9	+5	+4	+3	+2	-0	+1	+112.4%	+65.1%	+42.6%	+20.6%	-5.1%	+17.4%
Psychologists	2	+2	+2	+2	+0	+0	+0	+165.6%	+165.6%	+165.6%	+9.8%	+5.6%	+5.6%
Pharmacy	6	+0	+0	+1	-1	-1	-0	+1.6%	+4.9%	+8.5%	-11.1%	-17.9%	-5.9%
Management (VIII & above)	6	+1	+1	+1	-0	-1		+10.0%	+10.0%	+10.0%	-1.8%	-9.8%	
Administrative/ Supervisory (V to VII)	59	+16	+15	+11	+8	+3	+0	+37.8%	+34.8%	+23.6%	+15.8%	+4.7%	+0.3%
Clerical (III & IV)	74	+0	-7	-3	-6	+4	+2	+0.5%	-8.6%	-4.1%	-7.6%	+5.4%	+2.2%
Support	138	+24	+15	+11	+9	+5	-1	+20.6%	+12.3%	+8.2%	+6.8%	+3.7%	-0.4%
Maintenance/ Technical	8	+1	-2	-2	-3	-7	-7	+14.3%	-20.0%	-20.0%	-27.3%	-46.7%	-46.7%
Health Care Assistants	43	+16	+14	+12	+8	+0	+2	+57.7%	+51.4%	+39.1%	+22.9%	+0.9%	+4.9%
National Maternity	930	+125	+110	+70	+50	+14	-18	+15.5%	+13.4%	+8.2%	+5.7%	+1.5%	-1.9%
Consultants	153	+30	+23	+15	+8	-1	-0	+24.4%	+17.8%	+10.8%	+5.9%	-0.6%	-0.1%
Registrars	194	+42	+41	+39	+29	+27	+10	+27.7%	+26.9%	+24.9%	+17.9%	+16.0%	+5.6%
SHO/ Interns	167	+45	+46	+33	+40	-13	-5	+36.5%	+37.6%	+24.3%	+31.8%	-7.0%	-2.6%
Medical/ Dental, other	6	+1	+2	+5	+5	+5	-1	+13.8%	+50.0%	+413.9%	+386.0%	+527.0%	-8.5%
Nurse/ Midwife Manager	249	+82	+76	+79	+66	+16	+19	+49.4%	+44.3%	+46.2%	+35.8%	+6.9%	+8.0%
Nurse/ Midwife Specialist & AN/MP	83	+3	-1	-1	-4	-9	-3	+3.2%	-0.8%	-1.4%	-4.4%	-9.6%	-3.9%
Staff Nurse/ Staff Midwife	739	+77	-7	+58	+15	+19	-57	+11.7%	-0.9%	+8.5%	+2.0%	+2.7%	-7.1%
Nursing/ Midwifery Student	7	+2	-3	-7	-10	-59	-26	+27.3%	-33.2%	-51.0%	-59.4%	-89.3%	-78.5%
Nursing/ Midwifery other	5	-9	-9	-9	-9	-4	-0	-66.3%	-66.5%	-66.5%	-66.5%	-45.3%	-1.0%
Therapy Professions	107	+8	+10	+0	+3	-8	+0	+8.3%	+10.8%	+0.1%	+3.0%	-6.9%	+0.0%
Health Science/ Diagnostics	246	+41	+29	+23	+34	+23	+7	+20.1%	+13.2%	+10.3%	+15.9%	+10.3%	+2.8%
Social Workers	22	+2	+4	+3	+3	+1	+1	+12.7%	+24.1%	+17.5%	+17.5%	+5.7%	+6.7%
Psychologists	10	+5	+5	+4	-0	+1	-1	+97.7%	+86.0%	+52.8%	-0.9%	+8.6%	-10.0%
Pharmacy	57	+8	+3	+1	-0	-1	-2	+15.7%	+4.9%	+1.2%	-0.7%	-2.3%	-2.6%
H&SC, Other	0	-1	-1	-1			-1	-74.1%	-74.1%	-74.1%			-69.8%
Management (VIII & above)	25	+5	+9	+6	+7	+4	-0	+27.1%	+55.4%	+28.0%	+34.8%	+19.7%	-0.5%
Administrative/ Supervisory (V to VII)	186	+36	+32	+34	+37	+1	+2	+24.4%	+21.0%	+22.5%	+25.3%	+0.6%	+1.0%
Clerical (III & IV)	304	+56	+39	+26	+16	+36	+20	+22.7%	+14.8%	+9.3%	+5.7%	+13.3%	+6.9%
Support	304	+31	+20	+16	+11	-14	-12	+11.5%	+7.1%	+5.7%	+3.8%	-4.3%	-3.8%
Maintenance/ Technical	40	+5	+5	+5	+5	+5	-1	+13.7%	+13.7%	+13.7%	+13.7%	+13.7%	-1.3%
Health Care Assistants	220	+29	+36	+54	+39	+17	+22	+15.0%	+19.5%	+32.6%	+21.5%	+8.5%	+11.2%

Sep 2021 (Dec 2016 figure: 10,971)	WTE Sep 2021	WTE change since Dec 16	WTE change since Dec 17	WTE change since Dec 18	WTE change since Dec 19	WTE change since Dec 20	WTE change since Apr 21	% change since Dec 16	% change since Dec 17	% change since Dec 18	% change since Dec 19	% change since Dec 20	% change since Apr 21
Overall	13,297	+2,326	+1,915	+1,524	+1,252	+374	+70	+21.2%	+16.8%	+12.9%	+10.4%	+2.9%	+0.5%
Care, other	10	+1	+1	+1	+1	-1	-1	+13.9%	+16.0%	+16.0%	+16.0%	-6.1%	-8.1%
St. Vincent's University	3,134	+499	+360	+382	+296	+47	-27	+19.0%	+13.0%	+13.9%	+10.4%	+1.5%	-0.9%
Staff Nurse/ Staff Midwife	9	+9	+9	+9	+9	+1	-4	-100.0%	-100.0%	-100.0%	-100.0%	+15.8%	-32.0%
Health Care Assistants	0	+0	+0	+0	+0	+0	-0	-100.0%	-100.0%	-100.0%	-100.0%	+2.4%	-25.9%
IEHG Bank	10	+10	+10	+10	+10	+1	-4	-100.0%	-100.0%	-100.0%	-100.0%	+15.1%	-31.8%

Source: Health Service Personnel Census