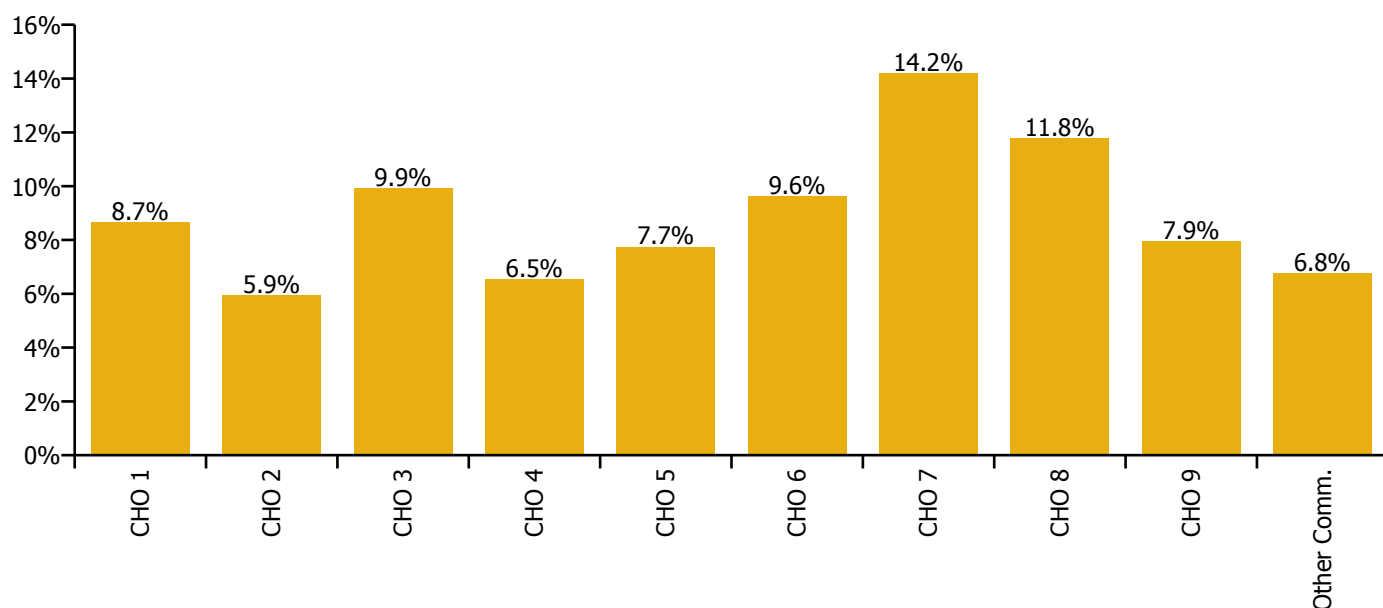


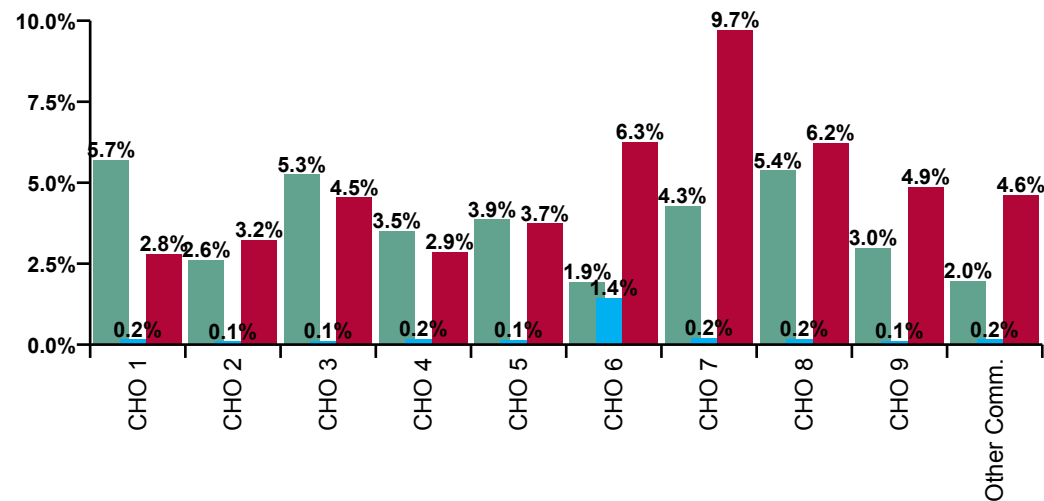
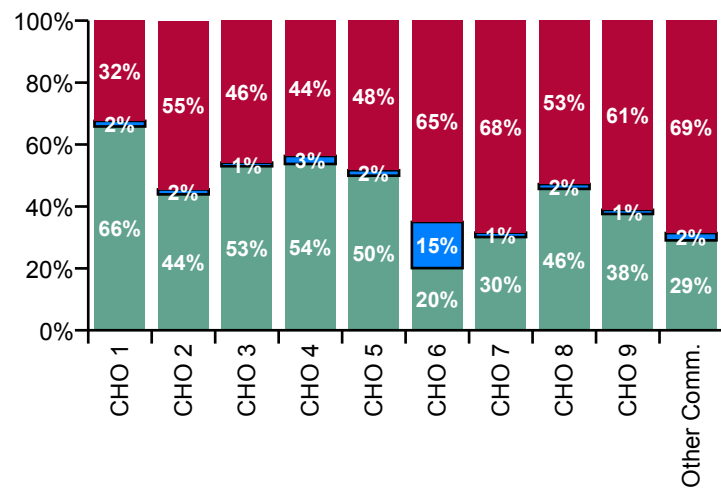
## April 2020

Mental Health Absence Rate - by Staff Category: Apr 2020	Certified absence	Self-certified absence	COVID-19 absence	Total absence rate	Certified	Self-certified	COVID-19
<b>Mental Health</b>	<b>3.7%</b>	<b>0.2%</b>	<b>4.4%</b>	<b>8.3%</b>	<b>44.2%</b>	<b>2.6%</b>	<b>53.1%</b>
Medical & Dental	1.5%	0.1%	4.6%	6.3%	24.2%	1.6%	74.2%
Nursing & Midwifery	4.0%	0.2%	5.2%	9.5%	42.0%	2.6%	55.4%
Health & Social Care Professionals	3.1%	0.2%	3.1%	6.3%	48.8%	2.7%	48.5%
Management & Administrative	2.6%	0.3%	2.4%	5.2%	49.2%	5.7%	45.1%
General Support	6.2%	0.3%	3.0%	9.5%	65.0%	3.1%	31.9%
Patient & Client Care	4.2%	0.1%	5.4%	9.7%	43.2%	1.4%	55.4%

Mental Health Absence Rate - by Care Group: Apr 2020	Certified absence	Self-certified absence	COVID-19 absence	Total absence rate	Certified	Self-certified	COVID-19
<b>Mental Health</b>	<b>3.7%</b>	<b>0.2%</b>	<b>4.4%</b>	<b>8.3%</b>	<b>44.2%</b>	<b>2.6%</b>	<b>53.1%</b>
CHO 1	5.7%	0.2%	2.8%	8.7%	65.8%	1.8%	32.4%
CHO 2	2.6%	0.1%	3.2%	5.9%	43.9%	1.6%	54.5%
CHO 3	5.3%	0.1%	4.5%	9.9%	53.0%	1.2%	45.8%
CHO 4	3.5%	0.2%	2.9%	6.5%	53.7%	2.6%	43.7%
CHO 5	3.9%	0.1%	3.7%	7.7%	49.9%	1.8%	48.3%
Health Service Executive	3.2%	0.2%	4.0%	7.4%	42.9%	3.0%	54.0%
Section 38 Voluntary Agencies		3.3%	9.7%	13.0%	0.0%	25.3%	74.7%
CHO 6	1.9%	1.4%	6.3%	9.6%	20.1%	14.9%	65.0%
CHO 7	4.3%	0.2%	9.7%	14.2%	30.1%	1.4%	68.5%
CHO 8	5.4%	0.2%	6.2%	11.8%	45.7%	1.6%	52.8%
Health Service Executive	3.0%	0.1%	5.1%	8.3%	36.5%	1.3%	62.2%
Section 38 Voluntary Agencies	2.8%	0.1%	3.2%	6.1%	46.0%	1.8%	52.2%
CHO 9	3.0%	0.1%	4.9%	7.9%	37.6%	1.4%	61.1%
Other Community Services	2.0%	0.2%	4.6%	6.8%	29.0%	2.4%	68.6%



Mental Health Overall Absence Rate - by Care Group & Staff Category: Apr 2020	Medical & Dental	Nursing & Midwifery	Health & Social Care Professionals	Management & Administrative	General Support	Patient & Client Care	Certified absence	Self-certified absence	COVID-19 absence	Total absence
<b>Mental Health</b>	<b>6.3%</b>	<b>9.5%</b>	<b>6.3%</b>	<b>5.2%</b>	<b>9.5%</b>	<b>9.7%</b>	<b>3.7%</b>	<b>0.2%</b>	<b>4.4%</b>	<b>8.3%</b>
CHO 1	6.1%	9.2%	4.7%	10.4%	6.7%	13.3%	5.7%	0.2%	2.8%	8.7%
CHO 2	3.3%	7.9%	3.3%	2.4%	1.2%	6.7%	2.6%	0.1%	3.2%	5.9%
CHO 3	8.1%	12.2%	6.1%	7.5%	8.9%	9.4%	5.3%	0.1%	4.5%	9.9%
CHO 4	4.7%	7.2%	5.7%	3.7%	12.2%	4.4%	3.5%	0.2%	2.9%	6.5%
CHO 5	8.4%	7.9%	4.9%	7.5%	8.8%	6.7%	3.9%	0.1%	3.7%	7.7%
Health Service Executive	0.8%	8.2%	5.1%	4.4%	14.6%	7.5%	3.2%	0.2%	4.0%	7.4%
Section 38 Voluntary Agencies	10.4%	10.9%	12.7%	16.8%	27.1%	0.0%		3.3%	9.7%	13.0%
CHO 6	6.3%	8.8%	10.4%	11.7%	17.5%	7.1%	1.9%	1.4%	6.3%	9.6%
CHO 7	7.0%	23.7%	2.9%	8.0%	22.0%	29.0%	4.3%	0.2%	9.7%	14.2%
CHO 8	8.5%	11.9%	8.1%	9.1%	16.2%	16.4%	5.4%	0.2%	6.2%	11.8%
Health Service Executive	6.5%	8.0%	8.6%	8.6%	7.9%	10.2%	3.0%	0.1%	5.1%	8.3%
Section 38 Voluntary Agencies	4.7%	6.1%	0.0%	2.0%	11.5%	0.0%	2.8%	0.1%	3.2%	6.1%
CHO 9	6.5%	7.7%	8.3%	7.3%	9.0%	9.8%	3.0%	0.1%	4.9%	7.9%
Other Community Services	5.7%	9.8%	6.9%	0.8%	1.2%	16.8%	2.0%	0.2%	4.6%	6.8%



Certified absence

Self-certified absence

COVID-19 absence

## Mental Health Absence Rate - by Care Group, Staff Category & Absence type: Apr 2020

CHO 1 by Staff Category Apr 2020	Certified absence	Self-certified absence	COVID-19 absence	Total absence	Certified	Self-certified	COVID-19
<b>Mental Health</b>	<b>5.7%</b>	<b>0.2%</b>	<b>2.8%</b>	<b>8.7%</b>	<b>65.8%</b>	<b>1.8%</b>	<b>32.4%</b>
Medical & Dental	0.7%	0.1%	5.3%	6.1%	11.5%	0.9%	87.6%
Nursing & Midwifery	6.3%	0.2%	2.7%	9.2%	68.6%	2.2%	29.3%
Health & Social Care Professionals	3.1%	0.0%	1.7%	4.7%	65.0%	0.0%	35.0%
Management & Administrative	7.1%	0.1%	3.1%	10.4%	68.7%	1.3%	30.0%
General Support	4.8%	0.1%	1.8%	6.7%	71.6%	1.8%	26.5%
Patient & Client Care	9.8%	0.3%	3.2%	13.3%	73.8%	2.4%	23.8%

CHO 2 by Staff Category Apr 2020	Certified absence	Self-certified absence	COVID-19 absence	Total absence	Certified	Self-certified	COVID-19
<b>Mental Health</b>	<b>2.6%</b>	<b>0.1%</b>	<b>3.2%</b>	<b>5.9%</b>	<b>43.9%</b>	<b>1.6%</b>	<b>54.5%</b>
Medical & Dental	0.0%	0.0%	3.3%	3.3%	0.0%	0.0%	100.0%
Nursing & Midwifery	3.2%	0.1%	4.6%	7.9%	40.4%	1.1%	58.5%
Health & Social Care Professionals	2.6%	0.1%	0.7%	3.3%	78.4%	2.0%	19.6%
Management & Administrative	2.2%	0.2%	0.0%	2.4%	92.2%	7.8%	0.0%
General Support	0.6%	0.1%	0.6%	1.2%	46.6%	5.4%	48.0%
Patient & Client Care	3.0%	0.1%	3.5%	6.7%	45.4%	1.9%	52.7%

CHO 3 by Staff Category Apr 2020	Certified absence	Self-certified absence	COVID-19 absence	Total absence	Certified	Self-certified	COVID-19
<b>Mental Health</b>	<b>5.3%</b>	<b>0.1%</b>	<b>4.5%</b>	<b>9.9%</b>	<b>53.0%</b>	<b>1.2%</b>	<b>45.8%</b>
Medical & Dental	0.7%	0.0%	7.4%	8.1%	8.3%	0.0%	91.7%
Nursing & Midwifery	6.5%	0.1%	5.7%	12.2%	52.9%	0.8%	46.3%
Health & Social Care Professionals	3.7%	0.2%	2.2%	6.1%	61.1%	2.7%	36.2%
Management & Administrative	2.6%	0.1%	4.9%	7.5%	34.3%	0.9%	64.8%
General Support	8.4%	0.1%	0.3%	8.9%	94.8%	1.6%	3.6%
Patient & Client Care	6.1%	0.2%	3.0%	9.4%	65.2%	2.6%	32.2%

CHO 4 by Staff Category Apr 2020	Certified absence	Self-certified absence	COVID-19 absence	Total absence	Certified	Self-certified	COVID-19
<b>Mental Health</b>	<b>3.5%</b>	<b>0.2%</b>	<b>2.9%</b>	<b>6.5%</b>	<b>53.7%</b>	<b>2.6%</b>	<b>43.7%</b>
Medical & Dental	1.7%	0.0%	3.0%	4.7%	35.3%	0.9%	63.8%
Nursing & Midwifery	3.6%	0.3%	3.3%	7.2%	50.1%	3.8%	46.1%
Health & Social Care Professionals	3.4%	0.1%	2.2%	5.7%	58.7%	2.4%	38.9%
Management & Administrative	2.6%	0.2%	0.9%	3.7%	70.9%	4.2%	24.9%
General Support	8.4%	0.0%	3.8%	12.2%	68.8%	0.4%	30.8%
Patient & Client Care	1.9%	0.1%	2.4%	4.4%	44.1%	1.5%	54.4%

CHO 5 by Staff Category Apr 2020	Certified absence	Self-certified absence	COVID-19 absence	Total absence	Certified	Self-certified	COVID-19
<b>Mental Health</b>	<b>3.9%</b>	<b>0.1%</b>	<b>3.7%</b>	<b>7.7%</b>	<b>49.9%</b>	<b>1.8%</b>	<b>48.3%</b>
Medical & Dental	0.7%	0.1%	7.7%	8.4%	8.3%	0.9%	90.7%
Nursing & Midwifery	4.3%	0.2%	3.5%	7.9%	54.0%	2.3%	43.7%
Health & Social Care Professionals	1.6%	0.1%	3.1%	4.9%	33.4%	2.2%	64.4%
Management & Administrative	2.9%	0.1%	4.5%	7.5%	38.7%	1.4%	59.9%
General Support	5.1%	0.1%	3.6%	8.8%	58.2%	1.1%	40.7%
Patient & Client Care	3.7%	0.0%	2.9%	6.7%	55.7%	0.0%	44.3%

CHO 6 by Staff Category Apr 2020	Certified absence	Self-certified absence	COVID-19 absence	Total absence	Certified	Self-certified	COVID-19
<b>Mental Health</b>	<b>1.9%</b>	<b>1.4%</b>	<b>6.3%</b>	<b>9.6%</b>	<b>20.1%</b>	<b>14.9%</b>	<b>65.0%</b>
Medical & Dental	0.2%	0.6%	5.5%	6.3%	3.3%	9.9%	86.8%
Nursing & Midwifery	2.1%	1.2%	5.5%	8.8%	24.3%	13.3%	62.5%
Health & Social Care Professionals	0.8%	1.0%	8.6%	10.4%	7.9%	10.0%	82.1%
Management & Administrative	0.5%	3.7%	7.4%	11.7%	4.4%	32.0%	63.6%
General Support	9.8%	3.5%	4.3%	17.5%	55.9%	19.8%	24.3%
Patient & Client Care	1.3%	0.1%	5.7%	7.1%	17.7%	1.9%	80.4%

CHO 7 by Staff Category Apr 2020	Certified absence	Self-certified absence	COVID-19 absence	Total absence	Certified	Self-certified	COVID-19
<b>Mental Health</b>	<b>4.3%</b>	<b>0.2%</b>	<b>9.7%</b>	<b>14.2%</b>	<b>30.1%</b>	<b>1.4%</b>	<b>68.5%</b>
Medical & Dental	2.0%	0.0%	5.0%	7.0%	28.4%	0.0%	71.6%
Nursing & Midwifery	4.9%	0.4%	18.4%	23.7%	20.7%	1.7%	77.6%
Health & Social Care Professionals	2.5%	0.2%	0.2%	2.9%	86.0%	7.0%	7.1%
Management & Administrative	4.9%	0.0%	3.1%	8.0%	61.3%	0.0%	38.7%
General Support	13.6%	0.0%	8.5%	22.0%	61.5%	0.0%	38.5%
Patient & Client Care	5.0%	0.0%	24.0%	29.0%	17.4%	0.0%	82.6%

CHO 8 by Staff Category Apr 2020	Certified absence	Self-certified absence	COVID-19 absence	Total absence	Certified	Self-certified	COVID-19
<b>Mental Health</b>	<b>5.4%</b>	<b>0.2%</b>	<b>6.2%</b>	<b>11.8%</b>	<b>45.7%</b>	<b>1.6%</b>	<b>52.8%</b>
Medical & Dental	4.0%	0.1%	4.5%	8.5%	46.6%	0.6%	52.8%
Nursing & Midwifery	4.3%	0.2%	7.4%	11.9%	36.0%	1.9%	62.2%
Health & Social Care Professionals	5.1%	0.0%	3.0%	8.1%	62.4%	0.0%	37.6%
Management & Administrative	5.0%	0.2%	3.9%	9.1%	54.3%	2.7%	43.1%
General Support	11.0%	0.2%	5.0%	16.2%	68.0%	1.1%	30.9%
Patient & Client Care	8.3%	0.2%	7.8%	16.4%	50.8%	1.5%	47.7%

CHO 9 by Staff Category Apr 2020	Certified absence	Self-certified absence	COVID-19 absence	Total absence	Certified	Self-certified	COVID-19
<b>Mental Health</b>	<b>3.0%</b>	<b>0.1%</b>	<b>4.9%</b>	<b>7.9%</b>	<b>37.6%</b>	<b>1.4%</b>	<b>61.1%</b>
Medical & Dental	2.0%	0.1%	4.4%	6.5%	31.4%	1.2%	67.4%
Nursing & Midwifery	2.4%	0.1%	5.1%	7.7%	31.9%	1.9%	66.3%
Health & Social Care Professionals	3.5%	0.0%	4.8%	8.3%	42.3%	0.0%	57.7%
Management & Administrative	3.5%	0.1%	3.7%	7.3%	47.5%	1.8%	50.7%
General Support	5.7%	0.1%	3.1%	9.0%	63.6%	1.5%	34.9%
Patient & Client Care	3.0%	0.1%	6.8%	9.8%	30.3%	0.5%	69.2%

Other Community Services by Staff Category Apr 2020	Certified absence	Self-certified absence	COVID-19 absence	Total absence	Certified	Self-certified	COVID-19
<b>Mental Health</b>	<b>2.0%</b>	<b>0.2%</b>	<b>4.6%</b>	<b>6.8%</b>	<b>29.0%</b>	<b>2.4%</b>	<b>68.6%</b>
Medical & Dental	2.9%	0.2%	2.6%	5.7%	51.1%	2.7%	46.3%
Nursing & Midwifery	2.8%	0.3%	6.7%	9.8%	28.7%	3.1%	68.2%
Health & Social Care Professionals	3.0%	0.0%	3.9%	6.9%	43.1%	0.0%	56.9%
Management & Administrative	0.4%	0.0%	0.3%	0.8%	55.8%	1.6%	42.6%
General Support	0.9%	0.0%	0.3%	1.2%	74.5%	0.0%	25.5%
Patient & Client Care	2.6%	0.2%	13.9%	16.8%	15.8%	1.0%	83.2%

Mental Health Absence Rate - by Staff Category & Care Group	CHO 1	CHO 2	CHO 3	CHO 4	CHO 5	HSE	S38	CHO 6	CHO 7	CHO 8	HSE	S38	CHO 9	Other Comm.	Total absence	Certified absence	Self-certified absence	COVID-19 absence
Mental Health: 2020 overall	7.9%	4.7%	7.9%	4.5%	6.2%	6.2%	7.1%	6.5%	13.2%	8.9%	6.4%	6.3%	6.4%	4.3%	6.4%	4.1%	0.4%	1.9%
Medical & Dental	4.3%	2.4%	5.4%	2.9%	4.1%	2.5%	3.9%	3.4%	10.4%	6.2%	5.0%	2.5%	5.0%	3.7%	4.5%	1.9%	0.2%	2.4%
Nursing & Midwifery	8.1%	6.0%	9.5%	4.8%	6.3%	6.6%	7.0%	6.7%	14.6%	8.5%	6.2%	6.1%	6.2%	6.4%	6.9%	4.3%	0.5%	2.2%
Health & Social Care Professionals	6.7%	3.1%	4.6%	4.0%	5.2%	4.0%	6.5%	5.8%	7.6%	8.5%	6.2%	4.4%	6.1%	3.0%	5.4%	3.5%	0.3%	1.6%
Management & Administrative	9.2%	3.5%	6.6%	3.1%	5.8%	3.6%	9.9%	7.4%	14.6%	8.2%	9.1%	3.5%	8.0%	0.9%	4.8%	3.5%	0.3%	0.9%
General Support	7.4%	3.4%	7.1%	9.4%	7.2%	10.4%	14.2%	11.4%	19.9%	11.7%	7.8%	10.5%	8.6%	3.7%	7.9%	6.4%	0.4%	1.1%
Patient & Client Care	10.1%	4.3%	9.4%	3.5%	5.9%	7.0%	8.1%	7.0%	34.3%	11.9%	6.0%	3.0%	5.9%	8.5%	7.1%	6.4%	0.4%	1.1%
Total April:	8.7%	5.9%	9.9%	6.5%	7.7%	7.4%	13.0%	9.6%	14.2%	11.8%	8.3%	6.1%	7.9%	6.8%	8.3%	3.7%	0.2%	4.4%
Medical & Dental	6.1%	3.3%	8.1%	4.7%	8.4%	0.8%	10.4%	6.3%	7.0%	8.5%	6.5%	4.7%	6.5%	5.7%	6.3%	1.5%	0.1%	4.6%
Nursing & Midwifery	9.2%	7.9%	12.2%	7.2%	7.9%	8.2%	10.9%	8.8%	23.7%	11.9%	8.0%	6.1%	7.7%	9.8%	9.5%	4.0%	0.2%	5.2%
Health & Social Care Professionals	4.7%	3.3%	6.1%	5.7%	4.9%	5.1%	12.7%	10.4%	2.9%	8.1%	8.6%	0.0%	8.3%	6.9%	6.3%	3.1%	0.2%	3.1%
Management & Administrative	10.4%	2.4%	7.5%	3.7%	7.5%	4.4%	16.8%	11.7%	8.0%	9.1%	8.6%	2.0%	7.3%	0.8%	5.2%	2.6%	0.3%	2.4%
General Support	6.7%	1.2%	8.9%	12.2%	8.8%	14.6%	27.1%	17.5%	22.0%	16.2%	7.9%	11.5%	9.0%	1.2%	9.5%	6.2%	0.3%	3.0%
Patient & Client Care	13.3%	6.7%	9.4%	4.4%	6.7%	7.5%	0.0%	7.1%	29.0%	16.4%	10.2%	0.0%	9.8%	16.8%	9.7%	4.2%	0.1%	5.4%
Total March:	9.8%	6.4%	9.4%	4.2%	6.0%	7.1%	5.5%	6.4%	24.9%	10.2%	8.1%	8.3%	8.1%	5.8%	7.7%	4.1%	0.4%	3.2%
Medical & Dental	9.0%	3.2%	6.7%	3.6%	1.4%	5.9%	4.0%	4.8%	28.5%	8.4%	8.5%	4.5%	8.4%	8.1%	6.9%	2.5%	0.2%	4.2%
Nursing & Midwifery	10.2%	7.9%	11.1%	4.0%	7.1%	6.0%	5.4%	5.8%	22.6%	9.2%	7.5%	8.5%	7.7%	8.8%	8.3%	4.1%	0.4%	3.7%
Health & Social Care Professionals	7.3%	5.6%	7.5%	4.3%	4.5%	8.9%	4.9%	5.8%	19.2%	12.1%	8.8%	7.8%	8.7%	3.9%	7.4%	3.8%	0.3%	3.3%
Management & Administrative	11.1%	4.9%	6.0%	4.9%	4.3%	7.5%	6.5%	6.9%	30.3%	9.7%	10.1%	7.4%	9.5%	0.8%	5.5%	3.7%	0.4%	1.4%
General Support	8.3%	4.5%	8.9%	7.6%	5.5%	10.1%	8.2%	9.6%	39.0%	10.1%	9.2%	10.2%	9.5%	3.4%	7.4%	5.9%	0.5%	1.0%
Patient & Client Care	10.5%	5.9%	9.5%	2.9%	6.6%	8.5%	26.3%	9.4%	54.2%	13.6%	7.1%	0.0%	6.8%	11.0%	8.4%	4.7%	0.4%	3.4%
Total February:	6.2%	2.3%	5.7%	3.9%	4.8%	4.3%	4.5%	4.4%	6.8%	6.7%	4.5%	5.7%	4.7%	2.2%	4.5%	4.0%	0.5%	
Medical & Dental	1.3%	0.9%	2.7%	1.3%	3.0%	3.5%	0.5%	1.7%	4.0%	4.5%	2.3%	0.0%	2.2%	0.4%	2.1%	1.8%	0.3%	
Nursing & Midwifery	6.3%	3.1%	6.7%	4.1%	4.5%	4.5%	3.6%	4.3%	5.6%	5.8%	4.3%	5.5%	4.5%	3.0%	4.6%	4.0%	0.6%	
Health & Social Care Professionals	6.0%	1.2%	1.8%	3.0%	4.0%	1.2%	3.5%	2.9%	8.2%	7.5%	4.0%	4.2%	4.0%	0.3%	3.6%	3.4%	0.3%	
Management & Administrative	8.5%	2.9%	5.3%	3.0%	3.7%	1.8%	10.6%	7.2%	16.3%	7.2%	8.0%	2.1%	6.9%	0.9%	4.2%	3.9%	0.2%	
General Support	7.3%	2.5%	6.6%	8.7%	7.3%	5.2%	10.9%	6.7%	0.0%	9.9%	8.4%	10.9%	9.1%	7.4%	7.4%	7.1%	0.3%	
Patient & Client Care	6.9%	1.4%	10.7%	3.7%	4.6%	6.7%	0.0%	6.4%	20.0%	9.2%	3.2%	0.0%	3.0%	3.7%	4.8%	4.3%	0.5%	
Total January:	6.7%	4.1%	6.3%	3.9%	6.2%	5.6%	5.1%	5.4%	5.8%	6.8%	4.7%	5.1%	4.8%	2.3%	5.0%	4.5%	0.5%	
Medical & Dental	0.8%	2.0%	3.8%	1.4%	3.2%	0.0%	0.8%	0.5%	4.5%	3.0%	2.7%	0.0%	2.6%	0.4%	2.1%	2.0%	0.2%	
Nursing & Midwifery	6.6%	5.1%	7.6%	4.6%	5.8%	7.4%	7.9%	7.5%	5.9%	6.7%	4.8%	4.3%	4.7%	3.7%	5.5%	5.0%	0.6%	
Health & Social Care Professionals	8.7%	2.4%	3.1%	2.3%	7.3%	1.0%	4.7%	3.7%	3.1%	6.3%	3.1%	5.2%	3.2%	0.4%	4.0%	3.7%	0.3%	
Management & Administrative	6.9%	3.8%	7.5%	1.8%	7.3%	1.0%	5.9%	3.9%	12.4%	6.6%	9.6%	2.2%	8.1%	1.1%	4.2%	3.9%	0.4%	
General Support	7.4%	5.2%	4.3%	7.9%	7.4%	10.9%	10.2%	10.7%	0.0%	10.6%	5.5%	9.4%	6.7%	3.1%	7.2%	6.7%	0.5%	
Patient & Client Care	9.6%	3.3%	8.0%	3.0%	5.7%	5.0%	0.0%	4.9%	16.0%	8.4%	3.5%	11.3%	3.8%	2.1%	5.1%	4.6%	0.5%	
Mental Health: 2019 overall	6.1%	4.1%	5.9%	3.3%	5.3%	4.7%	3.5%	4.1%	5.0%	5.7%	4.5%	3.8%	4.4%		4.7%	4.3%	0.5%	
Medical & Dental	1.5%	1.2%	4.8%	1.0%	2.8%	0.8%	0.6%	0.7%	1.9%	1.2%	3.3%	0.8%	3.3%		1.9%	1.7%	0.2%	
Nursing & Midwifery	6.3%	5.4%	6.8%	3.7%	5.1%	5.5%	3.1%	4.9%	4.5%	6.0%	4.4%	3.4%	4.2%		5.1%	4.6%	0.5%	
Health & Social Care Professionals	5.4%	4.3%	3.5%	2.8%	6.1%	4.9%	5.0%	5.0%	4.2%	4.6%	3.4%	2.0%	3.3%		4.1%	3.8%	0.4%	
Management & Administrative	6.1%	3.5%	4.4%	2.4%	5.1%	3.5%	3.2%	3.3%	9.6%	5.4%	6.2%	3.2%	5.7%		4.6%	4.3%	0.4%	
General Support	8.7%	3.8%	7.1%	3.5%	6.2%	5.2%	7.0%	5.8%	12.6%	8.0%	5.7%	5.8%	5.7%		6.0%	5.7%	0.4%	
Patient & Client Care	7.7%	2.7%	7.2%	3.7%	5.6%	3.8%	0.0%	3.6%	17.7%	7.2%	4.5%	5.6%	4.5%		4.9%	5.7%	0.4%	

Mental Health Absence Rate - by Staff Category & S38 Agency	St. John of God (MHS)	St. Vincent's, Fairview	Total absence	Certified absence	Self-certified absence	COVID-19 absence
<b>Mental Health: S38 2020 overall</b>	<b>7.1%</b>	<b>6.3%</b>	<b>6.7%</b>	<b>3.2%</b>	<b>1.1%</b>	<b>2.5%</b>
<i>Medical &amp; Dental</i>	3.9%	2.5%	3.8%	0.4%	0.3%	3.2%
<i>Nursing &amp; Midwifery</i>	7.0%	6.1%	6.4%	3.4%	1.0%	2.1%
<i>Health &amp; Social Care Professionals</i>	6.5%	4.4%	6.3%	2.1%	0.6%	3.6%
<i>Management &amp; Administrative</i>	9.9%	3.5%	7.4%	3.4%	1.9%	2.1%
<i>General Support</i>	14.2%	10.5%	11.3%	7.4%	2.1%	1.8%
<i>Patient &amp; Client Care</i>	8.1%	3.0%	4.4%	2.2%		2.2%
<b>Total April:</b>	<b>13.0%</b>	<b>6.1%</b>	<b>10.0%</b>	<b>1.2%</b>	<b>1.9%</b>	<b>6.9%</b>
Medical & Dental	10.4%	4.7%	10.0%		1.0%	9.0%
Nursing & Midwifery	10.9%	6.1%	7.7%	1.4%	1.4%	4.9%
Health & Social Care Professionals	12.7%	0.0%	11.9%		1.4%	10.5%
Management & Administrative	16.8%	2.0%	10.9%	0.5%	3.7%	6.7%
General Support	27.1%	11.5%	15.1%	5.5%	3.5%	6.1%
Patient & Client Care	0.0%	0.0%	0.0%			
<b>Total March:</b>	<b>5.5%</b>	<b>8.3%</b>	<b>6.7%</b>	<b>2.1%</b>	<b>1.6%</b>	<b>3.1%</b>
Medical & Dental	4.0%	4.5%	4.1%	0.5%		3.6%
Nursing & Midwifery	5.4%	8.5%	7.5%	3.2%	1.0%	3.3%
Health & Social Care Professionals	4.9%	7.8%	5.1%	0.1%	1.1%	3.8%
Management & Administrative	6.5%	7.4%	6.8%	1.3%	3.7%	1.8%
General Support	8.2%	10.2%	9.8%	4.8%	3.9%	1.0%
Patient & Client Care	26.3%	0.0%	8.3%			8.3%
<b>Total February:</b>	<b>4.5%</b>	<b>5.7%</b>	<b>5.0%</b>	<b>4.6%</b>	<b>0.4%</b>	
Medical & Dental	0.5%	0.0%	0.5%	0.5%		
Nursing & Midwifery	3.6%	5.5%	4.8%	3.7%	1.1%	
Health & Social Care Professionals	3.5%	4.2%	3.5%	3.5%		
Management & Administrative	10.6%	2.1%	7.6%	7.6%		
General Support	10.9%	10.9%	10.9%	10.7%	0.2%	
Patient & Client Care	0.0%	0.0%	0.0%			
<b>Total January:</b>	<b>5.1%</b>	<b>5.1%</b>	<b>5.1%</b>	<b>4.9%</b>	<b>0.2%</b>	
Medical & Dental	0.8%	0.0%	0.8%	0.8%		
Nursing & Midwifery	7.9%	4.3%	5.4%	5.1%	0.4%	
Health & Social Care Professionals	4.7%	5.2%	4.8%	4.8%		
Management & Administrative	5.9%	2.2%	4.4%	4.1%	0.2%	
General Support	10.2%	9.4%	9.6%	9.0%	0.6%	
Patient & Client Care	0.0%	11.3%	9.3%	9.3%		
<b>Mental Health: S38 2019 overall</b>	<b>3.5%</b>	<b>3.8%</b>	<b>3.6%</b>	<b>3.1%</b>	<b>0.5%</b>	
<i>Medical &amp; Dental</i>	0.6%	0.8%	0.6%	0.3%	0.3%	
<i>Nursing &amp; Midwifery</i>	3.1%	3.4%	3.3%	2.8%	0.5%	
<i>Health &amp; Social Care Professionals</i>	5.0%	2.0%	4.8%	4.2%	0.6%	
<i>Management &amp; Administrative</i>	3.2%	3.2%	3.2%	2.7%	0.5%	
<i>General Support</i>	7.0%	5.8%	6.1%	5.8%	0.3%	
<i>Patient &amp; Client Care</i>	0.0%	5.6%	4.2%	3.8%	0.4%	