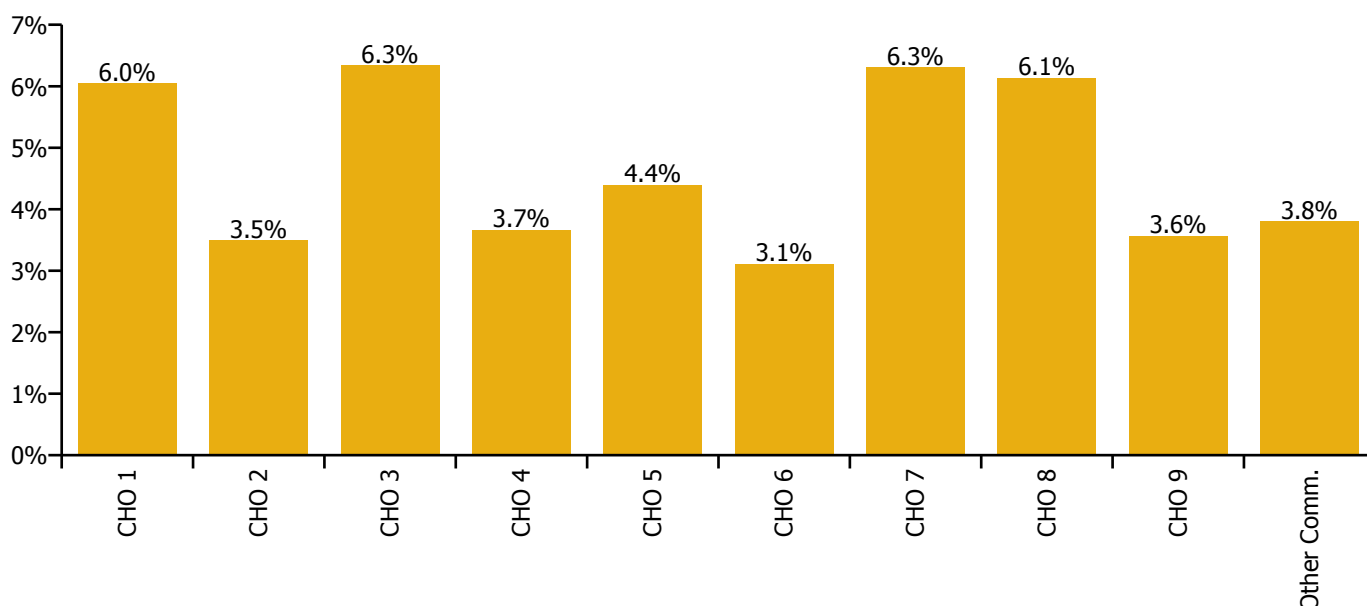


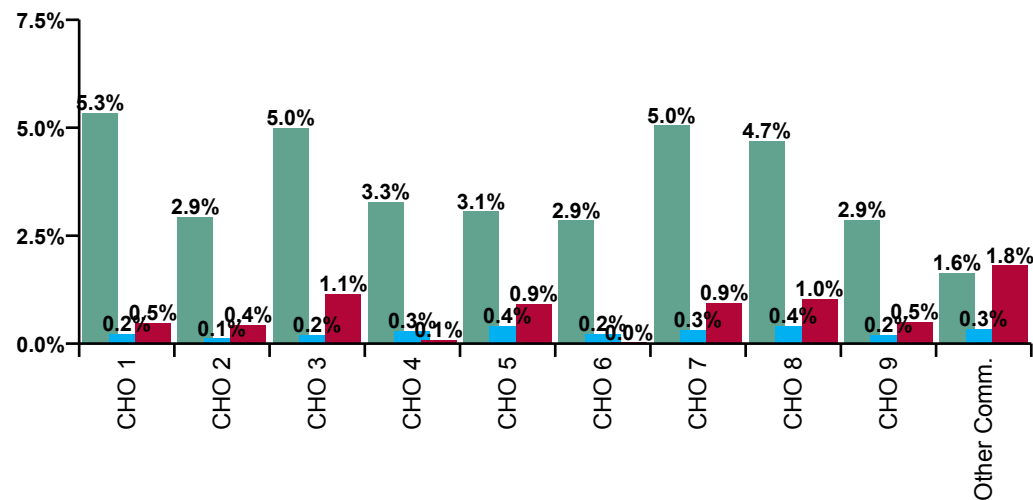
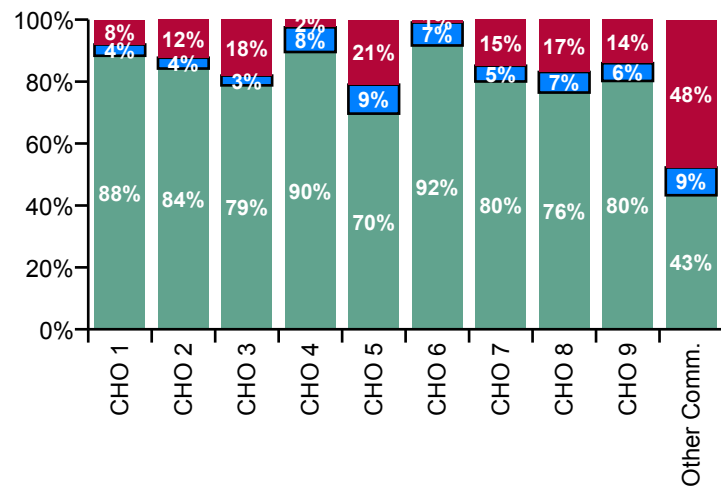
July 2020

Mental Health Absence Rate - by Staff Category: Jul 2020	Certified absence	Self-certified absence	COVID-19 absence	Total absence rate	Certified	Self-certified	COVID-19
Mental Health	3.5%	0.3%	0.7%	4.5%	77.9%	6.1%	16.0%
Medical & Dental	2.0%	0.1%	0.1%	2.2%	89.8%	4.6%	5.7%
Nursing & Midwifery	3.8%	0.4%	0.9%	5.0%	74.8%	7.1%	18.1%
Health & Social Care Professionals	2.5%	0.1%	0.2%	2.8%	89.2%	4.3%	6.5%
Management & Administrative	2.4%	0.1%	0.1%	2.6%	90.9%	3.9%	5.3%
General Support	5.0%	0.3%	0.5%	5.7%	86.5%	4.8%	8.7%
Patient & Client Care	4.7%	0.4%	1.6%	6.6%	70.6%	5.3%	24.1%

Mental Health Absence Rate - by Care Group: Jul 2020	Certified absence	Self-certified absence	COVID-19 absence	Total absence rate	Certified	Self-certified	COVID-19
Mental Health	3.5%	0.3%	0.7%	4.5%	77.9%	6.1%	16.0%
CHO 1	5.3%	0.2%	0.5%	6.0%	88.3%	3.6%	8.0%
CHO 2	2.9%	0.1%	0.4%	3.5%	84.2%	3.5%	12.3%
CHO 3	5.0%	0.2%	1.1%	6.3%	78.8%	3.2%	18.1%
CHO 4	3.3%	0.3%	0.1%	3.7%	89.5%	8.0%	2.5%
CHO 5	3.1%	0.4%	0.9%	4.4%	69.6%	9.4%	21.0%
Health Service Executive	3.4%	0.3%	0.0%	3.8%	91.6%	7.2%	1.2%
Section 38 Voluntary Agencies	1.9%	0.2%		2.1%	91.9%	8.1%	0.0%
CHO 6	2.9%	0.2%	0.0%	3.1%	91.7%	7.4%	0.9%
CHO 7	5.0%	0.3%	0.9%	6.3%	80.0%	5.1%	14.9%
CHO 8	4.7%	0.4%	1.0%	6.1%	76.5%	6.6%	16.9%
Health Service Executive	3.0%	0.2%	0.6%	3.7%	79.2%	5.0%	15.8%
Section 38 Voluntary Agencies	2.2%	0.3%		2.5%	88.2%	11.8%	0.0%
CHO 9	2.9%	0.2%	0.5%	3.6%	80.2%	5.7%	14.1%
Other Community Services	1.6%	0.3%	1.8%	3.8%	43.3%	9.0%	47.7%



Mental Health Overall Absence Rate - by Care Group & Staff Category: Jul 2020	Medical & Dental	Nursing & Midwifery	Health & Social Care Professionals	Management & Administrative	General Support	Patient & Client Care	Certified absence	Self-certified absence	COVID-19 absence	Total absence
Mental Health	2.2%	5.0%	2.8%	2.6%	5.7%	6.6%	3.5%	0.3%	0.7%	4.5%
CHO 1	2.8%	6.6%	4.1%	4.6%	7.4%	9.1%	5.3%	0.2%	0.5%	6.0%
CHO 2	2.7%	4.4%	2.1%	3.2%	2.2%	2.8%	2.9%	0.1%	0.4%	3.5%
CHO 3	1.3%	7.7%	3.0%	7.4%	4.0%	10.0%	5.0%	0.2%	1.1%	6.3%
CHO 4	2.8%	3.7%	3.0%	2.4%	7.4%	3.9%	3.3%	0.3%	0.1%	3.7%
CHO 5	1.0%	5.1%	2.9%	2.9%	5.3%	3.9%	3.1%	0.4%	0.9%	4.4%
Health Service Executive	4.9%	2.5%	4.7%	1.0%	8.2%	5.5%	3.4%	0.3%	0.0%	3.8%
Section 38 Voluntary Agencies	0.6%	3.6%	0.2%	3.3%	11.7%	2.9%	1.9%	0.2%		2.1%
CHO 6	2.3%	2.8%	1.7%	2.4%	9.0%	5.4%	2.9%	0.2%	0.0%	3.1%
CHO 7	6.6%	6.1%	5.4%	3.0%	14.4%	8.8%	5.0%	0.3%	0.9%	6.3%
CHO 8	1.3%	6.0%	3.3%	5.3%	6.0%	12.8%	4.7%	0.4%	1.0%	6.1%
Health Service Executive	2.1%	4.2%	2.0%	1.5%	4.8%	6.8%	3.0%	0.2%	0.6%	3.7%
Section 38 Voluntary Agencies	0.0%	1.9%	4.9%	4.2%	3.6%	0.0%	2.2%	0.3%		2.5%
CHO 9	2.1%	3.8%	2.1%	2.0%	4.4%	6.5%	2.9%	0.2%	0.5%	3.6%
Other Community Services	0.0%	5.6%	1.0%	0.6%	5.6%	10.1%	1.6%	0.3%	1.8%	3.8%



Certified absence

Self-certified absence

COVID-19 absence

Mental Health Absence Rate - by Care Group, Staff Category & Absence type: Jul 2020

CHO 1 by Staff Category Jul 2020	Certified absence	Self-certified absence	COVID-19 absence	Total absence	Certified	Self-certified	COVID-19
Mental Health	5.3%	0.2%	0.5%	6.0%	88.3%	3.6%	8.0%
Medical & Dental	1.7%	0.2%	0.9%	2.8%	59.5%	7.3%	33.2%
Nursing & Midwifery	5.9%	0.3%	0.4%	6.6%	89.8%	4.2%	6.0%
Health & Social Care Professionals	4.0%	0.1%	0.0%	4.1%	97.7%	2.3%	0.0%
Management & Administrative	4.3%	0.1%	0.2%	4.6%	93.1%	2.3%	4.6%
General Support	6.7%	0.2%	0.5%	7.4%	90.0%	3.1%	6.9%
Patient & Client Care	7.3%	0.2%	1.6%	9.1%	80.1%	2.3%	17.6%

CHO 2 by Staff Category Jul 2020	Certified absence	Self-certified absence	COVID-19 absence	Total absence	Certified	Self-certified	COVID-19
Mental Health	2.9%	0.1%	0.4%	3.5%	84.2%	3.5%	12.3%
Medical & Dental	2.6%	0.1%	0.0%	2.7%	96.8%	3.2%	0.0%
Nursing & Midwifery	3.5%	0.2%	0.8%	4.4%	79.1%	3.5%	17.4%
Health & Social Care Professionals	1.9%	0.1%	0.1%	2.1%	90.8%	4.0%	5.3%
Management & Administrative	3.0%	0.1%	0.0%	3.2%	95.6%	4.4%	0.0%
General Support	2.2%	0.0%	0.0%	2.2%	100.0%	0.0%	0.0%
Patient & Client Care	2.5%	0.1%	0.2%	2.8%	88.6%	3.4%	7.9%

CHO 3 by Staff Category Jul 2020	Certified absence	Self-certified absence	COVID-19 absence	Total absence	Certified	Self-certified	COVID-19
Mental Health	5.0%	0.2%	1.1%	6.3%	78.8%	3.2%	18.1%
Medical & Dental	1.2%	0.1%	0.0%	1.3%	92.7%	7.3%	0.0%
Nursing & Midwifery	5.5%	0.3%	1.9%	7.7%	71.5%	3.7%	24.8%
Health & Social Care Professionals	2.9%	0.0%	0.1%	3.0%	96.7%	1.1%	2.2%
Management & Administrative	6.8%	0.2%	0.4%	7.4%	92.0%	3.0%	4.9%
General Support	4.0%	0.0%	0.0%	4.0%	100.0%	0.0%	0.0%
Patient & Client Care	8.2%	0.3%	1.6%	10.0%	81.8%	2.6%	15.5%

CHO 4 by Staff Category Jul 2020	Certified absence	Self-certified absence	COVID-19 absence	Total absence	Certified	Self-certified	COVID-19
Mental Health	3.3%	0.3%	0.1%	3.7%	89.5%	8.0%	2.5%
Medical & Dental	2.5%	0.4%	0.0%	2.8%	86.7%	13.3%	0.0%
Nursing & Midwifery	3.3%	0.3%	0.1%	3.7%	88.7%	9.4%	1.9%
Health & Social Care Professionals	2.8%	0.2%	0.0%	3.0%	94.8%	5.2%	0.0%
Management & Administrative	2.3%	0.2%	0.0%	2.4%	92.6%	7.4%	0.0%
General Support	6.1%	0.3%	1.0%	7.4%	82.9%	4.1%	13.0%
Patient & Client Care	3.6%	0.2%	0.0%	3.9%	94.5%	4.5%	1.0%

CHO 5 by Staff Category Jul 2020	Certified absence	Self-certified absence	COVID-19 absence	Total absence	Certified	Self-certified	COVID-19
Mental Health	3.1%	0.4%	0.9%	4.4%	69.6%	9.4%	21.0%
Medical & Dental	0.8%	0.2%	0.0%	1.0%	80.4%	19.6%	0.0%
Nursing & Midwifery	3.5%	0.5%	1.1%	5.1%	69.4%	9.1%	21.5%
Health & Social Care Professionals	2.2%	0.0%	0.6%	2.9%	75.9%	1.5%	22.6%
Management & Administrative	2.7%	0.1%	0.0%	2.9%	95.2%	4.8%	0.0%
General Support	3.6%	0.4%	1.3%	5.3%	68.1%	6.8%	25.1%
Patient & Client Care	1.9%	1.1%	0.9%	3.9%	48.0%	28.5%	23.5%

CHO 6 by Staff Category Jul 2020	Certified absence	Self-certified absence	COVID-19 absence	Total absence	Certified	Self-certified	COVID-19
Mental Health	2.9%	0.2%	0.0%	3.1%	91.7%	7.4%	0.9%
Medical & Dental	2.1%	0.2%	0.0%	2.3%	92.6%	7.4%	0.0%
Nursing & Midwifery	2.4%	0.3%	0.1%	2.8%	85.7%	11.8%	2.5%
Health & Social Care Professionals	1.5%	0.2%	0.0%	1.7%	89.9%	10.1%	0.0%
Management & Administrative	2.2%	0.2%	0.0%	2.4%	92.7%	7.3%	0.0%
General Support	8.8%	0.2%	0.0%	9.0%	97.7%	2.3%	0.0%
Patient & Client Care	5.3%	0.1%	0.0%	5.4%	97.9%	2.1%	0.0%

CHO 7 by Staff Category Jul 2020	Certified absence	Self-certified absence	COVID-19 absence	Total absence	Certified	Self-certified	COVID-19
Mental Health	5.0%	0.3%	0.9%	6.3%	80.0%	5.1%	14.9%
Medical & Dental	6.3%	0.0%	0.3%	6.6%	94.8%	0.0%	5.2%
Nursing & Midwifery	4.3%	0.3%	1.5%	6.1%	70.8%	4.6%	24.5%
Health & Social Care Professionals	5.0%	0.3%	0.1%	5.4%	92.5%	4.8%	2.8%
Management & Administrative	2.6%	0.3%	0.1%	3.0%	85.1%	11.1%	3.8%
General Support	13.8%	0.6%	0.0%	14.4%	95.8%	4.2%	0.0%
Patient & Client Care	7.8%	1.1%	0.0%	8.8%	88.0%	12.0%	0.0%

CHO 8 by Staff Category Jul 2020	Certified absence	Self-certified absence	COVID-19 absence	Total absence	Certified	Self-certified	COVID-19
Mental Health	4.7%	0.4%	1.0%	6.1%	76.5%	6.6%	16.9%
Medical & Dental	1.3%	0.0%	0.0%	1.3%	100.0%	0.0%	0.0%
Nursing & Midwifery	4.6%	0.6%	0.8%	6.0%	77.3%	9.3%	13.3%
Health & Social Care Professionals	2.2%	0.2%	0.9%	3.3%	67.2%	6.4%	26.5%
Management & Administrative	4.1%	0.1%	1.1%	5.3%	77.4%	1.7%	20.9%
General Support	5.5%	0.5%	0.0%	6.0%	91.8%	8.2%	0.0%
Patient & Client Care	9.3%	0.5%	3.0%	12.8%	72.7%	4.1%	23.2%

CHO 9 by Staff Category Jul 2020	Certified absence	Self-certified absence	COVID-19 absence	Total absence	Certified	Self-certified	COVID-19
Mental Health	2.9%	0.2%	0.5%	3.6%	80.2%	5.7%	14.1%
Medical & Dental	2.1%	0.0%	0.0%	2.1%	100.0%	0.0%	0.0%
Nursing & Midwifery	3.1%	0.2%	0.5%	3.8%	80.9%	5.6%	13.4%
Health & Social Care Professionals	1.9%	0.1%	0.0%	2.1%	93.5%	6.5%	0.0%
Management & Administrative	1.9%	0.1%	0.0%	2.0%	94.4%	5.6%	0.0%
General Support	4.2%	0.2%	0.0%	4.4%	94.9%	5.1%	0.0%
Patient & Client Care	3.6%	0.5%	2.4%	6.5%	55.1%	7.8%	37.2%

Other Community Services by Staff Category Jul 2020	Certified absence	Self-certified absence	COVID-19 absence	Total absence	Certified	Self-certified	COVID-19
Mental Health	1.6%	0.3%	1.8%	3.8%	43.3%	9.0%	47.7%
Medical & Dental				0.0%			
Nursing & Midwifery	2.0%	0.7%	2.9%	5.6%	36.1%	12.4%	51.5%
Health & Social Care Professionals	1.0%	0.0%	0.0%	1.0%	100.0%	0.0%	0.0%
Management & Administrative	0.6%	0.0%	0.0%	0.6%	100.0%	0.0%	0.0%
General Support	5.2%	0.4%	0.0%	5.6%	92.4%	7.6%	0.0%
Patient & Client Care	3.4%	0.4%	6.4%	10.1%	33.4%	3.8%	62.8%

Mental Health Absence Rate - by Staff Category & Care Group	CHO 1	CHO 2	CHO 3	CHO 4	CHO 5	HSE	S38	CHO 6	CHO 7	CHO 8	HSE	S38	CHO 9	Other Comm.	Total absence	Certified absence	Self-certified absence	COVID-19 absence
Mental Health: 2020 overall	7.0%	4.2%	7.8%	4.4%	5.8%	5.3%	5.1%	5.2%	9.0%	8.1%	5.5%	5.3%	5.5%	4.3%	5.8%	3.8%	0.3%	1.7%
Medical & Dental	3.1%	1.7%	4.9%	2.7%	2.7%	3.5%	2.6%	3.0%	7.0%	4.7%	3.8%	1.4%	3.8%	2.5%	3.5%	1.7%	0.1%	1.6%
Nursing & Midwifery	7.2%	5.6%	9.7%	4.8%	6.1%	5.1%	6.0%	5.3%	9.8%	7.8%	5.6%	4.9%	5.5%	6.5%	6.5%	4.1%	0.4%	2.0%
Health & Social Care Professionals	5.2%	2.7%	3.7%	3.5%	4.1%	4.5%	4.0%	4.1%	5.7%	6.4%	4.5%	3.7%	4.4%	2.0%	4.2%	2.9%	0.2%	1.1%
Management & Administrative	7.7%	3.0%	6.8%	3.1%	5.2%	4.0%	7.2%	5.9%	7.9%	7.0%	6.3%	4.6%	5.9%	0.7%	4.0%	3.0%	0.2%	0.7%
General Support	7.6%	2.5%	6.7%	9.2%	7.1%	10.1%	13.1%	10.8%	16.0%	9.4%	6.5%	8.3%	7.0%	3.3%	7.2%	5.9%	0.3%	1.0%
Patient & Client Care	10.5%	3.8%	9.6%	3.7%	5.7%	5.4%	5.4%	5.4%	15.9%	12.4%	6.6%	1.7%	6.4%	10.1%	7.1%	5.9%	0.3%	1.0%
Total July:	6.0%	3.5%	6.3%	3.7%	4.4%	3.8%	2.1%	3.1%	6.3%	6.1%	3.7%	2.5%	3.6%	3.8%	4.5%	3.5%	0.3%	0.7%
Medical & Dental	2.8%	2.7%	1.3%	2.8%	1.0%	4.9%	0.6%	2.3%	6.6%	1.3%	2.1%	0.0%	2.1%	0.0%	2.2%	2.0%	0.1%	0.1%
Nursing & Midwifery	6.6%	4.4%	7.7%	3.7%	5.1%	2.5%	3.6%	2.8%	6.1%	6.0%	4.2%	1.9%	3.8%	5.6%	5.0%	3.8%	0.4%	0.9%
Health & Social Care Professionals	4.1%	2.1%	3.0%	3.0%	2.9%	4.7%	0.2%	1.7%	5.4%	3.3%	2.0%	4.9%	2.1%	1.0%	2.8%	2.5%	0.1%	0.2%
Management & Administrative	4.6%	3.2%	7.4%	2.4%	2.9%	1.0%	3.3%	2.4%	3.0%	5.3%	1.5%	4.2%	2.0%	0.6%	2.6%	2.4%	0.1%	0.1%
General Support	7.4%	2.2%	4.0%	7.4%	5.3%	8.2%	11.7%	9.0%	14.4%	6.0%	4.8%	3.6%	4.4%	5.6%	5.7%	5.0%	0.3%	0.5%
Patient & Client Care	9.1%	2.8%	10.0%	3.9%	3.9%	5.5%	2.9%	5.4%	8.8%	12.8%	6.8%	0.0%	6.5%	10.1%	6.6%	4.7%	0.4%	1.6%
Total June:	5.5%	3.0%	6.9%	3.8%	5.0%	4.2%	2.1%	3.4%	4.7%	6.1%	3.2%	3.2%	3.2%	3.8%	4.4%	3.2%	0.3%	0.9%
Medical & Dental	0.1%	0.3%	2.9%	1.3%	0.1%	7.7%	0.3%	3.4%	4.2%	1.5%	0.6%	0.0%	0.6%	0.2%	1.3%	1.1%	0.1%	0.1%
Nursing & Midwifery	5.5%	4.3%	8.7%	4.3%	5.7%	2.3%	3.7%	2.7%	4.5%	6.3%	3.8%	2.5%	3.5%	5.8%	5.1%	3.6%	0.4%	1.1%
Health & Social Care Professionals	2.4%	1.8%	2.4%	1.9%	1.6%	5.0%	0.2%	1.7%	3.1%	3.1%	2.7%	0.0%	2.6%	0.9%	2.2%	2.0%	0.1%	0.1%
Management & Administrative	5.5%	1.0%	7.0%	4.1%	2.5%	8.7%	3.4%	5.5%	3.3%	4.8%	1.4%	6.1%	2.3%	0.4%	2.7%	2.3%	0.1%	0.3%
General Support	8.1%	0.6%	6.2%	8.0%	7.3%	10.0%	12.7%	10.6%	14.0%	5.4%	5.3%	4.6%	5.1%	0.7%	6.2%	5.2%	0.3%	0.6%
Patient & Client Care	12.0%	3.1%	10.0%	4.7%	4.8%	2.6%	0.0%	2.5%	8.0%	12.0%	4.4%	0.0%	4.2%	10.8%	6.8%	4.5%	0.3%	2.0%
Total May:	6.1%	4.4%	9.7%	5.6%	6.6%	4.7%	3.7%	4.3%	7.1%	8.4%	5.8%	5.9%	5.8%	5.5%	6.2%	3.5%	0.2%	2.5%
Medical & Dental	1.2%	0.0%	8.2%	3.1%	1.7%	1.9%	1.3%	1.6%	1.7%	5.0%	3.6%	0.0%	3.5%	2.4%	2.7%	1.4%	0.1%	1.2%
Nursing & Midwifery	6.0%	6.7%	13.3%	6.9%	6.8%	4.7%	6.8%	5.2%	12.4%	8.7%	6.4%	5.4%	6.3%	8.5%	7.7%	4.1%	0.3%	3.3%
Health & Social Care Professionals	3.7%	2.4%	1.9%	3.1%	3.6%	5.7%	1.8%	2.8%	2.5%	4.8%	2.2%	2.8%	2.3%	0.0%	2.8%	2.1%	0.0%	0.6%
Management & Administrative	7.1%	2.4%	6.6%	3.2%	7.6%	3.9%	3.9%	3.9%	3.5%	6.7%	4.6%	8.0%	5.3%	0.3%	3.7%	2.4%	0.1%	1.2%
General Support	7.8%	1.0%	7.9%	10.6%	8.0%	10.8%	10.8%	10.8%	14.7%	7.1%	4.5%	8.1%	5.5%	2.2%	7.2%	5.5%	0.3%	1.5%
Patient & Client Care	11.7%	3.6%	9.5%	3.8%	7.4%	2.1%	2.0%	2.1%	6.4%	14.2%	10.5%	0.0%	10.2%	14.9%	8.4%	4.4%	0.3%	3.7%
Total April:	8.7%	5.9%	9.9%	6.5%	7.7%	7.4%	13.0%	9.6%	14.2%	11.8%	8.3%	6.1%	7.9%	6.8%	8.3%	3.7%	0.2%	4.4%
Medical & Dental	6.1%	3.3%	8.1%	4.7%	8.4%	0.8%	10.4%	6.3%	7.0%	8.5%	6.5%	4.7%	6.5%	5.7%	6.3%	1.5%	0.1%	4.6%
Nursing & Midwifery	9.2%	7.9%	12.2%	7.2%	7.9%	8.2%	10.9%	8.8%	23.7%	11.9%	8.0%	6.1%	7.7%	9.8%	9.5%	4.0%	0.2%	5.2%
Health & Social Care Professionals	4.7%	3.3%	6.1%	5.7%	4.9%	5.1%	12.7%	10.4%	2.9%	8.1%	8.6%	0.0%	8.3%	6.9%	6.3%	3.1%	0.2%	3.1%
Management & Administrative	10.4%	2.4%	7.5%	3.7%	7.5%	4.4%	16.8%	11.7%	8.0%	9.1%	8.6%	2.0%	7.3%	0.8%	5.2%	2.6%	0.3%	2.4%
General Support	6.7%	1.2%	8.9%	12.2%	8.8%	14.6%	27.1%	17.5%	22.0%	16.2%	7.9%	11.5%	9.0%	1.2%	9.5%	6.2%	0.3%	3.0%
Patient & Client Care	13.3%	6.7%	9.4%	4.4%	6.7%	7.5%	0.0%	7.1%	29.0%	16.4%	10.2%	0.0%	9.8%	16.8%	9.7%	4.2%	0.1%	5.4%
Total March:	9.8%	6.4%	9.4%	4.2%	6.0%	7.1%	5.5%	6.4%	24.9%	10.2%	8.1%	8.3%	8.1%	5.8%	7.7%	4.1%	0.4%	3.2%
Medical & Dental	9.0%	3.2%	6.7%	3.6%	1.4%	5.9%	4.0%	4.8%	28.5%	8.4%	8.5%	4.5%	8.4%	8.1%	6.9%	2.5%	0.2%	4.2%
Nursing & Midwifery	10.2%	7.9%	11.1%	4.0%	7.1%	6.0%	5.4%	5.8%	22.6%	9.2%	7.5%	8.5%	7.7%	8.8%	8.3%	4.1%	0.4%	3.7%
Health & Social Care Professionals	7.3%	5.6%	7.5%	4.3%	4.5%	8.9%	4.9%	5.8%	19.2%	12.1%	8.8%	7.8%	8.7%	3.9%	7.4%	3.8%	0.3%	3.3%
Management & Administrative	11.1%	4.9%	6.0%	4.9%	4.3%	7.5%	6.5%	6.9%	30.3%	9.7%	10.1%	7.4%	9.5%	0.8%	5.5%	3.7%	0.4%	1.4%
General Support	8.3%	4.5%	8.9%	7.6%	5.5%	10.1%	8.2%	9.6%	39.0%	10.1%	9.2%	10.2%	9.5%	3.4%	7.4%	5.9%	0.5%	1.0%
Patient & Client Care	10.5%	5.9%	9.5%	2.9%	6.6%	8.5%	26.3%	9.4%	54.2%	13.6%	7.1%	0.0%	6.8%	11.0%	8.4%	4.7%	0.4%	3.4%
Total February:	6.2%	2.3%	5.7%	3.9%	4.8%	4.3%	4.5%	4.4%	6.8%	6.7%	4.5%	5.7%	4.7%	2.2%	4.5%	4.0%	0.5%	
Medical & Dental	1.3%	0.9%	2.7%	1.3%	3.0%	3.5%	0.5%	1.7%	4.0%	4.5%	2.3%	0.0%	2.2%	0.4%	2.1%	1.8%	0.3%	
Nursing & Midwifery	6.3%	3.1%	6.7%	4.1%	4.5%	4.5%	3.6%	4.3%	5.6%	5.8%	4.3%	5.5%	4.5%	3.0%	4.6%	4.0%	0.6%	
Health & Social Care Professionals	6.0%	1.2%	1.8%	3.0%	4.0%	1.2%	3.5%	2.9%	8.2%	7.5%	4.0%	4.2%	4.0%	0.3%	3.6%	3.4%	0.3%	
Management & Administrative	8.5%	2.9%	5.3%	3.0%	3.7%	1.8%	10.6%	7.2%	16.3%	7.2%	8.0%	2.1%	6.9%	0.9%	4.2%	3.9%	0.2%	
General Support	7.3%	2.5%	6.6%	8.7%	7.3%	5.2%	10.9%	6.7%	0.0%	9.9%	8.4%	10.9%	9.1%	7.4%	7.4%	7.1%	0.3%	
Patient & Client Care	6.9%	1.4%	10.7%	3.7%	4.6%	6.7%	0.0%	6.4%	20.0%	9.2%	3.2%	0.0%	3.0%	3.7%	4.8%	4.3%	0.5%	
Total January:	6.7%	4.1%	6.3%	3.9%	6.2%	5.6%	5.1%	5.4%	5.8%	6.8%	4.7%	5.1%	4.8%	2.3%	5.0%	4.5%	0.5%	
Medical & Dental	0.8%	2.0%	3.8%	1.4%	3.2%	0.0%	0.8%	0.5%	4.5%	3.0%	2.7%	0.0%	2.6%	0.4%	2.1%	2.0%	0.2%	
Nursing & Midwifery	6.6%	5.1%	7.6%	4.6%	5.8%	7.4%	7.9%	7.5%	5.9%	6.7%	4.8%	4.3%	4.7%	3.7%	5.5%	5.0%	0.6%	
Health & Social Care Professionals	8.7%	2.4%	3.1%	2.3%	7.3%	1.0%	4.7%	3.7%	3.1%	6.3%	3.1%	5.2%	3.2%	0.4%	4.0%	3.7%	0.3%	
Management & Administrative	6.9%	3.8%	7.5%	1.8%	7.3%	1.0%	5.9%	3.9%	12.4%	6.6%	9.6%	2.2%	8.1%	1.1%	4.2%	3.9%	0.4%	
General Support	7.4%	5.2%	4.3%	7.9%	7.4%	10.9%	10.2%	10.7%	0.0%	10.6%	5.5%	9.4%	6.7%	3.1%	7.2%	6.7%	0.5%	
Patient & Client Care	9.6%	3.3%	8.0%	3.0%	5.7%	5.0%	0.0%	4.9%	16.0%	8.4%	3.5%	11.3%	3.8%	2.1%	5.1%	4.6%	0.5%	
Mental Health: 2019 overall	6.1%	4.1%	5.9%	3.3%	5.3%	4.7%	3.5%	4.1%	5.0%	5.7%	4.5%	3.8%	4.4%		4.7%	4.3%	0.5%	
Medical & Dental	1.5%	1.2%	4.8%	1.0%	2.8%	0.8%	0.6%	0.7%	1.9%	1.2%	3.3%	0.8%	3.3%		1.9%	1.7%	0.2%	
Nursing & Midwifery	6.3%	5.4%	6.8%	3.7%	5.1%	5.5%	3.1%	4.9%	4.5%	6.0%	4.4%	3.4%	4.2%		5.1%	4.6%	0.5%	
Health & Social Care Professionals	5.4%	4.3%	3.5%	2.8%	6.1%	4.9%	5.0%	5.0%	4.2%	4.6%	3.4%	2.0%	3.3%		4.1%	3.8%	0.4%	
Management & Administrative	6.1%	3.5%	4.4%	2.4%	5.1%	3.5%	3.2%	3.3%	9.6%	5.4%	6.2%	3.2%	5.7%		4.6%	4.3%	0.4%	
General Support	8.7%	3.8%	7.1%	3.5%	6.2%	5.2%	7.0%	5.8%	12.6%	8.0%	5.7%	5.8%	5.7%		6.0%	5.7%	0.4%	
Patient & Client Care	7.7%	2.7%	7.2%	3.7%	5.6%	3.8%	0.0%	3.6%	17.7%	7.2%	4.5%	5.6%	4.5%		4.9%	5.7%	0.4%	

Mental Health Absence Rate - by Staff Category & S38 Agency	St. John of God (MHS)	St. Vincent's, Fairview	Total absence	Certified absence	Self-certified absence	COVID-19 absence
Mental Health: S38 2020 overall	5.1%	5.3%	5.2%	2.7%	0.8%	1.7%
Medical & Dental	2.6%	1.4%	2.5%	0.4%	0.2%	1.9%
Nursing & Midwifery	6.0%	4.9%	5.3%	3.1%	0.8%	1.4%
Health & Social Care Professionals	4.0%	3.7%	4.0%	1.3%	0.4%	2.3%
Management & Administrative	7.2%	4.6%	6.2%	3.4%	1.2%	1.6%
General Support	13.1%	8.3%	9.4%	6.3%	1.5%	1.6%
Patient & Client Care	5.4%	1.7%	2.7%	1.3%	0.1%	1.3%
Total July:	2.1%	2.5%	2.3%	2.1%	0.2%	
Medical & Dental	0.6%	0.0%	0.5%	0.3%	0.3%	
Nursing & Midwifery	3.6%	1.9%	2.5%	2.2%	0.2%	
Health & Social Care Professionals	0.2%	4.9%	0.5%	0.3%	0.3%	
Management & Administrative	3.3%	4.2%	3.7%	3.6%	0.1%	
General Support	11.7%	3.6%	5.3%	5.1%	0.2%	
Patient & Client Care	2.9%	0.0%	0.8%		0.8%	
Total June:	2.1%	3.2%	2.6%	2.0%	0.5%	0.1%
Medical & Dental	0.3%	0.0%	0.3%	0.3%		
Nursing & Midwifery	3.7%	2.5%	2.9%	1.8%	1.1%	
Health & Social Care Professionals	0.2%	0.0%	0.2%		0.2%	
Management & Administrative	3.4%	6.1%	4.5%	4.5%		
General Support	12.7%	4.6%	6.4%	5.0%	0.8%	0.6%
Patient & Client Care	0.0%	0.0%	0.0%			
Total May:	3.7%	5.9%	4.6%	2.5%	0.2%	1.8%
Medical & Dental	1.3%	0.0%	1.2%	0.6%	0.1%	0.6%
Nursing & Midwifery	6.8%	5.4%	5.9%	4.0%	0.1%	1.8%
Health & Social Care Professionals	1.8%	2.8%	1.8%	0.5%		1.3%
Management & Administrative	3.9%	8.0%	5.5%	2.3%	0.5%	2.6%
General Support	10.8%	8.1%	8.8%	4.2%	0.9%	3.6%
Patient & Client Care	2.0%	0.0%	0.5%	0.5%		
Total April:	13.0%	6.1%	10.0%	1.2%	1.9%	6.9%
Medical & Dental	10.4%	4.7%	10.0%		1.0%	9.0%
Nursing & Midwifery	10.9%	6.1%	7.7%	1.4%	1.4%	4.9%
Health & Social Care Professionals	12.7%	0.0%	11.9%		1.4%	10.5%
Management & Administrative	16.8%	2.0%	10.9%	0.5%	3.7%	6.7%
General Support	27.1%	11.5%	15.1%	5.5%	3.5%	6.1%
Patient & Client Care	0.0%	0.0%	0.0%			
Total March:	5.5%	8.3%	6.7%	2.1%	1.6%	3.1%
Medical & Dental	4.0%	4.5%	4.1%	0.5%		3.6%
Nursing & Midwifery	5.4%	8.5%	7.5%	3.2%	1.0%	3.3%
Health & Social Care Professionals	4.9%	7.8%	5.1%	0.1%	1.1%	3.8%
Management & Administrative	6.5%	7.4%	6.8%	1.3%	3.7%	1.8%
General Support	8.2%	10.2%	9.8%	4.8%	3.9%	1.0%
Patient & Client Care	26.3%	0.0%	8.3%			8.3%
Total February:	4.5%	5.7%	5.0%	4.6%	0.4%	
Medical & Dental	0.5%	0.0%	0.5%	0.5%		
Nursing & Midwifery	3.6%	5.5%	4.8%	3.7%	1.1%	
Health & Social Care Professionals	3.5%	4.2%	3.5%	3.5%		
Management & Administrative	10.6%	2.1%	7.6%	7.6%		
General Support	10.9%	10.9%	10.9%	10.7%	0.2%	
Patient & Client Care	0.0%	0.0%	0.0%			
Total January:	5.1%	5.1%	5.1%	4.9%	0.2%	
Medical & Dental	0.8%	0.0%	0.8%	0.8%		
Nursing & Midwifery	7.9%	4.3%	5.4%	5.1%	0.4%	
Health & Social Care Professionals	4.7%	5.2%	4.8%	4.8%		
Management & Administrative	5.9%	2.2%	4.4%	4.1%	0.2%	
General Support	10.2%	9.4%	9.6%	9.0%	0.6%	
Patient & Client Care	0.0%	11.3%	9.3%	9.3%		
Mental Health: S38 2019 overall	3.5%	3.8%	3.6%	3.1%	0.5%	
Medical & Dental	0.6%	0.8%	0.6%	0.3%	0.3%	
Nursing & Midwifery	3.1%	3.4%	3.3%	2.8%	0.5%	
Health & Social Care Professionals	5.0%	2.0%	4.8%	4.2%	0.6%	
Management & Administrative	3.2%	3.2%	3.2%	2.7%	0.5%	
General Support	7.0%	5.8%	6.1%	5.8%	0.3%	
Patient & Client Care	0.0%	5.6%	4.2%	3.8%	0.4%	