

Mental Health Service Employment Report: April 2022

Employment by Staff Group

Apr 2022	WTE Dec 2019	WTE Dec 2020	WTE Mar 2022	WTE Apr 2022	WTE change since Mar 22	WTE change since Dec 20	% change since Dec 20	WTE change since Dec 19	% change since Dec 19	No. Apr 2022
Overall	9,954	10,301	10,503	10,508	+5	+206	+2.0%	+554	+5.6%	11,584
Consultants	353	370	384	384	-1	+14	+3.8%	+31	+8.8%	417
Registrars	269	281	337	340	+3	+59	+21.0%	+71	+26.5%	349
SHO/ Interns	261	276	230	227	-3	-49	-17.7%	-34	-13.0%	235
Medical/ Dental, other	5	5	4	5	+1	+0	+2.0%	+0	+2.0%	8
Medical & Dental	888	932	955	956	+0	+24	+2.6%	+68	+7.7%	1,009
Nurse/ Midwife Manager	1,192	1,240	1,268	1,273	+6	+34	+2.7%	+81	+6.8%	1,330
Nurse/ Midwife Specialist & AN/MP	459	529	553	561	+8	+33	+6.2%	+102	+22.3%	599
Staff Nurse/ Staff Midwife	3,003	3,076	3,044	3,044	+0	-32	-1.0%	+41	+1.4%	3,295
<i>Pre-registration Nurse Intern (COVID-19)</i>		42				-42	-100.0%		-100.0%	
<i>Pre-registration Nurse/ Midwife Intern</i>	28	11	161	159	-1	+149	+1388.8%	+132	+479.2%	321
<i>Post-registration Nurse/ Midwife Student</i>	1	1				-1	-100.0%	-1	-100.0%	
<i>Nursing/ Midwifery awaiting registration</i>	59	5	18	12	-6	+7	+144.7%	-47	-79.9%	12
Nursing/ Midwifery Student	87	59	179	171	-8	+112	+190.5%	+84	+95.9%	333
Nursing/ Midwifery other	32	32	34	34	+1	+3	+8.3%	+3	+8.7%	37
Nursing & Midwifery	4,773	4,935	5,077	5,085	+7	+149	+3.0%	+311	+6.5%	5,594
Therapy Professions	422	439	447	444	-3	+4	+1.0%	+21	+5.0%	501
Social Care	74	80	72	71	-1	-8	-10.6%	-2	-2.8%	84
Social Workers	350	373	389	393	+5	+21	+5.6%	+44	+12.6%	438
Psychologists	394	424	431	428	-3	+4	+1.0%	+34	+8.6%	478
Pharmacy	19	21	20	20	+0	-0	-1.2%	+2	+10.4%	27
H&SC, Other	108	108	131	131	-0	+23	+21.4%	+23	+21.5%	150
Health & Social Care Professionals	1,366	1,444	1,490	1,489	-2	+44	+3.1%	+122	+8.9%	1,678
Management (VIII & above)	57	67	69	69	-0	+2	+3.3%	+12	+20.9%	70
Administrative/ Supervisory (V to VII)	237	245	253	258	+5	+13	+5.3%	+21	+8.8%	274
Clerical (III & IV)	717	722	718	714	-4	-8	-1.1%	-3	-0.5%	807
Management & Administrative	1,012	1,034	1,040	1,041	+1	+7	+0.7%	+30	+2.9%	1,151
Support	581	594	574	576	+3	-18	-3.0%	-4	-0.7%	659
Maintenance/ Technical	131	137	129	129	-0	-8	-6.0%	-2	-1.4%	136
General Support	711	732	703	705	+2	-26	-3.6%	-6	-0.8%	795
Health Care Assistants	988	1,022	1,027	1,020	-7	-2	-0.2%	+32	+3.2%	1,107
Care, other	216	203	210	213	+3	+9	+4.6%	-3	-1.4%	250
Patient & Client Care	1,204	1,225	1,237	1,232	-4	+7	+0.6%	+29	+2.4%	1,357

Mental Health Services Employment by Administration (HSE / S38): April 2022

Apr 2022	WTE Dec 2019	WTE Dec 2020	WTE Mar 2022	WTE Apr 2022	WTE change since Mar 22	WTE change since Dec 20	% change since Dec 20	WTE change since Dec 19	% change since Dec 19	No. Apr 2022
Total	9,954	10,301	10,503	10,508	+5	+206	+2.0%	+554	+5.6%	11,584
HSE	9,513	9,855	10,087	10,096	+10	+242	+2.5%	+584	+6.1%	11,088
Section 38 Voluntary Agencies	441	446	416	411	-5	-35	-7.9%	-30	-6.8%	496

Employment by Staff Group

Apr 2022	WTE Dec 2019	WTE Dec 2020	WTE Mar 2022	WTE Apr 2022	WTE change since Mar 22	WTE change since Dec 20	% change since Dec 20	WTE change since Dec 19	% change since Dec 19	No. Apr 2022
Health Service Executive	9,513	9,855	10,087	10,096	+10	+242	+2.5%	+584	+6.1%	11,088
Consultants	333	349	363	362	-1	+13	+3.9%	+29	+8.8%	390
Registrars	250	266	318	321	+3	+55	+20.7%	+71	+28.3%	329
SHO/ Interns	255	267	222	220	-2	-47	-17.6%	-35	-13.8%	226
Medical/ Dental, other	5	5	4	5	+1	+0	+2.0%	+0	+2.0%	8
Medical & Dental	843	886	906	908	+2	+22	+2.4%	+65	+7.7%	953
Nurse/ Midwife Manager	1,154	1,202	1,232	1,238	+5	+36	+3.0%	+83	+7.2%	1,291
Nurse/ Midwife Specialist & AN/MP	452	520	544	552	+8	+33	+6.3%	+100	+22.1%	588
Staff Nurse/ Staff Midwife	2,880	2,953	2,934	2,936	+2	-17	-0.6%	+57	+2.0%	3,175
Pre-registration Nurse Intern (COVID-19)		41				-41	-100.0%		-100.0%	
Pre-registration Nurse/ Midwife Intern	21	1	154	152	-1	+152	+21371.8%	+132	+642.6%	307
Post-registration Nurse/ Midwife Student	1	1				-1	-100.0%	-1	-100.0%	
Nursing/ Midwifery awaiting registration	59	5	18	12	-6	+7	+144.7%	-47	-79.9%	12
Nursing/ Midwifery Student	80	48	172	164	-8	+116	+242.5%	+84	+104.3%	319
Nursing/ Midwifery other	29	29	31	32	+1	+3	+9.0%	+3	+9.5%	34
Nursing & Midwifery	4,596	4,752	4,914	4,922	+9	+170	+3.6%	+326	+7.1%	5,407
Therapy Professions	391	412	421	420	-1	+9	+2.1%	+29	+7.5%	468
Social Care	48	52	49	47	-2	-5	-9.6%	-1	-2.0%	55
Social Workers	330	354	371	375	+5	+21	+6.0%	+45	+13.8%	419
Psychologists	379	402	411	407	-4	+6	+1.4%	+29	+7.6%	452
Pharmacy	17	19	18	19	+0	-0	-1.3%	+2	+10.2%	25
H&SC, Other	103	107	131	131	-0	+24	+22.1%	+28	+26.7%	149
Health & Social Care Professionals	1,267	1,345	1,401	1,399	-1	+54	+4.0%	+132	+10.4%	1,568
Management (VIII & above)	55	65	67	67	-0	+2	+3.4%	+12	+21.7%	68
Administrative/ Supervisory (V to VII)	216	224	233	237	+5	+13	+5.8%	+21	+9.9%	251
Clerical (III & IV)	673	679	676	674	-2	-5	-0.7%	+2	+0.2%	758
Management & Administrative	944	968	976	979	+3	+10	+1.1%	+35	+3.7%	1,077
Support	543	556	540	543	+3	-13	-2.4%	+0	+0.1%	607
Maintenance/ Technical	125	130	122	122	-0	-8	-6.4%	-3	-2.2%	129
General Support	668	687	663	665	+3	-22	-3.2%	-3	-0.4%	736
Health Care Assistants	982	1,016	1,021	1,014	-7	-2	-0.2%	+32	+3.2%	1,101
Care, other	213	200	207	209	+3	+9	+4.7%	-4	-1.7%	246
Patient & Client Care	1,195	1,216	1,228	1,223	-4	+7	+0.6%	+28	+2.3%	1,347

Employment by Staff Group

Apr 2022	WTE Dec 2019	WTE Dec 2020	WTE Mar 2022	WTE Apr 2022	WTE change since Mar 22	WTE change since Dec 20	% change since Dec 20	WTE change since Dec 19	% change since Dec 19	No. Apr 2022
Section 38 Voluntary Agencies	441	446	416	411	-5	-35	-7.9%	-30	-6.8%	496
Consultants	20	21	22	22	-0	+1	+2.9%	+2	+8.5%	27
Registrars	19	15	19	19	-0	+4	+26.1%	+0	+1.6%	20
SHO/ Interns	6	9	8	7	-1	-2	-20.2%	+1	+19.7%	9
Medical & Dental	45	45	49	48	-1	+3	+6.1%	+3	+7.1%	56
Nurse/ Midwife Manager	38	38	35	36	+0	-2	-5.2%	-2	-6.1%	39
Nurse/ Midwife Specialist & AN/MP	7	9	9	9		+0	+2.3%	+2	+36.4%	11
Staff Nurse/ Staff Midwife	123	123	110	108	-2	-15	-12.1%	-15	-12.3%	120
Pre-registration Nurse Intern (COVID-19)		1				-1	-100.0%		-100.0%	
Pre-registration Nurse/ Midwife Intern	7	10	7	7		-3	-30.0%			14
Nursing/ Midwifery Student	7	11	7	7		-4	-36.4%			14
Nursing/ Midwifery other	3	3	3	3						3
Nursing & Midwifery	177	183	164	162	-1	-21	-11.3%	-15	-8.4%	187
Therapy Professions	31	27	26	23	-2	-4	-14.8%	-8	-26.0%	33
Social Care	25	28	24	24	+1	-3	-12.4%	-1	-4.2%	29
Social Care	25	28	24	24	+1	-3	-12.4%	-1	-4.2%	29
Social Workers	20	19	18	18	+0	-0	-1.7%	-1	-7.3%	19
Psychologists	16	22	20	21	+1	-1	-6.2%	+5	+31.8%	26
Pharmacy	2	2	2	2				+0	+12.5%	2
H&SC, Other	5	1	0	0		-1	-51.0%	-4	-90.1%	1
Health & Social Care Professionals	99	99	90	89	-1	-10	-9.8%	-10	-9.9%	110
Management (VIII & above)	2	2	2	2						2
Administrative/ Supervisory (V to VII)	21	21	21	21	-0	-0	-0.7%	-1	-2.9%	23
Clerical (III & IV)	45	43	42	40	-2	-3	-6.7%	-5	-10.7%	49
Management & Administrative	68	66	64	63	-2	-3	-4.6%	-5	-8.0%	74
Support	38	38	33	33	-0	-4	-11.8%	-5	-11.9%	52
Maintenance/ Technical	6	7	7	7				+1	+16.7%	7
General Support	44	45	40	40	-0	-4	-10.0%	-4	-8.0%	59
Health Care Assistants	6	6	6	6						6
Care, other	3	3	3	3				+1	+20.2%	4
Patient & Client Care	9	9	9	9				+1	+6.6%	10

Mental Health Services Employment by CHO: Apr 2022

Apr 2022	WTE Dec 2019	WTE Dec 2020	WTE Mar 2022	WTE Apr 2022	WTE change since Mar 22	WTE change since Dec 20	% change since Dec 20	WTE change since Dec 19	% change since Dec 19	No. Apr 2022
Overall	9,954	10,301	10,503	10,508	+5	+206	+2.0%	+554	+5.6%	11,584
CHO 1	953	976	1,033	1,025	-8	+50	+5.1%	+73	+7.6%	1,120
CHO 2	1,308	1,340	1,344	1,342	-1	+2	+0.1%	+34	+2.6%	1,465
CHO 3	795	809	825	826	+1	+17	+2.2%	+31	+3.9%	905
CHO 4	1,485	1,564	1,590	1,592	+2	+28	+1.8%	+107	+7.2%	1,764
CHO 5	1,178	1,188	1,224	1,230	+6	+42	+3.5%	+52	+4.4%	1,369
CHO 6	593	626	634	633	-1	+6	+1.0%	+40	+6.8%	707
CHO 7	835	861	905	904	-1	+42	+4.9%	+69	+8.2%	1,000
CHO 8	1,098	1,112	1,098	1,102	+4	-10	-0.9%	+4	+0.4%	1,220
CHO 9	1,272	1,331	1,351	1,354	+3	+23	+1.8%	+82	+6.5%	1,506
other Community Services	438	494	499	499	+0	+5	+1.0%	+62	+14.1%	528

Mental Health Services Employment by CHO etc. Apr 2022

CHO 1

Apr 2022	WTE Dec 2019	WTE Dec 2020	WTE Mar 2022	WTE Apr 2022	WTE change since Mar 22	WTE change since Dec 20	% change since Dec 20	WTE change since Dec 19	% change since Dec 19	No. Apr 2022
Overall	953	976	1,033	1,025	-8	+50	+5.1%	+73	+7.6%	1,120
Consultants	31	34	35	34	-1	-0	-0.6%	+3	+9.9%	37
Registrars	24	29	30	30	+0	+1	+4.5%	+6	+24.4%	31
SHO/ Interns	25	23	22	21	-1	-2	-9.5%	-5	-18.0%	22
Medical & Dental	81	86	87	85	-2	-1	-1.2%	+4	+5.6%	90
Nurse/ Midwife Manager	117	119	119	120	+1	+1	+0.7%	+3	+2.7%	126
Nurse/ Midwife Specialist & AN/MP	67	74	76	79	+2	+5	+6.7%	+11	+16.7%	83
Staff Nurse/ Staff Midwife	297	288	307	304	-2	+16	+5.6%	+7	+2.3%	319
Nursing/ Midwifery Student		3	15	13	-2	+10	+348.0%	+13	-100.0%	27
Nursing/ Midwifery other		1	2	2	-0	+1	+103.2%	+2	-100.0%	2
Nursing & Midwifery	482	485	519	518	-1	+33	+6.8%	+36	+7.6%	557
Therapy Professions	36	36	45	43	-2	+7	+19.8%	+7	+20.4%	48
Social Care	4	4	4	4	+0	+0	+1.1%	+0	+1.9%	5
Social Workers	39	43	43	44	+1	+1	+1.8%	+5	+11.7%	49
Psychologists	21	23	24	23	-1	-0	-0.4%	+3	+12.6%	26
Pharmacy	1	1	1	1	+0	+0	+12.5%	+0	+12.5%	1
H&SC, Other	13	14	19	19	+0	+5	+36.0%	+6	+44.0%	21
Health & Social Care Professionals	113	121	136	134	-2	+13	+10.7%	+20	+18.0%	150
Management (VIII & above)	6	8	10	10	0	+2	+26.1%	+4	+70.8%	10
Administrative/ Supervisory (V to VII)	30	31	33	33	-0	+2	+7.1%	+3	+9.0%	36
Clerical (III & IV)	85	85	89	87	-2	+2	+2.5%	+2	+2.4%	98
Management & Administrative	121	123	131	130	-2	+6	+5.1%	+9	+7.3%	144
Support	62	65	60	60	-0	-5	-7.7%	-2	-3.3%	68
Maintenance/ Technical	17	16	18	17	-1	+1	+5.4%	+0	+2.9%	18
General Support	79	81	78	77	-1	-4	-5.0%	-2	-2.0%	86
Health Care Assistants	66	68	70	69	-1	+1	+1.9%	+3	+4.2%	79
Care, other	11	11	12	12	+0	+1	+10.1%	+1	+13.7%	14
Patient & Client Care	77	79	82	81	-1	+2	+3.0%	+4	+5.5%	93

CHO 2

Apr 2022	WTE Dec 2019	WTE Dec 2020	WTE Mar 2022	WTE Apr 2022	WTE change since Mar 22	WTE change since Dec 20	% change since Dec 20	WTE change since Dec 19	% change since Dec 19	No. Apr 2022
Overall	1,308	1,340	1,344	1,342	-1	+2	+0.1%	+34	+2.6%	1,465
Consultants	38	37	37	37	+0	+0	+1.2%	-0	-0.2%	40
Registrars	33	37	41	41	+0	+5	+13.4%	+8	+25.1%	42
SHO/ Interns	35	40	34	35	+1	-5	-11.6%	+0	+1.1%	36
Medical/ Dental, other	1	1		1	+1					1
Medical & Dental	107	114	113	115	+2	+1	+0.6%	+9	+8.1%	119
Nurse/ Midwife Manager	146	151	151	150	-2	-2	-1.0%	+4	+2.6%	154
Nurse/ Midwife Specialist & AN/MP	67	79	83	85	+2	+6	+7.6%	+18	+26.2%	86
Staff Nurse/ Staff Midwife	357	355	355	354	-1	-0	-0.1%	-3	-0.8%	385
<i>Pre-registration Nurse Intern (COVID-19)</i>		10				-10	-100.0%		-100.0%	
<i>Pre-registration Nurse/ Midwife Intern</i>	0		25	23	-2	+23	-100.0%	+23	+19066.7%	46
<i>Nursing/ Midwifery awaiting registration</i>	5		5	4	-1	+4	-100.0%	-1	-15.8%	4
Nursing/ Midwifery Student	5	10	30	27	-3	+17	+165.2%	+22	+454.4%	50
Nursing/ Midwifery other	2	2	2	2	0	+0	+25.0%			2
Nursing & Midwifery	577	597	622	618	-4	+22	+3.6%	+41	+7.1%	677
Therapy Professions	45	55	50	49	-1	-6	-10.9%	+4	+8.4%	56
Social Care	15	16	14	14	-0	-2	-14.7%	-1	-7.1%	16
Social Workers	41	42	43	44	+1	+2	+5.7%	+3	+8.0%	48
Psychologists	34	37	42	40	-1	+3	+9.0%	+7	+20.2%	46
Pharmacy	3	2	2	2	+0	+1	+37.4%	-0	-5.2%	3
H&SC, Other	3	3	3	2	-0	-1	-19.7%	-1	-19.7%	3
Health & Social Care Professionals	140	155	154	152	-2	-3	-1.7%	+12	+8.6%	172
Management (VIII & above)	5	4	4	4	+0			-1	-20.0%	4
Administrative/ Supervisory (V to VII)	24	26	23	26	+2	-1	-3.6%	+2	+8.2%	26
Clerical (III & IV)	109	102	100	98	-1	-4	-3.8%	-11	-9.7%	111
Management & Administrative	138	133	127	128	+1	-5	-3.6%	-10	-7.0%	141
Support	36	31	27	28	+1	-3	-10.0%	-8	-22.3%	31
Maintenance/ Technical	27	33	31	32	+1	-1	-3.6%	+5	+18.4%	33
General Support	63	64	58	60	+2	-4	-6.7%	-3	-4.9%	64
Health Care Assistants	215	211	204	202	-2	-9	-4.4%	-13	-6.0%	216
Care, other	69	66	65	67	+2	+1	+1.1%	-2	-3.2%	76
Patient & Client Care	284	278	270	269	-1	-8	-3.1%	-15	-5.3%	292

CHO 3

Apr 2022	WTE Dec 2019	WTE Dec 2020	WTE Mar 2022	WTE Apr 2022	WTE change since Mar 22	WTE change since Dec 20	% change since Dec 20	WTE change since Dec 19	% change since Dec 19	No. Apr 2022
Overall	795	809	825	826	+1	+17	+2.2%	+31	+3.9%	905
Consultants	23	24	25	25	-0	+1	+2.8%	+1	+6.3%	29
Registrars	18	15	19	18	-0	+3	+19.5%	+0	+1.2%	19
SHO/ Interns	19	21	25	24	-1	+3	+12.1%	+5	+26.6%	24
Medical & Dental	60	61	68	67	-1	+6	+10.3%	+7	+11.2%	72
Nurse/ Midwife Manager	88	88	89	90	+0	+2	+2.4%	+2	+2.4%	94
Nurse/ Midwife Specialist & AN/MP	39	37	37	38	+1	+1	+2.8%	-1	-3.0%	43
Staff Nurse/ Staff Midwife	245	272	269	265	-4	-7	-2.6%	+19	+7.9%	287
<i>Pre-registration Nurse Intern (COVID-19)</i>		3				-3	-100.0%		-100.0%	
<i>Pre-registration Nurse/ Midwife Intern</i>	9		12	12	-0	+12	-100.0%	+3	+34.5%	24
Nursing/ Midwifery Student	9	3	12	12	-0	+9	+248.8%	+3	+34.5%	24
<i>Nursing Education/Clinical</i>			1	1	+0	+1	-100.0%	+1	-100.0%	1
Nursing/ Midwifery other			1	1	+0	+1	-100.0%	+1	-100.0%	1
Nursing & Midwifery	381	400	408	406	-2	+6	+1.4%	+24	+6.4%	449
Therapy Professions	26	25	25	27	+2	+2	+8.6%	+1	+2.4%	30
Social Care	3	3	2	2	-0	-1	-34.0%	-1	-31.0%	2
Social Workers	25	24	26	26	-0	+2	+7.4%	+1	+3.4%	28
Psychologists	92	91	87	89	+2	-2	-2.6%	-3	-3.7%	92
Pharmacy	3	3	3	3	0					3
H&SC, Other	10	12	12	11	-0	-1	-7.9%	+2	+17.1%	13
Health & Social Care Professionals	159	158	155	158	+3	-0	-0.2%	-1	-0.8%	168
Management (VIII & above)	2	2	3	3	+0	+1	+50.0%	+1	+52.3%	3
Administrative/ Supervisory (V to VII)	17	19	14	15	+1	-4	-22.5%	-2	-13.0%	15
Clerical (III & IV)	56	50	52	53	+1	+2	+4.9%	-3	-5.4%	58
Management & Administrative	75	71	68	70	+2	-1	-1.1%	-4	-5.5%	76
Support	32	30	33	33	+0	+3	+9.5%	+1	+1.8%	36
Maintenance/ Technical	11	9	7	7	0	-2	-22.2%	-4	-36.4%	7
General Support	43	39	40	40	+0	+1	+2.2%	-3	-7.9%	43
Health Care Assistants	75	79	85	85	-0	+6	+7.5%	+9	+12.3%	96
Care, other	2	1	1	1	0			-1	-40.1%	1
Patient & Client Care	77	80	86	86	-0	+6	+7.4%	+9	+11.2%	97

CHO 4

Apr 2022	WTE Dec 2019	WTE Dec 2020	WTE Mar 2022	WTE Apr 2022	WTE change since Mar 22	WTE change since Dec 20	% change since Dec 20	WTE change since Dec 19	% change since Dec 19	No. Apr 2022
Overall	1,485	1,564	1,590	1,592	+2	+28	+1.8%	+107	+7.2%	1,764
Consultants	50	54	57	56	-1	+2	+3.5%	+6	+12.7%	63
Registrars	46	42	54	53	-1	+12	+27.8%	+7	+16.1%	54
SHO/ Interns	31	43	35	36	+1	-7	-16.0%	+5	+16.3%	37
Medical/ Dental, other	2	2	2	2	+0	+0	+5.0%	+0	+5.0%	5
Medical & Dental	129	141	148	147	-0	+7	+4.7%	+19	+14.7%	159
Nurse/ Midwife Manager	170	192	209	214	+5	+22	+11.4%	+45	+26.4%	227
Nurse/ Midwife Specialist & AN/MP	60	71	68	70	+2	-1	-0.8%	+10	+17.1%	76
Staff Nurse/ Staff Midwife	502	519	500	495	-5	-24	-4.6%	-7	-1.4%	531
<i>Pre-registration Nurse Intern (COVID-19)</i>		3				-3	-100.0%		-100.0%	
<i>Pre-registration Nurse/ Midwife Intern</i>	3		23	23	+0	+23	-100.0%	+20	+667.0%	46
<i>Post-registration Nurse/ Midwife Student</i>	1						-100.0%	-1	-100.0%	
<i>Nursing/ Midwifery awaiting registration</i>	30	1	3	2	-1	+1	+100.0%	-28	-93.2%	2
Nursing/ Midwifery Student	34	4	26	25	-1	+21	+525.3%	-8	-25.3%	48
Nursing & Midwifery	765	786	803	805	+1	+18	+2.3%	+39	+5.2%	882
Therapy Professions	74	77	79	81	+2	+4	+4.9%	+7	+9.8%	90
Social Care	4	7	7	7	-0	-0	-5.1%	+3	+74.0%	8
Social Workers	53	64	67	68	+1	+4	+5.7%	+15	+28.3%	80
Psychologists	83	94	97	93	-4	-1	-0.8%	+11	+12.7%	106
Pharmacy	2	3	1	1	-0	-2	-57.1%	-1	-47.6%	2
H&SC, Other	11	12	16	17	+1	+4	+34.5%	+6	+54.7%	21
Health & Social Care Professionals	227	258	267	267	-0	+9	+3.4%	+40	+17.8%	307
Management (VIII & above)	1	3	3	3	0	+0	+9.9%	+2	+200.0%	3
Administrative/ Supervisory (V to VII)	22	22	22	22	-0	+0	+1.1%	-0	-1.8%	24
Clerical (III & IV)	87	94	92	92	+1	-2	-2.3%	+5	+5.6%	105
Management & Administrative	111	119	117	117	+1	-2	-1.4%	+6	+5.8%	132
Support	80	82	80	80	+0	-2	-2.1%	+0	+0.2%	90
Maintenance/ Technical	6	5	5	5	0			-1	-16.4%	6
General Support	86	87	85	85	+0	-2	-2.0%	-1	-1.0%	96
Health Care Assistants	161	166	163	164	+0	-3	-1.6%	+3	+1.8%	173
Care, other	7	6	7	7	+0	+1	+8.9%	-0	-3.9%	15
Patient & Client Care	168	173	170	170	+0	-2	-1.2%	+3	+1.6%	188

CHO 5

Apr 2022	WTE Dec 2019	WTE Dec 2020	WTE Mar 2022	WTE Apr 2022	WTE change since Mar 22	WTE change since Dec 20	% change since Dec 20	WTE change since Dec 19	% change since Dec 19	No. Apr 2022
Overall	1,178	1,188	1,224	1,230	+6	+42	+3.5%	+52	+4.4%	1,369
Consultants	26	27	31	31	+0	+4	+15.0%	+5	+19.8%	33
Registrars	10	9	12	13	+1	+4	+43.7%	+3	+29.3%	13
SHO/ Interns	32	36	31	29	-2	-6	-18.1%	-3	-8.3%	30
Medical/ Dental, other	2	2	2	2	0					2
Medical & Dental	70	74	76	76	-1	+2	+2.1%	+5	+7.8%	78
Nurse/ Midwife Manager	164	160	174	174	-0	+13	+8.4%	+9	+5.6%	181
Nurse/ Midwife Specialist & AN/MP	42	54	52	51	-0	-3	-4.9%	+9	+22.0%	54
Staff Nurse/ Staff Midwife	415	411	417	420	+3	+9	+2.3%	+5	+1.2%	470
<i>Pre-registration Nurse Intern (COVID-19)</i>		13				-13	-100.0%		-100.0%	
<i>Pre-registration Nurse/ Midwife Intern</i>	4		19	19	+0	+19	-100.0%	+15	+442.0%	38
<i>Nursing/ Midwifery awaiting registration</i>	2						-100.0%	-2	-100.0%	
Nursing/ Midwifery Student	6	13	19	19	+0	+6	+46.7%	+13	+244.9%	38
Nursing/ Midwifery other	4	4	4	4	0	+0	+2.8%	+0	+1.1%	4
Nursing & Midwifery	631	642	665	668	+3	+26	+4.1%	+37	+5.9%	747
Therapy Professions	40	39	33	35	+2	-3	-8.9%	-5	-12.3%	40
Social Care	5	5	5	4	-0	-0	-4.3%	-0	-4.3%	5
Social Workers	27	28	26	25	-1	-3	-9.2%	-2	-7.7%	28
Psychologists	21	21	21	23	+2	+2	+8.4%	+2	+9.7%	27
H&SC, Other	10	8	20	21	+0	+13	+162.6%	+11	+108.9%	21
Health & Social Care Professionals	103	100	105	109	+4	+8	+8.3%	+6	+5.4%	121
Management (VIII & above)	3	6	6	6	0			+3	+100.0%	6
Administrative/ Supervisory (V to VII)	20	20	24	25	+1	+5	+25.1%	+5	+23.6%	26
Clerical (III & IV)	74	68	71	69	-2	+1	+1.3%	-5	-6.1%	76
Management & Administrative	97	94	101	100	-1	+6	+6.2%	+3	+3.3%	108
Support	168	178	174	174	+0	-4	-2.5%	+6	+3.7%	197
Maintenance/ Technical	23	20	16	15	-1	-5	-24.7%	-8	-36.1%	17
General Support	191	198	189	189	-0	-9	-4.7%	-2	-1.1%	214
Health Care Assistants	73	68	76	77	+1	+10	+14.7%	+5	+6.7%	84
Care, other	13	12	11	11	+0	-1	-7.9%	-2	-12.6%	17
Patient & Client Care	85	80	87	89	+1	+9	+11.2%	+3	+3.8%	101

CHO 6

Apr 2022	WTE Dec 2019	WTE Dec 2020	WTE Mar 2022	WTE Apr 2022	WTE change since Mar 22	WTE change since Dec 20	% change since Dec 20	WTE change since Dec 19	% change since Dec 19	No. Apr 2022
Overall	593	626	634	633	-1	+6	+1.0%	+40	+6.8%	707
Consultants	36	40	39	39	-0	-1	-2.9%	+3	+8.2%	44
Registrars	22	19	24	24	-0	+5	+24.2%	+2	+8.7%	25
SHO/ Interns	9	13	14	12	-2	-1	-10.2%	+3	+29.8%	14
Medical & Dental	67	72	77	74	-3	+2	+2.9%	+8	+11.3%	83
Nurse/ Midwife Manager	76	77	75	75	0	-3	-3.3%	-2	-2.2%	79
Nurse/ Midwife Specialist & AN/MP	14	20	23	24	+1	+4	+22.3%	+10	+74.9%	27
Staff Nurse/ Staff Midwife	139	151	146	147	+1	-5	-3.2%	+7	+5.4%	159
<i>Pre-registration Nurse/ Midwife Intern</i>			5	5	-0	+5	-100.0%	+5	-100.0%	9
<i>Nursing/ Midwifery awaiting registration</i>		1	1	1	+0			+1	-100.0%	1
Nursing/ Midwifery Student		1	6	6	-0	+5	+450.0%	+6	-100.0%	10
Nursing/ Midwifery other	2	2	3	3	0	+1	+50.0%	+1	+50.0%	3
Nursing & Midwifery	231	251	253	254	+1	+3	+1.0%	+23	+9.8%	278
Therapy Professions	43	39	42	41	-2	+2	+5.2%	-2	-5.8%	49
Social Care	26	28	24	24	+1	-4	-13.9%	-2	-6.3%	29
Social Workers	30	30	33	33	+1	+4	+12.3%	+3	+11.5%	35
Psychologists	22	32	34	37	+3	+5	+16.5%	+15	+69.4%	45
H&SC, Other	9	5	7	7	-0	+2	+40.0%	-1	-16.8%	8
Health & Social Care Professionals	130	134	140	143	+3	+9	+6.8%	+13	+10.1%	166
Management (VIII & above)	3	3	4	4	0	+1	+33.3%	+1	+33.3%	4
Administrative/ Supervisory (V to VII)	27	24	26	27	+0	+2	+9.1%	-0	-0.7%	29
Clerical (III & IV)	42	43	37	35	-2	-8	-18.5%	-7	-17.2%	41
Management & Administrative	72	70	67	65	-1	-5	-6.7%	-6	-9.0%	74
Support	36	39	32	31	-1	-8	-20.4%	-6	-15.2%	38
Maintenance/ Technical	6	6	6	6	0			+0	+1.5%	6
General Support	42	45	38	37	-1	-8	-17.7%	-5	-12.9%	44
Health Care Assistants	46	49	54	54	-0	+5	+10.7%	+8	+18.2%	55
Care, other	5	6	6	6	+0			+1	+10.7%	7
Patient & Client Care	51	54	60	60	-0	+5	+9.5%	+9	+17.4%	62

CHO 7

Apr 2022	WTE Dec 2019	WTE Dec 2020	WTE Mar 2022	WTE Apr 2022	WTE change since Mar 22	WTE change since Dec 20	% change since Dec 20	WTE change since Dec 19	% change since Dec 19	No. Apr 2022
Overall	835	861	905	904	-1	+42	+4.9%	+69	+8.2%	1,000
Consultants	48	53	54	54	-0	+1	+1.9%	+6	+13.3%	57
Registrars	46	54	52	51	-1	-2	-4.1%	+5	+11.1%	54
SHO/ Interns	21	20	22	23	+1	+3	+12.8%	+2	+9.9%	23
Medical & Dental	115	127	128	128	+0	+1	+1.1%	+14	+11.8%	134
Nurse/ Midwife Manager	117	117	117	116	-1	-2	-1.4%	-1	-0.6%	120
Nurse/ Midwife Specialist & AN/MP	40	47	54	53	-2	+6	+13.6%	+13	+32.7%	58
Staff Nurse/ Staff Midwife	194	202	207	212	+5	+10	+4.9%	+17	+8.8%	233
<i>Pre-registration Nurse Intern (COVID-19)</i>		3				-3	-100.0%		-100.0%	
<i>Pre-registration Nurse/ Midwife Intern</i>	1	1	17	17	+0	+16	+3250.0%	+15	+1122.6%	36
<i>Post-registration Nurse/ Midwife Student</i>		1				-1	-100.0%		-100.0%	
<i>Nursing/ Midwifery awaiting registration</i>	10	3	3	2	-1	-1	-33.3%	-8	-80.7%	2
Nursing/ Midwifery Student	11	8	20	19	-1	+11	+141.0%	+7	+66.1%	38
Nursing/ Midwifery other	8	6	7	8	+1	+2	+32.3%	+0	+2.7%	9
Nursing & Midwifery	370	379	405	407	+2	+27	+7.2%	+37	+10.0%	458
Therapy Professions	48	53	56	55	-1	+1	+2.1%	+7	+13.9%	60
Social Care	8	7	7	7	-0	-0	-3.6%	-1	-8.3%	8
Social Workers	34	38	40	40	+1	+3	+7.1%	+6	+18.2%	43
Psychologists	31	29	28	26	-2	-3	-11.3%	-5	-17.2%	30
Pharmacy	1	1	1	1	0					1
H&SC, Other	18	18	21	21	-0	+3	+18.6%	+3	+18.6%	24
Health & Social Care Professionals	140	147	154	150	-3	+4	+2.4%	+10	+7.3%	166
Management (VIII & above)	3	4	5	5	0	+1	+26.7%	+2	+70.4%	5
Administrative/ Supervisory (V to VII)	16	17	17	18	+1	+1	+4.7%	+2	+15.2%	19
Clerical (III & IV)	47	49	51	52	+1	+3	+5.5%	+5	+10.6%	60
Management & Administrative	65	70	73	75	+2	+5	+6.5%	+9	+14.3%	84
Support	18	17	18	17	-1	-0	-2.7%	-1	-4.8%	19
Maintenance/ Technical	2	2	2	2	0			+0	+7.5%	2
General Support	20	19	20	19	-1	-0	-2.4%	-1	-3.6%	21
Health Care Assistants	33	34	34	33	-0	-1	-3.2%	-0	-0.0%	36
Care, other	92	84	92	91	-1	+7	+8.1%	-1	-0.9%	101
Patient & Client Care	125	119	125	125	-1	+6	+4.8%	-1	-0.7%	137

CHO 8

Apr 2022	WTE Dec 2019	WTE Dec 2020	WTE Mar 2022	WTE Apr 2022	WTE change since Mar 22	WTE change since Dec 20	% change since Dec 20	WTE change since Dec 19	% change since Dec 19	No. Apr 2022
Overall	1,098	1,112	1,098	1,102	+4	-10	-0.9%	+4	+0.4%	1,220
Consultants	35	36	39	39	+0	+3	+7.5%	+4	+10.9%	41
Registrars	26	31	41	42	+1	+11	+34.7%	+16	+63.1%	43
SHO/ Interns	36	26	20	21	+0	-5	-20.8%	-15	-42.3%	22
Medical & Dental	97	94	100	102	+2	+8	+8.6%	+5	+5.0%	106
Nurse/ Midwife Manager	121	120	121	122	+1	+2	+1.3%	+1	+1.1%	128
Nurse/ Midwife Specialist & AN/MP	56	60	67	66	-0	+7	+11.7%	+10	+18.5%	71
Staff Nurse/ Staff Midwife	332	342	311	319	+8	-23	-6.7%	-12	-3.7%	343
<i>Pre-registration Nurse Intern (COVID-19)</i>		1				-1	-100.0%		-100.0%	
<i>Pre-registration Nurse/ Midwife Intern</i>	1		24	24	+0	+24	-100.0%	+24	+4768.0%	48
<i>Nursing/ Midwifery awaiting registration</i>	2		2	1	-1	+1	-100.0%	-1	-51.5%	1
Nursing/ Midwifery Student	3	1	26	25	-1	+24	+2357.3%	+23	+912.4%	49
Nursing/ Midwifery other	4	3	3	3	-0	-0	-7.7%	-1	-30.6%	3
Nursing & Midwifery	515	526	528	536	+8	+10	+1.9%	+21	+4.1%	594
Therapy Professions	44	43	41	38	-3	-5	-11.5%	-6	-14.6%	44
Social Care	7	7	7	7	-1	-0	-6.3%	-1	-9.4%	8
Social Workers	41	44	50	50	+1	+7	+15.1%	+9	+21.9%	56
Psychologists	39	37	40	37	-2	+1	+1.5%	-2	-4.6%	40
Pharmacy	1	2	2	2	+1	+1	+63.3%	+1	+145.0%	4
H&SC, Other	20	21	16	15	-1	-6	-28.0%	-5	-24.7%	20
Health & Social Care Professionals	153	153	155	150	-5	-3	-2.1%	-4	-2.3%	172
Management (VIII & above)	3	3	3	4	+1	+1	+35.6%	+1	+36.1%	4
Administrative/ Supervisory (V to VII)	22	20	21	21	+0	+1	+4.9%	-1	-6.0%	23
Clerical (III & IV)	88	97	87	87	+0	-10	-10.1%	-1	-1.1%	98
Management & Administrative	114	120	111	112	+1	-8	-6.5%	-1	-1.1%	125
Support	33	31	30	30	+0	-1	-2.9%	-2	-7.1%	33
Maintenance/ Technical	26	28	25	25	+0	-3	-11.1%	-1	-4.6%	27
General Support	59	59	55	55	+1	-4	-6.8%	-4	-6.0%	60
Health Care Assistants	157	156	145	142	-3	-14	-8.7%	-14	-9.1%	158
Care, other	4	3	3	5	+1	+1	+41.8%	+1	+27.4%	5
Patient & Client Care	160	159	148	147	-1	-12	-7.7%	-13	-8.3%	163

CHO 9

Apr 2022	WTE Dec 2019	WTE Dec 2020	WTE Mar 2022	WTE Apr 2022	WTE change since Mar 22	WTE change since Dec 20	% change since Dec 20	WTE change since Dec 19	% change since Dec 19	No. Apr 2022
Overall	1,272	1,331	1,351	1,354	+3	+23	+1.8%	+82	+6.5%	1,506
Consultants	50	46	49	50	+1	+4	+7.9%	+0	+0.0%	54
Registrars	31	32	48	48	+0	+16	+51.4%	+17	+56.3%	49
SHO/ Interns	53	54	26	26	-0	-27	-50.7%	-27	-50.4%	27
Medical & Dental	134	132	124	125	+1	-7	-5.3%	-9	-7.0%	130
Nurse/ Midwife Manager	132	138	137	137	-0	-1	-0.4%	+5	+4.0%	142
Nurse/ Midwife Specialist & AN/MP	65	76	83	85	+2	+10	+12.8%	+20	+31.1%	91
Staff Nurse/ Staff Midwife	351	371	366	366	+0	-6	-1.5%	+15	+4.2%	399
<i>Pre-registration Nurse Intern (COVID-19)</i>		5				-5	-100.0%		-100.0%	
<i>Pre-registration Nurse/ Midwife Intern</i>	10	10	23	23	+1	+13	+129.6%	+13	+131.6%	47
<i>Nursing/ Midwifery awaiting registration</i>	11		2	2	0	+2	-100.0%	-9	-81.5%	2
Nursing/ Midwifery Student	21	16	25	25	+1	+10	+62.6%	+5	+21.6%	49
Nursing/ Midwifery other	11	13	10	10	+0	-3	-19.7%	-1	-10.1%	11
Nursing & Midwifery	581	613	621	624	+3	+11	+1.8%	+44	+7.5%	692
Therapy Professions	55	61	63	64	+1	+3	+5.1%	+9	+17.0%	72
Social Care	1	1	1	1	+0			+0	+11.1%	1
Social Workers	43	43	46	47	+1	+4	+9.5%	+3	+7.8%	53
Psychologists	46	53	52	53	+1	-0	-0.2%	+7	+16.0%	60
Pharmacy	8	9	9	9	-1	-0	-2.5%	+1	+8.6%	12
H&SC, Other	15	14	17	17	+0	+3	+22.7%	+3	+20.0%	19
Health & Social Care Professionals	167	181	189	191	+2	+10	+5.6%	+24	+14.2%	217
Management (VIII & above)	5	5	5	5	-0	-0	-0.2%			5
Administrative/ Supervisory (V to VII)	28	29	32	31	-1	+2	+8.5%	+3	+12.4%	33
Clerical (III & IV)	104	114	118	118	-1	+4	+3.1%	+14	+13.3%	136
Management & Administrative	137	148	155	154	-1	+6	+4.1%	+17	+12.6%	174
Support	103	104	104	103	-1	-1	-0.9%	-0	-0.1%	125
<i>Maintenance</i>	11	11	11	11	0			+0	+0.7%	11
Maintenance/ Technical	11	11	11	11	0			+0	+0.7%	11
General Support	114	115	115	114	-1	-1	-0.8%	-0	-0.0%	136
Health Care Assistants	126	129	135	134	-2	+4	+3.4%	+8	+6.0%	144
Care, other	13	12	12	12	+0	+0	+0.2%	-0	-1.7%	13
Patient & Client Care	139	142	148	146	-2	+4	+3.2%	+7	+5.3%	157

other Community Services

Apr 2022	WTE Dec 2019	WTE Dec 2020	WTE Mar 2022	WTE Apr 2022	WTE change since Mar 22	WTE change since Dec 20	% change since Dec 20	WTE change since Dec 19	% change since Dec 19	No. Apr 2022
Overall	438	494	499	499	+0	+5	+1.0%	+62	+14.1%	528
Consultants	16	17	17	18	+0	+1	+5.5%	+2	+12.2%	19
Registrars	13	14	17	19	+2	+5	+33.8%	+6	+44.1%	19
Medical & Dental	29	31	34	36	+2	+6	+18.4%	+8	+26.7%	38
Nurse/ Midwife Manager	62	76	75	76	+1	+0	+0.2%	+14	+22.1%	79
Nurse/ Midwife Specialist & AN/MP	8	13	9	9	-0	-3	-26.2%	+1	+13.3%	10
Staff Nurse/ Staff Midwife	169	165	166	162	-4	-3	-1.7%	-7	-4.0%	169
Nursing/ Midwifery other	1	2	2	2	0	+0	+2.0%	+1	+100.0%	2
Nursing & Midwifery	240	255	253	249	-4	-6	-2.3%	+9	+3.8%	260
Therapy Professions	11	12	12	11	-1	-0	-3.2%	+0	+2.0%	12
Social Care	2	2	2	2	0	+0	+5.3%	+0	+2.0%	2
Social Workers	15	17	15	15	-0	-2	-12.2%	+0	+2.1%	18
Psychologists	6	6	6	6	-0	+0	+0.5%	-0	-0.2%	6
Pharmacy		1	1	1	+0			+1	-100.0%	1
Health & Social Care Professionals	34	38	36	36	-0	-2	-6.3%	+2	+4.6%	39
Management (VIII & above)	27	30	27	26	-1	-4	-13.7%	-1	-4.0%	26
Administrative/ Supervisory (V to VII)	31	37	41	41	-0	+4	+11.7%	+10	+31.1%	43
Clerical (III & IV)	25	18	22	22	+1	+4	+21.5%	-3	-11.0%	24
Management & Administrative	83	85	90	89	-1	+4	+4.9%	+6	+7.0%	93
Support	12	16	17	20	+3	+4	+24.5%	+8	+63.4%	22
Maintenance/ Technical	2	7	9	9	+0	+2	+28.6%	+7	+350.0%	9
General Support	14	23	26	29	+3	+6	+25.7%	+15	+103.7%	31
Health Care Assistants	37	62	60	60	-0	-2	-3.5%	+23	+62.9%	66
Care, other	1	1	1	0	-0	-0	-38.0%	-0	-38.0%	1
Patient & Client Care	37	63	60	60	-0	-2	-3.7%	+23	+61.6%	67

Mental Health Services Employment by Grade Group: Apr 2022

Apr 2022	WTE Dec 2019	WTE Dec 2020	WTE Mar 2022	WTE Apr 2022	WTE change since Mar 22	WTE change since Dec 20	% change since Dec 20	WTE change since Dec 19	% change since Dec 19	No. Apr 2022
Overall	9,954	10,301	10,503	10,508	+5	+206	+2.0%	+554	+5.6%	11,584
Consultant Medicine	1	1	1	1						1
Consultant Psychiatry	352	369	383	383	-1	+14	+3.8%	+31	+8.8%	416
Consultants	353	370	384	384	-1	+14	+3.8%	+31	+8.8%	417
Registrars	269	281	337	340	+3	+59	+21.0%	+71	+26.5%	349
Senior House Officer	253	271	224	222	-2	-49	-17.9%	-31	-12.2%	230
Interns	8	5	6	5	-1	-0	-5.0%	-3	-40.6%	5
SHO/ Interns	261	276	230	227	-3	-49	-17.7%	-34	-13.0%	235
Medical/ Dental, other	5	5	4	5	+1	+0	+2.0%	+0	+2.0%	8
Medical & Dental	888	932	955	956	+0	+24	+2.6%	+68	+7.7%	1,009
Clinical Nurse/ Midwife Manager	999	1,041	1,060	1,065	+5	+24	+2.3%	+67	+6.7%	1,116
Director Nursing/Midwifery, Assistant	165	171	177	176	-1	+5	+3.1%	+11	+6.8%	181
Director of Nursing/Midwifery	29	28	31	32	+2	+4	+15.1%	+3	+11.2%	33
Nurse/ Midwife Manager	1,192	1,240	1,268	1,273	+6	+34	+2.7%	+81	+6.8%	1,330
Advanced Nurse/ Midwife Practitioner	31	39	48	49	+1	+10	+24.6%	+18	+59.8%	51
Clinical Nurse/ Midwife Specialist	428	489	505	512	+8	+23	+4.7%	+84	+19.6%	548
Nurse/ Midwife Specialist & AN/MP	459	529	553	561	+8	+33	+6.2%	+102	+22.3%	599
Staff Midwives		1				-1	-100.0%		-100.0%	
Staff Nurse [Psychiatric]	2,893	2,965	2,934	2,928	-6	-37	-1.2%	+34	+1.2%	3,169
Staff Nurses [General/ Children's]	105	106	106	108	+2	+2	+1.9%	+3	+3.3%	117
Staff Nurse [Intellectual Disability]	5	4	4	8	+4	+4	+94.3%	+4	+81.9%	9
Staff Nurse/ Staff Midwife	3,003	3,076	3,044	3,044	+0	-32	-1.0%	+41	+1.4%	3,295
Pre-registration Nurse Intern (COVID-19)		42				-42	-100.0%		-100.0%	
Pre-registration Nurse/ Midwife Intern	28	11	161	159	-1	+149	+1388.8%	+132	+479.2%	321
Post-registration Nurse/ Midwife Student	1	1				-1	-100.0%	-1	-100.0%	
Nursing/ Midwifery awaiting registration	59	5	18	12	-6	+7	+144.7%	-47	-79.9%	12
Nursing/ Midwifery Student	87	59	179	171	-8	+112	+190.5%	+84	+95.9%	333
Nursing Education/Clinical	32	32	34	34	+1	+3	+8.3%	+3	+8.7%	37
Nursing/ Midwifery other	32	32	34	34	+1	+3	+8.3%	+3	+8.7%	37
Nursing & Midwifery	4,773	4,935	5,077	5,085	+7	+149	+3.0%	+311	+6.5%	5,594
Dietitians	19	21	22	21	-1	-0	-0.8%	+2	+7.9%	23
Occupational Therapists	339	346	355	353	-3	+7	+2.1%	+14	+4.2%	395
Physiotherapists	2	2	3	3	-0	+0	+20.7%	+1	+30.5%	4
Podiatrists & Chiropodists	1	1	1	1	-0			+0	+9.6%	2
Speech & Language Therapists	62	70	66	66	+1	-3	-4.5%	+5	+7.8%	77
Therapy Professions	422	439	447	444	-3	+4	+1.0%	+21	+5.0%	501
Social Care	74	80	72	71	-1	-8	-10.6%	-2	-2.8%	84
Social Workers	350	373	389	393	+5	+21	+5.6%	+44	+12.6%	438
Psychologists	394	424	431	428	-3	+4	+1.0%	+34	+8.6%	478
Pharmacists	16	17	16	16	+0	-1	-4.6%	+0	+1.3%	20
Pharmacy Technicians	2	4	4	4	+0	+1	+14.8%	+2	+69.2%	7
Pharmacy	19	21	20	20	+0	-0	-1.2%	+2	+10.4%	27
Counsellor Therapists	95	101	124	124	-0	+23	+22.5%	+29	+30.8%	137
Other Health & Social Care	12	5	6	6	-0	+0	+6.3%	-6	-51.0%	11
Play Therapists/ Specialists	1	1	1	1				+0	+1.4%	2
H&SC, Other	108	108	131	131	-0	+23	+21.4%	+23	+21.5%	150
Health & Social Care Professionals	1,366	1,444	1,490	1,489	-2	+44	+3.1%	+122	+8.9%	1,678
Executive Management	11	15	14	15	+1	+0	+1.8%	+4	+36.4%	15
Senior Management (VIII & GM)	46	52	55	54	-1	+2	+3.7%	+8	+17.3%	55
Management (VIII & above)	57	67	69	69	-0	+2	+3.3%	+12	+20.9%	70
Middle Management (V-VII)	235	243	251	255	+5	+12	+4.9%	+20	+8.4%	271

Apr 2022	WTE Dec 2019	WTE Dec 2020	WTE Mar 2022	WTE Apr 2022	WTE change since Mar 22	WTE change since Dec 20	% change since Dec 20	WTE change since Dec 19	% change since Dec 19	No. Apr 2022
Overall	9,954	10,301	10,503	10,508	+5	+206	+2.0%	+554	+5.6%	11,584
Other Administrative	2	2	3	3		+1	+63.7%	+1	+63.7%	3
Administrative/ Supervisory (V to VII)	237	245	253	258	+5	+13	+5.3%	+21	+8.8%	274
General Administrative (III & IV)	717	722	718	714	-4	-8	-1.1%	-3	-0.5%	807
Clerical (III & IV)	717	722	718	714	-4	-8	-1.1%	-3	-0.5%	807
Management & Administrative	1,012	1,034	1,040	1,041	+1	+7	+0.7%	+30	+2.9%	1,151
Catering	65	64	71	71	+0	+7	+11.3%	+5	+8.4%	76
Household Services	425	441	417	418	+2	-23	-5.2%	-6	-1.4%	488
Other Support	43	42	38	40	+1	-2	-5.6%	-3	-7.3%	45
Portering	48	47	48	48	-0	+0	+0.7%	-0	-0.9%	50
Support	581	594	574	576	+3	-18	-3.0%	-4	-0.7%	659
Maintenance	129	137	129	129	-0	-8	-6.0%	+0	+0.1%	136
Technical Services	2						-100.0%	-2	-100.0%	
Maintenance/ Technical	131	137	129	129	-0	-8	-6.0%	-2	-1.4%	136
General Support	711	732	703	705	+2	-26	-3.6%	-6	-0.8%	795
Attendant/ Aide	605	583	512	501	-10	-82	-14.1%	-104	-17.2%	558
Health & Social Care Assistants	9	8	9	10	+0	+1	+17.1%	+1	+9.3%	11
Health Care Assistant/ Care Assistant	374	430	506	509	+3	+79	+18.3%	+135	+36.0%	538
Health Care Assistants	988	1,022	1,027	1,020	-7	-2	-0.2%	+32	+3.2%	1,107
Home Care Services	16	14	15	15	+0	+1	+3.9%	-1	-5.7%	24
Other Care Grades	23	22	21	21	+0	-1	-3.0%	-1	-5.4%	23
Pastoral Care	13	12	12	12	-0	-0	-1.0%	-1	-5.5%	17
Workshop Services	165	155	163	165	+2	+10	+6.2%	-0	-0.1%	186
Care, other	216	203	210	213	+3	+9	+4.6%	-3	-1.4%	250
Patient & Client Care	1,204	1,225	1,237	1,232	-4	+7	+0.6%	+29	+2.4%	1,357

Employment by WTE, Headcount, Gender, Full-Time /Part-Time etc.: Apr 2022

Mental Health Services Staff Group	WTE	Headcount	WTE: no.	% Male	% female	Male WTE: no.	Female WTE: no.	% Total Perm	% Male Perm	% Female Perm	% Total Full Time	% Total Part Time	% Male FT	% Female FT
Overall	10,508	11,584	1.10	26.9%	73.1%	1.06	1.12	83.3%	80.1%	84.4%	85.2%	14.8%	93.2%	82.3%
Consultant Medicine	1	1	1.00	100.0%		1.00		100.0%	100.0%		100.0%	0.0%	100.0%	
Consultant Psychiatry	383	416	1.09	42.3%	57.7%	1.06	1.11	67.8%	67.8%	65.8%	85.3%	14.7%	92.0%	80.4%
Consultants	384	417	1.09	42.4%	57.6%	1.06	1.11	67.9%	70.6%	65.8%	85.4%	14.6%	92.1%	80.4%
Registrar	218	225	1.03	45.8%	54.2%	1.02	1.04	2.7%	2.7%	1.6%	97.3%	2.7%	99.0%	95.9%
Senior Registrar	120	122	1.02	36.1%	63.9%	1.00	1.03	0.8%	0.8%	1.3%	96.7%	3.3%	100.0%	94.9%
Specialist Registrar	2	2	1.00	100.0%		1.00		0.0%	0.0%		100.0%	0.0%	100.0%	
Registrars	340	349	1.03	42.7%	57.3%	1.01	1.04	2.0%	2.7%	1.5%	97.1%	2.9%	99.3%	95.5%
Senior House Officer	222	230	1.03	44.3%	55.7%	1.02	1.05	0.0%	0.0%	0.0%	100.0%	0.0%	100.0%	100.0%
Interns	5	5	1.05	20.0%	80.0%	1.00	1.07	0.0%	0.0%	0.0%	100.0%	0.0%	100.0%	100.0%
SHO/ Interns	227	235	1.03	43.8%	56.2%	1.02	1.05	0.0%	0.0%	0.0%	100.0%	0.0%	100.0%	100.0%
Other Medical	5	8	1.57	50.0%	50.0%	1.72	1.44	62.5%	62.5%	75.0%	87.5%	12.5%	100.0%	75.0%
Medical/ Dental, other	5	8	1.57	50.0%	50.0%	1.72	1.44	62.5%	50.0%	75.0%	87.5%	12.5%	100.0%	75.0%
Medical & Dental	956	1,009	1.06	42.9%	57.1%	1.04	1.07	29.2%	30.3%	28.5%	92.9%	7.1%	96.5%	90.1%
Clinical Nurse/ Midwife Manager	1,065	1,116	1.05	33.8%	66.2%	1.02	1.06	98.7%	98.7%	99.1%	93.5%	6.5%	98.4%	91.1%
Director Nursing/Midwifery, Assistant	176	181	1.03	44.2%	55.8%	1.04	1.02	100.0%	100.0%	100.0%	97.8%	2.2%	97.5%	98.0%
Director of Nursing/Midwifery	32	33	1.03	51.5%	48.5%	1.02	1.04	100.0%	100.0%	100.0%	97.0%	3.0%	100.0%	93.8%
Nurse/ Midwife Manager	1,273	1,330	1.04	35.6%	64.4%	1.02	1.06	98.9%	98.3%	99.2%	94.2%	5.8%	98.3%	91.9%
Advanced Nurse/ Midwife Practitioner	49	51	1.04	19.6%	80.4%	1.00	1.05	98.0%	98.0%	97.6%	92.2%	7.8%	100.0%	90.2%
Clinical Nurse/ Midwife Specialist	512	548	1.07	19.3%	80.7%	1.02	1.08	99.8%	99.8%	99.8%	92.5%	7.5%	98.1%	91.2%
Nurse/ Midwife Specialist & AN/MP	561	599	1.07	19.4%	80.6%	1.02	1.08	99.7%	100.0%	99.6%	92.5%	7.5%	98.3%	91.1%
Staff Nurse [Psychiatric]	2,928	3,169	1.08	25.4%	74.6%	1.06	1.09	91.4%	91.4%	92.4%	87.6%	12.4%	91.9%	86.1%
Staff Nurses [General/ Children's]	108	117	1.08	25.6%	74.4%	1.11	1.07	74.4%	74.4%	78.2%	82.9%	17.1%	80.0%	83.9%
Staff Nurse [Intellectual Disability]	8	9	1.09	33.3%	66.7%	1.00	1.15	77.8%	77.8%	83.3%	88.9%	11.1%	100.0%	83.3%
Staff Nurse/ Staff Midwife	3,044	3,295	1.08	25.4%	74.6%	1.06	1.09	90.8%	87.6%	91.9%	87.4%	12.6%	91.5%	86.0%
Pre-registration Nurse/ Midwife Intern	159	321	2.01	15.9%	84.1%	2.00	2.02	0.3%	0.3%	0.4%	100.0%	0.0%	100.0%	100.0%
Nursing/ Midwifery awaiting registration	12	12	1.01	16.7%	83.3%	1.00	1.01	41.7%	41.7%	40.0%	100.0%	0.0%	100.0%	100.0%
Nursing/ Midwifery Student	171	333	1.94	15.9%	84.1%	1.93	1.95	1.8%	1.9%	1.8%	100.0%	0.0%	100.0%	100.0%
Nursing Education/Clinical	34	37	1.08	13.5%	86.5%	1.00	1.09	100.0%	100.0%	100.0%	89.2%	10.8%	100.0%	87.5%
Nursing/ Midwifery other	34	37	1.08	13.5%	86.5%	1.00	1.09	100.0%	100.0%	100.0%	89.2%	10.8%	100.0%	87.5%

Nursing & Midwifery	5,085	5,594	1.10	26.5%	73.5%	1.06	1.11	88.4%	89.0%	88.2%	90.3%	9.7%	94.5%	88.8%
Health & Social Care	1,489	1,678	1.13	16.3%	83.7%	1.05	1.14	86.2%	83.9%	86.6%	81.6%	18.4%	92.3%	79.6%
Executive Management	15	15	1.00	60.0%	40.0%	1.00	1.00	100.0%	100.0%	100.0%	100.0%	0.0%	100.0%	100.0%
Senior Management (VIII & GM)	54	55	1.01	29.1%	70.9%	1.02	1.01	96.4%	96.4%	97.4%	96.4%	3.6%	93.8%	97.4%
Management (VIII & above)	69	70	1.01	35.7%	64.3%	1.01	1.01	97.1%	96.0%	97.8%	97.1%	2.9%	96.0%	97.8%
Middle Management (V-VII)	255	271	1.06	20.3%	79.7%	1.02	1.07	89.7%	89.7%	91.7%	88.2%	11.8%	96.4%	86.1%
Other Administrative	3	3	1.17		100.0%		1.17	66.7%	66.7%	66.7%	66.7%	33.3%		66.7%
Administrative/ Supervisory (V to VII)	258	274	1.06	20.1%	79.9%	1.02	1.07	89.4%	81.8%	91.3%	88.0%	12.0%	96.4%	85.8%
General Administrative (III & IV)	714	807	1.13	9.2%	90.8%	1.05	1.14	85.7%	85.7%	85.9%	74.1%	25.9%	89.2%	72.6%
Clerical (III & IV)	714	807	1.13	9.2%	90.8%	1.05	1.14	85.7%	83.8%	85.9%	74.1%	25.9%	89.2%	72.6%
Management & Administrative	1,041	1,151	1.11	13.4%	86.6%	1.03	1.12	87.3%	85.1%	87.7%	78.8%	21.2%	92.9%	76.6%
Catering	71	76	1.08	36.8%	63.2%	1.04	1.10	94.7%	94.7%	93.8%	75.0%	25.0%	89.3%	66.7%
Household Services	418	488	1.17	21.1%	78.9%	1.09	1.19	91.4%	91.4%	92.7%	60.5%	39.5%	83.5%	54.3%
Other Support	40	45	1.14	33.3%	66.7%	1.03	1.20	88.9%	88.9%	86.7%	71.1%	28.9%	93.3%	60.0%
Portering	48	50	1.05	94.0%	6.0%	1.05	1.07	90.0%	90.0%	66.7%	86.0%	14.0%	87.2%	66.7%
Support	576	659	1.14	29.3%	70.7%	1.07	1.18	91.5%	89.6%	92.3%	64.8%	35.2%	86.0%	56.0%
Maintenance	129	136	1.05	99.3%	0.7%	1.05	1.00	95.6%	95.6%	100.0%	97.1%	2.9%	97.0%	100.0%
Maintenance/ Technical	129	136	1.05	99.3%	0.7%	1.05	1.00	95.6%	95.6%	100.0%	97.1%	2.9%	97.0%	100.0%
General Support	705	795	1.13	41.3%	58.7%	1.06	1.18	92.2%	92.1%	92.3%	70.3%	29.7%	90.5%	56.1%
Attendant/ Aide	501	558	1.11	23.5%	76.5%	1.09	1.12	85.8%	85.8%	89.2%	71.5%	28.5%	84.7%	67.4%
Health & Social Care Assistants	10	11	1.13	45.5%	54.5%	1.11	1.14	90.9%	90.9%	83.3%	63.6%	36.4%	80.0%	50.0%
Health Care Assistant/ Care Assistant	509	538	1.06	35.5%	64.5%	1.03	1.07	96.1%	96.1%	96.5%	87.0%	13.0%	95.3%	82.4%
Health Care Assistants	1,020	1,107	1.09	29.5%	70.5%	1.05	1.10	90.9%	87.2%	92.4%	79.0%	21.0%	90.8%	74.0%
Home Care Services	15	24	1.62	41.7%	58.3%	1.51	1.71	58.3%	58.3%	50.0%	29.2%	70.8%	30.0%	28.6%
Other Care Grades	21	23	1.08	78.3%	21.7%	1.02	1.36	82.6%	82.6%	80.0%	82.6%	17.4%	94.4%	40.0%
Pastoral Care	12	17	1.43	82.4%	17.6%	1.34	2.01	35.3%	35.3%	0.0%	58.8%	41.2%	64.3%	33.3%
Workshop Services	165	186	1.13	37.6%	62.4%	1.06	1.18	93.5%	93.5%	94.0%	73.1%	26.9%	84.3%	66.4%
Care, other	213	250	1.17	44.8%	55.2%	1.11	1.23	85.2%	83.0%	87.0%	68.8%	31.2%	78.6%	60.9%
Patient & Client Care	1,232	1,357	1.10	32.4%	67.6%	1.07	1.12	89.8%	86.1%	91.6%	77.1%	22.9%	87.7%	72.0%

Employment by WTE, Headcount, Gender, Full-Time /Part-Time etc.: Apr 2022

Mental Health Services CHO	WTE	Headcount	WTE: no.	% Male	% female	Male WTE: no.	Female WTE: no.	% Total Perm	% Male Perm	% Female Perm	% Total Full Time	% Total Part Time	% Male FT	% Female FT
Overall	10,508	11,584	1.10	26.9%	73.1%	1.06	1.12	83.3%	80.1%	84.4%	85.2%	14.8%	93.2%	82.3%
CHO 1	1,025	1,120	1.09	26.6%	73.4%	1.05	1.11	87.6%	87.6%	89.4%	87.1%	12.9%	96.3%	83.8%
CHO 2	1,342	1,465	1.09	27.8%	72.2%	1.05	1.11	85.2%	85.2%	86.6%	84.4%	15.6%	90.9%	81.9%
CHO 3	826	905	1.10	22.4%	77.6%	1.06	1.11	81.2%	81.2%	81.2%	85.9%	14.1%	90.6%	84.5%
CHO 4	1,592	1,764	1.11	25.4%	74.6%	1.07	1.12	70.7%	70.7%	72.5%	85.5%	14.5%	94.4%	82.4%
CHO 5	1,230	1,369	1.11	25.6%	74.4%	1.06	1.13	88.0%	88.0%	89.2%	80.1%	19.9%	91.5%	76.2%
CHO 6	633	707	1.12	30.1%	69.9%	1.08	1.14	84.9%	84.9%	86.0%	83.5%	16.5%	89.7%	80.8%
CHO 7	904	1,000	1.11	23.5%	76.5%	1.05	1.13	82.1%	82.1%	83.3%	88.1%	11.9%	95.3%	85.9%
CHO 8	1,102	1,220	1.11	24.1%	75.9%	1.04	1.13	85.3%	85.3%	86.5%	85.8%	14.2%	95.9%	82.6%
CHO 9	1,354	1,506	1.11	27.8%	72.2%	1.05	1.14	86.2%	86.2%	87.5%	84.3%	15.7%	93.8%	80.6%
other Community Services	499	528	1.06	46.4%	53.6%	1.06	1.06	88.6%	88.6%	89.8%	93.0%	7.0%	91.8%	94.0%

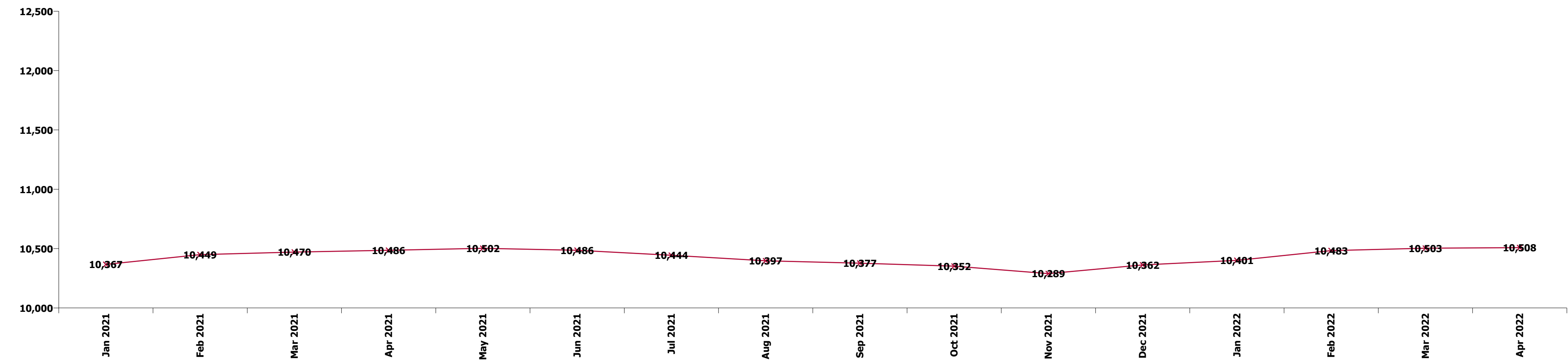
Summary Staff Movement: April 2022

Month-on-month
Summary

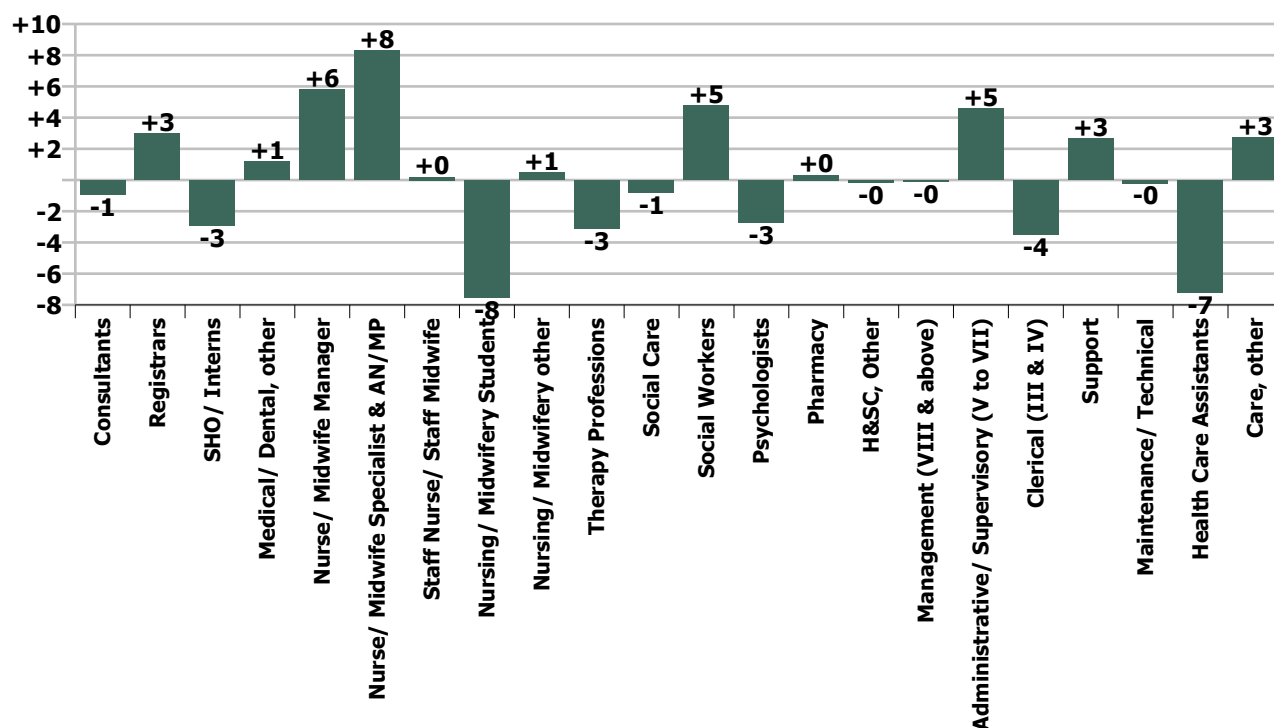
WTE change since Mar 22	% change since Mar 22	overall	Consultants	Registrars	SHO/ Interns	Medical/ Dental, other	Medical & Dental	Nurse/ Midwife Manager	Nurse/ Midwife Specialist & AN/MP	Staff Nurse/ Staff Midwife	Nursing/ Midwifery Student	Nursing/ Midwifery other	Nursing & Midwifery	Therapy Professions	Social Care	Social Workers	Psychologists	Pharmacy	H&SC, Other	Health & Social Care Professionals	Management (VIII & above)	Administrativ e/ Supervisory (V to VII)	Clerical (III & IV)	Management & Administrative	General Support	Health Care Assistants	Care, other	Patient & Client Care
Overall	+0.0%	+5	-1	+3	-3	+1	+0	+6	+8	+0	-8	+1	+7	-3	-1	+5	-3	+0	-0	-2	-0	+5	-4	+1	+2	-7	+3	-4
CHO 1	-0.8%	-8	-1	+0	-1		-2	+1	+2	-2	-2	-0	-1	-2	+0	+1	-1	+0	+0	-2		-0	-2	-2	-1	-1	+0	-1
CHO 2	-0.1%	-1	+0	+0	+1	+1	+2	-2	+2	-1	-3		-4	-1	-0	+1	-1		-0	-2	+0	+2	-1	+1	+2	-2	+2	-1
CHO 3	+0.1%	+1	-0	-0	-1		-1	+0	+1	-4	-0	+0	-2	+2	-0	-0	+2		-0	+3	+0	+1	+1	+2	+0	-0		-0
CHO 4	+0.1%	+2	-1	-1	+1	+0	-0	+5	+2	-5	-1		+1	+2	-0	+1	-4	-0	+1	-0		-0	+1	+1	+0	+0	+0	+0
CHO 5	+0.5%	+6	+0	+1	-2		-1	-0	-0	+3	+0		+3	+2	-0	-1	+2		+0	+4		+1	-2	-1	-0	+1	+0	+1
CHO 6	-0.2%	-1	-0	-0	-2		-3		+1	+1	-0		+1	-2	+1	+1	+3		-0	+3		+0	-2	-1	-1	-0	+0	-0
CHO 7	-0.1%	-1	-0	-1	+1		+0	-1	-2	+5	-1	+1	+2	-1	-0	+1	-2		-0	-3		+1	+1	+2	-1	-0	-1	-1
CHO 8	+0.4%	+4	+0	+1	+0		+2	+1	-0	+8	-1	-0	+8	-3	-1	+1	-2	+1	-1	-5	+1	+0	+0	+1	+1	-3	+1	-1
CHO 9	+0.2%	+3	+1	+0	-0		+1	-0	+2	+0	+1	+0	+3	+1	+0	+1	+1	-1	+0	+2	-0	-1	-1	-1	-1	-2	+0	-2
other Community Services	+0.0%	+0	+0	+2			+2	+1	-0	-4			-4	-1		-0	-0	+0		-0	-1	-0	+1	-1	+3	-0	-0	-0
		+0.0%	-0.2%	+0.9%	-1.3%	+31.1%	+0.0%	+0.5%	+1.5%	+0.0%	-4.2%	+1.5%	+0.1%	-0.7%	-1.1%	+1.2%	-0.6%	+1.6%	-0.1%	-0.1%	-0.1%	+1.8%	-0.5%	+0.1%	+0.4%	-0.7%	+1.3%	-0.4%

Year-on-year Summary

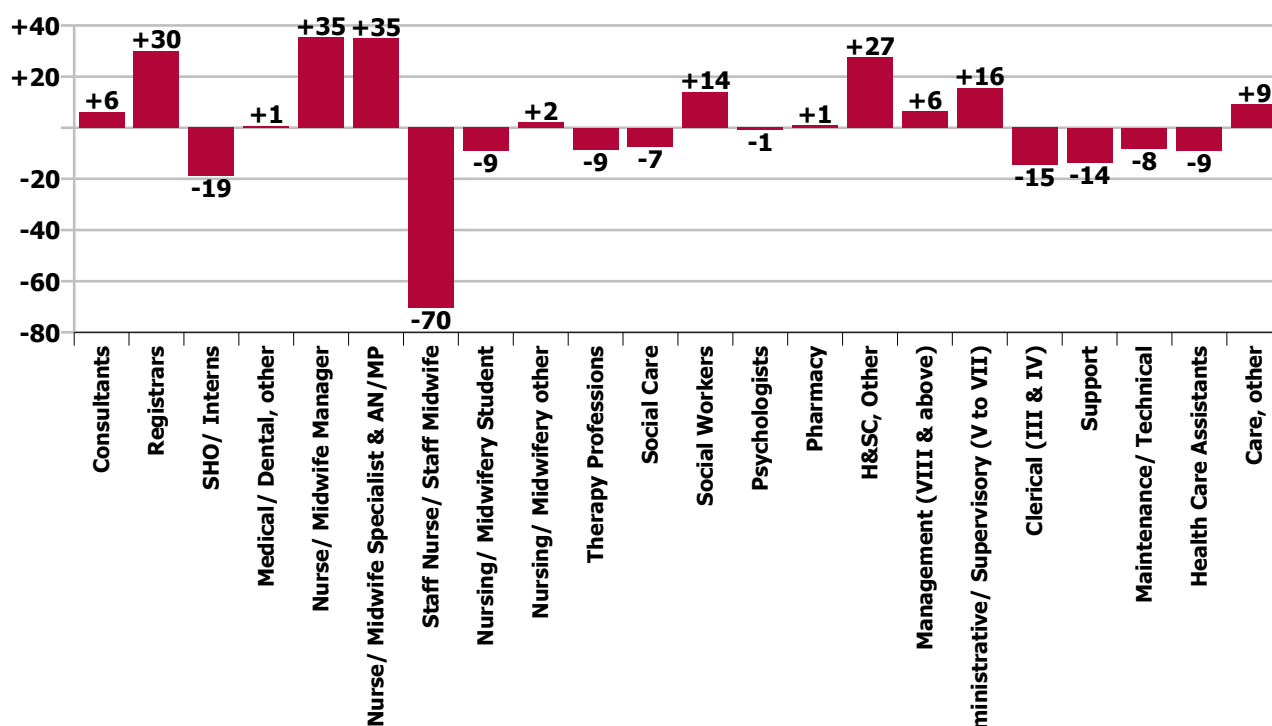
WTE change since Apr 21	% change since Apr 21	overall	Consultants	Registrars	SHO/ Interns	Medical/ Dental, other	Medical & Dental	Nurse/ Midwife Manager	Nurse/ Midwife Specialist & AN/MP	Staff Nurse/ Staff Midwife	Nursing/ Midwifery Student	Nursing/ Midwifery other	Nursing & Midwifery	Therapy Professions	Social Care	Social Workers	Psychologists	Pharmacy	H&SC, Other	Health & Social Care Professionals	Management (VIII & above)	Administrative/ Supervisory (V to VII)	Clerical (III & IV)	Management & Administrative	General Support	Health Care Assistants	Care, other	Patient & Client Care
Overall	+0.2%	+22	+6	+30	-19	+1	+18	+35	+35	-70	-9	+2	-7	-9	-7	+14	-1	+1	+27	+25	+6	+16	-15	+7	-22	-9	+9	+0
CHO 1	+2.2%	+22	-2	-2	+2		-2	-2	+7	+4	-2	+0	+7	+5		+2	-0	+0	+5	+12	+5	+2	-2	+5	-2	-0	+3	+3
CHO 2	-2.0%	-28	-2	+3	-3	+0	-2	+1	+9	-24	+6		-8	-7	-2	+3	+3	+1	-1	-4	+1	+1	-5	-3	-5	-6	-1	-7
CHO 3	-1.4%	-12	+1	-1	+3		+3	+2	+0	-8	-2	+1	+3	-7	-3	-1	+4	-4		-1	-6	+1	-3	-1	-4	-0	+2	+2
CHO 4	+1.4%	+23	+2	+12	-6	+0	+9	+18	+3	-12	-4		+5	+2	-0	+5	+1	-1	+4	+11	+1	+4	-2	+3	-4	-2	+1	-2
CHO 5	+0.5%	+7	+4	+3	-5		+2	+11	-4	-3	-8	+0	-5	-2	-0	-0	+1		+11	+9		+5	-6	-1	-5	+7	-1	+6
CHO 6	-0.2%	-1	-2	-1	-0		-3	+0	+5	-3	+1	+1	+4	-2	-3	+2	+8		+3	+8	+1	-0	-5	-4	-6	+0	+0	+0
CHO 7	+2.8%	+25	-0	-5	+6		+1	-0	+1	+8	+2	+1	+12	+6	-0	-3	-2		+3	+4	+1	+2	+2	+4	-1	-1	+6	+4
CHO 8	-1.8%	-20	+1	+8	-4		+5	+5	+8	-20	+1	-0	-7	-6	-0	+4	-2	+1	+0	-2	+1	-0	-8	-7	-3	-6	+1	-5
CHO 9	+1.8%	+24	+4	+11	-12		+3	+3	+7	-2	-3	-1	+4	-1	+0	+1	+0	-0	+3	+3	-1	+4	+9	+12	-0	+2	-0	+2
other Community Services	-3.4%	-18	+1	+2			+3	-2	-1	-11		+0	-13	-1	+0	-4	-5			-9	-3	+3	+3	+2	+5	-5	-0	-5
		+0.2%	+1.7%	+9.7%	-7.7%	+14.3%	+1.9%	+2.9%	+6.6%	-2.3%	-5.0%	+6.5%	-0.1%	-1.9%	-9.3%	+3.7%	-0.2%	+4.4%	+26.5%	+1.7%	+10.2%	+6.4%	-2.0%	+0.7%	-3.0%	-0.9%	+4.5%	+0.0%



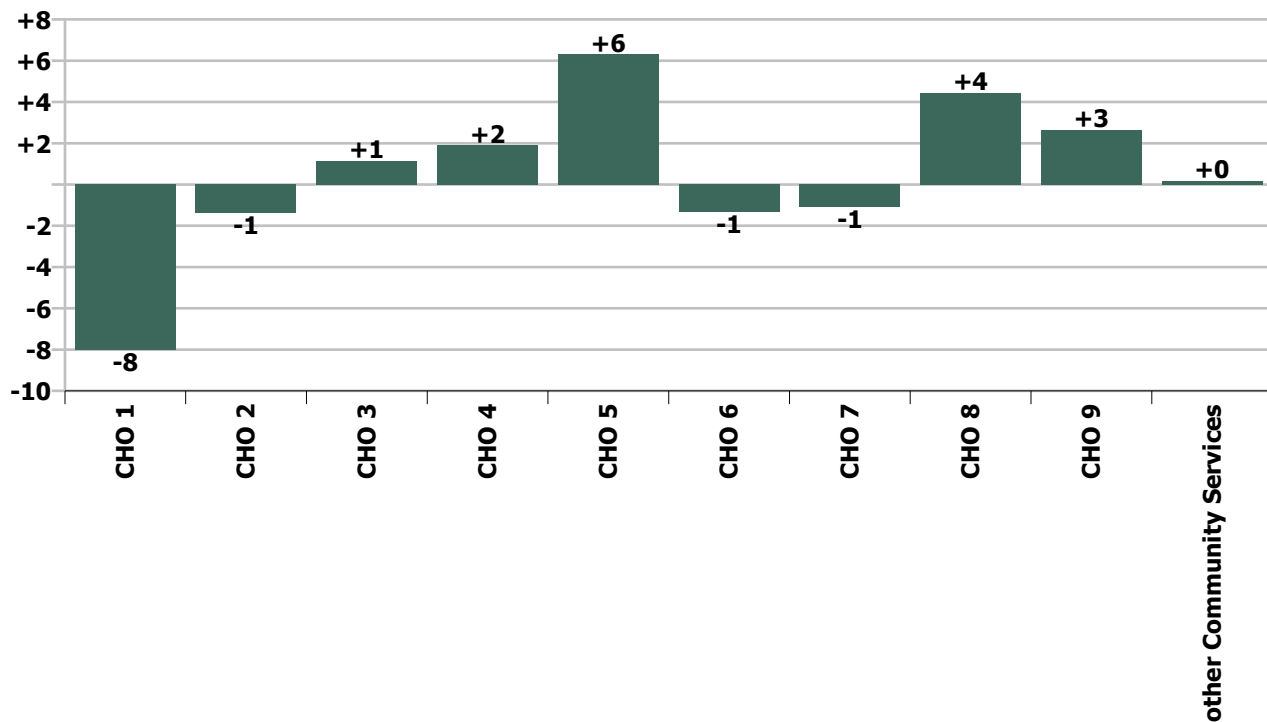
Staff Group change since: Mar 2022



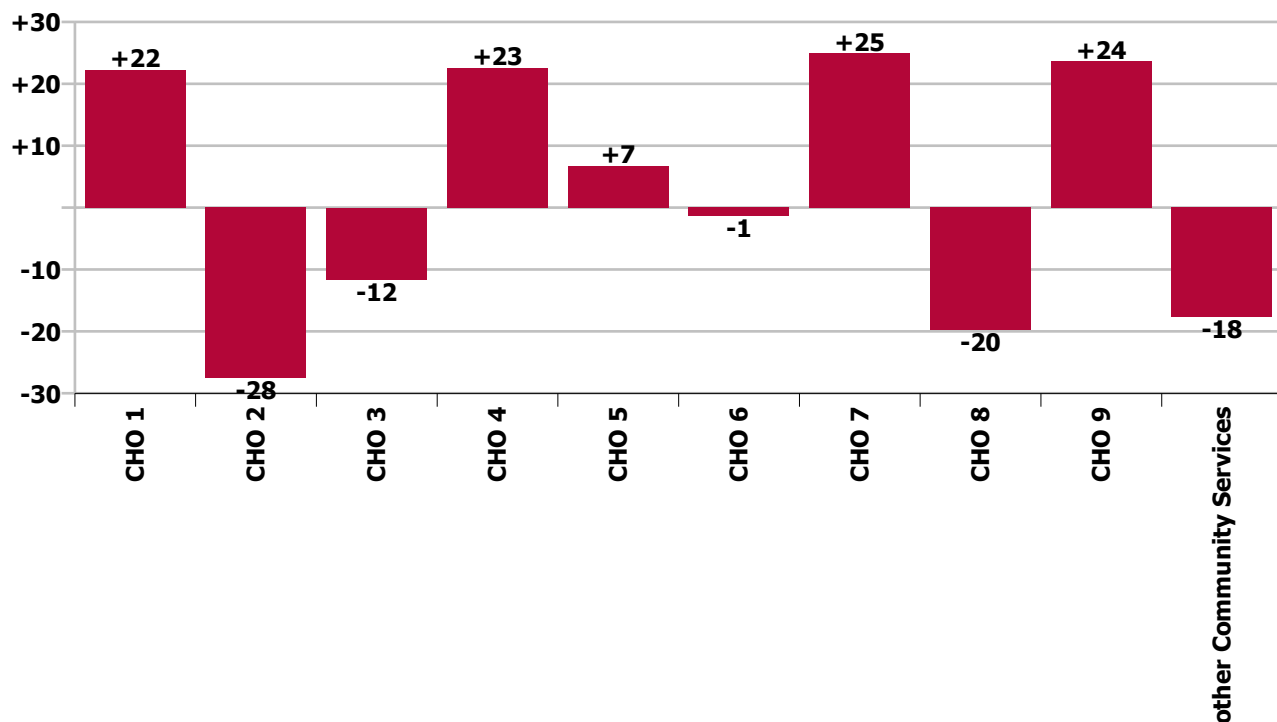
Staff Group change since: Apr 2021



CHO change since: Mar 2022



CHO change since: Apr 2021



Longitudinal Employment Levels by Grade Group - Dec 2016 to Apr 2022

Apr 2022 (Dec 2015 figure: 9,499)	WTE Apr 2022	WTE change since Dec 16	WTE change since Dec 17	WTE change since Dec 18	WTE change since Dec 19	WTE change since Dec 20	WTE change since Mar 22	% change since Dec 16	% change since Dec 17	% change since Dec 18	% change since Dec 19	% change since Dec 20	% change since Mar 22
Overall	10,508	+887	+718	+610	+554	+206	+5	+9.2%	+7.3%	+6.2%	+5.6%	+2.0%	+0.0%
Consultant Medicine	1		-0	-0					-9.1%	-9.1%			
Consultant Psychiatry	383	+68	+70	+53	+31	+14	-1	+21.5%	+22.6%	+16.0%	+8.8%	+3.8%	-0.2%
Consultants	384	+68	+70	+53	+31	+14	-1	+21.4%	+22.4%	+15.9%	+8.8%	+3.8%	-0.2%
Registrar	218	+86	+74	+65	+49	+50	+1	+65.3%	+51.0%	+41.9%	+29.0%	+30.1%	+0.6%
Senior Registrar	120	+53	+54	+34	+23	+9	+2	+78.3%	+81.9%	+39.3%	+23.2%	+7.7%	+1.3%
Specialist Registrar	2	+1		+1	-1			+100.0%		+100.0%	-20.0%		
Registrars	340	+140	+128	+99	+71	+59	+3	+69.9%	+60.1%	+41.2%	+26.5%	+21.0%	+0.9%
Senior House Officer	222	-25	-50	-47	-31	-49	-2	-9.9%	-18.4%	-17.4%	-12.2%	-17.9%	-0.7%
Interns	5	-7	-5	-3	-3	-0	-1	-60.4%	-52.5%	-40.6%	-40.6%	-5.0%	-20.8%
SHO/ Interns	227	-32	-55	-50	-34	-49	-3	-12.3%	-19.6%	-18.1%	-13.0%	-17.7%	-1.3%
Dentists			-0	-0				-100.0%	-100.0%	-100.0%	-100.0%	-100.0%	-100.0%
Other Medical	5	-5	-6	-1	+0	+0	+1	-47.0%	-53.0%	-21.4%	+2.0%	+2.0%	+31.1%
Medical/ Dental, other	5	-5	-6	-1	+0	+0	+1	-47.0%	-53.3%	-22.3%	+2.0%	+2.0%	+31.1%
Medical & Dental	956	+171	+137	+100	+68	+24	+0	+21.8%	+16.7%	+11.7%	+7.7%	+2.6%	+0.0%
Clinical Nurse/ Midwife Manager	1,065	+59	+83	+59	+67	+24	+5	+5.8%	+8.4%	+5.9%	+6.7%	+2.3%	+0.5%
Director Nursing/Midwifery, Assistant	176	+21	+14	+12	+11	+5	-1	+13.2%	+8.6%	+7.2%	+6.8%	+3.1%	-0.6%
Director of Nursing/Midwifery	32	+0	+4	+8	+3	+4	+2	+1.4%	+12.8%	+35.4%	+11.2%	+15.1%	+5.2%
Nurse/ Midwife Manager	1,273	+80	+100	+79	+81	+34	+6	+6.7%	+8.5%	+6.7%	+6.8%	+2.7%	+0.5%
Advanced Nurse/ Midwife Practitioner	49	+42	+39	+29	+18	+10	+1	+556.4%	+367.6%	+143.8%	+59.8%	+24.6%	+1.6%
Clinical Nurse/ Midwife Specialist	512	+176	+129	+117	+84	+23	+8	+52.3%	+33.7%	+29.6%	+19.6%	+4.7%	+1.5%
Nurse/ Midwife Specialist & AN/MP	561	+218	+168	+146	+102	+33	+8	+63.3%	+42.6%	+35.2%	+22.3%	+6.2%	+1.5%
Staff Midwives						-1		-100.0%	-100.0%	-100.0%	-100.0%	-100.0%	-100.0%
Staff Nurse [Psychiatric]	2,928	-129	-99	-27	+34	-37	-6	-4.2%	-3.3%	-0.9%	+1.2%	-1.2%	-0.2%
Staff Nurses [General/ Children's]	108	-12	-9	-9	+3	+2	+2	-10.2%	-7.9%	-7.9%	+3.3%	+1.9%	+2.0%
Staff Nurse [Intellectual Disability]	8	+5	+5	+2	+4	+4	+4	+146.7%	+138.2%	+37.3%	+81.9%	+94.3%	+119.1%
Graduate Nursing/ Midwifery								-100.0%	-100.0%	-100.0%	-100.0%	-100.0%	-100.0%
Staff Nurse/ Staff Midwife	3,044	-137	-104	-35	+41	-32	+0	-4.3%	-3.3%	-1.1%	+1.4%	-1.0%	+0.0%

Apr 2022 (Dec 2015 figure: 9,499)	WTE Apr 2022	WTE change since Dec 16	WTE change since Dec 17	WTE change since Dec 18	WTE change since Dec 19	WTE change since Dec 20	WTE change since Mar 22	% change since Dec 16	% change since Dec 17	% change since Dec 18	% change since Dec 19	% change since Dec 20	% change since Mar 22
Overall	10,508	+887	+718	+610	+554	+206	+5	+9.2%	+7.3%	+6.2%	+5.6%	+2.0%	+0.0%
Public Health Nurse		-1	-1					-100.0%	-100.0%	-100.0%	-100.0%	-100.0%	-100.0%
Pre-registration Nurse Intern (COVID-19)						-42		-100.0%	-100.0%	-100.0%	-100.0%	-100.0%	-100.0%
Pre-registration Nurse/ Midwife Intern	159	+151	+143	+132	+132	+149	-1	+1741.2%	+846.9%	+472.1%	+479.2%	+1388.8%	-0.9%
Post-registration Nurse/ Midwife Student					-1	-1		-100.0%	-100.0%	-100.0%	-100.0%	-100.0%	-100.0%
Nursing/ Midwifery awaiting registration	12	+10	+3	-8	-47	+7	-6	+493.5%	+37.2%	-40.2%	-79.9%	+144.7%	-33.8%
Nursing/ Midwifery Student	171	+161	+146	+124	+84	+112	-8	+1507.1%	+572.1%	+259.1%	+95.9%	+190.5%	-4.2%
Nursing Education/Clinical	34	+10	+4	+3	+3	+3	+1	+39.1%	+12.3%	+10.7%	+8.7%	+8.3%	+1.5%
Nursing/ Midwifery other	34	+10	+4	+3	+3	+3	+1	+39.1%	+12.3%	+10.7%	+8.7%	+8.3%	+1.5%
Nursing & Midwifery	5,085	+330	+313	+318	+311	+149	+7	+6.9%	+6.6%	+6.7%	+6.5%	+3.0%	+0.1%
Dietitians	21	+7	+4	+1	+2	-0	-1	+52.4%	+23.1%	+2.9%	+7.9%	-0.8%	-5.6%
Occupational Therapists	353	+53	+27	+13	+14	+7	-3	+17.7%	+8.2%	+4.0%	+4.2%	+2.1%	-0.7%
Physiotherapists	3	+1	+2	+1	+1	+0	-0	+44.8%	+140.5%	+80.7%	+30.5%	+20.7%	-0.0%
Podiatrists & Chiropodists	1	-1	-1	-0	+0		-0	-56.0%	-45.6%	-34.4%	+9.6%		-9.1%
Speech & Language Therapists	66	+7	+5	+5	+5	-3	+1	+11.8%	+8.3%	+8.1%	+7.8%	-4.5%	+1.0%
Therapy Professions	444	+67	+37	+20	+21	+4	-3	+17.8%	+9.0%	+4.7%	+5.0%	+1.0%	-0.7%
Social Care	71	-16	-11	-7	-2	-8	-1	-18.6%	-13.4%	-9.0%	-2.8%	-10.6%	-1.1%
Social Workers	393	+43	+36	+35	+44	+21	+5	+12.4%	+10.2%	+9.8%	+12.6%	+5.6%	+1.2%
Psychologists	428	+86	+58	+40	+34	+4	-3	+24.9%	+15.7%	+10.2%	+8.6%	+1.0%	-0.6%
Pharmacists	16	+1	+1	+0	+0	-1	+0	+9.6%	+10.1%	+3.1%	+1.3%	-4.6%	+1.7%
Pharmacy Technicians	4	-0	-0	+1	+2	+1	+0	-9.1%	-8.3%	+20.5%	+69.2%	+14.8%	+1.5%
Pharmacy	20	+1	+1	+1	+2	-0	+0	+5.2%	+5.7%	+6.2%	+10.4%	-1.2%	+1.6%
Counsellor Therapists	124	+39	+38	+39	+29	+23	-0	+45.7%	+44.9%	+45.8%	+30.8%	+22.5%	-0.1%
Other Health & Social Care	6	-3	-3	-3	-6	+0	-0	-31.8%	-32.9%	-33.2%	-51.0%	+6.3%	-1.9%
Play Therapists/ Specialists	1	-1	-0		+0			-40.8%	-2.0%		+1.4%		
H&SC, Other	131	+35	+36	+36	+23	+23	-0	+36.7%	+37.2%	+38.0%	+21.5%	+21.4%	-0.1%
Health & Social Care Professionals	1,489	+216	+157	+125	+122	+44	-2	+17.0%	+11.8%	+9.2%	+8.9%	+3.1%	-0.1%
Executive Management	15	+8	+7	+5	+4	+0	+1	+114.3%	+87.5%	+50.0%	+36.4%	+1.8%	+7.2%
Senior Management (VIII & GM)	54	+30	+23	+23	+8	+2	-1	+120.1%	+73.9%	+71.7%	+17.3%	+3.7%	-2.0%
Management (VIII & above)	69	+38	+30	+28	+12	+2	-0	+118.8%	+76.6%	+66.5%	+20.9%	+3.3%	-0.1%

Apr 2022 (Dec 2015 figure: 9,499)	WTE Apr 2022	WTE change since Dec 16	WTE change since Dec 17	WTE change since Dec 18	WTE change since Dec 19	WTE change since Dec 20	WTE change since Mar 22	% change since Dec 16	% change since Dec 17	% change since Dec 18	% change since Dec 19	% change since Dec 20	% change since Mar 22
Overall	10,508	+887	+718	+610	+554	+206	+5	+9.2%	+7.3%	+6.2%	+5.6%	+2.0%	+0.0%
Middle Management (V-VII)	255	+89	+58	+35	+20	+12	+5	+53.4%	+29.6%	+16.0%	+8.4%	+4.9%	+1.8%
Other Administrative	3	+1			+1	+1		+63.7%			+63.7%	+63.7%	
Administrative/ Supervisory (V to VII)	258	+90	+58	+35	+21	+13	+5	+53.5%	+29.2%	+15.8%	+8.8%	+5.3%	+1.8%
General Administrative (III & IV)	714	+53	+33	+19	-3	-8	-4	+8.0%	+4.8%	+2.7%	-0.5%	-1.1%	-0.5%
Clerical (III & IV)	714	+53	+33	+19	-3	-8	-4	+8.0%	+4.8%	+2.7%	-0.5%	-1.1%	-0.5%
Management & Administrative	1,041	+180	+121	+81	+30	+7	+1	+21.0%	+13.1%	+8.5%	+2.9%	+0.7%	+0.1%
Catering	71	+5	+5	-1	+5	+7	+0	+7.7%	+7.4%	-1.6%	+8.4%	+11.3%	+0.1%
Household Services	418	-74	-58	-27	-6	-23	+2	-15.0%	-12.1%	-6.1%	-1.4%	-5.2%	+0.4%
Other Support	40	-16	-10	-16	-3	-2	+1	-29.4%	-20.0%	-28.2%	-7.3%	-5.6%	+3.6%
Portering	48	-12	-1	-0	-0	+0	-0	-19.6%	-2.5%	-0.7%	-0.9%	+0.7%	-1.0%
Support	576	-97	-64	-44	-4	-18	+3	-14.4%	-10.0%	-7.1%	-0.7%	-3.0%	+0.5%
Maintenance	129	-14	-10	-5	+0	-8	-0	-9.7%	-6.9%	-3.9%	+0.1%	-6.0%	-0.2%
Technical Services		-2	-2	-2	-2			-100.0%	-100.0%	-100.0%	-100.0%	-100.0%	-100.0%
Maintenance/ Technical	129	-16	-12	-7	-2	-8	-0	-11.0%	-8.2%	-5.3%	-1.4%	-6.0%	-0.2%
General Support	705	-113	-76	-51	-6	-26	+2	-13.8%	-9.7%	-6.8%	-0.8%	-3.6%	+0.4%
Attendant/ Aide	501	-223	-199	-180	-104	-82	-10	-30.8%	-28.4%	-26.4%	-17.2%	-14.1%	-2.0%
Health & Social Care Assistants	10	+5	+5	+4	+1	+1	+0	+110.6%	+110.6%	+79.6%	+9.3%	+17.1%	+3.8%
Health Care Assistant/ Care Assistant	509	+304	+260	+216	+135	+79	+3	+148.6%	+104.8%	+73.6%	+36.0%	+18.3%	+0.6%
Health Care Assistants	1,020	+86	+66	+40	+32	-2	-7	+9.2%	+6.9%	+4.1%	+3.2%	-0.2%	-0.7%
Home Care Services	15	+15	-0	-2	-1	+1	+0	-100.0%	-0.9%	-10.4%	-5.7%	+3.9%	+0.3%
Other Care Grades	21	+11	+11	+6	-1	-1	+0	+100.0%	+98.1%	+35.2%	-5.4%	-3.0%	+2.3%
Pastoral Care	12	-2	-2	-1	-1	-0	-0	-15.7%	-12.8%	-9.7%	-5.5%	-1.0%	-0.7%
Workshop Services	165	-6	-8	-5	-0	+10	+2	-3.8%	-4.7%	-3.2%	-0.1%	+6.2%	+1.4%
Care, other	213	+17	+1	-3	-3	+9	+3	+8.6%	+0.3%	-1.4%	-1.4%	+4.6%	+1.3%
Patient & Client Care	1,232	+103	+67	+37	+29	+7	-4	+9.1%	+5.7%	+3.1%	+2.4%	+0.6%	-0.4%

Source: Health Service Personnel Census

Longitudinal Employment Levels by Grade Group - Dec 2016 to Apr 2022

Apr 2022 (Dec 2015 figure: 9,499)	WTE Apr 2022	WTE change since Dec 16	WTE change since Dec 17	WTE change since Dec 18	WTE change since Dec 19	WTE change since Dec 20	WTE change since Mar 22	% change since Dec 16	% change since Dec 17	% change since Dec 18	% change since Dec 19	% change since Dec 20	% change since Mar 22
Overall	10,508	+887	+718	+610	+554	+206	+5	+9.2%	+7.3%	+6.2%	+5.6%	+2.0%	+0.0%
Consultant Medicine	1		-0	-0					-9.1%	-9.1%			
Consultant Psychiatry	383	+68	+70	+53	+31	+14	-1	+21.5%	+22.6%	+16.0%	+8.8%	+3.8%	-0.2%
Consultants	384	+68	+70	+53	+31	+14	-1	+21.4%	+22.4%	+15.9%	+8.8%	+3.8%	-0.2%
Registrar	218	+86	+74	+65	+49	+50	+1	+65.3%	+51.0%	+41.9%	+29.0%	+30.1%	+0.6%
Senior Registrar	120	+53	+54	+34	+23	+9	+2	+78.3%	+81.9%	+39.3%	+23.2%	+7.7%	+1.3%
Specialist Registrar	2	+1		+1	-1			+100.0%		+100.0%	-20.0%		
Registrars	340	+140	+128	+99	+71	+59	+3	+69.9%	+60.1%	+41.2%	+26.5%	+21.0%	+0.9%
Senior House Officer	222	-25	-50	-47	-31	-49	-2	-9.9%	-18.4%	-17.4%	-12.2%	-17.9%	-0.7%
Interns	5	-7	-5	-3	-3	-0	-1	-60.4%	-52.5%	-40.6%	-40.6%	-5.0%	-20.8%
SHO/ Interns	227	-32	-55	-50	-34	-49	-3	-12.3%	-19.6%	-18.1%	-13.0%	-17.7%	-1.3%
Dentists			-0	-0				-100.0%	-100.0%	-100.0%	-100.0%	-100.0%	-100.0%
Other Medical	5	-5	-6	-1	+0	+0	+1	-47.0%	-53.0%	-21.4%	+2.0%	+2.0%	+31.1%
Medical/ Dental, other	5	-5	-6	-1	+0	+0	+1	-47.0%	-53.3%	-22.3%	+2.0%	+2.0%	+31.1%
Medical & Dental	956	+171	+137	+100	+68	+24	+0	+21.8%	+16.7%	+11.7%	+7.7%	+2.6%	+0.0%
Clinical Nurse/ Midwife Manager	1,065	+59	+83	+59	+67	+24	+5	+5.8%	+8.4%	+5.9%	+6.7%	+2.3%	+0.5%
Director Nursing/Midwifery, Assistant	176	+21	+14	+12	+11	+5	-1	+13.2%	+8.6%	+7.2%	+6.8%	+3.1%	-0.6%
Director of Nursing/Midwifery	32	+0	+4	+8	+3	+4	+2	+1.4%	+12.8%	+35.4%	+11.2%	+15.1%	+5.2%
Nurse/ Midwife Manager	1,273	+80	+100	+79	+81	+34	+6	+6.7%	+8.5%	+6.7%	+6.8%	+2.7%	+0.5%
Advanced Nurse/ Midwife Practitioner	49	+42	+39	+29	+18	+10	+1	+556.4%	+367.6%	+143.8%	+59.8%	+24.6%	+1.6%
Clinical Nurse/ Midwife Specialist	512	+176	+129	+117	+84	+23	+8	+52.3%	+33.7%	+29.6%	+19.6%	+4.7%	+1.5%
Nurse/ Midwife Specialist & AN/MP	561	+218	+168	+146	+102	+33	+8	+63.3%	+42.6%	+35.2%	+22.3%	+6.2%	+1.5%
Staff Midwives							-1	-100.0%	-100.0%	-100.0%	-100.0%	-100.0%	-100.0%
Staff Nurse [Psychiatric]	2,928	-129	-99	-27	+34	-37	-6	-4.2%	-3.3%	-0.9%	+1.2%	-1.2%	-0.2%
Staff Nurses [General/ Children's]	108	-12	-9	-9	+3	+2	+2	-10.2%	-7.9%	-7.9%	+3.3%	+1.9%	+2.0%
Staff Nurse [Intellectual Disability]	8	+5	+5	+2	+4	+4	+4	+146.7%	+138.2%	+37.3%	+81.9%	+94.3%	+119.1%
Graduate Nursing/ Midwifery								-100.0%	-100.0%	-100.0%	-100.0%	-100.0%	-100.0%
Staff Nurse/ Staff Midwife	3,044	-137	-104	-35	+41	-32	+0	-4.3%	-3.3%	-1.1%	+1.4%	-1.0%	+0.0%
Public Health Nurse		-1	-1					-100.0%	-100.0%	-100.0%	-100.0%	-100.0%	-100.0%
Public Health Nurse		-1	-1					-100.0%	-100.0%	-100.0%	-100.0%	-100.0%	-100.0%
Pre-registration Nurse Intern (COVID-19)						-42		-100.0%	-100.0%	-100.0%	-100.0%	-100.0%	-100.0%
Pre-registration Nurse/ Midwife Intern	159	+151	+143	+132	+132	+149	-1	+1741.2%	+846.9%	+472.1%	+479.2%	+1388.8%	-0.9%
Post-registration Nurse/ Midwife Student					-1	-1		-100.0%	-100.0%	-100.0%	-100.0%	-100.0%	-100.0%
Nursing/ Midwifery awaiting registration	12	+10	+3	-8	-47	+7	-6	+493.5%	+37.2%	-40.2%	-79.9%	+144.7%	-33.8%
Nursing/ Midwifery Student	171	+161	+146	+124	+84	+112	-8	+1507.1%	+572.1%	+259.1%	+95.9%	+190.5%	-4.2%
Nursing Education/Clinical	34	+10	+4	+3	+3	+3	+1	+39.1%	+12.3%	+10.7%	+8.7%	+8.3%	+1.5%
Nursing/ Midwifery other	34	+10	+4	+3	+3	+3	+1	+39.1%	+12.3%	+10.7%	+8.7%	+8.3%	+1.5%
Nursing & Midwifery	5,085	+330	+313	+318	+311	+149	+7	+6.9%	+6.6%	+6.7%	+6.5%	+3.0%	+0.1%
Dietitians	21	+7	+4	+1	+2	-0	-1	+52.4%	+23.1%	+2.9%	+7.9%	-0.8%	-5.6%
Occupational Therapists	353	+53	+27	+13	+14	+7	-3	+17.7%	+8.2%	+4.0%	+4.2%	+2.1%	-0.7%
Physiotherapists	3	+1	+2	+1	+1	+0	-0	+44.8%	+140.5%	+80.7%	+30.5%	+20.7%	-0.0%
Podiatrists & Chiroprodists	1	-1	-1	-0	+0		-0	-56.0%	-45.6%	-34.4%	+9.6%		-9.1%
Speech & Language Therapists	66	+7	+5	+5	+5	-3	+1	+11.8%	+8.3%	+8.1%	+7.8%	-4.5%	+1.0%
Therapy Professions	444	+67	+37	+20	+21	+4	-3	+17.8%	+9.0%	+4.7%	+5.0%	+1.0%	-0.7%
Social Care	71	-16	-11	-7	-2	-8	-1	-18.6%	-13.4%	-9.0%	-2.8%	-10.6%	-1.1%
Social Workers	393	+43	+36	+35	+44	+21	+5	+12.4%	+10.2%	+9.8%	+12.6%	+5.6%	+1.2%
Psychologists	428	+86	+58	+40	+34	+4	-3	+24.9%	+15.7%	+10.2%	+8.6%	+1.0%	-0.6%
Pharmacists	16	+1	+1	+0	+0	-1	+0	+9.6%	+10.1%	+3.1%	+1.3%	-4.6%	+1.7%
Pharmacy Technicians	4	-0	-0	+1	+2	+1	+0	-9.1%	-8.3%	+20.5%	+69.2%	+14.8%	+1.5%
Pharmacy	20	+1	+1	+1	+2	-0	+0	+5.2%	+5.7%	+6.2%	+10.4%	-1.2%	+1.6%
Counsellor Therapists	124	+39	+38	+39	+29	+23	-0	+45.7%	+44.9%	+45.8%	+30.8%	+22.5%	-0.1%
Other Health & Social Care	6	-3	-3	-3	-6	+0	-0	-31.8%	-32.9%	-33.2%	-51.0%	+6.3%	-1.9%
Play Therapists/ Specialists	1	-1	-0		+0			-40.8%	-2.0%		+1.4%		
H&SC, Other	131	+35	+36	+36	+23	+23	-0	+36.7%	+37.2%	+38.0%	+21.5%	+21.4%	-0.1%
Health & Social Care Professionals	1,489	+216	+157	+125	+122	+44	-2	+17.0%	+11.8%	+9.2%	+8.9%	+3.1%	-0.1%
Executive Management	15	+8	+7	+5	+4	+0	+1	+114.3%	+87.5%	+50.0%	+36.4%	+1.8%	+7.2%
Senior Management (VIII & GM)	54	+30	+23	+23	+8	+2	-1	+120.1%	+73.9%	+71.7%	+17.3%	+3.7%	-2.0%
Management (VIII & above)	69	+38	+30	+28	+12	+2	-0	+118.8%	+76.6%	+66.5%	+20.9%	+3.3%	-0.1%
Middle Management (V-VII)	255	+89	+58	+35	+20	+12	+5	+53.4%	+29.6%	+16.0%	+8.4%	+4.9%	+1.8%
Other Administrative	3	+1			+1	+1		+63.7%			+63.7%	+63.7%	
Administrative/ Supervisory (V to VII)	258	+90	+58	+35	+21	+13	+5	+53.5%	+29.2%	+15.8%	+8.8%	+5.3%	+1.8%
General Administrative (III & IV)	714	+53	+33	+19	-3	-8	-4	+8.0%	+4.8%	+2.7%	-0.5%	-1.1%	-0.5%
Clerical (III & IV)	714	+53	+33	+19	-3	-8	-4	+8.0%	+4.8%	+2.7%	-0.5%	-1.1%	-0.5%
Management & Administrative	1,041	+180	+121	+81	+30	+7	+1	+21.0%	+13.1%	+8.5%	+2.9%	+0.7%	+0.1%
Support	576	-97	-64	-44	-4	-18	+3	-14.4%	-10.0%	-7.1%	-0.7%	-3.0%	+0.5%
Maintenance	129	-14	-10	-5	+0	-8	-0	-9.7%	-6.9%	-3.9%	+0.1%	-6.0%	-0.2%
Technical Services		-2	-2	-2	-2			-100.0%	-100.0%	-100.0%	-100.0%	-100.0%	-100.0%
Maintenance/ Technical	129	-16	-12	-7	-2	-8	-0	-11.0%	-8.2%	-5.3%	-1.4%	-6.0%	-0.2%
General Support	705	-113	-76	-51	-6	-26	+2	-13.8%	-9.7%	-6.8%	-0.8%	-3.6%	+0.4%
Attendant/ Aide	501	-223	-199	-180	-104	-82	-10	-30.8%	-28.4%	-26.4%	-17.2%	-14.1%	-2.0%
Health & Social Care Assistants	10	+5	+5	+4	+1	+1	+0	+110.6%	+110.6%	+79.6%	+9.3%	+17.1%	+3.8%
Health Care Assistant/ Care Assistant	509	+304	+260	+216	+135	+79	+3	+148.6%	+104.8%	+73.6%	+36.0%	+18.3%	+0.6%
Health Care Assistants	1,020	+86	+66	+40	+32	-2	-7	+9.2%	+6.9%	+4.1%	+3.2%	-0.2%	-0.7%
Home Care Services	15	+15	-0	-2	-1	+1	+0	-100.0%	-0.9%	-10.4%	-5.7%	+3.9%	+0.3%
Other Care Grades	21	+11	+11	+6	-1	-1	+0	+100.0%	+98.1%	+35.2%	-5.4%	-3.0%	+2.3%
Pastoral Care	12	-2	-2	-1	-1	-0	-0	-15.7%	-12.8%	-9.7%	-5.5%	-1.0%	-0.7%
Workshop Services	165	-6	-8	-5	-0	+10	+2	-3.8%	-4.7%	-3.2%	-0.1%	+6.2%	+1.4%
Care, other	213	+17	+1	-3	-3	+9	+3	+8.6%	+0.3%	-1.4%	-1.4%	+4.6%	+1.3%
Patient & Client Care	1,232	+103	+67	+37	+29	+7	-4	+9.1%	+5.7%	+3.1%	+2.4%	+0.6%	-0.4%

Source: Health Service Personnel Census