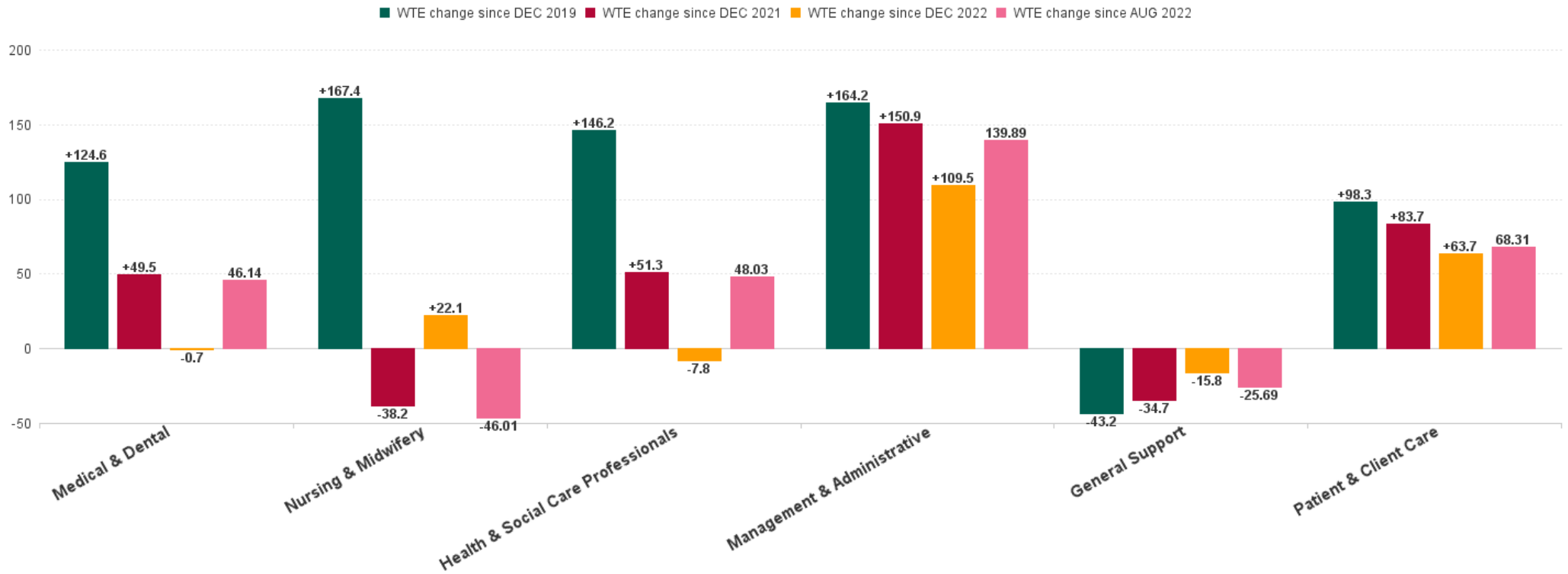


Mental Health Employment Report : AUG 2023

Mental Health Employment Report by Staff Group

AUG 2023	WTE DEC 2019	WTE DEC 2022	WTE JUL 2023	WTE AUG 2023	WTE change since DEC 2019	% WTE change since Dec 2019	WTE change since DEC 2022	% WTE change since Dec 2022	WTE change since JUL 2023	No. AUG 2023
Overall	9,967	10,453	10,602	10,625	+657	+6.6%	+171	+1.6%	+23	11,746
Consultants	353	397	404	410	+58	+16.3%	+13	+3.3%	+6	449
Registrars	269	345	334	333	+64	+23.8%	-12	-3.5%	-1	357
SHO/ Interns	261	267	230	266	+5	+2.0%	-1	-0.3%	+37	283
Medical/ Dental, other	5	4	3	3	-2	-40.6%	-1	-24.0%	+0	6
Medical & Dental	888	1,013	971	1,012	+125	+14.0%	-1	-0.1%	+41	1,095
Nurse/ Midwife Manager	1,201	1,245	1,237	1,240	+39	+3.3%	-5	-0.4%	+3	1,299
Nurse/ Midwife Specialist & AN/MP	460	631	692	690	+230	+50.0%	+59	+9.4%	-2	744
Staff Nurse/ Staff Midwife	3,002	2,948	2,841	2,812	-190	-6.3%	-136	-4.6%	-29	3,053
Pre-registration Nurse/ Midwife Intern	25	26	166	166	+141	+561.8%	+139	+527.2%	-0	334
Post-registration Nurse/ Midwife Student	1				-1	-100.0%				
Nursing/ Midwifery awaiting registration	57	39	5	5	-52	-91.2%	-34	-87.1%	-0	6
Nursing/ Midwifery Student	83	65	171	171	+88	+105.7%	+105	+161.9%	-1	340
Nursing/ Midwifery other	32	34	33	33	+1	+3.5%	-2	-5.1%	-0	36
Nursing & Midwifery	4,778	4,924	4,974	4,946	+167	+3.5%	+22	+0.4%	-28	5,472
Therapy Professions	420	435	433	426	+6	+1.4%	-9	-2.2%	-7	488
Social Care	74	72	63	63	-10	-14.0%	-9	-12.0%	+0	73
Social Workers	350	414	415	415	+65	+18.4%	+1	+0.3%	-0	462
Psychologists	394	448	456	453	+58	+14.8%	+5	+1.1%	-3	505
Pharmacy	19	19	21	22	+4	+20.2%	+3	+15.7%	+2	30
H&SC, Other	107	130	130	131	+24	+22.5%	+1	+0.7%	+1	152
Health & Social Care Professionals	1,364	1,518	1,518	1,511	+146	+10.7%	-8	-0.5%	-8	1,710
Management (VIII & above)	58	75	76	75	+16	+27.7%	-0	-0.1%	-1	76
Administrative/ Supervisory (V to VII)	238	287	310	315	+77	+32.5%	+28	+9.8%	+5	331
Clerical (III & IV)	717	707	782	788	+71	+9.9%	+81	+11.5%	+6	879
Management & Administrative	1,014	1,068	1,168	1,178	+164	+16.2%	+110	+10.3%	+9	1,286
Support	585	556	534	536	-49	-8.4%	-20	-3.5%	+2	613
Maintenance/ Technical	127	129	132	133	+6	+4.5%	+4	+3.0%	+1	137
General Support	712	685	666	669	-43	-6.1%	-16	-2.3%	+3	750
Health Care Assistants	996	1,030	1,075	1,081	+86	+8.6%	+51	+5.0%	+6	1,165
Care, other	216	216	229	229	+13	+5.8%	+13	+5.8%	-1	268
Patient & Client Care	1,212	1,246	1,305	1,310	+98	+8.1%	+64	+5.1%	+5	1,433

WTE Change by Staff Category



Mental Health Report by CHO: AUG 2023

AUG 2023	WTE DEC 2019	WTE DEC 2022	WTE JUL 2023	WTE AUG 2023	WTE change since DEC 2019	% WTE change since Dec 2019	WTE change since DEC 2022	% WTE change since Dec 2022	WTE change since JUL 2023	No. AUG 2023
Overall	9,967	10,453	10,602	10,625	+657	+6.6%	+171	+1.6%	+23	11,746
CHO 1	953	1,024	1,056	1,056	+103	+10.8%	+32	+3.1%	-0	1,146
CHO 2	1,308	1,329	1,323	1,322	+14	+1.1%	-7	-0.5%	-0	1,463
CHO 3	795	814	814	815	+20	+2.5%	+1	+0.1%	+1	905
CHO 4	1,499	1,562	1,568	1,568	+69	+4.6%	+6	+0.4%	+0	1,751
CHO 5	1,177	1,224	1,291	1,297	+119	+10.1%	+72	+5.9%	+6	1,444
CHO 6	593	650	663	670	+78	+13.2%	+21	+3.2%	+7	746
CHO 7	835	879	901	903	+68	+8.2%	+25	+2.8%	+2	1,001
CHO 8	1,098	1,091	1,131	1,135	+37	+3.4%	+45	+4.1%	+4	1,256
CHO 9	1,272	1,371	1,308	1,305	+34	+2.6%	-66	-4.8%	-3	1,454
other Community Services	438	511	547	553	+115	+26.4%	+42	+8.2%	+6	580



% Total by CHO



Mental Health Employment Report by HSE/S38: AUG 2023

AUG 2023	WTE DEC 2019	WTE DEC 2022	WTE JUL 2023	WTE AUG 2023	WTE change since DEC 2019	% WTE change since Dec 2019	WTE change since DEC 2022	% WTE change since Dec 2022	WTE change since JUL 2023	No. AUG 2023
Overall	9,967	10,453	10,602	10,625	+657	+6.6%	+171	+1.6%	+23	11,746
Health Service Executive	9,526	10,023	10,214	10,235	+709	+7.4%	+212	+2.1%	+21	11,286
Section 38 Voluntary Agencies	441	431	388	390	-52	-11.7%	-41	-9.6%	+1	460



Mental Health Employment Report by HSE: AUG 2023

AUG 2023	WTE DEC 2019	WTE DEC 2022	WTE JUL 2023	WTE AUG 2023	WTE change since DEC 2019	% WTE change since Dec 2019	WTE change since DEC 2022	% WTE change since Dec 2022	WTE change since JUL 2023	No. AUG 2023
Total HSE	9,526	10,023	10,214	10,235	+709	+7.4%	+212	+2.1%	+21	11,286
Consultants	333	372	377	383	+50	+15.1%	+11	+3.0%	+6	417
Registrars	250	325	317	314	+64	+25.6%	-11	-3.3%	-3	336
SHO/ Interns	255	260	222	257	+2	+0.8%	-3	-1.1%	+36	274
Medical/ Dental, other	5	4	3	3	-2	-40.6%	-1	-24.0%	+0	6
Medical & Dental	843	961	918	957	+114	+13.6%	-3	-0.4%	+39	1,033
Nurse/ Midwife Manager	1,163	1,211	1,207	1,211	+48	+4.1%	-1	-0.1%	+4	1,267
Nurse/ Midwife Specialist & AN/MP	453	620	678	677	+224	+49.4%	+57	+9.2%	-1	728
Staff Nurse/ Staff Midwife	2,879	2,838	2,764	2,737	-142	-4.9%	-101	-3.6%	-27	2,973
Nursing/ Midwifery awaiting registration	57	38	5	5	-36	-91.2%	+3	-86.8%	-0	6
Post-registration Nurse/ Midwife Student	1				-1	-100.0%				
Pre-registration Nurse/ Midwife Intern	18	18	157	157	+4	+771.5%	+7	+753.6%	-0	317
Nursing/ Midwifery Student	76	56	163	162	+86	+113.5%	+106	+188.8%	-1	323
Nursing/ Midwifery other	29	32	33	33	+4	+12.4%	+1	+2.4%	-0	36
Nursing & Midwifery	4,601	4,758	4,845	4,820	+219	+4.8%	+62	+1.3%	-25	5,327
Therapy Professions	389	407	411	403	+14	+3.6%	-4	-1.1%	-8	456
Social Care	48	44	37	37	-11	-23.4%	-7	-16.1%	-0	44
Social Workers	331	394	396	394	+63	+19.1%	+0	+0.0%	-2	438
Psychologists	379	423	434	431	+52	+13.8%	+8	+1.8%	-3	477
Pharmacy	17	17	18	20	+3	+17.9%	+3	+14.5%	+2	27
H&SC, Other	102	130	127	128	+26	+24.9%	-2	-1.6%	+0	148
Health & Social Care Professionals	1,265	1,415	1,424	1,412	+146	+11.6%	-3	-0.2%	-12	1,590
Management (VIII & above)	56	73	73	72	+15	+27.0%	-1	-1.4%	-1	73
Administrative/ Supervisory (V to VII)	217	264	288	296	+79	+36.4%	+32	+12.1%	+7	309
Clerical (III & IV)	673	670	741	747	+74	+11.0%	+76	+11.4%	+5	829
Management & Administrative	946	1,006	1,102	1,114	+168	+17.8%	+107	+10.7%	+11	1,211
Support	547	523	503	506	-41	-7.5%	-17	-3.2%	+3	572
Maintenance/ Technical	121	123	125	125	+4	+3.1%	+2	+1.6%	-0	129
General Support	668	646	628	631	-37	-5.6%	-15	-2.3%	+3	701
Health Care Assistants	990	1,024	1,070	1,076	+86	+8.7%	+52	+5.1%	+6	1,160
Care, other	213	213	226	225	+12	+5.6%	+12	+5.9%	-1	264
Patient & Client Care	1,203	1,237	1,296	1,301	+98	+8.2%	+64	+5.2%	+5	1,424

Mental Health Employment Report by S38 Vols: AUG 2023

AUG 2023	WTE DEC 2019	WTE DEC 2022	WTE JUL 2023	WTE AUG 2023	WTE change since DEC 2019	% WTE change since Dec 2019	WTE change since DEC 2022	% WTE change since Dec 2022	WTE change since JUL 2023	No. AUG 2023
Total S38 Vols	441	431	388	390	-52	-11.7%	-41	-9.6%	+1	460
Consultants	20	25	27	27	+7	+36.5%	+2	+7.9%	+0	32
Registrars	19	20	17	19	-0	-0.7%	-1	-6.1%	+1	21
SHO/ Interns	6	7	8	9	+3	+50.0%	+2	+28.6%	+1	9
Medical & Dental	45	52	52	55	+10	+22.6%	+3	+5.3%	+2	62
Nurse/ Midwife Manager	38	34	30	29	-9	-22.7%	-5	-13.4%	-1	32
Nurse/ Midwife Specialist & AN/MP	7	11	14	13	+6	+90.6%	+2	+18.9%	-1	16
Staff Nurse/ Staff Midwife	123	109	77	75	-48	-39.3%	-35	-31.6%	-2	80
Nursing/ Midwifery awaiting registration		1						-100.0%		
Pre-registration Nurse/ Midwife Intern	7	8	9	9	+0	+21.4%	+2	+6.3%	+0	17
Nursing/ Midwifery Student	7	9	9	9	+2	+21.4%	-1	-5.6%	+0	17
Nursing/ Midwifery other	3	3			-3	-100.0%	-3	-100.0%		
Nursing & Midwifery	177	166	129	125	-52	-29.3%	-40	-24.2%	-4	145
Therapy Professions	31	28	22	23	-8	-26.1%	-5	-17.5%	+1	32
Social Care	25	28	26	26	+1	+3.9%	-2	-5.6%	+0	29
Social Workers	20	20	19	21	+2	+8.1%	+1	+6.4%	+2	24
Psychologists	16	25	22	22	+6	+37.4%	-3	-11.0%	+0	28
Pharmacy	2	2	2	2	+1	+43.8%	+1	+27.8%	+0	3
H&SC, Other	5	0	3	3	-1	-28.1%	+3	+625.0%	+1	4
Health & Social Care Professionals	99	103	94	99	-0	-0.3%	-4	-4.3%	+4	120
Management (VIII & above)	2	2	3	3	+1	+50.0%	+1	+50.0%	+0	3
Administrative/ Supervisory (V to VII)	21	23	22	20	-2	-7.2%	-4	-16.4%	-2	22
Clerical (III & IV)	45	36	41	42	-3	-7.3%	+5	+13.9%	+0	50
Management & Administrative	68	62	66	64	-4	-5.6%	+2	+3.6%	-2	75
Support	38	33	31	30	-8	-20.5%	-3	-8.9%	-1	41
Maintenance/ Technical	6	6	7	8	+2	+32.7%	+2	+32.7%	+1	8
General Support	44	39	38	38	-6	-13.2%	-1	-2.5%	+0	49
Health Care Assistants	6	6	5	5	-1	-13.3%	-1	-13.3%	+0	5
Care, other	3	3	3	3	+1	+22.3%	+0	+2.4%	+0	4
Patient & Client Care	9	9	8	8	-0	-1.6%	-1	-7.5%	+0	9

Mental Health Employment Report by Grade Group: AUG 2023

CHO 1

AUG 2023	WTE DEC 2019	WTE DEC 2022	WTE JUL 2023	WTE AUG 2023	WTE change since DEC 2019	% WTE change since Dec 2019	WTE change since DEC 2022	% WTE change since Dec 2022	WTE change since JUL 2023	No. AUG 2023
Total CHO 1	953	1024	1056	1056	+103	+10.8%	+32	+3.1%	-0	1,146
Consultants	31	34	35	35	+4	+12.0%	+1	+2.2%	-0	36
Registrars	24	35	42	37	+13	+51.3%	+2	+6.6%	-5	38
SHO/ Interns	25	21	20	23	-2	-7.1%	+3	+12.8%	+4	24
Medical & Dental	81	89	96	95	+14	+18.0%	+6	+6.4%	-1	98
Nurse/ Midwife Manager	117	118	124	123	+6	+5.2%	+5	+4.6%	-1	129
Nurse/ Midwife Specialist & AN/MP	67	91	95	97	+30	+44.3%	+6	+6.4%	+2	104
Staff Nurse/ Staff Midwife	297	294	296	292	-5	-1.8%	-2	-0.6%	-4	308
<i>Nursing/ Midwifery awaiting registration</i>		3					-3	-100.0%		
<i>Pre-registration Nurse/ Midwife Intern</i>		2	15	15	+15		+13	+728.9%	-0	30
Nursing/ Midwifery Student		5	15	15	+15		+10	+212.1%	-0	30
Nursing/ Midwifery other		2	1	1	+1		-1	-47.1%	+0	1
Nursing & Midwifery	482	510	531	529	+47	+9.7%	+19	+3.7%	-3	572
Therapy Professions	36	40	41	40	+4	+11.6%	-1	-1.4%	-1	44
Social Care	4	4	2	2	-1	-37.4%	-2	-39.4%	-0	3
Social Workers	39	48	45	45	+6	+14.0%	-3	-6.6%	-1	48
Psychologists	21	25	31	31	+10	+49.2%	+6	+25.6%	-0	33
Pharmacy	1	1	1	1	+0	+6.3%	+0	+4.9%	-0	1
H&SC, Other	13	18	17	17	+4	+32.1%	-1	-6.1%	+0	21
Health & Social Care Professionals	113	136	137	136	+23	+20.0%	-0	0.0%	-1	150
Management (VIII & above)	6	9	6	7	+1	+18.8%	-2	-23.0%	+0	7
Administrative/ Supervisory (V to VII)	30	30	34	34	+4	+12.1%	+3	+11.5%	-0	36
Clerical (III & IV)	85	89	92	95	+10	+11.2%	+6	+6.3%	+2	105
Management & Administrative	121	128	133	135	+14	+11.7%	+7	+5.5%	+2	148
Support	62	58	61	62	+0	+0.3%	+4	+7.8%	+1	69
Maintenance/ Technical	17	16	16	16	-1	-5.8%	-1	-3.2%	+0	16
General Support	79	74	77	78	-1	-1.0%	+4	+5.3%	+1	85
Health Care Assistants	66	75	72	73	+7	+10.7%	-1	-1.6%	+2	82
Care, other	11	12	10	9	-1	-13.5%	-3	-21.3%	-0	11
Patient & Client Care	77	86	82	83	+6	+7.3%	-4	-4.3%	+1	93

Mental Health Employment Report by Grade Group: AUG 2023

CHO 2

AUG 2023	WTE DEC 2019	WTE DEC 2022	WTE JUL 2023	WTE AUG 2023	WTE change since DEC 2019	% WTE change since Dec 2019	WTE change since DEC 2022	% WTE change since Dec 2022	WTE change since JUL 2023	No. AUG 2023
Total CHO 2	1308	1329	1323	1322	+14	+1.1%	-7	-0.5%	-0	1,463
Consultants	38	37	39	40	+2	+5.8%	+3	+7.7%	+0	45
Registrars	33	37	37	40	+7	+19.7%	+3	+7.6%	+3	43
SHO/ Interns	35	39	28	34	-1	-2.5%	-5	-12.4%	+6	37
Medical/ Dental, other	1	1			-1	-100.0%	-1	-100.0%		
Medical & Dental	107	114	104	113	+7	+6.4%	-0	-0.2%	+9	125
Nurse/ Midwife Manager	146	142	148	151	+5	+3.6%	+9	+6.3%	+3	157
Nurse/ Midwife Specialist & AN/MP	67	88	96	94	+26	+39.2%	+6	+6.9%	-2	102
Staff Nurse/ Staff Midwife	357	353	333	327	-30	-8.5%	-26	-7.4%	-6	358
<i>Nursing/ Midwifery awaiting registration</i>	5	7	1	1	-4	-89.5%	-7	-92.9%	+0	1
<i>Pre-registration Nurse/ Midwife Intern</i>	0	4	23	23	+23	+18,958.3%	+19	+464.7%	-0	46
Nursing/ Midwifery Student	5	11	24	23	+19	+379.9%	+12	+111.5%	-0	47
Nursing/ Midwifery other	2	4	5	5	+3	+125.0%	+1	+12.5%	+0	5
Nursing & Midwifery	577	598	605	600	+23	+3.9%	+2	+0.3%	-5	669
Therapy Professions	45	55	53	50	+5	+11.3%	-4	-7.5%	-3	59
Social Care	15	14	12	12	-3	-21.5%	-2	-16.1%	-0	13
Social Workers	41	44	42	42	+2	+4.4%	-1	-3.1%	-0	48
Psychologists	34	37	41	41	+7	+21.2%	+4	+9.7%	-1	45
Pharmacy	3	3	2	2	-0	-2.0%	-0	-1.2%	+0	3
H&SC, Other	3	3	3	2	-1	-19.0%	-0	-14.1%	-0	3
Health & Social Care Professionals	140	155	154	150	+10	+7.3%	-5	-2.9%	-4	171
Management (VIII & above)	5	3	3	3	-2	-40.0%	+0	+0.0%	+0	3
Administrative/ Supervisory (V to VII)	24	25	25	28	+4	+17.3%	+3	+10.0%	+3	29
Clerical (III & IV)	109	98	102	100	-9	-8.0%	+3	+2.8%	-2	115
Management & Administrative	138	126	130	131	-7	-4.8%	+5	+4.2%	+1	147
Support	36	27	23	24	-12	-34.0%	-3	-10.1%	+1	26
Maintenance/ Technical	27	36	35	35	+8	+30.3%	-1	-2.0%	+0	36
General Support	63	62	58	59	-4	-6.5%	-3	-5.4%	+1	62
Health Care Assistants	215	202	201	199	-15	-7.2%	-3	-1.3%	-2	210
Care, other	69	73	71	70	+1	+0.8%	-3	-4.1%	-1	79
Patient & Client Care	284	275	272	269	-15	-5.2%	-6	-2.1%	-3	289

Mental Health Employment Report by Grade Group: AUG 2023

CHO 3

AUG 2023	WTE DEC 2019	WTE DEC 2022	WTE JUL 2023	WTE AUG 2023	WTE change since DEC 2019	% WTE change since Dec 2019	WTE change since DEC 2022	% WTE change since Dec 2022	WTE change since JUL 2023	No. AUG 2023
Total CHO 3	795	814	814	815	+20	+2.5%	+1	+0.1%	+1	905
Consultants	23	29	30	30	+7	+29.9%	+1	+4.3%	+0	35
Registrars	18	15	23	23	+5	+25.6%	+7	+47.7%	-0	25
SHO/ Interns	19	33	13	17	-2	-10.3%	-16	-49.0%	+4	17
Medical & Dental	60	78	66	70	+10	+16.0%	-8	-10.1%	+4	77
Nurse/ Midwife Manager	88	87	82	85	-3	-3.5%	-2	-2.6%	+3	89
Nurse/ Midwife Specialist & AN/MP	39	44	48	47	+8	+19.5%	+2	+5.3%	-1	52
Staff Nurse/ Staff Midwife	245	243	237	235	-11	-4.4%	-8	-3.4%	-2	259
Pre-registration Nurse/ Midwife Intern	9	4	17	17	+8	+90.6%	+13	+296.3%	+0	34
Nursing/ Midwifery Student	9	4	17	17	+8	+90.6%	+13	+296.3%	+0	34
Nursing/ Midwifery other		1	1	1	+1		+0	+1.0%	+0	1
Nursing & Midwifery	381	380	385	384	+3	+0.8%	+5	+1.2%	-1	435
Therapy Professions	26	30	30	30	+4	+15.9%	+0	+0.8%	+0	35
Social Care	3	2	1	1	-2	-65.2%	-1	-44.8%	+0	1
Social Workers	25	28	26	24	-1	-4.3%	-4	-13.4%	-2	26
Psychologists	92	93	89	89	-4	-4.0%	-5	-5.0%	-1	92
Pharmacy	3	3	3	3	+0	+0.0%	-0	-0.7%	+0	3
H&SC, Other	10	10	10	11	+1	+13.0%	+1	+12.3%	+0	12
Health & Social Care Professionals	159	166	159	158	-1	-0.8%	-8	-4.7%	-2	169
Management (VIII & above)	2	4	4	4	+2	+103.0%	+0	+1.3%	+0	4
Administrative/ Supervisory (V to VII)	17	16	18	18	+2	+9.9%	+2	+15.0%	+0	19
Clerical (III & IV)	56	50	59	58	+3	+4.5%	+8	+16.2%	-1	64
Management & Administrative	75	70	81	81	+6	+8.3%	+11	+15.1%	-0	87
Support	32	30	32	31	-1	-3.3%	+1	+3.8%	-0	35
Maintenance/ Technical	11	7	7	7	-4	-36.4%	+0	+1.0%	+0	7
General Support	43	37	39	38	-5	-11.7%	+1	+3.3%	-0	42
Health Care Assistants	75	82	81	81	+6	+7.4%	-1	-0.8%	-0	91
Care, other	2	2	3	3	+2	+103.6%	+1	+39.3%	+0	4
Patient & Client Care	77	84	85	84	+7	+9.5%	+0	+0.4%	-0	95

Mental Health Employment Report by Grade Group: AUG 2023

CHO 4

AUG 2023	WTE DEC 2019	WTE DEC 2022	WTE JUL 2023	WTE AUG 2023	WTE change since DEC 2019	% WTE change since Dec 2019	WTE change since DEC 2022	% WTE change since Dec 2022	WTE change since JUL 2023	No. AUG 2023
Total CHO 4	1499	1562	1568	1568	+69	+4.6%	+6	+0.4%	+0	1,751
Consultants	50	60	61	63	+13	+26.3%	+3	+4.4%	+2	70
Registrars	46	56	49	49	+3	+7.0%	-7	-13.0%	+0	51
SHO/ Interns	31	42	43	46	+15	+47.2%	+3	+7.5%	+3	50
Medical/ Dental, other	2	1	1	1	-1	-51.5%	+0	+1.0%	+0	4
Medical & Dental	129	160	154	158	+30	+23.3%	-1	-0.9%	+5	175
Nurse/ Midwife Manager	171	207	206	207	+36	+20.7%	-0	-0.1%	+1	218
Nurse/ Midwife Specialist & AN/MP	60	72	78	81	+21	+35.1%	+9	+12.1%	+3	86
Staff Nurse/ Staff Midwife	505	479	452	443	-63	-12.4%	-36	-7.6%	-9	479
<i>Nursing/ Midwifery awaiting registration</i>	30				-30	-100.0%				
<i>Post-registration Nurse/ Midwife Student</i>	1				-1	-100.0%				
<i>Pre-registration Nurse/ Midwife Intern</i>	3	7	24	24	+21	+715.3%	+18	+265.6%	+0	49
Nursing/ Midwifery Student	34	7	24	24	-9	-27.0%	+18	+265.6%	+0	49
Nursing & Midwifery	770	765	760	755	-15	-2.0%	-10	-1.3%	-5	832
Therapy Professions	74	79	87	86	+12	+16.8%	+7	+9.4%	-1	98
Social Care	4	6	5	5	+2	+40.1%	-0	-7.7%	+0	7
Social Workers	53	73	75	74	+21	+39.0%	+1	+1.2%	-1	86
Psychologists	83	96	89	89	+6	+7.5%	-7	-7.2%	+0	101
Pharmacy	2	2	1	1	-1	-43.5%	-1	-40.7%	-0	3
H&SC, Other	11	18	17	17	+6	+55.1%	-1	-5.2%	-0	21
Health & Social Care Professionals	227	273	274	272	+46	+20.2%	-1	-0.4%	-2	316
Management (VIII & above)	1	3	4	4	+3	+283.0%	+1	+27.7%	+0	4
Administrative/ Supervisory (V to VII)	22	26	30	32	+9	+40.4%	+5	+19.4%	+2	34
Clerical (III & IV)	87	87	95	93	+6	+6.5%	+6	+7.2%	-2	103
Management & Administrative	111	116	128	128	+18	+15.8%	+12	+10.5%	+0	141
Support	81	75	63	64	-17	-21.3%	-11	-15.0%	+0	76
Maintenance/ Technical	6	5	5	5	-1	-22.4%	-0	-6.9%	-0	6
General Support	87	80	69	68	-19	-21.4%	-12	-14.5%	-0	82
Health Care Assistants	168	162	177	180	+11	+6.7%	+17	+10.8%	+3	192
Care, other	7	5	6	6	-2	-23.1%	+0	+6.7%	-0	13
Patient & Client Care	176	167	183	185	+10	+5.5%	+18	+10.7%	+2	205

Mental Health Employment Report by Grade Group: AUG 2023

CHO 5

AUG 2023	WTE DEC 2019	WTE DEC 2022	WTE JUL 2023	WTE AUG 2023	WTE change since DEC 2019	% WTE change since Dec 2019	WTE change since DEC 2022	% WTE change since Dec 2022	WTE change since JUL 2023	No. AUG 2023
Total CHO 5	1177	1224	1291	1297	+119	+10.1%	+72	+5.9%	+6	1,444
Consultants	26	33	31	33	+7	+25.4%	-0	-1.2%	+2	35
Registrars	10	12	18	17	+7	+72.6%	+5	+45.3%	-1	19
SHO/ Interns	32	32	25	29	-3	-7.9%	-3	-8.9%	+4	30
Medical/ Dental, other	2	2	2	2	+0	+0.0%	+0	+2.6%	+0	2
Medical & Dental	70	80	77	82	+11	+16.2%	+2	+2.7%	+5	86
Nurse/ Midwife Manager	171	175	161	164	-7	-4.0%	-11	-6.1%	+4	171
Nurse/ Midwife Specialist & AN/MP	43	68	87	87	+44	+102.2%	+19	+28.4%	+0	91
Staff Nurse/ Staff Midwife	412	398	392	386	-26	-6.3%	-12	-2.9%	-6	432
<i>Nursing/ Midwifery awaiting registration</i>		6	1	1	+1		-5	-82.1%	+0	1
<i>Pre-registration Nurse/ Midwife Intern</i>	1	1	18	18	+17	+1,693.0%	+17	+1,729.6%	-0	37
Nursing/ Midwifery Student	1	7	19	19	+18	+1,793.0%	+12	+187.7%	-0	38
Nursing/ Midwifery other	4	4	5	5	+1	+25.3%	+1	+27.4%	+0	5
Nursing & Midwifery	631	651	664	661	+30	+4.8%	+10	+1.6%	-2	737
Therapy Professions	38	34	33	32	-6	-15.6%	-2	-4.5%	-1	36
Social Care	5	4	4	4	-1	-13.1%	+0	+11.8%	-0	5
Social Workers	28	29	31	30	+2	+5.3%	+1	+3.3%	-1	33
Psychologists	21	27	34	35	+14	+64.7%	+8	+27.9%	+0	40
H&SC, Other	9	23	22	22	+13	+148.0%	-1	-3.5%	-0	23
Health & Social Care Professionals	101	117	124	123	+22	+21.6%	+7	+5.7%	-1	137
Management (VIII & above)	4	6	5	5	+1	+24.5%	-1	-12.5%	-0	5
Administrative/ Supervisory (V to VII)	21	23	27	26	+5	+24.5%	+3	+12.0%	-0	27
Clerical (III & IV)	74	74	92	93	+19	+26.0%	+19	+24.9%	+1	102
Management & Administrative	99	104	124	124	+25	+25.6%	+21	+19.9%	+0	134
Support	171	175	180	183	+12	+7.1%	+9	+5.1%	+3	209
Maintenance/ Technical	19	14	15	15	-4	-20.8%	+1	+8.7%	+0	16
General Support	190	189	196	199	+8	+4.3%	+10	+5.4%	+3	225
Health Care Assistants	73	73	90	92	+19	+26.5%	+19	+25.5%	+1	101
Care, other	13	12	16	16	+3	+23.4%	+4	+33.7%	+0	24
Patient & Client Care	85	85	106	108	+22	+26.0%	+23	+26.7%	+2	125

Mental Health Employment Report by Grade Group: AUG 2023

CHO 6

AUG 2023	WTE DEC 2019	WTE DEC 2022	WTE JUL 2023	WTE AUG 2023	WTE change since DEC 2019	% WTE change since Dec 2019	WTE change since DEC 2022	% WTE change since Dec 2022	WTE change since JUL 2023	No. AUG 2023
Total CHO 6	593	650	663	670	+78	+13.2%	+21	+3.2%	+7	746
Consultants	36	45	47	48	+12	+32.6%	+3	+5.6%	+0	54
Registrars	22	30	26	31	+9	+43.4%	+2	+5.2%	+5	34
SHO/ Interns	9	9	10	11	+2	+20.3%	+2	+20.7%	+1	11
Medical & Dental	67	84	83	90	+23	+34.5%	+6	+7.1%	+6	99
Nurse/ Midwife Manager	76	75	72	70	-7	-9.0%	-5	-6.9%	-2	73
Nurse/ Midwife Specialist & AN/MP	14	27	32	32	+19	+135.4%	+5	+19.8%	+0	36
Staff Nurse/ Staff Midwife	139	151	152	150	+11	+8.0%	-1	-0.8%	-1	161
Pre-registration Nurse/ Midwife Intern			6	6	+6		+6		-0	11
Nursing/ Midwifery Student			6	6	+6		+6		-0	11
Nursing/ Midwifery other	2	4	3	2	+0	+0.0%	-2	-46.8%	-1	2
Nursing & Midwifery	231	257	264	259	+28	+12.2%	+3	+1.1%	-5	283
Therapy Professions	43	41	39	42	-1	-2.3%	+1	+1.9%	+3	52
Social Care	26	28	26	26	+0	+1.6%	-2	-5.6%	+0	29
Social Workers	30	36	39	41	+11	+37.6%	+5	+13.0%	+2	45
Psychologists	22	38	35	35	+12	+56.5%	-3	-8.3%	-1	44
H&SC, Other	9	6	9	10	+1	+12.5%	+3	+52.6%	+1	12
Health & Social Care Professionals	130	150	148	154	+24	+18.7%	+4	+2.8%	+6	182
Management (VIII & above)	3	5	5	5	+2	+66.7%	+0	+0.6%	+0	5
Administrative/ Supervisory (V to VII)	27	31	29	28	+1	+3.2%	-3	-10.4%	-1	29
Clerical (III & IV)	42	29	35	36	-6	-14.0%	+7	+24.6%	+2	42
Management & Administrative	72	65	68	69	-3	-4.2%	+4	+6.1%	+0	76
Support	36	29	28	27	-10	-26.8%	-3	-8.8%	-1	31
Maintenance/ Technical	6	5	7	8	+2	+34.5%	+3	+59.6%	+1	8
General Support	42	34	35	35	-8	-18.3%	+0	+1.1%	-1	39
Health Care Assistants	46	54	57	57	+12	+25.6%	+4	+6.7%	+0	59
Care, other	5	7	7	7	+2	+30.1%	+0	+1.2%	+0	8
Patient & Client Care	51	60	64	64	+13	+26.0%	+4	+6.0%	+0	67

Mental Health Employment Report by Grade Group: AUG 2023

CHO 7

AUG 2023	WTE DEC 2019	WTE DEC 2022	WTE JUL 2023	WTE AUG 2023	WTE change since DEC 2019	% WTE change since Dec 2019	WTE change since DEC 2022	% WTE change since Dec 2022	WTE change since JUL 2023	No. AUG 2023
Total CHO 7	835	879	901	903	+68	+8.2%	+25	+2.8%	+2	1,001
Consultants	48	52	55	57	+9	+18.7%	+4	+8.5%	+2	60
Registrars	46	55	46	45	-1	-2.1%	-10	-17.7%	-1	49
SHO/ Interns	21	26	25	28	+7	+35.9%	+3	+10.8%	+4	29
Medical & Dental	115	133	126	130	+15	+13.5%	-3	-1.9%	+5	138
Nurse/ Midwife Manager	117	109	111	105	-11	-9.9%	-4	-3.9%	-6	113
Nurse/ Midwife Specialist & AN/MP	40	56	65	63	+23	+57.3%	+7	+12.3%	-2	68
Staff Nurse/ Staff Midwife	194	205	198	199	+4	+2.3%	-6	-2.8%	+1	220
<i>Nursing/ Midwifery awaiting registration</i>	<i>10</i>	<i>1</i>			<i>-10</i>	<i>-100.0%</i>	<i>-1</i>	<i>-100.0%</i>		
<i>Pre-registration Nurse/ Midwife Intern</i>	<i>1</i>	<i>0</i>	<i>16</i>	<i>15</i>	<i>+14</i>	<i>+1,016.8%</i>	<i>+15</i>	<i>+15,200.0%</i>	<i>-0</i>	<i>31</i>
Nursing/ Midwifery Student	11	1	16	15	+4	+36.2%	+14	+1,303.7%	-0	31
Nursing/ Midwifery other	8	6	7	6	-1	-16.3%	+0	+6.4%	-0	8
Nursing & Midwifery	370	377	396	388	+19	+5.1%	+11	+3.0%	-7	440
Therapy Professions	48	51	50	51	+3	+5.4%	-0	-0.9%	+0	57
Social Care	8	7	6	6	-2	-23.3%	-1	-12.8%	-0	7
Social Workers	34	38	39	39	+5	+14.9%	+1	+2.0%	+1	43
Psychologists	31	35	39	39	+8	+25.8%	+5	+13.6%	+0	45
Pharmacy	1	0	1	1	-0	-20.0%	+1	+300.0%	+0	1
H&SC, Other	18	19	17	17	-1	-5.6%	-2	-9.0%	-0	20
Health & Social Care Professionals	140	150	152	153	+13	+9.1%	+3	+2.1%	+1	173
Management (VIII & above)	3	5	5	5	+2	+72.2%	+0	+1.7%	+0	5
Administrative/ Supervisory (V to VII)	16	22	26	25	+9	+55.8%	+2	+9.1%	-1	25
Clerical (III & IV)	47	55	61	64	+17	+35.7%	+8	+14.7%	+3	69
Management & Administrative	65	83	91	93	+28	+42.1%	+10	+12.4%	+2	99
Support	18	16	13	13	-4	-25.1%	-3	-17.5%	+0	15
Maintenance/ Technical	2	2	2	2	+0	+7.5%	+0	+3.1%	+0	2
General Support	20	18	15	15	-4	-22.0%	-3	-15.3%	+0	17
Health Care Assistants	33	31	31	33	-0	-1.3%	+2	+7.9%	+2	35
Care, other	92	88	91	90	-2	-1.8%	+3	+3.0%	-0	99
Patient & Client Care	125	118	121	123	-2	-1.7%	+5	+4.3%	+2	134

Mental Health Employment Report by Grade Group: AUG 2023

CHO 8

AUG 2023	WTE DEC 2019	WTE DEC 2022	WTE JUL 2023	WTE AUG 2023	WTE change since DEC 2019	% WTE change since Dec 2019	WTE change since DEC 2022	% WTE change since Dec 2022	WTE change since JUL 2023	No. AUG 2023
Total CHO 8	1098	1091	1131	1135	+37	+3.4%	+45	+4.1%	+4	1,256
Consultants	35	36	37	38	+2	+6.4%	+1	+3.6%	+1	40
Registrars	26	29	28	27	+2	+6.6%	-2	-5.9%	-1	33
SHO/ Interns	36	29	32	34	-2	-4.5%	+5	+18.8%	+3	39
Medical & Dental	97	94	96	99	+2	+2.4%	+5	+5.3%	+3	112
Nurse/ Midwife Manager	121	114	116	116	-5	-3.8%	+2	+1.9%	+0	120
Nurse/ Midwife Specialist & AN/MP	56	75	79	79	+23	+40.6%	+4	+5.9%	-0	84
Staff Nurse/ Staff Midwife	332	323	318	319	-13	-3.8%	-4	-1.3%	+1	340
<i>Nursing/ Midwifery awaiting registration</i>	2	8	1	1	-2	-75.0%	-8	-94.0%	-0	1
<i>Pre-registration Nurse/ Midwife Intern</i>	1	1	24	25	+24	+4,822.0%	+24	+4,822.0%	+1	50
Nursing/ Midwifery Student	3	9	25	25	+23	+904.4%	+16	+183.1%	+0	51
Nursing/ Midwifery other	4	3	3	3	-1	-26.6%	+0	+0.0%	+0	3
Nursing & Midwifery	515	523	540	542	+27	+5.3%	+18	+3.5%	+2	598
Therapy Professions	44	36	37	36	-8	-18.2%	+0	+1.0%	-1	42
Social Care	7	6	4	5	-3	-35.6%	-2	-26.3%	+1	6
Social Workers	41	50	50	51	+10	+23.3%	+1	+2.1%	+1	57
Psychologists	39	36	38	36	-3	-7.7%	-0	-0.2%	-2	40
Pharmacy	1	2	3	2	+1	+149.0%	+1	+56.6%	-0	4
H&SC, Other	20	16	17	17	-3	-15.4%	+1	+6.8%	+0	21
Health & Social Care Professionals	154	146	148	148	-6	-3.7%	+2	+1.1%	-1	170
Management (VIII & above)	3	3	3	4	+1	+21.8%	+1	+19.3%	+1	4
Administrative/ Supervisory (V to VII)	22	28	25	27	+4	+17.9%	-2	-6.3%	+1	28
Clerical (III & IV)	88	88	107	108	+20	+22.8%	+21	+23.7%	+2	120
Management & Administrative	114	119	135	138	+25	+21.8%	+20	+16.4%	+4	152
Support	33	27	25	24	-8	-25.9%	-3	-10.6%	-0	27
Maintenance/ Technical	26	25	28	28	+2	+8.6%	+4	+15.1%	+0	29
General Support	59	52	52	53	-6	-10.5%	+1	+1.7%	+0	56
Health Care Assistants	157	152	156	152	-4	-2.8%	+1	+0.5%	-4	165
Care, other	4	5	3	3	-1	-15.3%	-2	-33.3%	-0	3
Patient & Client Care	160	156	159	155	-5	-3.1%	-1	-0.5%	-4	168

Mental Health Employment Report by Grade Group: AUG 2023

CHO 9

AUG 2023	WTE DEC 2019	WTE DEC 2022	WTE JUL 2023	WTE AUG 2023	WTE change since DEC 2019	% WTE change since Dec 2019	WTE change since DEC 2022	% WTE change since Dec 2022	WTE change since JUL 2023	No. AUG 2023
Total CHO 9	1272	1371	1308	1305	+34	+2.6%	-66	-4.8%	-3	1,454
Consultants	50	55	53	51	+1	+2.9%	-4	-6.7%	-2	56
Registrars	31	57	51	46	+16	+50.2%	-11	-18.6%	-4	48
SHO/ Interns	53	36	33	43	-10	-18.9%	+7	+20.4%	+10	46
Medical & Dental	134	148	137	141	+7	+5.2%	-7	-4.7%	+4	150
Nurse/ Midwife Manager	132	138	137	139	+7	+5.0%	+1	+0.6%	+2	146
Nurse/ Midwife Specialist & AN/MP	65	99	102	99	+34	+52.5%	+1	+0.6%	-2	109
Staff Nurse/ Staff Midwife	351	351	308	303	-48	-13.8%	-48	-13.7%	-5	331
<i>Nursing/ Midwifery awaiting registration</i>	11	14	3	3	-8	-72.2%	-11	-78.3%	+0	3
<i>Pre-registration Nurse/ Midwife Intern</i>	10	8	23	23	+13	+127.3%	+15	+187.5%	+0	46
Nursing/ Midwifery Student	21	22	26	26	+5	+24.3%	+4	+19.3%	+0	49
Nursing/ Midwifery other	11	9	7	8	-3	-26.7%	-1	-10.6%	+1	9
Nursing & Midwifery	581	619	580	575	-6	-1.0%	-43	-7.0%	-5	644
Therapy Professions	55	60	54	50	-4	-8.0%	-9	-15.8%	-4	57
Social Care	1	1	1	1	+0	+11.1%	+0	+1.0%	+0	1
Social Workers	43	57	55	56	+13	+29.3%	-0	-0.6%	+1	62
Psychologists	46	56	55	55	+9	+20.3%	-1	-2.0%	+0	61
Pharmacy	8	7	8	8	+1	+6.6%	+1	+21.1%	+1	12
H&SC, Other	15	17	18	18	+3	+21.4%	+0	+1.3%	-0	19
Health & Social Care Professionals	167	198	190	189	+21	+12.8%	-9	-4.7%	-2	212
Management (VIII & above)	5	5	6	6	+1	+20.2%	+1	+21.7%	+0	6
Administrative/ Supervisory (V to VII)	28	38	41	41	+13	+45.9%	+2	+6.0%	-0	43
Clerical (III & IV)	104	109	109	108	+4	+3.7%	-1	-0.8%	-2	124
Management & Administrative	137	152	156	154	+18	+12.9%	+2	+1.6%	-2	173
Support	103	95	88	88	-16	-15.2%	-7	-7.6%	-1	104
Maintenance/ Technical	11	11	10	10	-1	-13.0%	-1	-13.0%	-0	10
General Support	114	106	98	97	-17	-15.0%	-9	-8.2%	-1	114
Health Care Assistants	126	137	135	138	+12	+9.4%	+1	+0.8%	+3	148
Care, other	13	12	12	11	-2	-11.8%	-1	-8.8%	-0	13
Patient & Client Care	139	149	147	149	+10	+7.4%	+0	+0.0%	+2	161

Mental Health Employment Report by Grade Group: AUG 2023

other Community Services

AUG 2023	WTE DEC 2019	WTE DEC 2022	WTE JUL 2023	WTE AUG 2023	WTE change since DEC 2019	% WTE change since Dec 2019	WTE change since DEC 2022	% WTE change since Dec 2022	WTE change since JUL 2023	No. AUG 2023
Total other Community Services	438	511	547	553	+115	+26.4%	+42	+8.2%	+6	580
Consultants	16	15	16	16	+1	+3.8%	+1	+9.9%	+0	18
Registrars	13	19	15	17	+4	+30.5%	-2	-9.9%	+2	17
SHO/ Interns			1						-1	
Medical & Dental	29	34	32	33	+5	+15.9%	-0	-1.2%	+2	35
Nurse/ Midwife Manager	62	81	82	81	+18	+29.3%	-0	-0.2%	-1	83
Nurse/ Midwife Specialist & AN/MP	8	11	10	11	+3	+30.7%	-0	-2.0%	+0	12
Staff Nurse/ Staff Midwife	169	151	156	158	-10	-6.1%	+8	+5.0%	+3	165
Nursing/ Midwifery other	1	2	2	2	+1	+100.0%	+0	+1.5%	+0	2
Nursing & Midwifery	240	245	250	252	+12	+4.8%	+7	+3.0%	+2	262
Therapy Professions	11	10	9	8	-3	-30.7%	-2	-21.7%	-2	8
Social Care	2	1	1	1	-1	-49.0%	+0	+1.0%	+0	1
Social Workers	15	11	13	13	-2	-16.3%	+2	+15.6%	-0	14
Psychologists	6	5	4	4	-2	-33.3%	-1	-25.7%	+0	4
Pharmacy		2	3	3	+3		+1	+51.5%	+1	3
Health & Social Care Professionals	34	29	30	28	-6	-17.0%	-1	-2.6%	-1	30
Management (VIII & above)	27	33	35	33	+6	+20.7%	+0	+0.1%	-2	33
Administrative/ Supervisory (V to VII)	31	46	57	58	+27	+87.4%	+12	+27.0%	+2	61
Clerical (III & IV)	25	28	30	33	+8	+30.8%	+5	+18.3%	+3	35
Management & Administrative	83	106	122	124	+41	+48.7%	+18	+16.5%	+2	129
Support	12	25	20	20	+8	+62.8%	-5	-19.6%	-0	21
Maintenance/ Technical	2	8	7	7	+5	+241.5%	-1	-14.3%	-0	7
General Support	14	33	27	27	+13	+88.0%	-6	-18.3%	-1	28
Health Care Assistants	37	64	75	76	+39	+107.2%	+12	+18.2%	+1	82
Care, other	1	0	12	13	+13	+2,520.0%	+13	+2,687.2%	+1	14
Patient & Client Care	37	65	87	89	+52	+139.6%	+24	+37.5%	+2	96

Mental Health Employment Report by Grade Group: AUG 2023

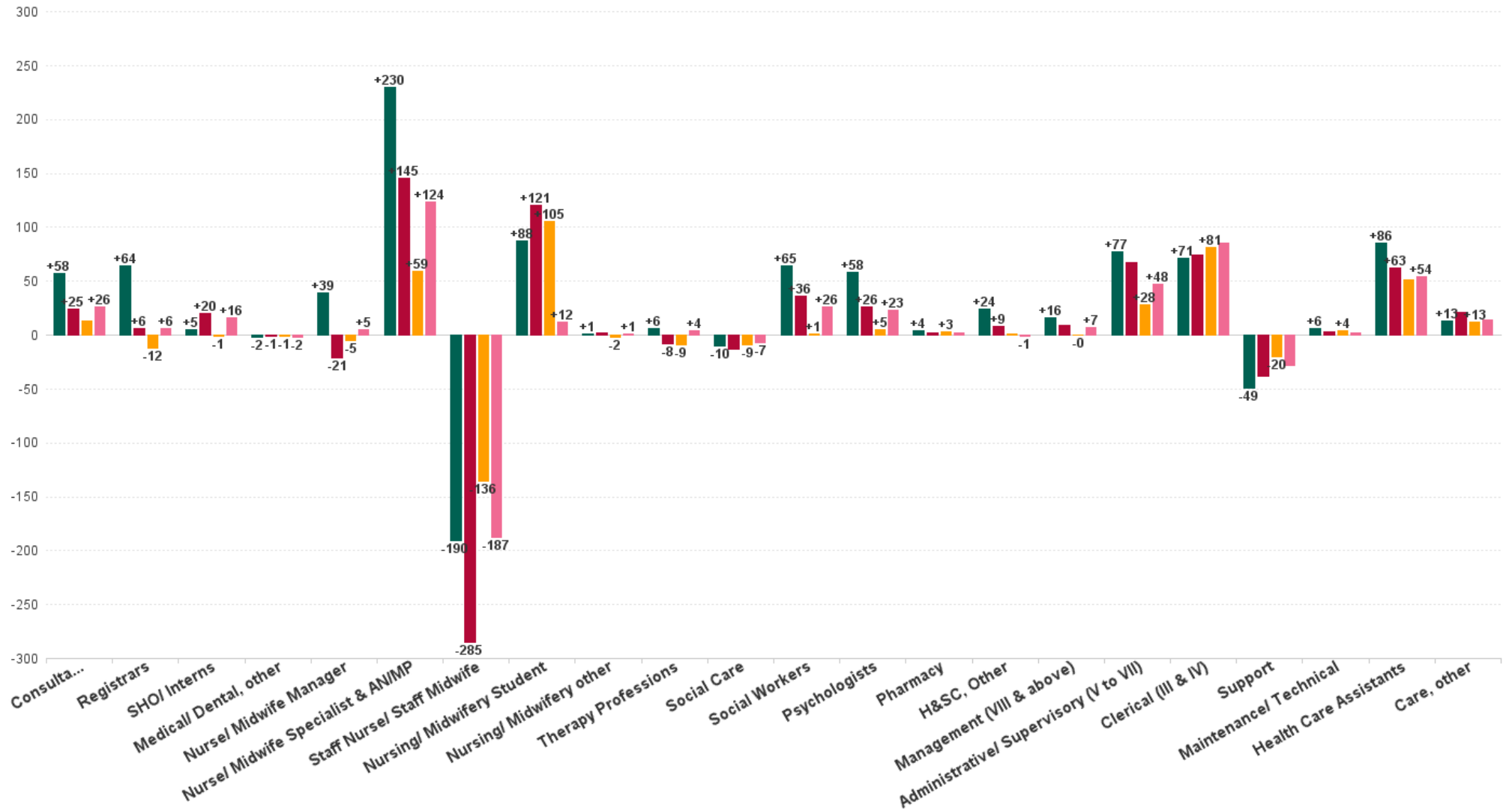
AUG 2023	WTE DEC 2019	WTE DEC 2022	WTE JUL 2023	WTE AUG 2023	WTE change since DEC 2019	% WTE change since Dec 2019	WTE change since DEC 2022	% WTE change since Dec 2022	WTE change since JUL 2023	No. AUG 2023
Overall	9,967	10,453	10,602	10,625	+657	+6.6%	+171	+1.6%	+23	11,746
Consultant Medicine	1	1	1	1	+0	+0.0%	+0	+0.0%	+0	1
Consultant Psychiatry	352	396	403	409	+58	+16.4%	+13	+3.3%	+6	448
Consultants	353	397	404	410	+58	+16.3%	+13	+3.3%	+6	449
Registrar	169	217	210	201	+32	+18.9%	-16	-7.3%	-9	215
Senior Registrar	97	126	122	127	+30	+31.2%	+2	+1.4%	+5	138
Specialist Registrar	3	2	2	4	+1	+59.6%	+2	+100.5%	+2	4
Registrars	269	345	334	333	+64	+23.8%	-12	-3.5%	-1	357
Interns	8	5	9	8	+0	+1.4%	+3	+64.8%	-1	10
Senior House Officer	253	262	220	258	+5	+2.0%	-4	-1.5%	+38	273
SHO/ Interns	261	267	230	266	+5	+2.0%	-1	-0.3%	+37	283
Other Medical	5	4	3	3	-2	-40.6%	-1	-24.0%	+0	6
Medical/ Dental, other	5	4	3	3	-2	-40.6%	-1	-24.0%	+0	6
Medical & Dental	888	1,013	971	1,012	+125	+14.0%	-1	-0.1%	+41	1,095
Clinical Nurse/ Midwife Manager 1	142	142	145	146	+5	+3.3%	+5	+3.3%	+1	152
Clinical Nurse/ Midwife Manager 2	755	781	761	760	+5	+0.7%	-21	-2.7%	-2	806
Clinical Nurse/ Midwife Manager 3	111	113	124	125	+14	+12.8%	+12	+10.7%	+1	128
Director Nursing/Midwifery, Assistant	165	176	177	178	+13	+7.9%	+2	+0.9%	+1	182
Director of Nursing/Midwifery	29	34	30	31	+2	+7.0%	-3	-8.3%	+1	31
Nurse/ Midwife Manager	1,201	1,245	1,237	1,240	+39	+3.3%	-5	-0.4%	+3	1,299
Advanced Nurse/ Midwife Practitioner	19	48	53	53	+34	+181.3%	+5	+9.7%	-0	56
Adv. Nurse/ Midwife, Candidate	11	20	24	27	+16	+145.8%	+7	+34.5%	+3	29
Clinical Nurse/ Midwife Specialist	430	563	614	610	+180	+41.8%	+48	+8.5%	-4	659
Nurse/ Midwife Specialist & AN/MP	460	631	692	690	+230	+50.0%	+59	+9.4%	-2	744
Staff Nurse [Intellectual Disability]	5	7	8	8	+4	+81.9%	+2	+23.9%	+0	9
Staff Nurse [Psychiatric]	2,890	2,835	2,737	2,710	-180	-6.2%	-125	-4.4%	-27	2,941
Staff Nurses [General/ Children's]	108	106	96	94	-14	-13.0%	-12	-11.7%	-2	103
Staff Nurse/ Staff Midwife	3,002	2,948	2,841	2,812	-190	-6.3%	-136	-4.6%	-29	3,053
Nursing/ Midwifery awaiting registration	57	39	5	5	-52	-91.2%	-34	-87.1%	-0	6
Post-registration Nurse/ Midwife Student	1				-1	-100.0%				
Pre-registration Nurse/ Midwife Intern	25	26	166	166	+141	+561.8%	+139	+527.2%	-0	334
Nursing/ Midwifery Student	83	65	171	171	+88	+105.7%	+105	+161.9%	-1	340
Nursing Education/Clinical	32	34	33	33	+1	+3.5%	-2	-5.1%	-0	36
Nursing/ Midwifery other	32	34	33	33	+1	+3.5%	-2	-5.1%	-0	36
Nursing & Midwifery	4,778	4,924	4,974	4,946	+167	+3.5%	+22	+0.4%	-28	5,472
Dietitians	19	18	19	19	-1	-3.0%	+0	+2.6%	-1	22
Occupational Therapists	337	346	347	340	+3	+1.0%	-6	-1.8%	-7	386
Physiotherapists	2	3	1	1	-1	-60.1%	-2	-69.7%	+0	2
Podiatrists & Chiropodists	1	1			-1	-100.0%	-1	-100.0%		
Speech & Language Therapists	62	68	66	67	+5	+8.0%	-1	-1.4%	+0	78
Therapy Professions	420	435	433	426	+6	+1.4%	-9	-2.2%	-7	488
Social Care	74	72	63	63	-10	-14.0%	-9	-12.0%	+0	73
Social Care	74	72	63	63	-10	-14.0%	-9	-12.0%	+0	73
Social Workers	350	414	415	415	+65	+18.4%	+1	+0.3%	-0	462
Social Workers	350	414	415	415	+65	+18.4%	+1	+0.3%	-0	462
Psychologists	394	448	456	453	+58	+14.8%	+5	+1.1%	-3	505
Psychologists	394	448	456	453	+58	+14.8%	+5	+1.1%	-3	505
Pharmacists	16	16	16	18	+2	+10.2%	+2	+14.1%	+2	23
Pharmacy Technicians	2	4	5	5	+2	+84.6%	+1	+22.6%	+0	7
Pharmacy	19	19	21	22	+4	+20.2%	+3	+15.7%	+2	30
Counsellor Therapists	95	124	122	124	+29	+30.5%	-1	-0.4%	+1	140
HSCP Trainees/Students				1	+1		+1		+1	1
Other Health & Social Care	11	3	4	2	-8	-77.1%	-1	-16.7%	-1	6
Play Therapists/ Specialists	1	3	4	4	+3	+181.5%	+1	+32.2%	+0	5
H&SC, Other	107	130	130	131	+24	+22.5%	+1	+0.7%	+1	152



AUG 2023	WTE DEC 2019	WTE DEC 2022	WTE JUL 2023	WTE AUG 2023	WTE change since DEC 2019	% WTE change since Dec 2019	WTE change since DEC 2022	% WTE change since Dec 2022	WTE change since JUL 2023	No. AUG 2023
Overall	9,967	10,453	10,602	10,625	+657	+6.6%	+171	+1.6%	+23	11,746
Health & Social Care Professionals	1,364	1,518	1,518	1,511	+146	+10.7%	-8	-0.5%	-8	1,710
Executive Management	11	14	17	17	+6	+53.0%	+3	+21.1%	+0	17
Senior Management (VIII & GM)	47	61	59	58	+10	+21.9%	-3	-4.9%	-2	59
Management (VIII & above)	58	75	76	75	+16	+27.7%	-0	-0.1%	-1	76
Middle Management (V-VII)	236	285	308	313	+76	+32.3%	+27	+9.5%	+5	328
Other Administrative	2	2	3	3	+1	+65.6%	+1	+65.6%	+0	3
Administrative/ Supervisory (V to VII)	238	287	310	315	+77	+32.5%	+28	+9.8%	+5	331
General Administrative (III & IV)	717	707	782	788	+71	+9.9%	+81	+11.5%	+6	879
Clerical (III & IV)	717	707	782	788	+71	+9.9%	+81	+11.5%	+6	879
Management & Administrative	1,014	1,068	1,168	1,178	+164	+16.2%	+110	+10.3%	+9	1,286
Catering	66	68	68	66	+1	+1.0%	-1	-1.7%	-1	73
Household Services	424	397	388	393	-32	-7.5%	-5	-1.2%	+4	454
Other Support	47	40	35	34	-13	-26.8%	-6	-15.0%	-1	41
Portering	48	51	43	43	-5	-10.6%	-8	-14.9%	+0	45
Support	585	556	534	536	-49	-8.4%	-20	-3.5%	+2	613
Maintenance	127	129	132	133	+6	+4.5%	+4	+3.0%	+1	137
Maintenance/ Technical	127	129	132	133	+6	+4.5%	+4	+3.0%	+1	137
General Support	712	685	666	669	-43	-6.1%	-16	-2.3%	+3	750
Attendant/ Aide	605	423	413	414	-191	-31.6%	-9	-2.1%	+1	456
Health Care Assistant/ Care Assistant	382	588	632	637	+256	+66.9%	+49	+8.3%	+5	673
Health & Social Care Assistants	9	19	31	31	+22	+241.3%	+11	+59.4%	-0	36
Health Care Assistants	996	1,030	1,075	1,081	+86	+8.6%	+51	+5.0%	+6	1,165
Home Care Services	16	23	20	20	+4	+26.1%	-3	-13.9%	-0	29
Other Care Grades	23	19	37	39	+16	+71.0%	+19	+100.6%	+1	43
Pastoral Care	13	9	9	9	-3	-25.5%	-0	-0.3%	+0	15
Workshop Services	165	164	163	161	-4	-2.6%	-4	-2.2%	-2	181
Care, other	216	216	229	229	+13	+5.8%	+13	+5.8%	-1	268
Patient & Client Care	1,212	1,246	1,305	1,310	+98	+8.1%	+64	+5.1%	+5	1,433

WTE Change by Staff Category

■ WTE change since DEC 2019 ■ WTE change since DEC 2021 ■ WTE change since DEC 2022 ■ WTE change since AUG 2022



Mental Health Employment Report by WTE, Headcount, Gender, Full-Time / Part-Time etc. AUG 2023

AUG 2023	WTE AUG 2023	No. AUG 2023	WTE : No	% Male	% Female	Male WTE : No.	Female WTE : No	Perm Count %	Perm Count Male %	Perm Count Female %	Fulltime Count %	Part time Count %	FT Count Male %	FT Count Female %
Total	10,625	11,746	1:0.9	27.02%	72.98%	1:0.9	1:0.9	83.59%	21.72%	61.88%	85.89%	14.11%	93.73%	82.99%
Consultants	410.13	449	1:0.9	41.87%	58.13%	1:0.9	1:0.9	67.48%	28.95%	38.53%	87.53%	12.47%	93.09%	83.52%
Registrars	332.75	357	1:0.9	43.42%	56.58%	1:1	1:0.9	2.52%	1.12%	1.40%	93.84%	6.16%	98.71%	90.10%
SHO/ Interns	266.25	283	1:0.9	41.70%	58.30%	1:0.9	1:0.9				98.59%	1.41%	100.00%	97.58%
Medical/ Dental, other	2.97	6	1:0.5	50.00%	50.00%	1:0.4	1:0.5	50.00%	16.67%	33.33%	33.33%	66.67%	33.33%	33.33%
Medical & Dental	1,012	1,095	1:0.9	42.37%	57.63%	1:0.9	1:0.9	28.77%	12.33%	16.44%	92.15%	7.85%	96.34%	89.06%
Nurse/ Midwife Manager	1,240.14	1,299	1:1	37.26%	62.74%	1:1	1:0.9	98.69%	36.64%	62.05%	94.61%	5.39%	98.55%	92.27%
Nurse/ Midwife Specialist & AN/MP	690.1	744	1:0.9	18.01%	81.99%	1:1	1:0.9	99.60%	18.01%	81.59%	93.01%	6.99%	97.76%	91.97%
Staff Nurse/ Staff Midwife	2,812.04	3,053	1:0.9	24.89%	75.11%	1:0.9	1:0.9	91.55%	21.95%	69.60%	87.19%	12.81%	90.92%	85.96%
Nursing/ Midwifery Student	170.64	340	1:0.5	17.65%	82.35%	1:0.5	1:0.5	1.47%	0.29%	1.18%	100.00%		100.00%	100.00%
Nursing/ Midwifery other	32.64	36	1:0.9	11.11%	88.89%	1:1	1:0.9	100.00%	11.11%	88.89%	88.89%	11.11%	100.00%	87.50%
Nursing & Midwifery	4,946	5,472	1:0.9	26.35%	73.65%	1:0.9	1:0.9	88.80%	23.48%	65.31%	90.55%	9.45%	94.52%	89.13%
Therapy Professions	426.03	488	1:0.9	9.63%	90.37%	1:0.9	1:0.9	94.26%	9.22%	85.04%	84.43%	15.57%	89.36%	83.90%
Social Care	63.24	73	1:0.9	20.55%	79.45%	1:1	1:0.8	90.41%	16.44%	73.97%	69.86%	30.14%	80.00%	67.24%
Social Workers	415.01	462	1:0.9	17.32%	82.68%	1:1	1:0.9	93.51%	16.23%	77.27%	84.20%	15.80%	95.00%	81.94%
Psychologists	452.73	505	1:0.9	20.59%	79.41%	1:1	1:0.9	76.04%	16.04%	60.00%	82.57%	17.43%	98.08%	78.55%
Pharmacy	22.24	30	1:0.7	16.67%	83.33%	1:0.9	1:0.7	93.33%	13.33%	80.00%	50.00%	50.00%	80.00%	44.00%
H&SC, Other	131.26	152	1:0.9	20.39%	79.61%	1:0.9	1:0.8	93.42%	19.74%	73.68%	72.37%	27.63%	90.32%	67.77%
Health & Social Care Professionals	1,511	1,710	1:0.9	16.49%	83.51%	1:1	1:0.9	88.42%	14.44%	73.98%	81.52%	18.48%	93.62%	79.13%
Management (VIII & above)	74.54	76	1:1	31.58%	68.42%	1:1	1:1	96.05%	30.26%	65.79%	97.37%	2.63%	95.83%	98.08%
Administrative/ Supervisory (V to VII)	315.16	331	1:1	20.85%	79.15%	1:1	1:0.9	94.86%	19.64%	75.23%	90.94%	9.06%	98.55%	88.93%
Clerical (III & IV)	788.12	879	1:0.9	8.87%	91.13%	1:1	1:0.9	86.01%	7.51%	78.50%	78.95%	21.05%	93.59%	77.53%
Management & Administrative	1,178	1,286	1:0.9	13.30%	86.70%	1:1	1:0.9	88.88%	11.98%	76.91%	83.13%	16.87%	95.91%	81.17%
Support	536.16	613	1:0.9	29.53%	70.47%	1:0.9	1:0.8	92.82%	26.92%	65.91%	64.44%	35.56%	90.06%	53.70%
Maintenance/ Technical	132.62	137	1:1	99.27%	0.73%	1:1	1:1	94.89%	94.16%	0.73%	97.08%	2.92%	97.06%	100.00%
General Support	669	750	1:0.9	42.27%	57.73%	1:0.9	1:0.9	93.20%	39.20%	54.00%	70.40%	29.60%	93.06%	53.81%
Health Care Assistants	1,081.28	1,165	1:0.9	31.93%	68.07%	1:1	1:0.9	90.99%	28.41%	62.58%	81.03%	18.97%	91.40%	76.17%
Care, other	228.52	268	1:0.9	47.01%	52.99%	1:0.9	1:0.8	86.19%	39.18%	47.01%	70.90%	29.10%	80.95%	61.97%
Patient & Client Care	1,310	1,433	1:0.9	34.75%	65.25%	1:0.9	1:0.9	90.09%	30.43%	59.67%	79.13%	20.87%	88.76%	74.01%



Mental Health Employment Report by WTE, Headcount, Gender, Full-Time / Part-Time etc. AUG 2023

AUG 2023	WTE AUG 2023	No. AUG 2023	WTE : No	% Male	% Female	Male WTE : No.	Female WTE : No	Perm Count %	Number Male %	Number Female %	Fulltime Count %	Part time Count %	FT Count Male %	FT Count Female %
Total	10,625	11,746	1:0.9	27.02%	72.98%	1:0.9	1:0.9	83.59%	21.72%	61.88%	85.89%	14.11%	93.73%	82.99%
CHO 1	1,056	1,146	1:0.9	26.09%	73.91%	1:1	1:0.9	89.09%	22.16%	66.93%	87.87%	12.13%	96.32%	84.89%
CHO 2	1,322	1,463	1:0.9	28.50%	71.50%	1:0.9	1:0.9	85.24%	23.03%	62.20%	86.06%	13.94%	92.09%	83.65%
CHO 3	815	905	1:0.9	21.22%	78.78%	1:0.9	1:0.9	80.77%	17.02%	63.76%	87.18%	12.82%	92.19%	85.83%
CHO 4	1,568	1,751	1:0.9	25.99%	74.01%	1:0.9	1:0.9	71.50%	16.90%	54.60%	82.98%	17.02%	91.87%	79.86%
CHO 5	1,297	1,444	1:0.9	25.14%	74.86%	1:0.9	1:0.9	88.43%	21.54%	66.90%	81.16%	18.84%	91.18%	77.80%
CHO 6	670	746	1:0.9	29.22%	70.78%	1:0.9	1:0.9	86.86%	25.07%	61.80%	83.11%	16.89%	91.28%	79.73%
CHO 7	903	1,001	1:0.9	24.28%	75.72%	1:0.9	1:0.9	81.32%	18.18%	63.14%	89.61%	10.39%	96.30%	87.47%
CHO 8	1,135	1,256	1:0.9	25.00%	75.00%	1:0.9	1:0.9	84.39%	19.90%	64.49%	87.10%	12.90%	96.50%	83.97%
CHO 9	1,305	1,454	1:0.9	27.79%	72.21%	1:0.9	1:0.9	85.56%	23.66%	61.90%	85.97%	14.03%	96.04%	82.10%
other Community Services	553	580	1:1	46.38%	53.62%	1:1	1:1	90.52%	40.69%	49.83%	94.48%	5.52%	94.05%	94.86%



Previous Month Summary

	% WTE change since JUL 2023	WTE change since DEC 2022	CHO 1	CHO 2	CHO 3	CHO 4	CHO 5	CHO 6	CHO 7	CHO 8	CHO 9	other Communi ty Services
Total	+0.2%	+171.1	+31.9	-6.7	+1.0	+6.1	+72.4	+21.0	+24.5	+44.7	-65.8	+42.0
Consultants	+1.4%	+13.1	+0.7	+2.8	+1.2	+2.7	-0.4	+2.6	+4.4	+1.3	-3.7	+1.5
Registrars	-0.4%	-12.0	+2.3	+2.8	+7.3	-7.3	+5.4	+1.6	-9.7	-1.7	-10.6	-1.9
SHO/ Interns	+15.9%	-0.9	+2.7	-4.8	-16.4	+3.2	-2.9	+1.9	+2.8	+5.5	+7.3	
Medical/ Dental, other	+0.0%	-0.9		-1.0		+0.0	+0.1					
Medical & Dental	+4.2%	-0.7	+5.7	-0.2	-7.8	-1.5	+2.2	+6.0	-2.5	+5.0	-7.0	-0.4
Nurse/ Midwife Manager	+0.2%	-5.2	+5.5	+9.0	-2.3	-0.1	-10.8	-5.2	-4.2	+2.2	+0.9	-0.1
Nurse/ Midwife Specialist & AN/MP	-0.2%	+59.3	+5.9	+6.1	+2.4	+8.8	+19.3	+5.3	+6.9	+4.4	+0.6	-0.2
Staff Nurse/ Staff Midwife	-1.0%	-135.8	-1.7	-26.0	-8.3	-36.3	-11.6	-1.2	-5.8	-4.3	-48.1	+7.5
Nursing/ Midwifery Student	-0.5%	+105.5	+10.1	+12.3	+12.7	+17.8	+12.4	+5.6	+14.2	+16.2	+4.2	
Nursing/ Midwifery other	-0.9%	-1.7	-0.9	+0.5	+0.0		+1.0	-1.8	+0.4	+0.0	-1.0	+0.0
Nursing & Midwifery	-0.6%	+22.1	+18.9	+1.8	+4.5	-9.9	+10.2	+2.8	+11.5	+18.4	-43.5	+7.2
Therapy Professions	-1.7%	-9.4	-0.6	-4.1	+0.2	+7.4	-1.5	+0.8	-0.5	+0.4	-9.5	-2.1
Social Care	+0.2%	-8.6	-1.5	-2.2	-0.8	-0.5	+0.4	-1.6	-0.9	-1.7	+0.0	+0.0
Social Workers	-0.1%	+1.4	-3.2	-1.4	-3.7	+0.8	+1.0	+4.7	+0.8	+1.0	-0.4	+1.7
Psychologists	-0.7%	+4.9	+6.3	+3.6	-4.7	-6.9	+7.6	-3.1	+4.7	-0.1	-1.1	-1.4
Pharmacy	+7.2%	+3.0	+0.0	-0.0	-0.0	-1.0			+0.6	+0.9	+1.5	+1.0



H&SC, Other	+1.0%	+1.0	-1.1	-0.4	+1.2	-0.9	-0.8	+3.4	-1.7	+1.1	+0.2	
Health & Social Care Professionals	-0.5%	-7.8	-0.0	-4.5	-7.9	-1.0	+6.6	+4.2	+3.1	+1.7	-9.2	-0.8
Management (VIII & above)	-1.6%	-0.1	-2.0	+0.0	+0.1	+0.8	-0.7	+0.0	+0.1	+0.6	+1.1	+0.0
Administrative/ Supervisory (V to VII)	+1.6%	+28.1	+3.5	+2.5	+2.4	+5.1	+2.8	-3.2	+2.1	-1.8	+2.3	+12.4
Clerical (III & IV)	+0.7%	+81.5	+5.6	+2.7	+8.1	+6.3	+18.5	+7.2	+8.1	+20.7	-0.9	+5.1
Management & Administrative	+0.8%	+109.5	+7.1	+5.3	+10.6	+12.2	+20.6	+4.0	+10.3	+19.5	+2.5	+17.5
Support	+0.4%	-19.7	+4.5	-2.7	+1.2	-11.2	+8.9	-2.6	-2.8	-2.9	-7.2	-4.9
Maintenance/ Technical	+0.5%	+3.9	-0.5	-0.7	+0.1	-0.4	+1.2	+3.0	+0.1	+3.7	-1.4	-1.1
General Support	+0.4%	-15.8	+4.0	-3.4	+1.2	-11.5	+10.1	+0.4	-2.8	+0.9	-8.6	-6.0
Health Care Assistants	+0.6%	+51.2	-1.2	-2.7	-0.6	+17.5	+18.7	+3.6	+2.4	+0.7	+1.1	+11.7
Care, other	-0.4%	+12.5	-2.5	-3.0	+1.0	+0.4	+4.0	+0.1	+2.6	-1.5	-1.1	+12.6
Patient & Client Care	+0.4%	+63.7	-3.7	-5.7	+0.3	+17.8	+22.7	+3.7	+5.0	-0.8	+0.0	+24.4



Year on Year Summary

	% WTE change since AUG 2022	WTE change since AUG 2022	CHO 1	CHO 2	CHO 3	CHO 4	CHO 5	CHO 6	CHO 7	CHO 8	CHO 9	other Communi ty Services
Total	+0.2%	+230.7	+30.9	+28.3	-9.0	-9.4	+73.5	+32.4	+17.1	+54.8	-48.5	+60.4
Consultants	+1.4%	+25.7	+1.7	+0.5	+3.4	+7.6	-0.7	+9.8	+5.0	-1.1	-0.6	+0.1
Registrars	-0.4%	+6.5	+2.9	+5.1	+5.6	-0.3	+4.3	+1.6	-5.9	-1.1	-3.7	-1.9
SHO/ Interns	+15.9%	+15.9	+3.6	-6.5	-10.2	-0.6	-3.0	+1.8	+1.2	+10.3	+19.2	
Medical/ Dental, other	+0.0%	-1.9		-1.0		-1.0	+0.1					
Medical & Dental	+4.2%	+46.1	+8.2	-1.9	-1.3	+5.7	+0.6	+13.2	+0.3	+8.2	+14.9	-1.8
Nurse/ Midwife Manager	+0.2%	+4.8	+8.1	+8.1	+3.9	-5.3	-7.1	+0.6	-7.9	-0.5	+0.2	+4.5
Nurse/ Midwife Specialist & AN/MP	-0.2%	+123.8	+17.4	+13.7	+10.7	+12.5	+29.6	+12.2	+5.7	+15.2	+6.1	+0.7
Staff Nurse/ Staff Midwife	-1.0%	-187.3	-11.6	-16.2	-27.7	-39.8	-11.0	-13.4	-9.6	-3.5	-59.3	+4.7
Nursing/ Midwifery Student	-0.5%	+11.6	+1.0	+0.8	+5.0	+0.9	+0.7	+0.9	-0.5	+1.4	+1.5	
Nursing/ Midwifery other	-0.9%	+1.2	-0.9	+1.5	+0.0		+1.1	-0.8	+0.6	+0.0	-0.3	+0.0
Nursing & Midwifery	-0.6%	-46.0	+14.1	+7.9	-8.0	-31.7	+13.3	-0.6	-11.7	+12.6	-51.8	+9.9
Therapy Professions	-1.7%	+4.5	-1.5	+3.7	-0.2	+10.7	-3.3	+2.7	+1.5	+2.8	-10.1	-1.8
Social Care	+0.2%	-6.6	-1.3	-0.5	-1.5	-1.6	-0.2	+1.2	-1.2	-1.5	+0.0	+0.0
Social Workers	-0.1%	+26.2	+1.7	-1.4	-1.4	+4.6	+3.3	+8.0	+1.6	+2.8	+6.3	+0.6
Psychologists	-0.7%	+22.9	+5.7	+5.6	+0.3	-6.3	+10.4	-2.7	+10.2	+1.7	-0.5	-1.3



Pharmacy	+7.2%	+1.9	+0.0	+0.0	-0.1	+0.1			+0.0	-0.0	-0.1	+2.0
H&SC, Other	+1.0%	-0.9	-0.3	-0.3	+0.0	-2.0	+0.4	+2.3	-2.4	+0.5	+0.8	
Health & Social Care Professionals	-0.5%	+48.0	+4.4	+7.0	-2.8	+5.4	+10.6	+11.5	+9.6	+6.2	-3.5	-0.5
Management (VIII & above)	-1.6%	+7.1	-2.4	+1.0	+2.0	+0.8	-1.0	+1.0	+0.0	+0.6	+2.0	+3.1
Administrative/ Supervisory (V to VII)	+1.6%	+47.6	+1.4	+1.8	+3.2	+7.1	+3.1	-1.3	+5.5	+4.7	+6.6	+15.5
Clerical (III & IV)	+0.7%	+85.1	+6.4	+7.8	+4.7	+2.0	+22.0	+2.6	+10.6	+19.3	-2.7	+12.5
Management & Administrative	+0.8%	+139.9	+5.4	+10.6	+9.9	+9.9	+24.1	+2.2	+16.1	+24.6	+5.9	+31.2
Support	+0.4%	-27.9	+3.7	-2.1	-1.9	-14.5	+8.8	-3.5	-2.3	-6.0	-6.8	-3.3
Maintenance/ Technical	+0.5%	+2.2	-1.1	+1.6	+0.3	-0.4	+0.1	+2.0	+0.0	+3.8	-0.9	-3.2
General Support	+0.4%	-25.7	+2.6	-0.5	-1.6	-14.9	+8.9	-1.5	-2.3	-2.2	-7.7	-6.5
Health Care Assistants	+0.6%	+54.4	-1.0	+3.5	-6.2	+15.8	+14.4	+8.0	+1.7	+6.4	-3.2	+15.0
Care, other	-0.4%	+13.9	-2.8	+1.6	+1.0	+0.3	+1.7	-0.4	+3.4	-1.0	-3.1	+13.1
Patient & Client Care	+0.4%	+68.3	-3.8	+5.1	-5.2	+16.1	+16.1	+7.6	+5.2	+5.4	-6.3	+28.1



Year to Date Summary

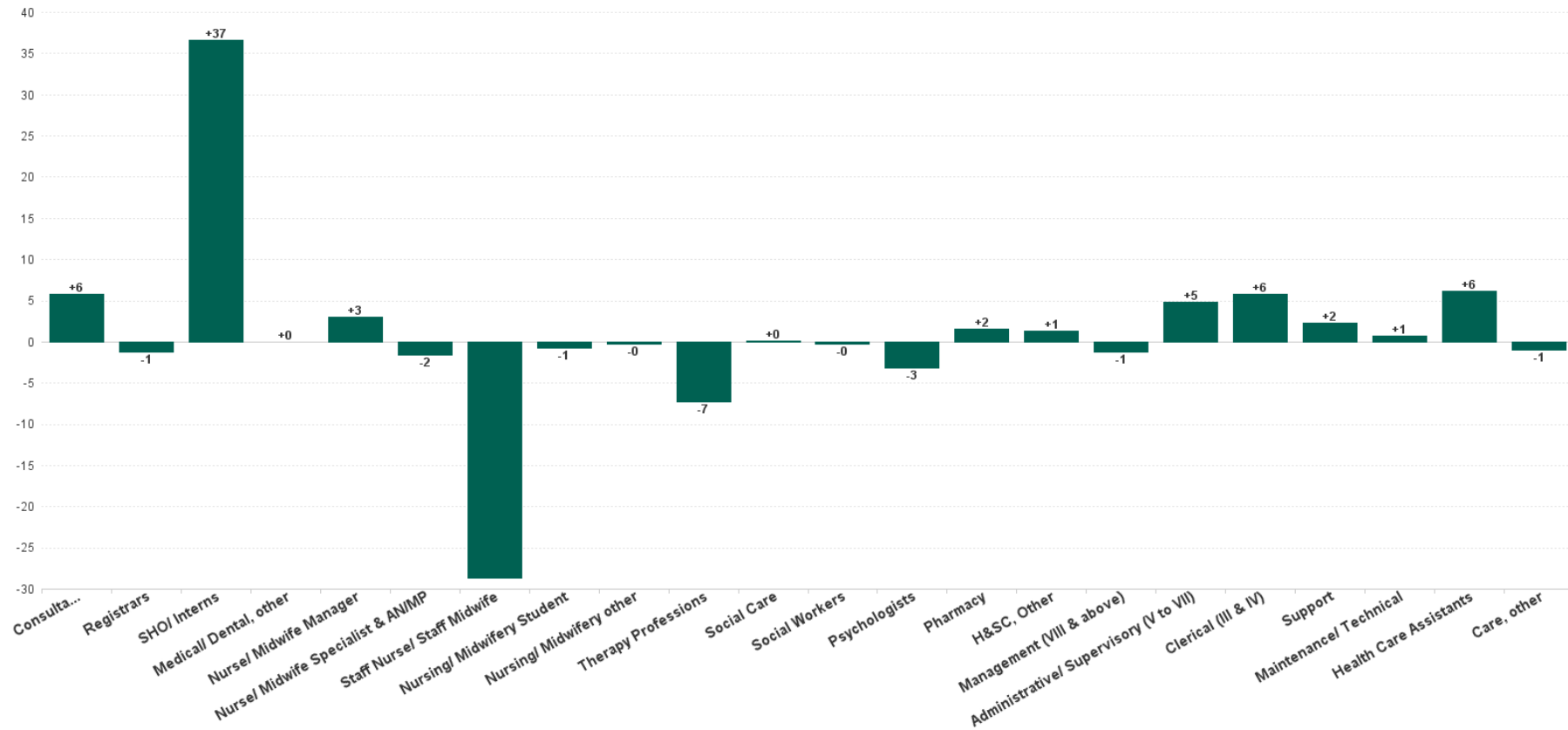
	% WTE change since AUG 2022	WTE change since DEC 2022	CHO 1	CHO 2	CHO 3	CHO 4	CHO 5	CHO 6	CHO 7	CHO 8	CHO 9	other Communi ty Services
Total	+1.6%	+171.1	+31.9	-6.7	+1.0	+6.1	+72.4	+21.0	+24.5	+44.7	-65.8	+42.0
Consultants	+3.3%	+13.1	+0.7	+2.8	+1.2	+2.7	-0.4	+2.6	+4.4	+1.3	-3.7	+1.5
Registrars	-3.5%	-12.0	+2.3	+2.8	+7.3	-7.3	+5.4	+1.6	-9.7	-1.7	-10.6	-1.9
SHO/ Interns	-0.3%	-0.9	+2.7	-4.8	-16.4	+3.2	-2.9	+1.9	+2.8	+5.5	+7.3	
Medical/ Dental, other	-24.0%	-0.9		-1.0		+0.0	+0.1					
Medical & Dental	-0.1%	-0.7	+5.7	-0.2	-7.8	-1.5	+2.2	+6.0	-2.5	+5.0	-7.0	-0.4
Nurse/ Midwife Manager	-0.4%	-5.2	+5.5	+9.0	-2.3	-0.1	-10.8	-5.2	-4.2	+2.2	+0.9	-0.1
Nurse/ Midwife Specialist & AN/MP	+9.4%	+59.3	+5.9	+6.1	+2.4	+8.8	+19.3	+5.3	+6.9	+4.4	+0.6	-0.2
Staff Nurse/ Staff Midwife	-4.6%	-135.8	-1.7	-26.0	-8.3	-36.3	-11.6	-1.2	-5.8	-4.3	-48.1	+7.5
Nursing/ Midwifery Student	+161.9%	+105.5	+10.1	+12.3	+12.7	+17.8	+12.4	+5.6	+14.2	+16.2	+4.2	
Nursing/ Midwifery other	-5.1%	-1.7	-0.9	+0.5	+0.0		+1.0	-1.8	+0.4	+0.0	-1.0	+0.0
Nursing & Midwifery	+0.4%	+22.1	+18.9	+1.8	+4.5	-9.9	+10.2	+2.8	+11.5	+18.4	-43.5	+7.2
Therapy Professions	-2.2%	-9.4	-0.6	-4.1	+0.2	+7.4	-1.5	+0.8	-0.5	+0.4	-9.5	-2.1
Social Care	-12.0%	-8.6	-1.5	-2.2	-0.8	-0.5	+0.4	-1.6	-0.9	-1.7	+0.0	+0.0
Social Workers	+0.3%	+1.4	-3.2	-1.4	-3.7	+0.8	+1.0	+4.7	+0.8	+1.0	-0.4	+1.7
Psychologists	+1.1%	+4.9	+6.3	+3.6	-4.7	-6.9	+7.6	-3.1	+4.7	-0.1	-1.1	-1.4
Pharmacy	+15.7%	+3.0	+0.0	-0.0	-0.0	-1.0			+0.6	+0.9	+1.5	+1.0
H&SC, Other	+0.7%	+1.0	-1.1	-0.4	+1.2	-0.9	-0.8	+3.4	-1.7	+1.1	+0.2	
Health & Social Care Professionals	-0.5%	-7.8	-0.0	-4.5	-7.9	-1.0	+6.6	+4.2	+3.1	+1.7	-9.2	-0.8
Management (VIII & above)	-0.1%	-0.1	-2.0	+0.0	+0.1	+0.8	-0.7	+0.0	+0.1	+0.6	+1.1	+0.0
Administrative/ Supervisory (V to VII)	+9.8%	+28.1	+3.5	+2.5	+2.4	+5.1	+2.8	-3.2	+2.1	-1.8	+2.3	+12.4
Clerical (III & IV)	+11.5%	+81.5	+5.6	+2.7	+8.1	+6.3	+18.5	+7.2	+8.1	+20.7	-0.9	+5.1
Management & Administrative	+10.3%	+109.5	+7.1	+5.3	+10.6	+12.2	+20.6	+4.0	+10.3	+19.5	+2.5	+17.5



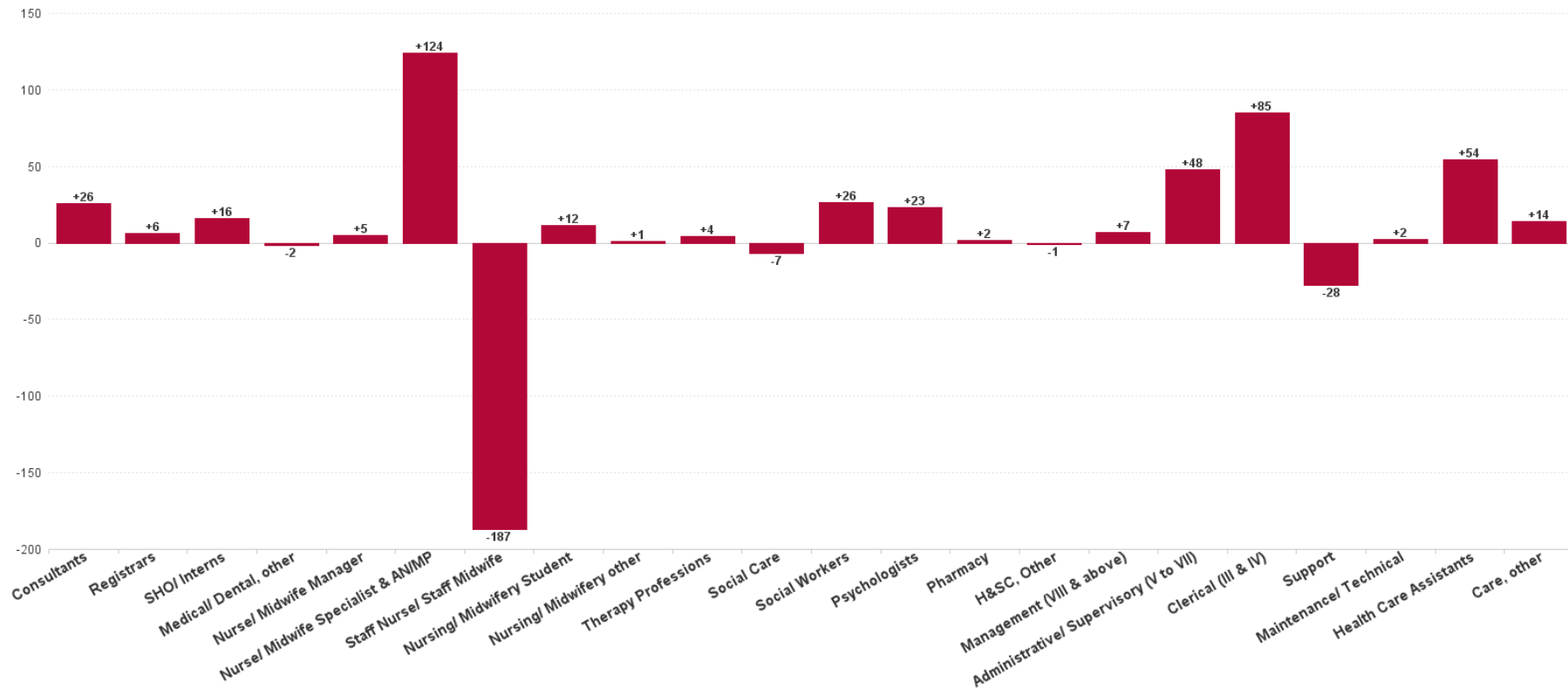
Support	-3.5%	-19.7	+4.5	-2.7	+1.2	-11.2	+8.9	-2.6	-2.8	-2.9	-7.2	-4.9
Maintenance/ Technical	+3.0%	+3.9	-0.5	-0.7	+0.1	-0.4	+1.2	+3.0	+0.1	+3.7	-1.4	-1.1
General Support	-2.3%	-15.8	+4.0	-3.4	+1.2	-11.5	+10.1	+0.4	-2.8	+0.9	-8.6	-6.0
Health Care Assistants	+5.0%	+51.2	-1.2	-2.7	-0.6	+17.5	+18.7	+3.6	+2.4	+0.7	+1.1	+11.7
Care, other	+5.8%	+12.5	-2.5	-3.0	+1.0	+0.4	+4.0	+0.1	+2.6	-1.5	-1.1	+12.6
Patient & Client Care	+5.1%	+63.7	-3.7	-5.7	+0.3	+17.8	+22.7	+3.7	+5.0	-0.8	+0.0	+24.4



Previous Month Summary Chart: Change since JUL 2023



Previous Year Summary Chart: Change since AUG 2022



YTD Summary Chart: Change since DEC 2022

