

Mental Health Service Employment Report: August 2022

Employment by Staff Group

Aug 2022	WTE Dec 2019	WTE Dec 2020	WTE Jul 2022	WTE Aug 2022	WTE change since Jul 22	WTE change since Dec 20	% change since Dec 20	WTE change since Dec 19	% change since Dec 19	No. Aug 2022
Overall	9,954	10,301	10,396	10,394	-2	+92	+0.9%	+440	+4.4%	11,511
Consultants	353	370	384	384	+0	+15	+4.0%	+32	+9.0%	421
Registrars	269	281	325	326	+1	+45	+16.1%	+57	+21.3%	353
SHO/ Interns	261	276	209	250	+42	-26	-9.3%	-11	-4.1%	267
Medical/ Dental, other	5	5	5	5	-0	-0	-2.6%	-0	-2.6%	8
Medical & Dental	888	932	923	966	+43	+34	+3.7%	+78	+8.8%	1,049
Nurse/ Midwife Manager	1,192	1,240	1,254	1,235	-18	-4	-0.3%	+43	+3.6%	1,293
Nurse/ Midwife Specialist & AN/MP	459	529	571	566	-4	+38	+7.1%	+107	+23.4%	608
Staff Nurse/ Staff Midwife	3,003	3,076	3,010	2,999	-10	-77	-2.5%	-3	-0.1%	3,254
<i>Pre-registration Nurse Intern (COVID-19)</i>		42				-42	-100.0%		-100.0%	
<i>Pre-registration Nurse/ Midwife Intern</i>	28	11	157	157	-0	+146	+1366.7%	+130	+470.6%	320
<i>Post-registration Nurse/ Midwife Student</i>	1	1				-1	-100.0%	-1	-100.0%	
<i>Nursing/ Midwifery awaiting registration</i>	59	5	3	2	-1	-3	-58.8%	-57	-96.6%	2
Nursing/ Midwifery Student	87	59	160	159	-1	+100	+169.8%	+72	+81.9%	322
Nursing/ Midwifery other	32	32	35	31	-3	-0	-0.6%	-0	-0.3%	35
Nursing & Midwifery	4,773	4,935	5,028	4,992	-37	+56	+1.1%	+218	+4.6%	5,512
Therapy Professions	422	439	427	422	-5	-18	-4.0%	-1	-0.2%	483
Social Care	74	80	71	70	-1	-10	-12.6%	-4	-5.0%	84
Social Workers	350	373	390	389	-1	+16	+4.4%	+39	+11.3%	436
Psychologists	394	424	435	430	-5	+6	+1.4%	+35	+9.0%	477
Pharmacy	19	21	20	20	-0	-0	-1.7%	+2	+9.8%	26
H&SC, Other	108	108	132	132	+0	+24	+22.3%	+24	+22.4%	148
Health & Social Care Professionals	1,366	1,444	1,475	1,462	-13	+18	+1.3%	+96	+7.0%	1,654
Management (VIII & above)	57	67	67	67	+0	+0	+0.4%	+10	+17.6%	69
Administrative/ Supervisory (V to VII)	237	245	264	268	+4	+23	+9.3%	+31	+12.9%	285
Clerical (III & IV)	717	722	704	703	-1	-19	-2.6%	-14	-2.0%	793
Management & Administrative	1,012	1,034	1,035	1,038	+3	+4	+0.4%	+26	+2.6%	1,147
Support	581	594	569	564	-5	-30	-5.1%	-16	-2.8%	650
Maintenance/ Technical	131	137	130	130	-0	-7	-5.1%	-1	-0.4%	136
General Support	711	732	699	694	-5	-37	-5.1%	-17	-2.4%	786
Health Care Assistants	988	1,022	1,022	1,027	+5	+5	+0.5%	+39	+3.9%	1,110
Care, other	216	203	214	215	+1	+11	+5.5%	-1	-0.6%	253
Patient & Client Care	1,204	1,225	1,236	1,241	+6	+16	+1.3%	+38	+3.1%	1,363

Mental Health Services Employment by Administration (HSE / S38): August 2022

Aug 2022	WTE Dec 2019	WTE Dec 2020	WTE Jul 2022	WTE Aug 2022	WTE change since Jul 22	WTE change since Dec 20	% change since Dec 20	WTE change since Dec 19	% change since Dec 19	No. Aug 2022
Total	9,954	10,301	10,396	10,394	-2	+92	+0.9%	+440	+4.4%	11,511
HSE	9,513	9,855	9,982	9,974	-9	+119	+1.2%	+461	+4.8%	11,011
Section 38 Voluntary Agencies	441	446	414	420	+7	-26	-5.9%	-21	-4.7%	500

Employment by Staff Group

Aug 2022	WTE Dec 2019	WTE Dec 2020	WTE Jul 2022	WTE Aug 2022	WTE change since Jul 22	WTE change since Dec 20	% change since Dec 20	WTE change since Dec 19	% change since Dec 19	No. Aug 2022
Health Service Executive	9,513	9,855	9,982	9,974	-9	+119	+1.2%	+461	+4.8%	11,011
Consultants	333	349	363	363	+0	+15	+4.2%	+30	+9.2%	396
Registrars	250	266	307	306	-1	+40	+15.2%	+56	+22.4%	332
SHO/ Interns	255	267	202	243	+42	-24	-8.8%	-12	-4.6%	260
Medical/ Dental, other	5	5	5	5	-0	-0	-2.6%	-0	-2.6%	8
Medical & Dental	843	886	877	917	+41	+31	+3.5%	+75	+8.9%	996
Nurse/ Midwife Manager	1,154	1,202	1,217	1,200	-18	-2	-0.2%	+45	+3.9%	1,255
Nurse/ Midwife Specialist & AN/MP	452	520	561	556	-5	+37	+7.0%	+104	+23.0%	596
Staff Nurse/ Staff Midwife	2,880	2,953	2,902	2,890	-12	-63	-2.1%	+10	+0.4%	3,134
Pre-registration Nurse Intern (COVID-19)		41				-41	-100.0%		-100.0%	
Pre-registration Nurse/ Midwife Intern	21	1	150	150	-0	+149	+21038.0%	+130	+631.0%	306
Post-registration Nurse/ Midwife Student	1	1				-1	-100.0%	-1	-100.0%	
Nursing/ Midwifery awaiting registration	59	5	3	2	-1	-3	-58.8%	-57	-96.6%	2
Nursing/ Midwifery Student	80	48	153	152	-1	+104	+217.0%	+72	+89.1%	308
Nursing/ Midwifery other	29	29	32	29	-3	-0	-0.7%	-0	-0.3%	32
Nursing & Midwifery	4,596	4,752	4,866	4,827	-39	+75	+1.6%	+231	+5.0%	5,325
Therapy Professions	391	412	402	395	-7	-17	-4.1%	+4	+1.0%	447
Social Care	48	52	45	45	-1	-8	-14.4%	-4	-7.3%	53
Social Workers	330	354	371	371	-1	+17	+4.8%	+41	+12.5%	416
Psychologists	379	402	413	407	-6	+6	+1.4%	+29	+7.6%	449
Pharmacy	17	19	19	19	-0	-0	-1.9%	+2	+9.6%	24
H&SC, Other	103	107	131	132	+0	+25	+23.0%	+29	+27.6%	147
Health & Social Care Professionals	1,267	1,345	1,382	1,368	-14	+22	+1.7%	+100	+7.9%	1,536
Management (VIII & above)	55	65	65	65	+0	+0	+0.5%	+10	+18.2%	67
Administrative/ Supervisory (V to VII)	216	224	242	246	+4	+22	+9.7%	+30	+13.9%	260
Clerical (III & IV)	673	679	665	664	-1	-15	-2.2%	-9	-1.3%	746
Management & Administrative	944	968	972	975	+3	+7	+0.7%	+31	+3.3%	1,073
Support	543	556	536	531	-5	-26	-4.6%	-12	-2.2%	599
Maintenance/ Technical	125	130	123	123	-0	-7	-5.4%	-2	-1.2%	129
General Support	668	687	659	654	-5	-33	-4.7%	-13	-2.0%	728
Health Care Assistants	982	1,016	1,016	1,021	+5	+5	+0.5%	+39	+4.0%	1,104
Care, other	213	200	211	211	+0	+11	+5.3%	-2	-1.1%	249
Patient & Client Care	1,195	1,216	1,227	1,232	+5	+16	+1.3%	+37	+3.1%	1,353

Employment by Staff Group

Aug 2022	WTE Dec 2019	WTE Dec 2020	WTE Jul 2022	WTE Aug 2022	WTE change since Jul 22	WTE change since Dec 20	% change since Dec 20	WTE change since Dec 19	% change since Dec 19	No. Aug 2022
Section 38 Voluntary Agencies	441	446	414	420	+7	-26	-5.9%	-21	-4.7%	500
Consultants	20	21	22	21	-0	+0	+1.7%	+1	+7.3%	25
Registrars	19	15	18	20	+3	+5	+32.6%	+1	+6.9%	21
SHO/ Interns	6	9	7	7	-0	-2	-22.2%	+1	+16.7%	7
Medical & Dental	45	45	46	49	+2	+3	+7.3%	+4	+8.4%	53
Nurse/ Midwife Manager	38	38	36	36	-1	-2	-5.3%	-2	-6.2%	38
Nurse/ Midwife Specialist & AN/MP	7	9	9	10	+1	+1	+12.9%	+3	+50.4%	12
Staff Nurse/ Staff Midwife	123	123	107	109	+2	-14	-11.1%	-14	-11.2%	120
Pre-registration Nurse Intern (COVID-19)		1				-1	-100.0%		-100.0%	
Pre-registration Nurse/ Midwife Intern	7	10	7	7		-3	-30.0%			14
Nursing/ Midwifery Student	7	11	7	7		-4	-36.4%			14
Nursing/ Midwifery other	3	3	3	3						3
Nursing & Midwifery	177	183	162	165	+2	-18	-10.1%	-13	-7.2%	187
Therapy Professions	31	27	25	27	+2	-1	-2.7%	-5	-15.5%	36
Social Care	25	28	26	25	-1	-3	-9.3%	-0	-0.8%	31
Social Workers	20	19	18	18	-0	-1	-3.4%	-2	-9.0%	20
Psychologists	16	22	22	23	+1	+0	+0.9%	+7	+41.8%	28
Pharmacy	2	2	2	2				+0	+12.5%	2
H&SC, Other	5	1	0	0		-1	-51.0%	-4	-90.1%	1
Health & Social Care Professionals	99	99	93	95	+2	-4	-4.3%	-4	-4.4%	118
Management (VIII & above)	2	2	2	2						2
Administrative/ Supervisory (V to VII)	21	21	22	22	-0	+1	+5.4%	+1	+3.0%	25
Clerical (III & IV)	45	43	39	39	+0	-4	-9.0%	-6	-12.8%	47
Management & Administrative	68	66	63	63	+0	-3	-4.2%	-5	-7.5%	74
Support	38	38	33	33	-0	-4	-11.8%	-5	-12.0%	51
Maintenance/ Technical	6	7	7	7				+1	+16.7%	7
General Support	44	45	40	40		-4	-10.0%	-4	-8.0%	58
Health Care Assistants	6	6	6	6						6
Care, other	3	3	3	4	+1	+0	+14.2%	+1	+37.2%	4
Patient & Client Care	9	9	9	10	+1	+0	+5.2%	+1	+12.2%	10

Mental Health Services Employment by CHO: Aug 2022

Aug 2022	WTE Dec 2019	WTE Dec 2020	WTE Jul 2022	WTE Aug 2022	WTE change since Jul 22	WTE change since Dec 20	% change since Dec 20	WTE change since Dec 19	% change since Dec 19	No. Aug 2022
Overall	9,954	10,301	10,396	10,394	-2	+92	+0.9%	+440	+4.4%	11,511
CHO 1	953	976	1,023	1,025	+2	+49	+5.0%	+72	+7.6%	1,127
CHO 2	1,308	1,340	1,295	1,294	-1	-46	-3.4%	-14	-1.1%	1,423
CHO 3	795	809	821	824	+3	+15	+1.9%	+29	+3.6%	910
CHO 4	1,485	1,564	1,578	1,577	-1	+13	+0.9%	+92	+6.2%	1,740
CHO 5	1,178	1,188	1,222	1,223	+1	+35	+2.9%	+46	+3.9%	1,365
CHO 6	593	626	639	638	-1	+12	+1.9%	+46	+7.7%	714
CHO 7	835	861	887	886	-1	+25	+2.8%	+51	+6.1%	991
CHO 8	1,098	1,112	1,087	1,081	-7	-31	-2.8%	-17	-1.6%	1,215
CHO 9	1,272	1,331	1,353	1,354	+1	+23	+1.7%	+82	+6.5%	1,506
other Community Services	438	494	491	493	+2	-2	-0.4%	+55	+12.6%	520

Mental Health Services Employment by CHO etc. Aug 2022

CHO 1

Aug 2022	WTE Dec 2019	WTE Dec 2020	WTE Jul 2022	WTE Aug 2022	WTE change since Jul 22	WTE change since Dec 20	% change since Dec 20	WTE change since Dec 19	% change since Dec 19	No. Aug 2022
Overall	953	976	1,023	1,025	+2	+49	+5.0%	+72	+7.6%	1,127
Consultants	31	34	34	33	-1	-1	-3.8%	+2	+6.5%	35
Registrars	24	29	31	34	+3	+5	+17.3%	+10	+39.6%	36
SHO/ Interns	25	23	20	20	-0	-3	-13.2%	-5	-21.4%	21
Medical & Dental	81	86	85	87	+2	+1	+0.9%	+6	+7.8%	92
Nurse/ Midwife Manager	117	119	115	115	-0	-4	-3.6%	-2	-1.7%	120
Nurse/ Midwife Specialist & AN/MP	67	74	82	80	-2	+6	+8.3%	+12	+18.5%	86
Staff Nurse/ Staff Midwife	297	288	301	304	+3	+16	+5.4%	+6	+2.1%	322
Nursing/ Midwifery Student		3	14	14	-0	+11	+364.3%	+14	-100.0%	29
Nursing/ Midwifery other		1	2	2	0	+1	+98.9%	+2	-100.0%	2
Nursing & Midwifery	482	485	514	515	+1	+29	+6.0%	+33	+6.8%	559
Therapy Professions	36	36	44	41	-2	+5	+15.2%	+6	+15.7%	48
Social Care	4	4	4	4	-0	-0	-3.0%	-0	-2.2%	5
Social Workers	39	43	44	43	-1	-0	-0.1%	+4	+9.6%	50
Psychologists	21	23	25	25	+0	+2	+7.5%	+4	+21.6%	27
Pharmacy	1	1	1	1	+0	+0	+6.3%	+0	+6.3%	1
H&SC, Other	13	14	18	18	-0	+4	+26.6%	+4	+34.0%	20
Health & Social Care Professionals	113	121	135	131	-3	+11	+9.0%	+18	+16.2%	151
Management (VIII & above)	6	8	9	9	+0	+1	+19.2%	+3	+61.4%	10
Administrative/ Supervisory (V to VII)	30	31	33	32	-1	+2	+5.4%	+2	+7.3%	34
Clerical (III & IV)	85	85	86	88	+2	+3	+3.8%	+3	+3.7%	99
Management & Administrative	121	123	128	130	+1	+6	+5.2%	+9	+7.3%	143
Support	62	65	59	59	-1	-6	-9.9%	-4	-5.7%	68
Maintenance/ Technical	17	16	17	17	+0	+1	+3.3%	+0	+0.8%	17
General Support	79	81	76	76	-1	-6	-7.3%	-3	-4.3%	85
Health Care Assistants	66	68	73	74	+1	+7	+9.6%	+8	+12.2%	83
Care, other	11	11	12	12	+0	+1	+8.6%	+1	+12.1%	14
Patient & Client Care	77	79	85	86	+2	+7	+9.5%	+9	+12.2%	97

CHO 2

Aug 2022	WTE Dec 2019	WTE Dec 2020	WTE Jul 2022	WTE Aug 2022	WTE change since Jul 22	WTE change since Dec 20	% change since Dec 20	WTE change since Dec 19	% change since Dec 19	No. Aug 2022
Overall	1,308	1,340	1,295	1,294	-1	-46	-3.4%	-14	-1.1%	1,423
Consultants	38	37	38	39	+1	+2	+5.9%	+2	+4.4%	42
Registrars	33	37	39	35	-5	-2	-5.3%	+1	+4.4%	36
SHO/ Interns	35	40	28	40	+13	+1	+1.4%	+6	+16.0%	41
Medical/ Dental, other	1	1	1	1	0					1
Medical & Dental	107	114	106	115	+9	+1	+0.7%	+9	+8.1%	120
Nurse/ Midwife Manager	146	151	144	143	-2	-8	-5.4%	-3	-1.9%	148
Nurse/ Midwife Specialist & AN/MP	67	79	81	80	-1	+1	+1.4%	+13	+18.9%	86
Staff Nurse/ Staff Midwife	357	355	351	343	-8	-11	-3.2%	-14	-3.9%	374
<i>Pre-registration Nurse Intern (COVID-19)</i>		10				-10	-100.0%		-100.0%	
<i>Pre-registration Nurse/ Midwife Intern</i>	0		23	23	-0	+23	-100.0%	+23	+18750.0%	46
<i>Nursing/ Midwifery awaiting registration</i>	5						-100.0%	-5	-100.0%	
Nursing/ Midwifery Student	5	10	23	23	-0	+12	+122.2%	+18	+364.5%	46
Nursing/ Midwifery other	2	2	3	3	0	+1	+87.5%	+1	+50.0%	3
Nursing & Midwifery	577	597	602	592	-10	-5	-0.8%	+15	+2.5%	657
Therapy Professions	45	55	47	47	+0	-8	-15.3%	+1	+3.1%	54
Social Care	15	16	13	12	-1	-4	-24.7%	-3	-18.0%	15
Social Workers	41	42	43	44	+1	+2	+5.7%	+3	+7.9%	48
Psychologists	34	37	36	35	-1	-2	-5.1%	+2	+4.6%	40
Pharmacy	3	2	2	2	+0	+1	+42.0%	-0	-2.0%	3
H&SC, Other	3	3	3	3	-0	-0	-8.7%	-0	-8.7%	3
Health & Social Care Professionals	140	155	144	143	-1	-11	-7.4%	+3	+2.3%	163
Management (VIII & above)	5	4	2	2	0	-2	-50.0%	-3	-60.0%	2
Administrative/ Supervisory (V to VII)	24	26	24	26	+2	-1	-2.3%	+2	+9.6%	27
Clerical (III & IV)	109	102	91	93	+1	-10	-9.5%	-16	-15.1%	107
Management & Administrative	138	133	117	120	+3	-12	-9.3%	-17	-12.5%	136
Support	36	31	27	26	-1	-5	-16.7%	-10	-28.1%	28
Maintenance/ Technical	27	33	33	34	+1	+0	+1.1%	+7	+24.3%	34
General Support	63	64	60	60	-0	-5	-7.5%	-4	-5.7%	62
Health Care Assistants	215	211	198	196	-2	-15	-7.3%	-19	-8.8%	208
Care, other	69	66	68	68	0	+2	+2.8%	-1	-1.5%	77
Patient & Client Care	284	278	266	264	-2	-13	-4.9%	-20	-7.0%	285

CHO 3

Aug 2022	WTE Dec 2019	WTE Dec 2020	WTE Jul 2022	WTE Aug 2022	WTE change since Jul 22	WTE change since Dec 20	% change since Dec 20	WTE change since Dec 19	% change since Dec 19	No. Aug 2022
Overall	795	809	821	824	+3	+15	+1.9%	+29	+3.6%	910
Consultants	23	24	26	27	+1	+3	+11.5%	+4	+15.3%	31
Registrars	18	15	16	17	+1	+2	+11.6%	-1	-5.5%	19
SHO/ Interns	19	21	19	27	+8	+6	+27.2%	+8	+43.7%	29
Medical & Dental	60	61	60	71	+11	+10	+17.1%	+11	+18.0%	79
Nurse/ Midwife Manager	88	88	91	81	-11	-7	-8.0%	-7	-7.9%	85
Nurse/ Midwife Specialist & AN/MP	39	37	38	36	-2	-1	-2.3%	-3	-7.8%	41
Staff Nurse/ Staff Midwife	245	272	255	262	+7	-9	-3.5%	+17	+6.9%	287
<i>Pre-registration Nurse Intern (COVID-19)</i>		3				-3	-100.0%		-100.0%	
<i>Pre-registration Nurse/ Midwife Intern</i>	9		12	12	0	+12	-100.0%	+3	+34.5%	24
Nursing/ Midwifery Student	9	3	12	12	0	+9	+248.8%	+3	+34.5%	24
Nursing/ Midwifery other			1	1	0	+1	-100.0%	+1	-100.0%	1
Nursing & Midwifery	381	400	398	392	-5	-8	-1.9%	+11	+2.9%	438
Therapy Professions	26	25	31	31	-1	+6	+23.9%	+4	+16.7%	34
Social Care	3	3	3	3	0	-1	-16.7%	-0	-12.9%	3
Social Workers	25	24	25	26	+1	+1	+5.0%	+0	+1.1%	28
Psychologists	92	91	89	88	-1	-3	-3.1%	-4	-4.2%	90
Pharmacy	3	3	3	3	+0	+0	+1.8%	+0	+1.8%	3
H&SC, Other	10	12	11	11	+0	-1	-11.5%	+1	+12.6%	12
Health & Social Care Professionals	159	158	161	161	-0	+2	+1.6%	+2	+1.0%	170
Management (VIII & above)	2	2	3	2	-1			+0	+1.5%	2
Administrative/ Supervisory (V to VII)	17	19	16	15	-0	-4	-19.3%	-2	-9.3%	16
Clerical (III & IV)	56	50	55	54	-1	+3	+6.5%	-2	-4.0%	59
Management & Administrative	75	71	73	71	-3	-0	-0.5%	-4	-5.0%	77
Support	32	30	33	33	+0	+3	+10.3%	+1	+2.5%	37
Maintenance/ Technical	11	9	7	7	-0	-2	-25.0%	-4	-38.6%	7
General Support	43	39	40	40	+0	+1	+2.2%	-3	-7.9%	44
Health Care Assistants	75	79	88	87	-1	+8	+10.7%	+12	+15.7%	99
Care, other	2	1	1	2	+1	+1	+136.0%	+1	+41.3%	3
Patient & Client Care	77	80	89	89	+1	+10	+12.3%	+12	+16.2%	102

CHO 4

Aug 2022	WTE Dec 2019	WTE Dec 2020	WTE Jul 2022	WTE Aug 2022	WTE change since Jul 22	WTE change since Dec 20	% change since Dec 20	WTE change since Dec 19	% change since Dec 19	No. Aug 2022
Overall	1,485	1,564	1,578	1,577	-1	+13	+0.9%	+92	+6.2%	1,740
Consultants	50	54	55	55	+0	+1	+1.9%	+6	+11.0%	63
Registrars	46	42	54	49	-5	+8	+18.7%	+4	+7.8%	51
SHO/ Interns	31	43	36	46	+11	+3	+7.7%	+15	+49.1%	49
Medical/ Dental, other	2	2	2	2	-0	-0	-4.0%	-0	-4.0%	5
Medical & Dental	129	141	147	153	+6	+12	+8.5%	+24	+18.8%	168
Nurse/ Midwife Manager	170	192	212	212	-0	+20	+10.3%	+43	+25.2%	223
Nurse/ Midwife Specialist & AN/MP	60	71	71	68	-2	-2	-3.2%	+9	+14.3%	73
Staff Nurse/ Staff Midwife	502	519	487	482	-4	-37	-7.1%	-20	-4.0%	516
<i>Pre-registration Nurse Intern (COVID-19)</i>		3				-3	-100.0%		-100.0%	
<i>Pre-registration Nurse/ Midwife Intern</i>	3		23	24	+1	+24	-100.0%	+21	+685.0%	47
<i>Post-registration Nurse/ Midwife Student</i>	1						-100.0%	-1	-100.0%	
<i>Nursing/ Midwifery awaiting registration</i>	30	1				-1	-100.0%	-30	-100.0%	
Nursing/ Midwifery Student	34	4	23	24	+1	+20	+488.8%	-10	-29.7%	47
Nursing & Midwifery	765	786	793	787	-6	+0	+0.0%	+21	+2.8%	859
Therapy Professions	74	77	77	76	-1	-2	-2.3%	+2	+2.3%	84
Social Care	4	7	7	7	-0	-0	-1.3%	+3	+81.0%	8
Social Workers	53	64	69	69	+0	+5	+7.4%	+16	+30.4%	80
Psychologists	83	94	96	95	-1	+1	+1.4%	+13	+15.2%	105
Pharmacy	2	3	1	1	0	-2	-56.1%	-1	-46.4%	2
H&SC, Other	11	12	18	19	+0	+6	+50.9%	+8	+73.6%	22
Health & Social Care Professionals	227	258	268	267	-1	+9	+3.4%	+40	+17.8%	301
Management (VIII & above)	1	3	3	3	0	+0	+9.9%	+2	+200.0%	3
Administrative/ Supervisory (V to VII)	22	22	24	24	+0	+3	+12.3%	+2	+9.0%	25
Clerical (III & IV)	87	94	90	91	+1	-3	-3.6%	+4	+4.1%	102
Management & Administrative	111	119	117	118	+1	-0	-0.4%	+8	+6.9%	130
Support	80	82	78	78	-0	-4	-4.5%	-2	-2.3%	91
Maintenance/ Technical	6	5	5	5	0			-1	-16.4%	6
General Support	86	87	83	83	-0	-4	-4.3%	-3	-3.3%	97
Health Care Assistants	161	166	164	164	-0	-2	-1.4%	+3	+2.0%	172
Care, other	7	6	6	5	-0	-1	-17.5%	-2	-27.2%	13
Patient & Client Care	168	173	170	169	-1	-3	-2.0%	+1	+0.7%	185

CHO 5

Aug 2022	WTE Dec 2019	WTE Dec 2020	WTE Jul 2022	WTE Aug 2022	WTE change since Jul 22	WTE change since Dec 20	% change since Dec 20	WTE change since Dec 19	% change since Dec 19	No. Aug 2022
Overall	1,178	1,188	1,222	1,223	+1	+35	+2.9%	+46	+3.9%	1,365
Consultants	26	27	33	34	+1	+6	+22.9%	+7	+28.1%	36
Registrars	10	9	14	13	-1	+4	+44.0%	+3	+29.6%	13
SHO/ Interns	32	36	31	32	+1	-3	-9.3%	+0	+1.5%	35
Medical/ Dental, other	2	2	2	2	0	-0	-2.5%	-0	-2.5%	2
Medical & Dental	70	74	80	81	+1	+7	+9.2%	+11	+15.3%	86
Nurse/ Midwife Manager	164	160	170	171	+2	+11	+7.1%	+7	+4.4%	179
Nurse/ Midwife Specialist & AN/MP	42	54	55	58	+2	+4	+6.6%	+15	+36.7%	61
Staff Nurse/ Staff Midwife	415	411	405	397	-7	-14	-3.3%	-18	-4.4%	445
<i>Pre-registration Nurse Intern (COVID-19)</i>		13				-13	-100.0%		-100.0%	
<i>Pre-registration Nurse/ Midwife Intern</i>	4		18	18	+0	+18	-100.0%	+15	+422.3%	37
<i>Nursing/ Midwifery awaiting registration</i>	2						-100.0%	-2	-100.0%	
Nursing/ Midwifery Student	6	13	18	18	+0	+5	+41.4%	+13	+232.4%	37
Nursing/ Midwifery other	4	4	4	4	-0	-0	-2.0%	-0	-3.6%	4
Nursing & Midwifery	631	642	651	648	-3	+6	+1.0%	+17	+2.7%	726
Therapy Professions	40	39	36	36	-1	-3	-8.1%	-5	-11.6%	40
Social Care	5	5	4	4	+0	-0	-9.0%	-0	-9.0%	5
Social Workers	27	28	26	27	+1	-1	-4.9%	-1	-3.4%	31
Psychologists	21	21	24	24	+1	+3	+14.0%	+3	+15.4%	28
H&SC, Other	10	8	23	22	-1	+14	+179.1%	+12	+122.1%	23
Health & Social Care Professionals	103	100	112	113	+0	+12	+12.1%	+9	+9.0%	127
Management (VIII & above)	3	6	6	6	+0			+3	+100.0%	6
Administrative/ Supervisory (V to VII)	20	20	23	23	+1	+3	+16.6%	+3	+15.2%	24
Clerical (III & IV)	74	68	70	71	+1	+3	+3.8%	-3	-3.8%	78
Management & Administrative	97	94	99	100	+1	+6	+6.3%	+3	+3.4%	108
Support	168	178	173	175	+1	-4	-2.1%	+7	+4.2%	198
Maintenance/ Technical	23	20	16	15	-1	-5	-23.3%	-8	-34.9%	16
General Support	191	198	189	190	+1	-8	-4.2%	-1	-0.6%	214
Health Care Assistants	73	68	77	77	+1	+10	+14.6%	+5	+6.6%	83
Care, other	13	12	14	14	+0	+2	+16.1%	+1	+10.2%	21
Patient & Client Care	85	80	91	92	+1	+12	+14.8%	+6	+7.1%	104

CHO 6

Aug 2022	WTE Dec 2019	WTE Dec 2020	WTE Jul 2022	WTE Aug 2022	WTE change since Jul 22	WTE change since Dec 20	% change since Dec 20	WTE change since Dec 19	% change since Dec 19	No. Aug 2022
Overall	593	626	639	638	-1	+12	+1.9%	+46	+7.7%	714
Consultants	36	40	39	38	-1	-2	-5.4%	+2	+5.4%	42
Registrars	22	19	25	30	+4	+11	+55.6%	+8	+36.2%	31
SHO/ Interns	9	13	9	9	-0	-4	-30.8%			9
Medical & Dental	67	72	73	77	+4	+4	+6.2%	+10	+14.7%	82
Nurse/ Midwife Manager	76	77	74	69	-5	-8	-10.9%	-8	-9.8%	73
Nurse/ Midwife Specialist & AN/MP	14	20	21	20	-1	+0	+2.4%	+6	+46.5%	23
Staff Nurse/ Staff Midwife	139	151	158	164	+5	+12	+8.1%	+24	+17.6%	176
<i>Pre-registration Nurse/ Midwife Intern</i>			5	5	+0	+5	-100.0%	+5	-100.0%	10
<i>Nursing/ Midwifery awaiting registration</i>		1				-1	-100.0%		-100.0%	
Nursing/ Midwifery Student		1	5	5	+0	+4	+370.0%	+5	-100.0%	10
Nursing/ Midwifery other	2	2	4	3	-1	+1	+40.0%	+1	+40.0%	3
Nursing & Midwifery	231	251	261	260	-1	+9	+3.5%	+29	+12.5%	285
Therapy Professions	43	39	39	39	+0	+1	+1.9%	-4	-8.7%	48
Social Care	26	28	26	25	-1	-3	-10.8%	-1	-3.0%	31
Social Workers	30	30	34	33	-1	+3	+11.5%	+3	+10.7%	37
Psychologists	22	32	37	37	-0	+5	+16.2%	+15	+69.0%	45
H&SC, Other	9	5	7	7	+0	+2	+44.4%	-1	-14.1%	8
Health & Social Care Professionals	130	134	144	142	-2	+9	+6.4%	+13	+9.8%	169
Management (VIII & above)	3	3	4	4	0	+1	+33.3%	+1	+33.3%	4
Administrative/ Supervisory (V to VII)	27	24	28	29	+1	+5	+18.9%	+2	+8.2%	32
Clerical (III & IV)	42	43	34	34	-1	-9	-21.3%	-8	-20.1%	39
Management & Administrative	72	70	67	67	-0	-4	-5.0%	-5	-7.3%	75
Support	36	39	31	30	-1	-9	-22.4%	-6	-17.3%	36
Maintenance/ Technical	6	6	6	6	0			+0	+1.5%	6
General Support	42	45	37	36	-1	-9	-19.4%	-6	-14.6%	42
Health Care Assistants	46	49	51	49	-1	+1	+1.2%	+4	+8.1%	53
Care, other	5	6	6	7	+1	+1	+24.3%	+2	+37.6%	8
Patient & Client Care	51	54	57	56	-1	+2	+3.7%	+6	+11.2%	61

CHO 7

Aug 2022	WTE Dec 2019	WTE Dec 2020	WTE Jul 2022	WTE Aug 2022	WTE change since Jul 22	WTE change since Dec 20	% change since Dec 20	WTE change since Dec 19	% change since Dec 19	No. Aug 2022
Overall	835	861	887	886	-1	+25	+2.8%	+51	+6.1%	991
Consultants	48	53	52	52	-0	-1	-2.5%	+4	+8.3%	55
Registrars	46	54	48	51	+4	-2	-4.5%	+5	+10.6%	57
SHO/ Interns	21	20	25	27	+2	+7	+33.7%	+6	+30.3%	28
Medical & Dental	115	127	124	130	+6	+3	+2.4%	+15	+13.2%	140
Nurse/ Midwife Manager	117	117	115	113	-2	-5	-3.8%	-4	-3.1%	119
Nurse/ Midwife Specialist & AN/MP	40	47	55	57	+2	+10	+22.4%	+17	+43.1%	61
Staff Nurse/ Staff Midwife	194	202	212	208	-4	+7	+3.4%	+14	+7.2%	232
<i>Pre-registration Nurse Intern (COVID-19)</i>		3				-3	-100.0%		-100.0%	
<i>Pre-registration Nurse/ Midwife Intern</i>	1	1	16	16	-0	+15	+3060.0%	+14	+1053.3%	32
<i>Post-registration Nurse/ Midwife Student</i>		1				-1	-100.0%		-100.0%	
<i>Nursing/ Midwifery awaiting registration</i>	10	3				-3	-100.0%	-10	-100.0%	
Nursing/ Midwifery Student	11	8	16	16	-0	+8	+104.1%	+5	+40.7%	32
Nursing/ Midwifery other	8	6	7	6	-1	-0	-1.9%	-2	-23.9%	7
Nursing & Midwifery	370	379	405	400	-5	+21	+5.4%	+30	+8.2%	451
Therapy Professions	48	53	50	49	-1	-4	-8.2%	+1	+2.4%	57
Social Care	8	7	7	7	+0	-0	-3.2%	-1	-7.9%	8
Social Workers	34	38	38	38	-1	-0	-0.1%	+4	+10.3%	40
Psychologists	31	29	29	29	+1	+0	+0.1%	-2	-6.6%	35
Pharmacy	1	1	1	1	-0	-0	-20.0%	-0	-20.0%	1
H&SC, Other	18	18	19	19	+0	+1	+7.9%	+1	+7.8%	22
Health & Social Care Professionals	140	147	145	143	-1	-3	-2.3%	+3	+2.3%	163
Management (VIII & above)	3	4	5	5	+0	+1	+27.7%	+2	+71.8%	5
Administrative/ Supervisory (V to VII)	16	17	18	19	+0	+2	+9.5%	+3	+20.6%	20
Clerical (III & IV)	47	49	53	53	+0	+4	+8.0%	+6	+13.2%	61
Management & Administrative	65	70	76	77	+1	+7	+9.4%	+11	+17.5%	86
Support	18	17	17	16	-1	-2	-10.0%	-2	-12.0%	18
Maintenance/ Technical	2	2	2	2	0			+0	+7.5%	2
General Support	20	19	19	18	-1	-2	-8.9%	-2	-10.1%	20
Health Care Assistants	33	34	31	31	+0	-3	-9.4%	-2	-6.5%	33
Care, other	92	84	88	87	-1	+3	+3.0%	-5	-5.6%	98
Patient & Client Care	125	119	119	118	-1	-1	-0.6%	-7	-5.8%	131

CHO 8

Aug 2022	WTE Dec 2019	WTE Dec 2020	WTE Jul 2022	WTE Aug 2022	WTE change since Jul 22	WTE change since Dec 20	% change since Dec 20	WTE change since Dec 19	% change since Dec 19	No. Aug 2022
Overall	1,098	1,112	1,087	1,081	-7	-31	-2.8%	-17	-1.6%	1,215
Consultants	35	36	41	39	-3	+2	+6.0%	+3	+9.4%	43
Registrars	26	31	35	28	-7	-3	-8.5%	+3	+10.9%	36
SHO/ Interns	36	26	21	24	+3	-2	-8.2%	-12	-33.2%	28
Medical & Dental	97	94	97	91	-6	-3	-2.8%	-6	-6.0%	107
Nurse/ Midwife Manager	121	120	115	117	+2	-4	-3.1%	-4	-3.4%	122
Nurse/ Midwife Specialist & AN/MP	56	60	65	64	-1	+4	+7.0%	+8	+13.6%	68
Staff Nurse/ Staff Midwife	332	342	322	322	+0	-20	-5.8%	-9	-2.8%	350
<i>Pre-registration Nurse Intern (COVID-19)</i>		1				-1	-100.0%		-100.0%	
<i>Pre-registration Nurse/ Midwife Intern</i>	1		24	24	+0	+24	-100.0%	+23	+4642.0%	49
<i>Nursing/ Midwifery awaiting registration</i>	2		1		-1		-100.0%	-2	-100.0%	
Nursing/ Midwifery Student	3	1	24	24	-0	+23	+2201.9%	+21	+848.4%	49
Nursing/ Midwifery other	4	3	3	3	0	-0	-2.7%	-1	-26.8%	3
Nursing & Midwifery	515	526	529	529	+0	+3	+0.6%	+14	+2.8%	592
Therapy Professions	44	43	34	33	-0	-9	-21.7%	-11	-24.4%	39
Social Care	7	7	6	6	+0	-1	-11.6%	-1	-14.5%	7
Social Workers	41	44	51	48	-3	+4	+10.0%	+7	+16.5%	54
Psychologists	39	37	38	34	-3	-2	-6.4%	-5	-12.1%	38
Pharmacy	1	2	3	3	0	+1	+68.7%	+2	+153.0%	4
H&SC, Other	20	21	16	17	+0	-5	-21.5%	-4	-17.9%	20
Health & Social Care Professionals	154	153	147	142	-5	-12	-7.6%	-12	-7.8%	162
Management (VIII & above)	3	3	2	3	+1	+0	+1.7%	+0	+2.0%	3
Administrative/ Supervisory (V to VII)	22	20	21	22	+1	+2	+8.2%	-1	-3.0%	25
Clerical (III & IV)	88	97	87	89	+2	-8	-8.3%	+1	+0.9%	100
Management & Administrative	114	120	111	114	+3	-6	-5.3%	+0	+0.2%	128
Support	33	31	30	30	-0	-1	-3.3%	-2	-7.5%	33
Maintenance/ Technical	26	28	24	25	+0	-3	-12.4%	-2	-6.0%	27
General Support	59	59	55	55	+0	-5	-7.6%	-4	-6.8%	60
Health Care Assistants	157	156	145	146	+1	-10	-6.5%	-11	-6.9%	162
Care, other	4	3	4	4	-0	+1	+25.8%	+0	+13.0%	4
Patient & Client Care	160	159	149	150	+1	-9	-5.8%	-10	-6.4%	166

CHO 9

Aug 2022	WTE Dec 2019	WTE Dec 2020	WTE Jul 2022	WTE Aug 2022	WTE change since Jul 22	WTE change since Dec 20	% change since Dec 20	WTE change since Dec 19	% change since Dec 19	No. Aug 2022
Overall	1,272	1,331	1,353	1,354	+1	+23	+1.7%	+82	+6.5%	1,506
Consultants	50	46	52	52	+0	+6	+12.3%	+2	+4.1%	56
Registrars	31	32	43	50	+7	+18	+57.1%	+19	+62.2%	54
SHO/ Interns	53	54	21	24	+3	-30	-55.3%	-29	-55.0%	27
Medical & Dental	134	132	116	126	+10	-6	-4.3%	-8	-5.9%	137
Nurse/ Midwife Manager	132	138	139	138	-1	+1	+0.4%	+6	+4.9%	144
Nurse/ Midwife Specialist & AN/MP	65	76	94	93	-1	+18	+23.3%	+28	+43.2%	98
Staff Nurse/ Staff Midwife	351	371	364	362	-2	-9	-2.5%	+11	+3.1%	392
<i>Pre-registration Nurse Intern (COVID-19)</i>		5				-5	-100.0%		-100.0%	
<i>Pre-registration Nurse/ Midwife Intern</i>	10	10	23	22	-0	+12	+120.3%	+12	+122.2%	46
<i>Nursing/ Midwifery awaiting registration</i>	11		2	2	0	+2	-100.0%	-9	-81.5%	2
Nursing/ Midwifery Student	21	16	25	24	-0	+9	+56.5%	+4	+17.1%	48
Nursing/ Midwifery other	11	13	9	9	-1	-4	-32.3%	-3	-24.2%	10
Nursing & Midwifery	581	613	632	627	-5	+14	+2.2%	+46	+8.0%	692
Therapy Professions	55	61	60	60	+1	-1	-0.9%	+6	+10.4%	69
Social Care	1	1	1	1	0			+0	+11.1%	1
Social Workers	43	43	48	50	+2	+7	+16.5%	+6	+14.7%	55
Psychologists	46	53	55	55	-0	+2	+4.5%	+10	+21.4%	63
Pharmacy	8	9	8	9	+0	-0	-3.5%	+1	+7.5%	11
H&SC, Other	15	14	17	17	-0	+3	+18.2%	+2	+15.6%	18
Health & Social Care Professionals	167	181	189	192	+3	+11	+6.2%	+25	+14.8%	217
Management (VIII & above)	5	5	4	4	-0	-1	-20.0%	-1	-19.8%	4
Administrative/ Supervisory (V to VII)	28	29	33	34	+1	+5	+18.1%	+6	+22.4%	37
Clerical (III & IV)	104	114	118	110	-7	-4	-3.3%	+7	+6.3%	126
Management & Administrative	137	148	155	148	-6	+0	+0.3%	+12	+8.6%	167
Support	103	104	101	94	-7	-10	-9.4%	-9	-8.6%	116
Maintenance/ Technical	11	11	11	10	-0	-1	-5.2%	-0	-4.5%	11
General Support	114	115	112	105	-7	-10	-9.0%	-9	-8.2%	127
Health Care Assistants	126	129	135	141	+6	+12	+9.2%	+15	+11.9%	151
Care, other	13	12	15	14	-0	+2	+14.8%	+2	+12.6%	15
Patient & Client Care	139	142	150	155	+6	+14	+9.7%	+17	+11.9%	166

other Community Services

Aug 2022	WTE Dec 2019	WTE Dec 2020	WTE Jul 2022	WTE Aug 2022	WTE change since Jul 22	WTE change since Dec 20	% change since Dec 20	WTE change since Dec 19	% change since Dec 19	No. Aug 2022
Overall	438	494	491	493	+2	-2	-0.4%	+55	+12.6%	520
Consultants	16	17	15	16	+1	-0	-2.9%	+1	+3.3%	18
Registrars	13	14	19	19	-0	+5	+34.9%	+6	+45.2%	20
Medical & Dental	29	31	35	35	+1	+4	+14.3%	+6	+22.3%	38
Nurse/ Midwife Manager	62	76	77	76	-1	+0	+0.2%	+14	+22.0%	80
Nurse/ Midwife Specialist & AN/MP	8	13	9	10	+1	-3	-20.8%	+2	+21.7%	11
Staff Nurse/ Staff Midwife	169	165	156	154	-2	-11	-6.7%	-15	-8.8%	160
Nursing/ Midwifery other	1	2	2	2	0	+0	+2.0%	+1	+100.0%	2
Nursing & Midwifery	240	255	244	242	-2	-14	-5.3%	+2	+0.7%	253
Therapy Professions	11	12	10	9	-0	-2	-18.7%	-2	-14.4%	10
Social Care	2	2	1	1	0	-1	-47.9%	-1	-49.5%	1
Social Workers	15	17	12	12	-0	-5	-31.4%	-3	-20.1%	13
Psychologists	6	6	6	5	-1	-1	-11.1%	-1	-11.7%	6
Pharmacy		1	1	1	0			+1	-100.0%	1
Health & Social Care Professionals	34	38	30	29	-1	-9	-24.3%	-5	-15.5%	31
Management (VIII & above)	27	30	30	29	-0	-1	-1.8%	+2	+9.1%	30
Administrative/ Supervisory (V to VII)	31	37	43	43	+0	+6	+17.2%	+12	+37.6%	45
Clerical (III & IV)	25	18	20	20	+1	+2	+10.7%	-5	-18.9%	22
Management & Administrative	83	85	92	93	+1	+8	+9.1%	+9	+11.3%	97
Support	12	16	20	23	+4	+7	+44.5%	+11	+89.8%	25
Maintenance/ Technical	2	7	10	10	0	+3	+42.9%	+8	+400.0%	10
General Support	14	23	30	33	+4	+10	+44.0%	+19	+133.4%	35
Health Care Assistants	37	62	61	61	+0	-1	-1.4%	+24	+66.4%	66
Care, other	1	1				-1	-100.0%	-1	-100.0%	
Patient & Client Care	37	63	61	61	+0	-1	-2.2%	+24	+64.2%	66

Mental Health Services Employment by Grade Group: Aug 2022

Aug 2022	WTE Dec 2019	WTE Dec 2020	WTE Jul 2022	WTE Aug 2022	WTE change since Jul 22	WTE change since Dec 20	% change since Dec 20	WTE change since Dec 19	% change since Dec 19	No. Aug 2022
Overall	9,954	10,301	10,396	10,394	-2	+92	+0.9%	+440	+4.4%	11,511
Consultant Medicine	1	1	1	1						1
Consultant Psychiatry	352	369	383	383	+0	+15	+4.0%	+32	+9.1%	420
Consultants	353	370	384	384	+0	+15	+4.0%	+32	+9.0%	421
Registrars	269	281	325	326	+1	+45	+16.1%	+57	+21.3%	353
Senior House Officer	253	271	203	242	+40	-29	-10.5%	-11	-4.2%	259
Interns	8	5	6	8	+2	+3	+60.0%			8
SHO/ Interns	261	276	209	250	+42	-26	-9.3%	-11	-4.1%	267
Medical/ Dental, other	5	5	5	5	-0	-0	-2.6%	-0	-2.6%	8
Medical & Dental	888	932	923	966	+43	+34	+3.7%	+78	+8.8%	1,049
Clinical Nurse/ Midwife Manager	999	1,041	1,043	1,029	-15	-13	-1.2%	+30	+3.0%	1,082
Director Nursing/Midwifery, Assistant	165	171	178	175	-2	+5	+2.8%	+11	+6.5%	179
Director of Nursing/Midwifery	29	28	33	31	-1	+3	+12.4%	+2	+8.6%	32
Nurse/ Midwife Manager	1,192	1,240	1,254	1,235	-18	-4	-0.3%	+43	+3.6%	1,293
Advanced Nurse/ Midwife Practitioner	31	39	51	57	+6	+18	+44.9%	+26	+85.8%	60
Clinical Nurse/ Midwife Specialist	428	489	520	509	-10	+20	+4.1%	+81	+18.9%	548
Nurse/ Midwife Specialist & AN/MP	459	529	571	566	-4	+38	+7.1%	+107	+23.4%	608
Staff Midwives		1				-1	-100.0%		-100.0%	
Staff Nurse [Psychiatric]	2,893	2,965	2,893	2,882	-11	-83	-2.8%	-12	-0.4%	3,126
Staff Nurses [General/ Children's]	105	106	110	112	+2	+6	+5.3%	+7	+6.8%	122
Staff Nurse [Intellectual Disability]	5	4	7	6	-1	+1	+34.0%	+1	+25.4%	6
Staff Nurse/ Staff Midwife	3,003	3,076	3,010	2,999	-10	-77	-2.5%	-3	-0.1%	3,254
Pre-registration Nurse Intern (COVID-19)		42				-42	-100.0%		-100.0%	
Pre-registration Nurse/ Midwife Intern	28	11	157	157	-0	+146	+1366.7%	+130	+470.6%	320
Post-registration Nurse/ Midwife Student	1	1				-1	-100.0%	-1	-100.0%	
Nursing/ Midwifery awaiting registration	59	5	3	2	-1	-3	-58.8%	-57	-96.6%	2
Nursing/ Midwifery Student	87	59	160	159	-1	+100	+169.8%	+72	+81.9%	322
Nursing Education/Clinical	32	32	35	31	-3	-0	-0.6%	-0	-0.3%	35
Nursing/ Midwifery other	32	32	35	31	-3	-0	-0.6%	-0	-0.3%	35
Nursing & Midwifery	4,773	4,935	5,028	4,992	-37	+56	+1.1%	+218	+4.6%	5,512
Dietitians	19	21	16	17	+1	-4	-18.1%	-2	-11.0%	20
Occupational Therapists	339	346	343	336	-7	-9	-2.7%	-3	-0.7%	380
Physiotherapists	2	2	3	3	+0	+1	+22.8%	+1	+32.7%	4
Podiatrists & Chiropodists	1	1	1	1	-0	-0	-2.5%	+0	+6.8%	2
Speech & Language Therapists	62	70	64	65	+1	-5	-7.1%	+3	+4.9%	77
Therapy Professions	422	439	427	422	-5	-18	-4.0%	-1	-0.2%	483
Social Care	74	80	71	70	-1	-10	-12.6%	-4	-5.0%	84
Social Workers	350	373	390	389	-1	+16	+4.4%	+39	+11.3%	436
Psychologists	394	424	435	430	-5	+6	+1.4%	+35	+9.0%	477
Pharmacists	16	17	16	16	-0	-1	-6.3%	-0	-0.4%	19
Pharmacy Technicians	2	4	4	4	+0	+1	+19.8%	+2	+76.5%	7
Pharmacy	19	21	20	20	-0	-0	-1.7%	+2	+9.8%	26
Counsellor Therapists	95	101	125	125	+0	+24	+23.5%	+30	+31.8%	136
Other Health & Social Care	12	5	4	4	+0	-1	-24.0%	-8	-64.9%	8
Play Therapists/ Specialists	1	1	3	3	+0	+2	+110.1%	+2	+113.0%	4
H&SC, Other	108	108	132	132	+0	+24	+22.3%	+24	+22.4%	148
Health & Social Care Professionals	1,366	1,444	1,475	1,462	-13	+18	+1.3%	+96	+7.0%	1,654
Executive Management	11	15	14	14	-0	-1	-5.1%	+3	+27.1%	14
Senior Management (VIII & GM)	46	52	53	53	+0	+1	+2.0%	+7	+15.3%	55
Management (VIII & above)	57	67	67	67	+0	+0	+0.4%	+10	+17.6%	69
Middle Management (V-VII)	235	243	261	265	+4	+22	+9.0%	+30	+12.6%	282

Aug 2022	WTE Dec 2019	WTE Dec 2020	WTE Jul 2022	WTE Aug 2022	WTE change since Jul 22	WTE change since Dec 20	% change since Dec 20	WTE change since Dec 19	% change since Dec 19	No. Aug 2022
Overall	9,954	10,301	10,396	10,394	-2	+92	+0.9%	+440	+4.4%	11,511
Other Administrative	2	2	3	3		+1	+60.5%	+1	+60.5%	3
Administrative/ Supervisory (V to VII)	237	245	264	268	+4	+23	+9.3%	+31	+12.9%	285
General Administrative (III & IV)	717	722	704	703	-1	-19	-2.6%	-14	-2.0%	793
Clerical (III & IV)	717	722	704	703	-1	-19	-2.6%	-14	-2.0%	793
Management & Administrative	1,012	1,034	1,035	1,038	+3	+4	+0.4%	+26	+2.6%	1,147
Catering	65	64	69	69	-0	+5	+8.2%	+4	+5.4%	75
Household Services	425	441	414	408	-6	-34	-7.6%	-17	-4.0%	479
Other Support	43	42	40	39	-0	-3	-6.3%	-3	-8.1%	45
Portering	48	47	46	48	+2	+1	+2.1%	+0	+0.5%	51
Support	581	594	569	564	-5	-30	-5.1%	-16	-2.8%	650
Maintenance	129	137	130	130	-0	-7	-5.1%	+1	+1.2%	136
Technical Services	2						-100.0%	-2	-100.0%	
Maintenance/ Technical	131	137	130	130	-0	-7	-5.1%	-1	-0.4%	136
General Support	711	732	699	694	-5	-37	-5.1%	-17	-2.4%	786
Attendant/ Aide	605	583	434	434	-0	-149	-25.5%	-171	-28.2%	484
Health & Social Care Assistants	9	8	11	12	+1	+3	+38.6%	+3	+29.3%	13
Health Care Assistant/ Care Assistant	374	430	576	581	+4	+151	+35.1%	+207	+55.3%	613
Health Care Assistants	988	1,022	1,022	1,027	+5	+5	+0.5%	+39	+3.9%	1,110
Home Care Services	16	14	19	22	+2	+7	+52.2%	+6	+38.1%	31
Other Care Grades	23	22	22	22	-0	-0	-1.5%	-1	-4.0%	23
Pastoral Care	13	12	12	12	+0	-0	-2.0%	-1	-6.4%	16
Workshop Services	165	155	161	160	-2	+4	+2.8%	-6	-3.4%	183
Care, other	216	203	214	215	+1	+11	+5.5%	-1	-0.6%	253
Patient & Client Care	1,204	1,225	1,236	1,241	+6	+16	+1.3%	+38	+3.1%	1,363

Employment by WTE, Headcount, Gender, Full-Time /Part-Time etc.: Aug 2022

Mental Health Services Staff Group	WTE	Headcount	WTE: no.	% Male	% female	Male WTE: no.	Female WTE: no.	% Total Perm	% Male Perm	% Female Perm	% Total Full Time	% Total Part Time	% Male FT	% Female FT
Overall	10,394	11,511	1.11	27.0%	73.0%	1.06	1.13	83.0%	80.1%	84.1%	85.2%	14.8%	93.3%	82.2%
Consultant Medicine	1	1	1.00	100.0%		1.00		100.0%	100.0%		100.0%	0.0%	100.0%	
Consultant Psychiatry	383	420	1.10	42.6%	57.4%	1.06	1.12	65.0%	65.0%	63.5%	86.4%	13.6%	92.2%	82.2%
Consultants	384	421	1.10	42.8%	57.2%	1.06	1.12	65.1%	67.2%	63.5%	86.5%	13.5%	92.2%	82.2%
Registrar	202	218	1.08	47.7%	52.3%	1.08	1.08	1.8%	1.8%	1.8%	98.2%	1.8%	99.0%	97.4%
Senior Registrar	122	132	1.08	33.3%	66.7%	1.09	1.08	1.5%	1.5%	1.1%	96.2%	3.8%	97.7%	95.5%
Specialist Registrar	3	3	1.17	33.3%	66.7%	1.00	1.28	0.0%	0.0%	0.0%	33.3%	66.7%	100.0%	0.0%
Registrars	326	353	1.08	42.2%	57.8%	1.08	1.08	1.7%	2.0%	1.5%	96.9%	3.1%	98.7%	95.6%
Senior House Officer	242	259	1.07	41.7%	58.3%	1.05	1.08	0.0%	0.0%	0.0%	98.8%	1.2%	100.0%	98.0%
Interns	8	8	1.00	25.0%	75.0%	1.00	1.00	0.0%	0.0%	0.0%	100.0%	0.0%	100.0%	100.0%
SHO/ Interns	250	267	1.07	41.2%	58.8%	1.05	1.08	0.0%	0.0%	0.0%	98.9%	1.1%	100.0%	98.1%
Medical/ Dental, other	5	8	1.64	50.0%	50.0%	1.79	1.52	62.5%	50.0%	75.0%	37.5%	62.5%	25.0%	50.0%
Medical & Dental	966	1,049	1.09	42.2%	57.8%	1.07	1.10	27.2%	28.4%	26.2%	92.8%	7.2%	95.7%	90.6%
Clinical Nurse/ Midwife Manager	1,029	1,082	1.05	34.4%	65.6%	1.02	1.07	98.4%	98.4%	98.7%	93.6%	6.4%	98.7%	91.0%
Director Nursing/Midwifery, Assistant	175	179	1.02	42.5%	57.5%	1.02	1.02	100.0%	100.0%	100.0%	97.8%	2.2%	97.4%	98.1%
Director of Nursing/Midwifery	31	32	1.02	56.3%	43.8%	1.02	1.02	100.0%	100.0%	100.0%	100.0%	0.0%	100.0%	100.0%
Nurse/ Midwife Manager	1,235	1,293	1.05	36.0%	64.0%	1.02	1.06	98.7%	98.3%	98.9%	94.4%	5.6%	98.5%	92.0%
Advanced Nurse/ Midwife Practitioner	57	60	1.05	21.7%	78.3%	1.00	1.07	98.3%	98.3%	97.9%	93.3%	6.7%	100.0%	91.5%
Clinical Nurse/ Midwife Specialist	509	548	1.08	19.5%	80.5%	1.02	1.09	99.6%	99.6%	99.5%	92.3%	7.7%	97.2%	91.2%
Nurse/ Midwife Specialist & AN/MP	566	608	1.07	19.7%	80.3%	1.02	1.09	99.5%	100.0%	99.4%	92.4%	7.6%	97.5%	91.2%
Staff Nurse [Psychiatric]	2,882	3,126	1.08	25.2%	74.8%	1.06	1.09	91.7%	91.7%	92.4%	87.5%	12.5%	92.4%	85.8%
Staff Nurses [General/ Children's]	112	122	1.09	24.6%	75.4%	1.12	1.08	77.0%	77.0%	79.3%	83.6%	16.4%	83.3%	83.7%
Staff Nurse [Intellectual Disability]	6	6	1.06	33.3%	66.7%	1.00	1.09	66.7%	66.7%	50.0%	100.0%	0.0%	100.0%	100.0%
Staff Nurse/ Staff Midwife	2,999	3,254	1.08	25.2%	74.8%	1.06	1.09	91.1%	88.8%	91.9%	87.4%	12.6%	92.1%	85.8%
Pre-registration Nurse/ Midwife Intern	157	320	2.04	15.9%	84.1%	2.01	2.04	0.3%	0.3%	0.4%	99.7%	0.3%	100.0%	99.6%
Nursing/ Midwifery awaiting registration	2	2	1.00		100.0%		1.00	100.0%	100.0%	100.0%	100.0%	0.0%		100.0%
Nursing/ Midwifery Student	159	322	2.02	15.8%	84.2%	2.01	2.03	0.9%	0.0%	1.1%	99.7%	0.3%	100.0%	99.6%
Nursing Education/Clinical	31	35	1.11	14.3%	85.7%	1.00	1.13	100.0%	100.0%	100.0%	88.6%	11.4%	100.0%	86.7%
Nursing/ Midwifery other	31	35	1.11	14.3%	85.7%	1.00	1.13	100.0%	100.0%	100.0%	88.6%	11.4%	100.0%	86.7%

Nursing & Midwifery	4,992	5,512	1.10	26.5%	73.5%	1.06	1.12	88.6%	89.7%	88.2%	90.3%	9.7%	94.9%	88.6%
Health & Social Care	1,462	1,654	1.13	16.5%	83.5%	1.05	1.15	86.0%	83.9%	86.5%	80.8%	19.2%	93.0%	78.4%
Executive Management	14	14	1.00	57.1%	42.9%	1.00	1.00	100.0%	100.0%	100.0%	100.0%	0.0%	100.0%	100.0%
Senior Management (VIII & GM)	53	55	1.03	29.1%	70.9%	1.03	1.03	96.4%	96.4%	97.4%	96.4%	3.6%	93.8%	97.4%
Management (VIII & above)	67	69	1.02	34.8%	65.2%	1.02	1.03	97.1%	95.8%	97.8%	97.1%	2.9%	95.8%	97.8%
Middle Management (V-VII)	265	282	1.06	19.9%	80.1%	1.03	1.07	93.3%	93.3%	94.2%	89.7%	10.3%	98.2%	87.6%
Other Administrative	3	3	1.19		100.0%		1.19	66.7%	66.7%	66.7%	66.7%	33.3%		66.7%
Administrative/ Supervisory (V to VII)	268	285	1.07	19.6%	80.4%	1.03	1.07	93.0%	89.3%	93.9%	89.5%	10.5%	98.2%	87.3%
General Administrative (III & IV)	703	793	1.13	9.5%	90.5%	1.08	1.13	85.2%	85.2%	86.2%	75.5%	24.5%	90.7%	74.0%
Clerical (III & IV)	703	793	1.13	9.5%	90.5%	1.08	1.13	85.2%	76.0%	86.2%	75.5%	24.5%	90.7%	74.0%
Management & Administrative	1,038	1,147	1.11	13.5%	86.5%	1.05	1.11	87.9%	83.9%	88.5%	80.3%	19.7%	94.2%	78.1%
Catering	69	75	1.09	37.3%	62.7%	1.07	1.10	94.7%	94.7%	93.6%	73.3%	26.7%	85.7%	66.0%
Household Services	408	479	1.17	20.7%	79.3%	1.10	1.20	91.4%	91.4%	92.6%	57.6%	42.4%	81.8%	51.3%
Other Support	39	45	1.15	33.3%	66.7%	1.03	1.22	88.9%	88.9%	86.7%	71.1%	28.9%	93.3%	60.0%
Portering	48	51	1.06	96.1%	3.9%	1.06	1.00	92.2%	92.2%	100.0%	88.2%	11.8%	87.8%	100.0%
Support	564	650	1.15	29.4%	70.6%	1.08	1.19	91.7%	90.1%	92.4%	62.8%	37.2%	84.8%	53.6%
Maintenance	130	136	1.04	99.3%	0.7%	1.04	1.00	95.6%	95.6%	100.0%	97.1%	2.9%	97.0%	100.0%
Maintenance/ Technical	130	136	1.04	99.3%	0.7%	1.04	1.00	95.6%	95.6%	100.0%	97.1%	2.9%	97.0%	100.0%
General Support	694	786	1.13	41.5%	58.5%	1.06	1.18	92.4%	92.3%	92.4%	68.7%	31.3%	89.9%	53.7%
Attendant/ Aide	434	484	1.11	23.6%	76.4%	1.08	1.12	84.3%	84.3%	87.3%	70.2%	29.8%	81.6%	66.8%
Health & Social Care Assistants	12	13	1.12	46.2%	53.8%	1.09	1.16	92.3%	92.3%	85.7%	69.2%	30.8%	83.3%	57.1%
Health Care Assistant/ Care Assistant	581	613	1.06	34.6%	65.4%	1.03	1.07	96.9%	96.9%	97.8%	86.8%	13.2%	96.2%	81.8%
Health Care Assistants	1,027	1,110	1.08	29.9%	70.1%	1.05	1.10	91.4%	88.3%	92.7%	79.4%	20.6%	91.0%	74.4%
Home Care Services	22	31	1.43	38.7%	61.3%	1.43	1.43	77.4%	77.4%	73.7%	38.7%	61.3%	41.7%	36.8%
Other Care Grades	22	23	1.06	82.6%	17.4%	1.02	1.30	82.6%	82.6%	75.0%	87.0%	13.0%	94.7%	50.0%
Pastoral Care	12	16	1.36	87.5%	12.5%	1.32	1.69	37.5%	37.5%	0.0%	56.3%	43.8%	57.1%	50.0%
Workshop Services	160	183	1.15	37.7%	62.3%	1.08	1.20	92.3%	92.3%	92.1%	73.2%	26.8%	87.0%	64.9%
Care, other	215	253	1.18	45.1%	54.9%	1.12	1.23	86.2%	84.2%	87.8%	69.2%	30.8%	79.8%	60.4%
Patient & Client Care	1,241	1,363	1.10	32.7%	67.3%	1.06	1.12	90.4%	87.2%	91.9%	77.5%	22.5%	88.1%	72.3%

Employment by WTE, Headcount, Gender, Full-Time /Part-Time etc.: Aug 2022

Mental Health Services CHO	WTE	Headcount	WTE: no.	% Male	% female	Male WTE: no.	Female WTE: no.	% Total Perm	% Male Perm	% Female Perm	% Total Full Time	% Total Part Time	% Male FT	% Female FT
Overall	10,394	11,511	1.11	27.0%	73.0%	1.06	1.13	83.0%	80.1%	84.1%	85.2%	14.8%	93.3%	82.2%
<i>CHO 1</i>	<i>1,025</i>	<i>1,127</i>	<i>1.10</i>	<i>25.9%</i>	<i>74.1%</i>	<i>1.05</i>	<i>1.12</i>	<i>87.1%</i>	<i>87.1%</i>	<i>88.3%</i>	<i>87.0%</i>	<i>13.0%</i>	<i>95.9%</i>	<i>84.0%</i>
<i>CHO 2</i>	<i>1,294</i>	<i>1,423</i>	<i>1.10</i>	<i>28.3%</i>	<i>71.7%</i>	<i>1.05</i>	<i>1.12</i>	<i>85.5%</i>	<i>85.5%</i>	<i>87.0%</i>	<i>84.5%</i>	<i>15.5%</i>	<i>91.0%</i>	<i>81.9%</i>
<i>CHO 3</i>	<i>824</i>	<i>910</i>	<i>1.10</i>	<i>22.1%</i>	<i>77.9%</i>	<i>1.07</i>	<i>1.12</i>	<i>81.1%</i>	<i>81.1%</i>	<i>81.2%</i>	<i>85.5%</i>	<i>14.5%</i>	<i>92.0%</i>	<i>83.6%</i>
<i>CHO 4</i>	<i>1,577</i>	<i>1,740</i>	<i>1.10</i>	<i>25.5%</i>	<i>74.5%</i>	<i>1.06</i>	<i>1.12</i>	<i>69.4%</i>	<i>69.4%</i>	<i>71.3%</i>	<i>83.8%</i>	<i>16.2%</i>	<i>93.0%</i>	<i>80.6%</i>
<i>CHO 5</i>	<i>1,223</i>	<i>1,365</i>	<i>1.12</i>	<i>26.1%</i>	<i>73.9%</i>	<i>1.06</i>	<i>1.14</i>	<i>87.9%</i>	<i>87.9%</i>	<i>89.6%</i>	<i>79.6%</i>	<i>20.4%</i>	<i>91.3%</i>	<i>75.4%</i>
<i>CHO 6</i>	<i>638</i>	<i>714</i>	<i>1.12</i>	<i>30.3%</i>	<i>69.7%</i>	<i>1.07</i>	<i>1.14</i>	<i>84.9%</i>	<i>84.9%</i>	<i>86.7%</i>	<i>84.3%</i>	<i>15.7%</i>	<i>92.1%</i>	<i>80.9%</i>
<i>CHO 7</i>	<i>886</i>	<i>991</i>	<i>1.12</i>	<i>22.9%</i>	<i>77.1%</i>	<i>1.07</i>	<i>1.13</i>	<i>82.0%</i>	<i>82.0%</i>	<i>82.3%</i>	<i>88.7%</i>	<i>11.3%</i>	<i>96.0%</i>	<i>86.5%</i>
<i>CHO 8</i>	<i>1,081</i>	<i>1,215</i>	<i>1.12</i>	<i>24.3%</i>	<i>75.7%</i>	<i>1.07</i>	<i>1.14</i>	<i>84.9%</i>	<i>84.9%</i>	<i>85.5%</i>	<i>86.1%</i>	<i>13.9%</i>	<i>95.6%</i>	<i>83.0%</i>
<i>CHO 9</i>	<i>1,354</i>	<i>1,506</i>	<i>1.11</i>	<i>27.9%</i>	<i>72.1%</i>	<i>1.06</i>	<i>1.13</i>	<i>86.1%</i>	<i>86.1%</i>	<i>87.1%</i>	<i>85.3%</i>	<i>14.7%</i>	<i>94.0%</i>	<i>82.0%</i>
<i>other Community Services</i>	<i>493</i>	<i>520</i>	<i>1.06</i>	<i>48.7%</i>	<i>51.3%</i>	<i>1.06</i>	<i>1.05</i>	<i>89.6%</i>	<i>89.6%</i>	<i>92.5%</i>	<i>93.7%</i>	<i>6.3%</i>	<i>92.9%</i>	<i>94.4%</i>

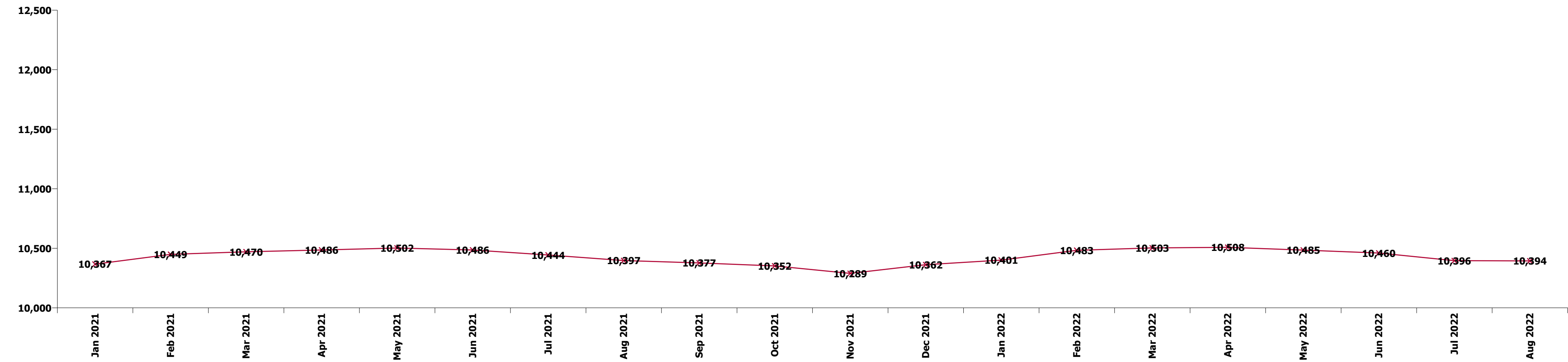
Summary Staff Movement: August 2022

Month-on-month
Summary

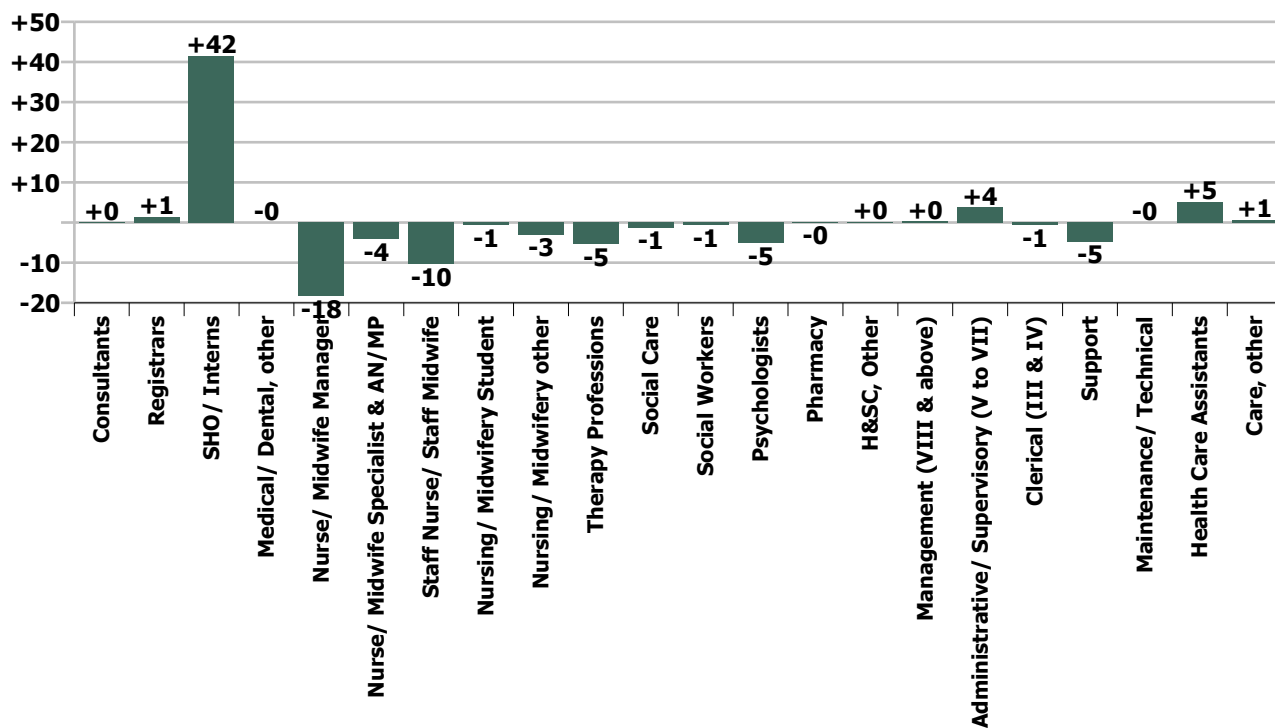
WTE change since Jul 22	% change since Jul 22	overall	Consultants	Registrars	SHO/ Interns	Medical/ Dental, other	Medical & Dental	Nurse/ Midwife Manager	Nurse/ Midwife Specialist & ANMP	Staff Nurse/ Staff Midwife	Nursing/ Midwifery Student	Nursing/ Midwifery other	Nursing & Midwifery	Therapy Professions	Social Care	Social Workers	Psychologists	Pharmacy	H&SC, Other	Health & Social Care Professionals	Management (VIII & above)	Administrative/ Supervisory (V to VII)	Clerical (III & IV)	Management & Administrative	General Support	Health Care Assistants	Care, other	Patient & Client Care
Overall	-0.0%	-2	+0	+1	+42	-0	+43	-18	-4	-10	-1	-3	-37	-5	-1	-1	-5	-0	+0	-13	+0	+4	-1	+3	-5	+5	+1	+6
CHO 1	+0.2%	+2	-1	+3	-0		+2	-0	-2	+3	-0		+1	-2	-0	-1	+0	+0	-0	-3	+0	-1	+2	+1	-1	+1	+0	+2
CHO 2	-0.1%	-1	+1	-5	+13		+9	-2	-1	-8	-0		-10	+0	-1	+1	-1	+0	-0	-1		+2	+1	+3	-0	-2		-2
CHO 3	+0.4%	+3	+1	+1	+8		+11	-11	-2	+7			-5	-1		+1	-1	+0	+0	-0	-1	-0	-1	-3	+0	-1	+1	+1
CHO 4	-0.0%	-1	+0	-5	+11	-0	+6	-0	-2	-4	+1		-6	-1	-0		+0	-1		-1		+0	+1		-0	-0	-0	-1
CHO 5	+0.1%	+1	+1	-1	+1		+1	+2	+2	-7	+0	-0	-3	-1	+0	+1	+1		-1	+0	+0	+1	+1	+1	+1	+1	+0	+1
CHO 6	-0.1%	-1	-1	+4	-0		+4	-5	-1	+5	+0	-1	-1	+0	-1	-1	-0		+0	-2		+1	-1	-0	-1	-1	+1	-1
CHO 7	-0.2%	-1	-0	+4	+2		+6	-2	+2	-4	-0	-1	-5	-1	+0		+1	-0	+0	-1	+0	+0	+0	+1	-1	+0	-1	-1
CHO 8	-0.6%	-7	-3	-7	+3		-6	+2	-1	+0	-0		+0	-0	+0	-3	-3		+0	-5	+1	+1	+2	+3	+0	+1	-0	+1
CHO 9	+0.1%	+1	+0	+7	+3		+10	-1	-1	-2	-0	-1	-5	+1		+2	-0	+0	-0	+3	-0	+1	-7	-6	-7	+6	-0	+6
other Community Services	+0.3%	+2	+1	-0			+1	-1	+1	-2			-2	-0		-0	-1			-1	-0	+0	+1	+1	+4	+0		+0
	-0.0%		+0.0%	+0.4%	+19.9%	-0.2%	+4.7%	-1.5%	-0.7%	-0.3%	-0.5%	-8.8%	-0.7%	-1.3%	-2.0%	-0.2%	-1.2%	-0.4%	+0.2%	-0.9%	+0.4%	+1.4%	-0.1%	+0.3%	-0.7%	+0.5%	+0.3%	+0.5%

Year-on-year Summary

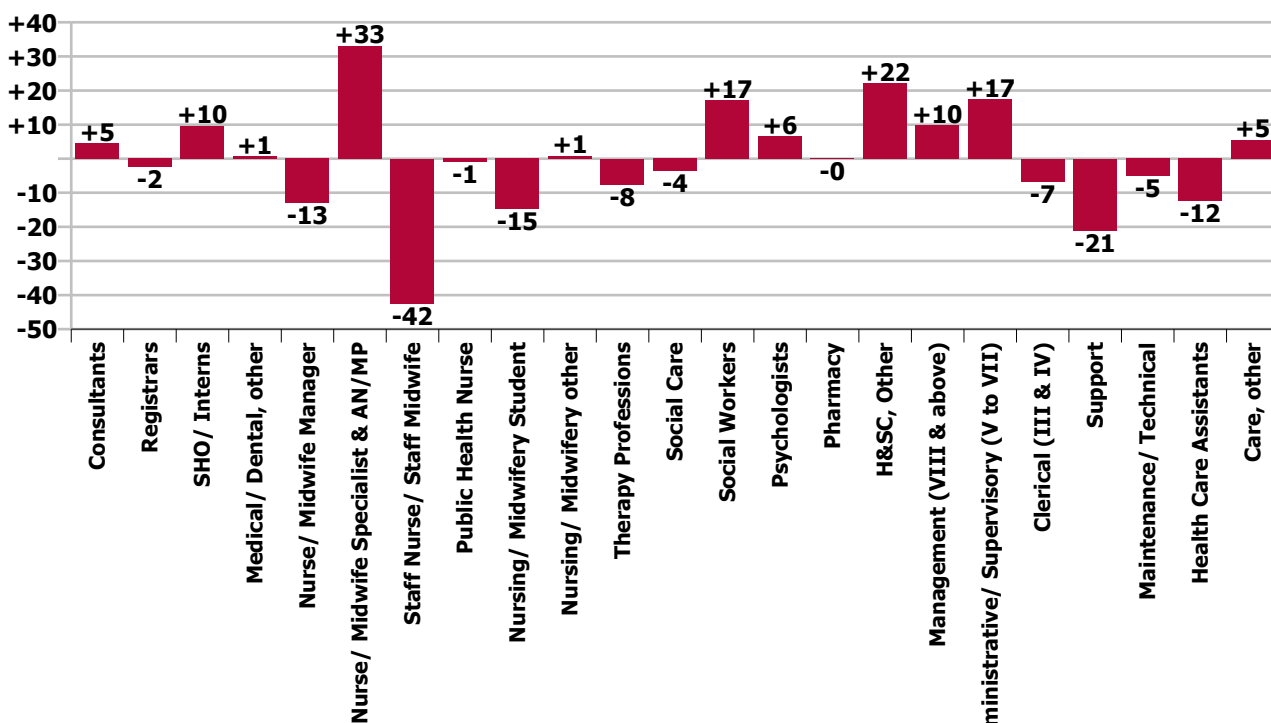
WTE change since Aug 21	% change since Aug 21	overall	Consultants	Registrars	SHO/ Interns	Medical/ Dental, other	Medical & Dental	Nurse/ Midwife Manager	Nurse/ Midwife Specialist & ANMP	Staff Nurse/ Staff Midwife	Public Health Nurse	Nursing/ Midwifery Student	Nursing/ Midwifery other	Nursing & Midwifery	Therapy Professions	Social Care	Social Workers	Psychologists	Pharmacy	H&SC, Other	Health & Social Care Professionals	Management (VIII & above)	Administrative/ Supervisory (V to VII)	Clerical (III & IV)	Management & Administrative	General Support	Health Care Assistants	Care, other	Patient & Client Care
Overall	-0.0%	-3	+5	-2	+10	+1	+12	-13	+33	-42	-1	-15	+1	-37	-8	-4	+17	+6	-0	+22	+34	+10	+17	-7	+20	-26	-12	+5	-7
CHO 1	+2.2%	+22	-4	+3	-2		-2	-8	+9	+11		-1		+11	+3	+0	+2	+3	+0	+3	+11	+4	+1	-1	+5	-5	+2	+2	+3
CHO 2	-2.9%	-39	-3	+1	+3	+1	+1	-3	+4	-23		+2	+1	-19	-5	-2	+5	-5	+1	-0	-7	-1	-0	-2	-3	-4	-11	+4	-7
CHO 3	-1.4%	-12	+2	-3	+3		+3	-10	+3	-6		-2	+1	-14	+1	-1	+1	-0	+0	-0	+1		-2	-0	-2	-2	+0	+1	+2
CHO 4	+1.2%	+18	+0	-3	+4	-0	+2	+18	-3	-5		-4		+7	+3	+1	+5	+6	-1	+8	+22	+1	+3	-2	+3	-6	-6	-2	-8
CHO 5	+1.3%	+16	+7	+1	+1	-0	+9	+3	+3	-14		-7	+0	-15	+3	-0	+2	+3		+2	+10	+1	-3	+1	-0	+4	+6	+2	+8
CHO 6	+0.8%	+5	-1	+4	-2		+1	+5	-2	+8		+0	+1	+2	-2	-1	+2	+5		+2	+7	+1	+6	-3	+4	-6	-4	+1	-3
CHO 7	+0.4%	+4	-3	-1	+6		+1	-4	+5	+3	-1	+0	+1	+4	+3	-0	-2	-1	-0	+3	+2	+0	+1	+6	+7	-1	-4	-5	-9
CHO 8	-3.0%	-34	+2	-14	+5		-8	-7	+1	+1		-1	-0	-5	-9	-0	+1	-3	+1	+2	-8	+0	-0	-6	-6	-4	-3	+1	-2
CHO 9	+3.0%	+39	+7	+5	-6		+6	+3	+13	+8		-3	-3	+18	-1		+4	+3	-0	+3	+8	-3	+7	+0	+5	-9	+10	+2	+12
other Community Services	-4.5%	-23	-1	+4	-3		-0	+1	-0	-26			+0	-25	-3	-0	-4	-4	-1		-12	+6	+4	-1	+8	+8	-3	-1	-3
	-0.0%		+1.2%	-0.7%	+4.0%	+14.3%	+1.3%	-1.0%	+6.2%	-1.4%	-100.0%	-8.5%	+2.8%	-0.7%	-1.8%	-4.9%	+4.6%	+1.5%	-0.6%	+20.1%	+2.4%	+16.8%	+6.9%	-0.9%	+2.0%	-3.6%	-1.2%	+2.6%	-0.6%



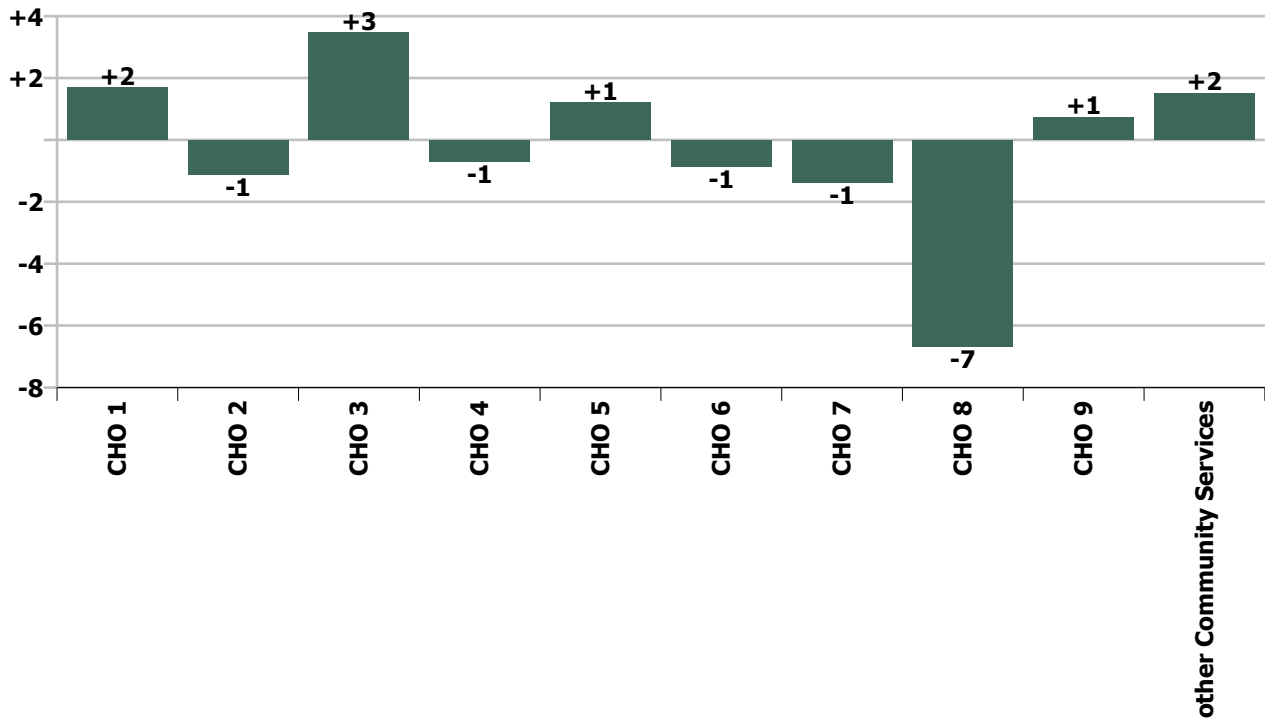
Staff Group change since: Jul 2022



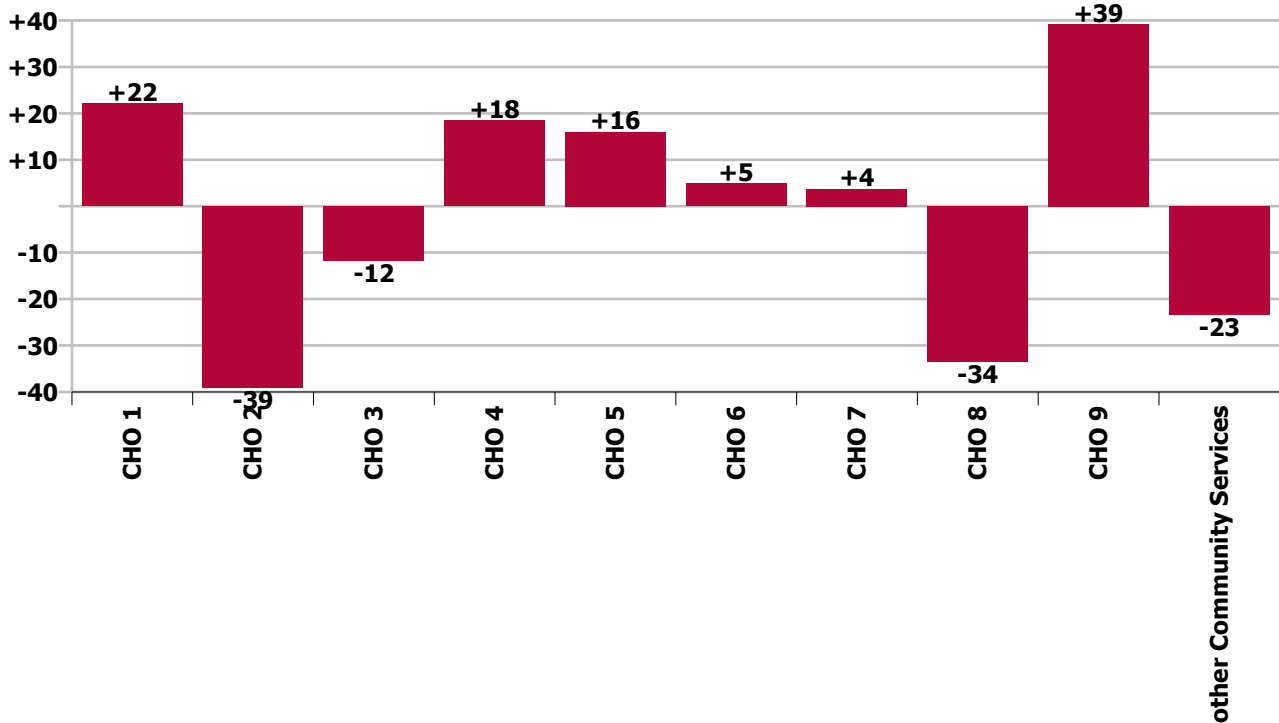
Staff Group change since: Aug 2021



CHO change since: Jul 2022



CHO change since: Aug 2021



Longitudinal Employment Levels by Grade Group - Dec 2016 to Aug 2022

Aug 2022 (Dec 2015 figure: 9,501)	WTE Aug 2022	WTE change since Dec 16	WTE change since Dec 17	WTE change since Dec 18	WTE change since Dec 19	WTE change since Dec 20	WTE change since Jul 22	% change since Dec 16	% change since Dec 17	% change since Dec 18	% change since Dec 19	% change since Dec 20	% change since Jul 22
Overall	10,394	+773	+603	+496	+440	+92	-2	+8.0%	+6.2%	+5.0%	+4.4%	+0.9%	-0.0%
Consultant Medicine	1		-0	-0					-9.1%	-9.1%			
Consultant Psychiatry	383	+69	+71	+54	+32	+15	+0	+21.8%	+22.8%	+16.3%	+9.1%	+4.0%	+0.0%
Consultants	384	+69	+71	+54	+32	+15	+0	+21.7%	+22.7%	+16.2%	+9.0%	+4.0%	+0.0%
Registrar	202	+70	+57	+48	+33	+34	-9	+52.9%	+39.6%	+31.2%	+19.3%	+20.3%	-4.4%
Senior Registrar	122	+55	+56	+36	+25	+11	+9	+81.5%	+85.1%	+41.8%	+25.4%	+9.6%	+8.2%
Specialist Registrar	3	+2	+1	+2	+0	+1	+2	+156.0%	+28.0%	+156.0%	+2.4%	+28.0%	+156.0%
Registrars	326	+126	+114	+86	+57	+45	+1	+63.0%	+53.6%	+35.5%	+21.3%	+16.1%	+0.4%
Senior House Officer	242	-5	-30	-27	-11	-29	+40	-1.8%	-11.0%	-10.0%	-4.2%	-10.5%	+19.5%
Interns	8	-4	-2			+3	+2	-33.3%	-20.0%			+60.0%	+31.6%
SHO/ Interns	250	-9	-32	-27	-11	-26	+42	-3.3%	-11.3%	-9.7%	-4.1%	-9.3%	+19.9%
Dentists			-0	-0				-100.0%	-100.0%	-100.0%	-100.0%	-100.0%	-100.0%
Other Medical	5	-5	-6	-2	-0	-0	-0	-49.4%	-55.1%	-25.0%	-2.6%	-2.6%	-0.2%
Medical/ Dental, other	5	-5	-6	-2	-0	-0	-0	-49.4%	-55.4%	-25.8%	-2.6%	-2.6%	-0.2%
Medical & Dental	966	+181	+147	+110	+78	+34	+43	+23.1%	+17.9%	+12.9%	+8.8%	+3.7%	+4.7%
Clinical Nurse/ Midwife Manager	1,029	+22	+46	+23	+30	-13	-15	+2.2%	+4.7%	+2.2%	+3.0%	-1.2%	-1.4%
Director Nursing/Midwifery, Assistant	175	+20	+14	+11	+11	+5	-2	+13.0%	+8.3%	+6.9%	+6.5%	+2.8%	-1.4%
Director of Nursing/Midwifery	31	-0	+3	+8	+2	+3	-1	-1.0%	+10.2%	+32.3%	+8.6%	+12.4%	-4.4%
Nurse/ Midwife Manager	1,235	+42	+62	+42	+43	-4	-18	+3.5%	+5.3%	+3.5%	+3.6%	-0.3%	-1.5%
Advanced Nurse/ Midwife Practitioner	57	+50	+47	+37	+26	+18	+6	+663.4%	+443.8%	+183.5%	+85.8%	+44.9%	+11.8%
Clinical Nurse/ Midwife Specialist	509	+173	+126	+114	+81	+20	-10	+51.4%	+32.9%	+28.9%	+18.9%	+4.1%	-2.0%
Nurse/ Midwife Specialist & AN/MP	566	+222	+173	+151	+107	+38	-4	+64.7%	+43.9%	+36.4%	+23.4%	+7.1%	-0.7%
Staff Midwives						-1		-100.0%	-100.0%	-100.0%	-100.0%	-100.0%	-100.0%
Staff Nurse [Psychiatric]	2,882	-175	-145	-73	-12	-83	-11	-5.7%	-4.8%	-2.5%	-0.4%	-2.8%	-0.4%
Staff Nurses [General/ Children's]	112	-9	-6	-6	+7	+6	+2	-7.2%	-4.8%	-4.8%	+6.8%	+5.3%	+1.5%
Staff Nurse [Intellectual Disability]	6	+2	+2	-0	+1	+1	-1	+70.1%	+64.2%	-5.3%	+25.4%	+34.0%	-17.0%
Graduate Nursing/ Midwifery								-100.0%	-100.0%	-100.0%	-100.0%	-100.0%	-100.0%
Staff Nurse/ Staff Midwife	2,999	-181	-149	-79	-3	-77	-10	-5.7%	-4.7%	-2.6%	-0.1%	-2.5%	-0.3%

Aug 2022 (Dec 2015 figure: 9,501)	WTE Aug 2022	WTE change since Dec 16	WTE change since Dec 17	WTE change since Dec 18	WTE change since Dec 19	WTE change since Dec 20	WTE change since Jul 22	% change since Dec 16	% change since Dec 17	% change since Dec 18	% change since Dec 19	% change since Dec 20	% change since Jul 22
Overall	10,394	+773	+603	+496	+440	+92	-2	+8.0%	+6.2%	+5.0%	+4.4%	+0.9%	-0.0%
Public Health Nurse		-1	-1					-100.0%	-100.0%	-100.0%	-100.0%	-100.0%	-100.0%
Pre-registration Nurse Intern (COVID-19)						-42		-100.0%	-100.0%	-100.0%	-100.0%	-100.0%	-100.0%
Pre-registration Nurse/ Midwife Intern	157	+148	+140	+129	+130	+146	-0	+1713.9%	+832.8%	+463.6%	+470.6%	+1366.7%	-0.1%
Post-registration Nurse/ Midwife Student					-1	-1		-100.0%	-100.0%	-100.0%	-100.0%	-100.0%	-100.0%
Nursing/ Midwifery awaiting registration	2		-7	-18	-57	-3	-1		-76.9%	-89.9%	-96.6%	-58.8%	-20.6%
Nursing/ Midwifery Student	159	+148	+134	+111	+72	+100	-1	+1392.3%	+524.1%	+233.4%	+81.9%	+169.8%	-0.5%
Nursing Education/Clinical	31	+7	+1	+0	-0	-0	-3	+27.7%	+3.0%	+1.5%	-0.3%	-0.6%	-8.8%
Nursing/ Midwifery other	31	+7	+1	+0	-0	-0	-3	+27.7%	+3.0%	+1.5%	-0.3%	-0.6%	-8.8%
Nursing & Midwifery	4,992	+237	+220	+225	+218	+56	-37	+5.0%	+4.6%	+4.7%	+4.6%	+1.1%	-0.7%
Dietitians	17	+4	+0	-3	-2	-4	+1	+25.8%	+1.6%	-15.1%	-11.0%	-18.1%	+5.2%
Occupational Therapists	336	+36	+10	-3	-3	-9	-7	+12.1%	+3.1%	-1.0%	-0.7%	-2.7%	-2.1%
Physiotherapists	3	+1	+2	+1	+1	+1	+0	+47.3%	+144.6%	+83.9%	+32.7%	+22.8%	+0.7%
Podiatrists & Chiropodists	1	-1	-1	-0	+0	-0	-0	-57.1%	-46.9%	-36.1%	+6.8%	-2.5%	-2.5%
Speech & Language Therapists	65	+5	+3	+3	+3	-5	+1	+8.8%	+5.4%	+5.2%	+4.9%	-7.1%	+1.3%
Therapy Professions	422	+45	+15	-2	-1	-18	-5	+11.9%	+3.6%	-0.5%	-0.2%	-4.0%	-1.3%
Social Care	70	-18	-13	-9	-4	-10	-1	-20.5%	-15.4%	-11.2%	-5.0%	-12.6%	-2.0%
Social Workers	389	+39	+32	+31	+39	+16	-1	+11.1%	+8.9%	+8.5%	+11.3%	+4.4%	-0.2%
Psychologists	430	+87	+59	+41	+35	+6	-5	+25.4%	+16.1%	+10.6%	+9.0%	+1.4%	-1.2%
Pharmacists	16	+1	+1	+0	-0	-1	-0	+7.8%	+8.2%	+1.3%	-0.4%	-6.3%	-0.8%
Pharmacy Technicians	4	-0	-0	+1	+2	+1	+0	-5.2%	-4.4%	+25.6%	+76.5%	+19.8%	+1.2%
Pharmacy	20	+1	+1	+1	+2	-0	-0	+4.7%	+5.2%	+5.7%	+9.8%	-1.7%	-0.4%
Counsellor Therapists	125	+40	+39	+40	+30	+24	+0	+46.9%	+46.0%	+47.0%	+31.8%	+23.5%	+0.1%
Other Health & Social Care	4	-4	-4	-4	-8	-1	+0	-51.2%	-52.0%	-52.2%	-64.9%	-24.0%	+1.0%
Play Therapists/ Specialists	3	+1	+2	+2	+2	+2	+0	+24.4%	+106.0%	+110.1%	+113.0%	+110.1%	+0.3%
H&SC, Other	132	+36	+37	+37	+24	+24	+0	+37.7%	+38.2%	+39.0%	+22.4%	+22.3%	+0.2%
Health & Social Care Professionals	1,462	+190	+131	+99	+96	+18	-13	+14.9%	+9.8%	+7.2%	+7.0%	+1.3%	-0.9%
Executive Management	14	+7	+6	+4	+3	-1	-0	+99.7%	+74.8%	+39.8%	+27.1%	-5.1%	-0.1%
Senior Management (VIII & GM)	53	+28	+21	+22	+7	+1	+0	+110.1%	+65.7%	+68.8%	+15.3%	+2.0%	+0.6%
Management (VIII & above)	67	+35	+27	+26	+10	+0	+0	+107.8%	+67.5%	+61.8%	+17.6%	+0.4%	+0.4%

Aug 2022 (Dec 2015 figure: 9,501)	WTE Aug 2022	WTE change since Dec 16	WTE change since Dec 17	WTE change since Dec 18	WTE change since Dec 19	WTE change since Dec 20	WTE change since Jul 22	% change since Dec 16	% change since Dec 17	% change since Dec 18	% change since Dec 19	% change since Dec 20	% change since Jul 22
Overall	10,394	+773	+603	+496	+440	+92	-2	+8.0%	+6.2%	+5.0%	+4.4%	+0.9%	-0.0%
Middle Management (V-VII)	265	+99	+68	+45	+30	+22	+4	+59.4%	+34.6%	+20.5%	+12.6%	+9.0%	+1.4%
Other Administrative	3	+1	-0	-0	+1	+1		+60.5%	-1.9%	-1.9%	+60.5%	+60.5%	
Administrative/ Supervisory (V to VII)	268	+100	+68	+45	+31	+23	+4	+59.4%	+34.2%	+20.2%	+12.9%	+9.3%	+1.4%
General Administrative (III & IV)	703	+42	+21	+8	-14	-19	-1	+6.3%	+3.1%	+1.1%	-2.0%	-2.6%	-0.1%
Clerical (III & IV)	703	+42	+21	+8	-14	-19	-1	+6.3%	+3.1%	+1.1%	-2.0%	-2.6%	-0.1%
Management & Administrative	1,038	+177	+117	+78	+26	+4	+3	+20.5%	+12.7%	+8.2%	+2.6%	+0.4%	+0.3%
Catering	69	+3	+3	-3	+4	+5	-0	+4.8%	+4.5%	-4.2%	+5.4%	+8.2%	-0.6%
Household Services	408	-84	-69	-38	-17	-34	-6	-17.2%	-14.4%	-8.5%	-4.0%	-7.6%	-1.5%
Other Support	39	-17	-10	-16	-3	-3	-0	-30.0%	-20.7%	-28.8%	-8.1%	-6.3%	-1.0%
Portering	48	-11	-1	+0	+0	+1	+2	-18.4%	-1.1%	+0.7%	+0.5%	+2.1%	+4.7%
Support	564	-109	-76	-56	-16	-30	-5	-16.2%	-11.9%	-9.1%	-2.8%	-5.1%	-0.8%
Maintenance	130	-13	-8	-4	+1	-7	-0	-8.8%	-6.0%	-2.9%	+1.2%	-5.1%	-0.0%
Technical Services		-2	-2	-2	-2			-100.0%	-100.0%	-100.0%	-100.0%	-100.0%	-100.0%
Maintenance/ Technical	130	-15	-10	-6	-1	-7	-0	-10.1%	-7.3%	-4.3%	-0.4%	-5.1%	-0.0%
General Support	694	-124	-87	-62	-17	-37	-5	-15.1%	-11.1%	-8.2%	-2.4%	-5.1%	-0.7%
Attendant/ Aide	434	-290	-266	-247	-171	-149	-0	-40.0%	-38.0%	-36.2%	-28.2%	-25.5%	-0.0%
Health & Social Care Assistants	12	+7	+7	+6	+3	+3	+1	+149.1%	+149.1%	+112.5%	+29.3%	+38.6%	+6.5%
Health Care Assistant/ Care Assistant	581	+376	+332	+288	+207	+151	+4	+183.9%	+133.9%	+98.2%	+55.3%	+35.1%	+0.8%
Health Care Assistants	1,027	+93	+74	+47	+39	+5	+5	+10.0%	+7.7%	+4.8%	+3.9%	+0.5%	+0.5%
Home Care Services	22	+22	+7	+5	+6	+7	+2	-100.0%	+45.2%	+31.2%	+38.1%	+52.2%	+12.4%
Other Care Grades	22	+11	+11	+6	-1	-0	-0	+102.9%	+101.0%	+37.2%	-4.0%	-1.5%	-0.8%
Pastoral Care	12	-2	-2	-1	-1	-0	+0	-16.6%	-13.7%	-10.6%	-6.4%	-2.0%	+1.9%
Workshop Services	160	-12	-13	-11	-6	+4	-2	-6.9%	-7.8%	-6.4%	-3.4%	+2.8%	-1.1%
Care, other	215	+19	+2	-1	-1	+11	+1	+9.4%	+1.1%	-0.6%	-0.6%	+5.5%	+0.3%
Patient & Client Care	1,241	+112	+76	+46	+38	+16	+6	+9.9%	+6.5%	+3.9%	+3.1%	+1.3%	+0.5%

Source: Health Service Personnel Census

Longitudinal Employment Levels by Grade Group - Dec 2016 to Aug 2022

Aug 2022 (Dec 2015 figure: 9,501)	WTE Aug 2022	WTE change since Dec 16	WTE change since Dec 17	WTE change since Dec 18	WTE change since Dec 19	WTE change since Dec 20	WTE change since Jul 22	% change since Dec 16	% change since Dec 17	% change since Dec 18	% change since Dec 19	% change since Dec 20	% change since Jul 22
Overall	10,394	+773	+603	+496	+440	+92	-2	+8.0%	+6.2%	+5.0%	+4.4%	+0.9%	-0.0%
Consultant Medicine	1		-0	-0					-9.1%	-9.1%			
Consultant Psychiatry	383	+69	+71	+54	+32	+15	+0	+21.8%	+22.8%	+16.3%	+9.1%	+4.0%	+0.0%
Consultants	384	+69	+71	+54	+32	+15	+0	+21.7%	+22.7%	+16.2%	+9.0%	+4.0%	+0.0%
Registrar	202	+70	+57	+48	+33	+34	-9	+52.9%	+39.6%	+31.2%	+19.3%	+20.3%	-4.4%
Senior Registrar	122	+55	+56	+36	+25	+11	+9	+81.5%	+85.1%	+41.8%	+25.4%	+9.6%	+8.2%
Specialist Registrar	3	+2	+1	+2	+0	+1	+2	+156.0%	+28.0%	+156.0%	+2.4%	+28.0%	+156.0%
Registrars	326	+126	+114	+86	+57	+45	+1	+63.0%	+53.6%	+35.5%	+21.3%	+16.1%	+0.4%
Senior House Officer	242	-5	-30	-27	-11	-29	+40	-1.8%	-11.0%	-10.0%	-4.2%	-10.5%	+19.5%
Interns	8	-4	-2			+3	+2	-33.3%	-20.0%			+60.0%	+31.6%
SHO/ Interns	250	-9	-32	-27	-11	-26	+42	-3.3%	-11.3%	-9.7%	-4.1%	-9.3%	+19.9%
Dentists			-0	-0				-100.0%	-100.0%	-100.0%	-100.0%	-100.0%	-100.0%
Other Medical	5	-5	-6	-2	-0	-0	-0	-49.4%	-55.1%	-25.0%	-2.6%	-2.6%	-0.2%
Medical/ Dental, other	5	-5	-6	-2	-0	-0	-0	-49.4%	-55.4%	-25.8%	-2.6%	-2.6%	-0.2%
Medical & Dental	966	+181	+147	+110	+78	+34	+43	+23.1%	+17.9%	+12.9%	+8.8%	+3.7%	+4.7%
Clinical Nurse/ Midwife Manager	1,029	+22	+46	+23	+30	-13	-15	+2.2%	+4.7%	+2.2%	+3.0%	-1.2%	-1.4%
Director Nursing/Midwifery, Assistant	175	+20	+14	+11	+11	+5	-2	+13.0%	+8.3%	+6.9%	+6.5%	+2.8%	-1.4%
Director of Nursing/Midwifery	31	-0	+3	+8	+2	+3	-1	-1.0%	+10.2%	+32.3%	+8.6%	+12.4%	-4.4%
Nurse/ Midwife Manager	1,235	+42	+62	+42	+43	-4	-18	+3.5%	+5.3%	+3.5%	+3.6%	-0.3%	-1.5%
Advanced Nurse/ Midwife Practitioner	57	+50	+47	+37	+26	+18	+6	+663.4%	+443.8%	+183.5%	+85.8%	+44.9%	+11.8%
Clinical Nurse/ Midwife Specialist	509	+173	+126	+114	+81	+20	-10	+51.4%	+32.9%	+28.9%	+18.9%	+4.1%	-2.0%
Nurse/ Midwife Specialist & AN/MP	566	+222	+173	+151	+107	+38	-4	+64.7%	+43.9%	+36.4%	+23.4%	+7.1%	-0.7%
Staff Midwives							-1	-100.0%	-100.0%	-100.0%	-100.0%	-100.0%	-100.0%
Staff Nurse [Psychiatric]	2,882	-175	-145	-74	-12	-83	-11	-5.7%	-4.8%	-2.5%	-0.4%	-2.8%	-0.4%
Staff Nurses [General/ Children's]	112	-9	-6	-6	+7	+6	+2	-7.2%	-4.8%	-4.8%	+6.8%	+5.3%	+1.5%
Staff Nurse [Intellectual Disability]	6	+2	+2	-0	+1	+1	-1	+70.1%	+64.2%	-5.3%	+25.4%	+34.0%	-17.0%
Graduate Nursing/ Midwifery								-100.0%	-100.0%	-100.0%	-100.0%	-100.0%	-100.0%
Staff Nurse/ Staff Midwife	2,999	-181	-149	-79	-3	-77	-10	-5.7%	-4.7%	-2.6%	-0.1%	-2.5%	-0.3%
Public Health Nurse		-1	-1					-100.0%	-100.0%	-100.0%	-100.0%	-100.0%	-100.0%
Public Health Nurse		-1	-1					-100.0%	-100.0%	-100.0%	-100.0%	-100.0%	-100.0%
Pre-registration Nurse Intern (COVID-19)						-42		-100.0%	-100.0%	-100.0%	-100.0%	-100.0%	-100.0%
Pre-registration Nurse/ Midwife Intern	157	+148	+140	+129	+130	+146	-0	+1713.9%	+832.8%	+463.6%	+470.6%	+1366.7%	-0.1%
Post-registration Nurse/ Midwife Student					-1	-1		-100.0%	-100.0%	-100.0%	-100.0%	-100.0%	-100.0%
Nursing/ Midwifery awaiting registration	2		-7	-18	-57	-3	-1		-76.9%	-89.9%	-96.6%	-58.8%	-20.6%
Nursing/ Midwifery Student	159	+148	+134	+111	+72	+100	-1	+1392.3%	+524.1%	+233.4%	+81.9%	+169.8%	-0.5%
Nursing Education/Clinical	31	+7	+1	+0	-0	-0	-3	+27.7%	+3.0%	+1.5%	-0.3%	-0.6%	-8.8%
Nursing/ Midwifery other	31	+7	+1	+0	-0	-0	-3	+27.7%	+3.0%	+1.5%	-0.3%	-0.6%	-8.8%
Nursing & Midwifery	4,992	+237	+220	+225	+218	+56	-37	+5.0%	+4.6%	+4.7%	+4.6%	+1.1%	-0.7%
Dietitians	17	+4	+0	-3	-2	-4	+1	+25.8%	+1.6%	-15.1%	-11.0%	-18.1%	+5.2%
Occupational Therapists	336	+36	+10	-3	-3	-9	-7	+12.1%	+3.1%	-1.0%	-0.7%	-2.7%	-2.1%
Physiotherapists	3	+1	+2	+1	+1	+1	+0	+47.3%	+144.6%	+83.9%	+32.7%	+22.8%	+0.7%
Podiatrists & Chiropodists	1	-1	-1	-0	+0	-0	-0	-57.1%	-46.9%	-36.1%	+6.8%	-2.5%	-2.5%
Speech & Language Therapists	65	+5	+3	+3	+3	-5	+1	+8.8%	+5.4%	+5.2%	+4.9%	-7.1%	+1.3%
Therapy Professions	422	+45	+15	-2	-1	-18	-5	+11.9%	+3.6%	-0.5%	-0.2%	-4.0%	-1.3%
Social Care	70	-18	-13	-9	-4	-10	-1	-20.5%	-15.4%	-11.2%	-5.0%	-12.6%	-2.0%
Social Workers	389	+39	+32	+31	+39	+16	-1	+11.1%	+8.9%	+8.5%	+11.3%	+4.4%	-0.2%
Psychologists	430	+87	+59	+41	+35	+6	-5	+25.4%	+16.1%	+10.6%	+9.0%	+1.4%	-1.2%
Pharmacists	16	+1	+1	+0	-0	-1	-0	+7.8%	+8.2%	+1.3%	-0.4%	-6.3%	-0.8%
Pharmacy Technicians	4	-0	-0	+1	+2	+1	+0	-5.2%	-4.4%	+25.6%	+76.5%	+19.8%	+1.2%
Pharmacy	20	+1	+1	+1	+2	-0	-0	+4.7%	+5.2%	+5.7%	+9.8%	-1.7%	-0.4%
Counsellor Therapists	125	+40	+39	+40	+30	+24	+0	+46.9%	+46.0%	+47.0%	+31.8%	+23.5%	+0.1%
Other Health & Social Care	4	-4	-4	-4	-8	-1	+0	-51.2%	-52.0%	-52.2%	-64.9%	-24.0%	+1.0%
Play Therapists/ Specialists	3	+1	+2	+2	+2	+2	+0	+24.4%	+106.0%	+110.1%	+113.0%	+110.1%	+0.3%
H&SC, Other	132	+36	+37	+37	+24	+24	+0	+37.7%	+38.2%	+39.0%	+22.4%	+22.3%	+0.2%
Health & Social Care Professionals	1,462	+190	+131	+99	+96	+18	-13	+14.9%	+9.8%	+7.2%	+7.0%	+1.3%	-0.9%
Executive Management	14	+7	+6	+4	+3	-1	-0	+99.7%	+74.8%	+39.8%	+27.1%	-5.1%	-0.1%
Senior Management (VIII & GM)	53	+28	+21	+22	+7	+1	+0	+110.1%	+65.7%	+68.8%	+15.3%	+2.0%	+0.6%
Management (VIII & above)	67	+35	+27	+26	+10	+0	+0	+107.8%	+67.5%	+61.8%	+17.6%	+0.4%	+0.4%
Middle Management (V-VII)	265	+99	+68	+45	+30	+22	+4	+59.4%	+34.6%	+20.5%	+12.6%	+9.0%	+1.4%
Other Administrative	3	+1	-0	-0	+1	+1		+60.5%	-1.9%	-1.9%	+60.5%	+60.5%	
Administrative/ Supervisory (V to VII)	268	+100	+68	+45	+31	+23	+4	+59.4%	+34.2%	+20.2%	+12.9%	+9.3%	+1.4%
General Administrative (III & IV)	703	+42	+21	+8	-14	-19	-1	+6.3%	+3.1%	+1.1%	-2.0%	-2.6%	-0.1%
Clerical (III & IV)	703	+42	+21	+8	-14	-19	-1	+6.3%	+3.1%	+1.1%	-2.0%	-2.6%	-0.1%
Management & Administrative	1,038	+177	+117	+78	+26	+4	+3	+20.5%	+12.7%	+8.2%	+2.6%	+0.4%	+0.3%
Support	564	-109	-76	-56	-16	-30	-5	-16.2%	-11.9%	-9.1%	-2.8%	-5.1%	-0.8%
Maintenance	130	-13	-8	-4	+1	-7	-0	-8.8%	-6.0%	-2.9%	+1.2%	-5.1%	-0.0%
Technical Services		-2	-2	-2	-2			-100.0%	-100.0%	-100.0%	-100.0%	-100.0%	-100.0%
Maintenance/ Technical	130	-15	-10	-6	-1	-7	-0	-10.1%	-7.3%	-4.3%	-0.4%	-5.1%	-0.0%
General Support	694	-124	-87	-62	-17	-37	-5	-15.1%	-11.1%	-8.2%	-2.4%	-5.1%	-0.7%
Attendant/ Aide	434	-290	-266	-247	-171	-149	-0	-40.0%	-38.0%	-36.2%	-28.2%	-25.5%	-0.0%
Health & Social Care Assistants	12	+7	+7	+6	+3	+3	+1	+149.1%	+149.1%	+112.5%	+29.3%	+38.6%	+6.5%
Health Care Assistant/ Care Assistant	581	+376	+332	+288	+207	+151	+4	+183.9%	+133.9%	+98.2%	+55.3%	+35.1%	+0.8%
Health Care Assistants	1,027	+93	+74	+47	+39	+5	+5	+10.0%	+7.7%	+4.8%	+3.9%	+0.5%	+0.5%
Home Care Services	22	+22	+7	+5	+6	+7	+2	-100.0%	+45.2%	+31.2%	+38.1%	+52.2%	+12.4%
Other Care Grades	22	+11	+11	+6	-1	-0	-0	+102.9%	+101.0%	+37.2%	-4.0%	-1.5%	-0.8%
Pastoral Care	12	-2	-2	-1	-1	-0	+0	-16.6%	-13.7%	-10.6%	-6.4%	-2.0%	+1.9%
Workshop Services	160	-12	-13	-11	-6	+4	-2	-6.9%	-7.8%	-6.4%	-3.4%	+2.8%	-1.1%
Care, other	215	+19	+2	-1	-1	+11	+1	+9.4%	+1.1%	-0.6%	-0.6%	+5.5%	+0.3%
Patient & Client Care	1,241	+112	+76	+46	+38	+16	+6	+9.9%	+6.5%	+3.9%	+3.1%	+1.3%	+0.5%

Source: Health Service Personnel Census