

Mental Health Service Employment Report: December 2020

Employment by Staff Group

Dec 2020 (Dec 2019 figure: 9,954)	WTE Nov 2020	WTE Dec 2020	WTE change since Nov 20	% change since Nov 20	WTE change since Dec 19	WTE change since Dec 19
Overall	10,283	10,301	+18	+0.2%	+347	+347
Consultants	368	370	+1	+0.4%	+17	+17
Registrars	281	281	+0	+0.1%	+12	+12
SHO/ Interns	272	276	+4	+1.4%	+15	+15
Medical/ Dental, other	6	5	-1	-12.7%		
Medical & Dental	927	932	+5	+0.5%	+44	+44
Nurse/ Midwife Manager	1,229	1,240	+10	+0.9%	+47	+47
Nurse/ Midwife Specialist & AN/MP	523	529	+5	+1.0%	+70	+70
Staff Nurse/ Staff Midwife	3,069	3,076	+7	+0.2%	+73	+73
<i>Pre-registration Nurse/ Midwife Intern</i>	<i>10</i>	<i>11</i>	<i>+1</i>	<i>+8.6%</i>	<i>-17</i>	<i>-17</i>
<i>Pre-registration Nurse Intern (COVID-19)</i>	<i>68</i>	<i>42</i>	<i>-25</i>	<i>-37.4%</i>	<i>+42</i>	<i>+42</i>
<i>Post-registration Nurse/ Midwife Student</i>	<i>1</i>	<i>1</i>			<i>+1</i>	
<i>Nursing/ Midwifery awaiting registration</i>	<i>5</i>	<i>5</i>	<i>-0</i>	<i>-1.6%</i>	<i>-15</i>	<i>-54</i>
Nursing/ Midwifery Student	84	59	-25	-29.5%	-28	-28
Nursing/ Midwifery other	34	32	-3	-7.6%	+0	+0
Nursing & Midwifery	4,940	4,935	-4	-0.1%	+162	+162
Therapy Professions	434	439	+5	+1.2%	+17	+17
Social Care	81	80	-1	-1.1%	+6	+6
Social Workers	373	373	-0	-0.1%	+23	+23
Psychologists	423	424	+1	+0.1%	+29	+29
Pharmacy	20	21	+1	+5.8%	+2	+2
H&SC, Other	109	108	-1	-0.7%	+0	+0
Health & Social Care Professionals	1,439	1,444	+5	+0.3%	+78	+78
Management (VIII & above)	65	67	+3	+3.9%	+10	+10
Administrative/ Supervisory (V to VII)	248	245	-3	-1.4%	+8	+8
Clerical (III & IV)	715	722	+7	+1.0%	+5	+5
Management & Administrative	1,028	1,034	+6	+0.6%	+22	+22
Support	591	594	+3	+0.6%	+14	+14
Maintenance/ Technical	137	137	+0	+0.2%	+6	+6
General Support	728	732	+4	+0.5%	+20	+20
Health Care Assistants	1,017	1,022	+4	+0.4%	+34	+34
Care, other	205	203	-2	-0.7%	-12	-12
Patient & Client Care	1,222	1,225	+3	+0.2%	+21	+21

Mental Health Services Employment by Administration (HSE / S38): December 2020

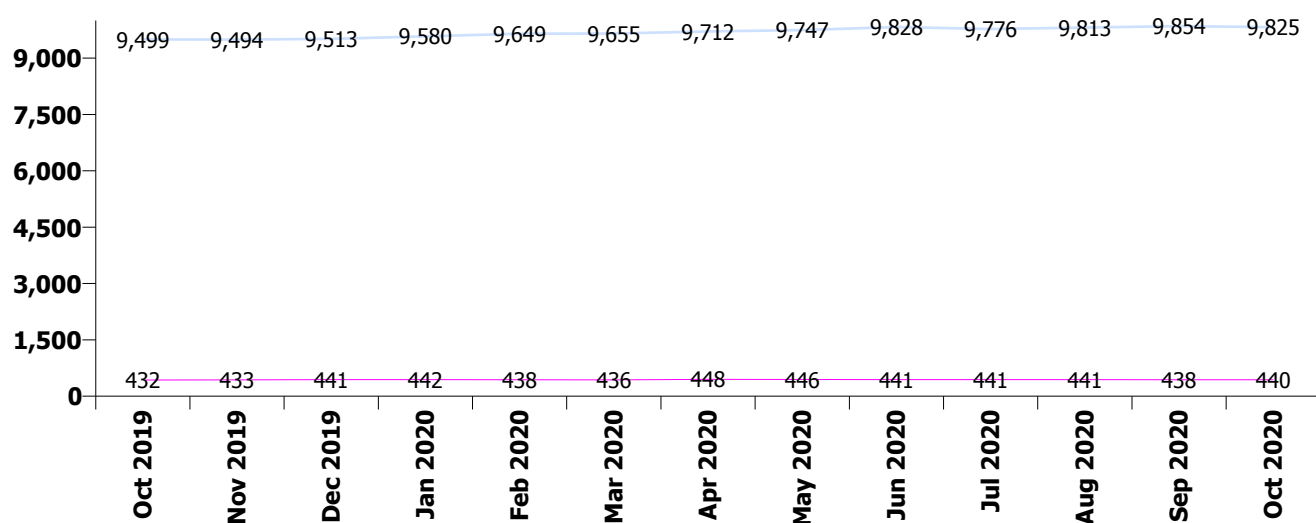
Dec 2020 (Dec 2019 figure: 9,954)	WTE Nov 2020	WTE Dec 2020	WTE change since Nov 20	% change since Nov 20	WTE change since Dec 19	WTE change since Dec 19
Overall	10,283	10,301	+18	+0.2%	+347	+347
HSE	9,843	9,855	+12	+0.1%	+342	+342
Section 38 Voluntary Agencies	440	446	+7	+1.5%	+5	+5

HSE

Dec 2020 (Dec 2019 figure: 9,513)	WTE Nov 2020	WTE Dec 2020	WTE change since Nov 20	% change since Nov 20	WTE change since Dec 19	WTE change since Dec 19
Overall	9,843	9,855	+12	+0.1%	+342	+342
Consultants	347	349	+1	+0.4%	+16	+16
Registrars	266	266	-0	-0.0%	+16	+16
SHO/ Interns	263	267	+4	+1.4%	+12	+12
Medical/ Dental, other	6	5	-1	-12.7%		
Medical & Dental	882	886	+4	+0.5%	+44	+44
Nurse/ Midwife Manager	1,192	1,202	+10	+0.8%	+48	+48
Nurse/ Midwife Specialist & AN/MP	514	520	+5	+1.0%	+67	+67
Staff Nurse/ Staff Midwife	2,943	2,953	+10	+0.4%	+74	+74
Pre-registration Nurse/ Midwife Intern	10	1	-9	-92.8%	-20	-20
Pre-registration Nurse Intern (COVID-19)	66	41	-24	-37.1%	+41	+41
Post-registration Nurse/ Midwife Student	1	1			+1	
Nursing/ Midwifery awaiting registration	5	5	-0	-1.6%	-15	-54
Nursing/ Midwifery Student	82	48	-34	-41.2%	-32	-32
Nursing/ Midwifery other	32	29	-3	-8.2%	+0	+0
Nursing & Midwifery	4,763	4,752	-10	-0.2%	+156	+156
Therapy Professions	407	412	+5	+1.2%	+21	+21
Social Care	53	52	-0	-0.7%	+4	+4
Social Workers	353	354	+1	+0.2%	+24	+24
Psychologists	401	402	+0	+0.1%	+23	+23
Pharmacy	18	19	+1	+6.4%	+2	+2
H&SC, Other	108	107	-1	-0.7%	+4	+4
Health & Social Care Professionals	1,339	1,345	+6	+0.4%	+78	+78
Management (VIII & above)	63	65	+3	+4.0%	+10	+10
Administrative/ Supervisory (V to VII)	228	224	-3	-1.5%	+8	+8
Clerical (III & IV)	673	679	+7	+1.0%	+7	+7
Management & Administrative	963	968	+6	+0.6%	+25	+25
Support	553	556	+3	+0.6%	+14	+14
Maintenance/ Technical	130	130	+0	+0.2%	+5	+5
General Support	684	687	+3	+0.5%	+19	+19
Health Care Assistants	1,011	1,016	+4	+0.4%	+34	+34
Care, other	202	200	-2	-0.8%	-13	-13
Patient & Client Care	1,213	1,216	+3	+0.2%	+21	+21

Section 38 Voluntary Agencies

Dec 2020 (Dec 2019 figure: 441)	WTE Nov 2020	WTE Dec 2020	WTE change since Nov 20	% change since Nov 20	WTE change since Dec 19	WTE change since Dec 19
Overall	440	446	+7	+1.5%	+5	+5
Consultants	21	21	+0	+0.4%	+1	+1
Registrars	15	15	+1	+3.6%	-4	-4
SHO/ Interns	9	9			+3	+3
Medical & Dental	45	45	+1	+1.4%	+0	+0
Nurse/ Midwife Manager	37	38	+0	+1.0%	-0	-0
Nurse/ Midwife Specialist & AN/MP	9	9	+0	+0.2%	+2	+2
Staff Nurse/ Staff Midwife	126	123	-3	-2.7%	-0	-0
Pre-registration Nurse/ Midwife Intern		10	+10	-100.0%	+3	+3
Pre-registration Nurse Intern (COVID-19)	2	1	-1	-50.0%	+1	+1
Nursing/ Midwifery Student	2	11	+9	+450.0%	+4	+4
Nursing/ Midwifery other	3	3				
Nursing & Midwifery	177	183	+6	+3.4%	+6	+6
Therapy Professions	27	27	+0	+0.4%	-4	-4
Social Care	28	28	-0	-1.7%	+2	+2
Social Workers	19	19	-1	-4.4%	-1	-1
Psychologists	22	22	+0	+0.5%	+6	+6
Pharmacy	2	2			+0	+0
H&SC, Other	1	1			-4	-4
Health & Social Care Professionals	100	99	-1	-1.1%	-0	-0
Management (VIII & above)	2	2				
Administrative/ Supervisory (V to VII)	21	21	+0	+0.4%	-0	-0
Clerical (III & IV)	42	43	+1	+1.3%	-2	-2
Management & Administrative	65	66	+1	+1.0%	-2	-2
Support	37	38	+0	+1.0%	-0	-0
Maintenance/ Technical	7	7			+1	+1
General Support	44	45	+0	+0.9%	+1	+1
Health Care Assistants	6	6				
Care, other	3	3			+1	+1
Patient & Client Care	9	9			+1	+1



Mental Health Services Employment by CHO: Dec 2020

Dec 2020 (Dec 2019 figure: 9,954)	WTE Nov 2020	WTE Dec 2020	WTE change since Nov 20	% change since Nov 20	WTE change since Dec 19	WTE change since Dec 19
Overall	10,283	10,301	+18	+0.2%	+347	+347
CHO 1	972	976	+4	+0.4%	+23	+23
CHO 2	1,345	1,340	-5	-0.4%	+32	+32
CHO 3	807	809	+2	+0.2%	+13	+13
CHO 4	1,562	1,564	+1	+0.1%	+78	+78
CHO 5	1,191	1,188	-3	-0.2%	+11	+11
CHO 6	626	626	+1	+0.1%	+34	+34
CHO 7	861	861	+0	+0.0%	+26	+26
CHO 8	1,114	1,112	-2	-0.2%	+14	+14
CHO 9	1,316	1,331	+15	+1.1%	+59	+59
other Community Services	490	494	+4	+0.9%	+57	+57

Mental Health Services Employment by CHO etc. Dec 2020

CHO 1

Dec 2020 (Dec 2019 figure: 953)	WTE Nov 2020	WTE Dec 2020	WTE change since Nov 20	% change since Nov 20	WTE change since Dec 19	WTE change since Dec 19
Overall	972	976	+4	+0.4%	+23	+23
Consultants	34	34	-0	-1%	+3	+3
Registrars	28	29	+1	+3%	+5	+5
SHO/ Interns	23	23	+0	+2%	-2	-2
Medical & Dental	85	86	+1	+1.1%	+6	+6
Nurse/ Midwife Manager	121	119	-1	-1%	+2	+2
Nurse/ Midwife Specialist & AN/MP	73	74	+1	+1%	+6	+6
Staff Nurse/ Staff Midwife	284	288	+4	+2%	-9	-9
<i>Pre-registration Nurse/ Midwife Intern</i>	1		-1	-100%		
<i>Pre-registration Nurse Intern (COVID-19)</i>	8	3	-5	-60%	+3	+3
<i>Nursing/ Midwifery awaiting registration</i>				-100%	-1	
Nursing/ Midwifery Student	9	3	-6	-67%	+3	+3
Nursing/ Midwifery other	1	1	+0	+8%	+1	+1
Nursing & Midwifery	487	485	-2	-0.4%	+3	+3
Therapy Professions	34	36	+2	+4%	+0	+0
Social Care	4	4	+0	+2%	+0	+0
Social Workers	41	43	+2	+5%	+4	+4
Psychologists	23	23	+0	+1%	+3	+3
Pharmacy	1	1	-0	-9%		
H&SC, Other	14	14	-0	-1%	+1	+1
Health & Social Care Professionals	117	121	+4	+3.3%	+7	+7
Management (VIII & above)	8	8	+0	+1%	+2	+2
Administrative/ Supervisory (V to VII)	30	31	+0	+0%	+1	+1
Clerical (III & IV)	85	85	+0	+0%	-0	-0
Management & Administrative	123	123	+0	+0.2%	+2	+2
Support	65	65	-0	-0%	+3	+3
Maintenance/ Technical	16	16	-0	-1%	-0	-0
General Support	82	81	-0	-0.2%	+3	+3
Health Care Assistants	66	68	+1	+2%	+2	+2
Care, other	11	11	-0	-0%	+0	+0
Patient & Client Care	78	79	+1	+1.7%	+2	+2

CHO 2

Dec 2020 (Dec 2019 figure: 1,308)	WTE Nov 2020	WTE Dec 2020	WTE change since Nov 20	% change since Nov 20	WTE change since Dec 19	WTE change since Dec 19
Overall	1,345	1,340	-5	-0.4%	+32	+32
Consultants	37	37	-0	-1%	-1	-1
Registrars	37	37	0		+3	+3
SHO/ Interns	40	40	+0	+0%	+5	+5
Medical/ Dental, other	2	1	-1	-43%		
Medical & Dental	115	114	-1	-0.8%	+8	+8
Nurse/ Midwife Manager	151	151	-0	-0%	+5	+5
Nurse/ Midwife Specialist & AN/MP	79	79	+1	+1%	+12	+12
Staff Nurse/ Staff Midwife	355	355	-0	-0%	-3	-3
<i>Pre-registration Nurse/ Midwife Intern</i>				-100%		-0
<i>Pre-registration Nurse Intern (COVID-19)</i>	15	10	-5	-34%	+10	+10
<i>Nursing/ Midwifery awaiting registration</i>				-100%	-11	-5
Nursing/ Midwifery Student	15	10	-5	-34%	+5	+5
Nursing/ Midwifery other	3	2	-1	-41%	-0	-0
Nursing & Midwifery	603	597	-6	-1.0%	+19	+19
Therapy Professions	53	55	+3	+5%	+10	+10
Social Care	16	16	+0	+2%	+1	+1
Social Workers	42	42	-1	-1%	+1	+1
Psychologists	37	37	-0	-1%	+3	+3
Pharmacy	2	2	-0	-2%	-1	-1
H&SC, Other	3	3	0			
Health & Social Care Professionals	153	155	+2	+1.3%	+15	+15
Management (VIII & above)	4	4	0		-1	-1
Administrative/ Supervisory (V to VII)	27	26	-1	-3%	+3	+3
Clerical (III & IV)	101	102	+2	+2%	-7	-7
Management & Administrative	132	133	+1	+0.6%	-5	-5
Support	32	31	-1	-2%	-5	-5
Maintenance/ Technical	33	33	+0	+1%	+6	+6
General Support	65	64	-0	-0.4%	+1	+1
Health Care Assistants	211	211	+0	+0%	-4	-4
Care, other	67	66	-1	-1%	-3	-3
Patient & Client Care	278	278	-0	-0.1%	-7	-7

CHO 3

Dec 2020 (Dec 2019 figure: 795)	WTE Nov 2020	WTE Dec 2020	WTE change since Nov 20	% change since Nov 20	WTE change since Dec 19	WTE change since Dec 19
Overall	807	809	+2	+0.2%	+13	+13
Consultants	25	24	-1	-3%	+1	+1
Registrars	16	15	-0	-2%	-3	-3
SHO/ Interns	21	21	0		+2	+2
Medical & Dental	62	61	-1	-1.9%	+1	+1
Nurse/ Midwife Manager	83	88	+5	+6%	+0	+0
Nurse/ Midwife Specialist & AN/MP	33	37	+4	+12%	-2	-2
Staff Nurse/ Staff Midwife	270	272	+1	+0%	+26	+26
<i>Pre-registration Nurse/ Midwife Intern</i>				-100%	-9	-9
<i>Pre-registration Nurse Intern (COVID-19)</i>	11	3	-7	-69%	+3	+3
Nursing/ Midwifery Student	11	3	-7	-69%	-5	-5
Nursing & Midwifery	397	400	+2	+0.6%	+19	+19
Therapy Professions	25	25	+0	+1%	-2	-2
Social Care	3	3	0		+0	+0
Social Workers	25	24	-0	-1%	-1	-1
Psychologists	91	91	-0	-0%	-1	-1
Pharmacy	3	3	0			
H&SC, Other	12	12	+0	+1%	+3	+3
Health & Social Care Professionals	158	158	-0	-0.1%	-1	-1
Management (VIII & above)	2	2	0		+0	+0
Administrative/ Supervisory (V to VII)	19	19	+0	+0%	+2	+2
Clerical (III & IV)	50	50	+0	+0%	-5	-5
Management & Administrative	71	71	+0	+0.3%	-3	-3
Support	30	30	-0	-1%	-2	-2
Maintenance/ Technical	9	9	0		-2	-2
General Support	39	39	-0	-0.7%	-4	-4
Health Care Assistants	78	79	+1	+1%	+3	+3
Care, other	1	1	0		-1	-1
Patient & Client Care	79	80	+1	+1.0%	+3	+3

CHO 4

Dec 2020 (Dec 2019 figure: 1,485)	WTE Nov 2020	WTE Dec 2020	WTE change since Nov 20	% change since Nov 20	WTE change since Dec 19	WTE change since Dec 19
Overall	1,562	1,564	+1	+0.1%	+78	+78
Consultants	54	54	+1	+1%	+4	+4
Registrars	42	42	-0	-1%	-4	-4
SHO/ Interns	43	43	+0	+0%	+12	+12
Medical/ Dental, other	2	2	0			
Medical & Dental	140	141	+0	+0.3%	+12	+12
Nurse/ Midwife Manager	190	192	+3	+1%	+23	+23
Nurse/ Midwife Specialist & AN/MP	70	71	+0	+0%	+11	+11
Staff Nurse/ Staff Midwife	521	519	-2	-0%	+17	+17
<i>Pre-registration Nurse/ Midwife Intern</i>				-100%	-1	-3
<i>Pre-registration Nurse Intern (COVID-19)</i>	5	3	-2	-33%	+3	+3
<i>Post-registration Nurse/ Midwife Student</i>				-100%		-1
<i>Nursing/ Midwifery awaiting registration</i>	1	1	0		+1	-29
Nursing/ Midwifery Student	6	4	-2	-27%	-30	-30
Nursing & Midwifery	787	786	-0	-0.0%	+21	+21
Therapy Professions	79	77	-1	-2%	+4	+4
Social Care	7	7	+0	+2%	+3	+3
Social Workers	65	64	-0	-1%	+11	+11
Psychologists	92	94	+2	+2%	+11	+11
Pharmacy	2	3	+1	+49%	+1	+1
H&SC, Other	13	12	-0	-2%	+2	+2
Health & Social Care Professionals	257	258	+1	+0.4%	+32	+32
<i>Executive Management</i>	2	2	-0	-14%	+2	+2
<i>Senior Management (VIII & GM)</i>	1	1	0		+1	
Management (VIII & above)	3	3	-0	-9%	+2	+2
Administrative/ Supervisory (V to VII)	22	22	-1	-3%	-1	-1
Clerical (III & IV)	93	94	+1	+1%	+7	+7
Management & Administrative	119	119	+0	+0.2%	+8	+8
Support	82	82	-0	-0%	+2	+2
Maintenance/ Technical	5	5	0		-1	-1
General Support	87	87	-0	-0.3%	+1	+1
Health Care Assistants	166	166	+0	+0%	+6	+6
Care, other	6	6	+0	+1%	-1	-1
Patient & Client Care	172	173	+0	+0.3%	+5	+5

CHO 5

Dec 2020 (Dec 2019 figure: 1,178)	WTE Nov 2020	WTE Dec 2020	WTE change since Nov 20	% change since Nov 20	WTE change since Dec 19	WTE change since Dec 19
Overall	1,191	1,188	-3	-0.2%	+11	+11
Consultants	27	27	-0	-0%	+1	+1
Registrars	9	9	0		-1	-1
SHO/ Interns	35	36	+1	+4%	+4	+4
Medical/ Dental, other	2	2	+0	+1%		
Medical & Dental	73	74	+1	+1.8%	+4	+4
Nurse/ Midwife Manager	162	160	-2	-1%	-4	-4
Nurse/ Midwife Specialist & AN/MP	54	54	+0	+0%	+12	+12
Staff Nurse/ Staff Midwife	410	411	+1	+0%	-4	-4
<i>Pre-registration Nurse/ Midwife Intern</i>				-100%	-1	-4
<i>Pre-registration Nurse Intern (COVID-19)</i>	15	13	-2	-13%	+13	+13
<i>Nursing/ Midwifery awaiting registration</i>				-100%		-2
Nursing/ Midwifery Student	15	13	-2	-13%	+7	+7
Nursing/ Midwifery other	3	4	+0	+3%	-0	-0
Nursing & Midwifery	644	642	-3	-0.4%	+11	+11
Therapy Professions	37	39	+1	+3%	-2	-2
Social Care	5	5	0			
Social Workers	28	28	-0	-1%	+0	+0
Psychologists	21	21	+0	+1%	+0	+0
H&SC, Other	8	8	0		-2	-2
Health & Social Care Professionals	99	100	+1	+1.1%	-3	-3
Management (VIII & above)	6	6	0		+3	+3
Administrative/ Supervisory (V to VII)	20	20	-0	-0%	-0	-0
Clerical (III & IV)	69	68	-1	-1%	-5	-5
Management & Administrative	95	94	-1	-1.0%	-3	-3
Support	179	178	-0	-0%	+11	+11
Maintenance/ Technical	20	20	-1	-2%	-4	-4
General Support	199	198	-1	-0.4%	+7	+7
Health Care Assistants	68	68	-1	-1%	-5	-5
Care, other	12	12	+0	+0%	-1	-1
Patient & Client Care	80	80	-1	-0.8%	-6	-6

CHO 6

Dec 2020 (Dec 2019 figure: 593)	WTE Nov 2020	WTE Dec 2020	WTE change since Nov 20	% change since Nov 20	WTE change since Dec 19	WTE change since Dec 19
Overall	626	626	+1	+0.1%	+34	+34
Consultants	39	40	+1	+3%	+4	+4
Registrars	19	19	+0	+2%	-3	-3
SHO/ Interns	14	13	-1	-5%	+4	+4
Medical/ Dental, other				-100%		
Medical & Dental	71	72	+1	+1.1%	+5	+5
Nurse/ Midwife Manager	76	77	+1	+1%	+1	+1
Nurse/ Midwife Specialist & AN/MP	20	20	-0	-0%	+6	+6
Staff Nurse/ Staff Midwife	153	151	-2	-1%	+12	+12
<i>Nursing/ Midwifery awaiting registration</i>	1	1	0		+1	+1
Nursing/ Midwifery Student	1	1	0		+1	+1
Nursing/ Midwifery other	2	2	0			
Nursing & Midwifery	252	251	-1	-0.5%	+20	+20
Therapy Professions	39	39	-0	-0%	-4	-4
Social Care	29	28	-1	-3%	+2	+2
Social Workers	31	30	-1	-3%	-0	-0
Psychologists	31	32	+1	+3%	+10	+10
H&SC, Other	5	5	-0	-4%	-4	-4
Health & Social Care Professionals	135	134	-1	-0.7%	+4	+4
Management (VIII & above)	3	3	0			
Administrative/ Supervisory (V to VII)	25	24	-1	-4%	-2	-2
Clerical (III & IV)	41	43	+1	+3%	+1	+1
Management & Administrative	70	70	+0	+0.7%	-2	-2
Support	37	39	+2	+6%	+2	+2
Maintenance/ Technical	6	6	0		+0	+0
General Support	43	45	+2	+5.4%	+2	+2
Health Care Assistants	49	49	-1	-1%	+3	+3
Care, other	6	6	0		+1	+1
Patient & Client Care	55	54	-1	-1.0%	+4	+4

CHO 7

Dec 2020 (Dec 2019 figure: 835)	WTE Nov 2020	WTE Dec 2020	WTE change since Nov 20	% change since Nov 20	WTE change since Dec 19	WTE change since Dec 19
Overall	861	861	+0	+0.0%	+26	+26
Consultants	52	53	+1	+2%	+5	+5
Registrars	53	54	+0	+0%	+7	+7
SHO/ Interns	19	20	+1	+4%	-1	-1
Medical & Dental	125	127	+2	+1.6%	+12	+12
Nurse/ Midwife Manager	116	117	+2	+1%	+1	+1
Nurse/ Midwife Specialist & AN/MP	49	47	-2	-4%	+7	+7
Staff Nurse/ Staff Midwife	200	202	+2	+1%	+7	+7
<i>Pre-registration Nurse/ Midwife Intern</i>		1	+1	-100%	-5	-1
<i>Pre-registration Nurse Intern (COVID-19)</i>	5	3	-2	-37%	+3	+3
<i>Post-registration Nurse/ Midwife Student</i>	1	1	0		+1	+1
<i>Nursing/ Midwifery awaiting registration</i>	3	3	-0	-3%	-1	-7
Nursing/ Midwifery Student	9	8	-2	-17%	-3	-3
Nursing/ Midwifery other	8	6	-2	-27%	-2	-2
Nursing & Midwifery	382	379	-2	-0.6%	+10	+10
Therapy Professions	50	53	+3	+6%	+6	+6
Social Care	8	7	-0	-5%	-0	-0
Social Workers	37	38	+0	+1%	+4	+4
Psychologists	31	29	-2	-6%	-2	-2
<i>Pharmacy</i>	1	1	+0	+1%	+1	
Pharmacy	1	1	+0	+1%		
H&SC, Other	19	18	-1	-6%	-0	-0
Health & Social Care Professionals	146	147	+0	+0.1%	+7	+7
Management (VIII & above)	3	4	+1	+35%	+1	+1
Administrative/ Supervisory (V to VII)	17	17	-0	-1%	+2	+2
Clerical (III & IV)	49	49	+0	+0%	+2	+2
Management & Administrative	69	70	+1	+1.6%	+5	+5
Support	17	17	+1	+3%	-0	-0
Maintenance/ Technical	2	2	0		+0	+0
General Support	19	19	+1	+3.0%	-0	-0
Health Care Assistants	35	34	-0	-1%	+1	+1
Care, other	86	84	-1	-1%	-8	-8
Patient & Client Care	120	119	-1	-1.2%	-7	-7

CHO 8

Dec 2020 (Dec 2019 figure: 1,098)	WTE Nov 2020	WTE Dec 2020	WTE change since Nov 20	% change since Nov 20	WTE change since Dec 19	WTE change since Dec 19
Overall	1,114	1,112	-2	-0.2%	+14	+14
Consultants	36	36	+1	+2%	+1	+1
Registrars	33	31	-2	-5%	+5	+5
SHO/ Interns	25	26	+1	+5%	-10	-10
Medical & Dental	94	94	+0	+0.3%	-3	-3
Nurse/ Midwife Manager	116	120	+4	+3%	-0	-0
Nurse/ Midwife Specialist & AN/MP	59	60	+0	+1%	+3	+3
Staff Nurse/ Staff Midwife	343	342	-1	-0%	+11	+11
<i>Pre-registration Nurse/ Midwife Intern</i>	1		-1	-100%		-1
<i>Pre-registration Nurse Intern (COVID-19)</i>	5	1	-4	-81%	+1	+1
<i>Nursing/ Midwifery awaiting registration</i>				-100%	-1	-2
Nursing/ Midwifery Student	6	1	-5	-84%	-1	-1
Nursing/ Midwifery other	3	3	0		-1	-1
Nursing & Midwifery	528	526	-2	-0.3%	+11	+11
Therapy Professions	43	43	-0	-1%	-2	-2
Social Care	7	7	-0	-2%	-0	-0
Social Workers	45	44	-1	-3%	+2	+2
Psychologists	37	37	-0	-1%	-2	-2
Pharmacy	2	2	0		+1	+1
H&SC, Other	20	21	+1	+6%	+1	+1
Health & Social Care Professionals	154	153	-1	-0.7%	-0	-0
Management (VIII & above)	3	3	+0	+2%	+0	+0
Administrative/ Supervisory (V to VII)	20	20	-0	-1%	-2	-2
Clerical (III & IV)	98	97	-1	-1%	+9	+9
Management & Administrative	121	120	-1	-0.7%	+7	+7
Support	31	31	+0	+1%	-1	-1
Maintenance/ Technical	28	28	+0	+1%	+2	+2
General Support	59	59	+1	+1.1%	+1	+1
Health Care Assistants	155	156	+1	+1%	-1	-1
Care, other	3	3	+0	+6%	-0	-0
Patient & Client Care	158	159	+1	+0.7%	-1	-1

CHO 9

Dec 2020 (Dec 2019 figure: 1,272)	WTE Nov 2020	WTE Dec 2020	WTE change since Nov 20	% change since Nov 20	WTE change since Dec 19	WTE change since Dec 19
Overall	1,316	1,331	+15	+1.1%	+59	+59
Consultants	47	46	-0	-1%	-4	-4
Registrars	31	32	+1	+3%	+1	+1
SHO/ Interns	53	54	+1	+1%	+0	+0
Medical & Dental	130	132	+1	+1.0%	-2	-2
Nurse/ Midwife Manager	138	138	+0	+0%	+6	+6
Nurse/ Midwife Specialist & AN/MP	75	76	+1	+1%	+11	+11
Staff Nurse/ Staff Midwife	368	371	+3	+1%	+20	+20
<i>Pre-registration Nurse/ Midwife Intern</i>	7	10	+3	+38%	-2	+0
<i>Pre-registration Nurse Intern (COVID-19)</i>	4	5	+2	+42%	+5	+5
<i>Nursing/ Midwifery awaiting registration</i>				-100%	-3	-11
Nursing/ Midwifery Student	11	16	+4	+39%	-5	-5
Nursing/ Midwifery other	12	13	+0	+4%	+1	+1
Nursing & Midwifery	604	613	+9	+1.5%	+33	+33
Therapy Professions	63	61	-2	-3%	+6	+6
Social Care	1	1	0		+0	+0
Social Workers	42	43	+0	+1%	-1	-1
Psychologists	53	53	+0	+0%	+7	+7
Pharmacy	9	9	+0	+3%	+1	+1
H&SC, Other	15	14	-0	-3%	-0	-0
Health & Social Care Professionals	182	181	-1	-0.8%	+14	+14
Management (VIII & above)	5	5	0		+0	+0
Administrative/ Supervisory (V to VII)	29	29	-1	-2%	+1	+1
Clerical (III & IV)	111	114	+3	+2%	+10	+10
Management & Administrative	146	148	+2	+1.5%	+11	+11
Support	102	104	+2	+2%	+1	+1
Maintenance/ Technical	11	11	0		+0	+0
General Support	113	115	+2	+1.5%	+1	+1
Health Care Assistants	127	129	+2	+2%	+3	+3
Care, other	12	12	-0	-0%	-0	-0
Patient & Client Care	140	142	+2	+1.4%	+3	+3

other Community Services

Dec 2020 (Dec 2019 figure: 438)	WTE Nov 2020	WTE Dec 2020	WTE change since Nov 20	% change since Nov 20	WTE change since Dec 19	WTE change since Dec 19
Overall	490	494	+4	+0.9%	+57	+57
Consultants	17	17	-0	-1%	+1	+1
Registrars	14	14	0		+1	+1
SHO/ Interns				-100%		
Medical & Dental	31	31	-0	-0.6%	+2	+2
Nurse/ Midwife Manager	76	76	+0	+0%	+14	+14
Nurse/ Midwife Specialist & AN/MP	12	13	+1	+6%	+4	+4
Staff Nurse/ Staff Midwife	165	165	-0	-0%	-4	-4
Nursing/ Midwifery other	2	2	-0	-2%	+1	+1
Nursing & Midwifery	255	255	+0	+0.2%	+15	+15
Therapy Professions	12	12	+0	+0%	+1	+1
Social Care	2	2	-0	-5%	-0	-0
Social Workers	17	17	+1	+3%	+2	+2
Psychologists	6	6	0		-0	-0
<i>Pharmacy</i>	<i>1</i>	<i>1</i>	<i>0</i>		<i>+1</i>	<i>+1</i>
Pharmacy	1	1	0		+1	+1
Health & Social Care Professionals	37	38	+0	+1.3%	+4	+4
Management (VIII & above)	28	30	+2	+6%	+3	+3
Administrative/ Supervisory (V to VII)	37	37	-0	-1%	+5	+5
Clerical (III & IV)	17	18	+2	+9%	-7	-7
Management & Administrative	82	85	+3	+3.7%	+2	+2
Support	16	16	+0	+1%	+4	+4
Maintenance/ Technical	7	7	0		+5	+5
General Support	23	23	+0	+0.7%	+9	+9
Health Care Assistants	62	62	+0	+1%	+25	+25
Care, other	1	1	0			
Patient & Client Care	62	63	+0	+0.5%	+25	+25

Mental Health Services Employment by Grade Group: Dec 2020

Dec 2020 (Dec 2019 figure: 9,954)	WTE Nov 2020	WTE Dec 2020	WTE change since Nov 20	% change since Nov 20	WTE change since Dec 19	WTE change since Dec 19
Overall	10,283	10,301	+18	+0.2%	+347	+347
Consultant Medicine	1	1	0			
Consultant Psychiatry	367	369	+1	+0%	+17	+17
Consultants	368	370	+1	+0%	+17	+17
Registrar	169	168	-1	-0%	-1	-1
Senior Registrar	110	111	+1	+1%	+14	+14
Specialist Registrar	2	2	0		-1	-1
Registrars	281	281	+0	+0%	+12	+12
Interns	5	5	0		-3	-3
Senior House Officer	267	271	+4	+1%	+18	+18
SHO/ Interns	272	276	+4	+1%	+15	+15
Other Medical	6	5	-1	-13%		
Medical/ Dental, other	6	5	-1	-13%		
Medical & Dental	927	932	+5	+1%	+44	+44
Clinical Nurse/ Midwife Manager	1,033	1,041	+8	+1%	+42	+42
Director Nursing/Midwifery, Assistant	169	171	+2	+1%	+6	+6
Director of Nursing/Midwifery	27	28	+1	+2%	-1	-1
Nurse/ Midwife Manager	1,229	1,240	+10	+1%	+47	+47
Advanced Nurse/ Midwife Practitioner	39	39	+0	+0%	+9	+9
Clinical Nurse/ Midwife Specialist	484	489	+5	+1%	+61	+61
Nurse/ Midwife Specialist & AN/MP	523	529	+5	+1%	+70	+70
Staff Midwives	1	1	0		+1	+1
Staff Nurse [Intellectual Disability]	4	4	-0	-0%	-0	-0
Staff Nurse [Psychiatric]	2,953	2,965	+12	+0%	+71	+71
Staff Nurses [General/ Children's]	111	106	-5	-4%	+2	+2
Staff Nurse/ Staff Midwife	3,069	3,076	+7	+0%	+73	+73
Pre-registration Nurse/ Midwife Intern	10	11	+1	+9%	-17	-17
Pre-registration Nurse Intern (COVID-19)	68	42	-25	-37%	+42	+42
Post-registration Nurse/ Midwife Student	1	1	0			
Nursing/ Midwifery awaiting registration	5	5	-0	-2%	-54	-54
Nursing/ Midwifery Student	84	59	-25	-29%	-28	-28
Nursing Education/Clinical	34	32	-3	-8%	+0	+0
Nursing/ Midwifery other	34	32	-3	-8%	+0	+0
Nursing & Midwifery	4,940	4,935	-4	-0%	+162	+162
Dietitians	18	21	+3	+17%	+2	+2
Occupational Therapists	348	346	-2	-1%	+7	+7
Physiotherapists	2	2	0		+0	+0
Podiatrists & Chiropodists	1	1	-0	-4%	+0	+0
Speech & Language Therapists	65	70	+4	+6%	+8	+8
Therapy Professions	434	439	+5	+1%	+17	+17
Social Care	81	80	-1	-1%	+6	+6
Social Workers	373	373	-0	-0%	+23	+23
Psychologists	423	424	+1	+0%	+29	+29
Pharmacy	20	21	+1	+6%	+2	+2
Counsellor Therapists	100	101	+1	+1%	+6	+6
Other Health & Social Care	7	5	-2	-23%	-6	-6
Play Therapists/ Specialists	1	1	0		+0	+0
H&SC, Other	109	108	-1	-1%	+0	+0
Health & Social Care Professionals	1,439	1,444	+5	+0%	+78	+78
Executive Management	14	15	+0	+3%	+4	+4
Senior Management (VIII & GM)	50	52	+2	+4%	+6	+6

Dec 2020 (Dec 2019 figure: 9,954)	WTE Nov 2020	WTE Dec 2020	WTE change since Nov 20	% change since Nov 20	WTE change since Dec 19	WTE change since Dec 19
Overall	10,283	10,301	+18	+0.2%	+347	+347
Management (VIII & above)	65	67	+3	+4%	+10	+10
Middle Management (V-VII)	247	243	-3	-1%	+8	+8
Other Administrative	2	2	0			
Administrative/ Supervisory (V to VII)	248	245	-3	-1%	+8	+8
General Administrative (III & IV)	715	722	+7	+1%	+5	+5
Clerical (III & IV)	715	722	+7	+1%	+5	+5
Management & Administrative	1,028	1,034	+6	+1%	+22	+22
Catering	64	64	-1	-1%	-2	-2
Household Services	437	441	+4	+1%	+17	+17
Other Support	42	42	+0	+1%	-1	-1
Portering	48	47	-0	-1%	-1	-1
Support	591	594	+3	+1%	+14	+14
Maintenance	137	137	+0	+0%	+8	+8
Technical Services				-100%	-2	-2
Maintenance/ Technical	137	137	+0	+0%	+6	+6
General Support	728	732	+4	+1%	+20	+20
HCA, Nurse's Aide, etc.	1,009	1,013	+5	+0%	+34	+34
Health & Social Care Assistants	8	8	-0	-1%	-1	-1
Health Care Assistants	1,017	1,022	+4	+0%	+34	+34
Care, other	205	203	-2	-1%	-12	-12
Patient & Client Care	1,222	1,225	+3	+0%	+21	+21

Employment by WTE, Headcount, Gender, Full-Time /Part-Time etc.: Dec 2020

Mental Health Services Staff Group	WTE	Headcount	WTE: no.	% Male	% female	Male WTE: no.	Female WTE: no.	% Total Perm	% Male Perm	% Female Perm	% Total Full Time	% Total Part Time	% Male FT	% Female FT
Overall	10,301	11,213	1.09	27.1%	72.9%	1.05	1.10	84.2%	80.3%	85.7%	84.4%	15.6%	92.7%	81.4%
Consultant Medicine	1	1	1.00	100.0%		1.00		100.0%	100.0%		100.0%	0.0%	100.0%	
Consultant Psychiatry	369	401	1.09	39.7%	60.3%	1.06	1.11	65.6%	65.6%	64.9%	85.0%	15.0%	91.8%	80.6%
Consultants	370	402	1.09	39.8%	60.2%	1.06	1.11	65.7%	66.9%	64.9%	85.1%	14.9%	91.9%	80.6%
Registrar	168	173	1.03	42.8%	57.2%	1.00	1.05	5.2%	5.2%	4.0%	96.5%	3.5%	100.0%	93.9%
Senior Registrar	111	116	1.04	43.1%	56.9%	1.00	1.08	1.7%	1.7%	3.0%	95.7%	4.3%	100.0%	92.4%
Specialist Registrar	2	2	1.00	50.0%	50.0%	1.00	1.00	0.0%	0.0%	0.0%	100.0%	0.0%	100.0%	100.0%
Registrars	281	291	1.04	43.0%	57.0%	1.00	1.06	3.8%	4.0%	3.6%	96.2%	3.8%	100.0%	93.4%
Interns	5	5	1.00	20.0%	80.0%	1.00	1.00	0.0%	0.0%	0.0%	100.0%	0.0%	100.0%	100.0%
Senior House Officer	271	275	1.01	37.5%	62.5%	1.01	1.02	0.4%	0.4%	0.0%	99.6%	0.4%	100.0%	99.4%
SHO/ Interns	276	280	1.01	37.1%	62.9%	1.01	1.02	0.4%	1.0%	0.0%	99.6%	0.4%	100.0%	99.4%
Other Medical	5	10	2.00	50.0%	50.0%	2.02	1.98	40.0%	40.0%	40.0%	90.0%	10.0%	100.0%	80.0%
Medical/ Dental, other	5	10	2.00	50.0%	50.0%	2.02	1.98	40.0%	40.0%	40.0%	90.0%	10.0%	100.0%	80.0%
Medical & Dental	932	983	1.06	40.1%	59.9%	1.03	1.07	28.5%	29.2%	28.0%	92.6%	7.4%	96.7%	89.8%
Clinical Nurse/ Midwife Manager	1,041	1,093	1.05	33.8%	66.2%	1.02	1.07	98.8%	98.8%	99.4%	93.5%	6.5%	98.1%	91.2%
Director Nursing/Midwifery, Assistant	171	174	1.02	46.6%	53.4%	1.02	1.02	99.4%	99.4%	98.9%	97.7%	2.3%	98.8%	96.8%
Director of Nursing/Midwifery	28	28	1.00	57.1%	42.9%	1.00	1.01	100.0%	100.0%	100.0%	96.4%	3.6%	100.0%	91.7%
Nurse/ Midwife Manager	1,240	1,295	1.04	36.0%	64.0%	1.02	1.06	98.9%	98.1%	99.4%	94.1%	5.9%	98.3%	91.8%
Advanced Nurse/ Midwife Practitioner	39	41	1.04	17.1%	82.9%	1.01	1.05	100.0%	100.0%	100.0%	90.2%	9.8%	100.0%	88.2%
Clinical Nurse/ Midwife Specialist	489	516	1.05	19.4%	80.6%	1.01	1.06	99.4%	99.4%	99.5%	92.2%	7.8%	98.0%	90.9%
Nurse/ Midwife Specialist & AN/MP	529	557	1.05	19.2%	80.8%	1.01	1.06	99.5%	99.1%	99.6%	92.1%	7.9%	98.1%	90.7%
Staff Midwives	1	1	1.00		100.0%		1.00	0.0%	0.0%	0.0%	100.0%	0.0%		100.0%
Staff Nurse [Intellectual Disability]	4	5	1.18		100.0%		1.18	40.0%	40.0%	40.0%	80.0%	20.0%		80.0%
Staff Nurse [Psychiatric]	2,965	3,215	1.08	26.4%	73.6%	1.06	1.09	91.2%	91.2%	92.1%	87.3%	12.7%	92.1%	85.6%
Staff Nurses [General/ Children's]	106	121	1.14	18.2%	81.8%	1.10	1.14	81.0%	81.0%	81.8%	77.7%	22.3%	81.8%	76.8%
Staff Nurse/ Staff Midwife	3,076	3,342	1.09	26.1%	73.9%	1.06	1.10	90.8%	88.6%	91.5%	87.0%	13.0%	91.8%	85.2%
Pre-registration Nurse/ Midwife Intern	11	22	2.05	13.6%	86.4%	2.48	2.00	4.5%	4.5%	0.0%	100.0%	0.0%	100.0%	100.0%
Pre-registration Nurse Intern (COVID-19)	42	48	1.13	20.8%	79.2%	1.12	1.14	0.0%	0.0%	0.0%	100.0%	0.0%	100.0%	100.0%
Post-registration Nurse/ Midwife Student	1	1	1.00		100.0%		1.00	0.0%	0.0%	0.0%	100.0%	0.0%		100.0%
Nursing/ Midwifery awaiting registration	5	5	1.03		100.0%		1.03	100.0%	100.0%	100.0%	100.0%	0.0%		100.0%

Nursing/ Midwifery Student	59	76	1.29	17.1%	82.9%	1.28	1.29	7.9%	7.7%	7.9%	100.0%	0.0%	100.0%	100.0%
Nursing Education/Clinical	32	36	1.14	16.7%	83.3%	1.00	1.17	100.0%	100.0%	100.0%	86.1%	13.9%	100.0%	83.3%
Nursing/ Midwifery other	32	36	1.14	16.7%	83.3%	1.00	1.17	100.0%	100.0%	100.0%	86.1%	13.9%	100.0%	83.3%
Nursing & Midwifery	4,935	5,306	1.08	27.6%	72.4%	1.04	1.09	92.5%	91.7%	92.8%	89.4%	10.6%	94.5%	87.5%
Health & Social Care	1,444	1,618	1.12	17.1%	82.9%	1.06	1.13	85.7%	80.5%	86.8%	81.7%	18.3%	90.6%	79.9%
Executive Management	15	15	1.02	66.7%	33.3%	1.00	1.06	100.0%	100.0%	100.0%	100.0%	0.0%	100.0%	100.0%
Senior Management (VIII & GM)	52	53	1.01	32.1%	67.9%	1.02	1.01	94.3%	94.3%	94.4%	96.2%	3.8%	94.1%	97.2%
Management (VIII & above)	67	68	1.01	39.7%	60.3%	1.01	1.01	95.6%	96.3%	95.1%	97.1%	2.9%	96.3%	97.6%
Middle Management (V-VII)	243	257	1.06	18.7%	81.3%	1.01	1.07	88.3%	88.3%	90.0%	89.1%	10.9%	97.9%	87.1%
Other Administrative	2	2	1.27		100.0%		1.27	100.0%	100.0%	100.0%	50.0%	50.0%		50.0%
Administrative/ Supervisory (V to VII)	245	259	1.06	18.5%	81.5%	1.01	1.07	88.4%	81.3%	90.0%	88.8%	11.2%	97.9%	86.7%
General Administrative (III & IV)	722	816	1.13	8.5%	91.5%	1.07	1.14	82.8%	82.8%	83.1%	73.5%	26.5%	88.4%	72.2%
Clerical (III & IV)	722	816	1.13	8.5%	91.5%	1.07	1.14	82.8%	79.7%	83.1%	73.5%	26.5%	88.4%	72.2%
Management & Administrative	1,034	1,143	1.11	12.6%	87.4%	1.04	1.12	84.9%	83.3%	85.1%	78.4%	21.6%	93.1%	76.3%
Catering	64	69	1.09	31.9%	68.1%	1.02	1.12	91.3%	91.3%	89.4%	72.5%	27.5%	90.9%	63.8%
Household Services	441	510	1.16	21.0%	79.0%	1.10	1.17	86.1%	86.1%	88.8%	60.0%	40.0%	81.3%	54.3%
Other Support	42	49	1.17	32.7%	67.3%	1.03	1.25	89.8%	89.8%	87.9%	69.4%	30.6%	87.5%	60.6%
Portering	47	49	1.04	91.8%	8.2%	1.03	1.10	81.6%	81.6%	50.0%	87.8%	12.2%	88.9%	75.0%
Support	594	677	1.14	28.1%	71.9%	1.06	1.17	86.6%	81.6%	88.5%	64.0%	36.0%	84.7%	55.9%
Maintenance	137	142	1.03	99.3%	0.7%	1.03	1.00	95.1%	95.1%	100.0%	96.5%	3.5%	96.5%	100.0%
Maintenance/ Technical	137	142	1.03	99.3%	0.7%	1.03	1.00	95.1%	95.0%	100.0%	96.5%	3.5%	96.5%	100.0%
General Support	732	819	1.12	40.4%	59.6%	1.05	1.17	88.0%	87.3%	88.5%	69.6%	30.4%	89.7%	55.9%
Health Care Assistants	1,022	1,104	1.08	28.8%	71.2%	1.05	1.09	89.1%	83.6%	91.3%	78.3%	21.7%	89.9%	73.5%
Care, other	203	240	1.18	45.4%	54.6%	1.11	1.25	78.8%	75.2%	81.7%	67.5%	32.5%	77.1%	59.5%
Patient & Client Care	1,225	1,344	1.10	31.8%	68.2%	1.07	1.11	87.3%	81.5%	90.0%	76.3%	23.7%	86.7%	71.5%

Employment by WTE, Headcount, Gender, Full-Time /Part-Time etc.: Dec 2020

Mental Health Services CHO	WTE	Headcount	WTE: no.	% Male	% female	Male WTE: no.	Female WTE: no.	% Total Perm	% Male Perm	% Female Perm	% Total Full Time	% Total Part Time	% Male FT	% Female FT
Overall	10,301	11,213	1.09	27.1%	72.9%	1.05	1.10	84.2%	80.3%	85.7%	84.4%	15.6%	92.7%	81.4%
CHO 1	976	1,055	1.08	27.0%	73.0%	1.03	1.10	90.7%	90.7%	92.2%	86.9%	13.1%	96.5%	83.4%
CHO 2	1,340	1,447	1.08	28.0%	72.0%	1.05	1.09	86.2%	86.2%	88.0%	83.3%	16.7%	89.9%	80.7%
CHO 3	809	877	1.08	22.6%	77.4%	1.05	1.10	84.3%	84.3%	84.4%	84.2%	15.8%	90.4%	82.3%
CHO 4	1,564	1,713	1.10	25.5%	74.5%	1.06	1.11	75.2%	75.2%	77.8%	84.3%	15.7%	93.6%	81.1%
CHO 5	1,188	1,303	1.10	26.0%	74.0%	1.04	1.12	86.3%	86.3%	88.0%	78.7%	21.3%	90.9%	74.5%
CHO 6	626	689	1.10	29.3%	70.7%	1.05	1.12	83.3%	83.3%	83.8%	83.6%	16.4%	91.1%	80.5%
CHO 7	861	947	1.10	23.0%	77.0%	1.06	1.11	82.8%	82.8%	83.1%	87.2%	12.8%	95.4%	84.8%
CHO 8	1,112	1,199	1.08	24.9%	75.1%	1.03	1.10	89.0%	89.0%	90.0%	85.1%	14.9%	94.3%	82.0%
CHO 9	1,331	1,463	1.10	27.9%	72.1%	1.05	1.12	83.6%	83.6%	85.1%	84.8%	15.2%	94.4%	81.0%
other Community Services	494	520	1.05	47.3%	52.7%	1.06	1.05	83.8%	83.8%	87.6%	91.7%	8.3%	90.2%	93.1%

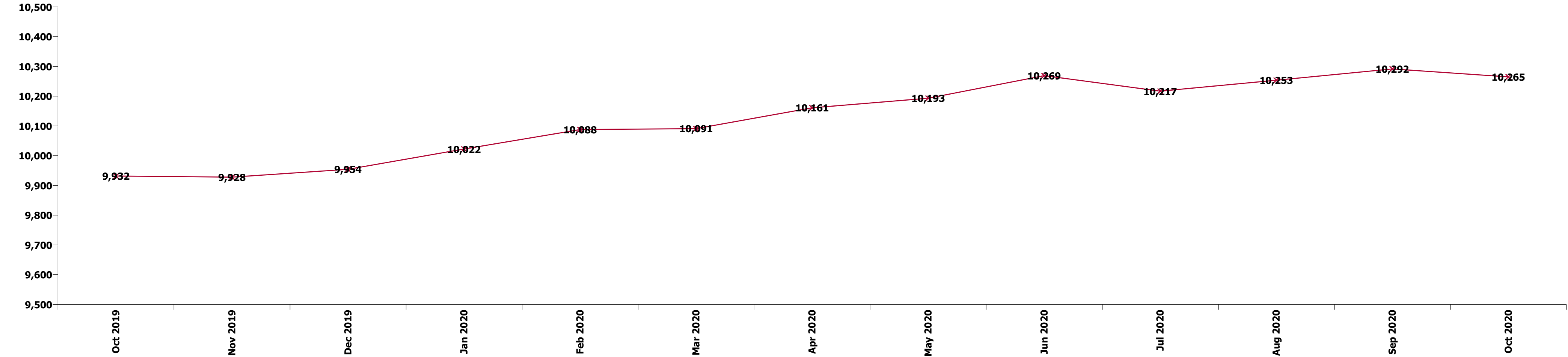
Summary Staff Movement: December 2020

Month-on-month
Summary

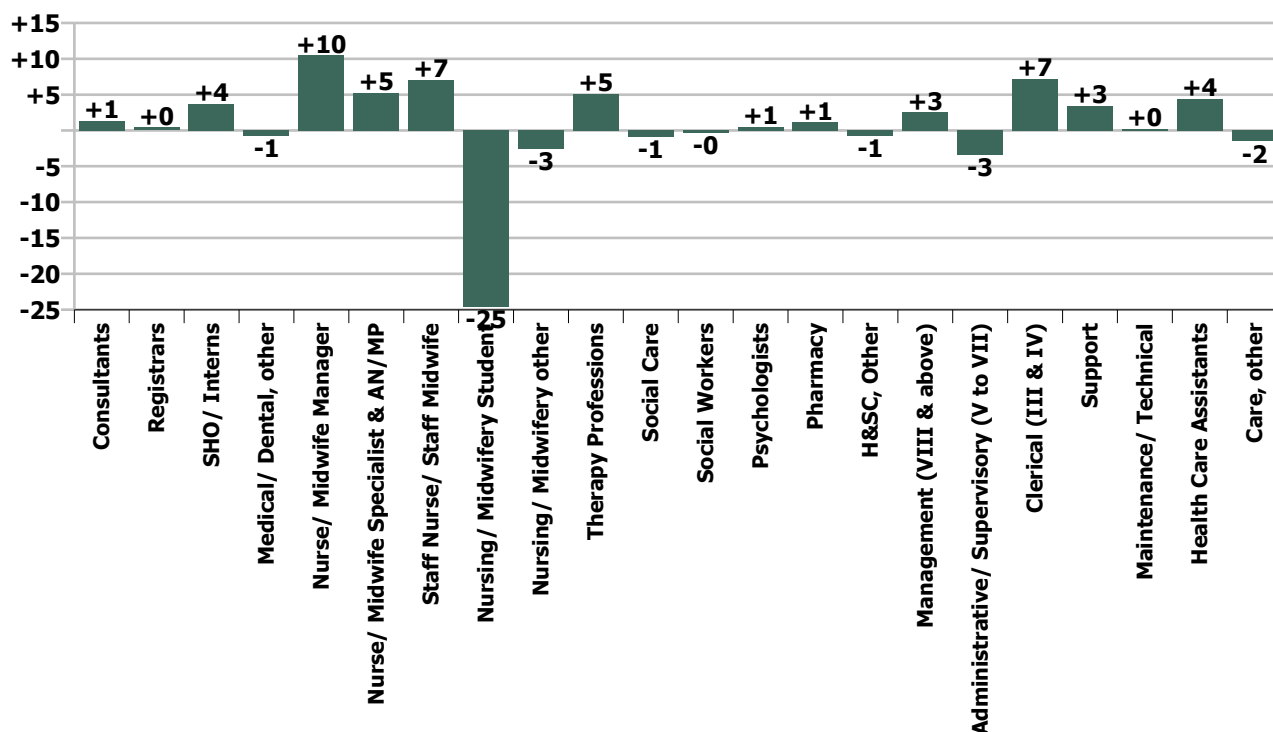
WTE change since Nov 20	% change since Nov 20	overall	Consultants	Registrars	SHO/ Interns	Medical/ Dental, other	Medical & Dental	Nurse/ Midwife Manager	Nurse/ Midwife Specialist & AN/MP	Staff Nurse/ Staff Midwife	Nursing/ Midwifery Student	Nursing/ Midwifery other	Nursing & Midwifery	Therapy Professions	Social Care	Social Workers	Psychologists	Pharmacy	H&SC, Other	Health & Social Care Professionals	Management (VIII & above)	Administrativ e/ Supervisory (V to VII)	Clerical (III & IV)	Management & Administrativ e	General Support	Health Care Assistants	Care, other	Patient & Client Care
Overall	+0.2%	+18	+1	+0	+4	-1	+5	+10	+5	+7	-25	-3	-4	+5	-1	-0	+1	+1	-1	+5	+3	-3	+7	+6	+4	+4	-2	+3
CHO 1	+0.4%	+4	-0	+1	+0		+1	-1	+1	+4	-6	+0	-2	+2	+0	+2	+0	-0	-0	+4	+0	+0	+0	+0	-0	+1	-0	+1
CHO 2	-0.4%	-5	-0		+0	-1	-1	-0	+1	-0	-5	-1	-6	+3	+0	-1	-0	-0		+2		-1	+2	+1	-0	+0	-1	-0
CHO 3	+0.2%	+2	-1	-0			-1	+5	+4	+1	-7		+2	+0		-0	-0		+0	-0		+0	+0	+0	-0	+1		+1
CHO 4	+0.1%	+1	+1	-0	+0		+0	+3	+0	-2	-2		-0	-1	+0	-0	+2	+1	-0	+1	-0	-1	+1	+0	-0	+0	+0	+0
CHO 5	-0.2%	-3	-0		+1	+0	+1	-2	+0	+1	-2	+0	-3	+1		-0	+0			+1		-0	-1	-1	-1	-1	+0	-1
CHO 6	+0.1%	+1	+1	+0	-1		+1	+1	-0	-2			-1	-0	-1	-1	+1		-0	-1		-1	+1	+0	+2	-1		-1
CHO 7	+0.0%	+0	+1	+0	+1		+2	+2	-2	+2	-2	-2	-2	+3	-0	+0	-1	+0	-1	+0	+1	-0	+0	+1	+1	-0	-1	-1
CHO 8	-0.2%	-2	+1	-2	+1		+0	+4	+0	-1	-5		-2	-0	-0	-1	-0		+1	-1	+0	-0	-1	-1	+1	+1	+0	+1
CHO 9	+1.1%	+15	-0	+1	+1		+1	+0	+1	+3	+4	+0	+9	-2		+0	+0	+0	-0	-1		-1	+3	+2	+2	+2	-0	+2
other Community Services	+0.9%	+4	-0				-0	+0	+1	-0		-0	+0	+0	-0	+1				+0	+2	-0	+2	+3	+0	+0		+0
		+0.2%	+0.4%	+0.1%	+1.4%	-12.7%	+0.5%	+0.9%	+1.0%	+0.2%	-29.5%	-7.6%	-0.1%	+1.2%	-1.1%	-0.1%	+0.1%	+5.8%	-0.7%	+0.3%	+3.9%	-1.4%	+1.0%	+0.6%	+0.5%	+0.4%	-0.7%	+0.2%

Year-on-year Summary

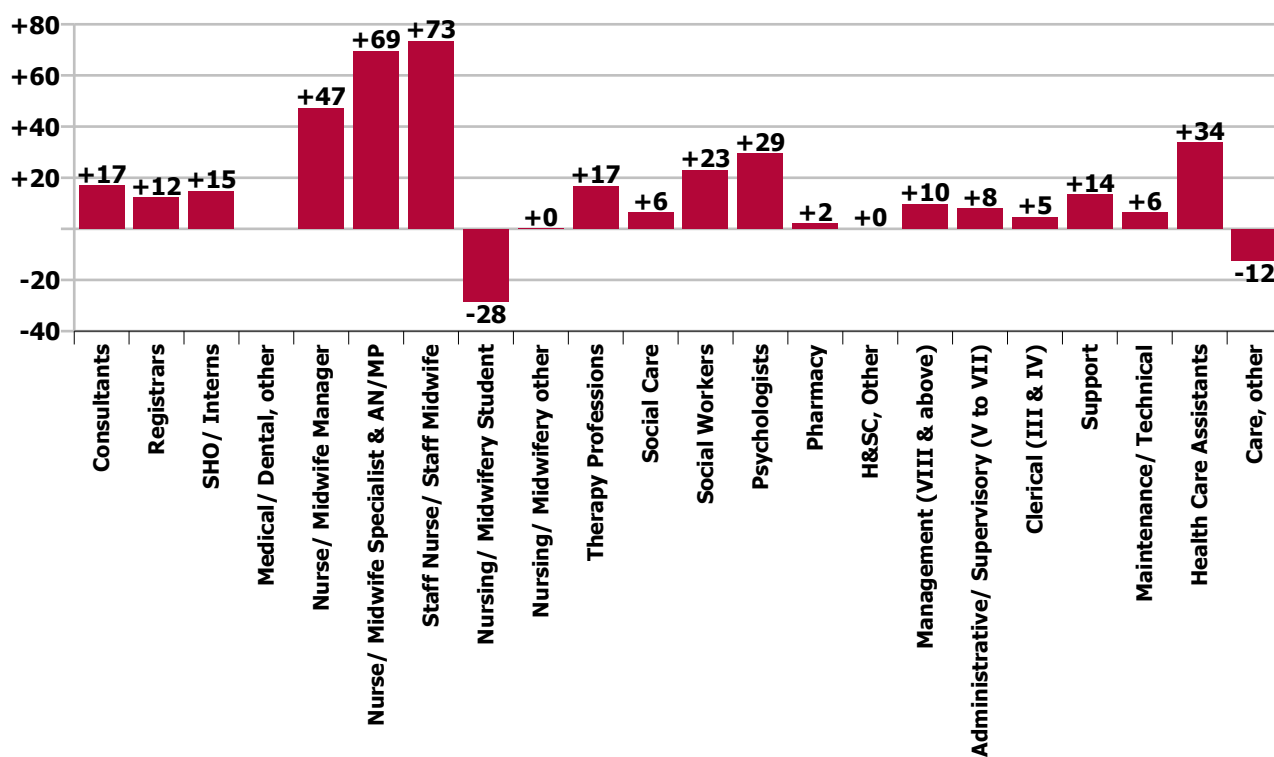
WTE change since Dec 19	% change since Dec 19	overall	Consultants	Registrars	SHO/ Interns	Medical/ Dental, other	Medical & Dental	Nurse/ Midwife Manager	Nurse/ Midwife Specialist & AN/MP	Staff Nurse/ Staff Midwife	Nursing/ Midwifery Student	Nursing/ Midwifery other	Nursing & Midwifery	Therapy Professions	Social Care	Social Workers	Psychologists	Pharmacy	H&SC, Other	Health & Social Care Professionals	Management (VIII & above)	Administrativ e/ Supervisory (V to VII)	Clerical (III & IV)	Management & Administrativ e	General Support	Health Care Assistants	Care, other	Patient & Client Care
Overall	+3.5%	+347	+17	+12	+15		+44	+47	+69	+73	-28	+0	+162	+17	+6	+23	+29	+2	+0	+78	+10	+8	+5	+22	+20	+34	-12	+21
CHO 1	+2.4%	+23	+3	+5	-2		+6	+2	+6	-9	+3	+1	+3	+0	+0	+4	+3		+1	+7	+2	+1	-0	+2	+3	+2	+0	+2
CHO 2	+2.4%	+32	-1	+3	+5		+8	+5	+12	-3	+5	-0	+19	+10	+1	+1	+3	-1		+15	-1	+3	-7	-5	+1	-4	-3	-7
CHO 3	+1.7%	+13	+1	-3	+2		+1	+0	-2	+26	-5		+19	-2	+0	-1	-1		+3	-1	+0	+2	-5	-3	-4	+3	-1	+3
CHO 4	+5.3%	+78	+4	-4	+12		+12	+23	+11	+17	-30		+21	+4	+3	+11	+11	+1	+2	+32	+2	-1	+7	+8	+1	+6	-1	+5
CHO 5	+0.9%	+11	+1	-1	+4		+4	+11	-4	+12	-4	+7	-0	+11	-2		+0	+0	+1	-2	-3	+3	-0	-5	+7	-5	-1	-6
CHO 6	+5.7%	+34	+4	-3	+4		+5	+1	+6	+12	+1		+20	-4	+2	-0	+10		-4	+4		-2	+1	-2	+2	+3	+1	+4
CHO 7	+3.2%	+26	+5	+7	-1		+12	+1	+7	+7	-3	-2	+10	+6	-0	+4	-2		-0	+7	+1	+2	+2	+5	-0	+1	-8	-7
CHO 8	+1.3%	+14	+1	+5	-10		-3	-0	+3	+11	-1	-1	+11	-2	-0	+2	-2	+1	+1	-0	+0	-2	+9	+7	+1	-1	-0	-1
CHO 9	+4.6%	+59	-4	+1	+0		-2	+6	+11	+20	-5	+1	+33	+6	+0	-1	+7	+1	-0	+14	+0	+1	+10	+11	+1	+3	-0	+3
other Community Services	+13.0%	+57	+1	+1			+2	+14	+4	-4		+1	+15	+1	-0	+2	-0	+1		+4	+3	+5	-7	+2	+9	+25		+25
		+3.5%	+4.8%	+4.5%	+5.7%		+5.0%	+4.0%	+15.1%	+2.4%	-32.6%	+0.4%	+3.4%	+4.0%	+8.7%	+6.6%	+7.5%	+11.7%	+0.0%	+5.7%	+17.0%	+3.3%	+0.6%	+2.2%	+2.8%	+3.4%	-5.8%	+1.8%



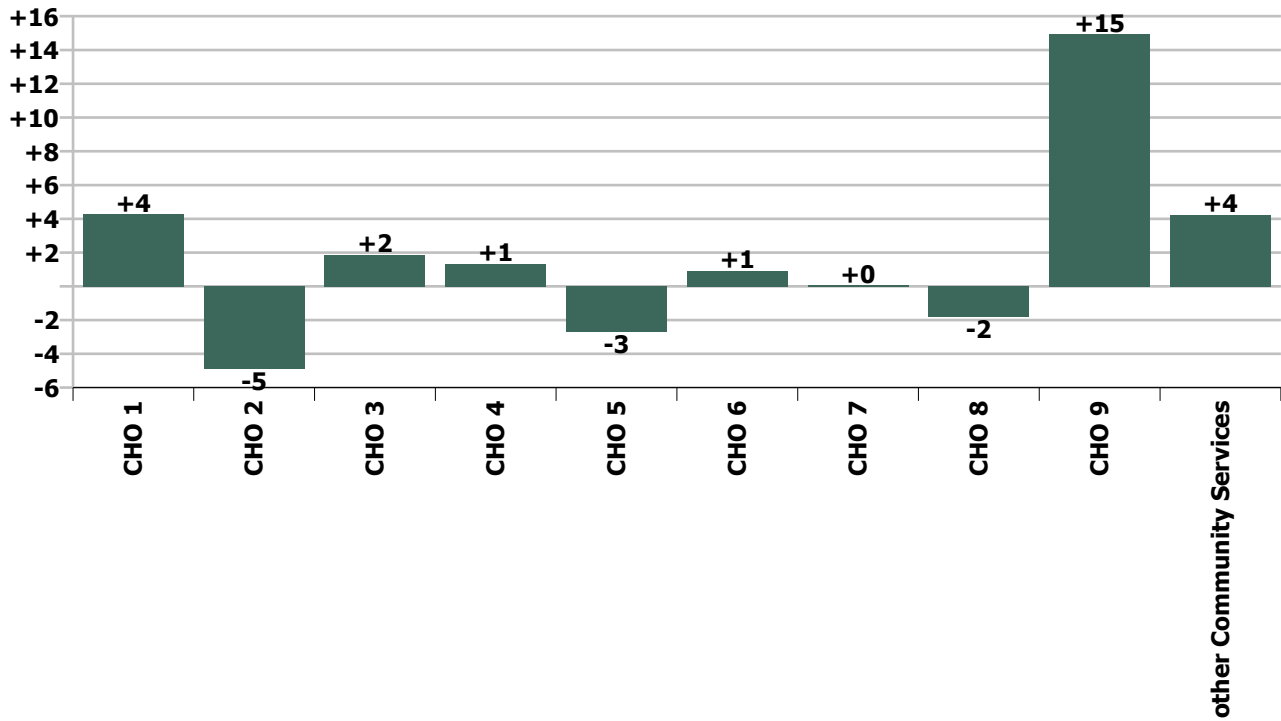
Staff Group change since: Nov 2020



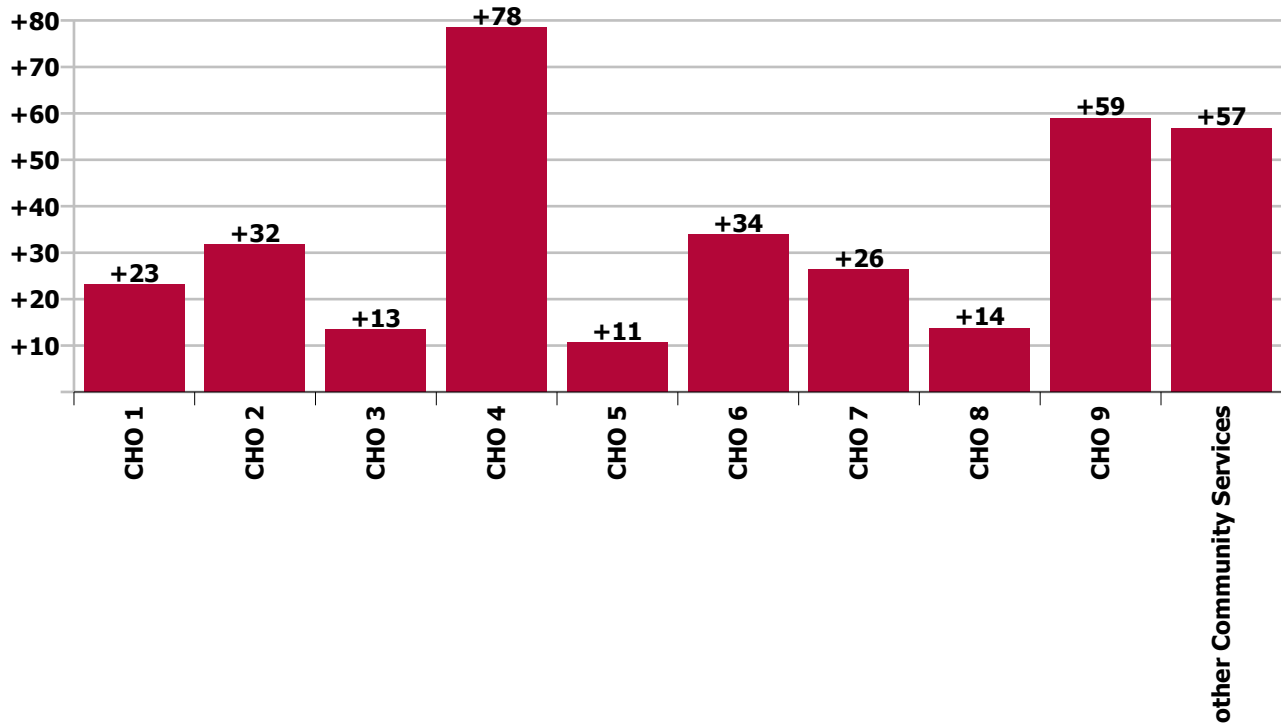
Staff Group change since: Dec 2019



CHO change since: Nov 2020



CHO change since: Dec 2019



Longitudinal Employment Levels by Grade Group - Oct 2013 to Dec 2020

Dec 2020 (Oct 2013 figure: 9,125)	WTE Dec 2020	WTE change since Oct 13	WTE change since Dec 15	WTE change since Dec 16	WTE change since Dec 17	WTE change since Dec 18	WTE change since Dec 19	% change since Oct 13	% change since Dec 15	% change since Dec 16	% change since Dec 17	% change since Dec 18	% change since Dec 19
Overall	10,301	+1,176	+802	+681	+512	+404	+347	+12.9%	+8.4%	+7.1%	+5.2%	+4.1%	+3.5%
Consultant Medicine	1				-0	-0					-9.1%	-9.1%	
Consultant Psychiatry	369	+81	+54	+54	+56	+39	+17	+28.0%	+17.1%	+17.0%	+18.1%	+11.7%	+4.8%
Consultants	370	+81	+54	+54	+56	+39	+17	+27.9%	+17.0%	+17.0%	+18.0%	+11.7%	+4.8%
Registrar	168	+50	+44	+36	+23	+14	-1	+42.4%	+35.2%	+27.1%	+16.1%	+9.1%	-0.8%
Senior Registrar	111	+48	+54	+44	+45	+25	+14	+75.6%	+93.9%	+65.6%	+68.9%	+29.4%	+14.4%
Specialist Registrar	2	+2	+1	+1		+1	-1	-100.0%	+102.0%	+100.0%		+100.0%	-20.0%
Registrars	281	+100	+99	+81	+69	+40	+12	+55.1%	+54.0%	+40.4%	+32.3%	+16.7%	+4.5%
<i>Intern</i>	5	-4	-8	-7	-5	-3		-44.4%	-61.5%	-58.3%	-50.0%	-37.5%	-37.5%
Interns	5	-4	-8	-7	-5	-3	-3	-44.4%	-61.5%	-58.3%	-50.0%	-37.5%	-37.5%
Senior House Officer	271	+51	+35	+24	-1	+2	+18	+23.4%	+15.0%	+9.7%	-0.5%	+0.6%	+7.0%
SHO/ Interns	276	+47	+27	+17	-6	-1	+15	+20.7%	+11.0%	+6.6%	-2.3%	-0.5%	+5.7%
Dentists					-0	-0		-100.0%	-100.0%	-100.0%	-100.0%	-100.0%	-100.0%
Other Medical	5	-5	-4	-5	-6	-1		-51.3%	-42.9%	-48.1%	-53.9%	-23.0%	
Medical/ Dental, other	5	-5	-4	-5	-6	-2		-51.3%	-42.9%	-48.1%	-54.2%	-23.8%	
Medical & Dental	932	+222	+176	+147	+113	+76		+31.4%	+23.3%	+18.7%	+13.7%	+8.9%	+5.0%
Clinical Nurse/ Midwife Manager	1,041	+248	+72	+34	+59	+35	+42	+31.2%	+7.4%	+3.4%	+6.0%	+3.5%	+4.2%
Director Nursing/Midwifery, Assistant	171	+66	+24	+15	+9	+7	+6	+62.7%	+16.7%	+9.8%	+5.3%	+4.0%	+3.6%
Director of Nursing/Midwifery	28	-0	-3	-4	-1	+4	-1	-1.7%	-8.7%	-11.9%	-2.0%	+17.7%	-3.4%
Nurse/ Midwife Manager	1,240	+313	+94	+46	+67	+46	+47	+33.8%	+8.2%	+3.9%	+5.7%	+3.8%	+4.0%
Advanced Nurse/ Midwife Practitioner	39	+30	+32	+32	+29	+19	+9	+337.9%	+463.0%	+426.9%	+275.3%	+95.7%	+28.2%
Clinical Nurse/ Midwife Specialist	489	+277	+183	+153	+106	+94	+61	+130.5%	+59.6%	+45.4%	+27.7%	+23.8%	+14.2%
Nurse/ Midwife Specialist & AN/MP	529	+307	+215	+185	+135	+113	+70	+138.9%	+68.6%	+53.7%	+34.3%	+27.3%	+15.1%
Graduate Nursing/ Midwifery		-48	-10					-100.0%	-100.0%	-100.0%	-100.0%	-100.0%	-100.0%
<i>Staff Midwife</i>	1	+1	+1	+1	+1	+1		-100.0%	-100.0%	-100.0%	-100.0%	-100.0%	-100.0%
Staff Midwives	1	+1	+1	+1	+1	+1	+1	-100.0%	-100.0%	-100.0%	-100.0%	-100.0%	-100.0%
Staff Nurse [Intellectual Disability]	4	+2	+2	+1	+1	-2	-0	+69.6%	+88.4%	+26.9%	+22.5%	-29.3%	-6.4%
Staff Nurse [Psychiatric]	2,965	-175	-127	-92	-62	+9	+71	-5.6%	-4.1%	-3.0%	-2.1%	+0.3%	+2.5%
Staff Nurses [General/ Children's]	106	-55	-18	-14	-11	-11	+2	-34.3%	-14.6%	-11.9%	-9.6%	-9.6%	+1.4%

Dec 2020 (Oct 2013 figure: 9,125)	WTE Dec 2020	WTE change since Oct 13	WTE change since Dec 15	WTE change since Dec 16	WTE change since Dec 17	WTE change since Dec 18	WTE change since Dec 19	% change since Oct 13	% change since Dec 15	% change since Dec 16	% change since Dec 17	% change since Dec 18	% change since Dec 19
Overall	10,301	+1,176	+802	+681	+512	+404	+347	+12.9%	+8.4%	+7.1%	+5.2%	+4.1%	+3.5%
Staff Nurse/ Staff Midwife	3,076	-276	-152	-105	-72	-3	+73	-8.2%	-4.7%	-3.3%	-2.3%	-0.1%	+2.4%
Public Health Nurse				-1	-1			-100.0%	-100.0%	-100.0%	-100.0%	-100.0%	-100.0%
<i>Student General Nursing Intern (pre-registration)</i>						-1		-100.0%	-100.0%	-100.0%	-100.0%	-100.0%	-100.0%
<i>Student Psychiatric Nursing Intern (pre-registration)</i>	11	-46	-7	+2	-6	-16		-81.1%	-40.7%	+23.7%	-36.4%	-60.3%	-61.1%
Pre-registration Nurse/ Midwife Intern	11	-46	-7	+2	-6	-17	-17	-81.1%	-40.7%	+23.7%	-36.4%	-61.6%	-61.1%
<i>Student Psychiatric Nursing Intern (COVID-19 HCA)</i>	42	+42	+42	+42	+42	+42		-100.0%	-100.0%	-100.0%	-100.0%	-100.0%	-100.0%
Pre-registration Nurse Intern (COVID-19)	42	+42	+42	+42	+42	+42	+42	-100.0%	-100.0%	-100.0%	-100.0%	-100.0%	-100.0%
<i>Student Public Health Nursing (post registration)</i>	1	+1	+1	+1	+1	+1		-100.0%	-100.0%	-100.0%	-100.0%	-100.0%	
Post-registration Nurse/ Midwife Student	1	+1	+1	+1	+1	+1		-100.0%	-100.0%	-100.0%	-100.0%	-100.0%	
Nursing/ Midwifery awaiting registration	5	+5	+5	+3	-4	-15	-54	-100.0%	-100.0%	+142.5%	-43.9%	-75.6%	-91.8%
Nursing/ Midwifery Student	59	+2	+41	+48	+33	+11	-28	+3.9%	+226.7%	+453.2%	+131.3%	+23.6%	-32.6%
Nursing Education/Clinical	32	+12	+12	+7	+1	+1	+0	+64.8%	+65.0%	+28.5%	+3.7%	+2.2%	+0.4%
Nursing/ Midwifery other	32	+12	+12	+7	+1	+1	+0	+64.8%	+65.0%	+28.5%	+3.7%	+2.2%	+0.4%
Nursing & Midwifery	4,935	+360	+210	+181	+163	+169		+7.9%	+4.4%	+3.8%	+3.4%	+3.5%	+3.4%
Dietitians	21	+20	+15	+7	+4	+1	+2	+2505.0%	+280.3%	+53.6%	+24.0%	+3.7%	+8.7%
Occupational Therapists	346	+91	+52	+46	+19	+6	+7	+35.7%	+17.9%	+15.3%	+6.0%	+1.8%	+2.1%
Physiotherapists	2	+0	+0	+0	+1	+1	+0	+9.0%	+9.0%	+19.9%	+99.2%	+49.7%	+8.1%
Podiatrists & Chiropodists	1	-1	-1	-1	-1	-0	+0	-40.7%	-48.1%	-56.0%	-45.6%	-34.4%	+9.6%
Speech & Language Therapists	70	+21	+17	+10	+8	+8	+8	+43.9%	+32.1%	+17.0%	+13.4%	+13.2%	+12.9%
Therapy Professions	439	+132	+84	+63	+32	+15	+17	+42.9%	+23.7%	+16.6%	+7.9%	+3.6%	+4.0%
Social Care	80	+1	-8	-8	-3	+1	+6	+1.7%	-8.7%	-9.0%	-3.1%	+1.7%	+8.7%
Social Workers	373	+99	+24	+22	+15	+14	+23	+36.1%	+6.8%	+6.4%	+4.3%	+4.0%	+6.6%
Psychologists	424	+173	+101	+81	+54	+35	+29	+69.1%	+31.4%	+23.7%	+14.5%	+9.1%	+7.5%
Pharmacy	21	+2	+4	+1	+1	+1	+2	+8.0%	+20.6%	+6.5%	+7.0%	+7.5%	+11.7%
Counsellor Therapists	101	+26	+14	+16	+16	+16	+6	+33.8%	+15.5%	+18.9%	+18.3%	+19.0%	+6.7%
HSCP Trainees/ Students		-8						-100.0%	-100.0%	-100.0%	-100.0%	-100.0%	-100.0%
Other Health & Social Care	5	-4	-2	-3	-3	-3	-6	-44.6%	-27.9%	-35.8%	-36.8%	-37.1%	-53.9%
Play Therapists/ Specialists	1	-1	-1	-1	-0		+0	-39.8%	-39.8%	-40.8%	-2.0%		+1.4%
H&SC, Other	108	+13	+11	+12	+12	+13	+0	+13.2%	+10.8%	+12.6%	+13.0%	+13.6%	+0.0%

Dec 2020 (Oct 2013 figure: 9,125)	WTE Dec 2020	WTE change since Oct 13	WTE change since Dec 15	WTE change since Dec 16	WTE change since Dec 17	WTE change since Dec 18	WTE change since Dec 19	% change since Oct 13	% change since Dec 15	% change since Dec 16	% change since Dec 17	% change since Dec 18	% change since Dec 19
Overall	10,301	+1,176	+802	+681	+512	+404	+347	+12.9%	+8.4%	+7.1%	+5.2%	+4.1%	+3.5%
Health & Social Care Professionals	1,444	+419	+216	+171	+112	+81		+40.9%	+17.5%	+13.5%	+8.4%	+5.9%	+5.7%
Executive Management	15	+14	+11	+8	+7	+5	+4	+1373.0%	+268.3%	+110.4%	+84.1%	+47.3%	+33.9%
Senior Management (VIII & GM)	52	+33	+24	+28	+21	+21	+6	+175.7%	+83.8%	+112.2%	+67.6%	+65.5%	+13.0%
Management (VIII & above)	67	+47	+35	+35	+28	+25	+10	+235.6%	+106.5%	+111.8%	+71.0%	+61.1%	+17.0%
Administrative/ Supervisory (V to VII)	245	+113	+96	+77	+45	+22	+8	+85.7%	+65.0%	+45.8%	+22.7%	+10.0%	+3.3%
Clerical (III & IV)	722	+110	+76	+61	+40	+27	+5	+18.0%	+11.8%	+9.2%	+5.9%	+3.8%	+0.6%
Management & Administrative	1,034	+270	+207	+173	+114	+74		+35.4%	+25.1%	+20.1%	+12.4%	+7.7%	+2.2%
Catering	64	-10	+1	-2	-2	-8	-2	-13.7%	+1.3%	-3.2%	-3.5%	-11.5%	-2.6%
Household Services	441	-190	-84	-51	-35	-4	+17	-30.1%	-16.0%	-10.3%	-7.3%	-0.9%	+4.0%
Other Support	42	-20	-10	-14	-8	-13	-1	-32.7%	-19.9%	-25.2%	-15.3%	-24.0%	-1.9%
Portering	47	-15	-11	-12	-2	-1	-1	-24.6%	-18.9%	-20.1%	-3.2%	-1.4%	-1.6%
Support	594	-236	-105	-79	-46	-26	+14	-28.4%	-15.0%	-11.7%	-7.2%	-4.2%	+2.3%
Maintenance	137	-31	-6	-6	-1	+3	+8	-18.3%	-4.0%	-3.9%	-0.9%	+2.3%	+6.6%
Technical Services		-2	-2	-2	-2	-2	-2	-100.0%	-100.0%	-100.0%	-100.0%	-100.0%	-100.0%
Maintenance/ Technical	137	-33	-8	-8	-3	+1	+6	-19.3%	-5.3%	-5.2%	-2.3%	+0.8%	+4.9%
General Support	732	-268	-112	-87	-50	-25		-26.8%	-13.3%	-10.6%	-6.3%	-3.3%	+2.8%
HCA, Nurse's Aide, etc.	1,013	+194	+102	+84	+65	+39	+34	+23.7%	+11.2%	+9.1%	+6.8%	+4.0%	+3.5%
Health & Social Care Assistants	8	+4	+5	+4	+4	+3	-1	+116.1%	+135.6%	+79.7%	+79.7%	+53.3%	-6.7%
Health Care Assistants	1,022	+199	+107	+88	+68	+42	+34	+24.2%	+11.6%	+9.4%	+7.2%	+4.3%	+3.4%
Other Care Grades	203	-26	-1	+7	-9	-12	-12	-11.2%	-0.3%	+3.8%	-4.1%	-5.7%	-5.8%
Care, other	203	-26	-1	+7	-9	-12	-12	-11.2%	-0.3%	+3.8%	-4.1%	-5.7%	-5.8%
Patient & Client Care	1,225	+173	+106	+95	+59	+30		+16.5%	+9.5%	+8.4%	+5.1%	+2.5%	+1.8%

Source: Health Service Personnel Census