

Mental Health Service Employment Report: December 2022

Employment by Staff Group

Dec 2022	WTE Dec 2019	WTE Dec 2020	WTE Nov 2022	WTE Dec 2022	WTE change since Nov 22	WTE change since Dec 20	% change since Dec 20	WTE change since Dec 19	% change since Dec 19	No. Dec 2022
Overall	9,954	10,301	10,453	10,453	+1	+152	+1.5%	+499	+5.0%	11,456
Consultants	353	370	399	397	-2	+27	+7.4%	+44	+12.6%	430
Registrars	269	281	346	345	-1	+64	+22.7%	+76	+28.2%	359
SHO/ Interns	261	276	265	267	+2	-9	-3.2%	+6	+2.3%	280
Medical/ Dental, other	5	5	4	4	-1	-1	-21.8%	-1	-21.8%	7
Medical & Dental	888	932	1,014	1,013	-1	+81	+8.7%	+125	+14.1%	1,076
Nurse/ Midwife Manager	1,192	1,240	1,240	1,245	+5	+6	+0.5%	+53	+4.4%	1,309
Nurse/ Midwife Specialist & AN/MP	459	529	621	631	+10	+102	+19.3%	+172	+37.4%	675
Staff Nurse/ Staff Midwife	3,003	3,076	2,945	2,948	+2	-128	-4.2%	-55	-1.8%	3,237
<i>Pre-registration Nurse Intern (COVID-19)</i>		42				-42	-100.0%		-100.0%	
<i>Pre-registration Nurse/ Midwife Intern</i>	28	11	26	26	-0	+16	+146.6%	-1	-4.1%	46
<i>Post-registration Nurse/ Midwife Student</i>	1	1				-1	-100.0%	-1	-100.0%	
<i>Nursing/ Midwifery awaiting registration</i>	59	5	50	39	-12	+34	+698.8%	-20	-34.2%	43
Nursing/ Midwifery Student	87	59	77	65	-12	+6	+10.5%	-22	-25.5%	89
Nursing/ Midwifery other	32	32	34	34	+0	+3	+8.6%	+3	+9.0%	39
Nursing & Midwifery	4,773	4,935	4,917	4,924	+6	-12	-0.2%	+150	+3.1%	5,349
Therapy Professions	422	439	438	435	-3	-4	-0.9%	+13	+3.1%	490
Social Care	74	80	74	72	-3	-8	-10.1%	-2	-2.3%	82
Social Workers	350	373	411	414	+2	+41	+11.0%	+64	+18.3%	459
Psychologists	394	424	446	448	+2	+24	+5.6%	+53	+13.5%	500
Pharmacy	19	21	20	19	-1	-1	-7.1%	+1	+3.8%	26
H&SC, Other	108	108	131	130	-1	+22	+20.6%	+22	+20.7%	148
Health & Social Care Professionals	1,366	1,444	1,522	1,518	-3	+74	+5.1%	+152	+11.1%	1,705
Management (VIII & above)	57	67	75	75	-0	+7	+11.1%	+17	+30.1%	76
Administrative/ Supervisory (V to VII)	237	245	278	287	+9	+42	+17.3%	+50	+21.2%	306
Clerical (III & IV)	717	722	709	707	-2	-15	-2.1%	-11	-1.5%	797
Management & Administrative	1,012	1,034	1,062	1,068	+6	+34	+3.3%	+57	+5.6%	1,179
Support	581	594	559	556	-3	-38	-6.5%	-25	-4.3%	644
Maintenance/ Technical	131	137	130	129	-1	-9	-6.3%	-2	-1.7%	133
General Support	711	732	689	685	-4	-47	-6.4%	-27	-3.8%	777
Health Care Assistants	988	1,022	1,032	1,030	-2	+9	+0.8%	+42	+4.3%	1,115
Care, other	216	203	217	216	-1	+12	+6.1%	+0	+0.0%	255
Patient & Client Care	1,204	1,225	1,249	1,246	-3	+21	+1.7%	+42	+3.5%	1,370



Mental Health Services Employment by Administration (HSE / S38): December 2022

Dec 2022	WTE Dec 2019	WTE Dec 2020	WTE Nov 2022	WTE Dec 2022	WTE change since Nov 22	WTE change since Dec 20	% change since Dec 20	WTE change since Dec 19	% change since Dec 19	No. Dec 2022
Total	9,954	10,301	10,453	10,453	+1	+152	+1.5%	+499	+5.0%	11,456
HSE	9,513	9,855	10,030	10,023	-7	+168	+1.7%	+510	+5.4%	10,939
Section 38 Voluntary Agencies	441	446	423	431	+8	-16	-3.5%	-11	-2.4%	517

Employment by Staff Group

Dec 2022	WTE Dec 2019	WTE Dec 2020	WTE Nov 2022	WTE Dec 2022	WTE change since Nov 22	WTE change since Dec 20	% change since Dec 20	WTE change since Dec 19	% change since Dec 19	No. Dec 2022
Health Service Executive	9,513	9,855	10,030	10,023	-7	+168	+1.7%	+510	+5.4%	10,939
Consultants	333	349	374	372	-2	+23	+6.7%	+39	+11.8%	399
Registrars	250	266	327	325	-2	+59	+22.2%	+75	+29.9%	338
SHO/ Interns	255	267	258	260	+2	-7	-2.6%	+5	+1.9%	273
Medical/ Dental, other	5	5	4	4	-1	-1	-21.8%	-1	-21.8%	7
Medical & Dental	843	886	963	961	-2	+74	+8.4%	+118	+14.0%	1,017
Nurse/ Midwife Manager	1,154	1,202	1,206	1,211	+5	+9	+0.8%	+57	+4.9%	1,271
Nurse/ Midwife Specialist & AN/MP	452	520	610	620	+10	+100	+19.3%	+168	+37.1%	662
Staff Nurse/ Staff Midwife	2,880	2,953	2,835	2,838	+3	-115	-3.9%	-41	-1.4%	3,112
Pre-registration Nurse Intern (COVID-19)		41				-41	-100.0%		-100.0%	
Pre-registration Nurse/ Midwife Intern	21	1	26	18	-8	+18	+2493.0%	-2	-10.3%	30
Post-registration Nurse/ Midwife Student	1	1				-1	-100.0%	-1	-100.0%	
Nursing/ Midwifery awaiting registration	59	5	49	38	-12	+33	+678.1%	-21	-35.9%	42
Nursing/ Midwifery Student	80	48	76	56	-20	+8	+17.1%	-24	-30.2%	72
Nursing/ Midwifery other	29	29	32	32	+0	+3	+9.3%	+3	+9.7%	36
Nursing & Midwifery	4,596	4,752	4,759	4,758	-1	+6	+0.1%	+162	+3.5%	5,153
Therapy Professions	391	412	411	407	-4	-5	-1.1%	+16	+4.2%	453
Social Care	48	52	46	44	-2	-8	-15.8%	-4	-8.8%	50
Social Workers	330	354	389	394	+5	+40	+11.2%	+64	+19.3%	437
Psychologists	379	402	422	423	+1	+22	+5.4%	+45	+11.8%	468
Pharmacy	17	19	18	17	-1	-1	-7.7%	+1	+3.0%	24
H&SC, Other	103	107	131	130	-1	+23	+21.3%	+27	+25.9%	147
Health & Social Care Professionals	1,267	1,345	1,418	1,415	-2	+70	+5.2%	+148	+11.7%	1,579
Management (VIII & above)	55	65	73	73	-0	+7	+11.5%	+17	+31.1%	74
Administrative/ Supervisory (V to VII)	216	224	255	264	+8	+40	+17.6%	+48	+22.2%	279
Clerical (III & IV)	673	679	672	670	-2	-9	-1.3%	-2	-0.4%	754
Management & Administrative	944	968	1,000	1,006	+6	+38	+3.9%	+63	+6.6%	1,107
Support	543	556	526	523	-3	-34	-6.0%	-20	-3.7%	596
Maintenance/ Technical	125	130	124	123	-1	-8	-5.9%	-2	-1.8%	127
General Support	668	687	650	646	-5	-41	-6.0%	-22	-3.3%	723



Health Care Assistants	982	1,016	1,027	1,024	-2	+9	+0.8%	+42	+4.3%	1,109
Care, other	213	200	213	213	-1	+13	+6.3%	-0	-0.2%	251
Patient & Client Care	1,195	1,216	1,240	1,237	-3	+21	+1.7%	+42	+3.5%	1,360

Employment by Staff Group

Dec 2022	WTE Dec 2019	WTE Dec 2020	WTE Nov 2022	WTE Dec 2022	WTE change since Nov 22	WTE change since Dec 20	% change since Dec 20	WTE change since Dec 19	% change since Dec 19	No. Dec 2022
Section 38 Voluntary Agencies	441	446	423	431	+8	-16	-3.5%	-11	-2.4%	517
Consultants	20	21	25	25	-0	+4	+19.9%	+5	+26.5%	31
Registrars	19	15	19	20	+1	+5	+31.2%	+1	+5.7%	21
SHO/ Interns	6	9	7	7	+0	-2	-22.2%	+1	+16.7%	7
Medical & Dental	45	45	51	52	+1	+7	+15.3%	+7	+16.4%	59
Nurse/ Midwife Manager	38	38	34	34	-0	-4	-9.9%	-4	-10.7%	38
Nurse/ Midwife Specialist & AN/MP	7	9	11	11	-0	+2	+20.4%	+4	+60.4%	13
Staff Nurse/ Staff Midwife	123	123	110	109	-1	-14	-11.0%	-14	-11.2%	125
Pre-registration Nurse Intern (COVID-19)		1				-1	-100.0%		-100.0%	
Pre-registration Nurse/ Midwife Intern	7	10		8	+8	-2	-20.0%	+1	+14.3%	16
Nursing/ Midwifery awaiting registration			1	1		+1	-100.0%	+1	-100.0%	1
Nursing/ Midwifery Student	7	11	1	9	+8	-2	-18.2%	+2	+28.6%	17
Nursing/ Midwifery other	3	3	3	3						3
Nursing & Midwifery	177	183	159	166	+7	-17	-9.5%	-12	-6.6%	196
Therapy Professions	31	27	27	28	+1	+1	+3.1%	-3	-10.4%	37
Social Care	25	28	28	28	-0	+0	+0.6%	+3	+10.1%	32
Social Workers	20	19	23	20	-3	+1	+7.7%	+0	+1.5%	22
Psychologists	16	22	24	25	+1	+2	+9.9%	+9	+54.5%	32
Pharmacy	2	2	2	2				+0	+12.5%	2
H&SC, Other	5	1	0	0	+0	-1	-51.0%	-4	-90.1%	1
Health & Social Care Professionals	99	99	104	103	-1	+4	+4.2%	+4	+4.2%	126
Management (VIII & above)	2	2	2	2						2
Administrative/ Supervisory (V to VII)	21	21	23	23	+0	+3	+13.5%	+2	+11.0%	27
Clerical (III & IV)	45	43	37	36	-0	-6	-14.9%	-8	-18.5%	43
Management & Administrative	68	66	62	62	+0	-4	-5.5%	-6	-8.8%	72
Support	38	38	33	33	+0	-5	-12.6%	-5	-12.7%	48
Maintenance/ Technical	6	7	6	6		-1	-14.3%			6
General Support	44	45	39	39	+0	-6	-12.9%	-5	-11.0%	54
Health Care Assistants	6	6	6	6						6
Care, other	3	3	3	3		-0	-0.6%	+1	+19.5%	4
Patient & Client Care	9	9	9	9		-0	-0.2%	+1	+6.4%	10



Mental Health Services Employment by CHO: Dec 2022

Dec 2022	WTE Dec 2019	WTE Dec 2020	WTE Nov 2022	WTE Dec 2022	WTE change since Nov 22	WTE change since Dec 20	% change since Dec 20	WTE change since Dec 19	% change since Dec 19	No. Dec 2022
Overall	9,954	10,301	10,453	10,453	+1	+152	+1.5%	+499	+5.0%	11,456
CHO 1	953	976	1,039	1,024	-15	+48	+4.9%	+71	+7.5%	1,115
CHO 2	1,308	1,340	1,322	1,329	+7	-11	-0.8%	+21	+1.6%	1,421
CHO 3	795	809	816	814	-1	+5	+0.7%	+19	+2.4%	892
CHO 4	1,485	1,564	1,558	1,562	+4	-2	-0.1%	+76	+5.1%	1,716
CHO 5	1,178	1,188	1,230	1,224	-5	+36	+3.0%	+47	+4.0%	1,371
CHO 6	593	626	653	650	-4	+23	+3.7%	+57	+9.6%	728
CHO 7	835	861	883	879	-5	+17	+2.0%	+44	+5.2%	974
CHO 8	1,098	1,112	1,087	1,091	+4	-21	-1.9%	-7	-0.7%	1,180
CHO 9	1,272	1,331	1,370	1,371	+1	+40	+3.0%	+99	+7.8%	1,523
other Community Services	438	494	495	511	+16	+17	+3.4%	+73	+16.8%	536

Mental Health Services Employment by CHO etc. Dec 2022

CHO 1

Dec 2022	WTE Dec 2019	WTE Dec 2020	WTE Nov 2022	WTE Dec 2022	WTE change since Nov 22	WTE change since Dec 20	% change since Dec 20	WTE change since Dec 19	% change since Dec 19	No. Dec 2022
Overall	953	976	1,039	1,024	-15	+48	+4.9%	+71	+7.5%	1,115
Consultants	31	34	34	34	-0	-0	-0.9%	+3	+9.6%	35
Registrars	24	29	35	35	-1	+6	+19.2%	+10	+42.0%	37
SHO/ Interns	25	23	22	21	-1	-2	-9.0%	-4	-17.6%	22
Medical & Dental	81	86	91	89	-2	+3	+3.8%	+9	+10.9%	94
Nurse/ Midwife Manager	117	119	116	118	+2	-2	-1.4%	+1	+0.6%	124
Nurse/ Midwife Specialist & AN/MP	67	74	90	91	+1	+18	+23.9%	+24	+35.6%	97
Staff Nurse/ Staff Midwife	297	288	301	294	-7	+6	+2.0%	-4	-1.2%	317
Nursing/ Midwifery Student		3	6	5	-1	+2	+59.3%	+5	-100.0%	6
Nursing/ Midwifery other		1	2	2	-0	+1	+101.1%	+2	-100.0%	2
Nursing & Midwifery	482	485	515	510	-5	+24	+5.0%	+28	+5.8%	546
Therapy Professions	36	36	42	40	-2	+5	+12.6%	+5	+13.2%	47
Social Care	4	4	4	4	-0	+0	+2.4%	+0	+3.3%	5
Social Workers	39	43	48	48	+0	+5	+11.4%	+9	+22.2%	53
Psychologists	21	23	24	25	+0	+1	+5.1%	+4	+18.8%	26
Pharmacy	1	1	1	1	+0	+0	+1.2%	+0	+1.2%	1
H&SC, Other	13	14	18	18	-0	+5	+32.8%	+5	+40.6%	21
Health & Social Care Professionals	113	121	138	136	-2	+15	+12.6%	+23	+20.1%	153
Management (VIII & above)	6	8	9	9	-0	+1	+13.9%	+3	+54.2%	9
Administrative/ Supervisory (V to VII)	30	31	31	30	-1	-0	-1.3%	+0	+0.6%	32
Clerical (III & IV)	85	85	92	89	-3	+4	+4.7%	+4	+4.6%	100
Management & Administrative	121	123	133	128	-4	+5	+3.8%	+7	+5.9%	141
Support	62	65	58	58	-0	-7	-11.1%	-4	-7.0%	66
Maintenance/ Technical	17	16	17	16	-0	-0	-0.2%	-0	-2.6%	17
General Support	79	81	75	74	-1	-7	-8.9%	-5	-6.0%	83
Health Care Assistants	66	68	76	75	-1	+7	+9.9%	+8	+12.5%	84
Care, other	11	11	12	12	+0	+1	+6.4%	+1	+9.9%	14
Patient & Client Care	77	79	88	86	-1	+7	+9.4%	+9	+12.1%	98

CHO 2

Dec 2022	WTE Dec 2019	WTE Dec 2020	WTE Nov 2022	WTE Dec 2022	WTE change since Nov 22	WTE change since Dec 20	% change since Dec 20	WTE change since Dec 19	% change since Dec 19	No. Dec 2022
Overall	1,308	1,340	1,322	1,329	+7	-11	-0.8%	+21	+1.6%	1,421
Consultants	38	37	37	37	-0	-0	-0.4%	-1	-1.8%	40
Registrars	33	37	35	37	+2	+0	+0.9%	+4	+11.3%	37
SHO/ Interns	35	40	39	39	-1	-1	-2.6%	+4	+11.3%	40
Medical/ Dental, other	1	1	1	1	0					1
Medical & Dental	107	114	113	114	+1	-1	-0.7%	+7	+6.6%	118
Nurse/ Midwife Manager	146	151	142	142	-0	-9	-6.0%	-4	-2.5%	146
Nurse/ Midwife Specialist & AN/MP	67	79	89	88	-1	+9	+11.0%	+20	+30.2%	93
Staff Nurse/ Staff Midwife	357	355	353	353	-0	-2	-0.5%	-4	-1.2%	381
<i>Pre-registration Nurse Intern (COVID-19)</i>		10				-10	-100.0%		-100.0%	
<i>Pre-registration Nurse/ Midwife Intern</i>	0		7	4	-3	+4	-100.0%	+4	+3275.0%	7
<i>Nursing/ Midwifery awaiting registration</i>	5		7	7	0	+7	-100.0%	+2	+47.4%	7
Nursing/ Midwifery Student	5	10	14	11	-3	+1	+8.5%	+6	+126.9%	14
Nursing/ Midwifery other	2	2	4	4	0	+2	+150.0%	+2	+100.0%	4
Nursing & Midwifery	577	597	602	598	-4	+1	+0.2%	+21	+3.6%	638
Therapy Professions	45	55	55	55	-0	-1	-1.1%	+9	+20.3%	59
Social Care	15	16	14	14	-0	-2	-14.1%	-1	-6.4%	15
Social Workers	41	42	44	44	+0	+2	+5.5%	+3	+7.7%	47
Psychologists	34	37	37	37	+0	+0	+0.2%	+4	+10.5%	42
Pharmacy	3	2	2	3	+0	+1	+43.7%	-0	-0.8%	3
H&SC, Other	3	3	3	3	-0	-0	-5.7%	-0	-5.7%	3
Health & Social Care Professionals	140	155	155	155	-0	+0	+0.1%	+15	+10.5%	169
Management (VIII & above)	5	4	3	3	+0	-1	-25.0%	-2	-40.0%	3
Administrative/ Supervisory (V to VII)	24	26	25	25	+1	-1	-5.0%	+2	+6.6%	26
Clerical (III & IV)	109	102	95	98	+3	-5	-4.6%	-11	-10.5%	110
Management & Administrative	138	133	122	126	+3	-7	-5.3%	-12	-8.6%	139
Support	36	31	27	27	+0	-5	-14.9%	-10	-26.6%	28
Maintenance/ Technical	27	33	35	36	+1	+3	+8.2%	+9	+33.0%	36
General Support	63	64	61	62	+1	-2	-3.0%	-1	-1.1%	64
Health Care Assistants	215	211	198	202	+4	-9	-4.3%	-13	-5.9%	212
Care, other	69	66	71	73	+2	+6	+9.7%	+4	+5.1%	81
Patient & Client Care	284	278	269	275	+5	-3	-1.0%	-9	-3.2%	293

CHO 3

Dec 2022	WTE Dec 2019	WTE Dec 2020	WTE Nov 2022	WTE Dec 2022	WTE change since Nov 22	WTE change since Dec 20	% change since Dec 20	WTE change since Dec 19	% change since Dec 19	No. Dec 2022
Overall	795	809	816	814	-1	+5	+0.7%	+19	+2.4%	892
Consultants	23	24	28	29	+1	+5	+20.4%	+6	+24.5%	32
Registrars	18	15	17	15	-2	+0	+0.5%	-3	-15.0%	16
SHO/ Interns	19	21	29	33	+4	+12	+55.8%	+14	+76.0%	34
Medical & Dental	60	61	74	78	+4	+17	+27.9%	+17	+28.9%	82
Nurse/ Midwife Manager	88	88	79	87	+8	-1	-0.9%	-1	-0.9%	92
Nurse/ Midwife Specialist & AN/MP	39	37	43	44	+2	+8	+20.3%	+5	+13.5%	49
Staff Nurse/ Staff Midwife	245	272	244	243	-1	-29	-10.6%	-3	-1.0%	271
<i>Pre-registration Nurse Intern (COVID-19)</i>		3				-3	-100.0%		-100.0%	
<i>Pre-registration Nurse/ Midwife Intern</i>	9		8	4	-4	+4	-100.0%	-5	-51.9%	5
Nursing/ Midwifery Student	9	3	8	4	-4	+1	+24.7%	-5	-51.9%	5
Nursing/ Midwifery other			1	1	-0	+1	-100.0%	+1	-100.0%	1
Nursing & Midwifery	381	400	375	380	+5	-20	-5.1%	-2	-0.4%	418
Therapy Professions	26	25	31	30	-1	+5	+22.0%	+4	+15.0%	33
Social Care	3	3	3	2	-1	-1	-39.7%	-1	-36.9%	2
Social Workers	25	24	28	28	-0	+4	+14.7%	+3	+10.4%	30
Psychologists	92	91	96	93	-3	+2	+2.4%	+1	+1.1%	97
Pharmacy	3	3	3	3	-0	+0	+0.7%	+0	+0.7%	3
H&SC, Other	10	12	10	10	-0	-3	-20.9%	+0	+0.6%	11
Health & Social Care Professionals	159	158	170	166	-5	+7	+4.7%	+7	+4.2%	176
Management (VIII & above)	2	2	4	4	-0	+2	+97.5%	+2	+100.5%	4
Administrative/ Supervisory (V to VII)	17	19	15	16	+1	-3	-14.9%	-1	-4.4%	17
Clerical (III & IV)	56	50	52	50	-2	-0	-0.3%	-6	-10.1%	55
Management & Administrative	75	71	70	70	-0	-1	-1.4%	-4	-5.9%	76
Support	32	30	32	30	-2	+0	+0.2%	-2	-6.9%	35
Maintenance/ Technical	11	9	6	7	+1	-2	-23.0%	-4	-37.0%	7
General Support	43	39	38	37	-1	-2	-5.1%	-6	-14.5%	42
Health Care Assistants	75	79	86	82	-5	+3	+3.6%	+6	+8.3%	95
Care, other	2	1	2	2	-0	+1	+144.0%	+1	+46.1%	3
Patient & Client Care	77	80	89	84	-5	+4	+5.4%	+7	+9.1%	98

CHO 4

Dec 2022	WTE Dec 2019	WTE Dec 2020	WTE Nov 2022	WTE Dec 2022	WTE change since Nov 22	WTE change since Dec 20	% change since Dec 20	WTE change since Dec 19	% change since Dec 19	No. Dec 2022
Overall	1,485	1,564	1,558	1,562	+4	-2	-0.1%	+76	+5.1%	1,716
Consultants	50	54	59	60	+1	+6	+11.0%	+10	+21.0%	68
Registrars	46	42	56	56	+0	+15	+35.6%	+11	+23.1%	57
SHO/ Interns	31	43	44	42	-2	-0	-1.1%	+11	+36.9%	44
Medical/ Dental, other	2	2	1	1	-1	-1	-52.0%	-1	-52.0%	4
Medical & Dental	129	141	161	160	-1	+19	+13.7%	+31	+24.4%	173
Nurse/ Midwife Manager	170	192	211	207	-4	+15	+7.6%	+38	+22.1%	219
Nurse/ Midwife Specialist & AN/MP	60	71	69	72	+3	+1	+2.1%	+12	+20.5%	76
Staff Nurse/ Staff Midwife	502	519	474	479	+5	-40	-7.8%	-23	-4.7%	520
<i>Pre-registration Nurse Intern (COVID-19)</i>		3				-3	-100.0%		-100.0%	
<i>Pre-registration Nurse/ Midwife Intern</i>	3		6	7	+1	+7	-100.0%	+4	+123.0%	11
<i>Post-registration Nurse/ Midwife Student</i>	1						-100.0%	-1	-100.0%	
<i>Nursing/ Midwifery awaiting registration</i>	30	1				-1	-100.0%	-30	-100.0%	
Nursing/ Midwifery Student	34	4	6	7	+1	+3	+67.2%	-27	-80.0%	11
Nursing & Midwifery	765	786	760	765	+5	-21	-2.7%	-0	-0.1%	826
Therapy Professions	74	77	80	79	-1	+1	+1.8%	+5	+6.7%	89
Social Care	4	7	6	6	-0	-1	-17.2%	+2	+51.8%	7
Social Workers	53	64	71	73	+2	+9	+13.2%	+20	+37.4%	84
Psychologists	83	94	94	96	+2	+2	+2.0%	+13	+15.9%	106
Pharmacy	2	3	2	2	+0	-1	-22.1%	-0	-4.8%	3
H&SC, Other	11	12	18	18	-0	+5	+42.2%	+7	+63.7%	21
Health & Social Care Professionals	227	258	271	273	+3	+15	+5.9%	+47	+20.6%	310
Management (VIII & above)	1	3	3	3	0	+0	+9.9%	+2	+200.0%	3
Administrative/ Supervisory (V to VII)	22	22	25	26	+1	+5	+21.1%	+4	+17.6%	27
Clerical (III & IV)	87	94	88	87	-1	-8	-8.1%	-1	-0.7%	100
Management & Administrative	111	119	116	116	+0	-3	-2.3%	+5	+4.8%	130
Support	80	82	76	75	-1	-7	-8.6%	-5	-6.4%	87
Maintenance/ Technical	6	5	5	5	-0	-0	-0.2%	-1	-16.6%	6
General Support	86	87	81	80	-1	-7	-8.1%	-6	-7.1%	93
Health Care Assistants	161	166	164	162	-2	-4	-2.4%	+1	+0.9%	172
Care, other	7	6	5	5	-0	-1	-18.3%	-2	-27.9%	12
Patient & Client Care	168	173	170	167	-2	-5	-3.0%	-1	-0.3%	184

CHO 5

Dec 2022	WTE Dec 2019	WTE Dec 2020	WTE Nov 2022	WTE Dec 2022	WTE change since Nov 22	WTE change since Dec 20	% change since Dec 20	WTE change since Dec 19	% change since Dec 19	No. Dec 2022
Overall	1,178	1,188	1,230	1,224	-5	+36	+3.0%	+47	+4.0%	1,371
Consultants	26	27	34	33	-1	+6	+21.8%	+7	+26.9%	35
Registrars	10	9	12	12	-0	+3	+32.0%	+2	+18.8%	12
SHO/ Interns	32	36	31	32	+1	-3	-9.7%	+0	+1.1%	34
Medical/ Dental, other	2	2	2	2	0	-0	-2.5%	-0	-2.5%	2
Medical & Dental	70	74	79	80	+0	+5	+7.2%	+9	+13.1%	83
Nurse/ Midwife Manager	164	160	177	175	-2	+15	+9.4%	+11	+6.6%	185
Nurse/ Midwife Specialist & AN/MP	42	54	65	68	+3	+14	+25.7%	+26	+61.2%	74
Staff Nurse/ Staff Midwife	415	411	400	398	-2	-13	-3.2%	-18	-4.2%	452
<i>Pre-registration Nurse Intern (COVID-19)</i>		13				-13	-100.0%		-100.0%	
<i>Pre-registration Nurse/ Midwife Intern</i>	4		2	1	-1	+1	-100.0%	-3	-72.0%	2
<i>Nursing/ Midwifery awaiting registration</i>	2		12	6	-6	+6	-100.0%	+4	+180.0%	7
Nursing/ Midwifery Student	6	13	13	7	-7	-6	-49.1%	+1	+19.6%	9
Nursing/ Midwifery other	4	4	3	4	+1			-0	-1.6%	4
Nursing & Midwifery	631	642	658	651	-7	+9	+1.5%	+20	+3.2%	724
Therapy Professions	40	39	34	34	+0	-5	-12.7%	-6	-16.0%	37
Social Care	5	5	4	4	-1	-1	-22.3%	-1	-22.3%	4
Social Workers	27	28	28	29	+1	+1	+3.5%	+1	+5.2%	32
Psychologists	21	21	26	27	+1	+6	+27.2%	+6	+28.7%	32
H&SC, Other	10	8	23	23	+0	+15	+194.3%	+13	+134.1%	24
Health & Social Care Professionals	103	100	115	117	+2	+16	+16.1%	+13	+12.9%	129
Management (VIII & above)	3	6	6	6	-0	-0	-5.2%	+3	+89.7%	6
Administrative/ Supervisory (V to VII)	20	20	22	23	+1	+4	+18.1%	+3	+16.7%	25
Clerical (III & IV)	74	68	74	74	+0	+6	+8.9%	+1	+0.9%	84
Management & Administrative	97	94	102	104	+1	+9	+9.9%	+7	+6.9%	115
Support	168	178	174	175	+0	-4	-2.2%	+7	+4.1%	202
Maintenance/ Technical	23	20	15	14	-1	-6	-29.0%	-9	-39.7%	15
General Support	191	198	189	189	-1	-10	-4.8%	-2	-1.2%	217
Health Care Assistants	73	68	74	73	-1	+6	+8.3%	+1	+0.7%	84
Care, other	13	12	12	12	-0	-0	-2.8%	-1	-7.7%	19
Patient & Client Care	85	80	86	85	-1	+5	+6.6%	-0	-0.5%	103

CHO 6

Dec 2022	WTE Dec 2019	WTE Dec 2020	WTE Nov 2022	WTE Dec 2022	WTE change since Nov 22	WTE change since Dec 20	% change since Dec 20	WTE change since Dec 19	% change since Dec 19	No. Dec 2022
Overall	593	626	653	650	-4	+23	+3.7%	+57	+9.6%	728
Consultants	36	40	46	45	-1	+5	+12.6%	+9	+25.5%	52
Registrars	22	19	29	30	+1	+11	+55.7%	+8	+36.3%	32
SHO/ Interns	9	13	9	9	+0	-4	-31.0%	-0	-0.3%	9
Medical & Dental	67	72	83	84	+0	+12	+16.1%	+17	+25.5%	93
Nurse/ Midwife Manager	76	77	75	75	-1	-3	-3.4%	-2	-2.3%	80
Nurse/ Midwife Specialist & AN/MP	14	20	27	27	-0	+7	+37.4%	+13	+96.5%	31
Staff Nurse/ Staff Midwife	139	151	150	151	+1	+0	+0.0%	+12	+8.8%	169
<i>Nursing/ Midwifery awaiting registration</i>		1				-1	-100.0%		-100.0%	
Nursing/ Midwifery Student		1				-1	-100.0%		-100.0%	
Nursing/ Midwifery other	2	2	4	4	-0	+2	+88.0%	+2	+88.0%	4
Nursing & Midwifery	231	251	256	257	+0	+5	+2.2%	+26	+11.0%	284
Therapy Professions	43	39	41	41	+0	+3	+7.0%	-2	-4.1%	49
Social Care	26	28	28	28	-0	-0	-1.1%	+2	+7.6%	32
Social Workers	30	30	39	36	-2	+7	+22.6%	+6	+21.7%	40
Psychologists	22	32	37	38	+0	+6	+17.4%	+16	+70.7%	47
H&SC, Other	9	5	7	6	-0	+1	+23.9%	-2	-26.3%	7
Health & Social Care Professionals	130	134	151	150	-2	+16	+11.9%	+20	+15.4%	175
Management (VIII & above)	3	3	5	5	-0	+2	+65.7%	+2	+65.7%	5
Administrative/ Supervisory (V to VII)	27	24	31	31	-1	+6	+26.6%	+4	+15.2%	34
Clerical (III & IV)	42	43	30	29	-1	-14	-32.0%	-13	-31.0%	33
Management & Administrative	72	70	66	65	-1	-5	-7.5%	-7	-9.8%	72
Support	36	39	30	29	-1	-10	-24.7%	-7	-19.7%	35
Maintenance/ Technical	6	6	5	5	-0	-1	-17.0%	-1	-15.7%	5
General Support	42	45	35	34	-1	-11	-23.7%	-8	-19.2%	40
Health Care Assistants	46	49	54	54	+0	+5	+10.2%	+8	+17.7%	56
Care, other	5	6	7	7	-0	+1	+16.1%	+2	+28.6%	8
Patient & Client Care	51	54	60	60	+0	+6	+10.8%	+10	+18.9%	64

CHO 7

Dec 2022	WTE Dec 2019	WTE Dec 2020	WTE Nov 2022	WTE Dec 2022	WTE change since Nov 22	WTE change since Dec 20	% change since Dec 20	WTE change since Dec 19	% change since Dec 19	No. Dec 2022
Overall	835	861	883	879	-5	+17	+2.0%	+44	+5.2%	974
Consultants	48	53	53	52	-1	-1	-1.5%	+5	+9.5%	55
Registrars	46	54	57	55	-2	+1	+2.7%	+9	+19.0%	59
SHO/ Interns	21	20	26	26	-0	+5	+25.9%	+5	+22.7%	29
Medical & Dental	115	127	136	133	-3	+6	+4.7%	+18	+15.7%	143
Nurse/ Midwife Manager	117	117	111	109	-2	-8	-7.0%	-7	-6.2%	116
Nurse/ Midwife Specialist & AN/MP	40	47	56	56	-0	+9	+19.8%	+16	+40.1%	60
Staff Nurse/ Staff Midwife	194	202	204	205	+0	+3	+1.5%	+10	+5.3%	230
<i>Pre-registration Nurse Intern (COVID-19)</i>		3				-3	-100.0%		-100.0%	
<i>Pre-registration Nurse/ Midwife Intern</i>	1	1		0	+0	-0	-80.0%	-1	-92.7%	1
<i>Post-registration Nurse/ Midwife Student</i>		1				-1	-100.0%		-100.0%	
<i>Nursing/ Midwifery awaiting registration</i>	10	3	1	1	+0	-2	-65.3%	-9	-90.0%	1
Nursing/ Midwifery Student	11	8	1	1	+0	-7	-85.9%	-10	-90.3%	2
Nursing/ Midwifery other	8	6	6	6	+0	+0	+1.4%	-2	-21.4%	8
Nursing & Midwifery	370	379	378	377	-1	-3	-0.7%	+7	+2.0%	416
Therapy Professions	48	53	51	51	+0	-2	-4.6%	+3	+6.4%	57
Social Care	8	7	7	7	-1	-1	-7.6%	-1	-12.1%	8
Social Workers	34	38	37	38	+2	+1	+2.1%	+4	+12.7%	43
Psychologists	31	29	35	35	-0	+5	+18.7%	+3	+10.7%	41
Pharmacy	1	1		0	+0	-1	-80.0%	-1	-80.0%	1
H&SC, Other	18	18	19	19	-0	+1	+3.8%	+1	+3.8%	23
Health & Social Care Professionals	140	147	149	150	+1	+3	+2.1%	+10	+6.9%	173
Management (VIII & above)	3	4	5	5	+0	+1	+25.9%	+2	+69.4%	5
Administrative/ Supervisory (V to VII)	16	17	22	22	+0	+5	+29.7%	+7	+42.8%	23
Clerical (III & IV)	47	49	55	55	+1	+6	+12.9%	+9	+18.4%	61
Management & Administrative	65	70	81	83	+1	+12	+17.8%	+17	+26.5%	89
Support	18	17	17	16	-1	-1	-7.2%	-2	-9.2%	19
Maintenance/ Technical	2	2	2	2	-0	-0	-3.0%	+0	+4.3%	2
General Support	20	19	19	18	-1	-1	-6.8%	-2	-8.0%	21
Health Care Assistants	33	34	31	31	-0	-4	-11.5%	-3	-8.6%	33
Care, other	92	84	90	88	-3	+3	+4.0%	-4	-4.7%	99
Patient & Client Care	125	119	121	118	-3	-1	-0.5%	-7	-5.7%	132

CHO 8

Dec 2022	WTE Dec 2019	WTE Dec 2020	WTE Nov 2022	WTE Dec 2022	WTE change since Nov 22	WTE change since Dec 20	% change since Dec 20	WTE change since Dec 19	% change since Dec 19	No. Dec 2022
Overall	1,098	1,112	1,087	1,091	+4	-21	-1.9%	-7	-0.7%	1,180
Consultants	35	36	37	36	-1	-0	-0.4%	+1	+2.7%	38
Registrars	26	31	28	29	+2	-2	-6.5%	+3	+13.3%	30
SHO/ Interns	36	26	30	29	-1	+3	+10.4%	-7	-19.6%	30
Medical & Dental	97	94	94	94	+0	+1	+0.6%	-3	-2.8%	98
Nurse/ Midwife Manager	121	120	113	114	+1	-6	-5.3%	-7	-5.6%	118
Nurse/ Midwife Specialist & AN/MP	56	60	73	75	+1	+15	+25.2%	+18	+32.8%	79
Staff Nurse/ Staff Midwife	332	342	318	323	+5	-19	-5.6%	-8	-2.5%	349
<i>Pre-registration Nurse Intern (COVID-19)</i>		1				-1	-100.0%		-100.0%	
<i>Pre-registration Nurse/ Midwife Intern</i>	1		1	1	-1	+1	-100.0%			1
<i>Nursing/ Midwifery awaiting registration</i>	2		11	8	-3	+8	-100.0%	+6	+318.5%	9
Nursing/ Midwifery Student	3	1	12	9	-4	+8	+761.2%	+6	+254.8%	10
Nursing/ Midwifery other	4	3	3	3	0	-0	-2.3%	-1	-26.6%	3
Nursing & Midwifery	515	526	520	523	+3	-3	-0.5%	+9	+1.7%	559
Therapy Professions	44	43	35	36	+1	-7	-16.1%	-8	-19.0%	40
Social Care	7	7	6	6	+0	-1	-9.6%	-1	-12.6%	7
Social Workers	41	44	50	50	+0	+6	+14.0%	+9	+20.7%	55
Psychologists	39	37	35	36	+1	-1	-1.5%	-3	-7.5%	38
Pharmacy	1	2	2	2	-1	+0	+6.0%	+1	+59.0%	3
H&SC, Other	20	21	16	16	-0	-5	-24.3%	-4	-20.7%	19
Health & Social Care Professionals	153	153	145	146	+1	-7	-4.6%	-7	-4.8%	162
Management (VIII & above)	3	3	3	3	0	+0	+1.7%	+0	+2.0%	3
Administrative/ Supervisory (V to VII)	22	20	26	28	+2	+8	+40.5%	+6	+25.9%	31
Clerical (III & IV)	88	97	91	88	-3	-9	-9.8%	-1	-0.7%	99
Management & Administrative	114	120	120	119	-1	-1	-1.1%	+5	+4.6%	133
Support	33	31	28	27	-1	-4	-13.4%	-6	-17.1%	31
Maintenance/ Technical	26	28	25	25	-1	-3	-12.0%	-1	-5.6%	26
General Support	59	59	53	52	-2	-8	-12.7%	-7	-12.0%	57
Health Care Assistants	157	156	150	152	+2	-4	-2.9%	-5	-3.3%	166
Care, other	4	3	5	5	-0	+1	+41.5%	+1	+27.1%	5
Patient & Client Care	160	159	154	156	+2	-3	-2.0%	-4	-2.6%	171

CHO 9

Dec 2022	WTE Dec 2019	WTE Dec 2020	WTE Nov 2022	WTE Dec 2022	WTE change since Nov 22	WTE change since Dec 20	% change since Dec 20	WTE change since Dec 19	% change since Dec 19	No. Dec 2022
Overall	1,272	1,331	1,370	1,371	+1	+40	+3.0%	+99	+7.8%	1,523
Consultants	50	46	55	55	+0	+9	+19.0%	+5	+10.3%	58
Registrars	31	32	58	57	-1	+25	+78.8%	+26	+84.6%	59
SHO/ Interns	53	54	35	36	+1	-18	-33.1%	-17	-32.7%	38
Medical & Dental	134	132	148	148	+0	+16	+12.4%	+14	+10.4%	155
Nurse/ Midwife Manager	132	138	138	138	+0	-0	-0.1%	+6	+4.4%	145
Nurse/ Midwife Specialist & AN/MP	65	76	97	99	+1	+23	+30.5%	+34	+51.6%	104
Staff Nurse/ Staff Midwife	351	371	352	351	-1	-20	-5.5%	-0	-0.1%	390
<i>Pre-registration Nurse Intern (COVID-19)</i>		5				-5	-100.0%		-100.0%	
<i>Pre-registration Nurse/ Midwife Intern</i>	10	10	1	8	+7	-2	-21.6%	-2	-20.9%	16
<i>Nursing/ Midwifery awaiting registration</i>	11		15	14	-2	+14	-100.0%	+3	+27.8%	16
Nursing/ Midwifery Student	21	16	16	22	+6	+6	+39.3%	+1	+4.2%	32
Nursing/ Midwifery other	11	13	10	9	-1	-3	-26.8%	-2	-18.0%	11
Nursing & Midwifery	581	613	613	619	+5	+5	+0.9%	+38	+6.5%	682
Therapy Professions	55	61	60	60	-1	-1	-1.9%	+5	+9.3%	69
Social Care	1	1	1	1	-0	-0	-1.0%	+0	+10.0%	1
Social Workers	43	43	57	57	-0	+14	+32.1%	+13	+30.1%	63
Psychologists	46	53	56	56	+0	+3	+5.6%	+10	+22.8%	64
Pharmacy	8	9	7	7	+0	-2	-21.0%	-1	-12.0%	10
H&SC, Other	15	14	18	17	-1	+3	+22.5%	+3	+19.8%	19
Health & Social Care Professionals	167	181	199	198	-1	+17	+9.4%	+31	+18.3%	226
Management (VIII & above)	5	5	5	5	-0	-0	-1.4%	-0	-1.2%	5
Administrative/ Supervisory (V to VII)	28	29	39	38	-0	+9	+32.8%	+10	+37.6%	42
Clerical (III & IV)	104	114	109	109	-1	-6	-4.9%	+5	+4.5%	125
Management & Administrative	137	148	153	152	-1	+4	+2.6%	+15	+11.1%	172
Support	103	104	94	95	+1	-9	-8.9%	-8	-8.2%	116
Maintenance/ Technical	11	11	11	11	-0	-0	-0.7%			11
General Support	114	115	105	106	+0	-9	-8.2%	-8	-7.4%	127
Health Care Assistants	126	129	139	137	-3	+8	+5.9%	+11	+8.5%	148
Care, other	13	12	12	12	-0	-0	-1.4%	-0	-3.3%	13
Patient & Client Care	139	142	152	149	-3	+7	+5.3%	+10	+7.4%	161

other Community Services

Dec 2022	WTE Dec 2019	WTE Dec 2020	WTE Nov 2022	WTE Dec 2022	WTE change since Nov 22	WTE change since Dec 20	% change since Dec 20	WTE change since Dec 19	% change since Dec 19	No. Dec 2022
Overall	438	494	495	511	+16	+17	+3.4%	+73	+16.8%	536
Consultants	16	17	16	15	-1	-2	-11.3%	-1	-5.6%	17
Registrars	13	14	19	19	-0	+5	+34.4%	+6	+44.8%	20
Medical & Dental	29	31	35	34	-1	+3	+9.6%	+5	+17.3%	37
Nurse/ Midwife Manager	62	76	79	81	+1	+5	+6.3%	+18	+29.5%	84
Nurse/ Midwife Specialist & AN/MP	8	13	11	11	+0	-2	-13.2%	+3	+33.3%	12
Staff Nurse/ Staff Midwife	169	165	148	151	+3	-14	-8.4%	-18	-10.5%	158
Nursing/ Midwifery other	1	2	2	2	-0	+0	+0.5%	+1	+97.0%	2
Nursing & Midwifery	240	255	240	245	+4	-11	-4.2%	+4	+1.8%	256
Therapy Professions	11	12	10	10	+0	-2	-16.0%	-1	-11.5%	10
Social Care	2	2	1	1	-0	-1	-47.9%	-1	-49.5%	1
Social Workers	15	17	12	11	-1	-7	-37.8%	-4	-27.6%	12
Psychologists	6	6	5	5	+0	-1	-9.7%	-1	-10.3%	7
Pharmacy		1	2	2	-0	+1	+98.0%	+2	-100.0%	2
Health & Social Care Professionals	34	38	29	29	-0	-9	-23.7%	-5	-14.8%	32
Management (VIII & above)	27	30	33	33	-0	+3	+8.5%	+6	+20.7%	33
Administrative/ Supervisory (V to VII)	31	37	43	46	+3	+9	+25.8%	+15	+47.6%	49
Clerical (III & IV)	25	18	24	28	+4	+9	+50.9%	+3	+10.6%	30
Management & Administrative	83	85	99	106	+7	+21	+25.2%	+23	+27.7%	112
Support	12	16	23	25	+2	+9	+54.3%	+13	+102.5%	25
Maintenance/ Technical	2	7	9	8	-1	+1	+13.9%	+6	+298.5%	8
General Support	14	23	32	33	+1	+10	+42.0%	+18	+130.1%	33
Health Care Assistants	37	62	60	64	+4	+2	+3.9%	+28	+75.3%	65
Care, other	1	1		0	+0	-0	-6.0%	-0	-6.0%	1
Patient & Client Care	37	63	60	65	+5	+2	+3.8%	+28	+74.2%	66

Mental Health Services Employment by Grade Group: Dec 2022

Dec 2022	WTE Dec 2019	WTE Dec 2020	WTE Nov 2022	WTE Dec 2022	WTE change since Nov 22	WTE change since Dec 20	% change since Dec 20	WTE change since Dec 19	% change since Dec 19	No. Dec 2022
Overall	9,954	10,301	10,453	10,453	+1	+152	+1.5%	+499	+5.0%	11,456
Consultant Medicine	1	1	1	1						1
Consultant Psychiatry	352	369	398	396	-2	+27	+7.5%	+44	+12.7%	429
Consultants	353	370	399	397	-2	+27	+7.4%	+44	+12.6%	430
Registrars	269	281	346	345	-1	+64	+22.7%	+76	+28.2%	359
Senior House Officer	253	271	260	262	+2	-9	-3.2%	+9	+3.6%	275
Interns	8	5	5	5	-0	-0	-1.6%	-3	-38.5%	5
SHO/ Interns	261	276	265	267	+2	-9	-3.2%	+6	+2.3%	280
Medical/ Dental, other	5	5	4	4	-1	-1	-21.8%	-1	-21.8%	7
Medical & Dental	888	932	1,014	1,013	-1	+81	+8.7%	+125	+14.1%	1,076
Clinical Nurse/ Midwife Manager	999	1,041	1,030	1,036	+5	-6	-0.5%	+37	+3.7%	1,093
Director Nursing/Midwifery, Assistant	165	171	177	176	-1	+6	+3.2%	+11	+6.9%	182
Director of Nursing/Midwifery	29	28	33	34	+1	+6	+20.7%	+5	+16.6%	34
Nurse/ Midwife Manager	1,192	1,240	1,240	1,245	+5	+6	+0.5%	+53	+4.4%	1,309
Advanced Nurse/ Midwife Practitioner	31	39	68	68	+0	+29	+73.1%	+38	+122.0%	73
Clinical Nurse/ Midwife Specialist	428	489	553	563	+10	+73	+15.0%	+134	+31.3%	602
Nurse/ Midwife Specialist & AN/MP	459	529	621	631	+10	+102	+19.3%	+172	+37.4%	675
Staff Midwives		1				-1	-100.0%		-100.0%	
Staff Nurse [Psychiatric]	2,893	2,965	2,830	2,835	+5	-130	-4.4%	-58	-2.0%	3,113
Staff Nurses [General/ Children's]	105	106	109	106	-3	-0	-0.2%	+1	+1.3%	117
Staff Nurse [Intellectual Disability]	5	4	6	7	+1	+2	+56.8%	+2	+46.8%	7
Staff Nurse/ Staff Midwife	3,003	3,076	2,945	2,948	+2	-128	-4.2%	-55	-1.8%	3,237
Pre-registration Nurse Intern (COVID-19)		42				-42	-100.0%		-100.0%	
Pre-registration Nurse/ Midwife Intern	28	11	26	26	-0	+16	+146.6%	-1	-4.1%	46
Post-registration Nurse/ Midwife Student	1	1				-1	-100.0%	-1	-100.0%	
Nursing/ Midwifery awaiting registration	59	5	50	39	-12	+34	+698.8%	-20	-34.2%	43
Nursing/ Midwifery Student	87	59	77	65	-12	+6	+10.5%	-22	-25.5%	89
Nursing Education/Clinical	32	32	34	34	+0	+3	+8.6%	+3	+9.0%	39
Nursing/ Midwifery other	32	32	34	34	+0	+3	+8.6%	+3	+9.0%	39
Nursing & Midwifery	4,773	4,935	4,917	4,924	+6	-12	-0.2%	+150	+3.1%	5,349
Dietitians	19	21	18	18	-0	-3	-13.1%	-1	-5.5%	21
Occupational Therapists	339	346	349	346	-3	+1	+0.2%	+8	+2.2%	385
Physiotherapists	2	2	3	3	-0	+1	+22.0%	+1	+31.8%	4
Podiatrists & Chiropodists	1	1	1	1	+0	-0	-12.5%	-0	-4.1%	1
Speech & Language Therapists	62	70	67	68	+0	-2	-3.0%	+6	+9.5%	79
Therapy Professions	422	439	438	435	-3	-4	-0.9%	+13	+3.1%	490
Social Care	74	80	74	72	-3	-8	-10.1%	-2	-2.3%	82
Social Workers	350	373	411	414	+2	+41	+11.0%	+64	+18.3%	459
Psychologists	394	424	446	448	+2	+24	+5.6%	+53	+13.5%	500
Pharmacists	16	17	16	16	-1	-2	-9.0%	-1	-3.4%	20
Pharmacy Technicians	2	4	4	4	-0	+0	+2.2%	+1	+50.6%	6
Pharmacy	19	21	20	19	-1	-1	-7.1%	+1	+3.8%	26
Counsellor Therapists	95	101	126	124	-1	+23	+22.8%	+29	+31.1%	137
Other Health & Social Care	12	5	3	3	-0	-2	-44.8%	-9	-74.6%	7
Play Therapists/ Specialists	1	1	3	3	+0	+2	+110.1%	+2	+113.0%	4
H&SC, Other	108	108	131	130	-1	+22	+20.6%	+22	+20.7%	148
Health & Social Care Professionals	1,366	1,444	1,522	1,518	-3	+74	+5.1%	+152	+11.1%	1,705

Dec 2022	WTE Dec 2019	WTE Dec 2020	WTE Nov 2022	WTE Dec 2022	WTE change since Nov 22	WTE change since Dec 20	% change since Dec 20	WTE change since Dec 19	% change since Dec 19	No. Dec 2022
Overall	9,954	10,301	10,453	10,453	+1	+152	+1.5%	+499	+5.0%	11,456
Executive Management	11	15	15	14	-1	-1	-5.6%	+3	+26.4%	14
Senior Management (VIII & GM)	46	52	60	61	+1	+8	+15.8%	+14	+30.9%	62
Management (VIII & above)	57	67	75	75	-0	+7	+11.1%	+17	+30.1%	76
Middle Management (V-VII)	235	243	277	285	+9	+42	+17.4%	+50	+21.3%	304
Other Administrative	2	2	2	2						2
Administrative/ Supervisory (V to VII)	237	245	278	287	+9	+42	+17.3%	+50	+21.2%	306
General Administrative (III & IV)	717	722	709	707	-2	-15	-2.1%	-11	-1.5%	797
Clerical (III & IV)	717	722	709	707	-2	-15	-2.1%	-11	-1.5%	797
Management & Administrative	1,012	1,034	1,062	1,068	+6	+34	+3.3%	+57	+5.6%	1,179
Catering	65	64	68	68	-0	+4	+6.5%	+2	+3.7%	75
Household Services	425	441	399	397	-2	-44	-10.0%	-27	-6.4%	469
Other Support	43	42	42	40	-1	-2	-4.0%	-2	-5.8%	47
Portering	48	47	50	51	+0	+3	+6.8%	+2	+5.0%	53
Support	581	594	559	556	-3	-38	-6.5%	-25	-4.3%	644
Maintenance	129	137	130	129	-1	-9	-6.3%	-0	-0.1%	133
Technical Services	2						-100.0%	-2	-100.0%	
Maintenance/ Technical	131	137	130	129	-1	-9	-6.3%	-2	-1.7%	133
General Support	711	732	689	685	-4	-47	-6.4%	-27	-3.8%	777
Attendant/ Aide	605	583	422	423	+1	-161	-27.6%	-182	-30.1%	467
Health & Social Care Assistants	9	8	18	19	+1	+11	+129.5%	+10	+114.1%	22
Health Care Assistant/ Care Assistant	374	430	592	588	-4	+158	+36.9%	+214	+57.3%	626
Health Care Assistants	988	1,022	1,032	1,030	-2	+9	+0.8%	+42	+4.3%	1,115
Home Care Services	16	14	23	23	+0	+9	+61.4%	+7	+46.4%	34
Other Care Grades	23	22	19	19	-0	-3	-12.5%	-3	-14.7%	21
Pastoral Care	13	12	9	9	+0	-3	-21.7%	-3	-25.3%	14
Workshop Services	165	155	165	164	-1	+9	+5.9%	-1	-0.4%	186
Care, other	216	203	217	216	-1	+12	+6.1%	+0	+0.0%	255
Patient & Client Care	1,204	1,225	1,249	1,246	-3	+21	+1.7%	+42	+3.5%	1,370

Employment by WTE, Headcount, Gender, Full-Time /Part-Time etc.: Dec 2022

Mental Health Services Staff Group	WTE	Headcount	WTE: no.	% Male	% female	Male WTE: no.	Female WTE: no.	% Total Perm	% Male Perm	% Female Perm	% Total Full Time	% Total Part Time	% Male FT	% Female FT
Overall	10,453	11,456	1.10	26.8%	73.2%	1.05	1.11	84.7%	81.3%	85.9%	85.2%	14.8%	93.1%	82.3%
Consultant Medicine	1	1	1.00	100.0%		1.00		100.0%	100.0%		100.0%	0.0%	100.0%	
Consultant Psychiatry	396	429	1.08	41.7%	58.3%	1.05	1.11	65.3%	65.3%	63.2%	85.8%	14.2%	92.2%	81.2%
Consultants	397	430	1.08	41.9%	58.1%	1.05	1.11	65.3%	68.3%	63.2%	85.8%	14.2%	92.2%	81.2%
Registrar	217	225	1.04	47.1%	52.9%	1.02	1.05	2.2%	2.2%	2.5%	96.9%	3.1%	99.1%	95.0%
Senior Registrar	126	132	1.05	31.1%	68.9%	1.01	1.07	1.5%	1.5%	1.1%	94.7%	5.3%	97.6%	93.4%
Specialist Registrar	2	2	1.01		100.0%		1.01	0.0%	0.0%	0.0%	0.0%	100.0%		0.0%
Registrars	345	359	1.04	40.9%	59.1%	1.02	1.06	1.9%	2.0%	1.9%	95.5%	4.5%	98.6%	93.4%
Senior House Officer	262	275	1.05	38.5%	61.5%	1.04	1.05	0.4%	0.4%	0.0%	98.9%	1.1%	100.0%	98.2%
Interns	5	5	1.02	40.0%	60.0%	1.01	1.02	0.0%	0.0%	0.0%	100.0%	0.0%	100.0%	100.0%
SHO/ Interns	267	280	1.05	38.6%	61.4%	1.04	1.05	0.4%	0.9%	0.0%	98.9%	1.1%	100.0%	98.3%
Medical/ Dental, other	4	7	1.79	42.9%	57.1%	2.33	1.53	57.1%	33.3%	75.0%	42.9%	57.1%	33.3%	50.0%
Medical & Dental	1,013	1,076	1.06	40.7%	59.3%	1.04	1.08	27.2%	29.2%	25.9%	92.2%	7.8%	95.9%	89.7%
Clinical Nurse/ Midwife Manager	1,036	1,093	1.06	34.5%	65.5%	1.03	1.07	98.4%	98.4%	98.6%	94.2%	5.8%	98.7%	91.9%
Director Nursing/Midwifery, Assistant	176	182	1.03	41.2%	58.8%	1.04	1.03	100.0%	100.0%	100.0%	98.4%	1.6%	97.3%	99.1%
Director of Nursing/Midwifery	34	34	1.01	58.8%	41.2%	1.01	1.01	100.0%	100.0%	100.0%	100.0%	0.0%	100.0%	100.0%
Nurse/ Midwife Manager	1,245	1,309	1.05	36.1%	63.9%	1.03	1.06	98.6%	98.3%	98.8%	95.0%	5.0%	98.5%	93.0%
Advanced Nurse/ Midwife Practitioner	68	73	1.07	20.5%	79.5%	1.01	1.09	100.0%	100.0%	100.0%	94.5%	5.5%	100.0%	93.1%
Clinical Nurse/ Midwife Specialist	563	602	1.07	19.3%	80.7%	1.03	1.08	99.7%	99.7%	99.6%	93.0%	7.0%	97.4%	92.0%
Nurse/ Midwife Specialist & AN/MP	631	675	1.07	19.4%	80.6%	1.03	1.08	99.7%	100.0%	99.6%	93.2%	6.8%	97.7%	92.1%
Staff Nurse [Psychiatric]	2,835	3,113	1.10	24.8%	75.2%	1.07	1.11	91.1%	91.1%	91.8%	88.1%	11.9%	92.1%	86.8%
Staff Nurses [General/ Children's]	106	117	1.10	28.2%	71.8%	1.15	1.08	75.2%	75.2%	77.4%	84.6%	15.4%	84.8%	84.5%
Staff Nurse [Intellectual Disability]	7	7	1.05	28.6%	71.4%	1.01	1.07	71.4%	71.4%	60.0%	100.0%	0.0%	100.0%	100.0%
Staff Nurse/ Staff Midwife	2,948	3,237	1.10	25.0%	75.0%	1.07	1.11	90.5%	88.4%	91.2%	88.0%	12.0%	91.8%	86.7%
Pre-registration Nurse/ Midwife Intern	26	46	1.74	17.4%	82.6%	1.63	1.77	0.0%	0.0%	0.0%	97.8%	2.2%	100.0%	97.4%
Nursing/ Midwifery awaiting registration	39	43	1.11	14.0%	86.0%	1.06	1.12	11.6%	11.6%	10.8%	95.3%	4.7%	100.0%	94.6%
Nursing/ Midwifery Student	65	89	1.37	15.7%	84.3%	1.33	1.37	5.6%	7.1%	5.3%	96.6%	3.4%	100.0%	96.0%
Nursing Education/Clinical	34	39	1.13	7.7%	92.3%	1.01	1.15	100.0%	100.0%	100.0%	87.2%	12.8%	100.0%	86.1%

Nursing/ Midwifery other	34	39	1.13	7.7%	92.3%	1.01	1.15	100.0%	100.0%	100.0%	87.2%	12.8%	100.0%	86.1%
Nursing & Midwifery	4,924	5,349	1.09	26.7%	73.3%	1.05	1.10	92.3%	91.9%	92.5%	90.5%	9.5%	94.7%	89.0%
Health & Social Care	1,518	1,705	1.12	16.0%	84.0%	1.05	1.14	86.3%	85.3%	86.5%	80.8%	19.2%	93.0%	78.5%
Executive Management	14	14	1.01	50.0%	50.0%	1.01	1.01	100.0%	100.0%	100.0%	100.0%	0.0%	100.0%	100.0%
Senior Management (VIII & GM)	61	62	1.02	27.4%	72.6%	1.04	1.02	96.8%	96.8%	97.8%	96.8%	3.2%	94.1%	97.8%
Management (VIII & above)	75	76	1.02	31.6%	68.4%	1.03	1.02	97.4%	95.8%	98.1%	97.4%	2.6%	95.8%	98.1%
Middle Management (V-VII)	285	304	1.06	21.1%	78.9%	1.04	1.07	93.1%	93.1%	93.3%	90.1%	9.9%	96.9%	88.3%
Other Administrative	2	2	1.27		100.0%		1.27	100.0%	100.0%	100.0%	50.0%	50.0%		50.0%
Administrative/ Supervisory (V to VII)	287	306	1.07	20.9%	79.1%	1.04	1.07	93.1%	92.2%	93.4%	89.9%	10.1%	96.9%	88.0%
General Administrative (III & IV)	707	797	1.13	8.8%	91.2%	1.08	1.13	85.6%	85.6%	86.4%	76.4%	23.6%	88.6%	75.2%
Clerical (III & IV)	707	797	1.13	8.8%	91.2%	1.08	1.13	85.6%	77.1%	86.4%	76.4%	23.6%	88.6%	75.2%
Management & Administrative	1,068	1,179	1.10	13.4%	86.6%	1.05	1.11	88.3%	86.1%	88.6%	81.3%	18.7%	93.0%	79.4%
Catering	68	75	1.11	36.0%	64.0%	1.12	1.10	94.7%	94.7%	93.8%	72.0%	28.0%	81.5%	66.7%
Household Services	397	469	1.18	20.7%	79.3%	1.10	1.20	92.3%	92.3%	93.3%	57.8%	42.2%	83.5%	51.1%
Other Support	40	47	1.17	34.0%	66.0%	1.04	1.25	85.1%	85.1%	87.1%	72.3%	27.7%	93.8%	61.3%
Portering	51	53	1.05	96.2%	3.8%	1.05	1.01	92.5%	92.5%	100.0%	88.7%	11.3%	88.2%	100.0%
Support	556	644	1.16	29.7%	70.3%	1.08	1.19	92.1%	90.1%	92.9%	63.0%	37.0%	85.3%	53.6%
Maintenance	129	133	1.03	99.2%	0.8%	1.03	1.01	95.5%	95.5%	100.0%	97.0%	3.0%	97.0%	100.0%
Maintenance/ Technical	129	133	1.03	99.2%	0.8%	1.03	1.01	95.5%	95.5%	100.0%	97.0%	3.0%	97.0%	100.0%
General Support	685	777	1.14	41.6%	58.4%	1.06	1.19	92.7%	92.3%	93.0%	68.9%	31.1%	90.1%	53.7%
Attendant/ Aide	423	467	1.11	24.8%	75.2%	1.06	1.12	85.0%	85.0%	88.0%	70.0%	30.0%	81.9%	66.1%
Health & Social Care Assistants	19	22	1.15	31.8%	68.2%	1.18	1.13	59.1%	59.1%	53.3%	72.7%	27.3%	71.4%	73.3%
Health Care Assistant/ Care Assistant	588	626	1.06	34.8%	65.2%	1.04	1.08	97.0%	97.0%	98.3%	86.3%	13.7%	95.9%	81.1%
Health Care Assistants	1,030	1,115	1.08	30.6%	69.4%	1.05	1.10	91.2%	87.7%	92.8%	79.2%	20.8%	90.6%	74.2%
Home Care Services	23	34	1.48	38.2%	61.8%	1.56	1.43	76.5%	76.5%	76.2%	32.4%	67.6%	30.8%	33.3%
Other Care Grades	19	21	1.09	81.0%	19.0%	1.03	1.48	90.5%	90.5%	75.0%	81.0%	19.0%	94.1%	25.0%
Pastoral Care	9	14	1.49	78.6%	21.4%	1.42	1.82	28.6%	28.6%	0.0%	57.1%	42.9%	54.5%	66.7%
Workshop Services	164	186	1.13	37.1%	62.9%	1.07	1.17	90.9%	90.9%	92.3%	74.2%	25.8%	85.5%	67.5%
Care, other	216	255	1.18	43.1%	56.9%	1.13	1.22	85.5%	82.7%	87.6%	68.2%	31.8%	77.3%	61.4%
Patient & Client Care	1,246	1,370	1.10	32.9%	67.1%	1.07	1.12	90.1%	86.5%	91.9%	77.2%	22.8%	87.4%	72.1%

Employment by WTE, Headcount, Gender, Full-Time /Part-Time etc.: Dec 2022

Mental Health Services CHO	WTE	Headcount	WTE: no.	% Male	% female	Male WTE: no.	Female WTE: no.	% Total Perm	% Male Perm	% Female Perm	% Total Full Time	% Total Part Time	% Male FT	% Female FT
Overall	10,453	11,456	1.10	26.8%	73.2%	1.05	1.11	84.7%	81.3%	85.9%	85.2%	14.8%	93.1%	82.3%
CHO 1	1,024	1,115	1.09	25.6%	74.4%	1.04	1.11	90.1%	90.1%	91.1%	87.0%	13.0%	96.1%	83.9%
CHO 2	1,329	1,421	1.07	28.5%	71.5%	1.05	1.08	86.7%	86.7%	88.5%	84.9%	15.1%	90.6%	82.6%
CHO 3	814	892	1.10	21.4%	78.6%	1.06	1.11	82.8%	82.8%	83.0%	85.9%	14.1%	91.6%	84.3%
CHO 4	1,562	1,716	1.10	25.7%	74.3%	1.06	1.11	70.0%	70.0%	72.2%	83.4%	16.6%	93.0%	80.2%
CHO 5	1,224	1,371	1.12	25.7%	74.3%	1.07	1.14	89.7%	89.7%	91.3%	80.2%	19.8%	90.9%	76.4%
CHO 6	650	728	1.12	29.5%	70.5%	1.09	1.14	87.5%	87.5%	88.3%	82.7%	17.3%	90.2%	79.5%
CHO 7	879	974	1.11	22.3%	77.7%	1.06	1.12	83.8%	83.8%	84.1%	89.0%	11.0%	95.9%	87.1%
CHO 8	1,091	1,180	1.08	24.8%	75.2%	1.04	1.10	88.1%	88.1%	89.5%	86.1%	13.9%	95.6%	83.0%
CHO 9	1,371	1,523	1.11	27.6%	72.4%	1.05	1.13	86.4%	86.4%	87.6%	85.4%	14.6%	94.8%	81.9%
other Community Services	511	536	1.05	47.0%	53.0%	1.04	1.06	90.1%	90.1%	93.0%	93.7%	6.3%	92.1%	95.1%

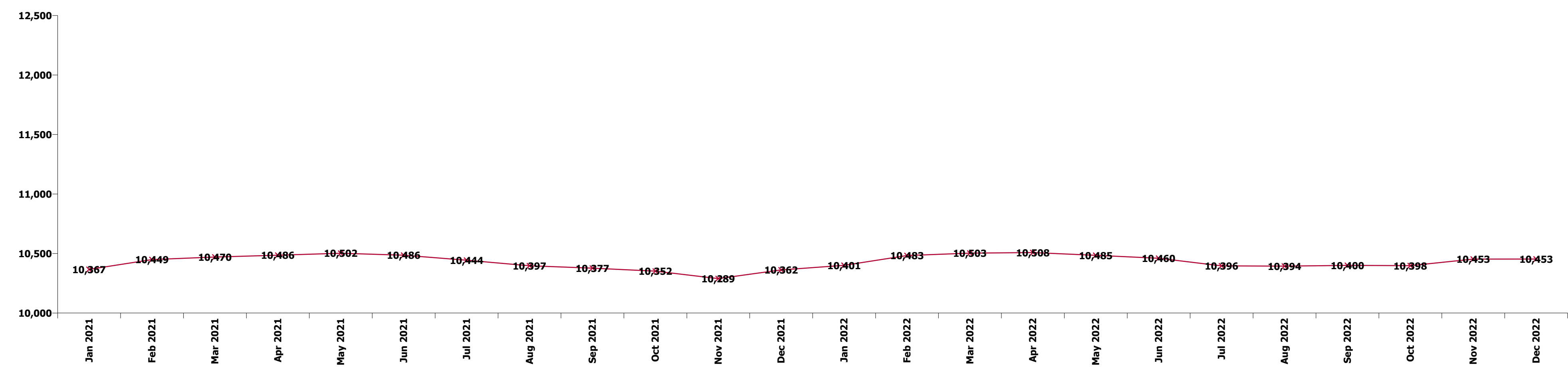
Summary Staff Movement: December 2022

Month-on-month
Summary

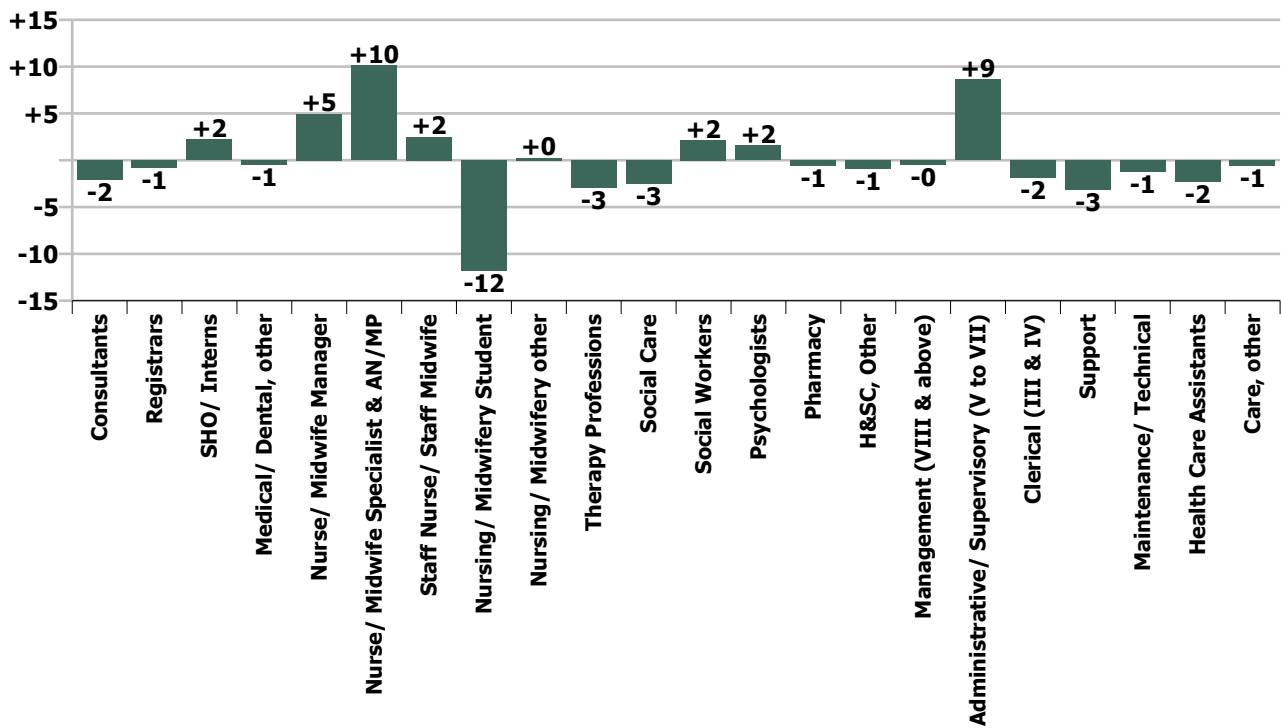
WTE change since Nov 22	% change since Nov 22	overall	Consultants	Registrars	SHO/ Interns	Medical/ Dental, other	Medical & Dental	Nurse/ Midwife Manager	Nurse/ Midwife Specialist & AN/MP	Staff Nurse/ Staff Midwife	Nursing/ Midwifery Student	Nursing/ Midwifery other	Nursing & Midwifery	Therapy Professions	Social Care	Social Workers	Psychologists	Pharmacy	H&SC, Other	Health & Social Care Professionals	Management (VIII & above)	Administrativ e/ Supervisory (V to VII)	Clerical (III & IV)	Management & Administrative	General Support	Health Care Assistants	Care, other	Patient & Client Care
Overall	+0.0%	+1	-2	-1	+2	-1	-1	+5	+10	+2	-12	+0	+6	-3	-3	+2	+2	-1	-1	-3	-0	+9	-2	+6	-4	-2	-1	-3
CHO 1	-1.5%	-15	-0	-1	-1		-2	+2	+1	-7	-1	-0	-5	-2	-0	+0	+0	+0	-0	-2	-0	-1	-3	-4	-1	-1	+0	-1
CHO 2	+0.5%	+7	-0	+2	-1		+1	-0	-1	-0	-3		-4	-0	-0	+0	+0	+0	-0	-0	+0	+1	+3	+3	+1	+4	+2	+5
CHO 3	-0.2%	-1	+1	-2	+4		+4	+8	+2	-1	-4	-0	+5	-1	-1	-0	-3	-0	-0	-5	-0	+1	-2	-0	-1	-5	-0	-5
CHO 4	+0.3%	+4	+1	+0	-2	-1	-1	-4	+3	+5	+1		+5	-1	-0	+2	+2	+0	-0	+3		+1	-1	+0	-1	-2	-0	-2
CHO 5	-0.4%	-5	-1	-0	+1		+0	-2	+3	-2	-7	+1	-7	+0	-1	+1	+1		+0	+2	-0	+1	+0	+1	-1	-1	-0	-1
CHO 6	-0.6%	-4	-1	+1	+0		+0	-1	-0	+1		-0	+0	+0	-0	-2	+0		-0	-2	-0	-1	-1	-1	-1	+0	-0	+0
CHO 7	-0.5%	-5	-1	-2	-0		-3	-2	-0	+0	+0	+0	-1	+0	-1	+2	-0	+0	-0	+1	+0	+0	+1	+1	-1	-0	-3	-3
CHO 8	+0.3%	+4	-1	+2	-1		+0	+1	+1	+5	-4		+3	+1	+0	+0	+1	-1	-0	+1		+2	-3	-1	-2	+2	-0	+2
CHO 9	+0.1%	+1	+0	-1	+1		+0	+0	+1	-1	+6	-1	+5	-1	-0	-0	+0	+0	-1	-1	-0	-0	-1	-1	+0	-3	-0	-3
other Community Services	+3.1%	+16	-1	-0			-1	+1	+0	+3		-0	+4	+0	-0	-1	+0	-0		-0	-0	+3	+4	+7	+1	+4	+0	+5
		+0.0%	-0.5%	-0.2%	+0.8%	-11.5%	-0.1%	+0.4%	+1.6%	+0.1%	-15.4%	+0.8%	+0.1%	-0.7%	-3.4%	+0.5%	+0.4%	-3.1%	-0.7%	-0.2%	-0.6%	+3.1%	-0.3%	+0.6%	-0.6%	-0.2%	-0.3%	-0.2%

Year-on-year Summary

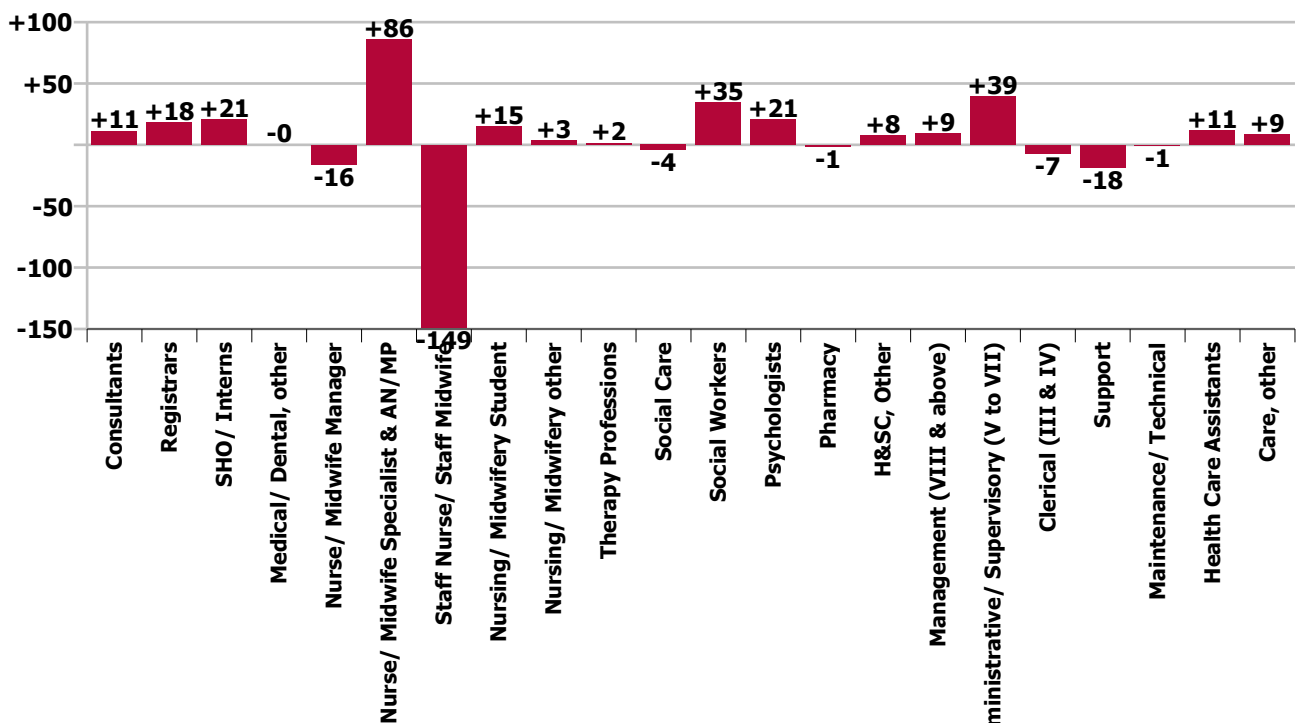
WTE change since Dec 21	% change since Dec 21	overall	Consultants	Registrars	SHO/ Interns	Medical/ Dental, other	Medical & Dental	Nurse/ Midwife Manager	Nurse/ Midwife Specialist & AN/MP	Staff Nurse/ Staff Midwife	Nursing/ Midwifery Student	Nursing/ Midwifery other	Nursing & Midwifery	Therapy Professions	Social Care	Social Workers	Psychologists	Pharmacy	H&SC, Other	Health & Social Care Professionals	Management (VIII & above)	Administrative/ Supervisory (V to VII)	Clerical (III & IV)	Management & Administrative	General Support	Health Care Assistants	Care, other	Patient & Client Care
Overall	+0.9%	+91	+11	+18	+21	-0	+50	-16	+86	-149	+15	+3	-60	+2	-4	+35	+21	-1	+8	+59	+9	+39	-7	+41	-19	+11	+9	+20
CHO 1	+1.7%	+17	-3	+4	-2		-0	-6	+16	-9	+2	+0	+4	-1	-0	+6	+3	+0	+1	+10	+1	+0	-2	-1	-4	+7	+1	+8
CHO 2	+0.6%	+8	-0	+1	+3	+1	+5	-7	+7	-15	+2	+2	-10	+3	-1	+1	-2	+0	+0	+1	-1	+2	+2	+3	+1	+1	+8	+8
CHO 3	-1.2%	-10	+4	-4	+11		+10	-6	+7	-24	-0	+1		+3	-1	+2	+4	+0	-1	+7	+1	+1	-2	-0	-2	-5	+1	-3
CHO 4	+0.3%	+4	+5	+5	-0	-1	+8	+8	+5	-23	+1		-9	+4	-1	+8	-1	+1	+3	+14		+4	-4	+1	-5	-4	-2	-5
CHO 5	+1.5%	+18	+4	+1	+0	-0	+5	+8	+13	-24	-2	-0	-4	+2	-1	+1	+5		+3	+10	-0	-1	+4	+2	+4	+1	+1	+1
CHO 6	+1.6%	+10	+4	+5	-2		+7	-1	+5	-2	-1	+1	+2	+1	+2	+4	+4		-0	+10	+1	+6	-9	-3	-9	+3	+1	+4
CHO 7	-0.6%	-6	-3	+4	+2		+3	-9	+4	-5	-4	+1	-14	-1	-0	-0	+7	-1	-0	+5	-0	+5	+5	+10	-2	-4	-4	-8
CHO 8	+0.4%	+4	-2	-11	+6		-7	-4	+9	-0	+4	-0	+8	-5	-1	+2	-3	-0	+1	-5	-1	+7	-1	+5	-3	+4	+2	+6
CHO 9	+3.2%	+42	+5	+9	+6		+20	-3	+21	-25	+13	-1	+5	-1	-0	+14	+4	-2	+0	+15	+0	+10	-7	+3	-8	+6	+1	+7
other Community Services	+0.5%	+3	-2	+3	-3		-2	+3	-0	-22		-0	-20	-3	-1	-3	-1	+1		-7	+9	+5	+6	+19	+10	+3	-0	+3
		+0.9%	+2.9%	+5.5%	+8.5%	-1.3%	+5.2%	-1.3%	+15.8%	-4.8%	+30.5%	+11.1%	-1.2%	+0.4%	-5.6%	+9.1%	+4.9%	-6.7%	+6.2%	+4.0%	+14.3%	+15.8%	-1.0%	+4.0%	-2.7%	+1.1%	+4.2%	+1.6%



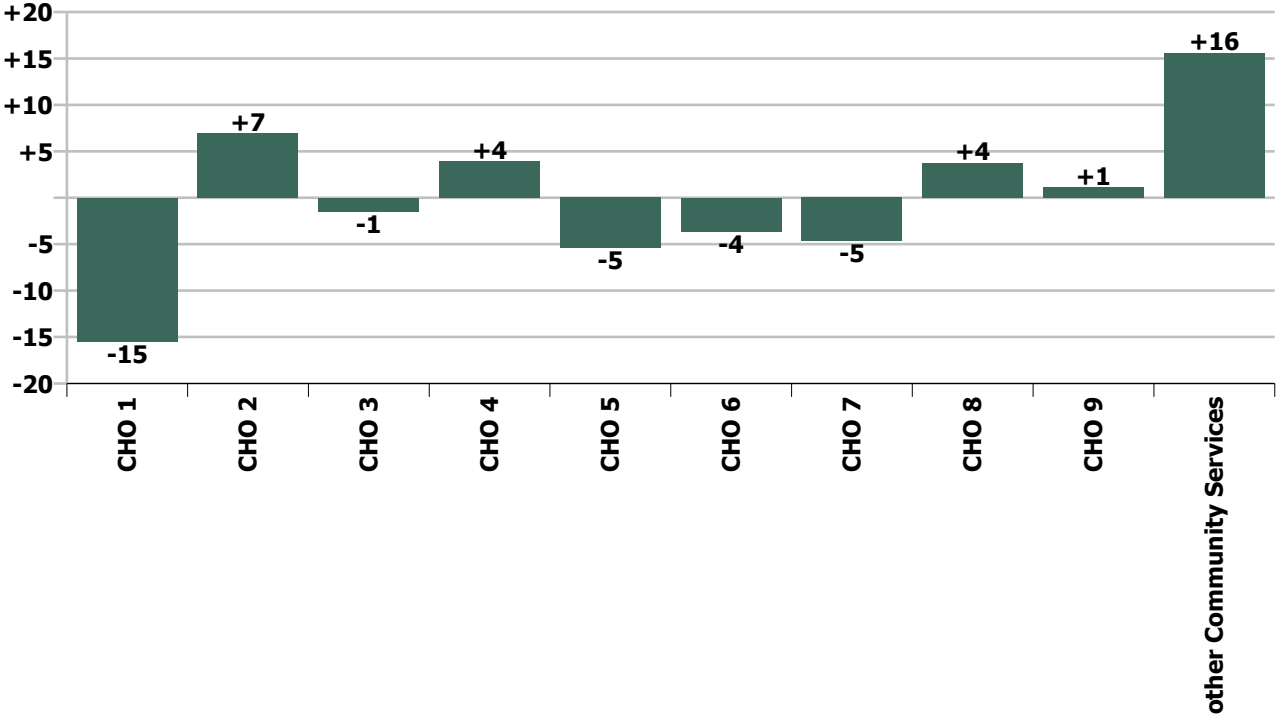
Staff Group change since: Nov 2022



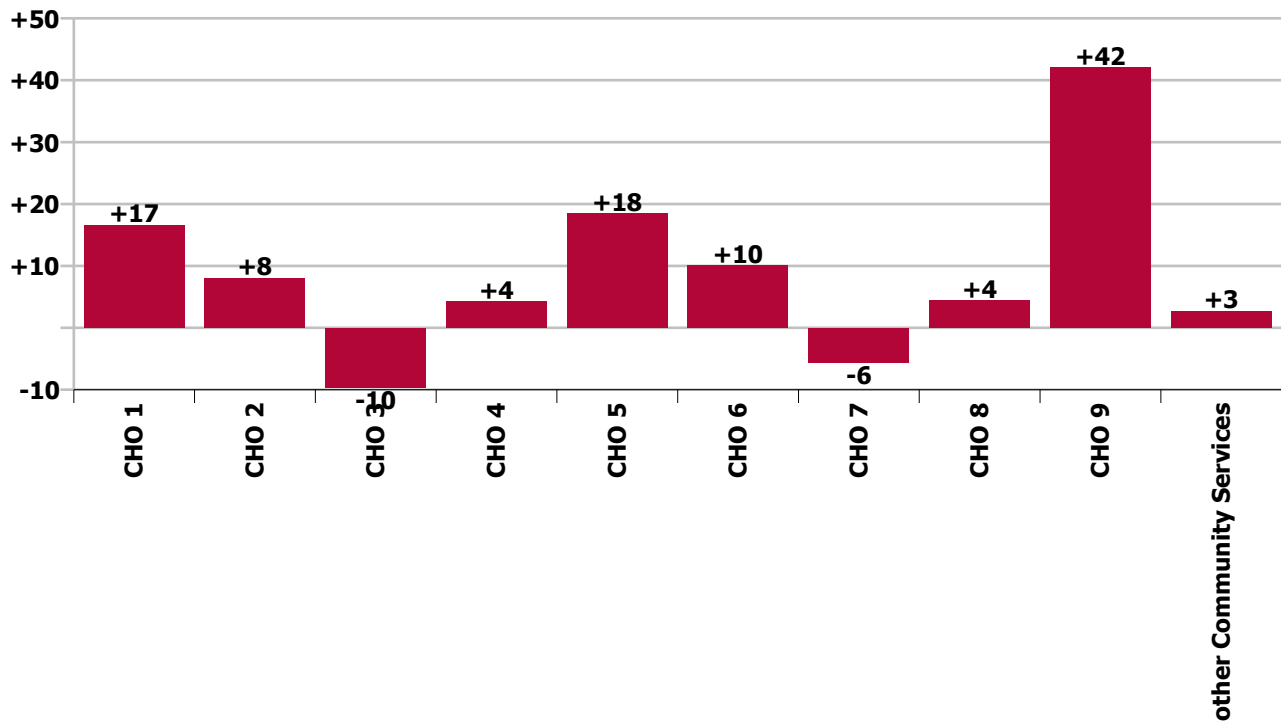
Staff Group change since: Dec 2021



CHO change since: Nov 2022



CHO change since: Dec 2021



Longitudinal Employment Levels by Grade Group - Dec 2016 to Dec 2022

Dec 2022 (Dec 2015 figure: 9,501)	WTE Dec 2022	WTE change since Dec 16	WTE change since Dec 17	WTE change since Dec 18	WTE change since Dec 19	WTE change since Dec 20	WTE change since Nov 22	% change since Dec 16	% change since Dec 17	% change since Dec 18	% change since Dec 19	% change since Dec 20	% change since Nov 22
Overall	10,453	+832	+663	+556	+499	+152	+1	+8.7%	+6.8%	+5.6%	+5.0%	+1.5%	+0.0%
Consultant Medicine	1		-0	-0					-9.1%	-9.1%			
Consultant Psychiatry	396	+81	+84	+66	+44	+27	-2	+25.8%	+26.9%	+20.1%	+12.7%	+7.5%	-0.5%
Consultants	397	+81	+84	+66	+44	+27	-2	+25.7%	+26.7%	+20.0%	+12.6%	+7.4%	-0.5%
Registrar	217	+85	+72	+63	+48	+49	+0	+64.3%	+50.1%	+41.1%	+28.3%	+29.3%	+0.1%
Senior Registrar	126	+59	+60	+40	+29	+15	-1	+87.3%	+91.1%	+46.3%	+29.4%	+13.1%	-0.8%
Specialist Registrar	2	+1	-0	+1	-1	-0	-0	+99.0%	-0.5%	+99.0%	-20.4%	-0.5%	-0.5%
Registrars	345	+145	+132	+104	+76	+64	-1	+72.2%	+62.3%	+43.2%	+28.2%	+22.7%	-0.2%
Senior House Officer	262	+15	-10	-7	+9	-9	+2	+6.2%	-3.8%	-2.7%	+3.6%	-3.2%	+0.9%
Interns	5	-7	-5	-3	-3	-0	-0	-59.0%	-50.8%	-38.5%	-38.5%	-1.6%	-1.6%
SHO/ Interns	267	+8	-15	-10	+6	-9	+2	+3.2%	-5.4%	-3.7%	+2.3%	-3.2%	+0.8%
Dentists			-0	-0				-100.0%	-100.0%	-100.0%	-100.0%	-100.0%	-100.0%
Other Medical	4	-6	-7	-3	-1	-1	-1	-59.4%	-64.0%	-39.8%	-21.8%	-21.8%	-11.5%
Medical/ Dental, other	4	-6	-7	-3	-1	-1	-1	-59.4%	-64.2%	-40.4%	-21.8%	-21.8%	-11.5%
Medical & Dental	1,013	+228	+194	+157	+125	+81	-1	+29.1%	+23.7%	+18.4%	+14.1%	+8.7%	-0.1%
Clinical Nurse/ Midwife Manager	1,036	+29	+53	+30	+37	-6	+5	+2.9%	+5.4%	+2.9%	+3.7%	-0.5%	+0.5%
Director Nursing/Midwifery, Assistant	176	+21	+14	+12	+11	+6	-1	+13.4%	+8.8%	+7.3%	+6.9%	+3.2%	-0.7%
Director of Nursing/Midwifery	34	+2	+5	+10	+5	+6	+1	+6.3%	+18.3%	+42.0%	+16.6%	+20.7%	+2.5%
Nurse/ Midwife Manager	1,245	+52	+72	+52	+53	+6	+5	+4.3%	+6.2%	+4.3%	+4.4%	+0.5%	+0.4%
Advanced Nurse/ Midwife Practitioner	68	+61	+58	+48	+38	+29	+0	+812.2%	+549.8%	+238.8%	+122.0%	+73.1%	+0.5%
Clinical Nurse/ Midwife Specialist	563	+226	+179	+167	+134	+73	+10	+67.2%	+46.9%	+42.4%	+31.3%	+15.0%	+1.8%
Nurse/ Midwife Specialist & AN/MP	631	+287	+237	+215	+172	+102	+10	+83.4%	+60.3%	+51.9%	+37.4%	+19.3%	+1.6%
Staff Midwives						-1		-100.0%	-100.0%	-100.0%	-100.0%	-100.0%	-100.0%
Staff Nurse [Psychiatric]	2,835	-222	-192	-120	-58	-130	+5	-7.3%	-6.3%	-4.1%	-2.0%	-4.4%	+0.2%
Staff Nurses [General/ Children's]	106	-15	-11	-11	+1	-0	-3	-12.0%	-9.7%	-9.7%	+1.3%	-0.2%	-2.9%
Staff Nurse [Intellectual Disability]	7	+3	+3	+1	+2	+2	+1	+99.1%	+92.2%	+10.8%	+46.8%	+56.8%	+12.3%

Dec 2022 (Dec 2015 figure: 9,501)	WTE Dec 2022	WTE change since Dec 16	WTE change since Dec 17	WTE change since Dec 18	WTE change since Dec 19	WTE change since Dec 20	WTE change since Nov 22	% change since Dec 16	% change since Dec 17	% change since Dec 18	% change since Dec 19	% change since Dec 20	% change since Nov 22
Overall	10,453	+832	+663	+556	+499	+152	+1	+8.7%	+6.8%	+5.6%	+5.0%	+1.5%	+0.0%
Graduate Nursing/ Midwifery								-100.0%	-100.0%	-100.0%	-100.0%	-100.0%	-100.0%
Staff Nurse/ Staff Midwife	2,948	-233	-200	-131	-55	-128	+2	-7.3%	-6.4%	-4.3%	-1.8%	-4.2%	+0.1%
Public Health Nurse		-1	-1					-100.0%	-100.0%	-100.0%	-100.0%	-100.0%	-100.0%
Pre-registration Nurse Intern (COVID-19)						-42		-100.0%	-100.0%	-100.0%	-100.0%	-100.0%	-100.0%
Pre-registration Nurse/ Midwife Intern	26	+18	+10	-1	-1	+16	-0	+205.0%	+56.8%	-5.2%	-4.1%	+146.6%	-0.3%
Post-registration Nurse/ Midwife Student					-1	-1		-100.0%	-100.0%	-100.0%	-100.0%	-100.0%	-100.0%
Nursing/ Midwifery awaiting registration	39	+37	+30	+19	-20	+34	-12	+1837.0%	+347.9%	+95.3%	-34.2%	+698.8%	-23.3%
Nursing/ Midwifery Student	65	+54	+40	+17	-22	+6	-12	+511.2%	+155.6%	+36.6%	-25.5%	+10.5%	-15.4%
Nursing Education/Clinical	34	+10	+4	+3	+3	+3	+0	+39.5%	+12.6%	+10.9%	+9.0%	+8.6%	+0.8%
Nursing/ Midwifery other	34	+10	+4	+3	+3	+3	+0	+39.5%	+12.6%	+10.9%	+9.0%	+8.6%	+0.8%
Nursing & Midwifery	4,924	+169	+152	+157	+150	-12	+6	+3.6%	+3.2%	+3.3%	+3.1%	-0.2%	+0.1%
Dietitians	18	+5	+1	-2	-1	-3	-0	+33.5%	+7.9%	-9.9%	-5.5%	-13.1%	-0.8%
Occupational Therapists	346	+46	+20	+7	+8	+1	-3	+15.5%	+6.1%	+2.0%	+2.2%	+0.2%	-0.9%
Physiotherapists	3	+1	+2	+1	+1	+1	-0	+46.3%	+143.0%	+82.6%	+31.8%	+22.0%	-0.3%
Podiatrists & Chiropodists	1	-1	-1	-1	-0	-0	+0	-61.5%	-52.4%	-42.6%	-4.1%	-12.5%	+1.4%
Speech & Language Therapists	68	+8	+6	+6	+6	-2	+0	+13.5%	+10.0%	+9.8%	+9.5%	-3.0%	+0.3%
Therapy Professions	435	+59	+28	+12	+13	-4	-3	+15.6%	+7.0%	+2.8%	+3.1%	-0.9%	-0.7%
Social Care	72	-16	-11	-7	-2	-8	-3	-18.2%	-12.9%	-8.6%	-2.3%	-10.1%	-3.4%
Social Workers	414	+63	+56	+55	+64	+41	+2	+18.1%	+15.8%	+15.4%	+18.3%	+11.0%	+0.5%
Psychologists	448	+105	+78	+59	+53	+24	+2	+30.6%	+20.9%	+15.2%	+13.5%	+5.6%	+0.4%
Pharmacists	15	+1	+1	-0	-1	-2	-1	+4.6%	+5.0%	-1.6%	-3.4%	-9.0%	-3.7%
Pharmacy Technicians	4	-1	-1	+0	+1	+0	-0	-19.1%	-18.4%	+7.2%	+50.6%	+2.2%	-0.5%
Pharmacy	19	-0	-0	-0	+1	-1	-1	-1.0%	-0.5%	-0.1%	+3.8%	-7.1%	-3.1%
Counsellor Therapists	124	+39	+39	+39	+29	+23	-1	+46.1%	+45.2%	+46.2%	+31.1%	+22.8%	-1.1%
Other Health & Social Care	3	-5	-6	-6	-9	-2	-0	-64.6%	-65.2%	-65.3%	-74.6%	-44.8%	-0.7%
Play Therapists/ Specialists	3	+1	+2	+2	+2	+2	+0	+24.4%	+106.0%	+110.1%	+113.0%	+110.1%	+18.7%
H&SC, Other	130	+34	+35	+35	+22	+22	-1	+35.8%	+36.3%	+37.1%	+20.7%	+20.6%	-0.7%

Dec 2022 (Dec 2015 figure: 9,501)	WTE Dec 2022	WTE change since Dec 16	WTE change since Dec 17	WTE change since Dec 18	WTE change since Dec 19	WTE change since Dec 20	WTE change since Nov 22	% change since Dec 16	% change since Dec 17	% change since Dec 18	% change since Dec 19	% change since Dec 20	% change since Nov 22
Overall	10,453	+832	+663	+556	+499	+152	+1	+8.7%	+6.8%	+5.6%	+5.0%	+1.5%	+0.0%
Health & Social Care Professionals	1,518	+245	+186	+155	+152	+74	-3	+19.3%	+14.0%	+11.3%	+11.1%	+5.1%	-0.2%
Executive Management	14	+7	+6	+4	+3	-1	-1	+98.6%	+73.8%	+39.0%	+26.4%	-5.6%	-7.0%
Senior Management (VIII & GM)	61	+35	+28	+29	+14	+8	+1	+138.6%	+88.1%	+91.7%	+30.9%	+15.8%	+1.0%
Management (VIII & above)	75	+42	+34	+33	+17	+7	-0	+129.9%	+85.3%	+79.0%	+30.1%	+11.1%	-0.6%
Middle Management (V-VII)	285	+119	+89	+66	+50	+42	+9	+71.7%	+45.0%	+29.8%	+21.3%	+17.4%	+3.1%
Other Administrative	2		-1	-1					-38.9%	-38.9%			
Administrative/ Supervisory (V to VII)	287	+119	+88	+65	+50	+42	+9	+71.0%	+44.0%	+29.0%	+21.2%	+17.3%	+3.1%
General Administrative (III & IV)	707	+46	+25	+11	-11	-15	-2	+6.9%	+3.7%	+1.6%	-1.5%	-2.1%	-0.3%
Clerical (III & IV)	707	+46	+25	+11	-11	-15	-2	+6.9%	+3.7%	+1.6%	-1.5%	-2.1%	-0.3%
Management & Administrative	1,068	+207	+147	+109	+57	+34	+6	+24.0%	+16.0%	+11.3%	+5.6%	+3.3%	+0.6%
Catering	68	+2	+2	-4	+2	+4	-0	+3.0%	+2.8%	-5.8%	+3.7%	+6.5%	-0.4%
Household Services	397	-95	-79	-48	-27	-44	-2	-19.2%	-16.5%	-10.8%	-6.4%	-10.0%	-0.4%
Other Support	40	-16	-9	-15	-2	-2	-1	-28.2%	-18.7%	-27.1%	-5.8%	-4.0%	-3.5%
Portering	51	-9	+2	+3	+2	+3	+0	-14.7%	+3.4%	+5.3%	+5.0%	+6.8%	+0.7%
Support	556	-117	-85	-65	-25	-38	-3	-17.4%	-13.2%	-10.4%	-4.3%	-6.5%	-0.6%
Maintenance	129	-14	-10	-6	-0	-9	-1	-10.0%	-7.2%	-4.2%	-0.1%	-6.3%	-1.0%
Technical Services		-2	-2	-2	-2			-100.0%	-100.0%	-100.0%	-100.0%	-100.0%	-100.0%
Maintenance/ Technical	129	-16	-12	-8	-2	-9	-1	-11.2%	-8.5%	-5.6%	-1.7%	-6.3%	-1.0%
General Support	685	-134	-97	-72	-27	-47	-4	-16.3%	-12.4%	-9.6%	-3.8%	-6.4%	-0.6%
Attendant/ Aide	423	-302	-278	-258	-182	-161	+1	-41.6%	-39.7%	-37.9%	-30.1%	-27.6%	+0.2%
Health & Social Care Assistants	19	+14	+14	+14	+10	+11	+1	+312.5%	+312.5%	+251.8%	+114.1%	+129.5%	+5.9%
Health Care Assistant/ Care Assistant	588	+384	+340	+295	+214	+158	-4	+187.5%	+136.9%	+100.8%	+57.3%	+36.9%	-0.7%
Health Care Assistants	1,030	+97	+77	+51	+42	+9	-2	+10.3%	+8.1%	+5.2%	+4.3%	+0.8%	-0.2%
Home Care Services	23	+23	+8	+6	+7	+9	+0	-100.0%	+53.9%	+39.1%	+46.4%	+61.4%	+0.1%
Other Care Grades	19	+9	+8	+3	-3	-3	-0	+80.3%	+78.6%	+21.9%	-14.7%	-12.5%	-0.6%
Pastoral Care	9	-5	-4	-4	-3	-3	+0	-33.4%	-31.1%	-28.6%	-25.3%	-21.7%	+5.4%
Workshop Services	164	-7	-9	-6	-1	+9	-1	-4.1%	-5.0%	-3.5%	-0.4%	+5.9%	-0.6%

Dec 2022 (Dec 2015 figure: 9,501)	WTE Dec 2022	WTE change since Dec 16	WTE change since Dec 17	WTE change since Dec 18	WTE change since Dec 19	WTE change since Dec 20	WTE change since Nov 22	% change since Dec 16	% change since Dec 17	% change since Dec 18	% change since Dec 19	% change since Dec 20	% change since Nov 22
Overall	10,453	+832	+663	+556	+499	+152	+1	+8.7%	+6.8%	+5.6%	+5.0%	+1.5%	+0.0%
Care, other	216	+20	+4	+0	+0	+12	-1	+10.1%	+1.7%	+0.1%	+0.0%	+6.1%	-0.3%
Patient & Client Care	1,246	+116	+80	+51	+42	+21	-3	+10.3%	+6.9%	+4.2%	+3.5%	+1.7%	-0.2%

Source: Health Service Personnel Census



Longitudinal Employment Levels by Grade Group - Dec 2016 to Dec 2022

Dec 2022 (Dec 2015 figure: 9,501)	WTE Dec 2022	WTE change since Dec 16	WTE change since Dec 17	WTE change since Dec 18	WTE change since Dec 19	WTE change since Dec 20	WTE change since Nov 22	% change since Dec 16	% change since Dec 17	% change since Dec 18	% change since Dec 19	% change since Dec 20	% change since Nov 22
Overall	10,453	+832	+663	+556	+499	+152	+1	+8.7%	+6.8%	+5.6%	+5.0%	+1.5%	+0.0%
Consultant Medicine	1		-0	-0					-9.1%	-9.1%			
Consultant Psychiatry	396	+81	+84	+66	+44	+27	-2	+25.8%	+26.9%	+20.1%	+12.7%	+7.5%	-0.5%
Consultants	397	+81	+84	+66	+44	+27	-2	+25.7%	+26.7%	+20.0%	+12.6%	+7.4%	-0.5%
Registrar	217	+85	+72	+63	+48	+49	+0	+64.3%	+50.1%	+41.1%	+28.3%	+29.3%	+0.1%
Senior Registrar	126	+59	+60	+40	+29	+15	-1	+87.3%	+91.1%	+46.3%	+29.4%	+13.1%	-0.8%
Specialist Registrar	2	+1	-0	+1	-1	-0	-0	+99.0%	-0.5%	+99.0%	-20.4%	-0.5%	-0.5%
Registrars	345	+145	+132	+104	+76	+64	-1	+72.2%	+62.3%	+43.2%	+28.2%	+22.7%	-0.2%
Senior House Officer	262	+15	-10	-7	+9	-9	+2	+6.2%	-3.8%	-2.7%	+3.6%	-3.2%	+0.9%
Interns	5	-7	-5	-3	-3	-0	-0	-59.0%	-50.8%	-38.5%	-38.5%	-1.6%	-1.6%
SHO/ Interns	267	+8	-15	-10	+6	-9	+2	+3.2%	-5.4%	-3.7%	+2.3%	-3.2%	+0.8%
Dentists			-0	-0				-100.0%	-100.0%	-100.0%	-100.0%	-100.0%	-100.0%
Other Medical	4	-6	-7	-3	-1	-1	-1	-59.4%	-64.0%	-39.8%	-21.8%	-21.8%	-11.5%
Medical/ Dental, other	4	-6	-7	-3	-1	-1	-1	-59.4%	-64.2%	-40.4%	-21.8%	-21.8%	-11.5%
Medical & Dental	1,013	+228	+194	+157	+125	+81	-1	+29.1%	+23.7%	+18.4%	+14.1%	+8.7%	-0.1%
Clinical Nurse/ Midwife Manager	1,036	+29	+53	+30	+37	-6	+5	+2.9%	+5.4%	+2.9%	+3.7%	-0.5%	+0.5%
Director Nursing/Midwifery, Assistant	176	+21	+14	+12	+11	+6	-1	+13.4%	+8.8%	+7.3%	+6.9%	+3.2%	-0.7%
Director of Nursing/Midwifery	34	+2	+5	+10	+5	+6	+1	+6.3%	+18.3%	+42.0%	+16.6%	+20.7%	+2.5%
Nurse/ Midwife Manager	1,245	+52	+72	+52	+53	+6	+5	+4.3%	+6.2%	+4.3%	+4.4%	+0.5%	+0.4%
Advanced Nurse/ Midwife Practitioner	68	+61	+58	+48	+38	+29	+0	+812.2%	+549.8%	+238.8%	+122.0%	+73.1%	+0.5%
Clinical Nurse/ Midwife Specialist	563	+226	+179	+167	+134	+73	+10	+67.2%	+46.9%	+42.4%	+31.3%	+15.0%	+1.8%
Nurse/ Midwife Specialist & AN/MP	631	+287	+237	+215	+172	+102	+10	+83.4%	+60.3%	+51.9%	+37.4%	+19.3%	+1.6%
Staff Midwives							-1	-100.0%	-100.0%	-100.0%	-100.0%	-100.0%	-100.0%
Staff Nurse [Psychiatric]	2,835	-222	-192	-120	-58	-130	+5	-7.3%	-6.3%	-4.1%	-2.0%	-4.4%	+0.2%
Staff Nurses [General/ Children's]	106	-15	-11	-11	+1	-0	-3	-12.0%	-9.7%	-9.7%	+1.3%	-0.2%	-2.9%
Staff Nurse [Intellectual Disability]	7	+3	+3	+1	+2	+2	+1	+99.1%	+92.2%	+10.8%	+46.8%	+56.8%	+12.3%
Graduate Nursing/ Midwifery								-100.0%	-100.0%	-100.0%	-100.0%	-100.0%	-100.0%
Staff Nurse/ Staff Midwife	2,948	-233	-200	-131	-55	-128	+2	-7.3%	-6.4%	-4.3%	-1.8%	-4.2%	+0.1%
Public Health Nurse		-1	-1					-100.0%	-100.0%	-100.0%	-100.0%	-100.0%	-100.0%
Public Health Nurse		-1	-1					-100.0%	-100.0%	-100.0%	-100.0%	-100.0%	-100.0%
Pre-registration Nurse Intern (COVID-19)						-42		-100.0%	-100.0%	-100.0%	-100.0%	-100.0%	-100.0%
Pre-registration Nurse/ Midwife Intern	26	+18	+10	-1	-1	+16	-0	+205.0%	+56.8%	-5.2%	-4.1%	+146.6%	-0.3%
Post-registration Nurse/ Midwife Student					-1	-1		-100.0%	-100.0%	-100.0%	-100.0%	-100.0%	-100.0%
Nursing/ Midwifery awaiting registration	39	+37	+30	+19	-20	+34	-12	+1837.0%	+347.9%	+95.3%	-34.2%	+698.8%	-23.3%
Nursing/ Midwifery Student	65	+54	+40	+17	-22	+6	-12	+511.2%	+155.6%	+36.6%	-25.5%	+10.5%	-15.4%
Nursing Education/Clinical	34	+10	+4	+3	+3	+3	+3	+39.5%	+12.6%	+10.9%	+9.0%	+8.6%	+0.8%
Nursing/ Midwifery other	34	+10	+4	+3	+3	+3	+0	+39.5%	+12.6%	+10.9%	+9.0%	+8.6%	+0.8%
Nursing & Midwifery	4,924	+169	+152	+157	+150	-12	+6	+3.6%	+3.2%	+3.3%	+3.1%	-0.2%	+0.1%
Dietitians	18	+5	+1	-2	-1	-3	-0	+33.5%	+7.9%	-9.9%	-5.5%	-13.1%	-0.8%
Occupational Therapists	346	+46	+20	+7	+8	+1	-3	+15.5%	+6.1%	+2.0%	+2.2%	+0.2%	-0.9%
Physiotherapists	3	+1	+2	+1	+1	+1	-0	+46.3%	+143.0%	+82.6%	+31.8%	+22.0%	-0.3%
Podiatrists & Chiropodists	1	-1	-1	-1	-0	-0	+0	-61.5%	-52.4%	-42.6%	-4.1%	-12.5%	+1.4%
Speech & Language Therapists	68	+8	+6	+6	+6	-2	+0	+13.5%	+10.0%	+9.8%	+9.5%	-3.0%	+0.3%
Therapy Professions	435	+59	+28	+12	+13	-4	-3	+15.6%	+7.0%	+2.8%	+3.1%	-0.9%	-0.7%
Social Care	72	-16	-11	-7	-2	-8	-3	-18.2%	-12.9%	-8.6%	-2.3%	-10.1%	-3.4%
Social Workers	414	+63	+56	+55	+64	+41	+2	+18.1%	+15.8%	+15.4%	+18.3%	+11.0%	+0.5%
Psychologists	448	+105	+78	+59	+53	+24	+2	+30.6%	+20.9%	+15.2%	+13.5%	+5.6%	+0.4%
Pharmacists	16	+1	+1	-0	-1	-2	-1	+4.6%	+5.0%	-1.6%	-3.4%	-9.0%	-3.7%
Pharmacy Technicians	4	-1	-1	+0	+1	+0	-0	-19.1%	-18.4%	+7.2%	+50.6%	+2.2%	-0.5%
Pharmacy	19	-0	-0	-0	+1	-1	-1	-1.0%	-0.5%	-0.1%	+3.8%	-7.1%	-3.1%
Counsellor Therapists	124	+39	+39	+39	+29	+23	-1	+46.1%	+45.2%	+46.2%	+31.1%	+22.8%	-1.1%
Other Health & Social Care	3	-5	-6	-6	-9	-2	-0	-64.6%	-65.2%	-65.3%	-74.6%	-44.8%	-0.7%
Play Therapists/ Specialists	3	+1	+2	+2	+2	+2	+0	+24.4%	+106.0%	+110.1%	+113.0%	+110.1%	+18.7%
H&SC, Other	130	+34	+35	+35	+22	+22	-1	+35.8%	+36.3%	+37.1%	+20.7%	+20.6%	-0.7%
Health & Social Care Professionals	1,518	+245	+186	+155	+152	+74	-3	+19.3%	+14.0%	+11.3%	+11.1%	+5.1%	-0.2%
Executive Management	14	+7	+6	+4	+3	-1	-1	+98.6%	+73.8%	+39.0%	+26.4%	-5.6%	-7.0%
Senior Management (VIII & GM)	61	+35	+28	+29	+14	+8	+1	+138.6%	+88.1%	+91.7%	+30.9%	+15.8%	+1.0%
Management (VIII & above)	75	+42	+34	+33	+17	+7	-0	+129.9%	+85.3%	+79.0%	+30.1%	+11.1%	-0.6%
Middle Management (V-VII)	285	+119	+89	+66	+50	+42	+9	+71.7%	+45.0%	+29.8%	+21.3%	+17.4%	+3.1%
Other Administrative	2		-1	-1					-38.9%	-38.9%			
Administrative/ Supervisory (V to VII)	287	+119	+88	+65	+50	+42	+9	+71.0%	+44.0%	+29.0%	+21.2%	+17.3%	+3.1%
General Administrative (III & IV)	707	+46	+25	+11	-11	-15	-2	+6.9%	+3.7%	+1.6%	-1.5%	-2.1%	-0.3%
Clerical (III & IV)	707	+46	+25	+11	-11	-15	-2	+6.9%	+3.7%	+1.6%	-1.5%	-2.1%	-0.3%
Management & Administrative	1,068	+207	+147	+109	+57	+34	+6	+24.0%	+16.0%	+11.3%	+5.6%	+3.3%	+0.6%
Support	556	-117	-85	-65	-25	-38	-3	-17.4%	-13.2%	-10.4%	-4.3%	-6.5%	-0.6%
Maintenance	129	-14	-10	-6	-0	-9	-1	-10.0%	-7.2%	-4.2%	-0.1%	-6.3%	-1.0%
Technical Services		-2	-2	-2	-2			-100.0%	-100.0%	-100.0%	-100.0%	-100.0%	-100.0%
Maintenance/ Technical	129	-16	-12	-8	-2	-9	-1	-11.2%	-8.5%	-5.6%	-1.7%	-6.3%	-1.0%
General Support	685	-134	-97	-72	-27	-47	-4	-16.3%	-12.4%	-9.6%	-3.8%	-6.4%	-0.6%
Attendant/ Aide	423	-302	-278	-258	-182	-161	+1	-41.6%	-39.7%	-37.9%	-30.1%	-27.6%	+0.2%
Health & Social Care Assistants	19	+15	+15	+14	+10	+11	+1	+312.5%	+312.5%	+251.8%	+114.1%	+129.5%	+5.9%
Health Care Assistant/ Care Assistant	588	+384	+340	+295	+214	+158	-4	+187.5%	+136.9%	+100.8%	+57.3%	+36.9%	-0.7%
Health Care Assistants	1,030	+97	+77	+51	+42	+9	-2	+10.3%	+8.1%	+5.2%	+4.3%	+0.8%	-0.2%
Home Care Services	23	+23	+8	+6	+7	+9	+0	-100.0%	+53.9%	+39.1%	+46.4%	+61.4%	+0.1%
Other Care Grades	19	+9	+8	+3	-3	-3	-0	+80.3%	+78.6%	+21.9%	-14.7%	-12.5%	-0.6%
Pastoral Care	9	-5	-4	-4	-3	-3	+0	-33.4%	-31.1%	-28.6%	-25.3%	-21.7%	+5.4%
Workshop Services	164	-7	-9	-6	-1	+9	-1	-4.1%	-5.0%	-3.5%	-0.4%	+5.9%	-0.6%
Care, other	216	+20	+4	+0	+0	+12	-1	+10.1%	+1.7%	+0.1%	+0.0%	+6.1%	-0.3%

Dec 2022 (Dec 2015 figure: 9,501)	WTE Dec 2022	WTE change since Dec 16	WTE change since Dec 17	WTE change since Dec 18	WTE change since Dec 19	WTE change since Dec 20	WTE change since Nov 22	% change since Dec 16	% change since Dec 17	% change since Dec 18	% change since Dec 19	% change since Dec 20	% change since Nov 22
Overall	10,453	+832	+663	+556	+499	+152	+1	+8.7%	+6.8%	+5.6%	+5.0%	+1.5%	+0.0%
Patient & Client Care	1,246	+116	+80	+51	+42	+21	-3	+10.3%	+6.9%	+4.2%	+3.5%	+1.7%	-0.2%

Source: Health Service Personnel Census