

Mental Health Service Employment Report: February 2022

Employment by Staff Group

Feb 2022	WTE Dec 2019	WTE Dec 2020	WTE Jan 2022	WTE Feb 2022	WTE change since Jan 22	WTE change since Dec 20	% change since Dec 20	WTE change since Dec 19	% change since Dec 19	No. Feb 2022
Overall	9,954	10,301	10,401	10,483	+83	+182	+1.8%	+529	+5.3%	11,583
Consultants	353	370	388	390	+2	+20	+5.5%	+37	+10.6%	422
Registrars	269	281	335	331	-4	+50	+17.8%	+62	+23.1%	345
SHO/ Interns	261	276	233	232	-1	-44	-16.1%	-29	-11.3%	241
Medical/ Dental, other	5	5	4	4		-1	-22.2%	-1	-22.2%	7
Medical & Dental	888	932	961	957	-4	+25	+2.7%	+69	+7.8%	1,015
Nurse/ Midwife Manager	1,192	1,240	1,260	1,266	+6	+26	+2.1%	+73	+6.1%	1,327
Nurse/ Midwife Specialist & AN/MP	459	529	541	546	+6	+18	+3.3%	+87	+19.0%	580
Staff Nurse/ Staff Midwife	3,003	3,076	3,092	3,063	-29	-13	-0.4%	+60	+2.0%	3,323
<i>Pre-registration Nurse Intern (COVID-19)</i>		42	1	1	-1	-42	-98.8%	+1	-100.0%	1
<i>Pre-registration Nurse/ Midwife Intern</i>	28	11	67	157	+90	+146	+1362.3%	+129	+468.9%	323
<i>Post-registration Nurse/ Midwife Student</i>	1	1				-1	-100.0%	-1	-100.0%	
<i>Nursing/ Midwifery awaiting registration</i>	59	5	21	24	+3	+19	+393.6%	-35	-59.4%	24
Nursing/ Midwifery Student	87	59	89	181	+92	+122	+207.0%	+94	+107.1%	348
Nursing/ Midwifery other	32	32	32	33	+1	+1	+2.9%	+1	+3.3%	35
Nursing & Midwifery	4,773	4,935	5,013	5,088	+75	+153	+3.1%	+315	+6.6%	5,613
Therapy Professions	422	439	437	441	+4	+2	+0.4%	+19	+4.4%	501
Social Care	74	80	75	72	-3	-8	-10.3%	-2	-2.5%	85
Social Workers	350	373	379	382	+4	+10	+2.6%	+33	+9.4%	429
Psychologists	394	424	429	429	-0	+5	+1.1%	+34	+8.7%	473
Pharmacy	19	21	20	20	-0	-1	-2.8%	+2	+8.6%	26
H&SC, Other	108	108	125	126	+1	+18	+16.6%	+18	+16.6%	146
Health & Social Care Professionals	1,366	1,444	1,465	1,470	+5	+25	+1.8%	+103	+7.6%	1,660
Management (VIII & above)	57	67	66	69	+3	+2	+2.8%	+12	+20.3%	70
Administrative/ Supervisory (V to VII)	237	245	252	256	+4	+11	+4.7%	+19	+8.2%	274
Clerical (III & IV)	717	722	714	713	-1	-9	-1.2%	-4	-0.6%	807
Management & Administrative	1,012	1,034	1,033	1,038	+5	+5	+0.4%	+27	+2.7%	1,151
Support	581	594	570	573	+3	-21	-3.5%	-7	-1.2%	659
Maintenance/ Technical	131	137	130	130	+0	-7	-5.1%	-1	-0.4%	137
General Support	711	732	700	704	+4	-28	-3.8%	-8	-1.1%	796
Health Care Assistants	988	1,022	1,020	1,021	+1	-1	-0.1%	+33	+3.3%	1,106
Care, other	216	203	208	205	-3	+2	+1.0%	-10	-4.8%	242
Patient & Client Care	1,204	1,225	1,228	1,226	-2	+1	+0.1%	+23	+1.9%	1,348

Mental Health Services Employment by Administration (HSE / S38): February 2022

Feb 2022	WTE Dec 2019	WTE Dec 2020	WTE Jan 2022	WTE Feb 2022	WTE change since Jan 22	WTE change since Dec 20	% change since Dec 20	WTE change since Dec 19	% change since Dec 19	No. Feb 2022
Total	9,954	10,301	10,401	10,483	+83	+182	+1.8%	+529	+5.3%	11,583
HSE	9,513	9,855	9,961	10,067	+106	+212	+2.1%	+554	+5.8%	11,086
Section 38 Voluntary Agencies	441	446	440	417	-23	-30	-6.7%	-25	-5.6%	497

Employment by Staff Group

Feb 2022	WTE Dec 2019	WTE Dec 2020	WTE Jan 2022	WTE Feb 2022	WTE change since Jan 22	WTE change since Dec 20	% change since Dec 20	WTE change since Dec 19	% change since Dec 19	No. Feb 2022
Health Service Executive	9,513	9,855	9,961	10,067	+106	+212	+2.1%	+554	+5.8%	11,086
Consultants	333	349	366	368	+1	+19	+5.5%	+35	+10.5%	394
Registrars	250	266	316	312	-3	+47	+17.5%	+62	+24.9%	325
SHO/ Interns	255	267	226	223	-2	-44	-16.3%	-32	-12.4%	232
Medical/ Dental, other	5	5	4	4		-1	-22.2%	-1	-22.2%	7
Medical & Dental	843	886	911	907	-4	+21	+2.4%	+64	+7.6%	958
Nurse/ Midwife Manager	1,154	1,202	1,220	1,230	+10	+28	+2.3%	+76	+6.6%	1,289
Nurse/ Midwife Specialist & AN/MP	452	520	530	537	+7	+17	+3.3%	+84	+18.7%	569
Staff Nurse/ Staff Midwife	2,880	2,953	2,969	2,953	-16	-1	-0.0%	+73	+2.5%	3,203
Pre-registration Nurse Intern (COVID-19)		41	1	1	-1	-41	-98.8%	+1	-100.0%	1
Pre-registration Nurse/ Midwife Intern	21	1	60	150	+90	+149	+20971.8%	+129	+628.7%	309
Post-registration Nurse/ Midwife Student	1	1				-1	-100.0%	-1	-100.0%	
Nursing/ Midwifery awaiting registration	59	5	21	24	+3	+19	+393.6%	-35	-59.4%	24
Nursing/ Midwifery Student	80	48	82	174	+92	+126	+262.8%	+94	+116.4%	334
Nursing/ Midwifery other	29	29	29	30	+1	+1	+3.2%	+1	+3.6%	32
Nursing & Midwifery	4,596	4,752	4,831	4,924	+93	+172	+3.6%	+328	+7.1%	5,427
Therapy Professions	391	412	412	414	+2	+2	+0.5%	+23	+5.9%	465
Social Care	48	52	49	48	-1	-4	-7.7%	-0	-0.0%	56
Social Workers	330	354	361	365	+5	+11	+3.1%	+35	+10.7%	410
Psychologists	379	402	407	410	+2	+8	+2.0%	+31	+8.2%	450
Pharmacy	17	19	18	18	-0	-1	-3.0%	+1	+8.3%	24
H&SC, Other	103	107	125	125	+1	+18	+17.1%	+22	+21.5%	145
Health & Social Care Professionals	1,267	1,345	1,372	1,381	+8	+35	+2.6%	+113	+8.9%	1,550
Management (VIII & above)	55	65	64	67	+3	+2	+2.9%	+12	+21.0%	68
Administrative/ Supervisory (V to VII)	216	224	232	235	+3	+11	+4.9%	+19	+9.0%	250
Clerical (III & IV)	673	679	672	673	+0	-6	-1.0%	+0	+0.0%	758
Management & Administrative	944	968	969	975	+6	+6	+0.7%	+31	+3.3%	1,076
Support	543	556	535	540	+5	-17	-3.0%	-3	-0.6%	607
Maintenance/ Technical	125	130	123	123	+0	-7	-5.4%	-2	-1.2%	130
General Support	668	687	658	663	+5	-24	-3.5%	-5	-0.7%	737
Health Care Assistants	982	1,016	1,014	1,015	+1	-1	-0.1%	+33	+3.4%	1,100
Care, other	213	200	205	202	-3	+2	+1.0%	-11	-5.2%	238
Patient & Client Care	1,195	1,216	1,219	1,217	-2	+1	+0.1%	+22	+1.8%	1,338

Employment by Staff Group

Feb 2022	WTE Dec 2019	WTE Dec 2020	WTE Jan 2022	WTE Feb 2022	WTE change since Jan 22	WTE change since Dec 20	% change since Dec 20	WTE change since Dec 19	% change since Dec 19	No. Feb 2022
Section 38 Voluntary Agencies	441	446	440	417	-23	-30	-6.7%	-25	-5.6%	497
Consultants	20	21	22	22	+0	+1	+6.7%	+3	+12.6%	28
Registrars	19	15	20	19	-1	+3	+22.8%	-0	-1.0%	20
SHO/ Interns	6	9	8	8	+1	-1	-8.4%	+2	+37.3%	9
Medical & Dental	45	45	49	49	-0	+4	+9.1%	+5	+10.2%	57
Nurse/ Midwife Manager	38	38	40	35	-4	-2	-6.2%	-3	-7.0%	38
Nurse/ Midwife Specialist & AN/MP	7	9	10	9	-1	+0	+4.4%	+3	+39.0%	11
Staff Nurse/ Staff Midwife	123	123	123	110	-12	-13	-10.2%	-13	-10.3%	120
Pre-registration Nurse Intern (COVID-19)		1				-1	-100.0%		-100.0%	
Pre-registration Nurse/ Midwife Intern	7	10	7	7		-3	-30.0%			14
Nursing/ Midwifery Student	7	11	7	7		-4	-36.4%			14
Nursing/ Midwifery other	3	3	3	3						3
Nursing & Midwifery	177	183	182	165	-18	-18	-10.1%	-13	-7.2%	186
Therapy Professions	31	27	25	27	+1	-0	-1.7%	-5	-14.6%	36
Social Care	25	28	25	24	-2	-4	-15.2%	-2	-7.2%	29
Social Care	25	28	25	24	-2	-4	-15.2%	-2	-7.2%	29
Social Workers	20	19	18	17	-1	-1	-6.9%	-2	-12.3%	19
Psychologists	16	22	22	19	-3	-3	-15.3%	+3	+19.1%	23
Pharmacy	2	2	2	2				+0	+12.5%	2
H&SC, Other	5	1	1	1		-0	-40.8%	-4	-88.0%	1
Health & Social Care Professionals	99	99	93	89	-4	-10	-9.9%	-10	-10.0%	110
Management (VIII & above)	2	2	2	2						2
Administrative/ Supervisory (V to VII)	21	21	20	21	+1	+0	+2.1%	-0	-0.1%	24
Clerical (III & IV)	45	43	42	41	-1	-2	-5.3%	-4	-9.3%	49
Management & Administrative	68	66	64	64	-1	-2	-2.8%	-4	-6.2%	75
Support	38	38	35	34	-1	-4	-10.4%	-4	-10.6%	52
Maintenance/ Technical	6	7	7	7				+1	+16.7%	7
General Support	44	45	42	41	-1	-4	-8.8%	-3	-6.8%	59
Health Care Assistants	6	6	6	6						6
Care, other	3	3	3	3				+1	+20.2%	4
Patient & Client Care	9	9	9	9				+1	+6.6%	10

Mental Health Services Employment by CHO: Feb 2022

Feb 2022	WTE Dec 2019	WTE Dec 2020	WTE Jan 2022	WTE Feb 2022	WTE change since Jan 22	WTE change since Dec 20	% change since Dec 20	WTE change since Dec 19	% change since Dec 19	No. Feb 2022
Overall	9,954	10,301	10,401	10,483	+83	+182	+1.8%	+529	+5.3%	11,583
CHO 1	953	976	1,024	1,030	+6	+54	+5.5%	+77	+8.1%	1,124
CHO 2	1,308	1,340	1,341	1,353	+12	+13	+1.0%	+45	+3.4%	1,468
CHO 3	795	809	816	821	+5	+12	+1.5%	+25	+3.2%	903
CHO 4	1,485	1,564	1,563	1,590	+26	+26	+1.7%	+104	+7.0%	1,756
CHO 5	1,178	1,188	1,203	1,228	+25	+40	+3.4%	+51	+4.3%	1,373
CHO 6	593	626	627	627	-0	+0	+0.1%	+34	+5.8%	702
CHO 7	835	861	887	901	+14	+40	+4.6%	+66	+7.9%	1,001
CHO 8	1,098	1,112	1,096	1,099	+3	-13	-1.1%	+1	+0.1%	1,228
CHO 9	1,272	1,331	1,350	1,337	-13	+7	+0.5%	+66	+5.2%	1,504
other Community Services	438	494	493	497	+3	+2	+0.5%	+59	+13.5%	524

Mental Health Services Employment by CHO etc. Feb 2022

CHO 1

Feb 2022	WTE Dec 2019	WTE Dec 2020	WTE Jan 2022	WTE Feb 2022	WTE change since Jan 22	WTE change since Dec 20	% change since Dec 20	WTE change since Dec 19	% change since Dec 19	No. Feb 2022
Overall	953	976	1,024	1,030	+6	+54	+5.5%	+77	+8.1%	1,124
Consultants	31	34	36	36	-1	+2	+5.0%	+5	+16.1%	38
Registrars	24	29	30	30	-0	+1	+4.2%	+6	+24.1%	31
SHO/ Interns	25	23	23	22	-1	-1	-3.1%	-3	-12.2%	23
Medical & Dental	81	86	90	88	-1	+2	+2.6%	+8	+9.7%	92
Nurse/ Midwife Manager	117	119	120	119	-1	-0	-0.2%	+2	+1.8%	126
Nurse/ Midwife Specialist & AN/MP	67	74	77	76	-1	+2	+3.0%	+9	+12.7%	80
Staff Nurse/ Staff Midwife	297	288	309	307	-2	+19	+6.6%	+10	+3.3%	323
Nursing/ Midwifery Student		3	9	16	+7	+13	+441.7%	+16	-100.0%	30
Nursing/ Midwifery other		1	2	2	0	+1	+98.9%	+2	-100.0%	2
Nursing & Midwifery	482	485	519	521	+2	+35	+7.3%	+39	+8.0%	561
Therapy Professions	36	36	43	45	+2	+9	+24.9%	+9	+25.5%	51
Social Care	4	4	4	4	+0	+0	+0.5%	+0	+1.4%	5
Social Workers	39	43	42	43	+0			+4	+9.7%	48
Psychologists	21	23	22	22	+1	-1	-4.0%	+2	+8.5%	24
Pharmacy	1	1	1	1	0	+0	+6.3%	+0	+6.3%	1
H&SC, Other	13	14	17	17	+0	+3	+23.6%	+4	+30.8%	20
Health & Social Care Professionals	113	121	128	132	+4	+11	+9.4%	+19	+16.6%	149
Management (VIII & above)	6	8	9	10	+1	+2	+26.1%	+4	+70.8%	10
Administrative/ Supervisory (V to VII)	30	31	32	32	+0	+1	+4.3%	+2	+6.3%	34
Clerical (III & IV)	85	85	89	89	+0	+4	+4.7%	+4	+4.5%	99
Management & Administrative	121	123	129	131	+1	+7	+5.9%	+10	+8.1%	143
Support	62	65	60	61	+1	-4	-6.0%	-1	-1.6%	70
Maintenance/ Technical	17	16	17	17	+0	+1	+5.8%	+1	+3.2%	18
General Support	79	81	78	79	+1	-3	-3.6%	-0	-0.5%	88
Health Care Assistants	66	68	69	69	-0	+1	+1.5%	+3	+3.9%	79
Care, other	11	11	11	10	-0	-1	-5.8%	-0	-2.7%	12
Patient & Client Care	77	79	80	79	-1	+0	+0.5%	+2	+3.0%	91

CHO 2

Feb 2022	WTE Dec 2019	WTE Dec 2020	WTE Jan 2022	WTE Feb 2022	WTE change since Jan 22	WTE change since Dec 20	% change since Dec 20	WTE change since Dec 19	% change since Dec 19	No. Feb 2022
Overall	1,308	1,340	1,341	1,353	+12	+13	+1.0%	+45	+3.4%	1,468
Consultants	38	37	38	38	-1	+1	+1.5%	+0	+0.1%	40
Registrars	33	37	40	40	+0	+4	+10.8%	+7	+22.2%	41
SHO/ Interns	35	40	36	36	-1	-4	-10.7%	+1	+2.1%	37
Medical/ Dental, other	1	1				-1	-100.0%	-1	-100.0%	
Medical & Dental	107	114	115	114	-1	-1	-0.7%	+7	+6.7%	118
Nurse/ Midwife Manager	146	151	148	150	+3	-1	-0.7%	+4	+3.0%	153
Nurse/ Midwife Specialist & AN/MP	67	79	83	84	+1	+4	+5.5%	+16	+23.8%	85
Staff Nurse/ Staff Midwife	357	355	366	363	-3	+8	+2.4%	+6	+1.6%	391
<i>Pre-registration Nurse Intern (COVID-19)</i>		10				-10	-100.0%		-100.0%	
<i>Pre-registration Nurse/ Midwife Intern</i>	0		17	25	+9	+25	-100.0%	+25	+20966.7%	48
<i>Nursing/ Midwifery awaiting registration</i>	5		1	6	+5	+6	-100.0%	+1	+26.3%	6
Nursing/ Midwifery Student	5	10	18	31	+14	+21	+207.3%	+26	+542.3%	54
Nursing/ Midwifery other	2	2	2	2	-0	+0	+24.4%	-0	-0.5%	2
Nursing & Midwifery	577	597	616	630	+14	+33	+5.6%	+53	+9.1%	685
Therapy Professions	45	55	52	50	-2	-5	-8.8%	+5	+11.0%	56
Social Care	15	16	14	14	+0	-2	-10.7%	-0	-2.7%	16
Social Workers	41	42	44	42	-1	+1	+1.4%	+1	+3.6%	46
Psychologists	34	37	40	42	+2	+5	+12.4%	+8	+23.9%	47
Pharmacy	3	2	2	2	+0	+1	+37.4%	-0	-5.2%	3
H&SC, Other	3	3	3	3	0	-0	-6.3%	-0	-6.3%	3
Health & Social Care Professionals	140	155	155	154	-2	-1	-0.6%	+14	+9.8%	171
Management (VIII & above)	5	4	4	4	+0			-1	-20.0%	4
Administrative/ Supervisory (V to VII)	24	26	24	25	+1	-1	-5.4%	+1	+6.2%	27
Clerical (III & IV)	109	102	96	98	+2	-4	-3.8%	-11	-9.8%	111
Management & Administrative	138	133	124	127	+3	-5	-4.0%	-10	-7.4%	142
Support	36	31	28	27	-1	-4	-13.2%	-9	-25.0%	30
Maintenance/ Technical	27	33	34	34	-0	+0	+1.0%	+7	+24.1%	34
General Support	63	64	62	61	-1	-4	-5.9%	-3	-4.0%	64
Health Care Assistants	215	211	203	203	-0	-8	-3.9%	-12	-5.5%	215
Care, other	69	66	66	65	-1	-1	-1.7%	-4	-5.8%	73
Patient & Client Care	284	278	270	268	-1	-9	-3.4%	-16	-5.6%	288

CHO 3

Feb 2022	WTE Dec 2019	WTE Dec 2020	WTE Jan 2022	WTE Feb 2022	WTE change since Jan 22	WTE change since Dec 20	% change since Dec 20	WTE change since Dec 19	% change since Dec 19	No. Feb 2022
Overall	795	809	816	821	+5	+12	+1.5%	+25	+3.2%	903
Consultants	23	24	26	27	+1	+3	+10.6%	+3	+14.4%	30
Registrars	18	15	18	16	-2	+1	+3.5%	-2	-12.4%	16
SHO/ Interns	19	21	20	24	+4	+3	+12.0%	+5	+26.5%	24
Medical & Dental	60	61	64	66	+3	+6	+9.3%	+6	+10.2%	70
Nurse/ Midwife Manager	88	88	89	85	-3	-3	-2.9%	-2	-2.8%	89
Nurse/ Midwife Specialist & AN/MP	39	37	30	35	+6	-2	-4.9%	-4	-10.3%	39
Staff Nurse/ Staff Midwife	245	272	278	275	-3	+3	+1.1%	+29	+12.0%	299
<i>Pre-registration Nurse Intern (COVID-19)</i>		3				-3	-100.0%		-100.0%	
<i>Pre-registration Nurse/ Midwife Intern</i>	9		3	12	+9	+12	-100.0%	+3	+36.9%	26
Nursing/ Midwifery Student	9	3	3	12	+9	+9	+254.9%	+3	+36.9%	26
Nursing & Midwifery	381	400	399	407	+8	+7	+1.9%	+26	+6.9%	453
Therapy Professions	26	25	27	25	-2	+0	+0.7%	-1	-5.1%	29
Social Care	3	3	3	2	-1	-1	-33.3%	-1	-30.3%	2
Social Workers	25	24	26	26	-0	+2	+6.5%	+1	+2.5%	28
Psychologists	92	91	89	88	-1	-4	-3.9%	-5	-5.1%	90
Pharmacy	3	3	3	3	0					3
H&SC, Other	10	12	10	10	-0	-2	-17.7%	+0	+4.6%	12
Health & Social Care Professionals	159	158	157	153	-4	-5	-3.1%	-6	-3.6%	164
Management (VIII & above)	2	2	3	4	+1	+2	+100.0%	+2	+103.0%	4
Administrative/ Supervisory (V to VII)	17	19	15	15	-0	-4	-18.6%	-1	-8.5%	16
Clerical (III & IV)	56	50	52	52	-0	+1	+2.7%	-4	-7.4%	58
Management & Administrative	75	71	70	71	+1	-0	-0.2%	-4	-4.7%	78
Support	32	30	32	33	+1	+2	+8.2%	+0	+0.6%	36
Maintenance/ Technical	11	9	7	7	0	-2	-22.2%	-4	-36.4%	7
General Support	43	39	39	40	+1	+0	+1.3%	-4	-8.7%	43
Health Care Assistants	75	79	86	82	-4	+4	+4.6%	+7	+9.3%	94
Care, other	2	1	1	1	0			-1	-40.1%	1
Patient & Client Care	77	80	87	83	-4	+4	+4.5%	+6	+8.2%	95

CHO 4

Feb 2022	WTE Dec 2019	WTE Dec 2020	WTE Jan 2022	WTE Feb 2022	WTE change since Jan 22	WTE change since Dec 20	% change since Dec 20	WTE change since Dec 19	% change since Dec 19	No. Feb 2022
Overall	1,485	1,564	1,563	1,590	+26	+26	+1.7%	+104	+7.0%	1,756
Consultants	50	54	57	57	+0	+3	+4.9%	+7	+14.4%	63
Registrars	46	42	53	54	+1	+13	+31.0%	+9	+18.9%	56
SHO/ Interns	31	43	37	36	-1	-7	-16.9%	+5	+15.1%	36
Medical/ Dental, other	2	2	2	2	0	-0	-5.5%	-0	-5.5%	5
Medical & Dental	129	141	149	149	+0	+8	+5.8%	+20	+15.9%	160
Nurse/ Midwife Manager	170	192	199	211	+12	+19	+9.7%	+42	+24.5%	222
Nurse/ Midwife Specialist & AN/MP	60	71	68	67	-0	-3	-4.7%	+8	+12.5%	72
Staff Nurse/ Staff Midwife	502	519	504	502	-2	-18	-3.4%	-1	-0.1%	534
<i>Pre-registration Nurse Intern (COVID-19)</i>		3				-3	-100.0%		-100.0%	
<i>Pre-registration Nurse/ Midwife Intern</i>	3		10	24	+14	+24	-100.0%	+21	+690.7%	47
<i>Post-registration Nurse/ Midwife Student</i>	1						-100.0%	-1	-100.0%	
<i>Nursing/ Midwifery awaiting registration</i>	30	1	3	3	0	+2	+200.0%	-27	-89.8%	3
Nursing/ Midwifery Student	34	4	13	27	+14	+23	+568.0%	-7	-20.2%	50
Nursing & Midwifery	765	786	783	807	+24	+21	+2.6%	+42	+5.4%	878
Therapy Professions	74	77	77	78	+1	+0	+0.4%	+4	+5.2%	86
Social Care	4	7	7	6	-0	-1	-8.7%	+3	+67.4%	8
Social Workers	53	64	64	65	+0	+0	+0.4%	+12	+21.9%	78
Psychologists	83	94	97	97	+0	+3	+3.1%	+14	+17.2%	109
Pharmacy	2	3	1	1	0	-2	-57.1%	-1	-47.6%	2
H&SC, Other	11	12	15	15	+0	+3	+22.0%	+4	+40.4%	19
Health & Social Care Professionals	227	258	260	262	+2	+4	+1.5%	+35	+15.6%	302
Management (VIII & above)	1	3	3	3	0	+0	+9.9%	+2	+200.0%	3
Administrative/ Supervisory (V to VII)	22	22	20	22	+2	-0	-0.2%	-1	-3.1%	23
Clerical (III & IV)	87	94	92	92	-0	-2	-2.5%	+5	+5.3%	105
Management & Administrative	111	119	115	117	+2	-2	-1.8%	+6	+5.4%	131
Support	80	82	79	78	-1	-4	-4.9%	-2	-2.6%	90
Maintenance/ Technical	6	5	5	5	0			-1	-16.4%	6
General Support	86	87	84	83	-1	-4	-4.6%	-3	-3.6%	96
Health Care Assistants	161	166	165	165	-0	-1	-0.6%	+5	+2.8%	174
Care, other	7	6	7	7	-0	+0	+7.2%	-0	-5.4%	15
Patient & Client Care	168	173	172	172	-0	-1	-0.3%	+4	+2.5%	189

CHO 5

Feb 2022	WTE Dec 2019	WTE Dec 2020	WTE Jan 2022	WTE Feb 2022	WTE change since Jan 22	WTE change since Dec 20	% change since Dec 20	WTE change since Dec 19	% change since Dec 19	No. Feb 2022
Overall	1,178	1,188	1,203	1,228	+25	+40	+3.4%	+51	+4.3%	1,373
Consultants	26	27	30	31	+1	+3	+11.9%	+4	+16.6%	33
Registrars	10	9	11	12	+1	+3	+31.1%	+2	+18.0%	12
SHO/ Interns	32	36	34	31	-3	-5	-13.3%	-1	-3.0%	32
Medical/ Dental, other	2	2	2	2	0					2
Medical & Dental	70	74	77	76	-1	+1	+1.8%	+5	+7.4%	79
Nurse/ Midwife Manager	164	160	170	173	+3	+13	+8.1%	+9	+5.4%	181
Nurse/ Midwife Specialist & AN/MP	42	54	54	54	-0	-0	-0.4%	+12	+27.8%	57
Staff Nurse/ Staff Midwife	415	411	418	419	+1	+8	+2.0%	+4	+1.0%	474
<i>Pre-registration Nurse Intern (COVID-19)</i>		13	1		-1	-13	-100.0%		-100.0%	
<i>Pre-registration Nurse/ Midwife Intern</i>	4		0	18	+17	+18	-100.0%	+14	+403.1%	37
<i>Nursing/ Midwifery awaiting registration</i>	2		5	3	-2	+3	-100.0%	+1	+50.0%	3
Nursing/ Midwifery Student	6	13	6	21	+14	+8	+59.4%	+15	+274.7%	40
Nursing/ Midwifery other	4	4	4	4	0	+0	+2.8%	+0	+1.1%	4
Nursing & Midwifery	631	642	652	671	+18	+29	+4.5%	+40	+6.3%	756
Therapy Professions	40	39	31	32	+1	-6	-15.9%	-8	-19.1%	37
Social Care	5	5	5	5	+0					5
Social Workers	27	28	28	28	-0	-0	-1.4%	+0	+0.2%	30
Psychologists	21	21	23	22	-1	+1	+3.1%	+1	+4.4%	25
H&SC, Other	10	8	21	20	-1	+12	+156.9%	+10	+104.4%	21
Health & Social Care Professionals	103	100	107	107	+0	+6	+6.4%	+4	+3.5%	118
Management (VIII & above)	3	6	6	6	+0	-0	-0.2%	+3	+99.7%	6
Administrative/ Supervisory (V to VII)	20	20	24	24	+0	+4	+20.6%	+4	+19.2%	25
Clerical (III & IV)	74	68	71	70	-1	+2	+2.4%	-4	-5.1%	77
Management & Administrative	97	94	100	100	-1	+6	+6.1%	+3	+3.2%	108
Support	168	178	169	173	+4	-6	-3.1%	+5	+3.1%	197
Maintenance/ Technical	23	20	16	16	-0	-4	-20.6%	-8	-32.6%	17
General Support	191	198	185	188	+4	-10	-4.9%	-2	-1.2%	214
Health Care Assistants	73	68	70	76	+5	+8	+11.9%	+3	+4.1%	81
Care, other	13	12	11	11	+0	-1	-7.9%	-2	-12.6%	17
Patient & Client Care	85	80	82	87	+5	+7	+8.9%	+1	+1.6%	98

CHO 6

Feb 2022	WTE Dec 2019	WTE Dec 2020	WTE Jan 2022	WTE Feb 2022	WTE change since Jan 22	WTE change since Dec 20	% change since Dec 20	WTE change since Dec 19	% change since Dec 19	No. Feb 2022
Overall	593	626	627	627	-0	+0	+0.1%	+34	+5.8%	702
Consultants	36	40	39	40	+0	-0	-1.0%	+4	+10.3%	45
Registrars	22	19	24	23	-1	+4	+21.6%	+1	+6.4%	25
SHO/ Interns	9	13	10	12	+2	-1	-5.8%	+3	+36.0%	13
Medical & Dental	67	72	74	75	+2	+3	+4.1%	+8	+12.5%	83
Nurse/ Midwife Manager	76	77	76	74	-2	-3	-3.7%	-2	-2.6%	79
Nurse/ Midwife Specialist & AN/MP	14	20	21	21	-1	+1	+6.0%	+7	+51.7%	24
Staff Nurse/ Staff Midwife	139	151	150	149	-1	-3	-1.8%	+10	+6.9%	160
<i>Pre-registration Nurse/ Midwife Intern</i>			2	5	+3	+5	-100.0%	+5	-100.0%	10
<i>Nursing/ Midwifery awaiting registration</i>		1	1	1	0			+1	-100.0%	1
Nursing/ Midwifery Student		1	3	6	+3	+5	+450.0%	+6	-100.0%	11
Nursing/ Midwifery other	2	2	3	3	0	+1	+50.0%	+1	+50.0%	3
Nursing & Midwifery	231	251	253	252	-0	+1	+0.5%	+21	+9.2%	277
Therapy Professions	43	39	38	42	+4	+3	+8.0%	-1	-3.3%	51
Social Care	26	28	25	24	-2	-5	-16.6%	-2	-9.3%	29
Social Workers	30	30	31	31	-1	+1	+2.9%	+1	+2.2%	34
Psychologists	22	32	33	33	-1	+1	+1.7%	+11	+47.8%	39
H&SC, Other	9	5	7	7	-0	+2	+41.5%	-1	-15.8%	8
Health & Social Care Professionals	130	134	135	136	+1	+2	+1.4%	+6	+4.6%	161
Management (VIII & above)	3	3	4	4	0	+1	+33.3%	+1	+33.3%	4
Administrative/ Supervisory (V to VII)	27	24	27	27	-0	+2	+9.4%	-0	-0.5%	29
Clerical (III & IV)	42	43	36	35	-1	-7	-17.2%	-7	-15.9%	41
Management & Administrative	72	70	67	66	-1	-4	-5.8%	-6	-8.1%	74
Support	36	39	33	33	+0	-6	-15.0%	-3	-9.4%	39
Maintenance/ Technical	6	6	6	6	0			+0	+1.5%	6
General Support	42	45	39	39	+0	-6	-13.0%	-3	-7.9%	45
Health Care Assistants	46	49	54	53	-1	+5	+9.4%	+8	+16.8%	55
Care, other	5	6	6	6	-0	-0	-3.6%	+0	+6.8%	7
Patient & Client Care	51	54	60	59	-1	+4	+8.0%	+8	+15.8%	62

CHO 7

Feb 2022	WTE Dec 2019	WTE Dec 2020	WTE Jan 2022	WTE Feb 2022	WTE change since Jan 22	WTE change since Dec 20	% change since Dec 20	WTE change since Dec 19	% change since Dec 19	No. Feb 2022
Overall	835	861	887	901	+14	+40	+4.6%	+66	+7.9%	1,001
Consultants	48	53	55	55	-0	+2	+4.0%	+7	+15.6%	58
Registrars	46	54	52	53	+1	-1	-1.3%	+7	+14.4%	56
SHO/ Interns	21	20	22	22	-0	+2	+8.3%	+1	+5.5%	22
Medical & Dental	115	127	130	130	+0	+3	+2.5%	+15	+13.3%	136
Nurse/ Midwife Manager	117	117	120	120	+0	+2	+1.8%	+3	+2.7%	124
Nurse/ Midwife Specialist & AN/MP	40	47	54	54	-0	+7	+15.1%	+14	+34.6%	58
Staff Nurse/ Staff Midwife	194	202	206	208	+2	+7	+3.2%	+14	+7.1%	230
<i>Pre-registration Nurse Intern (COVID-19)</i>		3	0	1	+0	-3	-85.3%	+1	-100.0%	1
<i>Pre-registration Nurse/ Midwife Intern</i>	1	1	2	15	+13	+14	+2868.0%	+13	+983.2%	33
<i>Post-registration Nurse/ Midwife Student</i>		1				-1	-100.0%		-100.0%	
<i>Nursing/ Midwifery awaiting registration</i>	10	3	4	3	-1	+0	+3.9%	-7	-70.0%	3
Nursing/ Midwifery Student	11	8	6	18	+12	+11	+136.4%	+7	+63.0%	37
Nursing/ Midwifery other	8	6	6	7	+1	+1	+17.1%	-1	-9.2%	8
Nursing & Midwifery	370	379	392	407	+14	+27	+7.2%	+37	+10.0%	457
Therapy Professions	48	53	55	55	+1	+2	+3.6%	+7	+15.5%	60
Social Care	8	7	7	7	+0	-0	-2.2%	-1	-6.9%	9
Social Workers	34	38	37	39	+2	+1	+3.5%	+5	+14.1%	42
Psychologists	31	29	27	27	+0	-2	-6.0%	-4	-12.3%	31
Pharmacy	1	1	1	1	-0	-0	-11.0%	-0	-11.0%	1
H&SC, Other	18	18	20	20	+0	+3	+13.9%	+2	+13.8%	24
Health & Social Care Professionals	140	147	148	150	+2	+4	+2.5%	+10	+7.3%	167
Management (VIII & above)	3	4	5	5	0	+1	+26.7%	+2	+70.4%	5
Administrative/ Supervisory (V to VII)	16	17	17	17	-0	-1	-3.6%	+1	+6.1%	18
Clerical (III & IV)	47	49	49	49	+0	-0	-0.3%	+2	+4.5%	58
Management & Administrative	65	70	71	71	-0	+0	+0.3%	+5	+7.7%	81
Support	18	17	18	18	-0	+1	+3.1%	+0	+0.8%	20
Maintenance/ Technical	2	2	2	2	0			+0	+7.5%	2
General Support	20	19	20	20	-0	+1	+2.8%	+0	+1.5%	22
Health Care Assistants	33	34	34	34	-1	-1	-1.9%	+0	+1.3%	37
Care, other	92	84	92	90	-2	+6	+6.7%	-2	-2.2%	101
Patient & Client Care	125	119	126	124	-2	+5	+4.2%	-2	-1.2%	138

CHO 8

Feb 2022	WTE Dec 2019	WTE Dec 2020	WTE Jan 2022	WTE Feb 2022	WTE change since Jan 22	WTE change since Dec 20	% change since Dec 20	WTE change since Dec 19	% change since Dec 19	No. Feb 2022
Overall	1,098	1,112	1,096	1,099	+3	-13	-1.1%	+1	+0.1%	1,228
Consultants	35	36	38	39	+1	+2	+6.6%	+4	+9.9%	41
Registrars	26	31	40	39	-1	+8	+25.6%	+13	+52.1%	43
SHO/ Interns	36	26	21	20	-0	-6	-22.3%	-16	-43.4%	24
Medical & Dental	97	94	99	98	-1	+5	+4.8%	+1	+1.3%	108
Nurse/ Midwife Manager	121	120	120	120	+0	+0	+0.1%	-0	-0.2%	127
Nurse/ Midwife Specialist & AN/MP	56	60	64	67	+3	+8	+13.4%	+11	+20.3%	72
Staff Nurse/ Staff Midwife	332	342	324	315	-9	-28	-8.1%	-17	-5.1%	340
<i>Pre-registration Nurse Intern (COVID-19)</i>		1				-1	-100.0%		-100.0%	
<i>Pre-registration Nurse/ Midwife Intern</i>	1		9	23	+13	+23	-100.0%	+22	+4412.0%	48
<i>Nursing/ Midwifery awaiting registration</i>	2		3	3	0	+3	-100.0%	+1	+50.0%	3
Nursing/ Midwifery Student	3	1	12	26	+13	+25	+2381.6%	+23	+922.4%	51
Nursing/ Midwifery other	4	3	3	3	0	-0	-2.7%	-1	-26.8%	3
Nursing & Midwifery	515	526	523	531	+8	+5	+0.9%	+16	+3.2%	593
Therapy Professions	44	43	40	39	-1	-3	-7.7%	-5	-10.9%	47
Social Care	7	7	7	7	-1	-0	-2.4%	-0	-5.7%	8
Social Workers	41	44	49	49	+0	+5	+12.3%	+8	+18.9%	54
Psychologists	39	37	40	40	-0	+3	+8.0%	+1	+1.4%	42
Pharmacy	1	2	1	2	+0			+1	+50.0%	3
H&SC, Other	20	21	15	15	+1	-6	-27.8%	-5	-24.5%	20
Health & Social Care Professionals	153	153	153	152	-1	-1	-0.7%	-1	-0.9%	174
Management (VIII & above)	3	3	4	4	-0	+1	+23.4%	+1	+23.8%	4
Administrative/ Supervisory (V to VII)	22	20	22	22	+0	+2	+9.6%	-0	-1.8%	25
Clerical (III & IV)	88	97	89	88	-1	-10	-9.8%	-1	-0.8%	99
Management & Administrative	114	120	115	113	-1	-7	-5.8%	-0	-0.3%	128
Support	33	31	30	31	+1	-1	-1.6%	-2	-5.9%	33
Maintenance/ Technical	26	28	26	25	-0	-3	-9.6%	-1	-3.0%	27
General Support	59	59	55	56	+1	-3	-5.4%	-3	-4.6%	60
Health Care Assistants	157	156	147	145	-2	-11	-6.9%	-11	-7.3%	162
Care, other	4	3	3	3	-0	-0	-6.3%	-1	-15.8%	3
Patient & Client Care	160	159	150	148	-2	-11	-6.9%	-12	-7.4%	165

CHO 9

Feb 2022	WTE Dec 2019	WTE Dec 2020	WTE Jan 2022	WTE Feb 2022	WTE change since Jan 22	WTE change since Dec 20	% change since Dec 20	WTE change since Dec 19	% change since Dec 19	No. Feb 2022
Overall	1,272	1,331	1,350	1,337	-13	+7	+0.5%	+66	+5.2%	1,504
Consultants	50	46	51	51	+0	+5	+10.2%	+1	+2.1%	55
Registrars	31	32	47	47	-0	+15	+46.3%	+16	+51.0%	48
SHO/ Interns	53	54	30	28	-1	-25	-46.7%	-25	-46.4%	30
Medical & Dental	134	132	127	126	-1	-5	-4.2%	-8	-5.8%	133
Nurse/ Midwife Manager	132	138	141	136	-5	-2	-1.2%	+4	+3.2%	147
Nurse/ Midwife Specialist & AN/MP	65	76	80	79	-0	+3	+4.5%	+14	+21.4%	83
Staff Nurse/ Staff Midwife	351	371	373	357	-16	-15	-4.0%	+5	+1.6%	398
<i>Pre-registration Nurse Intern (COVID-19)</i>		5				-5	-100.0%		-100.0%	
<i>Pre-registration Nurse/ Midwife Intern</i>	10	10	18	23	+5	+12	+121.7%	+13	+123.7%	47
<i>Nursing/ Midwifery awaiting registration</i>	11		1	2	+1	+2	-100.0%	-9	-81.7%	2
Nursing/ Midwifery Student	21	16	19	25	+6	+9	+57.3%	+4	+17.7%	49
Nursing/ Midwifery other	11	13	10	10	+0	-2	-19.3%	-1	-9.7%	11
Nursing & Midwifery	581	613	623	607	-16	-6	-1.0%	+26	+4.5%	688
Therapy Professions	55	61	62	63	+0	+2	+2.5%	+8	+14.2%	72
Social Care	1	1	1	1	0			+0	+11.1%	1
Social Workers	43	43	43	45	+3	+3	+6.2%	+2	+4.6%	51
Psychologists	46	53	54	52	-1	-1	-1.4%	+7	+14.6%	60
Pharmacy	8	9	9	9	-0	+1	+6.5%	+1	+18.6%	12
H&SC, Other	15	14	18	17	-0	+3	+22.9%	+3	+20.2%	19
Health & Social Care Professionals	167	181	187	188	+1	+7	+4.0%	+21	+12.5%	215
Management (VIII & above)	5	5	4	5	+1			+0	+0.2%	5
Administrative/ Supervisory (V to VII)	28	29	31	32	+1	+3	+10.0%	+4	+14.0%	33
Clerical (III & IV)	104	114	120	119	-1	+5	+4.7%	+16	+15.0%	137
Management & Administrative	137	148	155	156	+1	+8	+5.5%	+19	+14.3%	175
Support	103	104	104	103	-1	-1	-0.7%	+0	+0.1%	126
<i>Maintenance</i>	11	11	11	11	0			+0	+0.7%	11
Maintenance/ Technical	11	11	11	11	0			+0	+0.7%	11
General Support	114	115	115	114	-1	-1	-0.7%	+0	+0.1%	137
Health Care Assistants	126	129	132	134	+2	+5	+3.9%	+8	+6.5%	144
Care, other	13	12	11	11	+0	-1	-8.3%	-1	-10.0%	12
Patient & Client Care	139	142	143	146	+3	+4	+2.9%	+7	+5.0%	156

other Community Services

Feb 2022	WTE Dec 2019	WTE Dec 2020	WTE Jan 2022	WTE Feb 2022	WTE change since Jan 22	WTE change since Dec 20	% change since Dec 20	WTE change since Dec 19	% change since Dec 19	No. Feb 2022
Overall	438	494	493	497	+3	+2	+0.5%	+59	+13.5%	524
Consultants	16	17	17	17	+0	+1	+4.9%	+2	+11.7%	19
Registrars	13	14	20	16	-3	+2	+17.6%	+3	+26.7%	17
Medical & Dental	29	31	37	34	-3	+3	+10.7%	+5	+18.5%	36
Nurse/ Midwife Manager	62	76	78	76	-2	-0	-0.0%	+14	+21.8%	79
Nurse/ Midwife Specialist & AN/MP	8	13	10	9	-1	-3	-26.2%	+1	+13.3%	10
Staff Nurse/ Staff Midwife	169	165	164	169	+5	+4	+2.3%	-0	-0.1%	174
Nursing/ Midwifery other	1	2	2	2	0	+0	+2.0%	+1	+100.0%	2
Nursing & Midwifery	240	255	253	256	+3	+0	+0.2%	+16	+6.5%	265
Therapy Professions	11	12	13	12	-1	+0	+0.9%	+1	+6.4%	12
Social Care	2	2	2	2	0	+0	+5.3%	+0	+2.0%	2
Social Workers	15	17	14	15	+1	-2	-13.8%	+0	+0.3%	18
Psychologists	6	6	5	6	+1	+0	+0.5%	-0	-0.2%	6
Pharmacy		1	1	1	0			+1	-100.0%	1
Health & Social Care Professionals	34	38	35	36	+1	-2	-5.7%	+2	+5.2%	39
Management (VIII & above)	27	30	25	25	+0	-5	-17.0%	-2	-7.8%	25
Administrative/ Supervisory (V to VII)	31	37	40	41	+1	+5	+12.5%	+10	+32.0%	44
Clerical (III & IV)	25	18	21	21	-0	+2	+12.5%	-4	-17.6%	22
Management & Administrative	83	85	86	87	+1	+2	+2.1%	+3	+4.2%	91
Support	12	16	16	17	+1	+1	+5.2%	+5	+38.1%	18
Maintenance/ Technical	2	7	7	7	+0	+0	+6.4%	+5	+272.5%	9
General Support	14	23	23	24	+1	+1	+5.6%	+10	+71.1%	27
Health Care Assistants	37	62	59	60	+1	-2	-3.7%	+23	+62.6%	65
Care, other	1	1	1	0	-0	-0	-2.0%	-0	-2.0%	1
Patient & Client Care	37	63	60	60	+1	-2	-3.7%	+23	+61.7%	66

Mental Health Services Employment by Grade Group: Feb 2022

Feb 2022	WTE Dec 2019	WTE Dec 2020	WTE Jan 2022	WTE Feb 2022	WTE change since Jan 22	WTE change since Dec 20	% change since Dec 20	WTE change since Dec 19	% change since Dec 19	No. Feb 2022
Overall	9,954	10,301	10,401	10,483	+83	+182	+1.8%	+529	+5.3%	11,583
Consultant Medicine	1	1	1	1						1
Consultant Psychiatry	352	369	387	389	+2	+20	+5.5%	+37	+10.6%	421
Consultants	353	370	388	390	+2	+20	+5.5%	+37	+10.6%	422
Registrars	269	281	335	331	-4	+50	+17.8%	+62	+23.1%	345
Senior House Officer	253	271	228	226	-2	-45	-16.7%	-27	-10.9%	235
Interns	8	5	5	6	+1	+1	+20.0%	-2	-25.0%	6
SHO/ Interns	261	276	233	232	-1	-44	-16.1%	-29	-11.3%	241
Medical/ Dental, other	5	5	4	4		-1	-22.2%	-1	-22.2%	7
Medical & Dental	888	932	961	957	-4	+25	+2.7%	+69	+7.8%	1,015
Clinical Nurse/ Midwife Manager	999	1,041	1,053	1,059	+6	+18	+1.7%	+60	+6.0%	1,116
Director Nursing/Midwifery, Assistant	165	171	180	175	-5	+5	+2.7%	+10	+6.3%	179
Director of Nursing/Midwifery	29	28	27	31	+4	+3	+12.0%	+2	+8.2%	32
Nurse/ Midwife Manager	1,192	1,240	1,260	1,266	+6	+26	+2.1%	+73	+6.1%	1,327
Advanced Nurse/ Midwife Practitioner	31	39	47	47	+1	+8	+19.8%	+16	+53.6%	49
Clinical Nurse/ Midwife Specialist	428	489	494	499	+5	+10	+2.0%	+71	+16.5%	531
Nurse/ Midwife Specialist & AN/MP	459	529	541	546	+6	+18	+3.3%	+87	+19.0%	580
Staff Midwives		1				-1	-100.0%		-100.0%	
Staff Nurse [Psychiatric]	2,893	2,965	2,984	2,956	-28	-9	-0.3%	+62	+2.2%	3,205
Staff Nurses [General/ Children's]	105	106	105	105	-0	-2	-1.8%	-0	-0.4%	115
Staff Nurse [Intellectual Disability]	5	4	3	3	-0	-1	-33.0%	-2	-37.3%	3
Staff Nurse/ Staff Midwife	3,003	3,076	3,092	3,063	-29	-13	-0.4%	+60	+2.0%	3,323
Pre-registration Nurse Intern (COVID-19)		42	1	1	-1	-42	-98.8%	+1	-100.0%	1
Pre-registration Nurse/ Midwife Intern	28	11	67	157	+90	+146	+1362.3%	+129	+468.9%	323
Post-registration Nurse/ Midwife Student	1	1				-1	-100.0%	-1	-100.0%	
Nursing/ Midwifery awaiting registration	59	5	21	24	+3	+19	+393.6%	-35	-59.4%	24
Nursing/ Midwifery Student	87	59	89	181	+92	+122	+207.0%	+94	+107.1%	348
Nursing Education/Clinical	32	32	32	33	+1	+1	+2.9%	+1	+3.3%	35
Nursing/ Midwifery other	32	32	32	33	+1	+1	+2.9%	+1	+3.3%	35
Nursing & Midwifery	4,773	4,935	5,013	5,088	+75	+153	+3.1%	+315	+6.6%	5,613
Dietitians	19	21	20	21	+0	-0	-1.0%	+1	+7.6%	24
Occupational Therapists	339	346	351	354	+4	+9	+2.6%	+16	+4.7%	397
Physiotherapists	2	2	3	3	-0	+0	+16.2%	+1	+25.6%	4
Podiatrists & Chiropodists	1	1	1	1	-0	-0	-2.5%	+0	+6.8%	2
Speech & Language Therapists	62	70	62	62	+0	-7	-10.5%	+1	+1.0%	74
Therapy Professions	422	439	437	441	+4	+2	+0.4%	+19	+4.4%	501
Social Care	74	80	75	72	-3	-8	-10.3%	-2	-2.5%	85
Social Workers	350	373	379	382	+4	+10	+2.6%	+33	+9.4%	429
Psychologists	394	424	429	429	-0	+5	+1.1%	+34	+8.7%	473
Pharmacists	16	17	16	16	-0	-1	-6.5%	-0	-0.7%	19
Pharmacy Technicians	2	4	4	4	-0	+1	+14.8%	+2	+69.2%	7
Pharmacy	19	21	20	20	-0	-1	-2.8%	+2	+8.6%	26
Counsellor Therapists	95	101	118	118	+1	+17	+17.0%	+24	+24.9%	133
Other Health & Social Care	12	5	6	6	-0	+1	+10.9%	-6	-48.9%	11
Play Therapists/ Specialists	1	1	2	2		+0	+6.8%	+0	+8.2%	2
H&SC, Other	108	108	125	126	+1	+18	+16.6%	+18	+16.6%	146
Health & Social Care Professionals	1,366	1,444	1,465	1,470	+5	+25	+1.8%	+103	+7.6%	1,660
Executive Management	11	15	15	15		+0	+1.8%	+4	+36.4%	15
Senior Management (VIII & GM)	46	52	51	54	+3	+2	+3.1%	+8	+16.5%	55
Management (VIII & above)	57	67	66	69	+3	+2	+2.8%	+12	+20.3%	70
Middle Management (V-VII)	235	243	250	254	+3	+10	+4.3%	+18	+7.8%	271

Feb 2022	WTE Dec 2019	WTE Dec 2020	WTE Jan 2022	WTE Feb 2022	WTE change since Jan 22	WTE change since Dec 20	% change since Dec 20	WTE change since Dec 19	% change since Dec 19	No. Feb 2022
Overall	9,954	10,301	10,401	10,483	+83	+182	+1.8%	+529	+5.3%	11,583
Other Administrative	2	2	2	3	+1	+1	+63.7%	+1	+63.7%	3
Administrative/ Supervisory (V to VII)	237	245	252	256	+4	+11	+4.7%	+19	+8.2%	274
General Administrative (III & IV)	717	722	714	713	-1	-9	-1.2%	-4	-0.6%	807
Clerical (III & IV)	717	722	714	713	-1	-9	-1.2%	-4	-0.6%	807
Management & Administrative	1,012	1,034	1,033	1,038	+5	+5	+0.4%	+27	+2.7%	1,151
Catering	65	64	72	71	-1	+7	+11.5%	+6	+8.6%	76
Household Services	425	441	409	416	+6	-26	-5.8%	-9	-2.1%	489
Other Support	43	42	40	38	-2	-4	-8.5%	-4	-10.2%	44
Portering	48	47	48	48	-0	+1	+2.1%	+0	+0.5%	50
Support	581	594	570	573	+3	-21	-3.5%	-7	-1.2%	659
Maintenance	129	137	130	130	+0	-7	-5.1%	+1	+1.1%	137
Technical Services	2						-100.0%	-2	-100.0%	
Maintenance/ Technical	131	137	130	130	+0	-7	-5.1%	-1	-0.4%	137
General Support	711	732	700	704	+4	-28	-3.8%	-8	-1.1%	796
Attendant/ Aide	605	583	546	522	-24	-62	-10.5%	-83	-13.7%	578
Health & Social Care Assistants	9	8	8	9	+1	+0	+4.7%	-0	-2.3%	10
Health Care Assistant/ Care Assistant	374	430	466	490	+24	+61	+14.1%	+116	+31.1%	518
Health Care Assistants	988	1,022	1,020	1,021	+1	-1	-0.1%	+33	+3.3%	1,106
Home Care Services	16	14	13	13	+0	-1	-8.5%	-3	-17.0%	22
Other Care Grades	23	22	20	20	-0	-2	-10.7%	-3	-13.0%	21
Pastoral Care	13	12	11	11	-0	-1	-8.7%	-2	-12.9%	16
Workshop Services	165	155	165	162	-3	+7	+4.3%	-3	-2.0%	183
Care, other	216	203	208	205	-3	+2	+1.0%	-10	-4.8%	242
Patient & Client Care	1,204	1,225	1,228	1,226	-2	+1	+0.1%	+23	+1.9%	1,348

Employment by WTE, Headcount, Gender, Full-Time /Part-Time etc.: Feb 2022

Mental Health Services Staff Group	WTE	Headcount	WTE: no.	% Male	% female	Male WTE: no.	Female WTE: no.	% Total Perm	% Male Perm	% Female Perm	% Total Full Time	% Total Part Time	% Male FT	% Female FT
Overall	10,483	11,583	1.10	26.9%	73.1%	1.06	1.12	83.0%	79.8%	84.1%	85.3%	14.7%	93.3%	82.4%
Consultant Medicine	1	1	1.00	100.0%		1.00		100.0%	100.0%		100.0%	0.0%	100.0%	
Consultant Psychiatry	389	421	1.08	42.3%	57.7%	1.06	1.10	67.5%	67.5%	65.4%	85.5%	14.5%	91.6%	81.1%
Consultants	390	422	1.08	42.4%	57.6%	1.06	1.10	67.5%	70.4%	65.4%	85.5%	14.5%	91.6%	81.1%
Registrar	214	225	1.05	46.2%	53.8%	1.03	1.07	2.7%	2.7%	1.7%	97.3%	2.7%	99.0%	95.9%
Senior Registrar	115	118	1.02	37.3%	62.7%	1.01	1.03	0.8%	0.8%	1.4%	96.6%	3.4%	100.0%	94.6%
Specialist Registrar	2	2	1.00	100.0%		1.00		0.0%	0.0%		100.0%	0.0%	100.0%	
Registrars	331	345	1.04	43.5%	56.5%	1.02	1.06	2.0%	2.7%	1.5%	97.1%	2.9%	99.3%	95.4%
Senior House Officer	226	235	1.04	43.4%	56.6%	1.05	1.03	0.0%	0.0%	0.0%	99.6%	0.4%	100.0%	99.2%
Interns	6	6	1.00	16.7%	83.3%	1.00	1.00	0.0%	0.0%	0.0%	100.0%	0.0%	100.0%	100.0%
SHO/ Interns	232	241	1.04	42.7%	57.3%	1.05	1.03	0.0%	0.0%	0.0%	99.6%	0.4%	100.0%	99.3%
Other Medical	4	7	1.80	57.1%	42.9%	1.72	1.91	57.1%	57.1%	66.7%	85.7%	14.3%	100.0%	66.7%
Medical/ Dental, other	4	7	1.80	57.1%	42.9%	1.72	1.91	57.1%	50.0%	66.7%	85.7%	14.3%	100.0%	66.7%
Medical & Dental	957	1,015	1.06	43.0%	57.0%	1.05	1.07	29.2%	30.3%	28.3%	92.8%	7.2%	96.3%	90.2%
Clinical Nurse/ Midwife Manager	1,059	1,116	1.05	33.9%	66.1%	1.02	1.07	98.7%	98.7%	99.2%	93.8%	6.2%	98.4%	91.5%
Director Nursing/Midwifery, Assistant	175	179	1.02	43.6%	56.4%	1.02	1.02	100.0%	100.0%	100.0%	97.8%	2.2%	98.7%	97.0%
Director of Nursing/Midwifery	31	32	1.02	50.0%	50.0%	1.02	1.02	100.0%	100.0%	100.0%	96.9%	3.1%	100.0%	93.8%
Nurse/ Midwife Manager	1,266	1,327	1.05	35.6%	64.4%	1.02	1.06	98.9%	98.3%	99.3%	94.4%	5.6%	98.5%	92.2%
Advanced Nurse/ Midwife Practitioner	47	49	1.04	18.4%	81.6%	1.00	1.05	98.0%	98.0%	97.5%	91.8%	8.2%	100.0%	90.0%
Clinical Nurse/ Midwife Specialist	499	531	1.06	18.6%	81.4%	1.02	1.08	99.8%	99.8%	99.8%	92.3%	7.7%	98.0%	91.0%
Nurse/ Midwife Specialist & AN/MP	546	580	1.06	18.6%	81.4%	1.02	1.07	99.7%	100.0%	99.6%	92.2%	7.8%	98.1%	90.9%
Staff Nurse [Psychiatric]	2,956	3,205	1.08	25.6%	74.4%	1.06	1.09	91.4%	91.4%	92.2%	88.0%	12.0%	92.3%	86.4%
Staff Nurses [General/ Children's]	105	115	1.10	25.2%	74.8%	1.11	1.10	74.8%	74.8%	79.1%	81.7%	18.3%	82.8%	81.4%
Staff Nurse [Intellectual Disability]	3	3	1.06	33.3%	66.7%	1.00	1.09	33.3%	33.3%	50.0%	100.0%	0.0%	100.0%	100.0%
Staff Nurse/ Staff Midwife	3,063	3,323	1.08	25.6%	74.4%	1.06	1.09	90.7%	87.9%	91.7%	87.8%	12.2%	92.0%	86.3%
Pre-registration Nurse Intern (COVID-19)	1	1	2.00		100.0%		2.00	0.0%	0.0%	0.0%	100.0%	0.0%		100.0%
Pre-registration Nurse/ Midwife Intern	157	323	2.06	15.8%	84.2%	2.01	2.07	0.3%	0.3%	0.4%	100.0%	0.0%	100.0%	100.0%
Nursing/ Midwifery awaiting registration	24	24	1.00	16.7%	83.3%	1.01	1.00	20.8%	20.8%	20.0%	100.0%	0.0%	100.0%	100.0%
Nursing/ Midwifery Student	181	348	1.92	15.8%	84.2%	1.87	1.93	1.7%	1.8%	1.7%	100.0%	0.0%	100.0%	100.0%
Nursing Education/Clinical	33	35	1.07	14.3%	85.7%	1.00	1.09	100.0%	100.0%	100.0%	88.6%	11.4%	100.0%	86.7%

Nursing/ Midwifery other	33	35	1.07	14.3%	85.7%	1.00	1.09	100.0%	100.0%	100.0%	88.6%	11.4%	100.0%	86.7%
Nursing & Midwifery	5,088	5,613	1.10	26.6%	73.4%	1.06	1.12	88.1%	88.9%	87.8%	90.6%	9.4%	94.8%	89.0%
Health & Social Care	1,470	1,660	1.13	16.6%	83.4%	1.06	1.14	86.0%	83.6%	86.5%	81.8%	18.2%	92.4%	79.7%
Executive Management	15	15	1.00	60.0%	40.0%	1.00	1.00	100.0%	100.0%	100.0%	100.0%	0.0%	100.0%	100.0%
Senior Management (VIII & GM)	54	55	1.02	29.1%	70.9%	1.02	1.02	96.4%	96.4%	97.4%	96.4%	3.6%	93.8%	97.4%
Management (VIII & above)	69	70	1.01	35.7%	64.3%	1.01	1.01	97.1%	96.0%	97.8%	97.1%	2.9%	96.0%	97.8%
Middle Management (V-VII)	254	271	1.07	20.3%	79.7%	1.03	1.08	90.0%	90.0%	92.1%	87.1%	12.9%	96.4%	84.7%
Other Administrative	3	3	1.17		100.0%		1.17	66.7%	66.7%	66.7%	66.7%	33.3%		66.7%
Administrative/ Supervisory (V to VII)	256	274	1.07	20.1%	79.9%	1.03	1.08	89.8%	81.8%	91.8%	86.9%	13.1%	96.4%	84.5%
General Administrative (III & IV)	713	807	1.13	9.3%	90.7%	1.05	1.14	85.5%	85.5%	85.7%	74.1%	25.9%	90.7%	72.4%
Clerical (III & IV)	713	807	1.13	9.3%	90.7%	1.05	1.14	85.5%	84.0%	85.7%	74.1%	25.9%	90.7%	72.4%
Management & Administrative	1,038	1,151	1.11	13.5%	86.5%	1.04	1.12	87.2%	85.2%	87.6%	78.5%	21.5%	93.5%	76.2%
Catering	71	76	1.07	36.8%	63.2%	1.04	1.09	94.7%	94.7%	93.8%	76.3%	23.7%	89.3%	68.8%
Household Services	416	489	1.18	21.1%	78.9%	1.11	1.20	91.0%	91.0%	92.7%	59.9%	40.1%	83.5%	53.6%
Other Support	38	44	1.15	34.1%	65.9%	1.03	1.22	88.6%	88.6%	86.2%	70.5%	29.5%	93.3%	58.6%
Portering	48	50	1.03	94.0%	6.0%	1.03	1.07	90.0%	90.0%	66.7%	86.0%	14.0%	87.2%	66.7%
Support	573	659	1.15	29.3%	70.7%	1.07	1.18	91.2%	88.6%	92.3%	64.5%	35.5%	86.0%	55.6%
Maintenance	130	137	1.05	99.3%	0.7%	1.05	1.00	95.6%	95.6%	100.0%	96.4%	3.6%	96.3%	100.0%
Maintenance/ Technical	130	137	1.05	99.3%	0.7%	1.05	1.00	95.6%	95.6%	100.0%	96.4%	3.6%	96.3%	100.0%
General Support	704	796	1.13	41.3%	58.7%	1.06	1.18	92.0%	91.5%	92.3%	70.0%	30.0%	90.3%	55.7%
Attendant/ Aide	522	578	1.11	24.2%	75.8%	1.09	1.11	85.1%	85.1%	88.4%	72.3%	27.7%	85.0%	68.3%
Health & Social Care Assistants	9	10	1.15	40.0%	60.0%	1.15	1.14	90.0%	90.0%	83.3%	60.0%	40.0%	75.0%	50.0%
Health Care Assistant/ Care Assistant	490	518	1.06	34.4%	65.6%	1.02	1.08	96.1%	96.1%	96.5%	87.1%	12.9%	96.1%	82.4%
Health Care Assistants	1,021	1,106	1.08	29.1%	70.9%	1.05	1.10	90.3%	86.6%	91.8%	79.1%	20.9%	91.0%	74.2%
Home Care Services	13	22	1.68	45.5%	54.5%	1.55	1.82	45.5%	45.5%	50.0%	27.3%	72.7%	30.0%	25.0%
Other Care Grades	20	21	1.07	81.0%	19.0%	1.03	1.26	81.0%	81.0%	75.0%	85.7%	14.3%	94.1%	50.0%
Pastoral Care	11	16	1.46	81.3%	18.8%	1.40	1.80	37.5%	37.5%	0.0%	56.3%	43.8%	61.5%	33.3%
Workshop Services	162	183	1.13	38.8%	61.2%	1.06	1.18	94.5%	94.5%	95.5%	72.7%	27.3%	83.1%	66.1%
Care, other	205	242	1.18	45.9%	54.1%	1.12	1.23	85.1%	81.1%	88.5%	68.6%	31.4%	77.5%	61.1%
Patient & Client Care	1,226	1,348	1.10	32.1%	67.9%	1.07	1.11	89.4%	85.2%	91.4%	77.2%	22.8%	87.5%	72.3%

Employment by WTE, Headcount, Gender, Full-Time /Part-Time etc.: Feb 2022

Mental Health Services CHO	WTE	Headcount	WTE: no.	% Male	% female	Male WTE: no.	Female WTE: no.	% Total Perm	% Male Perm	% Female Perm	% Total Full Time	% Total Part Time	% Male FT	% Female FT
Overall	10,483	11,583	1.10	26.9%	73.1%	1.06	1.12	83.0%	79.8%	84.1%	85.3%	14.7%	93.3%	82.4%
<i>CHO 1</i>	<i>1,030</i>	<i>1,124</i>	<i>1.09</i>	<i>26.5%</i>	<i>73.5%</i>	<i>1.05</i>	<i>1.11</i>	<i>87.8%</i>	<i>87.8%</i>	<i>89.3%</i>	<i>87.2%</i>	<i>12.8%</i>	<i>97.0%</i>	<i>83.7%</i>
<i>CHO 2</i>	<i>1,353</i>	<i>1,468</i>	<i>1.08</i>	<i>28.0%</i>	<i>72.0%</i>	<i>1.05</i>	<i>1.10</i>	<i>84.5%</i>	<i>84.5%</i>	<i>85.7%</i>	<i>84.5%</i>	<i>15.5%</i>	<i>90.3%</i>	<i>82.2%</i>
<i>CHO 3</i>	<i>821</i>	<i>903</i>	<i>1.10</i>	<i>22.1%</i>	<i>77.9%</i>	<i>1.05</i>	<i>1.11</i>	<i>81.3%</i>	<i>81.3%</i>	<i>81.2%</i>	<i>85.6%</i>	<i>14.4%</i>	<i>90.5%</i>	<i>84.2%</i>
<i>CHO 4</i>	<i>1,590</i>	<i>1,756</i>	<i>1.10</i>	<i>25.5%</i>	<i>74.5%</i>	<i>1.06</i>	<i>1.12</i>	<i>70.7%</i>	<i>70.7%</i>	<i>72.7%</i>	<i>85.7%</i>	<i>14.3%</i>	<i>94.9%</i>	<i>82.6%</i>
<i>CHO 5</i>	<i>1,228</i>	<i>1,373</i>	<i>1.12</i>	<i>25.6%</i>	<i>74.4%</i>	<i>1.06</i>	<i>1.14</i>	<i>87.7%</i>	<i>87.7%</i>	<i>88.7%</i>	<i>80.3%</i>	<i>19.7%</i>	<i>91.2%</i>	<i>76.5%</i>
<i>CHO 6</i>	<i>627</i>	<i>702</i>	<i>1.12</i>	<i>29.9%</i>	<i>70.1%</i>	<i>1.08</i>	<i>1.14</i>	<i>83.9%</i>	<i>83.9%</i>	<i>85.2%</i>	<i>84.0%</i>	<i>16.0%</i>	<i>90.0%</i>	<i>81.5%</i>
<i>CHO 7</i>	<i>901</i>	<i>1,001</i>	<i>1.11</i>	<i>23.6%</i>	<i>76.4%</i>	<i>1.06</i>	<i>1.13</i>	<i>81.4%</i>	<i>81.4%</i>	<i>82.7%</i>	<i>88.0%</i>	<i>12.0%</i>	<i>95.3%</i>	<i>85.8%</i>
<i>CHO 8</i>	<i>1,099</i>	<i>1,228</i>	<i>1.12</i>	<i>24.8%</i>	<i>75.2%</i>	<i>1.06</i>	<i>1.14</i>	<i>85.0%</i>	<i>85.0%</i>	<i>86.4%</i>	<i>86.2%</i>	<i>13.8%</i>	<i>96.1%</i>	<i>82.9%</i>
<i>CHO 9</i>	<i>1,337</i>	<i>1,504</i>	<i>1.12</i>	<i>27.8%</i>	<i>72.2%</i>	<i>1.06</i>	<i>1.15</i>	<i>85.8%</i>	<i>85.8%</i>	<i>87.0%</i>	<i>84.4%</i>	<i>15.6%</i>	<i>94.3%</i>	<i>80.7%</i>
<i>other Community Services</i>	<i>497</i>	<i>524</i>	<i>1.05</i>	<i>46.6%</i>	<i>53.4%</i>	<i>1.06</i>	<i>1.05</i>	<i>88.9%</i>	<i>88.9%</i>	<i>90.4%</i>	<i>92.7%</i>	<i>7.3%</i>	<i>91.8%</i>	<i>93.6%</i>

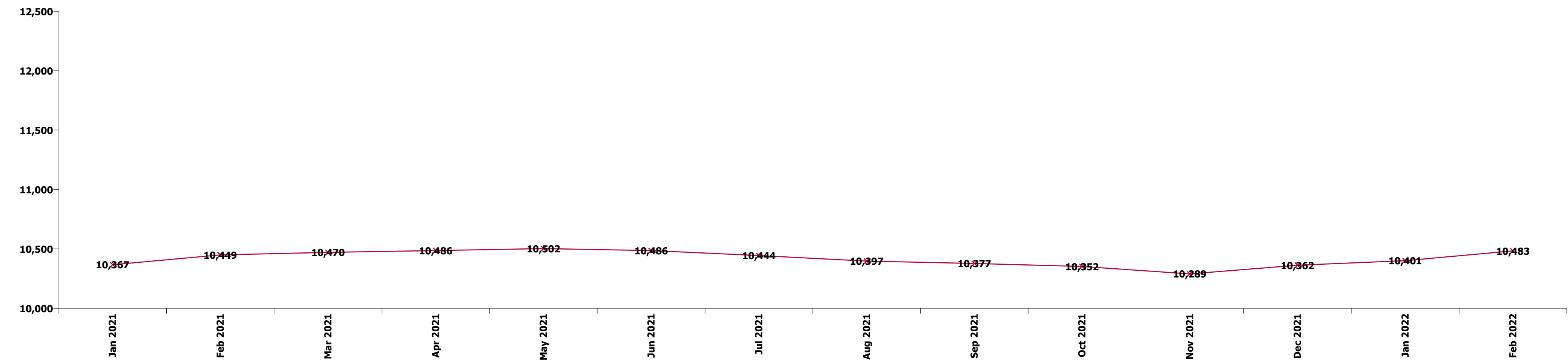
Summary Staff Movement: February 2022

Month-on-month
Summary

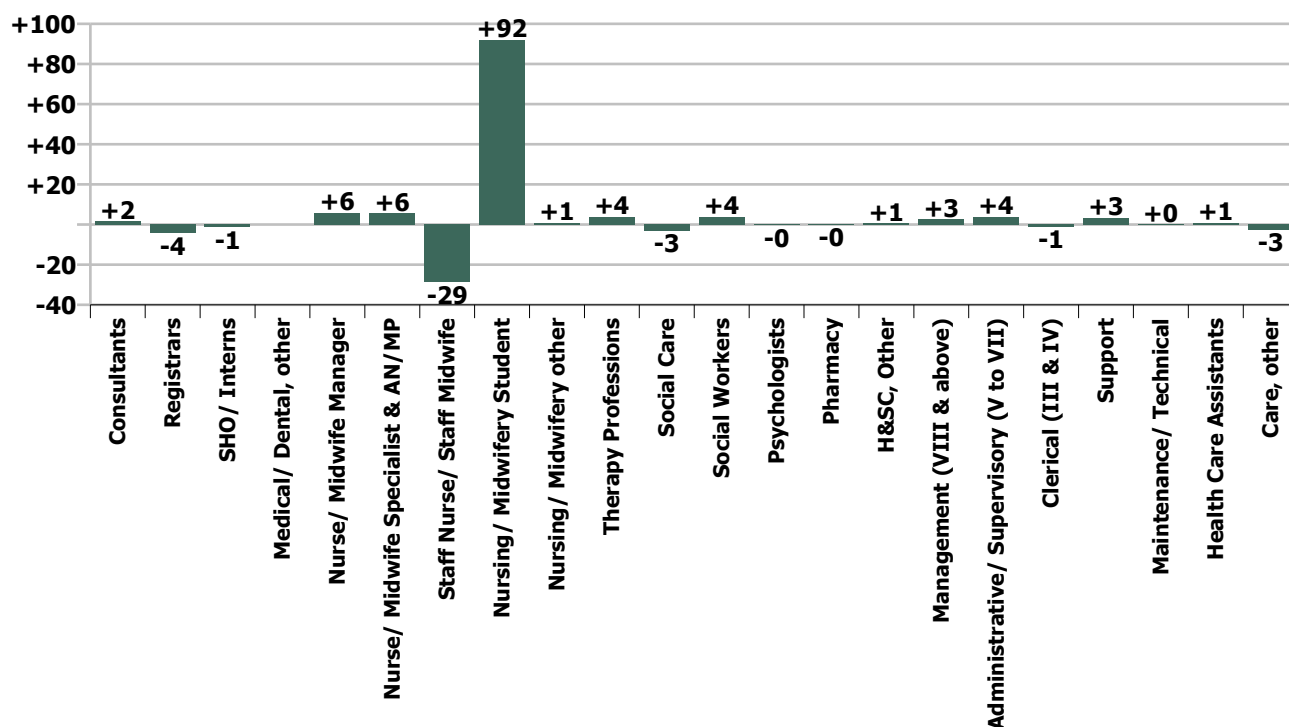
WTE change since Jan 22	% change since Jan 22	overall	Consultants	Registrars	SHO/ Interns	Medical/ Dental, other	Medical & Dental	Nurse/ Midwife Manager	Nurse/ Midwife Specialist & AN/MP	Staff Nurse/ Staff Midwife	Nursing/ Midwifery Student	Nursing/ Midwifery other	Nursing & Midwifery	Therapy Professions	Social Care	Social Workers	Psychologists	Pharmacy	H&SC, Other	Health & Social Care Professionals	Management (VIII & above)	Administrativ e/ Supervisory (V to VII)	Clerical (III & IV)	Management & Administrative	General Support	Health Care Assistants	Care, other	Patient & Client Care
Overall	+0.8%	+83	+2	-4	-1		-4	+6	+6	-29	+92	+1	+75	+4	-3	+4	-0	-0	+1	+5	+3	+4	-1	+5	+4	+1	-3	-2
CHO 1	+0.6%	+6	-1	-0	-1		-1	-1	-1	-2	+7		+2	+2	+0	+0	+1		+0	+4	+1	+0	+0	+1	+1	-0	-0	-1
CHO 2	+0.9%	+12	-1	+0	-1		-1	+3	+1	-3	+14	-0	+14	-2	+0	-1	+2	+0		-2	+0	+1	+2	+3	-1	-0	-1	-1
CHO 3	+0.6%	+5	+1	-2	+4		+3	-3	+6	-3	+9		+8	-2	-1	-0	-1		-0	-4	+1	-0	-0	+1	+1	-4		-4
CHO 4	+1.7%	+26	+0	+1	-1		+0	+12	-0	-2	+14		+24	+1	-0	+0	+0		+0	+2		+2	-0	+2	-1	-0	-0	-0
CHO 5	+2.1%	+25	+1	+1	-3		-1	+3	-0	+1	+14		+18	+1	+0	-0	-1		-1	+0	+0	+0	-1	-1	+4	+5	+0	+5
CHO 6	-0.1%	-0	+0	-1	+2		+2	-2	-1	-1	+3		-0	+4	-2	-1	-1		-0	+1		-0	-1	-1	+0	-1	-0	-1
CHO 7	+1.6%	+14	-0	+1	-0		+0	+0	-0	+2	+12	+1	+14	+1	+0	+2	+0	-0	+0	+2		-0	+0	-0	-0	-1	-2	-2
CHO 8	+0.3%	+3	+1	-1	-0		-1	+0	+3	-9	+13		+8	-1	-1	+0	-0	+0	+1	-1	-0	+0	-1	-1	+1	-2	-0	-2
CHO 9	-1.0%	-13	+0	-0	-1		-1	-5	-0	-16	+6	+0	-16	+0		+3	-1	-0	-0	+1	+1	+1	-1	+1	-1	+2	+0	+3
other Community Services	+0.7%	+3	+0	-3			-3	-2	-1	+5			+3	-1		+1	+1			+1	+0	+1	-0	+1	+1	-0	-0	+1
		+0.8%	+0.4%	-1.3%	-0.6%		-0.4%	+0.5%	+1.0%	-0.9%	+103.1%	+2.3%	+1.5%	+0.9%	-4.2%	+1.0%	-0.1%	-0.6%	+0.5%	+0.3%	+3.9%	+1.5%	-0.2%	+0.5%	+0.5%	+0.1%	-1.3%	-0.2%

Year-on-year Summary

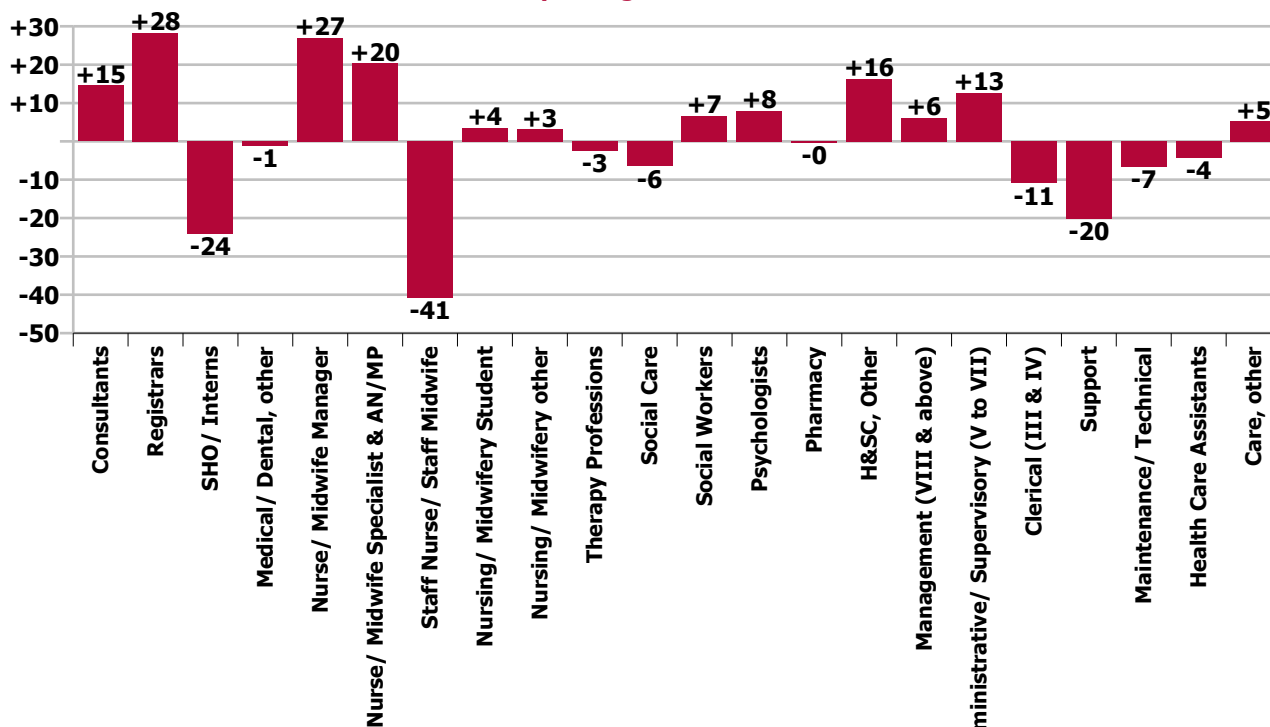
WTE change since Feb 21	% change since Feb 21	overall	Consultants	Registrars	SHO/ Interns	Medical/ Dental, other	Medical & Dental	Nurse/ Midwife Manager	Nurse/ Midwife Specialist & AN/MP	Staff Nurse/ Staff Midwife	Nursing/ Midwifery Student	Nursing/ Midwifery other	Nursing & Midwifery	Therapy Professions	Social Care	Social Workers	Psychologists	Pharmacy	H&SC, Other	Health & Social Care Professionals	Management (VIII & above)	Administrative/ Supervisory (V to VII)	Clerical (III & IV)	Management & Administrative	General Support	Health Care Assistants	Care, other	Patient & Client Care
Overall	+0.3%	+34	+15	+28	-24	-1	+18	+27	+20	-41	+4	+3	+13	-3	-6	+7	+8	-0	+16	+21	+6	+13	-11	+8	-27	-4	+5	+1
CHO 1	+3.2%	+32	-1	-1	+4		+2	-5	+3	+11	+1	+1	+11	+7	+0	+1	-1	+0	+3	+11	+4	+0	+3	+7	-1	+0	+2	+2
CHO 2	-1.0%	-14	-1	+3	-4	-1	-3	+2	+6	-9	+10	+1	+10	-4	-1	-1	+3	+1	-0	-3	+0	-0	-4	-4	-6	-8	-1	-9
CHO 3	-1.1%	-9	+4	-3	+5		+6	+2	+0	-8	-2		+6	-8	-5	-1	+2	-4		-2	-10	+2	-3	+1	+1	+0	+2	+2
CHO 4	+0.5%	+8	+2	+14	-8	-0	+7	+17	-1	-9	-4		+3	-1	-1	+1	+4	-2	+3	+5	+1	+1	-2	+0	-7	-1	+0	-0
CHO 5	+1.5%	+18	+3	+2	-4		+1	+9	-1	+3	-7	+0	+4	-2	+0	+2	+0		+10	+11	+1	+4	-1	+5	-7	+6	-1	+5
CHO 6	-1.2%	-7	-0	-1	+0		-1	-2	+1	-3	+1	+1	-2	+4	-4	-1	+2		+2	+4	+1	+1	-5	-3	-5	+2	-0	+1
CHO 7	+4.2%	+36	+1	-4	+4		+2	-1	+7	+8	+7	+2	+22	+3	-0	+0	+1	-0	+3	+7	+1	-1	-0	+0	+0	-1	+6	+5
CHO 8	-2.4%	-26	+1	+12	-8		+4	+5	+7	-24	+4	-0	-8	-3	+0	+3	+1	+0	-7	-5	+2	+3	-12	-7	-3	-8	-0	-8
CHO 9	+0.5%	+7	+5	+8	-14		-2	+1	+0	-9	-5	-2	-15	-1	+0	+2	+3	+1	+3	+8	-1	+4	+8	+11	+1	+4	-1	+3
other Community Services	-2.0%	-10	+1	-0			+1	-1	-3	-1			-4	-1		-3	-2			-7	-4	+2	+2	-0	+1	-1	-0	-1
		+0.3%	+3.9%	+9.4%	-9.5%	-22.2%	+1.9%	+2.2%	+3.9%	-1.3%	+2.0%	+10.9%	+0.3%	-0.6%	-8.3%	+1.8%	+1.9%	-1.8%	+14.9%	+1.5%	+9.7%	+5.2%	-1.5%	+0.8%	-3.7%	-0.4%	+2.6%	+0.1%



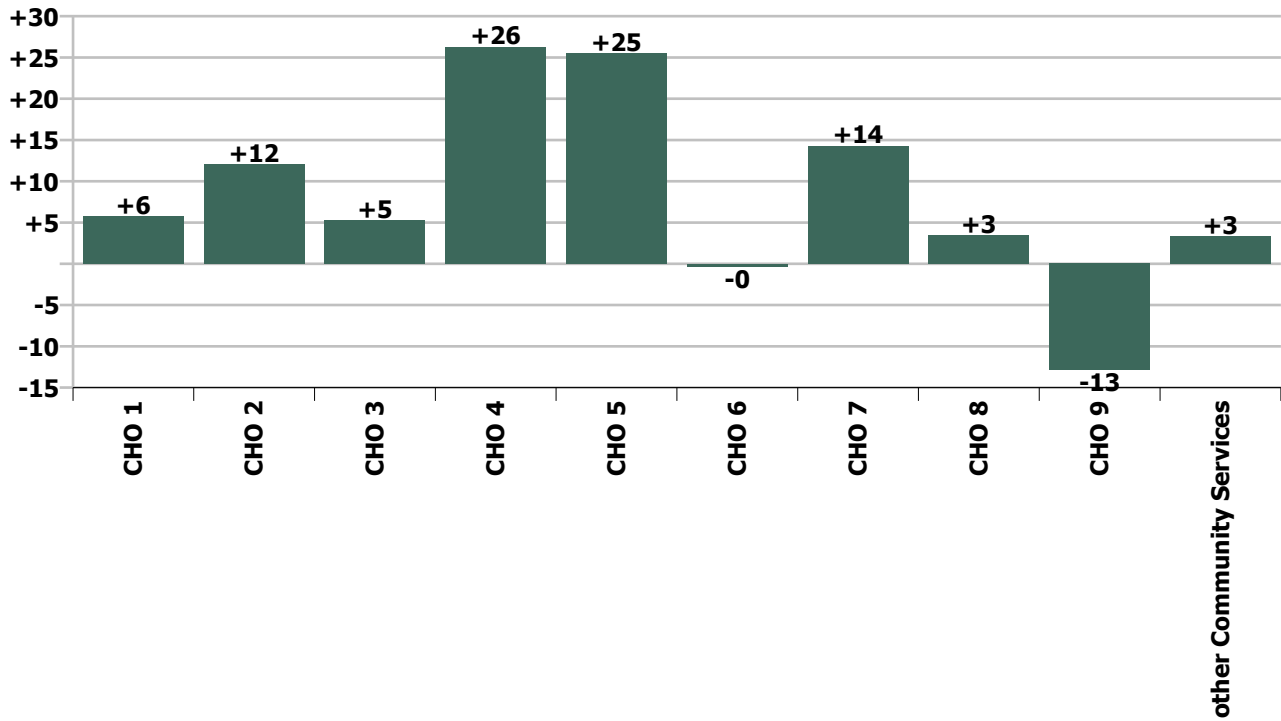
Staff Group change since: Jan 2022



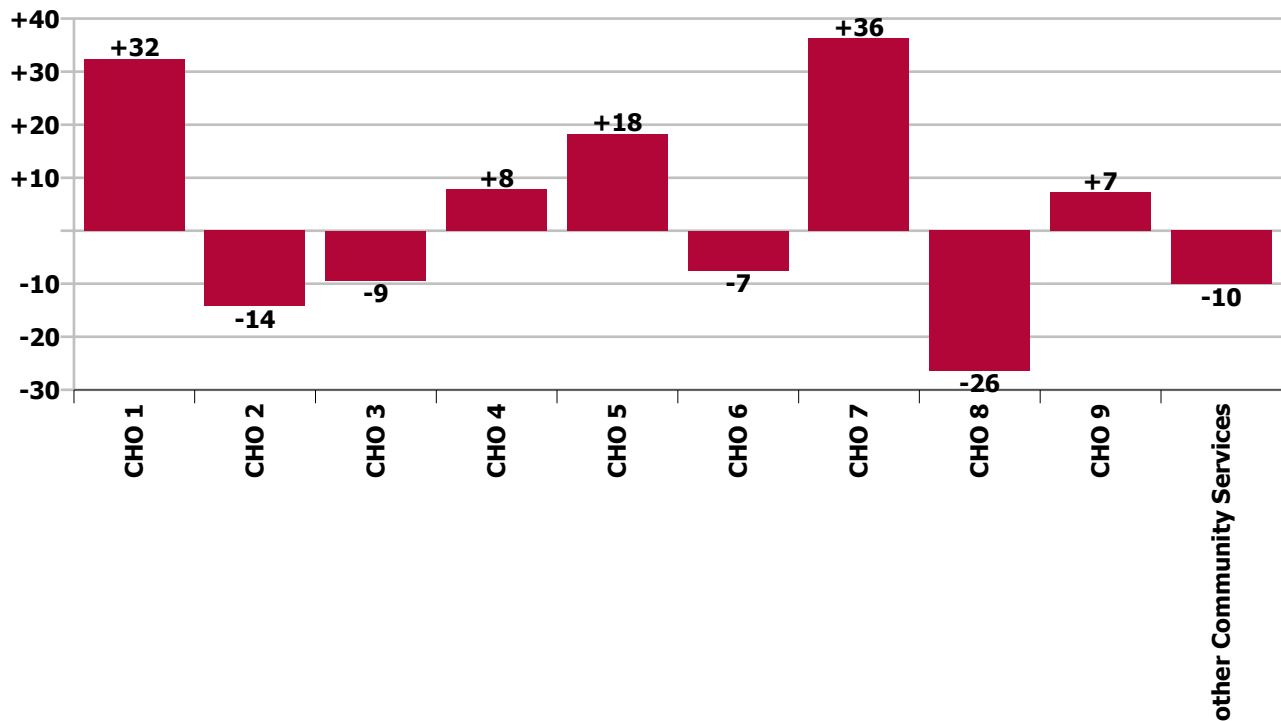
Staff Group change since: Feb 2021



CHO change since: Jan 2022



CHO change since: Feb 2021



Longitudinal Employment Levels by Grade Group - Dec 2016 to Feb 2022

Feb 2022 (Dec 2015 figure: 9,499)	WTE Feb 2022	WTE change since Dec 16	WTE change since Dec 17	WTE change since Dec 18	WTE change since Dec 19	WTE change since Dec 20	WTE change since Jan 22	% change since Dec 16	% change since Dec 17	% change since Dec 18	% change since Dec 19	% change since Dec 20	% change since Jan 22
Overall	10,483	+863	+694	+585	+529	+182	+83	+9.0%	+7.1%	+5.9%	+5.3%	+1.8%	+0.8%
Consultant Medicine	1		-0	-0					-9.1%	-9.1%			
Consultant Psychiatry	389	+74	+77	+59	+37	+20	+2	+23.5%	+24.6%	+17.9%	+10.6%	+5.5%	+0.4%
Consultants	390	+74	+77	+59	+37	+20	+2	+23.5%	+24.5%	+17.8%	+10.6%	+5.5%	+0.4%
Registrar	214	+82	+69	+60	+45	+46	-1	+61.9%	+47.9%	+39.0%	+26.4%	+27.4%	-0.4%
Senior Registrar	115	+48	+49	+29	+18	+4	-4	+71.7%	+75.1%	+34.1%	+18.6%	+3.7%	-3.0%
Specialist Registrar	2	+1		+1	-1			+100.0%		+100.0%	-20.0%		
Registrars	331	+131	+119	+90	+62	+50	-4	+65.4%	+55.8%	+37.5%	+23.1%	+17.8%	-1.3%
Senior House Officer	226	-21	-47	-44	-27	-45	-2	-8.6%	-17.2%	-16.2%	-10.9%	-16.7%	-1.1%
Interns	6	-6	-4	-2	-2	+1	+1	-50.0%	-40.0%	-25.0%	-25.0%	+20.0%	+20.2%
SHO/ Interns	232	-27	-51	-46	-29	-44	-1	-10.5%	-18.0%	-16.5%	-11.3%	-16.1%	-0.6%
Dentists			-0	-0				-100.0%	-100.0%	-100.0%	-100.0%	-100.0%	-100.0%
Other Medical	4	-6	-7	-3	-1	-1		-59.6%	-64.1%	-40.1%	-22.2%	-22.2%	
Medical/ Dental, other	4	-6	-7	-3	-1	-1		-59.6%	-64.3%	-40.7%	-22.2%	-22.2%	
Medical & Dental	957	+172	+138	+101	+69	+25	-4	+21.9%	+16.8%	+11.8%	+7.8%	+2.7%	-0.4%
Clinical Nurse/ Midwife Manager	1,059	+52	+76	+53	+60	+18	+6	+5.2%	+7.8%	+5.3%	+6.0%	+1.7%	+0.6%
Director Nursing/Midwifery, Assistant	175	+20	+13	+11	+10	+5	-5	+12.8%	+8.1%	+6.7%	+6.3%	+2.7%	-2.6%
Director of Nursing/Midwifery	31	-0	+3	+8	+2	+3	+4	-1.3%	+9.8%	+31.8%	+8.2%	+12.0%	+14.8%
Nurse/ Midwife Manager	1,266	+72	+92	+72	+73	+26	+6	+6.0%	+7.9%	+6.0%	+6.1%	+2.1%	+0.5%
Advanced Nurse/ Midwife Practitioner	47	+40	+37	+27	+16	+8	+1	+531.0%	+349.5%	+134.4%	+53.6%	+19.8%	+1.1%
Clinical Nurse/ Midwife Specialist	499	+163	+116	+104	+71	+10	+5	+48.3%	+30.3%	+26.3%	+16.5%	+2.0%	+1.0%
Nurse/ Midwife Specialist & AN/MP	546	+202	+153	+131	+87	+18	+6	+58.8%	+38.8%	+31.5%	+19.0%	+3.3%	+1.0%
Staff Midwives						-1		-100.0%	-100.0%	-100.0%	-100.0%	-100.0%	-100.0%
Staff Nurse [Psychiatric]	2,956	-101	-71	+1	+62	-9	-28	-3.3%	-2.4%	+0.0%	+2.2%	-0.3%	-0.9%
Staff Nurses [General/ Children's]	105	-16	-13	-13	-0	-2	-0	-13.4%	-11.2%	-11.2%	-0.4%	-1.8%	-0.4%
Staff Nurse [Intellectual Disability]	3	-1	-1	-3	-2	-1	-0	-15.0%	-17.9%	-52.7%	-37.3%	-33.0%	-12.3%
Graduate Nursing/ Midwifery								-100.0%	-100.0%	-100.0%	-100.0%	-100.0%	-100.0%
Staff Nurse/ Staff Midwife	3,063	-118	-85	-16	+60	-13	-29	-3.7%	-2.7%	-0.5%	+2.0%	-0.4%	-0.9%

Feb 2022 (Dec 2015 figure: 9,499)	WTE Feb 2022	WTE change since Dec 16	WTE change since Dec 17	WTE change since Dec 18	WTE change since Dec 19	WTE change since Dec 20	WTE change since Jan 22	% change since Dec 16	% change since Dec 17	% change since Dec 18	% change since Dec 19	% change since Dec 20	% change since Jan 22
Overall	10,483	+863	+694	+585	+529	+182	+83	+9.0%	+7.1%	+5.9%	+5.3%	+1.8%	+0.8%
Public Health Nurse		-1	-1					-100.0%	-100.0%	-100.0%	-100.0%	-100.0%	-100.0%
Pre-registration Nurse Intern (COVID-19)	1	+1	+1	+1	+1	-42	-1	-100.0%	-100.0%	-100.0%	-100.0%	-98.8%	-56.9%
Pre-registration Nurse/ Midwife Intern	157	+148	+140	+129	+129	+146	+90	+1708.4%	+830.0%	+461.9%	+468.9%	+1362.3%	+133.6%
Post-registration Nurse/ Midwife Student					-1	-1		-100.0%	-100.0%	-100.0%	-100.0%	-100.0%	-100.0%
Nursing/ Midwifery awaiting registration	24	+22	+15	+4	-35	+19	+3	+1097.0%	+176.8%	+20.7%	-59.4%	+393.6%	+14.4%
Nursing/ Midwifery Student	181	+170	+156	+133	+94	+122	+92	+1598.4%	+610.3%	+279.5%	+107.1%	+207.0%	+103.1%
Nursing Education/Clinical	33	+8	+2	+2	+1	+1	+1	+32.2%	+6.7%	+5.2%	+3.3%	+2.9%	+2.3%
Nursing/ Midwifery other	33	+8	+2	+2	+1	+1	+1	+32.2%	+6.7%	+5.2%	+3.3%	+2.9%	+2.3%
Nursing & Midwifery	5,088	+334	+317	+322	+315	+153	+75	+7.0%	+6.6%	+6.7%	+6.6%	+3.1%	+1.5%
Dietitians	21	+7	+4	+1	+1	-0	+0	+52.0%	+22.8%	+2.6%	+7.6%	-1.0%	+1.6%
Occupational Therapists	354	+55	+28	+15	+16	+9	+4	+18.3%	+8.7%	+4.5%	+4.7%	+2.6%	+1.0%
Physiotherapists	3	+1	+2	+1	+1	+0	-0	+39.3%	+131.4%	+73.9%	+25.6%	+16.2%	-3.8%
Podiatrists & Chiropodists	1	-1	-1	-0	+0	-0	-0	-57.1%	-46.9%	-36.1%	+6.8%	-2.5%	-3.7%
Speech & Language Therapists	62	+3	+1	+1	+1	-7	+0	+4.7%	+1.5%	+1.3%	+1.0%	-10.5%	+0.3%
Therapy Professions	441	+64	+34	+17	+19	+2	+4	+17.1%	+8.4%	+4.1%	+4.4%	+0.4%	+0.9%
Social Care	72	-16	-11	-7	-2	-8	-3	-18.4%	-13.1%	-8.8%	-2.5%	-10.3%	-4.2%
Social Workers	382	+32	+25	+24	+33	+10	+4	+9.2%	+7.1%	+6.7%	+9.4%	+2.6%	+1.0%
Psychologists	429	+86	+58	+40	+34	+5	-0	+25.0%	+15.7%	+10.3%	+8.7%	+1.1%	-0.1%
Pharmacists	16	+1	+1	+0	-0	-1	-0	+7.5%	+7.9%	+1.1%	-0.7%	-6.5%	-0.7%
Pharmacy Technicians	4	-0	-0	+1	+2	+1	-0	-9.1%	-8.3%	+20.5%	+69.2%	+14.8%	-0.2%
Pharmacy	20	+1	+1	+1	+2	-1	-0	+3.6%	+4.1%	+4.6%	+8.6%	-2.8%	-0.6%
Counsellor Therapists	118	+33	+33	+33	+24	+17	+1	+39.2%	+38.4%	+39.3%	+24.9%	+17.0%	+0.6%
Other Health & Social Care	6	-2	-3	-3	-6	+1	-0	-28.8%	-30.0%	-30.3%	-48.9%	+10.9%	-0.2%
Play Therapists/ Specialists	2	-1	+0	+0	+0	+0		-36.8%	+4.6%	+6.8%	+8.2%	+6.8%	
H&SC, Other	126	+30	+30	+31	+18	+18	+1	+31.2%	+31.7%	+32.5%	+16.6%	+16.6%	+0.5%
Health & Social Care Professionals	1,470	+197	+138	+106	+103	+25	+5	+15.5%	+10.3%	+7.8%	+7.6%	+1.8%	+0.3%
Executive Management	15	+8	+7	+5	+4	+0		+114.3%	+87.5%	+50.0%	+36.4%	+1.8%	
Senior Management (VIII & GM)	54	+29	+23	+22	+8	+2	+3	+118.7%	+72.7%	+70.5%	+16.5%	+3.1%	+5.0%
Management (VIII & above)	69	+37	+30	+27	+12	+2	+3	+117.7%	+75.7%	+65.6%	+20.3%	+2.8%	+3.9%

Feb 2022 (Dec 2015 figure: 9,499)	WTE Feb 2022	WTE change since Dec 16	WTE change since Dec 17	WTE change since Dec 18	WTE change since Dec 19	WTE change since Dec 20	WTE change since Jan 22	% change since Dec 16	% change since Dec 17	% change since Dec 18	% change since Dec 19	% change since Dec 20	% change since Jan 22
Overall	10,483	+863	+694	+585	+529	+182	+83	+9.0%	+7.1%	+5.9%	+5.3%	+1.8%	+0.8%
Middle Management (V-VII)	254	+87	+57	+34	+18	+10	+3	+52.5%	+28.9%	+15.3%	+7.8%	+4.3%	+1.3%
Other Administrative	3	+1			+1	+1	+1	+63.7%			+63.7%	+63.7%	+26.0%
Administrative/ Supervisory (V to VII)	256	+88	+57	+34	+19	+11	+4	+52.6%	+28.5%	+15.2%	+8.2%	+4.7%	+1.5%
General Administrative (III & IV)	713	+52	+32	+18	-4	-9	-1	+7.9%	+4.7%	+2.6%	-0.6%	-1.2%	-0.2%
Clerical (III & IV)	713	+52	+32	+18	-4	-9	-1	+7.9%	+4.7%	+2.6%	-0.6%	-1.2%	-0.2%
Management & Administrative	1,038	+178	+118	+79	+27	+5	+5	+20.7%	+12.9%	+8.2%	+2.7%	+0.4%	+0.5%
Catering	71	+5	+5	-1	+6	+7	-1	+7.9%	+7.7%	-1.4%	+8.6%	+11.5%	-1.4%
Household Services	416	-76	-60	-30	-9	-26	+6	-15.5%	-12.7%	-6.7%	-2.1%	-5.8%	+1.6%
Other Support	38	-18	-11	-17	-4	-4	-2	-31.6%	-22.5%	-30.5%	-10.2%	-8.5%	-4.8%
Portering	48	-11	-1	+0	+0	+1	-0	-18.4%	-1.1%	+0.7%	+0.5%	+2.1%	-0.2%
Support	573	-100	-67	-47	-7	-21	+3	-14.8%	-10.5%	-7.6%	-1.2%	-3.5%	+0.6%
Maintenance	130	-13	-8	-4	+1	-7	+0	-8.8%	-6.0%	-2.9%	+1.1%	-5.1%	+0.1%
Technical Services		-2	-2	-2	-2			-100.0%	-100.0%	-100.0%	-100.0%	-100.0%	-100.0%
Maintenance/ Technical	130	-15	-10	-6	-1	-7	+0	-10.1%	-7.3%	-4.4%	-0.4%	-5.1%	+0.1%
General Support	704	-114	-77	-53	-8	-28	+4	-14.0%	-9.9%	-7.0%	-1.1%	-3.8%	+0.5%
Attendant/ Aide	522	-202	-179	-159	-83	-62	-24	-28.0%	-25.5%	-23.4%	-13.7%	-10.5%	-4.5%
Health & Social Care Assistants	9	+4	+4	+3	-0	+0	+1	+88.1%	+88.1%	+60.5%	-2.3%	+4.7%	+11.9%
Health Care Assistant/ Care Assistant	490	+286	+242	+197	+116	+61	+24	+139.7%	+97.5%	+67.3%	+31.1%	+14.1%	+5.2%
Health Care Assistants	1,021	+87	+68	+41	+33	-1	+1	+9.4%	+7.1%	+4.2%	+3.3%	-0.1%	+0.1%
Home Care Services	13	+13	-2	-4	-3	-1	+0	-100.0%	-12.7%	-21.1%	-17.0%	-8.5%	+1.3%
Other Care Grades	20	+9	+9	+4	-3	-2	-0	+84.0%	+82.3%	+24.4%	-13.0%	-10.7%	-0.7%
Pastoral Care	11	-3	-3	-2	-2	-1	-0	-22.3%	-19.6%	-16.8%	-12.9%	-8.7%	-0.1%
Workshop Services	162	-10	-11	-9	-3	+7	-3	-5.5%	-6.4%	-5.0%	-2.0%	+4.3%	-1.7%
Care, other	205	+9	-7	-10	-10	+2	-3	+4.8%	-3.2%	-4.8%	-4.8%	+1.0%	-1.3%
Patient & Client Care	1,226	+97	+61	+31	+23	+1	-2	+8.6%	+5.2%	+2.6%	+1.9%	+0.1%	-0.2%

Source: Health Service Personnel Census

Longitudinal Employment Levels by Grade Group - Dec 2016 to Feb 2022

Feb 2022 (Dec 2015 figure: 9,499)	WTE Feb 2022	WTE change since Dec 16	WTE change since Dec 17	WTE change since Dec 18	WTE change since Dec 19	WTE change since Dec 20	WTE change since Jan 22	% change since Dec 16	% change since Dec 17	% change since Dec 18	% change since Dec 19	% change since Dec 20	% change since Jan 22
Overall	10,483	+863	+694	+585	+529	+182	+83	+9.0%	+7.1%	+5.9%	+5.3%	+1.8%	+0.8%
Consultant Medicine	1		-0	-0					-9.1%	-9.1%			
Consultant Psychiatry	389	+74	+77	+59	+37	+20	+2	+23.5%	+24.6%	+17.9%	+10.6%	+5.5%	+0.4%
Consultants	390	+74	+77	+59	+37	+20	+2	+23.5%	+24.5%	+17.8%	+10.6%	+5.5%	+0.4%
Registrar	214	+82	+69	+60	+45	+46	-1	+61.9%	+47.9%	+39.0%	+26.4%	+27.4%	-0.4%
Senior Registrar	115	+48	+49	+29	+18	+4	-4	+71.7%	+75.1%	+34.1%	+18.6%	+3.7%	-3.0%
Specialist Registrar	2	+1		+1	-1			+100.0%		+100.0%	-20.0%		
Registrars	331	+131	+119	+90	+62	+50	-4	+65.4%	+55.8%	+37.5%	+23.1%	+17.8%	-1.3%
Senior House Officer	226	-21	-47	-44	-27	-45	-2	-8.6%	-17.2%	-16.2%	-10.9%	-16.7%	-1.1%
Interns	6	-6	-4	-2	-2	+1	+1	-50.0%	-40.0%	-25.0%	-25.0%	+20.0%	+20.2%
SHO/ Interns	232	-27	-51	-46	-29	-44	-1	-10.5%	-18.0%	-16.5%	-11.3%	-16.1%	-0.6%
Dentists			-0	-0				-100.0%	-100.0%	-100.0%	-100.0%	-100.0%	-100.0%
Other Medical	4	-6	-7	-3	-1	-1		-59.6%	-64.1%	-40.1%	-22.2%	-22.2%	
Medical/ Dental, other	4	-6	-7	-3	-1	-1		-59.6%	-64.3%	-40.7%	-22.2%	-22.2%	
Medical & Dental	957	+172	+138	+101	+69	+25	-4	+21.9%	+16.8%	+11.8%	+7.8%	+2.7%	-0.4%
Clinical Nurse/ Midwife Manager	1,059	+52	+76	+53	+60	+18	+6	+5.2%	+7.8%	+5.3%	+6.0%	+1.7%	+0.6%
Director Nursing/Midwifery, Assistant	175	+20	+13	+11	+10	+5	-5	+12.8%	+8.1%	+6.7%	+6.3%	+2.7%	-2.6%
Director of Nursing/Midwifery	31	-0	+3	+8	+2	+3	+4	-1.3%	+9.8%	+31.8%	+8.2%	+12.0%	+14.8%
Nurse/ Midwife Manager	1,266	+72	+92	+72	+73	+26	+6	+6.0%	+7.9%	+6.0%	+6.1%	+2.1%	+0.5%
Advanced Nurse/ Midwife Practitioner	47	+40	+37	+27	+16	+8	+1	+531.0%	+349.5%	+134.4%	+53.6%	+19.8%	+1.1%
Clinical Nurse/ Midwife Specialist	499	+163	+116	+104	+71	+10	+5	+48.3%	+30.3%	+26.3%	+16.5%	+2.0%	+1.0%
Nurse/ Midwife Specialist & AN/MP	546	+202	+153	+131	+87	+18	+6	+58.8%	+38.8%	+31.5%	+19.0%	+3.3%	+1.0%
Staff Midwives							-1	-100.0%	-100.0%	-100.0%	-100.0%	-100.0%	-100.0%
Staff Nurse [Psychiatric]	2,956	-101	-71	+1	+62		-9	-3.3%	-2.4%	+0.0%	+2.2%	-0.3%	-0.9%
Staff Nurses [General/ Children's]	105	-16	-13	-13	-0	-2	-0	-13.4%	-11.2%	-11.2%	-0.4%	-1.8%	-0.4%
Staff Nurse [Intellectual Disability]	3	-1	-1	-3	-2	-1	-0	-15.0%	-17.9%	-52.7%	-37.3%	-33.0%	-12.3%
Graduate Nursing/ Midwifery								-100.0%	-100.0%	-100.0%	-100.0%	-100.0%	-100.0%
Staff Nurse/ Staff Midwife	3,063	-118	-85	-16	+60	-13	-29	-3.7%	-2.7%	-0.5%	+2.0%	-0.4%	-0.9%
Public Health Nurse		-1	-1					-100.0%	-100.0%	-100.0%	-100.0%	-100.0%	-100.0%
Public Health Nurse		-1	-1					-100.0%	-100.0%	-100.0%	-100.0%	-100.0%	-100.0%
Pre-registration Nurse Intern (COVID-19)	1	+1	+1	+1	+1	-42	-1	-100.0%	-100.0%	-100.0%	-100.0%	-98.8%	-56.9%
Pre-registration Nurse/ Midwife Intern	157	+148	+140	+129	+129	+146	+90	+1708.4%	+830.0%	+461.9%	+468.9%	+1362.3%	+133.6%
Post-registration Nurse/ Midwife Student					-1	-1		-100.0%	-100.0%	-100.0%	-100.0%	-100.0%	-100.0%
Nursing/ Midwifery awaiting registration	24	+22	+15	+4	-35	+19	+3	+1097.0%	+176.8%	+20.7%	-59.4%	+393.6%	+14.4%
Nursing/ Midwifery Student	181	+170	+156	+133	+94	+122	+92	+1598.4%	+610.3%	+279.5%	+107.1%	+207.0%	+103.1%
Nursing Education/Clinical	33	+8	+2	+2	+1	+1	+1	+32.2%	+6.7%	+5.2%	+3.3%	+2.9%	+2.3%
Nursing/ Midwifery other	33	+8	+2	+2	+1	+1	+1	+32.2%	+6.7%	+5.2%	+3.3%	+2.9%	+2.3%
Nursing & Midwifery	5,088	+334	+317	+322	+315	+153	+75	+7.0%	+6.6%	+6.7%	+6.6%	+3.1%	+1.5%
Dietitians	21	+7	+4	+1	+1	-0	+0	+52.0%	+22.8%	+2.6%	+7.6%	-1.0%	+1.6%
Occupational Therapists	354	+55	+28	+15	+16	+9	+4	+18.3%	+8.7%	+4.5%	+4.7%	+2.6%	+1.0%
Physiotherapists	3	+1	+2	+1	+1	+0	-0	+39.3%	+131.4%	+73.9%	+25.6%	+16.2%	-3.8%
Podiatrists & Chiropodists	1	-1	-1	-0	+0	-0	-0	-57.1%	-46.9%	-36.1%	+6.8%	-2.5%	-3.7%
Speech & Language Therapists	62	+3	+1	+1	+1	-7	+0	+4.7%	+1.5%	+1.3%	+1.0%	-10.5%	+0.3%
Therapy Professions	441	+64	+34	+17	+19	+2	+4	+17.1%	+8.4%	+4.1%	+4.4%	+0.4%	+0.9%
Social Care	72	-16	-11	-7	-2	-8	-3	-18.4%	-13.1%	-8.8%	-2.5%	-10.3%	-4.2%
Social Workers	382	+32	+25	+24	+33	+10	+4	+9.2%	+7.1%	+6.7%	+9.4%	+2.6%	+1.0%
Psychologists	429	+86	+58	+40	+34	+5	-0	+25.0%	+15.7%	+10.3%	+8.7%	+1.1%	-0.1%
Pharmacists	16	+1	+1	+0	-0	-1	-0	+7.5%	+7.9%	+1.1%	-0.7%	-6.5%	-0.7%
Pharmacy Technicians	4	-0	-0	+1	+2	+1	-0	-9.1%	-8.3%	+20.5%	+69.2%	+14.8%	-0.2%
Pharmacy	20	+1	+1	+1	+2	-1	-0	+3.6%	+4.1%	+4.6%	+8.6%	-2.8%	-0.6%
Counsellor Therapists	118	+33	+33	+33	+24	+17	+1	+39.2%	+38.4%	+39.3%	+24.9%	+17.0%	+0.6%
Other Health & Social Care	6	-2	-3	-3	-6	+1	-0	-28.8%	-30.0%	-30.3%	-48.9%	+10.9%	-0.2%
Play Therapists/ Specialists	2	-1	+0	+0	+0	+0		-36.8%	+4.6%	+6.8%	+8.2%	+6.8%	
H&SC, Other	126	+30	+30	+31	+18	+18	+1	+31.2%	+31.7%	+32.5%	+16.6%	+16.6%	+0.5%
Health & Social Care Professionals	1,470	+197	+138	+106	+103	+25	+5	+15.5%	+10.3%	+7.8%	+7.6%	+1.8%	+0.3%
Executive Management	15	+8	+7	+5	+4	+0		+114.3%	+87.5%	+50.0%	+36.4%	+1.8%	
Senior Management (VIII & GM)	54	+29	+23	+22	+8	+2	+3	+118.7%	+72.7%	+70.5%	+16.5%	+3.1%	+5.0%
Management (VIII & above)	69	+37	+30	+27	+12	+2	+3	+117.7%	+75.7%	+65.6%	+20.3%	+2.8%	+3.9%
Middle Management (V-VII)	254	+87	+57	+34	+18	+10	+3	+52.5%	+28.9%	+15.3%	+7.8%	+4.3%	+1.3%
Other Administrative	3	+1			+1	+1	+1	+63.7%			+63.7%	+63.7%	+26.0%
Administrative/ Supervisory (V to VII)	256	+88	+57	+34	+19	+11	+4	+52.6%	+28.5%	+15.2%	+8.2%	+4.7%	+1.5%
General Administrative (III & IV)	713	+52	+32	+18	-4	-9	-1	+7.9%	+4.7%	+2.6%	-0.6%	-1.2%	-0.2%
Clerical (III & IV)	713	+52	+32	+18	-4	-9	-1	+7.9%	+4.7%	+2.6%	-0.6%	-1.2%	-0.2%
Management & Administrative	1,038	+178	+118	+79	+27	+5	+5	+20.7%	+12.9%	+8.2%	+2.7%	+0.4%	+0.5%
Support	573	-100	-67	-47	-7	-21	+3	-14.8%	-10.5%	-7.6%	-1.2%	-3.5%	+0.6%
Maintenance	130	-13	-8	-4	+1	-7	+0	-8.8%	-6.0%	-2.9%	+1.1%	-5.1%	+0.1%
Technical Services		-2	-2	-2	-2			-100.0%	-100.0%	-100.0%	-100.0%	-100.0%	-100.0%
Maintenance/ Technical	130	-15	-10	-6	-1	-7	+0	-10.1%	-7.3%	-4.4%	-0.4%	-5.1%	+0.1%
General Support	704	-114	-77	-53	-8	-28	+4	-14.0%	-9.9%	-7.0%	-1.1%	-3.8%	+0.5%
Attendant/ Aide	522	-202	-179	-159	-83	-62	-24	-28.0%	-25.5%	-23.4%	-13.7%	-10.5%	-4.5%
Health & Social Care Assistants	9	+4	+4	+3	-0	+0	+1	+88.1%	+88.1%	+60.5%	-2.3%	+4.7%	+11.9%
Health Care Assistant/ Care Assistant	490	+286	+242	+197	+116	+61	+24	+139.7%	+97.5%	+67.3%	+31.1%	+14.1%	+5.2%
Health Care Assistants	1,021	+87	+68	+41	+33	-1	+1	+9.4%	+7.1%	+4.2%	+3.3%	-0.1%	+0.1%
Home Care Services	13	+13	-2	-4	-3	-1	+0	-100.0%	-12.7%	-21.1%	-17.0%	-8.5%	+1.3%
Other Care Grades	20	+9	+9	+4	-3	-2	-0	+84.0%	+82.3%	+24.4%	-13.0%	-10.7%	-0.7%
Pastoral Care	11	-3	-3	-2	-2	-1	-0	-22.3%	-19.6%	-16.8%	-12.9%	-8.7%	-0.1%
Workshop Services	162	-10	-11	-9	-3	+7	-3	-5.5%	-6.4%	-5.0%	-2.0%	+4.3%	-1.7%
Care, other	205	+9	-7	-10	-10	+2	-3	+4.8%	-3.2%	-4.8%	-4.8%	+1.0%	-1.3%
Patient & Client Care	1,226	+97	+61	+31	+23	+1	-2	+8.6%	+5.2%	+2.6%	+1.9%	+0.1%	-0.2%

Source: Health Service Personnel Census