

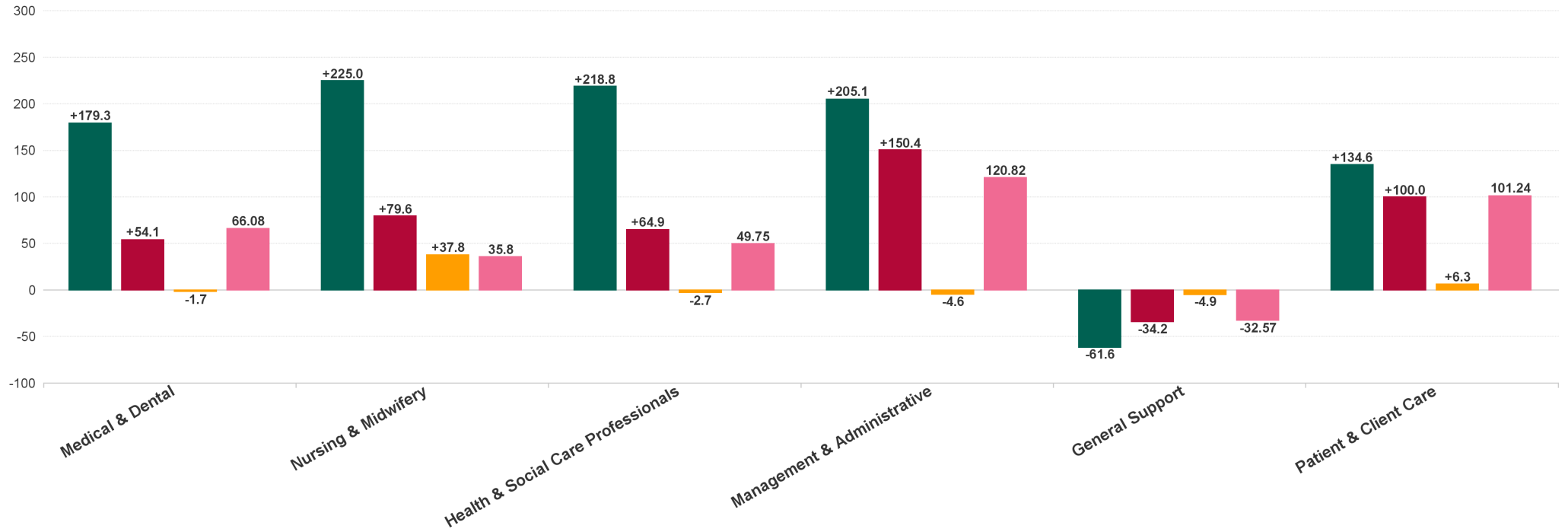
Mental Health Employment Report : JAN 2024

Mental Health Employment Report by Staff Group

JAN 2024	WTE DEC 2019	WTE DEC 2022	WTE DEC 2023(1)	WTE JAN 2024	WTE change since DEC 2019	% WTE change since Dec 2019	WTE change since DEC 2023 (1)	% WTE change since Dec 2023	WTE change since DEC 2022	No. JAN 2024
Overall	9,967	10,453	10,838	10,868	+901	+9.0%	+30	+0.3%	+415	12,003
Consultants	353	397	430	427	+74	+21.1%	-3	-0.8%	+30	459
Registrars	269	345	339	345	+76	+28.3%	+7	+1.9%	+0	396
SHO/ Interns	261	267	297	292	+31	+11.8%	-5	-1.7%	+25	311
Medical/ Dental, other	5	4	3	3	-2	-40.6%	+0	+0.0%	-1	6
Medical & Dental	888	1,013	1,069	1,067	+179	+20.2%	-2	-0.2%	+54	1,172
Nurse/ Midwife Manager	1,201	1,245	1,237	1,240	+39	+3.2%	+3	+0.2%	-6	1,286
Nurse/ Midwife Specialist & AN/MP	460	631	734	731	+271	+59.0%	-3	-0.4%	+101	777
Staff Nurse/ Staff Midwife	3,002	2,948	2,892	2,912	-90	-3.0%	+21	+0.7%	-35	3,159
Pre-registration Nurse/ Midwife Intern	25	26	14	65	+40	+160.8%	+52	+377.1%	+39	273
Post-registration Nurse/ Midwife Student	1				-1	-100.0%				
Nursing/ Midwifery awaiting registration	57	39	56	19	-38	-67.2%	-37	-66.4%	-20	21
Nursing/ Midwifery Student	83	65	69	84	+1	+1.2%	+15	+21.2%	+19	294
Nursing/ Midwifery other	32	34	33	36	+4	+12.5%	+3	+8.8%	+1	38
Nursing & Midwifery	4,778	4,924	4,965	5,003	+225	+4.7%	+38	+0.8%	+80	5,554
Therapy Professions	420	435	444	442	+22	+5.2%	-2	-0.5%	+7	493
Social Care	74	72	63	63	-10	-14.0%	+0	+0.4%	-9	71
Social Workers	350	414	431	431	+81	+23.1%	+1	+0.1%	+18	474
Psychologists	394	448	467	468	+73	+18.5%	+0	+0.0%	+20	516
Pharmacy	19	19	25	25	+6	+32.8%	-1	-2.3%	+5	33
H&SC, Other	107	130	155	154	+47	+44.2%	-1	-0.7%	+24	179
Health & Social Care Professionals	1,364	1,518	1,586	1,583	+219	+16.0%	-3	-0.2%	+65	1,766
Management (VIII & above)	58	75	73	73	+15	+25.3%	-0	-0.4%	-2	74
Administrative/ Supervisory (V to VII)	238	287	329	328	+90	+38.0%	-0	-0.1%	+41	343
Clerical (III & IV)	717	707	821	817	+100	+13.9%	-4	-0.5%	+111	906
Management & Administrative	1,014	1,068	1,223	1,219	+205	+20.2%	-5	-0.4%	+150	1,323
Support	585	556	530	525	-60	-10.3%	-6	-1.1%	-31	596
Maintenance/ Technical	127	129	125	126	-1	-1.1%	+1	+0.6%	-3	128
General Support	712	685	655	650	-62	-8.7%	-5	-0.7%	-34	724
Health Care Assistants	996	1,030	1,111	1,119	+124	+12.4%	+9	+0.8%	+89	1,199
Care, other	216	216	229	227	+11	+5.0%	-2	-1.0%	+11	265
Patient & Client Care	1,212	1,246	1,340	1,346	+135	+11.1%	+6	+0.5%	+100	1,464

WTE Change by Staff Category

■ WTE change since DEC 2019
 ■ WTE change since DEC 2022
 ■ WTE change since DEC 2023(1)
 ■ WTE change since JAN 2023

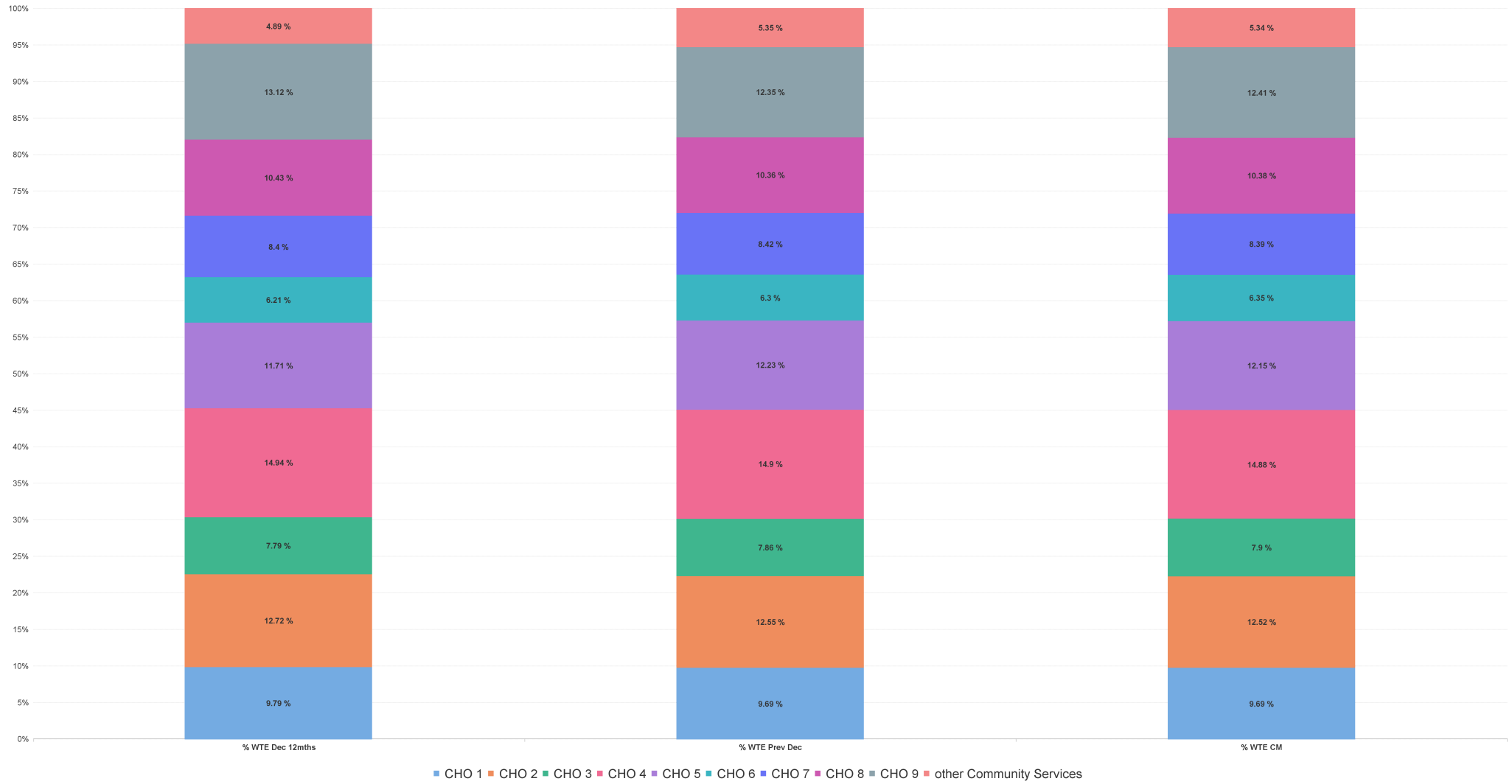


Mental Health Report by CHO: JAN 2024

JAN 2024	WTE DEC 2019	WTE DEC 2022	WTE DEC 2023(1)	WTE JAN 2024	WTE change since DEC 2019	% WTE change since Dec 2019	WTE change since DEC 2023(1)	% WTE change since Dec 2023	WTE change since DEC 2022	No. JAN 2024
Overall	9,967	10,453	10,838	10,868	+901	+9.0%	+30	+0.3%	+415	12,003
CHO 1	953	1,024	1,050	1,053	+101	+10.6%	+3	+0.3%	+30	1,141
CHO 2	1,308	1,329	1,361	1,361	+53	+4.0%	+1	+0.0%	+32	1,503
CHO 3	795	814	852	859	+63	+7.9%	+7	+0.8%	+44	940
CHO 4	1,499	1,562	1,615	1,617	+118	+7.9%	+2	+0.1%	+55	1,804
CHO 5	1,177	1,224	1,325	1,320	+143	+12.2%	-5	-0.4%	+96	1,477
CHO 6	593	650	683	690	+97	+16.4%	+7	+1.0%	+40	781
CHO 7	835	879	912	912	+77	+9.2%	-0	0.0%	+33	1,004
CHO 8	1,098	1,091	1,123	1,128	+30	+2.7%	+5	+0.5%	+37	1,229
CHO 9	1,272	1,371	1,338	1,348	+77	+6.0%	+10	+0.8%	-23	1,515
other Community Services	438	511	580	580	+143	+32.6%	+1	+0.1%	+69	609



% Total by CHO



Mental Health Employment Report by HSE/S38: JAN 2024

JAN 2024	WTE DEC 2019	WTE DEC 2022	WTE DEC 2023(1)	WTE JAN 2024	WTE change since DEC 2019	% WTE change since Dec 2019	WTE change since DEC 2023(1)	% WTE change since Dec 2023	WTE change since DEC 2022	No. JAN 2024
Overall	9,967	10,453	10,838	10,868	+901	+9.0%	+30	+0.3%	+415	12,003
Health Service Executive	9,526	10,023	10,443	10,471	+946	+9.9%	+28	+0.3%	+449	11,534
Section 38 Voluntary Agencies	441	431	395	397	-44	-10.1%	+2	+0.6%	-34	469



Mental Health Employment Report by HSE: JAN 2024

JAN 2024	WTE DEC 2019	WTE DEC 2022	WTE DEC 2023(1)	WTE JAN 2024	WTE change since DEC 2019	% WTE change since Dec 2019	WTE change since DEC 2023(1)	% WTE change since Dec 2023	WTE change since DEC 2022	No. JAN 2024
Total HSE	9,526	10,023	10,443	10,471	+946	+9.9%	+28	+0.3%	+449	11,534
Consultants	333	372	401	398	+65	+19.5%	-4	-0.9%	+26	426
Registrars	250	325	322	326	+76	+30.4%	+4	+1.3%	+1	370
SHO/ Interns	255	260	288	286	+30	+11.9%	-2	-0.8%	+25	303
Medical/ Dental, other	5	4	3	3	-2	-40.6%	+0	+0.0%	-1	6
Medical & Dental	843	961	1,014	1,012	+169	+20.1%	-2	-0.2%	+52	1,105
Nurse/ Midwife Manager	1,163	1,211	1,206	1,207	+44	+3.8%	+2	+0.2%	-4	1,253
Nurse/ Midwife Specialist & AN/MP	453	620	721	718	+265	+58.4%	-3	-0.4%	+98	762
Staff Nurse/ Staff Midwife	2,879	2,838	2,820	2,840	-40	-1.4%	+20	+0.7%	+1	3,081
Nursing/ Midwifery awaiting registration	57	38	56	19	-19	-67.2%	-8	-66.4%	-19	21
Post-registration Nurse/ Midwife Student	1				-1	-100.0%				
Pre-registration Nurse/ Midwife Intern	18	18	7	59	+0	+226.0%	-1	+718.5%	+40	260
Nursing/ Midwifery Student	76	56	63	77	+2	+2.0%	+15	+23.4%	+21	281
Nursing/ Midwifery other	29	32	33	36	+6	+22.2%	+3	+8.8%	+4	38
Nursing & Midwifery	4,601	4,758	4,842	4,878	+278	+6.0%	+37	+0.8%	+120	5,415
Therapy Professions	389	407	420	418	+29	+7.5%	-2	-0.5%	+11	461
Social Care	48	44	39	39	-9	-19.0%	-0	-0.9%	-5	44
Social Workers	331	394	410	412	+81	+24.6%	+2	+0.4%	+18	453
Psychologists	379	423	440	441	+62	+16.5%	+0	+0.1%	+18	484
Pharmacy	17	17	23	22	+5	+31.8%	-1	-2.5%	+5	30
H&SC, Other	102	130	148	151	+49	+47.6%	+3	+2.0%	+21	175
Health & Social Care Professionals	1,265	1,415	1,481	1,483	+218	+17.2%	+2	+0.1%	+68	1,647
Management (VIII & above)	56	73	70	70	+14	+24.4%	-0	-0.4%	-3	71
Administrative/ Supervisory (V to VII)	217	264	308	307	+90	+41.7%	-1	-0.4%	+43	318
Clerical (III & IV)	673	670	781	776	+103	+15.4%	-5	-0.7%	+106	854
Management & Administrative	946	1,006	1,160	1,153	+208	+21.9%	-7	-0.6%	+147	1,243
Support	547	523	501	495	-52	-9.6%	-6	-1.1%	-28	555
Maintenance/ Technical	121	123	118	119	-2	-2.0%	+1	+0.6%	-4	121
General Support	668	646	618	613	-55	-8.2%	-5	-0.8%	-32	676
Health Care Assistants	990	1,024	1,103	1,107	+118	+11.9%	+5	+0.4%	+83	1,187
Care, other	213	213	225	223	+10	+4.8%	-2	-0.8%	+11	261
Patient & Client Care	1,203	1,237	1,328	1,331	+128	+10.6%	+3	+0.2%	+94	1,448



Mental Health Employment Report by S38 Vols: JAN 2024

JAN 2024	WTE DEC 2019	WTE DEC 2022	WTE DEC 2023(1)	WTE JAN 2024	WTE change since DEC 2019	% WTE change since Dec 2019	WTE change since DEC 2023(1)	% WTE change since Dec 2023	WTE change since DEC 2022	No. JAN 2024
Total S38 Vols	441	431	395	397	-44	-10.1%	+2	+0.6%	-34	469
Consultants	20	25	29	29	+9	+47.2%	+0	+1.6%	+4	33
Registrars	19	20	17	19	+0	+0.4%	+2	+14.0%	-1	26
SHO/ Interns	6	7	9	6	+0	+7.7%	-3	-28.2%	-1	8
Medical & Dental	45	52	54	55	+10	+22.2%	+0	+0.4%	+3	67
Nurse/ Midwife Manager	38	34	32	32	-6	-14.8%	+1	+1.8%	-2	33
Nurse/ Midwife Specialist & AN/MP	7	11	13	13	+6	+94.3%	-0	-1.4%	+2	15
Staff Nurse/ Staff Midwife	123	109	72	73	-50	-40.9%	+1	+1.1%	-37	78
Nursing/ Midwifery awaiting registration		1			+1		-1		-1	
Pre-registration Nurse/ Midwife Intern	7	8	7	7	+1	-7.1%	-2	+0.0%	-2	13
Nursing/ Midwifery Student	7	9	7	7	-1	-7.1%	+0	+0.0%	-3	13
Nursing/ Midwifery other	3	3			-3	-100.0%			-3	
Nursing & Midwifery	177	166	124	125	-53	-29.7%	+1	+0.9%	-41	139
Therapy Professions	31	28	24	24	-8	-24.2%	+0	+0.3%	-4	32
Social Care	25	28	24	24	-1	-4.5%	+1	+2.5%	-4	27
Social Workers	20	20	20	19	-1	-2.9%	-1	-5.4%	-1	21
Psychologists	16	25	27	27	+11	+67.9%	-0	-0.7%	+2	32
Pharmacy	2	2	2	2	+1	+43.8%	+0	+0.0%	+1	3
H&SC, Other	5	0	7	3	-1	-28.9%	-4	-53.9%	+3	4
Health & Social Care Professionals	99	103	104	100	+1	+0.8%	-5	-4.5%	-3	119
Management (VIII & above)	2	2	3	3	+1	+50.0%	+0	+0.0%	+1	3
Administrative/ Supervisory (V to VII)	21	23	20	21	+0	+0.0%	+1	+3.7%	-2	25
Clerical (III & IV)	45	36	40	41	-3	-7.6%	+1	+3.0%	+5	52
Management & Administrative	68	62	64	66	-2	-3.5%	+2	+3.1%	+4	80
Support	38	33	30	30	-8	-20.7%	+0	+0.1%	-3	41
Maintenance/ Technical	6	6	7	7	+1	+16.7%	+0	+0.0%	+1	7
General Support	44	39	37	37	-7	-15.6%	+0	+0.1%	-2	48
Health Care Assistants	6	6	8	12	+6	+108.0%	+4	+50.0%	+6	12
Care, other	3	3	4	3	+1	+19.1%	-1	-13.0%	-0	4
Patient & Client Care	9	9	12	15	+7	+78.8%	+4	+29.5%	+6	16



Mental Health Employment Report by Grade Group: JAN 2024

CHO 1

JAN 2024	WTE DEC 2019	WTE DEC 2022	WTE DEC 2023(1)	WTE JAN 2024	WTE change since DEC 2019	% WTE change since Dec 2019	WTE change since DEC 2023 (1)	% WTE change since Dec 2023	WTE change since DEC 2022	No. JAN 2024
Total CHO 1	953	1024	1050	1053	+101	+10.6%	+3	+0.3%	+30	1,141
Consultants	31	34	36	35	+5	+15.2%	-1	-2.0%	+2	37
Registrars	24	35	39	38	+14	+56.1%	-1	-2.1%	+3	39
SHO/ Interns	25	21	23	23	-2	-8.4%	+0	+0.3%	+2	24
Medical & Dental	81	89	98	97	+16	+20.2%	-1	-1.5%	+8	100
Nurse/ Midwife Manager	117	118	120	123	+6	+5.1%	+3	+2.8%	+5	126
Nurse/ Midwife Specialist & AN/MP	67	91	101	99	+32	+47.2%	-1	-1.5%	+8	105
Staff Nurse/ Staff Midwife	297	294	288	290	-7	-2.4%	+3	+0.9%	-4	308
<i>Nursing/ Midwifery awaiting registration</i>		3	5	3	+3		-2	-41.4%	-0	3
<i>Pre-registration Nurse/ Midwife Intern</i>		2	3	6	+6		+4	+150.0%	+4	23
Nursing/ Midwifery Student		5	8	9	+9		+2	+22.4%	+4	26
Nursing/ Midwifery other		2	2	2	+2		+0	+3.2%	+0	2
Nursing & Midwifery	482	510	518	524	+42	+8.7%	+6	+1.2%	+14	567
Therapy Professions	36	40	41	41	+5	+14.5%	-0	-0.1%	+0	45
Social Care	4	4	2	2	-1	-36.9%	+0	+0.4%	-1	3
Social Workers	39	48	48	48	+9	+23.2%	+0	+0.0%	+0	52
Psychologists	21	25	28	27	+7	+32.2%	-0	-0.8%	+3	30
Pharmacy	1	1	1	1	+0	+25.0%	+0	+0.0%	+0	1
H&SC, Other	13	18	20	21	+8	+60.5%	+1	+7.4%	+3	24
Health & Social Care Professionals	113	136	140	141	+28	+24.5%	+1	+0.8%	+5	155
Management (VIII & above)	6	9	7	7	+1	+18.8%	+0	+0.8%	-2	7
Administrative/ Supervisory (V to VII)	30	30	34	35	+5	+17.9%	+1	+3.5%	+5	37
Clerical (III & IV)	85	89	95	93	+7	+8.6%	-2	-2.1%	+3	101
Management & Administrative	121	128	135	135	+14	+11.4%	-1	-0.5%	+7	145
Support	62	58	60	59	-3	-5.1%	-1	-1.8%	+1	65
Maintenance/ Technical	17	16	16	15	-2	-10.0%	-1	-4.1%	-1	16
General Support	79	74	76	74	-5	-6.1%	-2	-2.2%	-0	81
Health Care Assistants	66	75	74	73	+7	+10.9%	-0	-0.1%	-1	82
Care, other	11	12	10	9	-1	-12.3%	-0	-1.3%	-2	11
Patient & Client Care	77	86	83	83	+6	+7.7%	-0	-0.3%	-3	93



Mental Health Employment Report by Grade Group: JAN 2024

CHO 2

JAN 2024	WTE DEC 2019	WTE DEC 2022	WTE DEC 2023(1)	WTE JAN 2024	WTE change since DEC 2019	% WTE change since Dec 2019	WTE change since DEC 2023 (1)	% WTE change since Dec 2023	WTE change since DEC 2022	No. JAN 2024
Total CHO 2	1308	1329	1361	1361	+53	+4.0%	+1	+0.0%	+32	1,503
Consultants	38	37	43	43	+5	+14.1%	-0	-0.1%	+6	47
Registrars	33	37	42	45	+11	+34.6%	+2	+5.8%	+8	48
SHO/ Interns	35	39	37	32	-3	-7.5%	-5	-12.5%	-7	34
Medical/ Dental, other	1	1			-1	-100.0%			-1	
Medical & Dental	107	114	122	120	+13	+12.3%	-2	-1.8%	+6	129
Nurse/ Midwife Manager	146	142	151	151	+5	+3.7%	+1	+0.4%	+9	155
Nurse/ Midwife Specialist & AN/MP	67	88	105	107	+40	+58.7%	+2	+1.5%	+19	111
Staff Nurse/ Staff Midwife	357	353	326	329	-29	-8.0%	+3	+0.8%	-24	358
<i>Nursing/ Midwifery awaiting registration</i>	5	7	15	4	-1	-14.9%	-11	-73.5%	-3	5
<i>Pre-registration Nurse/ Midwife Intern</i>	0	4		9	+8	+7,008.3%	+9		+4	44
Nursing/ Midwifery Student	5	11	15	13	+8	+158.1%	-3	-17.6%	+2	49
Nursing/ Midwifery other	2	4	4	5	+3	+147.5%	+1	+23.8%	+1	5
Nursing & Midwifery	577	598	601	604	+27	+4.7%	+3	+0.5%	+6	678
Therapy Professions	45	55	57	56	+11	+23.5%	-1	-1.5%	+1	61
Social Care	15	14	13	13	-2	-10.2%	+0	+0.5%	-1	14
Social Workers	41	44	47	49	+8	+19.4%	+2	+3.8%	+5	52
Psychologists	34	37	36	33	-0	-0.7%	-2	-6.5%	-4	37
Pharmacy	3	3	4	4	+1	+45.6%	+0	+0.0%	+1	5
H&SC, Other	3	3	14	15	+12	+386.3%	+1	+4.0%	+12	19
Health & Social Care Professionals	140	155	170	169	+30	+21.2%	-1	-0.4%	+15	188
Management (VIII & above)	5	3	3	3	-2	-40.0%	+0	+0.0%	+0	3
Administrative/ Supervisory (V to VII)	24	25	31	30	+7	+29.1%	-1	-2.0%	+5	32
Clerical (III & IV)	109	98	111	110	+1	+0.5%	-1	-1.0%	+12	122
Management & Administrative	138	126	145	143	+5	+3.9%	-2	-1.2%	+17	157
Support	36	27	21	19	-17	-46.5%	-2	-8.8%	-7	22
Maintenance/ Technical	27	36	34	35	+8	+28.6%	+0	+1.3%	-1	35
General Support	63	62	56	54	-9	-14.4%	-1	-2.6%	-8	57
Health Care Assistants	215	202	199	204	-11	-4.9%	+5	+2.4%	+2	214
Care, other	69	73	68	66	-3	-4.1%	-1	-1.9%	-6	80
Patient & Client Care	284	275	267	271	-13	-4.7%	+3	+1.3%	-4	294



Mental Health Employment Report by Grade Group: JAN 2024

CHO 3

JAN 2024	WTE DEC 2019	WTE DEC 2022	WTE DEC 2023(1)	WTE JAN 2024	WTE change since DEC 2019	% WTE change since Dec 2019	WTE change since DEC 2023 (1)	% WTE change since Dec 2023	WTE change since DEC 2022	No. JAN 2024
Total CHO 3	795	814	852	859	+63	+7.9%	+7	+0.8%	+44	940
Consultants	23	29	30	29	+5	+22.4%	-1	-4.6%	-1	32
Registrars	18	15	22	28	+10	+54.9%	+6	+26.5%	+13	28
SHO/ Interns	19	33	19	14	-5	-24.8%	-5	-25.0%	-19	15
Medical & Dental	60	78	71	71	+10	+17.3%	-0	-0.4%	-7	75
Nurse/ Midwife Manager	88	87	91	91	+3	+3.3%	-0	-0.3%	+4	95
Nurse/ Midwife Specialist & AN/MP	39	44	52	52	+13	+32.0%	-0	-0.9%	+7	56
Staff Nurse/ Staff Midwife	245	243	254	252	+6	+2.5%	-2	-0.9%	+9	273
<i>Pre-registration Nurse/ Midwife Intern</i>	9	4	1	6	-3	-28.6%	+6	+649.4%	+2	26
Nursing/ Midwifery Student	9	4	1	6	-3	-28.6%	+6	+649.4%	+2	26
Nursing/ Midwifery other		1	1	1	+1		+0	+0.0%	+0	1
Nursing & Midwifery	381	380	399	401	+20	+5.3%	+3	+0.7%	+22	451
Therapy Professions	26	30	30	30	+4	+15.6%	+0	+1.6%	+0	33
Social Care	3	2	1	1	-2	-65.2%	+0	+6.4%	-1	1
Social Workers	25	28	26	27	+2	+6.7%	+1	+4.2%	-1	29
Psychologists	92	93	91	92	-0	-0.1%	+2	+1.7%	-1	95
Pharmacy	3	3	3	3	+0	+0.0%	+0	+1.8%	-0	3
H&SC, Other	10	10	11	11	+1	+12.3%	-0	-1.7%	+1	12
Health & Social Care Professionals	159	166	161	164	+5	+3.1%	+3	+1.9%	-2	173
Management (VIII & above)	2	4	4	4	+2	+103.0%	+0	+0.0%	+0	4
Administrative/ Supervisory (V to VII)	17	16	17	18	+1	+5.8%	+0	+2.0%	+2	18
Clerical (III & IV)	56	50	60	60	+4	+6.8%	+0	+0.0%	+9	64
Management & Administrative	75	70	81	81	+7	+9.1%	+0	+0.4%	+11	86
Support	32	30	32	31	-2	-5.4%	-1	-2.6%	+0	34
Maintenance/ Technical	11	7	9	9	-2	-18.9%	-0	-0.9%	+2	9
General Support	43	37	41	40	-4	-8.8%	-1	-2.2%	+2	43
Health Care Assistants	75	82	97	99	+24	+32.0%	+2	+2.3%	+18	109
Care, other	2	2	2	2	+1	+42.5%	-0	-3.3%	-0	3
Patient & Client Care	77	84	100	102	+25	+32.2%	+2	+2.1%	+18	112



Mental Health Employment Report by Grade Group: JAN 2024

CHO 4

JAN 2024	WTE DEC 2019	WTE DEC 2022	WTE DEC 2023(1)	WTE JAN 2024	WTE change since DEC 2019	% WTE change since Dec 2019	WTE change since DEC 2023 (1)	% WTE change since Dec 2023	WTE change since DEC 2022	No. JAN 2024
Total CHO 4	1499	1562	1615	1617	+118	+7.9%	+2	+0.1%	+55	1,804
Consultants	50	60	65	64	+14	+27.6%	-1	-1.8%	+3	70
Registrars	46	56	51	50	+5	+10.3%	-1	-1.0%	-6	53
SHO/ Interns	31	42	55	58	+27	+87.1%	+3	+6.0%	+16	59
Medical/ Dental, other	2	1	1	1	-1	-51.5%	+0	+0.0%	+0	4
Medical & Dental	129	160	171	173	+44	+34.6%	+2	+0.9%	+13	186
Nurse/ Midwife Manager	171	207	201	195	+24	+13.9%	-5	-2.6%	-12	206
Nurse/ Midwife Specialist & AN/MP	60	72	90	87	+27	+45.5%	-2	-2.8%	+15	95
Staff Nurse/ Staff Midwife	505	479	484	485	-20	-3.9%	+1	+0.3%	+7	525
<i>Nursing/ Midwifery awaiting registration</i>	30		1	1	-29	-96.6%	+0	+0.0%	+1	1
<i>Post-registration Nurse/ Midwife Student</i>	1				-1	-100.0%				
<i>Pre-registration Nurse/ Midwife Intern</i>	3	7	1	8	+5	+150.7%	+7	+1,404.0%	+1	43
Nursing/ Midwifery Student	34	7	2	9	-25	-74.6%	+7	+468.0%	+2	44
Nursing/ Midwifery other				1	+1		+1		+1	1
Nursing & Midwifery	770	765	776	777	+7	+0.9%	+2	+0.2%	+13	871
Therapy Professions	74	79	88	85	+12	+15.7%	-2	-2.6%	+7	96
Social Care	4	6	3	3	-1	-24.5%	-0	-9.4%	-3	4
Social Workers	53	73	74	73	+20	+38.2%	-1	-0.7%	+0	83
Psychologists	83	96	98	99	+16	+19.9%	+1	+1.4%	+3	110
Pharmacy	2	2	1	1	-2	-74.2%	-1	-52.6%	-2	2
H&SC, Other	11	18	19	20	+9	+81.6%	+1	+5.4%	+2	24
Health & Social Care Professionals	227	273	283	281	+54	+24.0%	-1	-0.5%	+8	319
Management (VIII & above)	1	3	3	3	+2	+180.0%	+0	+0.4%	-0	3
Administrative/ Supervisory (V to VII)	22	26	33	33	+11	+47.9%	+0	+0.2%	+7	35
Clerical (III & IV)	87	87	106	107	+20	+22.7%	+1	+0.9%	+20	120
Management & Administrative	111	116	142	143	+32	+29.2%	+1	+0.8%	+27	158
Support	81	75	65	64	-17	-20.8%	-1	-1.1%	-11	73
Maintenance/ Technical	6	5	4	4	-2	-37.2%	+0	+0.0%	-1	4
General Support	87	80	68	68	-19	-21.9%	-1	-1.0%	-12	77
Health Care Assistants	168	162	169	169	+0	+0.2%	-1	-0.4%	+7	181
Care, other	7	5	6	6	-2	-22.7%	-0	-0.9%	+0	12
Patient & Client Care	176	167	175	174	-1	-0.7%	-1	-0.4%	+7	193



Mental Health Employment Report by Grade Group: JAN 2024

CHO 5

JAN 2024	WTE DEC 2019	WTE DEC 2022	WTE DEC 2023(1)	WTE JAN 2024	WTE change since DEC 2019	% WTE change since Dec 2019	WTE change since DEC 2023 (1)	% WTE change since Dec 2023	WTE change since DEC 2022	No. JAN 2024
Total CHO 5	1177	1224	1325	1320	+143	+12.2%	-5	-0.4%	+96	1,477
Consultants	26	33	36	35	+9	+33.3%	-1	-2.8%	+2	37
Registrars	10	12	18	18	+8	+80.0%	+0	+0.6%	+6	18
SHO/ Interns	32	32	34	34	+2	+5.4%	-0	-0.3%	+1	34
Medical/ Dental, other	2	2	2	2	+0	+0.0%	+0	+0.0%	+0	2
Medical & Dental	70	80	90	89	+18	+26.3%	-1	-1.1%	+9	91
Nurse/ Midwife Manager	171	175	155	159	-12	-7.2%	+4	+2.8%	-16	165
Nurse/ Midwife Specialist & AN/MP	43	68	91	88	+45	+103.1%	-3	-3.2%	+20	93
Staff Nurse/ Staff Midwife	412	398	393	402	-10	-2.3%	+9	+2.4%	+5	450
<i>Nursing/ Midwifery awaiting registration</i>		6	19	3	+3		-16	-84.1%	-3	3
<i>Pre-registration Nurse/ Midwife Intern</i>	1	1	1	5	+4	+417.0%	+4	+254.1%	+4	39
Nursing/ Midwifery Student	1	7	20	8	+7	+717.0%	-12	-59.7%	+2	42
Nursing/ Midwifery other	4	4	5	5	+1	+37.4%	+0	+1.2%	+1	5
Nursing & Midwifery	631	651	663	662	+31	+4.9%	-1	-0.2%	+11	755
Therapy Professions	38	34	32	32	-6	-17.0%	-1	-1.7%	-2	36
Social Care	5	4	4	4	-0	-5.6%	+0	+0.2%	+1	5
Social Workers	28	29	34	34	+6	+20.8%	+0	+1.2%	+5	37
Psychologists	21	27	33	33	+12	+57.0%	-0	-0.2%	+6	38
H&SC, Other	9	23	21	21	+12	+133.6%	-0	-0.1%	-2	22
Health & Social Care Professionals	101	117	125	124	+23	+22.9%	-0	-0.2%	+8	138
Management (VIII & above)	4	6	5	5	+1	+25.0%	+0	+0.2%	-1	5
Administrative/ Supervisory (V to VII)	21	23	30	31	+10	+49.1%	+1	+4.8%	+8	33
Clerical (III & IV)	74	74	99	97	+23	+31.6%	-2	-2.1%	+23	106
Management & Administrative	99	104	134	133	+35	+35.0%	-1	-0.5%	+30	144
Support	171	175	183	181	+10	+5.9%	-2	-1.1%	+7	206
Maintenance/ Technical	19	14	13	13	-6	-31.2%	+0	+0.0%	-1	14
General Support	190	189	197	195	+4	+2.2%	-2	-1.0%	+6	220
Health Care Assistants	73	73	102	102	+29	+40.6%	+1	+0.6%	+29	108
Care, other	13	12	15	15	+2	+15.4%	-0	-1.5%	+3	21
Patient & Client Care	85	85	117	117	+31	+36.8%	+0	+0.3%	+32	129



Mental Health Employment Report by Grade Group: JAN 2024

CHO 6

JAN 2024	WTE DEC 2019	WTE DEC 2022	WTE DEC 2023(1)	WTE JAN 2024	WTE change since DEC 2019	% WTE change since Dec 2019	WTE change since DEC 2023 (1)	% WTE change since Dec 2023	WTE change since DEC 2022	No. JAN 2024
Total CHO 6	593	650	683	690	+97	+16.4%	+7	+1.0%	+40	781
Consultants	36	45	51	52	+16	+43.1%	+1	+1.7%	+6	59
Registrars	22	30	28	32	+10	+46.7%	+4	+13.6%	+2	41
SHO/ Interns	9	9	11	7	-2	-17.1%	-4	-32.2%	-2	9
Medical & Dental	67	84	90	91	+24	+36.1%	+1	+1.2%	+7	109
Nurse/ Midwife Manager	76	75	73	72	-5	-6.1%	-1	-1.8%	-3	74
Nurse/ Midwife Specialist & AN/MP	14	27	34	35	+21	+156.1%	+1	+4.2%	+8	38
Staff Nurse/ Staff Midwife	139	151	144	145	+6	+4.3%	+1	+0.7%	-6	155
<i>Pre-registration Nurse/ Midwife Intern</i>				3	+3		+3		+3	15
Nursing/ Midwifery Student				3	+3		+3		+3	15
Nursing/ Midwifery other	2	4	3	4	+2	+80.0%	+1	+20.0%	-0	4
Nursing & Midwifery	231	257	254	258	+27	+11.6%	+4	+1.7%	+1	286
Therapy Professions	43	41	43	44	+1	+2.1%	+1	+2.4%	+3	53
Social Care	26	28	24	24	-2	-6.6%	+1	+2.5%	-4	27
Social Workers	30	36	37	35	+5	+18.1%	-1	-3.8%	-1	39
Psychologists	22	38	43	43	+20	+92.9%	-1	-1.9%	+5	50
H&SC, Other	9	6	16	12	+3	+34.6%	-5	-28.1%	+5	15
Health & Social Care Professionals	130	150	163	158	+28	+21.7%	-5	-3.2%	+8	184
Management (VIII & above)	3	5	5	5	+2	+65.0%	-0	-1.0%	-0	5
Administrative/ Supervisory (V to VII)	27	31	27	27	+1	+2.7%	+0	+1.6%	-3	30
Clerical (III & IV)	42	29	41	44	+2	+3.7%	+3	+6.6%	+15	52
Management & Administrative	72	65	73	76	+4	+5.9%	+3	+4.2%	+11	87
Support	36	29	28	28	-9	-24.4%	-1	-2.8%	-2	33
Maintenance/ Technical	6	5	6	6	+0	+1.5%	+0	+0.0%	+1	6
General Support	42	34	34	34	-9	-20.8%	-1	-2.3%	-1	39
Health Care Assistants	46	54	62	67	+21	+46.5%	+5	+8.2%	+13	68
Care, other	5	7	7	7	+2	+28.9%	-1	-6.8%	+0	8
Patient & Client Care	51	60	69	74	+23	+44.6%	+5	+6.6%	+13	76



Mental Health Employment Report by Grade Group: JAN 2024

CHO 7

JAN 2024	WTE DEC 2019	WTE DEC 2022	WTE DEC 2023(1)	WTE JAN 2024	WTE change since DEC 2019	% WTE change since Dec 2019	WTE change since DEC 2023 (1)	% WTE change since Dec 2023	WTE change since DEC 2022	No. JAN 2024
Total CHO 7	835	879	912	912	+77	+9.2%	-0	0.0%	+33	1,004
Consultants	48	52	57	57	+9	+18.8%	+0	+0.3%	+4	59
Registrars	46	55	44	42	-4	-8.8%	-2	-4.3%	-13	60
SHO/ Interns	21	26	28	27	+6	+30.2%	-1	-4.6%	+2	31
Medical & Dental	115	133	129	126	+11	+9.8%	-3	-2.4%	-7	150
Nurse/ Midwife Manager	117	109	101	102	-14	-12.4%	+1	+0.8%	-7	106
Nurse/ Midwife Specialist & AN/MP	40	56	72	71	+32	+79.1%	-0	-0.4%	+16	76
Staff Nurse/ Staff Midwife	194	205	199	200	+5	+2.7%	+1	+0.3%	-5	220
<i>Nursing/ Midwifery awaiting registration</i>	10	1	7	2	-8	-82.3%	-5	-73.1%	+1	2
<i>Pre-registration Nurse/ Midwife Intern</i>	1	0		2	+0	+35.8%	+2		+2	6
Nursing/ Midwifery Student	11	1	7	4	-8	-67.9%	-3	-44.5%	+3	8
Nursing/ Midwifery other	8	6	5	5	-3	-38.3%	+0	+2.2%	-1	6
Nursing & Midwifery	370	377	383	382	+12	+3.2%	-2	-0.4%	+5	416
Therapy Professions	48	51	57	60	+12	+25.1%	+3	+5.8%	+9	65
Social Care	8	7	7	7	-1	-9.4%	-0	-3.9%	+0	8
Social Workers	34	38	44	44	+10	+30.3%	+0	+0.4%	+6	48
Psychologists	31	35	37	38	+7	+22.6%	+1	+3.6%	+4	43
Pharmacy	1	0	1	1	-0	-20.0%	-0	-5.9%	+1	1
H&SC, Other	18	19	19	19	+1	+3.8%	+0	+0.5%	+0	21
Health & Social Care Professionals	140	150	165	169	+29	+20.9%	+5	+2.8%	+20	186
Management (VIII & above)	3	5	4	4	+1	+38.0%	-0	-2.0%	-1	4
Administrative/ Supervisory (V to VII)	16	22	26	25	+10	+61.6%	-0	-1.2%	+3	26
Clerical (III & IV)	47	55	64	63	+16	+34.2%	-1	-2.0%	+7	68
Management & Administrative	65	83	94	92	+27	+40.9%	-2	-1.8%	+9	98
Support	18	16	13	13	-5	-26.5%	+0	+3.6%	-3	15
Maintenance/ Technical	2	2	1	1	-1	-46.2%	+0	+0.0%	-1	1
General Support	20	18	14	14	-6	-28.4%	+0	+3.3%	-4	16
Health Care Assistants	33	31	36	36	+3	+8.6%	+0	+0.7%	+6	38
Care, other	92	88	92	92	+0	+0.4%	+1	+0.9%	+5	100
Patient & Client Care	125	118	128	129	+3	+2.6%	+1	+0.8%	+10	138



Mental Health Employment Report by Grade Group: JAN 2024

CHO 8

JAN 2024	WTE DEC 2019	WTE DEC 2022	WTE DEC 2023(1)	WTE JAN 2024	WTE change since DEC 2019	% WTE change since Dec 2019	WTE change since DEC 2023 (1)	% WTE change since Dec 2023	WTE change since DEC 2022	No. JAN 2024
Total CHO 8	1098	1091	1123	1128	+30	+2.7%	+5	+0.5%	+37	1,229
Consultants	35	36	38	38	+3	+8.6%	+0	+0.3%	+2	40
Registrars	26	29	31	28	+2	+9.2%	-3	-8.3%	-1	30
SHO/ Interns	36	29	36	43	+7	+20.3%	+7	+20.6%	+14	44
Medical & Dental	97	94	105	110	+13	+13.1%	+5	+4.7%	+15	114
Nurse/ Midwife Manager	121	114	118	117	-3	-2.8%	-0	-0.3%	+3	121
Nurse/ Midwife Specialist & AN/MP	56	75	81	82	+25	+45.4%	+0	+0.3%	+7	87
Staff Nurse/ Staff Midwife	332	323	322	319	-12	-3.7%	-3	-1.0%	-4	340
<i>Nursing/ Midwifery awaiting registration</i>	2	8	1	1	-1	-50.0%	+0	+0.0%	-7	1
<i>Pre-registration Nurse/ Midwife Intern</i>	1	1	1	6	+6	+1,132.0%	+6	+1,132.0%	+6	24
Nursing/ Midwifery Student	3	9	2	7	+5	+186.4%	+6	+377.3%	-2	25
Nursing/ Midwifery other	4	3	3	3	-1	-25.8%	+0	+1.0%	+0	3
Nursing & Midwifery	515	523	526	528	+13	+2.6%	+2	+0.5%	+5	576
Therapy Professions	44	36	35	35	-9	-20.7%	+1	+1.8%	-1	39
Social Care	7	6	5	5	-2	-26.7%	+0	+3.3%	-1	6
Social Workers	41	50	52	52	+10	+24.9%	-1	-1.2%	+2	57
Psychologists	39	36	39	38	-1	-3.2%	-1	-2.6%	+2	41
Pharmacy	1	2	3	2	+1	+149.0%	-0	-2.0%	+1	4
H&SC, Other	20	16	18	19	-2	-9.6%	+1	+3.4%	+2	22
Health & Social Care Professionals	154	146	151	151	-3	-1.7%	-0	-0.2%	+5	169
Management (VIII & above)	3	3	4	4	+1	+36.1%	+0	+0.0%	+1	4
Administrative/ Supervisory (V to VII)	22	28	30	29	+7	+30.7%	-1	-1.8%	+1	31
Clerical (III & IV)	88	88	102	102	+13	+15.2%	-1	-0.6%	+14	114
Management & Administrative	114	119	136	135	+21	+18.8%	-1	-0.8%	+16	149
Support	33	27	23	23	-9	-28.2%	+0	+1.7%	-4	26
Maintenance/ Technical	26	25	28	29	+3	+10.1%	+0	+1.0%	+4	29
General Support	59	52	51	52	-7	-11.2%	+1	+1.3%	+0	55
Health Care Assistants	157	152	150	149	-8	-5.3%	-1	-0.9%	-3	162
Care, other	4	5	3	3	-0	-4.0%	-0	-1.7%	-1	4
Patient & Client Care	160	156	153	152	-8	-5.2%	-1	-0.9%	-4	166



Mental Health Employment Report by Grade Group: JAN 2024

CHO 9

JAN 2024	WTE DEC 2019	WTE DEC 2022	WTE DEC 2023(1)	WTE JAN 2024	WTE change since DEC 2019	% WTE change since Dec 2019	WTE change since DEC 2023 (1)	% WTE change since Dec 2023	WTE change since DEC 2022	No. JAN 2024
Total CHO 9	1272	1371	1338	1348	+77	+6.0%	+10	+0.8%	-23	1,515
Consultants	50	55	59	58	+8	+16.8%	-0	-0.3%	+3	60
Registrars	31	57	46	47	+16	+52.7%	+1	+3.0%	-10	57
SHO/ Interns	53	36	54	53	-1	-1.0%	-1	-2.5%	+17	61
Medical & Dental	134	148	158	158	+24	+18.0%	-0	-0.1%	+10	178
Nurse/ Midwife Manager	132	138	146	146	+14	+10.5%	+0	+0.1%	+8	152
Nurse/ Midwife Specialist & AN/MP	65	99	98	99	+34	+52.7%	+1	+1.4%	+1	104
Staff Nurse/ Staff Midwife	351	351	315	318	-33	-9.5%	+3	+1.0%	-33	351
<i>Nursing/ Midwifery awaiting registration</i>	11	14	6	4	-7	-63.4%	-2	-34.3%	-10	5
<i>Pre-registration Nurse/ Midwife Intern</i>	10	8	7	21	+11	+105.8%	+12	+203.2%	+13	53
Nursing/ Midwifery Student	21	22	13	25	+4	+18.5%	+12	+92.4%	+3	58
Nursing/ Midwifery other	11	9	8	8	-3	-26.1%	+0	+0.8%	-1	9
Nursing & Midwifery	581	619	580	596	+16	+2.7%	+17	+2.9%	-22	674
Therapy Professions	55	60	53	50	-5	-9.3%	-3	-5.4%	-10	56
Social Care	1	1	1	1	+0	+11.1%	+0	+0.0%	+0	1
Social Workers	43	57	55	54	+10	+23.7%	-1	-1.9%	-3	61
Psychologists	46	56	59	60	+14	+31.0%	+0	+0.8%	+4	68
Pharmacy	8	7	10	10	+2	+28.7%	+0	+1.8%	+3	14
H&SC, Other	15	17	19	19	+4	+28.3%	+0	+0.2%	+1	20
Health & Social Care Professionals	167	198	196	193	+26	+15.4%	-3	-1.6%	-5	220
Management (VIII & above)	5	5	6	6	+1	+17.2%	-0	-2.5%	+1	6
Administrative/ Supervisory (V to VII)	28	38	41	40	+12	+41.8%	-1	-3.4%	+1	42
Clerical (III & IV)	104	109	110	107	+4	+3.4%	-2	-2.0%	-1	122
Management & Administrative	137	152	156	153	+16	+11.7%	-4	-2.4%	+1	170
Support	103	95	88	90	-13	-12.9%	+2	+1.9%	-5	104
Maintenance/ Technical	11	11	8	8	-3	-26.7%	+0	+0.0%	-3	8
General Support	114	106	96	98	-16	-14.2%	+2	+1.7%	-8	112
Health Care Assistants	126	137	139	139	+13	+10.0%	-1	-0.4%	+2	149
Care, other	13	12	12	12	-1	-9.4%	-1	-5.9%	-1	12
Patient & Client Care	139	149	151	150	+11	+8.2%	-1	-0.9%	+1	161



Mental Health Employment Report by Grade Group: JAN 2024

other Community Services

JAN 2024	WTE DEC 2019	WTE DEC 2022	WTE DEC 2023(1)	WTE JAN 2024	WTE change since DEC 2019	% WTE change since Dec 2019	WTE change since DEC 2023 (1)	% WTE change since Dec 2023	WTE change since DEC 2022	No. JAN 2024
Total other Community Services	438	511	580	580	+143	+32.6%	+1	+0.1%	+69	609
Consultants	16	15	16	16	+1	+4.3%	+0	+0.0%	+2	18
Registrars	13	19	18	17	+4	+28.5%	-1	-7.2%	-2	22
Medical & Dental	29	34	34	33	+4	+15.3%	-1	-3.8%	-1	40
Nurse/ Midwife Manager	62	81	83	84	+22	+34.5%	+1	+0.6%	+3	86
Nurse/ Midwife Specialist & AN/MP	8	11	11	11	+3	+36.0%	+0	+0.1%	+0	12
Staff Nurse/ Staff Midwife	169	151	167	172	+3	+2.0%	+5	+3.0%	+21	179
<i>Nursing/ Midwifery awaiting registration</i>			2	1	+1		-1	-50.0%	+1	1
<i>Pre-registration Nurse/ Midwife Intern</i>			1				-1	-100.0%		
Nursing/ Midwifery Student			3	1	+1		-2	-66.7%	+1	1
Nursing/ Midwifery other	1	2	2	2	+1	+100.0%	+0	+0.5%	+0	2
Nursing & Midwifery	240	245	266	270	+30	+12.4%	+4	+1.3%	+25	280
Therapy Professions	11	10	10	9	-2	-18.9%	-1	-9.8%	-1	9
Social Care	2	1	2	2	-0	-2.6%	-0	-4.5%	+1	2
Social Workers	15	11	14	15	-0	-2.7%	+1	+5.1%	+4	16
Psychologists	6	5	4	4	-2	-33.3%	+0	+0.0%	-1	4
Pharmacy		2	3	3	+3		+0	+0.0%	+1	3
Health & Social Care Professionals	34	29	33	32	-2	-4.5%	-0	-1.1%	+4	34
Management (VIII & above)	27	33	33	33	+6	+21.9%	-0	-0.2%	+0	33
Administrative/ Supervisory (V to VII)	31	46	59	58	+27	+87.1%	-1	-1.8%	+12	59
Clerical (III & IV)	25	28	34	36	+11	+42.2%	+2	+4.8%	+8	37
Management & Administrative	83	106	126	127	+44	+52.4%	+1	+0.4%	+21	129
Support	12	25	17	16	+4	+34.9%	-1	-4.9%	-8	18
Maintenance/ Technical	2	8	5	6	+4	+197.5%	+1	+13.3%	-2	6
General Support	14	33	23	22	+8	+57.8%	-0	-0.6%	-10	24
Health Care Assistants	37	64	83	82	+45	+122.0%	-2	-1.9%	+17	88
Care, other	1	0	14	14	+13	+2,684.0%	-0	-0.6%	+13	14
Patient & Client Care	37	65	97	96	+58	+156.4%	-2	-1.7%	+31	102



Mental Health Employment Report by Grade Group: JAN 2024

JAN 2024	WTE DEC 2019	WTE DEC 2022	WTE DEC 2023(1)	WTE JAN 2024	WTE change since DEC 2019	% WTE change since Dec 2019	WTE change since DEC 2023(1)	% WTE change since Dec 2023	WTE change since DEC 2022	No. JAN 2024
Overall	9,967	10,453	10,838	10,868	+901	+9.0%	+30	+0.3%	+415	12,003
Consultant Medicine	1	1	1	1	+0	+0.0%	+0	+0.0%	+0	1
Consultant Psychiatry	352	396	429	426	+74	+21.1%	-3	-0.8%	+30	458
Consultants	353	397	430	427	+74	+21.1%	-3	-0.8%	+30	459
Registrar	169	217	208	213	+43	+25.6%	+5	+2.3%	-4	249
Senior Registrar	97	126	127	129	+31	+32.3%	+2	+1.3%	+3	143
Specialist Registrar	3	2	4	4	+2	+60.0%	+0	+0.0%	+2	4
Registrars	269	345	339	345	+76	+28.3%	+7	+1.9%	+0	396
Interns	8	5	7	6	-2	-25.0%	-1	-14.3%	+1	8
Senior House Officer	253	262	290	286	+33	+13.0%	-4	-1.3%	+24	303
SHO/ Interns	261	267	297	292	+31	+11.8%	-5	-1.7%	+25	311
Other Medical	5	4	3	3	-2	-40.6%	+0	+0.0%	-1	6
Medical/ Dental, other	5	4	3	3	-2	-40.6%	+0	+0.0%	-1	6
Medical & Dental	888	1,013	1,069	1,067	+179	+20.2%	-2	-0.2%	+54	1,172
Clinical Nurse/ Midwife Manager 1	142	142	135	142	+0	+0.1%	+7	+5.4%	+0	147
Clinical Nurse/ Midwife Manager 2	755	781	768	764	+9	+1.2%	-4	-0.6%	-17	799
Clinical Nurse/ Midwife Manager 3	111	113	119	115	+3	+3.1%	-5	-3.9%	+1	118
Director Nursing/Midwifery, Assistant	165	176	183	187	+23	+13.7%	+4	+2.1%	+11	190
Director of Nursing/Midwifery	29	34	32	32	+3	+10.7%	+0	+0.9%	-2	32
Nurse/ Midwife Manager	1,201	1,245	1,237	1,240	+39	+3.2%	+3	+0.2%	-6	1,286
Advanced Nurse/ Midwife Practitioner	19	48	59	63	+44	+234.4%	+4	+6.5%	+15	65
Adv. Nurse/ Midwife, Candidate	11	20	29	28	+17	+156.5%	-1	-3.1%	+8	29
Clinical Nurse/ Midwife Spec., Candidate			1	1	+1		+0	+0.0%	+1	1
Clinical Nurse/ Midwife Specialist	430	563	645	639	+209	+48.6%	-6	-0.9%	+77	682
Nurse/ Midwife Specialist & AN/MP	460	631	734	731	+271	+59.0%	-3	-0.4%	+101	777
Staff Nurse [Intellectual Disability]	5	7	7	7	+2	+54.3%	+0	+3.4%	+0	8
Staff Nurse [Psychiatric]	2,890	2,835	2,792	2,813	-77	-2.7%	+21	+0.8%	-22	3,051
Staff Nurses [General/ Children's]	108	106	93	93	-15	-14.1%	-1	-0.8%	-14	100
Staff Nurse/ Staff Midwife	3,002	2,948	2,892	2,912	-90	-3.0%	+21	+0.7%	-35	3,159
Nursing/ Midwifery awaiting registration	57	39	56	19	-38	-67.2%	-37	-66.4%	-20	21
Post-registration Nurse/ Midwife Student	1				-1	-100.0%				
Pre-registration Nurse/ Midwife Intern	25	26	14	65	+40	+160.8%	+52	+377.1%	+39	273
Nursing/ Midwifery Student	83	65	69	84	+1	+1.2%	+15	+21.2%	+19	294
Nursing Education/Clinical	32	34	33	36	+4	+12.5%	+3	+8.8%	+1	38
Nursing/ Midwifery other	32	34	33	36	+4	+12.5%	+3	+8.8%	+1	38
Nursing & Midwifery	4,778	4,924	4,965	5,003	+225	+4.7%	+38	+0.8%	+80	5,554
Dietitians	19	18	24	25	+5	+28.4%	+0	+0.5%	+6	28
Occupational Therapists	337	346	353	349	+12	+3.7%	-4	-1.2%	+3	385
Physiotherapists	2	3	1	1	-1	-60.1%	+0	+0.0%	-2	2
Podiatrists & Chiropodists	1	1			-1	-100.0%			-1	
Speech & Language Therapists	62	68	66	68	+6	+9.6%	+2	+2.9%	+0	78
Therapy Professions	420	435	444	442	+22	+5.2%	-2	-0.5%	+7	493
Social Care	74	72	63	63	-10	-14.0%	+0	+0.4%	-9	71
Social Care	74	72	63	63	-10	-14.0%	+0	+0.4%	-9	71
Social Workers	350	414	431	431	+81	+23.1%	+1	+0.1%	+18	474
Social Workers	350	414	431	431	+81	+23.1%	+1	+0.1%	+18	474
Psychologists	394	448	467	468	+73	+18.5%	+0	+0.0%	+20	516
Psychologists	394	448	467	468	+73	+18.5%	+0	+0.0%	+20	516
Pharmacists	16	16	21	20	+4	+25.2%	-1	-2.8%	+5	26
Pharmacy Technicians	2	4	5	5	+2	+82.2%	-0	-0.2%	+1	7
Pharmacy	19	19	25	25	+6	+32.8%	-1	-2.3%	+5	33
Counsellor Therapists	95	124	145	148	+53	+55.9%	+3	+2.1%	+24	168
HSCP Trainees/Students			4				-4	-100.0%		
Other Health & Social Care	11	3	3	3	-8	-76.8%	-0	-0.4%	-0	6
Play Therapists/ Specialists	1	3	4	4	+3	+181.5%	+0	+0.0%	+1	5

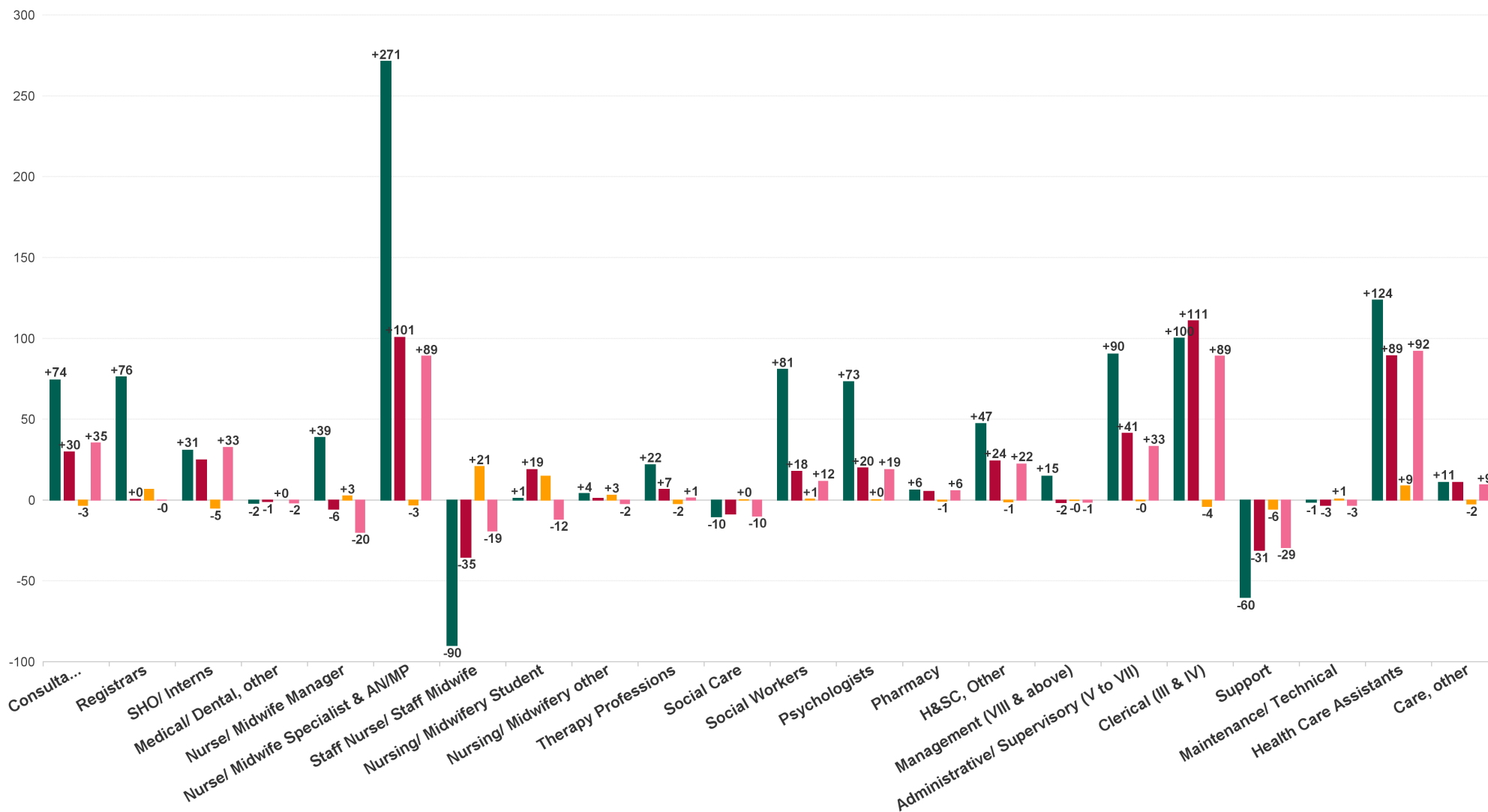


JAN 2024	WTE DEC 2019	WTE DEC 2022	WTE DEC 2023(1)	WTE JAN 2024	WTE change since DEC 2019	% WTE change since Dec 2019	WTE change since DEC 2023(1)	% WTE change since Dec 2023	WTE change since DEC 2022	No. JAN 2024
Overall	9,967	10,453	10,838	10,868	+901	+9.0%	+30	+0.3%	+415	12,003
H&SC, Other	107	130	155	154	+47	+44.2%	-1	-0.7%	+24	179
Health & Social Care Professionals	1,364	1,518	1,586	1,583	+219	+16.0%	-3	-0.2%	+65	1,766
Executive Management	11	14	16	16	+5	+43.6%	+0	+0.1%	+2	16
Senior Management (VIII & GM)	47	61	58	57	+10	+21.0%	-0	-0.5%	-3	58
Management (VIII & above)	58	75	73	73	+15	+25.3%	-0	-0.4%	-2	74
Middle Management (V-VII)	236	285	327	327	+90	+38.2%	-0	-0.1%	+41	341
Other Administrative	2	2	2	2	+0	+1.9%	+0	+0.0%	+0	2
Administrative/ Supervisory (V to VII)	238	287	329	328	+90	+38.0%	-0	-0.1%	+41	343
General Administrative (III & IV)	717	707	821	817	+100	+13.9%	-4	-0.5%	+111	906
Clerical (III & IV)	717	707	821	817	+100	+13.9%	-4	-0.5%	+111	906
Management & Administrative	1,014	1,068	1,223	1,219	+205	+20.2%	-5	-0.4%	+150	1,323
Catering	66	68	68	68	+3	+4.0%	+1	+0.8%	+1	76
Household Services	424	397	388	386	-39	-9.1%	-3	-0.7%	-12	442
Other Support	47	40	30	30	-17	-36.6%	-1	-2.3%	-11	36
Portering	48	51	44	41	-7	-14.6%	-3	-6.2%	-9	42
Support	585	556	530	525	-60	-10.3%	-6	-1.1%	-31	596
Maintenance	127	129	125	126	-1	-1.1%	+1	+0.6%	-3	128
Maintenance/ Technical	127	129	125	126	-1	-1.1%	+1	+0.6%	-3	128
General Support	712	685	655	650	-62	-8.7%	-5	-0.7%	-34	724
Attendant/ Aide	605	423	409	398	-207	-34.2%	-10	-2.5%	-24	440
Health Care Assistant/ Care Assistant	382	588	665	676	+294	+77.0%	+11	+1.7%	+87	711
Health & Social Care Assistants	9	19	38	45	+36	+406.8%	+8	+20.6%	+26	48
Health Care Assistants	996	1,030	1,111	1,119	+124	+12.4%	+9	+0.8%	+89	1,199
Home Care Services	16	23	21	20	+5	+28.9%	-0	-2.0%	-3	27
Other Care Grades	23	19	41	40	+18	+78.5%	-1	-2.0%	+21	43
Pastoral Care	13	9	10	9	-3	-25.2%	-1	-5.2%	+0	15
Workshop Services	165	164	157	157	-8	-5.0%	-1	-0.4%	-7	180
Care, other	216	216	229	227	+11	+5.0%	-2	-1.0%	+11	265
Patient & Client Care	1,212	1,246	1,340	1,346	+135	+11.1%	+6	+0.5%	+100	1,464



WTE Change by Staff Category

■ WTE change since DEC 2019
 ■ WTE change since DEC 2022
 ■ WTE change since DEC 2023(1)
 ■ WTE change since JAN 2023



Mental Health Employment Report by WTE, Headcount, Gender, Full-Time / Part-Time etc. JAN 2024

JAN 2024	WTE JAN 2024	No. JAN 2024	WTE : No	% Male	% Female	Male WTE : No.	Female WTE : No	Perm Count %	Perm Count Male %	Perm Count Female %	Fulltime Count %	Part time Count %	FT Count Male %	FT Count Female %
Total	10,868	12,003	1:0.9	26.78%	73.22%	1:0.9	1:0.9	84.16%	21.77%	62.39%	86.28%	13.72%	93.93%	83.48%
Consultants	426.81	459	1:0.9	41.61%	58.39%	1:1	1:0.9	67.97%	28.10%	39.87%	86.49%	13.51%	92.15%	82.46%
Registrars	345.08	396	1:0.9	41.41%	58.59%	1:0.9	1:0.8	3.03%	1.26%	1.77%	93.43%	6.57%	98.78%	89.66%
SHO/ Interns	291.97	311	1:0.9	40.84%	59.16%	1:0.9	1:0.9	0.32%		0.32%	98.39%	1.61%	100.00%	97.28%
Medical/ Dental, other	2.97	6	1:0.5	50.00%	50.00%	1:0.4	1:0.5	50.00%	16.67%	33.33%	33.33%	66.67%	33.33%	33.33%
Medical & Dental	1,067	1,172	1:0.9	41.38%	58.62%	1:0.9	1:0.9	27.99%	11.52%	16.47%	91.72%	8.28%	96.08%	88.65%
Nurse/ Midwife Manager	1,239.82	1,286	1:1	36.86%	63.14%	1:1	1:1	98.91%	36.31%	62.60%	94.95%	5.05%	98.10%	93.10%
Nurse/ Midwife Specialist & AN/MP	731.42	777	1:0.9	18.92%	81.08%	1:1	1:0.9	99.49%	18.79%	80.69%	92.79%	7.21%	97.96%	91.59%
Staff Nurse/ Staff Midwife	2,912.46	3,159	1:0.9	24.66%	75.34%	1:0.9	1:0.9	91.93%	21.91%	70.02%	87.97%	12.03%	91.53%	86.81%
Nursing/ Midwifery Student	83.94	294	1:0.3	16.67%	83.33%	1:0.3	1:0.3	2.38%	0.68%	1.70%	100.00%		100.00%	100.00%
Nursing/ Midwifery other	35.5	38	1:0.9	13.16%	86.84%	1:1	1:0.9	100.00%	13.16%	86.84%	92.11%	7.89%	100.00%	90.91%
Nursing & Midwifery	5,003	5,554	1:0.9	26.18%	73.82%	1:0.9	1:0.9	89.92%	23.62%	66.29%	90.93%	9.07%	94.64%	89.61%
Therapy Professions	442.04	493	1:0.9	9.13%	90.87%	1:0.9	1:0.9	96.15%	9.13%	87.02%	85.60%	14.40%	91.11%	85.04%
Social Care	63.26	71	1:0.9	21.13%	78.87%	1:0.9	1:0.9	100.00%	21.13%	78.87%	71.83%	28.17%	80.00%	69.64%
Social Workers	431.22	474	1:0.9	17.51%	82.49%	1:1	1:0.9	95.15%	16.46%	78.69%	84.81%	15.19%	95.18%	82.61%
Psychologists	467.62	516	1:0.9	19.38%	80.62%	1:1	1:0.9	75.00%	16.09%	58.91%	83.53%	16.47%	98.00%	80.05%
Pharmacy	24.58	33	1:0.7	15.15%	84.85%	1:0.9	1:0.7	93.94%	12.12%	81.82%	48.48%	51.52%	80.00%	42.86%
H&SC, Other	154.42	179	1:0.9	20.11%	79.89%	1:0.9	1:0.8	92.74%	19.55%	73.18%	69.27%	30.73%	86.11%	65.03%
Health & Social Care Professionals	1,583	1,766	1:0.9	16.08%	83.92%	1:0.9	1:0.9	89.47%	14.72%	74.75%	81.88%	18.12%	93.31%	79.69%
Management (VIII & above)	73.09	74	1:1	32.43%	67.57%	1:1	1:1	97.30%	31.08%	66.22%	98.65%	1.35%	95.83%	100.00%
Administrative/ Supervisory (V to VII)	328.21	343	1:1	19.83%	80.17%	1:1	1:0.9	95.92%	18.95%	76.97%	89.80%	10.20%	98.53%	87.64%
Clerical (III & IV)	817.41	906	1:0.9	9.49%	90.51%	1:1	1:0.9	86.42%	8.28%	78.15%	78.70%	21.30%	93.02%	77.20%
Management & Administrative	1,219	1,323	1:0.9	13.45%	86.55%	1:1	1:0.9	89.49%	12.32%	77.17%	82.69%	17.31%	95.51%	80.70%
Support	524.83	596	1:0.9	30.54%	69.46%	1:1	1:0.8	93.29%	27.85%	65.44%	64.93%	35.07%	90.11%	53.86%
Maintenance/ Technical	125.52	128	1:1	99.22%	0.78%	1:1	1:1	97.66%	96.88%	0.78%	97.66%	2.34%	97.64%	100.00%
General Support	650	724	1:0.9	42.68%	57.32%	1:1	1:0.8	94.06%	40.06%	54.01%	70.72%	29.28%	93.20%	53.98%
Health Care Assistants	1,119.36	1,199	1:0.9	31.78%	68.22%	1:1	1:0.9	92.33%	29.19%	63.14%	82.24%	17.76%	92.39%	77.51%
Care, other	226.75	265	1:0.9	46.42%	53.58%	1:0.9	1:0.8	86.04%	38.87%	47.17%	72.83%	27.17%	82.93%	64.08%
Patient & Client Care	1,346	1,464	1:0.9	34.43%	65.57%	1:0.9	1:0.9	91.19%	30.94%	60.25%	80.53%	19.47%	90.08%	75.52%



Mental Health Employment Report by WTE, Headcount, Gender, Full-Time / Part-Time etc. JAN 2024

JAN 2024	WTE JAN 2024	No. JAN 2024	WTE : No	% Male	% Female	Male WTE : No.	Female WTE : No	Perm Count %	Number Male %	Number Female %	Fulltime Count %	Part time Count %	FT Count Male %	FT Count Female %
Total	10,868	12,003	1:0.9	26.78%	73.22%	1:0.9	1:0.9	84.16%	21.77%	62.39%	86.28%	13.72%	93.93%	83.48%
CHO 1	1,053	1,141	1:0.9	25.68%	74.32%	1:1	1:0.9	89.31%	22.44%	66.87%	87.99%	12.01%	96.25%	85.14%
CHO 2	1,361	1,503	1:0.9	28.21%	71.79%	1:0.9	1:0.9	85.70%	22.75%	62.94%	86.36%	13.64%	92.22%	84.06%
CHO 3	859	940	1:0.9	21.49%	78.51%	1:0.9	1:0.9	82.13%	17.77%	64.36%	88.09%	11.91%	92.08%	86.99%
CHO 4	1,617	1,804	1:0.9	25.33%	74.67%	1:0.9	1:0.9	74.17%	17.96%	56.21%	83.15%	16.85%	92.12%	80.10%
CHO 5	1,320	1,477	1:0.9	24.85%	75.15%	1:0.9	1:0.9	88.49%	20.79%	67.70%	82.06%	17.94%	92.10%	78.74%
CHO 6	690	781	1:0.9	28.55%	71.45%	1:0.9	1:0.9	85.66%	24.46%	61.20%	83.87%	16.13%	91.93%	80.65%
CHO 7	912	1,004	1:0.9	24.30%	75.70%	1:0.9	1:0.9	83.57%	18.73%	64.84%	89.54%	10.46%	96.72%	87.24%
CHO 8	1,128	1,229	1:0.9	24.49%	75.51%	1:1	1:0.9	86.09%	20.18%	65.91%	87.06%	12.94%	96.35%	84.05%
CHO 9	1,348	1,515	1:0.9	28.32%	71.68%	1:0.9	1:0.9	83.17%	22.77%	60.40%	86.47%	13.53%	96.27%	82.60%
other Community Services	580	609	1:1	44.99%	55.01%	1:1	1:1	90.64%	40.23%	50.41%	95.24%	4.76%	93.80%	96.42%



Previous Month Summary

	% WTE change since DEC 2023	WTE change since DEC 2023 (1)	CHO 1	CHO 2	CHO 3	CHO 4	CHO 5	CHO 6	CHO 7	CHO 8	CHO 9	other Community Services
Total	+0.3%	+30.2	+3.3	+0.5	+7.0	+1.6	-4.8	+7.0	-0.4	+5.3	+10.1	+0.7
Consultants	-0.8%	-3.3	-0.7	-0.0	-1.4	-1.1	-1.0	+0.8	+0.2	+0.1	-0.2	+0.0
Registrars	+1.9%	+6.5	-0.8	+2.5	+5.8	-0.5	+0.1	+3.8	-1.9	-2.6	+1.4	-1.3
SHO/ Interns	-1.7%	-4.9	+0.1	-4.6	-4.7	+3.3	-0.1	-3.5	-1.3	+7.4	-1.4	
Medical/ Dental, other	+0.0%	+0.0				+0.0	+0.0					
Medical & Dental	-0.2%	-1.7	-1.5	-2.2	-0.3	+1.6	-1.0	+1.1	-3.0	+5.0	-0.2	-1.3
Nurse/ Midwife Manager	+0.2%	+2.5	+3.4	+0.6	-0.3	-5.3	+4.3	-1.3	+0.8	-0.4	+0.2	+0.5
Nurse/ Midwife Specialist & AN/MP	-0.4%	-2.9	-1.5	+1.6	-0.5	-2.5	-2.9	+1.4	-0.3	+0.3	+1.4	+0.0
Staff Nurse/ Staff Midwife	+0.7%	+20.7	+2.6	+2.7	-2.2	+1.5	+9.5	+1.0	+0.5	-3.1	+3.3	+5.0
Nursing/ Midwifery Student	+21.2%	+14.7	+1.7	-2.7	+5.5	+7.0	-12.1	+2.6	-2.9	+5.7	+11.9	-2.0
Nursing/ Midwifery other	+8.8%	+2.9	+0.1	+1.0	+0.0	+1.0	+0.1	+0.6	+0.1	+0.0	+0.1	+0.0
Nursing & Midwifery	+0.8%	+37.8	+6.2	+3.2	+2.6	+1.7	-1.2	+4.2	-1.7	+2.5	+16.8	+3.5
Therapy Professions	-0.5%	-2.1	-0.1	-0.9	+0.5	-2.3	-0.6	+1.0	+3.3	+0.6	-2.8	-1.0
Social Care	+0.4%	+0.2	+0.0	+0.1	+0.1	-0.3	+0.0	+0.6	-0.3	+0.2	+0.0	-0.1
Social Workers	+0.1%	+0.6	+0.0	+1.8	+1.1	-0.5	+0.4	-1.4	+0.2	-0.6	-1.0	+0.7
Psychologists	+0.0%	+0.2	-0.2	-2.3	+1.5	+1.4	-0.1	-0.8	+1.3	-1.0	+0.5	+0.0



Pharmacy	-2.3%	-0.6	+0.0	+0.0	+0.1	-0.7			-0.1	-0.1	+0.2	+0.0
H&SC, Other	-0.7%	-1.0	+1.4	+0.6	-0.2	+1.0	-0.0	-4.6	+0.1	+0.6	+0.0	
Health & Social Care Professionals	-0.2%	-2.7	+1.2	-0.8	+3.0	-1.5	-0.2	-5.2	+4.6	-0.3	-3.1	-0.4
Management (VIII & above)	-0.4%	-0.3	+0.1	+0.0	+0.0	+0.0	+0.0	-0.1	-0.1	+0.0	-0.2	-0.1
Administrative/ Supervisory (V to VII)	-0.1%	-0.4	+1.2	-0.6	+0.3	+0.1	+1.5	+0.4	-0.3	-0.5	-1.4	-1.0
Clerical (III & IV)	-0.5%	-3.9	-2.0	-1.1	+0.0	+1.0	-2.1	+2.7	-1.3	-0.6	-2.2	+1.6
Management & Administrative	-0.4%	-4.6	-0.7	-1.8	+0.4	+1.1	-0.7	+3.1	-1.7	-1.1	-3.7	+0.5
Support	-1.1%	-5.6	-1.1	-1.9	-0.8	-0.7	-2.0	-0.8	+0.5	+0.4	+1.7	-0.8
Maintenance/ Technical	+0.6%	+0.7	-0.6	+0.4	-0.1	+0.0	+0.0	+0.0	+0.0	+0.3	+0.0	+0.7
General Support	-0.7%	-4.9	-1.7	-1.4	-0.9	-0.7	-2.0	-0.8	+0.5	+0.7	+1.7	-0.1
Health Care Assistants	+0.8%	+8.7	-0.1	+4.8	+2.2	-0.6	+0.6	+5.1	+0.3	-1.3	-0.6	-1.6
Care, other	-1.0%	-2.4	-0.1	-1.3	-0.1	-0.1	-0.2	-0.5	+0.8	-0.1	-0.7	-0.1
Patient & Client Care	+0.5%	+6.3	-0.2	+3.5	+2.1	-0.7	+0.4	+4.6	+1.0	-1.4	-1.3	-1.7



Year on Year Summary

	% WTE change since JAN 2023	WTE change since JAN 2023	CHO 1	CHO 2	CHO 3	CHO 4	CHO 5	CHO 6	CHO 7	CHO 8	CHO 9	other Community Services
Total	+0.3%	+341.1	+10.1	+28.1	+29.5	+46.5	+83.0	+39.7	+34.5	+25.9	-33.6	+77.5
Consultants	-0.8%	+35.3	+1.5	+5.0	-0.5	+7.0	+2.5	+4.8	+6.3	+2.6	+3.5	+2.6
Registrars	+1.9%	-0.1	+3.0	+9.4	+10.9	-5.6	+4.0	+4.8	-10.4	-1.2	-10.7	-4.4
SHO/ Interns	-1.7%	+32.6	+1.2	-5.7	-14.9	+16.6	+0.5	-0.8	+6.6	+12.6	+18.4	-2.0
Medical/ Dental, other	+0.0%	-1.7		-1.0		-0.7	+0.1					
Medical & Dental	-0.2%	+66.1	+5.7	+7.7	-4.4	+17.3	+7.1	+8.8	+2.5	+14.0	+11.2	-3.8
Nurse/ Midwife Manager	+0.2%	-19.9	+4.5	+6.4	+1.4	-13.8	-14.7	-5.4	-11.2	+3.3	+7.8	+1.8
Nurse/ Midwife Specialist & AN/MP	-0.4%	+88.9	+5.4	+18.6	+6.1	+8.3	+19.6	+8.2	+15.3	+6.6	-0.5	+1.3
Staff Nurse/ Staff Midwife	+0.7%	-19.1	-6.0	-22.3	+3.5	+11.6	+8.9	-6.2	-2.5	-3.3	-33.1	+30.2
Nursing/ Midwifery Student	+21.2%	-11.9	-0.2	-2.6	-3.1	-1.7	-1.8	+2.5	+2.4	-5.9	-2.5	+1.0
Nursing/ Midwifery other	+8.8%	-2.2	-0.0	+1.0	+0.0	+1.0	+0.2	-0.2	-2.2	+0.0	-2.9	+1.0
Nursing & Midwifery	+0.8%	+35.8	+3.8	+1.1	+7.8	+5.4	+12.3	-1.1	+1.7	+0.7	-31.2	+35.2
Therapy Professions	-0.5%	+1.3	-1.6	+0.1	-0.1	+4.8	-2.1	+3.6	+7.5	+0.2	-10.1	-0.9
Social Care	+0.4%	-9.9	-1.4	-0.3	-0.9	-4.0	+0.2	-3.8	-0.1	-0.7	+0.0	+1.0
Social Workers	+0.1%	+11.6	+1.0	+4.9	-1.4	+0.4	+4.6	-1.6	+4.4	+1.0	-4.2	+2.7
Psychologists	+0.0%	+18.8	-0.3	-4.1	-0.8	+6.1	+3.8	+4.7	+3.9	+1.0	+5.6	-1.0
Pharmacy	-2.3%	+5.7	+0.2	+1.2	-0.1	-0.7			+0.4	+0.9	+2.7	+1.0



H&SC, Other	-0.7%	+22.2	+2.6	+12.6	+0.8	+2.1	-2.4	+4.3	-0.6	+2.3	+0.7	
Health & Social Care Professionals	-0.2%	+49.8	+0.5	+14.3	-2.4	+8.6	+4.1	+7.1	+15.4	+4.7	-5.3	+2.7
Management (VIII & above)	-0.4%	-1.2	-1.1	+0.0	+0.0	+0.0	+0.0	-0.1	-1.0	+1.0	+0.9	-1.0
Administrative/ Supervisory (V to VII)	-0.1%	+33.1	+5.0	+2.7	-0.1	+4.8	+6.4	+0.3	+2.0	+2.1	+2.0	+8.0
Clerical (III & IV)	-0.5%	+88.9	-1.0	+12.5	+10.2	+16.8	+16.1	+14.2	+9.0	+6.3	-4.0	+8.8
Management & Administrative	-0.4%	+120.8	+2.9	+15.2	+10.1	+21.6	+22.5	+14.4	+10.0	+9.4	-1.1	+15.7
Support	-1.1%	-29.3	+0.2	-6.8	-0.6	-9.4	+5.2	-2.1	-2.7	-2.9	-3.9	-6.3
Maintenance/ Technical	+0.6%	-3.3	-0.7	-1.2	+1.9	-1.3	-1.0	+0.2	-1.0	+3.8	-3.0	-1.1
General Support	-0.7%	-32.6	-0.5	-8.0	+1.3	-10.6	+4.2	-1.9	-3.7	+0.9	-6.9	-7.4
Health Care Assistants	+0.8%	+91.9	-1.0	+3.2	+17.2	+4.8	+29.9	+12.3	+6.1	-2.8	+0.2	+22.0
Care, other	-1.0%	+9.3	-1.4	-5.2	-0.1	-0.7	+2.9	+0.0	+2.5	-1.1	-0.6	+13.0
Patient & Client Care	+0.5%	+101.2	-2.4	-2.0	+17.1	+4.2	+32.8	+12.3	+8.5	-3.9	-0.4	+35.0



Year to Date Summary

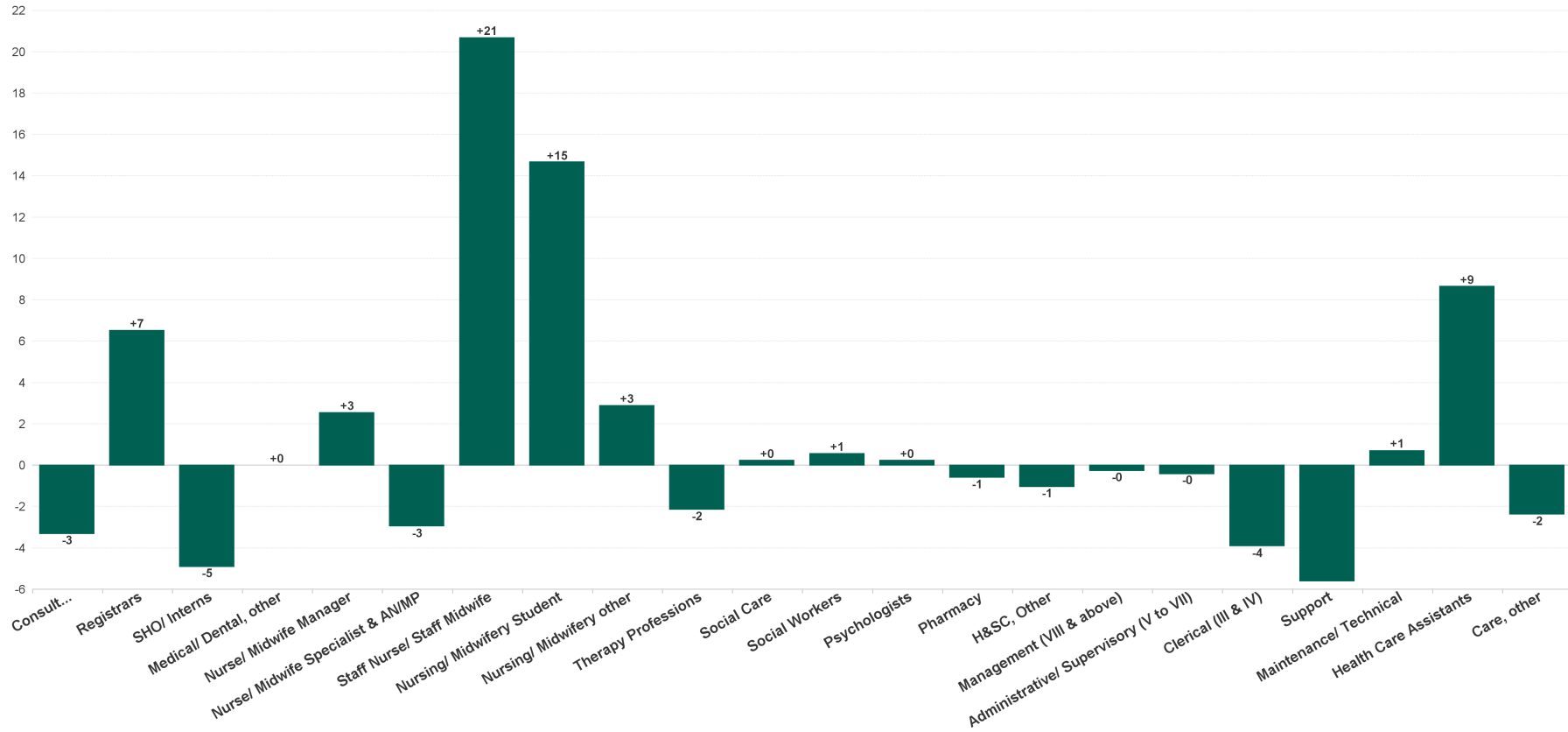
	% WTE change since DEC 2023	WTE change since DEC 2023 (1)	CHO 1	CHO 2	CHO 3	CHO 4	CHO 5	CHO 6	CHO 7	CHO 8	CHO 9	other Community Services
Total	+0.3%	+30.2	+3.3	+0.5	+7.0	+1.6	-4.8	+7.0	-0.4	+5.3	+10.1	+0.7
Consultants	-0.8%	-3.3	-0.7	-0.0	-1.4	-1.1	-1.0	+0.8	+0.2	+0.1	-0.2	+0.0
Registrars	+1.9%	+6.5	-0.8	+2.5	+5.8	-0.5	+0.1	+3.8	-1.9	-2.6	+1.4	-1.3
SHO/ Interns	-1.7%	-4.9	+0.1	-4.6	-4.7	+3.3	-0.1	-3.5	-1.3	+7.4	-1.4	
Medical/ Dental, other	+0.0%	+0.0				+0.0	+0.0					
Medical & Dental	-0.2%	-1.7	-1.5	-2.2	-0.3	+1.6	-1.0	+1.1	-3.0	+5.0	-0.2	-1.3
Nurse/ Midwife Manager	+0.2%	+2.5	+3.4	+0.6	-0.3	-5.3	+4.3	-1.3	+0.8	-0.4	+0.2	+0.5
Nurse/ Midwife Specialist & AN/MP	-0.4%	-2.9	-1.5	+1.6	-0.5	-2.5	-2.9	+1.4	-0.3	+0.3	+1.4	+0.0
Staff Nurse/ Staff Midwife	+0.7%	+20.7	+2.6	+2.7	-2.2	+1.5	+9.5	+1.0	+0.5	-3.1	+3.3	+5.0
Nursing/ Midwifery Student	+21.2%	+14.7	+1.7	-2.7	+5.5	+7.0	-12.1	+2.6	-2.9	+5.7	+11.9	-2.0
Nursing/ Midwifery other	+8.8%	+2.9	+0.1	+1.0	+0.0	+1.0	+0.1	+0.6	+0.1	+0.0	+0.1	+0.0
Nursing & Midwifery	+0.8%	+37.8	+6.2	+3.2	+2.6	+1.7	-1.2	+4.2	-1.7	+2.5	+16.8	+3.5
Therapy Professions	-0.5%	-2.1	-0.1	-0.9	+0.5	-2.3	-0.6	+1.0	+3.3	+0.6	-2.8	-1.0
Social Care	+0.4%	+0.2	+0.0	+0.1	+0.1	-0.3	+0.0	+0.6	-0.3	+0.2	+0.0	-0.1
Social Workers	+0.1%	+0.6	+0.0	+1.8	+1.1	-0.5	+0.4	-1.4	+0.2	-0.6	-1.0	+0.7
Psychologists	+0.0%	+0.2	-0.2	-2.3	+1.5	+1.4	-0.1	-0.8	+1.3	-1.0	+0.5	+0.0
Pharmacy	-2.3%	-0.6	+0.0	+0.0	+0.1	-0.7			-0.1	-0.1	+0.2	+0.0
H&SC, Other	-0.7%	-1.0	+1.4	+0.6	-0.2	+1.0	-0.0	-4.6	+0.1	+0.6	+0.0	
Health & Social Care Professionals	-0.2%	-2.7	+1.2	-0.8	+3.0	-1.5	-0.2	-5.2	+4.6	-0.3	-3.1	-0.4
Management (VIII & above)	-0.4%	-0.3	+0.1	+0.0	+0.0	+0.0	+0.0	-0.1	-0.1	+0.0	-0.2	-0.1
Administrative/ Supervisory (V to VII)	-0.1%	-0.4	+1.2	-0.6	+0.3	+0.1	+1.5	+0.4	-0.3	-0.5	-1.4	-1.0
Clerical (III & IV)	-0.5%	-3.9	-2.0	-1.1	+0.0	+1.0	-2.1	+2.7	-1.3	-0.6	-2.2	+1.6
Management & Administrative	-0.4%	-4.6	-0.7	-1.8	+0.4	+1.1	-0.7	+3.1	-1.7	-1.1	-3.7	+0.5



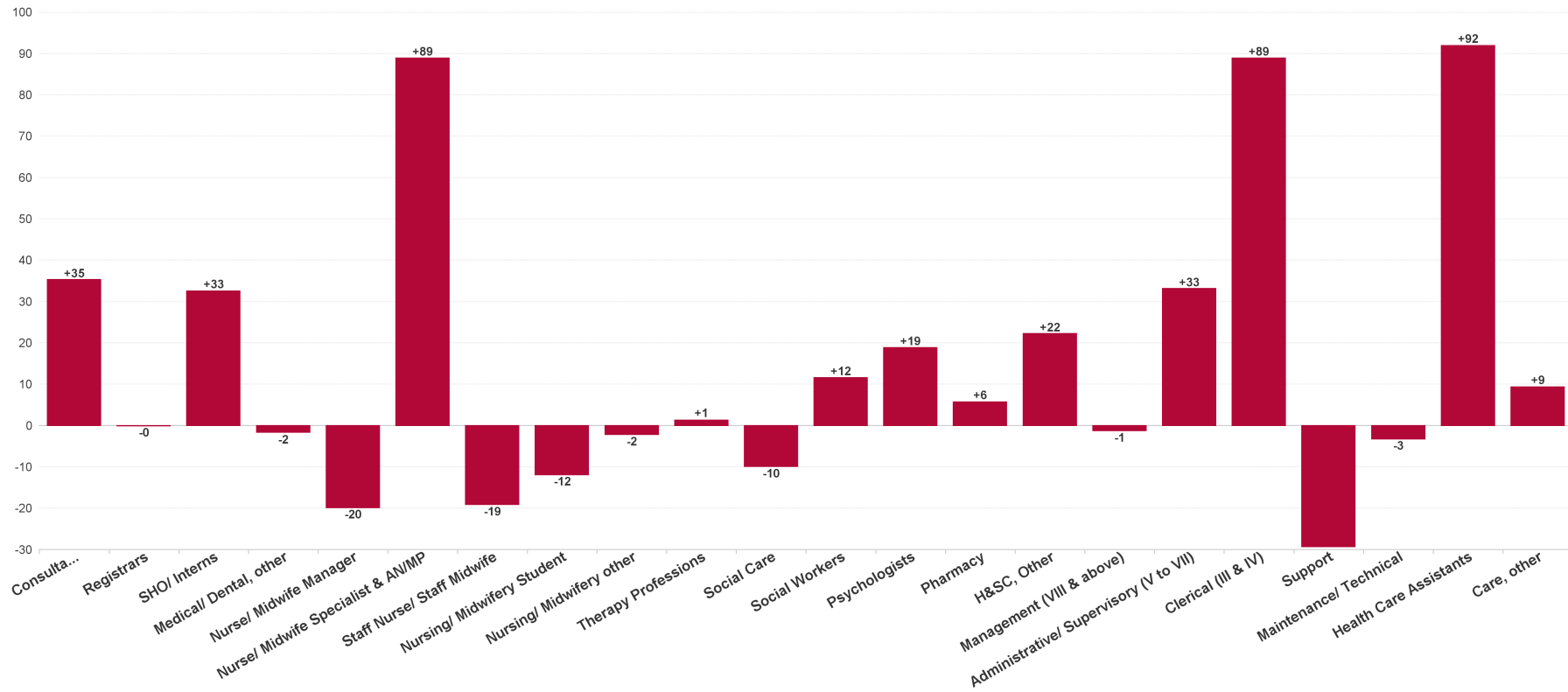
Support	-1.1%	-5.6	-1.1	-1.9	-0.8	-0.7	-2.0	-0.8	+0.5	+0.4	+1.7	-0.8
Maintenance/ Technical	+0.6%	+0.7	-0.6	+0.4	-0.1	+0.0	+0.0	+0.0	+0.0	+0.3	+0.0	+0.7
General Support	-0.7%	-4.9	-1.7	-1.4	-0.9	-0.7	-2.0	-0.8	+0.5	+0.7	+1.7	-0.1
Health Care Assistants	+0.8%	+8.7	-0.1	+4.8	+2.2	-0.6	+0.6	+5.1	+0.3	-1.3	-0.6	-1.6
Care, other	-1.0%	-2.4	-0.1	-1.3	-0.1	-0.1	-0.2	-0.5	+0.8	-0.1	-0.7	-0.1
Patient & Client Care	+0.5%	+6.3	-0.2	+3.5	+2.1	-0.7	+0.4	+4.6	+1.0	-1.4	-1.3	-1.7



Previous Month Summary Chart: Change since DEC 2023



Previous Year Summary Chart: Change since JAN 2023



YTD Summary Chart: Change since DEC 2023

