

# Mental Health Service Employment Report: January 2023

## Employment by Staff Group

Jan 2023	WTE Dec 2020	WTE Dec 2021	WTE Dec 2022	WTE Jan 2023	WTE change since Dec 22	WTE change since Dec 21	% change since Dec 21	WTE change since Dec 20	% change since Dec 20	No. Jan 2023
<b>Overall</b>	<b>10,301</b>	<b>10,362</b>	<b>10,453</b>	<b>10,527</b>	<b>+74</b>	<b>+165</b>	<b>+1.6%</b>	<b>+226</b>	<b>+2.2%</b>	<b>11,704</b>
Consultants	370	386	397	392	-5	+6	+1.5%	+22	+6.0%	431
Registrars	281	327	345	345	+0	+18	+5.6%	+64	+22.8%	389
SHO/ Interns	276	246	267	259	-8	+13	+5.3%	-17	-6.0%	280
Medical/ Dental, other	5	4	4	5	+1	+1	+16.7%	-0	-7.6%	8
<b>Medical &amp; Dental</b>	<b>932</b>	<b>963</b>	<b>1,013</b>	<b>1,001</b>	<b>-12</b>	<b>+38</b>	<b>+4.0%</b>	<b>+69</b>	<b>+7.4%</b>	<b>1,108</b>
Nurse/ Midwife Manager	1,240	1,262	1,245	1,260	+14	-2	-0.1%	+20	+1.6%	1,317
Nurse/ Midwife Specialist & AN/MP	529	545	631	643	+12	+98	+18.0%	+114	+21.5%	681
Staff Nurse/ Staff Midwife	3,076	3,097	2,948	2,932	-16	-165	-5.3%	-145	-4.7%	3,201
<i>Pre-registration Nurse Intern (COVID-19)</i>	42	1				-1	-100.0%	-42	-100.0%	
<i>Pre-registration Nurse/ Midwife Intern</i>	11	28	26	68	+42	+40	+140.3%	+57	+535.5%	261
<i>Post-registration Nurse/ Midwife Student</i>	1						-100.0%	-1	-100.0%	
<i>Nursing/ Midwifery awaiting registration</i>	5	21	39	28	-11	+7	+34.8%	+23	+473.0%	30
Nursing/ Midwifery Student	59	50	65	96	+31	+46	+92.0%	+37	+62.5%	291
Nursing/ Midwifery other	32	31	34	38	+3	+7	+21.8%	+6	+18.9%	41
<b>Nursing &amp; Midwifery</b>	<b>4,935</b>	<b>4,984</b>	<b>4,924</b>	<b>4,967</b>	<b>+44</b>	<b>-16</b>	<b>-0.3%</b>	<b>+32</b>	<b>+0.7%</b>	<b>5,531</b>
Therapy Professions	439	434	435	441	+5	+7	+1.6%	+2	+0.4%	490
Social Care	80	76	72	73	+1	-3	-3.9%	-7	-8.4%	84
Social Workers	373	379	414	420	+6	+41	+10.7%	+47	+12.6%	468
Psychologists	424	427	448	449	+1	+22	+5.1%	+25	+5.9%	502
Pharmacy	21	21	19	19	-0	-2	-8.5%	-2	-8.8%	25
H&SC, Other	108	123	130	132	+2	+9	+7.7%	+24	+22.4%	148
<b>Health &amp; Social Care Professionals</b>	<b>1,444</b>	<b>1,459</b>	<b>1,518</b>	<b>1,533</b>	<b>+15</b>	<b>+74</b>	<b>+5.1%</b>	<b>+89</b>	<b>+6.2%</b>	<b>1,717</b>
Management (VIII & above)	67	65	75	74	-0	+9	+13.9%	+7	+10.7%	75
Administrative/ Supervisory (V to VII)	245	248	287	295	+8	+47	+19.0%	+50	+20.6%	313
Clerical (III & IV)	722	714	707	728	+22	+15	+2.1%	+6	+0.9%	823
<b>Management &amp; Administrative</b>	<b>1,034</b>	<b>1,027</b>	<b>1,068</b>	<b>1,098</b>	<b>+30</b>	<b>+71</b>	<b>+6.9%</b>	<b>+64</b>	<b>+6.2%</b>	<b>1,211</b>
Support	594	574	556	554	-2	-20	-3.5%	-40	-6.7%	638
Maintenance/ Technical	137	129	129	129	+0	-1	-0.5%	-9	-6.3%	132
<b>General Support</b>	<b>732</b>	<b>704</b>	<b>685</b>	<b>683</b>	<b>-2</b>	<b>-21</b>	<b>-2.9%</b>	<b>-49</b>	<b>-6.6%</b>	<b>770</b>
Health Care Assistants	1,022	1,019	1,030	1,027	-3	+9	+0.9%	+6	+0.6%	1,111
Care, other	203	207	216	217	+1	+10	+4.9%	+14	+6.9%	256
<b>Patient &amp; Client Care</b>	<b>1,225</b>	<b>1,226</b>	<b>1,246</b>	<b>1,245</b>	<b>-1</b>	<b>+19</b>	<b>+1.5%</b>	<b>+20</b>	<b>+1.6%</b>	<b>1,367</b>



## Mental Health Services Employment by Administration (HSE / S38): January 2023

Jan 2023	WTE Dec 2020	WTE Dec 2021	WTE Dec 2022	WTE Jan 2023	WTE change since Dec 22	WTE change since Dec 21	% change since Dec 21	WTE change since Dec 20	% change since Dec 20	No. Jan 2023
<b>Total</b>	<b>10,301</b>	<b>10,362</b>	<b>10,453</b>	<b>10,527</b>	<b>+74</b>	<b>+165</b>	<b>+1.6%</b>	<b>+226</b>	<b>+2.2%</b>	<b>11,704</b>
HSE	9,855	9,917	10,023	10,100	+77	+183	+1.8%	+245	+2.5%	11,190
Section 38 Voluntary Agencies	446	445	431	427	-4	-18	-3.9%	-19	-4.3%	514

## Employment by Staff Group

Jan 2023	WTE Dec 2020	WTE Dec 2021	WTE Dec 2022	WTE Jan 2023	WTE change since Dec 22	WTE change since Dec 21	% change since Dec 21	WTE change since Dec 20	% change since Dec 20	No. Jan 2023
<b>Health Service Executive</b>	<b>9,855</b>	<b>9,917</b>	<b>10,023</b>	<b>10,100</b>	<b>+77</b>	<b>+183</b>	<b>+1.8%</b>	<b>+245</b>	<b>+2.5%</b>	<b>11,190</b>
Consultants	349	364	372	366	-6	+1	+0.3%	+17	+4.9%	398
Registrars	266	306	325	328	+3	+22	+7.2%	+62	+23.2%	367
SHO/ Interns	267	240	260	253	-7	+13	+5.4%	-14	-5.2%	273
Medical/ Dental, other	5	4	4	5	+1	+1	+16.7%	-0	-7.6%	8
<b>Medical &amp; Dental</b>	<b>886</b>	<b>914</b>	<b>961</b>	<b>951</b>	<b>-10</b>	<b>+37</b>	<b>+4.0%</b>	<b>+65</b>	<b>+7.3%</b>	<b>1,046</b>
Nurse/ Midwife Manager	1,202	1,222	1,211	1,225	+13	+3	+0.2%	+23	+1.9%	1,280
Nurse/ Midwife Specialist & AN/MP	520	534	620	631	+11	+97	+18.3%	+112	+21.5%	668
Staff Nurse/ Staff Midwife	2,953	2,973	2,838	2,823	-16	-151	-5.1%	-131	-4.4%	3,080
Pre-registration Nurse Intern (COVID-19)	41	1				-1	-100.0%	-41	-100.0%	
Pre-registration Nurse/ Midwife Intern	1	21	18	60	+42	+39	+181.7%	+59	+8359.2%	245
Post-registration Nurse/ Midwife Student	1						-100.0%	-1	-100.0%	
Nursing/ Midwifery awaiting registration	5	21	38	27	-11	+6	+30.0%	+22	+452.4%	29
Nursing/ Midwifery Student	48	43	56	87	+31	+44	+102.3%	+39	+81.1%	274
Nursing/ Midwifery other	29	28	32	35	+3	+7	+23.7%	+6	+20.6%	38
<b>Nursing &amp; Midwifery</b>	<b>4,752</b>	<b>4,801</b>	<b>4,758</b>	<b>4,801</b>	<b>+43</b>	<b>+0</b>	<b>+0.0%</b>	<b>+49</b>	<b>+1.0%</b>	<b>5,340</b>
Therapy Professions	412	407	407	414	+6	+7	+1.6%	+2	+0.4%	453
Social Care	52	50	44	45	+1	-5	-9.7%	-7	-13.4%	52
Social Workers	354	359	394	400	+6	+41	+11.3%	+46	+12.9%	446
Psychologists	402	405	423	424	+1	+20	+4.8%	+23	+5.7%	471
Pharmacy	19	19	17	17	-0	-2	-9.3%	-2	-9.6%	23
H&SC, Other	107	122	130	132	+2	+10	+7.8%	+25	+23.0%	147
<b>Health &amp; Social Care Professionals</b>	<b>1,345</b>	<b>1,362</b>	<b>1,415</b>	<b>1,432</b>	<b>+16</b>	<b>+70</b>	<b>+5.1%</b>	<b>+86</b>	<b>+6.4%</b>	<b>1,592</b>
Management (VIII & above)	65	63	73	72	-0	+9	+14.3%	+7	+11.1%	73
Administrative/ Supervisory (V to VII)	224	229	264	274	+10	+45	+19.5%	+50	+22.3%	288
Clerical (III & IV)	679	670	670	691	+21	+21	+3.2%	+12	+1.8%	779
<b>Management &amp; Administrative</b>	<b>968</b>	<b>963</b>	<b>1,006</b>	<b>1,037</b>	<b>+31</b>	<b>+75</b>	<b>+7.8%</b>	<b>+69</b>	<b>+7.1%</b>	<b>1,140</b>
Support	556	539	523	521	-2	-18	-3.3%	-35	-6.3%	590
Maintenance/ Technical	130	122	123	122	-1	-0	-0.4%	-8	-6.4%	125
<b>General Support</b>	<b>687</b>	<b>661</b>	<b>646</b>	<b>643</b>	<b>-2</b>	<b>-18</b>	<b>-2.7%</b>	<b>-44</b>	<b>-6.4%</b>	<b>715</b>



Health Care Assistants	1,016	1,013	1,024	1,022	-3	+9	+0.9%	+6	+0.6%	1,105
Care, other	200	204	213	214	+1	+10	+5.0%	+14	+6.9%	252
<b>Patient &amp; Client Care</b>	<b>1,216</b>	<b>1,217</b>	<b>1,237</b>	<b>1,236</b>	<b>-1</b>	<b>+19</b>	<b>+1.6%</b>	<b>+20</b>	<b>+1.6%</b>	<b>1,357</b>

## Employment by Staff Group

Jan 2023	WTE Dec 2020	WTE Dec 2021	WTE Dec 2022	WTE Jan 2023	WTE change since Dec 22	WTE change since Dec 21	% change since Dec 21	WTE change since Dec 20	% change since Dec 20	No. Jan 2023
<b>Section 38 Voluntary Agencies</b>	<b>446</b>	<b>445</b>	<b>431</b>	<b>427</b>	<b>-4</b>	<b>-18</b>	<b>-3.9%</b>	<b>-19</b>	<b>-4.3%</b>	<b>514</b>
Consultants	21	21	25	26	+1	+5	+22.2%	+5	+23.5%	33
Registrars	15	21	20	18	-2	-4	-16.9%	+2	+16.1%	22
SHO/ Interns	9	6	7	6	-1	+0	+3.8%	-3	-30.8%	7
<b>Medical &amp; Dental</b>	<b>45</b>	<b>48</b>	<b>52</b>	<b>50</b>	<b>-2</b>	<b>+1</b>	<b>+2.8%</b>	<b>+5</b>	<b>+10.2%</b>	<b>62</b>
Nurse/ Midwife Manager	38	39	34	35	+1	-4	-11.4%	-3	-7.7%	37
Nurse/ Midwife Specialist & AN/MP	9	11	11	11	+0	+0	+3.3%	+2	+23.5%	13
Staff Nurse/ Staff Midwife	123	123	109	109	-1	-15	-11.8%	-14	-11.5%	121
Pre-registration Nurse Intern (COVID-19)	1						-100.0%	-1	-100.0%	
Pre-registration Nurse/ Midwife Intern	10	7	8	8		+1	+14.3%	-2	-20.0%	16
Nursing/ Midwifery awaiting registration			1	1		+1	-100.0%	+1	-100.0%	1
Nursing/ Midwifery Student	11	7	9	9		+2	+28.6%	-2	-18.2%	17
Nursing/ Midwifery other	3	3	3	3						3
<b>Nursing &amp; Midwifery</b>	<b>183</b>	<b>183</b>	<b>166</b>	<b>166</b>	<b>+1</b>	<b>-17</b>	<b>-9.1%</b>	<b>-17</b>	<b>-9.2%</b>	<b>191</b>
Therapy Professions	27	27	28	27	-1	+0	+0.9%	-0	-1.0%	37
Social Care	28	26	28	28	+0	+2	+7.4%	+0	+0.8%	32
Social Workers	19	20	20	20	-0	+0	+0.3%	+1	+6.9%	22
Psychologists	22	22	25	24	-0	+2	+10.6%	+2	+9.3%	31
Pharmacy	2	2	2	2						2
H&SC, Other	1	1	0	0		-0	-20.0%	-1	-51.0%	1
<b>Health &amp; Social Care Professionals</b>	<b>99</b>	<b>97</b>	<b>103</b>	<b>102</b>	<b>-1</b>	<b>+4</b>	<b>+4.6%</b>	<b>+3</b>	<b>+2.9%</b>	<b>125</b>
Management (VIII & above)	2	2	2	2						2
Administrative/ Supervisory (V to VII)	21	19	23	21	-2	+2	+12.9%	+0	+1.8%	25
Clerical (III & IV)	43	44	36	37	+1	-6	-14.6%	-6	-12.9%	44
<b>Management &amp; Administrative</b>	<b>66</b>	<b>64</b>	<b>62</b>	<b>60</b>	<b>-2</b>	<b>-4</b>	<b>-6.2%</b>	<b>-5</b>	<b>-7.8%</b>	<b>71</b>
Support	38	35	33	33	+0	-2	-6.7%	-5	-12.5%	48
Maintenance/ Technical	7	7	6	7	+1	-0	-3.1%	-0	-3.1%	7
<b>General Support</b>	<b>45</b>	<b>42</b>	<b>39</b>	<b>40</b>	<b>+1</b>	<b>-3</b>	<b>-6.1%</b>	<b>-5</b>	<b>-11.0%</b>	<b>55</b>
Health Care Assistants	6	6	6	6						6
Care, other	3	4	3	4	+0	-0	-2.2%	+0	+3.2%	4
<b>Patient &amp; Client Care</b>	<b>9</b>	<b>9</b>	<b>9</b>	<b>9</b>	<b>+0</b>	<b>-0</b>	<b>-0.9%</b>	<b>+0</b>	<b>+1.2%</b>	<b>10</b>



## Mental Health Services Employment by CHO: Jan 2023

Jan 2023	WTE Dec 2020	WTE Dec 2021	WTE Dec 2022	WTE Jan 2023	WTE change since Dec 22	WTE change since Dec 21	% change since Dec 21	WTE change since Dec 20	% change since Dec 20	No. Jan 2023
<b>Overall</b>	<b>10,301</b>	<b>10,362</b>	<b>10,453</b>	<b>10,527</b>	<b>+74</b>	<b>+165</b>	<b>+1.6%</b>	<b>+226</b>	<b>+2.2%</b>	<b>11,704</b>
CHO 1	976	1,007	1,024	1,043	+19	+36	+3.6%	+67	+6.9%	1,150
CHO 2	1,340	1,321	1,329	1,333	+4	+12	+0.9%	-7	-0.5%	1,461
CHO 3	809	824	814	829	+15	+5	+0.6%	+20	+2.5%	920
CHO 4	1,564	1,557	1,562	1,570	+9	+13	+0.8%	+7	+0.4%	1,756
CHO 5	1,188	1,206	1,224	1,237	+13	+32	+2.6%	+49	+4.1%	1,396
CHO 6	626	639	650	650	+0	+11	+1.7%	+24	+3.8%	730
CHO 7	861	884	879	877	-1	-7	-0.8%	+16	+1.8%	973
CHO 8	1,112	1,086	1,091	1,102	+11	+16	+1.5%	-10	-0.9%	1,231
CHO 9	1,331	1,329	1,371	1,382	+11	+53	+4.0%	+51	+3.9%	1,556
other Community Services	494	508	511	503	-8	-5	-1.1%	+8	+1.7%	531

## Mental Health Services Employment by CHO etc. Jan 2023

### CHO 1

Jan 2023	WTE Dec 2020	WTE Dec 2021	WTE Dec 2022	WTE Jan 2023	WTE change since Dec 22	WTE change since Dec 21	% change since Dec 21	WTE change since Dec 20	% change since Dec 20	No. Jan 2023
<b>Overall</b>	<b>976</b>	<b>1,007</b>	<b>1,024</b>	<b>1,043</b>	<b>+20</b>	<b>+36</b>	<b>+3.6%</b>	<b>+67</b>	<b>+6.9%</b>	<b>1,150</b>
Consultants	34	36	34	34	+0	-2	-6.5%	-0	-0.4%	35
Registrars	29	31	35	35	+0	+5	+15.2%	+6	+20.8%	39
SHO/ Interns	23	23	21	22	+1	-1	-3.5%	-1	-3.8%	24
<b>Medical &amp; Dental</b>	<b>86</b>	<b>90</b>	<b>89</b>	<b>91</b>	<b>+2</b>	<b>+1</b>	<b>+1.7%</b>	<b>+5</b>	<b>+5.9%</b>	<b>98</b>
Nurse/ Midwife Manager	119	124	118	119	+1	-5	-4.2%	-1	-0.7%	123
Nurse/ Midwife Specialist & AN/MP	74	75	91	94	+2	+19	+24.7%	+20	+27.2%	100
Staff Nurse/ Staff Midwife	288	303	294	296	+2	-6	-2.1%	+8	+2.8%	316
Nursing/ Midwifery Student	3	3	5	9	+5	+7	+248.1%	+6	+211.0%	29
Nursing/ Midwifery other	1	2	2	2	+0	+0	+3.7%	+1	+106.4%	2
<b>Nursing &amp; Midwifery</b>	<b>485</b>	<b>506</b>	<b>510</b>	<b>520</b>	<b>+10</b>	<b>+14</b>	<b>+2.7%</b>	<b>+35</b>	<b>+7.1%</b>	<b>570</b>
Therapy Professions	36	41	40	43	+2	+1	+2.7%	+7	+18.3%	47
Social Care	4	4	4	4	-0	-0	-3.6%	-0	-0.5%	5
Social Workers	43	42	48	47	-1	+5	+12.8%	+4	+10.1%	52
Psychologists	23	21	25	28	+3	+6	+30.7%	+4	+18.0%	32
Pharmacy	1	1	1	1	-0					1
H&SC, Other	14	17	18	18	+0	+1	+8.8%	+5	+33.2%	21
<b>Health &amp; Social Care Professionals</b>	<b>121</b>	<b>126</b>	<b>136</b>	<b>140</b>	<b>+4</b>	<b>+14</b>	<b>+11.3%</b>	<b>+20</b>	<b>+16.3%</b>	<b>158</b>
Management (VIII & above)	8	8	9	8	-1	-0	-2.5%	+0	+1.4%	8
Administrative/ Supervisory (V to VII)	31	30	30	30	+0	+0	+1.6%	-0	-0.6%	32
Clerical (III & IV)	85	91	89	94	+4	+3	+2.9%	+8	+10.0%	106
<b>Management &amp; Administrative</b>	<b>123</b>	<b>129</b>	<b>128</b>	<b>132</b>	<b>+4</b>	<b>+3</b>	<b>+2.3%</b>	<b>+8</b>	<b>+6.8%</b>	<b>146</b>
Support	65	61	58	59	+1	-2	-3.5%	-6	-9.7%	66
Maintenance/ Technical	16	17	16	16	-1	-1	-8.2%	-1	-3.8%	16
<b>General Support</b>	<b>81</b>	<b>78</b>	<b>74</b>	<b>75</b>	<b>+0</b>	<b>-4</b>	<b>-4.5%</b>	<b>-7</b>	<b>-8.5%</b>	<b>82</b>
Health Care Assistants	68	68	74	74	-0	+7	+10.0%	+7	+9.8%	83
Care, other	11	10	12	11	-1	+0	+3.2%	-0	-2.5%	13
<b>Patient &amp; Client Care</b>	<b>79</b>	<b>78</b>	<b>86</b>	<b>85</b>	<b>-1</b>	<b>+7</b>	<b>+9.1%</b>	<b>+6</b>	<b>+8.1%</b>	<b>96</b>

## CHO 2

Jan 2023	WTE Dec 2020	WTE Dec 2021	WTE Dec 2022	WTE Jan 2023	WTE change since Dec 22	WTE change since Dec 21	% change since Dec 21	WTE change since Dec 20	% change since Dec 20	No. Jan 2023
<b>Overall</b>	<b>1,340</b>	<b>1,321</b>	<b>1,329</b>	<b>1,333</b>	<b>+4</b>	<b>+12</b>	<b>+0.9%</b>	<b>-7</b>	<b>-0.5%</b>	<b>1,461</b>
Consultants	37	37	37	38	+1	+1	+2.4%	+1	+2.3%	41
Registrars	37	35	37	35	-2	-0	-0.9%	-1	-3.8%	37
SHO/ Interns	40	36	39	38	-1	+2	+4.8%	-2	-4.7%	40
Medical/ Dental, other	1		1	1	0	+1	-100.0%			1
<b>Medical &amp; Dental</b>	<b>114</b>	<b>109</b>	<b>114</b>	<b>112</b>	<b>-2</b>	<b>+3</b>	<b>+3.0%</b>	<b>-2</b>	<b>-2.1%</b>	<b>119</b>
Nurse/ Midwife Manager	151	149	142	145	+3	-4	-2.6%	-6	-4.2%	149
Nurse/ Midwife Specialist & AN/MP	79	80	88	88	+1	+8	+10.0%	+9	+11.8%	91
Staff Nurse/ Staff Midwife	355	368	353	351	-2	-17	-4.6%	-4	-1.0%	380
<i>Pre-registration Nurse Intern (COVID-19)</i>	<i>10</i>						<i>-100.0%</i>	<i>-10</i>	<i>-100.0%</i>	
<i>Pre-registration Nurse/ Midwife Intern</i>		8	4	10	+6	+2	+26.8%	+10	-100.0%	43
<i>Nursing/ Midwifery awaiting registration</i>		1	7	5	-2	+4	+290.6%	+5	-100.0%	5
Nursing/ Midwifery Student	10	9	11	15	+4	+6	+63.1%	+5	+48.7%	48
Nursing/ Midwifery other	2	2	4	4	0	+2	+100.0%	+2	+150.0%	4
<b>Nursing &amp; Midwifery</b>	<b>597</b>	<b>608</b>	<b>598</b>	<b>603</b>	<b>+5</b>	<b>-5</b>	<b>-0.8%</b>	<b>+7</b>	<b>+1.1%</b>	<b>672</b>
Therapy Professions	55	52	55	56	+1	+4	+7.7%	+1	+1.4%	60
Social Care	16	15	14	14	-0	-1	-8.3%	-3	-15.7%	15
Social Workers	42	43	44	44	-0	+1	+2.2%	+2	+5.2%	47
Psychologists	37	39	37	37	+0	-1	-3.2%	+0	+1.3%	43
Pharmacy	2	2	3	2	-0	+0	+3.3%	+1	+42.0%	3
H&SC, Other	3	3	3	2	-1	-1	-27.8%	-1	-32.3%	3
<b>Health &amp; Social Care Professionals</b>	<b>155</b>	<b>153</b>	<b>155</b>	<b>155</b>	<b>+1</b>	<b>+2</b>	<b>+1.2%</b>	<b>+1</b>	<b>+0.4%</b>	<b>171</b>
Management (VIII & above)	4	4	3	3	0	-1	-25.0%	-1	-25.0%	3
Administrative/ Supervisory (V to VII)	26	23	25	28	+3	+5	+22.0%	+1	+4.7%	29
Clerical (III & IV)	102	96	98	97	-1	+1	+1.4%	-5	-5.1%	109
<b>Management &amp; Administrative</b>	<b>133</b>	<b>122</b>	<b>126</b>	<b>128</b>	<b>+2</b>	<b>+5</b>	<b>+4.3%</b>	<b>-5</b>	<b>-3.7%</b>	<b>141</b>
Support	31	28	27	26	-0	-2	-6.8%	-5	-16.1%	28
Maintenance/ Technical	33	33	36	36	+0	+2	+7.3%	+3	+8.2%	36
<b>General Support</b>	<b>64</b>	<b>62</b>	<b>62</b>	<b>62</b>	<b>-0</b>	<b>+1</b>	<b>+0.8%</b>	<b>-2</b>	<b>-3.6%</b>	<b>64</b>
Health Care Assistants	211	201	202	201	-1	-0	-0.2%	-10	-4.8%	213
Care, other	66	65	73	72	-1	+6	+9.9%	+5	+7.9%	81
<b>Patient &amp; Client Care</b>	<b>278</b>	<b>267</b>	<b>275</b>	<b>273</b>	<b>-2</b>	<b>+6</b>	<b>+2.3%</b>	<b>-5</b>	<b>-1.8%</b>	<b>294</b>

## CHO 3

Jan 2023	WTE Dec 2020	WTE Dec 2021	WTE Dec 2022	WTE Jan 2023	WTE change since Dec 22	WTE change since Dec 21	% change since Dec 21	WTE change since Dec 20	% change since Dec 20	No. Jan 2023
<b>Overall</b>	<b>809</b>	<b>824</b>	<b>814</b>	<b>829</b>	<b>+15</b>	<b>+5</b>	<b>+0.6%</b>	<b>+20</b>	<b>+2.5%</b>	<b>920</b>
Consultants	24	25	29	29	-0	+4	+13.8%	+5	+20.3%	33
Registrars	15	20	15	17	+2	-3	-14.3%	+2	+11.2%	19
SHO/ Interns	21	22	33	29	-4	+7	+32.4%	+8	+36.0%	30
<b>Medical &amp; Dental</b>	<b>61</b>	<b>67</b>	<b>78</b>	<b>75</b>	<b>-3</b>	<b>+8</b>	<b>+11.6%</b>	<b>+14</b>	<b>+23.6%</b>	<b>82</b>
Nurse/ Midwife Manager	88	93	87	89	+2	-4	-3.8%	+2	+1.7%	93
Nurse/ Midwife Specialist & AN/MP	37	37	44	46	+1	+8	+22.2%	+9	+23.5%	49
Staff Nurse/ Staff Midwife	272	267	243	248	+5	-19	-7.1%	-24	-8.7%	270
<i>Pre-registration Nurse Intern (COVID-19)</i>	3						-100.0%	-3	-100.0%	
<i>Pre-registration Nurse/ Midwife Intern</i>		4	4	9	+5	+5	+113.5%	+9	-100.0%	35
Nursing/ Midwifery Student	3	4	4	9	+5	+5	+113.5%	+6	+175.6%	35
Nursing/ Midwifery other			1	1	+0	+1	-100.0%	+1	-100.0%	1
<b>Nursing &amp; Midwifery</b>	<b>400</b>	<b>402</b>	<b>380</b>	<b>394</b>	<b>+14</b>	<b>-8</b>	<b>-2.1%</b>	<b>-6</b>	<b>-1.6%</b>	<b>448</b>
Therapy Professions	25	27	30	30	+0	+4	+14.1%	+6	+23.2%	33
Social Care	3	3	2	2	+0	-1	-38.3%	-1	-38.3%	2
Social Workers	24	26	28	28	+0	+2	+7.5%	+4	+16.5%	30
Psychologists	91	89	93	93	-0	+4	+4.5%	+2	+2.0%	96
Pharmacy	3	3	3	3	+0	+0	+1.8%	+0	+1.8%	3
H&SC, Other	12	11	10	10	+0	-1	-7.3%	-2	-18.5%	11
<b>Health &amp; Social Care Professionals</b>	<b>158</b>	<b>159</b>	<b>166</b>	<b>166</b>	<b>+1</b>	<b>+8</b>	<b>+4.9%</b>	<b>+8</b>	<b>+5.2%</b>	<b>175</b>
Management (VIII & above)	2	3	4	4	+0	+1	+33.3%	+2	+100.0%	4
Administrative/ Supervisory (V to VII)	19	15	16	18	+2	+3	+20.3%	-1	-5.2%	18
Clerical (III & IV)	50	52	50	49	-1	-3	-5.7%	-1	-1.9%	53
<b>Management &amp; Administrative</b>	<b>71</b>	<b>70</b>	<b>70</b>	<b>71</b>	<b>+1</b>	<b>+1</b>	<b>+1.4%</b>	<b>+0</b>	<b>+0.1%</b>	<b>75</b>
Support	30	32	30	31	+1	-0	-1.0%	+1	+3.7%	35
Maintenance/ Technical	9	7	7	7	+0	-0	-0.7%	-2	-22.2%	7
<b>General Support</b>	<b>39</b>	<b>39</b>	<b>37</b>	<b>38</b>	<b>+1</b>	<b>-0</b>	<b>-1.0%</b>	<b>-1</b>	<b>-2.2%</b>	<b>42</b>
Health Care Assistants	79	86	82	82	+1	-4	-4.8%	+4	+4.5%	95
Care, other	1	1	2	2	+0	+1	+146.0%	+1	+146.0%	3
<b>Patient &amp; Client Care</b>	<b>80</b>	<b>87</b>	<b>84</b>	<b>85</b>	<b>+1</b>	<b>-3</b>	<b>-3.1%</b>	<b>+5</b>	<b>+6.3%</b>	<b>98</b>

## CHO 4

Jan 2023	WTE Dec 2020	WTE Dec 2021	WTE Dec 2022	WTE Jan 2023	WTE change since Dec 22	WTE change since Dec 21	% change since Dec 21	WTE change since Dec 20	% change since Dec 20	No. Jan 2023
<b>Overall</b>	<b>1,564</b>	<b>1,557</b>	<b>1,562</b>	<b>1,570</b>	<b>+9</b>	<b>+13</b>	<b>+0.8%</b>	<b>+7</b>	<b>+0.4%</b>	<b>1,756</b>
Consultants	54	56	60	57	-4	+1	+1.8%	+2	+4.2%	67
Registrars	42	52	56	56	-0	+4	+8.7%	+15	+35.0%	57
SHO/ Interns	43	43	42	41	-1	-1	-3.2%	-2	-3.5%	42
Medical/ Dental, other	2	2	1	2	+1	-0	-14.8%	-0	-16.5%	5
<b>Medical &amp; Dental</b>	<b>141</b>	<b>152</b>	<b>160</b>	<b>156</b>	<b>-4</b>	<b>+4</b>	<b>+2.5%</b>	<b>+15</b>	<b>+10.6%</b>	<b>171</b>
Nurse/ Midwife Manager	192	199	207	209	+2	+10	+5.2%	+17	+8.7%	221
Nurse/ Midwife Specialist & AN/MP	71	68	72	79	+7	+11	+16.6%	+8	+11.5%	83
Staff Nurse/ Staff Midwife	519	502	479	474	-5	-28	-5.6%	-45	-8.7%	514
<i>Pre-registration Nurse Intern (COVID-19)</i>	3						-100.0%	-3	-100.0%	
<i>Pre-registration Nurse/ Midwife Intern</i>		2	7	9	+3	+8	+471.4%	+9	-100.0%	44
<i>Nursing/ Midwifery awaiting registration</i>	1	4		1	+1	-3	-75.0%			1
Nursing/ Midwifery Student	4	6	7	10	+4	+5	+81.8%	+6	+155.0%	45
<b>Nursing &amp; Midwifery</b>	<b>786</b>	<b>774</b>	<b>765</b>	<b>772</b>	<b>+7</b>	<b>-2</b>	<b>-0.2%</b>	<b>-14</b>	<b>-1.8%</b>	<b>863</b>
Therapy Professions	77	74	79	81	+2	+6	+8.5%	+3	+4.3%	90
Social Care	7	7	6	7	+1	+0	+3.9%	-0	-1.6%	8
Social Workers	64	65	73	73	+0	+8	+12.3%	+9	+13.3%	84
Psychologists	94	97	96	93	-3	-4	-3.9%	-1	-1.0%	105
Pharmacy	3	1	2	1	-1	-0	-1.5%	-2	-56.1%	2
H&SC, Other	12	15	18	17	-0	+3	+19.3%	+5	+41.1%	21
<b>Health &amp; Social Care Professionals</b>	<b>258</b>	<b>259</b>	<b>273</b>	<b>273</b>	<b>-1</b>	<b>+14</b>	<b>+5.2%</b>	<b>+14</b>	<b>+5.5%</b>	<b>310</b>
Management (VIII & above)	3	3	3	3	-0	-0	-7.0%	+0	+2.2%	3
Administrative/ Supervisory (V to VII)	22	22	26	28	+2	+6	+28.1%	+7	+30.3%	30
Clerical (III & IV)	94	90	87	90	+4	+0	+0.1%	-4	-4.2%	102
<b>Management &amp; Administrative</b>	<b>119</b>	<b>115</b>	<b>116</b>	<b>122</b>	<b>+5</b>	<b>+6</b>	<b>+5.3%</b>	<b>+3</b>	<b>+2.2%</b>	<b>135</b>
Support	82	79	75	73	-1	-6	-7.6%	-8	-10.3%	85
Maintenance/ Technical	5	5	5	5	+0					6
<b>General Support</b>	<b>87</b>	<b>84</b>	<b>80</b>	<b>78</b>	<b>-1</b>	<b>-6</b>	<b>-7.2%</b>	<b>-8</b>	<b>-9.7%</b>	<b>91</b>
Health Care Assistants	166	166	162	164	+2	-2	-1.2%	-2	-1.4%	173
Care, other	6	7	5	6	+1	-1	-9.4%	-0	-1.9%	13
<b>Patient &amp; Client Care</b>	<b>173</b>	<b>173</b>	<b>167</b>	<b>170</b>	<b>+3</b>	<b>-3</b>	<b>-1.5%</b>	<b>-2</b>	<b>-1.4%</b>	<b>186</b>



## CHO 5

Jan 2023	WTE Dec 2020	WTE Dec 2021	WTE Dec 2022	WTE Jan 2023	WTE change since Dec 22	WTE change since Dec 21	% change since Dec 21	WTE change since Dec 20	% change since Dec 20	No. Jan 2023
<b>Overall</b>	<b>1,188</b>	<b>1,206</b>	<b>1,224</b>	<b>1,237</b>	<b>+13</b>	<b>+32</b>	<b>+2.6%</b>	<b>+49</b>	<b>+4.1%</b>	<b>1,396</b>
Consultants	27	29	33	33	-1	+3	+11.6%	+5	+18.8%	35
Registrars	9	11	12	14	+2	+3	+27.2%	+5	+55.4%	14
SHO/ Interns	36	32	32	33	+1	+1	+3.8%	-3	-7.3%	34
Medical/ Dental, other	2	2	2	2	0	-0	-2.5%	-0	-2.5%	2
<b>Medical &amp; Dental</b>	<b>74</b>	<b>74</b>	<b>80</b>	<b>82</b>	<b>+2</b>	<b>+8</b>	<b>+10.2%</b>	<b>+7</b>	<b>+10.1%</b>	<b>85</b>
Nurse/ Midwife Manager	160	167	175	173	-2	+7	+4.0%	+13	+8.4%	182
Nurse/ Midwife Specialist & AN/MP	54	55	68	68	+0	+13	+24.2%	+14	+25.9%	72
Staff Nurse/ Staff Midwife	411	422	398	393	-4	-28	-6.7%	-18	-4.3%	445
<i>Pre-registration Nurse Intern (COVID-19)</i>	13	1				-1	-100.0%	-13	-100.0%	
<i>Pre-registration Nurse/ Midwife Intern</i>		2	1	6	+5	+3	+149.1%	+6	-100.0%	36
<i>Nursing/ Midwifery awaiting registration</i>		5	6	4	-1	-1	-14.0%	+4	-100.0%	5
Nursing/ Midwifery Student	13	8	7	10	+3	+2	+20.8%	-3	-23.2%	41
Nursing/ Midwifery other	4	4	4	5	+1	+1	+31.0%	+1	+33.5%	5
<b>Nursing &amp; Midwifery</b>	<b>642</b>	<b>655</b>	<b>651</b>	<b>650</b>	<b>-1</b>	<b>-5</b>	<b>-0.8%</b>	<b>+8</b>	<b>+1.3%</b>	<b>745</b>
Therapy Professions	39	32	34	34	+0	+2	+4.8%	-5	-12.6%	37
Social Care	5	5	4	4	+1	-1	-10.7%	-1	-10.7%	5
Social Workers	28	28	29	30	+1	+2	+7.3%	+2	+6.3%	32
Psychologists	21	22	27	29	+2	+7	+32.2%	+8	+37.5%	33
H&SC, Other	8	20	23	23	+0	+3	+16.4%	+16	+197.7%	24
<b>Health &amp; Social Care Professionals</b>	<b>100</b>	<b>107</b>	<b>117</b>	<b>120</b>	<b>+4</b>	<b>+13</b>	<b>+12.6%</b>	<b>+20</b>	<b>+19.9%</b>	<b>131</b>
Management (VIII & above)	6	6	6	5	-1	-1	-16.4%	-1	-16.7%	5
Administrative/ Supervisory (V to VII)	20	25	23	25	+2	+0	+0.8%	+5	+26.3%	26
Clerical (III & IV)	68	70	74	81	+7	+11	+15.0%	+13	+18.4%	89
<b>Management &amp; Administrative</b>	<b>94</b>	<b>101</b>	<b>104</b>	<b>111</b>	<b>+7</b>	<b>+10</b>	<b>+9.6%</b>	<b>+17</b>	<b>+17.8%</b>	<b>120</b>
Support	178	169	175	176	+2	+7	+4.4%	-2	-1.2%	202
Maintenance/ Technical	20	16	14	14	+0	-2	-11.1%	-6	-28.0%	15
<b>General Support</b>	<b>198</b>	<b>185</b>	<b>189</b>	<b>190</b>	<b>+2</b>	<b>+6</b>	<b>+3.1%</b>	<b>-8</b>	<b>-3.9%</b>	<b>217</b>
Health Care Assistants	68	73	73	72	-1	-0	-0.4%	+5	+6.9%	79
Care, other	12	11	12	12	+0	+1	+7.3%	-0	-2.2%	19
<b>Patient &amp; Client Care</b>	<b>80</b>	<b>84</b>	<b>85</b>	<b>84</b>	<b>-1</b>	<b>+1</b>	<b>+0.6%</b>	<b>+4</b>	<b>+5.5%</b>	<b>98</b>

## CHO 6

Jan 2023	WTE Dec 2020	WTE Dec 2021	WTE Dec 2022	WTE Jan 2023	WTE change since Dec 22	WTE change since Dec 21	% change since Dec 21	WTE change since Dec 20	% change since Dec 20	No. Jan 2023
<b>Overall</b>	<b>626</b>	<b>639</b>	<b>650</b>	<b>650</b>	<b>+0</b>	<b>+11</b>	<b>+1.7%</b>	<b>+24</b>	<b>+3.8%</b>	<b>730</b>
Consultants	40	41	45	47	+2	+6	+13.7%	+7	+16.5%	53
Registrars	19	25	30	27	-3	+2	+9.1%	+8	+42.4%	33
SHO/ Interns	13	11	9	8	-1	-3	-25.2%	-5	-36.7%	9
<b>Medical &amp; Dental</b>	<b>72</b>	<b>77</b>	<b>84</b>	<b>82</b>	<b>-2</b>	<b>+5</b>	<b>+6.7%</b>	<b>+10</b>	<b>+13.7%</b>	<b>95</b>
Nurse/ Midwife Manager	77	75	75	77	+2	+2	+2.4%	-0	-0.2%	81
Nurse/ Midwife Specialist & AN/MP	20	22	27	27	-0	+5	+20.5%	+7	+36.9%	31
Staff Nurse/ Staff Midwife	151	154	151	151	-0	-2	-1.5%	-0	-0.1%	165
<i>Pre-registration Nurse/ Midwife Intern</i>				0	+0	+0	-100.0%	+0	-100.0%	1
<i>Nursing/ Midwifery awaiting registration</i>	1	1				-1	-100.0%	-1	-100.0%	
Nursing/ Midwifery Student	1	1		0	+0	-1	-87.5%	-1	-88.0%	1
Nursing/ Midwifery other	2	3	4	4	+0	+1	+28.0%	+2	+92.0%	4
<b>Nursing &amp; Midwifery</b>	<b>251</b>	<b>255</b>	<b>257</b>	<b>259</b>	<b>+2</b>	<b>+4</b>	<b>+1.6%</b>	<b>+8</b>	<b>+3.2%</b>	<b>282</b>
Therapy Professions	39	41	41	40	-1	-0	-0.7%	+2	+4.7%	49
Social Care	28	26	28	28	+0	+2	+7.4%	-0	-0.9%	32
Social Workers	30	33	36	37	+1	+4	+12.5%	+7	+24.5%	42
Psychologists	32	34	38	38	+0	+4	+12.7%	+6	+18.1%	47
H&SC, Other	5	7	6	7	+1	+1	+13.5%	+2	+44.2%	8
<b>Health &amp; Social Care Professionals</b>	<b>134</b>	<b>140</b>	<b>150</b>	<b>151</b>	<b>+1</b>	<b>+11</b>	<b>+7.8%</b>	<b>+17</b>	<b>+12.6%</b>	<b>178</b>
Management (VIII & above)	3	4	5	5	+0	+1	+25.0%	+2	+66.7%	5
Administrative/ Supervisory (V to VII)	24	25	31	27	-4	+2	+8.4%	+3	+11.8%	31
Clerical (III & IV)	43	38	29	29	+0	-9	-23.0%	-13	-31.1%	34
<b>Management &amp; Administrative</b>	<b>70</b>	<b>67</b>	<b>65</b>	<b>62</b>	<b>-3</b>	<b>-6</b>	<b>-8.5%</b>	<b>-8</b>	<b>-12.1%</b>	<b>70</b>
Support	39	38	29	30	+0	-8	-21.1%	-9	-23.6%	35
Maintenance/ Technical	6	6	5	6	+1	-0	-3.7%	-0	-3.7%	6
<b>General Support</b>	<b>45</b>	<b>44</b>	<b>34</b>	<b>35</b>	<b>+1</b>	<b>-8</b>	<b>-18.7%</b>	<b>-9</b>	<b>-20.9%</b>	<b>41</b>
Health Care Assistants	49	51	54	54	+1	+4	+7.1%	+6	+11.7%	56
Care, other	6	6	7	7	+0	+1	+12.8%	+1	+16.5%	8
<b>Patient &amp; Client Care</b>	<b>54</b>	<b>57</b>	<b>60</b>	<b>61</b>	<b>+1</b>	<b>+4</b>	<b>+7.7%</b>	<b>+7</b>	<b>+12.2%</b>	<b>64</b>

## CHO 7

Jan 2023	WTE Dec 2020	WTE Dec 2021	WTE Dec 2022	WTE Jan 2023	WTE change since Dec 22	WTE change since Dec 21	% change since Dec 21	WTE change since Dec 20	% change since Dec 20	No. Jan 2023
<b>Overall</b>	<b>861</b>	<b>884</b>	<b>879</b>	<b>877</b>	<b>-1</b>	<b>-7</b>	<b>-0.8%</b>	<b>+16</b>	<b>+1.8%</b>	<b>973</b>
Consultants	53	56	52	50	-2	-5	-9.2%	-3	-4.9%	54
Registrars	54	51	55	53	-2	+2	+3.4%	-1	-1.9%	66
SHO/ Interns	20	23	26	21	-5	-3	-11.8%	+0	+1.1%	28
<b>Medical &amp; Dental</b>	<b>127</b>	<b>130</b>	<b>133</b>	<b>124</b>	<b>-9</b>	<b>-6</b>	<b>-4.7%</b>	<b>-3</b>	<b>-2.7%</b>	<b>148</b>
Nurse/ Midwife Manager	117	118	109	113	+4	-5	-4.0%	-4	-3.5%	119
Nurse/ Midwife Specialist & AN/MP	47	52	56	56	+0	+4	+8.2%	+10	+20.4%	60
Staff Nurse/ Staff Midwife	202	210	205	202	-2	-7	-3.5%	+1	+0.3%	222
<i>Pre-registration Nurse Intern (COVID-19)</i>	3						-100.0%	-3	-100.0%	
<i>Pre-registration Nurse/ Midwife Intern</i>	1	2	0	0	+0	-1	-83.3%	-0	-50.0%	1
<i>Post-registration Nurse/ Midwife Student</i>	1						-100.0%	-1	-100.0%	
<i>Nursing/ Midwifery awaiting registration</i>	3	4	1	1	+0	-3	-74.0%	-2	-64.9%	1
Nursing/ Midwifery Student	8	5	1	1	+0	-4	-76.6%	-6	-83.9%	2
Nursing/ Midwifery other	6	5	6	7	+1	+2	+28.8%	+1	+17.1%	8
<b>Nursing &amp; Midwifery</b>	<b>379</b>	<b>390</b>	<b>377</b>	<b>380</b>	<b>+3</b>	<b>-11</b>	<b>-2.7%</b>	<b>+0</b>	<b>+0.1%</b>	<b>411</b>
Therapy Professions	53	52	51	52	+1	+0	+0.6%	-1	-1.8%	57
Social Care	7	7	7	7	+0	+0	+2.8%	-0	-3.0%	8
Social Workers	38	38	38	40	+2	+2	+4.3%	+2	+6.5%	45
Psychologists	29	28	35	35	-0	+7	+25.3%	+5	+17.9%	40
Pharmacy	1	1	0	0	+0	-1	-60.0%	-1	-60.0%	1
H&SC, Other	18	19	19	19	+1	+0	+1.8%	+1	+7.4%	22
<b>Health &amp; Social Care Professionals</b>	<b>147</b>	<b>145</b>	<b>150</b>	<b>154</b>	<b>+4</b>	<b>+9</b>	<b>+6.1%</b>	<b>+7</b>	<b>+4.9%</b>	<b>173</b>
Management (VIII & above)	4	5	5	5	+0	+0	+1.0%	+1	+28.0%	5
Administrative/ Supervisory (V to VII)	17	17	22	23	+1	+6	+35.4%	+6	+35.1%	25
Clerical (III & IV)	49	50	55	54	-2	+4	+7.4%	+5	+9.7%	59
<b>Management &amp; Administrative</b>	<b>70</b>	<b>72</b>	<b>83</b>	<b>82</b>	<b>-1</b>	<b>+10</b>	<b>+13.6%</b>	<b>+12</b>	<b>+16.9%</b>	<b>89</b>
Support	17	18	16	16	-0	-3	-14.0%	-2	-9.5%	18
Maintenance/ Technical	2	2	2	2	+0					2
<b>General Support</b>	<b>19</b>	<b>20</b>	<b>18</b>	<b>18</b>	<b>-0</b>	<b>-3</b>	<b>-12.6%</b>	<b>-2</b>	<b>-8.5%</b>	<b>20</b>
Health Care Assistants	34	34	31	30	-0	-4	-12.5%	-4	-12.4%	32
Care, other	84	92	88	90	+2	-2	-2.2%	+6	+6.6%	100
<b>Patient &amp; Client Care</b>	<b>119</b>	<b>127</b>	<b>118</b>	<b>120</b>	<b>+2</b>	<b>-6</b>	<b>-5.0%</b>	<b>+1</b>	<b>+1.1%</b>	<b>132</b>

## CHO 8

Jan 2023	WTE Dec 2020	WTE Dec 2021	WTE Dec 2022	WTE Jan 2023	WTE change since Dec 22	WTE change since Dec 21	% change since Dec 21	WTE change since Dec 20	% change since Dec 20	No. Jan 2023
<b>Overall</b>	<b>1,112</b>	<b>1,086</b>	<b>1,091</b>	<b>1,102</b>	<b>+11</b>	<b>+16</b>	<b>+1.5%</b>	<b>-10</b>	<b>-0.9%</b>	<b>1,231</b>
Consultants	36	38	36	36	-1	-2	-6.3%	-1	-1.9%	38
Registrars	31	40	29	29	+0	-10	-26.4%	-2	-6.0%	31
SHO/ Interns	26	23	29	31	+2	+8	+32.7%	+4	+17.0%	32
<b>Medical &amp; Dental</b>	<b>94</b>	<b>101</b>	<b>94</b>	<b>96</b>	<b>+1</b>	<b>-5</b>	<b>-5.3%</b>	<b>+2</b>	<b>+2.0%</b>	<b>101</b>
Nurse/ Midwife Manager	120	118	114	114	+0	-4	-3.4%	-6	-5.3%	120
Nurse/ Midwife Specialist & AN/MP	60	66	75	75	+0	+9	+13.9%	+15	+25.9%	81
Staff Nurse/ Staff Midwife	342	323	323	322	-1	-1	-0.3%	-20	-5.8%	352
<i>Pre-registration Nurse Intern (COVID-19)</i>	1						-100.0%	-1	-100.0%	
<i>Pre-registration Nurse/ Midwife Intern</i>		3	1	8	+7	+5	+169.6%	+8	-100.0%	29
<i>Nursing/ Midwifery awaiting registration</i>		2	8	5	-3	+4	+184.9%	+5	-100.0%	6
Nursing/ Midwifery Student	1	5	9	13	+4	+8	+175.8%	+12	+1171.8%	35
Nursing/ Midwifery other	3	3	3	3	-0	-0	-2.7%	-0	-2.7%	3
<b>Nursing &amp; Midwifery</b>	<b>526</b>	<b>515</b>	<b>523</b>	<b>527</b>	<b>+4</b>	<b>+12</b>	<b>+2.4%</b>	<b>+1</b>	<b>+0.3%</b>	<b>591</b>
Therapy Professions	43	41	36	35	-1	-6	-14.1%	-8	-18.3%	39
Social Care	7	7	6	6	-0	-1	-16.8%	-1	-14.0%	7
Social Workers	44	47	50	51	+1	+3	+6.8%	+7	+15.7%	58
Psychologists	37	39	36	37	+1	-3	-6.6%	+0	+0.2%	38
Pharmacy	2	2	2	2	-0	-0	-17.0%	+0	+4.0%	3
H&SC, Other	21	15	16	16	-0	+1	+9.7%	-5	-24.4%	19
<b>Health &amp; Social Care Professionals</b>	<b>153</b>	<b>151</b>	<b>146</b>	<b>146</b>	<b>+0</b>	<b>-5</b>	<b>-3.4%</b>	<b>-7</b>	<b>-4.6%</b>	<b>164</b>
Management (VIII & above)	3	4	3	3	0	-1	-18.9%	+0	+1.7%	3
Administrative/ Supervisory (V to VII)	20	22	28	27	-1	+5	+25.1%	+7	+35.3%	29
Clerical (III & IV)	97	88	88	95	+8	+7	+8.2%	-2	-1.8%	115
<b>Management &amp; Administrative</b>	<b>120</b>	<b>114</b>	<b>119</b>	<b>126</b>	<b>+7</b>	<b>+12</b>	<b>+10.5%</b>	<b>+5</b>	<b>+4.5%</b>	<b>147</b>
Support	31	30	27	26	-1	-3	-11.6%	-5	-15.7%	31
Maintenance/ Technical	28	25	25	25	+0	-0	-0.1%	-3	-10.7%	26
<b>General Support</b>	<b>59</b>	<b>55</b>	<b>52</b>	<b>51</b>	<b>-0</b>	<b>-3</b>	<b>-6.4%</b>	<b>-8</b>	<b>-13.3%</b>	<b>57</b>
Health Care Assistants	156	147	152	151	-0	+4	+2.8%	-5	-3.1%	166
Care, other	3	3	5	4	-0	+1	+49.7%	+1	+41.2%	5
<b>Patient &amp; Client Care</b>	<b>159</b>	<b>150</b>	<b>156</b>	<b>156</b>	<b>-0</b>	<b>+6</b>	<b>+3.7%</b>	<b>-4</b>	<b>-2.2%</b>	<b>171</b>

## CHO 9

Jan 2023	WTE Dec 2020	WTE Dec 2021	WTE Dec 2022	WTE Jan 2023	WTE change since Dec 22	WTE change since Dec 21	% change since Dec 21	WTE change since Dec 20	% change since Dec 20	No. Jan 2023
<b>Overall</b>	<b>1,331</b>	<b>1,329</b>	<b>1,371</b>	<b>1,382</b>	<b>+11</b>	<b>+53</b>	<b>+4.0%</b>	<b>+51</b>	<b>+3.9%</b>	<b>1,556</b>
Consultants	46	50	55	55	-0	+5	+9.7%	+9	+18.5%	59
Registrars	32	48	57	58	+1	+10	+21.2%	+26	+81.3%	69
SHO/ Interns	54	30	36	34	-2	+4	+14.0%	-19	-36.1%	39
<b>Medical &amp; Dental</b>	<b>132</b>	<b>128</b>	<b>148</b>	<b>147</b>	<b>-1</b>	<b>+19</b>	<b>+15.0%</b>	<b>+15</b>	<b>+11.6%</b>	<b>167</b>
Nurse/ Midwife Manager	138	141	138	138	+0	-3	-2.2%	+0	+0.1%	144
Nurse/ Midwife Specialist & AN/MP	76	78	99	100	+1	+22	+28.1%	+24	+32.0%	103
Staff Nurse/ Staff Midwife	371	376	351	351	+0	-24	-6.5%	-20	-5.5%	388
<i>Pre-registration Nurse Intern (COVID-19)</i>	5						-100.0%	-5	-100.0%	
<i>Pre-registration Nurse/ Midwife Intern</i>	10	8	8	18	+10	+11	+138.0%	+8	+78.6%	45
<i>Nursing/ Midwifery awaiting registration</i>		1	14	9	-5	+8	+816.2%	+9	-100.0%	10
Nursing/ Midwifery Student	16	9	22	27	+6	+19	+215.6%	+12	+74.4%	55
Nursing/ Midwifery other	13	10	9	11	+2	+1	+12.2%	-1	-11.0%	13
<b>Nursing &amp; Midwifery</b>	<b>613</b>	<b>613</b>	<b>619</b>	<b>628</b>	<b>+9</b>	<b>+14</b>	<b>+2.3%</b>	<b>+14</b>	<b>+2.3%</b>	<b>703</b>
Therapy Professions	61	61	60	60	-0	-1	-2.4%	-1	-2.0%	68
Social Care	1	1	1	1	0	-0	-1.0%	-0	-1.0%	1
Social Workers	43	42	57	58	+1	+16	+37.5%	+15	+35.4%	65
Psychologists	53	52	56	54	-2	+2	+4.1%	+1	+2.1%	63
Pharmacy	9	9	7	7	+0	-2	-20.7%	-1	-15.4%	10
H&SC, Other	14	17	17	18	+1	+1	+4.4%	+4	+26.4%	19
<b>Health &amp; Social Care Professionals</b>	<b>181</b>	<b>183</b>	<b>198</b>	<b>198</b>	<b>+1</b>	<b>+15</b>	<b>+8.3%</b>	<b>+17</b>	<b>+9.7%</b>	<b>226</b>
Management (VIII & above)	5	5	5	5	+0	+0	+2.5%	-0	-0.2%	5
Administrative/ Supervisory (V to VII)	29	29	38	38	-1	+9	+31.2%	+9	+30.0%	40
Clerical (III & IV)	114	115	109	111	+3	-4	-3.3%	-3	-2.4%	128
<b>Management &amp; Administrative</b>	<b>148</b>	<b>149</b>	<b>152</b>	<b>154</b>	<b>+2</b>	<b>+5</b>	<b>+3.5%</b>	<b>+6</b>	<b>+4.0%</b>	<b>173</b>
Support	104	104	95	94	-1	-10	-9.4%	-10	-9.9%	114
Maintenance/ Technical	11	11	11	11	+0	+0	+3.5%			11
<b>General Support</b>	<b>115</b>	<b>114</b>	<b>106</b>	<b>105</b>	<b>-1</b>	<b>-9</b>	<b>-8.2%</b>	<b>-10</b>	<b>-9.0%</b>	<b>125</b>
Health Care Assistants	129	131	137	138	+2	+8	+5.8%	+9	+7.2%	149
Care, other	12	11	12	12	-0	+1	+9.6%	-0	-3.0%	13
<b>Patient &amp; Client Care</b>	<b>142</b>	<b>142</b>	<b>149</b>	<b>150</b>	<b>+1</b>	<b>+9</b>	<b>+6.1%</b>	<b>+9</b>	<b>+6.3%</b>	<b>162</b>

## other Community Services

Jan 2023	WTE Dec 2020	WTE Dec 2021	WTE Dec 2022	WTE Jan 2023	WTE change since Dec 22	WTE change since Dec 21	% change since Dec 21	WTE change since Dec 20	% change since Dec 20	No. Jan 2023
<b>Overall</b>	<b>494</b>	<b>508</b>	<b>511</b>	<b>503</b>	<b>-8</b>	<b>-5</b>	<b>-1.1%</b>	<b>+8</b>	<b>+1.7%</b>	<b>531</b>
Consultants	17	17	15	14	-1	-4	-20.5%	-3	-17.7%	16
Registrars	14	15	19	21	+2	+6	+37.9%	+7	+51.0%	24
SHO/ Interns		3		2	+2	-1	-34.0%	+2	-100.0%	2
<b>Medical &amp; Dental</b>	<b>31</b>	<b>36</b>	<b>34</b>	<b>37</b>	<b>+3</b>	<b>+1</b>	<b>+3.6%</b>	<b>+6</b>	<b>+20.2%</b>	<b>42</b>
Nurse/ Midwife Manager	76	78	81	82	+1	+4	+5.0%	+6	+8.1%	85
Nurse/ Midwife Specialist & AN/MP	13	11	11	10	-1	-1	-12.2%	-3	-21.3%	11
Staff Nurse/ Staff Midwife	165	173	151	142	-9	-31	-18.0%	-23	-14.0%	149
Nursing/ Midwifery other	2	2	2	1	-1	-1	-49.7%	-1	-49.0%	1
<b>Nursing &amp; Midwifery</b>	<b>255</b>	<b>264</b>	<b>245</b>	<b>235</b>	<b>-10</b>	<b>-30</b>	<b>-11.2%</b>	<b>-21</b>	<b>-8.1%</b>	<b>246</b>
Therapy Professions	12	13	10	10	+0	-3	-22.0%	-2	-15.2%	10
Social Care	2	2	1	1	-0	-1	-54.0%	-1	-51.6%	1
Social Workers	17	14	11	12	+1	-2	-16.3%	-6	-31.6%	13
Psychologists	6	6	5	5	-0	-1	-22.5%	-1	-16.1%	5
Pharmacy	1	1	2	2	+0	+1	+100.0%	+1	+100.0%	2
<b>Health &amp; Social Care Professionals</b>	<b>38</b>	<b>36</b>	<b>29</b>	<b>30</b>	<b>+1</b>	<b>-7</b>	<b>-18.3%</b>	<b>-8</b>	<b>-21.7%</b>	<b>31</b>
Management (VIII & above)	30	24	33	34	+1	+10	+41.7%	+4	+13.1%	34
Administrative/ Supervisory (V to VII)	37	41	46	50	+4	+10	+23.6%	+14	+37.6%	53
Clerical (III & IV)	18	22	28	27	-1	+5	+21.5%	+9	+46.5%	28
<b>Management &amp; Administrative</b>	<b>85</b>	<b>87</b>	<b>106</b>	<b>111</b>	<b>+5</b>	<b>+24</b>	<b>+28.1%</b>	<b>+26</b>	<b>+30.9%</b>	<b>115</b>
Support	16	16	25	23	-2	+7	+41.4%	+7	+42.2%	24
Maintenance/ Technical	7	7	8	7	-1	+0	+0.1%			7
<b>General Support</b>	<b>23</b>	<b>23</b>	<b>33</b>	<b>30</b>	<b>-3</b>	<b>+7</b>	<b>+28.9%</b>	<b>+7</b>	<b>+29.4%</b>	<b>31</b>
Health Care Assistants	62	62	64	60	-5	-2	-3.2%	-2	-3.9%	65
Care, other	1	1	0	1	+0	+0	+90.0%	+0	+90.0%	1
<b>Patient &amp; Client Care</b>	<b>63</b>	<b>62</b>	<b>65</b>	<b>61</b>	<b>-4</b>	<b>-2</b>	<b>-2.4%</b>	<b>-2</b>	<b>-3.2%</b>	<b>66</b>

## Mental Health Services Employment by Grade Group: Jan 2023

Jan 2023	WTE Dec 2020	WTE Dec 2021	WTE Dec 2022	WTE Jan 2023	WTE change since Dec 22	WTE change since Dec 21	% change since Dec 21	WTE change since Dec 20	% change since Dec 20	No. Jan 2023
<b>Overall</b>	<b>10,301</b>	<b>10,362</b>	<b>10,453</b>	<b>10,527</b>	<b>+74</b>	<b>+165</b>	<b>+1.6%</b>	<b>+226</b>	<b>+2.2%</b>	<b>11,704</b>
Consultant Medicine	1	1	1	1						1
Consultant Psychiatry	369	385	396	391	-5	+6	+1.5%	+22	+6.0%	430
<b>Consultants</b>	<b>370</b>	<b>386</b>	<b>397</b>	<b>392</b>	<b>-5</b>	<b>+6</b>	<b>+1.5%</b>	<b>+22</b>	<b>+6.0%</b>	<b>431</b>
<b>Registrars</b>	<b>281</b>	<b>327</b>	<b>345</b>	<b>345</b>	<b>+0</b>	<b>+18</b>	<b>+5.6%</b>	<b>+64</b>	<b>+22.8%</b>	<b>389</b>
Senior House Officer	271	239	262	255	-7	+16	+6.7%	-16	-5.7%	274
Interns	5	7	5	4	-1	-3	-43.0%	-1	-20.2%	6
<b>SHO/ Interns</b>	<b>276</b>	<b>246</b>	<b>267</b>	<b>259</b>	<b>-8</b>	<b>+13</b>	<b>+5.3%</b>	<b>-17</b>	<b>-6.0%</b>	<b>280</b>
<b>Medical/ Dental, other</b>	<b>5</b>	<b>4</b>	<b>4</b>	<b>5</b>	<b>+1</b>	<b>+1</b>	<b>+16.7%</b>	<b>-0</b>	<b>-7.6%</b>	<b>8</b>
<b>Medical &amp; Dental</b>	<b>932</b>	<b>963</b>	<b>1,013</b>	<b>1,001</b>	<b>-12</b>	<b>+38</b>	<b>+4.0%</b>	<b>+69</b>	<b>+7.4%</b>	<b>1,108</b>
Clinical Nurse/ Midwife Manager	1,041	1,053	1,036	1,049	+14	-4	-0.4%	+8	+0.8%	1,102
Director Nursing/Midwifery, Assistant	171	180	176	176	+0	-4	-2.2%	+6	+3.4%	181
Director of Nursing/Midwifery	28	28	34	34	+0	+6	+22.3%	+6	+21.6%	34
<b>Nurse/ Midwife Manager</b>	<b>1,240</b>	<b>1,262</b>	<b>1,245</b>	<b>1,260</b>	<b>+14</b>	<b>-2</b>	<b>-0.1%</b>	<b>+20</b>	<b>+1.6%</b>	<b>1,317</b>
Advanced Nurse/ Midwife Practitioner	39	46	68	69	+0	+23	+50.6%	+29	+74.1%	71
Clinical Nurse/ Midwife Specialist	489	499	563	574	+11	+75	+15.0%	+85	+17.3%	610
<b>Nurse/ Midwife Specialist &amp; AN/MP</b>	<b>529</b>	<b>545</b>	<b>631</b>	<b>643</b>	<b>+12</b>	<b>+98</b>	<b>+18.0%</b>	<b>+114</b>	<b>+21.5%</b>	<b>681</b>
Staff Midwives	1						-100.0%	-1	-100.0%	
Staff Nurse [Psychiatric]	2,965	2,987	2,835	2,821	-14	-166	-5.5%	-143	-4.8%	3,081
Staff Nurses [General/ Children's]	106	107	106	104	-2	-3	-2.4%	-2	-2.1%	113
Staff Nurse [Intellectual Disability]	4	3	7	6	-0	+3	+89.1%	+2	+46.7%	7
<b>Staff Nurse/ Staff Midwife</b>	<b>3,076</b>	<b>3,097</b>	<b>2,948</b>	<b>2,932</b>	<b>-16</b>	<b>-165</b>	<b>-5.3%</b>	<b>-145</b>	<b>-4.7%</b>	<b>3,201</b>
Pre-registration Nurse Intern (COVID-19)	42	1				-1	-100.0%	-42	-100.0%	
Pre-registration Nurse/ Midwife Intern	11	28	26	68	+42	+40	+140.3%	+57	+535.5%	261
Post-registration Nurse/ Midwife Student	1						-100.0%	-1	-100.0%	
Nursing/ Midwifery awaiting registration	5	21	39	28	-11	+7	+34.8%	+23	+473.0%	30
<b>Nursing/ Midwifery Student</b>	<b>59</b>	<b>50</b>	<b>65</b>	<b>96</b>	<b>+31</b>	<b>+46</b>	<b>+92.0%</b>	<b>+37</b>	<b>+62.5%</b>	<b>291</b>
Nursing Education/Clinical	32	31	34	38	+3	+7	+21.8%	+6	+18.9%	41
<b>Nursing/ Midwifery other</b>	<b>32</b>	<b>31</b>	<b>34</b>	<b>38</b>	<b>+3</b>	<b>+7</b>	<b>+21.8%</b>	<b>+6</b>	<b>+18.9%</b>	<b>41</b>
<b>Nursing &amp; Midwifery</b>	<b>4,935</b>	<b>4,984</b>	<b>4,924</b>	<b>4,967</b>	<b>+44</b>	<b>-16</b>	<b>-0.3%</b>	<b>+32</b>	<b>+0.7%</b>	<b>5,531</b>
Dietitians	21	21	18	19	+1	-1	-6.9%	-2	-8.2%	22
Occupational Therapists	346	349	346	350	+4	+2	+0.5%	+5	+1.4%	385
Physiotherapists	2	3	3	3	+0	+0	+1.7%	+1	+22.8%	4
Podiatrists & Chiropodists	1	1	1	1	-0	-0	-21.6%	-0	-13.7%	1
Speech & Language Therapists	70	61	68	68	+0	+7	+10.8%	-2	-2.9%	78
<b>Therapy Professions</b>	<b>439</b>	<b>434</b>	<b>435</b>	<b>441</b>	<b>+5</b>	<b>+7</b>	<b>+1.6%</b>	<b>+2</b>	<b>+0.4%</b>	<b>490</b>
<b>Social Care</b>	<b>80</b>	<b>76</b>	<b>72</b>	<b>73</b>	<b>+1</b>	<b>-3</b>	<b>-3.9%</b>	<b>-7</b>	<b>-8.4%</b>	<b>84</b>
<b>Social Workers</b>	<b>373</b>	<b>379</b>	<b>414</b>	<b>420</b>	<b>+6</b>	<b>+41</b>	<b>+10.7%</b>	<b>+47</b>	<b>+12.6%</b>	<b>468</b>
<b>Psychologists</b>	<b>424</b>	<b>427</b>	<b>448</b>	<b>449</b>	<b>+1</b>	<b>+22</b>	<b>+5.1%</b>	<b>+25</b>	<b>+5.9%</b>	<b>502</b>
Pharmacists	17	16	16	15	-0	-1	-8.0%	-2	-11.3%	19
Pharmacy Technicians	4	4	4	4	+0	-0	-10.3%	+0	+2.7%	6
<b>Pharmacy</b>	<b>21</b>	<b>21</b>	<b>19</b>	<b>19</b>	<b>-0</b>	<b>-2</b>	<b>-8.5%</b>	<b>-2</b>	<b>-8.8%</b>	<b>25</b>
Counsellor Therapists	101	115	124	126	+2	+11	+9.4%	+25	+24.7%	137
Other Health & Social Care	5	6	3	3	+0	-3	-48.8%	-2	-44.6%	7
Play Therapists/ Specialists	1	2	3	3		+2	+94.4%	+2	+110.1%	4
<b>H&amp;SC, Other</b>	<b>108</b>	<b>123</b>	<b>130</b>	<b>132</b>	<b>+2</b>	<b>+9</b>	<b>+7.7%</b>	<b>+24</b>	<b>+22.4%</b>	<b>148</b>
<b>Health &amp; Social Care Professionals</b>	<b>1,444</b>	<b>1,459</b>	<b>1,518</b>	<b>1,533</b>	<b>+15</b>	<b>+74</b>	<b>+5.1%</b>	<b>+89</b>	<b>+6.2%</b>	<b>1,717</b>

Jan 2023	WTE Dec 2020	WTE Dec 2021	WTE Dec 2022	WTE Jan 2023	WTE change since Dec 22	WTE change since Dec 21	% change since Dec 21	WTE change since Dec 20	% change since Dec 20	No. Jan 2023
<b>Overall</b>	<b>10,301</b>	<b>10,362</b>	<b>10,453</b>	<b>10,527</b>	<b>+74</b>	<b>+165</b>	<b>+1.6%</b>	<b>+226</b>	<b>+2.2%</b>	<b>11,704</b>
Executive Management	15	14	14	14	-0	+0	+0.1%	-1	-6.4%	14
Senior Management (VIII & GM)	52	52	61	61	-0	+9	+17.5%	+8	+15.6%	61
<b>Management (VIII &amp; above)</b>	<b>67</b>	<b>65</b>	<b>75</b>	<b>74</b>	<b>-0</b>	<b>+9</b>	<b>+13.9%</b>	<b>+7</b>	<b>+10.7%</b>	<b>75</b>
Middle Management (V-VII)	243	246	285	293	+8	+47	+19.1%	+50	+20.7%	311
Other Administrative	2	2	2	2						2
<b>Administrative/ Supervisory (V to VII)</b>	<b>245</b>	<b>248</b>	<b>287</b>	<b>295</b>	<b>+8</b>	<b>+47</b>	<b>+19.0%</b>	<b>+50</b>	<b>+20.6%</b>	<b>313</b>
General Administrative (III & IV)	722	714	707	728	+22	+15	+2.1%	+6	+0.9%	823
<b>Clerical (III &amp; IV)</b>	<b>722</b>	<b>714</b>	<b>707</b>	<b>728</b>	<b>+22</b>	<b>+15</b>	<b>+2.1%</b>	<b>+6</b>	<b>+0.9%</b>	<b>823</b>
<b>Management &amp; Administrative</b>	<b>1,034</b>	<b>1,027</b>	<b>1,068</b>	<b>1,098</b>	<b>+30</b>	<b>+71</b>	<b>+6.9%</b>	<b>+64</b>	<b>+6.2%</b>	<b>1,211</b>
Catering	64	72	68	68	+0	-4	-5.5%	+4	+7.0%	74
Household Services	441	414	397	396	-1	-18	-4.2%	-45	-10.2%	465
Other Support	42	41	40	41	+0	-0	-0.1%	-1	-3.2%	47
Portering	47	48	51	49	-1	+2	+3.4%	+2	+4.1%	52
<b>Support</b>	<b>594</b>	<b>574</b>	<b>556</b>	<b>554</b>	<b>-2</b>	<b>-20</b>	<b>-3.5%</b>	<b>-40</b>	<b>-6.7%</b>	<b>638</b>
Maintenance	137	129	129	129	+0	-1	-0.5%	-9	-6.3%	132
<b>Maintenance/ Technical</b>	<b>137</b>	<b>129</b>	<b>129</b>	<b>129</b>	<b>+0</b>	<b>-1</b>	<b>-0.5%</b>	<b>-9</b>	<b>-6.3%</b>	<b>132</b>
<b>General Support</b>	<b>732</b>	<b>704</b>	<b>685</b>	<b>683</b>	<b>-2</b>	<b>-21</b>	<b>-2.9%</b>	<b>-49</b>	<b>-6.6%</b>	<b>770</b>
Attendant/ Aide	583	555	423	417	-6	-138	-24.9%	-167	-28.6%	464
Health & Social Care Assistants	8	8	19	21	+2	+13	+157.2%	+13	+150.7%	23
Health Care Assistant/ Care Assistant	430	456	588	590	+2	+134	+29.4%	+160	+37.2%	624
<b>Health Care Assistants</b>	<b>1,022</b>	<b>1,019</b>	<b>1,030</b>	<b>1,027</b>	<b>-3</b>	<b>+9</b>	<b>+0.9%</b>	<b>+6</b>	<b>+0.6%</b>	<b>1,111</b>
Home Care Services	14	13	23	22	-1	+10	+77.1%	+8	+55.3%	33
Other Care Grades	22	20	19	20	+1	+1	+3.4%	-2	-6.9%	23
Pastoral Care	12	11	9	10	+0	-1	-9.8%	-2	-17.6%	14
Workshop Services	155	164	164	165	+1	+1	+0.5%	+10	+6.2%	186
<b>Care, other</b>	<b>203</b>	<b>207</b>	<b>216</b>	<b>217</b>	<b>+1</b>	<b>+10</b>	<b>+4.9%</b>	<b>+14</b>	<b>+6.9%</b>	<b>256</b>
<b>Patient &amp; Client Care</b>	<b>1,225</b>	<b>1,226</b>	<b>1,246</b>	<b>1,245</b>	<b>-1</b>	<b>+19</b>	<b>+1.5%</b>	<b>+20</b>	<b>+1.6%</b>	<b>1,367</b>



## Employment by WTE, Headcount, Gender, Full-Time /Part-Time etc.: Jan 2023

Mental Health Services Staff Group	WTE	Headcount	WTE: no.	% Male	% female	Male WTE: no.	Female WTE: no.	% Total Perm	% Male Perm	% Female Perm	% Total Full Time	% Total Part Time	% Male FT	% Female FT
<b>Overall</b>	<b>10,527</b>	<b>11,704</b>	<b>1.11</b>	<b>26.7%</b>	<b>73.3%</b>	<b>1.07</b>	<b>1.13</b>	<b>83.0%</b>	<b>80.1%</b>	<b>84.1%</b>	<b>85.7%</b>	<b>14.3%</b>	<b>93.3%</b>	<b>82.9%</b>
Consultant Medicine	1	1	1.00	100.0%		1.00		100.0%	100.0%		100.0%	0.0%	100.0%	
Consultant Psychiatry	391	430	1.10	41.6%	58.4%	1.07	1.12	65.6%	65.6%	63.3%	86.0%	14.0%	91.6%	82.1%
<b>Consultants</b>	<b>392</b>	<b>431</b>	<b>1.10</b>	<b>41.8%</b>	<b>58.2%</b>	<b>1.07</b>	<b>1.12</b>	<b>65.7%</b>	<b>68.9%</b>	<b>63.3%</b>	<b>86.1%</b>	<b>13.9%</b>	<b>91.7%</b>	<b>82.1%</b>
Registrar	224	257	1.15	46.3%	53.7%	1.11	1.19	1.9%	1.9%	2.2%	97.3%	2.7%	98.3%	96.4%
Senior Registrar	120	130	1.09	32.3%	67.7%	1.04	1.11	1.5%	1.5%	1.1%	94.6%	5.4%	97.6%	93.2%
Specialist Registrar	2	2	1.00		100.0%		1.00	0.0%	0.0%	0.0%	0.0%	100.0%		0.0%
<b>Registrars</b>	<b>345</b>	<b>389</b>	<b>1.13</b>	<b>41.4%</b>	<b>58.6%</b>	<b>1.09</b>	<b>1.16</b>	<b>1.8%</b>	<b>1.9%</b>	<b>1.8%</b>	<b>95.9%</b>	<b>4.1%</b>	<b>98.1%</b>	<b>94.3%</b>
Senior House Officer	255	274	1.07	40.5%	59.5%	1.07	1.07	0.4%	0.4%	0.0%	99.3%	0.7%	100.0%	98.8%
Interns	4	6	1.50	16.7%	83.3%	1.00	1.67	0.0%	0.0%	0.0%	100.0%	0.0%	100.0%	100.0%
<b>SHO/ Interns</b>	<b>259</b>	<b>280</b>	<b>1.08</b>	<b>40.0%</b>	<b>60.0%</b>	<b>1.07</b>	<b>1.08</b>	<b>0.4%</b>	<b>0.9%</b>	<b>0.0%</b>	<b>99.3%</b>	<b>0.7%</b>	<b>100.0%</b>	<b>98.8%</b>
<b>Medical/ Dental, other</b>	<b>5</b>	<b>8</b>	<b>1.73</b>	<b>37.5%</b>	<b>62.5%</b>	<b>2.33</b>	<b>1.50</b>	<b>50.0%</b>	<b>33.3%</b>	<b>60.0%</b>	<b>37.5%</b>	<b>62.5%</b>	<b>33.3%</b>	<b>40.0%</b>
<b>Medical &amp; Dental</b>	<b>1,001</b>	<b>1,108</b>	<b>1.11</b>	<b>41.2%</b>	<b>58.8%</b>	<b>1.08</b>	<b>1.13</b>	<b>26.6%</b>	<b>28.3%</b>	<b>25.5%</b>	<b>92.5%</b>	<b>7.5%</b>	<b>95.6%</b>	<b>90.3%</b>
Clinical Nurse/ Midwife Manager	1,049	1,102	1.05	34.5%	65.5%	1.02	1.07	98.3%	98.3%	98.6%	94.5%	5.5%	98.7%	92.2%
Director Nursing/Midwifery, Assistant	176	181	1.03	41.4%	58.6%	1.04	1.02	100.0%	100.0%	100.0%	98.3%	1.7%	97.3%	99.1%
Director of Nursing/Midwifery	34	34	1.00	58.8%	41.2%	1.00	1.00	100.0%	100.0%	100.0%	100.0%	0.0%	100.0%	100.0%
<b>Nurse/ Midwife Manager</b>	<b>1,260</b>	<b>1,317</b>	<b>1.05</b>	<b>36.1%</b>	<b>63.9%</b>	<b>1.02</b>	<b>1.06</b>	<b>98.6%</b>	<b>98.1%</b>	<b>98.8%</b>	<b>95.1%</b>	<b>4.9%</b>	<b>98.5%</b>	<b>93.2%</b>
Advanced Nurse/ Midwife Practitioner	69	71	1.03	19.7%	80.3%	1.01	1.04	100.0%	100.0%	100.0%	94.4%	5.6%	100.0%	93.0%
Clinical Nurse/ Midwife Specialist	574	610	1.06	19.2%	80.8%	1.02	1.07	99.7%	99.7%	99.6%	92.8%	7.2%	97.4%	91.7%
<b>Nurse/ Midwife Specialist &amp; AN/MP</b>	<b>643</b>	<b>681</b>	<b>1.06</b>	<b>19.2%</b>	<b>80.8%</b>	<b>1.02</b>	<b>1.07</b>	<b>99.7%</b>	<b>100.0%</b>	<b>99.6%</b>	<b>93.0%</b>	<b>7.0%</b>	<b>97.7%</b>	<b>91.8%</b>
Staff Nurse [Psychiatric]	2,821	3,081	1.09	24.8%	75.2%	1.06	1.10	91.3%	91.3%	92.0%	88.0%	12.0%	92.1%	86.7%
Staff Nurses [General/ Children's]	104	113	1.08	26.5%	73.5%	1.10	1.08	77.0%	77.0%	79.5%	85.0%	15.0%	83.3%	85.5%
Staff Nurse [Intellectual Disability]	6	7	1.13	28.6%	71.4%	1.01	1.18	71.4%	71.4%	60.0%	100.0%	0.0%	100.0%	100.0%
<b>Staff Nurse/ Staff Midwife</b>	<b>2,932</b>	<b>3,201</b>	<b>1.09</b>	<b>24.8%</b>	<b>75.2%</b>	<b>1.06</b>	<b>1.10</b>	<b>90.8%</b>	<b>88.6%</b>	<b>91.5%</b>	<b>87.9%</b>	<b>12.1%</b>	<b>91.8%</b>	<b>86.7%</b>
Pre-registration Nurse/ Midwife Intern	68	261	3.83	17.2%	82.8%	3.59	3.89	0.4%	0.4%	0.5%	100.0%	0.0%	100.0%	100.0%
Nursing/ Midwifery awaiting registration	28	30	1.08	16.7%	83.3%	1.00	1.10	16.7%	16.7%	16.0%	96.7%	3.3%	100.0%	96.0%
<b>Nursing/ Midwifery Student</b>	<b>96</b>	<b>291</b>	<b>3.04</b>	<b>17.2%</b>	<b>82.8%</b>	<b>2.85</b>	<b>3.08</b>	<b>2.1%</b>	<b>2.0%</b>	<b>2.1%</b>	<b>99.7%</b>	<b>0.3%</b>	<b>100.0%</b>	<b>99.6%</b>
Nursing Education/Clinical	38	41	1.09	9.8%	90.2%	1.00	1.10	100.0%	100.0%	100.0%	87.8%	12.2%	100.0%	86.5%

<i>Nursing/ Midwifery other</i>	<b>38</b>	<b>41</b>	<b>1.09</b>	<b>9.8%</b>	<b>90.2%</b>	<b>1.00</b>	<b>1.10</b>	<b>100.0%</b>	<b>100.0%</b>	<b>100.0%</b>	<b>87.8%</b>	<b>12.2%</b>	<b>100.0%</b>	<b>86.5%</b>
<b>Nursing &amp; Midwifery</b>	<b>4,967</b>	<b>5,531</b>	<b>1.11</b>	<b>26.3%</b>	<b>73.7%</b>	<b>1.07</b>	<b>1.13</b>	<b>89.1%</b>	<b>89.8%</b>	<b>88.9%</b>	<b>90.9%</b>	<b>9.1%</b>	<b>94.8%</b>	<b>89.5%</b>
<b>Health &amp; Social Care</b>	<b>1,533</b>	<b>1,717</b>	<b>1.12</b>	<b>16.0%</b>	<b>84.0%</b>	<b>1.04</b>	<b>1.14</b>	<b>86.6%</b>	<b>85.8%</b>	<b>86.8%</b>	<b>81.4%</b>	<b>18.6%</b>	<b>93.8%</b>	<b>79.1%</b>
Executive Management	14	14	1.02	42.9%	57.1%	1.00	1.03	92.9%	92.9%	87.5%	100.0%	0.0%	100.0%	100.0%
Senior Management (VIII & GM)	61	61	1.01	27.9%	72.1%	1.01	1.01	98.4%	98.4%	97.7%	96.7%	3.3%	94.1%	97.7%
<b>Management (VIII &amp; above)</b>	<b>74</b>	<b>75</b>	<b>1.01</b>	<b>30.7%</b>	<b>69.3%</b>	<b>1.01</b>	<b>1.01</b>	<b>97.3%</b>	<b>100.0%</b>	<b>96.2%</b>	<b>97.3%</b>	<b>2.7%</b>	<b>95.7%</b>	<b>98.1%</b>
Middle Management (V-VII)	293	311	1.06	21.5%	78.5%	1.03	1.07	94.5%	94.5%	95.1%	91.3%	8.7%	97.0%	89.8%
Other Administrative	2	2	1.27		100.0%		1.27	100.0%	100.0%	100.0%	50.0%	50.0%		50.0%
<b>Administrative/ Supervisory (V to VII)</b>	<b>295</b>	<b>313</b>	<b>1.06</b>	<b>21.4%</b>	<b>78.6%</b>	<b>1.03</b>	<b>1.07</b>	<b>94.6%</b>	<b>92.5%</b>	<b>95.1%</b>	<b>91.1%</b>	<b>8.9%</b>	<b>97.0%</b>	<b>89.4%</b>
General Administrative (III & IV)	728	823	1.13	9.0%	91.0%	1.04	1.14	83.6%	83.6%	84.1%	77.6%	22.4%	90.5%	76.4%
<b>Clerical (III &amp; IV)</b>	<b>728</b>	<b>823</b>	<b>1.13</b>	<b>9.0%</b>	<b>91.0%</b>	<b>1.04</b>	<b>1.14</b>	<b>83.6%</b>	<b>78.4%</b>	<b>84.1%</b>	<b>77.6%</b>	<b>22.4%</b>	<b>90.5%</b>	<b>76.4%</b>
<b>Management &amp; Administrative</b>	<b>1,098</b>	<b>1,211</b>	<b>1.10</b>	<b>13.5%</b>	<b>86.5%</b>	<b>1.04</b>	<b>1.11</b>	<b>87.3%</b>	<b>87.2%</b>	<b>87.3%</b>	<b>82.3%</b>	<b>17.7%</b>	<b>93.9%</b>	<b>80.5%</b>
Catering	68	74	1.09	36.5%	63.5%	1.10	1.08	95.9%	95.9%	95.7%	71.6%	28.4%	81.5%	66.0%
Household Services	396	465	1.17	20.9%	79.1%	1.10	1.20	92.7%	92.7%	93.5%	57.2%	42.8%	83.5%	50.3%
Other Support	41	47	1.16	34.0%	66.0%	1.03	1.24	85.1%	85.1%	87.1%	72.3%	27.7%	93.8%	61.3%
Portering	49	52	1.06	96.2%	3.8%	1.06	1.01	92.3%	92.3%	100.0%	88.5%	11.5%	88.0%	100.0%
<b>Support</b>	<b>554</b>	<b>638</b>	<b>1.15</b>	<b>29.8%</b>	<b>70.2%</b>	<b>1.08</b>	<b>1.18</b>	<b>92.5%</b>	<b>90.5%</b>	<b>93.3%</b>	<b>62.5%</b>	<b>37.5%</b>	<b>85.3%</b>	<b>52.9%</b>
Maintenance	129	132	1.03	99.2%	0.8%	1.03	1.00	95.5%	95.5%	100.0%	97.0%	3.0%	96.9%	100.0%
<b>Maintenance/ Technical</b>	<b>129</b>	<b>132</b>	<b>1.03</b>	<b>99.2%</b>	<b>0.8%</b>	<b>1.03</b>	<b>1.00</b>	<b>95.5%</b>	<b>95.4%</b>	<b>100.0%</b>	<b>97.0%</b>	<b>3.0%</b>	<b>96.9%</b>	<b>100.0%</b>
<b>General Support</b>	<b>683</b>	<b>770</b>	<b>1.13</b>	<b>41.7%</b>	<b>58.3%</b>	<b>1.06</b>	<b>1.18</b>	<b>93.0%</b>	<b>92.5%</b>	<b>93.3%</b>	<b>68.4%</b>	<b>31.6%</b>	<b>90.0%</b>	<b>53.0%</b>
Attendant/ Aide	417	464	1.11	25.9%	74.1%	1.09	1.12	84.5%	84.5%	88.1%	69.6%	30.4%	81.7%	65.4%
Health & Social Care Assistants	21	23	1.10	30.4%	69.6%	1.15	1.08	56.5%	56.5%	50.0%	73.9%	26.1%	71.4%	75.0%
Health Care Assistant/ Care Assistant	590	624	1.06	34.9%	65.1%	1.04	1.07	97.4%	97.4%	98.5%	86.7%	13.3%	96.3%	81.5%
<b>Health Care Assistants</b>	<b>1,027</b>	<b>1,111</b>	<b>1.08</b>	<b>31.1%</b>	<b>68.9%</b>	<b>1.06</b>	<b>1.09</b>	<b>91.2%</b>	<b>87.5%</b>	<b>92.8%</b>	<b>79.3%</b>	<b>20.7%</b>	<b>90.7%</b>	<b>74.2%</b>
Home Care Services	22	33	1.49	36.4%	63.6%	1.61	1.43	75.8%	75.8%	76.2%	30.3%	69.7%	25.0%	33.3%
Other Care Grades	20	23	1.13	78.3%	21.7%	1.04	1.59	91.3%	91.3%	80.0%	78.3%	21.7%	94.4%	20.0%
Pastoral Care	10	14	1.41	78.6%	21.4%	1.41	1.44	28.6%	28.6%	0.0%	64.3%	35.7%	63.6%	66.7%
Workshop Services	165	186	1.13	37.1%	62.9%	1.07	1.17	90.9%	90.9%	92.3%	74.7%	25.3%	85.5%	68.4%
<b>Care, other</b>	<b>217</b>	<b>256</b>	<b>1.18</b>	<b>43.0%</b>	<b>57.0%</b>	<b>1.13</b>	<b>1.22</b>	<b>85.5%</b>	<b>82.7%</b>	<b>87.7%</b>	<b>68.8%</b>	<b>31.3%</b>	<b>78.2%</b>	<b>61.6%</b>
<b>Patient &amp; Client Care</b>	<b>1,245</b>	<b>1,367</b>	<b>1.10</b>	<b>33.3%</b>	<b>66.7%</b>	<b>1.07</b>	<b>1.11</b>	<b>90.1%</b>	<b>86.4%</b>	<b>92.0%</b>	<b>77.3%</b>	<b>22.7%</b>	<b>87.7%</b>	<b>72.1%</b>

## Employment by WTE, Headcount, Gender, Full-Time /Part-Time etc.: Jan 2023

Mental Health Services CHO	WTE	Headcount	WTE: no.	% Male	% female	Male WTE: no.	Female WTE: no.	% Total Perm	% Male Perm	% Female Perm	% Total Full Time	% Total Part Time	% Male FT	% Female FT
<b>Overall</b>	<b>10,527</b>	<b>11,704</b>	<b>1.11</b>	<b>26.7%</b>	<b>73.3%</b>	<b>1.07</b>	<b>1.13</b>	<b>83.0%</b>	<b>80.1%</b>	<b>84.1%</b>	<b>85.7%</b>	<b>14.3%</b>	<b>93.3%</b>	<b>82.9%</b>
CHO 1	1,043	1,150	1.10	25.7%	74.3%	1.05	1.12	88.2%	88.2%	89.5%	87.6%	12.4%	96.3%	84.5%
CHO 2	1,333	1,461	1.10	28.3%	71.7%	1.06	1.11	84.8%	84.8%	86.1%	85.8%	14.2%	91.0%	83.7%
CHO 3	829	920	1.11	21.7%	78.3%	1.07	1.12	80.1%	80.1%	80.1%	86.5%	13.5%	92.0%	85.0%
CHO 4	1,570	1,756	1.12	25.6%	74.4%	1.08	1.13	68.7%	68.7%	70.7%	83.9%	16.1%	93.3%	80.7%
CHO 5	1,237	1,396	1.13	25.2%	74.8%	1.07	1.15	88.0%	88.0%	89.2%	80.9%	19.1%	90.9%	77.6%
CHO 6	650	730	1.12	29.7%	70.3%	1.09	1.14	87.8%	87.8%	89.1%	83.4%	16.6%	90.8%	80.3%
CHO 7	877	973	1.11	22.2%	77.8%	1.05	1.13	83.1%	83.1%	83.8%	88.6%	11.4%	95.4%	86.7%
CHO 8	1,102	1,231	1.12	24.6%	75.4%	1.06	1.14	85.3%	85.3%	86.5%	86.5%	13.5%	95.7%	83.5%
CHO 9	1,382	1,556	1.13	27.6%	72.4%	1.06	1.15	84.7%	84.7%	85.4%	85.9%	14.1%	94.9%	82.4%
other Community Services	503	531	1.06	47.3%	52.7%	1.07	1.05	89.1%	89.1%	91.8%	94.0%	6.0%	92.4%	95.4%

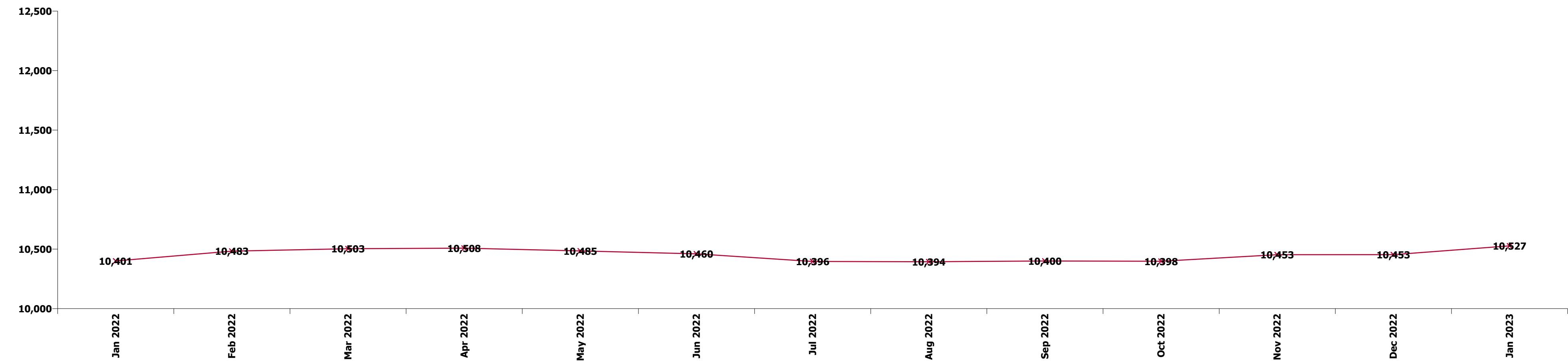
Summary Staff Movement: January 2023

Month-on-month  
Summary

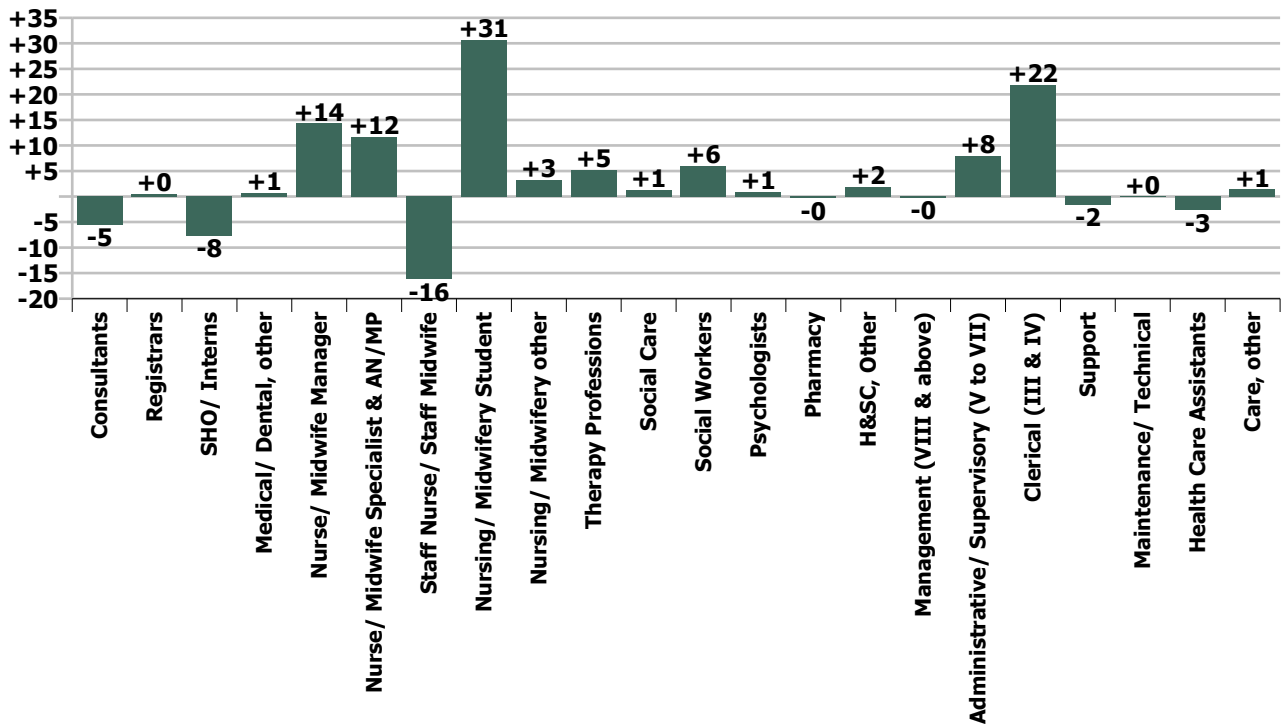
WTE change since Dec 22	% change since Dec 22	overall	Consultants	Registrars	SHO/ Interns	Medical/ Dental, other	Medical & Dental	Nurse/ Midwife Manager	Nurse/ Midwife Specialist & AN/MP	Staff Nurse/ Staff Midwife	Nursing/ Midwifery Student	Nursing/ Midwifery other	Nursing & Midwifery	Therapy Professions	Social Care	Social Workers	Psychologists	Pharmacy	H&SC, Other	Health & Social Care Professionals	Management (VIII & above)	Administrativ e/ Supervisory (V to VII)	Clerical (III & IV)	Management & Administrative	General Support	Health Care Assistants	Care, other	Patient & Client Care
Overall	+0.7%	+74	-5	+0	-8	+1	-12	+14	+12	-16	+31	+3	+44	+5	+1	+6	+1	-0	+2	+15	-0	+8	+22	+30	-2	-3	+1	-1
CHO 1	+1.9%	+20	+0	+0	+1		+2	+1	+2	+2	+5	+0	+10	+2	-0	-1	+3	-0	+0	+4	-1	+0	+4	+4	+0	-0	-1	
CHO 2	+0.3%	+4	+1	-2	-1		-2	+3	+1	-2	+4		+5	+1	-0	-0	+0	-0	-1	+1	+3	-1	+2	-0	-1	-1	-2	
CHO 3	+1.8%	+15	-0	+2	-4		-3	+2	+1	+5	+5	+0	+14	+0	+0	+0	-0	+0	+0	+1	+0	+2	-1	+1	+1	+0	+1	
CHO 4	+0.6%	+9	-4	-0	-1	+1	-4	+2	+7	-5	+4		+7	+2	+1	+0	-3	-1	-0	-1	-0	+2	+4	+5	-1	+2	+1	+3
CHO 5	+1.1%	+13	-1	+2	+1		+2	-2	+0	-4	+3	+1	-1	+0	+1	+1	+2		+0	+4	-1	+2	+7	+7	+2	-1	+0	-1
CHO 6	+0.1%	+0	+2	-3	-1		-2	+2	-0	-0	+0	+0	+2	-1	+0	+1	+0		+1	+1	+0	-4	+0	-3	+1	+1	+0	+1
CHO 7	-0.1%	-1	-2	-2	-5		-9	+4	+0	-2	+0	+1	+3	+1	+0	+2	-0	+0	+1	+4	+0	+1	-2	-1	-0	-0	+2	+2
CHO 8	+1.0%	+11	-1	+0	+2		+1	+0	+0	-1	+4	-0	+4	-1	-0	+1	+1	-0	-0	+0		-1	+8	+7	-0	-0	-0	-0
CHO 9	+0.8%	+11	-0	+1	-2		-1	+0	+1	+0	+6	+2	+9	-0		+1	-2	+0	+1	+1	+0	-1	+3	+2	-1	+2	-0	+1
other Community Services	-1.6%	-8	-1	+2	+2		+3	+1	-1	-9		-1	-10	+0	-0	+1	-0	+0		+1	+1	+4	-1	+5	-3	-5	+0	-4
		+0.7%	-1.4%	+0.1%	-2.9%	+18.2%	-1.2%	+1.2%	+1.9%	-0.6%	+47.1%	+9.6%	+0.9%	+1.2%	+1.8%	+1.5%	+0.2%	-1.9%	+1.5%	+1.0%	-0.3%	+2.8%	+3.1%	+2.8%	-0.2%	-0.3%	+0.7%	-0.1%

Year-on-year Summary

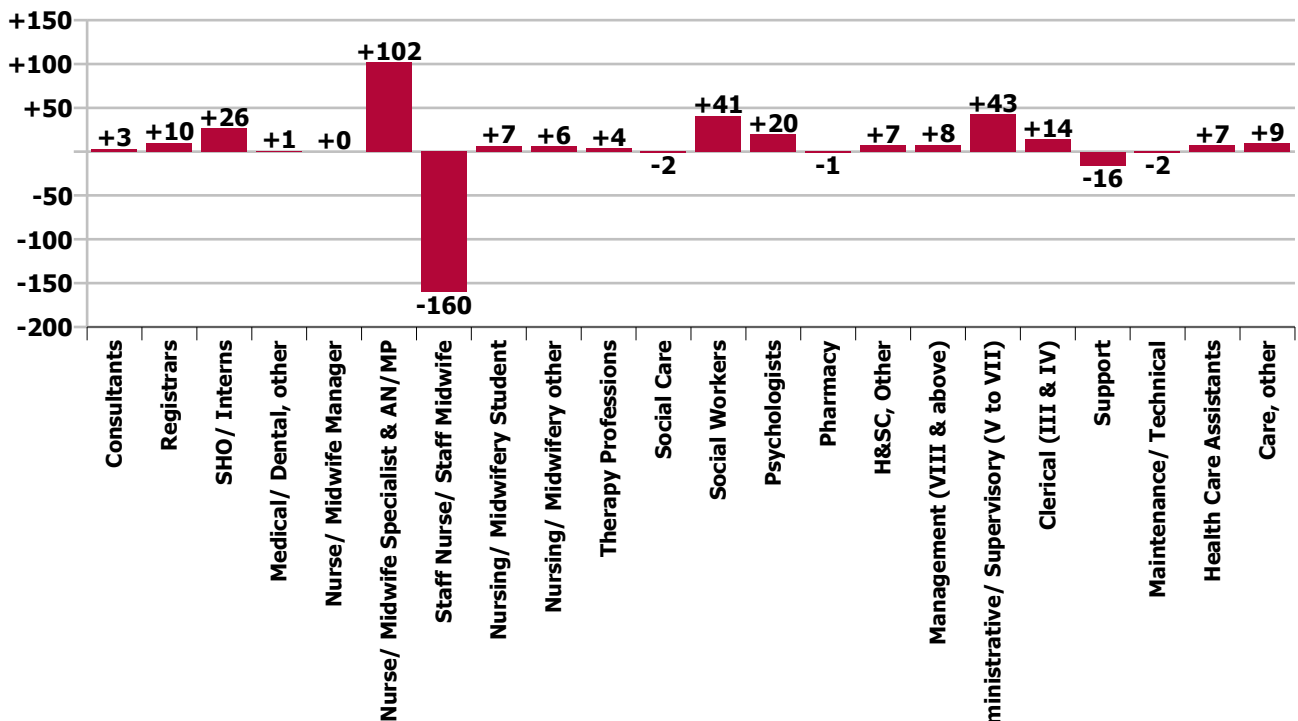
WTE change since Jan 22	% change since Jan 22	overall	Consultants	Registrars	SHO/ Interns	Medical/ Dental, other	Medical & Dental	Nurse/ Midwife Manager	Nurse/ Midwife Specialist & AN/MP	Staff Nurse/ Staff Midwife	Nursing/ Midwifery Student	Nursing/ Midwifery other	Nursing & Midwifery	Therapy Professions	Social Care	Social Workers	Psychologists	Pharmacy	H&SC, Other	Health & Social Care Professionals	Management (VIII & above)	Administrative/ Supervisory (V to VII)	Clerical (III & IV)	Management & Administrative	General Support	Health Care Assistants	Care, other	Patient & Client Care
Overall	+1.2%	+127	+3	+10	+26	+1	+40	+0	+102	-160	+7	+6	-46	+4	-2	+41	+20	-1	+7	+68	+8	+43	+14	+65	-17	+7	+9	+16
CHO 1	+1.9%	+19	-2	+5	-1		+1	-2	+16	-13	-0	+0	+1	-0	-0	+5	+6	-0	+1	+12	-1	-1	+5	+2	-3	+5	+0	+5
CHO 2	-0.6%	-8	-0	-5	+2	+1	-3	-3	+6	-15	-3	+2	-12	+3	-1	+0	-3	+0	-1	-0	-1	+3	+1	+4	+0	-2	+5	+3
CHO 3	+1.7%	+14	+3	-1	+9		+11	+1	+16	-30	+7	+1	-6	+4	-1	+2	+4	+0	-0	+9	+1	+2	-3	+1	-0	-4	+1	-2
CHO 4	+0.4%	+7	-0	+3	+5	-0	+7	+10	+11	-30	-3		-11	+4	+0	+9	-4	+0	+3	+12	-0	+9	-2	+7	-6	-2	-1	-2
CHO 5	+2.9%	+35	+3	+3	-1	-0	+5	+4	+14	-25	+4	+1	-3	+3	-0	+2	+7		+3	+14	-1	+1	+10	+11	+6	+2	+1	+3
CHO 6	+3.6%	+23	+7	+3	-2		+9	+1	+5	+1	-2	+1	+6	+2	+3	+6	+5		+0	+16	+1	+0	-7	-6	-3	+1	+1	
CHO 7	-1.1%	-10	-5	+0	-2		-6	-6	+2	-4	-5	+1	-12	-2	+0	+3	+7	-1	-1	+6	+0	+6	+5	+12	-3	-4	-2	-6
CHO 8	+0.6%	+6	-2	-11	+10		-4	-6	+11	-1	+1		+4	-5	-1	+2	-3	+0	+1	-6	-1	+5	+7	+11	-4	+4	+1	+6
CHO 9	+2.3%	+32	+4	+11	+5		+20	-3	+20	-22	+8	+1	+5	-2	-0	+15	+0	-2	+0	+12	+1	+7	-9	-2	-11	+7	+1	+8
other Community Services	+1.9%	+9	-4	+1	+2		-0	+4	+0	-22		-1	-18	-3	-1	-2		+1		-5	+9	+10	+6	+25	+7	+1	+0	+1
		+1.2%	+0.8%	+2.9%	+11.3%	+18.8%	+4.2%	+0.0%	+18.9%	-5.2%	+7.5%	+18.3%	-0.9%	+0.8%	-2.2%	+10.8%	+4.6%	-6.8%	+5.5%	+4.7%	+11.9%	+16.9%	+2.0%	+6.3%	-2.5%	+0.7%	+4.4%	+1.3%



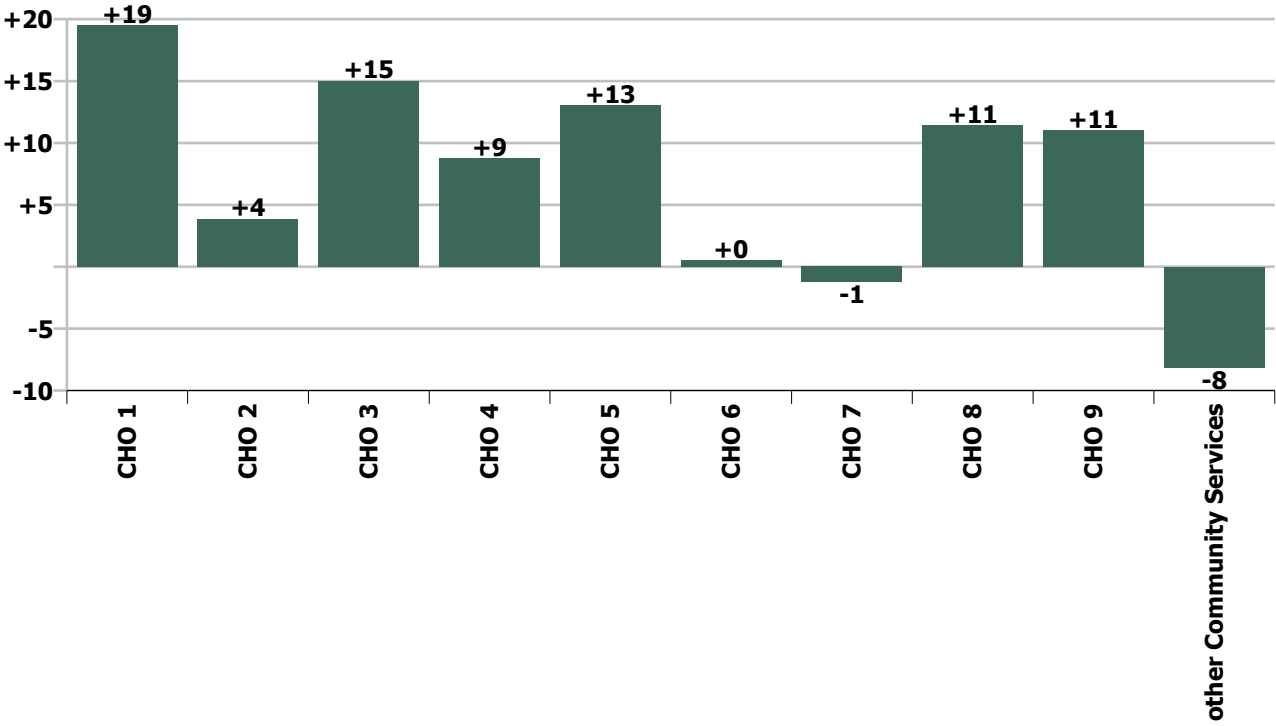
### Staff Group change since: Dec 2022



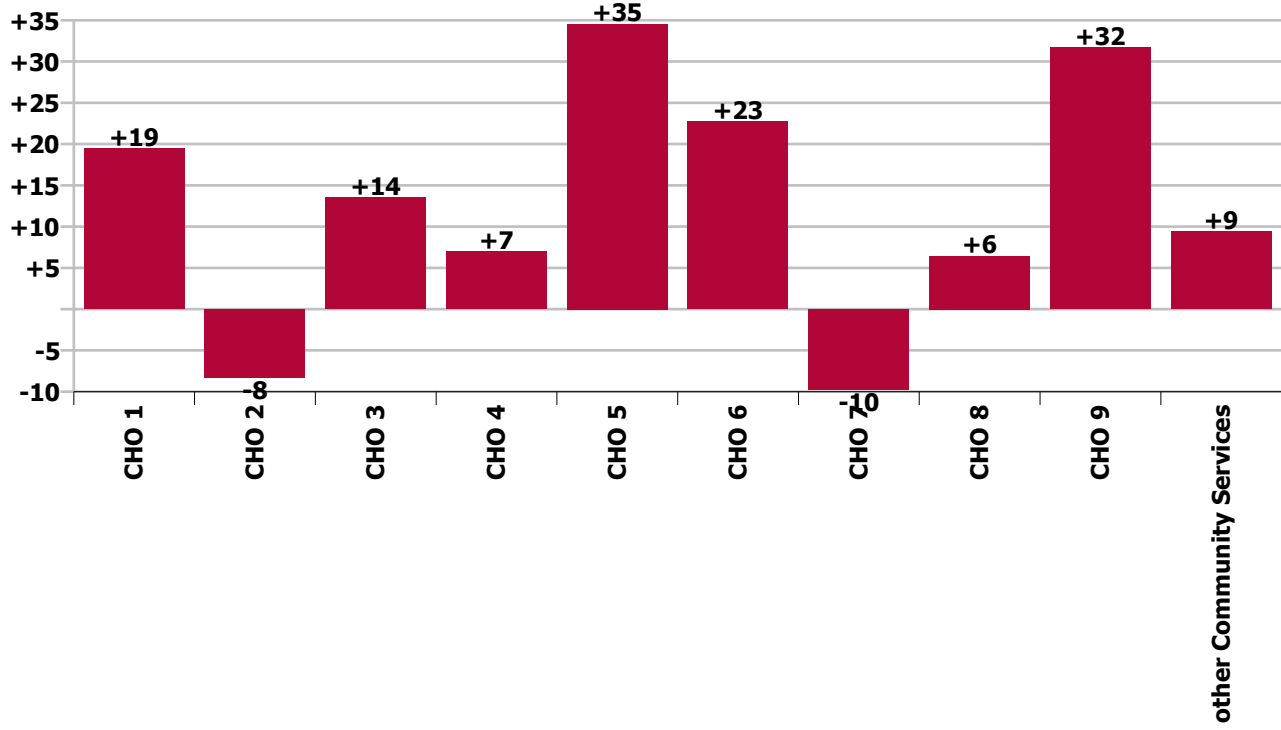
### Staff Group change since: Jan 2022



CHO change since: Dec 2022



CHO change since: Jan 2022



## Longitudinal Employment Levels by Grade Group - Dec 2017 to Jan 2023

Jan 2023 (Dec 2016 figure: 9,621)	WTE Jan 2023	WTE change since Dec 17	WTE change since Dec 18	WTE change since Dec 19	WTE change since Dec 20	WTE change since Dec 21	WTE change since Dec 22	% change since Dec 17	% change since Dec 18	% change since Dec 19	% change since Dec 20	% change since Dec 21	% change since Dec 22
<b>Overall</b>	<b>10,527</b>	<b>+737</b>	<b>+630</b>	<b>+573</b>	<b>+226</b>	<b>+165</b>	<b>+74</b>	<b>+7.5%</b>	<b>+6.4%</b>	<b>+5.8%</b>	<b>+2.2%</b>	<b>+1.6%</b>	<b>+0.7%</b>
Consultant Medicine	1	-0	-0					-9.1%	-9.1%				
Consultant Psychiatry	391	+78	+61	+39	+22	+6	-5	+25.1%	+18.4%	+11.1%	+6.0%	+1.5%	-1.4%
<b>Consultants</b>	<b>392</b>	<b>+78</b>	<b>+61</b>	<b>+39</b>	<b>+22</b>	<b>+6</b>	<b>-5</b>	<b>+25.0%</b>	<b>+18.3%</b>	<b>+11.1%</b>	<b>+6.0%</b>	<b>+1.5%</b>	<b>-1.4%</b>
Registrar	224	+79	+70	+54	+56	+20	+6	+54.6%	+45.3%	+32.1%	+33.1%	+9.6%	+3.0%
Senior Registrar	120	+54	+34	+23	+9	+1	-6	+81.9%	+39.3%	+23.2%	+7.7%	+0.7%	-4.8%
Specialist Registrar	2		+1	-1		-2	+0		+100.0%	-20.0%		-50.0%	+0.5%
<b>Registrars</b>	<b>345</b>	<b>+133</b>	<b>+104</b>	<b>+76</b>	<b>+64</b>	<b>+18</b>	<b>+0</b>	<b>+62.5%</b>	<b>+43.4%</b>	<b>+28.4%</b>	<b>+22.8%</b>	<b>+5.6%</b>	<b>+0.1%</b>
Senior House Officer	255	-17	-14	+2	-16	+16	-7	-6.2%	-5.2%	+0.9%	-5.7%	+6.7%	-2.6%
Interns	4	-6	-4	-4	-1	-3	-1	-60.1%	-50.1%	-50.1%	-20.2%	-43.0%	-18.9%
<b>SHO/ Interns</b>	<b>259</b>	<b>-23</b>	<b>-18</b>	<b>-2</b>	<b>-17</b>	<b>+13</b>	<b>-8</b>	<b>-8.1%</b>	<b>-6.5%</b>	<b>-0.7%</b>	<b>-6.0%</b>	<b>+5.3%</b>	<b>-2.9%</b>
Dentists		-0	-0					-100.0%	-100.0%	-100.0%	-100.0%	-100.0%	-100.0%
Other Medical	5	-6	-2	-0	-0	+1	+1	-57.4%	-28.8%	-7.6%	-7.6%	+16.7%	+18.2%
<b>Medical/ Dental, other</b>	<b>5</b>	<b>-6</b>	<b>-2</b>	<b>-0</b>	<b>-0</b>	<b>+1</b>	<b>+1</b>	<b>-57.7%</b>	<b>-29.6%</b>	<b>-7.6%</b>	<b>-7.6%</b>	<b>+16.7%</b>	<b>+18.2%</b>
<b>Medical &amp; Dental</b>	<b>1,001</b>	<b>+182</b>	<b>+145</b>	<b>+113</b>	<b>+69</b>	<b>+38</b>	<b>-12</b>	<b>+22.2%</b>	<b>+17.0%</b>	<b>+12.8%</b>	<b>+7.4%</b>	<b>+4.0%</b>	<b>-1.2%</b>
Clinical Nurse/ Midwife Manager	1,049	+67	+43	+51	+8	-4	+14	+6.8%	+4.3%	+5.1%	+0.8%	-0.4%	+1.3%
Director Nursing/Midwifery, Assistant	176	+15	+12	+12	+6	-4	+0	+9.0%	+7.5%	+7.1%	+3.4%	-2.2%	+0.2%
Director of Nursing/Midwifery	34	+5	+10	+5	+6	+6	+0	+19.2%	+43.1%	+17.5%	+21.6%	+22.3%	+0.7%
<b>Nurse/ Midwife Manager</b>	<b>1,260</b>	<b>+87</b>	<b>+66</b>	<b>+67</b>	<b>+20</b>	<b>-2</b>	<b>+14</b>	<b>+7.4%</b>	<b>+5.5%</b>	<b>+5.7%</b>	<b>+1.6%</b>	<b>-0.1%</b>	<b>+1.2%</b>
Advanced Nurse/ Midwife Practitioner	69	+58	+48	+38	+29	+23	+0	+553.4%	+240.7%	+123.3%	+74.1%	+50.6%	+0.6%
Clinical Nurse/ Midwife Specialist	574	+191	+179	+146	+85	+75	+11	+49.8%	+45.2%	+34.0%	+17.3%	+15.0%	+2.0%
<b>Nurse/ Midwife Specialist &amp; AN/MP</b>	<b>643</b>	<b>+249</b>	<b>+227</b>	<b>+183</b>	<b>+114</b>	<b>+98</b>	<b>+12</b>	<b>+63.3%</b>	<b>+54.7%</b>	<b>+39.9%</b>	<b>+21.5%</b>	<b>+18.0%</b>	<b>+1.9%</b>
Staff Midwives					-1			-100.0%	-100.0%	-100.0%	-100.0%	-100.0%	-100.0%
Staff Nurse [Psychiatric]	2,821	-206	-134	-72	-143	-166	-14	-6.8%	-4.5%	-2.5%	-4.8%	-5.5%	-0.5%
Staff Nurses [General/ Children's]	104	-13	-13	-1	-2	-3	-2	-11.4%	-11.4%	-0.6%	-2.1%	-2.4%	-1.9%
Staff Nurse [Intellectual Disability]	6	+3	+0	+2	+2	+3	-0	+79.8%	+3.7%	+37.3%	+46.7%	+89.1%	-6.5%
<b>Staff Nurse/ Staff Midwife</b>	<b>2,932</b>	<b>-217</b>	<b>-147</b>	<b>-71</b>	<b>-145</b>	<b>-165</b>	<b>-16</b>	<b>-6.9%</b>	<b>-4.8%</b>	<b>-2.4%</b>	<b>-4.7%</b>	<b>-5.3%</b>	<b>-0.6%</b>



Jan 2023 (Dec 2016 figure: 9,621)	WTE Jan 2023	WTE change since Dec 17	WTE change since Dec 18	WTE change since Dec 19	WTE change since Dec 20	WTE change since Dec 21	WTE change since Dec 22	% change since Dec 17	% change since Dec 18	% change since Dec 19	% change since Dec 20	% change since Dec 21	% change since Dec 22
<b>Overall</b>	<b>10,527</b>	<b>+737</b>	<b>+630</b>	<b>+573</b>	<b>+226</b>	<b>+165</b>	<b>+74</b>	<b>+7.5%</b>	<b>+6.4%</b>	<b>+5.8%</b>	<b>+2.2%</b>	<b>+1.6%</b>	<b>+0.7%</b>
<b>Public Health Nurse</b>		<b>-1</b>						<b>-100.0%</b>	<b>-100.0%</b>	<b>-100.0%</b>	<b>-100.0%</b>	<b>-100.0%</b>	<b>-100.0%</b>
Pre-registration Nurse Intern (COVID-19)					-42	-1		-100.0%	-100.0%	-100.0%	-100.0%	-100.0%	-100.0%
Pre-registration Nurse/ Midwife Intern	68	+51	+40	+41	+57	+40	+42	+304.2%	+144.2%	+147.2%	+535.5%	+140.3%	+157.7%
Post-registration Nurse/ Midwife Student				-1	-1			-100.0%	-100.0%	-100.0%	-100.0%	-100.0%	-100.0%
Nursing/ Midwifery awaiting registration	28	+19	+8	-31	+23	+7	-11	+221.3%	+40.1%	-52.8%	+473.0%	+34.8%	-28.3%
<b>Nursing/ Midwifery Student</b>	<b>96</b>	<b>+70</b>	<b>+48</b>	<b>+8</b>	<b>+37</b>	<b>+46</b>	<b>+31</b>	<b>+276.0%</b>	<b>+100.9%</b>	<b>+9.6%</b>	<b>+62.5%</b>	<b>+92.0%</b>	<b>+47.1%</b>
Nursing Education/Clinical	38	+7	+7	+6	+6	+7	+3	+23.3%	+21.6%	+19.4%	+18.9%	+21.8%	+9.6%
<b>Nursing/ Midwifery other</b>	<b>38</b>	<b>+7</b>	<b>+7</b>	<b>+6</b>	<b>+6</b>	<b>+7</b>	<b>+3</b>	<b>+23.3%</b>	<b>+21.6%</b>	<b>+19.4%</b>	<b>+18.9%</b>	<b>+21.8%</b>	<b>+9.6%</b>
<b>Nursing &amp; Midwifery</b>	<b>4,967</b>	<b>+196</b>	<b>+201</b>	<b>+194</b>	<b>+32</b>	<b>-16</b>	<b>+44</b>	<b>+4.1%</b>	<b>+4.2%</b>	<b>+4.1%</b>	<b>+0.7%</b>	<b>-0.3%</b>	<b>+0.9%</b>
Dietitians	19	+2	-1	-0	-2	-1	+1	+13.9%	-4.8%	-0.2%	-8.2%	-6.9%	+5.6%
Occupational Therapists	350	+24	+11	+12	+5	+2	+4	+7.4%	+3.2%	+3.5%	+1.4%	+0.5%	+1.2%
Physiotherapists	3	+2	+1	+1	+1	+0	+0	+144.6%	+83.9%	+32.7%	+22.8%	+1.7%	+0.7%
Podiatrists & Chiropodists	1	-1	-1	-0	-0	-0	-0	-53.1%	-43.4%	-5.5%	-13.7%	-21.6%	-1.4%
Speech & Language Therapists	68	+6	+6	+6	-2	+7	+0	+10.1%	+10.0%	+9.7%	-2.9%	+10.8%	+0.1%
<b>Therapy Professions</b>	<b>441</b>	<b>+34</b>	<b>+17</b>	<b>+18</b>	<b>+2</b>	<b>+7</b>	<b>+5</b>	<b>+8.3%</b>	<b>+4.0%</b>	<b>+4.3%</b>	<b>+0.4%</b>	<b>+1.6%</b>	<b>+1.2%</b>
<b>Social Care</b>	<b>73</b>	<b>-9</b>	<b>-5</b>	<b>-0</b>	<b>-7</b>	<b>-3</b>	<b>+1</b>	<b>-11.3%</b>	<b>-6.9%</b>	<b>-0.5%</b>	<b>-8.4%</b>	<b>-3.9%</b>	<b>+1.8%</b>
<b>Social Workers</b>	<b>420</b>	<b>+63</b>	<b>+61</b>	<b>+70</b>	<b>+47</b>	<b>+41</b>	<b>+6</b>	<b>+17.5%</b>	<b>+17.1%</b>	<b>+20.1%</b>	<b>+12.6%</b>	<b>+10.7%</b>	<b>+1.5%</b>
<b>Psychologists</b>	<b>449</b>	<b>+78</b>	<b>+60</b>	<b>+54</b>	<b>+25</b>	<b>+22</b>	<b>+1</b>	<b>+21.2%</b>	<b>+15.5%</b>	<b>+13.8%</b>	<b>+5.9%</b>	<b>+5.1%</b>	<b>+0.2%</b>
Pharmacists	15	+0	-1	-1	-2	-1	-0	+2.4%	-4.1%	-5.7%	-11.3%	-8.0%	-2.5%
Pharmacy Technicians	4	-1	+0	+1	+0	-0	+0	-18.0%	+7.8%	+51.4%	+2.7%	-10.3%	+0.5%
<b>Pharmacy</b>	<b>19</b>	<b>-0</b>	<b>-0</b>	<b>+0</b>	<b>-2</b>	<b>-2</b>	<b>-0</b>	<b>-2.4%</b>	<b>-1.9%</b>	<b>+1.9%</b>	<b>-8.8%</b>	<b>-8.5%</b>	<b>-1.9%</b>
Counsellor Therapists	126	+41	+41	+31	+25	+11	+2	+47.4%	+48.4%	+33.0%	+24.7%	+9.4%	+1.5%
Other Health & Social Care	3	-6	-6	-9	-2	-3	+0	-65.0%	-65.2%	-74.5%	-44.6%	-48.8%	+0.3%
Play Therapists/ Specialists	3	+2	+2	+2	+2	+2		+106.0%	+110.1%	+113.0%	+110.1%	+94.4%	
<b>H&amp;SC, Other</b>	<b>132</b>	<b>+37</b>	<b>+37</b>	<b>+24</b>	<b>+24</b>	<b>+9</b>	<b>+2</b>	<b>+38.3%</b>	<b>+39.0%</b>	<b>+22.4%</b>	<b>+22.4%</b>	<b>+7.7%</b>	<b>+1.5%</b>
<b>Health &amp; Social Care Professionals</b>	<b>1,533</b>	<b>+202</b>	<b>+170</b>	<b>+167</b>	<b>+89</b>	<b>+74</b>	<b>+15</b>	<b>+15.1%</b>	<b>+12.4%</b>	<b>+12.2%</b>	<b>+6.2%</b>	<b>+5.1%</b>	<b>+1.0%</b>
Executive Management	14	+6	+4	+3	-1	+0	-0	+72.4%	+37.9%	+25.4%	-6.4%	+0.1%	-0.8%
Senior Management (VIII & GM)	61	+28	+29	+14	+8	+9	-0	+87.7%	+91.2%	+30.6%	+15.6%	+17.5%	-0.2%

Jan 2023 (Dec 2016 figure: 9,621)	WTE Jan 2023	WTE change since Dec 17	WTE change since Dec 18	WTE change since Dec 19	WTE change since Dec 20	WTE change since Dec 21	WTE change since Dec 22	% change since Dec 17	% change since Dec 18	% change since Dec 19	% change since Dec 20	% change since Dec 21	% change since Dec 22
<b>Overall</b>	<b>10,527</b>	<b>+737</b>	<b>+630</b>	<b>+573</b>	<b>+226</b>	<b>+165</b>	<b>+74</b>	<b>+7.5%</b>	<b>+6.4%</b>	<b>+5.8%</b>	<b>+2.2%</b>	<b>+1.6%</b>	<b>+0.7%</b>
<b>Management (VIII &amp; above)</b>	<b>74</b>	<b>+34</b>	<b>+33</b>	<b>+17</b>	<b>+7</b>	<b>+9</b>	<b>-0</b>	<b>+84.6%</b>	<b>+78.4%</b>	<b>+29.6%</b>	<b>+10.7%</b>	<b>+13.9%</b>	<b>-0.3%</b>
Middle Management (V-VII)	293	+97	+74	+58	+50	+47	+8	+49.1%	+33.5%	+24.7%	+20.7%	+19.1%	+2.8%
Other Administrative	2	-1	-1					-38.9%	-38.9%				
<b>Administrative/ Supervisory (V to VII)</b>	<b>295</b>	<b>+96</b>	<b>+73</b>	<b>+58</b>	<b>+50</b>	<b>+47</b>	<b>+8</b>	<b>+48.0%</b>	<b>+32.6%</b>	<b>+24.6%</b>	<b>+20.6%</b>	<b>+19.0%</b>	<b>+2.8%</b>
General Administrative (III & IV)	728	+47	+33	+11	+6	+15	+22	+6.9%	+4.7%	+1.5%	+0.9%	+2.1%	+3.1%
<b>Clerical (III &amp; IV)</b>	<b>728</b>	<b>+47</b>	<b>+33</b>	<b>+11</b>	<b>+6</b>	<b>+15</b>	<b>+22</b>	<b>+6.9%</b>	<b>+4.7%</b>	<b>+1.5%</b>	<b>+0.9%</b>	<b>+2.1%</b>	<b>+3.1%</b>
<b>Management &amp; Administrative</b>	<b>1,098</b>	<b>+177</b>	<b>+138</b>	<b>+86</b>	<b>+64</b>	<b>+71</b>	<b>+30</b>	<b>+19.2%</b>	<b>+14.4%</b>	<b>+8.5%</b>	<b>+6.2%</b>	<b>+6.9%</b>	<b>+2.8%</b>
Catering	68	+2	-4	+3	+4	-4	+0	+3.3%	-5.4%	+4.2%	+7.0%	-5.5%	+0.5%
Household Services	396	-80	-49	-28	-45	-18	-1	-16.8%	-11.0%	-6.6%	-10.2%	-4.2%	-0.3%
Other Support	41	-9	-15	-2	-1	-0	+0	-18.1%	-26.5%	-5.0%	-3.2%	-0.1%	+0.8%
Portering	49	+0	+1	+1	+2	+2	-1	+0.8%	+2.6%	+2.4%	+4.1%	+3.4%	-2.5%
<b>Support</b>	<b>554</b>	<b>-86</b>	<b>-66</b>	<b>-26</b>	<b>-40</b>	<b>-20</b>	<b>-2</b>	<b>-13.5%</b>	<b>-10.7%</b>	<b>-4.5%</b>	<b>-6.7%</b>	<b>-3.5%</b>	<b>-0.3%</b>
Maintenance	129	-10	-6	-0	-9	-1	+0	-7.2%	-4.1%	-0.1%	-6.3%	-0.5%	+0.0%
Technical Services		-2	-2	-2				-100.0%	-100.0%	-100.0%	-100.0%	-100.0%	-100.0%
<b>Maintenance/ Technical</b>	<b>129</b>	<b>-12</b>	<b>-8</b>	<b>-2</b>	<b>-9</b>	<b>-1</b>	<b>+0</b>	<b>-8.5%</b>	<b>-5.5%</b>	<b>-1.6%</b>	<b>-6.3%</b>	<b>-0.5%</b>	<b>+0.0%</b>
<b>General Support</b>	<b>683</b>	<b>-98</b>	<b>-74</b>	<b>-29</b>	<b>-49</b>	<b>-21</b>	<b>-2</b>	<b>-12.6%</b>	<b>-9.8%</b>	<b>-4.0%</b>	<b>-6.6%</b>	<b>-2.9%</b>	<b>-0.2%</b>
Attendant/ Aide	417	-284	-264	-188	-167	-138	-6	-40.5%	-38.8%	-31.1%	-28.6%	-24.9%	-1.4%
Health & Social Care Assistants	21	+16	+15	+12	+13	+13	+2	+350.6%	+284.4%	+133.9%	+150.7%	+157.2%	+9.2%
Health Care Assistant/ Care Assistant	590	+342	+297	+216	+160	+134	+2	+137.5%	+101.3%	+57.7%	+37.2%	+29.4%	+0.3%
<b>Health Care Assistants</b>	<b>1,027</b>	<b>+74</b>	<b>+48</b>	<b>+40</b>	<b>+6</b>	<b>+9</b>	<b>-3</b>	<b>+7.8%</b>	<b>+4.9%</b>	<b>+4.0%</b>	<b>+0.6%</b>	<b>+0.9%</b>	<b>-0.3%</b>
Home Care Services	22	+7	+6	+6	+8	+10	-1	+48.1%	+33.8%	+40.9%	+55.3%	+77.1%	-3.8%
Other Care Grades	20	+10	+5	-2	-2	+1	+1	+90.1%	+29.8%	-9.2%	-6.9%	+3.4%	+6.5%
Pastoral Care	10	-4	-3	-3	-2	-1	+0	-27.5%	-24.9%	-21.4%	-17.6%	-9.8%	+5.2%
Workshop Services	165	-8	-5	-0	+10	+1	+1	-4.6%	-3.2%	-0.1%	+6.2%	+0.5%	+0.4%
<b>Care, other</b>	<b>217</b>	<b>+5</b>	<b>+2</b>	<b>+2</b>	<b>+14</b>	<b>+10</b>	<b>+1</b>	<b>+2.4%</b>	<b>+0.7%</b>	<b>+0.7%</b>	<b>+6.9%</b>	<b>+4.9%</b>	<b>+0.7%</b>
<b>Patient &amp; Client Care</b>	<b>1,245</b>	<b>+79</b>	<b>+49</b>	<b>+41</b>	<b>+20</b>	<b>+19</b>	<b>-1</b>	<b>+6.8%</b>	<b>+4.1%</b>	<b>+3.4%</b>	<b>+1.6%</b>	<b>+1.5%</b>	<b>-0.1%</b>

Source: Health Service Personnel Census



Longitudinal Employment Levels by Grade Group - Dec 2017 to Jan 2023

Jan 2023 (Dec 2016 figure: 9,621)	WTE Jan 2023	WTE change since Dec 17	WTE change since Dec 18	WTE change since Dec 19	WTE change since Dec 20	WTE change since Dec 21	WTE change since Dec 22	% change since Dec 17	% change since Dec 18	% change since Dec 19	% change since Dec 20	% change since Dec 21	% change since Dec 22
Overall	10,527	+737	+630	+573	+226	+165	+74	+7.5%	+6.4%	+5.8%	+2.2%	+1.6%	+0.7%
Consultant Medicine	1	-0	-0					-9.1%	-9.1%				
Consultant Psychiatry	391	+78	+61	+39	+22	+6	-5	+25.1%	+18.4%	+11.1%	+6.0%	+1.5%	-1.4%
Consultants	392	+78	+61	+39	+22	+6	-5	+25.0%	+18.3%	+11.1%	+6.0%	+1.5%	-1.4%
Registrar	224	+79	+70	+54	+56	+20	+6	+54.6%	+45.3%	+32.1%	+33.1%	+9.6%	+3.0%
Senior Registrar	120	+54	+34	+23	+9	+1	-6	+81.9%	+39.3%	+23.2%	+7.7%	+0.7%	-4.8%
Specialist Registrar	2		+1	-1		-2	+0		+100.0%	-20.0%		-50.0%	+0.5%
Registrars	345	+133	+104	+76	+64	+18	+0	+62.5%	+43.4%	+28.4%	+22.8%	+5.6%	+0.1%
Senior House Officer	255	-17	-14	+2	-16	+16	-7	-6.2%	-5.2%	+0.9%	-5.7%	+6.7%	-2.6%
Interns	4	-6	-4	-4	-1	-3	-1	-60.1%	-50.1%	-50.1%	-20.2%	-43.0%	-18.9%
SHO/ Interns	259	-23	-18	-2	-17	+13	-8	-8.1%	-6.5%	-0.7%	-6.0%	+5.3%	-2.9%
Dentists		-0	-0					-100.0%	-100.0%	-100.0%	-100.0%	-100.0%	-100.0%
Other Medical	5	-6	-2	-0	-0	+1	+1	-57.4%	-28.8%	-7.6%	-7.6%	+16.7%	+18.2%
Medical/ Dental, other	5	-6	-2	-0	-0	+1	+1	-57.7%	-29.6%	-7.6%	-7.6%	+16.7%	+18.2%
Medical & Dental	1,001	+182	+145	+113	+69	+38	-12	+22.2%	+17.0%	+12.8%	+7.4%	+4.0%	-1.2%
Clinical Nurse/ Midwife Manager	1,049	+67	+43	+51	+8	-4	+14	+6.8%	+4.3%	+5.1%	+0.8%	-0.4%	+1.3%
Director Nursing/Midwifery, Assistant	176	+15	+12	+12	+6	-4	+0	+9.0%	+7.5%	+7.1%	+3.4%	-2.2%	+0.2%
Director of Nursing/Midwifery	34	+5	+10	+5	+6	+6	+0	+19.2%	+43.1%	+17.5%	+21.6%	+22.3%	+0.7%
Nurse/ Midwife Manager	1,260	+87	+66	+67	+20	-2	+14	+7.4%	+5.5%	+5.7%	+1.6%	-0.1%	+1.2%
Advanced Nurse/ Midwife Practitioner	69	+58	+48	+38	+29	+23	+0	+553.4%	+240.7%	+123.3%	+74.1%	+50.6%	+0.6%
Clinical Nurse/ Midwife Specialist	574	+191	+179	+146	+85	+75	+11	+49.8%	+45.2%	+34.0%	+17.3%	+15.0%	+2.0%
Nurse/ Midwife Specialist & AN/MP	643	+249	+227	+183	+114	+98	+12	+63.3%	+54.7%	+39.9%	+21.5%	+18.0%	+1.9%
Staff Midwives					-1			-100.0%	-100.0%	-100.0%	-100.0%	-100.0%	-100.0%
Staff Nurse [Psychiatric]	2,821	-206	-134	-72	-143	-166	-14	-6.8%	-4.5%	-2.5%	-4.8%	-5.5%	-0.5%
Staff Nurses [General/ Children's]	104	-13	-13	-1	-2	-3	-2	-11.4%	-11.4%	-0.6%	-2.1%	-2.4%	-1.9%
Staff Nurse [Intellectual Disability]	6	+3	+0	+2	+2	+3	-0	+79.8%	+3.7%	+37.3%	+46.7%	+89.1%	-6.5%
Staff Nurse/ Staff Midwife	2,932	-217	-147	-71	-145	-165	-16	-6.9%	-4.8%	-2.4%	-4.7%	-5.3%	-0.6%
Public Health Nurse		-1						-100.0%	-100.0%	-100.0%	-100.0%	-100.0%	-100.0%
Public Health Nurse		-1						-100.0%	-100.0%	-100.0%	-100.0%	-100.0%	-100.0%
Pre-registration Nurse Intern (COVID-19)					-42	-1		-100.0%	-100.0%	-100.0%	-100.0%	-100.0%	-100.0%
Pre-registration Nurse/ Midwife Intern	68	+51	+40	+41	+57	+40	+42	+304.2%	+144.2%	+147.2%	+535.5%	+140.3%	+157.7%
Post-registration Nurse/ Midwife Student				-1	-1			-100.0%	-100.0%	-100.0%	-100.0%	-100.0%	-100.0%
Nursing/ Midwifery awaiting registration	28	+19	+8	-31	+23	+7	-11	+221.3%	+40.1%	-52.8%	+473.0%	+34.8%	-28.3%
Nursing/ Midwifery Student	96	+70	+48	+8	+37	+46	+31	+276.0%	+100.9%	+9.6%	+62.5%	+92.0%	+47.1%
Nursing Education/Clinical	38	+7	+7	+6	+6	+7	+3	+23.3%	+21.6%	+19.4%	+18.9%	+21.8%	+9.6%
Nursing/ Midwifery other	38	+7	+7	+6	+6	+7	+3	+23.3%	+21.6%	+19.4%	+18.9%	+21.8%	+9.6%
Nursing & Midwifery	4,967	+196	+201	+194	+32	-16	+44	+4.1%	+4.2%	+4.1%	+0.7%	-0.3%	+0.9%
Dietitians	19	+2	-1	-0	-2	-1	+1	+13.9%	-4.8%	-0.2%	-8.2%	-6.9%	+5.6%
Occupational Therapists	350	+24	+11	+12	+5	+2	+4	+7.4%	+3.2%	+3.5%	+1.4%	+0.5%	+1.2%
Physiotherapists	3	+2	+1	+1	+1	+0	+0	+144.6%	+83.9%	+32.7%	+22.8%	+1.7%	+0.7%
Podiatrists & Chiropodists	1	-1	-1	-0	-0	-0	-0	-53.1%	-43.4%	-5.5%	-13.7%	-21.6%	-1.4%
Speech & Language Therapists	68	+6	+6	+6	-2	+7	+0	+10.1%	+10.0%	+9.7%	-2.9%	+10.8%	+0.1%
Therapy Professions	441	+34	+17	+18	+2	+7	+5	+8.3%	+4.0%	+4.3%	+0.4%	+1.6%	+1.2%
Social Care	73	-9	-5	-0	-7	-3	+1	-11.3%	-6.9%	-0.5%	-8.4%	-3.9%	+1.8%
Social Workers	420	+62	+61	+70	+47	+41	+6	+17.5%	+17.1%	+20.1%	+12.6%	+10.7%	+1.5%
Psychologists	449	+78	+60	+54	+25	+22	+1	+21.2%	+15.5%	+13.8%	+5.9%	+5.1%	+0.2%
Pharmacists	15	+0	-1	-1	-2	-1	-0	+2.4%	-4.1%	-5.7%	-11.3%	-8.0%	-2.5%
Pharmacy Technicians	4	-1	+0	+1	+0	-0	+0	-18.0%	+7.8%	+51.4%	+2.7%	-10.3%	+0.5%
Pharmacy	19	-0	-0	+0	-2	-2	-0	-2.4%	-1.9%	+1.9%	-8.8%	-8.5%	-1.9%
Counsellor Therapists	126	+41	+41	+31	+25	+11	+2	+47.4%	+48.4%	+33.0%	+24.7%	+9.4%	+1.5%
Other Health & Social Care	3	-6	-6	-9	-2	-3	+0	-65.0%	-65.2%	-74.5%	-44.6%	-48.8%	+0.3%
Play Therapists/ Specialists	3	+2	+2	+2	+2	+2		+106.0%	+110.1%	+113.0%	+110.1%	+94.4%	
H&SC, Other	132	+37	+37	+24	+24	+9	+2	+38.3%	+39.0%	+22.4%	+22.4%	+7.7%	+1.5%
Health & Social Care Professionals	1,533	+202	+170	+167	+89	+74	+15	+15.1%	+12.4%	+12.2%	+6.2%	+5.1%	+1.0%
Executive Management	14	+6	+4	+3	-1	+0	-0	+72.4%	+37.9%	+25.4%	-6.4%	+0.1%	-0.8%
Senior Management (VIII & GM)	61	+28	+29	+14	+8	+9	-0	+87.7%	+91.2%	+30.6%	+15.6%	+17.5%	-0.2%
Management (VIII & above)	74	+34	+33	+17	+7	+9	-0	+84.6%	+78.4%	+29.6%	+10.7%	+13.9%	-0.3%
Middle Management (V-VII)	293	+97	+74	+58	+50	+47	+8	+49.1%	+33.5%	+24.7%	+20.7%	+19.1%	+2.8%
Other Administrative	2	-1	-1					-38.9%	-38.9%				
Administrative/ Supervisory (V to VII)	295	+96	+73	+58	+50	+47	+8	+48.0%	+32.6%	+24.6%	+20.6%	+19.0%	+2.8%
General Administrative (III & IV)	728	+47	+33	+11	+6	+15	+22	+6.9%	+4.7%	+1.5%	+0.9%	+2.1%	+3.1%
Clerical (III & IV)	728	+47	+33	+11	+6	+15	+22	+6.9%	+4.7%	+1.5%	+0.9%	+2.1%	+3.1%
Management & Administrative	1,098	+177	+138	+86	+64	+71	+30	+19.2%	+14.4%	+8.5%	+6.2%	+6.9%	+2.8%
Support	554	-86	-66	-26	-40	-20	-2	-13.5%	-10.7%	-4.5%	-6.7%	-3.5%	-0.3%
Maintenance	129	-10	-6	-0	-9	-1	+0	-7.2%	-4.1%	-0.1%	-6.3%	-0.5%	+0.0%
Technical Services		-2	-2	-2				-100.0%	-100.0%	-100.0%	-100.0%	-100.0%	-100.0%
Maintenance/ Technical	129	-12	-8	-2	-9	-1	+0	-8.5%	-5.5%	-1.6%	-6.3%	-0.5%	+0.0%
General Support	683	-98	-74	-29	-49	-21	-2	-12.6%	-9.8%	-4.0%	-6.6%	-2.9%	-0.2%
Attendant/ Aide	417	-284	-264	-188	-167	-138	-6	-40.5%	-38.8%	-31.1%	-28.6%	-24.9%	-1.4%
Health & Social Care Assistants	21	+16	+15	+12	+13	+13	+2	+350.6%	+284.4%	+133.9%	+150.7%	+157.2%	+9.2%
Health Care Assistant/ Care Assistant	590	+342	+297	+216	+160	+134	+2	+137.5%	+101.3%	+57.7%	+37.2%	+29.4%	+0.3%
Health Care Assistants	1,027	+74	+48	+40	+6	+9	-3	+7.8%	+4.9%	+4.0%	+0.6%	+0.9%	-0.3%
Home Care Services	22	+7	+6	+6	+8	+10	-1	+48.1%	+33.8%	+40.9%	+55.3%	+77.1%	-3.8%
Other Care Grades	20	+10	+5	-2	-2	+1	+1	+90.1%	+29.8%	-9.2%	-6.9%	+3.4%	+6.5%
Pastoral Care	10	-4	-3	-3	-2	-1	+0	-27.5%	-24.9%	-21.4%	-17.6%	-9.8%	+5.2%
Workshop Services	165	-8	-5	-0	+10	+1	+1	-4.6%	-3.2%	-0.1%	+6.2%	+0.5%	+0.4%
Care, other	217	+5	+2	+2	+14	+10	+1	+2.4%	+0.7%	+0.7%	+6.9%	+4.9%	+0.7%
Patient & Client Care	1,245	+79	+49	+41	+20	+19	-1	+6.8%	+4.1%	+3.4%	+1.6%	+1.5%	-0.1%

Source: Health Service Personnel Census