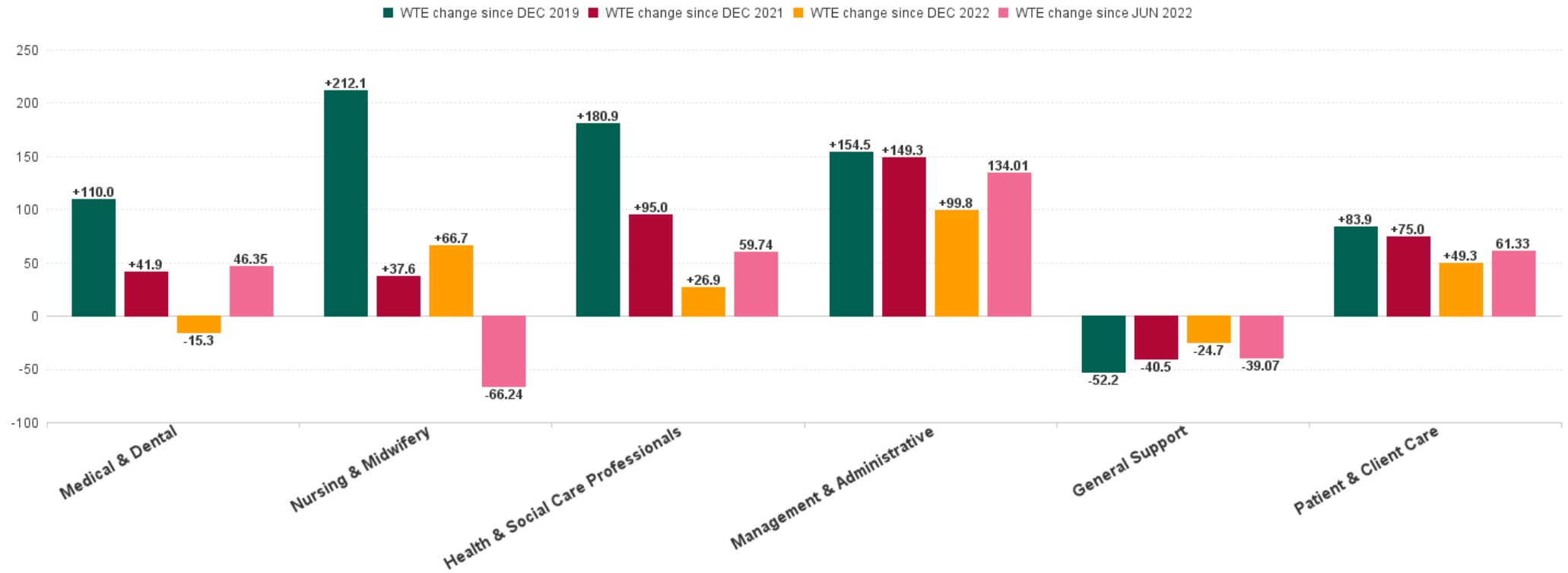


Mental Health Employment Report : JUN 2023

Mental Health Employment Report by Staff Group

JUN 2023	WTE DEC 2019	WTE DEC 2022	WTE MAY 2023	WTE JUN 2023	WTE change since DEC 2019	% WTE change since Dec 2019	WTE change since DEC 2022	% WTE change since Dec 2022	WTE change since MAY 2023	No. JUN 2023
Overall	9,967	10,453	10,672	10,656	+689	+6.9%	+203	+1.9%	-16	11,738
Consultants	353	397	404	406	+54	+15.3%	+9	+2.4%	+2	440
Registrars	269	345	341	343	+74	+27.7%	-2	-0.4%	+2	360
SHO/ Interns	261	267	244	245	-16	-6.2%	-22	-8.3%	+0	251
Medical/ Dental, other	5	4	3	3	-2	-40.6%	-1	-24.0%	+0	6
Medical & Dental	888	1,013	993	997	+110	+12.4%	-15	-1.5%	+5	1,057
Nurse/ Midwife Manager	1,201	1,245	1,229	1,232	+31	+2.5%	-14	-1.1%	+2	1,288
Nurse/ Midwife Specialist & AN/MP	460	631	678	684	+224	+48.7%	+54	+8.5%	+6	727
Staff Nurse/ Staff Midwife	3,002	2,948	2,896	2,871	-132	-4.4%	-77	-2.6%	-25	3,123
Pre-registration Nurse/ Midwife Intern	25	26	166	166	+141	+564.6%	+140	+529.8%	+1	333
Post-registration Nurse/ Midwife Student	1				-1	-100.0%				
Nursing/ Midwifery awaiting registration	57	39	6	5	-51	-90.4%	-33	-85.9%	-0	6
Nursing/ Midwifery Student	83	65	171	172	+89	+107.2%	+107	+163.7%	+1	339
Nursing/ Midwifery other	32	34	32	32	+0	+0.0%	-3	-8.2%	-1	34
Nursing & Midwifery	4,778	4,924	5,007	4,990	+212	+4.4%	+67	+1.4%	-17	5,511
Therapy Professions	420	435	451	445	+25	+5.9%	+10	+2.2%	-6	502
Social Care	74	72	68	66	-8	-10.4%	-6	-8.3%	-2	77
Social Workers	350	414	422	420	+70	+19.9%	+6	+1.6%	-2	467
Psychologists	394	448	466	462	+68	+17.2%	+15	+3.3%	-4	511
Pharmacy	19	19	22	22	+3	+16.4%	+2	+12.1%	-0	29
H&SC, Other	107	130	130	130	+23	+21.6%	-0	-0.1%	+0	145
Health & Social Care Professionals	1,364	1,518	1,559	1,545	+181	+13.3%	+27	+1.8%	-13	1,731
Management (VIII & above)	58	75	79	78	+19	+33.1%	+3	+4.1%	-1	79
Administrative/ Supervisory (V to VII)	238	287	317	314	+77	+32.2%	+27	+9.5%	-3	334
Clerical (III & IV)	717	707	768	776	+59	+8.2%	+69	+9.8%	+8	865
Management & Administrative	1,014	1,068	1,164	1,168	+154	+15.2%	+100	+9.3%	+4	1,278
Support	585	556	541	531	-54	-9.2%	-24	-4.4%	-10	605
Maintenance/ Technical	127	129	128	128	+1	+1.1%	-0	-0.3%	-0	133
General Support	712	685	670	660	-52	-7.3%	-25	-3.6%	-10	738
Health Care Assistants	996	1,030	1,058	1,069	+73	+7.4%	+39	+3.8%	+11	1,154
Care, other	216	216	222	226	+10	+4.8%	+10	+4.8%	+4	269
Patient & Client Care	1,212	1,246	1,280	1,295	+84	+6.9%	+49	+4.0%	+16	1,423

WTE Change by Staff Category



Mental Health Report by CHO: JUN 2023

JUN 2023	WTE DEC 2019	WTE DEC 2022	WTE MAY 2023	WTE JUN 2023	WTE change since DEC 2019	% WTE change since Dec 2019	WTE change since DEC 2022	% WTE change since Dec 2022	WTE change since MAY 2023	No. JUN 2023
Overall	9,967	10,453	10,672	10,656	+689	+6.9%	+203	+1.9%	-16	11,738
CHO 1	953	1,024	1,055	1,060	+107	+11.2%	+36	+3.5%	+4	1,155
CHO 2	1,308	1,329	1,347	1,344	+35	+2.7%	+15	+1.1%	-3	1,464
CHO 3	795	814	827	822	+27	+3.4%	+8	+1.0%	-4	907
CHO 4	1,499	1,562	1,574	1,575	+76	+5.1%	+13	+0.8%	+1	1,756
CHO 5	1,177	1,224	1,290	1,287	+110	+9.3%	+62	+5.1%	-3	1,434
CHO 6	593	650	662	664	+71	+12.1%	+15	+2.2%	+2	738
CHO 7	835	879	910	905	+70	+8.3%	+26	+3.0%	-5	998
CHO 8	1,098	1,091	1,137	1,138	+40	+3.6%	+47	+4.3%	+1	1,251
CHO 9	1,272	1,371	1,347	1,327	+56	+4.4%	-44	-3.2%	-20	1,469
other Community Services	438	511	524	535	+98	+22.3%	+24	+4.8%	+11	566



% Total by CHO



Mental Health Employment Report by HSE/S38: JUN 2023

JUN 2023	WTE DEC 2019	WTE DEC 2022	WTE MAY 2023	WTE JUN 2023	WTE change since DEC 2019	% WTE change since Dec 2019	WTE change since DEC 2022	% WTE change since Dec 2022	WTE change since MAY 2023	No. JUN 2023
Overall	9,967	10,453	10,672	10,656	+689	+6.9%	+203	+1.9%	-16	11,738
Health Service Executive	9,526	10,023	10,280	10,266	+741	+7.8%	+244	+2.4%	-14	11,277
Section 38 Voluntary Agencies	441	431	392	390	-52	-11.7%	-41	-9.5%	-2	461



Mental Health Employment Report by HSE: JUN 2023

JUN 2023	WTE DEC 2019	WTE DEC 2022	WTE MAY 2023	WTE JUN 2023	WTE change since DEC 2019	% WTE change since Dec 2019	WTE change since DEC 2022	% WTE change since Dec 2022	WTE change since MAY 2023	No. JUN 2023
Total HSE	9,526	10,023	10,280	10,266	+741	+7.8%	+244	+2.4%	-14	11,277
Consultants	333	372	377	380	+47	+14.2%	+8	+2.2%	+3	409
Registrars	250	325	320	322	+72	+28.9%	-3	-0.8%	+2	337
SHO/ Interns	255	260	240	240	-15	-6.0%	-20	-7.8%	-0	246
Medical/ Dental, other	5	4	3	3	-2	-40.6%	-1	-24.0%	+0	6
Medical & Dental	843	961	941	945	+102	+12.1%	-16	-1.6%	+5	998
Nurse/ Midwife Manager	1,163	1,211	1,199	1,200	+37	+3.2%	-11	-0.9%	+1	1,255
Nurse/ Midwife Specialist & AN/MP	453	620	665	671	+217	+47.9%	+51	+8.1%	+5	711
Staff Nurse/ Staff Midwife	2,879	2,838	2,813	2,792	-88	-3.0%	-47	-1.6%	-21	3,038
Nursing/ Midwifery awaiting registration	57	38	6	5	-39	-90.4%	-2	-85.5%	-0	6
Post-registration Nurse/ Midwife Student	1				-1	-100.0%				
Pre-registration Nurse Intern (COVID-19)					+1					
Pre-registration Nurse/ Midwife Intern	18	18	157	158	+3	+775.4%	+7	+757.4%	+1	316
Nursing/ Midwifery Student	76	56	163	163	+87	+115.1%	+107	+190.9%	+1	322
Nursing/ Midwifery other	29	32	32	32	+3	+8.6%	-0	-1.0%	-1	34
Nursing & Midwifery	4,601	4,758	4,872	4,857	+257	+5.6%	+99	+2.1%	-15	5,360
Therapy Professions	389	407	428	423	+34	+8.8%	+16	+3.9%	-5	470
Social Care	48	44	42	40	-8	-17.3%	-4	-9.3%	-2	47
Social Workers	331	394	401	400	+69	+21.0%	+7	+1.7%	-1	445
Psychologists	379	423	443	440	+62	+16.3%	+17	+4.0%	-3	482
Pharmacy	17	17	20	19	+2	+13.8%	+2	+10.5%	-0	26
H&SC, Other	102	130	129	129	+26	+25.9%	-1	-0.9%	-0	143
Health & Social Care Professionals	1,265	1,415	1,463	1,451	+186	+14.7%	+36	+2.5%	-11	1,613
Management (VIII & above)	56	73	76	75	+18	+32.5%	+2	+2.8%	-1	76
Administrative/ Supervisory (V to VII)	217	264	295	290	+74	+34.0%	+27	+10.2%	-4	305
Clerical (III & IV)	673	670	729	736	+64	+9.5%	+66	+9.9%	+8	820
Management & Administrative	946	1,006	1,099	1,101	+156	+16.5%	+95	+9.4%	+2	1,201
Support	547	523	512	502	-45	-8.3%	-21	-4.0%	-10	564
Maintenance/ Technical	121	123	122	122	+1	+1.2%	-0	-0.3%	-0	127
General Support	668	646	635	624	-44	-6.5%	-21	-3.3%	-10	691
Health Care Assistants	990	1,024	1,053	1,064	+74	+7.5%	+40	+3.9%	+11	1,149
Care, other	213	213	218	223	+10	+4.6%	+10	+4.8%	+4	265
Patient & Client Care	1,203	1,237	1,271	1,287	+84	+7.0%	+50	+4.0%	+15	1,414

Mental Health Employment Report by S38 Vols: JUN 2023

JUN 2023	WTE DEC 2019	WTE DEC 2022	WTE MAY 2023	WTE JUN 2023	WTE change since DEC 2019	% WTE change since Dec 2019	WTE change since DEC 2022	% WTE change since Dec 2022	WTE change since MAY 2023	No. JUN 2023
Total S38 Vols	441	431	392	390	-52	-11.7%	-41	-9.5%	-2	461
Consultants	20	25	27	27	+7	+33.3%	+1	+5.3%	-0	31
Registrars	19	20	21	21	+2	+11.0%	+1	+5.0%	-0	23
SHO/ Interns	6	7	5	5	-1	-16.7%	-2	-28.6%	+0	5
Medical & Dental	45	52	52	52	+8	+17.2%	+0	+0.7%	+0	59
Nurse/ Midwife Manager	38	34	30	31	-7	-17.7%	-3	-7.8%	+1	33
Nurse/ Midwife Specialist & AN/MP	7	11	13	14	+7	+105.5%	+3	+28.2%	+1	16
Staff Nurse/ Staff Midwife	123	109	83	79	-44	-35.7%	-30	-27.6%	-4	85
Nursing/ Midwifery awaiting registration		1						-100.0%		
Pre-registration Nurse/ Midwife Intern	7	8	9	9	+0	+21.4%	+2	+6.3%	+0	17
Nursing/ Midwifery Student	7	9	9	9	+2	+21.4%	-1	-5.6%	+0	17
Nursing/ Midwifery other	3	3			-3	-100.0%	-3	-100.0%		
Nursing & Midwifery	177	166	135	133	-45	-25.1%	-33	-19.8%	-2	151
Therapy Professions	31	28	23	22	-10	-30.5%	-6	-22.5%	-1	32
Social Care	25	28	26	26	+1	+2.6%	-2	-6.8%	+0	30
Social Workers	20	20	21	20	+0	+1.0%	-0	-0.5%	-1	22
Psychologists	16	25	23	22	+6	+40.5%	-2	-9.1%	-1	29
Pharmacy	2	2	2	2	+1	+43.8%	+1	+27.8%	+0	3
H&SC, Other	5	0	1	1	-3	-69.4%	+1	+208.3%	+0	2
Health & Social Care Professionals	99	103	96	94	-5	-5.0%	-9	-8.8%	-2	118
Management (VIII & above)	2	2	3	3	+1	+50.0%	+1	+50.0%	+0	3
Administrative/ Supervisory (V to VII)	21	23	23	24	+3	+14.0%	+1	+2.7%	+1	29
Clerical (III & IV)	45	36	40	40	-5	-11.4%	+3	+8.7%	+0	45
Management & Administrative	68	62	65	67	-1	-1.7%	+5	+7.8%	+2	77
Support	38	33	29	29	-8	-22.2%	-4	-10.9%	+1	41
Maintenance/ Technical	6	6	6	6	+0	+0.0%	+0	+0.0%	+0	6
General Support	44	39	35	35	-8	-19.2%	-4	-9.2%	+1	47
Health Care Assistants	6	6	5	5	-1	-13.3%	-1	-13.3%	+0	5
Care, other	3	3	3	3	+1	+23.4%	+0	+3.3%	+0	4
Patient & Client Care	9	9	8	8	-0	-1.3%	-1	-7.2%	+0	9

Mental Health Employment Report by Grade Group: JUN 2023

CHO 1

JUN 2023	WTE DEC 2019	WTE DEC 2022	WTE MAY 2023	WTE JUN 2023	WTE change since DEC 2019	% WTE change since Dec 2019	WTE change since DEC 2022	% WTE change since Dec 2022	WTE change since MAY 2023	No. JUN 2023
Total CHO 1	953	1024	1055	1060	+107	+11.2%	+36	+3.5%	+4	1,155
Consultants	31	34	36	36	+6	+18.1%	+3	+7.7%	+0	38
Registrars	24	35	38	37	+12	+49.6%	+2	+5.4%	-2	39
SHO/ Interns	25	21	22	23	-3	-9.9%	+2	+9.4%	+1	23
Medical & Dental	81	89	96	96	+15	+18.9%	+6	+7.2%	-0	100
Nurse/ Midwife Manager	117	118	122	123	+6	+5.3%	+5	+4.7%	+1	129
Nurse/ Midwife Specialist & AN/MP	67	91	93	93	+25	+37.6%	+1	+1.5%	+0	100
Staff Nurse/ Staff Midwife	297	294	289	296	-1	-0.3%	+3	+0.9%	+8	317
<i>Nursing/ Midwifery awaiting registration</i>		3					-3	-100.0%		
<i>Pre-registration Nurse/ Midwife Intern</i>		2	15	15	+15		+13	+733.3%	+0	30
Nursing/ Midwifery Student		5	15	15	+15		+10	+213.8%	+0	30
Nursing/ Midwifery other		2	1	1	+1		-1	-47.1%	+0	1
Nursing & Midwifery	482	510	519	529	+47	+9.7%	+19	+3.7%	+9	577
Therapy Professions	36	40	44	43	+7	+20.1%	+2	+6.1%	-1	46
Social Care	4	4	3	3	-0	-11.4%	-1	-14.2%	+0	4
Social Workers	39	48	48	47	+8	+19.8%	-1	-2.0%	-2	51
Psychologists	21	25	31	31	+11	+51.7%	+7	+27.7%	+0	33
Pharmacy	1	1	1	1	+0	+0.0%	-0	-1.2%	-0	1
H&SC, Other	13	18	18	18	+5	+41.1%	+0	+0.4%	+0	21
Health & Social Care Professionals	113	136	146	144	+31	+27.0%	+8	+5.8%	-2	156
Management (VIII & above)	6	9	8	7	+2	+31.9%	-1	-14.5%	-0	8
Administrative/ Supervisory (V to VII)	30	30	35	35	+5	+17.0%	+5	+16.3%	+1	37
Clerical (III & IV)	85	89	93	94	+9	+10.0%	+5	+5.2%	+1	103
Management & Administrative	121	128	135	136	+15	+12.8%	+8	+6.5%	+1	148
Support	62	58	60	60	-3	-4.2%	+2	+3.0%	-1	67
Maintenance/ Technical	17	16	16	14	-3	-15.4%	-2	-13.1%	-1	15
General Support	79	74	76	74	-5	-6.6%	-0	-0.6%	-2	82
Health Care Assistants	66	75	73	72	+6	+8.6%	-3	-3.5%	-1	81
Care, other	11	12	10	9	-1	-12.0%	-2	-19.9%	-0	11
Patient & Client Care	77	86	83	81	+4	+5.7%	-5	-5.7%	-1	92

Mental Health Employment Report by Grade Group: JUN 2023

CHO 2

JUN 2023	WTE DEC 2019	WTE DEC 2022	WTE MAY 2023	WTE JUN 2023	WTE change since DEC 2019	% WTE change since Dec 2019	WTE change since DEC 2022	% WTE change since Dec 2022	WTE change since MAY 2023	No. JUN 2023
Total CHO 2	1308	1329	1347	1344	+35	+2.7%	+15	+1.1%	-3	1,464
Consultants	38	37	39	39	+2	+5.1%	+3	+7.0%	+0	43
Registrars	33	37	33	35	+2	+4.6%	-2	-6.1%	+2	35
SHO/ Interns	35	39	40	38	+3	+8.2%	-1	-2.8%	-2	39
Medical/ Dental, other	1	1			-1	-100.0%	-1	-100.0%		
Medical & Dental	107	114	112	112	+5	+5.0%	-2	-1.5%	-0	117
Nurse/ Midwife Manager	146	142	143	147	+1	+0.6%	+5	+3.2%	+4	150
Nurse/ Midwife Specialist & AN/MP	67	88	96	96	+29	+43.0%	+9	+9.8%	+1	101
Staff Nurse/ Staff Midwife	357	353	346	339	-18	-5.1%	-14	-4.0%	-7	368
<i>Nursing/ Midwifery awaiting registration</i>	5	7	1	0	-4	-89.7%	-7	-93.0%	-0	1
<i>Pre-registration Nurse/ Midwife Intern</i>	0	4	22	23	+23	+19,050.0%	+19	+467.4%	+1	46
Nursing/ Midwifery Student	5	11	23	23	+19	+381.9%	+12	+112.4%	+1	47
Nursing/ Midwifery other	2	4	5	5	+3	+142.0%	+1	+21.0%	+0	5
Nursing & Midwifery	577	598	612	610	+33	+5.7%	+12	+2.1%	-2	671
Therapy Professions	45	55	58	56	+10	+22.7%	+1	+2.0%	-2	60
Social Care	15	14	13	13	-2	-14.1%	-1	-8.3%	+0	14
Social Workers	41	44	43	43	+3	+6.6%	-0	-1.1%	+0	48
Psychologists	34	37	42	41	+7	+22.0%	+4	+10.4%	-1	45
Pharmacy	3	3	2	2	-0	-1.2%	-0	-0.4%	+0	3
H&SC, Other	3	3	3	3	-0	-3.0%	+0	+2.8%	+0	3
Health & Social Care Professionals	140	155	161	158	+18	+13.0%	+3	+2.2%	-3	173
Management (VIII & above)	5	3	3	3	-2	-40.0%	+0	+0.0%	+0	3
Administrative/ Supervisory (V to VII)	24	25	26	27	+3	+12.6%	+1	+5.6%	+0	27
Clerical (III & IV)	109	98	104	105	-4	-4.1%	+7	+7.2%	+0	119
Management & Administrative	138	126	134	134	-3	-2.5%	+8	+6.7%	+0	149
Support	36	27	24	23	-13	-35.6%	-3	-12.3%	-0	25
Maintenance/ Technical	27	36	36	36	+9	+32.1%	-0	-0.6%	-0	36
General Support	63	62	59	59	-4	-6.7%	-4	-5.6%	-1	61
Health Care Assistants	215	202	200	202	-13	-6.1%	-0	-0.2%	+2	214
Care, other	69	73	70	69	-0	-0.5%	-4	-5.4%	-1	79
Patient & Client Care	284	275	269	271	-13	-4.7%	-4	-1.5%	+1	293

Mental Health Employment Report by Grade Group: JUN 2023

CHO 3

JUN 2023	WTE DEC 2019	WTE DEC 2022	WTE MAY 2023	WTE JUN 2023	WTE change since DEC 2019	% WTE change since Dec 2019	WTE change since DEC 2022	% WTE change since Dec 2022	WTE change since MAY 2023	No. JUN 2023
Total CHO 3	795	814	827	822	+27	+3.4%	+8	+1.0%	-4	907
Consultants	23	29	29	30	+6	+27.6%	+1	+2.4%	+1	34
Registrars	18	15	28	28	+10	+54.2%	+12	+81.3%	-0	29
SHO/ Interns	19	33	14	14	-5	-26.2%	-19	-58.1%	-0	14
Medical & Dental	60	78	71	71	+11	+18.6%	-6	-8.0%	+0	77
Nurse/ Midwife Manager	88	87	82	84	-3	-3.7%	-3	-2.9%	+3	88
Nurse/ Midwife Specialist & AN/MP	39	44	45	47	+8	+19.3%	+2	+5.1%	+2	51
Staff Nurse/ Staff Midwife	245	243	239	234	-12	-4.7%	-9	-3.7%	-5	258
Pre-registration Nurse/ Midwife Intern	9	4	17	17	+8	+90.0%	+13	+295.1%	-0	34
Nursing/ Midwifery Student	9	4	17	17	+8	+90.0%	+13	+295.1%	-0	34
Nursing/ Midwifery other		1	1	1	+1		+0	+1.0%	+0	1
Nursing & Midwifery	381	380	384	383	+2	+0.5%	+3	+0.9%	-1	432
Therapy Professions	26	30	33	32	+5	+20.3%	+1	+4.6%	-2	35
Social Care	3	2	2	1	-1	-50.2%	-0	-21.0%	-0	2
Social Workers	25	28	27	26	+1	+4.7%	-1	-5.2%	-1	28
Psychologists	92	93	91	90	-2	-2.3%	-3	-3.4%	-1	93
Pharmacy	3	3	3	3	-0	-1.8%	-0	-2.5%	-0	3
H&SC, Other	10	10	10	10	+1	+7.5%	+1	+6.8%	+0	11
Health & Social Care Professionals	159	166	167	163	+4	+2.3%	-3	-1.8%	-4	172
Management (VIII & above)	2	4	4	4	+2	+103.0%	+0	+1.3%	+0	4
Administrative/ Supervisory (V to VII)	17	16	18	16	-0	-2.5%	+0	+2.0%	-1	18
Clerical (III & IV)	56	50	58	60	+4	+7.5%	+10	+19.6%	+2	65
Management & Administrative	75	70	80	80	+6	+7.8%	+10	+14.5%	+0	87
Support	32	30	31	31	-2	-5.1%	+1	+1.9%	+0	34
Maintenance/ Technical	11	7	7	7	-4	-36.4%	+0	+1.0%	+0	7
General Support	43	37	38	38	-6	-13.0%	+1	+1.7%	+0	41
Health Care Assistants	75	82	84	84	+8	+11.2%	+2	+2.7%	-0	94
Care, other	2	2	3	3	+2	+101.8%	+1	+38.1%	+0	4
Patient & Client Care	77	84	87	87	+10	+13.1%	+3	+3.7%	-0	98

Mental Health Employment Report by Grade Group: JUN 2023

CHO 4

JUN 2023	WTE DEC 2019	WTE DEC 2022	WTE MAY 2023	WTE JUN 2023	WTE change since DEC 2019	% WTE change since Dec 2019	WTE change since DEC 2022	% WTE change since Dec 2022	WTE change since MAY 2023	No. JUN 2023
Total CHO 4	1499	1562	1574	1575	+76	+5.1%	+13	+0.8%	+1	1,756
Consultants	50	60	58	60	+10	+20.0%	-0	-0.8%	+2	66
Registrars	46	56	49	47	+1	+2.8%	-9	-16.5%	-2	50
SHO/ Interns	31	42	45	46	+15	+49.4%	+4	+9.1%	+2	47
Medical/ Dental, other	2	1	1	1	-1	-51.5%	+0	+1.0%	+0	4
Medical & Dental	129	160	152	154	+26	+19.9%	-6	-3.7%	+2	167
Nurse/ Midwife Manager	171	207	197	201	+29	+17.1%	-6	-3.1%	+4	214
Nurse/ Midwife Specialist & AN/MP	60	72	77	77	+17	+28.0%	+4	+6.2%	-1	81
Staff Nurse/ Staff Midwife	505	479	470	464	-42	-8.2%	-15	-3.2%	-6	503
<i>Nursing/ Midwifery awaiting registration</i>	30				-30	-100.0%				
<i>Post-registration Nurse/ Midwife Student</i>	1				-1	-100.0%				
<i>Pre-registration Nurse/ Midwife Intern</i>	3	7	24	24	+21	+713.3%	+18	+264.7%	+0	49
Nursing/ Midwifery Student	34	7	24	24	-9	-27.2%	+18	+264.7%	+0	49
Nursing & Midwifery	770	765	768	766	-5	-0.6%	+1	+0.1%	-3	847
Therapy Professions	74	79	85	85	+12	+15.6%	+7	+8.4%	+0	98
Social Care	4	6	5	5	+1	+26.3%	-1	-16.8%	-1	7
Social Workers	53	73	73	75	+22	+40.7%	+2	+2.3%	+1	86
Psychologists	83	96	95	94	+11	+13.3%	-2	-2.2%	-1	105
Pharmacy	2	2	2	1	-1	-40.3%	-1	-37.3%	-0	3
H&SC, Other	11	18	17	17	+6	+57.5%	-1	-3.8%	-0	20
Health & Social Care Professionals	227	273	277	277	+50	+22.2%	+4	+1.3%	-0	319
Management (VIII & above)	1	3	4	4	+3	+280.0%	+1	+26.7%	-0	4
Administrative/ Supervisory (V to VII)	22	26	30	29	+7	+31.0%	+3	+11.4%	-0	31
Clerical (III & IV)	87	87	91	93	+5	+6.2%	+6	+7.0%	+1	106
Management & Administrative	111	116	125	126	+15	+13.7%	+10	+8.5%	+1	141
Support	81	75	64	64	-17	-21.1%	-11	-14.8%	-0	74
Maintenance/ Technical	6	5	5	5	-1	-16.4%	+0	+0.2%	+0	6
General Support	87	80	69	69	-18	-20.8%	-11	-13.8%	-0	80
Health Care Assistants	168	162	176	177	+9	+5.2%	+15	+9.3%	+1	189
Care, other	7	5	6	6	-1	-16.7%	+1	+15.5%	+0	13
Patient & Client Care	176	167	182	183	+8	+4.3%	+16	+9.4%	+1	202

Mental Health Employment Report by Grade Group: JUN 2023

CHO 5

JUN 2023	WTE DEC 2019	WTE DEC 2022	WTE MAY 2023	WTE JUN 2023	WTE change since DEC 2019	% WTE change since Dec 2019	WTE change since DEC 2022	% WTE change since Dec 2022	WTE change since MAY 2023	No. JUN 2023
Total CHO 5	1177	1224	1290	1287	+110	+9.3%	+62	+5.1%	-3	1,434
Consultants	26	33	33	32	+5	+20.7%	-2	-4.9%	-1	33
Registrars	10	12	20	20	+10	+99.3%	+8	+67.8%	-0	20
SHO/ Interns	32	32	28	27	-5	-16.6%	-6	-17.5%	-1	28
Medical/ Dental, other	2	2	2	2	+0	+0.0%	+0	+2.6%	+0	2
Medical & Dental	70	80	83	80	+10	+14.3%	+1	+1.0%	-2	83
Nurse/ Midwife Manager	171	175	165	162	-9	-5.4%	-13	-7.5%	-3	170
Nurse/ Midwife Specialist & AN/MP	43	68	83	85	+42	+97.2%	+17	+25.2%	+2	90
Staff Nurse/ Staff Midwife	412	398	392	390	-22	-5.4%	-8	-2.1%	-2	439
<i>Nursing/ Midwifery awaiting registration</i>		6	1	1	+1		-5	-82.3%	-0	1
<i>Pre-registration Nurse/ Midwife Intern</i>	1	1	18	18	+17	+1,673.0%	+17	+1,709.2%	-0	36
Nursing/ Midwifery Student	1	7	19	19	+18	+1,772.0%	+12	+184.5%	-0	37
Nursing/ Midwifery other	4	4	4	5	+1	+26.4%	+1	+28.5%	+0	5
Nursing & Midwifery	631	651	664	660	+29	+4.6%	+9	+1.4%	-4	741
Therapy Professions	38	34	37	36	-3	-6.9%	+2	+5.2%	-1	39
Social Care	5	4	4	4	-0	-6.9%	+1	+19.8%	-0	5
Social Workers	28	29	31	30	+2	+7.5%	+2	+5.4%	-1	34
Psychologists	21	27	35	34	+13	+61.9%	+7	+25.8%	-1	39
H&SC, Other	9	23	23	23	+14	+150.1%	-1	-2.7%	-0	23
Health & Social Care Professionals	101	117	130	127	+26	+25.4%	+10	+9.0%	-3	140
Management (VIII & above)	4	6	6	6	+2	+40.8%	-0	-1.1%	-0	6
Administrative/ Supervisory (V to VII)	21	23	30	28	+7	+32.4%	+4	+19.1%	-2	30
Clerical (III & IV)	74	74	87	89	+15	+20.4%	+14	+19.4%	+2	98
Management & Administrative	99	104	123	122	+24	+23.8%	+19	+18.2%	-1	134
Support	171	175	177	177	+6	+3.6%	+3	+1.6%	+0	201
Maintenance/ Technical	19	14	14	15	-4	-22.1%	+1	+6.9%	+1	16
General Support	190	189	191	192	+2	+1.0%	+4	+2.0%	+2	217
Health Care Assistants	73	73	85	89	+17	+23.2%	+16	+22.3%	+5	96
Care, other	13	12	16	15	+3	+19.7%	+4	+29.7%	-0	23
Patient & Client Care	85	85	100	105	+19	+22.7%	+20	+23.3%	+4	119

Mental Health Employment Report by Grade Group: JUN 2023

CHO 6

JUN 2023	WTE DEC 2019	WTE DEC 2022	WTE MAY 2023	WTE JUN 2023	WTE change since DEC 2019	% WTE change since Dec 2019	WTE change since DEC 2022	% WTE change since Dec 2022	WTE change since MAY 2023	No. JUN 2023
Total CHO 6	593	650	662	664	+71	+12.1%	+15	+2.2%	+2	738
Consultants	36	45	47	47	+11	+31.0%	+2	+4.4%	+1	53
Registrars	22	30	28	26	+5	+21.4%	-3	-10.9%	-1	29
SHO/ Interns	9	9	8	8	-1	-11.2%	-1	-10.9%	+0	8
Medical & Dental	67	84	82	82	+15	+22.2%	-2	-2.7%	-0	90
Nurse/ Midwife Manager	76	75	73	73	-4	-5.1%	-2	-2.9%	-0	75
Nurse/ Midwife Specialist & AN/MP	14	27	32	34	+20	+149.7%	+7	+27.1%	+2	37
Staff Nurse/ Staff Midwife	139	151	156	155	+16	+11.7%	+4	+2.7%	-1	165
Pre-registration Nurse/ Midwife Intern			5	6	+6		+6		+1	11
Nursing/ Midwifery Student			5	6	+6		+6		+1	11
Nursing/ Midwifery other	2	4	3	2	+0	+0.0%	-2	-46.8%	-1	2
Nursing & Midwifery	231	257	269	270	+39	+16.7%	+13	+5.1%	+1	290
Therapy Professions	43	41	37	38	-5	-10.6%	-3	-6.8%	+1	50
Social Care	26	28	26	26	+0	+0.3%	-2	-6.8%	+0	30
Social Workers	30	36	39	39	+9	+30.4%	+3	+7.1%	-1	43
Psychologists	22	38	36	36	+14	+63.1%	-2	-4.5%	-0	46
H&SC, Other	9	6	6	6	-2	-27.0%	-0	-0.9%	-0	7
Health & Social Care Professionals	130	150	145	146	+16	+12.4%	-4	-2.6%	+1	176
Management (VIII & above)	3	5	5	5	+2	+66.7%	+0	+0.6%	+0	5
Administrative/ Supervisory (V to VII)	27	31	28	30	+4	+13.5%	-0	-1.5%	+3	34
Clerical (III & IV)	42	29	34	34	-9	-20.2%	+5	+15.6%	-0	37
Management & Administrative	72	65	66	69	-3	-4.1%	+4	+6.3%	+2	76
Support	36	29	29	28	-8	-22.7%	-1	-3.7%	-0	34
Maintenance/ Technical	6	5	6	6	+0	+1.5%	+1	+20.5%	+0	6
General Support	42	34	35	34	-8	-19.3%	-0	-0.2%	-0	40
Health Care Assistants	46	54	58	57	+11	+24.8%	+3	+6.0%	-1	58
Care, other	5	7	7	7	+2	+31.2%	+0	+2.0%	+0	8
Patient & Client Care	51	60	65	64	+13	+25.5%	+3	+5.6%	-1	66

Mental Health Employment Report by Grade Group: JUN 2023

CHO 7

JUN 2023	WTE DEC 2019	WTE DEC 2022	WTE MAY 2023	WTE JUN 2023	WTE change since DEC 2019	% WTE change since Dec 2019	WTE change since DEC 2022	% WTE change since Dec 2022	WTE change since MAY 2023	No. JUN 2023
Total CHO 7	835	879	910	905	+70	+8.3%	+26	+3.0%	-5	998
Consultants	48	52	55	55	+7	+14.6%	+2	+4.7%	+0	59
Registrars	46	55	51	52	+5	+11.5%	-3	-6.3%	+1	55
SHO/ Interns	21	26	18	18	-3	-14.2%	-8	-30.1%	-0	18
Medical & Dental	115	133	124	124	+9	+8.1%	-9	-6.6%	+1	132
Nurse/ Midwife Manager	117	109	114	112	-5	-3.9%	+3	+2.5%	-2	117
Nurse/ Midwife Specialist & AN/MP	40	56	62	64	+24	+60.6%	+8	+14.7%	+2	68
Staff Nurse/ Staff Midwife	194	205	202	201	+7	+3.4%	-4	-1.7%	-1	223
<i>Nursing/ Midwifery awaiting registration</i>	<i>10</i>	<i>1</i>			<i>-10</i>	<i>-100.0%</i>	<i>-1</i>	<i>-100.0%</i>		
<i>Pre-registration Nurse/ Midwife Intern</i>	<i>1</i>	<i>0</i>	<i>15</i>	<i>15</i>	<i>+14</i>	<i>+1,023.4%</i>	<i>+15</i>	<i>+15,290.0%</i>	<i>-0</i>	<i>31</i>
Nursing/ Midwifery Student	11	1	15	15	+4	+37.0%	+14	+1,311.9%	-0	31
Nursing/ Midwifery other	8	6	7	7	-1	-9.2%	+1	+15.5%	+0	8
Nursing & Midwifery	370	377	401	399	+30	+8.1%	+23	+6.0%	-2	447
Therapy Professions	48	51	54	53	+5	+9.9%	+2	+3.3%	-1	60
Social Care	8	7	7	6	-2	-20.6%	-1	-9.7%	-1	7
Social Workers	34	38	42	42	+8	+23.7%	+4	+9.8%	+0	45
Psychologists	31	35	37	39	+8	+24.4%	+4	+12.3%	+2	43
Pharmacy	1	0	1	1	-0	-20.0%	+1	+300.0%	+0	1
H&SC, Other	18	19	18	18	-0	-0.5%	-1	-4.1%	-0	20
Health & Social Care Professionals	140	150	159	159	+19	+13.3%	+9	+5.9%	-1	176
Management (VIII & above)	3	5	5	5	+2	+72.2%	+0	+1.7%	+0	5
Administrative/ Supervisory (V to VII)	16	22	25	25	+9	+55.8%	+2	+9.1%	-0	25
Clerical (III & IV)	47	55	61	59	+12	+26.2%	+4	+6.6%	-2	64
Management & Administrative	65	83	90	89	+23	+35.3%	+6	+7.0%	-2	94
Support	18	16	14	13	-4	-24.1%	-3	-16.3%	-1	16
Maintenance/ Technical	2	2	2	2	+0	+7.5%	+0	+3.1%	+0	2
General Support	20	18	16	15	-4	-21.1%	-3	-14.3%	-1	18
Health Care Assistants	33	31	30	30	-4	-11.3%	-1	-3.0%	-0	31
Care, other	92	88	90	89	-3	-3.7%	+1	+1.1%	-1	100
Patient & Client Care	125	118	119	118	-7	-5.7%	+0	+0.0%	-1	131

Mental Health Employment Report by Grade Group: JUN 2023

CHO 8

JUN 2023	WTE DEC 2019	WTE DEC 2022	WTE MAY 2023	WTE JUN 2023	WTE change since DEC 2019	% WTE change since Dec 2019	WTE change since DEC 2022	% WTE change since Dec 2022	WTE change since MAY 2023	No. JUN 2023
Total CHO 8	1098	1091	1137	1138	+40	+3.6%	+47	+4.3%	+1	1,251
Consultants	35	36	36	37	+1	+3.7%	+0	+0.9%	+0	39
Registrars	26	29	26	27	+1	+5.0%	-2	-7.4%	+1	28
SHO/ Interns	36	29	33	34	-2	-6.9%	+5	+15.9%	+1	35
Medical & Dental	97	94	95	97	+0	+0.1%	+3	+3.0%	+2	102
Nurse/ Midwife Manager	121	114	116	115	-6	-5.0%	+1	+0.6%	-1	119
Nurse/ Midwife Specialist & AN/MP	56	75	80	78	+22	+39.0%	+3	+4.7%	-2	84
Staff Nurse/ Staff Midwife	332	323	325	322	-10	-2.9%	-1	-0.4%	-3	345
<i>Nursing/ Midwifery awaiting registration</i>	2	8	1	1	-1	-50.0%	-7	-88.1%	+0	1
<i>Pre-registration Nurse/ Midwife Intern</i>	1	1	25	24	+24	+4,710.0%	+24	+4,710.0%	-0	49
Nursing/ Midwifery Student	3	9	26	25	+23	+902.0%	+16	+182.4%	-0	50
Nursing/ Midwifery other	4	3	3	3	-1	-27.1%	-0	-0.7%	-0	3
Nursing & Midwifery	515	523	549	542	+28	+5.4%	+19	+3.6%	-6	601
Therapy Professions	44	36	37	38	-7	-15.1%	+2	+4.8%	+0	42
Social Care	7	6	5	5	-2	-28.4%	-1	-18.1%	-0	6
Social Workers	41	50	48	49	+8	+19.5%	-1	-1.1%	+1	56
Psychologists	39	36	37	38	-1	-2.8%	+2	+5.1%	+1	41
Pharmacy	1	2	3	3	+2	+152.0%	+1	+58.5%	-0	4
H&SC, Other	20	16	17	17	-4	-17.1%	+1	+4.6%	+0	20
Health & Social Care Professionals	154	146	147	150	-4	-2.5%	+4	+2.4%	+2	169
Management (VIII & above)	3	3	3	3	+0	+2.0%	+0	+0.0%	+0	3
Administrative/ Supervisory (V to VII)	22	28	27	27	+4	+18.7%	-2	-5.7%	-1	28
Clerical (III & IV)	88	88	104	107	+18	+20.9%	+19	+21.8%	+3	119
Management & Administrative	114	119	134	136	+23	+20.0%	+17	+14.7%	+2	150
Support	33	27	27	27	-6	-18.1%	-0	-1.2%	+0	29
Maintenance/ Technical	26	25	27	27	+1	+4.9%	+3	+11.2%	+0	29
General Support	59	52	54	54	-5	-7.9%	+2	+4.7%	+1	58
Health Care Assistants	157	152	153	154	-3	-1.7%	+2	+1.6%	+1	166
Care, other	4	5	4	4	+1	+17.2%	-0	-7.8%	-0	5
Patient & Client Care	160	156	157	158	-2	-1.3%	+2	+1.3%	+1	171

Mental Health Employment Report by Grade Group: JUN 2023

CHO 9

JUN 2023	WTE DEC 2019	WTE DEC 2022	WTE MAY 2023	WTE JUN 2023	WTE change since DEC 2019	% WTE change since Dec 2019	WTE change since DEC 2022	% WTE change since Dec 2022	WTE change since MAY 2023	No. JUN 2023
Total CHO 9	1272	1371	1347	1327	+56	+4.4%	-44	-3.2%	-20	1,469
Consultants	50	55	56	55	+5	+9.1%	-1	-1.1%	-1	57
Registrars	31	57	57	59	+28	+91.0%	+2	+3.5%	+2	61
SHO/ Interns	53	36	36	36	-17	-32.5%	+0	+0.3%	+0	37
Medical & Dental	134	148	148	150	+15	+11.5%	+2	+1.0%	+1	155
Nurse/ Midwife Manager	132	138	136	134	+2	+1.4%	-4	-2.8%	-3	141
Nurse/ Midwife Specialist & AN/MP	65	99	100	100	+35	+53.3%	+1	+1.1%	-0	103
Staff Nurse/ Staff Midwife	351	351	324	318	-34	-9.6%	-33	-9.5%	-7	348
<i>Nursing/ Midwifery awaiting registration</i>	11	14	3	3	-8	-72.2%	-11	-78.3%	+0	3
<i>Pre-registration Nurse/ Midwife Intern</i>	10	8	23	23	+13	+127.3%	+15	+187.5%	+0	46
Nursing/ Midwifery Student	21	22	26	26	+5	+24.3%	+4	+19.3%	+0	49
Nursing/ Midwifery other	11	9	6	6	-5	-44.2%	-3	-31.9%	-0	7
Nursing & Midwifery	581	619	593	584	+3	+0.5%	-35	-5.7%	-9	648
Therapy Professions	55	60	56	55	+0	+0.9%	-5	-7.7%	-1	61
Social Care	1	1	1	1	+0	+11.1%	+0	+1.0%	+0	1
Social Workers	43	57	57	55	+12	+26.8%	-1	-2.5%	-2	62
Psychologists	46	56	57	55	+10	+21.0%	-1	-1.4%	-2	62
Pharmacy	8	7	8	8	-0	-2.5%	+1	+10.8%	-0	11
H&SC, Other	15	17	18	18	+3	+22.9%	+0	+2.6%	+0	20
Health & Social Care Professionals	167	198	197	192	+25	+14.9%	-6	-2.8%	-5	217
Management (VIII & above)	5	5	6	6	+1	+20.2%	+1	+21.7%	+0	6
Administrative/ Supervisory (V to VII)	28	38	41	41	+13	+46.1%	+2	+6.2%	-0	44
Clerical (III & IV)	104	109	111	109	+5	+4.7%	+0	+0.1%	-3	124
Management & Administrative	137	152	159	155	+19	+13.7%	+4	+2.4%	-3	174
Support	103	95	90	89	-15	-14.3%	-6	-6.6%	-1	104
Maintenance/ Technical	11	11	10	10	-1	-8.4%	-1	-8.4%	+0	10
General Support	114	106	100	99	-16	-13.7%	-7	-6.8%	-1	114
Health Care Assistants	126	137	138	136	+10	+8.2%	-0	-0.3%	-2	147
Care, other	13	12	12	12	-1	-7.0%	-0	-3.8%	-0	14
Patient & Client Care	139	149	150	148	+9	+6.8%	-1	-0.6%	-2	161

Mental Health Employment Report by Grade Group: JUN 2023

other Community Services

JUN 2023	WTE DEC 2019	WTE DEC 2022	WTE MAY 2023	WTE JUN 2023	WTE change since DEC 2019	% WTE change since Dec 2019	WTE change since DEC 2022	% WTE change since Dec 2022	WTE change since MAY 2023	No. JUN 2023
Total other Community Services	438	511	524	535	+98	+22.3%	+24	+4.8%	+11	566
Consultants	16	15	16	16	+1	+4.0%	+2	+10.2%	+0	18
Registrars	13	19	12	13	+0	+2.4%	-6	-29.3%	+1	14
SHO/ Interns			2	2	+2		+2		+0	2
Medical & Dental	29	34	30	32	+3	+10.3%	-2	-6.0%	+1	34
Nurse/ Midwife Manager	62	81	81	82	+19	+31.1%	+1	+1.2%	+0	85
Nurse/ Midwife Specialist & AN/MP	8	11	11	11	+2	+28.6%	-0	-3.5%	-0	12
Staff Nurse/ Staff Midwife	169	151	153	152	-16	-9.8%	+1	+0.9%	-1	157
Pre-registration Nurse/ Midwife Intern			1	1	+1		+1		+0	1
Nursing/ Midwifery Student			1	1	+1		+1		+0	1
Nursing/ Midwifery other	1	2	2	2	+1	+100.0%	+0	+1.5%	+0	2
Nursing & Midwifery	240	245	248	247	+7	+3.0%	+3	+1.2%	-1	257
Therapy Professions	11	10	10	10	-1	-8.5%	+0	+3.5%	+0	11
Social Care	2	1	1	1	-1	-49.0%	+0	+1.0%	+0	1
Social Workers	15	11	12	13	-3	-16.7%	+2	+15.1%	+0	14
Psychologists	6	5	4	4	-2	-33.3%	-1	-25.7%	+0	4
Pharmacy		2	3	3	+3		+1	+51.5%	+0	3
Health & Social Care Professionals	34	29	30	31	-3	-10.0%	+2	+5.6%	+1	33
Management (VIII & above)	27	33	35	35	+8	+29.4%	+2	+7.2%	-1	35
Administrative/ Supervisory (V to VII)	31	46	58	57	+26	+82.5%	+11	+23.7%	-1	60
Clerical (III & IV)	25	28	24	28	+3	+10.7%	+0	+0.1%	+4	30
Management & Administrative	83	106	117	120	+36	+43.6%	+13	+12.5%	+2	125
Support	12	25	26	20	+8	+63.7%	-5	-19.2%	-6	21
Maintenance/ Technical	2	8	6	6	+4	+200.0%	-2	-24.7%	+0	6
General Support	14	33	32	26	+12	+82.9%	-7	-20.5%	-6	27
Health Care Assistants	37	64	61	69	+32	+86.6%	+4	+6.5%	+8	78
Care, other	1	0	5	12	+11	+2,208.0%	+11	+2,355.3%	+7	12
Patient & Client Care	37	65	66	80	+43	+115.1%	+15	+23.5%	+14	90

Mental Health Employment Report by Grade Group: JUN 2023

JUN 2023	WTE DEC 2019	WTE DEC 2022	WTE MAY 2023	WTE JUN 2023	WTE change since DEC 2019	% WTE change since Dec 2019	WTE change since DEC 2022	% WTE change since Dec 2022	WTE change since MAY 2023	No. JUN 2023
Overall	9,967	10,453	10,672	10,656	+689	+6.9%	+203	+1.9%	-16	11,738
Consultant Medicine	1	1	1	1	+0	+0.0%	+0	+0.0%	+0	1
Consultant Psychiatry	352	396	403	405	+54	+15.3%	+9	+2.4%	+2	439
Consultants	353	397	404	406	+54	+15.3%	+9	+2.4%	+2	440
Registrar	169	217	223	225	+56	+33.2%	+8	+3.8%	+3	235
Senior Registrar	97	126	117	116	+19	+19.2%	-10	-7.8%	-1	123
Specialist Registrar	3	2	2	2	-1	-20.0%	+0	+0.5%	+0	2
Registrars	269	345	341	343	+74	+27.7%	-2	-0.4%	+2	360
Interns	8	5	5	5	-3	-37.8%	+0	+1.2%	-0	5
Senior House Officer	253	262	239	240	-13	-5.2%	-22	-8.5%	+0	246
SHO/ Interns	261	267	244	245	-16	-6.2%	-22	-8.3%	+0	251
Other Medical	5	4	3	3	-2	-40.6%	-1	-24.0%	+0	6
Medical/ Dental, other	5	4	3	3	-2	-40.6%	-1	-24.0%	+0	6
Medical & Dental	888	1,013	993	997	+110	+12.4%	-15	-1.5%	+5	1,057
Clinical Nurse/ Midwife Manager	1,008	1,036	1,020	1,021	+14	+1.3%	-15	-1.4%	+1	1,072
Director Nursing/Midwifery, Assistant	165	176	176	178	+14	+8.3%	+2	+1.3%	+2	183
Director of Nursing/Midwifery	29	34	33	32	+3	+11.5%	-1	-4.4%	-1	33
Nurse/ Midwife Manager	1,201	1,245	1,229	1,232	+31	+2.5%	-14	-1.1%	+2	1,288
Advanced Nurse/ Midwife Practitioner	30	68	73	75	+46	+153.4%	+7	+10.4%	+3	78
Clinical Nurse/ Midwife Specialist	430	563	605	609	+179	+41.5%	+46	+8.3%	+4	649
Nurse/ Midwife Specialist & AN/MP	460	631	678	684	+224	+48.7%	+54	+8.5%	+6	727
Staff Nurse [Intellectual Disability]	5	7	11	11	+6	+132.7%	+4	+58.5%	+0	11
Staff Nurse [Psychiatric]	2,890	2,835	2,774	2,755	-135	-4.7%	-80	-2.8%	-19	2,998
Staff Nurses [General/ Children's]	108	106	111	105	-3	-2.6%	-1	-1.1%	-6	114
Staff Nurse/ Staff Midwife	3,002	2,948	2,896	2,871	-132	-4.4%	-77	-2.6%	-25	3,123
Nursing/ Midwifery awaiting registration	57	39	6	5	-51	-90.4%	-33	-85.9%	-0	6
Post-registration Nurse/ Midwife Student	1				-1	-100.0%				
Pre-registration Nurse/ Midwife Intern	25	26	166	166	+141	+564.6%	+140	+529.8%	+1	333
Nursing/ Midwifery Student	83	65	171	172	+89	+107.2%	+107	+163.7%	+1	339
Nursing Education/Clinical	32	34	32	32	+0	+0.0%	-3	-8.2%	-1	34
Nursing/ Midwifery other	32	34	32	32	+0	+0.0%	-3	-8.2%	-1	34
Nursing & Midwifery	4,778	4,924	5,007	4,990	+212	+4.4%	+67	+1.4%	-17	5,511
Dietitians	19	18	20	20	+1	+3.1%	+2	+9.1%	-0	23
Occupational Therapists	337	346	355	352	+16	+4.7%	+6	+1.8%	-3	393
Physiotherapists	2	3	2	2	-0	-15.2%	-1	-35.7%	+0	3
Podiatrists & Chiropodists	1	1	1	1	+0	+2.7%	+0	+7.1%	+0	1
Speech & Language Therapists	62	68	73	70	+9	+14.2%	+3	+4.3%	-3	82
Therapy Professions	420	435	451	445	+25	+5.9%	+10	+2.2%	-6	502
Social Care	74	72	68	66	-8	-10.4%	-6	-8.3%	-2	77
Social Care	74	72	68	66	-8	-10.4%	-6	-8.3%	-2	77
Social Workers	350	414	422	420	+70	+19.9%	+6	+1.6%	-2	467
Social Workers	350	414	422	420	+70	+19.9%	+6	+1.6%	-2	467
Psychologists	394	448	466	462	+68	+17.2%	+15	+3.3%	-4	511
Psychologists	394	448	466	462	+68	+17.2%	+15	+3.3%	-4	511
Pharmacists	16	16	17	17	+1	+6.0%	+2	+9.7%	-0	22
Pharmacy Technicians	2	4	5	5	+2	+84.2%	+1	+22.3%	+0	7
Pharmacy	19	19	22	22	+3	+16.4%	+2	+12.1%	-0	29
Counsellor Therapists	95	124	122	123	+28	+29.3%	-2	-1.3%	+0	133
HSCP Trainees/Students			1						-1	
Other Health & Social Care	11	3	3	4	-7	-67.3%	+1	+18.7%	+1	7
Play Therapists/ Specialists	1	3	4	4	+3	+180.8%	+1	+31.8%	+0	5
H&SC, Other	107	130	130	130	+23	+21.6%	-0	-0.1%	-0	145
Health & Social Care Professionals	1,364	1,518	1,559	1,545	+181	+13.3%	+27	+1.8%	-13	1,731
Executive Management	11	14	17	17	+6	+52.6%	+3	+20.8%	-0	17
Senior Management (VIII & GM)	47	61	62	61	+14	+28.5%	+0	+0.3%	-1	62

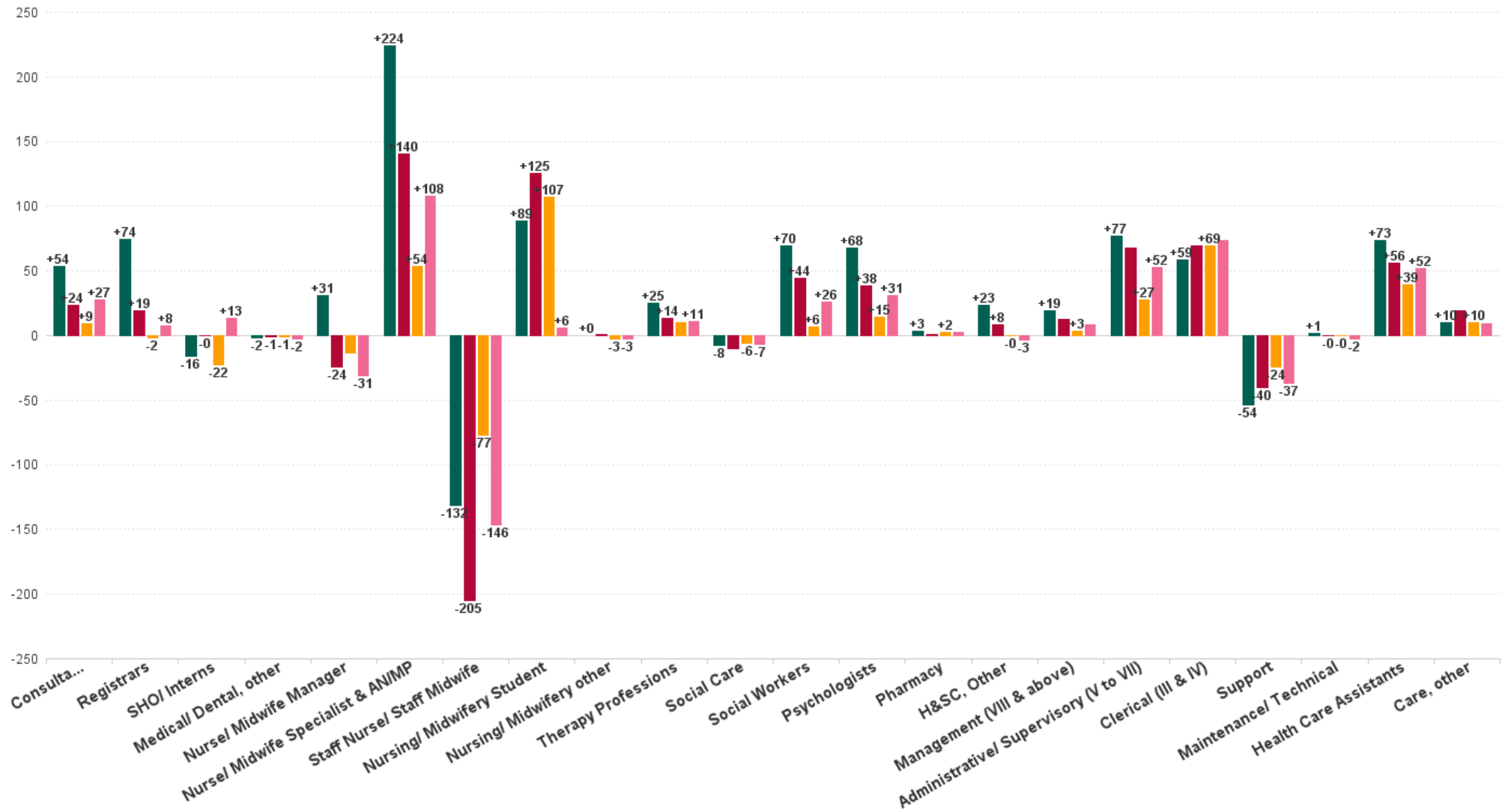


JUN 2023	WTE DEC 2019	WTE DEC 2022	WTE MAY 2023	WTE JUN 2023	WTE change since DEC 2019	% WTE change since Dec 2019	WTE change since DEC 2022	% WTE change since Dec 2022	WTE change since MAY 2023	No. JUN 2023
Overall	9,967	10,453	10,672	10,656	+689	+6.9%	+203	+1.9%	-16	11,738
Management (VIII & above)	58	75	79	78	+19	+33.1%	+3	+4.1%	-1	79
Middle Management (V-VII)	236	285	315	312	+76	+32.0%	+26	+9.2%	-3	331
Other Administrative	2	2	3	3	+1	+65.6%	+1	+65.6%	+0	3
Administrative/ Supervisory (V to VII)	238	287	317	314	+77	+32.2%	+27	+9.5%	-3	334
General Administrative (III & IV)	717	707	768	776	+59	+8.2%	+69	+9.8%	+8	865
Clerical (III & IV)	717	707	768	776	+59	+8.2%	+69	+9.8%	+8	865
Management & Administrative	1,014	1,068	1,164	1,168	+154	+15.2%	+100	+9.3%	+4	1,278
Catering	66	68	66	66	+0	+0.2%	-2	-2.5%	-0	72
Household Services	424	397	391	388	-37	-8.6%	-10	-2.4%	-3	446
Other Support	47	40	34	34	-12	-26.8%	-6	-14.9%	+0	40
Portering	48	51	50	44	-5	-9.4%	-7	-13.7%	-6	47
Support	585	556	541	531	-54	-9.2%	-24	-4.4%	-10	605
Maintenance	127	129	128	128	+1	+1.1%	-0	-0.3%	-0	133
Maintenance/ Technical	127	129	128	128	+1	+1.1%	-0	-0.3%	-0	133
General Support	712	685	670	660	-52	-7.3%	-25	-3.6%	-10	738
Attendant/ Aide	605	423	414	412	-193	-32.0%	-11	-2.6%	-2	456
Health Care Assistant/ Care Assistant	382	588	619	628	+247	+64.6%	+40	+6.8%	+10	664
Health & Social Care Assistants	9	19	26	29	+20	+225.4%	+10	+52.0%	+3	34
Health Care Assistants	996	1,030	1,058	1,069	+73	+7.4%	+39	+3.8%	+11	1,154
Home Care Services	16	23	20	20	+4	+26.8%	-3	-13.4%	+0	29
Other Care Grades	23	19	32	38	+15	+67.0%	+18	+95.9%	+6	43
Pastoral Care	13	9	10	9	-3	-26.1%	-0	-1.1%	-1	14
Workshop Services	165	164	160	159	-6	-3.4%	-5	-3.0%	-1	183
Care, other	216	216	222	226	+10	+4.8%	+10	+4.8%	+4	269
Patient & Client Care	1,212	1,246	1,280	1,295	+84	+6.9%	+49	+4.0%	+16	1,423



WTE Change by Staff Category

■ WTE change since DEC 2019 ■ WTE change since DEC 2021 ■ WTE change since DEC 2022 ■ WTE change since JUN 2022



Mental Health Employment Report by WTE, Headcount, Gender, Full-Time / Part-Time etc. JUN 2023

JUN 2023	WTE JUN 2023	No. JUN 2023	WTE : No	% Male	% Female	Male WTE : No.	Female WTE : No	Perm Count %	Perm Count Male %	Perm Count Female %	Fulltime Count %	Part time Count %	FT Count Male %	FT Count Female %
Total	10,656	11,738	1:0.9	26.60%	73.40%	1:0.9	1:0.9	83.69%	21.54%	62.16%	85.77%	14.23%	93.59%	82.94%
Consultants	406.43	440	1:0.9	40.91%	59.09%	1:1	1:0.9	67.95%	28.41%	39.55%	87.50%	12.50%	93.33%	83.46%
Registrars	343.24	360	1:1	41.67%	58.33%	1:1	1:0.9	2.22%	1.11%	1.11%	94.72%	5.28%	96.67%	93.33%
SHO/ Interns	244.85	251	1:1	39.44%	60.56%	1:1	1:1	0.40%	0.40%		99.20%	0.80%	100.00%	98.68%
Medical/ Dental, other	2.97	6	1:0.5	50.00%	50.00%	1:0.4	1:0.5	50.00%	16.67%	33.33%	33.33%	66.67%	33.33%	33.33%
Medical & Dental	997	1,057	1:0.9	40.87%	59.13%	1:1	1:0.9	29.42%	12.39%	17.03%	92.43%	7.57%	95.60%	90.24%
Nurse/ Midwife Manager	1,231.68	1,288	1:1	36.49%	63.51%	1:1	1:0.9	98.99%	35.95%	63.04%	94.80%	5.20%	98.51%	92.67%
Nurse/ Midwife Specialist & AN/MP	684.31	727	1:0.9	18.16%	81.84%	1:1	1:0.9	99.59%	18.16%	81.43%	93.26%	6.74%	97.73%	92.27%
Staff Nurse/ Staff Midwife	2,870.84	3,123	1:0.9	24.85%	75.15%	1:0.9	1:0.9	91.07%	21.84%	69.23%	87.35%	12.65%	91.37%	86.02%
Nursing/ Midwifery Student	171.82	339	1:0.5	17.70%	82.30%	1:0.5	1:0.5	1.77%	0.29%	1.47%	100.00%		100.00%	100.00%
Nursing/ Midwifery other	31.55	34	1:0.9	11.76%	88.24%	1:1	1:0.9	100.00%	11.76%	88.24%	85.29%	14.71%	100.00%	83.33%
Nursing & Midwifery	4,990	5,511	1:0.9	26.17%	73.83%	1:0.9	1:0.9	88.60%	23.26%	65.34%	90.64%	9.36%	94.66%	89.21%
Therapy Professions	445.08	502	1:0.9	9.96%	90.04%	1:0.9	1:0.9	93.43%	9.56%	83.86%	84.66%	15.34%	90.00%	84.07%
Social Care	65.87	77	1:0.9	19.48%	80.52%	1:1	1:0.8	90.91%	15.58%	75.32%	67.53%	32.47%	80.00%	64.52%
Social Workers	420.04	467	1:0.9	16.92%	83.08%	1:0.9	1:0.9	94.00%	15.85%	78.16%	83.08%	16.92%	94.94%	80.67%
Psychologists	462.47	511	1:0.9	20.55%	79.45%	1:1	1:0.9	75.15%	15.85%	59.30%	82.58%	17.42%	97.14%	78.82%
Pharmacy	21.55	29	1:0.7	17.24%	82.76%	1:0.9	1:0.7	93.10%	13.79%	79.31%	51.72%	48.28%	80.00%	45.83%
H&SC, Other	130.2	145	1:0.9	20.69%	79.31%	1:1	1:0.9	91.72%	18.62%	73.10%	73.10%	26.90%	90.00%	68.70%
Health & Social Care Professionals	1,545	1,731	1:0.9	16.41%	83.59%	1:1	1:0.9	87.93%	14.21%	73.71%	81.34%	18.66%	93.31%	78.99%
Management (VIII & above)	77.65	79	1:1	29.11%	70.89%	1:1	1:1	96.20%	27.85%	68.35%	97.47%	2.53%	95.65%	98.21%
Administrative/ Supervisory (V to VII)	314.44	334	1:0.9	20.36%	79.64%	1:1	1:0.9	94.01%	18.86%	75.15%	89.52%	10.48%	98.53%	87.22%
Clerical (III & IV)	775.97	865	1:0.9	8.90%	91.10%	1:0.9	1:0.9	86.01%	7.63%	78.38%	78.27%	21.73%	93.51%	76.78%
Management & Administrative	1,168	1,278	1:0.9	13.15%	86.85%	1:1	1:0.9	88.73%	11.82%	76.92%	82.39%	17.61%	95.83%	80.36%
Support	531.49	605	1:0.9	29.75%	70.25%	1:0.9	1:0.9	93.22%	27.44%	65.79%	63.31%	36.69%	88.89%	52.47%
Maintenance/ Technical	128.35	133	1:1	99.25%	0.75%	1:1	1:1	96.24%	95.49%	0.75%	96.99%	3.01%	96.97%	100.00%
General Support	660	738	1:0.9	42.28%	57.72%	1:0.9	1:0.9	93.77%	39.70%	54.07%	69.38%	30.62%	92.31%	52.58%
Health Care Assistants	1,069.1	1,154	1:0.9	31.46%	68.54%	1:0.9	1:0.9	90.90%	28.08%	62.82%	81.02%	18.98%	91.74%	76.11%
Care, other	226.3	269	1:0.8	44.98%	55.02%	1:0.9	1:0.8	86.62%	37.55%	49.07%	69.89%	30.11%	80.17%	61.49%
Patient & Client Care	1,295	1,423	1:0.9	34.01%	65.99%	1:0.9	1:0.9	90.09%	29.87%	60.22%	78.92%	21.08%	88.84%	73.80%



Mental Health Employment Report by WTE, Headcount, Gender, Full-Time / Part-Time etc. JUN 2023

JUN 2023	WTE JUN 2023	No. JUN 2023	WTE : No	% Male	% Female	Male WTE : No.	Female WTE : No	Perm Count %	Number Male %	Number Female %	Fulltime Count %	Part time Count %	FT Count Male %	FT Count Female %
Total	10,656	11,738	1:0.9	26.60%	73.40%	1:0.9	1:0.9	83.69%	21.54%	62.16%	85.77%	14.23%	93.59%	82.94%
CHO 1	1,060	1,155	1:0.9	25.97%	74.03%	1:1	1:0.9	88.83%	21.90%	66.93%	87.79%	12.21%	96.33%	84.80%
CHO 2	1,344	1,464	1:0.9	27.94%	72.06%	1:1	1:0.9	85.86%	22.88%	62.98%	86.07%	13.93%	91.69%	83.89%
CHO 3	822	907	1:0.9	21.50%	78.50%	1:0.9	1:0.9	81.04%	17.42%	63.62%	86.55%	13.45%	91.79%	85.11%
CHO 4	1,575	1,756	1:0.9	25.80%	74.20%	1:0.9	1:0.9	70.96%	16.74%	54.21%	83.03%	16.97%	92.27%	79.82%
CHO 5	1,287	1,434	1:0.9	24.97%	75.03%	1:0.9	1:0.9	88.15%	21.34%	66.81%	80.82%	19.18%	91.06%	77.42%
CHO 6	664	738	1:0.9	29.27%	70.73%	1:0.9	1:0.9	87.13%	24.93%	62.20%	83.06%	16.94%	91.20%	79.69%
CHO 7	905	998	1:0.9	22.14%	77.86%	1:0.9	1:0.9	82.36%	17.64%	64.73%	89.28%	10.72%	95.48%	87.52%
CHO 8	1,138	1,251	1:0.9	24.38%	75.62%	1:1	1:0.9	85.05%	19.90%	65.15%	87.05%	12.95%	96.39%	84.04%
CHO 9	1,327	1,469	1:0.9	27.71%	72.29%	1:1	1:0.9	85.36%	23.49%	61.88%	85.91%	14.09%	96.07%	82.02%
other Community Services	535	566	1:0.9	45.58%	54.42%	1:0.9	1:1	90.64%	40.28%	50.35%	94.88%	5.12%	93.80%	95.78%



Previous Month Summary

	% WTE change since MAY 2023	WTE change since DEC 2022	CHO 1	CHO 2	CHO 3	CHO 4	CHO 5	CHO 6	CHO 7	CHO 8	CHO 9	other Communi ty Services
Total	-0.1%	+202.7	+36.0	+14.6	+8.1	+13.1	+62.5	+14.5	+26.0	+47.3	-43.6	+24.3
Consultants	+0.6%	+9.4	+2.6	+2.6	+0.7	-0.5	-1.6	+2.0	+2.4	+0.3	-0.6	+1.5
Registrars	+0.5%	-1.5	+1.9	-2.2	+12.4	-9.3	+8.1	-3.2	-3.5	-2.1	+2.0	-5.5
SHO/ Interns	+0.2%	-22.3	+2.0	-1.1	-19.4	+3.9	-5.7	-1.0	-7.7	+4.6	+0.1	+2.0
Medical/ Dental, other	+0.0%	-0.9		-1.0		+0.0	+0.1					
Medical & Dental	+0.5%	-15.3	+6.4	-1.7	-6.2	-5.9	+0.8	-2.2	-8.7	+2.8	+1.5	-2.0
Nurse/ Midwife Manager	+0.2%	-13.7	+5.5	+4.6	-2.5	-6.4	-13.2	-2.2	+2.7	+0.7	-3.9	+1.0
Nurse/ Midwife Specialist & AN/MP	+0.9%	+53.5	+1.4	+8.6	+2.3	+4.5	+17.1	+7.3	+8.2	+3.5	+1.1	-0.4
Staff Nurse/ Staff Midwife	-0.9%	-77.0	+2.6	-14.1	-9.1	-15.2	-8.3	+4.1	-3.5	-1.3	-33.4	+1.3
Nursing/ Midwifery Student	+0.5%	+106.7	+10.2	+12.4	+12.7	+17.7	+12.1	+5.8	+14.3	+16.2	+4.2	+1.0
Nursing/ Midwifery other	-2.2%	-2.8	-0.9	+0.8	+0.0		+1.0	-1.8	+0.9	-0.0	-3.0	+0.0
Nursing & Midwifery	-0.3%	+66.7	+18.8	+12.4	+3.4	+0.6	+8.8	+13.2	+22.6	+19.0	-35.0	+2.9
Therapy Professions	-1.3%	+9.7	+2.5	+1.1	+1.4	+6.6	+1.8	-2.8	+1.7	+1.7	-4.6	+0.3
Social Care	-2.5%	-6.0	-0.5	-1.1	-0.4	-1.0	+0.7	-1.9	-0.7	-1.1	+0.0	+0.0
Social Workers	-0.5%	+6.4	-0.9	-0.5	-1.5	+1.7	+1.6	+2.6	+3.8	-0.5	-1.4	+1.6
Psychologists	-0.8%	+14.6	+6.8	+3.9	-3.2	-2.1	+7.0	-1.7	+4.3	+1.9	-0.8	-1.4



Pharmacy	-1.2%	+2.3	-0.0	-0.0	-0.1	-0.9			+0.6	+0.9	+0.8	+1.0
H&SC, Other	0.0%	-0.1	+0.1	+0.1	+0.7	-0.7	-0.6	-0.1	-0.8	+0.8	+0.5	
Health & Social Care Professionals	-0.9%	+26.9	+7.9	+3.4	-3.0	+3.7	+10.4	-3.9	+8.9	+3.6	-5.6	+1.6
Management (VIII & above)	-1.5%	+3.1	-1.3	+0.0	+0.1	+0.8	-0.1	+0.0	+0.1	+0.0	+1.1	+2.4
Administrative/ Supervisory (V to VII)	-0.9%	+27.4	+4.9	+1.4	+0.3	+3.0	+4.5	-0.5	+2.1	-1.6	+2.4	+10.9
Clerical (III & IV)	+1.0%	+69.3	+4.6	+7.0	+9.8	+6.0	+14.4	+4.5	+3.7	+19.1	+0.1	+0.0
Management & Administrative	+0.3%	+99.8	+8.3	+8.4	+10.2	+9.9	+18.8	+4.1	+5.8	+17.5	+3.6	+13.3
Support	-1.8%	-24.3	+1.7	-3.3	+0.6	-11.1	+2.8	-1.1	-2.6	-0.3	-6.3	-4.7
Maintenance/ Technical	0.0%	-0.4	-2.1	-0.2	+0.1	+0.0	+1.0	+1.0	+0.1	+2.8	-0.9	-2.0
General Support	-1.4%	-24.7	-0.4	-3.5	+0.6	-11.1	+3.8	-0.1	-2.6	+2.4	-7.2	-6.7
Health Care Assistants	+1.0%	+39.0	-2.6	-0.4	+2.2	+15.0	+16.3	+3.2	-0.9	+2.4	-0.4	+4.2
Care, other	+2.0%	+10.3	-2.4	-3.9	+0.9	+0.8	+3.5	+0.1	+0.9	-0.4	-0.5	+11.1
Patient & Client Care	+1.2%	+49.3	-5.0	-4.3	+3.1	+15.8	+19.8	+3.4	+0.0	+2.0	-0.9	+15.2



Year on Year Summary

	% WTE change since JUN 2022	WTE change since JUN 2022	CHO 1	CHO 2	CHO 3	CHO 4	CHO 5	CHO 6	CHO 7	CHO 8	CHO 9	other Communi- ty Services
Total	-0.1%	+196.1	+36.8	+23.0	+1.2	-6.6	+65.5	+19.5	+2.1	+38.5	-24.4	+40.5
Consultants	+0.6%	+27.5	+3.4	+2.6	+5.9	+5.5	-0.0	+9.2	+2.4	-3.8	+3.4	-1.0
Registrars	+0.5%	+7.6	+6.1	-8.6	+9.7	-6.0	+7.0	+3.0	-0.3	-11.2	+12.4	-4.6
SHO/ Interns	+0.2%	+13.4	+2.1	+5.5	-10.0	+9.9	-4.7	-4.0	-4.6	+9.9	+7.3	+2.0
Medical/ Dental, other	+0.0%	-2.1		-1.0		-1.1	+0.0					
Medical & Dental	+0.5%	+46.4	+11.7	-1.6	+5.6	+8.3	+2.3	+8.2	-2.5	-5.0	+23.0	-3.6
Nurse/ Midwife Manager	+0.2%	-31.1	+6.5	+0.4	-8.9	-14.4	-8.1	-3.5	-2.2	-0.1	-3.7	+3.0
Nurse/ Midwife Specialist & AN/MP	+0.9%	+107.6	+13.9	+11.9	+8.1	+4.7	+30.3	+13.4	+9.6	+9.7	+6.5	-0.4
Staff Nurse/ Staff Midwife	-0.9%	-146.1	-5.3	-16.6	-19.5	-23.3	-16.1	-5.1	-9.9	+0.4	-47.3	-3.4
Nursing/ Midwifery Student	+0.5%	+6.2	+0.9	-0.4	+5.0	-0.9	+0.3	+1.3	-2.6	+0.6	+0.9	+1.0
Nursing/ Midwifery other	-2.2%	-2.8	-0.9	+2.8	+0.0		+1.0	-1.0	-0.9	-0.0	-3.9	+0.0
Nursing & Midwifery	-0.3%	-66.2	+15.2	-1.9	-15.4	-33.9	+7.4	+5.1	-5.9	+10.6	-47.5	+0.1
Therapy Professions	-1.3%	+10.6	-0.7	+8.3	+0.0	+8.8	-1.7	-1.5	-0.6	+1.8	-5.0	+1.1
Social Care	-2.5%	-6.9	-0.4	+0.1	-1.6	-2.0	-0.3	-0.4	-1.4	-1.0	+0.0	+0.0
Social Workers	-0.5%	+25.6	+1.7	-1.4	+1.6	+3.5	+4.6	+5.4	+2.0	-0.2	+9.3	-0.7
Psychologists	-0.8%	+31.3	+7.7	+3.6	+1.0	-1.5	+10.7	-2.3	+11.3	+0.8	+2.0	-2.0
Pharmacy	-1.2%	+2.3	-0.1	+0.1	-0.1	+0.1			-0.2	+0.0	+0.3	+2.0



H&SC, Other	0.0%	-3.2	+0.7	+0.1	-0.1	-1.7	-0.3	-0.9	-3.1	+1.4	+0.7	
Health & Social Care Professionals	-0.9%	+59.7	+8.9	+10.7	+1.0	+7.3	+13.2	+0.3	+8.0	+2.8	+7.3	+0.4
Management (VIII & above)	-1.5%	+8.1	-1.2	+0.0	+2.0	+0.8	-0.4	+1.0	+0.1	-0.9	+0.7	+6.1
Administrative/ Supervisory (V to VII)	-0.9%	+52.4	+1.1	+0.1	+1.0	+5.3	+4.2	+2.6	+6.6	+8.2	+8.3	+15.2
Clerical (III & IV)	+1.0%	+73.5	+4.8	+9.5	+7.0	+6.3	+21.5	-1.8	+6.4	+16.7	-2.8	+5.8
Management & Administrative	+0.3%	+134.0	+4.7	+9.6	+10.0	+12.4	+25.3	+1.8	+13.1	+23.9	+6.2	+27.0
Support	-1.8%	-36.9	-0.9	-4.0	-1.0	-11.8	+2.0	-1.1	-3.4	-4.3	-13.4	+0.9
Maintenance/ Technical	0.0%	-2.2	-2.4	+3.3	+0.0	-0.1	-1.0	+0.0	+0.0	+2.7	-0.7	-4.0
General Support	-1.4%	-39.1	-3.3	-0.7	-1.0	-11.9	+1.1	-1.1	-3.4	-1.6	-14.1	-3.1
Health Care Assistants	+1.0%	+51.7	+2.1	+6.6	-1.3	+10.9	+14.2	+4.7	-3.4	+8.2	+1.5	+8.2
Care, other	+2.0%	+9.6	-2.5	+0.2	+2.4	+0.3	+2.0	+0.7	-3.8	-0.4	-0.9	+11.5
Patient & Client Care	+1.2%	+61.3	-0.4	+6.9	+1.0	+11.2	+16.3	+5.4	-7.2	+7.8	+0.6	+19.8



Year to Date Summary

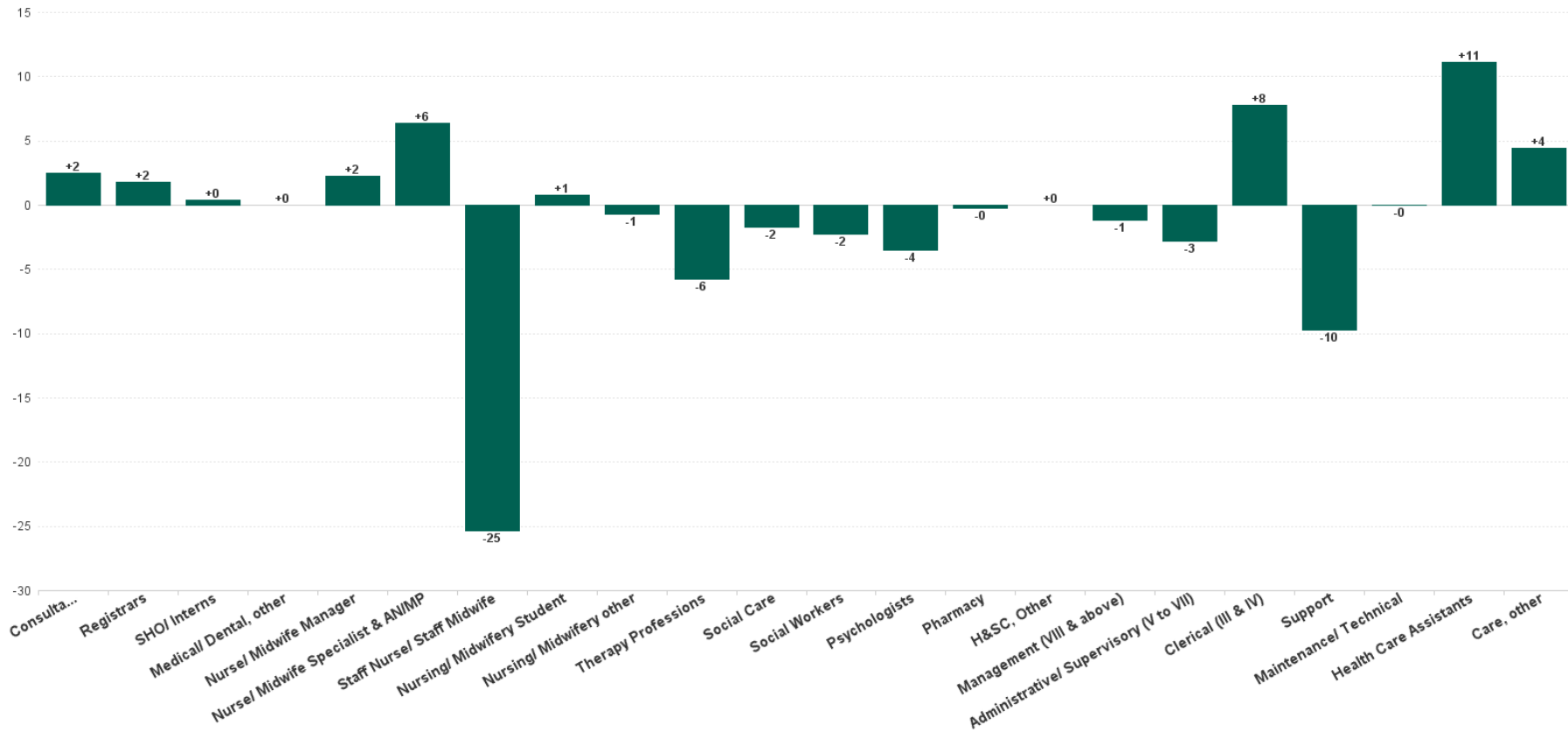
	% WTE change since JUN 2022	WTE change since DEC 2022	CHO 1	CHO 2	CHO 3	CHO 4	CHO 5	CHO 6	CHO 7	CHO 8	CHO 9	other Communi ty Services
Total	+1.9%	+202.7	+36.0	+14.6	+8.1	+13.1	+62.5	+14.5	+26.0	+47.3	-43.6	+24.3
Consultants	+2.4%	+9.4	+2.6	+2.6	+0.7	-0.5	-1.6	+2.0	+2.4	+0.3	-0.6	+1.5
Registrars	-0.4%	-1.5	+1.9	-2.2	+12.4	-9.3	+8.1	-3.2	-3.5	-2.1	+2.0	-5.5
SHO/ Interns	-8.3%	-22.3	+2.0	-1.1	-19.4	+3.9	-5.7	-1.0	-7.7	+4.6	+0.1	+2.0
Medical/ Dental, other	-24.0%	-0.9		-1.0		+0.0	+0.1					
Medical & Dental	-1.5%	-15.3	+6.4	-1.7	-6.2	-5.9	+0.8	-2.2	-8.7	+2.8	+1.5	-2.0
Nurse/ Midwife Manager	-1.1%	-13.7	+5.5	+4.6	-2.5	-6.4	-13.2	-2.2	+2.7	+0.7	-3.9	+1.0
Nurse/ Midwife Specialist & AN/MP	+8.5%	+53.5	+1.4	+8.6	+2.3	+4.5	+17.1	+7.3	+8.2	+3.5	+1.1	-0.4
Staff Nurse/ Staff Midwife	-2.6%	-77.0	+2.6	-14.1	-9.1	-15.2	-8.3	+4.1	-3.5	-1.3	-33.4	+1.3
Nursing/ Midwifery Student	+163.7%	+106.7	+10.2	+12.4	+12.7	+17.7	+12.1	+5.8	+14.3	+16.2	+4.2	+1.0
Nursing/ Midwifery other	-8.2%	-2.8	-0.9	+0.8	+0.0		+1.0	-1.8	+0.9	-0.0	-3.0	+0.0
Nursing & Midwifery	+1.4%	+66.7	+18.8	+12.4	+3.4	+0.6	+8.8	+13.2	+22.6	+19.0	-35.0	+2.9
Therapy Professions	+2.2%	+9.7	+2.5	+1.1	+1.4	+6.6	+1.8	-2.8	+1.7	+1.7	-4.6	+0.3
Social Care	-8.3%	-6.0	-0.5	-1.1	-0.4	-1.0	+0.7	-1.9	-0.7	-1.1	+0.0	+0.0
Social Workers	+1.6%	+6.4	-0.9	-0.5	-1.5	+1.7	+1.6	+2.6	+3.8	-0.5	-1.4	+1.6
Psychologists	+3.3%	+14.6	+6.8	+3.9	-3.2	-2.1	+7.0	-1.7	+4.3	+1.9	-0.8	-1.4
Pharmacy	+12.1%	+2.3	-0.0	-0.0	-0.1	-0.9			+0.6	+0.9	+0.8	+1.0
H&SC, Other	-0.1%	-0.1	+0.1	+0.1	+0.7	-0.7	-0.6	-0.1	-0.8	+0.8	+0.5	
Health & Social Care Professionals	+1.8%	+26.9	+7.9	+3.4	-3.0	+3.7	+10.4	-3.9	+8.9	+3.6	-5.6	+1.6
Management (VIII & above)	+4.1%	+3.1	-1.3	+0.0	+0.1	+0.8	-0.1	+0.0	+0.1	+0.0	+1.1	+2.4
Administrative/ Supervisory (V to VII)	+9.5%	+27.4	+4.9	+1.4	+0.3	+3.0	+4.5	-0.5	+2.1	-1.6	+2.4	+10.9
Clerical (III & IV)	+9.8%	+69.3	+4.6	+7.0	+9.8	+6.0	+14.4	+4.5	+3.7	+19.1	+0.1	+0.0
Management & Administrative	+9.3%	+99.8	+8.3	+8.4	+10.2	+9.9	+18.8	+4.1	+5.8	+17.5	+3.6	+13.3
Support	-4.4%	-24.3	+1.7	-3.3	+0.6	-11.1	+2.8	-1.1	-2.6	-0.3	-6.3	-4.7



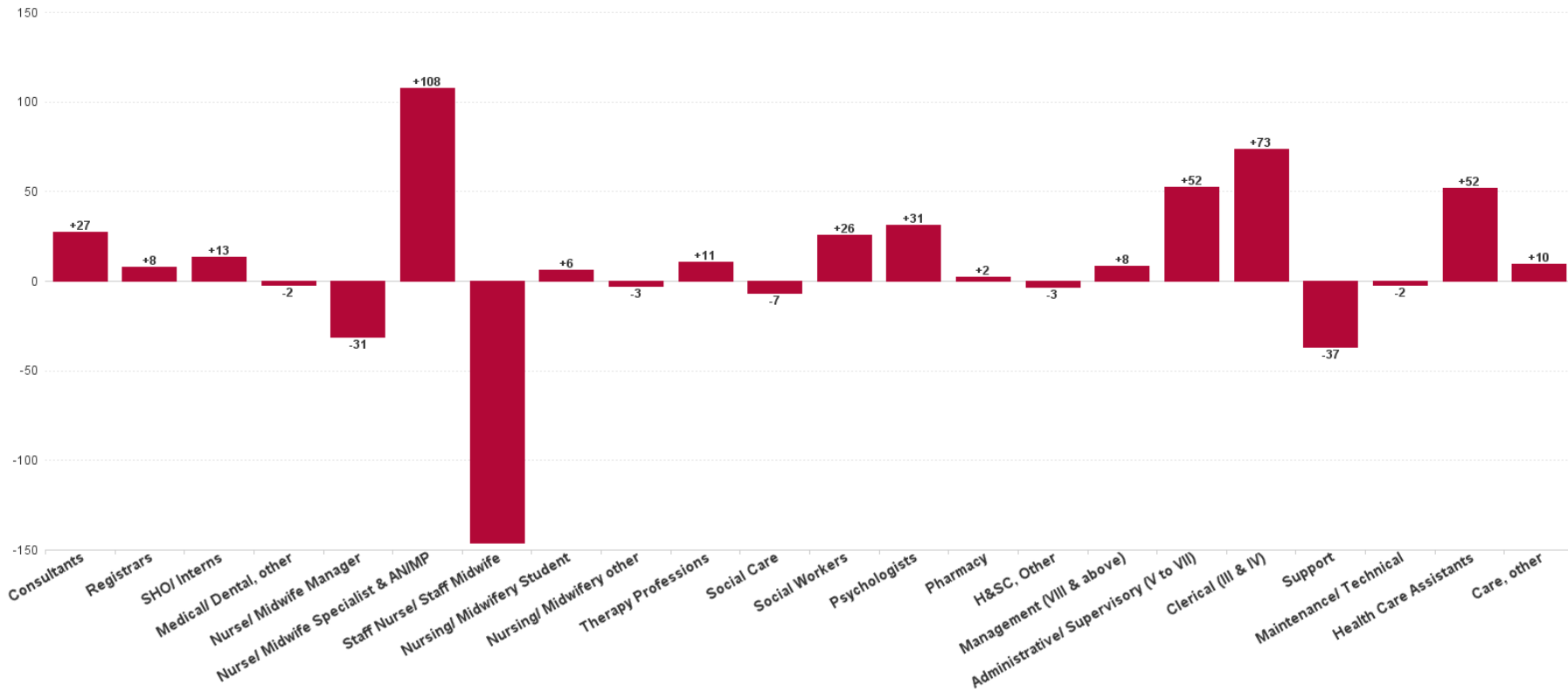
Maintenance/ Technical	-0.3%	-0.4	-2.1	-0.2	+0.1	+0.0	+1.0	+1.0	+0.1	+2.8	-0.9	-2.0
General Support	-3.6%	-24.7	-0.4	-3.5	+0.6	-11.1	+3.8	-0.1	-2.6	+2.4	-7.2	-6.7
Health Care Assistants	+3.8%	+39.0	-2.6	-0.4	+2.2	+15.0	+16.3	+3.2	-0.9	+2.4	-0.4	+4.2
Care, other	+4.8%	+10.3	-2.4	-3.9	+0.9	+0.8	+3.5	+0.1	+0.9	-0.4	-0.5	+11.1
Patient & Client Care	+4.0%	+49.3	-5.0	-4.3	+3.1	+15.8	+19.8	+3.4	+0.0	+2.0	-0.9	+15.2



Previous Month Summary Chart: Change since MAY 2023



Previous Year Summary Chart: Change since JUN 2022



YTD Summary Chart: Change since DEC 2022

