

Mental Health Service Employment Report: March 2022

Employment by Staff Group

Mar 2022	WTE Dec 2019	WTE Dec 2020	WTE Feb 2022	WTE Mar 2022	WTE change since Feb 22	WTE change since Dec 20	% change since Dec 20	WTE change since Dec 19	% change since Dec 19	No. Mar 2022
Overall	9,954	10,301	10,483	10,503	+20	+202	+2.0%	+549	+5.5%	11,602
Consultants	353	370	390	384	-5	+15	+4.1%	+32	+9.1%	418
Registrars	269	281	331	337	+6	+56	+19.9%	+68	+25.4%	347
SHO/ Interns	261	276	232	230	-2	-46	-16.7%	-31	-11.9%	242
Medical/ Dental, other	5	5	4	4		-1	-22.2%	-1	-22.2%	7
Medical & Dental	888	932	957	955	-1	+24	+2.6%	+68	+7.7%	1,014
Nurse/ Midwife Manager	1,192	1,240	1,266	1,268	+2	+28	+2.2%	+75	+6.3%	1,329
Nurse/ Midwife Specialist & AN/MP	459	529	546	553	+7	+24	+4.6%	+94	+20.5%	591
Staff Nurse/ Staff Midwife	3,003	3,076	3,063	3,044	-19	-32	-1.0%	+41	+1.4%	3,301
<i>Pre-registration Nurse Intern (COVID-19)</i>		42	1		-1	-42	-100.0%		-100.0%	
<i>Pre-registration Nurse/ Midwife Intern</i>	28	11	157	161	+4	+150	+1402.2%	+133	+484.4%	323
<i>Post-registration Nurse/ Midwife Student</i>	1	1				-1	-100.0%	-1	-100.0%	
<i>Nursing/ Midwifery awaiting registration</i>	59	5	24	18	-6	+13	+269.9%	-41	-69.5%	19
Nursing/ Midwifery Student	87	59	181	179	-2	+120	+203.3%	+91	+104.5%	342
Nursing/ Midwifery other	32	32	33	34	+1	+2	+6.7%	+2	+7.1%	37
Nursing & Midwifery	4,773	4,935	5,088	5,077	-11	+142	+2.9%	+304	+6.4%	5,600
Therapy Professions	422	439	441	447	+6	+8	+1.7%	+24	+5.8%	501
Social Care	74	80	72	72	+1	-8	-9.6%	-1	-1.7%	82
Social Workers	350	373	382	389	+6	+16	+4.3%	+39	+11.2%	435
Psychologists	394	424	429	431	+2	+7	+1.7%	+37	+9.3%	482
Pharmacy	19	21	20	20	-0	-1	-2.8%	+2	+8.6%	26
H&SC, Other	108	108	126	131	+5	+23	+21.6%	+23	+21.6%	152
Health & Social Care Professionals	1,366	1,444	1,470	1,490	+21	+46	+3.2%	+124	+9.1%	1,678
Management (VIII & above)	57	67	69	69	+0	+2	+3.5%	+12	+21.1%	71
Administrative/ Supervisory (V to VII)	237	245	256	253	-3	+8	+3.4%	+16	+6.9%	269
Clerical (III & IV)	717	722	713	718	+4	-4	-0.6%	+0	+0.0%	812
Management & Administrative	1,012	1,034	1,038	1,040	+2	+6	+0.6%	+29	+2.8%	1,152
Support	581	594	573	574	+0	-20	-3.4%	-7	-1.2%	665
Maintenance/ Technical	131	137	130	129	-1	-8	-5.9%	-2	-1.2%	134
General Support	711	732	704	703	-1	-29	-3.9%	-9	-1.2%	799
Health Care Assistants	988	1,022	1,021	1,027	+6	+5	+0.5%	+39	+3.9%	1,111
Care, other	216	203	205	210	+5	+7	+3.3%	-6	-2.7%	248
Patient & Client Care	1,204	1,225	1,226	1,237	+10	+12	+1.0%	+33	+2.7%	1,359

Mental Health Services Employment by Administration (HSE / S38): March 2022

Mar 2022	WTE Dec 2019	WTE Dec 2020	WTE Feb 2022	WTE Mar 2022	WTE change since Feb 22	WTE change since Dec 20	% change since Dec 20	WTE change since Dec 19	% change since Dec 19	No. Mar 2022
Total	9,954	10,301	10,483	10,503	+20	+202	+2.0%	+549	+5.5%	11,602
HSE	9,513	9,855	10,067	10,087	+20	+232	+2.4%	+574	+6.0%	11,108
Section 38 Voluntary Agencies	441	446	417	416	-0	-30	-6.7%	-25	-5.6%	494

Employment by Staff Group

Mar 2022	WTE Dec 2019	WTE Dec 2020	WTE Feb 2022	WTE Mar 2022	WTE change since Feb 22	WTE change since Dec 20	% change since Dec 20	WTE change since Dec 19	% change since Dec 19	No. Mar 2022
Health Service Executive	9,513	9,855	10,067	10,087	+20	+232	+2.4%	+574	+6.0%	11,108
Consultants	333	349	368	363	-5	+14	+4.0%	+30	+9.0%	391
Registrars	250	266	312	318	+5	+52	+19.6%	+68	+27.1%	327
SHO/ Interns	255	267	223	222	-1	-45	-16.8%	-33	-13.0%	231
Medical/ Dental, other	5	5	4	4		-1	-22.2%	-1	-22.2%	7
Medical & Dental	843	886	907	906	-1	+20	+2.3%	+64	+7.5%	956
Nurse/ Midwife Manager	1,154	1,202	1,230	1,232	+2	+30	+2.5%	+78	+6.7%	1,292
Nurse/ Midwife Specialist & AN/MP	452	520	537	544	+7	+24	+4.7%	+92	+20.2%	580
Staff Nurse/ Staff Midwife	2,880	2,953	2,953	2,934	-18	-19	-0.6%	+55	+1.9%	3,181
Pre-registration Nurse Intern (COVID-19)		41	1		-1	-41	-100.0%		-100.0%	
Pre-registration Nurse/ Midwife Intern	21	1	150	154	+4	+153	+21574.6%	+133	+649.6%	309
Post-registration Nurse/ Midwife Student	1	1				-1	-100.0%	-1	-100.0%	
Nursing/ Midwifery awaiting registration	59	5	24	18	-6	+13	+269.9%	-41	-69.5%	19
Nursing/ Midwifery Student	80	48	174	172	-2	+124	+258.2%	+91	+113.6%	328
Nursing/ Midwifery other	29	29	30	31	+1	+2	+7.3%	+2	+7.7%	34
Nursing & Midwifery	4,596	4,752	4,924	4,914	-10	+161	+3.4%	+318	+6.9%	5,415
Therapy Professions	391	412	414	421	+7	+9	+2.2%	+30	+7.7%	466
Social Care	48	52	48	49	+1	-3	-6.5%	+1	+1.3%	55
Social Workers	330	354	365	371	+6	+17	+4.7%	+41	+12.4%	416
Psychologists	379	402	410	411	+1	+9	+2.4%	+32	+8.6%	458
Pharmacy	17	19	18	18	-0	-1	-3.1%	+1	+8.2%	24
H&SC, Other	103	107	125	131	+6	+24	+22.2%	+28	+26.9%	151
Health & Social Care Professionals	1,267	1,345	1,381	1,401	+20	+55	+4.1%	+133	+10.5%	1,570
Management (VIII & above)	55	65	67	67	+0	+2	+3.6%	+12	+21.9%	69
Administrative/ Supervisory (V to VII)	216	224	235	233	-3	+8	+3.8%	+17	+7.8%	246
Clerical (III & IV)	673	679	673	676	+3	-3	-0.5%	+3	+0.5%	763
Management & Administrative	944	968	975	976	+1	+7	+0.8%	+32	+3.4%	1,078
Support	543	556	540	540	+1	-16	-2.9%	-2	-0.4%	613
Maintenance/ Technical	125	130	123	122	-1	-8	-6.2%	-3	-2.1%	127
General Support	668	687	663	663	-0	-24	-3.5%	-5	-0.8%	740
Health Care Assistants	982	1,016	1,015	1,021	+6	+5	+0.5%	+39	+4.0%	1,105
Care, other	213	200	202	207	+5	+7	+3.3%	-6	-3.0%	244
Patient & Client Care	1,195	1,216	1,217	1,228	+10	+12	+1.0%	+33	+2.7%	1,349

Employment by Staff Group

Mar 2022	WTE Dec 2019	WTE Dec 2020	WTE Feb 2022	WTE Mar 2022	WTE change since Feb 22	WTE change since Dec 20	% change since Dec 20	WTE change since Dec 19	% change since Dec 19	No. Mar 2022
Section 38 Voluntary Agencies	441	446	417	416	-0	-30	-6.7%	-25	-5.6%	494
Consultants	20	21	22	22	-0	+1	+4.6%	+2	+10.4%	27
Registrars	19	15	19	19	+1	+4	+26.4%	+0	+1.9%	20
SHO/ Interns	6	9	8	8	-0	-1	-11.1%	+2	+33.3%	11
Medical & Dental	45	45	49	49	-0	+4	+8.8%	+4	+9.9%	58
Nurse/ Midwife Manager	38	38	35	35	+0	-2	-6.1%	-3	-6.9%	37
Nurse/ Midwife Specialist & AN/MP	7	9	9	9	-0	+0	+2.3%	+2	+36.4%	11
Staff Nurse/ Staff Midwife	123	123	110	110	-1	-13	-10.8%	-14	-11.0%	120
Pre-registration Nurse Intern (COVID-19)		1				-1	-100.0%		-100.0%	
Pre-registration Nurse/ Midwife Intern	7	10	7	7		-3	-30.0%			14
Nursing/ Midwifery Student	7	11	7	7		-4	-36.4%			14
Nursing/ Midwifery other	3	3	3	3						3
Nursing & Midwifery	177	183	165	164	-1	-19	-10.6%	-14	-7.7%	185
Therapy Professions	31	27	27	26	-1	-2	-6.0%	-6	-18.4%	35
Social Care	25	28	24	24	-0	-4	-15.3%	-2	-7.4%	27
Social Care	25	28	24	24	-0	-4	-15.3%	-2	-7.4%	27
Social Workers	20	19	17	18	+1	-0	-2.4%	-2	-8.0%	19
Psychologists	16	22	19	20	+1	-2	-10.2%	+4	+26.2%	24
Pharmacy	2	2	2	2				+0	+12.5%	2
H&SC, Other	5	1	1	0	-0	-1	-51.0%	-4	-90.1%	1
Health & Social Care Professionals	99	99	89	90	+1	-9	-9.2%	-9	-9.3%	108
Management (VIII & above)	2	2	2	2						2
Administrative/ Supervisory (V to VII)	21	21	21	21	-1	-0	-0.5%	-1	-2.7%	23
Clerical (III & IV)	45	43	41	42	+1	-1	-2.4%	-3	-6.5%	49
Management & Administrative	68	66	64	64	+1	-1	-1.7%	-4	-5.2%	74
Support	38	38	34	33	-1	-4	-11.7%	-4	-11.9%	52
Maintenance/ Technical	6	7	7	7				+1	+16.7%	7
General Support	44	45	41	40	-1	-4	-9.9%	-3	-8.0%	59
Health Care Assistants	6	6	6	6						6
Care, other	3	3	3	3				+1	+20.2%	4
Patient & Client Care	9	9	9	9				+1	+6.6%	10

Mental Health Services Employment by CHO: Mar 2022

Mar 2022	WTE Dec 2019	WTE Dec 2020	WTE Feb 2022	WTE Mar 2022	WTE change since Feb 22	WTE change since Dec 20	% change since Dec 20	WTE change since Dec 19	% change since Dec 19	No. Mar 2022
Overall	9,954	10,301	10,483	10,503	+20	+202	+2.0%	+549	+5.5%	11,602
CHO 1	953	976	1,030	1,033	+4	+58	+5.9%	+81	+8.5%	1,127
CHO 2	1,308	1,340	1,353	1,344	-10	+3	+0.3%	+35	+2.7%	1,466
CHO 3	795	809	821	825	+4	+16	+2.0%	+30	+3.7%	908
CHO 4	1,485	1,564	1,590	1,590	+1	+27	+1.7%	+105	+7.1%	1,761
CHO 5	1,178	1,188	1,228	1,224	-5	+35	+3.0%	+46	+3.9%	1,365
CHO 6	593	626	627	634	+7	+8	+1.2%	+42	+7.0%	705
CHO 7	835	861	901	905	+3	+43	+5.0%	+70	+8.3%	1,006
CHO 8	1,098	1,112	1,099	1,098	-1	-14	-1.3%	-0	-0.0%	1,224
CHO 9	1,272	1,331	1,337	1,351	+14	+21	+1.6%	+80	+6.3%	1,510
other Community Services	438	494	497	499	+3	+5	+1.0%	+62	+14.1%	530

Mental Health Services Employment by CHO etc. Mar 2022

CHO 1

Mar 2022	WTE Dec 2019	WTE Dec 2020	WTE Feb 2022	WTE Mar 2022	WTE change since Feb 22	WTE change since Dec 20	% change since Dec 20	WTE change since Dec 19	% change since Dec 19	No. Mar 2022
Overall	953	976	1,030	1,033	+4	+58	+5.9%	+81	+8.5%	1,127
Consultants	31	34	36	35	-1	+1	+3.0%	+4	+13.9%	38
Registrars	24	29	30	30	+0	+1	+4.4%	+6	+24.3%	31
SHO/ Interns	25	23	22	22	-1	-1	-6.1%	-4	-14.9%	23
Medical & Dental	81	86	88	87	-1	+1	+1.1%	+6	+8.0%	92
Nurse/ Midwife Manager	117	119	119	119	+0	-0	-0.2%	+2	+1.8%	125
Nurse/ Midwife Specialist & AN/MP	67	74	76	76	+0	+3	+3.6%	+9	+13.3%	80
Staff Nurse/ Staff Midwife	297	288	307	307	-1	+18	+6.4%	+9	+3.1%	323
Nursing/ Midwifery Student		3	16	15	-1	+12	+406.3%	+15	-100.0%	29
Nursing/ Midwifery other		1	2	2	+0	+1	+106.4%	+2	-100.0%	2
Nursing & Midwifery	482	485	521	519	-1	+34	+7.0%	+37	+7.8%	559
Therapy Professions	36	36	45	45	+0	+9	+25.9%	+10	+26.6%	49
Social Care	4	4	4	4	+0	+0	+0.8%	+0	+1.6%	5
Social Workers	39	43	43	43	-0	-0	-0.1%	+4	+9.5%	48
Psychologists	21	23	22	24	+2	+1	+4.0%	+4	+17.6%	26
Pharmacy	1	1	1	1	+0	+0	+10.0%	+0	+10.0%	1
H&SC, Other	13	14	17	19	+1	+5	+34.2%	+6	+42.1%	21
Health & Social Care Professionals	113	121	132	136	+4	+15	+12.5%	+23	+19.9%	150
Management (VIII & above)	6	8	10	10	0	+2	+26.1%	+4	+70.8%	10
Administrative/ Supervisory (V to VII)	30	31	32	33	+1	+2	+7.5%	+3	+9.5%	35
Clerical (III & IV)	85	85	89	89	-0	+4	+4.3%	+4	+4.2%	100
Management & Administrative	121	123	131	131	+1	+8	+6.5%	+10	+8.6%	145
Support	62	65	61	60	-1	-5	-7.6%	-2	-3.3%	69
Maintenance/ Technical	17	16	17	18	+0	+1	+8.5%	+1	+5.9%	18
General Support	79	81	79	78	-1	-4	-4.4%	-1	-1.3%	87
Health Care Assistants	66	68	69	70	+1	+2	+3.3%	+4	+5.7%	80
Care, other	11	11	10	12	+2	+1	+8.6%	+1	+12.1%	14
Patient & Client Care	77	79	79	82	+3	+3	+4.0%	+5	+6.6%	94

CHO 2

Mar 2022	WTE Dec 2019	WTE Dec 2020	WTE Feb 2022	WTE Mar 2022	WTE change since Feb 22	WTE change since Dec 20	% change since Dec 20	WTE change since Dec 19	% change since Dec 19	No. Mar 2022
Overall	1,308	1,340	1,353	1,344	-10	+3	+0.3%	+35	+2.7%	1,466
Consultants	38	37	38	37	-0	+0	+0.6%	-0	-0.8%	40
Registrars	33	37	40	41	+1	+5	+12.8%	+8	+24.4%	42
SHO/ Interns	35	40	36	34	-1	-6	-13.9%	-1	-1.5%	35
Medical/ Dental, other	1	1				-1	-100.0%	-1	-100.0%	
Medical & Dental	107	114	114	113	-1	-2	-1.4%	+6	+5.9%	117
Nurse/ Midwife Manager	146	151	150	151	+1	-0	-0.0%	+5	+3.7%	154
Nurse/ Midwife Specialist & AN/MP	67	79	84	83	-0	+4	+5.1%	+16	+23.3%	87
Staff Nurse/ Staff Midwife	357	355	363	355	-8	+1	+0.2%	-2	-0.5%	386
<i>Pre-registration Nurse Intern (COVID-19)</i>		10				-10	-100.0%		-100.0%	
<i>Pre-registration Nurse/ Midwife Intern</i>	0		25	25	-0	+25	-100.0%	+25	+20733.3%	48
<i>Nursing/ Midwifery awaiting registration</i>	5		6	5	-1	+5	-100.0%	+0	+5.3%	5
Nursing/ Midwifery Student	5	10	31	30	-1	+20	+194.7%	+25	+516.0%	53
Nursing/ Midwifery other	2	2	2	2	+0	+0	+25.0%			2
Nursing & Midwifery	577	597	630	622	-8	+25	+4.2%	+44	+7.7%	682
Therapy Professions	45	55	50	50	+0	-5	-8.5%	+5	+11.3%	56
Social Care	15	16	14	14	-0	-2	-12.0%	-1	-4.1%	16
Social Workers	41	42	42	43	+1	+1	+3.5%	+2	+5.7%	48
Psychologists	34	37	42	42	+0	+5	+12.7%	+8	+24.2%	47
Pharmacy	3	2	2	2	0	+1	+37.4%	-0	-5.2%	3
H&SC, Other	3	3	3	3	-0	-0	-12.7%	-0	-12.7%	3
Health & Social Care Professionals	140	155	154	154	+1	-0	-0.1%	+14	+10.3%	173
Management (VIII & above)	5	4	4	4	-0	-0	-0.2%	-1	-20.2%	4
Administrative/ Supervisory (V to VII)	24	26	25	23	-2	-3	-12.2%	-0	-1.5%	24
Clerical (III & IV)	109	102	98	100	+1	-3	-2.6%	-9	-8.6%	113
Management & Administrative	138	133	127	127	-1	-6	-4.4%	-11	-7.8%	141
Support	36	31	27	27	-0	-4	-13.4%	-9	-25.2%	30
Maintenance/ Technical	27	33	34	31	-2	-2	-5.7%	+4	+15.8%	32
General Support	63	64	61	58	-2	-6	-9.4%	-5	-7.7%	62
Health Care Assistants	215	211	203	204	+1	-7	-3.2%	-10	-4.8%	218
Care, other	69	66	65	65	-0	-1	-1.7%	-4	-5.8%	73
Patient & Client Care	284	278	268	270	+1	-8	-2.8%	-14	-5.1%	291

CHO 3

Mar 2022	WTE Dec 2019	WTE Dec 2020	WTE Feb 2022	WTE Mar 2022	WTE change since Feb 22	WTE change since Dec 20	% change since Dec 20	WTE change since Dec 19	% change since Dec 19	No. Mar 2022
Overall	795	809	821	825	+4	+16	+2.0%	+30	+3.7%	908
Consultants	23	24	27	25	-2	+1	+4.2%	+2	+7.8%	29
Registrars	18	15	16	19	+3	+3	+21.6%	+1	+2.9%	19
SHO/ Interns	19	21	24	25	+1	+3	+15.1%	+6	+30.1%	25
Medical & Dental	60	61	66	68	+2	+8	+12.4%	+8	+13.4%	73
Nurse/ Midwife Manager	88	88	85	89	+4	+2	+1.8%	+2	+1.9%	95
Nurse/ Midwife Specialist & AN/MP	39	37	35	37	+1	-0	-1.2%	-3	-6.8%	40
Staff Nurse/ Staff Midwife	245	272	275	269	-6	-3	-1.0%	+24	+9.6%	292
<i>Pre-registration Nurse Intern (COVID-19)</i>		3				-3	-100.0%		-100.0%	
<i>Pre-registration Nurse/ Midwife Intern</i>	9		12	12	0	+12	-100.0%	+3	+36.9%	25
Nursing/ Midwifery Student	9	3	12	12	0	+9	+254.9%	+3	+36.9%	25
<i>Nursing Education/Clinical</i>				1	+1	+1	-100.0%	+1	-100.0%	1
Nursing/ Midwifery other				1	+1	+1	-100.0%	+1	-100.0%	1
Nursing & Midwifery	381	400	407	408	+1	+8	+2.0%	+27	+7.0%	453
Therapy Professions	26	25	25	25	+0	+0	+1.9%	-1	-4.0%	29
Social Care	3	3	2	2	0	-1	-33.3%	-1	-30.3%	2
Social Workers	25	24	26	26	+0	+2	+7.8%	+1	+3.8%	28
Psychologists	92	91	88	87	-0	-4	-4.4%	-5	-5.5%	92
Pharmacy	3	3	3	3	0					3
H&SC, Other	10	12	10	12	+2	-1	-5.1%	+2	+20.7%	14
Health & Social Care Professionals	159	158	153	155	+2	-3	-2.1%	-4	-2.6%	168
Management (VIII & above)	2	2	4	3	-1	+1	+48.0%	+1	+50.3%	3
Administrative/ Supervisory (V to VII)	17	19	15	14	-1	-5	-26.2%	-3	-17.1%	14
Clerical (III & IV)	56	50	52	52	-0	+1	+2.3%	-4	-7.7%	57
Management & Administrative	75	71	71	68	-3	-3	-4.0%	-6	-8.3%	74
Support	32	30	33	33	-0	+2	+8.2%	+0	+0.6%	36
Maintenance/ Technical	11	9	7	7	0	-2	-22.2%	-4	-36.4%	7
General Support	43	39	40	40	-0	+0	+1.2%	-4	-8.8%	43
Health Care Assistants	75	79	82	85	+3	+6	+8.0%	+10	+12.9%	96
Care, other	2	1	1	1	0			-1	-40.1%	1
Patient & Client Care	77	80	83	86	+3	+6	+7.9%	+9	+11.7%	97

CHO 4

Mar 2022	WTE Dec 2019	WTE Dec 2020	WTE Feb 2022	WTE Mar 2022	WTE change since Feb 22	WTE change since Dec 20	% change since Dec 20	WTE change since Dec 19	% change since Dec 19	No. Mar 2022
Overall	1,485	1,564	1,590	1,590	+1	+27	+1.7%	+105	+7.1%	1,761
Consultants	50	54	57	57	-0	+2	+4.5%	+7	+13.9%	62
Registrars	46	42	54	54	-1	+12	+29.2%	+8	+17.3%	55
SHO/ Interns	31	43	36	35	-0	-8	-17.6%	+4	+14.2%	39
Medical/ Dental, other	2	2	2	2	0	-0	-5.5%	-0	-5.5%	5
Medical & Dental	129	141	149	148	-1	+7	+4.9%	+19	+14.9%	161
Nurse/ Midwife Manager	170	192	211	209	-2	+17	+8.8%	+40	+23.4%	221
Nurse/ Midwife Specialist & AN/MP	60	71	67	68	+1	-3	-3.9%	+8	+13.4%	72
Staff Nurse/ Staff Midwife	502	519	502	500	-2	-19	-3.7%	-2	-0.4%	535
<i>Pre-registration Nurse Intern (COVID-19)</i>		3				-3	-100.0%		-100.0%	
<i>Pre-registration Nurse/ Midwife Intern</i>	3		24	23	-1	+23	-100.0%	+20	+666.7%	46
<i>Post-registration Nurse/ Midwife Student</i>	1						-100.0%	-1	-100.0%	
<i>Nursing/ Midwifery awaiting registration</i>	30	1	3	3	0	+2	+200.0%	-27	-89.8%	3
Nursing/ Midwifery Student	34	4	27	26	-1	+22	+550.0%	-8	-22.4%	49
Nursing & Midwifery	765	786	807	803	-4	+17	+2.2%	+38	+5.0%	877
Therapy Professions	74	77	78	79	+2	+2	+2.4%	+5	+7.3%	88
Social Care	4	7	6	7	+0	-0	-4.5%	+3	+75.0%	8
Social Workers	53	64	65	67	+2	+3	+3.9%	+14	+26.1%	79
Psychologists	83	94	97	97	+0	+3	+3.1%	+14	+17.2%	110
Pharmacy	2	3	1	1	+0	-2	-56.1%	-1	-46.4%	2
H&SC, Other	11	12	15	16	+1	+4	+29.0%	+5	+48.5%	21
Health & Social Care Professionals	227	258	262	267	+5	+9	+3.4%	+40	+17.8%	308
Management (VIII & above)	1	3	3	3	0	+0	+9.9%	+2	+200.0%	3
Administrative/ Supervisory (V to VII)	22	22	22	22	+0	+0	+2.1%	-0	-0.9%	23
Clerical (III & IV)	87	94	92	92	-1	-3	-3.1%	+4	+4.7%	104
Management & Administrative	111	119	117	117	-0	-2	-1.8%	+6	+5.4%	130
Support	80	82	78	80	+2	-2	-2.2%	+0	+0.1%	93
Maintenance/ Technical	6	5	5	5	0			-1	-16.4%	6
General Support	86	87	83	85	+2	-2	-2.1%	-1	-1.0%	99
Health Care Assistants	161	166	165	163	-2	-3	-1.7%	+3	+1.7%	171
Care, other	7	6	7	7	+0	+1	+8.3%	-0	-4.4%	15
Patient & Client Care	168	173	172	170	-2	-2	-1.3%	+2	+1.4%	186

CHO 5

Mar 2022	WTE Dec 2019	WTE Dec 2020	WTE Feb 2022	WTE Mar 2022	WTE change since Feb 22	WTE change since Dec 20	% change since Dec 20	WTE change since Dec 19	% change since Dec 19	No. Mar 2022
Overall	1,178	1,188	1,228	1,224	-5	+35	+3.0%	+46	+3.9%	1,365
Consultants	26	27	31	31	+1	+4	+13.9%	+5	+18.8%	33
Registrars	10	9	12	12	+0	+3	+33.1%	+2	+19.8%	12
SHO/ Interns	32	36	31	31	+0	-5	-12.7%	-1	-2.3%	32
Medical/ Dental, other	2	2	2	2	0					2
Medical & Dental	70	74	76	76	+1	+2	+3.0%	+6	+8.8%	79
Nurse/ Midwife Manager	164	160	173	174	+1	+14	+8.5%	+9	+5.7%	181
Nurse/ Midwife Specialist & AN/MP	42	54	54	52	-2	-2	-4.1%	+10	+23.0%	54
Staff Nurse/ Staff Midwife	415	411	419	417	-2	+6	+1.5%	+2	+0.4%	468
<i>Pre-registration Nurse Intern (COVID-19)</i>		13				-13	-100.0%		-100.0%	
<i>Pre-registration Nurse/ Midwife Intern</i>	4		18	19	+1	+19	-100.0%	+15	+435.7%	38
<i>Nursing/ Midwifery awaiting registration</i>	2		3		-3		-100.0%	-2	-100.0%	
Nursing/ Midwifery Student	6	13	21	19	-2	+6	+45.0%	+13	+240.9%	38
Nursing/ Midwifery other	4	4	4	4	0	+0	+2.8%	+0	+1.1%	4
Nursing & Midwifery	631	642	671	665	-6	+23	+3.7%	+34	+5.4%	745
Therapy Professions	40	39	32	33	+0	-6	-14.9%	-7	-18.1%	38
Social Care	5	5	5	5	-0	-0	-1.1%	-0	-1.1%	5
Social Workers	27	28	28	26	-2	-2	-7.4%	-2	-5.9%	28
Psychologists	21	21	22	21	-1	-0	-2.2%	-0	-1.0%	24
H&SC, Other	10	8	20	20	+0	+13	+160.7%	+11	+107.4%	22
Health & Social Care Professionals	103	100	107	105	-2	+4	+4.3%	+1	+1.4%	117
Management (VIII & above)	3	6	6	6	+0			+3	+100.0%	6
Administrative/ Supervisory (V to VII)	20	20	24	24	-0	+4	+19.8%	+4	+18.3%	25
Clerical (III & IV)	74	68	70	71	+1	+3	+4.0%	-3	-3.6%	78
Management & Administrative	97	94	100	101	+1	+7	+7.1%	+4	+4.2%	109
Support	168	178	173	174	+1	-5	-2.7%	+6	+3.5%	199
Maintenance/ Technical	23	20	16	16	-0	-4	-20.8%	-8	-32.7%	17
General Support	191	198	188	189	+1	-9	-4.5%	-2	-0.9%	216
Health Care Assistants	73	68	76	76	+1	+9	+12.6%	+3	+4.8%	82
Care, other	13	12	11	11	-0	-1	-8.1%	-2	-12.7%	17
Patient & Client Care	85	80	87	87	+0	+8	+9.5%	+2	+2.2%	99

CHO 6

Mar 2022	WTE Dec 2019	WTE Dec 2020	WTE Feb 2022	WTE Mar 2022	WTE change since Feb 22	WTE change since Dec 20	% change since Dec 20	WTE change since Dec 19	% change since Dec 19	No. Mar 2022
Overall	593	626	627	634	+7	+8	+1.2%	+41	+7.0%	705
Consultants	36	40	40	39	-0	-1	-2.2%	+3	+8.9%	44
Registrars	22	19	23	24	+1	+5	+24.5%	+2	+8.9%	25
SHO/ Interns	9	13	12	14	+2	+1	+7.6%	+5	+55.4%	17
Medical & Dental	67	72	75	77	+2	+5	+6.6%	+10	+15.2%	86
Nurse/ Midwife Manager	76	77	74	75	+0	-3	-3.3%	-2	-2.2%	79
Nurse/ Midwife Specialist & AN/MP	14	20	21	23	+3	+4	+19.5%	+10	+70.9%	27
Staff Nurse/ Staff Midwife	139	151	149	146	-3	-6	-3.6%	+7	+4.9%	158
<i>Pre-registration Nurse/ Midwife Intern</i>			5	5	+0	+5	-100.0%	+5	-100.0%	10
<i>Nursing/ Midwifery awaiting registration</i>		1	1	1	-0	-0	-1.0%	+1	-100.0%	1
Nursing/ Midwifery Student		1	6	6	+0	+5	+470.0%	+6	-100.0%	11
Nursing/ Midwifery other	2	2	3	3	0	+1	+50.0%	+1	+50.0%	3
Nursing & Midwifery	231	251	252	253	+0	+1	+0.6%	+21	+9.3%	278
Therapy Professions	43	39	42	42	+0	+4	+9.3%	-1	-2.1%	50
Social Care	26	28	24	24	-0	-5	-16.8%	-2	-9.5%	27
Social Workers	30	30	31	33	+2	+3	+9.8%	+3	+9.0%	35
Psychologists	22	32	33	34	+2	+2	+7.4%	+12	+56.2%	41
H&SC, Other	9	5	7	7	+0	+2	+41.9%	-1	-15.6%	8
Health & Social Care Professionals	130	134	136	140	+4	+6	+4.7%	+10	+8.0%	161
Management (VIII & above)	3	3	4	4	0	+1	+33.3%	+1	+33.3%	4
Administrative/ Supervisory (V to VII)	27	24	27	26	-1	+2	+7.3%	-1	-2.4%	28
Clerical (III & IV)	42	43	35	37	+1	-6	-14.5%	-6	-13.1%	41
Management & Administrative	72	70	66	67	+1	-3	-4.9%	-5	-7.2%	73
Support	36	39	33	32	-1	-7	-17.2%	-4	-11.8%	39
Maintenance/ Technical	6	6	6	6	0			+0	+1.5%	6
General Support	42	45	39	38	-1	-7	-14.9%	-4	-9.9%	45
Health Care Assistants	46	49	53	54	+1	+5	+10.9%	+8	+18.5%	55
Care, other	5	6	6	6	+0	-0	-1.5%	+0	+9.0%	7
Patient & Client Care	51	54	59	60	+1	+5	+9.6%	+9	+17.5%	62

CHO 7

Mar 2022	WTE Dec 2019	WTE Dec 2020	WTE Feb 2022	WTE Mar 2022	WTE change since Feb 22	WTE change since Dec 20	% change since Dec 20	WTE change since Dec 19	% change since Dec 19	No. Mar 2022
Overall	835	861	901	905	+3	+43	+5.0%	+70	+8.3%	1,006
Consultants	48	53	55	54	-1	+1	+2.2%	+7	+13.6%	58
Registrars	46	54	53	52	-1	-2	-2.9%	+6	+12.5%	54
SHO/ Interns	21	20	22	22	-0	+2	+7.8%	+1	+5.0%	22
Medical & Dental	115	127	130	128	-2	+1	+1.0%	+13	+11.6%	134
Nurse/ Midwife Manager	117	117	120	117	-3	-1	-0.6%	+0	+0.2%	122
Nurse/ Midwife Specialist & AN/MP	40	47	54	54	+1	+8	+16.8%	+15	+36.5%	60
Staff Nurse/ Staff Midwife	194	202	208	207	-1	+5	+2.6%	+13	+6.4%	230
<i>Pre-registration Nurse Intern (COVID-19)</i>		3	1		-1	-3	-100.0%		-100.0%	
<i>Pre-registration Nurse/ Midwife Intern</i>	1	1	15	17	+2	+16	+3238.0%	+15	+1118.2%	34
<i>Post-registration Nurse/ Midwife Student</i>		1				-1	-100.0%		-100.0%	
<i>Nursing/ Midwifery awaiting registration</i>	10	3	3	3	+0	+0	+4.6%	-7	-69.8%	3
Nursing/ Midwifery Student	11	8	18	20	+1	+12	+154.1%	+8	+75.2%	37
Nursing/ Midwifery other	8	6	7	7	+0	+1	+22.7%	-0	-4.8%	9
Nursing & Midwifery	370	379	407	405	-2	+26	+6.8%	+35	+9.6%	458
Therapy Professions	48	53	55	56	+0	+2	+4.3%	+8	+16.4%	60
Social Care	8	7	7	7	+0	+0	+2.1%	-0	-2.9%	8
Social Workers	34	38	39	40	+1	+2	+5.6%	+6	+16.5%	43
Psychologists	31	29	27	28	+1	-1	-3.2%	-3	-9.6%	33
Pharmacy	1	1	1	1	+0					1
H&SC, Other	18	18	20	21	+1	+3	+18.8%	+3	+18.8%	24
Health & Social Care Professionals	140	147	150	154	+3	+7	+4.8%	+14	+9.7%	169
Management (VIII & above)	3	4	5	5	0	+1	+26.7%	+2	+70.4%	5
Administrative/ Supervisory (V to VII)	16	17	17	17	-0	-1	-3.9%	+1	+5.8%	18
Clerical (III & IV)	47	49	49	51	+2	+2	+4.3%	+4	+9.3%	60
Management & Administrative	65	70	71	73	+2	+2	+3.5%	+7	+11.1%	83
Support	18	17	18	18	-0	+0	+1.0%	-0	-1.2%	20
Maintenance/ Technical	2	2	2	2	0			+0	+7.5%	2
General Support	20	19	20	20	-0	+0	+0.9%	-0	-0.4%	22
Health Care Assistants	33	34	34	34	-0	-1	-2.3%	+0	+0.9%	37
Care, other	92	84	90	92	+2	+7	+8.7%	-0	-0.4%	103
Patient & Client Care	125	119	124	125	+2	+7	+5.5%	-0	-0.0%	140

CHO 8

Mar 2022	WTE Dec 2019	WTE Dec 2020	WTE Feb 2022	WTE Mar 2022	WTE change since Feb 22	WTE change since Dec 20	% change since Dec 20	WTE change since Dec 19	% change since Dec 19	No. Mar 2022
Overall	1,098	1,112	1,099	1,098	-1	-14	-1.3%	-0	-0.0%	1,224
Consultants	35	36	39	39	+0	+3	+7.3%	+4	+10.7%	41
Registrars	26	31	39	41	+1	+9	+30.3%	+15	+57.8%	42
SHO/ Interns	36	26	20	20	+0	-6	-21.9%	-16	-43.1%	22
Medical & Dental	97	94	98	100	+2	+6	+6.7%	+3	+3.2%	105
Nurse/ Midwife Manager	121	120	120	121	+0	+0	+0.2%	-0	-0.1%	128
Nurse/ Midwife Specialist & AN/MP	56	60	67	67	-1	+7	+12.4%	+11	+19.3%	72
Staff Nurse/ Staff Midwife	332	342	315	311	-3	-31	-9.0%	-20	-6.1%	338
<i>Pre-registration Nurse Intern (COVID-19)</i>		1				-1	-100.0%		-100.0%	
<i>Pre-registration Nurse/ Midwife Intern</i>	1		23	24	+2	+24	-100.0%	+24	+4734.0%	48
<i>Nursing/ Midwifery awaiting registration</i>	2		3	2	-1	+2	-100.0%	+0	+12.5%	3
Nursing/ Midwifery Student	3	1	26	26	+1	+25	+2465.0%	+24	+956.8%	51
Nursing/ Midwifery other	4	3	3	3	-0	-0	-4.3%	-1	-28.1%	3
Nursing & Midwifery	515	526	531	528	-3	+2	+0.4%	+13	+2.6%	592
Therapy Professions	44	43	39	41	+2	-1	-3.4%	-3	-6.8%	47
Social Care	7	7	7	7	+0	+0	+1.9%	-0	-1.5%	8
Social Workers	41	44	49	50	+1	+6	+13.9%	+9	+20.6%	55
Psychologists	39	37	40	40	-0	+3	+7.4%	+0	+0.9%	43
Pharmacy	1	2	2	2	0			+1	+50.0%	3
H&SC, Other	20	21	15	16	+1	-5	-24.7%	-4	-21.2%	20
Health & Social Care Professionals	153	153	152	155	+3	+2	+1.4%	+2	+1.2%	176
Management (VIII & above)	3	3	4	3	-0	+0	+6.8%	+0	+7.1%	4
Administrative/ Supervisory (V to VII)	22	20	22	21	-1	+1	+4.7%	-1	-6.2%	24
Clerical (III & IV)	88	97	88	87	-1	-10	-10.4%	-1	-1.4%	99
Management & Administrative	114	120	113	111	-2	-9	-7.4%	-2	-2.1%	127
Support	33	31	31	30	-1	-1	-3.8%	-3	-7.9%	33
Maintenance/ Technical	26	28	25	25	-1	-3	-12.4%	-2	-6.0%	26
General Support	59	59	56	55	-1	-5	-7.9%	-4	-7.1%	59
Health Care Assistants	157	156	145	145	-0	-11	-7.1%	-12	-7.4%	161
Care, other	4	3	3	3	+0	+0	+1.9%	-0	-8.5%	4
Patient & Client Care	160	159	148	148	-0	-11	-6.9%	-12	-7.5%	165

CHO 9

Mar 2022	WTE Dec 2019	WTE Dec 2020	WTE Feb 2022	WTE Mar 2022	WTE change since Feb 22	WTE change since Dec 20	% change since Dec 20	WTE change since Dec 19	% change since Dec 19	No. Mar 2022
Overall	1,272	1,331	1,337	1,351	+14	+21	+1.6%	+80	+6.3%	1,510
Consultants	50	46	51	49	-2	+3	+5.8%	-1	-2.0%	54
Registrars	31	32	47	48	+1	+16	+50.5%	+17	+55.4%	49
SHO/ Interns	53	54	28	26	-2	-27	-50.5%	-27	-50.2%	27
Medical & Dental	134	132	126	124	-3	-8	-6.2%	-11	-7.9%	130
Nurse/ Midwife Manager	132	138	136	137	+1	-0	-0.4%	+5	+4.1%	145
Nurse/ Midwife Specialist & AN/MP	65	76	79	83	+4	+8	+9.9%	+18	+27.7%	89
Staff Nurse/ Staff Midwife	351	371	357	366	+9	-6	-1.6%	+14	+4.0%	399
<i>Pre-registration Nurse Intern (COVID-19)</i>		5				-5	-100.0%		-100.0%	
<i>Pre-registration Nurse/ Midwife Intern</i>	10	10	23	23	+0	+13	+124.2%	+13	+126.2%	47
<i>Nursing/ Midwifery awaiting registration</i>	11		2	2	+0	+2	-100.0%	-9	-81.5%	2
Nursing/ Midwifery Student	21	16	25	25	+0	+9	+59.0%	+4	+19.0%	49
Nursing/ Midwifery other	11	13	10	10	-0	-3	-20.1%	-1	-10.5%	11
Nursing & Midwifery	581	613	607	621	+14	+8	+1.3%	+40	+7.0%	693
Therapy Professions	55	61	63	63	+0	+2	+3.0%	+8	+14.7%	72
Social Care	1	1	1	1	-0	-0	-1.0%	+0	+10.0%	1
Social Workers	43	43	45	46	+1	+3	+8.0%	+3	+6.4%	53
Psychologists	46	53	52	52	-0	-1	-2.2%	+6	+13.7%	60
Pharmacy	8	9	9	9	-0	+1	+6.4%	+1	+18.5%	12
H&SC, Other	15	14	17	17	-0	+3	+21.7%	+3	+19.1%	19
Health & Social Care Professionals	167	181	188	189	+0	+8	+4.3%	+21	+12.8%	217
Management (VIII & above)	5	5	5	5	0			+0	+0.2%	5
Administrative/ Supervisory (V to VII)	28	29	32	32	+0	+3	+11.4%	+4	+15.4%	34
Clerical (III & IV)	104	114	119	118	-1	+4	+3.7%	+14	+13.9%	136
Management & Administrative	137	148	156	155	-1	+7	+5.1%	+19	+13.7%	175
Support	103	104	103	104	+1	-0	-0.2%	+1	+0.6%	126
<i>Maintenance</i>	11	11	11	11	0			+0	+0.7%	11
Maintenance/ Technical	11	11	11	11	0			+0	+0.7%	11
General Support	114	115	114	115	+1	-0	-0.2%	+1	+0.6%	137
Health Care Assistants	126	129	134	135	+1	+6	+4.9%	+9	+7.4%	145
Care, other	13	12	11	12	+1	-0	-0.1%	-0	-2.0%	13
Patient & Client Care	139	142	146	148	+2	+6	+4.4%	+9	+6.6%	158

other Community Services

Mar 2022	WTE Dec 2019	WTE Dec 2020	WTE Feb 2022	WTE Mar 2022	WTE change since Feb 22	WTE change since Dec 20	% change since Dec 20	WTE change since Dec 19	% change since Dec 19	No. Mar 2022
Overall	438	494	497	499	+3	+5	+1.0%	+62	+14.1%	530
Consultants	16	17	17	17	0	+1	+4.9%	+2	+11.7%	19
Registrars	13	14	16	17	+1	+3	+21.8%	+4	+31.2%	18
Medical & Dental	29	31	34	34	+1	+4	+12.6%	+6	+20.5%	37
Nurse/ Midwife Manager	62	76	76	75	-1	-1	-0.7%	+13	+21.0%	79
Nurse/ Midwife Specialist & AN/MP	8	13	9	9	+0	-3	-25.7%	+1	+14.1%	10
Staff Nurse/ Staff Midwife	169	165	169	166	-2	+1	+0.8%	-3	-1.5%	172
Nursing/ Midwifery other	1	2	2	2	0	+0	+2.0%	+1	+100.0%	2
Nursing & Midwifery	240	255	256	253	-3	-2	-1.0%	+13	+5.3%	263
Therapy Professions	11	12	12	12	+0	+0	+1.2%	+1	+6.6%	12
Social Care	2	2	2	2	0	+0	+5.3%	+0	+2.0%	2
Social Workers	15	17	15	15	+0	-2	-12.2%	+0	+2.2%	18
Psychologists	6	6	6	6	+0	+0	+0.7%			6
Pharmacy		1	1	1	-0	-0	-17.0%	+1	-100.0%	1
Health & Social Care Professionals	34	38	36	36	+0	-2	-5.3%	+2	+5.7%	39
Management (VIII & above)	27	30	25	27	+2	-3	-10.4%	-0	-0.4%	27
Administrative/ Supervisory (V to VII)	31	37	41	41	-0	+5	+12.4%	+10	+31.9%	44
Clerical (III & IV)	25	18	21	22	+1	+3	+18.6%	-3	-13.1%	24
Management & Administrative	83	85	87	90	+3	+5	+5.7%	+7	+7.9%	95
Support	12	16	17	17	-0	+1	+4.1%	+4	+36.7%	20
Maintenance/ Technical	2	7	7	9	+2	+2	+28.3%	+7	+349.0%	9
General Support	14	23	24	26	+1	+3	+11.5%	+11	+80.6%	29
Health Care Assistants	37	62	60	60	+0	-2	-3.3%	+23	+63.1%	66
Care, other	1	1	0	1	+0					1
Patient & Client Care	37	63	60	60	+0	-2	-3.3%	+23	+62.3%	67

Mental Health Services Employment by Grade Group: Mar 2022

Mar 2022	WTE Dec 2019	WTE Dec 2020	WTE Feb 2022	WTE Mar 2022	WTE change since Feb 22	WTE change since Dec 20	% change since Dec 20	WTE change since Dec 19	% change since Dec 19	No. Mar 2022
Overall	9,954	10,301	10,483	10,503	+20	+202	+2.0%	+549	+5.5%	11,602
Consultant Medicine	1	1	1	1						1
Consultant Psychiatry	352	369	389	383	-5	+15	+4.1%	+32	+9.1%	417
Consultants	353	370	390	384	-5	+15	+4.1%	+32	+9.1%	418
Registrars	269	281	331	337	+6	+56	+19.9%	+68	+25.4%	347
Senior House Officer	253	271	226	224	-2	-47	-17.3%	-29	-11.5%	236
Interns	8	5	6	6		+1	+20.0%	-2	-25.0%	6
SHO/ Interns	261	276	232	230	-2	-46	-16.7%	-31	-11.9%	242
Medical/ Dental, other	5	5	4	4		-1	-22.2%	-1	-22.2%	7
Medical & Dental	888	932	957	955	-1	+24	+2.6%	+68	+7.7%	1,014
Clinical Nurse/ Midwife Manager	999	1,041	1,059	1,060	+1	+19	+1.8%	+61	+6.1%	1,113
Director Nursing/Midwifery, Assistant	165	171	175	177	+2	+6	+3.7%	+12	+7.4%	184
Director of Nursing/Midwifery	29	28	31	31	-1	+3	+9.4%	+2	+5.7%	32
Nurse/ Midwife Manager	1,192	1,240	1,266	1,268	+2	+28	+2.2%	+75	+6.3%	1,329
Advanced Nurse/ Midwife Practitioner	31	39	47	48	+1	+9	+22.7%	+18	+57.3%	50
Clinical Nurse/ Midwife Specialist	428	489	499	505	+6	+16	+3.2%	+76	+17.8%	541
Nurse/ Midwife Specialist & AN/MP	459	529	546	553	+7	+24	+4.6%	+94	+20.5%	591
Staff Midwives		1				-1	-100.0%		-100.0%	
Staff Nurse [Psychiatric]	2,893	2,965	2,956	2,934	-22	-31	-1.0%	+41	+1.4%	3,182
Staff Nurses [General/ Children's]	105	106	105	106	+2	-0	-0.2%	+1	+1.3%	115
Staff Nurse [Intellectual Disability]	5	4	3	4	+1	-0	-11.3%	-1	-17.0%	4
Staff Nurse/ Staff Midwife	3,003	3,076	3,063	3,044	-19	-32	-1.0%	+41	+1.4%	3,301
Pre-registration Nurse Intern (COVID-19)		42	1		-1	-42	-100.0%		-100.0%	
Pre-registration Nurse/ Midwife Intern	28	11	157	161	+4	+150	+1402.2%	+133	+484.4%	323
Post-registration Nurse/ Midwife Student	1	1				-1	-100.0%	-1	-100.0%	
Nursing/ Midwifery awaiting registration	59	5	24	18	-6	+13	+269.9%	-41	-69.5%	19
Nursing/ Midwifery Student	87	59	181	179	-2	+120	+203.3%	+91	+104.5%	342
Nursing Education/Clinical	32	32	33	34	+1	+2	+6.7%	+2	+7.1%	37
Nursing/ Midwifery other	32	32	33	34	+1	+2	+6.7%	+2	+7.1%	37
Nursing & Midwifery	4,773	4,935	5,088	5,077	-11	+142	+2.9%	+304	+6.4%	5,600
Dietitians	19	21	21	22	+1	+1	+5.1%	+3	+14.3%	24
Occupational Therapists	339	346	354	355	+1	+10	+2.8%	+17	+4.9%	393
Physiotherapists	2	2	3	3	+0	+1	+20.7%	+1	+30.5%	4
Podiatrists & Chiropodists	1	1	1	1	+0	+0	+10.0%	+0	+20.5%	2
Speech & Language Therapists	62	70	62	66	+4	-4	-5.5%	+4	+6.7%	78
Therapy Professions	422	439	441	447	+6	+8	+1.7%	+24	+5.8%	501
Social Care	74	80	72	72	+1	-8	-9.6%	-1	-1.7%	82
Social Workers	350	373	382	389	+6	+16	+4.3%	+39	+11.2%	435
Psychologists	394	424	429	431	+2	+7	+1.7%	+37	+9.3%	482
Pharmacists	16	17	16	16	+0	-1	-6.2%	-0	-0.4%	19
Pharmacy Technicians	2	4	4	4	-0	+0	+13.2%	+2	+66.8%	7
Pharmacy	19	21	20	20	-0	-1	-2.8%	+2	+8.6%	26
Counsellor Therapists	95	101	118	124	+6	+23	+22.6%	+29	+30.8%	139
Other Health & Social Care	12	5	6	6	-0	+0	+8.3%	-6	-50.0%	11
Play Therapists/ Specialists	1	1	2	1	-0			+0	+1.4%	2
H&SC, Other	108	108	126	131	+5	+23	+21.6%	+23	+21.6%	152
Health & Social Care Professionals	1,366	1,444	1,470	1,490	+21	+46	+3.2%	+124	+9.1%	1,678
Executive Management	11	15	15	14	-1	-1	-5.0%	+3	+27.2%	14
Senior Management (VIII & GM)	46	52	54	55	+1	+3	+5.9%	+9	+19.7%	57
Management (VIII & above)	57	67	69	69	+0	+2	+3.5%	+12	+21.1%	71
Middle Management (V-VII)	235	243	254	251	-3	+7	+3.0%	+15	+6.5%	266

Mar 2022	WTE Dec 2019	WTE Dec 2020	WTE Feb 2022	WTE Mar 2022	WTE change since Feb 22	WTE change since Dec 20	% change since Dec 20	WTE change since Dec 19	% change since Dec 19	No. Mar 2022
Overall	9,954	10,301	10,483	10,503	+20	+202	+2.0%	+549	+5.5%	11,602
Other Administrative	2	2	3	3		+1	+63.7%	+1	+63.7%	3
Administrative/ Supervisory (V to VII)	237	245	256	253	-3	+8	+3.4%	+16	+6.9%	269
General Administrative (III & IV)	717	722	713	718	+4	-4	-0.6%	+0	+0.0%	812
Clerical (III & IV)	717	722	713	718	+4	-4	-0.6%	+0	+0.0%	812
Management & Administrative	1,012	1,034	1,038	1,040	+2	+6	+0.6%	+29	+2.8%	1,152
Catering	65	64	71	71	-0	+7	+11.1%	+5	+8.2%	76
Household Services	425	441	416	417	+1	-25	-5.6%	-8	-1.8%	495
Other Support	43	42	38	38	-0	-4	-8.8%	-4	-10.5%	44
Portering	48	47	48	48	-0	+1	+1.7%	+0	+0.0%	50
Support	581	594	573	574	+0	-20	-3.4%	-7	-1.2%	665
Maintenance	129	137	130	129	-1	-8	-5.9%	+0	+0.3%	134
Technical Services	2						-100.0%	-2	-100.0%	
Maintenance/ Technical	131	137	130	129	-1	-8	-5.9%	-2	-1.2%	134
General Support	711	732	704	703	-1	-29	-3.9%	-9	-1.2%	799
Attendant/ Aide	605	583	522	512	-10	-72	-12.3%	-93	-15.4%	567
Health & Social Care Assistants	9	8	9	9	+1	+1	+12.8%	+0	+5.3%	11
Health Care Assistant/ Care Assistant	374	430	490	506	+15	+76	+17.7%	+132	+35.3%	533
Health Care Assistants	988	1,022	1,021	1,027	+6	+5	+0.5%	+39	+3.9%	1,111
Home Care Services	16	14	13	15	+2	+1	+3.6%	-1	-6.0%	24
Other Care Grades	23	22	20	21	+1	-1	-5.1%	-2	-7.5%	23
Pastoral Care	13	12	11	12	+1	-0	-0.3%	-1	-4.8%	17
Workshop Services	165	155	162	163	+1	+7	+4.7%	-3	-1.5%	184
Care, other	216	203	205	210	+5	+7	+3.3%	-6	-2.7%	248
Patient & Client Care	1,204	1,225	1,226	1,237	+10	+12	+1.0%	+33	+2.7%	1,359

Employment by WTE, Headcount, Gender, Full-Time /Part-Time etc.: Mar 2022

Mental Health Services Staff Group	WTE	Headcount	WTE: no.	% Male	% female	Male WTE: no.	Female WTE: no.	% Total Perm	% Male Perm	% Female Perm	% Total Full Time	% Total Part Time	% Male FT	% Female FT
Overall	10,503	11,602	1.10	26.9%	73.1%	1.06	1.12	83.1%	80.0%	84.3%	85.3%	14.7%	93.3%	82.4%
Consultant Medicine	1	1	1.00	100.0%		1.00		100.0%	100.0%		100.0%	0.0%	100.0%	
Consultant Psychiatry	384	417	1.09	42.2%	57.8%	1.06	1.11	67.6%	67.6%	65.6%	85.9%	14.1%	92.6%	80.9%
Consultants	385	418	1.09	42.3%	57.7%	1.06	1.11	67.7%	70.6%	65.6%	85.9%	14.1%	92.7%	80.9%
Registrar	217	223	1.03	46.2%	53.8%	1.01	1.04	2.7%	2.7%	1.7%	97.3%	2.7%	99.0%	95.8%
Senior Registrar	118	122	1.03	36.1%	63.9%	1.00	1.05	0.8%	0.8%	1.3%	96.7%	3.3%	100.0%	94.9%
Specialist Registrar	2	2	1.00	100.0%		1.00		0.0%	0.0%		100.0%	0.0%	100.0%	
Registrars	337	347	1.03	42.9%	57.1%	1.01	1.05	2.0%	2.7%	1.5%	97.1%	2.9%	99.3%	95.5%
Senior House Officer	224	236	1.05	44.1%	55.9%	1.04	1.06	0.0%	0.0%	0.0%	99.6%	0.4%	100.0%	99.2%
Interns	6	6	1.00	16.7%	83.3%	1.00	1.00	0.0%	0.0%	0.0%	100.0%	0.0%	100.0%	100.0%
SHO/ Interns	230	242	1.05	43.4%	56.6%	1.04	1.06	0.0%	0.0%	0.0%	99.6%	0.4%	100.0%	99.3%
Other Medical	4	7	1.80	57.1%	42.9%	1.72	1.91	57.1%	57.1%	66.7%	85.7%	14.3%	100.0%	66.7%
Medical/ Dental, other	4	7	1.80	57.1%	42.9%	1.72	1.91	57.1%	50.0%	66.7%	85.7%	14.3%	100.0%	66.7%
Medical & Dental	955	1,014	1.06	42.9%	57.1%	1.04	1.08	29.0%	30.1%	28.2%	93.0%	7.0%	96.8%	90.2%
Clinical Nurse/ Midwife Manager	1,060	1,113	1.05	34.0%	66.0%	1.02	1.06	98.7%	98.7%	99.2%	93.8%	6.2%	98.4%	91.4%
Director Nursing/Midwifery, Assistant	177	184	1.04	45.1%	54.9%	1.05	1.03	99.5%	99.5%	100.0%	98.4%	1.6%	98.8%	98.0%
Director of Nursing/Midwifery	31	32	1.05	50.0%	50.0%	1.06	1.04	100.0%	100.0%	100.0%	96.9%	3.1%	100.0%	93.8%
Nurse/ Midwife Manager	1,268	1,329	1.05	35.9%	64.1%	1.03	1.06	98.9%	98.1%	99.3%	94.5%	5.5%	98.5%	92.3%
Advanced Nurse/ Midwife Practitioner	48	50	1.03	18.0%	82.0%	1.00	1.04	98.0%	98.0%	97.6%	92.0%	8.0%	100.0%	90.2%
Clinical Nurse/ Midwife Specialist	505	541	1.07	19.0%	81.0%	1.03	1.08	99.8%	99.8%	99.8%	92.4%	7.6%	98.1%	91.1%
Nurse/ Midwife Specialist & AN/MP	553	591	1.07	19.0%	81.0%	1.03	1.08	99.7%	100.0%	99.6%	92.4%	7.6%	98.2%	91.0%
Staff Nurse [Psychiatric]	2,934	3,182	1.08	25.5%	74.5%	1.06	1.09	91.4%	91.4%	92.3%	87.6%	12.4%	92.1%	86.1%
Staff Nurses [General/ Children's]	106	115	1.08	25.2%	74.8%	1.11	1.07	74.8%	74.8%	79.1%	83.5%	16.5%	82.8%	83.7%
Staff Nurse [Intellectual Disability]	4	4	1.06	25.0%	75.0%	1.00	1.09	50.0%	50.0%	66.7%	100.0%	0.0%	100.0%	100.0%
Staff Nurse/ Staff Midwife	3,044	3,301	1.08	25.5%	74.5%	1.06	1.09	90.8%	87.8%	91.8%	87.5%	12.5%	91.8%	86.1%
Pre-registration Nurse/ Midwife Intern	161	323	2.01	16.1%	83.9%	1.97	2.01	0.3%	0.3%	0.4%	100.0%	0.0%	100.0%	100.0%
Nursing/ Midwifery awaiting registration	18	19	1.06	15.8%	84.2%	1.01	1.07	26.3%	26.3%	25.0%	100.0%	0.0%	100.0%	100.0%
Nursing/ Midwifery Student	179	342	1.91	16.1%	83.9%	1.88	1.92	1.8%	1.8%	1.7%	100.0%	0.0%	100.0%	100.0%
Nursing Education/Clinical	34	37	1.09	13.5%	86.5%	1.00	1.11	100.0%	100.0%	100.0%	89.2%	10.8%	100.0%	87.5%
Nursing/ Midwifery other	34	37	1.09	13.5%	86.5%	1.00	1.11	100.0%	100.0%	100.0%	89.2%	10.8%	100.0%	87.5%

Nursing & Midwifery	5,077	5,600	1.10	26.6%	73.4%	1.06	1.12	88.3%	88.9%	88.1%	90.5%	9.5%	94.8%	88.9%
Health & Social Care	1,490	1,678	1.13	16.4%	83.6%	1.05	1.14	86.1%	84.0%	86.5%	81.8%	18.2%	92.4%	79.8%
Executive Management	14	14	1.00	57.1%	42.9%	1.00	1.00	100.0%	100.0%	100.0%	100.0%	0.0%	100.0%	100.0%
Senior Management (VIII & GM)	55	57	1.03	29.8%	70.2%	1.02	1.03	96.5%	96.5%	97.5%	96.5%	3.5%	94.1%	97.5%
Management (VIII & above)	69	71	1.02	35.2%	64.8%	1.02	1.03	97.2%	96.0%	97.8%	97.2%	2.8%	96.0%	97.8%
Middle Management (V-VII)	251	266	1.06	20.3%	79.7%	1.03	1.07	90.2%	90.2%	92.5%	88.0%	12.0%	96.3%	85.8%
Other Administrative	3	3	1.17		100.0%		1.17	66.7%	66.7%	66.7%	66.7%	33.3%		66.7%
Administrative/ Supervisory (V to VII)	253	269	1.06	20.1%	79.9%	1.03	1.07	90.0%	81.5%	92.1%	87.7%	12.3%	96.3%	85.6%
General Administrative (III & IV)	718	812	1.13	9.4%	90.6%	1.05	1.14	85.6%	85.6%	85.7%	74.0%	26.0%	89.5%	72.4%
Clerical (III & IV)	718	812	1.13	9.4%	90.6%	1.05	1.14	85.6%	84.2%	85.7%	74.0%	26.0%	89.5%	72.4%
Management & Administrative	1,040	1,152	1.11	13.5%	86.5%	1.04	1.12	87.3%	85.2%	87.7%	78.6%	21.4%	92.9%	76.4%
Catering	71	76	1.08	36.8%	63.2%	1.04	1.10	94.7%	94.7%	93.8%	75.0%	25.0%	89.3%	66.7%
Household Services	417	495	1.19	21.6%	78.4%	1.13	1.21	91.3%	91.3%	92.8%	60.4%	39.6%	83.2%	54.1%
Other Support	38	44	1.15	34.1%	65.9%	1.03	1.23	88.6%	88.6%	86.2%	70.5%	29.5%	93.3%	58.6%
Portering	48	50	1.04	94.0%	6.0%	1.04	1.07	90.0%	90.0%	66.7%	86.0%	14.0%	87.2%	66.7%
Support	574	665	1.16	29.6%	70.4%	1.08	1.19	91.4%	89.3%	92.3%	64.7%	35.3%	85.8%	55.8%
Maintenance	129	134	1.04	99.3%	0.7%	1.04	1.00	95.5%	95.5%	100.0%	97.0%	3.0%	97.0%	100.0%
Maintenance/ Technical	129	134	1.04	99.3%	0.7%	1.04	1.00	95.5%	95.5%	100.0%	97.0%	3.0%	97.0%	100.0%
General Support	703	799	1.14	41.3%	58.7%	1.06	1.19	92.1%	91.8%	92.3%	70.1%	29.9%	90.3%	55.9%
Attendant/ Aide	511	567	1.11	23.8%	76.2%	1.07	1.12	85.5%	85.5%	88.7%	71.8%	28.2%	85.2%	67.6%
Health & Social Care Assistants	9	11	1.17	45.5%	54.5%	1.18	1.16	90.9%	90.9%	83.3%	63.6%	36.4%	80.0%	50.0%
Health Care Assistant/ Care Assistant	506	533	1.05	35.1%	64.9%	1.03	1.07	96.8%	96.8%	97.4%	87.2%	12.8%	95.7%	82.7%
Health Care Assistants	1,027	1,111	1.08	29.4%	70.6%	1.05	1.10	91.0%	87.5%	92.5%	79.1%	20.9%	91.1%	74.1%
Home Care Services	15	24	1.62	41.7%	58.3%	1.52	1.71	45.8%	45.8%	42.9%	29.2%	70.8%	30.0%	28.6%
Other Care Grades	21	23	1.10	78.3%	21.7%	1.03	1.47	82.6%	82.6%	80.0%	82.6%	17.4%	94.4%	40.0%
Pastoral Care	12	17	1.42	82.4%	17.6%	1.36	1.79	35.3%	35.3%	0.0%	58.8%	41.2%	64.3%	33.3%
Workshop Services	163	184	1.13	38.6%	61.4%	1.06	1.18	94.6%	94.6%	95.6%	72.8%	27.2%	84.5%	65.5%
Care, other	210	248	1.18	45.6%	54.4%	1.12	1.24	84.7%	81.4%	87.4%	68.5%	31.5%	78.8%	60.0%
Patient & Client Care	1,237	1,359	1.10	32.4%	67.6%	1.07	1.12	89.8%	85.9%	91.7%	77.2%	22.8%	88.0%	72.0%

Employment by WTE, Headcount, Gender, Full-Time /Part-Time etc.: Mar 2022

Mental Health Services CHO	WTE	Headcount	WTE: no.	% Male	% female	Male WTE: no.	Female WTE: no.	% Total Perm	% Male Perm	% Female Perm	% Total Full Time	% Total Part Time	% Male FT	% Female FT
Overall	10,503	11,602	1.10	26.9%	73.1%	1.06	1.12	83.1%	80.0%	84.3%	85.3%	14.7%	93.3%	82.4%
CHO 1	1,033	1,127	1.09	26.6%	73.4%	1.05	1.11	87.6%	87.6%	89.1%	87.2%	12.8%	97.0%	83.7%
CHO 2	1,344	1,466	1.09	27.8%	72.2%	1.05	1.11	84.8%	84.8%	86.3%	84.4%	15.6%	90.7%	82.0%
CHO 3	825	908	1.10	22.7%	77.3%	1.07	1.11	81.1%	81.1%	80.9%	85.8%	14.2%	90.8%	84.3%
CHO 4	1,590	1,761	1.11	25.4%	74.6%	1.06	1.12	70.9%	70.9%	72.8%	85.6%	14.4%	94.6%	82.5%
CHO 5	1,224	1,365	1.12	25.8%	74.2%	1.07	1.13	88.0%	88.0%	89.2%	80.1%	19.9%	91.2%	76.3%
CHO 6	634	705	1.11	30.1%	69.9%	1.08	1.13	84.0%	84.0%	85.0%	84.3%	15.7%	91.0%	81.3%
CHO 7	905	1,006	1.11	23.7%	76.3%	1.05	1.13	82.1%	82.1%	83.5%	87.9%	12.1%	95.4%	85.5%
CHO 8	1,098	1,224	1.11	24.3%	75.7%	1.05	1.14	85.1%	85.1%	86.2%	85.9%	14.1%	96.0%	82.6%
CHO 9	1,351	1,510	1.12	27.9%	72.1%	1.06	1.14	86.0%	86.0%	87.2%	84.4%	15.6%	93.8%	80.7%
other Community Services	499	530	1.06	46.0%	54.0%	1.06	1.06	88.7%	88.7%	89.9%	93.0%	7.0%	91.8%	94.1%

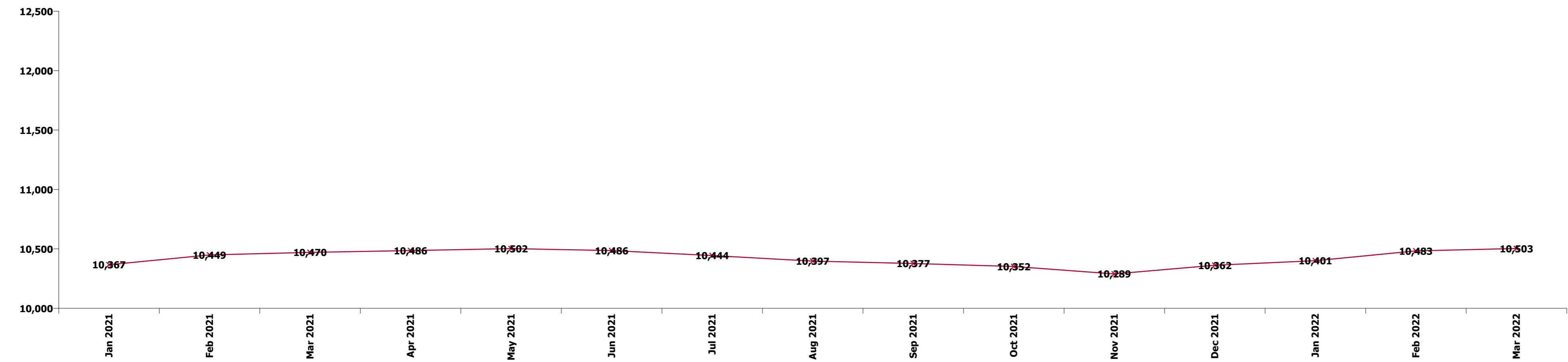
Summary Staff Movement: March 2022

Month-on-month
Summary

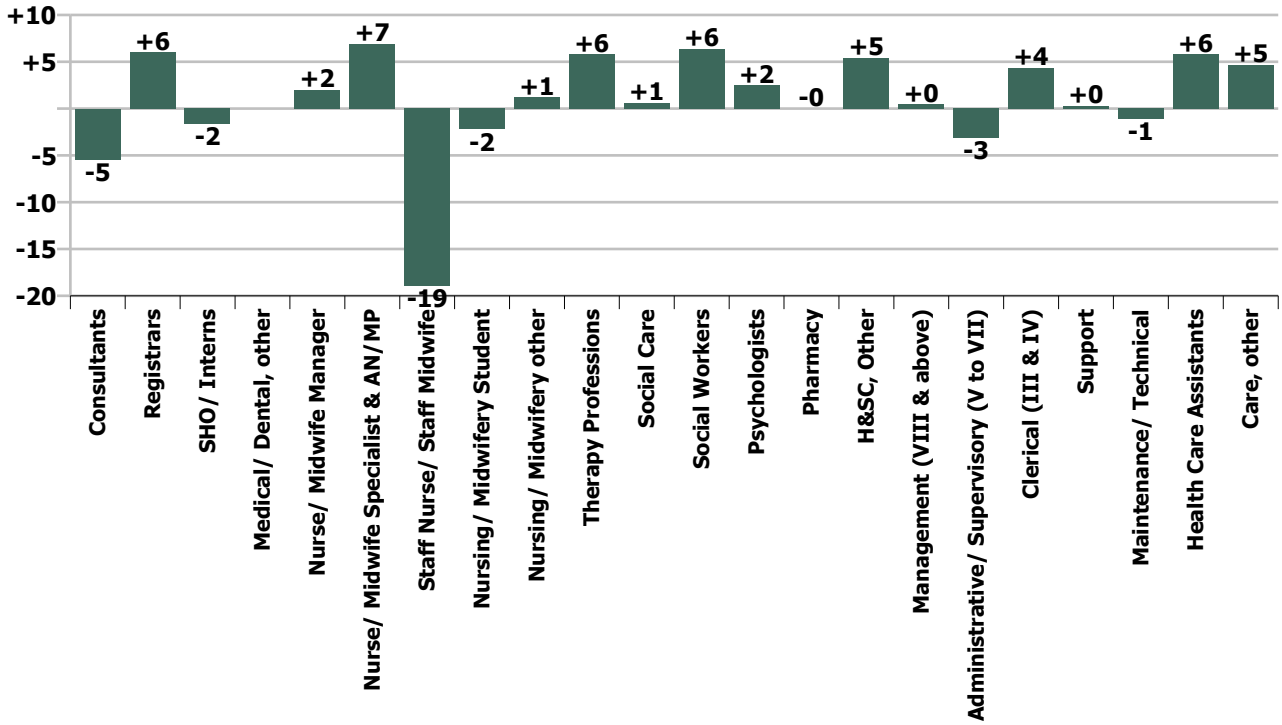
WTE change since Feb 22	% change since Feb 22	overall	Consultants	Registrars	SHO/ Interns	Medical/ Dental, other	Medical & Dental	Nurse/ Midwife Manager	Nurse/ Midwife Specialist & AN/MP	Staff Nurse/ Staff Midwife	Nursing/ Midwifery Student	Nursing/ Midwifery other	Nursing & Midwifery	Therapy Professions	Social Care	Social Workers	Psychologists	Pharmacy	H&SC, Other	Health & Social Care Professionals	Management (VIII & above)	Administrativ e/ Supervisory (V to VII)	Clerical (III & IV)	Management & Administrative	General Support	Health Care Assistants	Care, other	Patient & Client Care
Overall	+0.2%	+20	-5	+6	-2		-1	+2	+7	-19	-2	+1	-11	+6	+1	+6	+2	-0	+5	+21	+0	-3	+4	+2	-1	+6	+5	+10
CHO 1	+0.4%	+4	-1	+0	-1		-1	+0	+0	-1	-1	+0	-1	+0	+0	-0	+2	+0	+1	+4		+1	-0	+1	-1	+1	+2	+3
CHO 2	-0.7%	-10	-0	+1	-1		-1	+1	-0	-8	-1		+0	-8	+0	-0	+1	+0		+1	-0	-2	+1	-1	-2	+1	-0	+1
CHO 3	+0.5%	+4	-2	+3	+1		+2	+4	+1	-6		+1	+1	+0			+0	-0		+2	+2	-1	-1	-0	-3	-0	+3	+3
CHO 4	+0.0%	+1	-0	-1	-0		-1	-2	+1	-2	-1		-4	+2	+0	+2	+0	+0	+1	+5		+0	-1	-0	+2	-2	+0	-2
CHO 5	-0.4%	-5	+1	+0	+0		+1	+1	-2	-2	-2		-6	+0	-0	-2	-1		+0	-2	+0	-0	+1	+1	+1	+1	-0	+0
CHO 6	+1.1%	+7	-0	+1	+2		+2	+0	+3	-3	+0		+0	+0	-0	+2	+2		+0	+4		-1	+1	+1	-1	+1	+0	+1
CHO 7	+0.4%	+3	-1	-1	-0		-2	-3	+1	-1	+1	+0	-2	+0	+0	+1	+1	+0	+1	+3		-0	+2	+2	-0	-0	+2	+2
CHO 8	-0.1%	-1	+0	+1	+0		+2	+0	-1	-3	+1	-0	-3	+2	+0	+1	-0		+1	+3	-0	-1	-1	-2	-1	-0	+0	-0
CHO 9	+1.0%	+14	-2	+1	-2		-3	+1	+4	+9	+0	-0	+14	+0	-0	+1	-0	-0	-0	+0		+0	-1	-1	+1	+1	+1	+2
other Community Services	+0.5%	+3		+1			+1	-1	+0	-2			-3	+0		+0	+0	-0		+0	+2	-0	+1	+3	+1	+0	+0	+0
		+0.2%	-1.4%	+1.8%	-0.7%		-0.1%	+0.2%	+1.3%	-0.6%	-1.2%	+3.7%	-0.2%	+1.3%	+0.8%	+1.7%	+0.6%	-0.0%	+4.3%	+1.4%	+0.7%	-1.2%	+0.6%	+0.2%	-0.1%	+0.6%	+2.3%	+0.9%

Year-on-year Summary

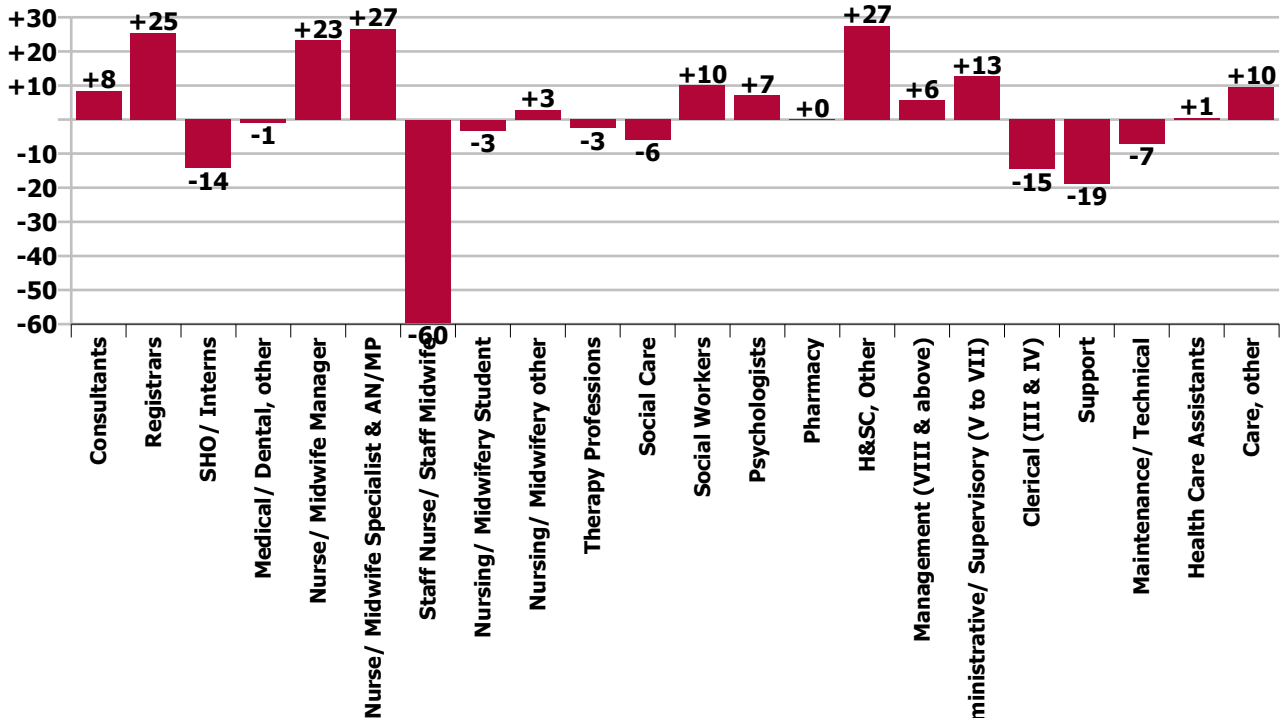
WTE change since Mar 21	% change since Mar 21	overall	Consultants	Registrars	SHO/ Interns	Medical/ Dental, other	Medical & Dental	Nurse/ Midwife Manager	Nurse/ Midwife Specialist & AN/MP	Staff Nurse/ Staff Midwife	Nursing/ Midwifery Student	Nursing/ Midwifery other	Nursing & Midwifery	Therapy Professions	Social Care	Social Workers	Psychologists	Pharmacy	H&SC, Other	Health & Social Care Professionals	Management (VIII & above)	Administrative/ Supervisory (V to VII)	Clerical (III & IV)	Management & Administrative	General Support	Health Care Assistants	Care, other	Patient & Client Care
Overall	+0.3%	+33	+8	+25	-14	-1	+19	+23	+27	-60	-3	+3	-10	-3	-6	+10	+7	+0	+28	+36	+6	+13	-15	+4	-26	+1	+10	+10
CHO 1	+3.9%	+39	-1	-1	+4		+1	-3	+4	+13	-1	+0	+12	+6	+0	+1	+1	+0	+4	+13	+4	+2	+2	+8	-1	+2	+4	+5
CHO 2	-1.8%	-24	-2	+2	+2	-1	+1	+2	+7	-19	+9	+0	-2	-6	-2	+1	+4	+1	-0	-3	+1	-2	-4	-4	-8	-6	-2	-8
CHO 3	-1.0%	-9	+2	-1	+5		+6	+1	-2	-5	-2	+1	+6	-7	-4	-1	+4	-5		-1	-7	+1	-4	-1	-4	-0	+4	+4
CHO 4	+0.6%	+9	+1	+13	-8	+0	+6	+14	+2	-11	-5		+0	-0	-0	+3	+4	-1	+4	+9	+2	+2	-4	-0	-5	-2	+1	-1
CHO 5	+0.6%	+7	+4	+1	-2		+2	+8	-3	-2	-9	+0	-5	-3	-0	+1	-1		+11	+8		+6	-3	+3	-7	+7	-1	+6
CHO 6	+0.4%	+2	-1	-2	+1		-1	-0	+3	-3	-1	+1	+2	+3	-4	+1	+4		+3	+3	+8	+1	+0	-5	-4	-5	+2	+0
CHO 7	+3.4%	+30	+0	-5	+5		+0	-2	+6	+4	+3	+2	+14	+6	+0	-3	+1		+4	+8	+1	-1	+1	+1	-0	-1	+8	+6
CHO 8	-1.7%	-19	+1	+9	-5		+5	+6	+7	-24	+3	-0	-8	-2	+1	+3	+0		+1	+3	+1	+1	-11	-9	-3	-6	+0	-6
CHO 9	+0.9%	+11	+3	+9	-14		-2	+2	+5	-8	-3	-2	-6	-2	+0	+2	+1	+1	+2	+4	-1	+5	+8	+11	+0	+5	-0	+5
other Community Services	-2.9%	-15	+1	+0			+1	-4	-2	-4			-10	-0		-4	-3	-0		-7	-4	+3	+3	+2	+2	-3		-3
		+0.3%	+2.2%	+8.1%	-5.9%	-18.8%	+2.0%	+1.9%	+5.1%	-1.9%	-1.8%	+9.2%	-0.2%	-0.6%	-7.7%	+2.7%	+1.7%	+0.5%	+26.5%	+2.5%	+8.8%	+5.3%	-2.0%	+0.4%	-3.6%	+0.1%	+4.8%	+0.8%



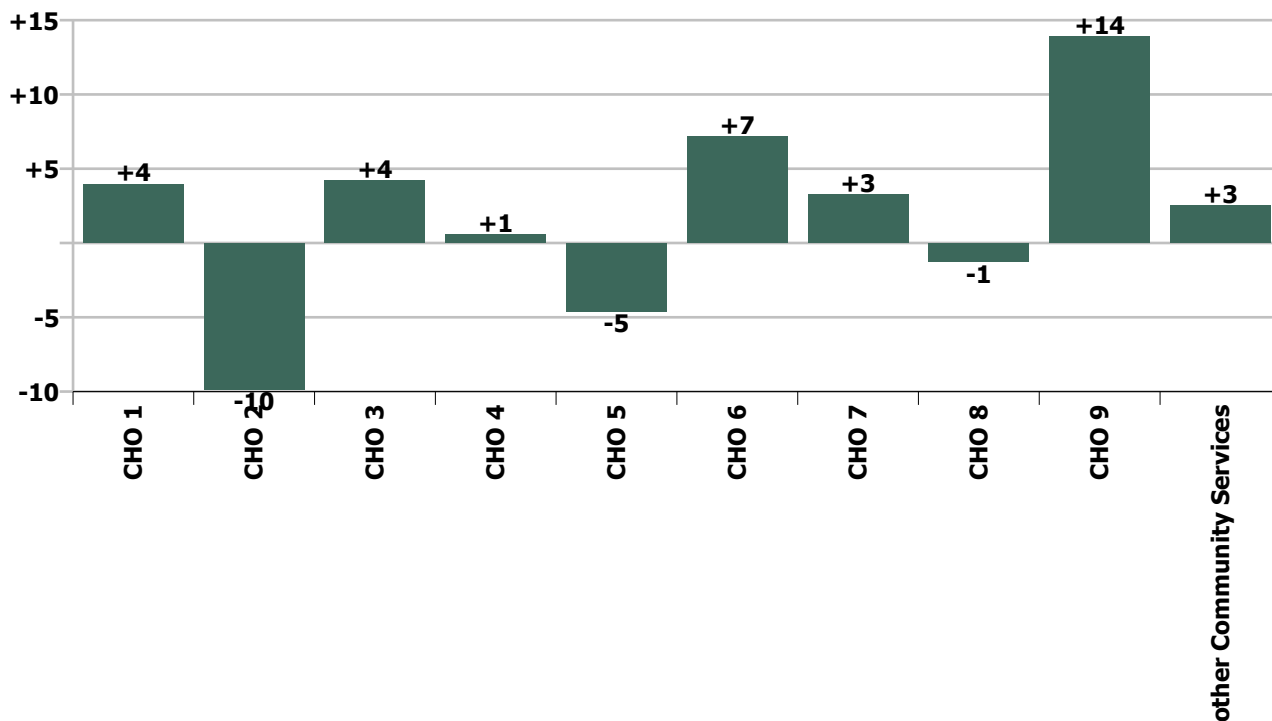
Staff Group change since: Feb 2022



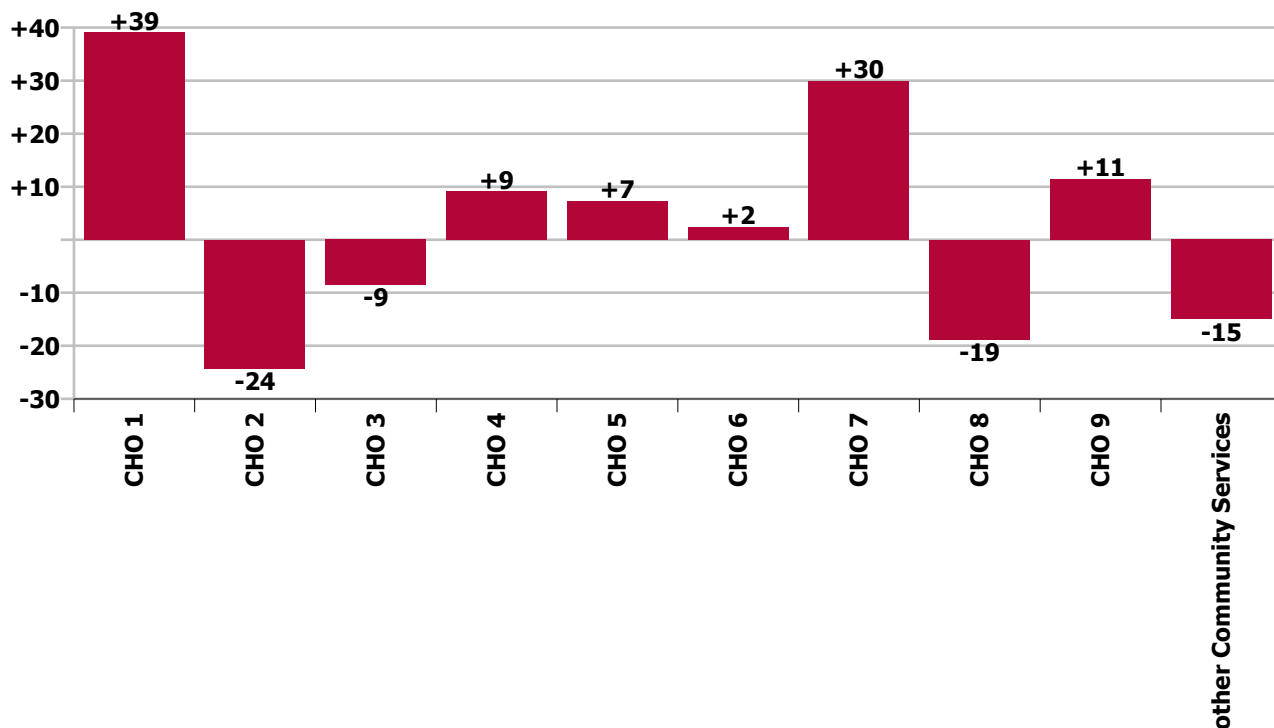
Staff Group change since: Mar 2021



CHO change since: Feb 2022



CHO change since: Mar 2021



Longitudinal Employment Levels by Grade Group - Dec 2016 to Mar 2022

Mar 2022 (Dec 2015 figure: 9,499)	WTE Mar 2022	WTE change since Dec 16	WTE change since Dec 17	WTE change since Dec 18	WTE change since Dec 19	WTE change since Dec 20	WTE change since Feb 22	% change since Dec 16	% change since Dec 17	% change since Dec 18	% change since Dec 19	% change since Dec 20	% change since Feb 22
Overall	10,503	+883	+713	+605	+549	+202	+20	+9.2%	+7.3%	+6.1%	+5.5%	+2.0%	+0.2%
Consultant Medicine	1		-0	-0					-9.1%	-9.1%			
Consultant Psychiatry	383	+69	+71	+54	+32	+15	-5	+21.8%	+22.9%	+16.3%	+9.1%	+4.1%	-1.4%
Consultants	384	+69	+71	+54	+32	+15	-5	+21.7%	+22.7%	+16.2%	+9.1%	+4.1%	-1.4%
Registrar	217	+85	+72	+63	+48	+49	+3	+64.3%	+50.0%	+41.0%	+28.2%	+29.2%	+1.5%
Senior Registrar	118	+51	+52	+32	+21	+7	+3	+76.0%	+79.5%	+37.5%	+21.6%	+6.3%	+2.5%
Specialist Registrar	2	+1		+1	-1			+100.0%		+100.0%	-20.0%		
Registrars	337	+137	+125	+96	+68	+56	+6	+68.4%	+58.7%	+40.0%	+25.4%	+19.9%	+1.8%
Senior House Officer	224	-23	-48	-45	-29	-47	-2	-9.3%	-17.8%	-16.8%	-11.5%	-17.3%	-0.7%
Interns	6	-6	-4	-2	-2	+1		-50.0%	-40.0%	-25.0%	-25.0%	+20.0%	
SHO/ Interns	230	-29	-52	-47	-31	-46	-2	-11.2%	-18.6%	-17.1%	-11.9%	-16.7%	-0.7%
Dentists			-0	-0				-100.0%	-100.0%	-100.0%	-100.0%	-100.0%	-100.0%
Other Medical	4	-6	-7	-3	-1	-1		-59.6%	-64.1%	-40.1%	-22.2%	-22.2%	
Medical/ Dental, other	4	-6	-7	-3	-1	-1		-59.6%	-64.3%	-40.7%	-22.2%	-22.2%	
Medical & Dental	955	+171	+136	+100	+68	+24	-1	+21.8%	+16.7%	+11.7%	+7.7%	+2.6%	-0.1%
Clinical Nurse/ Midwife Manager	1,060	+53	+77	+54	+61	+19	+1	+5.3%	+7.9%	+5.4%	+6.1%	+1.8%	+0.1%
Director Nursing/Midwifery, Assistant	177	+22	+15	+13	+12	+6	+2	+13.9%	+9.3%	+7.8%	+7.4%	+3.7%	+1.0%
Director of Nursing/Midwifery	31	-1	+2	+7	+2	+3	-1	-3.6%	+7.2%	+28.7%	+5.7%	+9.4%	-2.3%
Nurse/ Midwife Manager	1,268	+74	+94	+74	+75	+28	+2	+6.2%	+8.1%	+6.2%	+6.3%	+2.2%	+0.2%
Advanced Nurse/ Midwife Practitioner	48	+41	+38	+28	+18	+9	+1	+546.3%	+360.4%	+140.0%	+57.3%	+22.7%	+2.4%
Clinical Nurse/ Midwife Specialist	505	+168	+122	+110	+76	+16	+6	+50.1%	+31.8%	+27.7%	+17.8%	+3.2%	+1.2%
Nurse/ Midwife Specialist & AN/MP	553	+209	+160	+138	+94	+24	+7	+60.8%	+40.5%	+33.2%	+20.5%	+4.6%	+1.3%
Staff Midwives						-1		-100.0%	-100.0%	-100.0%	-100.0%	-100.0%	-100.0%
Staff Nurse [Psychiatric]	2,934	-123	-93	-21	+41	-31	-22	-4.0%	-3.1%	-0.7%	+1.4%	-1.0%	-0.7%
Staff Nurses [General/ Children's]	106	-15	-11	-11	+1	-0	+2	-12.0%	-9.7%	-9.7%	+1.3%	-0.2%	+1.6%
Staff Nurse [Intellectual Disability]	4	+0	+0	-2	-1	-0	+1	+12.6%	+8.7%	-37.3%	-17.0%	-11.3%	+32.4%
Graduate Nursing/ Midwifery								-100.0%	-100.0%	-100.0%	-100.0%	-100.0%	-100.0%
Staff Nurse/ Staff Midwife	3,044	-137	-104	-35	+41	-32	-19	-4.3%	-3.3%	-1.1%	+1.4%	-1.0%	-0.6%

Mar 2022 (Dec 2015 figure: 9,499)	WTE Mar 2022	WTE change since Dec 16	WTE change since Dec 17	WTE change since Dec 18	WTE change since Dec 19	WTE change since Dec 20	WTE change since Feb 22	% change since Dec 16	% change since Dec 17	% change since Dec 18	% change since Dec 19	% change since Dec 20	% change since Feb 22
Overall	10,503	+883	+713	+605	+549	+202	+20	+9.2%	+7.3%	+6.1%	+5.5%	+2.0%	+0.2%
Public Health Nurse		-1	-1					-100.0%	-100.0%	-100.0%	-100.0%	-100.0%	-100.0%
Pre-registration Nurse Intern (COVID-19)						-42	-1	-100.0%	-100.0%	-100.0%	-100.0%	-100.0%	-100.0%
Pre-registration Nurse/ Midwife Intern	161	+152	+144	+133	+133	+150	+4	+1757.9%	+855.4%	+477.3%	+484.4%	+1402.2%	+2.7%
Post-registration Nurse/ Midwife Student					-1	-1		-100.0%	-100.0%	-100.0%	-100.0%	-100.0%	-100.0%
Nursing/ Midwifery awaiting registration	18	+16	+9	-2	-41	+13	-6	+797.0%	+107.4%	-9.6%	-69.5%	+269.9%	-25.1%
Nursing/ Midwifery Student	179	+168	+153	+131	+91	+120	-2	+1577.6%	+601.6%	+274.8%	+104.5%	+203.3%	-1.2%
Nursing Education/Clinical	34	+9	+3	+3	+2	+2	+1	+37.1%	+10.6%	+9.0%	+7.1%	+6.7%	+3.7%
Nursing/ Midwifery other	34	+9	+3	+3	+2	+2	+1	+37.1%	+10.6%	+9.0%	+7.1%	+6.7%	+3.7%
Nursing & Midwifery	5,077	+323	+305	+311	+304	+142	-11	+6.8%	+6.4%	+6.5%	+6.4%	+2.9%	-0.2%
Dietitians	22	+8	+5	+2	+3	+1	+1	+61.5%	+30.4%	+9.0%	+14.3%	+5.1%	+6.2%
Occupational Therapists	355	+56	+29	+16	+17	+10	+1	+18.5%	+8.9%	+4.7%	+4.9%	+2.8%	+0.2%
Physiotherapists	3	+1	+2	+1	+1	+1	+0	+44.8%	+140.5%	+80.7%	+30.5%	+20.7%	+3.9%
Podiatrists & Chiropodists	1	-1	-1	-0	+0	+0	+0	-51.6%	-40.1%	-27.9%	+20.5%	+10.0%	+12.8%
Speech & Language Therapists	66	+6	+4	+4	+4	-4	+4	+10.6%	+7.2%	+7.0%	+6.7%	-5.5%	+5.6%
Therapy Professions	447	+70	+40	+23	+24	+8	+6	+18.6%	+9.8%	+5.4%	+5.8%	+1.7%	+1.3%
Social Care	72	-16	-10	-6	-1	-8	+1	-17.7%	-12.4%	-8.0%	-1.7%	-9.6%	+0.8%
Social Workers	389	+39	+32	+30	+39	+16	+6	+11.0%	+8.8%	+8.5%	+11.2%	+4.3%	+1.7%
Psychologists	431	+88	+61	+42	+37	+7	+2	+25.7%	+16.4%	+10.9%	+9.3%	+1.7%	+0.6%
Pharmacists	16	+1	+1	+0	-0	-1	+0	+7.8%	+8.3%	+1.4%	-0.4%	-6.2%	+0.3%
Pharmacy Technicians	4	-0	-0	+1	+2	+0	-0	-10.4%	-9.6%	+18.7%	+66.8%	+13.2%	-1.4%
Pharmacy	20	+1	+1	+1	+2	-1	-0	+3.5%	+4.0%	+4.5%	+8.6%	-2.8%	-0.0%
Counsellor Therapists	124	+39	+38	+39	+29	+23	+6	+45.8%	+45.0%	+45.9%	+30.8%	+22.6%	+4.8%
Other Health & Social Care	6	-3	-3	-3	-6	+0	-0	-30.5%	-31.6%	-31.9%	-50.0%	+8.3%	-2.3%
Play Therapists/ Specialists	1	-1	-0		+0		-0	-40.8%	-2.0%		+1.4%		-6.3%
H&SC, Other	131	+35	+36	+36	+23	+23	+5	+36.9%	+37.4%	+38.2%	+21.6%	+21.6%	+4.3%
Health & Social Care Professionals	1,490	+217	+158	+127	+124	+46	+21	+17.1%	+11.9%	+9.3%	+9.1%	+3.2%	+1.4%
Executive Management	14	+7	+6	+4	+3	-1	-1	+99.9%	+74.9%	+39.9%	+27.2%	-5.0%	-6.7%
Senior Management (VIII & GM)	55	+31	+24	+24	+9	+3	+1	+124.6%	+77.4%	+75.2%	+19.7%	+5.9%	+2.7%
Management (VIII & above)	69	+38	+30	+28	+12	+2	+0	+119.2%	+76.9%	+66.7%	+21.1%	+3.5%	+0.7%

Mar 2022 (Dec 2015 figure: 9,499)	WTE Mar 2022	WTE change since Dec 16	WTE change since Dec 17	WTE change since Dec 18	WTE change since Dec 19	WTE change since Dec 20	WTE change since Feb 22	% change since Dec 16	% change since Dec 17	% change since Dec 18	% change since Dec 19	% change since Dec 20	% change since Feb 22
Overall	10,503	+883	+713	+605	+549	+202	+20	+9.2%	+7.3%	+6.1%	+5.5%	+2.0%	+0.2%
Middle Management (V-VII)	251	+84	+54	+31	+15	+7	-3	+50.6%	+27.3%	+13.9%	+6.5%	+3.0%	-1.2%
Other Administrative	3	+1			+1	+1		+63.7%			+63.7%	+63.7%	
Administrative/ Supervisory (V to VII)	253	+85	+54	+31	+16	+8	-3	+50.8%	+26.9%	+13.8%	+6.9%	+3.4%	-1.2%
General Administrative (III & IV)	718	+56	+36	+22	+0	-4	+4	+8.5%	+5.3%	+3.2%	+0.0%	-0.6%	+0.6%
Clerical (III & IV)	718	+56	+36	+22	+0	-4	+4	+8.5%	+5.3%	+3.2%	+0.0%	-0.6%	+0.6%
Management & Administrative	1,040	+179	+120	+81	+29	+6	+2	+20.9%	+13.0%	+8.4%	+2.8%	+0.6%	+0.2%
Catering	71	+5	+5	-1	+5	+7	-0	+7.6%	+7.3%	-1.7%	+8.2%	+11.1%	-0.4%
Household Services	417	-75	-60	-29	-8	-25	+1	-15.3%	-12.5%	-6.5%	-1.8%	-5.6%	+0.2%
Other Support	38	-18	-11	-17	-4	-4	-0	-31.8%	-22.8%	-30.7%	-10.5%	-8.8%	-0.4%
Portering	48	-11	-1	+0	+0	+1	-0	-18.8%	-1.6%	+0.3%	+0.0%	+1.7%	-0.4%
Support	574	-99	-67	-47	-7	-20	+0	-14.8%	-10.4%	-7.6%	-1.2%	-3.4%	+0.1%
Maintenance	129	-14	-9	-5	+0	-8	-1	-9.6%	-6.8%	-3.7%	+0.3%	-5.9%	-0.8%
Technical Services		-2	-2	-2	-2			-100.0%	-100.0%	-100.0%	-100.0%	-100.0%	-100.0%
Maintenance/ Technical	129	-16	-11	-7	-2	-8	-1	-10.8%	-8.1%	-5.1%	-1.2%	-5.9%	-0.8%
General Support	703	-115	-78	-54	-9	-29	-1	-14.1%	-10.0%	-7.1%	-1.2%	-3.9%	-0.1%
Attendant/ Aide	512	-213	-189	-170	-93	-72	-10	-29.4%	-27.0%	-24.9%	-15.4%	-12.3%	-2.0%
Health & Social Care Assistants	9	+5	+5	+4	+0	+1	+1	+102.8%	+102.8%	+73.0%	+5.3%	+12.8%	+7.8%
Health Care Assistant/ Care Assistant	506	+301	+257	+213	+132	+76	+15	+147.2%	+103.7%	+72.6%	+35.3%	+17.7%	+3.1%
Health Care Assistants	1,027	+93	+73	+47	+39	+5	+6	+10.0%	+7.7%	+4.8%	+3.9%	+0.5%	+0.6%
Home Care Services	15	+15	-0	-2	-1	+1	+2	-100.0%	-1.1%	-10.7%	-6.0%	+3.6%	+13.2%
Other Care Grades	21	+10	+10	+5	-2	-1	+1	+95.5%	+93.7%	+32.2%	-7.5%	-5.1%	+6.2%
Pastoral Care	12	-2	-2	-1	-1	-0	+1	-15.2%	-12.2%	-9.1%	-4.8%	-0.3%	+9.2%
Workshop Services	163	-9	-10	-8	-3	+7	+1	-5.1%	-6.0%	-4.6%	-1.5%	+4.7%	+0.4%
Care, other	210	+14	-2	-6	-6	+7	+5	+7.2%	-1.0%	-2.6%	-2.7%	+3.3%	+2.3%
Patient & Client Care	1,237	+107	+71	+42	+33	+12	+10	+9.5%	+6.1%	+3.5%	+2.7%	+1.0%	+0.9%

Source: Health Service Personnel Census

Longitudinal Employment Levels by Grade Group - Dec 2016 to Mar 2022

Mar 2022 (Dec 2015 figure: 9,499)	WTE Mar 2022	WTE change since Dec 16	WTE change since Dec 17	WTE change since Dec 18	WTE change since Dec 19	WTE change since Dec 20	WTE change since Feb 22	% change since Dec 16	% change since Dec 17	% change since Dec 18	% change since Dec 19	% change since Dec 20	% change since Feb 22
Overall	10,503	+883	+713	+605	+549	+202	+20	+9.2%	+7.3%	+6.1%	+5.5%	+2.0%	+0.2%
Consultant Medicine	1		-0	-0					-9.1%	-9.1%			
Consultant Psychiatry	383	+69	+71	+54	+32	+15	-5	+21.8%	+22.9%	+16.3%	+9.1%	+4.1%	-1.4%
Consultants	384	+69	+71	+54	+32	+15	-5	+21.7%	+22.7%	+16.2%	+9.1%	+4.1%	-1.4%
Registrar	217	+85	+72	+63	+48	+49	+3	+64.3%	+50.0%	+41.0%	+28.2%	+29.2%	+1.5%
Senior Registrar	118	+51	+52	+32	+21	+7	+3	+76.0%	+79.5%	+37.5%	+21.6%	+6.3%	+2.5%
Specialist Registrar	2	+1		+1	-1			+100.0%		+100.0%	-20.0%		
Registrars	337	+137	+125	+96	+68	+56	+6	+68.4%	+58.7%	+40.0%	+25.4%	+19.9%	+1.8%
Senior House Officer	224	-23	-48	-45	-29	-47	-2	-9.3%	-17.8%	-16.8%	-11.5%	-17.3%	-0.7%
Interns	6	-6	-4	-2	-2	+1		-50.0%	-40.0%	-25.0%	-25.0%	+20.0%	
SHO/ Interns	230	-29	-52	-47	-31	-46	-2	-11.2%	-18.6%	-17.1%	-11.9%	-16.7%	-0.7%
Dentists			-0	-0				-100.0%	-100.0%	-100.0%	-100.0%	-100.0%	-100.0%
Other Medical	4	-6	-7	-3	-1	-1		-59.6%	-64.1%	-40.1%	-22.2%	-22.2%	
Medical/ Dental, other	4	-6	-7	-3	-1	-1		-59.6%	-64.3%	-40.7%	-22.2%	-22.2%	
Medical & Dental	955	+171	+136	+100	+68	+24	-1	+21.8%	+16.7%	+11.7%	+7.7%	+2.6%	-0.1%
Clinical Nurse/ Midwife Manager	1,060	+53	+77	+54	+61	+19	+1	+5.3%	+7.9%	+5.4%	+6.1%	+1.8%	+0.1%
Director Nursing/Midwifery, Assistant	177	+22	+15	+13	+12	+6	+2	+13.9%	+9.3%	+7.8%	+7.4%	+3.7%	+1.0%
Director of Nursing/Midwifery	31	-1	+2	+7	+2	+3	-1	-3.6%	+7.2%	+28.7%	+5.7%	+9.4%	-2.3%
Nurse/ Midwife Manager	1,268	+74	+94	+74	+75	+28	+2	+6.2%	+8.1%	+6.2%	+6.3%	+2.2%	+0.2%
Advanced Nurse/ Midwife Practitioner	48	+41	+38	+28	+18	+9	+1	+546.3%	+360.4%	+140.0%	+57.3%	+22.7%	+2.4%
Clinical Nurse/ Midwife Specialist	505	+168	+122	+110	+76	+16	+6	+50.1%	+31.8%	+27.7%	+17.8%	+3.2%	+1.2%
Nurse/ Midwife Specialist & AN/MP	553	+209	+160	+138	+94	+24	+7	+60.8%	+40.5%	+33.2%	+20.5%	+4.6%	+1.3%
Staff Midwives						-1		-100.0%	-100.0%	-100.0%	-100.0%	-100.0%	-100.0%
Staff Nurse [Psychiatric]	2,934	-123	-93	-21	+41	-31	-22	-4.0%	-3.1%	-0.7%	+1.4%	-1.0%	-0.7%
Staff Nurses [General/ Children's]	106	-15	-11	-11	+1	-0	+2	-12.0%	-9.7%	-9.7%	+1.3%	-0.2%	+1.6%
Staff Nurse [Intellectual Disability]	4	+0	+0	-2	-1	-0	+1	+12.6%	+8.7%	-37.3%	-17.0%	-11.3%	+32.4%
Graduate Nursing/ Midwifery								-100.0%	-100.0%	-100.0%	-100.0%	-100.0%	-100.0%
Staff Nurse/ Staff Midwife	3,044	-137	-104	-35	+41	-32	-19	-4.3%	-3.3%	-1.1%	+1.4%	-1.0%	-0.6%
Public Health Nurse		-1	-1					-100.0%	-100.0%	-100.0%	-100.0%	-100.0%	-100.0%
Public Health Nurse		-1	-1					-100.0%	-100.0%	-100.0%	-100.0%	-100.0%	-100.0%
Pre-registration Nurse Intern (COVID-19)						-42	-1	-100.0%	-100.0%	-100.0%	-100.0%	-100.0%	-100.0%
Pre-registration Nurse/ Midwife Intern	161	+152	+144	+133	+133	+150	+4	+1757.9%	+855.4%	+477.3%	+484.4%	+1402.2%	+2.7%
Post-registration Nurse/ Midwife Student					-1	-1		-100.0%	-100.0%	-100.0%	-100.0%	-100.0%	-100.0%
Nursing/ Midwifery awaiting registration	18	+16	+9	-2	-41	+13	-6	+797.0%	+107.4%	-9.6%	-69.5%	+269.9%	-25.1%
Nursing/ Midwifery Student	179	+168	+153	+131	+91	+120	-2	+1577.6%	+601.6%	+274.8%	+104.5%	+203.3%	-1.2%
Nursing Education/Clinical	34	+9	+3	+3	+2	+2	+1	+37.1%	+10.6%	+9.0%	+7.1%	+6.7%	+3.7%
Nursing/ Midwifery other	34	+9	+3	+3	+2	+2	+1	+37.1%	+10.6%	+9.0%	+7.1%	+6.7%	+3.7%
Nursing & Midwifery	5,077	+323	+305	+311	+304	+142	-11	+6.8%	+6.4%	+6.5%	+6.4%	+2.9%	-0.2%
Dietitians	22	+8	+5	+2	+3	+1	+1	+61.5%	+30.4%	+9.0%	+14.3%	+5.1%	+6.2%
Occupational Therapists	355	+56	+29	+16	+17	+10	+1	+18.5%	+8.9%	+4.7%	+4.9%	+2.8%	+0.2%
Physiotherapists	3	+1	+2	+1	+1	+1	+0	+44.8%	+140.5%	+80.7%	+30.5%	+20.7%	+3.9%
Podiatrists & Chiropodists	1	-1	-1	-0	+0	+0	+0	-51.6%	-40.1%	-27.9%	+20.5%	+10.0%	+12.8%
Speech & Language Therapists	66	+6	+4	+4	+4	-4	+4	+10.6%	+7.2%	+7.0%	+6.7%	-5.5%	+5.6%
Therapy Professions	447	+70	+40	+23	+24	+8	+6	+18.6%	+9.8%	+5.4%	+5.8%	+1.7%	+1.3%
Social Care	72	-16	-10	-6	-1	-8	+1	-17.7%	-12.4%	-8.0%	-1.7%	-9.6%	+0.8%
Social Workers	389	+39	+32	+30	+39	+16	+6	+11.0%	+8.8%	+8.5%	+11.2%	+4.3%	+1.7%
Psychologists	431	+88	+61	+42	+37	+7	+2	+25.7%	+16.4%	+10.9%	+9.3%	+1.7%	+0.6%
Pharmacists	16	+1	+1	+0	-0	-1	+0	+7.8%	+8.3%	+1.4%	-0.4%	-6.2%	+0.3%
Pharmacy Technicians	4	-0	-0	+1	+2	+0	-0	-10.4%	-9.6%	+18.7%	+66.8%	+13.2%	-1.4%
Pharmacy	20	+1	+1	+1	+2	-1	-0	+3.5%	+4.0%	+4.5%	+8.6%	-2.8%	-0.0%
Counsellor Therapists	124	+39	+38	+39	+29	+23	+6	+45.8%	+45.0%	+45.9%	+30.8%	+22.6%	+4.8%
Other Health & Social Care	6	-3	-3	-3	-6	+0	-0	-30.5%	-31.6%	-31.9%	-50.0%	+8.3%	-2.3%
Play Therapists/ Specialists	1	-1	-0		+0		-0	-40.8%	-2.0%		+1.4%		-6.3%
H&SC, Other	131	+35	+36	+36	+23	+23	+5	+36.9%	+37.4%	+38.2%	+21.6%	+21.6%	+4.3%
Health & Social Care Professionals	1,490	+217	+158	+127	+124	+46	+21	+17.1%	+11.9%	+9.3%	+9.1%	+3.2%	+1.4%
Executive Management	14	+7	+6	+4	+3	-1	-1	+99.9%	+74.9%	+39.9%	+27.2%	-5.0%	-6.7%
Senior Management (VIII & GM)	55	+31	+24	+24	+9	+3	+1	+124.6%	+77.4%	+75.2%	+19.7%	+5.9%	+2.7%
Management (VIII & above)	69	+38	+30	+28	+12	+2	+0	+119.2%	+76.9%	+66.7%	+21.1%	+3.5%	+0.7%
Middle Management (V-VII)	251	+84	+54	+31	+15	+7	-3	+50.6%	+27.3%	+13.9%	+6.5%	+3.0%	-1.2%
Other Administrative	3	+1			+1	+1		+63.7%			+63.7%	+63.7%	
Administrative/ Supervisory (V to VII)	253	+85	+54	+31	+16	+8	-3	+50.8%	+26.9%	+13.8%	+6.9%	+3.4%	-1.2%
General Administrative (III & IV)	718	+56	+36	+22	+0	-4	+4	+8.5%	+5.3%	+3.2%	+0.0%	-0.6%	+0.6%
Clerical (III & IV)	718	+56	+36	+22	+0	-4	+4	+8.5%	+5.3%	+3.2%	+0.0%	-0.6%	+0.6%
Management & Administrative	1,040	+179	+120	+81	+29	+6	+2	+20.9%	+13.0%	+8.4%	+2.8%	+0.6%	+0.2%
Support	574	-99	-67	-47	-7	-20	+0	-14.8%	-10.4%	-7.6%	-1.2%	-3.4%	+0.1%
Maintenance	129	-14	-9	-5	+0	-8	-1	-9.6%	-6.8%	-3.7%	+0.3%	-5.9%	-0.8%
Technical Services		-2	-2	-2	-2			-100.0%	-100.0%	-100.0%	-100.0%	-100.0%	-100.0%
Maintenance/ Technical	129	-16	-11	-7	-2	-8	-1	-10.8%	-8.1%	-5.1%	-1.2%	-5.9%	-0.8%
General Support	703	-115	-78	-54	-9	-29	-1	-14.1%	-10.0%	-7.1%	-1.2%	-3.9%	-0.1%
Attendant/ Aide	512	-213	-189	-170	-93	-72	-10	-29.4%	-27.0%	-24.9%	-15.4%	-12.3%	-2.0%
Health & Social Care Assistants	9	+5	+5	+4	+0	+1	+1	+102.8%	+102.8%	+73.0%	+5.3%	+12.8%	+7.8%
Health Care Assistant/ Care Assistant	506	+301	+257	+213	+132	+76	+15	+147.2%	+103.7%	+72.6%	+35.3%	+17.7%	+3.1%
Health Care Assistants	1,027	+93	+73	+47	+39	+5	+6	+10.0%	+7.7%	+4.8%	+3.9%	+0.5%	+0.6%
Home Care Services	15	+15	-0	-2	-1	+1	+2	-100.0%	-1.1%	-10.7%	-6.0%	+3.6%	+13.2%
Other Care Grades	21	+10	+10	+5	-2	-1	+1	+95.5%	+93.7%	+32.2%	-7.5%	-5.1%	+6.2%
Pastoral Care	12	-2	-2	-1	-1	-0	+1	-15.2%	-12.2%	-9.1%	-4.8%	-0.3%	+9.2%
Workshop Services	163	-9	-10	-8	-3	+7	+1	-5.1%	-6.0%	-4.6%	-1.5%	+4.7%	+0.4%
Care, other	210	+14	-2	-6	-6	+7	+5	+7.2%	-1.0%	-2.6%	-2.7%	+3.3%	+2.3%
Patient & Client Care	1,237	+107	+71	+42	+33	+12	+10	+9.5%	+6.1%	+3.5%	+2.7%	+1.0%	+0.9%

Source: Health Service Personnel Census