

Mental Health Service Employment Report: May 2022

Employment by Staff Group

May 2022	WTE Dec 2019	WTE Dec 2020	WTE Apr 2022	WTE May 2022	WTE change since Apr 22	WTE change since Dec 20	% change since Dec 20	WTE change since Dec 19	% change since Dec 19	No. May 2022
Overall	9,954	10,301	10,508	10,485	-23	+183	+1.8%	+531	+5.3%	11,590
Consultants	353	370	384	379	-5	+9	+2.5%	+26	+7.4%	416
Registrars	269	281	340	336	-4	+55	+19.7%	+68	+25.1%	348
SHO/ Interns	261	276	227	231	+4	-45	-16.4%	-30	-11.6%	238
Medical/ Dental, other	5	5	5	5	+0	+0	+6.0%	+0	+6.0%	8
Medical & Dental	888	932	956	951	-5	+20	+2.1%	+64	+7.2%	1,010
Nurse/ Midwife Manager	1,192	1,240	1,273	1,271	-2	+31	+2.5%	+78	+6.6%	1,327
Nurse/ Midwife Specialist & AN/MP	459	529	561	573	+12	+44	+8.4%	+114	+24.8%	610
Staff Nurse/ Staff Midwife	3,003	3,076	3,044	3,025	-20	-52	-1.7%	+22	+0.7%	3,296
<i>Pre-registration Nurse Intern (COVID-19)</i>		42				-42	-100.0%		-100.0%	
<i>Pre-registration Nurse/ Midwife Intern</i>	28	11	159	158	-1	+148	+1379.4%	+131	+475.5%	320
<i>Post-registration Nurse/ Midwife Student</i>	1	1				-1	-100.0%	-1	-100.0%	
<i>Nursing/ Midwifery awaiting registration</i>	59	5	12	9	-3	+4	+76.9%	-50	-85.4%	9
Nursing/ Midwifery Student	87	59	171	167	-4	+108	+183.2%	+80	+91.0%	329
Nursing/ Midwifery other	32	32	34	34	+0	+3	+8.5%	+3	+8.9%	37
Nursing & Midwifery	4,773	4,935	5,085	5,070	-15	+135	+2.7%	+297	+6.2%	5,599
Therapy Professions	422	439	444	442	-1	+3	+0.7%	+20	+4.7%	498
Social Care	74	80	71	73	+2	-7	-8.6%	-0	-0.7%	85
Social Workers	350	373	393	396	+3	+24	+6.4%	+47	+13.4%	447
Psychologists	394	424	428	431	+3	+7	+1.7%	+37	+9.3%	478
Pharmacy	19	21	20	19	-1	-2	-7.9%	+1	+2.9%	25
H&SC, Other	108	108	131	133	+2	+25	+23.3%	+25	+23.4%	152
Health & Social Care Professionals	1,366	1,444	1,489	1,495	+7	+51	+3.5%	+129	+9.4%	1,685
Management (VIII & above)	57	67	69	70	+0	+3	+3.9%	+12	+21.6%	71
Administrative/ Supervisory (V to VII)	237	245	258	259	+2	+15	+6.0%	+23	+9.5%	276
Clerical (III & IV)	717	722	714	703	-11	-19	-2.7%	-15	-2.0%	795
Management & Administrative	1,012	1,034	1,041	1,032	-9	-2	-0.2%	+20	+2.0%	1,142
Support	581	594	576	576	-0	-18	-3.1%	-5	-0.8%	662
Maintenance/ Technical	131	137	129	132	+3	-5	-3.8%	+1	+1.0%	136
General Support	711	732	705	708	+3	-23	-3.2%	-3	-0.5%	798
Health Care Assistants	988	1,022	1,020	1,014	-6	-8	-0.7%	+26	+2.6%	1,105
Care, other	216	203	213	214	+1	+11	+5.2%	-2	-0.8%	251
Patient & Client Care	1,204	1,225	1,232	1,228	-4	+3	+0.2%	+24	+2.0%	1,356

Mental Health Services Employment by Administration (HSE / S38): May 2022

May 2022	WTE Dec 2019	WTE Dec 2020	WTE Apr 2022	WTE May 2022	WTE change since Apr 22	WTE change since Dec 20	% change since Dec 20	WTE change since Dec 19	% change since Dec 19	No. May 2022
Total	9,954	10,301	10,508	10,485	-23	+183	+1.8%	+531	+5.3%	11,590
HSE	9,513	9,855	10,096	10,067	-29	+212	+2.2%	+554	+5.8%	11,087
Section 38 Voluntary Agencies	441	446	411	418	+6	-29	-6.5%	-24	-5.4%	503

Employment by Staff Group

May 2022	WTE Dec 2019	WTE Dec 2020	WTE Apr 2022	WTE May 2022	WTE change since Apr 22	WTE change since Dec 20	% change since Dec 20	WTE change since Dec 19	% change since Dec 19	No. May 2022
Health Service Executive	9,513	9,855	10,096	10,067	-29	+212	+2.2%	+554	+5.8%	11,087
Consultants	333	349	362	357	-5	+9	+2.5%	+25	+7.4%	389
Registrars	250	266	321	317	-4	+52	+19.4%	+67	+26.9%	328
SHO/ Interns	255	267	220	224	+4	-43	-16.2%	-31	-12.3%	231
Medical/ Dental, other	5	5	5	5	+0	+0	+6.0%	+0	+6.0%	8
Medical & Dental	843	886	908	904	-4	+17	+2.0%	+61	+7.2%	956
Nurse/ Midwife Manager	1,154	1,202	1,238	1,234	-3	+32	+2.7%	+80	+6.9%	1,287
Nurse/ Midwife Specialist & AN/MP	452	520	552	564	+12	+44	+8.5%	+112	+24.7%	599
Staff Nurse/ Staff Midwife	2,880	2,953	2,936	2,917	-19	-36	-1.2%	+37	+1.3%	3,174
Pre-registration Nurse Intern (COVID-19)		41				-41	-100.0%		-100.0%	
Pre-registration Nurse/ Midwife Intern	21	1	152	151	-1	+151	+21229.6%	+131	+637.7%	306
Post-registration Nurse/ Midwife Student	1	1				-1	-100.0%	-1	-100.0%	
Nursing/ Midwifery awaiting registration	59	5	12	9	-3	+4	+76.9%	-50	-85.4%	9
Nursing/ Midwifery Student	80	48	164	160	-4	+112	+233.6%	+80	+98.9%	315
Nursing/ Midwifery other	29	29	32	32	+0	+3	+9.3%	+3	+9.7%	34
Nursing & Midwifery	4,596	4,752	4,922	4,907	-15	+155	+3.3%	+311	+6.8%	5,409
Therapy Professions	391	412	420	417	-4	+5	+1.2%	+26	+6.6%	463
Social Care	48	52	47	47	-0	-5	-10.5%	-1	-3.1%	55
Social Workers	330	354	375	376	+1	+22	+6.3%	+47	+14.1%	425
Psychologists	379	402	407	409	+2	+8	+2.0%	+31	+8.2%	451
Pharmacy	17	19	19	17	-1	-2	-8.7%	+0	+2.0%	23
H&SC, Other	103	107	131	133	+2	+26	+24.0%	+30	+28.7%	151
Health & Social Care Professionals	1,267	1,345	1,399	1,399	+0	+54	+4.0%	+132	+10.4%	1,568
Management (VIII & above)	55	65	67	68	+0	+3	+4.1%	+12	+22.4%	69
Administrative/ Supervisory (V to VII)	216	224	237	240	+3	+16	+7.1%	+24	+11.2%	254
Clerical (III & IV)	673	679	674	663	-12	-17	-2.4%	-10	-1.5%	746
Management & Administrative	944	968	979	970	-8	+2	+0.2%	+27	+2.8%	1,069
Support	543	556	543	543	-0	-14	-2.5%	-0	-0.0%	610
Maintenance/ Technical	125	130	122	125	+3	-5	-4.0%	+0	+0.2%	129
General Support	668	687	665	668	+3	-19	-2.8%	+0	+0.0%	739
Health Care Assistants	982	1,016	1,014	1,008	-6	-8	-0.7%	+26	+2.7%	1,099
Care, other	213	200	209	211	+1	+11	+5.3%	-2	-1.1%	247
Patient & Client Care	1,195	1,216	1,223	1,219	-4	+3	+0.2%	+24	+2.0%	1,346

Employment by Staff Group

May 2022	WTE Dec 2019	WTE Dec 2020	WTE Apr 2022	WTE May 2022	WTE change since Apr 22	WTE change since Dec 20	% change since Dec 20	WTE change since Dec 19	% change since Dec 19	No. May 2022
Section 38 Voluntary Agencies	441	446	411	418	+6	-29	-6.5%	-24	-5.4%	503
Consultants	20	21	22	22	-0	+1	+2.4%	+2	+8.1%	27
Registrars	19	15	19	19	-0	+4	+25.7%	+0	+1.3%	20
SHO/ Interns	6	9	7	7	-0	-2	-22.2%	+1	+16.7%	7
Medical & Dental	45	45	48	48	-0	+2	+5.4%	+3	+6.4%	54
Nurse/ Midwife Manager	38	38	36	37	+1	-1	-2.9%	-1	-3.8%	40
Nurse/ Midwife Specialist & AN/MP	7	9	9	9	-0	+0	+1.9%	+2	+35.8%	11
Staff Nurse/ Staff Midwife	123	123	108	108	-0	-15	-12.3%	-15	-12.5%	122
Pre-registration Nurse Intern (COVID-19)		1				-1	-100.0%		-100.0%	
Pre-registration Nurse/ Midwife Intern	7	10	7	7		-3	-30.0%			14
Nursing/ Midwifery Student	7	11	7	7		-4	-36.4%			14
Nursing/ Midwifery other	3	3	3	3						3
Nursing & Midwifery	177	183	162	163	+1	-20	-11.0%	-14	-8.1%	190
Therapy Professions	31	27	23	25	+2	-2	-6.8%	-6	-19.1%	35
Social Care	25	28	24	26	+2	-1	-5.0%	+1	+3.9%	30
Social Care	25	28	24	26	+2	-1	-5.0%	+1	+3.9%	30
Social Workers	20	19	18	20	+2	+1	+7.4%	+0	+1.2%	22
Psychologists	16	22	21	22	+1	-1	-2.7%	+6	+36.7%	27
Pharmacy	2	2	2	2				+0	+12.5%	2
H&SC, Other	5	1	0	0		-1	-51.0%	-4	-90.1%	1
Health & Social Care Professionals	99	99	89	96	+7	-3	-3.0%	-3	-3.1%	117
Management (VIII & above)	2	2	2	2						2
Administrative/ Supervisory (V to VII)	21	21	21	20	-1	-1	-5.4%	-2	-7.5%	22
Clerical (III & IV)	45	43	40	40	+0	-3	-6.3%	-5	-10.3%	49
Management & Administrative	68	66	63	62	-1	-4	-5.8%	-6	-9.1%	73
Support	38	38	33	33	-0	-4	-11.8%	-5	-12.0%	52
Maintenance/ Technical	6	7	7	7				+1	+16.7%	7
General Support	44	45	40	40	-0	-4	-10.0%	-4	-8.0%	59
Health Care Assistants	6	6	6	6						6
Care, other	3	3	3	3	+0	+0	+1.5%	+1	+22.0%	4
Patient & Client Care	9	9	9	9	+0	+0	+0.5%	+1	+7.2%	10

Mental Health Services Employment by CHO: May 2022

May 2022	WTE Dec 2019	WTE Dec 2020	WTE Apr 2022	WTE May 2022	WTE change since Apr 22	WTE change since Dec 20	% change since Dec 20	WTE change since Dec 19	% change since Dec 19	No. May 2022
Overall	9,954	10,301	10,508	10,485	-23	+183	+1.8%	+531	+5.3%	11,590
CHO 1	953	976	1,025	1,015	-11	+39	+4.0%	+62	+6.5%	1,111
CHO 2	1,308	1,340	1,342	1,332	-11	-9	-0.6%	+23	+1.8%	1,453
CHO 3	795	809	826	818	-8	+9	+1.1%	+22	+2.8%	906
CHO 4	1,485	1,564	1,592	1,585	-7	+21	+1.3%	+99	+6.7%	1,758
CHO 5	1,178	1,188	1,230	1,227	-3	+38	+3.2%	+49	+4.2%	1,371
CHO 6	593	626	633	644	+11	+17	+2.8%	+51	+8.6%	724
CHO 7	835	861	904	904	+0	+42	+4.9%	+69	+8.2%	1,007
CHO 8	1,098	1,112	1,102	1,102	+0	-9	-0.8%	+5	+0.4%	1,222
CHO 9	1,272	1,331	1,354	1,359	+5	+28	+2.1%	+87	+6.8%	1,511
other Community Services	438	494	499	501	+1	+6	+1.3%	+63	+14.5%	527

Mental Health Services Employment by CHO etc. May 2022

CHO 1

May 2022	WTE Dec 2019	WTE Dec 2020	WTE Apr 2022	WTE May 2022	WTE change since Apr 22	WTE change since Dec 20	% change since Dec 20	WTE change since Dec 19	% change since Dec 19	No. May 2022
Overall	953	976	1,025	1,015	-11	+39	+4.0%	+62	+6.5%	1,111
Consultants	31	34	34	33	-1	-1	-3.8%	+2	+6.5%	37
Registrars	24	29	30	31	+0	+1	+4.6%	+6	+24.5%	31
SHO/ Interns	25	23	21	20	-0	-3	-11.5%	-5	-19.9%	21
Medical & Dental	81	86	85	84	-2	-3	-3.0%	+3	+3.7%	89
Nurse/ Midwife Manager	117	119	120	118	-2	-1	-0.8%	+1	+1.1%	123
Nurse/ Midwife Specialist & AN/MP	67	74	79	77	-2	+3	+4.1%	+9	+13.9%	83
Staff Nurse/ Staff Midwife	297	288	304	300	-4	+12	+4.0%	+2	+0.8%	321
Nursing/ Midwifery Student		3	13	13	+0	+10	+348.7%	+13	-100.0%	27
Nursing/ Midwifery other		1	2	2	+0	+1	+106.4%	+2	-100.0%	2
Nursing & Midwifery	482	485	518	510	-8	+25	+5.2%	+28	+5.9%	556
Therapy Professions	36	36	43	43	+0	+7	+20.1%	+7	+20.7%	47
Social Care	4	4	4	4	-0	-0	-1.1%	-0	-0.3%	5
Social Workers	39	43	44	45	+2	+2	+5.4%	+6	+15.6%	50
Psychologists	21	23	23	22	-1	-1	-5.2%	+1	+7.1%	24
Pharmacy	1	1	1	1	-0					1
H&SC, Other	13	14	19	18	-1	+4	+26.5%	+4	+34.0%	20
Health & Social Care Professionals	113	121	134	133	-1	+12	+9.9%	+19	+17.2%	147
Management (VIII & above)	6	8	10	10	-0	+2	+24.8%	+4	+69.0%	10
Administrative/ Supervisory (V to VII)	30	31	33	34	+1	+3	+10.3%	+4	+12.4%	36
Clerical (III & IV)	85	85	87	86	-1	+1	+1.6%	+1	+1.5%	96
Management & Administrative	121	123	130	130	+0	+6	+5.2%	+9	+7.4%	142
Support	62	65	60	60	+0	-5	-7.3%	-2	-2.9%	67
Maintenance/ Technical	17	16	17	17	-1	+0	+2.3%	-0	-0.2%	17
General Support	79	81	77	77	-0	-4	-5.4%	-2	-2.3%	84
Health Care Assistants	66	68	69	69	-0	+1	+1.7%	+3	+4.0%	79
Care, other	11	11	12	12	-0	+1	+9.5%	+1	+13.1%	14
Patient & Client Care	77	79	81	81	-0	+2	+2.8%	+4	+5.3%	93

CHO 2

May 2022	WTE Dec 2019	WTE Dec 2020	WTE Apr 2022	WTE May 2022	WTE change since Apr 22	WTE change since Dec 20	% change since Dec 20	WTE change since Dec 19	% change since Dec 19	No. May 2022
Overall	1,308	1,340	1,342	1,332	-11	-9	-0.6%	+23	+1.8%	1,453
Consultants	38	37	37	37	-0	-0	-0.2%	-1	-1.6%	40
Registrars	33	37	41	42	+1	+6	+15.8%	+9	+27.7%	43
SHO/ Interns	35	40	35	34	-1	-6	-14.8%	-1	-2.6%	35
Medical/ Dental, other	1	1	1	1	0					1
Medical & Dental	107	114	115	114	-1	-0	-0.2%	+8	+7.2%	119
Nurse/ Midwife Manager	146	151	150	146	-3	-5	-3.2%	+0	+0.3%	149
Nurse/ Midwife Specialist & AN/MP	67	79	85	86	+1	+7	+9.3%	+19	+28.2%	88
Staff Nurse/ Staff Midwife	357	355	354	358	+3	+3	+0.9%	+0	+0.1%	385
<i>Pre-registration Nurse Intern (COVID-19)</i>		10				-10	-100.0%		-100.0%	
<i>Pre-registration Nurse/ Midwife Intern</i>	0		23	23	0	+23	-100.0%	+23	+19066.7%	46
<i>Nursing/ Midwifery awaiting registration</i>	5		4	1	-3	+1	-100.0%	-4	-78.9%	1
Nursing/ Midwifery Student	5	10	27	24	-3	+14	+135.8%	+19	+392.8%	47
Nursing/ Midwifery other	2	2	2	2	0	+0	+25.0%			2
Nursing & Midwifery	577	597	618	616	-2	+20	+3.3%	+39	+6.8%	671
Therapy Professions	45	55	49	46	-3	-9	-15.9%	+1	+2.3%	53
Social Care	15	16	14	12	-1	-4	-24.0%	-3	-17.2%	15
Social Workers	41	42	44	45	+1	+3	+8.2%	+4	+10.5%	49
Psychologists	34	37	40	40	-1	+3	+7.1%	+6	+18.0%	45
Pharmacy	3	2	2	2	+0	+1	+37.4%	-0	-5.2%	3
H&SC, Other	3	3	2	3	+0	-0	-8.0%	-0	-8.0%	3
Health & Social Care Professionals	140	155	152	148	-4	-6	-4.0%	+8	+6.0%	168
Management (VIII & above)	5	4	4	4	-0	-0	-0.2%	-1	-20.2%	4
Administrative/ Supervisory (V to VII)	24	26	26	26	+1	-0	-0.1%	+3	+12.1%	28
Clerical (III & IV)	109	102	98	96	-3	-7	-6.4%	-13	-12.2%	109
Management & Administrative	138	133	128	126	-2	-7	-5.0%	-11	-8.3%	141
Support	36	31	28	29	+0	-3	-8.5%	-8	-21.0%	32
Maintenance/ Technical	27	33	32	33	+1	-0	-0.9%	+6	+21.8%	33
General Support	63	64	60	61	+1	-3	-4.6%	-2	-2.7%	65
Health Care Assistants	215	211	202	196	-6	-15	-7.3%	-19	-8.9%	212
Care, other	69	66	67	70	+2	+3	+4.8%	+0	+0.4%	77
Patient & Client Care	284	278	269	265	-4	-12	-4.4%	-19	-6.6%	289

CHO 3

May 2022	WTE Dec 2019	WTE Dec 2020	WTE Apr 2022	WTE May 2022	WTE change since Apr 22	WTE change since Dec 20	% change since Dec 20	WTE change since Dec 19	% change since Dec 19	No. May 2022
Overall	795	809	826	818	-8	+9	+1.1%	+22	+2.8%	906
Consultants	23	24	25	24	-1	-0	-0.2%	+1	+3.2%	28
Registrars	18	15	18	18	-0	+3	+17.7%	-0	-0.4%	19
SHO/ Interns	19	21	24	24	-0	+2	+10.3%	+5	+24.6%	24
Medical & Dental	60	61	67	66	-1	+5	+8.0%	+5	+8.9%	71
Nurse/ Midwife Manager	88	88	90	93	+4	+6	+6.5%	+6	+6.6%	98
Nurse/ Midwife Specialist & AN/MP	39	37	38	39	+1	+2	+5.8%	-0	-0.3%	44
Staff Nurse/ Staff Midwife	245	272	265	254	-11	-18	-6.6%	+8	+3.4%	278
<i>Pre-registration Nurse Intern (COVID-19)</i>		3				-3	-100.0%		-100.0%	
<i>Pre-registration Nurse/ Midwife Intern</i>	9		12	12	-0	+12	-100.0%	+3	+31.7%	24
Nursing/ Midwifery Student	9	3	12	12	-0	+8	+241.6%	+3	+31.7%	24
<i>Nursing Education/Clinical</i>			1	1	+0	+1	-100.0%	+1	-100.0%	1
Nursing/ Midwifery other			1	1	+0	+1	-100.0%	+1	-100.0%	1
Nursing & Midwifery	381	400	406	399	-6	-1	-0.2%	+18	+4.7%	445
Therapy Professions	26	25	27	29	+2	+4	+16.5%	+3	+9.8%	34
Social Care	3	3	2	2	+0	-1	-25.0%	-1	-21.6%	3
Social Workers	25	24	26	26	-0	+2	+6.5%	+1	+2.6%	28
Psychologists	92	91	89	89	+0	-2	-2.2%	-3	-3.4%	92
Pharmacy	3	3	3	3	0					3
H&SC, Other	10	12	11	11	0	-1	-7.9%	+2	+17.1%	13
Health & Social Care Professionals	159	158	158	160	+2	+2	+1.2%	+1	+0.7%	173
Management (VIII & above)	2	2	3	2	-1			+0	+1.5%	2
Administrative/ Supervisory (V to VII)	17	19	15	14	-1	-5	-25.7%	-3	-16.5%	15
Clerical (III & IV)	56	50	53	52	-1	+1	+2.3%	-4	-7.7%	57
Management & Administrative	75	71	70	67	-3	-4	-5.2%	-7	-9.5%	74
Support	32	30	33	32	-1	+2	+7.4%	-0	-0.2%	37
Maintenance/ Technical	11	9	7	7	0	-2	-22.2%	-4	-36.4%	7
General Support	43	39	40	39	-1	+0	+0.6%	-4	-9.3%	44
Health Care Assistants	75	79	85	85	+0	+6	+8.1%	+10	+12.9%	98
Care, other	2	1	1	1	0			-1	-40.1%	1
Patient & Client Care	77	80	86	86	+0	+6	+8.0%	+9	+11.8%	99

CHO 4

May 2022	WTE Dec 2019	WTE Dec 2020	WTE Apr 2022	WTE May 2022	WTE change since Apr 22	WTE change since Dec 20	% change since Dec 20	WTE change since Dec 19	% change since Dec 19	No. May 2022
Overall	1,485	1,564	1,592	1,585	-7	+21	+1.3%	+99	+6.7%	1,758
Consultants	50	54	56	54	-2	-0	-0.3%	+4	+8.6%	62
Registrars	46	42	53	52	-1	+10	+25.1%	+6	+13.6%	55
SHO/ Interns	31	43	36	35	-1	-8	-18.7%	+4	+12.7%	37
Medical/ Dental, other	2	2	2	2	+0	+0	+15.0%	+0	+15.0%	5
Medical & Dental	129	141	147	143	-4	+3	+1.8%	+15	+11.5%	159
Nurse/ Midwife Manager	170	192	214	218	+4	+25	+13.2%	+48	+28.5%	232
Nurse/ Midwife Specialist & AN/MP	60	71	70	72	+2	+1	+1.9%	+12	+20.3%	76
Staff Nurse/ Staff Midwife	502	519	495	484	-11	-35	-6.8%	-18	-3.7%	522
<i>Pre-registration Nurse Intern (COVID-19)</i>		3				-3	-100.0%		-100.0%	
<i>Pre-registration Nurse/ Midwife Intern</i>	3		23	24	+0	+24	-100.0%	+21	+683.3%	47
<i>Post-registration Nurse/ Midwife Student</i>	1						-100.0%	-1	-100.0%	
<i>Nursing/ Midwifery awaiting registration</i>	30	1	2	2	-0	+1	+98.0%	-28	-93.3%	2
Nursing/ Midwifery Student	34	4	25	25	+0	+21	+537.0%	-8	-23.9%	49
Nursing & Midwifery	765	786	805	799	-5	+13	+1.7%	+34	+4.4%	879
Therapy Professions	74	77	81	82	+1	+4	+5.7%	+8	+10.7%	90
Social Care	4	7	7	8	+1	+1	+10.8%	+4	+103.1%	9
Social Workers	53	64	68	70	+2	+6	+8.8%	+17	+32.1%	82
Psychologists	83	94	93	95	+2	+1	+1.4%	+13	+15.3%	106
Pharmacy	2	3	1	1	0	-2	-57.1%	-1	-47.6%	2
H&SC, Other	11	12	17	18	+2	+6	+48.5%	+8	+70.9%	23
Health & Social Care Professionals	227	258	267	275	+8	+16	+6.4%	+48	+21.2%	312
Management (VIII & above)	1	3	3	3	0	+0	+9.9%	+2	+200.0%	3
Administrative/ Supervisory (V to VII)	22	22	22	24	+2	+2	+9.8%	+1	+6.6%	25
Clerical (III & IV)	87	94	92	87	-5	-8	-8.1%	-1	-0.7%	99
Management & Administrative	111	119	117	114	-4	-5	-4.4%	+3	+2.6%	127
Support	80	82	80	79	-1	-2	-3.0%	-1	-0.8%	90
Maintenance/ Technical	6	5	5	5	0			-1	-16.4%	6
General Support	86	87	85	84	-1	-2	-2.9%	-2	-1.9%	96
Health Care Assistants	161	166	164	164	+0	-3	-1.5%	+3	+1.9%	171
Care, other	7	6	7	6	-1	-1	-11.0%	-2	-21.4%	14
Patient & Client Care	168	173	170	169	-1	-3	-1.9%	+1	+0.9%	185

CHO 5

May 2022	WTE Dec 2019	WTE Dec 2020	WTE Apr 2022	WTE May 2022	WTE change since Apr 22	WTE change since Dec 20	% change since Dec 20	WTE change since Dec 19	% change since Dec 19	No. May 2022
Overall	1,178	1,188	1,230	1,227	-3	+38	+3.2%	+49	+4.2%	1,371
Consultants	26	27	31	32	+0	+4	+15.9%	+5	+20.8%	34
Registrars	10	9	13	13	+0	+4	+44.4%	+3	+30.0%	13
SHO/ Interns	32	36	29	30	+0	-6	-17.3%	-2	-7.5%	31
Medical/ Dental, other	2	2	2	2	0					2
Medical & Dental	70	74	76	76	+1	+2	+2.9%	+6	+8.6%	80
Nurse/ Midwife Manager	164	160	174	168	-6	+7	+4.6%	+3	+2.0%	175
Nurse/ Midwife Specialist & AN/MP	42	54	51	51	-1	-3	-6.3%	+9	+20.2%	53
Staff Nurse/ Staff Midwife	415	411	420	418	-2	+7	+1.7%	+3	+0.7%	468
<i>Pre-registration Nurse Intern (COVID-19)</i>		13				-13	-100.0%		-100.0%	
<i>Pre-registration Nurse/ Midwife Intern</i>	4		19	19	-0	+19	-100.0%	+15	+435.4%	38
<i>Nursing/ Midwifery awaiting registration</i>	2						-100.0%	-2	-100.0%	
Nursing/ Midwifery Student	6	13	19	19	-0	+6	+44.9%	+13	+240.7%	38
Nursing/ Midwifery other	4	4	4	4	0	+0	+2.8%	+0	+1.1%	4
Nursing & Midwifery	631	642	668	659	-9	+17	+2.7%	+28	+4.4%	738
Therapy Professions	40	39	35	37	+2	-1	-3.4%	-3	-7.0%	42
Social Care	5	5	4	4	-0	-0	-7.1%	-0	-7.1%	5
Social Workers	27	28	25	25	+0	-3	-9.1%	-2	-7.7%	29
Psychologists	21	21	23	24	+1	+2	+11.4%	+3	+12.7%	27
H&SC, Other	10	8	21	22	+2	+14	+183.5%	+12	+125.5%	23
Health & Social Care Professionals	103	100	109	113	+4	+13	+12.6%	+10	+9.5%	126
Management (VIII & above)	3	6	6	6	0			+3	+100.0%	6
Administrative/ Supervisory (V to VII)	20	20	25	25	-0	+5	+24.0%	+5	+22.5%	26
Clerical (III & IV)	74	68	69	69	-1	+0	+0.5%	-5	-6.8%	75
Management & Administrative	97	94	100	99	-1	+5	+5.4%	+2	+2.6%	107
Support	168	178	174	174	+0	-4	-2.3%	+7	+4.0%	199
Maintenance/ Technical	23	20	15	16	+1	-4	-19.1%	-7	-31.3%	17
General Support	191	198	189	190	+1	-8	-4.0%	-1	-0.3%	216
Health Care Assistants	73	68	77	77	-0	+10	+14.5%	+5	+6.5%	86
Care, other	13	12	11	12	+0	-1	-5.0%	-1	-9.8%	18
Patient & Client Care	85	80	89	89	+0	+9	+11.5%	+3	+4.1%	104

CHO 6

May 2022	WTE Dec 2019	WTE Dec 2020	WTE Apr 2022	WTE May 2022	WTE change since Apr 22	WTE change since Dec 20	% change since Dec 20	WTE change since Dec 19	% change since Dec 19	No. May 2022
Overall	593	626	633	644	+11	+17	+2.8%	+51	+8.6%	724
Consultants	36	40	39	39	+0	-1	-2.6%	+3	+8.6%	45
Registrars	22	19	24	24	-0	+5	+23.9%	+2	+8.5%	25
SHO/ Interns	9	13	12	12	+0	-1	-7.7%	+3	+33.3%	12
Medical & Dental	67	72	74	75	+0	+3	+3.5%	+8	+11.9%	82
Nurse/ Midwife Manager	76	77	75	76	+1	-1	-1.4%	-0	-0.3%	81
Nurse/ Midwife Specialist & AN/MP	14	20	24	23	-1	+3	+15.7%	+9	+65.4%	26
Staff Nurse/ Staff Midwife	139	151	147	154	+7	+2	+1.5%	+15	+10.5%	171
<i>Pre-registration Nurse/ Midwife Intern</i>			5	5	+0	+5	-100.0%	+5	-100.0%	10
<i>Nursing/ Midwifery awaiting registration</i>		1	1	1	0			+1	-100.0%	1
Nursing/ Midwifery Student		1	6	6	+0	+5	+470.0%	+6	-100.0%	11
Nursing/ Midwifery other	2	2	3	3	0	+1	+50.0%	+1	+50.0%	3
Nursing & Midwifery	231	251	254	261	+7	+10	+4.0%	+30	+13.0%	292
Therapy Professions	43	39	41	42	+1	+3	+8.4%	-1	-2.9%	50
Social Care	26	28	24	26	+2	-2	-6.6%	+0	+1.6%	30
Social Workers	30	30	33	35	+2	+5	+17.4%	+5	+16.6%	39
Psychologists	22	32	37	38	+1	+6	+18.8%	+16	+72.7%	46
H&SC, Other	9	5	7	7	0	+2	+40.0%	-1	-16.8%	8
Health & Social Care Professionals	130	134	143	148	+6	+15	+11.0%	+19	+14.4%	173
Management (VIII & above)	3	3	4	4	0	+1	+33.3%	+1	+33.3%	4
Administrative/ Supervisory (V to VII)	27	24	27	25	-1	+1	+3.6%	-2	-5.7%	27
Clerical (III & IV)	42	43	35	35	+0	-8	-18.1%	-7	-16.9%	41
Management & Administrative	72	70	65	64	-1	-6	-8.4%	-8	-10.6%	72
Support	36	39	31	31	-0	-8	-21.3%	-6	-16.2%	37
Maintenance/ Technical	6	6	6	6	0			+0	+1.5%	6
General Support	42	45	37	37	-0	-8	-18.5%	-6	-13.7%	43
Health Care Assistants	46	49	54	53	-1	+4	+8.8%	+7	+16.3%	55
Care, other	5	6	6	6	+0	+0	+0.8%	+1	+11.7%	7
Patient & Client Care	51	54	60	59	-1	+4	+8.0%	+8	+15.8%	62

CHO 7

May 2022	WTE Dec 2019	WTE Dec 2020	WTE Apr 2022	WTE May 2022	WTE change since Apr 22	WTE change since Dec 20	% change since Dec 20	WTE change since Dec 19	% change since Dec 19	No. May 2022
Overall	835	861	904	904	+0	+42	+4.9%	+69	+8.2%	1,007
Consultants	48	53	54	53	-1	+0	+0.5%	+6	+11.7%	56
Registrars	46	54	51	51	-1	-3	-5.4%	+4	+9.6%	54
SHO/ Interns	21	20	23	24	+1	+4	+17.4%	+3	+14.4%	24
Medical & Dental	115	127	128	128	-1	+1	+0.7%	+13	+11.3%	134
Nurse/ Midwife Manager	117	117	116	115	-1	-3	-2.3%	-2	-1.6%	119
Nurse/ Midwife Specialist & AN/MP	40	47	53	55	+2	+8	+17.2%	+15	+37.0%	60
Staff Nurse/ Staff Midwife	194	202	211	213	+1	+11	+5.6%	+18	+9.5%	241
<i>Pre-registration Nurse Intern (COVID-19)</i>		3				-3	-100.0%		-100.0%	
<i>Pre-registration Nurse/ Midwife Intern</i>	1	1	17	16	-1	+15	+3096.0%	+15	+1066.4%	32
<i>Post-registration Nurse/ Midwife Student</i>		1				-1	-100.0%		-100.0%	
<i>Nursing/ Midwifery awaiting registration</i>	10	3	2	2	+0	-1	-29.8%	-8	-79.7%	2
Nursing/ Midwifery Student	11	8	19	18	-1	+10	+132.3%	+7	+60.1%	34
Nursing/ Midwifery other	8	6	8	8	+0	+2	+32.5%	+0	+2.8%	9
Nursing & Midwifery	370	379	407	408	+1	+29	+7.5%	+38	+10.4%	463
Therapy Professions	48	53	55	56	+1	+2	+3.9%	+8	+15.9%	60
Social Care	8	7	7	7	+0	-0	-1.2%	-0	-6.0%	8
Social Workers	34	38	40	40	-0	+2	+6.6%	+6	+17.5%	44
Psychologists	31	29	26	25	-1	-4	-13.5%	-6	-19.3%	30
Pharmacy	1	1	1	1	0					1
H&SC, Other	18	18	21	21	+0	+3	+18.7%	+3	+18.6%	24
Health & Social Care Professionals	140	147	150	150	+0	+4	+2.6%	+10	+7.5%	167
Management (VIII & above)	3	4	5	5	0	+1	+26.7%	+2	+70.4%	5
Administrative/ Supervisory (V to VII)	16	17	18	18	+0	+1	+5.9%	+3	+16.6%	19
Clerical (III & IV)	47	49	52	52	-0	+2	+4.9%	+5	+10.0%	61
Management & Administrative	65	70	75	75	-0	+4	+6.4%	+9	+14.2%	85
Support	18	17	17	17	-0	-1	-3.5%	-1	-5.6%	19
Maintenance/ Technical	2	2	2	2	0			+0	+7.5%	2
General Support	20	19	19	19	-0	-1	-3.2%	-1	-4.4%	21
Health Care Assistants	33	34	33	33	-1	-2	-5.1%	-1	-2.0%	35
Care, other	92	84	91	91	-0	+7	+8.0%	-1	-1.0%	102
Patient & Client Care	125	119	125	124	-1	+5	+4.2%	-2	-1.3%	137

CHO 8

May 2022	WTE Dec 2019	WTE Dec 2020	WTE Apr 2022	WTE May 2022	WTE change since Apr 22	WTE change since Dec 20	% change since Dec 20	WTE change since Dec 19	% change since Dec 19	No. May 2022
Overall	1,098	1,112	1,102	1,102	+0	-9	-0.8%	+5	+0.4%	1,222
Consultants	35	36	39	39	-0	+3	+7.2%	+4	+10.6%	41
Registrars	26	31	42	40	-2	+9	+29.3%	+15	+56.6%	41
SHO/ Interns	36	26	21	23	+2	-4	-13.7%	-13	-37.1%	23
Medical & Dental	97	94	102	102	+0	+8	+8.7%	+5	+5.0%	105
Nurse/ Midwife Manager	121	120	122	120	-2	-0	-0.1%	-0	-0.4%	125
Nurse/ Midwife Specialist & AN/MP	56	60	66	70	+3	+10	+17.4%	+14	+24.5%	75
Staff Nurse/ Staff Midwife	332	342	319	321	+2	-21	-6.1%	-10	-3.1%	347
<i>Pre-registration Nurse Intern (COVID-19)</i>		1				-1	-100.0%		-100.0%	
<i>Pre-registration Nurse/ Midwife Intern</i>	1		24	24	-1	+24	-100.0%	+23	+4650.0%	49
<i>Nursing/ Midwifery awaiting registration</i>	2		1	1	-0	+1	-100.0%	-1	-70.0%	1
Nursing/ Midwifery Student	3	1	25	24	-1	+23	+2264.1%	+22	+874.0%	50
Nursing/ Midwifery other	4	3	3	3	0	-0	-7.7%	-1	-30.6%	3
Nursing & Midwifery	515	526	536	538	+3	+12	+2.4%	+24	+4.6%	600
Therapy Professions	44	43	38	34	-3	-8	-19.7%	-10	-22.5%	40
Social Care	7	7	7	6	-0	-1	-11.3%	-1	-14.3%	7
Social Workers	41	44	50	49	-1	+6	+12.9%	+8	+19.6%	56
Psychologists	39	37	37	37	+0	+1	+1.6%	-2	-4.6%	40
Pharmacy	1	2	2	2	-0	+1	+51.3%	+1	+127.0%	4
H&SC, Other	20	21	15	15	-0	-6	-29.4%	-5	-26.2%	19
Health & Social Care Professionals	153	153	150	145	-5	-8	-5.5%	-9	-5.7%	166
Management (VIII & above)	3	3	4	3	-1	+0	+1.7%	+0	+2.0%	3
Administrative/ Supervisory (V to VII)	22	20	21	21	-0	+1	+4.0%	-2	-6.8%	24
Clerical (III & IV)	88	97	87	89	+1	-8	-8.6%	+1	+0.6%	100
Management & Administrative	114	120	112	113	+0	-8	-6.2%	-1	-0.8%	127
Support	33	31	30	31	+0	-1	-1.8%	-2	-6.0%	33
Maintenance/ Technical	26	28	25	26	+1	-2	-8.4%	-0	-1.8%	27
General Support	59	59	55	56	+1	-3	-4.9%	-2	-4.1%	60
Health Care Assistants	157	156	142	144	+1	-12	-7.9%	-13	-8.3%	159
Care, other	4	3	5	5	+0	+1	+42.8%	+1	+28.2%	5
Patient & Client Care	160	159	147	148	+1	-11	-6.9%	-12	-7.4%	164

CHO 9

May 2022	WTE Dec 2019	WTE Dec 2020	WTE Apr 2022	WTE May 2022	WTE change since Apr 22	WTE change since Dec 20	% change since Dec 20	WTE change since Dec 19	% change since Dec 19	No. May 2022
Overall	1,272	1,331	1,354	1,359	+5	+28	+2.1%	+87	+6.8%	1,511
Consultants	50	46	50	50	+0	+4	+8.1%	+0	+0.2%	54
Registrars	31	32	48	49	+0	+17	+51.9%	+18	+56.8%	49
SHO/ Interns	53	54	26	30	+4	-24	-44.1%	-23	-43.7%	31
Medical & Dental	134	132	125	129	+4	-3	-2.5%	-6	-4.2%	134
Nurse/ Midwife Manager	132	138	137	138	+1	+0	+0.3%	+6	+4.8%	143
Nurse/ Midwife Specialist & AN/MP	65	76	85	91	+5	+15	+20.1%	+26	+39.5%	94
Staff Nurse/ Staff Midwife	351	371	366	363	-3	-8	-2.3%	+12	+3.3%	399
<i>Pre-registration Nurse Intern (COVID-19)</i>		5				-5	-100.0%		-100.0%	
<i>Pre-registration Nurse/ Midwife Intern</i>	10	10	23	24	+0	+13	+130.8%	+13	+132.8%	47
<i>Nursing/ Midwifery awaiting registration</i>	11		2	2	0	+2	-100.0%	-9	-81.5%	2
Nursing/ Midwifery Student	21	16	25	26	+0	+10	+63.3%	+5	+22.2%	49
Nursing/ Midwifery other	11	13	10	10	-0	-3	-19.7%	-1	-10.1%	11
Nursing & Midwifery	581	613	624	628	+4	+15	+2.4%	+47	+8.1%	696
Therapy Professions	55	61	64	63	-1	+2	+3.5%	+8	+15.3%	71
Social Care	1	1	1	1	0			+0	+11.1%	1
Social Workers	43	43	47	46	-1	+3	+7.0%	+2	+5.3%	53
Psychologists	46	53	53	54	+1	+1	+1.0%	+8	+17.4%	61
Pharmacy	8	9	9	7	-1	-1	-15.1%	-0	-5.4%	10
H&SC, Other	15	14	17	17	-0	+3	+22.6%	+3	+19.9%	19
Health & Social Care Professionals	167	181	191	188	-3	+8	+4.2%	+21	+12.7%	215
Management (VIII & above)	5	5	5	6	+1	+1	+17.0%	+1	+17.2%	6
Administrative/ Supervisory (V to VII)	28	29	31	31	+0	+3	+8.7%	+4	+12.6%	33
Clerical (III & IV)	104	114	118	117	-1	+3	+2.2%	+13	+12.3%	134
Management & Administrative	137	148	154	154	-0	+6	+4.0%	+17	+12.6%	173
Support	103	104	103	103	-1	-1	-1.4%	-1	-0.6%	125
<i>Maintenance</i>	11	11	11	11	-0	-0	-1.7%	-0	-1.0%	11
Maintenance/ Technical	11	11	11	11	-0	-0	-1.7%	-0	-1.0%	11
General Support	114	115	114	114	-1	-2	-1.5%	-1	-0.7%	136
Health Care Assistants	126	129	134	134	+0	+5	+3.7%	+8	+6.2%	144
Care, other	13	12	12	13	+0	+0	+0.3%	-0	-1.6%	13
Patient & Client Care	139	142	146	146	+0	+5	+3.4%	+8	+5.5%	157

other Community Services

May 2022	WTE Dec 2019	WTE Dec 2020	WTE Apr 2022	WTE May 2022	WTE change since Apr 22	WTE change since Dec 20	% change since Dec 20	WTE change since Dec 19	% change since Dec 19	No. May 2022
Overall	438	494	499	501	+1	+6	+1.3%	+63	+14.5%	527
Consultants	16	17	18	17	-0	+1	+4.8%	+2	+11.5%	19
Registrars	13	14	19	18	-1	+4	+27.9%	+5	+37.7%	18
Medical & Dental	29	31	36	35	-1	+5	+15.3%	+7	+23.4%	37
Nurse/ Midwife Manager	62	76	76	78	+2	+2	+2.6%	+16	+25.1%	82
Nurse/ Midwife Specialist & AN/MP	8	13	9	10	+1	-3	-20.1%	+2	+22.7%	11
Staff Nurse/ Staff Midwife	169	165	162	160	-2	-4	-2.7%	-8	-4.9%	164
Nursing/ Midwifery other	1	2	2	2	0	+0	+2.0%	+1	+100.0%	2
Nursing & Midwifery	240	255	249	250	+1	-5	-1.9%	+10	+4.3%	259
Therapy Professions	11	12	11	10	-1	-2	-13.7%	-1	-9.1%	11
Social Care	2	2	2	2	0	+0	+5.3%	+0	+2.0%	2
Social Workers	15	17	15	15	-1	-3	-16.9%	-0	-3.3%	17
Psychologists	6	6	6	7	+1	+1	+17.4%	+1	+16.7%	7
Pharmacy		1	1	1	0			+1	-100.0%	1
Health & Social Care Professionals	34	38	36	35	-1	-3	-9.0%	+1	+1.6%	38
Management (VIII & above)	27	30	26	28	+2	-2	-8.1%	+1	+2.1%	28
Administrative/ Supervisory (V to VII)	31	37	41	41	+0	+4	+11.8%	+10	+31.1%	43
Clerical (III & IV)	25	18	22	22	-1	+3	+17.0%	-4	-14.3%	23
Management & Administrative	83	85	89	90	+1	+5	+5.9%	+7	+8.0%	94
Support	12	16	20	21	+1	+5	+28.2%	+8	+68.3%	23
Maintenance/ Technical	2	7	9	10	+1	+3	+42.9%	+8	+400.0%	10
General Support	14	23	29	31	+2	+8	+32.7%	+16	+115.0%	33
Health Care Assistants	37	62	60	60	+0	-2	-3.1%	+23	+63.5%	66
Care, other	1	1	0		-0	-1	-100.0%	-1	-100.0%	
Patient & Client Care	37	63	60	60	-0	-2	-3.9%	+23	+61.3%	66

Mental Health Services Employment by Grade Group: May 2022

May 2022	WTE Dec 2019	WTE Dec 2020	WTE Apr 2022	WTE May 2022	WTE change since Apr 22	WTE change since Dec 20	% change since Dec 20	WTE change since Dec 19	% change since Dec 19	No. May 2022
Overall	9,954	10,301	10,508	10,485	-23	+183	+1.8%	+531	+5.3%	11,590
Consultant Medicine	1	1	1	1						1
Consultant Psychiatry	352	369	383	378	-5	+9	+2.5%	+26	+7.5%	415
Consultants	353	370	384	379	-5	+9	+2.5%	+26	+7.4%	416
Registrars	269	281	340	336	-4	+55	+19.7%	+68	+25.1%	348
Senior House Officer	253	271	222	226	+3	-45	-16.7%	-27	-10.8%	233
Interns	8	5	5	5	+0			-3	-37.5%	5
SHO/ Interns	261	276	227	231	+4	-45	-16.4%	-30	-11.6%	238
Medical/ Dental, other	5	5	5	5	+0	+0	+6.0%	+0	+6.0%	8
Medical & Dental	888	932	956	951	-5	+20	+2.1%	+64	+7.2%	1,010
Clinical Nurse/ Midwife Manager	999	1,041	1,065	1,065	-0	+24	+2.3%	+66	+6.6%	1,116
Director Nursing/Midwifery, Assistant	165	171	176	173	-3	+2	+1.4%	+8	+5.0%	178
Director of Nursing/Midwifery	29	28	32	33	+1	+5	+17.2%	+4	+13.2%	33
Nurse/ Midwife Manager	1,192	1,240	1,273	1,271	-2	+31	+2.5%	+78	+6.6%	1,327
Advanced Nurse/ Midwife Practitioner	31	39	49	50	+1	+11	+27.4%	+19	+63.4%	52
Clinical Nurse/ Midwife Specialist	428	489	512	523	+11	+34	+6.9%	+94	+22.1%	558
Nurse/ Midwife Specialist & AN/MP	459	529	561	573	+12	+44	+8.4%	+114	+24.8%	610
Staff Midwives		1				-1	-100.0%		-100.0%	
Staff Nurse [Psychiatric]	2,893	2,965	2,928	2,902	-26	-63	-2.1%	+8	+0.3%	3,158
Staff Nurses [General/ Children's]	105	106	108	117	+8	+10	+9.6%	+12	+11.2%	131
Staff Nurse [Intellectual Disability]	5	4	8	6	-2	+2	+51.9%	+2	+42.2%	7
Staff Nurse/ Staff Midwife	3,003	3,076	3,044	3,025	-20	-52	-1.7%	+22	+0.7%	3,296
Pre-registration Nurse Intern (COVID-19)		42				-42	-100.0%		-100.0%	
Pre-registration Nurse/ Midwife Intern	28	11	159	158	-1	+148	+1379.4%	+131	+475.5%	320
Post-registration Nurse/ Midwife Student	1	1				-1	-100.0%	-1	-100.0%	
Nursing/ Midwifery awaiting registration	59	5	12	9	-3	+4	+76.9%	-50	-85.4%	9
Nursing/ Midwifery Student	87	59	171	167	-4	+108	+183.2%	+80	+91.0%	329
Nursing Education/Clinical	32	32	34	34	+0	+3	+8.5%	+3	+8.9%	37
Nursing/ Midwifery other	32	32	34	34	+0	+3	+8.5%	+3	+8.9%	37
Nursing & Midwifery	4,773	4,935	5,085	5,070	-15	+135	+2.7%	+297	+6.2%	5,599
Dietitians	19	21	21	19	-1	-1	-6.7%	+0	+1.5%	23
Occupational Therapists	339	346	353	353	+1	+8	+2.2%	+15	+4.3%	393
Physiotherapists	2	2	3	3		+0	+20.7%	+1	+30.5%	4
Podiatrists & Chiropodists	1	1	1	1	+0	+0	+3.7%	+0	+13.7%	2
Speech & Language Therapists	62	70	66	66	-1	-4	-5.4%	+4	+6.8%	76
Therapy Professions	422	439	444	442	-1	+3	+0.7%	+20	+4.7%	498
Social Care	74	80	71	73	+2	-7	-8.6%	-0	-0.7%	85
Social Workers	350	373	393	396	+3	+24	+6.4%	+47	+13.4%	447
Psychologists	394	424	428	431	+3	+7	+1.7%	+37	+9.3%	478
Pharmacists	16	17	16	15	-1	-2	-12.6%	-1	-7.2%	18
Pharmacy Technicians	2	4	4	4	-0	+1	+14.0%	+2	+68.0%	7
Pharmacy	19	21	20	19	-1	-2	-7.9%	+1	+2.9%	25
Counsellor Therapists	95	101	124	125	+1	+24	+23.6%	+30	+31.9%	138
Other Health & Social Care	12	5	6	5	-1	-0	-5.2%	-7	-56.3%	10
Play Therapists/ Specialists	1	1	1	3	+2	+2	+108.1%	+2	+111.0%	4
H&SC, Other	108	108	131	133	+2	+25	+23.3%	+25	+23.4%	152
Health & Social Care Professionals	1,366	1,444	1,489	1,495	+7	+51	+3.5%	+129	+9.4%	1,685
Executive Management	11	15	15	15	-0	+0	+1.6%	+4	+36.1%	15
Senior Management (VIII & GM)	46	52	54	55	+0	+2	+4.6%	+8	+18.2%	56
Management (VIII & above)	57	67	69	70	+0	+3	+3.9%	+12	+21.6%	71
Middle Management (V-VII)	235	243	255	257	+2	+14	+5.7%	+22	+9.2%	273

May 2022	WTE Dec 2019	WTE Dec 2020	WTE Apr 2022	WTE May 2022	WTE change since Apr 22	WTE change since Dec 20	% change since Dec 20	WTE change since Dec 19	% change since Dec 19	No. May 2022
Overall	9,954	10,301	10,508	10,485	-23	+183	+1.8%	+531	+5.3%	11,590
Other Administrative	2	2	3	3		+1	+63.7%	+1	+63.7%	3
Administrative/ Supervisory (V to VII)	237	245	258	259	+2	+15	+6.0%	+23	+9.5%	276
General Administrative (III & IV)	717	722	714	703	-11	-19	-2.7%	-15	-2.0%	795
Clerical (III & IV)	717	722	714	703	-11	-19	-2.7%	-15	-2.0%	795
Management & Administrative	1,012	1,034	1,041	1,032	-9	-2	-0.2%	+20	+2.0%	1,142
Catering	65	64	71	72	+1	+9	+13.5%	+7	+10.6%	79
Household Services	425	441	418	417	-1	-24	-5.5%	-7	-1.7%	487
Other Support	43	42	40	39	-0	-2	-5.8%	-3	-7.6%	46
Portering	48	47	48	47	-1	-0	-0.4%	-1	-2.0%	50
Support	581	594	576	576	-0	-18	-3.1%	-5	-0.8%	662
Maintenance	129	137	129	132	+3	-5	-3.8%	+3	+2.5%	136
Technical Services	2						-100.0%	-2	-100.0%	
Maintenance/ Technical	131	137	129	132	+3	-5	-3.8%	+1	+1.0%	136
General Support	711	732	705	708	+3	-23	-3.2%	-3	-0.5%	798
Attendant/ Aide	605	583	501	469	-32	-114	-19.6%	-136	-22.4%	524
Health & Social Care Assistants	9	8	10	10	+1	+2	+24.6%	+1	+16.2%	12
Health Care Assistant/ Care Assistant	374	430	509	534	+26	+104	+24.3%	+160	+42.9%	569
Health Care Assistants	988	1,022	1,020	1,014	-6	-8	-0.7%	+26	+2.6%	1,105
Home Care Services	16	14	15	14	-0	+0	+1.0%	-1	-8.4%	24
Other Care Grades	23	22	21	21	+0	-1	-2.7%	-1	-5.2%	23
Pastoral Care	13	12	12	12	-0	-0	-3.5%	-1	-7.9%	16
Workshop Services	165	155	165	167	+2	+12	+7.4%	+2	+1.0%	188
Care, other	216	203	213	214	+1	+11	+5.2%	-2	-0.8%	251
Patient & Client Care	1,204	1,225	1,232	1,228	-4	+3	+0.2%	+24	+2.0%	1,356

Employment by WTE, Headcount, Gender, Full-Time /Part-Time etc.: May 2022

Mental Health Services Staff Group	WTE	Headcount	WTE: no.	% Male	% female	Male WTE: no.	Female WTE: no.	% Total Perm	% Male Perm	% Female Perm	% Total Full Time	% Total Part Time	% Male FT	% Female FT
Overall	10,485	11,590	1.11	26.8%	73.2%	1.06	1.12	83.1%	79.8%	84.3%	85.2%	14.8%	93.2%	82.3%
Consultant Medicine	1	1	1.00	100.0%		1.00		100.0%	100.0%		100.0%	0.0%	100.0%	
Consultant Psychiatry	378	415	1.10	42.4%	57.6%	1.06	1.13	67.7%	67.7%	66.1%	85.1%	14.9%	92.0%	79.9%
Consultants	379	416	1.10	42.5%	57.5%	1.06	1.13	67.8%	70.1%	66.1%	85.1%	14.9%	92.1%	79.9%
Registrar	217	226	1.04	45.6%	54.4%	1.03	1.05	3.1%	3.1%	2.4%	96.9%	3.1%	99.0%	95.1%
Senior Registrar	117	120	1.02	37.5%	62.5%	1.00	1.04	0.8%	0.8%	1.3%	96.7%	3.3%	100.0%	94.7%
Specialist Registrar	2	2	1.00	100.0%		1.00		0.0%	0.0%		100.0%	0.0%	100.0%	
Registrars	336	348	1.03	43.1%	56.9%	1.02	1.04	2.3%	2.7%	2.0%	96.8%	3.2%	99.3%	94.9%
Senior House Officer	226	233	1.03	44.2%	55.8%	1.02	1.04	0.0%	0.0%	0.0%	100.0%	0.0%	100.0%	100.0%
Interns	5	5	1.00	40.0%	60.0%	1.00	1.00	0.0%	0.0%	0.0%	100.0%	0.0%	100.0%	100.0%
SHO/ Interns	231	238	1.03	44.1%	55.9%	1.02	1.04	0.0%	0.0%	0.0%	100.0%	0.0%	100.0%	100.0%
Other Medical	5	8	1.51	50.0%	50.0%	1.72	1.34	62.5%	62.5%	75.0%	87.5%	12.5%	100.0%	75.0%
Medical/ Dental, other	5	8	1.51	50.0%	50.0%	1.72	1.34	62.5%	50.0%	75.0%	87.5%	12.5%	100.0%	75.0%
Medical & Dental	951	1,010	1.06	43.2%	56.8%	1.04	1.08	29.2%	29.8%	28.7%	92.7%	7.3%	96.6%	89.7%
Clinical Nurse/ Midwife Manager	1,065	1,116	1.05	34.0%	66.0%	1.01	1.07	98.3%	98.3%	98.6%	93.5%	6.5%	98.4%	90.9%
Director Nursing/Midwifery, Assistant	173	178	1.03	43.8%	56.2%	1.04	1.02	100.0%	100.0%	100.0%	97.8%	2.2%	97.4%	98.0%
Director of Nursing/Midwifery	33	33	1.01	54.5%	45.5%	1.01	1.01	100.0%	100.0%	100.0%	97.0%	3.0%	100.0%	93.3%
Nurse/ Midwife Manager	1,271	1,327	1.04	35.8%	64.2%	1.02	1.06	98.6%	98.1%	98.8%	94.1%	5.9%	98.3%	91.8%
Advanced Nurse/ Midwife Practitioner	50	52	1.04	19.2%	80.8%	1.00	1.04	98.1%	98.1%	97.6%	92.3%	7.7%	100.0%	90.5%
Clinical Nurse/ Midwife Specialist	523	558	1.07	19.4%	80.6%	1.02	1.08	99.8%	99.8%	99.8%	92.5%	7.5%	98.1%	91.1%
Nurse/ Midwife Specialist & AN/MP	573	610	1.06	19.3%	80.7%	1.02	1.08	99.7%	100.0%	99.6%	92.5%	7.5%	98.3%	91.1%
Staff Nurse [Psychiatric]	2,902	3,158	1.09	25.0%	75.0%	1.06	1.10	91.3%	91.3%	92.2%	87.7%	12.3%	92.0%	86.2%
Staff Nurses [General/ Children's]	117	131	1.12	27.5%	72.5%	1.16	1.11	67.9%	67.9%	72.6%	84.7%	15.3%	83.3%	85.3%
Staff Nurse [Intellectual Disability]	6	7	1.09	42.9%	57.1%	1.00	1.16	57.1%	57.1%	50.0%	100.0%	0.0%	100.0%	100.0%
Staff Nurse/ Staff Midwife	3,025	3,296	1.09	25.2%	74.8%	1.07	1.10	90.3%	87.1%	91.4%	87.6%	12.4%	91.7%	86.2%
Pre-registration Nurse/ Midwife Intern	158	320	2.02	15.9%	84.1%	2.00	2.02	0.3%	0.3%	0.4%	100.0%	0.0%	100.0%	100.0%
Nursing/ Midwifery awaiting registration	9	9	1.05	11.1%	88.9%	1.00	1.06	66.7%	66.7%	62.5%	100.0%	0.0%	100.0%	100.0%
Nursing/ Midwifery Student	167	329	1.97	15.8%	84.2%	1.96	1.97	2.1%	1.9%	2.2%	100.0%	0.0%	100.0%	100.0%
Nursing Education/Clinical	34	37	1.08	13.5%	86.5%	1.00	1.09	100.0%	100.0%	100.0%	89.2%	10.8%	100.0%	87.5%
Nursing/ Midwifery other	34	37	1.08	13.5%	86.5%	1.00	1.09	100.0%	100.0%	100.0%	89.2%	10.8%	100.0%	87.5%

Nursing & Midwifery	5,070	5,599	1.10	26.4%	73.6%	1.06	1.12	88.2%	88.7%	88.0%	90.4%	9.6%	94.7%	88.9%
Health & Social Care	1,495	1,685	1.13	16.2%	83.8%	1.05	1.14	85.9%	82.8%	86.5%	81.7%	18.3%	92.3%	79.6%
Executive Management	15	15	1.00	60.0%	40.0%	1.00	1.01	100.0%	100.0%	100.0%	100.0%	0.0%	100.0%	100.0%
Senior Management (VIII & GM)	55	56	1.02	28.6%	71.4%	1.02	1.02	96.4%	96.4%	97.5%	94.6%	5.4%	93.8%	95.0%
Management (VIII & above)	70	71	1.02	35.2%	64.8%	1.02	1.02	97.2%	96.0%	97.8%	95.8%	4.2%	96.0%	95.7%
Middle Management (V-VII)	257	273	1.06	19.8%	80.2%	1.01	1.08	90.5%	90.5%	91.8%	87.9%	12.1%	96.3%	85.8%
Other Administrative	3	3	1.17		100.0%		1.17	66.7%	66.7%	66.7%	66.7%	33.3%		66.7%
Administrative/ Supervisory (V to VII)	259	276	1.06	19.6%	80.4%	1.01	1.08	90.2%	85.2%	91.4%	87.7%	12.3%	96.3%	85.6%
General Administrative (III & IV)	703	795	1.13	9.1%	90.9%	1.05	1.14	85.8%	85.8%	85.9%	74.7%	25.3%	88.9%	73.3%
Clerical (III & IV)	703	795	1.13	9.1%	90.9%	1.05	1.14	85.8%	84.7%	85.9%	74.7%	25.3%	88.9%	73.3%
Management & Administrative	1,032	1,142	1.11	13.2%	86.8%	1.03	1.12	87.6%	86.8%	87.7%	79.2%	20.8%	92.7%	77.1%
Catering	72	79	1.10	36.7%	63.3%	1.08	1.11	94.9%	94.9%	94.0%	74.7%	25.3%	89.7%	66.0%
Household Services	417	487	1.17	21.1%	78.9%	1.09	1.19	91.4%	91.4%	92.7%	58.7%	41.3%	83.5%	52.1%
Other Support	39	46	1.17	32.6%	67.4%	1.03	1.24	89.1%	89.1%	87.1%	69.6%	30.4%	93.3%	58.1%
Portering	47	50	1.06	94.0%	6.0%	1.06	1.07	90.0%	90.0%	66.7%	86.0%	14.0%	87.2%	66.7%
Support	576	662	1.15	29.3%	70.7%	1.08	1.18	91.5%	89.7%	92.3%	63.4%	36.6%	86.1%	54.1%
Maintenance	132	136	1.03	99.3%	0.7%	1.03	1.00	95.6%	95.6%	100.0%	97.1%	2.9%	97.0%	100.0%
Maintenance/ Technical	132	136	1.03	99.3%	0.7%	1.03	1.00	95.6%	95.6%	100.0%	97.1%	2.9%	97.0%	100.0%
General Support	708	798	1.13	41.2%	58.8%	1.06	1.18	92.2%	92.1%	92.3%	69.2%	30.8%	90.6%	54.2%
Attendant/ Aide	469	524	1.12	23.3%	76.7%	1.08	1.13	85.5%	85.5%	88.8%	71.0%	29.0%	82.8%	67.4%
Health & Social Care Assistants	10	12	1.15	50.0%	50.0%	1.21	1.10	91.7%	91.7%	83.3%	66.7%	33.3%	83.3%	50.0%
Health Care Assistant/ Care Assistant	534	569	1.06	35.3%	64.7%	1.04	1.08	95.6%	95.6%	96.7%	86.3%	13.7%	95.5%	81.3%
Health Care Assistants	1,014	1,105	1.09	29.8%	70.2%	1.06	1.10	90.8%	86.6%	92.5%	78.8%	21.2%	90.6%	73.8%
Home Care Services	14	24	1.67	41.7%	58.3%	1.58	1.73	62.5%	62.5%	57.1%	29.2%	70.8%	30.0%	28.6%
Other Care Grades	21	23	1.08	78.3%	21.7%	1.02	1.35	82.6%	82.6%	80.0%	82.6%	17.4%	94.4%	40.0%
Pastoral Care	12	16	1.38	87.5%	12.5%	1.34	1.71	37.5%	37.5%	0.0%	62.5%	37.5%	64.3%	50.0%
Workshop Services	167	188	1.13	37.8%	62.2%	1.06	1.17	93.1%	93.1%	93.2%	73.4%	26.6%	84.5%	66.7%
Care, other	214	251	1.17	45.0%	55.0%	1.11	1.22	85.7%	83.2%	87.7%	69.3%	30.7%	78.8%	61.6%
Patient & Client Care	1,228	1,356	1.10	32.6%	67.4%	1.07	1.12	89.8%	85.7%	91.8%	77.1%	22.9%	87.6%	72.0%

Employment by WTE, Headcount, Gender, Full-Time /Part-Time etc.: May 2022

Mental Health Services CHO	WTE	Headcount	WTE: no.	% Male	% female	Male WTE: no.	Female WTE: no.	% Total Perm	% Male Perm	% Female Perm	% Total Full Time	% Total Part Time	% Male FT	% Female FT
Overall	10,485	11,590	1.11	26.8%	73.2%	1.06	1.12	83.1%	79.8%	84.3%	85.2%	14.8%	93.2%	82.3%
<i>CHO 1</i>	<i>1,015</i>	<i>1,111</i>	<i>1.10</i>	<i>26.6%</i>	<i>73.4%</i>	<i>1.05</i>	<i>1.11</i>	<i>87.7%</i>	<i>87.7%</i>	<i>89.3%</i>	<i>87.4%</i>	<i>12.6%</i>	<i>96.3%</i>	<i>84.2%</i>
<i>CHO 2</i>	<i>1,332</i>	<i>1,453</i>	<i>1.09</i>	<i>27.9%</i>	<i>72.1%</i>	<i>1.05</i>	<i>1.11</i>	<i>85.2%</i>	<i>85.2%</i>	<i>86.6%</i>	<i>84.5%</i>	<i>15.5%</i>	<i>90.9%</i>	<i>82.1%</i>
<i>CHO 3</i>	<i>818</i>	<i>906</i>	<i>1.11</i>	<i>22.2%</i>	<i>77.8%</i>	<i>1.07</i>	<i>1.12</i>	<i>81.2%</i>	<i>81.2%</i>	<i>81.3%</i>	<i>85.7%</i>	<i>14.3%</i>	<i>90.5%</i>	<i>84.3%</i>
<i>CHO 4</i>	<i>1,585</i>	<i>1,758</i>	<i>1.11</i>	<i>25.3%</i>	<i>74.7%</i>	<i>1.07</i>	<i>1.12</i>	<i>70.4%</i>	<i>70.4%</i>	<i>72.1%</i>	<i>85.3%</i>	<i>14.7%</i>	<i>94.4%</i>	<i>82.3%</i>
<i>CHO 5</i>	<i>1,227</i>	<i>1,371</i>	<i>1.12</i>	<i>25.6%</i>	<i>74.4%</i>	<i>1.06</i>	<i>1.14</i>	<i>88.1%</i>	<i>88.1%</i>	<i>89.3%</i>	<i>79.8%</i>	<i>20.2%</i>	<i>91.5%</i>	<i>75.8%</i>
<i>CHO 6</i>	<i>644</i>	<i>724</i>	<i>1.12</i>	<i>30.0%</i>	<i>70.0%</i>	<i>1.08</i>	<i>1.15</i>	<i>83.6%</i>	<i>83.6%</i>	<i>85.4%</i>	<i>83.0%</i>	<i>17.0%</i>	<i>89.9%</i>	<i>80.1%</i>
<i>CHO 7</i>	<i>904</i>	<i>1,007</i>	<i>1.11</i>	<i>23.3%</i>	<i>76.7%</i>	<i>1.06</i>	<i>1.13</i>	<i>81.8%</i>	<i>81.8%</i>	<i>82.9%</i>	<i>88.5%</i>	<i>11.5%</i>	<i>95.7%</i>	<i>86.3%</i>
<i>CHO 8</i>	<i>1,102</i>	<i>1,222</i>	<i>1.11</i>	<i>24.2%</i>	<i>75.8%</i>	<i>1.04</i>	<i>1.13</i>	<i>85.4%</i>	<i>85.4%</i>	<i>86.9%</i>	<i>85.7%</i>	<i>14.3%</i>	<i>95.6%</i>	<i>82.5%</i>
<i>CHO 9</i>	<i>1,359</i>	<i>1,511</i>	<i>1.11</i>	<i>27.8%</i>	<i>72.2%</i>	<i>1.06</i>	<i>1.14</i>	<i>85.8%</i>	<i>85.8%</i>	<i>87.0%</i>	<i>84.4%</i>	<i>15.6%</i>	<i>93.8%</i>	<i>80.8%</i>
<i>other Community Services</i>	<i>501</i>	<i>527</i>	<i>1.05</i>	<i>46.9%</i>	<i>53.1%</i>	<i>1.06</i>	<i>1.05</i>	<i>89.2%</i>	<i>89.2%</i>	<i>90.7%</i>	<i>93.4%</i>	<i>6.6%</i>	<i>92.3%</i>	<i>94.3%</i>

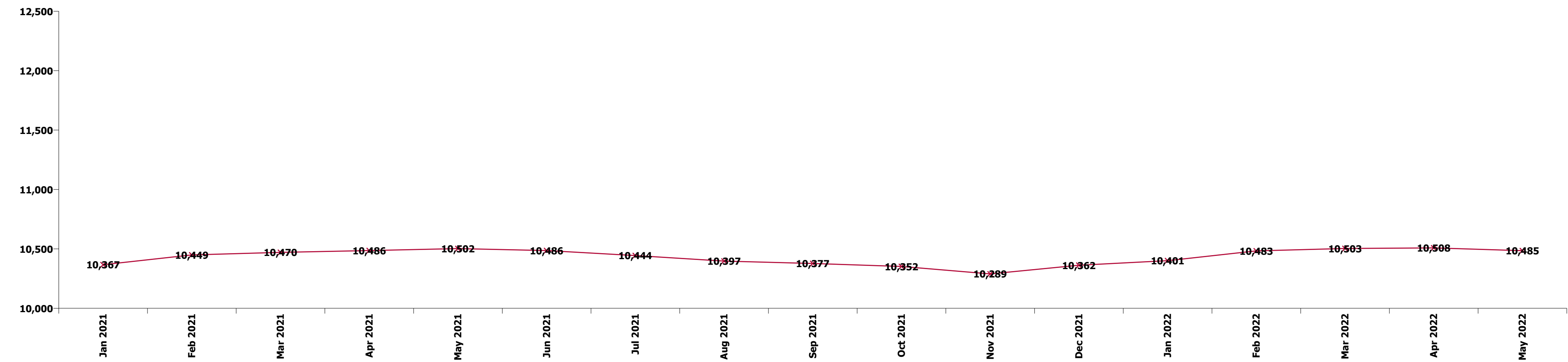
Summary Staff Movement: May 2022

Month-on-month
Summary

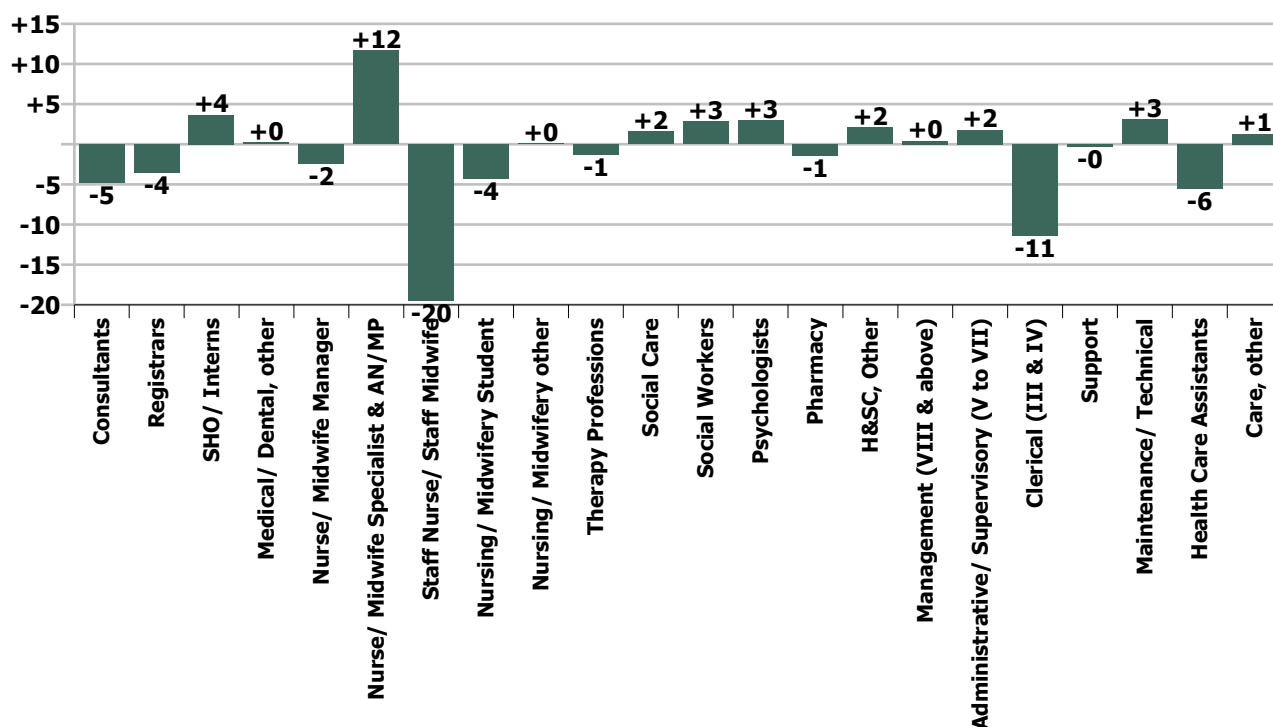
WTE change since Apr 22	% change since Apr 22	overall	Consultants	Registrars	SHO/ Interns	Medical/ Dental, other	Medical & Dental	Nurse/ Midwife Manager	Nurse/ Midwife Specialist & AN/MP	Staff Nurse/ Staff Midwife	Nursing/ Midwifery Student	Nursing/ Midwifery other	Nursing & Midwifery	Therapy Professions	Social Care	Social Workers	Psychologists	Pharmacy	H&SC, Other	Health & Social Care Professionals	Management (VIII & above)	Administrativ e/ Supervisory (V to VII)	Clerical (III & IV)	Management & Administrative	General Support	Health Care Assistants	Care, other	Patient & Client Care
Overall	-0.2%	-23	-5	-4	+4	+0	-5	-2	+12	-20	-4	+0	-15	-1	+2	+3	+3	-1	+2	+7	+0	+2	-11	-9	+3	-6	+1	-4
CHO 1	-1.1%	-11	-1	+0	-0		-2	-2	-2	-4	+0	+0	-8	+0	-0	+2	-1	-0	-1	-1	-0	+1	-1	+0	-0	-0	-0	
CHO 2	-0.8%	-11	-0	+1	-1		-1	-3	+1	+3	-3		-2	-3	-1	+1	-1		+0	-4	-0	+1	-3	-2	+1	-6	+2	-4
CHO 3	-1.0%	-8	-1	-0	-0		-1	+4	+1	-11	-0	+0	-6	+2	+0	-0	+0			+2	-1	-1	-1	-3	-1	+0		+0
CHO 4	-0.5%	-7	-2	-1	-1	+0	-4	+4	+2	-11	+0		-5	+1	+1	+2	+2		+2	+8		+2	-5	-4	-1	+0	-1	-1
CHO 5	-0.3%	-3	+0	+0	+0		+1	-6	-1	-2	-0		-9	+2	-0	+0	+1		+2	+4		-0	-1	-1	+1	-0	+0	+0
CHO 6	+1.7%	+11	+0	-0	+0		+0	+1	-1	+7	+0		+7	+1	+2	+2	+1			+6		-1	+0	-1	-0	-1	+0	-1
CHO 7	+0.0%	+0	-1	-1	+1		-1	-1	+2	+1	-1	+0	+1	+1	+0	-0	-1		+0	+0		+0	-0	-0	-0	-1	-0	-1
CHO 8	+0.0%	+0	-0	-2	+2		+0	-2	+3	+2	-1		+3	-3	-0	-1	+0	-0	-0	-5	-1	-0	+1	+0	+1	+0	+0	+1
CHO 9	+0.3%	+5	+0	+0	+4		+4	+1	+5	-3	+0	-0	+4	-1			+1	-1	-0	-3	+1	+0	-1	-0	-1	+0	+0	+0
other Community Services	+0.3%	+1	-0	-1			-1	+2	+1	-2			+1	-1			+1			-1	+2	+0	-1	+1	+2	+0	-0	-0
		-0.2%	-1.3%	-1.1%	+1.6%	+3.9%	-0.5%	-0.2%	+2.1%	-0.6%	-2.5%	+0.2%	-0.3%	-0.3%	+2.2%	+0.7%	+0.7%	-6.8%	+1.6%	+0.5%	+0.6%	+0.7%	-1.6%	-0.9%	+0.4%	-0.5%	+0.6%	-0.4%

Year-on-year Summary

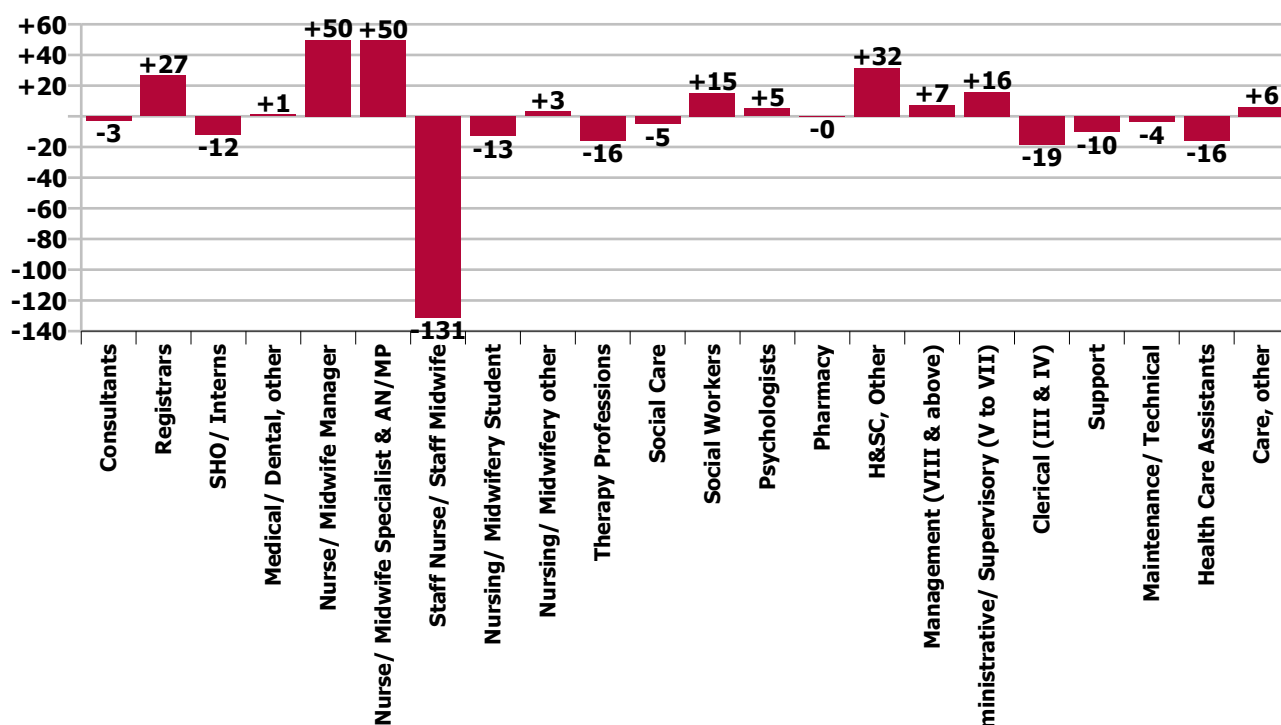
WTE change since May 21	% change since May 21	overall	Consultants	Registrars	SHO/ Interns	Medical/ Dental, other	Medical & Dental	Nurse/ Midwife Manager	Nurse/ Midwife Specialist & AN/MP	Staff Nurse/ Staff Midwife	Nursing/ Midwifery Student	Nursing/ Midwifery other	Nursing & Midwifery	Therapy Professions	Social Care	Social Workers	Psychologists	Pharmacy	H&SC, Other	Health & Social Care Professionals	Management (VIII & above)	Administrative/ Supervisory (V to VII)	Clerical (III & IV)	Management & Administrative	General Support	Health Care Assistants	Care, other	Patient & Client Care
Overall	-0.2%	-18	-3	+27	-12	+1	+13	+50	+50	-131	-13	+3	-42	-16	-5	+15	+5	-0	+32	+30	+7	+16	-19	+5	-14	-16	+6	-10
CHO 1	+0.2%	+2	-3	-1	+1		-3	-4	+6	-7	-2		-7	+5	-0	+4	-1		+3	+11	+5	+4	-4	+4	-2	-4	+2	-1
CHO 2	-2.8%	-39	-4	+3	-4	+1	-4	+0	+11	-26	+3	+0	-12	-10	-4	+3	+3	+1	-0	-8	+2	+1	-5	-2	-3	-12	+2	-10
CHO 3	-1.7%	-14	-1	-1	+2		-0	+12	+8	-28	-2	+1	-9	-1	-1	+2	-2		+0	-2		-4	-3	-7	-1	+4		+4
CHO 4	+0.8%	+13	-2	+8	-8	+0	-1	+27	+4	-21	-4		+6	+1	+1	+6	+3	-1	+6	+18		+4	-6	-1	-4	-4	-1	-5
CHO 5	+0.9%	+10	+4	+4	-5		+4	+7	-3	-5	-7	+0	-9	-1	-0	-1	+2		+12	+11		+4	-7	-2	-1	+8	-1	+7
CHO 6	+1.7%	+11	-2	+1			-1	+1	+3	-2	+1	+1	+5	-1	-1	+4	+8		+3	+14	+1	+1	-2	-1	-5	-0	+0	-0
CHO 7	+1.7%	+15	-1	-5	+7		+1	-1	+3	-0	+1	+1	+3	+7	-0	-2	-3		+4	+6	+1	+2	+3	+6	-1	-2	+2	-1
CHO 8	-2.1%	-23	+0	+6	-1		+6	+1	+8	-16	-0	-0	-7	-11	-1	+4	-2	+1	-0	-9	-1	-2	-5	-7	-3	-4	+1	-3
CHO 9	+2.1%	+28	+5	+10	-5		+9	+5	+11	-6	-2	+0	+7	-2	+0	-1	+0	-1	+3	-1	-0	+4	+7	+11	-1	+2	+0	+2
other Community Services	-4.0%	-21	+1	+1			+2	+2	-0	-20		+0	-18	-2		-4	-3			-9	-0	+2	+2	+4	+5	-4	-1	-4
		-0.2%	-0.7%	+8.6%	-5.0%	+30.9%	+1.4%	+4.1%	+9.5%	-4.2%	-7.2%	+10.0%	-0.8%	-3.5%	-6.6%	+4.0%	+1.2%	-2.0%	+31.0%	+2.1%	+11.8%	+6.5%	-2.6%	+0.4%	-2.0%	-1.5%	+2.9%	-0.8%



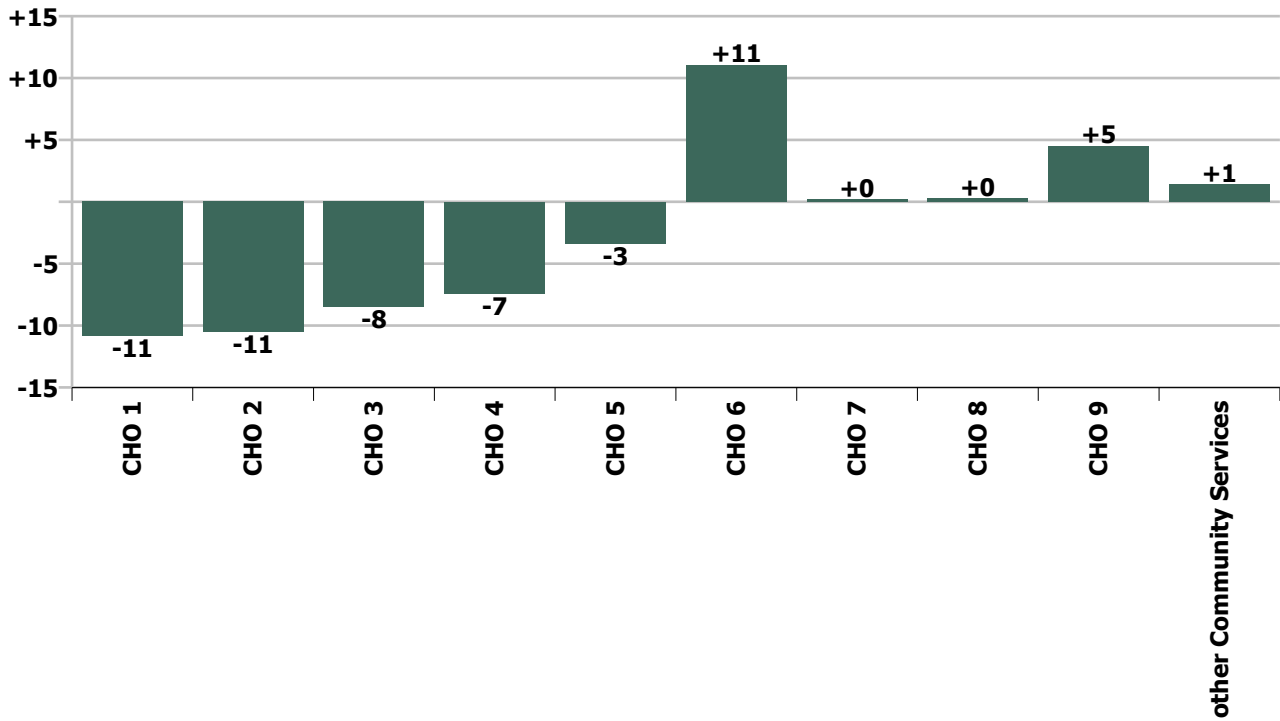
Staff Group change since: Apr 2022



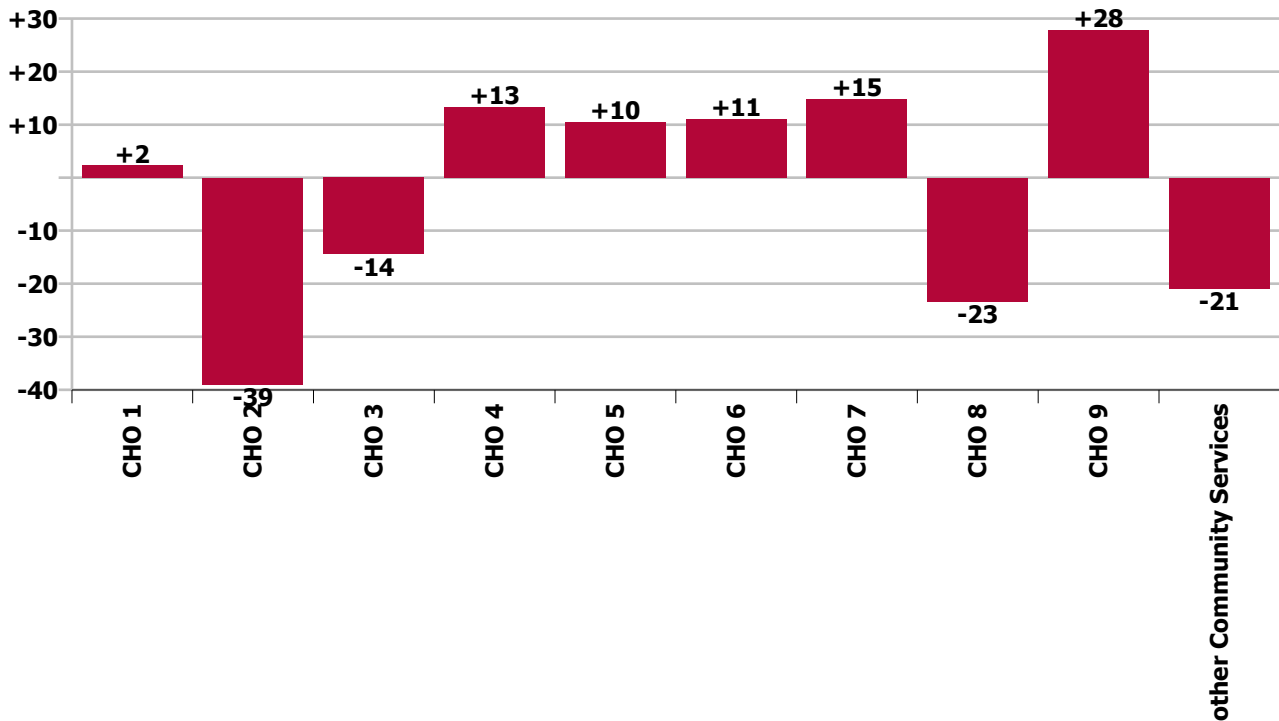
Staff Group change since: May 2021



CHO change since: Apr 2022



CHO change since: May 2021



Longitudinal Employment Levels by Grade Group - Dec 2016 to May 2022

May 2022 (Dec 2015 figure: 9,501)	WTE May 2022	WTE change since Dec 16	WTE change since Dec 17	WTE change since Dec 18	WTE change since Dec 19	WTE change since Dec 20	WTE change since Apr 22	% change since Dec 16	% change since Dec 17	% change since Dec 18	% change since Dec 19	% change since Dec 20	% change since Apr 22
Overall	10,485	+864	+694	+587	+531	+183	-23	+9.0%	+7.1%	+5.9%	+5.3%	+1.8%	-0.2%
Consultant Medicine	1		-0	-0					-9.1%	-9.1%			
Consultant Psychiatry	378	+63	+66	+48	+26	+9	-5	+20.0%	+21.0%	+14.5%	+7.5%	+2.5%	-1.3%
Consultants	379	+63	+65	+48	+26	+9	-5	+19.9%	+20.9%	+14.5%	+7.4%	+2.5%	-1.3%
Registrar	217	+85	+73	+63	+48	+49	-1	+64.5%	+50.3%	+41.2%	+28.4%	+29.4%	-0.5%
Senior Registrar	117	+50	+51	+31	+20	+6	-3	+74.6%	+78.1%	+36.4%	+20.6%	+5.4%	-2.1%
Specialist Registrar	2	+1		+1	-1			+100.0%		+100.0%	-20.0%		
Registrars	336	+136	+124	+96	+68	+55	-4	+68.1%	+58.4%	+39.7%	+25.1%	+19.7%	-1.1%
Senior House Officer	226	-21	-47	-44	-27	-45	+3	-8.6%	-17.1%	-16.2%	-10.8%	-16.7%	+1.5%
Interns	5	-7	-5	-3	-3		+0	-58.3%	-50.0%	-37.5%	-37.5%		+5.3%
SHO/ Interns	231	-28	-52	-47	-30	-45	+4	-10.9%	-18.3%	-16.8%	-11.6%	-16.4%	+1.6%
Dentists			-0	-0				-100.0%	-100.0%	-100.0%	-100.0%	-100.0%	-100.0%
Other Medical	5	-4	-6	-1	+0	+0	+0	-45.0%	-51.2%	-18.3%	+6.0%	+6.0%	+3.9%
Medical/ Dental, other	5	-4	-6	-1	+0	+0	+0	-45.0%	-51.4%	-19.2%	+6.0%	+6.0%	+3.9%
Medical & Dental	951	+167	+132	+96	+64	+20	-5	+21.2%	+16.2%	+11.2%	+7.2%	+2.1%	-0.5%
Clinical Nurse/ Midwife Manager	1,065	+58	+83	+59	+66	+24	-0	+5.8%	+8.4%	+5.9%	+6.6%	+2.3%	-0.0%
Director Nursing/Midwifery, Assistant	173	+18	+11	+9	+8	+2	-3	+11.4%	+6.8%	+5.4%	+5.0%	+1.4%	-1.7%
Director of Nursing/Midwifery	33	+1	+4	+9	+4	+5	+1	+3.2%	+14.9%	+37.9%	+13.2%	+17.2%	+1.8%
Nurse/ Midwife Manager	1,271	+77	+98	+77	+78	+31	-2	+6.5%	+8.3%	+6.4%	+6.6%	+2.5%	-0.2%
Advanced Nurse/ Midwife Practitioner	50	+43	+40	+30	+19	+11	+1	+571.4%	+378.3%	+149.4%	+63.4%	+27.4%	+2.3%
Clinical Nurse/ Midwife Specialist	523	+186	+140	+128	+94	+34	+11	+55.4%	+36.5%	+32.3%	+22.1%	+6.9%	+2.1%
Nurse/ Midwife Specialist & AN/MP	573	+229	+180	+158	+114	+44	+12	+66.7%	+45.6%	+38.0%	+24.8%	+8.4%	+2.1%
Staff Midwives						-1		-100.0%	-100.0%	-100.0%	-100.0%	-100.0%	-100.0%
Staff Nurse [Psychiatric]	2,902	-155	-125	-54	+8	-63	-26	-5.1%	-4.1%	-1.8%	+0.3%	-2.1%	-0.9%
Staff Nurses [General/ Children's]	117	-4	-1	-1	+12	+10	+8	-3.4%	-0.8%	-0.8%	+11.2%	+9.6%	+7.6%
Staff Nurse [Intellectual Disability]	6	+3	+3	+0	+2	+2	-2	+92.8%	+86.1%	+7.3%	+42.2%	+51.9%	-21.8%
Graduate Nursing/ Midwifery								-100.0%	-100.0%	-100.0%	-100.0%	-100.0%	-100.0%
Staff Nurse/ Staff Midwife	3,025	-156	-123	-54	+22	-52	-20	-4.9%	-3.9%	-1.8%	+0.7%	-1.7%	-0.6%

May 2022 (Dec 2015 figure: 9,501)	WTE May 2022	WTE change since Dec 16	WTE change since Dec 17	WTE change since Dec 18	WTE change since Dec 19	WTE change since Dec 20	WTE change since Apr 22	% change since Dec 16	% change since Dec 17	% change since Dec 18	% change since Dec 19	% change since Dec 20	% change since Apr 22
Overall	10,485	+864	+694	+587	+531	+183	-23	+9.0%	+7.1%	+5.9%	+5.3%	+1.8%	-0.2%
Public Health Nurse		-1	-1					-100.0%	-100.0%	-100.0%	-100.0%	-100.0%	-100.0%
Pre-registration Nurse Intern (COVID-19)						-42		-100.0%	-100.0%	-100.0%	-100.0%	-100.0%	-100.0%
Pre-registration Nurse/ Midwife Intern	158	+150	+142	+131	+131	+148	-1	+1729.6%	+840.9%	+468.5%	+475.5%	+1379.4%	-0.6%
Post-registration Nurse/ Midwife Student					-1	-1		-100.0%	-100.0%	-100.0%	-100.0%	-100.0%	-100.0%
Nursing/ Midwifery awaiting registration	9	+7	-0	-11	-50	+4	-3	+329.0%	-0.8%	-56.8%	-85.4%	+76.9%	-27.7%
Nursing/ Midwifery Student	167	+156	+142	+119	+80	+108	-4	+1466.8%	+555.2%	+250.1%	+91.0%	+183.2%	-2.5%
Nursing Education/Clinical	34	+10	+4	+3	+3	+3	+0	+39.4%	+12.5%	+10.9%	+8.9%	+8.5%	+0.2%
Nursing/ Midwifery other	34	+10	+4	+3	+3	+3	+0	+39.4%	+12.5%	+10.9%	+8.9%	+8.5%	+0.2%
Nursing & Midwifery	5,070	+315	+298	+303	+297	+135	-15	+6.6%	+6.2%	+6.4%	+6.2%	+2.7%	-0.3%
Dietitians	19	+6	+3	-1	+0	-1	-1	+43.3%	+15.8%	-3.2%	+1.5%	-6.7%	-5.9%
Occupational Therapists	353	+54	+27	+14	+15	+8	+1	+17.9%	+8.3%	+4.1%	+4.3%	+2.2%	+0.1%
Physiotherapists	3	+1	+2	+1	+1	+0		+44.8%	+140.5%	+80.7%	+30.5%	+20.7%	
Podiatrists & Chiropodists	1	-1	-1	-0	+0	+0	+0	-54.4%	-43.5%	-32.0%	+13.7%	+3.7%	+3.7%
Speech & Language Therapists	66	+6	+4	+4	+4	-4	-1	+10.7%	+7.3%	+7.1%	+6.8%	-5.4%	-1.0%
Therapy Professions	442	+66	+35	+19	+20	+3	-1	+17.4%	+8.7%	+4.4%	+4.7%	+0.7%	-0.3%
Social Care	73	-15	-9	-6	-0	-7	+2	-16.8%	-11.5%	-7.1%	-0.7%	-8.6%	+2.2%
Social Workers	396	+46	+39	+38	+47	+24	+3	+13.2%	+11.0%	+10.6%	+13.4%	+6.4%	+0.7%
Psychologists	431	+88	+61	+43	+37	+7	+3	+25.8%	+16.5%	+11.0%	+9.3%	+1.7%	+0.7%
Pharmacists	15	+0	+0	-1	-1	-2	-1	+0.5%	+0.9%	-5.5%	-7.2%	-12.6%	-8.4%
Pharmacy Technicians	4	-0	-0	+1	+2	+1	-0	-9.8%	-9.0%	+19.6%	+68.0%	+14.0%	-0.7%
Pharmacy	19	-0	-0	-0	+1	-2	-1	-2.0%	-1.4%	-1.0%	+2.9%	-7.9%	-6.8%
Counsellor Therapists	125	+40	+40	+40	+30	+24	+1	+47.1%	+46.2%	+47.1%	+31.9%	+23.6%	+0.9%
Other Health & Social Care	5	-3	-3	-3	-7	-0	-1	-39.1%	-40.1%	-40.4%	-56.3%	-5.2%	-10.8%
Play Therapists/ Specialists	3	+1	+2	+2	+2	+2	+2	+23.2%	+104.0%	+108.1%	+111.0%	+108.1%	+108.1%
H&SC, Other	133	+37	+38	+38	+25	+25	+2	+38.9%	+39.4%	+40.2%	+23.4%	+23.3%	+1.6%
Health & Social Care Professionals	1,495	+222	+163	+132	+129	+51	+7	+17.5%	+12.3%	+9.7%	+9.4%	+3.5%	+0.5%
Executive Management	15	+8	+7	+5	+4	+0	-0	+113.9%	+87.1%	+49.7%	+36.1%	+1.6%	-0.2%
Senior Management (VIII & GM)	55	+29	+23	+23	+8	+2	+0	+115.4%	+69.8%	+73.1%	+18.2%	+4.6%	+0.8%
Management (VIII & above)	70	+37	+29	+28	+12	+3	+0	+115.0%	+73.3%	+67.5%	+21.6%	+3.9%	+0.6%

May 2022 (Dec 2015 figure: 9,501)	WTE May 2022	WTE change since Dec 16	WTE change since Dec 17	WTE change since Dec 18	WTE change since Dec 19	WTE change since Dec 20	WTE change since Apr 22	% change since Dec 16	% change since Dec 17	% change since Dec 18	% change since Dec 19	% change since Dec 20	% change since Apr 22
Overall	10,485	+864	+694	+587	+531	+183	-23	+9.0%	+7.1%	+5.9%	+5.3%	+1.8%	-0.2%
Middle Management (V-VII)	257	+91	+60	+37	+22	+14	+2	+54.5%	+30.5%	+16.8%	+9.2%	+5.7%	+0.7%
Other Administrative	3	+1			+1	+1		+63.7%			+63.7%	+63.7%	
Administrative/ Supervisory (V to VII)	259	+92	+60	+37	+23	+15	+2	+54.6%	+30.1%	+16.6%	+9.5%	+6.0%	+0.7%
General Administrative (III & IV)	703	+42	+21	+7	-15	-19	-11	+6.3%	+3.1%	+1.0%	-2.0%	-2.7%	-1.6%
Clerical (III & IV)	703	+42	+21	+7	-15	-19	-11	+6.3%	+3.1%	+1.0%	-2.0%	-2.7%	-1.6%
Management & Administrative	1,032	+171	+111	+72	+20	-2	-9	+19.8%	+12.0%	+7.5%	+2.0%	-0.2%	-0.9%
Catering	72	+6	+6	+0	+7	+9	+1	+9.9%	+9.6%	+0.4%	+10.6%	+13.5%	+2.0%
Household Services	417	-75	-59	-28	-7	-24	-1	-15.2%	-12.4%	-6.3%	-1.7%	-5.5%	-0.3%
Other Support	39	-17	-10	-16	-3	-2	-0	-29.6%	-20.3%	-28.5%	-7.6%	-5.8%	-0.3%
Portering	47	-12	-2	-1	-1	-0	-1	-20.4%	-3.6%	-1.8%	-2.0%	-0.4%	-1.1%
Support	576	-97	-64	-45	-5	-18	-0	-14.4%	-10.1%	-7.2%	-0.8%	-3.1%	-0.1%
Maintenance	132	-11	-7	-2	+3	-5	+3	-7.6%	-4.7%	-1.6%	+2.5%	-3.8%	+2.4%
Technical Services		-2	-2	-2	-2			-100.0%	-100.0%	-100.0%	-100.0%	-100.0%	-100.0%
Maintenance/ Technical	132	-13	-9	-4	+1	-5	+3	-8.9%	-6.1%	-3.1%	+1.0%	-3.8%	+2.4%
General Support	708	-110	-73	-49	-3	-23	+3	-13.4%	-9.3%	-6.4%	-0.5%	-3.2%	+0.4%
Attendant/ Aide	469	-255	-231	-212	-136	-114	-32	-35.2%	-33.0%	-31.1%	-22.4%	-19.6%	-6.4%
Health & Social Care Assistants	10	+6	+6	+5	+1	+2	+1	+123.9%	+123.9%	+91.0%	+16.2%	+24.6%	+6.3%
Health Care Assistant/ Care Assistant	534	+330	+286	+241	+160	+104	+26	+161.1%	+115.2%	+82.3%	+42.9%	+24.3%	+5.1%
Health Care Assistants	1,014	+80	+61	+34	+26	-8	-6	+8.6%	+6.4%	+3.5%	+2.6%	-0.7%	-0.5%
Home Care Services	14	+14	-1	-2	-1	+0	-0	-100.0%	-3.7%	-13.0%	-8.4%	+1.0%	-2.8%
Other Care Grades	21	+11	+11	+6	-1	-1	+0	+100.5%	+98.6%	+35.6%	-5.2%	-2.7%	+0.2%
Pastoral Care	12	-3	-2	-2	-1	-0	-0	-17.8%	-15.0%	-12.0%	-7.9%	-3.5%	-2.5%
Workshop Services	167	-5	-6	-4	+2	+12	+2	-2.7%	-3.6%	-2.1%	+1.0%	+7.4%	+1.2%
Care, other	214	+18	+2	-2	-2	+11	+1	+9.2%	+0.9%	-0.8%	-0.8%	+5.2%	+0.6%
Patient & Client Care	1,228	+98	+62	+33	+24	+3	-4	+8.7%	+5.4%	+2.7%	+2.0%	+0.2%	-0.4%

Source: Health Service Personnel Census

Longitudinal Employment Levels by Grade Group - Dec 2016 to May 2022

May 2022 (Dec 2015 figure: 9,501)	WTE May 2022	WTE change since Dec 16	WTE change since Dec 17	WTE change since Dec 18	WTE change since Dec 19	WTE change since Dec 20	WTE change since Apr 22	% change since Dec 16	% change since Dec 17	% change since Dec 18	% change since Dec 19	% change since Dec 20	% change since Apr 22
Overall	10,485	+864	+694	+587	+531	+183	-23	+9.0%	+7.1%	+5.9%	+5.3%	+1.8%	-0.2%
Consultant Medicine	1		-0	-0					-9.1%	-9.1%			
Consultant Psychiatry	378	+63	+66	+48	+26	+9	-5	+20.0%	+21.0%	+14.5%	+7.5%	+2.5%	-1.3%
Consultants	379	+63	+65	+48	+26	+9	-5	+19.9%	+20.9%	+14.5%	+7.4%	+2.5%	-1.3%
Registrar	217	+85	+73	+63	+48	+49	-1	+64.5%	+50.3%	+41.2%	+28.4%	+29.4%	-0.5%
Senior Registrar	117	+50	+51	+31	+20	+6	-3	+74.6%	+78.1%	+36.4%	+20.6%	+5.4%	-2.1%
Specialist Registrar	2	+1		+1	-1			+100.0%		+100.0%	-20.0%		
Registrars	336	+136	+124	+96	+68	+55	-4	+68.1%	+58.4%	+39.7%	+25.1%	+19.7%	-1.1%
Senior House Officer	226	-21	-47	-44	-27	-45	+3	-8.6%	-17.1%	-16.2%	-10.8%	-16.7%	+1.5%
Interns	5	-7	-5	-3	-3		+0	-58.3%	-50.0%	-37.5%	-37.5%		+5.3%
SHO/ Interns	231	-28	-52	-47	-30	-45	+4	-10.9%	-18.3%	-16.8%	-11.6%	-16.4%	+1.6%
Dentists			-0	-0				-100.0%	-100.0%	-100.0%	-100.0%	-100.0%	-100.0%
Other Medical	5	-4	-6	-1	+0	+0	+0	-45.0%	-51.2%	-18.3%	+6.0%	+6.0%	+3.9%
Medical/ Dental, other	5	-4	-6	-1	+0	+0	+0	-45.0%	-51.4%	-19.2%	+6.0%	+6.0%	+3.9%
Medical & Dental	951	+167	+132	+96	+64	+20	-5	+21.2%	+16.2%	+11.2%	+7.2%	+2.1%	-0.5%
Clinical Nurse/ Midwife Manager	1,065	+58	+83	+59	+66	+24	-0	+5.8%	+8.4%	+5.9%	+6.6%	+2.3%	-0.0%
Director Nursing/Midwifery, Assistant	173	+18	+11	+9	+8	+2	-3	+11.4%	+6.8%	+5.4%	+5.0%	+1.4%	-1.7%
Director of Nursing/Midwifery	33	+1	+4	+9	+4	+5	+1	+3.2%	+14.9%	+37.9%	+13.2%	+17.2%	+1.8%
Nurse/ Midwife Manager	1,271	+77	+98	+77	+78	+31	-2	+6.5%	+8.3%	+6.4%	+6.6%	+2.5%	-0.2%
Advanced Nurse/ Midwife Practitioner	50	+43	+40	+30	+19	+11	+1	+571.4%	+378.3%	+149.4%	+63.4%	+27.4%	+2.3%
Clinical Nurse/ Midwife Specialist	523	+186	+140	+128	+94	+34	+11	+55.4%	+36.5%	+32.3%	+22.1%	+6.9%	+2.1%
Nurse/ Midwife Specialist & AN/MP	573	+229	+180	+158	+114	+44	+12	+66.7%	+45.6%	+38.0%	+24.8%	+8.4%	+2.1%
Staff Midwives						-1		-100.0%	-100.0%	-100.0%	-100.0%	-100.0%	-100.0%
Staff Nurse [Psychiatric]	2,902	-155	-125	-54	+8	-63	-26	-5.1%	-4.1%	-1.8%	+0.3%	-2.1%	-0.9%
Staff Nurses [General/ Children's]	117	-4	-1	-1	+12	+10	+8	-3.4%	-0.8%	-0.8%	+11.2%	+9.6%	+7.6%
Staff Nurse [Intellectual Disability]	6	+3	+3	+0	+2	+2	-2	+92.8%	+86.1%	+7.3%	+42.2%	+51.9%	-21.8%
Graduate Nursing/ Midwifery								-100.0%	-100.0%	-100.0%	-100.0%	-100.0%	-100.0%
Staff Nurse/ Staff Midwife	3,025	-156	-123	-54	+22	-52	-20	-4.9%	-3.9%	-1.8%	+0.7%	-1.7%	-0.6%
Public Health Nurse		-1	-1					-100.0%	-100.0%	-100.0%	-100.0%	-100.0%	-100.0%
Public Health Nurse		-1	-1					-100.0%	-100.0%	-100.0%	-100.0%	-100.0%	-100.0%
Pre-registration Nurse Intern (COVID-19)						-42		-100.0%	-100.0%	-100.0%	-100.0%	-100.0%	-100.0%
Pre-registration Nurse/ Midwife Intern	158	+150	+142	+131	+131	+148	-1	+1729.6%	+840.9%	+468.5%	+475.5%	+1379.4%	-0.6%
Post-registration Nurse/ Midwife Student					-1	-1		-100.0%	-100.0%	-100.0%	-100.0%	-100.0%	-100.0%
Nursing/ Midwifery awaiting registration	9	+7	-0	-11	-50	+4	-3	+329.0%	-0.8%	-56.8%	-85.4%	+76.9%	-27.7%
Nursing/ Midwifery Student	167	+156	+142	+119	+80	+108	-4	+1466.8%	+555.2%	+250.1%	+91.0%	+183.2%	-2.5%
Nursing Education/Clinical	34	+10	+4	+3	+3	+3	+0	+39.4%	+12.5%	+10.9%	+8.9%	+8.5%	+0.2%
Nursing/ Midwifery other	34	+10	+4	+3	+3	+3	+0	+39.4%	+12.5%	+10.9%	+8.9%	+8.5%	+0.2%
Nursing & Midwifery	5,070	+315	+298	+303	+297	+135	-15	+6.6%	+6.2%	+6.4%	+6.2%	+2.7%	-0.3%
Dietitians	19	+6	+3	-1	+0	-1	-1	+43.3%	+15.8%	-3.2%	+1.5%	-6.7%	-5.9%
Occupational Therapists	353	+54	+27	+14	+15	+8	+1	+17.9%	+8.3%	+4.1%	+4.3%	+2.2%	+0.1%
Physiotherapists	3	+1	+2	+1	+1	+0		+44.8%	+140.5%	+80.7%	+30.5%	+20.7%	
Podiatrists & Chiropodists	1	-1	-1	-0	+0	+0	+0	-54.4%	-43.5%	-32.0%	+13.7%	+3.7%	+3.7%
Speech & Language Therapists	66	+6	+4	+4	+4	-4	-1	+10.7%	+7.3%	+7.1%	+6.8%	-5.4%	-1.0%
Therapy Professions	442	+66	+35	+19	+20	+3	-1	+17.4%	+8.7%	+4.4%	+4.7%	+0.7%	-0.3%
Social Care	73	-15	-9	-6	-0	-7	+2	-16.8%	-11.5%	-7.1%	-0.7%	-8.6%	+2.2%
Social Workers	396	+46	+39	+38	+47	+24	+3	+13.2%	+11.0%	+10.6%	+13.4%	+6.4%	+0.7%
Psychologists	431	+88	+61	+43	+37	+7	+3	+25.8%	+16.5%	+11.0%	+9.3%	+1.7%	+0.7%
Pharmacists	15	+0	+0	-1	-1	-2	-1	+0.5%	+0.9%	-5.5%	-7.2%	-12.6%	-8.4%
Pharmacy Technicians	4	-0	-0	+1	+2	+1	-0	-9.8%	-9.0%	+19.6%	+68.0%	+14.0%	-0.7%
Pharmacy	19	-0	-0	-0	+1	-2	-1	-2.0%	-1.4%	-1.0%	+2.9%	-7.9%	-6.8%
Counsellor Therapists	125	+40	+40	+40	+30	+24	+1	+47.1%	+46.2%	+47.1%	+31.9%	+23.6%	+0.9%
Other Health & Social Care	5	-3	-3	-3	-7	-0	-1	-39.1%	-40.1%	-40.4%	-56.3%	-5.2%	-10.8%
Play Therapists/ Specialists	3	+1	+2	+2	+2	+2	+2	+23.2%	+104.0%	+108.1%	+111.0%	+108.1%	+108.1%
H&SC, Other	133	+37	+38	+38	+25	+25	+2	+38.9%	+39.4%	+40.2%	+23.4%	+23.3%	+1.6%
Health & Social Care Professionals	1,495	+222	+163	+132	+129	+51	+7	+17.5%	+12.3%	+9.7%	+9.4%	+3.5%	+0.5%
Executive Management	15	+8	+7	+5	+4	+0	-0	+113.9%	+87.1%	+49.7%	+36.1%	+1.6%	-0.2%
Senior Management (VIII & GM)	55	+29	+23	+23	+8	+2	+0	+115.4%	+69.8%	+73.1%	+18.2%	+4.6%	+0.8%
Management (VIII & above)	70	+37	+29	+28	+12	+3	+0	+115.0%	+73.3%	+67.5%	+21.6%	+3.9%	+0.6%
Middle Management (V-VII)	257	+91	+60	+37	+22	+14	+2	+54.5%	+30.5%	+16.8%	+9.2%	+5.7%	+0.7%
Other Administrative	3	+1			+1	+1		+63.7%			+63.7%	+63.7%	
Administrative/ Supervisory (V to VII)	259	+92	+60	+37	+23	+15	+2	+54.6%	+30.1%	+16.6%	+9.5%	+6.0%	+0.7%
General Administrative (III & IV)	703	+42	+21	+7	-15	-19	-11	+6.3%	+3.1%	+1.0%	-2.0%	-2.7%	-1.6%
Clerical (III & IV)	703	+42	+21	+7	-15	-19	-11	+6.3%	+3.1%	+1.0%	-2.0%	-2.7%	-1.6%
Management & Administrative	1,032	+171	+111	+72	+20	-2	-9	+19.8%	+12.0%	+7.5%	+2.0%	-0.2%	-0.9%
Support	576	-97	-64	-45	-5	-18	-0	-14.4%	-10.1%	-7.2%	-0.8%	-3.1%	-0.1%
Maintenance	132	-11	-7	-2	+3	-5	+3	-7.6%	-4.7%	-1.6%	+2.5%	-3.8%	+2.4%
Technical Services		-2	-2	-2	-2			-100.0%	-100.0%	-100.0%	-100.0%	-100.0%	-100.0%
Maintenance/ Technical	132	-13	-9	-4	+1	-5	+3	-8.9%	-6.1%	-3.1%	+1.0%	-3.8%	+2.4%
General Support	708	-110	-73	-49	-3	-23	+3	-13.4%	-9.3%	-6.4%	-0.5%	-3.2%	+0.4%
Attendant/ Aide	469	-255	-231	-212	-136	-114	-32	-35.2%	-33.0%	-31.1%	-22.4%	-19.6%	-6.4%
Health & Social Care Assistants	10	+6	+6	+5	+1	+2	+1	+123.9%	+123.9%	+91.0%	+16.2%	+24.6%	+6.3%
Health Care Assistant/ Care Assistant	534	+330	+286	+241	+160	+104	+26	+161.1%	+115.2%	+82.3%	+42.9%	+24.3%	+5.1%
Health Care Assistants	1,014	+80	+61	+34	+26	-8	-6	+8.6%	+6.4%	+3.5%	+2.6%	-0.7%	-0.5%
Home Care Services	14	+14	-1	-2	-1	+0	-0	-100.0%	-3.7%	-13.0%	-8.4%	+1.0%	-2.8%
Other Care Grades	21	+11	+11	+6	-1	-1	+0	+100.5%	+98.6%	+35.6%	-5.2%	-2.7%	+0.2%
Pastoral Care	12	-3	-2	-2	-1	-0	-0	-17.8%	-15.0%	-12.0%	-7.9%	-3.5%	-2.5%
Workshop Services	167	-5	-6	-4	+2	+12	+2	-2.7%	-3.6%	-2.1%	+1.0%	+7.4%	+1.2%
Care, other	214	+18	+2	-2	-2	+11	+1	+9.2%	+0.9%	-0.8%	-0.8%	+5.2%	+0.6%
Patient & Client Care	1,228	+98	+62	+33	+24	+3	-4	+8.7%	+5.4%	+2.7%	+2.0%	+0.2%	-0.4%

Source: Health Service Personnel Census