

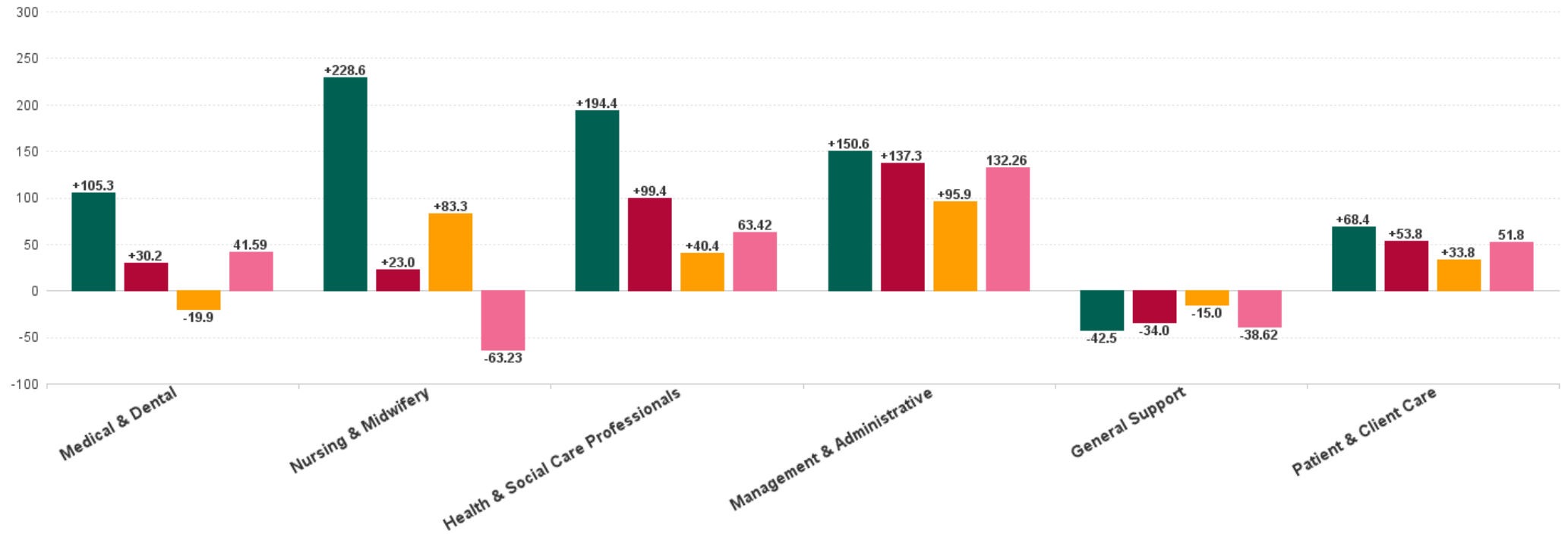
# Mental Health Employment Report : MAY 2023

## Mental Health Employment Report by Staff Group

MAY 2023	WTE DEC 2019	WTE DEC 2022	WTE APR 2023	WTE MAY 2023	WTE change since DEC 2019	% WTE change since Dec 2019	WTE change since DEC 2022	% WTE change since Dec 2022	WTE change since APR 2023	No. MAY 2023
<b>Overall</b>	<b>9,967</b>	<b>10,453</b>	<b>10,640</b>	<b>10,672</b>	<b>+705</b>	<b>+7.1%</b>	<b>+218</b>	<b>+2.1%</b>	<b>+32</b>	<b>11,719</b>
Consultants	353	397	403	404	+51	+14.6%	+7	+1.8%	+1	437
Registrars	269	345	339	341	+73	+27.0%	-3	-1.0%	+2	358
SHO/ Interns	261	267	240	244	-17	-6.4%	-23	-8.5%	+5	253
Medical/ Dental, other	5	4	3	3	-2	-40.6%	-1	-24.0%	+0	6
<b>Medical &amp; Dental</b>	<b>888</b>	<b>1,013</b>	<b>984</b>	<b>993</b>	<b>+105</b>	<b>+11.9%</b>	<b>-20</b>	<b>-2.0%</b>	<b>+8</b>	<b>1,054</b>
Nurse/ Midwife Manager	1,201	1,245	1,227	1,229	+28	+2.4%	-16	-1.3%	+2	1,288
Nurse/ Midwife Specialist & AN/MP	460	631	669	678	+218	+47.3%	+47	+7.5%	+8	718
Staff Nurse/ Staff Midwife	3,002	2,948	2,918	2,896	-106	-3.5%	-52	-1.8%	-22	3,134
Pre-registration Nurse/ Midwife Intern	25	26	158	166	+141	+561.3%	+139	+526.8%	+8	332
Post-registration Nurse/ Midwife Student	1				-1	-100.0%				
Nursing/ Midwifery awaiting registration	57	39	6	6	-51	-90.3%	-33	-85.8%	-0	6
Nursing/ Midwifery Student	83	65	164	171	+88	+106.2%	+106	+162.5%	+7	338
Nursing/ Midwifery other	32	34	32	32	+1	+2.3%	-2	-6.2%	+1	36
<b>Nursing &amp; Midwifery</b>	<b>4,778</b>	<b>4,924</b>	<b>5,010</b>	<b>5,007</b>	<b>+229</b>	<b>+4.8%</b>	<b>+83</b>	<b>+1.7%</b>	<b>-3</b>	<b>5,514</b>
Therapy Professions	420	435	449	451	+30	+7.3%	+15	+3.5%	+1	502
Social Care	74	72	70	68	-6	-8.1%	-4	-6.0%	-2	78
Social Workers	350	414	423	422	+72	+20.5%	+9	+2.1%	-1	466
Psychologists	394	448	461	466	+72	+18.1%	+18	+4.0%	+5	510
Pharmacy	19	19	21	22	+3	+17.9%	+3	+13.5%	+1	29
H&SC, Other	107	130	129	130	+23	+21.6%	-0	-0.1%	+1	148
<b>Health &amp; Social Care Professionals</b>	<b>1,364</b>	<b>1,518</b>	<b>1,554</b>	<b>1,559</b>	<b>+194</b>	<b>+14.2%</b>	<b>+40</b>	<b>+2.7%</b>	<b>+5</b>	<b>1,733</b>
Management (VIII & above)	58	75	77	79	+20	+35.1%	+4	+5.7%	+1	80
Administrative/ Supervisory (V to VII)	238	287	312	317	+79	+33.4%	+30	+10.5%	+6	334
Clerical (III & IV)	717	707	771	768	+51	+7.1%	+62	+8.7%	-3	853
<b>Management &amp; Administrative</b>	<b>1,014</b>	<b>1,068</b>	<b>1,160</b>	<b>1,164</b>	<b>+151</b>	<b>+14.9%</b>	<b>+96</b>	<b>+9.0%</b>	<b>+4</b>	<b>1,267</b>
Support	585	556	549	541	-44	-7.5%	-15	-2.6%	-8	615
Maintenance/ Technical	127	129	127	128	+1	+1.1%	-0	-0.3%	+2	132
<b>General Support</b>	<b>712</b>	<b>685</b>	<b>676</b>	<b>670</b>	<b>-42</b>	<b>-6.0%</b>	<b>-15</b>	<b>-2.2%</b>	<b>-6</b>	<b>747</b>
Health Care Assistants	996	1,030	1,036	1,058	+62	+6.3%	+28	+2.7%	+22	1,142
Care, other	216	216	220	222	+6	+2.8%	+6	+2.7%	+1	262
<b>Patient &amp; Client Care</b>	<b>1,212</b>	<b>1,246</b>	<b>1,256</b>	<b>1,280</b>	<b>+68</b>	<b>+5.6%</b>	<b>+34</b>	<b>+2.7%</b>	<b>+24</b>	<b>1,404</b>

## WTE Change by Staff Category

■ WTE change since DEC 2019 ■ WTE change since DEC 2021 ■ WTE change since DEC 2022 ■ WTE change since MAY 2022



## Mental Health Report by CHO: MAY 2023

MAY 2023	WTE DEC 2019	WTE DEC 2022	WTE APR 2023	WTE MAY 2023	WTE change since DEC 2019	% WTE change since Dec 2019	WTE change since DEC 2022	% WTE change since Dec 2022	WTE change since APR 2023	No. MAY 2023
<b>Overall</b>	<b>9,967</b>	<b>10,453</b>	<b>10,640</b>	<b>10,672</b>	<b>+705</b>	<b>+7.1%</b>	<b>+218</b>	<b>+2.1%</b>	<b>+32</b>	<b>11,719</b>
CHO 1	953	1,024	1,059	1,055	+103	+10.8%	+32	+3.1%	-4	1,147
CHO 2	1,308	1,329	1,343	1,347	+39	+2.9%	+18	+1.3%	+4	1,463
CHO 3	795	814	829	827	+31	+3.9%	+12	+1.5%	-3	909
CHO 4	1,499	1,562	1,575	1,574	+75	+5.0%	+12	+0.8%	-1	1,756
CHO 5	1,177	1,224	1,283	1,290	+113	+9.6%	+66	+5.4%	+7	1,425
CHO 6	593	650	654	662	+69	+11.7%	+12	+1.9%	+7	736
CHO 7	835	879	899	910	+75	+9.0%	+31	+3.6%	+11	1,002
CHO 8	1,098	1,091	1,141	1,137	+39	+3.5%	+46	+4.2%	-5	1,248
CHO 9	1,272	1,371	1,347	1,347	+75	+5.9%	-24	-1.7%	-0	1,481
other Community Services	438	511	509	524	+87	+19.8%	+13	+2.6%	+16	552



## % Total by CHO



## Mental Health Employment Report by HSE/S38: MAY 2023

MAY 2023	WTE DEC 2019	WTE DEC 2022	WTE APR 2023	WTE MAY 2023	WTE change since DEC 2019	% WTE change since Dec 2019	WTE change since DEC 2022	% WTE change since Dec 2022	WTE change since APR 2023	No. MAY 2023
<b>Overall</b>	<b>9,967</b>	<b>10,453</b>	<b>10,640</b>	<b>10,672</b>	<b>+705</b>	<b>+7.1%</b>	<b>+218</b>	<b>+2.1%</b>	<b>+32</b>	<b>11,719</b>
Health Service Executive	9,526	10,023	10,251	10,280	+755	+7.9%	+258	+2.6%	+29	11,252
Section 38 Voluntary Agencies	441	431	389	392	-50	-11.3%	-39	-9.1%	+3	467



## Mental Health Employment Report by HSE: MAY 2023

MAY 2023	WTE DEC 2019	WTE DEC 2022	WTE APR 2023	WTE MAY 2023	WTE change since DEC 2019	% WTE change since Dec 2019	WTE change since DEC 2022	% WTE change since Dec 2022	WTE change since APR 2023	No. MAY 2023
<b>Total HSE</b>	<b>9,526</b>	<b>10,023</b>	<b>10,251</b>	<b>10,280</b>	<b>+755</b>	<b>+7.9%</b>	<b>+258</b>	<b>+2.6%</b>	<b>+29</b>	<b>11,252</b>
Consultants	333	372	376	377	+45	+13.4%	+5	+1.5%	+1	406
Registrars	250	325	321	320	+70	+28.1%	-4	-1.4%	-1	335
SHO/ Interns	255	260	235	240	-15	-6.0%	-20	-7.7%	+5	247
Medical/ Dental, other	5	4	3	3	-2	-40.6%	-1	-24.0%	+0	6
<b>Medical &amp; Dental</b>	<b>843</b>	<b>961</b>	<b>935</b>	<b>941</b>	<b>+98</b>	<b>+11.6%</b>	<b>-20</b>	<b>-2.1%</b>	<b>+6</b>	<b>994</b>
Nurse/ Midwife Manager	1,163	1,211	1,197	1,199	+36	+3.1%	-12	-1.0%	+2	1,254
Nurse/ Midwife Specialist & AN/MP	453	620	658	665	+212	+46.7%	+45	+7.3%	+7	703
Staff Nurse/ Staff Midwife	2,879	2,838	2,833	2,813	-67	-2.3%	-26	-0.9%	-21	3,045
Nursing/ Midwifery awaiting registration	57	38	6	6	-36	-90.3%	-3	-85.4%	-0	6
Post-registration Nurse/ Midwife Student	1				-1	-100.0%				
Pre-registration Nurse Intern (COVID-19)					+1					
Pre-registration Nurse/ Midwife Intern	18	18	149	157	+3	+770.9%	+6	+753.0%	+8	315
Nursing/ Midwifery Student	76	56	155	163	+87	+114.0%	+106	+189.5%	+7	321
Nursing/ Midwifery other	29	32	32	32	+3	+11.0%	+0	+1.2%	+1	36
<b>Nursing &amp; Midwifery</b>	<b>4,601</b>	<b>4,758</b>	<b>4,875</b>	<b>4,872</b>	<b>+271</b>	<b>+5.9%</b>	<b>+114</b>	<b>+2.4%</b>	<b>-3</b>	<b>5,359</b>
Therapy Professions	389	407	426	428	+39	+10.1%	+21	+5.2%	+2	470
Social Care	48	44	43	42	-6	-13.0%	-2	-4.6%	-1	49
Social Workers	331	394	403	401	+71	+21.4%	+8	+2.0%	-1	443
Psychologists	379	423	438	443	+64	+17.0%	+20	+4.7%	+5	480
Pharmacy	17	17	19	20	+3	+15.4%	+2	+12.1%	+1	26
H&SC, Other	102	130	129	129	+26	+25.9%	-1	-0.9%	+0	146
<b>Health &amp; Social Care Professionals</b>	<b>1,265</b>	<b>1,415</b>	<b>1,457</b>	<b>1,463</b>	<b>+197</b>	<b>+15.6%</b>	<b>+48</b>	<b>+3.4%</b>	<b>+6</b>	<b>1,614</b>
Management (VIII & above)	56	73	74	76	+19	+34.6%	+3	+4.5%	+1	77
Administrative/ Supervisory (V to VII)	217	264	289	295	+78	+35.9%	+31	+11.8%	+5	307
Clerical (III & IV)	673	670	731	729	+56	+8.3%	+58	+8.7%	-3	805
<b>Management &amp; Administrative</b>	<b>946</b>	<b>1,006</b>	<b>1,095</b>	<b>1,099</b>	<b>+153</b>	<b>+16.2%</b>	<b>+93</b>	<b>+9.2%</b>	<b>+4</b>	<b>1,189</b>
Support	547	523	520	512	-35	-6.4%	-11	-2.0%	-8	575
Maintenance/ Technical	121	123	121	122	+1	+1.2%	-0	-0.3%	+2	126
<b>General Support</b>	<b>668</b>	<b>646</b>	<b>641</b>	<b>635</b>	<b>-34</b>	<b>-5.0%</b>	<b>-11</b>	<b>-1.7%</b>	<b>-6</b>	<b>701</b>
Health Care Assistants	990	1,024	1,031	1,053	+63	+6.4%	+29	+2.8%	+22	1,137
Care, other	213	213	217	218	+5	+2.5%	+6	+2.7%	+1	258
<b>Patient &amp; Client Care</b>	<b>1,203</b>	<b>1,237</b>	<b>1,248</b>	<b>1,271</b>	<b>+69</b>	<b>+5.7%</b>	<b>+34</b>	<b>+2.8%</b>	<b>+24</b>	<b>1,395</b>

## Mental Health Employment Report by S38 Vols: MAY 2023

MAY 2023	WTE DEC 2019	WTE DEC 2022	WTE APR 2023	WTE MAY 2023	WTE change since DEC 2019	% WTE change since Dec 2019	WTE change since DEC 2022	% WTE change since Dec 2022	WTE change since APR 2023	No. MAY 2023
<b>Total S38 Vols</b>	<b>441</b>	<b>431</b>	<b>389</b>	<b>392</b>	<b>-50</b>	<b>-11.3%</b>	<b>-39</b>	<b>-9.1%</b>	<b>+3</b>	<b>467</b>
Consultants	20	25	26	27	+7	+34.3%	+2	+6.2%	+0	31
Registrars	19	20	18	21	+2	+11.8%	+1	+5.8%	+3	23
SHO/ Interns	6	7	5	5	-1	-24.7%	-2	-35.4%	-0	6
<b>Medical &amp; Dental</b>	<b>45</b>	<b>52</b>	<b>50</b>	<b>52</b>	<b>+8</b>	<b>+16.9%</b>	<b>+0</b>	<b>+0.4%</b>	<b>+3</b>	<b>60</b>
Nurse/ Midwife Manager	38	34	30	30	-8	-20.8%	-4	-11.2%	+0	34
Nurse/ Midwife Specialist & AN/MP	7	11	12	13	+6	+90.6%	+2	+18.9%	+1	15
Staff Nurse/ Staff Midwife	123	109	85	83	-40	-32.3%	-26	-23.8%	-1	89
Nursing/ Midwifery awaiting registration		1						-100.0%		
Pre-registration Nurse/ Midwife Intern	7	8	9	9	+0	+21.4%	+2	+6.3%	+0	17
Nursing/ Midwifery Student	7	9	9	9	+2	+21.4%	-1	-5.6%	+0	17
Nursing/ Midwifery other	3	3			-3	-100.0%	-3	-100.0%		
<b>Nursing &amp; Midwifery</b>	<b>177</b>	<b>166</b>	<b>135</b>	<b>135</b>	<b>-43</b>	<b>-24.0%</b>	<b>-31</b>	<b>-18.6%</b>	<b>+0</b>	<b>155</b>
Therapy Professions	31	28	23	23	-9	-28.4%	-6	-20.1%	-1	32
Social Care	25	28	27	26	+0	+1.2%	-2	-8.1%	-1	29
Social Workers	20	20	21	21	+1	+6.3%	+1	+4.7%	+0	23
Psychologists	16	25	23	23	+7	+44.4%	-2	-6.5%	+0	30
Pharmacy	2	2	2	2	+1	+43.8%	+1	+27.8%	+0	3
H&SC, Other	5	0	0	1	-3	-69.4%	+1	+208.3%	+1	2
<b>Health &amp; Social Care Professionals</b>	<b>99</b>	<b>103</b>	<b>96</b>	<b>96</b>	<b>-3</b>	<b>-3.0%</b>	<b>-7</b>	<b>-6.9%</b>	<b>-0</b>	<b>119</b>
Management (VIII & above)	2	2	3	3	+1	+50.0%	+1	+50.0%	+0	3
Administrative/ Supervisory (V to VII)	21	23	22	23	+1	+7.0%	-1	-3.6%	+0	27
Clerical (III & IV)	45	36	40	40	-5	-11.6%	+3	+8.5%	-0	48
<b>Management &amp; Administrative</b>	<b>68</b>	<b>62</b>	<b>65</b>	<b>65</b>	<b>-3</b>	<b>-4.0%</b>	<b>+3</b>	<b>+5.3%</b>	<b>+0</b>	<b>78</b>
Support	38	33	29	29	-9	-23.6%	-4	-12.4%	+0	40
Maintenance/ Technical	6	6	6	6	+0	+0.0%	+0	+0.0%	+0	6
<b>General Support</b>	<b>44</b>	<b>39</b>	<b>35</b>	<b>35</b>	<b>-9</b>	<b>-20.3%</b>	<b>-4</b>	<b>-10.5%</b>	<b>+0</b>	<b>46</b>
Health Care Assistants	6	6	5	5	-1	-13.3%	-1	-13.3%	+0	5
Care, other	3	3	3	3	+1	+22.3%	+0	+2.4%	+0	4
<b>Patient &amp; Client Care</b>	<b>9</b>	<b>9</b>	<b>8</b>	<b>8</b>	<b>-0</b>	<b>-1.6%</b>	<b>-1</b>	<b>-7.5%</b>	<b>+0</b>	<b>9</b>

## Mental Health Employment Report by Grade Group: MAY 2023

### CHO 1

MAY 2023	WTE DEC 2019	WTE DEC 2022	WTE APR 2023	WTE MAY 2023	WTE change since DEC 2019	% WTE change since Dec 2019	WTE change since DEC 2022	% WTE change since Dec 2022	WTE change since APR 2023	No. MAY 2023
<b>Total CHO 1</b>	<b>953</b>	<b>1024</b>	<b>1059</b>	<b>1055</b>	<b>+103</b>	<b>+10.8%</b>	<b>+32</b>	<b>+3.1%</b>	<b>-4</b>	<b>1,147</b>
Consultants	31	34	36	36	+5	+16.9%	+2	+6.6%	-0	37
Registrars	24	35	40	38	+14	+56.8%	+4	+10.5%	-2	40
SHO/ Interns	25	21	22	22	-3	-13.5%	+1	+5.0%	-0	22
<b>Medical &amp; Dental</b>	<b>81</b>	<b>89</b>	<b>98</b>	<b>96</b>	<b>+16</b>	<b>+19.5%</b>	<b>+7</b>	<b>+7.7%</b>	<b>-2</b>	<b>99</b>
Nurse/ Midwife Manager	117	118	122	122	+5	+4.4%	+4	+3.8%	+0	128
Nurse/ Midwife Specialist & AN/MP	67	91	93	93	+25	+37.3%	+1	+1.3%	+0	100
Staff Nurse/ Staff Midwife	297	294	292	289	-9	-3.0%	-5	-1.8%	-3	309
<i>Nursing/ Midwifery awaiting registration</i>		3					-3	-100.0%		
<i>Pre-registration Nurse/ Midwife Intern</i>		2	14	15	+15		+13	+733.3%	+1	30
Nursing/ Midwifery Student		5	14	15	+15		+10	+213.8%	+1	30
Nursing/ Midwifery other		2	1	1	+1		-1	-47.1%	+0	1
<b>Nursing &amp; Midwifery</b>	<b>482</b>	<b>510</b>	<b>522</b>	<b>519</b>	<b>+37</b>	<b>+7.8%</b>	<b>+10</b>	<b>+1.9%</b>	<b>-2</b>	<b>568</b>
Therapy Professions	36	40	42	44	+8	+22.8%	+3	+8.5%	+2	47
Social Care	4	4	3	3	-1	-16.8%	-1	-19.4%	-0	5
Social Workers	39	48	48	48	+9	+23.6%	+1	+1.2%	+0	52
Psychologists	21	25	31	31	+10	+50.3%	+7	+26.5%	+0	33
Pharmacy	1	1	1	1	+0	+3.8%	+0	+2.5%	+0	1
H&SC, Other	13	18	19	18	+5	+39.7%	-0	-0.7%	-1	21
<b>Health &amp; Social Care Professionals</b>	<b>113</b>	<b>136</b>	<b>144</b>	<b>146</b>	<b>+32</b>	<b>+28.6%</b>	<b>+10</b>	<b>+7.1%</b>	<b>+1</b>	<b>159</b>
Management (VIII & above)	6	9	8	8	+2	+37.3%	-1	-10.9%	+0	8
Administrative/ Supervisory (V to VII)	30	30	33	35	+5	+15.0%	+4	+14.4%	+1	36
Clerical (III & IV)	85	89	96	93	+8	+9.0%	+4	+4.2%	-3	102
<b>Management &amp; Administrative</b>	<b>121</b>	<b>128</b>	<b>137</b>	<b>135</b>	<b>+14</b>	<b>+11.8%</b>	<b>+7</b>	<b>+5.5%</b>	<b>-2</b>	<b>146</b>
Support	62	58	60	60	-2	-3.2%	+2	+4.1%	-0	67
Maintenance/ Technical	17	16	14	16	-1	-6.6%	-1	-4.1%	+1	16
<b>General Support</b>	<b>79</b>	<b>74</b>	<b>75</b>	<b>76</b>	<b>-3</b>	<b>-3.9%</b>	<b>+2</b>	<b>+2.3%</b>	<b>+1</b>	<b>83</b>
Health Care Assistants	66	75	73	73	+7	+10.6%	-1	-1.6%	+0	81
Care, other	11	12	10	10	-1	-11.5%	-2	-19.5%	-1	11
<b>Patient &amp; Client Care</b>	<b>77</b>	<b>86</b>	<b>84</b>	<b>83</b>	<b>+6</b>	<b>+7.5%</b>	<b>-4</b>	<b>-4.1%</b>	<b>-1</b>	<b>92</b>



## Mental Health Employment Report by Grade Group: MAY 2023

### CHO 2

MAY 2023	WTE DEC 2019	WTE DEC 2022	WTE APR 2023	WTE MAY 2023	WTE change since DEC 2019	% WTE change since Dec 2019	WTE change since DEC 2022	% WTE change since Dec 2022	WTE change since APR 2023	No. MAY 2023
<b>Total CHO 2</b>	<b>1308</b>	<b>1329</b>	<b>1343</b>	<b>1347</b>	<b>+39</b>	<b>+2.9%</b>	<b>+18</b>	<b>+1.3%</b>	<b>+4</b>	<b>1,463</b>
Consultants	38	37	38	39	+2	+4.4%	+2	+6.3%	+1	43
Registrars	33	37	33	33	-0	-1.1%	-4	-11.2%	-0	33
SHO/ Interns	35	39	41	40	+5	+14.4%	+1	+2.8%	-1	42
Medical/ Dental, other	1	1			-1	-100.0%	-1	-100.0%		
<b>Medical &amp; Dental</b>	<b>107</b>	<b>114</b>	<b>113</b>	<b>112</b>	<b>+5</b>	<b>+5.0%</b>	<b>-2</b>	<b>-1.5%</b>	<b>-1</b>	<b>118</b>
Nurse/ Midwife Manager	146	142	142	143	-3	-2.0%	+1	+0.6%	+1	147
Nurse/ Midwife Specialist & AN/MP	67	88	92	96	+28	+42.1%	+8	+9.2%	+4	98
Staff Nurse/ Staff Midwife	357	353	356	346	-11	-3.2%	-7	-2.0%	-10	375
<i>Nursing/ Midwifery awaiting registration</i>	5	7		1	-4	-89.5%	-7	-92.9%	+1	1
<i>Pre-registration Nurse/ Midwife Intern</i>	0	4	21	22	+22	+18,541.7%	+18	+452.3%	+2	45
Nursing/ Midwifery Student	5	11	21	23	+18	+369.6%	+12	+107.0%	+2	46
Nursing/ Midwifery other	2	4	4	5	+3	+133.0%	+1	+16.5%	+1	5
<b>Nursing &amp; Midwifery</b>	<b>577</b>	<b>598</b>	<b>615</b>	<b>612</b>	<b>+35</b>	<b>+6.0%</b>	<b>+14</b>	<b>+2.4%</b>	<b>-3</b>	<b>671</b>
Therapy Professions	45	55	57	58	+12	+26.9%	+3	+5.5%	+1	62
Social Care	15	14	13	13	-2	-14.3%	-1	-8.5%	+0	14
Social Workers	41	44	43	43	+3	+6.2%	-1	-1.4%	+0	47
Psychologists	34	37	40	42	+8	+24.6%	+5	+12.8%	+2	45
Pharmacy	3	3	2	2	-0	-2.0%	-0	-1.2%	+0	3
H&SC, Other	3	3	3	3	-0	-4.7%	+0	+1.1%	+0	3
<b>Health &amp; Social Care Professionals</b>	<b>140</b>	<b>155</b>	<b>157</b>	<b>161</b>	<b>+21</b>	<b>+14.8%</b>	<b>+6</b>	<b>+3.8%</b>	<b>+3</b>	<b>174</b>
Management (VIII & above)	5	3	3	3	-2	-40.8%	-0	-1.3%	-0	3
Administrative/ Supervisory (V to VII)	24	25	27	26	+3	+12.1%	+1	+5.1%	-1	27
Clerical (III & IV)	109	98	100	104	-5	-4.3%	+7	+6.9%	+4	117
<b>Management &amp; Administrative</b>	<b>138</b>	<b>126</b>	<b>131</b>	<b>134</b>	<b>-4</b>	<b>-2.8%</b>	<b>+8</b>	<b>+6.4%</b>	<b>+3</b>	<b>147</b>
Support	36	27	25	24	-13	-34.9%	-3	-11.4%	-2	25
Maintenance/ Technical	27	36	35	36	+9	+33.0%	+0	+0.0%	+1	36
<b>General Support</b>	<b>63</b>	<b>62</b>	<b>60</b>	<b>59</b>	<b>-4</b>	<b>-5.9%</b>	<b>-3</b>	<b>-4.8%</b>	<b>-1</b>	<b>61</b>
Health Care Assistants	215	202	197	200	-15	-7.1%	-2	-1.2%	+2	213
Care, other	69	73	70	70	+0	+0.5%	-3	-4.3%	-1	79
<b>Patient &amp; Client Care</b>	<b>284</b>	<b>275</b>	<b>268</b>	<b>269</b>	<b>-15</b>	<b>-5.2%</b>	<b>-6</b>	<b>-2.0%</b>	<b>+2</b>	<b>292</b>

## Mental Health Employment Report by Grade Group: MAY 2023

### CHO 3

MAY 2023	WTE DEC 2019	WTE DEC 2022	WTE APR 2023	WTE MAY 2023	WTE change since DEC 2019	% WTE change since Dec 2019	WTE change since DEC 2022	% WTE change since Dec 2022	WTE change since APR 2023	No. MAY 2023
<b>Total CHO 3</b>	<b>795</b>	<b>814</b>	<b>829</b>	<b>827</b>	<b>+31</b>	<b>+3.9%</b>	<b>+12</b>	<b>+1.5%</b>	<b>-3</b>	<b>909</b>
Consultants	23	29	29	29	+6	+25.4%	+0	+0.7%	-0	33
Registrars	18	15	27	28	+10	+55.8%	+13	+83.2%	+1	30
SHO/ Interns	19	33	11	14	-5	-26.1%	-19	-58.0%	+3	14
<b>Medical &amp; Dental</b>	<b>60</b>	<b>78</b>	<b>67</b>	<b>71</b>	<b>+11</b>	<b>+18.2%</b>	<b>-6</b>	<b>-8.3%</b>	<b>+4</b>	<b>77</b>
Nurse/ Midwife Manager	88	87	85	82	-6	-6.8%	-5	-6.0%	-3	86
Nurse/ Midwife Specialist & AN/MP	39	44	45	45	+6	+14.2%	+0	+0.6%	-0	49
Staff Nurse/ Staff Midwife	245	243	242	239	-6	-2.6%	-4	-1.6%	-3	262
Pre-registration Nurse/ Midwife Intern	9	4	16	17	+8	+90.1%	+13	+295.3%	+1	34
Nursing/ Midwifery Student	9	4	16	17	+8	+90.1%	+13	+295.3%	+1	34
Nursing/ Midwifery other		1	1	1	+1		+0	+1.0%	+0	1
<b>Nursing &amp; Midwifery</b>	<b>381</b>	<b>380</b>	<b>389</b>	<b>384</b>	<b>+2</b>	<b>+0.6%</b>	<b>+4</b>	<b>+1.0%</b>	<b>-6</b>	<b>432</b>
Therapy Professions	26	30	32	33	+7	+27.0%	+3	+10.5%	+1	36
Social Care	3	2	2	2	-1	-37.6%	-0	-1.1%	+0	2
Social Workers	25	28	29	27	+2	+7.4%	-1	-2.8%	-2	29
Psychologists	92	93	92	91	-1	-0.9%	-2	-2.0%	-0	94
Pharmacy	3	3	3	3	+0	+1.8%	+0	+1.1%	+0	3
H&SC, Other	10	10	9	10	+1	+6.9%	+1	+6.3%	+1	11
<b>Health &amp; Social Care Professionals</b>	<b>159</b>	<b>166</b>	<b>167</b>	<b>167</b>	<b>+8</b>	<b>+4.9%</b>	<b>+1</b>	<b>+0.7%</b>	<b>+0</b>	<b>175</b>
Management (VIII & above)	2	4	4	4	+2	+102.0%	+0	+0.8%	-0	4
Administrative/ Supervisory (V to VII)	17	16	18	18	+1	+6.1%	+2	+11.0%	-0	19
Clerical (III & IV)	56	50	58	58	+3	+4.7%	+8	+16.4%	+0	64
<b>Management &amp; Administrative</b>	<b>75</b>	<b>70</b>	<b>81</b>	<b>80</b>	<b>+6</b>	<b>+7.6%</b>	<b>+10</b>	<b>+14.3%</b>	<b>-1</b>	<b>87</b>
Support	32	30	32	31	-2	-5.2%	+1	+1.8%	-1	34
Maintenance/ Technical	11	7	7	7	-4	-36.4%	+0	+1.0%	+0	7
<b>General Support</b>	<b>43</b>	<b>37</b>	<b>39</b>	<b>38</b>	<b>-6</b>	<b>-13.1%</b>	<b>+1</b>	<b>+1.7%</b>	<b>-1</b>	<b>41</b>
Health Care Assistants	75	82	83	84	+8	+11.2%	+2	+2.7%	+1	93
Care, other	2	2	3	3	+2	+101.2%	+1	+37.7%	-0	4
<b>Patient &amp; Client Care</b>	<b>77</b>	<b>84</b>	<b>87</b>	<b>87</b>	<b>+10</b>	<b>+13.1%</b>	<b>+3</b>	<b>+3.7%</b>	<b>+1</b>	<b>97</b>

## Mental Health Employment Report by Grade Group: MAY 2023

### CHO 4

MAY 2023	WTE DEC 2019	WTE DEC 2022	WTE APR 2023	WTE MAY 2023	WTE change since DEC 2019	% WTE change since Dec 2019	WTE change since DEC 2022	% WTE change since Dec 2022	WTE change since APR 2023	No. MAY 2023
<b>Total CHO 4</b>	<b>1499</b>	<b>1562</b>	<b>1575</b>	<b>1574</b>	<b>+75</b>	<b>+5.0%</b>	<b>+12</b>	<b>+0.8%</b>	<b>-1</b>	<b>1,756</b>
Consultants	50	60	59	58	+8	+16.1%	-2	-4.1%	-1	66
Registrars	46	56	48	49	+3	+6.3%	-8	-13.7%	+1	51
SHO/ Interns	31	42	43	45	+14	+43.7%	+2	+4.9%	+1	46
Medical/ Dental, other	2	1	1	1	-1	-51.5%	+0	+1.0%	+0	4
<b>Medical &amp; Dental</b>	<b>129</b>	<b>160</b>	<b>151</b>	<b>152</b>	<b>+23</b>	<b>+18.2%</b>	<b>-8</b>	<b>-5.0%</b>	<b>+1</b>	<b>167</b>
Nurse/ Midwife Manager	171	207	190	197	+25	+14.8%	-10	-5.0%	+7	209
Nurse/ Midwife Specialist & AN/MP	60	72	77	77	+18	+29.3%	+5	+7.3%	+0	82
Staff Nurse/ Staff Midwife	505	479	484	470	-36	-7.1%	-9	-2.0%	-15	506
<i>Nursing/ Midwifery awaiting registration</i>	30				-30	-100.0%				
<i>Post-registration Nurse/ Midwife Student</i>	1				-1	-100.0%				
<i>Pre-registration Nurse/ Midwife Intern</i>	3	7	24	24	+21	+707.0%	+18	+261.9%	+1	49
Nursing/ Midwifery Student	34	7	24	24	-9	-27.7%	+18	+261.9%	+1	49
<b>Nursing &amp; Midwifery</b>	<b>770</b>	<b>765</b>	<b>775</b>	<b>768</b>	<b>-2</b>	<b>-0.3%</b>	<b>+3</b>	<b>+0.4%</b>	<b>-7</b>	<b>846</b>
Therapy Professions	74	79	86	85	+11	+15.4%	+6	+8.2%	-0	97
Social Care	4	6	6	5	+2	+40.1%	-0	-7.7%	-0	7
Social Workers	53	73	73	73	+20	+37.9%	+0	+0.3%	+0	86
Psychologists	83	96	95	95	+12	+14.7%	-1	-1.0%	+0	105
Pharmacy	2	2	2	2	-1	-38.3%	-1	-35.2%	+0	3
H&SC, Other	11	18	17	17	+6	+58.5%	-1	-3.2%	-0	22
<b>Health &amp; Social Care Professionals</b>	<b>227</b>	<b>273</b>	<b>278</b>	<b>277</b>	<b>+51</b>	<b>+22.3%</b>	<b>+4</b>	<b>+1.4%</b>	<b>-1</b>	<b>320</b>
Management (VIII & above)	1	3	4	4	+3	+285.0%	+1	+28.3%	-0	4
Administrative/ Supervisory (V to VII)	22	26	26	30	+7	+32.9%	+3	+13.0%	+3	32
Clerical (III & IV)	87	87	93	91	+4	+4.6%	+5	+5.4%	-2	103
<b>Management &amp; Administrative</b>	<b>111</b>	<b>116</b>	<b>124</b>	<b>125</b>	<b>+14</b>	<b>+12.9%</b>	<b>+9</b>	<b>+7.7%</b>	<b>+1</b>	<b>139</b>
Support	81	75	69	64	-17	-20.8%	-11	-14.4%	-5	76
Maintenance/ Technical	6	5	5	5	-1	-16.4%	+0	+0.2%	+0	6
<b>General Support</b>	<b>87</b>	<b>80</b>	<b>74</b>	<b>69</b>	<b>-18</b>	<b>-20.5%</b>	<b>-11</b>	<b>-13.4%</b>	<b>-5</b>	<b>82</b>
Health Care Assistants	168	162	168	176	+8	+4.7%	+14	+8.7%	+8	189
Care, other	7	5	5	6	-1	-18.2%	+1	+13.4%	+1	13
<b>Patient &amp; Client Care</b>	<b>176</b>	<b>167</b>	<b>173</b>	<b>182</b>	<b>+7</b>	<b>+3.8%</b>	<b>+15</b>	<b>+8.9%</b>	<b>+9</b>	<b>202</b>

## Mental Health Employment Report by Grade Group: MAY 2023

### CHO 5

MAY 2023	WTE DEC 2019	WTE DEC 2022	WTE APR 2023	WTE MAY 2023	WTE change since DEC 2019	% WTE change since Dec 2019	WTE change since DEC 2022	% WTE change since Dec 2022	WTE change since APR 2023	No. MAY 2023
<b>Total CHO 5</b>	<b>1177</b>	<b>1224</b>	<b>1283</b>	<b>1290</b>	<b>+113</b>	<b>+9.6%</b>	<b>+66</b>	<b>+5.4%</b>	<b>+7</b>	<b>1,425</b>
Consultants	26	33	33	33	+6	+24.5%	-1	-1.9%	-0	34
Registrars	10	12	19	20	+10	+99.8%	+8	+68.2%	+1	20
SHO/ Interns	32	32	28	28	-4	-12.8%	-4	-13.7%	-0	28
Medical/ Dental, other	2	2	2	2	+0	+0.0%	+0	+2.6%	+0	2
<b>Medical &amp; Dental</b>	<b>70</b>	<b>80</b>	<b>82</b>	<b>83</b>	<b>+12</b>	<b>+17.5%</b>	<b>+3</b>	<b>+3.9%</b>	<b>+0</b>	<b>84</b>
Nurse/ Midwife Manager	171	175	168	165	-6	-3.5%	-10	-5.7%	-3	172
Nurse/ Midwife Specialist & AN/MP	43	68	78	83	+40	+92.1%	+15	+22.0%	+5	87
Staff Nurse/ Staff Midwife	412	398	399	392	-20	-4.8%	-6	-1.5%	-7	435
<i>Nursing/ Midwifery awaiting registration</i>		6	1	1	+1		-5	-82.1%	+0	1
<i>Pre-registration Nurse/ Midwife Intern</i>	1	1	17	18	+17	+1,701.0%	+17	+1,737.8%	+1	36
Nursing/ Midwifery Student	1	7	18	19	+18	+1,801.0%	+12	+188.9%	+1	37
Nursing/ Midwifery other	4	4	4	4	+1	+22.0%	+1	+24.0%	+0	5
<b>Nursing &amp; Midwifery</b>	<b>631</b>	<b>651</b>	<b>667</b>	<b>664</b>	<b>+33</b>	<b>+5.2%</b>	<b>+12</b>	<b>+1.9%</b>	<b>-4</b>	<b>736</b>
Therapy Professions	38	34	35	37	-2	-4.2%	+3	+8.3%	+1	39
Social Care	5	4	4	4	-0	-5.8%	+1	+21.2%	-0	5
Social Workers	28	29	30	31	+3	+10.5%	+2	+8.4%	+1	34
Psychologists	21	27	34	35	+14	+64.8%	+8	+28.1%	+0	39
H&SC, Other	9	23	23	23	+14	+150.8%	-1	-2.4%	-1	24
<b>Health &amp; Social Care Professionals</b>	<b>101</b>	<b>117</b>	<b>128</b>	<b>130</b>	<b>+28</b>	<b>+28.0%</b>	<b>+13</b>	<b>+11.2%</b>	<b>+2</b>	<b>141</b>
Management (VIII & above)	4	6	6	6	+2	+50.0%	+0	+5.4%	+0	6
Administrative/ Supervisory (V to VII)	21	23	28	30	+9	+40.9%	+6	+26.7%	+2	31
Clerical (III & IV)	74	74	86	87	+13	+18.2%	+13	+17.2%	+1	95
<b>Management &amp; Administrative</b>	<b>99</b>	<b>104</b>	<b>119</b>	<b>123</b>	<b>+24</b>	<b>+24.3%</b>	<b>+19</b>	<b>+18.7%</b>	<b>+3</b>	<b>132</b>
Support	171	175	177	177	+6	+3.4%	+2	+1.4%	-0	201
Maintenance/ Technical	19	14	14	14	-6	-28.6%	-0	-2.0%	-0	15
<b>General Support</b>	<b>190</b>	<b>189</b>	<b>192</b>	<b>191</b>	<b>+0</b>	<b>+0.1%</b>	<b>+2</b>	<b>+1.2%</b>	<b>-1</b>	<b>216</b>
Health Care Assistants	73	73	80	85	+12	+16.7%	+12	+15.9%	+5	93
Care, other	13	12	15	16	+3	+22.5%	+4	+32.8%	+1	23
<b>Patient &amp; Client Care</b>	<b>85</b>	<b>85</b>	<b>95</b>	<b>100</b>	<b>+15</b>	<b>+17.6%</b>	<b>+15</b>	<b>+18.2%</b>	<b>+6</b>	<b>116</b>

## Mental Health Employment Report by Grade Group: MAY 2023

### CHO 6

MAY 2023	WTE DEC 2019	WTE DEC 2022	WTE APR 2023	WTE MAY 2023	WTE change since DEC 2019	% WTE change since Dec 2019	WTE change since DEC 2022	% WTE change since Dec 2022	WTE change since APR 2023	No. MAY 2023
<b>Total CHO 6</b>	<b>593</b>	<b>650</b>	<b>654</b>	<b>662</b>	<b>+69</b>	<b>+11.7%</b>	<b>+12</b>	<b>+1.9%</b>	<b>+7</b>	<b>736</b>
Consultants	36	45	47	47	+11	+29.4%	+1	+3.1%	-0	52
Registrars	22	30	24	28	+6	+26.4%	-2	-7.2%	+4	30
SHO/ Interns	9	9	8	8	-1	-16.6%	-1	-16.3%	-0	9
<b>Medical &amp; Dental</b>	<b>67</b>	<b>84</b>	<b>78</b>	<b>82</b>	<b>+15</b>	<b>+22.2%</b>	<b>-2</b>	<b>-2.6%</b>	<b>+3</b>	<b>91</b>
Nurse/ Midwife Manager	76	75	73	73	-4	-4.8%	-2	-2.6%	+0	77
Nurse/ Midwife Specialist & AN/MP	14	27	31	32	+18	+135.3%	+5	+19.7%	+1	35
Staff Nurse/ Staff Midwife	139	151	151	156	+17	+12.2%	+5	+3.1%	+5	167
Pre-registration Nurse/ Midwife Intern			5	5	+5		+5		+0	10
Nursing/ Midwifery Student			5	5	+5		+5		+0	10
Nursing/ Midwifery other	2	4	3	3	+1	+50.0%	-1	-20.2%	+0	3
<b>Nursing &amp; Midwifery</b>	<b>231</b>	<b>257</b>	<b>263</b>	<b>269</b>	<b>+38</b>	<b>+16.3%</b>	<b>+12</b>	<b>+4.8%</b>	<b>+6</b>	<b>292</b>
Therapy Professions	43	41	40	37	-6	-14.0%	-4	-10.3%	-3	47
Social Care	26	28	27	26	-0	-1.1%	-2	-8.1%	-1	29
Social Workers	30	36	39	39	+10	+32.1%	+3	+8.6%	+0	43
Psychologists	22	38	36	36	+14	+64.9%	-1	-3.4%	+0	46
H&SC, Other	9	6	5	6	-2	-26.4%	-0	-0.2%	+1	7
<b>Health &amp; Social Care Professionals</b>	<b>130</b>	<b>150</b>	<b>148</b>	<b>145</b>	<b>+15</b>	<b>+11.8%</b>	<b>-5</b>	<b>-3.1%</b>	<b>-3</b>	<b>172</b>
Management (VIII & above)	3	5	5	5	+2	+66.7%	+0	+0.6%	+0	5
Administrative/ Supervisory (V to VII)	27	31	27	28	+1	+3.9%	-3	-9.8%	+0	31
Clerical (III & IV)	42	29	34	34	-8	-19.9%	+5	+16.0%	-0	39
<b>Management &amp; Administrative</b>	<b>72</b>	<b>65</b>	<b>66</b>	<b>66</b>	<b>-5</b>	<b>-7.5%</b>	<b>+2</b>	<b>+2.5%</b>	<b>+0</b>	<b>75</b>
Support	36	29	29	29	-8	-21.5%	-1	-2.2%	+0	33
Maintenance/ Technical	6	5	6	6	+0	+1.5%	+1	+20.5%	+0	6
<b>General Support</b>	<b>42</b>	<b>34</b>	<b>35</b>	<b>35</b>	<b>-8</b>	<b>-18.3%</b>	<b>+0</b>	<b>+1.1%</b>	<b>+0</b>	<b>39</b>
Health Care Assistants	46	54	58	58	+13	+27.9%	+5	+8.7%	+0	59
Care, other	5	7	7	7	+2	+30.6%	+0	+1.6%	+0	8
<b>Patient &amp; Client Care</b>	<b>51</b>	<b>60</b>	<b>65</b>	<b>65</b>	<b>+14</b>	<b>+28.2%</b>	<b>+5</b>	<b>+7.9%</b>	<b>+0</b>	<b>67</b>

## Mental Health Employment Report by Grade Group: MAY 2023

### CHO 7

MAY 2023	WTE DEC 2019	WTE DEC 2022	WTE APR 2023	WTE MAY 2023	WTE change since DEC 2019	% WTE change since Dec 2019	WTE change since DEC 2022	% WTE change since Dec 2022	WTE change since APR 2023	No. MAY 2023
<b>Total CHO 7</b>	<b>835</b>	<b>879</b>	<b>899</b>	<b>910</b>	<b>+75</b>	<b>+9.0%</b>	<b>+31</b>	<b>+3.6%</b>	<b>+11</b>	<b>1,002</b>
Consultants	48	52	54	55	+7	+14.5%	+2	+4.6%	+1	58
Registrars	46	55	50	51	+4	+9.6%	-4	-7.9%	+1	54
SHO/ Interns	21	26	17	18	-3	-12.7%	-7	-28.9%	+1	19
<b>Medical &amp; Dental</b>	<b>115</b>	<b>133</b>	<b>121</b>	<b>124</b>	<b>+9</b>	<b>+7.6%</b>	<b>-9</b>	<b>-7.0%</b>	<b>+3</b>	<b>131</b>
Nurse/ Midwife Manager	117	109	114	114	-2	-1.9%	+5	+4.6%	+1	120
Nurse/ Midwife Specialist & AN/MP	40	56	62	62	+22	+55.5%	+6	+11.0%	-0	66
Staff Nurse/ Staff Midwife	194	205	198	202	+8	+4.1%	-2	-1.1%	+5	224
<i>Nursing/ Midwifery awaiting registration</i>	<i>10</i>	<i>1</i>			<i>-10</i>	<i>-100.0%</i>	<i>-1</i>	<i>-100.0%</i>		
<i>Pre-registration Nurse/ Midwife Intern</i>	<i>1</i>	<i>0</i>	<i>15</i>	<i>15</i>	<i>+14</i>	<i>+1,027.7%</i>	<i>+15</i>	<i>+15,350.0%</i>	<i>+1</i>	<i>31</i>
Nursing/ Midwifery Student	11	1	15	15	+4	+37.6%	+14	+1,317.4%	+1	31
Nursing/ Midwifery other	8	6	7	7	-1	-9.2%	+1	+15.5%	+0	8
<b>Nursing &amp; Midwifery</b>	<b>370</b>	<b>377</b>	<b>395</b>	<b>401</b>	<b>+31</b>	<b>+8.5%</b>	<b>+24</b>	<b>+6.4%</b>	<b>+6</b>	<b>449</b>
Therapy Professions	48	51	55	54	+6	+12.4%	+3	+5.6%	-1	60
Social Care	8	7	7	7	-0	-4.5%	+1	+8.6%	-0	8
Social Workers	34	38	41	42	+8	+22.3%	+3	+8.6%	+1	44
Psychologists	31	35	35	37	+6	+19.5%	+3	+7.9%	+2	42
Pharmacy	1	0	1	1	-0	-20.0%	+1	+300.0%	+0	1
H&SC, Other	18	19	18	18	+0	+1.2%	-0	-2.5%	-0	21
<b>Health &amp; Social Care Professionals</b>	<b>140</b>	<b>150</b>	<b>158</b>	<b>159</b>	<b>+19</b>	<b>+13.8%</b>	<b>+10</b>	<b>+6.4%</b>	<b>+2</b>	<b>176</b>
Management (VIII & above)	3	5	5	5	+2	+72.2%	+0	+1.7%	+0	5
Administrative/ Supervisory (V to VII)	16	22	25	25	+9	+57.1%	+2	+10.0%	-0	25
Clerical (III & IV)	47	55	60	61	+14	+29.4%	+5	+9.3%	+1	65
<b>Management &amp; Administrative</b>	<b>65</b>	<b>83</b>	<b>90</b>	<b>90</b>	<b>+25</b>	<b>+37.9%</b>	<b>+8</b>	<b>+9.1%</b>	<b>+1</b>	<b>95</b>
Support	18	16	15	14	-3	-18.8%	-2	-10.6%	-1	17
Maintenance/ Technical	2	2	2	2	+0	+7.5%	+0	+3.1%	+0	2
<b>General Support</b>	<b>20</b>	<b>18</b>	<b>17</b>	<b>16</b>	<b>-3</b>	<b>-16.3%</b>	<b>-2</b>	<b>-9.1%</b>	<b>-1</b>	<b>19</b>
Health Care Assistants	33	31	30	30	-4	-10.7%	-1	-2.3%	-0	32
Care, other	92	88	89	90	-3	-2.8%	+2	+2.0%	+1	100
<b>Patient &amp; Client Care</b>	<b>125</b>	<b>118</b>	<b>119</b>	<b>119</b>	<b>-6</b>	<b>-4.9%</b>	<b>+1</b>	<b>+0.9%</b>	<b>+1</b>	<b>132</b>

## Mental Health Employment Report by Grade Group: MAY 2023

### CHO 8

MAY 2023	WTE DEC 2019	WTE DEC 2022	WTE APR 2023	WTE MAY 2023	WTE change since DEC 2019	% WTE change since Dec 2019	WTE change since DEC 2022	% WTE change since Dec 2022	WTE change since APR 2023	No. MAY 2023
<b>Total CHO 8</b>	<b>1098</b>	<b>1091</b>	<b>1141</b>	<b>1137</b>	<b>+39</b>	<b>+3.5%</b>	<b>+46</b>	<b>+4.2%</b>	<b>-5</b>	<b>1,248</b>
Consultants	35	36	37	36	+1	+2.8%	+0	+0.1%	-1	39
Registrars	26	29	27	26	+0	+1.0%	-3	-10.9%	-1	27
SHO/ Interns	36	29	33	33	-3	-8.6%	+4	+13.6%	+0	34
<b>Medical &amp; Dental</b>	<b>97</b>	<b>94</b>	<b>97</b>	<b>95</b>	<b>-2</b>	<b>-1.9%</b>	<b>+1</b>	<b>+0.9%</b>	<b>-2</b>	<b>100</b>
Nurse/ Midwife Manager	121	114	115	116	-5	-4.1%	+2	+1.6%	+0	120
Nurse/ Midwife Specialist & AN/MP	56	75	78	80	+23	+41.9%	+5	+6.8%	+1	86
Staff Nurse/ Staff Midwife	332	323	328	325	-6	-2.0%	+2	+0.6%	-3	349
<i>Nursing/ Midwifery awaiting registration</i>	2	8	2	1	-1	-50.0%	-7	-88.1%	-1	1
<i>Pre-registration Nurse/ Midwife Intern</i>	1	1	24	25	+24	+4,806.0%	+24	+4,806.0%	+0	50
Nursing/ Midwifery Student	3	9	26	26	+23	+921.2%	+17	+187.8%	-1	51
Nursing/ Midwifery other	4	3	3	3	-1	-26.8%	-0	-0.3%	+0	3
<b>Nursing &amp; Midwifery</b>	<b>515</b>	<b>523</b>	<b>551</b>	<b>549</b>	<b>+34</b>	<b>+6.6%</b>	<b>+25</b>	<b>+4.9%</b>	<b>-2</b>	<b>609</b>
Therapy Professions	44	36	36	37	-7	-15.4%	+2	+4.5%	+2	41
Social Care	7	6	6	5	-2	-26.6%	-1	-16.0%	-0	6
Social Workers	41	50	49	48	+7	+15.9%	-2	-4.0%	-1	55
Psychologists	39	36	37	37	-2	-4.8%	+1	+2.9%	+0	39
Pharmacy	1	2	2	3	+2	+156.0%	+1	+61.0%	+1	4
H&SC, Other	20	16	16	17	-4	-17.5%	+1	+4.1%	+1	20
<b>Health &amp; Social Care Professionals</b>	<b>154</b>	<b>146</b>	<b>144</b>	<b>147</b>	<b>-6</b>	<b>-4.0%</b>	<b>+1</b>	<b>+0.9%</b>	<b>+3</b>	<b>165</b>
Management (VIII & above)	3	3	3	3	+0	+2.0%	+0	+0.0%	+0	3
Administrative/ Supervisory (V to VII)	22	28	28	27	+5	+21.6%	-1	-3.4%	-0	29
Clerical (III & IV)	88	88	107	104	+16	+17.9%	+16	+18.7%	-3	115
<b>Management &amp; Administrative</b>	<b>114</b>	<b>119</b>	<b>138</b>	<b>134</b>	<b>+21</b>	<b>+18.2%</b>	<b>+15</b>	<b>+13.0%</b>	<b>-4</b>	<b>147</b>
Support	33	27	27	27	-6	-18.5%	-0	-1.7%	-1	29
Maintenance/ Technical	26	25	27	27	+1	+3.2%	+2	+9.3%	-0	28
<b>General Support</b>	<b>59</b>	<b>52</b>	<b>54</b>	<b>54</b>	<b>-5</b>	<b>-8.8%</b>	<b>+2</b>	<b>+3.6%</b>	<b>-1</b>	<b>57</b>
Health Care Assistants	157	152	153	153	-3	-2.2%	+2	+1.1%	+1	165
Care, other	4	5	4	4	+1	+17.5%	-0	-7.6%	-0	5
<b>Patient &amp; Client Care</b>	<b>160</b>	<b>156</b>	<b>157</b>	<b>157</b>	<b>-3</b>	<b>-1.8%</b>	<b>+1</b>	<b>+0.8%</b>	<b>+0</b>	<b>170</b>

## Mental Health Employment Report by Grade Group: MAY 2023

### CHO 9

MAY 2023	WTE DEC 2019	WTE DEC 2022	WTE APR 2023	WTE MAY 2023	WTE change since DEC 2019	% WTE change since Dec 2019	WTE change since DEC 2022	% WTE change since Dec 2022	WTE change since APR 2023	No. MAY 2023
<b>Total CHO 9</b>	<b>1272</b>	<b>1371</b>	<b>1347</b>	<b>1347</b>	<b>+75</b>	<b>+5.9%</b>	<b>-24</b>	<b>-1.7%</b>	<b>-0</b>	<b>1,481</b>
Consultants	50	55	55	56	+6	+11.2%	+0	+0.8%	+0	57
Registrars	31	57	58	57	+26	+84.9%	+0	+0.1%	-0	59
SHO/ Interns	53	36	34	36	-18	-33.0%	-0	-0.5%	+1	37
<b>Medical &amp; Dental</b>	<b>134</b>	<b>148</b>	<b>147</b>	<b>148</b>	<b>+14</b>	<b>+10.7%</b>	<b>+0</b>	<b>+0.2%</b>	<b>+1</b>	<b>153</b>
Nurse/ Midwife Manager	132	138	137	136	+4	+3.3%	-1	-1.0%	-1	144
Nurse/ Midwife Specialist & AN/MP	65	99	101	100	+35	+53.4%	+1	+1.2%	-1	103
Staff Nurse/ Staff Midwife	351	351	321	324	-27	-7.7%	-27	-7.6%	+3	351
<i>Nursing/ Midwifery awaiting registration</i>	11	14	3	3	-8	-72.2%	-11	-78.3%	+0	3
<i>Pre-registration Nurse/ Midwife Intern</i>	10	8	22	23	+13	+127.3%	+15	+187.5%	+1	46
Nursing/ Midwifery Student	21	22	25	26	+5	+24.3%	+4	+19.3%	+1	49
Nursing/ Midwifery other	11	9	7	6	-5	-43.8%	-3	-31.5%	-1	8
<b>Nursing &amp; Midwifery</b>	<b>581</b>	<b>619</b>	<b>591</b>	<b>593</b>	<b>+12</b>	<b>+2.1%</b>	<b>-26</b>	<b>-4.2%</b>	<b>+2</b>	<b>655</b>
Therapy Professions	55	60	58	56	+2	+2.8%	-4	-5.9%	-1	63
Social Care	1	1	1	1	+0	+11.1%	+0	+1.0%	+0	1
Social Workers	43	57	59	57	+14	+32.1%	+1	+1.5%	-1	63
Psychologists	46	56	57	57	+11	+24.9%	+1	+1.8%	+0	63
Pharmacy	8	7	8	8	-0	-1.6%	+1	+11.8%	+0	11
H&SC, Other	15	17	18	18	+3	+21.9%	+0	+1.7%	-0	19
<b>Health &amp; Social Care Professionals</b>	<b>167</b>	<b>198</b>	<b>200</b>	<b>197</b>	<b>+30</b>	<b>+17.9%</b>	<b>-1</b>	<b>-0.3%</b>	<b>-3</b>	<b>220</b>
Management (VIII & above)	5	5	6	6	+1	+20.2%	+1	+21.7%	+0	6
Administrative/ Supervisory (V to VII)	28	38	40	41	+13	+47.8%	+3	+7.4%	+1	44
Clerical (III & IV)	104	109	113	111	+8	+7.3%	+3	+2.7%	-1	127
<b>Management &amp; Administrative</b>	<b>137</b>	<b>152</b>	<b>159</b>	<b>159</b>	<b>+22</b>	<b>+16.1%</b>	<b>+7</b>	<b>+4.5%</b>	<b>+0</b>	<b>177</b>
Support	103	95	90	90	-14	-13.2%	-5	-5.5%	-0	105
Maintenance/ Technical	11	11	10	10	-1	-8.4%	-1	-8.4%	+0	10
<b>General Support</b>	<b>114</b>	<b>106</b>	<b>100</b>	<b>100</b>	<b>-15</b>	<b>-12.8%</b>	<b>-6</b>	<b>-5.8%</b>	<b>-0</b>	<b>115</b>
Health Care Assistants	126	137	138	138	+12	+9.7%	+2	+1.1%	+0	147
Care, other	13	12	12	12	-1	-4.9%	-0	-1.6%	-0	14
<b>Patient &amp; Client Care</b>	<b>139</b>	<b>149</b>	<b>150</b>	<b>150</b>	<b>+12</b>	<b>+8.4%</b>	<b>+1</b>	<b>+0.9%</b>	<b>-0</b>	<b>161</b>



## Mental Health Employment Report by Grade Group: MAY 2023

### other Community Services

MAY 2023	WTE DEC 2019	WTE DEC 2022	WTE APR 2023	WTE MAY 2023	WTE change since DEC 2019	% WTE change since Dec 2019	WTE change since DEC 2022	% WTE change since Dec 2022	WTE change since APR 2023	No. MAY 2023
<b>Total other Community Services</b>	<b>438</b>	<b>511</b>	<b>509</b>	<b>524</b>	<b>+87</b>	<b>+19.8%</b>	<b>+13</b>	<b>+2.6%</b>	<b>+16</b>	<b>552</b>
Consultants	16	15	14	16	+0	+1.1%	+1	+7.1%	+1	18
Registrars	13	19	14	12	-1	-4.0%	-6	-33.7%	-1	14
SHO/ Interns			2	2	+2		+2		+0	2
<b>Medical &amp; Dental</b>	<b>29</b>	<b>34</b>	<b>30</b>	<b>30</b>	<b>+2</b>	<b>+5.8%</b>	<b>-3</b>	<b>-9.8%</b>	<b>+0</b>	<b>34</b>
Nurse/ Midwife Manager	62	81	82	81	+19	+30.7%	+1	+0.9%	-1	85
Nurse/ Midwife Specialist & AN/MP	8	11	12	11	+2	+30.2%	-0	-2.4%	-1	12
Staff Nurse/ Staff Midwife	169	151	146	153	-16	-9.3%	+2	+1.4%	+7	156
Pre-registration Nurse/ Midwife Intern			1	1	+1		+1		+0	1
Nursing/ Midwifery Student			1	1	+1		+1		+0	1
Nursing/ Midwifery other	1	2	1	2	+1	+100.0%	+0	+1.5%	+1	2
<b>Nursing &amp; Midwifery</b>	<b>240</b>	<b>245</b>	<b>243</b>	<b>248</b>	<b>+8</b>	<b>+3.3%</b>	<b>+4</b>	<b>+1.5%</b>	<b>+6</b>	<b>256</b>
Therapy Professions	11	10	10	10	-1	-12.8%	-0	-1.4%	-0	10
Social Care	2	1	1	1	-1	-49.0%	+0	+1.0%	+0	1
Social Workers	15	11	12	12	-3	-17.0%	+2	+14.6%	+0	13
Psychologists	6	5	4	4	-2	-33.3%	-1	-25.7%	-0	4
Pharmacy		2	3	3	+3		+1	+51.5%	+0	3
<b>Health &amp; Social Care Professionals</b>	<b>34</b>	<b>29</b>	<b>30</b>	<b>30</b>	<b>-4</b>	<b>-11.6%</b>	<b>+1</b>	<b>+3.8%</b>	<b>-0</b>	<b>31</b>
Management (VIII & above)	27	33	34	35	+8	+31.3%	+3	+8.8%	+2	36
Administrative/ Supervisory (V to VII)	31	46	59	58	+27	+86.0%	+12	+26.0%	-1	60
Clerical (III & IV)	25	28	23	24	-1	-4.6%	-4	-13.7%	+1	26
<b>Management &amp; Administrative</b>	<b>83</b>	<b>106</b>	<b>116</b>	<b>117</b>	<b>+34</b>	<b>+40.9%</b>	<b>+11</b>	<b>+10.4%</b>	<b>+1</b>	<b>122</b>
Support	12	25	24	26	+14	+116.5%	+2	+6.9%	+2	28
Maintenance/ Technical	2	8	6	6	+4	+200.0%	-2	-24.7%	+0	6
<b>General Support</b>	<b>14</b>	<b>33</b>	<b>30</b>	<b>32</b>	<b>+18</b>	<b>+128.2%</b>	<b>-0</b>	<b>-0.8%</b>	<b>+2</b>	<b>34</b>
Health Care Assistants	37	64	55	61	+24	+65.8%	-3	-5.4%	+6	70
Care, other	1	0	5	5	+5	+900.0%	+5	+963.8%	+0	5
<b>Patient &amp; Client Care</b>	<b>37</b>	<b>65</b>	<b>60</b>	<b>66</b>	<b>+29</b>	<b>+77.0%</b>	<b>+1</b>	<b>+1.6%</b>	<b>+6</b>	<b>75</b>

## Mental Health Employment Report by Grade Group: MAY 2023

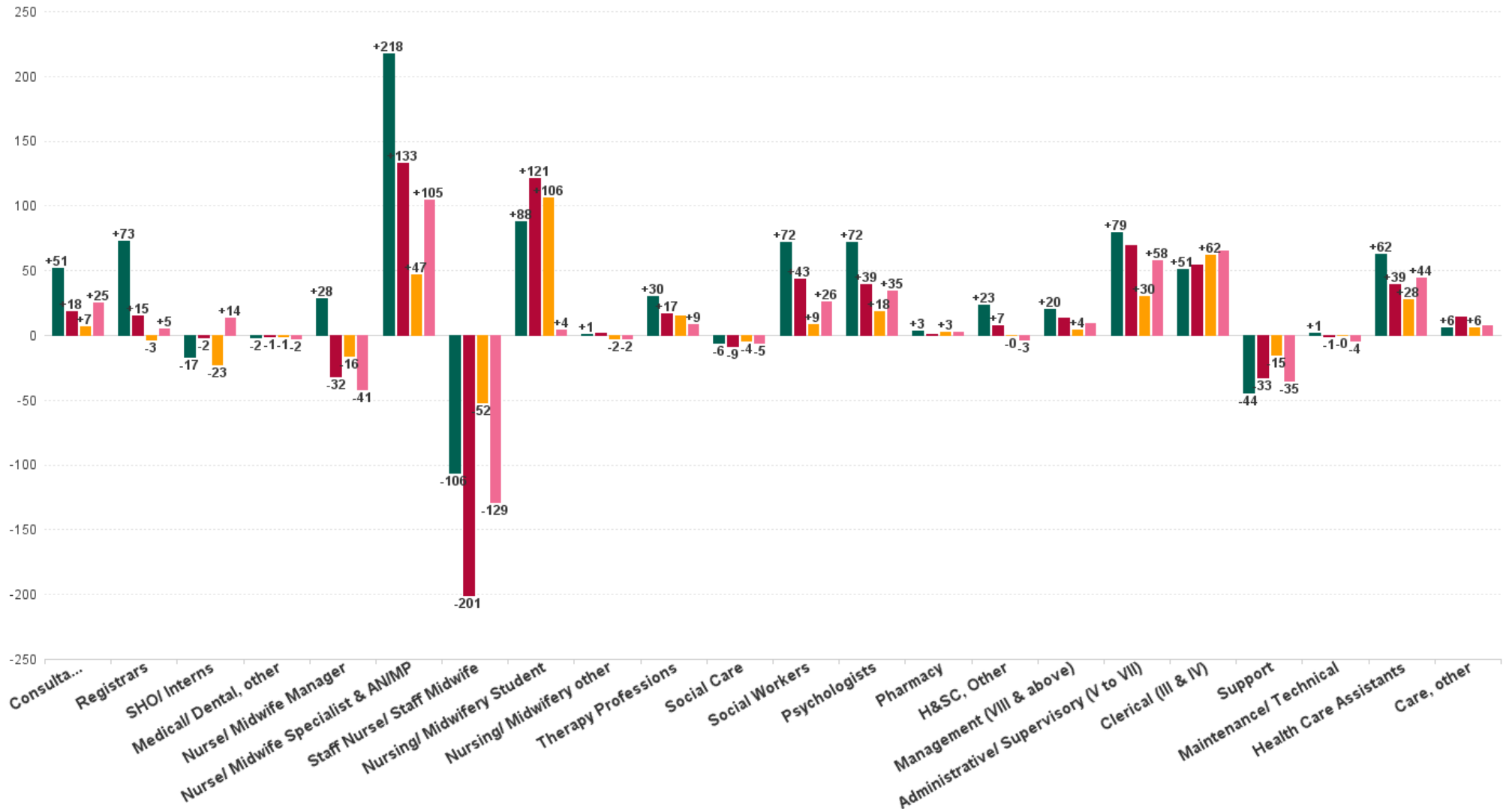
MAY 2023	WTE DEC 2019	WTE DEC 2022	WTE APR 2023	WTE MAY 2023	WTE change since DEC 2019	% WTE change since Dec 2019	WTE change since DEC 2022	% WTE change since Dec 2022	WTE change since APR 2023	No. MAY 2023
<b>Overall</b>	<b>9,967</b>	<b>10,453</b>	<b>10,640</b>	<b>10,672</b>	<b>+705</b>	<b>+7.1%</b>	<b>+218</b>	<b>+2.1%</b>	<b>+32</b>	<b>11,719</b>
Consultant Medicine	1	1	1	1	+0	+0.0%	+0	+0.0%	+0	1
Consultant Psychiatry	352	396	402	403	+51	+14.6%	+7	+1.8%	+1	436
<b>Consultants</b>	<b>353</b>	<b>397</b>	<b>403</b>	<b>404</b>	<b>+51</b>	<b>+14.6%</b>	<b>+7</b>	<b>+1.8%</b>	<b>+1</b>	<b>437</b>
Registrar	169	217	224	223	+54	+31.6%	+6	+2.6%	-1	233
Senior Registrar	97	126	114	117	+20	+20.1%	-9	-7.2%	+3	123
Specialist Registrar	3	2	2	2	-1	-20.0%	+0	+0.5%	+0	2
<b>Registrars</b>	<b>269</b>	<b>345</b>	<b>339</b>	<b>341</b>	<b>+73</b>	<b>+27.0%</b>	<b>-3</b>	<b>-1.0%</b>	<b>+2</b>	<b>358</b>
Interns	8	5	5	5	-3	-37.5%	+0	+1.6%	+0	5
Senior House Officer	253	262	235	239	-14	-5.4%	-23	-8.7%	+5	248
<b>SHO/ Interns</b>	<b>261</b>	<b>267</b>	<b>240</b>	<b>244</b>	<b>-17</b>	<b>-6.4%</b>	<b>-23</b>	<b>-8.5%</b>	<b>+5</b>	<b>253</b>
Other Medical	5	4	3	3	-2	-40.6%	-1	-24.0%	+0	6
<b>Medical/ Dental, other</b>	<b>5</b>	<b>4</b>	<b>3</b>	<b>3</b>	<b>-2</b>	<b>-40.6%</b>	<b>-1</b>	<b>-24.0%</b>	<b>+0</b>	<b>6</b>
<b>Medical &amp; Dental</b>	<b>888</b>	<b>1,013</b>	<b>984</b>	<b>993</b>	<b>+105</b>	<b>+11.9%</b>	<b>-20</b>	<b>-2.0%</b>	<b>+8</b>	<b>1,054</b>
Clinical Nurse/ Midwife Manager	1,008	1,036	1,017	1,020	+13	+1.3%	-15	-1.5%	+3	1,074
Director Nursing/Midwifery, Assistant	165	176	178	176	+12	+7.0%	+0	+0.1%	-2	181
Director of Nursing/Midwifery	29	34	32	33	+4	+13.3%	-1	-2.9%	+1	33
<b>Nurse/ Midwife Manager</b>	<b>1,201</b>	<b>1,245</b>	<b>1,227</b>	<b>1,229</b>	<b>+28</b>	<b>+2.4%</b>	<b>-16</b>	<b>-1.3%</b>	<b>+2</b>	<b>1,288</b>
Advanced Nurse/ Midwife Practitioner	30	68	71	73	+43	+144.5%	+4	+6.5%	+2	77
Clinical Nurse/ Midwife Specialist	430	563	599	605	+175	+40.6%	+43	+7.6%	+7	641
<b>Nurse/ Midwife Specialist &amp; AN/MP</b>	<b>460</b>	<b>631</b>	<b>669</b>	<b>678</b>	<b>+218</b>	<b>+47.3%</b>	<b>+47</b>	<b>+7.5%</b>	<b>+8</b>	<b>718</b>
Staff Nurse [Intellectual Disability]	5	7	6	11	+6	+132.0%	+4	+58.0%	+5	11
Staff Nurse [Psychiatric]	2,890	2,835	2,808	2,774	-116	-4.0%	-61	-2.1%	-34	3,002
Staff Nurses [General/ Children's]	108	106	104	111	+3	+3.2%	+5	+4.7%	+7	121
<b>Staff Nurse/ Staff Midwife</b>	<b>3,002</b>	<b>2,948</b>	<b>2,918</b>	<b>2,896</b>	<b>-106</b>	<b>-3.5%</b>	<b>-52</b>	<b>-1.8%</b>	<b>-22</b>	<b>3,134</b>
Nursing/ Midwifery awaiting registration	57	39	6	6	-51	-90.3%	-33	-85.8%	-0	6
Post-registration Nurse/ Midwife Student	1				-1	-100.0%				
Pre-registration Nurse/ Midwife Intern	25	26	158	166	+141	+561.3%	+139	+526.8%	+8	332
<b>Nursing/ Midwifery Student</b>	<b>83</b>	<b>65</b>	<b>164</b>	<b>171</b>	<b>+88</b>	<b>+106.2%</b>	<b>+106</b>	<b>+162.5%</b>	<b>+7</b>	<b>338</b>
Nursing Education/Clinical	32	34	32	32	+1	+2.3%	-2	-6.2%	+1	36
<b>Nursing/ Midwifery other</b>	<b>32</b>	<b>34</b>	<b>32</b>	<b>32</b>	<b>+1</b>	<b>+2.3%</b>	<b>-2</b>	<b>-6.2%</b>	<b>+1</b>	<b>36</b>
<b>Nursing &amp; Midwifery</b>	<b>4,778</b>	<b>4,924</b>	<b>5,010</b>	<b>5,007</b>	<b>+229</b>	<b>+4.8%</b>	<b>+83</b>	<b>+1.7%</b>	<b>-3</b>	<b>5,514</b>
Dietitians	19	18	20	20	+1	+4.9%	+2	+11.0%	+0	22
Occupational Therapists	337	346	355	355	+18	+5.5%	+9	+2.6%	-0	392
Physiotherapists	2	3	2	2	-0	-15.2%	-1	-35.7%	+0	3
Podiatrists & Chiropodists	1	1	1	1	+0	+1.4%	+0	+5.7%	+0	1
Speech & Language Therapists	62	68	72	73	+11	+18.6%	+6	+8.3%	+1	84
<b>Therapy Professions</b>	<b>420</b>	<b>435</b>	<b>449</b>	<b>451</b>	<b>+30</b>	<b>+7.3%</b>	<b>+15</b>	<b>+3.5%</b>	<b>+1</b>	<b>502</b>
Social Care	74	72	70	68	-6	-8.1%	-4	-6.0%	-2	78
<b>Social Care</b>	<b>74</b>	<b>72</b>	<b>70</b>	<b>68</b>	<b>-6</b>	<b>-8.1%</b>	<b>-4</b>	<b>-6.0%</b>	<b>-2</b>	<b>78</b>
Social Workers	350	414	423	422	+72	+20.5%	+9	+2.1%	-1	466
<b>Social Workers</b>	<b>350</b>	<b>414</b>	<b>423</b>	<b>422</b>	<b>+72</b>	<b>+20.5%</b>	<b>+9</b>	<b>+2.1%</b>	<b>-1</b>	<b>466</b>
Psychologists	394	448	461	466	+72	+18.1%	+18	+4.0%	+5	510
<b>Psychologists</b>	<b>394</b>	<b>448</b>	<b>461</b>	<b>466</b>	<b>+72</b>	<b>+18.1%</b>	<b>+18</b>	<b>+4.0%</b>	<b>+5</b>	<b>510</b>
Pharmacists	16	16	16	17	+1	+7.7%	+2	+11.4%	+1	22
Pharmacy Technicians	2	4	5	5	+2	+84.2%	+1	+22.3%	+0	7
<b>Pharmacy</b>	<b>19</b>	<b>19</b>	<b>21</b>	<b>22</b>	<b>+3</b>	<b>+17.9%</b>	<b>+3</b>	<b>+13.5%</b>	<b>+1</b>	<b>29</b>
Counsellor Therapists	95	124	123	122	+28	+29.0%	-2	-1.5%	-1	135
HSCP Trainees/Students				1	+1		+1		+1	1
Other Health & Social Care	11	3	3	3	-8	-74.0%	-0	-5.4%	+0	7
Play Therapists/ Specialists	1	3	3	4	+3	+179.5%	+1	+31.2%	+1	5
<b>H&amp;SC, Other</b>	<b>107</b>	<b>130</b>	<b>129</b>	<b>130</b>	<b>+23</b>	<b>+21.6%</b>	<b>-0</b>	<b>-0.1%</b>	<b>+1</b>	<b>148</b>
<b>Health &amp; Social Care Professionals</b>	<b>1,364</b>	<b>1,518</b>	<b>1,554</b>	<b>1,559</b>	<b>+194</b>	<b>+14.2%</b>	<b>+40</b>	<b>+2.7%</b>	<b>+5</b>	<b>1,733</b>
Executive Management	11	14	17	17	+6	+52.8%	+3	+20.9%	-0	17
Senior Management (VIII & GM)	47	61	60	62	+15	+31.0%	+1	+2.2%	+2	63



MAY 2023	WTE DEC 2019	WTE DEC 2022	WTE APR 2023	WTE MAY 2023	WTE change since DEC 2019	% WTE change since Dec 2019	WTE change since DEC 2022	% WTE change since Dec 2022	WTE change since APR 2023	No. MAY 2023
<b>Overall</b>	<b>9,967</b>	<b>10,453</b>	<b>10,640</b>	<b>10,672</b>	<b>+705</b>	<b>+7.1%</b>	<b>+218</b>	<b>+2.1%</b>	<b>+32</b>	<b>11,719</b>
<b>Management (VIII &amp; above)</b>	<b>58</b>	<b>75</b>	<b>77</b>	<b>79</b>	<b>+20</b>	<b>+35.1%</b>	<b>+4</b>	<b>+5.7%</b>	<b>+1</b>	<b>80</b>
Middle Management (V-VII)	236	285	309	315	+78	+33.1%	+29	+10.2%	+6	331
Other Administrative	2	2	3	3	+1	+65.6%	+1	+65.6%	+0	3
<b>Administrative/ Supervisory (V to VII)</b>	<b>238</b>	<b>287</b>	<b>312</b>	<b>317</b>	<b>+79</b>	<b>+33.4%</b>	<b>+30</b>	<b>+10.5%</b>	<b>+6</b>	<b>334</b>
General Administrative (III & IV)	717	707	771	768	+51	+7.1%	+62	+8.7%	-3	853
<b>Clerical (III &amp; IV)</b>	<b>717</b>	<b>707</b>	<b>771</b>	<b>768</b>	<b>+51</b>	<b>+7.1%</b>	<b>+62</b>	<b>+8.7%</b>	<b>-3</b>	<b>853</b>
<b>Management &amp; Administrative</b>	<b>1,014</b>	<b>1,068</b>	<b>1,160</b>	<b>1,164</b>	<b>+151</b>	<b>+14.9%</b>	<b>+96</b>	<b>+9.0%</b>	<b>+4</b>	<b>1,267</b>
Catering	66	68	67	66	+0	+0.5%	-1	-2.2%	-1	72
Household Services	424	397	396	391	-34	-7.9%	-7	-1.7%	-5	450
Other Support	47	40	36	34	-13	-26.8%	-6	-15.0%	-2	40
Portering	48	51	50	50	+2	+4.1%	-0	-0.9%	+0	53
<b>Support</b>	<b>585</b>	<b>556</b>	<b>549</b>	<b>541</b>	<b>-44</b>	<b>-7.5%</b>	<b>-15</b>	<b>-2.6%</b>	<b>-8</b>	<b>615</b>
Maintenance	127	129	127	128	+1	+1.1%	-0	-0.3%	+2	132
<b>Maintenance/ Technical</b>	<b>127</b>	<b>129</b>	<b>127</b>	<b>128</b>	<b>+1</b>	<b>+1.1%</b>	<b>-0</b>	<b>-0.3%</b>	<b>+2</b>	<b>132</b>
<b>General Support</b>	<b>712</b>	<b>685</b>	<b>676</b>	<b>670</b>	<b>-42</b>	<b>-6.0%</b>	<b>-15</b>	<b>-2.2%</b>	<b>-6</b>	<b>747</b>
Attendant/ Aide	605	423	408	414	-191	-31.6%	-9	-2.1%	+6	456
Health Care Assistant/ Care Assistant	382	588	606	619	+237	+62.0%	+30	+5.1%	+13	654
Health & Social Care Assistants	9	19	22	26	+17	+187.1%	+7	+34.1%	+4	32
<b>Health Care Assistants</b>	<b>996</b>	<b>1,030</b>	<b>1,036</b>	<b>1,058</b>	<b>+62</b>	<b>+6.3%</b>	<b>+28</b>	<b>+2.7%</b>	<b>+22</b>	<b>1,142</b>
Home Care Services	16	23	19	20	+4	+25.8%	-3	-14.1%	+1	29
Other Care Grades	23	19	31	32	+9	+41.0%	+13	+65.4%	+1	36
Pastoral Care	13	9	10	10	-2	-18.2%	+1	+9.5%	+0	15
Workshop Services	165	164	160	160	-5	-3.0%	-4	-2.6%	+0	182
<b>Care, other</b>	<b>216</b>	<b>216</b>	<b>220</b>	<b>222</b>	<b>+6</b>	<b>+2.8%</b>	<b>+6</b>	<b>+2.7%</b>	<b>+1</b>	<b>262</b>
<b>Patient &amp; Client Care</b>	<b>1,212</b>	<b>1,246</b>	<b>1,256</b>	<b>1,280</b>	<b>+68</b>	<b>+5.6%</b>	<b>+34</b>	<b>+2.7%</b>	<b>+24</b>	<b>1,404</b>

## WTE Change by Staff Category

■ WTE change since DEC 2019 ■ WTE change since DEC 2021 ■ WTE change since DEC 2022 ■ WTE change since MAY 2022



## Mental Health Employment Report by WTE, Headcount, Gender, Full-Time / Part-Time etc. MAY 2023

MAY 2023	WTE MAY 2023	No. MAY 2023	WTE : No	% Male	% Female	Male WTE : No.	Female WTE : No	Perm Count %	Perm Count Male %	Perm Count Female %	Fulltime Count %	Part time Count %	FT Count Male %	FT Count Female %
<b>Total</b>	<b>10,672</b>	<b>11,719</b>	<b>1:0.9</b>	<b>26.60%</b>	<b>73.40%</b>	<b>1:0.9</b>	<b>1:0.9</b>	<b>83.64%</b>	<b>21.60%</b>	<b>62.04%</b>	<b>85.71%</b>	<b>14.29%</b>	<b>93.52%</b>	<b>82.88%</b>
Consultants	403.96	437	1:0.9	40.96%	59.04%	1:1	1:0.9	67.28%	28.15%	39.13%	87.87%	12.13%	93.30%	84.11%
Registrars	341.44	358	1:1	41.34%	58.66%	1:1	1:0.9	2.51%	0.84%	1.68%	94.13%	5.87%	97.30%	91.90%
SHO/ Interns	244.47	253	1:1	38.74%	61.26%	1:1	1:1	0.40%	0.40%		99.21%	0.79%	100.00%	98.71%
Medical/ Dental, other	2.97	6	1:0.5	50.00%	50.00%	1:0.4	1:0.5	50.00%	16.67%	33.33%	33.33%	66.67%	33.33%	33.33%
<b>Medical &amp; Dental</b>	<b>993</b>	<b>1,054</b>	<b>1:0.9</b>	<b>40.61%</b>	<b>59.39%</b>	<b>1:1</b>	<b>1:0.9</b>	<b>29.13%</b>	<b>12.14%</b>	<b>16.98%</b>	<b>92.41%</b>	<b>7.59%</b>	<b>95.79%</b>	<b>90.10%</b>
Nurse/ Midwife Manager	1,229.43	1,288	1:1	36.72%	63.28%	1:1	1:0.9	98.76%	36.10%	62.66%	94.88%	5.12%	98.52%	92.76%
Nurse/ Midwife Specialist & AN/MP	677.91	718	1:0.9	18.80%	81.20%	1:1	1:0.9	99.58%	18.80%	80.78%	93.31%	6.69%	97.78%	92.28%
Staff Nurse/ Staff Midwife	2,896.14	3,134	1:0.9	24.86%	75.14%	1:0.9	1:0.9	90.87%	21.86%	69.02%	87.49%	12.51%	91.40%	86.20%
Nursing/ Midwifery Student	171.03	338	1:0.5	17.75%	82.25%	1:0.5	1:0.5	1.48%	0.30%	1.18%	100.00%		100.00%	100.00%
Nursing/ Midwifery other	32.26	36	1:0.9	11.11%	88.89%	1:1	1:0.9	100.00%	11.11%	88.89%	86.11%	13.89%	100.00%	84.38%
<b>Nursing &amp; Midwifery</b>	<b>5,007</b>	<b>5,514</b>	<b>1:0.9</b>	<b>26.31%</b>	<b>73.69%</b>	<b>1:0.9</b>	<b>1:0.9</b>	<b>88.43%</b>	<b>23.39%</b>	<b>65.03%</b>	<b>90.73%</b>	<b>9.27%</b>	<b>94.69%</b>	<b>89.32%</b>
Therapy Professions	450.84	502	1:0.9	9.96%	90.04%	1:1	1:0.9	93.03%	9.56%	83.47%	84.86%	15.14%	90.00%	84.29%
Social Care	67.58	78	1:0.9	19.23%	80.77%	1:1	1:0.8	91.03%	15.38%	75.64%	67.95%	32.05%	80.00%	65.08%
Social Workers	422.26	466	1:0.9	16.31%	83.69%	1:1	1:0.9	94.21%	15.45%	78.76%	82.83%	17.17%	94.74%	80.51%
Psychologists	465.98	510	1:0.9	20.78%	79.22%	1:1	1:0.9	75.29%	16.08%	59.22%	82.55%	17.45%	97.17%	78.71%
Pharmacy	21.82	29	1:0.8	17.24%	82.76%	1:0.9	1:0.7	93.10%	13.79%	79.31%	51.72%	48.28%	80.00%	45.83%
H&SC, Other	130.2	148	1:0.9	20.95%	79.05%	1:0.9	1:0.9	91.89%	18.92%	72.97%	72.30%	27.70%	87.10%	68.38%
<b>Health &amp; Social Care Professionals</b>	<b>1,559</b>	<b>1,733</b>	<b>1:0.9</b>	<b>16.33%</b>	<b>83.67%</b>	<b>1:1</b>	<b>1:0.9</b>	<b>87.94%</b>	<b>14.20%</b>	<b>73.74%</b>	<b>81.25%</b>	<b>18.75%</b>	<b>92.93%</b>	<b>78.97%</b>
Management (VIII & above)	78.83	80	1:1	30.00%	70.00%	1:1	1:1	96.25%	28.75%	67.50%	97.50%	2.50%	95.83%	98.21%
Administrative/ Supervisory (V to VII)	317.2	334	1:0.9	19.46%	80.54%	1:1	1:0.9	94.61%	18.26%	76.35%	89.22%	10.78%	100.00%	86.62%
Clerical (III & IV)	768.17	853	1:0.9	8.91%	91.09%	1:1	1:0.9	85.81%	7.74%	78.08%	77.73%	22.27%	92.11%	76.32%
<b>Management &amp; Administrative</b>	<b>1,164</b>	<b>1,267</b>	<b>1:0.9</b>	<b>13.02%</b>	<b>86.98%</b>	<b>1:1</b>	<b>1:0.9</b>	<b>88.79%</b>	<b>11.84%</b>	<b>76.95%</b>	<b>82.00%</b>	<b>18.00%</b>	<b>95.76%</b>	<b>79.95%</b>
Support	541.17	615	1:0.9	30.73%	69.27%	1:0.9	1:0.9	93.33%	28.62%	64.72%	63.90%	36.10%	88.36%	53.05%
Maintenance/ Technical	128.36	132	1:1	99.24%	0.76%	1:1	1:1	96.21%	95.45%	0.76%	96.97%	3.03%	96.95%	100.00%
<b>General Support</b>	<b>670</b>	<b>747</b>	<b>1:0.9</b>	<b>42.84%</b>	<b>57.16%</b>	<b>1:1</b>	<b>1:0.9</b>	<b>93.84%</b>	<b>40.43%</b>	<b>53.41%</b>	<b>69.75%</b>	<b>30.25%</b>	<b>91.88%</b>	<b>53.16%</b>
Health Care Assistants	1,058.01	1,142	1:0.9	31.26%	68.74%	1:1	1:0.9	91.33%	28.11%	63.22%	80.39%	19.61%	91.60%	75.29%
Care, other	221.89	262	1:0.8	43.13%	56.87%	1:0.9	1:0.8	86.26%	35.88%	50.38%	69.08%	30.92%	78.76%	61.74%
<b>Patient &amp; Client Care</b>	<b>1,280</b>	<b>1,404</b>	<b>1:0.9</b>	<b>33.48%</b>	<b>66.52%</b>	<b>1:0.9</b>	<b>1:0.9</b>	<b>90.38%</b>	<b>29.56%</b>	<b>60.83%</b>	<b>78.28%</b>	<b>21.72%</b>	<b>88.51%</b>	<b>73.13%</b>



## Mental Health Employment Report by WTE, Headcount, Gender, Full-Time / Part-Time etc. MAY 2023

MAY 2023	WTE MAY 2023	No. MAY 2023	WTE : No	% Male	% Female	Male WTE : No.	Female WTE : No	Perm Count %	Number Male %	Number Female %	Fulltime Count %	Part time Count %	FT Count Male %	FT Count Female %
<b>Total</b>	<b>10,672</b>	<b>11,719</b>	<b>1:0.9</b>	<b>26.60%</b>	<b>73.40%</b>	<b>1:0.9</b>	<b>1:0.9</b>	<b>83.64%</b>	<b>21.60%</b>	<b>62.04%</b>	<b>85.71%</b>	<b>14.29%</b>	<b>93.52%</b>	<b>82.88%</b>
CHO 1	1,055	1,147	1:0.9	26.07%	73.93%	1:1	1:0.9	88.93%	22.23%	66.70%	87.53%	12.47%	96.32%	84.43%
CHO 2	1,347	1,463	1:0.9	27.89%	72.11%	1:1	1:0.9	85.65%	22.90%	62.75%	85.92%	14.08%	91.91%	83.60%
CHO 3	827	909	1:0.9	21.23%	78.77%	1:0.9	1:0.9	81.08%	17.16%	63.92%	86.47%	13.53%	91.71%	85.06%
CHO 4	1,574	1,756	1:0.9	25.74%	74.26%	1:0.9	1:0.9	70.62%	16.86%	53.76%	82.97%	17.03%	92.04%	79.83%
CHO 5	1,290	1,425	1:0.9	25.19%	74.81%	1:0.9	1:0.9	88.42%	21.54%	66.88%	81.40%	18.60%	90.81%	78.24%
CHO 6	662	736	1:0.9	28.67%	71.33%	1:0.9	1:0.9	87.23%	24.59%	62.64%	82.88%	17.12%	91.94%	79.24%
CHO 7	910	1,002	1:0.9	22.46%	77.54%	1:0.9	1:0.9	82.04%	17.76%	64.27%	88.82%	11.18%	94.67%	87.13%
CHO 8	1,137	1,248	1:0.9	24.68%	75.32%	1:1	1:0.9	84.94%	20.19%	64.74%	86.86%	13.14%	96.43%	83.72%
CHO 9	1,347	1,481	1:0.9	27.62%	72.38%	1:1	1:0.9	85.75%	23.43%	62.32%	86.02%	13.98%	96.09%	82.18%
other Community Services	524	552	1:0.9	45.83%	54.17%	1:1	1:0.9	90.22%	40.58%	49.64%	94.57%	5.43%	93.28%	95.65%



## Previous Month Summary

	% WTE change since APR 2023	WTE change since DEC 2022	CHO 1	CHO 2	CHO 3	CHO 4	CHO 5	CHO 6	CHO 7	CHO 8	CHO 9	other Communi ty Services
<b>Total</b>	<b>+0.3%</b>	<b>+218.5</b>	<b>+31.6</b>	<b>+17.8</b>	<b>+12.3</b>	<b>+12.1</b>	<b>+65.6</b>	<b>+12.2</b>	<b>+31.5</b>	<b>+46.2</b>	<b>-23.9</b>	<b>+13.2</b>
Consultants	+0.3%	+7.0	+2.2	+2.3	+0.2	-2.5	-0.6	+1.4	+2.4	+0.0	+0.4	+1.0
Registrars	+0.7%	-3.3	+3.6	-4.1	+12.7	-7.7	+8.1	-2.2	-4.4	-3.2	+0.1	-6.3
SHO/ Interns	+2.0%	-22.6	+1.1	+1.1	-19.4	+2.1	-4.4	-1.5	-7.4	+4.0	-0.2	+2.0
Medical/ Dental, other	+2.8%	-0.9		-1.0		+0.0	+0.1					
<b>Medical &amp; Dental</b>	<b>+0.9%</b>	<b>-19.9</b>	<b>+6.9</b>	<b>-1.7</b>	<b>-6.5</b>	<b>-8.1</b>	<b>+3.1</b>	<b>-2.2</b>	<b>-9.3</b>	<b>+0.8</b>	<b>+0.3</b>	<b>-3.3</b>
Nurse/ Midwife Manager	+0.2%	-16.0	+4.5	+0.8	-5.2	-10.3	-10.0	-2.0	+5.1	+1.8	-1.4	+0.7
Nurse/ Midwife Specialist & AN/MP	+1.3%	+47.1	+1.2	+8.1	+0.3	+5.3	+15.0	+5.3	+6.2	+5.1	+1.1	-0.3
Staff Nurse/ Staff Midwife	-0.7%	-51.7	-5.3	-7.2	-3.8	-9.4	-5.8	+4.7	-2.3	+1.9	-26.8	+2.2
Nursing/ Midwifery Student	+4.4%	+105.9	+10.2	+11.8	+12.7	+17.5	+12.4	+5.0	+14.4	+16.7	+4.2	+1.0
Nursing/ Midwifery other	+2.4%	-2.1	-0.9	+0.7	+0.0		+0.9	-0.8	+0.9	-0.0	-2.9	+0.0
<b>Nursing &amp; Midwifery</b>	<b>-0.1%</b>	<b>+83.3</b>	<b>+9.7</b>	<b>+14.2</b>	<b>+4.0</b>	<b>+3.2</b>	<b>+12.4</b>	<b>+12.3</b>	<b>+24.2</b>	<b>+25.4</b>	<b>-25.7</b>	<b>+3.6</b>
Therapy Professions	+0.3%	+15.4	+3.5	+3.0	+3.2	+6.4	+2.8	-4.2	+2.9	+1.6	-3.5	-0.1
Social Care	-3.4%	-4.3	-0.7	-1.2	-0.0	-0.5	+0.8	-2.3	+0.6	-1.0	+0.0	+0.0
Social Workers	-0.3%	+8.7	+0.6	-0.6	-0.8	+0.2	+2.4	+3.1	+3.3	-2.0	+0.9	+1.6
Psychologists	+1.1%	+18.1	+6.5	+4.7	-1.9	-1.0	+7.6	-1.3	+2.7	+1.1	+1.0	-1.4
Pharmacy	+4.7%	+2.6	+0.0	-0.0	+0.0	-0.8			+0.6	+1.0	+0.8	+1.0



H&SC, Other	+0.9%	-0.1	-0.1	+0.0	+0.6	-0.6	-0.6	-0.0	-0.5	+0.7	+0.3	
<b>Health &amp; Social Care Professionals</b>	<b>+0.3%</b>	<b>+40.4</b>	<b>+9.7</b>	<b>+5.9</b>	<b>+1.1</b>	<b>+3.9</b>	<b>+13.0</b>	<b>-4.7</b>	<b>+9.6</b>	<b>+1.3</b>	<b>-0.6</b>	<b>+1.1</b>
Management (VIII & above)	+1.8%	+4.2	-1.0	-0.0	+0.0	+0.9	+0.3	+0.0	+0.1	+0.0	+1.1	+2.9
Administrative/ Supervisory (V to VII)	+1.8%	+30.2	+4.3	+1.3	+1.8	+3.4	+6.3	-3.0	+2.3	-1.0	+2.8	+12.0
Clerical (III & IV)	-0.4%	+61.5	+3.7	+6.8	+8.2	+4.7	+12.8	+4.6	+5.2	+16.4	+2.9	-3.8
<b>Management &amp; Administrative</b>	<b>+0.4%</b>	<b>+95.9</b>	<b>+7.1</b>	<b>+8.0</b>	<b>+10.0</b>	<b>+9.0</b>	<b>+19.4</b>	<b>+1.7</b>	<b>+7.5</b>	<b>+15.5</b>	<b>+6.8</b>	<b>+11.0</b>
Support	-1.4%	-14.6	+2.4	-3.0	+0.6	-10.7	+2.5	-0.6	-1.7	-0.5	-5.2	+1.7
Maintenance/ Technical	+1.2%	-0.4	-0.7	+0.0	+0.1	+0.0	-0.3	+1.0	+0.1	+2.3	-0.9	-2.0
<b>General Support</b>	<b>-0.9%</b>	<b>-15.0</b>	<b>+1.7</b>	<b>-3.0</b>	<b>+0.6</b>	<b>-10.7</b>	<b>+2.2</b>	<b>+0.4</b>	<b>-1.6</b>	<b>+1.9</b>	<b>-6.1</b>	<b>-0.3</b>
Health Care Assistants	+2.2%	+27.9	-1.2	-2.5	+2.2	+14.2	+11.6	+4.6	-0.7	+1.6	+1.5	-3.5
Care, other	+0.7%	+5.9	-2.3	-3.2	+0.9	+0.7	+3.9	+0.1	+1.8	-0.3	-0.2	+4.5
<b>Patient &amp; Client Care</b>	<b>+1.9%</b>	<b>+33.8</b>	<b>-3.5</b>	<b>-5.6</b>	<b>+3.1</b>	<b>+14.9</b>	<b>+15.5</b>	<b>+4.8</b>	<b>+1.1</b>	<b>+1.3</b>	<b>+1.3</b>	<b>+1.0</b>





## Year on Year Summary

	% WTE change since MAY 2022	WTE change since MAY 2022	CHO 1	CHO 2	CHO 3	CHO 4	CHO 5	CHO 6	CHO 7	CHO 8	CHO 9	other Communi ty Services
<b>Total</b>	<b>+0.3%</b>	<b>+187.2</b>	<b>+40.6</b>	<b>+15.3</b>	<b>+8.8</b>	<b>-11.1</b>	<b>+63.2</b>	<b>+17.9</b>	<b>+6.3</b>	<b>+34.3</b>	<b>-11.5</b>	<b>+23.4</b>
Consultants	+0.3%	+25.2	+3.2	+2.2	+5.2	+3.7	+1.0	+7.5	+1.3	-2.7	+5.5	-1.6
Registrars	+0.7%	+5.0	+7.9	-9.5	+10.1	-3.3	+7.0	+3.9	-0.0	-14.3	+8.7	-5.4
SHO/ Interns	+2.0%	+13.7	+1.6	+6.0	-9.6	+9.6	-1.7	-4.5	-5.7	+10.3	+5.7	+2.0
Medical/ Dental, other	+2.8%	-2.3		-1.0		-1.3	+0.0					
<b>Medical &amp; Dental</b>	<b>+0.9%</b>	<b>+41.6</b>	<b>+12.7</b>	<b>-2.3</b>	<b>+5.6</b>	<b>+8.7</b>	<b>+6.3</b>	<b>+6.9</b>	<b>-4.3</b>	<b>-6.8</b>	<b>+19.9</b>	<b>-5.1</b>
Nurse/ Midwife Manager	+0.2%	-41.4	+3.8	-3.3	-11.8	-21.1	-2.3	-3.5	-0.4	-4.5	-1.9	+3.5
Nurse/ Midwife Specialist & AN/MP	+1.3%	+104.8	+15.8	+9.4	+5.7	+5.4	+32.2	+9.5	+7.4	+9.7	+9.0	+0.6
Staff Nurse/ Staff Midwife	-0.7%	-128.6	-11.2	-11.8	-14.7	-14.4	-26.0	+2.4	-10.5	+3.7	-38.7	-7.3
Nursing/ Midwifery Student	+4.4%	+4.0	+1.5	-1.1	+5.2	-1.3	+0.3	-0.7	-2.5	+1.2	+0.4	+1.0
Nursing/ Midwifery other	+2.4%	-2.1	-0.9	+2.7	+0.0		+0.8	+0.0	-0.9	+0.2	-3.8	+0.0
<b>Nursing &amp; Midwifery</b>	<b>-0.1%</b>	<b>-63.2</b>	<b>+9.0</b>	<b>-4.1</b>	<b>-15.6</b>	<b>-31.3</b>	<b>+4.9</b>	<b>+7.8</b>	<b>-6.9</b>	<b>+10.3</b>	<b>-35.0</b>	<b>-2.2</b>
Therapy Professions	+0.3%	+8.5	+0.8	+11.2	+4.5	+3.4	-0.8	-4.8	-1.7	+3.2	-6.8	-0.4
Social Care	-3.4%	-5.5	-0.6	+0.4	-0.5	-2.4	+0.1	-0.7	+0.1	-0.9	+0.0	-1.0
Social Workers	-0.3%	+25.9	+3.2	-1.7	+1.2	+3.1	+6.0	+4.6	+1.6	-1.5	+11.6	-2.1
Psychologists	+1.1%	+34.7	+8.9	+2.2	+2.3	-0.4	+11.0	-1.7	+12.2	-0.1	+3.4	-3.0



Pharmacy	+4.7%	+2.8	+0.0	+0.1	+0.1	+0.2			-0.2	+0.3	+0.3	+2.0
H&SC, Other	+0.9%	-3.1	+0.8	+0.1	-1.0	-1.3	+0.3	-0.8	-3.1	+1.8	+0.3	
<b>Health &amp; Social Care Professionals</b>	<b>+0.3%</b>	<b>+63.4</b>	<b>+13.0</b>	<b>+12.2</b>	<b>+6.6</b>	<b>+2.6</b>	<b>+16.5</b>	<b>-3.4</b>	<b>+8.9</b>	<b>+2.7</b>	<b>+8.8</b>	<b>-4.5</b>
Management (VIII & above)	+1.8%	+9.1	-1.8	-1.0	+2.0	+0.9	+0.0	+1.0	+0.1	+0.0	+0.2	+7.9
Administrative/ Supervisory (V to VII)	+1.8%	+57.7	+0.8	-0.0	+3.8	+5.9	+5.1	+2.6	+6.4	+6.4	+9.8	+17.1
Clerical (III & IV)	-0.4%	+65.5	+6.4	+8.7	+6.9	+4.7	+18.5	-1.3	+9.1	+15.3	-5.2	+2.5
<b>Management &amp; Administrative</b>	<b>+0.4%</b>	<b>+132.3</b>	<b>+5.4</b>	<b>+7.6</b>	<b>+12.7</b>	<b>+11.4</b>	<b>+23.6</b>	<b>+2.3</b>	<b>+15.5</b>	<b>+21.7</b>	<b>+4.7</b>	<b>+27.4</b>
Support	-1.4%	-34.8	-0.2	-5.0	-1.6	-15.3	+2.7	-1.9	-2.3	-4.1	-13.0	+5.9
Maintenance/ Technical	+1.2%	-3.8	-1.1	+3.0	+0.0	+0.0	-2.2	+0.0	+0.0	+1.3	-0.8	-4.0
<b>General Support</b>	<b>-0.9%</b>	<b>-38.6</b>	<b>-1.2</b>	<b>-2.0</b>	<b>-1.6</b>	<b>-15.3</b>	<b>+0.5</b>	<b>-1.9</b>	<b>-2.3</b>	<b>-2.8</b>	<b>-13.8</b>	<b>+1.9</b>
Health Care Assistants	+2.2%	+44.1	+4.4	+3.9	-1.3	+12.6	+7.4	+5.3	-2.9	+9.5	+4.4	+0.9
Care, other	+0.7%	+7.7	-2.7	+0.1	+2.4	+0.2	+4.2	+1.0	-1.7	-0.4	-0.4	+5.0
<b>Patient &amp; Client Care</b>	<b>+1.9%</b>	<b>+51.8</b>	<b>+1.7</b>	<b>+3.9</b>	<b>+1.1</b>	<b>+12.9</b>	<b>+11.6</b>	<b>+6.3</b>	<b>-4.5</b>	<b>+9.1</b>	<b>+4.0</b>	<b>+5.9</b>



## Year to Date Summary

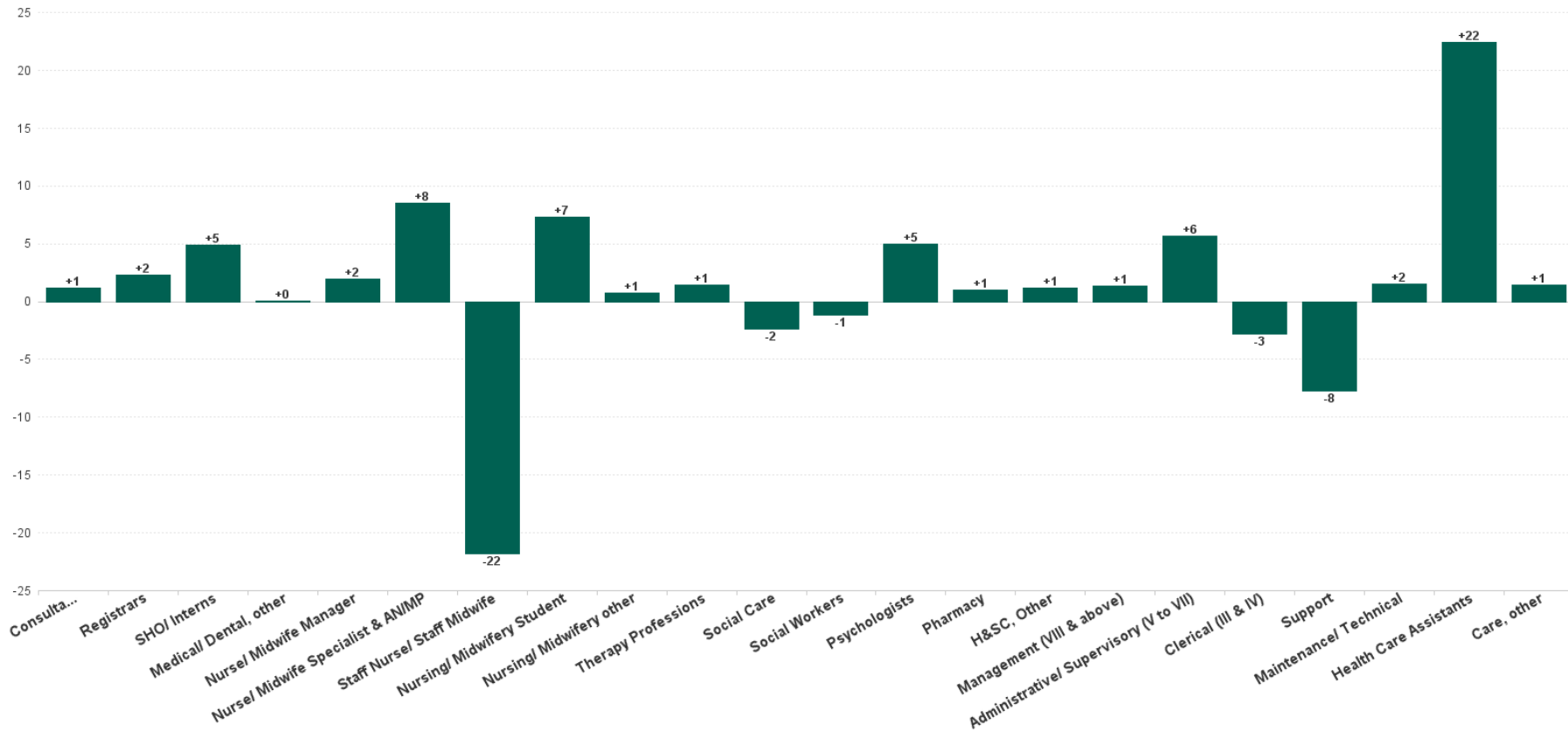
	% WTE change since MAY 2022	WTE change since DEC 2022	CHO 1	CHO 2	CHO 3	CHO 4	CHO 5	CHO 6	CHO 7	CHO 8	CHO 9	other Communi ty Services
<b>Total</b>	<b>+2.1%</b>	<b>+218.5</b>	<b>+31.6</b>	<b>+17.8</b>	<b>+12.3</b>	<b>+12.1</b>	<b>+65.6</b>	<b>+12.2</b>	<b>+31.5</b>	<b>+46.2</b>	<b>-23.9</b>	<b>+13.2</b>
Consultants	+1.8%	+7.0	+2.2	+2.3	+0.2	-2.5	-0.6	+1.4	+2.4	+0.0	+0.4	+1.0
Registrars	-1.0%	-3.3	+3.6	-4.1	+12.7	-7.7	+8.1	-2.2	-4.4	-3.2	+0.1	-6.3
SHO/ Interns	-8.5%	-22.6	+1.1	+1.1	-19.4	+2.1	-4.4	-1.5	-7.4	+4.0	-0.2	+2.0
Medical/ Dental, other	-24.0%	-0.9		-1.0		+0.0	+0.1					
<b>Medical &amp; Dental</b>	<b>-2.0%</b>	<b>-19.9</b>	<b>+6.9</b>	<b>-1.7</b>	<b>-6.5</b>	<b>-8.1</b>	<b>+3.1</b>	<b>-2.2</b>	<b>-9.3</b>	<b>+0.8</b>	<b>+0.3</b>	<b>-3.3</b>
Nurse/ Midwife Manager	-1.3%	-16.0	+4.5	+0.8	-5.2	-10.3	-10.0	-2.0	+5.1	+1.8	-1.4	+0.7
Nurse/ Midwife Specialist & AN/MP	+7.5%	+47.1	+1.2	+8.1	+0.3	+5.3	+15.0	+5.3	+6.2	+5.1	+1.1	-0.3
Staff Nurse/ Staff Midwife	-1.8%	-51.7	-5.3	-7.2	-3.8	-9.4	-5.8	+4.7	-2.3	+1.9	-26.8	+2.2
Nursing/ Midwifery Student	+162.5%	+105.9	+10.2	+11.8	+12.7	+17.5	+12.4	+5.0	+14.4	+16.7	+4.2	+1.0
Nursing/ Midwifery other	-6.2%	-2.1	-0.9	+0.7	+0.0		+0.9	-0.8	+0.9	-0.0	-2.9	+0.0
<b>Nursing &amp; Midwifery</b>	<b>+1.7%</b>	<b>+83.3</b>	<b>+9.7</b>	<b>+14.2</b>	<b>+4.0</b>	<b>+3.2</b>	<b>+12.4</b>	<b>+12.3</b>	<b>+24.2</b>	<b>+25.4</b>	<b>-25.7</b>	<b>+3.6</b>
Therapy Professions	+3.5%	+15.4	+3.5	+3.0	+3.2	+6.4	+2.8	-4.2	+2.9	+1.6	-3.5	-0.1
Social Care	-6.0%	-4.3	-0.7	-1.2	-0.0	-0.5	+0.8	-2.3	+0.6	-1.0	+0.0	+0.0
Social Workers	+2.1%	+8.7	+0.6	-0.6	-0.8	+0.2	+2.4	+3.1	+3.3	-2.0	+0.9	+1.6
Psychologists	+4.0%	+18.1	+6.5	+4.7	-1.9	-1.0	+7.6	-1.3	+2.7	+1.1	+1.0	-1.4
Pharmacy	+13.5%	+2.6	+0.0	-0.0	+0.0	-0.8			+0.6	+1.0	+0.8	+1.0
H&SC, Other	-0.1%	-0.1	-0.1	+0.0	+0.6	-0.6	-0.6	-0.0	-0.5	+0.7	+0.3	
<b>Health &amp; Social Care Professionals</b>	<b>+2.7%</b>	<b>+40.4</b>	<b>+9.7</b>	<b>+5.9</b>	<b>+1.1</b>	<b>+3.9</b>	<b>+13.0</b>	<b>-4.7</b>	<b>+9.6</b>	<b>+1.3</b>	<b>-0.6</b>	<b>+1.1</b>
Management (VIII & above)	+5.7%	+4.2	-1.0	-0.0	+0.0	+0.9	+0.3	+0.0	+0.1	+0.0	+1.1	+2.9
Administrative/ Supervisory (V to VII)	+10.5%	+30.2	+4.3	+1.3	+1.8	+3.4	+6.3	-3.0	+2.3	-1.0	+2.8	+12.0
Clerical (III & IV)	+8.7%	+61.5	+3.7	+6.8	+8.2	+4.7	+12.8	+4.6	+5.2	+16.4	+2.9	-3.8
<b>Management &amp; Administrative</b>	<b>+9.0%</b>	<b>+95.9</b>	<b>+7.1</b>	<b>+8.0</b>	<b>+10.0</b>	<b>+9.0</b>	<b>+19.4</b>	<b>+1.7</b>	<b>+7.5</b>	<b>+15.5</b>	<b>+6.8</b>	<b>+11.0</b>



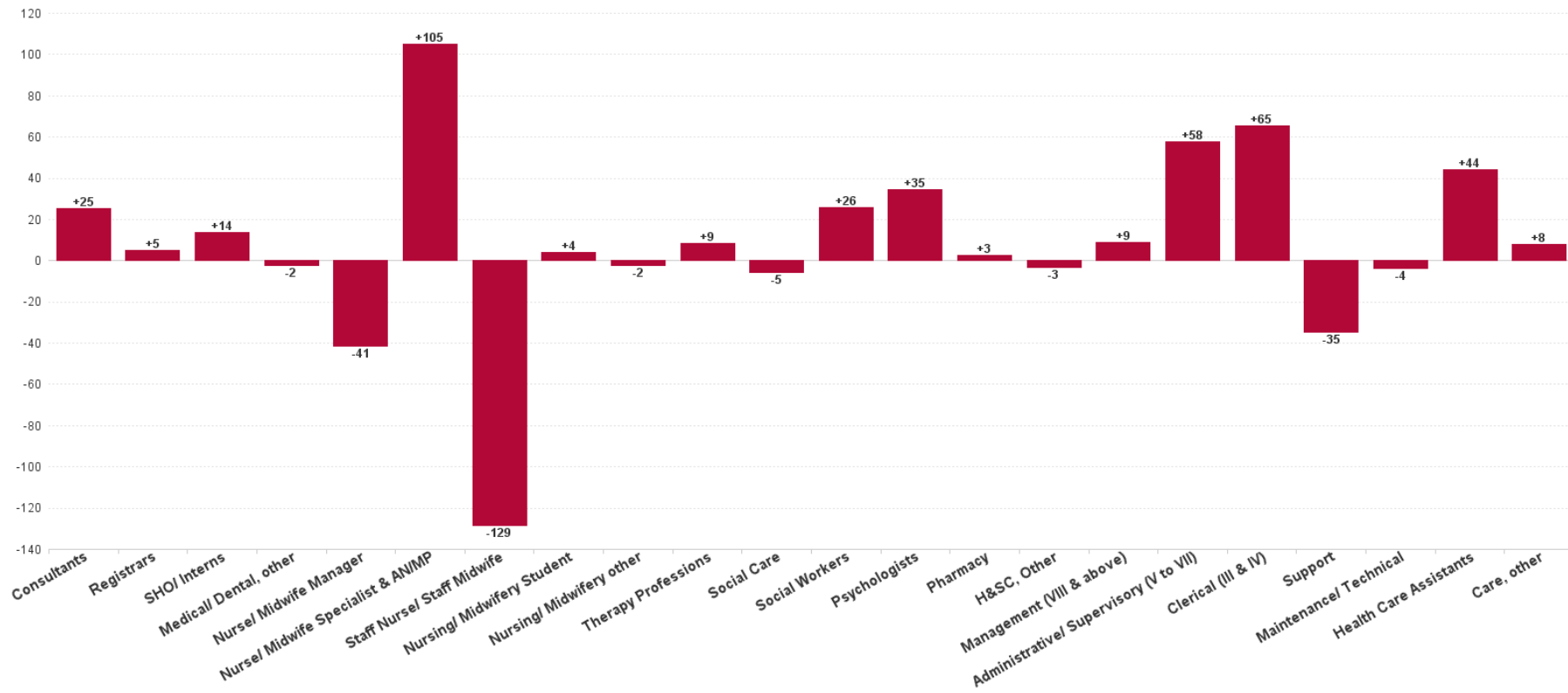
Support	-2.6%	-14.6	+2.4	-3.0	+0.6	-10.7	+2.5	-0.6	-1.7	-0.5	-5.2	+1.7
Maintenance/ Technical	-0.3%	-0.4	-0.7	+0.0	+0.1	+0.0	-0.3	+1.0	+0.1	+2.3	-0.9	-2.0
<b>General Support</b>	<b>-2.2%</b>	<b>-15.0</b>	<b>+1.7</b>	<b>-3.0</b>	<b>+0.6</b>	<b>-10.7</b>	<b>+2.2</b>	<b>+0.4</b>	<b>-1.6</b>	<b>+1.9</b>	<b>-6.1</b>	<b>-0.3</b>
Health Care Assistants	+2.7%	+27.9	-1.2	-2.5	+2.2	+14.2	+11.6	+4.6	-0.7	+1.6	+1.5	-3.5
Care, other	+2.7%	+5.9	-2.3	-3.2	+0.9	+0.7	+3.9	+0.1	+1.8	-0.3	-0.2	+4.5
<b>Patient &amp; Client Care</b>	<b>+2.7%</b>	<b>+33.8</b>	<b>-3.5</b>	<b>-5.6</b>	<b>+3.1</b>	<b>+14.9</b>	<b>+15.5</b>	<b>+4.8</b>	<b>+1.1</b>	<b>+1.3</b>	<b>+1.3</b>	<b>+1.0</b>



Previous Month Summary Chart: Change since APR 2023



Previous Year Summary Chart: Change since MAY 2022



YTD Summary Chart: Change since DEC 2022

