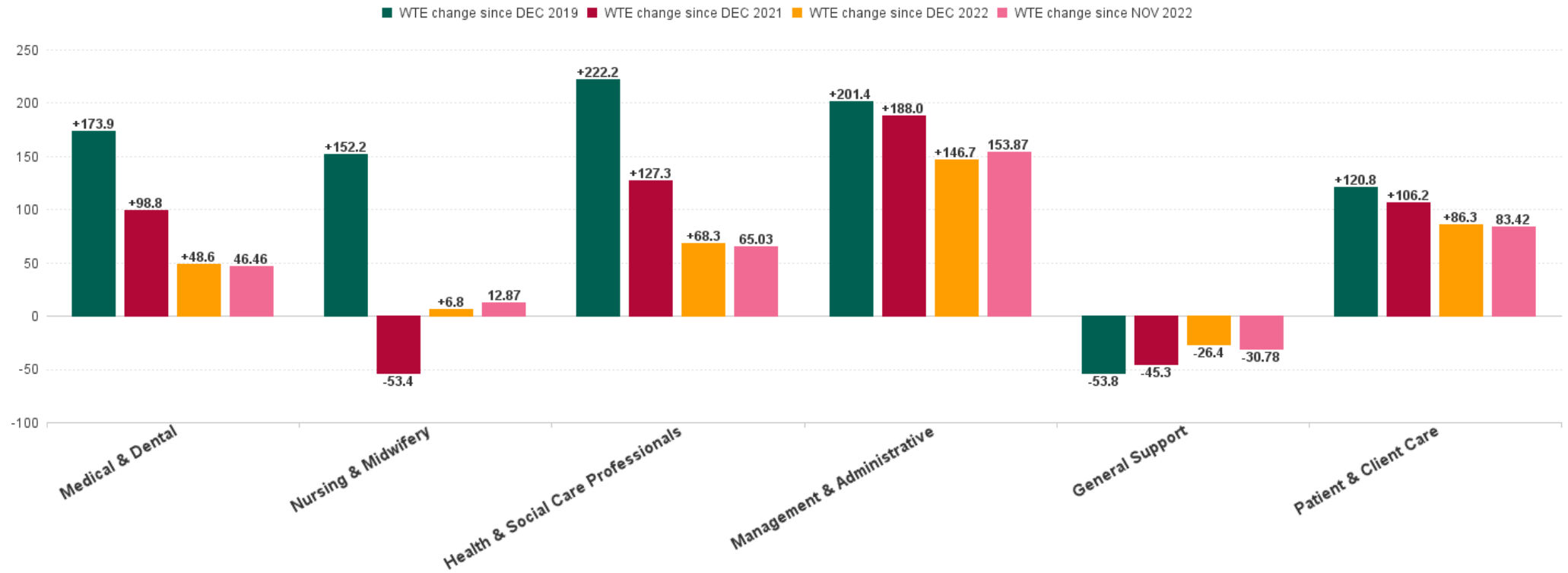


Mental Health Employment Report : NOV 2023

Mental Health Employment Report by Staff Group

NOV 2023	WTE DEC 2019	WTE DEC 2022	WTE OCT 2023	WTE NOV 2023	WTE change since DEC 2019	% WTE change since Dec 2019	WTE change since DEC 2022	% WTE change since Dec 2022	WTE change since OCT 2023	No. NOV 2023
Overall	9,967	10,453	10,690	10,784	+817	+8.2%	+330	+3.2%	+94	11,734
Consultants	353	397	403	428	+75	+21.3%	+31	+7.7%	+25	457
Registrars	269	345	346	335	+66	+24.7%	-10	-2.8%	-10	350
SHO/ Interns	261	267	284	296	+35	+13.2%	+29	+10.7%	+11	318
Medical/ Dental, other	5	4	3	3	-2	-40.6%	-1	-24.0%	+0	6
Medical & Dental	888	1,013	1,036	1,061	+174	+19.6%	+49	+4.8%	+26	1,131
Nurse/ Midwife Manager	1,201	1,245	1,231	1,229	+28	+2.4%	-16	-1.3%	-1	1,284
Nurse/ Midwife Specialist & AN/MP	460	631	711	726	+266	+57.8%	+95	+15.1%	+15	769
Staff Nurse/ Staff Midwife	3,002	2,948	2,786	2,850	-152	-5.1%	-98	-3.3%	+64	3,120
Pre-registration Nurse/ Midwife Intern	25	26	30	12	-13	-53.6%	-15	-56.0%	-18	21
Post-registration Nurse/ Midwife Student	1				-1	-100.0%				
Nursing/ Midwifery awaiting registration	57	39	95	80	+23	+40.6%	+41	+106.5%	-15	86
Nursing/ Midwifery Student	83	65	124	92	+9	+10.5%	+26	+40.6%	-33	107
Nursing/ Midwifery other	32	34	35	33	+1	+4.2%	-1	-4.3%	-2	36
Nursing & Midwifery	4,778	4,924	4,887	4,930	+152	+3.2%	+7	+0.1%	+43	5,316
Therapy Professions	420	435	431	437	+17	+4.0%	+2	+0.4%	+6	492
Social Care	74	72	49	63	-10	-13.8%	-8	-11.8%	+14	75
Social Workers	350	414	424	431	+81	+23.0%	+17	+4.2%	+7	473
Psychologists	394	448	487	474	+80	+20.3%	+27	+5.9%	-12	525
Pharmacy	19	19	24	25	+7	+37.0%	+6	+31.9%	+2	34
H&SC, Other	107	130	142	155	+48	+44.8%	+25	+19.0%	+13	176
Health & Social Care Professionals	1,364	1,518	1,556	1,587	+222	+16.3%	+68	+4.5%	+30	1,775
Management (VIII & above)	58	75	74	73	+15	+25.0%	-2	-2.2%	-1	76
Administrative/ Supervisory (V to VII)	238	287	333	331	+93	+39.3%	+44	+15.4%	-2	347
Clerical (III & IV)	717	707	808	811	+93	+13.0%	+104	+14.7%	+3	899
Management & Administrative	1,014	1,068	1,215	1,215	+201	+19.9%	+147	+13.7%	-0	1,322
Support	585	556	538	531	-55	-9.3%	-25	-4.5%	-8	603
Maintenance/ Technical	127	129	128	128	+1	+0.5%	-1	-0.9%	-1	131
General Support	712	685	667	658	-54	-7.6%	-26	-3.9%	-8	734
Health Care Assistants	996	1,030	1,095	1,104	+109	+10.9%	+74	+7.2%	+9	1,188
Care, other	216	216	233	228	+12	+5.7%	+12	+5.6%	-5	268
Patient & Client Care	1,212	1,246	1,329	1,332	+121	+10.0%	+86	+6.9%	+4	1,456

WTE Change by Staff Category



Mental Health Report by CHO: NOV 2023

NOV 2023	WTE DEC 2019	WTE DEC 2022	WTE OCT 2023	WTE NOV 2023	WTE change since DEC 2019	% WTE change since Dec 2019	WTE change since DEC 2022	% WTE change since Dec 2022	WTE change since OCT 2023	No. NOV 2023
Overall	9,967	10,453	10,690	10,784	+817	+8.2%	+330	+3.2%	+94	11,734
CHO 1	953	1,024	1,047	1,047	+94	+9.9%	+23	+2.2%	-1	1,118
CHO 2	1,308	1,329	1,345	1,374	+65	+5.0%	+45	+3.3%	+28	1,482
CHO 3	795	814	822	838	+42	+5.3%	+24	+2.9%	+16	920
CHO 4	1,499	1,562	1,593	1,598	+99	+6.6%	+36	+2.3%	+5	1,763
CHO 5	1,177	1,224	1,322	1,320	+143	+12.1%	+96	+7.8%	-3	1,453
CHO 6	593	650	655	677	+85	+14.3%	+28	+4.3%	+23	754
CHO 7	835	879	900	907	+72	+8.6%	+28	+3.2%	+7	987
CHO 8	1,098	1,091	1,132	1,126	+28	+2.6%	+36	+3.3%	-6	1,209
CHO 9	1,272	1,371	1,306	1,328	+56	+4.4%	-43	-3.1%	+22	1,447
other Community Services	438	511	567	569	+132	+30.1%	+58	+11.4%	+2	601



% Total by CHO



Mental Health Employment Report by HSE/S38: NOV 2023

NOV 2023	WTE DEC 2019	WTE DEC 2022	WTE OCT 2023	WTE NOV 2023	WTE change since DEC 2019	% WTE change since Dec 2019	WTE change since DEC 2022	% WTE change since Dec 2022	WTE change since OCT 2023	No. NOV 2023
Overall	9,967	10,453	10,690	10,784	+817	+8.2%	+330	+3.2%	+94	11,734
Health Service Executive	9,526	10,023	10,328	10,396	+870	+9.1%	+373	+3.7%	+68	11,281
Section 38 Voluntary Agencies	441	431	362	388	-53	-12.1%	-43	-9.9%	+26	453



Mental Health Employment Report by HSE: NOV 2023

NOV 2023	WTE DEC 2019	WTE DEC 2022	WTE OCT 2023	WTE NOV 2023	WTE change since DEC 2019	% WTE change since Dec 2019	WTE change since DEC 2022	% WTE change since Dec 2022	WTE change since OCT 2023	No. NOV 2023
Total HSE	9,526	10,023	10,328	10,396	+870	+9.1%	+373	+3.7%	+68	11,281
Consultants	333	372	394	399	+66	+19.9%	+27	+7.3%	+4	425
Registrars	250	325	322	320	+70	+27.8%	-5	-1.6%	-2	332
SHO/ Interns	255	260	275	286	+31	+12.0%	+26	+9.8%	+10	306
Medical/ Dental, other	5	4	3	3	-2	-40.6%	-1	-24.0%	+0	6
Medical & Dental	843	961	994	1,007	+164	+19.5%	+46	+4.8%	+13	1,069
Nurse/ Midwife Manager	1,163	1,211	1,201	1,198	+35	+3.0%	-13	-1.1%	-3	1,250
Nurse/ Midwife Specialist & AN/MP	453	620	701	712	+259	+57.1%	+92	+14.9%	+11	753
Staff Nurse/ Staff Midwife	2,879	2,838	2,715	2,779	-101	-3.5%	-60	-2.1%	+63	3,042
Nursing/ Midwifery awaiting registration	57	38	92	80	-36	+40.6%	+32	+112.0%	-12	86
Post-registration Nurse/ Midwife Student	1				-1	-100.0%				
Pre-registration Nurse/ Midwife Intern	18	18	30	12	+4	-35.6%	-15	-36.9%	-18	21
Nursing/ Midwifery Student	76	56	121	92	+16	+20.6%	+35	+63.2%	-30	107
Nursing/ Midwifery other	29	32	35	33	+4	+13.2%	+1	+3.2%	-2	36
Nursing & Midwifery	4,601	4,758	4,774	4,814	+213	+4.6%	+56	+1.2%	+40	5,188
Therapy Professions	389	407	409	415	+26	+6.6%	+7	+1.8%	+5	461
Social Care	48	44	39	39	-9	-18.9%	-5	-11.1%	+0	45
Social Workers	331	394	403	410	+79	+24.0%	+16	+4.2%	+7	450
Psychologists	379	423	463	448	+69	+18.2%	+24	+5.7%	-15	493
Pharmacy	17	17	21	23	+6	+36.4%	+6	+32.4%	+2	31
H&SC, Other	102	130	135	149	+46	+45.4%	+19	+14.6%	+13	169
Health & Social Care Professionals	1,265	1,415	1,470	1,483	+218	+17.2%	+68	+4.8%	+13	1,649
Management (VIII & above)	56	73	71	70	+14	+24.1%	-3	-3.6%	-1	73
Administrative/ Supervisory (V to VII)	217	264	303	310	+94	+43.2%	+47	+17.7%	+7	323
Clerical (III & IV)	673	670	767	770	+98	+14.5%	+100	+14.9%	+3	850
Management & Administrative	946	1,006	1,141	1,150	+205	+21.7%	+144	+14.3%	+9	1,246
Support	547	523	506	501	-47	-8.5%	-22	-4.3%	-5	561
Maintenance/ Technical	121	123	122	121	-0	-0.3%	-2	-1.7%	-1	124
General Support	668	646	628	621	-47	-7.0%	-24	-3.8%	-7	685
Health Care Assistants	990	1,024	1,091	1,096	+106	+10.7%	+72	+7.0%	+5	1,180
Care, other	213	213	229	224	+11	+5.2%	+12	+5.4%	-5	264
Patient & Client Care	1,203	1,237	1,321	1,320	+117	+9.8%	+83	+6.7%	-0	1,444

Mental Health Employment Report by S38 Vols: NOV 2023

NOV 2023	WTE DEC 2019	WTE DEC 2022	WTE OCT 2023	WTE NOV 2023	WTE change since DEC 2019	% WTE change since Dec 2019	WTE change since DEC 2022	% WTE change since Dec 2022	WTE change since OCT 2023	No. NOV 2023
Total S38 Vols	441	431	362	388	-53	-12.1%	-43	-9.9%	+26	453
Consultants	20	25	9	29	+9	+44.1%	+4	+13.9%	+20	32
Registrars	19	20	24	16	-3	-17.4%	-4	-21.9%	-8	18
SHO/ Interns	6	7	9	10	+4	+67.0%	+3	+43.1%	+1	12
Medical & Dental	45	52	41	54	+10	+21.3%	+2	+4.1%	+13	62
Nurse/ Midwife Manager	38	34	30	31	-7	-17.6%	-3	-7.8%	+2	34
Nurse/ Midwife Specialist & AN/MP	7	11	10	14	+7	+103.6%	+3	+27.0%	+4	16
Staff Nurse/ Staff Midwife	123	109	71	72	-51	-41.8%	-38	-34.4%	+1	78
Nursing/ Midwifery awaiting registration		1	3				-1	-100.0%	-3	
Pre-registration Nurse/ Midwife Intern	7	8			+0	-100.0%		-100.0%		
Nursing/ Midwifery Student	7	9	3		-7	-100.0%	-9	-100.0%	-3	
Nursing/ Midwifery other	3	3			-3	-100.0%	-3	-100.0%		
Nursing & Midwifery	177	166	114	117	-61	-34.2%	-49	-29.5%	+3	128
Therapy Professions	31	28	22	23	-9	-27.7%	-5	-19.3%	+0	31
Social Care	25	28	10	24	-1	-4.0%	-4	-12.8%	+14	30
Social Workers	20	20	21	21	+1	+6.3%	+1	+4.7%	-0	23
Psychologists	16	25	24	27	+11	+68.9%	+2	+9.3%	+3	32
Pharmacy	2	2	2	2	+1	+43.8%	+1	+27.8%	+0	3
H&SC, Other	5	0	6	6	+1	+30.4%	+6	+1,214.6%	-0	7
Health & Social Care Professionals	99	103	86	104	+5	+4.7%	+1	+0.5%	+18	126
Management (VIII & above)	2	2	3	3	+1	+50.0%	+1	+50.0%	+0	3
Administrative/ Supervisory (V to VII)	21	23	30	21	-0	-0.1%	-2	-10.0%	-9	24
Clerical (III & IV)	45	36	41	40	-4	-9.7%	+4	+10.9%	-1	49
Management & Administrative	68	62	74	65	-3	-5.0%	+3	+4.2%	-10	76
Support	38	33	32	30	-8	-20.5%	-3	-8.9%	-2	42
Maintenance/ Technical	6	6	7	7	+1	+16.7%	+1	+16.7%	+0	7
General Support	44	39	39	37	-7	-15.4%	-2	-5.0%	-2	49
Health Care Assistants	6	6	4	8	+2	+38.6%	+2	+38.6%	+4	8
Care, other	3	3	4	4	+1	+40.4%	+1	+17.5%	+0	4
Patient & Client Care	9	9	8	12	+3	+39.2%	+3	+30.9%	+4	12

Mental Health Employment Report by Grade Group: NOV 2023

CHO 1

NOV 2023	WTE DEC 2019	WTE DEC 2022	WTE OCT 2023	WTE NOV 2023	WTE change since DEC 2019	% WTE change since Dec 2019	WTE change since DEC 2022	% WTE change since Dec 2022	WTE change since OCT 2023	No. NOV 2023
Total CHO 1	953	1024	1047	1047	+94	+9.9%	+23	+2.2%	-1	1,118
Consultants	31	34	34	35	+4	+13.6%	+1	+3.6%	+1	36
Registrars	24	35	39	38	+14	+56.7%	+4	+10.4%	-0	40
SHO/ Interns	25	21	20	20	-5	-19.8%	-1	-2.6%	-0	22
Medical & Dental	81	89	93	94	+13	+16.2%	+4	+4.8%	+0	98
Nurse/ Midwife Manager	117	118	124	121	+4	+3.2%	+3	+2.6%	-3	125
Nurse/ Midwife Specialist & AN/MP	67	91	98	99	+31	+46.4%	+7	+8.0%	+1	105
Staff Nurse/ Staff Midwife	297	294	288	288	-10	-3.3%	-6	-2.1%	-1	305
<i>Nursing/ Midwifery awaiting registration</i>		3	3	5	+5		+2	+68.8%	+2	6
<i>Pre-registration Nurse/ Midwife Intern</i>		2	2	2	+2		+1	+35.0%	+1	3
Nursing/ Midwifery Student		5	5	7	+7		+3	+56.1%	+3	9
Nursing/ Midwifery other		2	2	1	+1		-1	-47.1%	-1	1
Nursing & Midwifery	482	510	517	516	+34	+7.0%	+6	+1.2%	-2	545
Therapy Professions	36	40	41	40	+4	+12.4%	-0	-0.7%	-0	44
Social Care	4	4	3	2	-1	-38.5%	-2	-40.4%	-0	3
Social Workers	39	48	48	49	+10	+25.3%	+1	+2.5%	+1	51
Psychologists	21	25	29	31	+10	+49.6%	+6	+25.9%	+1	33
Pharmacy	1	1	1	1	+0	+25.0%	+0	+23.5%	+0	1
H&SC, Other	13	18	19	20	+7	+49.7%	+1	+6.5%	+1	22
Health & Social Care Professionals	113	136	140	143	+30	+26.4%	+7	+5.2%	+3	154
Management (VIII & above)	6	9	7	7	+1	+17.9%	-2	-23.5%	+0	7
Administrative/ Supervisory (V to VII)	30	30	35	36	+6	+18.7%	+5	+18.0%	+1	37
Clerical (III & IV)	85	89	95	94	+9	+10.3%	+5	+5.4%	-1	103
Management & Administrative	121	128	136	136	+15	+12.7%	+8	+6.4%	-0	147
Support	62	58	62	61	-2	-2.6%	+3	+4.7%	-1	67
Maintenance/ Technical	17	16	16	16	-1	-5.5%	-0	-3.0%	+0	16
General Support	79	74	78	76	-3	-3.2%	+2	+3.0%	-1	83
Health Care Assistants	66	75	73	72	+6	+8.4%	-3	-3.6%	-1	80
Care, other	11	12	10	10	-1	-10.3%	-2	-18.4%	-0	11
Patient & Client Care	77	86	83	81	+4	+5.8%	-5	-5.6%	-1	91

Mental Health Employment Report by Grade Group: NOV 2023

CHO 2

NOV 2023	WTE DEC 2019	WTE DEC 2022	WTE OCT 2023	WTE NOV 2023	WTE change since DEC 2019	% WTE change since Dec 2019	WTE change since DEC 2022	% WTE change since Dec 2022	WTE change since OCT 2023	No. NOV 2023
Total CHO 2	1308	1329	1345	1374	+65	+5.0%	+45	+3.3%	+28	1,482
Consultants	38	37	42	42	+4	+10.6%	+5	+12.7%	-0	46
Registrars	33	37	41	41	+8	+24.4%	+4	+11.8%	+0	44
SHO/ Interns	35	39	36	37	+2	+5.8%	-2	-4.9%	+1	39
Medical/ Dental, other	1	1			-1	-100.0%	-1	-100.0%		
Medical & Dental	107	114	118	120	+13	+12.3%	+6	+5.4%	+1	129
Nurse/ Midwife Manager	146	142	151	150	+4	+3.0%	+8	+5.7%	-1	154
Nurse/ Midwife Specialist & AN/MP	67	88	102	105	+38	+56.0%	+17	+19.8%	+3	109
Staff Nurse/ Staff Midwife	357	353	323	331	-26	-7.2%	-22	-6.1%	+9	358
<i>Nursing/ Midwifery awaiting registration</i>	5	7	20	17	+13	+266.9%	+10	+149.0%	-2	18
<i>Pre-registration Nurse/ Midwife Intern</i>	0	4	3	1	+1	+566.7%	-3	-80.2%	-2	3
Nursing/ Midwifery Student	5	11	23	18	+13	+274.3%	+7	+65.0%	-5	21
Nursing/ Midwifery other	2	4	4	4	+2	+93.5%	-0	-3.3%	+0	4
Nursing & Midwifery	577	598	602	609	+32	+5.5%	+11	+1.8%	+7	646
Therapy Professions	45	55	53	55	+10	+21.9%	+1	+1.3%	+2	60
Social Care	15	14	13	13	-2	-10.2%	-1	-4.1%	+0	14
Social Workers	41	44	43	48	+7	+18.0%	+4	+9.6%	+5	53
Psychologists	34	37	42	41	+7	+21.9%	+4	+10.4%	-1	46
Pharmacy	3	3	3	4	+1	+51.6%	+1	+52.8%	+1	5
H&SC, Other	3	3	3	15	+12	+390.7%	+12	+420.1%	+12	18
Health & Social Care Professionals	140	155	157	176	+36	+25.8%	+21	+13.8%	+19	196
Management (VIII & above)	5	3	3	3	-2	-40.0%	+0	+0.0%	+0	3
Administrative/ Supervisory (V to VII)	24	25	28	31	+8	+33.1%	+6	+24.8%	+4	32
Clerical (III & IV)	109	98	108	111	+2	+2.0%	+14	+13.9%	+3	124
Management & Administrative	138	126	139	145	+8	+5.8%	+20	+15.7%	+7	159
Support	36	27	22	21	-15	-40.7%	-5	-19.3%	-1	24
Maintenance/ Technical	27	36	35	34	+7	+25.9%	-2	-5.3%	-1	35
General Support	63	62	57	55	-8	-12.2%	-7	-11.2%	-1	59
Health Care Assistants	215	202	200	200	-15	-6.8%	-2	-0.9%	-0	211
Care, other	69	73	72	68	-1	-1.9%	-5	-6.6%	-4	82
Patient & Client Care	284	275	272	268	-16	-5.6%	-7	-2.4%	-4	293

Mental Health Employment Report by Grade Group: NOV 2023

CHO 3

NOV 2023	WTE DEC 2019	WTE DEC 2022	WTE OCT 2023	WTE NOV 2023	WTE change since DEC 2019	% WTE change since Dec 2019	WTE change since DEC 2022	% WTE change since Dec 2022	WTE change since OCT 2023	No. NOV 2023
Total CHO 3	795	814	822	838	+42	+5.3%	+24	+2.9%	+16	920
Consultants	23	29	31	30	+6	+27.1%	+1	+2.1%	-1	33
Registrars	18	15	23	22	+4	+21.5%	+7	+42.9%	-1	22
SHO/ Interns	19	33	16	21	+2	+10.4%	-12	-37.3%	+5	22
Medical & Dental	60	78	70	72	+12	+20.2%	-5	-6.8%	+3	77
Nurse/ Midwife Manager	88	87	88	92	+4	+4.5%	+5	+5.4%	+4	95
Nurse/ Midwife Specialist & AN/MP	39	44	50	50	+11	+27.3%	+5	+12.2%	-0	55
Staff Nurse/ Staff Midwife	245	243	226	246	+0	+0.1%	+3	+1.1%	+20	281
Pre-registration Nurse/ Midwife Intern	9	4	4	0	-9	-98.1%	-4	-96.0%	-4	1
Nursing/ Midwifery Student	9	4	4	0	-9	-98.1%	-4	-96.0%	-4	1
Nursing/ Midwifery other		1	1	1	+1		+0	+1.0%	+0	1
Nursing & Midwifery	381	380	369	388	+7	+1.8%	+9	+2.3%	+19	433
Therapy Professions	26	30	31	30	+4	+15.6%	+0	+0.5%	-0	35
Social Care	3	2	1	1	-2	-65.2%	-1	-44.8%	+0	1
Social Workers	25	28	25	25	-0	-0.8%	-3	-10.2%	-0	27
Psychologists	92	93	102	91	-2	-1.8%	-3	-2.9%	-11	94
Pharmacy	3	3	3	3	-0	-0.7%	-0	-1.4%	+0	3
H&SC, Other	10	10	11	11	+2	+19.1%	+2	+18.4%	+0	12
Health & Social Care Professionals	159	166	173	161	+2	+1.4%	-4	-2.7%	-11	172
Management (VIII & above)	2	4	4	4	+2	+103.0%	+0	+1.3%	+0	4
Administrative/ Supervisory (V to VII)	17	16	18	19	+2	+13.7%	+3	+19.0%	+1	20
Clerical (III & IV)	56	50	61	59	+3	+5.3%	+9	+17.1%	-2	63
Management & Administrative	75	70	82	82	+7	+9.8%	+12	+16.6%	-0	87
Support	32	30	31	30	-2	-7.1%	-0	-0.3%	-1	34
Maintenance/ Technical	11	7	8	9	-2	-18.4%	+2	+29.6%	+1	9
General Support	43	37	39	39	-4	-10.0%	+2	+5.3%	+0	43
Health Care Assistants	75	82	87	93	+17	+23.0%	+11	+13.6%	+6	105
Care, other	2	2	2	2	+1	+47.3%	+0	+0.8%	+0	3
Patient & Client Care	77	84	89	95	+18	+23.5%	+11	+13.2%	+6	108

Mental Health Employment Report by Grade Group: NOV 2023

CHO 4

NOV 2023	WTE DEC 2019	WTE DEC 2022	WTE OCT 2023	WTE NOV 2023	WTE change since DEC 2019	% WTE change since Dec 2019	WTE change since DEC 2022	% WTE change since Dec 2022	WTE change since OCT 2023	No. NOV 2023
Total CHO 4	1499	1562	1593	1598	+99	+6.6%	+36	+2.3%	+5	1,763
Consultants	50	60	65	66	+16	+32.8%	+6	+9.8%	+2	72
Registrars	46	56	49	49	+3	+7.4%	-7	-12.7%	-0	51
SHO/ Interns	31	42	53	53	+22	+69.7%	+10	+23.9%	-1	53
Medical/ Dental, other	2	1	1	1	-1	-51.5%	+0	+1.0%	+0	4
Medical & Dental	129	160	168	169	+40	+31.4%	+9	+5.6%	+1	180
Nurse/ Midwife Manager	171	207	200	198	+27	+15.5%	-9	-4.4%	-2	212
Nurse/ Midwife Specialist & AN/MP	60	72	88	90	+30	+49.9%	+18	+24.4%	+2	97
Staff Nurse/ Staff Midwife	505	479	448	468	-37	-7.4%	-11	-2.3%	+21	514
<i>Nursing/ Midwifery awaiting registration</i>	<i>30</i>		<i>14</i>	<i>6</i>	<i>-24</i>	<i>-80.3%</i>	<i>+6</i>		<i>-8</i>	<i>7</i>
<i>Post-registration Nurse/ Midwife Student</i>	<i>1</i>				<i>-1</i>	<i>-100.0%</i>				
<i>Pre-registration Nurse/ Midwife Intern</i>	<i>3</i>	<i>7</i>	<i>10</i>	<i>3</i>	<i>+0</i>	<i>+14.3%</i>	<i>-3</i>	<i>-48.7%</i>	<i>-6</i>	<i>7</i>
Nursing/ Midwifery Student	34	7	24	9	-24	-72.4%	+3	+38.0%	-15	14
Nursing & Midwifery	770	765	759	765	-5	-0.7%	+0	+0.0%	+6	837
Therapy Professions	74	79	87	87	+13	+17.6%	+8	+10.2%	-1	97
Social Care	4	6	5	4	-0	-0.5%	-2	-34.5%	-1	6
Social Workers	53	73	74	73	+20	+37.8%	+0	+0.2%	-0	84
Psychologists	83	96	98	98	+16	+19.0%	+3	+2.7%	+0	110
Pharmacy	2	2	2	2	-1	-39.5%	-1	-36.4%	+0	3
H&SC, Other	11	18	18	18	+7	+67.3%	+0	+2.2%	-0	22
Health & Social Care Professionals	227	273	284	282	+55	+24.2%	+8	+3.0%	-2	322
Management (VIII & above)	1	3	4	3	+2	+180.0%	-0	-6.7%	-1	3
Administrative/ Supervisory (V to VII)	22	26	32	33	+10	+45.8%	+6	+24.0%	+1	34
Clerical (III & IV)	87	87	97	100	+12	+13.9%	+13	+14.8%	+2	111
Management & Administrative	111	116	133	135	+24	+21.9%	+19	+16.3%	+2	148
Support	81	75	64	65	-15	-19.0%	-9	-12.5%	+1	76
Maintenance/ Technical	6	5	4	4	-2	-37.2%	-1	-24.7%	+0	4
General Support	87	80	68	69	-18	-20.3%	-11	-13.3%	+1	80
Health Care Assistants	168	162	176	172	+4	+2.4%	+10	+6.3%	-3	184
Care, other	7	5	6	6	-2	-22.1%	+0	+8.0%	+0	12
Patient & Client Care	176	167	181	178	+2	+1.4%	+11	+6.4%	-3	196

Mental Health Employment Report by Grade Group: NOV 2023

CHO 5

NOV 2023	WTE DEC 2019	WTE DEC 2022	WTE OCT 2023	WTE NOV 2023	WTE change since DEC 2019	% WTE change since Dec 2019	WTE change since DEC 2022	% WTE change since Dec 2022	WTE change since OCT 2023	No. NOV 2023
Total CHO 5	1177	1224	1322	1320	+143	+12.1%	+96	+7.8%	-3	1,453
Consultants	26	33	35	36	+9	+35.9%	+2	+7.1%	+1	37
Registrars	10	12	18	18	+8	+79.5%	+6	+51.1%	-0	18
SHO/ Interns	32	32	33	33	+1	+2.9%	+1	+1.8%	+0	33
Medical/ Dental, other	2	2	2	2	+0	+0.0%	+0	+2.6%	+0	2
Medical & Dental	70	80	88	89	+18	+26.0%	+9	+11.4%	+1	90
Nurse/ Midwife Manager	171	175	157	155	-16	-9.3%	-20	-11.4%	-1	162
Nurse/ Midwife Specialist & AN/MP	43	68	88	89	+46	+106.6%	+21	+31.2%	+2	94
Staff Nurse/ Staff Midwife	412	398	384	384	-28	-6.9%	-14	-3.5%	-0	433
<i>Nursing/ Midwifery awaiting registration</i>		6	22	24	+24		+18	+321.6%	+2	24
<i>Pre-registration Nurse/ Midwife Intern</i>	1	1	7	3	+2	+229.0%	+2	+235.7%	-4	5
Nursing/ Midwifery Student	1	7	29	27	+26	+2,590.0%	+20	+308.8%	-2	29
Nursing/ Midwifery other	4	4	6	5	+1	+35.2%	+1	+37.4%	-1	5
Nursing & Midwifery	631	651	663	660	+29	+4.6%	+9	+1.4%	-3	723
Therapy Professions	38	34	32	34	-4	-11.5%	+0	+0.0%	+2	38
Social Care	5	4	4	4	-0	-3.9%	+1	+23.7%	+0	5
Social Workers	28	29	33	33	+4	+15.6%	+4	+13.4%	-1	36
Psychologists	21	27	35	33	+12	+58.0%	+6	+22.8%	-2	39
H&SC, Other	9	23	23	22	+13	+146.1%	-1	-4.2%	-1	24
Health & Social Care Professionals	101	117	128	126	+25	+24.9%	+10	+8.5%	-1	142
Management (VIII & above)	4	6	4	5	+1	+23.3%	-1	-13.4%	+1	5
Administrative/ Supervisory (V to VII)	21	23	31	31	+10	+45.3%	+7	+30.8%	-1	33
Clerical (III & IV)	74	74	95	96	+22	+30.1%	+22	+28.9%	+1	107
Management & Administrative	99	104	130	132	+33	+33.1%	+28	+27.0%	+1	145
Support	171	175	186	184	+13	+7.6%	+10	+5.5%	-2	207
Maintenance/ Technical	19	14	14	14	-5	-27.4%	-0	-0.4%	-0	15
General Support	190	189	200	198	+8	+4.0%	+10	+5.1%	-2	222
Health Care Assistants	73	73	99	101	+28	+38.4%	+27	+37.4%	+2	109
Care, other	13	12	15	15	+2	+14.8%	+3	+24.4%	-1	22
Patient & Client Care	85	85	114	115	+30	+34.9%	+30	+35.6%	+1	131



Mental Health Employment Report by Grade Group: NOV 2023

CHO 6

NOV 2023	WTE DEC 2019	WTE DEC 2022	WTE OCT 2023	WTE NOV 2023	WTE change since DEC 2019	% WTE change since Dec 2019	WTE change since DEC 2022	% WTE change since Dec 2022	WTE change since OCT 2023	No. NOV 2023
Total CHO 6	593	650	655	677	+85	+14.3%	+28	+4.3%	+23	754
Consultants	36	45	30	50	+14	+39.9%	+5	+11.5%	+20	55
Registrars	22	30	37	28	+6	+28.2%	-2	-6.0%	-9	31
SHO/ Interns	9	9	11	11	+2	+26.2%	+2	+26.6%	+0	15
Medical & Dental	67	84	78	90	+23	+34.2%	+6	+6.9%	+12	101
Nurse/ Midwife Manager	76	75	71	72	-5	-6.2%	-3	-4.0%	+1	75
Nurse/ Midwife Specialist & AN/MP	14	27	27	32	+18	+134.3%	+5	+19.2%	+5	35
Staff Nurse/ Staff Midwife	139	151	147	145	+6	+4.0%	-7	-4.4%	-3	156
Nursing/ Midwifery awaiting registration			1						-1	
Nursing/ Midwifery Student			1						-1	
Nursing/ Midwifery other	2	4	3	3	+1	+50.0%	-1	-20.2%	+0	3
Nursing & Midwifery	231	257	249	251	+20	+8.7%	-5	-2.1%	+3	269
Therapy Professions	43	41	40	41	-2	-5.4%	-1	-1.3%	+1	51
Social Care	26	28	10	24	-2	-6.2%	-4	-12.8%	+14	30
Social Workers	30	36	38	38	+8	+26.2%	+1	+3.7%	-1	41
Psychologists	22	38	40	43	+21	+96.4%	+6	+15.0%	+3	51
H&SC, Other	9	6	15	14	+5	+62.8%	+8	+120.9%	-1	16
Health & Social Care Professionals	130	150	143	160	+31	+23.6%	+11	+7.1%	+17	189
Management (VIII & above)	3	5	5	5	+2	+66.7%	+0	+0.6%	+0	5
Administrative/ Supervisory (V to VII)	27	31	38	29	+2	+8.2%	-2	-6.0%	-9	31
Clerical (III & IV)	42	29	39	39	-3	-6.1%	+10	+36.0%	+0	46
Management & Administrative	72	65	82	73	+2	+2.3%	+9	+13.3%	-9	82
Support	36	29	31	28	-8	-23.2%	-1	-4.3%	-3	34
Maintenance/ Technical	6	5	6	7	+1	+18.4%	+2	+40.6%	+1	7
General Support	42	34	37	35	-7	-17.4%	+1	+2.2%	-2	41
Health Care Assistants	46	54	59	60	+15	+32.9%	+7	+12.9%	+2	64
Care, other	5	7	7	7	+2	+39.3%	+1	+8.3%	+0	8
Patient & Client Care	51	60	66	68	+17	+33.5%	+7	+12.4%	+2	72

Mental Health Employment Report by Grade Group: NOV 2023

CHO 7

NOV 2023	WTE DEC 2019	WTE DEC 2022	WTE OCT 2023	WTE NOV 2023	WTE change since DEC 2019	% WTE change since Dec 2019	WTE change since DEC 2022	% WTE change since Dec 2022	WTE change since OCT 2023	No. NOV 2023
Total CHO 7	835	879	900	907	+72	+8.6%	+28	+3.2%	+7	987
Consultants	48	52	55	57	+9	+19.3%	+5	+8.9%	+2	59
Registrars	46	55	45	43	-3	-6.0%	-12	-21.0%	-1	46
SHO/ Interns	21	26	30	30	+9	+42.7%	+4	+16.3%	-0	37
Medical & Dental	115	133	130	130	+15	+13.4%	-3	-2.0%	+0	142
Nurse/ Midwife Manager	117	109	101	102	-14	-12.3%	-7	-6.4%	+1	108
Nurse/ Midwife Specialist & AN/MP	40	56	70	70	+30	+75.1%	+14	+25.0%	-0	73
Staff Nurse/ Staff Midwife	194	205	193	197	+3	+1.6%	-7	-3.5%	+5	219
<i>Nursing/ Midwifery awaiting registration</i>	<i>10</i>	<i>1</i>	<i>10</i>	<i>7</i>	<i>-3</i>	<i>-29.0%</i>	<i>+6</i>	<i>+607.1%</i>	<i>-3</i>	<i>7</i>
<i>Pre-registration Nurse/ Midwife Intern</i>	<i>1</i>	<i>0</i>	<i>0</i>		<i>-1</i>	<i>-100.0%</i>	<i>-0</i>	<i>-100.0%</i>	<i>-0</i>	
Nursing/ Midwifery Student	11	1	10	7	-4	-37.7%	+6	+542.2%	-3	7
Nursing/ Midwifery other	8	6	7	6	-2	-21.8%	-0	-0.5%	-1	8
Nursing & Midwifery	370	377	381	382	+13	+3.5%	+6	+1.5%	+2	415
Therapy Professions	48	51	54	54	+6	+13.2%	+3	+6.4%	+0	61
Social Care	8	7	6	7	-1	-8.1%	+0	+4.5%	+1	8
Social Workers	34	38	41	44	+10	+29.8%	+6	+15.2%	+3	47
Psychologists	31	35	40	38	+7	+21.4%	+3	+9.6%	-2	44
Pharmacy	1	0	1	1	-0	-20.0%	+1	+300.0%	+0	1
H&SC, Other	18	19	17	18	-0	-2.6%	-1	-6.1%	+1	20
Health & Social Care Professionals	140	150	159	162	+22	+15.6%	+12	+8.1%	+3	181
Management (VIII & above)	3	5	4	4	+1	+35.9%	-1	-19.8%	-0	4
Administrative/ Supervisory (V to VII)	16	22	25	26	+10	+62.5%	+3	+13.8%	+1	26
Clerical (III & IV)	47	55	62	63	+16	+33.5%	+7	+12.7%	+0	67
Management & Administrative	65	83	91	92	+27	+40.5%	+9	+11.1%	+1	97
Support	18	16	13	14	-4	-23.7%	-3	-15.9%	+0	15
Maintenance/ Technical	2	2	1	1	-1	-46.2%	-1	-48.5%	-0	1
General Support	20	18	14	15	-5	-25.8%	-4	-19.4%	+0	16
Health Care Assistants	33	31	34	35	+1	+4.0%	+4	+13.8%	+1	36
Care, other	92	88	92	91	-1	-1.0%	+3	+3.8%	-1	100
Patient & Client Care	125	118	126	126	+0	+0.3%	+8	+6.4%	-0	136

Mental Health Employment Report by Grade Group: NOV 2023

CHO 8

NOV 2023	WTE DEC 2019	WTE DEC 2022	WTE OCT 2023	WTE NOV 2023	WTE change since DEC 2019	% WTE change since Dec 2019	WTE change since DEC 2022	% WTE change since Dec 2022	WTE change since OCT 2023	No. NOV 2023
Total CHO 8	1098	1091	1132	1126	+28	+2.6%	+36	+3.3%	-6	1,209
Consultants	35	36	38	38	+2	+6.4%	+1	+3.6%	-1	41
Registrars	26	29	30	30	+5	+18.4%	+1	+4.5%	+0	32
SHO/ Interns	36	29	34	36	+0	+1.3%	+8	+26.0%	+2	37
Medical & Dental	97	94	103	105	+7	+7.7%	+10	+10.8%	+2	110
Nurse/ Midwife Manager	121	114	120	118	-3	-2.4%	+4	+3.3%	-2	122
Nurse/ Midwife Specialist & AN/MP	56	75	79	80	+24	+42.5%	+5	+7.2%	+1	85
Staff Nurse/ Staff Midwife	332	323	315	316	-16	-4.8%	-7	-2.3%	+1	337
<i>Nursing/ Midwifery awaiting registration</i>	2	8	10	11	+9	+434.5%	+2	+27.7%	+1	12
<i>Pre-registration Nurse/ Midwife Intern</i>	1	1	3	1	+0	+0.0%	+0	+0.0%	-2	1
Nursing/ Midwifery Student	3	9	12	11	+9	+347.6%	+2	+26.2%	-1	13
Nursing/ Midwifery other	4	3	3	3	-1	-26.6%	+0	+0.0%	+0	3
Nursing & Midwifery	515	523	530	527	+13	+2.5%	+4	+0.8%	-2	560
Therapy Professions	44	36	36	34	-10	-22.8%	-2	-4.7%	-2	38
Social Care	7	6	5	5	-2	-28.3%	-1	-17.9%	+0	6
Social Workers	41	50	54	54	+12	+29.7%	+4	+7.4%	-1	60
Psychologists	39	36	40	38	-2	-4.1%	+1	+3.7%	-2	41
Pharmacy	1	2	3	3	+2	+155.0%	+1	+60.4%	-0	4
H&SC, Other	20	16	18	18	-3	-13.1%	+2	+9.7%	+0	21
Health & Social Care Professionals	154	146	156	151	-3	-1.7%	+5	+3.3%	-5	170
Management (VIII & above)	3	3	4	4	+1	+36.1%	+1	+33.3%	+0	4
Administrative/ Supervisory (V to VII)	22	28	29	30	+7	+31.3%	+1	+4.3%	+0	31
Clerical (III & IV)	88	88	107	105	+17	+19.5%	+18	+20.3%	-2	116
Management & Administrative	114	119	140	139	+25	+22.2%	+20	+16.8%	-1	151
Support	33	27	23	23	-10	-29.6%	-4	-15.0%	-0	25
Maintenance/ Technical	26	25	29	29	+2	+9.2%	+4	+15.7%	+0	29
General Support	59	52	52	51	-7	-12.3%	-0	-0.3%	-0	54
Health Care Assistants	157	152	149	150	-7	-4.5%	-2	-1.2%	+0	160
Care, other	4	5	3	3	-0	-9.0%	-1	-28.4%	-0	4
Patient & Client Care	160	156	153	153	-7	-4.6%	-3	-2.0%	+0	164

Mental Health Employment Report by Grade Group: NOV 2023

CHO 9

NOV 2023	WTE DEC 2019	WTE DEC 2022	WTE OCT 2023	WTE NOV 2023	WTE change since DEC 2019	% WTE change since Dec 2019	WTE change since DEC 2022	% WTE change since Dec 2022	WTE change since OCT 2023	No. NOV 2023
Total CHO 9	1272	1371	1306	1328	+56	+4.4%	-43	-3.1%	+22	1,447
Consultants	50	55	57	58	+8	+16.4%	+3	+5.5%	+2	60
Registrars	31	57	46	47	+16	+52.0%	-10	-17.6%	+1	48
SHO/ Interns	53	36	51	54	+1	+2.4%	+19	+52.1%	+3	60
Medical & Dental	134	148	154	160	+26	+19.1%	+12	+7.9%	+5	168
Nurse/ Midwife Manager	132	138	140	142	+10	+7.7%	+4	+3.2%	+3	149
Nurse/ Midwife Specialist & AN/MP	65	99	100	101	+35	+54.5%	+2	+1.9%	+1	104
Staff Nurse/ Staff Midwife	351	351	299	312	-39	-11.2%	-39	-11.1%	+13	346
<i>Nursing/ Midwifery awaiting registration</i>	<i>11</i>	<i>14</i>	<i>14</i>	<i>8</i>	<i>-3</i>	<i>-26.4%</i>	<i>-6</i>	<i>-42.4%</i>	<i>-6</i>	<i>8</i>
<i>Pre-registration Nurse/ Midwife Intern</i>	<i>10</i>	<i>8</i>	<i>1</i>		<i>-10</i>	<i>-100.0%</i>	<i>-8</i>	<i>-100.0%</i>	<i>-1</i>	
Nursing/ Midwifery Student	21	22	15	8	-13	-62.0%	-14	-63.5%	-7	8
Nursing/ Midwifery other	11	9	8	8	-3	-27.3%	-1	-11.4%	+0	9
Nursing & Midwifery	581	619	561	571	-10	-1.7%	-48	-7.7%	+9	616
Therapy Professions	55	60	51	53	-2	-3.9%	-7	-12.1%	+1	58
Social Care	1	1	1	1	+0	+11.1%	+0	+1.0%	+0	1
Social Workers	43	57	54	54	+10	+24.0%	-3	-4.7%	-0	59
Psychologists	46	56	56	57	+12	+25.8%	+1	+2.5%	+2	63
Pharmacy	8	7	9	10	+2	+25.3%	+3	+42.4%	+1	14
H&SC, Other	15	17	19	20	+5	+35.6%	+2	+13.2%	+1	21
Health & Social Care Professionals	167	198	191	195	+27	+16.4%	-3	-1.6%	+4	216
Management (VIII & above)	5	5	6	6	+1	+19.8%	+1	+21.3%	-0	6
Administrative/ Supervisory (V to VII)	28	38	41	40	+12	+42.6%	+1	+3.7%	-1	42
Clerical (III & IV)	104	109	110	110	+6	+6.2%	+2	+1.6%	-0	126
Management & Administrative	137	152	157	156	+19	+14.1%	+4	+2.7%	-1	174
Support	103	95	87	87	-16	-15.8%	-8	-8.3%	+0	102
Maintenance/ Technical	11	11	9	8	-3	-26.7%	-3	-26.7%	-1	8
General Support	114	106	95	95	-19	-16.9%	-11	-10.2%	-0	110
Health Care Assistants	126	137	135	140	+14	+11.0%	+3	+2.3%	+5	151
Care, other	13	12	12	12	-1	-6.1%	-0	-2.9%	-0	12
Patient & Client Care	139	149	147	152	+13	+9.4%	+3	+1.8%	+5	163

Mental Health Employment Report by Grade Group: NOV 2023

other Community Services

NOV 2023	WTE DEC 2019	WTE DEC 2022	WTE OCT 2023	WTE NOV 2023	WTE change since DEC 2019	% WTE change since Dec 2019	WTE change since DEC 2022	% WTE change since Dec 2022	WTE change since OCT 2023	No. NOV 2023
Total other Community Services	438	511	567	569	+132	+30.1%	+58	+11.4%	+2	601
Consultants	16	15	16	16	+1	+4.3%	+2	+10.4%	+0	18
Registrars	13	19	18	18	+5	+38.1%	-1	-4.6%	-0	18
Medical & Dental	29	34	34	34	+6	+19.6%	+1	+2.0%	-0	36
Nurse/ Midwife Manager	62	81	80	80	+17	+28.0%	-1	-1.2%	-0	82
Nurse/ Midwife Specialist & AN/MP	8	11	10	11	+3	+34.3%	+0	+0.7%	+1	12
Staff Nurse/ Staff Midwife	169	151	164	164	-5	-2.8%	+13	+8.6%	+0	171
Nursing/ Midwifery awaiting registration			2	2	+2		+2		+1	4
Pre-registration Nurse/ Midwife Intern				1	+1		+1		+1	1
Nursing/ Midwifery Student			2	3	+3		+3		+2	5
Nursing/ Midwifery other	1	2	2	2	+1	+100.0%	+0	+1.5%	+0	2
Nursing & Midwifery	240	245	257	260	+20	+8.3%	+16	+6.4%	+3	272
Therapy Professions	11	10	8	9	-2	-16.7%	-1	-5.9%	+1	10
Social Care	2	1	1	1	-1	-49.0%	+0	+1.0%	+0	1
Social Workers	15	11	12	13	-2	-10.8%	+3	+23.3%	+1	15
Psychologists	6	5	4	4	-2	-33.3%	-1	-25.7%	+0	4
Pharmacy		2	3	3	+3		+1	+51.5%	+0	3
Health & Social Care Professionals	34	29	28	31	-3	-10.1%	+2	+5.6%	+3	33
Management (VIII & above)	27	33	34	33	+6	+21.4%	+0	+0.6%	-1	35
Administrative/ Supervisory (V to VII)	31	46	56	58	+27	+86.7%	+12	+26.5%	+2	61
Clerical (III & IV)	25	28	34	34	+8	+33.2%	+6	+20.5%	-0	36
Management & Administrative	83	106	124	124	+41	+49.4%	+18	+17.0%	+0	132
Support	12	25	19	17	+5	+42.9%	-7	-29.4%	-2	19
Maintenance/ Technical	2	8	8	6	+4	+222.5%	-2	-19.1%	-2	7
General Support	14	33	27	24	+10	+68.2%	-9	-26.9%	-3	26
Health Care Assistants	37	64	83	82	+45	+123.2%	+18	+27.4%	-1	88
Care, other	1	0	14	14	+13	+2,698.0%	+14	+2,876.6%	+0	14
Patient & Client Care	37	65	97	96	+59	+157.8%	+31	+48.0%	-1	102

Mental Health Employment Report by Grade Group: NOV 2023

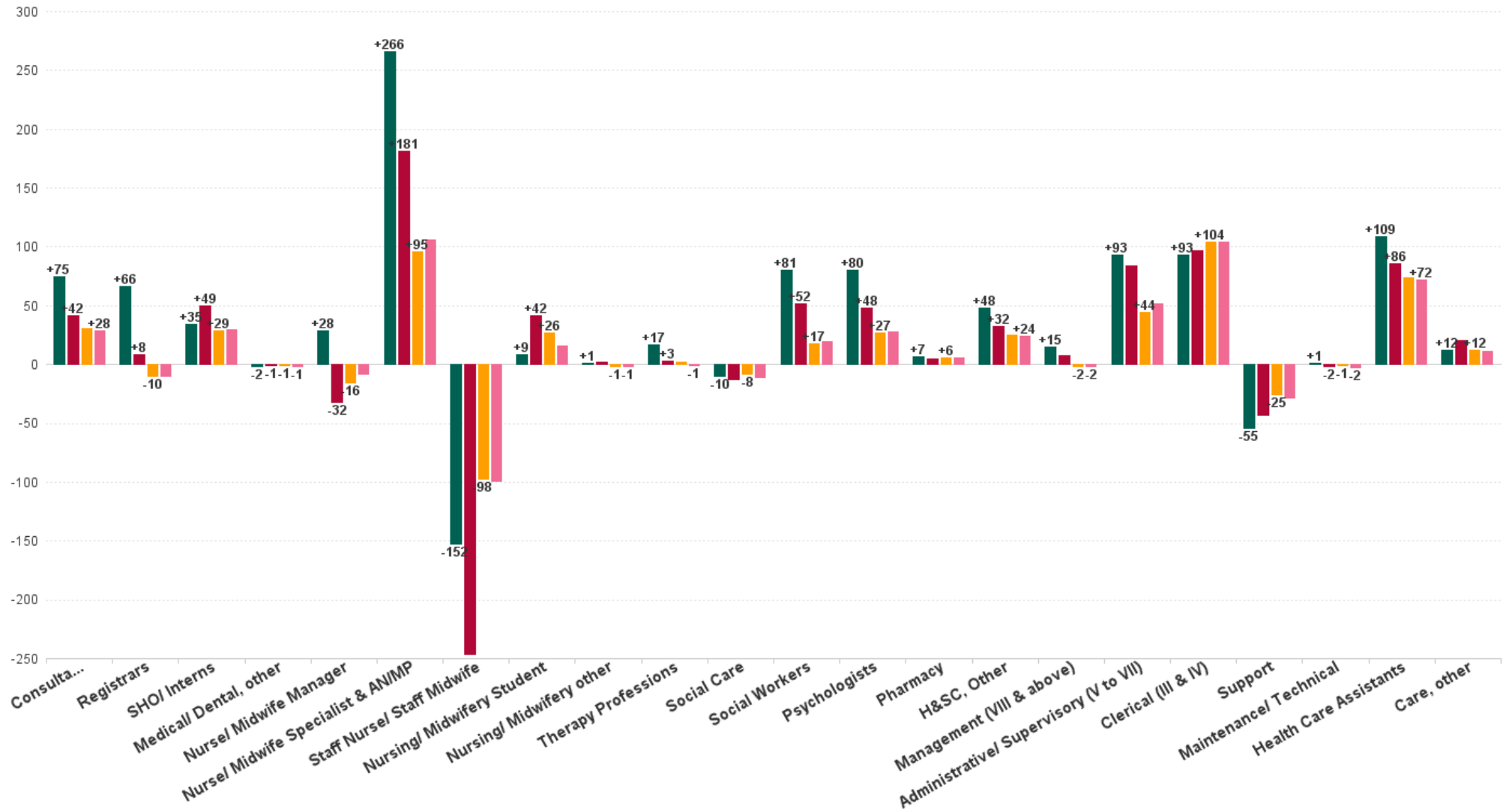
NOV 2023	WTE DEC 2019	WTE DEC 2022	WTE OCT 2023	WTE NOV 2023	WTE change since DEC 2019	% WTE change since Dec 2019	WTE change since DEC 2022	% WTE change since Dec 2022	WTE change since OCT 2023	No. NOV 2023
Overall	9,967	10,453	10,690	10,784	+817	+8.2%	+330	+3.2%	+94	11,734
Consultant Medicine	1	1	1	1	+0	+0.0%	+0	+0.0%	+0	1
Consultant Psychiatry	352	396	402	427	+75	+21.3%	+31	+7.7%	+25	456
Consultants	353	397	403	428	+75	+21.3%	+31	+7.7%	+25	457
Registrar	169	217	206	207	+37	+22.1%	-10	-4.8%	+1	214
Senior Registrar	97	126	136	125	+27	+28.3%	-1	-0.9%	-11	132
Specialist Registrar	3	2	4	4	+2	+60.0%	+2	+101.0%	+0	4
Registrars	269	345	346	335	+66	+24.7%	-10	-2.8%	-10	350
Interns	8	5	9	7	-1	-13.1%	+2	+41.3%	-2	7
Senior House Officer	253	262	276	289	+36	+14.1%	+27	+10.1%	+13	311
SHO/ Interns	261	267	284	296	+35	+13.2%	+29	+10.7%	+11	318
Other Medical	5	4	3	3	-2	-40.6%	-1	-24.0%	+0	6
Medical/ Dental, other	5	4	3	3	-2	-40.6%	-1	-24.0%	+0	6
Medical & Dental	888	1,013	1,036	1,061	+174	+19.6%	+49	+4.8%	+26	1,131
Clinical Nurse/ Midwife Manager 1	142	142	140	134	-7	-5.1%	-7	-5.2%	-5	141
Clinical Nurse/ Midwife Manager 2	755	781	762	759	+4	+0.6%	-22	-2.8%	-3	800
Clinical Nurse/ Midwife Manager 3	111	113	122	123	+12	+11.0%	+10	+9.0%	+2	126
Director Nursing/Midwifery, Assistant	165	176	176	181	+16	+9.9%	+5	+2.8%	+5	185
Director of Nursing/Midwifery	29	34	31	32	+3	+9.6%	-2	-6.0%	+0	32
Nurse/ Midwife Manager	1,201	1,245	1,231	1,229	+28	+2.4%	-16	-1.3%	-1	1,284
Advanced Nurse/ Midwife Practitioner	19	48	57	61	+42	+221.7%	+12	+25.5%	+4	63
Adv. Nurse/ Midwife, Candidate	11	20	28	26	+15	+139.1%	+6	+30.8%	-2	27
Clinical Nurse/ Midwife Spec., Candidate				1	+1		+1		+1	2
Clinical Nurse/ Midwife Specialist	430	563	627	638	+208	+48.2%	+75	+13.4%	+11	677
Nurse/ Midwife Specialist & AN/MP	460	631	711	726	+266	+57.8%	+95	+15.1%	+15	769
Staff Nurse [Intellectual Disability]	5	7	10	10	+5	+115.5%	+3	+46.8%	+0	10
Staff Nurse [Psychiatric]	2,890	2,835	2,684	2,747	-143	-4.9%	-88	-3.1%	+64	3,008
Staff Nurses [General/ Children's]	108	106	93	93	-14	-13.4%	-13	-12.1%	+1	102
Staff Nurse/ Staff Midwife	3,002	2,948	2,786	2,850	-152	-5.1%	-98	-3.3%	+64	3,120
Nursing/ Midwifery awaiting registration	57	39	95	80	+23	+40.6%	+41	+106.5%	-15	86
Post-registration Nurse/ Midwife Student	1				-1	-100.0%				
Pre-registration Nurse/ Midwife Intern	25	26	30	12	-13	-53.6%	-15	-56.0%	-18	21
Nursing/ Midwifery Student	83	65	124	92	+9	+10.5%	+26	+40.6%	-33	107
Nursing Education/Clinical	32	34	35	33	+1	+4.2%	-1	-4.3%	-2	36
Nursing/ Midwifery other	32	34	35	33	+1	+4.2%	-1	-4.3%	-2	36
Nursing & Midwifery	4,778	4,924	4,887	4,930	+152	+3.2%	+7	+0.1%	+43	5,316
Dietitians	19	18	22	25	+6	+30.6%	+7	+38.1%	+3	28
Occupational Therapists	337	346	342	346	+9	+2.8%	-0	0.0%	+4	385
Physiotherapists	2	3	1	1	-1	-60.5%	-2	-70.1%	-0	2
Podiatrists & Chiropodists	1	1			-1	-100.0%	-1	-100.0%		
Speech & Language Therapists	62	68	66	65	+4	+6.0%	-2	-3.2%	-0	77
Therapy Professions	420	435	431	437	+17	+4.0%	+2	+0.4%	+6	492
Social Care	74	72	49	63	-10	-13.8%	-8	-11.8%	+14	75
Social Care	74	72	49	63	-10	-13.8%	-8	-11.8%	+14	75
Social Workers	350	414	424	431	+81	+23.0%	+17	+4.2%	+7	473
Social Workers	350	414	424	431	+81	+23.0%	+17	+4.2%	+7	473
Psychologists	394	448	487	474	+80	+20.3%	+27	+5.9%	-12	525
Psychologists	394	448	487	474	+80	+20.3%	+27	+5.9%	-12	525
Pharmacists	16	16	19	21	+5	+29.9%	+5	+34.5%	+2	27
Pharmacy Technicians	2	4	5	5	+2	+83.0%	+1	+21.5%	+0	7
Pharmacy	19	19	24	25	+7	+37.0%	+6	+31.9%	+2	34
Counsellor Therapists	95	124	131	145	+50	+52.5%	+20	+16.4%	+13	161
HSCP Trainees/Students			4	4	+4		+4		-0	4
Other Health & Social Care	11	3	2	3	-8	-77.0%	-0	-16.4%	+0	6
Play Therapists/ Specialists	1	3	4	4	+3	+182.2%	+1	+32.5%	+0	5



NOV 2023	WTE DEC 2019	WTE DEC 2022	WTE OCT 2023	WTE NOV 2023	WTE change since DEC 2019	% WTE change since Dec 2019	WTE change since DEC 2022	% WTE change since Dec 2022	WTE change since OCT 2023	No. NOV 2023
Overall	9,967	10,453	10,690	10,784	+817	+8.2%	+330	+3.2%	+94	11,734
H&SC, Other	107	130	142	155	+48	+44.8%	+25	+19.0%	+13	176
Health & Social Care Professionals	1,364	1,518	1,556	1,587	+222	+16.3%	+68	+4.5%	+30	1,775
Executive Management	11	14	17	15	+4	+39.5%	+1	+10.4%	-2	17
Senior Management (VIII & GM)	47	61	57	58	+10	+21.6%	-3	-5.1%	+1	59
Management (VIII & above)	58	75	74	73	+15	+25.0%	-2	-2.2%	-1	76
Middle Management (V-VII)	236	285	331	330	+93	+39.6%	+44	+15.5%	-2	345
Other Administrative	2	2	2	2	+0	+1.9%	+0	+1.9%	+0	2
Administrative/ Supervisory (V to VII)	238	287	333	331	+93	+39.3%	+44	+15.4%	-2	347
General Administrative (III & IV)	717	707	808	811	+93	+13.0%	+104	+14.7%	+3	899
Clerical (III & IV)	717	707	808	811	+93	+13.0%	+104	+14.7%	+3	899
Management & Administrative	1,014	1,068	1,215	1,215	+201	+19.9%	+147	+13.7%	-0	1,322
Catering	66	68	67	67	+1	+1.5%	-1	-1.2%	-0	75
Household Services	424	397	396	389	-35	-8.4%	-8	-2.1%	-7	446
Other Support	47	40	32	31	-16	-33.3%	-9	-22.6%	-1	37
Portering	48	51	43	44	-5	-9.4%	-7	-13.7%	+1	45
Support	585	556	538	531	-55	-9.3%	-25	-4.5%	-8	603
Maintenance	127	129	128	128	+1	+0.5%	-1	-0.9%	-1	131
Maintenance/ Technical	127	129	128	128	+1	+0.5%	-1	-0.9%	-1	131
General Support	712	685	667	658	-54	-7.6%	-26	-3.9%	-8	734
Attendant/ Aide	605	423	406	409	-196	-32.4%	-14	-3.2%	+3	452
Health Care Assistant/ Care Assistant	382	588	655	660	+279	+73.0%	+72	+12.2%	+5	696
Health & Social Care Assistants	9	19	34	35	+26	+292.6%	+16	+83.4%	+1	40
Health Care Assistants	996	1,030	1,095	1,104	+109	+10.9%	+74	+7.2%	+9	1,188
Home Care Services	16	23	20	20	+5	+28.9%	-3	-12.0%	-0	27
Other Care Grades	23	19	41	41	+18	+80.2%	+21	+111.3%	-0	43
Pastoral Care	13	9	10	10	-3	-21.0%	+1	+5.7%	+0	15
Workshop Services	165	164	162	157	-8	-4.7%	-7	-4.3%	-5	183
Care, other	216	216	233	228	+12	+5.7%	+12	+5.6%	-5	268
Patient & Client Care	1,212	1,246	1,329	1,332	+121	+10.0%	+86	+6.9%	+4	1,456

WTE Change by Staff Category

■ WTE change since DEC 2019 ■ WTE change since DEC 2021 ■ WTE change since DEC 2022 ■ WTE change since NOV 2022



Mental Health Employment Report by WTE, Headcount, Gender, Full-Time / Part-Time etc. NOV 2023

NOV 2023	WTE NOV 2023	No. NOV 2023	WTE : No	% Male	% Female	Male WTE : No.	Female WTE : No	Perm Count %	Perm Count Male %	Perm Count Female %	Fulltime Count %	Part time Count %	FT Count Male %	FT Count Female %
Total	10,784	11,734	1:0.9	26.98%	73.02%	1:1	1:0.9	85.22%	22.10%	63.12%	85.91%	14.09%	93.75%	83.02%
Consultants	427.54	457	1:0.9	41.36%	58.64%	1:1	1:0.9	66.96%	27.79%	39.17%	87.75%	12.25%	93.12%	83.96%
Registrars	335.21	350	1:1	42.57%	57.43%	1:1	1:0.9	3.14%	1.43%	1.71%	94.00%	6.00%	99.33%	90.05%
SHO/ Interns	295.67	318	1:0.9	38.99%	61.01%	1:0.9	1:0.9	0.31%		0.31%	98.74%	1.26%	100.00%	97.94%
Medical/ Dental, other	2.97	6	1:0.5	50.00%	50.00%	1:0.4	1:0.5	50.00%	16.67%	33.33%	33.33%	66.67%	33.33%	33.33%
Medical & Dental	1,061	1,131	1:0.9	41.11%	58.89%	1:1	1:0.9	28.38%	11.76%	16.62%	92.48%	7.52%	96.56%	89.64%
Nurse/ Midwife Manager	1,229.49	1,284	1:1	36.84%	63.16%	1:1	1:0.9	98.68%	36.21%	62.46%	94.86%	5.14%	98.31%	92.85%
Nurse/ Midwife Specialist & AN/MP	726.14	769	1:0.9	18.60%	81.40%	1:1	1:0.9	99.48%	18.60%	80.88%	92.85%	7.15%	97.90%	91.69%
Staff Nurse/ Staff Midwife	2,850.23	3,120	1:0.9	24.97%	75.03%	1:0.9	1:0.9	90.87%	21.96%	68.91%	87.53%	12.47%	91.27%	86.29%
Nursing/ Midwifery Student	91.61	107	1:0.9	22.43%	77.57%	1:0.8	1:0.9	7.48%	2.80%	4.67%	100.00%		100.00%	100.00%
Nursing/ Midwifery other	32.89	36	1:0.9	11.11%	88.89%	1:1	1:0.9	100.00%	11.11%	88.89%	88.89%	11.11%	100.00%	87.50%
Nursing & Midwifery	4,930	5,316	1:0.9	26.77%	73.23%	1:1	1:0.9	92.38%	24.45%	67.93%	90.33%	9.67%	94.45%	88.83%
Therapy Professions	437.27	492	1:0.9	9.55%	90.45%	1:0.9	1:0.9	94.92%	9.35%	85.57%	85.57%	14.43%	89.36%	85.17%
Social Care	63.41	75	1:0.8	21.33%	78.67%	1:0.9	1:0.8	100.00%	21.33%	78.67%	68.00%	32.00%	75.00%	66.10%
Social Workers	430.99	473	1:0.9	17.97%	82.03%	1:1	1:0.9	94.29%	16.70%	77.59%	85.20%	14.80%	95.29%	82.99%
Psychologists	474.46	525	1:0.9	18.86%	81.14%	1:1	1:0.9	75.24%	15.43%	59.81%	83.43%	16.57%	97.98%	80.05%
Pharmacy	25.36	34	1:0.7	14.71%	85.29%	1:0.9	1:0.7	94.12%	11.76%	82.35%	50.00%	50.00%	80.00%	44.83%
H&SC, Other	155.05	176	1:0.9	21.02%	78.98%	1:0.9	1:0.9	91.48%	19.32%	72.16%	69.32%	30.68%	86.49%	64.75%
Health & Social Care Professionals	1,587	1,775	1:0.9	16.28%	83.72%	1:0.9	1:0.9	88.79%	14.65%	74.14%	81.80%	18.20%	92.73%	79.68%
Management (VIII & above)	72.95	76	1:1	32.89%	67.11%	1:1	1:1	97.37%	31.58%	65.79%	98.68%	1.32%	96.00%	100.00%
Administrative/ Supervisory (V to VII)	331.34	347	1:1	19.31%	80.69%	1:1	1:0.9	96.25%	18.73%	77.52%	89.91%	10.09%	98.51%	87.86%
Clerical (III & IV)	810.66	899	1:0.9	9.45%	90.55%	1:1	1:0.9	85.87%	8.34%	77.53%	79.09%	20.91%	94.12%	77.52%
Management & Administrative	1,215	1,322	1:0.9	13.39%	86.61%	1:1	1:0.9	89.26%	12.41%	76.85%	83.06%	16.94%	96.05%	81.05%
Support	530.56	603	1:0.9	30.18%	69.82%	1:0.9	1:0.9	92.70%	27.36%	65.34%	64.84%	35.16%	89.01%	54.39%
Maintenance/ Technical	127.61	131	1:1	99.24%	0.76%	1:1	1:1	96.18%	95.42%	0.76%	97.71%	2.29%	97.69%	100.00%
General Support	658	734	1:0.9	42.51%	57.49%	1:1	1:0.9	93.32%	39.51%	53.81%	70.71%	29.29%	92.63%	54.50%
Health Care Assistants	1,104.24	1,188	1:0.9	31.57%	68.43%	1:1	1:0.9	92.34%	28.79%	63.55%	81.73%	18.27%	92.00%	77.00%
Care, other	228.12	268	1:0.9	46.64%	53.36%	1:0.9	1:0.8	85.82%	38.81%	47.01%	72.01%	27.99%	82.40%	62.94%
Patient & Client Care	1,332	1,456	1:0.9	34.34%	65.66%	1:0.9	1:0.9	91.14%	30.63%	60.51%	79.95%	20.05%	89.60%	74.90%



Mental Health Employment Report by WTE, Headcount, Gender, Full-Time / Part-Time etc. NOV 2023

NOV 2023	WTE NOV 2023	No. NOV 2023	WTE : No	% Male	% Female	Male WTE : No.	Female WTE : No	Perm Count %	Number Male %	Number Female %	Fulltime Count %	Part time Count %	FT Count Male %	FT Count Female %
Total	10,784	11,734	1:0.9	26.98%	73.02%	1:1	1:0.9	85.22%	22.10%	63.12%	85.91%	14.09%	93.75%	83.02%
CHO 1	1,047	1,118	1:0.9	26.21%	73.79%	1:1	1:0.9	90.61%	22.81%	67.80%	87.84%	12.16%	96.25%	84.85%
CHO 2	1,374	1,482	1:0.9	28.74%	71.26%	1:1	1:0.9	86.10%	23.28%	62.82%	85.63%	14.37%	91.78%	83.14%
CHO 3	838	920	1:0.9	21.41%	78.59%	1:0.9	1:0.9	84.24%	17.83%	66.41%	87.72%	12.28%	91.88%	86.58%
CHO 4	1,598	1,763	1:0.9	25.64%	74.36%	1:0.9	1:0.9	74.02%	17.70%	56.32%	83.27%	16.73%	92.26%	80.17%
CHO 5	1,320	1,453	1:0.9	25.05%	74.95%	1:0.9	1:0.9	89.19%	21.34%	67.86%	81.42%	18.58%	91.48%	78.05%
CHO 6	677	754	1:0.9	28.51%	71.49%	1:0.9	1:0.9	87.67%	24.93%	62.73%	83.42%	16.58%	91.63%	80.15%
CHO 7	907	987	1:0.9	24.11%	75.89%	1:1	1:0.9	83.79%	18.74%	65.05%	89.36%	10.64%	96.22%	87.18%
CHO 8	1,126	1,209	1:0.9	24.57%	75.43%	1:1	1:0.9	86.85%	20.43%	66.42%	86.77%	13.23%	96.30%	83.66%
CHO 9	1,328	1,447	1:0.9	28.13%	71.87%	1:1	1:0.9	86.45%	23.64%	62.82%	85.90%	14.10%	96.31%	81.83%
other Community Services	569	601	1:0.9	46.09%	53.91%	1:0.9	1:0.9	90.85%	40.77%	50.08%	94.68%	5.32%	93.86%	95.37%



Previous Month Summary

	% WTE change since OCT 2023	WTE change since DEC 2022	CHO 1	CHO 2	CHO 3	CHO 4	CHO 5	CHO 6	CHO 7	CHO 8	CHO 9	other Communi ty Services
Total	+0.9%	+330.3	+22.9	+44.5	+23.7	+36.4	+95.7	+28.0	+28.4	+35.6	-43.2	+58.3
Consultants	+6.1%	+30.5	+1.2	+4.7	+0.6	+5.9	+2.4	+5.2	+4.7	+1.3	+3.1	+1.5
Registrars	-3.0%	-9.5	+3.6	+4.4	+6.6	-7.2	+6.1	-1.8	-11.5	+1.3	-10.1	-0.9
SHO/ Interns	+4.0%	+28.6	-0.5	-1.9	-12.4	+10.2	+0.6	+2.4	+4.2	+7.5	+18.7	
Medical/ Dental, other	+0.0%	-0.9		-1.0		+0.0	+0.1					
Medical & Dental	+2.5%	+48.6	+4.3	+6.1	-5.3	+8.9	+9.1	+5.8	-2.7	+10.2	+11.6	+0.7
Nurse/ Midwife Manager	-0.1%	-15.9	+3.0	+8.1	+4.7	-9.1	-19.9	-3.0	-7.0	+3.8	+4.4	-0.9
Nurse/ Midwife Specialist & AN/MP	+2.1%	+95.4	+7.3	+17.4	+5.4	+17.6	+21.2	+5.2	+14.0	+5.4	+1.9	+0.1
Staff Nurse/ Staff Midwife	+2.3%	-97.6	-6.2	-21.6	+2.7	-10.8	-14.1	-6.7	-7.2	-7.5	-39.1	+13.0
Nursing/ Midwifery Student	-26.4%	+26.5	+2.7	+7.2	-4.1	+2.5	+20.3		+5.9	+2.3	-13.9	+3.5
Nursing/ Midwifery other	-5.8%	-1.5	-0.9	-0.1	+0.0		+1.3	-0.8	-0.0	+0.0	-1.1	+0.0
Nursing & Midwifery	+0.9%	+6.8	+5.9	+10.9	+8.7	+0.2	+8.9	-5.3	+5.6	+4.0	-47.7	+15.6
Therapy Professions	+1.3%	+1.8	-0.3	+0.7	+0.2	+8.0	+0.0	-0.6	+3.3	-1.7	-7.2	-0.6
Social Care	+29.4%	-8.5	-1.5	-0.6	-0.8	-2.0	+0.9	-3.6	+0.3	-1.1	+0.0	+0.0
Social Workers	+1.7%	+17.4	+1.2	+4.2	-2.8	+0.2	+3.9	+1.3	+5.8	+3.7	-2.6	+2.5
Psychologists	-2.5%	+26.6	+6.4	+3.9	-2.7	+2.6	+6.2	+5.7	+3.3	+1.4	+1.4	-1.4
Pharmacy	+7.3%	+6.1	+0.2	+1.3	-0.0	-0.9			+0.6	+1.0	+3.0	+1.0



H&SC, Other	+9.3%	+24.7	+1.2	+11.9	+1.8	+0.4	-1.0	+7.8	-1.1	+1.6	+2.3	
Health & Social Care Professionals	+1.9%	+68.3	+7.1	+21.4	-4.5	+8.3	+10.0	+10.6	+12.2	+4.8	-3.2	+1.6
Management (VIII & above)	-1.7%	-1.6	-2.1	+0.0	+0.1	-0.2	-0.8	+0.0	-1.0	+1.0	+1.1	+0.2
Administrative/ Supervisory (V to VII)	-0.5%	+44.3	+5.4	+6.2	+3.0	+6.3	+7.2	-1.9	+3.1	+1.2	+1.4	+12.2
Clerical (III & IV)	+0.3%	+104.0	+4.8	+13.6	+8.6	+12.8	+21.5	+10.5	+7.1	+17.8	+1.7	+5.7
Management & Administrative	0.0%	+146.7	+8.2	+19.8	+11.7	+18.9	+28.0	+8.6	+9.2	+20.0	+4.2	+18.1
Support	-1.4%	-25.3	+2.7	-5.1	-0.1	-9.4	+9.6	-1.3	-2.6	-4.1	-7.9	-7.3
Maintenance/ Technical	-0.6%	-1.1	-0.5	-1.9	+2.1	-1.3	-0.1	+2.0	-0.9	+3.9	-2.9	-1.5
General Support	-1.3%	-26.4	+2.2	-7.0	+2.0	-10.6	+9.6	+0.8	-3.5	-0.2	-10.8	-8.8
Health Care Assistants	+0.8%	+74.1	-2.7	-1.8	+11.1	+10.2	+27.4	+6.9	+4.2	-1.9	+3.1	+17.6
Care, other	-2.2%	+12.1	-2.2	-4.8	+0.0	+0.4	+2.9	+0.6	+3.4	-1.3	-0.4	+13.5
Patient & Client Care	+0.3%	+86.3	-4.9	-6.7	+11.1	+10.6	+30.3	+7.5	+7.6	-3.1	+2.8	+31.1



Year on Year Summary

	% WTE change since NOV 2022	WTE change since NOV 2022	CHO 1	CHO 2	CHO 3	CHO 4	CHO 5	CHO 6	CHO 7	CHO 8	CHO 9	other Communi ty Services
Total	+0.9%	+330.9	+7.4	+51.4	+22.2	+40.4	+90.3	+24.3	+23.7	+39.3	-42.1	+73.9
Consultants	+6.1%	+28.4	+1.1	+4.3	+1.5	+6.9	+1.7	+4.1	+4.0	+0.7	+3.5	+0.6
Registrars	-3.0%	-10.3	+2.9	+5.9	+5.0	-6.8	+6.0	-0.6	-13.4	+2.8	-11.1	-1.0
SHO/ Interns	+4.0%	+29.8	-1.6	-2.5	-8.0	+8.3	+1.6	+2.8	+4.1	+5.7	+19.5	
Medical/ Dental, other	+0.0%	-1.5		-1.0		-0.5	+0.1					
Medical & Dental	+2.5%	+46.5	+2.4	+6.7	-1.4	+7.8	+9.4	+6.3	-5.4	+9.3	+11.9	-0.5
Nurse/ Midwife Manager	-0.1%	-8.0	+5.0	+8.0	+12.7	-12.7	-21.4	-3.5	-8.6	+7.5	+4.6	+0.4
Nurse/ Midwife Specialist & AN/MP	+2.1%	+105.5	+8.8	+16.7	+7.2	+20.7	+23.8	+4.7	+13.5	+6.5	+3.3	+0.3
Staff Nurse/ Staff Midwife	+2.3%	-99.0	-13.6	-22.0	+1.7	-5.7	-16.2	-5.5	-6.7	-6.2	-40.5	+15.6
Nursing/ Midwifery Student	-26.4%	+15.6	+1.3	+4.6	-8.1	+3.1	+13.7		+6.1	-0.3	-8.2	+3.5
Nursing/ Midwifery other	-5.8%	-1.2	-0.9	-0.1	+0.0		+2.2	-0.8	+0.1	+0.0	-1.6	+0.0
Nursing & Midwifery	+0.9%	+12.9	+0.5	+7.2	+13.6	+5.5	+2.0	-5.1	+4.3	+7.5	-42.4	+19.7
Therapy Professions	+1.3%	-1.1	-2.2	+0.4	-0.5	+6.9	+0.0	-0.1	+3.4	-0.7	-7.8	-0.5
Social Care	+29.4%	-11.0	-1.6	-0.7	-1.6	-2.2	+0.3	-3.7	-0.5	-1.1	+0.0	+0.0
Social Workers	+1.7%	+19.5	+1.2	+4.2	-3.1	+2.6	+4.9	-0.9	+7.8	+3.7	-2.7	+1.8
Psychologists	-2.5%	+28.2	+6.5	+4.1	-5.5	+4.3	+6.9	+6.0	+3.2	+2.3	+1.4	-1.0



Pharmacy	+7.3%	+5.5	+0.2	+1.3	-0.1	-0.8			+0.8	+0.1	+3.0	+1.0
H&SC, Other	+9.3%	+23.8	+1.1	+11.8	+1.6	+0.4	-0.5	+7.4	-1.2	+1.4	+1.8	
Health & Social Care Professionals	+1.9%	+65.0	+5.3	+21.2	-9.1	+11.2	+11.6	+8.8	+13.4	+5.7	-4.4	+1.4
Management (VIII & above)	-1.7%	-2.1	-2.1	+0.3	+0.0	-0.2	-1.1	+0.0	-0.9	+1.0	+1.0	-0.2
Administrative/ Supervisory (V to VII)	-0.5%	+51.9	+4.3	+6.8	+4.5	+7.6	+8.7	-2.6	+3.6	+2.4	+1.0	+15.6
Clerical (III & IV)	+0.3%	+104.0	+1.6	+16.2	+6.9	+12.0	+21.9	+9.9	+8.0	+16.8	+1.2	+9.7
Management & Administrative	0.0%	+153.9	+3.8	+23.2	+11.4	+19.4	+29.5	+7.4	+10.7	+20.2	+3.2	+25.2
Support	-1.4%	-28.4	+2.5	-5.1	-1.7	-10.7	+9.9	-2.5	-3.2	-5.0	-7.4	-5.3
Maintenance/ Technical	-0.6%	-2.4	-0.8	-0.6	+3.0	-1.3	-1.2	+2.0	-1.0	+3.1	-3.0	-2.6
General Support	-1.3%	-30.8	+1.7	-5.7	+1.3	-12.0	+8.7	-0.5	-4.2	-1.9	-10.4	-7.9
Health Care Assistants	+0.8%	+71.8	-4.2	+1.8	+6.5	+8.0	+26.3	+6.9	+4.1	-0.1	+0.5	+22.0
Care, other	-2.2%	+11.6	-2.1	-3.0	+0.0	+0.4	+2.8	+0.5	+0.8	-1.3	-0.6	+14.0
Patient & Client Care	+0.3%	+83.4	-6.3	-1.2	+6.6	+8.4	+29.1	+7.5	+4.9	-1.4	-0.1	+36.0



Year to Date Summary

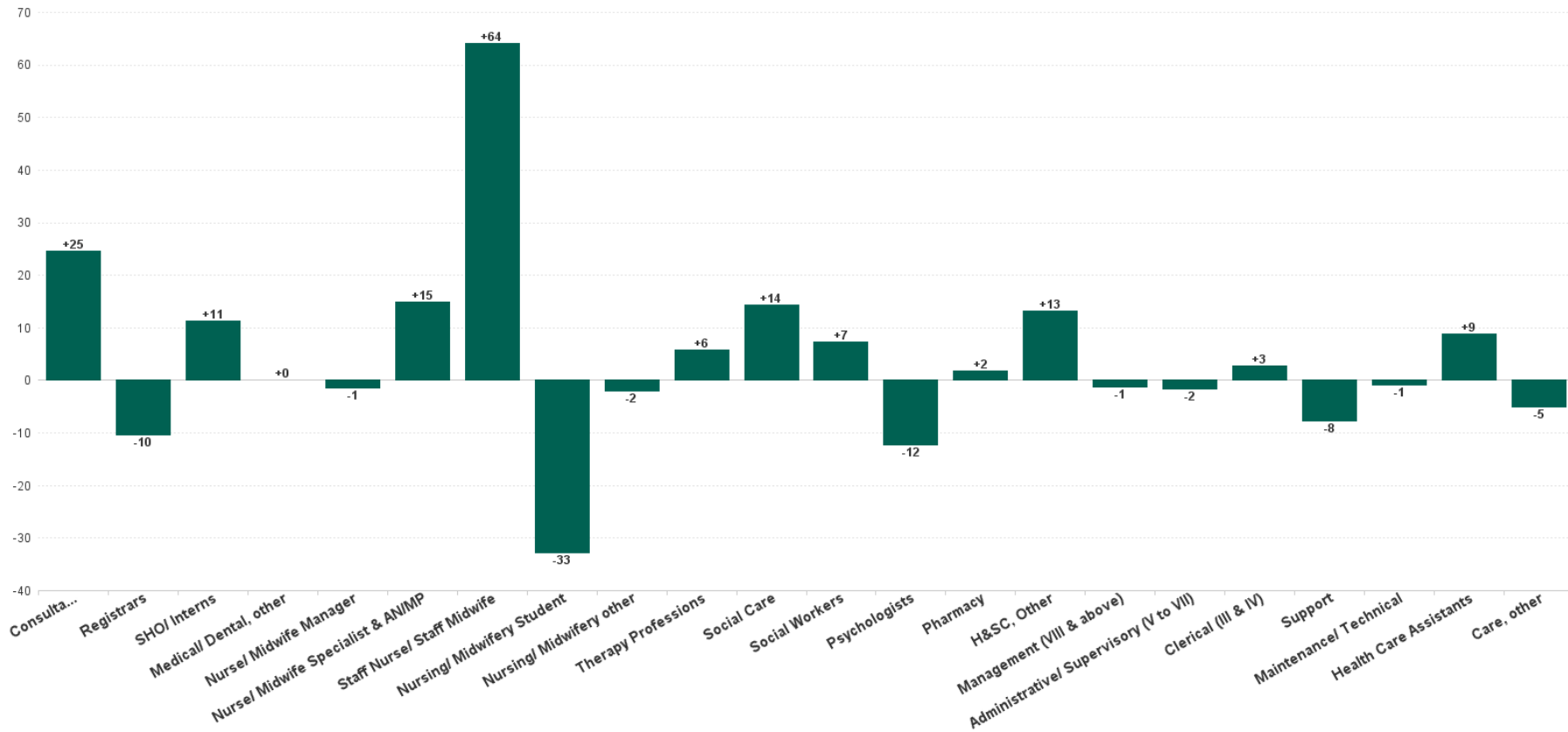
	% WTE change since NOV 2022	WTE change since DEC 2022	CHO 1	CHO 2	CHO 3	CHO 4	CHO 5	CHO 6	CHO 7	CHO 8	CHO 9	other Communi ty Services
Total	+3.2%	+330.3	+22.9	+44.5	+23.7	+36.4	+95.7	+28.0	+28.4	+35.6	-43.2	+58.3
Consultants	+7.7%	+30.5	+1.2	+4.7	+0.6	+5.9	+2.4	+5.2	+4.7	+1.3	+3.1	+1.5
Registrars	-2.8%	-9.5	+3.6	+4.4	+6.6	-7.2	+6.1	-1.8	-11.5	+1.3	-10.1	-0.9
SHO/ Interns	+10.7%	+28.6	-0.5	-1.9	-12.4	+10.2	+0.6	+2.4	+4.2	+7.5	+18.7	
Medical/ Dental, other	-24.0%	-0.9		-1.0		+0.0	+0.1					
Medical & Dental	+4.8%	+48.6	+4.3	+6.1	-5.3	+8.9	+9.1	+5.8	-2.7	+10.2	+11.6	+0.7
Nurse/ Midwife Manager	-1.3%	-15.9	+3.0	+8.1	+4.7	-9.1	-19.9	-3.0	-7.0	+3.8	+4.4	-0.9
Nurse/ Midwife Specialist & AN/MP	+15.1%	+95.4	+7.3	+17.4	+5.4	+17.6	+21.2	+5.2	+14.0	+5.4	+1.9	+0.1
Staff Nurse/ Staff Midwife	-3.3%	-97.6	-6.2	-21.6	+2.7	-10.8	-14.1	-6.7	-7.2	-7.5	-39.1	+13.0
Nursing/ Midwifery Student	+40.6%	+26.5	+2.7	+7.2	-4.1	+2.5	+20.3		+5.9	+2.3	-13.9	+3.5
Nursing/ Midwifery other	-4.3%	-1.5	-0.9	-0.1	+0.0		+1.3	-0.8	-0.0	+0.0	-1.1	+0.0
Nursing & Midwifery	+0.1%	+6.8	+5.9	+10.9	+8.7	+0.2	+8.9	-5.3	+5.6	+4.0	-47.7	+15.6
Therapy Professions	+0.4%	+1.8	-0.3	+0.7	+0.2	+8.0	+0.0	-0.6	+3.3	-1.7	-7.2	-0.6
Social Care	-11.8%	-8.5	-1.5	-0.6	-0.8	-2.0	+0.9	-3.6	+0.3	-1.1	+0.0	+0.0
Social Workers	+4.2%	+17.4	+1.2	+4.2	-2.8	+0.2	+3.9	+1.3	+5.8	+3.7	-2.6	+2.5
Psychologists	+5.9%	+26.6	+6.4	+3.9	-2.7	+2.6	+6.2	+5.7	+3.3	+1.4	+1.4	-1.4
Pharmacy	+31.9%	+6.1	+0.2	+1.3	-0.0	-0.9			+0.6	+1.0	+3.0	+1.0
H&SC, Other	+19.0%	+24.7	+1.2	+11.9	+1.8	+0.4	-1.0	+7.8	-1.1	+1.6	+2.3	
Health & Social Care Professionals	+4.5%	+68.3	+7.1	+21.4	-4.5	+8.3	+10.0	+10.6	+12.2	+4.8	-3.2	+1.6
Management (VIII & above)	-2.2%	-1.6	-2.1	+0.0	+0.1	-0.2	-0.8	+0.0	-1.0	+1.0	+1.1	+0.2
Administrative/ Supervisory (V to VII)	+15.4%	+44.3	+5.4	+6.2	+3.0	+6.3	+7.2	-1.9	+3.1	+1.2	+1.4	+12.2
Clerical (III & IV)	+14.7%	+104.0	+4.8	+13.6	+8.6	+12.8	+21.5	+10.5	+7.1	+17.8	+1.7	+5.7
Management & Administrative	+13.7%	+146.7	+8.2	+19.8	+11.7	+18.9	+28.0	+8.6	+9.2	+20.0	+4.2	+18.1



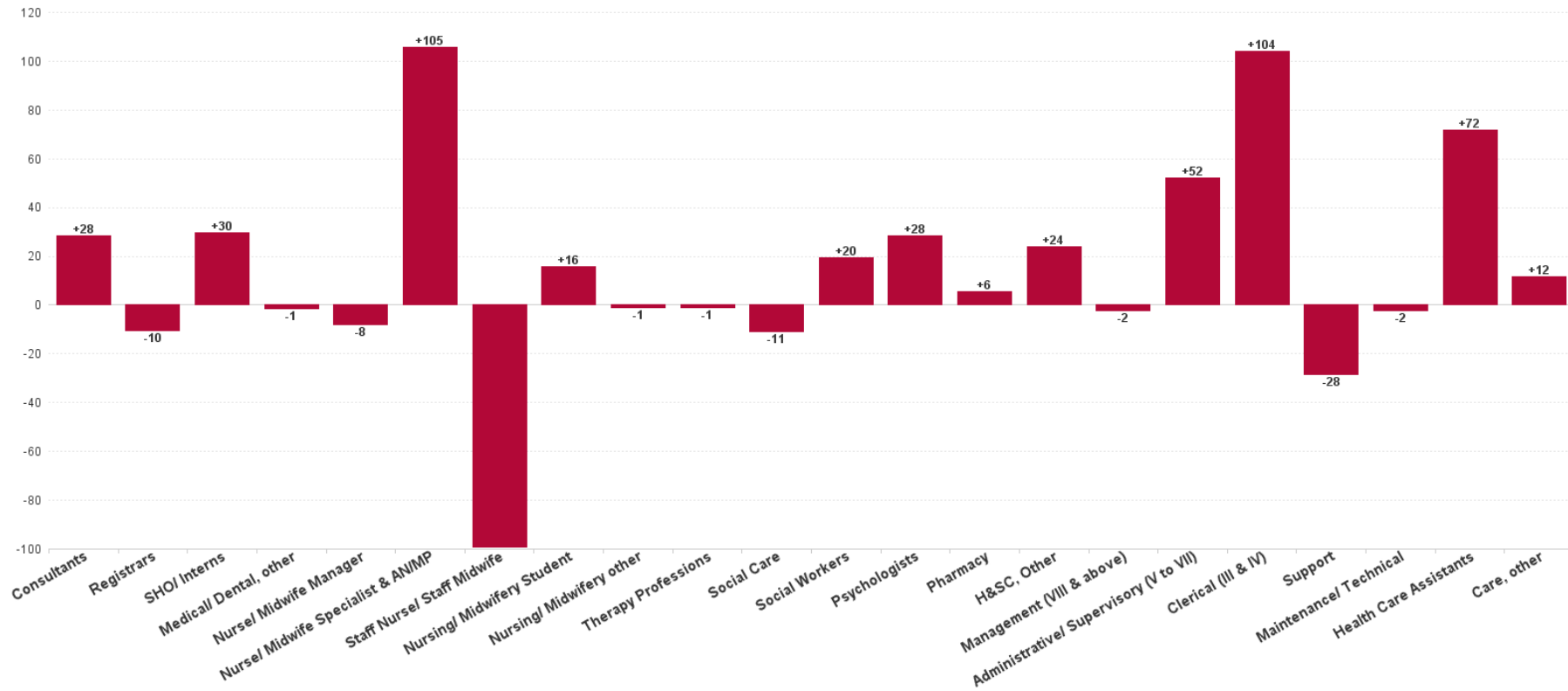
Support	-4.5%	-25.3	+2.7	-5.1	-0.1	-9.4	+9.6	-1.3	-2.6	-4.1	-7.9	-7.3
Maintenance/ Technical	-0.9%	-1.1	-0.5	-1.9	+2.1	-1.3	-0.1	+2.0	-0.9	+3.9	-2.9	-1.5
General Support	-3.9%	-26.4	+2.2	-7.0	+2.0	-10.6	+9.6	+0.8	-3.5	-0.2	-10.8	-8.8
Health Care Assistants	+7.2%	+74.1	-2.7	-1.8	+11.1	+10.2	+27.4	+6.9	+4.2	-1.9	+3.1	+17.6
Care, other	+5.6%	+12.1	-2.2	-4.8	+0.0	+0.4	+2.9	+0.6	+3.4	-1.3	-0.4	+13.5
Patient & Client Care	+6.9%	+86.3	-4.9	-6.7	+11.1	+10.6	+30.3	+7.5	+7.6	-3.1	+2.8	+31.1



Previous Month Summary Chart: Change since OCT 2023



Previous Year Summary Chart: Change since NOV 2022



YTD Summary Chart: Change since DEC 2022

