

Mental Health Service Employment Report: November 2021

Employment by Staff Group

Nov 2021	WTE Dec 2019	WTE Dec 2020	WTE Oct 2021	WTE Nov 2021	WTE change since Oct 21	WTE change since Dec 20	% change since Dec 20	WTE change since Dec 19	% change since Dec 19	No. Nov 2021
Overall	9,954	10,301	10,352	10,289	-63	-12	-0.1%	+335	+3.4%	11,315
Consultants	353	370	380	383	+2	+13	+3.5%	+30	+8.5%	420
Registrars	269	281	333	326	-7	+45	+16.1%	+57	+21.3%	338
SHO/ Interns	261	276	243	246	+3	-30	-10.8%	-15	-5.7%	259
Medical/ Dental, other	5	5	4	4	+0	-1	-18.8%	-1	-18.8%	8
Medical & Dental	888	932	961	959	-2	+27	+2.9%	+71	+8.0%	1,025
Nurse/ Midwife Manager	1,192	1,240	1,242	1,252	+10	+13	+1.0%	+60	+5.0%	1,312
Nurse/ Midwife Specialist & AN/MP	459	529	545	539	-6	+10	+2.0%	+80	+17.4%	577
Staff Nurse/ Staff Midwife	3,003	3,076	3,026	3,048	+22	-28	-0.9%	+45	+1.5%	3,341
Public Health Nurse			1		-1		-100.0%		-100.0%	
<i>Pre-registration Nurse Intern (COVID-19)</i>		42	2	1	-1	-41	-97.7%	+1	-100.0%	1
<i>Pre-registration Nurse/ Midwife Intern</i>	28	11	68	31	-37	+20	+187.4%	+3	+11.8%	57
<i>Post-registration Nurse/ Midwife Student</i>	1	1				-1	-100.0%	-1	-100.0%	
<i>Nursing/ Midwifery awaiting registration</i>	59	5	54	32	-21	+27	+566.4%	-27	-45.1%	42
Nursing/ Midwifery Student	87	59	123	64	-59	+5	+8.7%	-23	-26.7%	100
Nursing/ Midwifery other	32	32	31	31	-0	-1	-1.6%	-0	-1.2%	34
Nursing & Midwifery	4,773	4,935	4,968	4,935	-34	-0	-0.0%	+161	+3.4%	5,364
Therapy Professions	422	439	438	434	-4	-5	-1.2%	+12	+2.7%	490
Social Care	74	80	74	74	-0	-6	-7.8%	+0	+0.2%	86
Social Workers	350	373	381	381	+0	+9	+2.3%	+32	+9.1%	430
Psychologists	394	424	432	427	-5	+3	+0.7%	+32	+8.2%	476
Pharmacy	19	21	22	21	-1	-0	-0.1%	+2	+11.6%	26
H&SC, Other	108	108	114	118	+4	+10	+9.1%	+10	+9.1%	138
Health & Social Care Professionals	1,366	1,444	1,460	1,454	-6	+10	+0.7%	+88	+6.4%	1,646
Management (VIII & above)	57	67	60	63	+3	-4	-6.4%	+5	+9.5%	64
Administrative/ Supervisory (V to VII)	237	245	250	248	-3	+3	+1.2%	+11	+4.6%	264
Clerical (III & IV)	717	722	716	702	-15	-20	-2.8%	-16	-2.2%	802
Management & Administrative	1,012	1,034	1,026	1,012	-14	-22	-2.1%	+1	+0.1%	1,130
Support	581	594	574	573	-1	-21	-3.5%	-7	-1.2%	660
Maintenance/ Technical	131	137	133	130	-2	-7	-5.0%	-0	-0.3%	136
General Support	711	732	707	704	-3	-28	-3.8%	-8	-1.1%	796
Health Care Assistants	988	1,022	1,024	1,021	-3	-1	-0.1%	+33	+3.3%	1,112
Care, other	216	203	205	204	-1	+1	+0.4%	-12	-5.4%	242
Patient & Client Care	1,204	1,225	1,229	1,225	-4	+0	+0.0%	+21	+1.8%	1,354

Mental Health Services Employment by Administration (HSE / S38): November 2021

Nov 2021	WTE Dec 2019	WTE Dec 2020	WTE Oct 2021	WTE Nov 2021	WTE change since Oct 21	WTE change since Dec 20	% change since Dec 20	WTE change since Dec 19	% change since Dec 19	No. Nov 2021
Total	9,954	10,301	10,352	10,289	-63	-12	-0.1%	+335	+3.4%	11,315
HSE	9,513	9,855	9,913	9,854	-59	-1	-0.0%	+341	+3.6%	10,797
Section 38 Voluntary Agencies	441	446	439	435	-4	-11	-2.5%	-6	-1.4%	518

Employment by Staff Group

Nov 2021	WTE Dec 2019	WTE Dec 2020	WTE Oct 2021	WTE Nov 2021	WTE change since Oct 21	WTE change since Dec 20	% change since Dec 20	WTE change since Dec 19	% change since Dec 19	No. Nov 2021
Health Service Executive	9,513	9,855	9,913	9,854	-59	-1	-0.0%	+341	+3.6%	10,797
Consultants	333	349	359	362	+2	+13	+3.7%	+29	+8.7%	393
Registrars	250	266	312	306	-6	+40	+15.0%	+56	+22.3%	315
SHO/ Interns	255	267	237	240	+3	-27	-10.0%	-15	-5.8%	250
Medical/ Dental, other	5	5	4	4	+0	-1	-18.8%	-1	-18.8%	8
Medical & Dental	843	886	913	912	-1	+25	+2.9%	+69	+8.2%	966
Nurse/ Midwife Manager	1,154	1,202	1,209	1,212	+3	+10	+0.8%	+58	+5.0%	1,270
Nurse/ Midwife Specialist & AN/MP	452	520	532	529	-3	+10	+1.9%	+77	+17.0%	564
Staff Nurse/ Staff Midwife	2,880	2,953	2,899	2,925	+26	-28	-0.9%	+46	+1.6%	3,205
Public Health Nurse			1		-1		-100.0%		-100.0%	
Pre-registration Nurse Intern (COVID-19)		41	2	1	-1	-40	-97.6%	+1	-100.0%	1
Pre-registration Nurse/ Midwife Intern	21	1	68	31	-37	+30	+4235.2%	+10	+49.9%	57
Post-registration Nurse/ Midwife Student	1	1				-1	-100.0%	-1	-100.0%	
Nursing/ Midwifery awaiting registration	59	5	54	32	-21	+27	+566.4%	-27	-45.1%	42
Nursing/ Midwifery Student	80	48	123	64	-59	+16	+33.6%	-16	-20.3%	100
Nursing/ Midwifery other	29	29	29	29	-0	-1	-1.7%	-0	-1.3%	31
Nursing & Midwifery	4,596	4,752	4,793	4,760	-33	+7	+0.2%	+164	+3.6%	5,170
Therapy Professions	391	412	409	408	-1	-4	-0.9%	+17	+4.4%	455
Social Care	48	52	48	48	-1	-4	-8.0%	-0	-0.3%	56
Social Workers	330	354	362	362	+0	+8	+2.2%	+32	+9.7%	409
Psychologists	379	402	409	404	-5	+2	+0.6%	+25	+6.7%	448
Pharmacy	17	19	20	19	-1	-0	-0.1%	+2	+11.5%	24
H&SC, Other	103	107	112	117	+5	+10	+9.5%	+14	+13.7%	137
Health & Social Care Professionals	1,267	1,345	1,360	1,358	-2	+13	+0.9%	+91	+7.2%	1,529
Management (VIII & above)	55	65	58	61	+3	-4	-6.6%	+5	+9.9%	62
Administrative/ Supervisory (V to VII)	216	224	231	228	-4	+4	+1.7%	+12	+5.6%	241
Clerical (III & IV)	673	679	673	659	-14	-20	-3.0%	-14	-2.0%	750
Management & Administrative	944	968	962	947	-14	-21	-2.2%	+4	+0.4%	1,053
Support	543	556	539	538	-2	-19	-3.4%	-5	-1.0%	606
Maintenance/ Technical	125	130	126	123	-2	-7	-5.3%	-1	-1.2%	129
General Support	668	687	665	661	-4	-26	-3.8%	-7	-1.0%	735
Health Care Assistants	982	1,016	1,018	1,015	-3	-1	-0.1%	+33	+3.4%	1,106
Care, other	213	200	202	201	-1	+1	+0.4%	-12	-5.8%	238
Patient & Client Care	1,195	1,216	1,220	1,216	-4	+0	+0.0%	+21	+1.7%	1,344

Employment by Staff Group

Nov 2021	WTE Dec 2019	WTE Dec 2020	WTE Oct 2021	WTE Nov 2021	WTE change since Oct 21	WTE change since Dec 20	% change since Dec 20	WTE change since Dec 19	% change since Dec 19	No. Nov 2021
Section 38 Voluntary Agencies	441	446	439	435	-4	-11	-2.5%	-6	-1.4%	518
Consultants	20	21	21	21	-0	+0	+0.3%	+1	+5.9%	27
Registrars	19	15	21	20	-1	+5	+33.9%	+2	+8.0%	23
SHO/ Interns	6	9	6	6	+0	-3	-35.3%	-0	-3.0%	9
Medical & Dental	45	45	48	47	-1	+2	+4.5%	+2	+5.6%	59
Nurse/ Midwife Manager	38	38	33	40	+7	+3	+6.9%	+2	+5.9%	42
Nurse/ Midwife Specialist & AN/MP	7	9	13	10	-3	+1	+7.3%	+3	+42.9%	13
Staff Nurse/ Staff Midwife	123	123	127	123	-4	-0	-0.1%	-0	-0.2%	136
Pre-registration Nurse Intern (COVID-19)		1				-1	-100.0%		-100.0%	
Pre-registration Nurse/ Midwife Intern	7	10				-10	-100.0%	-7	-100.0%	
Nursing/ Midwifery Student	7	11				-11	-100.0%	-7	-100.0%	
Nursing/ Midwifery other	3	3	3	3						3
Nursing & Midwifery	177	183	175	175	-0	-8	-4.3%	-2	-1.2%	194
Therapy Professions	31	27	28	26	-3	-1	-5.3%	-6	-17.7%	35
Social Care	25	28	25	26	+0	-2	-7.4%	+0	+1.2%	30
Social Care	25	28	25	26	+0	-2	-7.4%	+0	+1.2%	30
Social Workers	20	19	20	19	-0	+1	+4.4%	-0	-1.6%	21
Psychologists	16	22	23	23	-0	+0	+1.9%	+7	+43.2%	28
Pharmacy	2	2	2	2				+0	+12.5%	2
H&SC, Other	5	1	2	1	-1	-0	-40.8%	-4	-88.0%	1
Health & Social Care Professionals	99	99	100	96	-4	-3	-2.7%	-3	-2.8%	117
Management (VIII & above)	2	2	2	2						2
Administrative/ Supervisory (V to VII)	21	21	19	20	+1	-1	-3.3%	-1	-5.5%	23
Clerical (III & IV)	45	43	44	43	-1	-0	-0.5%	-2	-4.8%	52
Management & Administrative	68	66	65	65	-0	-1	-1.4%	-3	-4.8%	77
Support	38	38	35	36	+1	-2	-4.7%	-2	-4.8%	54
Maintenance/ Technical	6	7	7	7				+1	+16.7%	7
General Support	44	45	42	43	+1	-2	-3.9%	-1	-1.9%	61
Health Care Assistants	6	6	6	6						6
Care, other	3	3	3	3				+1	+20.2%	4
Patient & Client Care	9	9	9	9				+1	+6.6%	10

Mental Health Services Employment by CHO: Nov 2021

Nov 2021	WTE Dec 2019	WTE Dec 2020	WTE Oct 2021	WTE Nov 2021	WTE change since Oct 21	WTE change since Dec 20	% change since Dec 20	WTE change since Dec 19	% change since Dec 19	No. Nov 2021
Overall	9,954	10,301	10,352	10,289	-63	-12	-0.1%	+335	+3.4%	11,315
CHO 1	953	976	1,001	993	-8	+17	+1.7%	+40	+4.2%	1,078
CHO 2	1,308	1,340	1,336	1,315	-21	-25	-1.9%	+7	+0.5%	1,427
CHO 3	795	809	819	818	-1	+10	+1.2%	+23	+2.9%	901
CHO 4	1,485	1,564	1,543	1,558	+15	-5	-0.3%	+73	+4.9%	1,703
CHO 5	1,178	1,188	1,212	1,196	-16	+8	+0.7%	+19	+1.6%	1,338
CHO 6	593	626	637	635	-2	+9	+1.4%	+43	+7.2%	714
CHO 7	835	861	877	875	-2	+14	+1.6%	+40	+4.8%	973
CHO 8	1,098	1,112	1,105	1,081	-25	-31	-2.8%	-17	-1.6%	1,193
CHO 9	1,272	1,331	1,310	1,309	-1	-22	-1.6%	+37	+2.9%	1,449
other Community Services	438	494	510	508	-2	+13	+2.7%	+70	+16.1%	539

Mental Health Services Employment by CHO etc. Nov 2021

CHO 1

Nov 2021	WTE Dec 2019	WTE Dec 2020	WTE Oct 2021	WTE Nov 2021	WTE change since Oct 21	WTE change since Dec 20	% change since Dec 20	WTE change since Dec 19	% change since Dec 19	No. Nov 2021
Overall	953	976	1,001	993	-8	+17	+1.7%	+40	+4.2%	1,078
Consultants	31	34	36	37	+1	+3	+8.8%	+6	+20.4%	40
Registrars	24	29	31	31	-0	+1	+5.0%	+6	+25.0%	32
SHO/ Interns	25	23	22	22	+0	-1	-4.5%	-3	-13.5%	23
Medical & Dental	81	86	89	90	+0	+3	+4.0%	+9	+11.2%	95
Nurse/ Midwife Manager	117	119	123	118	-4	-1	-0.9%	+1	+1.1%	124
Nurse/ Midwife Specialist & AN/MP	67	74	74	73	-1	-0	-0.5%	+6	+8.9%	77
Staff Nurse/ Staff Midwife	297	288	295	298	+3	+10	+3.6%	+1	+0.3%	317
Nursing/ Midwifery Student		3	3	2	-1	-1	-34.7%	+2	-100.0%	2
Nursing/ Midwifery other		1	2	2	-0	+1	+97.9%	+2	-100.0%	2
Nursing & Midwifery	482	485	497	494	-3	+9	+1.8%	+12	+2.5%	522
Therapy Professions	36	36	42	41	-1	+5	+13.6%	+5	+14.2%	46
<i>Social Care</i>	4	4	4	4	+0	+0	+1.1%	+0	+1.9%	5
Social Care	4	4	4	4	+0	+0	+1.1%	+0	+1.9%	5
Social Workers	39	43	41	41	-0	-2	-4.2%	+2	+5.1%	46
Psychologists	21	23	23	21	-2	-3	-11.3%	+0	+0.2%	23
Pharmacy	1	1	1	1	0					1
H&SC, Other	13	14	15	17	+2	+3	+22.4%	+4	+29.5%	19
Health & Social Care Professionals	113	121	126	124	-2	+4	+3.0%	+11	+9.8%	140
Management (VIII & above)	6	8	6	8	+2	+0	+0.8%	+2	+36.5%	8
Administrative/ Supervisory (V to VII)	30	31	31	30	-1	-1	-2.8%	-0	-1.0%	32
Clerical (III & IV)	85	85	92	90	-2	+5	+5.8%	+5	+5.7%	101
Management & Administrative	121	123	129	128	-1	+4	+3.3%	+7	+5.4%	141
Support	62	65	60	62	+1	-3	-5.4%	-1	-0.9%	71
Maintenance/ Technical	17	16	17	17	-0	+1	+4.3%	+0	+1.7%	18
General Support	79	81	77	79	+1	-3	-3.4%	-0	-0.4%	89
Health Care Assistants	66	68	71	68	-3	+0	+0.6%	+2	+2.9%	79
Care, other	11	11	12	11	-1	-1	-4.8%	-0	-1.7%	12
Patient & Client Care	77	79	83	79	-4	-0	-0.2%	+2	+2.3%	91

CHO 2

Nov 2021	WTE Dec 2019	WTE Dec 2020	WTE Oct 2021	WTE Nov 2021	WTE change since Oct 21	WTE change since Dec 20	% change since Dec 20	WTE change since Dec 19	% change since Dec 19	No. Nov 2021
Overall	1,308	1,340	1,336	1,315	-21	-25	-1.9%	+7	+0.5%	1,427
Consultants	38	37	40	39	-1	+2	+4.8%	+1	+3.3%	43
Registrars	33	37	35	34	-0	-2	-5.6%	+1	+4.1%	36
SHO/ Interns	35	40	37	38	+1	-2	-4.7%	+3	+8.9%	40
Medical/ Dental, other	1	1				-1	-100.0%	-1	-100.0%	
Medical & Dental	107	114	112	111	-0	-3	-2.8%	+5	+4.4%	119
Nurse/ Midwife Manager	146	151	148	146	-2	-5	-3.1%	+1	+0.5%	151
Nurse/ Midwife Specialist & AN/MP	67	79	81	80	-1	+1	+0.7%	+12	+18.2%	83
Staff Nurse/ Staff Midwife	357	355	363	363	+0	+9	+2.4%	+6	+1.7%	397
Pre-registration Nurse Intern (COVID-19)		10	1		-1	-10	-100.0%		-100.0%	
Pre-registration Nurse/ Midwife Intern	0		20	8	-12	+8	-100.0%	+8	+6725.0%	9
Nursing/ Midwifery awaiting registration	5			3	+3	+3	-100.0%	-2	-40.0%	4
Nursing/ Midwifery Student	5	10	21	11	-10	+1	+8.4%	+6	+126.7%	13
Nursing Education/Clinical	2	2	2	2	-0	+0	+23.7%	-0	-1.0%	2
Nursing/ Midwifery other	2	2	2	2	-0	+0	+23.7%	-0	-1.0%	2
Nursing & Midwifery	577	597	615	602	-13	+6	+1.0%	+25	+4.4%	646
Therapy Professions	45	55	54	53	-1	-2	-3.7%	+8	+17.2%	59
Social Care	15	16	15	15	-0	-2	-9.4%	-0	-1.3%	17
Social Workers	41	42	42	43	+1	+1	+2.7%	+2	+4.9%	46
Psychologists	34	37	37	37	-0	-0	-1.2%	+3	+8.9%	42
Pharmacy	3	2	2	2	0	+1	+37.4%	-0	-5.2%	3
H&SC, Other	3	3	3	3	+0	-0	-6.3%	-0	-6.3%	3
Health & Social Care Professionals	140	155	153	152	-0	-2	-1.6%	+12	+8.8%	170
Management (VIII & above)	5	4	4	4	+0	-0	-3.2%	-1	-22.6%	4
Administrative/ Supervisory (V to VII)	24	26	24	23	-1	-3	-11.9%	-0	-1.1%	25
Clerical (III & IV)	109	102	97	92	-4	-10	-9.6%	-16	-15.1%	108
Management & Administrative	138	133	125	120	-5	-13	-9.8%	-18	-13.0%	137
Support	36	31	29	28	-1	-3	-9.1%	-8	-21.6%	32
Maintenance/ Technical	27	33	32	33	+1	+0	+0.0%	+6	+22.9%	34
General Support	63	64	62	62	-0	-3	-4.4%	-2	-2.5%	66
Health Care Assistants	215	211	205	204	-1	-7	-3.2%	-10	-4.9%	217
Care, other	69	66	65	64	-1	-2	-3.4%	-5	-7.5%	72
Patient & Client Care	284	278	270	268	-2	-9	-3.3%	-16	-5.5%	289

CHO 3

Nov 2021	WTE Dec 2019	WTE Dec 2020	WTE Oct 2021	WTE Nov 2021	WTE change since Oct 21	WTE change since Dec 20	% change since Dec 20	WTE change since Dec 19	% change since Dec 19	No. Nov 2021
Overall	795	809	819	818	-1	+10	+1.2%	+23	+2.9%	901
Consultants	23	24	25	25	-0	+1	+4.4%	+2	+7.9%	28
Registrars	18	15	19	20	+0	+5	+30.2%	+2	+10.2%	20
SHO/ Interns	19	21	22	23	+0	+1	+5.1%	+4	+18.7%	23
Medical & Dental	60	61	67	67	+0	+7	+11.1%	+7	+12.0%	71
Nurse/ Midwife Manager	88	88	85	94	+9	+6	+6.5%	+6	+6.6%	99
Nurse/ Midwife Specialist & AN/MP	39	37	31	37	+6	-0	-0.2%	-2	-5.8%	41
Staff Nurse/ Staff Midwife	245	272	273	259	-14	-13	-4.8%	+13	+5.4%	285
Pre-registration Nurse Intern (COVID-19)		3				-3	-100.0%		-100.0%	
Pre-registration Nurse/ Midwife Intern	9		8	8	+1	+8	-100.0%	-1	-7.6%	13
Nursing/ Midwifery Student	9	3	8	8	+1	+5	+139.5%	-1	-7.6%	13
Nursing & Midwifery	381	400	397	397	+1	-3	-0.6%	+16	+4.2%	438
Therapy Professions	26	25	29	29	-0	+4	+15.5%	+2	+8.9%	32
Social Care	3	3	3	3	-0	-0	-1.0%	+0	+3.5%	3
Social Workers	25	24	25	26	+1	+2	+6.8%	+1	+2.8%	28
Psychologists	92	91	90	90	-0	-2	-1.7%	-3	-2.9%	94
Pharmacy	3	3	3	3	0					3
H&SC, Other	10	12	11	11	-0	-1	-10.4%	+1	+14.0%	13
Health & Social Care Professionals	159	158	160	161	+1	+3	+1.7%	+2	+1.1%	173
Management (VIII & above)	2	2	1	2	+1			+0	+1.5%	2
Administrative/ Supervisory (V to VII)	17	19	17	16	-1	-3	-16.5%	-1	-6.2%	16
Clerical (III & IV)	56	50	52	51	-1	+1	+1.3%	-5	-8.7%	57
Management & Administrative	75	71	70	69	-1	-2	-3.5%	-6	-7.8%	75
Support	32	30	30	31	+0	+0	+1.5%	-2	-5.7%	35
Maintenance/ Technical	11	9	9	8	-1	-1	-11.9%	-3	-27.9%	8
General Support	43	39	39	39	-1	-1	-1.6%	-5	-11.3%	43
Health Care Assistants	75	79	86	85	-1	+6	+7.4%	+9	+12.3%	100
Care, other	2	1	1	1	-0	-0	-1.0%	-1	-40.7%	1
Patient & Client Care	77	80	87	86	-1	+6	+7.3%	+9	+11.1%	101

CHO 4

Nov 2021	WTE Dec 2019	WTE Dec 2020	WTE Oct 2021	WTE Nov 2021	WTE change since Oct 21	WTE change since Dec 20	% change since Dec 20	WTE change since Dec 19	% change since Dec 19	No. Nov 2021
Overall	1,485	1,564	1,543	1,558	+15	-5	-0.3%	+73	+4.9%	1,703
Consultants	50	54	56	55	-1	+1	+1.2%	+5	+10.3%	62
Registrars	46	42	53	52	-1	+10	+24.6%	+6	+13.1%	53
SHO/ Interns	31	43	42	43	+1	+0	+0.2%	+12	+38.8%	44
Medical/ Dental, other	2	2	2	2	+0	+0	+3.0%	+0	+3.0%	6
Medical & Dental	129	141	152	152	-1	+11	+7.8%	+23	+18.1%	165
Nurse/ Midwife Manager	170	192	193	196	+2	+3	+1.7%	+26	+15.4%	205
Nurse/ Midwife Specialist & AN/MP	60	71	71	70	-1	-1	-1.0%	+10	+16.9%	74
Staff Nurse/ Staff Midwife	502	519	478	498	+20	-22	-4.2%	-5	-0.9%	535
<i>Pre-registration Nurse Intern (COVID-19)</i>		3				-3	-100.0%		-100.0%	
<i>Pre-registration Nurse/ Midwife Intern</i>	3		13	3	-10	+3	-100.0%	+0	+6.7%	8
<i>Post-registration Nurse/ Midwife Student</i>	1						-100.0%	-1	-100.0%	
<i>Nursing/ Midwifery awaiting registration</i>	30	1	6	4	-2	+3	+300.0%	-26	-86.4%	4
Nursing/ Midwifery Student	34	4	19	7	-11	+3	+80.0%	-26	-78.5%	12
Nursing & Midwifery	765	786	761	770	+9	-16	-2.0%	+5	+0.7%	826
Therapy Professions	74	77	74	77	+3	-0	-0.5%	+3	+4.3%	86
Social Care	4	7	6	6	-0	-1	-14.1%	+2	+57.6%	7
Social Workers	53	64	64	66	+2	+2	+2.6%	+13	+24.5%	77
Psychologists	83	94	95	96	+1	+2	+2.2%	+13	+16.1%	107
Pharmacy	2	3	2	2	0	-1	-39.6%	-1	-26.2%	3
H&SC, Other	11	12	12	15	+3	+2	+18.0%	+4	+35.8%	19
Health & Social Care Professionals	227	258	253	262	+9	+3	+1.3%	+35	+15.4%	299
Management (VIII & above)	1	3	3	3	+0	+0	+9.9%	+2	+200.0%	3
Administrative/ Supervisory (V to VII)	22	22	23	23	-0	+1	+3.4%	+0	+0.4%	24
Clerical (III & IV)	87	94	91	89	-2	-5	-5.2%	+2	+2.4%	102
Management & Administrative	111	119	117	115	-2	-4	-3.3%	+4	+3.8%	129
Support	80	82	80	81	+0	-1	-1.4%	+1	+0.9%	90
<i>Maintenance</i>	6	5	5	5	0			-1	-16.4%	6
Maintenance/ Technical	6	5	5	5	0			-1	-16.4%	6
General Support	86	87	85	86	+0	-1	-1.3%	-0	-0.3%	96
Health Care Assistants	161	166	167	167	-0	+1	+0.5%	+6	+4.0%	173
Care, other	7	6	7	7	-0	+1	+8.5%	-0	-4.3%	15
Patient & Client Care	168	173	174	174	-1	+1	+0.8%	+6	+3.6%	188

CHO 5

Nov 2021	WTE Dec 2019	WTE Dec 2020	WTE Oct 2021	WTE Nov 2021	WTE change since Oct 21	WTE change since Dec 20	% change since Dec 20	WTE change since Dec 19	% change since Dec 19	No. Nov 2021
Overall	1,178	1,188	1,212	1,196	-16	+8	+0.7%	+19	+1.6%	1,338
Consultants	26	27	28	28	+1	+1	+3.5%	+2	+7.9%	31
Registrars	10	9	11	11	-0	+2	+21.4%	+1	+9.3%	11
SHO/ Interns	32	36	31	33	+2	-3	-8.6%	+1	+2.3%	33
Medical/ Dental, other	2	2	2	2	0					2
Medical & Dental	70	74	72	74	+2	-0	-0.2%	+4	+5.3%	77
Nurse/ Midwife Manager	164	160	169	165	-4	+5	+3.1%	+1	+0.5%	175
Nurse/ Midwife Specialist & AN/MP	42	54	55	53	-1	-1	-1.3%	+11	+26.5%	57
Staff Nurse/ Staff Midwife	415	411	409	412	+3	+1	+0.1%	-4	-0.9%	471
Pre-registration Nurse Intern (COVID-19)		13	1	1	+0	-12	-92.4%	+1	-100.0%	1
Pre-registration Nurse/ Midwife Intern	4		12	6	-6	+6	-100.0%	+2	+68.0%	13
Nursing/ Midwifery awaiting registration	2		15	10	-6	+10	-100.0%	+8	+387.0%	11
Nursing/ Midwifery Student	6	13	28	17	-12	+4	+28.4%	+11	+201.8%	25
Nursing/ Midwifery other	4	4	4	4	-0	+0	+2.5%	+0	+0.8%	4
Nursing & Midwifery	631	642	665	650	-14	+9	+1.3%	+19	+3.1%	732
Therapy Professions	40	39	32	31	-1	-7	-18.8%	-9	-21.9%	35
Social Care	5	5	5	5	-0	-0	-1.7%	-0	-1.7%	5
Social Workers	27	28	27	27	-0	-1	-2.0%	-0	-0.4%	30
Psychologists	21	21	22	22	+0	+1	+3.0%	+1	+4.2%	25
H&SC, Other	10	8	20	20	-0	+12	+152.3%	+10	+100.7%	20
Health & Social Care Professionals	103	100	106	105	-1	+5	+4.7%	+2	+1.8%	115
Management (VIII & above)	3	6	6	6	+0			+3	+100.0%	6
Administrative/ Supervisory (V to VII)	20	20	25	25	-0	+5	+24.3%	+5	+22.8%	26
Clerical (III & IV)	74	68	72	71	-1	+3	+3.7%	-3	-3.9%	78
Management & Administrative	97	94	103	102	-1	+7	+7.8%	+5	+4.8%	110
Support	168	178	170	168	-2	-10	-5.8%	+0	+0.2%	192
Maintenance	21	20	16	16	-0	-4	-19.2%	-5	-24.9%	17
Technical Services	2						-100.0%	-2	-100.0%	
Maintenance/ Technical	23	20	16	16	-0	-4	-19.2%	-7	-31.4%	17
General Support	191	198	186	184	-2	-14	-7.2%	-7	-3.6%	209
Health Care Assistants	73	68	69	71	+1	+3	+4.3%	-2	-2.9%	78
Care, other	13	12	12	11	-1	-1	-9.2%	-2	-13.8%	17
Patient & Client Care	85	80	81	82	+1	+2	+2.3%	-4	-4.6%	95

CHO 6

Nov 2021	WTE Dec 2019	WTE Dec 2020	WTE Oct 2021	WTE Nov 2021	WTE change since Oct 21	WTE change since Dec 20	% change since Dec 20	WTE change since Dec 19	% change since Dec 19	No. Nov 2021
Overall	593	626	637	635	-2	+9	+1.4%	+43	+7.2%	714
Consultants	36	40	39	40	+1	-0	-0.1%	+4	+11.3%	45
Registrars	22	19	25	24	-1	+5	+25.7%	+2	+10.0%	27
SHO/ Interns	9	13	11	11	+0	-2	-17.0%	+2	+19.9%	14
Medical & Dental	67	72	75	75	+0	+3	+3.6%	+8	+12.0%	86
Nurse/ Midwife Manager	76	77	71	75	+5	-2	-2.5%	-1	-1.4%	81
Nurse/ Midwife Specialist & AN/MP	14	20	24	20	-4	+1	+3.1%	+6	+47.4%	24
Staff Nurse/ Staff Midwife	139	151	152	153	+1	+1	+0.8%	+13	+9.7%	166
<i>Pre-registration Nurse/ Midwife Intern</i>			1	0	-0	+0	-100.0%	+0	-100.0%	1
<i>Nursing/ Midwifery awaiting registration</i>		1	1	1	0			+1	-100.0%	1
Nursing/ Midwifery Student		1	2	1	-0	+0	+25.0%	+1	-100.0%	2
<i>Nursing Education/Clinical</i>	2	2	3	3	0	+1	+50.0%	+1	+50.0%	3
Nursing/ Midwifery other	2	2	3	3	0	+1	+50.0%	+1	+50.0%	3
Nursing & Midwifery	231	251	251	252	+1	+1	+0.4%	+21	+9.1%	276
Therapy Professions	43	39	43	40	-4	+1	+2.6%	-3	-8.1%	48
Social Care	26	28	25	26	+0	-3	-9.0%	-0	-1.0%	30
Social Workers	30	30	34	33	-1	+4	+11.8%	+3	+11.0%	36
Psychologists	22	32	35	34	-1	+2	+6.9%	+12	+55.5%	42
H&SC, Other	9	5	6	5	-0	-0	-2.3%	-4	-41.9%	7
Health & Social Care Professionals	130	134	144	138	-6	+4	+3.0%	+8	+6.3%	163
Management (VIII & above)	3	3	4	4	+0	+1	+33.3%	+1	+33.3%	4
Administrative/ Supervisory (V to VII)	27	24	25	26	+2	+2	+8.5%	-0	-1.3%	29
Clerical (III & IV)	42	43	38	38	-0	-5	-11.1%	-4	-9.7%	46
Management & Administrative	72	70	67	68	+1	-2	-2.4%	-3	-4.8%	79
Support	36	39	37	38	+1	-1	-2.9%	+1	+3.5%	44
Maintenance/ Technical	6	6	6	6	0			+0	+1.5%	6
General Support	42	45	43	44	+1	-1	-2.5%	+1	+3.2%	50
Health Care Assistants	46	49	52	52	-0	+4	+7.6%	+7	+14.9%	53
Care, other	5	6	6	6	0			+1	+10.7%	7
Patient & Client Care	51	54	58	58	-0	+4	+6.8%	+7	+14.5%	60

CHO 7

Nov 2021	WTE Dec 2019	WTE Dec 2020	WTE Oct 2021	WTE Nov 2021	WTE change since Oct 21	WTE change since Dec 20	% change since Dec 20	WTE change since Dec 19	% change since Dec 19	No. Nov 2021
Overall	835	861	877	875	-2	+14	+1.6%	+40	+4.8%	973
Consultants	48	53	55	56	+1	+3	+6.0%	+9	+17.8%	61
Registrars	46	54	52	52	-1	-2	-3.8%	+5	+11.4%	53
SHO/ Interns	21	20	23	22	-1	+1	+6.3%	+1	+3.5%	23
Medical & Dental	115	127	130	129	-1	+2	+1.9%	+15	+12.6%	137
Nurse/ Midwife Manager	117	117	116	120	+4	+2	+1.7%	+3	+2.6%	124
Nurse/ Midwife Specialist & AN/MP	40	47	50	50	-0	+3	+7.3%	+10	+25.4%	56
Staff Nurse/ Staff Midwife	194	202	206	207	+1	+5	+2.6%	+13	+6.4%	235
Public Health Nurse			1		-1		-100.0%		-100.0%	
<i>Pre-registration Nurse Intern (COVID-19)</i>		3				-3	-100.0%		-100.0%	
<i>Pre-registration Nurse/ Midwife Intern</i>	1	1	7	2	-4	+2	+386.0%	+1	+77.4%	7
<i>Post-registration Nurse/ Midwife Student</i>		1				-1	-100.0%		-100.0%	
<i>Nursing/ Midwifery awaiting registration</i>	10	3	3	4	+1	+1	+31.2%	-6	-62.1%	5
Nursing/ Midwifery Student	11	8	9	6	-3	-2	-20.3%	-5	-45.1%	12
Nursing/ Midwifery other	8	6	6	6	+0	-0	-3.9%	-2	-25.5%	7
Nursing & Midwifery	370	379	388	388	+0	+9	+2.3%	+19	+5.0%	434
Therapy Professions	48	53	48	48	-0	-6	-10.7%	-0	-0.3%	54
Social Care	8	7	7	7	-1	-0	-6.1%	-1	-10.6%	8
Social Workers	34	38	41	40	-1	+2	+5.8%	+6	+16.7%	45
Psychologists	31	29	29	29	-0	-1	-2.0%	-3	-8.5%	33
Pharmacy	1	1	1	1	-0	-0	-1.0%	-0	-1.0%	1
H&SC, Other	18	18	18	17	-1	-1	-5.3%	-1	-5.3%	20
Health & Social Care Professionals	140	147	144	141	-3	-6	-3.8%	+1	+0.8%	161
Management (VIII & above)	3	4	5	5	+0	+1	+25.1%	+2	+68.3%	5
Administrative/ Supervisory (V to VII)	16	17	18	18	-0	+1	+2.9%	+2	+13.3%	19
Clerical (III & IV)	47	49	50	49	-1	+0	+0.2%	+2	+5.0%	57
Management & Administrative	65	70	72	72	-1	+2	+2.2%	+6	+9.7%	81
Support	18	17	18	18	-0	+0	+2.2%			20
Maintenance/ Technical	2	2	2	2	0			+0	+7.5%	2
General Support	20	19	20	20	-0	+0	+2.0%	+0	+0.7%	22
Health Care Assistants	33	34	35	35	+0	+1	+2.0%	+2	+5.4%	37
Care, other	92	84	88	90	+2	+5	+6.2%	-2	-2.7%	101
Patient & Client Care	125	119	123	125	+2	+6	+5.0%	-1	-0.5%	138

CHO 8

Nov 2021	WTE Dec 2019	WTE Dec 2020	WTE Oct 2021	WTE Nov 2021	WTE change since Oct 21	WTE change since Dec 20	% change since Dec 20	WTE change since Dec 19	% change since Dec 19	No. Nov 2021
Overall	1,098	1,112	1,105	1,081	-25	-31	-2.8%	-17	-1.6%	1,193
Consultants	35	36	37	37	+0	+1	+2.3%	+2	+5.5%	40
Registrars	26	31	42	40	-3	+9	+27.8%	+14	+54.8%	41
SHO/ Interns	36	26	23	24	+1	-3	-10.1%	-12	-34.6%	26
Medical & Dental	97	94	102	101	-2	+7	+7.3%	+4	+3.7%	107
Nurse/ Midwife Manager	121	120	122	121	-1	+1	+1.0%	+1	+0.7%	127
Nurse/ Midwife Specialist & AN/MP	56	60	65	65	-0	+5	+9.0%	+9	+15.7%	69
Staff Nurse/ Staff Midwife	332	342	315	313	-2	-30	-8.6%	-19	-5.7%	341
<i>Pre-registration Nurse Intern (COVID-19)</i>		1				-1	-100.0%		-100.0%	
<i>Pre-registration Nurse/ Midwife Intern</i>	1		5	2	-3	+2	-100.0%	+2	+370.0%	5
<i>Nursing/ Midwifery awaiting registration</i>	2		16	7	-9	+7	-100.0%	+5	+253.0%	13
Nursing/ Midwifery Student	3	1	21	9	-12	+8	+813.6%	+7	+276.4%	18
Nursing/ Midwifery other	4	3	3	3	+0	-0	-0.3%	-1	-25.1%	3
Nursing & Midwifery	515	526	526	511	-15	-15	-2.8%	-3	-0.6%	558
Therapy Professions	44	43	42	41	-1	-2	-4.0%	-3	-7.4%	46
Social Care	7	7	7	7	+0	+0	+0.9%	-0	-2.5%	8
Social Workers	41	44	48	47	-0	+4	+8.3%	+6	+14.7%	55
Psychologists	39	37	39	39	-0	+2	+4.8%	-1	-1.6%	42
Pharmacy	1	2	2	2	0			+1	+50.0%	2
H&SC, Other	20	21	15	15	+0	-7	-31.1%	-6	-27.9%	18
Health & Social Care Professionals	153	153	152	150	-1	-3	-1.9%	-3	-2.1%	171
Management (VIII & above)	3	3	4	3	-1	+0	+0.3%	+0	+0.7%	3
Administrative/ Supervisory (V to VII)	22	20	21	21	-0	+1	+4.2%	-1	-6.6%	23
Clerical (III & IV)	88	97	95	89	-6	-8	-7.9%	+1	+1.4%	102
Management & Administrative	114	120	120	113	-7	-7	-5.6%	-0	-0.2%	128
Support	33	31	30	30	-0	-1	-3.8%	-3	-8.0%	33
Maintenance/ Technical	26	28	27	25	-1	-3	-9.3%	-1	-2.7%	27
General Support	59	59	57	55	-2	-4	-6.4%	-3	-5.6%	60
Health Care Assistants	157	156	145	147	+2	-10	-6.1%	-10	-6.5%	166
Care, other	4	3	3	3	+0	-0	-5.7%	-1	-15.3%	3
Patient & Client Care	160	159	148	150	+2	-10	-6.1%	-11	-6.7%	169

CHO 9

Nov 2021	WTE Dec 2019	WTE Dec 2020	WTE Oct 2021	WTE Nov 2021	WTE change since Oct 21	WTE change since Dec 20	% change since Dec 20	WTE change since Dec 19	% change since Dec 19	No. Nov 2021
Overall	1,272	1,331	1,310	1,309	-1	-22	-1.6%	+37	+2.9%	1,449
Consultants	50	46	47	47	+0	+1	+1.9%	-3	-5.6%	51
Registrars	31	32	49	48	-0	+16	+51.2%	+17	+56.1%	49
SHO/ Interns	53	54	30	29	-1	-24	-45.6%	-24	-45.3%	30
Medical & Dental	134	132	125	125	-1	-7	-5.4%	-9	-7.1%	130
Nurse/ Midwife Manager	132	138	139	140	+1	+2	+1.6%	+8	+6.1%	146
Nurse/ Midwife Specialist & AN/MP	65	76	82	80	-3	+4	+5.2%	+14	+22.2%	84
Staff Nurse/ Staff Midwife	351	371	362	372	+10	+0	+0.0%	+20	+5.8%	410
<i>Pre-registration Nurse Intern (COVID-19)</i>		5				-5	-100.0%		-100.0%	
<i>Pre-registration Nurse/ Midwife Intern</i>	10	10	2	0	-2	-10	-97.6%	-10	-97.6%	1
<i>Nursing/ Midwifery awaiting registration</i>	11		11	2	-9	+2	-100.0%	-9	-81.8%	2
Nursing/ Midwifery Student	21	16	14	2	-11	-13	-85.9%	-19	-89.4%	3
Nursing/ Midwifery other	11	13	10	10	-0	-3	-21.1%	-1	-11.7%	11
Nursing & Midwifery	581	613	606	603	-3	-10	-1.6%	+23	+3.9%	654
Therapy Professions	55	61	61	63	+2	+2	+3.1%	+8	+14.8%	72
Social Care	1	1	1	1	-0	-0	-1.0%	+0	+10.0%	1
Social Workers	43	43	45	42	-2	-0	-0.7%	-1	-2.2%	50
Psychologists	46	53	54	53	-1	-0	-0.1%	+7	+16.1%	60
Pharmacy	8	9	9	9	+0	+1	+6.1%	+1	+18.2%	12
H&SC, Other	15	14	15	16	+1	+2	+12.1%	+1	+9.6%	19
Health & Social Care Professionals	167	181	184	185	+1	+4	+2.1%	+17	+10.4%	214
Management (VIII & above)	5	5	5	5	-0	-0	-4.2%	-0	-4.0%	5
Administrative/ Supervisory (V to VII)	28	29	27	27	+0	-2	-5.3%	-1	-1.9%	29
Clerical (III & IV)	104	114	108	109	+1	-5	-4.6%	+5	+4.8%	126
Management & Administrative	137	148	140	141	+1	-7	-4.7%	+4	+3.1%	160
Support	103	104	102	103	+1	-1	-1.4%	-1	-0.6%	125
<i>Maintenance</i>	11	11	11	11	-0	-0	-1.5%	-0	-0.8%	11
Maintenance/ Technical	11	11	11	11	-0	-0	-1.5%	-0	-0.8%	11
General Support	114	115	113	114	+0	-2	-1.4%	-1	-0.6%	136
Health Care Assistants	126	129	131	130	-0	+1	+0.9%	+4	+3.4%	142
Care, other	13	12	12	12	-0	-1	-7.4%	-1	-9.1%	13
Patient & Client Care	139	142	142	142	-1	+0	+0.2%	+3	+2.2%	155

other Community Services

Nov 2021	WTE Dec 2019	WTE Dec 2020	WTE Oct 2021	WTE Nov 2021	WTE change since Oct 21	WTE change since Dec 20	% change since Dec 20	WTE change since Dec 19	% change since Dec 19	No. Nov 2021
Overall	438	494	510	508	-2	+13	+2.7%	+70	+16.1%	539
Consultants	16	17	17	17	+0	+1	+4.9%	+2	+11.6%	19
Registrars	13	14	16	15	-1	+1	+8.0%	+2	+16.3%	16
SHO/ Interns			3	3	-0	+3	-100.0%	+3	-100.0%	3
Medical & Dental	29	31	36	36	-1	+5	+16.0%	+7	+24.1%	38
Nurse/ Midwife Manager	62	76	76	77	+1	+1	+1.1%	+14	+23.2%	80
Advanced Nurse/ Midwife Practitioner	1	1	3	3	+0	+2	+199.0%	+2	+199.0%	3
Clinical Nurse/ Midwife Specialist	7	12	8	8	-0	-4	-30.9%	+1	+11.2%	9
Nurse/ Midwife Specialist & AN/MP	8	13	11	11	-0	-2	-12.8%	+3	+33.9%	12
Staff Nurse/ Staff Midwife	169	165	174	175	+1	+10	+6.2%	+6	+3.7%	184
Nursing Education/Clinical	1	2	2	2	0	+0	+2.0%	+1	+100.0%	2
Nursing/ Midwifery other	1	2	2	2	0	+0	+2.0%	+1	+100.0%	2
Nursing & Midwifery	240	255	263	265	+2	+9	+3.7%	+25	+10.2%	278
Occupational Therapists	11	12	13	12	-1	+0	+1.6%	+1	+7.1%	12
Therapy Professions	11	12	13	12	-1	+0	+1.6%	+1	+7.1%	12
Social Care	2	2	1	1	+0	-1	-37.4%	-1	-39.3%	2
Social Workers	15	17	15	15	-0	-2	-13.5%	+0	+0.7%	17
Psychologists	6	6	9	7	-2	+2	+25.3%	+1	+24.5%	8
Pharmacy		1	2	1	-1			+1	-100.0%	1
Health & Social Care Professionals	34	38	40	37	-4	-1	-3.6%	+3	+7.6%	40
Management (VIII & above)	27	30	23	24	+1	-6	-20.9%	-3	-12.1%	24
Administrative/ Supervisory (V to VII)	31	37	40	39	-1	+3	+7.4%	+8	+26.0%	41
Clerical (III & IV)	25	18	21	22	+1	+4	+20.3%	-3	-11.8%	25
Management & Administrative	83	85	84	85	+1	+0	+0.2%	+2	+2.2%	90
Support	12	16	17	16	-1	+0	+1.1%	+4	+32.8%	18
Maintenance/ Technical	2	7	7	7	-0	-0	-0.3%	+5	+249.0%	7
General Support	14	23	24	23	-1	+0	+0.7%	+9	+63.2%	25
HCA, Nurse's Aide, etc.	35	59	60	59	-0	+0	+0.3%	+24	+68.2%	64
Health & Social Care Assistants	2	3	3	3	-0	-0	-0.3%	+1	+92.7%	3
Health Care Assistants	37	62	63	62	-0	+0	+0.2%	+25	+69.2%	67
Care, other	1	1	1	1	0					1
Patient & Client Care	37	63	63	63	-0	+0	+0.2%	+25	+68.2%	68

Mental Health Services Employment by Grade Group: Nov 2021

Nov 2021	WTE Dec 2019	WTE Dec 2020	WTE Oct 2021	WTE Nov 2021	WTE change since Oct 21	WTE change since Dec 20	% change since Dec 20	WTE change since Dec 19	% change since Dec 19	No. Nov 2021
Overall	9,954	10,301	10,352	10,289	-63	-12	-0.1%	+335	+3.4%	11,315
Consultant Medicine	1	1	1	1	-0	-0	-1.0%	-0	-1.0%	1
Consultant Psychiatry	352	369	379	382	+2	+13	+3.5%	+30	+8.6%	419
Consultants	353	370	380	383	+2	+13	+3.5%	+30	+8.5%	420
Registrars	269	281	333	326	-7	+45	+16.1%	+57	+21.3%	338
Senior House Officer	253	271	238	239	+1	-32	-11.7%	-14	-5.5%	252
Interns	8	5	5	7	+2	+2	+39.2%	-1	-13.0%	7
SHO/ Interns	261	276	243	246	+3	-30	-10.8%	-15	-5.7%	259
Medical/ Dental, other	5	5	4	4	+0	-1	-18.8%	-1	-18.8%	8
Medical & Dental	888	932	961	959	-2	+27	+2.9%	+71	+8.0%	1,025
Clinical Nurse/ Midwife Manager	999	1,041	1,039	1,045	+6	+4	+0.4%	+47	+4.7%	1,100
Director Nursing/Midwifery, Assistant	165	171	177	181	+4	+10	+5.9%	+16	+9.7%	185
Director of Nursing/Midwifery	29	28	26	26	+0	-2	-6.1%	-3	-9.3%	27
Nurse/ Midwife Manager	1,192	1,240	1,242	1,252	+10	+13	+1.0%	+60	+5.0%	1,312
Advanced Nurse/ Midwife Practitioner	31	39	47	46	-1	+7	+17.0%	+15	+50.0%	48
Clinical Nurse/ Midwife Specialist	428	489	498	493	-5	+4	+0.8%	+65	+15.1%	529
Nurse/ Midwife Specialist & AN/MP	459	529	545	539	-6	+10	+2.0%	+80	+17.4%	577
Staff Midwives		1				-1	-100.0%		-100.0%	
Staff Nurse [Psychiatric]	2,893	2,965	2,911	2,935	+23	-30	-1.0%	+41	+1.4%	3,214
Staff Nurses [General/ Children's]	105	106	112	110	-2	+4	+3.5%	+5	+5.0%	123
Staff Nurse [Intellectual Disability]	5	4	3	3	+0	-1	-20.5%	-1	-25.6%	4
Staff Nurse/ Staff Midwife	3,003	3,076	3,026	3,048	+22	-28	-0.9%	+45	+1.5%	3,341
Public Health Nurse			1		-1		-100.0%		-100.0%	
Public Health Nurse			1		-1		-100.0%		-100.0%	
Pre-registration Nurse Intern (COVID-19)		42	2	1	-1	-41	-97.7%	+1	-100.0%	1
Pre-registration Nurse/ Midwife Intern	28	11	68	31	-37	+20	+187.4%	+3	+11.8%	57
Post-registration Nurse/ Midwife Student	1	1				-1	-100.0%	-1	-100.0%	
Nursing/ Midwifery awaiting registration	59	5	54	32	-21	+27	+566.4%	-27	-45.1%	42
Nursing/ Midwifery Student	87	59	123	64	-59	+5	+8.7%	-23	-26.7%	100
Nursing Education/Clinical	32	32	31	31	-0	-1	-1.6%	-0	-1.2%	34
Nursing/ Midwifery other	32	32	31	31	-0	-1	-1.6%	-0	-1.2%	34
Nursing & Midwifery	4,773	4,935	4,968	4,935	-34	-0	-0.0%	+161	+3.4%	5,364
Dietitians	19	21	20	21	+1	+0	+1.6%	+2	+10.5%	24
Occupational Therapists	339	346	352	348	-4	+2	+0.7%	+9	+2.8%	388
Physiotherapists	2	2	3	3	-0	+0	+20.3%	+1	+30.0%	4
Podiatrists & Chiropodists	1	1	1	1	-0	-0	-7.5%	+0	+1.4%	1
Speech & Language Therapists	62	70	62	61	-1	-8	-12.2%	-1	-0.8%	73
Therapy Professions	422	439	438	434	-4	-5	-1.2%	+12	+2.7%	490
Social Care	74	80	74	74	-0	-6	-7.8%	+0	+0.2%	86
Social Workers	350	373	381	381	+0	+9	+2.3%	+32	+9.1%	430
Psychologists	394	424	432	427	-5	+3	+0.7%	+32	+8.2%	476
Pharmacy	19	21	22	21	-1	-0	-0.1%	+2	+11.6%	26
Counsellor Therapists	95	101	106	111	+5	+10	+10.1%	+17	+17.5%	126
Other Health & Social Care	12	5	6	5	-1	-1	-10.0%	-7	-58.5%	10
Play Therapists/ Specialists	1	1	2	2	+0	+0	+6.8%	+0	+8.2%	2
H&SC, Other	108	108	114	118	+4	+10	+9.1%	+10	+9.1%	138
Health & Social Care Professionals	1,366	1,444	1,460	1,454	-6	+10	+0.7%	+88	+6.4%	1,646
Executive Management	11	15	14	13	-1	-2	-12.1%	+2	+17.7%	13
Senior Management (VIII & GM)	46	52	46	50	+4	-3	-4.8%	+4	+7.6%	51
Management (VIII & above)	57	67	60	63	+3	-4	-6.4%	+5	+9.5%	64
Middle Management (V-VII)	235	243	249	246	-3	+3	+1.2%	+11	+4.6%	262

Nov 2021	WTE Dec 2019	WTE Dec 2020	WTE Oct 2021	WTE Nov 2021	WTE change since Oct 21	WTE change since Dec 20	% change since Dec 20	WTE change since Dec 19	% change since Dec 19	No. Nov 2021
Overall	9,954	10,301	10,352	10,289	-63	-12	-0.1%	+335	+3.4%	11,315
Other Administrative	2	2	2	2						2
Administrative/ Supervisory (V to VII)	237	245	250	248	-3	+3	+1.2%	+11	+4.6%	264
General Administrative (III & IV)	717	722	716	702	-15	-20	-2.8%	-16	-2.2%	802
Clerical (III & IV)	717	722	716	702	-15	-20	-2.8%	-16	-2.2%	802
Management & Administrative	1,012	1,034	1,026	1,012	-14	-22	-2.1%	+1	+0.1%	1,130
Catering	65	64	70	72	+2	+8	+13.2%	+7	+10.3%	77
Household Services	425	441	417	415	-2	-26	-6.0%	-10	-2.2%	488
Other Support	43	42	40	40	-0	-2	-4.6%	-3	-6.4%	47
Portering	48	47	47	47	-1	-1	-1.6%	-2	-3.2%	48
Support	581	594	574	573	-1	-21	-3.5%	-7	-1.2%	660
Maintenance	129	137	133	130	-2	-7	-5.0%	+2	+1.2%	136
Technical Services	2						-100.0%	-2	-100.0%	
Maintenance/ Technical	131	137	133	130	-2	-7	-5.0%	-0	-0.3%	136
General Support	711	732	707	704	-3	-28	-3.8%	-8	-1.1%	796
HCA, Nurse's Aide, etc.	979	1,013	1,015	1,012	-3	-1	-0.1%	+33	+3.4%	1,102
Health & Social Care Assistants	9	8	9	9	-0	+0	+4.1%	-0	-2.9%	10
Health Care Assistants	988	1,022	1,024	1,021	-3	-1	-0.1%	+33	+3.3%	1,112
Care, other	216	203	205	204	-1	+1	+0.4%	-12	-5.4%	242
Patient & Client Care	1,204	1,225	1,229	1,225	-4	+0	+0.0%	+21	+1.8%	1,354

Employment by WTE, Headcount, Gender, Full-Time /Part-Time etc.: Nov 2021

Mental Health Services Staff Group	WTE	Headcount	WTE: no.	% Male	% female	Male WTE: no.	Female WTE: no.	% Total Perm	% Male Perm	% Female Perm	% Total Full Time	% Total Part Time	% Male FT	% Female FT
Overall	10,289	11,315	1.10	27.1%	72.9%	1.05	1.12	84.7%	80.9%	86.2%	85.0%	15.0%	93.1%	82.0%
Consultant Medicine	1	1	1.01	100.0%		1.01		100.0%	100.0%		100.0%	0.0%	100.0%	
Consultant Psychiatry	382	419	1.10	41.5%	58.5%	1.06	1.12	66.1%	66.1%	64.1%	85.9%	14.1%	92.5%	81.2%
Consultants	383	420	1.10	41.7%	58.3%	1.06	1.12	66.2%	69.1%	64.1%	86.0%	14.0%	92.6%	81.2%
Registrar	203	212	1.04	44.3%	55.7%	1.03	1.06	2.8%	2.8%	1.7%	96.7%	3.3%	98.9%	94.9%
Senior Registrar	119	122	1.03	36.9%	63.1%	1.03	1.03	0.8%	0.8%	1.3%	97.5%	2.5%	100.0%	96.1%
Specialist Registrar	4	4	1.03	50.0%	50.0%	1.00	1.05	0.0%	0.0%	0.0%	100.0%	0.0%	100.0%	100.0%
Registrars	326	338	1.04	41.7%	58.3%	1.03	1.04	2.1%	2.8%	1.5%	97.0%	3.0%	99.3%	95.4%
Senior House Officer	239	252	1.05	42.5%	57.5%	1.06	1.05	0.0%	0.0%	0.0%	100.0%	0.0%	100.0%	100.0%
Interns	7	7	1.01	42.9%	57.1%	1.00	1.01	0.0%	0.0%	0.0%	100.0%	0.0%	100.0%	100.0%
SHO/ Interns	246	259	1.05	42.5%	57.5%	1.06	1.05	0.0%	0.0%	0.0%	100.0%	0.0%	100.0%	100.0%
Other Medical	4	8	1.97	62.5%	37.5%	2.02	1.90	50.0%	50.0%	66.7%	87.5%	12.5%	100.0%	66.7%
Medical/ Dental, other	4	8	1.97	62.5%	37.5%	2.02	1.90	50.0%	40.0%	66.7%	87.5%	12.5%	100.0%	66.7%
Medical & Dental	959	1,025	1.07	42.0%	58.0%	1.05	1.08	28.2%	29.5%	27.3%	93.2%	6.8%	96.8%	90.6%
Clinical Nurse/ Midwife Manager	1,045	1,100	1.05	33.6%	66.4%	1.02	1.07	98.9%	98.9%	99.3%	93.6%	6.4%	98.4%	91.2%
Director Nursing/Midwifery, Assistant	181	185	1.02	43.2%	56.8%	1.03	1.02	100.0%	100.0%	100.0%	97.8%	2.2%	98.8%	97.1%
Director of Nursing/Midwifery	26	27	1.03	48.1%	51.9%	1.02	1.04	100.0%	100.0%	100.0%	96.3%	3.7%	100.0%	92.9%
Nurse/ Midwife Manager	1,252	1,312	1.05	35.3%	64.7%	1.02	1.06	99.1%	98.5%	99.4%	94.3%	5.7%	98.5%	92.0%
Advanced Nurse/ Midwife Practitioner	46	48	1.04	18.8%	81.3%	1.01	1.05	97.9%	97.9%	97.4%	91.7%	8.3%	100.0%	89.7%
Clinical Nurse/ Midwife Specialist	493	529	1.07	19.3%	80.7%	1.03	1.08	99.6%	99.6%	99.8%	92.4%	7.6%	98.0%	91.1%
Nurse/ Midwife Specialist & AN/MP	539	577	1.07	19.2%	80.8%	1.03	1.08	99.5%	99.1%	99.6%	92.4%	7.6%	98.2%	91.0%
Staff Nurse [Psychiatric]	2,935	3,214	1.10	25.7%	74.3%	1.06	1.11	91.8%	91.8%	92.7%	88.0%	12.0%	92.0%	86.6%
Staff Nurses [General/ Children's]	110	123	1.12	23.6%	76.4%	1.11	1.12	77.2%	77.2%	80.9%	81.3%	18.7%	82.8%	80.9%
Staff Nurse [Intellectual Disability]	3	4	1.19	25.0%	75.0%	1.04	1.24	50.0%	50.0%	66.7%	75.0%	25.0%	100.0%	66.7%
Staff Nurse/ Staff Midwife	3,048	3,341	1.10	25.7%	74.3%	1.06	1.11	91.2%	88.3%	92.2%	87.7%	12.3%	91.7%	86.3%
Pre-registration Nurse Intern (COVID-19)	1	1	1.02		100.0%		1.02	0.0%	0.0%	0.0%	100.0%	0.0%		100.0%
Pre-registration Nurse/ Midwife Intern	31	57	1.85	17.5%	82.5%	1.70	1.89	0.0%	0.0%	0.0%	100.0%	0.0%	100.0%	100.0%
Nursing/ Midwifery awaiting registration	32	42	1.30	9.5%	90.5%	1.07	1.33	9.5%	9.5%	7.9%	88.1%	11.9%	100.0%	86.8%
Nursing/ Midwifery Student	64	100	1.56	14.0%	86.0%	1.46	1.58	4.0%	7.1%	3.5%	95.0%	5.0%	100.0%	94.2%
Nursing Education/Clinical	31	34	1.09	14.7%	85.3%	1.00	1.11	100.0%	100.0%	100.0%	88.2%	11.8%	100.0%	86.2%

<i>Nursing/ Midwifery other</i>	31	34	1.09	14.7%	85.3%	1.00	1.11	100.0%	100.0%	100.0%	88.2%	11.8%	100.0%	86.2%
Nursing & Midwifery	4,935	5,364	1.09	27.0%	73.0%	1.05	1.10	92.4%	91.7%	92.7%	90.0%	10.0%	94.5%	88.3%
Health & Social Care	1,454	1,646	1.13	16.9%	83.1%	1.07	1.15	86.4%	83.5%	87.0%	81.9%	18.1%	91.4%	80.0%
Executive Management	13	13	1.00	61.5%	38.5%	1.01	1.00	100.0%	100.0%	100.0%	100.0%	0.0%	100.0%	100.0%
Senior Management (VIII & GM)	50	51	1.02	27.5%	72.5%	1.00	1.03	94.1%	94.1%	94.6%	98.0%	2.0%	100.0%	97.3%
Management (VIII & above)	63	64	1.02	34.4%	65.6%	1.00	1.03	95.3%	95.5%	95.2%	98.4%	1.6%	100.0%	97.6%
Middle Management (V-VII)	246	262	1.06	18.7%	81.3%	1.04	1.07	89.7%	89.7%	90.6%	88.2%	11.8%	95.9%	86.4%
Other Administrative	2	2	1.27		100.0%		1.27	100.0%	100.0%	100.0%	50.0%	50.0%		50.0%
Administrative/ Supervisory (V to VII)	248	264	1.07	18.6%	81.4%	1.04	1.07	89.8%	85.7%	90.7%	87.9%	12.1%	95.9%	86.0%
General Administrative (III & IV)	702	802	1.14	9.0%	91.0%	1.05	1.15	84.7%	84.7%	84.8%	74.6%	25.4%	90.3%	73.0%
Clerical (III & IV)	702	802	1.14	9.0%	91.0%	1.05	1.15	84.7%	83.3%	84.8%	74.6%	25.4%	90.3%	73.0%
Management & Administrative	1,012	1,130	1.12	12.7%	87.3%	1.04	1.13	86.5%	86.0%	86.5%	79.0%	21.0%	93.7%	76.9%
Catering	72	77	1.07	36.4%	63.6%	1.03	1.10	94.8%	94.8%	93.9%	76.6%	23.4%	92.9%	67.3%
Household Services	415	488	1.18	20.7%	79.3%	1.10	1.20	91.0%	91.0%	92.2%	59.6%	40.4%	82.2%	53.7%
Other Support	40	47	1.18	31.9%	68.1%	1.03	1.26	89.4%	89.4%	87.5%	72.3%	27.7%	93.3%	62.5%
Portering	47	48	1.03	93.8%	6.3%	1.03	1.00	89.6%	89.6%	66.7%	85.4%	14.6%	86.7%	66.7%
Support	573	660	1.15	28.6%	71.4%	1.07	1.19	91.2%	89.4%	91.9%	64.4%	35.6%	85.7%	55.8%
Maintenance	130	136	1.04	99.3%	0.7%	1.04	1.00	97.1%	97.1%	100.0%	96.3%	3.7%	96.3%	100.0%
Maintenance/ Technical	130	136	1.04	99.3%	0.7%	1.04	1.00	97.1%	97.0%	100.0%	96.3%	3.7%	96.3%	100.0%
General Support	704	796	1.13	40.7%	59.3%	1.06	1.19	92.2%	92.6%	91.9%	69.8%	30.2%	90.1%	55.9%
HCA, Nurse's Aide, etc.	1,012	1,102	1.09	29.0%	71.0%	1.05	1.11	90.4%	90.4%	92.5%	78.8%	21.2%	91.3%	73.7%
Health & Social Care Assistants	9	10	1.15	40.0%	60.0%	1.15	1.15	90.0%	90.0%	83.3%	60.0%	40.0%	75.0%	50.0%
Health Care Assistants	1,021	1,112	1.09	29.1%	70.9%	1.05	1.11	90.4%	85.5%	92.4%	78.6%	21.4%	91.0%	73.5%
Care, other	204	242	1.19	46.7%	53.3%	1.13	1.23	83.9%	78.8%	88.4%	69.0%	31.0%	78.8%	60.5%
Patient & Client Care	1,225	1,354	1.11	32.3%	67.7%	1.07	1.12	89.2%	83.8%	91.8%	76.9%	23.1%	87.9%	71.6%

Employment by WTE, Headcount, Gender, Full-Time /Part-Time etc.: Nov 2021

Mental Health Services CHO	WTE	Headcount	WTE: no.	% Male	% female	Male WTE: no.	Female WTE: no.	% Total Perm	% Male Perm	% Female Perm	% Total Full Time	% Total Part Time	% Male FT	% Female FT
Overall	10,289	11,315	1.10	27.1%	72.9%	1.05	1.12	84.7%	80.9%	86.2%	85.0%	15.0%	93.1%	82.0%
<i>CHO 1</i>	993	1,078	1.09	26.1%	73.9%	1.03	1.11	90.9%	90.9%	92.1%	87.1%	12.9%	97.2%	83.6%
<i>CHO 2</i>	1,315	1,427	1.08	28.4%	71.6%	1.06	1.10	86.6%	86.6%	88.5%	83.8%	16.2%	89.9%	81.4%
<i>CHO 3</i>	818	901	1.10	22.6%	77.4%	1.06	1.11	82.2%	82.2%	81.9%	85.1%	14.9%	91.2%	83.4%
<i>CHO 4</i>	1,558	1,703	1.09	25.4%	74.6%	1.05	1.11	72.5%	72.5%	74.8%	85.2%	14.8%	94.2%	82.1%
<i>CHO 5</i>	1,196	1,338	1.12	25.6%	74.4%	1.07	1.14	88.5%	88.5%	89.7%	79.7%	20.3%	90.4%	76.0%
<i>CHO 6</i>	635	714	1.12	30.3%	69.7%	1.09	1.14	84.0%	84.0%	85.5%	84.6%	15.4%	90.7%	81.9%
<i>CHO 7</i>	875	973	1.11	23.4%	76.6%	1.05	1.13	83.8%	83.8%	85.2%	87.8%	12.2%	95.6%	85.4%
<i>CHO 8</i>	1,081	1,193	1.10	25.5%	74.5%	1.04	1.13	87.8%	87.8%	89.2%	85.8%	14.2%	95.4%	82.5%
<i>CHO 9</i>	1,309	1,449	1.11	28.1%	71.9%	1.05	1.13	88.1%	88.1%	90.6%	84.0%	16.0%	94.6%	79.8%
<i>other Community Services</i>	508	539	1.06	45.1%	54.9%	1.06	1.06	88.1%	88.1%	88.5%	92.9%	7.1%	91.4%	94.3%

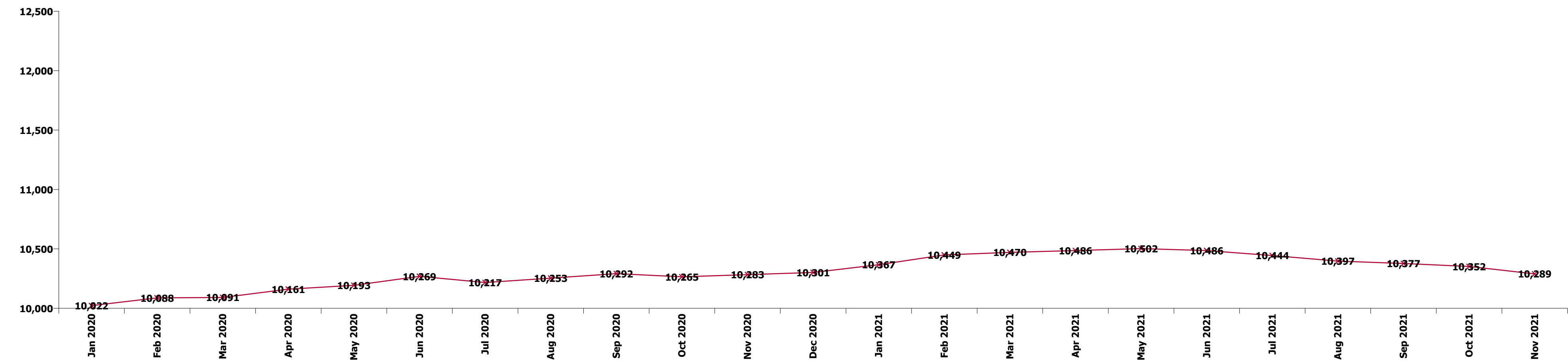
Summary Staff Movement: November 2021

Month-on-month
Summary

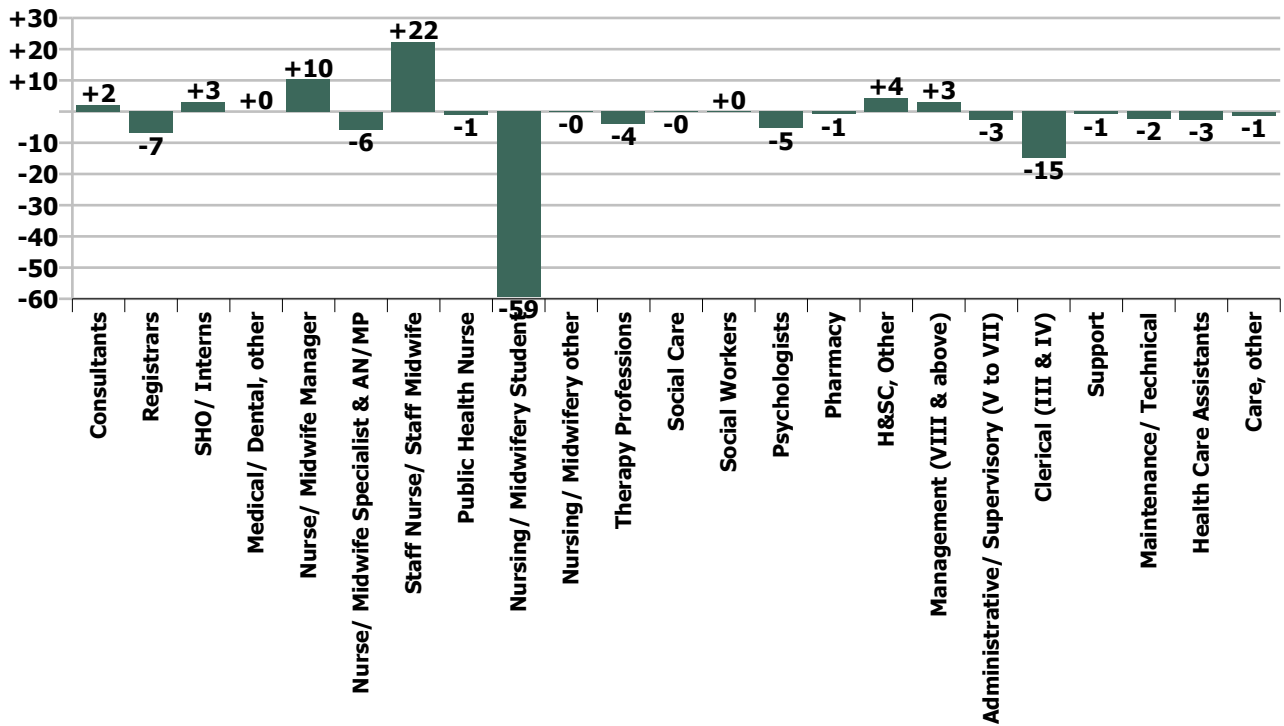
WTE change since Oct 21	% change since Oct 21	overall	Consultants	Registrars	SHO/ Interns	Medical/ Dental, other	Medical & Dental	Nurse/ Midwife Manager	Nurse/ Midwife Specialist & AN/MP	Staff Nurse/ Staff Midwife	Public Health Nurse	Nursing/ Midwifery Student	Nursing/ Midwifery other	Nursing & Midwifery	Therapy Professions	Social Care	Social Workers	Psychologists	Pharmacy	H&SC, Other	Health & Social Care Professionals	Management (VIII & above)	Administrativ e/ Supervisory (V to VII)	Clerical (III & IV)	Management & Administrative	General Support	Health Care Assistants	Care, other	Patient & Client Care
Overall	-0.6%	-63	+2	-7	+3	+0	-2	+10	-6	+22	-1	-59	-0	-34	-4	-0	+0	-5	-1	+4	-6	+3	-3	-15	-14	-3	-3	-1	-4
CHO 1	-0.8%	-8	+1	-0	+0		+0	-4	-1	+3		-1	-0	-3	-1	+0	-0	-2		+2	-2	+2	-1	-2	-1	+1	-3	-1	-4
CHO 2	-1.5%	-21	-1	-0	+1		-0	-2	-1	+0		-10	-0	-13	-1	-0	+1	-0		+0	-0	+0	-1	-4	-5	-0	-1	-1	-2
CHO 3	-0.1%	-1	-0	+0	+0		+0	+9	+6	-14		+1		+1	-0	-0	+1	-0		-0	+1	+1	-1	-1	-1	-1	-1	-0	-1
CHO 4	+1.0%	+15	-1	-1	+1	+0	-1	+2	-1	+20		-11		+9	+3	-0	+2	+1		+3	+9	+0	-0	-2	-2	+0	-0	-0	-1
CHO 5	-1.3%	-16	+1	-0	+2		+2	-4	-1	+3		-12	-0	-14	-1	-0	-0	+0		-0	-1	+0	-0	-1	-1	-2	+1	-1	+1
CHO 6	-0.4%	-2	+1	-1	+0		+0	+5	-4	+1		-0		+1	-4	+0	-1	-1		-0	-6	+0	+2	-0	+1	+1	-0	-0	-0
CHO 7	-0.2%	-2	+1	-1	-1		-1	+4	-0	+1	-1	-3	+0	+0	-0	-1	-1	-0	-0	-1	-3	+0	-0	-1	-1	-0	+0	+2	+2
CHO 8	-2.2%	-25	+0	-3	+1		-2	-1	-0	-2		-12	+0	-15	-1	+0	-0	-0		+0	-1	-1	-0	-6	-7	-2	+2	+0	+2
CHO 9	-0.1%	-1	+0	-0	-1		-1	+1	-3	+10		-11	-0	-3	+2	-0	-2	-1	+0	+1	+1	-0	+0	+1	+1	+0	-0	-0	-1
other Community Services	-0.5%	-2	+0	-1	-0		-1	+1	-0	+1				+2	-1	+0	-0	-2	-2	-1	-4	+1	-1	+1	+1	-1	-0		-0
		-0.6%	+0.6%	-2.1%	+1.3%	+0.2%	-0.2%	+0.8%	-1.1%	+0.7%	-100.0%	-48.1%	-0.4%	-0.7%	-0.9%	-0.2%	+0.0%	-1.2%	-4.0%	+3.8%	-0.4%	+5.3%	-1.1%	-2.1%	-1.4%	-0.5%	-0.3%	-0.6%	-0.3%

Year-on-year Summary

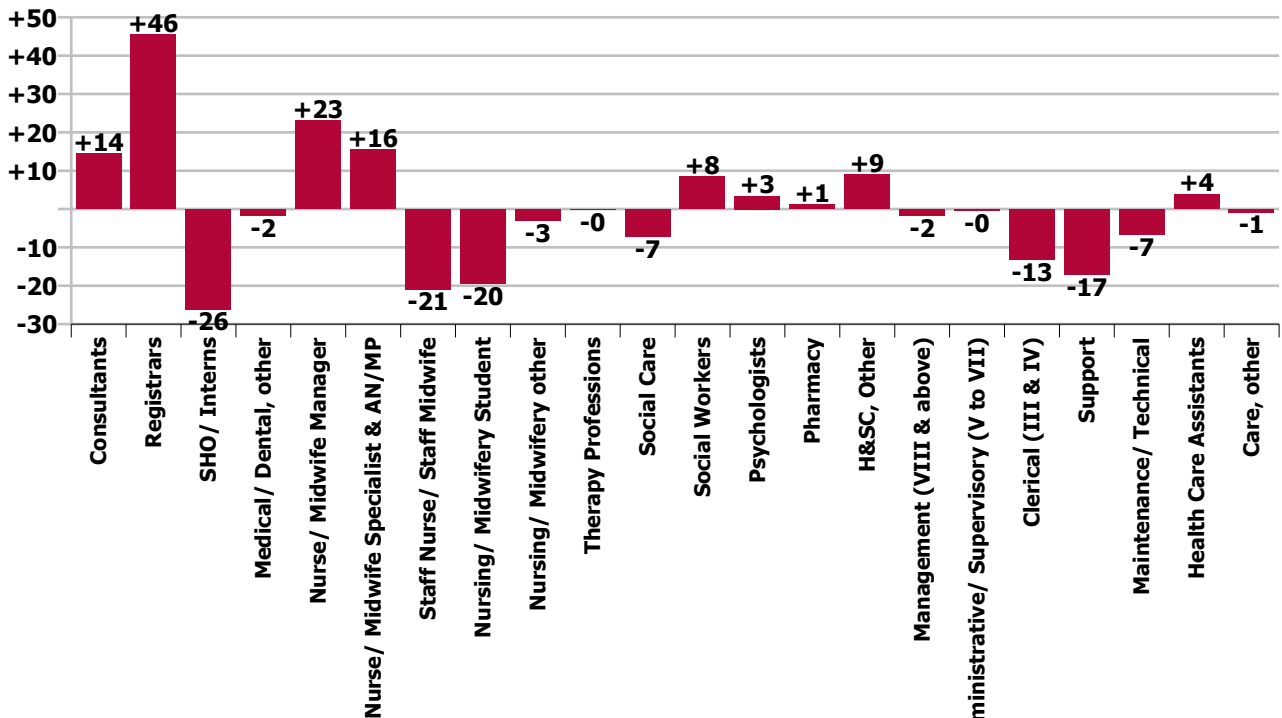
WTE change since Nov 20	% change since Nov 20	overall	Consultants	Registrars	SHO/ Interns	Medical/ Dental, other	Medical & Dental	Nurse/ Midwife Manager	Nurse/ Midwife Specialist & AN/MP	Staff Nurse/ Staff Midwife	Nursing/ Midwifery Student	Nursing/ Midwifery other	Nursing & Midwifery	Therapy Professions	Social Care	Social Workers	Psychologists	Pharmacy	H&SC, Other	Health & Social Care Professionals	Management (VIII & above)	Administrative/ Supervisory (V to VII)	Clerical (III & IV)	Management & Administrative	General Support	Health Care Assistants	Care, other	Patient & Client Care
Overall	+0.1%	+6	+14	+46	-26	-2	+32	+23	+16	-21	-20	-3	-5	-0	-7	+8	+3	+1	+9	+15	-2	-0	-13	-15	-24	+4	-1	+3
CHO 1	+2.2%	+21	+3	+2	-1		+4	-2	+0	+15	-7	+1	+7	+6	+0	+0	-2	-0	+3	+7	+0	-1	+5	+4	-3	+2	-1	+1
CHO 2	-2.2%	-30	+2	-2	-2	-2	-4	-5	+1	+8	-4	-1	-0	+1	-1	+1	-1	+1	-0	-0	-0	-4	-8	-12	-3	-7	-3	-9
CHO 3	+1.4%	+11	+0	+4	+1		+6	+10	+4	-12	-3		-0	+4	-0	+1	-2		-1	+2		-3	+1	-2	-1	+7	-0	+7
CHO 4	-0.2%	-4	+1	+10	+0	+0	+11	+6	-0	-23	+2		-16	-2	-1	+1	+4	-0	+2	+4		+0	-4	-4	-1	+1	+1	+2
CHO 5	+0.5%	+5	+1	+2	-2	+0	+1	+3	-1	+2	+2	+0	+6	-6	-0	-1	+1		+12	+6		+5	+2	+6	-15	+2	-1	+1
CHO 6	+1.5%	+10	+1	+5	-3		+3	-1	+1	-1	+0	+1	-0	+1	-3	+3	+3		-0	+1	+3	+1	+1	-3	-1	+1	+3	+3
CHO 7	+1.6%	+14	+4	-2	+2		+4	+4	+1	+7	-3	-2	+7	-2	-1	+2	-2		-2	-5	+2	+0	+0	+3	+1	+0	+4	+4
CHO 8	-2.9%	-33	+2	+7	-2		+7	+5	+6	-30	+3	-0	-16	-2	-0	+2	+1		-5	-4	+0	+1	-8	-8	-3	-9		-9
CHO 9	-0.5%	-7	+0	+17	-24		-6	+2	+5	+4	-9	-2	-1	+0	-0	+0	+0	+1	+1	+2	-0	-2	-2	-5	+0	+3	-1	+2
other Community Services	+3.6%	+18	+1	+1	+3		+5	+1	-1	+10			+10	+0	-1	-2	+2			-1	-5	+3	+5	+3	+0	+0		+0
			+0.1%	+3.9%	+16.2%	-9.6%	+3.5%	+1.9%	+3.0%	-0.7%	-23.3%	-9.0%	-0.1%	-0.0%	-8.8%	+2.3%	+0.8%	+5.7%	+8.3%	+1.0%	-2.8%	-0.2%	-1.9%	-1.5%	-3.3%	+0.4%	-0.4%	+0.3%



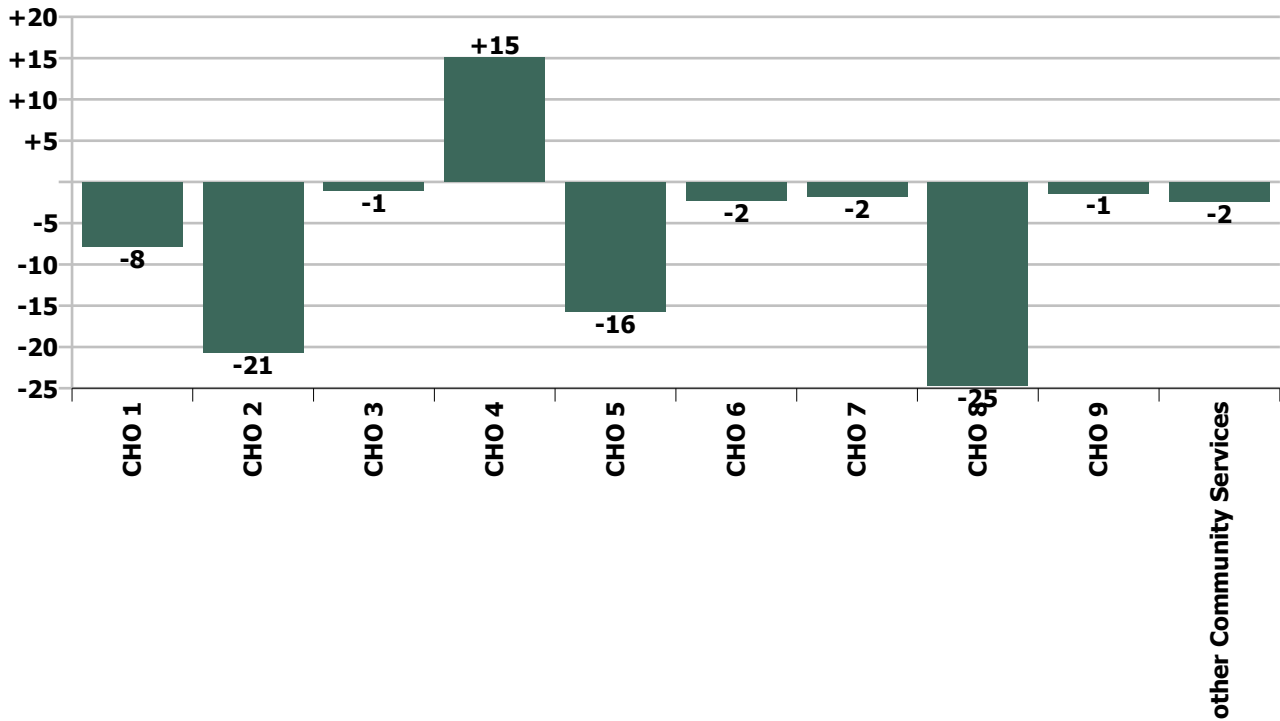
Staff Group change since: Oct 2021



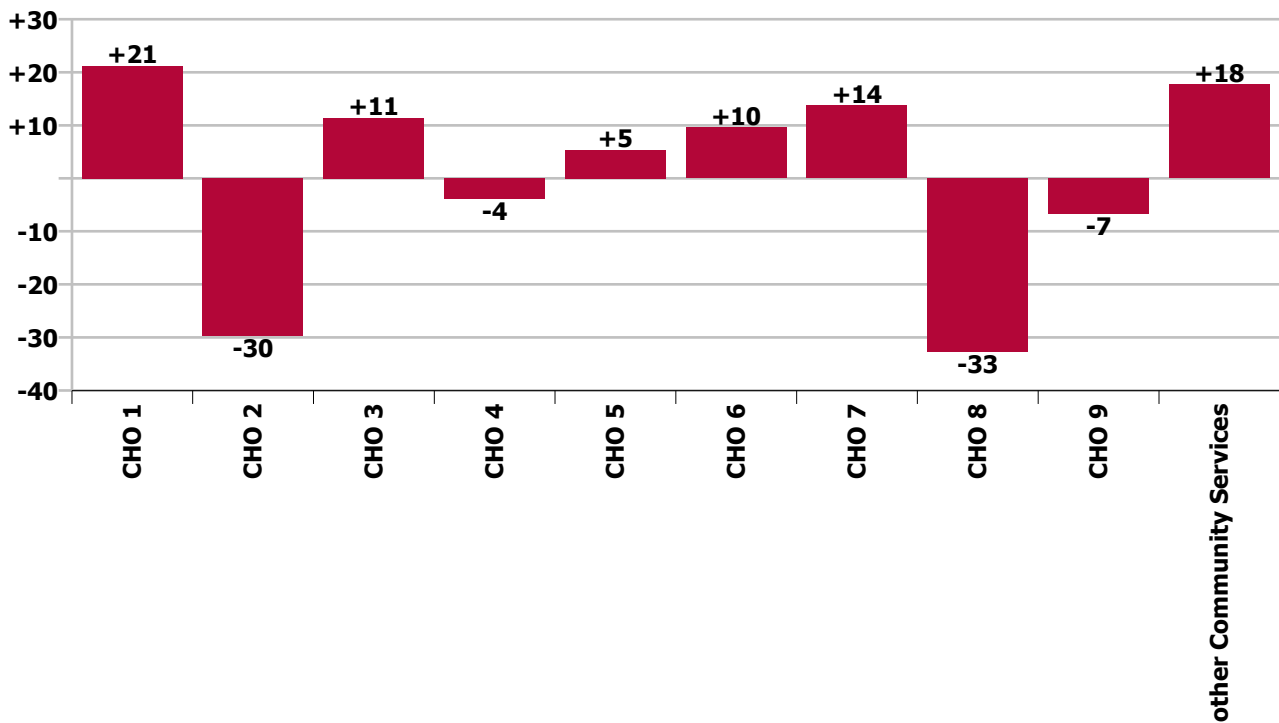
Staff Group change since: Nov 2020



CHO change since: Oct 2021



CHO change since: Nov 2020



Longitudinal Employment Levels by Grade Group - Dec 2016 to Nov 2021

Nov 2021 (Dec 2015 figure: 9,499)	WTE Nov 2021	WTE change since Dec 16	WTE change since Dec 17	WTE change since Dec 18	WTE change since Dec 19	WTE change since Dec 20	WTE change since Oct 21	% change since Dec 16	% change since Dec 17	% change since Dec 18	% change since Dec 19	% change since Dec 20	% change since Oct 21
Overall	10,289	+669	+500	+392	+335	-12	-63	+7.0%	+5.1%	+4.0%	+3.4%	-0.1%	-0.6%
Consultant Medicine	1	-0	-0	-0	-0	-0	-0	-1.0%	-10.0%	-10.0%	-1.0%	-1.0%	-1.0%
Consultant Psychiatry	382	+67	+69	+52	+30	+13	+2	+21.2%	+22.2%	+15.7%	+8.6%	+3.5%	+0.6%
Consultants	383	+67	+69	+52	+30	+13	+2	+21.1%	+22.1%	+15.6%	+8.5%	+3.5%	+0.6%
Registrar	203	+71	+59	+50	+34	+36	-7	+54.0%	+40.7%	+32.2%	+20.2%	+21.2%	-3.5%
Senior Registrar	119	+52	+53	+33	+22	+8	+0	+77.1%	+80.6%	+38.3%	+22.3%	+6.9%	+0.4%
Specialist Registrar	4	+3	+2	+3	+1	+2	-0	+290.0%	+95.0%	+290.0%	+56.0%	+95.0%	-2.5%
Registrars	326	+126	+114	+85	+57	+45	-7	+62.9%	+53.5%	+35.5%	+21.3%	+16.1%	-2.1%
Senior House Officer	239	-8	-33	-30	-14	-32	+1	-3.1%	-12.2%	-11.2%	-5.5%	-11.7%	+0.6%
Interns	7	-5	-3	-1	-1	+2	+2	-42.0%	-30.4%	-13.0%	-13.0%	+39.2%	+30.8%
SHO/ Interns	246	-13	-36	-31	-15	-30	+3	-4.9%	-12.8%	-11.2%	-5.7%	-10.8%	+1.3%
Dentists			-0	-0				-100.0%	-100.0%	-100.0%	-100.0%	-100.0%	-100.0%
Other Medical	4	-6	-7	-2	-1	-1	+0	-57.8%	-62.6%	-37.4%	-18.8%	-18.8%	+0.2%
Medical/ Dental, other	4	-6	-7	-3	-1	-1	+0	-57.8%	-62.8%	-38.1%	-18.8%	-18.8%	+0.2%
Medical & Dental	959	+174	+140	+103	+71	+27	-2	+22.2%	+17.1%	+12.1%	+8.0%	+2.9%	-0.2%
Clinical Nurse/ Midwife Manager	1,045	+39	+63	+39	+47	+4	+6	+3.8%	+6.4%	+3.9%	+4.7%	+0.4%	+0.6%
Director Nursing/Midwifery, Assistant	181	+25	+19	+17	+16	+10	+4	+16.4%	+11.6%	+10.1%	+9.7%	+5.9%	+2.2%
Director of Nursing/Midwifery	26	-5	-2	+2	-3	-2	+0	-17.3%	-7.9%	+10.5%	-9.3%	-6.1%	+1.0%
Nurse/ Midwife Manager	1,252	+59	+79	+58	+60	+13	+10	+4.9%	+6.8%	+4.9%	+5.0%	+1.0%	+0.8%
Advanced Nurse/ Midwife Practitioner	46	+39	+36	+26	+15	+7	-1	+516.2%	+339.0%	+128.8%	+50.0%	+17.0%	-1.4%
Clinical Nurse/ Midwife Specialist	493	+157	+110	+98	+65	+4	-5	+46.5%	+28.7%	+24.7%	+15.1%	+0.8%	-1.0%
Nurse/ Midwife Specialist & AN/MP	539	+195	+145	+124	+80	+10	-6	+56.7%	+36.9%	+29.8%	+17.4%	+2.0%	-1.1%
Staff Midwives						-1		-100.0%	-100.0%	-100.0%	-100.0%	-100.0%	-100.0%
Staff Nurse [Psychiatric]	2,935	-122	-92	-20	+41	-30	+23	-4.0%	-3.0%	-0.7%	+1.4%	-1.0%	+0.8%
Staff Nurses [General/ Children's]	110	-11	-8	-8	+5	+4	-2	-8.8%	-6.4%	-6.4%	+5.0%	+3.5%	-1.4%
Staff Nurse [Intellectual Disability]	3	+0	-0	-3	-1	-1	+0	+0.9%	-2.6%	-43.8%	-25.6%	-20.5%	+11.6%
Graduate Nursing/ Midwifery								-100.0%	-100.0%	-100.0%	-100.0%	-100.0%	-100.0%
Staff Nurse/ Staff Midwife	3,048	-132	-100	-30	+45	-28	+22	-4.2%	-3.2%	-1.0%	+1.5%	-0.9%	+0.7%

Nov 2021 (Dec 2015 figure: 9,499)	WTE Nov 2021	WTE change since Dec 16	WTE change since Dec 17	WTE change since Dec 18	WTE change since Dec 19	WTE change since Dec 20	WTE change since Oct 21	% change since Dec 16	% change since Dec 17	% change since Dec 18	% change since Dec 19	% change since Dec 20	% change since Oct 21
Overall	10,289	+669	+500	+392	+335	-12	-63	+7.0%	+5.1%	+4.0%	+3.4%	-0.1%	-0.6%
Public Health Nurse		-1	-1				-1	-100.0%	-100.0%	-100.0%	-100.0%	-100.0%	-100.0%
Pre-registration Nurse Intern (COVID-19)	1	+1	+1	+1	+1	-41	-1	-100.0%	-100.0%	-100.0%	-100.0%	-97.7%	-48.4%
Pre-registration Nurse/ Midwife Intern	31	+22	+14	+3	+3	+20	-37	+255.4%	+82.8%	+10.4%	+11.8%	+187.4%	-54.7%
Post-registration Nurse/ Midwife Student					-1	-1		-100.0%	-100.0%	-100.0%	-100.0%	-100.0%	-100.0%
Nursing/ Midwifery awaiting registration	32	+30	+24	+12	-27	+27	-21	+1516.0%	+273.6%	+62.9%	-45.1%	+566.4%	-39.7%
Nursing/ Midwifery Student	64	+53	+39	+16	-23	+5	-59	+501.1%	+151.4%	+34.3%	-26.7%	+8.7%	-48.1%
Nursing Education/Clinical	31	+7	+1	+0	-0	-1	-0	+26.5%	+2.1%	+0.6%	-1.2%	-1.6%	-0.4%
Nursing/ Midwifery other	31	+7	+1	+0	-0	-1	-0	+26.5%	+2.1%	+0.6%	-1.2%	-1.6%	-0.4%
Nursing & Midwifery	4,935	+180	+163	+168	+161	-0	-34	+3.8%	+3.4%	+3.5%	+3.4%	-0.0%	-0.7%
Dietitians	21	+8	+4	+1	+2	+0	+1	+56.1%	+26.1%	+5.4%	+10.5%	+1.6%	+4.9%
Occupational Therapists	348	+48	+22	+9	+9	+2	-4	+16.1%	+6.7%	+2.6%	+2.8%	+0.7%	-1.0%
Physiotherapists	3	+1	+2	+1	+1	+0	-0	+44.3%	+139.7%	+80.1%	+30.0%	+20.3%	-0.3%
Podiatrists & Chiropodists	1	-1	-1	-0	+0	-0	-0	-59.3%	-49.7%	-39.3%	+1.4%	-7.5%	-15.9%
Speech & Language Therapists	61	+2	-0	-0	-1	-8	-1	+2.8%	-0.4%	-0.6%	-0.8%	-12.2%	-2.0%
Therapy Professions	434	+57	+27	+10	+12	-5	-4	+15.2%	+6.6%	+2.4%	+2.7%	-1.2%	-0.9%
Social Care	74	-14	-9	-5	+0	-6	-0	-16.1%	-10.7%	-6.2%	+0.2%	-7.8%	-0.2%
Social Workers	381	+31	+24	+23	+32	+9	+0	+8.9%	+6.8%	+6.4%	+9.1%	+2.3%	+0.0%
Psychologists	427	+84	+57	+38	+32	+3	-5	+24.5%	+15.3%	+9.8%	+8.2%	+0.7%	-1.2%
Pharmacy	21	+1	+1	+1	+2	-0	-1	+6.4%	+6.9%	+7.4%	+11.6%	-0.1%	-4.0%
Counsellor Therapists	111	+26	+26	+26	+17	+10	+5	+31.0%	+30.2%	+31.1%	+17.5%	+10.1%	+5.2%
Other Health & Social Care	5	-4	-4	-4	-7	-1	-1	-42.2%	-43.1%	-43.4%	-58.5%	-10.0%	-18.9%
Play Therapists/ Specialists	2	-1	+0	+0	+0	+0	+0	-36.8%	+4.6%	+6.8%	+8.2%	+6.8%	+1.3%
H&SC, Other	118	+22	+22	+23	+10	+10	+4	+22.8%	+23.3%	+24.0%	+9.1%	+9.1%	+3.8%
Health & Social Care Professionals	1,454	+181	+122	+91	+88	+10	-6	+14.3%	+9.2%	+6.6%	+6.4%	+0.7%	-0.4%
Executive Management	13	+6	+5	+3	+2	-2	-1	+85.0%	+61.9%	+29.5%	+17.7%	-12.1%	-6.4%
Senior Management (VIII & GM)	50	+25	+19	+18	+4	-3	+4	+101.9%	+59.5%	+57.5%	+7.6%	-4.8%	+8.8%
Management (VIII & above)	63	+31	+24	+21	+5	-4	+3	+98.2%	+60.0%	+50.8%	+9.5%	-6.4%	+5.3%
Middle Management (V-VII)	246	+80	+49	+26	+11	+3	-3	+48.0%	+25.1%	+11.9%	+4.6%	+1.2%	-1.1%
Other Administrative	2		-1	-1					-38.9%	-38.9%			

Nov 2021 (Dec 2015 figure: 9,499)	WTE Nov 2021	WTE change since Dec 16	WTE change since Dec 17	WTE change since Dec 18	WTE change since Dec 19	WTE change since Dec 20	WTE change since Oct 21	% change since Dec 16	% change since Dec 17	% change since Dec 18	% change since Dec 19	% change since Dec 20	% change since Oct 21
Overall	10,289	+669	+500	+392	+335	-12	-63	+7.0%	+5.1%	+4.0%	+3.4%	-0.1%	-0.6%
Administrative/ Supervisory (V to VII)	248	+80	+48	+25	+11	+3	-3	+47.6%	+24.2%	+11.3%	+4.6%	+1.2%	-1.1%
General Administrative (III & IV)	702	+40	+20	+6	-16	-20	-15	+6.1%	+2.9%	+0.9%	-2.2%	-2.8%	-2.1%
Clerical (III & IV)	702	+40	+20	+6	-16	-20	-15	+6.1%	+2.9%	+0.9%	-2.2%	-2.8%	-2.1%
Management & Administrative	1,012	+151	+92	+52	+1	-22	-14	+17.6%	+10.0%	+5.5%	+0.1%	-2.1%	-1.4%
Catering	72	+6	+6	+0	+7	+8	+2	+9.6%	+9.3%	+0.2%	+10.3%	+13.2%	+2.5%
Household Services	415	-77	-61	-31	-10	-26	-2	-15.7%	-12.9%	-6.9%	-2.2%	-6.0%	-0.4%
Other Support	40	-16	-9	-15	-3	-2	-0	-28.7%	-19.2%	-27.5%	-6.4%	-4.6%	-1.0%
Portering	47	-13	-2	-1	-2	-1	-1	-21.5%	-4.8%	-3.0%	-3.2%	-1.6%	-1.2%
Support	573	-100	-67	-47	-7	-21	-1	-14.8%	-10.5%	-7.6%	-1.2%	-3.5%	-0.2%
Maintenance	130	-13	-8	-4	+2	-7	-2	-8.8%	-5.9%	-2.9%	+1.2%	-5.0%	-1.7%
Technical Services		-2	-2	-2	-2			-100.0%	-100.0%	-100.0%	-100.0%	-100.0%	-100.0%
Maintenance/ Technical	130	-15	-10	-6	-0	-7	-2	-10.0%	-7.3%	-4.3%	-0.3%	-5.0%	-1.7%
General Support	704	-114	-77	-53	-8	-28	-3	-14.0%	-9.9%	-7.0%	-1.1%	-3.8%	-0.5%
HCA, Nurse's Aide, etc.	1,012	+83	+64	+38	+33	-1	-3	+9.0%	+6.7%	+3.9%	+3.4%	-0.1%	-0.3%
Health & Social Care Assistants	9	+4	+4	+3	-0	+0	-0	+87.1%	+87.1%	+59.6%	-2.9%	+4.1%	-0.8%
Health Care Assistants	1,021	+87	+68	+41	+33	-1	-3	+9.4%	+7.1%	+4.2%	+3.3%	-0.1%	-0.3%
Other Care Grades	204	+8	-8	-12	-12	+1	-1	+4.1%	-3.8%	-5.4%	-5.4%	+0.4%	-0.6%
Care, other	204	+8	-8	-12	-12	+1	-1	+4.1%	-3.8%	-5.4%	-5.4%	+0.4%	-0.6%
Patient & Client Care	1,225	+96	+60	+30	+21	+0	-4	+8.5%	+5.1%	+2.5%	+1.8%	+0.0%	-0.3%

Source: Health Service Personnel Census

Longitudinal Employment Levels by Grade Group - Dec 2016 to Nov 2021

Nov 2021 (Dec 2015 figure: 9,499)	WTE Nov 2021	WTE change since Dec 16	WTE change since Dec 17	WTE change since Dec 18	WTE change since Dec 19	WTE change since Dec 20	WTE change since Oct 21	% change since Dec 16	% change since Dec 17	% change since Dec 18	% change since Dec 19	% change since Dec 20	% change since Oct 21
Overall	10,289	+669	+500	+392	+335	-12	-63	+7.0%	+5.1%	+4.0%	+3.4%	-0.1%	-0.6%
Consultant Medicine	1	-0	-0	-0	-0	-0	-0	-1.0%	-10.0%	-10.0%	-1.0%	-1.0%	-1.0%
Consultant Psychiatry	382	+67	+69	+52	+30	+13	+2	+21.2%	+22.2%	+15.7%	+8.6%	+3.5%	+0.6%
Consultants	383	+67	+69	+52	+30	+13	+2	+21.1%	+22.1%	+15.6%	+8.5%	+3.5%	+0.6%
Registrar	203	+71	+59	+50	+34	+36	-7	+54.0%	+40.7%	+32.2%	+20.2%	+21.2%	-3.5%
Senior Registrar	119	+52	+53	+33	+22	+8	+0	+77.1%	+80.6%	+38.3%	+22.3%	+6.9%	+0.4%
Specialist Registrar	4	+3	+2	+3	+1	+2	-0	+290.0%	+95.0%	+290.0%	+56.0%	+95.0%	-2.5%
Registrars	326	+126	+114	+85	+57	+45	-7	+62.9%	+53.5%	+35.5%	+21.3%	+16.1%	-2.1%
Senior House Officer	239	-8	-33	-30	-14	-32	+1	-3.1%	-12.2%	-11.2%	-5.5%	-11.7%	+0.6%
Interns	7	-5	-3	-1	-1	+2	+2	-42.0%	-30.4%	-13.0%	-13.0%	+39.2%	+30.8%
SHO/ Interns	246	-13	-36	-31	-15	-30	+3	-4.9%	-12.8%	-11.2%	-5.7%	-10.8%	+1.3%
Dentists			-0	-0				-100.0%	-100.0%	-100.0%	-100.0%	-100.0%	-100.0%
Other Medical	4	-6	-7	-2	-1	-1	+0	-57.8%	-62.6%	-37.4%	-18.8%	-18.8%	+0.2%
Medical/ Dental, other	4	-6	-7	-3	-1	-1	+0	-57.8%	-62.8%	-38.1%	-18.8%	-18.8%	+0.2%
Medical & Dental	959	+174	+140	+103	+71	+27	-2	+22.2%	+17.1%	+12.1%	+8.0%	+2.9%	-0.2%
Clinical Nurse/ Midwife Manager	1,045	+39	+63	+39	+47	+4	+6	+3.8%	+6.4%	+3.9%	+4.7%	+0.4%	+0.6%
Director Nursing/Midwifery, Assistant	181	+25	+19	+17	+16	+10	+4	+16.4%	+11.6%	+10.1%	+9.7%	+5.9%	+2.2%
Director of Nursing/Midwifery	26	-5	-2	+2	-3	-2	+0	-17.3%	-7.9%	+10.5%	-9.3%	-6.1%	+1.0%
Nurse/ Midwife Manager	1,252	+59	+79	+58	+60	+13	+10	+4.9%	+6.8%	+4.9%	+5.0%	+1.0%	+0.8%
Advanced Nurse/ Midwife Practitioner	46	+39	+36	+26	+15	+7	-1	+516.2%	+339.0%	+128.8%	+50.0%	+17.0%	-1.4%
Clinical Nurse/ Midwife Specialist	493	+157	+110	+98	+65	+4	-5	+46.5%	+28.7%	+24.7%	+15.1%	+0.8%	-1.0%
Nurse/ Midwife Specialist & AN/MP	539	+195	+145	+124	+80	+10	-6	+56.7%	+36.9%	+29.8%	+17.4%	+2.0%	-1.1%
Staff Midwives							-1	-100.0%	-100.0%	-100.0%	-100.0%	-100.0%	-100.0%
Staff Nurse [Psychiatric]	2,935	-122	-92	-20	+41	-30	+23	-4.0%	-3.0%	-0.7%	+1.4%	-1.0%	+0.8%
Staff Nurses [General/ Children's]	110	-11	-8	-8	+5	+4	-2	-8.8%	-6.4%	-6.4%	+5.0%	+3.5%	-1.4%
Staff Nurse [Intellectual Disability]	3	+0	-0	-3	-1	-1	+0	+0.9%	-2.6%	-43.8%	-25.6%	-20.5%	+11.6%
Graduate Nursing/ Midwifery								-100.0%	-100.0%	-100.0%	-100.0%	-100.0%	-100.0%
Staff Nurse/ Staff Midwife	3,048	-132	-100	-30	+45	-28	+22	-4.2%	-3.2%	-1.0%	+1.5%	-0.9%	+0.7%
Public Health Nurse		-1	-1				-1	-100.0%	-100.0%	-100.0%	-100.0%	-100.0%	-100.0%
Public Health Nurse		-1	-1				-1	-100.0%	-100.0%	-100.0%	-100.0%	-100.0%	-100.0%
Pre-registration Nurse Intern (COVID-19)	1	+1	+1	+1	+1	-41	-1	-100.0%	-100.0%	-100.0%	-100.0%	-97.7%	-48.4%
Pre-registration Nurse/ Midwife Intern	31	+22	+14	+3	+3	+20	-37	+255.4%	+82.8%	+10.4%	+11.8%	+187.4%	-54.7%
Post-registration Nurse/ Midwife Student					-1	-1		-100.0%	-100.0%	-100.0%	-100.0%	-100.0%	-100.0%
Nursing/ Midwifery awaiting registration	32	+30	+24	+12	-27	+27	-21	+1516.0%	+273.6%	+62.9%	-45.1%	+566.4%	-39.7%
Nursing/ Midwifery Student	64	+53	+39	+16	-23	+5	-59	+501.1%	+151.4%	+34.3%	-26.7%	+8.7%	-48.1%
Nursing Education/Clinical	31	+7	+1	+0	-0	-1	-0	+26.5%	+2.1%	+0.6%	-1.2%	-1.6%	-0.4%
Nursing/ Midwifery other	31	+7	+1	+0	-0	-1	-0	+26.5%	+2.1%	+0.6%	-1.2%	-1.6%	-0.4%
Nursing & Midwifery	4,935	+180	+163	+168	+161	-0	-34	+3.8%	+3.4%	+3.5%	+3.4%	-0.0%	-0.7%
Dietitians	21	+8	+4	+1	+2	+0	+1	+56.1%	+26.1%	+5.4%	+10.5%	+1.6%	+4.9%
Occupational Therapists	348	+48	+22	+9	+9	+2	-4	+16.1%	+6.7%	+2.6%	+2.8%	+0.7%	-1.0%
Physiotherapists	3	+1	+2	+1	+1	+0	-0	+44.3%	+139.7%	+80.1%	+30.0%	+20.3%	-0.3%
Podiatrists & Chiropodists	1	-1	-1	-0	+0	-0	-0	-59.3%	-49.7%	-39.3%	+1.4%	-7.5%	-15.9%
Speech & Language Therapists	61	+2	-0	-0	-1	-8	-1	+2.8%	-0.4%	-0.6%	-0.8%	-12.2%	-2.0%
Therapy Professions	434	+57	+27	+10	+12	-5	-4	+15.2%	+6.6%	+2.4%	+2.7%	-1.2%	-0.9%
Social Care	74	-14	-9	-5	+0	-6	-0	-16.1%	-10.7%	-6.2%	+0.2%	-7.8%	-0.2%
Social Workers	381	+31	+24	+23	+32	+9	+0	+8.9%	+6.8%	+6.4%	+9.1%	+2.3%	+0.0%
Psychologists	427	+84	+57	+38	+32	+3	-5	+24.5%	+15.3%	+9.8%	+8.2%	+0.7%	-1.2%
Pharmacy	21	+1	+1	+1	+2	-0	-1	+6.4%	+6.9%	+7.4%	+11.6%	-0.1%	-4.0%
Counsellor Therapists	111	+26	+26	+26	+17	+10	+5	+31.0%	+30.2%	+31.1%	+17.5%	+10.1%	+5.2%
Other Health & Social Care	5	-4	-4	-4	-7	-1	-1	-42.2%	-43.1%	-43.4%	-58.5%	-10.0%	-18.9%
Play Therapists/ Specialists	2	-1	+0	+0	+0	+0	+0	-36.8%	+4.6%	+6.8%	+8.2%	+6.8%	+1.3%
H&SC, Other	118	+22	+22	+23	+10	+10	+4	+22.8%	+23.3%	+24.0%	+9.1%	+9.1%	+3.8%
Health & Social Care Professionals	1,454	+181	+122	+91	+88	+10	-6	+14.3%	+9.2%	+6.6%	+6.4%	+0.7%	-0.4%
Executive Management	13	+6	+5	+3	+2	-2	-1	+85.0%	+61.9%	+29.5%	+17.7%	-12.1%	-6.4%
Senior Management (VIII & GM)	50	+25	+19	+18	+4	-3	+4	+101.9%	+59.5%	+57.5%	+7.6%	-4.8%	+8.8%
Management (VIII & above)	63	+31	+24	+21	+5	-4	+3	+98.2%	+60.0%	+50.8%	+9.5%	-6.4%	+5.3%
Middle Management (V-VII)	246	+80	+49	+26	+11	+3	-3	+48.0%	+25.1%	+11.9%	+4.6%	+1.2%	-1.1%
Other Administrative	2		-1	-1					-38.9%	-38.9%			
Administrative/ Supervisory (V to VII)	248	+80	+48	+25	+11	+3	-3	+47.6%	+24.2%	+11.3%	+4.6%	+1.2%	-1.1%
General Administrative (III & IV)	702	+40	+20	+6	-16	-20	-15	+6.1%	+2.9%	+0.9%	-2.2%	-2.8%	-2.1%
Clerical (III & IV)	702	+40	+20	+6	-16	-20	-15	+6.1%	+2.9%	+0.9%	-2.2%	-2.8%	-2.1%
Management & Administrative	1,012	+151	+92	+52	+1	-22	-14	+17.6%	+10.0%	+5.5%	+0.1%	-2.1%	-1.4%
Support	573	-100	-67	-47	-7	-21	-1	-14.8%	-10.5%	-7.6%	-1.2%	-3.5%	-0.2%
Maintenance	130	-13	-8	-4	+2	-7	-2	-8.8%	-5.9%	-2.9%	+1.2%	-5.0%	-1.7%
Technical Services		-2	-2	-2	-2			-100.0%	-100.0%	-100.0%	-100.0%	-100.0%	-100.0%
Maintenance/ Technical	130	-15	-10	-6	-0	-7	-2	-10.0%	-7.3%	-4.3%	-0.3%	-5.0%	-1.7%
General Support	704	-114	-77	-53	-8	-28	-3	-14.0%	-9.9%	-7.0%	-1.1%	-3.8%	-0.5%
HCA, Nurse's Aide, etc.	1,012	+83	+64	+38	+33	-1	-3	+9.0%	+6.7%	+3.9%	+3.4%	-0.1%	-0.3%
Health & Social Care Assistants	9	+4	+4	+3	-0	+0	-0	+87.1%	+87.1%	+59.6%	-2.9%	+4.1%	-0.8%
Health Care Assistants	1,021	+87	+68	+41	+33	-1	-3	+9.4%	+7.1%	+4.2%	+3.3%	-0.1%	-0.3%
Other Care Grades	204	+8	-8	-12	-12	+1	-1	+4.1%	-3.8%	-5.4%	-5.4%	+0.4%	-0.6%
Care, other	204	+8	-8	-12	-12	+1	-1	+4.1%	-3.8%	-5.4%	-5.4%	+0.4%	-0.6%
Patient & Client Care	1,225	+96	+60	+30	+21	+0	-4	+8.5%	+5.1%	+2.5%	+1.8%	+0.0%	-0.3%

Source: Health Service Personnel Census