

Mental Health Service Employment Report: November 2022

Employment by Staff Group

Nov 2022	WTE Dec 2019	WTE Dec 2020	WTE Oct 2022	WTE Nov 2022	WTE change since Oct 22	WTE change since Dec 20	% change since Dec 20	WTE change since Dec 19	% change since Dec 19	No. Nov 2022
Overall	9,954	10,301	10,398	10,453	+55	+151	+1.5%	+499	+5.0%	11,397
Consultants	353	370	397	399	+2	+30	+8.0%	+47	+13.2%	431
Registrars	269	281	345	346	+0	+65	+23.0%	+77	+28.5%	359
SHO/ Interns	261	276	261	265	+4	-11	-4.0%	+4	+1.4%	275
Medical/ Dental, other	5	5	5	4	-0	-1	-11.6%	-1	-11.6%	8
Medical & Dental	888	932	1,008	1,014	+6	+82	+8.8%	+126	+14.2%	1,073
Nurse/ Midwife Manager	1,192	1,240	1,238	1,240	+2	+1	+0.1%	+48	+4.0%	1,297
Nurse/ Midwife Specialist & AN/MP	459	529	601	621	+20	+92	+17.4%	+162	+35.2%	661
Staff Nurse/ Staff Midwife	3,003	3,076	2,911	2,945	+35	-131	-4.3%	-58	-1.9%	3,207
<i>Pre-registration Nurse Intern (COVID-19)</i>		42				-42	-100.0%		-100.0%	
<i>Pre-registration Nurse/ Midwife Intern</i>	28	11	51	26	-24	+16	+147.3%	-1	-3.8%	44
<i>Post-registration Nurse/ Midwife Student</i>	1	1				-1	-100.0%	-1	-100.0%	
<i>Nursing/ Midwifery awaiting registration</i>	59	5	72	50	-22	+46	+940.8%	-8	-14.3%	54
Nursing/ Midwifery Student	87	59	123	77	-46	+18	+30.5%	-10	-12.0%	98
Nursing/ Midwifery other	32	32	34	34	+0	+2	+7.7%	+3	+8.1%	37
Nursing & Midwifery	4,773	4,935	4,906	4,917	+11	-18	-0.4%	+144	+3.0%	5,300
Therapy Professions	422	439	437	438	+2	-1	-0.2%	+16	+3.8%	492
Social Care	74	80	73	74	+2	-6	-6.9%	+1	+1.2%	84
Social Workers	350	373	401	411	+10	+39	+10.4%	+62	+17.7%	457
Psychologists	394	424	440	446	+6	+22	+5.3%	+52	+13.1%	489
Pharmacy	19	21	19	20	+1	-1	-4.1%	+1	+7.1%	25
H&SC, Other	108	108	134	131	-2	+23	+21.5%	+23	+21.5%	149
Health & Social Care Professionals	1,366	1,444	1,503	1,522	+18	+77	+5.3%	+155	+11.4%	1,696
Management (VIII & above)	57	67	73	75	+2	+8	+11.8%	+18	+30.8%	76
Administrative/ Supervisory (V to VII)	237	245	270	278	+8	+34	+13.8%	+42	+17.6%	294
Clerical (III & IV)	717	722	704	709	+5	-13	-1.9%	-9	-1.2%	795
Management & Administrative	1,012	1,034	1,047	1,062	+15	+28	+2.7%	+50	+5.0%	1,165
Support	581	594	558	559	+1	-35	-5.9%	-22	-3.7%	643
Maintenance/ Technical	131	137	131	130	-1	-7	-5.4%	-1	-0.7%	134
General Support	711	732	689	689	-0	-43	-5.8%	-23	-3.2%	777
Health Care Assistants	988	1,022	1,029	1,032	+4	+11	+1.1%	+45	+4.5%	1,128
Care, other	216	203	216	217	+1	+13	+6.4%	+1	+0.3%	258
Patient & Client Care	1,204	1,225	1,245	1,249	+4	+24	+2.0%	+45	+3.7%	1,386



Mental Health Services Employment by Administration (HSE / S38): November 2022

Nov 2022	WTE Dec 2019	WTE Dec 2020	WTE Oct 2022	WTE Nov 2022	WTE change since Oct 22	WTE change since Dec 20	% change since Dec 20	WTE change since Dec 19	% change since Dec 19	No. Nov 2022
Total	9,954	10,301	10,398	10,453	+55	+151	+1.5%	+499	+5.0%	11,397
HSE	9,513	9,855	9,969	10,030	+61	+175	+1.8%	+517	+5.4%	10,898
Section 38 Voluntary Agencies	441	446	429	423	-6	-23	-5.2%	-18	-4.1%	499

Employment by Staff Group

Nov 2022	WTE Dec 2019	WTE Dec 2020	WTE Oct 2022	WTE Nov 2022	WTE change since Oct 22	WTE change since Dec 20	% change since Dec 20	WTE change since Dec 19	% change since Dec 19	No. Nov 2022
Health Service Executive	9,513	9,855	9,969	10,030	+61	+175	+1.8%	+517	+5.4%	10,898
Consultants	333	349	373	374	+0	+25	+7.2%	+41	+12.4%	399
Registrars	250	266	326	327	+1	+61	+22.9%	+77	+30.6%	339
SHO/ Interns	255	267	255	258	+3	-9	-3.3%	+3	+1.2%	267
Medical/ Dental, other	5	5	5	4	-0	-1	-11.6%	-1	-11.6%	8
Medical & Dental	843	886	959	963	+4	+77	+8.7%	+120	+14.3%	1,013
Nurse/ Midwife Manager	1,154	1,202	1,204	1,206	+2	+4	+0.3%	+52	+4.5%	1,261
Nurse/ Midwife Specialist & AN/MP	452	520	591	610	+19	+90	+17.3%	+157	+34.7%	646
Staff Nurse/ Staff Midwife	2,880	2,953	2,788	2,835	+47	-118	-4.0%	-44	-1.5%	3,087
Pre-registration Nurse Intern (COVID-19)		41				-41	-100.0%		-100.0%	
Pre-registration Nurse/ Midwife Intern	21	1	50	26	-24	+26	+3631.0%	+6	+29.0%	44
Post-registration Nurse/ Midwife Student	1	1				-1	-100.0%	-1	-100.0%	
Nursing/ Midwifery awaiting registration	59	5	71	49	-22	+45	+920.2%	-9	-16.0%	53
Nursing/ Midwifery Student	80	48	121	76	-45	+28	+58.4%	-4	-5.6%	97
Nursing/ Midwifery other	29	29	32	32	+0	+2	+8.4%	+3	+8.8%	34
Nursing & Midwifery	4,596	4,752	4,736	4,759	+23	+7	+0.1%	+163	+3.5%	5,125
Therapy Professions	391	412	410	411	+1	-1	-0.2%	+20	+5.1%	455
Social Care	48	52	45	46	+2	-6	-11.1%	-2	-3.7%	53
Social Workers	330	354	382	389	+7	+35	+9.8%	+59	+17.9%	433
Psychologists	379	402	417	422	+5	+21	+5.2%	+44	+11.6%	459
Pharmacy	17	19	17	18	+1	-1	-4.5%	+1	+6.6%	23
H&SC, Other	103	107	133	131	-2	+24	+22.6%	+28	+27.2%	148
Health & Social Care Professionals	1,267	1,345	1,404	1,418	+13	+72	+5.4%	+150	+11.9%	1,571
Management (VIII & above)	55	65	71	73	+2	+8	+12.2%	+18	+32.0%	74
Administrative/ Supervisory (V to VII)	216	224	247	255	+8	+31	+14.0%	+40	+18.4%	267
Clerical (III & IV)	673	679	666	672	+6	-7	-1.1%	-1	-0.1%	751
Management & Administrative	944	968	984	1,000	+17	+32	+3.3%	+57	+6.0%	1,092
Support	543	556	526	526	+0	-30	-5.4%	-17	-3.1%	594
Maintenance/ Technical	125	130	125	124	-1	-6	-4.9%	-1	-0.7%	128
General Support	668	687	651	650	-0	-37	-5.3%	-18	-2.6%	722



Health Care Assistants	982	1,016	1,023	1,027	+4	+11	+1.1%	+45	+4.5%	1,122
Care, other	213	200	212	213	+1	+13	+6.5%	+0	+0.0%	253
Patient & Client Care	1,195	1,216	1,236	1,240	+4	+24	+2.0%	+45	+3.7%	1,375

Employment by Staff Group

Nov 2022	WTE Dec 2019	WTE Dec 2020	WTE Oct 2022	WTE Nov 2022	WTE change since Oct 22	WTE change since Dec 20	% change since Dec 20	WTE change since Dec 19	% change since Dec 19	No. Nov 2022
Section 38 Voluntary Agencies	441	446	429	423	-6	-23	-5.2%	-18	-4.1%	499
Consultants	20	21	24	25	+2	+4	+21.0%	+6	+27.7%	32
Registrars	19	15	19	19	-0	+4	+24.3%	+0	+0.2%	20
SHO/ Interns	6	9	6	7	+1	-2	-26.6%	+1	+10.2%	8
Medical & Dental	45	45	49	51	+2	+6	+12.7%	+6	+13.8%	60
Nurse/ Midwife Manager	38	38	34	34	+0	-3	-8.8%	-4	-9.6%	36
Nurse/ Midwife Specialist & AN/MP	7	9	10	11	+1	+2	+24.0%	+4	+65.3%	15
Staff Nurse/ Staff Midwife	123	123	122	110	-12	-13	-10.6%	-13	-10.8%	120
Pre-registration Nurse Intern (COVID-19)		1				-1	-100.0%		-100.0%	
Pre-registration Nurse/ Midwife Intern	7	10	1		-1	-10	-100.0%	-7	-100.0%	
Nursing/ Midwifery awaiting registration			1	1		+1	-100.0%	+1	-100.0%	1
Nursing/ Midwifery Student	7	11	2	1	-1	-10	-90.9%	-6	-85.7%	1
Nursing/ Midwifery other	3	3	3	3						3
Nursing & Midwifery	177	183	170	159	-11	-24	-13.2%	-19	-10.4%	175
Therapy Professions	31	27	26	27	+1	+0	+0.1%	-4	-13.0%	37
Social Care	25	28	28	28	+0	+0	+0.9%	+3	+10.4%	31
Social Workers	20	19	19	23	+3	+4	+22.4%	+3	+15.4%	24
Psychologists	16	22	23	24	+1	+2	+6.9%	+8	+50.3%	30
Pharmacy	2	2	2	2				+0	+12.5%	2
H&SC, Other	5	1	0	0	-0	-1	-99.0%	-5	-99.8%	1
Health & Social Care Professionals	99	99	99	104	+5	+5	+5.1%	+5	+5.0%	125
Management (VIII & above)	2	2	2	2						2
Administrative/ Supervisory (V to VII)	21	21	23	23	+0	+2	+11.5%	+2	+9.0%	27
Clerical (III & IV)	45	43	38	37	-2	-6	-14.7%	-8	-18.3%	44
Management & Administrative	68	66	63	62	-1	-4	-6.0%	-6	-9.3%	73
Support	38	38	33	33	+0	-5	-13.1%	-5	-13.3%	49
Maintenance/ Technical	6	7	6	6		-1	-14.3%			6
General Support	44	45	39	39	+0	-6	-13.3%	-5	-11.4%	55
Health Care Assistants	6	6	6	6						6
Care, other	3	3	3	3		-0	-0.6%	+1	+19.5%	5
Patient & Client Care	9	9	9	9		-0	-0.2%	+1	+6.4%	11



Mental Health Services Employment by CHO: Nov 2022

Nov 2022	WTE Dec 2019	WTE Dec 2020	WTE Oct 2022	WTE Nov 2022	WTE change since Oct 22	WTE change since Dec 20	% change since Dec 20	WTE change since Dec 19	% change since Dec 19	No. Nov 2022
Overall	9,954	10,301	10,398	10,453	+55	+151	+1.5%	+499	+5.0%	11,397
CHO 1	953	976	1,034	1,039	+5	+63	+6.5%	+86	+9.1%	1,124
CHO 2	1,308	1,340	1,302	1,322	+21	-18	-1.3%	+14	+1.1%	1,414
CHO 3	795	809	813	816	+2	+7	+0.8%	+20	+2.5%	890
CHO 4	1,485	1,564	1,557	1,558	+1	-6	-0.4%	+72	+4.9%	1,700
CHO 5	1,178	1,188	1,229	1,230	+1	+41	+3.5%	+52	+4.4%	1,366
CHO 6	593	626	642	653	+12	+27	+4.3%	+61	+10.2%	726
CHO 7	835	861	882	883	+1	+22	+2.5%	+48	+5.8%	965
CHO 8	1,098	1,112	1,079	1,087	+8	-25	-2.2%	-11	-1.0%	1,189
CHO 9	1,272	1,331	1,366	1,370	+4	+39	+3.0%	+98	+7.7%	1,503
other Community Services	438	494	494	495	+1	+1	+0.2%	+58	+13.2%	520

Mental Health Services Employment by CHO etc. Nov 2022

CHO 1

Nov 2022	WTE Dec 2019	WTE Dec 2020	WTE Oct 2022	WTE Nov 2022	WTE change since Oct 22	WTE change since Dec 20	% change since Dec 20	WTE change since Dec 19	% change since Dec 19	No. Nov 2022
Overall	953	976	1,034	1,039	+5	+63	+6.5%	+86	+9.1%	1,124
Consultants	31	34	33	34	+1	-0	-0.5%	+3	+10.1%	36
Registrars	24	29	36	35	-0	+6	+21.7%	+11	+44.9%	37
SHO/ Interns	25	23	23	22	-1	-1	-4.5%	-3	-13.5%	22
Medical & Dental	81	86	92	91	-1	+5	+6.0%	+11	+13.3%	95
Nurse/ Midwife Manager	117	119	112	116	+4	-4	-3.0%	-1	-1.1%	121
Nurse/ Midwife Specialist & AN/MP	67	74	86	90	+4	+16	+21.9%	+22	+33.3%	95
Staff Nurse/ Staff Midwife	297	288	298	301	+3	+13	+4.6%	+4	+1.3%	322
Nursing/ Midwifery Student		3	10	6	-4	+3	+106.3%	+6	-100.0%	8
Nursing/ Midwifery other		1	2	2	+0	+1	+106.4%	+2	-100.0%	2
Nursing & Midwifery	482	485	509	515	+6	+30	+6.2%	+33	+6.9%	548
Therapy Professions	36	36	45	42	-2	+6	+17.9%	+7	+18.5%	48
Social Care	4	4	4	4	-0	+0	+3.8%	+0	+4.6%	5
Social Workers	39	43	47	48	+0	+5	+11.3%	+9	+22.1%	53
Psychologists	21	23	24	24	-0	+1	+4.4%	+4	+18.0%	26
Pharmacy	1	1	1	1	0					1
H&SC, Other	13	14	18	18	+0	+5	+33.2%	+5	+41.0%	21
Health & Social Care Professionals	113	121	140	138	-2	+17	+14.1%	+25	+21.7%	154
Management (VIII & above)	6	8	8	9	+0	+1	+14.0%	+3	+54.3%	9
Administrative/ Supervisory (V to VII)	30	31	31	31	+0	+1	+2.5%	+1	+4.4%	33
Clerical (III & IV)	85	85	91	92	+2	+7	+8.6%	+7	+8.4%	103
Management & Administrative	121	123	131	133	+2	+9	+7.4%	+12	+9.6%	145
Support	62	65	58	58	+0	-7	-10.9%	-4	-6.7%	65
Maintenance/ Technical	17	16	17	17	+0	+0	+1.9%	-0	-0.6%	17
General Support	79	81	74	75	+1	-7	-8.3%	-4	-5.4%	82
Health Care Assistants	66	68	76	76	-0	+8	+12.1%	+10	+14.7%	86
Care, other	11	11	12	12	-0	+1	+5.9%	+1	+9.3%	14
Patient & Client Care	77	79	88	88	-0	+9	+11.2%	+11	+13.9%	100

CHO 2

Nov 2022	WTE Dec 2019	WTE Dec 2020	WTE Oct 2022	WTE Nov 2022	WTE change since Oct 22	WTE change since Dec 20	% change since Dec 20	WTE change since Dec 19	% change since Dec 19	No. Nov 2022
Overall	1,308	1,340	1,302	1,322	+21	-18	-1.3%	+14	+1.1%	1,414
Consultants	38	37	37	37	+0	+0	+0.6%	-0	-0.8%	40
Registrars	33	37	36	35	-1	-1	-3.2%	+2	+6.7%	36
SHO/ Interns	35	40	39	39	+1	-0	-1.2%	+5	+12.9%	41
Medical/ Dental, other	1	1	1	1	0					1
Medical & Dental	107	114	112	113	+1	-1	-1.3%	+6	+6.0%	118
Nurse/ Midwife Manager	146	151	140	142	+2	-9	-5.9%	-4	-2.5%	146
Nurse/ Midwife Specialist & AN/MP	67	79	87	89	+1	+9	+11.8%	+21	+31.2%	91
Staff Nurse/ Staff Midwife	357	355	340	353	+14	-1	-0.3%	-4	-1.1%	379
<i>Pre-registration Nurse Intern (COVID-19)</i>		10				-10	-100.0%		-100.0%	
<i>Pre-registration Nurse/ Midwife Intern</i>	0		8	7	-2	+7	-100.0%	+7	+5416.7%	11
<i>Nursing/ Midwifery awaiting registration</i>	5		11	7	-4	+7	-100.0%	+2	+47.4%	7
Nursing/ Midwifery Student	5	10	19	14	-5	+3	+33.8%	+9	+179.7%	18
Nursing/ Midwifery other	2	2	4	4	0	+2	+150.0%	+2	+100.0%	4
Nursing & Midwifery	577	597	590	602	+11	+5	+0.9%	+24	+4.2%	638
Therapy Professions	45	55	51	55	+4	-0	-0.5%	+10	+21.1%	60
Social Care	15	16	14	14	+0	-2	-13.3%	-1	-5.6%	15
Social Workers	41	42	43	44	+1	+2	+5.5%	+3	+7.7%	47
Psychologists	34	37	35	37	+2	-0	-0.5%	+3	+9.7%	41
Pharmacy	3	2	2	2	+0	+1	+42.5%	-0	-1.6%	3
H&SC, Other	3	3	3	3	+0	-0	-3.0%	-0	-3.0%	3
Health & Social Care Professionals	140	155	148	155	+7	+0	+0.2%	+15	+10.7%	169
Management (VIII & above)	5	4	3	3	-0	-1	-31.3%	-2	-45.0%	3
Administrative/ Supervisory (V to VII)	24	26	25	25	+0	-2	-7.3%	+1	+4.1%	25
Clerical (III & IV)	109	102	95	95	+0	-7	-7.1%	-14	-12.9%	107
Management & Administrative	138	133	122	122	+0	-10	-7.9%	-15	-11.1%	135
Support	36	31	27	27	-0	-5	-15.0%	-10	-26.7%	28
Maintenance/ Technical	27	33	35	35	+0	+1	+4.3%	+8	+28.2%	35
General Support	63	64	61	61	-0	-3	-5.1%	-2	-3.2%	63
Health Care Assistants	215	211	198	198	+0	-13	-6.0%	-16	-7.6%	210
Care, other	69	66	69	71	+2	+5	+6.9%	+2	+2.5%	81
Patient & Client Care	284	278	268	269	+2	-8	-2.9%	-15	-5.2%	291

CHO 3

Nov 2022	WTE Dec 2019	WTE Dec 2020	WTE Oct 2022	WTE Nov 2022	WTE change since Oct 22	WTE change since Dec 20	% change since Dec 20	WTE change since Dec 19	% change since Dec 19	No. Nov 2022
Overall	795	809	813	816	+2	+7	+0.8%	+20	+2.5%	890
Consultants	23	24	29	28	-1	+4	+16.5%	+5	+20.5%	32
Registrars	18	15	17	17	-1	+2	+10.5%	-1	-6.5%	18
SHO/ Interns	19	21	28	29	+1	+8	+35.0%	+10	+52.6%	29
Medical & Dental	60	61	74	74	-1	+13	+21.5%	+14	+22.5%	79
Nurse/ Midwife Manager	88	88	86	79	-7	-9	-10.1%	-9	-10.0%	83
Nurse/ Midwife Specialist & AN/MP	39	37	41	43	+1	+6	+15.5%	+3	+8.9%	46
Staff Nurse/ Staff Midwife	245	272	237	244	+7	-28	-10.3%	-2	-0.6%	269
<i>Pre-registration Nurse Intern (COVID-19)</i>		3				-3	-100.0%		-100.0%	
<i>Pre-registration Nurse/ Midwife Intern</i>	9		12	8	-4	+8	-100.0%	-1	-7.5%	11
Nursing/ Midwifery Student	9	3	12	8	-4	+5	+139.8%	-1	-7.5%	11
Nursing/ Midwifery other			1	1	+0	+1	-100.0%	+1	-100.0%	1
Nursing & Midwifery	381	400	377	375	-2	-25	-6.3%	-7	-1.7%	410
Therapy Professions	26	25	29	31	+2	+6	+24.7%	+5	+17.6%	33
Social Care	3	3	3	3	-0	-0	-13.3%	-0	-9.4%	3
Social Workers	25	24	29	28	-1	+4	+15.8%	+3	+11.5%	31
Psychologists	92	91	93	96	+3	+5	+5.4%	+4	+4.1%	99
Pharmacy	3	3	3	3	0	+0	+1.8%	+0	+1.8%	3
H&SC, Other	10	12	11	10	-1	-2	-19.9%	+0	+1.9%	11
Health & Social Care Professionals	159	158	167	170	+3	+12	+7.7%	+11	+7.1%	180
Management (VIII & above)	2	2	3	4	+1	+2	+100.0%	+2	+103.0%	4
Administrative/ Supervisory (V to VII)	17	19	14	15	+0	-4	-22.6%	-2	-13.0%	15
Clerical (III & IV)	56	50	51	52	+0	+2	+3.1%	-4	-7.1%	57
Management & Administrative	75	71	68	70	+2	-1	-1.0%	-4	-5.5%	76
Support	32	30	32	32	-1	+2	+5.6%	-1	-1.9%	36
Maintenance/ Technical	11	9	6	6	0	-3	-33.3%	-5	-45.5%	6
General Support	43	39	38	38	-1	-1	-3.4%	-6	-12.9%	42
Health Care Assistants	75	79	85	86	+1	+7	+9.4%	+11	+14.3%	100
Care, other	2	1	2	2	-0	+1	+145.0%	+1	+46.7%	3
Patient & Client Care	77	80	88	89	+1	+9	+11.1%	+12	+15.0%	103

CHO 4

Nov 2022	WTE Dec 2019	WTE Dec 2020	WTE Oct 2022	WTE Nov 2022	WTE change since Oct 22	WTE change since Dec 20	% change since Dec 20	WTE change since Dec 19	% change since Dec 19	No. Nov 2022
Overall	1,485	1,564	1,557	1,558	+1	-6	-0.4%	+72	+4.9%	1,700
Consultants	50	54	60	59	-1	+5	+9.3%	+10	+19.1%	65
Registrars	46	42	52	56	+4	+14	+34.7%	+10	+22.3%	57
SHO/ Interns	31	43	45	44	-1	+1	+3.2%	+13	+43.0%	46
Medical/ Dental, other	2	2	2	1	-0	-1	-26.5%	-1	-26.5%	5
Medical & Dental	129	141	159	161	+2	+20	+14.4%	+32	+25.3%	173
Nurse/ Midwife Manager	170	192	214	211	-3	+18	+9.5%	+41	+24.2%	221
Nurse/ Midwife Specialist & AN/MP	60	71	67	69	+2	-2	-2.4%	+9	+15.3%	73
Staff Nurse/ Staff Midwife	502	519	462	474	+12	-45	-8.7%	-29	-5.7%	509
<i>Pre-registration Nurse Intern (COVID-19)</i>		3				-3	-100.0%		-100.0%	
<i>Pre-registration Nurse/ Midwife Intern</i>	3		15	6	-8	+6	-100.0%	+3	+103.3%	12
<i>Post-registration Nurse/ Midwife Student</i>	1						-100.0%	-1	-100.0%	
<i>Nursing/ Midwifery awaiting registration</i>	30	1				-1	-100.0%	-30	-100.0%	
Nursing/ Midwifery Student	34	4	15	6	-8	+2	+52.5%	-27	-81.8%	12
Nursing & Midwifery	765	786	757	760	+2	-27	-3.4%	-6	-0.7%	815
Therapy Professions	74	77	80	80	-1	+3	+3.3%	+6	+8.2%	88
Social Care	4	7	5	6	+1	-1	-14.8%	+2	+56.3%	7
Social Workers	53	64	69	71	+1	+6	+9.4%	+17	+32.8%	81
Psychologists	83	94	95	94	-1	+0	+0.2%	+11	+13.8%	104
Pharmacy	2	3	1	2	+1	-1	-23.1%	-0	-6.0%	3
H&SC, Other	11	12	19	18	-1	+5	+42.3%	+7	+63.8%	21
Health & Social Care Professionals	227	258	270	271	+0	+12	+4.8%	+44	+19.3%	304
Management (VIII & above)	1	3	3	3	0	+0	+9.9%	+2	+200.0%	3
Administrative/ Supervisory (V to VII)	22	22	23	25	+2	+3	+15.4%	+3	+12.0%	26
Clerical (III & IV)	87	94	90	88	-3	-7	-7.3%	+0	+0.2%	99
Management & Administrative	111	119	117	116	-1	-3	-2.7%	+5	+4.4%	128
Support	80	82	76	76	+0	-6	-6.9%	-4	-4.7%	87
Maintenance/ Technical	6	5	5	5	0			-1	-16.4%	6
General Support	86	87	81	81	+0	-6	-6.5%	-5	-5.5%	93
Health Care Assistants	161	166	167	164	-3	-2	-1.1%	+4	+2.3%	174
Care, other	7	6	5	5	+0	-1	-18.2%	-2	-27.8%	13
Patient & Client Care	168	173	173	170	-3	-3	-1.7%	+2	+1.0%	187

CHO 5

Nov 2022	WTE Dec 2019	WTE Dec 2020	WTE Oct 2022	WTE Nov 2022	WTE change since Oct 22	WTE change since Dec 20	% change since Dec 20	WTE change since Dec 19	% change since Dec 19	No. Nov 2022
Overall	1,178	1,188	1,229	1,230	+1	+41	+3.5%	+52	+4.4%	1,366
Consultants	26	27	34	34	-0	+7	+24.1%	+8	+29.3%	36
Registrars	10	9	12	12	-0	+3	+32.8%	+2	+19.5%	12
SHO/ Interns	32	36	31	31	+1	-4	-12.6%	-1	-2.2%	33
Medical/ Dental, other	2	2	2	2	0	-0	-2.5%	-0	-2.5%	2
Medical & Dental	70	74	79	79	+0	+5	+6.7%	+9	+12.7%	83
Nurse/ Midwife Manager	164	160	174	177	+3	+17	+10.4%	+12	+7.5%	185
Nurse/ Midwife Specialist & AN/MP	42	54	63	65	+2	+11	+21.0%	+23	+55.2%	70
Staff Nurse/ Staff Midwife	415	411	388	400	+12	-11	-2.7%	-15	-3.7%	452
<i>Pre-registration Nurse Intern (COVID-19)</i>		13				-13	-100.0%		-100.0%	
<i>Pre-registration Nurse/ Midwife Intern</i>	4		2	2	-0	+2	-100.0%	-2	-57.1%	3
<i>Nursing/ Midwifery awaiting registration</i>	2		30	12	-18	+12	-100.0%	+10	+487.5%	12
Nursing/ Midwifery Student	6	13	31	13	-18	+0	+2.5%	+8	+140.9%	15
Nursing/ Midwifery other	4	4	3	3	-0	-1	-23.7%	-1	-25.0%	3
Nursing & Midwifery	631	642	659	658	-1	+16	+2.5%	+27	+4.3%	725
Therapy Professions	40	39	34	34	-0	-5	-12.8%	-6	-16.0%	38
Social Care	5	5	5	4	-0	-0	-9.4%	-0	-9.4%	5
Social Workers	27	28	27	28	+1	-0	-0.1%	+0	+1.5%	31
Psychologists	21	21	26	26	+1	+5	+23.8%	+5	+25.3%	30
H&SC, Other	10	8	22	23	+1	+15	+188.4%	+13	+129.5%	24
Health & Social Care Professionals	103	100	113	115	+2	+14	+14.4%	+12	+11.3%	128
Management (VIII & above)	3	6	5	6	+1			+3	+100.0%	6
Administrative/ Supervisory (V to VII)	20	20	23	22	-2	+2	+10.8%	+2	+9.5%	23
Clerical (III & IV)	74	68	72	74	+2	+6	+8.3%	+0	+0.4%	80
Management & Administrative	97	94	101	102	+1	+8	+8.3%	+5	+5.4%	109
Support	168	178	175	174	-1	-4	-2.3%	+7	+4.0%	200
Maintenance/ Technical	23	20	15	15	-0	-5	-23.2%	-8	-34.8%	16
General Support	191	198	190	189	-1	-9	-4.4%	-1	-0.7%	216
Health Care Assistants	73	68	74	74	-0	+7	+9.9%	+2	+2.2%	86
Care, other	13	12	13	12	-1	-0	-2.3%	-1	-7.3%	19
Patient & Client Care	85	80	87	86	-1	+6	+8.0%	+1	+0.8%	105

CHO 6

Nov 2022	WTE Dec 2019	WTE Dec 2020	WTE Oct 2022	WTE Nov 2022	WTE change since Oct 22	WTE change since Dec 20	% change since Dec 20	WTE change since Dec 19	% change since Dec 19	No. Nov 2022
Overall	593	626	642	653	+12	+27	+4.3%	+61	+10.2%	726
Consultants	36	40	44	46	+3	+6	+15.2%	+10	+28.4%	53
Registrars	22	19	29	29	-0	+9	+49.6%	+7	+30.9%	30
SHO/ Interns	9	13	8	9	+1	-4	-33.8%	-0	-4.3%	10
Medical & Dental	67	72	80	83	+3	+11	+15.5%	+17	+24.8%	93
Nurse/ Midwife Manager	76	77	71	75	+5	-2	-2.7%	-1	-1.6%	78
Nurse/ Midwife Specialist & AN/MP	14	20	26	27	+1	+8	+39.7%	+14	+99.8%	33
Staff Nurse/ Staff Midwife	139	151	156	150	-6	-1	-0.8%	+11	+8.0%	165
<i>Pre-registration Nurse/ Midwife Intern</i>			0		-0		-100.0%		-100.0%	
<i>Nursing/ Midwifery awaiting registration</i>		1				-1	-100.0%		-100.0%	
Nursing/ Midwifery Student		1	0		-0	-1	-100.0%		-100.0%	
Nursing/ Midwifery other	2	2	4	4	0	+2	+90.0%	+2	+90.0%	4
Nursing & Midwifery	231	251	257	256	-1	+5	+2.1%	+25	+10.9%	280
Therapy Professions	43	39	40	41	+1	+2	+5.7%	-2	-5.3%	49
Social Care	26	28	28	28	+0	-0	-0.8%	+2	+7.9%	31
Social Workers	30	30	33	39	+5	+9	+30.3%	+9	+29.3%	41
Psychologists	22	32	37	37	+1	+5	+16.3%	+15	+69.1%	45
H&SC, Other	9	5	7	7	-1	+2	+30.3%	-2	-22.5%	8
Health & Social Care Professionals	130	134	145	151	+7	+18	+13.3%	+22	+16.8%	174
Management (VIII & above)	3	3	5	5	+0	+2	+66.7%	+2	+66.7%	5
Administrative/ Supervisory (V to VII)	27	24	31	31	+1	+7	+29.5%	+5	+17.9%	35
Clerical (III & IV)	42	43	31	30	-1	-13	-30.8%	-13	-29.8%	34
Management & Administrative	72	70	66	66	-0	-4	-5.7%	-6	-8.0%	74
Support	36	39	29	30	+1	-8	-21.5%	-6	-16.4%	36
Maintenance/ Technical	6	6	5	5	0	-1	-16.7%	-1	-15.4%	5
General Support	42	45	34	35	+1	-9	-20.9%	-7	-16.2%	41
Health Care Assistants	46	49	52	54	+2	+5	+10.1%	+8	+17.6%	55
Care, other	5	6	7	7	0	+1	+16.6%	+2	+29.1%	9
Patient & Client Care	51	54	58	60	+2	+6	+10.8%	+10	+18.9%	64

CHO 7

Nov 2022	WTE Dec 2019	WTE Dec 2020	WTE Oct 2022	WTE Nov 2022	WTE change since Oct 22	WTE change since Dec 20	% change since Dec 20	WTE change since Dec 19	% change since Dec 19	No. Nov 2022
Overall	835	861	882	883	+1	+22	+2.5%	+48	+5.8%	965
Consultants	48	53	53	53	-0	-0	-0.2%	+5	+10.9%	55
Registrars	46	54	57	57	+0	+3	+6.2%	+11	+23.1%	59
SHO/ Interns	21	20	26	26	-0	+5	+26.5%	+5	+23.3%	26
Medical & Dental	115	127	136	136	-0	+9	+6.8%	+21	+18.1%	140
Nurse/ Midwife Manager	117	117	111	111	+0	-7	-5.7%	-6	-4.9%	116
Nurse/ Midwife Specialist & AN/MP	40	47	56	56	+1	+10	+20.9%	+16	+41.2%	60
Staff Nurse/ Staff Midwife	194	202	203	204	+1	+2	+1.2%	+10	+5.0%	228
<i>Pre-registration Nurse Intern (COVID-19)</i>		3				-3	-100.0%		-100.0%	
<i>Pre-registration Nurse/ Midwife Intern</i>	1	1	1		-1	-1	-100.0%	-1	-100.0%	
<i>Post-registration Nurse/ Midwife Student</i>		1				-1	-100.0%		-100.0%	
<i>Nursing/ Midwifery awaiting registration</i>	10	3	3	1	-2	-2	-67.7%	-9	-90.7%	1
Nursing/ Midwifery Student	11	8	4	1	-3	-7	-88.1%	-10	-91.8%	1
Nursing/ Midwifery other	8	6	6	6	-0	-0	-0.2%	-2	-22.5%	7
Nursing & Midwifery	370	379	379	378	-1	-1	-0.3%	+8	+2.3%	412
Therapy Professions	48	53	53	51	-2	-3	-4.8%	+3	+6.2%	57
Social Care	8	7	7	7	+1	+0	+3.2%	-0	-1.8%	9
Social Workers	34	38	35	37	+2	-1	-3.0%	+2	+7.0%	42
Psychologists	31	29	33	35	+2	+6	+19.1%	+4	+11.2%	39
Pharmacy	1	1				-1	-100.0%	-1	-100.0%	
H&SC, Other	18	18	19	19	-0	+1	+4.4%	+1	+4.3%	22
Health & Social Care Professionals	140	147	147	149	+1	+2	+1.3%	+8	+6.1%	169
Management (VIII & above)	3	4	5	5	-0	+1	+23.8%	+2	+66.5%	5
Administrative/ Supervisory (V to VII)	16	17	21	22	+0	+5	+26.8%	+6	+39.6%	23
Clerical (III & IV)	47	49	54	55	+0	+5	+11.1%	+8	+16.5%	61
Management & Administrative	65	70	80	81	+1	+11	+15.7%	+16	+24.2%	89
Support	18	17	16	17	+0	-1	-3.7%	-1	-5.8%	19
Maintenance/ Technical	2	2	2	2	0			+0	+7.5%	2
General Support	20	19	18	19	+0	-1	-3.3%	-1	-4.5%	21
Health Care Assistants	33	34	31	31	-0	-4	-11.1%	-3	-8.2%	33
Care, other	92	84	90	90	+0	+6	+7.0%	-2	-1.9%	101
Patient & Client Care	125	119	121	121	-0	+2	+1.8%	-4	-3.6%	134

CHO 8

Nov 2022	WTE Dec 2019	WTE Dec 2020	WTE Oct 2022	WTE Nov 2022	WTE change since Oct 22	WTE change since Dec 20	% change since Dec 20	WTE change since Dec 19	% change since Dec 19	No. Nov 2022
Overall	1,098	1,112	1,079	1,087	+8	-25	-2.2%	-11	-1.0%	1,189
Consultants	35	36	37	37	-0	+0	+1.2%	+2	+4.4%	39
Registrars	26	31	28	28	-1	-4	-11.4%	+2	+7.4%	29
SHO/ Interns	36	26	27	30	+2	+4	+13.5%	-6	-17.4%	31
Medical & Dental	97	94	93	94	+2	+0	+0.5%	-3	-2.9%	99
Nurse/ Midwife Manager	121	120	116	113	-3	-7	-6.0%	-8	-6.2%	118
Nurse/ Midwife Specialist & AN/MP	56	60	70	73	+4	+14	+23.3%	+17	+30.9%	79
Staff Nurse/ Staff Midwife	332	342	316	318	+2	-24	-7.1%	-14	-4.1%	344
<i>Pre-registration Nurse Intern (COVID-19)</i>		1				-1	-100.0%		-100.0%	
<i>Pre-registration Nurse/ Midwife Intern</i>	1		3	1	-2	+1	-100.0%	+1	+100.0%	2
<i>Nursing/ Midwifery awaiting registration</i>	2		12	11	-0	+11	-100.0%	+9	+474.5%	14
Nursing/ Midwifery Student	3	1	15	12	-3	+11	+1112.6%	+10	+399.6%	16
Nursing/ Midwifery other	4	3	3	3	+0	-0	-2.3%	-1	-26.6%	3
Nursing & Midwifery	515	526	520	520	-0	-6	-1.2%	+5	+1.0%	560
Therapy Professions	44	43	35	35	+0	-8	-18.3%	-9	-21.2%	39
Social Care	7	7	6	6	+0	-1	-10.7%	-1	-13.7%	7
Social Workers	41	44	50	50	-1	+6	+13.9%	+9	+20.6%	56
Psychologists	39	37	36	35	-0	-1	-4.0%	-4	-9.8%	37
Pharmacy	1	2	3	2	-0	+1	+65.3%	+1	+148.0%	4
H&SC, Other	20	21	17	16	-0	-5	-23.6%	-4	-20.0%	20
Health & Social Care Professionals	153	153	146	145	-1	-8	-5.2%	-8	-5.4%	163
Management (VIII & above)	3	3	3	3	0	+0	+1.7%	+0	+2.0%	3
Administrative/ Supervisory (V to VII)	22	20	25	26	+1	+6	+29.7%	+4	+16.3%	29
Clerical (III & IV)	88	97	89	91	+1	-7	-6.7%	+2	+2.6%	102
Management & Administrative	114	120	117	120	+2	-1	-0.4%	+6	+5.3%	134
Support	33	31	29	28	-1	-3	-10.5%	-5	-14.3%	31
Maintenance/ Technical	26	28	25	25	+0	-3	-9.2%	-1	-2.6%	27
General Support	59	59	54	53	-0	-6	-9.9%	-5	-9.1%	58
Health Care Assistants	157	156	145	150	+5	-6	-4.0%	-7	-4.4%	170
Care, other	4	3	4	5	+0	+1	+42.8%	+1	+28.2%	5
Patient & Client Care	160	159	149	154	+5	-5	-3.0%	-6	-3.7%	175

CHO 9

Nov 2022	WTE Dec 2019	WTE Dec 2020	WTE Oct 2022	WTE Nov 2022	WTE change since Oct 22	WTE change since Dec 20	% change since Dec 20	WTE change since Dec 19	% change since Dec 19	No. Nov 2022
Overall	1,272	1,331	1,366	1,370	+4	+39	+3.0%	+98	+7.7%	1,503
Consultants	50	46	54	55	+0	+8	+18.1%	+5	+9.4%	58
Registrars	31	32	59	58	-1	+26	+82.0%	+27	+87.8%	61
SHO/ Interns	53	54	34	35	+1	-19	-34.6%	-18	-34.2%	37
Medical & Dental	134	132	147	148	+0	+16	+12.2%	+14	+10.2%	156
Nurse/ Midwife Manager	132	138	137	138	+1	-0	-0.2%	+6	+4.3%	146
Nurse/ Midwife Specialist & AN/MP	65	76	93	97	+4	+22	+28.6%	+32	+49.4%	102
Staff Nurse/ Staff Midwife	351	371	361	352	-9	-19	-5.1%	+1	+0.3%	387
<i>Pre-registration Nurse Intern (COVID-19)</i>		5				-5	-100.0%		-100.0%	
<i>Pre-registration Nurse/ Midwife Intern</i>	10	10	5	1	-5	-9	-92.7%	-9	-92.6%	1
<i>Nursing/ Midwifery awaiting registration</i>	11		10	15	+5	+15	-100.0%	+5	+42.6%	16
Nursing/ Midwifery Student	21	16	16	16	+1	+1	+3.2%	-5	-22.8%	17
Nursing/ Midwifery other	11	13	10	10	+0	-3	-22.4%	-1	-13.2%	11
Nursing & Midwifery	581	613	617	613	-3	-0	-0.0%	+33	+5.6%	663
Therapy Professions	55	61	61	60	-0	-1	-0.9%	+6	+10.4%	70
Social Care	1	1	1	1	0			+0	+11.1%	1
Social Workers	43	43	55	57	+2	+14	+32.2%	+13	+30.2%	62
Psychologists	46	53	56	56	+0	+3	+5.6%	+10	+22.7%	63
Pharmacy	8	9	7	7	+0	-2	-21.7%	-1	-12.8%	9
H&SC, Other	15	14	18	18	+0	+4	+26.4%	+3	+23.6%	19
Health & Social Care Professionals	167	181	197	199	+2	+18	+10.0%	+32	+19.0%	224
Management (VIII & above)	5	5	4	5	+1	-0	-0.6%	-0	-0.4%	5
Administrative/ Supervisory (V to VII)	28	29	34	39	+5	+10	+34.1%	+11	+38.9%	40
Clerical (III & IV)	104	114	109	109	-0	-5	-4.4%	+5	+5.1%	126
Management & Administrative	137	148	147	153	+6	+5	+3.3%	+16	+11.8%	171
Support	103	104	94	94	+0	-10	-9.4%	-9	-8.7%	116
Maintenance/ Technical	11	11	11	11	0			+0	+0.7%	11
General Support	114	115	105	105	+0	-10	-8.5%	-9	-7.8%	127
Health Care Assistants	126	129	140	139	-1	+10	+8.0%	+13	+10.6%	149
Care, other	13	12	13	12	-0	+0	+0.2%	-0	-1.7%	13
Patient & Client Care	139	142	153	152	-1	+10	+7.3%	+13	+9.5%	162

other Community Services

Nov 2022	WTE Dec 2019	WTE Dec 2020	WTE Oct 2022	WTE Nov 2022	WTE change since Oct 22	WTE change since Dec 20	% change since Dec 20	WTE change since Dec 19	% change since Dec 19	No. Nov 2022
Overall	438	494	494	495	+1	+1	+0.2%	+58	+13.2%	520
Consultants	16	17	16	16	+0	-1	-5.5%	+0	+0.5%	17
Registrars	13	14	19	19	0	+5	+35.6%	+6	+46.1%	20
Medical & Dental	29	31	35	35	+0	+4	+13.3%	+6	+21.2%	37
Nurse/ Midwife Manager	62	76	78	79	+1	+3	+4.6%	+17	+27.5%	83
Nurse/ Midwife Specialist & AN/MP	8	13	10	11	+0	-2	-14.5%	+3	+31.3%	12
Staff Nurse/ Staff Midwife	169	165	150	148	-1	-17	-10.0%	-20	-12.1%	152
Nursing/ Midwifery other	1	2	2	2	+0	+0	+2.0%	+1	+100.0%	2
Nursing & Midwifery	240	255	240	240	+0	-15	-5.8%	+0	+0.1%	249
Therapy Professions	11	12	10	10	+0	-2	-17.1%	-1	-12.6%	10
Social Care	2	2	1	1	0	-1	-47.4%	-1	-49.0%	1
Social Workers	15	17	12	12	-0	-6	-33.6%	-3	-22.7%	13
Psychologists	6	6	6	5	-1	-1	-16.4%	-1	-17.0%	5
Pharmacy		1	2	2	-0	+1	+99.0%	+2	-100.0%	2
Health & Social Care Professionals	34	38	31	29	-1	-9	-23.0%	-5	-14.1%	31
Management (VIII & above)	27	30	33	33	+0	+3	+9.7%	+6	+21.9%	33
Administrative/ Supervisory (V to VII)	31	37	42	43	+1	+6	+16.3%	+11	+36.5%	45
Clerical (III & IV)	25	18	22	24	+2	+5	+29.4%	-1	-5.2%	26
Management & Administrative	83	85	97	99	+3	+14	+16.8%	+16	+19.2%	104
Support	12	16	23	23	0	+7	+41.9%	+11	+86.3%	25
Maintenance/ Technical	2	7	10	9	-1	+2	+28.6%	+7	+350.0%	9
General Support	14	23	33	32	-1	+9	+37.9%	+18	+123.4%	34
Health Care Assistants	37	62	60	60	+0	-2	-3.2%	+23	+63.3%	65
Care, other	1	1				-1	-100.0%	-1	-100.0%	
Patient & Client Care	37	63	60	60	+0	-2	-4.0%	+23	+61.1%	65

Mental Health Services Employment by Grade Group: Nov 2022

Nov 2022	WTE Dec 2019	WTE Dec 2020	WTE Oct 2022	WTE Nov 2022	WTE change since Oct 22	WTE change since Dec 20	% change since Dec 20	WTE change since Dec 19	% change since Dec 19	No. Nov 2022
Overall	9,954	10,301	10,398	10,453	+55	+151	+1.5%	+499	+5.0%	11,397
Consultant Medicine	1	1	1	1						1
Consultant Psychiatry	352	369	396	398	+2	+30	+8.0%	+47	+13.3%	430
Consultants	353	370	397	399	+2	+30	+8.0%	+47	+13.2%	431
Registrars	269	281	345	346	+0	+65	+23.0%	+77	+28.5%	359
Senior House Officer	253	271	255	260	+5	-11	-4.1%	+7	+2.7%	270
Interns	8	5	6	5	-1			-3	-37.5%	5
SHO/ Interns	261	276	261	265	+4	-11	-4.0%	+4	+1.4%	275
Medical/ Dental, other	5	5	5	4	-0	-1	-11.6%	-1	-11.6%	8
Medical & Dental	888	932	1,008	1,014	+6	+82	+8.8%	+126	+14.2%	1,073
Clinical Nurse/ Midwife Manager	999	1,041	1,030	1,030	+1	-11	-1.0%	+31	+3.2%	1,081
Director Nursing/Midwifery, Assistant	165	171	175	177	+3	+7	+3.9%	+13	+7.7%	182
Director of Nursing/Midwifery	29	28	34	33	-1	+5	+17.8%	+4	+13.8%	34
Nurse/ Midwife Manager	1,192	1,240	1,238	1,240	+2	+1	+0.1%	+48	+4.0%	1,297
Advanced Nurse/ Midwife Practitioner	31	39	65	68	+2	+28	+72.3%	+37	+121.0%	73
Clinical Nurse/ Midwife Specialist	428	489	535	553	+17	+64	+13.0%	+124	+29.0%	588
Nurse/ Midwife Specialist & AN/MP	459	529	601	621	+20	+92	+17.4%	+162	+35.2%	661
Staff Midwives		1				-1	-100.0%		-100.0%	
Staff Nurse [Psychiatric]	2,893	2,965	2,797	2,830	+33	-135	-4.5%	-63	-2.2%	3,083
Staff Nurses [General/ Children's]	105	106	107	109	+2	+3	+2.8%	+4	+4.3%	118
Staff Nurse [Intellectual Disability]	5	4	6	6	-0	+2	+39.6%	+1	+30.7%	6
Staff Nurse/ Staff Midwife	3,003	3,076	2,911	2,945	+35	-131	-4.3%	-58	-1.9%	3,207
Pre-registration Nurse Intern (COVID-19)		42				-42	-100.0%		-100.0%	
Pre-registration Nurse/ Midwife Intern	28	11	51	26	-24	+16	+147.3%	-1	-3.8%	44
Post-registration Nurse/ Midwife Student	1	1				-1	-100.0%	-1	-100.0%	
Nursing/ Midwifery awaiting registration	59	5	72	50	-22	+46	+940.8%	-8	-14.3%	54
Nursing/ Midwifery Student	87	59	123	77	-46	+18	+30.5%	-10	-12.0%	98
Nursing Education/Clinical	32	32	34	34	+0	+2	+7.7%	+3	+8.1%	37
Nursing/ Midwifery other	32	32	34	34	+0	+2	+7.7%	+3	+8.1%	37
Nursing & Midwifery	4,773	4,935	4,906	4,917	+11	-18	-0.4%	+144	+3.0%	5,300
Dietitians	19	21	19	18	-1	-3	-12.4%	-1	-4.7%	21
Occupational Therapists	339	346	349	349	+0	+4	+1.0%	+11	+3.1%	387
Physiotherapists	2	2	3	3	-0	+1	+22.4%	+1	+32.3%	4
Podiatrists & Chiropodists	1	1	1	1	-0	-0	-13.7%	-0	-5.5%	1
Speech & Language Therapists	62	70	65	67	+3	-2	-3.3%	+6	+9.2%	79
Therapy Professions	422	439	437	438	+2	-1	-0.2%	+16	+3.8%	492
Social Care	74	80	73	74	+2	-6	-6.9%	+1	+1.2%	84
Social Workers	350	373	401	411	+10	+39	+10.4%	+62	+17.7%	457
Psychologists	394	424	440	446	+6	+22	+5.3%	+52	+13.1%	489
Pharmacists	16	17	15	16	+1	-1	-5.6%	+0	+0.3%	19
Pharmacy Technicians	2	4	4	4	-0	+0	+2.7%	+1	+51.4%	6
Pharmacy	19	21	19	20	+1	-1	-4.1%	+1	+7.1%	25
Counsellor Therapists	95	101	127	126	-1	+24	+24.2%	+31	+32.5%	138
Other Health & Social Care	12	5	4	3	-1	-2	-44.5%	-9	-74.4%	8
Play Therapists/ Specialists	1	1	3	3	-0	+1	+77.0%	+1	+79.5%	3
H&SC, Other	108	108	134	131	-2	+23	+21.5%	+23	+21.5%	149
Health & Social Care Professionals	1,366	1,444	1,503	1,522	+18	+77	+5.3%	+155	+11.4%	1,696

Nov 2022	WTE Dec 2019	WTE Dec 2020	WTE Oct 2022	WTE Nov 2022	WTE change since Oct 22	WTE change since Dec 20	% change since Dec 20	WTE change since Dec 19	% change since Dec 19	No. Nov 2022
Overall	9,954	10,301	10,398	10,453	+55	+151	+1.5%	+499	+5.0%	11,397
Executive Management	11	15	13	15	+2	+0	+1.5%	+4	+35.9%	15
Senior Management (VIII & GM)	46	52	59	60	+1	+8	+14.7%	+14	+29.6%	61
Management (VIII & above)	57	67	73	75	+2	+8	+11.8%	+18	+30.8%	76
Middle Management (V-VII)	235	243	269	277	+8	+34	+13.9%	+42	+17.7%	292
Other Administrative	2	2	2	2						2
Administrative/ Supervisory (V to VII)	237	245	270	278	+8	+34	+13.8%	+42	+17.6%	294
General Administrative (III & IV)	717	722	704	709	+5	-13	-1.9%	-9	-1.2%	795
Clerical (III & IV)	717	722	704	709	+5	-13	-1.9%	-9	-1.2%	795
Management & Administrative	1,012	1,034	1,047	1,062	+15	+28	+2.7%	+50	+5.0%	1,165
Catering	65	64	69	68	-1	+4	+6.9%	+3	+4.1%	74
Household Services	425	441	400	399	-1	-42	-9.6%	-25	-6.0%	468
Other Support	43	42	42	42	+0	-0	-0.5%	-1	-2.4%	48
Portering	48	47	48	50	+2	+3	+6.0%	+2	+4.3%	53
Support	581	594	558	559	+1	-35	-5.9%	-22	-3.7%	643
Maintenance	129	137	131	130	-1	-7	-5.4%	+1	+0.8%	134
Technical Services	2						-100.0%	-2	-100.0%	
Maintenance/ Technical	131	137	131	130	-1	-7	-5.4%	-1	-0.7%	134
General Support	711	732	689	689	-0	-43	-5.8%	-23	-3.2%	777
Attendant/ Aide	605	583	424	422	-3	-161	-27.7%	-183	-30.2%	478
Health & Social Care Assistants	9	8	16	18	+2	+10	+116.7%	+9	+102.1%	21
Health Care Assistant/ Care Assistant	374	430	588	592	+4	+162	+37.8%	+218	+58.4%	629
Health Care Assistants	988	1,022	1,029	1,032	+4	+11	+1.1%	+45	+4.5%	1,128
Home Care Services	16	14	23	23	+0	+9	+61.2%	+7	+46.2%	34
Other Care Grades	23	22	19	19	+0	-3	-12.0%	-3	-14.2%	21
Pastoral Care	13	12	10	9	-1	-3	-25.7%	-4	-29.1%	13
Workshop Services	165	155	164	165	+1	+10	+6.5%	+0	+0.1%	190
Care, other	216	203	216	217	+1	+13	+6.4%	+1	+0.3%	258
Patient & Client Care	1,204	1,225	1,245	1,249	+4	+24	+2.0%	+45	+3.7%	1,386

Employment by WTE, Headcount, Gender, Full-Time /Part-Time etc.: Nov 2022

Mental Health Services Staff Group	WTE	Headcount	WTE: no.	% Male	% female	Male WTE: no.	Female WTE: no.	% Total Perm	% Male Perm	% Female Perm	% Total Full Time	% Total Part Time	% Male FT	% Female FT
Overall	10,453	11,397	1.09	27.0%	73.0%	1.05	1.11	84.6%	81.0%	85.9%	85.0%	15.0%	93.0%	82.0%
Consultant Medicine	1	1	1.00	100.0%		1.00		100.0%	100.0%		100.0%	0.0%	100.0%	
Consultant Psychiatry	398	430	1.08	42.1%	57.9%	1.04	1.11	65.6%	65.6%	63.9%	86.0%	14.0%	92.8%	81.1%
Consultants	399	431	1.08	42.2%	57.8%	1.04	1.11	65.7%	68.1%	63.9%	86.1%	13.9%	92.9%	81.1%
Registrar	217	225	1.04	48.0%	52.0%	1.03	1.05	2.2%	2.2%	2.6%	96.9%	3.1%	99.1%	94.9%
Senior Registrar	127	132	1.04	31.1%	68.9%	1.01	1.06	2.3%	2.3%	2.2%	93.9%	6.1%	97.6%	92.3%
Specialist Registrar	2	2	1.00		100.0%		1.00	0.0%	0.0%	0.0%	0.0%	100.0%		0.0%
Registrars	346	359	1.04	41.5%	58.5%	1.02	1.05	2.2%	2.0%	2.4%	95.3%	4.7%	98.7%	92.9%
Senior House Officer	260	270	1.04	40.0%	60.0%	1.05	1.03	0.4%	0.4%	0.0%	99.3%	0.7%	100.0%	98.8%
Interns	5	5	1.00	40.0%	60.0%	1.00	1.00	0.0%	0.0%	0.0%	100.0%	0.0%	100.0%	100.0%
SHO/ Interns	265	275	1.04	40.0%	60.0%	1.05	1.03	0.4%	0.9%	0.0%	99.3%	0.7%	100.0%	98.8%
Medical/ Dental, other	4	8	1.81	50.0%	50.0%	2.23	1.52	62.5%	50.0%	75.0%	37.5%	62.5%	25.0%	50.0%
Medical & Dental	1,014	1,073	1.06	41.5%	58.5%	1.04	1.07	27.7%	29.2%	26.6%	92.2%	7.8%	96.0%	89.5%
Clinical Nurse/ Midwife Manager	1,030	1,081	1.05	34.3%	65.7%	1.02	1.07	98.2%	98.2%	98.6%	94.1%	5.9%	98.4%	91.8%
Director Nursing/Midwifery, Assistant	177	182	1.03	41.2%	58.8%	1.03	1.02	100.0%	100.0%	100.0%	98.4%	1.6%	97.3%	99.1%
Director of Nursing/Midwifery	33	34	1.04	58.8%	41.2%	1.02	1.06	100.0%	100.0%	100.0%	100.0%	0.0%	100.0%	100.0%
Nurse/ Midwife Manager	1,240	1,297	1.05	35.9%	64.1%	1.02	1.06	98.5%	98.1%	98.8%	94.8%	5.2%	98.3%	92.9%
Advanced Nurse/ Midwife Practitioner	68	73	1.08	20.5%	79.5%	1.00	1.10	100.0%	100.0%	100.0%	94.5%	5.5%	100.0%	93.1%
Clinical Nurse/ Midwife Specialist	553	588	1.06	19.6%	80.4%	1.03	1.07	99.7%	99.7%	99.6%	92.7%	7.3%	97.4%	91.5%
Nurse/ Midwife Specialist & AN/MP	621	661	1.07	19.7%	80.3%	1.02	1.08	99.7%	100.0%	99.6%	92.9%	7.1%	97.7%	91.7%
Staff Nurse [Psychiatric]	2,830	3,083	1.09	25.0%	75.0%	1.06	1.10	91.4%	91.4%	92.1%	87.8%	12.2%	92.2%	86.4%
Staff Nurses [General/ Children's]	109	118	1.08	28.0%	72.0%	1.12	1.07	75.4%	75.4%	77.6%	84.7%	15.3%	84.8%	84.7%
Staff Nurse [Intellectual Disability]	6	6	1.01	33.3%	66.7%	1.00	1.02	66.7%	66.7%	50.0%	100.0%	0.0%	100.0%	100.0%
Staff Nurse/ Staff Midwife	2,945	3,207	1.09	25.2%	74.8%	1.06	1.10	90.8%	88.6%	91.5%	87.7%	12.3%	91.9%	86.3%
Pre-registration Nurse/ Midwife Intern	26	44	1.66	20.5%	79.5%	1.40	1.74	0.0%	0.0%	0.0%	97.7%	2.3%	100.0%	97.1%
Nursing/ Midwifery awaiting registration	50	54	1.07	14.8%	85.2%	1.04	1.08	5.6%	5.6%	4.3%	96.3%	3.7%	100.0%	95.7%
Nursing/ Midwifery Student	77	98	1.27	17.3%	82.7%	1.20	1.29	3.1%	5.9%	2.5%	96.9%	3.1%	100.0%	96.3%
Nursing Education/Clinical	34	37	1.08	8.1%	91.9%	1.00	1.09	100.0%	100.0%	100.0%	86.5%	13.5%	100.0%	85.3%

<i>Nursing/ Midwifery other</i>	34	37	1.08	8.1%	91.9%	1.00	1.09	100.0%	100.0%	100.0%	86.5%	13.5%	100.0%	85.3%
Nursing & Midwifery	4,917	5,300	1.08	26.8%	73.2%	1.05	1.09	92.2%	91.8%	92.4%	90.3%	9.7%	94.7%	88.7%
Health & Social Care	1,522	1,696	1.11	16.0%	84.0%	1.05	1.13	86.0%	84.2%	86.3%	80.7%	19.3%	93.0%	78.4%
Executive Management	15	15	1.00	53.3%	46.7%	1.00	1.00	100.0%	100.0%	100.0%	100.0%	0.0%	100.0%	100.0%
Senior Management (VIII & GM)	60	61	1.02	27.9%	72.1%	1.03	1.01	96.7%	96.7%	97.7%	96.7%	3.3%	94.1%	97.7%
Management (VIII & above)	75	76	1.01	32.9%	67.1%	1.02	1.01	97.4%	96.0%	98.0%	97.4%	2.6%	96.0%	98.0%
Middle Management (V-VII)	277	292	1.05	21.2%	78.8%	1.02	1.06	92.8%	92.8%	93.5%	89.0%	11.0%	96.8%	87.0%
Other Administrative	2	2	1.27		100.0%		1.27	100.0%	100.0%	100.0%	50.0%	50.0%		50.0%
Administrative/ Supervisory (V to VII)	278	294	1.06	21.1%	78.9%	1.02	1.07	92.9%	90.3%	93.5%	88.8%	11.2%	96.8%	86.6%
General Administrative (III & IV)	709	795	1.12	8.7%	91.3%	1.06	1.13	85.9%	85.9%	86.6%	76.2%	23.8%	88.4%	75.1%
Clerical (III & IV)	709	795	1.12	8.7%	91.3%	1.06	1.13	85.9%	78.3%	86.6%	76.2%	23.8%	88.4%	75.1%
Management & Administrative	1,062	1,165	1.10	13.4%	86.6%	1.04	1.11	88.4%	85.9%	88.8%	80.8%	19.2%	92.9%	78.9%
Catering	68	74	1.09	37.8%	62.2%	1.11	1.08	95.9%	95.9%	95.7%	71.6%	28.4%	82.1%	65.2%
Household Services	399	468	1.17	20.7%	79.3%	1.11	1.19	91.9%	91.9%	93.3%	57.7%	42.3%	83.5%	50.9%
Other Support	42	48	1.15	35.4%	64.6%	1.03	1.23	85.4%	85.4%	87.1%	72.9%	27.1%	94.1%	61.3%
Portering	50	53	1.06	96.2%	3.8%	1.06	1.00	92.5%	92.5%	100.0%	88.7%	11.3%	88.2%	100.0%
Support	559	643	1.15	30.0%	70.0%	1.09	1.18	91.9%	89.1%	93.1%	63.0%	37.0%	85.5%	53.3%
Maintenance	130	134	1.03	99.3%	0.7%	1.03	1.00	95.5%	95.5%	100.0%	97.0%	3.0%	97.0%	100.0%
Maintenance/ Technical	130	134	1.03	99.3%	0.7%	1.03	1.00	95.5%	95.5%	100.0%	97.0%	3.0%	97.0%	100.0%
General Support	689	777	1.13	42.0%	58.0%	1.06	1.18	92.5%	91.7%	93.1%	68.9%	31.1%	90.2%	53.4%
Attendant/ Aide	422	478	1.13	24.7%	75.3%	1.11	1.14	84.7%	84.7%	87.5%	69.9%	30.1%	82.2%	65.8%
Health & Social Care Assistants	18	21	1.16	33.3%	66.7%	1.19	1.15	61.9%	61.9%	57.1%	66.7%	33.3%	71.4%	64.3%
Health Care Assistant/ Care Assistant	592	629	1.06	35.0%	65.0%	1.03	1.08	96.5%	96.5%	97.8%	86.0%	14.0%	95.0%	81.2%
Health Care Assistants	1,032	1,128	1.09	30.6%	69.4%	1.06	1.11	90.9%	87.5%	92.3%	78.8%	21.2%	90.1%	73.8%
Home Care Services	23	34	1.48	35.3%	64.7%	1.48	1.48	76.5%	76.5%	72.7%	32.4%	67.6%	33.3%	31.8%
Other Care Grades	19	21	1.09	81.0%	19.0%	1.02	1.48	90.5%	90.5%	75.0%	81.0%	19.0%	94.1%	25.0%
Pastoral Care	9	13	1.46	84.6%	15.4%	1.42	1.69	30.8%	30.8%	0.0%	53.8%	46.2%	54.5%	50.0%
Workshop Services	165	190	1.15	38.4%	61.6%	1.11	1.18	90.5%	90.5%	92.3%	73.7%	26.3%	84.9%	66.7%
Care, other	217	258	1.19	43.8%	56.2%	1.15	1.23	85.7%	83.2%	87.6%	67.8%	32.2%	77.9%	60.0%
Patient & Client Care	1,249	1,386	1.11	33.0%	67.0%	1.08	1.12	89.9%	86.5%	91.6%	76.8%	23.2%	87.1%	71.7%

Employment by WTE, Headcount, Gender, Full-Time /Part-Time etc.: Nov 2022

Mental Health Services CHO	WTE	Headcount	WTE: no.	% Male	% female	Male WTE: no.	Female WTE: no.	% Total Perm	% Male Perm	% Female Perm	% Total Full Time	% Total Part Time	% Male FT	% Female FT
Overall	10,453	11,397	1.09	27.0%	73.0%	1.05	1.11	84.6%	81.0%	85.9%	85.0%	15.0%	93.0%	82.0%
CHO 1	1,039	1,124	1.08	25.3%	74.7%	1.03	1.10	89.9%	89.9%	90.7%	86.7%	13.3%	96.1%	83.5%
CHO 2	1,322	1,414	1.07	28.6%	71.4%	1.05	1.08	86.5%	86.5%	88.3%	84.8%	15.2%	90.6%	82.5%
CHO 3	816	890	1.09	21.6%	78.4%	1.05	1.10	82.0%	82.0%	82.2%	85.5%	14.5%	91.1%	84.0%
CHO 4	1,558	1,700	1.09	25.8%	74.2%	1.05	1.11	69.9%	69.9%	72.0%	83.3%	16.7%	92.9%	79.9%
CHO 5	1,230	1,366	1.11	25.8%	74.2%	1.06	1.13	89.5%	89.5%	91.0%	79.9%	20.1%	90.9%	76.1%
CHO 6	653	726	1.11	30.3%	69.7%	1.08	1.13	86.9%	86.9%	88.5%	82.2%	17.8%	90.0%	78.9%
CHO 7	883	965	1.09	22.7%	77.3%	1.05	1.11	83.8%	83.8%	84.2%	88.6%	11.4%	95.9%	86.5%
CHO 8	1,087	1,189	1.09	25.0%	75.0%	1.04	1.11	87.6%	87.6%	89.2%	86.0%	14.0%	95.3%	82.8%
CHO 9	1,370	1,503	1.10	28.1%	71.9%	1.06	1.11	87.4%	87.4%	89.0%	85.2%	14.8%	94.8%	81.5%
other Community Services	495	520	1.05	47.9%	52.1%	1.05	1.05	90.2%	90.2%	93.4%	93.5%	6.5%	92.4%	94.5%

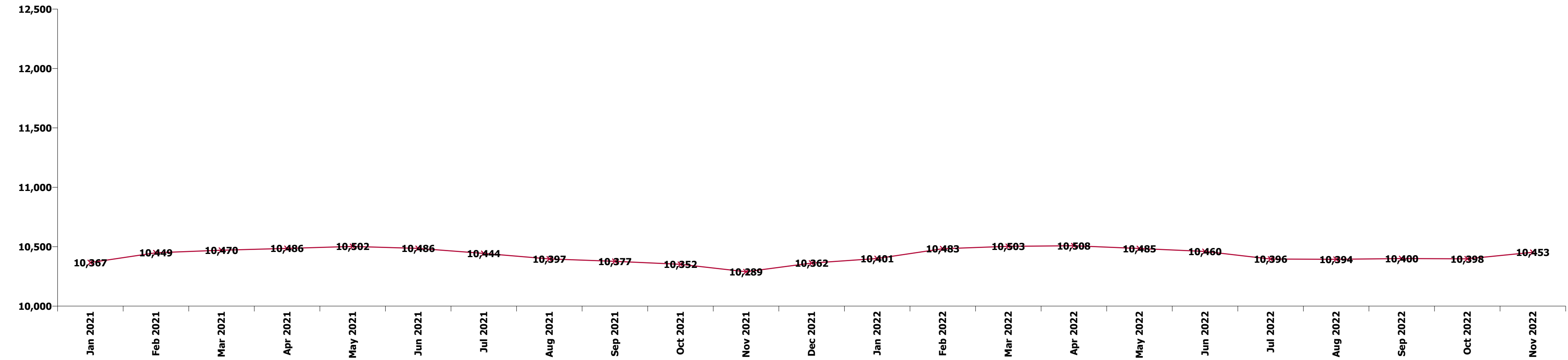
Summary Staff Movement: November 2022

Month-on-month
Summary

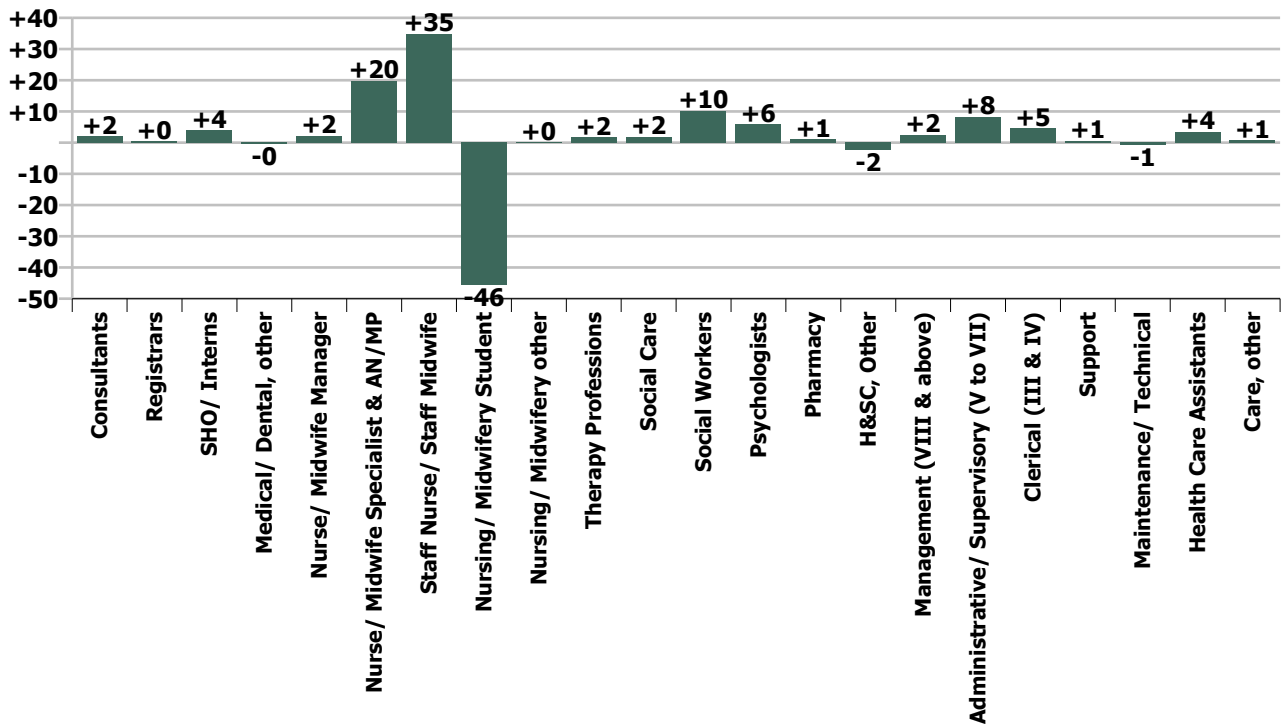
WTE change since Oct 22	% change since Oct 22	overall	Consultants	Registrars	SHO/ Interns	Medical/ Dental, other	Medical & Dental	Nurse/ Midwife Manager	Nurse/ Midwife Specialist & AN/MP	Staff Nurse/ Staff Midwife	Nursing/ Midwifery Student	Nursing/ Midwifery other	Nursing & Midwifery	Therapy Professions	Social Care	Social Workers	Psychologists	Pharmacy	H&SC, Other	Health & Social Care Professionals	Management (VIII & above)	Administrativ e/ Supervisory (V to VII)	Clerical (III & IV)	Management & Administrative	General Support	Health Care Assistants	Care, other	Patient & Client Care
Overall	+0.5%	+55	+2	+0	+4	-0	+6	+2	+20	+35	-46	+0	+11	+2	+2	+10	+6	+1	-2	+18	+2	+8	+5	+15	-0	+4	+1	+4
CHO 1	+0.5%	+5	+1	-0	-1		-1	+4	+4	+3	-4	+0	+6	-2	-0	+0	-0		+0	-2	+0	+0	+2	+2	+1	-0	-0	-0
CHO 2	+1.6%	+21	+0	-1	+1		+1	+2	+1	+14	-5		+11	+4	+0	+1	+2		+0	+7	-0	+0	+0	+0	-0	+0	+2	+2
CHO 3	+0.3%	+2	-1	-1	+1		-1	-7	+1	+7	-4	+0	-2	+2	-0	-1	+3		-1	+3	+1	+0	+0	+2	-1	+1	-0	+1
CHO 4	+0.0%	+1	-1	+4	-1	-0	+2	-3	+2	+12	-8		+2	-1	+1	+1	-1	+1	-1	+0		+2	-3	-1	+0	-3	+0	-3
CHO 5	+0.1%	+1	-0	-0	+1		+0	+3	+2	+12	-18	-0	-1	-0	-0	+1	+1		+1	+2	+1	-2	+2	+1	-1	-0	-1	-1
CHO 6	+1.8%	+12	+3	-0	+1		+3	+5	+1	-6	-0		-1	+1	+0	+5	+1		-1	+7	+0	+1	-1	-0	+1	+2		+2
CHO 7	+0.1%	+1	-0	+0	-0		-0	+0	+1	+1	-3	-0	-1	-2	+1	+2	+2		-0	+1	-0	+0	+0	+1	+0	-0	+0	-0
CHO 8	+0.7%	+8	-0	-1	+2		+2	-3	+4	+2	-3	+0	-0	+0	+0	-1	-0	-0	-0	-1		+1	+1	+2	-0	+5	+0	+5
CHO 9	+0.3%	+4	+0	-1	+1		+0	+1	+4	-9	+1	+0	-3	-0			+2	+0	+0	+0	+2	+1	+5	-0	+6	+0	-1	-0
other Community Services	+0.2%	+1	+0				+0	+1	+0	-1		+0	+0	+0			-0	-1	-0		-1	+0	+1	+2	+3	-1	+0	+0
		+0.5%	+0.5%	+0.1%	+1.5%	-9.2%	+0.6%	+0.2%	+3.3%	+1.2%	-37.2%	+0.3%	+0.2%	+0.4%	+2.5%	+2.5%	+1.3%	+5.4%	-1.8%	+1.2%	+3.4%	+3.1%	+0.7%	+1.5%	-0.0%	+0.3%	+0.3%	+0.3%

Year-on-year Summary

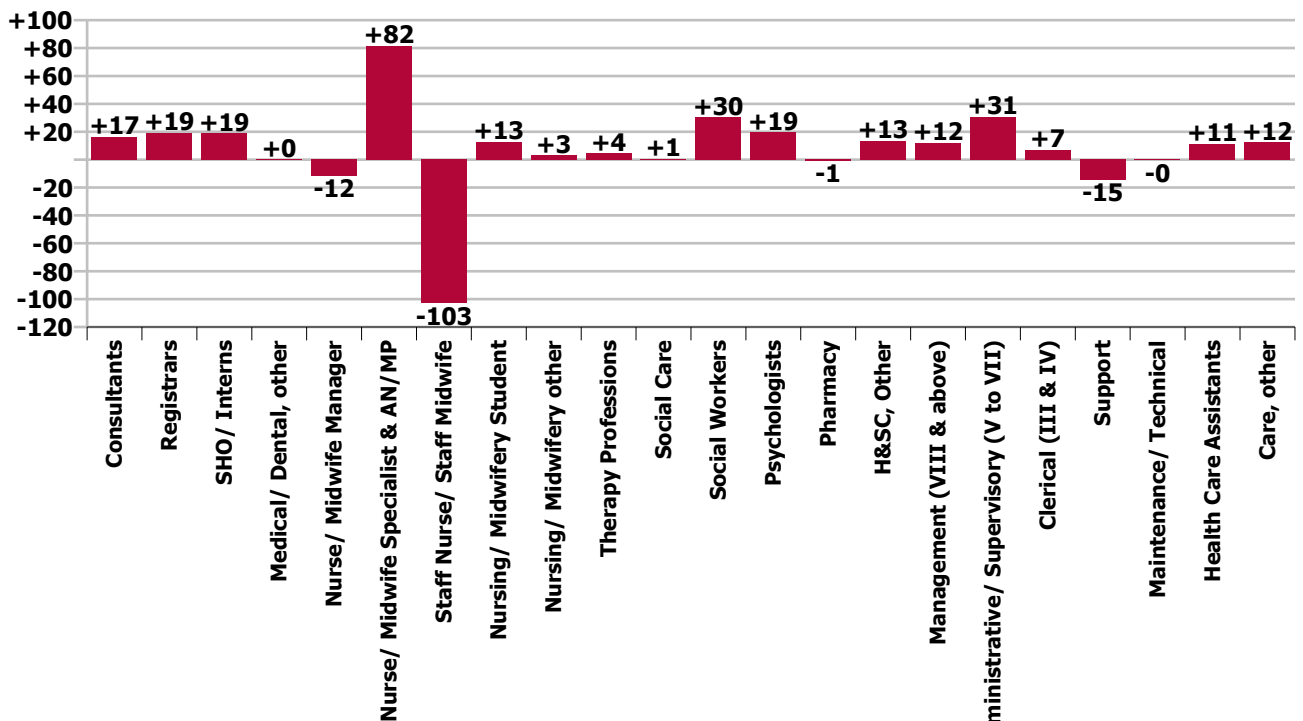
WTE change since Nov 21	% change since Nov 21	overall	Consultants	Registrars	SHO/ Interns	Medical/ Dental, other	Medical & Dental	Nurse/ Midwife Manager	Nurse/ Midwife Specialist & AN/MP	Staff Nurse/ Staff Midwife	Nursing/ Midwifery Student	Nursing/ Midwifery other	Nursing & Midwifery	Therapy Professions	Social Care	Social Workers	Psychologists	Pharmacy	H&SC, Other	Health & Social Care Professionals	Management (VIII & above)	Administrative/ Supervisory (V to VII)	Clerical (III & IV)	Management & Administrative	General Support	Health Care Assistants	Care, other	Patient & Client Care
Overall	+1.6%	+164	+17	+19	+19	+0	+55	-12	+82	-103	+13	+3	-17	+4	+1	+30	+19	-1	+13	+67	+12	+31	+7	+50	-15	+11	+12	+24
CHO 1	+4.7%	+46	-3	+5			+2	-3	+17	+3	+4	+0	+21	+2	+0	+7	+4		+2	+13	+1	+2	+2	+5	-4	+8	+1	+9
CHO 2	+0.5%	+7	-2	+1	+1	+1	+2	-4	+9	-10	+3	+2	-1	+2	-1	+1	+0	+0	+0	+3	-1	+1	+2	+3	-0	-6	+7	+1
CHO 3	-0.3%	-3	+3	-3	+6		+6	-15	+6	-15	+0	+1	+6	-23	+2	-0	+2	+6	+0	-1	+9	+2	-1	+1	+2	-1	+2	+1
CHO 4	-0.1%	-1	+4	+4	+1	-1	+9	+15	-1	-24	-1		-11	+3	-0	+4	-2	+1	+3	+9		+3	-2	+1	-4	-3	-2	-4
CHO 5	+2.8%	+33	+6	+1	-1	-0	+5	+12	+12	-12	-3	-1	+8	+2	-0	+1	+4		+3	+10		-3	+3	+1	+6	+4	+1	+5
CHO 6	+2.8%	+18	+6	+5	+5	-2	+9	-0	+7	-2	-1	+1	+4	+1	+2	+5	+3		+2	+14	+1	+5	-8	-2	-8	+1	+1	+2
CHO 7	+0.9%	+8	-3	+5	+4		+6	-9	+6	-3	-5	+0	-10	+3	+1	-3	+6	-1	+2	+7	-0	+4	+5	+9	-1	-5	+1	-4
CHO 8	+0.6%	+6	-0	-12	+6		-6	-8	+9	+5	+3	-0	+8	-6	-1	+2	-3	+1	+2	-5	+0	+5	+1	+6	-2	+3	+2	+5
CHO 9	+4.7%	+61	+8	+10	+6		+23	-2	+18	-19	+14	-0	+10	-2	+0	+14	+3	-2	+2	+14	+0	+11	+0	+12	-8	+9	+1	+10
other Community Services	-2.5%	-12	-2	+4	-3		-1	+3	-0	-27			-24	-2	-0	-4	-2	+1		-7	+9	+3	+2	+14	+9	-2	-1	-3
		+1.6%	+4.3%	+5.9%	+7.6%	+8.9%	+5.7%	-0.9%	+15.2%	-3.4%	+20.1%	+9.5%	-0.3%	+1.0%	+0.9%	+7.9%	+4.5%	-4.0%	+11.4%	+4.6%	+19.5%	+12.4%	+1.0%	+4.9%	-2.1%	+1.1%	+6.0%	+1.9%



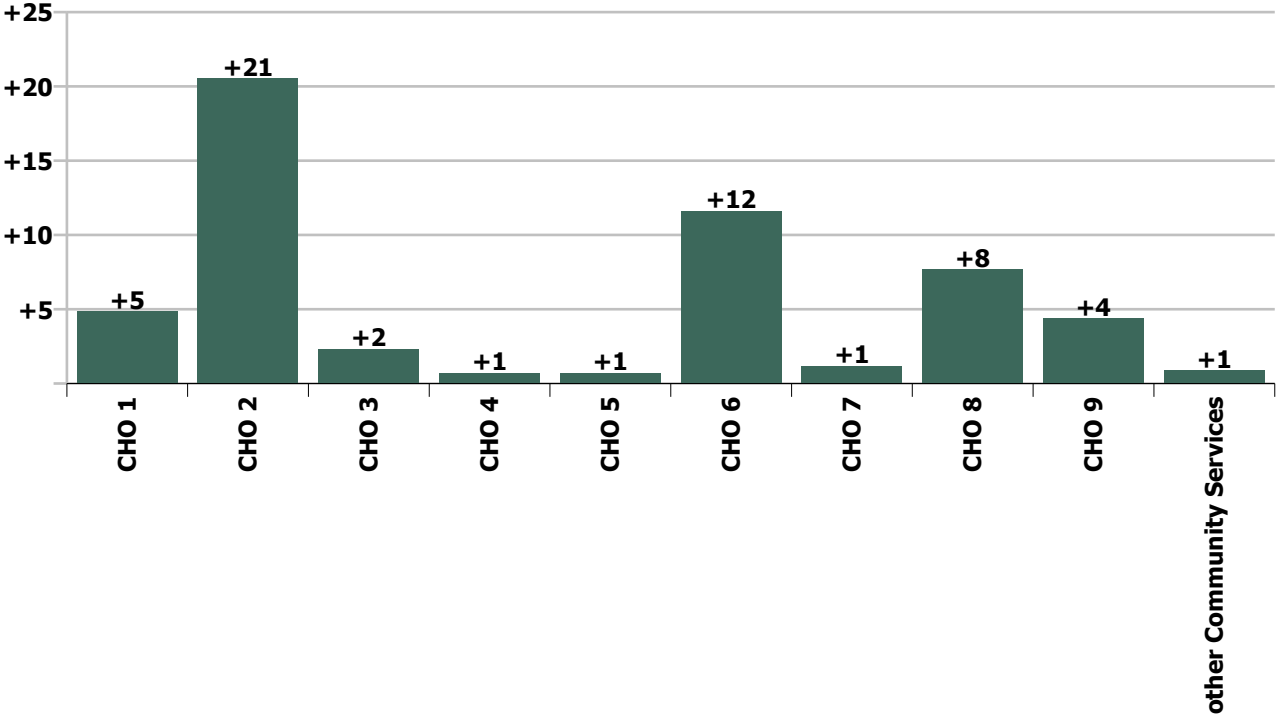
Staff Group change since: Oct 2022



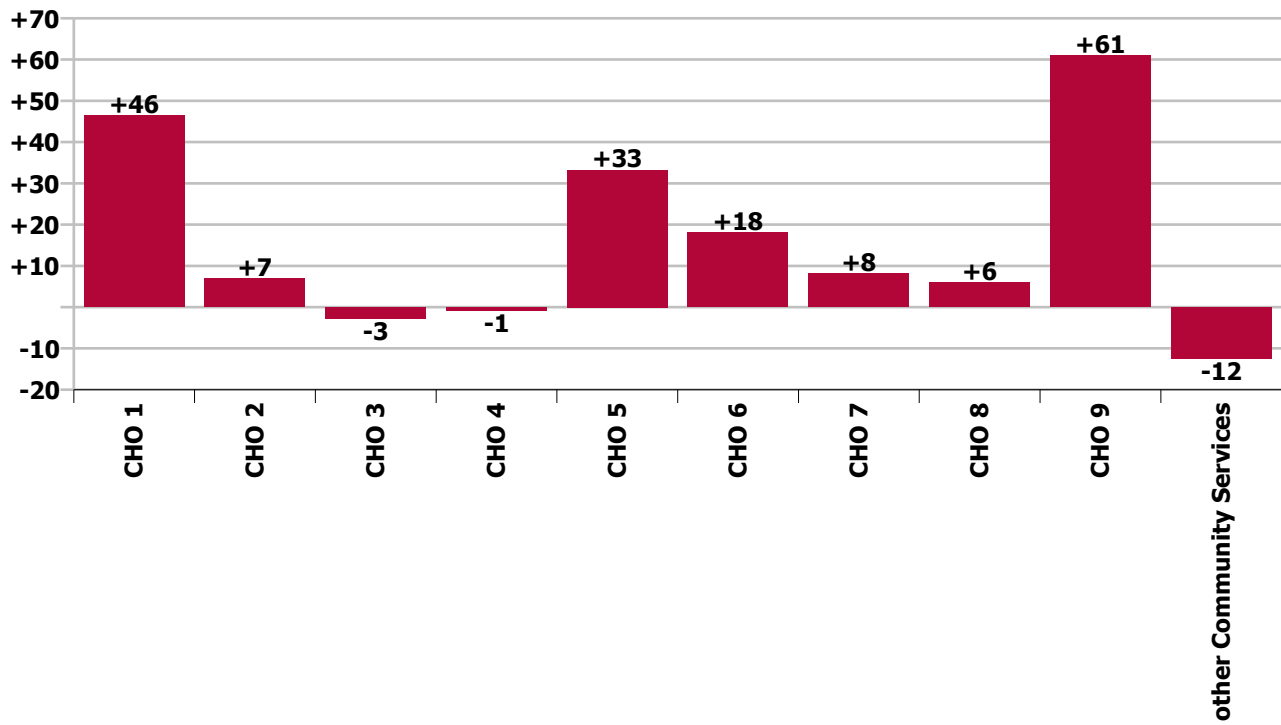
Staff Group change since: Nov 2021



CHO change since: Oct 2022



CHO change since: Nov 2021



Longitudinal Employment Levels by Grade Group - Dec 2016 to Nov 2022

Nov 2022 (Dec 2015 figure: 9,501)	WTE Nov 2022	WTE change since Dec 16	WTE change since Dec 17	WTE change since Dec 18	WTE change since Dec 19	WTE change since Dec 20	WTE change since Oct 22	% change since Dec 16	% change since Dec 17	% change since Dec 18	% change since Dec 19	% change since Dec 20	% change since Oct 22
Overall	10,453	+832	+662	+555	+499	+151	+55	+8.6%	+6.8%	+5.6%	+5.0%	+1.5%	+0.5%
Consultant Medicine	1		-0	-0					-9.1%	-9.1%			
Consultant Psychiatry	398	+83	+86	+68	+47	+30	+2	+26.4%	+27.5%	+20.7%	+13.3%	+8.0%	+0.5%
Consultants	399	+83	+86	+68	+47	+30	+2	+26.4%	+27.4%	+20.6%	+13.2%	+8.0%	+0.5%
Registrar	217	+85	+72	+63	+48	+49	+1	+64.2%	+50.0%	+40.9%	+28.1%	+29.2%	+0.3%
Senior Registrar	127	+60	+61	+41	+30	+16	-0	+88.8%	+92.6%	+47.5%	+30.4%	+14.0%	-0.1%
Specialist Registrar	2	+1		+1	-1			+100.0%		+100.0%	-20.0%		
Registrars	346	+145	+133	+105	+77	+65	+0	+72.6%	+62.7%	+43.5%	+28.5%	+23.0%	+0.1%
Senior House Officer	260	+13	-13	-9	+7	-11	+5	+5.2%	-4.6%	-3.5%	+2.7%	-4.1%	+1.8%
Interns	5	-7	-5	-3	-3		-1	-58.3%	-50.0%	-37.5%	-37.5%		-13.0%
SHO/ Interns	265	+6	-18	-12	+4	-11	+4	+2.3%	-6.2%	-4.5%	+1.4%	-4.0%	+1.5%
Dentists			-0	-0				-100.0%	-100.0%	-100.0%	-100.0%	-100.0%	-100.0%
Other Medical	4	-5	-6	-2	-1	-1	-0	-54.1%	-59.3%	-31.9%	-11.6%	-11.6%	-9.2%
Medical/ Dental, other	4	-5	-6	-2	-1	-1	-0	-54.1%	-59.5%	-32.6%	-11.6%	-11.6%	-9.2%
Medical & Dental	1,014	+229	+195	+158	+126	+82	+6	+29.2%	+23.8%	+18.5%	+14.2%	+8.8%	+0.6%
Clinical Nurse/ Midwife Manager	1,030	+24	+48	+24	+31	-11	+1	+2.3%	+4.8%	+2.4%	+3.2%	-1.0%	+0.1%
Director Nursing/Midwifery, Assistant	177	+22	+15	+13	+13	+7	+3	+14.2%	+9.5%	+8.1%	+7.7%	+3.9%	+1.6%
Director of Nursing/Midwifery	33	+1	+4	+9	+4	+5	-1	+3.8%	+15.5%	+38.6%	+13.8%	+17.8%	-3.8%
Nurse/ Midwife Manager	1,240	+47	+67	+47	+48	+1	+2	+3.9%	+5.7%	+3.9%	+4.0%	+0.1%	+0.2%
Advanced Nurse/ Midwife Practitioner	68	+60	+57	+48	+37	+28	+2	+807.8%	+546.7%	+237.1%	+121.0%	+72.3%	+3.7%
Clinical Nurse/ Midwife Specialist	553	+216	+170	+158	+124	+64	+17	+64.3%	+44.3%	+39.9%	+29.0%	+13.0%	+3.3%
Nurse/ Midwife Specialist & AN/MP	621	+277	+227	+205	+162	+92	+20	+80.5%	+57.7%	+49.4%	+35.2%	+17.4%	+3.3%
Staff Midwives						-1		-100.0%	-100.0%	-100.0%	-100.0%	-100.0%	-100.0%
Staff Nurse [Psychiatric]	2,830	-227	-197	-125	-63	-135	+33	-7.4%	-6.5%	-4.2%	-2.2%	-4.5%	+1.2%
Staff Nurses [General/ Children's]	109	-11	-8	-8	+4	+3	+2	-9.4%	-7.0%	-7.0%	+4.3%	+2.8%	+2.2%
Staff Nurse [Intellectual Disability]	6	+3	+2	-0	+1	+2	-0	+77.2%	+71.1%	-1.3%	+30.7%	+39.6%	-1.3%

Nov 2022 (Dec 2015 figure: 9,501)	WTE Nov 2022	WTE change since Dec 16	WTE change since Dec 17	WTE change since Dec 18	WTE change since Dec 19	WTE change since Dec 20	WTE change since Oct 22	% change since Dec 16	% change since Dec 17	% change since Dec 18	% change since Dec 19	% change since Dec 20	% change since Oct 22
Overall	10,453	+832	+662	+555	+499	+151	+55	+8.6%	+6.8%	+5.6%	+5.0%	+1.5%	+0.5%
Graduate Nursing/ Midwifery								-100.0%	-100.0%	-100.0%	-100.0%	-100.0%	-100.0%
Staff Nurse/ Staff Midwife	2,945	-235	-203	-133	-58	-131	+35	-7.4%	-6.4%	-4.3%	-1.9%	-4.3%	+1.2%
Public Health Nurse		-1	-1					-100.0%	-100.0%	-100.0%	-100.0%	-100.0%	-100.0%
Pre-registration Nurse Intern (COVID-19)						-42		-100.0%	-100.0%	-100.0%	-100.0%	-100.0%	-100.0%
Pre-registration Nurse/ Midwife Intern	26	+18	+10	-1	-1	+16	-24	+205.9%	+57.3%	-5.0%	-3.8%	+147.3%	-47.6%
Post-registration Nurse/ Midwife Student					-1	-1		-100.0%	-100.0%	-100.0%	-100.0%	-100.0%	-100.0%
Nursing/ Midwifery awaiting registration	50	+48	+42	+31	-8	+46	-22	+2424.0%	+483.6%	+154.4%	-14.3%	+940.8%	-29.9%
Nursing/ Midwifery Student	77	+66	+51	+29	-10	+18	-46	+622.0%	+202.0%	+61.3%	-12.0%	+30.5%	-37.2%
Nursing Education/Clinical	34	+9	+4	+3	+3	+2	+0	+38.4%	+11.7%	+10.1%	+8.1%	+7.7%	+0.3%
Nursing/ Midwifery other	34	+9	+4	+3	+3	+2	+0	+38.4%	+11.7%	+10.1%	+8.1%	+7.7%	+0.3%
Nursing & Midwifery	4,917	+163	+146	+151	+144	-18	+11	+3.4%	+3.1%	+3.2%	+3.0%	-0.4%	+0.2%
Dietitians	18	+5	+1	-2	-1	-3	-1	+34.6%	+8.7%	-9.2%	-4.7%	-12.4%	-6.2%
Occupational Therapists	349	+49	+23	+10	+11	+4	+0	+16.5%	+7.1%	+2.9%	+3.1%	+1.0%	+0.1%
Physiotherapists	3	+1	+2	+1	+1	+1	-0	+46.8%	+143.8%	+83.2%	+32.3%	+22.4%	-0.3%
Podiatrists & Chiropodists	1	-1	-1	-1	-0	-0	-0	-62.1%	-53.1%	-43.4%	-5.5%	-13.7%	-4.2%
Speech & Language Therapists	67	+8	+6	+6	+6	-2	+3	+13.1%	+9.6%	+9.5%	+9.2%	-3.3%	+4.0%
Therapy Professions	438	+62	+31	+15	+16	-1	+2	+16.4%	+7.7%	+3.4%	+3.8%	-0.2%	+0.4%
Social Care	74	-13	-8	-4	+1	-6	+2	-15.3%	-9.8%	-5.3%	+1.2%	-6.9%	+2.5%
Social Workers	411	+61	+54	+53	+62	+39	+10	+17.5%	+15.2%	+14.8%	+17.7%	+10.4%	+2.5%
Psychologists	446	+103	+76	+58	+52	+22	+6	+30.2%	+20.5%	+14.8%	+13.1%	+5.3%	+1.3%
Pharmacists	16	+1	+1	+0	+0	-1	+1	+8.6%	+9.0%	+2.1%	+0.3%	-5.6%	+7.1%
Pharmacy Technicians	4	-1	-1	+0	+1	+0	-0	-18.7%	-18.0%	+7.8%	+51.4%	+2.7%	-1.6%
Pharmacy	20	+0	+1	+1	+1	-1	+1	+2.1%	+2.6%	+3.1%	+7.1%	-4.1%	+5.4%
Counsellor Therapists	126	+41	+40	+41	+31	+24	-1	+47.7%	+46.9%	+47.8%	+32.5%	+24.2%	-0.7%
Other Health & Social Care	3	-5	-6	-6	-9	-2	-1	-64.3%	-64.9%	-65.1%	-74.4%	-44.5%	-24.0%
Play Therapists/ Specialists	3	+0	+1	+1	+1	+1	-0	+4.8%	+73.5%	+77.0%	+79.5%	+77.0%	-15.8%
H&SC, Other	131	+35	+36	+36	+23	+23	-2	+36.8%	+37.3%	+38.0%	+21.5%	+21.5%	-1.8%

Nov 2022 (Dec 2015 figure: 9,501)	WTE Nov 2022	WTE change since Dec 16	WTE change since Dec 17	WTE change since Dec 18	WTE change since Dec 19	WTE change since Dec 20	WTE change since Oct 22	% change since Dec 16	% change since Dec 17	% change since Dec 18	% change since Dec 19	% change since Dec 20	% change since Oct 22
Overall	10,453	+832	+662	+555	+499	+151	+55	+8.6%	+6.8%	+5.6%	+5.0%	+1.5%	+0.5%
Health & Social Care Professionals	1,522	+249	+190	+158	+155	+77	+18	+19.5%	+14.2%	+11.6%	+11.4%	+5.3%	+1.2%
Executive Management	15	+8	+7	+5	+4	+0	+2	+113.6%	+86.9%	+49.5%	+35.9%	+1.5%	+11.2%
Senior Management (VIII & GM)	60	+35	+28	+28	+14	+8	+1	+136.2%	+86.3%	+89.8%	+29.6%	+14.7%	+1.6%
Management (VIII & above)	75	+43	+35	+33	+18	+8	+2	+131.3%	+86.4%	+80.1%	+30.8%	+11.8%	+3.4%
Middle Management (V-VII)	277	+111	+80	+57	+42	+34	+8	+66.5%	+40.7%	+25.9%	+17.7%	+13.9%	+3.1%
Other Administrative	2		-1	-1					-38.9%	-38.9%			
Administrative/ Supervisory (V to VII)	278	+111	+79	+56	+42	+34	+8	+65.9%	+39.6%	+25.1%	+17.6%	+13.8%	+3.1%
General Administrative (III & IV)	709	+47	+27	+13	-9	-13	+5	+7.2%	+4.0%	+1.9%	-1.2%	-1.9%	+0.7%
Clerical (III & IV)	709	+47	+27	+13	-9	-13	+5	+7.2%	+4.0%	+1.9%	-1.2%	-1.9%	+0.7%
Management & Administrative	1,062	+201	+141	+102	+50	+28	+15	+23.3%	+15.3%	+10.7%	+5.0%	+2.7%	+1.5%
Catering	68	+2	+2	-4	+3	+4	-1	+3.5%	+3.2%	-5.4%	+4.1%	+6.9%	-1.1%
Household Services	399	-93	-77	-46	-25	-42	-1	-18.9%	-16.2%	-10.4%	-6.0%	-9.6%	-0.3%
Other Support	42	-14	-8	-13	-1	-0	+0	-25.6%	-15.7%	-24.4%	-2.4%	-0.5%	+0.2%
Portering	50	-9	+1	+2	+2	+3	+2	-15.3%	+2.6%	+4.5%	+4.3%	+6.0%	+4.8%
Support	559	-114	-81	-62	-22	-35	+1	-17.0%	-12.7%	-9.9%	-3.7%	-5.9%	+0.1%
Maintenance	130	-13	-9	-4	+1	-7	-1	-9.1%	-6.3%	-3.2%	+0.8%	-5.4%	-0.6%
Technical Services		-2	-2	-2	-2			-100.0%	-100.0%	-100.0%	-100.0%	-100.0%	-100.0%
Maintenance/ Technical	130	-15	-11	-6	-1	-7	-1	-10.4%	-7.6%	-4.7%	-0.7%	-5.4%	-0.6%
General Support	689	-129	-92	-68	-23	-43	-0	-15.8%	-11.8%	-9.0%	-3.2%	-5.8%	-0.0%
Attendant/ Aide	422	-302	-278	-259	-183	-161	-3	-41.7%	-39.7%	-38.0%	-30.2%	-27.7%	-0.6%
Health & Social Care Assistants	18	+13	+13	+13	+9	+10	+2	+289.4%	+289.4%	+232.2%	+102.1%	+116.7%	+10.6%
Health Care Assistant/ Care Assistant	592	+388	+344	+299	+218	+162	+4	+189.5%	+138.5%	+102.1%	+58.4%	+37.8%	+0.7%
Health Care Assistants	1,032	+99	+79	+53	+45	+11	+4	+10.6%	+8.3%	+5.4%	+4.5%	+1.1%	+0.3%
Home Care Services	23	+23	+8	+6	+7	+9	+0	-100.0%	+53.7%	+38.9%	+46.2%	+61.2%	+2.0%
Other Care Grades	19	+9	+9	+4	-3	-3	+0	+81.4%	+79.7%	+22.7%	-14.2%	-12.0%	+0.5%
Pastoral Care	9	-5	-5	-4	-4	-3	-1	-36.8%	-34.6%	-32.2%	-29.1%	-25.7%	-10.0%
Workshop Services	165	-6	-8	-5	+0	+10	+1	-3.5%	-4.4%	-3.0%	+0.1%	+6.5%	+0.7%

Nov 2022 (Dec 2015 figure: 9,501)	WTE Nov 2022	WTE change since Dec 16	WTE change since Dec 17	WTE change since Dec 18	WTE change since Dec 19	WTE change since Dec 20	WTE change since Oct 22	% change since Dec 16	% change since Dec 17	% change since Dec 18	% change since Dec 19	% change since Dec 20	% change since Oct 22
Overall	10,453	+832	+662	+555	+499	+151	+55	+8.6%	+6.8%	+5.6%	+5.0%	+1.5%	+0.5%
Care, other	217	+20	+4	+1	+1	+13	+1	+10.4%	+2.0%	+0.3%	+0.3%	+6.4%	+0.3%
Patient & Client Care	1,249	+119	+83	+54	+45	+24	+4	+10.6%	+7.1%	+4.5%	+3.7%	+2.0%	+0.3%

Source: Health Service Personnel Census



Longitudinal Employment Levels by Grade Group - Dec 2016 to Nov 2022

Nov 2022 (Dec 2015 figure: 9,501)	WTE Nov 2022	WTE change since Dec 16	WTE change since Dec 17	WTE change since Dec 18	WTE change since Dec 19	WTE change since Dec 20	WTE change since Oct 22	% change since Dec 16	% change since Dec 17	% change since Dec 18	% change since Dec 19	% change since Dec 20	% change since Oct 22
Overall	10,453	+832	+662	+555	+499	+151	+55	+8.6%	+6.8%	+5.6%	+5.0%	+1.5%	+0.5%
Consultant Medicine	1		-0	-0					-9.1%	-9.1%			
Consultant Psychiatry	398	+83	+86	+68	+47	+30	+2	+26.4%	+27.5%	+20.7%	+13.3%	+8.0%	+0.5%
Consultants	399	+83	+86	+68	+47	+30	+2	+26.4%	+27.4%	+20.6%	+13.2%	+8.0%	+0.5%
Registrar	217	+85	+72	+63	+48	+49	+1	+64.2%	+50.0%	+40.9%	+28.1%	+29.2%	+0.3%
Senior Registrar	127	+60	+61	+41	+30	+16	-0	+88.8%	+92.6%	+47.5%	+30.4%	+14.0%	-0.1%
Specialist Registrar	2	+1		+1	-1			+100.0%		+100.0%	-20.0%		
Registrars	346	+145	+133	+105	+77	+65	+0	+72.6%	+62.7%	+43.5%	+28.5%	+23.0%	+0.1%
Senior House Officer	260	+13	-13	-9	+7	-11	+5	+5.2%	-4.6%	-3.5%	+2.7%	-4.1%	+1.8%
Interns	5	-7	-5	-3	-3		-1	-58.3%	-50.0%	-37.5%	-37.5%		-13.0%
SHO/ Interns	265	+6	-18	-12	+4	-11	+4	+2.3%	-6.2%	-4.5%	+1.4%	-4.0%	+1.5%
Dentists			-0	-0				-100.0%	-100.0%	-100.0%	-100.0%	-100.0%	-100.0%
Other Medical	4	-5	-6	-2	-1	-1	-0	-54.1%	-59.3%	-31.9%	-11.6%	-11.6%	-9.2%
Medical/ Dental, other	4	-5	-6	-2	-1	-1	-0	-54.1%	-59.5%	-32.6%	-11.6%	-11.6%	-9.2%
Medical & Dental	1,014	+229	+195	+158	+126	+82	+6	+29.2%	+23.8%	+18.5%	+14.2%	+8.8%	+0.6%
Clinical Nurse/ Midwife Manager	1,030	+24	+48	+24	+31	-11	+1	+2.3%	+4.8%	+2.4%	+3.2%	-1.0%	+0.1%
Director Nursing/Midwifery, Assistant	177	+22	+15	+13	+13	+7	+3	+14.2%	+9.5%	+8.1%	+7.7%	+3.9%	+1.6%
Director of Nursing/Midwifery	33	+1	+4	+9	+4	+5	-1	+3.8%	+15.5%	+38.6%	+13.8%	+17.8%	-3.8%
Nurse/ Midwife Manager	1,240	+47	+67	+47	+48	+1	+2	+3.9%	+5.7%	+3.9%	+4.0%	+0.1%	+0.2%
Advanced Nurse/ Midwife Practitioner	68	+60	+57	+48	+37	+28	+2	+807.8%	+546.7%	+237.1%	+121.0%	+72.3%	+3.7%
Clinical Nurse/ Midwife Specialist	553	+216	+170	+158	+124	+64	+17	+64.3%	+44.3%	+39.9%	+29.0%	+13.0%	+3.3%
Nurse/ Midwife Specialist & AN/MP	621	+277	+227	+205	+162	+92	+20	+80.5%	+57.7%	+49.4%	+35.2%	+17.4%	+3.3%
Staff Midwives							-1	-100.0%	-100.0%	-100.0%	-100.0%	-100.0%	-100.0%
Staff Nurse [Psychiatric]	2,830	-227	-197	-125	-63	-135	+33	-7.4%	-6.5%	-4.2%	-2.2%	-4.5%	+1.2%
Staff Nurses [General/ Children's]	109	-11	-8	-8	+4	+3	+2	-9.4%	-7.0%	-7.0%	+4.3%	+2.8%	+2.2%
Staff Nurse [Intellectual Disability]	6	+3	+2	-0	+1	+2	-0	+77.2%	+71.1%	-1.3%	+30.7%	+39.6%	-1.3%
Graduate Nursing/ Midwifery								-100.0%	-100.0%	-100.0%	-100.0%	-100.0%	-100.0%
Staff Nurse/ Staff Midwife	2,945	-235	-203	-133	-58	-131	+35	-7.4%	-6.4%	-4.3%	-1.9%	-4.3%	+1.2%
Public Health Nurse		-1	-1					-100.0%	-100.0%	-100.0%	-100.0%	-100.0%	-100.0%
Public Health Nurse		-1	-1					-100.0%	-100.0%	-100.0%	-100.0%	-100.0%	-100.0%
Pre-registration Nurse Intern (COVID-19)						-42		-100.0%	-100.0%	-100.0%	-100.0%	-100.0%	-100.0%
Pre-registration Nurse/ Midwife Intern	26	+18	+10	-1	-1	+16	-24	+205.9%	+57.3%	-5.0%	-3.8%	+147.3%	-47.6%
Post-registration Nurse/ Midwife Student					-1	-1		-100.0%	-100.0%	-100.0%	-100.0%	-100.0%	-100.0%
Nursing/ Midwifery awaiting registration	50	+48	+42	+31	-8	+46	-22	+2424.0%	+483.6%	+154.4%	-14.3%	+940.8%	-29.9%
Nursing/ Midwifery Student	77	+66	+51	+29	-10	+18	-46	+622.0%	+202.0%	+61.3%	-12.0%	+30.5%	-37.2%
Nursing Education/Clinical	34	+9	+4	+3	+3	+2	+0	+38.4%	+11.7%	+10.1%	+8.1%	+7.7%	+0.3%
Nursing/ Midwifery other	34	+9	+4	+3	+3	+2	+0	+38.4%	+11.7%	+10.1%	+8.1%	+7.7%	+0.3%
Nursing & Midwifery	4,917	+163	+146	+151	+144	-18	+11	+3.4%	+3.1%	+3.2%	+3.0%	-0.4%	+0.2%
Dietitians	18	+5	+1	-2	-1	-3	-1	+34.6%	+8.7%	-9.2%	-4.7%	-12.4%	-6.2%
Occupational Therapists	349	+49	+23	+10	+11	+4	+0	+16.5%	+7.1%	+2.9%	+3.1%	+1.0%	+0.1%
Physiotherapists	3	+1	+2	+1	+1	+1	-0	+46.8%	+143.8%	+83.2%	+32.3%	+22.4%	-0.3%
Podiatrists & Chiropodists	1	-1	-1	-1	-0	-0	-0	-62.1%	-53.1%	-43.4%	-5.5%	-13.7%	-4.2%
Speech & Language Therapists	67	+8	+6	+6	+6	-2	+3	+13.1%	+9.6%	+9.5%	+9.2%	-3.3%	+4.0%
Therapy Professions	438	+62	+31	+15	+16	-1	+2	+16.4%	+7.7%	+3.4%	+3.8%	-0.2%	+0.4%
Social Care	74	-13	-8	-4	+1	-6	+2	-15.3%	-9.8%	-5.3%	+1.2%	-6.9%	+2.5%
Social Workers	411	+61	+54	+53	+62	+39	+10	+17.5%	+15.2%	+14.8%	+17.7%	+10.4%	+2.5%
Psychologists	446	+103	+76	+58	+52	+22	+6	+30.2%	+20.5%	+14.8%	+13.1%	+5.3%	+1.3%
Pharmacists	16	+1	+1	+0	+0	-1	+1	+8.6%	+9.0%	+2.1%	+0.3%	-5.6%	+7.1%
Pharmacy Technicians	4	-1	-1	+0	+1	+0	-0	-18.7%	-18.0%	+7.8%	+51.4%	+2.7%	-1.6%
Pharmacy	20	+0	+1	+1	+1	-1	+1	+2.1%	+2.6%	+3.1%	+7.1%	-4.1%	+5.4%
Counsellor Therapists	126	+41	+40	+41	+31	+24	-1	+47.7%	+46.9%	+47.8%	+32.5%	+24.2%	-0.7%
Other Health & Social Care	3	-5	-6	-6	-9	-2	-1	-64.3%	-64.9%	-65.1%	-74.4%	-44.5%	-24.0%
Play Therapists/ Specialists	3	+0	+1	+1	+1	+1	-0	+4.8%	+73.5%	+77.0%	+79.5%	+77.0%	-15.8%
H&SC, Other	131	+35	+36	+36	+23	+23	-2	+36.8%	+37.3%	+38.0%	+21.5%	+21.5%	-1.8%
Health & Social Care Professionals	1,522	+249	+190	+158	+155	+77	+18	+19.5%	+14.2%	+11.6%	+11.4%	+5.3%	+1.2%
Executive Management	15	+8	+7	+5	+4	+0	+2	+113.6%	+86.9%	+49.5%	+35.9%	+1.5%	+11.2%
Senior Management (VIII & GM)	60	+35	+28	+28	+14	+8	+1	+136.2%	+86.3%	+89.8%	+29.6%	+14.7%	+1.6%
Management (VIII & above)	75	+43	+35	+33	+18	+8	+2	+131.3%	+86.4%	+80.1%	+30.8%	+11.8%	+3.4%
Middle Management (V-VII)	277	+111	+80	+57	+42	+34	+8	+66.5%	+40.7%	+25.9%	+17.7%	+13.9%	+3.1%
Other Administrative	2		-1	-1					-38.9%	-38.9%			
Administrative/ Supervisory (V to VII)	278	+111	+79	+56	+42	+34	+8	+65.9%	+39.6%	+25.1%	+17.6%	+13.8%	+3.1%
General Administrative (III & IV)	709	+47	+27	+13	-9	-13	+5	+7.2%	+4.0%	+1.9%	-1.2%	-1.9%	+0.7%
Clerical (III & IV)	709	+47	+27	+13	-9	-13	+5	+7.2%	+4.0%	+1.9%	-1.2%	-1.9%	+0.7%
Management & Administrative	1,062	+201	+141	+102	+50	+28	+15	+23.3%	+15.3%	+10.7%	+5.0%	+2.7%	+1.5%
Support	559	-114	-81	-62	-22	-35	+1	-17.0%	-12.7%	-9.9%	-3.7%	-5.9%	+0.1%
Maintenance	130	-13	-9	-4	+1	-7	-1	-9.1%	-6.3%	-3.2%	+0.8%	-5.4%	-0.6%
Technical Services		-2	-2	-2	-2			-100.0%	-100.0%	-100.0%	-100.0%	-100.0%	-100.0%
Maintenance/ Technical	130	-15	-11	-6	-1	-7	-1	-10.4%	-7.6%	-4.7%	-0.7%	-5.4%	-0.6%
General Support	689	-129	-92	-68	-23	-43	-0	-15.8%	-11.8%	-9.0%	-3.2%	-5.8%	-0.0%
Attendant/ Aide	422	-302	-278	-259	-183	-161	-3	-41.7%	-39.7%	-38.0%	-30.2%	-27.7%	-0.6%
Health & Social Care Assistants	18	+13	+13	+13	+9	+10	+2	+289.4%	+289.4%	+232.2%	+102.1%	+116.7%	+10.6%
Health Care Assistant/ Care Assistant	592	+388	+344	+299	+218	+162	+4	+189.5%	+138.5%	+102.1%	+58.4%	+37.8%	+0.7%
Health Care Assistants	1,032	+99	+79	+53	+45	+11	+4	+10.6%	+8.3%	+5.4%	+4.5%	+1.1%	+0.3%
Home Care Services	23	+23	+8	+6	+7	+9	+0	-100.0%	+53.7%	+38.9%	+46.2%	+61.2%	+2.0%
Other Care Grades	19	+9	+9	+4	-3	-3	+0	+81.4%	+79.7%	+22.7%	-14.2%	-12.0%	+0.5%
Pastoral Care	9	-5	-5	-4	-4	-3	-1	-36.8%	-34.6%	-32.2%	-29.1%	-25.7%	-10.0%
Workshop Services	165	-6	-8	-5	+0	+10	+1	-3.5%	-4.4%	-3.0%	+0.1%	+6.5%	+0.7%
Care, other	217	+20	+4	+1	+1	+13	+1	+10.4%	+2.0%	+0.3%	+0.3%	+6.4%	+0.3%

Nov 2022 (Dec 2015 figure: 9,501)	WTE Nov 2022	WTE change since Dec 16	WTE change since Dec 17	WTE change since Dec 18	WTE change since Dec 19	WTE change since Dec 20	WTE change since Oct 22	% change since Dec 16	% change since Dec 17	% change since Dec 18	% change since Dec 19	% change since Dec 20	% change since Oct 22
Overall	10,453	+832	+662	+555	+499	+151	+55	+8.6%	+6.8%	+5.6%	+5.0%	+1.5%	+0.5%
Patient & Client Care	1,249	+119	+83	+54	+45	+24	+4	+10.6%	+7.1%	+4.5%	+3.7%	+2.0%	+0.3%

Source: Health Service Personnel Census