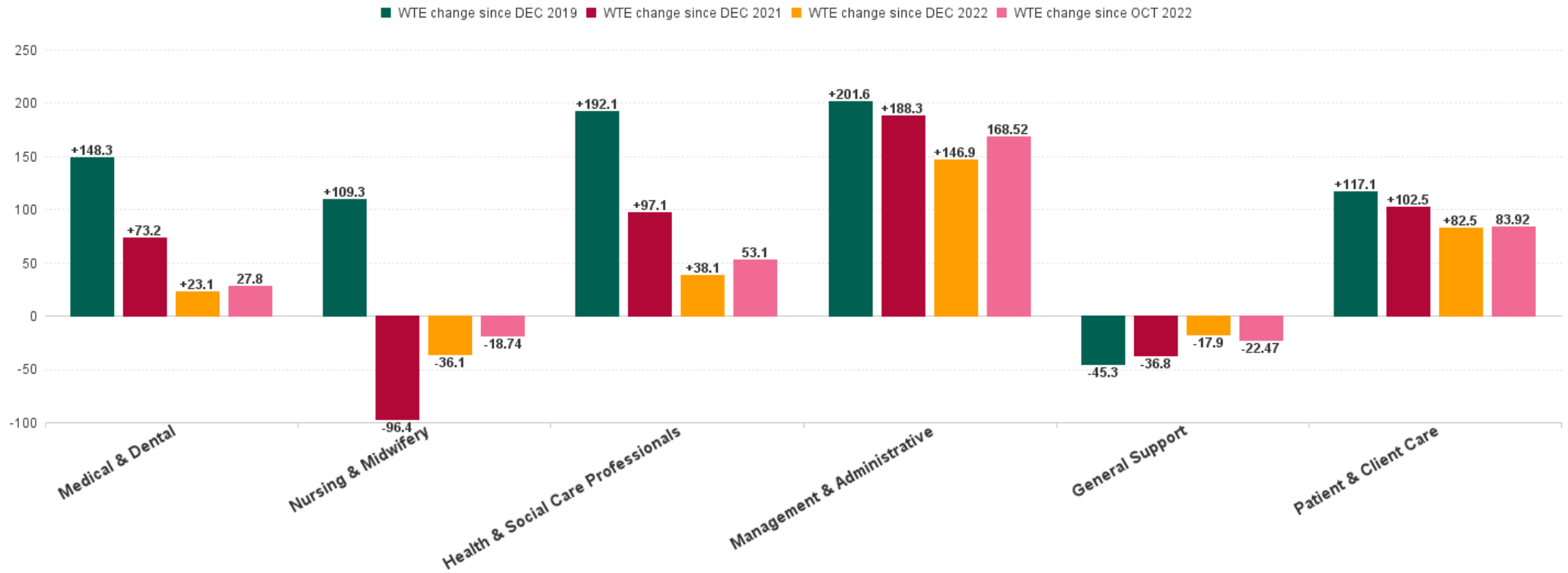


Mental Health Employment Report : OCT 2023

Mental Health Employment Report by Staff Group

OCT 2023	WTE DEC 2019	WTE DEC 2022	WTE SEP 2023	WTE OCT 2023	WTE change since DEC 2019	% WTE change since Dec 2019	WTE change since DEC 2022	% WTE change since Dec 2022	WTE change since SEP 2023	No. OCT 2023
Overall	9,967	10,453	10,667	10,690	+723	+7.3%	+237	+2.3%	+23	11,660
Consultants	353	397	415	403	+50	+14.3%	+6	+1.5%	-12	433
Registrars	269	345	334	346	+77	+28.5%	+1	+0.2%	+11	359
SHO/ Interns	261	267	273	284	+23	+8.9%	+17	+6.5%	+12	293
Medical/ Dental, other	5	4	3	3	-2	-40.6%	-1	-24.0%	+0	6
Medical & Dental	888	1,013	1,024	1,036	+148	+16.7%	+23	+2.3%	+12	1,091
Nurse/ Midwife Manager	1,201	1,245	1,231	1,231	+30	+2.5%	-15	-1.2%	+0	1,288
Nurse/ Midwife Specialist & AN/MP	460	631	706	711	+251	+54.6%	+80	+12.7%	+6	755
Staff Nurse/ Staff Midwife	3,002	2,948	2,802	2,786	-216	-7.2%	-162	-5.5%	-16	3,028
Pre-registration Nurse/ Midwife Intern	25	26	122	30	+4	+17.9%	+3	+11.8%	-93	84
Post-registration Nurse/ Midwife Student	1				-1	-100.0%				
Nursing/ Midwifery awaiting registration	57	39	58	95	+38	+66.7%	+56	+144.9%	+37	124
Nursing/ Midwifery Student	83	65	180	124	+41	+50.0%	+59	+91.0%	-56	208
Nursing/ Midwifery other	32	34	32	35	+3	+10.7%	+1	+1.6%	+3	38
Nursing & Midwifery	4,778	4,924	4,950	4,887	+109	+2.3%	-36	-0.7%	-63	5,317
Therapy Professions	420	435	423	431	+11	+2.6%	-4	-0.9%	+8	486
Social Care	74	72	62	49	-25	-33.4%	-23	-31.8%	-13	58
Social Workers	350	414	417	424	+73	+20.9%	+10	+2.4%	+7	471
Psychologists	394	448	455	487	+92	+23.4%	+39	+8.7%	+31	541
Pharmacy	19	19	23	24	+5	+27.7%	+4	+23.0%	+1	32
H&SC, Other	107	130	135	142	+35	+32.4%	+12	+8.8%	+7	159
Health & Social Care Professionals	1,364	1,518	1,515	1,556	+192	+14.1%	+38	+2.5%	+41	1,747
Management (VIII & above)	58	75	75	74	+16	+27.2%	-0	-0.5%	-1	76
Administrative/ Supervisory (V to VII)	238	287	322	333	+95	+40.0%	+46	+16.0%	+11	348
Clerical (III & IV)	717	707	796	808	+91	+12.6%	+101	+14.3%	+12	892
Management & Administrative	1,014	1,068	1,192	1,215	+202	+19.9%	+147	+13.8%	+23	1,316
Support	585	556	542	538	-47	-8.0%	-18	-3.2%	-3	610
Maintenance/ Technical	127	129	130	128	+2	+1.2%	-0	-0.2%	-2	133
General Support	712	685	672	667	-45	-6.4%	-18	-2.6%	-5	743
Health Care Assistants	996	1,030	1,085	1,095	+100	+10.0%	+65	+6.3%	+10	1,180
Care, other	216	216	229	233	+17	+8.0%	+17	+8.0%	+5	266
Patient & Client Care	1,212	1,246	1,314	1,329	+117	+9.7%	+82	+6.6%	+15	1,446

WTE Change by Staff Category

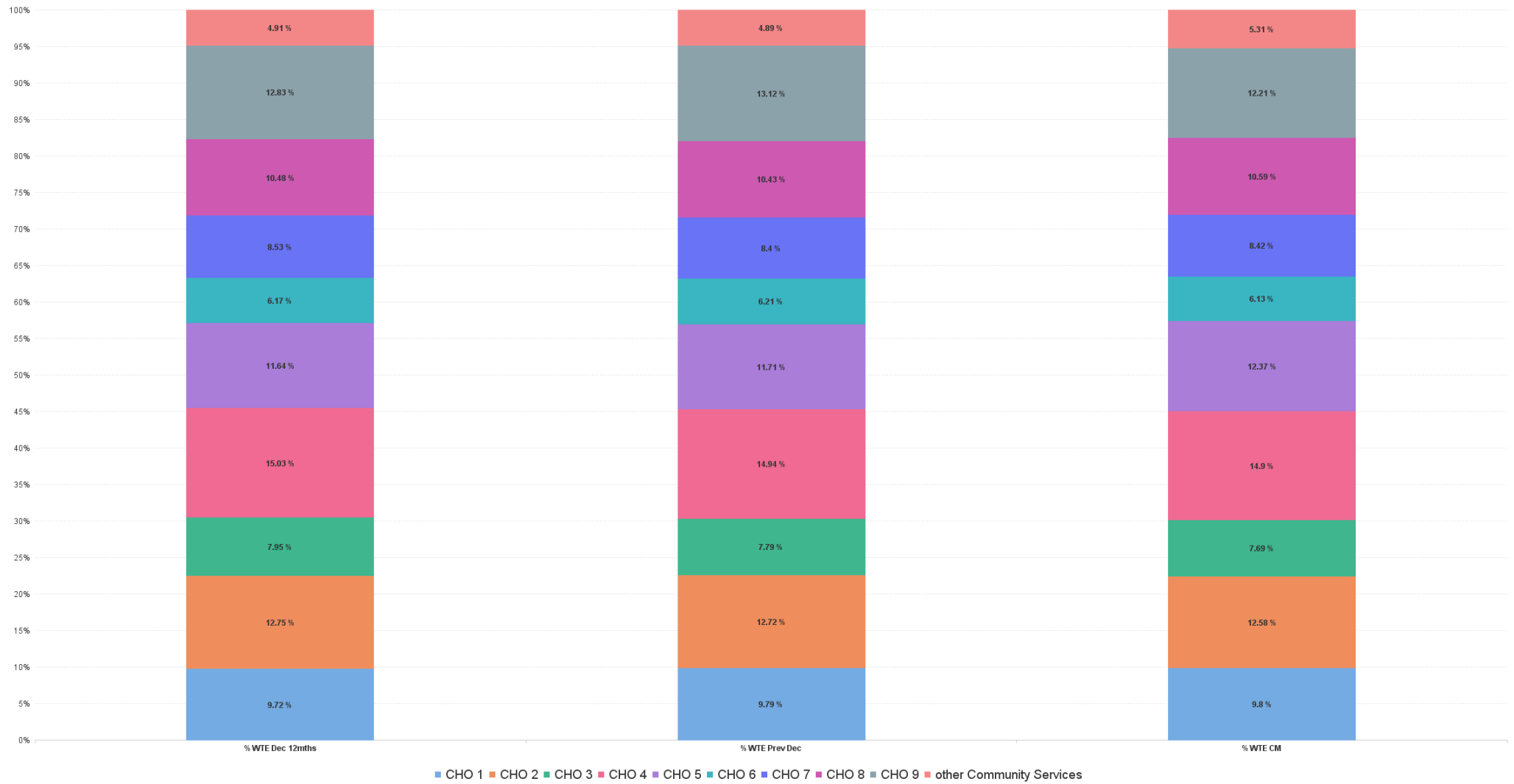


Mental Health Report by CHO: OCT 2023

OCT 2023	WTE DEC 2019	WTE DEC 2022	WTE SEP 2023	WTE OCT 2023	WTE change since DEC 2019	% WTE change since Dec 2019	WTE change since DEC 2022	% WTE change since Dec 2022	WTE change since SEP 2023	No. OCT 2023
Overall	9,967	10,453	10,667	10,690	+723	+7.3%	+237	+2.3%	+23	11,660
CHO 1	953	1,024	1,050	1,047	+95	+9.9%	+24	+2.3%	-3	1,128
CHO 2	1,308	1,329	1,335	1,345	+37	+2.8%	+16	+1.2%	+10	1,461
CHO 3	795	814	817	822	+26	+3.3%	+7	+0.9%	+4	899
CHO 4	1,499	1,562	1,574	1,593	+95	+6.3%	+32	+2.0%	+19	1,770
CHO 5	1,177	1,224	1,319	1,322	+145	+12.3%	+98	+8.0%	+4	1,457
CHO 6	593	650	670	655	+62	+10.5%	+5	+0.8%	-15	720
CHO 7	835	879	904	900	+65	+7.8%	+22	+2.5%	-4	980
CHO 8	1,098	1,091	1,143	1,132	+34	+3.1%	+42	+3.8%	-11	1,227
CHO 9	1,272	1,371	1,302	1,306	+34	+2.7%	-65	-4.8%	+4	1,423
other Community Services	438	511	553	567	+130	+29.6%	+56	+11.0%	+14	595



% Total by CHO



Mental Health Employment Report by HSE/S38: OCT 2023

OCT 2023	WTE DEC 2019	WTE DEC 2022	WTE SEP 2023	WTE OCT 2023	WTE change since DEC 2019	% WTE change since Dec 2019	WTE change since DEC 2022	% WTE change since Dec 2022	WTE change since SEP 2023	No. OCT 2023
Overall	9,967	10,453	10,667	10,690	+723	+7.3%	+237	+2.3%	+23	11,660
Health Service Executive	9,526	10,023	10,291	10,328	+802	+8.4%	+305	+3.0%	+37	11,239
Section 38 Voluntary Agencies	441	431	376	362	-79	-18.0%	-69	-16.0%	-14	421



Mental Health Employment Report by HSE: OCT 2023

OCT 2023	WTE DEC 2019	WTE DEC 2022	WTE SEP 2023	WTE OCT 2023	WTE change since DEC 2019	% WTE change since Dec 2019	WTE change since DEC 2022	% WTE change since Dec 2022	WTE change since SEP 2023	No. OCT 2023
Total HSE	9,526	10,023	10,291	10,328	+802	+8.4%	+305	+3.0%	+37	11,239
Consultants	333	372	386	394	+62	+18.6%	+23	+6.1%	+9	422
Registrars	250	325	317	322	+72	+28.6%	-3	-1.0%	+5	333
SHO/ Interns	255	260	264	275	+20	+7.9%	+15	+5.9%	+12	284
Medical/ Dental, other	5	4	3	3	-2	-40.6%	-1	-24.0%	+0	6
Medical & Dental	843	961	969	994	+152	+18.0%	+34	+3.5%	+26	1,045
Nurse/ Midwife Manager	1,163	1,211	1,201	1,201	+38	+3.3%	-10	-0.8%	-0	1,256
Nurse/ Midwife Specialist & AN/MP	453	620	693	701	+248	+54.6%	+81	+13.1%	+8	743
Staff Nurse/ Staff Midwife	2,879	2,838	2,729	2,715	-164	-5.7%	-123	-4.3%	-14	2,952
Nursing/ Midwifery awaiting registration	57	38	56	92	-36	+61.5%	+21	+143.5%	+36	121
Post-registration Nurse/ Midwife Student	1				-1	-100.0%				
Pre-registration Nurse/ Midwife Intern	18	18	122	30	+4	+63.7%	-21	+60.3%	-92	84
Nursing/ Midwifery Student	76	56	178	121	+45	+59.9%	+65	+116.2%	-56	205
Nursing/ Midwifery other	29	32	32	35	+6	+20.2%	+3	+9.5%	+3	38
Nursing & Midwifery	4,601	4,758	4,833	4,774	+173	+3.8%	+16	+0.3%	-59	5,194
Therapy Professions	389	407	401	409	+20	+5.2%	+2	+0.5%	+9	456
Social Care	48	44	37	39	-9	-19.4%	-5	-11.6%	+2	44
Social Workers	331	394	395	403	+72	+21.8%	+9	+2.3%	+8	448
Psychologists	379	423	435	463	+85	+22.3%	+40	+9.4%	+28	512
Pharmacy	17	17	21	21	+4	+26.2%	+4	+22.5%	+1	29
H&SC, Other	102	130	133	135	+33	+32.4%	+6	+4.3%	+2	152
Health & Social Care Professionals	1,265	1,415	1,421	1,470	+205	+16.2%	+55	+3.9%	+49	1,641
Management (VIII & above)	56	73	72	71	+15	+26.4%	-1	-1.9%	-1	73
Administrative/ Supervisory (V to VII)	217	264	301	303	+86	+39.8%	+39	+14.9%	+2	314
Clerical (III & IV)	673	670	755	767	+94	+14.0%	+97	+14.4%	+12	842
Management & Administrative	946	1,006	1,128	1,141	+195	+20.7%	+135	+13.4%	+13	1,229
Support	547	523	511	506	-41	-7.6%	-17	-3.2%	-5	566
Maintenance/ Technical	121	123	123	122	+1	+0.8%	-1	-0.7%	-1	126
General Support	668	646	634	628	-40	-6.0%	-18	-2.7%	-6	692
Health Care Assistants	990	1,024	1,081	1,091	+102	+10.3%	+67	+6.5%	+11	1,176
Care, other	213	213	225	229	+16	+7.6%	+17	+7.9%	+4	262
Patient & Client Care	1,203	1,237	1,306	1,321	+118	+9.8%	+84	+6.8%	+15	1,438

Mental Health Employment Report by S38 Vols: OCT 2023

OCT 2023	WTE DEC 2019	WTE DEC 2022	WTE SEP 2023	WTE OCT 2023	WTE change since DEC 2019	% WTE change since Dec 2019	WTE change since DEC 2022	% WTE change since Dec 2022	WTE change since SEP 2023	No. OCT 2023
Total S38 Vols	441	431	376	362	-79	-18.0%	-69	-16.0%	-14	421
Consultants	20	25	29	9	-11	-57.2%	-17	-66.2%	-21	11
Registrars	19	20	17	24	+5	+26.8%	+4	+19.9%	+6	26
SHO/ Interns	6	7	9	9	+3	+50.0%	+2	+28.6%	+0	9
Medical & Dental	45	52	55	41	-3	-7.4%	-11	-20.5%	-14	46
Nurse/ Midwife Manager	38	34	29	30	-8	-21.9%	-4	-12.6%	+0	32
Nurse/ Midwife Specialist & AN/MP	7	11	13	10	+3	+51.1%	-1	-5.8%	-2	12
Staff Nurse/ Staff Midwife	123	109	73	71	-52	-42.5%	-39	-35.3%	-2	76
Nursing/ Midwifery awaiting registration		1	2	3			+2	+200.0%	+1	3
Pre-registration Nurse/ Midwife Intern	7	8	1		+0	-100.0%	-1	-100.0%	-1	
Nursing/ Midwifery Student	7	9	3	3	-4	-57.1%	-6	-66.7%	+1	3
Nursing/ Midwifery other	3	3			-3	-100.0%	-3	-100.0%		
Nursing & Midwifery	177	166	118	114	-64	-35.9%	-52	-31.4%	-4	123
Therapy Professions	31	28	22	22	-9	-29.1%	-6	-20.9%	-0	30
Social Care	25	28	25	10	-15	-59.8%	-18	-63.5%	-15	14
Social Workers	20	20	22	21	+1	+7.2%	+1	+5.6%	-1	23
Psychologists	16	25	21	24	+8	+48.6%	-1	-3.8%	+3	29
Pharmacy	2	2	2	2	+1	+43.8%	+1	+27.8%	+0	3
H&SC, Other	5	0	1	6	+2	+32.4%	+6	+1,235.4%	+5	7
Health & Social Care Professionals	99	103	94	86	-13	-13.0%	-17	-16.5%	-8	106
Management (VIII & above)	2	2	3	3	+1	+50.0%	+1	+50.0%	+0	3
Administrative/ Supervisory (V to VII)	21	23	20	30	+9	+42.1%	+7	+28.0%	+10	34
Clerical (III & IV)	45	36	41	41	-4	-8.0%	+5	+13.0%	+1	50
Management & Administrative	68	62	64	74	+6	+9.3%	+12	+19.9%	+10	87
Support	38	33	30	32	-5	-14.5%	-1	-2.0%	+2	44
Maintenance/ Technical	6	6	7	7	+1	+8.5%	+1	+8.5%	-1	7
General Support	44	39	38	39	-5	-11.3%	-0	-0.4%	+1	51
Health Care Assistants	6	6	4	4	-2	-30.7%	-2	-30.7%	-0	4
Care, other	3	3	3	4	+1	+37.2%	+1	+14.8%	+1	4
Patient & Client Care	9	9	8	8	-1	-8.4%	-1	-13.9%	+0	8

Mental Health Employment Report by Grade Group: OCT 2023

CHO 1

OCT 2023	WTE DEC 2019	WTE DEC 2022	WTE SEP 2023	WTE OCT 2023	WTE change since DEC 2019	% WTE change since Dec 2019	WTE change since DEC 2022	% WTE change since Dec 2022	WTE change since SEP 2023	No. OCT 2023
Total CHO 1	953	1024	1050	1047	+95	+9.9%	+24	+2.3%	-3	1,128
Consultants	31	34	35	34	+4	+11.9%	+1	+2.1%	-0	36
Registrars	24	35	37	39	+14	+57.2%	+4	+10.7%	+1	39
SHO/ Interns	25	21	20	20	-5	-19.2%	-0	-1.9%	+1	21
Medical & Dental	81	89	92	93	+13	+15.9%	+4	+4.5%	+1	96
Nurse/ Midwife Manager	117	118	126	124	+7	+5.8%	+6	+5.2%	-2	130
Nurse/ Midwife Specialist & AN/MP	67	91	97	98	+31	+45.5%	+7	+7.4%	+1	104
Staff Nurse/ Staff Midwife	297	294	290	288	-9	-3.1%	-6	-1.9%	-1	307
<i>Nursing/ Midwifery awaiting registration</i>		3	1	3	+3		+0	+6.7%	+2	4
<i>Pre-registration Nurse/ Midwife Intern</i>		2	15	2	+2		-0	-3.9%	-13	9
Nursing/ Midwifery Student		5	15	5	+5		+0	+2.7%	-11	13
Nursing/ Midwifery other		2	1	2	+2		+0	+1.6%	+1	2
Nursing & Midwifery	482	510	529	517	+35	+7.3%	+7	+1.5%	-12	556
Therapy Professions	36	40	40	41	+5	+13.3%	+0	+0.1%	+1	44
Social Care	4	4	2	3	-1	-32.0%	-1	-34.1%	+0	3
Social Workers	39	48	46	48	+9	+22.0%	-0	-0.1%	+2	51
Psychologists	21	25	28	29	+9	+42.6%	+5	+20.1%	+1	32
Pharmacy	1	1	1	1	+0	+12.5%	+0	+11.1%	+0	1
H&SC, Other	13	18	18	19	+6	+43.0%	+0	+1.7%	+1	21
Health & Social Care Professionals	113	136	135	140	+27	+23.6%	+4	+2.9%	+5	152
Management (VIII & above)	6	9	6	7	+1	+17.9%	-2	-23.5%	+0	7
Administrative/ Supervisory (V to VII)	30	30	35	35	+5	+17.0%	+5	+16.3%	+0	37
Clerical (III & IV)	85	89	94	95	+9	+11.1%	+6	+6.2%	+1	103
Management & Administrative	121	128	135	136	+16	+12.9%	+8	+6.5%	+1	147
Support	62	58	62	62	-0	-0.6%	+4	+6.9%	-0	68
Maintenance/ Technical	17	16	16	16	-1	-5.5%	-0	-3.0%	-0	16
General Support	79	74	78	78	-1	-1.6%	+3	+4.7%	-0	84
Health Care Assistants	66	75	71	73	+7	+10.2%	-1	-2.0%	+2	82
Care, other	11	12	9	10	-1	-10.2%	-2	-18.3%	+0	11
Patient & Client Care	77	86	81	83	+6	+7.4%	-4	-4.2%	+2	93

Mental Health Employment Report by Grade Group: OCT 2023

CHO 2

OCT 2023	WTE DEC 2019	WTE DEC 2022	WTE SEP 2023	WTE OCT 2023	WTE change since DEC 2019	% WTE change since Dec 2019	WTE change since DEC 2022	% WTE change since Dec 2022	WTE change since SEP 2023	No. OCT 2023
Total CHO 2	1308	1329	1335	1345	+37	+2.8%	+16	+1.2%	+10	1,461
Consultants	38	37	40	42	+4	+11.3%	+5	+13.3%	+2	46
Registrars	33	37	39	41	+8	+23.4%	+4	+10.8%	+2	44
SHO/ Interns	35	39	35	36	+1	+1.9%	-3	-8.4%	+1	37
Medical/ Dental, other	1	1			-1	-100.0%	-1	-100.0%		
Medical & Dental	107	114	114	118	+12	+10.9%	+5	+4.1%	+4	127
Nurse/ Midwife Manager	146	142	150	151	+5	+3.6%	+9	+6.3%	+1	155
Nurse/ Midwife Specialist & AN/MP	67	88	97	102	+35	+51.2%	+14	+16.1%	+5	106
Staff Nurse/ Staff Midwife	357	353	323	323	-34	-9.6%	-30	-8.6%	-0	351
<i>Nursing/ Midwifery awaiting registration</i>	5	7	13	20	+15	+316.4%	+13	+182.6%	+7	30
<i>Pre-registration Nurse/ Midwife Intern</i>	0	4	17	3	+3	+2,400.0%	-1	-25.9%	-14	13
Nursing/ Midwifery Student	5	11	29	23	+18	+367.8%	+12	+106.2%	-6	43
Nursing/ Midwifery other	2	4	3	4	+2	+75.0%	-1	-12.5%	+0	4
Nursing & Midwifery	577	598	603	602	+25	+4.3%	+4	+0.7%	-1	659
Therapy Professions	45	55	50	53	+7	+16.4%	-2	-3.3%	+2	58
Social Care	15	14	12	13	-2	-10.4%	-1	-4.3%	+1	14
Social Workers	41	44	44	43	+3	+6.1%	-1	-1.5%	-1	48
Psychologists	34	37	41	42	+8	+24.6%	+5	+12.8%	+1	47
Pharmacy	3	3	3	3	+1	+21.8%	+1	+22.8%	+0	4
H&SC, Other	3	3	3	3	-0	-4.7%	+0	+1.1%	+0	3
Health & Social Care Professionals	140	155	153	157	+17	+12.2%	+2	+1.5%	+4	174
Management (VIII & above)	5	3	3	3	-2	-40.0%	+0	+0.0%	+0	3
Administrative/ Supervisory (V to VII)	24	25	28	28	+4	+17.7%	+3	+10.4%	-1	29
Clerical (III & IV)	109	98	104	108	-1	-0.8%	+11	+10.8%	+4	118
Management & Administrative	138	126	136	139	+1	+0.9%	+13	+10.5%	+3	150
Support	36	27	24	22	-14	-39.1%	-5	-17.0%	-2	24
Maintenance/ Technical	27	36	35	35	+8	+29.1%	-1	-2.9%	-0	35
General Support	63	62	59	57	-6	-9.9%	-6	-8.9%	-2	59
Health Care Assistants	215	202	199	200	-14	-6.6%	-2	-0.8%	+2	212
Care, other	69	73	71	72	+3	+3.6%	-1	-1.4%	+0	80
Patient & Client Care	284	275	270	272	-12	-4.1%	-3	-0.9%	+2	292

Mental Health Employment Report by Grade Group: OCT 2023

CHO 3

OCT 2023	WTE DEC 2019	WTE DEC 2022	WTE SEP 2023	WTE OCT 2023	WTE change since DEC 2019	% WTE change since Dec 2019	WTE change since DEC 2022	% WTE change since Dec 2022	WTE change since SEP 2023	No. OCT 2023
Total CHO 3	795	814	817	822	+26	+3.3%	+7	+0.9%	+4	899
Consultants	23	29	31	31	+7	+31.5%	+2	+5.6%	-0	34
Registrars	18	15	23	23	+5	+27.7%	+8	+50.1%	-0	23
SHO/ Interns	19	33	16	16	-3	-15.6%	-17	-52.1%	+0	16
Medical & Dental	60	78	70	70	+9	+15.5%	-8	-10.4%	-0	73
Nurse/ Midwife Manager	88	87	85	88	-0	-0.2%	+1	+0.7%	+3	92
Nurse/ Midwife Specialist & AN/MP	39	44	49	50	+11	+28.0%	+6	+12.8%	+2	54
Staff Nurse/ Staff Midwife	245	243	231	226	-19	-7.9%	-17	-7.0%	-5	250
Pre-registration Nurse/ Midwife Intern	9	4	17	4	-5	-52.0%	-0	-0.2%	-13	7
Nursing/ Midwifery Student	9	4	17	4	-5	-52.0%	-0	-0.2%	-13	7
Nursing/ Midwifery other		1	1	1	+1		+0	+0.0%	-0	1
Nursing & Midwifery	381	380	382	369	-12	-3.2%	-11	-2.8%	-13	404
Therapy Professions	26	30	31	31	+4	+16.4%	+0	+1.2%	-0	34
Social Care	3	2	1	1	-2	-65.2%	-1	-44.8%	+0	1
Social Workers	25	28	25	25	-0	-0.2%	-3	-9.6%	+0	27
Psychologists	92	93	90	102	+10	+10.5%	+9	+9.2%	+12	112
Pharmacy	3	3	3	3	-0	-1.8%	-0	-2.5%	+0	3
H&SC, Other	10	10	11	11	+2	+16.7%	+2	+16.0%	-0	12
Health & Social Care Professionals	159	166	161	173	+14	+8.6%	+7	+4.2%	+12	189
Management (VIII & above)	2	4	4	4	+2	+103.0%	+0	+1.3%	+0	4
Administrative/ Supervisory (V to VII)	17	16	18	18	+1	+5.3%	+2	+10.2%	-0	18
Clerical (III & IV)	56	50	59	61	+5	+8.7%	+10	+20.9%	+2	67
Management & Administrative	75	70	80	82	+8	+10.4%	+12	+17.3%	+2	89
Support	32	30	31	31	-1	-3.8%	+1	+3.3%	+0	35
Maintenance/ Technical	11	7	7	8	-4	-31.8%	+1	+8.2%	+1	9
General Support	43	37	38	39	-5	-10.9%	+2	+4.2%	+1	44
Health Care Assistants	75	82	83	87	+12	+15.4%	+5	+6.6%	+4	97
Care, other	2	2	2	2	+1	+47.3%	+0	+0.8%	+0	3
Patient & Client Care	77	84	86	89	+12	+16.1%	+5	+6.4%	+4	100

Mental Health Employment Report by Grade Group: OCT 2023

CHO 4

OCT 2023	WTE DEC 2019	WTE DEC 2022	WTE SEP 2023	WTE OCT 2023	WTE change since DEC 2019	% WTE change since Dec 2019	WTE change since DEC 2022	% WTE change since Dec 2022	WTE change since SEP 2023	No. OCT 2023
Total CHO 4	1499	1562	1574	1593	+95	+6.3%	+32	+2.0%	+19	1,770
Consultants	50	60	62	65	+15	+29.6%	+4	+7.1%	+3	71
Registrars	46	56	48	49	+3	+7.6%	-7	-12.6%	+1	52
SHO/ Interns	31	42	51	53	+22	+72.1%	+11	+25.7%	+3	54
Medical/ Dental, other	2	1	1	1	-1	-51.5%	+0	+1.0%	+0	4
Medical & Dental	129	160	162	168	+40	+30.8%	+8	+5.1%	+6	181
Nurse/ Midwife Manager	171	207	204	200	+29	+16.9%	-7	-3.2%	-4	213
Nurse/ Midwife Specialist & AN/MP	60	72	82	88	+28	+46.2%	+15	+21.3%	+5	96
Staff Nurse/ Staff Midwife	505	479	450	448	-58	-11.4%	-31	-6.6%	-2	485
<i>Nursing/ Midwifery awaiting registration</i>	<i>30</i>		<i>1</i>	<i>14</i>	<i>-15</i>	<i>-51.8%</i>	<i>+14</i>		<i>+14</i>	<i>22</i>
<i>Post-registration Nurse/ Midwife Student</i>	<i>1</i>				<i>-1</i>	<i>-100.0%</i>				
<i>Pre-registration Nurse/ Midwife Intern</i>	<i>3</i>	<i>7</i>	<i>24</i>	<i>10</i>	<i>+7</i>	<i>+217.3%</i>	<i>+3</i>	<i>+42.3%</i>	<i>-14</i>	<i>26</i>
Nursing/ Midwifery Student	34	7	25	24	-10	-29.1%	+17	+255.0%	-1	48
Nursing & Midwifery	770	765	761	759	-11	-1.4%	-6	-0.7%	-2	842
Therapy Professions	74	79	86	87	+13	+18.2%	+9	+10.8%	+1	99
Social Care	4	6	4	5	+1	+22.9%	-1	-19.0%	+0	6
Social Workers	53	73	72	74	+20	+38.5%	+1	+0.8%	+1	84
Psychologists	83	96	90	98	+16	+18.9%	+3	+2.6%	+8	110
Pharmacy	2	2	1	2	-1	-39.5%	-1	-36.4%	+0	3
H&SC, Other	11	18	18	18	+7	+67.5%	+0	+2.3%	+0	22
Health & Social Care Professionals	227	273	273	284	+57	+25.0%	+10	+3.7%	+11	324
Management (VIII & above)	1	3	4	4	+3	+280.0%	+1	+26.7%	+0	4
Administrative/ Supervisory (V to VII)	22	26	31	32	+10	+42.6%	+6	+21.2%	+1	33
Clerical (III & IV)	87	87	93	97	+10	+11.2%	+10	+12.0%	+5	108
Management & Administrative	111	116	128	133	+22	+20.0%	+17	+14.5%	+5	145
Support	81	75	66	64	-17	-20.5%	-11	-14.0%	-1	75
Maintenance/ Technical	6	5	4	4	-2	-37.2%	-1	-24.7%	+0	4
General Support	87	80	69	68	-19	-21.6%	-12	-14.7%	-1	79
Health Care Assistants	168	162	176	176	+7	+4.4%	+14	+8.5%	-0	187
Care, other	7	5	5	6	-2	-23.1%	+0	+6.7%	+0	12
Patient & Client Care	176	167	181	181	+6	+3.3%	+14	+8.4%	+0	199

Mental Health Employment Report by Grade Group: OCT 2023

CHO 5

OCT 2023	WTE DEC 2019	WTE DEC 2022	WTE SEP 2023	WTE OCT 2023	WTE change since DEC 2019	% WTE change since Dec 2019	WTE change since DEC 2022	% WTE change since Dec 2022	WTE change since SEP 2023	No. OCT 2023
Total CHO 5	1177	1224	1319	1322	+145	+12.3%	+98	+8.0%	+4	1,457
Consultants	26	33	33	35	+9	+32.3%	+1	+4.3%	+2	38
Registrars	10	12	18	18	+8	+80.0%	+6	+51.5%	-0	18
SHO/ Interns	32	32	30	33	+1	+2.3%	+0	+1.2%	+2	35
Medical/ Dental, other	2	2	2	2	+0	+0.0%	+0	+2.6%	+0	2
Medical & Dental	70	80	84	88	+17	+24.5%	+8	+10.0%	+4	93
Nurse/ Midwife Manager	171	175	162	157	-14	-8.5%	-18	-10.5%	-5	163
Nurse/ Midwife Specialist & AN/MP	43	68	88	88	+44	+102.7%	+20	+28.7%	-1	92
Staff Nurse/ Staff Midwife	412	398	388	384	-28	-6.8%	-14	-3.5%	-4	430
<i>Nursing/ Midwifery awaiting registration</i>		6	10	22	+22		+16	+290.2%	+12	23
<i>Pre-registration Nurse/ Midwife Intern</i>	1	1	12	7	+6	+586.0%	+6	+600.0%	-5	12
Nursing/ Midwifery Student	1	7	22	29	+28	+2,771.0%	+22	+336.3%	+7	35
Nursing/ Midwifery other	4	4	5	6	+2	+60.2%	+2	+62.8%	+1	6
Nursing & Midwifery	631	651	665	663	+32	+5.0%	+12	+1.8%	-3	726
Therapy Professions	38	34	32	32	-7	-17.3%	-2	-6.5%	-0	36
Social Care	5	4	4	4	-0	-5.4%	+1	+21.8%	+0	5
Social Workers	28	29	32	33	+5	+17.6%	+4	+15.4%	+2	37
Psychologists	21	27	34	35	+14	+67.7%	+8	+30.3%	+1	40
H&SC, Other	9	23	23	23	+14	+157.6%	+0	+0.2%	+0	24
Health & Social Care Professionals	101	117	125	128	+27	+26.3%	+11	+9.7%	+3	142
Management (VIII & above)	4	6	5	4	-0	-0.3%	-2	-29.9%	-1	4
Administrative/ Supervisory (V to VII)	21	23	30	31	+10	+49.1%	+8	+34.1%	+2	33
Clerical (III & IV)	74	74	95	95	+21	+28.4%	+20	+27.3%	-0	103
Management & Administrative	99	104	130	130	+31	+31.6%	+27	+25.7%	+1	140
Support	171	175	187	186	+15	+8.6%	+11	+6.5%	-1	211
Maintenance/ Technical	19	14	15	14	-5	-26.0%	+0	+1.6%	-1	15
General Support	190	189	201	200	+10	+5.1%	+12	+6.2%	-1	226
Health Care Assistants	73	73	98	99	+26	+36.1%	+26	+35.1%	+1	108
Care, other	13	12	15	15	+2	+18.8%	+3	+28.7%	+0	22
Patient & Client Care	85	85	113	114	+29	+33.5%	+29	+34.3%	+1	130

Mental Health Employment Report by Grade Group: OCT 2023

CHO 6

OCT 2023	WTE DEC 2019	WTE DEC 2022	WTE SEP 2023	WTE OCT 2023	WTE change since DEC 2019	% WTE change since Dec 2019	WTE change since DEC 2022	% WTE change since Dec 2022	WTE change since SEP 2023	No. OCT 2023
Total CHO 6	593	650	670	655	+62	+10.5%	+5	+0.8%	-15	720
Consultants	36	45	50	30	-6	-15.8%	-15	-32.9%	-20	34
Registrars	22	30	30	37	+15	+68.7%	+7	+23.8%	+7	39
SHO/ Interns	9	9	11	11	+2	+22.2%	+2	+22.6%	+0	11
Medical & Dental	67	84	91	78	+11	+16.9%	-6	-6.9%	-13	84
Nurse/ Midwife Manager	76	75	70	71	-6	-7.2%	-4	-5.1%	+1	74
Nurse/ Midwife Specialist & AN/MP	14	27	31	27	+13	+96.3%	-0	-0.1%	-4	30
Staff Nurse/ Staff Midwife	139	151	148	147	+8	+5.9%	-4	-2.7%	-1	157
<i>Nursing/ Midwifery awaiting registration</i>			1	1	+1		+1		-0	1
<i>Pre-registration Nurse/ Midwife Intern</i>			3						-3	
Nursing/ Midwifery Student			4	1	+1		+1		-3	1
Nursing/ Midwifery other	2	4	3	3	+1	+50.0%	-1	-20.2%	+0	3
Nursing & Midwifery	231	257	255	249	+17	+7.5%	-8	-3.2%	-7	265
Therapy Professions	43	41	41	40	-3	-8.1%	-2	-4.1%	-1	48
Social Care	26	28	25	10	-16	-60.7%	-18	-63.5%	-15	14
Social Workers	30	36	41	38	+9	+28.8%	+2	+5.8%	-2	42
Psychologists	22	38	35	40	+18	+81.4%	+2	+6.3%	+5	48
H&SC, Other	9	6	10	15	+6	+70.0%	+8	+130.7%	+4	17
Health & Social Care Professionals	130	150	152	143	+13	+10.3%	-7	-4.4%	-9	169
Management (VIII & above)	3	5	5	5	+2	+65.7%	+0	+0.0%	-0	5
Administrative/ Supervisory (V to VII)	27	31	28	38	+11	+42.1%	+7	+23.4%	+10	41
Clerical (III & IV)	42	29	39	39	-3	-6.5%	+10	+35.5%	+1	45
Management & Administrative	72	65	72	82	+10	+14.6%	+18	+27.0%	+11	91
Support	36	29	28	31	-6	-15.4%	+2	+5.4%	+3	36
Maintenance/ Technical	6	5	7	6	+0	+1.5%	+1	+20.5%	-1	6
General Support	42	34	35	37	-6	-13.0%	+3	+7.6%	+2	42
Health Care Assistants	46	54	58	59	+13	+29.5%	+5	+10.0%	+1	61
Care, other	5	7	7	7	+2	+38.5%	+1	+7.7%	+1	8
Patient & Client Care	51	60	65	66	+15	+30.4%	+6	+9.7%	+1	69

Mental Health Employment Report by Grade Group: OCT 2023

CHO 7

OCT 2023	WTE DEC 2019	WTE DEC 2022	WTE SEP 2023	WTE OCT 2023	WTE change since DEC 2019	% WTE change since Dec 2019	WTE change since DEC 2022	% WTE change since Dec 2022	WTE change since SEP 2023	No. OCT 2023
Total CHO 7	835	879	904	900	+65	+7.8%	+22	+2.5%	-4	980
Consultants	48	52	56	55	+8	+15.9%	+3	+5.9%	-1	58
Registrars	46	55	45	45	-2	-3.7%	-11	-19.1%	-1	47
SHO/ Interns	21	26	29	30	+9	+43.8%	+4	+17.2%	+1	30
Medical & Dental	115	133	130	130	+15	+13.1%	-3	-2.3%	-0	135
Nurse/ Midwife Manager	117	109	100	101	-16	-13.5%	-8	-7.8%	+0	108
Nurse/ Midwife Specialist & AN/MP	40	56	69	70	+30	+75.8%	+14	+25.5%	+1	74
Staff Nurse/ Staff Midwife	194	205	199	193	-1	-0.8%	-12	-5.7%	-6	214
<i>Nursing/ Midwifery awaiting registration</i>	<i>10</i>	<i>1</i>	<i>9</i>	<i>10</i>	<i>+0</i>	<i>+0.4%</i>	<i>+9</i>	<i>+900.0%</i>	<i>+1</i>	<i>11</i>
<i>Pre-registration Nurse/ Midwife Intern</i>	<i>1</i>	<i>0</i>	<i>10</i>	<i>0</i>	<i>-1</i>	<i>-73.0%</i>	<i>+0</i>	<i>+270.0%</i>	<i>-10</i>	<i>2</i>
Nursing/ Midwifery Student	11	1	19	10	-1	-8.5%	+9	+842.2%	-8	13
Nursing/ Midwifery other	8	6	5	7	-1	-11.8%	+1	+12.1%	+1	8
Nursing & Midwifery	370	377	392	381	+11	+3.0%	+4	+1.0%	-12	417
Therapy Professions	48	51	50	54	+6	+12.3%	+3	+5.5%	+4	61
Social Care	8	7	6	6	-2	-21.5%	-1	-10.7%	+0	7
Social Workers	34	38	39	41	+7	+21.5%	+3	+7.9%	+3	47
Psychologists	31	35	39	40	+9	+27.2%	+5	+14.9%	+1	44
Pharmacy	1	0	1	1	-0	-20.0%	+1	+300.0%	+0	1
H&SC, Other	18	19	16	17	-1	-7.3%	-2	-10.7%	+1	18
Health & Social Care Professionals	140	150	151	159	+19	+13.3%	+9	+5.9%	+8	178
Management (VIII & above)	3	5	5	4	+1	+37.0%	-1	-19.1%	-1	4
Administrative/ Supervisory (V to VII)	16	22	25	25	+9	+56.5%	+2	+9.7%	-0	25
Clerical (III & IV)	47	55	62	62	+15	+32.6%	+7	+12.0%	+0	68
Management & Administrative	65	83	92	91	+25	+38.5%	+8	+9.5%	-1	97
Support	18	16	14	13	-4	-25.3%	-3	-17.7%	-0	15
Maintenance/ Technical	2	2	2	1	-1	-40.3%	-1	-42.8%	-1	2
General Support	20	18	16	14	-5	-26.7%	-4	-20.4%	-1	17
Health Care Assistants	33	31	33	34	+1	+2.1%	+4	+11.7%	+1	36
Care, other	92	88	90	92	-0	-0.3%	+4	+4.6%	+2	100
Patient & Client Care	125	118	123	126	+0	+0.3%	+8	+6.4%	+3	136

Mental Health Employment Report by Grade Group: OCT 2023

CHO 8

OCT 2023	WTE DEC 2019	WTE DEC 2022	WTE SEP 2023	WTE OCT 2023	WTE change since DEC 2019	% WTE change since Dec 2019	WTE change since DEC 2022	% WTE change since Dec 2022	WTE change since SEP 2023	No. OCT 2023
Total CHO 8	1098	1091	1143	1132	+34	+3.1%	+42	+3.8%	-11	1,227
Consultants	35	36	38	38	+3	+7.9%	+2	+5.0%	+0	40
Registrars	26	29	29	30	+5	+18.2%	+1	+4.3%	+1	32
SHO/ Interns	36	29	34	34	-2	-5.4%	+5	+17.6%	+0	35
Medical & Dental	97	94	101	103	+6	+5.7%	+8	+8.7%	+1	107
Nurse/ Midwife Manager	121	114	117	120	-1	-0.5%	+6	+5.4%	+3	123
Nurse/ Midwife Specialist & AN/MP	56	75	80	79	+23	+41.6%	+5	+6.6%	-1	84
Staff Nurse/ Staff Midwife	332	323	316	315	-16	-5.0%	-8	-2.5%	-1	336
<i>Nursing/ Midwifery awaiting registration</i>	2	8	9	10	+8	+376.0%	+1	+13.7%	+0	12
<i>Pre-registration Nurse/ Midwife Intern</i>	1	1	19	3	+2	+452.0%	+2	+452.0%	-16	13
Nursing/ Midwifery Student	3	9	28	12	+10	+391.2%	+3	+38.4%	-16	25
Nursing/ Midwifery other	4	3	3	3	-1	-26.6%	+0	+0.0%	+0	3
Nursing & Midwifery	515	523	544	530	+15	+2.9%	+6	+1.2%	-15	571
Therapy Professions	44	36	35	36	-8	-18.6%	+0	+0.5%	+1	41
Social Care	7	6	5	5	-2	-31.7%	-1	-21.9%	-0	6
Social Workers	41	50	52	54	+13	+31.7%	+5	+9.1%	+2	61
Psychologists	39	36	39	40	+1	+2.2%	+4	+10.5%	+2	43
Pharmacy	1	2	3	3	+2	+156.0%	+1	+61.0%	+0	4
H&SC, Other	20	16	18	18	-3	-14.4%	+1	+8.0%	-0	21
Health & Social Care Professionals	154	146	151	156	+2	+1.3%	+9	+6.4%	+5	176
Management (VIII & above)	3	3	4	4	+1	+36.1%	+1	+33.3%	+0	4
Administrative/ Supervisory (V to VII)	22	28	28	29	+7	+30.6%	+1	+3.7%	+2	31
Clerical (III & IV)	88	88	108	107	+19	+21.2%	+19	+22.0%	-1	118
Management & Administrative	114	119	139	140	+27	+23.4%	+21	+18.0%	+1	153
Support	33	27	24	23	-10	-29.4%	-4	-14.9%	-1	25
Maintenance/ Technical	26	25	29	29	+2	+9.2%	+4	+15.7%	+0	29
General Support	59	52	53	52	-7	-12.2%	-0	-0.3%	-1	54
Health Care Assistants	157	152	152	149	-7	-4.7%	-2	-1.5%	-3	162
Care, other	4	5	3	3	-0	-4.0%	-1	-24.4%	+0	4
Patient & Client Care	160	156	155	153	-8	-4.7%	-3	-2.2%	-2	166

Mental Health Employment Report by Grade Group: OCT 2023

CHO 9

OCT 2023	WTE DEC 2019	WTE DEC 2022	WTE SEP 2023	WTE OCT 2023	WTE change since DEC 2019	% WTE change since Dec 2019	WTE change since DEC 2022	% WTE change since Dec 2022	WTE change since SEP 2023	No. OCT 2023
Total CHO 9	1272	1371	1302	1306	+34	+2.7%	-65	-4.8%	+4	1,423
Consultants	50	55	53	57	+7	+13.1%	+1	+2.5%	+3	58
Registrars	31	57	46	46	+16	+50.2%	-11	-18.6%	+1	47
SHO/ Interns	53	36	47	51	-2	-3.4%	+16	+43.4%	+4	54
Medical & Dental	134	148	147	154	+20	+15.1%	+6	+4.3%	+8	159
Nurse/ Midwife Manager	132	138	139	140	+8	+5.8%	+2	+1.3%	+1	147
Nurse/ Midwife Specialist & AN/MP	65	99	101	100	+35	+53.2%	+1	+1.1%	-1	104
Staff Nurse/ Staff Midwife	351	351	299	299	-53	-15.0%	-52	-14.9%	-1	327
<i>Nursing/ Midwifery awaiting registration</i>	<i>11</i>	<i>14</i>	<i>14</i>	<i>14</i>	<i>+4</i>	<i>+33.6%</i>	<i>+1</i>	<i>+4.6%</i>	<i>+0</i>	<i>19</i>
<i>Pre-registration Nurse/ Midwife Intern</i>	<i>10</i>	<i>8</i>	<i>6</i>	<i>1</i>	<i>-9</i>	<i>-90.1%</i>	<i>-7</i>	<i>-87.5%</i>	<i>-5</i>	<i>2</i>
Nursing/ Midwifery Student	21	22	20	15	-5	-26.2%	-6	-29.2%	-5	21
Nursing/ Midwifery other	11	9	8	8	-3	-28.8%	-1	-13.2%	-0	9
Nursing & Midwifery	581	619	568	561	-19	-3.3%	-57	-9.2%	-6	608
Therapy Professions	55	60	50	51	-3	-6.1%	-8	-14.0%	+1	57
Social Care	1	1	1	1	+0	+11.1%	+0	+1.0%	+0	1
Social Workers	43	57	55	54	+11	+25.0%	-2	-3.9%	-0	61
Psychologists	46	56	54	56	+10	+22.4%	-0	-0.3%	+2	61
Pharmacy	8	7	9	9	+1	+14.5%	+2	+30.2%	+0	13
H&SC, Other	15	17	18	19	+4	+30.2%	+2	+8.7%	+1	21
Health & Social Care Professionals	167	198	186	191	+23	+14.0%	-7	-3.6%	+4	214
Management (VIII & above)	5	5	6	6	+1	+20.2%	+1	+21.7%	+0	6
Administrative/ Supervisory (V to VII)	28	38	41	41	+13	+45.6%	+2	+5.8%	-0	43
Clerical (III & IV)	104	109	108	110	+7	+6.3%	+2	+1.6%	+2	126
Management & Administrative	137	152	155	157	+20	+14.8%	+5	+3.3%	+2	175
Support	103	95	87	87	-17	-16.1%	-8	-8.6%	-1	101
Maintenance/ Technical	11	11	10	9	-2	-22.1%	-2	-22.1%	-1	9
General Support	114	106	97	95	-19	-16.7%	-11	-10.0%	-2	110
Health Care Assistants	126	137	138	135	+9	+7.2%	-2	-1.2%	-3	145
Care, other	13	12	11	12	-1	-5.7%	-0	-2.4%	+1	12
Patient & Client Care	139	149	149	147	+8	+6.0%	-2	-1.3%	-2	157



Mental Health Employment Report by Grade Group: OCT 2023

other Community Services

OCT 2023	WTE DEC 2019	WTE DEC 2022	WTE SEP 2023	WTE OCT 2023	WTE change since DEC 2019	% WTE change since Dec 2019	WTE change since DEC 2022	% WTE change since Dec 2022	WTE change since SEP 2023	No. OCT 2023
Total other Community Services	438	511	553	567	+130	+29.6%	+56	+11.0%	+14	595
Consultants	16	15	16	16	+1	+4.3%	+2	+10.4%	+0	18
Registrars	13	19	17	18	+5	+38.5%	-1	-4.4%	+1	18
Medical & Dental	29	34	34	34	+6	+19.8%	+1	+2.1%	+1	36
Nurse/ Midwife Manager	62	81	78	80	+18	+28.3%	-1	-0.9%	+2	83
Nurse/ Midwife Specialist & AN/MP	8	11	11	10	+2	+18.9%	-1	-10.8%	-1	11
Staff Nurse/ Staff Midwife	169	151	159	164	-5	-3.1%	+13	+8.3%	+5	171
Nursing/ Midwifery awaiting registration			1	2	+2		+2		+1	2
Nursing/ Midwifery Student			1	2	+2		+2		+1	2
Nursing/ Midwifery other	1	2	2	2	+1	+100.0%	+0	+1.5%	+0	2
Nursing & Midwifery	240	245	250	257	+17	+6.9%	+12	+5.0%	+7	269
Therapy Professions	11	10	8	8	-3	-28.3%	-2	-18.9%	+0	8
Social Care	2	1	1	1	-1	-49.0%	+0	+1.0%	+0	1
Social Workers	15	11	12	12	-3	-20.5%	+1	+9.8%	+0	13
Psychologists	6	5	4	4	-2	-33.3%	-1	-25.7%	+0	4
Pharmacy		2	3	3	+3		+1	+51.5%	+0	3
Health & Social Care Professionals	34	29	28	28	-6	-18.1%	-1	-3.9%	+0	29
Management (VIII & above)	27	33	33	34	+7	+25.9%	+1	+4.3%	+1	35
Administrative/ Supervisory (V to VII)	31	46	58	56	+25	+81.3%	+11	+22.9%	-2	58
Clerical (III & IV)	25	28	35	34	+9	+34.8%	+6	+21.9%	-1	36
Management & Administrative	83	106	126	124	+41	+49.3%	+18	+16.9%	-1	129
Support	12	25	19	19	+7	+57.0%	-6	-22.5%	+0	20
Maintenance/ Technical	2	8	7	8	+6	+300.0%	+0	+0.4%	+1	8
General Support	14	33	26	27	+13	+91.2%	-6	-16.9%	+1	28
Health Care Assistants	37	64	76	83	+46	+125.6%	+18	+28.7%	+7	90
Care, other	1	0	14	14	+13	+2,698.0%	+14	+2,876.6%	-0	14
Patient & Client Care	37	65	90	97	+60	+160.1%	+32	+49.3%	+7	104

Mental Health Employment Report by Grade Group: OCT 2023

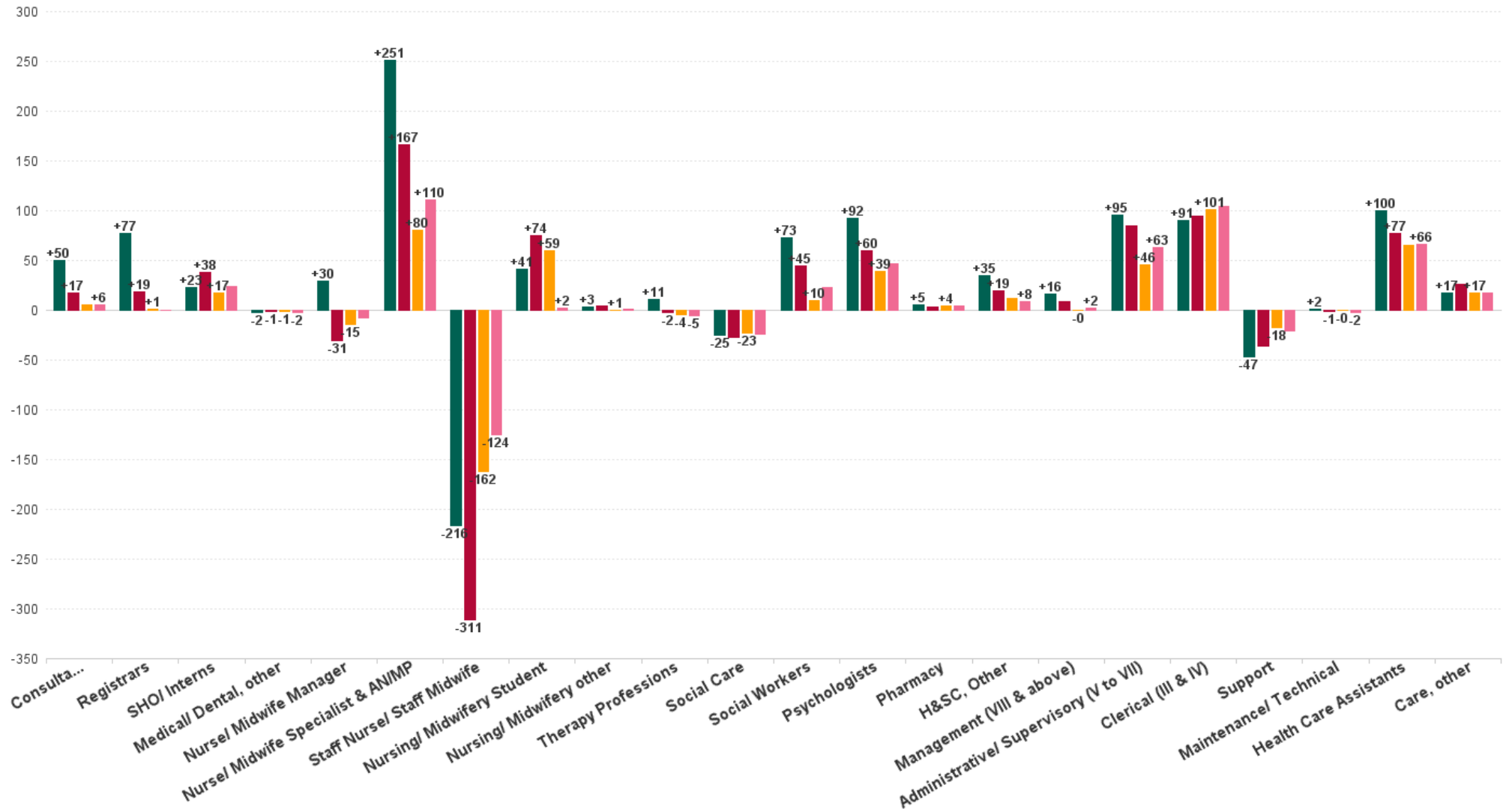
OCT 2023	WTE DEC 2019	WTE DEC 2022	WTE SEP 2023	WTE OCT 2023	WTE change since DEC 2019	% WTE change since Dec 2019	WTE change since DEC 2022	% WTE change since Dec 2022	WTE change since SEP 2023	No. OCT 2023
Overall	9,967	10,453	10,667	10,690	+723	+7.3%	+237	+2.3%	+23	11,660
Consultant Medicine	1	1	1	1	+0	+0.0%	+0	+0.0%	+0	1
Consultant Psychiatry	352	396	414	402	+50	+14.3%	+6	+1.5%	-12	432
Consultants	353	397	415	403	+50	+14.3%	+6	+1.5%	-12	433
Registrar	169	217	204	206	+37	+21.6%	-11	-5.2%	+1	212
Senior Registrar	97	126	126	136	+39	+39.8%	+10	+8.0%	+10	143
Specialist Registrar	3	2	4	4	+1	+58.8%	+2	+99.5%	-0	4
Registrars	269	345	334	346	+77	+28.5%	+1	+0.2%	+11	359
Interns	8	5	8	9	+1	+9.4%	+4	+77.8%	+1	9
Senior House Officer	253	262	265	276	+23	+8.9%	+14	+5.1%	+11	284
SHO/ Interns	261	267	273	284	+23	+8.9%	+17	+6.5%	+12	293
Other Medical	5	4	3	3	-2	-40.6%	-1	-24.0%	+0	6
Medical/ Dental, other	5	4	3	3	-2	-40.6%	-1	-24.0%	+0	6
Medical & Dental	888	1,013	1,024	1,036	+148	+16.7%	+23	+2.3%	+12	1,091
Clinical Nurse/ Midwife Manager 1	142	142	141	140	-2	-1.3%	-2	-1.4%	-1	146
Clinical Nurse/ Midwife Manager 2	755	781	759	762	+7	+0.9%	-19	-2.4%	+3	805
Clinical Nurse/ Midwife Manager 3	111	113	123	122	+11	+9.6%	+9	+7.6%	-1	124
Director Nursing/Midwifery, Assistant	165	176	180	176	+11	+6.8%	-0	-0.1%	-4	181
Director of Nursing/Midwifery	29	34	28	31	+2	+8.6%	-2	-6.9%	+3	32
Nurse/ Midwife Manager	1,201	1,245	1,231	1,231	+30	+2.5%	-15	-1.2%	+0	1,288
Advanced Nurse/ Midwife Practitioner	19	48	56	57	+38	+201.5%	+9	+17.6%	+1	59
Adv. Nurse/ Midwife, Candidate	11	20	28	28	+17	+154.7%	+8	+39.3%	+0	29
Clinical Nurse/ Midwife Specialist	430	563	622	627	+196	+45.6%	+64	+11.4%	+4	667
Nurse/ Midwife Specialist & AN/MP	460	631	706	711	+251	+54.6%	+80	+12.7%	+6	755
Staff Nurse [Intellectual Disability]	5	7	12	10	+5	+115.5%	+3	+46.8%	-2	10
Staff Nurse [Psychiatric]	2,890	2,835	2,698	2,684	-207	-7.1%	-151	-5.3%	-14	2,917
Staff Nurses [General/ Children's]	108	106	93	93	-15	-14.0%	-14	-12.7%	-1	101
Staff Nurse/ Staff Midwife	3,002	2,948	2,802	2,786	-216	-7.2%	-162	-5.5%	-16	3,028
Nursing/ Midwifery awaiting registration	57	39	58	95	+38	+66.7%	+56	+144.9%	+37	124
Post-registration Nurse/ Midwife Student	1				-1	-100.0%				
Pre-registration Nurse/ Midwife Intern	25	26	122	30	+4	+17.9%	+3	+11.8%	-93	84
Nursing/ Midwifery Student	83	65	180	124	+41	+50.0%	+59	+91.0%	-56	208
Nursing Education/Clinical	32	34	32	35	+3	+10.7%	+1	+1.6%	+3	38
Nursing/ Midwifery other	32	34	32	35	+3	+10.7%	+1	+1.6%	+3	38
Nursing & Midwifery	4,778	4,924	4,950	4,887	+109	+2.3%	-36	-0.7%	-63	5,317
Dietitians	19	18	19	22	+3	+16.8%	+4	+23.6%	+3	26
Occupational Therapists	337	346	337	342	+6	+1.7%	-4	-1.1%	+5	379
Physiotherapists	2	3	1	1	-1	-60.1%	-2	-69.7%	+0	2
Podiatrists & Chiropodists	1	1			-1	-100.0%	-1	-100.0%		
Speech & Language Therapists	62	68	65	66	+4	+6.8%	-2	-2.5%	+0	79
Therapy Professions	420	435	423	431	+11	+2.6%	-4	-0.9%	+8	486
Social Care	74	72	62	49	-25	-33.4%	-23	-31.8%	-13	58
Social Care	74	72	62	49	-25	-33.4%	-23	-31.8%	-13	58
Social Workers	350	414	417	424	+73	+20.9%	+10	+2.4%	+7	471
Social Workers	350	414	417	424	+73	+20.9%	+10	+2.4%	+7	471
Psychologists	394	448	455	487	+92	+23.4%	+39	+8.7%	+31	541
Psychologists	394	448	455	487	+92	+23.4%	+39	+8.7%	+31	541
Pharmacists	16	16	19	19	+3	+19.2%	+4	+23.4%	+1	25
Pharmacy Technicians	2	4	5	5	+2	+83.0%	+1	+21.5%	-0	7
Pharmacy	19	19	23	24	+5	+27.7%	+4	+23.0%	+1	32
Counsellor Therapists	95	124	128	131	+36	+38.5%	+7	+5.7%	+3	145
HSCP Trainees/Students				4	+4		+4		+4	4
Other Health & Social Care	11	3	3	2	-8	-77.1%	-1	-16.7%	-0	5
Play Therapists/ Specialists	1	3	4	4	+3	+181.5%	+1	+32.2%	+0	5
H&SC, Other	107	130	135	142	+35	+32.4%	+12	+8.8%	+7	159



OCT 2023	WTE DEC 2019	WTE DEC 2022	WTE SEP 2023	WTE OCT 2023	WTE change since DEC 2019	% WTE change since Dec 2019	WTE change since DEC 2022	% WTE change since Dec 2022	WTE change since SEP 2023	No. OCT 2023
Overall	9,967	10,453	10,667	10,690	+723	+7.3%	+237	+2.3%	+23	11,660
Health & Social Care Professionals	1,364	1,518	1,515	1,556	+192	+14.1%	+38	+2.5%	+41	1,747
Executive Management	11	14	17	17	+6	+57.2%	+3	+24.4%	+1	18
Senior Management (VIII & GM)	47	61	58	57	+10	+20.3%	-4	-6.2%	-1	58
Management (VIII & above)	58	75	75	74	+16	+27.2%	-0	-0.5%	-1	76
Middle Management (V-VII)	236	285	320	331	+95	+40.3%	+46	+16.1%	+12	346
Other Administrative	2	2	2	2	+0	+1.9%	+0	+1.9%	-0	2
Administrative/ Supervisory (V to VII)	238	287	322	333	+95	+40.0%	+46	+16.0%	+11	348
General Administrative (III & IV)	717	707	796	808	+91	+12.6%	+101	+14.3%	+12	892
Clerical (III & IV)	717	707	796	808	+91	+12.6%	+101	+14.3%	+12	892
Management & Administrative	1,014	1,068	1,192	1,215	+202	+19.9%	+147	+13.8%	+23	1,316
Catering	66	68	68	67	+1	+2.2%	-0	-0.5%	-0	74
Household Services	424	397	397	396	-29	-6.8%	-2	-0.5%	-2	452
Other Support	47	40	33	32	-14	-30.7%	-8	-19.5%	-1	39
Portering	48	51	43	43	-5	-10.5%	-7	-14.8%	-0	45
Support	585	556	542	538	-47	-8.0%	-18	-3.2%	-3	610
Maintenance	127	129	130	128	+2	+1.2%	-0	-0.2%	-2	133
Maintenance/ Technical	127	129	130	128	+2	+1.2%	-0	-0.2%	-2	133
General Support	712	685	672	667	-45	-6.4%	-18	-2.6%	-5	743
Attendant/ Aide	605	423	407	406	-199	-32.8%	-16	-3.9%	-1	449
Health Care Assistant/ Care Assistant	382	588	647	655	+273	+71.5%	+66	+11.3%	+8	693
Health & Social Care Assistants	9	19	31	34	+25	+284.0%	+15	+79.4%	+3	38
Health Care Assistants	996	1,030	1,085	1,095	+100	+10.0%	+65	+6.3%	+10	1,180
Home Care Services	16	23	20	20	+5	+29.2%	-3	-11.7%	+0	27
Other Care Grades	23	19	38	41	+18	+80.2%	+21	+111.4%	+2	43
Pastoral Care	13	9	9	10	-3	-21.0%	+1	+5.7%	+1	15
Workshop Services	165	164	160	162	-3	-1.6%	-2	-1.2%	+2	181
Care, other	216	216	229	233	+17	+8.0%	+17	+8.0%	+5	266
Patient & Client Care	1,212	1,246	1,314	1,329	+117	+9.7%	+82	+6.6%	+15	1,446

WTE Change by Staff Category

■ WTE change since DEC 2019 ■ WTE change since DEC 2021 ■ WTE change since DEC 2022 ■ WTE change since OCT 2022



Mental Health Employment Report by WTE, Headcount, Gender, Full-Time / Part-Time etc. OCT 2023

OCT 2023	WTE OCT 2023	No. OCT 2023	WTE : No	% Male	% Female	Male WTE : No.	Female WTE : No	Perm Count %	Perm Count Male %	Perm Count Female %	Fulltime Count %	Part time Count %	FT Count Male %	FT Count Female %
Total	10,690	11,660	1:0.9	26.95%	73.05%	1:1	1:0.9	82.98%	21.72%	61.27%	85.85%	14.15%	93.70%	82.95%
Consultants	402.93	433	1:0.9	41.11%	58.89%	1:1	1:0.9	64.20%	26.79%	37.41%	86.61%	13.39%	92.13%	82.75%
Registrars	345.52	359	1:1	42.90%	57.10%	1:1	1:0.9	8.36%	3.62%	4.74%	93.59%	6.41%	99.35%	89.27%
SHO/ Interns	284.43	293	1:1	39.59%	60.41%	1:1	1:1	3.07%	1.02%	2.05%	98.63%	1.37%	100.00%	97.74%
Medical/ Dental, other	2.97	6	1:0.5	50.00%	50.00%	1:0.4	1:0.5	50.00%	16.67%	33.33%	33.33%	66.67%	33.33%	33.33%
Medical & Dental	1,036	1,091	1:0.9	41.34%	58.66%	1:1	1:0.9	29.33%	12.19%	17.14%	91.84%	8.16%	96.23%	88.75%
Nurse/ Midwife Manager	1,230.84	1,288	1:1	36.96%	63.04%	1:1	1:0.9	97.59%	35.64%	61.96%	94.95%	5.05%	98.53%	92.86%
Nurse/ Midwife Specialist & AN/MP	711.19	755	1:0.9	18.28%	81.72%	1:1	1:0.9	97.88%	18.28%	79.60%	92.72%	7.28%	97.83%	91.57%
Staff Nurse/ Staff Midwife	2,786.04	3,028	1:0.9	25.26%	74.74%	1:0.9	1:0.9	90.62%	22.03%	68.59%	86.99%	13.01%	90.85%	85.68%
Nursing/ Midwifery Student	124.41	208	1:0.6	17.31%	82.69%	1:0.5	1:0.6	1.92%		1.92%	100.00%		100.00%	100.00%
Nursing/ Midwifery other	34.92	38	1:0.9	13.16%	86.84%	1:1	1:0.9	100.00%	13.16%	86.84%	89.47%	10.53%	100.00%	87.88%
Nursing & Midwifery	4,887	5,317	1:0.9	26.71%	73.29%	1:0.9	1:0.9	89.94%	23.87%	66.07%	90.26%	9.74%	94.37%	88.76%
Therapy Professions	431.45	486	1:0.9	9.67%	90.33%	1:0.9	1:0.9	89.51%	8.44%	81.07%	85.19%	14.81%	89.36%	84.74%
Social Care	49	58	1:0.8	10.34%	89.66%	1:0.7	1:0.9	75.86%	5.17%	70.69%	62.07%	37.93%	50.00%	63.46%
Social Workers	423.73	471	1:0.9	17.20%	82.80%	1:1	1:0.9	91.08%	15.50%	75.58%	84.71%	15.29%	95.06%	82.56%
Psychologists	486.72	541	1:0.9	19.41%	80.59%	1:1	1:0.9	68.95%	14.97%	53.97%	83.92%	16.08%	98.10%	80.50%
Pharmacy	23.64	32	1:0.7	15.63%	84.38%	1:0.9	1:0.7	93.75%	12.50%	81.25%	50.00%	50.00%	80.00%	44.44%
H&SC, Other	141.84	159	1:0.9	20.75%	79.25%	1:1	1:0.9	91.82%	20.13%	71.70%	72.33%	27.67%	90.91%	67.46%
Health & Social Care Professionals	1,556	1,747	1:0.9	15.86%	84.14%	1:0.9	1:0.9	83.40%	13.39%	70.01%	82.08%	17.92%	93.50%	79.93%
Management (VIII & above)	74.24	76	1:1	32.89%	67.11%	1:1	1:1	94.74%	31.58%	63.16%	97.37%	2.63%	96.00%	98.04%
Administrative/ Supervisory (V to VII)	333	348	1:1	19.54%	80.46%	1:1	1:0.9	89.37%	18.68%	70.69%	90.80%	9.20%	98.53%	88.93%
Clerical (III & IV)	807.97	892	1:0.9	9.64%	90.36%	1:1	1:0.9	82.40%	8.30%	74.10%	79.15%	20.85%	94.19%	77.54%
Management & Administrative	1,215	1,316	1:0.9	13.60%	86.40%	1:1	1:0.9	84.95%	12.39%	72.57%	83.28%	16.72%	96.09%	81.27%
Support	538.22	610	1:0.9	29.84%	70.16%	1:1	1:0.9	91.80%	27.21%	64.59%	64.75%	35.25%	89.01%	54.44%
Maintenance/ Technical	128.44	133	1:1	99.25%	0.75%	1:1	1:1	93.98%	93.23%	0.75%	96.99%	3.01%	96.97%	100.00%
General Support	667	743	1:0.9	42.26%	57.74%	1:1	1:0.9	92.19%	39.03%	53.16%	70.52%	29.48%	92.36%	54.55%
Health Care Assistants	1,095.35	1,180	1:0.9	31.86%	68.14%	1:0.9	1:0.9	92.20%	28.98%	63.22%	81.69%	18.31%	92.02%	76.87%
Care, other	233.23	266	1:0.9	46.99%	53.01%	1:0.9	1:0.8	84.96%	37.97%	46.99%	71.80%	28.20%	82.40%	62.41%
Patient & Client Care	1,329	1,446	1:0.9	34.65%	65.35%	1:0.9	1:0.9	90.87%	30.64%	60.24%	79.88%	20.12%	89.62%	74.71%



Mental Health Employment Report by WTE, Headcount, Gender, Full-Time / Part-Time etc. OCT 2023

OCT 2023	WTE OCT 2023	No. OCT 2023	WTE : No	% Male	% Female	Male WTE : No.	Female WTE : No	Perm Count %	Number Male %	Number Female %	Fulltime Count %	Part time Count %	FT Count Male %	FT Count Female %
Total	10,690	11,660	1:0.9	26.95%	73.05%	1:1	1:0.9	82.98%	21.72%	61.27%	85.85%	14.15%	93.70%	82.95%
CHO 1	1,047	1,128	1:0.9	26.24%	73.76%	1:1	1:0.9	90.60%	22.78%	67.82%	87.59%	12.41%	96.28%	84.50%
CHO 2	1,345	1,461	1:0.9	28.82%	71.18%	1:1	1:0.9	85.69%	23.41%	62.29%	86.04%	13.96%	92.16%	83.56%
CHO 3	822	899	1:0.9	21.02%	78.98%	1:0.9	1:0.9	81.54%	17.35%	64.18%	86.99%	13.01%	91.53%	85.77%
CHO 4	1,593	1,770	1:0.9	25.65%	74.35%	1:0.9	1:0.9	72.77%	17.40%	55.37%	83.50%	16.50%	92.51%	80.40%
CHO 5	1,322	1,457	1:0.9	25.19%	74.81%	1:0.9	1:0.9	88.47%	21.55%	66.92%	81.54%	18.46%	91.01%	78.35%
CHO 6	655	720	1:0.9	27.92%	72.08%	1:0.9	1:0.9	63.61%	20.14%	43.47%	82.64%	17.36%	91.04%	79.38%
CHO 7	900	980	1:0.9	23.78%	76.22%	1:1	1:0.9	83.27%	18.47%	64.80%	89.08%	10.92%	96.14%	86.88%
CHO 8	1,132	1,227	1:0.9	24.78%	75.22%	1:1	1:0.9	86.06%	20.29%	65.77%	86.96%	13.04%	96.38%	83.86%
CHO 9	1,306	1,423	1:0.9	28.32%	71.68%	1:1	1:0.9	85.87%	23.75%	62.12%	85.59%	14.41%	96.03%	81.47%
other Community Services	567	595	1:1	46.05%	53.95%	1:1	1:1	90.76%	40.67%	50.08%	94.79%	5.21%	93.80%	95.64%



Previous Month Summary

	% WTE change since SEP 2023	WTE change since DEC 2022	CHO 1	CHO 2	CHO 3	CHO 4	CHO 5	CHO 6	CHO 7	CHO 8	CHO 9	other Communi ty Services
Total	+0.2%	+236.6	+23.7	+16.1	+7.3	+31.7	+98.2	+5.5	+21.6	+41.8	-65.4	+56.3
Consultants	-2.8%	+5.9	+0.7	+4.9	+1.6	+4.3	+1.4	-14.9	+3.1	+1.8	+1.4	+1.5
Registrars	+3.4%	+0.8	+3.7	+4.0	+7.7	-7.1	+6.1	+7.1	-10.5	+1.3	-10.6	-0.8
SHO/ Interns	+4.4%	+17.3	-0.4	-3.3	-17.4	+10.9	+0.4	+2.0	+4.4	+5.1	+15.6	
Medical/ Dental, other	+0.0%	-0.9		-1.0		+0.0	+0.1					
Medical & Dental	+1.1%	+23.1	+4.0	+4.6	-8.1	+8.1	+8.0	-5.8	-3.0	+8.2	+6.3	+0.7
Nurse/ Midwife Manager	+0.0%	-14.6	+6.2	+9.0	+0.6	-6.7	-18.5	-3.8	-8.5	+6.1	+1.8	-0.8
Nurse/ Midwife Specialist & AN/MP	+0.8%	+80.4	+6.7	+14.2	+5.7	+15.4	+19.5	-0.0	+14.2	+4.9	+1.1	-1.2
Staff Nurse/ Staff Midwife	-0.6%	-161.8	-5.6	-30.3	-16.9	-31.4	-13.8	-4.1	-11.7	-8.1	-52.4	+12.6
Nursing/ Midwifery Student	-30.9%	+59.3	+0.1	+11.7	-0.0	+17.1	+22.1	+0.5	+9.2	+3.4	-6.4	+1.5
Nursing/ Midwifery other	+10.0%	+0.5	+0.0	-0.5	+0.0		+2.3	-0.8	+0.7	+0.0	-1.2	+0.0
Nursing & Midwifery	-1.3%	-36.1	+7.4	+4.1	-10.7	-5.6	+11.6	-8.2	+3.9	+6.3	-57.2	+12.2
Therapy Professions	+2.0%	-4.0	+0.0	-1.8	+0.4	+8.5	-2.2	-1.7	+2.8	+0.2	-8.4	-1.8
Social Care	-21.1%	-22.9	-1.3	-0.6	-0.8	-1.1	+0.8	-17.8	-0.7	-1.4	+0.0	+0.0
Social Workers	+1.7%	+10.1	-0.1	-0.7	-2.7	+0.6	+4.5	+2.1	+3.0	+4.5	-2.2	+1.1
Psychologists	+6.9%	+38.9	+4.9	+4.8	+8.6	+2.5	+8.2	+2.4	+5.2	+3.8	-0.2	-1.4
Pharmacy	+2.6%	+4.4	+0.1	+0.6	-0.1	-0.9			+0.6	+1.0	+2.1	+1.0



H&SC, Other	+5.2%	+11.5	+0.3	+0.0	+1.5	+0.4	+0.1	+8.4	-2.0	+1.3	+1.5	
Health & Social Care Professionals	+2.7%	+38.1	+4.0	+2.3	+7.0	+10.1	+11.3	-6.6	+8.9	+9.4	-7.2	-1.1
Management (VIII & above)	-0.7%	-0.3	-2.1	+0.0	+0.1	+0.8	-1.7	+0.0	-0.9	+1.0	+1.1	+1.4
Administrative/ Supervisory (V to VII)	+3.6%	+46.0	+4.9	+2.6	+1.6	+5.6	+8.0	+7.2	+2.2	+1.1	+2.2	+10.5
Clerical (III & IV)	+1.6%	+101.3	+5.5	+10.5	+10.5	+10.4	+20.3	+10.3	+6.6	+19.3	+1.8	+6.1
Management & Administrative	+2.0%	+146.9	+8.4	+13.2	+12.2	+16.8	+26.6	+17.5	+7.9	+21.4	+5.1	+18.0
Support	-0.6%	-17.6	+4.0	-4.5	+1.0	-10.5	+11.4	+1.6	-2.8	-4.0	-8.2	-5.6
Maintenance/ Technical	-1.5%	-0.3	-0.5	-1.0	+0.6	-1.3	+0.2	+1.0	-0.8	+3.9	-2.4	+0.0
General Support	-0.8%	-17.9	+3.5	-5.6	+1.6	-11.8	+11.7	+2.6	-3.7	-0.1	-10.6	-5.5
Health Care Assistants	+1.0%	+65.2	-1.5	-1.5	+5.4	+13.7	+25.7	+5.4	+3.6	-2.3	-1.7	+18.5
Care, other	+2.0%	+17.3	-2.2	-1.0	+0.0	+0.4	+3.4	+0.5	+4.0	-1.1	-0.3	+13.5
Patient & Client Care	+1.1%	+82.5	-3.7	-2.6	+5.4	+14.1	+29.1	+5.9	+7.6	-3.4	-2.0	+32.0



Year on Year Summary

	% WTE change since OCT 2022	WTE change since OCT 2022	CHO 1	CHO 2	CHO 3	CHO 4	CHO 5	CHO 6	CHO 7	CHO 8	CHO 9	other Communi ty Services
Total	+0.2%	+292.1	+13.1	+43.5	+8.2	+36.3	+93.5	+13.4	+18.1	+53.2	-60.0	+72.7
Consultants	-2.8%	+5.8	+1.2	+5.0	+1.8	+4.5	+0.3	-13.3	+2.3	+1.2	+2.3	+0.6
Registrars	+3.4%	+0.4	+2.5	+4.9	+5.5	-2.8	+6.0	+8.0	-12.1	+2.1	-12.6	-1.0
SHO/ Interns	+4.4%	+23.5	-2.8	-3.0	-12.0	+8.1	+2.1	+3.1	+4.1	+6.6	+17.2	
Medical/ Dental, other	+0.0%	-1.9		-1.0		-1.0	+0.1					
Medical & Dental	+1.1%	+27.8	+1.0	+5.8	-4.7	+8.8	+8.5	-2.2	-5.8	+9.8	+6.9	-0.4
Nurse/ Midwife Manager	+0.0%	-7.4	+11.8	+10.9	+1.8	-13.7	-17.2	+0.3	-9.7	+3.8	+2.9	+1.8
Nurse/ Midwife Specialist & AN/MP	+0.8%	+110.4	+11.8	+14.7	+8.7	+20.7	+24.2	+0.5	+14.3	+9.8	+6.5	-0.7
Staff Nurse/ Staff Midwife	-0.6%	-124.5	-10.2	-17.1	-10.9	-14.3	-3.8	-8.7	-9.9	-0.8	-62.6	+14.0
Nursing/ Midwifery Student	-30.9%	+1.8	-5.4	+3.7	-7.7	+9.2	-2.6	+0.1	+6.1	-2.9	-0.1	+1.5
Nursing/ Midwifery other	+10.0%	+0.9	+0.1	-0.5	+0.0		+3.1	-0.8	+0.8	+0.0	-1.8	+0.1
Nursing & Midwifery	-1.3%	-18.7	+8.1	+11.6	-8.2	+1.9	+3.7	-8.7	+1.5	+9.8	-55.2	+16.7
Therapy Professions	+2.0%	-5.1	-4.3	+1.9	+1.4	+6.9	-2.2	-0.1	+0.8	+1.3	-9.1	-1.7
Social Care	-21.1%	-23.6	-1.4	-0.5	-1.7	-0.3	-0.3	-17.6	-0.8	-1.1	+0.0	+0.0
Social Workers	+1.7%	+22.4	+0.4	+0.1	-3.6	+4.2	+6.7	+5.0	+6.5	+4.0	-0.8	-0.1
Psychologists	+6.9%	+46.3	+5.1	+6.9	+9.1	+3.1	+9.6	+3.4	+6.5	+4.5	+0.2	-2.0
Pharmacy	+2.6%	+4.8	+0.1	+0.6	-0.1	+0.1			+0.8	+0.1	+2.2	+1.0



H&SC, Other	+5.2%	+8.3	+0.3	+0.1	+0.4	-0.7	+1.1	+7.4	-2.4	+0.7	+1.4	
Health & Social Care Professionals	+2.7%	+53.1	+0.2	+9.0	+5.5	+13.4	+14.9	-1.9	+11.4	+9.4	-6.0	-2.8
Management (VIII & above)	-0.7%	+1.7	-1.8	+0.0	+1.1	+0.8	-1.5	-0.0	-1.0	+1.0	+2.0	+1.1
Administrative/ Supervisory (V to VII)	+3.6%	+62.8	+3.8	+3.2	+3.5	+8.5	+7.9	+7.2	+3.2	+4.2	+6.5	+14.8
Clerical (III & IV)	+1.6%	+104.0	+3.8	+13.6	+9.2	+6.9	+22.9	+8.8	+8.0	+17.8	+1.1	+11.9
Management & Administrative	+2.0%	+168.5	+5.7	+16.8	+13.8	+16.2	+29.4	+16.0	+10.2	+23.0	+9.7	+27.7
Support	-0.6%	-20.2	+4.3	-4.9	-1.2	-11.5	+11.1	+1.5	-3.0	-5.5	-7.2	-3.6
Maintenance/ Technical	-1.5%	-2.3	-0.8	+0.4	+1.5	-1.3	-1.0	+1.0	-0.9	+3.3	-2.5	-2.0
General Support	-0.8%	-22.5	+3.5	-4.5	+0.3	-12.8	+10.1	+2.5	-3.9	-2.2	-9.7	-5.6
Health Care Assistants	+1.0%	+66.5	-3.1	+2.4	+1.4	+8.4	+24.6	+7.3	+3.2	+4.5	-5.1	+23.1
Care, other	+2.0%	+17.4	-2.3	+2.4	+0.0	+0.5	+2.3	+0.5	+1.6	-1.0	-0.5	+14.0
Patient & Client Care	+1.1%	+83.9	-5.4	+4.8	+1.4	+8.8	+26.9	+7.8	+4.7	+3.5	-5.7	+37.0



Year to Date Summary

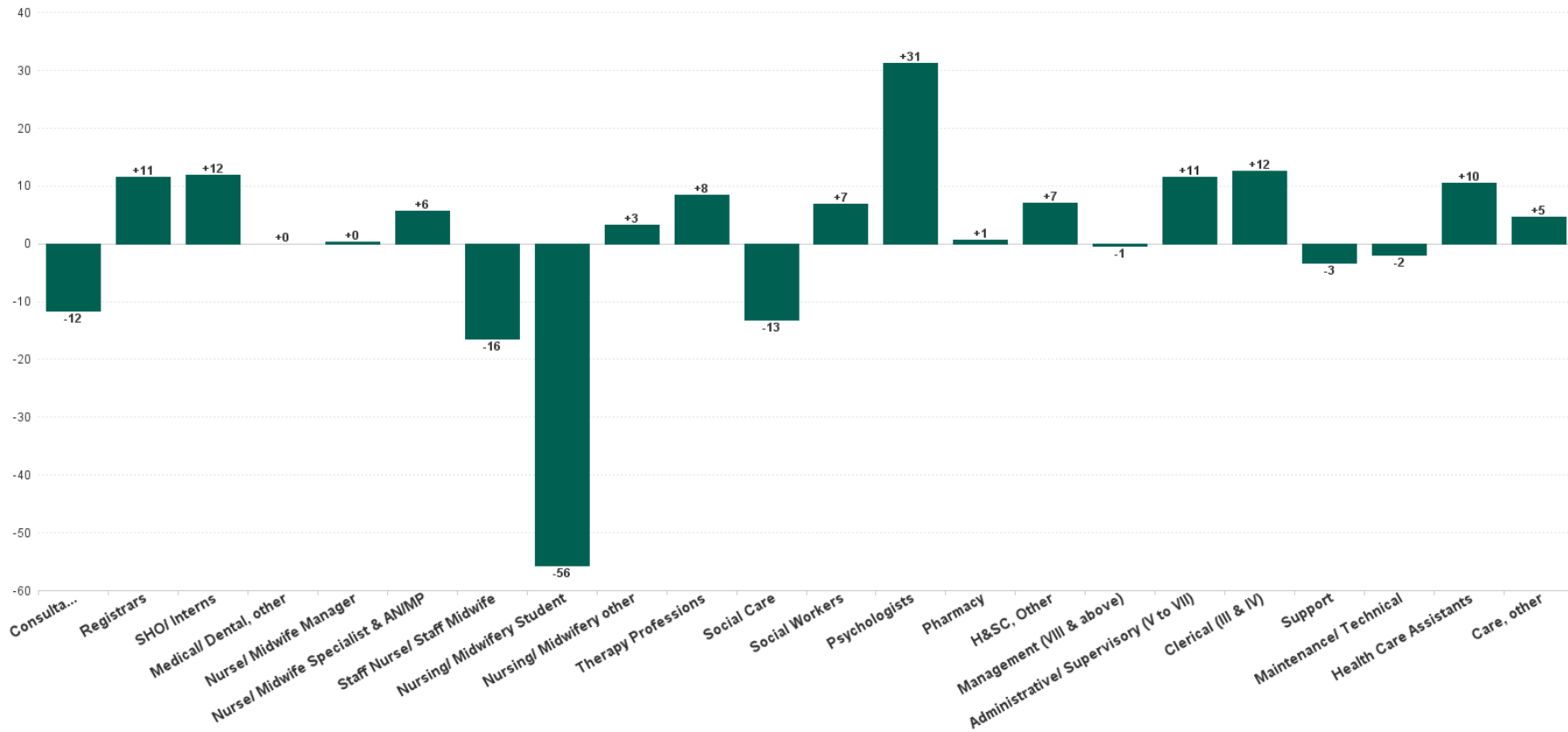
	% WTE change since OCT 2022	WTE change since DEC 2022	CHO 1	CHO 2	CHO 3	CHO 4	CHO 5	CHO 6	CHO 7	CHO 8	CHO 9	other Communi ty Services
Total	+2.3%	+236.6	+23.7	+16.1	+7.3	+31.7	+98.2	+5.5	+21.6	+41.8	-65.4	+56.3
Consultants	+1.5%	+5.9	+0.7	+4.9	+1.6	+4.3	+1.4	-14.9	+3.1	+1.8	+1.4	+1.5
Registrars	+0.2%	+0.8	+3.7	+4.0	+7.7	-7.1	+6.1	+7.1	-10.5	+1.3	-10.6	-0.8
SHO/ Interns	+6.5%	+17.3	-0.4	-3.3	-17.4	+10.9	+0.4	+2.0	+4.4	+5.1	+15.6	
Medical/ Dental, other	-24.0%	-0.9		-1.0		+0.0	+0.1					
Medical & Dental	+2.3%	+23.1	+4.0	+4.6	-8.1	+8.1	+8.0	-5.8	-3.0	+8.2	+6.3	+0.7
Nurse/ Midwife Manager	-1.2%	-14.6	+6.2	+9.0	+0.6	-6.7	-18.5	-3.8	-8.5	+6.1	+1.8	-0.8
Nurse/ Midwife Specialist & AN/MP	+12.7%	+80.4	+6.7	+14.2	+5.7	+15.4	+19.5	-0.0	+14.2	+4.9	+1.1	-1.2
Staff Nurse/ Staff Midwife	-5.5%	-161.8	-5.6	-30.3	-16.9	-31.4	-13.8	-4.1	-11.7	-8.1	-52.4	+12.6
Nursing/ Midwifery Student	+91.0%	+59.3	+0.1	+11.7	-0.0	+17.1	+22.1	+0.5	+9.2	+3.4	-6.4	+1.5
Nursing/ Midwifery other	+1.6%	+0.5	+0.0	-0.5	+0.0		+2.3	-0.8	+0.7	+0.0	-1.2	+0.0
Nursing & Midwifery	-0.7%	-36.1	+7.4	+4.1	-10.7	-5.6	+11.6	-8.2	+3.9	+6.3	-57.2	+12.2
Therapy Professions	-0.9%	-4.0	+0.0	-1.8	+0.4	+8.5	-2.2	-1.7	+2.8	+0.2	-8.4	-1.8
Social Care	-31.8%	-22.9	-1.3	-0.6	-0.8	-1.1	+0.8	-17.8	-0.7	-1.4	+0.0	+0.0
Social Workers	+2.4%	+10.1	-0.1	-0.7	-2.7	+0.6	+4.5	+2.1	+3.0	+4.5	-2.2	+1.1
Psychologists	+8.7%	+38.9	+4.9	+4.8	+8.6	+2.5	+8.2	+2.4	+5.2	+3.8	-0.2	-1.4
Pharmacy	+23.0%	+4.4	+0.1	+0.6	-0.1	-0.9			+0.6	+1.0	+2.1	+1.0
H&SC, Other	+8.8%	+11.5	+0.3	+0.0	+1.5	+0.4	+0.1	+8.4	-2.0	+1.3	+1.5	
Health & Social Care Professionals	+2.5%	+38.1	+4.0	+2.3	+7.0	+10.1	+11.3	-6.6	+8.9	+9.4	-7.2	-1.1
Management (VIII & above)	-0.5%	-0.3	-2.1	+0.0	+0.1	+0.8	-1.7	+0.0	-0.9	+1.0	+1.1	+1.4
Administrative/ Supervisory (V to VII)	+16.0%	+46.0	+4.9	+2.6	+1.6	+5.6	+8.0	+7.2	+2.2	+1.1	+2.2	+10.5
Clerical (III & IV)	+14.3%	+101.3	+5.5	+10.5	+10.5	+10.4	+20.3	+10.3	+6.6	+19.3	+1.8	+6.1
Management & Administrative	+13.8%	+146.9	+8.4	+13.2	+12.2	+16.8	+26.6	+17.5	+7.9	+21.4	+5.1	+18.0
Support	-3.2%	-17.6	+4.0	-4.5	+1.0	-10.5	+11.4	+1.6	-2.8	-4.0	-8.2	-5.6



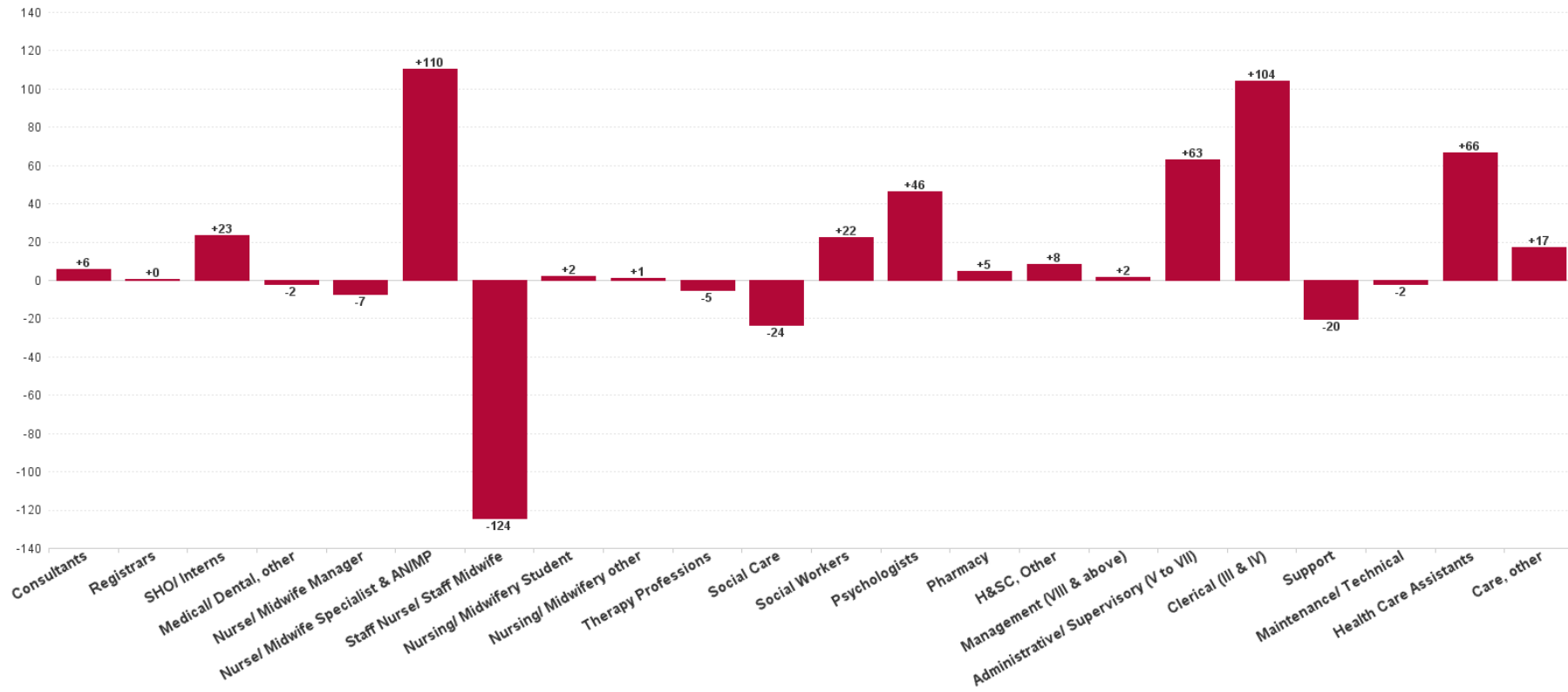
Maintenance/ Technical	-0.2%	-0.3	-0.5	-1.0	+0.6	-1.3	+0.2	+1.0	-0.8	+3.9	-2.4	+0.0
General Support	-2.6%	-17.9	+3.5	-5.6	+1.6	-11.8	+11.7	+2.6	-3.7	-0.1	-10.6	-5.5
Health Care Assistants	+6.3%	+65.2	-1.5	-1.5	+5.4	+13.7	+25.7	+5.4	+3.6	-2.3	-1.7	+18.5
Care, other	+8.0%	+17.3	-2.2	-1.0	+0.0	+0.4	+3.4	+0.5	+4.0	-1.1	-0.3	+13.5
Patient & Client Care	+6.6%	+82.5	-3.7	-2.6	+5.4	+14.1	+29.1	+5.9	+7.6	-3.4	-2.0	+32.0



Previous Month Summary Chart: Change since SEP 2023



Previous Year Summary Chart: Change since OCT 2022



YTD Summary Chart: Change since DEC 2022

