

# Mental Health Service Employment Report: October 2022

## Employment by Staff Group

Oct 2022	WTE Dec 2019	WTE Dec 2020	WTE Sep 2022	WTE Oct 2022	WTE change since Sep 22	WTE change since Dec 20	% change since Dec 20	WTE change since Dec 19	% change since Dec 19	No. Oct 2022
<b>Overall</b>	<b>9,954</b>	<b>10,301</b>	<b>10,400</b>	<b>10,398</b>	<b>-2</b>	<b>+97</b>	<b>+0.9%</b>	<b>+444</b>	<b>+4.5%</b>	<b>11,436</b>
Consultants	353	370	392	397	+6	+28	+7.5%	+45	+12.7%	434
Registrars	269	281	340	345	+5	+64	+22.8%	+76	+28.3%	354
SHO/ Interns	261	276	253	261	+8	-15	-5.4%	-0	-0.1%	270
Medical/ Dental, other	5	5	5	5		-0	-2.6%	-0	-2.6%	8
<b>Medical &amp; Dental</b>	<b>888</b>	<b>932</b>	<b>990</b>	<b>1,008</b>	<b>+18</b>	<b>+77</b>	<b>+8.2%</b>	<b>+121</b>	<b>+13.6%</b>	<b>1,066</b>
Nurse/ Midwife Manager	1,192	1,240	1,235	1,238	+3	-1	-0.1%	+46	+3.8%	1,294
Nurse/ Midwife Specialist & AN/MP	459	529	579	601	+21	+72	+13.7%	+142	+30.9%	641
Staff Nurse/ Staff Midwife	3,003	3,076	2,946	2,911	-36	-166	-5.4%	-92	-3.1%	3,173
<i>Pre-registration Nurse Intern (COVID-19)</i>		42				-42	-100.0%		-100.0%	
<i>Pre-registration Nurse/ Midwife Intern</i>	28	11	108	51	-57	+40	+372.0%	+23	+83.6%	140
<i>Post-registration Nurse/ Midwife Student</i>	1	1				-1	-100.0%	-1	-100.0%	
<i>Nursing/ Midwifery awaiting registration</i>	59	5	61	72	+11	+67	+1384.9%	+13	+22.3%	91
Nursing/ Midwifery Student	87	59	169	123	-46	+64	+107.9%	+35	+40.2%	231
Nursing/ Midwifery other	32	32	35	34	-1	+2	+7.5%	+2	+7.9%	38
<b>Nursing &amp; Midwifery</b>	<b>4,773</b>	<b>4,935</b>	<b>4,965</b>	<b>4,906</b>	<b>-58</b>	<b>-29</b>	<b>-0.6%</b>	<b>+133</b>	<b>+2.8%</b>	<b>5,377</b>
Therapy Professions	422	439	420	437	+16	-3	-0.6%	+14	+3.4%	497
Social Care	74	80	73	73	-0	-7	-9.2%	-1	-1.3%	83
Social Workers	350	373	390	401	+11	+29	+7.7%	+52	+14.8%	444
Psychologists	394	424	434	440	+7	+16	+3.9%	+46	+11.6%	486
Pharmacy	19	21	20	19	-2	-2	-9.0%	+0	+1.7%	25
H&SC, Other	108	108	132	134	+1	+26	+23.6%	+26	+23.7%	150
<b>Health &amp; Social Care Professionals</b>	<b>1,366</b>	<b>1,444</b>	<b>1,470</b>	<b>1,503</b>	<b>+34</b>	<b>+59</b>	<b>+4.1%</b>	<b>+137</b>	<b>+10.0%</b>	<b>1,685</b>
Management (VIII & above)	57	67	70	73	+3	+5	+8.1%	+15	+26.5%	75
Administrative/ Supervisory (V to VII)	237	245	274	270	-4	+25	+10.4%	+33	+14.1%	288
Clerical (III & IV)	717	722	697	704	+7	-18	-2.5%	-13	-1.9%	792
<b>Management &amp; Administrative</b>	<b>1,012</b>	<b>1,034</b>	<b>1,041</b>	<b>1,047</b>	<b>+6</b>	<b>+13</b>	<b>+1.2%</b>	<b>+35</b>	<b>+3.5%</b>	<b>1,155</b>
Support	581	594	562	558	-3	-36	-6.0%	-22	-3.8%	646
Maintenance/ Technical	131	137	130	131	+0	-7	-4.9%	-0	-0.2%	135
<b>General Support</b>	<b>711</b>	<b>732</b>	<b>692</b>	<b>689</b>	<b>-3</b>	<b>-42</b>	<b>-5.8%</b>	<b>-22</b>	<b>-3.1%</b>	<b>781</b>
Health Care Assistants	988	1,022	1,028	1,029	+1	+7	+0.7%	+41	+4.1%	1,118
Care, other	216	203	215	216	+1	+12	+6.0%	-0	-0.1%	254
<b>Patient &amp; Client Care</b>	<b>1,204</b>	<b>1,225</b>	<b>1,243</b>	<b>1,245</b>	<b>+2</b>	<b>+20</b>	<b>+1.6%</b>	<b>+41</b>	<b>+3.4%</b>	<b>1,372</b>



## Mental Health Services Employment by Administration (HSE / S38): October 2022

Oct 2022	WTE Dec 2019	WTE Dec 2020	WTE Sep 2022	WTE Oct 2022	WTE change since Sep 22	WTE change since Dec 20	% change since Dec 20	WTE change since Dec 19	% change since Dec 19	No. Oct 2022
<b>Total</b>	<b>9,954</b>	<b>10,301</b>	<b>10,400</b>	<b>10,398</b>	<b>-2</b>	<b>+97</b>	<b>+0.9%</b>	<b>+444</b>	<b>+4.5%</b>	<b>11,436</b>
HSE	9,513	9,855	9,978	9,969	-8	+114	+1.2%	+456	+4.8%	10,931
Section 38 Voluntary Agencies	441	446	423	429	+6	-18	-4.0%	-12	-2.8%	505

## Employment by Staff Group

Oct 2022	WTE Dec 2019	WTE Dec 2020	WTE Sep 2022	WTE Oct 2022	WTE change since Sep 22	WTE change since Dec 20	% change since Dec 20	WTE change since Dec 19	% change since Dec 19	No. Oct 2022
<b>Health Service Executive</b>	<b>9,513</b>	<b>9,855</b>	<b>9,978</b>	<b>9,969</b>	<b>-8</b>	<b>+114</b>	<b>+1.2%</b>	<b>+456</b>	<b>+4.8%</b>	<b>10,931</b>
Consultants	333	349	370	373	+3	+25	+7.1%	+41	+12.2%	403
Registrars	250	266	321	326	+5	+60	+22.6%	+76	+30.4%	334
SHO/ Interns	255	267	247	255	+8	-12	-4.5%	-0	-0.0%	264
Medical/ Dental, other	5	5	5	5		-0	-2.6%	-0	-2.6%	8
<b>Medical &amp; Dental</b>	<b>843</b>	<b>886</b>	<b>943</b>	<b>959</b>	<b>+16</b>	<b>+73</b>	<b>+8.2%</b>	<b>+116</b>	<b>+13.8%</b>	<b>1,009</b>
Nurse/ Midwife Manager	1,154	1,202	1,202	1,204	+2	+2	+0.2%	+50	+4.3%	1,258
Nurse/ Midwife Specialist & AN/MP	452	520	570	591	+21	+71	+13.7%	+138	+30.6%	629
Staff Nurse/ Staff Midwife	2,880	2,953	2,836	2,788	-47	-165	-5.6%	-91	-3.2%	3,040
Pre-registration Nurse Intern (COVID-19)		41				-41	-100.0%		-100.0%	
Pre-registration Nurse/ Midwife Intern	21	1	107	50	-57	+49	+6949.3%	+30	+143.8%	139
Post-registration Nurse/ Midwife Student	1	1				-1	-100.0%	-1	-100.0%	
Nursing/ Midwifery awaiting registration	59	5	50	71	+21	+66	+1364.3%	+12	+20.6%	90
Nursing/ Midwifery Student	80	48	157	121	-36	+73	+152.4%	+41	+50.5%	229
Nursing/ Midwifery other	29	29	32	32	-1	+2	+8.1%	+2	+8.5%	35
<b>Nursing &amp; Midwifery</b>	<b>4,596</b>	<b>4,752</b>	<b>4,797</b>	<b>4,736</b>	<b>-61</b>	<b>-16</b>	<b>-0.3%</b>	<b>+140</b>	<b>+3.0%</b>	<b>5,191</b>
Therapy Professions	391	412	395	410	+15	-2	-0.4%	+19	+4.9%	461
Social Care	48	52	45	45	-0	-7	-14.1%	-3	-6.9%	51
Social Workers	330	354	370	382	+12	+28	+7.9%	+52	+15.8%	424
Psychologists	379	402	413	417	+5	+16	+4.0%	+39	+10.3%	456
Pharmacy	17	19	18	17	-1	-2	-9.9%	+0	+0.7%	23
H&SC, Other	103	107	132	133	+1	+26	+24.3%	+30	+29.0%	149
<b>Health &amp; Social Care Professionals</b>	<b>1,267</b>	<b>1,345</b>	<b>1,372</b>	<b>1,404</b>	<b>+32</b>	<b>+59</b>	<b>+4.4%</b>	<b>+137</b>	<b>+10.8%</b>	<b>1,564</b>
Management (VIII & above)	55	65	68	71	+3	+5	+8.4%	+15	+27.5%	73
Administrative/ Supervisory (V to VII)	216	224	251	247	-4	+23	+10.4%	+32	+14.7%	261
Clerical (III & IV)	673	679	659	666	+7	-14	-2.0%	-7	-1.0%	746
<b>Management &amp; Administrative</b>	<b>944</b>	<b>968</b>	<b>978</b>	<b>984</b>	<b>+6</b>	<b>+15</b>	<b>+1.6%</b>	<b>+40</b>	<b>+4.2%</b>	<b>1,080</b>
Support	543	556	530	526	-4	-31	-5.5%	-17	-3.1%	596
Maintenance/ Technical	125	130	123	125	+1	-6	-4.4%	-0	-0.2%	129
<b>General Support</b>	<b>668</b>	<b>687</b>	<b>653</b>	<b>651</b>	<b>-3</b>	<b>-36</b>	<b>-5.3%</b>	<b>-17</b>	<b>-2.6%</b>	<b>725</b>



Health Care Assistants	982	1,016	1,023	1,023	+1	+7	+0.7%	+41	+4.2%	1,112
Care, other	213	200	211	212	+1	+12	+6.2%	-1	-0.3%	250
<b>Patient &amp; Client Care</b>	<b>1,195</b>	<b>1,216</b>	<b>1,234</b>	<b>1,236</b>	<b>+2</b>	<b>+20</b>	<b>+1.6%</b>	<b>+40</b>	<b>+3.4%</b>	<b>1,362</b>

## Employment by Staff Group

Oct 2022	WTE Dec 2019	WTE Dec 2020	WTE Sep 2022	WTE Oct 2022	WTE change since Sep 22	WTE change since Dec 20	% change since Dec 20	WTE change since Dec 19	% change since Dec 19	No. Oct 2022
<b>Section 38 Voluntary Agencies</b>	<b>441</b>	<b>446</b>	<b>423</b>	<b>429</b>	<b>+6</b>	<b>-18</b>	<b>-4.0%</b>	<b>-12</b>	<b>-2.8%</b>	<b>505</b>
Consultants	20	21	22	24	+2	+3	+13.7%	+4	+20.0%	31
Registrars	19	15	19	19	+0	+4	+26.1%	+0	+1.6%	20
SHO/ Interns	6	9	6	6	-0	-3	-34.3%	-0	-1.5%	6
<b>Medical &amp; Dental</b>	<b>45</b>	<b>45</b>	<b>47</b>	<b>49</b>	<b>+2</b>	<b>+4</b>	<b>+8.3%</b>	<b>+4</b>	<b>+9.3%</b>	<b>57</b>
Nurse/ Midwife Manager	38	38	33	34	+1	-4	-9.6%	-4	-10.4%	36
Nurse/ Midwife Specialist & AN/MP	7	9	10	10	+0	+1	+13.3%	+3	+51.0%	12
Staff Nurse/ Staff Midwife	123	123	111	122	+12	-1	-0.7%	-1	-0.8%	133
Pre-registration Nurse Intern (COVID-19)		1				-1	-100.0%		-100.0%	
Pre-registration Nurse/ Midwife Intern	7	10	1	1		-10	-95.0%	-7	-92.9%	1
Nursing/ Midwifery awaiting registration			11	1	-10	+1	-100.0%	+1	-100.0%	1
Nursing/ Midwifery Student	7	11	12	2	-10	-10	-86.4%	-6	-78.6%	2
Nursing/ Midwifery other	3	3	3	3						3
<b>Nursing &amp; Midwifery</b>	<b>177</b>	<b>183</b>	<b>168</b>	<b>170</b>	<b>+3</b>	<b>-13</b>	<b>-7.0%</b>	<b>-7</b>	<b>-4.0%</b>	<b>186</b>
Therapy Professions	31	27	25	26	+1	-1	-3.2%	-5	-15.9%	36
Social Care	25	28	28	28	+0	+0	+0.0%	+2	+9.4%	32
Social Workers	20	19	19	19	-0	+1	+3.9%	-0	-2.1%	20
Psychologists	16	22	21	23	+2	+1	+2.5%	+7	+44.1%	30
Pharmacy	2	2	3	2	-1			+0	+12.5%	2
H&SC, Other	5	1	0	0		-1	-51.0%	-4	-90.1%	1
<b>Health &amp; Social Care Professionals</b>	<b>99</b>	<b>99</b>	<b>97</b>	<b>99</b>	<b>+2</b>	<b>-0</b>	<b>-0.1%</b>	<b>-0</b>	<b>-0.2%</b>	<b>121</b>
Management (VIII & above)	2	2	2	2						2
Administrative/ Supervisory (V to VII)	21	21	23	23	+0	+2	+10.1%	+2	+7.6%	27
Clerical (III & IV)	45	43	39	38	-0	-5	-10.6%	-6	-14.4%	46
<b>Management &amp; Administrative</b>	<b>68</b>	<b>66</b>	<b>63</b>	<b>63</b>	<b>-0</b>	<b>-2</b>	<b>-3.8%</b>	<b>-5</b>	<b>-7.1%</b>	<b>75</b>
Support	38	38	32	33	+1	-5	-13.6%	-5	-13.7%	50
Maintenance/ Technical	6	7	7	6	-1	-1	-14.3%			6
<b>General Support</b>	<b>44</b>	<b>45</b>	<b>39</b>	<b>39</b>	<b>-0</b>	<b>-6</b>	<b>-13.7%</b>	<b>-5</b>	<b>-11.9%</b>	<b>56</b>
Health Care Assistants	6	6	6	6						6
Care, other	3	3	3	3		-0	-0.6%	+1	+19.5%	4
<b>Patient &amp; Client Care</b>	<b>9</b>	<b>9</b>	<b>9</b>	<b>9</b>		<b>-0</b>	<b>-0.2%</b>	<b>+1</b>	<b>+6.4%</b>	<b>10</b>



## Mental Health Services Employment by CHO: Oct 2022

Oct 2022	WTE Dec 2019	WTE Dec 2020	WTE Sep 2022	WTE Oct 2022	WTE change since Sep 22	WTE change since Dec 20	% change since Dec 20	WTE change since Dec 19	% change since Dec 19	No. Oct 2022
<b>Overall</b>	<b>9,954</b>	<b>10,301</b>	<b>10,400</b>	<b>10,398</b>	<b>-2</b>	<b>+97</b>	<b>+0.9%</b>	<b>+444</b>	<b>+4.5%</b>	<b>11,436</b>
CHO 1	953	976	1,037	1,034	-3	+58	+6.0%	+82	+8.6%	1,131
CHO 2	1,308	1,340	1,290	1,302	+11	-38	-2.9%	-7	-0.5%	1,421
CHO 3	795	809	820	813	-7	+5	+0.6%	+18	+2.2%	904
CHO 4	1,485	1,564	1,568	1,557	-11	-7	-0.4%	+72	+4.8%	1,720
CHO 5	1,178	1,188	1,221	1,229	+8	+41	+3.4%	+51	+4.4%	1,368
CHO 6	593	626	640	642	+1	+15	+2.4%	+49	+8.3%	716
CHO 7	835	861	890	882	-8	+21	+2.4%	+47	+5.6%	963
CHO 8	1,098	1,112	1,090	1,079	-11	-33	-2.9%	-19	-1.7%	1,187
CHO 9	1,272	1,331	1,350	1,366	+16	+35	+2.6%	+94	+7.4%	1,508
other Community Services	438	494	494	494	+0	+0	+0.0%	+57	+13.0%	518

## Mental Health Services Employment by CHO etc. Oct 2022

### CHO 1

Oct 2022	WTE Dec 2019	WTE Dec 2020	WTE Sep 2022	WTE Oct 2022	WTE change since Sep 22	WTE change since Dec 20	% change since Dec 20	WTE change since Dec 19	% change since Dec 19	No. Oct 2022
<b>Overall</b>	<b>953</b>	<b>976</b>	<b>1,037</b>	<b>1,034</b>	<b>-3</b>	<b>+58</b>	<b>+6.0%</b>	<b>+82</b>	<b>+8.6%</b>	<b>1,131</b>
Consultants	31	34	33	33	-0	-1	-2.4%	+2	+8.0%	36
Registrars	24	29	35	36	+0	+7	+23.3%	+11	+46.8%	37
SHO/ Interns	25	23	21	23	+2	+0	+1.3%	-2	-8.3%	24
<b>Medical &amp; Dental</b>	<b>81</b>	<b>86</b>	<b>90</b>	<b>92</b>	<b>+3</b>	<b>+6</b>	<b>+7.3%</b>	<b>+12</b>	<b>+14.7%</b>	<b>97</b>
Nurse/ Midwife Manager	117	119	114	112	-2	-7	-6.1%	-5	-4.2%	118
Nurse/ Midwife Specialist & AN/MP	67	74	81	86	+5	+13	+17.0%	+19	+28.0%	93
Staff Nurse/ Staff Midwife	297	288	302	298	-3	+10	+3.6%	+1	+0.3%	318
Nursing/ Midwifery Student		3	19	10	-9	+7	+244.0%	+10	-100.0%	21
Nursing/ Midwifery other		1	2	2	-0	+1	+98.9%	+2	-100.0%	2
<b>Nursing &amp; Midwifery</b>	<b>482</b>	<b>485</b>	<b>517</b>	<b>509</b>	<b>-8</b>	<b>+24</b>	<b>+4.9%</b>	<b>+27</b>	<b>+5.6%</b>	<b>552</b>
Therapy Professions	36	36	42	45	+3	+9	+24.6%	+9	+25.2%	51
Social Care	4	4	4	4	+0	+0	+4.3%	+0	+5.1%	5
Social Workers	39	43	46	47	+1	+4	+10.3%	+8	+21.0%	53
Psychologists	21	23	25	24	-0	+1	+4.5%	+4	+18.2%	26
Pharmacy	1	1	1	1	0					1
H&SC, Other	13	14	19	18	-0	+5	+32.7%	+5	+40.5%	21
<b>Health &amp; Social Care Professionals</b>	<b>113</b>	<b>121</b>	<b>136</b>	<b>140</b>	<b>+4</b>	<b>+19</b>	<b>+15.8%</b>	<b>+27</b>	<b>+23.4%</b>	<b>157</b>
Management (VIII & above)	6	8	9	8	-0	+1	+11.0%	+3	+50.3%	9
Administrative/ Supervisory (V to VII)	30	31	33	31	-1	+1	+2.4%	+1	+4.4%	33
Clerical (III & IV)	85	85	89	91	+2	+6	+6.8%	+6	+6.6%	101
<b>Management &amp; Administrative</b>	<b>121</b>	<b>123</b>	<b>131</b>	<b>131</b>	<b>+0</b>	<b>+7</b>	<b>+6.0%</b>	<b>+10</b>	<b>+8.1%</b>	<b>143</b>
Support	62	65	59	58	-1	-8	-11.6%	-5	-7.4%	66
Maintenance/ Technical	17	16	17	17	-0	+0	+1.6%	-0	-0.8%	17
<b>General Support</b>	<b>79</b>	<b>81</b>	<b>75</b>	<b>74</b>	<b>-1</b>	<b>-7</b>	<b>-8.9%</b>	<b>-5</b>	<b>-6.0%</b>	<b>83</b>
Health Care Assistants	66	68	76	76	+0	+8	+12.3%	+10	+14.9%	85
Care, other	11	11	12	12	-0	+1	+7.8%	+1	+11.3%	14
<b>Patient &amp; Client Care</b>	<b>77</b>	<b>79</b>	<b>88</b>	<b>88</b>	<b>+0</b>	<b>+9</b>	<b>+11.7%</b>	<b>+11</b>	<b>+14.4%</b>	<b>99</b>

## CHO 2

Oct 2022	WTE Dec 2019	WTE Dec 2020	WTE Sep 2022	WTE Oct 2022	WTE change since Sep 22	WTE change since Dec 20	% change since Dec 20	WTE change since Dec 19	% change since Dec 19	No. Oct 2022
<b>Overall</b>	<b>1,308</b>	<b>1,340</b>	<b>1,290</b>	<b>1,302</b>	<b>+11</b>	<b>-38</b>	<b>-2.9%</b>	<b>-7</b>	<b>-0.5%</b>	<b>1,421</b>
Consultants	38	37	38	37	-2	-0	-0.5%	-1	-1.9%	40
Registrars	33	37	35	36	+0	-1	-1.5%	+3	+8.6%	36
SHO/ Interns	35	40	39	39	+0	-1	-3.3%	+4	+10.6%	41
Medical/ Dental, other	1	1	1	1	0					1
<b>Medical &amp; Dental</b>	<b>107</b>	<b>114</b>	<b>113</b>	<b>112</b>	<b>-1</b>	<b>-2</b>	<b>-1.8%</b>	<b>+6</b>	<b>+5.5%</b>	<b>118</b>
Nurse/ Midwife Manager	146	151	143	140	-2	-11	-7.2%	-6	-3.8%	144
Nurse/ Midwife Specialist & AN/MP	67	79	81	87	+6	+8	+10.4%	+20	+29.5%	90
Staff Nurse/ Staff Midwife	357	355	339	340	+1	-15	-4.2%	-17	-4.9%	369
<i>Pre-registration Nurse Intern (COVID-19)</i>		10				-10	-100.0%		-100.0%	
<i>Pre-registration Nurse/ Midwife Intern</i>	0		22	8	-14	+8	-100.0%	+8	+6708.3%	24
<i>Nursing/ Midwifery awaiting registration</i>	5		1	11	+10	+11	-100.0%	+6	+130.1%	15
Nursing/ Midwifery Student	5	10	23	19	-4	+9	+87.6%	+14	+292.2%	39
Nursing/ Midwifery other	2	2	4	4	0	+2	+150.0%	+2	+100.0%	4
<b>Nursing &amp; Midwifery</b>	<b>577</b>	<b>597</b>	<b>591</b>	<b>590</b>	<b>-0</b>	<b>-6</b>	<b>-1.0%</b>	<b>+13</b>	<b>+2.3%</b>	<b>646</b>
Therapy Professions	45	55	47	51	+4	-4	-7.8%	+6	+12.2%	59
Social Care	15	16	13	14	+1	-2	-14.8%	-1	-7.2%	15
Social Workers	41	42	43	43	+0	+2	+3.8%	+2	+6.0%	47
Psychologists	34	37	34	35	+1	-2	-5.5%	+1	+4.2%	39
Pharmacy	3	2	2	2	+0	+1	+42.0%	-0	-2.0%	3
H&SC, Other	3	3	3	3	-0	-0	-6.7%	-0	-6.7%	3
<b>Health &amp; Social Care Professionals</b>	<b>140</b>	<b>155</b>	<b>142</b>	<b>148</b>	<b>+6</b>	<b>-7</b>	<b>-4.3%</b>	<b>+8</b>	<b>+5.8%</b>	<b>166</b>
Management (VIII & above)	5	4	3	3	+0	-1	-25.0%	-2	-40.0%	3
Administrative/ Supervisory (V to VII)	24	26	26	25	-2	-2	-7.3%	+1	+4.0%	25
Clerical (III & IV)	109	102	92	95	+3	-8	-7.6%	-14	-13.3%	108
<b>Management &amp; Administrative</b>	<b>138</b>	<b>133</b>	<b>121</b>	<b>122</b>	<b>+1</b>	<b>-11</b>	<b>-8.1%</b>	<b>-16</b>	<b>-11.3%</b>	<b>136</b>
Support	36	31	27	27	-0	-4	-13.7%	-9	-25.5%	29
Maintenance/ Technical	27	33	33	35	+1	+1	+4.0%	+8	+27.8%	35
<b>General Support</b>	<b>63</b>	<b>64</b>	<b>60</b>	<b>61</b>	<b>+1</b>	<b>-3</b>	<b>-4.6%</b>	<b>-2</b>	<b>-2.7%</b>	<b>64</b>
Health Care Assistants	215	211	195	198	+3	-13	-6.1%	-17	-7.7%	212
Care, other	69	66	68	69	+1	+3	+4.5%	+0	+0.1%	79
<b>Patient &amp; Client Care</b>	<b>284</b>	<b>278</b>	<b>263</b>	<b>268</b>	<b>+4</b>	<b>-10</b>	<b>-3.6%</b>	<b>-17</b>	<b>-5.8%</b>	<b>291</b>

## CHO 3

Oct 2022	WTE Dec 2019	WTE Dec 2020	WTE Sep 2022	WTE Oct 2022	WTE change since Sep 22	WTE change since Dec 20	% change since Dec 20	WTE change since Dec 19	% change since Dec 19	No. Oct 2022
<b>Overall</b>	<b>795</b>	<b>809</b>	<b>820</b>	<b>813</b>	<b>-7</b>	<b>+5</b>	<b>+0.6%</b>	<b>+18</b>	<b>+2.2%</b>	<b>904</b>
Consultants	23	24	29	29	+0	+5	+19.8%	+6	+23.9%	32
Registrars	18	15	19	17	-1	+2	+14.8%	-1	-2.8%	18
SHO/ Interns	19	21	27	28	+1	+7	+30.6%	+9	+47.5%	28
<b>Medical &amp; Dental</b>	<b>60</b>	<b>61</b>	<b>74</b>	<b>74</b>	<b>-0</b>	<b>+14</b>	<b>+22.4%</b>	<b>+14</b>	<b>+23.4%</b>	<b>78</b>
Nurse/ Midwife Manager	88	88	85	86	+0	-2	-2.4%	-2	-2.3%	90
Nurse/ Midwife Specialist & AN/MP	39	37	38	41	+4	+5	+12.3%	+2	+5.9%	45
Staff Nurse/ Staff Midwife	245	272	245	237	-9	-35	-12.8%	-9	-3.5%	263
<i>Pre-registration Nurse Intern (COVID-19)</i>		3				-3	-100.0%		-100.0%	
<i>Pre-registration Nurse/ Midwife Intern</i>	9		12	12	+0	+12	-100.0%	+3	+34.5%	24
Nursing/ Midwifery Student	9	3	12	12	+0	+9	+248.8%	+3	+34.5%	24
Nursing/ Midwifery other			1	1	-0	+1	-100.0%	+1	-100.0%	1
<b>Nursing &amp; Midwifery</b>	<b>381</b>	<b>400</b>	<b>381</b>	<b>377</b>	<b>-4</b>	<b>-23</b>	<b>-5.7%</b>	<b>-4</b>	<b>-1.1%</b>	<b>423</b>
Therapy Professions	26	25	28	29	+1	+4	+17.9%	+3	+11.1%	33
Social Care	3	3	3	3	+0	-0	-10.0%	-0	-5.9%	3
Social Workers	25	24	26	29	+2	+4	+18.3%	+4	+13.9%	31
Psychologists	92	91	96	93	-3	+2	+1.8%	+1	+0.6%	99
Pharmacy	3	3	3	3	0	+0	+1.8%	+0	+1.8%	3
H&SC, Other	10	12	11	11	+0	-1	-11.4%	+1	+12.7%	12
<b>Health &amp; Social Care Professionals</b>	<b>159</b>	<b>158</b>	<b>166</b>	<b>167</b>	<b>+1</b>	<b>+9</b>	<b>+5.6%</b>	<b>+8</b>	<b>+5.1%</b>	<b>181</b>
Management (VIII & above)	2	2	2	3	+1	+1	+47.5%	+1	+49.7%	3
Administrative/ Supervisory (V to VII)	17	19	15	14	-1	-5	-25.1%	-3	-15.8%	15
Clerical (III & IV)	56	50	53	51	-1	+1	+2.1%	-4	-7.9%	58
<b>Management &amp; Administrative</b>	<b>75</b>	<b>71</b>	<b>70</b>	<b>68</b>	<b>-1</b>	<b>-3</b>	<b>-3.8%</b>	<b>-6</b>	<b>-8.1%</b>	<b>76</b>
Support	32	30	32	32	+0	+2	+7.5%	-0	-0.1%	36
Maintenance/ Technical	11	9	6	6	0	-3	-33.3%	-5	-45.5%	6
<b>General Support</b>	<b>43</b>	<b>39</b>	<b>38</b>	<b>38</b>	<b>+0</b>	<b>-1</b>	<b>-1.9%</b>	<b>-5</b>	<b>-11.5%</b>	<b>42</b>
Health Care Assistants	75	79	88	85	-2	+7	+8.6%	+10	+13.5%	101
Care, other	2	1	2	2	0	+1	+146.0%	+1	+47.3%	3
<b>Patient &amp; Client Care</b>	<b>77</b>	<b>80</b>	<b>90</b>	<b>88</b>	<b>-2</b>	<b>+8</b>	<b>+10.4%</b>	<b>+11</b>	<b>+14.2%</b>	<b>104</b>

## CHO 4

Oct 2022	WTE Dec 2019	WTE Dec 2020	WTE Sep 2022	WTE Oct 2022	WTE change since Sep 22	WTE change since Dec 20	% change since Dec 20	WTE change since Dec 19	% change since Dec 19	No. Oct 2022
<b>Overall</b>	<b>1,485</b>	<b>1,564</b>	<b>1,568</b>	<b>1,557</b>	<b>-11</b>	<b>-7</b>	<b>-0.4%</b>	<b>+72</b>	<b>+4.8%</b>	<b>1,720</b>
Consultants	50	54	58	60	+2	+6	+10.7%	+10	+20.6%	67
Registrars	46	42	50	52	+2	+10	+25.2%	+6	+13.7%	53
SHO/ Interns	31	43	45	45	+1	+2	+5.4%	+14	+46.0%	47
Medical/ Dental, other	2	2	2	2	0	-0	-4.0%	-0	-4.0%	5
<b>Medical &amp; Dental</b>	<b>129</b>	<b>141</b>	<b>155</b>	<b>159</b>	<b>+4</b>	<b>+19</b>	<b>+13.2%</b>	<b>+31</b>	<b>+23.9%</b>	<b>172</b>
Nurse/ Midwife Manager	170	192	214	214	-0	+22	+11.3%	+45	+26.3%	225
Nurse/ Midwife Specialist & AN/MP	60	71	68	67	-1	-4	-5.5%	+7	+11.6%	70
Staff Nurse/ Staff Midwife	502	519	471	462	-9	-57	-11.0%	-40	-8.1%	495
<i>Pre-registration Nurse Intern (COVID-19)</i>		3				-3	-100.0%		-100.0%	
<i>Pre-registration Nurse/ Midwife Intern</i>	3		24	15	-9	+15	-100.0%	+12	+385.3%	45
<i>Post-registration Nurse/ Midwife Student</i>	1						-100.0%	-1	-100.0%	
<i>Nursing/ Midwifery awaiting registration</i>	30	1				-1	-100.0%	-30	-100.0%	
Nursing/ Midwifery Student	34	4	24	15	-9	+11	+264.0%	-19	-56.5%	45
<b>Nursing &amp; Midwifery</b>	<b>765</b>	<b>786</b>	<b>778</b>	<b>757</b>	<b>-20</b>	<b>-29</b>	<b>-3.7%</b>	<b>-8</b>	<b>-1.0%</b>	<b>835</b>
Therapy Professions	74	77	77	80	+3	+3	+3.9%	+7	+8.9%	89
Social Care	4	7	6	5	-1	-2	-29.0%	+1	+30.2%	6
Social Workers	53	64	69	69	+1	+5	+7.7%	+16	+30.7%	80
Psychologists	83	94	94	95	+1	+1	+1.4%	+13	+15.2%	104
Pharmacy	2	3	1	1	+0	-2	-54.5%	-1	-44.4%	2
H&SC, Other	11	12	19	19	+0	+6	+50.9%	+8	+73.6%	22
<b>Health &amp; Social Care Professionals</b>	<b>227</b>	<b>258</b>	<b>266</b>	<b>270</b>	<b>+4</b>	<b>+12</b>	<b>+4.6%</b>	<b>+43</b>	<b>+19.1%</b>	<b>303</b>
Management (VIII & above)	1	3	3	3	0	+0	+9.9%	+2	+200.0%	3
Administrative/ Supervisory (V to VII)	22	22	24	23	-1	+2	+7.7%	+1	+4.5%	24
Clerical (III & IV)	87	94	91	90	-1	-4	-4.4%	+3	+3.3%	102
<b>Management &amp; Administrative</b>	<b>111</b>	<b>119</b>	<b>118</b>	<b>117</b>	<b>-1</b>	<b>-2</b>	<b>-1.9%</b>	<b>+6</b>	<b>+5.3%</b>	<b>129</b>
Support	80	82	76	76	-1	-6	-7.3%	-4	-5.1%	87
Maintenance/ Technical	6	5	5	5	0			-1	-16.4%	6
<b>General Support</b>	<b>86</b>	<b>87</b>	<b>81</b>	<b>81</b>	<b>-1</b>	<b>-6</b>	<b>-6.9%</b>	<b>-5</b>	<b>-5.9%</b>	<b>93</b>
Health Care Assistants	161	166	164	167	+3	+1	+0.8%	+7	+4.2%	175
Care, other	7	6	5	5	-0	-1	-19.9%	-2	-29.3%	13
<b>Patient &amp; Client Care</b>	<b>168</b>	<b>173</b>	<b>170</b>	<b>173</b>	<b>+3</b>	<b>-0</b>	<b>-0.0%</b>	<b>+5</b>	<b>+2.8%</b>	<b>188</b>



## CHO 5

Oct 2022	WTE Dec 2019	WTE Dec 2020	WTE Sep 2022	WTE Oct 2022	WTE change since Sep 22	WTE change since Dec 20	% change since Dec 20	WTE change since Dec 19	% change since Dec 19	No. Oct 2022
<b>Overall</b>	<b>1,178</b>	<b>1,188</b>	<b>1,221</b>	<b>1,229</b>	<b>+8</b>	<b>+41</b>	<b>+3.4%</b>	<b>+51</b>	<b>+4.4%</b>	<b>1,368</b>
Consultants	26	27	34	34	+1	+7	+25.9%	+8	+31.2%	36
Registrars	10	9	13	12	-1	+3	+33.3%	+2	+20.0%	12
SHO/ Interns	32	36	31	31	-0	-5	-14.5%	-1	-4.3%	32
Medical/ Dental, other	2	2	2	2	0	-0	-2.5%	-0	-2.5%	2
<b>Medical &amp; Dental</b>	<b>70</b>	<b>74</b>	<b>80</b>	<b>79</b>	<b>-1</b>	<b>+5</b>	<b>+6.6%</b>	<b>+9</b>	<b>+12.5%</b>	<b>82</b>
Nurse/ Midwife Manager	164	160	167	174	+7	+14	+8.6%	+10	+5.8%	183
Nurse/ Midwife Specialist & AN/MP	42	54	58	63	+5	+9	+17.0%	+21	+50.1%	68
Staff Nurse/ Staff Midwife	415	411	399	388	-11	-23	-5.6%	-28	-6.6%	439
<i>Pre-registration Nurse Intern (COVID-19)</i>		13				-13	-100.0%		-100.0%	
<i>Pre-registration Nurse/ Midwife Intern</i>	4		2	2	-0	+2	-100.0%	-2	-55.1%	4
<i>Nursing/ Midwifery awaiting registration</i>	2		17	30	+13	+30	-100.0%	+28	+1386.0%	33
Nursing/ Midwifery Student	6	13	19	31	+13	+18	+142.0%	+26	+468.9%	37
Nursing/ Midwifery other	4	4	3	3	-0	-1	-22.9%	-1	-24.2%	3
<b>Nursing &amp; Midwifery</b>	<b>631</b>	<b>642</b>	<b>646</b>	<b>659</b>	<b>+13</b>	<b>+17</b>	<b>+2.7%</b>	<b>+28</b>	<b>+4.4%</b>	<b>730</b>
Therapy Professions	40	39	35	34	-1	-5	-12.7%	-6	-15.9%	39
Social Care	5	5	5	5	+0					5
Social Workers	27	28	26	27	+1	-1	-4.7%	-1	-3.1%	30
Psychologists	21	21	25	26	+1	+4	+20.7%	+5	+22.1%	29
H&SC, Other	10	8	22	22	+0	+14	+181.6%	+12	+124.0%	23
<b>Health &amp; Social Care Professionals</b>	<b>103</b>	<b>100</b>	<b>112</b>	<b>113</b>	<b>+1</b>	<b>+12</b>	<b>+12.4%</b>	<b>+10</b>	<b>+9.3%</b>	<b>126</b>
Management (VIII & above)	3	6	6	5	-1	-1	-9.3%	+2	+81.3%	7
Administrative/ Supervisory (V to VII)	20	20	24	23	-0	+4	+18.4%	+3	+17.0%	25
Clerical (III & IV)	74	68	73	72	-1	+3	+5.0%	-2	-2.7%	77
<b>Management &amp; Administrative</b>	<b>97</b>	<b>94</b>	<b>102</b>	<b>101</b>	<b>-2</b>	<b>+6</b>	<b>+6.9%</b>	<b>+4</b>	<b>+4.0%</b>	<b>109</b>
Support	168	178	176	175	-1	-3	-2.0%	+7	+4.3%	202
Maintenance/ Technical	23	20	15	15	+0	-5	-22.8%	-8	-34.5%	16
<b>General Support</b>	<b>191</b>	<b>198</b>	<b>191</b>	<b>190</b>	<b>-1</b>	<b>-8</b>	<b>-4.0%</b>	<b>-1</b>	<b>-0.4%</b>	<b>218</b>
Health Care Assistants	73	68	76	74	-1	+7	+10.0%	+2	+2.3%	83
Care, other	13	12	14	13	-1	+1	+6.0%	+0	+0.6%	20
<b>Patient &amp; Client Care</b>	<b>85</b>	<b>80</b>	<b>90</b>	<b>87</b>	<b>-2</b>	<b>+7</b>	<b>+9.4%</b>	<b>+2</b>	<b>+2.1%</b>	<b>103</b>

## CHO 6

Oct 2022	WTE Dec 2019	WTE Dec 2020	WTE Sep 2022	WTE Oct 2022	WTE change since Sep 22	WTE change since Dec 20	% change since Dec 20	WTE change since Dec 19	% change since Dec 19	No. Oct 2022
<b>Overall</b>	<b>593</b>	<b>626</b>	<b>640</b>	<b>642</b>	<b>+1</b>	<b>+15</b>	<b>+2.4%</b>	<b>+49</b>	<b>+8.3%</b>	<b>716</b>
Consultants	36	40	40	44	+4	+3	+8.6%	+8	+21.0%	51
Registrars	22	19	29	29	+0	+10	+51.0%	+7	+32.1%	30
SHO/ Interns	9	13	8	8	-0	-5	-39.2%	-1	-12.1%	8
<b>Medical &amp; Dental</b>	<b>67</b>	<b>72</b>	<b>76</b>	<b>80</b>	<b>+4</b>	<b>+8</b>	<b>+11.2%</b>	<b>+13</b>	<b>+20.2%</b>	<b>89</b>
Nurse/ Midwife Manager	76	77	68	71	+2	-7	-8.6%	-6	-7.6%	74
Nurse/ Midwife Specialist & AN/MP	14	20	28	26	-1	+7	+34.9%	+13	+93.0%	30
Staff Nurse/ Staff Midwife	139	151	156	156	+0	+5	+3.1%	+17	+12.2%	169
<i>Pre-registration Nurse/ Midwife Intern</i>			4	0	-3	+0	-100.0%	+0	-100.0%	2
<i>Nursing/ Midwifery awaiting registration</i>		1				-1	-100.0%		-100.0%	
Nursing/ Midwifery Student		1	4	0	-3	-1	-63.0%	+0	-100.0%	2
Nursing/ Midwifery other	2	2	4	4	-0	+2	+90.0%	+2	+90.0%	4
<b>Nursing &amp; Midwifery</b>	<b>231</b>	<b>251</b>	<b>260</b>	<b>257</b>	<b>-2</b>	<b>+6</b>	<b>+2.4%</b>	<b>+26</b>	<b>+11.3%</b>	<b>279</b>
Therapy Professions	43	39	38	40	+2	+1	+2.9%	-3	-7.8%	48
Social Care	26	28	28	28	+0	-0	-1.7%	+2	+7.0%	32
Social Workers	30	30	34	33	-1	+4	+12.9%	+4	+12.0%	36
Psychologists	22	32	35	37	+2	+4	+14.0%	+15	+65.8%	46
Pharmacy			1		-1		-100.0%		-100.0%	
H&SC, Other	9	5	7	7	-0	+2	+43.8%	-1	-14.5%	8
<b>Health &amp; Social Care Professionals</b>	<b>130</b>	<b>134</b>	<b>144</b>	<b>145</b>	<b>+1</b>	<b>+11</b>	<b>+8.4%</b>	<b>+15</b>	<b>+11.8%</b>	<b>170</b>
Management (VIII & above)	3	3	4	5	+1	+2	+66.3%	+2	+66.3%	5
Administrative/ Supervisory (V to VII)	27	24	31	31	+0	+7	+26.7%	+4	+15.3%	35
Clerical (III & IV)	42	43	32	31	-1	-12	-28.6%	-12	-27.5%	36
<b>Management &amp; Administrative</b>	<b>72</b>	<b>70</b>	<b>66</b>	<b>66</b>	<b>-0</b>	<b>-4</b>	<b>-5.3%</b>	<b>-5</b>	<b>-7.6%</b>	<b>76</b>
Support	36	39	29	29	+0	-9	-24.3%	-7	-19.3%	36
Maintenance/ Technical	6	6	6	5	-1	-1	-16.7%	-1	-15.4%	5
<b>General Support</b>	<b>42</b>	<b>45</b>	<b>35</b>	<b>34</b>	<b>-1</b>	<b>-10</b>	<b>-23.3%</b>	<b>-8</b>	<b>-18.8%</b>	<b>41</b>
Health Care Assistants	46	49	52	52	-1	+3	+6.2%	+6	+13.5%	53
Care, other	5	6	7	7	+0	+1	+16.6%	+2	+29.1%	8
<b>Patient &amp; Client Care</b>	<b>51</b>	<b>54</b>	<b>59</b>	<b>58</b>	<b>-0</b>	<b>+4</b>	<b>+7.3%</b>	<b>+8</b>	<b>+15.1%</b>	<b>61</b>

## CHO 7

Oct 2022	WTE Dec 2019	WTE Dec 2020	WTE Sep 2022	WTE Oct 2022	WTE change since Sep 22	WTE change since Dec 20	% change since Dec 20	WTE change since Dec 19	% change since Dec 19	No. Oct 2022
<b>Overall</b>	<b>835</b>	<b>861</b>	<b>890</b>	<b>882</b>	<b>-8</b>	<b>+21</b>	<b>+2.4%</b>	<b>+47</b>	<b>+5.6%</b>	<b>963</b>
Consultants	48	53	53	53	+0	+0	+0.1%	+5	+11.2%	56
Registrars	46	54	58	57	-1	+3	+5.7%	+10	+22.5%	58
SHO/ Interns	21	20	27	26	-1	+6	+27.3%	+5	+24.0%	26
<b>Medical &amp; Dental</b>	<b>115</b>	<b>127</b>	<b>138</b>	<b>136</b>	<b>-2</b>	<b>+9</b>	<b>+6.8%</b>	<b>+21</b>	<b>+18.1%</b>	<b>140</b>
Nurse/ Midwife Manager	117	117	111	111	-1	-7	-5.9%	-6	-5.1%	116
Nurse/ Midwife Specialist & AN/MP	40	47	56	56	+0	+9	+19.7%	+16	+39.8%	60
Staff Nurse/ Staff Midwife	194	202	204	203	-1	+1	+0.6%	+8	+4.4%	225
<i>Pre-registration Nurse Intern (COVID-19)</i>		3				-3	-100.0%		-100.0%	
<i>Pre-registration Nurse/ Midwife Intern</i>	1	1	12	1	-10	+1	+154.0%	-0	-7.3%	3
<i>Post-registration Nurse/ Midwife Student</i>		1				-1	-100.0%		-100.0%	
<i>Nursing/ Midwifery awaiting registration</i>	10	3	6	3	-3	+0	+2.8%	-7	-70.3%	5
Nursing/ Midwifery Student	11	8	18	4	-14	-4	-45.7%	-7	-62.6%	8
Nursing/ Midwifery other	8	6	6	6	-0	+0	+0.7%	-2	-21.9%	8
<b>Nursing &amp; Midwifery</b>	<b>370</b>	<b>379</b>	<b>395</b>	<b>379</b>	<b>-15</b>	<b>-0</b>	<b>-0.0%</b>	<b>+10</b>	<b>+2.6%</b>	<b>417</b>
Therapy Professions	48	53	50	53	+3	-0	-0.8%	+5	+10.7%	59
Social Care	8	7	7	7	-0	-0	-6.3%	-1	-10.9%	8
Social Workers	34	38	33	35	+2	-3	-7.2%	+1	+2.4%	39
Psychologists	31	29	31	33	+2	+4	+14.0%	+2	+6.4%	38
Pharmacy	1	1				-1	-100.0%	-1	-100.0%	
H&SC, Other	18	18	19	19	+0	+1	+6.0%	+1	+5.9%	22
<b>Health &amp; Social Care Professionals</b>	<b>140</b>	<b>147</b>	<b>140</b>	<b>147</b>	<b>+7</b>	<b>+1</b>	<b>+0.4%</b>	<b>+7</b>	<b>+5.1%</b>	<b>166</b>
Management (VIII & above)	3	4	5	5	-0	+1	+26.7%	+2	+70.4%	5
Administrative/ Supervisory (V to VII)	16	17	21	21	+0	+4	+23.9%	+6	+36.5%	22
Clerical (III & IV)	47	49	54	54	+0	+5	+10.3%	+7	+15.6%	59
<b>Management &amp; Administrative</b>	<b>65</b>	<b>70</b>	<b>80</b>	<b>80</b>	<b>+1</b>	<b>+10</b>	<b>+14.5%</b>	<b>+15</b>	<b>+23.0%</b>	<b>86</b>
Support	18	17	17	16	-0	-1	-6.1%	-1	-8.2%	19
Maintenance/ Technical	2	2	2	2	0			+0	+7.5%	2
<b>General Support</b>	<b>20</b>	<b>19</b>	<b>19</b>	<b>18</b>	<b>-0</b>	<b>-1</b>	<b>-5.5%</b>	<b>-1</b>	<b>-6.7%</b>	<b>21</b>
Health Care Assistants	33	34	31	31	-0	-4	-10.3%	-2	-7.4%	34
Care, other	92	84	88	90	+2	+6	+6.9%	-2	-2.0%	99
<b>Patient &amp; Client Care</b>	<b>125</b>	<b>119</b>	<b>119</b>	<b>121</b>	<b>+2</b>	<b>+2</b>	<b>+1.9%</b>	<b>-4</b>	<b>-3.5%</b>	<b>133</b>

## CHO 8

Oct 2022	WTE Dec 2019	WTE Dec 2020	WTE Sep 2022	WTE Oct 2022	WTE change since Sep 22	WTE change since Dec 20	% change since Dec 20	WTE change since Dec 19	% change since Dec 19	No. Oct 2022
<b>Overall</b>	<b>1,098</b>	<b>1,112</b>	<b>1,090</b>	<b>1,079</b>	<b>-11</b>	<b>-33</b>	<b>-2.9%</b>	<b>-19</b>	<b>-1.7%</b>	<b>1,187</b>
Consultants	35	36	37	37	+0	+1	+1.4%	+2	+4.6%	39
Registrars	26	31	28	28	-0	-3	-9.1%	+3	+10.1%	29
SHO/ Interns	36	26	27	27	+1	+1	+4.7%	-9	-23.7%	28
<b>Medical &amp; Dental</b>	<b>97</b>	<b>94</b>	<b>92</b>	<b>93</b>	<b>+1</b>	<b>-1</b>	<b>-1.2%</b>	<b>-4</b>	<b>-4.5%</b>	<b>96</b>
Nurse/ Midwife Manager	121	120	118	116	-1	-4	-3.4%	-4	-3.7%	121
Nurse/ Midwife Specialist & AN/MP	56	60	67	70	+3	+10	+17.0%	+14	+24.1%	75
Staff Nurse/ Staff Midwife	332	342	323	316	-7	-26	-7.7%	-16	-4.7%	345
<i>Pre-registration Nurse Intern (COVID-19)</i>		1				-1	-100.0%		-100.0%	
<i>Pre-registration Nurse/ Midwife Intern</i>	1		14	3	-11	+3	-100.0%	+3	+578.0%	14
<i>Nursing/ Midwifery awaiting registration</i>	2		12	12	-0	+12	-100.0%	+10	+490.5%	15
Nursing/ Midwifery Student	3	1	26	15	-11	+14	+1375.7%	+13	+508.0%	29
Nursing/ Midwifery other	4	3	3	3	0	-0	-2.7%	-1	-26.8%	3
<b>Nursing &amp; Midwifery</b>	<b>515</b>	<b>526</b>	<b>536</b>	<b>520</b>	<b>-16</b>	<b>-6</b>	<b>-1.2%</b>	<b>+5</b>	<b>+1.0%</b>	<b>573</b>
Therapy Professions	44	43	34	35	+0	-8	-18.6%	-9	-21.4%	40
Social Care	7	7	6	6	-0	-1	-13.3%	-1	-16.2%	7
Social Workers	41	44	50	50	+1	+7	+15.2%	+9	+21.9%	55
Psychologists	39	37	35	36	+1	-1	-3.3%	-4	-9.2%	37
Pharmacy	1	2	2	3	+0	+1	+66.7%	+2	+150.0%	4
H&SC, Other	20	21	17	17	+0	-5	-21.5%	-4	-17.8%	20
<b>Health &amp; Social Care Professionals</b>	<b>153</b>	<b>153</b>	<b>143</b>	<b>146</b>	<b>+3</b>	<b>-7</b>	<b>-4.6%</b>	<b>-7</b>	<b>-4.8%</b>	<b>163</b>
Management (VIII & above)	3	3	3	3	0	+0	+1.7%	+0	+2.0%	3
Administrative/ Supervisory (V to VII)	22	20	24	25	+1	+5	+24.8%	+3	+11.9%	27
Clerical (III & IV)	88	97	87	89	+2	-8	-8.2%	+1	+1.1%	101
<b>Management &amp; Administrative</b>	<b>114</b>	<b>120</b>	<b>114</b>	<b>117</b>	<b>+3</b>	<b>-3</b>	<b>-2.4%</b>	<b>+4</b>	<b>+3.2%</b>	<b>131</b>
Support	33	31	29	29	-0	-3	-8.5%	-4	-12.5%	31
Maintenance/ Technical	26	28	25	25	-0	-3	-9.9%	-1	-3.4%	27
<b>General Support</b>	<b>59</b>	<b>59</b>	<b>54</b>	<b>54</b>	<b>-1</b>	<b>-5</b>	<b>-9.2%</b>	<b>-5</b>	<b>-8.4%</b>	<b>58</b>
Health Care Assistants	157	156	147	145	-2	-11	-7.2%	-12	-7.6%	161
Care, other	4	3	4	4	+0	+1	+38.7%	+1	+24.6%	5
<b>Patient &amp; Client Care</b>	<b>160</b>	<b>159</b>	<b>151</b>	<b>149</b>	<b>-1</b>	<b>-10</b>	<b>-6.3%</b>	<b>-11</b>	<b>-6.9%</b>	<b>166</b>

## CHO 9

Oct 2022	WTE Dec 2019	WTE Dec 2020	WTE Sep 2022	WTE Oct 2022	WTE change since Sep 22	WTE change since Dec 20	% change since Dec 20	WTE change since Dec 19	% change since Dec 19	No. Oct 2022
<b>Overall</b>	<b>1,272</b>	<b>1,331</b>	<b>1,350</b>	<b>1,366</b>	<b>+16</b>	<b>+35</b>	<b>+2.6%</b>	<b>+94</b>	<b>+7.4%</b>	<b>1,508</b>
Consultants	50	46	53	54	+1	+8	+17.1%	+4	+8.5%	59
Registrars	31	32	54	59	+6	+27	+84.9%	+28	+90.9%	61
SHO/ Interns	53	54	29	34	+5	-19	-36.2%	-19	-35.8%	36
<b>Medical &amp; Dental</b>	<b>134</b>	<b>132</b>	<b>136</b>	<b>147</b>	<b>+12</b>	<b>+16</b>	<b>+11.9%</b>	<b>+13</b>	<b>+9.9%</b>	<b>156</b>
Nurse/ Midwife Manager	132	138	138	137	-2	-1	-0.8%	+5	+3.6%	142
Nurse/ Midwife Specialist & AN/MP	65	76	93	93	+0	+18	+23.4%	+28	+43.3%	98
Staff Nurse/ Staff Midwife	351	371	355	361	+6	-10	-2.8%	+10	+2.8%	397
<i>Pre-registration Nurse Intern (COVID-19)</i>		5				-5	-100.0%		-100.0%	
<i>Pre-registration Nurse/ Midwife Intern</i>	10	10	7	5	-1	-5	-47.3%	-5	-46.8%	11
<i>Nursing/ Midwifery awaiting registration</i>	11		19	10	-9	+10	-100.0%	-1	-6.0%	15
Nursing/ Midwifery Student	21	16	25	16	-10	-0	-0.8%	-5	-25.8%	26
Nursing/ Midwifery other	11	13	10	10	+0	-3	-22.4%	-2	-13.2%	11
<b>Nursing &amp; Midwifery</b>	<b>581</b>	<b>613</b>	<b>622</b>	<b>617</b>	<b>-5</b>	<b>+3</b>	<b>+0.5%</b>	<b>+36</b>	<b>+6.2%</b>	<b>674</b>
Therapy Professions	55	61	60	61	+1	-0	-0.7%	+6	+10.6%	69
Social Care	1	1	1	1	+0			+0	+11.1%	1
Social Workers	43	43	51	55	+4	+12	+28.7%	+12	+26.7%	60
Psychologists	46	53	55	56	+1	+3	+5.0%	+10	+22.0%	62
Pharmacy	8	9	8	7	-2	-2	-22.6%	-1	-13.8%	10
H&SC, Other	15	14	17	18	+1	+3	+23.1%	+3	+20.4%	19
<b>Health &amp; Social Care Professionals</b>	<b>167</b>	<b>181</b>	<b>192</b>	<b>197</b>	<b>+4</b>	<b>+16</b>	<b>+8.7%</b>	<b>+29</b>	<b>+17.6%</b>	<b>221</b>
Management (VIII & above)	5	5	4	4	0	-1	-20.0%	-1	-19.8%	4
Administrative/ Supervisory (V to VII)	28	29	35	34	-0	+5	+18.0%	+6	+22.2%	37
Clerical (III & IV)	104	114	104	109	+5	-5	-4.3%	+5	+5.2%	127
<b>Management &amp; Administrative</b>	<b>137</b>	<b>148</b>	<b>143</b>	<b>147</b>	<b>+4</b>	<b>-1</b>	<b>-0.5%</b>	<b>+11</b>	<b>+7.7%</b>	<b>168</b>
Support	103	104	94	94	-0	-10	-9.8%	-9	-9.1%	116
Maintenance/ Technical	11	11	11	11	+0			+0	+0.7%	11
<b>General Support</b>	<b>114</b>	<b>115</b>	<b>105</b>	<b>105</b>	<b>-0</b>	<b>-10</b>	<b>-8.9%</b>	<b>-9</b>	<b>-8.2%</b>	<b>127</b>
Health Care Assistants	126	129	138	140	+2	+11	+8.6%	+14	+11.2%	149
Care, other	13	12	14	13	-2	+0	+0.3%	-0	-1.6%	13
<b>Patient &amp; Client Care</b>	<b>139</b>	<b>142</b>	<b>152</b>	<b>153</b>	<b>+0</b>	<b>+11</b>	<b>+7.9%</b>	<b>+14</b>	<b>+10.1%</b>	<b>162</b>

## other Community Services

Oct 2022	WTE Dec 2019	WTE Dec 2020	WTE Sep 2022	WTE Oct 2022	WTE change since Sep 22	WTE change since Dec 20	% change since Dec 20	WTE change since Dec 19	% change since Dec 19	No. Oct 2022
<b>Overall</b>	<b>438</b>	<b>494</b>	<b>494</b>	<b>494</b>	<b>+0</b>	<b>+0</b>	<b>+0.0%</b>	<b>+57</b>	<b>+13.0%</b>	<b>518</b>
Consultants	16	17	17	16	-1	-1	-5.8%	+0	+0.2%	18
Registrars	13	14	19	19	-0	+5	+35.6%	+6	+46.1%	20
<b>Medical &amp; Dental</b>	<b>29</b>	<b>31</b>	<b>36</b>	<b>35</b>	<b>-1</b>	<b>+4</b>	<b>+13.1%</b>	<b>+6</b>	<b>+21.0%</b>	<b>38</b>
Nurse/ Midwife Manager	62	76	76	78	+2	+2	+2.9%	+16	+25.4%	81
Nurse/ Midwife Specialist & AN/MP	8	13	10	10	+0	-2	-17.4%	+2	+26.9%	12
Staff Nurse/ Staff Midwife	169	165	151	150	-2	-15	-9.3%	-19	-11.4%	153
Nursing/ Midwifery other	1	2	2	2	-0	-0	-2.0%	+1	+92.0%	2
<b>Nursing &amp; Midwifery</b>	<b>240</b>	<b>255</b>	<b>240</b>	<b>240</b>	<b>+0</b>	<b>-15</b>	<b>-6.0%</b>	<b>-0</b>	<b>-0.1%</b>	<b>248</b>
Therapy Professions	11	12	9	10	+0	-2	-17.7%	-1	-13.3%	10
Social Care	2	2	1	1	0	-1	-47.4%	-1	-49.0%	1
Social Workers	15	17	12	12	+0	-5	-30.9%	-3	-19.6%	13
Psychologists	6	6	5	6	+1	+0	+0.7%			6
Pharmacy		1	1	2	+1	+1	+100.0%	+2	-100.0%	2
<b>Health &amp; Social Care Professionals</b>	<b>34</b>	<b>38</b>	<b>29</b>	<b>31</b>	<b>+2</b>	<b>-7</b>	<b>-19.3%</b>	<b>-3</b>	<b>-9.9%</b>	<b>32</b>
Management (VIII & above)	27	30	31	33	+2	+3	+9.6%	+6	+21.9%	33
Administrative/ Supervisory (V to VII)	31	37	43	42	-1	+5	+14.2%	+11	+34.0%	45
Clerical (III & IV)	25	18	22	22	-0	+4	+19.6%	-3	-12.4%	23
<b>Management &amp; Administrative</b>	<b>83</b>	<b>85</b>	<b>96</b>	<b>97</b>	<b>+0</b>	<b>+12</b>	<b>+13.7%</b>	<b>+13</b>	<b>+16.0%</b>	<b>101</b>
Support	12	16	23	23	-0	+7	+41.9%	+11	+86.3%	24
Maintenance/ Technical	2	7	10	10	+0	+3	+42.9%	+8	+400.0%	10
<b>General Support</b>	<b>14</b>	<b>23</b>	<b>33</b>	<b>33</b>	<b>-0</b>	<b>+10</b>	<b>+42.2%</b>	<b>+19</b>	<b>+130.5%</b>	<b>34</b>
Health Care Assistants	37	62	61	60	-1	-2	-3.5%	+23	+62.8%	65
Care, other	1	1				-1	-100.0%	-1	-100.0%	
<b>Patient &amp; Client Care</b>	<b>37</b>	<b>63</b>	<b>61</b>	<b>60</b>	<b>-1</b>	<b>-3</b>	<b>-4.3%</b>	<b>+23</b>	<b>+60.6%</b>	<b>65</b>

## Mental Health Services Employment by Grade Group: Oct 2022

Oct 2022	WTE Dec 2019	WTE Dec 2020	WTE Sep 2022	WTE Oct 2022	WTE change since Sep 22	WTE change since Dec 20	% change since Dec 20	WTE change since Dec 19	% change since Dec 19	No. Oct 2022
<b>Overall</b>	<b>9,954</b>	<b>10,301</b>	<b>10,400</b>	<b>10,398</b>	<b>-2</b>	<b>+97</b>	<b>+0.9%</b>	<b>+444</b>	<b>+4.5%</b>	<b>11,436</b>
Consultant Medicine	1	1	1	1						1
Consultant Psychiatry	352	369	391	396	+6	+28	+7.5%	+45	+12.7%	433
<b>Consultants</b>	<b>353</b>	<b>370</b>	<b>392</b>	<b>397</b>	<b>+6</b>	<b>+28</b>	<b>+7.5%</b>	<b>+45</b>	<b>+12.7%</b>	<b>434</b>
<b>Registrars</b>	<b>269</b>	<b>281</b>	<b>340</b>	<b>345</b>	<b>+5</b>	<b>+64</b>	<b>+22.8%</b>	<b>+76</b>	<b>+28.3%</b>	<b>354</b>
Senior House Officer	253	271	246	255	+9	-16	-5.8%	+2	+0.8%	264
Interns	8	5	7	6	-1	+1	+15.0%	-2	-28.1%	6
<b>SHO/ Interns</b>	<b>261</b>	<b>276</b>	<b>253</b>	<b>261</b>	<b>+8</b>	<b>-15</b>	<b>-5.4%</b>	<b>-0</b>	<b>-0.1%</b>	<b>270</b>
<b>Medical/ Dental, other</b>	<b>5</b>	<b>5</b>	<b>5</b>	<b>5</b>		<b>-0</b>	<b>-2.6%</b>	<b>-0</b>	<b>-2.6%</b>	<b>8</b>
<b>Medical &amp; Dental</b>	<b>888</b>	<b>932</b>	<b>990</b>	<b>1,008</b>	<b>+18</b>	<b>+77</b>	<b>+8.2%</b>	<b>+121</b>	<b>+13.6%</b>	<b>1,066</b>
Clinical Nurse/ Midwife Manager	999	1,041	1,026	1,030	+3	-12	-1.1%	+31	+3.1%	1,079
Director Nursing/Midwifery, Assistant	165	171	176	175	-1	+4	+2.3%	+10	+6.0%	180
Director of Nursing/Midwifery	29	28	34	34	+1	+6	+22.5%	+5	+18.4%	35
<b>Nurse/ Midwife Manager</b>	<b>1,192</b>	<b>1,240</b>	<b>1,235</b>	<b>1,238</b>	<b>+3</b>	<b>-1</b>	<b>-0.1%</b>	<b>+46</b>	<b>+3.8%</b>	<b>1,294</b>
Advanced Nurse/ Midwife Practitioner	31	39	59	65	+7	+26	+66.2%	+35	+113.1%	69
Clinical Nurse/ Midwife Specialist	428	489	521	535	+15	+46	+9.4%	+107	+25.0%	572
<b>Nurse/ Midwife Specialist &amp; AN/MP</b>	<b>459</b>	<b>529</b>	<b>579</b>	<b>601</b>	<b>+21</b>	<b>+72</b>	<b>+13.7%</b>	<b>+142</b>	<b>+30.9%</b>	<b>641</b>
Staff Midwives		1				-1	-100.0%		-100.0%	
Staff Nurse [Psychiatric]	2,893	2,965	2,832	2,797	-35	-167	-5.6%	-96	-3.3%	3,051
Staff Nurses [General/ Children's]	105	106	108	107	-1	+1	+0.6%	+2	+2.0%	116
Staff Nurse [Intellectual Disability]	5	4	6	6	+0	+2	+41.5%	+1	+32.5%	6
<b>Staff Nurse/ Staff Midwife</b>	<b>3,003</b>	<b>3,076</b>	<b>2,946</b>	<b>2,911</b>	<b>-36</b>	<b>-166</b>	<b>-5.4%</b>	<b>-92</b>	<b>-3.1%</b>	<b>3,173</b>
Pre-registration Nurse Intern (COVID-19)		42				-42	-100.0%		-100.0%	
Pre-registration Nurse/ Midwife Intern	28	11	108	51	-57	+40	+372.0%	+23	+83.6%	140
Post-registration Nurse/ Midwife Student	1	1				-1	-100.0%	-1	-100.0%	
Nursing/ Midwifery awaiting registration	59	5	61	72	+11	+67	+1384.9%	+13	+22.3%	91
<b>Nursing/ Midwifery Student</b>	<b>87</b>	<b>59</b>	<b>169</b>	<b>123</b>	<b>-46</b>	<b>+64</b>	<b>+107.9%</b>	<b>+35</b>	<b>+40.2%</b>	<b>231</b>
Nursing Education/Clinical	32	32	35	34	-1	+2	+7.5%	+2	+7.9%	38
<b>Nursing/ Midwifery other</b>	<b>32</b>	<b>32</b>	<b>35</b>	<b>34</b>	<b>-1</b>	<b>+2</b>	<b>+7.5%</b>	<b>+2</b>	<b>+7.9%</b>	<b>38</b>
<b>Nursing &amp; Midwifery</b>	<b>4,773</b>	<b>4,935</b>	<b>4,965</b>	<b>4,906</b>	<b>-58</b>	<b>-29</b>	<b>-0.6%</b>	<b>+133</b>	<b>+2.8%</b>	<b>5,377</b>
Dietitians	19	21	19	19	+1	-1	-6.6%	+0	+1.5%	22
Occupational Therapists	339	346	337	349	+12	+3	+0.9%	+10	+3.0%	393
Physiotherapists	2	2	3	3		+1	+22.8%	+1	+32.7%	4
Podiatrists & Chiropodists	1	1	1	1	-0	-0	-10.0%	-0	-1.4%	2
Speech & Language Therapists	62	70	61	65	+3	-5	-7.0%	+3	+5.0%	76
<b>Therapy Professions</b>	<b>422</b>	<b>439</b>	<b>420</b>	<b>437</b>	<b>+16</b>	<b>-3</b>	<b>-0.6%</b>	<b>+14</b>	<b>+3.4%</b>	<b>497</b>
<b>Social Care</b>	<b>74</b>	<b>80</b>	<b>73</b>	<b>73</b>	<b>-0</b>	<b>-7</b>	<b>-9.2%</b>	<b>-1</b>	<b>-1.3%</b>	<b>83</b>
<b>Social Workers</b>	<b>350</b>	<b>373</b>	<b>390</b>	<b>401</b>	<b>+11</b>	<b>+29</b>	<b>+7.7%</b>	<b>+52</b>	<b>+14.8%</b>	<b>444</b>
<b>Psychologists</b>	<b>394</b>	<b>424</b>	<b>434</b>	<b>440</b>	<b>+7</b>	<b>+16</b>	<b>+3.9%</b>	<b>+46</b>	<b>+11.6%</b>	<b>486</b>
Pharmacists	16	17	16	15	-1	-2	-11.9%	-1	-6.4%	18
Pharmacy Technicians	2	4	4	4	-1	+0	+4.4%	+1	+53.8%	7
<b>Pharmacy</b>	<b>19</b>	<b>21</b>	<b>20</b>	<b>19</b>	<b>-2</b>	<b>-2</b>	<b>-9.0%</b>	<b>+0</b>	<b>+1.7%</b>	<b>25</b>
Counsellor Therapists	95	101	125	127	+1	+25	+25.1%	+32	+33.5%	138
Other Health & Social Care	12	5	4	4	-0	-1	-26.9%	-8	-66.3%	8
Play Therapists/ Specialists	1	1	3	3		+2	+110.1%	+2	+113.0%	4
<b>H&amp;SC, Other</b>	<b>108</b>	<b>108</b>	<b>132</b>	<b>134</b>	<b>+1</b>	<b>+26</b>	<b>+23.6%</b>	<b>+26</b>	<b>+23.7%</b>	<b>150</b>
<b>Health &amp; Social Care Professionals</b>	<b>1,366</b>	<b>1,444</b>	<b>1,470</b>	<b>1,503</b>	<b>+34</b>	<b>+59</b>	<b>+4.1%</b>	<b>+137</b>	<b>+10.0%</b>	<b>1,685</b>

Oct 2022	WTE Dec 2019	WTE Dec 2020	WTE Sep 2022	WTE Oct 2022	WTE change since Sep 22	WTE change since Dec 20	% change since Dec 20	WTE change since Dec 19	% change since Dec 19	No. Oct 2022
<b>Overall</b>	<b>9,954</b>	<b>10,301</b>	<b>10,400</b>	<b>10,398</b>	<b>-2</b>	<b>+97</b>	<b>+0.9%</b>	<b>+444</b>	<b>+4.5%</b>	<b>11,436</b>
Executive Management	11	15	14	13	-1	-1	-8.7%	+2	+22.3%	15
Senior Management (VIII & GM)	46	52	56	59	+3	+7	+12.8%	+13	+27.6%	60
<b>Management (VIII &amp; above)</b>	<b>57</b>	<b>67</b>	<b>70</b>	<b>73</b>	<b>+3</b>	<b>+5</b>	<b>+8.1%</b>	<b>+15</b>	<b>+26.5%</b>	<b>75</b>
Middle Management (V-VII)	235	243	272	269	-3	+25	+10.5%	+33	+14.2%	286
Other Administrative	2	2	2	2	-0					2
<b>Administrative/ Supervisory (V to VII)</b>	<b>237</b>	<b>245</b>	<b>274</b>	<b>270</b>	<b>-4</b>	<b>+25</b>	<b>+10.4%</b>	<b>+33</b>	<b>+14.1%</b>	<b>288</b>
General Administrative (III & IV)	717	722	697	704	+7	-18	-2.5%	-13	-1.9%	792
<b>Clerical (III &amp; IV)</b>	<b>717</b>	<b>722</b>	<b>697</b>	<b>704</b>	<b>+7</b>	<b>-18</b>	<b>-2.5%</b>	<b>-13</b>	<b>-1.9%</b>	<b>792</b>
<b>Management &amp; Administrative</b>	<b>1,012</b>	<b>1,034</b>	<b>1,041</b>	<b>1,047</b>	<b>+6</b>	<b>+13</b>	<b>+1.2%</b>	<b>+35</b>	<b>+3.5%</b>	<b>1,155</b>
Catering	65	64	68	69	+1	+5	+8.2%	+3	+5.4%	75
Household Services	425	441	405	400	-5	-41	-9.3%	-24	-5.7%	473
Other Support	43	42	40	42	+2	-0	-0.7%	-1	-2.5%	48
Portering	48	47	49	48	-1	+1	+1.1%	-0	-0.5%	50
<b>Support</b>	<b>581</b>	<b>594</b>	<b>562</b>	<b>558</b>	<b>-3</b>	<b>-36</b>	<b>-6.0%</b>	<b>-22</b>	<b>-3.8%</b>	<b>646</b>
Maintenance	129	137	130	131	+0	-7	-4.9%	+2	+1.4%	135
Technical Services	2						-100.0%	-2	-100.0%	
<b>Maintenance/ Technical</b>	<b>131</b>	<b>137</b>	<b>130</b>	<b>131</b>	<b>+0</b>	<b>-7</b>	<b>-4.9%</b>	<b>-0</b>	<b>-0.2%</b>	<b>135</b>
<b>General Support</b>	<b>711</b>	<b>732</b>	<b>692</b>	<b>689</b>	<b>-3</b>	<b>-42</b>	<b>-5.8%</b>	<b>-22</b>	<b>-3.1%</b>	<b>781</b>
Attendant/ Aide	605	583	433	424	-9	-159	-27.2%	-180	-29.8%	474
Health & Social Care Assistants	9	8	13	16	+3	+8	+95.9%	+7	+82.8%	18
Health Care Assistant/ Care Assistant	374	430	582	588	+6	+158	+36.8%	+214	+57.2%	626
<b>Health Care Assistants</b>	<b>988</b>	<b>1,022</b>	<b>1,028</b>	<b>1,029</b>	<b>+1</b>	<b>+7</b>	<b>+0.7%</b>	<b>+41</b>	<b>+4.1%</b>	<b>1,118</b>
Home Care Services	16	14	23	23	-0	+8	+58.0%	+7	+43.3%	34
Other Care Grades	23	22	21	19	-2	-3	-12.4%	-3	-14.7%	21
Pastoral Care	13	12	11	10	-1	-2	-17.5%	-3	-21.2%	14
Workshop Services	165	155	160	164	+4	+9	+5.7%	-1	-0.6%	185
<b>Care, other</b>	<b>216</b>	<b>203</b>	<b>215</b>	<b>216</b>	<b>+1</b>	<b>+12</b>	<b>+6.0%</b>	<b>-0</b>	<b>-0.1%</b>	<b>254</b>
<b>Patient &amp; Client Care</b>	<b>1,204</b>	<b>1,225</b>	<b>1,243</b>	<b>1,245</b>	<b>+2</b>	<b>+20</b>	<b>+1.6%</b>	<b>+41</b>	<b>+3.4%</b>	<b>1,372</b>



## Employment by WTE, Headcount, Gender, Full-Time /Part-Time etc.: Oct 2022

Mental Health Services Staff Group	WTE	Headcount	WTE: no.	% Male	% female	Male WTE: no.	Female WTE: no.	% Total Perm	% Male Perm	% Female Perm	% Total Full Time	% Total Part Time	% Male FT	% Female FT
<b>Overall</b>	<b>10,398</b>	<b>11,436</b>	<b>1.10</b>	<b>27.0%</b>	<b>73.0%</b>	<b>1.06</b>	<b>1.12</b>	<b>83.7%</b>	<b>80.4%</b>	<b>85.0%</b>	<b>85.0%</b>	<b>15.0%</b>	<b>92.9%</b>	<b>82.1%</b>
Consultant Medicine	1	1	1.00	100.0%		1.00		100.0%	100.0%		100.0%	0.0%	100.0%	
Consultant Psychiatry	396	433	1.09	43.2%	56.8%	1.07	1.11	64.4%	64.4%	63.8%	85.7%	14.3%	92.0%	80.9%
<b>Consultants</b>	<b>397</b>	<b>434</b>	<b>1.09</b>	<b>43.3%</b>	<b>56.7%</b>	<b>1.07</b>	<b>1.11</b>	<b>64.5%</b>	<b>65.4%</b>	<b>63.8%</b>	<b>85.7%</b>	<b>14.3%</b>	<b>92.0%</b>	<b>80.9%</b>
Registrar	216	222	1.03	48.2%	51.8%	1.02	1.03	1.8%	1.8%	1.7%	97.7%	2.3%	99.1%	96.5%
Senior Registrar	127	130	1.03	30.8%	69.2%	1.01	1.03	1.5%	1.5%	1.1%	95.4%	4.6%	97.5%	94.4%
Specialist Registrar	2	2	1.00		100.0%		1.00	0.0%	0.0%	0.0%	0.0%	100.0%		0.0%
<b>Registrars</b>	<b>345</b>	<b>354</b>	<b>1.03</b>	<b>41.5%</b>	<b>58.5%</b>	<b>1.02</b>	<b>1.03</b>	<b>1.7%</b>	<b>2.0%</b>	<b>1.4%</b>	<b>96.3%</b>	<b>3.7%</b>	<b>98.6%</b>	<b>94.7%</b>
Senior House Officer	255	264	1.03	41.3%	58.7%	1.03	1.04	0.4%	0.4%	0.0%	98.9%	1.1%	100.0%	98.1%
Interns	6	6	1.04	33.3%	66.7%	1.00	1.07	0.0%	0.0%	0.0%	100.0%	0.0%	100.0%	100.0%
<b>SHO/ Interns</b>	<b>261</b>	<b>270</b>	<b>1.03</b>	<b>41.1%</b>	<b>58.9%</b>	<b>1.03</b>	<b>1.04</b>	<b>0.4%</b>	<b>0.9%</b>	<b>0.0%</b>	<b>98.9%</b>	<b>1.1%</b>	<b>100.0%</b>	<b>98.1%</b>
<b>Medical/ Dental, other</b>	<b>5</b>	<b>8</b>	<b>1.64</b>	<b>50.0%</b>	<b>50.0%</b>	<b>1.79</b>	<b>1.52</b>	<b>62.5%</b>	<b>50.0%</b>	<b>75.0%</b>	<b>37.5%</b>	<b>62.5%</b>	<b>25.0%</b>	<b>50.0%</b>
<b>Medical &amp; Dental</b>	<b>1,008</b>	<b>1,066</b>	<b>1.06</b>	<b>42.2%</b>	<b>57.8%</b>	<b>1.05</b>	<b>1.07</b>	<b>27.4%</b>	<b>28.7%</b>	<b>26.5%</b>	<b>92.2%</b>	<b>7.8%</b>	<b>95.6%</b>	<b>89.8%</b>
Clinical Nurse/ Midwife Manager	1,030	1,079	1.05	34.2%	65.8%	1.02	1.07	98.4%	98.4%	98.6%	93.9%	6.1%	98.4%	91.5%
Director Nursing/Midwifery, Assistant	175	180	1.03	41.7%	58.3%	1.03	1.03	100.0%	100.0%	100.0%	98.3%	1.7%	97.3%	99.0%
Director of Nursing/Midwifery	34	35	1.02	57.1%	42.9%	1.04	1.01	100.0%	100.0%	100.0%	100.0%	0.0%	100.0%	100.0%
<b>Nurse/ Midwife Manager</b>	<b>1,238</b>	<b>1,294</b>	<b>1.05</b>	<b>35.9%</b>	<b>64.1%</b>	<b>1.02</b>	<b>1.06</b>	<b>98.7%</b>	<b>98.5%</b>	<b>98.8%</b>	<b>94.7%</b>	<b>5.3%</b>	<b>98.3%</b>	<b>92.7%</b>
Advanced Nurse/ Midwife Practitioner	65	69	1.05	20.3%	79.7%	1.00	1.07	100.0%	100.0%	100.0%	94.2%	5.8%	100.0%	92.7%
Clinical Nurse/ Midwife Specialist	535	572	1.07	19.8%	80.2%	1.02	1.08	99.7%	99.7%	99.6%	92.7%	7.3%	97.3%	91.5%
<b>Nurse/ Midwife Specialist &amp; AN/MP</b>	<b>601</b>	<b>641</b>	<b>1.07</b>	<b>19.8%</b>	<b>80.2%</b>	<b>1.02</b>	<b>1.08</b>	<b>99.7%</b>	<b>100.0%</b>	<b>99.6%</b>	<b>92.8%</b>	<b>7.2%</b>	<b>97.6%</b>	<b>91.6%</b>
Staff Nurse [Psychiatric]	2,797	3,051	1.09	25.3%	74.7%	1.06	1.10	92.0%	92.0%	92.9%	87.5%	12.5%	92.1%	86.0%
Staff Nurses [General/ Children's]	107	116	1.08	26.7%	73.3%	1.12	1.07	76.7%	76.7%	78.8%	84.5%	15.5%	83.9%	84.7%
Staff Nurse [Intellectual Disability]	6	6	1.00	33.3%	66.7%	1.00	1.00	66.7%	66.7%	50.0%	100.0%	0.0%	100.0%	100.0%
<b>Staff Nurse/ Staff Midwife</b>	<b>2,911</b>	<b>3,173</b>	<b>1.09</b>	<b>25.4%</b>	<b>74.6%</b>	<b>1.06</b>	<b>1.10</b>	<b>91.4%</b>	<b>88.6%</b>	<b>92.3%</b>	<b>87.4%</b>	<b>12.6%</b>	<b>91.8%</b>	<b>85.9%</b>
Pre-registration Nurse/ Midwife Intern	51	140	2.77	20.0%	80.0%	2.80	2.76	0.0%	0.0%	0.0%	99.3%	0.7%	100.0%	99.1%
Nursing/ Midwifery awaiting registration	72	91	1.26	12.1%	87.9%	1.36	1.25	4.4%	4.4%	3.8%	95.6%	4.4%	90.9%	96.3%
<b>Nursing/ Midwifery Student</b>	<b>123</b>	<b>231</b>	<b>1.88</b>	<b>16.9%</b>	<b>83.1%</b>	<b>2.16</b>	<b>1.84</b>	<b>1.7%</b>	<b>2.6%</b>	<b>1.6%</b>	<b>97.8%</b>	<b>2.2%</b>	<b>97.4%</b>	<b>97.9%</b>
Nursing Education/Clinical	34	38	1.12	10.5%	89.5%	1.14	1.11	100.0%	100.0%	100.0%	89.5%	10.5%	100.0%	88.2%

<b>Nursing/ Midwifery other</b>	<b>34</b>	<b>38</b>	<b>1.12</b>	<b>10.5%</b>	<b>89.5%</b>	<b>1.14</b>	<b>1.11</b>	<b>100.0%</b>	<b>100.0%</b>	<b>100.0%</b>	<b>89.5%</b>	<b>10.5%</b>	<b>100.0%</b>	<b>88.2%</b>
<b>Nursing &amp; Midwifery</b>	<b>4,906</b>	<b>5,377</b>	<b>1.10</b>	<b>26.8%</b>	<b>73.2%</b>	<b>1.06</b>	<b>1.11</b>	<b>90.3%</b>	<b>90.5%</b>	<b>90.3%</b>	<b>90.3%</b>	<b>9.7%</b>	<b>94.6%</b>	<b>88.7%</b>
<b>Health &amp; Social Care</b>	<b>1,503</b>	<b>1,685</b>	<b>1.12</b>	<b>16.0%</b>	<b>84.0%</b>	<b>1.04</b>	<b>1.14</b>	<b>85.8%</b>	<b>84.4%</b>	<b>86.1%</b>	<b>81.1%</b>	<b>18.9%</b>	<b>92.9%</b>	<b>78.8%</b>
Executive Management	13	15	1.12	53.3%	46.7%	1.10	1.13	100.0%	100.0%	100.0%	100.0%	0.0%	100.0%	100.0%
Senior Management (VIII & GM)	59	60	1.01	26.7%	73.3%	1.01	1.02	96.7%	96.7%	97.7%	96.7%	3.3%	93.8%	97.7%
<b>Management (VIII &amp; above)</b>	<b>73</b>	<b>75</b>	<b>1.03</b>	<b>32.0%</b>	<b>68.0%</b>	<b>1.04</b>	<b>1.03</b>	<b>97.3%</b>	<b>95.8%</b>	<b>98.0%</b>	<b>97.3%</b>	<b>2.7%</b>	<b>95.8%</b>	<b>98.0%</b>
Middle Management (V-VII)	269	286	1.06	21.7%	78.3%	1.04	1.07	93.0%	93.0%	93.8%	88.8%	11.2%	96.8%	86.6%
Other Administrative	2	2	1.27		100.0%		1.27	100.0%	100.0%	100.0%	50.0%	50.0%		50.0%
<b>Administrative/ Supervisory (V to VII)</b>	<b>270</b>	<b>288</b>	<b>1.07</b>	<b>21.5%</b>	<b>78.5%</b>	<b>1.04</b>	<b>1.07</b>	<b>93.1%</b>	<b>90.3%</b>	<b>93.8%</b>	<b>88.5%</b>	<b>11.5%</b>	<b>96.8%</b>	<b>86.3%</b>
General Administrative (III & IV)	704	792	1.13	8.3%	91.7%	1.05	1.13	85.6%	85.6%	86.2%	75.8%	24.2%	87.9%	74.7%
<b>Clerical (III &amp; IV)</b>	<b>704</b>	<b>792</b>	<b>1.13</b>	<b>8.3%</b>	<b>91.7%</b>	<b>1.05</b>	<b>1.13</b>	<b>85.6%</b>	<b>78.8%</b>	<b>86.2%</b>	<b>75.8%</b>	<b>24.2%</b>	<b>87.9%</b>	<b>74.7%</b>
<b>Management &amp; Administrative</b>	<b>1,047</b>	<b>1,155</b>	<b>1.10</b>	<b>13.2%</b>	<b>86.8%</b>	<b>1.04</b>	<b>1.11</b>	<b>88.2%</b>	<b>86.2%</b>	<b>88.5%</b>	<b>80.3%</b>	<b>19.7%</b>	<b>92.8%</b>	<b>78.5%</b>
Catering	69	75	1.09	37.3%	62.7%	1.09	1.10	94.7%	94.7%	93.6%	72.0%	28.0%	82.1%	66.0%
Household Services	400	473	1.18	20.7%	79.3%	1.12	1.20	92.2%	92.2%	93.1%	57.3%	42.7%	81.6%	50.9%
Other Support	42	48	1.15	35.4%	64.6%	1.04	1.22	85.4%	85.4%	87.1%	72.9%	27.1%	94.1%	61.3%
Portering	48	50	1.04	96.0%	4.0%	1.05	1.01	92.0%	92.0%	100.0%	88.0%	12.0%	87.5%	100.0%
<b>Support</b>	<b>558</b>	<b>646</b>	<b>1.16</b>	<b>29.6%</b>	<b>70.4%</b>	<b>1.09</b>	<b>1.19</b>	<b>92.0%</b>	<b>90.1%</b>	<b>92.7%</b>	<b>62.5%</b>	<b>37.5%</b>	<b>84.3%</b>	<b>53.4%</b>
Maintenance	131	135	1.03	99.3%	0.7%	1.03	1.00	95.6%	95.6%	100.0%	97.0%	3.0%	97.0%	100.0%
<b>Maintenance/ Technical</b>	<b>131</b>	<b>135</b>	<b>1.03</b>	<b>99.3%</b>	<b>0.7%</b>	<b>1.03</b>	<b>1.00</b>	<b>95.6%</b>	<b>95.5%</b>	<b>100.0%</b>	<b>97.0%</b>	<b>3.0%</b>	<b>97.0%</b>	<b>100.0%</b>
<b>General Support</b>	<b>689</b>	<b>781</b>	<b>1.13</b>	<b>41.6%</b>	<b>58.4%</b>	<b>1.06</b>	<b>1.19</b>	<b>92.6%</b>	<b>92.3%</b>	<b>92.8%</b>	<b>68.5%</b>	<b>31.5%</b>	<b>89.5%</b>	<b>53.5%</b>
Attendant/ Aide	424	474	1.12	23.8%	76.2%	1.08	1.13	84.6%	84.6%	87.8%	69.8%	30.2%	81.4%	66.2%
Health & Social Care Assistants	16	18	1.10	33.3%	66.7%	1.09	1.11	72.2%	72.2%	66.7%	72.2%	27.8%	83.3%	66.7%
Health Care Assistant/ Care Assistant	588	626	1.06	34.7%	65.3%	1.04	1.08	96.6%	96.6%	97.8%	86.4%	13.6%	95.4%	81.7%
<b>Health Care Assistants</b>	<b>1,029</b>	<b>1,118</b>	<b>1.09</b>	<b>30.1%</b>	<b>69.9%</b>	<b>1.06</b>	<b>1.10</b>	<b>91.1%</b>	<b>87.5%</b>	<b>92.7%</b>	<b>79.2%</b>	<b>20.8%</b>	<b>90.5%</b>	<b>74.3%</b>
Home Care Services	23	34	1.51	35.3%	64.7%	1.51	1.51	76.5%	76.5%	72.7%	32.4%	67.6%	33.3%	31.8%
Other Care Grades	19	21	1.09	81.0%	19.0%	1.02	1.55	90.5%	90.5%	75.0%	81.0%	19.0%	94.1%	25.0%
Pastoral Care	10	14	1.41	85.7%	14.3%	1.37	1.69	35.7%	35.7%	0.0%	57.1%	42.9%	58.3%	50.0%
Workshop Services	164	185	1.13	38.4%	61.6%	1.07	1.16	91.4%	91.4%	92.1%	73.5%	26.5%	85.9%	65.8%
<b>Care, other</b>	<b>216</b>	<b>254</b>	<b>1.18</b>	<b>44.1%</b>	<b>55.9%</b>	<b>1.13</b>	<b>1.22</b>	<b>86.2%</b>	<b>84.8%</b>	<b>87.3%</b>	<b>67.7%</b>	<b>32.3%</b>	<b>78.6%</b>	<b>59.2%</b>
<b>Patient &amp; Client Care</b>	<b>1,245</b>	<b>1,372</b>	<b>1.10</b>	<b>32.7%</b>	<b>67.3%</b>	<b>1.07</b>	<b>1.12</b>	<b>90.2%</b>	<b>86.8%</b>	<b>91.9%</b>	<b>77.0%</b>	<b>23.0%</b>	<b>87.5%</b>	<b>72.0%</b>

## Employment by WTE, Headcount, Gender, Full-Time /Part-Time etc.: Oct 2022

Mental Health Services CHO	WTE	Headcount	WTE: no.	% Male	% female	Male WTE: no.	Female WTE: no.	% Total Perm	% Male Perm	% Female Perm	% Total Full Time	% Total Part Time	% Male FT	% Female FT
<b>Overall</b>	<b>10,398</b>	<b>11,436</b>	<b>1.10</b>	<b>27.0%</b>	<b>73.0%</b>	<b>1.06</b>	<b>1.12</b>	<b>83.7%</b>	<b>80.4%</b>	<b>85.0%</b>	<b>85.0%</b>	<b>15.0%</b>	<b>92.9%</b>	<b>82.1%</b>
CHO 1	1,034	1,131	1.09	25.2%	74.8%	1.04	1.11	88.0%	88.0%	88.7%	86.6%	13.4%	95.4%	83.7%
CHO 2	1,302	1,421	1.09	28.5%	71.5%	1.06	1.10	85.9%	85.9%	87.7%	84.7%	15.3%	90.9%	82.3%
CHO 3	813	904	1.11	21.6%	78.4%	1.06	1.13	80.8%	80.8%	81.0%	85.6%	14.4%	90.8%	84.2%
CHO 4	1,557	1,720	1.10	25.9%	74.1%	1.07	1.12	69.2%	69.2%	71.2%	83.5%	16.5%	93.0%	80.1%
CHO 5	1,229	1,368	1.11	26.2%	73.8%	1.07	1.13	88.4%	88.4%	89.9%	80.1%	19.9%	91.1%	76.2%
CHO 6	642	716	1.12	29.6%	70.4%	1.07	1.14	86.7%	86.7%	87.9%	82.3%	17.7%	89.6%	79.2%
CHO 7	882	963	1.09	22.6%	77.4%	1.04	1.11	83.5%	83.5%	84.0%	88.8%	11.2%	95.9%	86.7%
CHO 8	1,079	1,187	1.10	24.8%	75.2%	1.04	1.12	86.7%	86.7%	88.0%	85.9%	14.1%	95.2%	82.9%
CHO 9	1,366	1,508	1.10	27.9%	72.1%	1.06	1.12	86.8%	86.8%	88.5%	85.2%	14.8%	94.5%	81.6%
other Community Services	494	518	1.05	48.1%	51.9%	1.05	1.04	90.0%	90.0%	92.9%	93.4%	6.6%	92.4%	94.4%

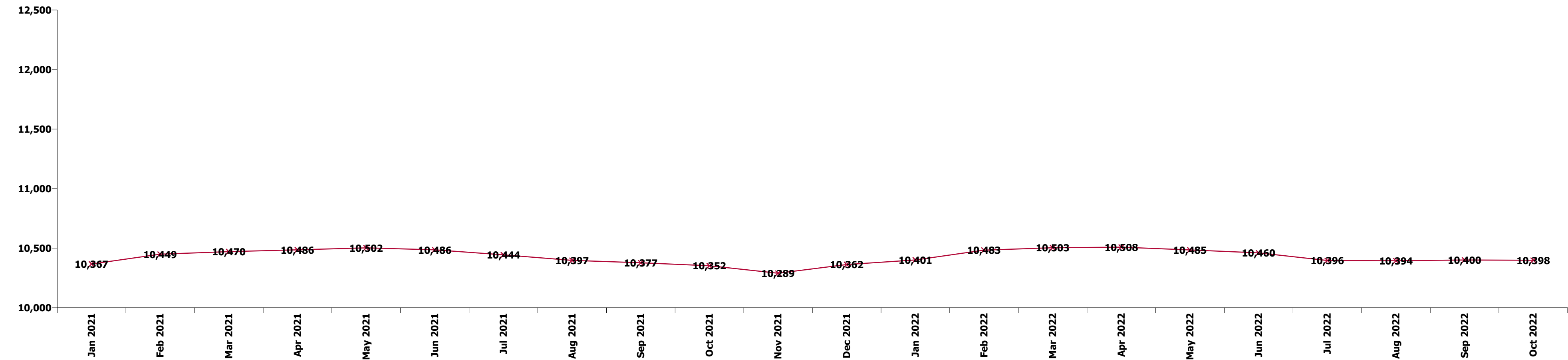
Summary Staff Movement: October 2022

Month-on-month  
Summary

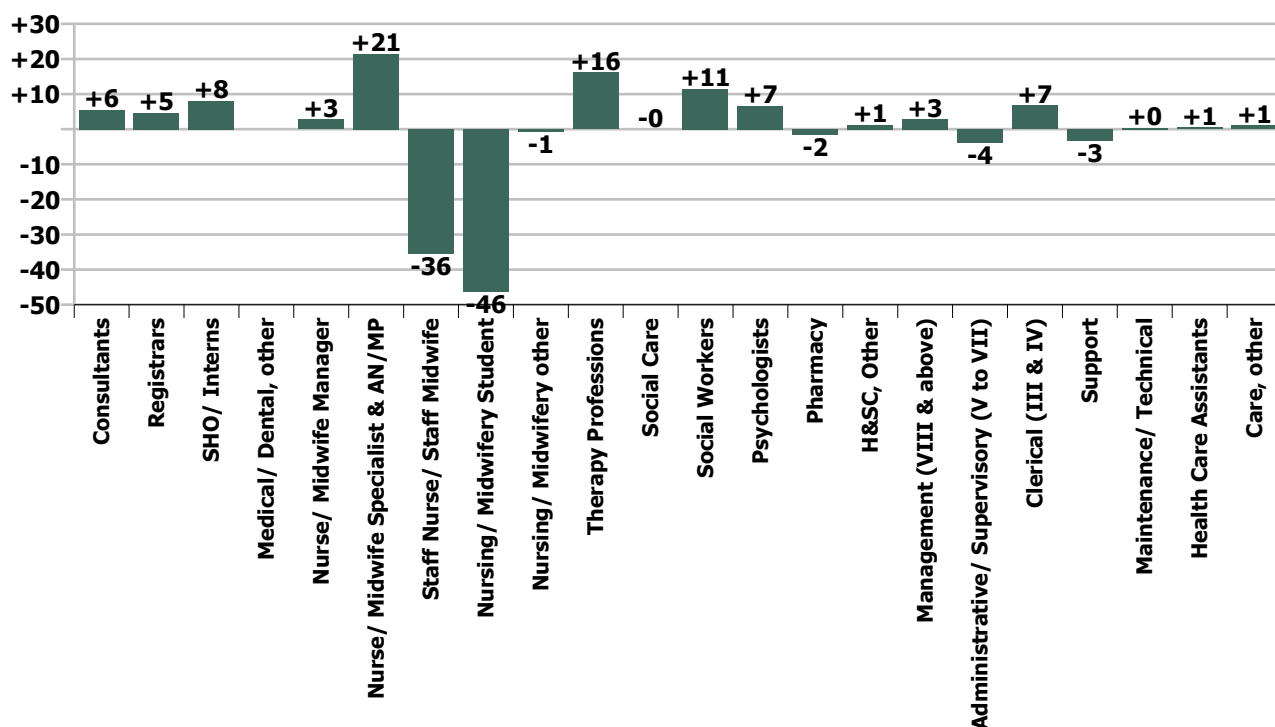
WTE change since Sep 22	% change since Sep 22	overall	Consultants	Registrars	SHO/ Interns	Medical/ Dental, other	Medical & Dental	Nurse/ Midwife Manager	Nurse/ Midwife Specialist & AN/MP	Staff Nurse/ Staff Midwife	Nursing/ Midwifery Student	Nursing/ Midwifery other	Nursing & Midwifery	Therapy Professions	Social Care	Social Workers	Psychologists	Pharmacy	H&SC, Other	Health & Social Care Professionals	Management (VIII & above)	Administrativ e/ Supervisory (V to VII)	Clerical (III & IV)	Management & Administrative	General Support	Health Care Assistants	Care, other	Patient & Client Care
Overall	-0.0%	-2	+6	+5	+8		+18	+3	+21	-36	-46	-1	-58	+16	-0	+11	+7	-2	+1	+34	+3	-4	+7	+6	-3	+1	+1	+2
CHO 1	-0.3%	-3	-0	+0	+2		+3	-2	+5	-3	-9	-0	-8	+3	+0	+1	-0		-0	+4	-0	-1	+2	+0	-1	+0	-0	+0
CHO 2	+0.9%	+11	-2	+0	+0		-1	-2	+6	+1	-4		-0	+4	+1	+0	+1	+0	-0	+6	+0	-2	+3	+1	+1	+3	+1	+4
CHO 3	-0.8%	-7	+0	-1	+1		-0	+0	+4	-9	+0	-0	-4	+1	+0	+2	-3		+0	+1	+1	-1	-1	-1	+0	-2		-2
CHO 4	-0.7%	-11	+2	+2	+1		+4	-0	-1	-9	-9		-20	+3	-1	+1	+1	+0	+0	+4		-1	-1	-1	-1	+3	-0	+3
CHO 5	+0.7%	+8	+1	-1	-0		-1	+7	+5	-11	+13	-0	+13	-1	+0	+1	+1		+0	+1	-1	-0	-1	-2	-1	-1	-1	-2
CHO 6	+0.2%	+1	+4	+0	-0		+4	+2	-1	+0	-3	-0	-2	+2	+0	-1	+2	-1	-0	+1	+1	+0	-1	-0	-1	-1	+0	-0
CHO 7	-0.9%	-8	+0	-1	-1		-2	-1	+0	-1	-14	-0	-15	+3	-0	+2	+2		+0	+7	-0	+0	+0	+1	-0	-0	+2	+2
CHO 8	-1.0%	-11	+0	-0	+1		+1	-1	+3	-7	-11		-16	+0	-0	+1	+1	+0	+0	+3		+1	+2	+3	-1	-2	+0	-1
CHO 9	+1.2%	+16	+1	+6	+5		+12	-2	+0	+6	-10	+0	-5	+1	+0	+4	+1	-2	+1	+4		-0	+5	+4	-0	+2	-2	+0
other Community Services	+0.1%	+0	-1	-0			-1	+2	+0	-2		-0	+0	+0		+0	+1	+1		+2	+2	-1	-0	+0	-0	-1		-1
		-0.0%	+1.4%	+1.4%	+3.2%		+1.8%	+0.2%	+3.7%	-1.2%	-27.5%	-1.6%	-1.2%	+3.9%	-0.0%	+2.9%	+1.5%	-8.2%	+0.9%	+2.3%	+4.1%	-1.4%	+1.0%	+0.5%	-0.4%	+0.1%	+0.5%	+0.1%

Year-on-year Summary

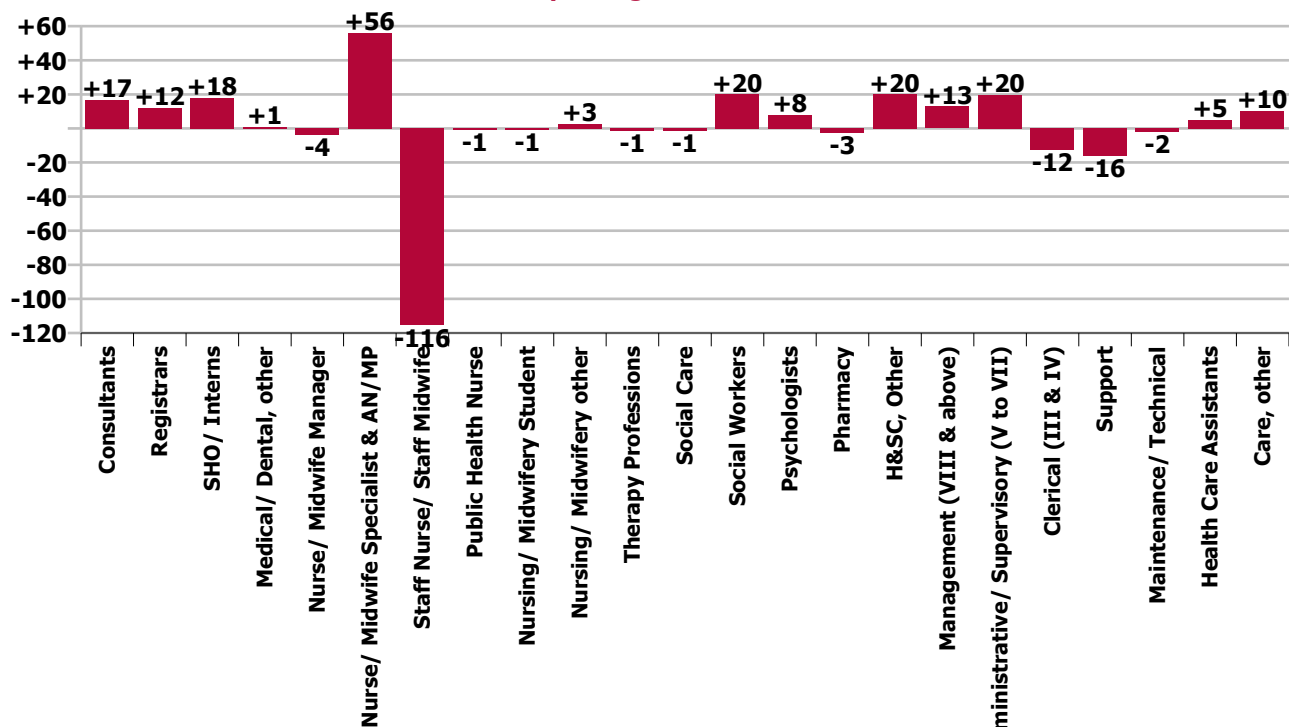
WTE change since Oct 21	% change since Oct 21	overall	Consultants	Registrars	SHO/ Interns	Medical/ Dental, other	Medical & Dental	Nurse/ Midwife Manager	Nurse/ Midwife Specialist & AN/MP	Staff Nurse/ Staff Midwife	Public Health Nurse	Nursing/ Midwifery Student	Nursing/ Midwifery other	Nursing & Midwifery	Therapy Professions	Social Care	Social Workers	Psychologists	Pharmacy	H&SC, Other	Health & Social Care Professionals	Management (VIII & above)	Administrative/ Supervisory (V to VII)	Clerical (III & IV)	Management & Administrative	General Support	Health Care Assistants	Care, other	Patient & Client Care
Overall	+0.4%	+46	+17	+12	+18	+1	+47	-4	+56	-116	-1	-1	+3	-62	-1	-1	+20	+8	-3	+20	+43	+13	+20	-12	+20	-18	+5	+10	+16
CHO 1	+3.4%	+34	-3	+5	+1		+3	-10	+12	+3		+8	-0	+13	+3	+0	+6	+1		+3	+14	+3	+1	-1	+2	-3	+5	+0	+5
CHO 2	-2.6%	-34	-3	+1	+2	+1	+1	-8	+6	-23		-2	+2	-25	-3	-1	+1	-2	+0	+0	-5	-1	+0	-2	-3	-0	-7	+5	-2
CHO 3	-0.7%	-6	+4	-2	+6		+7	+1	+10	-36		+4	+1	-20	+1	-0	+4	+3	+0	-0	+7	+2	-3	-1	-1	-1	-0	+1	+1
CHO 4	+0.9%	+14	+5	-1	+3	-0	+7	+21	-4	-16		-4		-4	+6	-1	+6	+0	-0	+7	+17	+0	+1	-1	-0	-5	+0	-2	-2
CHO 5	+1.4%	+17	+7	+1	-0	-0	+7	+5	+9	-21		+3	-1	-6	+1	+0	-1	+4		+2	+7	-0	-1	-0	-2	+4	+5	+1	+6
CHO 6	+0.7%	+4	+4	+4	-3		+6	-0	+2	+4		-1	+1	+6	-4	+2	-1	+1	+1	+2	+1	+1	+6	-8	-1	-8	-1	+1	+0
CHO 7	+0.6%	+5	-2	+4	+3		+6	-5	+6	-3	-1	-5	+0	-9	+5	-1	-6	+4	-1	+1	+4	+0	+4	+4	+8	-2	-4	+2	-2
CHO 8	-2.4%	-26	-0	-14	+5		-10	-6	+4	+1		-6	-0	-6	-7	-1	+3	-3	+1	+2	-6	-1	+4	-6	-3	-3	+0	+1	+2
CHO 9	+4.2%	+55	+7	+10	+4		+22	-2	+11	-0		+2	-0	+11	-0		+10	+2	-2	+3	+13	-1	+7	+1	+7	-8	+10	+1	+10
other Community Services	-3.1%	-16	-2	+3	-3		-1	+2	-1	-24		-0		-23	-3		-3	-3			-10	+10	+2	+1	+13	+8	-3	-1	-3
		+0.4%	+4.4%	+3.6%	+7.4%	+20.2%	+4.9%	-0.3%	+10.3%	-3.8%	-100.0%	-0.7%	+8.7%	-1.3%	-0.3%	-1.7%	+5.3%	+1.9%	-12.6%	+17.7%	+2.9%	+21.6%	+7.9%	-1.7%	+2.0%	-2.5%	+0.5%	+5.0%	+1.3%



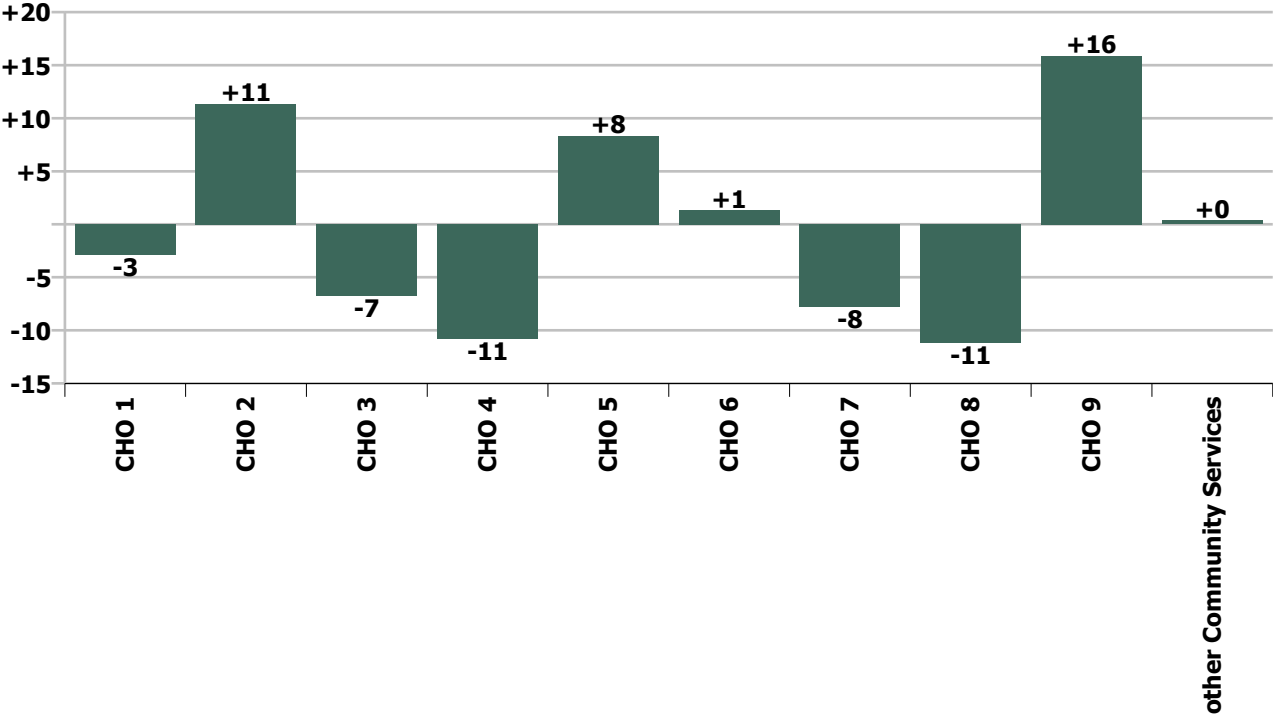
Staff Group change since: Sep 2022



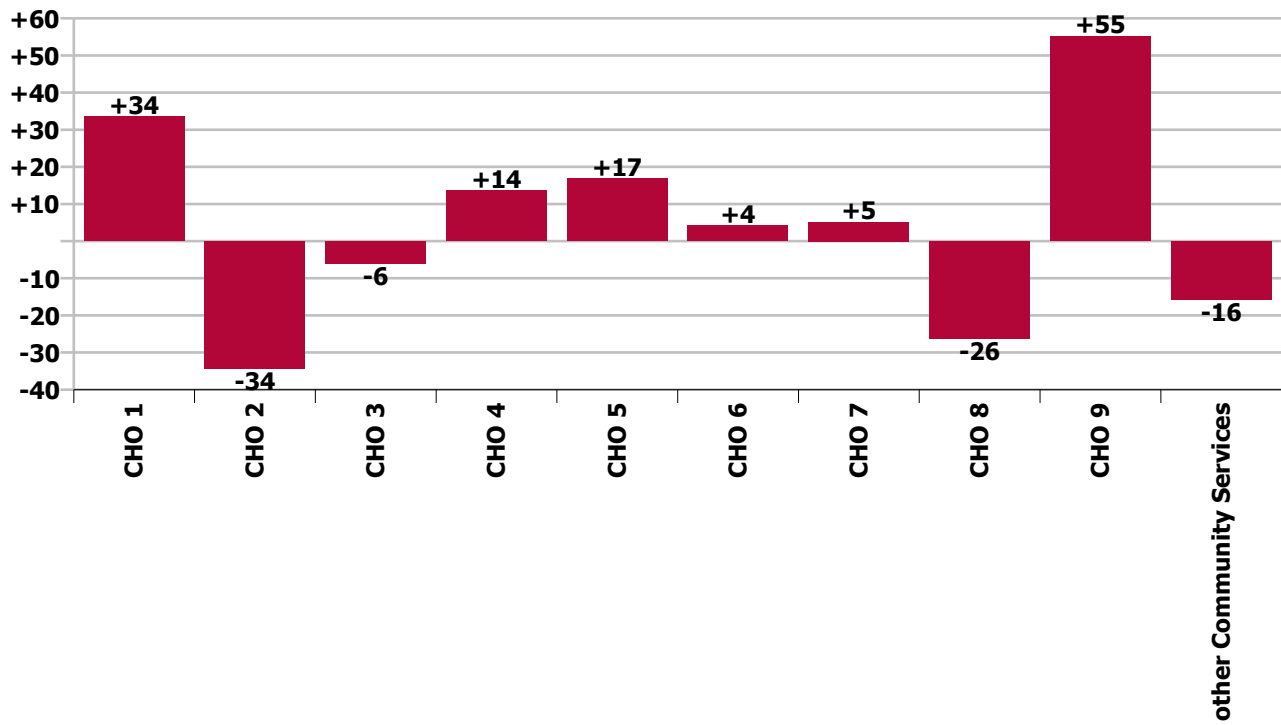
Staff Group change since: Oct 2021



CHO change since: Sep 2022



CHO change since: Oct 2021



## Longitudinal Employment Levels by Grade Group - Dec 2016 to Oct 2022

Oct 2022 (Dec 2015 figure: 9,501)	WTE Oct 2022	WTE change since Dec 16	WTE change since Dec 17	WTE change since Dec 18	WTE change since Dec 19	WTE change since Dec 20	WTE change since Sep 22	% change since Dec 16	% change since Dec 17	% change since Dec 18	% change since Dec 19	% change since Dec 20	% change since Sep 22
<b>Overall</b>	<b>10,398</b>	<b>+777</b>	<b>+607</b>	<b>+500</b>	<b>+444</b>	<b>+97</b>	<b>-2</b>	<b>+8.1%</b>	<b>+6.2%</b>	<b>+5.1%</b>	<b>+4.5%</b>	<b>+0.9%</b>	<b>-0.0%</b>
Consultant Medicine	1		-0	-0					-9.1%	-9.1%			
Consultant Psychiatry	396	+81	+84	+66	+45	+28	+6	+25.8%	+26.9%	+20.1%	+12.7%	+7.5%	+1.4%
<b>Consultants</b>	<b>397</b>	<b>+81</b>	<b>+84</b>	<b>+66</b>	<b>+45</b>	<b>+28</b>	<b>+6</b>	<b>+25.7%</b>	<b>+26.8%</b>	<b>+20.0%</b>	<b>+12.7%</b>	<b>+7.5%</b>	<b>+1.4%</b>
Registrar	216	+84	+72	+62	+47	+48	+1	+63.8%	+49.6%	+40.6%	+27.8%	+28.8%	+0.5%
Senior Registrar	127	+60	+61	+41	+30	+16	+4	+88.9%	+92.7%	+47.6%	+30.5%	+14.1%	+3.7%
Specialist Registrar	2	+1		+1	-1		-1	+100.0%		+100.0%	-20.0%		-33.3%
<b>Registrars</b>	<b>345</b>	<b>+145</b>	<b>+133</b>	<b>+104</b>	<b>+76</b>	<b>+64</b>	<b>+5</b>	<b>+72.4%</b>	<b>+62.5%</b>	<b>+43.3%</b>	<b>+28.3%</b>	<b>+22.8%</b>	<b>+1.4%</b>
Senior House Officer	255	+8	-17	-14	+2	-16	+9	+3.4%	-6.3%	-5.2%	+0.8%	-5.8%	+3.8%
Interns	6	-6	-4	-2	-2	+1	-1	-52.1%	-42.5%	-28.1%	-28.1%	+15.0%	-17.9%
<b>SHO/ Interns</b>	<b>261</b>	<b>+2</b>	<b>-21</b>	<b>-16</b>	<b>-0</b>	<b>-15</b>	<b>+8</b>	<b>+0.8%</b>	<b>-7.6%</b>	<b>-5.9%</b>	<b>-0.1%</b>	<b>-5.4%</b>	<b>+3.2%</b>
Dentists			-0	-0				-100.0%	-100.0%	-100.0%	-100.0%	-100.0%	-100.0%
Other Medical	5	-5	-6	-2	-0	-0		-49.4%	-55.1%	-25.0%	-2.6%	-2.6%	
<b>Medical/ Dental, other</b>	<b>5</b>	<b>-5</b>	<b>-6</b>	<b>-2</b>	<b>-0</b>	<b>-0</b>		<b>-49.4%</b>	<b>-55.4%</b>	<b>-25.8%</b>	<b>-2.6%</b>	<b>-2.6%</b>	
<b>Medical &amp; Dental</b>	<b>1,008</b>	<b>+223</b>	<b>+189</b>	<b>+153</b>	<b>+121</b>	<b>+77</b>	<b>+18</b>	<b>+28.5%</b>	<b>+23.1%</b>	<b>+17.8%</b>	<b>+13.6%</b>	<b>+8.2%</b>	<b>+1.8%</b>
Clinical Nurse/ Midwife Manager	1,030	+23	+47	+23	+31	-12	+3	+2.3%	+4.8%	+2.3%	+3.1%	-1.1%	+0.3%
Director Nursing/Midwifery, Assistant	175	+19	+13	+10	+10	+4	-1	+12.4%	+7.8%	+6.4%	+6.0%	+2.3%	-0.7%
Director of Nursing/Midwifery	34	+3	+6	+10	+5	+6	+1	+7.9%	+20.1%	+44.1%	+18.4%	+22.5%	+1.7%
<b>Nurse/ Midwife Manager</b>	<b>1,238</b>	<b>+45</b>	<b>+65</b>	<b>+44</b>	<b>+46</b>	<b>-1</b>	<b>+3</b>	<b>+3.7%</b>	<b>+5.6%</b>	<b>+3.7%</b>	<b>+3.8%</b>	<b>-0.1%</b>	<b>+0.2%</b>
Advanced Nurse/ Midwife Practitioner	65	+58	+55	+45	+35	+26	+7	+775.5%	+523.7%	+225.2%	+113.1%	+66.2%	+11.4%
Clinical Nurse/ Midwife Specialist	535	+199	+152	+140	+107	+46	+15	+59.1%	+39.7%	+35.5%	+25.0%	+9.4%	+2.8%
<b>Nurse/ Midwife Specialist &amp; AN/MP</b>	<b>601</b>	<b>+257</b>	<b>+207</b>	<b>+185</b>	<b>+142</b>	<b>+72</b>	<b>+21</b>	<b>+74.7%</b>	<b>+52.7%</b>	<b>+44.7%</b>	<b>+30.9%</b>	<b>+13.7%</b>	<b>+3.7%</b>
Staff Midwives						-1		-100.0%	-100.0%	-100.0%	-100.0%	-100.0%	-100.0%
Staff Nurse [Psychiatric]	2,797	-259	-230	-158	-96	-167	-35	-8.5%	-7.6%	-5.3%	-3.3%	-5.6%	-1.2%
Staff Nurses [General/ Children's]	107	-14	-11	-11	+2	+1	-1	-11.4%	-9.0%	-9.0%	+2.0%	+0.6%	-0.7%
Staff Nurse [Intellectual Disability]	6	+3	+3		+1	+2	+0	+79.6%	+73.4%		+32.5%	+41.5%	+4.0%



Oct 2022 (Dec 2015 figure: 9,501)	WTE Oct 2022	WTE change since Dec 16	WTE change since Dec 17	WTE change since Dec 18	WTE change since Dec 19	WTE change since Dec 20	WTE change since Sep 22	% change since Dec 16	% change since Dec 17	% change since Dec 18	% change since Dec 19	% change since Dec 20	% change since Sep 22
<b>Overall</b>	<b>10,398</b>	<b>+777</b>	<b>+607</b>	<b>+500</b>	<b>+444</b>	<b>+97</b>	<b>-2</b>	<b>+8.1%</b>	<b>+6.2%</b>	<b>+5.1%</b>	<b>+4.5%</b>	<b>+0.9%</b>	<b>-0.0%</b>
Graduate Nursing/ Midwifery								-100.0%	-100.0%	-100.0%	-100.0%	-100.0%	-100.0%
<b>Staff Nurse/ Staff Midwife</b>	<b>2,911</b>	<b>-270</b>	<b>-238</b>	<b>-168</b>	<b>-92</b>	<b>-166</b>	<b>-36</b>	<b>-8.5%</b>	<b>-7.5%</b>	<b>-5.5%</b>	<b>-3.1%</b>	<b>-5.4%</b>	<b>-1.2%</b>
<b>Public Health Nurse</b>		<b>-1</b>	<b>-1</b>					<b>-100.0%</b>	<b>-100.0%</b>	<b>-100.0%</b>	<b>-100.0%</b>	<b>-100.0%</b>	<b>-100.0%</b>
Pre-registration Nurse Intern (COVID-19)						-42		-100.0%	-100.0%	-100.0%	-100.0%	-100.0%	-100.0%
Pre-registration Nurse/ Midwife Intern	51	+42	+34	+23	+23	+40	-57	+483.7%	+200.2%	+81.4%	+83.6%	+372.0%	-53.1%
Post-registration Nurse/ Midwife Student					-1	-1		-100.0%	-100.0%	-100.0%	-100.0%	-100.0%	-100.0%
Nursing/ Midwifery awaiting registration	72	+70	+63	+52	+13	+67	+11	+3501.0%	+732.6%	+263.0%	+22.3%	+1384.9%	+17.9%
<b>Nursing/ Midwifery Student</b>	<b>123</b>	<b>+112</b>	<b>+97</b>	<b>+75</b>	<b>+35</b>	<b>+64</b>	<b>-46</b>	<b>+1049.8%</b>	<b>+380.9%</b>	<b>+156.9%</b>	<b>+40.2%</b>	<b>+107.9%</b>	<b>-27.5%</b>
Nursing Education/Clinical	34	+9	+3	+3	+2	+2	-1	+38.1%	+11.4%	+9.8%	+7.9%	+7.5%	-1.6%
<b>Nursing/ Midwifery other</b>	<b>34</b>	<b>+9</b>	<b>+3</b>	<b>+3</b>	<b>+2</b>	<b>+2</b>	<b>-1</b>	<b>+38.1%</b>	<b>+11.4%</b>	<b>+9.8%</b>	<b>+7.9%</b>	<b>+7.5%</b>	<b>-1.6%</b>
<b>Nursing &amp; Midwifery</b>	<b>4,906</b>	<b>+152</b>	<b>+134</b>	<b>+140</b>	<b>+133</b>	<b>-29</b>	<b>-58</b>	<b>+3.2%</b>	<b>+2.8%</b>	<b>+2.9%</b>	<b>+2.8%</b>	<b>-0.6%</b>	<b>-1.2%</b>
Dietitians	19	+6	+3	-1	+0	-1	+1	+43.4%	+15.8%	-3.2%	+1.5%	-6.6%	+5.0%
Occupational Therapists	349	+49	+23	+9	+10	+3	+12	+16.3%	+6.9%	+2.8%	+3.0%	+0.9%	+3.6%
Physiotherapists	3	+1	+2	+1	+1	+1		+47.3%	+144.6%	+83.9%	+32.7%	+22.8%	
Podiatrists & Chiropodists	1	-1	-1	-0	-0	-0	-0	-60.4%	-51.0%	-41.0%	-1.4%	-10.0%	-11.1%
Speech & Language Therapists	65	+5	+3	+3	+3	-5	+3	+8.8%	+5.4%	+5.3%	+5.0%	-7.0%	+5.4%
<b>Therapy Professions</b>	<b>437</b>	<b>+60</b>	<b>+30</b>	<b>+13</b>	<b>+14</b>	<b>-3</b>	<b>+16</b>	<b>+15.9%</b>	<b>+7.3%</b>	<b>+3.0%</b>	<b>+3.4%</b>	<b>-0.6%</b>	<b>+3.9%</b>
<b>Social Care</b>	<b>73</b>	<b>-15</b>	<b>-10</b>	<b>-6</b>	<b>-1</b>	<b>-7</b>	<b>-0</b>	<b>-17.4%</b>	<b>-12.0%</b>	<b>-7.6%</b>	<b>-1.3%</b>	<b>-9.2%</b>	<b>-0.0%</b>
<b>Social Workers</b>	<b>401</b>	<b>+51</b>	<b>+44</b>	<b>+43</b>	<b>+52</b>	<b>+29</b>	<b>+11</b>	<b>+14.6%</b>	<b>+12.4%</b>	<b>+12.0%</b>	<b>+14.8%</b>	<b>+7.7%</b>	<b>+2.9%</b>
<b>Psychologists</b>	<b>440</b>	<b>+98</b>	<b>+70</b>	<b>+52</b>	<b>+46</b>	<b>+16</b>	<b>+7</b>	<b>+28.5%</b>	<b>+18.9%</b>	<b>+13.3%</b>	<b>+11.6%</b>	<b>+3.9%</b>	<b>+1.5%</b>
Pharmacists	15	+0	+0	-1	-1	-2	-1	+1.3%	+1.8%	-4.7%	-6.4%	-11.9%	-6.9%
Pharmacy Technicians	4	-1	-1	+0	+1	+0	-1	-17.4%	-16.7%	+9.5%	+53.8%	+4.4%	-12.8%
<b>Pharmacy</b>	<b>19</b>	<b>-1</b>	<b>-1</b>	<b>-0</b>	<b>+0</b>	<b>-2</b>	<b>-2</b>	<b>-3.1%</b>	<b>-2.6%</b>	<b>-2.1%</b>	<b>+1.7%</b>	<b>-9.0%</b>	<b>-8.2%</b>
Counsellor Therapists	127	+41	+41	+42	+32	+25	+1	+48.8%	+47.9%	+48.9%	+33.5%	+25.1%	+1.0%
Other Health & Social Care	4	-4	-5	-5	-8	-1	-0	-53.1%	-53.8%	-54.1%	-66.3%	-26.9%	-1.0%
Play Therapists/ Specialists	3	+1	+2	+2	+2	+2		+24.4%	+106.0%	+110.1%	+113.0%	+110.1%	
<b>H&amp;SC, Other</b>	<b>134</b>	<b>+38</b>	<b>+38</b>	<b>+39</b>	<b>+26</b>	<b>+26</b>	<b>+1</b>	<b>+39.2%</b>	<b>+39.7%</b>	<b>+40.5%</b>	<b>+23.7%</b>	<b>+23.6%</b>	<b>+0.9%</b>

Oct 2022 (Dec 2015 figure: 9,501)	WTE Oct 2022	WTE change since Dec 16	WTE change since Dec 17	WTE change since Dec 18	WTE change since Dec 19	WTE change since Dec 20	WTE change since Sep 22	% change since Dec 16	% change since Dec 17	% change since Dec 18	% change since Dec 19	% change since Dec 20	% change since Sep 22
<b>Overall</b>	<b>10,398</b>	<b>+777</b>	<b>+607</b>	<b>+500</b>	<b>+444</b>	<b>+97</b>	<b>-2</b>	<b>+8.1%</b>	<b>+6.2%</b>	<b>+5.1%</b>	<b>+4.5%</b>	<b>+0.9%</b>	<b>-0.0%</b>
<b>Health &amp; Social Care Professionals</b>	<b>1,503</b>	<b>+230</b>	<b>+171</b>	<b>+140</b>	<b>+137</b>	<b>+59</b>	<b>+34</b>	<b>+18.1%</b>	<b>+12.9%</b>	<b>+10.2%</b>	<b>+10.0%</b>	<b>+4.1%</b>	<b>+2.3%</b>
Executive Management	13	+6	+5	+3	+2	-1	-1	+92.1%	+68.1%	+34.5%	+22.3%	-8.7%	-3.9%
Senior Management (VIII & GM)	59	+34	+27	+27	+13	+7	+3	+132.4%	+83.3%	+86.7%	+27.6%	+12.8%	+6.1%
<b>Management (VIII &amp; above)</b>	<b>73</b>	<b>+40</b>	<b>+32</b>	<b>+31</b>	<b>+15</b>	<b>+5</b>	<b>+3</b>	<b>+123.7%</b>	<b>+80.3%</b>	<b>+74.2%</b>	<b>+26.5%</b>	<b>+8.1%</b>	<b>+4.1%</b>
Middle Management (V-VII)	269	+102	+72	+49	+33	+25	-3	+61.5%	+36.5%	+22.1%	+14.2%	+10.5%	-1.3%
Other Administrative	2		-1	-1			-0		-38.9%	-38.9%			-23.4%
<b>Administrative/ Supervisory (V to VII)</b>	<b>270</b>	<b>+102</b>	<b>+71</b>	<b>+48</b>	<b>+33</b>	<b>+25</b>	<b>-4</b>	<b>+60.9%</b>	<b>+35.5%</b>	<b>+21.4%</b>	<b>+14.1%</b>	<b>+10.4%</b>	<b>-1.4%</b>
General Administrative (III & IV)	704	+43	+22	+8	-13	-18	+7	+6.5%	+3.3%	+1.2%	-1.9%	-2.5%	+1.0%
<b>Clerical (III &amp; IV)</b>	<b>704</b>	<b>+43</b>	<b>+22</b>	<b>+8</b>	<b>-13</b>	<b>-18</b>	<b>+7</b>	<b>+6.5%</b>	<b>+3.3%</b>	<b>+1.2%</b>	<b>-1.9%</b>	<b>-2.5%</b>	<b>+1.0%</b>
<b>Management &amp; Administrative</b>	<b>1,047</b>	<b>+185</b>	<b>+125</b>	<b>+87</b>	<b>+35</b>	<b>+13</b>	<b>+6</b>	<b>+21.5%</b>	<b>+13.6%</b>	<b>+9.1%</b>	<b>+3.5%</b>	<b>+1.2%</b>	<b>+0.5%</b>
Catering	69	+3	+3	-3	+3	+5	+1	+4.7%	+4.4%	-4.3%	+5.4%	+8.2%	+1.5%
Household Services	400	-92	-76	-45	-24	-41	-5	-18.7%	-16.0%	-10.2%	-5.7%	-9.3%	-1.3%
Other Support	42	-14	-8	-14	-1	-0	+2	-25.7%	-15.9%	-24.5%	-2.5%	-0.7%	+5.1%
Portering	48	-11	-1	-0	-0	+1	-1	-19.2%	-2.1%	-0.3%	-0.5%	+1.1%	-2.3%
<b>Support</b>	<b>558</b>	<b>-115</b>	<b>-82</b>	<b>-62</b>	<b>-22</b>	<b>-36</b>	<b>-3</b>	<b>-17.0%</b>	<b>-12.8%</b>	<b>-10.0%</b>	<b>-3.8%</b>	<b>-6.0%</b>	<b>-0.6%</b>
Maintenance	131	-12	-8	-4	+2	-7	+0	-8.6%	-5.8%	-2.7%	+1.4%	-4.9%	+0.2%
Technical Services		-2	-2	-2	-2			-100.0%	-100.0%	-100.0%	-100.0%	-100.0%	-100.0%
<b>Maintenance/ Technical</b>	<b>131</b>	<b>-14</b>	<b>-10</b>	<b>-6</b>	<b>-0</b>	<b>-7</b>	<b>+0</b>	<b>-9.9%</b>	<b>-7.1%</b>	<b>-4.1%</b>	<b>-0.2%</b>	<b>-4.9%</b>	<b>+0.2%</b>
<b>General Support</b>	<b>689</b>	<b>-129</b>	<b>-92</b>	<b>-68</b>	<b>-22</b>	<b>-42</b>	<b>-3</b>	<b>-15.8%</b>	<b>-11.8%</b>	<b>-8.9%</b>	<b>-3.1%</b>	<b>-5.8%</b>	<b>-0.4%</b>
Attendant/ Aide	424	-300	-276	-257	-180	-159	-9	-41.4%	-39.4%	-37.7%	-29.8%	-27.2%	-2.0%
Health & Social Care Assistants	16	+12	+12	+11	+7	+8	+3	+252.2%	+252.2%	+200.4%	+82.8%	+95.9%	+23.4%
Health Care Assistant/ Care Assistant	588	+383	+340	+295	+214	+158	+6	+187.4%	+136.8%	+100.6%	+57.2%	+36.8%	+1.1%
<b>Health Care Assistants</b>	<b>1,029</b>	<b>+95</b>	<b>+76</b>	<b>+49</b>	<b>+41</b>	<b>+7</b>	<b>+1</b>	<b>+10.2%</b>	<b>+7.9%</b>	<b>+5.0%</b>	<b>+4.1%</b>	<b>+0.7%</b>	<b>+0.1%</b>
Home Care Services	23	+23	+8	+6	+7	+8	-0	-100.0%	+50.7%	+36.1%	+43.3%	+58.0%	-0.2%
Other Care Grades	19	+9	+8	+3	-3	-3	-2	+80.5%	+78.8%	+22.0%	-14.7%	-12.4%	-7.3%
Pastoral Care	10	-4	-4	-3	-3	-2	-1	-29.7%	-27.3%	-24.7%	-21.2%	-17.5%	-9.9%
Workshop Services	164	-7	-9	-6	-1	+9	+4	-4.2%	-5.1%	-3.7%	-0.6%	+5.7%	+2.3%

Oct 2022 (Dec 2015 figure: 9,501)	WTE Oct 2022	WTE change since Dec 16	WTE change since Dec 17	WTE change since Dec 18	WTE change since Dec 19	WTE change since Dec 20	WTE change since Sep 22	% change since Dec 16	% change since Dec 17	% change since Dec 18	% change since Dec 19	% change since Dec 20	% change since Sep 22
Overall	10,398	+777	+607	+500	+444	+97	-2	+8.1%	+6.2%	+5.1%	+4.5%	+0.9%	-0.0%
Care, other	216	+20	+4	-0	-0	+12	+1	+10.0%	+1.6%	-0.0%	-0.1%	+6.0%	+0.5%
Patient & Client Care	1,245	+115	+79	+49	+41	+20	+2	+10.2%	+6.8%	+4.1%	+3.4%	+1.6%	+0.1%

Source: Health Service Personnel Census



Longitudinal Employment Levels by Grade Group - Dec 2016 to Oct 2022

Oct 2022 (Dec 2015 figure: 9,501)	WTE Oct 2022	WTE change since Dec 16	WTE change since Dec 17	WTE change since Dec 18	WTE change since Dec 19	WTE change since Dec 20	WTE change since Sep 22	% change since Dec 16	% change since Dec 17	% change since Dec 18	% change since Dec 19	% change since Dec 20	% change since Sep 22
Overall	10,398	+777	+607	+500	+444	+97	-2	+8.1%	+6.2%	+5.1%	+4.5%	+0.9%	-0.0%
Consultant Medicine	1		-0	-0					-9.1%	-9.1%			
Consultant Psychiatry	396	+81	+84	+66	+45	+28	+6	+25.8%	+26.9%	+20.1%	+12.7%	+7.5%	+1.4%
Consultants	397	+81	+84	+66	+45	+28	+6	+25.7%	+26.8%	+20.0%	+12.7%	+7.5%	+1.4%
Registrar	216	+84	+72	+62	+47	+48	+1	+63.8%	+49.6%	+40.6%	+27.8%	+28.8%	+0.5%
Senior Registrar	127	+60	+61	+41	+30	+16	+4	+88.9%	+92.7%	+47.6%	+30.5%	+14.1%	+3.7%
Specialist Registrar	2	+1		+1	-1		-1	+100.0%		+100.0%	-20.0%		-33.3%
Registrars	345	+145	+133	+104	+76	+64	+5	+72.4%	+62.5%	+43.3%	+28.3%	+22.8%	+1.4%
Senior House Officer	255	+8	-17	-14	+2	-16	+9	+3.4%	-6.3%	-5.2%	+0.8%	-5.8%	+3.8%
Interns	6	-6	-4	-2	-2	+1	-1	-52.1%	-42.5%	-28.1%	-28.1%	+15.0%	-17.9%
SHO/ Interns	261	+2	-21	-16	-0	-15	+8	+0.8%	-7.6%	-5.9%	-0.1%	-5.4%	+3.2%
Dentists			-0	-0				-100.0%	-100.0%	-100.0%	-100.0%	-100.0%	-100.0%
Other Medical	5	-5	-6	-2	-0	-0		-49.4%	-55.1%	-25.0%	-2.6%	-2.6%	
Medical/ Dental, other	5	-5	-6	-2	-0	-0		-49.4%	-55.4%	-25.8%	-2.6%	-2.6%	
Medical & Dental	1,008	+223	+189	+153	+121	+77	+18	+28.5%	+23.1%	+17.8%	+13.6%	+8.2%	+1.8%
Clinical Nurse/ Midwife Manager	1,030	+23	+47	+23	+31	-12	+3	+2.3%	+4.8%	+2.3%	+3.1%	-1.1%	+0.3%
Director Nursing/Midwifery, Assistant	175	+19	+13	+10	+10	+4	-1	+12.4%	+7.8%	+6.4%	+6.0%	+2.3%	-0.7%
Director of Nursing/Midwifery	34	+3	+6	+10	+5	+6	+1	+7.9%	+20.1%	+44.1%	+18.4%	+22.5%	+1.7%
Nurse/ Midwife Manager	1,238	+45	+65	+44	+46	-1	+3	+3.7%	+5.6%	+3.7%	+3.8%	-0.1%	+0.2%
Advanced Nurse/ Midwife Practitioner	65	+58	+55	+45	+35	+26	+7	+775.5%	+523.7%	+225.2%	+113.1%	+66.2%	+11.4%
Clinical Nurse/ Midwife Specialist	535	+199	+152	+140	+107	+46	+15	+59.1%	+39.7%	+35.5%	+25.0%	+9.4%	+2.8%
Nurse/ Midwife Specialist & AN/MP	601	+257	+207	+185	+142	+72	+21	+74.7%	+52.7%	+44.7%	+30.9%	+13.7%	+3.7%
Staff Midwives							-1	-100.0%	-100.0%	-100.0%	-100.0%	-100.0%	-100.0%
Staff Nurse [Psychiatric]	2,797	-259	-230	-158	-96	-167	-35	-8.5%	-7.6%	-5.3%	-3.3%	-5.6%	-1.2%
Staff Nurses [General/ Children's]	107	-14	-11	-11	+2	+1	-1	-11.4%	-9.0%	-9.0%	+2.0%	+0.6%	-0.7%
Staff Nurse [Intellectual Disability]	6	+3	+3		+1	+2	+0	+79.6%	+73.4%		+32.5%	+41.5%	+4.0%
Graduate Nursing/ Midwifery								-100.0%	-100.0%	-100.0%	-100.0%	-100.0%	-100.0%
Staff Nurse/ Staff Midwife	2,911	-270	-238	-168	-92	-166	-36	-8.5%	-7.5%	-5.5%	-3.1%	-5.4%	-1.2%
Public Health Nurse		-1	-1					-100.0%	-100.0%	-100.0%	-100.0%	-100.0%	-100.0%
Public Health Nurse		-1	-1					-100.0%	-100.0%	-100.0%	-100.0%	-100.0%	-100.0%
Pre-registration Nurse Intern (COVID-19)						-42		-100.0%	-100.0%	-100.0%	-100.0%	-100.0%	-100.0%
Pre-registration Nurse/ Midwife Intern	51	+42	+34	+23	+23	+40	-57	+483.7%	+200.2%	+81.4%	+83.6%	+372.0%	-53.1%
Post-registration Nurse/ Midwife Student					-1	-1		-100.0%	-100.0%	-100.0%	-100.0%	-100.0%	-100.0%
Nursing/ Midwifery awaiting registration	72	+70	+63	+52	+13	+67	+11	+3501.0%	+732.6%	+263.0%	+22.3%	+1384.9%	+17.9%
Nursing/ Midwifery Student	123	+112	+97	+75	+35	+64	-46	+1049.8%	+380.9%	+156.9%	+40.2%	+107.9%	-27.5%
Nursing Education/Clinical	34	+9	+3	+3	+2	+2	-1	+38.1%	+11.4%	+9.8%	+7.9%	+7.5%	-1.6%
Nursing/ Midwifery other	34	+9	+3	+3	+2	+2	-1	+38.1%	+11.4%	+9.8%	+7.9%	+7.5%	-1.6%
Nursing & Midwifery	4,906	+152	+134	+140	+133	-29	-58	+3.2%	+2.8%	+2.9%	+2.8%	-0.6%	-1.2%
Dietitians	19	+6	+3	-1	+0	-1	+1	+43.4%	+15.8%	-3.2%	+1.5%	-6.6%	+5.0%
Occupational Therapists	349	+49	+23	+9	+10	+3	+12	+16.3%	+6.9%	+2.8%	+3.0%	+0.9%	+3.6%
Physiotherapists	3	+1	+2	+1	+1	+1		+47.3%	+144.6%	+83.9%	+32.7%	+22.8%	
Podiatrists & Chiroprodists	1	-1	-1	-0	-0	-0	-0	-60.4%	-51.0%	-41.0%	-1.4%	-10.0%	-11.1%
Speech & Language Therapists	65	+5	+3	+3	+3	-5	+3	+8.8%	+5.4%	+5.3%	+5.0%	-7.0%	+5.4%
Therapy Professions	437	+60	+30	+13	+14	-3	+16	+15.9%	+7.3%	+3.0%	+3.4%	-0.6%	+3.9%
Social Care	73	-15	-10	-6	-1	-7	-0	-17.4%	-12.0%	-7.6%	-1.3%	-9.2%	-0.0%
Social Workers	401	+51	+44	+43	+52	+29	+11	+14.6%	+12.4%	+12.0%	+14.8%	+7.7%	+2.9%
Psychologists	440	+98	+70	+52	+46	+16	+7	+28.5%	+18.9%	+13.3%	+11.6%	+3.9%	+1.5%
Pharmacists	15	+0	+0	-1	-1	-2	-1	+1.3%	+1.8%	-4.7%	-6.4%	-11.9%	-6.9%
Pharmacy Technicians	4	-1	-1	+0	+1	+0	-1	-17.4%	-16.7%	+9.5%	+53.8%	+4.4%	-12.8%
Pharmacy	19	-1	-1	-0	+0	-2	-2	-3.1%	-2.6%	-2.1%	+1.7%	-9.0%	-8.2%
Counsellor Therapists	127	+41	+41	+42	+32	+25	+1	+48.8%	+47.9%	+48.9%	+33.5%	+25.1%	+1.0%
Other Health & Social Care	4	-4	-5	-5	-8	-1	-0	-53.1%	-53.8%	-54.1%	-66.3%	-26.9%	-1.0%
Play Therapists/ Specialists	3	+1	+2	+2	+2	+2		+24.4%	+106.0%	+110.1%	+113.0%	+110.1%	
H&SC, Other	134	+38	+38	+39	+26	+26	+1	+39.2%	+39.7%	+40.5%	+23.7%	+23.6%	+0.9%
Health & Social Care Professionals	1,503	+230	+171	+140	+137	+59	+34	+18.1%	+12.9%	+10.2%	+10.0%	+4.1%	+2.3%
Executive Management	13	+6	+5	+3	+2	-1	-1	+92.1%	+68.1%	+34.5%	+22.3%	-8.7%	-3.9%
Senior Management (VIII & GM)	59	+34	+27	+27	+13	+7	+3	+132.4%	+83.3%	+86.7%	+27.6%	+12.8%	+6.1%
Management (VIII & above)	73	+40	+32	+31	+15	+5	+3	+123.7%	+80.3%	+74.2%	+26.5%	+8.1%	+4.1%
Middle Management (V-VII)	269	+102	+72	+49	+33	+25	-3	+61.5%	+36.5%	+22.1%	+14.2%	+10.5%	-1.3%
Other Administrative	2		-1	-1			-0		-38.9%	-38.9%			-23.4%
Administrative/ Supervisory (V to VII)	270	+102	+71	+48	+33	+25	-4	+60.9%	+35.5%	+21.4%	+14.1%	+10.4%	-1.4%
General Administrative (III & IV)	704	+43	+22	+8	-13	-18	+7	+6.5%	+3.3%	+1.2%	-1.9%	-2.5%	+1.0%
Clerical (III & IV)	704	+43	+22	+8	-13	-18	+7	+6.5%	+3.3%	+1.2%	-1.9%	-2.5%	+1.0%
Management & Administrative	1,047	+185	+125	+87	+35	+13	+6	+21.5%	+13.6%	+9.1%	+3.5%	+1.2%	+0.5%
Support	558	-115	-82	-62	-22	-36	-3	-17.0%	-12.8%	-10.0%	-3.8%	-6.0%	-0.6%
Maintenance	131	-12	-8	-4	+2	-7	+0	-8.6%	-5.8%	-2.7%	+1.4%	-4.9%	+0.2%
Technical Services		-2	-2	-2	-2			-100.0%	-100.0%	-100.0%	-100.0%	-100.0%	-100.0%
Maintenance/ Technical	131	-14	-10	-6	-0	-7	+0	-9.9%	-7.1%	-4.1%	-0.2%	-4.9%	+0.2%
General Support	689	-129	-92	-68	-22	-42	-3	-15.8%	-11.8%	-8.9%	-3.1%	-5.8%	-0.4%
Attendant/ Aide	424	-300	-276	-257	-180	-159	-9	-41.4%	-39.4%	-37.7%	-29.8%	-27.2%	-2.0%
Health & Social Care Assistants	16	+12	+12	+11	+7	+8	+3	+252.2%	+252.2%	+200.4%	+82.8%	+95.9%	+23.4%
Health Care Assistant/ Care Assistant	588	+383	+340	+295	+214	+158	+6	+187.4%	+136.8%	+100.6%	+57.2%	+36.8%	+1.1%
Health Care Assistants	1,029	+95	+76	+49	+41	+7	+1	+10.2%	+7.9%	+5.0%	+4.1%	+0.7%	+0.1%
Home Care Services	23	+23	+8	+6	+7	+8	-0	-100.0%	+50.7%	+36.1%	+43.3%	+58.0%	-0.2%
Other Care Grades	19	+9	+8	+3	-3	-3	-2	+80.5%	+78.8%	+22.0%	-14.7%	-12.4%	-7.3%
Pastoral Care	10	-4	-4	-3	-3	-2	-1	-29.7%	-27.3%	-24.7%	-21.2%	-17.5%	-9.9%
Workshop Services	164	-7	-9	-6	-1	+9	+4	-4.2%	-5.1%	-3.7%	-0.6%	+5.7%	+2.3%
Care, other	216	+20	+4	-0	-0	+12	+1	+10.0%	+1.6%	-0.0%	-0.1%	+6.0%	+0.5%

Oct 2022 (Dec 2015 figure: 9,501)	WTE Oct 2022	WTE change since Dec 16	WTE change since Dec 17	WTE change since Dec 18	WTE change since Dec 19	WTE change since Dec 20	WTE change since Sep 22	% change since Dec 16	% change since Dec 17	% change since Dec 18	% change since Dec 19	% change since Dec 20	% change since Sep 22
Overall	10,398	+777	+607	+500	+444	+97	-2	+8.1%	+6.2%	+5.1%	+4.5%	+0.9%	-0.0%
Patient & Client Care	1,245	+115	+79	+49	+41	+20	+2	+10.2%	+6.8%	+4.1%	+3.4%	+1.6%	+0.1%

Source: Health Service Personnel Census