

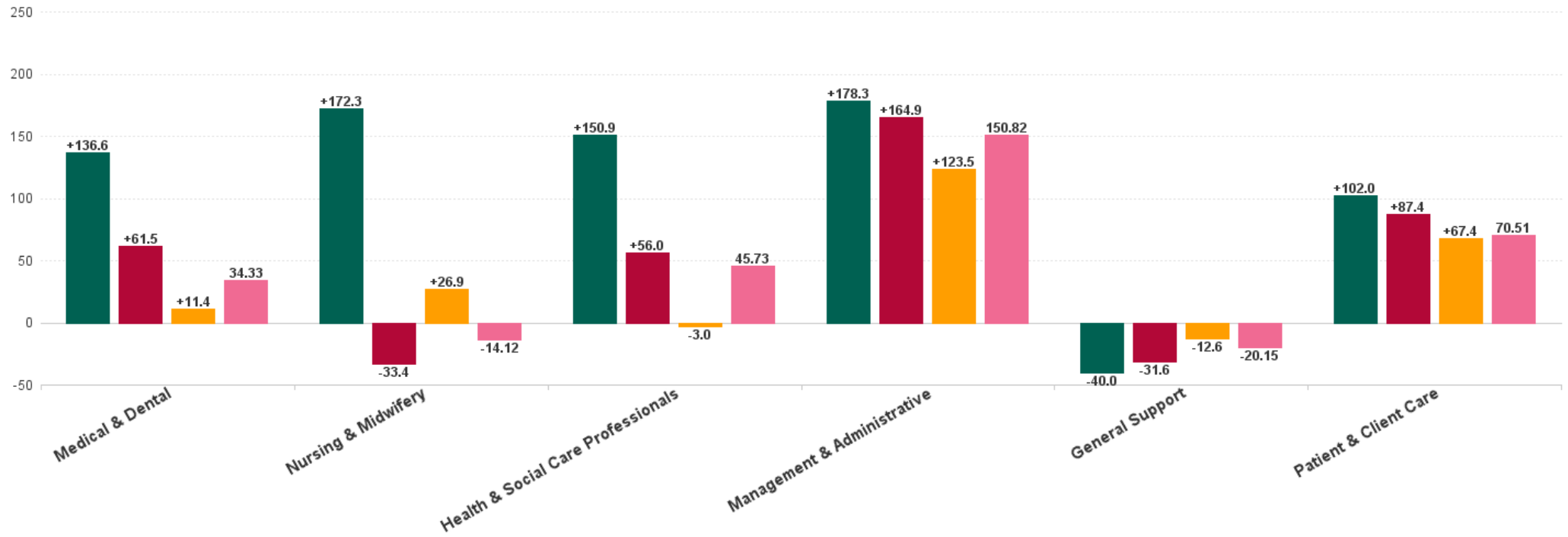
Mental Health Employment Report : SEP 2023

Mental Health Employment Report by Staff Group

SEP 2023	WTE DEC 2019	WTE DEC 2022	WTE AUG 2023	WTE SEP 2023	WTE change since DEC 2019	% WTE change since Dec 2019	WTE change since DEC 2022	% WTE change since Dec 2022	WTE change since AUG 2023	No. SEP 2023
Overall	9,967	10,453	10,625	10,667	+700	+7.0%	+214	+2.0%	+43	11,769
Consultants	353	397	410	415	+62	+17.6%	+18	+4.4%	+4	455
Registrars	269	345	333	334	+65	+24.2%	-11	-3.1%	+1	356
SHO/ Interns	261	267	266	273	+11	+4.4%	+5	+2.0%	+6	281
Medical/ Dental, other	5	4	3	3	-2	-40.6%	-1	-24.0%	+0	6
Medical & Dental	888	1,013	1,012	1,024	+137	+15.4%	+11	+1.1%	+12	1,098
Nurse/ Midwife Manager	1,201	1,245	1,240	1,231	+29	+2.5%	-15	-1.2%	-10	1,287
Nurse/ Midwife Specialist & AN/MP	460	631	690	706	+245	+53.4%	+75	+11.9%	+15	757
Staff Nurse/ Staff Midwife	3,002	2,948	2,812	2,802	-200	-6.7%	-145	-4.9%	-10	3,045
Pre-registration Nurse/ Midwife Intern	25	26	166	122	+97	+387.8%	+96	+362.3%	-44	251
Post-registration Nurse/ Midwife Student	1				-1	-100.0%				
Nursing/ Midwifery awaiting registration	57	39	5	58	+1	+1.9%	+19	+49.6%	+53	67
Nursing/ Midwifery Student	83	65	171	180	+97	+117.1%	+115	+176.4%	+9	318
Nursing/ Midwifery other	32	34	33	32	+0	+0.6%	-3	-7.7%	-1	35
Nursing & Midwifery	4,778	4,924	4,946	4,950	+172	+3.6%	+27	+0.5%	+5	5,442
Therapy Professions	420	435	426	423	+3	+0.6%	-12	-2.9%	-3	486
Social Care	74	72	63	62	-11	-15.5%	-10	-13.6%	-1	72
Social Workers	350	414	415	417	+66	+19.0%	+3	+0.8%	+2	465
Psychologists	394	448	453	455	+61	+15.5%	+8	+1.7%	+3	544
Pharmacy	19	19	22	23	+5	+24.5%	+4	+19.9%	+1	32
H&SC, Other	107	130	131	135	+28	+25.9%	+4	+3.4%	+4	152
Health & Social Care Professionals	1,364	1,518	1,511	1,515	+151	+11.1%	-3	-0.2%	+5	1,751
Management (VIII & above)	58	75	75	75	+16	+28.1%	+0	+0.2%	+0	77
Administrative/ Supervisory (V to VII)	238	287	315	322	+84	+35.2%	+35	+12.0%	+6	338
Clerical (III & IV)	717	707	788	796	+78	+10.9%	+89	+12.6%	+7	884
Management & Administrative	1,014	1,068	1,178	1,192	+178	+17.6%	+124	+11.6%	+14	1,299
Support	585	556	536	542	-44	-7.4%	-14	-2.6%	+5	616
Maintenance/ Technical	127	129	133	130	+4	+2.8%	+2	+1.3%	-2	133
General Support	712	685	669	672	-40	-5.6%	-13	-1.8%	+3	749
Health Care Assistants	996	1,030	1,081	1,085	+89	+9.0%	+55	+5.3%	+4	1,166
Care, other	216	216	229	229	+13	+5.9%	+13	+5.8%	+0	264
Patient & Client Care	1,212	1,246	1,310	1,314	+102	+8.4%	+67	+5.4%	+4	1,430

WTE Change by Staff Category

■ WTE change since DEC 2019 ■ WTE change since DEC 2021 ■ WTE change since DEC 2022 ■ WTE change since SEP 2022



Mental Health Report by CHO: SEP 2023

SEP 2023	WTE DEC 2019	WTE DEC 2022	WTE AUG 2023	WTE SEP 2023	WTE change since DEC 2019	% WTE change since Dec 2019	WTE change since DEC 2022	% WTE change since Dec 2022	WTE change since AUG 2023	No. SEP 2023
Overall	9,967	10,453	10,625	10,667	+700	+7.0%	+214	+2.0%	+43	11,769
CHO 1	953	1,024	1,056	1,050	+97	+10.2%	+26	+2.6%	-6	1,140
CHO 2	1,308	1,329	1,322	1,335	+27	+2.0%	+6	+0.5%	+13	1,464
CHO 3	795	814	815	817	+22	+2.8%	+3	+0.4%	+2	922
CHO 4	1,499	1,562	1,568	1,574	+75	+5.0%	+12	+0.8%	+6	1,775
CHO 5	1,177	1,224	1,297	1,319	+141	+12.0%	+94	+7.7%	+22	1,457
CHO 6	593	650	670	670	+77	+13.1%	+20	+3.1%	-1	752
CHO 7	835	879	903	904	+69	+8.2%	+25	+2.9%	+1	993
CHO 8	1,098	1,091	1,135	1,143	+45	+4.1%	+53	+4.8%	+8	1,250
CHO 9	1,272	1,371	1,305	1,302	+30	+2.4%	-69	-5.0%	-3	1,434
other Community Services	438	511	553	553	+116	+26.4%	+42	+8.3%	+0	582



% Total by CHO



Mental Health Employment Report by HSE/S38: SEP 2023

SEP 2023	WTE DEC 2019	WTE DEC 2022	WTE AUG 2023	WTE SEP 2023	WTE change since DEC 2019	% WTE change since Dec 2019	WTE change since DEC 2022	% WTE change since Dec 2022	WTE change since AUG 2023	No. SEP 2023
Overall	9,967	10,453	10,625	10,667	+700	+7.0%	+214	+2.0%	+43	11,769
Health Service Executive	9,526	10,023	10,235	10,291	+765	+8.0%	+268	+2.7%	+56	11,326
Section 38 Voluntary Agencies	441	431	390	376	-65	-14.7%	-54	-12.6%	-13	443



Mental Health Employment Report by HSE: SEP 2023

SEP 2023	WTE DEC 2019	WTE DEC 2022	WTE AUG 2023	WTE SEP 2023	WTE change since DEC 2019	% WTE change since Dec 2019	WTE change since DEC 2022	% WTE change since Dec 2022	WTE change since AUG 2023	No. SEP 2023
Total HSE	9,526	10,023	10,235	10,291	+765	+8.0%	+268	+2.7%	+56	11,326
Consultants	333	372	383	386	+53	+15.9%	+14	+3.7%	+3	422
Registrars	250	325	314	317	+67	+26.6%	-8	-2.5%	+3	336
SHO/ Interns	255	260	257	264	+8	+3.3%	+3	+1.3%	+6	272
Medical/ Dental, other	5	4	3	3	-2	-40.6%	-1	-24.0%	+0	6
Medical & Dental	843	961	957	969	+126	+14.9%	+8	+0.8%	+11	1,036
Nurse/ Midwife Manager	1,163	1,211	1,211	1,201	+38	+3.3%	-10	-0.8%	-10	1,256
Nurse/ Midwife Specialist & AN/MP	453	620	677	693	+240	+52.9%	+73	+11.8%	+16	742
Staff Nurse/ Staff Midwife	2,879	2,838	2,737	2,729	-150	-5.2%	-109	-3.8%	-8	2,964
Nursing/ Midwifery awaiting registration	57	38	5	56	-36	-1.7%	+6	+48.3%	+51	65
Post-registration Nurse/ Midwife Student	1				-1	-100.0%				
Pre-registration Nurse/ Midwife Intern	18	18	157	122	+4	+574.4%	+14	+560.5%	-36	250
Nursing/ Midwifery Student	76	56	162	178	+102	+133.8%	+121	+216.2%	+15	315
Nursing/ Midwifery other	29	32	33	32	+3	+9.3%	-0	-0.4%	-1	35
Nursing & Midwifery	4,601	4,758	4,820	4,833	+232	+5.0%	+75	+1.6%	+13	5,312
Therapy Professions	389	407	403	401	+12	+3.0%	-7	-1.6%	-2	456
Social Care	48	44	37	37	-11	-22.8%	-7	-15.4%	+0	44
Social Workers	331	394	394	395	+64	+19.4%	+1	+0.3%	+1	441
Psychologists	379	423	431	435	+56	+14.8%	+11	+2.7%	+4	517
Pharmacy	17	17	20	21	+4	+22.7%	+3	+19.1%	+1	29
H&SC, Other	102	130	128	133	+31	+30.4%	+3	+2.7%	+6	150
Health & Social Care Professionals	1,265	1,415	1,412	1,421	+156	+12.3%	+6	+0.4%	+9	1,637
Management (VIII & above)	56	73	72	72	+15	+27.3%	-1	-1.2%	+0	74
Administrative/ Supervisory (V to VII)	217	264	296	301	+85	+39.1%	+38	+14.3%	+6	314
Clerical (III & IV)	673	670	747	755	+82	+12.2%	+85	+12.6%	+8	833
Management & Administrative	946	1,006	1,114	1,128	+182	+19.3%	+122	+12.1%	+14	1,221
Support	547	523	506	511	-36	-6.6%	-12	-2.2%	+5	574
Maintenance/ Technical	121	123	125	123	+2	+1.7%	+0	+0.2%	-2	125
General Support	668	646	631	634	-34	-5.1%	-11	-1.8%	+3	699
Health Care Assistants	990	1,024	1,076	1,081	+91	+9.2%	+56	+5.5%	+4	1,161
Care, other	213	213	225	225	+12	+5.7%	+13	+5.9%	+0	260
Patient & Client Care	1,203	1,237	1,301	1,306	+103	+8.6%	+69	+5.6%	+5	1,421

Mental Health Employment Report by S38 Vols: SEP 2023

SEP 2023	WTE DEC 2019	WTE DEC 2022	WTE AUG 2023	WTE SEP 2023	WTE change since DEC 2019	% WTE change since Dec 2019	WTE change since DEC 2022	% WTE change since Dec 2022	WTE change since AUG 2023	No. SEP 2023
Total S38 Vols	441	431	390	376	-65	-14.7%	-54	-12.6%	-13	443
Consultants	20	25	27	29	+9	+46.0%	+4	+15.4%	+2	33
Registrars	19	20	19	17	-1	-7.5%	-3	-12.5%	-1	20
SHO/ Interns	6	7	9	9	+3	+50.0%	+2	+28.6%	+0	9
Medical & Dental	45	52	55	55	+11	+24.0%	+3	+6.5%	+1	62
Nurse/ Midwife Manager	38	34	29	29	-9	-22.8%	-5	-13.6%	-0	31
Nurse/ Midwife Specialist & AN/MP	7	11	13	13	+6	+86.3%	+2	+16.2%	-0	15
Staff Nurse/ Staff Midwife	123	109	75	73	-50	-40.5%	-36	-33.0%	-2	81
Nursing/ Midwifery awaiting registration		1		2			-9	+100.0%	+2	2
Pre-registration Nurse/ Midwife Intern	7	8	9	1	+0	-92.9%	+0	-93.8%	-8	1
Nursing/ Midwifery Student	7	9	9	3	-5	-64.3%	-7	-72.2%	-6	3
Nursing/ Midwifery other	3	3			-3	-100.0%	-3	-100.0%		
Nursing & Midwifery	177	166	125	118	-60	-33.7%	-48	-29.0%	-8	130
Therapy Professions	31	28	23	22	-9	-28.8%	-6	-20.6%	-1	30
Social Care	25	28	26	25	-0	-1.8%	-3	-10.8%	-1	28
Social Workers	20	20	21	22	+2	+12.3%	+2	+10.6%	+1	24
Psychologists	16	25	22	21	+5	+31.1%	-4	-15.1%	-1	27
Pharmacy	2	2	2	2	+1	+43.8%	+1	+27.8%	+0	3
H&SC, Other	5	0	3	1	-3	-69.4%	+1	+208.3%	-2	2
Health & Social Care Professionals	99	103	99	94	-5	-4.8%	-9	-8.6%	-4	114
Management (VIII & above)	2	2	3	3	+1	+50.0%	+1	+50.0%	+0	3
Administrative/ Supervisory (V to VII)	21	23	20	20	-1	-4.3%	-3	-13.8%	+1	24
Clerical (III & IV)	45	36	42	41	-4	-9.2%	+4	+11.4%	-1	51
Management & Administrative	68	62	64	64	-4	-5.9%	+2	+3.1%	-0	78
Support	38	33	30	30	-8	-20.0%	-3	-8.3%	+0	42
Maintenance/ Technical	6	6	8	7	+1	+24.3%	+1	+24.3%	-1	8
General Support	44	39	38	38	-6	-13.9%	-1	-3.3%	-0	50
Health Care Assistants	6	6	5	4	-2	-27.0%	-2	-27.0%	-1	5
Care, other	3	3	3	3	+1	+19.1%	-0	-0.3%	-0	4
Patient & Client Care	9	9	8	8	-1	-11.9%	-2	-17.2%	-1	9



Mental Health Employment Report by Grade Group: SEP 2023

CHO 1

SEP 2023	WTE DEC 2019	WTE DEC 2022	WTE AUG 2023	WTE SEP 2023	WTE change since DEC 2019	% WTE change since Dec 2019	WTE change since DEC 2022	% WTE change since Dec 2022	WTE change since AUG 2023	No. SEP 2023
Total CHO 1	953	1024	1056	1050	+97	+10.2%	+26	+2.6%	-6	1,140
Consultants	31	34	35	35	+4	+13.4%	+1	+3.4%	+0	37
Registrars	24	35	37	37	+13	+52.4%	+3	+7.3%	+0	39
SHO/ Interns	25	21	23	20	-5	-21.4%	-1	-4.6%	-4	20
Medical & Dental	81	89	95	92	+12	+14.3%	+3	+3.1%	-3	96
Nurse/ Midwife Manager	117	118	123	126	+8	+7.2%	+8	+6.6%	+2	131
Nurse/ Midwife Specialist & AN/MP	67	91	97	97	+30	+44.1%	+6	+6.3%	-0	106
Staff Nurse/ Staff Midwife	297	294	292	290	-8	-2.6%	-4	-1.4%	-3	305
<i>Nursing/ Midwifery awaiting registration</i>		3		1	+1		-2	-68.8%	+1	1
<i>Pre-registration Nurse/ Midwife Intern</i>		2	15	15	+15		+13	+705.6%	-0	29
Nursing/ Midwifery Student		5	15	15	+15		+11	+222.8%	+1	30
Nursing/ Midwifery other		2	1	1	+1		-1	-47.1%	+0	1
Nursing & Midwifery	482	510	529	529	+47	+9.7%	+19	+3.7%	+0	573
Therapy Professions	36	40	40	40	+4	+10.5%	-1	-2.4%	-0	44
Social Care	4	4	2	2	-2	-40.7%	-2	-42.5%	-0	3
Social Workers	39	48	45	46	+7	+17.1%	-2	-4.1%	+1	49
Psychologists	21	25	31	28	+8	+38.0%	+4	+16.2%	-2	31
Pharmacy	1	1	1	1	+0	+6.3%	+0	+4.9%	+0	1
H&SC, Other	13	18	17	18	+5	+38.8%	-0	-1.3%	+1	21
Health & Social Care Professionals	113	136	136	135	+22	+19.4%	-1	-0.6%	-1	149
Management (VIII & above)	6	9	7	6	+1	+13.8%	-2	-26.2%	-0	7
Administrative/ Supervisory (V to VII)	30	30	34	35	+5	+16.8%	+5	+16.2%	+1	37
Clerical (III & IV)	85	89	95	94	+8	+9.8%	+4	+5.0%	-1	103
Management & Administrative	121	128	135	135	+14	+11.7%	+7	+5.5%	-0	147
Support	62	58	62	62	-0	-0.4%	+4	+7.1%	-0	68
Maintenance/ Technical	17	16	16	16	-1	-4.8%	-0	-2.3%	+0	16
General Support	79	74	78	78	-1	-1.3%	+4	+5.0%	-0	84
Health Care Assistants	66	75	73	71	+5	+7.8%	-3	-4.1%	-2	80
Care, other	11	12	9	9	-1	-12.7%	-2	-20.5%	+0	11
Patient & Client Care	77	86	83	81	+4	+5.0%	-6	-6.4%	-2	91

Mental Health Employment Report by Grade Group: SEP 2023

CHO 2

SEP 2023	WTE DEC 2019	WTE DEC 2022	WTE AUG 2023	WTE SEP 2023	WTE change since DEC 2019	% WTE change since Dec 2019	WTE change since DEC 2022	% WTE change since Dec 2022	WTE change since AUG 2023	No. SEP 2023
Total CHO 2	1308	1329	1322	1335	+27	+2.0%	+6	+0.5%	+13	1,464
Consultants	38	37	40	40	+3	+7.1%	+3	+9.0%	+0	45
Registrars	33	37	40	39	+6	+18.5%	+2	+6.5%	-0	44
SHO/ Interns	35	39	34	35	-0	-0.9%	-4	-11.0%	+1	37
Medical/ Dental, other	1	1			-1	-100.0%	-1	-100.0%		
Medical & Dental	107	114	113	114	+7	+7.0%	+0	+0.4%	+1	126
Nurse/ Midwife Manager	146	142	151	150	+4	+3.0%	+8	+5.7%	-1	156
Nurse/ Midwife Specialist & AN/MP	67	88	94	97	+30	+44.0%	+9	+10.6%	+3	105
Staff Nurse/ Staff Midwife	357	353	327	323	-34	-9.6%	-30	-8.5%	-4	352
<i>Nursing/ Midwifery awaiting registration</i>	5	7	1	13	+8	+165.1%	+6	+79.9%	+12	14
<i>Pre-registration Nurse/ Midwife Intern</i>	0	4	23	17	+16	+13,650.0%	+12	+307.4%	-6	33
Nursing/ Midwifery Student	5	11	23	29	+24	+497.3%	+18	+163.3%	+6	47
Nursing/ Midwifery other	2	4	5	3	+1	+72.5%	-1	-13.8%	-1	4
Nursing & Midwifery	577	598	600	603	+26	+4.4%	+5	+0.8%	+3	664
Therapy Professions	45	55	50	50	+5	+11.3%	-4	-7.5%	-0	59
Social Care	15	14	12	12	-3	-17.4%	-2	-11.7%	+1	14
Social Workers	41	44	42	44	+3	+8.2%	+0	+0.5%	+2	48
Psychologists	34	37	41	41	+8	+22.6%	+4	+11.0%	+0	46
Pharmacy	3	3	2	3	+0	+15.5%	+0	+16.4%	+0	4
H&SC, Other	3	3	2	3	-0	-11.7%	-0	-6.4%	+0	3
Health & Social Care Professionals	140	155	150	153	+14	+9.7%	-1	-0.8%	+3	174
Management (VIII & above)	5	3	3	3	-2	-40.0%	+0	+0.0%	+0	3
Administrative/ Supervisory (V to VII)	24	25	28	28	+5	+20.5%	+3	+13.0%	+1	29
Clerical (III & IV)	109	98	100	104	-5	-4.4%	+7	+6.8%	+4	117
Management & Administrative	138	126	131	136	-2	-1.4%	+10	+7.9%	+5	149
Support	36	27	24	24	-12	-33.4%	-2	-9.3%	+0	26
Maintenance/ Technical	27	36	35	35	+8	+29.3%	-1	-2.8%	-0	35
General Support	63	62	59	59	-4	-6.6%	-3	-5.6%	-0	61
Health Care Assistants	215	202	199	199	-16	-7.3%	-3	-1.5%	-0	210
Care, other	69	73	70	71	+2	+3.0%	-1	-2.0%	+2	80
Patient & Client Care	284	275	269	270	-14	-4.8%	-4	-1.6%	+1	290



Mental Health Employment Report by Grade Group: SEP 2023

CHO 3

SEP 2023	WTE DEC 2019	WTE DEC 2022	WTE AUG 2023	WTE SEP 2023	WTE change since DEC 2019	% WTE change since Dec 2019	WTE change since DEC 2022	% WTE change since Dec 2022	WTE change since AUG 2023	No. SEP 2023
Total CHO 3	795	814	815	817	+22	+2.8%	+3	+0.4%	+2	922
Consultants	23	29	30	31	+8	+32.2%	+2	+6.2%	+1	35
Registrars	18	15	23	23	+5	+29.2%	+8	+52.0%	+1	24
SHO/ Interns	19	33	17	16	-3	-15.7%	-17	-52.1%	-1	16
Medical & Dental	60	78	70	70	+10	+16.2%	-8	-9.9%	+0	75
Nurse/ Midwife Manager	88	87	85	85	-3	-3.2%	-2	-2.3%	+0	89
Nurse/ Midwife Specialist & AN/MP	39	44	47	49	+9	+24.1%	+4	+9.4%	+2	54
Staff Nurse/ Staff Midwife	245	243	235	231	-15	-5.9%	-12	-4.9%	-4	255
Pre-registration Nurse/ Midwife Intern	9	4	17	17	+8	+88.3%	+13	+291.6%	-0	34
Nursing/ Midwifery Student	9	4	17	17	+8	+88.3%	+13	+291.6%	-0	34
Nursing/ Midwifery other		1	1	1	+1		+0	+1.0%	+0	1
Nursing & Midwifery	381	380	384	382	+1	+0.3%	+3	+0.7%	-2	433
Therapy Professions	26	30	30	31	+5	+17.8%	+1	+2.5%	+1	34
Social Care	3	2	1	1	-2	-65.2%	-1	-44.8%	+0	1
Social Workers	25	28	24	25	-0	-1.9%	-3	-11.2%	+1	27
Psychologists	92	93	89	90	-2	-2.2%	-3	-3.3%	+2	111
Pharmacy	3	3	3	3	-0	-1.8%	-0	-2.5%	-0	3
H&SC, Other	10	10	11	11	+2	+19.0%	+2	+18.2%	+1	12
Health & Social Care Professionals	159	166	158	161	+2	+1.3%	-5	-2.8%	+3	188
Management (VIII & above)	2	4	4	4	+2	+103.0%	+0	+1.3%	+0	4
Administrative/ Supervisory (V to VII)	17	16	18	18	+1	+5.6%	+2	+10.5%	-1	19
Clerical (III & IV)	56	50	58	59	+3	+5.1%	+8	+16.9%	+0	64
Management & Administrative	75	70	81	80	+6	+7.8%	+10	+14.6%	-0	87
Support	32	30	31	31	-1	-4.0%	+1	+3.0%	-0	35
Maintenance/ Technical	11	7	7	7	-4	-36.4%	+0	+1.0%	+0	7
General Support	43	37	38	38	-5	-12.2%	+1	+2.7%	-0	42
Health Care Assistants	75	82	81	83	+8	+10.4%	+2	+1.9%	+2	94
Care, other	2	2	3	2	+1	+47.3%	+0	+0.8%	-1	3
Patient & Client Care	77	84	84	86	+9	+11.2%	+2	+1.9%	+1	97

Mental Health Employment Report by Grade Group: SEP 2023

CHO 4

SEP 2023	WTE DEC 2019	WTE DEC 2022	WTE AUG 2023	WTE SEP 2023	WTE change since DEC 2019	% WTE change since Dec 2019	WTE change since DEC 2022	% WTE change since Dec 2022	WTE change since AUG 2023	No. SEP 2023
Total CHO 4	1499	1562	1568	1574	+75	+5.0%	+12	+0.8%	+6	1,775
Consultants	50	60	63	62	+12	+23.9%	+1	+2.4%	-1	72
Registrars	46	56	49	48	+3	+5.8%	-8	-14.0%	-1	52
SHO/ Interns	31	42	46	51	+20	+63.2%	+8	+19.2%	+5	53
Medical/ Dental, other	2	1	1	1	-1	-51.5%	+0	+1.0%	+0	4
Medical & Dental	129	160	158	162	+33	+25.8%	+2	+1.1%	+3	181
Nurse/ Midwife Manager	171	207	207	204	+33	+19.1%	-3	-1.4%	-3	215
Nurse/ Midwife Specialist & AN/MP	60	72	81	82	+22	+37.4%	+10	+14.1%	+1	89
Staff Nurse/ Staff Midwife	505	479	443	450	-55	-11.0%	-29	-6.1%	+7	489
<i>Nursing/ Midwifery awaiting registration</i>	<i>30</i>			<i>1</i>	<i>-29</i>	<i>-98.3%</i>	<i>+1</i>		<i>+1</i>	<i>1</i>
<i>Post-registration Nurse/ Midwife Student</i>	<i>1</i>				<i>-1</i>	<i>-100.0%</i>				
<i>Pre-registration Nurse/ Midwife Intern</i>	<i>3</i>	<i>7</i>	<i>24</i>	<i>24</i>	<i>+21</i>	<i>+700.0%</i>	<i>+17</i>	<i>+258.7%</i>	<i>-0</i>	<i>48</i>
Nursing/ Midwifery Student	34	7	24	25	-9	-26.9%	+18	+266.2%	+0	49
Nursing & Midwifery	770	765	755	761	-9	-1.2%	-4	-0.5%	+6	842
Therapy Professions	74	79	86	86	+13	+17.1%	+8	+9.8%	+0	100
Social Care	4	6	5	4	+1	+15.6%	-1	-23.8%	-1	6
Social Workers	53	73	74	72	+19	+36.1%	-1	-1.0%	-2	84
Psychologists	83	96	89	90	+8	+9.3%	-5	-5.7%	+1	115
Pharmacy	2	2	1	1	-1	-40.3%	-1	-37.3%	+0	3
H&SC, Other	11	18	17	18	+7	+65.2%	+0	+0.9%	+1	21
Health & Social Care Professionals	227	273	272	273	+46	+20.3%	-1	-0.2%	+0	329
Management (VIII & above)	1	3	4	4	+3	+275.0%	+1	+25.0%	-0	4
Administrative/ Supervisory (V to VII)	22	26	32	31	+9	+39.8%	+5	+18.9%	-0	33
Clerical (III & IV)	87	87	93	93	+5	+5.9%	+6	+6.7%	-0	106
Management & Administrative	111	116	128	128	+17	+15.2%	+12	+9.9%	-1	143
Support	81	75	64	66	-15	-18.7%	-9	-12.1%	+2	77
Maintenance/ Technical	6	5	5	4	-2	-37.2%	-1	-24.7%	-1	4
General Support	87	80	68	69	-17	-20.0%	-10	-12.9%	+1	81
Health Care Assistants	168	162	180	176	+8	+4.5%	+14	+8.5%	-4	187
Care, other	7	5	6	5	-2	-24.9%	+0	+4.2%	-0	12
Patient & Client Care	176	167	185	181	+6	+3.3%	+14	+8.4%	-4	199

Mental Health Employment Report by Grade Group: SEP 2023

CHO 5

SEP 2023	WTE DEC 2019	WTE DEC 2022	WTE AUG 2023	WTE SEP 2023	WTE change since DEC 2019	% WTE change since Dec 2019	WTE change since DEC 2022	% WTE change since Dec 2022	WTE change since AUG 2023	No. SEP 2023
Total CHO 5	1177	1224	1297	1319	+141	+12.0%	+94	+7.7%	+22	1,457
Consultants	26	33	33	33	+7	+25.8%	-0	-0.9%	+0	36
Registrars	10	12	17	18	+8	+81.5%	+6	+52.8%	+1	19
SHO/ Interns	32	32	29	30	-2	-4.8%	-2	-5.8%	+1	31
Medical/ Dental, other	2	2	2	2	+0	+0.0%	+0	+2.6%	+0	2
Medical & Dental	70	80	82	84	+13	+19.0%	+4	+5.2%	+2	88
Nurse/ Midwife Manager	171	175	164	162	-9	-5.4%	-13	-7.5%	-2	169
Nurse/ Midwife Specialist & AN/MP	43	68	87	88	+45	+104.7%	+20	+30.0%	+1	93
Staff Nurse/ Staff Midwife	412	398	386	388	-24	-5.8%	-10	-2.4%	+2	431
Nursing/ Midwifery awaiting registration		6	1	10	+10		+5	+80.7%	+9	11
Pre-registration Nurse/ Midwife Intern	1	1	18	12	+11	+1,105.0%	+11	+1,129.6%	-6	24
Nursing/ Midwifery Student	1	7	19	22	+21	+2,117.0%	+16	+236.9%	+3	35
Nursing/ Midwifery other	4	4	5	5	+1	+28.8%	+1	+31.0%	+0	5
Nursing & Midwifery	631	651	661	665	+34	+5.5%	+14	+2.2%	+4	733
Therapy Professions	38	34	32	32	-6	-16.3%	-2	-5.4%	-0	37
Social Care	5	4	4	4	-0	-6.2%	+1	+20.7%	+0	5
Social Workers	28	29	30	32	+3	+12.3%	+3	+10.1%	+2	36
Psychologists	21	27	35	34	+13	+61.5%	+7	+25.5%	-1	39
H&SC, Other	9	23	22	23	+14	+155.4%	-0	-0.6%	+1	24
Health & Social Care Professionals	101	117	123	125	+24	+23.6%	+9	+7.4%	+2	141
Management (VIII & above)	4	6	5	5	+1	+25.0%	-1	-12.1%	+0	5
Administrative/ Supervisory (V to VII)	21	23	26	30	+8	+40.1%	+6	+26.0%	+3	31
Clerical (III & IV)	74	74	93	95	+21	+28.8%	+21	+27.7%	+2	102
Management & Administrative	99	104	124	130	+31	+31.0%	+26	+25.1%	+5	138
Support	171	175	183	187	+15	+9.0%	+12	+7.0%	+3	212
Maintenance/ Technical	19	14	15	15	-5	-23.4%	+1	+5.1%	-1	16
General Support	190	189	199	201	+11	+5.7%	+13	+6.8%	+3	228
Health Care Assistants	73	73	92	98	+26	+35.3%	+25	+34.3%	+6	106
Care, other	13	12	16	15	+2	+18.4%	+3	+28.3%	-1	23
Patient & Client Care	85	85	108	113	+28	+32.7%	+28	+33.5%	+6	129



Mental Health Employment Report by Grade Group: SEP 2023

CHO 6

SEP 2023	WTE DEC 2019	WTE DEC 2022	WTE AUG 2023	WTE SEP 2023	WTE change since DEC 2019	% WTE change since Dec 2019	WTE change since DEC 2022	% WTE change since Dec 2022	WTE change since AUG 2023	No. SEP 2023
Total CHO 6	593	650	670	670	+77	+13.1%	+20	+3.1%	-1	752
Consultants	36	45	48	50	+14	+38.8%	+5	+10.6%	+2	56
Registrars	22	30	31	30	+8	+37.5%	+0	+0.9%	-1	33
SHO/ Interns	9	9	11	11	+2	+22.2%	+2	+22.6%	+0	11
Medical & Dental	67	84	90	91	+24	+36.1%	+7	+8.4%	+1	100
Nurse/ Midwife Manager	76	75	70	70	-7	-9.0%	-5	-6.9%	+0	72
Nurse/ Midwife Specialist & AN/MP	14	27	32	31	+17	+124.7%	+4	+14.3%	-1	34
Staff Nurse/ Staff Midwife	139	151	150	148	+9	+6.7%	-3	-1.9%	-2	162
Nursing/ Midwifery awaiting registration				1	+1		+1		+1	1
Pre-registration Nurse/ Midwife Intern			6	3	+3		+3		-2	9
Nursing/ Midwifery Student			6	4	+4		+4		-2	10
Nursing/ Midwifery other	2	4	2	3	+1	+50.0%	-1	-20.2%	+1	3
Nursing & Midwifery	231	257	259	255	+24	+10.5%	-1	-0.5%	-4	281
Therapy Professions	43	41	42	41	-3	-5.9%	-1	-1.8%	-2	50
Social Care	26	28	26	25	-1	-4.0%	-3	-10.8%	-1	28
Social Workers	30	36	41	41	+11	+36.3%	+4	+12.0%	-0	44
Psychologists	22	38	35	35	+13	+60.3%	-2	-6.1%	+1	45
H&SC, Other	9	6	10	10	+2	+18.7%	+4	+61.1%	+1	12
Health & Social Care Professionals	130	150	154	152	+22	+17.1%	+2	+1.5%	-2	179
Management (VIII & above)	3	5	5	5	+2	+66.7%	+0	+0.6%	+0	5
Administrative/ Supervisory (V to VII)	27	31	28	28	+1	+5.2%	-3	-8.6%	+1	31
Clerical (III & IV)	42	29	36	39	-4	-8.4%	+10	+32.7%	+2	46
Management & Administrative	72	65	69	72	-0	-0.2%	+7	+10.6%	+3	82
Support	36	29	27	28	-8	-23.1%	-1	-4.1%	+1	34
Maintenance/ Technical	6	5	8	7	+1	+17.6%	+2	+39.6%	-1	7
General Support	42	34	35	35	-7	-17.4%	+1	+2.2%	+0	41
Health Care Assistants	46	54	57	58	+13	+28.1%	+5	+8.8%	+1	61
Care, other	5	7	7	7	+2	+28.9%	+0	+0.3%	-0	8
Patient & Client Care	51	60	64	65	+14	+28.2%	+5	+7.9%	+1	69

Mental Health Employment Report by Grade Group: SEP 2023

CHO 7

SEP 2023	WTE DEC 2019	WTE DEC 2022	WTE AUG 2023	WTE SEP 2023	WTE change since DEC 2019	% WTE change since Dec 2019	WTE change since DEC 2022	% WTE change since Dec 2022	WTE change since AUG 2023	No. SEP 2023
Total CHO 7	835	879	903	904	+69	+8.2%	+25	+2.9%	+1	993
Consultants	48	52	57	56	+8	+17.6%	+4	+7.4%	-1	60
Registrars	46	55	45	45	-1	-2.4%	-10	-17.9%	-0	49
SHO/ Interns	21	26	28	29	+8	+38.9%	+3	+13.2%	+1	29
Medical & Dental	115	133	130	130	+15	+13.4%	-3	-2.0%	-0	138
Nurse/ Midwife Manager	117	109	105	100	-16	-13.8%	-9	-8.1%	-5	105
Nurse/ Midwife Specialist & AN/MP	40	56	63	69	+30	+74.1%	+14	+24.3%	+7	74
Staff Nurse/ Staff Midwife	194	205	199	199	+4	+2.1%	-6	-3.0%	-0	220
<i>Nursing/ Midwifery awaiting registration</i>	<i>10</i>	<i>1</i>		<i>9</i>	<i>-1</i>	<i>-11.2%</i>	<i>+8</i>	<i>+784.8%</i>	<i>+9</i>	<i>10</i>
<i>Pre-registration Nurse/ Midwife Intern</i>	<i>1</i>	<i>0</i>	<i>15</i>	<i>10</i>	<i>+9</i>	<i>+625.5%</i>	<i>+10</i>	<i>+9,840.0%</i>	<i>-5</i>	<i>20</i>
Nursing/ Midwifery Student	11	1	15	19	+7	+66.5%	+18	+1,615.6%	+3	30
Nursing/ Midwifery other	8	6	6	5	-2	-28.4%	-1	-8.9%	-1	7
Nursing & Midwifery	370	377	388	392	+23	+6.2%	+16	+4.2%	+4	436
Therapy Professions	48	51	51	50	+2	+4.8%	-1	-1.5%	-0	57
Social Care	8	7	6	6	-2	-23.9%	-1	-13.4%	-0	7
Social Workers	34	38	39	39	+5	+13.6%	+0	+0.8%	-0	43
Psychologists	31	35	39	39	+8	+25.3%	+5	+13.2%	-0	45
Pharmacy	1	0	1	1	-0	-20.0%	+1	+300.0%	+0	1
H&SC, Other	18	19	17	16	-2	-10.4%	-3	-13.7%	-1	19
Health & Social Care Professionals	140	150	153	151	+11	+7.8%	+1	+0.8%	-2	172
Management (VIII & above)	3	5	5	5	+2	+72.2%	+0	+1.7%	+0	5
Administrative/ Supervisory (V to VII)	16	22	25	25	+9	+56.7%	+2	+9.7%	+0	25
Clerical (III & IV)	47	55	64	62	+15	+32.5%	+7	+12.0%	-2	67
Management & Administrative	65	83	93	92	+26	+40.1%	+9	+10.8%	-1	97
Support	18	16	13	14	-4	-23.7%	-3	-16.0%	+0	15
Maintenance/ Technical	2	2	2	2	+0	+7.5%	+0	+3.1%	+0	2
General Support	20	18	15	16	-4	-20.8%	-3	-13.9%	+0	17
Health Care Assistants	33	31	33	33	-0	-1.2%	+2	+8.1%	+0	35
Care, other	92	88	90	90	-2	-2.5%	+2	+2.3%	-1	98
Patient & Client Care	125	118	123	123	-3	-2.1%	+5	+3.8%	-1	133

Mental Health Employment Report by Grade Group: SEP 2023

CHO 8

SEP 2023	WTE DEC 2019	WTE DEC 2022	WTE AUG 2023	WTE SEP 2023	WTE change since DEC 2019	% WTE change since Dec 2019	WTE change since DEC 2022	% WTE change since Dec 2022	WTE change since AUG 2023	No. SEP 2023
Total CHO 8	1098	1091	1135	1143	+45	+4.1%	+53	+4.8%	+8	1,250
Consultants	35	36	38	38	+3	+7.4%	+2	+4.6%	+0	40
Registrars	26	29	27	29	+4	+14.5%	+0	+1.1%	+2	31
SHO/ Interns	36	29	34	34	-2	-6.3%	+5	+16.6%	-1	35
Medical & Dental	97	94	99	101	+4	+4.2%	+7	+7.2%	+2	106
Nurse/ Midwife Manager	121	114	116	117	-4	-2.9%	+3	+2.8%	+1	122
Nurse/ Midwife Specialist & AN/MP	56	75	79	80	+24	+42.7%	+6	+7.4%	+1	85
Staff Nurse/ Staff Midwife	332	323	319	316	-16	-4.7%	-7	-2.2%	-3	337
Nursing/ Midwifery awaiting registration	2	8	1	9	+7	+354.5%	+1	+8.6%	+9	10
Pre-registration Nurse/ Midwife Intern	1	1	25	19	+19	+3,746.0%	+19	+3,746.0%	-5	39
Nursing/ Midwifery Student	3	9	25	28	+26	+1,032.8%	+19	+219.3%	+3	49
Nursing/ Midwifery other	4	3	3	3	-1	-26.6%	+0	+0.0%	+0	3
Nursing & Midwifery	515	523	542	544	+30	+5.7%	+21	+4.0%	+3	596
Therapy Professions	44	36	36	35	-9	-21.3%	-1	-2.9%	-1	40
Social Care	7	6	5	5	-2	-28.8%	-1	-18.5%	+0	6
Social Workers	41	50	51	52	+11	+25.7%	+2	+4.1%	+1	60
Psychologists	39	36	36	39	-1	-1.7%	+2	+6.3%	+2	44
Pharmacy	1	2	2	3	+2	+152.0%	+1	+58.5%	+0	4
H&SC, Other	20	16	17	18	-3	-12.9%	+2	+9.9%	+1	21
Health & Social Care Professionals	154	146	148	151	-3	-1.8%	+5	+3.2%	+3	175
Management (VIII & above)	3	3	4	4	+1	+36.1%	+1	+33.3%	+0	4
Administrative/ Supervisory (V to VII)	22	28	27	28	+5	+22.7%	-1	-2.5%	+1	29
Clerical (III & IV)	88	88	108	108	+20	+22.1%	+20	+23.0%	-1	119
Management & Administrative	114	119	138	139	+26	+22.6%	+20	+17.2%	+1	152
Support	33	27	24	24	-8	-25.4%	-3	-10.0%	+0	27
Maintenance/ Technical	26	25	28	29	+2	+9.1%	+4	+15.7%	+0	29
General Support	59	52	53	53	-6	-10.0%	+1	+2.3%	+0	56
Health Care Assistants	157	152	152	152	-5	-3.1%	+0	+0.2%	-0	162
Care, other	4	5	3	3	-1	-15.3%	-2	-33.3%	+0	3
Patient & Client Care	160	156	155	155	-5	-3.4%	-1	-0.8%	-0	165

Mental Health Employment Report by Grade Group: SEP 2023

CHO 9

SEP 2023	WTE DEC 2019	WTE DEC 2022	WTE AUG 2023	WTE SEP 2023	WTE change since DEC 2019	% WTE change since Dec 2019	WTE change since DEC 2022	% WTE change since Dec 2022	WTE change since AUG 2023	No. SEP 2023
Total CHO 9	1272	1371	1305	1302	+30	+2.4%	-69	-5.0%	-3	1,434
Consultants	50	55	51	53	+3	+7.0%	-2	-3.0%	+2	56
Registrars	31	57	46	46	+15	+48.2%	-11	-19.7%	-1	47
SHO/ Interns	53	36	43	47	-6	-10.8%	+12	+32.4%	+4	49
Medical & Dental	134	148	141	147	+13	+9.4%	-1	-0.9%	+6	152
Nurse/ Midwife Manager	132	138	139	139	+7	+5.3%	+1	+0.9%	+0	147
Nurse/ Midwife Specialist & AN/MP	65	99	99	101	+36	+54.9%	+2	+2.2%	+2	105
Staff Nurse/ Staff Midwife	351	351	303	299	-52	-14.8%	-52	-14.8%	-4	328
<i>Nursing/ Midwifery awaiting registration</i>	<i>11</i>	<i>14</i>	<i>3</i>	<i>14</i>	<i>+4</i>	<i>+32.7%</i>	<i>+1</i>	<i>+3.8%</i>	<i>+11</i>	<i>18</i>
<i>Pre-registration Nurse/ Midwife Intern</i>	<i>10</i>	<i>8</i>	<i>23</i>	<i>6</i>	<i>-4</i>	<i>-40.6%</i>	<i>-2</i>	<i>-24.9%</i>	<i>-17</i>	<i>15</i>
Nursing/ Midwifery Student	21	22	26	20	-1	-2.8%	-1	-6.7%	-6	33
Nursing/ Midwifery other	11	9	8	8	-3	-26.6%	-1	-10.5%	+0	9
Nursing & Midwifery	581	619	575	568	-13	-2.2%	-51	-8.2%	-7	622
Therapy Professions	55	60	50	50	-4	-8.0%	-9	-15.8%	-0	57
Social Care	1	1	1	1	+0	+11.1%	+0	+1.0%	+0	1
Social Workers	43	57	56	55	+11	+25.9%	-2	-3.3%	-1	61
Psychologists	46	56	55	54	+8	+18.4%	-2	-3.6%	-1	64
Pharmacy	8	7	8	9	+1	+10.9%	+2	+26.0%	+0	13
H&SC, Other	15	17	18	18	+3	+21.0%	+0	+1.0%	-0	19
Health & Social Care Professionals	167	198	189	186	+19	+11.5%	-11	-5.7%	-2	215
Management (VIII & above)	5	5	6	6	+1	+20.2%	+1	+21.7%	+0	6
Administrative/ Supervisory (V to VII)	28	38	41	41	+13	+46.4%	+2	+6.4%	+0	43
Clerical (III & IV)	104	109	108	108	+5	+4.4%	-0	-0.2%	+1	124
Management & Administrative	137	152	154	155	+18	+13.5%	+3	+2.2%	+1	173
Support	103	95	88	87	-16	-15.6%	-8	-8.0%	-0	102
Maintenance/ Technical	11	11	10	10	-1	-12.9%	-1	-12.9%	+0	10
General Support	114	106	97	97	-17	-15.3%	-9	-8.5%	-0	112
Health Care Assistants	126	137	138	138	+12	+9.5%	+1	+0.9%	+0	148
Care, other	13	12	11	11	-2	-12.7%	-1	-9.7%	-0	12
Patient & Client Care	139	149	149	149	+10	+7.4%	+0	+0.0%	+0	160



Mental Health Employment Report by Grade Group: SEP 2023

other Community Services

SEP 2023	WTE DEC 2019	WTE DEC 2022	WTE AUG 2023	WTE SEP 2023	WTE change since DEC 2019	% WTE change since Dec 2019	WTE change since DEC 2022	% WTE change since Dec 2022	WTE change since AUG 2023	No. SEP 2023
Total other Community Services	438	511	553	553	+116	+26.4%	+42	+8.3%	+0	582
Consultants	16	15	16	16	+1	+4.0%	+2	+10.2%	+0	18
Registrars	13	19	17	17	+4	+34.1%	-1	-7.4%	+0	18
Medical & Dental	29	34	33	34	+5	+17.7%	+0	+0.3%	+1	36
Nurse/ Midwife Manager	62	81	81	78	+15	+24.6%	-3	-3.8%	-3	81
Nurse/ Midwife Specialist & AN/MP	8	11	11	11	+3	+33.0%	-0	-0.3%	+0	12
Staff Nurse/ Staff Midwife	169	151	158	159	-10	-5.9%	+8	+5.1%	+0	166
Nursing/ Midwifery awaiting registration				1	+1		+1		+1	1
Nursing/ Midwifery Student				1	+1		+1		+1	1
Nursing/ Midwifery other	1	2	2	2	+1	+92.0%	-0	-2.5%	-0	2
Nursing & Midwifery	240	245	252	250	+10	+4.1%	+6	+2.3%	-2	262
Therapy Professions	11	10	8	8	-3	-29.7%	-2	-20.6%	+0	8
Social Care	2	1	1	1	-1	-49.0%	+0	+1.0%	+0	1
Social Workers	15	11	13	12	-3	-20.8%	+1	+9.4%	-1	13
Psychologists	6	5	4	4	-2	-33.3%	-1	-25.7%	+0	4
Pharmacy		2	3	3	+3		+1	+50.0%	-0	3
Health & Social Care Professionals	34	29	28	28	-6	-18.8%	-1	-4.7%	-1	29
Management (VIII & above)	27	33	33	33	+6	+21.2%	+0	+0.4%	+0	34
Administrative/ Supervisory (V to VII)	31	46	58	58	+27	+87.3%	+12	+26.9%	-0	61
Clerical (III & IV)	25	28	33	35	+9	+37.6%	+7	+24.4%	+2	36
Management & Administrative	83	106	124	126	+42	+50.8%	+19	+18.1%	+2	131
Support	12	25	20	19	+7	+55.0%	-6	-23.5%	-1	20
Maintenance/ Technical	2	8	7	7	+5	+250.0%	-1	-12.2%	+0	7
General Support	14	33	27	26	+12	+82.5%	-7	-20.7%	-1	27
Health Care Assistants	37	64	76	76	+39	+107.4%	+12	+18.4%	+0	83
Care, other	1	0	13	14	+14	+2,700.0%	+14	+2,878.7%	+1	14
Patient & Client Care	37	65	89	90	+53	+142.2%	+25	+39.1%	+1	97

Mental Health Employment Report by Grade Group: SEP 2023

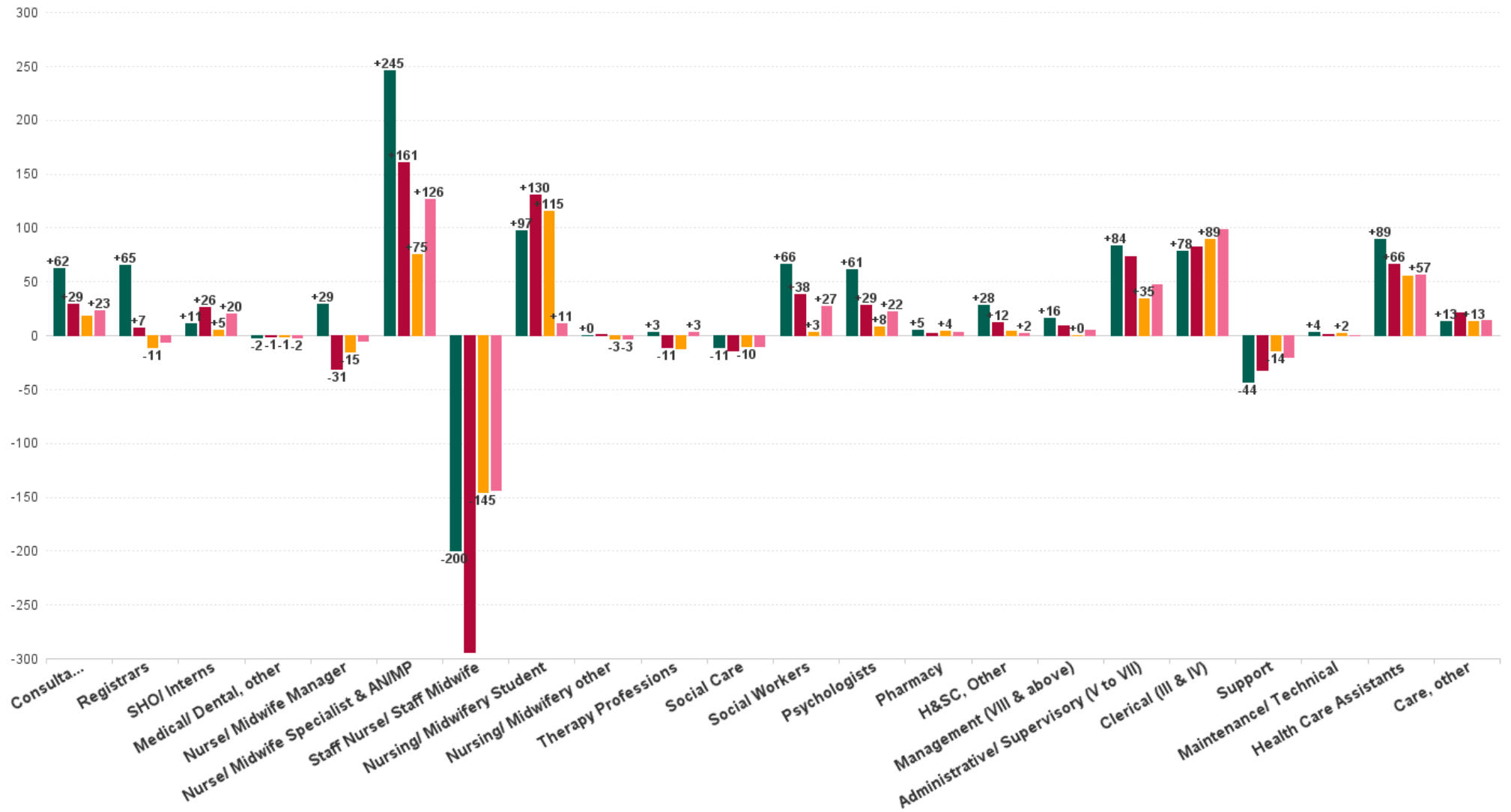
SEP 2023	WTE DEC 2019	WTE DEC 2022	WTE AUG 2023	WTE SEP 2023	WTE change since DEC 2019	% WTE change since Dec 2019	WTE change since DEC 2022	% WTE change since Dec 2022	WTE change since AUG 2023	No. SEP 2023
Overall	9,967	10,453	10,625	10,667	+700	+7.0%	+214	+2.0%	+43	11,769
Consultant Medicine	1	1	1	1	+0	+0.0%	+0	+0.0%	+0	1
Consultant Psychiatry	352	396	409	414	+62	+17.7%	+18	+4.4%	+4	454
Consultants	353	397	410	415	+62	+17.6%	+18	+4.4%	+4	455
Registrar	169	217	201	204	+35	+20.8%	-13	-5.8%	+3	216
Senior Registrar	97	126	127	126	+28	+29.3%	-0	0.0%	-2	136
Specialist Registrar	3	2	4	4	+2	+60.0%	+2	+101.0%	+0	4
Registrars	269	345	333	334	+65	+24.2%	-11	-3.1%	+1	356
Interns	8	5	8	8	+0	+0.0%	+3	+62.6%	-0	8
Senior House Officer	253	262	258	265	+11	+4.5%	+2	+0.9%	+6	273
SHO/ Interns	261	267	266	273	+11	+4.4%	+5	+2.0%	+6	281
Other Medical	5	4	3	3	-2	-40.6%	-1	-24.0%	+0	6
Medical/ Dental, other	5	4	3	3	-2	-40.6%	-1	-24.0%	+0	6
Medical & Dental	888	1,013	1,012	1,024	+137	+15.4%	+11	+1.1%	+12	1,098
Clinical Nurse/ Midwife Manager 1	142	142	146	141	-1	-0.8%	-1	-0.9%	-6	146
Clinical Nurse/ Midwife Manager 2	755	781	760	759	+4	+0.6%	-22	-2.8%	-1	800
Clinical Nurse/ Midwife Manager 3	111	113	125	123	+12	+10.6%	+10	+8.6%	-2	127
Director Nursing/Midwifery, Assistant	165	176	178	180	+15	+9.4%	+4	+2.3%	+2	186
Director of Nursing/Midwifery	29	34	31	28	-1	-3.4%	-6	-17.1%	-3	28
Nurse/ Midwife Manager	1,201	1,245	1,240	1,231	+29	+2.5%	-15	-1.2%	-10	1,287
Advanced Nurse/ Midwife Practitioner	19	48	53	56	+37	+195.0%	+7	+15.0%	+3	58
Adv. Nurse/ Midwife, Candidate	11	20	27	28	+17	+154.6%	+8	+39.3%	+1	29
Clinical Nurse/ Midwife Specialist	430	563	610	622	+192	+44.6%	+60	+10.6%	+12	670
Nurse/ Midwife Specialist & AN/MP	460	631	690	706	+245	+53.4%	+75	+11.9%	+15	757
Staff Nurse [Intellectual Disability]	5	7	8	12	+7	+155.8%	+5	+74.3%	+3	13
Staff Nurse [Psychiatric]	2,890	2,835	2,710	2,698	-193	-6.7%	-137	-4.8%	-13	2,930
Staff Nurses [General/ Children's]	108	106	94	93	-14	-13.4%	-13	-12.1%	-0	102
Staff Nurse/ Staff Midwife	3,002	2,948	2,812	2,802	-200	-6.7%	-145	-4.9%	-10	3,045
Nursing/ Midwifery awaiting registration	57	39	5	58	+1	+1.9%	+19	+49.6%	+53	67
Post-registration Nurse/ Midwife Student	1				-1	-100.0%				
Pre-registration Nurse/ Midwife Intern	25	26	166	122	+97	+387.8%	+96	+362.3%	-44	251
Nursing/ Midwifery Student	83	65	171	180	+97	+117.1%	+115	+176.4%	+9	318
Nursing Education/Clinical	32	34	33	32	+0	+0.6%	-3	-7.7%	-1	35
Nursing/ Midwifery other	32	34	33	32	+0	+0.6%	-3	-7.7%	-1	35
Nursing & Midwifery	4,778	4,924	4,946	4,950	+172	+3.6%	+27	+0.5%	+5	5,442
Dietitians	19	18	19	19	+0	+1.2%	+1	+7.1%	+1	25
Occupational Therapists	337	346	340	337	+1	+0.2%	-9	-2.6%	-3	381
Physiotherapists	2	3	1	1	-1	-60.1%	-2	-69.7%	+0	2
Podiatrists & Chiropodists	1	1			-1	-100.0%	-1	-100.0%		
Speech & Language Therapists	62	68	67	65	+4	+6.2%	-2	-3.1%	-1	78
Therapy Professions	420	435	426	423	+3	+0.6%	-12	-2.9%	-3	486
Social Care	74	72	63	62	-11	-15.5%	-10	-13.6%	-1	72
Social Care	74	72	63	62	-11	-15.5%	-10	-13.6%	-1	72
Social Workers	350	414	415	417	+66	+19.0%	+3	+0.8%	+2	465
Social Workers	350	414	415	417	+66	+19.0%	+3	+0.8%	+2	465
Psychologists	394	448	453	455	+61	+15.5%	+8	+1.7%	+3	544
Psychologists	394	448	453	455	+61	+15.5%	+8	+1.7%	+3	544
Pharmacists	16	16	18	19	+2	+15.5%	+3	+19.5%	+1	25
Pharmacy Technicians	2	4	5	5	+2	+83.4%	+1	+21.8%	-0	7
Pharmacy	19	19	22	23	+5	+24.5%	+4	+19.9%	+1	32
Counsellor Therapists	95	124	124	128	+33	+35.2%	+4	+3.2%	+5	141
HSCP Trainees/Students			1						-1	
Other Health & Social Care	11	3	2	3	-8	-76.7%	-0	-15.4%	+0	6
Play Therapists/ Specialists	1	3	4	4	+3	+181.5%	+1	+32.2%	+0	5
H&SC, Other	107	130	131	135	+28	+25.9%	+4	+3.4%	+4	152



SEP 2023	WTE DEC 2019	WTE DEC 2022	WTE AUG 2023	WTE SEP 2023	WTE change since DEC 2019	% WTE change since Dec 2019	WTE change since DEC 2022	% WTE change since Dec 2022	WTE change since AUG 2023	No. SEP 2023
Overall	9,967	10,453	10,625	10,667	+700	+7.0%	+214	+2.0%	+43	11,769
Health & Social Care Professionals	1,364	1,518	1,511	1,515	+151	+11.1%	-3	-0.2%	+5	1,751
Executive Management	11	14	17	17	+6	+52.3%	+3	+20.5%	-0	17
Senior Management (VIII & GM)	47	61	58	58	+11	+22.5%	-3	-4.4%	+0	60
Management (VIII & above)	58	75	75	75	+16	+28.1%	+0	+0.2%	+0	77
Middle Management (V-VII)	236	285	313	320	+83	+35.3%	+34	+12.0%	+7	335
Other Administrative	2	2	3	2	+0	+17.8%	+0	+17.8%	-1	3
Administrative/ Supervisory (V to VII)	238	287	315	322	+84	+35.2%	+35	+12.0%	+6	338
General Administrative (III & IV)	717	707	788	796	+78	+10.9%	+89	+12.6%	+7	884
Clerical (III & IV)	717	707	788	796	+78	+10.9%	+89	+12.6%	+7	884
Management & Administrative	1,014	1,068	1,178	1,192	+178	+17.6%	+124	+11.6%	+14	1,299
Catering	66	68	66	68	+2	+3.0%	+0	+0.2%	+1	75
Household Services	424	397	393	397	-27	-6.4%	-0	0.0%	+5	456
Other Support	47	40	34	33	-13	-28.5%	-7	-16.9%	-1	40
Portering	48	51	43	43	-5	-10.4%	-7	-14.7%	+0	45
Support	585	556	536	542	-44	-7.4%	-14	-2.6%	+5	616
Maintenance	127	129	133	130	+4	+2.8%	+2	+1.3%	-2	133
Maintenance/ Technical	127	129	133	130	+4	+2.8%	+2	+1.3%	-2	133
General Support	712	685	669	672	-40	-5.6%	-13	-1.8%	+3	749
Attendant/ Aide	605	423	414	407	-198	-32.7%	-15	-3.6%	-6	448
Health Care Assistant/ Care Assistant	382	588	637	647	+265	+69.5%	+59	+9.9%	+10	683
Health & Social Care Assistants	9	19	31	31	+22	+245.2%	+12	+61.2%	+0	35
Health Care Assistants	996	1,030	1,081	1,085	+89	+9.0%	+55	+5.3%	+4	1,166
Home Care Services	16	23	20	20	+5	+29.1%	-3	-11.8%	+0	27
Other Care Grades	23	19	39	38	+16	+70.4%	+19	+99.9%	-0	41
Pastoral Care	13	9	9	9	-3	-24.9%	+0	+0.4%	+0	15
Workshop Services	165	164	161	160	-5	-2.8%	-4	-2.4%	-0	181
Care, other	216	216	229	229	+13	+5.9%	+13	+5.8%	+0	264
Patient & Client Care	1,212	1,246	1,310	1,314	+102	+8.4%	+67	+5.4%	+4	1,430

WTE Change by Staff Category

■ WTE change since DEC 2019 ■ WTE change since DEC 2021 ■ WTE change since DEC 2022 ■ WTE change since SEP 2022



Mental Health Employment Report by WTE, Headcount, Gender, Full-Time / Part-Time etc. SEP 2023

SEP 2023	WTE SEP 2023	No. SEP 2023	WTE : No	% Male	% Female	Male WTE : No.	Female WTE : No	Perm Count %	Perm Count Male %	Perm Count Female %	Fulltime Count %	Part time Count %	FT Count Male %	FT Count Female %
Total	10,667	11,769	1:0.9	26.91%	73.09%	1:0.9	1:0.9	83.48%	21.71%	61.77%	85.91%	14.09%	93.78%	83.02%
Consultants	414.61	455	1:0.9	41.32%	58.68%	1:1	1:0.9	66.15%	28.13%	38.02%	88.13%	11.87%	93.62%	84.27%
Registrars	334.05	356	1:0.9	42.42%	57.58%	1:1	1:0.9	3.37%	1.40%	1.97%	93.82%	6.18%	99.34%	89.76%
SHO/ Interns	272.55	281	1:1	40.57%	59.43%	1:1	1:1	0.36%		0.36%	98.58%	1.42%	100.00%	97.60%
Medical/ Dental, other	2.97	6	1:0.5	50.00%	50.00%	1:0.4	1:0.5	50.00%	16.67%	33.33%	33.33%	66.67%	33.33%	33.33%
Medical & Dental	1,024	1,098	1:0.9	41.53%	58.47%	1:1	1:0.9	28.87%	12.20%	16.67%	92.35%	7.65%	96.71%	89.25%
Nurse/ Midwife Manager	1,230.57	1,287	1:1	37.45%	62.55%	1:1	1:0.9	98.60%	36.83%	61.77%	94.95%	5.05%	98.55%	92.80%
Nurse/ Midwife Specialist & AN/MP	705.59	757	1:0.9	18.10%	81.90%	1:1	1:0.9	99.47%	18.10%	81.37%	92.73%	7.27%	97.81%	91.61%
Staff Nurse/ Staff Midwife	2,802.45	3,045	1:0.9	24.93%	75.07%	1:0.9	1:0.9	91.36%	21.97%	69.39%	87.13%	12.87%	90.91%	85.87%
Nursing/ Midwifery Student	180.07	318	1:0.6	17.61%	82.39%	1:0.5	1:0.6	0.94%		0.94%	100.00%		100.00%	100.00%
Nursing/ Midwifery other	31.74	35	1:0.9	11.43%	88.57%	1:1	1:0.9	100.00%	11.43%	88.57%	88.57%	11.43%	100.00%	87.10%
Nursing & Midwifery	4,950	5,442	1:0.9	26.42%	73.58%	1:0.9	1:0.9	88.97%	23.59%	65.38%	90.52%	9.48%	94.51%	89.09%
Therapy Professions	423	486	1:0.9	9.67%	90.33%	1:0.9	1:0.9	95.27%	9.47%	85.80%	84.57%	15.43%	89.36%	84.05%
Social Care	62.11	72	1:0.9	19.44%	80.56%	1:1	1:0.8	93.06%	16.67%	76.39%	69.44%	30.56%	85.71%	65.52%
Social Workers	416.82	465	1:0.9	17.42%	82.58%	1:0.9	1:0.9	93.76%	16.13%	77.63%	84.09%	15.91%	95.06%	81.77%
Psychologists	455.45	544	1:0.8	19.85%	80.15%	1:0.9	1:0.8	70.59%	14.89%	55.70%	83.64%	16.36%	98.15%	80.05%
Pharmacy	23.05	32	1:0.7	15.63%	84.38%	1:0.9	1:0.7	93.75%	12.50%	81.25%	50.00%	50.00%	80.00%	44.44%
H&SC, Other	134.8	152	1:0.9	20.39%	79.61%	1:0.9	1:0.9	92.76%	19.74%	73.03%	71.05%	28.95%	90.32%	66.12%
Health & Social Care Professionals	1,515	1,751	1:0.9	16.33%	83.67%	1:0.9	1:0.9	86.86%	14.16%	72.70%	81.72%	18.28%	94.06%	79.32%
Management (VIII & above)	74.74	77	1:1	31.17%	68.83%	1:1	1:1	96.10%	29.87%	66.23%	97.40%	2.60%	95.83%	98.11%
Administrative/ Supervisory (V to VII)	321.58	338	1:1	20.41%	79.59%	1:1	1:0.9	95.56%	19.23%	76.33%	90.83%	9.17%	98.55%	88.85%
Clerical (III & IV)	795.51	884	1:0.9	9.50%	90.50%	1:1	1:0.9	85.52%	8.14%	77.38%	78.96%	21.04%	94.05%	77.38%
Management & Administrative	1,192	1,299	1:0.9	13.63%	86.37%	1:1	1:0.9	88.76%	12.32%	76.44%	83.14%	16.86%	96.05%	81.11%
Support	541.53	616	1:0.9	29.71%	70.29%	1:0.9	1:0.9	92.21%	26.95%	65.26%	64.12%	35.88%	88.52%	53.81%
Maintenance/ Technical	130.42	133	1:1	99.25%	0.75%	1:1	1:1	95.49%	94.74%	0.75%	96.99%	3.01%	96.97%	100.00%
General Support	672	749	1:0.9	42.06%	57.94%	1:1	1:0.9	92.79%	38.99%	53.81%	69.96%	30.04%	92.06%	53.92%
Health Care Assistants	1,084.94	1,166	1:0.9	31.82%	68.18%	1:0.9	1:0.9	91.77%	28.64%	63.12%	81.22%	18.78%	91.64%	76.35%
Care, other	228.61	264	1:0.9	46.97%	53.03%	1:0.9	1:0.8	85.98%	39.02%	46.97%	71.59%	28.41%	81.45%	62.86%
Patient & Client Care	1,314	1,430	1:0.9	34.62%	65.38%	1:0.9	1:0.9	90.70%	30.56%	60.14%	79.44%	20.56%	89.09%	74.33%



Mental Health Employment Report by WTE, Headcount, Gender, Full-Time / Part-Time etc. SEP 2023

SEP 2023	WTE SEP 2023	No. SEP 2023	WTE : No	% Male	% Female	Male WTE : No.	Female WTE : No	Perm Count %	Number Male %	Number Female %	Fulltime Count %	Part time Count %	FT Count Male %	FT Count Female %
Total	10,667	11,769	1:0.9	26.91%	73.09%	1:0.9	1:0.9	83.48%	21.71%	61.77%	85.91%	14.09%	93.78%	83.02%
CHO 1	1,050	1,140	1:0.9	26.05%	73.95%	1:1	1:0.9	89.30%	22.37%	66.93%	87.72%	12.28%	96.30%	84.70%
CHO 2	1,335	1,464	1:0.9	28.42%	71.58%	1:1	1:0.9	85.04%	23.02%	62.02%	85.93%	14.07%	92.07%	83.49%
CHO 3	817	922	1:0.9	20.93%	79.07%	1:0.9	1:0.9	79.28%	16.81%	62.47%	87.42%	12.58%	92.23%	86.15%
CHO 4	1,574	1,775	1:0.9	25.75%	74.25%	1:0.9	1:0.9	71.72%	16.96%	54.76%	83.49%	16.51%	92.34%	80.42%
CHO 5	1,319	1,457	1:0.9	25.39%	74.61%	1:0.9	1:0.9	88.61%	21.83%	66.78%	81.40%	18.60%	90.81%	78.20%
CHO 6	670	752	1:0.9	28.32%	71.68%	1:1	1:0.9	86.30%	24.47%	61.84%	83.24%	16.76%	92.49%	79.59%
CHO 7	904	993	1:0.9	23.97%	76.03%	1:1	1:0.9	81.37%	18.03%	63.34%	89.33%	10.67%	96.22%	87.15%
CHO 8	1,143	1,250	1:0.9	24.80%	75.20%	1:1	1:0.9	84.56%	19.92%	64.64%	87.12%	12.88%	96.45%	84.04%
CHO 9	1,302	1,434	1:0.9	28.24%	71.76%	1:1	1:0.9	85.50%	23.78%	61.72%	85.63%	14.37%	96.05%	81.54%
other Community Services	553	582	1:1	46.05%	53.95%	1:1	1:0.9	90.55%	40.55%	50.00%	94.33%	5.67%	93.66%	94.90%



Previous Month Summary

	% WTE change since AUG 2023	WTE change since DEC 2022	CHO 1	CHO 2	CHO 3	CHO 4	CHO 5	CHO 6	CHO 7	CHO 8	CHO 9	other Communi ty Services
Total	+0.4%	+213.7	+26.2	+6.1	+3.2	+12.4	+94.3	+20.4	+25.2	+52.7	-69.1	+42.2
Consultants	+1.1%	+17.6	+1.2	+3.3	+1.8	+1.5	-0.3	+4.8	+3.9	+1.7	-1.7	+1.5
Registrars	+0.4%	-10.7	+2.6	+2.4	+7.9	-7.9	+6.3	+0.3	-9.9	+0.3	-11.3	-1.4
SHO/ Interns	+2.4%	+5.5	-1.0	-4.3	-17.4	+8.1	-1.9	+2.0	+3.4	+4.8	+11.6	
Medical/ Dental, other	+0.0%	-0.9		-1.0		+0.0	+0.1					
Medical & Dental	+1.2%	+11.4	+2.7	+0.5	-7.7	+1.7	+4.1	+7.1	-2.6	+6.8	-1.3	+0.1
Nurse/ Midwife Manager	-0.8%	-14.8	+7.8	+8.1	-2.0	-2.8	-13.2	-5.2	-8.9	+3.2	+1.2	-3.1
Nurse/ Midwife Specialist & AN/MP	+2.2%	+74.8	+5.8	+9.3	+4.2	+10.1	+20.4	+3.9	+13.6	+5.5	+2.1	-0.0
Staff Nurse/ Staff Midwife	-0.3%	-145.4	-4.2	-30.0	-12.0	-29.1	-9.7	-3.0	-6.1	-7.2	-51.8	+7.7
Nursing/ Midwifery Student	+5.5%	+114.9	+10.7	+18.0	+12.5	+17.8	+15.6	+3.7	+17.6	+19.5	-1.5	+1.0
Nursing/ Midwifery other	-2.8%	-2.6	-0.9	-0.6	+0.0		+1.1	-0.8	-0.5	+0.0	-1.0	-0.1
Nursing & Midwifery	+0.1%	+26.9	+19.1	+4.9	+2.7	-3.9	+14.2	-1.3	+15.6	+21.0	-50.9	+5.6
Therapy Professions	-0.7%	-12.4	-1.0	-4.1	+0.8	+7.7	-1.8	-0.7	-0.8	-1.0	-9.5	-2.0
Social Care	-1.8%	-9.8	-1.6	-1.6	-0.8	-1.4	+0.8	-3.0	-0.9	-1.2	+0.0	+0.0
Social Workers	+0.4%	+3.2	-2.0	+0.2	-3.1	-0.7	+2.9	+4.4	+0.3	+2.0	-1.8	+1.0
Psychologists	+0.6%	+7.6	+4.0	+4.1	-3.1	-5.4	+6.9	-2.3	+4.6	+2.3	-2.0	-1.4



Pharmacy	+3.6%	+3.8	+0.0	+0.4	-0.1	-0.9			+0.6	+0.9	+1.8	+1.0
H&SC, Other	+2.7%	+4.5	-0.2	-0.2	+1.8	+0.2	-0.1	+3.9	-2.6	+1.6	+0.2	
Health & Social Care Professionals	+0.3%	-3.0	-0.8	-1.2	-4.6	-0.6	+8.6	+2.2	+1.3	+4.7	-11.3	-1.4
Management (VIII & above)	+0.3%	+0.2	-2.3	+0.0	+0.1	+0.8	-0.7	+0.0	+0.1	+1.0	+1.1	+0.1
Administrative/ Supervisory (V to VII)	+2.0%	+34.5	+4.9	+3.3	+1.7	+5.0	+6.1	-2.7	+2.2	-0.7	+2.5	+12.4
Clerical (III & IV)	+0.9%	+88.9	+4.4	+6.6	+8.5	+5.8	+20.6	+9.5	+6.6	+20.2	-0.2	+6.8
Management & Administrative	+1.2%	+123.5	+7.0	+9.9	+10.2	+11.6	+26.0	+6.9	+8.9	+20.4	+3.4	+19.3
Support	+1.0%	-14.3	+4.1	-2.5	+0.9	-9.1	+12.1	-1.2	-2.6	-2.7	-7.6	-5.8
Maintenance/ Technical	-1.7%	+1.7	-0.4	-1.0	+0.1	-1.3	+0.7	+2.0	+0.1	+3.9	-1.4	-1.0
General Support	+0.5%	-12.6	+3.7	-3.5	+1.0	-10.3	+12.9	+0.8	-2.5	+1.2	-9.0	-6.8
Health Care Assistants	+0.3%	+54.8	-3.1	-3.0	+1.6	+13.8	+25.1	+4.7	+2.5	+0.2	+1.2	+11.8
Care, other	+0.0%	+12.6	-2.4	-1.4	+0.0	+0.2	+3.4	+0.0	+2.0	-1.5	-1.2	+13.5
Patient & Client Care	+0.3%	+67.4	-5.5	-4.5	+1.6	+14.0	+28.4	+4.8	+4.5	-1.3	+0.0	+25.4



Year on Year Summary

	% WTE change since SEP 2022	WTE change since SEP 2022	CHO 1	CHO 2	CHO 3	CHO 4	CHO 5	CHO 6	CHO 7	CHO 8	CHO 9	other Communi ty Services
Total	+0.4%	+267.1	+12.8	+44.9	-2.6	+6.3	+97.9	+29.7	+14.0	+53.0	-47.8	+59.0
Consultants	+1.1%	+23.0	+1.4	+1.8	+2.3	+3.3	-0.9	+10.2	+3.4	+1.4	+0.5	-0.4
Registrars	+0.4%	-6.4	+1.9	+3.8	+4.5	-1.7	+5.2	+1.2	-12.9	+1.0	-7.7	-1.6
SHO/ Interns	+2.4%	+19.6	-1.1	-4.0	-11.2	+6.0	-0.5	+3.0	+2.1	+6.9	+18.4	
Medical/ Dental, other	+0.0%	-1.9		-1.0		-1.0	+0.1					
Medical & Dental	+1.2%	+34.3	+2.2	+0.6	-4.4	+6.6	+3.9	+14.5	-7.5	+9.2	+11.2	-2.0
Nurse/ Midwife Manager	-0.8%	-4.9	+11.7	+7.6	-0.4	-10.2	-5.2	+1.1	-11.0	-0.5	+0.7	+1.5
Nurse/ Midwife Specialist & AN/MP	+2.2%	+126.2	+16.2	+15.7	+11.1	+14.2	+30.0	+3.2	+13.9	+13.5	+7.6	+0.8
Staff Nurse/ Staff Midwife	-0.3%	-143.6	-12.1	-16.2	-14.6	-21.4	-11.1	-7.5	-5.1	-7.1	-55.9	+7.4
Nursing/ Midwifery Student	+5.5%	+11.1	-3.4	+5.9	+4.9	+0.9	+3.7	-0.1	+0.9	+2.3	-4.9	+1.0
Nursing/ Midwifery other	-2.8%	-2.9	-0.9	-0.6	+0.0		+1.6	-0.8	-0.8	+0.0	-1.3	-0.1
Nursing & Midwifery	+0.1%	-14.1	+11.4	+12.4	+1.0	-16.5	+18.9	-4.2	-2.2	+8.3	-53.8	+10.6
Therapy Professions	-0.7%	+2.6	-2.4	+3.8	+2.8	+9.3	-2.6	+2.4	+0.2	+0.5	-9.5	-1.8
Social Care	-1.8%	-10.5	-1.4	-0.7	-1.5	-1.9	-0.1	-2.8	-1.1	-1.0	+0.1	+0.0
Social Workers	+0.4%	+27.0	-0.1	+1.0	-1.5	+3.4	+5.8	+6.5	+6.0	+2.3	+3.7	-0.2
Psychologists	+0.6%	+21.6	+3.7	+7.4	-5.5	-3.5	+9.1	+0.3	+8.3	+4.0	-1.1	-1.2
Pharmacy	+3.6%	+2.6	+0.1	+0.5	-0.1	+0.1		-1.1	+0.8	+0.2	+0.3	+1.7



H&SC, Other	+2.7%	+2.4	-0.4	-0.2	+0.7	-0.9	+1.3	+2.9	-2.9	+1.3	+0.8	
Health & Social Care Professionals	+0.3%	+45.7	-0.6	+11.7	-5.1	+6.6	+13.5	+8.2	+11.3	+7.4	-5.8	-1.4
Management (VIII & above)	+0.3%	+5.0	-2.4	+0.1	+2.0	+0.8	-1.0	+1.0	+0.0	+1.0	+2.0	+1.6
Administrative/ Supervisory (V to VII)	+2.0%	+47.5	+2.6	+2.0	+2.8	+7.4	+5.7	-2.4	+3.6	+3.9	+6.3	+15.6
Clerical (III & IV)	+0.9%	+98.3	+4.2	+12.4	+5.8	+1.8	+22.5	+6.6	+8.3	+20.7	+4.1	+12.2
Management & Administrative	+1.2%	+150.8	+4.4	+14.5	+10.6	+9.9	+27.2	+5.2	+11.8	+25.5	+12.3	+29.4
Support	+1.0%	-20.2	+3.3	-3.1	-1.1	-10.6	+11.1	-1.1	-3.0	-4.7	-6.9	-4.0
Maintenance/ Technical	-1.7%	+0.0	-0.9	+1.8	+1.0	-1.3	-0.5	+1.0	+0.0	+3.2	-1.4	-2.9
General Support	+0.5%	-20.2	+2.4	-1.3	-0.1	-11.9	+10.6	-0.2	-3.0	-1.5	-8.3	-6.9
Health Care Assistants	+0.3%	+56.6	-4.5	+3.7	-4.5	+11.4	+22.5	+6.2	+1.6	+5.1	-0.0	+15.2
Care, other	+0.0%	+13.9	-2.7	+3.4	+0.0	+0.2	+1.4	+0.0	+2.0	-1.0	-3.4	+14.0
Patient & Client Care	+0.3%	+70.5	-7.2	+7.1	-4.5	+11.6	+23.8	+6.2	+3.6	+4.1	-3.4	+29.2



Year to Date Summary

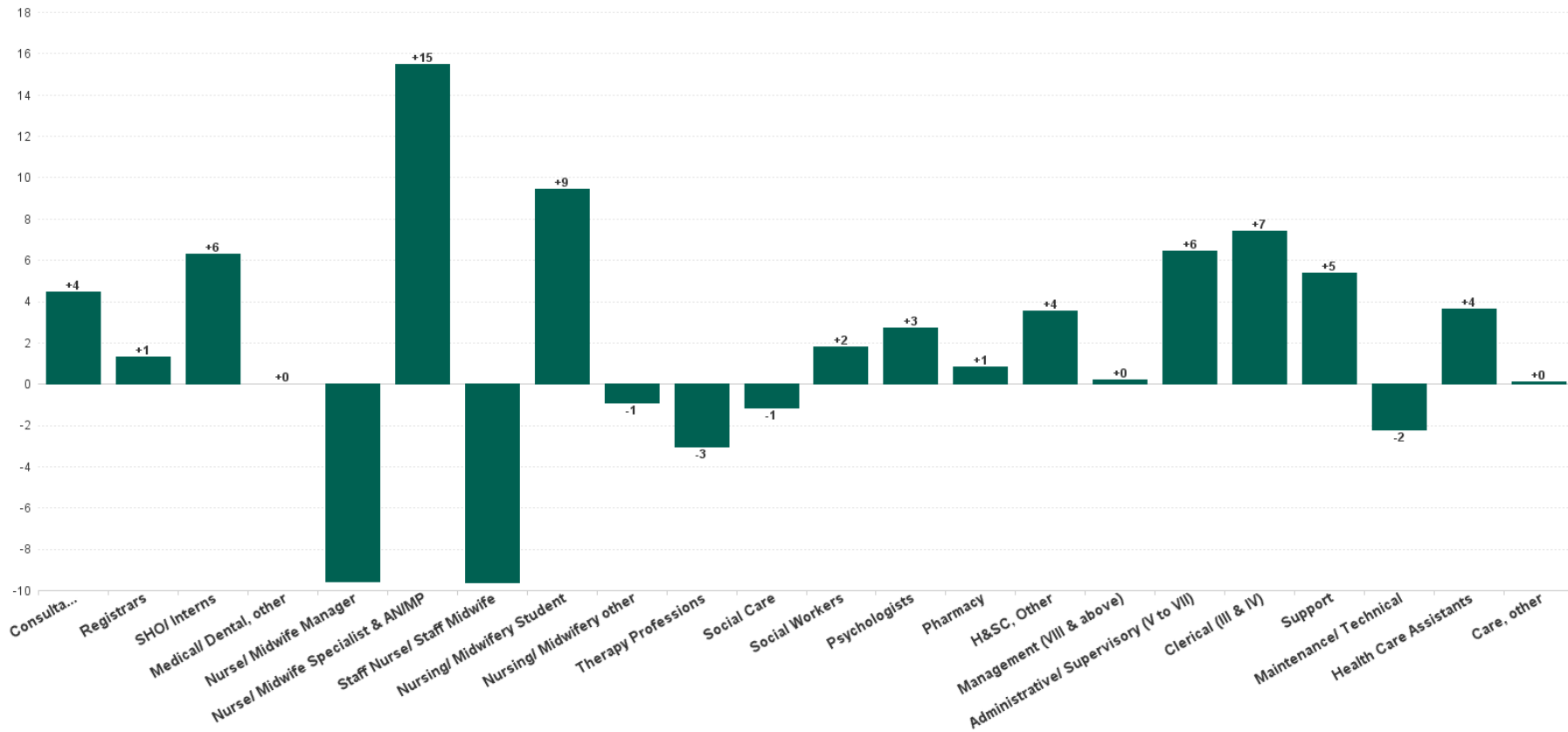
	% WTE change since SEP 2022	WTE change since DEC 2022	CHO 1	CHO 2	CHO 3	CHO 4	CHO 5	CHO 6	CHO 7	CHO 8	CHO 9	other Communi ty Services
Total	+2.0%	+213.7	+26.2	+6.1	+3.2	+12.4	+94.3	+20.4	+25.2	+52.7	-69.1	+42.2
Consultants	+4.4%	+17.6	+1.2	+3.3	+1.8	+1.5	-0.3	+4.8	+3.9	+1.7	-1.7	+1.5
Registrars	-3.1%	-10.7	+2.6	+2.4	+7.9	-7.9	+6.3	+0.3	-9.9	+0.3	-11.3	-1.4
SHO/ Interns	+2.0%	+5.5	-1.0	-4.3	-17.4	+8.1	-1.9	+2.0	+3.4	+4.8	+11.6	
Medical/ Dental, other	-24.0%	-0.9		-1.0		+0.0	+0.1					
Medical & Dental	+1.1%	+11.4	+2.7	+0.5	-7.7	+1.7	+4.1	+7.1	-2.6	+6.8	-1.3	+0.1
Nurse/ Midwife Manager	-1.2%	-14.8	+7.8	+8.1	-2.0	-2.8	-13.2	-5.2	-8.9	+3.2	+1.2	-3.1
Nurse/ Midwife Specialist & AN/MP	+11.9%	+74.8	+5.8	+9.3	+4.2	+10.1	+20.4	+3.9	+13.6	+5.5	+2.1	-0.0
Staff Nurse/ Staff Midwife	-4.9%	-145.4	-4.2	-30.0	-12.0	-29.1	-9.7	-3.0	-6.1	-7.2	-51.8	+7.7
Nursing/ Midwifery Student	+176.4%	+114.9	+10.7	+18.0	+12.5	+17.8	+15.6	+3.7	+17.6	+19.5	-1.5	+1.0
Nursing/ Midwifery other	-7.7%	-2.6	-0.9	-0.6	+0.0		+1.1	-0.8	-0.5	+0.0	-1.0	-0.1
Nursing & Midwifery	+0.5%	+26.9	+19.1	+4.9	+2.7	-3.9	+14.2	-1.3	+15.6	+21.0	-50.9	+5.6
Therapy Professions	-2.9%	-12.4	-1.0	-4.1	+0.8	+7.7	-1.8	-0.7	-0.8	-1.0	-9.5	-2.0
Social Care	-13.6%	-9.8	-1.6	-1.6	-0.8	-1.4	+0.8	-3.0	-0.9	-1.2	+0.0	+0.0
Social Workers	+0.8%	+3.2	-2.0	+0.2	-3.1	-0.7	+2.9	+4.4	+0.3	+2.0	-1.8	+1.0
Psychologists	+1.7%	+7.6	+4.0	+4.1	-3.1	-5.4	+6.9	-2.3	+4.6	+2.3	-2.0	-1.4
Pharmacy	+19.9%	+3.8	+0.0	+0.4	-0.1	-0.9			+0.6	+0.9	+1.8	+1.0
H&SC, Other	+3.4%	+4.5	-0.2	-0.2	+1.8	+0.2	-0.1	+3.9	-2.6	+1.6	+0.2	
Health & Social Care Professionals	-0.2%	-3.0	-0.8	-1.2	-4.6	-0.6	+8.6	+2.2	+1.3	+4.7	-11.3	-1.4
Management (VIII & above)	+0.2%	+0.2	-2.3	+0.0	+0.1	+0.8	-0.7	+0.0	+0.1	+1.0	+1.1	+0.1
Administrative/ Supervisory (V to VII)	+12.0%	+34.5	+4.9	+3.3	+1.7	+5.0	+6.1	-2.7	+2.2	-0.7	+2.5	+12.4
Clerical (III & IV)	+12.6%	+88.9	+4.4	+6.6	+8.5	+5.8	+20.6	+9.5	+6.6	+20.2	-0.2	+6.8
Management & Administrative	+11.6%	+123.5	+7.0	+9.9	+10.2	+11.6	+26.0	+6.9	+8.9	+20.4	+3.4	+19.3
Support	-2.6%	-14.3	+4.1	-2.5	+0.9	-9.1	+12.1	-1.2	-2.6	-2.7	-7.6	-5.8



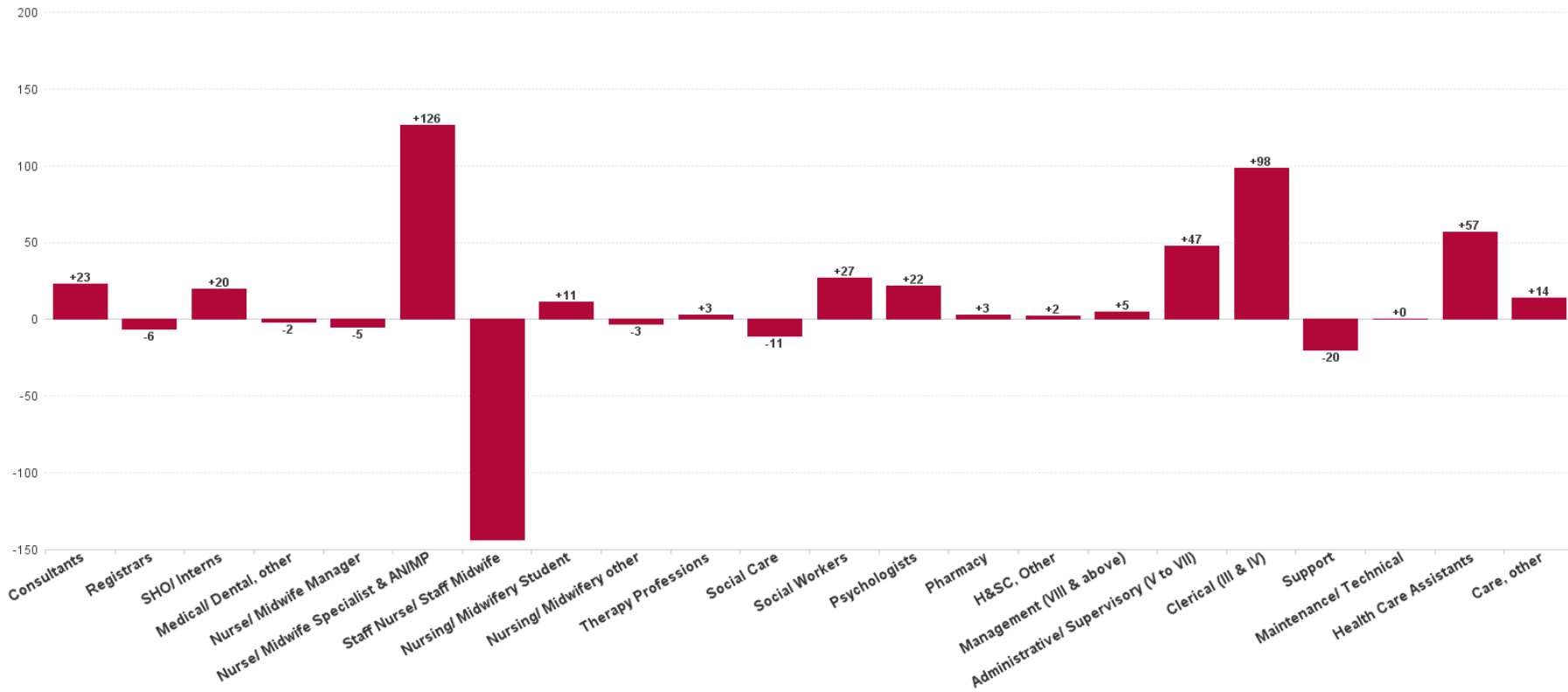
Maintenance/ Technical	+1.3%	+1.7	-0.4	-1.0	+0.1	-1.3	+0.7	+2.0	+0.1	+3.9	-1.4	-1.0
General Support	-1.8%	-12.6	+3.7	-3.5	+1.0	-10.3	+12.9	+0.8	-2.5	+1.2	-9.0	-6.8
Health Care Assistants	+5.3%	+54.8	-3.1	-3.0	+1.6	+13.8	+25.1	+4.7	+2.5	+0.2	+1.2	+11.8
Care, other	+5.8%	+12.6	-2.4	-1.4	+0.0	+0.2	+3.4	+0.0	+2.0	-1.5	-1.2	+13.5
Patient & Client Care	+5.4%	+67.4	-5.5	-4.5	+1.6	+14.0	+28.4	+4.8	+4.5	-1.3	+0.0	+25.4



Previous Month Summary Chart: Change since AUG 2023



Previous Year Summary Chart: Change since SEP 2022



YTD Summary Chart: Change since DEC 2022

