

# Mental Health Service Employment Report: September 2022

## Employment by Staff Group

Sep 2022	WTE Dec 2019	WTE Dec 2020	WTE Aug 2022	WTE Sep 2022	WTE change since Aug 22	WTE change since Dec 20	% change since Dec 20	WTE change since Dec 19	% change since Dec 19	No. Sep 2022
<b>Overall</b>	<b>9,954</b>	<b>10,301</b>	<b>10,394</b>	<b>10,400</b>	<b>+6</b>	<b>+99</b>	<b>+1.0%</b>	<b>+446</b>	<b>+4.5%</b>	<b>11,568</b>
Consultants	353	370	384	392	+7	+22	+6.0%	+39	+11.1%	429
Registrars	269	281	326	340	+14	+59	+21.2%	+72	+26.6%	351
SHO/ Interns	261	276	250	253	+3	-23	-8.4%	-8	-3.2%	261
Medical/ Dental, other	5	5	5	5		-0	-2.6%	-0	-2.6%	8
<b>Medical &amp; Dental</b>	<b>888</b>	<b>932</b>	<b>966</b>	<b>990</b>	<b>+24</b>	<b>+58</b>	<b>+6.3%</b>	<b>+102</b>	<b>+11.5%</b>	<b>1,049</b>
Nurse/ Midwife Manager	1,192	1,240	1,235	1,235	+0	-4	-0.3%	+43	+3.6%	1,296
Nurse/ Midwife Specialist & AN/MP	459	529	566	579	+13	+51	+9.6%	+120	+26.2%	625
Staff Nurse/ Staff Midwife	3,003	3,076	2,999	2,946	-53	-130	-4.2%	-57	-1.9%	3,217
<i>Pre-registration Nurse Intern (COVID-19)</i>		42				-42	-100.0%		-100.0%	
<i>Pre-registration Nurse/ Midwife Intern</i>	28	11	157	108	-49	+97	+907.4%	+80	+291.9%	224
<i>Post-registration Nurse/ Midwife Student</i>	1	1				-1	-100.0%	-1	-100.0%	
<i>Nursing/ Midwifery awaiting registration</i>	59	5	2	61	+59	+56	+1159.6%	+2	+3.7%	93
Nursing/ Midwifery Student	87	59	159	169	+10	+110	+186.6%	+82	+93.3%	317
Nursing/ Midwifery other	32	32	31	35	+3	+3	+9.3%	+3	+9.7%	39
<b>Nursing &amp; Midwifery</b>	<b>4,773</b>	<b>4,935</b>	<b>4,992</b>	<b>4,965</b>	<b>-27</b>	<b>+29</b>	<b>+0.6%</b>	<b>+191</b>	<b>+4.0%</b>	<b>5,494</b>
Therapy Professions	422	439	422	420	-1	-19	-4.3%	-2	-0.5%	493
Social Care	74	80	70	73	+3	-7	-9.1%	-1	-1.2%	85
Social Workers	350	373	389	390	+1	+17	+4.6%	+40	+11.5%	445
Psychologists	394	424	430	434	+4	+10	+2.3%	+39	+10.0%	510
Pharmacy	19	21	20	20	+0	-0	-0.9%	+2	+10.7%	28
H&SC, Other	108	108	132	132	+0	+24	+22.5%	+24	+22.6%	148
<b>Health &amp; Social Care Professionals</b>	<b>1,366</b>	<b>1,444</b>	<b>1,462</b>	<b>1,470</b>	<b>+7</b>	<b>+25</b>	<b>+1.7%</b>	<b>+103</b>	<b>+7.6%</b>	<b>1,709</b>
Management (VIII & above)	57	67	67	70	+2	+3	+3.9%	+12	+21.6%	71
Administrative/ Supervisory (V to VII)	237	245	268	274	+7	+29	+12.0%	+37	+15.7%	294
Clerical (III & IV)	717	722	703	697	-6	-25	-3.4%	-20	-2.8%	792
<b>Management &amp; Administrative</b>	<b>1,012</b>	<b>1,034</b>	<b>1,038</b>	<b>1,041</b>	<b>+3</b>	<b>+7</b>	<b>+0.7%</b>	<b>+29</b>	<b>+2.9%</b>	<b>1,157</b>
Support	581	594	564	562	-2	-32	-5.5%	-19	-3.2%	650
Maintenance/ Technical	131	137	130	130	-0	-7	-5.1%	-1	-0.4%	135
<b>General Support</b>	<b>711</b>	<b>732</b>	<b>694</b>	<b>692</b>	<b>-2</b>	<b>-39</b>	<b>-5.4%</b>	<b>-19</b>	<b>-2.7%</b>	<b>785</b>
Health Care Assistants	988	1,022	1,027	1,028	+1	+7	+0.7%	+40	+4.1%	1,120
Care, other	216	203	215	215	+0	+11	+5.5%	-1	-0.6%	254
<b>Patient &amp; Client Care</b>	<b>1,204</b>	<b>1,225</b>	<b>1,241</b>	<b>1,243</b>	<b>+2</b>	<b>+18</b>	<b>+1.5%</b>	<b>+39</b>	<b>+3.3%</b>	<b>1,374</b>



## Mental Health Services Employment by Administration (HSE / S38): September 2022

Sep 2022	WTE Dec 2019	WTE Dec 2020	WTE Aug 2022	WTE Sep 2022	WTE change since Aug 22	WTE change since Dec 20	% change since Dec 20	WTE change since Dec 19	% change since Dec 19	No. Sep 2022
<b>Total</b>	<b>9,954</b>	<b>10,301</b>	<b>10,394</b>	<b>10,400</b>	<b>+6</b>	<b>+99</b>	<b>+1.0%</b>	<b>+446</b>	<b>+4.5%</b>	<b>11,568</b>
HSE	9,513	9,855	9,974	9,978	+4	+123	+1.2%	+465	+4.9%	11,066
Section 38 Voluntary Agencies	441	446	420	423	+2	-24	-5.4%	-19	-4.3%	502

### Employment by Staff Group

Sep 2022	WTE Dec 2019	WTE Dec 2020	WTE Aug 2022	WTE Sep 2022	WTE change since Aug 22	WTE change since Dec 20	% change since Dec 20	WTE change since Dec 19	% change since Dec 19	No. Sep 2022
<b>Health Service Executive</b>	<b>9,513</b>	<b>9,855</b>	<b>9,974</b>	<b>9,978</b>	<b>+4</b>	<b>+123</b>	<b>+1.2%</b>	<b>+465</b>	<b>+4.9%</b>	<b>11,066</b>
Consultants	333	349	363	370	+7	+21	+6.1%	+37	+11.2%	401
Registrars	250	266	306	321	+15	+56	+20.9%	+71	+28.5%	331
SHO/ Interns	255	267	243	247	+4	-20	-7.5%	-8	-3.2%	255
Medical/ Dental, other	5	5	5	5		-0	-2.6%	-0	-2.6%	8
<b>Medical &amp; Dental</b>	<b>843</b>	<b>886</b>	<b>917</b>	<b>943</b>	<b>+26</b>	<b>+57</b>	<b>+6.4%</b>	<b>+100</b>	<b>+11.9%</b>	<b>995</b>
Nurse/ Midwife Manager	1,154	1,202	1,200	1,202	+2	+0	+0.0%	+48	+4.1%	1,259
Nurse/ Midwife Specialist & AN/MP	452	520	556	570	+13	+50	+9.6%	+117	+25.9%	613
Staff Nurse/ Staff Midwife	2,880	2,953	2,890	2,836	-54	-118	-4.0%	-44	-1.5%	3,094
Pre-registration Nurse Intern (COVID-19)		41				-41	-100.0%		-100.0%	
Pre-registration Nurse/ Midwife Intern	21	1	150	107	-43	+107	+15025.4%	+87	+423.1%	223
Post-registration Nurse/ Midwife Student	1	1				-1	-100.0%	-1	-100.0%	
Nursing/ Midwifery awaiting registration	59	5	2	50	+48	+45	+932.8%	-9	-15.0%	82
<b>Nursing/ Midwifery Student</b>	<b>80</b>	<b>48</b>	<b>152</b>	<b>157</b>	<b>+5</b>	<b>+110</b>	<b>+228.3%</b>	<b>+77</b>	<b>+95.8%</b>	<b>305</b>
Nursing/ Midwifery other	29	29	29	32	+3	+3	+10.0%	+3	+10.5%	36
<b>Nursing &amp; Midwifery</b>	<b>4,596</b>	<b>4,752</b>	<b>4,827</b>	<b>4,797</b>	<b>-30</b>	<b>+45</b>	<b>+0.9%</b>	<b>+201</b>	<b>+4.4%</b>	<b>5,307</b>
Therapy Professions	391	412	395	395	-0	-17	-4.1%	+4	+1.0%	458
Social Care	48	52	45	45	+0	-7	-14.0%	-3	-6.8%	54
Social Workers	330	354	371	370	-0	+16	+4.7%	+41	+12.3%	424
Psychologists	379	402	407	413	+6	+11	+2.8%	+34	+9.0%	482
Pharmacy	17	19	19	18	-1	-1	-6.6%	+1	+4.3%	24
H&SC, Other	103	107	132	132	+0	+25	+23.2%	+29	+27.9%	147
<b>Health &amp; Social Care Professionals</b>	<b>1,267</b>	<b>1,345</b>	<b>1,368</b>	<b>1,372</b>	<b>+5</b>	<b>+27</b>	<b>+2.0%</b>	<b>+105</b>	<b>+8.3%</b>	<b>1,589</b>
Management (VIII & above)	55	65	65	68	+2	+3	+4.0%	+12	+22.3%	69
Administrative/ Supervisory (V to VII)	216	224	246	251	+6	+27	+12.2%	+36	+16.6%	268
Clerical (III & IV)	673	679	664	659	-5	-20	-3.0%	-14	-2.1%	745
<b>Management &amp; Administrative</b>	<b>944</b>	<b>968</b>	<b>975</b>	<b>978</b>	<b>+3</b>	<b>+10</b>	<b>+1.0%</b>	<b>+34</b>	<b>+3.6%</b>	<b>1,082</b>
Support	543	556	531	530	-1	-26	-4.7%	-13	-2.3%	601
Maintenance/ Technical	125	130	123	123	-0	-7	-5.4%	-2	-1.2%	128
<b>General Support</b>	<b>668</b>	<b>687</b>	<b>654</b>	<b>653</b>	<b>-1</b>	<b>-33</b>	<b>-4.9%</b>	<b>-14</b>	<b>-2.1%</b>	<b>729</b>



Health Care Assistants	982	1,016	1,021	1,023	+1	+7	+0.7%	+40	+4.1%	1,114
Care, other	213	200	211	211	+1	+11	+5.6%	-2	-0.8%	250
<b>Patient &amp; Client Care</b>	<b>1,195</b>	<b>1,216</b>	<b>1,232</b>	<b>1,234</b>	<b>+2</b>	<b>+18</b>	<b>+1.5%</b>	<b>+39</b>	<b>+3.2%</b>	<b>1,364</b>

## Employment by Staff Group

Sep 2022	WTE Dec 2019	WTE Dec 2020	WTE Aug 2022	WTE Sep 2022	WTE change since Aug 22	WTE change since Dec 20	% change since Dec 20	WTE change since Dec 19	% change since Dec 19	No. Sep 2022
<b>Section 38 Voluntary Agencies</b>	<b>441</b>	<b>446</b>	<b>420</b>	<b>422</b>	<b>+2</b>	<b>-24</b>	<b>-5.4%</b>	<b>-19</b>	<b>-4.3%</b>	<b>502</b>
Consultants	20	21	21	22	+0	+1	+3.5%	+2	+9.3%	28
Registrars	19	15	20	19	-1	+4	+25.9%	+0	+1.4%	20
SHO/ Interns	6	9	7	6	-1	-3	-33.3%			6
<b>Medical &amp; Dental</b>	<b>45</b>	<b>45</b>	<b>49</b>	<b>47</b>	<b>-2</b>	<b>+2</b>	<b>+3.7%</b>	<b>+2</b>	<b>+4.7%</b>	<b>54</b>
Nurse/ Midwife Manager	38	38	36	33	-2	-4	-11.3%	-5	-12.1%	37
Nurse/ Midwife Specialist & AN/MP	7	9	10	10	-0	+1	+9.4%	+3	+45.8%	12
Staff Nurse/ Staff Midwife	123	123	109	111	+1	-12	-10.1%	-13	-10.3%	123
Pre-registration Nurse Intern (COVID-19)		1				-1	-100.0%		-100.0%	
Pre-registration Nurse/ Midwife Intern	7	10	7	1	-7	-10	-95.0%	-7	-92.9%	1
Nursing/ Midwifery awaiting registration				11	+11	+11	-100.0%	+11	-100.0%	11
Nursing/ Midwifery Student	7	11	7	12	+5	+1	+4.5%	+5	+64.3%	12
Nursing/ Midwifery other	3	3	3	3						3
<b>Nursing &amp; Midwifery</b>	<b>177</b>	<b>183</b>	<b>165</b>	<b>168</b>	<b>+3</b>	<b>-15</b>	<b>-8.4%</b>	<b>-10</b>	<b>-5.4%</b>	<b>187</b>
Therapy Professions	31	27	27	25	-1	-2	-7.0%	-6	-19.2%	35
Social Care	25	28	25	28	+3			+2	+9.4%	31
Social Workers	20	19	18	19	+1	+1	+4.5%	-0	-1.6%	21
Psychologists	16	22	23	21	-1	-1	-5.7%	+5	+32.5%	28
Pharmacy	2	2	2	3	+1	+1	+58.3%	+1	+78.1%	4
H&SC, Other	5	1	0	0		-1	-51.0%	-4	-90.1%	1
<b>Health &amp; Social Care Professionals</b>	<b>99</b>	<b>99</b>	<b>95</b>	<b>97</b>	<b>+2</b>	<b>-2</b>	<b>-1.8%</b>	<b>-2</b>	<b>-1.9%</b>	<b>120</b>
Management (VIII & above)	2	2	2	2						2
Administrative/ Supervisory (V to VII)	21	21	22	23	+1	+2	+9.5%	+2	+7.1%	26
Clerical (III & IV)	45	43	39	39	-0	-4	-10.1%	-6	-13.9%	47
<b>Management &amp; Administrative</b>	<b>68</b>	<b>66</b>	<b>63</b>	<b>63</b>	<b>+0</b>	<b>-2</b>	<b>-3.6%</b>	<b>-5</b>	<b>-7.0%</b>	<b>75</b>
Support	38	38	33	32	-2	-6	-16.2%	-6	-16.3%	49
Maintenance/ Technical	6	7	7	7				+1	+16.7%	7
<b>General Support</b>	<b>44</b>	<b>45</b>	<b>40</b>	<b>39</b>	<b>-2</b>	<b>-6</b>	<b>-13.7%</b>	<b>-5</b>	<b>-11.8%</b>	<b>56</b>
Health Care Assistants	6	6	6	6						6
Care, other	3	3	4	3	-1	-0	-0.6%	+1	+19.5%	4
<b>Patient &amp; Client Care</b>	<b>9</b>	<b>9</b>	<b>10</b>	<b>9</b>	<b>-1</b>	<b>-0</b>	<b>-0.2%</b>	<b>+1</b>	<b>+6.4%</b>	<b>10</b>



## Mental Health Services Employment by CHO: Sep 2022

Sep 2022	WTE Dec 2019	WTE Dec 2020	WTE Aug 2022	WTE Sep 2022	WTE change since Aug 22	WTE change since Dec 20	% change since Dec 20	WTE change since Dec 19	% change since Dec 19	No. Sep 2022
<b>Overall</b>	<b>9,954</b>	<b>10,301</b>	<b>10,394</b>	<b>10,400</b>	<b>+6</b>	<b>+99</b>	<b>+1.0%</b>	<b>+446</b>	<b>+4.5%</b>	<b>11,568</b>
CHO 1	953	976	1,025	1,037	+13	+61	+6.3%	+84	+8.9%	1,137
CHO 2	1,308	1,340	1,294	1,290	-4	-50	-3.7%	-18	-1.4%	1,434
CHO 3	795	809	824	820	-4	+11	+1.4%	+25	+3.1%	930
CHO 4	1,485	1,564	1,577	1,568	-9	+4	+0.3%	+82	+5.6%	1,743
CHO 5	1,178	1,188	1,223	1,221	-3	+32	+2.7%	+43	+3.7%	1,366
CHO 6	593	626	638	640	+2	+14	+2.2%	+48	+8.1%	726
CHO 7	835	861	886	890	+4	+28	+3.3%	+55	+6.6%	994
CHO 8	1,098	1,112	1,081	1,090	+10	-21	-1.9%	-8	-0.7%	1,211
CHO 9	1,272	1,331	1,354	1,350	-4	+19	+1.4%	+78	+6.1%	1,505
other Community Services	438	494	493	494	+2	-0	-0.0%	+57	+12.9%	522

## Mental Health Services Employment by CHO etc. Sep 2022

### CHO 1

Sep 2022	WTE Dec 2019	WTE Dec 2020	WTE Aug 2022	WTE Sep 2022	WTE change since Aug 22	WTE change since Dec 20	% change since Dec 20	WTE change since Dec 19	% change since Dec 19	No. Sep 2022
<b>Overall</b>	<b>953</b>	<b>976</b>	<b>1,025</b>	<b>1,037</b>	<b>+13</b>	<b>+61</b>	<b>+6.3%</b>	<b>+84</b>	<b>+8.9%</b>	<b>1,137</b>
Consultants	31	34	33	33	+1	-1	-1.7%	+3	+8.7%	35
Registrars	24	29	34	35	+1	+6	+21.6%	+11	+44.8%	36
SHO/ Interns	25	23	20	21	+1	-2	-8.6%	-4	-17.2%	21
<b>Medical &amp; Dental</b>	<b>81</b>	<b>86</b>	<b>87</b>	<b>90</b>	<b>+3</b>	<b>+4</b>	<b>+4.4%</b>	<b>+9</b>	<b>+11.6%</b>	<b>92</b>
Nurse/ Midwife Manager	117	119	115	114	-1	-6	-4.7%	-3	-2.8%	119
Nurse/ Midwife Specialist & AN/MP	67	74	80	81	+1	+7	+9.7%	+14	+20.0%	87
Staff Nurse/ Staff Midwife	297	288	304	302	-2	+14	+4.7%	+4	+1.5%	322
Nursing/ Midwifery Student		3	14	19	+5	+16	+529.0%	+19	-100.0%	32
Nursing/ Midwifery other		1	2	2	+0	+1	+105.3%	+2	-100.0%	2
<b>Nursing &amp; Midwifery</b>	<b>482</b>	<b>485</b>	<b>515</b>	<b>517</b>	<b>+3</b>	<b>+32</b>	<b>+6.6%</b>	<b>+35</b>	<b>+7.3%</b>	<b>562</b>
Therapy Professions	36	36	41	42	+1	+6	+16.7%	+6	+17.3%	49
Social Care	4	4	4	4	+0	-0	-2.7%	-0	-1.9%	5
Social Workers	39	43	43	46	+3	+3	+6.9%	+7	+17.3%	53
Psychologists	21	23	25	25	-0	+1	+6.2%	+4	+20.0%	27
Pharmacy	1	1	1	1	-0					1
H&SC, Other	13	14	18	19	+1	+5	+34.1%	+5	+42.0%	21
<b>Health &amp; Social Care Professionals</b>	<b>113</b>	<b>121</b>	<b>131</b>	<b>136</b>	<b>+4</b>	<b>+15</b>	<b>+12.5%</b>	<b>+23</b>	<b>+19.9%</b>	<b>156</b>
Management (VIII & above)	6	8	9	9	-0	+1	+15.0%	+3	+55.8%	9
Administrative/ Supervisory (V to VII)	30	31	32	33	+0	+2	+6.2%	+2	+8.1%	34
Clerical (III & IV)	85	85	88	89	+1	+4	+5.0%	+4	+4.9%	101
<b>Management &amp; Administrative</b>	<b>121</b>	<b>123</b>	<b>130</b>	<b>131</b>	<b>+1</b>	<b>+7</b>	<b>+5.9%</b>	<b>+10</b>	<b>+8.1%</b>	<b>144</b>
Support	62	65	59	59	-0	-6	-10.0%	-4	-5.7%	67
Maintenance/ Technical	17	16	17	17	-0	+0	+3.0%	+0	+0.5%	17
<b>General Support</b>	<b>79</b>	<b>81</b>	<b>76</b>	<b>75</b>	<b>-0</b>	<b>-6</b>	<b>-7.4%</b>	<b>-3</b>	<b>-4.4%</b>	<b>84</b>
Health Care Assistants	66	68	74	76	+2	+8	+12.0%	+10	+14.6%	85
Care, other	11	11	12	12	+0	+1	+8.6%	+1	+12.2%	14
<b>Patient &amp; Client Care</b>	<b>77</b>	<b>79</b>	<b>86</b>	<b>88</b>	<b>+2</b>	<b>+9</b>	<b>+11.5%</b>	<b>+11</b>	<b>+14.3%</b>	<b>99</b>

## CHO 2

Sep 2022	WTE Dec 2019	WTE Dec 2020	WTE Aug 2022	WTE Sep 2022	WTE change since Aug 22	WTE change since Dec 20	% change since Dec 20	WTE change since Dec 19	% change since Dec 19	No. Sep 2022
<b>Overall</b>	<b>1,308</b>	<b>1,340</b>	<b>1,294</b>	<b>1,290</b>	<b>-4</b>	<b>-50</b>	<b>-3.7%</b>	<b>-18</b>	<b>-1.4%</b>	<b>1,434</b>
Consultants	38	37	39	38	-1	+1	+3.8%	+1	+2.3%	42
Registrars	33	37	35	35	+1	-1	-2.8%	+2	+7.2%	36
SHO/ Interns	35	40	40	39	-2	-1	-3.4%	+4	+10.4%	40
Medical/ Dental, other	1	1	1	1	0					1
<b>Medical &amp; Dental</b>	<b>107</b>	<b>114</b>	<b>115</b>	<b>113</b>	<b>-2</b>	<b>-1</b>	<b>-0.8%</b>	<b>+7</b>	<b>+6.5%</b>	<b>119</b>
Nurse/ Midwife Manager	146	151	143	143	-0	-9	-5.7%	-3	-2.2%	148
Nurse/ Midwife Specialist & AN/MP	67	79	80	81	+1	+2	+3.0%	+14	+20.8%	89
Staff Nurse/ Staff Midwife	357	355	343	339	-4	-15	-4.3%	-18	-5.0%	371
<i>Pre-registration Nurse Intern (COVID-19)</i>		10				-10	-100.0%		-100.0%	
<i>Pre-registration Nurse/ Midwife Intern</i>	0		23	22	-0	+22	-100.0%	+22	+1855.3%	45
<i>Nursing/ Midwifery awaiting registration</i>	5			1	+1	+1	-100.0%	-4	-82.5%	1
Nursing/ Midwifery Student	5	10	23	23	+1	+13	+128.1%	+18	+376.8%	46
Nursing/ Midwifery other	2	2	3	4	+1	+2	+150.0%	+2	+100.0%	4
<b>Nursing &amp; Midwifery</b>	<b>577</b>	<b>597</b>	<b>592</b>	<b>591</b>	<b>-1</b>	<b>-6</b>	<b>-1.0%</b>	<b>+13</b>	<b>+2.3%</b>	<b>658</b>
Therapy Professions	45	55	47	47	-0	-8	-15.3%	+1	+3.0%	60
Social Care	15	16	12	13	+1	-3	-20.0%	-2	-12.9%	16
Social Workers	41	42	44	43	-1	+2	+3.6%	+2	+5.8%	48
Psychologists	34	37	35	34	-1	-3	-8.6%	+0	+0.7%	40
Pharmacy	3	2	2	2	-0	+1	+41.4%	-0	-2.4%	3
H&SC, Other	3	3	3	3	+0	-0	-4.7%	-0	-4.7%	3
<b>Health &amp; Social Care Professionals</b>	<b>140</b>	<b>155</b>	<b>143</b>	<b>142</b>	<b>-1</b>	<b>-13</b>	<b>-8.3%</b>	<b>+2</b>	<b>+1.3%</b>	<b>170</b>
Management (VIII & above)	5	4	2	3	+1	-1	-27.2%	-2	-41.8%	3
Administrative/ Supervisory (V to VII)	24	26	26	26	+1	-0	-0.4%	+3	+11.8%	27
Clerical (III & IV)	109	102	93	92	-1	-10	-10.2%	-17	-15.7%	107
<b>Management &amp; Administrative</b>	<b>138</b>	<b>133</b>	<b>120</b>	<b>121</b>	<b>+1</b>	<b>-12</b>	<b>-8.7%</b>	<b>-16</b>	<b>-11.9%</b>	<b>137</b>
Support	36	31	26	27	+1	-4	-12.9%	-9	-24.8%	30
Maintenance/ Technical	27	33	34	33	-0	-0	-0.3%	+6	+22.5%	34
<b>General Support</b>	<b>63</b>	<b>64</b>	<b>60</b>	<b>60</b>	<b>+1</b>	<b>-4</b>	<b>-6.4%</b>	<b>-3</b>	<b>-4.6%</b>	<b>64</b>
Health Care Assistants	215	211	196	195	-0	-16	-7.5%	-19	-9.0%	208
Care, other	69	66	68	68	-0	+2	+2.4%	-1	-1.9%	78
<b>Patient &amp; Client Care</b>	<b>284</b>	<b>278</b>	<b>264</b>	<b>263</b>	<b>-1</b>	<b>-14</b>	<b>-5.1%</b>	<b>-21</b>	<b>-7.3%</b>	<b>286</b>

## CHO 3

Sep 2022	WTE Dec 2019	WTE Dec 2020	WTE Aug 2022	WTE Sep 2022	WTE change since Aug 22	WTE change since Dec 20	% change since Dec 20	WTE change since Dec 19	% change since Dec 19	No. Sep 2022
<b>Overall</b>	<b>795</b>	<b>809</b>	<b>824</b>	<b>820</b>	<b>-4</b>	<b>+11</b>	<b>+1.4%</b>	<b>+25</b>	<b>+3.1%</b>	<b>930</b>
Consultants	23	24	27	29	+2	+4	+18.3%	+5	+22.4%	32
Registrars	18	15	17	19	+2	+3	+22.9%	+1	+4.1%	19
SHO/ Interns	19	21	27	27	-0	+6	+26.8%	+8	+43.3%	28
<b>Medical &amp; Dental</b>	<b>60</b>	<b>61</b>	<b>71</b>	<b>74</b>	<b>+3</b>	<b>+14</b>	<b>+22.5%</b>	<b>+14</b>	<b>+23.5%</b>	<b>79</b>
Nurse/ Midwife Manager	88	88	81	85	+5	-2	-2.8%	-2	-2.7%	91
Nurse/ Midwife Specialist & AN/MP	39	37	36	38	+1	+1	+1.6%	-2	-4.2%	42
Staff Nurse/ Staff Midwife	245	272	262	245	-17	-26	-9.7%	+0	+0.0%	271
<i>Pre-registration Nurse Intern (COVID-19)</i>		3				-3	-100.0%		-100.0%	
<i>Pre-registration Nurse/ Midwife Intern</i>	9		12	12	-0	+12	-100.0%	+3	+33.2%	24
Nursing/ Midwifery Student	9	3	12	12	-0	+8	+245.3%	+3	+33.2%	24
Nursing/ Midwifery other			1	1	0	+1	-100.0%	+1	-100.0%	1
<b>Nursing &amp; Midwifery</b>	<b>381</b>	<b>400</b>	<b>392</b>	<b>381</b>	<b>-11</b>	<b>-19</b>	<b>-4.7%</b>	<b>+0</b>	<b>+0.0%</b>	<b>429</b>
Therapy Professions	26	25	31	28	-3	+3	+13.6%	+2	+7.1%	33
Social Care	3	3	3	3	0	-1	-16.7%	-0	-12.9%	3
Social Workers	25	24	26	26	+1	+2	+8.2%	+1	+4.2%	30
Psychologists	92	91	88	96	+7	+5	+5.0%	+3	+3.8%	117
Pharmacy	3	3	3	3	0	+0	+1.8%	+0	+1.8%	3
H&SC, Other	10	12	11	11	-0	-1	-12.2%	+1	+11.6%	12
<b>Health &amp; Social Care Professionals</b>	<b>159</b>	<b>158</b>	<b>161</b>	<b>166</b>	<b>+6</b>	<b>+8</b>	<b>+5.1%</b>	<b>+7</b>	<b>+4.5%</b>	<b>198</b>
Management (VIII & above)	2	2	2	2	-0	-0	-0.5%	+0	+1.0%	2
Administrative/ Supervisory (V to VII)	17	19	15	15	-0	-4	-20.8%	-2	-11.0%	17
Clerical (III & IV)	56	50	54	53	-1	+3	+5.1%	-3	-5.2%	59
<b>Management &amp; Administrative</b>	<b>75</b>	<b>71</b>	<b>71</b>	<b>70</b>	<b>-1</b>	<b>-1</b>	<b>-1.9%</b>	<b>-5</b>	<b>-6.3%</b>	<b>78</b>
Support	32	30	33	32	-1	+2	+7.0%	-0	-0.6%	36
Maintenance/ Technical	11	9	7	6	-1	-3	-33.3%	-5	-45.5%	6
<b>General Support</b>	<b>43</b>	<b>39</b>	<b>40</b>	<b>38</b>	<b>-2</b>	<b>-1</b>	<b>-2.3%</b>	<b>-5</b>	<b>-11.9%</b>	<b>42</b>
Health Care Assistants	75	79	87	88	+1	+9	+11.4%	+12	+16.4%	101
Care, other	2	1	2	2	+0	+1	+146.0%	+1	+47.3%	3
<b>Patient &amp; Client Care</b>	<b>77</b>	<b>80</b>	<b>89</b>	<b>90</b>	<b>+1</b>	<b>+10</b>	<b>+13.1%</b>	<b>+13</b>	<b>+17.1%</b>	<b>104</b>

## CHO 4

Sep 2022	WTE Dec 2019	WTE Dec 2020	WTE Aug 2022	WTE Sep 2022	WTE change since Aug 22	WTE change since Dec 20	% change since Dec 20	WTE change since Dec 19	% change since Dec 19	No. Sep 2022
<b>Overall</b>	<b>1,485</b>	<b>1,564</b>	<b>1,577</b>	<b>1,568</b>	<b>-9</b>	<b>+4</b>	<b>+0.3%</b>	<b>+82</b>	<b>+5.6%</b>	<b>1,743</b>
Consultants	50	54	55	58	+3	+4	+7.6%	+9	+17.2%	66
Registrars	46	42	49	50	+1	+9	+20.7%	+4	+9.6%	52
SHO/ Interns	31	43	46	45	-2	+2	+3.9%	+14	+43.9%	48
Medical/ Dental, other	2	2	2	2	0	-0	-4.0%	-0	-4.0%	5
<b>Medical &amp; Dental</b>	<b>129</b>	<b>141</b>	<b>153</b>	<b>155</b>	<b>+2</b>	<b>+14</b>	<b>+10.2%</b>	<b>+27</b>	<b>+20.6%</b>	<b>171</b>
Nurse/ Midwife Manager	170	192	212	214	+2	+22	+11.4%	+45	+26.5%	227
Nurse/ Midwife Specialist & AN/MP	60	71	68	68	-0	-3	-3.7%	+8	+13.7%	72
Staff Nurse/ Staff Midwife	502	519	482	471	-11	-48	-9.2%	-31	-6.2%	505
<i>Pre-registration Nurse Intern (COVID-19)</i>		3				-3	-100.0%		-100.0%	
<i>Pre-registration Nurse/ Midwife Intern</i>	3		24	24	+0	+24	-100.0%	+21	+688.0%	47
<i>Post-registration Nurse/ Midwife Student</i>	1						-100.0%	-1	-100.0%	
<i>Nursing/ Midwifery awaiting registration</i>	30	1				-1	-100.0%	-30	-100.0%	
Nursing/ Midwifery Student	34	4	24	24	+0	+20	+491.0%	-10	-29.4%	47
<b>Nursing &amp; Midwifery</b>	<b>765</b>	<b>786</b>	<b>787</b>	<b>778</b>	<b>-9</b>	<b>-9</b>	<b>-1.1%</b>	<b>+12</b>	<b>+1.6%</b>	<b>851</b>
Therapy Professions	74	77	76	77	+2	-0	-0.2%	+3	+4.6%	87
Social Care	4	7	7	6	-1	-1	-10.5%	+2	+64.1%	8
Social Workers	53	64	69	69	-0	+4	+6.9%	+16	+29.7%	82
Psychologists	83	94	95	94	-1	-0	-0.1%	+11	+13.5%	107
Pharmacy	2	3	1	1	+0	-2	-55.4%	-1	-45.6%	2
H&SC, Other	11	12	19	19	-0	+6	+50.7%	+8	+73.5%	22
<b>Health &amp; Social Care Professionals</b>	<b>227</b>	<b>258</b>	<b>267</b>	<b>266</b>	<b>-1</b>	<b>+8</b>	<b>+3.1%</b>	<b>+40</b>	<b>+17.4%</b>	<b>308</b>
Management (VIII & above)	1	3	3	3	0	+0	+9.9%	+2	+200.0%	3
Administrative/ Supervisory (V to VII)	22	22	24	24	-0	+2	+10.1%	+2	+6.9%	25
Clerical (III & IV)	87	94	91	91	-0	-4	-3.8%	+3	+3.9%	103
<b>Management &amp; Administrative</b>	<b>111</b>	<b>119</b>	<b>118</b>	<b>118</b>	<b>-1</b>	<b>-1</b>	<b>-0.9%</b>	<b>+7</b>	<b>+6.3%</b>	<b>131</b>
Support	80	82	78	76	-2	-5	-6.7%	-4	-4.5%	89
Maintenance/ Technical	6	5	5	5	0			-1	-16.4%	6
<b>General Support</b>	<b>86</b>	<b>87</b>	<b>83</b>	<b>81</b>	<b>-2</b>	<b>-5</b>	<b>-6.3%</b>	<b>-5</b>	<b>-5.3%</b>	<b>95</b>
Health Care Assistants	161	166	164	164	+1	-2	-1.0%	+4	+2.4%	175
Care, other	7	6	5	5	-0	-1	-17.8%	-2	-27.5%	12
<b>Patient &amp; Client Care</b>	<b>168</b>	<b>173</b>	<b>169</b>	<b>170</b>	<b>+1</b>	<b>-3</b>	<b>-1.6%</b>	<b>+2</b>	<b>+1.1%</b>	<b>187</b>

## CHO 5

Sep 2022	WTE Dec 2019	WTE Dec 2020	WTE Aug 2022	WTE Sep 2022	WTE change since Aug 22	WTE change since Dec 20	% change since Dec 20	WTE change since Dec 19	% change since Dec 19	No. Sep 2022
<b>Overall</b>	<b>1,178</b>	<b>1,188</b>	<b>1,223</b>	<b>1,221</b>	<b>-3</b>	<b>+32</b>	<b>+2.7%</b>	<b>+43</b>	<b>+3.7%</b>	<b>1,366</b>
Consultants	26	27	34	34	+0	+7	+23.8%	+8	+29.1%	36
Registrars	10	9	13	13	+0	+4	+44.2%	+3	+29.8%	13
SHO/ Interns	32	36	32	31	-2	-5	-13.6%	-1	-3.4%	32
Medical/ Dental, other	2	2	2	2	0	-0	-2.5%	-0	-2.5%	2
<b>Medical &amp; Dental</b>	<b>70</b>	<b>74</b>	<b>81</b>	<b>80</b>	<b>-1</b>	<b>+6</b>	<b>+7.5%</b>	<b>+9</b>	<b>+13.5%</b>	<b>83</b>
Nurse/ Midwife Manager	164	160	171	167	-4	+7	+4.5%	+3	+1.8%	175
Nurse/ Midwife Specialist & AN/MP	42	54	58	58	+1	+4	+7.9%	+16	+38.5%	61
Staff Nurse/ Staff Midwife	415	411	397	399	+2	-12	-2.9%	-16	-3.9%	448
<i>Pre-registration Nurse Intern (COVID-19)</i>		13				-13	-100.0%		-100.0%	
<i>Pre-registration Nurse/ Midwife Intern</i>	4		18	2	-16	+2	-100.0%	-2	-42.9%	4
<i>Nursing/ Midwifery awaiting registration</i>	2			17	+17	+17	-100.0%	+15	+726.0%	33
Nursing/ Midwifery Student	6	13	18	19	+0	+6	+43.2%	+13	+236.7%	37
Nursing/ Midwifery other	4	4	4	3	-0	-0	-12.3%	-1	-13.7%	4
<b>Nursing &amp; Midwifery</b>	<b>631</b>	<b>642</b>	<b>648</b>	<b>646</b>	<b>-2</b>	<b>+5</b>	<b>+0.7%</b>	<b>+16</b>	<b>+2.5%</b>	<b>725</b>
Therapy Professions	40	39	36	35	-1	-4	-10.7%	-6	-14.0%	39
Social Care	5	5	4	5	+0	-0	-3.4%	-0	-3.4%	5
Social Workers	27	28	27	26	-1	-2	-6.8%	-1	-5.3%	30
Psychologists	21	21	24	25	+1	+4	+16.8%	+4	+18.2%	29
H&SC, Other	10	8	22	22	-0	+14	+176.6%	+12	+120.0%	22
<b>Health &amp; Social Care Professionals</b>	<b>103</b>	<b>100</b>	<b>113</b>	<b>112</b>	<b>-1</b>	<b>+11</b>	<b>+11.2%</b>	<b>+8</b>	<b>+8.2%</b>	<b>125</b>
Management (VIII & above)	3	6	6	6	0			+3	+100.0%	6
Administrative/ Supervisory (V to VII)	20	20	23	24	+1	+4	+19.9%	+4	+18.5%	25
Clerical (III & IV)	74	68	71	73	+2	+4	+6.1%	-1	-1.7%	79
<b>Management &amp; Administrative</b>	<b>97</b>	<b>94</b>	<b>100</b>	<b>102</b>	<b>+2</b>	<b>+8</b>	<b>+8.6%</b>	<b>+5</b>	<b>+5.6%</b>	<b>110</b>
Support	168	178	175	176	+1	-3	-1.6%	+8	+4.8%	202
Maintenance/ Technical	23	20	15	15	+0	-5	-22.9%	-8	-34.6%	16
<b>General Support</b>	<b>191</b>	<b>198</b>	<b>190</b>	<b>191</b>	<b>+1</b>	<b>-7</b>	<b>-3.7%</b>	<b>-0</b>	<b>-0.0%</b>	<b>218</b>
Health Care Assistants	73	68	77	76	-2	+8	+12.1%	+3	+4.3%	84
Care, other	13	12	14	14	-0	+2	+13.6%	+1	+7.9%	21
<b>Patient &amp; Client Care</b>	<b>85</b>	<b>80</b>	<b>92</b>	<b>90</b>	<b>-2</b>	<b>+10</b>	<b>+12.4%</b>	<b>+4</b>	<b>+4.9%</b>	<b>105</b>

## CHO 6

Sep 2022	WTE Dec 2019	WTE Dec 2020	WTE Aug 2022	WTE Sep 2022	WTE change since Aug 22	WTE change since Dec 20	% change since Dec 20	WTE change since Dec 19	% change since Dec 19	No. Sep 2022
<b>Overall</b>	<b>593</b>	<b>626</b>	<b>638</b>	<b>640</b>	<b>+2</b>	<b>+14</b>	<b>+2.2%</b>	<b>+48</b>	<b>+8.1%</b>	<b>726</b>
Consultants	36	40	38	40	+2	-0	-1.0%	+4	+10.3%	47
Registrars	22	19	30	29	-1	+10	+50.8%	+7	+32.0%	30
SHO/ Interns	9	13	9	8	-1	-5	-38.6%	-1	-11.3%	8
<b>Medical &amp; Dental</b>	<b>67</b>	<b>72</b>	<b>77</b>	<b>76</b>	<b>-0</b>	<b>+4</b>	<b>+5.9%</b>	<b>+10</b>	<b>+14.5%</b>	<b>85</b>
Nurse/ Midwife Manager	76	77	69	68	-0	-9	-11.4%	-8	-10.4%	74
Nurse/ Midwife Specialist & AN/MP	14	20	20	28	+8	+8	+40.9%	+14	+101.5%	32
Staff Nurse/ Staff Midwife	139	151	164	156	-8	+5	+3.0%	+17	+12.1%	171
<i>Pre-registration Nurse/ Midwife Intern</i>			5	4	-1	+4	-100.0%	+4	-100.0%	9
<i>Nursing/ Midwifery awaiting registration</i>		1				-1	-100.0%		-100.0%	
Nursing/ Midwifery Student		1	5	4	-1	+3	+284.0%	+4	-100.0%	9
Nursing/ Midwifery other	2	2	3	4	+1	+2	+90.5%	+2	+90.5%	4
<b>Nursing &amp; Midwifery</b>	<b>231</b>	<b>251</b>	<b>260</b>	<b>260</b>	<b>-0</b>	<b>+8</b>	<b>+3.3%</b>	<b>+28</b>	<b>+12.3%</b>	<b>290</b>
Therapy Professions	43	39	39	38	-1	-0	-1.1%	-5	-11.4%	47
Social Care	26	28	25	28	+3	-0	-1.7%	+2	+6.9%	31
Social Workers	30	30	33	34	+1	+5	+15.5%	+4	+14.6%	37
Psychologists	22	32	37	35	-2	+3	+9.1%	+13	+58.7%	45
Pharmacy				1	+1	+1	-100.0%	+1	-100.0%	2
H&SC, Other	9	5	7	7	-0	+2	+44.0%	-1	-14.4%	8
<b>Health &amp; Social Care Professionals</b>	<b>130</b>	<b>134</b>	<b>142</b>	<b>144</b>	<b>+1</b>	<b>+10</b>	<b>+7.5%</b>	<b>+14</b>	<b>+10.8%</b>	<b>170</b>
Management (VIII & above)	3	3	4	4	0	+1	+33.3%	+1	+33.3%	4
Administrative/ Supervisory (V to VII)	27	24	29	31	+2	+6	+25.5%	+4	+14.2%	34
Clerical (III & IV)	42	43	34	32	-2	-11	-25.2%	-10	-24.0%	39
<b>Management &amp; Administrative</b>	<b>72</b>	<b>70</b>	<b>67</b>	<b>66</b>	<b>-0</b>	<b>-4</b>	<b>-5.1%</b>	<b>-5</b>	<b>-7.4%</b>	<b>77</b>
Support	36	39	30	29	-1	-10	-24.9%	-7	-20.0%	35
Maintenance/ Technical	6	6	6	6	0			+0	+1.5%	6
<b>General Support</b>	<b>42</b>	<b>45</b>	<b>36</b>	<b>35</b>	<b>-1</b>	<b>-10</b>	<b>-21.6%</b>	<b>-7</b>	<b>-17.0%</b>	<b>41</b>
Health Care Assistants	46	49	49	52	+3	+4	+7.3%	+7	+14.6%	55
Care, other	5	6	7	7	-1	+1	+15.8%	+2	+28.2%	8
<b>Patient &amp; Client Care</b>	<b>51</b>	<b>54</b>	<b>56</b>	<b>59</b>	<b>+2</b>	<b>+4</b>	<b>+8.2%</b>	<b>+8</b>	<b>+16.0%</b>	<b>63</b>

## CHO 7

Sep 2022	WTE Dec 2019	WTE Dec 2020	WTE Aug 2022	WTE Sep 2022	WTE change since Aug 22	WTE change since Dec 20	% change since Dec 20	WTE change since Dec 19	% change since Dec 19	No. Sep 2022
<b>Overall</b>	<b>835</b>	<b>861</b>	<b>886</b>	<b>890</b>	<b>+4</b>	<b>+28</b>	<b>+3.3%</b>	<b>+55</b>	<b>+6.6%</b>	<b>994</b>
Consultants	48	53	52	53	+1	-0	-0.5%	+5	+10.6%	56
Registrars	46	54	51	58	+7	+4	+8.4%	+12	+25.5%	60
SHO/ Interns	21	20	27	27	-0	+7	+32.5%	+6	+29.1%	27
<b>Medical &amp; Dental</b>	<b>115</b>	<b>127</b>	<b>130</b>	<b>138</b>	<b>+8</b>	<b>+11</b>	<b>+8.5%</b>	<b>+23</b>	<b>+20.0%</b>	<b>143</b>
Nurse/ Midwife Manager	117	117	113	111	-2	-6	-5.1%	-5	-4.4%	117
Nurse/ Midwife Specialist & AN/MP	40	47	57	56	-2	+9	+19.2%	+16	+39.3%	60
Staff Nurse/ Staff Midwife	194	202	208	204	-5	+2	+1.0%	+9	+4.7%	228
<i>Pre-registration Nurse Intern (COVID-19)</i>		3				-3	-100.0%		-100.0%	
<i>Pre-registration Nurse/ Midwife Intern</i>	1	1	16	12	-4	+11	+2212.0%	+10	+743.8%	24
<i>Post-registration Nurse/ Midwife Student</i>		1				-1	-100.0%		-100.0%	
<i>Nursing/ Midwifery awaiting registration</i>	10	3		6	+6	+3	+117.5%	-4	-37.1%	8
Nursing/ Midwifery Student	11	8	16	18	+2	+10	+129.5%	+7	+58.1%	32
Nursing/ Midwifery other	8	6	6	6	+0	+0	+5.6%	-1	-18.0%	8
<b>Nursing &amp; Midwifery</b>	<b>370</b>	<b>379</b>	<b>400</b>	<b>395</b>	<b>-5</b>	<b>+15</b>	<b>+4.0%</b>	<b>+25</b>	<b>+6.8%</b>	<b>445</b>
Therapy Professions	48	53	49	50	+1	-3	-6.4%	+2	+4.4%	59
Social Care	8	7	7	7	-0	-0	-4.5%	-1	-9.2%	8
Social Workers	34	38	38	33	-5	-5	-13.0%	-1	-4.0%	39
Psychologists	31	29	29	31	+2	+2	+5.8%	-0	-1.3%	36
Pharmacy	1	1	1		-1	-1	-100.0%	-1	-100.0%	
H&SC, Other	18	18	19	19	-0	+1	+5.9%	+1	+5.9%	22
<b>Health &amp; Social Care Professionals</b>	<b>140</b>	<b>147</b>	<b>143</b>	<b>140</b>	<b>-3</b>	<b>-7</b>	<b>-4.7%</b>	<b>-0</b>	<b>-0.2%</b>	<b>164</b>
Management (VIII & above)	3	4	5	5	+0	+1	+28.0%	+2	+72.2%	5
Administrative/ Supervisory (V to VII)	16	17	19	21	+2	+4	+21.7%	+5	+34.0%	23
Clerical (III & IV)	47	49	53	54	+1	+5	+9.6%	+7	+14.9%	60
<b>Management &amp; Administrative</b>	<b>65</b>	<b>70</b>	<b>77</b>	<b>80</b>	<b>+3</b>	<b>+10</b>	<b>+13.6%</b>	<b>+14</b>	<b>+22.0%</b>	<b>88</b>
Support	18	17	16	17	+1	-1	-4.6%	-1	-6.7%	19
Maintenance/ Technical	2	2	2	2	0			+0	+7.5%	2
<b>General Support</b>	<b>20</b>	<b>19</b>	<b>18</b>	<b>19</b>	<b>+1</b>	<b>-1</b>	<b>-4.1%</b>	<b>-1</b>	<b>-5.3%</b>	<b>21</b>
Health Care Assistants	33	34	31	31	+0	-3	-8.9%	-2	-5.9%	34
Care, other	92	84	87	88	+1	+3	+4.0%	-4	-4.6%	99
<b>Patient &amp; Client Care</b>	<b>125</b>	<b>119</b>	<b>118</b>	<b>119</b>	<b>+1</b>	<b>+0</b>	<b>+0.3%</b>	<b>-6</b>	<b>-5.0%</b>	<b>133</b>

## CHO 8

Sep 2022	WTE Dec 2019	WTE Dec 2020	WTE Aug 2022	WTE Sep 2022	WTE change since Aug 22	WTE change since Dec 20	% change since Dec 20	WTE change since Dec 19	% change since Dec 19	No. Sep 2022
<b>Overall</b>	<b>1,098</b>	<b>1,112</b>	<b>1,081</b>	<b>1,090</b>	<b>+10</b>	<b>-21</b>	<b>-1.9%</b>	<b>-8</b>	<b>-0.7%</b>	<b>1,211</b>
Consultants	35	36	39	37	-2	+0	+0.4%	+1	+3.6%	39
Registrars	26	31	28	28	-0	-3	-8.6%	+3	+10.8%	30
SHO/ Interns	36	26	24	27	+3	+1	+2.4%	-9	-25.4%	27
<b>Medical &amp; Dental</b>	<b>97</b>	<b>94</b>	<b>91</b>	<b>92</b>	<b>+1</b>	<b>-2</b>	<b>-2.0%</b>	<b>-5</b>	<b>-5.3%</b>	<b>96</b>
Nurse/ Midwife Manager	121	120	117	118	+1	-3	-2.2%	-3	-2.5%	122
Nurse/ Midwife Specialist & AN/MP	56	60	64	67	+3	+7	+11.7%	+10	+18.6%	71
Staff Nurse/ Staff Midwife	332	342	322	323	+1	-19	-5.6%	-9	-2.6%	351
<i>Pre-registration Nurse Intern (COVID-19)</i>		1				-1	-100.0%		-100.0%	
<i>Pre-registration Nurse/ Midwife Intern</i>	1		24	14	-10	+14	-100.0%	+14	+2726.0%	30
<i>Nursing/ Midwifery awaiting registration</i>	2			12	+12	+12	-100.0%	+10	+493.5%	15
Nursing/ Midwifery Student	3	1	24	26	+2	+25	+2424.3%	+24	+940.0%	45
Nursing/ Midwifery other	4	3	3	3	0	-0	-2.7%	-1	-26.8%	3
<b>Nursing &amp; Midwifery</b>	<b>515</b>	<b>526</b>	<b>529</b>	<b>536</b>	<b>+7</b>	<b>+10</b>	<b>+1.9%</b>	<b>+21</b>	<b>+4.1%</b>	<b>592</b>
Therapy Professions	44	43	33	34	+1	-8	-19.7%	-10	-22.5%	40
Social Care	7	7	6	6	-0	-1	-11.7%	-1	-14.7%	7
Social Workers	41	44	48	50	+1	+6	+13.3%	+8	+20.0%	57
Psychologists	39	37	34	35	+0	-2	-6.2%	-5	-11.9%	39
Pharmacy	1	2	3	2	-0	+1	+53.3%	+1	+130.0%	4
H&SC, Other	20	21	17	17	-0	-5	-22.9%	-4	-19.3%	20
<b>Health &amp; Social Care Professionals</b>	<b>153</b>	<b>153</b>	<b>142</b>	<b>143</b>	<b>+2</b>	<b>-10</b>	<b>-6.4%</b>	<b>-10</b>	<b>-6.6%</b>	<b>167</b>
Management (VIII & above)	3	3	3	3	0	+0	+1.7%	+0	+2.0%	3
Administrative/ Supervisory (V to VII)	22	20	22	24	+2	+4	+17.7%	+1	+5.5%	26
Clerical (III & IV)	88	97	89	87	-2	-10	-10.3%	-1	-1.3%	100
<b>Management &amp; Administrative</b>	<b>114</b>	<b>120</b>	<b>114</b>	<b>114</b>	<b>-0</b>	<b>-6</b>	<b>-5.3%</b>	<b>+0</b>	<b>+0.2%</b>	<b>129</b>
Support	33	31	30	29	-1	-2	-7.0%	-4	-11.0%	33
Maintenance/ Technical	26	28	25	25	+1	-3	-9.6%	-1	-3.0%	27
<b>General Support</b>	<b>59</b>	<b>59</b>	<b>55</b>	<b>54</b>	<b>-0</b>	<b>-5</b>	<b>-8.2%</b>	<b>-4</b>	<b>-7.4%</b>	<b>60</b>
Health Care Assistants	157	156	146	147	+1	-9	-6.0%	-10	-6.4%	163
Care, other	4	3	4	4	0	+1	+25.8%	+0	+13.0%	4
<b>Patient &amp; Client Care</b>	<b>160</b>	<b>159</b>	<b>150</b>	<b>151</b>	<b>+1</b>	<b>-9</b>	<b>-5.4%</b>	<b>-10</b>	<b>-6.0%</b>	<b>167</b>

## CHO 9

Sep 2022	WTE Dec 2019	WTE Dec 2020	WTE Aug 2022	WTE Sep 2022	WTE change since Aug 22	WTE change since Dec 20	% change since Dec 20	WTE change since Dec 19	% change since Dec 19	No. Sep 2022
<b>Overall</b>	<b>1,272</b>	<b>1,331</b>	<b>1,354</b>	<b>1,350</b>	<b>-4</b>	<b>+19</b>	<b>+1.4%</b>	<b>+78</b>	<b>+6.1%</b>	<b>1,505</b>
Consultants	50	46	52	53	+1	+7	+14.5%	+3	+6.1%	58
Registrars	31	32	50	54	+3	+22	+67.5%	+23	+72.9%	55
SHO/ Interns	53	54	24	29	+5	-24	-45.8%	-24	-45.4%	30
<b>Medical &amp; Dental</b>	<b>134</b>	<b>132</b>	<b>126</b>	<b>136</b>	<b>+9</b>	<b>+4</b>	<b>+2.9%</b>	<b>+1</b>	<b>+1.1%</b>	<b>143</b>
Nurse/ Midwife Manager	132	138	138	138	-0	+0	+0.3%	+6	+4.8%	144
Nurse/ Midwife Specialist & AN/MP	65	76	93	93	-0	+18	+23.3%	+28	+43.2%	100
Staff Nurse/ Staff Midwife	351	371	362	355	-7	-16	-4.4%	+4	+1.1%	391
<i>Pre-registration Nurse Intern (COVID-19)</i>		5				-5	-100.0%		-100.0%	
<i>Pre-registration Nurse/ Midwife Intern</i>	10	10	22	7	-16	-4	-36.1%	-4	-35.6%	17
<i>Nursing/ Midwifery awaiting registration</i>	11		2	19	+17	+19	-100.0%	+8	+73.4%	28
Nursing/ Midwifery Student	21	16	24	25	+1	+10	+61.3%	+4	+20.7%	45
Nursing/ Midwifery other	11	13	9	10	+1	-3	-24.4%	-2	-15.4%	11
<b>Nursing &amp; Midwifery</b>	<b>581</b>	<b>613</b>	<b>627</b>	<b>622</b>	<b>-5</b>	<b>+8</b>	<b>+1.3%</b>	<b>+41</b>	<b>+7.0%</b>	<b>691</b>
Therapy Professions	55	61	60	60	-1	-1	-1.8%	+5	+9.4%	69
Social Care	1	1	1	1	-0	-0	-5.0%	+0	+5.6%	1
Social Workers	43	43	50	51	+1	+8	+19.2%	+8	+17.3%	56
Psychologists	46	53	55	55	-0	+2	+3.8%	+9	+20.7%	64
Pharmacy	8	9	9	8	-0	-0	-4.3%	+1	+6.6%	11
H&SC, Other	15	14	17	17	+0	+3	+18.4%	+2	+15.7%	18
<b>Health &amp; Social Care Professionals</b>	<b>167</b>	<b>181</b>	<b>192</b>	<b>192</b>	<b>+0</b>	<b>+11</b>	<b>+6.3%</b>	<b>+25</b>	<b>+14.9%</b>	<b>219</b>
Management (VIII & above)	5	5	4	4	0	-1	-20.0%	-1	-19.8%	4
Administrative/ Supervisory (V to VII)	28	29	34	35	+0	+6	+19.7%	+7	+24.0%	38
Clerical (III & IV)	104	114	110	104	-6	-10	-8.6%	+1	+0.5%	120
<b>Management &amp; Administrative</b>	<b>137</b>	<b>148</b>	<b>148</b>	<b>143</b>	<b>-6</b>	<b>-5</b>	<b>-3.4%</b>	<b>+6</b>	<b>+4.5%</b>	<b>162</b>
Support	103	104	94	94	-0	-10	-9.6%	-9	-8.9%	115
Maintenance/ Technical	11	11	10	11	+0	-0	-0.7%			11
<b>General Support</b>	<b>114</b>	<b>115</b>	<b>105</b>	<b>105</b>	<b>+0</b>	<b>-10</b>	<b>-8.8%</b>	<b>-9</b>	<b>-8.0%</b>	<b>126</b>
Health Care Assistants	126	129	141	138	-3	+9	+6.9%	+12	+9.5%	149
Care, other	13	12	14	14	+0	+2	+16.1%	+2	+13.9%	15
<b>Patient &amp; Client Care</b>	<b>139</b>	<b>142</b>	<b>155</b>	<b>152</b>	<b>-3</b>	<b>+11</b>	<b>+7.7%</b>	<b>+14</b>	<b>+9.9%</b>	<b>164</b>

## other Community Services

Sep 2022	WTE Dec 2019	WTE Dec 2020	WTE Aug 2022	WTE Sep 2022	WTE change since Aug 22	WTE change since Dec 20	% change since Dec 20	WTE change since Dec 19	% change since Dec 19	No. Sep 2022
<b>Overall</b>	<b>438</b>	<b>494</b>	<b>493</b>	<b>494</b>	<b>+2</b>	<b>-0</b>	<b>-0.0%</b>	<b>+57</b>	<b>+12.9%</b>	<b>522</b>
Consultants	16	17	16	17	+1	+0	+0.1%	+1	+6.5%	18
Registrars	13	14	19	19	+0	+5	+35.7%	+6	+46.2%	20
<b>Medical &amp; Dental</b>	<b>29</b>	<b>31</b>	<b>35</b>	<b>36</b>	<b>+1</b>	<b>+5</b>	<b>+16.4%</b>	<b>+7</b>	<b>+24.5%</b>	<b>38</b>
Nurse/ Midwife Manager	62	76	76	76	+0	+0	+0.3%	+14	+22.3%	79
Nurse/ Midwife Specialist & AN/MP	8	13	10	10	+0	-3	-20.0%	+2	+22.9%	11
Staff Nurse/ Staff Midwife	169	165	154	151	-3	-14	-8.2%	-17	-10.3%	159
Nursing/ Midwifery other	1	2	2	2	-0	+0	+1.5%	+1	+99.0%	2
<b>Nursing &amp; Midwifery</b>	<b>240</b>	<b>255</b>	<b>242</b>	<b>240</b>	<b>-2</b>	<b>-16</b>	<b>-6.2%</b>	<b>-1</b>	<b>-0.3%</b>	<b>251</b>
Therapy Professions	11	12	9	9	+0	-2	-18.1%	-2	-13.7%	10
Social Care	2	2	1	1	+0	-1	-47.4%	-1	-49.0%	1
Social Workers	15	17	12	12	+0	-5	-31.1%	-3	-19.8%	13
Psychologists	6	6	5	5	-0	-1	-12.8%	-1	-13.3%	6
Pharmacy		1	1	1	+0	+0	+25.0%	+1	-100.0%	2
<b>Health &amp; Social Care Professionals</b>	<b>34</b>	<b>38</b>	<b>29</b>	<b>29</b>	<b>+0</b>	<b>-9</b>	<b>-23.6%</b>	<b>-5</b>	<b>-14.7%</b>	<b>32</b>
Management (VIII & above)	27	30	29	31	+2	+1	+3.8%	+4	+15.4%	32
Administrative/ Supervisory (V to VII)	31	37	43	43	-0	+6	+16.8%	+12	+37.0%	45
Clerical (III & IV)	25	18	20	22	+2	+4	+21.7%	-3	-10.9%	24
<b>Management &amp; Administrative</b>	<b>83</b>	<b>85</b>	<b>93</b>	<b>96</b>	<b>+4</b>	<b>+11</b>	<b>+13.3%</b>	<b>+13</b>	<b>+15.6%</b>	<b>101</b>
Support	12	16	23	23	-0	+7	+42.7%	+11	+87.4%	24
Maintenance/ Technical	2	7	10	10	-0	+3	+41.4%	+8	+395.0%	10
<b>General Support</b>	<b>14</b>	<b>23</b>	<b>33</b>	<b>33</b>	<b>-0</b>	<b>+10</b>	<b>+42.3%</b>	<b>+19</b>	<b>+130.7%</b>	<b>34</b>
Health Care Assistants	37	62	61	61	-0	-1	-1.7%	+24	+66.0%	66
Care, other	1	1				-1	-100.0%	-1	-100.0%	
<b>Patient &amp; Client Care</b>	<b>37</b>	<b>63</b>	<b>61</b>	<b>61</b>	<b>-0</b>	<b>-2</b>	<b>-2.4%</b>	<b>+24</b>	<b>+63.7%</b>	<b>66</b>

## Mental Health Services Employment by Grade Group: Sep 2022

Sep 2022	WTE Dec 2019	WTE Dec 2020	WTE Aug 2022	WTE Sep 2022	WTE change since Aug 22	WTE change since Dec 20	% change since Dec 20	WTE change since Dec 19	% change since Dec 19	No. Sep 2022
<b>Overall</b>	<b>9,954</b>	<b>10,301</b>	<b>10,394</b>	<b>10,400</b>	<b>+6</b>	<b>+99</b>	<b>+1.0%</b>	<b>+446</b>	<b>+4.5%</b>	<b>11,568</b>
Consultant Medicine	1	1	1	1						1
Consultant Psychiatry	352	369	383	391	+7	+22	+6.0%	+39	+11.1%	428
<b>Consultants</b>	<b>353</b>	<b>370</b>	<b>384</b>	<b>392</b>	<b>+7</b>	<b>+22</b>	<b>+6.0%</b>	<b>+39</b>	<b>+11.1%</b>	<b>429</b>
<b>Registrars</b>	<b>269</b>	<b>281</b>	<b>326</b>	<b>340</b>	<b>+14</b>	<b>+59</b>	<b>+21.2%</b>	<b>+72</b>	<b>+26.6%</b>	<b>351</b>
Senior House Officer	253	271	242	246	+4	-25	-9.2%	-7	-2.9%	254
Interns	8	5	8	7	-1	+2	+40.0%	-1	-12.5%	7
<b>SHO/ Interns</b>	<b>261</b>	<b>276</b>	<b>250</b>	<b>253</b>	<b>+3</b>	<b>-23</b>	<b>-8.4%</b>	<b>-8</b>	<b>-3.2%</b>	<b>261</b>
<b>Medical/ Dental, other</b>	<b>5</b>	<b>5</b>	<b>5</b>	<b>5</b>		<b>-0</b>	<b>-2.6%</b>	<b>-0</b>	<b>-2.6%</b>	<b>8</b>
<b>Medical &amp; Dental</b>	<b>888</b>	<b>932</b>	<b>966</b>	<b>990</b>	<b>+24</b>	<b>+58</b>	<b>+6.3%</b>	<b>+102</b>	<b>+11.5%</b>	<b>1,049</b>
Clinical Nurse/ Midwife Manager	999	1,041	1,029	1,026	-2	-15	-1.4%	+27	+2.7%	1,081
Director Nursing/Midwifery, Assistant	165	171	175	176	+0	+5	+3.1%	+11	+6.7%	181
Director of Nursing/Midwifery	29	28	31	34	+2	+6	+20.4%	+5	+16.4%	34
<b>Nurse/ Midwife Manager</b>	<b>1,192</b>	<b>1,240</b>	<b>1,235</b>	<b>1,235</b>	<b>+0</b>	<b>-4</b>	<b>-0.3%</b>	<b>+43</b>	<b>+3.6%</b>	<b>1,296</b>
Advanced Nurse/ Midwife Practitioner	31	39	57	59	+2	+19	+49.2%	+28	+91.4%	63
Clinical Nurse/ Midwife Specialist	428	489	509	521	+11	+31	+6.4%	+92	+21.5%	562
<b>Nurse/ Midwife Specialist &amp; AN/MP</b>	<b>459</b>	<b>529</b>	<b>566</b>	<b>579</b>	<b>+13</b>	<b>+51</b>	<b>+9.6%</b>	<b>+120</b>	<b>+26.2%</b>	<b>625</b>
Staff Midwives		1				-1	-100.0%		-100.0%	
Staff Nurse [Psychiatric]	2,893	2,965	2,882	2,832	-49	-132	-4.5%	-61	-2.1%	3,092
Staff Nurses [General/ Children's]	105	106	112	108	-4	+1	+1.3%	+3	+2.8%	119
Staff Nurse [Intellectual Disability]	5	4	6	6	+0	+2	+36.1%	+1	+27.4%	6
<b>Staff Nurse/ Staff Midwife</b>	<b>3,003</b>	<b>3,076</b>	<b>2,999</b>	<b>2,946</b>	<b>-53</b>	<b>-130</b>	<b>-4.2%</b>	<b>-57</b>	<b>-1.9%</b>	<b>3,217</b>
Pre-registration Nurse Intern (COVID-19)		42				-42	-100.0%		-100.0%	
Pre-registration Nurse/ Midwife Intern	28	11	157	108	-49	+97	+907.4%	+80	+291.9%	224
Post-registration Nurse/ Midwife Student	1	1				-1	-100.0%	-1	-100.0%	
Nursing/ Midwifery awaiting registration	59	5	2	61	+59	+56	+1159.6%	+2	+3.7%	93
<b>Nursing/ Midwifery Student</b>	<b>87</b>	<b>59</b>	<b>159</b>	<b>169</b>	<b>+10</b>	<b>+110</b>	<b>+186.6%</b>	<b>+82</b>	<b>+93.3%</b>	<b>317</b>
Nursing Education/Clinical	32	32	31	35	+3	+3	+9.3%	+3	+9.7%	39
<b>Nursing/ Midwifery other</b>	<b>32</b>	<b>32</b>	<b>31</b>	<b>35</b>	<b>+3</b>	<b>+3</b>	<b>+9.3%</b>	<b>+3</b>	<b>+9.7%</b>	<b>39</b>
<b>Nursing &amp; Midwifery</b>	<b>4,773</b>	<b>4,935</b>	<b>4,992</b>	<b>4,965</b>	<b>-27</b>	<b>+29</b>	<b>+0.6%</b>	<b>+191</b>	<b>+4.0%</b>	<b>5,494</b>
Dietitians	19	21	17	19	+1	-2	-11.1%	-1	-3.3%	23
Occupational Therapists	339	346	336	337	+1	-9	-2.6%	-2	-0.6%	387
Physiotherapists	2	2	3	3		+1	+22.8%	+1	+32.7%	4
Podiatrists & Chiropodists	1	1	1	1	+0	+0	+1.2%	+0	+11.0%	2
Speech & Language Therapists	62	70	65	61	-3	-8	-11.8%	-0	-0.4%	77
<b>Therapy Professions</b>	<b>422</b>	<b>439</b>	<b>422</b>	<b>420</b>	<b>-1</b>	<b>-19</b>	<b>-4.3%</b>	<b>-2</b>	<b>-0.5%</b>	<b>493</b>
<b>Social Care</b>	<b>74</b>	<b>80</b>	<b>70</b>	<b>73</b>	<b>+3</b>	<b>-7</b>	<b>-9.1%</b>	<b>-1</b>	<b>-1.2%</b>	<b>85</b>
<b>Social Workers</b>	<b>350</b>	<b>373</b>	<b>389</b>	<b>390</b>	<b>+1</b>	<b>+17</b>	<b>+4.6%</b>	<b>+40</b>	<b>+11.5%</b>	<b>445</b>
<b>Psychologists</b>	<b>394</b>	<b>424</b>	<b>430</b>	<b>434</b>	<b>+4</b>	<b>+10</b>	<b>+2.3%</b>	<b>+39</b>	<b>+10.0%</b>	<b>510</b>
Pharmacists	16	17	16	16	+0	-1	-5.3%	+0	+0.6%	21
Pharmacy Technicians	2	4	4	4	-0	+1	+19.8%	+2	+76.5%	7
<b>Pharmacy</b>	<b>19</b>	<b>21</b>	<b>20</b>	<b>20</b>	<b>+0</b>	<b>-0</b>	<b>-0.9%</b>	<b>+2</b>	<b>+10.7%</b>	<b>28</b>
Counsellor Therapists	95	101	125	125	+0	+24	+23.8%	+30	+32.1%	136
Other Health & Social Care	12	5	4	4	-0	-1	-26.2%	-8	-66.0%	8
Play Therapists/ Specialists	1	1	3	3		+2	+110.1%	+2	+113.0%	4
<b>H&amp;SC, Other</b>	<b>108</b>	<b>108</b>	<b>132</b>	<b>132</b>	<b>+0</b>	<b>+24</b>	<b>+22.5%</b>	<b>+24</b>	<b>+22.6%</b>	<b>148</b>
<b>Health &amp; Social Care Professionals</b>	<b>1,366</b>	<b>1,444</b>	<b>1,462</b>	<b>1,470</b>	<b>+7</b>	<b>+25</b>	<b>+1.7%</b>	<b>+103</b>	<b>+7.6%</b>	<b>1,709</b>

Sep 2022	WTE Dec 2019	WTE Dec 2020	WTE Aug 2022	WTE Sep 2022	WTE change since Aug 22	WTE change since Dec 20	% change since Dec 20	WTE change since Dec 19	% change since Dec 19	No. Sep 2022
<b>Overall</b>	<b>9,954</b>	<b>10,301</b>	<b>10,394</b>	<b>10,400</b>	<b>+6</b>	<b>+99</b>	<b>+1.0%</b>	<b>+446</b>	<b>+4.5%</b>	<b>11,568</b>
Executive Management	11	15	14	14	+0	-1	-5.0%	+3	+27.2%	14
Senior Management (VIII & GM)	46	52	53	56	+2	+3	+6.4%	+9	+20.2%	57
<b>Management (VIII &amp; above)</b>	<b>57</b>	<b>67</b>	<b>67</b>	<b>70</b>	<b>+2</b>	<b>+3</b>	<b>+3.9%</b>	<b>+12</b>	<b>+21.6%</b>	<b>71</b>
Middle Management (V-VII)	235	243	265	272	+7	+29	+11.9%	+37	+15.6%	291
Other Administrative	2	2	3	2	-0	+0	+30.6%	+0	+30.6%	3
<b>Administrative/ Supervisory (V to VII)</b>	<b>237</b>	<b>245</b>	<b>268</b>	<b>274</b>	<b>+7</b>	<b>+29</b>	<b>+12.0%</b>	<b>+37</b>	<b>+15.7%</b>	<b>294</b>
General Administrative (III & IV)	717	722	703	697	-6	-25	-3.4%	-20	-2.8%	792
<b>Clerical (III &amp; IV)</b>	<b>717</b>	<b>722</b>	<b>703</b>	<b>697</b>	<b>-6</b>	<b>-25</b>	<b>-3.4%</b>	<b>-20</b>	<b>-2.8%</b>	<b>792</b>
<b>Management &amp; Administrative</b>	<b>1,012</b>	<b>1,034</b>	<b>1,038</b>	<b>1,041</b>	<b>+3</b>	<b>+7</b>	<b>+0.7%</b>	<b>+29</b>	<b>+2.9%</b>	<b>1,157</b>
Catering	65	64	69	68	-1	+4	+6.5%	+2	+3.8%	74
Household Services	425	441	408	405	-2	-36	-8.2%	-19	-4.5%	479
Other Support	43	42	39	40	+0	-2	-5.5%	-3	-7.2%	46
Portering	48	47	48	49	+1	+2	+3.6%	+1	+1.9%	51
<b>Support</b>	<b>581</b>	<b>594</b>	<b>564</b>	<b>562</b>	<b>-2</b>	<b>-32</b>	<b>-5.5%</b>	<b>-19</b>	<b>-3.2%</b>	<b>650</b>
Maintenance	129	137	130	130	-0	-7	-5.1%	+1	+1.1%	135
Technical Services	2						-100.0%	-2	-100.0%	
<b>Maintenance/ Technical</b>	<b>131</b>	<b>137</b>	<b>130</b>	<b>130</b>	<b>-0</b>	<b>-7</b>	<b>-5.1%</b>	<b>-1</b>	<b>-0.4%</b>	<b>135</b>
<b>General Support</b>	<b>711</b>	<b>732</b>	<b>694</b>	<b>692</b>	<b>-2</b>	<b>-39</b>	<b>-5.4%</b>	<b>-19</b>	<b>-2.7%</b>	<b>785</b>
Attendant/ Aide	605	583	434	433	-1	-150	-25.7%	-172	-28.4%	486
Health & Social Care Assistants	9	8	12	13	+2	+5	+58.8%	+4	+48.1%	16
Health Care Assistant/ Care Assistant	374	430	581	582	+1	+152	+35.4%	+208	+55.6%	618
<b>Health Care Assistants</b>	<b>988</b>	<b>1,022</b>	<b>1,027</b>	<b>1,028</b>	<b>+1</b>	<b>+7</b>	<b>+0.7%</b>	<b>+40</b>	<b>+4.1%</b>	<b>1,120</b>
Home Care Services	16	14	22	23	+1	+8	+58.2%	+7	+43.5%	33
Other Care Grades	23	22	22	21	-1	-1	-5.6%	-2	-7.9%	22
Pastoral Care	13	12	12	11	-1	-1	-8.4%	-2	-12.5%	15
Workshop Services	165	155	160	160	+1	+5	+3.3%	-5	-2.8%	184
<b>Care, other</b>	<b>216</b>	<b>203</b>	<b>215</b>	<b>215</b>	<b>+0</b>	<b>+11</b>	<b>+5.5%</b>	<b>-1</b>	<b>-0.6%</b>	<b>254</b>
<b>Patient &amp; Client Care</b>	<b>1,204</b>	<b>1,225</b>	<b>1,241</b>	<b>1,243</b>	<b>+2</b>	<b>+18</b>	<b>+1.5%</b>	<b>+39</b>	<b>+3.3%</b>	<b>1,374</b>

## Employment by WTE, Headcount, Gender, Full-Time /Part-Time etc.: Sep 2022

Mental Health Services Staff Group	WTE	Headcount	WTE: no.	% Male	% female	Male WTE: no.	Female WTE: no.	% Total Perm	% Male Perm	% Female Perm	% Total Full Time	% Total Part Time	% Male FT	% Female FT
<b>Overall</b>	<b>10,400</b>	<b>11,568</b>	<b>1.11</b>	<b>26.8%</b>	<b>73.2%</b>	<b>1.06</b>	<b>1.13</b>	<b>83.0%</b>	<b>80.1%</b>	<b>84.0%</b>	<b>85.2%</b>	<b>14.8%</b>	<b>93.2%</b>	<b>82.3%</b>
Consultant Medicine	1	1	1.00	100.0%		1.00		100.0%	100.0%		100.0%	0.0%	100.0%	
Consultant Psychiatry	391	428	1.10	43.2%	56.8%	1.07	1.12	65.0%	65.0%	63.8%	86.2%	13.8%	93.0%	81.1%
<b>Consultants</b>	<b>392</b>	<b>429</b>	<b>1.10</b>	<b>43.4%</b>	<b>56.6%</b>	<b>1.07</b>	<b>1.12</b>	<b>65.0%</b>	<b>66.7%</b>	<b>63.8%</b>	<b>86.2%</b>	<b>13.8%</b>	<b>93.0%</b>	<b>81.1%</b>
Registrar	215	221	1.03	46.6%	53.4%	1.02	1.03	1.8%	1.8%	1.7%	97.7%	2.3%	99.0%	96.6%
Senior Registrar	122	127	1.04	30.7%	69.3%	1.01	1.05	1.6%	1.6%	1.1%	95.3%	4.7%	97.4%	94.3%
Specialist Registrar	3	3	1.00	33.3%	66.7%	1.00	1.00	0.0%	0.0%	0.0%	33.3%	66.7%	100.0%	0.0%
<b>Registrars</b>	<b>340</b>	<b>351</b>	<b>1.03</b>	<b>40.7%</b>	<b>59.3%</b>	<b>1.02</b>	<b>1.04</b>	<b>1.7%</b>	<b>2.1%</b>	<b>1.4%</b>	<b>96.3%</b>	<b>3.7%</b>	<b>98.6%</b>	<b>94.7%</b>
Senior House Officer	246	254	1.03	40.9%	59.1%	1.02	1.04	0.4%	0.4%	0.0%	98.8%	1.2%	100.0%	98.0%
Interns	7	7	1.00	28.6%	71.4%	1.00	1.00	0.0%	0.0%	0.0%	100.0%	0.0%	100.0%	100.0%
<b>SHO/ Interns</b>	<b>253</b>	<b>261</b>	<b>1.03</b>	<b>40.6%</b>	<b>59.4%</b>	<b>1.02</b>	<b>1.04</b>	<b>0.4%</b>	<b>0.9%</b>	<b>0.0%</b>	<b>98.9%</b>	<b>1.1%</b>	<b>100.0%</b>	<b>98.1%</b>
<b>Medical/ Dental, other</b>	<b>5</b>	<b>8</b>	<b>1.64</b>	<b>50.0%</b>	<b>50.0%</b>	<b>1.79</b>	<b>1.52</b>	<b>62.5%</b>	<b>50.0%</b>	<b>75.0%</b>	<b>37.5%</b>	<b>62.5%</b>	<b>25.0%</b>	<b>50.0%</b>
<b>Medical &amp; Dental</b>	<b>990</b>	<b>1,049</b>	<b>1.06</b>	<b>41.8%</b>	<b>58.2%</b>	<b>1.04</b>	<b>1.07</b>	<b>27.7%</b>	<b>29.6%</b>	<b>26.4%</b>	<b>92.4%</b>	<b>7.6%</b>	<b>95.9%</b>	<b>89.8%</b>
Clinical Nurse/ Midwife Manager	1,026	1,081	1.05	34.1%	65.9%	1.02	1.07	98.4%	98.4%	98.6%	93.5%	6.5%	98.4%	91.0%
Director Nursing/Midwifery, Assistant	176	181	1.03	42.0%	58.0%	1.03	1.03	100.0%	100.0%	100.0%	98.3%	1.7%	97.4%	99.0%
Director of Nursing/Midwifery	34	34	1.01	58.8%	41.2%	1.02	1.01	100.0%	100.0%	100.0%	100.0%	0.0%	100.0%	100.0%
<b>Nurse/ Midwife Manager</b>	<b>1,235</b>	<b>1,296</b>	<b>1.05</b>	<b>35.9%</b>	<b>64.1%</b>	<b>1.02</b>	<b>1.06</b>	<b>98.7%</b>	<b>98.5%</b>	<b>98.8%</b>	<b>94.4%</b>	<b>5.6%</b>	<b>98.3%</b>	<b>92.2%</b>
Advanced Nurse/ Midwife Practitioner	59	63	1.07	20.6%	79.4%	1.00	1.09	98.4%	98.4%	98.0%	93.7%	6.3%	100.0%	92.0%
Clinical Nurse/ Midwife Specialist	521	562	1.08	19.0%	81.0%	1.02	1.10	99.6%	99.6%	99.6%	92.3%	7.7%	97.2%	91.2%
<b>Nurse/ Midwife Specialist &amp; AN/MP</b>	<b>579</b>	<b>625</b>	<b>1.08</b>	<b>19.2%</b>	<b>80.8%</b>	<b>1.01</b>	<b>1.10</b>	<b>99.5%</b>	<b>100.0%</b>	<b>99.4%</b>	<b>92.5%</b>	<b>7.5%</b>	<b>97.5%</b>	<b>91.3%</b>
Staff Nurse [Psychiatric]	2,832	3,092	1.09	25.4%	74.6%	1.06	1.10	91.9%	91.9%	92.6%	87.7%	12.3%	92.5%	86.0%
Staff Nurses [General/ Children's]	108	119	1.10	26.1%	73.9%	1.11	1.10	75.6%	75.6%	78.4%	83.2%	16.8%	83.9%	83.0%
Staff Nurse [Intellectual Disability]	6	6	1.04	33.3%	66.7%	1.00	1.06	66.7%	66.7%	50.0%	100.0%	0.0%	100.0%	100.0%
<b>Staff Nurse/ Staff Midwife</b>	<b>2,946</b>	<b>3,217</b>	<b>1.09</b>	<b>25.4%</b>	<b>74.6%</b>	<b>1.06</b>	<b>1.10</b>	<b>91.2%</b>	<b>88.9%</b>	<b>92.0%</b>	<b>87.5%</b>	<b>12.5%</b>	<b>92.2%</b>	<b>86.0%</b>
Pre-registration Nurse/ Midwife Intern	108	224	2.08	18.8%	81.3%	2.04	2.09	0.0%	0.0%	0.0%	99.6%	0.4%	100.0%	99.5%
Nursing/ Midwifery awaiting registration	61	93	1.52	10.8%	89.2%	1.42	1.54	2.2%	2.2%	2.4%	100.0%	0.0%	100.0%	100.0%
<b>Nursing/ Midwifery Student</b>	<b>169</b>	<b>317</b>	<b>1.88</b>	<b>16.4%</b>	<b>83.6%</b>	<b>1.88</b>	<b>1.88</b>	<b>0.6%</b>	<b>0.0%</b>	<b>0.8%</b>	<b>99.7%</b>	<b>0.3%</b>	<b>100.0%</b>	<b>99.6%</b>
Nursing Education/Clinical	35	39	1.13	12.8%	87.2%	1.09	1.13	100.0%	100.0%	100.0%	89.7%	10.3%	100.0%	88.2%

<i>Nursing/ Midwifery other</i>	35	39	1.13	12.8%	87.2%	1.09	1.13	100.0%	100.0%	100.0%	89.7%	10.3%	100.0%	88.2%
<b>Nursing &amp; Midwifery</b>	<b>4,965</b>	<b>5,494</b>	<b>1.11</b>	<b>26.6%</b>	<b>73.4%</b>	<b>1.06</b>	<b>1.12</b>	<b>88.8%</b>	<b>89.7%</b>	<b>88.4%</b>	<b>90.4%</b>	<b>9.6%</b>	<b>94.9%</b>	<b>88.8%</b>
<b>Health &amp; Social Care</b>	<b>1,469</b>	<b>1,709</b>	<b>1.16</b>	<b>16.1%</b>	<b>83.9%</b>	<b>1.07</b>	<b>1.18</b>	<b>84.7%</b>	<b>81.9%</b>	<b>85.3%</b>	<b>81.4%</b>	<b>18.6%</b>	<b>93.1%</b>	<b>79.1%</b>
Executive Management	14	14	1.00	57.1%	42.9%	1.00	1.00	100.0%	100.0%	100.0%	100.0%	0.0%	100.0%	100.0%
Senior Management (VIII & GM)	56	57	1.02	28.1%	71.9%	1.01	1.03	96.5%	96.5%	97.6%	96.5%	3.5%	93.8%	97.6%
<b>Management (VIII &amp; above)</b>	<b>70</b>	<b>71</b>	<b>1.02</b>	<b>33.8%</b>	<b>66.2%</b>	<b>1.01</b>	<b>1.02</b>	<b>97.2%</b>	<b>95.8%</b>	<b>97.9%</b>	<b>97.2%</b>	<b>2.8%</b>	<b>95.8%</b>	<b>97.9%</b>
Middle Management (V-VII)	272	291	1.07	21.3%	78.7%	1.04	1.08	93.1%	93.1%	93.9%	89.7%	10.3%	96.8%	87.8%
Other Administrative	2	3	1.46		100.0%		1.46	66.7%	66.7%	66.7%	66.7%	33.3%		66.7%
<b>Administrative/ Supervisory (V to VII)</b>	<b>274</b>	<b>294</b>	<b>1.07</b>	<b>21.1%</b>	<b>78.9%</b>	<b>1.04</b>	<b>1.08</b>	<b>92.9%</b>	<b>90.3%</b>	<b>93.5%</b>	<b>89.5%</b>	<b>10.5%</b>	<b>96.8%</b>	<b>87.5%</b>
General Administrative (III & IV)	697	792	1.14	8.6%	91.4%	1.06	1.14	85.2%	85.2%	86.0%	76.1%	23.9%	89.7%	74.9%
<b>Clerical (III &amp; IV)</b>	<b>697</b>	<b>792</b>	<b>1.14</b>	<b>8.6%</b>	<b>91.4%</b>	<b>1.06</b>	<b>1.14</b>	<b>85.2%</b>	<b>76.5%</b>	<b>86.0%</b>	<b>76.1%</b>	<b>23.9%</b>	<b>89.7%</b>	<b>74.9%</b>
<b>Management &amp; Administrative</b>	<b>1,041</b>	<b>1,157</b>	<b>1.11</b>	<b>13.3%</b>	<b>86.7%</b>	<b>1.04</b>	<b>1.12</b>	<b>87.9%</b>	<b>85.1%</b>	<b>88.3%</b>	<b>80.8%</b>	<b>19.2%</b>	<b>93.5%</b>	<b>78.9%</b>
Catering	68	74	1.09	39.2%	60.8%	1.10	1.09	94.6%	94.6%	93.3%	73.0%	27.0%	82.8%	66.7%
Household Services	405	479	1.18	20.5%	79.5%	1.10	1.20	91.9%	91.9%	93.2%	57.4%	42.6%	81.6%	51.2%
Other Support	40	46	1.16	32.6%	67.4%	1.03	1.24	89.1%	89.1%	87.1%	71.7%	28.3%	93.3%	61.3%
Portering	49	51	1.04	96.1%	3.9%	1.04	1.04	92.2%	92.2%	100.0%	88.2%	11.8%	87.8%	100.0%
<b>Support</b>	<b>562</b>	<b>650</b>	<b>1.16</b>	<b>29.4%</b>	<b>70.6%</b>	<b>1.08</b>	<b>1.19</b>	<b>92.0%</b>	<b>90.1%</b>	<b>92.8%</b>	<b>62.6%</b>	<b>37.4%</b>	<b>84.3%</b>	<b>53.6%</b>
Maintenance	130	135	1.04	98.5%	1.5%	1.04	1.00	95.6%	95.6%	100.0%	97.0%	3.0%	97.0%	100.0%
<b>Maintenance/ Technical</b>	<b>130</b>	<b>135</b>	<b>1.04</b>	<b>98.5%</b>	<b>1.5%</b>	<b>1.04</b>	<b>1.00</b>	<b>95.6%</b>	<b>95.5%</b>	<b>100.0%</b>	<b>97.0%</b>	<b>3.0%</b>	<b>97.0%</b>	<b>100.0%</b>
<b>General Support</b>	<b>692</b>	<b>785</b>	<b>1.13</b>	<b>41.3%</b>	<b>58.7%</b>	<b>1.06</b>	<b>1.19</b>	<b>92.6%</b>	<b>92.3%</b>	<b>92.8%</b>	<b>68.5%</b>	<b>31.5%</b>	<b>89.5%</b>	<b>53.8%</b>
Attendant/ Aide	433	486	1.12	24.1%	75.9%	1.09	1.13	84.0%	84.0%	87.3%	69.3%	30.7%	82.1%	65.3%
Health & Social Care Assistants	13	16	1.21	37.5%	62.5%	1.09	1.29	81.3%	81.3%	70.0%	75.0%	25.0%	83.3%	70.0%
Health Care Assistant/ Care Assistant	582	618	1.06	34.6%	65.4%	1.03	1.08	96.8%	96.8%	97.8%	86.4%	13.6%	95.8%	81.4%
<b>Health Care Assistants</b>	<b>1,028</b>	<b>1,120</b>	<b>1.09</b>	<b>30.1%</b>	<b>69.9%</b>	<b>1.05</b>	<b>1.11</b>	<b>91.0%</b>	<b>87.5%</b>	<b>92.5%</b>	<b>78.8%</b>	<b>21.2%</b>	<b>90.8%</b>	<b>73.7%</b>
Home Care Services	23	33	1.46	39.4%	60.6%	1.49	1.45	78.8%	78.8%	75.0%	36.4%	63.6%	38.5%	35.0%
Other Care Grades	21	22	1.06	86.4%	13.6%	1.02	1.38	81.8%	81.8%	66.7%	86.4%	13.6%	94.7%	33.3%
Pastoral Care	11	15	1.36	86.7%	13.3%	1.32	1.69	40.0%	40.0%	0.0%	60.0%	40.0%	61.5%	50.0%
Workshop Services	160	184	1.15	37.5%	62.5%	1.07	1.20	92.4%	92.4%	92.2%	72.8%	27.2%	85.5%	65.2%
<b>Care, other</b>	<b>215</b>	<b>254</b>	<b>1.18</b>	<b>44.9%</b>	<b>55.1%</b>	<b>1.12</b>	<b>1.24</b>	<b>86.6%</b>	<b>85.1%</b>	<b>87.9%</b>	<b>68.5%</b>	<b>31.5%</b>	<b>78.9%</b>	<b>60.0%</b>
<b>Patient &amp; Client Care</b>	<b>1,243</b>	<b>1,374</b>	<b>1.11</b>	<b>32.8%</b>	<b>67.2%</b>	<b>1.07</b>	<b>1.12</b>	<b>90.2%</b>	<b>86.9%</b>	<b>91.8%</b>	<b>76.9%</b>	<b>23.1%</b>	<b>87.8%</b>	<b>71.6%</b>

## Employment by WTE, Headcount, Gender, Full-Time /Part-Time etc.: Sep 2022

Mental Health Services CHO	WTE	Headcount	WTE: no.	% Male	% female	Male WTE: no.	Female WTE: no.	% Total Perm	% Male Perm	% Female Perm	% Total Full Time	% Total Part Time	% Male FT	% Female FT
<b>Overall</b>	<b>10,400</b>	<b>11,568</b>	<b>1.11</b>	<b>26.8%</b>	<b>73.2%</b>	<b>1.06</b>	<b>1.13</b>	<b>83.0%</b>	<b>80.1%</b>	<b>84.0%</b>	<b>85.2%</b>	<b>14.8%</b>	<b>93.2%</b>	<b>82.3%</b>
CHO 1	1,037	1,137	1.10	25.8%	74.2%	1.04	1.12	87.3%	87.3%	88.5%	87.0%	13.0%	95.9%	83.9%
CHO 2	1,290	1,434	1.11	27.9%	72.1%	1.06	1.13	85.8%	85.8%	87.1%	84.5%	15.5%	91.0%	82.0%
CHO 3	820	930	1.13	22.0%	78.0%	1.08	1.15	78.8%	78.8%	79.0%	85.9%	14.1%	91.7%	84.3%
CHO 4	1,568	1,743	1.11	25.7%	74.3%	1.07	1.13	69.1%	69.1%	71.0%	83.9%	16.1%	93.3%	80.6%
CHO 5	1,221	1,366	1.12	26.1%	73.9%	1.06	1.14	88.3%	88.3%	89.7%	79.9%	20.1%	91.3%	75.8%
CHO 6	640	726	1.13	29.6%	70.4%	1.09	1.15	86.0%	86.0%	87.1%	83.5%	16.5%	90.7%	80.4%
CHO 7	890	994	1.12	22.6%	77.4%	1.05	1.14	81.3%	81.3%	81.4%	89.2%	10.8%	96.0%	87.3%
CHO 8	1,090	1,211	1.11	24.3%	75.7%	1.05	1.13	85.4%	85.4%	86.3%	85.8%	14.2%	95.6%	82.7%
CHO 9	1,350	1,505	1.12	27.6%	72.4%	1.06	1.14	86.2%	86.2%	87.3%	85.4%	14.6%	94.2%	82.0%
other Community Services	494	522	1.06	48.3%	51.7%	1.05	1.06	89.8%	89.8%	93.0%	93.5%	6.5%	92.5%	94.4%

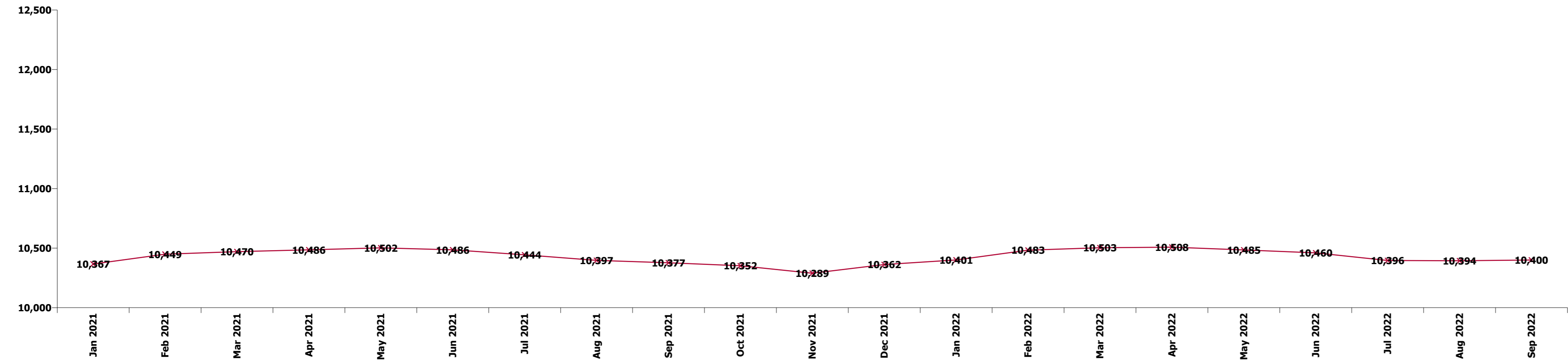
Summary Staff Movement: September 2022

Month-on-month  
Summary

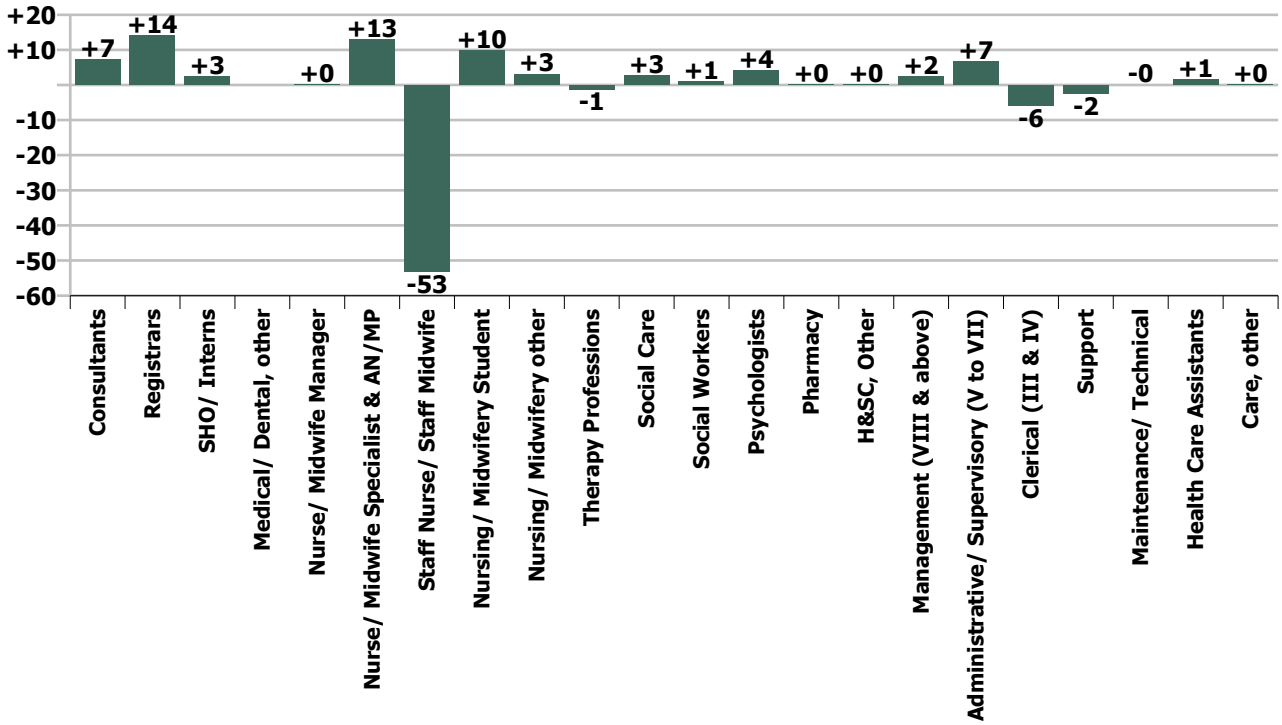
WTE change since Aug 22	% change since Aug 22	overall	Consultants	Registrars	SHO/ Interns	Medical/ Dental, other	Medical & Dental	Nurse/ Midwife Manager	Nurse/ Midwife Specialist & ANMP	Staff Nurse/ Staff Midwife	Nursing/ Midwifery Student	Nursing/ Midwifery other	Nursing & Midwifery	Therapy Professions	Social Care	Social Workers	Psychologists	Pharmacy	H&SC, Other	Health & Social Care Professionals	Management (VIII & above)	Administrative/ Supervisory (V to VII)	Clerical (III & IV)	Management & Administrative	General Support	Health Care Assistants	Care, other	Patient & Client Care
Overall	+0.1%	+6	+7	+14	+3		+24	+0	+13	-53	+10	+3	-27	-1	+3	+1	+4	+0	+0	+7	+2	+7	-6	+3	-2	+1	+0	+2
CHO 1	+1.2%	+13	+1	+1	+1		+3	-1	+1	-2	+5	+0	+3	+1	+0	+3	-0	-0	+1	+4	-0	+0	+1	+1	-0	+2	+0	+2
CHO 2	-0.3%	-4	-1	+1	-2		-2	-0	+1	-4	+1	+1	-1	-0	+1	-1	-1	-0	+0	-1	+1	+1	-1	+1	+1	-0	-0	-1
CHO 3	-0.5%	-4	+2	+2	-0		+3	+5	+1	-17	-0		-11	-3		+1	+7		-0	+6	-0	-0	-1	-1	-2	+1	+0	+1
CHO 4	-0.6%	-9	+3	+1	-2		+2	+2	-0	-11	+0		-9	+2	-1	-0	-1	+0	-0	-1	-1	-0	-0	-1	-2	+1	-0	+1
CHO 5	-0.2%	-3	+0	+0	-2		-1	-4	+1	+2	+0	-0	-2	-1	+0	-1	+1		-0	-1		+1	+2	+2	+1	-2	-0	-2
CHO 6	+0.3%	+2	+2	-1	-1		-0	-0	+8	-8	-1	+1	-0	-1	+3	+1	-2	+1	-0	+1		+2	-2	-0	-1	+3	-1	+2
CHO 7	+0.4%	+4	+1	+7	-0		+8	-2	-2	-5	+2	+0	-5	+1	-0	-5	+2	-1	-0	+3	+0	+2	+1	+3	+1	+0	+1	+1
CHO 8	+0.9%	+10	-2	-0	+3		+1	+1	+3	+1	+2		+7	+1	-0	+1	+0	-0	-0	+2		+2	-2	-0	-0	+1		+1
CHO 9	-0.3%	-4	+1	+3	+5		+9	-0	-0	-7	+1	+1	-5	-1	-0	+1	-0	-0	+0	+0		+0	-6	-6	+0	-3	+0	-3
other Community Services	+0.3%	+2	+1	+0			+1	+0	+0	-3		-0	-2	+0	+0	+0	-0	+0		+0	+2	-0	+2	+4	-0	-0		-0
		+0.1%	+1.9%	+4.3%	+1.0%		+2.5%	+0.0%	+2.3%	-1.8%	+6.2%	+9.9%	-0.5%	-0.3%	+4.0%	+0.3%	+0.9%	+0.8%	+0.2%	+0.5%	+3.4%	+2.5%	-0.8%	+0.3%	-0.3%	+0.1%	+0.0%	+0.1%

Year-on-year Summary

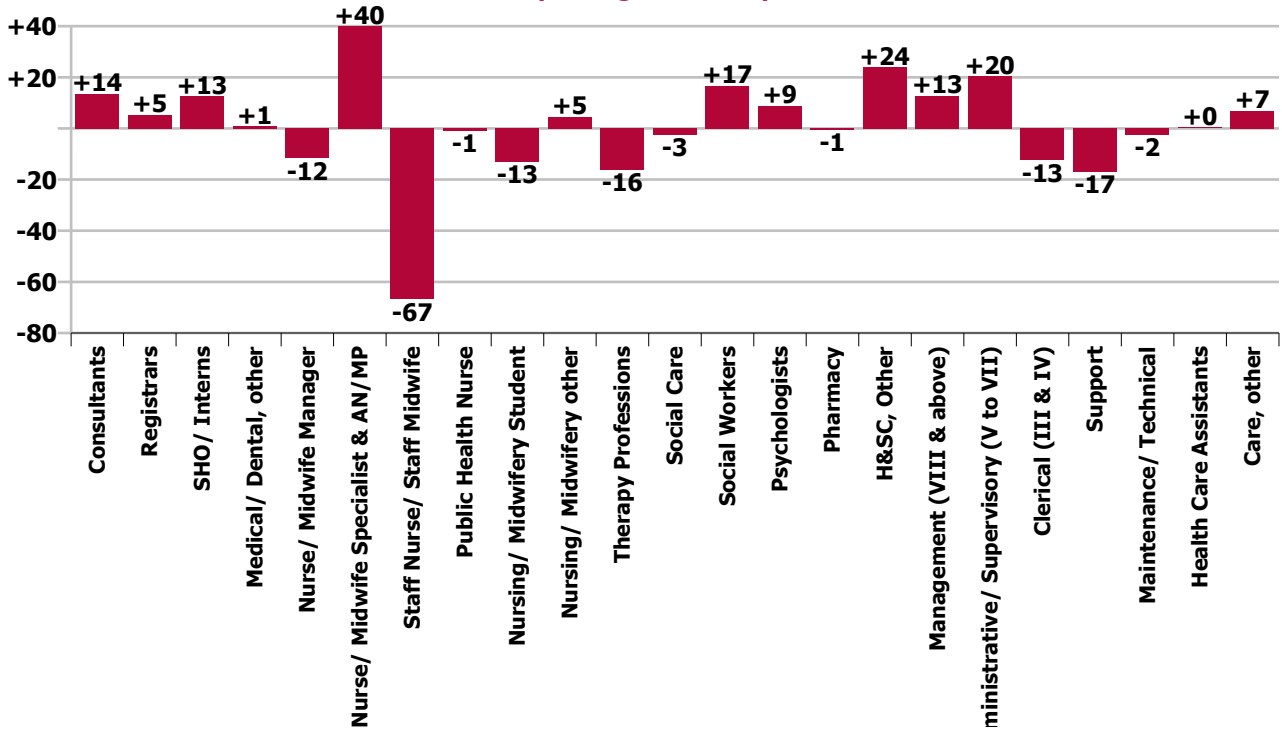
WTE change since Sep 21	% change since Sep 21	overall	Consultants	Registrars	SHO/ Interns	Medical/ Dental, other	Medical & Dental	Nurse/ Midwife Manager	Nurse/ Midwife Specialist & ANMP	Staff Nurse/ Staff Midwife	Public Health Nurse	Nursing/ Midwifery Student	Nursing/ Midwifery other	Nursing & Midwifery	Therapy Professions	Social Care	Social Workers	Psychologists	Pharmacy	H&SC, Other	Health & Social Care Professionals	Management (VIII & above)	Administrative/ Supervisory (V to VII)	Clerical (III & IV)	Management & Administrative	General Support	Health Care Assistants	Care, other	Patient & Client Care
Overall	+0.2%	+23	+14	+5	+13	+1	+32	-12	+40	-67	-1	-13	+5	-48	-16	-3	+17	+9	-1	+24	+30	+13	+20	-13	+21	-19	+0	+7	+7
CHO 1	+3.8%	+38	-3	+4	-1		-0	-10	+9	+8		+7	+0	+14	+3	-0	+5	+3		+4	+15	+4	+2	-0	+5	-3	+5	+1	+6
CHO 2	-3.3%	-45	-3	+0	+4	+1	+2	-4	+3	-26		+0	+2	-25	-6	-2	+1	-4	+0	+0	-11	-0	+0	-3	-3	-2	-10	+3	-7
CHO 3	-1.2%	-10	+4	-1	+4		+7	-3	+3	-20		-2	+1	-21	-2	-0	+2	+6	+0	-0	+5		-3	+0	-2	-2	+2	+1	+3
CHO 4	+1.0%	+16	+4	-3	+2	-0	+2	+23	-3	-9		-4		+6	-1	+1	+7	+4	-0	+8	+18	+2	+2	+0	+4	-7	-6	-2	-7
CHO 5	+0.4%	+5	+6	+1	+0	-0	+7	-2	+4	-12		-13	-0	-24	+3	-0	+0	+4		+2	+9	+1	-2	+1	-0	+5	+7	+2	+9
CHO 6	+0.2%	+2	+1	+3	-2		+3	+6	+5	+5		-1	+2	+5	-6	+1	+1	+1	+1	+3	+1	+1	+1	+4	-5	+0	-8	-1	+1
CHO 7	+0.7%	+6	-1	+5	+4		+8	-4	+5	-4	-1	+3	+1	-1	+4	-1	-8	+1	-1	+2	-3	+0	+3	+7	+10	-1	-3	-3	-6
CHO 8	-1.4%	-15	+1	-15	+6		-9	-7	+3	+8		-1	-0	+4	-8	-1	+5	-4	+1	+3	-5	-1	+3	-8	-6	-3	+2	+1	+3
CHO 9	+3.0%	+40	+6	+7	-1		+12	+1	+12	+4		-3	-2	+13	+0	-0	+6	+2	-0	+3	+11	-2	+8	-5	+1	-7	+8	+2	+10
other Community Services	-2.8%	-14	-1	+4	-3		-0	-0	-1	-20			+1	-20	-3		-3	-4	-1	-1	-11	+8	+3	+1	+12	+8	-3	-1	-3
		+0.2%	+3.6%	+1.6%	+5.2%	+20.2%	+3.4%	-0.9%	+7.4%	-2.2%	-100.0%	-7.1%	+15.0%	-1.0%	-3.7%	-3.4%	+4.5%	+2.0%	-2.6%	+22.1%	+2.1%	+22.6%	+8.0%	-1.8%	+2.0%	-2.7%	+0.0%	+3.3%	+0.6%



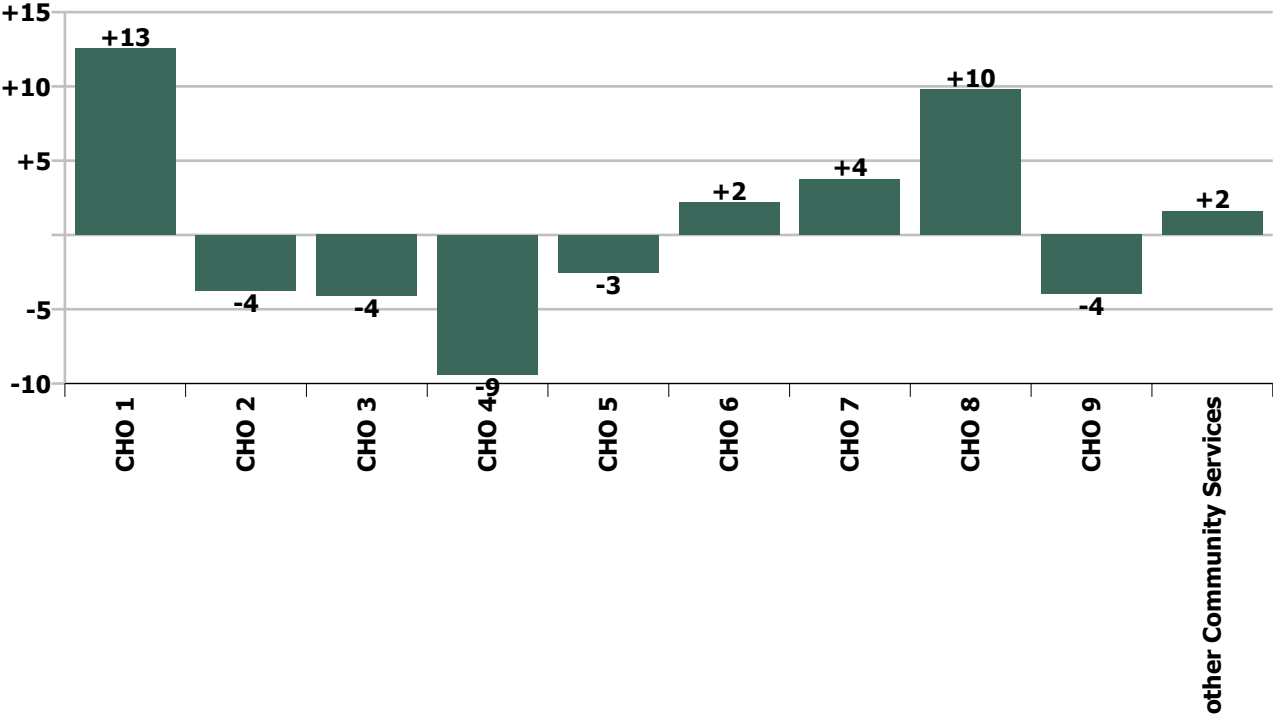
### Staff Group change since: Aug 2022



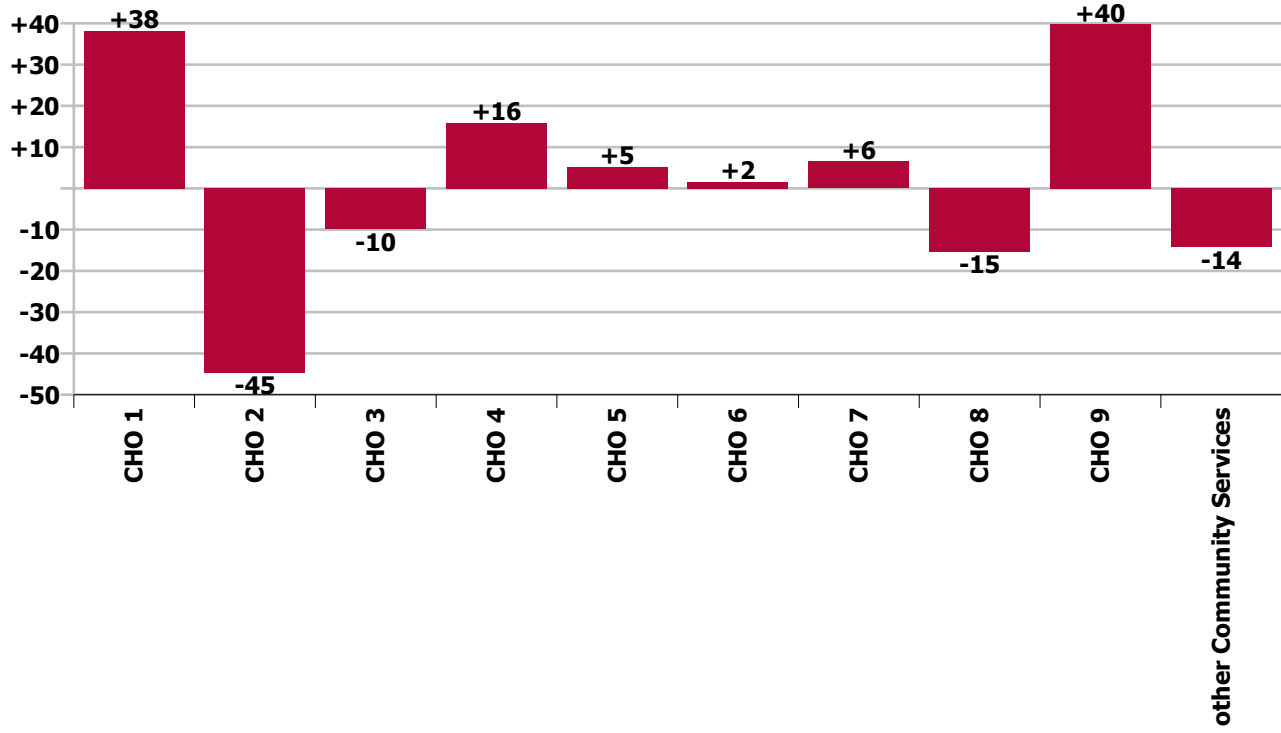
### Staff Group change since: Sep 2021



CHO change since: Aug 2022



CHO change since: Sep 2021



## Longitudinal Employment Levels by Grade Group - Dec 2016 to Sep 2022

Sep 2022 (Dec 2015 figure: 9,501)	WTE Sep 2022	WTE change since Dec 16	WTE change since Dec 17	WTE change since Dec 18	WTE change since Dec 19	WTE change since Dec 20	WTE change since Aug 22	% change since Dec 16	% change since Dec 17	% change since Dec 18	% change since Dec 19	% change since Dec 20	% change since Aug 22
<b>Overall</b>	<b>10,400</b>	<b>+779</b>	<b>+609</b>	<b>+502</b>	<b>+446</b>	<b>+99</b>	<b>+6</b>	<b>+8.1%</b>	<b>+6.2%</b>	<b>+5.1%</b>	<b>+4.5%</b>	<b>+1.0%</b>	<b>+0.1%</b>
Consultant Medicine	1		-0	-0					-9.1%	-9.1%			
Consultant Psychiatry	391	+76	+78	+61	+39	+22	+7	+24.1%	+25.1%	+18.4%	+11.1%	+6.0%	+1.9%
<b>Consultants</b>	<b>392</b>	<b>+76</b>	<b>+78</b>	<b>+61</b>	<b>+39</b>	<b>+22</b>	<b>+7</b>	<b>+24.0%</b>	<b>+25.0%</b>	<b>+18.3%</b>	<b>+11.1%</b>	<b>+6.0%</b>	<b>+1.9%</b>
Registrar	215	+83	+71	+61	+46	+47	+13	+62.9%	+48.8%	+39.9%	+27.2%	+28.2%	+6.6%
Senior Registrar	122	+55	+56	+36	+25	+11	+0	+82.3%	+85.9%	+42.3%	+25.9%	+10.0%	+0.4%
Specialist Registrar	3	+2	+1	+2	+1	+1	+0	+200.0%	+50.0%	+200.0%	+20.0%	+50.0%	+17.2%
<b>Registrars</b>	<b>340</b>	<b>+140</b>	<b>+128</b>	<b>+100</b>	<b>+72</b>	<b>+59</b>	<b>+14</b>	<b>+70.1%</b>	<b>+60.3%</b>	<b>+41.4%</b>	<b>+26.6%</b>	<b>+21.2%</b>	<b>+4.3%</b>
Senior House Officer	246	-1	-26	-23	-7	-25	+4	-0.4%	-9.7%	-8.7%	-2.9%	-9.2%	+1.5%
Interns	7	-5	-3	-1	-1	+2	-1	-41.7%	-30.0%	-12.5%	-12.5%	+40.0%	-12.5%
<b>SHO/ Interns</b>	<b>253</b>	<b>-6</b>	<b>-29</b>	<b>-24</b>	<b>-8</b>	<b>-23</b>	<b>+3</b>	<b>-2.3%</b>	<b>-10.4%</b>	<b>-8.8%</b>	<b>-3.2%</b>	<b>-8.4%</b>	<b>+1.0%</b>
Dentists			-0	-0				-100.0%	-100.0%	-100.0%	-100.0%	-100.0%	-100.0%
Other Medical	5	-5	-6	-2	-0	-0		-49.4%	-55.1%	-25.0%	-2.6%	-2.6%	
<b>Medical/ Dental, other</b>	<b>5</b>	<b>-5</b>	<b>-6</b>	<b>-2</b>	<b>-0</b>	<b>-0</b>		<b>-49.4%</b>	<b>-55.4%</b>	<b>-25.8%</b>	<b>-2.6%</b>	<b>-2.6%</b>	
<b>Medical &amp; Dental</b>	<b>990</b>	<b>+205</b>	<b>+171</b>	<b>+134</b>	<b>+102</b>	<b>+58</b>	<b>+24</b>	<b>+26.2%</b>	<b>+20.9%</b>	<b>+15.7%</b>	<b>+11.5%</b>	<b>+6.3%</b>	<b>+2.5%</b>
Clinical Nurse/ Midwife Manager	1,026	+19	+43	+20	+27	-15	-2	+1.9%	+4.4%	+2.0%	+2.7%	-1.4%	-0.2%
Director Nursing/Midwifery, Assistant	176	+20	+14	+12	+11	+5	+0	+13.2%	+8.6%	+7.1%	+6.7%	+3.1%	+0.2%
Director of Nursing/Midwifery	34	+2	+5	+10	+5	+6	+2	+6.1%	+18.1%	+41.7%	+16.4%	+20.4%	+7.1%
<b>Nurse/ Midwife Manager</b>	<b>1,235</b>	<b>+42</b>	<b>+62</b>	<b>+42</b>	<b>+43</b>	<b>-4</b>	<b>+0</b>	<b>+3.5%</b>	<b>+5.3%</b>	<b>+3.5%</b>	<b>+3.6%</b>	<b>-0.3%</b>	<b>+0.0%</b>
Advanced Nurse/ Midwife Practitioner	59	+51	+48	+39	+28	+19	+2	+686.2%	+460.1%	+192.0%	+91.4%	+49.2%	+3.0%
Clinical Nurse/ Midwife Specialist	521	+184	+138	+125	+92	+31	+11	+54.8%	+35.9%	+31.7%	+21.5%	+6.4%	+2.2%
<b>Nurse/ Midwife Specialist &amp; AN/MP</b>	<b>579</b>	<b>+236</b>	<b>+186</b>	<b>+164</b>	<b>+120</b>	<b>+51</b>	<b>+13</b>	<b>+68.5%</b>	<b>+47.2%</b>	<b>+39.5%</b>	<b>+26.2%</b>	<b>+9.6%</b>	<b>+2.3%</b>
Staff Midwives						-1		-100.0%	-100.0%	-100.0%	-100.0%	-100.0%	-100.0%
Staff Nurse [Psychiatric]	2,832	-224	-195	-123	-61	-132	-49	-7.3%	-6.4%	-4.1%	-2.1%	-4.5%	-1.7%
Staff Nurses [General/ Children's]	108	-13	-10	-10	+3	+1	-4	-10.7%	-8.4%	-8.4%	+2.8%	+1.3%	-3.8%
Staff Nurse [Intellectual Disability]	6	+2	+2	-0	+1	+2	+0	+72.8%	+66.8%	-3.8%	+27.4%	+36.1%	+1.6%

Sep 2022 (Dec 2015 figure: 9,501)	WTE Sep 2022	WTE change since Dec 16	WTE change since Dec 17	WTE change since Dec 18	WTE change since Dec 19	WTE change since Dec 20	WTE change since Aug 22	% change since Dec 16	% change since Dec 17	% change since Dec 18	% change since Dec 19	% change since Dec 20	% change since Aug 22
<b>Overall</b>	<b>10,400</b>	<b>+779</b>	<b>+609</b>	<b>+502</b>	<b>+446</b>	<b>+99</b>	<b>+6</b>	<b>+8.1%</b>	<b>+6.2%</b>	<b>+5.1%</b>	<b>+4.5%</b>	<b>+1.0%</b>	<b>+0.1%</b>
Graduate Nursing/ Midwifery								-100.0%	-100.0%	-100.0%	-100.0%	-100.0%	-100.0%
<b>Staff Nurse/ Staff Midwife</b>	<b>2,946</b>	<b>-235</b>	<b>-202</b>	<b>-133</b>	<b>-57</b>	<b>-130</b>	<b>-53</b>	<b>-7.4%</b>	<b>-6.4%</b>	<b>-4.3%</b>	<b>-1.9%</b>	<b>-4.2%</b>	<b>-1.8%</b>
<b>Public Health Nurse</b>		<b>-1</b>	<b>-1</b>					<b>-100.0%</b>	<b>-100.0%</b>	<b>-100.0%</b>	<b>-100.0%</b>	<b>-100.0%</b>	<b>-100.0%</b>
Pre-registration Nurse Intern (COVID-19)						-42		-100.0%	-100.0%	-100.0%	-100.0%	-100.0%	-100.0%
Pre-registration Nurse/ Midwife Intern	108	+99	+91	+80	+80	+97	-49	+1145.8%	+540.7%	+287.1%	+291.9%	+907.4%	-31.3%
Post-registration Nurse/ Midwife Student					-1	-1		-100.0%	-100.0%	-100.0%	-100.0%	-100.0%	-100.0%
Nursing/ Midwifery awaiting registration	61	+59	+52	+41	+2	+56	+59	+2954.5%	+606.2%	+207.9%	+3.7%	+1159.6%	+2954.5%
<b>Nursing/ Midwifery Student</b>	<b>169</b>	<b>+158</b>	<b>+143</b>	<b>+121</b>	<b>+82</b>	<b>+110</b>	<b>+10</b>	<b>+1485.2%</b>	<b>+562.9%</b>	<b>+254.2%</b>	<b>+93.3%</b>	<b>+186.6%</b>	<b>+6.2%</b>
Nursing Education/Clinical	35	+10	+4	+4	+3	+3	+3	+40.4%	+13.3%	+11.6%	+9.7%	+9.3%	+9.9%
<b>Nursing/ Midwifery other</b>	<b>35</b>	<b>+10</b>	<b>+4</b>	<b>+4</b>	<b>+3</b>	<b>+3</b>	<b>+3</b>	<b>+40.4%</b>	<b>+13.3%</b>	<b>+11.6%</b>	<b>+9.7%</b>	<b>+9.3%</b>	<b>+9.9%</b>
<b>Nursing &amp; Midwifery</b>	<b>4,965</b>	<b>+210</b>	<b>+193</b>	<b>+198</b>	<b>+191</b>	<b>+29</b>	<b>-27</b>	<b>+4.4%</b>	<b>+4.0%</b>	<b>+4.2%</b>	<b>+4.0%</b>	<b>+0.6%</b>	<b>-0.5%</b>
Dietitians	19	+5	+2	-2	-1	-2	+1	+36.6%	+10.3%	-7.8%	-3.3%	-11.1%	+8.6%
Occupational Therapists	337	+37	+11	-3	-2	-9	+1	+12.3%	+3.2%	-0.8%	-0.6%	-2.6%	+0.2%
Physiotherapists	3	+1	+2	+1	+1	+1		+47.3%	+144.6%	+83.9%	+32.7%	+22.8%	
Podiatrists & Chiropodists	1	-1	-1	-0	+0	+0	+0	-55.5%	-44.9%	-33.6%	+11.0%	+1.2%	+3.8%
Speech & Language Therapists	61	+2	+0	-0	-0	-8	-3	+3.2%	+0.0%	-0.1%	-0.4%	-11.8%	-5.1%
<b>Therapy Professions</b>	<b>420</b>	<b>+44</b>	<b>+13</b>	<b>-3</b>	<b>-2</b>	<b>-19</b>	<b>-1</b>	<b>+11.6%</b>	<b>+3.3%</b>	<b>-0.8%</b>	<b>-0.5%</b>	<b>-4.3%</b>	<b>-0.3%</b>
<b>Social Care</b>	<b>73</b>	<b>-15</b>	<b>-10</b>	<b>-6</b>	<b>-1</b>	<b>-7</b>	<b>+3</b>	<b>-17.3%</b>	<b>-12.0%</b>	<b>-7.6%</b>	<b>-1.2%</b>	<b>-9.1%</b>	<b>+4.0%</b>
<b>Social Workers</b>	<b>390</b>	<b>+40</b>	<b>+33</b>	<b>+32</b>	<b>+40</b>	<b>+17</b>	<b>+1</b>	<b>+11.4%</b>	<b>+9.2%</b>	<b>+8.8%</b>	<b>+11.5%</b>	<b>+4.6%</b>	<b>+0.3%</b>
<b>Psychologists</b>	<b>434</b>	<b>+91</b>	<b>+64</b>	<b>+45</b>	<b>+39</b>	<b>+10</b>	<b>+4</b>	<b>+26.6%</b>	<b>+17.2%</b>	<b>+11.6%</b>	<b>+10.0%</b>	<b>+2.3%</b>	<b>+0.9%</b>
Pharmacists	16	+1	+1	+0	+0	-1	+0	+8.8%	+9.3%	+2.3%	+0.6%	-5.3%	+1.0%
Pharmacy Technicians	4	-0	-0	+1	+2	+1		-5.2%	-4.4%	+25.6%	+76.5%	+19.8%	
<b>Pharmacy</b>	<b>20</b>	<b>+1</b>	<b>+1</b>	<b>+1</b>	<b>+2</b>	<b>-0</b>	<b>+0</b>	<b>+5.5%</b>	<b>+6.1%</b>	<b>+6.6%</b>	<b>+10.7%</b>	<b>-0.9%</b>	<b>+0.8%</b>
Counsellor Therapists	125	+40	+40	+40	+30	+24	+0	+47.3%	+46.4%	+47.4%	+32.1%	+23.8%	+0.3%
Other Health & Social Care	4	-4	-5	-5	-8	-1	-0	-52.6%	-53.4%	-53.6%	-66.0%	-26.2%	-2.9%
Play Therapists/ Specialists	3	+1	+2	+2	+2	+2		+24.4%	+106.0%	+110.1%	+113.0%	+110.1%	
<b>H&amp;SC, Other</b>	<b>132</b>	<b>+36</b>	<b>+37</b>	<b>+37</b>	<b>+24</b>	<b>+24</b>	<b>+0</b>	<b>+37.9%</b>	<b>+38.4%</b>	<b>+39.2%</b>	<b>+22.6%</b>	<b>+22.5%</b>	<b>+0.2%</b>

Sep 2022 (Dec 2015 figure: 9,501)	WTE Sep 2022	WTE change since Dec 16	WTE change since Dec 17	WTE change since Dec 18	WTE change since Dec 19	WTE change since Dec 20	WTE change since Aug 22	% change since Dec 16	% change since Dec 17	% change since Dec 18	% change since Dec 19	% change since Dec 20	% change since Aug 22
<b>Overall</b>	<b>10,400</b>	<b>+779</b>	<b>+609</b>	<b>+502</b>	<b>+446</b>	<b>+99</b>	<b>+6</b>	<b>+8.1%</b>	<b>+6.2%</b>	<b>+5.1%</b>	<b>+4.5%</b>	<b>+1.0%</b>	<b>+0.1%</b>
<b>Health &amp; Social Care Professionals</b>	<b>1,470</b>	<b>+197</b>	<b>+138</b>	<b>+106</b>	<b>+103</b>	<b>+25</b>	<b>+7</b>	<b>+15.5%</b>	<b>+10.3%</b>	<b>+7.8%</b>	<b>+7.6%</b>	<b>+1.7%</b>	<b>+0.5%</b>
Executive Management	14	+7	+6	+4	+3	-1	+0	+99.9%	+74.9%	+39.9%	+27.2%	-5.0%	+0.1%
Senior Management (VIII & GM)	56	+30	+23	+24	+9	+3	+2	+119.0%	+72.7%	+76.0%	+20.2%	+6.4%	+4.3%
<b>Management (VIII &amp; above)</b>	<b>70</b>	<b>+37</b>	<b>+29</b>	<b>+28</b>	<b>+12</b>	<b>+3</b>	<b>+2</b>	<b>+114.9%</b>	<b>+73.1%</b>	<b>+67.3%</b>	<b>+21.6%</b>	<b>+3.9%</b>	<b>+3.4%</b>
Middle Management (V-VII)	272	+106	+75	+52	+37	+29	+7	+63.6%	+38.2%	+23.7%	+15.6%	+11.9%	+2.7%
Other Administrative	2	+0	-1	-1	+0	+0	-0	+30.6%	-20.2%	-20.2%	+30.6%	+30.6%	-18.7%
<b>Administrative/ Supervisory (V to VII)</b>	<b>274</b>	<b>+106</b>	<b>+75</b>	<b>+52</b>	<b>+37</b>	<b>+29</b>	<b>+7</b>	<b>+63.3%</b>	<b>+37.5%</b>	<b>+23.2%</b>	<b>+15.7%</b>	<b>+12.0%</b>	<b>+2.5%</b>
General Administrative (III & IV)	697	+36	+16	+2	-20	-25	-6	+5.5%	+2.3%	+0.2%	-2.8%	-3.4%	-0.8%
<b>Clerical (III &amp; IV)</b>	<b>697</b>	<b>+36</b>	<b>+16</b>	<b>+2</b>	<b>-20</b>	<b>-25</b>	<b>-6</b>	<b>+5.5%</b>	<b>+2.3%</b>	<b>+0.2%</b>	<b>-2.8%</b>	<b>-3.4%</b>	<b>-0.8%</b>
<b>Management &amp; Administrative</b>	<b>1,041</b>	<b>+180</b>	<b>+120</b>	<b>+81</b>	<b>+29</b>	<b>+7</b>	<b>+3</b>	<b>+20.8%</b>	<b>+13.0%</b>	<b>+8.5%</b>	<b>+2.9%</b>	<b>+0.7%</b>	<b>+0.3%</b>
Catering	68	+2	+2	-4	+2	+4	-1	+3.1%	+2.9%	-5.8%	+3.8%	+6.5%	-1.6%
Household Services	405	-87	-71	-40	-19	-36	-2	-17.6%	-14.9%	-9.0%	-4.5%	-8.2%	-0.6%
Other Support	40	-16	-10	-16	-3	-2	+0	-29.3%	-20.0%	-28.2%	-7.2%	-5.5%	+0.9%
Portering	49	-10	+0	+1	+1	+2	+1	-17.3%	+0.3%	+2.1%	+1.9%	+3.6%	+1.4%
<b>Support</b>	<b>562</b>	<b>-111</b>	<b>-79</b>	<b>-59</b>	<b>-19</b>	<b>-32</b>	<b>-2</b>	<b>-16.5%</b>	<b>-12.3%</b>	<b>-9.5%</b>	<b>-3.2%</b>	<b>-5.5%</b>	<b>-0.4%</b>
Maintenance	130	-13	-8	-4	+1	-7	-0	-8.8%	-6.0%	-2.9%	+1.1%	-5.1%	-0.0%
Technical Services		-2	-2	-2	-2			-100.0%	-100.0%	-100.0%	-100.0%	-100.0%	-100.0%
<b>Maintenance/ Technical</b>	<b>130</b>	<b>-15</b>	<b>-10</b>	<b>-6</b>	<b>-1</b>	<b>-7</b>	<b>-0</b>	<b>-10.1%</b>	<b>-7.3%</b>	<b>-4.3%</b>	<b>-0.4%</b>	<b>-5.1%</b>	<b>-0.0%</b>
<b>General Support</b>	<b>692</b>	<b>-126</b>	<b>-89</b>	<b>-65</b>	<b>-19</b>	<b>-39</b>	<b>-2</b>	<b>-15.4%</b>	<b>-11.4%</b>	<b>-8.6%</b>	<b>-2.7%</b>	<b>-5.4%</b>	<b>-0.3%</b>
Attendant/ Aide	433	-291	-267	-248	-172	-150	-1	-40.2%	-38.1%	-36.4%	-28.4%	-25.7%	-0.3%
Health & Social Care Assistants	13	+9	+9	+8	+4	+5	+2	+185.3%	+185.3%	+143.4%	+48.1%	+58.8%	+14.5%
Health Care Assistant/ Care Assistant	582	+377	+334	+289	+208	+152	+1	+184.4%	+134.3%	+98.6%	+55.6%	+35.4%	+0.2%
<b>Health Care Assistants</b>	<b>1,028</b>	<b>+95</b>	<b>+75</b>	<b>+49</b>	<b>+40</b>	<b>+7</b>	<b>+1</b>	<b>+10.2%</b>	<b>+7.9%</b>	<b>+5.0%</b>	<b>+4.1%</b>	<b>+0.7%</b>	<b>+0.1%</b>
Home Care Services	23	+23	+8	+6	+7	+8	+1	-100.0%	+50.9%	+36.4%	+43.5%	+58.2%	+4.0%
Other Care Grades	21	+10	+10	+5	-2	-1	-1	+94.6%	+92.8%	+31.6%	-7.9%	-5.6%	-4.1%
Pastoral Care	11	-3	-3	-2	-2	-1	-1	-22.0%	-19.3%	-16.5%	-12.5%	-8.4%	-6.5%
Workshop Services	160	-11	-13	-10	-5	+5	+1	-6.4%	-7.3%	-5.9%	-2.8%	+3.3%	+0.5%

Sep 2022 (Dec 2015 figure: 9,501)	WTE Sep 2022	WTE change since Dec 16	WTE change since Dec 17	WTE change since Dec 18	WTE change since Dec 19	WTE change since Dec 20	WTE change since Aug 22	% change since Dec 16	% change since Dec 17	% change since Dec 18	% change since Dec 19	% change since Dec 20	% change since Aug 22
Overall	10,400	+779	+609	+502	+446	+99	+6	+8.1%	+6.2%	+5.1%	+4.5%	+1.0%	+0.1%
Care, other	215	+19	+2	-1	-1	+11	+0	+9.5%	+1.1%	-0.5%	-0.6%	+5.5%	+0.0%
Patient & Client Care	1,243	+113	+77	+48	+39	+18	+2	+10.0%	+6.6%	+4.0%	+3.3%	+1.5%	+0.1%

Source: Health Service Personnel Census



Longitudinal Employment Levels by Grade Group - Dec 2016 to Sep 2022

Sep 2022 (Dec 2015 figure: 9,501)	WTE Sep 2022	WTE change since Dec 16	WTE change since Dec 17	WTE change since Dec 18	WTE change since Dec 19	WTE change since Dec 20	WTE change since Aug 22	% change since Dec 16	% change since Dec 17	% change since Dec 18	% change since Dec 19	% change since Dec 20	% change since Aug 22
Overall	10,400	+779	+609	+502	+446	+99	+6	+8.1%	+6.2%	+5.1%	+4.5%	+1.0%	+0.1%
Consultant Medicine	1		-0	-0					-9.1%	-9.1%			
Consultant Psychiatry	391	+76	+78	+61	+39	+22	+7	+24.1%	+25.1%	+18.4%	+11.1%	+6.0%	+1.9%
Consultants	392	+76	+78	+61	+39	+22	+7	+24.0%	+25.0%	+18.3%	+11.1%	+6.0%	+1.9%
Registrar	215	+83	+71	+61	+46	+47	+13	+62.9%	+48.8%	+39.9%	+27.2%	+28.2%	+6.6%
Senior Registrar	122	+55	+56	+36	+25	+11	+0	+82.3%	+85.9%	+42.3%	+25.9%	+10.0%	+0.4%
Specialist Registrar	3	+2	+1	+2	+1	+1	+0	+200.0%	+50.0%	+200.0%	+20.0%	+50.0%	+17.2%
Registrars	340	+140	+128	+100	+72	+59	+14	+70.1%	+60.3%	+41.4%	+26.6%	+21.2%	+4.3%
Senior House Officer	246	-1	-26	-23	-7	-25	+4	-0.4%	-9.7%	-8.7%	-2.9%	-9.2%	+1.5%
Interns	7	-5	-3	-1	-1	+2	-1	-41.7%	-30.0%	-12.5%	-12.5%	+40.0%	-12.5%
SHO/ Interns	253	-6	-29	-24	-8	-23	+3	-2.3%	-10.4%	-8.8%	-3.2%	-8.4%	+1.0%
Dentists			-0	-0				-100.0%	-100.0%	-100.0%	-100.0%	-100.0%	-100.0%
Other Medical	5	-5	-6	-2	-0	-0		-49.4%	-55.1%	-25.0%	-2.6%	-2.6%	
Medical/ Dental, other	5	-5	-6	-2	-0	-0		-49.4%	-55.4%	-25.8%	-2.6%	-2.6%	
Medical & Dental	990	+205	+171	+134	+102	+58	+24	+26.2%	+20.9%	+15.7%	+11.5%	+6.3%	+2.5%
Clinical Nurse/ Midwife Manager	1,026	+19	+43	+20	+27	-15	-2	+1.9%	+4.4%	+2.0%	+2.7%	-1.4%	-0.2%
Director Nursing/Midwifery, Assistant	176	+20	+14	+12	+11	+5	+0	+13.2%	+8.6%	+7.1%	+6.7%	+3.1%	+0.2%
Director of Nursing/Midwifery	34	+2	+5	+10	+5	+6	+2	+6.1%	+18.1%	+41.7%	+16.4%	+20.4%	+7.1%
Nurse/ Midwife Manager	1,235	+42	+62	+42	+43	-4	+0	+3.5%	+5.3%	+3.5%	+3.6%	-0.3%	+0.0%
Advanced Nurse/ Midwife Practitioner	59	+51	+48	+39	+28	+19	+2	+686.2%	+460.1%	+192.0%	+91.4%	+49.2%	+3.0%
Clinical Nurse/ Midwife Specialist	521	+184	+138	+125	+92	+31	+11	+54.8%	+35.9%	+31.7%	+21.5%	+6.4%	+2.2%
Nurse/ Midwife Specialist & AN/MP	579	+236	+186	+164	+120	+51	+13	+68.5%	+47.2%	+39.5%	+26.2%	+9.6%	+2.3%
Staff Midwives						-1		-100.0%	-100.0%	-100.0%	-100.0%	-100.0%	-100.0%
Staff Nurse [Psychiatric]	2,832	-224	-195	-123	-61	-132	-49	-7.3%	-6.4%	-4.1%	-2.1%	-4.5%	-1.7%
Staff Nurses [General/ Children's]	108	-13	-10	-10	+3	+1	-4	-10.7%	-8.4%	-8.4%	+2.8%	+1.3%	-3.8%
Staff Nurse [Intellectual Disability]	6	+2	+2	-0	+1	+2	+0	+72.8%	+66.8%	-3.8%	+27.4%	+36.1%	+1.6%
Graduate Nursing/ Midwifery								-100.0%	-100.0%	-100.0%	-100.0%	-100.0%	-100.0%
Staff Nurse/ Staff Midwife	2,946	-235	-202	-133	-57	-130	-53	-7.4%	-6.4%	-4.3%	-1.9%	-4.2%	-1.8%
Public Health Nurse		-1	-1					-100.0%	-100.0%	-100.0%	-100.0%	-100.0%	-100.0%
Public Health Nurse		-1	-1					-100.0%	-100.0%	-100.0%	-100.0%	-100.0%	-100.0%
Pre-registration Nurse Intern (COVID-19)						-42		-100.0%	-100.0%	-100.0%	-100.0%	-100.0%	-100.0%
Pre-registration Nurse/ Midwife Intern	108	+99	+91	+80	+80	+97	-49	+1145.8%	+540.7%	+287.1%	+291.9%	+907.4%	-31.3%
Post-registration Nurse/ Midwife Student					-1	-1		-100.0%	-100.0%	-100.0%	-100.0%	-100.0%	-100.0%
Nursing/ Midwifery awaiting registration	61	+59	+52	+41	+2	+56	+59	+2954.5%	+606.2%	+207.9%	+3.7%	+1159.6%	+2954.5%
Nursing/ Midwifery Student	169	+158	+143	+121	+82	+110	+10	+1485.2%	+562.9%	+254.2%	+93.3%	+186.6%	+6.2%
Nursing Education/Clinical	35	+10	+4	+4	+3	+3	+3	+40.4%	+13.3%	+11.6%	+9.7%	+9.3%	+9.9%
Nursing/ Midwifery other	35	+10	+4	+4	+3	+3	+3	+40.4%	+13.3%	+11.6%	+9.7%	+9.3%	+9.9%
Nursing & Midwifery	4,965	+210	+193	+198	+191	+29	-27	+4.4%	+4.0%	+4.2%	+4.0%	+0.6%	-0.5%
Dietitians	19	+5	+2	-2	-1	-2	+1	+36.6%	+10.3%	-7.8%	-3.3%	-11.1%	+8.6%
Occupational Therapists	337	+37	+11	-3	-2	-9	+1	+12.3%	+3.2%	-0.8%	-0.6%	-2.6%	+0.2%
Physiotherapists	3	+1	+2	+1	+1	+1		+47.3%	+144.6%	+83.9%	+32.7%	+22.8%	
Podiatrists & Chiropodists	1	-1	-1	-0	+0	+0	+0	-55.5%	-44.9%	-33.6%	+11.0%	+1.2%	+3.8%
Speech & Language Therapists	61	+2	+0	-0	-0	-8	-3	+3.2%	+0.0%	-0.1%	-0.4%	-11.8%	-5.1%
Therapy Professions	420	+44	+13	-3	-2	-19	-1	+11.6%	+3.3%	-0.8%	-0.5%	-4.3%	-0.3%
Social Care	73	-15	-10	-6	-1	-7	+3	-17.3%	-12.0%	-7.6%	-1.2%	-9.1%	+4.0%
Social Workers	390	+40	+33	+32	+40	+17	+1	+11.4%	+9.2%	+8.8%	+11.5%	+4.6%	+0.3%
Psychologists	434	+91	+64	+45	+39	+10	+4	+26.6%	+17.2%	+11.6%	+10.0%	+2.3%	+0.9%
Pharmacists	16	+1	+1	+0	+0	-1	+0	+8.8%	+9.3%	+2.3%	+0.6%	-5.3%	+1.0%
Pharmacy Technicians	4	-0	-0	+1	+2	+1	-0	-5.2%	-4.4%	+25.6%	+76.5%	+19.8%	-0.0%
Pharmacy	20	+1	+1	+1	+2	-0	+0	+5.5%	+6.1%	+6.6%	+10.7%	-0.9%	+0.8%
Counsellor Therapists	125	+40	+40	+40	+30	+24	+0	+47.3%	+46.4%	+47.4%	+32.1%	+23.8%	+0.3%
Other Health & Social Care	4	-4	-5	-5	-8	-1	-0	-52.6%	-53.4%	-53.6%	-66.0%	-26.2%	-2.9%
Play Therapists/ Specialists	3	+1	+2	+2	+2	+2		+24.4%	+106.0%	+110.1%	+113.0%	+110.1%	
H&SC, Other	132	+36	+37	+37	+24	+24	+0	+37.9%	+38.4%	+39.2%	+22.6%	+22.5%	+0.2%
Health & Social Care Professionals	1,470	+197	+138	+106	+103	+25	+7	+15.5%	+10.3%	+7.8%	+7.6%	+1.7%	+0.5%
Executive Management	14	+7	+6	+4	+3	-1	+0	+99.9%	+74.9%	+39.9%	+27.2%	-5.0%	+0.1%
Senior Management (VIII & GM)	56	+30	+23	+24	+9	+3	+2	+119.0%	+72.7%	+76.0%	+20.2%	+6.4%	+4.3%
Management (VIII & above)	70	+37	+29	+28	+12	+3	+2	+114.9%	+73.1%	+67.3%	+21.6%	+3.9%	+3.4%
Middle Management (V-VII)	272	+106	+75	+52	+37	+29	+7	+63.6%	+38.2%	+23.7%	+15.6%	+11.9%	+2.7%
Other Administrative	2	+0	-1	-1	+0	+0	-0	+30.6%	-20.2%	-20.2%	+30.6%	+30.6%	-18.7%
Administrative/ Supervisory (V to VII)	274	+106	+75	+52	+37	+29	+7	+63.3%	+37.5%	+23.2%	+15.7%	+12.0%	+2.5%
General Administrative (III & IV)	697	+36	+16	+2	-20	-25	-6	+5.5%	+2.3%	+0.2%	-2.8%	-3.4%	-0.8%
Clerical (III & IV)	697	+36	+16	+2	-20	-25	-6	+5.5%	+2.3%	+0.2%	-2.8%	-3.4%	-0.8%
Management & Administrative	1,041	+180	+120	+81	+29	+7	+3	+20.8%	+13.0%	+8.5%	+2.9%	+0.7%	+0.3%
Support	562	-111	-79	-59	-19	-32	-2	-16.5%	-12.3%	-9.5%	-3.2%	-5.5%	-0.4%
Maintenance	130	-13	-8	-4	+1	-7	-0	-8.8%	-6.0%	-2.9%	+1.1%	-5.1%	-0.0%
Technical Services		-2	-2	-2	-2			-100.0%	-100.0%	-100.0%	-100.0%	-100.0%	-100.0%
Maintenance/ Technical	130	-15	-10	-6	-1	-7	-0	-10.1%	-7.3%	-4.3%	-0.4%	-5.1%	-0.0%
General Support	692	-126	-89	-65	-19	-39	-2	-15.4%	-11.4%	-8.6%	-2.7%	-5.4%	-0.3%
Attendant/ Aide	433	-291	-267	-248	-172	-150	-1	-40.2%	-38.1%	-36.4%	-28.4%	-25.7%	-0.3%
Health & Social Care Assistants	13	+9	+9	+8	+4	+5	+2	+185.3%	+185.3%	+143.4%	+48.1%	+58.8%	+14.5%
Health Care Assistant/ Care Assistant	582	+377	+334	+289	+208	+152	+1	+184.4%	+134.3%	+98.6%	+55.6%	+35.4%	+0.2%
Health Care Assistants	1,028	+95	+75	+49	+40	+7	+1	+10.2%	+7.9%	+5.0%	+4.1%	+0.7%	+0.1%
Home Care Services	23	+23	+8	+6	+7	+8	+1	-100.0%	+50.9%	+36.4%	+43.5%	+58.2%	+4.0%
Other Care Grades	21	+10	+10	+5	-2	-1	-1	+94.6%	+92.8%	+31.6%	-7.9%	-5.6%	-4.1%
Pastoral Care	11	-3	-3	-2	-2	-1	-1	-22.0%	-19.3%	-16.5%	-12.5%	-8.4%	-6.5%
Workshop Services	160	-11	-13	-10	-5	+5	+1	-6.4%	-7.3%	-5.9%	-2.8%	+3.3%	+0.5%
Care, other	215	+19	+2	-1	-1	+11	+0	+9.5%	+1.1%	-0.5%	-0.6%	+5.5%	+0.0%

Sep 2022 (Dec 2015 figure: 9,501)	WTE Sep 2022	WTE change since Dec 16	WTE change since Dec 17	WTE change since Dec 18	WTE change since Dec 19	WTE change since Dec 20	WTE change since Aug 22	% change since Dec 16	% change since Dec 17	% change since Dec 18	% change since Dec 19	% change since Dec 20	% change since Aug 22
Overall	10,400	+779	+609	+502	+446	+99	+6	+8.1%	+6.2%	+5.1%	+4.5%	+1.0%	+0.1%
Patient & Client Care	1,243	+113	+77	+48	+39	+18	+2	+10.0%	+6.6%	+4.0%	+3.3%	+1.5%	+0.1%

Source: Health Service Personnel Census

