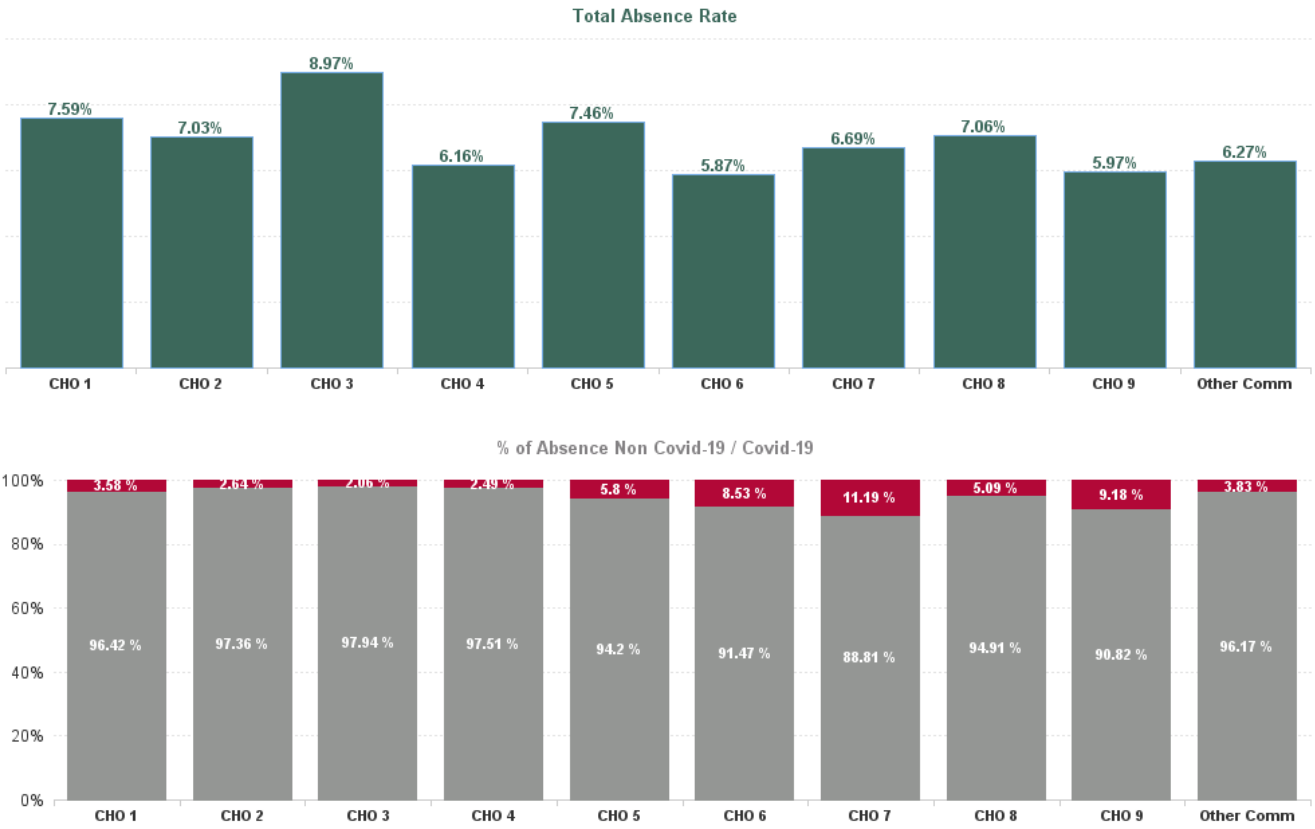


October 2024

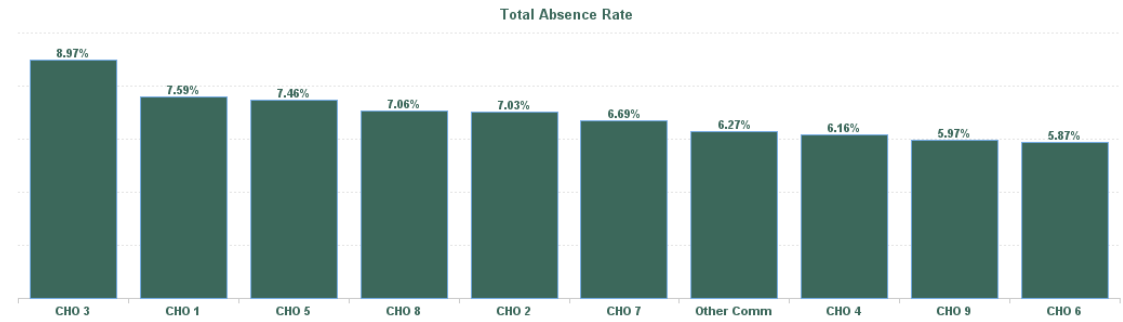
Health Service Absence Rate - by Staff Category: Oct 2024	Certified absence	Self- certified absence	Non Covid-19 absence	Covid-19 Absence	Total absence rate	% Non Covid-19 absence	% Covid-19 absence
Mental Health	5.90%	0.64%	6.53%	0.35%	6.89%	94.85%	5.15%
Medical & Dental	2.48%	0.36%	2.83%	0.15%	2.99%	94.95%	5.05%
Nursing & Midwifery	6.25%	0.71%	6.97%	0.41%	7.37%	94.49%	5.51%
Health & Social Care Professionals	4.53%	0.49%	5.03%	0.19%	5.22%	96.43%	3.57%
Management & Administrative	6.67%	0.48%	7.15%	0.36%	7.51%	95.15%	4.85%
General Support	6.31%	0.65%	6.96%	0.39%	7.35%	94.66%	5.34%
Patient & Client Care	8.12%	0.86%	8.98%	0.49%	9.47%	94.79%	5.21%

Health Service Absence Rate - by Hospital Group: Oct 2024	Certified absence	Self- certified absence	Non Covid-19 absence	Covid-19 Absence	Total absence rate	% Non Covid-19 absence	% Covid-19 absence
Mental Health	5.90%	0.64%	6.53%	0.35%	6.89%	94.85%	5.15%
CHO 1	6.70%	0.62%	7.32%	0.27%	7.59%	96.42%	3.58%
CHO 2	6.35%	0.49%	6.84%	0.19%	7.03%	97.36%	2.64%
CHO 3	8.19%	0.60%	8.79%	0.18%	8.97%	97.94%	2.06%
CHO 4	5.40%	0.60%	6.01%	0.15%	6.16%	97.51%	2.49%
CHO 5	6.47%	0.55%	7.02%	0.43%	7.46%	94.20%	5.80%
CHO 6	4.74%	0.63%	5.37%	0.50%	5.87%	91.47%	8.53%
CHO 7	5.38%	0.57%	5.94%	0.75%	6.69%	88.81%	11.19%
CHO 8	5.79%	0.90%	6.70%	0.36%	7.06%	94.91%	5.09%
CHO 9	4.79%	0.63%	5.42%	0.55%	5.97%	90.82%	9.18%
Other Community Services	5.08%	0.95%	6.03%	0.24%	6.27%	96.17%	3.83%



October 2024

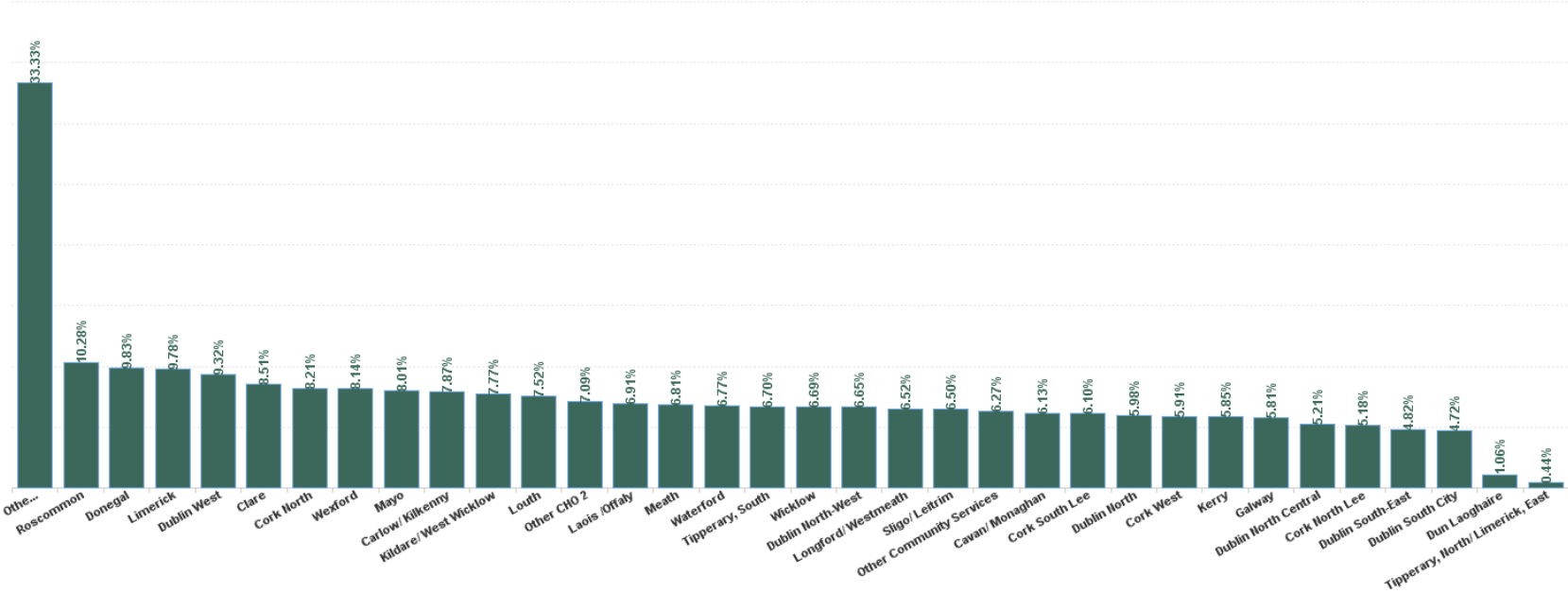
Health Service Absence Rate - by HG, CHO/Care Group & Staff Category : Oct 2024	Certified absence	Self-certified absence	Non Covid-19 absence	Covid-19 Absence	Total absence rate	Medical & Dental	Nursing & Midwifery	Health & Social Care Professionals	Management & Administrative	General Support	Patient & Client Care
Mental Health	5.90%	0.64%	6.53%	0.35%	6.89%	2.99%	7.37%	5.22%	7.51%	7.35%	9.47%
CHO 1	6.70%	0.62%	7.32%	0.27%	7.59%	2.53%	7.94%	5.98%	10.19%	10.31%	8.60%
CHO 2	6.35%	0.49%	6.84%	0.19%	7.03%	2.13%	8.36%	7.69%	4.09%	4.07%	8.19%
CHO 3	8.19%	0.60%	8.79%	0.18%	8.97%	1.05%	9.83%	3.87%	11.60%	9.73%	16.65%
CHO 4	5.40%	0.60%	6.01%	0.15%	6.16%	4.22%	6.93%	4.83%	4.94%	6.25%	7.86%
CHO 5	6.47%	0.55%	7.02%	0.43%	7.46%	7.27%	7.88%	4.85%	10.08%	6.42%	6.77%
CHO 6	4.74%	0.63%	5.37%	0.50%	5.87%	2.53%	6.59%	4.79%	7.14%	7.96%	7.66%
CHO 7	5.38%	0.57%	5.94%	0.75%	6.69%	1.46%	7.38%	4.39%	9.15%	0.34%	11.99%
CHO 8	5.79%	0.90%	6.70%	0.36%	7.06%	3.59%	7.03%	5.53%	9.05%	6.06%	9.83%
CHO 9	4.79%	0.63%	5.42%	0.55%	5.97%	2.70%	4.84%	4.92%	7.67%	8.15%	12.35%
Other Community Services	5.08%	0.95%	6.03%	0.24%	6.27%	0.60%	7.69%	7.11%	3.90%	15.25%	4.85%



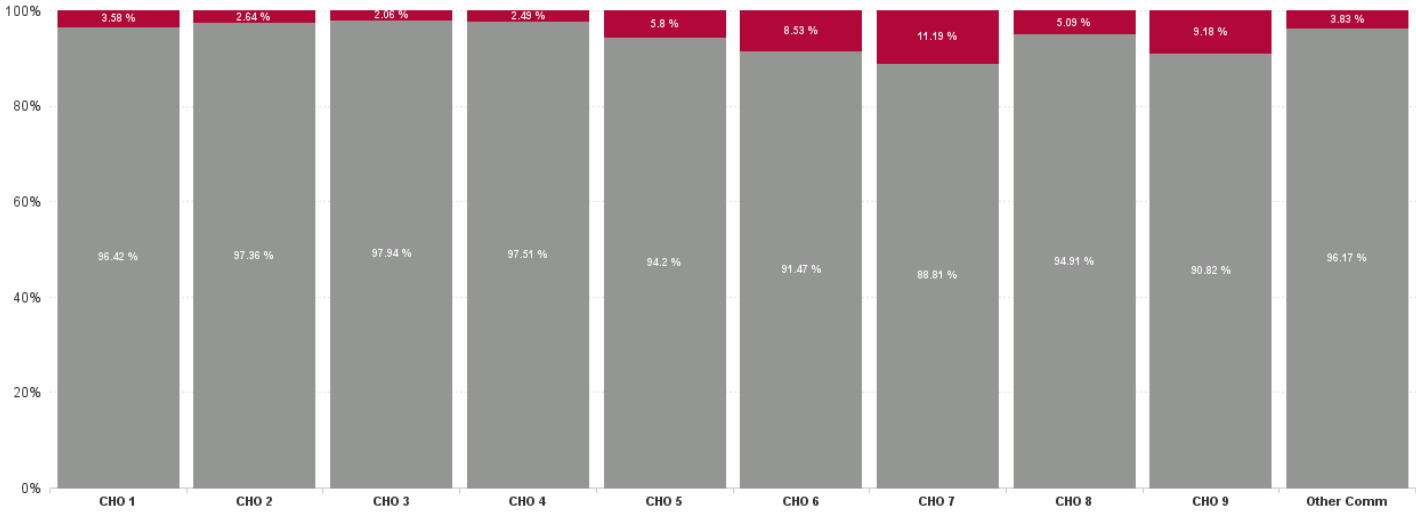
October 2024

Health Service Absence Rate - by HG, CHO/Care Group & Staff Category: Oct 2024	Certified absence	Self- certified absence	Non Covid-19 absence	Covid-19 Absence	Total absence rate	Medical & Dental	Nursing & Midwifery	Health & Social Care Professionals	Management & Administrative	General Support	Patient & Client Care
Total	5.90%	0.64%	6.53%	0.35%	6.89%	2.99%	7.37%	5.22%	7.51%	7.35%	9.47%
Cavan/ Monaghan	5.22%	0.57%	5.78%	0.35%	6.13%	3.51%	5.80%	5.81%	6.04%	9.71%	8.94%
Donegal	8.92%	0.75%	9.67%	0.16%	9.83%	3.32%	12.02%	5.55%	13.72%	7.77%	5.17%
Other CHO 1	33.33%	0.00%	33.33%	0.00%	33.33%				33.33%		
Sligo/ Leitrim	5.66%	0.53%	6.19%	0.32%	6.50%	0.73%	4.93%	6.69%	10.93%	12.00%	11.31%
CHO 1	6.70%	0.62%	7.32%	0.27%	7.59%	2.53%	7.94%	5.98%	10.19%	10.31%	8.60%
Galway	5.06%	0.49%	5.55%	0.26%	5.81%	2.53%	7.12%	6.45%	5.00%	3.64%	5.38%
Mayo	7.38%	0.50%	7.88%	0.12%	8.01%	1.19%	9.03%	9.29%	4.20%	0.42%	11.40%
Other CHO 2	6.52%	0.57%	7.09%	0.00%	7.09%			10.42%	0.82%		
Roscommon	9.83%	0.45%	10.28%	0.00%	10.28%	1.79%	11.93%	10.29%	1.65%	11.18%	13.84%
CHO 2	6.35%	0.49%	6.84%	0.19%	7.03%	2.13%	8.36%	7.69%	4.09%	4.07%	8.19%
Clare	7.56%	0.74%	8.30%	0.21%	8.51%	1.69%	8.29%	1.21%	10.15%	14.00%	11.01%
Limerick	9.05%	0.54%	9.59%	0.19%	9.78%	0.98%	11.60%	4.39%	13.03%	7.99%	22.52%
Tipperary, North/ Limerick, East	0.00%	0.44%	0.44%	0.00%	0.44%	0.62%	0.59%	0.00%	0.00%		
CHO 3	8.19%	0.60%	8.79%	0.18%	8.97%	1.05%	9.83%	3.87%	11.60%	9.73%	16.65%
Cork North	7.18%	0.76%	7.94%	0.28%	8.21%	6.46%	9.06%	8.13%	8.02%	5.59%	8.09%
Cork North Lee	4.43%	0.64%	5.08%	0.10%	5.18%	4.99%	7.17%	2.78%	2.30%	0.00%	6.53%
Cork South Lee	5.51%	0.45%	5.95%	0.15%	6.10%	4.79%	6.17%	8.16%	3.58%	0.00%	6.18%
Cork West	4.99%	0.45%	5.44%	0.47%	5.91%	0.69%	7.34%	0.00%	0.84%		9.34%
Kerry	5.20%	0.60%	5.79%	0.06%	5.85%	1.68%	5.67%	3.93%	9.51%	7.57%	8.50%
CHO 4	5.40%	0.60%	6.01%	0.15%	6.16%	4.22%	6.93%	4.83%	4.94%	6.25%	7.86%
Carlow/ Kilkenny	6.48%	0.46%	6.94%	0.93%	7.87%	10.16%	9.22%	3.20%	6.97%	6.39%	7.13%
Tipperary, South	6.01%	0.57%	6.58%	0.11%	6.70%	1.06%	7.03%	9.22%	14.31%	5.11%	2.84%
Waterford	6.11%	0.66%	6.77%	0.00%	6.77%	5.37%	5.87%	4.23%	11.14%	9.92%	8.92%
Wexford	7.21%	0.55%	7.76%	0.38%	8.14%	11.20%	8.76%	4.98%	10.58%	5.24%	6.86%
CHO 5	6.47%	0.55%	7.02%	0.43%	7.46%	7.27%	7.88%	4.85%	10.08%	6.42%	6.77%
Dublin South-East	4.09%	0.60%	4.68%	0.14%	4.82%	0.00%	3.76%	7.22%	10.62%	0.57%	7.03%
Dun Laoghaire	0.00%	1.06%	1.06%	0.00%	1.06%			1.06%			
Wicklow	5.30%	0.64%	5.94%	0.76%	6.69%	3.15%	9.88%	4.28%	6.18%	11.15%	9.01%
CHO 6	4.74%	0.63%	5.37%	0.50%	5.87%	2.53%	6.59%	4.79%	7.14%	7.96%	7.66%
Dublin South City	3.97%	0.46%	4.43%	0.29%	4.72%	1.12%	4.87%	4.30%	14.89%	0.41%	5.35%
Dublin West	6.94%	0.82%	7.76%	1.56%	9.32%	1.69%	12.22%	3.38%	5.35%	0.00%	15.08%
Kildare/ West Wicklow	6.56%	0.49%	7.05%	0.72%	7.77%	1.95%	10.39%	6.43%	6.62%	0.00%	3.46%
CHO 7	5.38%	0.57%	5.94%	0.75%	6.69%	1.46%	7.38%	4.39%	9.15%	0.34%	11.99%
Laois /Offaly	5.40%	1.04%	6.44%	0.46%	6.91%	5.43%	4.51%	5.31%	10.96%	3.93%	11.85%
Longford/ Westmeath	5.49%	0.85%	6.34%	0.18%	6.52%	0.48%	7.72%	7.95%	9.93%	6.25%	3.06%
Louth	6.27%	0.84%	7.11%	0.41%	7.52%	2.41%	8.25%	5.75%	6.96%	7.42%	13.69%
Meath	5.96%	0.85%	6.81%	0.00%	6.81%	16.43%	6.70%	0.37%	14.71%		
CHO 8	5.79%	0.90%	6.70%	0.36%	7.06%	3.59%	7.03%	5.53%	9.05%	6.06%	9.83%
Dublin North	5.07%	0.53%	5.60%	0.37%	5.98%	4.55%	4.92%	6.44%	4.17%	3.87%	11.22%
Dublin North Central	3.64%	0.56%	4.20%	1.01%	5.21%	0.70%	4.18%	2.24%	11.40%	6.79%	30.58%
Dublin North-West	5.54%	0.81%	6.36%	0.30%	6.65%	4.22%	5.24%	8.07%	6.95%	16.26%	8.13%
CHO 9	4.79%	0.63%	5.42%	0.55%	5.97%	2.70%	4.84%	4.92%	7.67%	8.15%	12.35%
Other Community Services	5.08%	0.95%	6.03%	0.24%	6.27%	0.60%	7.69%	7.11%	3.90%	15.25%	4.85%
Other Community Services	5.08%	0.95%	6.03%	0.24%	6.27%	0.60%	7.69%	7.11%	3.90%	15.25%	4.85%
Community Services	5.90%	0.64%	6.53%	0.35%	6.89%	2.99%	7.37%	5.22%	7.51%	7.35%	9.47%

Total Absence Rate



% of Absence Non Covid-19 / Covid-19

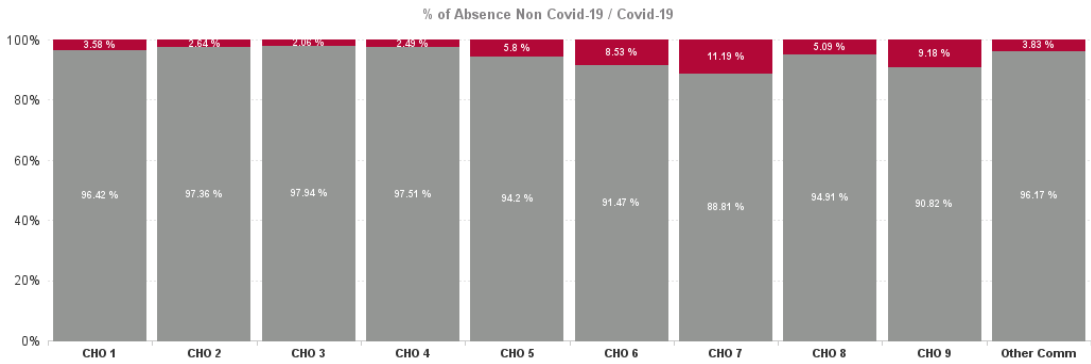


October 2024

Health Service Covid 19 Absence Rate - by Hospital & Staff Category: Oct 2024	Non Covid-19 absence	Covid-19 absence	Total absence rate	Medical & Dental	Nursing & Midwifery	Health & Social Care Professionals	Management & Administrative	General Support	Patient & Client Care
Mental Health	6.53%	0.35%	6.89%	0.15%	0.41%	0.19%	0.36%	0.39%	0.49%
Cavan/ Monaghan	5.78%	0.35%	6.13%	0.00%	0.29%	0.47%	0.00%	1.23%	0.86%
Donegal	9.67%	0.16%	9.83%	0.00%	0.25%	0.00%	0.25%	0.00%	0.00%
Other CHO 1	33.33%	0.00%	33.33%				0.00%		
Sligo/ Leitrim	6.19%	0.32%	6.50%	0.00%	0.23%	0.58%	0.00%	0.41%	1.68%
CHO 1	7.32%	0.27%	7.59%	0.00%	0.26%	0.31%	0.08%	0.37%	0.83%
Galway	5.55%	0.26%	5.81%	0.00%	0.34%	0.20%	0.36%	0.00%	0.29%
Mayo	7.88%	0.12%	8.01%	0.00%	0.20%	0.00%	0.24%	0.00%	0.00%
Other CHO 2	7.09%	0.00%	7.09%			0.00%	0.00%		
Roscommon	10.28%	0.00%	10.28%	0.00%	0.00%	0.00%	0.00%	0.00%	0.00%
CHO 2	6.84%	0.19%	7.03%	0.00%	0.25%	0.13%	0.26%	0.00%	0.17%
Clare	8.30%	0.21%	8.51%	0.00%	0.00%	1.21%	1.16%	0.00%	0.28%
Limerick	9.59%	0.19%	9.78%	0.00%	0.24%	0.00%	0.99%	0.00%	0.00%
Tipperary, North/ Limerick, East	0.44%	0.00%	0.44%	0.00%	0.00%	0.00%	0.00%		
CHO 3	8.79%	0.18%	8.97%	0.00%	0.13%	0.13%	0.98%	0.00%	0.14%
Cork North	7.94%	0.28%	8.21%	0.00%	0.44%	0.00%	0.50%	0.00%	0.15%
Cork North Lee	5.08%	0.10%	5.18%	0.23%	0.16%	0.00%	0.00%	0.00%	0.00%
Cork South Lee	5.95%	0.15%	6.10%	0.00%	0.31%	0.00%	0.00%	0.00%	0.00%
Cork West	5.44%	0.47%	5.91%	0.00%	0.89%	0.00%	0.00%		0.00%
Kerry	5.79%	0.06%	5.85%	0.00%	0.00%	0.14%	0.67%	0.00%	0.00%
CHO 4	6.01%	0.15%	6.16%	0.08%	0.24%	0.02%	0.22%	0.00%	0.06%
Carlow/ Kilkenny	6.94%	0.93%	7.87%	0.00%	1.62%	0.00%	0.31%	0.53%	0.00%
Tipperary, South	6.58%	0.11%	6.70%	0.00%	0.13%	0.89%	0.00%	0.00%	0.00%
Waterford	6.77%	0.00%	6.77%	0.00%	0.00%	0.00%	0.00%	0.00%	0.00%
Wexford	7.76%	0.38%	8.14%	0.00%	0.52%	0.00%	0.69%	0.90%	0.00%
CHO 5	7.02%	0.43%	7.46%	0.00%	0.70%	0.12%	0.29%	0.29%	0.00%
Dublin South-East	4.68%	0.14%	4.82%	0.00%	0.00%	1.08%	0.00%	0.00%	0.00%
Dun Laoghaire	1.06%	0.00%	1.06%			0.00%			
Wicklow	5.94%	0.76%	6.69%	0.21%	2.21%	0.00%	0.00%	0.66%	0.00%
CHO 6	5.37%	0.50%	5.87%	0.17%	1.02%	0.26%	0.00%	0.46%	0.00%
Dublin South City	4.43%	0.29%	4.72%	0.37%	0.31%	0.41%	0.00%	0.00%	0.00%
Dublin West	7.76%	1.56%	9.32%	1.17%	0.27%	0.00%	1.19%	0.00%	3.41%
Kildare/ West Wicklow	7.05%	0.72%	7.77%	0.00%	0.64%	2.61%	0.56%	0.00%	0.00%
CHO 7	5.94%	0.75%	6.69%	0.51%	0.40%	0.66%	0.61%	0.00%	2.40%
Laois /Offaly	6.44%	0.46%	6.91%	0.00%	1.05%	0.00%	0.13%	0.00%	0.00%
Longford/ Westmeath	6.34%	0.18%	6.52%	0.00%	0.37%	0.00%	0.00%	0.00%	0.00%
Louth	7.11%	0.41%	7.52%	0.79%	0.63%	0.00%	0.00%	0.00%	0.00%
Meath	6.81%	0.00%	6.81%	0.00%	0.00%	0.00%	0.00%		
CHO 8	6.70%	0.36%	7.06%	0.37%	0.67%	0.00%	0.04%	0.00%	0.00%
Dublin North	5.60%	0.37%	5.98%	0.61%	0.36%	0.23%	0.00%	0.51%	0.47%
Dublin North Central	4.20%	1.01%	5.21%	0.05%	0.48%	0.04%	2.01%	3.29%	7.76%

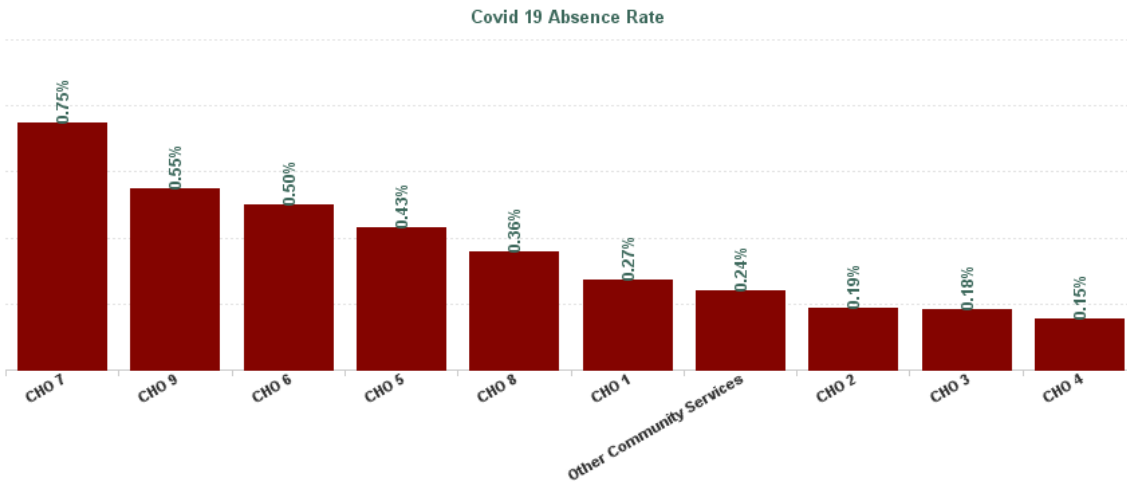
Dublin North-West	6.36%	0.30%	6.65%	0.00%	0.17%	0.49%	0.46%	0.00%	1.02%
CHO 9	5.42%	0.55%	5.97%	0.17%	0.32%	0.21%	0.86%	1.30%	1.44%
Other Community Services	6.03%	0.24%	6.27%	0.00%	0.22%	0.00%	0.45%	0.90%	0.00%
Other Community Services	6.03%	0.24%	6.27%	0.00%	0.22%	0.00%	0.45%	0.90%	0.00%
Community Services	6.53%	0.35%	6.89%	0.15%	0.41%	0.19%	0.36%	0.39%	0.49%

Health Service Absence Rate - by HG, CHO/Care Group & Staff Category: Oct 2024	Certified absence	Self-certified absence	Non Covid-19 absence	Covid-19 Absence	Total absence rate	Medical & Dental	Nursing & Midwifery	Health & Social Care Professionals	Management & Administrative	General Support	Patient & Client Care
Total	5.90%	0.64%	6.53%	0.35%	6.89%	2.99%	7.37%	5.22%	7.51%	7.35%	9.47%
Health Service Executive	6.70%	0.62%	7.32%	0.27%	7.59%	2.53%	7.94%	5.98%	10.19%	10.31%	8.60%
CHO 1	6.70%	0.62%	7.32%	0.27%	7.59%	2.53%	7.94%	5.98%	10.19%	10.31%	8.60%
Health Service Executive	6.35%	0.49%	6.84%	0.19%	7.03%	2.13%	8.36%	7.69%	4.09%	4.07%	8.19%
CHO 2	6.35%	0.49%	6.84%	0.19%	7.03%	2.13%	8.36%	7.69%	4.09%	4.07%	8.19%
Health Service Executive	8.19%	0.60%	8.79%	0.18%	8.97%	1.05%	9.83%	3.87%	11.60%	9.73%	16.65%
CHO 3	8.19%	0.60%	8.79%	0.18%	8.97%	1.05%	9.83%	3.87%	11.60%	9.73%	16.65%
Health Service Executive	5.40%	0.60%	6.01%	0.15%	6.16%	4.22%	6.93%	4.83%	4.94%	6.25%	7.86%
CHO 4	5.40%	0.60%	6.01%	0.15%	6.16%	4.22%	6.93%	4.83%	4.94%	6.25%	7.86%
Health Service Executive	6.47%	0.55%	7.02%	0.43%	7.46%	7.27%	7.88%	4.85%	10.08%	6.42%	6.77%
CHO 5	6.47%	0.55%	7.02%	0.43%	7.46%	7.27%	7.88%	4.85%	10.08%	6.42%	6.77%
Health Service Executive	4.66%	0.63%	5.29%	0.62%	5.90%	0.56%	6.27%	4.79%	6.23%	7.95%	7.70%
Section 38 Voluntary Agencies	4.88%	0.63%	5.51%	0.32%	5.83%	3.79%	7.60%	4.78%	7.72%	8.02%	6.99%
CHO 6	4.74%	0.63%	5.37%	0.50%	5.87%	2.53%	6.59%	4.79%	7.14%	7.96%	7.66%
Health Service Executive	5.38%	0.57%	5.94%	0.75%	6.69%	1.46%	7.38%	4.39%	9.15%	0.34%	11.99%
CHO 7	5.38%	0.57%	5.94%	0.75%	6.69%	1.46%	7.38%	4.39%	9.15%	0.34%	11.99%
Health Service Executive	5.79%	0.90%	6.70%	0.36%	7.06%	3.59%	7.03%	5.53%	9.05%	6.06%	9.83%
CHO 8	5.79%	0.90%	6.70%	0.36%	7.06%	3.59%	7.03%	5.53%	9.05%	6.06%	9.83%
Health Service Executive	5.13%	0.65%	5.78%	0.26%	6.04%	2.75%	5.24%	5.04%	7.92%	8.42%	11.24%
Section 38 Voluntary Agencies	2.11%	0.47%	2.58%	2.80%	5.39%	1.16%	2.05%	0.73%	6.59%	7.50%	37.60%
CHO 9	4.79%	0.63%	5.42%	0.55%	5.97%	2.70%	4.84%	4.92%	7.67%	8.15%	12.35%
Health Service Executive	5.08%	0.95%	6.03%	0.24%	6.27%	0.60%	7.69%	7.11%	3.90%	15.25%	4.85%
Other Community Services	5.08%	0.95%	6.03%	0.24%	6.27%	0.60%	7.69%	7.11%	3.90%	15.25%	4.85%
Community Services	5.90%	0.64%	6.53%	0.35%	6.89%	2.99%	7.37%	5.22%	7.51%	7.35%	9.47%



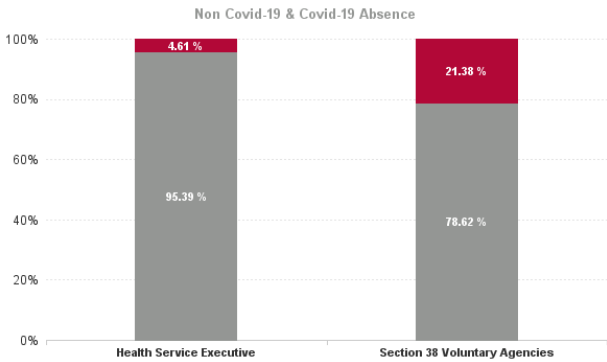
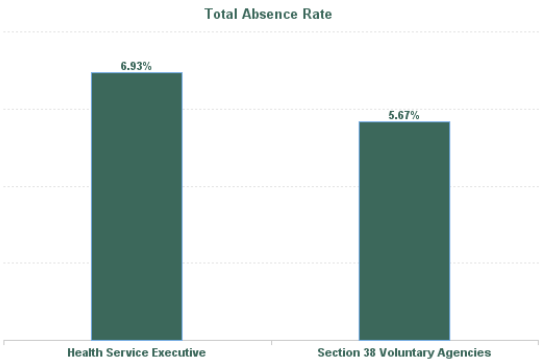
October 2024

Health Service Covid 19 Absence Rate - by Hospital & Staff Category: Oct 2024	Non Covid-19 absence	Covid-19 Absence	Total absence rate	Medical & Dental	Nursing & Midwifery	Health & Social Care Professionals	Management & Administrative	General Support	Patient & Client Care
Mental Health	6.53%	0.35%	6.89%	0.15%	0.41%	0.19%	0.36%	0.39%	0.49%
Health Service Executive	7.32%	0.27%	7.59%	0.00%	0.26%	0.31%	0.08%	0.37%	0.83%
CHO 1	7.32%	0.27%	7.59%	0.00%	0.26%	0.31%	0.08%	0.37%	0.83%
Health Service Executive	6.84%	0.19%	7.03%	0.00%	0.25%	0.13%	0.26%	0.00%	0.17%
CHO 2	6.84%	0.19%	7.03%	0.00%	0.25%	0.13%	0.26%	0.00%	0.17%
Health Service Executive	8.79%	0.18%	8.97%	0.00%	0.13%	0.13%	0.98%	0.00%	0.14%
CHO 3	8.79%	0.18%	8.97%	0.00%	0.13%	0.13%	0.98%	0.00%	0.14%
Health Service Executive	6.01%	0.15%	6.16%	0.08%	0.24%	0.02%	0.22%	0.00%	0.06%
CHO 4	6.01%	0.15%	6.16%	0.08%	0.24%	0.02%	0.22%	0.00%	0.06%
Health Service Executive	7.02%	0.43%	7.46%	0.00%	0.70%	0.12%	0.29%	0.29%	0.00%
CHO 5	7.02%	0.43%	7.46%	0.00%	0.70%	0.12%	0.29%	0.29%	0.00%
Health Service Executive	5.29%	0.62%	5.90%	0.00%	1.02%	0.65%	0.00%	0.57%	0.00%
Section 38 Voluntary Agencies	5.51%	0.32%	5.83%	0.27%	1.03%	0.00%	0.00%	0.00%	0.00%
CHO 6	5.37%	0.50%	5.87%	0.17%	1.02%	0.26%	0.00%	0.46%	0.00%
Health Service Executive	5.94%	0.75%	6.69%	0.51%	0.40%	0.66%	0.61%	0.00%	2.40%
CHO 7	5.94%	0.75%	6.69%	0.51%	0.40%	0.66%	0.61%	0.00%	2.40%
Health Service Executive	6.70%	0.36%	7.06%	0.37%	0.67%	0.00%	0.04%	0.00%	0.00%
CHO 8	6.70%	0.36%	7.06%	0.37%	0.67%	0.00%	0.04%	0.00%	0.00%
Health Service Executive	5.78%	0.26%	6.04%	0.16%	0.22%	0.20%	0.21%	0.29%	0.62%
Section 38 Voluntary Agencies	2.58%	2.80%	5.39%	0.58%	1.03%	0.73%	3.57%	3.75%	20.07%
CHO 9	5.42%	0.55%	5.97%	0.17%	0.32%	0.21%	0.86%	1.30%	1.44%
Health Service Executive	6.03%	0.24%	6.27%	0.00%	0.22%	0.00%	0.45%	0.90%	0.00%
Other Community Services	6.03%	0.24%	6.27%	0.00%	0.22%	0.00%	0.45%	0.90%	0.00%
Community Services	6.53%	0.35%	6.89%	0.15%	0.41%	0.19%	0.36%	0.39%	0.49%



October 2024

Health Service Absence Rate - by Admin : Oct 2024	Certified absence	Self- certified absence	Non Covid-19 absence	Covid-19 Absence	Total absence rate	Medical & Dental	Nursing & Midwifery	Health & Social Care Profession als	Manageme nt & Administra tive	General Support	Patient & Client Care
Total	5.90%	0.64%	6.53%	0.35%	6.89%	2.99%	7.37%	5.22%	7.51%	7.35%	9.47%
Health Service Executive	5.98%	0.64%	6.62%	0.32%	6.93%	2.95%	7.45%	5.26%	7.53%	7.34%	9.35%
Section 38 Voluntary Agencies	3.89%	0.57%	4.46%	1.21%	5.67%	3.55%	4.66%	4.58%	7.29%	7.58%	24.42%



Health Service Absence Rate - by Staff Category: Oct 2024	Certified absence	Self- certified absence	Non Covid-19 absence	Covid-19 Absence	Total absence rate	% Non Covid-19 absence	% Covid-19 absence
CHO 1	6.70%	0.62%	7.32%	0.27%	7.59%	96.42%	3.58%
Medical & Dental	1.92%	0.61%	2.53%	0.00%	2.53%	100.00%	0.00%
Nursing & Midwifery	7.07%	0.61%	7.68%	0.26%	7.94%	96.74%	3.26%
Health & Social Care Professionals	5.14%	0.52%	5.66%	0.31%	5.98%	94.73%	5.27%
Management & Administrative	9.65%	0.46%	10.11%	0.08%	10.19%	99.22%	0.78%
General Support	8.83%	1.11%	9.94%	0.37%	10.31%	96.43%	3.57%
Patient & Client Care	7.14%	0.62%	7.77%	0.83%	8.60%	90.32%	9.68%

Health Service Absence Rate - by Staff Category: Oct 2024	Certified absence	Self- certified absence	Non Covid-19 absence	Covid-19 Absence	Total absence rate	% Non Covid-19 absence	% Covid-19 absence
CHO 2	6.35%	0.49%	6.84%	0.19%	7.03%	97.36%	2.64%
Medical & Dental	1.99%	0.14%	2.13%	0.00%	2.13%	100.00%	0.00%
Nursing & Midwifery	7.65%	0.47%	8.12%	0.25%	8.36%	97.02%	2.98%
Health & Social Care Professionals	6.92%	0.64%	7.56%	0.13%	7.69%	98.35%	1.65%
Management & Administrative	3.24%	0.59%	3.83%	0.26%	4.09%	93.74%	6.26%
General Support	3.44%	0.63%	4.07%	0.00%	4.07%	100.00%	0.00%
Patient & Client Care	7.48%	0.54%	8.01%	0.17%	8.19%	97.88%	2.12%

Health Service Absence Rate - by Staff Category: Oct 2024	Certified absence	Self- certified absence	Non Covid-19 absence	Covid-19 Absence	Total absence rate	% Non Covid-19 absence	% Covid-19 absence
CHO 3	8.19%	0.60%	8.79%	0.18%	8.97%	97.94%	2.06%
Medical & Dental	0.55%	0.50%	1.05%	0.00%	1.05%	100.00%	0.00%
Nursing & Midwifery	8.90%	0.80%	9.69%	0.13%	9.83%	98.63%	1.37%
Health & Social Care Professionals	3.61%	0.13%	3.74%	0.13%	3.87%	96.65%	3.35%
Management & Administrative	10.44%	0.18%	10.62%	0.98%	11.60%	91.59%	8.41%
General Support	8.87%	0.86%	9.73%	0.00%	9.73%	100.00%	0.00%
Patient & Client Care	15.73%	0.77%	16.50%	0.14%	16.65%	99.14%	0.86%

Health Service Absence Rate - by Staff Category: Oct 2024	Certified absence	Self- certified absence	Non Covid-19 absence	Covid-19 Absence	Total absence rate	% Non Covid-19 absence	% Covid-19 absence
CHO 4	5.40%	0.60%	6.01%	0.15%	6.16%	97.51%	2.49%
Medical & Dental	3.78%	0.37%	4.14%	0.08%	4.22%	98.21%	1.79%
Nursing & Midwifery	6.03%	0.65%	6.69%	0.24%	6.93%	96.48%	3.52%
Health & Social Care Professionals	4.40%	0.41%	4.81%	0.02%	4.83%	99.61%	0.39%
Management & Administrative	4.14%	0.58%	4.72%	0.22%	4.94%	95.52%	4.48%
General Support	5.50%	0.74%	6.25%	0.00%	6.25%	100.00%	0.00%
Patient & Client Care	6.91%	0.89%	7.80%	0.06%	7.86%	99.27%	0.73%

Health Service Absence Rate - by Staff Category: Oct 2024	Certified absence	Self- certified absence	Non Covid-19 absence	Covid-19 Absence	Total absence rate	% Non Covid-19 absence	% Covid-19 absence
CHO 5	6.47%	0.55%	7.02%	0.43%	7.46%	94.20%	5.80%
Medical & Dental	6.92%	0.35%	7.27%	0.00%	7.27%	100.00%	0.00%
Nursing & Midwifery	6.62%	0.56%	7.18%	0.70%	7.88%	91.10%	8.90%
Health & Social Care Professionals	4.06%	0.67%	4.73%	0.12%	4.85%	97.53%	2.47%
Management & Administrative	9.52%	0.26%	9.79%	0.29%	10.08%	97.10%	2.90%
General Support	5.50%	0.64%	6.13%	0.29%	6.42%	95.52%	4.48%
Patient & Client Care	6.09%	0.68%	6.77%	0.00%	6.77%	100.00%	0.00%

Health Service Absence Rate - by Staff Category: Oct 2024	Certified absence	Self- certified absence	Non Covid-19 absence	Covid-19 Absence	Total absence rate	% Non Covid-19 absence	% Covid-19 absence
CHO 6	4.74%	0.63%	5.37%	0.50%	5.87%	91.47%	8.53%
Medical & Dental	2.16%	0.21%	2.37%	0.17%	2.53%	93.38%	6.62%
Nursing & Midwifery	5.00%	0.58%	5.57%	1.02%	6.59%	84.48%	15.52%
Health & Social Care Professionals	3.65%	0.88%	4.53%	0.26%	4.79%	94.61%	5.39%
Management & Administrative	6.52%	0.62%	7.14%	0.00%	7.14%	100.00%	0.00%
General Support	6.08%	1.42%	7.50%	0.46%	7.96%	94.19%	5.81%
Patient & Client Care	7.11%	0.55%	7.66%	0.00%	7.66%	100.00%	0.00%

Health Service Absence Rate - by Staff Category: Oct 2024	Certified absence	Self- certified absence	Non Covid-19 absence	Covid-19 Absence	Total absence rate	% Non Covid-19 absence	% Covid-19 absence
CHO 7	5.38%	0.57%	5.94%	0.75%	6.69%	88.81%	11.19%
Medical & Dental	0.68%	0.26%	0.95%	0.51%	1.46%	64.89%	35.11%
Nursing & Midwifery	6.42%	0.56%	6.98%	0.40%	7.38%	94.62%	5.38%
Health & Social Care Professionals	3.21%	0.52%	3.73%	0.66%	4.39%	84.96%	15.04%
Management & Administrative	7.95%	0.59%	8.54%	0.61%	9.15%	93.30%	6.70%
General Support	0.34%	0.00%	0.34%	0.00%	0.34%	100.00%	0.00%
Patient & Client Care	8.56%	1.03%	9.60%	2.40%	11.99%	80.02%	19.98%

Health Service Absence Rate - by Staff Category: Oct 2024	Certified absence	Self- certified absence	Non Covid-19 absence	Covid-19 Absence	Total absence rate	% Non Covid-19 absence	% Covid-19 absence
CHO 8	5.79%	0.90%	6.70%	0.36%	7.06%	94.91%	5.09%
Medical & Dental	2.78%	0.44%	3.22%	0.37%	3.59%	89.56%	10.44%
Nursing & Midwifery	5.32%	1.04%	6.36%	0.67%	7.03%	90.45%	9.55%
Health & Social Care Professionals	5.12%	0.41%	5.53%	0.00%	5.53%	100.00%	0.00%
Management & Administrative	8.55%	0.45%	9.00%	0.04%	9.05%	99.55%	0.45%
General Support	5.60%	0.46%	6.06%	0.00%	6.06%	100.00%	0.00%
Patient & Client Care	8.08%	1.76%	9.83%	0.00%	9.83%	100.00%	0.00%

Health Service Absence Rate - by Staff Category: Oct 2024	Certified absence	Self- certified absence	Non Covid-19 absence	Covid-19 Absence	Total absence rate	% Non Covid-19 absence	% Covid-19 absence
CHO 9	4.79%	0.63%	5.42%	0.55%	5.97%	90.82%	9.18%
Medical & Dental	2.05%	0.48%	2.52%	0.17%	2.70%	93.54%	6.46%
Nursing & Midwifery	3.72%	0.80%	4.52%	0.32%	4.84%	93.38%	6.62%
Health & Social Care Professionals	4.38%	0.33%	4.71%	0.21%	4.92%	95.66%	4.34%
Management & Administrative	6.02%	0.79%	6.81%	0.86%	7.67%	88.83%	11.17%
General Support	6.64%	0.21%	6.85%	1.30%	8.15%	84.03%	15.97%
Patient & Client Care	10.24%	0.66%	10.91%	1.44%	12.35%	88.31%	11.69%

Health Service Absence Rate - by Staff Category: Oct 2024	Certified absence	Self- certified absence	Non Covid-19 absence	Covid-19 Absence	Total absence rate	% Non Covid-19 absence	% Covid-19 absence
Other Comm	5.08%	0.95%	6.03%	0.24%	6.27%	96.17%	3.83%
Medical & Dental	0.60%	0.00%	0.60%	0.00%	0.60%	100.00%	0.00%
Nursing & Midwifery	6.09%	1.39%	7.48%	0.22%	7.69%	97.16%	2.84%
Health & Social Care Professionals	6.29%	0.82%	7.11%	0.00%	7.11%	100.00%	0.00%
Management & Administrative	3.22%	0.23%	3.44%	0.45%	3.90%	88.41%	11.59%
General Support	13.67%	0.68%	14.35%	0.90%	15.25%	94.12%	5.88%
Patient & Client Care	3.75%	1.11%	4.85%	0.00%	4.85%	100.00%	0.00%

Health Service Absence Rate - by Staff Category: Oct 2024	Certified absence	Self- certified absence	Non Covid-19 absence	Covid-19 Absence	Total absence rate	% Non Covid-19 absence	% Covid-19 absence
St. John of God (MHS)	4.88%	0.63%	5.51%	0.32%	5.83%	94.55%	5.45%
Medical & Dental	3.35%	0.16%	3.51%	0.27%	3.79%	92.76%	7.24%
Nursing & Midwifery	6.10%	0.46%	6.56%	1.03%	7.60%	86.41%	13.59%
Health & Social Care Professionals	3.70%	1.08%	4.78%	0.00%	4.78%	100.00%	0.00%
Management & Administrative	7.10%	0.62%	7.72%	0.00%	7.72%	100.00%	0.00%
General Support	7.05%	0.97%	8.02%	0.00%	8.02%	100.00%	0.00%
Patient & Client Care	6.99%	0.00%	6.99%	0.00%	6.99%	100.00%	0.00%

Health Service Absence Rate - by Staff Category: Oct 2024	Certified absence	Self- certified absence	Non Covid-19 absence	Covid-19 Absence	Total absence rate	% Non Covid-19 absence	% Covid-19 absence
St. Vincent's, Fairview	2.11%	0.47%	2.58%	2.80%	5.39%	47.95%	52.05%
Medical & Dental	0.58%	0.00%	0.58%	0.58%	1.16%	50.00%	50.00%
Nursing & Midwifery	0.55%	0.48%	1.03%	1.03%	2.05%	50.00%	50.00%
Health & Social Care Professionals	0.00%	0.00%	0.00%	0.73%	0.73%	0.00%	100.00%
Management & Administrative	2.09%	0.93%	3.02%	3.57%	6.59%	45.86%	54.14%
General Support	3.59%	0.16%	3.75%	3.75%	7.50%	50.00%	50.00%
Patient & Client Care	16.65%	0.88%	17.53%	20.07%	37.60%	46.61%	53.39%

Year / Month	Certified absence	Self-certified absence	Non Covid-19 absence	Covid-19 Absence	Total absence rate	Medical & Dental	Nursing & Midwifery	Health & Social Care Professionals	Management & Administrative	General Support	Patient & Client Care
Oct 2024	5.90%	0.64%	6.53%	0.35%	6.89%	2.99%	7.37%	5.22%	7.51%	7.35%	9.47%
Sep 2024	5.54%	0.58%	6.11%	0.55%	6.66%	3.33%	7.05%	5.24%	7.04%	7.98%	8.59%
Aug 2024	5.64%	0.52%	6.15%	0.74%	6.90%	2.64%	7.39%	6.44%	6.85%	8.01%	8.64%
Jul 2024	5.84%	0.51%	6.35%	1.04%	7.39%	2.63%	8.08%	6.44%	7.45%	9.15%	9.01%
Jun 2024	5.36%	0.57%	5.93%	0.69%	6.62%	3.30%	7.10%	5.78%	6.34%	7.93%	7.70%
May 2024	5.15%	0.51%	5.66%	0.26%	5.92%	2.58%	6.38%	4.86%	5.63%	6.86%	7.82%
Apr 2024	5.16%	0.56%	5.71%	0.18%	5.89%	2.15%	6.24%	4.66%	5.50%	8.00%	8.02%
Mar 2024	5.22%	0.55%	5.77%	0.18%	5.96%	1.78%	6.35%	5.34%	5.74%	7.66%	7.56%
Feb 2024	5.12%	0.55%	5.67%	0.28%	5.95%	2.63%	6.02%	5.90%	5.85%	7.21%	7.72%
Jan 2024	5.44%	0.60%	6.04%	0.56%	6.61%	2.66%	6.68%	6.31%	8.04%	8.04%	7.58%
2024	5.44%	0.56%	5.99%	0.48%	6.47%	2.67%	6.86%	5.61%	6.62%	7.82%	8.20%
Dec 2023	5.47%	0.67%	6.13%	0.66%	6.80%	2.57%	7.35%	6.63%	6.38%	7.20%	8.05%
Nov 2023	5.14%	0.57%	5.71%	0.40%	6.11%	2.25%	6.51%	4.99%	5.78%	8.15%	8.08%
Oct 2023	4.95%	0.54%	5.49%	0.52%	6.01%	2.35%	6.48%	5.05%	5.48%	8.67%	7.12%
Sep 2023	4.43%	0.49%	4.92%	0.68%	5.60%	1.58%	6.23%	4.69%	5.35%	7.80%	6.54%
Aug 2023	4.45%	0.46%	4.91%	0.70%	5.60%	1.80%	5.89%	5.43%	5.35%	7.56%	6.72%
Jul 2023	4.15%	0.49%	4.64%	0.40%	5.04%	1.93%	5.54%	3.92%	3.64%	6.47%	6.76%
Jun 2023	4.30%	0.49%	4.79%	0.27%	5.06%	2.61%	5.14%	3.79%	4.15%	8.07%	7.01%
May 2023	4.14%	0.48%	4.62%	0.36%	4.98%	2.25%	5.58%	3.91%	3.60%	6.64%	6.21%
Apr 2023	4.22%	0.50%	4.72%	0.37%	5.10%	2.08%	5.68%	3.93%	3.89%	6.41%	6.45%
Mar 2023	4.29%	0.47%	4.76%	0.47%	5.23%	2.18%	5.52%	4.20%	4.00%	7.28%	7.45%
Feb 2023	4.25%	0.50%	4.75%	0.36%	5.11%	1.37%	5.72%	3.85%	4.03%	7.12%	6.56%
Jan 2023	5.02%	0.56%	5.58%	0.83%	6.42%	1.45%	7.25%	5.30%	5.43%	8.81%	7.07%
2023	4.57%	0.52%	5.09%	0.50%	5.59%	2.05%	6.07%	4.63%	4.77%	7.52%	7.01%
Dec 2022	5.31%	0.69%	6.00%	1.09%	7.09%	2.20%	8.01%	5.85%	6.65%	7.62%	8.27%
Nov 2022	4.46%	0.55%	5.01%	0.59%	5.59%	1.98%	6.39%	4.54%	5.00%	6.24%	6.59%
Oct 2022	4.60%	0.60%	5.19%	0.68%	5.87%	2.31%	6.94%	4.19%	4.06%	7.01%	6.80%
Sep 2022	4.64%	0.51%	5.15%	0.64%	5.80%	1.88%	6.85%	3.67%	4.31%	7.54%	7.26%
Aug 2022	4.61%	0.50%	5.11%	0.81%	5.93%	1.36%	7.14%	4.13%	4.61%	7.15%	6.55%
Jul 2022	4.85%	0.46%	5.31%	2.03%	7.34%	2.35%	8.29%	6.30%	5.35%	8.47%	8.66%
Jun 2022	4.46%	0.54%	5.01%	1.80%	6.81%	2.78%	7.74%	5.65%	5.64%	6.61%	8.13%
May 2022	4.07%	0.45%	4.52%	0.91%	5.44%	2.44%	6.07%	3.91%	3.85%	6.93%	7.00%
Apr 2022	4.15%	0.47%	4.61%	2.56%	7.17%	3.09%	7.99%	5.29%	5.62%	8.61%	9.06%
Mar 2022	4.50%	0.51%	5.01%	4.19%	9.20%	4.37%	10.45%	7.47%	7.28%	11.64%	10.10%
Feb 2022	3.81%	0.43%	4.24%	2.68%	6.92%	3.47%	7.95%	5.63%	5.27%	7.70%	7.55%
Jan 2022	3.88%	0.33%	4.21%	5.36%	9.56%	3.68%	11.10%	6.73%	7.18%	10.62%	11.43%
2022	4.44%	0.50%	4.95%	1.94%	6.89%	2.66%	7.92%	5.26%	5.40%	8.00%	8.08%
Dec 2021	4.33%	0.43%	4.76%	2.90%	7.66%	2.84%	9.05%	5.41%	5.17%	9.70%	8.72%
Nov 2021	4.53%	0.57%	5.10%	2.23%	7.33%	2.44%	8.46%	5.24%	5.38%	9.77%	9.10%
Oct 2021	4.32%	0.49%	4.82%	1.15%	5.97%	3.32%	6.82%	4.48%	4.17%	7.74%	6.41%
Sep 2021	4.08%	0.41%	4.49%	1.02%	5.52%	2.97%	6.35%	3.56%	4.70%	7.43%	6.00%
Aug 2021	4.33%	0.40%	4.73%	0.94%	5.67%	1.45%	6.58%	4.55%	4.53%	5.35%	7.31%
Jul 2021	3.66%	0.40%	4.06%	0.68%	4.75%	1.56%	5.43%	3.79%	3.78%	5.82%	5.76%
Jun 2021	3.44%	0.39%	3.83%	0.47%	4.30%	1.25%	4.82%	3.88%	2.64%	6.42%	5.26%
May 2021	2.88%	0.32%	3.19%	0.55%	3.75%	0.78%	4.46%	2.93%	2.01%	4.62%	4.99%
Apr 2021	3.04%	0.33%	3.37%	0.61%	3.98%	1.19%	4.76%	3.07%	2.52%	4.25%	5.29%
Mar 2021	3.21%	0.41%	3.62%	0.92%	4.53%	0.99%	5.22%	3.52%	3.23%	5.67%	6.11%
Feb 2021	3.45%	0.40%	3.84%	1.56%	5.41%	1.49%	6.43%	4.01%	4.16%	5.18%	7.24%
Jan 2021	3.73%	0.23%	3.96%	3.80%	7.76%	3.93%	9.63%	3.98%	4.59%	7.68%	9.58%
2021	3.75%	0.40%	4.15%	1.41%	5.56%	2.02%	6.52%	4.04%	3.84%	6.66%	6.82%

Year / Month	Certified absence	Self-certified absence	Non Covid-19 absence	Covid-19 Absence	Total absence rate	CHO 1	CHO 2	CHO 3	CHO 4	CHO 5	CHO 6	CHO 7	CHO 8	CHO 9	Other Comm	Mental Health
Oct 2024	5.90%	0.64%	6.53%	0.35%	6.89%	7.59%	7.03%	8.97%	6.16%	7.46%	5.87%	6.69%	7.06%	5.97%	6.27%	6.89%
Sep 2024	5.54%	0.58%	6.11%	0.55%	6.66%	7.64%	6.59%	8.88%	6.08%	7.32%	5.87%	6.26%	7.65%	5.06%	5.74%	6.66%
Aug 2024	5.64%	0.52%	6.15%	0.74%	6.90%	7.93%	7.44%	7.94%	7.11%	6.68%	6.37%	6.79%	8.06%	5.58%	3.88%	6.90%
Jul 2024	5.84%	0.51%	6.35%	1.04%	7.39%	9.03%	7.86%	8.14%	7.31%	7.70%	5.69%	7.06%	8.02%	6.43%	5.24%	7.39%
Jun 2024	5.36%	0.57%	5.93%	0.69%	6.62%	8.13%	6.48%	6.17%	7.47%	7.14%	4.88%	6.81%	7.25%	5.19%	5.40%	6.62%
May 2024	5.15%	0.51%	5.66%	0.26%	5.92%	6.99%	5.86%	6.45%	6.32%	5.87%	6.06%	5.13%	6.64%	4.76%	4.73%	5.92%
Apr 2024	5.16%	0.56%	5.71%	0.18%	5.89%	7.17%	5.94%	6.76%	6.19%	6.33%	4.57%	5.64%	6.12%	5.07%	3.72%	5.89%
Mar 2024	5.22%	0.55%	5.77%	0.18%	5.96%	7.15%	5.34%	6.30%	5.80%	6.45%	4.75%	5.43%	7.03%	5.65%	5.40%	5.96%
Feb 2024	5.12%	0.55%	5.67%	0.28%	5.95%	7.01%	4.85%	6.41%	5.45%	6.59%	4.75%	6.23%	7.17%	5.44%	5.77%	5.95%
Jan 2024	5.44%	0.60%	6.04%	0.56%	6.61%	7.13%	6.06%	7.74%	6.79%	8.52%	5.90%	5.80%	7.51%	5.28%	4.98%	6.61%
2024	5.44%	0.56%	5.99%	0.48%	6.47%	7.57%	6.35%	7.36%	6.46%	7.02%	5.48%	6.18%	7.25%	5.44%	5.17%	6.47%
Dec 2023	5.47%	0.67%	6.13%	0.66%	6.80%	7.64%	5.86%	7.63%	6.93%	8.54%	4.67%	6.36%	7.70%	5.56%	6.49%	6.80%
Nov 2023	5.14%	0.57%	5.71%	0.40%	6.11%	7.56%	5.45%	7.44%	6.43%	6.61%	4.38%	6.21%	6.90%	5.07%	4.83%	6.11%
Oct 2023	4.95%	0.54%	5.49%	0.52%	6.01%	7.66%	4.07%	7.32%	6.67%	7.21%	4.61%	6.24%	5.73%	5.88%	4.44%	6.01%
Sep 2023	4.43%	0.49%	4.92%	0.68%	5.60%	7.41%	3.82%	6.59%	5.80%	6.63%	3.65%	7.29%	5.47%	4.83%	4.72%	5.60%
Aug 2023	4.45%	0.46%	4.91%	0.70%	5.60%	8.10%	3.19%	6.64%	6.32%	6.71%	4.67%	7.01%	6.11%	4.29%	3.79%	5.60%
Jul 2023	4.15%	0.49%	4.64%	0.40%	5.04%	7.15%	2.79%	6.07%	5.65%	5.77%	3.07%	6.09%	5.06%	4.34%	4.44%	5.04%
Jun 2023	4.30%	0.49%	4.79%	0.27%	5.06%	7.47%	2.91%	4.51%	5.72%	5.82%	3.27%	6.24%	5.43%	4.26%	4.78%	5.06%
May 2023	4.14%	0.48%	4.62%	0.36%	4.98%	7.22%	2.56%	5.54%	5.80%	5.72%	3.21%	5.46%	4.97%	4.24%	5.17%	4.98%
Apr 2023	4.22%	0.50%	4.72%	0.37%	5.10%	7.15%	2.79%	6.07%	5.65%	5.76%	3.39%	6.09%	5.04%	4.41%	4.87%	5.10%
Mar 2023	4.29%	0.47%	4.76%	0.47%	5.23%	7.22%	3.23%	6.51%	3.99%	6.39%	4.56%	6.59%	5.57%	4.74%	5.13%	5.23%
Feb 2023	4.25%	0.50%	4.75%	0.36%	5.11%	6.77%	2.80%	5.08%	5.58%	6.84%	3.84%	6.51%	5.39%	4.71%	3.72%	5.11%
Jan 2023	5.02%	0.56%	5.58%	0.83%	6.42%	7.65%	4.50%	7.15%	7.40%	8.48%	5.97%	6.12%	6.70%	5.24%	5.03%	6.42%
2023	4.57%	0.52%	5.09%	0.50%	5.59%	7.42%	3.65%	6.40%	5.94%	6.71%	4.09%	6.34%	5.84%	4.80%	4.79%	5.59%
Dec 2022	5.31%	0.69%	6.00%	1.09%	7.09%	8.93%	4.30%	8.91%	5.89%	9.30%	5.50%	7.53%	7.82%	6.41%	7.38%	7.09%
Nov 2022	4.46%	0.55%	5.01%	0.59%	5.59%	6.98%	3.74%	7.18%	5.03%	6.96%	4.18%	6.68%	6.50%	5.21%	3.67%	5.59%
Oct 2022	4.60%	0.60%	5.19%	0.68%	5.87%	6.36%	4.52%	6.69%	5.32%	7.44%	5.08%	6.92%	6.59%	5.55%	4.15%	5.87%
Sep 2022	4.64%	0.51%	5.15%	0.64%	5.80%	7.30%	3.29%	7.14%	4.68%	7.38%	5.40%	7.45%	6.24%	5.74%	4.41%	5.80%
Aug 2022	4.61%	0.50%	5.11%	0.81%	5.93%	7.27%	3.95%	7.80%	5.42%	6.90%	5.36%	7.61%	7.22%	4.89%	4.34%	5.93%
Jul 2022	4.85%	0.46%	5.31%	2.03%	7.34%	8.81%	5.25%	9.19%	7.04%	8.12%	7.07%	9.69%	8.72%	5.55%	5.39%	7.34%
Jun 2022	4.46%	0.54%	5.01%	1.80%	6.81%	8.19%	5.03%	8.63%	4.63%	7.25%	5.33%	8.50%	8.76%	6.14%	6.87%	6.81%
May 2022	4.07%	0.45%	4.52%	0.91%	5.44%	6.42%	4.15%	7.10%	4.78%	6.02%	4.46%	5.50%	6.47%	5.05%	4.72%	5.44%
Apr 2022	4.15%	0.47%	4.61%	2.56%	7.17%	7.10%	5.05%	8.99%	8.15%	7.19%	5.90%	7.28%	9.21%	6.36%	6.81%	7.17%
Mar 2022	4.50%	0.51%	5.01%	4.19%	9.20%	10.34%	7.06%	11.77%	7.05%	10.91%	6.52%	11.33%	10.97%	8.03%	8.88%	9.20%
Feb 2022	3.81%	0.43%	4.24%	2.68%	6.92%	8.69%	4.12%	9.35%	6.97%	7.69%	5.83%	7.97%	8.47%	5.07%	6.51%	6.92%
Jan 2022	3.88%	0.33%	4.21%	5.36%	9.56%	11.06%	6.65%	12.72%	9.26%	9.88%	7.50%	9.27%	11.60%	8.55%	9.72%	9.56%
2022	4.44%	0.50%	4.95%	1.94%	6.89%	8.12%	4.75%	8.80%	6.19%	7.92%	5.64%	7.97%	8.24%	6.05%	6.09%	6.89%
Dec 2021	4.33%	0.43%	4.76%	2.90%	7.66%	9.28%	5.22%	9.26%	6.08%	9.06%	6.07%	7.79%	8.98%	7.31%	8.70%	7.66%
Nov 2021	4.53%	0.57%	5.10%	2.23%	7.33%	8.89%	5.66%	7.58%	5.43%	8.40%	5.89%	7.27%	9.30%	7.72%	7.51%	7.33%
Oct 2021	4.32%	0.49%	4.82%	1.15%	5.97%	7.71%	3.81%	7.04%	4.84%	7.45%	5.08%	7.09%	6.65%	5.46%	5.63%	5.97%
Sep 2021	4.08%	0.41%	4.49%	1.02%	5.52%	8.25%	3.58%	8.29%	4.21%	6.59%	3.72%	6.40%	6.27%	5.10%	4.38%	5.52%
Aug 2021	4.33%	0.40%	4.73%	0.94%	5.67%	8.23%	5.06%	7.17%	4.14%	6.34%	4.29%	6.34%	6.96%	4.55%	4.58%	5.67%
Jul 2021	3.66%	0.40%	4.06%	0.68%	4.75%	6.38%	2.58%	7.24%	3.52%	5.63%	3.78%	5.47%	6.08%	4.27%	3.82%	4.75%
Jun 2021	3.44%	0.39%	3.83%	0.47%	4.30%	5.30%	1.51%	6.27%	4.05%	4.97%	3.90%	5.25%	6.10%	4.33%	3.16%	4.30%
May 2021	2.88%	0.32%	3.19%	0.55%	3.75%	4.57%	1.24%	4.91%	2.88%	4.65%	3.70%	4.06%	5.80%	4.00%	1.98%	3.75%
Apr 2021	3.04%	0.33%	3.37%	0.61%	3.98%	4.43%	2.68%	5.07%	3.29%	4.13%	3.43%	4.62%	6.36%	3.70%	2.90%	3.98%
Mar 2021	3.21%	0.41%	3.62%	0.92%	4.53%	5.35%	2.90%	6.31%	4.19%	4.63%	4.04%	5.26%	5.50%	4.01%	4.28%	4.53%
Feb 2021	3.45%	0.40%	3.84%	1.56%	5.41%	6.15%	3.66%	6.69%	4.55%	5.28%	6.57%	6.76%	5.70%	5.14%	5.41%	5.41%
Jan 2021	3.73%	0.23%	3.96%	3.80%	7.76%	9.00%	4.58%	10.47%	5.72%	9.16%	10.21%	8.23%	8.51%	6.82%	7.55%	7.76%
2021	3.75%	0.40%	4.15%	1.41%	5.56%	6.96%	3.54%	7.19%	4.57%	6.35%	4.89%	6.18%	6.93%	5.24%	4.85%	5.56%

Total Absence Rate

