

Mental Health Service Employment Report: April 2021

Employment by Staff Group

Apr 2021 (Dec 2020 figure: 10,301)	WTE Mar 2021	WTE Apr 2021	WTE change since Mar 21	% change since Mar 21	WTE change since Dec 20	WTE change since Apr 20
Overall	10,470	10,486	+15	+0.1%	+184	+325
Consultants	376	377	+1	+0.3%	+8	+16
Registrars	312	310	-2	-0.5%	+29	+50
SHO/ Interns	244	246	+2	+0.7%	-30	-6
Medical/ Dental, other	5	4	-0	-6.9%	-1	-1
Medical & Dental	937	938	+1	+0.1%	+6	+59
Nurse/ Midwife Manager	1,244	1,238	-6	-0.5%	-2	+15
Nurse/ Midwife Specialist & AN/MP	526	527	+0	+0.0%	-2	+41
Staff Nurse/ Staff Midwife	3,104	3,115	+11	+0.4%	+38	+73
<i>Pre-registration Nurse/ Midwife Intern</i>	<i>163</i>	<i>171</i>	<i>+8</i>	<i>+5.2%</i>	<i>+143</i>	<i>+75</i>
<i>Pre-registration Nurse Intern (COVID-19)</i>	<i>16</i>	<i>5</i>	<i>-11</i>	<i>-70.6%</i>	<i>+5</i>	<i>-64</i>
<i>Post-registration Nurse/ Midwife Student</i>	<i>1</i>	<i>1</i>				<i>+1</i>
<i>Nursing/ Midwifery awaiting registration</i>	<i>3</i>	<i>4</i>	<i>+1</i>	<i>+27.0%</i>	<i>-55</i>	<i>-9</i>
Nursing/ Midwifery Student	182	180	-2	-0.9%	+121	+3
Nursing/ Midwifery other	31	32	+1	+4.0%	+1	-1
Nursing & Midwifery	5,087	5,092	+4	+0.1%	+157	+131
Therapy Professions	449	452	+3	+0.6%	+13	+18
Social Care	78	79	+0	+0.6%	-1	+2
Social Workers	379	380	+1	+0.2%	+7	+20
Psychologists	424	429	+5	+1.2%	+5	+35
Pharmacy	20	20	-0	-2.2%	-1	-0
H&SC, Other	104	104	-0	-0.2%	-4	-6
Health & Social Care Professionals	1,454	1,463	+9	+0.6%	+19	+69
Management (VIII & above)	64	63	-1	-1.4%	-4	+2
Administrative/ Supervisory (V to VII)	240	242	+2	+0.7%	-3	+6
Clerical (III & IV)	732	729	-4	-0.5%	+7	+21
Management & Administrative	1,036	1,034	-3	-0.3%	-0	+29
Support	592	590	-2	-0.4%	-4	+13
Maintenance/ Technical	136	137	+1	+0.6%	-0	+6
General Support	729	727	-2	-0.2%	-4	+19
Health Care Assistants	1,026	1,029	+2	+0.2%	+7	+26
Care, other	201	204	+3	+1.5%	+0	-9
Patient & Client Care	1,227	1,232	+5	+0.4%	+7	+17

Mental Health Services Employment by Administration (HSE / S38): April 2021

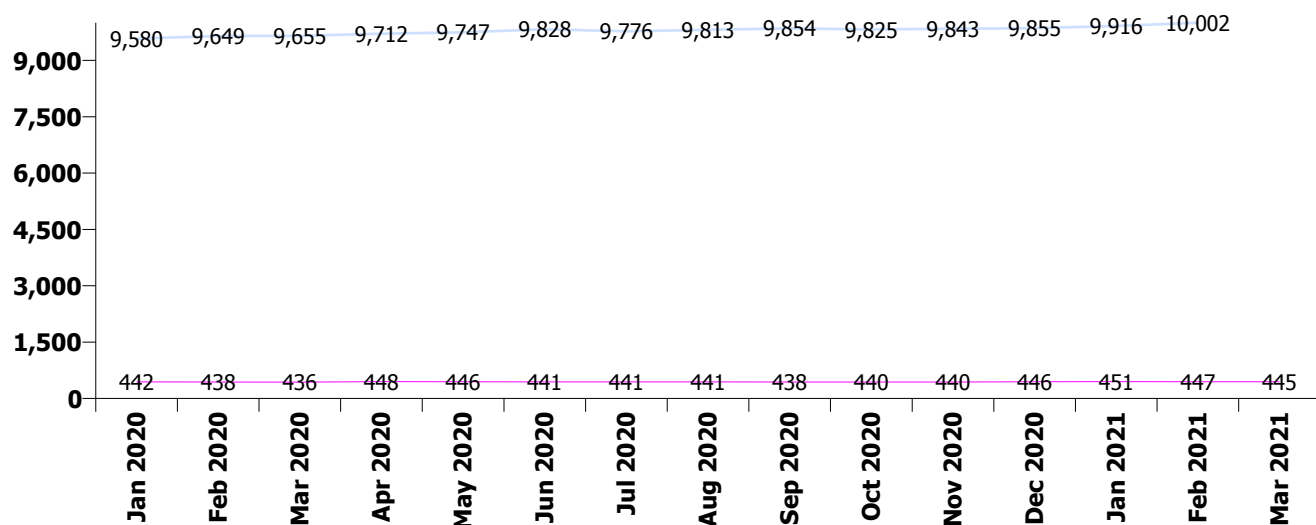
Apr 2021 (Dec 2020 figure: 10,301)	WTE Mar 2021	WTE Apr 2021	WTE change since Mar 21	% change since Mar 21	WTE change since Dec 20	WTE change since Apr 20
Overall	10,470	10,486	+15	+0.1%	+184	+325
HSE	10,025	10,043	+18	+0.2%	+188	+331
Section 38 Voluntary Agencies	445	443	-3	-0.6%	-4	-6

HSE

Apr 2021 (Dec 2020 figure: 9,855)	WTE Mar 2021	WTE Apr 2021	WTE change since Mar 21	% change since Mar 21	WTE change since Dec 20	WTE change since Apr 20
Overall	10,025	10,043	+18	+0.2%	+188	+331
Consultants	356	357	+1	+0.2%	+8	+17
Registrars	291	290	-1	-0.3%	+24	+45
SHO/ Interns	236	238	+2	+0.7%	-29	-6
Medical/ Dental, other	5	4	-0	-6.9%	-1	-1
Medical & Dental	889	890	+1	+0.1%	+3	+55
Nurse/ Midwife Manager	1,207	1,200	-6	-0.5%	-2	+15
Nurse/ Midwife Specialist & AN/MP	517	518	+2	+0.3%	-1	+41
Staff Nurse/ Staff Midwife	2,980	2,991	+12	+0.4%	+38	+75
Pre-registration Nurse/ Midwife Intern	153	161	+8	+5.5%	+140	+65
Pre-registration Nurse Intern (COVID-19)	16	5	-11	-70.6%	+5	-51
Post-registration Nurse/ Midwife Student	1	1				+1
Nursing/ Midwifery awaiting registration	3	4	+1	+27.0%	-55	-9
Nursing/ Midwifery Student	172	170	-2	-1.0%	+122	+6
Nursing/ Midwifery other	28	30	+1	+4.4%	+1	-1
Nursing & Midwifery	4,904	4,910	+6	+0.1%	+158	+137
Therapy Professions	422	425	+3	+0.7%	+13	+21
Social Care	51	51	+0	+0.1%	-1	+2
Social Workers	361	361	+0	+0.1%	+8	+23
Psychologists	404	410	+6	+1.4%	+8	+32
Pharmacy	18	18	-0	-2.4%	-1	-0
H&SC, Other	103	103	-0	-0.0%	-4	-5
Health & Social Care Professionals	1,360	1,369	+9	+0.6%	+23	+72
Management (VIII & above)	61	60	-1	-1.5%	-5	+1
Administrative/ Supervisory (V to VII)	221	222	+1	+0.6%	-2	+7
Clerical (III & IV)	689	686	-2	-0.3%	+7	+22
Management & Administrative	970	968	-2	-0.2%	+0	+30
Support	556	553	-2	-0.4%	-3	+15
Maintenance/ Technical	129	130	+1	+0.6%	-0	+5
General Support	685	684	-2	-0.2%	-3	+20
Health Care Assistants	1,020	1,023	+2	+0.2%	+7	+26
Care, other	197	200	+3	+1.4%	-0	-9
Patient & Client Care	1,218	1,223	+5	+0.4%	+7	+17

Section 38 Voluntary Agencies

Apr 2021 (Dec 2020 figure: 446)	WTE Mar 2021	WTE Apr 2021	WTE change since Mar 21	% change since Mar 21	WTE change since Dec 20	WTE change since Apr 20
Overall	445	443	-3	-0.6%	-4	-6
Consultants	20	20	+1	+2.8%	-1	-1
Registrars	21	20	-1	-3.6%	+5	+5
SHO/ Interns	8	8	+0	+0.6%	-1	
Medical & Dental	48	48	-0	-0.3%	+3	+4
Nurse/ Midwife Manager	37	38	+0	+0.2%	-0	-1
Nurse/ Midwife Specialist & AN/MP	10	8	-2	-15.5%	-1	-0
Staff Nurse/ Staff Midwife	124	123	-1	-0.5%	+1	-1
Pre-registration Nurse/ Midwife Intern	10	10			+3	+10
Pre-registration Nurse Intern (COVID-19)				-100.0%		-13
Nursing/ Midwifery Student	10	10			-1	-3
Nursing/ Midwifery other	3	3				
Nursing & Midwifery	184	182	-2	-1.1%	-1	-5
Therapy Professions	27	27	+0	+0.1%	-0	-3
Social Care	27	28	+0	+1.6%	-0	+1
Social Workers	18	18	+0	+2.3%	-1	-3
Psychologists	20	20	-1	-2.6%	-3	+3
Pharmacy	2	2				
H&SC, Other	1	0	-0	-22.6%	-1	-1
Health & Social Care Professionals	94	95	+0	+0.2%	-4	-3
Management (VIII & above)	3	3			+1	+1
Administrative/ Supervisory (V to VII)	20	20	+0	+2.1%	-1	-1
Clerical (III & IV)	43	42	-1	-2.7%	-1	-1
Management & Administrative	66	65	-1	-1.2%	-0	-0
Support	37	37	-0	-0.3%	-1	-2
Maintenance/ Technical	7	7				+1
General Support	44	44	-0	-0.3%	-1	-1
Health Care Assistants	6	6				
Care, other	3	4	+0	+6.8%	+0	+0
Patient & Client Care	9	9	+0	+2.5%	+0	+0



Mental Health Services Employment by CHO: Apr 2021

Apr 2021 (Dec 2020 figure: 10,301)	WTE Mar 2021	WTE Apr 2021	WTE change since Mar 21	% change since Mar 21	WTE change since Dec 20	WTE change since Apr 20
Overall	10,470	10,486	+15	+0.1%	+184	+325
CHO 1	994	1,003	+9	+0.9%	+27	+36
CHO 2	1,368	1,370	+2	+0.1%	+30	+40
CHO 3	834	838	+4	+0.5%	+29	+33
CHO 4	1,581	1,570	-12	-0.7%	+6	+35
CHO 5	1,216	1,223	+7	+0.6%	+35	+23
CHO 6	632	634	+3	+0.4%	+8	+31
CHO 7	875	879	+4	+0.4%	+17	+32
CHO 8	1,117	1,122	+5	+0.5%	+10	-1
CHO 9	1,340	1,330	-10	-0.7%	-0	+42
other Community Services	514	517	+3	+0.6%	+23	+54

Mental Health Services Employment by CHO etc. Apr 2021

CHO 1

Apr 2021 (Dec 2020 figure: 976)	WTE Mar 2021	WTE Apr 2021	WTE change since Mar 21	% change since Mar 21	WTE change since Dec 20	WTE change since Apr 20
Overall	994	1,003	+9	+0.9%	+27	+36
Consultants	36	36	-0	-1%	+2	+4
Registrars	32	33	+1	+2%	+3	+9
SHO/ Interns	18	19	+1	+6%	-4	-6
Medical & Dental	86	87	+2	+1.9%	+1	+8
Nurse/ Midwife Manager	123	123	+0	+0%	+3	+4
Nurse/ Midwife Specialist & AN/MP	73	71	-1	-2%	-2	+4
Staff Nurse/ Staff Midwife	294	300	+6	+2%	+12	+7
Pre-registration Nurse/ Midwife Intern	16	16	-0	-2%	+16	+1
Pre-registration Nurse Intern (COVID-19)				-100%		
Nursing/ Midwifery Student	16	16	-0	-2%	+13	+1
Nursing/ Midwifery other	2	2	0		+1	+1
Nursing & Midwifery	507	511	+4	+0.8%	+26	+16
Therapy Professions	39	38	-1	-2%	+2	+1
Social Care	4	4	+0	+6%	+0	+0
Social Workers	42	41	-0	-1%	-2	+1
Psychologists	24	24	+0	+0%	+0	+3
Pharmacy	1	1	0			
H&SC, Other	15	14	-0	-2%	+0	+0
Health & Social Care Professionals	123	122	-1	-0.9%	+1	+5
Management (VIII & above)	6	5	-1	-15%	-3	-2
Administrative/ Supervisory (V to VII)	30	31	+0	+1%	+0	+1
Clerical (III & IV)	87	89	+2	+3%	+4	+5
Management & Administrative	123	125	+2	+1.4%	+1	+4
Support	63	63	+0	+1%	-2	+2
Maintenance/ Technical	16	16	+0	+3%		-0
General Support	79	80	+1	+1.0%	-2	+2
Health Care Assistants	68	69	+1	+2%	+2	+4
Care, other	8	9	+0	+4%	-2	-2
Patient & Client Care	77	78	+2	+2.0%	-1	+2

CHO 2

Apr 2021 (Dec 2020 figure: 1,340)	WTE Mar 2021	WTE Apr 2021	WTE change since Mar 21	% change since Mar 21	WTE change since Dec 20	WTE change since Apr 20
Overall	1,368	1,370	+2	+0.1%	+30	+40
Consultants	39	40	+1	+2%	+3	+2
Registrars	39	38	-1	-3%	+2	+3
SHO/ Interns	33	38	+5	+16%	-2	+6
Medical/ Dental, other	1	1	-0	-40%	-0	-0
Medical & Dental	112	117	+5	+4.1%	+2	+10
Nurse/ Midwife Manager	149	148	-1	-1%	-3	+3
Nurse/ Midwife Specialist & AN/MP	77	76	-0	-0%	-3	+5
Staff Nurse/ Staff Midwife	375	378	+3	+1%	+23	+27
Pre-registration Nurse/ Midwife Intern	13	21	+8	+58%	+20	+21
Pre-registration Nurse Intern (COVID-19)	9	1	-8	-88%	+1	-23
Nursing/ Midwifery awaiting registration				-100%	-5	
Nursing/ Midwifery Student	22	22	0		+11	-2
Nursing/ Midwifery other	2	2	+0	+24%	+0	-0
Nursing & Midwifery	624	626	+2	+0.4%	+30	+32
Therapy Professions	57	56	-0	-1%	+1	+8
Social Care	16	16	-0	-2%	-0	-0
Social Workers	42	41	-1	-2%	-0	+0
Psychologists	37	38	+0	+0%	+1	+2
Pharmacy	2	2	0			-1
H&SC, Other	3	3	-0	-1%	-0	-0
Health & Social Care Professionals	157	156	-1	-0.8%	+1	+10
Management (VIII & above)	3	3	-0	-13%	-1	-2
Administrative/ Supervisory (V to VII)	25	25	+0	+0%	-2	+2
Clerical (III & IV)	104	103	-1	-1%	+1	-6
Management & Administrative	131	130	-1	-0.7%	-2	-6
Support	31	30	-1	-3%	-1	-4
Maintenance/ Technical	35	35	+0	+0%	+2	+7
General Support	66	65	-1	-1.4%	+1	+3
Health Care Assistants	211	208	-3	-1%	-3	-7
Care, other	67	68	+1	+1%	+1	-1
Patient & Client Care	278	276	-2	-0.8%	-2	-8

CHO 3

Apr 2021 (Dec 2020 figure: 809)	WTE Mar 2021	WTE Apr 2021	WTE change since Mar 21	% change since Mar 21	WTE change since Dec 20	WTE change since Apr 20
Overall	834	838	+4	+0.5%	+29	+33
Consultants	23	24	+1	+4%	-0	+2
Registrars	19	19	0		+4	+2
SHO/ Interns	20	21	+1	+5%	-0	+1
Medical & Dental	62	64	+2	+3.3%	+4	+4
Nurse/ Midwife Manager	88	88	-0	-0%	+0	-1
Nurse/ Midwife Specialist & AN/MP	39	38	-1	-3%	+1	+1
Staff Nurse/ Staff Midwife	274	273	-1	-0%	+1	+12
<i>Pre-registration Nurse/ Midwife Intern</i>	13	14	+0	+1%	+5	+4
<i>Pre-registration Nurse Intern (COVID-19)</i>	1		-1	-100%		
Nursing/ Midwifery Student	14	14	-1	-6%	+10	+4
Nursing & Midwifery	415	412	-3	-0.7%	+12	+16
Therapy Professions	29	30	+1	+2%	+5	+6
Social Care	3	3	0			+0
Social Workers	23	23	-0	-0%	-2	-3
Psychologists	92	93	+1	+1%	+2	+4
Pharmacy	3	3	0			
H&SC, Other	12	12	-0	-1%	+0	+1
Health & Social Care Professionals	162	163	+1	+0.9%	+5	+8
Management (VIII & above)	2	2	-0	-1%	-0	-1
Administrative/ Supervisory (V to VII)	18	18	-0	-1%	-1	-2
Clerical (III & IV)	53	54	+2	+3%	+4	+1
Management & Administrative	72	74	+2	+2.3%	+3	-1
Support	31	31	+0	+1%	+1	-0
Maintenance/ Technical	9	9	0			-1
General Support	40	40	+0	+0.8%	+1	-1
Health Care Assistants	81	83	+2	+2%	+4	+6
Care, other	1	1	0			
Patient & Client Care	82	84	+2	+2.3%	+4	+6

CHO 4

Apr 2021 (Dec 2020 figure: 1,564)	WTE Mar 2021	WTE Apr 2021	WTE change since Mar 21	% change since Mar 21	WTE change since Dec 20	WTE change since Apr 20
Overall	1,581	1,570	-12	-0.7%	+6	+35
Consultants	56	54	-1	-3%	+0	+0
Registrars	41	41	+0	+0%	-1	-5
SHO/ Interns	43	42	-1	-3%	-1	+10
Medical/ Dental, other	2	2	+0	+4%	-0	-0
Medical & Dental	142	139	-3	-1.9%	-2	+5
Nurse/ Midwife Manager	196	196	+0	+0%	+3	+11
Nurse/ Midwife Specialist & AN/MP	66	67	+2	+2%	-4	+1
Staff Nurse/ Staff Midwife	512	507	-4	-1%	-12	-3
<i>Pre-registration Nurse/ Midwife Intern</i>	28	28	0		+25	+8
<i>Pre-registration Nurse Intern (COVID-19)</i>	2	1	-1	-50%	+1	+1
<i>Post-registration Nurse/ Midwife Student</i>				-100%	-1	
<i>Nursing/ Midwifery awaiting registration</i>	1	1	-0	-2%	-29	-8
Nursing/ Midwifery Student	31	29	-1	-3%	+25	+1
Nursing & Midwifery	803	800	-3	-0.4%	+13	+10
Therapy Professions	79	79	-0	-1%	+1	+3
Social Care	7	7	-0	-0%	-0	+2
Social Workers	64	63	-0	-1%	-1	+6
Psychologists	93	93	-1	-1%	-1	+7
Pharmacy	2	2	-1	-21%	-1	-2
H&SC, Other	12	12	-0	-0%	-0	-2
Health & Social Care Professionals	258	256	-2	-0.8%	-2	+14
<i>Executive Management</i>	1	2	+1	+200%	+2	+1
<i>Senior Management (VIII & GM)</i>	1	1	0			
Management (VIII & above)	2	3	+1	+67%	-0	+1
Administrative/ Supervisory (V to VII)	20	18	-2	-8%	-4	-3
Clerical (III & IV)	96	94	-2	-2%	-1	+5
Management & Administrative	117	115	-3	-2.3%	-4	+2
Support	85	84	-1	-1%	+2	+6
Maintenance/ Technical	5	5	0			-1
General Support	90	89	-1	-1.3%	+2	+5
Health Care Assistants	165	166	+0	+0%	-1	+1
Care, other	6	6	+0	+3%	+0	-1
Patient & Client Care	171	172	+1	+0.3%	-1	-1

CHO 5

Apr 2021 (Dec 2020 figure: 1,188)	WTE Mar 2021	WTE Apr 2021	WTE change since Mar 21	% change since Mar 21	WTE change since Dec 20	WTE change since Apr 20
Overall	1,216	1,223	+7	+0.6%	+35	+23
Consultants	27	27	+0	+0%	-0	+1
Registrars	11	10	-1	-9%	+1	-2
SHO/ Interns	34	34	+0	+1%	-2	+9
Medical/ Dental, other	2	2	0			
Medical & Dental	74	73	-1	-1.1%	-1	+8
Nurse/ Midwife Manager	165	163	-2	-1%	+3	-3
Nurse/ Midwife Specialist & AN/MP	55	56	+1	+2%	+2	+7
Staff Nurse/ Staff Midwife	419	424	+4	+1%	+13	+9
<i>Pre-registration Nurse/ Midwife Intern</i>	25	25	-0	-0%	+21	+9
<i>Pre-registration Nurse Intern (COVID-19)</i>	3	2	-1	-33%	+2	-5
<i>Nursing/ Midwifery awaiting registration</i>				-100%	-2	
Nursing/ Midwifery Student	28	27	-1	-4%	+14	+4
Nursing/ Midwifery other	4	4	0		-0	-0
Nursing & Midwifery	671	673	+2	+0.3%	+31	+17
Therapy Professions	36	38	+2	+4%	-1	-3
Social Care	5	5	0			
Social Workers	25	26	+1	+4%	-2	-1
Psychologists	22	22	+0	+1%	+1	+2
H&SC, Other	10	10	-0	-0%	+2	+0
Health & Social Care Professionals	97	100	+3	+2.8%	-1	-2
Management (VIII & above)	6	6	0			+1
Administrative/ Supervisory (V to VII)	18	20	+2	+9%	-0	+2
Clerical (III & IV)	74	76	+2	+2%	+7	+5
Management & Administrative	98	101	+3	+3.3%	+7	+8
Support	178	176	-2	-1%	-2	+3
Maintenance/ Technical	18	18	+0	+0%	-2	-6
General Support	196	194	-2	-0.8%	-4	-4
Health Care Assistants	69	70	+1	+2%	+3	-3
Care, other	12	12	-0	-0%	-0	-1
Patient & Client Care	81	82	+1	+1.5%	+3	-3

CHO 6

Apr 2021 (Dec 2020 figure: 626)	WTE Mar 2021	WTE Apr 2021	WTE change since Mar 21	% change since Mar 21	WTE change since Dec 20	WTE change since Apr 20
Overall	632	634	+3	+0.4%	+8	+31
Consultants	40	41	+1	+1%	+1	+1
Registrars	25	24	-1	-4%	+5	+7
SHO/ Interns	13	12	-1	-7%	-1	-0
Medical & Dental	78	77	-1	-1.6%	+5	+8
Nurse/ Midwife Manager	75	75	-0	-0%	-3	-0
Nurse/ Midwife Specialist & AN/MP	20	19	-2	-7%	-1	+3
Staff Nurse/ Staff Midwife	148	150	+2	+1%	-1	-0
<i>Pre-registration Nurse/ Midwife Intern</i>	4	3	-0	-5%	+3	+3
<i>Nursing/ Midwifery awaiting registration</i>	1	1	0		+1	+1
Nursing/ Midwifery Student	5	4	-0	-4%	+3	+4
Nursing/ Midwifery other	2	2	0			-1
Nursing & Midwifery	250	250	-0	-0.2%	-1	+6
Therapy Professions	39	42	+4	+10%	+4	+2
Social Care	27	28	+0	+2%	-1	-0
Social Workers	31	31	-0	-1%	+1	-0
Psychologists	30	30	-0	-1%	-2	+6
H&SC, Other	5	4	-0	-3%	-1	-0
Health & Social Care Professionals	132	135	+3	+2.6%	+1	+7
Management (VIII & above)	3	3	0			
Administrative/ Supervisory (V to VII)	26	27	+1	+2%	+2	+1
Clerical (III & IV)	42	40	-2	-4%	-3	-1
Management & Administrative	71	69	-1	-1.7%	-1	+0
Support	37	37	+0	+1%	-2	+1
Maintenance/ Technical	6	6	0			+1
General Support	43	43	+0	+0.8%	-2	+2
Health Care Assistants	52	54	+2	+3%	+5	+8
Care, other	6	6	+0	+1%	-0	-0
Patient & Client Care	58	59	+2	+2.8%	+5	+8

CHO 7

Apr 2021 (Dec 2020 figure: 861)	WTE Mar 2021	WTE Apr 2021	WTE change since Mar 21	% change since Mar 21	WTE change since Dec 20	WTE change since Apr 20
Overall	875	879	+4	+0.4%	+17	+32
Consultants	54	54	+1	+1%	+1	+6
Registrars	57	56	-1	-1%	+3	+16
SHO/ Interns	17	17	-0	-2%	-4	-5
Medical & Dental	128	127	-0	-0.3%	+1	+18
Nurse/ Midwife Manager	119	116	-3	-2%	-1	+1
Nurse/ Midwife Specialist & AN/MP	48	52	+3	+7%	+5	+8
Staff Nurse/ Staff Midwife	203	203	+1	+0%	+2	-2
<i>Pre-registration Nurse/ Midwife Intern</i>	14	14	+0	+3%	+12	+14
<i>Pre-registration Nurse Intern (COVID-19)</i>	1	1	-0	-45%	+1	-14
<i>Post-registration Nurse/ Midwife Student</i>	1	1	0		+1	+1
<i>Nursing/ Midwifery awaiting registration</i>	1	1	-0	-3%	-9	-3
Nursing/ Midwifery Student	17	16	-0	-1%	+9	-2
Nursing/ Midwifery other	5	7	+2	+37%	+1	-0
Nursing & Midwifery	391	394	+3	+0.8%	+15	+4
Therapy Professions	50	49	-1	-3%	-5	+1
Social Care	7	7	+0	+3%		+1
Social Workers	43	43	+1	+1%	+5	+7
Psychologists	27	28	+1	+3%	-1	-0
<i>Pharmacy</i>	1	1	0			
Pharmacy	1	1	0			
H&SC, Other	17	18	+1	+4%	-0	+0
Health & Social Care Professionals	145	146	+1	+0.6%	-0	+9
Management (VIII & above)	4	4	+0	+2%		+1
Administrative/ Supervisory (V to VII)	17	17	-1	-5%	-1	+0
Clerical (III & IV)	50	50	-0	-1%	+1	+4
Management & Administrative	72	70	-1	-1.6%	+0	+5
Support	18	18	-0	-0%	+0	+0
Maintenance/ Technical	2	2	0			
General Support	20	20	-0	-0.2%	+0	+0
Health Care Assistants	35	35	-0	-1%	+0	-1
Care, other	84	86	+2	+2%	+1	-4
Patient & Client Care	119	120	+1	+1.2%	+2	-4

CHO 8

Apr 2021 (Dec 2020 figure: 1,112)	WTE Mar 2021	WTE Apr 2021	WTE change since Mar 21	% change since Mar 21	WTE change since Dec 20	WTE change since Apr 20
Overall	1,117	1,122	+5	+0.5%	+10	-1
Consultants	38	38	+0	+1%	+2	+3
Registrars	31	34	+3	+9%	+3	+13
SHO/ Interns	26	25	-1	-4%	-1	-14
Medical & Dental	95	97	+2	+2.1%	+3	+2
Nurse/ Midwife Manager	114	117	+3	+2%	-3	-8
Nurse/ Midwife Specialist & AN/MP	60	59	-1	-2%	-1	+1
Staff Nurse/ Staff Midwife	336	339	+4	+1%	-3	+13
Pre-registration Nurse/ Midwife Intern	23	24	+1	+5%	+24	+4
Pre-registration Nurse Intern (COVID-19)				-100%		
Nursing/ Midwifery awaiting registration				-100%	-2	
Nursing/ Midwifery Student	23	24	+1	+5%	+23	+4
Nursing/ Midwifery other	3	3	0			-1
Nursing & Midwifery	536	543	+7	+1.2%	+17	+10
Therapy Professions	44	43	-0	-0%	+1	-3
Social Care	6	7	+0	+2%	-0	-1
Social Workers	47	47	-0	-0%	+3	+4
Psychologists	39	39	-0	-1%	+2	+1
Pharmacy	2	2	0			
H&SC, Other	15	15	-0	-1%	-6	-6
Health & Social Care Professionals	153	152	-1	-0.3%	-1	-5
Management (VIII & above)	2	3	+1	+48%	-0	-0
Administrative/ Supervisory (V to VII)	20	22	+1	+6%	+1	+1
Clerical (III & IV)	98	95	-3	-3%	-2	-3
Management & Administrative	120	119	-1	-0.5%	-1	-2
Support	30	30	-0	-1%	-1	-2
Maintenance/ Technical	28	29	+1	+4%	+1	+2
General Support	58	59	+1	+1.2%	-1	-0
Health Care Assistants	152	149	-3	-2%	-8	-5
Care, other	3	3	+0	+6%		-0
Patient & Client Care	155	152	-3	-1.8%	-8	-5

CHO 9

Apr 2021 (Dec 2020 figure: 1,331)	WTE Mar 2021	WTE Apr 2021	WTE change since Mar 21	% change since Mar 21	WTE change since Dec 20	WTE change since Apr 20
Overall	1,340	1,330	-10	-0.7%	-0	+42
Consultants	46	46	-0	-1%	-0	-2
Registrars	39	38	-1	-4%	+6	+2
SHO/ Interns	40	38	-2	-5%	-15	-8
Medical & Dental	126	122	-4	-3.1%	-10	-8
Nurse/ Midwife Manager	136	134	-2	-1%	-4	-1
Nurse/ Midwife Specialist & AN/MP	78	78	+0	+0%	+3	+10
Staff Nurse/ Staff Midwife	374	368	-6	-2%	-4	+15
Pre-registration Nurse/ Midwife Intern	28	28	-0	-1%	+18	+12
Pre-registration Nurse Intern (COVID-19)				-100%		-23
Nursing/ Midwifery awaiting registration		1	+1	-100%	-10	+1
Nursing/ Midwifery Student	28	29	+1	+2%	+13	-9
Nursing/ Midwifery other	12	11	-1	-8%	-2	-0
Nursing & Midwifery	627	620	-7	-1.2%	+7	+14
Therapy Professions	65	65	+0	+0%	+4	+4
Social Care	1	1	-0	-13%	-0	-0
Social Workers	44	45	+1	+2%	+3	+2
Psychologists	51	53	+2	+4%	-0	+7
Pharmacy	9	9	+0	+1%	-0	+1
H&SC, Other	15	15	-0	-1%	+1	+0
Health & Social Care Professionals	185	188	+3	+1.6%	+7	+15
Management (VIII & above)	6	6	-0	-0%	+1	+1
Administrative/ Supervisory (V to VII)	27	28	+0	+1%	-1	-1
Clerical (III & IV)	111	109	-2	-2%	-6	+12
Management & Administrative	144	142	-2	-1.4%	-6	+12
Support	104	103	-0	-0%	-1	+2
Maintenance/ Technical	11	11	0			+0
General Support	115	114	-0	-0.2%	-1	+3
Health Care Assistants	131	132	+1	+1%	+3	+7
Care, other	12	13	+0	+0%	+0	+0
Patient & Client Care	143	144	+1	+0.6%	+3	+7

other Community Services

Apr 2021 (Dec 2020 figure: 494)	WTE Mar 2021	WTE Apr 2021	WTE change since Mar 21	% change since Mar 21	WTE change since Dec 20	WTE change since Apr 20
Overall	514	517	+3	+0.6%	+23	+54
Consultants	16	16	+0	+0%	-0	-0
Registrars	17	17	-0	-0%	+3	+5
Medical & Dental	33	33	-0	-0.2%	+3	+5
Nurse/ Midwife Manager	79	78	-2	-2%	+2	+9
Nurse/ Midwife Specialist & AN/MP	12	11	-1	-10%	-2	+1
Staff Nurse/ Staff Midwife	170	173	+3	+2%	+8	-5
Nursing/ Midwifery other	2	2	-0	-1%	+0	+1
Nursing & Midwifery	263	263	+0	+0.0%	+7	+6
Therapy Professions	12	12	+0	+1%	+0	-1
Social Care	2	2	-0	-2%	+0	+0
Social Workers	19	19	+0	+0%	+2	+4
Psychologists	9	11	+2	+26%	+5	+5
Pharmacy	1	1	0		+1	+1
Pharmacy	1	1	0			+1
Health & Social Care Professionals	43	45	+2	+5.7%	+7	+9
Management (VIII & above)	31	29	-2	-5%	-1	+3
Administrative/ Supervisory (V to VII)	38	38	+0	+1%	+2	+6
Clerical (III & IV)	19	20	+0	+2%	+1	-1
Management & Administrative	88	87	-1	-1.0%	+2	+8
Support	17	18	+1	+6%	+2	+6
Maintenance/ Technical	7	6	-1	-13%	-1	+4
General Support	24	24	-0	-0.0%	+1	+9
Health Care Assistants	63	65	+1	+2%	+3	+16
Care, other	1	1	0			
Patient & Client Care	64	65	+1	+2.0%	+3	+16

Mental Health Services Employment by Grade Group: Apr 2021

Apr 2021 (Dec 2020 figure: 10,301)	WTE Mar 2021	WTE Apr 2021	WTE change since Mar 21	% change since Mar 21	WTE change since Dec 20	WTE change since Apr 20
Overall	10,470	10,486	+15	+0.1%	+184	+325
Consultant Medicine	1	1	0			
Consultant Psychiatry	375	376	+1	+0%	+8	+16
Consultants	376	377	+1	+0%	+8	+16
Registrar	199	199	+0	+0%	+31	+29
Senior Registrar	110	109	-2	-2%	-2	+21
Specialist Registrar	2	2	0			-0
Registrars	312	310	-2	-1%	+29	+50
Interns	5	5	-0	-3%	-0	-1
Senior House Officer	239	241	+2	+1%	-30	-5
SHO/ Interns	244	246	+2	+1%	-30	-6
Other Medical	5	4	-0	-7%	-1	-1
Medical/ Dental, other	5	4	-0	-7%	-1	-1
Medical & Dental	937	938	+1	+0%	+6	+59
Clinical Nurse/ Midwife Manager	1,046	1,035	-11	-1%	-6	+15
Director Nursing/Midwifery, Assistant	172	176	+5	+3%	+6	+1
Director of Nursing/Midwifery	27	27	-0	-1%	-1	-1
Nurse/ Midwife Manager	1,244	1,238	-6	-1%	-2	+15
Advanced Nurse/ Midwife Practitioner	41	41	+1	+1%	+2	+7
Clinical Nurse/ Midwife Specialist	486	485	-1	-0%	-4	+35
Nurse/ Midwife Specialist & AN/MP	526	527	+0	+0%	-2	+41
Staff Midwives	1		-1	-100%	-1	-1
Staff Nurse [Intellectual Disability]	4	2	-2	-43%	-2	-5
Staff Nurse [Psychiatric]	2,990	3,017	+27	+1%	+53	+110
Staff Nurses [General/ Children's]	108	95	-13	-12%	-11	-31
Staff Nurse/ Staff Midwife	3,104	3,115	+11	+0%	+38	+73
Pre-registration Nurse/ Midwife Intern	163	171	+8	+5%	+160	+75
Pre-registration Nurse Intern (COVID-19)	16	5	-11	-71%	-38	-64
Post-registration Nurse/ Midwife Student	1	1	0			+1
Nursing/ Midwifery awaiting registration	3	4	+1	+27%	-1	-9
Nursing/ Midwifery Student	182	180	-2	-1%	+121	+3
Nursing Education/Clinical	31	32	+1	+4%	+1	-1
Nursing/ Midwifery other	31	32	+1	+4%	+1	-1
Nursing & Midwifery	5,087	5,092	+4	+0%	+157	+131
Dietitians	20	21	+1	+5%	+0	+0
Occupational Therapists	353	359	+5	+1%	+13	+17
Physiotherapists	2	2	0			+0
Podiatrists & Chiropodists	1	1	+0	+3%	-0	+0
Speech & Language Therapists	73	69	-3	-5%	-0	+0
Therapy Professions	449	452	+3	+1%	+13	+18
Social Care	78	79	+0	+1%	-1	+2
Social Workers	379	380	+1	+0%	+7	+20
Psychologists	424	429	+5	+1%	+5	+35
Pharmacy	20	20	-0	-2%	-1	-0
Counsellor Therapists	97	97	-0	-0%	-4	-4
Other Health & Social Care	5	5	-0	-2%	-0	-2
Play Therapists/ Specialists	2	1	-0	-1%		
H&SC, Other	104	104	-0	-0%	-4	-6
Health & Social Care Professionals	1,454	1,463	+9	+1%	+19	+69
Executive Management	14	15	+1	+7%	+1	+3
Senior Management (VIII & GM)	49	47	-2	-4%	-5	-1

Apr 2021 (Dec 2020 figure: 10,301)	WTE Mar 2021	WTE Apr 2021	WTE change since Mar 21	% change since Mar 21	WTE change since Dec 20	WTE change since Apr 20
Overall	10,470	10,486	+15	+0.1%	+184	+325
Management (VIII & above)	64	63	-1	-1%	-4	+2
Middle Management (V-VII)	239	241	+2	+1%	-3	+6
Other Administrative	2	2	0			
Administrative/ Supervisory (V to VII)	240	242	+2	+1%	-3	+6
General Administrative (III & IV)	732	729	-4	-0%	+7	+21
Clerical (III & IV)	732	729	-4	-0%	+7	+21
Management & Administrative	1,036	1,034	-3	-0%	-0	+29
Catering	65	65	+0	+0%	+2	+4
Household Services	439	435	-4	-1%	-7	+7
Other Support	43	43	-0	-0%	+1	+2
Portering	45	47	+2	+4%	-0	-0
Support	592	590	-2	-0%	-4	+13
Maintenance	136	137	+1	+1%	-0	+8
Technical Services				-100%		-2
Maintenance/ Technical	136	137	+1	+1%	-0	+6
General Support	729	727	-2	-0%	-4	+19
HCA, Nurse's Aide, etc.	1,016	1,018	+2	+0%	+5	+24
Health & Social Care Assistants	10	10	+0	+2%	+2	+1
Health Care Assistants	1,026	1,029	+2	+0%	+7	+26
Care, other	201	204	+3	+2%	+0	-9
Patient & Client Care	1,227	1,232	+5	+0%	+7	+17

Employment by WTE, Headcount, Gender, Full-Time /Part-Time etc.: Apr 2021

Mental Health Services Staff Group	WTE	Headcount	WTE: no.	% Male	% female	Male WTE: no.	Female WTE: no.	% Total Perm	% Male Perm	% Female Perm	% Total Full Time	% Total Part Time	% Male FT	% Female FT
Overall	10,486	11,545	1.10	26.9%	73.1%	1.06	1.12	83.1%	79.8%	84.3%	85.0%	15.0%	93.0%	82.0%
Consultant Medicine	1	1	1.00	100.0%		1.00		100.0%	100.0%		100.0%	0.0%	100.0%	
Consultant Psychiatry	376	404	1.07	40.3%	59.7%	1.05	1.09	66.6%	66.6%	65.6%	87.4%	12.6%	93.3%	83.4%
Consultants	377	405	1.07	40.5%	59.5%	1.05	1.09	66.7%	68.3%	65.6%	87.4%	12.6%	93.3%	83.4%
Registrar	199	206	1.03	43.7%	56.3%	1.03	1.03	4.9%	4.9%	3.4%	97.6%	2.4%	100.0%	95.7%
Senior Registrar	109	114	1.05	41.2%	58.8%	1.00	1.08	1.8%	1.8%	3.0%	95.6%	4.4%	100.0%	92.5%
Specialist Registrar	2	2	1.00	50.0%	50.0%	1.00	1.00	0.0%	0.0%	0.0%	100.0%	0.0%	100.0%	100.0%
Registrars	310	322	1.04	42.9%	57.1%	1.02	1.05	3.7%	4.3%	3.3%	96.9%	3.1%	100.0%	94.6%
Interns	5	5	1.04		100.0%		1.04	0.0%	0.0%	0.0%	100.0%	0.0%		100.0%
Senior House Officer	241	247	1.02	40.5%	59.5%	1.01	1.03	0.4%	0.4%	0.0%	99.2%	0.8%	100.0%	98.6%
SHO/ Interns	246	252	1.02	39.7%	60.3%	1.01	1.03	0.4%	1.0%	0.0%	99.2%	0.8%	100.0%	98.7%
Other Medical	4	9	2.02	55.6%	44.4%	2.02	2.02	44.4%	44.4%	50.0%	88.9%	11.1%	100.0%	75.0%
Medical/ Dental, other	4	9	2.02	55.6%	44.4%	2.02	2.02	44.4%	40.0%	50.0%	88.9%	11.1%	100.0%	75.0%
Medical & Dental	938	988	1.05	41.2%	58.8%	1.04	1.07	29.0%	29.7%	28.6%	93.5%	6.5%	97.3%	90.9%
Clinical Nurse/ Midwife Manager	1,035	1,086	1.05	34.1%	65.9%	1.02	1.06	99.2%	99.2%	99.7%	92.9%	7.1%	97.8%	90.4%
Director Nursing/Midwifery, Assistant	176	181	1.03	44.2%	55.8%	1.02	1.03	100.0%	100.0%	100.0%	97.8%	2.2%	98.8%	97.0%
Director of Nursing/Midwifery	27	27	1.01	55.6%	44.4%	1.00	1.02	100.0%	100.0%	100.0%	96.3%	3.7%	100.0%	91.7%
Nurse/ Midwife Manager	1,238	1,294	1.05	35.9%	64.1%	1.02	1.06	99.3%	98.5%	99.8%	93.7%	6.3%	98.1%	91.2%
Advanced Nurse/ Midwife Practitioner	41	43	1.04	18.6%	81.4%	1.00	1.06	97.7%	97.7%	97.1%	90.7%	9.3%	100.0%	88.6%
Clinical Nurse/ Midwife Specialist	485	512	1.05	19.1%	80.9%	1.01	1.07	99.6%	99.6%	99.8%	92.4%	7.6%	98.0%	91.1%
Nurse/ Midwife Specialist & AN/MP	527	555	1.05	19.1%	80.9%	1.01	1.07	99.5%	99.1%	99.6%	92.3%	7.7%	98.1%	90.9%
Staff Nurse [Intellectual Disability]	2	3	1.28		100.0%		1.28	66.7%	66.7%	66.7%	66.7%	33.3%		66.7%
Staff Nurse [Psychiatric]	3,017	3,259	1.08	26.3%	73.7%	1.05	1.09	92.2%	92.2%	92.9%	87.7%	12.3%	92.2%	86.1%
Staff Nurses [General/ Children's]	95	110	1.16	20.0%	80.0%	1.16	1.16	90.9%	90.9%	93.2%	75.5%	24.5%	77.3%	75.0%
Staff Nurse/ Staff Midwife	3,115	3,372	1.08	26.0%	74.0%	1.06	1.09	92.1%	89.9%	92.9%	87.2%	12.8%	91.8%	85.6%
Pre-registration Nurse/ Midwife Intern	171	343	2.01	15.7%	84.3%	2.03	2.00	0.3%	0.3%	0.0%	100.0%	0.0%	100.0%	100.0%
Pre-registration Nurse Intern (COVID-19)	5	6	1.32	16.7%	83.3%	2.00	1.23	16.7%	16.7%	20.0%	100.0%	0.0%	100.0%	100.0%
Post-registration Nurse/ Midwife Student	1	1	1.00		100.0%		1.00	0.0%	0.0%	0.0%	100.0%	0.0%		100.0%
Nursing/ Midwifery awaiting registration	4	4	1.05		100.0%		1.05	100.0%	100.0%	100.0%	100.0%	0.0%		100.0%
Nursing/ Midwifery Student	180	354	1.96	15.5%	84.5%	2.03	1.95	1.7%	1.8%	1.7%	100.0%	0.0%	100.0%	100.0%

Nursing Education/Clinical	32	36	1.12	16.7%	83.3%	1.00	1.14	100.0%	100.0%	100.0%	88.9%	11.1%	100.0%	86.7%
Nursing/ Midwifery other	32	36	1.12	16.7%	83.3%	1.00	1.14	100.0%	100.0%	100.0%	88.9%	11.1%	100.0%	86.7%
Nursing & Midwifery	5,092	5,611	1.10	26.9%	73.1%	1.06	1.12	88.8%	90.0%	88.4%	90.0%	10.0%	94.5%	88.4%
Health & Social Care	1,463	1,633	1.12	16.5%	83.5%	1.04	1.13	86.7%	82.2%	87.5%	81.5%	18.5%	91.5%	79.5%
Executive Management	15	16	1.03	62.5%	37.5%	1.00	1.10	100.0%	100.0%	100.0%	100.0%	0.0%	100.0%	100.0%
Senior Management (VIII & GM)	47	49	1.03	30.6%	69.4%	1.00	1.05	93.9%	93.9%	94.1%	98.0%	2.0%	100.0%	97.1%
Management (VIII & above)	63	65	1.03	38.5%	61.5%	1.00	1.05	95.4%	96.0%	95.0%	98.5%	1.5%	100.0%	97.5%
Middle Management (V-VII)	241	253	1.05	20.6%	79.4%	1.05	1.05	89.7%	89.7%	92.0%	88.9%	11.1%	98.1%	86.6%
Other Administrative	2	2	1.27		100.0%		1.27	100.0%	100.0%	100.0%	50.0%	50.0%		50.0%
Administrative/ Supervisory (V to VII)	242	255	1.05	20.4%	79.6%	1.05	1.05	89.8%	80.8%	92.1%	88.6%	11.4%	98.1%	86.2%
General Administrative (III & IV)	729	824	1.13	8.6%	91.4%	1.04	1.14	82.9%	82.9%	83.3%	73.8%	26.2%	88.7%	72.4%
Clerical (III & IV)	729	824	1.13	8.6%	91.4%	1.04	1.14	82.9%	78.9%	83.3%	73.8%	26.2%	88.7%	72.4%
Management & Administrative	1,034	1,144	1.11	12.9%	87.1%	1.04	1.12	85.1%	82.4%	85.5%	78.5%	21.5%	93.9%	76.2%
Catering	65	70	1.07	34.3%	65.7%	1.03	1.09	95.7%	95.7%	93.5%	74.3%	25.7%	91.7%	65.2%
Household Services	435	504	1.16	20.8%	79.2%	1.11	1.17	87.7%	87.7%	90.5%	59.7%	40.3%	81.0%	54.1%
Other Support	43	49	1.14	32.7%	67.3%	1.03	1.20	89.8%	89.8%	87.9%	69.4%	30.6%	87.5%	60.6%
Portering	47	48	1.02	93.8%	6.3%	1.03	1.00	85.4%	85.4%	66.7%	89.6%	10.4%	88.9%	100.0%
Support	590	671	1.14	28.3%	71.7%	1.07	1.17	88.5%	83.7%	90.4%	64.1%	35.9%	84.7%	55.9%
Maintenance	137	143	1.04	99.3%	0.7%	1.04	1.00	95.8%	95.8%	100.0%	96.5%	3.5%	96.5%	100.0%
Maintenance/ Technical	137	143	1.04	99.3%	0.7%	1.04	1.00	95.8%	95.8%	100.0%	96.5%	3.5%	96.5%	100.0%
General Support	727	814	1.12	40.8%	59.2%	1.06	1.17	89.8%	88.9%	90.5%	69.8%	30.2%	89.8%	56.0%
Health Care Assistants	1,029	1,116	1.08	29.1%	70.9%	1.06	1.10	90.1%	84.6%	92.4%	78.3%	21.7%	89.8%	73.6%
Care, other	204	239	1.17	46.0%	54.0%	1.12	1.22	80.3%	74.5%	85.3%	67.4%	32.6%	77.3%	58.9%
Patient & Client Care	1,232	1,355	1.10	32.1%	67.9%	1.08	1.11	88.4%	82.1%	91.4%	76.4%	23.6%	86.7%	71.5%

Employment by WTE, Headcount, Gender, Full-Time /Part-Time etc.: Apr 2021

Mental Health Services CHO	WTE	Headcount	WTE: no.	% Male	% female	Male WTE: no.	Female WTE: no.	% Total Perm	% Male Perm	% Female Perm	% Total Full Time	% Total Part Time	% Male FT	% Female FT
Overall	10,486	11,545	1.10	26.9%	73.1%	1.06	1.12	83.1%	79.8%	84.3%	85.0%	15.0%	93.0%	82.0%
CHO 1	1,003	1,086	1.08	26.6%	73.4%	1.04	1.10	88.4%	88.4%	89.6%	87.9%	12.1%	97.2%	84.6%
CHO 2	1,370	1,493	1.09	27.9%	72.1%	1.06	1.10	84.9%	84.9%	86.8%	83.9%	16.1%	90.4%	81.3%
CHO 3	838	916	1.09	22.9%	77.1%	1.05	1.11	82.1%	82.1%	82.2%	84.7%	15.3%	90.5%	83.0%
CHO 4	1,570	1,743	1.11	25.3%	74.7%	1.07	1.13	73.0%	73.0%	75.3%	84.9%	15.1%	94.1%	81.7%
CHO 5	1,223	1,363	1.11	25.3%	74.7%	1.05	1.14	86.1%	86.1%	86.7%	79.2%	20.8%	90.4%	75.3%
CHO 6	634	700	1.10	29.9%	70.1%	1.06	1.12	83.3%	83.3%	84.3%	84.0%	16.0%	91.4%	80.9%
CHO 7	879	970	1.10	23.6%	76.4%	1.06	1.12	82.0%	82.0%	83.4%	87.5%	12.5%	95.6%	85.0%
CHO 8	1,122	1,239	1.10	24.3%	75.7%	1.03	1.13	85.8%	85.8%	85.8%	86.2%	13.8%	95.3%	83.3%
CHO 9	1,330	1,490	1.12	27.5%	72.5%	1.07	1.14	83.4%	83.4%	84.9%	84.4%	15.6%	93.9%	80.8%
other Community Services	517	545	1.05	46.2%	53.8%	1.06	1.05	88.3%	88.3%	91.1%	92.5%	7.5%	90.5%	94.2%

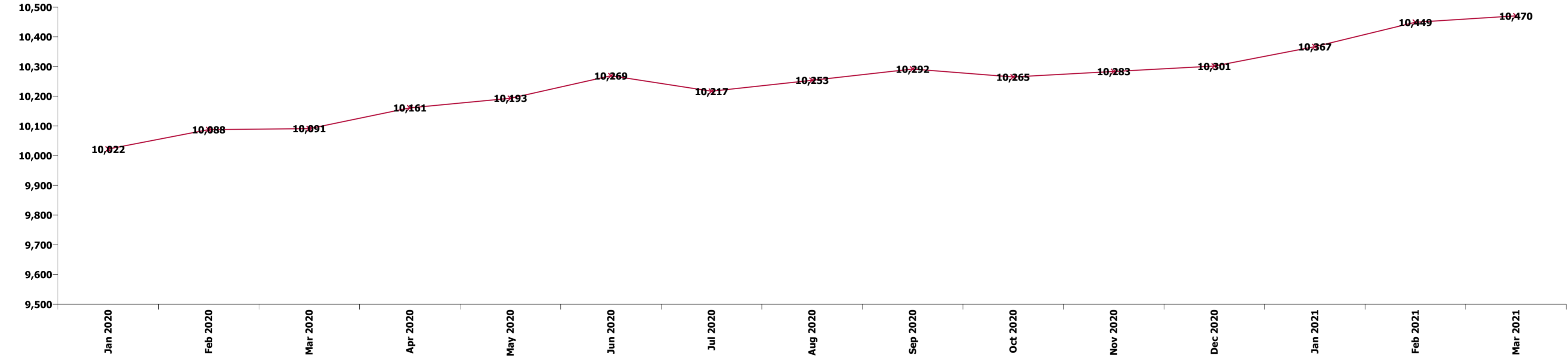
Summary Staff Movement: April 2021

Month-on-month
Summary

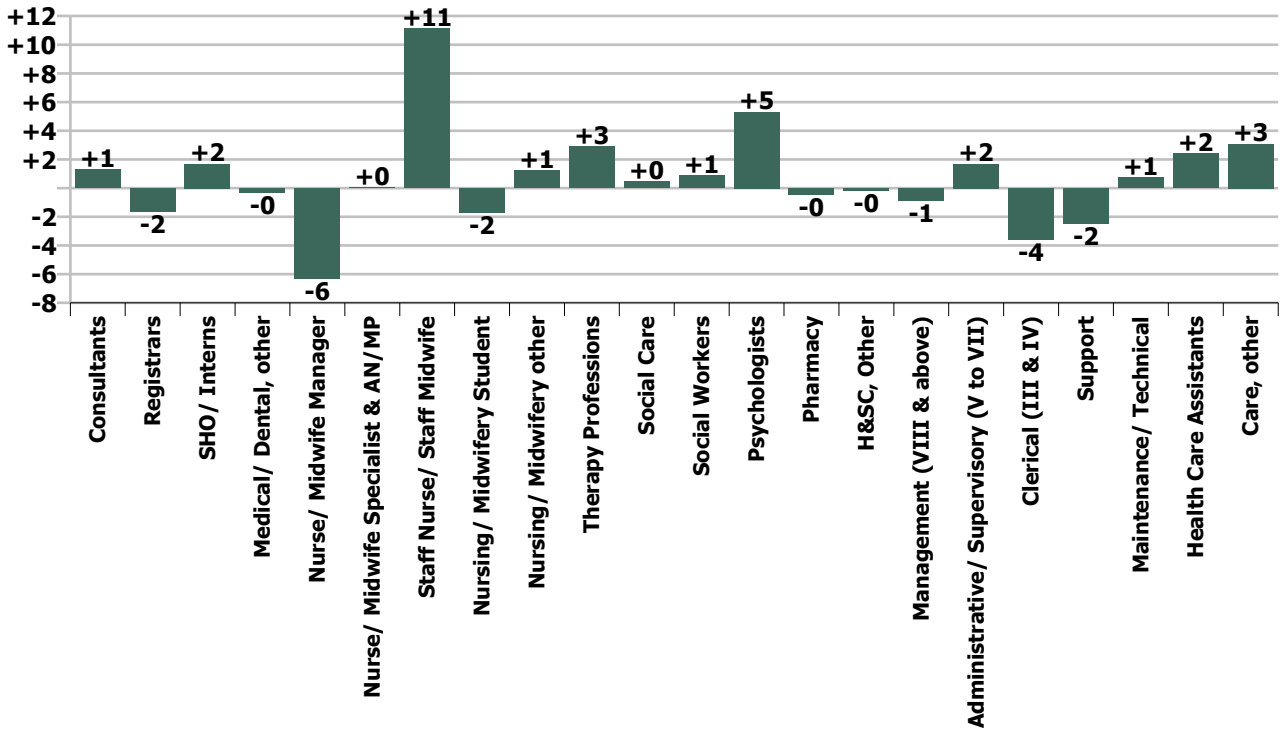
WTE change since Mar 21	% change since Mar 21	overall	Consultants	Registrars	SHO/ Interns	Medical/ Dental, other	Medical & Dental	Nurse/ Midwife Manager	Nurse/ Midwife Specialist & AN/MP	Staff Nurse/ Staff Midwife	Nursing/ Midwifery Student	Nursing/ Midwifery other	Nursing & Midwifery	Therapy Professions	Social Care	Social Workers	Psychologists	Pharmacy	H&SC, Other	Health & Social Care Professionals	Management (VIII & above)	Administrativ e/ Supervisory (V to VII)	Clerical (III & IV)	Management & Administrativ e	General Support	Health Care Assistants	Care, other	Patient & Client Care
Overall	+0.1%	+15	+1	-2	+2	-0	+1	-6	+0	+11	-2	+1	+4	+3	+0	+1	+5	-0	-0	+9	-1	+2	-4	-3	-2	+2	+3	+5
CHO 1	+0.9%	+9	-0	+1	+1		+2	+0	-1	+6	-0		+4	-1	+0	-0	+0		-0	-1	-1	+0	+2	+2	+1	+1	+0	+2
CHO 2	+0.1%	+2	+1	-1	+5	-0	+5	-1	-0	+3		+0	+2	-0	-0	-1	+0		-0	-1	-0	+0	-1	-1	-1	-3	+1	-2
CHO 3	+0.5%	+4	+1		+1		+2	-0	-1	-1	-1		-3	+1		-0	+1		-0	+1	-0	-0	+2	+2	+0	+2		+2
CHO 4	-0.7%	-12	-1	+0	-1	+0	-3	+0	+2	-4	-1		-3	-0	-0	-0	-1	-1	-0	-2	+1	-2	-2	-3	-1	+0	+0	+1
CHO 5	+0.6%	+7	+0	-1	+0		-1	-2	+1	+4	-1		+2	+2		+1	+0		-0	+3		+2	+2	+3	-2	+1	-0	+1
CHO 6	+0.4%	+3	+1	-1	-1		-1	-0	-2	+2	-0		-0	+4	+0	-0	-0		-0	+3		+1	-2	-1	+0	+2	+0	+2
CHO 7	+0.4%	+4	+1	-1	-0		-0	-3	+3	+1	-0	+2	+3	-1	+0	+1	+1		+1	+1	+0	-1	-0	-1	-0	-0	+2	+1
CHO 8	+0.5%	+5	+0	+3	-1		+2	+3	-1	+4	+1		+7	-0	+0	-0	-0		-0	-1	+1	+1	-3	-1	+1	-3	+0	-3
CHO 9	-0.7%	-10	-0	-1	-2		-4	-2	+0	-6	+1	-1	-7	+0	-0	+1	+2	+0	-0	+3	-0	+0	-2	-2	-0	+1	+0	+1
other Community Services	+0.6%	+3	+0	-0			-0	-2	-1	+3		-0	+0	+0	-0	+0	+2			+2	-2	+0	+0	-1	-0	+1		+1
		+0.1%	+0.3%	-0.5%	+0.7%	-6.9%	+0.1%	-0.5%	+0.0%	+0.4%	-0.9%	+4.0%	+0.1%	+0.6%	+0.6%	+0.2%	+1.2%	-2.2%	-0.2%	+0.6%	-1.4%	+0.7%	-0.5%	-0.3%	-0.2%	+0.2%	+1.5%	+0.4%

Year-on-year Summary

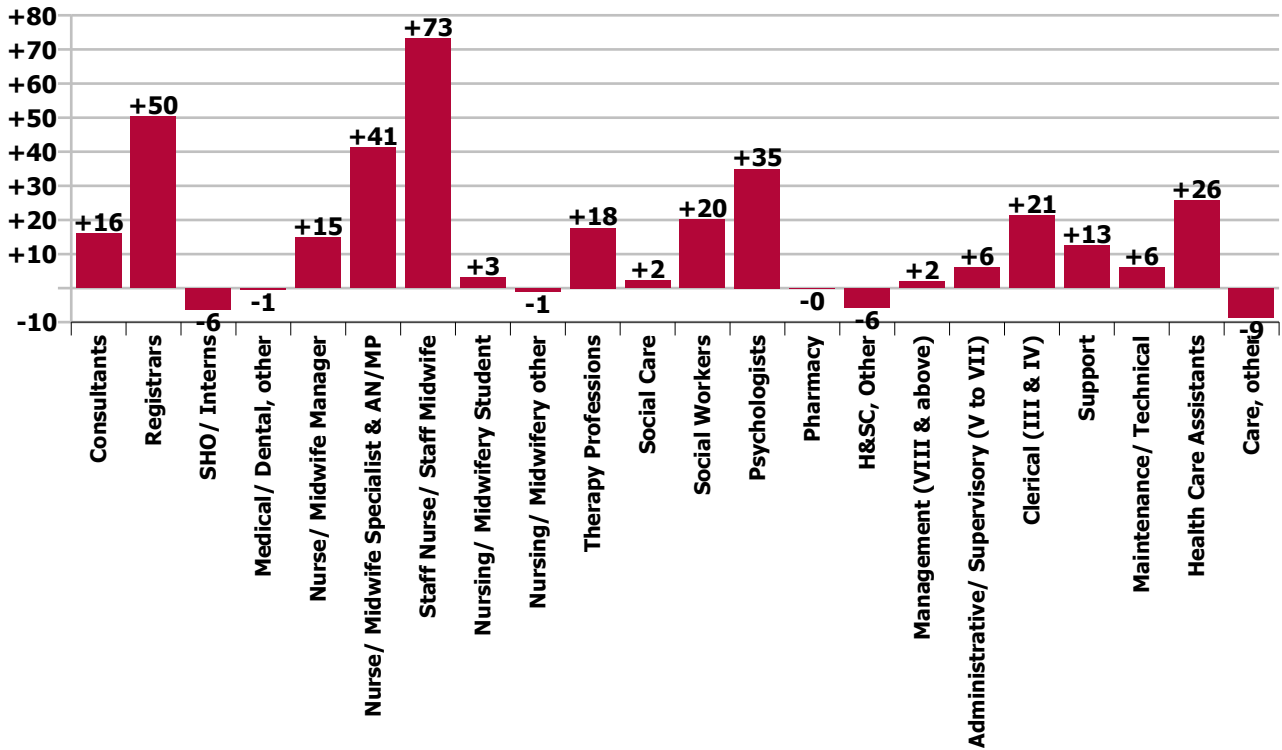
WTE change since Apr 20	% change since Apr 20	overall	Consultants	Registrars	SHO/ Interns	Medical/ Dental, other	Medical & Dental	Nurse/ Midwife Manager	Nurse/ Midwife Specialist & AN/MP	Staff Nurse/ Staff Midwife	Nursing/ Midwifery Student	Nursing/ Midwifery other	Nursing & Midwifery	Therapy Professions	Social Care	Social Workers	Psychologists	Pharmacy	H&SC, Other	Health & Social Care Professionals	Management (VIII & above)	Administrativ e/ Supervisory (V to VII)	Clerical (III & IV)	Management & Administrativ e	General Support	Health Care Assistants	Care, other	Patient & Client Care
Overall	+3.2%	+325	+16	+50	-6	-1	+59	+15	+41	+73	+3	-1	+131	+18	+2	+20	+35	-0	-6	+69	+2	+6	+21	+29	+19	+26	-9	+17
CHO 1	+3.7%	+36	+4	+9	-6		+8	+4	+4	+7	+1	+1	+16	+1	+0	+1	+3		+0	+5	-2	+1	+5	+4	+2	+4	-2	+2
CHO 2	+3.0%	+40	+2	+3	+6	-0	+10	+3	+5	+27	-2	-0	+32	+8	-0	+0	+2	-1	+0	+10	-2	+2	-6	-6	+3	-7	-1	-8
CHO 3	+4.1%	+33	+2	+2	+1		+4	-1	+1	+12	+4		+16	+6	+0	-3	+4		+1	+8	-1	-2	+1	-1	-1	+6		+6
CHO 4	+2.3%	+35	+0	-5	+10	-0	+5	+11	+1	-3	+1		+10	+3	+2	+6	+7	-2	-2	+14	+1	-3	+5	+2	+5	+1	-1	-1
CHO 5	+2.0%	+23	+1	-2	+9		+8	-3	+7	+9	+4	-0	+17	-3		-1	+2		+0	-2	+1	+2	+5	+8	-4	-3	-1	-3
CHO 6	+5.2%	+31	+1	+7	-0		+8	-0	+3	-0	+4	-1	+6	+2	-0	-0	+6		-0	+7		+1	-1	+0	+2	+8	-0	+8
CHO 7	+3.8%	+32	+6	+16	-5		+18	+1	+8	-2	-2	-0	+4	+1	+1	+7	-0		+0	+9	+1	+0	+4	+5	+0	-1	-4	-4
CHO 8	-0.1%	-1	+3	+13	-14		+2	-8	+1	+13	+4	-1	+10	-3	-1	+4	+1		-6	-5	-0	+1	-3	-2	-0	-5	-0	-5
CHO 9	+3.3%	+42	-2	+2	-8		-8	-1	+10	+15	-9	-0	+14	+4	-0	+2	+7	+1	+0	+15	+1	-1	+12	+12	+3	+7	+0	+7
other Community Services	+11.5%	+54	-0	+5			+5	+9	+1	-5		+1	+6	-1	+0	+4	+5	+1		+9	+3	+6	-1	+8	+9	+16		+16
		+3.2%	+4.4%	+19.3%	-2.5%	-10.3%	+6.8%	+1.2%	+8.5%	+2.4%	+1.8%	-3.4%	+2.6%	+4.1%	+2.9%	+5.6%	+8.9%	-0.6%	-5.3%	+5.0%	+3.1%	+2.6%	+3.0%	+2.9%	+2.6%	+2.6%	-4.1%	+1.4%



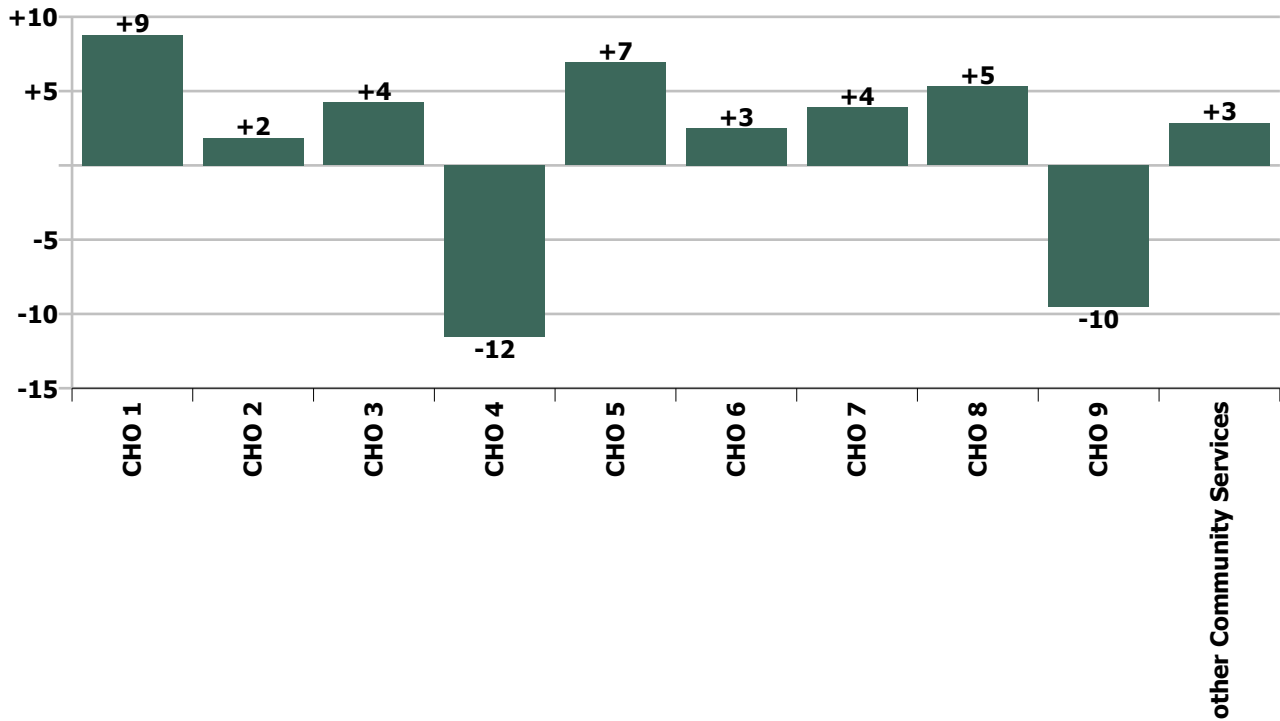
Staff Group change since: Mar 2021



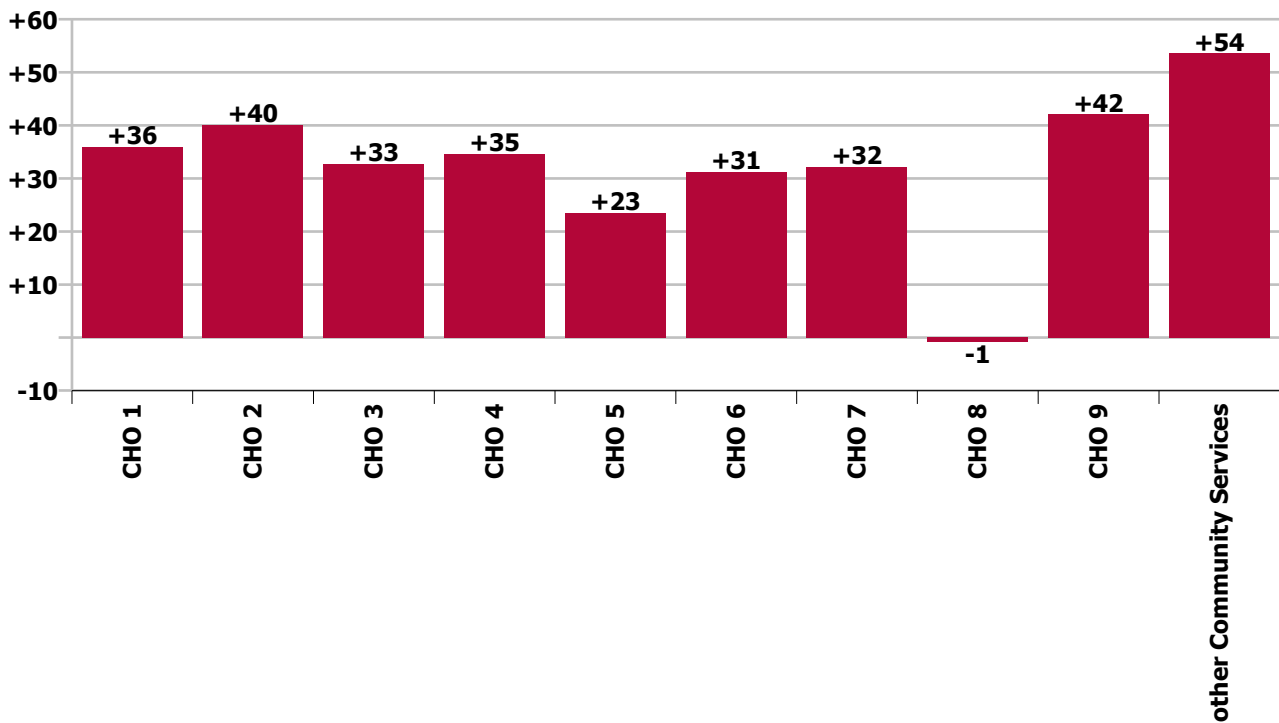
Staff Group change since: Apr 2020



CHO change since: Mar 2021



CHO change since: Apr 2020



Longitudinal Employment Levels by Grade Group - Dec 2015 to Apr 2021

Apr 2021 (Dec 2015 figure: 9,499)	WTE Apr 2021	WTE change since Dec 15	WTE change since Dec 16	WTE change since Dec 17	WTE change since Dec 18	WTE change since Dec 19	WTE change since Dec 20	% change since Dec 15	% change since Dec 16	% change since Dec 17	% change since Dec 18	% change since Dec 19	% change since Dec 20
Overall	10,486	+987	+865	+696	+588	+532	+184	+10.4%	+9.0%	+7.1%	+5.9%	+5.3%	+1.8%
Consultant Medicine	1			-0	-0					-9.1%	-9.1%		
Consultant Psychiatry	376	+62	+61	+64	+47	+25	+8	+19.6%	+19.5%	+20.6%	+14.1%	+7.1%	+2.1%
Consultants	377	+62	+61	+64	+46	+25	+8	+19.5%	+19.5%	+20.4%	+14.0%	+7.0%	+2.1%
Registrar	199	+75	+67	+55	+46	+30	+31	+60.5%	+51.0%	+37.9%	+29.6%	+17.8%	+18.7%
Senior Registrar	109	+51	+42	+43	+23	+12	-2	+89.7%	+62.0%	+65.2%	+26.5%	+11.9%	-2.2%
Specialist Registrar	2	+1	+1		+1	-1		+102.0%	+100.0%		+100.0%	-20.0%	
Registrars	310	+128	+110	+98	+69	+41	+29	+69.9%	+54.9%	+46.0%	+28.8%	+15.3%	+10.3%
<i>Intern</i>	5	-8	-7	-5	-3	-3		-62.8%	-59.7%	-51.7%	-39.6%	-39.6%	-3.4%
Interns	5	-8	-7	-5	-3	-3	-0	-62.8%	-59.7%	-51.7%	-39.6%	-39.6%	-3.4%
Senior House Officer	241	+5	-6	-31	-28	-12	-30	+2.3%	-2.3%	-11.5%	-10.5%	-4.7%	-11.0%
SHO/ Interns	246	-3	-13	-36	-31	-15	-30	-1.1%	-5.0%	-12.9%	-11.3%	-5.8%	-10.9%
Dentists				-0	-0			-100.0%	-100.0%	-100.0%	-100.0%	-100.0%	-100.0%
Other Medical	4	-4	-5	-6	-2	-1	-1	-49.0%	-53.7%	-58.9%	-31.3%	-10.8%	-10.8%
Medical/ Dental, other	4	-4	-5	-6	-2	-1	-1	-49.0%	-53.7%	-59.1%	-32.0%	-10.8%	-10.8%
Medical & Dental	938	+182	+153	+119	+82	+50		+24.1%	+19.5%	+14.5%	+9.6%	+5.7%	+0.7%
Clinical Nurse/ Midwife Manager	1,035	+65	+28	+52	+29	+36	-6	+6.7%	+2.8%	+5.3%	+2.9%	+3.6%	-0.6%
Director Nursing/Midwifery, Assistant	176	+30	+21	+15	+12	+12	+6	+20.7%	+13.6%	+9.0%	+7.6%	+7.2%	+3.5%
Director of Nursing/Midwifery	27	-4	-5	-2	+3	-2	-1	-12.5%	-15.5%	-6.0%	+12.9%	-7.3%	-4.1%
Nurse/ Midwife Manager	1,238	+92	+44	+65	+44	+46	-2	+8.0%	+3.7%	+5.5%	+3.7%	+3.8%	-0.1%
Advanced Nurse/ Midwife Practitioner	41	+34	+34	+31	+21	+10	+2	+488.0%	+450.3%	+292.0%	+104.4%	+33.9%	+4.4%
Clinical Nurse/ Midwife Specialist	485	+179	+149	+102	+90	+57	-4	+58.4%	+44.3%	+26.7%	+22.8%	+13.3%	-0.8%
Nurse/ Midwife Specialist & AN/MP	527	+213	+183	+133	+111	+67	-2	+68.0%	+53.1%	+33.8%	+26.8%	+14.7%	-0.4%
Graduate Nursing/ Midwifery		-10						-100.0%	-100.0%	-100.0%	-100.0%	-100.0%	-100.0%
<i>Staff Midwife</i>								-100.0%	-100.0%	-100.0%	-100.0%	-100.0%	-100.0%
Staff Midwives							-1	-100.0%	-100.0%	-100.0%	-100.0%	-100.0%	-100.0%
Staff Nurse [Intellectual Disability]	2	+0	-1	-1	-4	-2	-2	+4.0%	-29.9%	-32.4%	-61.0%	-48.3%	-44.8%
Staff Nurse [Psychiatric]	3,017	-74	-39	-10	+62	+124	+53	-2.4%	-1.3%	-0.3%	+2.1%	+4.3%	+1.8%
Staff Nurses [General/ Children's]	95	-29	-26	-23	-23	-10	-11	-23.7%	-21.2%	-19.1%	-19.1%	-9.3%	-10.6%

Apr 2021 (Dec 2015 figure: 9,499)	WTE Apr 2021	WTE change since Dec 15	WTE change since Dec 16	WTE change since Dec 17	WTE change since Dec 18	WTE change since Dec 19	WTE change since Dec 20	% change since Dec 15	% change since Dec 16	% change since Dec 17	% change since Dec 18	% change since Dec 19	% change since Dec 20
Overall	10,486	+987	+865	+696	+588	+532	+184	+10.4%	+9.0%	+7.1%	+5.9%	+5.3%	+1.8%
Staff Nurse/ Staff Midwife	3,115	-114	-66	-33	+36	+112	+38	-3.5%	-2.1%	-1.1%	+1.2%	+3.7%	+1.2%
Public Health Nurse			-1	-1				-100.0%	-100.0%	-100.0%	-100.0%	-100.0%	-100.0%
Student General Nursing Intern (pre-registration)					-1			-100.0%	-100.0%	-100.0%	-100.0%	-100.0%	-100.0%
Student Psychiatric Nursing Intern (pre-registration)	171	+153	+162	+154	+144	+143		+847.4%	+1874.7%	+915.5%	+533.1%	+521.2%	+1496.7%
Pre-registration Nurse/ Midwife Intern	171	+153	+162	+154	+143	+143	+160	+847.4%	+1874.7%	+915.5%	+513.6%	+521.2%	+1496.7%
Student Psychiatric Nursing Intern (COVID-19 HCA)	5	+5	+5	+5	+5	+5		-100.0%	-100.0%	-100.0%	-100.0%	-100.0%	-89.3%
Pre-registration Nurse Intern (COVID-19)	5	+5	+5	+5	+5	+5	-38	-100.0%	-100.0%	-100.0%	-100.0%	-100.0%	-89.3%
Student Public Health Nursing (post registration)	1	+1	+1	+1	+1	+1		-100.0%	-100.0%	-100.0%	-100.0%		
Post-registration Nurse/ Midwife Student	1	+1	+1	+1	+1	+1		-100.0%	-100.0%	-100.0%	-100.0%		
Nursing/ Midwifery awaiting registration	4	+4	+2	-5	-16	-55	-1	-100.0%	+90.5%	-56.0%	-80.8%	-93.5%	-21.4%
Nursing/ Midwifery Student	180	+162	+170	+155	+133	+93	+121	+899.3%	+1592.0%	+607.6%	+278.1%	+106.3%	+205.9%
Nursing Education/Clinical	32	+13	+8	+2	+1	+1	+1	+67.8%	+30.6%	+5.4%	+3.9%	+2.1%	+1.7%
Nursing/ Midwifery other	32	+13	+8	+2	+1	+1	+1	+67.8%	+30.6%	+5.4%	+3.9%	+2.1%	+1.7%
Nursing & Midwifery	5,092	+367	+337	+320	+325	+318		+7.8%	+7.1%	+6.7%	+6.8%	+6.7%	+3.2%
Dietitians	21	+16	+8	+4	+1	+2	+0	+284.7%	+55.3%	+25.5%	+4.9%	+10.0%	+1.2%
Occupational Therapists	359	+65	+59	+32	+19	+20	+13	+22.3%	+19.6%	+9.9%	+5.7%	+5.9%	+3.8%
Physiotherapists	2	+0	+0	+1	+1	+0		+9.0%	+19.9%	+99.2%	+49.7%	+8.1%	
Podiatrists & Chiropodists	1	-1	-1	-1	-0	+0	-0	-49.4%	-57.1%	-46.9%	-36.1%	+6.8%	-2.5%
Speech & Language Therapists	69	+17	+10	+8	+8	+8	-0	+31.8%	+16.7%	+13.1%	+12.9%	+12.6%	-0.2%
Therapy Professions	452	+97	+76	+45	+28	+30	+13	+27.4%	+20.1%	+11.1%	+6.7%	+7.1%	+3.0%
Social Care	79	-9	-9	-4	+0	+5	-1	-10.0%	-10.3%	-4.5%	+0.3%	+7.2%	-1.4%
Social Workers	380	+31	+29	+22	+21	+30	+7	+8.8%	+8.4%	+6.3%	+5.9%	+8.6%	+1.9%
Psychologists	429	+107	+86	+59	+41	+35	+5	+33.1%	+25.2%	+15.9%	+10.5%	+8.8%	+1.3%
Pharmacy	20	+2	+0	+0	+0	+1	-1	+14.1%	+0.7%	+1.2%	+1.7%	+5.7%	-5.4%
Counsellor Therapists	97	+10	+12	+12	+12	+2	-4	+10.9%	+14.2%	+13.6%	+14.3%	+2.5%	-4.0%
Other Health & Social Care	5	-2	-3	-4	-4	-7	-0	-32.7%	-40.0%	-41.0%	-41.3%	-56.9%	-6.6%
Play Therapists/ Specialists	1	-1	-1	-0		+0		-39.8%	-40.8%	-2.0%		+1.4%	
H&SC, Other	104	+6	+8	+8	+9	-4	-4	+6.3%	+8.0%	+8.4%	+9.0%	-4.0%	-4.0%
Health & Social Care Professionals	1,463	+234	+190	+131	+99	+97		+19.1%	+14.9%	+9.9%	+7.3%	+7.1%	+1.3%

Apr 2021 (Dec 2015 figure: 9,499)	WTE Apr 2021	WTE change since Dec 15	WTE change since Dec 16	WTE change since Dec 17	WTE change since Dec 18	WTE change since Dec 19	WTE change since Dec 20	% change since Dec 15	% change since Dec 16	% change since Dec 17	% change since Dec 18	% change since Dec 19	% change since Dec 20
Overall	10,486	+987	+865	+696	+588	+532	+184	+10.4%	+9.0%	+7.1%	+5.9%	+5.3%	+1.8%
Executive Management	15	+11	+8	+7	+5	+4	+1	+286.8%	+121.0%	+93.4%	+54.7%	+40.6%	+5.0%
Senior Management (VIII & GM)	47	+19	+23	+16	+16	+1	-5	+66.5%	+92.2%	+51.8%	+49.9%	+2.4%	-9.4%
Management (VIII & above)	63	+30	+31	+24	+21	+6	-4	+93.6%	+98.5%	+60.3%	+51.0%	+9.7%	-6.3%
Administrative/ Supervisory (V to VII)	242	+94	+74	+43	+20	+5	-3	+63.2%	+44.2%	+21.4%	+8.8%	+2.2%	-1.1%
Clerical (III & IV)	729	+83	+68	+47	+33	+11	+7	+12.9%	+10.2%	+6.9%	+4.8%	+1.6%	+0.9%
Management & Administrative	1,034	+207	+173	+113	+74	+22		+25.1%	+20.1%	+12.3%	+7.7%	+2.2%	-0.0%
Catering	65	+3	-0	-0	-6	+0	+2	+4.3%	-0.3%	-0.6%	-8.9%	+0.3%	+3.0%
Household Services	435	-91	-57	-42	-11	+10	-7	-17.3%	-11.7%	-8.7%	-2.4%	+2.4%	-1.5%
Other Support	43	-9	-13	-6	-12	+0	+1	-17.8%	-23.3%	-13.1%	-22.0%	+0.7%	+2.6%
Portering	47	-11	-12	-2	-1	-1	-0	-19.6%	-20.9%	-4.1%	-2.3%	-2.5%	-0.9%
Support	590	-109	-83	-50	-31	+9	-4	-15.6%	-12.3%	-7.9%	-4.9%	+1.6%	-0.7%
Maintenance	137	-6	-6	-1	+3	+8	-0	-4.1%	-4.1%	-1.1%	+2.1%	+6.4%	-0.1%
Technical Services		-2	-2	-2	-2	-2		-100.0%	-100.0%	-100.0%	-100.0%	-100.0%	-100.0%
Maintenance/ Technical	137	-8	-8	-3	+1	+6	-0	-5.4%	-5.4%	-2.5%	+0.6%	+4.8%	-0.1%
General Support	727	-117	-91	-54	-30	+16		-13.8%	-11.1%	-6.9%	-3.9%	+2.2%	-0.6%
HCA, Nurse's Aide, etc.	1,018	+107	+89	+70	+44	+39	+5	+11.7%	+9.6%	+7.3%	+4.5%	+4.0%	+0.5%
Health & Social Care Assistants	10	+7	+6	+6	+5	+1	+2	+193.5%	+123.9%	+123.9%	+91.0%	+16.2%	+24.6%
Health Care Assistants	1,029	+114	+95	+75	+49	+41	+7	+12.4%	+10.2%	+7.9%	+5.0%	+4.1%	+0.7%
Other Care Grades	204	-0	+8	-9	-12	-12	+0	-0.2%	+3.9%	-4.1%	-5.6%	-5.7%	+0.1%
Care, other	204	-0	+8	-9	-12	-12	+0	-0.2%	+3.9%	-4.1%	-5.6%	-5.7%	+0.1%
Patient & Client Care	1,232	+113	+103	+67	+37	+28		+10.1%	+9.1%	+5.7%	+3.1%	+2.4%	+0.6%

Source: Health Service Personnel Census