

# Mental Health Service Employment Report: August 2020

## Employment by Staff Group

Aug 2020 (Dec 2019 figure: 9,954)	WTE Jul 2020	WTE Aug 2020	WTE change since Jul 20	% change since Jul 20	WTE change since Dec 19	WTE change since Aug 19
<b>Overall</b>	<b>10,217</b>	<b>10,253</b>	<b>+37</b>	<b>+0.4%</b>	<b>+299</b>	<b>+323</b>
Consultants	359	366	+7	+1.9%	+13	+30
Registrars	265	276	+12	+4.4%	+7	+15
SHO/ Interns	229	259	+31	+13.5%	-2	+2
Medical/ Dental, other	5	5	+0	+4.4%	+0	-1
<b>Medical &amp; Dental</b>	<b>857</b>	<b>906</b>	<b>+49</b>	<b>+5.8%</b>	<b>+19</b>	<b>+46</b>
Nurse/ Midwife Manager	1,238	1,233	-5	-0.4%	+41	+15
Nurse/ Midwife Specialist & AN/MP	493	495	+2	+0.5%	+36	+46
Staff Nurse/ Staff Midwife	2,997	2,981	-16	-0.5%	-22	-4
<i>Pre-registration Nurse/ Midwife Intern</i>	29	38	+9	+32.1%	+10	-83
<i>Pre-registration Nurse Intern (COVID-19)</i>	195	171	-23	-12.0%	+171	+171
<i>Post-registration Nurse/ Midwife Student</i>				-100.0%		
<i>Nursing/ Midwifery awaiting registration</i>	8	8	-0	-4.1%	-12	+6
Nursing/ Midwifery Student	232	217	-14	-6.2%	+130	+94
Nursing/ Midwifery other	34	35	+1	+3.4%	+4	+6
<b>Nursing &amp; Midwifery</b>	<b>4,993</b>	<b>4,962</b>	<b>-31</b>	<b>-0.6%</b>	<b>+189</b>	<b>+158</b>
Therapy Professions	431	428	-2	-0.6%	+6	+8
Social Care	76	78	+3	+3.6%	+5	+4
Social Workers	367	365	-2	-0.6%	+15	+23
Psychologists	407	409	+3	+0.7%	+15	+20
Pharmacy	18	19	+1	+3.3%	+0	-1
H&SC, Other	109	109	+0	+0.1%	+1	+9
<b>Health &amp; Social Care Professionals</b>	<b>1,407</b>	<b>1,409</b>	<b>+2</b>	<b>+0.1%</b>	<b>+42</b>	<b>+63</b>
Management (VIII & above)	59	58	-0	-0.6%	+1	+5
Administrative/ Supervisory (V to VII)	242	245	+3	+1.0%	+8	+19
Clerical (III & IV)	707	715	+8	+1.1%	-3	+7
<b>Management &amp; Administrative</b>	<b>1,008</b>	<b>1,018</b>	<b>+10</b>	<b>+1.0%</b>	<b>+7</b>	<b>+31</b>
Support	584	585	+1	+0.2%	+5	-3
Maintenance/ Technical	134	132	-2	-1.4%	+1	-3
<b>General Support</b>	<b>718</b>	<b>717</b>	<b>-1</b>	<b>-0.1%</b>	<b>+6</b>	<b>-6</b>
Health Care Assistants	1,024	1,034	+9	+0.9%	+46	+42
Care, other	209	208	-2	-0.9%	-8	-11
<b>Patient &amp; Client Care</b>	<b>1,233</b>	<b>1,241</b>	<b>+8</b>	<b>+0.6%</b>	<b>+37</b>	<b>+31</b>

## Mental Health Services Employment by Administration (HSE / S38): August 2020

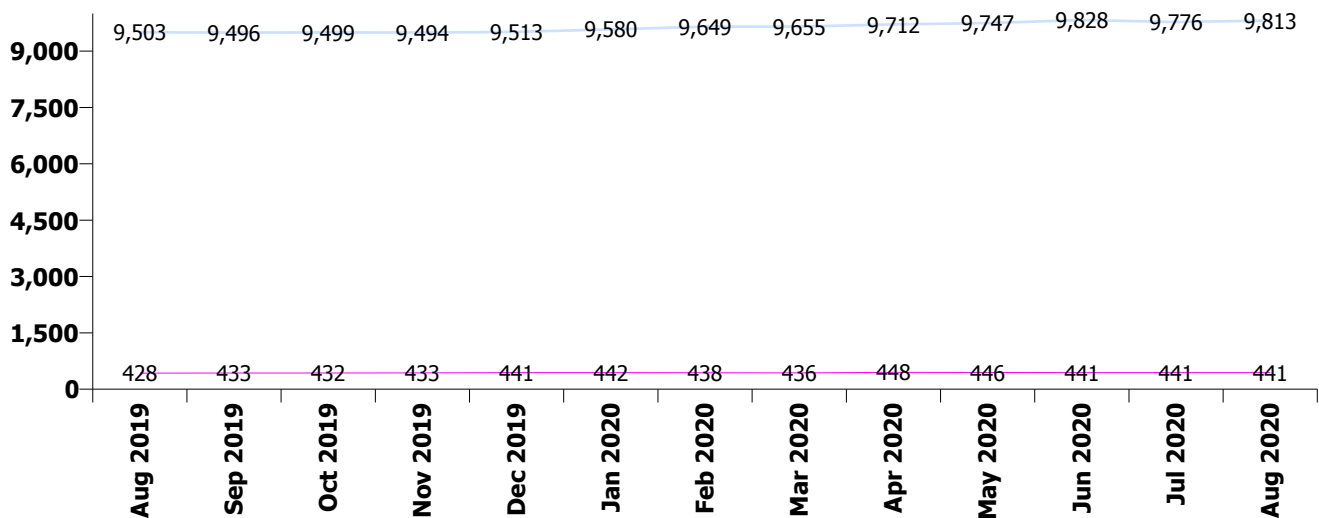
Aug 2020 (Dec 2019 figure: 9,954)	WTE Jul 2020	WTE Aug 2020	WTE change since Jul 20	% change since Jul 20	WTE change since Dec 19	WTE change since Aug 19
<b>Overall</b>	<b>10,217</b>	<b>10,253</b>	<b>+37</b>	<b>+0.4%</b>	<b>+299</b>	<b>+323</b>
<b>HSE</b>	<b>9,776</b>	<b>9,813</b>	<b>+37</b>	<b>+0.4%</b>	<b>+300</b>	<b>+310</b>
<b>Section 38 Voluntary Agencies</b>	<b>441</b>	<b>441</b>	<b>-1</b>	<b>-0.1%</b>	<b>-1</b>	<b>+13</b>

### HSE

Aug 2020 (Dec 2019 figure: 9,513)	WTE Jul 2020	WTE Aug 2020	WTE change since Jul 20	% change since Jul 20	WTE change since Dec 19	WTE change since Aug 19
<b>Overall</b>	<b>9,776</b>	<b>9,813</b>	<b>+37</b>	<b>+0.4%</b>	<b>+300</b>	<b>+310</b>
Consultants	339	346	+7	+2.0%	+13	+29
Registrars	248	261	+13	+5.4%	+11	+19
SHO/ Interns	221	252	+31	+14.1%	-4	+0
Medical/ Dental, other	5	5	+0	+4.4%	+0	-1
<b>Medical &amp; Dental</b>	<b>813</b>	<b>864</b>	<b>+51</b>	<b>+6.3%</b>	<b>+21</b>	<b>+47</b>
Nurse/ Midwife Manager	1,199	1,195	-4	-0.3%	+40	+14
Nurse/ Midwife Specialist & AN/MP	485	487	+2	+0.5%	+35	+44
Staff Nurse/ Staff Midwife	2,876	2,860	-16	-0.6%	-20	-2
<i>Pre-registration Nurse/ Midwife Intern</i>	29	38	+9	+32.1%	+18	-76
<i>Pre-registration Nurse Intern (COVID-19)</i>	182	158	-23	-12.9%	+158	+158
<i>Post-registration Nurse/ Midwife Student</i>				-100.0%		
<i>Nursing/ Midwifery awaiting registration</i>	8	8	-0	-4.1%	-12	+6
Nursing/ Midwifery Student	219	204	-14	-6.6%	+124	+89
Nursing/ Midwifery other	32	33	+1	+3.6%	+4	+6
<b>Nursing &amp; Midwifery</b>	<b>4,810</b>	<b>4,779</b>	<b>-31</b>	<b>-0.6%</b>	<b>+183</b>	<b>+151</b>
Therapy Professions	406	402	-4	-1.0%	+11	+10
Social Care	50	50	+0	+0.7%	+2	+4
Social Workers	345	345	-0	-0.0%	+16	+23
Psychologists	387	391	+3	+0.8%	+12	+16
Pharmacy	16	17	+1	+3.6%	-0	-1
H&SC, Other	108	108	+0	+0.3%	+5	+9
<b>Health &amp; Social Care Professionals</b>	<b>1,313</b>	<b>1,314</b>	<b>+0</b>	<b>+0.0%</b>	<b>+46</b>	<b>+60</b>
Management (VIII & above)	57	56	-0	-0.6%	+1	+5
Administrative/ Supervisory (V to VII)	222	224	+2	+0.7%	+8	+20
Clerical (III & IV)	662	672	+9	+1.4%	-1	+3
<b>Management &amp; Administrative</b>	<b>941</b>	<b>951</b>	<b>+10</b>	<b>+1.1%</b>	<b>+8</b>	<b>+27</b>
Support	545	546	+1	+0.1%	+3	-4
Maintenance/ Technical	129	127	-2	-1.4%	+2	-2
<b>General Support</b>	<b>674</b>	<b>673</b>	<b>-1</b>	<b>-0.2%</b>	<b>+5</b>	<b>-6</b>
Health Care Assistants	1,018	1,028	+9	+0.9%	+46	+42
Care, other	207	204	-2	-1.1%	-9	-11
<b>Patient &amp; Client Care</b>	<b>1,225</b>	<b>1,232</b>	<b>+7</b>	<b>+0.6%</b>	<b>+37</b>	<b>+31</b>

## Section 38 Voluntary Agencies

Aug 2020 (Dec 2019 figure: 441)	WTE Jul 2020	WTE Aug 2020	WTE change since Jul 20	% change since Jul 20	WTE change since Dec 19	WTE change since Aug 19
<b>Overall</b>	<b>441</b>	<b>441</b>	<b>-1</b>	<b>-0.1%</b>	<b>-1</b>	<b>+13</b>
Consultants	20	20	+0	+0.6%	-0	+1
Registrars	17	15	-2	-11.0%	-4	-4
SHO/ Interns	8	8	-0	-2.2%	+2	+2
<b>Medical &amp; Dental</b>	<b>44</b>	<b>42</b>	<b>-2</b>	<b>-4.3%</b>	<b>-2</b>	<b>-1</b>
Nurse/ Midwife Manager	39	38	-1	-2.3%	+0	+2
Nurse/ Midwife Specialist & AN/MP	8	8			+1	+1
Staff Nurse/ Staff Midwife	121	121	+0	+0.4%	-2	-2
<i>Pre-registration Nurse/ Midwife Intern</i>				-100.0%	-8	-8
<i>Pre-registration Nurse Intern (COVID-19)</i>	13	13			+13	+13
Nursing/ Midwifery Student	13	13			+6	+6
Nursing/ Midwifery other	3	3				
<b>Nursing &amp; Midwifery</b>	<b>183</b>	<b>183</b>	<b>-0</b>	<b>-0.3%</b>	<b>+6</b>	<b>+7</b>
Therapy Professions	24	26	+2	+6.9%	-5	-2
Social Care	26	28	+2	+9.2%	+3	+1
Social Workers	22	19	-2	-10.6%	-0	+0
Psychologists	19	19	-0	-2.0%	+3	+4
Pharmacy	2	2			+0	+0
H&SC, Other	1	1	-0	-15.3%	-4	+0
<b>Health &amp; Social Care Professionals</b>	<b>94</b>	<b>95</b>	<b>+1</b>	<b>+1.3%</b>	<b>-4</b>	<b>+3</b>
Management (VIII & above)	2	2				
Administrative/ Supervisory (V to VII)	21	22	+1	+4.8%	+0	-0
Clerical (III & IV)	45	43	-1	-3.1%	-2	+4
<b>Management &amp; Administrative</b>	<b>67</b>	<b>67</b>	<b>-0</b>	<b>-0.6%</b>	<b>-1</b>	<b>+3</b>
Support	39	39	+0	+1.0%	+2	+1
Maintenance/ Technical	5	5			-1	-1
<b>General Support</b>	<b>44</b>	<b>44</b>	<b>+0</b>	<b>+0.9%</b>	<b>+1</b>	<b>-0</b>
Health Care Assistants	6	6				
Care, other	3	3	+1	+17.9%	+1	+0
<b>Patient &amp; Client Care</b>	<b>9</b>	<b>9</b>	<b>+1</b>	<b>+5.9%</b>	<b>+1</b>	<b>+0</b>



## Mental Health Services Employment by CHO: Aug 2020

Aug 2020 (Dec 2019 figure: 9,954)	WTE Jul 2020	WTE Aug 2020	WTE change since Jul 20	% change since Jul 20	WTE change since Dec 19	WTE change since Aug 19
<b>Overall</b>	<b>10,217</b>	<b>10,253</b>	<b>+37</b>	<b>+0.4%</b>	<b>+299</b>	<b>+323</b>
<b>CHO 1</b>	<b>970</b>	<b>979</b>	<b>+9</b>	<b>+0.9%</b>	<b>+26</b>	<b>+26</b>
<b>CHO 2</b>	<b>1,334</b>	<b>1,349</b>	<b>+14</b>	<b>+1.1%</b>	<b>+40</b>	<b>+28</b>
<b>CHO 3</b>	<b>810</b>	<b>800</b>	<b>-10</b>	<b>-1.2%</b>	<b>+5</b>	<b>+7</b>
<b>CHO 4</b>	<b>1,571</b>	<b>1,563</b>	<b>-8</b>	<b>-0.5%</b>	<b>+78</b>	<b>+69</b>
<b>CHO 5</b>	<b>1,186</b>	<b>1,159</b>	<b>-28</b>	<b>-2.3%</b>	<b>-19</b>	<b>-7</b>
<b>CHO 6</b>	<b>596</b>	<b>603</b>	<b>+7</b>	<b>+1.1%</b>	<b>+10</b>	<b>+28</b>
<b>CHO 7</b>	<b>851</b>	<b>876</b>	<b>+25</b>	<b>+2.9%</b>	<b>+41</b>	<b>+39</b>
<b>CHO 8</b>	<b>1,122</b>	<b>1,127</b>	<b>+5</b>	<b>+0.5%</b>	<b>+29</b>	<b>+23</b>
<b>CHO 9</b>	<b>1,297</b>	<b>1,317</b>	<b>+20</b>	<b>+1.6%</b>	<b>+46</b>	<b>+31</b>
<b>other Community Services</b>	<b>479</b>	<b>481</b>	<b>+2</b>	<b>+0.4%</b>	<b>+43</b>	<b>+80</b>

## Mental Health Services Employment by CHO etc. Aug 2020

### CHO 1

Aug 2020 (Dec 2019 figure: 953)	WTE Jul 2020	WTE Aug 2020	WTE change since Jul 20	% change since Jul 20	WTE change since Dec 19	WTE change since Aug 19
<b>Overall</b>	<b>970</b>	<b>979</b>	<b>+9</b>	<b>+0.9%</b>	<b>+26</b>	<b>+26</b>
Consultants	33	33	+0	+1%	+2	+4
Registrars	24	22	-2	-7%	-2	-4
SHO/ Interns	23	25	+2	+9%	-0	+2
<b>Medical &amp; Dental</b>	<b>80</b>	<b>81</b>	<b>+1</b>	<b>+1.0%</b>	<b>-0</b>	<b>+2</b>
Nurse/ Midwife Manager	122	124	+2	+2%	+7	+4
Nurse/ Midwife Specialist & AN/MP	65	66	+1	+2%	-1	-2
Staff Nurse/ Staff Midwife	290	286	-4	-1%	-11	-12
<i>Pre-registration Nurse/ Midwife Intern</i>	5		-5	-100%		-8
<i>Pre-registration Nurse Intern (COVID-19)</i>	13	26	+14	+106%	+26	+26
<i>Nursing/ Midwifery awaiting registration</i>				-100%	-1	
Nursing/ Midwifery Student	18	26	+8	+47%	+26	+18
Nursing/ Midwifery other	1	1	-0	-7%	+1	+1
<b>Nursing &amp; Midwifery</b>	<b>496</b>	<b>503</b>	<b>+8</b>	<b>+1.5%</b>	<b>+21</b>	<b>+10</b>
Therapy Professions	36	36	-0	-1%	+0	+1
Social Care	3	3	-0	-13%	-1	-1
Social Workers	39	38	-1	-3%	-1	-1
Psychologists	22	23	+1	+4%	+2	+3
Pharmacy	1	1	+0	+2%	+0	+0
H&SC, Other	12	13	+1	+5%	-0	+1
<b>Health &amp; Social Care Professionals</b>	<b>114</b>	<b>113</b>	<b>-1</b>	<b>-0.4%</b>	<b>+0</b>	<b>+3</b>
Management (VIII & above)	7	8	+0	+5%	+2	+2
Administrative/ Supervisory (V to VII)	31	31	-0	-1%	+0	+5
Clerical (III & IV)	84	85	+2	+2%	+0	+4
<b>Management &amp; Administrative</b>	<b>122</b>	<b>124</b>	<b>+2</b>	<b>+1.6%</b>	<b>+3</b>	<b>+10</b>
Support	64	64	+0	+0%	+1	+1
Maintenance/ Technical	17	17	+0	+0%	+0	+0
<b>General Support</b>	<b>80</b>	<b>81</b>	<b>+0</b>	<b>+0.2%</b>	<b>+2</b>	<b>+2</b>
Health Care Assistants	68	67	-0	-0%	+1	-0
Care, other	11	10	-1	-8%	-1	-1
<b>Patient &amp; Client Care</b>	<b>79</b>	<b>78</b>	<b>-1</b>	<b>-1.3%</b>	<b>+1</b>	<b>-1</b>

## CHO 2

Aug 2020 (Dec 2019 figure: 1,308)	WTE Jul 2020	WTE Aug 2020	WTE change since Jul 20	% change since Jul 20	WTE change since Dec 19	WTE change since Aug 19
<b>Overall</b>	<b>1,334</b>	<b>1,349</b>	<b>+14</b>	<b>+1.1%</b>	<b>+40</b>	<b>+28</b>
Consultants	39	41	+2	+5%	+3	+7
Registrars	37	36	-0	-1%	+3	+6
SHO/ Interns	32	39	+7	+23%	+4	+6
Medical/ Dental, other	1	1	0			
<b>Medical &amp; Dental</b>	<b>108</b>	<b>117</b>	<b>+9</b>	<b>+8.0%</b>	<b>+10</b>	<b>+19</b>
Nurse/ Midwife Manager	146	147	+1	+1%	+1	-1
Nurse/ Midwife Specialist & AN/MP	74	75	+1	+1%	+7	+7
Staff Nurse/ Staff Midwife	349	348	-1	-0%	-9	-6
<i>Pre-registration Nurse/ Midwife Intern</i>				-100%		-13
<i>Pre-registration Nurse Intern (COVID-19)</i>	31	31	0		+31	+31
<i>Nursing/ Midwifery awaiting registration</i>				-100%	-11	
Nursing/ Midwifery Student	31	31	0		+26	+19
Nursing/ Midwifery other	3	3	0		+1	+1
<b>Nursing &amp; Midwifery</b>	<b>601</b>	<b>603</b>	<b>+1</b>	<b>+0.2%</b>	<b>+26</b>	<b>+20</b>
Therapy Professions	54	55	+1	+2%	+10	+8
Social Care	14	15	+1	+7%	+0	+2
Social Workers	42	44	+1	+3%	+3	+2
Psychologists	36	40	+4	+10%	+6	+2
Pharmacy	2	2	-0	-1%	-1	-1
H&SC, Other	3	3	-1	-17%	-1	-1
<b>Health &amp; Social Care Professionals</b>	<b>151</b>	<b>158</b>	<b>+7</b>	<b>+4.3%</b>	<b>+18</b>	<b>+14</b>
Management (VIII & above)	4	4	0		-1	-3
Administrative/ Supervisory (V to VII)	25	26	+1	+2%	+2	+3
Clerical (III & IV)	103	103	-0	-0%	-6	-8
<b>Management &amp; Administrative</b>	<b>132</b>	<b>132</b>	<b>+0</b>	<b>+0.2%</b>	<b>-5</b>	<b>-8</b>
Support	33	33	+0	+0%	-3	-3
Maintenance/ Technical	29	28	-0	-1%	+1	-2
<b>General Support</b>	<b>62</b>	<b>62</b>	<b>-0</b>	<b>-0.5%</b>	<b>-1</b>	<b>-5</b>
Health Care Assistants	210	210	-0	-0%	-5	-7
Care, other	69	67	-2	-3%	-2	-5
<b>Patient &amp; Client Care</b>	<b>279</b>	<b>277</b>	<b>-2</b>	<b>-0.8%</b>	<b>-7</b>	<b>-12</b>

### CHO 3

Aug 2020 (Dec 2019 figure: 795)	WTE Jul 2020	WTE Aug 2020	WTE change since Jul 20	% change since Jul 20	WTE change since Dec 19	WTE change since Aug 19
<b>Overall</b>	<b>810</b>	<b>800</b>	<b>-10</b>	<b>-1.2%</b>	<b>+5</b>	<b>+7</b>
Consultants	23	24	+1	+4%	+1	+1
Registrars	17	16	-0	-3%	-2	-2
SHO/ Interns	17	20	+3	+21%	+1	+1
<b>Medical &amp; Dental</b>	<b>56</b>	<b>60</b>	<b>+4</b>	<b>+7.1%</b>	<b>-0</b>	<b>+1</b>
Nurse/ Midwife Manager	91	91	-1	-1%	+3	+7
Nurse/ Midwife Specialist & AN/MP	35	32	-3	-8%	-7	-3
Staff Nurse/ Staff Midwife	259	259	-0	-0%	+13	+8
<i>Pre-registration Nurse/ Midwife Intern</i>				-100%	-9	-9
<i>Pre-registration Nurse Intern (COVID-19)</i>	19	12	-8	-40%	+12	+12
Nursing/ Midwifery Student	19	12	-8	-40%	+3	+3
<b>Nursing &amp; Midwifery</b>	<b>404</b>	<b>393</b>	<b>-11</b>	<b>-2.8%</b>	<b>+12</b>	<b>+14</b>
Therapy Professions	24	24	-0	-2%	-2	-5
Social Care	3	3	0		+0	+0
Social Workers	26	26	+0	+0%	+1	+1
Psychologists	89	89	-0	-0%	-3	+1
Pharmacy	3	3	0			
H&SC, Other	14	14	0		+4	+3
<b>Health &amp; Social Care Professionals</b>	<b>159</b>	<b>158</b>	<b>-1</b>	<b>-0.3%</b>	<b>-1</b>	<b>-1</b>
Management (VIII & above)	3	1	-2	-67%	-1	-1
Administrative/ Supervisory (V to VII)	18	19	+1	+6%	+2	+1
Clerical (III & IV)	52	51	-1	-2%	-5	-4
<b>Management &amp; Administrative</b>	<b>72</b>	<b>70</b>	<b>-2</b>	<b>-2.7%</b>	<b>-4</b>	<b>-5</b>
Support	30	31	+0	+1%	-2	-2
Maintenance/ Technical	10	10	-0	-2%	-1	-1
<b>General Support</b>	<b>40</b>	<b>40</b>	<b>+0</b>	<b>+0.5%</b>	<b>-3</b>	<b>-4</b>
Health Care Assistants	77	77	-0	-0%	+2	+2
Care, other	1	1	0		-1	-1
<b>Patient &amp; Client Care</b>	<b>78</b>	<b>78</b>	<b>-0</b>	<b>-0.4%</b>	<b>+1</b>	<b>+1</b>

## CHO 4

Aug 2020 (Dec 2019 figure: 1,485)	WTE Jul 2020	WTE Aug 2020	WTE change since Jul 20	% change since Jul 20	WTE change since Dec 19	WTE change since Aug 19
<b>Overall</b>	<b>1,571</b>	<b>1,563</b>	<b>-8</b>	<b>-0.5%</b>	<b>+78</b>	<b>+69</b>
Consultants	53	52	-1	-2%	+2	+2
Registrars	46	42	-4	-9%	-4	-2
SHO/ Interns	28	30	+3	+11%	-1	+2
Medical/ Dental, other	2	2	+0	+11%	+0	-1
<b>Medical &amp; Dental</b>	<b>129</b>	<b>126</b>	<b>-2</b>	<b>-1.6%</b>	<b>-2</b>	<b>+1</b>
Nurse/ Midwife Manager	188	185	-3	-2%	+15	-9
Nurse/ Midwife Specialist & AN/MP	70	68	-1	-2%	+8	+12
Staff Nurse/ Staff Midwife	513	510	-4	-1%	+7	+2
<i>Pre-registration Nurse/ Midwife Intern</i>				-100%	-1	-19
<i>Pre-registration Nurse Intern (COVID-19)</i>	24	23	-1	-3%	+23	+23
<i>Post-registration Nurse/ Midwife Student</i>				-100%		
<i>Nursing/ Midwifery awaiting registration</i>	4	4	0		+4	+4
Nursing/ Midwifery Student	28	27	-1	-2%	-6	+8
<b>Nursing &amp; Midwifery</b>	<b>798</b>	<b>790</b>	<b>-8</b>	<b>-1.1%</b>	<b>+25</b>	<b>+14</b>
Therapy Professions	78	78	-0	-0%	+4	+3
Social Care	7	7	+0	+4%	+3	+2
Social Workers	61	61	-0	-0%	+8	+8
Psychologists	86	83	-3	-4%	+0	+5
Pharmacy	3	3	-0	-9%	+1	-0
H&SC, Other	14	14	-0	-3%	+3	+4
<b>Health &amp; Social Care Professionals</b>	<b>250</b>	<b>246</b>	<b>-4</b>	<b>-1.6%</b>	<b>+19</b>	<b>+21</b>
<i>Executive Management</i>	1	1	-0	-10%	+1	+1
<i>Senior Management (VIII &amp; GM)</i>				-100%		
Management (VIII & above)	1	1	-0	-10%	-0	+1
Administrative/ Supervisory (V to VII)	23	24	+0	+1%	+1	+1
Clerical (III & IV)	92	94	+2	+2%	+7	+6
<b>Management &amp; Administrative</b>	<b>116</b>	<b>118</b>	<b>+2</b>	<b>+1.8%</b>	<b>+8</b>	<b>+8</b>
Support	84	83	-2	-2%	+3	+3
Maintenance/ Technical	6	5	-1	-11%	-1	-1
<b>General Support</b>	<b>90</b>	<b>88</b>	<b>-2</b>	<b>-2.5%</b>	<b>+2</b>	<b>+2</b>
Health Care Assistants	182	188	+7	+4%	+28	+25
Care, other	6	6	-0	-4%	-1	-1
<b>Patient &amp; Client Care</b>	<b>188</b>	<b>194</b>	<b>+7</b>	<b>+3.6%</b>	<b>+26</b>	<b>+24</b>



## CHO 5

Aug 2020 (Dec 2019 figure: 1,178)	WTE Jul 2020	WTE Aug 2020	WTE change since Jul 20	% change since Jul 20	WTE change since Dec 19	WTE change since Aug 19
<b>Overall</b>	<b>1,186</b>	<b>1,159</b>	<b>-28</b>	<b>-2.3%</b>	<b>-19</b>	<b>-7</b>
Consultants	26	27	+1	+5%	+1	+0
Registrars	12	11	-1	-11%	+1	+1
SHO/ Interns	28	32	+4	+13%	-0	+0
Medical/ Dental, other	2	2	0			
<b>Medical &amp; Dental</b>	<b>68</b>	<b>71</b>	<b>+4</b>	<b>+5.5%</b>	<b>+1</b>	<b>+2</b>
Nurse/ Midwife Manager	158	156	-2	-1%	-9	-7
Nurse/ Midwife Specialist & AN/MP	50	48	-2	-5%	+6	+1
Staff Nurse/ Staff Midwife	401	397	-4	-1%	-18	+4
<i>Pre-registration Nurse/ Midwife Intern</i>				-100%	-1	-19
<i>Pre-registration Nurse Intern (COVID-19)</i>	30	7	-23	-78%	+7	+7
<i>Nursing/ Midwifery awaiting registration</i>				-100%		
Nursing/ Midwifery Student	30	7	-23	-78%	+1	-12
Nursing/ Midwifery other	3	4	+0	+3%	-0	+0
<b>Nursing &amp; Midwifery</b>	<b>643</b>	<b>611</b>	<b>-32</b>	<b>-5.0%</b>	<b>-20</b>	<b>-13</b>
Therapy Professions	41	40	-1	-2%	+0	+0
Social Care	4	4	0		-0	
Social Workers	26	26	+1	+2%	-1	-1
Psychologists	23	23	+0	+1%	+2	+2
H&SC, Other	10	9	-0	-4%	-1	+0
<b>Health &amp; Social Care Professionals</b>	<b>104</b>	<b>103</b>	<b>-1</b>	<b>-0.6%</b>	<b>-0</b>	<b>+1</b>
Management (VIII & above)	5	5	0		+2	+2
Administrative/ Supervisory (V to VII)	20	20	+0	+0%	-0	+0
Clerical (III & IV)	68	68	-0	-0%	-6	-4
<b>Management &amp; Administrative</b>	<b>93</b>	<b>93</b>	<b>-0</b>	<b>-0.1%</b>	<b>-4</b>	<b>-3</b>
Support	171	170	-1	-1%	+3	+5
Maintenance/ Technical	24	24	0		+1	+2
<b>General Support</b>	<b>196</b>	<b>195</b>	<b>-1</b>	<b>-0.6%</b>	<b>+4</b>	<b>+7</b>
Health Care Assistants	72	73	+2	+3%	+1	+0
Care, other	12	12	+0	+3%	-1	-1
<b>Patient &amp; Client Care</b>	<b>83</b>	<b>85</b>	<b>+2</b>	<b>+2.7%</b>	<b>-0</b>	<b>-1</b>

## CHO 6

Aug 2020 (Dec 2019 figure: 593)	WTE Jul 2020	WTE Aug 2020	WTE change since Jul 20	% change since Jul 20	WTE change since Dec 19	WTE change since Aug 19
<b>Overall</b>	<b>596</b>	<b>603</b>	<b>+7</b>	<b>+1.1%</b>	<b>+10</b>	<b>+28</b>
Consultants	38	38	+0	+1%	+2	+7
Registrars	19	17	-1	-8%	-5	-5
SHO/ Interns	13	14	+0	+2%	+5	+4
Medical/ Dental, other				-100%		
<b>Medical &amp; Dental</b>	<b>69</b>	<b>69</b>	<b>-1</b>	<b>-1.2%</b>	<b>+2</b>	<b>+5</b>
Nurse/ Midwife Manager	75	77	+2	+2%	+1	-0
Nurse/ Midwife Specialist & AN/MP	15	16	+1	+7%	+2	+5
Staff Nurse/ Staff Midwife	150	149	-1	-1%	+10	+8
Nursing/ Midwifery other	2	3	+1	+50%	+1	+1
<b>Nursing &amp; Midwifery</b>	<b>242</b>	<b>245</b>	<b>+2</b>	<b>+1.0%</b>	<b>+14</b>	<b>+13</b>
Therapy Professions	35	36	+1	+4%	-7	-0
Social Care	26	28	+2	+8%	+2	+1
Social Workers	32	31	-1	-3%	+1	+3
Psychologists	26	26	-0	-1%	+4	+4
H&SC, Other	4	4	-0	-6%	-4	-0
<b>Health &amp; Social Care Professionals</b>	<b>123</b>	<b>125</b>	<b>+2</b>	<b>+1.7%</b>	<b>-4</b>	<b>+6</b>
Management (VIII & above)	3	3	0			
Administrative/ Supervisory (V to VII)	25	26	+1	+4%	-1	+1
Clerical (III & IV)	41	41	+0	+0%	-1	+7
<b>Management &amp; Administrative</b>	<b>69</b>	<b>70</b>	<b>+1</b>	<b>+1.8%</b>	<b>-1</b>	<b>+8</b>
Support	36	37	+1	+2%	+1	-3
Maintenance/ Technical	4	4	0		-2	-2
<b>General Support</b>	<b>40</b>	<b>41</b>	<b>+1</b>	<b>+1.9%</b>	<b>-1</b>	<b>-5</b>
Health Care Assistants	46	47	+0	+1%	+1	-0
Care, other	5	6	+1	+10%	+0	+0
<b>Patient &amp; Client Care</b>	<b>52</b>	<b>53</b>	<b>+1</b>	<b>+1.9%</b>	<b>+2</b>	<b>-0</b>

## CHO 7

Aug 2020 (Dec 2019 figure: 835)	WTE Jul 2020	WTE Aug 2020	WTE change since Jul 20	% change since Jul 20	WTE change since Dec 19	WTE change since Aug 19
<b>Overall</b>	<b>851</b>	<b>876</b>	<b>+25</b>	<b>+2.9%</b>	<b>+41</b>	<b>+39</b>
Consultants	51	54	+3	+6%	+7	+9
Registrars	44	55	+12	+27%	+9	+9
SHO/ Interns	16	22	+5	+33%	+1	+1
<b>Medical &amp; Dental</b>	<b>111</b>	<b>131</b>	<b>+20</b>	<b>+18.0%</b>	<b>+17</b>	<b>+19</b>
Nurse/ Midwife Manager	117	116	-1	-1%	-0	+2
Nurse/ Midwife Specialist & AN/MP	45	46	+2	+4%	+6	+9
Staff Nurse/ Staff Midwife	198	193	-4	-2%	-1	-15
<i>Pre-registration Nurse/ Midwife Intern</i>				-100%	-6	-13
<i>Pre-registration Nurse Intern (COVID-19)</i>	17	24	+7	+44%	+24	+24
<i>Nursing/ Midwifery awaiting registration</i>	4	4	-0	-8%	-0	+3
Nursing/ Midwifery Student	21	27	+7	+33%	+16	+13
Nursing/ Midwifery other	8	8	+0	+1%	+0	+1
<b>Nursing &amp; Midwifery</b>	<b>388</b>	<b>391</b>	<b>+3</b>	<b>+0.8%</b>	<b>+22</b>	<b>+11</b>
Therapy Professions	45	43	-2	-4%	-5	-2
Social Care	8	8	-0	-1%	-0	+1
Social Workers	38	37	-1	-3%	+2	+6
Psychologists	30	32	+1	+4%	+0	+2
<i>Pharmacy</i>	1	1	0		+1	
Pharmacy	1	1	0			
H&SC, Other	18	19	+1	+3%	+1	+2
<b>Health &amp; Social Care Professionals</b>	<b>139</b>	<b>138</b>	<b>-1</b>	<b>-0.9%</b>	<b>-2</b>	<b>+9</b>
Management (VIII & above)	3	4	+1	+35%	+1	+1
Administrative/ Supervisory (V to VII)	17	17	0		+1	+3
Clerical (III & IV)	51	52	+1	+1%	+5	+3
<b>Management &amp; Administrative</b>	<b>71</b>	<b>72</b>	<b>+2</b>	<b>+2.2%</b>	<b>+7</b>	<b>+8</b>
Support	16	16	+0	+2%	-2	-4
Maintenance/ Technical	2	2	-0	-5%	+0	-0
<b>General Support</b>	<b>18</b>	<b>18</b>	<b>+0</b>	<b>+0.8%</b>	<b>-2</b>	<b>-4</b>
Health Care Assistants	34	35	+1	+2%	+2	-2
Care, other	89	89	+1	+1%	-3	-1
<b>Patient &amp; Client Care</b>	<b>123</b>	<b>124</b>	<b>+1</b>	<b>+1.1%</b>	<b>-1</b>	<b>-3</b>

## CHO 8

Aug 2020 (Dec 2019 figure: 1,098)	WTE Jul 2020	WTE Aug 2020	WTE change since Jul 20	% change since Jul 20	WTE change since Dec 19	WTE change since Aug 19
<b>Overall</b>	<b>1,122</b>	<b>1,127</b>	<b>+5</b>	<b>+0.5%</b>	<b>+29</b>	<b>+23</b>
Consultants	35	34	-2	-4%	-1	-1
Registrars	22	29	+7	+35%	+3	+5
SHO/ Interns	30	31	+0	+1%	-5	-4
<b>Medical &amp; Dental</b>	<b>87</b>	<b>94</b>	<b>+6</b>	<b>+7.3%</b>	<b>-3</b>	<b>+0</b>
Nurse/ Midwife Manager	123	122	-1	-1%	+1	-5
Nurse/ Midwife Specialist & AN/MP	58	60	+1	+2%	+4	+4
Staff Nurse/ Staff Midwife	325	329	+4	+1%	-3	+8
<i>Pre-registration Nurse/ Midwife Intern</i>	7		-7	-100%		-18
<i>Pre-registration Nurse Intern (COVID-19)</i>	27	32	+5	+19%	+32	+32
<i>Nursing/ Midwifery awaiting registration</i>				-100%	-1	
Nursing/ Midwifery Student	33	32	-2	-5%	+29	+13
Nursing/ Midwifery other	4	4	0		+0	+2
<b>Nursing &amp; Midwifery</b>	<b>544</b>	<b>546</b>	<b>+2</b>	<b>+0.4%</b>	<b>+31</b>	<b>+22</b>
Therapy Professions	43	44	+1	+2%	-0	-1
Social Care	7	7	-0	-1%	-0	-0
Social Workers	45	44	-1	-2%	+2	+4
Psychologists	37	37	-0	-1%	-2	-4
Pharmacy	1	1	-0	-14%	-1	-1
H&SC, Other	20	20	-0	-1%	-0	-0
<b>Health &amp; Social Care Professionals</b>	<b>153</b>	<b>152</b>	<b>-1</b>	<b>-0.5%</b>	<b>-1</b>	<b>-2</b>
Management (VIII & above)	3	3	0		+0	
Administrative/ Supervisory (V to VII)	21	20	-1	-5%	-2	-0
Clerical (III & IV)	100	99	-1	-1%	+11	+14
<b>Management &amp; Administrative</b>	<b>125</b>	<b>122</b>	<b>-3</b>	<b>-2.0%</b>	<b>+8</b>	<b>+13</b>
Support	32	32	+0	+0%	-1	-2
Maintenance/ Technical	27	27	0		+1	-1
<b>General Support</b>	<b>59</b>	<b>59</b>	<b>+0</b>	<b>+0.1%</b>	<b>+0</b>	<b>-3</b>
Health Care Assistants	151	151	+0	+0%	-6	-8
Care, other	4	3	-0	-8%	-0	-0
<b>Patient &amp; Client Care</b>	<b>154</b>	<b>154</b>	<b>-0</b>	<b>-0.0%</b>	<b>-6</b>	<b>-8</b>

## CHO 9

Aug 2020 (Dec 2019 figure: 1,272)	WTE Jul 2020	WTE Aug 2020	WTE change since Jul 20	% change since Jul 20	WTE change since Dec 19	WTE change since Aug 19
<b>Overall</b>	<b>1,297</b>	<b>1,317</b>	<b>+20</b>	<b>+1.6%</b>	<b>+46</b>	<b>+31</b>
Consultants	45	46	+2	+4%	-4	-2
Registrars	31	33	+2	+5%	+2	+6
SHO/ Interns	42	47	+5	+13%	-6	-9
<b>Medical &amp; Dental</b>	<b>118</b>	<b>127</b>	<b>+9</b>	<b>+7.5%</b>	<b>-7</b>	<b>-5</b>
Nurse/ Midwife Manager	140	139	-1	-1%	+7	+5
Nurse/ Midwife Specialist & AN/MP	70	73	+2	+3%	+7	+10
Staff Nurse/ Staff Midwife	347	346	-1	-0%	-6	-12
<i>Pre-registration Nurse/ Midwife Intern</i>	17	38	+21	+123%	+26	+16
<i>Pre-registration Nurse Intern (COVID-19)</i>	34	17	-17	-51%	+17	+17
<i>Nursing/ Midwifery awaiting registration</i>				-100%	-3	-1
Nursing/ Midwifery Student	51	55	+4	+7%	+34	+32
Nursing/ Midwifery other	12	13	+0	+1%	+1	+0
<b>Nursing &amp; Midwifery</b>	<b>621</b>	<b>624</b>	<b>+4</b>	<b>+0.6%</b>	<b>+44</b>	<b>+35</b>
Therapy Professions	61	60	-1	-2%	+5	+3
Social Care	1	1	-0	-3%		
Social Workers	44	44	-0	-1%	+0	+1
Psychologists	50	51	+2	+3%	+6	+3
Pharmacy	7	8	+1	+11%	-0	-0
H&SC, Other	13	14	+1	+5%	-0	+1
<b>Health &amp; Social Care Professionals</b>	<b>176</b>	<b>178</b>	<b>+1</b>	<b>+0.8%</b>	<b>+10</b>	<b>+7</b>
Management (VIII & above)	5	5	+0	+0%	+0	
Administrative/ Supervisory (V to VII)	28	27	-1	-2%	-1	-1
Clerical (III & IV)	99	105	+6	+6%	+1	-2
<b>Management &amp; Administrative</b>	<b>131</b>	<b>137</b>	<b>+6</b>	<b>+4.2%</b>	<b>+0</b>	<b>-3</b>
Support	102	104	+2	+2%	+1	-2
Maintenance/ Technical	11	10	-1	-5%	-1	-1
<b>General Support</b>	<b>112</b>	<b>114</b>	<b>+2</b>	<b>+1.5%</b>	<b>-0</b>	<b>-2</b>
Health Care Assistants	127	126	-1	-1%	-0	+1
Care, other	12	12	-0	-0%	-0	-1
<b>Patient &amp; Client Care</b>	<b>139</b>	<b>138</b>	<b>-1</b>	<b>-0.8%</b>	<b>-1</b>	<b>+0</b>

## other Community Services

Aug 2020 (Dec 2019 figure: 438)	WTE Jul 2020	WTE Aug 2020	WTE change since Jul 20	% change since Jul 20	WTE change since Dec 19	WTE change since Aug 19
<b>Overall</b>	<b>479</b>	<b>481</b>	<b>+2</b>	<b>+0.4%</b>	<b>+43</b>	<b>+80</b>
Consultants	17	17	-0	-0%	+1	+2
Registrars	14	14	0		+1	+1
SHO/ Interns				-100%		
<b>Medical &amp; Dental</b>	<b>31</b>	<b>31</b>	<b>-0</b>	<b>-0.0%</b>	<b>+2</b>	<b>+3</b>
Nurse/ Midwife Manager	79	78	-0	-1%	+16	+19
Nurse/ Midwife Specialist & AN/MP	11	11	+0	+2%	+3	+3
Staff Nurse/ Staff Midwife	165	165	+0	+0%	-4	+11
Nursing/ Midwifery other	1	1	0			
<b>Nursing &amp; Midwifery</b>	<b>256</b>	<b>256</b>	<b>-0</b>	<b>-0.1%</b>	<b>+15</b>	<b>+33</b>
Therapy Professions	13	12	-1	-7%	+1	+2
Social Care	2	2	0		+0	+0
Social Workers	15	15	+0	+1%	-0	+2
Psychologists	7	7	-0	-3%	+1	+1
<i>Pharmacy</i>	<i>1</i>	<i>1</i>	<i>+0</i>	<i>+20%</i>	<i>+1</i>	<i>+1</i>
Pharmacy	1	1	+0	+20%	+1	+1
<b>Health &amp; Social Care Professionals</b>	<b>37</b>	<b>36</b>	<b>-1</b>	<b>-2.2%</b>	<b>+2</b>	<b>+6</b>
Management (VIII & above)	25	25	+0	+1%	-2	+3
Administrative/ Supervisory (V to VII)	35	36	+2	+4%	+5	+6
Clerical (III & IV)	17	17	0		-8	-8
<b>Management &amp; Administrative</b>	<b>77</b>	<b>78</b>	<b>+2</b>	<b>+2.5%</b>	<b>-5</b>	<b>+1</b>
Support	16	16	-0	-0%	+4	+4
Maintenance/ Technical	4	4	0		+2	+2
<b>General Support</b>	<b>20</b>	<b>20</b>	<b>-0</b>	<b>-0.1%</b>	<b>+6</b>	<b>+6</b>
Health Care Assistants	58	60	+1	+2%	+23	+32
Care, other	1	1	0			
<b>Patient &amp; Client Care</b>	<b>59</b>	<b>60</b>	<b>+1</b>	<b>+2.0%</b>	<b>+23</b>	<b>+32</b>

## Mental Health Services Employment by Grade Group: Aug 2020

Aug 2020 (Dec 2019 figure: 9,954)	WTE Jul 2020	WTE Aug 2020	WTE change since Jul 20	% change since Jul 20	WTE change since Dec 19	WTE change since Aug 19
<b>Overall</b>	<b>10,217</b>	<b>10,253</b>	<b>+37</b>	<b>+0.4%</b>	<b>+299</b>	<b>+323</b>
Consultant Medicine	1	1	0			+0
Consultant Psychiatry	358	365	+7	+2%	+13	+30
<b>Consultants</b>	<b>359</b>	<b>366</b>	<b>+7</b>	<b>+2%</b>	<b>+13</b>	<b>+30</b>
Registrar	169	169	+0	+0%	+0	+6
Senior Registrar	94	105	+11	+12%	+8	+9
Specialist Registrar	2	2	0		-1	-1
<b>Registrars</b>	<b>265</b>	<b>276</b>	<b>+12</b>	<b>+4%</b>	<b>+7</b>	<b>+15</b>
Interns	5	7	+2	+29%	-1	-1
Senior House Officer	223	253	+29	+13%	-1	+3
<b>SHO/ Interns</b>	<b>229</b>	<b>259</b>	<b>+31</b>	<b>+13%</b>	<b>-2</b>	<b>+2</b>
Dentists		0	+0	-100%	+0	-0
Other Medical	5	5	+0	+4%	+0	-1
<b>Medical/ Dental, other</b>	<b>5</b>	<b>5</b>	<b>+0</b>	<b>+4%</b>	<b>+0</b>	<b>-1</b>
<b>Medical &amp; Dental</b>	<b>857</b>	<b>906</b>	<b>+49</b>	<b>+6%</b>	<b>+19</b>	<b>+46</b>
Clinical Nurse/ Midwife Manager	1,032	1,030	-2	-0%	+31	+8
Director Nursing/Midwifery, Assistant	177	174	-2	-1%	+10	+6
Director of Nursing/Midwifery	29	29	-0	-1%	-0	+1
<b>Nurse/ Midwife Manager</b>	<b>1,238</b>	<b>1,233</b>	<b>-5</b>	<b>-0%</b>	<b>+41</b>	<b>+15</b>
Advanced Nurse/ Midwife Practitioner	36	36	-0	-0%	+6	+6
Clinical Nurse/ Midwife Specialist	456	459	+3	+1%	+31	+40
<b>Nurse/ Midwife Specialist &amp; AN/MP</b>	<b>493</b>	<b>495</b>	<b>+2</b>	<b>+0%</b>	<b>+36</b>	<b>+46</b>
Staff Midwives	1	1	0		+1	+1
Staff Nurse [Intellectual Disability]	4	5	+1	+12%	+0	+0
Staff Nurse [Psychiatric]	2,874	2,857	-17	-1%	-36	-14
Staff Nurses [General/ Children's]	117	118	+1	+1%	+14	+9
<b>Staff Nurse/ Staff Midwife</b>	<b>2,997</b>	<b>2,981</b>	<b>-16</b>	<b>-1%</b>	<b>-22</b>	<b>-4</b>
Pre-registration Nurse/ Midwife Intern	29	38	+9	+32%	+11	-83
Pre-registration Nurse Intern (COVID-19)	195	171	-23	-12%	+171	+171
Post-registration Nurse/ Midwife Student				-100%	-1	
Nursing/ Midwifery awaiting registration	8	8	-0	-4%	-51	+6
<b>Nursing/ Midwifery Student</b>	<b>232</b>	<b>217</b>	<b>-14</b>	<b>-6%</b>	<b>+130</b>	<b>+94</b>
Nursing Education/Clinical	34	35	+1	+3%	+4	+6
<b>Nursing/ Midwifery other</b>	<b>34</b>	<b>35</b>	<b>+1</b>	<b>+3%</b>	<b>+4</b>	<b>+6</b>
<b>Nursing &amp; Midwifery</b>	<b>4,993</b>	<b>4,962</b>	<b>-31</b>	<b>-1%</b>	<b>+189</b>	<b>+158</b>
Dietitians	20	20	+0	+0%	+1	+0
Occupational Therapists	347	348	+0	+0%	+9	+15
Physiotherapists	3	3	0		+0	+0
Podiatrists & Chiropodists	1	1	-0	-6%	+0	-0
Speech & Language Therapists	60	57	-3	-5%	-4	-8
<b>Therapy Professions</b>	<b>431</b>	<b>428</b>	<b>-2</b>	<b>-1%</b>	<b>+6</b>	<b>+8</b>
<b>Social Care</b>	<b>76</b>	<b>78</b>	<b>+3</b>	<b>+4%</b>	<b>+5</b>	<b>+4</b>
<b>Social Workers</b>	<b>367</b>	<b>365</b>	<b>-2</b>	<b>-1%</b>	<b>+15</b>	<b>+23</b>
<b>Psychologists</b>	<b>407</b>	<b>409</b>	<b>+3</b>	<b>+1%</b>	<b>+15</b>	<b>+20</b>
<b>Pharmacy</b>	<b>18</b>	<b>19</b>	<b>+1</b>	<b>+3%</b>	<b>+0</b>	<b>-1</b>
Counsellor Therapists	102	101	-1	-1%	+6	+9
Other Health & Social Care	6	7	+1	+16%	-5	+0
Play Therapists/ Specialists	1	1	0		+0	
<b>H&amp;SC, Other</b>	<b>109</b>	<b>109</b>	<b>+0</b>	<b>+0%</b>	<b>+1</b>	<b>+9</b>
<b>Health &amp; Social Care Professionals</b>	<b>1,407</b>	<b>1,409</b>	<b>+2</b>	<b>+0%</b>	<b>+42</b>	<b>+63</b>
Executive Management	12	12	-0	-1%	+1	+2

Aug 2020 (Dec 2019 figure: 9,954)	WTE Jul 2020	WTE Aug 2020	WTE change since Jul 20	% change since Jul 20	WTE change since Dec 19	WTE change since Aug 19
<b>Overall</b>	<b>10,217</b>	<b>10,253</b>	<b>+37</b>	<b>+0.4%</b>	<b>+299</b>	<b>+323</b>
Senior Management (VIII & GM)	47	46	-0	-1%	+0	+3
<b>Management (VIII &amp; above)</b>	<b>59</b>	<b>58</b>	<b>-0</b>	<b>-1%</b>	<b>+1</b>	<b>+5</b>
Middle Management (V-VII)	241	243	+3	+1%	+8	+19
Other Administrative	2	2	0			
<b>Administrative/ Supervisory (V to VII)</b>	<b>242</b>	<b>245</b>	<b>+3</b>	<b>+1%</b>	<b>+8</b>	<b>+19</b>
General Administrative (III & IV)	707	715	+8	+1%	-3	+7
<b>Clerical (III &amp; IV)</b>	<b>707</b>	<b>715</b>	<b>+8</b>	<b>+1%</b>	<b>-3</b>	<b>+7</b>
<b>Management &amp; Administrative</b>	<b>1,008</b>	<b>1,018</b>	<b>+10</b>	<b>+1%</b>	<b>+7</b>	<b>+31</b>
Catering	64	64	+1	+1%	-1	-5
Household Services	434	434	0		+10	+5
Other Support	38	38	+0	+0%	-4	-4
Portering	48	48	+1	+1%	+0	+3
<b>Support</b>	<b>584</b>	<b>585</b>	<b>+1</b>	<b>+0%</b>	<b>+5</b>	<b>-3</b>
Maintenance	132	130	-2	-1%	+1	-3
Technical Services	2	2	0			
<b>Maintenance/ Technical</b>	<b>134</b>	<b>132</b>	<b>-2</b>	<b>-1%</b>	<b>+1</b>	<b>-3</b>
<b>General Support</b>	<b>718</b>	<b>717</b>	<b>-1</b>	<b>-0%</b>	<b>+6</b>	<b>-6</b>
HCA, Nurse's Aide, etc.	1,015	1,025	+9	+1%	+46	+41
Health & Social Care Assistants	9	9	+0	+0%		+2
<b>Health Care Assistants</b>	<b>1,024</b>	<b>1,034</b>	<b>+9</b>	<b>+1%</b>	<b>+46</b>	<b>+42</b>
<b>Care, other</b>	<b>209</b>	<b>208</b>	<b>-2</b>	<b>-1%</b>	<b>-8</b>	<b>-11</b>
<b>Patient &amp; Client Care</b>	<b>1,233</b>	<b>1,241</b>	<b>+8</b>	<b>+1%</b>	<b>+37</b>	<b>+31</b>



## Employment by WTE, Headcount, Gender, Full-Time /Part-Time etc.: Aug 2020

Mental Health Services Staff Group	WTE	Headcount	WTE: no.	% Male	% female	Male WTE: no.	Female WTE: no.	% Total Perm	% Male Perm	% Female Perm	% Total Full Time	% Total Part Time	% Male FT	% Female FT
<b>Overall</b>	<b>10,253</b>	<b>11,197</b>	<b>1.09</b>	<b>27.1%</b>	<b>72.9%</b>	<b>1.05</b>	<b>1.11</b>	<b>84.0%</b>	<b>80.8%</b>	<b>85.1%</b>	<b>82.4%</b>	<b>17.6%</b>	<b>90.9%</b>	<b>79.2%</b>
Consultant Medicine	1	1	1.00	100.0%		1.00		100.0%	100.0%		100.0%	0.0%	100.0%	
Consultant Psychiatry	365	399	1.09	40.1%	59.9%	1.05	1.12	68.2%	68.2%	66.9%	84.2%	15.8%	91.3%	79.5%
<b>Consultants</b>	<b>366</b>	<b>400</b>	<b>1.09</b>	<b>40.3%</b>	<b>59.8%</b>	<b>1.05</b>	<b>1.12</b>	<b>68.3%</b>	<b>70.2%</b>	<b>66.9%</b>	<b>84.3%</b>	<b>15.8%</b>	<b>91.3%</b>	<b>79.5%</b>
Registrar	169	179	1.06	42.5%	57.5%	1.04	1.07	7.3%	7.3%	3.9%	96.1%	3.9%	98.7%	94.2%
Senior Registrar	105	112	1.06	42.9%	57.1%	1.01	1.10	4.5%	4.5%	4.7%	94.6%	5.4%	100.0%	90.6%
Specialist Registrar	2	2	1.33	50.0%	50.0%	2.00	1.00	0.0%	0.0%	0.0%	100.0%	0.0%	100.0%	100.0%
<b>Registrars</b>	<b>276</b>	<b>293</b>	<b>1.06</b>	<b>42.7%</b>	<b>57.3%</b>	<b>1.04</b>	<b>1.08</b>	<b>6.1%</b>	<b>8.8%</b>	<b>4.2%</b>	<b>95.6%</b>	<b>4.4%</b>	<b>99.2%</b>	<b>92.9%</b>
Interns	7	7	1.01	28.6%	71.4%	1.05	1.00	0.0%	0.0%	0.0%	85.7%	14.3%	50.0%	100.0%
Senior House Officer	253	269	1.07	41.6%	58.4%	1.06	1.07	4.1%	4.1%	1.9%	91.4%	8.6%	88.4%	93.6%
<b>SHO/ Interns</b>	<b>259</b>	<b>276</b>	<b>1.06</b>	<b>41.3%</b>	<b>58.7%</b>	<b>1.06</b>	<b>1.06</b>	<b>4.0%</b>	<b>7.0%</b>	<b>1.9%</b>	<b>91.3%</b>	<b>8.7%</b>	<b>87.7%</b>	<b>93.8%</b>
Dentists	0	1	25.00		100.0%		25.00	0.0%	0.0%	0.0%	0.0%	100.0%		0.0%
Other Medical	5	10	1.93	50.0%	50.0%	1.92	1.94	30.0%	30.0%	40.0%	30.0%	70.0%	20.0%	40.0%
<b>Medical/ Dental, other</b>	<b>5</b>	<b>11</b>	<b>2.11</b>	<b>45.5%</b>	<b>54.5%</b>	<b>1.92</b>	<b>2.29</b>	<b>27.3%</b>	<b>20.0%</b>	<b>33.3%</b>	<b>27.3%</b>	<b>72.7%</b>	<b>20.0%</b>	<b>33.3%</b>
<b>Medical &amp; Dental</b>	<b>906</b>	<b>980</b>	<b>1.08</b>	<b>41.3%</b>	<b>58.7%</b>	<b>1.06</b>	<b>1.10</b>	<b>31.1%</b>	<b>32.8%</b>	<b>29.9%</b>	<b>89.0%</b>	<b>11.0%</b>	<b>91.9%</b>	<b>87.0%</b>
Clinical Nurse/ Midwife Manager	1,030	1,084	1.05	34.0%	66.0%	1.01	1.07	99.1%	99.1%	99.4%	90.9%	9.1%	97.8%	87.3%
Director Nursing/Midwifery, Assistant	174	179	1.03	46.9%	53.1%	1.03	1.02	99.4%	99.4%	98.9%	96.1%	3.9%	98.8%	93.7%
Director of Nursing/Midwifery	29	29	1.01	51.7%	48.3%	1.00	1.03	96.6%	96.6%	92.9%	100.0%	0.0%	100.0%	100.0%
<b>Nurse/ Midwife Manager</b>	<b>1,233</b>	<b>1,292</b>	<b>1.05</b>	<b>36.2%</b>	<b>63.8%</b>	<b>1.02</b>	<b>1.07</b>	<b>99.1%</b>	<b>98.7%</b>	<b>99.3%</b>	<b>91.8%</b>	<b>8.2%</b>	<b>98.1%</b>	<b>88.2%</b>
Advanced Nurse/ Midwife Practitioner	36	38	1.05	18.4%	81.6%	1.03	1.05	100.0%	100.0%	100.0%	89.5%	10.5%	100.0%	87.1%
Clinical Nurse/ Midwife Specialist	459	490	1.07	19.4%	80.6%	1.01	1.08	99.4%	99.4%	99.5%	87.8%	12.2%	94.7%	86.1%
<b>Nurse/ Midwife Specialist &amp; AN/MP</b>	<b>495</b>	<b>528</b>	<b>1.07</b>	<b>19.3%</b>	<b>80.7%</b>	<b>1.02</b>	<b>1.08</b>	<b>99.4%</b>	<b>99.0%</b>	<b>99.5%</b>	<b>87.9%</b>	<b>12.1%</b>	<b>95.1%</b>	<b>86.2%</b>
Staff Midwives	1	1	1.00		100.0%		1.00	0.0%	0.0%	0.0%	100.0%	0.0%		100.0%
Staff Nurse [Intellectual Disability]	5	5	1.05		100.0%		1.05	40.0%	40.0%	40.0%	100.0%	0.0%		100.0%
Staff Nurse [Psychiatric]	2,857	3,098	1.08	26.4%	73.6%	1.05	1.10	92.4%	92.4%	93.2%	84.7%	15.3%	90.5%	82.7%
Staff Nurses [General/ Children's]	118	134	1.13	18.7%	81.3%	1.11	1.14	81.3%	81.3%	82.6%	78.4%	21.6%	80.0%	78.0%
<b>Staff Nurse/ Staff Midwife</b>	<b>2,981</b>	<b>3,238</b>	<b>1.09</b>	<b>26.0%</b>	<b>74.0%</b>	<b>1.05</b>	<b>1.10</b>	<b>91.9%</b>	<b>89.9%</b>	<b>92.6%</b>	<b>84.5%</b>	<b>15.5%</b>	<b>90.1%</b>	<b>82.5%</b>
Pre-registration Nurse/ Midwife Intern	38	39	1.02	5.1%	94.9%	1.00	1.02	2.6%	2.6%	2.7%	100.0%	0.0%	100.0%	100.0%
Pre-registration Nurse Intern (COVID-19)	171	190	1.11	26.3%	73.7%	1.13	1.10	4.2%	4.2%	3.6%	99.5%	0.5%	98.0%	100.0%
Nursing/ Midwifery awaiting registration	8	8	1.04	12.5%	87.5%	1.00	1.05	100.0%	100.0%	100.0%	100.0%	0.0%	100.0%	100.0%

<b>Nursing/ Midwifery Student</b>	<b>217</b>	<b>237</b>	<b>1.09</b>	<b>22.4%</b>	<b>77.6%</b>	<b>1.12</b>	<b>1.08</b>	<b>7.2%</b>	<b>7.5%</b>	<b>7.1%</b>	<b>99.6%</b>	<b>0.4%</b>	<b>98.1%</b>	<b>100.0%</b>
Nursing Education/Clinical	35	37	1.04	13.5%	86.5%	1.00	1.05	100.0%	100.0%	100.0%	83.8%	16.2%	100.0%	81.3%
<b>Nursing/ Midwifery other</b>	<b>35</b>	<b>37</b>	<b>1.04</b>	<b>13.5%</b>	<b>86.5%</b>	<b>1.00</b>	<b>1.05</b>	<b>100.0%</b>	<b>100.0%</b>	<b>100.0%</b>	<b>83.8%</b>	<b>16.2%</b>	<b>100.0%</b>	<b>81.3%</b>
<b>Nursing &amp; Midwifery</b>	<b>4,962</b>	<b>5,332</b>	<b>1.07</b>	<b>27.6%</b>	<b>72.4%</b>	<b>1.04</b>	<b>1.09</b>	<b>90.7%</b>	<b>90.4%</b>	<b>90.8%</b>	<b>87.3%</b>	<b>12.7%</b>	<b>93.3%</b>	<b>85.0%</b>
<b>Health &amp; Social Care</b>	<b>1,409</b>	<b>1,579</b>	<b>1.12</b>	<b>17.2%</b>	<b>82.8%</b>	<b>1.05</b>	<b>1.14</b>	<b>87.1%</b>	<b>84.1%</b>	<b>87.7%</b>	<b>79.9%</b>	<b>20.1%</b>	<b>89.7%</b>	<b>77.8%</b>
Executive Management	12	12	1.01	58.3%	41.7%	1.00	1.02	100.0%	100.0%	100.0%	100.0%	0.0%	100.0%	100.0%
Senior Management (VIII & GM)	46	47	1.01	27.7%	72.3%	1.03	1.01	97.9%	97.9%	97.1%	95.7%	4.3%	92.3%	97.1%
<b>Management (VIII &amp; above)</b>	<b>58</b>	<b>59</b>	<b>1.01</b>	<b>33.9%</b>	<b>66.1%</b>	<b>1.02</b>	<b>1.01</b>	<b>98.3%</b>	<b>100.0%</b>	<b>97.4%</b>	<b>96.6%</b>	<b>3.4%</b>	<b>95.0%</b>	<b>97.4%</b>
Middle Management (V-VII)	243	257	1.06	19.8%	80.2%	1.01	1.07	88.3%	88.3%	89.3%	86.8%	13.2%	98.0%	84.0%
Other Administrative	2	2	1.27		100.0%		1.27	100.0%	100.0%	100.0%	50.0%	50.0%		50.0%
<b>Administrative/ Supervisory (V to VII)</b>	<b>245</b>	<b>259</b>	<b>1.06</b>	<b>19.7%</b>	<b>80.3%</b>	<b>1.01</b>	<b>1.07</b>	<b>88.4%</b>	<b>84.3%</b>	<b>89.4%</b>	<b>86.5%</b>	<b>13.5%</b>	<b>98.0%</b>	<b>83.7%</b>
General Administrative (III & IV)	715	814	1.14	8.7%	91.3%	1.08	1.14	83.7%	83.7%	83.8%	72.4%	27.6%	87.3%	70.9%
<b>Clerical (III &amp; IV)</b>	<b>715</b>	<b>814</b>	<b>1.14</b>	<b>8.7%</b>	<b>91.3%</b>	<b>1.08</b>	<b>1.14</b>	<b>83.7%</b>	<b>81.7%</b>	<b>83.8%</b>	<b>72.4%</b>	<b>27.6%</b>	<b>87.3%</b>	<b>70.9%</b>
<b>Management &amp; Administrative</b>	<b>1,018</b>	<b>1,132</b>	<b>1.11</b>	<b>12.5%</b>	<b>87.5%</b>	<b>1.04</b>	<b>1.12</b>	<b>85.5%</b>	<b>85.2%</b>	<b>85.6%</b>	<b>76.9%</b>	<b>23.1%</b>	<b>92.3%</b>	<b>74.6%</b>
Catering	64	69	1.07	33.3%	66.7%	1.02	1.10	95.7%	95.7%	93.5%	65.2%	34.8%	82.6%	56.5%
Household Services	434	510	1.17	21.6%	78.4%	1.10	1.20	87.6%	87.6%	90.5%	53.7%	46.3%	69.1%	49.5%
Other Support	38	46	1.20	28.3%	71.7%	1.05	1.28	95.7%	95.7%	93.9%	67.4%	32.6%	84.6%	60.6%
Portering	48	50	1.04	90.0%	10.0%	1.03	1.08	86.0%	86.0%	60.0%	88.0%	12.0%	88.9%	80.0%
<b>Support</b>	<b>585</b>	<b>675</b>	<b>1.15</b>	<b>28.3%</b>	<b>71.7%</b>	<b>1.07</b>	<b>1.19</b>	<b>88.9%</b>	<b>84.3%</b>	<b>90.7%</b>	<b>58.4%</b>	<b>41.6%</b>	<b>76.4%</b>	<b>51.2%</b>
Maintenance	130	135	1.04	99.3%	0.7%	1.04	1.00	97.0%	97.0%	100.0%	96.3%	3.7%	96.3%	100.0%
Technical Services	2	2	1.00	100.0%		1.00		100.0%	100.0%		100.0%	0.0%	100.0%	
<b>Maintenance/ Technical</b>	<b>132</b>	<b>137</b>	<b>1.04</b>	<b>99.3%</b>	<b>0.7%</b>	<b>1.04</b>	<b>1.00</b>	<b>97.1%</b>	<b>97.1%</b>	<b>100.0%</b>	<b>96.4%</b>	<b>3.6%</b>	<b>96.3%</b>	<b>100.0%</b>
<b>General Support</b>	<b>717</b>	<b>812</b>	<b>1.13</b>	<b>40.3%</b>	<b>59.7%</b>	<b>1.06</b>	<b>1.19</b>	<b>90.3%</b>	<b>89.6%</b>	<b>90.7%</b>	<b>64.8%</b>	<b>35.2%</b>	<b>84.7%</b>	<b>51.3%</b>
<b>Health Care Assistants</b>	<b>1,034</b>	<b>1,119</b>	<b>1.08</b>	<b>28.2%</b>	<b>71.8%</b>	<b>1.05</b>	<b>1.10</b>	<b>87.9%</b>	<b>83.5%</b>	<b>89.7%</b>	<b>78.5%</b>	<b>21.5%</b>	<b>89.6%</b>	<b>74.1%</b>
<b>Care, other</b>	<b>208</b>	<b>243</b>	<b>1.17</b>	<b>43.6%</b>	<b>56.4%</b>	<b>1.09</b>	<b>1.24</b>	<b>82.7%</b>	<b>80.2%</b>	<b>84.7%</b>	<b>66.7%</b>	<b>33.3%</b>	<b>77.4%</b>	<b>58.4%</b>
<b>Patient &amp; Client Care</b>	<b>1,241</b>	<b>1,362</b>	<b>1.10</b>	<b>31.0%</b>	<b>69.0%</b>	<b>1.06</b>	<b>1.12</b>	<b>87.0%</b>	<b>82.7%</b>	<b>88.9%</b>	<b>76.4%</b>	<b>23.6%</b>	<b>86.5%</b>	<b>71.8%</b>

## Employment by WTE, Headcount, Gender, Full-Time /Part-Time etc.: Aug 2020

Mental Health Services CHO	WTE	Headcount	WTE: no.	% Male	% female	Male WTE: no.	Female WTE: no.	% Total Perm	% Male Perm	% Female Perm	% Total Full Time	% Total Part Time	% Male FT	% Female FT
<b>Overall</b>	<b>10,253</b>	<b>11,197</b>	<b>1.09</b>	<b>27.1%</b>	<b>72.9%</b>	<b>1.05</b>	<b>1.11</b>	<b>84.0%</b>	<b>80.8%</b>	<b>85.1%</b>	<b>82.4%</b>	<b>17.6%</b>	<b>90.9%</b>	<b>79.2%</b>
<i>CHO 1</i>	979	1,051	1.07	27.0%	73.0%	1.02	1.09	89.0%	89.0%	90.4%	87.3%	12.7%	97.2%	83.7%
<i>CHO 2</i>	1,349	1,457	1.08	28.4%	71.6%	1.04	1.10	85.7%	85.7%	87.8%	83.3%	16.7%	89.9%	80.6%
<i>CHO 3</i>	800	871	1.09	23.0%	77.0%	1.05	1.10	82.4%	82.4%	82.9%	84.2%	15.8%	90.0%	82.4%
<i>CHO 4</i>	1,563	1,733	1.11	25.3%	74.7%	1.05	1.13	75.1%	75.1%	77.3%	82.5%	17.5%	91.6%	79.4%
<i>CHO 5</i>	1,159	1,275	1.10	26.7%	73.3%	1.06	1.11	96.6%	96.6%	97.2%	63.5%	36.5%	77.4%	58.5%
<i>CHO 6</i>	603	674	1.12	29.4%	70.6%	1.06	1.15	81.5%	81.5%	81.5%	82.3%	17.7%	89.4%	79.4%
<i>CHO 7</i>	876	963	1.10	22.9%	77.1%	1.05	1.11	80.8%	80.8%	81.1%	87.3%	12.7%	95.9%	84.8%
<i>CHO 8</i>	1,127	1,226	1.09	24.7%	75.3%	1.04	1.11	84.7%	84.7%	85.4%	84.8%	15.2%	94.1%	81.8%
<i>CHO 9</i>	1,317	1,441	1.09	27.8%	72.2%	1.05	1.11	81.6%	81.6%	83.0%	84.5%	15.5%	94.0%	80.9%
<i>other Community Services</i>	481	506	1.05	46.6%	53.4%	1.05	1.05	83.4%	83.4%	86.3%	91.7%	8.3%	91.1%	92.2%

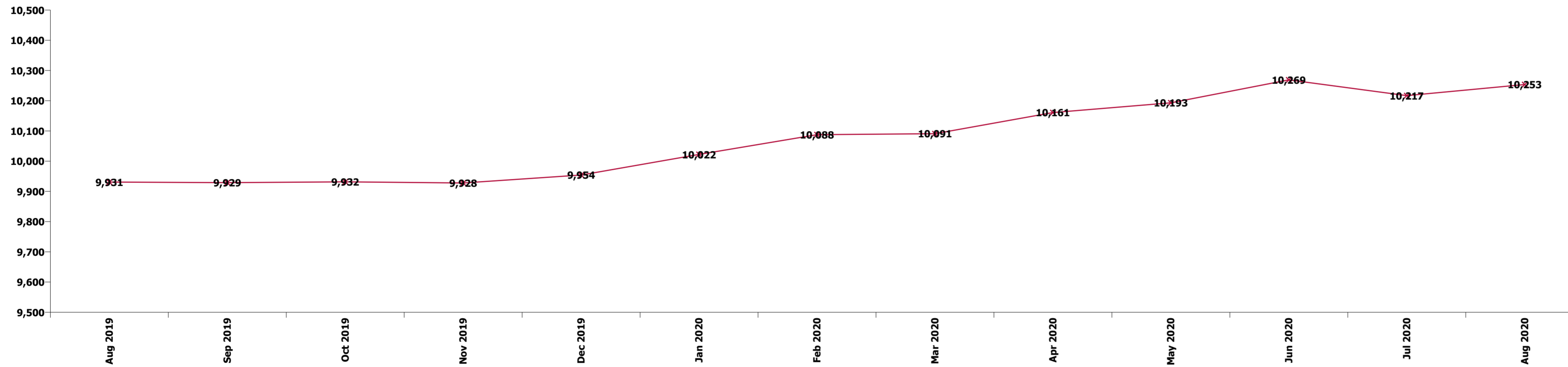
## Summary Staff Movement: August 2020

### Month-on-month Summary

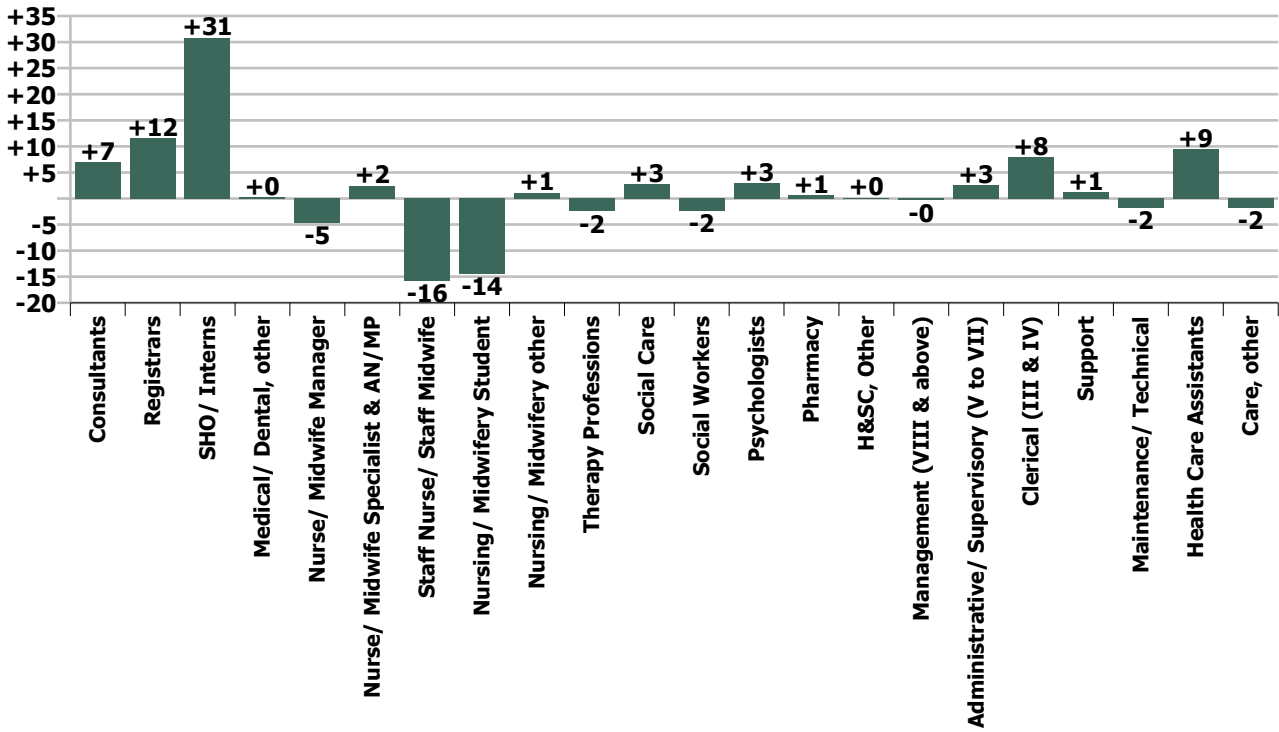
WTE change since Jul 20	% change since Jul 20	overall	Consultants	Registrars	SHO/ Interns	Medical/ Dental, other	Medical & Dental	Nurse/ Midwife Manager	Nurse/ Midwife Specialist & AN/MP	Staff Nurse/ Staff Midwife	Nursing/ Midwifery Student	Nursing/ Midwifery other	Nursing & Midwifery	Therapy Professions	Social Care	Social Workers	Psychologists	Pharmacy	H&SC, Other	Health & Social Care Professionals	Management (VIII & above)	Administrative/ Supervisory (V to VII)	Clerical (III & IV)	Management & Administrative	General Support	Health Care Assistants	Care, other	Patient & Client Care
<b>Overall</b>	<b>+0.4%</b>	<b>+37</b>	<b>+7</b>	<b>+12</b>	<b>+31</b>	<b>+0</b>	<b>+49</b>	<b>-5</b>	<b>+2</b>	<b>-16</b>	<b>-14</b>	<b>+1</b>	<b>-31</b>	<b>-2</b>	<b>+3</b>	<b>-2</b>	<b>+3</b>	<b>+1</b>	<b>+0</b>	<b>+2</b>	<b>-0</b>	<b>+3</b>	<b>+8</b>	<b>+10</b>	<b>-1</b>	<b>+9</b>	<b>-2</b>	<b>+8</b>
CHO 1	+0.9%	+9	+0	-2	+2		+1	+2	+1	-4	+8	-0	+8	-0	-0	-1	+1	+0	+1	-1	+0	-0	+2	+2	+0	-0	-1	-1
CHO 2	+1.1%	+14	+2	-0	+7		+9	+1	+1	-1			+1	+1	+1	+1	+4	-0	-1	+7	+1	-0	+0	-0	-0	-0	-2	-2
CHO 3	-1.2%	-10	+1	-0	+3		+4	-1	-3	-0	-8		-11	-0	-0	+0	-0	-0	-1	-2	+1	-1	-2	-2	+0	-0	-0	-0
CHO 4	-0.5%	-8	-1	-4	+3	+0	-2	-3	-1	-4	-1		-8	-0	+0	-0	-3	-0	-0	-4	-0	+0	+2	+2	-2	+7	-0	+7
CHO 5	-2.3%	-28	+1	-1	+4		+4	-2	-2	-4	-23	+0	-32	-1		+1	+0		-0	-1		+0	-0	-0	-1	+2	+0	+2
CHO 6	+1.1%	+7	+0	-1	+0		-1	+2	+1	-1		+1	+2	+1	+2	-1	-0		-0	+2		+1	+0	+1	+1	+0	+1	+1
CHO 7	+2.9%	+25	+3	+12	+5		+20	-1	+2	+12	+7	+0	+3	-2	-0	-4	+1		+1	-1	+1		+1	+2	+0	+1	+1	+1
CHO 8	+0.5%	+5	-2	+7	+0		+6	-1	+1	+4	-2		+2	+1	-0	-1	-0		-0	-1		-1	-1	-3	+0	+0	-0	-0
CHO 9	+1.6%	+20	+2	+2	+5		+9	-1	+2	-1	+4	+0	+4	-1	-0	-0	+2	+1	+1	+1	+0	-1	+6	+6	+2	-1	-0	-1
other Community Services	+0.4%	+2	-0				-0	-0	+0	+0			-0	-1		+0	-0	+0	+0	-1	+0	+2		+2	-0	+1		+1
		<b>+0.4%</b>	<b>+1.9%</b>	<b>+4.4%</b>	<b>+13.5%</b>	<b>+4.4%</b>	<b>+5.8%</b>	<b>-0.4%</b>	<b>+0.5%</b>	<b>-0.5%</b>	<b>-6.2%</b>	<b>+3.4%</b>	<b>-0.6%</b>	<b>-0.6%</b>	<b>+3.6%</b>	<b>-0.6%</b>	<b>+0.7%</b>	<b>+3.3%</b>	<b>+0.1%</b>	<b>+0.1%</b>	<b>-0.6%</b>	<b>+1.0%</b>	<b>+1.1%</b>	<b>+1.0%</b>	<b>-0.1%</b>	<b>+0.9%</b>	<b>-0.9%</b>	<b>+0.6%</b>

### Year-on-year Summary

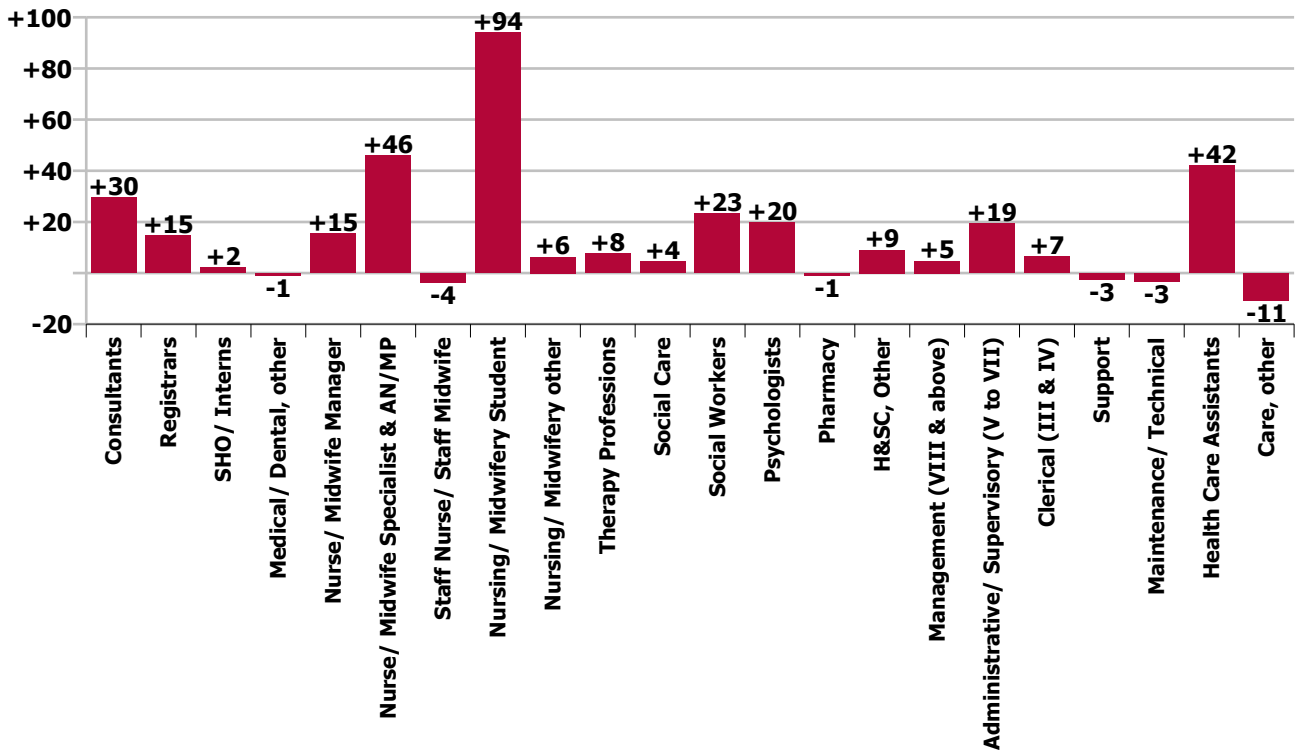
WTE change since Aug 19	% change since Aug 19	overall	Consultants	Registrars	SHO/ Interns	Medical/ Dental, other	Medical & Dental	Nurse/ Midwife Manager	Nurse/ Midwife Specialist & AN/MP	Staff Nurse/ Staff Midwife	Nursing/ Midwifery Student	Nursing/ Midwifery other	Nursing & Midwifery	Therapy Professions	Social Care	Social Workers	Psychologists	Pharmacy	H&SC, Other	Health & Social Care Professionals	Management (VIII & above)	Administrative/ Supervisory (V to VII)	Clerical (III & IV)	Management & Administrative	General Support	Health Care Assistants	Care, other	Patient & Client Care
<b>Overall</b>	<b>+3.2%</b>	<b>+323</b>	<b>+30</b>	<b>+15</b>	<b>+2</b>	<b>-1</b>	<b>+46</b>	<b>+15</b>	<b>+46</b>	<b>-4</b>	<b>+94</b>	<b>+6</b>	<b>+158</b>	<b>+8</b>	<b>+4</b>	<b>+23</b>	<b>+20</b>	<b>-1</b>	<b>+9</b>	<b>+63</b>	<b>+5</b>	<b>+19</b>	<b>+7</b>	<b>+31</b>	<b>-6</b>	<b>+42</b>	<b>-11</b>	<b>+31</b>
CHO 1	+2.7%	+26	+4	-4	+2		+2	+4	-2	-12	+18	+1	+10	+1	-1	-1	+3	+0	+1	+3	+2	+5	+4	+10	+2	-0	-1	-1
CHO 2	+2.1%	+28	+7	+6	+6		+19	-1	+7	-6	+19	+1	+20	+8	+2	+2	+2	-1	+2	-1	+14	-3	+3	-8	-8	-5	-7	-5
CHO 3	+0.9%	+7	+1	-2	+1		+1	+7	-3	+8	+3		+14	-5	+0	+1	+1		+3	-1	-1	+1	-4	-5	-4	+2	-1	+1
CHO 4	+4.6%	+69	+2	-2	+2	-1	+1	-9	+12	+2	+8		+14	+3	+2	+8	+5	-0	+4	+21	+1	+1	+6	+8	+2	+25	-1	+24
CHO 5	-0.6%	-7	+0	+1	+0		+2	-7	+1	+4	-12	+0	-13	+0	+1		+2		+0	+1	+2	+0	-4	-3	+7	+0	-1	-1
CHO 6	+4.8%	+28	+7	-5	+4		+5	-0	+5	+8		+1	+13	-0	+1	+3	+4		-0	+6		+1	+7	+8	-5	-0	+0	-0
CHO 7	+4.6%	+39	+9	+9	+1		+19	+2	+9	-15	+13	+1	+11	-2	+1	+6	+2		+2	+9	+1	+3	+3	+8	-4	-2	-1	-3
CHO 8	+2.1%	+23	-1	+5	-4		+0	-5	+4	+8	+13	+2	+22	-1	-0	+4	-4	-1	-0	-2		-0	+14	+13	-3	-8	-0	-8
CHO 9	+2.4%	+31	-2	+6	-9		-5	+5	+10	-12	+32	+0	+35	+3		-12	+3	-0	+1	+7		-1	-2	-3	-2	+1	-1	+0
other Community Services	+19.9%	+80	+2	+1			+3	+19	+3	+11			+33	+2	+0	+2	+1	+1		+6	+3	+6	-8	+1	+6	+32		+32
		<b>+3.2%</b>	<b>+8.8%</b>	<b>+5.7%</b>	<b>+0.8%</b>	<b>-13.9%</b>	<b>+5.3%</b>	<b>+1.3%</b>	<b>+10.2%</b>	<b>-0.1%</b>	<b>+76.4%</b>	<b>+21.6%</b>	<b>+3.3%</b>	<b>+1.8%</b>	<b>+6.0%</b>	<b>+6.9%</b>	<b>+5.1%</b>	<b>-4.8%</b>	<b>+9.0%</b>	<b>+4.7%</b>	<b>+8.9%</b>	<b>+8.6%</b>	<b>+0.9%</b>	<b>+3.1%</b>	<b>-0.8%</b>	<b>+4.2%</b>	<b>-4.9%</b>	<b>+2.6%</b>



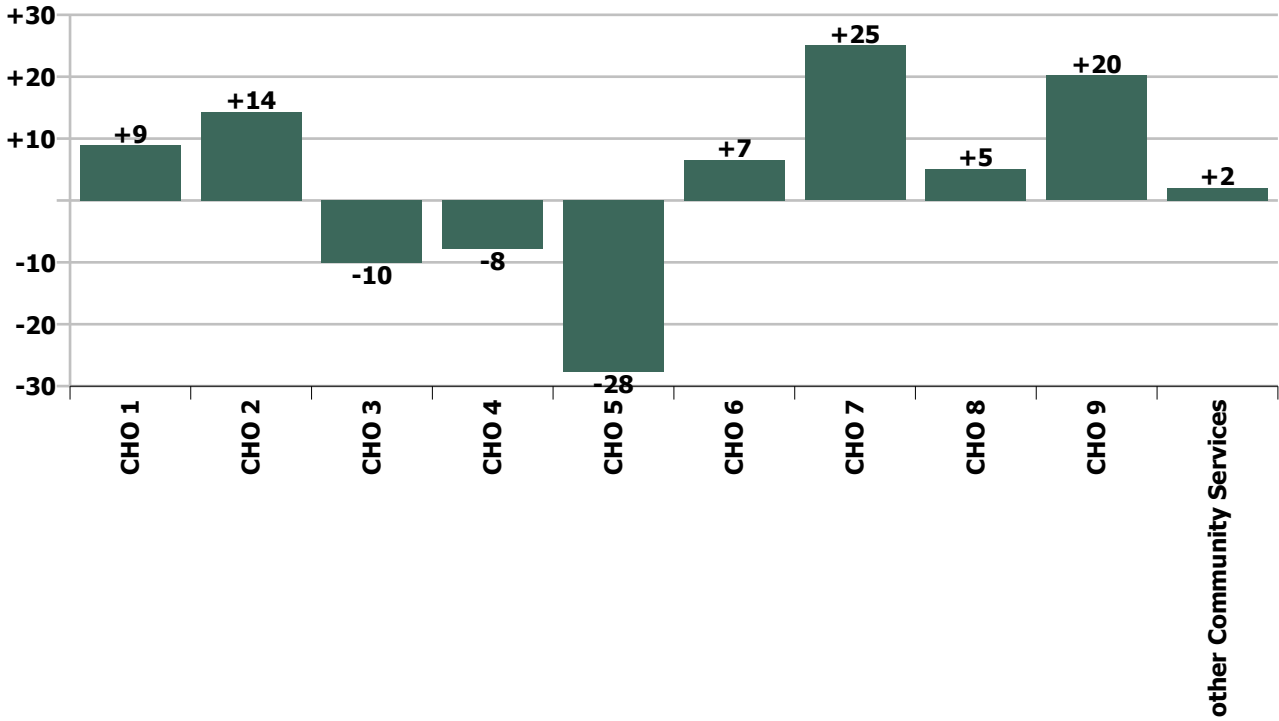
Staff Group change since: Jul 2020



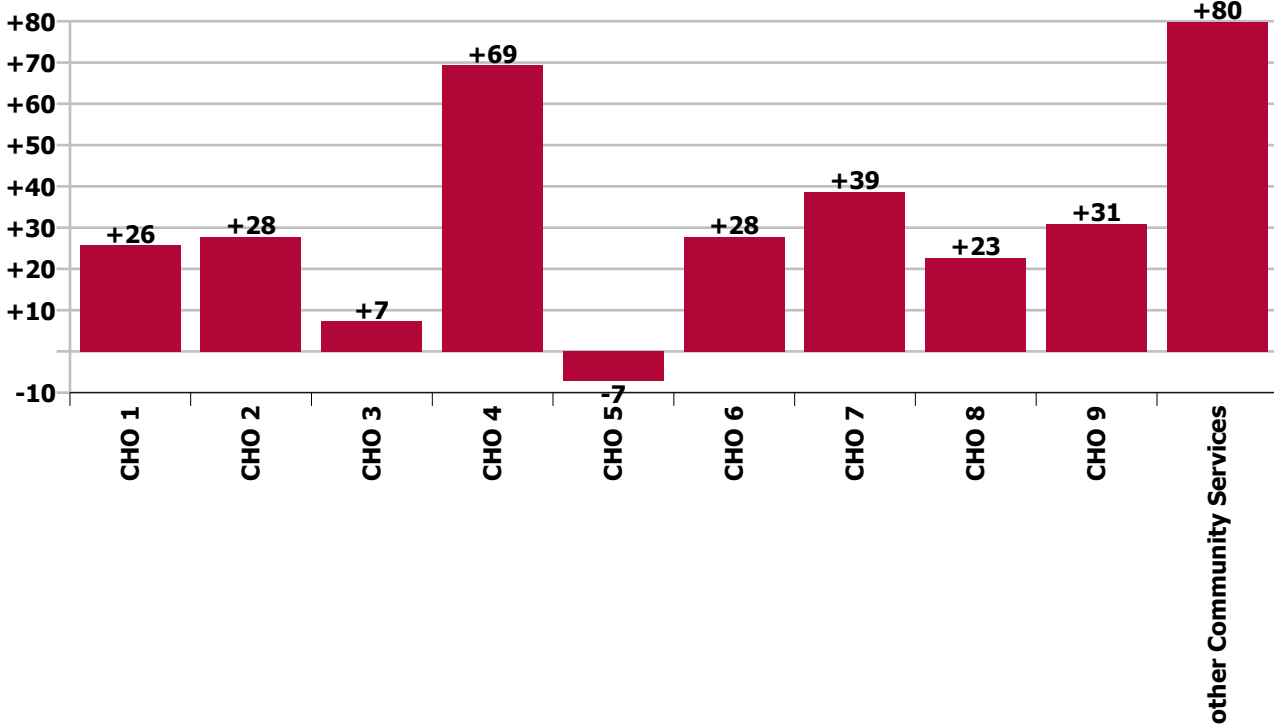
Staff Group change since: Aug 2019



CHO change since: Jul 2020



CHO change since: Aug 2019



## Longitudinal Employment Levels by Grade Group - Oct 2013 to Aug 2020

Aug 2020 (Oct 2013 figure: 9,125)	WTE Aug 2020	WTE change since Oct 13	WTE change since Dec 15	WTE change since Dec 16	WTE change since Dec 17	WTE change since Dec 18	WTE change since Dec 19	% change since Oct 13	% change since Dec 15	% change since Dec 16	% change since Dec 17	% change since Dec 18	% change since Dec 19
<b>Overall</b>	<b>10,253</b>	<b>+1,128</b>	<b>+754</b>	<b>+633</b>	<b>+464</b>	<b>+356</b>	<b>+299</b>	<b>+12.4%</b>	<b>+7.9%</b>	<b>+6.6%</b>	<b>+4.7%</b>	<b>+3.6%</b>	<b>+3.0%</b>
Consultant Medicine	1				-0	-0					-9.1%	-9.1%	
Consultant Psychiatry	365	+77	+50	+50	+53	+35	+13	+26.7%	+15.9%	+15.8%	+16.8%	+10.6%	+3.8%
<b>Consultants</b>	<b>366</b>	<b>+77</b>	<b>+50</b>	<b>+50</b>	<b>+52</b>	<b>+35</b>	<b>+13</b>	<b>+26.6%</b>	<b>+15.8%</b>	<b>+15.8%</b>	<b>+16.7%</b>	<b>+10.5%</b>	<b>+3.8%</b>
Registrar	169	+51	+45	+37	+25	+15	+0	+43.6%	+36.3%	+28.2%	+17.1%	+10.0%	+0.0%
Senior Registrar	105	+42	+48	+38	+39	+19	+8	+66.3%	+83.7%	+56.9%	+60.0%	+22.5%	+8.3%
Specialist Registrar	2	+2	+1	+1	-1	+1	-1	-100.0%	+51.5%	+50.0%	-25.0%	+50.0%	-40.0%
<b>Registrars</b>	<b>276</b>	<b>+95</b>	<b>+94</b>	<b>+76</b>	<b>+64</b>	<b>+35</b>	<b>+7</b>	<b>+52.4%</b>	<b>+51.3%</b>	<b>+37.9%</b>	<b>+30.0%</b>	<b>+14.7%</b>	<b>+2.7%</b>
<i>Intern</i>	7	-2	-6	-5	-3	-1		-23.3%	-46.9%	-42.5%	-31.0%	-13.7%	-13.7%
Interns	7	-2	-6	-5	-3	-1	-1	-23.3%	-46.9%	-42.5%	-31.0%	-13.7%	-13.7%
Senior House Officer	253	+33	+17	+6	-20	-17	-1	+15.0%	+7.1%	+2.3%	-7.3%	-6.2%	-0.2%
<b>SHO/ Interns</b>	<b>259</b>	<b>+31</b>	<b>+11</b>	<b>+1</b>	<b>-23</b>	<b>-18</b>	<b>-2</b>	<b>+13.5%</b>	<b>+4.3%</b>	<b>+0.2%</b>	<b>-8.1%</b>	<b>-6.4%</b>	<b>-0.7%</b>
Dentists	0	+0	+0	+0	-0	-0	+0	-100.0%	-100.0%	-100.0%	-33.3%	-42.9%	-100.0%
Other Medical	5	-5	-4	-4	-6	-1	+0	-49.5%	-40.8%	-46.2%	-52.3%	-20.2%	+3.6%
<b>Medical/ Dental, other</b>	<b>5</b>	<b>-5</b>	<b>-4</b>	<b>-4</b>	<b>-6</b>	<b>-1</b>	<b>+0</b>	<b>-49.1%</b>	<b>-40.3%</b>	<b>-45.8%</b>	<b>-52.2%</b>	<b>-20.4%</b>	<b>+4.4%</b>
<b>Medical &amp; Dental</b>	<b>906</b>	<b>+197</b>	<b>+151</b>	<b>+122</b>	<b>+87</b>	<b>+51</b>		<b>+27.8%</b>	<b>+19.9%</b>	<b>+15.5%</b>	<b>+10.7%</b>	<b>+6.0%</b>	<b>+2.1%</b>
Clinical Nurse/ Midwife Manager	1,030	+237	+61	+23	+47	+24	+31	+29.8%	+6.3%	+2.3%	+4.8%	+2.4%	+3.1%
Director Nursing/Midwifery, Assistant	174	+70	+28	+19	+13	+10	+10	+66.4%	+19.3%	+12.4%	+7.8%	+6.4%	+5.9%
Director of Nursing/Midwifery	29	+0	-2	-3	+0	+5	-0	+0.8%	-6.4%	-9.7%	+0.5%	+20.7%	-0.9%
<b>Nurse/ Midwife Manager</b>	<b>1,233</b>	<b>+307</b>	<b>+87</b>	<b>+39</b>	<b>+60</b>	<b>+39</b>	<b>+41</b>	<b>+33.1%</b>	<b>+7.6%</b>	<b>+3.3%</b>	<b>+5.1%</b>	<b>+3.3%</b>	<b>+3.4%</b>
Advanced Nurse/ Midwife Practitioner	36	+27	+29	+29	+26	+16	+6	+302.8%	+417.9%	+384.6%	+245.2%	+80.0%	+18.0%
Clinical Nurse/ Midwife Specialist	459	+247	+152	+123	+76	+64	+31	+116.2%	+49.7%	+36.4%	+19.8%	+16.1%	+7.1%
<b>Nurse/ Midwife Specialist &amp; AN/MP</b>	<b>495</b>	<b>+274</b>	<b>+182</b>	<b>+151</b>	<b>+102</b>	<b>+80</b>	<b>+36</b>	<b>+123.8%</b>	<b>+58.0%</b>	<b>+44.0%</b>	<b>+25.8%</b>	<b>+19.2%</b>	<b>+7.8%</b>
Graduate Nursing/ Midwifery		-48	-10					-100.0%	-100.0%	-100.0%	-100.0%	-100.0%	-100.0%
<i>Staff Midwife</i>	1	+1	+1	+1	+1	+1		-100.0%	-100.0%	-100.0%	-100.0%	-100.0%	-100.0%
Staff Midwives	1	+1	+1	+1	+1	+1	+1	-100.0%	-100.0%	-100.0%	-100.0%	-100.0%	-100.0%
Staff Nurse [Intellectual Disability]	5	+2	+3	+1	+1	-1	+0	+90.4%	+111.6%	+42.5%	+37.6%	-20.7%	+5.1%
Staff Nurse [Psychiatric]	2,857	-283	-235	-200	-170	-98	-36	-9.0%	-7.6%	-6.5%	-5.6%	-3.3%	-1.3%
Staff Nurses [General/ Children's]	118	-43	-6	-2	+1	+1	+14	-26.9%	-5.0%	-1.9%	+0.7%	+0.6%	+12.9%

Aug 2020 (Oct 2013 figure: 9,125)	WTE Aug 2020	WTE change since Oct 13	WTE change since Dec 15	WTE change since Dec 16	WTE change since Dec 17	WTE change since Dec 18	WTE change since Dec 19	% change since Oct 13	% change since Dec 15	% change since Dec 16	% change since Dec 17	% change since Dec 18	% change since Dec 19
<b>Overall</b>	<b>10,253</b>	<b>+1,128</b>	<b>+754</b>	<b>+633</b>	<b>+464</b>	<b>+356</b>	<b>+299</b>	<b>+12.4%</b>	<b>+7.9%</b>	<b>+6.6%</b>	<b>+4.7%</b>	<b>+3.6%</b>	<b>+3.0%</b>
<b>Staff Nurse/ Staff Midwife</b>	<b>2,981</b>	<b>-371</b>	<b>-247</b>	<b>-200</b>	<b>-167</b>	<b>-98</b>	<b>-22</b>	<b>-11.1%</b>	<b>-7.7%</b>	<b>-6.3%</b>	<b>-5.3%</b>	<b>-3.2%</b>	<b>-0.7%</b>
<b>Public Health Nurse</b>				<b>-1</b>	<b>-1</b>			<b>-100.0%</b>	<b>-100.0%</b>	<b>-100.0%</b>	<b>-100.0%</b>	<b>-100.0%</b>	<b>-100.0%</b>
<i>Student General Nursing Intern (pre-registration)</i>							-1	-100.0%	-100.0%	-100.0%	-100.0%	-100.0%	-100.0%
<i>Student Psychiatric Nursing Intern (pre-registration)</i>	38	-19	+20	+30	+21	+11		-32.6%	+111.9%	+341.6%	+127.1%	+41.6%	+38.9%
Pre-registration Nurse/ Midwife Intern	38	-19	+20	+30	+21	+10	+11	-32.6%	+111.9%	+341.6%	+127.1%	+37.2%	+38.9%
<i>Student Psychiatric Nursing Intern (COVID-19 HCA)</i>	171	+171	+171	+171	+171	+171		-100.0%	-100.0%	-100.0%	-100.0%	-100.0%	-100.0%
Pre-registration Nurse Intern (COVID-19)	171	+171	+171	+171	+171	+171	+171	-100.0%	-100.0%	-100.0%	-100.0%	-100.0%	-100.0%
<i>Student Public Health Nursing (post registration)</i>								-100.0%	-100.0%	-100.0%	-100.0%	-100.0%	-100.0%
Post-registration Nurse/ Midwife Student							-1	-100.0%	-100.0%	-100.0%	-100.0%	-100.0%	-100.0%
Nursing/ Midwifery awaiting registration	8	+8	+8	+6	-1	-12	-51	-100.0%	-100.0%	+283.5%	-11.3%	-61.3%	-87.0%
<b>Nursing/ Midwifery Student</b>	<b>217</b>	<b>+160</b>	<b>+199</b>	<b>+207</b>	<b>+192</b>	<b>+169</b>	<b>+130</b>	<b>+282.8%</b>	<b>+1103.2%</b>	<b>+1937.3%</b>	<b>+752.0%</b>	<b>+355.2%</b>	<b>+148.4%</b>
Nursing Education/Clinical	35	+16	+16	+11	+5	+4	+4	+84.2%	+84.5%	+43.7%	+15.9%	+14.3%	+12.2%
<b>Nursing/ Midwifery other</b>	<b>35</b>	<b>+16</b>	<b>+16</b>	<b>+11</b>	<b>+5</b>	<b>+4</b>	<b>+4</b>	<b>+84.2%</b>	<b>+84.5%</b>	<b>+43.7%</b>	<b>+15.9%</b>	<b>+14.3%</b>	<b>+12.2%</b>
<b>Nursing &amp; Midwifery</b>	<b>4,962</b>	<b>+386</b>	<b>+237</b>	<b>+207</b>	<b>+190</b>	<b>+195</b>		<b>+8.4%</b>	<b>+5.0%</b>	<b>+4.4%</b>	<b>+4.0%</b>	<b>+4.1%</b>	<b>+4.0%</b>
Dietitians	20	+19	+14	+6	+3	-0	+1	+2396.3%	+264.4%	+47.2%	+18.9%	-0.6%	+4.2%
Occupational Therapists	348	+93	+55	+48	+22	+8	+9	+36.6%	+18.6%	+16.0%	+6.6%	+2.5%	+2.7%
Physiotherapists	3	+0	+0	+1	+1	+1	+0	+18.1%	+18.1%	+29.9%	+115.7%	+62.1%	+17.0%
Podiatrists & Chiropodists	1	-1	-1	-1	-1	-0	+0	-42.2%	-49.4%	-57.1%	-46.9%	-36.1%	+6.8%
Speech & Language Therapists	57	+9	+5	-2	-4	-4	-4	+18.4%	+8.7%	-3.7%	-6.7%	-6.8%	-7.1%
<b>Therapy Professions</b>	<b>428</b>	<b>+121</b>	<b>+73</b>	<b>+52</b>	<b>+21</b>	<b>+5</b>	<b>+6</b>	<b>+39.4%</b>	<b>+20.6%</b>	<b>+13.7%</b>	<b>+5.3%</b>	<b>+1.1%</b>	<b>+1.4%</b>
<b>Social Care</b>	<b>78</b>	<b>-0</b>	<b>-9</b>	<b>-10</b>	<b>-4</b>	<b>-0</b>	<b>+5</b>	<b>-0.3%</b>	<b>-10.5%</b>	<b>-10.8%</b>	<b>-5.1%</b>	<b>-0.3%</b>	<b>+6.5%</b>
<b>Social Workers</b>	<b>365</b>	<b>+91</b>	<b>+16</b>	<b>+14</b>	<b>+7</b>	<b>+6</b>	<b>+15</b>	<b>+33.2%</b>	<b>+4.5%</b>	<b>+4.1%</b>	<b>+2.1%</b>	<b>+1.7%</b>	<b>+4.3%</b>
<b>Psychologists</b>	<b>409</b>	<b>+159</b>	<b>+87</b>	<b>+67</b>	<b>+39</b>	<b>+21</b>	<b>+15</b>	<b>+63.3%</b>	<b>+27.0%</b>	<b>+19.4%</b>	<b>+10.6%</b>	<b>+5.3%</b>	<b>+3.8%</b>
<b>Pharmacy</b>	<b>19</b>	<b>-1</b>	<b>+1</b>	<b>-1</b>	<b>-1</b>	<b>-1</b>	<b>+0</b>	<b>-2.7%</b>	<b>+8.6%</b>	<b>-4.1%</b>	<b>-3.6%</b>	<b>-3.1%</b>	<b>+0.6%</b>
Counsellor Therapists	101	+25	+13	+16	+15	+16	+6	+33.1%	+15.0%	+18.4%	+17.7%	+18.4%	+6.2%
HSCP Trainees/ Students		-8						-100.0%	-100.0%	-100.0%	-100.0%	-100.0%	-100.0%
Other Health & Social Care	7	-3	-0	-1	-1	-1	-5	-27.2%	-5.2%	-15.5%	-16.9%	-17.3%	-39.3%
Play Therapists/ Specialists	1	-1	-1	-1	-0		+0	-39.8%	-39.8%	-40.8%	-2.0%		+1.4%
<b>H&amp;SC, Other</b>	<b>109</b>	<b>+14</b>	<b>+12</b>	<b>+13</b>	<b>+14</b>	<b>+14</b>	<b>+1</b>	<b>+14.5%</b>	<b>+12.0%</b>	<b>+13.8%</b>	<b>+14.3%</b>	<b>+14.9%</b>	<b>+1.2%</b>



Aug 2020 (Oct 2013 figure: 9,125)	WTE Aug 2020	WTE change since Oct 13	WTE change since Dec 15	WTE change since Dec 16	WTE change since Dec 17	WTE change since Dec 18	WTE change since Dec 19	% change since Oct 13	% change since Dec 15	% change since Dec 16	% change since Dec 17	% change since Dec 18	% change since Dec 19
<b>Overall</b>	<b>10,253</b>	<b>+1,128</b>	<b>+754</b>	<b>+633</b>	<b>+464</b>	<b>+356</b>	<b>+299</b>	<b>+12.4%</b>	<b>+7.9%</b>	<b>+6.6%</b>	<b>+4.7%</b>	<b>+3.6%</b>	<b>+3.0%</b>
<b>Health &amp; Social Care Professionals</b>	<b>1,409</b>	<b>+384</b>	<b>+180</b>	<b>+136</b>	<b>+77</b>	<b>+45</b>		<b>+37.4%</b>	<b>+14.6%</b>	<b>+10.7%</b>	<b>+5.8%</b>	<b>+3.3%</b>	<b>+3.1%</b>
Executive Management	12	+11	+8	+5	+4	+2	+1	+1090.0%	+197.5%	+70.0%	+48.8%	+19.0%	+8.2%
Senior Management (VIII & GM)	46	+27	+18	+22	+15	+15	+0	+144.0%	+62.7%	+87.8%	+48.3%	+46.4%	+0.0%
<b>Management (VIII &amp; above)</b>	<b>58</b>	<b>+38</b>	<b>+26</b>	<b>+27</b>	<b>+19</b>	<b>+17</b>	<b>+1</b>	<b>+191.3%</b>	<b>+79.3%</b>	<b>+83.8%</b>	<b>+48.4%</b>	<b>+39.8%</b>	<b>+1.6%</b>
<b>Administrative/ Supervisory (V to VII)</b>	<b>245</b>	<b>+113</b>	<b>+97</b>	<b>+77</b>	<b>+46</b>	<b>+23</b>	<b>+8</b>	<b>+86.0%</b>	<b>+65.2%</b>	<b>+46.0%</b>	<b>+22.9%</b>	<b>+10.1%</b>	<b>+3.4%</b>
<b>Clerical (III &amp; IV)</b>	<b>715</b>	<b>+103</b>	<b>+69</b>	<b>+54</b>	<b>+33</b>	<b>+19</b>	<b>-3</b>	<b>+16.8%</b>	<b>+10.7%</b>	<b>+8.1%</b>	<b>+4.9%</b>	<b>+2.8%</b>	<b>-0.4%</b>
<b>Management &amp; Administrative</b>	<b>1,018</b>	<b>+254</b>	<b>+192</b>	<b>+157</b>	<b>+98</b>	<b>+58</b>		<b>+33.3%</b>	<b>+23.2%</b>	<b>+18.3%</b>	<b>+10.6%</b>	<b>+6.1%</b>	<b>+0.6%</b>
Catering	64	-9	+2	-1	-1	-7	-1	-12.6%	+2.6%	-2.0%	-2.2%	-10.4%	-1.4%
Household Services	434	-197	-91	-58	-42	-11	+10	-31.2%	-17.3%	-11.7%	-8.8%	-2.5%	+2.3%
Other Support	38	-24	-14	-18	-11	-17	-4	-38.6%	-26.9%	-31.8%	-22.7%	-30.7%	-10.5%
Portering	48	-15	-10	-11	-1	+0	+0	-23.3%	-17.5%	-18.8%	-1.5%	+0.3%	+0.1%
<b>Support</b>	<b>585</b>	<b>-245</b>	<b>-114</b>	<b>-88</b>	<b>-55</b>	<b>-35</b>	<b>+5</b>	<b>-29.5%</b>	<b>-16.3%</b>	<b>-13.1%</b>	<b>-8.6%</b>	<b>-5.7%</b>	<b>+0.8%</b>
Maintenance	130	-38	-13	-13	-9	-4	+1	-22.7%	-9.1%	-9.0%	-6.2%	-3.2%	+0.9%
Technical Services	2												
<b>Maintenance/ Technical</b>	<b>132</b>	<b>-38</b>	<b>-13</b>	<b>-13</b>	<b>-9</b>	<b>-4</b>	<b>+1</b>	<b>-22.4%</b>	<b>-8.9%</b>	<b>-8.9%</b>	<b>-6.1%</b>	<b>-3.1%</b>	<b>+0.9%</b>
<b>General Support</b>	<b>717</b>	<b>-283</b>	<b>-127</b>	<b>-101</b>	<b>-64</b>	<b>-40</b>		<b>-28.3%</b>	<b>-15.0%</b>	<b>-12.3%</b>	<b>-8.2%</b>	<b>-5.2%</b>	<b>+0.8%</b>
HCA, Nurse's Aide, etc.	1,025	+206	+113	+96	+76	+50	+46	+25.1%	+12.4%	+10.3%	+8.0%	+5.2%	+4.7%
Health & Social Care Assistants	9	+5	+5	+4	+4	+4		+131.6%	+152.5%	+92.7%	+92.7%	+64.3%	
<b>Health Care Assistants</b>	<b>1,034</b>	<b>+211</b>	<b>+119</b>	<b>+100</b>	<b>+80</b>	<b>+54</b>	<b>+46</b>	<b>+25.6%</b>	<b>+13.0%</b>	<b>+10.7%</b>	<b>+8.4%</b>	<b>+5.5%</b>	<b>+4.6%</b>
Other Care Grades	208	-22	+3	+11	-5	-8	-8	-9.4%	+1.7%	+5.8%	-2.2%	-3.8%	-3.9%
<b>Care, other</b>	<b>208</b>	<b>-22</b>	<b>+3</b>	<b>+11</b>	<b>-5</b>	<b>-8</b>	<b>-8</b>	<b>-9.4%</b>	<b>+1.7%</b>	<b>+5.8%</b>	<b>-2.2%</b>	<b>-3.8%</b>	<b>-3.9%</b>
<b>Patient &amp; Client Care</b>	<b>1,241</b>	<b>+189</b>	<b>+122</b>	<b>+111</b>	<b>+75</b>	<b>+46</b>		<b>+18.0%</b>	<b>+10.9%</b>	<b>+9.9%</b>	<b>+6.5%</b>	<b>+3.8%</b>	<b>+3.1%</b>

Source: Health Service Personnel Census