

Mental Health Service Employment Report: August 2021

Employment by Staff Group

Aug 2021 (Dec 2020 figure: 10,301)	WTE Jul 2021	WTE Aug 2021	WTE change since Jul 21	% change since Jul 21	WTE change since Dec 20	WTE change since Aug 20
Overall	10,444	10,397	-47	-0.4%	+96	+144
Consultants	380	380	+0	+0.0%	+10	+14
Registrars	318	329	+10	+3.3%	+48	+53
SHO/ Interns	224	241	+17	+7.6%	-35	-19
Medical/ Dental, other	4	4	+0	+5.2%	-1	-1
Medical & Dental	926	954	+28	+3.0%	+22	+47
Nurse/ Midwife Manager	1,233	1,248	+15	+1.2%	+9	+15
Nurse/ Midwife Specialist & AN/MP	527	533	+6	+1.2%	+5	+38
Staff Nurse/ Staff Midwife	3,106	3,042	-64	-2.1%	-34	+61
Public Health Nurse		1	+1	-100.0%	+1	+1
<i>Pre-registration Nurse/ Midwife Intern</i>	170	169	-0	-0.2%	+142	+131
<i>Pre-registration Nurse Intern (COVID-19)</i>	4	1	-2	-59.9%	+1	-170
<i>Post-registration Nurse/ Midwife Student</i>				-100.0%	-1	
<i>Nursing/ Midwifery awaiting registration</i>	3	3			-56	-5
Nursing/ Midwifery Student	176	174	-3	-1.4%	+115	-43
Nursing/ Midwifery other	31	31	-0	-1.1%	-1	-5
Nursing & Midwifery	5,074	5,029	-45	-0.9%	+94	+67
Therapy Professions	440	429	-11	-2.5%	-10	+1
Social Care	75	73	-2	-2.4%	-6	-5
Social Workers	374	372	-3	-0.7%	-1	+7
Psychologists	431	423	-8	-1.8%	-1	+14
Pharmacy	20	20	+0	+0.3%	-0	+2
H&SC, Other	110	110	+0	+0.3%	+2	+1
Health & Social Care Professionals	1,451	1,428	-22	-1.5%	-16	+19
Management (VIII & above)	60	58	-2	-3.5%	-9	-1
Administrative/ Supervisory (V to VII)	242	250	+9	+3.6%	+5	+5
Clerical (III & IV)	720	710	-10	-1.4%	-12	-5
Management & Administrative	1,021	1,018	-3	-0.3%	-16	-1
Support	585	585	+0	+0.0%	-9	+0
Maintenance/ Technical	135	135	+1	+0.4%	-2	+3
General Support	720	721	+1	+0.1%	-11	+3
Health Care Assistants	1,042	1,039	-3	-0.3%	+18	+6
Care, other	211	209	-2	-0.8%	+6	+2
Patient & Client Care	1,253	1,248	-4	-0.4%	+23	+7

Mental Health Services Employment by Administration (HSE / S38): August 2021

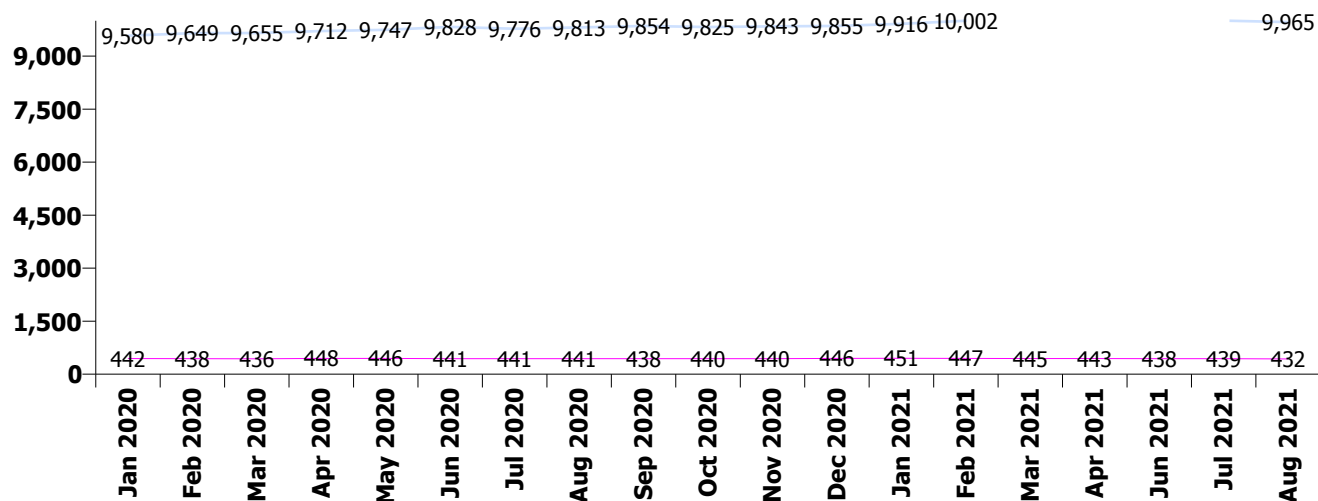
Aug 2021 (Dec 2020 figure: 10,301)	WTE Jul 2021	WTE Aug 2021	WTE change since Jul 21	% change since Jul 21	WTE change since Dec 20	WTE change since Aug 20
Overall	10,444	10,397	-47	-0.4%	+96	+144
HSE	10,004	9,965	-39	-0.4%	+110	+152
Section 38 Voluntary Agencies	439	432	-7	-1.7%	-15	-9

HSE

Aug 2021 (Dec 2020 figure: 9,855)	WTE Jul 2021	WTE Aug 2021	WTE change since Jul 21	% change since Jul 21	WTE change since Dec 20	WTE change since Aug 20
Overall	10,004	9,965	-39	-0.4%	+110	+152
Consultants	359	359	-0	-0.0%	+10	+13
Registrars	295	307	+11	+3.8%	+41	+45
SHO/ Interns	217	236	+19	+8.5%	-31	-16
Medical/ Dental, other	4	4	+0	+5.2%	-1	-1
Medical & Dental	876	905	+30	+3.4%	+19	+41
Nurse/ Midwife Manager	1,195	1,211	+15	+1.3%	+9	+16
Nurse/ Midwife Specialist & AN/MP	520	524	+5	+0.9%	+5	+37
Staff Nurse/ Staff Midwife	2,984	2,924	-59	-2.0%	-29	+64
Public Health Nurse		1	+1	-100.0%	+1	+1
Pre-registration Nurse/ Midwife Intern	160	159	-0	-0.2%	+139	+121
Pre-registration Nurse Intern (COVID-19)	4	1	-2	-59.9%	+1	-157
Post-registration Nurse/ Midwife Student				-100.0%	-1	
Nursing/ Midwifery awaiting registration	3	3			-56	-5
Nursing/ Midwifery Student	166	164	-3	-1.5%	+116	-40
Nursing/ Midwifery other	28	28	-0	-1.2%	-1	-5
Nursing & Midwifery	4,893	4,852	-41	-0.8%	+100	+73
Therapy Professions	414	402	-13	-3.1%	-10	-1
Social Care	49	48	-2	-3.4%	-4	-2
Social Workers	358	355	-3	-0.8%	+1	+9
Psychologists	410	404	-6	-1.5%	+3	+13
Pharmacy	19	19	+0	+0.4%	-0	+2
H&SC, Other	109	109	-1	-0.6%	+1	+0
Health & Social Care Professionals	1,359	1,335	-24	-1.8%	-10	+22
Management (VIII & above)	57	55	-2	-3.6%	-10	-2
Administrative/ Supervisory (V to VII)	224	231	+7	+3.1%	+7	+8
Clerical (III & IV)	676	669	-7	-1.0%	-10	-3
Management & Administrative	957	955	-2	-0.2%	-13	+4
Support	549	550	+1	+0.1%	-7	+4
Maintenance/ Technical	128	128	+1	+0.4%	-2	+1
General Support	677	678	+1	+0.2%	-8	+6
Health Care Assistants	1,034	1,034	-1	-0.1%	+18	+6
Care, other	207	206	-2	-0.8%	+6	+2
Patient & Client Care	1,242	1,239	-3	-0.2%	+23	+7

Section 38 Voluntary Agencies

Aug 2021 (Dec 2020 figure: 446)	WTE Jul 2021	WTE Aug 2021	WTE change since Jul 21	% change since Jul 21	WTE change since Dec 20	WTE change since Aug 20
Overall	439	432	-7	-1.7%	-15	-9
Consultants	21	21	+0	+0.6%	-0	+1
Registrars	23	22	-1	-3.4%	+7	+7
SHO/ Interns	6	5	-1	-22.1%	-4	-3
Medical & Dental	50	48	-2	-4.1%	+3	+6
Nurse/ Midwife Manager	38	38	-0	-1.0%	+0	-1
Nurse/ Midwife Specialist & AN/MP	8	9	+1	+17.7%	+0	+1
Staff Nurse/ Staff Midwife	122	118	-4	-3.5%	-5	-4
Pre-registration Nurse/ Midwife Intern	10	10			+3	+10
Pre-registration Nurse Intern (COVID-19)				-100.0%		-13
Nursing/ Midwifery Student	10	10			-1	-3
Nursing/ Midwifery other	3	3				
Nursing & Midwifery	180	177	-3	-1.9%	-6	-6
Therapy Professions	26	27	+2	+7.3%	+0	+1
Social Care	26	26	-0	-0.7%	-2	-2
Social Workers	17	17	+0	+2.9%	-1	-2
Psychologists	21	19	-2	-7.5%	-3	+0
Pharmacy	2	2				
H&SC, Other	0	1	+1	+208.3%	+1	+1
Health & Social Care Professionals	91	93	+2	+1.8%	-6	-2
Management (VIII & above)	3	3			+1	+1
Administrative/ Supervisory (V to VII)	17	19	+2	+9.6%	-2	-3
Clerical (III & IV)	44	41	-3	-7.1%	-2	-2
Management & Administrative	64	63	-1	-2.3%	-3	-4
Support	36	35	-0	-1.1%	-2	-4
Maintenance/ Technical	7	7				+2
General Support	43	42	-0	-0.9%	-2	-2
Health Care Assistants	8	6	-2	-23.9%		
Care, other	3	3				+0
Patient & Client Care	11	9	-2	-16.5%		+0



Mental Health Services Employment by CHO: Aug 2021

Aug 2021 (Dec 2020 figure: 10,301)	WTE Jul 2021	WTE Aug 2021	WTE change since Jul 21	% change since Jul 21	WTE change since Dec 20	WTE change since Aug 20
Overall	10,444	10,397	-47	-0.4%	+96	+144
CHO 1	995	1,002	+7	+0.7%	+27	+23
CHO 2	1,344	1,333	-11	-0.8%	-7	-15
CHO 3	834	836	+1	+0.2%	+27	+36
CHO 4	1,567	1,559	-8	-0.5%	-5	-5
CHO 5	1,216	1,207	-9	-0.7%	+19	+48
CHO 6	630	633	+3	+0.5%	+7	+30
CHO 7	884	882	-2	-0.2%	+21	+7
CHO 8	1,120	1,114	-6	-0.6%	+2	-13
CHO 9	1,326	1,314	-12	-0.9%	-16	-3
other Community Services	527	516	-11	-2.1%	+21	+35

Mental Health Services Employment by CHO etc. Aug 2021

CHO 1

Aug 2021 (Dec 2020 figure: 976)	WTE Jul 2021	WTE Aug 2021	WTE change since Jul 21	% change since Jul 21	WTE change since Dec 20	WTE change since Aug 20
Overall	995	1,002	+7	+0.7%	+27	+23
Consultants	36	37	+1	+3%	+3	+4
Registrars	32	31	-2	-5%	+2	+8
SHO/ Interns	17	21	+4	+26%	-1	-4
Medical & Dental	85	89	+4	+4.3%	+3	+8
Nurse/ Midwife Manager	119	123	+5	+4%	+4	-0
Nurse/ Midwife Specialist & AN/MP	71	71	-0	-0%	-3	+5
Staff Nurse/ Staff Midwife	301	293	-8	-3%	+4	+6
Pre-registration Nurse/ Midwife Intern	15	15	-1	-3%	+15	+15
Pre-registration Nurse Intern (COVID-19)				-100%		-26
Nursing/ Midwifery Student	15	15	-1	-3%	+12	-12
Nursing/ Midwifery other	2	2	0		+1	+1
Nursing & Midwifery	508	504	-4	-0.8%	+18	+0
Therapy Professions	37	39	+2	+4%	+3	+3
Social Care	4	4	-0	-4%	-0	+1
Social Workers	40	41	+1	+3%	-2	+3
Psychologists	22	22	-0	-1%	-2	-1
Pharmacy	1	1	+0	+4%	+0	-0
H&SC, Other	14	14	+0	+2%	+0	+1
Health & Social Care Professionals	118	120	+3	+2.3%	-0	+7
Management (VIII & above)	5	5	-0	-0%	-3	-3
Administrative/ Supervisory (V to VII)	29	31	+2	+7%	+0	+0
Clerical (III & IV)	89	89	+0	+0%	+4	+4
Management & Administrative	123	125	+2	+2.0%	+2	+2
Support	63	64	+1	+2%	-1	+0
Maintenance/ Technical	16	17	+1	+7%	+1	+0
General Support	79	81	+2	+2.8%	-0	+0
Health Care Assistants	72	73	+1	+1%	+5	+5
Care, other	11	11	-0	-0%	-1	+0
Patient & Client Care	83	83	+1	+0.7%	+4	+6

CHO 2

Aug 2021 (Dec 2020 figure: 1,340)	WTE Jul 2021	WTE Aug 2021	WTE change since Jul 21	% change since Jul 21	WTE change since Dec 20	WTE change since Aug 20
Overall	1,344	1,333	-11	-0.8%	-7	-15
Consultants	42	42	+1	+1%	+5	+2
Registrars	38	34	-4	-11%	-3	-3
SHO/ Interns	33	38	+5	+15%	-2	-1
Medical/ Dental, other				-100%	-1	-1
Medical & Dental	113	114	+1	+0.9%	-1	-3
Nurse/ Midwife Manager	148	146	-1	-1%	-5	-0
Nurse/ Midwife Specialist & AN/MP	76	77	+1	+1%	-3	+2
Staff Nurse/ Staff Midwife	371	366	-6	-1%	+11	+18
<i>Pre-registration Nurse/ Midwife Intern</i>	20	20	+0	+2%	+20	+20
<i>Pre-registration Nurse Intern (COVID-19)</i>	1	1	0		+1	-31
<i>Nursing/ Midwifery awaiting registration</i>				-100%	-5	
Nursing/ Midwifery Student	20	21	+0	+2%	+10	-11
Nursing/ Midwifery other	2	2	+0	+2%	+0	-1
Nursing & Midwifery	617	611	-5	-0.9%	+15	+9
Therapy Professions	55	52	-3	-6%	-3	-3
Social Care	14	15	+0	+1%	-2	-1
Social Workers	39	39	+1	+2%	-2	-4
Psychologists	39	40	+1	+2%	+3	+0
Pharmacy	2	2	0			+0
H&SC, Other	3	3	0		-0	+0
Health & Social Care Professionals	152	151	-2	-1.1%	-4	-7
Management (VIII & above)	2	3	+1	+44%	-1	-1
Administrative/ Supervisory (V to VII)	26	26	-0	-2%	-1	-0
Clerical (III & IV)	96	94	-2	-2%	-8	-8
Management & Administrative	125	123	-2	-1.4%	-10	-10
Support	31	30	-0	-0%	-1	-3
Maintenance/ Technical	34	33	-1	-2%	-0	+5
General Support	64	64	-1	-1.0%	-1	+2
Health Care Assistants	207	206	-1	-1%	-5	-3
Care, other	66	65	-1	-2%	-2	-3
Patient & Client Care	273	271	-2	-0.8%	-7	-6

CHO 3

Aug 2021 (Dec 2020 figure: 809)	WTE Jul 2021	WTE Aug 2021	WTE change since Jul 21	% change since Jul 21	WTE change since Dec 20	WTE change since Aug 20
Overall	834	836	+1	+0.2%	+27	+36
Consultants	25	25	+0	+0%	+1	+1
Registrars	18	20	+2	+9%	+4	+3
SHO/ Interns	24	24	-0	-2%	+2	+4
Medical & Dental	67	68	+1	+1.8%	+8	+8
Nurse/ Midwife Manager	88	91	+3	+3%	+3	+0
Nurse/ Midwife Specialist & AN/MP	33	33	+0	+1%	-4	+1
Staff Nurse/ Staff Midwife	270	269	-1	-1%	-3	+10
Pre-registration Nurse/ Midwife Intern	13	14	+0	+0%	+5	+14
Pre-registration Nurse Intern (COVID-19)				-100%		-12
Nursing/ Midwifery Student	13	14	+0	+0%	+10	+2
Nursing & Midwifery	405	406	+1	+0.4%	+6	+13
Therapy Professions	30	30	-0	-1%	+5	+6
Social Care	3	3	+0	+1%		
Social Workers	24	24	-0	-0%	-0	-2
Psychologists	92	89	-3	-3%	-3	-0
Pharmacy	3	3	0			
H&SC, Other	11	11	0		-1	-3
Health & Social Care Professionals	163	159	-3	-2.1%	+1	+1
Management (VIII & above)	2	2	0			+1
Administrative/ Supervisory (V to VII)	18	17	-1	-4%	-2	-2
Clerical (III & IV)	54	54	-0	-1%	+4	+3
Management & Administrative	74	73	-1	-1.4%	+2	+2
Support	32	32	+0	+1%	+2	+1
Maintenance/ Technical	9	10	+0	+4%	+1	-0
General Support	41	42	+1	+1.8%	+2	+1
Health Care Assistants	84	87	+3	+4%	+8	+10
Care, other	1	1	-0	-32%		
Patient & Client Care	85	88	+3	+2.9%	+8	+10

CHO 4

Aug 2021 (Dec 2020 figure: 1,564)	WTE Jul 2021	WTE Aug 2021	WTE change since Jul 21	% change since Jul 21	WTE change since Dec 20	WTE change since Aug 20
Overall	1,567	1,559	-8	-0.5%	-5	-5
Consultants	57	55	-2	-3%	+1	+3
Registrars	48	52	+4	+9%	+10	+10
SHO/ Interns	41	42	+1	+3%	-1	+12
Medical/ Dental, other	2	2	+0	+10%	+0	+0
Medical & Dental	147	151	+4	+2.8%	+10	+25
Nurse/ Midwife Manager	194	194	+0	+0%	+2	+9
Nurse/ Midwife Specialist & AN/MP	71	71	+0	+0%	+0	+3
Staff Nurse/ Staff Midwife	496	487	-9	-2%	-32	-23
<i>Pre-registration Nurse/ Midwife Intern</i>	27	27	0		+24	+27
<i>Pre-registration Nurse Intern (COVID-19)</i>	1		-1	-100%		-23
<i>Post-registration Nurse/ Midwife Student</i>				-100%	-1	
<i>Nursing/ Midwifery awaiting registration</i>	1	1	0		-29	-3
Nursing/ Midwifery Student	29	28	-1	-3%	+24	+1
Nursing & Midwifery	790	780	-10	-1.3%	-6	-10
Therapy Professions	75	73	-2	-3%	-5	-5
Social Care	7	6	-0	-5%	-1	-1
Social Workers	64	64	-0	-0%	-1	+3
Psychologists	92	89	-3	-3%	-5	+6
Pharmacy	2	2	+0	+3%	-1	-1
H&SC, Other	11	11	-0	-2%	-1	-3
Health & Social Care Professionals	251	245	-5	-2.1%	-13	-1
<i>Executive Management</i>	1	1	-0	-1%	+1	+0
<i>Senior Management (VIII & GM)</i>	1	1	-0	-1%	-0	+1
Management (VIII & above)	2	2	-0	-1%	-1	+1
Administrative/ Supervisory (V to VII)	20	21	+1	+6%	-1	-2
Clerical (III & IV)	93	93	-1	-1%	-2	-1
Management & Administrative	115	116	+1	+0.6%	-3	-2
Support	85	85	-0	-0%	+3	+2
Maintenance/ Technical	5	5	0			-0
General Support	90	90	-0	-0.4%	+3	+2
Health Care Assistants	168	169	+2	+1%	+3	-19
Care, other	7	7	+1	+10%	+1	+1
Patient & Client Care	174	177	+2	+1.4%	+4	-18

CHO 5

Aug 2021 (Dec 2020 figure: 1,188)	WTE Jul 2021	WTE Aug 2021	WTE change since Jul 21	% change since Jul 21	WTE change since Dec 20	WTE change since Aug 20
Overall	1,216	1,207	-9	-0.7%	+19	+48
Consultants	27	27	-0	-1%	-0	+0
Registrars	9	12	+3	+33%	+3	+1
SHO/ Interns	37	31	-6	-16%	-5	-1
Medical/ Dental, other	2	2	0			
Medical & Dental	75	72	-3	-4.1%	-2	+1
Nurse/ Midwife Manager	165	168	+3	+2%	+8	+13
Nurse/ Midwife Specialist & AN/MP	52	55	+2	+4%	+0	+6
Staff Nurse/ Staff Midwife	415	412	-4	-1%	+1	+14
<i>Pre-registration Nurse/ Midwife Intern</i>	25	24	-0	-0%	+21	+24
<i>Pre-registration Nurse Intern (COVID-19)</i>	2	0	-1	-69%	+0	-6
<i>Nursing/ Midwifery awaiting registration</i>				-100%	-2	
Nursing/ Midwifery Student	26	25	-1	-5%	+12	+18
Nursing/ Midwifery other	3	3	+0	+2%	-0	-0
Nursing & Midwifery	663	663	+0	+0.0%	+21	+52
Therapy Professions	34	33	-1	-3%	-6	-8
Social Care	4	4	-0	-1%	-0	-0
Social Workers	26	25	-1	-6%	-3	-2
Psychologists	22	22	-0	-1%	+0	-1
H&SC, Other	20	20	-0	-1%	+12	+10
Health & Social Care Professionals	106	103	-3	-2.6%	+2	-0
Management (VIII & above)	6	5	-1	-16%	-1	-0
Administrative/ Supervisory (V to VII)	23	26	+3	+13%	+6	+6
Clerical (III & IV)	74	70	-4	-6%	+1	+1
Management & Administrative	103	100	-2	-2.2%	+6	+7
Support	170	169	-1	-1%	-9	-1
Maintenance/ Technical	16	16	+0	+1%	-4	-8
General Support	186	185	-1	-0.6%	-13	-9
Health Care Assistants	71	72	+0	+0%	+4	-2
Care, other	12	12	-0	-0%	-0	+0
Patient & Client Care	84	84	+0	+0.1%	+4	-2

CHO 6

Aug 2021 (Dec 2020 figure: 626)	WTE Jul 2021	WTE Aug 2021	WTE change since Jul 21	% change since Jul 21	WTE change since Dec 20	WTE change since Aug 20
Overall	630	633	+3	+0.5%	+7	+30
Consultants	40	39	-1	-2%	-1	+1
Registrars	24	26	+2	+7%	+7	+9
SHO/ Interns	11	11	+0	+0%	-2	-3
Medical & Dental	75	76	+1	+1.3%	+3	+7
Nurse/ Midwife Manager	74	74	-0	-0%	-3	-3
Nurse/ Midwife Specialist & AN/MP	19	22	+2	+12%	+2	+6
Staff Nurse/ Staff Midwife	157	156	-1	-1%	+4	+7
<i>Pre-registration Nurse/ Midwife Intern</i>	3	4	+0	+1%	+4	+4
<i>Nursing/ Midwifery awaiting registration</i>	1	1	0		+1	+1
Nursing/ Midwifery Student	4	5	+0	+1%	+4	+5
Nursing/ Midwifery other	2	2	0			-1
Nursing & Midwifery	257	258	+1	+0.4%	+7	+14
Therapy Professions	39	41	+2	+6%	+3	+5
Social Care	26	26	-0	-1%	-3	-3
Social Workers	30	31	+1	+2%	+1	-0
Psychologists	32	32	+0	+0%	-0	+6
H&SC, Other	4	5	+1	+22%	+0	+1
Health & Social Care Professionals	131	135	+4	+2.9%	+1	+9
Management (VIII & above)	3	3	0			
Administrative/ Supervisory (V to VII)	22	23	+2	+8%	-1	-3
Clerical (III & IV)	38	36	-2	-5%	-6	-5
Management & Administrative	63	62	-0	-0.2%	-8	-8
Support	37	37	-1	-2%	-2	-0
Maintenance/ Technical	6	6	0			+2
General Support	43	43	-1	-1.5%	-2	+2
Health Care Assistants	55	53	-2	-3%	+5	+7
Care, other	6	6	+0	+1%		+0
Patient & Client Care	61	59	-2	-2.9%	+5	+7

CHO 7

Aug 2021 (Dec 2020 figure: 861)	WTE Jul 2021	WTE Aug 2021	WTE change since Jul 21	% change since Jul 21	WTE change since Dec 20	WTE change since Aug 20
Overall	884	882	-2	-0.2%	+21	+7
Consultants	55	55	-0	-0%	+2	+1
Registrars	50	52	+2	+5%	-1	-3
SHO/ Interns	18	22	+4	+21%	+1	-0
Medical & Dental	123	129	+6	+4.9%	+2	-3
Nurse/ Midwife Manager	117	117	+0	+0%	-0	+1
Nurse/ Midwife Specialist & AN/MP	50	52	+2	+5%	+6	+6
Staff Nurse/ Staff Midwife	212	205	-7	-3%	+4	+12
Public Health Nurse		1	+1	-100%	+1	+1
Public Health Nurse		1	+1	-100%	+1	+1
Pre-registration Nurse/ Midwife Intern	15	15	+0	+0%	+14	+15
Pre-registration Nurse Intern (COVID-19)	1	1	-0	-19%	+1	-23
Post-registration Nurse/ Midwife Student				-100%		
Nursing/ Midwifery awaiting registration				-100%	-10	-4
Nursing/ Midwifery Student	16	15	-0	-0%	+8	-12
Nursing/ Midwifery other	6	5	-0	-8%	-1	-3
Nursing & Midwifery	400	396	-4	-0.9%	+17	+5
Therapy Professions	49	46	-3	-6%	-7	+3
Social Care	7	8	+0	+3%	+0	+0
Social Workers	41	40	-1	-3%	+2	+3
Psychologists	31	31	-0	-0%	+1	-1
Pharmacy	1	1	0			
Pharmacy	1	1	0			
H&SC, Other	17	17	-0	-3%	-1	-2
Health & Social Care Professionals	146	142	-4	-3.0%	-5	+4
Management (VIII & above)	4	5	+1	+26%	+1	+1
Administrative/ Supervisory (V to VII)	17	18	+1	+4%	+1	+1
Clerical (III & IV)	47	47	-0	-0%	-2	-5
Management & Administrative	68	70	+2	+2.3%	-1	-3
Support	17	17	-0	-1%	-1	+1
Maintenance/ Technical	2	2	+0	+1%		+0
General Support	19	19	-0	-1.1%	-1	+1
Health Care Assistants	35	35	-0	-0%	+0	-0
Care, other	93	92	-1	-1%	+8	+3
Patient & Client Care	128	127	-1	-0.7%	+8	+3

CHO 8

Aug 2021 (Dec 2020 figure: 1,112)	WTE Jul 2021	WTE Aug 2021	WTE change since Jul 21	% change since Jul 21	WTE change since Dec 20	WTE change since Aug 20
Overall	1,120	1,114	-6	-0.6%	+2	-13
Consultants	38	37	-0	-1%	+1	+3
Registrars	35	43	+7	+21%	+12	+14
SHO/ Interns	18	19	+1	+7%	-7	-11
Medical & Dental	91	99	+8	+8.9%	+5	+5
Nurse/ Midwife Manager	120	123	+3	+3%	+3	+2
Nurse/ Midwife Specialist & AN/MP	62	62	+1	+1%	+3	+3
Staff Nurse/ Staff Midwife	334	321	-13	-4%	-21	-7
<i>Pre-registration Nurse/ Midwife Intern</i>	24	24	-0	-0%	+24	+24
<i>Pre-registration Nurse Intern (COVID-19)</i>				-100%		-32
<i>Nursing/ Midwifery awaiting registration</i>				-100%	-2	
Nursing/ Midwifery Student	24	24	-0	-0%	+23	-7
Nursing/ Midwifery other	3	3	-0	-0%	-0	-1
Nursing & Midwifery	543	534	-9	-1.6%	+8	-11
Therapy Professions	44	42	-1	-3%	-0	-2
Social Care	7	7	-1	-9%	-0	-1
Social Workers	47	47	-0	-1%	+3	+3
Psychologists	39	38	-2	-4%	+1	+1
Pharmacy	2	2	0			+1
H&SC, Other	15	15	+0	+1%	-7	-6
Health & Social Care Professionals	153	149	-4	-2.5%	-4	-3
Management (VIII & above)	4	3	-1	-25%	+0	
Administrative/ Supervisory (V to VII)	23	22	-0	-2%	+2	+2
Clerical (III & IV)	94	95	+1	+1%	-2	-4
Management & Administrative	121	120	-0	-0.4%	+0	-2
Support	30	31	+1	+4%	-0	-1
Maintenance/ Technical	29	28	-1	-3%	+0	+1
General Support	59	59	+0	+0.8%	-0	-0
Health Care Assistants	151	149	-2	-1%	-7	-2
Care, other	3	3	0		-0	-0
Patient & Client Care	154	152	-2	-1.2%	-7	-2

CHO 9

Aug 2021 (Dec 2020 figure: 1,331)	WTE Jul 2021	WTE Aug 2021	WTE change since Jul 21	% change since Jul 21	WTE change since Dec 20	WTE change since Aug 20
Overall	1,326	1,314	-12	-0.9%	-16	-3
Consultants	45	45	+0	+1%	-1	-1
Registrars	42	45	+3	+7%	+13	+12
SHO/ Interns	23	30	+7	+31%	-24	-18
Medical & Dental	110	120	+10	+9.2%	-11	-6
Nurse/ Midwife Manager	134	135	+1	+1%	-2	-3
Nurse/ Midwife Specialist & AN/MP	83	80	-3	-3%	+5	+8
Staff Nurse/ Staff Midwife	364	354	-10	-3%	-18	+8
<i>Pre-registration Nurse/ Midwife Intern</i>	27	27	-0	-1%	+17	-11
<i>Pre-registration Nurse Intern (COVID-19)</i>				-100%		-17
<i>Nursing/ Midwifery awaiting registration</i>	1	1	0		-10	+1
Nursing/ Midwifery Student	28	28	-0	-1%	+12	-27
Nursing/ Midwifery other	11	11	+0	+3%	-1	-1
Nursing & Midwifery	620	609	-11	-1.8%	-4	-16
Therapy Professions	65	62	-4	-6%	+1	+2
Social Care	1	1	+0	+15%		+0
Social Workers	47	45	-1	-3%	+3	+2
Psychologists	54	53	-1	-2%	-0	+2
Pharmacy	9	9	-0	-0%	-0	+1
H&SC, Other	14	14	-0	-1%	+0	+0
Health & Social Care Professionals	190	184	-6	-3.3%	+3	+6
Management (VIII & above)	7	7	+0	+1%	+2	+2
Administrative/ Supervisory (V to VII)	26	27	+1	+3%	-2	-0
Clerical (III & IV)	114	110	-3	-3%	-4	+5
Management & Administrative	146	144	-2	-1.7%	-4	+7
Support	103	103	-0	-0%	-1	-1
Maintenance/ Technical	11	11	0			+1
General Support	114	114	-0	-0.3%	-1	+0
Health Care Assistants	133	131	-2	-2%	+2	+6
Care, other	12	12	-0	-0%	-0	-0
Patient & Client Care	146	144	-2	-1.5%	+2	+6

other Community Services

Aug 2021 (Dec 2020 figure: 494)	WTE Jul 2021	WTE Aug 2021	WTE change since Jul 21	% change since Jul 21	WTE change since Dec 20	WTE change since Aug 20
Overall	527	516	-11	-2.1%	+21	+35
Consultants	16	17	+1	+9%	+1	+1
Registrars	22	15	-7	-31%	+1	+1
SHO/ Interns	2	3	+1	+30%	+3	+3
Medical & Dental	40	35	-4	-11.3%	+4	+5
Nurse/ Midwife Manager	75	75	+0	+0%	-1	-3
Nurse/ Midwife Specialist & AN/MP	10	10	-0	-0%	-2	-1
Staff Nurse/ Staff Midwife	184	180	-5	-3%	+15	+15
Nursing/ Midwifery other	2	2	-0	-15%	-0	+1
Nursing & Midwifery	271	267	-5	-1.7%	+11	+11
Therapy Professions	12	12	+0	+1%	+0	+0
Social Care	2	1	-1	-50%	-1	-1
Social Workers	17	16	-0	-2%	-1	+1
Psychologists	9	9	+0	+0%	+3	+2
<i>Pharmacy</i>	2	2	0		+2	+1
Pharmacy	2	2	0		+1	+1
Health & Social Care Professionals	42	40	-1	-2.9%	+2	+4
Management (VIII & above)	25	23	-2	-8%	-7	-2
Administrative/ Supervisory (V to VII)	39	39	+1	+2%	+3	+3
Clerical (III & IV)	20	22	+1	+7%	+3	+4
Management & Administrative	84	84	-0	-0.1%	-1	+6
Support	18	18	+0	+2%	+2	+2
Maintenance/ Technical	7	7	+0	+4%	-0	+3
General Support	24	25	+1	+2.5%	+2	+5
Health Care Assistants	65	64	-1	-2%	+2	+4
Care, other	1	1	0			
Patient & Client Care	66	64	-1	-1.9%	+2	+4

Mental Health Services Employment by Grade Group: Aug 2021

Aug 2021 (Dec 2020 figure: 10,301)	WTE Jul 2021	WTE Aug 2021	WTE change since Jul 21	% change since Jul 21	WTE change since Dec 20	WTE change since Aug 20
Overall	10,444	10,397	-47	-0.4%	+96	+144
Consultant Medicine	1	1	0			
Consultant Psychiatry	379	379	+0	+0%	+10	+14
Consultants	380	380	+0	+0%	+10	+14
Registrar	203	205	+2	+1%	+37	+36
Senior Registrar	113	120	+6	+6%	+9	+14
Specialist Registrar	2	4	+2	+98%	+2	+2
Registrars	318	329	+10	+3%	+48	+53
Interns	8	7	-1	-16%	+2	-0
Senior House Officer	216	234	+18	+8%	-37	-18
SHO/ Interns	224	241	+17	+8%	-35	-19
Dentists				-100%		-0
Other Medical	4	4	+0	+5%	-1	-1
Medical/ Dental, other	4	4	+0	+5%	-1	-1
Medical & Dental	926	954	+28	+3%	+22	+47
Clinical Nurse/ Midwife Manager	1,037	1,047	+10	+1%	+6	+17
Director Nursing/Midwifery, Assistant	169	171	+2	+1%	+1	-3
Director of Nursing/Midwifery	28	30	+2	+8%	+2	+1
Nurse/ Midwife Manager	1,233	1,248	+15	+1%	+9	+15
Advanced Nurse/ Midwife Practitioner	47	47	+1	+1%	+8	+11
Clinical Nurse/ Midwife Specialist	481	486	+6	+1%	-3	+27
Nurse/ Midwife Specialist & AN/MP	527	533	+6	+1%	+5	+38
Staff Midwives				-100%	-1	-1
Staff Nurse [Intellectual Disability]	3	3	-0	-5%	-1	-2
Staff Nurse [Psychiatric]	2,986	2,922	-64	-2%	-43	+65
Staff Nurses [General/ Children's]	116	117	+1	+1%	+10	-2
Staff Nurse/ Staff Midwife	3,106	3,042	-64	-2%	-34	+61
Public Health Nurse		1	+1	-100%	+1	+1
Public Health Nurse		1	+1	-100%	+1	+1
Pre-registration Nurse/ Midwife Intern	170	169	-0	-0%	+159	+131
Pre-registration Nurse Intern (COVID-19)	4	1	-2	-60%	-41	-170
Post-registration Nurse/ Midwife Student				-100%	-1	
Nursing/ Midwifery awaiting registration	3	3	0		-2	-5
Nursing/ Midwifery Student	176	174	-3	-1%	+115	-43
Nursing Education/Clinical	31	31	-0	-1%	-1	-5
Nursing/ Midwifery other	31	31	-0	-1%	-1	-5
Nursing & Midwifery	5,074	5,029	-45	-1%	+94	+67
Dietitians	20	18	-1	-6%	-2	-2
Occupational Therapists	350	344	-6	-2%	-1	-4
Physiotherapists	2	2	0			-0
Podiatrists & Chiropodists	1	1	+0	+10%	-0	-0
Speech & Language Therapists	67	63	-4	-6%	-6	+6
Therapy Professions	440	429	-11	-2%	-10	+1
Social Care	75	73	-2	-2%	-6	-5
Social Workers	374	372	-3	-1%	-1	+7
Psychologists	431	423	-8	-2%	-1	+14
Pharmacy	20	20	+0	+0%	-0	+2
Counsellor Therapists	103	102	-1	-1%	+1	+2
Other Health & Social Care	5	6	+1	+19%	+1	-1
Play Therapists/ Specialists	1	1	0			
H&SC, Other	110	110	+0	+0%	+2	+1

Aug 2021 (Dec 2020 figure: 10,301)	WTE Jul 2021	WTE Aug 2021	WTE change since Jul 21	% change since Jul 21	WTE change since Dec 20	WTE change since Aug 20
Overall	10,444	10,397	-47	-0.4%	+96	+144
Health & Social Care Professionals	1,451	1,428	-22	-2%	-16	+19
Executive Management	15	15	+0	+0%	+0	+3
Senior Management (VIII & GM)	45	43	-2	-5%	-10	-4
Management (VIII & above)	60	58	-2	-3%	-9	-1
Middle Management (V-VII)	240	249	+9	+4%	+5	+5
Other Administrative	2	2	-0	-1%	-0	-0
Administrative/ Supervisory (V to VII)	242	250	+9	+4%	+5	+5
General Administrative (III & IV)	720	710	-10	-1%	-12	-5
Clerical (III & IV)	720	710	-10	-1%	-12	-5
Management & Administrative	1,021	1,018	-3	-0%	-16	-1
Catering	67	70	+3	+4%	+7	+6
Household Services	427	424	-3	-1%	-18	-11
Other Support	44	45	+1	+3%	+3	+7
Portering	47	46	-1	-1%	-1	-2
Support	585	585	+0	+0%	-9	+0
Maintenance	135	135	+1	+0%	-2	+5
Technical Services				-100%		-2
Maintenance/ Technical	135	135	+1	+0%	-2	+3
General Support	720	721	+1	+0%	-11	+3
HCA, Nurse's Aide, etc.	1,031	1,029	-2	-0%	+16	+4
Health & Social Care Assistants	11	10	-1	-6%	+2	+1
Health Care Assistants	1,042	1,039	-3	-0%	+18	+6
Care, other	211	209	-2	-1%	+6	+2
Patient & Client Care	1,253	1,248	-4	-0%	+23	+7

Employment by WTE, Headcount, Gender, Full-Time /Part-Time etc.: Aug 2021

Mental Health Services Staff Group	WTE	Headcount	WTE: no.	% Male	% female	Male WTE: no.	Female WTE: no.	% Total Perm	% Male Perm	% Female Perm	% Total Full Time	% Total Part Time	% Male FT	% Female FT
Overall	10,397	11,522	1.11	27.0%	73.0%	1.06	1.13	82.8%	79.2%	84.1%	85.1%	14.9%	93.0%	82.2%
Consultant Medicine	1	1	1.00	100.0%		1.00		100.0%	100.0%		100.0%	0.0%	100.0%	
Consultant Psychiatry	379	410	1.08	41.0%	59.0%	1.04	1.11	66.8%	66.8%	65.7%	86.8%	13.2%	92.3%	83.1%
Consultants	380	411	1.08	41.1%	58.9%	1.04	1.11	66.9%	68.6%	65.7%	86.9%	13.1%	92.3%	83.1%
Registrar	205	219	1.07	43.4%	56.6%	1.05	1.08	3.2%	3.2%	2.4%	96.3%	3.7%	98.9%	94.4%
Senior Registrar	120	126	1.05	35.7%	64.3%	1.01	1.08	1.6%	1.6%	2.5%	96.8%	3.2%	100.0%	95.1%
Specialist Registrar	4	4	1.01	50.0%	50.0%	1.00	1.03	0.0%	0.0%	0.0%	100.0%	0.0%	100.0%	100.0%
Registrars	329	349	1.06	40.7%	59.3%	1.04	1.08	2.6%	2.8%	2.4%	96.6%	3.4%	99.3%	94.7%
Interns	7	7	1.08	28.6%	71.4%	1.00	1.11	0.0%	0.0%	0.0%	100.0%	0.0%	100.0%	100.0%
Senior House Officer	234	248	1.06	44.0%	56.0%	1.05	1.06	0.0%	0.0%	0.0%	99.6%	0.4%	100.0%	99.3%
SHO/ Interns	241	255	1.06	43.5%	56.5%	1.05	1.06	0.0%	0.0%	0.0%	99.6%	0.4%	100.0%	99.3%
Other Medical	4	8	1.88	62.5%	37.5%	2.02	1.69	50.0%	50.0%	66.7%	87.5%	12.5%	100.0%	66.7%
Medical/ Dental, other	4	8	1.88	62.5%	37.5%	2.02	1.69	50.0%	40.0%	66.7%	87.5%	12.5%	100.0%	66.7%
Medical & Dental	954	1,023	1.07	41.7%	58.3%	1.05	1.09	28.2%	28.6%	27.9%	93.4%	6.6%	96.7%	90.9%
Clinical Nurse/ Midwife Manager	1,047	1,105	1.06	33.6%	66.4%	1.02	1.07	98.9%	98.9%	99.5%	93.5%	6.5%	98.4%	91.0%
Director Nursing/Midwifery, Assistant	171	177	1.03	45.8%	54.2%	1.03	1.04	99.4%	99.4%	100.0%	97.2%	2.8%	97.5%	96.9%
Director of Nursing/Midwifery	30	30	1.00	50.0%	50.0%	1.00	1.01	100.0%	100.0%	100.0%	96.7%	3.3%	100.0%	93.3%
Nurse/ Midwife Manager	1,248	1,312	1.05	35.6%	64.4%	1.02	1.07	99.0%	98.1%	99.5%	94.1%	5.9%	98.3%	91.7%
Advanced Nurse/ Midwife Practitioner	47	49	1.04	16.3%	83.7%	1.00	1.05	98.0%	98.0%	97.6%	91.8%	8.2%	100.0%	90.2%
Clinical Nurse/ Midwife Specialist	486	521	1.07	19.6%	80.4%	1.01	1.09	99.6%	99.6%	99.8%	92.7%	7.3%	98.0%	91.4%
Nurse/ Midwife Specialist & AN/MP	533	570	1.07	19.3%	80.7%	1.01	1.08	99.5%	99.1%	99.6%	92.6%	7.4%	98.2%	91.3%
Staff Nurse [Intellectual Disability]	3	4	1.26	25.0%	75.0%	1.00	1.38	50.0%	50.0%	66.7%	75.0%	25.0%	100.0%	66.7%
Staff Nurse [Psychiatric]	2,922	3,169	1.08	26.1%	73.9%	1.06	1.10	92.6%	92.6%	93.3%	87.4%	12.6%	91.9%	85.8%
Staff Nurses [General/ Children's]	117	129	1.11	22.5%	77.5%	1.11	1.10	79.1%	79.1%	83.0%	82.2%	17.8%	82.8%	82.0%
Staff Nurse/ Staff Midwife	3,042	3,302	1.09	25.9%	74.1%	1.06	1.10	92.0%	89.6%	92.9%	87.2%	12.8%	91.6%	85.6%
Public Health Nurse	1	1	1.08		100.0%		1.08	100.0%	100.0%	100.0%	100.0%	0.0%		100.0%
Public Health Nurse	1	1	1.08		100.0%		1.08	100.0%		100.0%	100.0%	0.0%		100.0%
Pre-registration Nurse/ Midwife Intern	169	339	2.00	15.6%	84.4%	2.00	2.00	0.0%	0.0%	0.0%	100.0%	0.0%	100.0%	100.0%
Pre-registration Nurse Intern (COVID-19)	1	3	2.01	33.3%	66.7%	2.00	2.02	0.0%	0.0%	0.0%	100.0%	0.0%	100.0%	100.0%
Nursing/ Midwifery awaiting registration	3	3	1.00		100.0%		1.00	100.0%	100.0%	100.0%	100.0%	0.0%		100.0%

Nursing/ Midwifery Student	174	345	1.98	15.7%	84.3%	2.00	1.98	0.9%	0.0%	1.0%	100.0%	0.0%	100.0%	100.0%
Nursing Education/Clinical	31	34	1.11	17.6%	82.4%	1.05	1.12	100.0%	100.0%	100.0%	88.2%	11.8%	100.0%	85.7%
Nursing/ Midwifery other	31	34	1.11	17.6%	82.4%	1.05	1.12	100.0%	100.0%	100.0%	88.2%	11.8%	100.0%	85.7%
Nursing & Midwifery	5,029	5,564	1.11	26.8%	73.2%	1.06	1.12	88.8%	89.8%	88.5%	90.2%	9.8%	94.5%	88.6%
Health & Social Care	1,428	1,618	1.13	16.6%	83.4%	1.06	1.15	86.3%	82.8%	87.0%	81.5%	18.5%	91.4%	79.5%
Executive Management	15	15	1.00	60.0%	40.0%	1.01	1.00	100.0%	100.0%	100.0%	100.0%	0.0%	100.0%	100.0%
Senior Management (VIII & GM)	43	45	1.05	28.9%	71.1%	1.07	1.04	95.6%	95.6%	96.9%	97.8%	2.2%	100.0%	96.9%
Management (VIII & above)	58	60	1.04	36.7%	63.3%	1.04	1.04	96.7%	95.5%	97.4%	98.3%	1.7%	100.0%	97.4%
Middle Management (V-VII)	249	263	1.06	19.8%	80.2%	1.03	1.06	90.5%	90.5%	91.9%	89.4%	10.6%	98.1%	87.2%
Other Administrative	2	2	1.29		100.0%		1.29	100.0%	100.0%	100.0%	50.0%	50.0%		50.0%
Administrative/ Supervisory (V to VII)	250	265	1.06	19.6%	80.4%	1.03	1.07	90.6%	84.6%	92.0%	89.1%	10.9%	98.1%	86.9%
General Administrative (III & IV)	710	809	1.14	8.5%	91.5%	1.05	1.15	84.1%	84.1%	84.5%	74.0%	26.0%	88.4%	72.7%
Clerical (III & IV)	710	809	1.14	8.5%	91.5%	1.05	1.15	84.1%	79.7%	84.5%	74.0%	26.0%	88.4%	72.7%
Management & Administrative	1,018	1,134	1.11	12.6%	87.4%	1.04	1.13	86.2%	83.9%	86.6%	78.8%	21.2%	93.7%	76.7%
Catering	70	75	1.07	34.7%	65.3%	1.03	1.09	94.7%	94.7%	93.9%	74.7%	25.3%	92.3%	65.3%
Household Services	424	493	1.16	20.9%	79.1%	1.09	1.18	87.6%	87.6%	90.5%	59.2%	40.8%	81.6%	53.3%
Other Support	45	51	1.13	33.3%	66.7%	1.03	1.19	90.2%	90.2%	88.2%	72.5%	27.5%	88.2%	64.7%
Portering	46	49	1.06	93.9%	6.1%	1.07	1.00	85.7%	85.7%	66.7%	89.8%	10.2%	89.1%	100.0%
Support	585	668	1.14	28.7%	71.3%	1.07	1.17	88.5%	83.3%	90.5%	64.2%	35.8%	85.4%	55.7%
Maintenance	135	141	1.04	99.3%	0.7%	1.04	1.00	95.7%	95.7%	100.0%	96.5%	3.5%	96.4%	100.0%
Maintenance/ Technical	135	141	1.04	99.3%	0.7%	1.04	1.00	95.7%	95.7%	100.0%	96.5%	3.5%	96.4%	100.0%
General Support	721	809	1.12	41.0%	59.0%	1.06	1.17	89.7%	88.6%	90.6%	69.8%	30.2%	90.1%	55.8%
Health Care Assistants	1,039	1,127	1.08	29.3%	70.7%	1.06	1.09	89.2%	83.3%	91.6%	78.4%	21.6%	90.3%	73.5%
Care, other	209	247	1.18	46.6%	53.4%	1.13	1.23	81.8%	76.5%	86.4%	69.2%	30.8%	78.3%	61.4%
Patient & Client Care	1,248	1,374	1.10	32.4%	67.6%	1.08	1.11	87.8%	81.6%	90.9%	76.8%	23.2%	87.2%	71.8%

Employment by WTE, Headcount, Gender, Full-Time /Part-Time etc.: Aug 2021

Mental Health Services CHO	WTE	Headcount	WTE: no.	% Male	% female	Male WTE: no.	Female WTE: no.	% Total Perm	% Male Perm	% Female Perm	% Total Full Time	% Total Part Time	% Male FT	% Female FT
Overall	10,397	11,522	1.11	27.0%	73.0%	1.06	1.13	82.8%	79.2%	84.1%	85.1%	14.9%	93.0%	82.2%
CHO 1	1,002	1,093	1.09	26.6%	73.4%	1.05	1.11	88.9%	88.9%	90.5%	87.5%	12.5%	96.9%	84.0%
CHO 2	1,333	1,468	1.10	28.1%	71.9%	1.06	1.12	85.1%	85.1%	87.2%	84.0%	16.0%	90.0%	81.6%
CHO 3	836	912	1.09	23.0%	77.0%	1.05	1.10	81.1%	81.1%	80.9%	85.1%	14.9%	91.4%	83.2%
CHO 4	1,559	1,739	1.12	25.5%	74.5%	1.07	1.13	72.1%	72.1%	74.5%	84.7%	15.3%	93.9%	81.5%
CHO 5	1,207	1,354	1.12	25.2%	74.8%	1.06	1.15	86.8%	86.8%	87.4%	79.4%	20.6%	90.3%	75.7%
CHO 6	633	706	1.12	29.3%	70.7%	1.07	1.14	81.7%	81.7%	82.2%	84.3%	15.7%	91.3%	81.4%
CHO 7	882	987	1.12	23.8%	76.2%	1.07	1.14	81.0%	81.0%	82.7%	87.9%	12.1%	95.7%	85.5%
CHO 8	1,114	1,245	1.12	24.7%	75.3%	1.05	1.14	84.9%	84.9%	85.5%	86.4%	13.6%	95.1%	83.6%
CHO 9	1,314	1,474	1.12	27.8%	72.2%	1.06	1.15	83.8%	83.8%	85.9%	84.7%	15.3%	94.4%	80.9%
other Community Services	516	544	1.05	46.1%	53.9%	1.07	1.04	88.2%	88.2%	90.1%	92.5%	7.5%	90.4%	94.2%

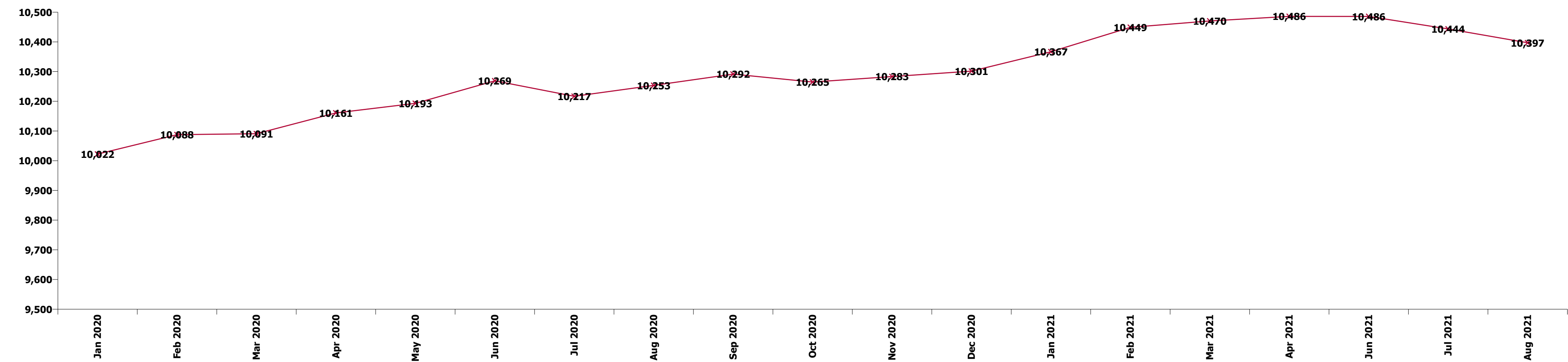
Summary Staff Movement: August 2021

Month-on-month
Summary

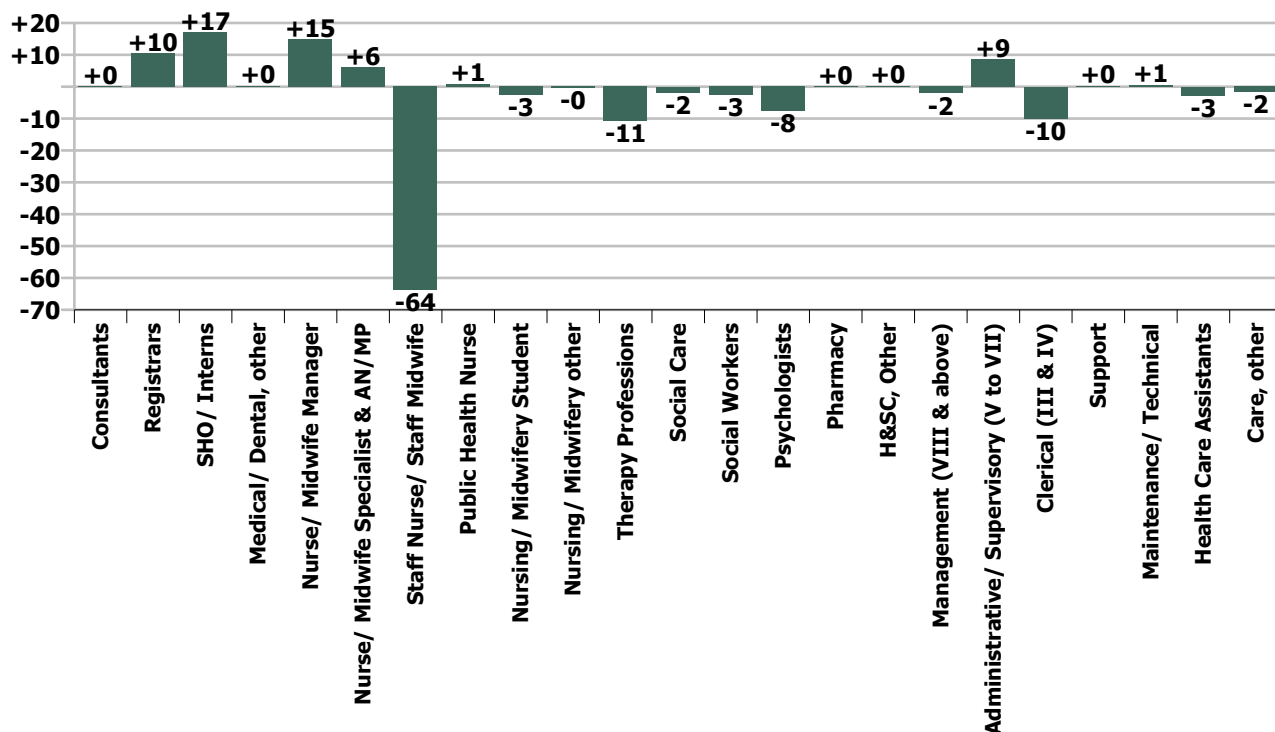
WTE change since Jul 21	% change since Jul 21	overall	Consultants	Registrars	SHO/ Interns	Medical/ Dental, other	Medical & Dental	Nurse/ Midwife Manager	Nurse/ Midwife Specialist & AN/MP	Staff Nurse/ Staff Midwife	Public Health Nurse	Nursing/ Midwifery Student	Nursing/ Midwifery other	Nursing & Midwifery	Therapy Professions	Social Care	Social Workers	Psychologists	Pharmacy	H&SC, Other	Health & Social Care Professionals	Management (VIII & above)	Administrativ e/ Supervisory (V to VII)	Clerical (III & IV)	Management & Administrativ e	General Support	Health Care Assistants	Care, other	Patient & Client Care
Overall	-0.4%	-47	+0	+10	+17	+0	+28	+15	+6	-64	+1	-3	-0	-45	-11	-2	-3	-8	+0	+0	-22	-2	+9	-10	-3	+1	-3	-2	-4
CHO 1	+0.7%	+7	+1	-2	+4		+4	+5	-0	-8		-1		-4	+2	-0	+1	-0	+0		+3	-0	+2	+0	+2	+2	+1	-0	+1
CHO 2	-0.8%	-11	+1	-4	+5		+1	-1	+1	-6		+0	+0	-5	-3	+0	+1	+1			-2	+1	-0	-2	-2	-1	-1	-2	
CHO 3	+0.2%	+1	+0	+2	-0		+1	+3	+0	-1		+0		+1	-0	+0	-0	-3			-3		-1	-0	-1	+1	+3	-0	+3
CHO 4	-0.5%	-8	-2	+4	+1	+0	+4	+0	+0	-9		-1		-10	-2	-0	-0	-3	+0	-0	-5	-0	+1	-1	+1	-0	+2	+1	+2
CHO 5	-0.7%	-9	-0	+3	-6		-3	+3	+2	-4		-1	+0	+0	-1	-0	-1	-0		-0	-3	-1	+3	-4	-2	-1	+0	-0	+0
CHO 6	+0.5%	+3	-1	+2	+0		+1	-0	+2	-1		+0		+1	+2	-0	+1	+0		+1	+4		+2	-2	-0	-1	-2	+0	-2
CHO 7	-0.2%	-2	-0	+2	+4		+6	+0	+2	-7	+1	-0	-0	-4	-3	+0	-1	-0		-0	-4	+1	+1	-0	+2	-0	-0	-1	-1
CHO 8	-0.6%	-6	-0	+7	+1		+8	+3	+1	-13		-0	-0	-9	-1	-1	-0	-2		+0	-4	-1	-0	+1	-0	+0	-2		-2
CHO 9	-0.9%	-12	+0	+3	+7		+10	+1	-3	-10		-0	+0	-11	-4	+0	-1	-1	-0	-0	-6	+0	+1	-3	-2	-0	-2	-0	-2
other Community Services	-2.1%	-11	+1	-7	+1		-4	+0	-0	-5			-0	-5	+0	-1	-0	+0			-1	-2	+1	+1	-0	+1	-1		-1
		-0.4%	+0.0%	+3.3%	+7.6%	+5.2%	+3.0%	+1.2%	+1.2%	-2.1%	-100.0%	-1.4%	-1.1%	-0.9%	-2.5%	-2.4%	-0.7%	-1.8%	+0.3%	+0.3%	-1.5%	-3.5%	+3.6%	-1.4%	-0.3%	+0.1%	-0.3%	-0.8%	-0.4%

Year-on-year Summary

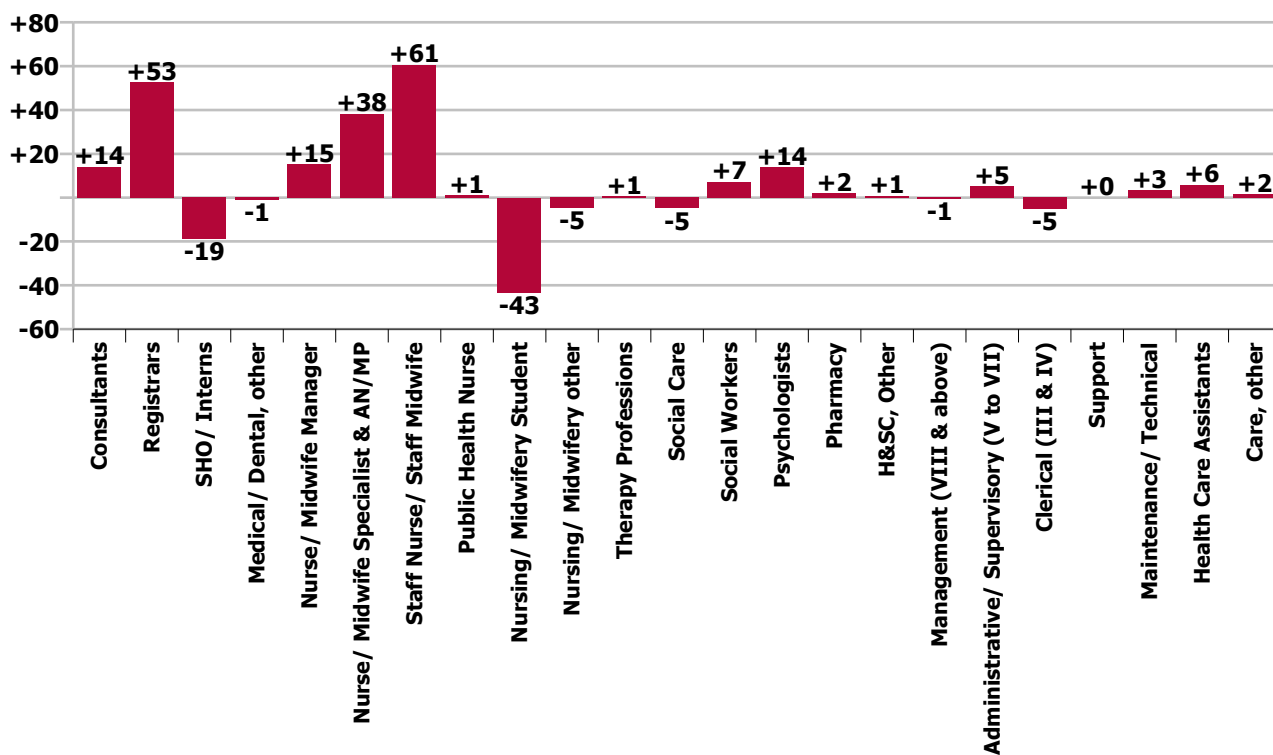
WTE change since Aug 20	% change since Aug 20	overall	Consultants	Registrars	SHO/ Interns	Medical/ Dental, other	Medical & Dental	Nurse/ Midwife Manager	Nurse/ Midwife Specialist & AN/MP	Staff Nurse/ Staff Midwife	Public Health Nurse	Nursing/ Midwifery Student	Nursing/ Midwifery other	Nursing & Midwifery	Therapy Professions	Social Care	Social Workers	Psychologists	Pharmacy	H&SC, Other	Health & Social Care Professionals	Management (VIII & above)	Administrativ e/ Supervisory (V to VII)	Clerical (III & IV)	Management & Administrativ e	General Support	Health Care Assistants	Care, other	Patient & Client Care	
Overall	+1.4%	+144	+14	+53	-19	-1	+47	+15	+38	+61	+1	-43	-5	+67	+1	-5	+7	+14	+2	+1	+19	-1	+5	-5	-1	+3	+6	+2	+7	
CHO 1	+2.4%	+23	+4	+8	-4		+8	-0	+5	+6		-12	+1	+0	+3	+1	+3	-1	-0	+1	+7	-3	+0	+4	+2	+0	+5	+0	+6	
CHO 2	-1.1%	-15	+2	-3	-1	-1	-3	-0	+2	+18		-11	-1	+9	-3	-1	-4	+0	+0	+0	-7	-1	-0	-8	-10	+2	-3	-3	-6	
CHO 3	+4.5%	+36	+1	+3	+4		+8	+0	+1	+10	+4	+2		+13	+6		-2	-0		-3	+1	+1	-2	+3	+2	+1	+10		+10	
CHO 4	-0.3%	-5	+3	+10	+12	+0	+25	+9	+3	-23		+1		-10	-5	-1	+3	+6	-1	-3	-1	+1	-2	-1	-2	+2	+2	-19	+1	-18
CHO 5	+4.2%	+48	+0	+1	-1		+1	+13	+6	+14		+18	-0	+52	-8	-0	-2	-1		+10	-0	-0	+6	+1	+7	-9	-2	+0	-2	
CHO 6	+5.0%	+30	+1	+9	-3		+7	-3	+6	+7		+5	-1	+14	+5	-3	-0	+6		+1	+9		-3	-5	-8	+2	+7	+0	+7	
CHO 7	+0.8%	+7	+1	-3	-0		-3	+1	+6	+12	+1	-12	-3	+5	+3	+0	+3	-1		-2	+4	+1	+1	-5	-3	+1	-0	+3	+3	
CHO 8	-1.2%	-13	+3	+14	-11		+5	+2	+3	-7		-7	-1	-11	-2	-1	+3	+1	+1	-6	-3		+2	-4	-2	-0	-2	-0	-2	
CHO 9	-0.2%	-3	-1	+12	-18		-6	-3	+8	+8		-27	-1	-16	+2	+0	+2	+2	+1	+0	+6	+2	-0	+5	+7	+0	+6	-0	+6	
other Community Services	+7.3%	+35	+1	+1	+3		+5	-3	-1	+15			+1	+11	+0	-1	+1	+2	+1		+4	-2	+3	+4	+6	+5	+4		+4	
		+1.4%	+3.9%	+19.1%	-7.2%	-18.4%	+5.2%	+1.2%	+7.7%	+2.0%	-100.0%	-19.9%	-13.6%	+1.3%	+0.2%	-6.2%	+2.0%	+3.4%	+9.8%	+0.7%	+1.4%	-0.9%	+2.1%	-0.7%	-0.1%	+0.5%	+0.6%	+0.8%	+0.6%	



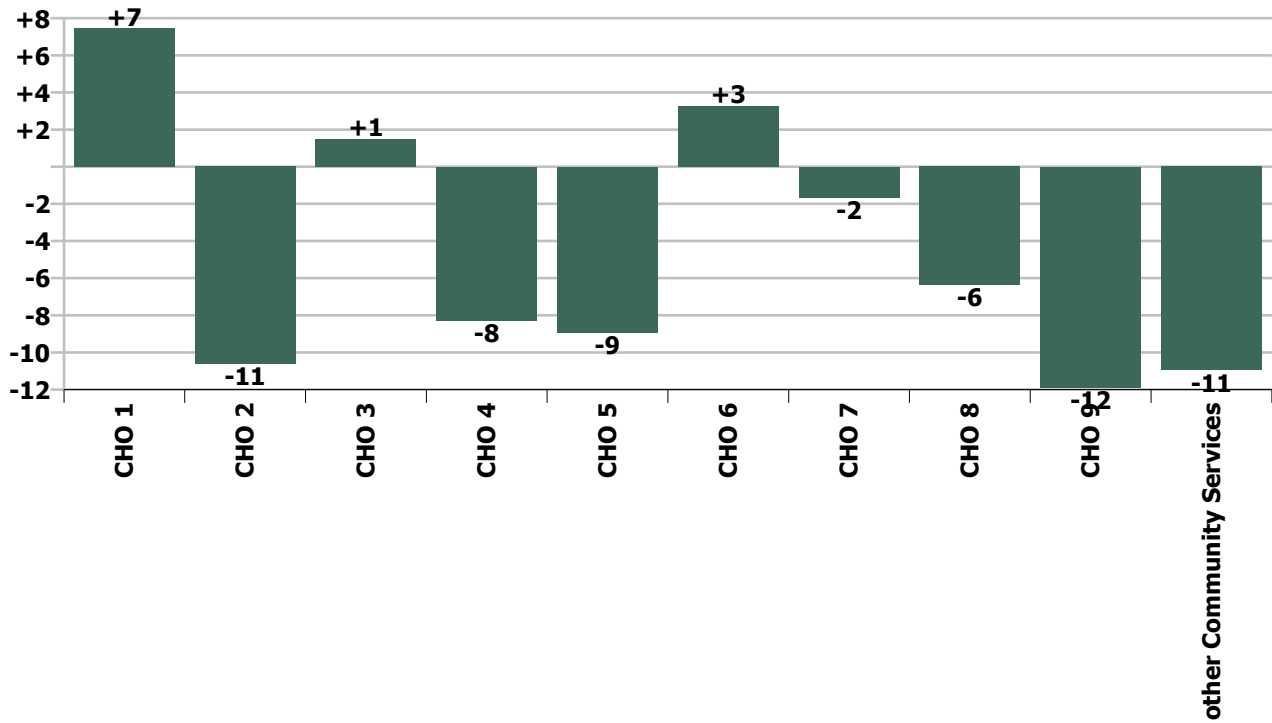
Staff Group change since: Jul 2021



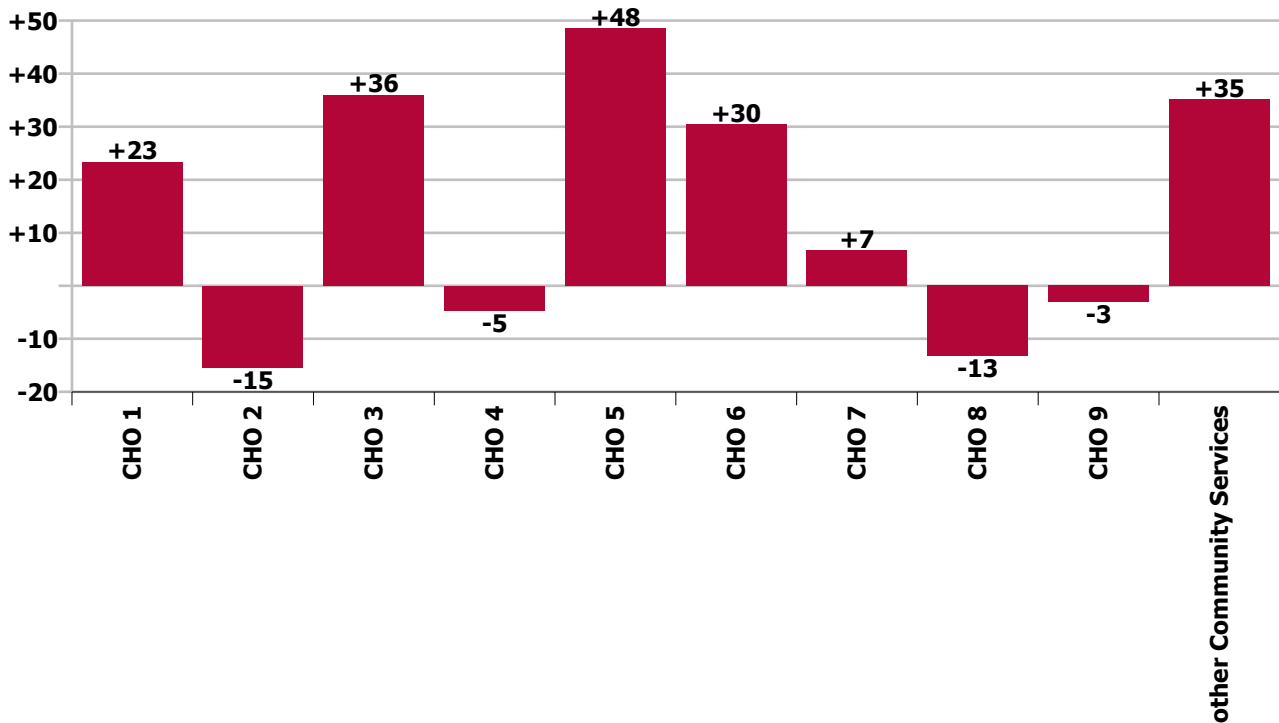
Staff Group change since: Aug 2020



CHO change since: Jul 2021



CHO change since: Aug 2020



Longitudinal Employment Levels by Grade Group - Dec 2016 to Aug 2021

Aug 2021 (Dec 2015 figure: 9,499)	WTE Aug 2021	WTE change since Dec 16	WTE change since Dec 17	WTE change since Dec 18	WTE change since Dec 19	WTE change since Dec 20	WTE change since Apr 21	% change since Dec 16	% change since Dec 17	% change since Dec 18	% change since Dec 19	% change since Dec 20	% change since Apr 21
Overall	10,397	+777	+607	+499	+443	+96	-89	+8.1%	+6.2%	+5.0%	+4.5%	+0.9%	-0.8%
Consultant Medicine	1		-0	-0					-9.1%	-9.1%			
Consultant Psychiatry	379	+64	+67	+49	+27	+10	+3	+20.3%	+21.4%	+14.9%	+7.8%	+2.8%	+0.7%
Consultants	380	+64	+67	+49	+27	+10	+3	+20.3%	+21.3%	+14.8%	+7.8%	+2.8%	+0.7%
Registrar	205	+73	+60	+51	+36	+37	+6	+55.3%	+41.8%	+33.3%	+21.2%	+22.1%	+2.8%
Senior Registrar	120	+53	+54	+34	+23	+9	+11	+78.4%	+81.9%	+39.3%	+23.2%	+7.7%	+10.1%
Specialist Registrar	4	+3	+2	+3	+1	+2	+2	+295.0%	+97.5%	+295.0%	+58.0%	+97.5%	+97.5%
Registrars	329	+129	+116	+88	+60	+48	+19	+64.2%	+54.8%	+36.5%	+22.3%	+17.0%	+6.0%
<i>Intern</i>	7	-6	-4	-2	-2			-45.8%	-35.0%	-18.8%	-18.8%	+30.0%	+30.0%
Interns	7	-6	-4	-2	-2	+2	+2	-45.8%	-35.0%	-18.8%	-18.8%	+30.0%	+34.6%
Senior House Officer	234	-13	-38	-35	-19	-37	-7	-5.1%	-14.0%	-13.0%	-7.5%	-13.6%	-2.9%
SHO/ Interns	241	-18	-42	-37	-20	-35	-5	-7.0%	-14.8%	-13.2%	-7.8%	-12.8%	-2.1%
Dentists			-0	-0				-100.0%	-100.0%	-100.0%	-100.0%	-100.0%	-100.0%
Other Medical	4	-5	-7	-2	-1	-1	-0	-55.8%	-60.7%	-34.4%	-14.8%	-14.8%	-4.5%
Medical/ Dental, other	4	-5	-7	-2	-1	-1	-0	-55.8%	-61.0%	-35.1%	-14.8%	-14.8%	-4.5%
Medical & Dental	954	+169	+135	+98	+66	+22	+16	+21.5%	+16.4%	+11.5%	+7.4%	+2.4%	+1.7%
Clinical Nurse/ Midwife Manager	1,047	+40	+64	+41	+48	+6	+12	+4.0%	+6.6%	+4.1%	+4.8%	+0.6%	+1.2%
Director Nursing/Midwifery, Assistant	171	+16	+9	+7	+7	+1	-5	+10.3%	+5.8%	+4.4%	+4.0%	+0.4%	-2.9%
Director of Nursing/Midwifery	30	-2	+1	+6	+1	+2	+3	-5.5%	+5.2%	+26.2%	+3.7%	+7.3%	+11.9%
Nurse/ Midwife Manager	1,248	+55	+75	+54	+56	+9	+10	+4.6%	+6.4%	+4.6%	+4.7%	+0.7%	+0.8%
Advanced Nurse/ Midwife Practitioner	47	+40	+37	+27	+16	+8	+6	+530.3%	+349.0%	+134.1%	+53.4%	+19.6%	+14.6%
Clinical Nurse/ Midwife Specialist	486	+150	+103	+91	+58	-3	+1	+44.5%	+26.9%	+23.0%	+13.5%	-0.6%	+0.2%
Nurse/ Midwife Specialist & AN/MP	533	+189	+140	+118	+74	+5	+7	+55.1%	+35.5%	+28.4%	+16.2%	+0.9%	+1.3%
Graduate Nursing/ Midwifery								-100.0%	-100.0%	-100.0%	-100.0%	-100.0%	-100.0%
<i>Staff Midwife</i>								-100.0%	-100.0%	-100.0%	-100.0%	-100.0%	-100.0%
Staff Midwives						-1		-100.0%	-100.0%	-100.0%	-100.0%	-100.0%	-100.0%
Staff Nurse [Intellectual Disability]	3	-0	-0	-3	-1	-1	+1	-5.1%	-8.4%	-47.2%	-30.0%	-25.2%	+35.5%
Staff Nurse [Psychiatric]	2,922	-135	-105	-33	+29	-43	-95	-4.4%	-3.5%	-1.1%	+1.0%	-1.4%	-3.2%
Staff Nurses [General/ Children's]	117	-4	-1	-1	+12	+10	+22	-3.4%	-0.9%	-0.9%	+11.2%	+9.6%	+22.6%

Aug 2021 (Dec 2015 figure: 9,499)	WTE Aug 2021	WTE change since Dec 16	WTE change since Dec 17	WTE change since Dec 18	WTE change since Dec 19	WTE change since Dec 20	WTE change since Apr 21	% change since Dec 16	% change since Dec 17	% change since Dec 18	% change since Dec 19	% change since Dec 20	% change since Apr 21
Overall	10,397	+777	+607	+499	+443	+96	-89	+8.1%	+6.2%	+5.0%	+4.5%	+0.9%	-0.8%
Staff Nurse/ Staff Midwife	3,042	-139	-106	-37	+39	-34	-73	-4.4%	-3.4%	-1.2%	+1.3%	-1.1%	-2.3%
Public Health Nurse	1	-0	-0	+1	+1	+1	+1	-7.0%	-7.0%	-100.0%	-100.0%	-100.0%	-100.0%
<i>Student General Nursing Intern (pre-registration)</i>				-1				-100.0%	-100.0%	-100.0%	-100.0%	-100.0%	-100.0%
<i>Student Psychiatric Nursing Intern (pre-registration)</i>	169	+161	+153	+142	+142			+1855.9%	+905.8%	+527.1%	+515.3%	+1481.5%	+1481.5%
Pre-registration Nurse/ Midwife Intern	169	+161	+153	+142	+142	+159	-2	+1855.9%	+905.8%	+507.8%	+515.3%	+1481.5%	-1.0%
<i>Student Psychiatric Nursing Intern (COVID-19 HCA)</i>	1	+1	+1	+1	+1			-100.0%	-100.0%	-100.0%	-100.0%	-96.5%	-96.5%
Pre-registration Nurse Intern (COVID-19)	1	+1	+1	+1	+1	-41	-3	-100.0%	-100.0%	-100.0%	-100.0%	-96.5%	-67.3%
<i>Student Public Health Nursing (post registration)</i>					-1			-100.0%	-100.0%	-100.0%	-100.0%	-100.0%	-100.0%
Post-registration Nurse/ Midwife Student					-1	-1	-1	-100.0%	-100.0%	-100.0%	-100.0%	-100.0%	-100.0%
Nursing/ Midwifery awaiting registration	3	+1	-6	-17	-56	-2	-1	+50.0%	-65.3%	-84.9%	-94.9%	-38.1%	-21.3%
Nursing/ Midwifery Student	174	+163	+148	+126	+86	+115	-7	+1531.1%	+582.1%	+264.4%	+98.8%	+194.8%	-3.6%
Nursing Education/Clinical	31	+6	+0	-0	-1	-1	-2	+24.2%	+0.2%	-1.2%	-3.0%	-3.3%	-4.9%
Nursing/ Midwifery other	31	+6	+0	-0	-1	-1	-2	+24.2%	+0.2%	-1.2%	-3.0%	-3.3%	-4.9%
Nursing & Midwifery	5,029	+274	+257	+262	+256	+94	-63	+5.8%	+5.4%	+5.5%	+5.4%	+1.9%	-1.2%
Dietitians	18	+5	+2	-2	-1	-2	-3	+35.8%	+9.7%	-8.3%	-3.9%	-11.6%	-12.6%
Occupational Therapists	344	+44	+18	+5	+6	-1	-14	+14.8%	+5.5%	+1.4%	+1.6%	-0.4%	-4.0%
Physiotherapists	2	+0	+1	+1	+0			+19.9%	+99.2%	+49.7%	+8.1%		
Podiatrists & Chiropodists	1	-1	-1	-0	+0	-0	-0	-58.2%	-48.3%	-37.7%	+4.1%	-5.0%	-2.6%
Speech & Language Therapists	63	+4	+2	+2	+2	-6	-6	+6.5%	+3.2%	+3.0%	+2.8%	-9.0%	-8.8%
Therapy Professions	429	+52	+22	+5	+7	-10	-23	+13.9%	+5.4%	+1.3%	+1.6%	-2.3%	-5.1%
Social Care	73	-14	-9	-5	-0	-6	-5	-16.4%	-11.0%	-6.5%	-0.1%	-8.1%	-6.8%
Social Workers	372	+22	+15	+14	+22	-1	-8	+6.2%	+4.1%	+3.8%	+6.4%	-0.2%	-2.0%
Psychologists	423	+80	+53	+35	+29	-1	-6	+23.5%	+14.3%	+8.9%	+7.3%	-0.1%	-1.4%
Pharmacy	20	+1	+1	+1	+2	-0	+1	+5.4%	+5.9%	+6.4%	+10.5%	-1.1%	+4.6%
Counsellor Therapists	102	+17	+17	+17	+8	+1	+5	+20.5%	+19.8%	+20.6%	+8.1%	+1.3%	+5.5%
Other Health & Social Care	6	-2	-3	-3	-6	+1	+1	-28.1%	-29.3%	-29.6%	-48.3%	+12.0%	+20.0%
Play Therapists/ Specialists	1	-1	-0		+0			-40.8%	-2.0%		+1.4%		
H&SC, Other	110	+14	+14	+15	+2	+2	+6	+14.6%	+15.0%	+15.7%	+1.9%	+1.8%	+6.1%
Health & Social Care Professionals	1,428	+155	+96	+65	+62	-16	-35	+12.2%	+7.2%	+4.7%	+4.5%	-1.1%	-2.4%

Aug 2021 (Dec 2015 figure: 9,499)	WTE Aug 2021	WTE change since Dec 16	WTE change since Dec 17	WTE change since Dec 18	WTE change since Dec 19	WTE change since Dec 20	WTE change since Apr 21	% change since Dec 16	% change since Dec 17	% change since Dec 18	% change since Dec 19	% change since Dec 20	% change since Apr 21
Overall	10,397	+777	+607	+499	+443	+96	-89	+8.1%	+6.2%	+5.0%	+4.5%	+0.9%	-0.8%
Executive Management	15	+8	+7	+5	+4	+0	-1	+113.3%	+86.6%	+49.3%	+35.7%	+1.4%	-3.5%
Senior Management (VIII & GM)	43	+18	+12	+11	-4	-10	-5	+73.3%	+36.9%	+35.2%	-7.7%	-18.3%	-9.8%
Management (VIII & above)	58	+26	+18	+16	+0	-9	-5	+82.1%	+47.0%	+38.6%	+0.6%	-14.0%	-8.3%
Administrative/ Supervisory (V to VII)	250	+82	+51	+28	+13	+5	+8	+49.0%	+25.5%	+12.4%	+5.6%	+2.2%	+3.3%
Clerical (III & IV)	710	+49	+28	+14	-8	-12	-19	+7.3%	+4.1%	+2.0%	-1.1%	-1.7%	-2.6%
Management & Administrative	1,018	+157	+97	+58	+6	-16	-16	+18.2%	+10.6%	+6.0%	+0.6%	-1.6%	-1.6%
Catering	70	+5	+4	-2	+5	+7	+5	+6.9%	+6.6%	-2.3%	+7.6%	+10.5%	+7.3%
Household Services	424	-68	-53	-22	-1	-18	-11	-13.9%	-11.0%	-4.9%	-0.2%	-4.0%	-2.5%
Other Support	45	-11	-4	-10	+2	+3	+2	-19.4%	-8.7%	-18.1%	+5.8%	+7.8%	+5.0%
Portering	46	-13	-3	-2	-2	-1	-1	-22.2%	-5.7%	-4.0%	-4.2%	-2.6%	-1.7%
Support	585	-88	-55	-35	+5	-9	-5	-13.1%	-8.6%	-5.7%	+0.8%	-1.5%	-0.8%
Maintenance	135	-8	-3	+1	+7	-2	-2	-5.3%	-2.3%	+0.9%	+5.1%	-1.4%	-1.3%
Technical Services		-2	-2	-2	-2			-100.0%	-100.0%	-100.0%	-100.0%	-100.0%	-100.0%
Maintenance/ Technical	135	-10	-5	-1	+5	-2	-2	-6.6%	-3.7%	-0.6%	+3.5%	-1.4%	-1.3%
General Support	721	-97	-60	-36	+9	-11	-7	-11.9%	-7.7%	-4.8%	+1.3%	-1.5%	-0.9%
HCA, Nurse's Aide, etc.	1,029	+100	+80	+55	+50	+16	+11	+10.8%	+8.5%	+5.6%	+5.1%	+1.5%	+1.0%
Health & Social Care Assistants	10	+6	+6	+5	+1	+2		+123.9%	+123.9%	+91.0%	+16.2%	+24.6%	
Health Care Assistants	1,039	+106	+86	+60	+51	+18	+11	+11.3%	+9.0%	+6.1%	+5.2%	+1.7%	+1.0%
Other Care Grades	209	+13	-3	-7	-7	+6	+5	+6.6%	-1.5%	-3.1%	-3.1%	+2.8%	+2.7%
Care, other	209	+13	-3	-7	-7	+6	+5	+6.6%	-1.5%	-3.1%	-3.1%	+2.8%	+2.7%
Patient & Client Care	1,248	+119	+83	+53	+45	+23	+16	+10.5%	+7.1%	+4.4%	+3.7%	+1.9%	+1.3%

Source: Health Service Personnel Census

