

Mental Health Service Employment Report: February 2021

Employment by Staff Group

Feb 2021 (Dec 2020 figure: 10,301)	WTE Jan 2021	WTE Feb 2021	WTE change since Jan 21	% change since Jan 21	WTE change since Dec 20	WTE change since Feb 20
Overall	10,367	10,449	+82	+0.8%	+148	+361
Consultants	375	375	+1	+0.2%	+6	+21
Registrars	294	303	+8	+2.8%	+22	+43
SHO/ Interns	262	256	-6	-2.2%	-20	-0
Medical/ Dental, other	5	5	+0	+1.4%		+0
Medical & Dental	936	939	+3	+0.4%	+7	+64
Nurse/ Midwife Manager	1,248	1,239	-9	-0.7%	-1	+38
Nurse/ Midwife Specialist & AN/MP	525	526	+1	+0.3%	-3	+57
Staff Nurse/ Staff Midwife	3,095	3,104	+9	+0.3%	+28	+65
<i>Pre-registration Nurse/ Midwife Intern</i>	63	155	+93	+147.7%	+128	+16
<i>Pre-registration Nurse Intern (COVID-19)</i>	26	18	-8	-30.2%	+18	+18
<i>Post-registration Nurse/ Midwife Student</i>	1	1				+1
<i>Nursing/ Midwifery awaiting registration</i>	4	3	-1	-20.1%	-56	-26
Nursing/ Midwifery Student	94	177	+84	+89.6%	+118	+9
Nursing/ Midwifery other	30	29	-0	-1.1%	-2	-1
Nursing & Midwifery	4,991	5,075	+84	+1.7%	+140	+168
Therapy Professions	442	444	+2	+0.4%	+4	+6
Social Care	81	78	-3	-3.7%	-2	+4
Social Workers	374	376	+1	+0.3%	+3	+23
Psychologists	425	421	-4	-1.0%	-3	+28
Pharmacy	21	20	-0	-1.4%	-0	+2
H&SC, Other	109	110	+0	+0.2%	+2	+5
Health & Social Care Professionals	1,453	1,448	-5	-0.3%	+4	+68
Management (VIII & above)	66	63	-3	-4.6%	-4	+4
Administrative/ Supervisory (V to VII)	246	244	-2	-0.8%	-1	+13
Clerical (III & IV)	717	724	+7	+1.0%	+2	+15
Management & Administrative	1,029	1,031	+2	+0.2%	-3	+31
Support	592	594	+1	+0.2%	-1	+13
Maintenance/ Technical	138	137	-0	-0.3%	-0	+8
General Support	730	731	+1	+0.1%	-1	+21
Health Care Assistants	1,025	1,025	-0	-0.0%	+4	+24
Care, other	204	200	-4	-1.8%	-3	-15
Patient & Client Care	1,229	1,225	-4	-0.3%	+0	+9

Mental Health Services Employment by Administration (HSE / S38): February 2021

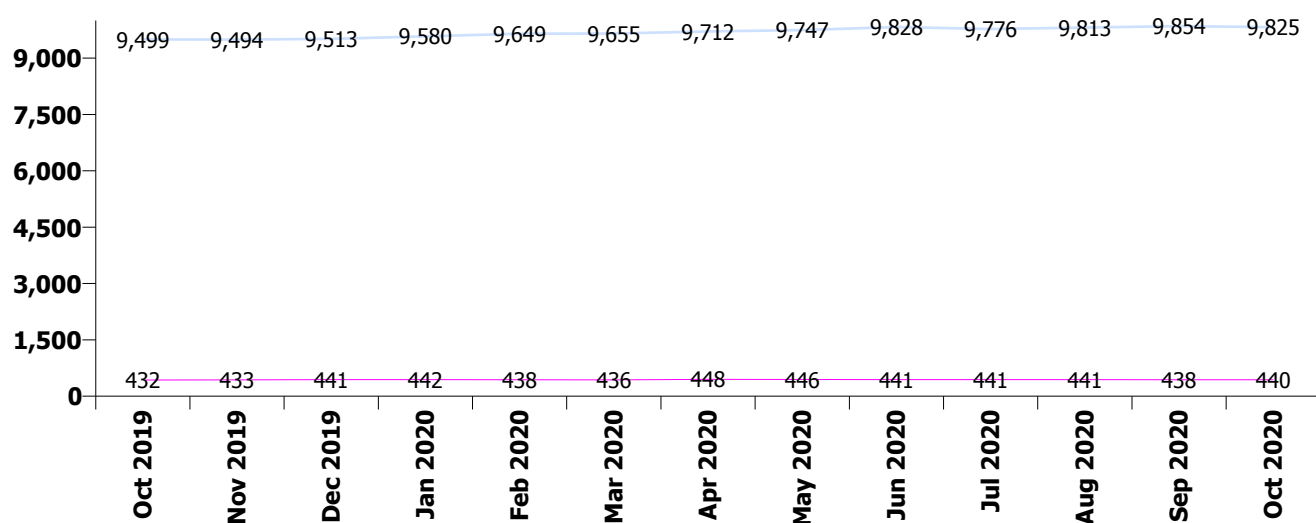
Feb 2021 (Dec 2020 figure: 10,301)	WTE Jan 2021	WTE Feb 2021	WTE change since Jan 21	% change since Jan 21	WTE change since Dec 20	WTE change since Feb 20
Overall	10,367	10,449	+82	+0.8%	+148	+361
HSE	9,916	10,002	+86	+0.9%	+147	+353
Section 38 Voluntary Agencies	451	447	-4	-0.8%	+0	+9

HSE

Feb 2021 (Dec 2020 figure: 9,855)	WTE Jan 2021	WTE Feb 2021	WTE change since Jan 21	% change since Jan 21	WTE change since Dec 20	WTE change since Feb 20
Overall	9,916	10,002	+86	+0.9%	+147	+353
Consultants	354	355	+2	+0.5%	+7	+21
Registrars	276	283	+8	+2.8%	+17	+39
SHO/ Interns	254	248	-6	-2.3%	-19	-0
Medical/ Dental, other	5	5	+0	+1.4%		+0
Medical & Dental	888	892	+4	+0.4%	+5	+60
Nurse/ Midwife Manager	1,210	1,201	-9	-0.8%	-1	+38
Nurse/ Midwife Specialist & AN/MP	515	516	+1	+0.2%	-3	+55
Staff Nurse/ Staff Midwife	2,969	2,978	+9	+0.3%	+25	+63
Pre-registration Nurse/ Midwife Intern	53	145	+93	+175.7%	+125	+13
Pre-registration Nurse Intern (COVID-19)	26	18	-8	-30.2%	+18	+18
Post-registration Nurse/ Midwife Student	1	1				+1
Nursing/ Midwifery awaiting registration	4	3	-1	-20.1%	-56	-26
Nursing/ Midwifery Student	84	167	+84	+100.3%	+119	+6
Nursing/ Midwifery other	27	27	-0	-1.2%	-2	-1
Nursing & Midwifery	4,805	4,890	+85	+1.8%	+138	+161
Therapy Professions	415	416	+1	+0.3%	+5	+12
Social Care	52	51	-1	-2.5%	-1	+3
Social Workers	356	357	+1	+0.3%	+3	+25
Psychologists	403	400	-4	-0.9%	-2	+24
Pharmacy	19	19	-0	-1.5%	-0	+2
H&SC, Other	108	109	+0	+0.2%	+2	+5
Health & Social Care Professionals	1,354	1,351	-3	-0.2%	+6	+70
Management (VIII & above)	64	60	-4	-6.3%	-5	+3
Administrative/ Supervisory (V to VII)	225	224	-1	-0.5%	+0	+15
Clerical (III & IV)	674	682	+8	+1.1%	+3	+15
Management & Administrative	963	966	+3	+0.3%	-3	+33
Support	555	557	+2	+0.3%	+1	+14
Maintenance/ Technical	131	130	-0	-0.4%	-0	+7
General Support	686	687	+1	+0.2%	+0	+21
Health Care Assistants	1,020	1,019	-0	-0.0%	+4	+24
Care, other	200	197	-3	-1.7%	-3	-15
Patient & Client Care	1,220	1,216	-4	-0.3%	+0	+9

Section 38 Voluntary Agencies

Feb 2021 (Dec 2020 figure: 446)	WTE Jan 2021	WTE Feb 2021	WTE change since Jan 21	% change since Jan 21	WTE change since Dec 20	WTE change since Feb 20
Overall	451	447	-4	-0.8%	+0	+9
Consultants	21	20	-1	-4.3%	-1	+0
Registrars	19	19	+1	+3.3%	+4	+4
SHO/ Interns	8	8	+0	+0.9%	-1	
Medical & Dental	48	47	-0	-0.4%	+2	+4
Nurse/ Midwife Manager	38	38	+0	+0.0%	-0	+1
Nurse/ Midwife Specialist & AN/MP	9	9	+0	+1.8%	+1	+2
Staff Nurse/ Staff Midwife	126	126	-0	-0.3%	+3	+2
Pre-registration Nurse/ Midwife Intern	10	10			+3	+3
Pre-registration Nurse Intern (COVID-19)				-100.0%		
Nursing/ Midwifery Student	10	10			-1	+3
Nursing/ Midwifery other	3	3				
Nursing & Midwifery	185	185	-0	-0.1%	+2	+7
Therapy Professions	27	27	+0	+1.8%	-0	-7
Social Care	29	27	-2	-5.9%	-1	+1
Social Workers	19	19	+0	+0.3%	+0	-2
Psychologists	22	21	-1	-4.1%	-1	+5
Pharmacy	2	2				+0
H&SC, Other	1	1				+0
Health & Social Care Professionals	99	97	-2	-2.1%	-2	-2
Management (VIII & above)	2	3	+1	+50.0%	+1	+1
Administrative/ Supervisory (V to VII)	21	19	-1	-5.1%	-1	-3
Clerical (III & IV)	43	42	-1	-1.5%	-0	+0
Management & Administrative	66	65	-1	-1.1%	-1	-1
Support	37	37	-0	-1.1%	-1	-1
Maintenance/ Technical	7	7				+1
General Support	44	44	-0	-0.9%	-1	+0
Health Care Assistants	6	6				
Care, other	4	3	-0	-6.4%		+1
Patient & Client Care	9	9	-0	-2.4%		+1



Mental Health Services Employment by CHO: Feb 2021

Feb 2021 (Dec 2020 figure: 10,301)	WTE Jan 2021	WTE Feb 2021	WTE change since Jan 21	% change since Jan 21	WTE change since Dec 20	WTE change since Feb 20
Overall	10,367	10,449	+82	+0.8%	+148	+361
CHO 1	990	997	+7	+0.7%	+21	+29
CHO 2	1,354	1,368	+14	+1.0%	+27	+42
CHO 3	821	830	+10	+1.2%	+21	+23
CHO 4	1,575	1,582	+7	+0.5%	+18	+65
CHO 5	1,194	1,210	+16	+1.3%	+22	+18
CHO 6	633	634	+1	+0.2%	+8	+37
CHO 7	863	865	+2	+0.3%	+4	+25
CHO 8	1,114	1,125	+11	+1.0%	+14	+19
CHO 9	1,329	1,330	+2	+0.1%	-0	+51
other Community Services	495	507	+12	+2.4%	+12	+50

Mental Health Services Employment by CHO etc. Feb 2021

CHO 1

Feb 2021 (Dec 2020 figure: 976)	WTE Jan 2021	WTE Feb 2021	WTE change since Jan 21	% change since Jan 21	WTE change since Dec 20	WTE change since Feb 20
Overall	990	997	+7	+0.7%	+21	+29
Consultants	36	36	+1	+2%	+2	+5
Registrars	34	31	-2	-6%	+2	+8
SHO/ Interns	18	18	+0	+0%	-5	-8
Medical & Dental	87	86	-2	-1.7%	-0	+5
Nurse/ Midwife Manager	123	124	+1	+1%	+5	+4
Nurse/ Midwife Specialist & AN/MP	74	73	-0	-1%	-1	+7
Staff Nurse/ Staff Midwife	295	296	+0	+0%	+8	-2
Pre-registration Nurse/ Midwife Intern	7	16	+8	+111%	+16	+5
Pre-registration Nurse Intern (COVID-19)				-100%		
Nursing/ Midwifery Student	7	16	+8	+111%	+13	+5
Nursing/ Midwifery other	1	1	-0	-10%	-0	+1
Nursing & Midwifery	500	510	+10	+1.9%	+24	+16
Therapy Professions	36	37	+1	+3%	+1	+2
Social Care	4	4	+0	+1%	-0	-0
Social Workers	43	42	-2	-4%	-1	+3
Psychologists	23	24	+0	+1%	+0	+2
Pharmacy	1	1	0			
H&SC, Other	14	14	-0	-1%	-0	-0
Health & Social Care Professionals	122	121	-0	-0.4%	+0	+6
Management (VIII & above)	7	6	-1	-14%	-2	-1
Administrative/ Supervisory (V to VII)	31	31	+0	+1%	+1	+1
Clerical (III & IV)	85	87	+2	+2%	+1	+2
Management & Administrative	123	124	+1	+0.6%	+1	+3
Support	65	63	-2	-2%	-2	+2
Maintenance/ Technical	16	16	-0	-1%	-0	-1
General Support	81	79	-2	-2.1%	-2	+1
Health Care Assistants	67	69	+2	+2%	+1	+1
Care, other	10	8	-1	-14%	-3	-2
Patient & Client Care	77	77	+0	+0.1%	-2	-1

CHO 2

Feb 2021 (Dec 2020 figure: 1,340)	WTE Jan 2021	WTE Feb 2021	WTE change since Jan 21	% change since Jan 21	WTE change since Dec 20	WTE change since Feb 20
Overall	1,354	1,368	+14	+1.0%	+27	+42
Consultants	38	39	+1	+3%	+2	+0
Registrars	36	37	+1	+2%	+1	+2
SHO/ Interns	37	40	+3	+8%	-0	+8
Medical/ Dental, other	1	1	0			
Medical & Dental	111	116	+5	+4.4%	+2	+10
Nurse/ Midwife Manager	150	148	-2	-1%	-3	+2
Nurse/ Midwife Specialist & AN/MP	78	78	-1	-1%	-2	+8
Staff Nurse/ Staff Midwife	366	372	+6	+2%	+18	+15
<i>Pre-registration Nurse/ Midwife Intern</i>	4	12	+7	+170%	+12	-4
<i>Pre-registration Nurse Intern (COVID-19)</i>	10	9	-0	-3%	+9	+9
<i>Nursing/ Midwifery awaiting registration</i>				-100%	-5	
Nursing/ Midwifery Student	14	21	+7	+51%	+11	+5
Nursing/ Midwifery other	1	1	-0	-20%	-1	-1
Nursing & Midwifery	610	620	+10	+1.6%	+23	+29
Therapy Professions	55	55	-1	-1%	-1	+9
Social Care	16	16	-0	-3%	-0	-0
Social Workers	43	43	+0	+1%	+2	+1
Psychologists	38	38	-0	-0%	+1	+4
Pharmacy	2	2	0			-1
H&SC, Other	3	3	0			
Health & Social Care Professionals	157	157	-1	-0.5%	+2	+12
Management (VIII & above)	4	4	-0	-6%	-0	-1
Administrative/ Supervisory (V to VII)	24	25	+2	+7%	-1	+2
Clerical (III & IV)	104	103	-2	-1%	+0	-6
Management & Administrative	132	132	-0	-0.2%	-1	-5
Support	31	32	+1	+2%	+1	-4
Maintenance/ Technical	34	35	+1	+3%	+2	+8
General Support	65	67	+2	+2.5%	+2	+4
Health Care Assistants	211	211	-0	-0%	-0	-4
Care, other	67	66	-1	-1%	-1	-4
Patient & Client Care	278	277	-1	-0.5%	-1	-8

CHO 3

Feb 2021 (Dec 2020 figure: 809)	WTE Jan 2021	WTE Feb 2021	WTE change since Jan 21	% change since Jan 21	WTE change since Dec 20	WTE change since Feb 20
Overall	821	830	+10	+1.2%	+21	+23
Consultants	24	23	-1	-5%	-1	+1
Registrars	19	19	-0	-1%	+4	+1
SHO/ Interns	19	19	-1	-3%	-3	-3
Medical & Dental	63	61	-2	-3.2%	+0	-0
Nurse/ Midwife Manager	88	83	-5	-5%	-4	-4
Nurse/ Midwife Specialist & AN/MP	37	35	-2	-6%	-2	-3
Staff Nurse/ Staff Midwife	274	283	+10	+3%	+11	+26
<i>Pre-registration Nurse/ Midwife Intern</i>	6	13	+7	+110%	+4	+3
<i>Pre-registration Nurse Intern (COVID-19)</i>	1	1	+0	+14%	+1	+1
<i>Nursing/ Midwifery awaiting registration</i>				-100%		-4
Nursing/ Midwifery Student	7	14	+7	+98%	+11	+0
Nursing & Midwifery	406	416	+10	+2.4%	+16	+20
Therapy Professions	27	29	+2	+8%	+5	+3
Social Care	3	3	0			+0
Social Workers	24	24	+1	+2%	-0	-1
Psychologists	92	91	-1	-1%	+0	+2
Pharmacy	3	3	0			
H&SC, Other	12	12	-0	-0%	+0	+2
Health & Social Care Professionals	161	163	+2	+1.1%	+5	+6
Management (VIII & above)	2	2	0			
Administrative/ Supervisory (V to VII)	18	18	-0	-0%	-1	+0
Clerical (III & IV)	51	50	-0	-0%	-0	-4
Management & Administrative	70	70	-0	-0.5%	-1	-3
Support	30	31	+1	+3%	+0	-1
Maintenance/ Technical	9	9	0			-2
General Support	39	40	+1	+2.0%	+0	-3
Health Care Assistants	81	80	-0	-0%	+2	+4
Care, other	1	1	0			-1
Patient & Client Care	82	81	-0	-0.4%	+2	+3

CHO 4

Feb 2021 (Dec 2020 figure: 1,564)	WTE Jan 2021	WTE Feb 2021	WTE change since Jan 21	% change since Jan 21	WTE change since Dec 20	WTE change since Feb 20
Overall	1,575	1,582	+7	+0.5%	+18	+65
Consultants	56	55	-1	-1%	+1	+5
Registrars	41	41	-1	-1%	-1	-5
SHO/ Interns	43	44	+0	+1%	+1	+12
Medical/ Dental, other	2	2	+0	+4%		+0
Medical & Dental	142	142	-1	-0.6%	+1	+12
Nurse/ Midwife Manager	199	194	-4	-2%	+2	+16
Nurse/ Midwife Specialist & AN/MP	69	69	-1	-1%	-2	+4
Staff Nurse/ Staff Midwife	512	510	-2	-0%	-9	-2
<i>Pre-registration Nurse/ Midwife Intern</i>	9	28	+19	+212%	+25	+8
<i>Pre-registration Nurse Intern (COVID-19)</i>	3	2	-1	-33%	+2	+2
<i>Post-registration Nurse/ Midwife Student</i>				-100%	-1	
<i>Nursing/ Midwifery awaiting registration</i>	1	1	0		-29	-13
Nursing/ Midwifery Student	13	31	+18	+138%	+27	-4
Nursing & Midwifery	793	804	+11	+1.4%	+18	+14
Therapy Professions	78	79	+0	+1%	+2	+2
Social Care	7	7	-0	-2%	+0	+3
Social Workers	64	63	-1	-1%	-1	+8
Psychologists	94	93	-2	-2%	-1	+9
Pharmacy	3	3	-0	-3%	-0	-0
H&SC, Other	12	12	+0	+1%	-0	+1
Health & Social Care Professionals	259	257	-2	-0.7%	-1	+24
<i>Executive Management</i>	2	2	0		+2	+2
<i>Senior Management (VIII & GM)</i>	1	1	0			
Management (VIII & above)	3	3	0		-0	+2
Administrative/ Supervisory (V to VII)	25	21	-4	-16%	-1	-0
Clerical (III & IV)	90	94	+3	+3%	-1	+6
Management & Administrative	117	117	-1	-0.6%	-2	+7
Support	85	85	-0	-0%	+3	+7
Maintenance/ Technical	5	5	0			-1
General Support	90	90	-0	-0.1%	+3	+6
Health Care Assistants	166	166	-0	-0%	-1	+3
Care, other	6	6	+0	+2%	+0	-1
Patient & Client Care	172	172	+0	+0.0%	-0	+2

CHO 5

Feb 2021 (Dec 2020 figure: 1,188)	WTE Jan 2021	WTE Feb 2021	WTE change since Jan 21	% change since Jan 21	WTE change since Dec 20	WTE change since Feb 20
Overall	1,194	1,210	+16	+1.3%	+22	+18
Consultants	27	27	-0	-0%	+0	+1
Registrars	9	10	+1	+14%	+1	-1
SHO/ Interns	35	35	-1	-2%	-1	+9
Medical/ Dental, other	2	2	0			
Medical & Dental	74	74	+1	+0.7%	+0	+9
Nurse/ Midwife Manager	165	164	-0	-0%	+4	+1
Nurse/ Midwife Specialist & AN/MP	55	54	-1	-1%	+0	+10
Staff Nurse/ Staff Midwife	412	416	+5	+1%	+5	+6
<i>Pre-registration Nurse/ Midwife Intern</i>	7	24	+18	+268%	+21	+3
<i>Pre-registration Nurse Intern (COVID-19)</i>	8	4	-4	-51%	+4	+4
<i>Nursing/ Midwifery awaiting registration</i>				-100%	-2	-1
Nursing/ Midwifery Student	15	28	+13	+91%	+15	+6
Nursing/ Midwifery other	4	4	+0	+0%	-0	-0
Nursing & Midwifery	650	667	+17	+2.6%	+25	+24
Therapy Professions	37	35	-2	-6%	-4	-7
Social Care	5	5	-0	-1%	-0	-0
Social Workers	26	25	-1	-5%	-3	-3
Psychologists	22	22	+0	+0%	+0	+2
H&SC, Other	9	10	+1	+11%	+2	+0
Health & Social Care Professionals	99	96	-3	-2.7%	-4	-8
Management (VIII & above)	6	5	-1	-17%	-1	+1
Administrative/ Supervisory (V to VII)	20	20	-0	-1%	-0	+2
Clerical (III & IV)	69	71	+2	+2%	+2	-2
Management & Administrative	95	95	+1	+0.6%	+1	+1
Support	176	177	+1	+1%	-1	+2
Maintenance/ Technical	19	18	-1	-5%	-2	-5
General Support	195	196	+0	+0.1%	-3	-3
Health Care Assistants	69	70	+0	+0%	+2	-3
Care, other	12	12	+0	+0%	+0	-1
Patient & Client Care	82	82	+0	+0.4%	+2	-4

CHO 6

Feb 2021 (Dec 2020 figure: 626)	WTE Jan 2021	WTE Feb 2021	WTE change since Jan 21	% change since Jan 21	WTE change since Dec 20	WTE change since Feb 20
Overall	633	634	+1	+0.2%	+8	+37
Consultants	41	40	-1	-2%	-0	+2
Registrars	22	24	+2	+9%	+5	+6
SHO/ Interns	12	12	+0	+4%	-1	
Medical & Dental	75	76	+2	+2.2%	+4	+8
Nurse/ Midwife Manager	76	77	+1	+1%	-0	+1
Nurse/ Midwife Specialist & AN/MP	20	19	-1	-3%	-0	+4
Staff Nurse/ Staff Midwife	152	152	-1	-0%	+0	+8
<i>Pre-registration Nurse/ Midwife Intern</i>	1	4	+3	+376%	+4	+4
<i>Nursing/ Midwifery awaiting registration</i>	1	1	+0	+1%	+1	+1
Nursing/ Midwifery Student	2	5	+3	+174%	+4	+5
Nursing/ Midwifery other	2	2	+0	+1%		
Nursing & Midwifery	252	255	+3	+1.0%	+3	+17
Therapy Professions	38	38	-1	-1%	-1	-7
Social Care	29	27	-2	-6%	-1	+0
Social Workers	30	32	+1	+4%	+2	+1
Psychologists	32	31	-1	-3%	-1	+8
H&SC, Other	5	5	0		-0	+0
Health & Social Care Professionals	134	132	-2	-1.5%	-2	+2
Management (VIII & above)	3	3	0			
Administrative/ Supervisory (V to VII)	25	26	+1	+3%	+1	-1
Clerical (III & IV)	42	41	-2	-4%	-2	+0
Management & Administrative	70	69	-1	-1.2%	-1	-1
Support	40	38	-1	-3%	-0	+3
Maintenance/ Technical	6	6	+0	+0%		+1
General Support	45	44	-1	-2.2%	-0	+4
Health Care Assistants	51	51	+1	+1%	+3	+6
Care, other	6	6	+0	+2%	+0	+1
Patient & Client Care	57	57	+1	+1.4%	+3	+7

CHO 7

Feb 2021 (Dec 2020 figure: 861)	WTE Jan 2021	WTE Feb 2021	WTE change since Jan 21	% change since Jan 21	WTE change since Dec 20	WTE change since Feb 20
Overall	863	865	+2	+0.3%	+4	+25
Consultants	53	54	+0	+1%	+1	+6
Registrars	54	56	+3	+5%	+3	+14
SHO/ Interns	19	18	-1	-6%	-2	-3
Medical & Dental	126	128	+2	+1.5%	+1	+17
Nurse/ Midwife Manager	118	120	+2	+2%	+3	+7
Nurse/ Midwife Specialist & AN/MP	46	47	+1	+2%	+0	+7
Staff Nurse/ Staff Midwife	207	201	-6	-3%	-1	+1
<i>Pre-registration Nurse/ Midwife Intern</i>	1	8	+8	+765%	+7	-6
<i>Pre-registration Nurse Intern (COVID-19)</i>	2	1	-1	-48%	+1	+1
<i>Post-registration Nurse/ Midwife Student</i>	1	1	0		+1	+1
<i>Nursing/ Midwifery awaiting registration</i>	2	1	-1	-43%	-9	-4
Nursing/ Midwifery Student	6	11	+6	+102%	+4	-8
Nursing/ Midwifery other	5	5	0		-1	-2
Nursing & Midwifery	381	384	+3	+0.7%	+5	+5
Therapy Professions	53	52	-1	-2%	-1	+2
Social Care	7	7	-0	-1%	+0	-0
Social Workers	38	39	+1	+3%	+1	+7
Psychologists	27	27	-0	-0%	-2	-4
<i>Pharmacy</i>	1	1	0			
Pharmacy	1	1	0			
H&SC, Other	18	17	-1	-5%	-1	-1
Health & Social Care Professionals	144	143	-1	-0.8%	-3	+5
Management (VIII & above)	4	4	-0	-1%	-0	+1
Administrative/ Supervisory (V to VII)	18	17	-0	-2%	+0	+2
Clerical (III & IV)	49	49	+0	+0%	+0	+2
Management & Administrative	71	70	-0	-0.4%	+0	+5
Support	17	18	+0	+2%	+0	-1
Maintenance/ Technical	2	2	0			+0
General Support	19	20	+0	+2.1%	+0	-1
Health Care Assistants	35	35	+0	+0%	+0	+2
Care, other	86	84	-1	-1%	+0	-7
Patient & Client Care	120	119	-1	-0.9%	+0	-5

CHO 8

Feb 2021 (Dec 2020 figure: 1,112)	WTE Jan 2021	WTE Feb 2021	WTE change since Jan 21	% change since Jan 21	WTE change since Dec 20	WTE change since Feb 20
Overall	1,114	1,125	+11	+1.0%	+14	+19
Consultants	37	38	+1	+3%	+2	+2
Registrars	30	28	-2	-7%	-4	+9
SHO/ Interns	31	29	-2	-6%	+3	-8
Medical & Dental	97	94	-3	-3.0%	+1	+2
Nurse/ Midwife Manager	117	115	-2	-2%	-5	-7
Nurse/ Midwife Specialist & AN/MP	58	60	+3	+5%	+1	+5
Staff Nurse/ Staff Midwife	338	338	-0	-0%	-4	+14
<i>Pre-registration Nurse/ Midwife Intern</i>	6	22	+15	+235%	+21	+3
<i>Pre-registration Nurse Intern (COVID-19)</i>	0		-0	-100%		
<i>Nursing/ Midwifery awaiting registration</i>				-100%	-2	-1
Nursing/ Midwifery Student	7	22	+15	+227%	+21	+2
Nursing/ Midwifery other	3	3	0			-1
Nursing & Midwifery	523	539	+16	+3.0%	+13	+12
Therapy Professions	44	42	-2	-4%	-0	-4
Social Care	7	7	-1	-9%	-0	+0
Social Workers	45	46	+1	+2%	+2	+4
Psychologists	38	39	+1	+2%	+2	+1
Pharmacy	1	1	0		-0	+0
H&SC, Other	22	22	+0	+1%	+1	+2
Health & Social Care Professionals	158	157	-1	-0.4%	+4	+4
Management (VIII & above)	3	2	-1	-32%	-1	-1
Administrative/ Supervisory (V to VII)	20	19	-2	-8%	-1	-1
Clerical (III & IV)	96	100	+4	+4%	+3	+5
Management & Administrative	119	121	+2	+1.4%	+1	+3
Support	30	31	+0	+1%	-1	-2
Maintenance/ Technical	28	28	-0	-1%	-0	+2
General Support	59	59	-0	-0.0%	-1	+0
Health Care Assistants	155	153	-2	-1%	-3	-3
Care, other	3	3	-0	-7%	-0	-0
Patient & Client Care	158	156	-2	-1.4%	-3	-3

CHO 9

Feb 2021 (Dec 2020 figure: 1,331)	WTE Jan 2021	WTE Feb 2021	WTE change since Jan 21	% change since Jan 21	WTE change since Dec 20	WTE change since Feb 20
Overall	1,329	1,330	+2	+0.1%	-0	+51
Consultants	46	46	+0	+1%	+0	-3
Registrars	36	39	+4	+10%	+7	+5
SHO/ Interns	47	42	-5	-11%	-11	-6
Medical & Dental	129	128	-1	-0.8%	-4	-3
Nurse/ Midwife Manager	136	135	-1	-1%	-2	+3
Nurse/ Midwife Specialist & AN/MP	76	79	+3	+4%	+3	+13
Staff Nurse/ Staff Midwife	372	366	-6	-2%	-5	+10
<i>Pre-registration Nurse/ Midwife Intern</i>	21	28	+8	+37%	+18	+0
<i>Pre-registration Nurse Intern (COVID-19)</i>	3	1	-2	-60%	+1	+1
<i>Nursing/ Midwifery awaiting registration</i>				-100%	-11	-4
Nursing/ Midwifery Student	23	29	+6	+26%	+14	-3
Nursing/ Midwifery other	12	12	0		-1	+1
Nursing & Midwifery	620	622	+2	+0.3%	+8	+24
Therapy Professions	60	63	+4	+6%	+2	+4
Social Care	1	1	-0	-5%	-0	-0
Social Workers	43	44	+0	+1%	+1	+1
Psychologists	53	49	-4	-7%	-4	+3
Pharmacy	9	9	-0	-2%	-0	+2
H&SC, Other	14	14	-0	-1%	-0	-0
Health & Social Care Professionals	180	180	-0	-0.2%	-1	+10
Management (VIII & above)	5	6	+1	+20%	+1	+1
Administrative/ Supervisory (V to VII)	28	28	-0	-1%	-1	-2
Clerical (III & IV)	112	111	-0	-0%	-3	+14
Management & Administrative	145	145	+0	+0.3%	-3	+13
Support	102	103	+0	+0%	-1	+3
Maintenance/ Technical	11	11	0			+0
General Support	113	114	+0	+0.3%	-1	+3
Health Care Assistants	129	130	+1	+1%	+1	+4
Care, other	13	12	-0	-1%	-0	-0
Patient & Client Care	142	142	+1	+0.6%	+1	+4

other Community Services

Feb 2021 (Dec 2020 figure: 494)	WTE Jan 2021	WTE Feb 2021	WTE change since Jan 21	% change since Jan 21	WTE change since Dec 20	WTE change since Feb 20
Overall	495	507	+12	+2.4%	+12	+50
Consultants	17	16	-0	-1%	-0	+1
Registrars	13	17	+3	+23%	+3	+4
Medical & Dental	30	33	+3	+9.7%	+2	+4
Nurse/ Midwife Manager	75	77	+1	+1%	+1	+14
Nurse/ Midwife Specialist & AN/MP	12	12	+0	+0%	-0	+3
Staff Nurse/ Staff Midwife	166	169	+4	+2%	+5	-11
Nursing/ Midwifery other	2	2	0		+0	+1
Nursing & Midwifery	255	260	+5	+1.9%	+5	+7
Therapy Professions	12	13	+1	+10%	+1	+0
Social Care	2	2	+0	+4%	+0	+0
Social Workers	18	18	+0	+1%	+1	+2
Psychologists	6	8	+2	+36%	+2	+2
Pharmacy	1	1	0		+1	+1
Pharmacy	1	1	0			+1
Health & Social Care Professionals	39	42	+4	+9.5%	+5	+6
Management (VIII & above)	30	29	-1	-3%	-1	+2
Administrative/ Supervisory (V to VII)	37	39	+2	+4%	+3	+9
Clerical (III & IV)	19	19	-0	-0%	+1	-2
Management & Administrative	86	87	+1	+1.0%	+2	+9
Support	16	16	+0	+2%	+0	+4
Maintenance/ Technical	7	7	-0	-0%	-0	+5
General Support	23	23	+0	+1.2%	+0	+9
Health Care Assistants	61	60	-1	-1%	-2	+14
Care, other	1	1	0			
Patient & Client Care	62	61	-1	-1.2%	-2	+14

Mental Health Services Employment by Grade Group: Feb 2021

Feb 2021 (Dec 2020 figure: 10,301)	WTE Jan 2021	WTE Feb 2021	WTE change since Jan 21	% change since Jan 21	WTE change since Dec 20	WTE change since Feb 20
Overall	10,367	10,449	+82	+0.8%	+148	+361
Consultant Medicine	1	1	0			
Consultant Psychiatry	374	374	+1	+0%	+6	+21
Consultants	375	375	+1	+0%	+6	+21
Registrar	182	189	+8	+4%	+21	+20
Senior Registrar	111	111	+1	+1%	+0	+23
Specialist Registrar	2	2	0			-1
Registrars	294	303	+8	+3%	+22	+43
Interns	4	5	+1	+25%		-3
Senior House Officer	258	251	-7	-3%	-20	+3
SHO/ Interns	262	256	-6	-2%	-20	-0
Other Medical	5	5	+0	+1%		+0
Medical/ Dental, other	5	5	+0	+1%		+0
Medical & Dental	936	939	+3	+0%	+7	+64
Clinical Nurse/ Midwife Manager	1,049	1,042	-6	-1%	+1	+39
Director Nursing/Midwifery, Assistant	171	169	-2	-1%	-1	-0
Director of Nursing/Midwifery	28	27	-1	-4%	-1	-1
Nurse/ Midwife Manager	1,248	1,239	-9	-1%	-1	+38
Advanced Nurse/ Midwife Practitioner	40	40	+0	+1%	+1	+8
Clinical Nurse/ Midwife Specialist	485	486	+1	+0%	-3	+49
Nurse/ Midwife Specialist & AN/MP	525	526	+1	+0%	-3	+57
Staff Midwives	1	1	-0	-25%	-0	+0
Staff Nurse [Intellectual Disability]	4	4	-0	-3%	-0	-3
Staff Nurse [Psychiatric]	2,985	2,996	+11	+0%	+32	+82
Staff Nurses [General/ Children's]	105	103	-2	-2%	-4	-14
Staff Nurse/ Staff Midwife	3,095	3,104	+9	+0%	+28	+65
Pre-registration Nurse/ Midwife Intern	63	155	+93	+148%	+144	+16
Pre-registration Nurse Intern (COVID-19)	26	18	-8	-30%	-24	+18
Post-registration Nurse/ Midwife Student	1	1	0			+1
Nursing/ Midwifery awaiting registration	4	3	-1	-20%	-2	-26
Nursing/ Midwifery Student	94	177	+84	+90%	+118	+9
Nursing Education/Clinical	30	29	-0	-1%	-2	-1
Nursing/ Midwifery other	30	29	-0	-1%	-2	-1
Nursing & Midwifery	4,991	5,075	+84	+2%	+140	+168
Dietitians	21	19	-2	-8%	-2	-3
Occupational Therapists	345	349	+4	+1%	+4	+4
Physiotherapists	2	2	0			+0
Podiatrists & Chiropodists	1	1	+0	+5%	+0	-0
Speech & Language Therapists	72	72	-1	-1%	+2	+5
Therapy Professions	442	444	+2	+0%	+4	+6
Social Care	81	78	-3	-4%	-2	+4
Social Workers	374	376	+1	+0%	+3	+23
Psychologists	425	421	-4	-1%	-3	+28
Pharmacy	21	20	-0	-1%	-0	+2
Counsellor Therapists	103	103	+0	+0%	+2	+7
Other Health & Social Care	5	5	-0	-4%	-0	-2
Play Therapists/ Specialists	1	1	0			
H&SC, Other	109	110	+0	+0%	+2	+5
Health & Social Care Professionals	1,453	1,448	-5	-0%	+4	+68
Executive Management	14	15	+1	+8%	+1	+4
Senior Management (VIII & GM)	52	47	-4	-8%	-5	-1

Feb 2021 (Dec 2020 figure: 10,301)	WTE Jan 2021	WTE Feb 2021	WTE change since Jan 21	% change since Jan 21	WTE change since Dec 20	WTE change since Feb 20
Overall	10,367	10,449	+82	+0.8%	+148	+361
Management (VIII & above)	66	63	-3	-5%	-4	+4
Middle Management (V-VII)	244	242	-2	-1%	-1	+13
Other Administrative	2	2	0			
Administrative/ Supervisory (V to VII)	246	244	-2	-1%	-1	+13
General Administrative (III & IV)	717	724	+7	+1%	+2	+15
Clerical (III & IV)	717	724	+7	+1%	+2	+15
Management & Administrative	1,029	1,031	+2	+0%	-3	+31
Catering	64	64	+0	+1%	+1	+2
Household Services	441	442	+1	+0%	+1	+14
Other Support	41	43	+1	+3%	+1	+0
Portering	47	45	-2	-3%	-2	-3
Support	592	594	+1	+0%	-1	+13
Maintenance	138	137	-0	-0%	-0	+10
Technical Services				-100%		-2
Maintenance/ Technical	138	137	-0	-0%	-0	+8
General Support	730	731	+1	+0%	-1	+21
HCA, Nurse's Aide, etc.	1,017	1,016	-1	-0%	+3	+24
Health & Social Care Assistants	8	9	+1	+12%	+1	-0
Health Care Assistants	1,025	1,025	-0	-0%	+4	+24
Care, other	204	200	-4	-2%	-3	-15
Patient & Client Care	1,229	1,225	-4	-0%	+0	+9

Employment by WTE, Headcount, Gender, Full-Time /Part-Time etc.: Feb 2021

Mental Health Services Staff Group	WTE	Headcount	WTE: no.	% Male	% female	Male WTE: no.	Female WTE: no.	% Total Perm	% Male Perm	% Female Perm	% Total Full Time	% Total Part Time	% Male FT	% Female FT
Overall	10,449	11,515	1.10	26.8%	73.2%	1.06	1.12	82.4%	79.4%	83.5%	84.9%	15.1%	92.9%	82.0%
Consultant Medicine	1	1	1.00	100.0%		1.00		100.0%	100.0%		100.0%	0.0%	100.0%	
Consultant Psychiatry	374	401	1.07	40.1%	59.9%	1.04	1.09	66.3%	66.3%	65.8%	86.3%	13.7%	91.9%	82.5%
Consultants	375	402	1.07	40.3%	59.7%	1.04	1.09	66.4%	67.3%	65.8%	86.3%	13.7%	92.0%	82.5%
Registrar	189	202	1.07	44.6%	55.4%	1.06	1.07	4.5%	4.5%	3.6%	97.0%	3.0%	100.0%	94.6%
Senior Registrar	112	117	1.05	41.0%	59.0%	1.01	1.08	1.7%	1.7%	2.9%	95.7%	4.3%	100.0%	92.8%
Specialist Registrar	2	2	1.00	50.0%	50.0%	1.00	1.00	0.0%	0.0%	0.0%	100.0%	0.0%	100.0%	100.0%
Registrars	303	321	1.06	43.3%	56.7%	1.04	1.08	3.4%	3.6%	3.3%	96.6%	3.4%	100.0%	94.0%
Interns	5	5	1.00	20.0%	80.0%	1.00	1.00	0.0%	0.0%	0.0%	100.0%	0.0%	100.0%	100.0%
Senior House Officer	251	259	1.03	39.0%	61.0%	1.03	1.03	0.4%	0.4%	0.0%	100.0%	0.0%	100.0%	100.0%
SHO/ Interns	256	264	1.03	38.6%	61.4%	1.03	1.03	0.4%	1.0%	0.0%	100.0%	0.0%	100.0%	100.0%
Other Medical	5	10	2.00	50.0%	50.0%	2.02	1.98	40.0%	40.0%	40.0%	90.0%	10.0%	100.0%	80.0%
Medical/ Dental, other	5	10	2.00	50.0%	50.0%	2.02	1.98	40.0%	40.0%	40.0%	90.0%	10.0%	100.0%	80.0%
Medical & Dental	939	997	1.06	40.9%	59.1%	1.04	1.07	28.4%	28.7%	28.2%	93.3%	6.7%	96.8%	90.8%
Clinical Nurse/ Midwife Manager	1,042	1,096	1.05	33.3%	66.7%	1.02	1.07	98.9%	98.9%	99.6%	93.3%	6.7%	98.1%	91.0%
Director Nursing/Midwifery, Assistant	169	174	1.03	46.0%	54.0%	1.03	1.03	99.4%	99.4%	98.9%	98.3%	1.7%	98.8%	97.9%
Director of Nursing/Midwifery	27	27	1.00	55.6%	44.4%	1.00	1.01	100.0%	100.0%	100.0%	96.3%	3.7%	100.0%	91.7%
Nurse/ Midwife Manager	1,239	1,297	1.05	35.5%	64.5%	1.02	1.06	99.0%	98.0%	99.5%	94.1%	5.9%	98.3%	91.8%
Advanced Nurse/ Midwife Practitioner	40	42	1.05	16.7%	83.3%	1.00	1.06	100.0%	100.0%	100.0%	90.5%	9.5%	100.0%	88.6%
Clinical Nurse/ Midwife Specialist	486	512	1.05	19.9%	80.1%	1.01	1.07	99.6%	99.6%	99.8%	92.4%	7.6%	98.0%	91.0%
Nurse/ Midwife Specialist & AN/MP	526	554	1.05	19.7%	80.3%	1.01	1.07	99.6%	99.1%	99.8%	92.2%	7.8%	98.2%	90.8%
Staff Midwives	1	1	1.33		100.0%		1.33	0.0%	0.0%	0.0%	100.0%	0.0%		100.0%
Staff Nurse [Intellectual Disability]	4	5	1.20		100.0%		1.20	40.0%	40.0%	40.0%	80.0%	20.0%		80.0%
Staff Nurse [Psychiatric]	2,996	3,238	1.08	26.4%	73.6%	1.05	1.09	91.6%	91.6%	92.4%	87.5%	12.5%	92.3%	85.8%
Staff Nurses [General/ Children's]	103	117	1.14	19.7%	80.3%	1.14	1.14	82.1%	82.1%	84.0%	75.2%	24.8%	78.3%	74.5%
Staff Nurse/ Staff Midwife	3,104	3,361	1.08	26.1%	73.9%	1.06	1.09	91.2%	88.9%	92.0%	87.1%	12.9%	91.9%	85.3%
Pre-registration Nurse/ Midwife Intern	155	317	2.04	14.5%	85.5%	2.03	2.04	0.3%	0.3%	0.0%	100.0%	0.0%	100.0%	100.0%
Pre-registration Nurse Intern (COVID-19)	18	27	1.48	25.9%	74.1%	1.56	1.45	3.7%	3.7%	0.0%	100.0%	0.0%	100.0%	100.0%
Post-registration Nurse/ Midwife Student	1	1	1.00		100.0%		1.00	0.0%	0.0%	0.0%	100.0%	0.0%		100.0%
Nursing/ Midwifery awaiting registration	3	3	1.01		100.0%		1.01	100.0%	100.0%	100.0%	100.0%	0.0%		100.0%

Nursing/ Midwifery Student	177	348	1.96	15.2%	84.8%	1.95	1.96	1.4%	3.8%	1.0%	100.0%	0.0%	100.0%	100.0%
Nursing Education/Clinical	29	32	1.09	18.8%	81.3%	1.00	1.11	100.0%	100.0%	100.0%	87.5%	12.5%	100.0%	84.6%
Nursing/ Midwifery other	29	32	1.09	18.8%	81.3%	1.00	1.11	100.0%	100.0%	100.0%	87.5%	12.5%	100.0%	84.6%
Nursing & Midwifery	5,075	5,592	1.10	26.9%	73.1%	1.06	1.12	88.3%	89.5%	87.9%	90.0%	10.0%	94.6%	88.3%
Health & Social Care	1,448	1,621	1.12	16.5%	83.5%	1.05	1.14	86.1%	82.1%	86.9%	81.5%	18.5%	91.0%	79.6%
Executive Management	15	16	1.03	62.5%	37.5%	1.00	1.10	100.0%	100.0%	100.0%	100.0%	0.0%	100.0%	100.0%
Senior Management (VIII & GM)	47	48	1.01	31.3%	68.8%	1.02	1.01	93.8%	93.8%	93.9%	97.9%	2.1%	100.0%	97.0%
Management (VIII & above)	63	64	1.02	39.1%	60.9%	1.01	1.02	95.3%	96.0%	94.9%	98.4%	1.6%	100.0%	97.4%
Middle Management (V-VII)	242	255	1.05	19.6%	80.4%	1.02	1.06	89.0%	89.0%	91.2%	89.0%	11.0%	98.0%	86.8%
Other Administrative	2	2	1.27		100.0%		1.27	100.0%	100.0%	100.0%	50.0%	50.0%		50.0%
Administrative/ Supervisory (V to VII)	244	257	1.06	19.5%	80.5%	1.02	1.06	89.1%	80.0%	91.3%	88.7%	11.3%	98.0%	86.5%
General Administrative (III & IV)	724	824	1.14	8.6%	91.4%	1.09	1.14	82.0%	82.0%	82.1%	73.4%	26.6%	87.3%	72.1%
Clerical (III & IV)	724	824	1.14	8.6%	91.4%	1.09	1.14	82.0%	81.7%	82.1%	73.4%	26.6%	87.3%	72.1%
Management & Administrative	1,031	1,145	1.11	12.8%	87.2%	1.05	1.12	84.4%	83.6%	84.5%	78.3%	21.7%	93.2%	76.1%
Catering	64	71	1.11	32.4%	67.6%	1.05	1.14	94.4%	94.4%	91.7%	73.2%	26.8%	91.3%	64.6%
Household Services	442	509	1.15	20.8%	79.2%	1.08	1.17	86.4%	86.4%	89.3%	60.5%	39.5%	82.1%	54.8%
Other Support	43	50	1.17	32.0%	68.0%	1.03	1.26	88.0%	88.0%	85.3%	68.0%	32.0%	87.5%	58.8%
Portering	45	46	1.02	93.5%	6.5%	1.03	1.00	84.8%	84.8%	66.7%	89.1%	10.9%	88.4%	100.0%
Support	594	676	1.14	27.8%	72.2%	1.06	1.17	87.3%	82.4%	89.1%	64.3%	35.7%	85.1%	56.4%
Maintenance	137	142	1.04	99.3%	0.7%	1.04	1.00	95.8%	95.8%	100.0%	96.5%	3.5%	96.5%	100.0%
Maintenance/ Technical	137	142	1.04	99.3%	0.7%	1.04	1.00	95.8%	95.7%	100.0%	96.5%	3.5%	96.5%	100.0%
General Support	731	818	1.12	40.2%	59.8%	1.05	1.17	88.8%	88.1%	89.2%	69.9%	30.1%	90.0%	56.4%
Health Care Assistants	1,025	1,108	1.08	28.7%	71.3%	1.06	1.09	90.0%	85.2%	91.9%	78.2%	21.8%	89.6%	73.7%
Care, other	200	234	1.17	47.0%	53.0%	1.11	1.23	79.9%	74.5%	84.7%	67.5%	32.5%	76.4%	59.7%
Patient & Client Care	1,225	1,342	1.10	31.9%	68.1%	1.07	1.11	88.2%	82.5%	90.9%	76.4%	23.6%	86.2%	71.8%

Employment by WTE, Headcount, Gender, Full-Time /Part-Time etc.: Feb 2021

Mental Health Services CHO	WTE	Headcount	WTE: no.	% Male	% female	Male WTE: no.	Female WTE: no.	% Total Perm	% Male Perm	% Female Perm	% Total Full Time	% Total Part Time	% Male FT	% Female FT
Overall	10,449	11,515	1.10	26.8%	73.2%	1.06	1.12	82.4%	79.4%	83.5%	84.9%	15.1%	92.9%	82.0%
CHO 1	997	1,086	1.09	26.3%	73.7%	1.03	1.11	88.6%	88.6%	89.5%	87.6%	12.4%	96.9%	84.3%
CHO 2	1,368	1,494	1.09	27.9%	72.1%	1.06	1.10	84.7%	84.7%	86.4%	83.7%	16.3%	89.7%	81.4%
CHO 3	830	909	1.09	22.9%	77.1%	1.06	1.10	82.3%	82.3%	82.3%	84.4%	15.6%	89.9%	82.7%
CHO 4	1,582	1,752	1.11	25.5%	74.5%	1.06	1.12	72.8%	72.8%	75.2%	85.0%	15.0%	94.2%	81.9%
CHO 5	1,210	1,349	1.11	25.4%	74.6%	1.05	1.14	84.6%	84.6%	85.2%	79.4%	20.6%	90.9%	75.5%
CHO 6	634	698	1.10	29.1%	70.9%	1.05	1.12	82.4%	82.4%	83.2%	84.4%	15.6%	92.6%	81.0%
CHO 7	865	955	1.10	23.6%	76.4%	1.06	1.12	81.8%	81.8%	82.7%	87.4%	12.6%	95.6%	84.9%
CHO 8	1,125	1,249	1.11	24.2%	75.8%	1.04	1.13	84.8%	84.8%	85.0%	85.7%	14.3%	94.4%	83.0%
CHO 9	1,330	1,487	1.12	27.5%	72.5%	1.06	1.14	82.5%	82.5%	83.9%	84.7%	15.3%	94.1%	81.1%
other Community Services	507	536	1.06	45.9%	54.1%	1.06	1.05	85.6%	85.6%	87.9%	92.2%	7.8%	90.2%	93.8%

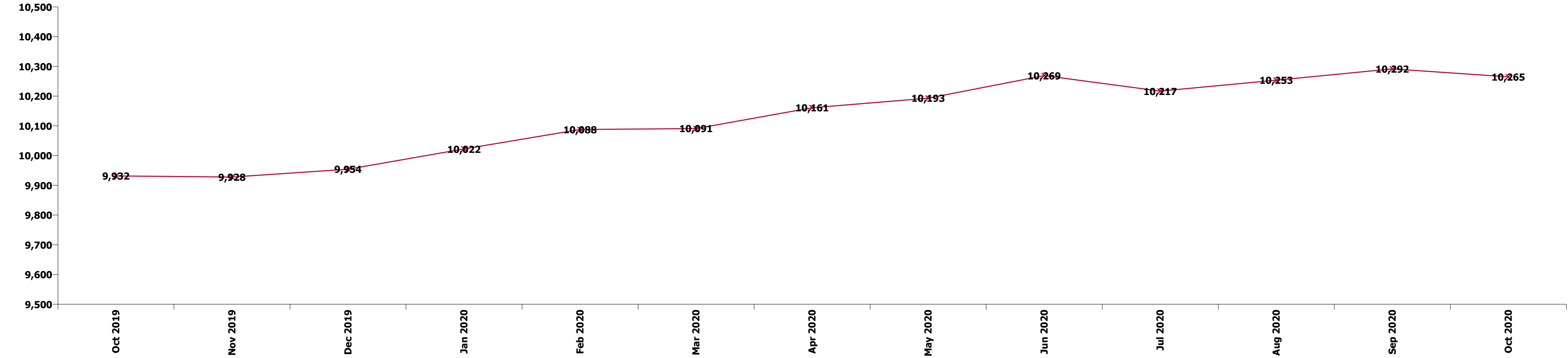
Summary Staff Movement: February 2021

Month-on-month
Summary

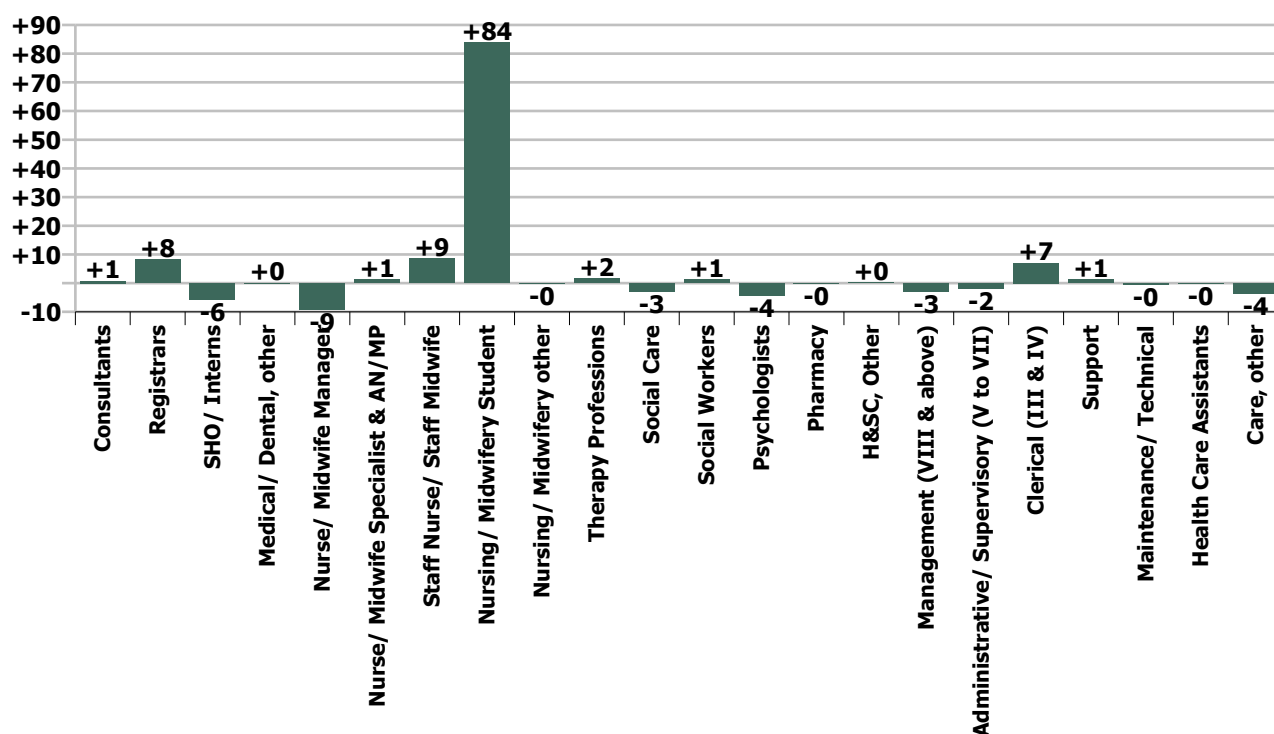
WTE change since Jan 21	% change since Jan 21	overall	Consultants	Registrars	SHO/ Interns	Medical/ Dental, other	Medical & Dental	Nurse/ Midwife Manager	Nurse/ Midwife Specialist & AN/MP	Staff Nurse/ Staff Midwife	Nursing/ Midwifery Student	Nursing/ Midwifery other	Nursing & Midwifery	Therapy Professions	Social Care	Social Workers	Psychologists	Pharmacy	H&SC, Other	Health & Social Care Professionals	Management (VIII & above)	Administrative/ Supervisory (V to VII)	Clerical (III & IV)	Management & Administrative	General Support	Health Care Assistants	Care, other	Patient & Client Care
Overall	+0.8%	+82	+1	+8	-6	+0	+3	-9	+1	+9	+84	-0	+84	+2	-3	+1	-4	-0	+0	-5	-3	-2	+7	+2	+1	-0	-4	-4
CHO 1	+0.7%	+7	+1	-2	+0		-2	+1	-0	+0	+8	-0	+10	+1	+0	-2	+0		-0	-0	-1	+0	+2	+1	-2	+2	-1	+0
CHO 2	+1.0%	+14	+1	+1	+3		+5	-2	-1	+6	+7	-0	+10	-1	-0	+0	-0		-1	-0	+2	-2	-0	+2	-0	-1	-1	
CHO 3	+1.2%	+10	-1	-0	-1		-2	-5	-2	+10	+7		+10	+2		+1	-1		-0	+2		-0	-0	-0	+1	-0	-0	
CHO 4	+0.5%	+7	-1	-1	+0	+0	-1	-4	-1	-2	+18		+11	+0	-0	-2	-1	-2	-0	+0	-2		-4	+3	-1	-0	+0	+0
CHO 5	+1.3%	+16	-0	+1	-1		+1	-0	-1	+5	+13	+0	+17	-2	-0	-1	+0		+1	-3	-1	-0	+2	+1	+0	+0	+0	
CHO 6	+0.2%	+1	-1	+2	+0		+2	+1	-1	-1	+3	+0	+3	-1	-2	+1	-1		-2		+1	-2	-1	-1	+1	+0	+1	
CHO 7	+0.3%	+2	+0	+3	-1		+2	+2	+1	+3	+6		+3	-1	-0	+1	-0		-1	-1	-0	-0	+0	-0	+0	-1	-1	
CHO 8	+1.0%	+11	+1	-2	-2		-3	-2	+3	-0	+15		+16	-2	-1	+1	+1		+0	-1	-1	-2	+4	+2	-0	-2	-0	
CHO 9	+0.1%	+2	+0	+4	-5		-1	-1	+3	-6	+6		+2	+4	-0	+0	-4	-0	-0	-0	+1	-0	-0	+0	+1	-0	+1	
other Community Services	+2.4%	+12	-0	+3			+3	+1	+0	+4			+5	+1	+0	+0	+2	-0		+4	-1	+2	-0	+1	+0	-1		
		+0.8%	+0.2%	+2.8%	-2.2%	+1.4%	+0.4%	-0.7%	+0.3%	+0.3%	+89.6%	-1.1%	+1.7%	+0.4%	-3.7%	+0.3%	-1.0%	-1.4%	+0.2%	-0.3%	-4.6%	-0.8%	+1.0%	+0.2%	+0.1%	-0.0%	-1.8%	-0.3%

Year-on-year Summary

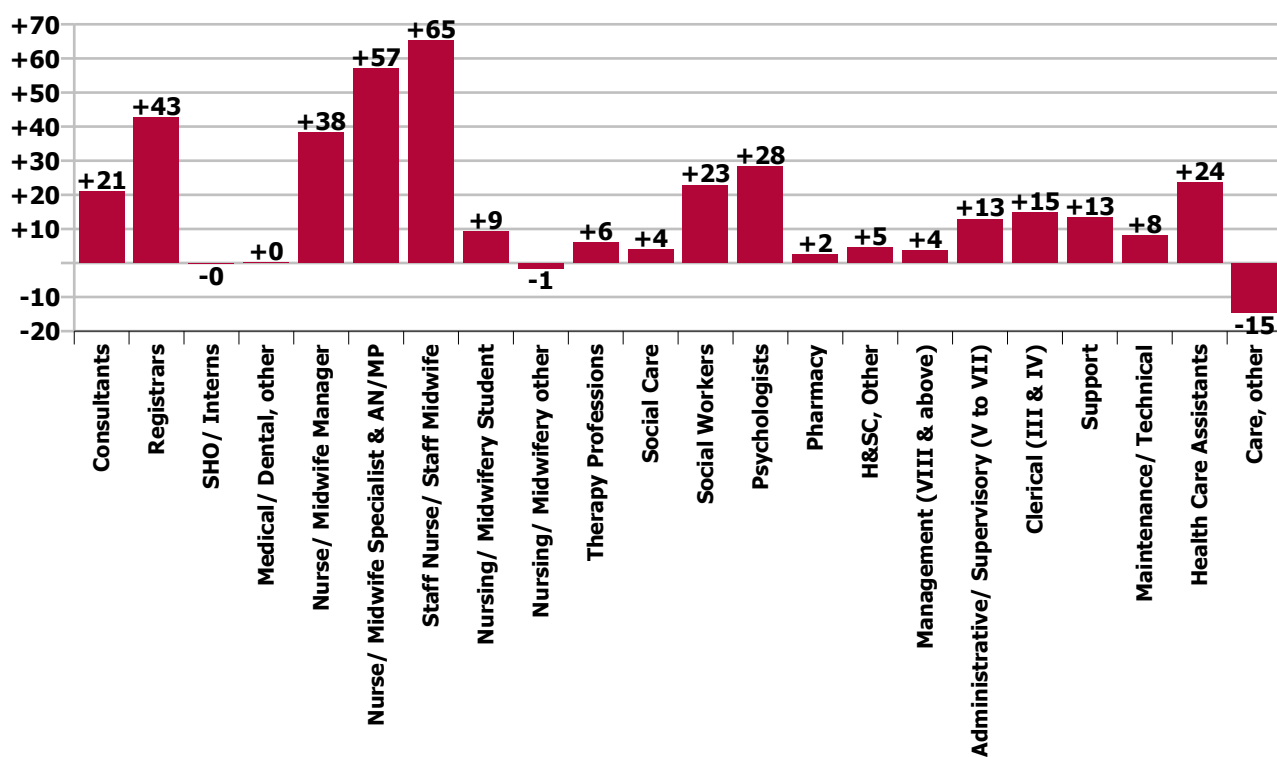
WTE change since Feb 20	% change since Feb 20	overall	Consultants	Registrars	SHO/ Interns	Medical/ Dental, other	Medical & Dental	Nurse/ Midwife Manager	Nurse/ Midwife Specialist & AN/MP	Staff Nurse/ Staff Midwife	Nursing/ Midwifery Student	Nursing/ Midwifery other	Nursing & Midwifery	Therapy Professions	Social Care	Social Workers	Psychologists	Pharmacy	H&SC, Other	Health & Social Care Professionals	Management (VIII & above)	Administrativ e/ Supervisory (V to VII)	Clerical (III & IV)	Management & Administrativ e	General Support	Health Care Assistants	Care, other	Patient & Client Care
Overall	+3.6%	+361	+21	+43	-0	+0	+64	+38	+57	+65	+9	-1	+168	+6	+4	+23	+28	+2	+5	+68	+4	+13	+15	+31	+21	+24	-15	+9
CHO 1	+3.0%	+29	+5	+8	-8		+5	+4	+7	-2	+5	+1	+16	+2	-0	+3	+2		-0	+6	-1	+1	+2	+3	+1	+1	-2	-1
CHO 2	+3.2%	+42	+0	+2	+8		+10	+2	+8	+15	+5	-1	+29	+9	-0	+1	+4	-1		+12	-1	+2	-6	-5	+4	-4	-8	
CHO 3	+2.8%	+23	+1	+1	-3		-0	-4	-3	+26	+0		+20	+3	+0	-1	+2		+2	+6		+0	-4	-3	-3	+4	-1	+3
CHO 4	+4.3%	+65	+5	-5	+12	+0	+12	+16	+4	-2	-4		+14	+2	+3	+8	+9	-0	+1	+24	+2	-0	+6	+7	+6	+3	-1	+2
CHO 5	+1.5%	+18	+1	-1	+9		+9	+1	+10	+6	+6	-0	+24	-7	-0	-3	+2		+0	-8	+1	+2	-2	+1	-3	-3	-1	-4
CHO 6	+6.3%	+37	+2	+6			+8	+1	+4	+8	+5		+17	-7	+0	+1	+8		+0	+2		-1	+0	-1	+4	+6	+1	+7
CHO 7	+3.0%	+25	+6	+14	-3		+17	+7	+7	+1	-8	-2	+5	+2	-0	+7	-4		-1	+5	+1	+2	+2	+5	-1	+2	-7	-5
CHO 8	+1.8%	+19	+2	+9	-8		+2	-7	+5	+14	+2	-1	+12	-4	+0	+4	+1	+0	+2	+4	-1	-1	+5	+3	+0	-3	-0	-3
CHO 9	+4.0%	+51	-3	+5	-6		-3	+3	+13	+10	-3	+1	+24	+4	-0	+1	+3	+2	-0	+10	+1	-2	+14	+13	+3	+4	-0	+4
other Community Services	+11.0%	+50	+1	+4			+4	+14	+3	-11		+1	+7	+0	+0	+2	+2	+1		+6	+2	+9	-2	+9	+9	+14		+14
		+3.6%	+5.9%	+16.5%	-0.0%	+1.4%	+7.3%	+3.2%	+12.2%	+2.1%	+5.5%	-4.8%	+3.4%	+1.4%	+5.2%	+6.5%	+7.2%	+13.1%	+4.3%	+4.9%	+6.2%	+5.6%	+2.1%	+3.1%	+3.0%	+2.4%	-6.8%	+0.7%



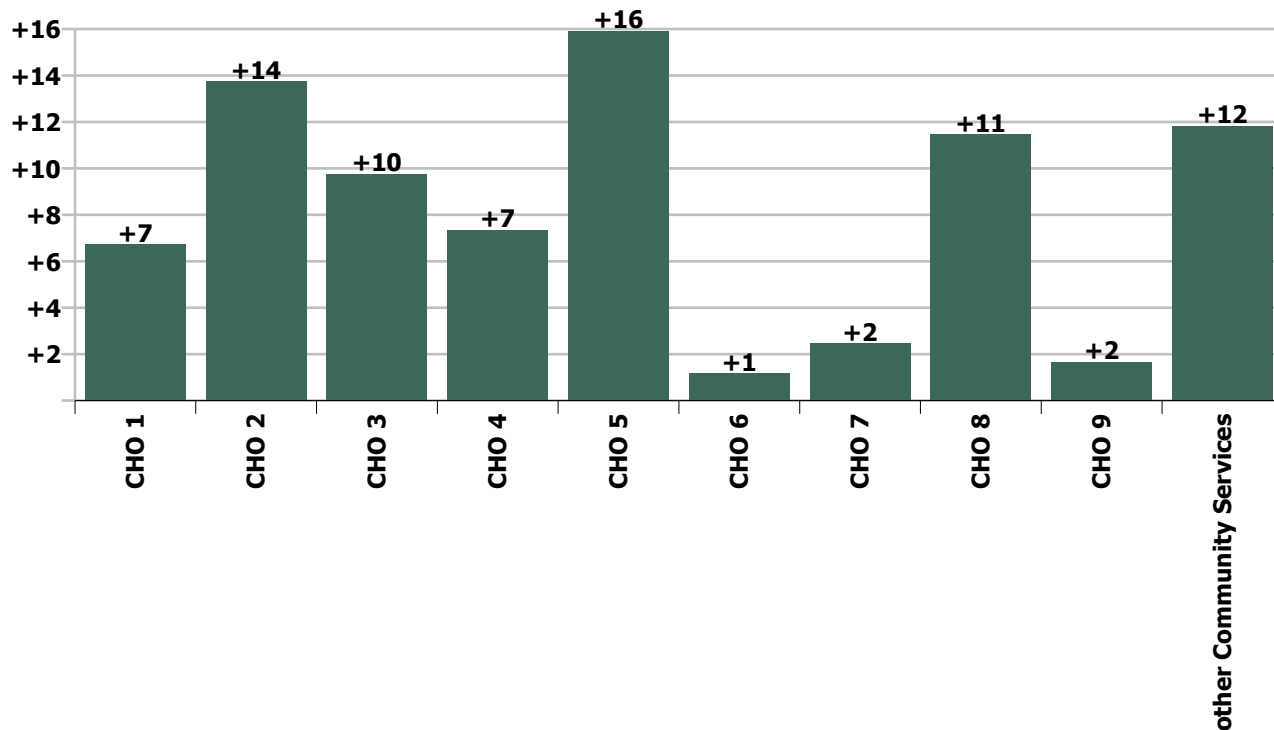
Staff Group change since: Jan 2021



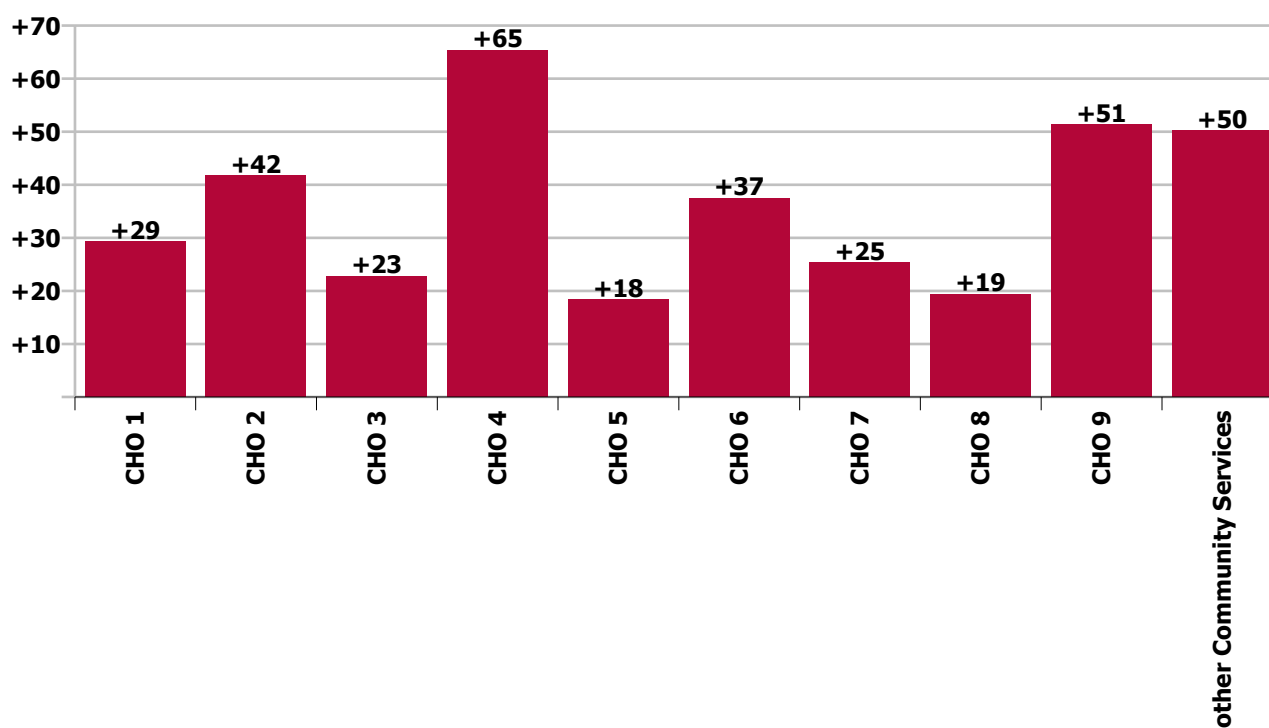
Staff Group change since: Feb 2020



CHO change since: Jan 2021



CHO change since: Feb 2020



Longitudinal Employment Levels by Grade Group - Dec 2015 to Feb 2021

Feb 2021 (Dec 2015 figure: 9,499)	WTE Feb 2021	WTE change since Dec 15	WTE change since Dec 16	WTE change since Dec 17	WTE change since Dec 18	WTE change since Dec 19	WTE change since Dec 20	% change since Dec 15	% change since Dec 16	% change since Dec 17	% change since Dec 18	% change since Dec 19	% change since Dec 20
Overall	10,449	+950	+829	+659	+551	+495	+148	+10.0%	+8.6%	+6.7%	+5.6%	+5.0%	+1.4%
Consultant Medicine	1			-0	-0					-9.1%	-9.1%		
Consultant Psychiatry	374	+60	+60	+62	+45	+23	+6	+18.9%	+18.9%	+19.9%	+13.5%	+6.5%	+1.6%
Consultants	375	+60	+60	+62	+44	+23	+6	+18.9%	+18.8%	+19.8%	+13.4%	+6.5%	+1.6%
Registrar	189	+65	+57	+45	+35	+20	+21	+52.3%	+43.2%	+30.8%	+23.0%	+11.8%	+12.7%
Senior Registrar	112	+54	+44	+46	+26	+14	+0	+94.6%	+66.2%	+69.5%	+29.8%	+14.8%	+0.3%
Specialist Registrar	2	+1	+1		+1	-1		+102.0%	+100.0%		+100.0%	-20.0%	
Registrars	303	+120	+103	+90	+62	+34	+22	+65.9%	+51.2%	+42.5%	+25.7%	+12.6%	+7.7%
<i>Intern</i>	5	-8	-7	-5	-3	-3		-61.5%	-58.3%	-50.0%	-37.5%	-37.5%	
Interns	5	-8	-7	-5	-3	-3		-61.5%	-58.3%	-50.0%	-37.5%	-37.5%	
Senior House Officer	251	+15	+4	-22	-18	-2	-20	+6.4%	+1.6%	-7.9%	-6.9%	-0.9%	-7.4%
SHO/ Interns	256	+7	-3	-27	-21	-5	-20	+2.9%	-1.2%	-9.4%	-7.7%	-2.0%	-7.3%
Dentists				-0	-0			-100.0%	-100.0%	-100.0%	-100.0%	-100.0%	-100.0%
Other Medical	5	-4	-5	-6	-1			-42.9%	-48.1%	-53.9%	-23.0%		
Medical/ Dental, other	5	-4	-5	-6	-2			-42.9%	-48.1%	-54.2%	-23.8%		
Medical & Dental	939	+183	+154	+120	+83	+51		+24.2%	+19.7%	+14.6%	+9.7%	+5.8%	+0.8%
Clinical Nurse/ Midwife Manager	1,042	+73	+36	+60	+36	+44	+1	+7.5%	+3.5%	+6.1%	+3.6%	+4.4%	+0.1%
Director Nursing/Midwifery, Assistant	169	+23	+14	+7	+5	+5	-1	+15.8%	+9.0%	+4.6%	+3.2%	+2.8%	-0.7%
Director of Nursing/Midwifery	27	-4	-5	-2	+3	-2	-1	-12.0%	-15.1%	-5.5%	+13.5%	-6.8%	-3.6%
Nurse/ Midwife Manager	1,239	+92	+45	+66	+45	+46	-1	+8.1%	+3.8%	+5.6%	+3.7%	+3.9%	-0.1%
Advanced Nurse/ Midwife Practitioner	40	+33	+32	+29	+20	+9	+1	+470.3%	+433.7%	+280.2%	+98.2%	+29.9%	+1.3%
Clinical Nurse/ Midwife Specialist	486	+179	+150	+103	+91	+58	-3	+58.6%	+44.5%	+26.9%	+23.0%	+13.4%	-0.7%
Nurse/ Midwife Specialist & AN/MP	526	+212	+182	+132	+111	+67	-3	+67.8%	+52.9%	+33.6%	+26.6%	+14.5%	-0.5%
Graduate Nursing/ Midwifery		-10						-100.0%	-100.0%	-100.0%	-100.0%	-100.0%	-100.0%
<i>Staff Midwife</i>	1	+1	+1	+1	+1	+1		-100.0%	-100.0%	-100.0%	-100.0%	-100.0%	-25.0%
Staff Midwives	1	+1	+1	+1	+1	+1	-0	-100.0%	-100.0%	-100.0%	-100.0%	-100.0%	-25.0%
Staff Nurse [Intellectual Disability]	4	+2	+1	+1	-2	-0	-0	+85.8%	+25.1%	+20.8%	-30.3%	-7.7%	-1.4%
Staff Nurse [Psychiatric]	2,996	-95	-61	-31	+41	+103	+32	-3.1%	-2.0%	-1.0%	+1.4%	+3.6%	+1.1%
Staff Nurses [General/ Children's]	103	-22	-18	-15	-15	-2	-4	-17.6%	-14.9%	-12.7%	-12.7%	-2.1%	-3.5%

Feb 2021 (Dec 2015 figure: 9,499)	WTE Feb 2021	WTE change since Dec 15	WTE change since Dec 16	WTE change since Dec 17	WTE change since Dec 18	WTE change since Dec 19	WTE change since Dec 20	% change since Dec 15	% change since Dec 16	% change since Dec 17	% change since Dec 18	% change since Dec 19	% change since Dec 20
Overall	10,449	+950	+829	+659	+551	+495	+148	+10.0%	+8.6%	+6.7%	+5.6%	+5.0%	+1.4%
Staff Nurse/ Staff Midwife	3,104	-125	-77	-44	+25	+101	+28	-3.9%	-2.4%	-1.4%	+0.8%	+3.4%	+0.9%
Public Health Nurse			-1	-1				-100.0%	-100.0%	-100.0%	-100.0%	-100.0%	-100.0%
<i>Student General Nursing Intern (pre-registration)</i>					-1			-100.0%	-100.0%	-100.0%	-100.0%	-100.0%	-100.0%
<i>Student Psychiatric Nursing Intern (pre-registration)</i>	155	+137	+147	+138	+128	+128		+759.7%	+1691.8%	+821.4%	+474.5%	+463.6%	+1348.8%
Pre-registration Nurse/ Midwife Intern	155	+137	+147	+138	+127	+128	+144	+759.7%	+1691.8%	+821.4%	+456.8%	+463.6%	+1348.8%
<i>Student Psychiatric Nursing Intern (COVID-19 HCA)</i>	18	+18	+18	+18	+18	+18		-100.0%	-100.0%	-100.0%	-100.0%	-100.0%	-56.8%
Pre-registration Nurse Intern (COVID-19)	18	+18	+18	+18	+18	+18	-24	-100.0%	-100.0%	-100.0%	-100.0%	-100.0%	-56.8%
<i>Student Public Health Nursing (post registration)</i>	1	+1	+1	+1	+1			-100.0%	-100.0%	-100.0%	-100.0%		
Post-registration Nurse/ Midwife Student	1	+1	+1	+1	+1			-100.0%	-100.0%	-100.0%	-100.0%		
Nursing/ Midwifery awaiting registration	3	+3	+1	-6	-17	-56	-2	-100.0%	+49.0%	-65.5%	-85.0%	-94.9%	-38.6%
Nursing/ Midwifery Student	177	+159	+167	+152	+130	+90	+118	+883.1%	+1564.6%	+596.2%	+271.9%	+102.9%	+200.9%
Nursing Education/Clinical	29	+10	+5	-1	-2	-2	-2	+53.2%	+19.3%	-3.7%	-5.1%	-6.8%	-7.2%
Nursing/ Midwifery other	29	+10	+5	-1	-2	-2	-2	+53.2%	+19.3%	-3.7%	-5.1%	-6.8%	-7.2%
Nursing & Midwifery	5,075	+350	+320	+303	+309	+302		+7.4%	+6.7%	+6.4%	+6.5%	+6.3%	+2.8%
Dietitians	19	+14	+5	+2	-1	-0	-2	+247.3%	+40.2%	+13.3%	-5.3%	-0.7%	-8.7%
Occupational Therapists	349	+56	+50	+23	+10	+11	+4	+19.2%	+16.5%	+7.1%	+3.0%	+3.2%	+1.1%
Physiotherapists	2	+0	+0	+1	+1	+0		+9.0%	+19.9%	+99.2%	+49.7%	+8.1%	
Podiatrists & Chiropodists	1	-1	-1	-1	-0	+0	+0	-43.5%	-52.2%	-40.8%	-28.7%	+19.2%	+8.7%
Speech & Language Therapists	72	+19	+12	+10	+10	+10	+2	+36.4%	+20.8%	+17.1%	+16.9%	+16.5%	+3.2%
Therapy Professions	444	+88	+67	+37	+20	+21	+4	+24.9%	+17.8%	+9.0%	+4.7%	+5.0%	+1.0%
Social Care	78	-9	-10	-4	-0	+5	-2	-10.7%	-11.0%	-5.3%	-0.5%	+6.3%	-2.2%
Social Workers	376	+27	+26	+19	+17	+26	+3	+7.7%	+7.3%	+5.2%	+4.8%	+7.5%	+0.8%
Psychologists	421	+98	+78	+50	+32	+26	-3	+30.4%	+22.7%	+13.6%	+8.2%	+6.6%	-0.8%
Pharmacy	20	+3	+1	+1	+1	+2	-0	+19.4%	+5.5%	+6.0%	+6.5%	+10.6%	-1.0%
Counsellor Therapists	103	+15	+18	+17	+18	+8	+2	+17.6%	+21.1%	+20.4%	+21.2%	+8.7%	+1.8%
Other Health & Social Care	5	-2	-3	-3	-3	-7	-0	-31.0%	-38.5%	-39.5%	-39.8%	-55.8%	-4.2%
Play Therapists/ Specialists	1	-1	-1	-0		+0		-39.8%	-40.8%	-2.0%		+1.4%	
H&SC, Other	110	+12	+14	+14	+15	+2	+2	+12.4%	+14.3%	+14.7%	+15.3%	+1.5%	+1.5%
Health & Social Care Professionals	1,448	+219	+175	+116	+85	+82		+17.9%	+13.8%	+8.7%	+6.2%	+6.0%	+0.3%

Feb 2021 (Dec 2015 figure: 9,499)	WTE Feb 2021	WTE change since Dec 15	WTE change since Dec 16	WTE change since Dec 17	WTE change since Dec 18	WTE change since Dec 19	WTE change since Dec 20	% change since Dec 15	% change since Dec 16	% change since Dec 17	% change since Dec 18	% change since Dec 19	% change since Dec 20
Overall	10,449	+950	+829	+659	+551	+495	+148	+10.0%	+8.6%	+6.7%	+5.6%	+5.0%	+1.4%
Executive Management	15	+11	+8	+7	+5	+4	+1	+286.5%	+120.9%	+93.3%	+54.6%	+40.5%	+5.0%
Senior Management (VIII & GM)	47	+19	+23	+16	+16	+1	-5	+66.4%	+92.1%	+51.7%	+49.8%	+2.3%	-9.5%
Management (VIII & above)	63	+30	+31	+24	+21	+6	-4	+93.5%	+98.5%	+60.2%	+51.0%	+9.7%	-6.3%
Administrative/ Supervisory (V to VII)	244	+95	+76	+44	+21	+7	-1	+64.2%	+45.1%	+22.2%	+9.5%	+2.8%	-0.5%
Clerical (III & IV)	724	+79	+63	+43	+29	+7	+2	+12.2%	+9.5%	+6.3%	+4.1%	+1.0%	+0.3%
Management & Administrative	1,031	+204	+170	+110	+71	+19		+24.7%	+19.8%	+12.0%	+7.4%	+1.9%	-0.3%
Catering	64	+1	-2	-2	-8	-1	+1	+2.1%	-2.4%	-2.7%	-10.8%	-1.8%	+0.8%
Household Services	442	-83	-50	-34	-4	+17	+1	-15.9%	-10.2%	-7.2%	-0.8%	+4.1%	+0.1%
Other Support	43	-10	-13	-7	-13	-0	+1	-18.5%	-24.0%	-13.9%	-22.7%	-0.2%	+1.7%
Portering	45	-13	-14	-4	-3	-3	-2	-23.0%	-24.2%	-8.2%	-6.5%	-6.7%	-5.1%
Support	594	-105	-80	-47	-27	+13	-1	-15.1%	-11.8%	-7.3%	-4.3%	+2.2%	-0.1%
Maintenance	137	-6	-6	-2	+3	+8	-0	-4.1%	-4.1%	-1.1%	+2.1%	+6.4%	-0.2%
Technical Services		-2	-2	-2	-2	-2		-100.0%	-100.0%	-100.0%	-100.0%	-100.0%	-100.0%
Maintenance/ Technical	137	-8	-8	-4	+1	+6	-0	-5.5%	-5.4%	-2.5%	+0.6%	+4.7%	-0.2%
General Support	731	-113	-87	-50	-26	+19		-13.4%	-10.7%	-6.5%	-3.5%	+2.7%	-0.1%
HCA, Nurse's Aide, etc.	1,016	+105	+87	+67	+42	+37	+3	+11.5%	+9.4%	+7.1%	+4.3%	+3.8%	+0.3%
Health & Social Care Assistants	9	+5	+4	+4	+4	+0	+1	+155.1%	+94.6%	+94.6%	+66.0%	+1.0%	+8.3%
Health Care Assistants	1,025	+110	+92	+72	+46	+37	+4	+12.0%	+9.8%	+7.5%	+4.7%	+3.8%	+0.4%
Other Care Grades	200	-4	+4	-12	-16	-16	-3	-1.9%	+2.1%	-5.7%	-7.2%	-7.3%	-1.6%
Care, other	200	-4	+4	-12	-16	-16	-3	-1.9%	+2.1%	-5.7%	-7.2%	-7.3%	-1.6%
Patient & Client Care	1,225	+106	+96	+60	+30	+22		+9.5%	+8.5%	+5.1%	+2.5%	+1.8%	+0.0%

Source: Health Service Personnel Census