

Mental Health Service Employment Report: January 2021

Employment by Staff Group

Jan 2021 (Dec 2019 figure: 9,954)	WTE Dec 2020	WTE Jan 2021	WTE change since Dec 20	% change since Dec 20	WTE change since Dec 19	WTE change since Jan 20
Overall	10,301	10,367	+65	+0.6%	+413	+345
Consultants	370	375	+5	+1.4%	+22	+21
Registrars	281	294	+13	+4.7%	+25	+24
SHO/ Interns	276	262	-14	-5.2%	+0	+6
Medical/ Dental, other	5	5	-0	-1.4%	-0	-0
Medical & Dental	932	936	+4	+0.4%	+48	+51
Nurse/ Midwife Manager	1,240	1,248	+8	+0.6%	+55	+50
Nurse/ Midwife Specialist & AN/MP	529	525	-4	-0.8%	+65	+62
Staff Nurse/ Staff Midwife	3,076	3,095	+19	+0.6%	+92	+78
<i>Pre-registration Nurse/ Midwife Intern</i>	11	63	+52	+485.0%	+35	-28
<i>Pre-registration Nurse Intern (COVID-19)</i>	42	26	-16	-38.2%	+26	+26
<i>Post-registration Nurse/ Midwife Student</i>	1	1			+1	+1
<i>Nursing/ Midwifery awaiting registration</i>	5	4	-1	-23.1%	-16	-39
Nursing/ Midwifery Student	59	94	+35	+58.7%	+6	-40
Nursing/ Midwifery other	32	30	-2	-6.1%	-2	-1
Nursing & Midwifery	4,935	4,991	+56	+1.1%	+217	+149
Therapy Professions	439	442	+3	+0.6%	+19	+11
Social Care	80	81	+1	+1.6%	+8	+4
Social Workers	373	374	+2	+0.5%	+25	+25
Psychologists	424	425	+1	+0.3%	+31	+30
Pharmacy	21	21	+0	+0.4%	+2	+3
H&SC, Other	108	109	+1	+1.3%	+1	+6
Health & Social Care Professionals	1,444	1,453	+8	+0.6%	+86	+78
Management (VIII & above)	67	66	-1	-1.8%	+9	+8
Administrative/ Supervisory (V to VII)	245	246	+1	+0.4%	+9	+10
Clerical (III & IV)	722	717	-5	-0.7%	-0	+5
Management & Administrative	1,034	1,029	-5	-0.5%	+17	+22
Support	594	592	-2	-0.3%	+12	+17
Maintenance/ Technical	137	138	+0	+0.1%	+7	+8
General Support	732	730	-2	-0.2%	+18	+25
Health Care Assistants	1,022	1,025	+4	+0.4%	+37	+32
Care, other	203	204	+0	+0.2%	-12	-13
Patient & Client Care	1,225	1,229	+4	+0.3%	+25	+19

Mental Health Services Employment by Administration (HSE / S38): January 2021

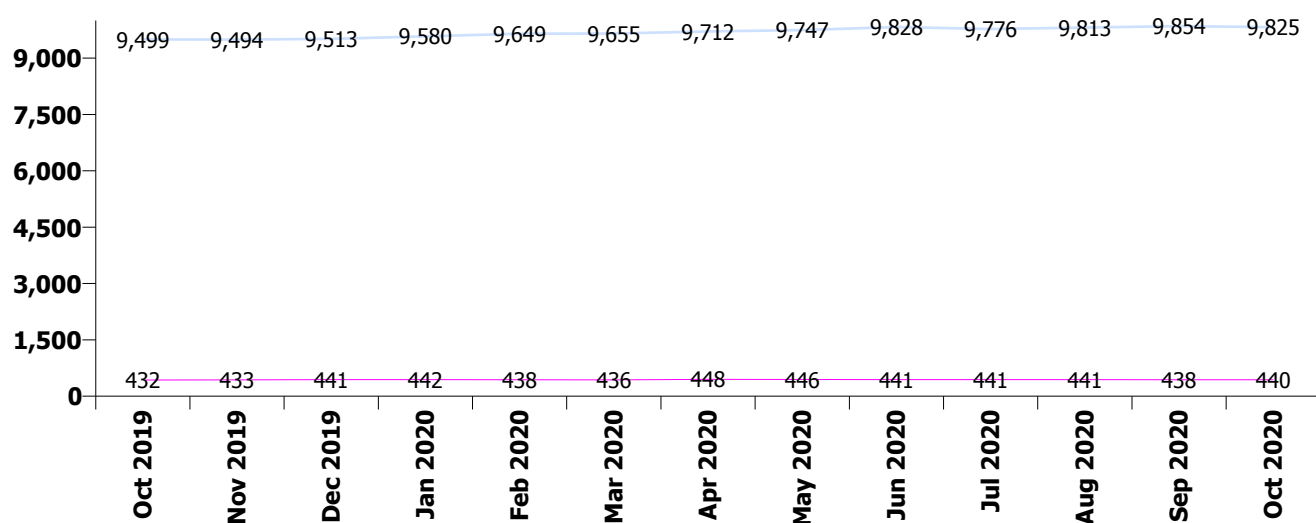
Jan 2021 (Dec 2019 figure: 9,954)	WTE Dec 2020	WTE Jan 2021	WTE change since Dec 20	% change since Dec 20	WTE change since Dec 19	WTE change since Jan 20
Overall	10,301	10,367	+65	+0.6%	+413	+345
HSE	9,855	9,916	+61	+0.6%	+403	+336
Section 38 Voluntary Agencies	446	451	+4	+1.0%	+9	+8

HSE

Jan 2021 (Dec 2019 figure: 9,513)	WTE Dec 2020	WTE Jan 2021	WTE change since Dec 20	% change since Dec 20	WTE change since Dec 19	WTE change since Jan 20
Overall	9,855	9,916	+61	+0.6%	+403	+336
Consultants	349	354	+5	+1.5%	+21	+20
Registrars	266	276	+10	+3.6%	+26	+24
SHO/ Interns	267	254	-13	-5.0%	-1	+5
Medical/ Dental, other	5	5	-0	-1.4%	-0	-0
Medical & Dental	886	888	+2	+0.2%	+45	+49
Nurse/ Midwife Manager	1,202	1,210	+8	+0.7%	+56	+50
Nurse/ Midwife Specialist & AN/MP	520	515	-4	-0.9%	+63	+60
Staff Nurse/ Staff Midwife	2,953	2,969	+16	+0.5%	+89	+77
<i>Pre-registration Nurse/ Midwife Intern</i>	1	53	+52	+7315.5%	+32	-31
<i>Pre-registration Nurse Intern (COVID-19)</i>	41	26	-15	-36.7%	+26	+26
<i>Post-registration Nurse/ Midwife Student</i>	1	1			+1	+1
<i>Nursing/ Midwifery awaiting registration</i>	5	4	-1	-23.1%	-16	-39
Nursing/ Midwifery Student	48	84	+36	+74.3%	+3	-43
Nursing/ Midwifery other	29	27	-2	-6.7%	-2	-1
Nursing & Midwifery	4,752	4,805	+53	+1.1%	+209	+143
Therapy Professions	412	415	+3	+0.8%	+24	+16
Social Care	52	52	+0	+0.5%	+4	+3
Social Workers	354	356	+2	+0.5%	+26	+26
Psychologists	402	403	+2	+0.4%	+25	+24
Pharmacy	19	19	+0	+0.5%	+2	+3
H&SC, Other	107	108	+1	+1.3%	+5	+6
Health & Social Care Professionals	1,345	1,354	+9	+0.6%	+87	+78
Management (VIII & above)	65	64	-1	-1.9%	+9	+8
Administrative/ Supervisory (V to VII)	224	225	+1	+0.5%	+9	+11
Clerical (III & IV)	679	674	-5	-0.7%	+2	+5
Management & Administrative	968	963	-5	-0.5%	+20	+24
Support	556	555	-1	-0.2%	+12	+17
Maintenance/ Technical	130	131	+0	+0.1%	+6	+7
General Support	687	686	-1	-0.1%	+18	+24
Health Care Assistants	1,016	1,020	+4	+0.4%	+37	+32
Care, other	200	200	+0	+0.1%	-13	-14
Patient & Client Care	1,216	1,220	+4	+0.3%	+25	+18

Section 38 Voluntary Agencies

Jan 2021 (Dec 2019 figure: 441)	WTE Dec 2020	WTE Jan 2021	WTE change since Dec 20	% change since Dec 20	WTE change since Dec 19	WTE change since Jan 20
Overall	446	451	+4	+1.0%	+9	+8
Consultants	21	21	-0	-0.9%	+1	+1
Registrars	15	19	+4	+23.8%	-0	+0
SHO/ Interns	9	8	-1	-11.9%	+2	+1
Medical & Dental	45	48	+2	+5.2%	+3	+2
Nurse/ Midwife Manager	38	38	-0	-0.4%	-0	-0
Nurse/ Midwife Specialist & AN/MP	9	9	+0	+3.8%	+3	+2
Staff Nurse/ Staff Midwife	123	126	+3	+2.6%	+3	+1
Pre-registration Nurse/ Midwife Intern	10	10			+3	+3
Pre-registration Nurse Intern (COVID-19)	1		-1	-100.0%		
Nursing/ Midwifery Student	11	10	-1	-9.1%	+3	+3
Nursing/ Midwifery other	3	3				
Nursing & Midwifery	183	185	+2	+1.3%	+8	+6
Therapy Professions	27	27	-1	-2.7%	-5	-5
Social Care	28	29	+1	+3.6%	+3	+1
Social Workers	19	19	+0	+0.3%	-1	-1
Psychologists	22	22	-0	-1.9%	+6	+5
Pharmacy	2	2			+0	+0
H&SC, Other	1	1			-4	+0
Health & Social Care Professionals	99	99	-0	-0.1%	-0	+1
Management (VIII & above)	2	2				
Administrative/ Supervisory (V to VII)	21	21	-0	-0.7%	-1	-2
Clerical (III & IV)	43	43	+0	+0.5%	-2	-0
Management & Administrative	66	66	+0	+0.1%	-2	-2
Support	38	37	-1	-1.9%	-1	-0
Maintenance/ Technical	7	7			+1	+1
General Support	45	44	-1	-1.6%	+0	+1
Health Care Assistants	6	6				
Care, other	3	4	+0	+6.8%	+1	+1
Patient & Client Care	9	9	+0	+2.5%	+1	+1



Mental Health Services Employment by CHO: Jan 2021

Jan 2021 (Dec 2019 figure: 9,954)	WTE Dec 2020	WTE Jan 2021	WTE change since Dec 20	% change since Dec 20	WTE change since Dec 19	WTE change since Jan 20
Overall	10,301	10,367	+65	+0.6%	+413	+345
CHO 1	976	990	+15	+1.5%	+38	+23
CHO 2	1,340	1,354	+14	+1.0%	+45	+37
CHO 3	809	821	+12	+1.4%	+25	+18
CHO 4	1,564	1,575	+11	+0.7%	+89	+57
CHO 5	1,188	1,194	+6	+0.5%	+16	+5
CHO 6	626	633	+7	+1.1%	+41	+38
CHO 7	861	863	+1	+0.1%	+28	+37
CHO 8	1,112	1,114	+2	+0.2%	+16	+27
CHO 9	1,331	1,329	-2	-0.1%	+57	+53
other Community Services	494	495	+1	+0.1%	+57	+49

Mental Health Services Employment by CHO etc. Jan 2021

CHO 1

Jan 2021 (Dec 2019 figure: 953)	WTE Dec 2020	WTE Jan 2021	WTE change since Dec 20	% change since Dec 20	WTE change since Dec 19	WTE change since Jan 20
Overall	976	990	+15	+1.5%	+38	+23
Consultants	34	36	+2	+5%	+5	+4
Registrars	29	34	+4	+15%	+9	+10
SHO/ Interns	23	18	-5	-21%	-7	-7
Medical & Dental	86	87	+1	+1.5%	+7	+7
Nurse/ Midwife Manager	119	123	+3	+3%	+6	+4
Nurse/ Midwife Specialist & AN/MP	74	74	-0	-0%	+6	+6
Staff Nurse/ Staff Midwife	288	295	+7	+3%	-2	-4
<i>Pre-registration Nurse/ Midwife Intern</i>		7	+7	-100%	+7	+3
<i>Pre-registration Nurse Intern (COVID-19)</i>	3		-3	-100%		
<i>Nursing/ Midwifery awaiting registration</i>				-100%	-1	
Nursing/ Midwifery Student	3	7	+4	+146%	+7	+3
Nursing/ Midwifery other	1	1	+0	+3%	+1	+1
Nursing & Midwifery	485	500	+15	+3.1%	+18	+9
Therapy Professions	36	36	+0	+1%	+1	-1
Social Care	4	4	-0	-5%	-0	-0
Social Workers	43	43	+0	+1%	+4	+5
Psychologists	23	23	+0	+0%	+3	+2
Pharmacy	1	1	0			-0
H&SC, Other	14	14	+0	+1%	+1	+0
Health & Social Care Professionals	121	122	+1	+0.7%	+8	+6
Management (VIII & above)	8	7	-1	-9%	+1	+0
Administrative/ Supervisory (V to VII)	31	31	+1	+2%	+1	+1
Clerical (III & IV)	85	85	-0	-0%	-0	+0
Management & Administrative	123	123	-0	-0.1%	+2	+1
Support	65	65	-0	-1%	+2	+2
Maintenance/ Technical	16	16	+0	+0%	-0	-0
General Support	81	81	-0	-0.6%	+2	+2
Health Care Assistants	68	67	-1	-1%	+1	-0
Care, other	11	10	-1	-12%	-1	-1
Patient & Client Care	79	77	-2	-2.3%	+0	-2

CHO 2

Jan 2021 (Dec 2019 figure: 1,308)	WTE Dec 2020	WTE Jan 2021	WTE change since Dec 20	% change since Dec 20	WTE change since Dec 19	WTE change since Jan 20
Overall	1,340	1,354	+14	+1.0%	+45	+37
Consultants	37	38	+1	+2%	+0	+0
Registrars	37	36	-0	-1%	+3	+2
SHO/ Interns	40	37	-3	-8%	+2	+2
Medical/ Dental, other	1	1	0			
Medical & Dental	114	111	-3	-2.6%	+5	+4
Nurse/ Midwife Manager	151	150	-1	-1%	+4	+4
Nurse/ Midwife Specialist & AN/MP	79	78	-1	-1%	+11	+9
Staff Nurse/ Staff Midwife	355	366	+12	+3%	+9	+9
<i>Pre-registration Nurse/ Midwife Intern</i>		4	+4	-100%	+4	-1
<i>Pre-registration Nurse Intern (COVID-19)</i>	10	10	-1	-6%	+10	+10
<i>Nursing/ Midwifery awaiting registration</i>				-100%	-11	-2
Nursing/ Midwifery Student	10	14	+4	+36%	+9	+7
Nursing/ Midwifery other	2	1	-0	-22%	-1	-1
Nursing & Midwifery	597	610	+13	+2.2%	+33	+28
Therapy Professions	55	55	0		+10	+8
Social Care	16	16	+0	+1%	+2	+0
Social Workers	42	43	+1	+3%	+2	+1
Psychologists	37	38	+2	+4%	+5	+4
Pharmacy	2	2	0		-1	-1
H&SC, Other	3	3	0			
Health & Social Care Professionals	155	157	+3	+1.8%	+18	+13
Management (VIII & above)	4	4	0		-1	-1
Administrative/ Supervisory (V to VII)	26	24	-3	-10%	+0	+1
Clerical (III & IV)	102	104	+2	+2%	-5	-3
Management & Administrative	133	132	-1	-0.5%	-6	-3
Support	31	31	-0	-0%	-5	-4
Maintenance/ Technical	33	34	+1	+2%	+7	+7
General Support	64	65	+0	+0.7%	+2	+3
Health Care Assistants	211	211	+0	+0%	-3	-4
Care, other	66	67	+0	+1%	-2	-3
Patient & Client Care	278	278	+1	+0.2%	-6	-7

CHO 3

Jan 2021 (Dec 2019 figure: 795)	WTE Dec 2020	WTE Jan 2021	WTE change since Dec 20	% change since Dec 20	WTE change since Dec 19	WTE change since Jan 20
Overall	809	821	+12	+1.4%	+25	+18
Consultants	24	24	-0	-1%	+1	+1
Registrars	15	19	+4	+28%	+1	+2
SHO/ Interns	21	19	-2	-9%	+0	-1
Medical & Dental	61	63	+2	+3.5%	+3	+2
Nurse/ Midwife Manager	88	88	+0	+0%	+0	+1
Nurse/ Midwife Specialist & AN/MP	37	37	-0	-0%	-2	-2
Staff Nurse/ Staff Midwife	272	274	+2	+1%	+28	+21
<i>Pre-registration Nurse/ Midwife Intern</i>		6	+6	-100%	-2	-6
<i>Pre-registration Nurse Intern (COVID-19)</i>	3	1	-3	-74%	+1	+1
Nursing/ Midwifery Student	3	7	+4	+112%	-2	-5
Nursing & Midwifery	400	406	+6	+1.4%	+24	+15
Therapy Professions	25	27	+2	+10%	+1	+1
Social Care	3	3	0		+0	+0
Social Workers	24	24	-1	-3%	-2	-2
Psychologists	91	92	+1	+1%	+0	+1
Pharmacy	3	3	0			
H&SC, Other	12	12	+0	+0%	+3	+3
Health & Social Care Professionals	158	161	+3	+1.9%	+2	+3
Management (VIII & above)	2	2	0		+0	
Administrative/ Supervisory (V to VII)	19	18	-1	-5%	+1	+1
Clerical (III & IV)	50	51	+0	+0%	-5	-4
Management & Administrative	71	70	-1	-1.0%	-4	-3
Support	30	30	-0	-2%	-3	-2
Maintenance/ Technical	9	9	0		-2	-2
General Support	39	39	-0	-1.2%	-5	-4
Health Care Assistants	79	81	+2	+3%	+5	+5
Care, other	1	1	0		-1	-1
Patient & Client Care	80	82	+2	+2.6%	+5	+5

CHO 4

Jan 2021 (Dec 2019 figure: 1,485)	WTE Dec 2020	WTE Jan 2021	WTE change since Dec 20	% change since Dec 20	WTE change since Dec 19	WTE change since Jan 20
Overall	1,564	1,575	+11	+0.7%	+89	+57
Consultants	54	56	+2	+3%	+6	+7
Registrars	42	41	-0	-1%	-4	-5
SHO/ Interns	43	43	+0	+1%	+12	+12
Medical/ Dental, other	2	2	-0	-3%	-0	-0
Medical & Dental	141	142	+2	+1.2%	+14	+13
Nurse/ Midwife Manager	192	199	+6	+3%	+29	+20
Nurse/ Midwife Specialist & AN/MP	71	69	-2	-2%	+9	+10
Staff Nurse/ Staff Midwife	519	512	-7	-1%	+10	+4
<i>Pre-registration Nurse/ Midwife Intern</i>		9	+9	-100%	+8	-12
<i>Pre-registration Nurse Intern (COVID-19)</i>	3	3	0		+3	+3
<i>Post-registration Nurse/ Midwife Student</i>				-100%		
<i>Nursing/ Midwifery awaiting registration</i>	1	1	0		+1	-21
Nursing/ Midwifery Student	4	13	+9	+222%	-21	-29
Nursing & Midwifery	786	793	+7	+0.9%	+28	+5
Therapy Professions	77	78	+1	+1%	+5	+2
Social Care	7	7	+0	+3%	+3	+3
Social Workers	64	64	-1	-1%	+11	+9
Psychologists	94	94	+0	+0%	+12	+11
Pharmacy	3	3	0		+1	+0
H&SC, Other	12	12	-0	-3%	+1	+1
Health & Social Care Professionals	258	259	+1	+0.3%	+32	+28
<i>Executive Management</i>	2	2	-0	-13%	+2	+2
<i>Senior Management (VIII & GM)</i>	1	1	0		+1	
Management (VIII & above)	3	3	-0	-8%	+2	+2
Administrative/ Supervisory (V to VII)	22	25	+3	+13%	+2	+3
Clerical (III & IV)	94	90	-4	-4%	+3	+1
Management & Administrative	119	117	-1	-1.2%	+7	+5
Support	82	85	+3	+4%	+5	+7
Maintenance/ Technical	5	5	0		-1	-1
General Support	87	90	+3	+4.0%	+4	+6
Health Care Assistants	166	166	-0	-0%	+5	+1
Care, other	6	6	-0	-1%	-1	-1
Patient & Client Care	173	172	-0	-0.3%	+4	+0

CHO 5

Jan 2021 (Dec 2019 figure: 1,178)	WTE Dec 2020	WTE Jan 2021	WTE change since Dec 20	% change since Dec 20	WTE change since Dec 19	WTE change since Jan 20
Overall	1,188	1,194	+6	+0.5%	+16	+5
Consultants	27	27	+0	+0%	+1	+1
Registrars	9	9	-0	-0%	-1	-1
SHO/ Interns	36	35	-0	-1%	+3	+5
Medical/ Dental, other	2	2	0			
Medical & Dental	74	74	-0	-0.4%	+4	+5
Nurse/ Midwife Manager	160	165	+5	+3%	+0	+3
Nurse/ Midwife Specialist & AN/MP	54	55	+1	+2%	+13	+12
Staff Nurse/ Staff Midwife	411	412	+1	+0%	-4	-3
<i>Pre-registration Nurse/ Midwife Intern</i>		7	+7	-100%	+6	-16
<i>Pre-registration Nurse Intern (COVID-19)</i>	13	8	-5	-37%	+8	+8
<i>Nursing/ Midwifery awaiting registration</i>				-100%		-1
Nursing/ Midwifery Student	13	15	+2	+14%	+9	-9
Nursing/ Midwifery other	4	4	-0	-1%	-0	+0
Nursing & Midwifery	642	650	+8	+1.3%	+19	+4
Therapy Professions	39	37	-2	-4%	-3	-2
Social Care	5	5	0			
Social Workers	28	26	-2	-6%	-1	-1
Psychologists	21	22	+0	+1%	+0	+1
H&SC, Other	8	9	+1	+13%	-1	-1
Health & Social Care Professionals	100	99	-2	-1.9%	-5	-3
Management (VIII & above)	6	6	0		+3	+3
Administrative/ Supervisory (V to VII)	20	20	0		-0	-0
Clerical (III & IV)	68	69	+1	+1%	-5	-5
Management & Administrative	94	95	+1	+0.6%	-2	-2
Support	178	176	-2	-1%	+8	+9
Maintenance/ Technical	20	19	-1	-3%	-4	-4
General Support	198	195	-3	-1.4%	+4	+5
Health Care Assistants	68	69	+2	+3%	-3	-3
Care, other	12	12	-0	-0%	-1	-1
Patient & Client Care	80	82	+2	+2.3%	-4	-4

CHO 6

Jan 2021 (Dec 2019 figure: 593)	WTE Dec 2020	WTE Jan 2021	WTE change since Dec 20	% change since Dec 20	WTE change since Dec 19	WTE change since Jan 20
Overall	626	633	+7	+1.1%	+41	+38
Consultants	40	41	+1	+2%	+5	+3
Registrars	19	22	+3	+17%	+1	+2
SHO/ Interns	13	12	-1	-11%	+3	+2
Medical/ Dental, other				-100%		
Medical & Dental	72	75	+3	+3.7%	+8	+6
Nurse/ Midwife Manager	77	76	-1	-1%	-0	-1
Nurse/ Midwife Specialist & AN/MP	20	20	+0	+1%	+6	+4
Staff Nurse/ Staff Midwife	151	152	+1	+1%	+13	+12
<i>Pre-registration Nurse/ Midwife Intern</i>		1	+1	-100%	+1	+1
<i>Nursing/ Midwifery awaiting registration</i>	1	1	-0	-2%	+1	+1
Nursing/ Midwifery Student	1	2	+1	+82%	+2	+2
Nursing/ Midwifery other	2	2	-0	-1%	-0	-0
Nursing & Midwifery	251	252	+1	+0.3%	+21	+17
Therapy Professions	39	38	-0	-1%	-5	-4
Social Care	28	29	+1	+2%	+3	+0
Social Workers	30	30	+1	+3%	+1	+1
Psychologists	32	32	-0	-1%	+10	+9
H&SC, Other	5	5	-0	-4%	-4	+0
Health & Social Care Professionals	134	134	+0	+0.3%	+4	+6
Management (VIII & above)	3	3	0			
Administrative/ Supervisory (V to VII)	24	25	+1	+2%	-2	-3
Clerical (III & IV)	43	42	-1	-1%	+0	+1
Management & Administrative	70	70	+0	+0.1%	-2	-2
Support	39	40	+1	+2%	+3	+3
Maintenance/ Technical	6	6	-0	-0%	+0	+1
General Support	45	45	+1	+1.4%	+3	+4
Health Care Assistants	49	51	+2	+4%	+5	+6
Care, other	6	6	+0	+3%	+1	+1
Patient & Client Care	54	57	+2	+3.8%	+6	+6

CHO 7

Jan 2021 (Dec 2019 figure: 835)	WTE Dec 2020	WTE Jan 2021	WTE change since Dec 20	% change since Dec 20	WTE change since Dec 19	WTE change since Jan 20
Overall	861	863	+1	+0.1%	+28	+37
Consultants	53	53	+0	+0%	+6	+7
Registrars	54	54	+0	+1%	+8	+9
SHO/ Interns	20	19	-1	-6%	-2	+0
Medical & Dental	127	126	-1	-0.5%	+11	+16
Nurse/ Midwife Manager	117	118	+1	+0%	+1	+7
Nurse/ Midwife Specialist & AN/MP	47	46	-1	-1%	+6	+6
Staff Nurse/ Staff Midwife	202	207	+5	+3%	+13	+11
<i>Pre-registration Nurse/ Midwife Intern</i>	<i>1</i>	<i>1</i>	<i>+0</i>	<i>+96%</i>	<i>-5</i>	<i>-3</i>
<i>Pre-registration Nurse Intern (COVID-19)</i>	<i>3</i>	<i>2</i>	<i>-1</i>	<i>-43%</i>	<i>+2</i>	<i>+2</i>
<i>Post-registration Nurse/ Midwife Student</i>	<i>1</i>	<i>1</i>	<i>0</i>		<i>+1</i>	<i>+1</i>
<i>Nursing/ Midwifery awaiting registration</i>	<i>3</i>	<i>2</i>	<i>-1</i>	<i>-39%</i>	<i>-2</i>	<i>-6</i>
Nursing/ Midwifery Student	8	6	-2	-27%	-6	-6
Nursing/ Midwifery other	6	5	-1	-17%	-3	-2
Nursing & Midwifery	379	381	+2	+0.6%	+12	+16
Therapy Professions	53	53	-0	-0%	+6	+5
Social Care	7	7	+0	+3%	-0	-0
Social Workers	38	38	-0	-0%	+3	+5
Psychologists	29	27	-2	-8%	-4	-5
<i>Pharmacy</i>	<i>1</i>	<i>1</i>	<i>0</i>		<i>+1</i>	
Pharmacy	1	1	0			
H&SC, Other	18	18	+0	+0%	+0	+0
Health & Social Care Professionals	147	144	-2	-1.5%	+4	+5
Management (VIII & above)	4	4	+0	+1%	+1	+1
Administrative/ Supervisory (V to VII)	17	18	+0	+2%	+2	+3
Clerical (III & IV)	49	49	+0	+0%	+2	+2
Management & Administrative	70	71	+0	+0.7%	+5	+6
Support	17	17	-0	-1%	-1	-1
Maintenance/ Technical	2	2	0		+0	+0
General Support	19	19	-0	-0.6%	-0	-1
Health Care Assistants	34	35	+0	+1%	+1	+1
Care, other	84	86	+1	+1%	-6	-7
Patient & Client Care	119	120	+2	+1.3%	-5	-5

CHO 8

Jan 2021 (Dec 2019 figure: 1,098)	WTE Dec 2020	WTE Jan 2021	WTE change since Dec 20	% change since Dec 20	WTE change since Dec 19	WTE change since Jan 20
Overall	1,112	1,114	+2	+0.2%	+16	+27
Consultants	36	37	+0	+1%	+2	+1
Registrars	31	30	-1	-5%	+4	+7
SHO/ Interns	26	31	+5	+18%	-5	-5
Medical & Dental	94	97	+4	+3.8%	+0	+3
Nurse/ Midwife Manager	120	117	-3	-3%	-3	-1
Nurse/ Midwife Specialist & AN/MP	60	58	-2	-3%	+2	+3
Staff Nurse/ Staff Midwife	342	338	-4	-1%	+7	+8
<i>Pre-registration Nurse/ Midwife Intern</i>		6	+6	-100%	+6	+3
<i>Pre-registration Nurse Intern (COVID-19)</i>	1	0	-1	-84%	+0	+0
<i>Nursing/ Midwifery awaiting registration</i>				-100%	-1	-1
Nursing/ Midwifery Student	1	7	+6	+546%	+4	+3
Nursing/ Midwifery other	3	3	0		-1	-1
Nursing & Midwifery	526	523	-3	-0.6%	+8	+12
Therapy Professions	43	44	+1	+3%	-0	+0
Social Care	7	7	+0	+5%	+0	+0
Social Workers	44	45	+1	+3%	+4	+4
Psychologists	37	38	+1	+2%	-2	-1
Pharmacy	2	1	-0	-1%	+0	+1
H&SC, Other	21	22	+1	+3%	+2	+2
Health & Social Care Professionals	153	158	+4	+2.9%	+4	+6
Management (VIII & above)	3	3	-0	-2%	-0	-0
Administrative/ Supervisory (V to VII)	20	20	+0	+1%	-2	-2
Clerical (III & IV)	97	96	-1	-1%	+8	+8
Management & Administrative	120	119	-1	-0.9%	+5	+6
Support	31	30	-1	-3%	-2	-2
Maintenance/ Technical	28	28	+0	+0%	+2	+2
General Support	59	59	-1	-1.1%	-0	+1
Health Care Assistants	156	155	-1	-1%	-2	-1
Care, other	3	3	+0	+2%	-0	-0
Patient & Client Care	159	158	-1	-0.6%	-2	-1

CHO 9

Jan 2021 (Dec 2019 figure: 1,272)	WTE Dec 2020	WTE Jan 2021	WTE change since Dec 20	% change since Dec 20	WTE change since Dec 19	WTE change since Jan 20
Overall	1,331	1,329	-2	-0.1%	+57	+53
Consultants	46	46	-0	-1%	-4	-4
Registrars	32	36	+4	+11%	+5	+1
SHO/ Interns	54	47	-6	-11%	-6	-1
Medical & Dental	132	129	-3	-2.1%	-5	-4
Nurse/ Midwife Manager	138	136	-1	-1%	+4	+3
Nurse/ Midwife Specialist & AN/MP	76	76	+0	+0%	+11	+9
Staff Nurse/ Staff Midwife	371	372	+1	+0%	+21	+25
<i>Pre-registration Nurse/ Midwife Intern</i>	10	21	+11	+104%	+9	+3
<i>Pre-registration Nurse Intern (COVID-19)</i>	5	3	-3	-54%	+3	+3
<i>Nursing/ Midwifery awaiting registration</i>				-100%	-3	-10
Nursing/ Midwifery Student	16	23	+8	+49%	+2	-5
Nursing/ Midwifery other	13	12	-1	-5%	+1	+1
Nursing & Midwifery	613	620	+7	+1.1%	+39	+32
Therapy Professions	61	60	-1	-2%	+5	+1
Social Care	1	1	-0	-5%	+0	+0
Social Workers	43	43	+1	+2%	+0	+1
Psychologists	53	53	-0	-1%	+7	+7
Pharmacy	9	9	+0	+1%	+1	+2
H&SC, Other	14	14	+0	+0%	-0	+0
Health & Social Care Professionals	181	180	-1	-0.4%	+13	+11
Management (VIII & above)	5	5	0		+0	+0
Administrative/ Supervisory (V to VII)	29	28	-1	-3%	+0	-1
Clerical (III & IV)	114	112	-3	-2%	+8	+9
Management & Administrative	148	145	-3	-2.3%	+8	+9
Support	104	102	-2	-2%	-1	+0
Maintenance/ Technical	11	11	0		+0	+0
General Support	115	113	-2	-1.5%	-1	+1
Health Care Assistants	129	129	0		+3	+4
Care, other	12	13	+0	+0%	-0	-0
Patient & Client Care	142	142	+0	+0.0%	+3	+4

other Community Services

Jan 2021 (Dec 2019 figure: 438)	WTE Dec 2020	WTE Jan 2021	WTE change since Dec 20	% change since Dec 20	WTE change since Dec 19	WTE change since Jan 20
Overall	494	495	+1	+0.1%	+57	+49
Consultants	17	17	-0	-1%	+1	+1
Registrars	14	13	-1	-4%	+0	-3
SHO/ Interns				-100%		
Medical & Dental	31	30	-1	-2.1%	+1	-2
Nurse/ Midwife Manager	76	75	-0	-1%	+13	+12
Nurse/ Midwife Specialist & AN/MP	13	12	-0	-4%	+4	+4
Staff Nurse/ Staff Midwife	165	166	+1	+0%	-3	-6
Nursing/ Midwifery other	2	2	+0	+2%	+1	+1
Nursing & Midwifery	255	255	-0	-0.0%	+15	+11
Therapy Professions	12	12	+0	+2%	+1	+0
Social Care	2	2	+0	+2%	-0	+0
Social Workers	17	18	+1	+4%	+3	+2
Psychologists	6	6	+0	+1%		
<i>Pharmacy</i>	<i>1</i>	<i>1</i>	<i>0</i>		+1	+1
Pharmacy	1	1	0		+1	+1
Health & Social Care Professionals	38	39	+1	+2.3%	+5	+3
Management (VIII & above)	30	30	-0	-1%	+3	+3
Administrative/ Supervisory (V to VII)	37	37	+1	+2%	+6	+7
Clerical (III & IV)	18	19	+1	+4%	-6	-5
Management & Administrative	85	86	+1	+1.6%	+3	+5
Support	16	16	-0	-0%	+4	+4
Maintenance/ Technical	7	7	0		+5	+5
General Support	23	23	-0	-0.0%	+9	+9
Health Care Assistants	62	61	-1	-1%	+24	+22
Care, other	1	1	0			
Patient & Client Care	63	62	-1	-1.5%	+24	+22

Mental Health Services Employment by Grade Group: Jan 2021

Jan 2021 (Dec 2019 figure: 9,954)	WTE Dec 2020	WTE Jan 2021	WTE change since Dec 20	% change since Dec 20	WTE change since Dec 19	WTE change since Jan 20
Overall	10,301	10,367	+65	+0.6%	+413	+345
Consultant Medicine	1	1	0			
Consultant Psychiatry	369	374	+5	+1%	+22	+21
Consultants	370	375	+5	+1%	+22	+21
Registrar	168	182	+14	+8%	+12	+8
Senior Registrar	111	111	-0	-0%	+14	+16
Specialist Registrar	2	2	0		-1	-1
Registrars	281	294	+13	+5%	+25	+24
Interns	5	4	-1	-20%	-4	-4
Senior House Officer	271	258	-13	-5%	+4	+11
SHO/ Interns	276	262	-14	-5%	+0	+6
Other Medical	5	5	-0	-1%	-0	-0
Medical/ Dental, other	5	5	-0	-1%	-0	-0
Medical & Dental	932	936	+4	+0%	+48	+51
Clinical Nurse/ Midwife Manager	1,041	1,049	+8	+1%	+50	+47
Director Nursing/Midwifery, Assistant	171	171	+0	+0%	+6	+4
Director of Nursing/Midwifery	28	28	+0	+0%	-1	-1
Nurse/ Midwife Manager	1,240	1,248	+8	+1%	+55	+50
Advanced Nurse/ Midwife Practitioner	39	40	+0	+1%	+9	+7
Clinical Nurse/ Midwife Specialist	489	485	-4	-1%	+57	+55
Nurse/ Midwife Specialist & AN/MP	529	525	-4	-1%	+65	+62
Staff Midwives	1	1	0		+1	+1
Staff Nurse [Intellectual Disability]	4	4	+0	+2%	-0	-1
Staff Nurse [Psychiatric]	2,965	2,985	+20	+1%	+92	+80
Staff Nurses [General/ Children's]	106	105	-2	-1%	-0	-1
Staff Nurse/ Staff Midwife	3,076	3,095	+19	+1%	+92	+78
Pre-registration Nurse/ Midwife Intern	11	63	+52	+485%	+35	-28
Pre-registration Nurse Intern (COVID-19)	42	26	-16	-38%	+26	+26
Post-registration Nurse/ Midwife Student	1	1	0			+1
Nursing/ Midwifery awaiting registration	5	4	-1	-23%	-55	-39
Nursing/ Midwifery Student	59	94	+35	+59%	+6	-40
Nursing Education/Clinical	32	30	-2	-6%	-2	-1
Nursing/ Midwifery other	32	30	-2	-6%	-2	-1
Nursing & Midwifery	4,935	4,991	+56	+1%	+217	+149
Dietitians	21	21	-0	-1%	+1	-1
Occupational Therapists	346	345	-0	-0%	+7	+3
Physiotherapists	2	2	0		+0	+0
Podiatrists & Chiropodists	1	1	+0	+4%	+0	+0
Speech & Language Therapists	70	72	+3	+4%	+11	+8
Therapy Professions	439	442	+3	+1%	+19	+11
Social Care	80	81	+1	+2%	+8	+4
Social Workers	373	374	+2	+1%	+25	+25
Psychologists	424	425	+1	+0%	+31	+30
Pharmacy	21	21	+0	+0%	+2	+3
Counsellor Therapists	101	103	+1	+1%	+8	+8
Other Health & Social Care	5	5	0		-6	-2
Play Therapists/ Specialists	1	1	0		+0	-0
H&SC, Other	108	109	+1	+1%	+1	+6
Health & Social Care Professionals	1,444	1,453	+8	+1%	+86	+78
Executive Management	15	14	-0	-3%	+3	+3
Senior Management (VIII & GM)	52	52	-1	-2%	+5	+4

Jan 2021 (Dec 2019 figure: 9,954)	WTE Dec 2020	WTE Jan 2021	WTE change since Dec 20	% change since Dec 20	WTE change since Dec 19	WTE change since Jan 20
Overall	10,301	10,367	+65	+0.6%	+413	+345
Management (VIII & above)	67	66	-1	-2%	+9	+8
Middle Management (V-VII)	243	244	+1	+0%	+9	+10
Other Administrative	2	2	0			
Administrative/ Supervisory (V to VII)	245	246	+1	+0%	+9	+10
General Administrative (III & IV)	722	717	-5	-1%	-0	+5
Clerical (III & IV)	722	717	-5	-1%	-0	+5
Management & Administrative	1,034	1,029	-5	-0%	+17	+22
Catering	64	64	+0	+0%	-2	-1
Household Services	441	441	-1	-0%	+16	+21
Other Support	42	41	-0	-1%	-1	-2
Portering	47	47	-1	-2%	-2	-1
Support	594	592	-2	-0%	+12	+17
Maintenance	137	138	+0	+0%	+9	+10
Technical Services				-100%	-2	-2
Maintenance/ Technical	137	138	+0	+0%	+7	+8
General Support	732	730	-2	-0%	+18	+25
HCA, Nurse's Aide, etc.	1,013	1,017	+4	+0%	+38	+33
Health & Social Care Assistants	8	8	-0	-3%	-1	-1
Health Care Assistants	1,022	1,025	+4	+0%	+37	+32
Care, other	203	204	+0	+0%	-12	-13
Patient & Client Care	1,225	1,229	+4	+0%	+25	+19

Employment by WTE, Headcount, Gender, Full-Time /Part-Time etc.: Jan 2021

Mental Health Services Staff Group	WTE	Headcount	WTE: no.	% Male	% female	Male WTE: no.	Female WTE: no.	% Total Perm	% Male Perm	% Female Perm	% Total Full Time	% Total Part Time	% Male FT	Female FT
Overall	10,367	11,487	1.11	26.8%	73.2%	1.06	1.13	82.3%	79.3%	83.4%	84.9%	15.1%	92.9%	81.9%
Consultant Medicine	1	1	1.00	100.0%		1.00		100.0%	100.0%		100.0%	0.0%	100.0%	
Consultant Psychiatry	374	398	1.07	39.9%	60.1%	1.03	1.09	65.6%	65.6%	64.9%	86.2%	13.8%	92.5%	82.0%
Consultants	375	399	1.07	40.1%	59.9%	1.03	1.09	65.7%	66.9%	64.9%	86.2%	13.8%	92.5%	82.0%
Registrar	182	213	1.17	43.2%	56.8%	1.10	1.23	4.2%	4.2%	3.3%	97.2%	2.8%	100.0%	95.0%
Senior Registrar	111	122	1.10	40.2%	59.8%	1.02	1.17	1.6%	1.6%	2.7%	95.9%	4.1%	100.0%	93.2%
Specialist Registrar	2	2	1.00	50.0%	50.0%	1.00	1.00	0.0%	0.0%	0.0%	100.0%	0.0%	100.0%	100.0%
Registrars	294	337	1.14	42.1%	57.9%	1.07	1.20	3.3%	3.5%	3.1%	96.7%	3.3%	100.0%	94.4%
Interns	4	6	1.50		100.0%		1.50	0.0%	0.0%	0.0%	100.0%	0.0%		100.0%
Senior House Officer	258	280	1.09	37.1%	62.9%	1.07	1.10	0.4%	0.4%	0.0%	99.6%	0.4%	100.0%	99.4%
SHO/ Interns	262	286	1.09	36.4%	63.6%	1.07	1.11	0.3%	1.0%	0.0%	99.7%	0.3%	100.0%	99.5%
Other Medical	5	10	2.03	50.0%	50.0%	2.02	2.04	40.0%	40.0%	40.0%	90.0%	10.0%	100.0%	80.0%
Medical/ Dental, other	5	10	2.03	50.0%	50.0%	2.02	2.04	40.0%	40.0%	40.0%	90.0%	10.0%	100.0%	80.0%
Medical & Dental	936	1,032	1.10	39.8%	60.2%	1.06	1.13	26.9%	28.0%	26.2%	93.4%	6.6%	97.1%	91.0%
Clinical Nurse/ Midwife Manager	1,049	1,095	1.04	33.2%	66.8%	1.02	1.06	98.8%	98.8%	99.5%	93.5%	6.5%	98.1%	91.2%
Director Nursing/Midwifery, Assistant	171	175	1.02	46.3%	53.7%	1.02	1.03	99.4%	99.4%	98.9%	97.7%	2.3%	98.8%	96.8%
Director of Nursing/Midwifery	28	28	1.00	57.1%	42.9%	1.00	1.01	100.0%	100.0%	100.0%	96.4%	3.6%	100.0%	91.7%
Nurse/ Midwife Manager	1,248	1,298	1.04	35.5%	64.5%	1.02	1.05	98.9%	98.0%	99.4%	94.1%	5.9%	98.3%	91.9%
Advanced Nurse/ Midwife Practitioner	40	41	1.04	17.1%	82.9%	1.00	1.04	100.0%	100.0%	100.0%	90.2%	9.8%	100.0%	88.2%
Clinical Nurse/ Midwife Specialist	485	510	1.05	19.6%	80.4%	1.01	1.06	99.6%	99.6%	99.8%	92.0%	8.0%	98.0%	90.5%
Nurse/ Midwife Specialist & AN/MP	525	551	1.05	19.4%	80.6%	1.01	1.06	99.6%	99.1%	99.8%	91.8%	8.2%	98.1%	90.3%
Staff Midwives	1	1	1.00		100.0%		1.00	0.0%	0.0%	0.0%	100.0%	0.0%		100.0%
Staff Nurse [Intellectual Disability]	4	5	1.16		100.0%		1.16	40.0%	40.0%	40.0%	80.0%	20.0%		80.0%
Staff Nurse [Psychiatric]	2,985	3,230	1.08	26.3%	73.7%	1.05	1.09	91.5%	91.5%	92.3%	87.6%	12.4%	92.3%	85.9%
Staff Nurses [General/ Children's]	105	120	1.14	19.2%	80.8%	1.14	1.14	81.7%	81.7%	83.5%	75.8%	24.2%	78.3%	75.3%
Staff Nurse/ Staff Midwife	3,095	3,356	1.08	26.0%	74.0%	1.05	1.10	91.1%	89.1%	91.8%	87.1%	12.9%	92.0%	85.4%
Pre-registration Nurse/ Midwife Intern	63	249	3.97	14.5%	85.5%	3.77	4.01	0.4%	0.4%	0.0%	100.0%	0.0%	100.0%	100.0%
Pre-registration Nurse Intern (COVID-19)	26	47	1.79	19.1%	80.9%	1.57	1.86	2.1%	2.1%	0.0%	100.0%	0.0%	100.0%	100.0%
Post-registration Nurse/ Midwife Student	1	1	1.00		100.0%		1.00	0.0%	0.0%	0.0%	100.0%	0.0%		100.0%
Nursing/ Midwifery awaiting registration	4	4	1.07		100.0%		1.07	100.0%	100.0%	100.0%	100.0%	0.0%		100.0%

Nursing/ Midwifery Student	94	301	3.22	15.0%	85.0%	2.94	3.27	2.0%	4.4%	1.6%	100.0%	0.0%	100.0%	100.0%
Nursing Education/Clinical	30	33	1.11	18.2%	81.8%	1.00	1.14	100.0%	100.0%	100.0%	84.8%	15.2%	100.0%	81.5%
Nursing/ Midwifery other	30	33	1.11	18.2%	81.8%	1.00	1.14	100.0%	100.0%	100.0%	84.8%	15.2%	100.0%	81.5%
Nursing & Midwifery	4,991	5,539	1.11	26.9%	73.1%	1.06	1.13	89.0%	90.1%	88.6%	89.9%	10.1%	94.6%	88.2%
Health & Social Care	1,453	1,616	1.11	17.0%	83.0%	1.05	1.13	85.8%	81.0%	86.8%	81.4%	18.6%	90.9%	79.5%
Executive Management	14	15	1.05	66.7%	33.3%	1.02	1.11	100.0%	100.0%	100.0%	100.0%	0.0%	100.0%	100.0%
Senior Management (VIII & GM)	52	52	1.01	30.8%	69.2%	1.00	1.01	94.2%	94.2%	94.4%	98.1%	1.9%	100.0%	97.2%
Management (VIII & above)	66	67	1.02	38.8%	61.2%	1.01	1.02	95.5%	96.2%	95.1%	98.5%	1.5%	100.0%	97.6%
Middle Management (V-VII)	244	257	1.05	19.5%	80.5%	1.02	1.06	87.9%	87.9%	89.4%	89.1%	10.9%	98.0%	87.0%
Other Administrative	2	2	1.27		100.0%		1.27	100.0%	100.0%	100.0%	50.0%	50.0%		50.0%
Administrative/ Supervisory (V to VII)	246	259	1.05	19.3%	80.7%	1.02	1.06	88.0%	82.0%	89.5%	88.8%	11.2%	98.0%	86.6%
General Administrative (III & IV)	717	811	1.13	8.3%	91.7%	1.08	1.14	82.1%	82.1%	82.3%	73.2%	26.8%	88.1%	71.9%
Clerical (III & IV)	717	811	1.13	8.3%	91.7%	1.08	1.14	82.1%	80.6%	82.3%	73.2%	26.8%	88.1%	71.9%
Management & Administrative	1,029	1,137	1.11	12.6%	87.4%	1.05	1.11	84.3%	83.9%	84.3%	78.3%	21.7%	93.7%	76.1%
Catering	64	69	1.08	31.9%	68.1%	1.01	1.12	92.8%	92.8%	91.5%	73.9%	26.1%	90.9%	66.0%
Household Services	441	507	1.15	20.9%	79.1%	1.08	1.17	86.4%	86.4%	89.3%	60.6%	39.4%	82.1%	54.9%
Other Support	41	50	1.21	32.0%	68.0%	1.03	1.31	88.0%	88.0%	85.3%	68.0%	32.0%	87.5%	58.8%
Portering	47	49	1.05	89.8%	10.2%	1.03	1.34	81.6%	81.6%	40.0%	87.8%	12.2%	88.6%	80.0%
Support	592	675	1.14	27.9%	72.1%	1.06	1.18	86.8%	81.9%	88.7%	64.4%	35.6%	85.1%	56.5%
Maintenance	138	141	1.02	99.3%	0.7%	1.02	1.00	95.7%	95.7%	100.0%	96.5%	3.5%	96.4%	100.0%
Maintenance/ Technical	138	141	1.02	99.3%	0.7%	1.02	1.00	95.7%	95.7%	100.0%	96.5%	3.5%	96.4%	100.0%
General Support	730	816	1.12	40.2%	59.8%	1.04	1.17	88.4%	87.8%	88.7%	70.0%	30.0%	89.9%	56.6%
Health Care Assistants	1,025	1,107	1.08	28.7%	71.3%	1.05	1.09	89.6%	84.6%	91.6%	78.1%	21.9%	89.6%	73.5%
Care, other	204	240	1.18	46.3%	53.8%	1.11	1.24	77.9%	73.9%	81.4%	67.5%	32.5%	76.6%	59.7%
Patient & Client Care	1,229	1,347	1.10	31.8%	68.2%	1.07	1.11	87.5%	81.8%	90.2%	76.2%	23.8%	86.2%	71.6%

Employment by WTE, Headcount, Gender, Full-Time /Part-Time etc.: Jan 2021

Mental Health Services CHO	WTE	Headcount	WTE: no.	% Male	% female	Male WTE: no.	Female WTE: no.	% Total Perm	% Male Perm	% Female Perm	% Total Full Time	% Total Part Time	% Male FT	% Female FT
Overall	10,367	11,487	1.11	26.8%	73.2%	1.06	1.13	82.3%	79.3%	83.4%	84.9%	15.1%	92.9%	81.9%
CHO 1	990	1,090	1.10	26.6%	73.4%	1.05	1.12	88.3%	88.3%	89.5%	87.6%	12.4%	97.2%	84.1%
CHO 2	1,354	1,475	1.09	28.0%	72.0%	1.06	1.10	85.4%	85.4%	87.3%	83.6%	16.4%	89.6%	81.3%
CHO 3	821	902	1.10	22.6%	77.4%	1.06	1.11	82.0%	82.0%	82.2%	84.3%	15.7%	90.2%	82.5%
CHO 4	1,575	1,750	1.11	25.3%	74.7%	1.07	1.13	73.3%	73.3%	75.6%	84.9%	15.1%	94.1%	81.8%
CHO 5	1,194	1,349	1.13	25.2%	74.8%	1.05	1.16	84.1%	84.1%	84.8%	79.6%	20.4%	91.2%	75.7%
CHO 6	633	712	1.12	29.2%	70.8%	1.07	1.15	81.5%	81.5%	82.3%	84.1%	15.9%	91.8%	81.0%
CHO 7	863	959	1.11	23.0%	77.0%	1.06	1.13	81.2%	81.2%	81.6%	87.4%	12.6%	95.5%	85.0%
CHO 8	1,114	1,224	1.10	24.5%	75.5%	1.03	1.12	86.3%	86.3%	86.8%	85.4%	14.6%	94.3%	82.5%
CHO 9	1,329	1,496	1.13	27.4%	72.6%	1.06	1.15	81.4%	81.4%	82.1%	85.0%	15.0%	94.4%	81.5%
other Community Services	495	530	1.07	46.6%	53.4%	1.07	1.07	83.2%	83.2%	85.2%	91.9%	8.1%	90.3%	93.3%

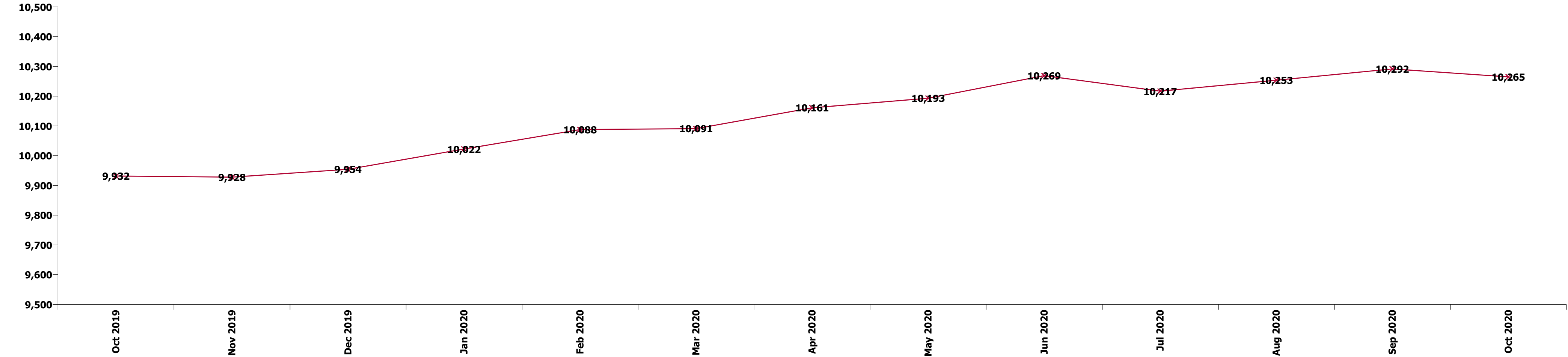
Summary Staff Movement: January 2021

Month-on-month
Summary

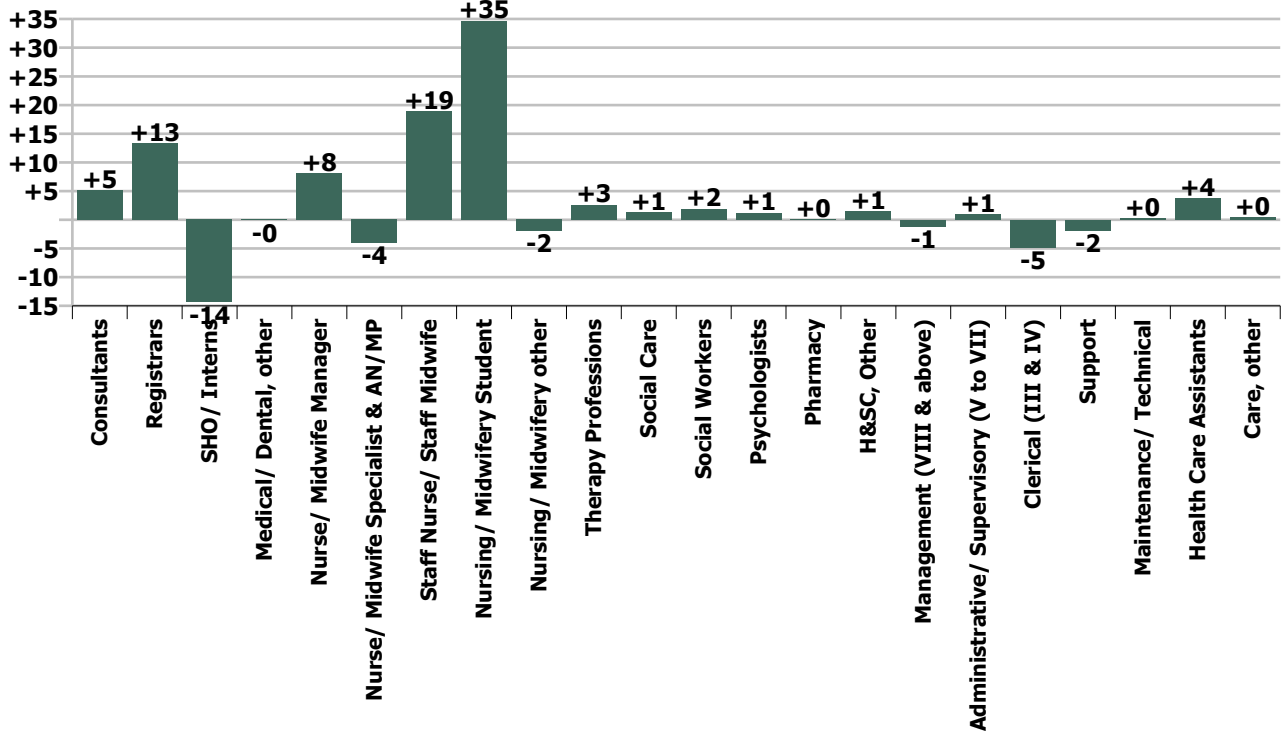
WTE change since Dec 20	% change since Dec 20	overall	Consultants	Registrars	SHO/ Interns	Medical/ Dental, other	Medical & Dental	Nurse/ Midwife Manager	Nurse/ Midwife Specialist & AN/MP	Staff Nurse/ Staff Midwife	Nursing/ Midwifery Student	Nursing/ Midwifery other	Nursing & Midwifery	Therapy Professions	Social Care	Social Workers	Psychologists	Pharmacy	H&SC, Other	Health & Social Care Professionals	Management (VIII & above)	Administrativ e/ Supervisory (V to VII)	Clerical (III & IV)	Management & Administrativ e	General Support	Health Care Assistants	Care, other	Patient & Client Care
Overall	+0.6%	+65	+5	+13	-14	-0	+4	+8	-4	+19	+35	-2	+56	+3	+1	+2	+1	+0	+1	+8	-1	+1	-5	-5	-2	+4	+0	+4
CHO 1	+1.5%	+15	+2	+4	-5		+1	+3	-0	+7	+4	+0	+15	+0	-0	+0	+0		+0	+1	-1	+1	-0	-0	-0	-1	-1	-2
CHO 2	+1.0%	+14	+1	-0	-3		-3	-1	-1	+12	+4	-0	+13		+0	+1	+2			+3		-3	+2	-1	+0	+0	+0	+1
CHO 3	+1.4%	+12	-0	+4	-2		+2	+0	-0	+2	+4		+6	+2		-1	+1		+0	+3		-1	+0	-1	-0	+2		+2
CHO 4	+0.7%	+11	+2	-0	+0	-0	+2	+6	+2	-7	+9		+7	+1	+0	-1	+0		-0	+1	-0	+3	-4	-1	+3	-0	-0	-0
CHO 5	+0.5%	+6	+0	-0	-0		-0	+5	+1	+1	+2	-0	+8	-2		-2	+0		+1	-2			+1	+1	-3	+2	-0	+2
CHO 6	+1.1%	+7	+1	+3	-1		+3	-1	+0	+1	+1	-0	+1	-0	+1	+1	-0		-0	+0		+1	-1	+0	+1	+2	+0	+2
CHO 7	+0.1%	+1	+0	+0	-1		-1	+1	-1	+5	-2	-1	+2	-0	+0	-0	-2		+0	-2	+0	+0	+0	+0	-0	+0	+1	+2
CHO 8	+0.2%	+2	+0	-1	+5		+4	-3	-2	-4	+6		-3	+1	+0	+1	+1	-0	+1	+4	-0	+0	-1	-1	-1	-1	+0	-1
CHO 9	-0.1%	-2	-0	+4	-6		-3	-1	+0	+1	+8	-1	+7	-1	-0	+1	-0	+0	+0	-1		-1	-3	-3	-2		+0	+0
other Community Services	+0.1%	+1	-0	-1			-1	-0	-0	+1		+0	-0	+0	+0	+1	+0			+1	-0	+1	+1	+1	-0	-1		-1
		+0.6%	+1.4%	+4.7%	-5.2%	-1.4%	+0.4%	+0.6%	-0.8%	+0.6%	+58.7%	-6.1%	+1.1%	+0.6%	+1.6%	+0.5%	+0.3%	+0.4%	+1.3%	+0.6%	-1.8%	+0.4%	-0.7%	-0.5%	-0.2%	+0.4%	+0.2%	+0.3%

Year-on-year Summary

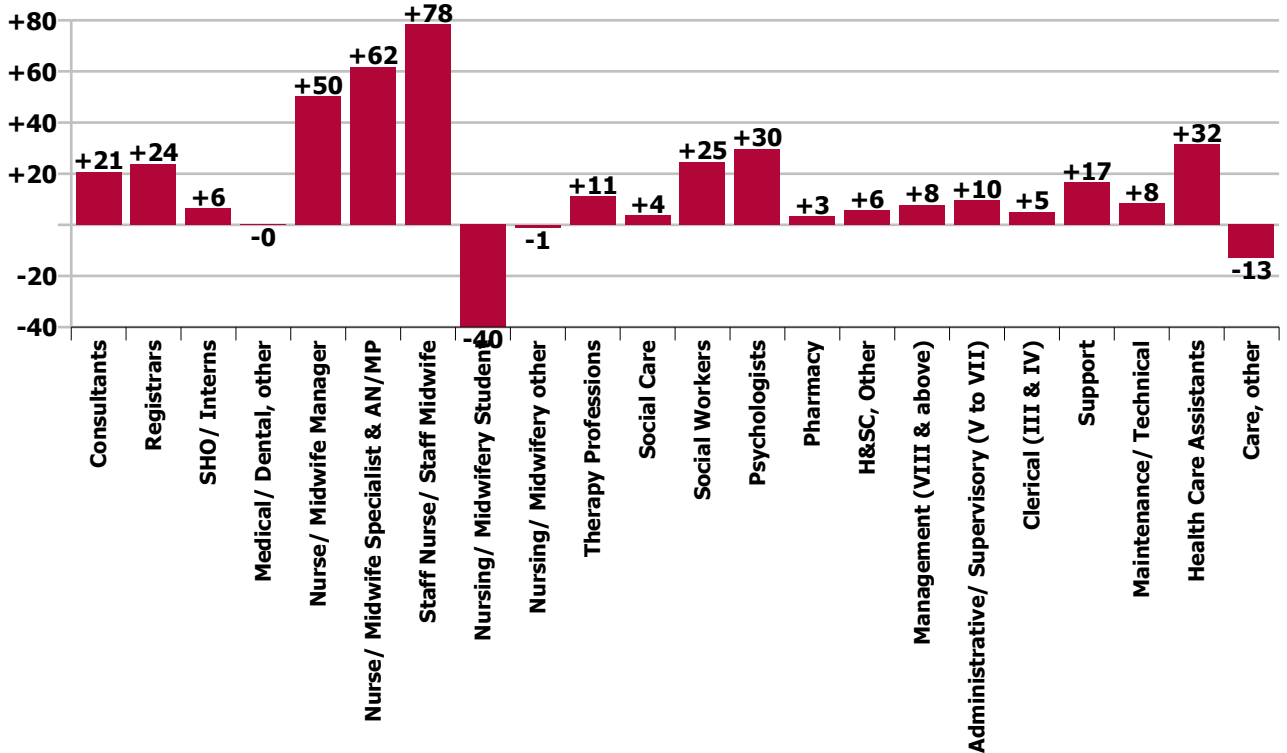
WTE change since Jan 20	% change since Jan 20	overall	Consultants	Registrars	SHO/ Interns	Medical/ Dental, other	Medical & Dental	Nurse/ Midwife Manager	Nurse/ Midwife Specialist & AN/MP	Staff Nurse/ Staff Midwife	Nursing/ Midwifery Student	Nursing/ Midwifery other	Nursing & Midwifery	Therapy Professions	Social Care	Social Workers	Psychologists	Pharmacy	H&SC, Other	Health & Social Care Professionals	Management (VIII & above)	Administrativ e/ Supervisory (V to VII)	Clerical (III & IV)	Management & Administrativ e	General Support	Health Care Assistants	Care, other	Patient & Client Care
Overall	+3.4%	+345	+21	+24	+6	-0	+51	+50	+62	+78	-40	-1	+149	+11	+4	+25	+30	+3	+6	+78	+8	+10	+5	+22	+25	+32	-13	+19
CHO 1	+2.4%	+23	+4	+10	-7		+7	+4	+6	-4	+3	+1	+9	-1	-0	+5	+2	-0	+0	+6	+0	+1	+0	+1	+2	-0	-1	-2
CHO 2	+2.8%	+37	+0	+2	+2		+4	+4	+9	+9	+7	-1	+28	+8	+0	+9	+1	+4	-1		+13	-1	+1	-3	+3	-4	-3	-7
CHO 3	+2.2%	+18	+1	+2	-1		+2	+1	-2	+21	-5		+15	+1	+0	-2	+1		+3	+3		+1	-4	-3	-4	+5	-1	+5
CHO 4	+3.8%	+57	+7	-5	+12	-0	+13	+20	+10	+4	-29		+5	+2	+3	+9	+11	+0	+1	+28	+2	+3	+1	+5	+6	+1	-1	+0
CHO 5	+0.4%	+5	+1	-1	+5		+5	+3	+12	-3	-9	+0	+4	-2		-1	+1		-1	-3	+3	-0	-5	-2	+5	-3	-1	-4
CHO 6	+6.3%	+38	+3	+2	+2		+6	-1	+4	+12	+2	-0	+17	-4	+0	+1	+9		+0	+6		-3	+1	-2	+4	+6	+1	+6
CHO 7	+4.5%	+37	+7	+9	+0		+16	+7	+6	+11	-6	-2	+16	+5	-0	+5	-5		+0	+5	+1	+3	+2	+6	-1	+1	-7	-5
CHO 8	+2.4%	+27	+1	+7	-5		+3	-1	+3	+8	+3	-1	+12	+0	+0	+4	-1	+1	+2	+6	-0	-2	+8	+6	+1	-1	-0	-1
CHO 9	+4.2%	+53	-4	+1	-1		-4	+3	+9	+25	-5	+1	+32	+1	+0	+1	+7	+2	+0	+11	+0	-1	+9	+9	+1	+4	-0	+4
other Community Services	+10.9%	+49	+1	-3			-2	+12	+4	-6		+1	+11	+0	+0	+2		+1		+3	+3	+7	-5	+5	+9	+22		+22
		+3.4%	+5.9%	+8.8%	+2.5%	-1.4%	+5.8%	+4.2%	+13.3%	+2.6%	-29.9%	-3.6%	+3.1%	+2.6%	+4.9%	+7.0%	+7.5%	+19.7%	+5.5%	+5.7%	+13.3%	+4.0%	+0.7%	+2.2%	+3.6%	+3.2%	-6.0%	+1.5%



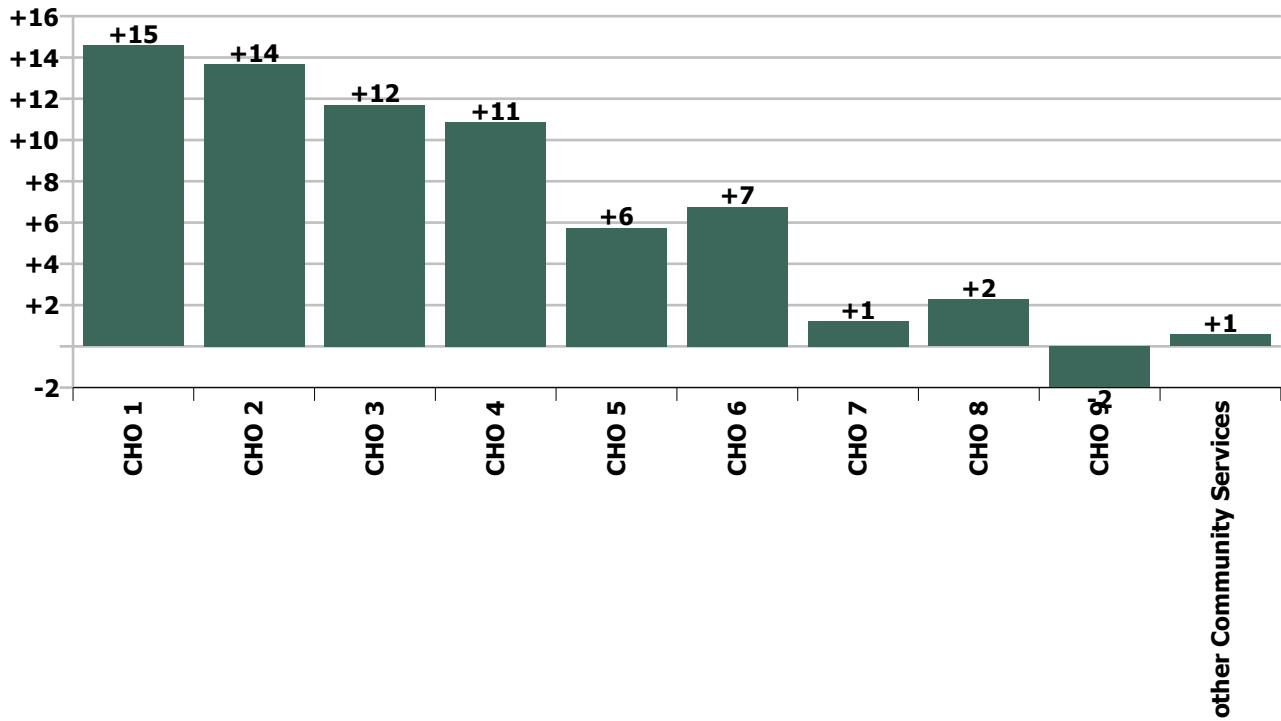
Staff Group change since: Dec 2020



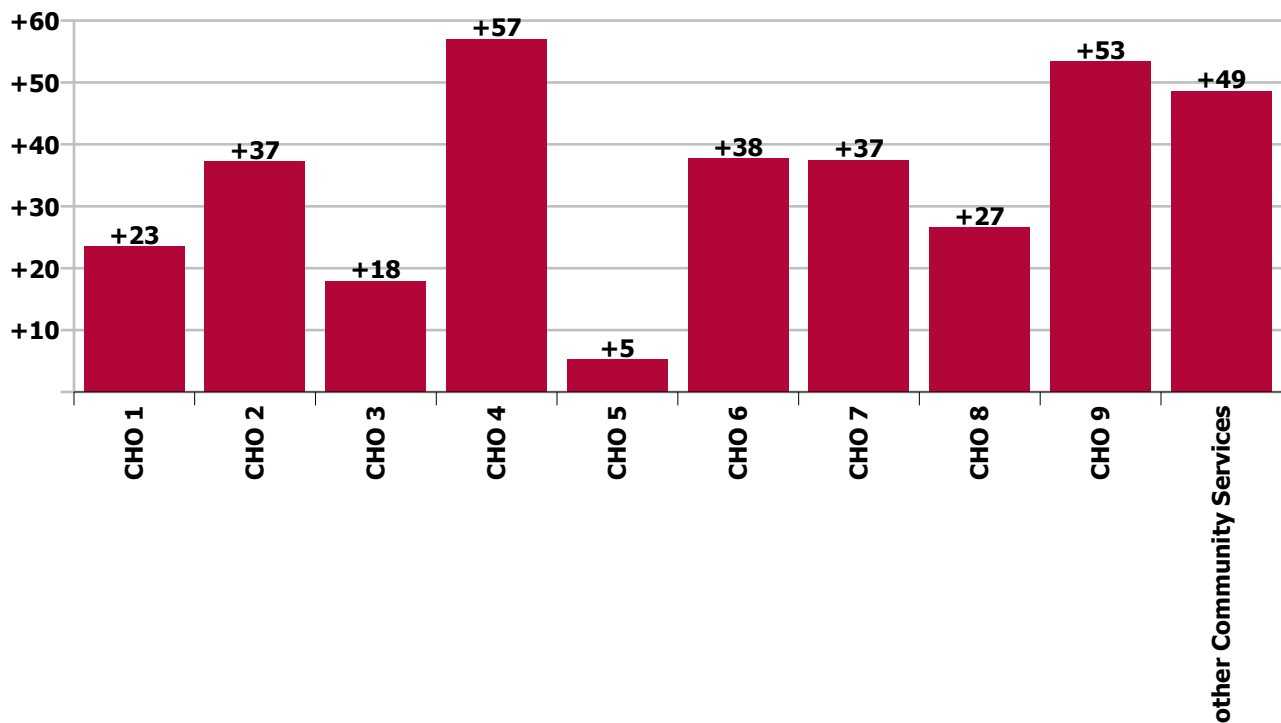
Staff Group change since: Jan 2020



CHO change since: Dec 2020



CHO change since: Jan 2020



Longitudinal Employment Levels by Grade Group - Oct 2013 to Jan 2021

Jan 2021 (Oct 2013 figure: 9,125)	WTE Jan 2021	WTE change since Oct 13	WTE change since Dec 15	WTE change since Dec 16	WTE change since Dec 17	WTE change since Dec 18	WTE change since Dec 19	% change since Oct 13	% change since Dec 15	% change since Dec 16	% change since Dec 17	% change since Dec 18	% change since Dec 19
Overall	10,367	+1,242	+868	+746	+577	+469	+413	+13.6%	+9.1%	+7.8%	+5.9%	+4.7%	+4.1%
Consultant Medicine	1				-0	-0					-9.1%	-9.1%	
Consultant Psychiatry	374	+86	+59	+59	+61	+44	+22	+29.7%	+18.7%	+18.7%	+19.7%	+13.3%	+6.3%
Consultants	375	+86	+59	+59	+61	+44	+22	+29.6%	+18.6%	+18.6%	+19.6%	+13.2%	+6.3%
Registrar	182	+64	+57	+50	+37	+28	+12	+54.0%	+46.2%	+37.5%	+25.6%	+18.0%	+7.3%
Senior Registrar	111	+47	+53	+44	+45	+25	+14	+75.0%	+93.2%	+65.0%	+68.3%	+28.9%	+14.0%
Specialist Registrar	2	+2	+1	+1		+1	-1	-100.0%	+102.0%	+100.0%		+100.0%	-20.0%
Registrars	294	+113	+112	+94	+82	+54	+25	+62.4%	+61.3%	+47.0%	+38.6%	+22.2%	+9.5%
<i>Intern</i>	4	-5	-9	-8	-6	-4		-55.6%	-69.2%	-66.7%	-60.0%	-50.0%	-50.0%
Interns	4	-5	-9	-8	-6	-4	-4	-55.6%	-69.2%	-66.7%	-60.0%	-50.0%	-50.0%
Senior House Officer	258	+38	+22	+11	-15	-12	+4	+17.3%	+9.3%	+4.3%	-5.4%	-4.3%	+1.8%
SHO/ Interns	262	+33	+13	+3	-21	-16	+0	+14.4%	+5.2%	+1.0%	-7.4%	-5.7%	+0.2%
Dentists					-0	-0		-100.0%	-100.0%	-100.0%	-100.0%	-100.0%	-100.0%
Other Medical	5	-5	-4	-5	-6	-2	-0	-51.9%	-43.7%	-48.8%	-54.6%	-24.0%	-1.4%
Medical/ Dental, other	5	-5	-4	-5	-6	-2	-0	-51.9%	-43.7%	-48.8%	-54.8%	-24.8%	-1.4%
Medical & Dental	936	+226	+180	+151	+117	+80		+31.9%	+23.8%	+19.2%	+14.2%	+9.3%	+5.4%
Clinical Nurse/ Midwife Manager	1,049	+255	+79	+42	+66	+43	+50	+32.2%	+8.2%	+4.2%	+6.7%	+4.2%	+5.0%
Director Nursing/Midwifery, Assistant	171	+66	+25	+16	+9	+7	+6	+63.1%	+17.0%	+10.1%	+5.6%	+4.3%	+3.9%
Director of Nursing/Midwifery	28	-0	-3	-4	-1	+4	-1	-1.6%	-8.6%	-11.8%	-1.9%	+17.8%	-3.3%
Nurse/ Midwife Manager	1,248	+321	+102	+54	+75	+54	+55	+34.7%	+8.9%	+4.5%	+6.4%	+4.5%	+4.6%
Advanced Nurse/ Midwife Practitioner	40	+31	+33	+32	+29	+19	+9	+340.1%	+465.9%	+429.5%	+277.2%	+96.7%	+28.9%
Clinical Nurse/ Midwife Specialist	485	+273	+178	+149	+102	+90	+57	+128.5%	+58.2%	+44.2%	+26.6%	+22.7%	+13.2%
Nurse/ Midwife Specialist & AN/MP	525	+303	+211	+181	+131	+109	+65	+137.1%	+67.3%	+52.5%	+33.3%	+26.3%	+14.2%
Graduate Nursing/ Midwifery		-48	-10					-100.0%	-100.0%	-100.0%	-100.0%	-100.0%	-100.0%
<i>Staff Midwife</i>	1	+1	+1	+1	+1	+1		-100.0%	-100.0%	-100.0%	-100.0%	-100.0%	-100.0%
Staff Midwives	1	+1	+1	+1	+1	+1	+1	-100.0%	-100.0%	-100.0%	-100.0%	-100.0%	-100.0%
Staff Nurse [Intellectual Disability]	4	+2	+2	+1	+1	-2	-0	+72.8%	+92.0%	+29.3%	+24.9%	-28.0%	-4.6%
Staff Nurse [Psychiatric]	2,985	-155	-107	-72	-42	+30	+92	-4.9%	-3.4%	-2.3%	-1.4%	+1.0%	+3.2%
Staff Nurses [General/ Children's]	105	-57	-20	-16	-13	-13	-0	-35.2%	-15.8%	-13.1%	-10.8%	-10.9%	-0.0%

Jan 2021 (Oct 2013 figure: 9,125)	WTE Jan 2021	WTE change since Oct 13	WTE change since Dec 15	WTE change since Dec 16	WTE change since Dec 17	WTE change since Dec 18	WTE change since Dec 19	% change since Oct 13	% change since Dec 15	% change since Dec 16	% change since Dec 17	% change since Dec 18	% change since Dec 19
Overall	10,367	+1,242	+868	+746	+577	+469	+413	+13.6%	+9.1%	+7.8%	+5.9%	+4.7%	+4.1%
Staff Nurse/ Staff Midwife	3,095	-257	-133	-86	-53	+16	+92	-7.7%	-4.1%	-2.7%	-1.7%	+0.5%	+3.1%
Public Health Nurse				-1	-1			-100.0%	-100.0%	-100.0%	-100.0%	-100.0%	-100.0%
<i>Student General Nursing Intern (pre-registration)</i>						-1		-100.0%	-100.0%	-100.0%	-100.0%	-100.0%	-100.0%
<i>Student Psychiatric Nursing Intern (pre-registration)</i>	63	+6	+45	+54	+46	+36		+10.4%	+247.1%	+623.4%	+272.0%	+132.0%	+127.6%
Pre-registration Nurse/ Midwife Intern	63	+6	+45	+54	+46	+35	+35	+10.4%	+247.1%	+623.4%	+272.0%	+124.8%	+127.6%
<i>Student Psychiatric Nursing Intern (COVID-19 HCA)</i>	26	+26	+26	+26	+26	+26		-100.0%	-100.0%	-100.0%	-100.0%	-100.0%	-100.0%
Pre-registration Nurse Intern (COVID-19)	26	+26	+26	+26	+26	+26	+26	-100.0%	-100.0%	-100.0%	-100.0%	-100.0%	-100.0%
<i>Student Public Health Nursing (post registration)</i>	1	+1	+1	+1	+1	+1		-100.0%	-100.0%	-100.0%	-100.0%	-100.0%	
Post-registration Nurse/ Midwife Student	1	+1	+1	+1	+1	+1		-100.0%	-100.0%	-100.0%	-100.0%	-100.0%	
Nursing/ Midwifery awaiting registration	4	+4	+4	+2	-5	-16	-55	-100.0%	-100.0%	+86.5%	-56.9%	-81.2%	-93.7%
Nursing/ Midwifery Student	94	+37	+76	+83	+68	+46	+6	+65.0%	+418.6%	+778.1%	+267.2%	+96.2%	+7.1%
Nursing Education/Clinical	30	+11	+11	+5	-1	-1	-2	+54.7%	+54.9%	+20.6%	-2.7%	-4.1%	-5.8%
Nursing/ Midwifery other	30	+11	+11	+5	-1	-1	-2	+54.7%	+54.9%	+20.6%	-2.7%	-4.1%	-5.8%
Nursing & Midwifery	4,991	+415	+266	+236	+219	+224		+9.1%	+5.6%	+5.0%	+4.6%	+4.7%	+4.6%
Dietitians	21	+20	+15	+7	+4	+1	+1	+2480.0%	+276.6%	+52.1%	+22.9%	+2.7%	+7.7%
Occupational Therapists	345	+91	+52	+46	+19	+6	+7	+35.7%	+17.8%	+15.2%	+5.9%	+1.8%	+2.0%
Physiotherapists	2	+0	+0	+0	+1	+1	+0	+9.0%	+9.0%	+19.9%	+99.2%	+49.7%	+8.1%
Podiatrists & Chiropodists	1	-1	-1	-1	-1	-0	+0	-38.5%	-46.1%	-54.4%	-43.5%	-32.0%	+13.7%
Speech & Language Therapists	72	+24	+20	+13	+11	+11	+11	+49.9%	+37.6%	+21.8%	+18.1%	+17.9%	+17.6%
Therapy Professions	442	+134	+87	+65	+35	+18	+19	+43.8%	+24.4%	+17.3%	+8.6%	+4.3%	+4.6%
Social Care	81	+3	-6	-7	-1	+3	+8	+3.3%	-7.3%	-7.6%	-1.6%	+3.3%	+10.4%
Social Workers	374	+101	+26	+24	+17	+16	+25	+36.8%	+7.3%	+7.0%	+4.8%	+4.5%	+7.1%
Psychologists	425	+174	+103	+82	+55	+36	+31	+69.5%	+31.8%	+24.0%	+14.8%	+9.4%	+7.8%
Pharmacy	21	+2	+4	+1	+1	+2	+2	+8.5%	+21.1%	+7.0%	+7.5%	+8.0%	+12.2%
Counsellor Therapists	103	+27	+15	+18	+17	+18	+8	+35.7%	+17.2%	+20.6%	+19.9%	+20.7%	+8.2%
HSCP Trainees/ Students		-8						-100.0%	-100.0%	-100.0%	-100.0%	-100.0%	-100.0%
Other Health & Social Care	5	-4	-2	-3	-3	-3	-6	-44.6%	-27.9%	-35.8%	-36.8%	-37.1%	-53.9%
Play Therapists/ Specialists	1	-1	-1	-1	-0		+0	-39.8%	-39.8%	-40.8%	-2.0%		+1.4%
H&SC, Other	109	+14	+12	+14	+14	+14	+1	+14.7%	+12.2%	+14.1%	+14.5%	+15.1%	+1.4%

Jan 2021 (Oct 2013 figure: 9,125)	WTE Jan 2021	WTE change since Oct 13	WTE change since Dec 15	WTE change since Dec 16	WTE change since Dec 17	WTE change since Dec 18	WTE change since Dec 19	% change since Oct 13	% change since Dec 15	% change since Dec 16	% change since Dec 17	% change since Dec 18	% change since Dec 19
Overall	10,367	+1,242	+868	+746	+577	+469	+413	+13.6%	+9.1%	+7.8%	+5.9%	+4.7%	+4.1%
Health & Social Care Professionals	1,453	+428	+224	+180	+121	+89		+41.7%	+18.2%	+14.1%	+9.1%	+6.5%	+6.3%
Executive Management	14	+13	+10	+7	+6	+4	+3	+1334.0%	+258.5%	+104.9%	+79.3%	+43.4%	+30.4%
Senior Management (VIII & GM)	52	+33	+23	+27	+20	+20	+5	+171.4%	+80.9%	+108.9%	+65.0%	+62.9%	+11.3%
Management (VIII & above)	66	+46	+33	+34	+27	+24	+9	+229.5%	+102.8%	+108.0%	+67.9%	+58.2%	+14.9%
Administrative/ Supervisory (V to VII)	246	+114	+97	+78	+46	+23	+9	+86.5%	+65.6%	+46.3%	+23.2%	+10.4%	+3.7%
Clerical (III & IV)	717	+105	+72	+56	+36	+22	-0	+17.2%	+11.1%	+8.5%	+5.2%	+3.1%	-0.0%
Management & Administrative	1,029	+265	+202	+168	+109	+69		+34.7%	+24.5%	+19.5%	+11.8%	+7.2%	+1.7%
Catering	64	-10	+1	-2	-2	-8	-2	-13.4%	+1.6%	-2.9%	-3.2%	-11.3%	-2.3%
Household Services	441	-190	-85	-52	-36	-5	+16	-30.2%	-16.1%	-10.5%	-7.5%	-1.1%	+3.8%
Other Support	41	-21	-11	-15	-8	-14	-1	-33.5%	-20.8%	-26.1%	-16.3%	-24.9%	-3.0%
Portering	47	-16	-12	-13	-2	-1	-2	-25.9%	-20.3%	-21.5%	-4.8%	-3.1%	-3.3%
Support	592	-238	-106	-81	-48	-28	+12	-28.6%	-15.2%	-12.0%	-7.5%	-4.5%	+2.0%
Maintenance	138	-31	-5	-5	-1	+3	+9	-18.2%	-3.8%	-3.8%	-0.8%	+2.4%	+6.7%
Technical Services		-2	-2	-2	-2	-2	-2	-100.0%	-100.0%	-100.0%	-100.0%	-100.0%	-100.0%
Maintenance/ Technical	138	-33	-7	-7	-3	+1	+7	-19.2%	-5.1%	-5.1%	-2.2%	+0.9%	+5.1%
General Support	730	-270	-114	-88	-51	-27		-27.0%	-13.5%	-10.8%	-6.6%	-3.6%	+2.6%
HCA, Nurse's Aide, etc.	1,017	+198	+106	+88	+68	+43	+38	+24.2%	+11.6%	+9.5%	+7.2%	+4.4%	+3.9%
Health & Social Care Assistants	8	+4	+5	+3	+3	+3	-1	+109.6%	+128.5%	+74.4%	+74.4%	+48.7%	-9.5%
Health Care Assistants	1,025	+202	+110	+92	+72	+46	+37	+24.6%	+12.0%	+9.8%	+7.5%	+4.7%	+3.8%
Other Care Grades	204	-25	-0	+8	-8	-12	-12	-11.0%	-0.1%	+4.0%	-3.9%	-5.5%	-5.5%
Care, other	204	-25	-0	+8	-8	-12	-12	-11.0%	-0.1%	+4.0%	-3.9%	-5.5%	-5.5%
Patient & Client Care	1,229	+177	+110	+100	+64	+34		+16.9%	+9.8%	+8.8%	+5.5%	+2.8%	+2.1%

Source: Health Service Personnel Census