

Mental Health Service Employment Report: July 2020

Employment by Staff Group

Jul 2020 (Dec 2019 figure: 9,954)	WTE Jun 2020	WTE Jul 2020	WTE change since Jun 20	% change since Jun 20	WTE change since Dec 19	WTE change since Jul 19
Overall	10,269	10,217	-52	-0.5%	+263	+240
Consultants	362	359	-3	-0.9%	+6	+22
Registrars	265	265	-1	-0.3%	-4	+12
SHO/ Interns	244	229	-15	-6.2%	-33	-9
Medical/ Dental, other	5	5				-1
Medical & Dental	876	857	-19	-2.2%	-31	+25
Nurse/ Midwife Manager	1,239	1,238	-1	-0.1%	+45	+11
Nurse/ Midwife Specialist & AN/MP	493	493	-0	-0.0%	+34	+40
Staff Nurse/ Staff Midwife	3,012	2,997	-15	-0.5%	-6	-15
<i>Pre-registration Nurse/ Midwife Intern</i>	3	29	+26	+971.9%	+1	-94
<i>Pre-registration Nurse Intern (COVID-19)</i>	231	195	-36	-15.7%	+195	+195
<i>Post-registration Nurse/ Midwife Student</i>				-100.0%		
<i>Nursing/ Midwifery awaiting registration</i>	12	8	-4	-33.2%	-12	+6
Nursing/ Midwifery Student	246	232	-14	-5.7%	+144	+107
Nursing/ Midwifery other	32	34	+2	+6.9%	+3	+6
Nursing & Midwifery	5,022	4,993	-29	-0.6%	+220	+149
Therapy Professions	437	431	-6	-1.4%	+9	+1
Social Care	76	76	-1	-0.9%	+2	-0
Social Workers	367	367	-0	-0.1%	+17	+29
Psychologists	403	407	+3	+0.9%	+12	+12
Pharmacy	21	18	-3	-12.3%	-0	-2
H&SC, Other	112	109	-3	-2.4%	+1	+12
Health & Social Care Professionals	1,416	1,407	-9	-0.6%	+41	+52
Management (VIII & above)	58	59	+0	+0.7%	+1	+3
Administrative/ Supervisory (V to VII)	242	242	+1	+0.4%	+6	+15
Clerical (III & IV)	705	707	+2	+0.3%	-10	-7
Management & Administrative	1,005	1,008	+3	+0.3%	-4	+10
Support	586	584	-2	-0.4%	+3	-10
Maintenance/ Technical	133	134	+1	+0.8%	+3	-3
General Support	719	718	-1	-0.2%	+6	-14
Health Care Assistants	1,019	1,024	+5	+0.5%	+36	+29
Care, other	212	209	-3	-1.3%	-7	-12
Patient & Client Care	1,231	1,233	+3	+0.2%	+30	+17

Mental Health Services Employment by Administration (HSE / S38): July 2020

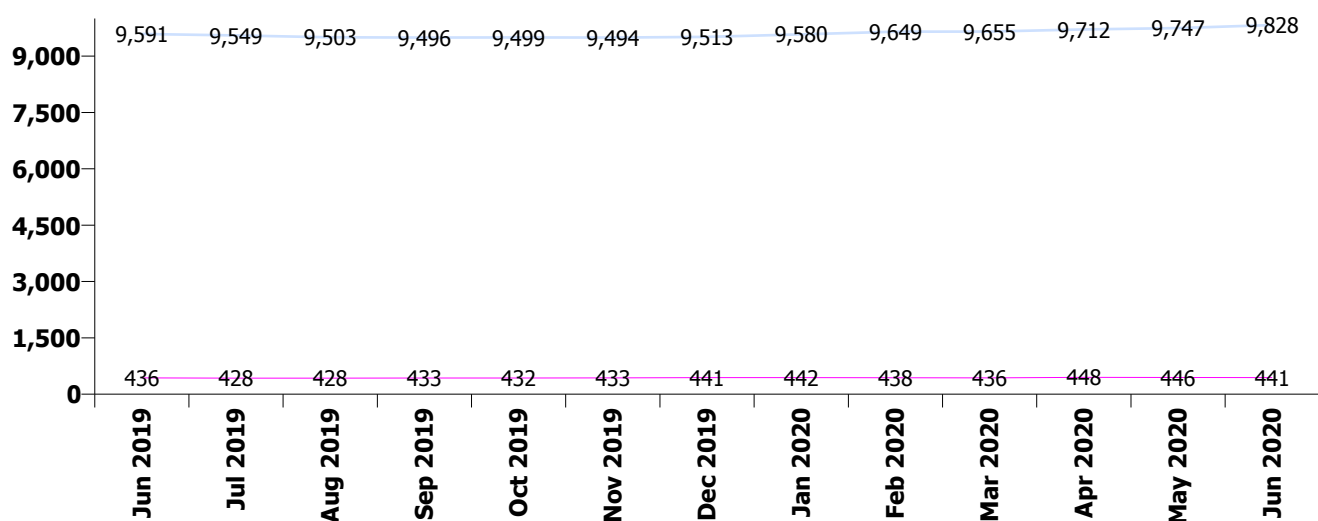
Jul 2020 (Dec 2019 figure: 9,954)	WTE Jun 2020	WTE Jul 2020	WTE change since Jun 20	% change since Jun 20	WTE change since Dec 19	WTE change since Jul 19
Overall	10,269	10,217	-52	-0.5%	+263	+240
HSE	9,828	9,776	-52	-0.5%	+263	+226
Section 38 Voluntary Agencies	441	441	+0	+0.0%	-0	+13

HSE

Jul 2020 (Dec 2019 figure: 9,513)	WTE Jun 2020	WTE Jul 2020	WTE change since Jun 20	% change since Jun 20	WTE change since Dec 19	WTE change since Jul 19
Overall	9,828	9,776	-52	-0.5%	+263	+226
Consultants	342	339	-3	-1.0%	+6	+23
Registrars	250	248	-2	-0.8%	-2	+13
SHO/ Interns	236	221	-15	-6.4%	-35	-9
Medical/ Dental, other	5	5				-1
Medical & Dental	833	813	-20	-2.5%	-30	+26
Nurse/ Midwife Manager	1,200	1,199	-1	-0.1%	+44	+8
Nurse/ Midwife Specialist & AN/MP	485	485	-0	-0.0%	+32	+39
Staff Nurse/ Staff Midwife	2,890	2,876	-14	-0.5%	-3	-13
Pre-registration Nurse/ Midwife Intern	3	29	+26	+971.9%	+9	-86
Pre-registration Nurse Intern (COVID-19)	218	182	-36	-16.7%	+182	+182
Post-registration Nurse/ Midwife Student				-100.0%		
Nursing/ Midwifery awaiting registration	12	8	-4	-33.2%	-12	+6
Nursing/ Midwifery Student	233	219	-14	-6.1%	+138	+101
Nursing/ Midwifery other	30	32	+2	+7.5%	+3	+6
Nursing & Midwifery	4,838	4,810	-28	-0.6%	+214	+141
Therapy Professions	408	406	-2	-0.5%	+15	+6
Social Care	50	50	-1	-1.4%	+2	+1
Social Workers	346	345	-0	-0.1%	+16	+26
Psychologists	388	387	-1	-0.1%	+9	+8
Pharmacy	19	16	-3	-13.4%	-1	-2
H&SC, Other	111	108	-3	-2.4%	+5	+11
Health & Social Care Professionals	1,322	1,313	-9	-0.7%	+46	+50
Management (VIII & above)	56	57	+0	+0.7%	+1	+3
Administrative/ Supervisory (V to VII)	221	222	+1	+0.4%	+6	+15
Clerical (III & IV)	660	662	+2	+0.3%	-10	-13
Management & Administrative	937	941	+3	+0.4%	-3	+5
Support	547	545	-2	-0.4%	+2	-11
Maintenance/ Technical	128	129	+1	+0.8%	+4	-2
General Support	675	674	-1	-0.2%	+6	-13
Health Care Assistants	1,013	1,018	+5	+0.5%	+36	+29
Care, other	209	207	-3	-1.3%	-7	-12
Patient & Client Care	1,222	1,225	+3	+0.2%	+30	+17

Section 38 Voluntary Agencies

Jul 2020 (Dec 2019 figure: 441)	WTE Jun 2020	WTE Jul 2020	WTE change since Jun 20	% change since Jun 20	WTE change since Dec 19	WTE change since Jul 19
Overall	441	441	+0	+0.0%	-0	+13
Consultants	20	20			-0	-1
Registrars	15	17	+1	+7.6%	-2	-1
SHO/ Interns	8	8			+2	+0
Medical & Dental	43	44	+1	+2.7%	-0	-2
Nurse/ Midwife Manager	39	39			+1	+4
Nurse/ Midwife Specialist & AN/MP	8	8			+1	+1
Staff Nurse/ Staff Midwife	122	121	-1	-0.8%	-2	-2
Pre-registration Nurse/ Midwife Intern				-100.0%	-8	-8
Pre-registration Nurse Intern (COVID-19)	13	13			+13	+13
Nursing/ Midwifery Student	13	13			+6	+6
Nursing/ Midwifery other	3	3				
Nursing & Midwifery	184	183	-1	-0.5%	+6	+9
Therapy Professions	28	24	-4	-14.0%	-7	-5
Social Care	26	26			+0	-1
Social Workers	22	22	+0	+0.0%	+2	+3
Psychologists	15	19	+4	+26.4%	+3	+4
Pharmacy	2	2			+0	+0
H&SC, Other	1	1			-4	+0
Health & Social Care Professionals	94	94			-5	+2
Management (VIII & above)	2	2				
Administrative/ Supervisory (V to VII)	21	21	+0	+0.0%	-1	-1
Clerical (III & IV)	45	45			-0	+6
Management & Administrative	67	67			-1	+5
Support	39	39	+0	+0.0%	+1	+1
Maintenance/ Technical	5	5			-1	-1
General Support	44	44			+0	-0
Health Care Assistants	6	6				
Care, other	3	3			+0	+0
Patient & Client Care	9	9			+0	+0



Mental Health Services Employment by CHO: Jul 2020

Jul 2020 (Dec 2019 figure: 9,954)	WTE Jun 2020	WTE Jul 2020	WTE change since Jun 20	% change since Jun 20	WTE change since Dec 19	WTE change since Jul 19
Overall	10,269	10,217	-52	-0.5%	+263	+240
CHO 1	978	970	-8	-0.8%	+18	+16
CHO 2	1,341	1,334	-6	-0.5%	+26	+13
CHO 3	817	810	-7	-0.8%	+15	+14
CHO 4	1,585	1,571	-14	-0.9%	+86	+61
CHO 5	1,183	1,186	+3	+0.3%	+9	-3
CHO 6	596	596	+0	+0.0%	+4	+19
CHO 7	866	851	-16	-1.8%	+16	+17
CHO 8	1,122	1,122	+0	+0.0%	+24	+21
CHO 9	1,308	1,297	-11	-0.8%	+26	+7
other Community Services	473	479	+6	+1.3%	+41	+76

Mental Health Services Employment by CHO etc. Jul 2020

CHO 1

Jul 2020 (Dec 2019 figure: 953)	WTE Jun 2020	WTE Jul 2020	WTE change since Jun 20	% change since Jun 20	WTE change since Dec 19	WTE change since Jul 19
Overall	978	970	-8	-0.8%	+18	+16
Consultants	33	33	-0	-0%	+2	+3
Registrars	23	24	+1	+2%	-1	-3
SHO/ Interns	26	23	-3	-12%	-2	+5
Medical & Dental	83	80	-3	-3.3%	-1	+5
Nurse/ Midwife Manager	120	122	+1	+1%	+5	+2
Nurse/ Midwife Specialist & AN/MP	66	65	-1	-2%	-3	-3
Staff Nurse/ Staff Midwife	292	290	-2	-1%	-7	-12
<i>Pre-registration Nurse/ Midwife Intern</i>		5	+5	-100%	+5	-3
<i>Pre-registration Nurse Intern (COVID-19)</i>	25	13	-12	-49%	+13	+13
<i>Nursing/ Midwifery awaiting registration</i>				-100%	-1	
Nursing/ Midwifery Student	25	18	-7	-29%	+18	+10
Nursing/ Midwifery other	1	1	-0	-6%	+1	+1
Nursing & Midwifery	505	496	-9	-1.7%	+14	-2
Therapy Professions	36	36	+0	+0%	+1	+2
Social Care	4	3	-0	-12%	-0	-0
Social Workers	40	39	-1	-2%	+0	+1
Psychologists	22	22	+0	+0%	+1	+2
Pharmacy	1	1	+0	+4%	+0	+0
H&SC, Other	12	12	+0	+1%	-1	+2
Health & Social Care Professionals	115	114	-1	-0.9%	+1	+7
Management (VIII & above)	7	7	+1	+9%	+2	+1
Administrative/ Supervisory (V to VII)	30	31	+0	+1%	+1	+4
Clerical (III & IV)	84	84	+0	+0%	-2	+2
Management & Administrative	121	122	+1	+0.9%	+1	+7
Support	63	64	+0	+1%	+1	+1
Maintenance/ Technical	17	17	-0	-0%	+0	+0
General Support	80	80	+0	+0.4%	+1	+2
Health Care Assistants	64	68	+3	+5%	+1	-2
Care, other	11	11	-0	-1%	+0	-1
Patient & Client Care	76	79	+3	+4.0%	+2	-3

CHO 2

Jul 2020 (Dec 2019 figure: 1,308)	WTE Jun 2020	WTE Jul 2020	WTE change since Jun 20	% change since Jun 20	WTE change since Dec 19	WTE change since Jul 19
Overall	1,341	1,334	-6	-0.5%	+26	+13
Consultants	39	39	-0	-1%	+1	+5
Registrars	35	37	+1	+4%	+4	+9
SHO/ Interns	33	32	-1	-3%	-3	+3
Medical/ Dental, other	1	1	0			
Medical & Dental	108	108	+0	+0.2%	+2	+18
Nurse/ Midwife Manager	144	146	+2	+1%	-0	-5
Nurse/ Midwife Specialist & AN/MP	74	74	+0	+0%	+6	+5
Staff Nurse/ Staff Midwife	352	349	-4	-1%	-9	-4
<i>Pre-registration Nurse/ Midwife Intern</i>				-100%		-13
<i>Pre-registration Nurse Intern (COVID-19)</i>	31	31	0		+31	+31
<i>Nursing/ Midwifery awaiting registration</i>				-100%	-11	
Nursing/ Midwifery Student	31	31	0		+26	+19
Nursing/ Midwifery other	3	3	0		+1	+1
Nursing & Midwifery	603	601	-2	-0.3%	+24	+14
Therapy Professions	52	54	+2	+3%	+9	+6
Social Care	15	14	-1	-6%	-1	+1
Social Workers	43	42	-1	-2%	+2	+1
Psychologists	36	36	+0	+0%	+3	-2
Pharmacy	3	2	-1	-37%	-1	-1
H&SC, Other	3	3	0			
Health & Social Care Professionals	152	151	-1	-0.6%	+12	+6
Management (VIII & above)	4	4	0		-1	-3
Administrative/ Supervisory (V to VII)	24	25	+1	+5%	+2	+2
Clerical (III & IV)	107	103	-4	-3%	-6	-9
Management & Administrative	135	132	-2	-1.8%	-5	-9
Support	33	33	0		-3	-2
Maintenance/ Technical	28	29	+1	+3%	+2	-2
General Support	61	62	+1	+1.2%	-1	-4
Health Care Assistants	212	210	-2	-1%	-5	-9
Care, other	70	69	-1	-1%	-0	-3
Patient & Client Care	282	279	-3	-0.9%	-5	-12

CHO 3

Jul 2020 (Dec 2019 figure: 795)	WTE Jun 2020	WTE Jul 2020	WTE change since Jun 20	% change since Jun 20	WTE change since Dec 19	WTE change since Jul 19
Overall	817	810	-7	-0.8%	+15	+14
Consultants	23	23	-0	-0%	-0	-0
Registrars	19	17	-2	-11%	-1	-2
SHO/ Interns	20	17	-3	-16%	-2	-2
Medical & Dental	62	56	-5	-8.6%	-4	-4
Nurse/ Midwife Manager	90	91	+1	+1%	+4	+8
Nurse/ Midwife Specialist & AN/MP	35	35	-1	-2%	-5	-0
Staff Nurse/ Staff Midwife	260	259	-1	-0%	+14	+7
<i>Pre-registration Nurse/ Midwife Intern</i>				-100%	-9	-10
<i>Pre-registration Nurse Intern (COVID-19)</i>	20	19	-1	-3%	+19	+19
Nursing/ Midwifery Student	20	19	-1	-3%	+10	+9
Nursing & Midwifery	405	404	-1	-0.2%	+23	+24
Therapy Professions	25	24	-0	-1%	-2	-5
Social Care	3	3	0		+0	+0
Social Workers	26	26	+0	+0%	+1	+1
Psychologists	90	89	-1	-1%	-3	+1
Pharmacy	3	3	0			
H&SC, Other	13	14	+1	+5%	+4	+3
Health & Social Care Professionals	160	159	-1	-0.5%	-0	-0
Management (VIII & above)	3	3	0		+1	+1
Administrative/ Supervisory (V to VII)	19	18	-1	-6%	+1	-0
Clerical (III & IV)	53	52	-1	-2%	-4	-5
Management & Administrative	75	72	-2	-3.1%	-2	-4
Support	30	30	-0	-0%	-2	-2
Maintenance/ Technical	10	10	0		-1	-1
General Support	40	40	-0	-0.3%	-3	-3
Health Care Assistants	75	77	+2	+3%	+2	+2
Care, other	1	1	0		-1	-1
Patient & Client Care	76	78	+2	+3.1%	+1	+1

CHO 4

Jul 2020 (Dec 2019 figure: 1,485)	WTE Jun 2020	WTE Jul 2020	WTE change since Jun 20	% change since Jun 20	WTE change since Dec 19	WTE change since Jul 19
Overall	1,585	1,571	-14	-0.9%	+86	+61
Consultants	53	53	-0	-1%	+3	+3
Registrars	47	46	-1	-2%	+0	+1
SHO/ Interns	31	28	-4	-13%	-3	-3
Medical/ Dental, other	2	2	0			-1
Medical & Dental	134	129	-5	-4.0%	+0	-0
Nurse/ Midwife Manager	190	188	-3	-1%	+18	-5
Nurse/ Midwife Specialist & AN/MP	70	70	+0	+0%	+10	+14
Staff Nurse/ Staff Midwife	507	513	+6	+1%	+11	-4
<i>Pre-registration Nurse/ Midwife Intern</i>				-100%	-1	-19
<i>Pre-registration Nurse Intern (COVID-19)</i>	24	24	0		+24	+24
<i>Post-registration Nurse/ Midwife Student</i>				-100%		
<i>Nursing/ Midwifery awaiting registration</i>	8	4	-4	-50%	+4	+4
Nursing/ Midwifery Student	32	28	-4	-13%	-6	+9
Nursing & Midwifery	799	798	-1	-0.1%	+33	+14
Therapy Professions	79	78	-1	-1%	+5	+2
Social Care	6	7	+1	+11%	+3	+1
Social Workers	61	61	-0	-0%	+8	+8
Psychologists	88	86	-2	-2%	+4	+6
Pharmacy	4	3	-0	-7%	+1	-0
H&SC, Other	17	14	-2	-14%	+4	+4
Health & Social Care Professionals	255	250	-5	-1.8%	+23	+21
<i>Executive Management</i>	1	1	0		+1	+1
<i>Senior Management (VIII & GM)</i>				-100%		-1
Management (VIII & above)	1	1	0			
Administrative/ Supervisory (V to VII)	24	23	-1	-2%	+1	+2
Clerical (III & IV)	89	92	+3	+3%	+5	+3
Management & Administrative	114	116	+2	+1.7%	+5	+5
Support	86	84	-2	-2%	+5	+3
Maintenance/ Technical	6	6	-0	-5%	-0	-0
General Support	92	90	-2	-2.5%	+4	+3
Health Care Assistants	182	182	-1	-0%	+21	+20
Care, other	8	6	-2	-25%	-1	-1
Patient & Client Care	190	188	-3	-1.5%	+20	+19

CHO 5

Jul 2020 (Dec 2019 figure: 1,178)	WTE Jun 2020	WTE Jul 2020	WTE change since Jun 20	% change since Jun 20	WTE change since Dec 19	WTE change since Jul 19
Overall	1,183	1,186	+3	+0.3%	+9	-3
Consultants	26	26	-1	-3%	-1	-1
Registrars	14	12	-2	-12%	+2	+2
SHO/ Interns	24	28	+4	+17%	-4	-2
Medical/ Dental, other	2	2	0			
Medical & Dental	66	68	+1	+2.1%	-3	-0
Nurse/ Midwife Manager	159	158	-1	-1%	-7	-11
Nurse/ Midwife Specialist & AN/MP	51	50	-0	-0%	+8	+1
Staff Nurse/ Staff Midwife	404	401	-2	-1%	-14	-1
<i>Pre-registration Nurse/ Midwife Intern</i>				-100%	-1	-19
<i>Pre-registration Nurse Intern (COVID-19)</i>	24	30	+6	+27%	+30	+30
<i>Nursing/ Midwifery awaiting registration</i>				-100%		
Nursing/ Midwifery Student	24	30	+6	+27%	+25	+11
Nursing/ Midwifery other	4	3	-0	-3%	-0	-0
Nursing & Midwifery	641	643	+2	+0.4%	+12	+0
Therapy Professions	41	41	+0	+1%	+1	-0
Social Care	4	4	-0	-2%	-0	+0
Social Workers	26	26	-1	-2%	-2	-2
Psychologists	23	23	+0	+0%	+2	+2
H&SC, Other	10	10	0		-0	-0
Health & Social Care Professionals	104	104	-0	-0.3%	+0	-1
Management (VIII & above)	5	5	0		+2	+2
Administrative/ Supervisory (V to VII)	19	20	+1	+4%	-0	-0
Clerical (III & IV)	70	68	-2	-2%	-5	-3
Management & Administrative	94	93	-1	-1.0%	-4	-2
Support	171	171	+0	+0%	+4	+2
Maintenance/ Technical	24	24	0		+1	+1
General Support	195	196	+0	+0.2%	+5	+4
Health Care Assistants	71	72	+1	+1%	-1	-2
Care, other	12	12	-0	-3%	-1	-1
Patient & Client Care	83	83	+0	+0.6%	-2	-4

CHO 6

Jul 2020 (Dec 2019 figure: 593)	WTE Jun 2020	WTE Jul 2020	WTE change since Jun 20	% change since Jun 20	WTE change since Dec 19	WTE change since Jul 19
Overall	596	596	+0	+0.0%	+4	+19
Consultants	38	38	-0	-1%	+2	+4
Registrars	18	19	+0	+2%	-3	-2
SHO/ Interns	12	13	+1	+10%	+4	+1
Medical/ Dental, other				-100%		
Medical & Dental	68	69	+1	+2.0%	+3	+4
Nurse/ Midwife Manager	76	75	-1	-1%	-1	-2
Nurse/ Midwife Specialist & AN/MP	15	15	0		+1	+3
Staff Nurse/ Staff Midwife	149	150	+1	+1%	+11	+9
Nursing/ Midwifery other	2	2	0			+0
Nursing & Midwifery	242	242	+0	+0.1%	+11	+10
Therapy Professions	39	35	-4	-11%	-8	-2
Social Care	26	26	0		+0	-2
Social Workers	32	32	-1	-2%	+2	+4
Psychologists	22	26	+4	+19%	+4	+4
H&SC, Other	5	4	-1	-10%	-4	-0
Health & Social Care Professionals	124	123	-1	-0.9%	-6	+4
Management (VIII & above)	3	3	0			
Administrative/ Supervisory (V to VII)	25	25	-0	-0%	-2	-1
Clerical (III & IV)	41	41	+1	+1%	-1	+9
Management & Administrative	69	69	+0	+0.7%	-3	+8
Support	36	36	-0	-0%	-0	-5
Maintenance/ Technical	4	4	0		-2	-2
General Support	40	40	-0	-0.4%	-2	-7
Health Care Assistants	47	46	-1	-2%	+1	-1
Care, other	5	5	+0	+10%	-0	-0
Patient & Client Care	52	52	-1	-1.1%	+1	-1

CHO 7

Jul 2020 (Dec 2019 figure: 835)	WTE Jun 2020	WTE Jul 2020	WTE change since Jun 20	% change since Jun 20	WTE change since Dec 19	WTE change since Jul 19
Overall	866	851	-16	-1.8%	+16	+17
Consultants	50	51	+1	+3%	+4	+8
Registrars	40	44	+4	+9%	-3	+1
SHO/ Interns	20	16	-4	-19%	-5	+3
Medical & Dental	110	111	+1	+1.1%	-3	+12
Nurse/ Midwife Manager	120	117	-3	-2%	+1	+3
Nurse/ Midwife Specialist & AN/MP	46	45	-2	-4%	+5	+7
Staff Nurse/ Staff Midwife	200	198	-3	-1%	+3	-12
<i>Pre-registration Nurse/ Midwife Intern</i>				-100%	-6	-14
<i>Pre-registration Nurse Intern (COVID-19)</i>	29	17	-12	-42%	+17	+17
<i>Nursing/ Midwifery awaiting registration</i>	4	4	+0	+1%		+3
Nursing/ Midwifery Student	33	21	-12	-37%	+9	+6
Nursing/ Midwifery other	7	8	+1	+22%	+0	+1
Nursing & Midwifery	406	388	-18	-4.4%	+18	+5
Therapy Professions	47	45	-2	-4%	-3	-2
Social Care	8	8	+0	+0%	-0	-0
Social Workers	37	38	+1	+3%	+4	+6
Psychologists	29	30	+2	+6%	-1	+1
<i>Pharmacy</i>	1	1	0		+1	
Pharmacy	1	1	0			
H&SC, Other	18	18	-0	-1%	-0	+3
Health & Social Care Professionals	139	139	+1	+0.6%	-1	+7
Management (VIII & above)	3	3	0			
Administrative/ Supervisory (V to VII)	18	17	-1	-6%	+1	+4
Clerical (III & IV)	48	51	+3	+7%	+5	+1
Management & Administrative	69	71	+2	+3.2%	+5	+6
Support	17	16	-1	-8%	-2	-5
Maintenance/ Technical	2	2	0		+0	
General Support	19	18	-1	-7.2%	-2	-5
Health Care Assistants	35	34	-1	-2%	+1	-3
Care, other	89	89	-0	-0%	-3	-5
Patient & Client Care	124	123	-1	-0.6%	-2	-8

CHO 8

Jul 2020 (Dec 2019 figure: 1,098)	WTE Jun 2020	WTE Jul 2020	WTE change since Jun 20	% change since Jun 20	WTE change since Dec 19	WTE change since Jul 19
Overall	1,122	1,122	+0	+0.0%	+24	+21
Consultants	36	35	-0	-1%	+0	+1
Registrars	23	22	-2	-7%	-4	+0
SHO/ Interns	33	30	-3	-9%	-6	-1
Medical & Dental	92	87	-5	-5.3%	-10	-1
Nurse/ Midwife Manager	123	123	+0	+0%	+2	-2
Nurse/ Midwife Specialist & AN/MP	59	58	-0	-1%	+2	+2
Staff Nurse/ Staff Midwife	324	325	+1	+0%	-6	+5
<i>Pre-registration Nurse/ Midwife Intern</i>	2	7	+4	+197%	+7	-12
<i>Pre-registration Nurse Intern (COVID-19)</i>	26	27	+1	+3%	+27	+27
<i>Nursing/ Midwifery awaiting registration</i>				-100%	-1	-1
Nursing/ Midwifery Student	28	33	+5	+18%	+31	+14
Nursing/ Midwifery other	4	4	0		+0	+2
Nursing & Midwifery	537	544	+6	+1.2%	+29	+21
Therapy Professions	45	43	-1	-3%	-1	-3
Social Care	7	7	+0	+0%		-0
Social Workers	45	45	-0	-0%	+3	+4
Psychologists	37	37	-0	-1%	-2	-4
Pharmacy	2	1	-1	-61%	-0	-0
H&SC, Other	20	20	+0	+0%	-0	+1
Health & Social Care Professionals	156	153	-2	-1.5%	-0	-1
Management (VIII & above)	3	3	+0	+1%	+0	
Administrative/ Supervisory (V to VII)	21	21	+0	+1%	-1	-0
Clerical (III & IV)	100	100	+1	+1%	+12	+15
Management & Administrative	124	125	+1	+0.6%	+11	+15
Support	31	32	+0	+1%	-1	-2
Maintenance/ Technical	27	27	+1	+3%	+1	-2
General Support	58	59	+1	+1.8%	+0	-4
Health Care Assistants	151	151	-1	-0%	-6	-9
Care, other	4	4	0			
Patient & Client Care	155	154	-1	-0.3%	-6	-9

CHO 9

Jul 2020 (Dec 2019 figure: 1,272)	WTE Jun 2020	WTE Jul 2020	WTE change since Jun 20	% change since Jun 20	WTE change since Dec 19	WTE change since Jul 19
Overall	1,308	1,297	-11	-0.8%	+26	+7
Consultants	47	45	-2	-5%	-5	-4
Registrars	34	31	-3	-8%	+0	+7
SHO/ Interns	44	42	-2	-5%	-11	-11
Medical & Dental	125	118	-7	-5.7%	-16	-8
Nurse/ Midwife Manager	139	140	+1	+0%	+8	+4
Nurse/ Midwife Specialist & AN/MP	68	70	+2	+3%	+5	+6
Staff Nurse/ Staff Midwife	356	347	-10	-3%	-4	-13
<i>Pre-registration Nurse/ Midwife Intern</i>	1	17	+17	+3336%	+5	-5
<i>Pre-registration Nurse Intern (COVID-19)</i>	52	34	-18	-35%	+34	+34
<i>Nursing/ Midwifery awaiting registration</i>				-100%	-3	
Nursing/ Midwifery Student	53	51	-2	-3%	+30	+29
Nursing/ Midwifery other	12	12	+1	+8%	+1	+1
Nursing & Midwifery	628	621	-8	-1.2%	+40	+28
Therapy Professions	61	61	+0	+1%	+6	+3
Social Care	1	1	+0	+3%	+0	-0
Social Workers	43	44	+1	+1%	+0	+1
Psychologists	49	50	+1	+1%	+4	+1
Pharmacy	7	7	-0	-3%	-1	-1
H&SC, Other	14	13	-0	-2%	-1	-0
Health & Social Care Professionals	175	176	+1	+0.6%	+9	+3
Management (VIII & above)	5	5	0			+0
Administrative/ Supervisory (V to VII)	28	28	-1	-2%	-0	+0
Clerical (III & IV)	95	99	+4	+4%	-5	-11
Management & Administrative	128	131	+3	+2.2%	-5	-11
Support	102	102	-0	-0%	-2	-4
Maintenance/ Technical	11	11	-0	-2%	-0	-0
General Support	113	112	-1	-0.6%	-2	-4
Health Care Assistants	126	127	+1	+0%	+1	-1
Care, other	12	12	+0	+0%	-0	-1
Patient & Client Care	138	139	+1	+0.4%	+0	-1

other Community Services

Jul 2020 (Dec 2019 figure: 438)	WTE Jun 2020	WTE Jul 2020	WTE change since Jun 20	% change since Jun 20	WTE change since Dec 19	WTE change since Jul 19
Overall	473	479	+6	+1.3%	+41	+76
Consultants	17	17	-0	-1%	+1	+3
Registrars	12	14	+2	+17%	+1	-3
SHO/ Interns				-100%		
Medical & Dental	29	31	+2	+6.7%	+2	-0
Nurse/ Midwife Manager	78	79	+1	+1%	+16	+21
Nurse/ Midwife Specialist & AN/MP	9	11	+2	+19%	+3	+4
Staff Nurse/ Staff Midwife	168	165	-3	-2%	-4	+9
Nursing/ Midwifery other	1	1	0			
Nursing & Midwifery	256	256	-1	-0.2%	+15	+34
Therapy Professions	13	13	-0	-0%	+2	+1
Social Care	2	2	0		+0	+0
Social Workers	14	15	+1	+4%	-0	+2
Psychologists	7	7	+0	+2%	+1	+1
<i>Pharmacy</i>	<i>1</i>	<i>1</i>	<i>-0</i>	<i>-17%</i>	<i>+1</i>	<i>+1</i>
Pharmacy	1	1	-0	-17%	+1	+1
Health & Social Care Professionals	37	37	+1	+1.4%	+3	+6
Management (VIII & above)	25	25	-0	-1%	-2	+2
Administrative/ Supervisory (V to VII)	33	35	+2	+6%	+4	+3
Clerical (III & IV)	19	17	-2	-9%	-8	-9
Management & Administrative	77	77	-0	-0.2%	-7	-4
Support	15	16	+1	+5%	+4	+4
Maintenance/ Technical	4	4	0		+2	+2
General Support	19	20	+1	+4.1%	+6	+6
Health Care Assistants	55	58	+3	+6%	+22	+34
Care, other	1	1	0			
Patient & Client Care	56	59	+3	+6.3%	+22	+34

Mental Health Services Employment by Grade Group: Jul 2020

Jul 2020 (Dec 2019 figure: 9,954)	WTE Jun 2020	WTE Jul 2020	WTE change since Jun 20	% change since Jun 20	WTE change since Dec 19	WTE change since Jul 19
Overall	10,269	10,217	-52	-0.5%	+263	+240
Consultant Medicine	1	1	0			+0
Consultant Psychiatry	361	358	-3	-1%	+6	+22
Consultants	362	359	-3	-1%	+6	+22
Registrar	173	169	-4	-2%	-0	-0
Senior Registrar	90	94	+4	+4%	-3	+13
Specialist Registrar	3	2	-1	-40%	-1	-1
Registrars	265	265	-1	-0%	-4	+12
Interns	4	5	+1	+34%	-3	-2
Senior House Officer	240	223	-16	-7%	-30	-7
SHO/ Interns	244	229	-15	-6%	-33	-9
Dentists				-100%		-0
Other Medical	5	5	0			-1
Medical/ Dental, other	5	5	0			-1
Medical & Dental	876	857	-19	-2%	-31	+25
Clinical Nurse/ Midwife Manager	1,035	1,032	-2	-0%	+33	+2
Director Nursing/Midwifery, Assistant	176	177	+1	+0%	+12	+9
Director of Nursing/Midwifery	29	29	-0	-0%		+0
Nurse/ Midwife Manager	1,239	1,238	-1	-0%	+45	+11
Advanced Nurse/ Midwife Practitioner	36	36	+0	+1%	+6	+7
Clinical Nurse/ Midwife Specialist	457	456	-0	-0%	+28	+33
Nurse/ Midwife Specialist & AN/MP	493	493	-0	-0%	+34	+40
Staff Midwives	1	1	0		+1	+1
Staff Nurse [Intellectual Disability]	4	4	-0	-5%	-0	-0
Staff Nurse [Psychiatric]	2,891	2,874	-17	-1%	-19	-21
Staff Nurses [General/ Children's]	116	117	+1	+1%	+12	+6
Staff Nurse/ Staff Midwife	3,012	2,997	-15	-1%	-6	-15
Pre-registration Nurse/ Midwife Intern	3	29	+26	+972%	+1	-94
Pre-registration Nurse Intern (COVID-19)	231	195	-36	-16%	+195	+195
Post-registration Nurse/ Midwife Student				-100%	-1	
Nursing/ Midwifery awaiting registration	12	8	-4	-33%	-51	+6
Nursing/ Midwifery Student	246	232	-14	-6%	+144	+107
Nursing Education/Clinical	32	34	+2	+7%	+3	+6
Nursing/ Midwifery other	32	34	+2	+7%	+3	+6
Nursing & Midwifery	5,022	4,993	-29	-1%	+220	+149
Dietitians	20	20	+0	+2%	+1	
Occupational Therapists	350	347	-2	-1%	+9	+8
Physiotherapists	3	3	0		+0	+0
Podiatrists & Chiropodists	1	1	-0	-6%	+0	+0
Speech & Language Therapists	64	60	-4	-6%	-2	-7
Therapy Professions	437	431	-6	-1%	+9	+1
Social Care	76	76	-1	-1%	+2	-0
Social Workers	367	367	-0	-0%	+17	+29
Psychologists	403	407	+3	+1%	+12	+12
Pharmacy	21	18	-3	-12%	-0	-2
Counsellor Therapists	104	102	-2	-2%	+7	+13
Other Health & Social Care	6	6	-0	-3%	-6	-2
Play Therapists/ Specialists	1	1	0		+0	+0
H&SC, Other	112	109	-3	-2%	+1	+12
Health & Social Care Professionals	1,416	1,407	-9	-1%	+41	+52
Executive Management	12	12	0		+1	+2

Jul 2020 (Dec 2019 figure: 9,954)	WTE Jun 2020	WTE Jul 2020	WTE change since Jun 20	% change since Jun 20	WTE change since Dec 19	WTE change since Jul 19
Overall	10,269	10,217	-52	-0.5%	+263	+240
Senior Management (VIII & GM)	46	47	+0	+1%	+0	+1
Management (VIII & above)	58	59	+0	+1%	+1	+3
Middle Management (V-VII)	240	241	+1	+0%	+6	+15
Other Administrative	2	2	0			
Administrative/ Supervisory (V to VII)	242	242	+1	+0%	+6	+15
General Administrative (III & IV)	705	707	+2	+0%	-10	-7
Clerical (III & IV)	705	707	+2	+0%	-10	-7
Management & Administrative	1,005	1,008	+3	+0%	-4	+10
Catering	63	64	+1	+1%	-1	-6
Household Services	437	434	-3	-1%	+10	+0
Other Support	39	38	-1	-2%	-5	-5
Portering	47	48	+0	+0%	-0	+1
Support	586	584	-2	-0%	+3	-10
Maintenance	131	132	+1	+1%	+3	-3
Technical Services	2	2	0			
Maintenance/ Technical	133	134	+1	+1%	+3	-3
General Support	719	718	-1	-0%	+6	-14
HCA, Nurse's Aide, etc.	1,011	1,015	+4	+0%	+36	+28
Health & Social Care Assistants	8	9	+1	+12%	-0	+1
Health Care Assistants	1,019	1,024	+5	+1%	+36	+29
Care, other	212	209	-3	-1%	-7	-12
Patient & Client Care	1,231	1,233	+3	+0%	+30	+17

Employment by WTE, Headcount, Gender, Full-Time /Part-Time etc.: Jul 2020

Mental Health Services Staff Group	WTE	Headcount	WTE: no.	% Male	% female	Male WTE: no.	Female WTE: no.	% Total Perm	% Male Perm	% Female Perm	% Total Full Time	% Total Part Time	% Male FT	% Female FT
Overall	10,217	11,215	1.10	27.2%	72.8%	1.06	1.11	87.0%	84.0%	88.1%	81.3%	18.7%	91.2%	77.6%
Consultant Medicine	1	1	1.00	100.0%		1.00		100.0%	100.0%		100.0%	0.0%	100.0%	
Consultant Psychiatry	358	388	1.08	40.7%	59.3%	1.04	1.12	78.1%	78.1%	77.0%	85.1%	14.9%	92.4%	80.0%
Consultants	359	389	1.08	40.9%	59.1%	1.04	1.12	78.1%	79.9%	77.0%	85.1%	14.9%	92.5%	80.0%
Registrar	169	193	1.14	43.5%	56.5%	1.08	1.19	7.8%	7.8%	5.5%	95.9%	4.1%	100.0%	92.7%
Senior Registrar	94	125	1.33	40.8%	59.2%	1.36	1.31	4.0%	4.0%	6.8%	94.4%	5.6%	98.0%	91.9%
Specialist Registrar	2	2	1.33		100.0%		1.33	0.0%	0.0%	0.0%	50.0%	50.0%		50.0%
Registrars	265	320	1.21	42.2%	57.8%	1.17	1.24	6.3%	6.7%	5.9%	95.0%	5.0%	99.3%	91.9%
Interns	5	7	1.31	28.6%	71.4%	1.00	1.50	0.0%	0.0%	0.0%	100.0%	0.0%	100.0%	100.0%
Senior House Officer	223	257	1.15	40.9%	59.1%	1.14	1.16	7.4%	7.4%	3.3%	99.2%	0.8%	100.0%	98.7%
SHO/ Interns	229	264	1.15	40.5%	59.5%	1.13	1.17	7.2%	13.1%	3.2%	99.2%	0.8%	100.0%	98.7%
Other Medical	5	10	2.00	50.0%	50.0%	2.02	1.98	90.0%	90.0%	80.0%	40.0%	60.0%	40.0%	40.0%
Medical/ Dental, other	5	10	2.00	50.0%	50.0%	2.02	1.98	90.0%	100.0%	80.0%	40.0%	60.0%	40.0%	40.0%
Medical & Dental	857	983	1.15	41.3%	58.7%	1.11	1.17	35.8%	38.2%	34.1%	91.7%	8.3%	96.1%	88.6%
Clinical Nurse/ Midwife Manager	1,032	1,082	1.05	33.8%	66.2%	1.01	1.07	99.4%	99.4%	99.6%	88.7%	11.3%	98.1%	83.9%
Director Nursing/Midwifery, Assistant	177	180	1.02	46.7%	53.3%	1.01	1.03	99.4%	99.4%	99.0%	97.2%	2.8%	98.8%	95.8%
Director of Nursing/Midwifery	29	29	1.00	51.7%	48.3%	1.00	1.01	96.6%	96.6%	92.9%	100.0%	0.0%	100.0%	100.0%
Nurse/ Midwife Manager	1,238	1,291	1.04	36.0%	64.0%	1.01	1.06	99.3%	99.1%	99.4%	90.2%	9.8%	98.3%	85.6%
Advanced Nurse/ Midwife Practitioner	36	38	1.05	21.1%	78.9%	1.01	1.06	100.0%	100.0%	100.0%	86.8%	13.2%	100.0%	83.3%
Clinical Nurse/ Midwife Specialist	456	489	1.07	20.2%	79.8%	1.02	1.09	99.4%	99.4%	99.2%	87.5%	12.5%	97.0%	85.1%
Nurse/ Midwife Specialist & AN/MP	493	527	1.07	20.3%	79.7%	1.02	1.08	99.4%	100.0%	99.3%	87.5%	12.5%	97.2%	85.0%
Staff Midwives	1	1	1.00		100.0%		1.00	0.0%	0.0%	0.0%	100.0%	0.0%		100.0%
Staff Nurse [Intellectual Disability]	4	5	1.18		100.0%		1.18	40.0%	40.0%	40.0%	100.0%	0.0%		100.0%
Staff Nurse [Psychiatric]	2,874	3,107	1.08	26.4%	73.6%	1.05	1.09	95.4%	95.4%	95.9%	83.3%	16.7%	88.6%	81.3%
Staff Nurses [General/ Children's]	117	131	1.12	19.1%	80.9%	1.13	1.11	84.0%	84.0%	85.8%	73.3%	26.7%	80.0%	71.7%
Staff Nurse/ Staff Midwife	2,997	3,244	1.08	26.0%	74.0%	1.06	1.09	94.9%	93.5%	95.3%	82.9%	17.1%	88.4%	81.0%
Pre-registration Nurse/ Midwife Intern	29	39	1.35	17.9%	82.1%	1.55	1.31	0.0%	0.0%	0.0%	100.0%	0.0%	100.0%	100.0%
Pre-registration Nurse Intern (COVID-19)	195	213	1.09	23.5%	76.5%	1.07	1.10	26.8%	26.8%	25.8%	98.1%	1.9%	100.0%	97.5%
Nursing/ Midwifery awaiting registration	8	8	1.00	12.5%	87.5%	1.00	1.00	100.0%	100.0%	100.0%	100.0%	0.0%	100.0%	100.0%
Nursing/ Midwifery Student	232	260	1.12	22.3%	77.7%	1.11	1.13	25.0%	27.6%	24.3%	98.5%	1.5%	100.0%	98.0%

Nursing Education/Clinical	34	36	1.05	13.9%	86.1%	1.00	1.06	100.0%	100.0%	100.0%	83.3%	16.7%	100.0%	80.6%
Nursing/ Midwifery other	34	36	1.05	13.9%	86.1%	1.00	1.06	100.0%	100.0%	100.0%	83.3%	16.7%	100.0%	80.6%
Nursing & Midwifery	4,993	5,358	1.07	27.6%	72.4%	1.04	1.09	93.0%	93.2%	93.0%	85.9%	14.1%	92.6%	83.3%
Health & Social Care	1,407	1,580	1.12	16.9%	83.1%	1.05	1.14	90.0%	86.9%	90.6%	77.0%	23.0%	89.5%	74.4%
Executive Management	12	12	1.00	58.3%	41.7%	1.00	1.00	100.0%	100.0%	100.0%	100.0%	0.0%	100.0%	100.0%
Senior Management (VIII & GM)	47	48	1.03	29.2%	70.8%	1.03	1.03	95.8%	95.8%	97.1%	95.8%	4.2%	92.9%	97.1%
Management (VIII & above)	59	60	1.02	35.0%	65.0%	1.02	1.03	96.7%	95.2%	97.4%	96.7%	3.3%	95.2%	97.4%
Middle Management (V-VII)	241	255	1.06	20.0%	80.0%	1.01	1.07	91.0%	91.0%	91.7%	86.3%	13.7%	96.1%	83.8%
Other Administrative	2	2	1.27		100.0%		1.27	100.0%	100.0%	100.0%	50.0%	50.0%		50.0%
Administrative/ Supervisory (V to VII)	242	257	1.06	19.8%	80.2%	1.01	1.07	91.1%	88.2%	91.7%	86.0%	14.0%	96.1%	83.5%
General Administrative (III & IV)	707	806	1.14	8.8%	91.2%	1.07	1.15	87.8%	87.8%	88.2%	71.5%	28.5%	85.9%	70.1%
Clerical (III & IV)	707	806	1.14	8.8%	91.2%	1.07	1.15	87.8%	84.5%	88.2%	71.5%	28.5%	85.9%	70.1%
Management & Administrative	1,008	1,123	1.11	12.7%	87.3%	1.04	1.13	89.0%	87.4%	89.3%	76.1%	23.9%	90.9%	74.0%
Catering	64	70	1.10	32.9%	67.1%	1.04	1.13	98.6%	98.6%	97.9%	62.9%	37.1%	82.6%	53.2%
Household Services	434	513	1.18	21.6%	78.4%	1.11	1.20	94.0%	94.0%	95.0%	52.2%	47.8%	73.0%	46.5%
Other Support	38	46	1.21	30.4%	69.6%	1.09	1.27	97.8%	97.8%	96.9%	67.4%	32.6%	85.7%	59.4%
Portering	48	50	1.05	90.0%	10.0%	1.04	1.10	88.0%	88.0%	60.0%	88.0%	12.0%	88.9%	80.0%
Support	584	679	1.16	28.4%	71.6%	1.08	1.20	94.3%	92.2%	95.1%	57.0%	43.0%	78.8%	48.4%
Maintenance	132	135	1.02	99.3%	0.7%	1.02	1.00	97.8%	97.8%	100.0%	95.6%	4.4%	95.5%	100.0%
Technical Services	2	2	1.00	100.0%		1.00		100.0%	100.0%		100.0%	0.0%	100.0%	
Maintenance/ Technical	134	137	1.02	99.3%	0.7%	1.02	1.00	97.8%	97.8%	100.0%	95.6%	4.4%	95.6%	100.0%
General Support	718	816	1.14	40.3%	59.7%	1.06	1.20	94.9%	94.5%	95.1%	63.5%	36.5%	85.7%	48.5%
Health Care Assistants	1,024	1,110	1.08	28.3%	71.7%	1.05	1.10	91.4%	86.3%	93.5%	77.6%	22.4%	90.1%	72.6%
Care, other	209	245	1.17	44.1%	55.9%	1.10	1.23	85.3%	81.5%	88.3%	67.8%	32.2%	78.7%	59.1%
Patient & Client Care	1,233	1,355	1.10	31.1%	68.9%	1.06	1.12	90.3%	85.1%	92.7%	75.8%	24.2%	87.2%	70.6%

Employment by WTE, Headcount, Gender, Full-Time /Part-Time etc.: Jul 2020

Mental Health Services CHO	WTE	Headcount	WTE: no.	% Male	% female	Male WTE: no.	Female WTE: no.	% Total Perm	% Male Perm	% Female Perm	% Total Full Time	% Total Part Time	% Male FT	% Female FT
Overall	10,217	11,215	1.10	27.2%	72.8%	1.06	1.11	87.0%	84.0%	88.1%	81.3%	18.7%	91.2%	77.6%
CHO 1	970	1,048	1.08	26.9%	73.1%	1.02	1.10	89.1%	89.1%	90.2%	87.0%	13.0%	97.2%	83.3%
CHO 2	1,334	1,452	1.09	28.2%	71.8%	1.05	1.11	86.0%	86.0%	87.7%	83.1%	16.9%	89.7%	80.5%
CHO 3	810	872	1.08	23.2%	76.8%	1.04	1.09	82.3%	82.3%	83.1%	83.8%	16.2%	89.6%	82.1%
CHO 4	1,571	1,722	1.10	25.7%	74.3%	1.05	1.11	94.7%	94.7%	96.4%	72.3%	27.7%	87.8%	66.9%
CHO 5	1,186	1,297	1.09	26.4%	73.6%	1.05	1.11	97.7%	97.7%	97.7%	68.8%	31.2%	85.7%	62.7%
CHO 6	596	664	1.11	30.0%	70.0%	1.07	1.14	81.3%	81.3%	81.7%	82.8%	17.2%	91.0%	79.4%
CHO 7	851	972	1.14	23.4%	76.6%	1.10	1.16	80.7%	80.7%	81.5%	87.0%	13.0%	95.6%	84.4%
CHO 8	1,122	1,220	1.09	24.4%	75.6%	1.03	1.11	84.8%	84.8%	85.1%	84.4%	15.6%	93.6%	81.5%
CHO 9	1,297	1,455	1.12	28.0%	72.0%	1.08	1.14	81.1%	81.1%	82.6%	84.7%	15.3%	93.9%	81.2%
other Community Services	479	513	1.07	45.8%	54.2%	1.07	1.07	81.7%	81.7%	83.1%	91.8%	8.2%	91.1%	92.4%

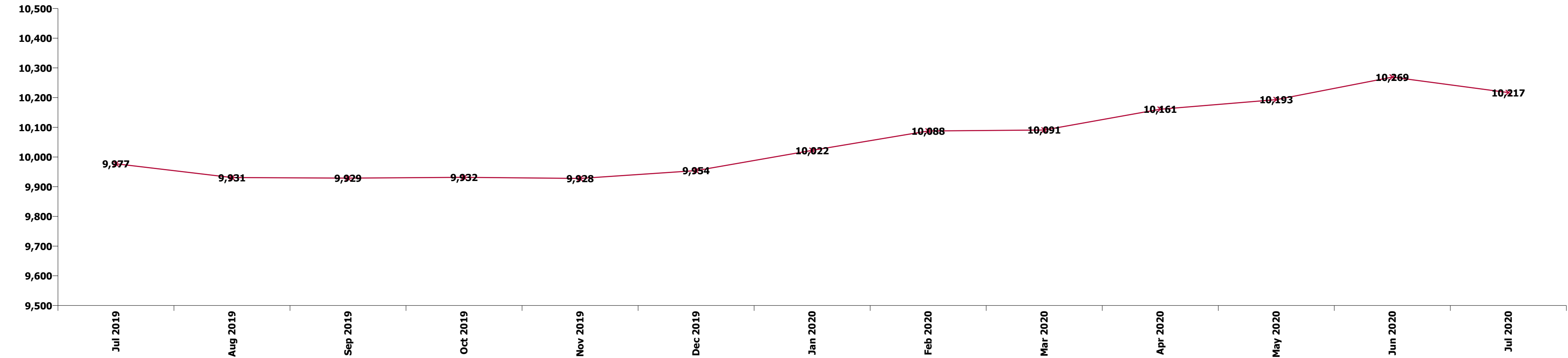
Summary Staff Movement: July 2020

Month-on-month
Summary

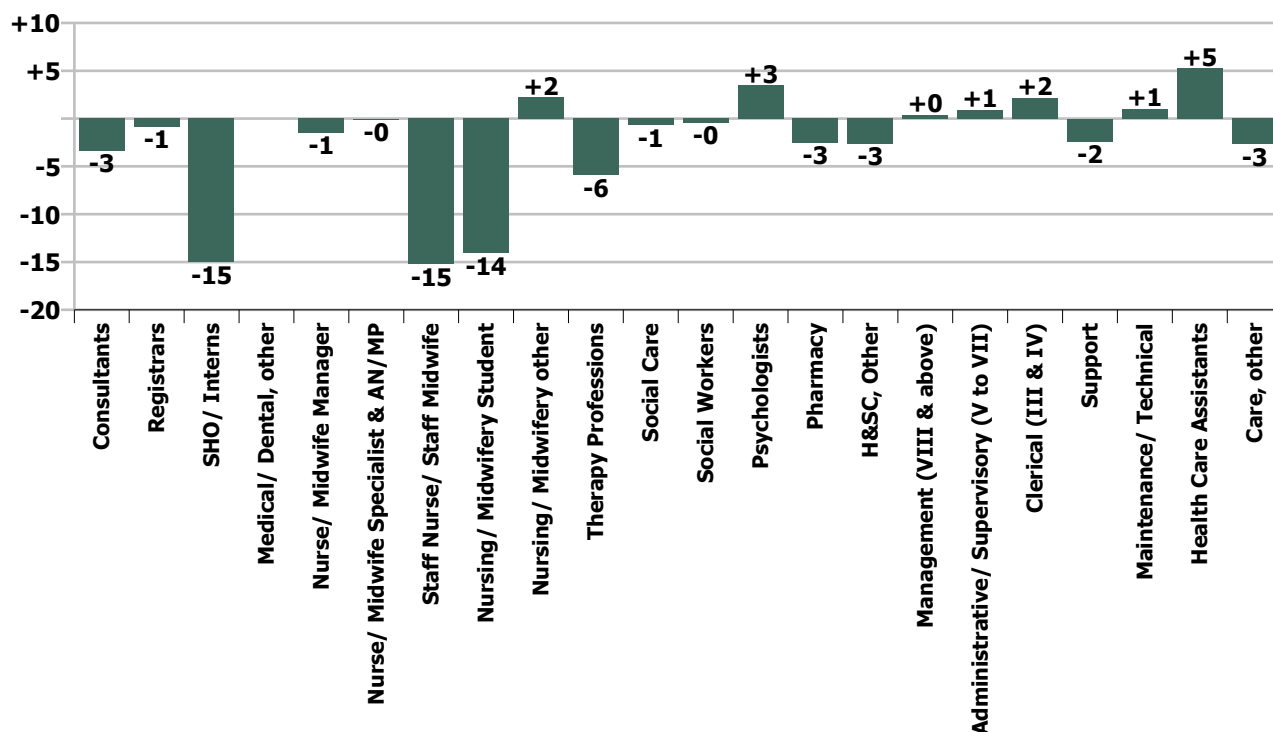
WTE change since Jun 20	% change since Jun 20	overall	Consultants	Registrars	SHO/ Interns	Medical/ Dental, other	Medical & Dental	Nurse/ Midwife Manager	Nurse/ Midwife Specialist & AN/MP	Staff Nurse/ Staff Midwife	Nursing/ Midwifery Student	Nursing/ Midwifery other	Nursing & Midwifery	Therapy Professions	Social Care	Social Workers	Psychologists	Pharmacy	H&SC, Other	Health & Social Care Professionals	Management (VIII & above)	Administrativ e/ Supervisory (V to VII)	Clerical (III & IV)	Management & Administrativ e	General Support	Health Care Assistants	Care, other	Patient & Client Care	
Overall	-0.5%	-52	-3	-1	-15		-19	-1	-0	-15	-14	+2	-29	-6	-1	-0	+3	-3	-3	-9	+0	+1	+2	+3	-1	+5	-3	+3	
CHO 1	-0.8%	-8	-0	+1	-3		-3	+1	-1	-2	-7	-0	-9	+0	-0	-1	+0	+0	+0	-1	+1	+0	+0	+1	+0	+3	-0	+3	
CHO 2	-0.5%	-6	-0	+1	-1		+0	+2	+0	-4			-2	+2	-1	-1	+0	-1		-1		+1	-4	-2	+1	-2	-1	-3	
CHO 3	-0.8%	-7	-0	-2	-3		-5	+1	-1	-1	-1		-1	-0		+0	-1		+1	-1		-1	-1	-2	-0	+2		+2	
CHO 4	-0.9%	-14	-0	-1	-4		-5	-3	+0	+6	-4		-1	-1	+1	-0	-2	-0	-2	-5		-1	+3	+2	-2	-1	-2	-3	
CHO 5	+0.3%	+3	-1	-2	+4		+1	-1	-0	-2	+6	-0	+2	+0	-0	-1	+0			-0		+1	-2	-1	+0	+1	-0	+0	
CHO 6	+0.0%	+0	-0	+0	+1		+1	-1		+1			+0	-4		-1	+4		-1	-1		-0	+1	+0	-0	-1	+0	-1	
CHO 7	-1.8%	-16	+1	+4	-4		+1	-3	-2	-3	-12	+1	-18	-2	+0	+1	+2			-0	+1		-1	+3	+2	-1	-1	-0	-1
CHO 8	+0.0%	+0	-0	-2	-3		-5	+0	-0	+1	+5		+6	-1	+0	-0	-0	-1	+0	-2	+0	+0	+1	+1	+1	-1		-1	
CHO 9	-0.8%	-11	-2	-3	-2		-7	+1	+2	-10	-2	+1	-8	+0	+0	+1	+1	-0	-0	+1		-1	+4	+3	-1	+1	+0	+1	
other Community Services	+1.3%	+6	-0	+2			+2	+1	+2	-3			-1	-0		+1	+0	-0		+1	-0	+2	-2	-0	+1	+3		+3	
		-0.5%	-0.9%	-0.3%	-6.2%		-2.2%	-0.1%	-0.0%	-0.5%	-5.7%	+6.9%	-0.6%	-1.4%	-0.9%	-0.1%	+0.9%	-12.3%	-2.4%	-0.6%	+0.7%	+0.4%	+0.3%	+0.3%	-0.2%	+0.5%	-1.3%	+0.2%	

Year-on-year Summary

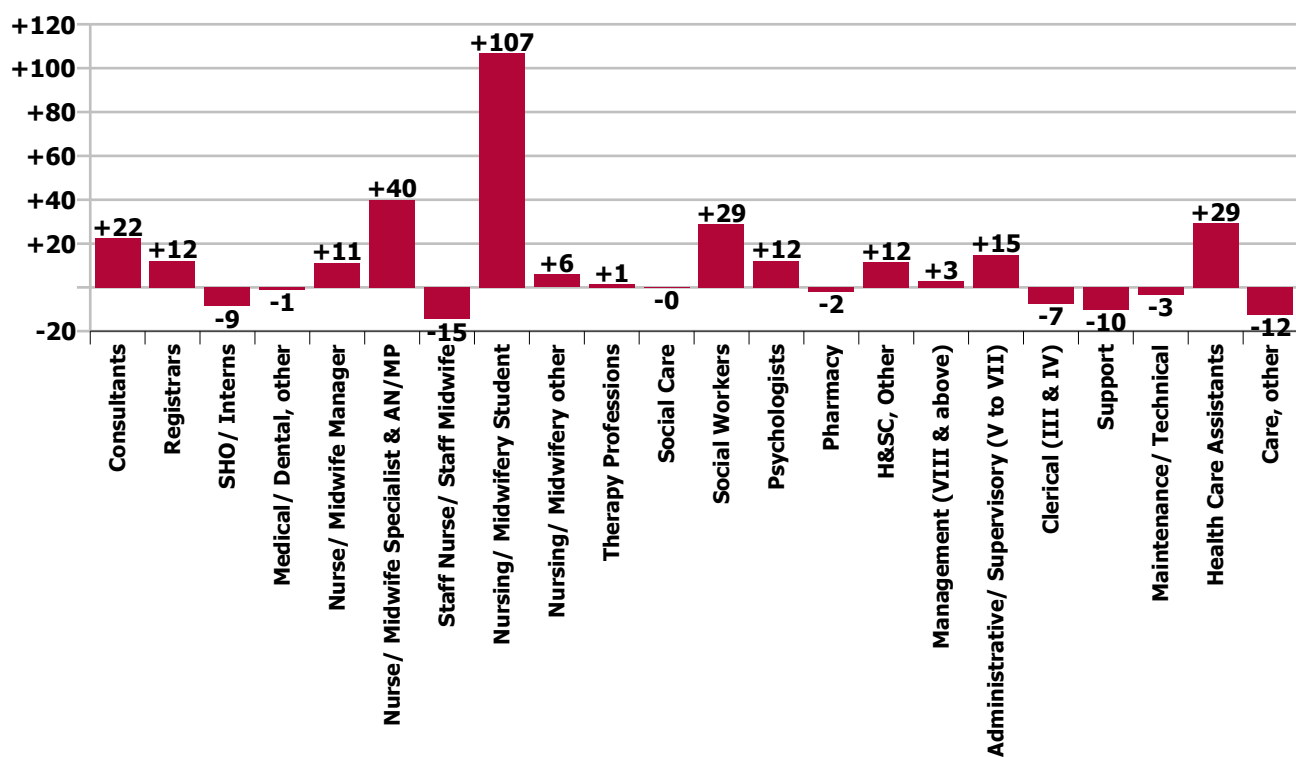
WTE change since Jul 19	% change since Jul 19	overall	Consultants	Registrars	SHO/ Interns	Medical/ Dental, other	Medical & Dental	Nurse/ Midwife Manager	Nurse/ Midwife Specialist & AN/MP	Staff Nurse/ Staff Midwife	Nursing/ Midwifery Student	Nursing/ Midwifery other	Nursing & Midwifery	Therapy Professions	Social Care	Social Workers	Psychologists	Pharmacy	H&SC, Other	Health & Social Care Professionals	Management (VIII & above)	Administrativ e/ Supervisory (V to VII)	Clerical (III & IV)	Management & Administrativ e	General Support	Health Care Assistants	Care, other	Patient & Client Care
Overall	+2.4%	+240	+22	+12	-9	-1	+25	+11	+40	-15	+107	+6	+149	+1	-0	+29	+12	-2	+12	+52	+3	+15	-7	+10	-14	+29	-12	+17
CHO 1	+1.7%	+16	+3	-3	+5		+5	+2	-3	-12	+10	+1	-2	+2	-0	+1	+2	+0	+2	+7	+1	+4	+2	+7	+2	-2	-1	-3
CHO 2	+1.0%	+13	+5	+9	+3		+18	-5	+5	-4	+19	+1	-2	+6	+1	+1	+2	-1		+6	-3	+2	-9	-9	-4	-9	-3	-12
CHO 3	+1.7%	+14	-0	-2	-2		-4	+8	-0	+7	+9		+24	-5	+0	+1	+1		+3	-0	+1	-0	-5	-4	-3	+2	-1	+1
CHO 4	+4.0%	+61	+3	+1	-3	-1	-0	-5	+14	-4	+9		+14	+2	+1	+8	+6	-0	+4	+21		+2	+3	+5	+3	+20	-1	+19
CHO 5	-0.2%	-3	-1	+2	-2		-0	-11	+1	+2	-1	+11	-0	+0	+0	-2	+2		-0	-1	+2	-0	-3	-2	+4	-2	-1	-4
CHO 6	+3.3%	+19	+4	-2	+1		+4	-2	+3	+9		+0	+10	-2	-2	+4	+4		-0	+4		-1	+9	+8	-7	-1	-0	-1
CHO 7	+2.0%	+17	+8	+1	+3		+12	+3	+7	-12	+6	+1	+5	-2	-0	+6	+1		+3	+7		+4	+1	+6	-5	-3	-5	-8
CHO 8	+1.9%	+21	+1	+0	-1		-1	-2	+2	+5	+14	+2	+21	-3	-0	+4	-4	-0	+1	-1		-0	+15	+15	-4	-9		-9
CHO 9	+0.5%	+7	-4	+7	-11		-8	+4	+6	-13	+29	+1	+28	+3	-0	+1	+1	-1	-0	+3	+0	+0	-11	-11	-4	-1	-1	-1
other Community Services	+18.9%	+76	+3	-3			-0	+21	+4	+9			+34	+1	+0	+2	+1	+1		+6	+2	+3	-9	-4	+6	+34		+34
		+2.4%	+6.7%	+4.8%	-3.6%	-16.5%	+3.0%	+0.9%	+8.8%	-0.5%	+85.6%	+20.6%	+3.1%	+0.3%	-0.1%	+8.5%	+3.1%	-9.6%	+11.8%	+3.8%	+5.1%	+6.5%	-1.0%	+1.0%	-1.8%	+2.9%	-5.6%	+1.4%



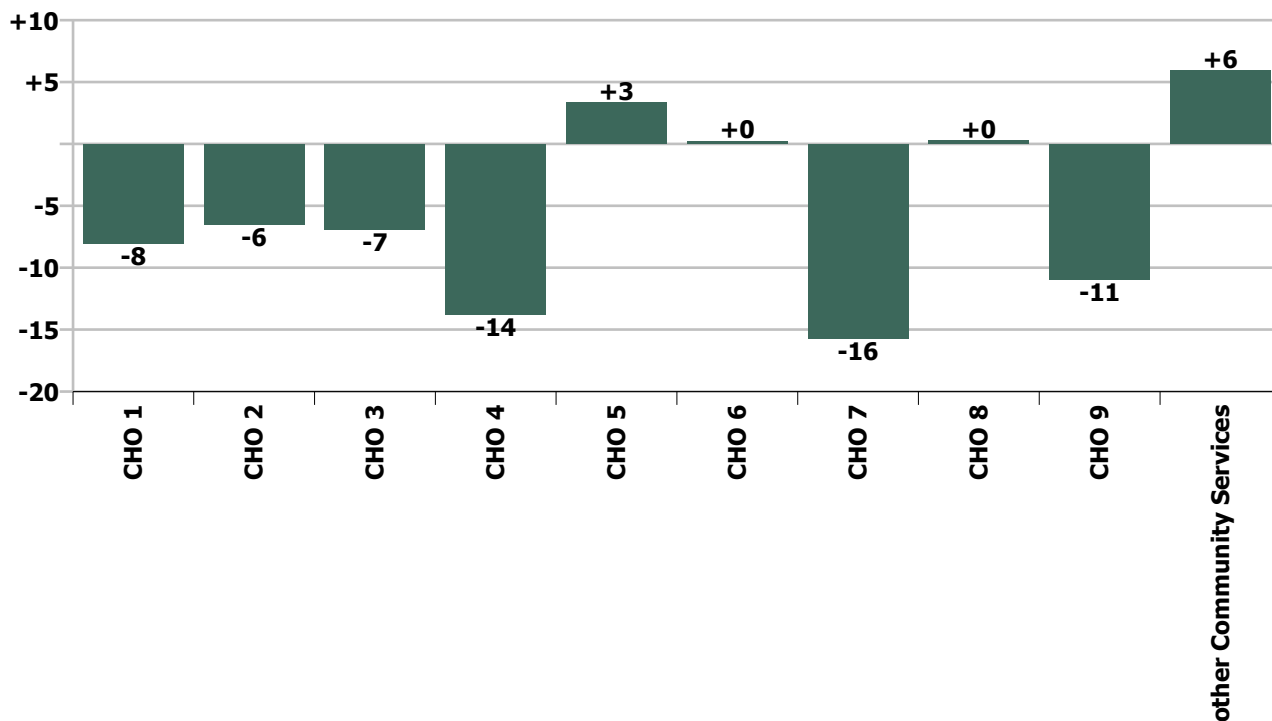
Staff Group change since: Jun 2020



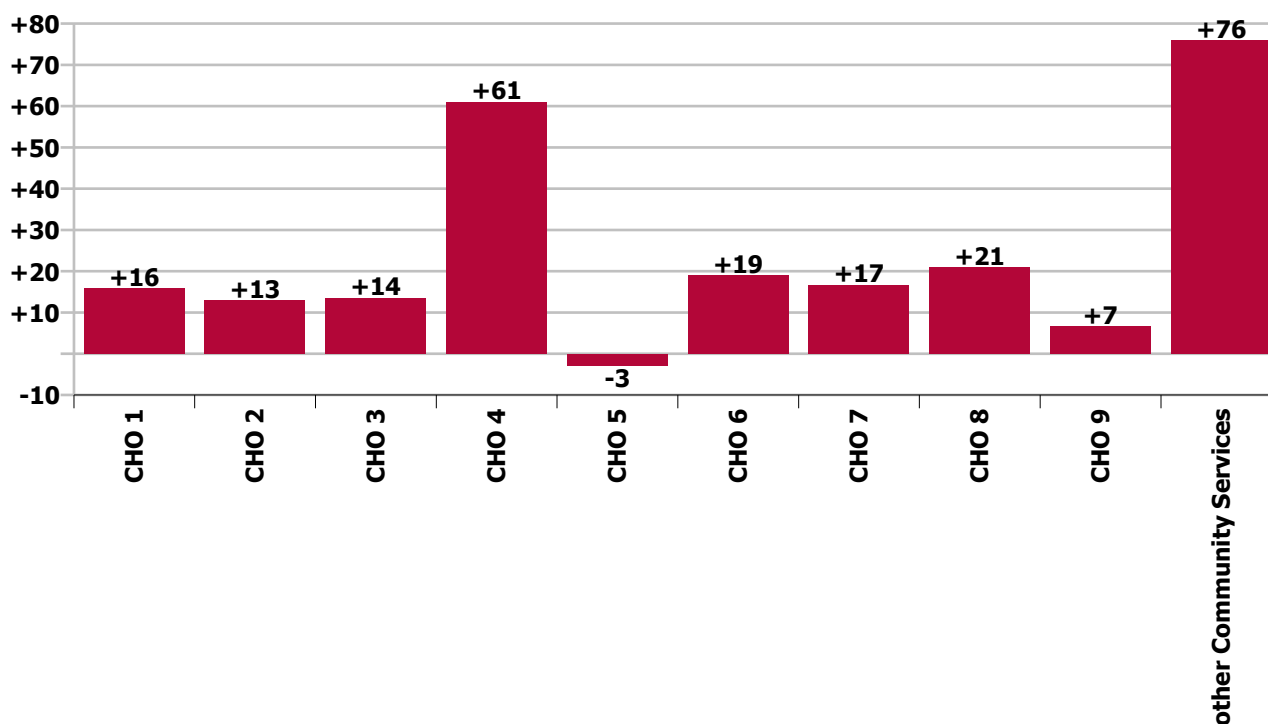
Staff Group change since: Jul 2019



CHO change since: Jun 2020



CHO change since: Jul 2019



Longitudinal Employment Levels by Grade Group - Oct 2013 to Jul 2020

Jul 2020 (Oct 2013 figure: 9,125)	WTE Jul 2020	WTE change since Oct 13	WTE change since Dec 15	WTE change since Dec 16	WTE change since Dec 17	WTE change since Dec 18	WTE change since Dec 19	% change since Oct 13	% change since Dec 15	% change since Dec 16	% change since Dec 17	% change since Dec 18	% change since Dec 19
Overall	10,217	+1,092	+718	+596	+427	+319	+263	+12.0%	+7.6%	+6.2%	+4.4%	+3.2%	+2.6%
Consultant Medicine	1				-0	-0					-9.1%	-9.1%	
Consultant Psychiatry	358	+70	+43	+43	+46	+28	+6	+24.3%	+13.7%	+13.6%	+14.6%	+8.5%	+1.8%
Consultants	359	+70	+43	+43	+46	+28	+6	+24.2%	+13.6%	+13.6%	+14.5%	+8.4%	+1.8%
Registrar	169	+51	+45	+37	+25	+15	-0	+43.5%	+36.2%	+28.1%	+17.0%	+10.0%	-0.0%
Senior Registrar	94	+31	+37	+27	+28	+8	-3	+48.3%	+63.8%	+39.9%	+42.7%	+9.2%	-3.4%
Specialist Registrar	2	+2	+1	+1	-1	+1	-1	-100.0%	+51.5%	+50.0%	-25.0%	+50.0%	-40.0%
Registrars	265	+83	+82	+64	+52	+24	-4	+46.0%	+45.0%	+32.1%	+24.5%	+9.9%	-1.6%
<i>Intern</i>	5	-4	-8	-7	-5	-3		-40.7%	-58.9%	-55.5%	-46.6%	-33.3%	-33.3%
Interns	5	-4	-8	-7	-5	-3	-3	-40.7%	-58.9%	-55.5%	-46.6%	-33.3%	-33.3%
Senior House Officer	223	+4	-12	-24	-49	-46	-30	+1.7%	-5.3%	-9.6%	-18.0%	-17.1%	-11.8%
SHO/ Interns	229	-0	-20	-30	-54	-49	-33	-0.0%	-8.1%	-11.7%	-19.0%	-17.6%	-12.5%
Dentists					-0	-0		-100.0%	-100.0%	-100.0%	-100.0%	-100.0%	-100.0%
Other Medical	5	-5	-4	-5	-6	-1		-51.3%	-42.9%	-48.1%	-53.9%	-23.0%	
Medical/ Dental, other	5	-5	-4	-5	-6	-2		-51.3%	-42.9%	-48.1%	-54.2%	-23.8%	
Medical & Dental	857	+148	+101	+72	+38	+1		+20.9%	+13.4%	+9.2%	+4.6%	+0.2%	-3.4%
Clinical Nurse/ Midwife Manager	1,032	+239	+63	+26	+50	+26	+33	+30.1%	+6.5%	+2.5%	+5.0%	+2.6%	+3.4%
Director Nursing/Midwifery, Assistant	177	+72	+30	+21	+15	+13	+12	+68.5%	+20.8%	+13.8%	+9.1%	+7.7%	+7.3%
Director of Nursing/Midwifery	29	+1	-2	-3	+0	+5		+1.8%	-5.6%	-8.8%	+1.4%	+21.8%	
Nurse/ Midwife Manager	1,238	+311	+92	+44	+65	+44	+45	+33.6%	+8.0%	+3.7%	+5.5%	+3.7%	+3.8%
Advanced Nurse/ Midwife Practitioner	36	+27	+29	+29	+26	+16	+6	+304.0%	+419.4%	+386.1%	+246.3%	+80.5%	+18.3%
Clinical Nurse/ Midwife Specialist	456	+244	+150	+120	+73	+61	+28	+115.0%	+48.9%	+35.7%	+19.1%	+15.5%	+6.5%
Nurse/ Midwife Specialist & AN/MP	493	+272	+179	+149	+99	+77	+34	+122.7%	+57.2%	+43.3%	+25.2%	+18.6%	+7.3%
Graduate Nursing/ Midwifery		-48	-10					-100.0%	-100.0%	-100.0%	-100.0%	-100.0%	-100.0%
<i>Staff Midwife</i>	1	+1	+1	+1	+1	+1		-100.0%	-100.0%	-100.0%	-100.0%	-100.0%	-100.0%
Staff Midwives	1	+1	+1	+1	+1	+1	+1	-100.0%	-100.0%	-100.0%	-100.0%	-100.0%	-100.0%
Staff Nurse [Intellectual Disability]	4	+2	+2	+1	+1	-2	-0	+69.6%	+88.4%	+26.9%	+22.5%	-29.3%	-6.4%
Staff Nurse [Psychiatric]	2,874	-265	-217	-182	-153	-81	-19	-8.4%	-7.0%	-6.0%	-5.0%	-2.7%	-0.7%
Staff Nurses [General/ Children's]	117	-45	-7	-3	-0	-0	+12	-27.6%	-5.9%	-2.9%	-0.3%	-0.3%	+11.8%

Jul 2020 (Oct 2013 figure: 9,125)	WTE Jul 2020	WTE change since Oct 13	WTE change since Dec 15	WTE change since Dec 16	WTE change since Dec 17	WTE change since Dec 18	WTE change since Dec 19	% change since Oct 13	% change since Dec 15	% change since Dec 16	% change since Dec 17	% change since Dec 18	% change since Dec 19
Overall	10,217	+1,092	+718	+596	+427	+319	+263	+12.0%	+7.6%	+6.2%	+4.4%	+3.2%	+2.6%
Staff Nurse/ Staff Midwife	2,997	-355	-231	-184	-151	-82	-6	-10.6%	-7.2%	-5.8%	-4.8%	-2.7%	-0.2%
Public Health Nurse				-1	-1			-100.0%	-100.0%	-100.0%	-100.0%	-100.0%	-100.0%
<i>Student General Nursing Intern (pre-registration)</i>						-1		-100.0%	-100.0%	-100.0%	-100.0%	-100.0%	-100.0%
<i>Student Psychiatric Nursing Intern (pre-registration)</i>	29	-28	+11	+20	+12	+2		-49.0%	+60.3%	+234.2%	+71.9%	+7.1%	+5.1%
Pre-registration Nurse/ Midwife Intern	29	-28	+11	+20	+12	+1	+1	-49.0%	+60.3%	+234.2%	+71.9%	+3.8%	+5.1%
<i>Student Psychiatric Nursing Intern (COVID-19 HCA)</i>	195	+195	+195	+195	+195	+195		-100.0%	-100.0%	-100.0%	-100.0%	-100.0%	-100.0%
Pre-registration Nurse Intern (COVID-19)	195	+195	+195	+195	+195	+195	+195	-100.0%	-100.0%	-100.0%	-100.0%	-100.0%	-100.0%
<i>Student Public Health Nursing (post registration)</i>								-100.0%	-100.0%	-100.0%	-100.0%	-100.0%	-100.0%
Post-registration Nurse/ Midwife Student							-1	-100.0%	-100.0%	-100.0%	-100.0%	-100.0%	-100.0%
Nursing/ Midwifery awaiting registration	8	+8	+8	+6	-1	-12	-51	-100.0%	-100.0%	+300.0%	-7.5%	-59.7%	-86.4%
Nursing/ Midwifery Student	232	+175	+214	+221	+206	+184	+144	+308.2%	+1183.2%	+2072.7%	+808.6%	+385.5%	+164.9%
Nursing Education/Clinical	34	+15	+15	+10	+4	+3	+3	+78.3%	+78.5%	+39.0%	+12.2%	+10.6%	+8.6%
Nursing/ Midwifery other	34	+15	+15	+10	+4	+3	+3	+78.3%	+78.5%	+39.0%	+12.2%	+10.6%	+8.6%
Nursing & Midwifery	4,993	+418	+268	+239	+222	+227		+9.1%	+5.7%	+5.0%	+4.6%	+4.8%	+4.6%
Dietitians	20	+19	+14	+6	+3	-0	+1	+2390.0%	+263.5%	+46.8%	+18.6%	-0.9%	+3.9%
Occupational Therapists	347	+93	+54	+48	+21	+8	+9	+36.4%	+18.5%	+15.9%	+6.5%	+2.4%	+2.6%
Physiotherapists	3	+0	+0	+1	+1	+1	+0	+18.1%	+18.1%	+29.9%	+115.7%	+62.1%	+17.0%
Podiatrists & Chiropodists	1	-1	-1	-1	-1	-0	+0	-38.5%	-46.1%	-54.4%	-43.5%	-32.0%	+13.7%
Speech & Language Therapists	60	+12	+7	+1	-1	-1	-2	+24.3%	+14.1%	+1.1%	-2.0%	-2.2%	-2.5%
Therapy Professions	431	+124	+76	+54	+24	+7	+9	+40.2%	+21.3%	+14.4%	+5.9%	+1.7%	+2.0%
Social Care	76	-3	-12	-12	-7	-3	+2	-3.7%	-13.6%	-13.9%	-8.4%	-3.8%	+2.8%
Social Workers	367	+93	+18	+17	+10	+9	+17	+34.1%	+5.2%	+4.8%	+2.7%	+2.4%	+5.0%
Psychologists	407	+156	+84	+64	+36	+18	+12	+62.1%	+26.1%	+18.6%	+9.8%	+4.6%	+3.1%
Pharmacy	18	-1	+1	-1	-1	-1	-0	-5.7%	+5.2%	-7.1%	-6.6%	-6.2%	-2.5%
Counsellor Therapists	102	+26	+14	+16	+16	+17	+7	+34.3%	+16.0%	+19.4%	+18.7%	+19.5%	+7.1%
HSCP Trainees/ Students		-8						-100.0%	-100.0%	-100.0%	-100.0%	-100.0%	-100.0%
Other Health & Social Care	6	-4	-1	-2	-2	-2	-6	-37.4%	-18.5%	-27.4%	-28.6%	-28.9%	-47.8%
Play Therapists/ Specialists	1	-1	-1	-1	-0		+0	-39.8%	-39.8%	-40.8%	-2.0%		+1.4%
H&SC, Other	109	+14	+12	+13	+14	+14	+1	+14.4%	+11.9%	+13.7%	+14.1%	+14.8%	+1.1%

Jul 2020 (Oct 2013 figure: 9,125)	WTE Jul 2020	WTE change since Oct 13	WTE change since Dec 15	WTE change since Dec 16	WTE change since Dec 17	WTE change since Dec 18	WTE change since Dec 19	% change since Oct 13	% change since Dec 15	% change since Dec 16	% change since Dec 17	% change since Dec 18	% change since Dec 19
Overall	10,217	+1,092	+718	+596	+427	+319	+263	+12.0%	+7.6%	+6.2%	+4.4%	+3.2%	+2.6%
Health & Social Care Professionals	1,407	+382	+178	+134	+75	+44		+37.3%	+14.5%	+10.6%	+5.7%	+3.2%	+3.0%
Executive Management	12	+11	+8	+5	+4	+2	+1	+1099.0%	+199.8%	+71.3%	+49.9%	+19.9%	+9.0%
Senior Management (VIII & GM)	47	+28	+18	+22	+15	+15	+0	+145.3%	+63.5%	+88.8%	+49.1%	+47.2%	+0.6%
Management (VIII & above)	59	+39	+26	+27	+19	+17	+1	+193.0%	+80.3%	+84.9%	+49.3%	+40.7%	+2.2%
Administrative/ Supervisory (V to VII)	242	+111	+94	+75	+43	+20	+6	+84.0%	+63.5%	+44.5%	+21.6%	+9.0%	+2.4%
Clerical (III & IV)	707	+95	+61	+46	+25	+11	-10	+15.5%	+9.5%	+6.9%	+3.7%	+1.6%	-1.5%
Management & Administrative	1,008	+244	+182	+147	+88	+48		+32.0%	+22.0%	+17.1%	+9.5%	+5.0%	-0.3%
Catering	64	-10	+1	-2	-2	-8	-1	-13.3%	+1.7%	-2.8%	-3.0%	-11.2%	-2.2%
Household Services	434	-197	-91	-58	-42	-11	+10	-31.2%	-17.3%	-11.7%	-8.8%	-2.5%	+2.3%
Other Support	38	-24	-14	-18	-11	-17	-5	-38.9%	-27.2%	-32.1%	-23.0%	-30.9%	-10.8%
Portering	48	-15	-11	-12	-1	-0	-0	-24.1%	-18.3%	-19.6%	-2.6%	-0.8%	-1.0%
Support	584	-246	-115	-89	-57	-37	+3	-29.6%	-16.4%	-13.3%	-8.8%	-5.9%	+0.6%
Maintenance	132	-36	-11	-11	-7	-2	+3	-21.6%	-7.8%	-7.8%	-4.9%	-1.8%	+2.3%
Technical Services	2												
Maintenance/ Technical	134	-36	-11	-11	-7	-2	+3	-21.3%	-7.7%	-7.7%	-4.8%	-1.8%	+2.3%
General Support	718	-282	-126	-100	-63	-39		-28.2%	-14.9%	-12.3%	-8.1%	-5.2%	+0.9%
HCA, Nurse's Aide, etc.	1,015	+196	+104	+86	+67	+41	+36	+24.0%	+11.4%	+9.3%	+7.0%	+4.2%	+3.7%
Health & Social Care Assistants	9	+5	+5	+4	+4	+3	-0	+131.1%	+152.0%	+92.2%	+92.2%	+64.0%	-0.2%
Health Care Assistants	1,024	+201	+109	+91	+71	+45	+36	+24.5%	+11.9%	+9.7%	+7.4%	+4.6%	+3.7%
Other Care Grades	209	-20	+5	+13	-3	-6	-7	-8.6%	+2.6%	+6.7%	-1.4%	-3.0%	-3.0%
Care, other	209	-20	+5	+13	-3	-6	-7	-8.6%	+2.6%	+6.7%	-1.4%	-3.0%	-3.0%
Patient & Client Care	1,233	+182	+114	+104	+68	+38		+17.3%	+10.2%	+9.2%	+5.8%	+3.2%	+2.5%

Source: Health Service Personnel Census