

Mental Health Service Employment Report: July 2021

Employment by Staff Group

Jul 2021 (Dec 2020 figure: 10,301)	WTE Jun 2021	WTE Jul 2021	WTE change since Jun 21	% change since Jun 21	WTE change since Dec 20	WTE change since Jul 20
Overall	10,486	10,444	-42	-0.4%	+142	+227
Consultants	382	380	-2	-0.5%	+10	+21
Registrars	308	318	+10	+3.4%	+37	+54
SHO/ Interns	248	224	-25	-9.9%	-52	-5
Medical/ Dental, other	4	4	-0	-0.0%	-1	-1
Medical & Dental	942	926	-16	-1.7%	-6	+69
Nurse/ Midwife Manager	1,225	1,233	+8	+0.7%	-6	-4
Nurse/ Midwife Specialist & AN/MP	523	527	+4	+0.8%	-1	+34
Staff Nurse/ Staff Midwife	3,135	3,106	-30	-1.0%	+29	+109
<i>Pre-registration Nurse/ Midwife Intern</i>	<i>171</i>	<i>170</i>	<i>-2</i>	<i>-1.0%</i>	<i>+142</i>	<i>+141</i>
<i>Pre-registration Nurse Intern (COVID-19)</i>	<i>4</i>	<i>4</i>	<i>-0</i>	<i>-9.3%</i>	<i>+4</i>	<i>-191</i>
<i>Post-registration Nurse/ Midwife Student</i>	<i>1</i>		<i>-1</i>	<i>-100.0%</i>	<i>-1</i>	
<i>Nursing/ Midwifery awaiting registration</i>	<i>3</i>	<i>3</i>	<i>+0</i>	<i>+2.4%</i>	<i>-56</i>	<i>-5</i>
Nursing/ Midwifery Student	179	176	-3	-1.7%	+117	-55
Nursing/ Midwifery other	29	31	+2	+6.3%	-1	-3
Nursing & Midwifery	5,092	5,074	-19	-0.4%	+138	+80
Therapy Professions	446	440	-7	-1.5%	+1	+9
Social Care	76	75	-1	-1.1%	-5	-0
Social Workers	379	374	-5	-1.3%	+2	+7
Psychologists	427	431	+4	+0.9%	+7	+24
Pharmacy	20	20	+1	+2.7%	-0	+2
H&SC, Other	108	110	+2	+2.0%	+2	+1
Health & Social Care Professionals	1,456	1,451	-6	-0.4%	+6	+43
Management (VIII & above)	57	60	+2	+4.0%	-7	+1
Administrative/ Supervisory (V to VII)	246	242	-4	-1.7%	-3	-1
Clerical (III & IV)	723	720	-3	-0.5%	-2	+13
Management & Administrative	1,026	1,021	-5	-0.5%	-13	+13
Support	585	585	-0	-0.0%	-9	+1
Maintenance/ Technical	135	135	-0	-0.2%	-2	+1
General Support	720	720	-0	-0.1%	-12	+2
Health Care Assistants	1,040	1,042	+2	+0.2%	+21	+18
Care, other	209	211	+2	+0.8%	+7	+1
Patient & Client Care	1,249	1,253	+4	+0.3%	+28	+19

Mental Health Services Employment by Administration (HSE / S38): July 2021

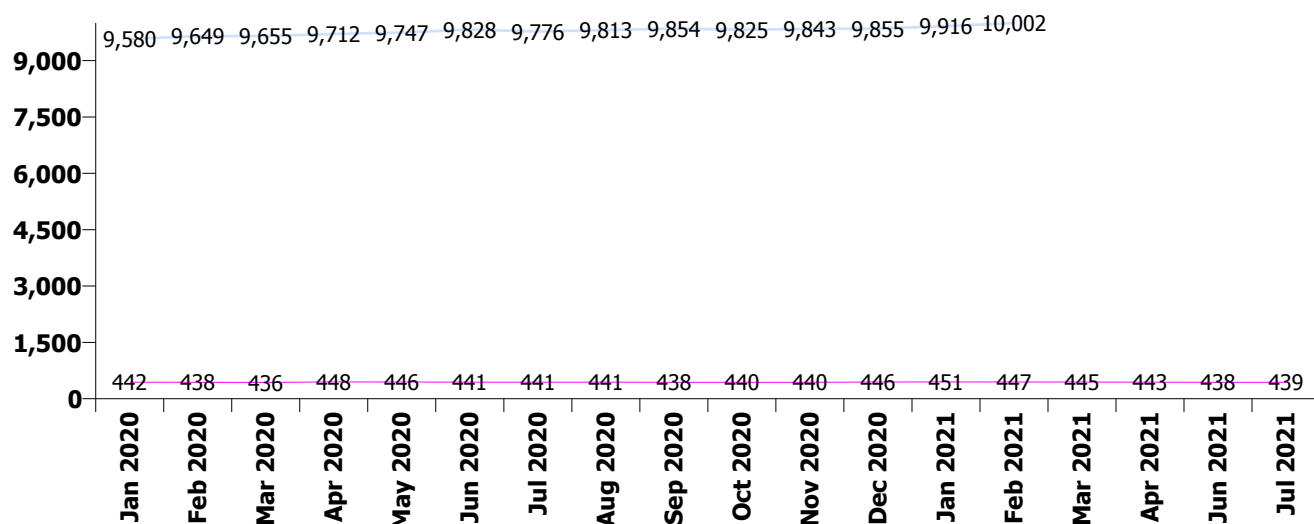
Jul 2021 (Dec 2020 figure: 10,301)	WTE Jun 2021	WTE Jul 2021	WTE change since Jun 21	% change since Jun 21	WTE change since Dec 20	WTE change since Jul 20
Overall	10,486	10,444	-42	-0.4%	+142	+227
HSE	10,048	10,004	-44	-0.4%	+149	+229
Section 38 Voluntary Agencies	438	439	+1	+0.3%	-7	-2

HSE

Jul 2021 (Dec 2020 figure: 9,855)	WTE Jun 2021	WTE Jul 2021	WTE change since Jun 21	% change since Jun 21	WTE change since Dec 20	WTE change since Jul 20
Overall	10,048	10,004	-44	-0.4%	+149	+229
Consultants	360	359	-1	-0.4%	+10	+20
Registrars	289	295	+7	+2.3%	+30	+47
SHO/ Interns	240	217	-23	-9.5%	-50	-3
Medical/ Dental, other	4	4	-0	-0.0%	-1	-1
Medical & Dental	893	876	-18	-2.0%	-11	+63
Nurse/ Midwife Manager	1,188	1,195	+7	+0.6%	-7	-3
Nurse/ Midwife Specialist & AN/MP	515	520	+5	+0.9%	-0	+35
Staff Nurse/ Staff Midwife	3,011	2,984	-27	-0.9%	+30	+107
Pre-registration Nurse/ Midwife Intern	161	160	-2	-1.0%	+139	+131
Pre-registration Nurse Intern (COVID-19)	4	4	-0	-9.3%	+4	-178
Post-registration Nurse/ Midwife Student	1		-1	-100.0%	-1	
Nursing/ Midwifery awaiting registration	3	3	+0	+2.4%	-56	-5
Nursing/ Midwifery Student	169	166	-3	-1.8%	+118	-52
Nursing/ Midwifery other	27	28	+2	+6.9%	-1	-3
Nursing & Midwifery	4,910	4,893	-17	-0.3%	+141	+83
Therapy Professions	420	414	-6	-1.3%	+3	+8
Social Care	49	49	-0	-0.3%	-3	-0
Social Workers	363	358	-5	-1.4%	+4	+12
Psychologists	408	410	+2	+0.6%	+9	+23
Pharmacy	18	19	+1	+3.0%	-0	+2
H&SC, Other	107	109	+3	+2.6%	+2	+1
Health & Social Care Professionals	1,365	1,359	-5	-0.4%	+14	+46
Management (VIII & above)	54	57	+2	+4.3%	-8	+0
Administrative/ Supervisory (V to VII)	228	224	-3	-1.4%	+0	+2
Clerical (III & IV)	681	676	-5	-0.7%	-3	+13
Management & Administrative	963	957	-6	-0.6%	-11	+16
Support	549	549	-0	-0.0%	-7	+4
Maintenance/ Technical	128	128	-0	-0.2%	-2	-1
General Support	678	677	-0	-0.1%	-10	+3
Health Care Assistants	1,034	1,034	+0	+0.0%	+19	+16
Care, other	206	207	+2	+0.9%	+7	+1
Patient & Client Care	1,240	1,242	+2	+0.2%	+26	+17

Section 38 Voluntary Agencies

Jul 2021 (Dec 2020 figure: 446)	WTE Jun 2021	WTE Jul 2021	WTE change since Jun 21	% change since Jun 21	WTE change since Dec 20	WTE change since Jul 20
Overall	438	439	+1	+0.3%	-7	-2
Consultants	21	21	-0	-1.5%	-0	+1
Registrars	19	23	+4	+19.3%	+8	+6
SHO/ Interns	8	6	-2	-19.8%	-3	-2
Medical & Dental	48	50	+2	+3.7%	+5	+6
Nurse/ Midwife Manager	37	38	+1	+3.0%	+0	-1
Nurse/ Midwife Specialist & AN/MP	8	8	-0	-4.1%	-1	-0
Staff Nurse/ Staff Midwife	125	122	-3	-2.3%	-1	+1
Pre-registration Nurse/ Midwife Intern	10	10			+3	+10
Pre-registration Nurse Intern (COVID-19)				-100.0%		-13
Nursing/ Midwifery Student	10	10			-1	-3
Nursing/ Midwifery other	3	3				
Nursing & Midwifery	182	180	-2	-1.2%	-3	-3
Therapy Professions	26	26	-1	-3.1%	-2	+1
Social Care	27	26	-1	-2.7%	-2	+0
Social Workers	16	17	+0	+2.1%	-2	-5
Psychologists	19	21	+1	+6.5%	-2	+2
Pharmacy	2	2				
H&SC, Other	1	0	-1	-54.3%	-1	-1
Health & Social Care Professionals	92	91	-1	-0.6%	-8	-3
Management (VIII & above)	3	3			+1	+1
Administrative/ Supervisory (V to VII)	18	17	-1	-5.1%	-4	-3
Clerical (III & IV)	42	44	+2	+3.7%	+1	-1
Management & Administrative	63	64	+1	+1.0%	-1	-3
Support	36	36	-0	-0.1%	-2	-3
Maintenance/ Technical	7	7				+2
General Support	43	43	-0	-0.1%	-2	-1
Health Care Assistants	6	8	+2	+31.4%	+2	+2
Care, other	4	3	-0	-3.1%		+1
Patient & Client Care	9	11	+2	+18.3%	+2	+2



Mental Health Services Employment by CHO: Jul 2021

Jul 2021 (Dec 2020 figure: 10,301)	WTE Jun 2021	WTE Jul 2021	WTE change since Jun 21	% change since Jun 21	WTE change since Dec 20	WTE change since Jul 20
Overall	10,486	10,444	-42	-0.4%	+142	+227
CHO 1	1,004	995	-9	-0.9%	+19	+25
CHO 2	1,366	1,344	-22	-1.6%	+4	+10
CHO 3	828	834	+6	+0.7%	+26	+24
CHO 4	1,567	1,567	-1	-0.0%	+3	-4
CHO 5	1,213	1,216	+3	+0.3%	+28	+30
CHO 6	630	630	+0	+0.0%	+3	+34
CHO 7	887	884	-3	-0.3%	+22	+33
CHO 8	1,126	1,120	-5	-0.5%	+9	-2
CHO 9	1,341	1,326	-14	-1.1%	-4	+29
other Community Services	523	527	+4	+0.7%	+32	+48

Mental Health Services Employment by CHO etc. Jul 2021

CHO 1

Jul 2021 (Dec 2020 figure: 976)	WTE Jun 2021	WTE Jul 2021	WTE change since Jun 21	% change since Jun 21	WTE change since Dec 20	WTE change since Jul 20
Overall	1,004	995	-9	-0.9%	+19	+25
Consultants	36	36	-0	-0%	+2	+3
Registrars	32	32	+1	+3%	+3	+9
SHO/ Interns	20	17	-3	-14%	-6	-6
Medical & Dental	87	85	-2	-2.3%	-1	+6
Nurse/ Midwife Manager	121	119	-2	-2%	-1	-3
Nurse/ Midwife Specialist & AN/MP	71	71	+0	+0%	-3	+6
Staff Nurse/ Staff Midwife	304	301	-3	-1%	+13	+11
Pre-registration Nurse/ Midwife Intern	16	15	-0	-2%	+15	+10
Pre-registration Nurse Intern (COVID-19)				-100%		-13
Nursing/ Midwifery Student	16	15	-0	-2%	+12	-3
Nursing/ Midwifery other	2	2	0		+1	+1
Nursing & Midwifery	513	508	-5	-1.1%	+23	+12
Therapy Professions	37	37	+0	+1%	+1	+1
Social Care	4	4	-0	-3%	-0	+0
Social Workers	41	40	-1	-3%	-3	+1
Psychologists	22	22	-0	-2%	-1	-0
Pharmacy	1	1	0			-0
H&SC, Other	13	14	+0	+3%	+0	+2
Health & Social Care Professionals	119	118	-1	-0.8%	-3	+4
Management (VIII & above)	4	5	+1	+24%	-3	-2
Administrative/ Supervisory (V to VII)	30	29	-1	-2%	-2	-2
Clerical (III & IV)	91	89	-2	-2%	+4	+5
Management & Administrative	124	123	-1	-1.2%	-1	+1
Support	63	63	-0	-0%	-3	-1
Maintenance/ Technical	16	16	-0	-1%	-0	-1
General Support	79	79	-0	-0.2%	-3	-2
Health Care Assistants	71	72	+1	+1%	+4	+5
Care, other	11	11	0		-1	-1
Patient & Client Care	82	83	+1	+0.8%	+4	+4

CHO 2

Jul 2021 (Dec 2020 figure: 1,340)	WTE Jun 2021	WTE Jul 2021	WTE change since Jun 21	% change since Jun 21	WTE change since Dec 20	WTE change since Jul 20
Overall	1,366	1,344	-22	-1.6%	+4	+10
Consultants	42	42	+0	+0%	+5	+3
Registrars	40	38	-2	-4%	+2	+1
SHO/ Interns	38	33	-5	-13%	-7	+1
Medical/ Dental, other				-100%	-1	-1
Medical & Dental	119	113	-6	-5.4%	-2	+5
Nurse/ Midwife Manager	147	148	+1	+1%	-3	+2
Nurse/ Midwife Specialist & AN/MP	78	76	-2	-3%	-4	+2
Staff Nurse/ Staff Midwife	378	371	-6	-2%	+17	+23
<i>Pre-registration Nurse/ Midwife Intern</i>	21	20	-1	-6%	+19	+20
<i>Pre-registration Nurse Intern (COVID-19)</i>	1	1	0		+1	-31
<i>Nursing/ Midwifery awaiting registration</i>				-100%	-5	
Nursing/ Midwifery Student	21	20	-1	-6%	+10	-11
Nursing/ Midwifery other	1	2	+1	+97%	+0	-1
Nursing & Midwifery	625	617	-8	-1.3%	+20	+15
Therapy Professions	58	55	-3	-5%	+0	+1
Social Care	15	14	-1	-6%	-2	+0
Social Workers	40	39	-1	-3%	-3	-4
Psychologists	38	39	+1	+3%	+2	+3
Pharmacy	2	2	0			+0
H&SC, Other	3	3	0		-0	-0
Health & Social Care Professionals	156	152	-3	-2.2%	-2	+1
Management (VIII & above)	2	2	0		-2	-2
Administrative/ Supervisory (V to VII)	25	26	+2	+7%	-0	+1
Clerical (III & IV)	102	96	-5	-5%	-6	-6
Management & Administrative	128	125	-3	-2.7%	-8	-7
Support	31	31	-0	-1%	-1	-3
Maintenance/ Technical	33	34	+1	+3%	+1	+5
General Support	64	64	+1	+1.0%	-0	+2
Health Care Assistants	208	207	-1	-0%	-4	-3
Care, other	67	66	-1	-2%	-1	-3
Patient & Client Care	275	273	-2	-0.7%	-4	-6

CHO 3

Jul 2021 (Dec 2020 figure: 809)	WTE Jun 2021	WTE Jul 2021	WTE change since Jun 21	% change since Jun 21	WTE change since Dec 20	WTE change since Jul 20
Overall	828	834	+6	+0.7%	+26	+24
Consultants	25	25	+0	+1%	+1	+2
Registrars	19	18	-1	-6%	+3	+1
SHO/ Interns	22	24	+3	+13%	+3	+8
Medical & Dental	65	67	+2	+2.9%	+6	+11
Nurse/ Midwife Manager	87	88	+1	+2%	+0	-3
Nurse/ Midwife Specialist & AN/MP	32	33	+0	+1%	-4	-2
Staff Nurse/ Staff Midwife	271	270	-1	-0%	-2	+11
Pre-registration Nurse/ Midwife Intern	13	13	+0	+0%	+5	+13
Pre-registration Nurse Intern (COVID-19)				-100%		-19
Nursing/ Midwifery Student	13	13	+0	+0%	+10	-6
Nursing & Midwifery	403	405	+1	+0.3%	+5	+0
Therapy Professions	30	30	-0	-0%	+5	+6
Social Care	3	3	-0	-1%	-0	-0
Social Workers	24	24	+1	+2%	-0	-2
Psychologists	92	92	-0	-0%	+1	+3
Pharmacy	3	3	0			
H&SC, Other	11	11	+0	+0%	-1	-3
Health & Social Care Professionals	162	163	+0	+0.2%	+5	+4
Management (VIII & above)	2	2	0			-1
Administrative/ Supervisory (V to VII)	19	18	-1	-6%	-1	+0
Clerical (III & IV)	54	54	+1	+1%	+4	+2
Management & Administrative	74	74	-0	-0.5%	+3	+2
Support	30	32	+1	+4%	+1	+2
Maintenance/ Technical	9	9	+0	+2%	+0	-1
General Support	39	41	+1	+3.5%	+2	+1
Health Care Assistants	83	84	+1	+1%	+5	+7
Care, other	1	1	+0	+47%	+0	+0
Patient & Client Care	84	85	+2	+2.0%	+6	+7

CHO 4

Jul 2021 (Dec 2020 figure: 1,564)	WTE Jun 2021	WTE Jul 2021	WTE change since Jun 21	% change since Jun 21	WTE change since Dec 20	WTE change since Jul 20
Overall	1,567	1,567	-1	-0.0%	+3	-4
Consultants	56	57	+0	+0%	+2	+4
Registrars	42	48	+6	+14%	+6	+2
SHO/ Interns	43	41	-2	-5%	-2	+13
Medical/ Dental, other	2	2	-0	-0%	+0	+0
Medical & Dental	143	147	+4	+2.6%	+6	+19
Nurse/ Midwife Manager	188	194	+6	+3%	+1	+6
Nurse/ Midwife Specialist & AN/MP	70	71	+1	+2%	+0	+1
Staff Nurse/ Staff Midwife	502	496	-6	-1%	-23	-17
<i>Pre-registration Nurse/ Midwife Intern</i>	27	27	0		+24	+27
<i>Pre-registration Nurse Intern (COVID-19)</i>	1	1	0		+1	-23
<i>Post-registration Nurse/ Midwife Student</i>				-100%	-1	
<i>Nursing/ Midwifery awaiting registration</i>	1	1	0		-29	-3
Nursing/ Midwifery Student	29	29	0		+25	+1
Nursing & Midwifery	789	790	+1	+0.1%	+4	-8
Therapy Professions	77	75	-2	-3%	-2	-3
Social Care	6	7	+0	+8%	-1	-0
Social Workers	65	64	-1	-2%	-1	+3
Psychologists	93	92	-1	-1%	-2	+6
Pharmacy	2	2	-0	-5%	-1	-1
H&SC, Other	12	11	-1	-7%	-1	-3
Health & Social Care Professionals	255	251	-4	-1.7%	-8	+0
<i>Executive Management</i>	1	1	+0	+4%	+1	
<i>Senior Management (VIII & GM)</i>	1	1	0			+1
Management (VIII & above)	2	2	+0	+2%	-1	+1
Administrative/ Supervisory (V to VII)	21	20	-1	-4%	-2	-3
Clerical (III & IV)	92	93	+1	+1%	-1	+1
Management & Administrative	115	115	+0	+0.3%	-4	-1
Support	84	85	+1	+2%	+3	+0
Maintenance/ Technical	5	5	0			-1
General Support	89	90	+1	+1.5%	+3	-0
Health Care Assistants	170	168	-2	-1%	+2	-14
Care, other	6	7	+0	+2%	+0	+0
Patient & Client Care	177	174	-2	-1.3%	+2	-13

CHO 5

Jul 2021 (Dec 2020 figure: 1,188)	WTE Jun 2021	WTE Jul 2021	WTE change since Jun 21	% change since Jun 21	WTE change since Dec 20	WTE change since Jul 20
Overall	1,213	1,216	+3	+0.3%	+28	+30
Consultants	27	27	-0	-0%	-0	+2
Registrars	9	9	-0	-1%	-0	-3
SHO/ Interns	36	37	+1	+3%	+1	+9
Medical/ Dental, other	2	2	0			
Medical & Dental	74	75	+1	+1.0%	+1	+8
Nurse/ Midwife Manager	163	165	+3	+2%	+5	+8
Nurse/ Midwife Specialist & AN/MP	52	52	+0	+0%	-2	+2
Staff Nurse/ Staff Midwife	419	415	-3	-1%	+4	+14
<i>Pre-registration Nurse/ Midwife Intern</i>	24	25	+0	+0%	+21	+25
<i>Pre-registration Nurse Intern (COVID-19)</i>	2	2	0		+2	-29
<i>Nursing/ Midwifery awaiting registration</i>				-100%	-2	
Nursing/ Midwifery Student	26	26	+0	+0%	+13	-4
Nursing/ Midwifery other	4	3	-0	-3%	-0	-0
Nursing & Midwifery	663	663	-0	-0.1%	+21	+19
Therapy Professions	35	34	-1	-3%	-5	-7
Social Care	4	4	+0	+1%	-0	-0
Social Workers	27	26	-0	-2%	-2	+0
Psychologists	22	22	-0	-1%	+0	-1
H&SC, Other	15	20	+5	+34%	+12	+10
Health & Social Care Professionals	103	106	+3	+3.0%	+5	+2
Management (VIII & above)	5	6	+1	+19%	-0	+1
Administrative/ Supervisory (V to VII)	22	23	+1	+5%	+3	+3
Clerical (III & IV)	74	74	-0	-0%	+6	+6
Management & Administrative	101	103	+2	+1.6%	+9	+10
Support	172	170	-2	-1%	-8	-1
Maintenance/ Technical	17	16	-1	-5%	-4	-8
General Support	189	186	-3	-1.4%	-12	-9
Health Care Assistants	71	71	+1	+1%	+4	-0
Care, other	12	12	0		+0	+0
Patient & Client Care	83	84	+1	+0.7%	+4	+0

CHO 6

Jul 2021 (Dec 2020 figure: 626)	WTE Jun 2021	WTE Jul 2021	WTE change since Jun 21	% change since Jun 21	WTE change since Dec 20	WTE change since Jul 20
Overall	630	630	+0	+0.0%	+3	+34
Consultants	41	40	-1	-3%	-0	+2
Registrars	22	24	+2	+8%	+5	+5
SHO/ Interns	12	11	-2	-12%	-2	-3
Medical & Dental	76	75	-1	-1.5%	+2	+5
Nurse/ Midwife Manager	75	74	-1	-1%	-3	-1
Nurse/ Midwife Specialist & AN/MP	19	19	+1	+3%	-0	+4
Staff Nurse/ Staff Midwife	156	157	+1	+1%	+6	+7
<i>Pre-registration Nurse/ Midwife Intern</i>	4	3	-0	-1%	+3	+3
<i>Nursing/ Midwifery awaiting registration</i>	1	1	0		+1	+1
Nursing/ Midwifery Student	5	4	-0	-1%	+3	+4
Nursing/ Midwifery other	2	2	0			
Nursing & Midwifery	256	257	+1	+0.4%	+6	+15
Therapy Professions	41	39	-2	-5%	+0	+4
Social Care	27	26	-1	-3%	-2	-0
Social Workers	30	30	+0	+1%	+0	-2
Psychologists	30	32	+2	+6%	-0	+6
H&SC, Other	5	4	-1	-11%	-1	
Health & Social Care Professionals	133	131	-1	-1.1%	-3	+8
Management (VIII & above)	3	3	0			
Administrative/ Supervisory (V to VII)	23	22	-1	-6%	-3	-4
Clerical (III & IV)	37	38	+1	+2%	-5	-3
Management & Administrative	63	63	-1	-1.2%	-7	-7
Support	36	37	+1	+2%	-2	+1
Maintenance/ Technical	6	6	0			+2
General Support	42	43	+1	+1.9%	-2	+3
Health Care Assistants	53	55	+2	+4%	+7	+9
Care, other	6	6	-0	-3%	-0	+1
Patient & Client Care	59	61	+2	+3.1%	+7	+9

CHO 7

Jul 2021 (Dec 2020 figure: 861)	WTE Jun 2021	WTE Jul 2021	WTE change since Jun 21	% change since Jun 21	WTE change since Dec 20	WTE change since Jul 20
Overall	887	884	-3	-0.3%	+22	+33
Consultants	54	55	+1	+2%	+2	+4
Registrars	55	50	-5	-10%	-4	+6
SHO/ Interns	18	18	-0	-1%	-2	+2
Medical & Dental	127	123	-5	-3.5%	-4	+11
Nurse/ Midwife Manager	117	117	-1	-1%	-1	-1
Nurse/ Midwife Specialist & AN/MP	49	50	+1	+2%	+4	+6
Staff Nurse/ Staff Midwife	215	212	-3	-1%	+10	+14
<i>Pre-registration Nurse/ Midwife Intern</i>	14	15	+0	+3%	+14	+15
<i>Pre-registration Nurse Intern (COVID-19)</i>	1	1	-0	-38%	+1	-16
<i>Post-registration Nurse/ Midwife Student</i>	1		-1	-100%		
<i>Nursing/ Midwifery awaiting registration</i>				-100%	-10	-4
Nursing/ Midwifery Student	16	16	-1	-6%	+8	-5
Nursing/ Midwifery other	6	6	+0	+2%	-0	-2
Nursing & Midwifery	404	400	-4	-0.9%	+21	+12
Therapy Professions	48	49	+1	+3%	-5	+4
Social Care	7	7	-0	-1%	+0	-0
Social Workers	41	41	-0	-1%	+3	+3
Psychologists	29	31	+2	+8%	+1	+0
<i>Pharmacy</i>	1	1	0			
Pharmacy	1	1	0			
H&SC, Other	17	17	-0	-0%	-1	-1
Health & Social Care Professionals	143	146	+3	+2.1%	-1	+7
Management (VIII & above)	4	4	0		+0	+1
Administrative/ Supervisory (V to VII)	16	17	+1	+6%	+0	+1
Clerical (III & IV)	48	47	-1	-2%	-2	-5
Management & Administrative	68	68	+0	+0.4%	-2	-3
Support	18	17	-1	-3%	-0	+1
Maintenance/ Technical	2	2	-0	-1%	-0	-0
General Support	20	19	-1	-3.0%	-0	+1
Health Care Assistants	35	35	+0	+0%	+1	+1
Care, other	91	93	+2	+2%	+8	+4
Patient & Client Care	126	128	+2	+1.9%	+9	+5

CHO 8

Jul 2021 (Dec 2020 figure: 1,112)	WTE Jun 2021	WTE Jul 2021	WTE change since Jun 21	% change since Jun 21	WTE change since Dec 20	WTE change since Jul 20
Overall	1,126	1,120	-5	-0.5%	+9	-2
Consultants	38	38	-1	-2%	+1	+2
Registrars	34	35	+1	+3%	+4	+14
SHO/ Interns	24	18	-6	-24%	-8	-12
Medical & Dental	97	91	-6	-5.8%	-3	+4
Nurse/ Midwife Manager	117	120	+3	+2%	-0	-3
Nurse/ Midwife Specialist & AN/MP	61	62	+1	+1%	+2	+3
Staff Nurse/ Staff Midwife	341	334	-6	-2%	-8	+9
<i>Pre-registration Nurse/ Midwife Intern</i>	24	24	+0	+0%	+24	+18
<i>Pre-registration Nurse Intern (COVID-19)</i>				-100%		-27
<i>Nursing/ Midwifery awaiting registration</i>				-100%	-2	
Nursing/ Midwifery Student	24	24	+0	+0%	+23	-9
Nursing/ Midwifery other	3	3	0			-1
Nursing & Midwifery	546	543	-3	-0.5%	+17	-0
Therapy Professions	43	44	+1	+2%	+1	+0
Social Care	7	7	+0	+6%	+0	+0
Social Workers	46	47	+0	+1%	+3	+2
Psychologists	40	39	-1	-2%	+2	+2
Pharmacy	2	2	0			+1
H&SC, Other	15	15	-1	-4%	-7	-6
Health & Social Care Professionals	153	153	+0	+0.2%	-0	-0
Management (VIII & above)	3	4	+1	+36%	+1	+1
Administrative/ Supervisory (V to VII)	23	23	-0	-1%	+2	+1
Clerical (III & IV)	93	94	+1	+1%	-3	-6
Management & Administrative	119	121	+2	+1.5%	+1	-4
Support	30	30	-0	-1%	-2	-2
Maintenance/ Technical	29	29	-0	-0%	+1	+2
General Support	59	59	-0	-0.5%	-1	-0
Health Care Assistants	149	151	+2	+1%	-5	+0
Care, other	3	3	0		-0	-1
Patient & Client Care	152	154	+2	+1.0%	-6	-0

CHO 9

Jul 2021 (Dec 2020 figure: 1,331)	WTE Jun 2021	WTE Jul 2021	WTE change since Jun 21	% change since Jun 21	WTE change since Dec 20	WTE change since Jul 20
Overall	1,341	1,326	-14	-1.1%	-4	+29
Consultants	45	45	+0	+0%	-1	+1
Registrars	38	42	+5	+13%	+10	+11
SHO/ Interns	36	23	-13	-37%	-31	-19
Medical & Dental	119	110	-8	-7.1%	-22	-8
Nurse/ Midwife Manager	134	134	-0	-0%	-4	-6
Nurse/ Midwife Specialist & AN/MP	81	83	+2	+3%	+7	+13
Staff Nurse/ Staff Midwife	370	364	-6	-2%	-8	+17
Pre-registration Nurse/ Midwife Intern	28	27	-1	-3%	+17	+10
Pre-registration Nurse Intern (COVID-19)				-100%		-34
Nursing/ Midwifery awaiting registration	1	1	+0	+8%	-10	+1
Nursing/ Midwifery Student	29	28	-1	-2%	+12	-23
Nursing/ Midwifery other	10	11	+1	+9%	-2	-1
Nursing & Midwifery	623	620	-4	-0.6%	+7	-1
Therapy Professions	66	65	-1	-1%	+4	+4
Social Care	1	1	+0	+7%	-0	-0
Social Workers	47	47	-0	-0%	+4	+3
Psychologists	53	54	+1	+2%	+1	+4
Pharmacy	9	9	+0	+2%	-0	+2
H&SC, Other	16	14	-1	-8%	+0	+1
Health & Social Care Professionals	191	190	-1	-0.4%	+9	+14
Management (VIII & above)	6	7	+1	+12%	+2	+2
Administrative/ Supervisory (V to VII)	28	26	-3	-9%	-3	-2
Clerical (III & IV)	113	114	+0	+0%	-1	+15
Management & Administrative	148	146	-2	-1.1%	-2	+15
Support	103	103	+0	+0%	-1	+2
Maintenance/ Technical	11	11	+0	+0%		+0
General Support	114	114	+0	+0.1%	-1	+2
Health Care Assistants	134	133	-0	-0%	+4	+7
Care, other	12	12	+0	+2%	-0	+0
Patient & Client Care	146	146	-0	-0.0%	+4	+7

other Community Services

Jul 2021 (Dec 2020 figure: 494)	WTE Jun 2021	WTE Jul 2021	WTE change since Jun 21	% change since Jun 21	WTE change since Dec 20	WTE change since Jul 20
Overall	523	527	+4	+0.7%	+32	+48
Consultants	17	16	-1	-5%	-1	-1
Registrars	17	22	+5	+27%	+8	+8
SHO/ Interns		2	+2	-100%	+2	+2
Medical & Dental	34	40	+6	+18.0%	+9	+9
Nurse/ Midwife Manager	76	75	-1	-1%	-1	-4
Nurse/ Midwife Specialist & AN/MP	11	10	-0	-4%	-2	-1
Staff Nurse/ Staff Midwife	181	184	+3	+2%	+19	+19
Nursing/ Midwifery other	2	2	0		+0	+1
Nursing & Midwifery	270	271	+2	+0.7%	+16	+16
Therapy Professions	12	12	-0	-0%	+0	-1
Social Care	2	2	-0	-1%	+0	-0
Social Workers	19	17	-2	-10%	-1	+2
Psychologists	9	9	-0	-0%	+3	+2
<i>Pharmacy</i>	2	2	+1	+33%	+2	+1
Pharmacy	2	2	+1	+33%	+1	+1
Health & Social Care Professionals	43	42	-1	-3.4%	+4	+4
Management (VIII & above)	27	25	-1	-5%	-5	+1
Administrative/ Supervisory (V to VII)	40	39	-1	-2%	+2	+4
Clerical (III & IV)	19	20	+1	+5%	+2	+3
Management & Administrative	86	84	-1	-1.7%	-1	+8
Support	18	18	-1	-4%	+2	+2
Maintenance/ Technical	7	7	-0	-4%	-0	+3
General Support	25	24	-1	-3.7%	+1	+5
Health Care Assistants	66	65	-0	-1%	+3	+7
Care, other	1	1	0			
Patient & Client Care	66	66	-0	-0.7%	+3	+7

Mental Health Services Employment by Grade Group: Jul 2021

Jul 2021 (Dec 2020 figure: 10,301)	WTE Jun 2021	WTE Jul 2021	WTE change since Jun 21	% change since Jun 21	WTE change since Dec 20	WTE change since Jul 20
Overall	10,486	10,444	-42	-0.4%	+142	+227
Consultant Medicine	1	1	0			
Consultant Psychiatry	381	379	-2	-0%	+10	+21
Consultants	382	380	-2	-0%	+10	+21
Registrar	196	203	+7	+4%	+35	+34
Senior Registrar	110	113	+3	+3%	+2	+19
Specialist Registrar	2	2	0			+1
Registrars	308	318	+10	+3%	+37	+54
Interns	5	8	+3	+55%	+3	+2
Senior House Officer	243	216	-27	-11%	-55	-7
SHO/ Interns	248	224	-25	-10%	-52	-5
Other Medical	4	4	-0	-0%	-1	-1
Medical/ Dental, other	4	4	-0	-0%	-1	-1
Medical & Dental	942	926	-16	-2%	-6	+69
Clinical Nurse/ Midwife Manager	1,030	1,037	+7	+1%	-4	+5
Director Nursing/Midwifery, Assistant	168	169	+1	+1%	-2	-8
Director of Nursing/Midwifery	28	28	+0	+1%	-0	-1
Nurse/ Midwife Manager	1,225	1,233	+8	+1%	-6	-4
Advanced Nurse/ Midwife Practitioner	43	47	+4	+10%	+7	+10
Clinical Nurse/ Midwife Specialist	481	481	+0	+0%	-9	+24
Nurse/ Midwife Specialist & AN/MP	523	527	+4	+1%	-1	+34
Staff Midwives				-100%	-1	-1
Staff Nurse [Intellectual Disability]	3	3	+0	+5%	-1	-1
Staff Nurse [Psychiatric]	3,010	2,986	-23	-1%	+22	+112
Staff Nurses [General/ Children's]	122	116	-7	-5%	+9	-1
Staff Nurse/ Staff Midwife	3,135	3,106	-30	-1%	+29	+109
Pre-registration Nurse/ Midwife Intern	171	170	-2	-1%	+159	+141
Pre-registration Nurse Intern (COVID-19)	4	4	-0	-9%	-39	-191
Post-registration Nurse/ Midwife Student	1		-1	-100%	-1	
Nursing/ Midwifery awaiting registration	3	3	+0	+2%	-2	-5
Nursing/ Midwifery Student	179	176	-3	-2%	+117	-55
Nursing Education/Clinical	29	31	+2	+6%	-1	-3
Nursing/ Midwifery other	29	31	+2	+6%	-1	-3
Nursing & Midwifery	5,092	5,074	-19	-0%	+138	+80
Dietitians	22	20	-2	-10%	-1	-0
Occupational Therapists	353	350	-3	-1%	+4	+2
Physiotherapists	2	2	0			-0
Podiatrists & Chiropodists	1	1	-0	-3%	-0	-0
Speech & Language Therapists	68	67	-1	-1%	-2	+7
Therapy Professions	446	440	-7	-1%	+1	+9
Social Care	76	75	-1	-1%	-5	-0
Social Workers	379	374	-5	-1%	+2	+7
Psychologists	427	431	+4	+1%	+7	+24
Pharmacy	20	20	+1	+3%	-0	+2
Counsellor Therapists	100	103	+3	+3%	+2	+2
Other Health & Social Care	6	5	-1	-10%	-0	-1
Play Therapists/ Specialists	1	1	0			
H&SC, Other	108	110	+2	+2%	+2	+1
Health & Social Care Professionals	1,456	1,451	-6	-0%	+6	+43
Executive Management	15	15	-0	-1%	+0	+3
Senior Management (VIII & GM)	43	45	+2	+6%	-7	-2

Jul 2021 (Dec 2020 figure: 10,301)	WTE Jun 2021	WTE Jul 2021	WTE change since Jun 21	% change since Jun 21	WTE change since Dec 20	WTE change since Jul 20
Overall	10,486	10,444	-42	-0.4%	+142	+227
Management (VIII & above)	57	60	+2	+4%	-7	+1
Middle Management (V-VII)	244	240	-4	-2%	-3	-1
Other Administrative	2	2	0			
Administrative/ Supervisory (V to VII)	246	242	-4	-2%	-3	-1
General Administrative (III & IV)	723	720	-3	-0%	-2	+13
Clerical (III & IV)	723	720	-3	-0%	-2	+13
Management & Administrative	1,026	1,021	-5	-1%	-13	+13
Catering	66	67	+1	+2%	+4	+4
Household Services	429	427	-2	-0%	-14	-7
Other Support	43	44	+1	+2%	+2	+6
Portering	47	47	-0	-1%	-1	-1
Support	585	585	-0	-0%	-9	+1
Maintenance	135	135	-0	-0%	-2	+3
Technical Services				-100%		-2
Maintenance/ Technical	135	135	-0	-0%	-2	+1
General Support	720	720	-0	-0%	-12	+2
HCA, Nurse's Aide, etc.	1,029	1,031	+2	+0%	+18	+16
Health & Social Care Assistants	11	11	-0	-1%	+3	+2
Health Care Assistants	1,040	1,042	+2	+0%	+21	+18
Care, other	209	211	+2	+1%	+7	+1
Patient & Client Care	1,249	1,253	+4	+0%	+28	+19

Employment by WTE, Headcount, Gender, Full-Time /Part-Time etc.: Jul 2021

Mental Health Services Staff Group	WTE	Headcount	WTE: no.	% Male	% female	Male WTE: no.	Female WTE: no.	% Total Perm	% Male Perm	% Female Perm	% Total Full Time	% Total Part Time	% Male FT	% Female FT
Overall	10,444	11,643	1.11	27.0%	73.0%	1.07	1.13	82.3%	78.5%	83.7%	85.2%	14.8%	93.1%	82.3%
Consultant Medicine	1	1	1.00	100.0%		1.00		100.0%	100.0%		100.0%	0.0%	100.0%	
Consultant Psychiatry	379	414	1.09	40.8%	59.2%	1.07	1.11	66.2%	66.2%	64.9%	86.7%	13.3%	91.7%	83.3%
Consultants	380	415	1.09	41.0%	59.0%	1.07	1.11	66.3%	68.2%	64.9%	86.7%	13.3%	91.8%	83.3%
Registrar	203	253	1.25	43.5%	56.5%	1.21	1.28	3.2%	3.2%	2.8%	97.2%	2.8%	100.0%	95.1%
Senior Registrar	113	147	1.30	40.8%	59.2%	1.23	1.35	1.4%	1.4%	1.1%	96.6%	3.4%	98.3%	95.4%
Specialist Registrar	2	2	1.00	50.0%	50.0%	1.00	1.00	0.0%	0.0%	0.0%	100.0%	0.0%	100.0%	100.0%
Registrars	318	402	1.26	42.5%	57.5%	1.21	1.30	2.5%	2.9%	2.2%	97.0%	3.0%	99.4%	95.2%
Interns	8	11	1.42	18.2%	81.8%	2.22	1.32	0.0%	0.0%	0.0%	100.0%	0.0%	100.0%	100.0%
Senior House Officer	216	254	1.18	42.5%	57.5%	1.16	1.19	0.8%	0.8%	0.0%	98.8%	1.2%	100.0%	97.9%
SHO/ Interns	224	265	1.19	41.5%	58.5%	1.17	1.19	0.8%	1.8%	0.0%	98.9%	1.1%	100.0%	98.1%
Other Medical	4	8	1.98	62.5%	37.5%	2.02	1.91	50.0%	50.0%	66.7%	87.5%	12.5%	100.0%	66.7%
Medical/ Dental, other	4	8	1.98	62.5%	37.5%	2.02	1.91	50.0%	40.0%	66.7%	87.5%	12.5%	100.0%	66.7%
Medical & Dental	926	1,090	1.18	41.8%	58.2%	1.15	1.20	26.7%	27.4%	26.2%	93.5%	6.5%	96.7%	91.2%
Clinical Nurse/ Midwife Manager	1,037	1,094	1.06	33.2%	66.8%	1.02	1.07	98.9%	98.9%	99.5%	93.4%	6.6%	98.1%	91.1%
Director Nursing/Midwifery, Assistant	169	174	1.03	46.6%	53.4%	1.03	1.03	99.4%	99.4%	100.0%	97.1%	2.9%	97.5%	96.8%
Director of Nursing/Midwifery	28	28	1.01	50.0%	50.0%	1.00	1.01	100.0%	100.0%	100.0%	96.4%	3.6%	100.0%	92.9%
Nurse/ Midwife Manager	1,233	1,296	1.05	35.3%	64.7%	1.02	1.07	99.0%	98.0%	99.5%	94.0%	6.0%	98.0%	91.8%
Advanced Nurse/ Midwife Practitioner	47	49	1.05	16.3%	83.7%	1.00	1.06	98.0%	98.0%	97.6%	89.8%	10.2%	100.0%	87.8%
Clinical Nurse/ Midwife Specialist	481	513	1.07	19.5%	80.5%	1.01	1.08	99.6%	99.6%	99.8%	92.4%	7.6%	98.0%	91.0%
Nurse/ Midwife Specialist & AN/MP	527	562	1.07	19.2%	80.8%	1.01	1.08	99.5%	99.1%	99.6%	92.2%	7.8%	98.1%	90.7%
Staff Nurse [Intellectual Disability]	3	4	1.20	25.0%	75.0%	1.00	1.28	50.0%	50.0%	66.7%	75.0%	25.0%	100.0%	66.7%
Staff Nurse [Psychiatric]	2,986	3,231	1.08	26.0%	74.0%	1.05	1.09	92.5%	92.5%	93.1%	87.6%	12.4%	92.1%	85.9%
Staff Nurses [General/ Children's]	116	128	1.11	21.9%	78.1%	1.09	1.11	79.7%	79.7%	83.0%	82.0%	18.0%	85.7%	81.0%
Staff Nurse/ Staff Midwife	3,106	3,363	1.08	25.8%	74.2%	1.05	1.09	91.9%	89.8%	92.7%	87.3%	12.7%	91.9%	85.7%
Pre-registration Nurse/ Midwife Intern	170	341	2.01	15.5%	84.5%	2.04	2.01	0.0%	0.0%	0.0%	100.0%	0.0%	100.0%	100.0%
Pre-registration Nurse Intern (COVID-19)	4	5	1.34	20.0%	80.0%	2.00	1.24	0.0%	0.0%	0.0%	100.0%	0.0%	100.0%	100.0%
Nursing/ Midwifery awaiting registration	3	3	1.00		100.0%		1.00	100.0%	100.0%	100.0%	100.0%	0.0%		100.0%
Nursing/ Midwifery Student	176	349	1.98	15.5%	84.5%	2.03	1.97	0.9%	0.0%	1.0%	100.0%	0.0%	100.0%	100.0%
Nursing Education/Clinical	31	34	1.10	17.6%	82.4%	1.00	1.12	100.0%	100.0%	100.0%	88.2%	11.8%	100.0%	85.7%

<i>Nursing/ Midwifery other</i>	31	34	1.10	17.6%	82.4%	1.00	1.12	100.0%	100.0%	100.0%	88.2%	11.8%	100.0%	85.7%
Nursing & Midwifery	5,074	5,604	1.10	26.7%	73.3%	1.06	1.12	88.7%	89.8%	88.3%	90.1%	9.9%	94.6%	88.5%
Health & Social Care	1,451	1,629	1.12	16.5%	83.5%	1.05	1.14	86.4%	82.1%	87.3%	81.7%	18.3%	91.8%	79.7%
Executive Management	15	15	1.01	60.0%	40.0%	1.02	1.00	100.0%	100.0%	100.0%	100.0%	0.0%	100.0%	100.0%
Senior Management (VIII & GM)	45	47	1.05	29.8%	70.2%	1.01	1.06	95.7%	95.7%	97.0%	97.9%	2.1%	100.0%	97.0%
Management (VIII & above)	60	62	1.04	37.1%	62.9%	1.01	1.05	96.8%	95.7%	97.4%	98.4%	1.6%	100.0%	97.4%
Middle Management (V-VII)	240	253	1.05	19.8%	80.2%	1.01	1.07	90.1%	90.1%	91.6%	88.9%	11.1%	98.0%	86.7%
Other Administrative	2	2	1.27		100.0%		1.27	100.0%	100.0%	100.0%	50.0%	50.0%		50.0%
Administrative/ Supervisory (V to VII)	242	255	1.06	19.6%	80.4%	1.01	1.07	90.2%	84.0%	91.7%	88.6%	11.4%	98.0%	86.3%
General Administrative (III & IV)	720	819	1.14	8.8%	91.2%	1.06	1.15	84.1%	84.1%	84.5%	74.1%	25.9%	88.9%	72.7%
Clerical (III & IV)	720	819	1.14	8.8%	91.2%	1.06	1.15	84.1%	80.6%	84.5%	74.1%	25.9%	88.9%	72.7%
Management & Administrative	1,021	1,136	1.11	12.8%	87.2%	1.03	1.13	86.2%	84.1%	86.5%	78.7%	21.3%	93.8%	76.5%
Catering	67	73	1.08	35.6%	64.4%	1.03	1.11	94.5%	94.5%	93.6%	74.0%	26.0%	92.3%	63.8%
Household Services	427	499	1.17	20.6%	79.4%	1.09	1.19	87.8%	87.8%	90.7%	59.7%	40.3%	81.6%	54.0%
Other Support	44	50	1.14	34.0%	66.0%	1.05	1.19	90.0%	90.0%	87.9%	72.0%	28.0%	88.2%	63.6%
Portering	47	48	1.03	93.8%	6.3%	1.03	1.00	85.4%	85.4%	66.7%	89.6%	10.4%	88.9%	100.0%
Support	585	670	1.15	28.5%	71.5%	1.06	1.18	88.5%	83.2%	90.6%	64.3%	35.7%	85.3%	55.9%
Maintenance	135	140	1.04	99.3%	0.7%	1.04	1.00	95.7%	95.7%	100.0%	96.4%	3.6%	96.4%	100.0%
Maintenance/ Technical	135	140	1.04	99.3%	0.7%	1.04	1.00	95.7%	95.7%	100.0%	96.4%	3.6%	96.4%	100.0%
General Support	720	810	1.13	40.7%	59.3%	1.05	1.18	89.8%	88.5%	90.6%	69.9%	30.1%	90.0%	56.0%
Health Care Assistants	1,042	1,127	1.08	29.3%	70.7%	1.05	1.10	89.3%	83.6%	91.6%	78.4%	21.6%	90.0%	73.7%
Care, other	211	247	1.17	46.2%	53.8%	1.12	1.22	81.8%	76.3%	86.5%	68.8%	31.2%	78.1%	60.9%
Patient & Client Care	1,253	1,374	1.10	32.3%	67.7%	1.07	1.11	87.9%	81.8%	90.9%	76.7%	23.3%	86.9%	71.8%

Employment by WTE, Headcount, Gender, Full-Time /Part-Time etc.: Jul 2021

Mental Health Services CHO	WTE	Headcount	WTE: no.	% Male	% female	Male WTE: no.	Female WTE: no.	% Total Perm	% Male Perm	% Female Perm	% Total Full Time	% Total Part Time	% Male FT	% Female FT
Overall	10,444	11,643	1.11	27.0%	73.0%	1.07	1.13	82.3%	78.5%	83.7%	85.2%	14.8%	93.1%	82.3%
CHO 1	995	1,095	1.10	26.5%	73.5%	1.06	1.12	88.2%	88.2%	89.8%	87.6%	12.4%	96.9%	84.2%
CHO 2	1,344	1,476	1.10	27.9%	72.1%	1.06	1.11	85.1%	85.1%	87.2%	84.0%	16.0%	90.0%	81.7%
CHO 3	834	914	1.10	23.2%	76.8%	1.07	1.10	81.6%	81.6%	81.3%	85.0%	15.0%	91.0%	83.2%
CHO 4	1,567	1,747	1.11	25.4%	74.6%	1.07	1.13	72.1%	72.1%	74.8%	84.6%	15.4%	93.9%	81.4%
CHO 5	1,216	1,361	1.12	25.3%	74.7%	1.05	1.14	86.6%	86.6%	87.2%	79.5%	20.5%	91.0%	75.6%
CHO 6	630	721	1.14	30.1%	69.9%	1.11	1.16	79.3%	79.3%	80.6%	84.5%	15.5%	91.7%	81.3%
CHO 7	884	1,017	1.15	24.0%	76.0%	1.11	1.16	78.5%	78.5%	80.5%	88.4%	11.6%	95.9%	86.0%
CHO 8	1,120	1,240	1.11	24.0%	76.0%	1.03	1.14	86.1%	86.1%	86.3%	86.1%	13.9%	95.0%	83.3%
CHO 9	1,326	1,508	1.14	27.8%	72.2%	1.09	1.15	83.1%	83.1%	85.1%	84.9%	15.1%	94.5%	81.3%
other Community Services	527	564	1.07	45.7%	54.3%	1.07	1.07	86.3%	86.3%	87.9%	92.7%	7.3%	90.3%	94.8%

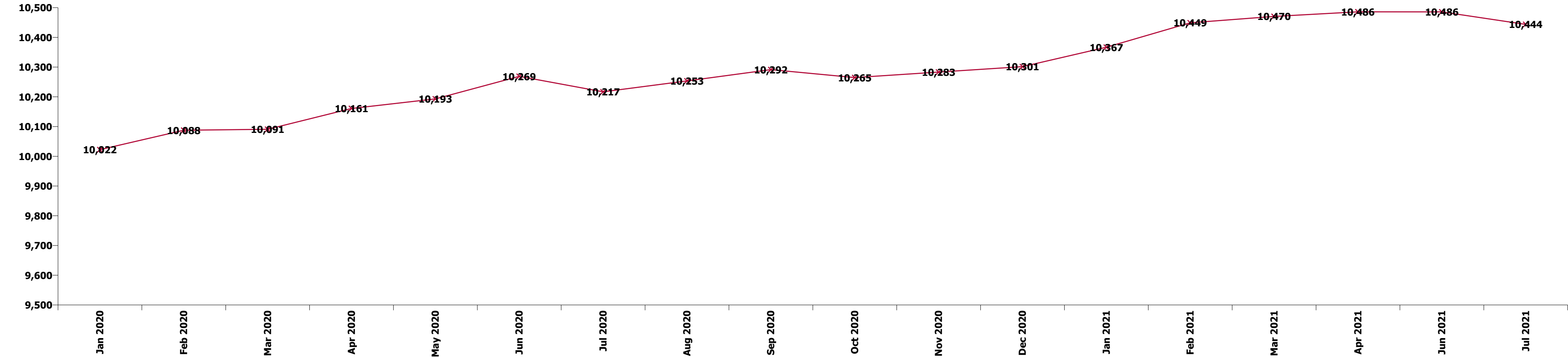
Summary Staff Movement: July 2021

Month-on-month
Summary

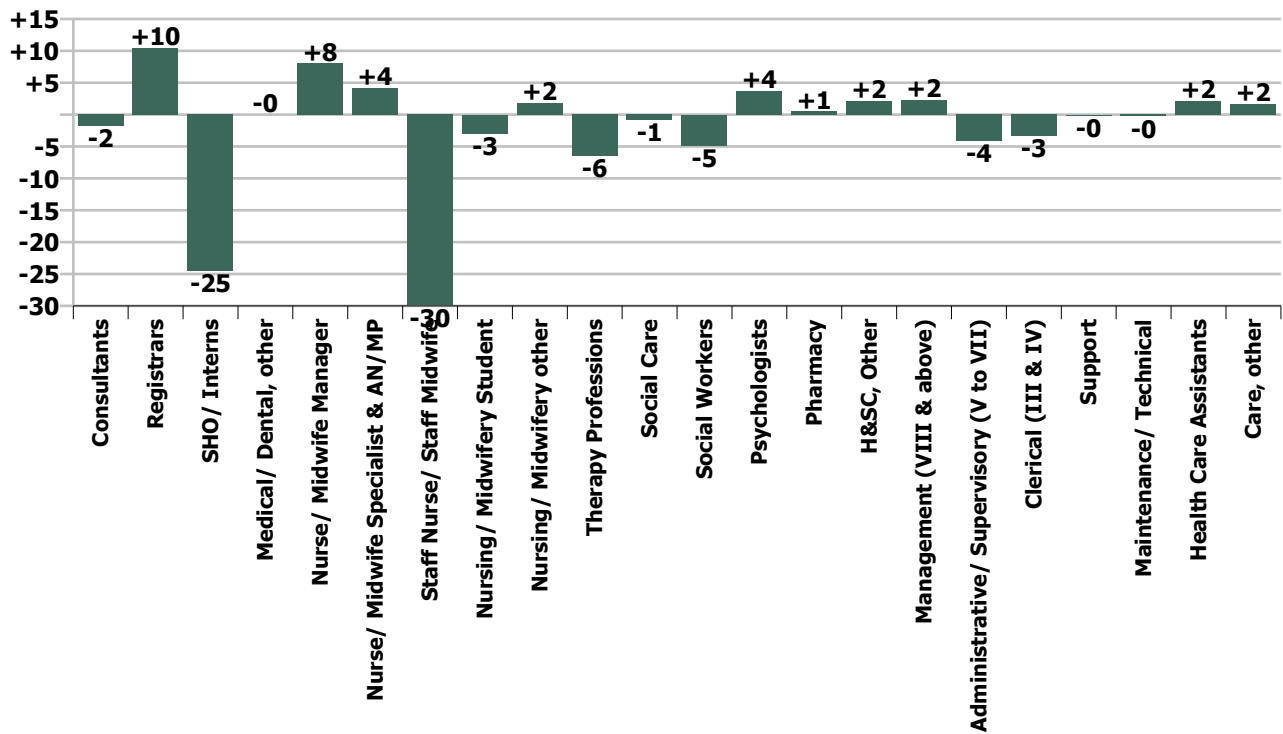
WTE change since Jun 21	% change since Jun 21	overall	Consultants	Registrars	SHO/ Interns	Medical/ Dental, other	Medical & Dental	Nurse/ Midwife Manager	Nurse/ Midwife Specialist & AN/MP	Staff Nurse/ Staff Midwife	Nursing/ Midwifery Student	Nursing/ Midwifery other	Nursing & Midwifery	Therapy Professions	Social Care	Social Workers	Psychologists	Pharmacy	H&SC, Other	Health & Social Care Professionals	Management (VIII & above)	Administrativ e/ Supervisory (V to VII)	Clerical (III & IV)	Management & Administrativ e	General Support	Health Care Assistants	Care, other	Patient & Client Care
Overall	-0.4%	-42	-2	+10	-25	-0	-16	+8	+4	-30	-3	+2	-19	-7	-1	-5	+4	+1	+2	-6	+2	-4	-3	-5	-0	+2	+2	+4
CHO 1	-0.9%	-9	-0	+1	-3		-2	-2	+0	-3	-0		-5	+0	-0	-1	-0		+0	-1	+1	-1	-2	-1	-0	+1		+1
CHO 2	-1.6%	-22	+0	-2	-5		-6	+1	-2	-6	-1	+1	-8	-3	-1	-1	+1			-3		+2	-5	-3	+1	-1	-1	-2
CHO 3	+0.7%	+6	+0	-1	+3		+2	+1	+0	-1	+0		+1	-0	-0	+1	-0		+0			-1	+1	-0	+1	+1	+0	+2
CHO 4	-0.0%	-1	+0	+6	-2	-0	+4	+6	+1	-6			+1	-2	+0	-1	-1	-0	-1	-4	+0	-1	+1	+0	+1	-2	+0	-2
CHO 5	+0.3%	+3	-0	-0	+1		+1	+3	+0	-3	+0	-0	-0	-1	+0	-0	-0		+5	+3	+1	+1	-0	+2	-3	+1		+1
CHO 6	+0.0%	+0	-1	+2	-2		-1	-1	+1	+1	-0		+1	-2	-1	+0	+2		-1	-1		-1	+1	-1	+1	+2	-0	+2
CHO 7	-0.3%	-3	+1	-5	-0		-5	+1	+1	-3	-1	+0	-4	+1	-0	-0	+2		-0	+3		+1	-1	+0	-1	+0	+2	+2
CHO 8	-0.5%	-5	-1	+1	-6		-6	+3	+1	-6	+0		-3	+1	+0	+0	-1		-1	+0	+1	-0	+1	+2	-0	+2		+2
CHO 9	-1.1%	-14	+0	+5	-13		-8	-0	+2	-6	-1	+1	-4	-1	+0	-0	+1	+0	-1	-1	+1	-3	+0	-2	+0	-0	+0	-0
other Community Services	+0.7%	+4	-1	+5	+2		+6	-1	-0	+3			+2	-0	-0	-2	-0	+1		-1	-1	-1	+1	-1	-1	-0		-0
		-0.4%	-0.5%	+3.4%	-9.9%	-0.0%	-1.7%	+0.7%	+0.8%	-1.0%	-1.7%	+6.3%	-0.4%	-1.5%	-1.1%	-1.3%	+0.9%	+2.7%	+2.0%	-0.4%	+4.0%	-1.7%	-0.5%	-0.5%	-0.1%	+0.2%	+0.8%	+0.3%

Year-on-year Summary

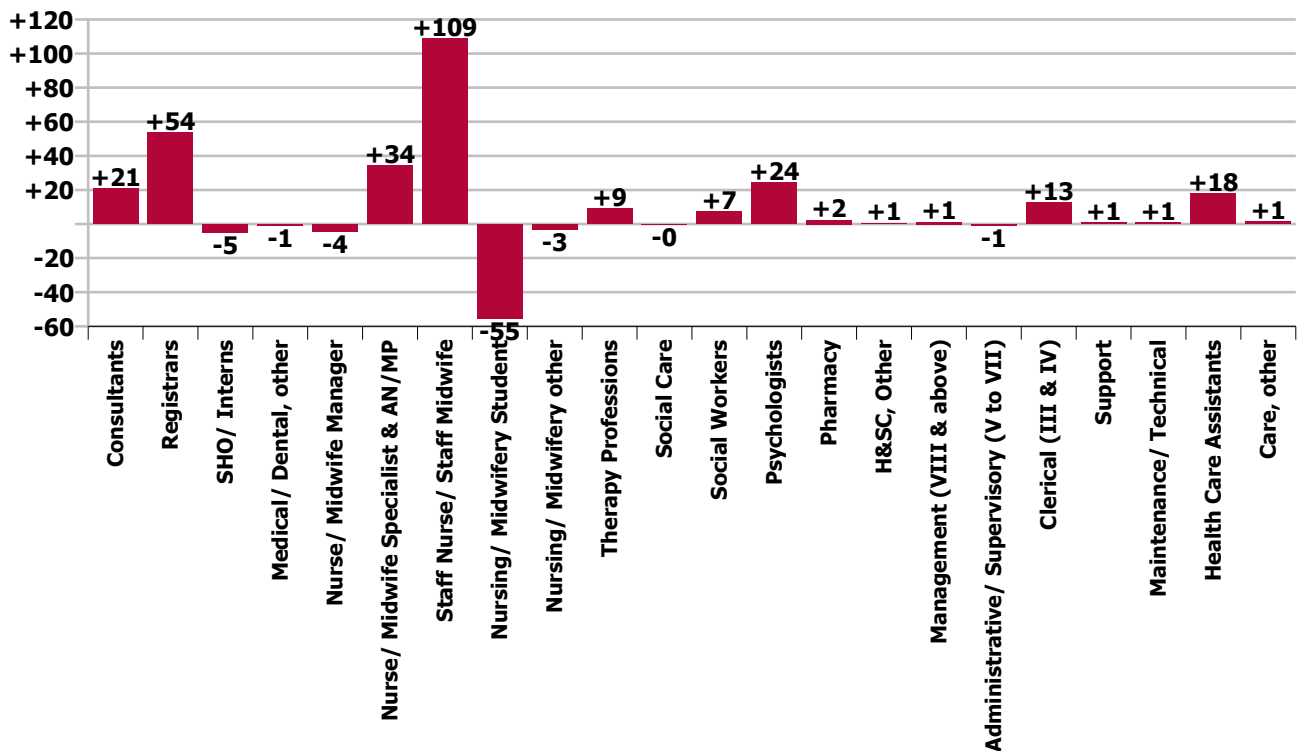
WTE change since Jul 20	% change since Jul 20	overall	Consultants	Registrars	SHO/ Interns	Medical/ Dental, other	Medical & Dental	Nurse/ Midwife Manager	Nurse/ Midwife Specialist & AN/MP	Staff Nurse/ Staff Midwife	Nursing/ Midwifery Student	Nursing/ Midwifery other	Nursing & Midwifery	Therapy Professions	Social Care	Social Workers	Psychologists	Pharmacy	H&SC, Other	Health & Social Care Professionals	Management (VIII & above)	Administrativ e/ Supervisory (V to VII)	Clerical (III & IV)	Management & Administrativ e	General Support	Health Care Assistants	Care, other	Patient & Client Care	
Overall	+2.2%	+227	+21	+54	-5	-1	+69	-4	+34	+109	-55	-3	+80	+9	-0	+7	+24	+2	+1	+43	+1	-1	+13	+13	+2	+18	+1	+19	
CHO 1	+2.6%	+25	+3	+9	-6		+6	-3	+6	+11	-3	+1	+12	+1	+0	+1	-0	-0	+2	+4		-2	-2	+5	+1	-2	+5	-1	+4
CHO 2	+0.7%	+10	+3	+1	+1	-1	+5	+2	+2	+23	-11	-1	+15	+1	+0		+4	+0	-0	+1	-2	+1	-6	-7	+2	-3	-3	-6	
CHO 3	+3.0%	+24	+2	+1	+8		+11	-3	-2	+11	-6		+0	+6	-0	-2	+3		-3	+4	-1	+0	+2	+2	+1	+7	+0	+7	
CHO 4	-0.3%	-4	+4	+2	+3	+0	+19	+6	+1	-17	+1		-8	-3	-0	+3	+6	-1	-3	+0	+1	-3	+1	-1	-0	-14	+0	-13	
CHO 5	+2.5%	+30	+2	-3	+9		+8	+8	+2	+14	-4	-0	+19	-7	-0	+0	-1		+10	+2	+1	+3	+6	+10	-9	-0	+0	+0	
CHO 6	+5.6%	+34	+2	+5	-3		+5	-1	+4	+7	+4		+15	+4	-0	-2	+6			+8		-4	-3	-7	+3	+9	+1	+9	
CHO 7	+3.9%	+33	+4	+6	+2		+11	-1	+6	+14	-5	-2	+12	+4	-0	+3	+0		-1	+7	+1	+1	-5	-3	+1	+1	+4	+5	
CHO 8	-0.2%	-2	+2	+14	-12		+4	-3	+3	+9	-9	-1	-0	+0	+0	+2	+2	+1	-6	-0	+1	+1	-6	-4	-0	+0	-1	-0	
CHO 9	+2.2%	+29	+1	+11	-19		-8	-6	+13	+17	-23	-1	-1	+4	-0	+3	+4	+2	+1	+14	+2	-2	+15	+15	+2	+7	+0	+7	
other Community Services	+10.1%	+48	-1	+8	+2		+9	-4	-1	+19		+1	+16	-1	-0	+2	+2	+1		+4	+1	+4	+3	+8	+5	+7		+7	
		+2.2%	+5.8%	+20.3%	-2.2%	-19.0%	+8.0%	-0.4%	+7.0%	+3.6%	-23.8%	-9.7%	+1.6%	+2.1%	-0.4%	+2.0%	+6.0%	+13.0%	+0.5%	+3.1%	+2.0%	-0.4%	+1.8%	+1.3%	+0.3%	+1.7%	+0.7%	+1.6%	



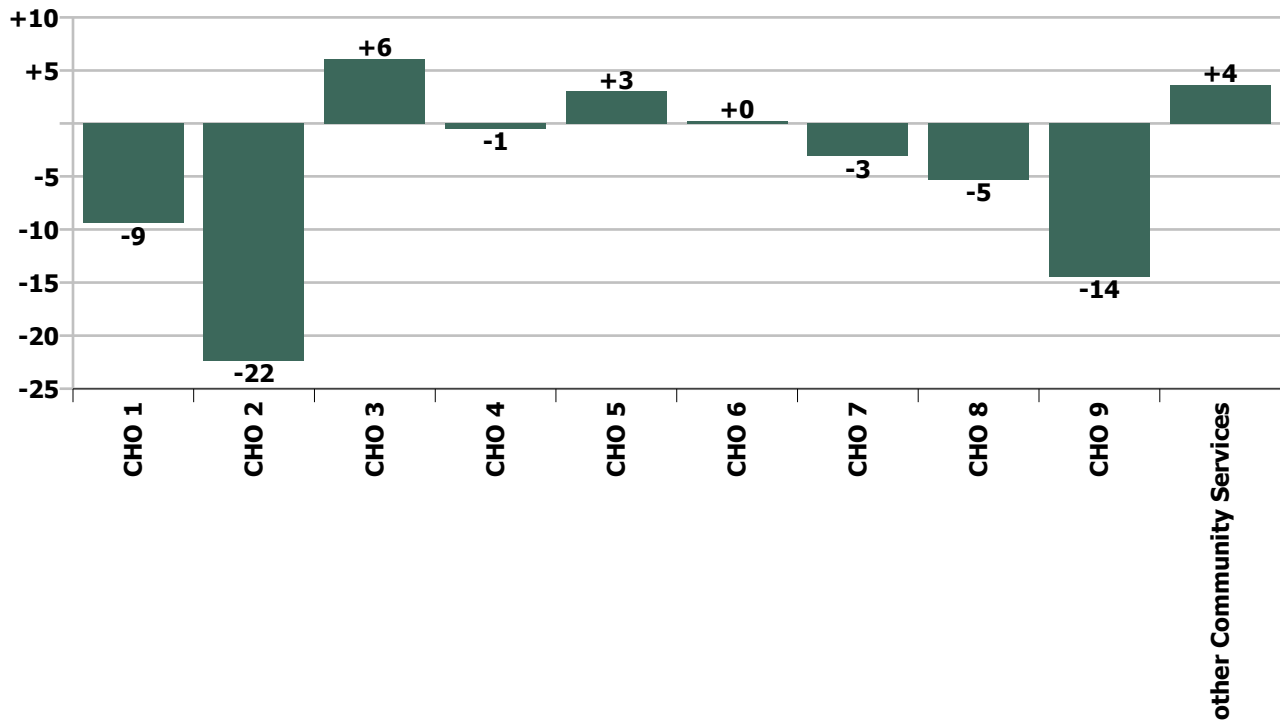
Staff Group change since: Jun 2021



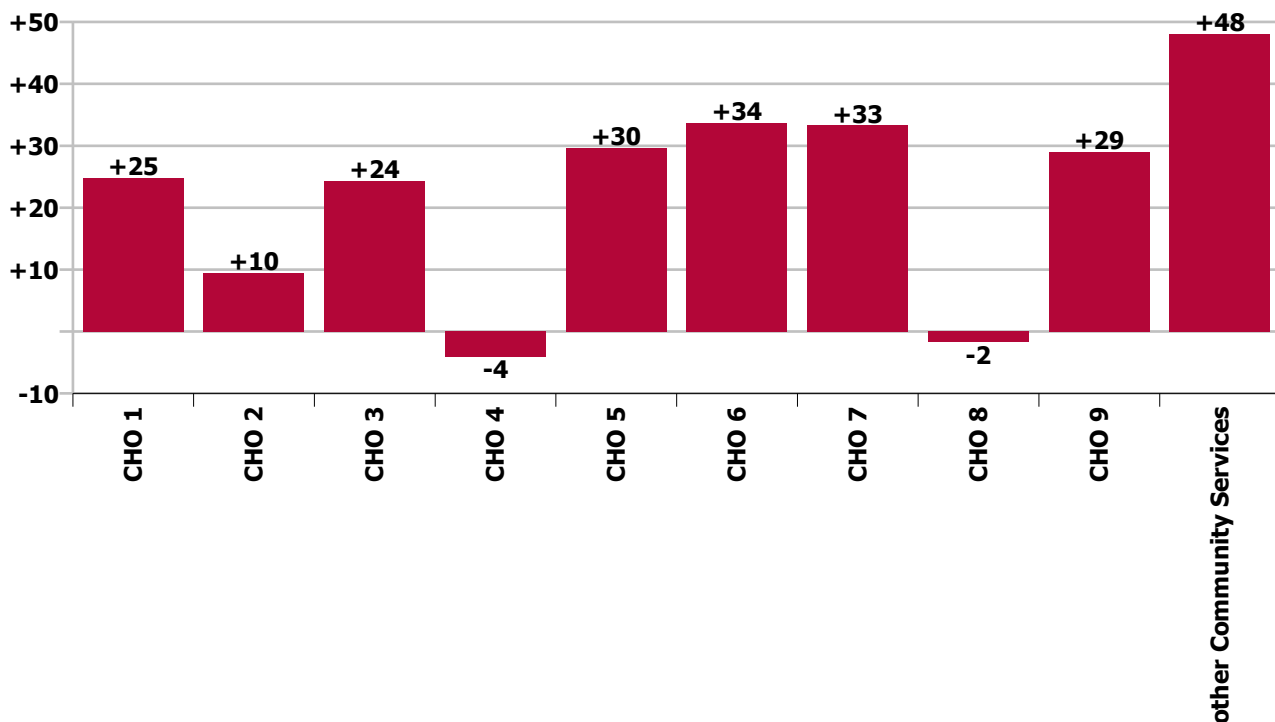
Staff Group change since: Jul 2020



CHO change since: Jun 2021



CHO change since: Jul 2020



Longitudinal Employment Levels by Grade Group - Dec 2016 to Jul 2021

Jul 2021 (Dec 2015 figure: 9,499)	WTE Jul 2021	WTE change since Dec 16	WTE change since Dec 17	WTE change since Dec 18	WTE change since Dec 19	WTE change since Dec 20	WTE change since Apr 21	% change since Dec 16	% change since Dec 17	% change since Dec 18	% change since Dec 19	% change since Dec 20	% change since Apr 21
Overall	10,444	+823	+654	+546	+490	+142	-42	+8.6%	+6.7%	+5.5%	+4.9%	+1.4%	-0.4%
Consultant Medicine	1		-0	-0					-9.1%	-9.1%			
Consultant Psychiatry	379	+64	+67	+49	+27	+10	+2	+20.3%	+21.3%	+14.8%	+7.8%	+2.8%	+0.6%
Consultants	380	+64	+66	+49	+27	+10	+2	+20.2%	+21.2%	+14.8%	+7.7%	+2.8%	+0.6%
Registrar	203	+71	+58	+49	+34	+35	+4	+53.7%	+40.4%	+31.9%	+19.9%	+20.9%	+1.8%
Senior Registrar	113	+46	+48	+27	+16	+2	+5	+68.9%	+72.3%	+31.9%	+16.7%	+2.0%	+4.3%
Specialist Registrar	2	+1		+1	-1			+100.0%		+100.0%	-20.0%		
Registrars	318	+118	+106	+78	+49	+37	+8	+59.0%	+49.9%	+32.2%	+18.4%	+13.3%	+2.7%
<i>Intern</i>	8	-4	-2	-0	-0			-35.6%	-22.7%	-3.4%	-3.4%	+54.6%	+54.6%
Interns	8	-4	-2	-0	-0	+3	+3	-35.6%	-22.7%	-3.4%	-3.4%	+54.6%	+60.0%
Senior House Officer	216	-31	-57	-53	-37	-55	-25	-12.6%	-20.7%	-19.8%	-14.7%	-20.3%	-10.5%
SHO/ Interns	224	-35	-59	-54	-38	-52	-22	-13.6%	-20.8%	-19.4%	-14.4%	-19.0%	-9.1%
Dentists			-0	-0				-100.0%	-100.0%	-100.0%	-100.0%	-100.0%	-100.0%
Other Medical	4	-6	-7	-2	-1	-1	-0	-57.9%	-62.7%	-37.6%	-19.0%	-19.0%	-9.2%
Medical/ Dental, other	4	-6	-7	-3	-1	-1	-0	-57.9%	-62.9%	-38.3%	-19.0%	-19.0%	-9.2%
Medical & Dental	926	+141	+107	+70	+38	-6	-12	+18.0%	+13.0%	+8.2%	+4.3%	-0.6%	-1.3%
Clinical Nurse/ Midwife Manager	1,037	+30	+54	+31	+38	-4	+2	+3.0%	+5.5%	+3.1%	+3.8%	-0.4%	+0.2%
Director Nursing/Midwifery, Assistant	169	+13	+7	+5	+4	-2	-8	+8.7%	+4.2%	+2.9%	+2.5%	-1.0%	-4.4%
Director of Nursing/Midwifery	28	-4	-1	+4	-1	-0	+1	-12.1%	-2.2%	+17.4%	-3.6%	-0.2%	+4.0%
Nurse/ Midwife Manager	1,233	+40	+60	+40	+41	-6	-5	+3.3%	+5.1%	+3.3%	+3.4%	-0.5%	-0.4%
Advanced Nurse/ Midwife Practitioner	47	+39	+36	+26	+16	+7	+5	+522.9%	+343.7%	+131.3%	+51.6%	+18.2%	+13.2%
Clinical Nurse/ Midwife Specialist	481	+144	+98	+85	+52	-9	-5	+42.9%	+25.5%	+21.6%	+12.2%	-1.7%	-1.0%
Nurse/ Midwife Specialist & AN/MP	527	+183	+134	+112	+68	-1	+1	+53.3%	+34.0%	+27.0%	+14.8%	-0.3%	+0.1%
Graduate Nursing/ Midwifery								-100.0%	-100.0%	-100.0%	-100.0%	-100.0%	-100.0%
<i>Staff Midwife</i>								-100.0%	-100.0%	-100.0%	-100.0%	-100.0%	-100.0%
Staff Midwives						-1		-100.0%	-100.0%	-100.0%	-100.0%	-100.0%	-100.0%
Staff Nurse [Intellectual Disability]	3		-0	-3	-1	-1	+1		-3.5%	-44.3%	-26.3%	-21.2%	+42.7%
Staff Nurse [Psychiatric]	2,986	-70	-41	+31	+93	+22	-31	-2.3%	-1.3%	+1.1%	+3.2%	+0.7%	-1.0%
Staff Nurses [General/ Children's]	116	-5	-2	-2	+11	+9	+21	-4.1%	-1.6%	-1.6%	+10.4%	+8.8%	+21.7%

Jul 2021 (Dec 2015 figure: 9,499)	WTE Jul 2021	WTE change since Dec 16	WTE change since Dec 17	WTE change since Dec 18	WTE change since Dec 19	WTE change since Dec 20	WTE change since Apr 21	% change since Dec 16	% change since Dec 17	% change since Dec 18	% change since Dec 19	% change since Dec 20	% change since Apr 21
Overall	10,444	+823	+654	+546	+490	+142	-42	+8.6%	+6.7%	+5.5%	+4.9%	+1.4%	-0.4%
Staff Nurse/ Staff Midwife	3,106	-75	-43	+27	+103	+29	-9	-2.4%	-1.4%	+0.9%	+3.4%	+1.0%	-0.3%
Public Health Nurse		-1	-1					-100.0%	-100.0%	-100.0%	-100.0%	-100.0%	-100.0%
Student General Nursing Intern (pre-registration)				-1				-100.0%	-100.0%	-100.0%	-100.0%	-100.0%	-100.0%
Student Psychiatric Nursing Intern (pre-registration)	170	+161	+153	+143	+142			+1859.2%	+907.5%	+528.2%	+516.3%	+1484.2%	+1484.2%
Pre-registration Nurse/ Midwife Intern	170	+161	+153	+142	+142	+159	-1	+1859.2%	+907.5%	+508.8%	+516.3%	+1484.2%	-0.8%
Student Psychiatric Nursing Intern (COVID-19 HCA)	4	+4	+4	+4	+4			-100.0%	-100.0%	-100.0%	-100.0%	-91.2%	-91.2%
Pre-registration Nurse Intern (COVID-19)	4	+4	+4	+4	+4	-39	-1	-100.0%	-100.0%	-100.0%	-100.0%	-91.2%	-18.2%
Student Public Health Nursing (post registration)					-1			-100.0%	-100.0%	-100.0%	-100.0%	-100.0%	-100.0%
Post-registration Nurse/ Midwife Student					-1	-1	-1	-100.0%	-100.0%	-100.0%	-100.0%	-100.0%	-100.0%
Nursing/ Midwifery awaiting registration	3	+1	-6	-17	-56	-2	-1	+50.0%	-65.3%	-84.9%	-94.9%	-38.1%	-21.3%
Nursing/ Midwifery Student	176	+166	+151	+129	+89	+117	-4	+1554.7%	+592.0%	+269.7%	+101.7%	+199.1%	-2.2%
Nursing Education/Clinical	31	+6	+0	-0	-1	-1	-1	+25.6%	+1.3%	-0.1%	-1.9%	-2.3%	-3.9%
Nursing/ Midwifery other	31	+6	+0	-0	-1	-1	-1	+25.6%	+1.3%	-0.1%	-1.9%	-2.3%	-3.9%
Nursing & Midwifery	5,074	+319	+302	+307	+300	+138	-18	+6.7%	+6.3%	+6.4%	+6.3%	+2.8%	-0.4%
Dietitians	20	+6	+3	-0	+1	-1	-1	+45.0%	+17.1%	-2.1%	+2.7%	-5.6%	-6.6%
Occupational Therapists	350	+50	+24	+10	+11	+4	-9	+16.7%	+7.3%	+3.1%	+3.3%	+1.2%	-2.4%
Physiotherapists	2	+0	+1	+1	+0			+19.9%	+99.2%	+49.7%	+8.1%		
Podiatrists & Chiropodists	1	-1	-1	-1	-0	-0	-0	-62.1%	-53.1%	-43.4%	-5.5%	-13.8%	-11.5%
Speech & Language Therapists	67	+8	+6	+6	+6	-2	-2	+13.3%	+9.8%	+9.6%	+9.3%	-3.2%	-3.0%
Therapy Professions	440	+63	+33	+16	+18	+1	-12	+16.8%	+8.1%	+3.8%	+4.2%	+0.2%	-2.7%
Social Care	75	-13	-7	-3	+2	-5	-3	-14.3%	-8.8%	-4.2%	+2.4%	-5.8%	-4.4%
Social Workers	374	+24	+17	+16	+25	+2	-5	+6.9%	+4.8%	+4.5%	+7.1%	+0.5%	-1.4%
Psychologists	431	+88	+61	+42	+36	+7	+2	+25.7%	+16.4%	+10.9%	+9.2%	+1.7%	+0.4%
Pharmacy	20	+1	+1	+1	+2	-0	+1	+5.0%	+5.5%	+6.0%	+10.2%	-1.4%	+4.2%
Counsellor Therapists	103	+18	+18	+18	+8	+2	+6	+21.3%	+20.6%	+21.3%	+8.8%	+1.9%	+6.2%
Other Health & Social Care	5	-3	-3	-4	-7	-0	+0	-39.5%	-40.4%	-40.7%	-56.5%	-5.7%	+1.0%
Play Therapists/ Specialists	1	-1	-0		+0			-40.8%	-2.0%		+1.4%		
H&SC, Other	110	+14	+14	+15	+2	+2	+6	+14.3%	+14.7%	+15.4%	+1.6%	+1.5%	+5.8%
Health & Social Care Professionals	1,451	+178	+119	+87	+84	+6	-13	+14.0%	+8.9%	+6.4%	+6.2%	+0.4%	-0.9%

Jul 2021 (Dec 2015 figure: 9,499)	WTE Jul 2021	WTE change since Dec 16	WTE change since Dec 17	WTE change since Dec 18	WTE change since Dec 19	WTE change since Dec 20	WTE change since Apr 21	% change since Dec 16	% change since Dec 17	% change since Dec 18	% change since Dec 19	% change since Dec 20	% change since Apr 21
Overall	10,444	+823	+654	+546	+490	+142	-42	+8.6%	+6.7%	+5.5%	+4.9%	+1.4%	-0.4%
Executive Management	15	+8	+7	+5	+4	+0	-1	+112.3%	+85.8%	+48.6%	+35.1%	+0.9%	-3.9%
Senior Management (VIII & GM)	45	+20	+14	+13	-1	-7	-3	+82.0%	+43.7%	+41.9%	-3.1%	-14.2%	-5.3%
Management (VIII & above)	60	+28	+21	+18	+2	-7	-3	+88.7%	+52.3%	+43.5%	+4.3%	-10.9%	-5.0%
Administrative/ Supervisory (V to VII)	242	+74	+42	+19	+5	-3	-1	+43.9%	+21.2%	+8.6%	+2.0%	-1.3%	-0.2%
Clerical (III & IV)	720	+59	+38	+24	+2	-2	-9	+8.9%	+5.6%	+3.5%	+0.3%	-0.3%	-1.2%
Management & Administrative	1,021	+160	+101	+61	+9	-13	-13	+18.6%	+11.0%	+6.4%	+0.9%	-1.2%	-1.2%
Catering	67	+2	+2	-4	+2	+4	+2	+2.7%	+2.4%	-6.2%	+3.3%	+6.1%	+3.0%
Household Services	427	-65	-49	-19	+2	-14	-8	-13.3%	-10.4%	-4.2%	+0.6%	-3.3%	-1.8%
Other Support	44	-12	-6	-11	+1	+2	+1	-21.7%	-11.4%	-20.5%	+2.7%	+4.7%	+2.0%
Portering	47	-13	-2	-1	-1	-1	-0	-21.2%	-4.5%	-2.7%	-3.0%	-1.4%	-0.4%
Support	585	-88	-56	-36	+4	-9	-5	-13.1%	-8.7%	-5.8%	+0.7%	-1.6%	-0.9%
Maintenance	135	-8	-4	+1	+6	-2	-2	-5.6%	-2.7%	+0.5%	+4.7%	-1.8%	-1.6%
Technical Services		-2	-2	-2	-2			-100.0%	-100.0%	-100.0%	-100.0%	-100.0%	-100.0%
Maintenance/ Technical	135	-10	-6	-1	+4	-2	-2	-6.9%	-4.1%	-1.0%	+3.1%	-1.8%	-1.6%
General Support	720	-98	-61	-37	+8	-12	-7	-12.0%	-7.8%	-4.9%	+1.2%	-1.6%	-1.0%
HCA, Nurse's Aide, etc.	1,031	+102	+82	+57	+52	+18	+13	+11.0%	+8.7%	+5.8%	+5.3%	+1.8%	+1.3%
Health & Social Care Assistants	11	+6	+6	+6	+2	+3	+1	+137.9%	+137.9%	+102.9%	+23.5%	+32.4%	+6.3%
Health Care Assistants	1,042	+109	+89	+63	+54	+21	+13	+11.6%	+9.3%	+6.4%	+5.5%	+2.0%	+1.3%
Other Care Grades	211	+15	-1	-5	-5	+7	+7	+7.5%	-0.7%	-2.3%	-2.3%	+3.6%	+3.5%
Care, other	211	+15	-1	-5	-5	+7	+7	+7.5%	-0.7%	-2.3%	-2.3%	+3.6%	+3.5%
Patient & Client Care	1,253	+123	+87	+58	+49	+28	+21	+10.9%	+7.5%	+4.8%	+4.1%	+2.3%	+1.7%

Source: Health Service Personnel Census

