

# Mental Health Service Employment Report: May 2020

## Employment by Staff Group

May 2020 (Dec 2019 figure: 9,954)	WTE Apr 2020	WTE May 2020	WTE change since Apr 20	% change since Apr 20	WTE change since Dec 19	WTE change since May 19
<b>Overall</b>	<b>10,161</b>	<b>10,193</b>	<b>+32</b>	<b>+0.3%</b>	<b>+239</b>	<b>+90</b>
Consultants	361	366	+5	+1.4%	+14	+30
Registrars	260	261	+1	+0.4%	-8	+29
SHO/ Interns	252	243	-10	-3.9%	-19	-42
Medical/ Dental, other	5	5	+0	+0.6%		-2
<b>Medical &amp; Dental</b>	<b>878</b>	<b>875</b>	<b>-3</b>	<b>-0.4%</b>	<b>-13</b>	<b>+15</b>
Nurse/ Midwife Manager	1,223	1,233	+10	+0.8%	+41	+38
Nurse/ Midwife Specialist & AN/MP	485	492	+7	+1.5%	+33	+46
Staff Nurse/ Staff Midwife	3,041	3,007	-34	-1.1%	+4	-101
<i>Pre-registration Nurse/ Midwife Intern</i>	96	27	-69	-71.8%	-1	-96
<i>Pre-registration Nurse Intern (COVID-19)</i>	68	164	+96	+141.6%	+164	+164
<i>Post-registration Nurse/ Midwife Student</i>				-100.0%		
<i>Nursing/ Midwifery awaiting registration</i>	13	12	-1	-6.8%	-8	+10
Nursing/ Midwifery Student	177	204	+26	+14.9%	+116	+79
Nursing/ Midwifery other	33	33	-1	-2.3%	+1	+4
<b>Nursing &amp; Midwifery</b>	<b>4,960</b>	<b>4,969</b>	<b>+8</b>	<b>+0.2%</b>	<b>+196</b>	<b>+66</b>
Therapy Professions	435	437	+2	+0.5%	+15	-1
Social Care	77	76	-1	-0.7%	+2	-2
Social Workers	359	366	+7	+2.0%	+17	+16
Psychologists	394	401	+6	+1.6%	+6	+6
Pharmacy	20	19	-0	-1.3%	+1	+1
H&SC, Other	109	112	+3	+2.3%	+4	+13
<b>Health &amp; Social Care Professionals</b>	<b>1,394</b>	<b>1,411</b>	<b>+17</b>	<b>+1.3%</b>	<b>+45</b>	<b>+33</b>
Management (VIII & above)	61	60	-1	-1.2%	+3	+13
Administrative/ Supervisory (V to VII)	236	239	+3	+1.3%	+2	+15
Clerical (III & IV)	707	707	+0	+0.0%	-10	-11
<b>Management &amp; Administrative</b>	<b>1,004</b>	<b>1,007</b>	<b>+2</b>	<b>+0.2%</b>	<b>-5</b>	<b>+16</b>
Support	577	570	-7	-1.2%	-10	-29
Maintenance/ Technical	131	134	+2	+1.8%	+3	-3
<b>General Support</b>	<b>709</b>	<b>704</b>	<b>-5</b>	<b>-0.6%</b>	<b>-7</b>	<b>-32</b>
Health Care Assistants	1,003	1,017	+14	+1.4%	+29	+10
Care, other	212	211	-2	-0.8%	-5	-18
<b>Patient &amp; Client Care</b>	<b>1,215</b>	<b>1,227</b>	<b>+12</b>	<b>+1.0%</b>	<b>+23</b>	<b>-8</b>

## Mental Health Services Employment by Administration (HSE / S38): May 2020

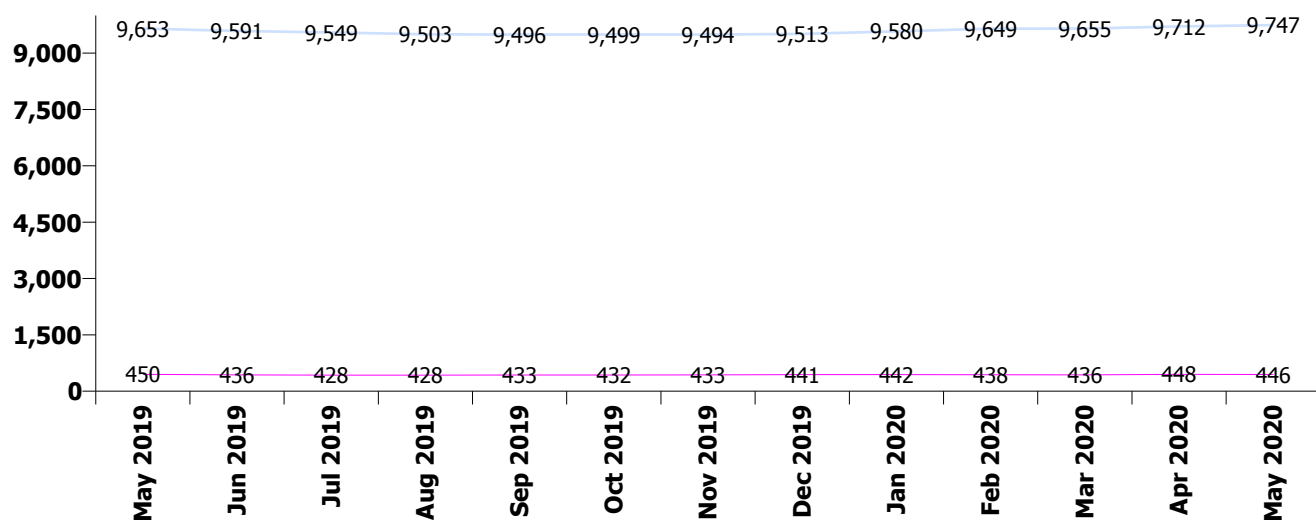
May 2020 (Dec 2019 figure: 9,954)	WTE Apr 2020	WTE May 2020	WTE change since Apr 20	% change since Apr 20	WTE change since Dec 19	WTE change since May 19
<b>Overall</b>	<b>10,161</b>	<b>10,193</b>	<b>+32</b>	<b>+0.3%</b>	<b>+239</b>	<b>+90</b>
<b>HSE</b>	<b>9,712</b>	<b>9,747</b>	<b>+35</b>	<b>+0.4%</b>	<b>+234</b>	<b>+94</b>
<b>Section 38 Voluntary Agencies</b>	<b>448</b>	<b>446</b>	<b>-2</b>	<b>-0.5%</b>	<b>+5</b>	<b>-4</b>

### HSE

May 2020 (Dec 2019 figure: 9,513)	WTE Apr 2020	WTE May 2020	WTE change since Apr 20	% change since Apr 20	WTE change since Dec 19	WTE change since May 19
<b>Overall</b>	<b>9,712</b>	<b>9,747</b>	<b>+35</b>	<b>+0.4%</b>	<b>+234</b>	<b>+94</b>
Consultants	340	346	+7	+1.9%	+13	+31
Registrars	246	246	+1	+0.3%	-4	+30
SHO/ Interns	244	235	-10	-4.0%	-21	-38
Medical/ Dental, other	5	5	+0	+0.6%		-2
<b>Medical &amp; Dental</b>	<b>834</b>	<b>832</b>	<b>-3</b>	<b>-0.3%</b>	<b>-11</b>	<b>+20</b>
Nurse/ Midwife Manager	1,185	1,195	+10	+0.8%	+41	+39
Nurse/ Midwife Specialist & AN/MP	477	484	+7	+1.5%	+32	+44
Staff Nurse/ Staff Midwife	2,917	2,883	-33	-1.1%	+3	-96
Pre-registration Nurse/ Midwife Intern	96	27	-69	-71.8%	+7	-88
Pre-registration Nurse Intern (COVID-19)	55	151	+96	+175.1%	+151	+151
Post-registration Nurse/ Midwife Student				-100.0%		
Nursing/ Midwifery awaiting registration	13	12	-1	-6.8%	-8	+10
Nursing/ Midwifery Student	164	191	+26	+16.1%	+110	+73
Nursing/ Midwifery other	31	30	-1	-2.4%	+1	+4
<b>Nursing &amp; Midwifery</b>	<b>4,773</b>	<b>4,783</b>	<b>+9</b>	<b>+0.2%</b>	<b>+187</b>	<b>+64</b>
Therapy Professions	404	407	+3	+0.7%	+16	-0
Social Care	50	50	+1	+1.0%	+2	+1
Social Workers	338	345	+6	+1.9%	+15	+13
Psychologists	378	384	+6	+1.7%	+5	+5
Pharmacy	18	18	-0	-1.5%	+1	+1
H&SC, Other	109	111	+3	+2.4%	+8	+13
<b>Health &amp; Social Care Professionals</b>	<b>1,296</b>	<b>1,315</b>	<b>+18</b>	<b>+1.4%</b>	<b>+47</b>	<b>+33</b>
Management (VIII & above)	59	58	-1	-1.3%	+3	+13
Administrative/ Supervisory (V to VII)	215	219	+3	+1.5%	+3	+16
Clerical (III & IV)	664	664	-1	-0.1%	-9	-16
<b>Management &amp; Administrative</b>	<b>939</b>	<b>941</b>	<b>+2</b>	<b>+0.2%</b>	<b>-3</b>	<b>+13</b>
Support	538	532	-7	-1.3%	-11	-27
Maintenance/ Technical	125	127	+2	+1.6%	+2	-3
<b>General Support</b>	<b>664</b>	<b>659</b>	<b>-5</b>	<b>-0.7%</b>	<b>-9</b>	<b>-31</b>
Health Care Assistants	997	1,011	+14	+1.4%	+29	+12
Care, other	209	208	-1	-0.5%	-5	-18
<b>Patient &amp; Client Care</b>	<b>1,206</b>	<b>1,219</b>	<b>+12</b>	<b>+1.0%</b>	<b>+23</b>	<b>-6</b>

## Section 38 Voluntary Agencies

May 2020 (Dec 2019 figure: 441)	WTE Apr 2020	WTE May 2020	WTE change since Apr 20	% change since Apr 20	WTE change since Dec 19	WTE change since May 19
<b>Overall</b>	<b>448</b>	<b>446</b>	<b>-2</b>	<b>-0.5%</b>	<b>+5</b>	<b>-4</b>
Consultants	22	20	-1	-5.9%	+1	-0
Registrars	14	15	+0	+2.7%	-4	-1
SHO/ Interns	8	8			+2	-4
<b>Medical &amp; Dental</b>	<b>44</b>	<b>43</b>	<b>-1</b>	<b>-2.0%</b>	<b>-2</b>	<b>-6</b>
Nurse/ Midwife Manager	38	38	+0	+0.4%	+0	-0
Nurse/ Midwife Specialist & AN/MP	9	9			+2	+2
Staff Nurse/ Staff Midwife	125	124	-1	-0.8%	+1	-5
Pre-registration Nurse/ Midwife Intern				-100.0%	-8	-8
Pre-registration Nurse Intern (COVID-19)	13	13			+13	+13
Nursing/ Midwifery Student	13	13			+6	+6
Nursing/ Midwifery other	3	3				
<b>Nursing &amp; Midwifery</b>	<b>187</b>	<b>186</b>	<b>-1</b>	<b>-0.4%</b>	<b>+9</b>	<b>+2</b>
Therapy Professions	30	30	-1	-1.8%	-2	-1
Social Care	27	26	-1	-4.0%	+1	-3
Social Workers	21	22	+1	+3.7%	+2	+3
Psychologists	17	17	-0	-0.2%	+1	+1
Pharmacy	2	2			+0	+0
H&SC, Other	1	1			-4	
<b>Health &amp; Social Care Professionals</b>	<b>98</b>	<b>97</b>	<b>-1</b>	<b>-0.9%</b>	<b>-2</b>	<b>+0</b>
Management (VIII & above)	2	2				
Administrative/ Supervisory (V to VII)	21	21	-0	-0.6%	-1	-2
Clerical (III & IV)	43	43	+1	+1.2%	-1	+5
<b>Management &amp; Administrative</b>	<b>66</b>	<b>66</b>	<b>+0</b>	<b>+0.6%</b>	<b>-2</b>	<b>+3</b>
Support	39	39	+0	+0.0%	+1	-2
Maintenance/ Technical	6	6	+0	+5.8%	+0	+0
<b>General Support</b>	<b>45</b>	<b>45</b>	<b>+0</b>	<b>+0.8%</b>	<b>+1</b>	<b>-2</b>
Health Care Assistants	6	6				-2
Care, other	3	3	-1	-16.8%	+0	-0
<b>Patient &amp; Client Care</b>	<b>9</b>	<b>9</b>	<b>-1</b>	<b>-6.3%</b>	<b>+0</b>	<b>-2</b>



## Mental Health Services Employment by CHO: May 2020

May 2020 (Dec 2019 figure: 9,954)	WTE Apr 2020	WTE May 2020	WTE change since Apr 20	% change since Apr 20	WTE change since Dec 19	WTE change since May 19
<b>Overall</b>	<b>10,161</b>	<b>10,193</b>	<b>+32</b>	<b>+0.3%</b>	<b>+239</b>	<b>+90</b>
CHO 1	967	965	-3	-0.3%	+12	+6
CHO 2	1,330	1,336	+7	+0.5%	+28	-3
CHO 3	805	809	+4	+0.5%	+14	+2
CHO 4	1,535	1,559	+24	+1.5%	+73	+30
CHO 5	1,200	1,173	-27	-2.2%	-4	-12
CHO 6	603	599	-4	-0.7%	+6	+20
CHO 7	846	866	+20	+2.3%	+31	+3
CHO 8	1,123	1,118	-5	-0.4%	+20	-1
CHO 9	1,288	1,300	+12	+0.9%	+29	-17
other Community Services	464	468	+4	+0.9%	+30	+62

## Mental Health Services Employment by CHO etc. May 2020

### CHO 1

May 2020 (Dec 2019 figure: 953)	WTE Apr 2020	WTE May 2020	WTE change since Apr 20	% change since Apr 20	WTE change since Dec 19	WTE change since May 19
<b>Overall</b>	<b>967</b>	<b>965</b>	<b>-3</b>	<b>-0.3%</b>	<b>+12</b>	<b>+6</b>
Consultants	31	32	+1	+3%	+2	+3
Registrars	23	23	-0	-1%	-1	+1
SHO/ Interns	25	23	-2	-7%	-2	-3
<b>Medical &amp; Dental</b>	<b>80</b>	<b>79</b>	<b>-1</b>	<b>-1.2%</b>	<b>-2</b>	<b>+1</b>
Nurse/ Midwife Manager	119	121	+2	+2%	+4	+3
Nurse/ Midwife Specialist & AN/MP	68	68	+1	+1%	+1	+3
Staff Nurse/ Staff Midwife	293	290	-3	-1%	-8	-19
<i>Pre-registration Nurse/ Midwife Intern</i>	15		-15	-100%		-9
<i>Pre-registration Nurse Intern (COVID-19)</i>		16	+16	-100%	+16	+16
<i>Nursing/ Midwifery awaiting registration</i>				-100%	-1	
Nursing/ Midwifery Student	15	16	+1	+9%	+16	+8
Nursing/ Midwifery other	1	1	+0	+6%	+1	+1
<b>Nursing &amp; Midwifery</b>	<b>495</b>	<b>496</b>	<b>+1</b>	<b>+0.2%</b>	<b>+14</b>	<b>-3</b>
Therapy Professions	37	36	-1	-4%	+0	+2
Social Care	4	4	-0	-2%	-0	-0
Social Workers	40	41	+0	+1%	+2	+3
Psychologists	21	22	+1	+3%	+1	-0
Pharmacy	1	1	+0	+6%	+0	+0
H&SC, Other	14	13	-1	-9%	-0	-0
<b>Health &amp; Social Care Professionals</b>	<b>117</b>	<b>115</b>	<b>-2</b>	<b>-1.4%</b>	<b>+2</b>	<b>+4</b>
Management (VIII & above)	7	7	+0	+1%	+1	+3
Administrative/ Supervisory (V to VII)	30	30	+0	+0%	+0	+7
Clerical (III & IV)	84	83	-0	-0%	-2	+3
<b>Management &amp; Administrative</b>	<b>120</b>	<b>121</b>	<b>+0</b>	<b>+0.1%</b>	<b>-0</b>	<b>+13</b>
Support	61	62	+1	+1%	+0	-1
Maintenance/ Technical	17	17	-0	-0%	+0	+1
<b>General Support</b>	<b>78</b>	<b>79</b>	<b>+1</b>	<b>+1.2%</b>	<b>+0</b>	<b>-0</b>
Health Care Assistants	66	63	-2	-4%	-3	-7
Care, other	11	11	+0	+3%	+1	-1
<b>Patient &amp; Client Care</b>	<b>77</b>	<b>74</b>	<b>-2</b>	<b>-2.7%</b>	<b>-3</b>	<b>-9</b>

## CHO 2

May 2020 (Dec 2019 figure: 1,308)	WTE Apr 2020	WTE May 2020	WTE change since Apr 20	% change since Apr 20	WTE change since Dec 19	WTE change since May 19
<b>Overall</b>	<b>1,330</b>	<b>1,336</b>	<b>+7</b>	<b>+0.5%</b>	<b>+28</b>	<b>-3</b>
Consultants	38	39	+1	+4%	+2	+6
Registrars	35	35	+0	+0%	+2	+8
SHO/ Interns	32	33	+1	+2%	-2	-5
Medical/ Dental, other	1	1	0			-1
<b>Medical &amp; Dental</b>	<b>106</b>	<b>108</b>	<b>+2</b>	<b>+2.1%</b>	<b>+2</b>	<b>+8</b>
Nurse/ Midwife Manager	146	145	-1	-1%	-1	-7
Nurse/ Midwife Specialist & AN/MP	71	73	+2	+2%	+6	+7
Staff Nurse/ Staff Midwife	352	349	-3	-1%	-8	-12
<i>Pre-registration Nurse/ Midwife Intern</i>				-100%		-12
<i>Pre-registration Nurse Intern (COVID-19)</i>	24	31	+7	+30%	+31	+31
<i>Nursing/ Midwifery awaiting registration</i>				-100%	-11	
Nursing/ Midwifery Student	24	31	+7	+30%	+26	+18
Nursing/ Midwifery other	2	3	+0	+1%	+1	+1
<b>Nursing &amp; Midwifery</b>	<b>595</b>	<b>600</b>	<b>+5</b>	<b>+0.9%</b>	<b>+23</b>	<b>+6</b>
Therapy Professions	48	49	+1	+3%	+4	-1
Social Care	16	16	-0	-0%	+1	+3
Social Workers	41	41	-0	-1%	-0	+0
Psychologists	36	35	-1	-2%	+2	-0
Pharmacy	3	3	+0	+3%	+0	+0
H&SC, Other	3	3	0			
<b>Health &amp; Social Care Professionals</b>	<b>146</b>	<b>146</b>	<b>+0</b>	<b>+0.3%</b>	<b>+7</b>	<b>+3</b>
Management (VIII & above)	5	5	-0	-0%	-0	+0
Administrative/ Supervisory (V to VII)	23	23	+0	+1%	-0	-0
Clerical (III & IV)	109	109	+0	+0%	+0	-4
<b>Management &amp; Administrative</b>	<b>137</b>	<b>137</b>	<b>+0</b>	<b>+0.4%</b>	<b>-0</b>	<b>-4</b>
Support	35	34	-0	-1%	-2	-1
Maintenance/ Technical	28	28	0		+1	-3
<b>General Support</b>	<b>62</b>	<b>62</b>	<b>-0</b>	<b>-0.6%</b>	<b>-1</b>	<b>-3</b>
Health Care Assistants	215	212	-3	-1%	-2	-10
Care, other	68	70	+1	+2%	+0	-2
<b>Patient &amp; Client Care</b>	<b>284</b>	<b>282</b>	<b>-1</b>	<b>-0.5%</b>	<b>-2</b>	<b>-12</b>

### CHO 3

May 2020 (Dec 2019 figure: 795)	WTE Apr 2020	WTE May 2020	WTE change since Apr 20	% change since Apr 20	WTE change since Dec 19	WTE change since May 19
<b>Overall</b>	<b>805</b>	<b>809</b>	<b>+4</b>	<b>+0.5%</b>	<b>+14</b>	<b>+2</b>
Consultants	22	23	+1	+3%	-0	-0
Registrars	18	18	-0	-0%	-0	+3
SHO/ Interns	20	20	-0	-0%	+1	-4
<b>Medical &amp; Dental</b>	<b>60</b>	<b>61</b>	<b>+1</b>	<b>+1.0%</b>	<b>+0</b>	<b>-1</b>
Nurse/ Midwife Manager	88	90	+2	+2%	+2	+4
Nurse/ Midwife Specialist & AN/MP	36	35	-2	-4%	-4	-1
Staff Nurse/ Staff Midwife	261	260	-1	-0%	+15	+7
<i>Pre-registration Nurse/ Midwife Intern</i>	10		-10	-100%	-9	-10
<i>Pre-registration Nurse Intern (COVID-19)</i>		15	+15	-100%	+15	+15
Nursing/ Midwifery Student	10	15	+5	+51%	+6	+5
<b>Nursing &amp; Midwifery</b>	<b>396</b>	<b>400</b>	<b>+4</b>	<b>+1.0%</b>	<b>+19</b>	<b>+15</b>
Therapy Professions	24	24	+0	+0%	-2	-7
Social Care	3	3	+0	+5%	+0	+0
Social Workers	25	26	+0	+1%	+0	+1
Psychologists	89	89	-0	-0%	-3	-1
Pharmacy	3	3	0			
H&SC, Other	11	13	+2	+17%	+3	+1
<b>Health &amp; Social Care Professionals</b>	<b>155</b>	<b>157</b>	<b>+2</b>	<b>+1.5%</b>	<b>-1</b>	<b>-5</b>
Management (VIII & above)	3	3	+0	+15%	+1	+1
Administrative/ Supervisory (V to VII)	20	19	-1	-5%	+2	+1
Clerical (III & IV)	53	53	+0	+0%	-3	-4
<b>Management &amp; Administrative</b>	<b>76</b>	<b>75</b>	<b>-1</b>	<b>-0.8%</b>	<b>+0</b>	<b>-1</b>
Support	31	30	-1	-4%	-2	-3
Maintenance/ Technical	10	10	0		-1	-1
<b>General Support</b>	<b>41</b>	<b>40</b>	<b>-1</b>	<b>-3.2%</b>	<b>-3</b>	<b>-4</b>
Health Care Assistants	76	75	-1	-1%	-0	-1
Care, other	1	1	0		-1	-1
<b>Patient &amp; Client Care</b>	<b>77</b>	<b>76</b>	<b>-1</b>	<b>-1.1%</b>	<b>-1</b>	<b>-1</b>

## CHO 4

May 2020 (Dec 2019 figure: 1,485)	WTE Apr 2020	WTE May 2020	WTE change since Apr 20	% change since Apr 20	WTE change since Dec 19	WTE change since May 19
<b>Overall</b>	<b>1,535</b>	<b>1,559</b>	<b>+24</b>	<b>+1.5%</b>	<b>+73</b>	<b>+30</b>
Consultants	54	56	+2	+3%	+6	+8
Registrars	46	46	0		+0	+5
SHO/ Interns	32	30	-1	-4%	-1	-6
Medical/ Dental, other	2	2	+0	+2%		-1
<b>Medical &amp; Dental</b>	<b>134</b>	<b>134</b>	<b>+0</b>	<b>+0.1%</b>	<b>+6</b>	<b>+6</b>
Nurse/ Midwife Manager	185	192	+7	+4%	+22	+37
Nurse/ Midwife Specialist & AN/MP	66	70	+4	+6%	+10	+15
Staff Nurse/ Staff Midwife	511	504	-6	-1%	+2	-65
Pre-registration Nurse/ Midwife Intern	20	12	-8	-38%	+12	-7
Post-registration Nurse/ Midwife Student				-100%		
Nursing/ Midwifery awaiting registration	9	8	-1	-11%	+8	+8
Nursing/ Midwifery Student	29	20	-9	-30%	-14	+1
<b>Nursing &amp; Midwifery</b>	<b>790</b>	<b>786</b>	<b>-4</b>	<b>-0.5%</b>	<b>+20</b>	<b>-12</b>
Therapy Professions	76	77	+1	+1%	+3	-2
Social Care	5	5	-0	-1%	+1	-0
Social Workers	58	61	+4	+7%	+8	+4
Psychologists	86	89	+3	+3%	+6	+8
Pharmacy	4	3	-0	-6%	+1	+1
H&SC, Other	14	17	+2	+17%	+6	+6
<b>Health &amp; Social Care Professionals</b>	<b>242</b>	<b>251</b>	<b>+9</b>	<b>+3.8%</b>	<b>+25</b>	<b>+17</b>
Executive Management	1	1	0		+1	+1
Senior Management (VIII & GM)	1		-1	-100%		
Management (VIII & above)	2	1	-1	-50%		+1
Administrative/ Supervisory (V to VII)	21	24	+2	+10%	+1	+5
Clerical (III & IV)	89	91	+2	+2%	+3	-3
<b>Management &amp; Administrative</b>	<b>113</b>	<b>115</b>	<b>+3</b>	<b>+2.3%</b>	<b>+4</b>	<b>+4</b>
Support	77	76	-1	-2%	-4	-6
Maintenance/ Technical	6	6	0			
<b>General Support</b>	<b>83</b>	<b>82</b>	<b>-1</b>	<b>-1.4%</b>	<b>-4</b>	<b>-6</b>
Health Care Assistants	165	182	+17	+10%	+21	+20
Care, other	8	8	+0	+3%	+1	+0
<b>Patient &amp; Client Care</b>	<b>173</b>	<b>190</b>	<b>+17</b>	<b>+9.9%</b>	<b>+22</b>	<b>+21</b>



## CHO 5

May 2020 (Dec 2019 figure: 1,178)	WTE Apr 2020	WTE May 2020	WTE change since Apr 20	% change since Apr 20	WTE change since Dec 19	WTE change since May 19
<b>Overall</b>	<b>1,200</b>	<b>1,173</b>	<b>-27</b>	<b>-2.2%</b>	<b>-4</b>	<b>-12</b>
Consultants	26	26	+0	+0%	+0	-0
Registrars	12	12	-0	-2%	+2	+3
SHO/ Interns	25	23	-2	-7%	-9	-8
Medical/ Dental, other	2	2	0			
<b>Medical &amp; Dental</b>	<b>65</b>	<b>63</b>	<b>-2</b>	<b>-3.1%</b>	<b>-7</b>	<b>-5</b>
Nurse/ Midwife Manager	166	159	-7	-4%	-5	-6
Nurse/ Midwife Specialist & AN/MP	49	49	+0	+1%	+7	+0
Staff Nurse/ Staff Midwife	414	401	-13	-3%	-14	+2
<i>Pre-registration Nurse/ Midwife Intern</i>	16	4	-12	-75%	+4	-15
<i>Pre-registration Nurse Intern (COVID-19)</i>	7	16	+9	+129%	+16	+16
<i>Nursing/ Midwifery awaiting registration</i>				-100%		
Nursing/ Midwifery Student	23	20	-3	-13%	+15	+1
Nursing/ Midwifery other	4	4	0			+0
<b>Nursing &amp; Midwifery</b>	<b>656</b>	<b>633</b>	<b>-22</b>	<b>-3.4%</b>	<b>+2</b>	<b>-2</b>
Therapy Professions	40	41	+1	+2%	+1	-2
Social Care	5	5	0			
Social Workers	27	27	-0	-0%	-1	+0
Psychologists	20	22	+1	+7%	+1	-1
H&SC, Other	10	10	+0	+2%	+0	
<b>Health &amp; Social Care Professionals</b>	<b>102</b>	<b>104</b>	<b>+2</b>	<b>+2.2%</b>	<b>+1</b>	<b>-2</b>
Management (VIII & above)	5	5	0		+2	+1
Administrative/ Supervisory (V to VII)	18	19	+1	+5%	-1	-1
Clerical (III & IV)	71	70	-1	-1%	-4	-3
<b>Management &amp; Administrative</b>	<b>94</b>	<b>94</b>	<b>+0</b>	<b>+0.1%</b>	<b>-3</b>	<b>-4</b>
Support	174	170	-4	-2%	+2	+1
Maintenance/ Technical	24	24	0		+1	+1
<b>General Support</b>	<b>198</b>	<b>194</b>	<b>-4</b>	<b>-2.0%</b>	<b>+3</b>	<b>+2</b>
Health Care Assistants	73	73	+0	+0%	+1	-0
Care, other	13	12	-1	-5%	-1	-1
<b>Patient &amp; Client Care</b>	<b>86</b>	<b>85</b>	<b>-0</b>	<b>-0.4%</b>	<b>-0</b>	<b>-1</b>

## CHO 6

May 2020 (Dec 2019 figure: 593)	WTE Apr 2020	WTE May 2020	WTE change since Apr 20	% change since Apr 20	WTE change since Dec 19	WTE change since May 19
<b>Overall</b>	<b>603</b>	<b>599</b>	<b>-4</b>	<b>-0.7%</b>	<b>+6</b>	<b>+20</b>
Consultants	40	39	-1	-3%	+3	+5
Registrars	17	17	+0	+2%	-4	-0
SHO/ Interns	12	12	-0	-1%	+3	-5
Medical/ Dental, other				-100%		-0
<b>Medical &amp; Dental</b>	<b>69</b>	<b>68</b>	<b>-1</b>	<b>-1.5%</b>	<b>+1</b>	<b>-1</b>
Nurse/ Midwife Manager	75	75	+0	+0%	-1	-7
Nurse/ Midwife Specialist & AN/MP	16	16	+0	+0%	+2	+4
Staff Nurse/ Staff Midwife	150	150	-1	-0%	+11	+8
Nursing/ Midwifery other	3	2	-1	-30%		
<b>Nursing &amp; Midwifery</b>	<b>244</b>	<b>242</b>	<b>-1</b>	<b>-0.6%</b>	<b>+11</b>	<b>+5</b>
Therapy Professions	41	40	-0	-1%	-3	+2
Social Care	28	26	-1	-5%	+0	-3
Social Workers	31	33	+2	+6%	+3	+5
Psychologists	24	24	-0	-0%	+1	+9
H&SC, Other	5	5	-0	-1%	-4	-0
<b>Health &amp; Social Care Professionals</b>	<b>128</b>	<b>128</b>	<b>-0</b>	<b>-0.0%</b>	<b>-2</b>	<b>+13</b>
Management (VIII & above)	3	3	0			+1
Administrative/ Supervisory (V to VII)	25	25	0		-1	-1
Clerical (III & IV)	41	40	-1	-2%	-2	+10
<b>Management &amp; Administrative</b>	<b>69</b>	<b>68</b>	<b>-1</b>	<b>-1.1%</b>	<b>-4</b>	<b>+10</b>
Support	36	36	-1	-2%	-1	-5
Maintenance/ Technical	5	5	+0	+7%	-1	-1
<b>General Support</b>	<b>41</b>	<b>41</b>	<b>-0</b>	<b>-1.0%</b>	<b>-1</b>	<b>-5</b>
Health Care Assistants	46	46	+1	+1%	+1	-1
Care, other	6	5	-1	-16%	-0	-1
<b>Patient &amp; Client Care</b>	<b>52</b>	<b>51</b>	<b>-0</b>	<b>-0.8%</b>	<b>+1</b>	<b>-1</b>

## CHO 7

May 2020 (Dec 2019 figure: 835)	WTE Apr 2020	WTE May 2020	WTE change since Apr 20	% change since Apr 20	WTE change since Dec 19	WTE change since May 19
<b>Overall</b>	<b>846</b>	<b>866</b>	<b>+20</b>	<b>+2.3%</b>	<b>+31</b>	<b>+3</b>
Consultants	48	49	+1	+2%	+1	+4
Registrars	40	40	-0	-0%	-6	+1
SHO/ Interns	21	21	-0	-0%	+0	+2
<b>Medical &amp; Dental</b>	<b>110</b>	<b>111</b>	<b>+1</b>	<b>+0.9%</b>	<b>-4</b>	<b>+7</b>
Nurse/ Midwife Manager	115	119	+4	+3%	+3	+1
Nurse/ Midwife Specialist & AN/MP	44	45	+1	+1%	+5	+7
Staff Nurse/ Staff Midwife	205	202	-3	-2%	+8	-14
<i>Pre-registration Nurse/ Midwife Intern</i>				-100%	-6	-13
<i>Pre-registration Nurse Intern (COVID-19)</i>	15	29	+14	+95%	+29	+29
<i>Nursing/ Midwifery awaiting registration</i>	4	4	+0	+3%		+3
Nursing/ Midwifery Student	19	33	+14	+76%	+22	+18
Nursing/ Midwifery other	7	7	0		-1	
<b>Nursing &amp; Midwifery</b>	<b>390</b>	<b>406</b>	<b>+16</b>	<b>+4.0%</b>	<b>+36</b>	<b>+13</b>
Therapy Professions	48	49	+1	+2%	+1	+1
Social Care	7	8	+1	+16%	-0	-2
Social Workers	36	37	+1	+2%	+3	+1
Psychologists	28	28	+0	+0%	-3	-4
<i>Pharmacy</i>	1	1	0		+1	+1
Pharmacy	1	1	0			+1
H&SC, Other	18	17	-0	-1%	-1	+2
<b>Health &amp; Social Care Professionals</b>	<b>138</b>	<b>140</b>	<b>+2</b>	<b>+1.6%</b>	<b>-0</b>	<b>-1</b>
Management (VIII & above)	3	3	0			
Administrative/ Supervisory (V to VII)	17	18	+2	+11%	+3	+5
Clerical (III & IV)	46	47	+1	+3%	+0	-5
<b>Management &amp; Administrative</b>	<b>65</b>	<b>68</b>	<b>+3</b>	<b>+4.8%</b>	<b>+3</b>	<b>+1</b>
Support	17	17	-0	-1%	-1	-5
Maintenance/ Technical	2	2	0		+0	
<b>General Support</b>	<b>19</b>	<b>19</b>	<b>-0</b>	<b>-1.0%</b>	<b>-0</b>	<b>-5</b>
Health Care Assistants	35	35	-0	-0%	+2	-3
Care, other	89	87	-2	-2%	-5	-9
<b>Patient &amp; Client Care</b>	<b>125</b>	<b>123</b>	<b>-2</b>	<b>-1.6%</b>	<b>-3</b>	<b>-12</b>

## CHO 8

May 2020 (Dec 2019 figure: 1,098)	WTE Apr 2020	WTE May 2020	WTE change since Apr 20	% change since Apr 20	WTE change since Dec 19	WTE change since May 19
<b>Overall</b>	<b>1,123</b>	<b>1,118</b>	<b>-5</b>	<b>-0.4%</b>	<b>+20</b>	<b>-1</b>
Consultants	36	35	-0	-1%	+0	+1
Registrars	21	23	+3	+14%	-2	-2
SHO/ Interns	39	35	-4	-11%	-1	+3
<b>Medical &amp; Dental</b>	<b>95</b>	<b>93</b>	<b>-2</b>	<b>-2.0%</b>	<b>-4</b>	<b>+2</b>
Nurse/ Midwife Manager	125	122	-3	-3%	+1	-5
Nurse/ Midwife Specialist & AN/MP	57	58	+1	+2%	+2	+4
Staff Nurse/ Staff Midwife	326	329	+3	+1%	-3	-1
<i>Pre-registration Nurse/ Midwife Intern</i>	20	11	-10	-48%	+11	-8
<i>Pre-registration Nurse Intern (COVID-19)</i>		10	+10	-100%	+10	+10
<i>Nursing/ Midwifery awaiting registration</i>				-100%	-1	-1
Nursing/ Midwifery Student	20	20	-0	-2%	+18	+1
Nursing/ Midwifery other	4	4	+0	+0%	+0	+2
<b>Nursing &amp; Midwifery</b>	<b>533</b>	<b>533</b>	<b>+1</b>	<b>+0.1%</b>	<b>+19</b>	<b>-0</b>
Therapy Professions	47	46	-1	-2%	+2	-1
Social Care	7	7	-0	-4%	-0	-0
Social Workers	43	44	+1	+3%	+3	+4
Psychologists	39	38	-1	-3%	-2	-3
Pharmacy	2	2	0		+1	+1
H&SC, Other	21	20	-0	-2%	-0	+2
<b>Health &amp; Social Care Professionals</b>	<b>158</b>	<b>156</b>	<b>-1</b>	<b>-0.7%</b>	<b>+3</b>	<b>+3</b>
Management (VIII & above)	3	3	+0	+1%	+0	-1
Administrative/ Supervisory (V to VII)	20	20	-0	-2%	-3	-2
Clerical (III & IV)	98	98	-1	-1%	+9	+12
<b>Management &amp; Administrative</b>	<b>121</b>	<b>120</b>	<b>-1</b>	<b>-0.8%</b>	<b>+7</b>	<b>+10</b>
Support	32	31	-1	-3%	-1	-3
Maintenance/ Technical	26	26	+0	+0%	+0	-3
<b>General Support</b>	<b>59</b>	<b>58</b>	<b>-1</b>	<b>-1.7%</b>	<b>-1</b>	<b>-6</b>
Health Care Assistants	154	153	-1	-0%	-4	-9
Care, other	4	4	0			
<b>Patient &amp; Client Care</b>	<b>157</b>	<b>157</b>	<b>-1</b>	<b>-0.4%</b>	<b>-4</b>	<b>-9</b>

## CHO 9

May 2020 (Dec 2019 figure: 1,272)	WTE Apr 2020	WTE May 2020	WTE change since Apr 20	% change since Apr 20	WTE change since Dec 19	WTE change since May 19
<b>Overall</b>	<b>1,288</b>	<b>1,300</b>	<b>+12</b>	<b>+0.9%</b>	<b>+29</b>	<b>-17</b>
Consultants	48	49	+1	+1%	-1	-1
Registrars	35	34	-2	-4%	+3	+9
SHO/ Interns	46	45	-1	-2%	-8	-16
<b>Medical &amp; Dental</b>	<b>130</b>	<b>128</b>	<b>-2</b>	<b>-1.3%</b>	<b>-6</b>	<b>-7</b>
Nurse/ Midwife Manager	136	136	+1	+1%	+4	+1
Nurse/ Midwife Specialist & AN/MP	69	69	+1	+1%	+4	+4
Staff Nurse/ Staff Midwife	353	352	-1	-0%	+0	-17
<i>Pre-registration Nurse/ Midwife Intern</i>	15	1	-15	-97%	-12	-21
<i>Pre-registration Nurse Intern (COVID-19)</i>	23	48	+25	+111%	+48	+48
<i>Nursing/ Midwifery awaiting registration</i>				-100%	-3	
Nursing/ Midwifery Student	38	48	+10	+28%	+27	+27
Nursing/ Midwifery other	12	12	0		+0	
<b>Nursing &amp; Midwifery</b>	<b>606</b>	<b>617</b>	<b>+11</b>	<b>+1.8%</b>	<b>+36</b>	<b>+15</b>
Therapy Professions	61	63	+1	+2%	+8	+5
Social Care	1	1	-0	-7%		-0
Social Workers	43	43	-0	-0%	-0	-3
Psychologists	46	48	+3	+6%	+3	-3
Pharmacy	7	7	-0	-2%	-1	-1
H&SC, Other	14	14	+0	+1%	-0	+2
<b>Health &amp; Social Care Professionals</b>	<b>173</b>	<b>177</b>	<b>+4</b>	<b>+2.3%</b>	<b>+10</b>	<b>-1</b>
Management (VIII & above)	5	5	+0	+0%	+0	+2
Administrative/ Supervisory (V to VII)	29	28	-0	-2%	+1	+0
Clerical (III & IV)	97	96	-0	-0%	-8	-14
<b>Management &amp; Administrative</b>	<b>130</b>	<b>130</b>	<b>-1</b>	<b>-0.6%</b>	<b>-7</b>	<b>-11</b>
Support	101	101	+0	+0%	-2	-7
Maintenance/ Technical	11	11	+0	+2%	+0	-0
<b>General Support</b>	<b>112</b>	<b>112</b>	<b>+1</b>	<b>+0.5%</b>	<b>-2</b>	<b>-7</b>
Health Care Assistants	125	124	-1	-0%	-2	-4
Care, other	12	12	-0	-1%	-1	-3
<b>Patient &amp; Client Care</b>	<b>137</b>	<b>136</b>	<b>-1</b>	<b>-0.5%</b>	<b>-2</b>	<b>-7</b>

## other Community Services

May 2020 (Dec 2019 figure: 438)	WTE Apr 2020	WTE May 2020	WTE change since Apr 20	% change since Apr 20	WTE change since Dec 19	WTE change since May 19
<b>Overall</b>	<b>464</b>	<b>468</b>	<b>+4</b>	<b>+0.9%</b>	<b>+30</b>	<b>+62</b>
Consultants	17	17	+0	+2%	+1	+4
Registrars	12	12	+0	+0%	-1	+0
SHO/ Interns				-100%		
<b>Medical &amp; Dental</b>	<b>29</b>	<b>29</b>	<b>+0</b>	<b>+1.1%</b>	<b>+0</b>	<b>+4</b>
Nurse/ Midwife Manager	69	75	+6	+8%	+12	+17
Nurse/ Midwife Specialist & AN/MP	9	9	+0	+1%	+1	+2
Staff Nurse/ Staff Midwife	177	171	-7	-4%	+2	+11
Nursing/ Midwifery other	1	1	+0	+3%		+0
<b>Nursing &amp; Midwifery</b>	<b>257</b>	<b>256</b>	<b>-1</b>	<b>-0.2%</b>	<b>+16</b>	<b>+30</b>
Therapy Professions	13	13	0		+2	+1
Social Care	2	2	+0	+2%	-0	-0
Social Workers	15	14	-1	-6%	-1	-0
Psychologists	6	7	+1	+10%	+1	+2
<b>Health &amp; Social Care Professionals</b>	<b>36</b>	<b>36</b>	<b>-0</b>	<b>-0.7%</b>	<b>+2</b>	<b>+2</b>
Management (VIII & above)	26	26	-0	-1%	-1	+5
Administrative/ Supervisory (V to VII)	32	32	-0	-0%	+1	-1
Clerical (III & IV)	21	20	-1	-2%	-5	-4
<b>Management &amp; Administrative</b>	<b>79</b>	<b>78</b>	<b>-1</b>	<b>-1.1%</b>	<b>-5</b>	<b>+0</b>
Support	12	13	+1	+5%	+0	+0
Maintenance/ Technical	2	4	+2	+79%	+2	+2
<b>General Support</b>	<b>14</b>	<b>17</b>	<b>+2</b>	<b>+16.8%</b>	<b>+2</b>	<b>+2</b>
Health Care Assistants	49	52	+3	+7%	+15	+24
Care, other	1	1	0			
<b>Patient &amp; Client Care</b>	<b>49</b>	<b>52</b>	<b>+3</b>	<b>+6.7%</b>	<b>+15</b>	<b>+24</b>

## Mental Health Services Employment by Grade Group: May 2020

May 2020 (Dec 2019 figure: 9,954)	WTE Apr 2020	WTE May 2020	WTE change since Apr 20	% change since Apr 20	WTE change since Dec 19	WTE change since May 19
<b>Overall</b>	<b>10,161</b>	<b>10,193</b>	<b>+32</b>	<b>+0.3%</b>	<b>+239</b>	<b>+90</b>
Consultant Medicine	1	1	0			-0
Consultant Psychiatry	360	365	+5	+1%	+14	+31
<b>Consultants</b>	<b>361</b>	<b>366</b>	<b>+5</b>	<b>+1%</b>	<b>+14</b>	<b>+30</b>
Registrar	170	170	+0	+0%	+1	+20
Senior Registrar	87	89	+1	+1%	-9	+7
Specialist Registrar	2	2	-0	-4%	-0	+1
<b>Registrars</b>	<b>260</b>	<b>261</b>	<b>+1</b>	<b>+0%</b>	<b>-8</b>	<b>+29</b>
Interns	6	1	-5	-84%	-7	-6
Senior House Officer	246	242	-4	-2%	-12	-36
<b>SHO/ Interns</b>	<b>252</b>	<b>243</b>	<b>-10</b>	<b>-4%</b>	<b>-19</b>	<b>-42</b>
Dentists				-100%		-0
Other Medical	5	5	+0	+1%		-2
<b>Medical/ Dental, other</b>	<b>5</b>	<b>5</b>	<b>+0</b>	<b>+1%</b>		<b>-2</b>
<b>Medical &amp; Dental</b>	<b>878</b>	<b>875</b>	<b>-3</b>	<b>-0%</b>	<b>-13</b>	<b>+15</b>
Clinical Nurse/ Midwife Manager	1,020	1,030	+10	+1%	+31	+23
Director Nursing/Midwifery, Assistant	176	175	-1	-1%	+10	+13
Director of Nursing/Midwifery	28	29	+1	+4%	-0	+2
<b>Nurse/ Midwife Manager</b>	<b>1,223</b>	<b>1,233</b>	<b>+10</b>	<b>+1%</b>	<b>+41</b>	<b>+38</b>
Advanced Nurse/ Midwife Practitioner	35	35	+0	+1%	+4	+9
Clinical Nurse/ Midwife Specialist	451	458	+7	+2%	+29	+37
<b>Nurse/ Midwife Specialist &amp; AN/MP</b>	<b>485</b>	<b>492</b>	<b>+7</b>	<b>+1%</b>	<b>+33</b>	<b>+46</b>
Staff Midwives	1	1	0		+1	+1
Staff Nurse [Intellectual Disability]	7	5	-2	-34%	+0	-0
Staff Nurse [Psychiatric]	2,908	2,882	-26	-1%	-11	-106
Staff Nurses [General/ Children's]	126	119	-7	-5%	+15	+5
<b>Staff Nurse/ Staff Midwife</b>	<b>3,041</b>	<b>3,007</b>	<b>-34</b>	<b>-1%</b>	<b>+4</b>	<b>-101</b>
Pre-registration Nurse/ Midwife Intern	96	27	-69	-72%	-0	-96
Pre-registration Nurse Intern (COVID-19)	68	164	+96	+142%	+164	+164
Post-registration Nurse/ Midwife Student				-100%	-1	
Nursing/ Midwifery awaiting registration	13	12	-1	-7%	-47	+10
<b>Nursing/ Midwifery Student</b>	<b>177</b>	<b>204</b>	<b>+26</b>	<b>+15%</b>	<b>+116</b>	<b>+79</b>
Nursing Education/Clinical	33	33	-1	-2%	+1	+4
<b>Nursing/ Midwifery other</b>	<b>33</b>	<b>33</b>	<b>-1</b>	<b>-2%</b>	<b>+1</b>	<b>+4</b>
<b>Nursing &amp; Midwifery</b>	<b>4,960</b>	<b>4,969</b>	<b>+8</b>	<b>+0%</b>	<b>+196</b>	<b>+66</b>
Dietitians	21	20	-1	-6%	+0	-1
Occupational Therapists	342	347	+5	+1%	+8	+1
Physiotherapists	2	2	0			
Podiatrists & Chiropodists	1	1	-0	-1%		-1
Speech & Language Therapists	69	67	-2	-2%	+6	-1
<b>Therapy Professions</b>	<b>435</b>	<b>437</b>	<b>+2</b>	<b>+1%</b>	<b>+15</b>	<b>-1</b>
<b>Social Care</b>	<b>77</b>	<b>76</b>	<b>-1</b>	<b>-1%</b>	<b>+2</b>	<b>-2</b>
<b>Social Workers</b>	<b>359</b>	<b>366</b>	<b>+7</b>	<b>+2%</b>	<b>+17</b>	<b>+16</b>
<b>Psychologists</b>	<b>394</b>	<b>401</b>	<b>+6</b>	<b>+2%</b>	<b>+6</b>	<b>+6</b>
<b>Pharmacy</b>	<b>20</b>	<b>19</b>	<b>-0</b>	<b>-1%</b>	<b>+1</b>	<b>+1</b>
Counsellor Therapists	101	104	+3	+3%	+9	+15
Other Health & Social Care	7	7	-0	-1%	-5	-2
Play Therapists/ Specialists	1	1	0		+0	
<b>H&amp;SC, Other</b>	<b>109</b>	<b>112</b>	<b>+3</b>	<b>+2%</b>	<b>+4</b>	<b>+13</b>
<b>Health &amp; Social Care Professionals</b>	<b>1,394</b>	<b>1,411</b>	<b>+17</b>	<b>+1%</b>	<b>+45</b>	<b>+33</b>
Executive Management	13	13	+0	+0%	+2	+3

May 2020 (Dec 2019 figure: 9,954)	WTE Apr 2020	WTE May 2020	WTE change since Apr 20	% change since Apr 20	WTE change since Dec 19	WTE change since May 19
<b>Overall</b>	<b>10,161</b>	<b>10,193</b>	<b>+32</b>	<b>+0.3%</b>	<b>+239</b>	<b>+90</b>
Senior Management (VIII & GM)	48	47	-1	-2%	+1	+10
<b>Management (VIII &amp; above)</b>	<b>61</b>	<b>60</b>	<b>-1</b>	<b>-1%</b>	<b>+3</b>	<b>+13</b>
Middle Management (V-VII)	234	238	+3	+1%	+2	+15
Other Administrative	2	2	0			
<b>Administrative/ Supervisory (V to VII)</b>	<b>236</b>	<b>239</b>	<b>+3</b>	<b>+1%</b>	<b>+2</b>	<b>+15</b>
General Administrative (III & IV)	707	707	+0	+0%	-10	-11
<b>Clerical (III &amp; IV)</b>	<b>707</b>	<b>707</b>	<b>+0</b>	<b>+0%</b>	<b>-10</b>	<b>-11</b>
<b>Management &amp; Administrative</b>	<b>1,004</b>	<b>1,007</b>	<b>+2</b>	<b>+0%</b>	<b>-5</b>	<b>+16</b>
Catering	62	61	-0	-1%	-4	-9
Household Services	428	423	-5	-1%	-2	-15
Other Support	41	39	-2	-5%	-4	-5
Portering	47	48	+1	+1%	-0	+0
<b>Support</b>	<b>577</b>	<b>570</b>	<b>-7</b>	<b>-1%</b>	<b>-10</b>	<b>-29</b>
Maintenance	129	132	+2	+2%	+3	-3
Technical Services	2	2	0			
<b>Maintenance/ Technical</b>	<b>131</b>	<b>134</b>	<b>+2</b>	<b>+2%</b>	<b>+3</b>	<b>-3</b>
<b>General Support</b>	<b>709</b>	<b>704</b>	<b>-5</b>	<b>-1%</b>	<b>-7</b>	<b>-32</b>
HCA, Nurse's Aide, etc.	994	1,009	+15	+2%	+30	+11
Health & Social Care Assistants	9	8	-1	-15%	-1	-1
<b>Health Care Assistants</b>	<b>1,003</b>	<b>1,017</b>	<b>+14</b>	<b>+1%</b>	<b>+29</b>	<b>+10</b>
<b>Care, other</b>	<b>212</b>	<b>211</b>	<b>-2</b>	<b>-1%</b>	<b>-5</b>	<b>-18</b>
<b>Patient &amp; Client Care</b>	<b>1,215</b>	<b>1,227</b>	<b>+12</b>	<b>+1%</b>	<b>+23</b>	<b>-8</b>



## Employment by WTE, Headcount, Gender, Full-Time /Part-Time etc.: May 2020

Mental Health Services Staff Group	WTE	Headcount	WTE: no.	% Male	% female	Male WTE: no.	Female WTE: no.	% Total Perm	% Male Perm	% Female Perm	% Total Full Time	% Total Part Time	% Male FT	% Female FT
<b>Overall</b>	<b>10,193</b>	<b>11,113</b>	<b>1.09</b>	<b>27.1%</b>	<b>72.9%</b>	<b>1.05</b>	<b>1.11</b>	<b>87.1%</b>	<b>84.3%</b>	<b>88.2%</b>	<b>80.9%</b>	<b>19.1%</b>	<b>90.4%</b>	<b>77.4%</b>
Consultant Medicine	1	1	1.00	100.0%		1.00		100.0%	100.0%		100.0%	0.0%	100.0%	
Consultant Psychiatry	365	393	1.08	41.0%	59.0%	1.03	1.11	78.4%	78.4%	77.6%	85.2%	14.8%	92.5%	80.2%
<b>Consultants</b>	<b>366</b>	<b>394</b>	<b>1.08</b>	<b>41.1%</b>	<b>58.9%</b>	<b>1.03</b>	<b>1.11</b>	<b>78.4%</b>	<b>79.6%</b>	<b>77.6%</b>	<b>85.3%</b>	<b>14.7%</b>	<b>92.6%</b>	<b>80.2%</b>
Registrar	170	176	1.04	46.6%	53.4%	1.01	1.06	9.1%	9.1%	6.4%	93.8%	6.3%	97.6%	90.4%
Senior Registrar	89	94	1.06	39.4%	60.6%	1.05	1.07	4.3%	4.3%	7.0%	93.6%	6.4%	97.3%	91.2%
Specialist Registrar	2	3	1.28		100.0%		1.28	0.0%	0.0%	0.0%	66.7%	33.3%		66.7%
<b>Registrars</b>	<b>261</b>	<b>273</b>	<b>1.05</b>	<b>43.6%</b>	<b>56.4%</b>	<b>1.02</b>	<b>1.07</b>	<b>7.3%</b>	<b>8.4%</b>	<b>6.5%</b>	<b>93.4%</b>	<b>6.6%</b>	<b>97.5%</b>	<b>90.3%</b>
Interns	1	1	1.00		100.0%		1.00	0.0%	0.0%	0.0%	100.0%	0.0%		100.0%
Senior House Officer	242	250	1.04	39.6%	60.4%	1.05	1.02	6.4%	6.4%	3.3%	94.4%	5.6%	92.9%	95.4%
<b>SHO/ Interns</b>	<b>243</b>	<b>251</b>	<b>1.03</b>	<b>39.4%</b>	<b>60.6%</b>	<b>1.05</b>	<b>1.02</b>	<b>6.4%</b>	<b>11.1%</b>	<b>3.3%</b>	<b>94.4%</b>	<b>5.6%</b>	<b>92.9%</b>	<b>95.4%</b>
Other Medical	5	10	2.00	50.0%	50.0%	2.02	1.98	90.0%	90.0%	80.0%	40.0%	60.0%	40.0%	40.0%
<b>Medical/ Dental, other</b>	<b>5</b>	<b>10</b>	<b>2.00</b>	<b>50.0%</b>	<b>50.0%</b>	<b>2.02</b>	<b>1.98</b>	<b>90.0%</b>	<b>100.0%</b>	<b>80.0%</b>	<b>40.0%</b>	<b>60.0%</b>	<b>40.0%</b>	<b>40.0%</b>
<b>Medical &amp; Dental</b>	<b>875</b>	<b>928</b>	<b>1.06</b>	<b>41.5%</b>	<b>58.5%</b>	<b>1.04</b>	<b>1.08</b>	<b>38.1%</b>	<b>40.3%</b>	<b>36.6%</b>	<b>89.7%</b>	<b>10.3%</b>	<b>93.5%</b>	<b>86.9%</b>
Clinical Nurse/ Midwife Manager	1,030	1,081	1.05	34.0%	66.0%	1.02	1.07	99.4%	99.4%	99.6%	87.9%	12.1%	97.3%	83.0%
Director Nursing/Midwifery, Assistant	175	177	1.01	46.3%	53.7%	1.01	1.02	99.4%	99.4%	98.9%	97.2%	2.8%	98.8%	95.8%
Director of Nursing/Midwifery	29	29	1.01	51.7%	48.3%	1.00	1.02	96.6%	96.6%	92.9%	100.0%	0.0%	100.0%	100.0%
<b>Nurse/ Midwife Manager</b>	<b>1,233</b>	<b>1,287</b>	<b>1.04</b>	<b>36.1%</b>	<b>63.9%</b>	<b>1.01</b>	<b>1.06</b>	<b>99.3%</b>	<b>99.1%</b>	<b>99.4%</b>	<b>89.4%</b>	<b>10.6%</b>	<b>97.6%</b>	<b>84.8%</b>
Advanced Nurse/ Midwife Practitioner	35	37	1.06	18.9%	81.1%	1.01	1.08	100.0%	100.0%	100.0%	86.5%	13.5%	100.0%	83.3%
Clinical Nurse/ Midwife Specialist	458	483	1.06	20.1%	79.9%	1.01	1.07	99.4%	99.4%	99.2%	86.1%	13.9%	93.8%	84.2%
<b>Nurse/ Midwife Specialist &amp; AN/MP</b>	<b>492</b>	<b>520</b>	<b>1.06</b>	<b>20.0%</b>	<b>80.0%</b>	<b>1.01</b>	<b>1.07</b>	<b>99.4%</b>	<b>100.0%</b>	<b>99.3%</b>	<b>86.2%</b>	<b>13.8%</b>	<b>94.2%</b>	<b>84.1%</b>
Staff Midwives	1	1	1.00		100.0%		1.00	0.0%	0.0%	0.0%	100.0%	0.0%		100.0%
Staff Nurse [Intellectual Disability]	5	5	1.09		100.0%		1.09	40.0%	40.0%	40.0%	100.0%	0.0%		100.0%
Staff Nurse [Psychiatric]	2,882	3,113	1.08	26.4%	73.6%	1.06	1.09	95.2%	95.2%	95.6%	83.7%	16.3%	89.5%	81.6%
Staff Nurses [General/ Children's]	119	133	1.11	18.0%	82.0%	1.13	1.11	84.2%	84.2%	86.2%	76.7%	23.3%	79.2%	76.1%
<b>Staff Nurse/ Staff Midwife</b>	<b>3,007</b>	<b>3,252</b>	<b>1.08</b>	<b>26.0%</b>	<b>74.0%</b>	<b>1.06</b>	<b>1.09</b>	<b>94.6%</b>	<b>93.5%</b>	<b>95.1%</b>	<b>83.5%</b>	<b>16.5%</b>	<b>89.2%</b>	<b>81.4%</b>
Pre-registration Nurse/ Midwife Intern	27	55	2.02	23.6%	76.4%	2.11	2.00	0.0%	0.0%	0.0%	41.8%	58.2%	30.8%	45.2%
Pre-registration Nurse Intern (COVID-19)	164	191	1.16	22.0%	78.0%	1.17	1.16	9.4%	9.4%	10.1%	100.0%	0.0%	100.0%	100.0%
Nursing/ Midwifery awaiting registration	12	12	1.00	25.0%	75.0%	1.00	1.00	100.0%	100.0%	100.0%	100.0%	0.0%	100.0%	100.0%
<b>Nursing/ Midwifery Student</b>	<b>204</b>	<b>258</b>	<b>1.27</b>	<b>22.5%</b>	<b>77.5%</b>	<b>1.29</b>	<b>1.26</b>	<b>11.6%</b>	<b>10.3%</b>	<b>12.0%</b>	<b>87.6%</b>	<b>12.4%</b>	<b>84.5%</b>	<b>88.5%</b>

Nursing Education/Clinical	33	34	1.04	14.7%	85.3%	1.00	1.05	100.0%	100.0%	100.0%	85.3%	14.7%	100.0%	82.8%
<b>Nursing/ Midwifery other</b>	<b>33</b>	<b>34</b>	<b>1.04</b>	<b>14.7%</b>	<b>85.3%</b>	<b>1.00</b>	<b>1.05</b>	<b>100.0%</b>	<b>100.0%</b>	<b>100.0%</b>	<b>85.3%</b>	<b>14.7%</b>	<b>100.0%</b>	<b>82.8%</b>
<b>Nursing &amp; Midwifery</b>	<b>4,969</b>	<b>5,351</b>	<b>1.08</b>	<b>27.6%</b>	<b>72.4%</b>	<b>1.05</b>	<b>1.09</b>	<b>92.3%</b>	<b>92.5%</b>	<b>92.2%</b>	<b>85.4%</b>	<b>14.6%</b>	<b>92.1%</b>	<b>82.8%</b>
<b>Health &amp; Social Care</b>	<b>1,411</b>	<b>1,575</b>	<b>1.12</b>	<b>16.8%</b>	<b>83.2%</b>	<b>1.06</b>	<b>1.13</b>	<b>90.1%</b>	<b>87.1%</b>	<b>90.7%</b>	<b>77.3%</b>	<b>22.7%</b>	<b>89.0%</b>	<b>74.9%</b>
Executive Management	13	13	1.00	61.5%	38.5%	1.00	1.00	100.0%	100.0%	100.0%	100.0%	0.0%	100.0%	100.0%
Senior Management (VIII & GM)	47	48	1.01	31.3%	68.8%	1.03	1.01	97.9%	97.9%	100.0%	95.8%	4.2%	93.3%	97.0%
<b>Management (VIII &amp; above)</b>	<b>60</b>	<b>61</b>	<b>1.01</b>	<b>37.7%</b>	<b>62.3%</b>	<b>1.02</b>	<b>1.01</b>	<b>98.4%</b>	<b>95.7%</b>	<b>100.0%</b>	<b>96.7%</b>	<b>3.3%</b>	<b>95.7%</b>	<b>97.4%</b>
Middle Management (V-VII)	238	250	1.05	20.0%	80.0%	1.04	1.06	90.0%	90.0%	90.0%	86.8%	13.2%	96.0%	84.5%
Other Administrative	2	2	1.27		100.0%		1.27	100.0%	100.0%	100.0%	50.0%	50.0%		50.0%
<b>Administrative/ Supervisory (V to VII)</b>	<b>239</b>	<b>252</b>	<b>1.05</b>	<b>19.8%</b>	<b>80.2%</b>	<b>1.04</b>	<b>1.06</b>	<b>90.1%</b>	<b>90.0%</b>	<b>90.1%</b>	<b>86.5%</b>	<b>13.5%</b>	<b>96.0%</b>	<b>84.2%</b>
General Administrative (III & IV)	707	797	1.13	8.9%	91.1%	1.07	1.13	88.5%	88.5%	88.8%	72.0%	28.0%	87.3%	70.5%
<b>Clerical (III &amp; IV)</b>	<b>707</b>	<b>797</b>	<b>1.13</b>	<b>8.9%</b>	<b>91.1%</b>	<b>1.07</b>	<b>1.13</b>	<b>88.5%</b>	<b>84.5%</b>	<b>88.8%</b>	<b>72.0%</b>	<b>28.0%</b>	<b>87.3%</b>	<b>70.5%</b>
<b>Management &amp; Administrative</b>	<b>1,007</b>	<b>1,110</b>	<b>1.10</b>	<b>13.0%</b>	<b>87.0%</b>	<b>1.05</b>	<b>1.11</b>	<b>89.4%</b>	<b>88.2%</b>	<b>89.5%</b>	<b>76.7%</b>	<b>23.3%</b>	<b>91.7%</b>	<b>74.4%</b>
Catering	61	68	1.11	32.4%	67.6%	1.09	1.12	98.5%	98.5%	97.8%	61.8%	38.2%	81.8%	52.2%
Household Services	423	497	1.17	20.7%	79.3%	1.10	1.20	94.2%	94.2%	95.2%	53.7%	46.3%	73.8%	48.5%
Other Support	39	46	1.19	30.4%	69.6%	1.09	1.24	97.8%	97.8%	96.9%	63.0%	37.0%	71.4%	59.4%
Portering	48	49	1.03	89.8%	10.2%	1.02	1.10	89.8%	89.8%	60.0%	87.8%	12.2%	88.6%	80.0%
<b>Support</b>	<b>570</b>	<b>660</b>	<b>1.16</b>	<b>27.7%</b>	<b>72.3%</b>	<b>1.08</b>	<b>1.19</b>	<b>94.5%</b>	<b>92.9%</b>	<b>95.2%</b>	<b>57.7%</b>	<b>42.3%</b>	<b>78.1%</b>	<b>49.9%</b>
Maintenance	132	135	1.03	99.3%	0.7%	1.03	1.00	96.3%	96.3%	100.0%	96.3%	3.7%	96.3%	100.0%
Technical Services	2	2	1.00	100.0%		1.00		100.0%	100.0%		100.0%	0.0%	100.0%	
<b>Maintenance/ Technical</b>	<b>134</b>	<b>137</b>	<b>1.03</b>	<b>99.3%</b>	<b>0.7%</b>	<b>1.03</b>	<b>1.00</b>	<b>96.4%</b>	<b>96.3%</b>	<b>100.0%</b>	<b>96.4%</b>	<b>3.6%</b>	<b>96.3%</b>	<b>100.0%</b>
<b>General Support</b>	<b>704</b>	<b>797</b>	<b>1.13</b>	<b>40.0%</b>	<b>60.0%</b>	<b>1.05</b>	<b>1.19</b>	<b>94.9%</b>	<b>94.4%</b>	<b>95.2%</b>	<b>64.4%</b>	<b>35.6%</b>	<b>85.9%</b>	<b>50.0%</b>
<b>Health Care Assistants</b>	<b>1,017</b>	<b>1,103</b>	<b>1.09</b>	<b>28.2%</b>	<b>71.8%</b>	<b>1.06</b>	<b>1.10</b>	<b>91.6%</b>	<b>86.5%</b>	<b>93.6%</b>	<b>77.0%</b>	<b>23.0%</b>	<b>89.7%</b>	<b>72.0%</b>
<b>Care, other</b>	<b>211</b>	<b>249</b>	<b>1.18</b>	<b>44.2%</b>	<b>55.8%</b>	<b>1.12</b>	<b>1.23</b>	<b>85.5%</b>	<b>81.8%</b>	<b>88.5%</b>	<b>65.9%</b>	<b>34.1%</b>	<b>74.5%</b>	<b>59.0%</b>
<b>Patient &amp; Client Care</b>	<b>1,227</b>	<b>1,352</b>	<b>1.10</b>	<b>31.1%</b>	<b>68.9%</b>	<b>1.08</b>	<b>1.11</b>	<b>90.5%</b>	<b>85.3%</b>	<b>92.8%</b>	<b>74.9%</b>	<b>25.1%</b>	<b>85.7%</b>	<b>70.0%</b>

## Employment by WTE, Headcount, Gender, Full-Time /Part-Time etc.: May 2020

Mental Health Services CHO	WTE	Headcount	WTE: no.	% Male	% female	Male WTE: no.	Female WTE: no.	% Total Perm	% Male Perm	% Female Perm	% Total Full Time	% Total Part Time	% Male FT	% Female FT
<b>Overall</b>	<b>10,193</b>	<b>11,113</b>	<b>1.09</b>	<b>27.1%</b>	<b>72.9%</b>	<b>1.05</b>	<b>1.11</b>	<b>87.1%</b>	<b>84.3%</b>	<b>88.2%</b>	<b>80.9%</b>	<b>19.1%</b>	<b>90.4%</b>	<b>77.4%</b>
CHO 1	965	1,040	1.08	27.1%	72.9%	1.03	1.10	89.8%	89.8%	91.2%	86.3%	13.8%	96.5%	82.5%
CHO 2	1,336	1,441	1.08	28.4%	71.6%	1.04	1.09	86.1%	86.1%	87.7%	82.8%	17.2%	89.5%	80.1%
CHO 3	809	873	1.08	23.0%	77.0%	1.04	1.09	81.9%	81.9%	82.6%	84.0%	16.0%	90.0%	82.1%
CHO 4	1,559	1,710	1.10	26.1%	73.9%	1.06	1.11	93.1%	93.1%	94.9%	72.7%	27.3%	87.0%	67.6%
CHO 5	1,173	1,283	1.09	26.0%	74.0%	1.06	1.11	97.3%	97.3%	97.4%	66.5%	33.5%	80.5%	61.5%
CHO 6	599	666	1.11	30.0%	70.0%	1.08	1.13	81.7%	81.7%	82.4%	83.3%	16.7%	91.0%	80.0%
CHO 7	866	944	1.09	22.9%	77.1%	1.04	1.11	82.6%	82.6%	83.2%	86.9%	13.1%	96.3%	84.1%
CHO 8	1,118	1,238	1.11	24.8%	75.2%	1.06	1.13	84.4%	84.4%	85.0%	84.2%	15.8%	93.5%	81.2%
CHO 9	1,300	1,422	1.09	27.3%	72.7%	1.05	1.11	82.8%	82.8%	83.8%	84.5%	15.5%	93.6%	81.0%
other Community Services	468	496	1.06	45.8%	54.2%	1.07	1.05	81.7%	81.7%	81.8%	91.9%	8.1%	90.7%	92.9%

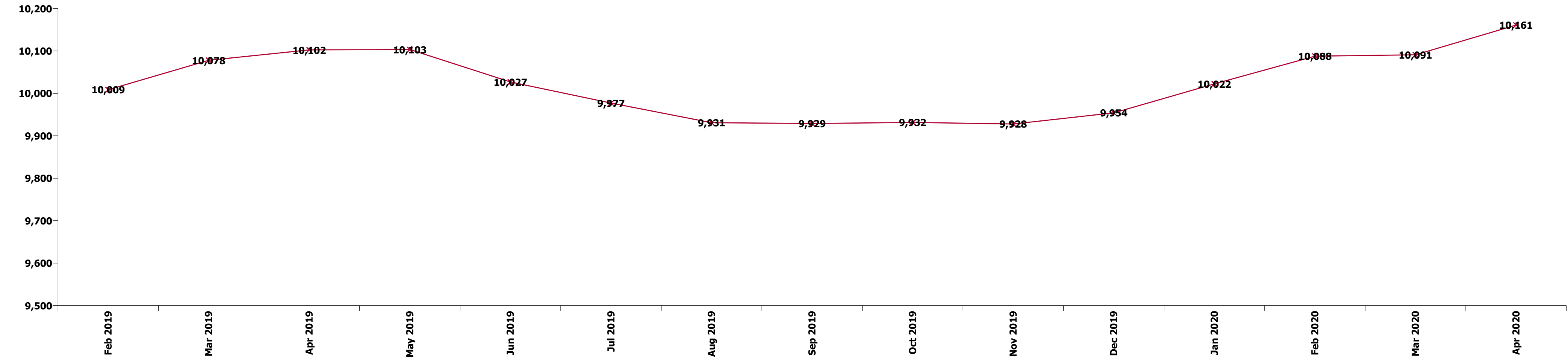
Summary Staff Movement: May 2020

Month-on-month  
Summary

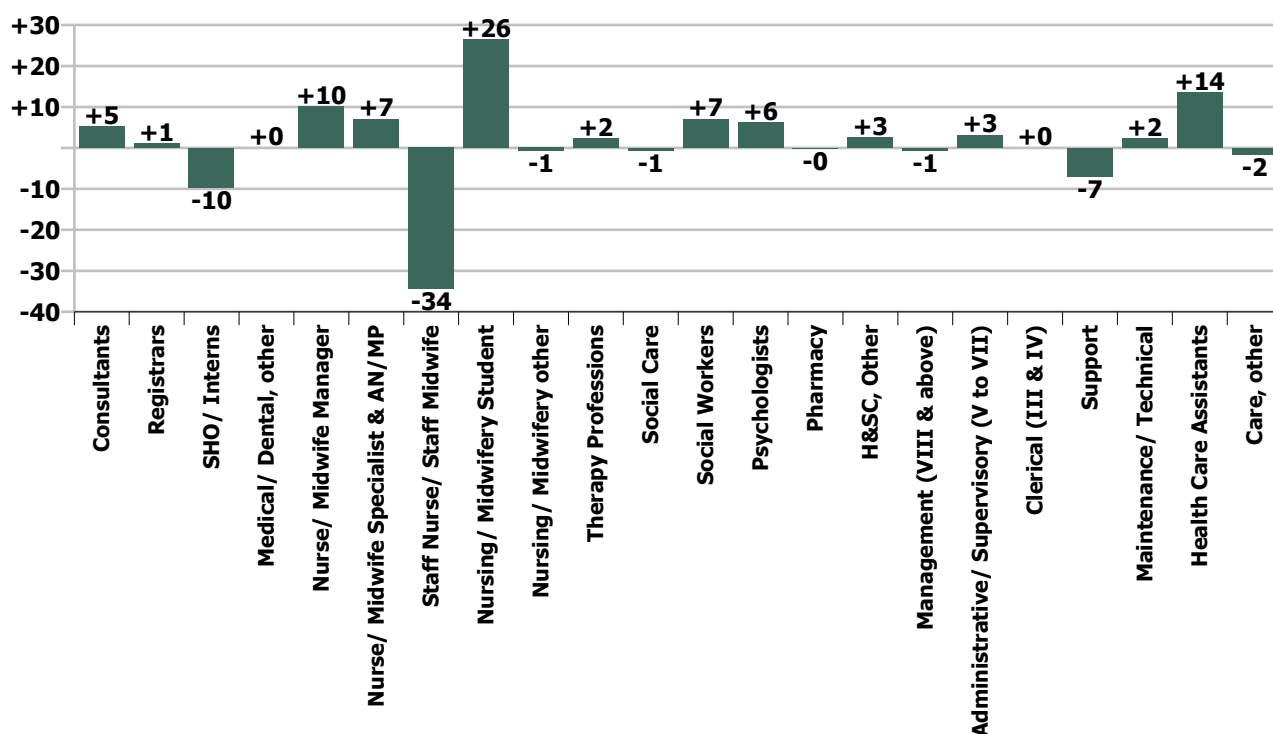
WTE change since Apr 20	% change since Apr 20	overall	Consultants	Registrars	SHO/ Interns	Medical/ Dental, other	Medical & Dental	Nurse/ Midwife Manager	Nurse/ Midwife Specialist & AN/MP	Staff Nurse/ Staff Midwife	Nursing/ Midwifery Student	Nursing/ Midwifery other	Nursing & Midwifery	Therapy Professions	Social Care	Social Workers	Psychologists	Pharmacy	H&SC, Other	Health & Social Care Professionals	Management (VIII & above)	Administrativ e/ Supervisory (V to VII)	Clerical (III & IV)	Management & Administrativ e	General Support	Health Care Assistants	Care, other	Patient & Client Care
Overall	+0.3%	+32	+5	+1	-10	+0	-3	+10	+7	-34	+26	-1	+8	+2	-1	+7	+6	-0	+3	+17	-1	+3	+0	+2	-5	+14	-2	+12
CHO 1	-0.3%	-3	+1	-0	-2		-1	+2	+1	-3	+1	+0	+1	-1	-0	+0	+1	+0	-1	-2	+0	+0	-0	+0	+1	-2	+0	-2
CHO 2	+0.5%	+7	+1	+0	+1		+2	-1	+2	-3	+7	+0	+5	+1	-0	-0	-1	+0		+0	-0	+0	+0	+0	-0	-3	+1	-1
CHO 3	+0.5%	+4	+1	-0	-0		+1	+2	-2	-1	+5		+4	+0	+0	+0	-0		+2	+2	+0	-1	+0	-1	-1	-1		-1
CHO 4	+1.5%	+24	+2		-1	+0	+0	+7	+4	-6	-9		-4	+1	-0	+4	+3	-0	+2	+9	-1	+2	+2	+3	-1	+17	+0	+17
CHO 5	-2.2%	-27	+0	-0	-2		-2	-7	+0	-13	-3		-22	+1			+1		+0	+2		+1	-1	+0	-4	+0	-1	-0
CHO 6	-0.7%	-4	-1	+0	-0		-1	+0	+0	-1		-1	-1	-0	-1	+2	-0		-0	-0			-1	-1	-0	+1	-1	-0
CHO 7	+2.3%	+20	+1	-0	-0		+1	+4	+1	-3	+14		+16	+1	+1	+1	+0		-0	+2		+2	+1	+3	-0	-0	-2	-2
CHO 8	-0.4%	-5	-0	+3	-4		-2	-3	+1	+3	-0	+0	+1	-1	-0	+1	-1		-0	-1	+0	-0	-1	-1	-1	-1		-1
CHO 9	+0.9%	+12	+1	-2	-1		-2	+1	+1	-1	+10		+11	+1	-0	-0	+3	-0	+0	+4	+0	-0	-0	-1	+1	-1	-0	-1
other Community Services	+0.9%	+4	+0	+0			+0	+6	+0	-7		+0	-1		+0	-1	+1			-0	-0	-0	-1	-1	+2	+3		+3
		+0.3%	+1.4%	+0.4%	-3.9%	+0.6%	-0.4%	+0.8%	+1.5%	-1.1%	+14.9%	-2.3%	+0.2%	+0.5%	-0.7%	+2.0%	+1.6%	-1.3%	+2.3%	+1.3%	-1.2%	+1.3%	+0.0%	+0.2%	-0.6%	+1.4%	-0.8%	+1.0%

Year-on-year Summary

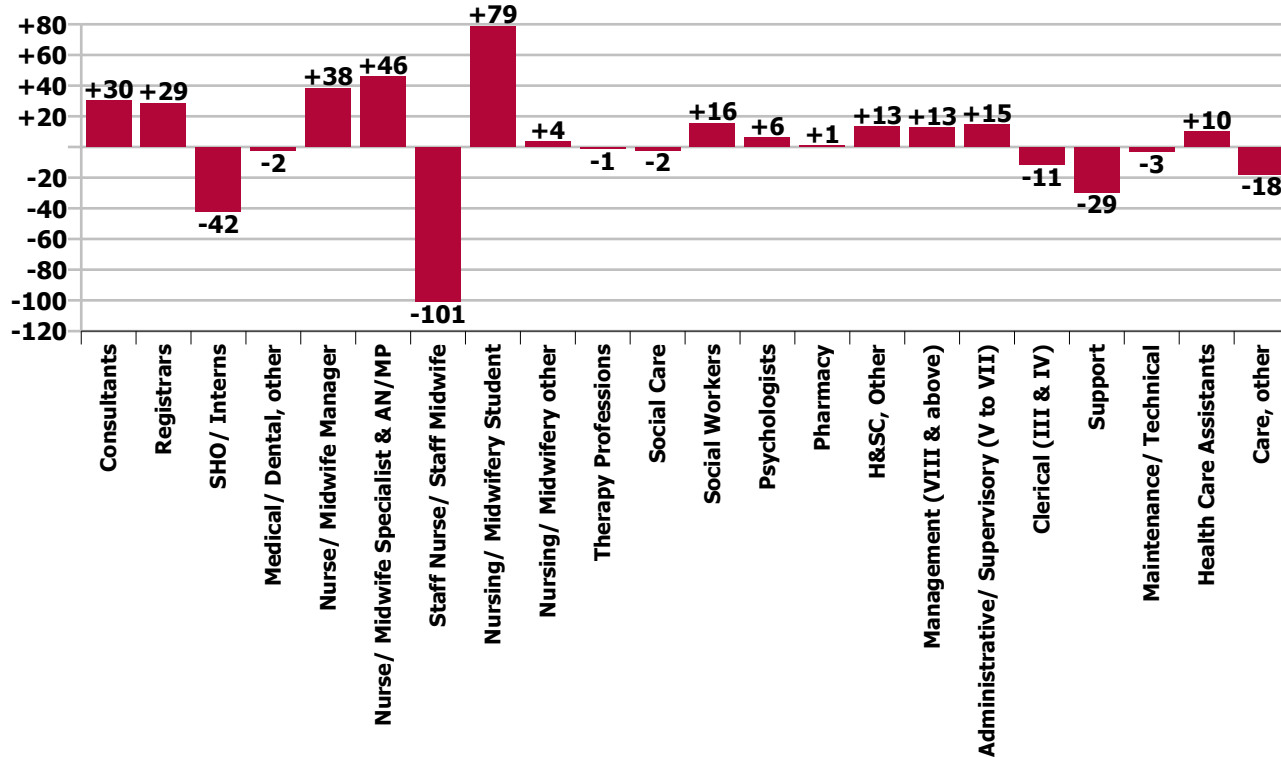
WTE change since May 19	% change since May 19	overall	Consultants	Registrars	SHO/ Interns	Medical/ Dental, other	Medical & Dental	Nurse/ Midwife Manager	Nurse/ Midwife Specialist & AN/MP	Staff Nurse/ Staff Midwife	Nursing/ Midwifery Student	Nursing/ Midwifery other	Nursing & Midwifery	Therapy Professions	Social Care	Social Workers	Psychologists	Pharmacy	H&SC, Other	Health & Social Care Professionals	Management (VIII & above)	Administrativ e/ Supervisory (V to VII)	Clerical (III & IV)	Management & Administrativ e	General Support	Health Care Assistants	Care, other	Patient & Client Care
Overall	+0.9%	+90	+30	+29	-42	-2	+15	+38	+46	-101	+79	+4	+66	-1	-2	+16	+6	+1	+13	+33	+13	+15	-11	+16	-32	+10	-18	-8
CHO 1	+0.6%	+6	+3	+1	-3		+1	+3	+3	-19	+8	+1	-3	+2	-0	+3	-0	+0	-0	+4	+3	+7	+3	+13	-0	-7	-1	-9
CHO 2	-0.2%	-3	+6	+8	-5	-1	+8	-7	+7	-12	+18	+1	+6	-1	+3	+0	+0	+0		+3	+0	-0	-4	-4	-3	-10	-2	-12
CHO 3	+0.3%	+2	-0	+3	-4		-1	+4	-1	+7	+5		+15	-7	+0	+1	-1		+1	-5	+1	+1	-4	-1	-4	-1	-1	-1
CHO 4	+2.0%	+30	+8	+5	-6	-1	+6	+37	+15	-65	+1		-12	-2	-0	+4	+8	+1	+6	+17	+1	+5	-3	+4	-6	+20	+0	+21
CHO 5	-1.0%	-12	-0	+3	-8		-5	-12	-6	+0	+2	+1	+0	-2	-2		+0	-1	-2	-2	+1	-1	-3	-4	+2	-0	-1	-1
CHO 6	+3.5%	+20	+5	-0	-5	-0	-1	-7	+4	+8			+5	+2	-3	+5	+9		-0	+13	+1	-1	+10	+10	-5	-1	-1	-1
CHO 7	+0.3%	+3	+4	+1	+2		+7	+1	+7	-14	+18		+13	+1	-2	+1	-4	+1	+2	-1		+5	-5	+1	-5	-3	-9	-12
CHO 8	-0.0%	-1	+1	-2	+3		+2	-5	+4	-1	+1	+2	-0	-1	-0	+4	-3	+1	+2	+3	-1	-2	+12	+10	-6	-9		-9
CHO 9	-1.3%	-17	-1	+9	-16		-7	+1	+4	-17	+27		+15	+5	-0	-3	-3	-1	+2	-1	+2	+0	-14	-11	-7	-4	-3	-7
other Community Services	+15.3%	+62	+4	+0			+4	+17	+2	+11		+0	+30	+1	-0	-0	+2			+2	+5	-1	-4	+0	+2	+24		+24
		+0.9%	+9.1%	+12.3%	-14.7%	-32.2%	+1.7%	+3.2%	+10.3%	-3.2%	+63.1%	+12.9%	+1.4%	-0.2%	-2.6%	+4.5%	+1.5%	+4.1%	+13.6%	+2.4%	+27.0%	+6.5%	-1.6%	+1.6%	-4.4%	+1.0%	-7.7%	-0.6%



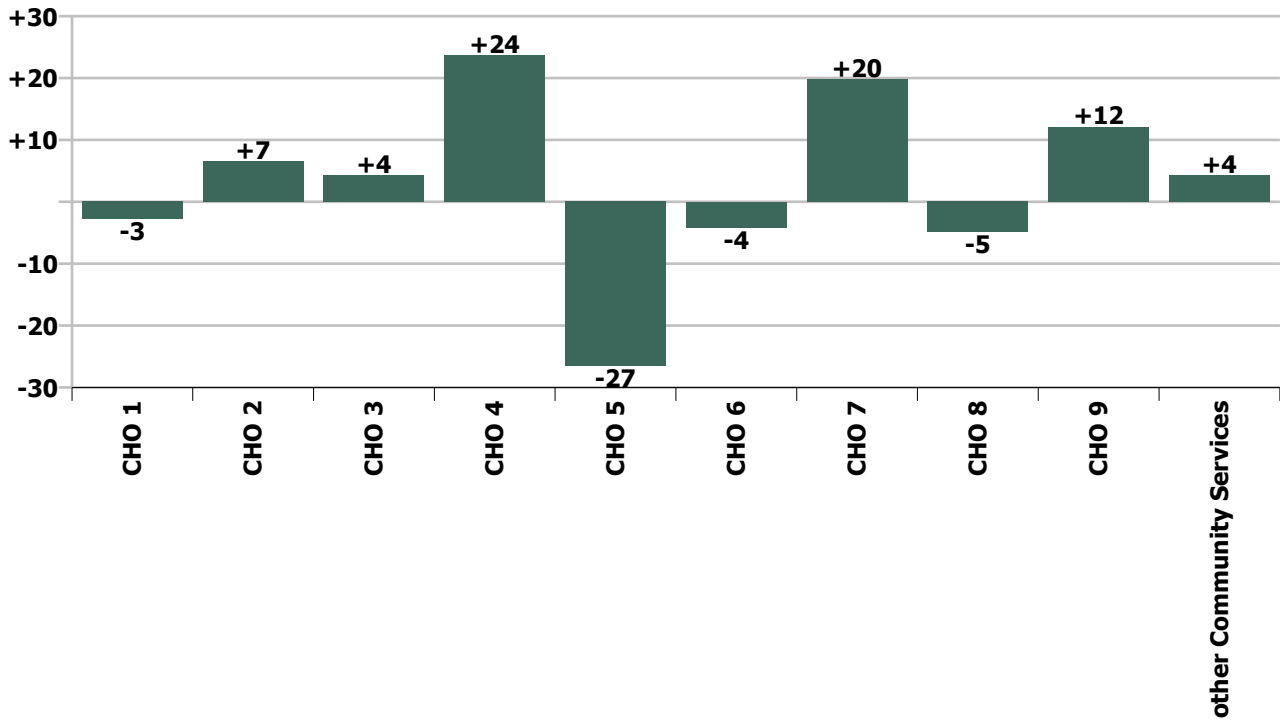
Staff Group change since: Apr 2020



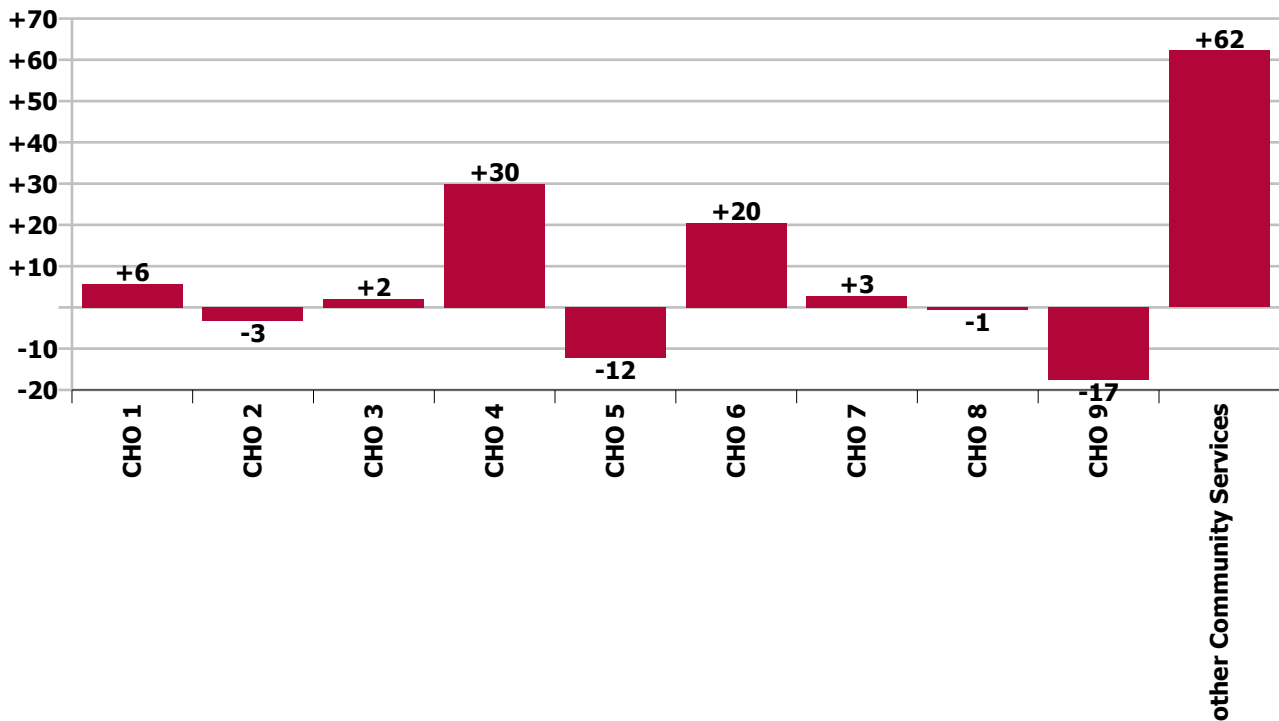
Staff Group change since: May 2019



CHO change since: Apr 2020



CHO change since: May 2019



## Longitudinal Employment Levels by Grade Group - Oct 2013 to May 2020

May 2020 (Oct 2013 figure: 9,125)	WTE May 2020	WTE change since Oct 13	WTE change since Dec 15	WTE change since Dec 16	WTE change since Dec 17	WTE change since Dec 18	WTE change since Dec 19	% change since Oct 13	% change since Dec 15	% change since Dec 16	% change since Dec 17	% change since Dec 18	% change since Dec 19
<b>Overall</b>	<b>10,193</b>	<b>+1,068</b>	<b>+694</b>	<b>+573</b>	<b>+403</b>	<b>+295</b>	<b>+239</b>	<b>+11.7%</b>	<b>+7.3%</b>	<b>+6.0%</b>	<b>+4.1%</b>	<b>+3.0%</b>	<b>+2.4%</b>
Consultant Medicine	1				-0	-0					-9.1%	-9.1%	
Consultant Psychiatry	365	+78	+51	+51	+53	+36	+14	+26.9%	+16.1%	+16.1%	+17.1%	+10.8%	+4.0%
<b>Consultants</b>	<b>366</b>	<b>+78</b>	<b>+51</b>	<b>+51</b>	<b>+53</b>	<b>+36</b>	<b>+14</b>	<b>+26.8%</b>	<b>+16.1%</b>	<b>+16.0%</b>	<b>+17.0%</b>	<b>+10.8%</b>	<b>+4.0%</b>
Registrar	170	+52	+46	+38	+25	+16	+1	+44.2%	+36.9%	+28.7%	+17.6%	+10.5%	+0.5%
Senior Registrar	89	+25	+31	+21	+23	+3	-9	+39.9%	+54.5%	+31.9%	+34.6%	+3.0%	-8.9%
Specialist Registrar	2	+2	+1	+1	+0	+1	-0	-100.0%	+136.4%	+134.0%	+17.0%	+134.0%	-6.4%
<b>Registrars</b>	<b>261</b>	<b>+80</b>	<b>+78</b>	<b>+61</b>	<b>+49</b>	<b>+20</b>	<b>-8</b>	<b>+44.0%</b>	<b>+43.0%</b>	<b>+30.3%</b>	<b>+22.8%</b>	<b>+8.4%</b>	<b>-3.0%</b>
<i>Intern</i>	1	-8	-12	-11	-9	-7		-88.9%	-92.3%	-91.7%	-90.0%	-87.5%	-87.5%
Interns	1	-8	-12	-11	-9	-7	-7	-88.9%	-92.3%	-91.7%	-90.0%	-87.5%	-87.5%
Senior House Officer	242	+22	+6	-5	-31	-28	-12	+10.0%	+2.5%	-2.2%	-11.3%	-10.3%	-4.6%
<b>SHO/ Interns</b>	<b>243</b>	<b>+14</b>	<b>-6</b>	<b>-16</b>	<b>-40</b>	<b>-35</b>	<b>-19</b>	<b>+6.1%</b>	<b>-2.5%</b>	<b>-6.3%</b>	<b>-14.1%</b>	<b>-12.5%</b>	<b>-7.1%</b>
Dentists					-0	-0		-100.0%	-100.0%	-100.0%	-100.0%	-100.0%	-100.0%
Other Medical	5	-5	-4	-5	-6	-1		-51.3%	-42.9%	-48.1%	-53.9%	-23.0%	
<b>Medical/ Dental, other</b>	<b>5</b>	<b>-5</b>	<b>-4</b>	<b>-5</b>	<b>-6</b>	<b>-2</b>		<b>-51.3%</b>	<b>-42.9%</b>	<b>-48.1%</b>	<b>-54.2%</b>	<b>-23.8%</b>	
<b>Medical &amp; Dental</b>	<b>875</b>	<b>+166</b>	<b>+119</b>	<b>+90</b>	<b>+56</b>	<b>+19</b>		<b>+23.4%</b>	<b>+15.8%</b>	<b>+11.5%</b>	<b>+6.8%</b>	<b>+2.3%</b>	<b>-1.4%</b>
Clinical Nurse/ Midwife Manager	1,030	+237	+61	+23	+47	+24	+31	+29.8%	+6.3%	+2.3%	+4.8%	+2.4%	+3.1%
Director Nursing/Midwifery, Assistant	175	+70	+28	+19	+13	+11	+10	+66.5%	+19.4%	+12.4%	+7.8%	+6.4%	+6.0%
Director of Nursing/Midwifery	29	+0	-2	-3	+0	+5	-0	+1.1%	-6.2%	-9.4%	+0.8%	+21.0%	-0.7%
<b>Nurse/ Midwife Manager</b>	<b>1,233</b>	<b>+307</b>	<b>+87</b>	<b>+40</b>	<b>+60</b>	<b>+39</b>	<b>+41</b>	<b>+33.1%</b>	<b>+7.6%</b>	<b>+3.3%</b>	<b>+5.1%</b>	<b>+3.3%</b>	<b>+3.4%</b>
Advanced Nurse/ Midwife Practitioner	35	+26	+28	+27	+24	+15	+4	+286.8%	+397.3%	+365.4%	+231.5%	+72.8%	+13.3%
Clinical Nurse/ Midwife Specialist	458	+245	+151	+121	+75	+62	+29	+115.6%	+49.3%	+36.0%	+19.5%	+15.8%	+6.8%
<b>Nurse/ Midwife Specialist &amp; AN/MP</b>	<b>492</b>	<b>+271</b>	<b>+179</b>	<b>+149</b>	<b>+99</b>	<b>+77</b>	<b>+33</b>	<b>+122.6%</b>	<b>+57.1%</b>	<b>+43.2%</b>	<b>+25.1%</b>	<b>+18.6%</b>	<b>+7.3%</b>
Graduate Nursing/ Midwifery		-48	-10					-100.0%	-100.0%	-100.0%	-100.0%	-100.0%	-100.0%
<i>Staff Midwife</i>	1	+1	+1	+1	+1	+1		-100.0%	-100.0%	-100.0%	-100.0%	-100.0%	-100.0%
Staff Midwives	1	+1	+1	+1	+1	+1	+1	-100.0%	-100.0%	-100.0%	-100.0%	-100.0%	-100.0%
Staff Nurse [Intellectual Disability]	5	+2	+2	+1	+1	-1	+0	+84.0%	+104.4%	+37.7%	+32.9%	-23.3%	+1.5%
Staff Nurse [Psychiatric]	2,882	-258	-210	-175	-145	-73	-11	-8.2%	-6.8%	-5.7%	-4.8%	-2.5%	-0.4%
Staff Nurses [General/ Children's]	119	-42	-5	-1	+2	+2	+15	-26.2%	-4.2%	-1.1%	+1.5%	+1.5%	+13.8%



May 2020 (Oct 2013 figure: 9,125)	WTE May 2020	WTE change since Oct 13	WTE change since Dec 15	WTE change since Dec 16	WTE change since Dec 17	WTE change since Dec 18	WTE change since Dec 19	% change since Oct 13	% change since Dec 15	% change since Dec 16	% change since Dec 17	% change since Dec 18	% change since Dec 19
<b>Overall</b>	<b>10,193</b>	<b>+1,068</b>	<b>+694</b>	<b>+573</b>	<b>+403</b>	<b>+295</b>	<b>+239</b>	<b>+11.7%</b>	<b>+7.3%</b>	<b>+6.0%</b>	<b>+4.1%</b>	<b>+3.0%</b>	<b>+2.4%</b>
<b>Staff Nurse/ Staff Midwife</b>	<b>3,007</b>	<b>-345</b>	<b>-221</b>	<b>-174</b>	<b>-141</b>	<b>-72</b>	<b>+4</b>	<b>-10.3%</b>	<b>-6.9%</b>	<b>-5.5%</b>	<b>-4.5%</b>	<b>-2.3%</b>	<b>+0.1%</b>
<b>Public Health Nurse</b>				<b>-1</b>	<b>-1</b>			<b>-100.0%</b>	<b>-100.0%</b>	<b>-100.0%</b>	<b>-100.0%</b>	<b>-100.0%</b>	<b>-100.0%</b>
<i>Student General Nursing Intern (pre-registration)</i>						-1		-100.0%	-100.0%	-100.0%	-100.0%	-100.0%	-100.0%
<i>Student Psychiatric Nursing Intern (pre-registration)</i>	27	-30	+9	+19	+10	+0		-52.1%	+50.5%	+213.7%	+61.3%	+0.6%	-1.3%
Pre-registration Nurse/ Midwife Intern	27	-30	+9	+19	+10	-1	-0	-52.1%	+50.5%	+213.7%	+61.3%	-2.5%	-1.3%
<i>Student Psychiatric Nursing Intern (COVID-19 HCA)</i>	164	+164	+164	+164	+164	+164		-100.0%	-100.0%	-100.0%	-100.0%	-100.0%	-100.0%
Pre-registration Nurse Intern (COVID-19)	164	+164	+164	+164	+164	+164	+164	-100.0%	-100.0%	-100.0%	-100.0%	-100.0%	-100.0%
<i>Student Public Health Nursing (post registration)</i>								-100.0%	-100.0%	-100.0%	-100.0%	-100.0%	-100.0%
Post-registration Nurse/ Midwife Student							-1	-100.0%	-100.0%	-100.0%	-100.0%	-100.0%	-100.0%
Nursing/ Midwifery awaiting registration	12	+12	+12	+10	+3	-8	-47	-100.0%	-100.0%	+500.0%	+38.7%	-39.5%	-79.6%
<b>Nursing/ Midwifery Student</b>	<b>204</b>	<b>+147</b>	<b>+186</b>	<b>+193</b>	<b>+178</b>	<b>+156</b>	<b>+116</b>	<b>+258.8%</b>	<b>+1027.9%</b>	<b>+1809.8%</b>	<b>+698.7%</b>	<b>+326.7%</b>	<b>+132.8%</b>
Nursing Education/Clinical	33	+13	+13	+8	+2	+2	+1	+69.5%	+69.8%	+32.2%	+6.7%	+5.1%	+3.3%
<b>Nursing/ Midwifery other</b>	<b>33</b>	<b>+13</b>	<b>+13</b>	<b>+8</b>	<b>+2</b>	<b>+2</b>	<b>+1</b>	<b>+69.5%</b>	<b>+69.8%</b>	<b>+32.2%</b>	<b>+6.7%</b>	<b>+5.1%</b>	<b>+3.3%</b>
<b>Nursing &amp; Midwifery</b>	<b>4,969</b>	<b>+393</b>	<b>+244</b>	<b>+214</b>	<b>+197</b>	<b>+202</b>		<b>+8.6%</b>	<b>+5.2%</b>	<b>+4.5%</b>	<b>+4.1%</b>	<b>+4.2%</b>	<b>+4.1%</b>
Dietitians	20	+19	+14	+6	+3	-0	+0	+2350.0%	+257.7%	+44.4%	+16.7%	-2.5%	+2.2%
Occupational Therapists	347	+92	+54	+47	+21	+8	+8	+36.3%	+18.3%	+15.7%	+6.4%	+2.2%	+2.5%
Physiotherapists	2	+0	+0	+0	+1	+1		+0.9%	+0.9%	+10.9%	+84.3%	+38.5%	
Podiatrists & Chiropodists	1	-1	-1	-1	-1	-0		-45.9%	-52.6%	-59.9%	-50.3%	-40.2%	
Speech & Language Therapists	67	+19	+15	+8	+6	+6	+6	+39.5%	+28.1%	+13.4%	+9.9%	+9.7%	+9.4%
<b>Therapy Professions</b>	<b>437</b>	<b>+130</b>	<b>+82</b>	<b>+60</b>	<b>+30</b>	<b>+13</b>	<b>+15</b>	<b>+42.2%</b>	<b>+23.0%</b>	<b>+16.0%</b>	<b>+7.4%</b>	<b>+3.1%</b>	<b>+3.4%</b>
<b>Social Care</b>	<b>76</b>	<b>-3</b>	<b>-12</b>	<b>-12</b>	<b>-7</b>	<b>-3</b>	<b>+2</b>	<b>-3.3%</b>	<b>-13.2%</b>	<b>-13.5%</b>	<b>-7.9%</b>	<b>-3.3%</b>	<b>+3.4%</b>
<b>Social Workers</b>	<b>366</b>	<b>+93</b>	<b>+17</b>	<b>+16</b>	<b>+9</b>	<b>+8</b>	<b>+17</b>	<b>+33.8%</b>	<b>+5.0%</b>	<b>+4.6%</b>	<b>+2.6%</b>	<b>+2.2%</b>	<b>+4.8%</b>
<b>Psychologists</b>	<b>401</b>	<b>+150</b>	<b>+78</b>	<b>+58</b>	<b>+30</b>	<b>+12</b>	<b>+6</b>	<b>+59.8%</b>	<b>+24.2%</b>	<b>+16.9%</b>	<b>+8.2%</b>	<b>+3.1%</b>	<b>+1.6%</b>
<b>Pharmacy</b>	<b>19</b>	<b>+0</b>	<b>+2</b>	<b>-0</b>	<b>+0</b>	<b>+0</b>	<b>+1</b>	<b>+1.4%</b>	<b>+13.2%</b>	<b>-0.1%</b>	<b>+0.5%</b>	<b>+0.9%</b>	<b>+4.9%</b>
Counsellor Therapists	104	+28	+16	+19	+18	+19	+9	+37.6%	+18.8%	+22.3%	+21.6%	+22.4%	+9.7%
HSCP Trainees/ Students		-8						-100.0%	-100.0%	-100.0%	-100.0%	-100.0%	-100.0%
Other Health & Social Care	7	-3	-1	-2	-2	-2	-5	-33.0%	-12.8%	-22.3%	-23.5%	-23.9%	-44.2%
Play Therapists/ Specialists	1	-1	-1	-1	-0		+0	-39.8%	-39.8%	-40.8%	-2.0%		+1.4%
<b>H&amp;SC, Other</b>	<b>112</b>	<b>+17</b>	<b>+15</b>	<b>+16</b>	<b>+16</b>	<b>+17</b>	<b>+4</b>	<b>+17.4%</b>	<b>+14.9%</b>	<b>+16.8%</b>	<b>+17.2%</b>	<b>+17.8%</b>	<b>+3.8%</b>



May 2020 (Oct 2013 figure: 9,125)	WTE May 2020	WTE change since Oct 13	WTE change since Dec 15	WTE change since Dec 16	WTE change since Dec 17	WTE change since Dec 18	WTE change since Dec 19	% change since Oct 13	% change since Dec 15	% change since Dec 16	% change since Dec 17	% change since Dec 18	% change since Dec 19
<b>Overall</b>	<b>10,193</b>	<b>+1,068</b>	<b>+694</b>	<b>+573</b>	<b>+403</b>	<b>+295</b>	<b>+239</b>	<b>+11.7%</b>	<b>+7.3%</b>	<b>+6.0%</b>	<b>+4.1%</b>	<b>+3.0%</b>	<b>+2.4%</b>
<b>Health &amp; Social Care Professionals</b>	<b>1,411</b>	<b>+386</b>	<b>+183</b>	<b>+139</b>	<b>+79</b>	<b>+48</b>		<b>+37.7%</b>	<b>+14.9%</b>	<b>+10.9%</b>	<b>+6.0%</b>	<b>+3.5%</b>	<b>+3.3%</b>
Executive Management	13	+12	+9	+6	+5	+3	+2	+1200.0%	+225.0%	+85.7%	+62.5%	+30.0%	+18.2%
Senior Management (VIII & GM)	47	+28	+19	+23	+16	+16	+1	+149.0%	+66.0%	+91.6%	+51.3%	+49.4%	+2.1%
<b>Management (VIII &amp; above)</b>	<b>60</b>	<b>+40</b>	<b>+28</b>	<b>+29</b>	<b>+21</b>	<b>+19</b>	<b>+3</b>	<b>+201.6%</b>	<b>+85.6%</b>	<b>+90.3%</b>	<b>+53.6%</b>	<b>+44.8%</b>	<b>+5.2%</b>
<b>Administrative/ Supervisory (V to VII)</b>	<b>239</b>	<b>+107</b>	<b>+91</b>	<b>+71</b>	<b>+40</b>	<b>+17</b>	<b>+2</b>	<b>+81.5%</b>	<b>+61.2%</b>	<b>+42.4%</b>	<b>+19.9%</b>	<b>+7.5%</b>	<b>+1.0%</b>
<b>Clerical (III &amp; IV)</b>	<b>707</b>	<b>+95</b>	<b>+62</b>	<b>+46</b>	<b>+26</b>	<b>+12</b>	<b>-10</b>	<b>+15.6%</b>	<b>+9.5%</b>	<b>+7.0%</b>	<b>+3.8%</b>	<b>+1.7%</b>	<b>-1.4%</b>
<b>Management &amp; Administrative</b>	<b>1,007</b>	<b>+243</b>	<b>+180</b>	<b>+146</b>	<b>+86</b>	<b>+47</b>		<b>+31.8%</b>	<b>+21.8%</b>	<b>+17.0%</b>	<b>+9.4%</b>	<b>+4.9%</b>	<b>-0.5%</b>
Catering	61	-12	-2	-4	-5	-11	-4	-16.9%	-2.5%	-6.8%	-7.1%	-14.8%	-6.2%
Household Services	423	-208	-102	-69	-53	-23	-2	-33.0%	-19.5%	-14.1%	-11.2%	-5.1%	-0.4%
Other Support	39	-24	-14	-18	-11	-17	-4	-38.2%	-26.3%	-31.3%	-22.1%	-30.1%	-9.8%
Portering	48	-15	-11	-12	-1	-0	-0	-23.9%	-18.1%	-19.4%	-2.3%	-0.5%	-0.7%
<b>Support</b>	<b>570</b>	<b>-259</b>	<b>-128</b>	<b>-103</b>	<b>-70</b>	<b>-50</b>	<b>-10</b>	<b>-31.3%</b>	<b>-18.4%</b>	<b>-15.3%</b>	<b>-10.9%</b>	<b>-8.1%</b>	<b>-1.7%</b>
Maintenance	132	-37	-11	-11	-7	-3	+3	-21.8%	-8.0%	-8.0%	-5.1%	-2.0%	+2.1%
Technical Services	2												
<b>Maintenance/ Technical</b>	<b>134</b>	<b>-37</b>	<b>-11</b>	<b>-11</b>	<b>-7</b>	<b>-3</b>	<b>+3</b>	<b>-21.5%</b>	<b>-7.9%</b>	<b>-7.9%</b>	<b>-5.1%</b>	<b>-2.0%</b>	<b>+2.0%</b>
<b>General Support</b>	<b>704</b>	<b>-296</b>	<b>-140</b>	<b>-114</b>	<b>-77</b>	<b>-53</b>		<b>-29.6%</b>	<b>-16.6%</b>	<b>-13.9%</b>	<b>-9.9%</b>	<b>-7.0%</b>	<b>-1.0%</b>
HCA, Nurse's Aide, etc.	1,009	+190	+97	+80	+60	+35	+30	+23.2%	+10.7%	+8.6%	+6.3%	+3.6%	+3.0%
Health & Social Care Assistants	8	+4	+4	+3	+3	+2	-1	+101.8%	+120.1%	+67.9%	+67.9%	+43.2%	-12.9%
<b>Health Care Assistants</b>	<b>1,017</b>	<b>+194</b>	<b>+102</b>	<b>+83</b>	<b>+63</b>	<b>+37</b>	<b>+29</b>	<b>+23.6%</b>	<b>+11.1%</b>	<b>+8.9%</b>	<b>+6.6%</b>	<b>+3.8%</b>	<b>+2.9%</b>
Other Care Grades	211	-18	+7	+15	-2	-5	-5	-8.0%	+3.2%	+7.4%	-0.8%	-2.4%	-2.4%
<b>Care, other</b>	<b>211</b>	<b>-18</b>	<b>+7</b>	<b>+15</b>	<b>-2</b>	<b>-5</b>	<b>-5</b>	<b>-8.0%</b>	<b>+3.2%</b>	<b>+7.4%</b>	<b>-0.8%</b>	<b>-2.4%</b>	<b>-2.4%</b>
<b>Patient &amp; Client Care</b>	<b>1,227</b>	<b>+175</b>	<b>+108</b>	<b>+98</b>	<b>+62</b>	<b>+32</b>		<b>+16.7%</b>	<b>+9.7%</b>	<b>+8.6%</b>	<b>+5.3%</b>	<b>+2.7%</b>	<b>+1.9%</b>

Source: Health Service Personnel Census