

# Mental Health Service Employment Report: November 2020

## Employment by Staff Group

Nov 2020 (Dec 2019 figure: 9,954)	WTE Oct 2020	WTE Nov 2020	WTE change since Oct 20	% change since Oct 20	WTE change since Dec 19	WTE change since Nov 19
<b>Overall</b>	<b>10,265</b>	<b>10,283</b>	<b>+18</b>	<b>+0.2%</b>	<b>+329</b>	<b>+355</b>
Consultants	372	368	-4	-1.1%	+16	+22
Registrars	285	281	-4	-1.4%	+12	+14
SHO/ Interns	270	272	+2	+0.7%	+11	+11
Medical/ Dental, other	10	6	-4	-43.7%	+1	+1
<b>Medical &amp; Dental</b>	<b>937</b>	<b>927</b>	<b>-11</b>	<b>-1.1%</b>	<b>+39</b>	<b>+47</b>
Nurse/ Midwife Manager	1,248	1,229	-19	-1.5%	+37	+45
Nurse/ Midwife Specialist & AN/MP	512	523	+11	+2.2%	+64	+67
Staff Nurse/ Staff Midwife	2,986	3,069	+84	+2.8%	+66	+70
<i>Pre-registration Nurse/ Midwife Intern</i>	20	10	-10	-50.6%	-18	-18
<i>Pre-registration Nurse Intern (COVID-19)</i>	125	68	-57	-45.7%	+68	+68
<i>Post-registration Nurse/ Midwife Student</i>	1	1			+1	
<i>Nursing/ Midwifery awaiting registration</i>	5	5	-0	-5.2%	-15	-63
Nursing/ Midwifery Student	151	84	-67	-44.7%	-4	-13
Nursing/ Midwifery other	36	34	-2	-5.8%	+3	+6
<b>Nursing &amp; Midwifery</b>	<b>4,934</b>	<b>4,940</b>	<b>+6</b>	<b>+0.1%</b>	<b>+166</b>	<b>+175</b>
Therapy Professions	426	434	+8	+1.9%	+12	+13
Social Care	81	81	-0	-0.1%	+7	+8
Social Workers	373	373	-1	-0.2%	+23	+27
Psychologists	420	423	+4	+0.9%	+29	+29
Pharmacy	19	20	+0	+1.3%	+1	+1
H&SC, Other	110	109	-1	-0.9%	+1	+5
<b>Health &amp; Social Care Professionals</b>	<b>1,429</b>	<b>1,439</b>	<b>+11</b>	<b>+0.7%</b>	<b>+73</b>	<b>+82</b>
Management (VIII & above)	59	65	+6	+10.0%	+7	+7
Administrative/ Supervisory (V to VII)	251	248	-2	-1.0%	+11	+13
Clerical (III & IV)	709	715	+6	+0.8%	-3	-1
<b>Management &amp; Administrative</b>	<b>1,018</b>	<b>1,028</b>	<b>+9</b>	<b>+0.9%</b>	<b>+16</b>	<b>+18</b>
Support	589	591	+2	+0.3%	+10	+10
Maintenance/ Technical	133	137	+4	+2.9%	+6	+5
<b>General Support</b>	<b>723</b>	<b>728</b>	<b>+5</b>	<b>+0.7%</b>	<b>+16</b>	<b>+15</b>
Health Care Assistants	1,019	1,017	-2	-0.2%	+29	+31
Care, other	205	205	-0	-0.1%	-11	-12
<b>Patient &amp; Client Care</b>	<b>1,224</b>	<b>1,222</b>	<b>-2</b>	<b>-0.2%</b>	<b>+18</b>	<b>+19</b>

## Mental Health Services Employment by Administration (HSE / S38): November 2020

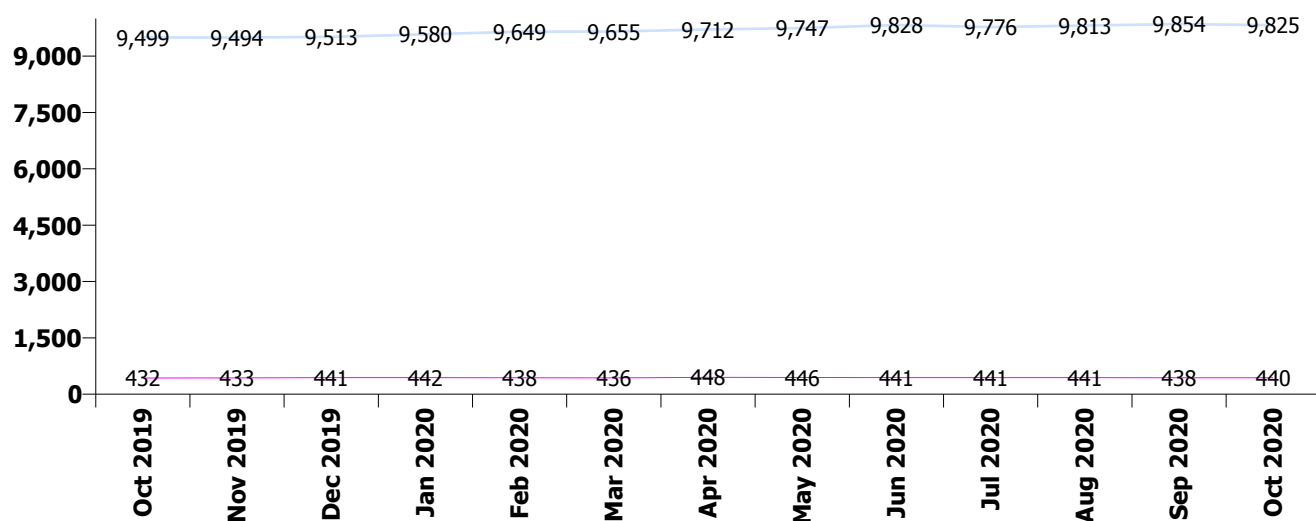
Nov 2020 (Dec 2019 figure: 9,954)	WTE Oct 2020	WTE Nov 2020	WTE change since Oct 20	% change since Oct 20	WTE change since Dec 19	WTE change since Nov 19
<b>Overall</b>	<b>10,265</b>	<b>10,283</b>	<b>+18</b>	<b>+0.2%</b>	<b>+329</b>	<b>+355</b>
<b>HSE</b>	<b>9,825</b>	<b>9,843</b>	<b>+18</b>	<b>+0.2%</b>	<b>+331</b>	<b>+349</b>
<b>Section 38 Voluntary Agencies</b>	<b>440</b>	<b>440</b>	<b>+0</b>	<b>+0.1%</b>	<b>-1</b>	<b>+7</b>

### HSE

Nov 2020 (Dec 2019 figure: 9,513)	WTE Oct 2020	WTE Nov 2020	WTE change since Oct 20	% change since Oct 20	WTE change since Dec 19	WTE change since Nov 19
<b>Overall</b>	<b>9,825</b>	<b>9,843</b>	<b>+18</b>	<b>+0.2%</b>	<b>+331</b>	<b>+349</b>
Consultants	352	347	-5	-1.4%	+15	+20
Registrars	270	266	-4	-1.3%	+16	+18
SHO/ Interns	261	263	+2	+0.7%	+8	+8
Medical/ Dental, other	10	6	-4	-43.7%	+1	+1
<b>Medical &amp; Dental</b>	<b>893</b>	<b>882</b>	<b>-11</b>	<b>-1.3%</b>	<b>+39</b>	<b>+47</b>
Nurse/ Midwife Manager	1,209	1,192	-17	-1.4%	+38	+46
Nurse/ Midwife Specialist & AN/MP	504	514	+11	+2.1%	+62	+65
Staff Nurse/ Staff Midwife	2,862	2,943	+81	+2.8%	+63	+68
Pre-registration Nurse/ Midwife Intern	20	10	-10	-50.6%	-11	-17
Pre-registration Nurse Intern (COVID-19)	123	66	-57	-46.5%	+66	+66
Post-registration Nurse/ Midwife Student	1	1			+1	
Nursing/ Midwifery awaiting registration	5	5	-0	-5.2%	-15	-63
Nursing/ Midwifery Student	149	82	-67	-45.3%	+1	-15
Nursing/ Midwifery other	34	32	-2	-6.3%	+3	+6
<b>Nursing &amp; Midwifery</b>	<b>4,757</b>	<b>4,763</b>	<b>+5</b>	<b>+0.1%</b>	<b>+167</b>	<b>+170</b>
Therapy Professions	401	407	+6	+1.5%	+16	+17
Social Care	52	53	+1	+1.4%	+4	+6
Social Workers	354	353	-0	-0.1%	+24	+27
Psychologists	397	401	+4	+0.9%	+23	+22
Pharmacy	17	18	+0	+1.4%	+1	+1
H&SC, Other	109	108	-1	-0.9%	+5	+5
<b>Health &amp; Social Care Professionals</b>	<b>1,330</b>	<b>1,339</b>	<b>+9</b>	<b>+0.7%</b>	<b>+72</b>	<b>+78</b>
Management (VIII & above)	57	63	+6	+10.3%	+7	+7
Administrative/ Supervisory (V to VII)	230	228	-2	-0.9%	+12	+12
Clerical (III & IV)	665	673	+7	+1.1%	-0	+1
<b>Management &amp; Administrative</b>	<b>952</b>	<b>963</b>	<b>+11</b>	<b>+1.1%</b>	<b>+19</b>	<b>+20</b>
Support	551	553	+2	+0.4%	+11	+11
Maintenance/ Technical	126	130	+4	+3.0%	+5	+4
<b>General Support</b>	<b>678</b>	<b>684</b>	<b>+6</b>	<b>+0.9%</b>	<b>+16</b>	<b>+15</b>
Health Care Assistants	1,013	1,011	-2	-0.2%	+29	+31
Care, other	202	202	+0	+0.0%	-11	-13
<b>Patient &amp; Client Care</b>	<b>1,215</b>	<b>1,213</b>	<b>-2</b>	<b>-0.2%</b>	<b>+18</b>	<b>+19</b>

## Section 38 Voluntary Agencies

Nov 2020 (Dec 2019 figure: 441)	WTE Oct 2020	WTE Nov 2020	WTE change since Oct 20	% change since Oct 20	WTE change since Dec 19	WTE change since Nov 19
<b>Overall</b>	<b>440</b>	<b>440</b>	<b>+0</b>	<b>+0.1%</b>	<b>-1</b>	<b>+7</b>
Consultants	20	21	+1	+5.1%	+1	+2
Registrars	15	15	-0	-3.2%	-4	-4
SHO/ Interns	9	9			+3	+3
<b>Medical &amp; Dental</b>	<b>44</b>	<b>45</b>	<b>+1</b>	<b>+1.2%</b>	<b>-0</b>	<b>+0</b>
Nurse/ Midwife Manager	39	37	-2	-5.0%	-1	-1
Nurse/ Midwife Specialist & AN/MP	9	9	+0	+4.2%	+2	+2
Staff Nurse/ Staff Midwife	124	126	+2	+1.8%	+3	+2
Pre-registration Nurse/ Midwife Intern				-100.0%	-8	-1
Pre-registration Nurse Intern (COVID-19)	2	2			+2	+2
Nursing/ Midwifery Student	2	2			-5	+2
Nursing/ Midwifery other	3	3				
<b>Nursing &amp; Midwifery</b>	<b>176</b>	<b>177</b>	<b>+1</b>	<b>+0.4%</b>	<b>-0</b>	<b>+4</b>
Therapy Professions	25	27	+2	+9.2%	-4	-4
Social Care	29	28	-1	-2.9%	+3	+2
Social Workers	20	19	-0	-1.0%	-0	-1
Psychologists	22	22	+0	+1.0%	+6	+7
Pharmacy	2	2			+0	+0
H&SC, Other	1	1			-4	-1
<b>Health &amp; Social Care Professionals</b>	<b>98</b>	<b>100</b>	<b>+2</b>	<b>+1.5%</b>	<b>+1</b>	<b>+3</b>
Management (VIII & above)	2	2				
Administrative/ Supervisory (V to VII)	21	21	-0	-1.8%	-1	+0
Clerical (III & IV)	44	42	-1	-3.0%	-2	-2
<b>Management &amp; Administrative</b>	<b>67</b>	<b>65</b>	<b>-2</b>	<b>-2.6%</b>	<b>-3</b>	<b>-2</b>
Support	38	37	-1	-1.3%	-0	-1
Maintenance/ Technical	7	7			+1	+1
<b>General Support</b>	<b>45</b>	<b>44</b>	<b>-1</b>	<b>-1.1%</b>	<b>+1</b>	<b>-0</b>
Health Care Assistants	6	6				
Care, other	4	3	-0	-4.5%	+1	+1
<b>Patient &amp; Client Care</b>	<b>9</b>	<b>9</b>	<b>-0</b>	<b>-1.7%</b>	<b>+1</b>	<b>+1</b>



## Mental Health Services Employment by CHO: Nov 2020

Nov 2020 (Dec 2019 figure: 9,954)	WTE Oct 2020	WTE Nov 2020	WTE change since Oct 20	% change since Oct 20	WTE change since Dec 19	WTE change since Nov 19
<b>Overall</b>	<b>10,265</b>	<b>10,283</b>	<b>+18</b>	<b>+0.2%</b>	<b>+329</b>	<b>+355</b>
<b>CHO 1</b>	<b>977</b>	<b>972</b>	<b>-5</b>	<b>-0.5%</b>	<b>+19</b>	<b>+18</b>
<b>CHO 2</b>	<b>1,353</b>	<b>1,345</b>	<b>-7</b>	<b>-0.5%</b>	<b>+37</b>	<b>+30</b>
<b>CHO 3</b>	<b>791</b>	<b>807</b>	<b>+16</b>	<b>+2.0%</b>	<b>+12</b>	<b>+11</b>
<b>CHO 4</b>	<b>1,559</b>	<b>1,562</b>	<b>+3</b>	<b>+0.2%</b>	<b>+77</b>	<b>+90</b>
<b>CHO 5</b>	<b>1,190</b>	<b>1,191</b>	<b>+1</b>	<b>+0.0%</b>	<b>+13</b>	<b>+15</b>
<b>CHO 6</b>	<b>616</b>	<b>626</b>	<b>+10</b>	<b>+1.6%</b>	<b>+33</b>	<b>+40</b>
<b>CHO 7</b>	<b>866</b>	<b>861</b>	<b>-4</b>	<b>-0.5%</b>	<b>+26</b>	<b>+30</b>
<b>CHO 8</b>	<b>1,116</b>	<b>1,114</b>	<b>-2</b>	<b>-0.2%</b>	<b>+16</b>	<b>+15</b>
<b>CHO 9</b>	<b>1,315</b>	<b>1,316</b>	<b>+1</b>	<b>+0.1%</b>	<b>+44</b>	<b>+53</b>
<b>other Community Services</b>	<b>483</b>	<b>490</b>	<b>+7</b>	<b>+1.4%</b>	<b>+53</b>	<b>+53</b>

## Mental Health Services Employment by CHO etc. Nov 2020

### CHO 1

Nov 2020 (Dec 2019 figure: 953)	WTE Oct 2020	WTE Nov 2020	WTE change since Oct 20	% change since Oct 20	WTE change since Dec 19	WTE change since Nov 19
<b>Overall</b>	<b>977</b>	<b>972</b>	<b>-5</b>	<b>-0.5%</b>	<b>+19</b>	<b>+18</b>
Consultants	35	34	-0	-1%	+4	+5
Registrars	29	28	-1	-3%	+4	+3
SHO/ Interns	23	23	-0	-2%	-3	-2
<b>Medical &amp; Dental</b>	<b>87</b>	<b>85</b>	<b>-1</b>	<b>-1.5%</b>	<b>+5</b>	<b>+5</b>
Nurse/ Midwife Manager	124	121	-3	-3%	+3	+2
Nurse/ Midwife Specialist & AN/MP	70	73	+3	+5%	+6	+6
Staff Nurse/ Staff Midwife	288	284	-4	-1%	-14	-11
<i>Pre-registration Nurse/ Midwife Intern</i>	1	1	+1	+192%	+1	+1
<i>Pre-registration Nurse Intern (COVID-19)</i>	12	8	-4	-35%	+8	+8
<i>Nursing/ Midwifery awaiting registration</i>				-100%	-1	
Nursing/ Midwifery Student	12	9	-3	-26%	+9	+9
Nursing/ Midwifery other	1	1	0		+1	+1
<b>Nursing &amp; Midwifery</b>	<b>494</b>	<b>487</b>	<b>-7</b>	<b>-1.3%</b>	<b>+5</b>	<b>+7</b>
Therapy Professions	34	34	+0	+0%	-1	-1
Social Care	4	4	+0	+2%	-0	-0
Social Workers	41	41	-0	-0%	+2	+1
Psychologists	23	23	+0	+0%	+2	+3
Pharmacy	1	1	+0	+6%	+0	+0
H&SC, Other	14	14	+0	+0%	+1	-0
<b>Health &amp; Social Care Professionals</b>	<b>117</b>	<b>117</b>	<b>+0</b>	<b>+0.2%</b>	<b>+4</b>	<b>+2</b>
Management (VIII & above)	7	8	+1	+14%	+2	+1
Administrative/ Supervisory (V to VII)	31	30	-0	-0%	+0	+0
Clerical (III & IV)	85	85	+0	+1%	-0	-0
<b>Management &amp; Administrative</b>	<b>122</b>	<b>123</b>	<b>+1</b>	<b>+1.1%</b>	<b>+2</b>	<b>+1</b>
Support	64	65	+1	+2%	+3	+3
Maintenance/ Technical	17	16	-0	-1%	-0	-0
<b>General Support</b>	<b>81</b>	<b>82</b>	<b>+1</b>	<b>+1.2%</b>	<b>+3</b>	<b>+2</b>
Health Care Assistants	66	66	+0	+0%	+0	-1
Care, other	11	11	+0	+1%	+0	-1
<b>Patient &amp; Client Care</b>	<b>77</b>	<b>78</b>	<b>+0</b>	<b>+0.2%</b>	<b>+1</b>	<b>-1</b>

## CHO 2

Nov 2020 (Dec 2019 figure: 1,308)	WTE Oct 2020	WTE Nov 2020	WTE change since Oct 20	% change since Oct 20	WTE change since Dec 19	WTE change since Nov 19
<b>Overall</b>	<b>1,353</b>	<b>1,345</b>	<b>-7</b>	<b>-0.5%</b>	<b>+37</b>	<b>+30</b>
Consultants	39	37	-2	-6%	-0	+1
Registrars	36	37	+0	+0%	+3	+3
SHO/ Interns	39	40	+0	+1%	+5	+5
Medical/ Dental, other	1	2	+1	+75%	+1	+1
<b>Medical &amp; Dental</b>	<b>116</b>	<b>115</b>	<b>-1</b>	<b>-0.8%</b>	<b>+9</b>	<b>+10</b>
Nurse/ Midwife Manager	154	151	-2	-1%	+5	+7
Nurse/ Midwife Specialist & AN/MP	78	79	+1	+1%	+11	+11
Staff Nurse/ Staff Midwife	346	355	+9	+2%	-2	-3
<i>Pre-registration Nurse/ Midwife Intern</i>				-100%		-1
<i>Pre-registration Nurse Intern (COVID-19)</i>	26	15	-11	-41%	+15	+15
<i>Nursing/ Midwifery awaiting registration</i>				-100%	-11	-11
Nursing/ Midwifery Student	26	15	-11	-41%	+11	+4
Nursing/ Midwifery other	3	3	-0	-6%	+1	+1
<b>Nursing &amp; Midwifery</b>	<b>606</b>	<b>603</b>	<b>-4</b>	<b>-0.6%</b>	<b>+26</b>	<b>+19</b>
Therapy Professions	54	53	-1	-3%	+7	+7
Social Care	15	16	+0	+3%	+1	+2
Social Workers	42	42	+0	+1%	+1	+1
Psychologists	40	37	-3	-7%	+4	+3
Pharmacy	2	2	+0	+5%	-1	-1
H&SC, Other	3	3	0			+0
<b>Health &amp; Social Care Professionals</b>	<b>156</b>	<b>153</b>	<b>-3</b>	<b>-2.1%</b>	<b>+13</b>	<b>+13</b>
Management (VIII & above)	4	4	0		-1	-2
Administrative/ Supervisory (V to VII)	28	27	-1	-3%	+4	+4
Clerical (III & IV)	101	101	-0	-0%	-8	-8
<b>Management &amp; Administrative</b>	<b>133</b>	<b>132</b>	<b>-1</b>	<b>-0.9%</b>	<b>-6</b>	<b>-7</b>
Support	32	32	-0	-1%	-4	-3
Maintenance/ Technical	30	33	+3	+10%	+6	+4
<b>General Support</b>	<b>62</b>	<b>65</b>	<b>+3</b>	<b>+4.3%</b>	<b>+1</b>	<b>+1</b>
Health Care Assistants	211	211	-0	-0%	-4	-3
Care, other	68	67	-1	-1%	-2	-3
<b>Patient &amp; Client Care</b>	<b>279</b>	<b>278</b>	<b>-1</b>	<b>-0.4%</b>	<b>-6</b>	<b>-6</b>

### CHO 3

Nov 2020 (Dec 2019 figure: 795)	WTE Oct 2020	WTE Nov 2020	WTE change since Oct 20	% change since Oct 20	WTE change since Dec 19	WTE change since Nov 19
<b>Overall</b>	<b>791</b>	<b>807</b>	<b>+16</b>	<b>+2.0%</b>	<b>+12</b>	<b>+11</b>
Consultants	25	25	+0	+1%	+2	+1
Registrars	16	16	0		-2	-2
SHO/ Interns	21	21	+1	+4%	+2	+2
<b>Medical &amp; Dental</b>	<b>61</b>	<b>62</b>	<b>+1</b>	<b>+1.6%</b>	<b>+2</b>	<b>+0</b>
Nurse/ Midwife Manager	88	83	-5	-6%	-5	-3
Nurse/ Midwife Specialist & AN/MP	36	33	-3	-8%	-6	-9
Staff Nurse/ Staff Midwife	253	270	+18	+7%	+25	+28
<i>Pre-registration Nurse/ Midwife Intern</i>				-100%	-9	-10
<i>Pre-registration Nurse Intern (COVID-19)</i>	17	11	-6	-37%	+11	+11
Nursing/ Midwifery Student	17	11	-6	-37%	+2	+1
<b>Nursing &amp; Midwifery</b>	<b>394</b>	<b>397</b>	<b>+4</b>	<b>+1.0%</b>	<b>+16</b>	<b>+18</b>
Therapy Professions	24	25	+1	+4%	-2	-3
Social Care	3	3	0		+0	+0
Social Workers	24	25	+0	+0%	-1	-1
Psychologists	81	91	+10	+13%	-1	-1
Pharmacy	3	3	0			
H&SC, Other	13	12	-1	-5%	+2	+2
<b>Health &amp; Social Care Professionals</b>	<b>148</b>	<b>158</b>	<b>+11</b>	<b>+7.2%</b>	<b>-1</b>	<b>-2</b>
Management (VIII & above)	2	2	+0	+1%	+0	+1
Administrative/ Supervisory (V to VII)	19	19	+0	+0%	+2	+2
Clerical (III & IV)	50	50	+0	+0%	-6	-6
<b>Management &amp; Administrative</b>	<b>71</b>	<b>71</b>	<b>+0</b>	<b>+0.2%</b>	<b>-4</b>	<b>-3</b>
Support	30	30	+1	+3%	-2	-2
Maintenance/ Technical	9	9	-0	-3%	-2	-2
<b>General Support</b>	<b>39</b>	<b>39</b>	<b>+1</b>	<b>+1.4%</b>	<b>-4</b>	<b>-4</b>
Health Care Assistants	78	78	-0	-0%	+3	+3
Care, other	1	1	0		-1	-1
<b>Patient &amp; Client Care</b>	<b>79</b>	<b>79</b>	<b>-0</b>	<b>-0.3%</b>	<b>+2</b>	<b>+2</b>

## CHO 4

Nov 2020 (Dec 2019 figure: 1,485)	WTE Oct 2020	WTE Nov 2020	WTE change since Oct 20	% change since Oct 20	WTE change since Dec 19	WTE change since Nov 19
<b>Overall</b>	<b>1,559</b>	<b>1,562</b>	<b>+3</b>	<b>+0.2%</b>	<b>+77</b>	<b>+90</b>
Consultants	55	54	-1	-2%	+4	+5
Registrars	43	42	-1	-3%	-4	-4
SHO/ Interns	41	43	+2	+5%	+12	+12
Medical/ Dental, other	7	2	-5	-72%		+0
<b>Medical &amp; Dental</b>	<b>146</b>	<b>140</b>	<b>-6</b>	<b>-4.1%</b>	<b>+12</b>	<b>+12</b>
Nurse/ Midwife Manager	193	190	-3	-1%	+20	+24
Nurse/ Midwife Specialist & AN/MP	67	70	+3	+5%	+11	+13
Staff Nurse/ Staff Midwife	509	521	+12	+2%	+19	+31
<i>Pre-registration Nurse/ Midwife Intern</i>				-100%	-1	-10
<i>Pre-registration Nurse Intern (COVID-19)</i>	11	5	-7	-60%	+5	+5
<i>Post-registration Nurse/ Midwife Student</i>				-100%		-1
<i>Nursing/ Midwifery awaiting registration</i>	1	1	0		+1	-29
Nursing/ Midwifery Student	12	6	-7	-55%	-28	-35
<b>Nursing &amp; Midwifery</b>	<b>781</b>	<b>787</b>	<b>+6</b>	<b>+0.7%</b>	<b>+21</b>	<b>+33</b>
Therapy Professions	78	79	+1	+1%	+5	+3
Social Care	7	7	+0	+2%	+3	+3
Social Workers	66	65	-1	-1%	+12	+14
Psychologists	94	92	-1	-2%	+10	+10
Pharmacy	2	2	-0	-2%	-0	-0
H&SC, Other	13	13	-0	-2%	+2	+3
<b>Health &amp; Social Care Professionals</b>	<b>259</b>	<b>257</b>	<b>-1</b>	<b>-0.6%</b>	<b>+31</b>	<b>+33</b>
<i>Executive Management</i>	2	2	+0	+5%	+2	+2
<i>Senior Management (VIII &amp; GM)</i>		1	+1	-100%	+1	
Management (VIII & above)	2	3	+1	+57%	+2	+2
Administrative/ Supervisory (V to VII)	23	22	-0	-1%	-0	+0
Clerical (III & IV)	91	93	+3	+3%	+6	+4
<b>Management &amp; Administrative</b>	<b>115</b>	<b>119</b>	<b>+3</b>	<b>+3.0%</b>	<b>+8</b>	<b>+6</b>
Support	81	82	+0	+1%	+2	+3
Maintenance/ Technical	5	5	-0	-0%	-1	-1
<b>General Support</b>	<b>87</b>	<b>87</b>	<b>+0</b>	<b>+0.5%</b>	<b>+1</b>	<b>+2</b>
Health Care Assistants	165	166	+0	+0%	+5	+4
Care, other	6	6	+0	+6%	-1	-1
<b>Patient &amp; Client Care</b>	<b>171</b>	<b>172</b>	<b>+1</b>	<b>+0.4%</b>	<b>+4</b>	<b>+3</b>



## CHO 5

Nov 2020 (Dec 2019 figure: 1,178)	WTE Oct 2020	WTE Nov 2020	WTE change since Oct 20	% change since Oct 20	WTE change since Dec 19	WTE change since Nov 19
<b>Overall</b>	<b>1,190</b>	<b>1,191</b>	<b>+1</b>	<b>+0.0%</b>	<b>+13</b>	<b>+15</b>
Consultants	28	27	-0	-0%	+1	+1
Registrars	9	9	-0	-5%	-1	-1
SHO/ Interns	35	35	-0	-1%	+3	+3
Medical/ Dental, other	2	2	-0	-1%	-0	-0
<b>Medical &amp; Dental</b>	<b>74</b>	<b>73</b>	<b>-1</b>	<b>-1.2%</b>	<b>+3</b>	<b>+3</b>
Nurse/ Midwife Manager	165	162	-3	-2%	-2	-1
Nurse/ Midwife Specialist & AN/MP	52	54	+2	+4%	+12	+12
Staff Nurse/ Staff Midwife	399	410	+11	+3%	-6	-7
<i>Pre-registration Nurse/ Midwife Intern</i>				-100%	-1	-4
<i>Pre-registration Nurse Intern (COVID-19)</i>	23	15	-8	-36%	+15	+15
<i>Nursing/ Midwifery awaiting registration</i>				-100%		-3
Nursing/ Midwifery Student	23	15	-8	-36%	+9	+8
Nursing/ Midwifery other	4	3	-0	-5%	-0	+0
<b>Nursing &amp; Midwifery</b>	<b>643</b>	<b>644</b>	<b>+2</b>	<b>+0.2%</b>	<b>+13</b>	<b>+13</b>
Therapy Professions	37	37	+1	+2%	-3	-2
Social Care	5	5	0			
Social Workers	28	28	+0	+1%	+1	+1
Psychologists	21	21	-0	-0%	+0	-1
H&SC, Other	8	8	-0	-1%	-2	-2
<b>Health &amp; Social Care Professionals</b>	<b>98</b>	<b>99</b>	<b>+1</b>	<b>+0.8%</b>	<b>-4</b>	<b>-4</b>
Management (VIII & above)	6	6	0		+3	+3
Administrative/ Supervisory (V to VII)	20	20	-0	-0%	-0	-0
Clerical (III & IV)	68	69	+2	+2%	-5	-4
<b>Management &amp; Administrative</b>	<b>94</b>	<b>95</b>	<b>+2</b>	<b>+1.7%</b>	<b>-2</b>	<b>-1</b>
Support	179	179	-1	-0%	+11	+12
Maintenance/ Technical	20	20	-0	-0%	-3	-3
<b>General Support</b>	<b>199</b>	<b>199</b>	<b>-1</b>	<b>-0.3%</b>	<b>+8</b>	<b>+9</b>
Health Care Assistants	71	68	-2	-3%	-4	-4
Care, other	12	12	+0	+4%	-1	-1
<b>Patient &amp; Client Care</b>	<b>82</b>	<b>80</b>	<b>-2</b>	<b>-2.3%</b>	<b>-5</b>	<b>-5</b>

## CHO 6

Nov 2020 (Dec 2019 figure: 593)	WTE Oct 2020	WTE Nov 2020	WTE change since Oct 20	% change since Oct 20	WTE change since Dec 19	WTE change since Nov 19
<b>Overall</b>	<b>616</b>	<b>626</b>	<b>+10</b>	<b>+1.6%</b>	<b>+33</b>	<b>+40</b>
Consultants	38	39	+1	+3%	+3	+5
Registrars	19	19	-0	-2%	-3	-3
SHO/ Interns	14	14	-0	-2%	+5	+5
Medical/ Dental, other				-100%		
<b>Medical &amp; Dental</b>	<b>71</b>	<b>71</b>	<b>+0</b>	<b>+0.5%</b>	<b>+5</b>	<b>+6</b>
Nurse/ Midwife Manager	77	76	-0	-0%	-0	-1
Nurse/ Midwife Specialist & AN/MP	19	20	+0	+2%	+6	+7
Staff Nurse/ Staff Midwife	146	153	+7	+5%	+14	+16
<i>Nursing/ Midwifery awaiting registration</i>	0	1	+1	+178%	+1	+1
Nursing/ Midwifery Student	0	1	+1	+178%	+1	+1
Nursing/ Midwifery other	3	2	-1	-33%		+1
<b>Nursing &amp; Midwifery</b>	<b>245</b>	<b>252</b>	<b>+7</b>	<b>+3.0%</b>	<b>+21</b>	<b>+24</b>
Therapy Professions	36	39	+2	+7%	-4	-3
Social Care	29	29	-0	-1%	+3	+2
Social Workers	31	31	-0	-1%	+1	+0
Psychologists	30	31	+1	+5%	+9	+9
H&SC, Other	5	5	+0	+6%	-3	-0
<b>Health &amp; Social Care Professionals</b>	<b>131</b>	<b>135</b>	<b>+3</b>	<b>+2.6%</b>	<b>+5</b>	<b>+8</b>
Management (VIII & above)	3	3	0			
Administrative/ Supervisory (V to VII)	26	25	-0	-1%	-1	-1
Clerical (III & IV)	42	41	-0	-1%	-1	-1
<b>Management &amp; Administrative</b>	<b>70</b>	<b>70</b>	<b>-1</b>	<b>-1.1%</b>	<b>-2</b>	<b>-1</b>
Support	36	37	+0	+0%	+0	-1
Maintenance/ Technical	6	6	0		+0	+0
<b>General Support</b>	<b>42</b>	<b>43</b>	<b>+0</b>	<b>+0.3%</b>	<b>+0</b>	<b>-1</b>
Health Care Assistants	50	49	-0	-1%	+4	+3
Care, other	6	6	-0	-1%	+1	+1
<b>Patient &amp; Client Care</b>	<b>56</b>	<b>55</b>	<b>-1</b>	<b>-0.9%</b>	<b>+4</b>	<b>+4</b>

## CHO 7

Nov 2020 (Dec 2019 figure: 835)	WTE Oct 2020	WTE Nov 2020	WTE change since Oct 20	% change since Oct 20	WTE change since Dec 19	WTE change since Nov 19
<b>Overall</b>	<b>866</b>	<b>861</b>	<b>-4</b>	<b>-0.5%</b>	<b>+26</b>	<b>+30</b>
Consultants	54	52	-2	-3%	+4	+7
Registrars	54	53	-1	-1%	+7	+7
SHO/ Interns	19	19	+0	+1%	-1	-0
<b>Medical &amp; Dental</b>	<b>127</b>	<b>125</b>	<b>-2</b>	<b>-1.5%</b>	<b>+10</b>	<b>+14</b>
Nurse/ Midwife Manager	118	116	-2	-2%	-1	+1
Nurse/ Midwife Specialist & AN/MP	47	49	+1	+3%	+9	+10
Staff Nurse/ Staff Midwife	195	200	+5	+3%	+5	+0
<i>Pre-registration Nurse/ Midwife Intern</i>				-100%	-6	-2
<i>Pre-registration Nurse Intern (COVID-19)</i>	10	5	-5	-48%	+5	+5
<i>Post-registration Nurse/ Midwife Student</i>	1	1	0		+1	+1
<i>Nursing/ Midwifery awaiting registration</i>	4	3	-1	-24%	-1	-6
Nursing/ Midwifery Student	15	9	-6	-39%	-2	-1
Nursing/ Midwifery other	9	8	-1	-9%	+0	+2
<b>Nursing &amp; Midwifery</b>	<b>384</b>	<b>382</b>	<b>-2</b>	<b>-0.6%</b>	<b>+12</b>	<b>+12</b>
Therapy Professions	46	50	+4	+8%	+2	+3
Social Care	8	8	-0	-5%	-0	-0
Social Workers	36	37	+2	+5%	+3	+4
Psychologists	34	31	-2	-7%	-0	+1
<i>Pharmacy</i>	1	1	-0	-1%	+1	-0
Pharmacy	1	1	-0	-1%	-0	-0
H&SC, Other	19	19	-0	-1%	+1	+1
<b>Health &amp; Social Care Professionals</b>	<b>144</b>	<b>146</b>	<b>+3</b>	<b>+1.7%</b>	<b>+6</b>	<b>+10</b>
Management (VIII & above)	3	3	0			
Administrative/ Supervisory (V to VII)	18	17	-1	-5%	+2	+1
Clerical (III & IV)	49	49	-1	-1%	+2	+2
<b>Management &amp; Administrative</b>	<b>71</b>	<b>69</b>	<b>-1</b>	<b>-2.1%</b>	<b>+4</b>	<b>+3</b>
Support	16	17	+1	+4%	-1	-2
Maintenance/ Technical	2	2	0		+0	
<b>General Support</b>	<b>18</b>	<b>19</b>	<b>+1</b>	<b>+3.2%</b>	<b>-1</b>	<b>-2</b>
Health Care Assistants	36	35	-1	-3%	+1	+0
Care, other	86	86	-0	-1%	-6	-6
<b>Patient &amp; Client Care</b>	<b>122</b>	<b>120</b>	<b>-1</b>	<b>-1.2%</b>	<b>-5</b>	<b>-5</b>

## CHO 8

Nov 2020 (Dec 2019 figure: 1,098)	WTE Oct 2020	WTE Nov 2020	WTE change since Oct 20	% change since Oct 20	WTE change since Dec 19	WTE change since Nov 19
<b>Overall</b>	<b>1,116</b>	<b>1,114</b>	<b>-2</b>	<b>-0.2%</b>	<b>+16</b>	<b>+15</b>
Consultants	35	36	+1	+3%	+0	+0
Registrars	31	33	+2	+5%	+7	+7
SHO/ Interns	29	25	-4	-13%	-11	-11
<b>Medical &amp; Dental</b>	<b>95</b>	<b>94</b>	<b>-1</b>	<b>-1.2%</b>	<b>-3</b>	<b>-3</b>
Nurse/ Midwife Manager	117	116	-0	-0%	-4	-5
Nurse/ Midwife Specialist & AN/MP	60	59	-1	-2%	+3	+3
Staff Nurse/ Staff Midwife	331	343	+12	+4%	+11	+6
<i>Pre-registration Nurse/ Midwife Intern</i>		1	+1	-100%	+1	+1
<i>Pre-registration Nurse Intern (COVID-19)</i>	19	5	-14	-72%	+5	+5
<i>Nursing/ Midwifery awaiting registration</i>				-100%	-1	-3
Nursing/ Midwifery Student	19	6	-13	-67%	+4	+3
Nursing/ Midwifery other	3	3	+0	+1%	-1	
<b>Nursing &amp; Midwifery</b>	<b>530</b>	<b>528</b>	<b>-2</b>	<b>-0.5%</b>	<b>+13</b>	<b>+7</b>
Therapy Professions	43	43	+1	+1%	-1	-1
Social Care	7	7	-0	-1%	-0	-0
Social Workers	45	45	+0	+1%	+4	+5
Psychologists	38	37	-1	-2%	-2	-2
Pharmacy	1	2	+0	+27%	+1	+1
H&SC, Other	20	20	-0	-0%	-0	+1
<b>Health &amp; Social Care Professionals</b>	<b>154</b>	<b>154</b>	<b>+0</b>	<b>+0.1%</b>	<b>+1</b>	<b>+3</b>
Management (VIII & above)	3	3	-0	-2%	-0	-0
Administrative/ Supervisory (V to VII)	21	20	-0	-2%	-2	-2
Clerical (III & IV)	98	98	-0	-0%	+10	+11
<b>Management &amp; Administrative</b>	<b>122</b>	<b>121</b>	<b>-1</b>	<b>-0.5%</b>	<b>+7</b>	<b>+9</b>
Support	31	31	-0	-0%	-2	-1
Maintenance/ Technical	27	28	+1	+2%	+2	+1
<b>General Support</b>	<b>58</b>	<b>59</b>	<b>+0</b>	<b>+0.8%</b>	<b>-0</b>	<b>-0</b>
Health Care Assistants	154	155	+1	+1%	-2	+0
Care, other	3	3	0		-1	-1
<b>Patient &amp; Client Care</b>	<b>157</b>	<b>158</b>	<b>+1</b>	<b>+0.8%</b>	<b>-2</b>	<b>-0</b>

## CHO 9

Nov 2020 (Dec 2019 figure: 1,272)	WTE Oct 2020	WTE Nov 2020	WTE change since Oct 20	% change since Oct 20	WTE change since Dec 19	WTE change since Nov 19
<b>Overall</b>	<b>1,315</b>	<b>1,316</b>	<b>+1</b>	<b>+0.1%</b>	<b>+44</b>	<b>+53</b>
Consultants	48	47	-1	-2%	-3	-3
Registrars	33	31	-2	-6%	-0	+3
SHO/ Interns	50	53	+3	+7%	-0	-3
<b>Medical &amp; Dental</b>	<b>130</b>	<b>130</b>	<b>+0</b>	<b>+0.1%</b>	<b>-4</b>	<b>-3</b>
Nurse/ Midwife Manager	138	138	-0	-0%	+6	+9
Nurse/ Midwife Specialist & AN/MP	72	75	+3	+4%	+10	+10
Staff Nurse/ Staff Midwife	354	368	+14	+4%	+17	+14
<i>Pre-registration Nurse/ Midwife Intern</i>	19	7	-12	-62%	-5	+5
<i>Pre-registration Nurse Intern (COVID-19)</i>	6	4	-2	-36%	+4	+4
<i>Nursing/ Midwifery awaiting registration</i>				-100%	-3	-12
Nursing/ Midwifery Student	25	11	-14	-56%	-10	-3
Nursing/ Midwifery other	12	12	-0	-0%	+1	+1
<b>Nursing &amp; Midwifery</b>	<b>602</b>	<b>604</b>	<b>+2</b>	<b>+0.4%</b>	<b>+23</b>	<b>+30</b>
Therapy Professions	63	63	+0	+0%	+8	+9
Social Care	1	1	0		+0	+0
Social Workers	45	42	-3	-6%	-1	-1
Psychologists	52	53	+0	+1%	+7	+6
Pharmacy	9	9	-0	-2%	+1	+0
H&SC, Other	15	15	-0	-1%	+0	+0
<b>Health &amp; Social Care Professionals</b>	<b>185</b>	<b>182</b>	<b>-2</b>	<b>-1.3%</b>	<b>+15</b>	<b>+15</b>
Management (VIII & above)	5	5	0		+0	
Administrative/ Supervisory (V to VII)	30	29	-1	-3%	+2	+2
Clerical (III & IV)	109	111	+2	+2%	+8	+9
<b>Management &amp; Administrative</b>	<b>144</b>	<b>146</b>	<b>+1</b>	<b>+1.0%</b>	<b>+9</b>	<b>+11</b>
Support	104	102	-1	-1%	-1	-1
Maintenance/ Technical	11	11	+0	+1%	+0	+0
<b>General Support</b>	<b>114</b>	<b>113</b>	<b>-1</b>	<b>-0.9%</b>	<b>-1</b>	<b>-1</b>
Health Care Assistants	126	127	+1	+1%	+1	+1
Care, other	12	12	+0	+1%	-0	-0
<b>Patient &amp; Client Care</b>	<b>139</b>	<b>140</b>	<b>+1</b>	<b>+0.6%</b>	<b>+1</b>	<b>+1</b>

## other Community Services

Nov 2020 (Dec 2019 figure: 438)	WTE Oct 2020	WTE Nov 2020	WTE change since Oct 20	% change since Oct 20	WTE change since Dec 19	WTE change since Nov 19
<b>Overall</b>	<b>483</b>	<b>490</b>	<b>+7</b>	<b>+1.4%</b>	<b>+53</b>	<b>+53</b>
Consultants	17	17	+0	+0%	+1	+1
Registrars	14	14	0		+1	+1
SHO/ Interns				-100%		
<b>Medical &amp; Dental</b>	<b>31</b>	<b>31</b>	<b>+0</b>	<b>+0.2%</b>	<b>+2</b>	<b>+2</b>
Nurse/ Midwife Manager	76	76	-1	-1%	+14	+12
Nurse/ Midwife Specialist & AN/MP	11	12	+1	+7%	+4	+4
Staff Nurse/ Staff Midwife	165	165	+0	+0%	-4	-4
Nursing/ Midwifery other	2	2	+0	+1%	+1	+1
<b>Nursing &amp; Midwifery</b>	<b>255</b>	<b>255</b>	<b>+0</b>	<b>+0.2%</b>	<b>+15</b>	<b>+12</b>
Therapy Professions	12	12	0		+1	+1
Social Care	2	2	+0	+4%	+0	+0
Social Workers	16	17	+1	+5%	+2	+3
Psychologists	7	6	-1	-12%	-0	-0
<i>Pharmacy</i>	<i>1</i>	<i>1</i>	<i>0</i>		<i>+1</i>	<i>+1</i>
Pharmacy	1	1	0		+1	+1
<b>Health &amp; Social Care Professionals</b>	<b>37</b>	<b>37</b>	<b>+0</b>	<b>+0.2%</b>	<b>+3</b>	<b>+5</b>
Management (VIII & above)	24	28	+4	+16%	+1	+2
Administrative/ Supervisory (V to VII)	36	37	+1	+3%	+6	+6
Clerical (III & IV)	16	17	+1	+3%	-8	-9
<b>Management &amp; Administrative</b>	<b>77</b>	<b>82</b>	<b>+5</b>	<b>+7.0%</b>	<b>-1</b>	<b>-1</b>
Support	15	16	+1	+4%	+4	+4
Maintenance/ Technical	7	7	+1	+8%	+5	+5
<b>General Support</b>	<b>22</b>	<b>23</b>	<b>+1</b>	<b>+5.3%</b>	<b>+9</b>	<b>+9</b>
Health Care Assistants	62	62	-0	-0%	+25	+26
Care, other	1	1	0			
<b>Patient &amp; Client Care</b>	<b>62</b>	<b>62</b>	<b>-0</b>	<b>-0.2%</b>	<b>+25</b>	<b>+26</b>

## Mental Health Services Employment by Grade Group: Nov 2020

Nov 2020 (Dec 2019 figure: 9,954)	WTE Oct 2020	WTE Nov 2020	WTE change since Oct 20	% change since Oct 20	WTE change since Dec 19	WTE change since Nov 19
<b>Overall</b>	<b>10,265</b>	<b>10,283</b>	<b>+18</b>	<b>+0.2%</b>	<b>+329</b>	<b>+355</b>
Consultant Medicine	1	1	0			
Consultant Psychiatry	371	367	-4	-1%	+16	+22
<b>Consultants</b>	<b>372</b>	<b>368</b>	<b>-4</b>	<b>-1%</b>	<b>+16</b>	<b>+22</b>
Registrar	171	169	-2	-1%	-1	+2
Senior Registrar	112	110	-2	-1%	+13	+12
Specialist Registrar	2	2	0		-1	-1
<b>Registrars</b>	<b>285</b>	<b>281</b>	<b>-4</b>	<b>-1%</b>	<b>+12</b>	<b>+14</b>
Interns	5	5	-0	-7%	-3	-3
Senior House Officer	265	267	+2	+1%	+14	+14
<b>SHO/ Interns</b>	<b>270</b>	<b>272</b>	<b>+2</b>	<b>+1%</b>	<b>+11</b>	<b>+11</b>
Other Medical	10	6	-4	-44%	+1	+1
<b>Medical/ Dental, other</b>	<b>10</b>	<b>6</b>	<b>-4</b>	<b>-44%</b>	<b>+1</b>	<b>+1</b>
<b>Medical &amp; Dental</b>	<b>937</b>	<b>927</b>	<b>-11</b>	<b>-1%</b>	<b>+39</b>	<b>+47</b>
Clinical Nurse/ Midwife Manager	1,051	1,033	-18	-2%	+34	+44
Director Nursing/Midwifery, Assistant	171	169	-2	-1%	+4	+3
Director of Nursing/Midwifery	26	27	+1	+4%	-1	-1
<b>Nurse/ Midwife Manager</b>	<b>1,248</b>	<b>1,229</b>	<b>-19</b>	<b>-2%</b>	<b>+37</b>	<b>+45</b>
Advanced Nurse/ Midwife Practitioner	38	39	+2	+4%	+9	+9
Clinical Nurse/ Midwife Specialist	474	484	+10	+2%	+56	+58
<b>Nurse/ Midwife Specialist &amp; AN/MP</b>	<b>512</b>	<b>523</b>	<b>+11</b>	<b>+2%</b>	<b>+64</b>	<b>+67</b>
Staff Midwives	1	1	+0	+1%	+1	+1
Staff Nurse [Intellectual Disability]	4	4	-0	-2%	-0	-0
Staff Nurse [Psychiatric]	2,868	2,953	+85	+3%	+60	+66
Staff Nurses [General/ Children's]	113	111	-2	-2%	+6	+3
<b>Staff Nurse/ Staff Midwife</b>	<b>2,986</b>	<b>3,069</b>	<b>+84</b>	<b>+3%</b>	<b>+66</b>	<b>+70</b>
Pre-registration Nurse/ Midwife Intern	20	10	-10	-51%	-18	-18
Pre-registration Nurse Intern (COVID-19)	125	68	-57	-46%	+68	+68
Post-registration Nurse/ Midwife Student	1	1	0			
Nursing/ Midwifery awaiting registration	5	5	-0	-5%	-54	-63
<b>Nursing/ Midwifery Student</b>	<b>151</b>	<b>84</b>	<b>-67</b>	<b>-45%</b>	<b>-4</b>	<b>-13</b>
Nursing Education/Clinical	36	34	-2	-6%	+3	+6
<b>Nursing/ Midwifery other</b>	<b>36</b>	<b>34</b>	<b>-2</b>	<b>-6%</b>	<b>+3</b>	<b>+6</b>
<b>Nursing &amp; Midwifery</b>	<b>4,934</b>	<b>4,940</b>	<b>+6</b>	<b>+0%</b>	<b>+166</b>	<b>+175</b>
Dietitians	17	18	+1	+5%	-1	-0
Occupational Therapists	344	348	+3	+1%	+9	+12
Physiotherapists	2	2	-0	-2%	+0	+0
Podiatrists & Chiropodists	1	1	-0	-14%	+0	+0
Speech & Language Therapists	61	65	+4	+7%	+4	+1
<b>Therapy Professions</b>	<b>426</b>	<b>434</b>	<b>+8</b>	<b>+2%</b>	<b>+12</b>	<b>+13</b>
<b>Social Care</b>	<b>81</b>	<b>81</b>	<b>-0</b>	<b>-0%</b>	<b>+7</b>	<b>+8</b>
<b>Social Workers</b>	<b>373</b>	<b>373</b>	<b>-1</b>	<b>-0%</b>	<b>+23</b>	<b>+27</b>
<b>Psychologists</b>	<b>420</b>	<b>423</b>	<b>+4</b>	<b>+1%</b>	<b>+29</b>	<b>+29</b>
<b>Pharmacy</b>	<b>19</b>	<b>20</b>	<b>+0</b>	<b>+1%</b>	<b>+1</b>	<b>+1</b>
Counsellor Therapists	101	100	-1	-1%	+5	+6
Other Health & Social Care	7	7	+0	+0%	-5	-1
Play Therapists/ Specialists	1	1	0		+0	+0
<b>H&amp;SC, Other</b>	<b>110</b>	<b>109</b>	<b>-1</b>	<b>-1%</b>	<b>+1</b>	<b>+5</b>
<b>Health &amp; Social Care Professionals</b>	<b>1,429</b>	<b>1,439</b>	<b>+11</b>	<b>+1%</b>	<b>+73</b>	<b>+82</b>
Executive Management	13	14	+1	+11%	+3	+3
Senior Management (VIII & GM)	46	50	+4	+10%	+4	+4

Nov 2020 (Dec 2019 figure: 9,954)	WTE Oct 2020	WTE Nov 2020	WTE change since Oct 20	% change since Oct 20	WTE change since Dec 19	WTE change since Nov 19
<b>Overall</b>	<b>10,265</b>	<b>10,283</b>	<b>+18</b>	<b>+0.2%</b>	<b>+329</b>	<b>+355</b>
<b>Management (VIII &amp; above)</b>	<b>59</b>	<b>65</b>	<b>+6</b>	<b>+10%</b>	<b>+7</b>	<b>+7</b>
Middle Management (V-VII)	249	247	-2	-1%	+11	+13
Other Administrative	2	2	0			
<b>Administrative/ Supervisory (V to VII)</b>	<b>251</b>	<b>248</b>	<b>-2</b>	<b>-1%</b>	<b>+11</b>	<b>+13</b>
General Administrative (III & IV)	709	715	+6	+1%	-3	-1
<b>Clerical (III &amp; IV)</b>	<b>709</b>	<b>715</b>	<b>+6</b>	<b>+1%</b>	<b>-3</b>	<b>-1</b>
<b>Management &amp; Administrative</b>	<b>1,018</b>	<b>1,028</b>	<b>+9</b>	<b>+1%</b>	<b>+16</b>	<b>+18</b>
Catering	64	64	+0	+0%	-1	-4
Household Services	437	437	+0	+0%	+13	+16
Other Support	41	42	+1	+2%	-1	-2
Portering	47	48	+0	+1%	-0	-1
<b>Support</b>	<b>589</b>	<b>591</b>	<b>+2</b>	<b>+0%</b>	<b>+10</b>	<b>+10</b>
Maintenance	133	137	+4	+3%	+8	+7
Technical Services				-100%	-2	-2
<b>Maintenance/ Technical</b>	<b>133</b>	<b>137</b>	<b>+4</b>	<b>+3%</b>	<b>+6</b>	<b>+5</b>
<b>General Support</b>	<b>723</b>	<b>728</b>	<b>+5</b>	<b>+1%</b>	<b>+16</b>	<b>+15</b>
HCA, Nurse's Aide, etc.	1,011	1,009	-2	-0%	+30	+31
Health & Social Care Assistants	8	8	-0	-0%	-1	-0
<b>Health Care Assistants</b>	<b>1,019</b>	<b>1,017</b>	<b>-2</b>	<b>-0%</b>	<b>+29</b>	<b>+31</b>
<b>Care, other</b>	<b>205</b>	<b>205</b>	<b>-0</b>	<b>-0%</b>	<b>-11</b>	<b>-12</b>
<b>Patient &amp; Client Care</b>	<b>1,224</b>	<b>1,222</b>	<b>-2</b>	<b>-0%</b>	<b>+18</b>	<b>+19</b>



## Employment by WTE, Headcount, Gender, Full-Time /Part-Time etc.: Nov 2020

Mental Health Services Staff Group	WTE	Headcount	WTE: no.	% Male	% female	Male WTE: no.	Female WTE: no.	% Total Perm	% Male Perm	% Female Perm	% Total Full Time	% Total Part Time	% Male FT	% Female FT
<b>Overall</b>	<b>10,283</b>	<b>11,180</b>	<b>1.09</b>	<b>27.1%</b>	<b>72.9%</b>	<b>1.04</b>	<b>1.10</b>	<b>84.1%</b>	<b>80.0%</b>	<b>85.6%</b>	<b>84.3%</b>	<b>15.7%</b>	<b>92.6%</b>	<b>81.3%</b>
Consultant Medicine	1	1	1.00	100.0%		1.00		100.0%	100.0%		100.0%	0.0%	100.0%	
Consultant Psychiatry	367	397	1.08	39.0%	61.0%	1.03	1.12	65.5%	65.5%	64.0%	84.9%	15.1%	92.3%	80.2%
<b>Consultants</b>	<b>368</b>	<b>398</b>	<b>1.08</b>	<b>39.2%</b>	<b>60.8%</b>	<b>1.03</b>	<b>1.12</b>	<b>65.6%</b>	<b>67.9%</b>	<b>64.0%</b>	<b>84.9%</b>	<b>15.1%</b>	<b>92.3%</b>	<b>80.2%</b>
Registrar	169	175	1.04	43.4%	56.6%	1.01	1.06	5.1%	5.1%	4.0%	96.6%	3.4%	100.0%	93.9%
Senior Registrar	110	116	1.05	43.1%	56.9%	1.01	1.09	1.7%	1.7%	3.0%	95.7%	4.3%	100.0%	92.4%
Specialist Registrar	2	2	1.00	50.0%	50.0%	1.00	1.00	0.0%	0.0%	0.0%	100.0%	0.0%	100.0%	100.0%
<b>Registrars</b>	<b>281</b>	<b>293</b>	<b>1.04</b>	<b>43.3%</b>	<b>56.7%</b>	<b>1.01</b>	<b>1.07</b>	<b>3.8%</b>	<b>3.9%</b>	<b>3.6%</b>	<b>96.2%</b>	<b>3.8%</b>	<b>100.0%</b>	<b>93.4%</b>
Interns	5	5	1.00	20.0%	80.0%	1.00	1.00	0.0%	0.0%	0.0%	100.0%	0.0%	100.0%	100.0%
Senior House Officer	267	273	1.02	38.1%	61.9%	1.02	1.02	0.4%	0.4%	0.0%	99.6%	0.4%	100.0%	99.4%
<b>SHO/ Interns</b>	<b>272</b>	<b>278</b>	<b>1.02</b>	<b>37.8%</b>	<b>62.2%</b>	<b>1.02</b>	<b>1.02</b>	<b>0.4%</b>	<b>1.0%</b>	<b>0.0%</b>	<b>99.6%</b>	<b>0.4%</b>	<b>100.0%</b>	<b>99.4%</b>
Other Medical	6	11	1.92	45.5%	54.5%	2.02	1.84	45.5%	45.5%	50.0%	90.9%	9.1%	100.0%	83.3%
<b>Medical/ Dental, other</b>	<b>6</b>	<b>11</b>	<b>1.92</b>	<b>45.5%</b>	<b>54.5%</b>	<b>2.02</b>	<b>1.84</b>	<b>45.5%</b>	<b>40.0%</b>	<b>50.0%</b>	<b>90.9%</b>	<b>9.1%</b>	<b>100.0%</b>	<b>83.3%</b>
<b>Medical &amp; Dental</b>	<b>927</b>	<b>980</b>	<b>1.06</b>	<b>40.1%</b>	<b>59.9%</b>	<b>1.03</b>	<b>1.08</b>	<b>28.4%</b>	<b>29.0%</b>	<b>27.9%</b>	<b>92.6%</b>	<b>7.4%</b>	<b>96.9%</b>	<b>89.6%</b>
Clinical Nurse/ Midwife Manager	1,033	1,080	1.05	34.1%	65.9%	1.02	1.06	98.8%	98.8%	99.4%	93.4%	6.6%	98.1%	91.0%
Director Nursing/Midwifery, Assistant	169	175	1.04	45.7%	54.3%	1.03	1.04	99.4%	99.4%	98.9%	97.7%	2.3%	98.8%	96.8%
Director of Nursing/Midwifery	27	28	1.02	57.1%	42.9%	1.03	1.01	100.0%	100.0%	100.0%	96.4%	3.6%	100.0%	91.7%
<b>Nurse/ Midwife Manager</b>	<b>1,229</b>	<b>1,283</b>	<b>1.04</b>	<b>36.2%</b>	<b>63.8%</b>	<b>1.02</b>	<b>1.06</b>	<b>98.9%</b>	<b>98.1%</b>	<b>99.4%</b>	<b>94.1%</b>	<b>5.9%</b>	<b>98.3%</b>	<b>91.7%</b>
Advanced Nurse/ Midwife Practitioner	39	41	1.04	17.1%	82.9%	1.01	1.05	100.0%	100.0%	100.0%	90.2%	9.8%	100.0%	88.2%
Clinical Nurse/ Midwife Specialist	484	510	1.05	19.6%	80.4%	1.01	1.06	99.4%	99.4%	99.5%	92.2%	7.8%	98.0%	90.7%
<b>Nurse/ Midwife Specialist &amp; AN/MP</b>	<b>523</b>	<b>551</b>	<b>1.05</b>	<b>19.4%</b>	<b>80.6%</b>	<b>1.01</b>	<b>1.06</b>	<b>99.5%</b>	<b>99.1%</b>	<b>99.5%</b>	<b>92.0%</b>	<b>8.0%</b>	<b>98.1%</b>	<b>90.5%</b>
Staff Midwives	1	1	1.00		100.0%		1.00	0.0%	0.0%	0.0%	100.0%	0.0%		100.0%
Staff Nurse [Intellectual Disability]	4	5	1.18		100.0%		1.18	40.0%	40.0%	40.0%	80.0%	20.0%		80.0%
Staff Nurse [Psychiatric]	2,953	3,194	1.08	26.4%	73.6%	1.05	1.09	91.5%	91.5%	92.4%	87.2%	12.8%	91.8%	85.5%
Staff Nurses [General/ Children's]	111	125	1.13	17.6%	82.4%	1.14	1.12	80.8%	80.8%	82.5%	77.6%	22.4%	77.3%	77.7%
<b>Staff Nurse/ Staff Midwife</b>	<b>3,069</b>	<b>3,325</b>	<b>1.08</b>	<b>26.0%</b>	<b>74.0%</b>	<b>1.06</b>	<b>1.09</b>	<b>91.0%</b>	<b>88.6%</b>	<b>91.9%</b>	<b>86.8%</b>	<b>13.2%</b>	<b>91.5%</b>	<b>85.2%</b>
Pre-registration Nurse/ Midwife Intern	10	15	1.52	6.7%	93.3%	1.67	1.51	6.7%	6.7%	7.1%	100.0%	0.0%	100.0%	100.0%
Pre-registration Nurse Intern (COVID-19)	68	75	1.11	24.0%	76.0%	1.09	1.11	0.0%	0.0%	0.0%	98.7%	1.3%	100.0%	98.2%
Post-registration Nurse/ Midwife Student	1	1	1.00		100.0%		1.00	0.0%	0.0%	0.0%	100.0%	0.0%		100.0%
Nursing/ Midwifery awaiting registration	5	5	1.01		100.0%		1.01	100.0%	100.0%	100.0%	100.0%	0.0%		100.0%

<b>Nursing/ Midwifery Student</b>	<b>84</b>	<b>96</b>	<b>1.15</b>	<b>19.8%</b>	<b>80.2%</b>	<b>1.11</b>	<b>1.16</b>	<b>6.3%</b>	<b>0.0%</b>	<b>7.8%</b>	<b>99.0%</b>	<b>1.0%</b>	<b>100.0%</b>	<b>98.7%</b>
Nursing Education/Clinical	34	37	1.08	13.5%	86.5%	1.00	1.09	100.0%	100.0%	100.0%	86.5%	13.5%	100.0%	84.4%
<b>Nursing/ Midwifery other</b>	<b>34</b>	<b>37</b>	<b>1.08</b>	<b>13.5%</b>	<b>86.5%</b>	<b>1.00</b>	<b>1.09</b>	<b>100.0%</b>	<b>100.0%</b>	<b>100.0%</b>	<b>86.5%</b>	<b>13.5%</b>	<b>100.0%</b>	<b>84.4%</b>
<b>Nursing &amp; Midwifery</b>	<b>4,940</b>	<b>5,292</b>	<b>1.07</b>	<b>27.6%</b>	<b>72.4%</b>	<b>1.04</b>	<b>1.08</b>	<b>92.3%</b>	<b>91.2%</b>	<b>92.7%</b>	<b>89.3%</b>	<b>10.7%</b>	<b>94.3%</b>	<b>87.5%</b>
<b>Health &amp; Social Care</b>	<b>1,439</b>	<b>1,611</b>	<b>1.12</b>	<b>17.2%</b>	<b>82.8%</b>	<b>1.05</b>	<b>1.13</b>	<b>85.7%</b>	<b>80.9%</b>	<b>86.7%</b>	<b>81.4%</b>	<b>18.6%</b>	<b>90.3%</b>	<b>79.6%</b>
Executive Management	14	15	1.05	66.7%	33.3%	1.06	1.01	100.0%	100.0%	100.0%	100.0%	0.0%	100.0%	100.0%
Senior Management (VIII & GM)	50	51	1.01	29.4%	70.6%	1.03	1.01	94.1%	94.1%	94.4%	96.1%	3.9%	93.3%	97.2%
<b>Management (VIII &amp; above)</b>	<b>65</b>	<b>66</b>	<b>1.02</b>	<b>37.9%</b>	<b>62.1%</b>	<b>1.04</b>	<b>1.01</b>	<b>95.5%</b>	<b>96.0%</b>	<b>95.1%</b>	<b>97.0%</b>	<b>3.0%</b>	<b>96.0%</b>	<b>97.6%</b>
Middle Management (V-VII)	247	259	1.05	18.9%	81.1%	1.01	1.06	88.0%	88.0%	89.5%	89.2%	10.8%	98.0%	87.1%
Other Administrative	2	2	1.27		100.0%		1.27	100.0%	100.0%	100.0%	50.0%	50.0%		50.0%
<b>Administrative/ Supervisory (V to VII)</b>	<b>248</b>	<b>261</b>	<b>1.05</b>	<b>18.8%</b>	<b>81.2%</b>	<b>1.01</b>	<b>1.06</b>	<b>88.1%</b>	<b>81.6%</b>	<b>89.6%</b>	<b>88.9%</b>	<b>11.1%</b>	<b>98.0%</b>	<b>86.8%</b>
General Administrative (III & IV)	715	813	1.14	8.2%	91.8%	1.07	1.14	83.1%	83.1%	83.5%	73.2%	26.8%	88.1%	71.8%
<b>Clerical (III &amp; IV)</b>	<b>715</b>	<b>813</b>	<b>1.14</b>	<b>8.2%</b>	<b>91.8%</b>	<b>1.07</b>	<b>1.14</b>	<b>83.1%</b>	<b>79.1%</b>	<b>83.5%</b>	<b>73.2%</b>	<b>26.8%</b>	<b>88.1%</b>	<b>71.8%</b>
<b>Management &amp; Administrative</b>	<b>1,028</b>	<b>1,140</b>	<b>1.11</b>	<b>12.4%</b>	<b>87.6%</b>	<b>1.04</b>	<b>1.12</b>	<b>85.0%</b>	<b>83.0%</b>	<b>85.3%</b>	<b>78.2%</b>	<b>21.8%</b>	<b>92.9%</b>	<b>76.1%</b>
Catering	64	70	1.09	32.9%	67.1%	1.03	1.12	92.9%	92.9%	91.5%	72.9%	27.1%	91.3%	63.8%
Household Services	437	508	1.16	21.3%	78.7%	1.10	1.18	86.0%	86.0%	88.8%	59.6%	40.4%	81.5%	53.8%
Other Support	42	49	1.18	32.7%	67.3%	1.03	1.27	89.8%	89.8%	87.9%	69.4%	30.6%	87.5%	60.6%
Portering	48	49	1.03	91.8%	8.2%	1.02	1.12	81.6%	81.6%	50.0%	87.8%	12.2%	88.9%	75.0%
<b>Support</b>	<b>591</b>	<b>676</b>	<b>1.14</b>	<b>28.4%</b>	<b>71.6%</b>	<b>1.06</b>	<b>1.18</b>	<b>86.7%</b>	<b>81.8%</b>	<b>88.6%</b>	<b>63.8%</b>	<b>36.2%</b>	<b>84.9%</b>	<b>55.4%</b>
Maintenance	137	141	1.03	99.3%	0.7%	1.03	1.00	95.0%	95.0%	100.0%	96.5%	3.5%	96.4%	100.0%
<b>Maintenance/ Technical</b>	<b>137</b>	<b>141</b>	<b>1.03</b>	<b>99.3%</b>	<b>0.7%</b>	<b>1.03</b>	<b>1.00</b>	<b>95.0%</b>	<b>95.0%</b>	<b>100.0%</b>	<b>96.5%</b>	<b>3.5%</b>	<b>96.4%</b>	<b>100.0%</b>
<b>General Support</b>	<b>728</b>	<b>817</b>	<b>1.12</b>	<b>40.6%</b>	<b>59.4%</b>	<b>1.05</b>	<b>1.18</b>	<b>88.1%</b>	<b>87.3%</b>	<b>88.7%</b>	<b>69.4%</b>	<b>30.6%</b>	<b>89.8%</b>	<b>55.5%</b>
<b>Health Care Assistants</b>	<b>1,017</b>	<b>1,100</b>	<b>1.08</b>	<b>28.9%</b>	<b>71.1%</b>	<b>1.05</b>	<b>1.09</b>	<b>89.0%</b>	<b>84.0%</b>	<b>91.0%</b>	<b>78.4%</b>	<b>21.6%</b>	<b>89.9%</b>	<b>73.7%</b>
<b>Care, other</b>	<b>205</b>	<b>240</b>	<b>1.17</b>	<b>45.8%</b>	<b>54.2%</b>	<b>1.11</b>	<b>1.23</b>	<b>78.3%</b>	<b>74.5%</b>	<b>81.5%</b>	<b>67.5%</b>	<b>32.5%</b>	<b>77.3%</b>	<b>59.2%</b>
<b>Patient &amp; Client Care</b>	<b>1,222</b>	<b>1,340</b>	<b>1.10</b>	<b>31.9%</b>	<b>68.1%</b>	<b>1.07</b>	<b>1.11</b>	<b>87.1%</b>	<b>81.5%</b>	<b>89.7%</b>	<b>76.4%</b>	<b>23.6%</b>	<b>86.7%</b>	<b>71.6%</b>

## Employment by WTE, Headcount, Gender, Full-Time /Part-Time etc.: Nov 2020

Mental Health Services CHO	WTE	Headcount	WTE: no.	% Male	% female	Male WTE: no.	Female WTE: no.	% Total Perm	% Male Perm	% Female Perm	% Total Full Time	% Total Part Time	% Male FT	% Female FT
<b>Overall</b>	<b>10,283</b>	<b>11,180</b>	<b>1.09</b>	<b>27.1%</b>	<b>72.9%</b>	<b>1.04</b>	<b>1.10</b>	<b>84.1%</b>	<b>80.0%</b>	<b>85.6%</b>	<b>84.3%</b>	<b>15.7%</b>	<b>92.6%</b>	<b>81.3%</b>
CHO 1	972	1,050	1.08	27.0%	73.0%	1.02	1.10	90.2%	90.2%	91.7%	87.0%	13.0%	96.5%	83.6%
CHO 2	1,345	1,444	1.07	28.1%	71.9%	1.04	1.09	86.1%	86.1%	87.9%	83.0%	17.0%	89.9%	80.3%
CHO 3	807	870	1.08	22.8%	77.2%	1.04	1.09	83.2%	83.2%	83.5%	84.3%	15.7%	90.4%	82.4%
CHO 4	1,562	1,707	1.09	25.5%	74.5%	1.05	1.11	75.4%	75.4%	78.1%	84.1%	15.9%	93.6%	80.9%
CHO 5	1,191	1,299	1.09	25.9%	74.1%	1.04	1.11	86.4%	86.4%	88.1%	78.6%	21.4%	90.8%	74.3%
CHO 6	625	696	1.11	29.6%	70.4%	1.06	1.13	82.3%	82.3%	82.7%	83.9%	16.1%	91.3%	80.8%
CHO 7	861	943	1.09	22.8%	77.2%	1.06	1.11	83.4%	83.4%	83.7%	87.0%	13.0%	94.9%	84.6%
CHO 8	1,114	1,206	1.08	25.0%	75.0%	1.04	1.10	88.3%	88.3%	89.2%	85.2%	14.8%	94.0%	82.2%
CHO 9	1,316	1,448	1.10	28.0%	72.0%	1.04	1.13	84.2%	84.2%	85.9%	84.4%	15.6%	94.1%	80.6%
other Community Services	490	517	1.05	47.2%	52.8%	1.06	1.05	83.9%	83.9%	87.9%	91.5%	8.5%	90.2%	92.7%

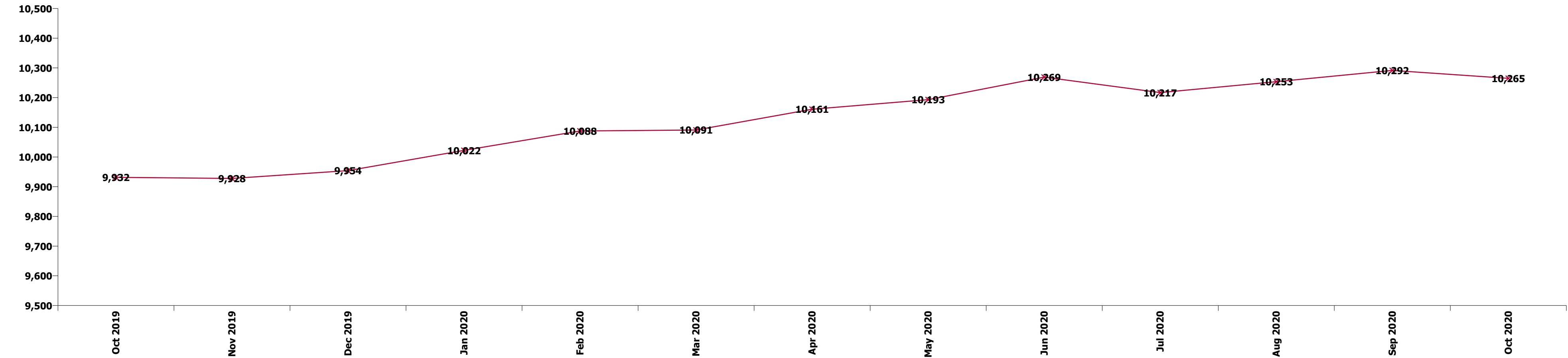
Summary Staff Movement: November 2020

Month-on-month  
Summary

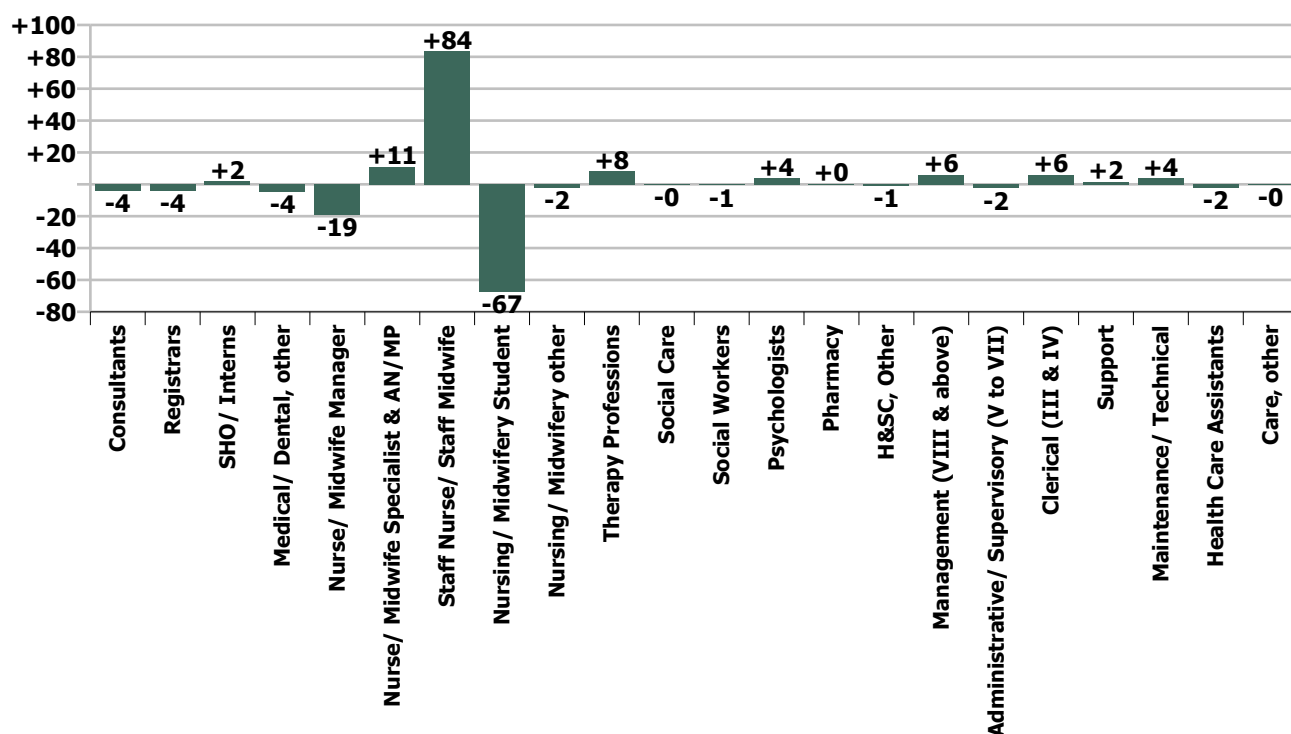
WTE change since Oct 20	% change since Oct 20	overall	Consultants	Registrars	SHO/ Interns	Medical/ Dental, other	Medical & Dental	Nurse/ Midwife Manager	Nurse/ Midwife Specialist & AN/MP	Staff Nurse/ Staff Midwife	Nursing/ Midwifery Student	Nursing/ Midwifery other	Nursing & Midwifery	Therapy Professions	Social Care	Social Workers	Psychologists	Pharmacy	H&SC, Other	Health & Social Care Professionals	Management (VIII & above)	Administrativ e/ Supervisory (V to VII)	Clerical (III & IV)	Management & Administrativ e	General Support	Health Care Assistants	Care, other	Patient & Client Care
Overall	+0.2%	+18	-4	-4	+2	-4	-11	-19	+11	+84	-67	-2	+6	+8	-0	-1	+4	+0	-1	+11	+6	-2	+6	+9	+5	-2	-0	-2
CHO 1	-0.5%	-5	-0	-1	-0		-1	-3	+3	-4	-3		-7	+0	+0	-0	+0	+0	+0		+1	-0	+0	+1	+1	+0	+0	+0
CHO 2	-0.5%	-7	-2	+0	+0	+1	-1	-2	+1	+9	-11	-0	-4	-1	+0	+0	-3	+0		-3		-1	-0	-1	+3	-0	-1	-1
CHO 3	+2.0%	+16	+0		+1		+1	-5	-3	+18	-6		+4	+1		+0	+10		-1	+11	+0	+0	+0	+1	-0		-0	
CHO 4	+0.2%	+3	-1	-1	+2	-5	-6	-3	+3	+12	-7		+6	+1	+0	-1	-1	-0	-0	-1	+1	-0	+3	+3	+0	+0	+0	+1
CHO 5	+0.0%	+1	-0	-0	-0	-0	-1	-3	+2	+11	-8	-0	+2	+1		+0	-0		-0	+1		-0	+2	+2	-1	-2	+0	-2
CHO 6	+1.6%	+10	+1	-0	-0		+0	-0	+0	+7	+1	-1	+7	+2	-0	-0	+1		+0	+3		-0	-0	-1	+0	-0	-0	-1
CHO 7	-0.5%	-4	-2	-1	+0		-2	-2	+1	+5	-6	-1	-2	+4	-0	+2	-2	-0	-0	+3		-1	-1	-1	+1	-1	-0	-1
CHO 8	-0.2%	-2	+1	+2	-4		-1	-0	-1	+12	-13	+0	-2	+1	-0	+0	-1	+0	-0	+0	-0	-0	-0	-1	+0	+1		+1
CHO 9	+0.1%	+1	-1	-2	+3		+0	-0	+3	+14	-14	-0	+2	+0		-3	+0	-0	-0	-2		-1	+2	+1	-1	+1	+0	+1
other Community Services	+1.4%	+7	+0				+0	-1	+1	+0		+0	+0		+0	+1	-1			+0	+4	+1	+1	+5	+1	-0		-0
		+0.2%	-1.1%	-1.4%	+0.7%	-43.7%	-1.1%	-1.5%	+2.2%	+2.8%	-44.7%	-5.8%	+0.1%	+1.9%	-0.1%	-0.2%	+0.9%	+1.3%	-0.9%	+0.7%	+10.0%	-1.0%	+0.8%	+0.9%	+0.7%	-0.2%	-0.1%	-0.2%

Year-on-year Summary

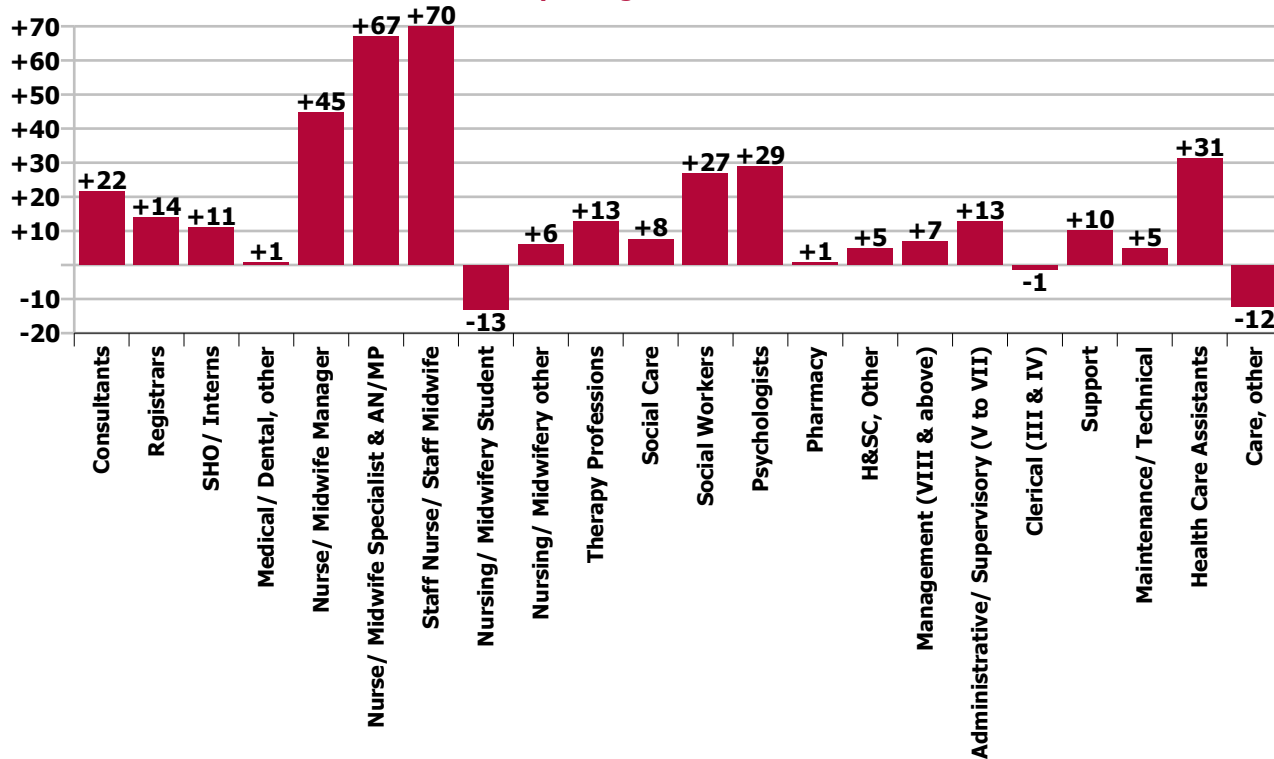
WTE change since Nov 19	% change since Nov 19	overall	Consultants	Registrars	SHO/ Interns	Medical/ Dental, other	Medical & Dental	Nurse/ Midwife Manager	Nurse/ Midwife Specialist & AN/MP	Staff Nurse/ Staff Midwife	Nursing/ Midwifery Student	Nursing/ Midwifery other	Nursing & Midwifery	Therapy Professions	Social Care	Social Workers	Psychologists	Pharmacy	H&SC, Other	Health & Social Care Professionals	Management (VIII & above)	Administrativ e/ Supervisory (V to VII)	Clerical (III & IV)	Management & Administrativ e	General Support	Health Care Assistants	Care, other	Patient & Client Care
Overall	+3.6%	+355	+22	+14	+11	+1	+47	+45	+67	+70	-13	+6	+175	+13	+8	+27	+29	+1	+5	+82	+7	+13	-1	+18	+15	+31	-12	+19
CHO 1	+1.8%	+18	+5	+3	-2		+5	+2	+6	-11	+9	+1	+7	-1	-0	+1	+3	+0	-0	+2	+1	+0	-0	+1	+2	-1	-1	-1
CHO 2	+2.3%	+30	+1	+3	+5	+1	+10	+7	+11	-3	+4	+1	+19	+7	+2	+1	+3	-1	+0	+13	-2	+4	-8	-7	+1	-3	-3	-6
CHO 3	+1.4%	+11	+1	-2	+2		+0	-3	-9	+28	+1		+18	-3	+0	-1	-1		+2	-2	+1	+2	-6	-3	-4	+3	-1	+2
CHO 4	+6.1%	+90	+5	-4	+12	+0	+12	+24	+13	+31	-35		+33	+3	+3	+14	+10	-0	+3	+33	+2	+0	+4	+6	+2	+4	-1	+3
CHO 5	+1.3%	+15	+1	-1	+3	-0	+3	+15	-1	+12	-7	+8	+0	+13	-2		+1	-1	-2	-4	+3	-0	-4	-1	+9	-4	-1	-5
CHO 6	+6.8%	+40	+5	-3	+5		+6	-1	+7	+16	+1	+1	+24	-3	+2	+0	+9		-0	+8		-1	-1	-1	-1	+3	+1	+4
CHO 7	+3.6%	+30	+7	+7	-0		+14	+1	+10	+0	-1	+2	+12	+3	-0	+4	+1	-0	+1	+10		+1	+2	+3	-2	+0	-6	-5
CHO 8	+1.4%	+15	+0	+7	-11		-3	-5	+3	+6	+3		+7	-1	-0	+5	-2	+1	+1	+3	-0	-2	+11	+9	-0	+0	-1	-0
CHO 9	+4.2%	+53	-3	+3	-3		-3	+9	+10	+14	-3	+1	+30	+9	+0	-1	+6	+0	+0	+15		+2	+9	+11	-1	+1	-0	+1
other Community Services	+12.1%	+53	+1	+1			+2	+12	+4	-4		+1	+12	+1	+0	+3	-0	+1		+5	+2	+6	-9	-1	+9	+26		+26
		+3.6%	+6.2%	+5.2%	+4.2%	+16.2%	+5.4%	+3.8%	+14.7%	+2.3%	-13.6%	+21.7%	+3.7%	+3.0%	+10.4%	+7.8%	+7.3%	+4.2%	+4.5%	+6.0%	+12.0%	+5.4%	-0.2%	+1.8%	+2.1%	+3.2%	-5.6%	+1.6%



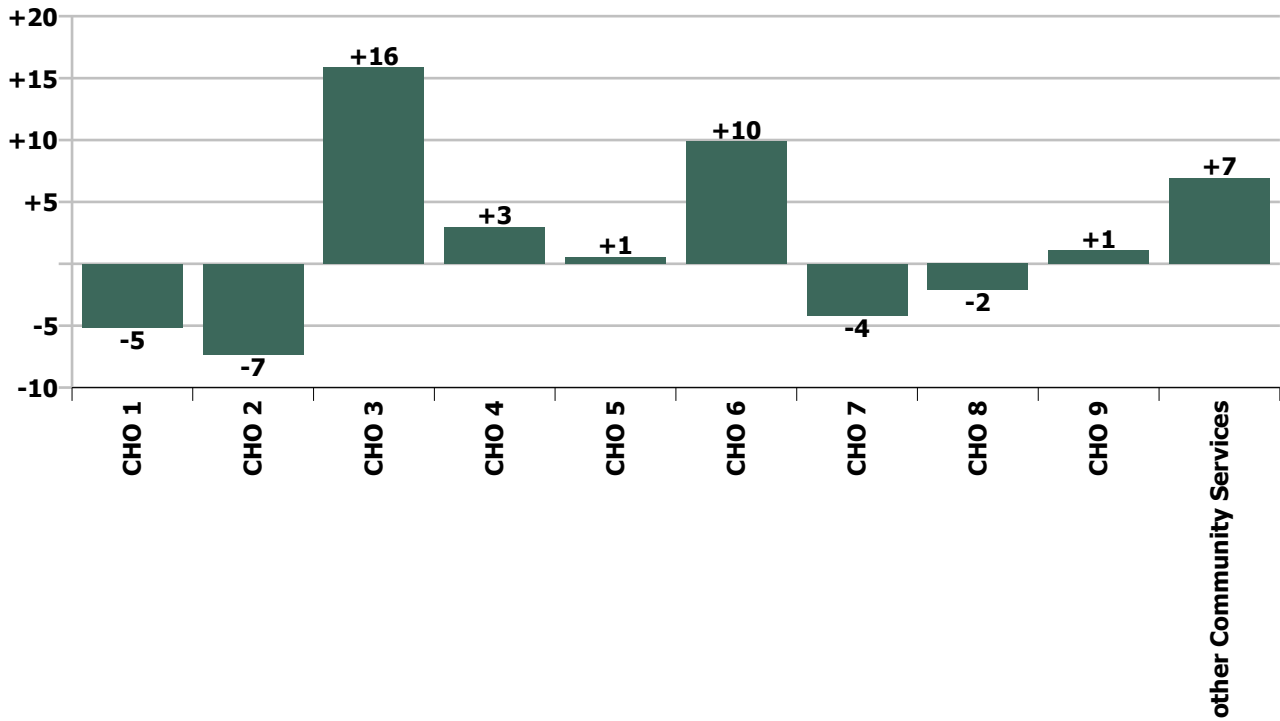
Staff Group change since: Oct 2020



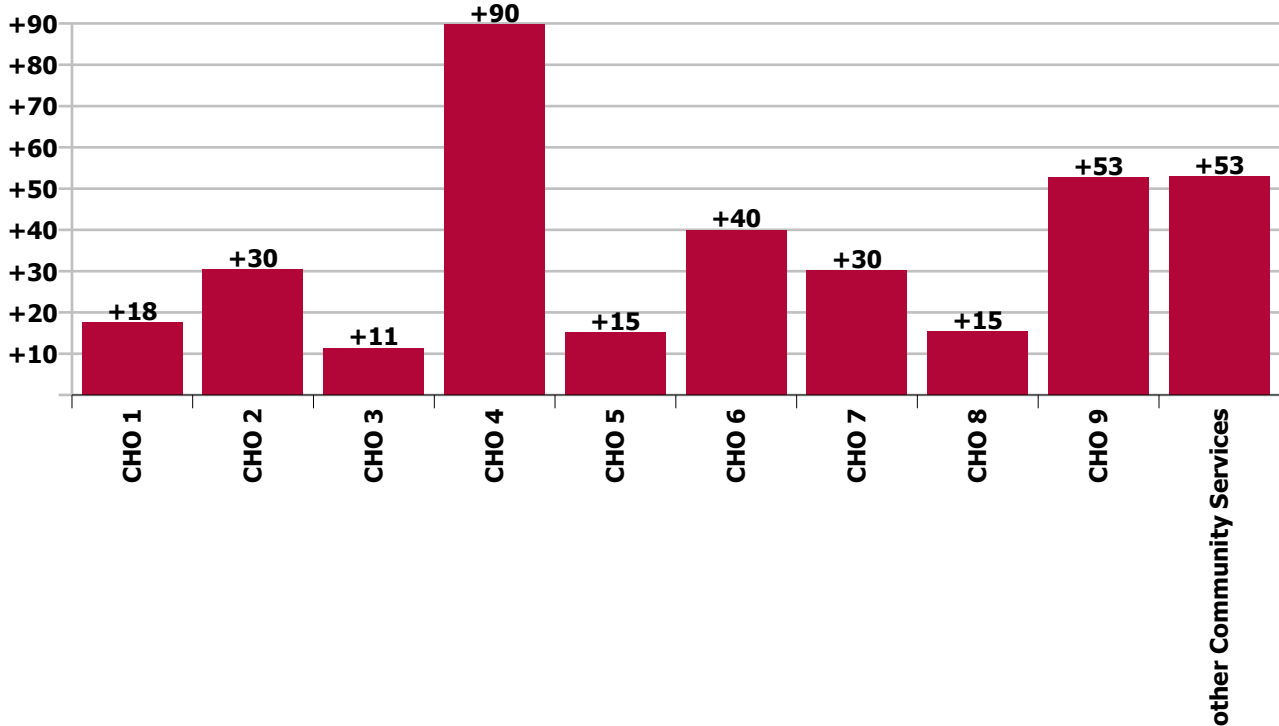
Staff Group change since: Nov 2019



CHO change since: Oct 2020



CHO change since: Nov 2019



## Longitudinal Employment Levels by Grade Group - Oct 2013 to Nov 2020

Nov 2020 (Oct 2013 figure: 9,125)	WTE Nov 2020	WTE change since Oct 13	WTE change since Dec 15	WTE change since Dec 16	WTE change since Dec 17	WTE change since Dec 18	WTE change since Dec 19	% change since Oct 13	% change since Dec 15	% change since Dec 16	% change since Dec 17	% change since Dec 18	% change since Dec 19
<b>Overall</b>	<b>10,283</b>	<b>+1,158</b>	<b>+784</b>	<b>+663</b>	<b>+494</b>	<b>+386</b>	<b>+329</b>	<b>+12.7%</b>	<b>+8.3%</b>	<b>+6.9%</b>	<b>+5.0%</b>	<b>+3.9%</b>	<b>+3.3%</b>
Consultant Medicine	1				-0	-0					-9.1%	-9.1%	
Consultant Psychiatry	367	+79	+52	+52	+55	+37	+16	+27.5%	+16.7%	+16.6%	+17.6%	+11.3%	+4.5%
<b>Consultants</b>	<b>368</b>	<b>+79</b>	<b>+52</b>	<b>+52</b>	<b>+55</b>	<b>+37</b>	<b>+16</b>	<b>+27.4%</b>	<b>+16.6%</b>	<b>+16.6%</b>	<b>+17.5%</b>	<b>+11.3%</b>	<b>+4.4%</b>
Registrar	169	+51	+44	+36	+24	+15	-1	+42.9%	+35.7%	+27.6%	+16.5%	+9.5%	-0.4%
Senior Registrar	110	+47	+53	+43	+44	+24	+13	+74.0%	+92.1%	+64.1%	+67.4%	+28.2%	+13.3%
Specialist Registrar	2	+2	+1	+1		+1	-1	-100.0%	+102.0%	+100.0%		+100.0%	-20.0%
<b>Registrars</b>	<b>281</b>	<b>+99</b>	<b>+98</b>	<b>+80</b>	<b>+68</b>	<b>+40</b>	<b>+12</b>	<b>+54.9%</b>	<b>+53.8%</b>	<b>+40.2%</b>	<b>+32.1%</b>	<b>+16.5%</b>	<b>+4.4%</b>
<i>Intern</i>	5	-4	-8	-7	-5	-3		-44.4%	-61.5%	-58.3%	-50.0%	-37.5%	-37.5%
Interns	5	-4	-8	-7	-5	-3	-3	-44.4%	-61.5%	-58.3%	-50.0%	-37.5%	-37.5%
Senior House Officer	267	+48	+32	+20	-5	-2	+14	+21.7%	+13.4%	+8.2%	-1.9%	-0.8%	+5.6%
<b>SHO/ Interns</b>	<b>272</b>	<b>+44</b>	<b>+24</b>	<b>+13</b>	<b>-10</b>	<b>-5</b>	<b>+11</b>	<b>+19.1%</b>	<b>+9.5%</b>	<b>+5.1%</b>	<b>-3.6%</b>	<b>-1.8%</b>	<b>+4.2%</b>
Dentists					-0	-0		-100.0%	-100.0%	-100.0%	-100.0%	-100.0%	-100.0%
Other Medical	6	-5	-3	-4	-5	-1	+1	-44.2%	-34.5%	-40.5%	-47.2%	-11.7%	+14.6%
<b>Medical/ Dental, other</b>	<b>6</b>	<b>-5</b>	<b>-3</b>	<b>-4</b>	<b>-5</b>	<b>-1</b>	<b>+1</b>	<b>-44.2%</b>	<b>-34.5%</b>	<b>-40.5%</b>	<b>-47.5%</b>	<b>-12.7%</b>	<b>+14.6%</b>
<b>Medical &amp; Dental</b>	<b>927</b>	<b>+218</b>	<b>+171</b>	<b>+142</b>	<b>+108</b>	<b>+71</b>		<b>+30.7%</b>	<b>+22.6%</b>	<b>+18.1%</b>	<b>+13.2%</b>	<b>+8.3%</b>	<b>+4.4%</b>
Clinical Nurse/ Midwife Manager	1,033	+240	+64	+26	+50	+27	+34	+30.2%	+6.6%	+2.6%	+5.1%	+2.7%	+3.4%
Director Nursing/Midwifery, Assistant	169	+64	+23	+14	+7	+5	+4	+61.1%	+15.5%	+8.8%	+4.3%	+3.0%	+2.6%
Director of Nursing/Midwifery	27	-1	-3	-4	-1	+4	-1	-3.5%	-10.4%	-13.5%	-3.8%	+15.5%	-5.1%
<b>Nurse/ Midwife Manager</b>	<b>1,229</b>	<b>+303</b>	<b>+83</b>	<b>+36</b>	<b>+56</b>	<b>+35</b>	<b>+37</b>	<b>+32.7%</b>	<b>+7.2%</b>	<b>+3.0%</b>	<b>+4.8%</b>	<b>+3.0%</b>	<b>+3.1%</b>
Advanced Nurse/ Midwife Practitioner	39	+30	+32	+32	+29	+19	+9	+336.7%	+461.4%	+425.4%	+274.3%	+95.1%	+27.9%
Clinical Nurse/ Midwife Specialist	484	+272	+178	+148	+101	+89	+56	+128.1%	+58.0%	+43.9%	+26.4%	+22.5%	+13.0%
<b>Nurse/ Midwife Specialist &amp; AN/MP</b>	<b>523</b>	<b>+302</b>	<b>+210</b>	<b>+179</b>	<b>+130</b>	<b>+108</b>	<b>+64</b>	<b>+136.5%</b>	<b>+67.0%</b>	<b>+52.2%</b>	<b>+33.0%</b>	<b>+26.0%</b>	<b>+14.0%</b>
Graduate Nursing/ Midwifery		-48	-10					-100.0%	-100.0%	-100.0%	-100.0%	-100.0%	-100.0%
<i>Staff Midwife</i>	1	+1	+1	+1	+1	+1		-100.0%	-100.0%	-100.0%	-100.0%	-100.0%	-100.0%
Staff Midwives	1	+1	+1	+1	+1	+1	+1	-100.0%	-100.0%	-100.0%	-100.0%	-100.0%	-100.0%
Staff Nurse [Intellectual Disability]	4	+2	+2	+1	+1	-2	-0	+70.0%	+88.9%	+27.2%	+22.8%	-29.2%	-6.2%
Staff Nurse [Psychiatric]	2,953	-187	-139	-104	-74	-2	+60	-5.9%	-4.5%	-3.4%	-2.4%	-0.1%	+2.1%
Staff Nurses [General/ Children's]	111	-51	-14	-10	-7	-7	+6	-31.5%	-11.0%	-8.1%	-5.7%	-5.7%	+5.8%



Nov 2020 (Oct 2013 figure: 9,125)	WTE Nov 2020	WTE change since Oct 13	WTE change since Dec 15	WTE change since Dec 16	WTE change since Dec 17	WTE change since Dec 18	WTE change since Dec 19	% change since Oct 13	% change since Dec 15	% change since Dec 16	% change since Dec 17	% change since Dec 18	% change since Dec 19
<b>Overall</b>	<b>10,283</b>	<b>+1,158</b>	<b>+784</b>	<b>+663</b>	<b>+494</b>	<b>+386</b>	<b>+329</b>	<b>+12.7%</b>	<b>+8.3%</b>	<b>+6.9%</b>	<b>+5.0%</b>	<b>+3.9%</b>	<b>+3.3%</b>
<b>Staff Nurse/ Staff Midwife</b>	<b>3,069</b>	<b>-283</b>	<b>-159</b>	<b>-112</b>	<b>-79</b>	<b>-10</b>	<b>+66</b>	<b>-8.4%</b>	<b>-4.9%</b>	<b>-3.5%</b>	<b>-2.5%</b>	<b>-0.3%</b>	<b>+2.2%</b>
<b>Public Health Nurse</b>				<b>-1</b>	<b>-1</b>			<b>-100.0%</b>	<b>-100.0%</b>	<b>-100.0%</b>	<b>-100.0%</b>	<b>-100.0%</b>	<b>-100.0%</b>
<i>Student General Nursing Intern (pre-registration)</i>						-1		-100.0%	-100.0%	-100.0%	-100.0%	-100.0%	-100.0%
<i>Student Psychiatric Nursing Intern (pre-registration)</i>	10	-47	-8	+1	-7	-17		-82.6%	-45.4%	+13.9%	-41.4%	-63.5%	-64.2%
Pre-registration Nurse/ Midwife Intern	10	-47	-8	+1	-7	-18	-18	-82.6%	-45.4%	+13.9%	-41.4%	-64.6%	-64.2%
<i>Student Psychiatric Nursing Intern (COVID-19 HCA)</i>	68	+68	+68	+68	+68	+68		-100.0%	-100.0%	-100.0%	-100.0%	-100.0%	-100.0%
Pre-registration Nurse Intern (COVID-19)	68	+68	+68	+68	+68	+68	+68	-100.0%	-100.0%	-100.0%	-100.0%	-100.0%	-100.0%
<i>Student Public Health Nursing (post registration)</i>	1	+1	+1	+1	+1	+1		-100.0%	-100.0%	-100.0%	-100.0%	-100.0%	
Post-registration Nurse/ Midwife Student	1	+1	+1	+1	+1	+1		-100.0%	-100.0%	-100.0%	-100.0%	-100.0%	
Nursing/ Midwifery awaiting registration	5	+5	+5	+3	-4	-15	-54	-100.0%	-100.0%	+146.5%	-43.0%	-75.2%	-91.6%
<b>Nursing/ Midwifery Student</b>	<b>84</b>	<b>+27</b>	<b>+66</b>	<b>+73</b>	<b>+58</b>	<b>+36</b>	<b>-4</b>	<b>+47.3%</b>	<b>+363.1%</b>	<b>+684.1%</b>	<b>+227.9%</b>	<b>+75.2%</b>	<b>-4.4%</b>
Nursing Education/Clinical	34	+15	+15	+10	+4	+3	+3	+78.3%	+78.6%	+39.0%	+12.2%	+10.6%	+8.6%
<b>Nursing/ Midwifery other</b>	<b>34</b>	<b>+15</b>	<b>+15</b>	<b>+10</b>	<b>+4</b>	<b>+3</b>	<b>+3</b>	<b>+78.3%</b>	<b>+78.6%</b>	<b>+39.0%</b>	<b>+12.2%</b>	<b>+10.6%</b>	<b>+8.6%</b>
<b>Nursing &amp; Midwifery</b>	<b>4,940</b>	<b>+364</b>	<b>+214</b>	<b>+185</b>	<b>+168</b>	<b>+173</b>		<b>+8.0%</b>	<b>+4.5%</b>	<b>+3.9%</b>	<b>+3.5%</b>	<b>+3.6%</b>	<b>+3.5%</b>
Dietitians	18	+17	+12	+4	+1	-2	-1	+2135.0%	+226.3%	+31.8%	+6.4%	-11.0%	-6.7%
Occupational Therapists	348	+93	+54	+48	+21	+8	+9	+36.5%	+18.5%	+15.9%	+6.6%	+2.4%	+2.6%
Physiotherapists	2	+0	+0	+0	+1	+1	+0	+9.0%	+9.0%	+19.9%	+99.2%	+49.7%	+8.1%
Podiatrists & Chiropodists	1	-1	-1	-1	-1	-0	+0	-38.5%	-46.1%	-54.4%	-43.5%	-32.0%	+13.7%
Speech & Language Therapists	65	+17	+13	+6	+4	+4	+4	+35.4%	+24.3%	+10.1%	+6.6%	+6.5%	+6.2%
<b>Therapy Professions</b>	<b>434</b>	<b>+127</b>	<b>+79</b>	<b>+57</b>	<b>+27</b>	<b>+10</b>	<b>+12</b>	<b>+41.3%</b>	<b>+22.2%</b>	<b>+15.3%</b>	<b>+6.7%</b>	<b>+2.4%</b>	<b>+2.8%</b>
<b>Social Care</b>	<b>81</b>	<b>+2</b>	<b>-7</b>	<b>-7</b>	<b>-2</b>	<b>+2</b>	<b>+7</b>	<b>+2.8%</b>	<b>-7.7%</b>	<b>-8.0%</b>	<b>-2.1%</b>	<b>+2.8%</b>	<b>+9.9%</b>
<b>Social Workers</b>	<b>373</b>	<b>+99</b>	<b>+24</b>	<b>+23</b>	<b>+16</b>	<b>+15</b>	<b>+23</b>	<b>+36.2%</b>	<b>+6.9%</b>	<b>+6.5%</b>	<b>+4.4%</b>	<b>+4.0%</b>	<b>+6.7%</b>
<b>Psychologists</b>	<b>423</b>	<b>+173</b>	<b>+101</b>	<b>+81</b>	<b>+53</b>	<b>+35</b>	<b>+29</b>	<b>+68.8%</b>	<b>+31.3%</b>	<b>+23.5%</b>	<b>+14.3%</b>	<b>+8.9%</b>	<b>+7.3%</b>
<b>Pharmacy</b>	<b>20</b>	<b>+0</b>	<b>+2</b>	<b>+0</b>	<b>+0</b>	<b>+0</b>	<b>+1</b>	<b>+2.1%</b>	<b>+13.9%</b>	<b>+0.6%</b>	<b>+1.1%</b>	<b>+1.6%</b>	<b>+5.6%</b>
Counsellor Therapists	100	+25	+13	+15	+15	+15	+5	+32.6%	+14.5%	+17.9%	+17.2%	+18.0%	+5.8%
HSCP Trainees/ Students		-8						-100.0%	-100.0%	-100.0%	-100.0%	-100.0%	-100.0%
Other Health & Social Care	7	-3	-0	-1	-2	-2	-5	-28.0%	-6.2%	-16.5%	-17.8%	-18.2%	-40.0%
Play Therapists/ Specialists	1	-1	-1	-1	-0		+0	-39.8%	-39.8%	-40.8%	-2.0%		+1.4%
<b>H&amp;SC, Other</b>	<b>109</b>	<b>+13</b>	<b>+11</b>	<b>+13</b>	<b>+13</b>	<b>+14</b>	<b>+1</b>	<b>+14.0%</b>	<b>+11.5%</b>	<b>+13.3%</b>	<b>+13.8%</b>	<b>+14.4%</b>	<b>+0.7%</b>



Nov 2020 (Oct 2013 figure: 9,125)	WTE Nov 2020	WTE change since Oct 13	WTE change since Dec 15	WTE change since Dec 16	WTE change since Dec 17	WTE change since Dec 18	WTE change since Dec 19	% change since Oct 13	% change since Dec 15	% change since Dec 16	% change since Dec 17	% change since Dec 18	% change since Dec 19
<b>Overall</b>	<b>10,283</b>	<b>+1,158</b>	<b>+784</b>	<b>+663</b>	<b>+494</b>	<b>+386</b>	<b>+329</b>	<b>+12.7%</b>	<b>+8.3%</b>	<b>+6.9%</b>	<b>+5.0%</b>	<b>+3.9%</b>	<b>+3.3%</b>
<b>Health &amp; Social Care Professionals</b>	<b>1,439</b>	<b>+415</b>	<b>+211</b>	<b>+167</b>	<b>+108</b>	<b>+76</b>		<b>+40.4%</b>	<b>+17.1%</b>	<b>+13.1%</b>	<b>+8.1%</b>	<b>+5.6%</b>	<b>+5.4%</b>
Executive Management	14	+13	+10	+7	+6	+4	+3	+1335.0%	+258.8%	+105.0%	+79.4%	+43.5%	+30.5%
Senior Management (VIII & GM)	50	+31	+22	+26	+19	+19	+4	+164.5%	+76.4%	+103.6%	+60.8%	+58.7%	+8.4%
<b>Management (VIII &amp; above)</b>	<b>65</b>	<b>+45</b>	<b>+32</b>	<b>+33</b>	<b>+25</b>	<b>+23</b>	<b>+7</b>	<b>+223.1%</b>	<b>+98.8%</b>	<b>+103.9%</b>	<b>+64.6%</b>	<b>+55.1%</b>	<b>+12.7%</b>
<b>Administrative/ Supervisory (V to VII)</b>	<b>248</b>	<b>+116</b>	<b>+100</b>	<b>+80</b>	<b>+49</b>	<b>+26</b>	<b>+11</b>	<b>+88.3%</b>	<b>+67.3%</b>	<b>+47.8%</b>	<b>+24.4%</b>	<b>+11.5%</b>	<b>+4.8%</b>
<b>Clerical (III &amp; IV)</b>	<b>715</b>	<b>+103</b>	<b>+69</b>	<b>+54</b>	<b>+33</b>	<b>+19</b>	<b>-3</b>	<b>+16.8%</b>	<b>+10.7%</b>	<b>+8.1%</b>	<b>+4.9%</b>	<b>+2.8%</b>	<b>-0.4%</b>
<b>Management &amp; Administrative</b>	<b>1,028</b>	<b>+264</b>	<b>+201</b>	<b>+167</b>	<b>+107</b>	<b>+68</b>		<b>+34.5%</b>	<b>+24.3%</b>	<b>+19.4%</b>	<b>+11.7%</b>	<b>+7.1%</b>	<b>+1.6%</b>
Catering	64	-9	+2	-1	-2	-8	-1	-12.6%	+2.5%	-2.0%	-2.3%	-10.5%	-1.4%
Household Services	437	-194	-88	-55	-39	-8	+13	-30.7%	-16.8%	-11.2%	-8.2%	-1.9%	+3.0%
Other Support	42	-21	-11	-15	-8	-14	-1	-33.3%	-20.6%	-25.9%	-16.1%	-24.7%	-2.8%
Portering	48	-15	-11	-12	-1	-0	-0	-24.0%	-18.2%	-19.4%	-2.4%	-0.5%	-0.8%
<b>Support</b>	<b>591</b>	<b>-239</b>	<b>-108</b>	<b>-82</b>	<b>-50</b>	<b>-30</b>	<b>+10</b>	<b>-28.8%</b>	<b>-15.5%</b>	<b>-12.2%</b>	<b>-7.8%</b>	<b>-4.8%</b>	<b>+1.7%</b>
Maintenance	137	-31	-6	-6	-2	+3	+8	-18.5%	-4.1%	-4.1%	-1.1%	+2.1%	+6.4%
Technical Services		-2	-2	-2	-2	-2	-2	-100.0%	-100.0%	-100.0%	-100.0%	-100.0%	-100.0%
<b>Maintenance/ Technical</b>	<b>137</b>	<b>-33</b>	<b>-8</b>	<b>-8</b>	<b>-4</b>	<b>+1</b>	<b>+6</b>	<b>-19.4%</b>	<b>-5.4%</b>	<b>-5.4%</b>	<b>-2.5%</b>	<b>+0.6%</b>	<b>+4.8%</b>
<b>General Support</b>	<b>728</b>	<b>-272</b>	<b>-116</b>	<b>-90</b>	<b>-53</b>	<b>-29</b>		<b>-27.2%</b>	<b>-13.7%</b>	<b>-11.0%</b>	<b>-6.8%</b>	<b>-3.8%</b>	<b>+2.3%</b>
HCA, Nurse's Aide, etc.	1,009	+190	+97	+80	+60	+35	+30	+23.2%	+10.7%	+8.6%	+6.3%	+3.5%	+3.0%
Health & Social Care Assistants	8	+5	+5	+4	+4	+3	-1	+118.4%	+138.1%	+81.7%	+81.7%	+55.0%	-5.7%
<b>Health Care Assistants</b>	<b>1,017</b>	<b>+194</b>	<b>+102</b>	<b>+84</b>	<b>+64</b>	<b>+38</b>	<b>+29</b>	<b>+23.6%</b>	<b>+11.2%</b>	<b>+9.0%</b>	<b>+6.7%</b>	<b>+3.8%</b>	<b>+3.0%</b>
Other Care Grades	205	-24	+1	+9	-7	-11	-11	-10.5%	+0.5%	+4.5%	-3.4%	-5.0%	-5.0%
<b>Care, other</b>	<b>205</b>	<b>-24</b>	<b>+1</b>	<b>+9</b>	<b>-7</b>	<b>-11</b>	<b>-11</b>	<b>-10.5%</b>	<b>+0.5%</b>	<b>+4.5%</b>	<b>-3.4%</b>	<b>-5.0%</b>	<b>-5.0%</b>
<b>Patient &amp; Client Care</b>	<b>1,222</b>	<b>+170</b>	<b>+103</b>	<b>+92</b>	<b>+56</b>	<b>+27</b>		<b>+16.2%</b>	<b>+9.2%</b>	<b>+8.2%</b>	<b>+4.8%</b>	<b>+2.2%</b>	<b>+1.5%</b>

Source: Health Service Personnel Census