

Mental Health Service Employment Report: September 2021

Employment by Staff Group

Sep 2021 (Dec 2020 figure: 10,301)	WTE Aug 2021	WTE Sep 2021	WTE change since Aug 21	% change since Aug 21	WTE change since Dec 20	WTE change since Sep 20
Overall	10,397	10,377	-20	-0.2%	+76	+85
Consultants	380	378	-2	-0.5%	+8	+5
Registrars	329	335	+6	+2.0%	+54	+51
SHO/ Interns	241	240	-0	-0.1%	-36	-33
Medical/ Dental, other	4	4	-0	-4.9%	-1	-6
Medical & Dental	954	958	+4	+0.4%	+26	+17
Nurse/ Midwife Manager	1,248	1,247	-1	-0.1%	+8	-3
Nurse/ Midwife Specialist & AN/MP	533	539	+6	+1.2%	+11	+41
Staff Nurse/ Staff Midwife	3,042	3,013	-29	-0.9%	-63	+44
Public Health Nurse	1	1	+0	+7.5%	+1	+1
<i>Pre-registration Nurse/ Midwife Intern</i>	<i>169</i>	<i>131</i>	<i>-38</i>	<i>-22.7%</i>	<i>+103</i>	<i>+121</i>
<i>Pre-registration Nurse Intern (COVID-19)</i>	<i>1</i>	<i>2</i>	<i>+1</i>	<i>+62.4%</i>	<i>+2</i>	<i>-198</i>
<i>Post-registration Nurse/ Midwife Student</i>				<i>-100.0%</i>	<i>-1</i>	<i>-0</i>
<i>Nursing/ Midwifery awaiting registration</i>	<i>3</i>	<i>49</i>	<i>+46</i>	<i>+1522.0%</i>	<i>-10</i>	<i>+41</i>
Nursing/ Midwifery Student	174	182	+8	+4.7%	+123	-36
Nursing/ Midwifery other	31	30	-1	-1.7%	-2	-4
Nursing & Midwifery	5,029	5,013	-16	-0.3%	+77	+42
Therapy Professions	429	436	+7	+1.7%	-3	+9
Social Care	73	75	+2	+2.3%	-5	-2
Social Workers	372	373	+1	+0.3%	+1	+6
Psychologists	423	425	+2	+0.4%	+1	+24
Pharmacy	20	21	+1	+2.8%	+0	+1
H&SC, Other	110	108	-2	-1.5%	+0	-4
Health & Social Care Professionals	1,428	1,439	+11	+0.8%	-5	+34
Management (VIII & above)	58	57	-1	-1.5%	-10	-3
Administrative/ Supervisory (V to VII)	250	254	+4	+1.4%	+9	+6
Clerical (III & IV)	710	710	+0	+0.0%	-12	+2
Management & Administrative	1,018	1,020	+3	+0.3%	-14	+5
Support	585	579	-6	-1.1%	-16	-15
Maintenance/ Technical	135	133	-3	-2.0%	-5	+2
General Support	721	711	-9	-1.3%	-20	-12
Health Care Assistants	1,039	1,028	-11	-1.1%	+6	+5
Care, other	209	208	-1	-0.6%	+4	-5
Patient & Client Care	1,248	1,236	-13	-1.0%	+11	-0

Mental Health Services Employment by Administration (HSE / S38): September 2021

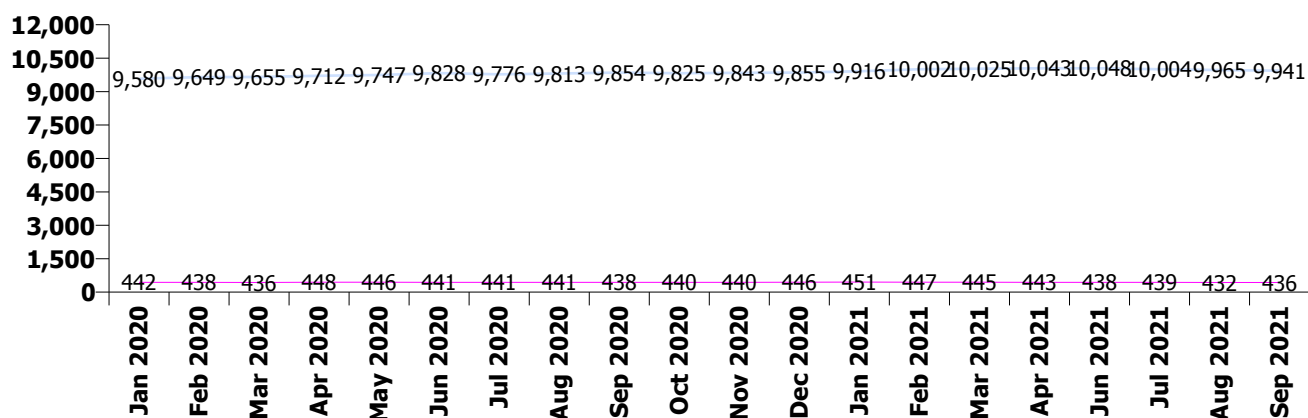
Sep 2021 (Dec 2020 figure: 10,301)	WTE Aug 2021	WTE Sep 2021	WTE change since Aug 21	% change since Aug 21	WTE change since Dec 20	WTE change since Sep 20
Overall	10,397	10,377	-20	-0.2%	+76	+85
HSE	9,965	9,941	-24	-0.2%	+86	+87
Section 38 Voluntary Agencies	432	436	+4	+1.0%	-10	-2

HSE

Sep 2021 (Dec 2020 figure: 9,855)	WTE Aug 2021	WTE Sep 2021	WTE change since Aug 21	% change since Aug 21	WTE change since Dec 20	WTE change since Sep 20
Overall	9,965	9,941	-24	-0.2%	+86	+87
Consultants	359	358	-1	-0.3%	+9	+4
Registrars	307	313	+7	+2.2%	+48	+45
SHO/ Interns	236	235	-0	-0.1%	-32	-29
Medical/ Dental, other	4	4	-0	-4.9%	-1	-6
Medical & Dental	905	911	+5	+0.6%	+24	+14
Nurse/ Midwife Manager	1,211	1,209	-1	-0.1%	+7	-2
Nurse/ Midwife Specialist & AN/MP	524	530	+6	+1.1%	+10	+39
Staff Nurse/ Staff Midwife	2,924	2,897	-27	-0.9%	-56	+47
Public Health Nurse	1	1	+0	+7.5%	+1	+1
<i>Pre-registration Nurse/ Midwife Intern</i>	159	131	-28	-17.9%	+110	+121
<i>Pre-registration Nurse Intern (COVID-19)</i>	1	2	+1	+62.4%	+2	-191
<i>Post-registration Nurse/ Midwife Student</i>				-100.0%	-1	-0
<i>Nursing/ Midwifery awaiting registration</i>	3	39	+36	+1188.7%	-20	+31
Nursing/ Midwifery Student	164	172	+8	+4.9%	+124	-39
Nursing/ Midwifery other	28	28	-1	-1.8%	-2	-4
Nursing & Midwifery	4,852	4,837	-15	-0.3%	+85	+42
Therapy Professions	402	408	+6	+1.4%	-4	+6
Social Care	48	48	+1	+1.4%	-4	-2
Social Workers	355	355	+0	+0.0%	+1	+7
Psychologists	404	404	-0	-0.1%	+2	+23
Pharmacy	19	19	+1	+3.1%	+0	+1
H&SC, Other	109	108	-1	-0.7%	+1	-3
Health & Social Care Professionals	1,335	1,341	+6	+0.5%	-4	+32
Management (VIII & above)	55	54	-1	-1.6%	-11	-4
Administrative/ Supervisory (V to VII)	231	234	+3	+1.2%	+10	+9
Clerical (III & IV)	669	668	-0	-0.1%	-11	+4
Management & Administrative	955	956	+1	+0.2%	-12	+9
Support	550	543	-6	-1.2%	-13	-11
Maintenance/ Technical	128	126	-3	-2.1%	-5	+2
General Support	678	669	-9	-1.4%	-18	-9
Health Care Assistants	1,034	1,022	-12	-1.2%	+6	+4
Care, other	206	205	-1	-0.6%	+4	-5
Patient & Client Care	1,239	1,226	-13	-1.1%	+10	-1

Section 38 Voluntary Agencies

Sep 2021 (Dec 2020 figure: 446)	WTE Aug 2021	WTE Sep 2021	WTE change since Aug 21	% change since Aug 21	WTE change since Dec 20	WTE change since Sep 20
Overall	432	436	+4	+1.0%	-10	-2
Consultants	21	20	-1	-3.5%	-1	+0
Registrars	22	22	-0	-1.8%	+7	+7
SHO/ Interns	5	5			-4	-4
Medical & Dental	48	47	-1	-2.3%	+2	+3
Nurse/ Midwife Manager	38	38	+0	+0.3%	+0	-1
Nurse/ Midwife Specialist & AN/MP	9	10	+1	+6.1%	+1	+2
Staff Nurse/ Staff Midwife	118	115	-2	-1.8%	-7	-3
Pre-registration Nurse/ Midwife Intern	10		-10	-100.0%	-7	
Pre-registration Nurse Intern (COVID-19)				-100.0%		-7
Nursing/ Midwifery awaiting registration		10	+10	-100.0%	+10	+10
Nursing/ Midwifery Student	10	10			-1	+3
Nursing/ Midwifery other	3	3				
Nursing & Midwifery	177	175	-1	-0.8%	-8	+0
Therapy Professions	27	29	+2	+5.8%	+2	+3
Social Care	26	27	+1	+4.1%	-1	-1
Social Workers	17	18	+1	+6.9%	-0	-1
Psychologists	19	21	+2	+11.0%	-1	+1
Pharmacy	2	2				
H&SC, Other	1	1	-1	-58.1%	-0	-0
Health & Social Care Professionals	93	98	+5	+5.5%	-1	+2
Management (VIII & above)	3	3			+1	+1
Administrative/ Supervisory (V to VII)	19	20	+1	+4.6%	-1	-3
Clerical (III & IV)	41	41	+0	+1.1%	-2	-2
Management & Administrative	63	64	+1	+2.1%	-2	-4
Support	35	35			-2	-4
Maintenance/ Technical	7	7				+0
General Support	42	42			-2	-3
Health Care Assistants	6	6	+1	+11.3%	+1	+1
Care, other	3	3	-0	-1.2%	-0	-0
Patient & Client Care	9	10	+1	+6.7%	+1	+1



Mental Health Services Employment by CHO: Sep 2021

Sep 2021 (Dec 2020 figure: 10,301)	WTE Aug 2021	WTE Sep 2021	WTE change since Aug 21	% change since Aug 21	WTE change since Dec 20	WTE change since Sep 20
Overall	10,397	10,377	-20	-0.2%	+76	+85
CHO 1	1,002	999	-3	-0.3%	+23	+15
CHO 2	1,333	1,335	+2	+0.1%	-5	-7
CHO 3	836	830	-6	-0.7%	+21	+39
CHO 4	1,559	1,552	-7	-0.4%	-12	-17
CHO 5	1,207	1,215	+8	+0.7%	+27	+11
CHO 6	633	639	+6	+0.9%	+12	+29
CHO 7	882	883	+1	+0.1%	+22	+14
CHO 8	1,114	1,106	-8	-0.7%	-6	-17
CHO 9	1,314	1,310	-5	-0.3%	-21	-7
other Community Services	516	508	-7	-1.4%	+14	+26

Mental Health Services Employment by CHO etc. Sep 2021

CHO 1

Sep 2021 (Dec 2020 figure: 976)	WTE Aug 2021	WTE Sep 2021	WTE change since Aug 21	% change since Aug 21	WTE change since Dec 20	WTE change since Sep 20
Overall	1,002	999	-3	-0.3%	+23	+15
Consultants	37	37	-0	-1%	+3	+2
Registrars	31	31	+1	+2%	+2	+4
SHO/ Interns	21	22	+1	+3%	-1	+0
Medical & Dental	89	90	+1	+1.0%	+4	+6
Nurse/ Midwife Manager	123	124	+0	+0%	+4	-0
Nurse/ Midwife Specialist & AN/MP	71	72	+0	+1%	-2	+3
Staff Nurse/ Staff Midwife	293	294	+2	+1%	+6	+5
Pre-registration Nurse/ Midwife Intern	15	12	-3	-18%	+12	+7
Pre-registration Nurse Intern (COVID-19)				-100%		-21
Nursing/ Midwifery Student	15	12	-3	-18%	+9	-14
Nursing/ Midwifery other	2	2	+0	+2%	+1	+1
Nursing & Midwifery	504	503	-0	-0.1%	+18	-5
Therapy Professions	39	39	+0	+1%	+3	+5
Social Care	4	4	+0	+3%	-0	+1
Social Workers	41	41	-1	-2%	-2	+2
Psychologists	22	22	+0	+2%	-1	-1
Pharmacy	1	1	-0	-4%		-0
H&SC, Other	14	14	+0	+1%	+0	+1
Health & Social Care Professionals	120	120	+0	+0.1%	-0	+8
Management (VIII & above)	5	5	+0	+1%	-3	-3
Administrative/ Supervisory (V to VII)	31	31	-0	-1%	+0	+0
Clerical (III & IV)	89	90	+1	+1%	+5	+6
Management & Administrative	125	125	+0	+0.2%	+2	+3
Support	64	61	-3	-4%	-4	-3
Maintenance/ Technical	17	17	-0	-1%	+1	+0
General Support	81	78	-3	-3.5%	-3	-2
Health Care Assistants	73	71	-2	-2%	+3	+5
Care, other	11	11	+0	+1%	-0	-0
Patient & Client Care	83	82	-1	-1.8%	+3	+5

CHO 2

Sep 2021 (Dec 2020 figure: 1,340)	WTE Aug 2021	WTE Sep 2021	WTE change since Aug 21	% change since Aug 21	WTE change since Dec 20	WTE change since Sep 20
Overall	1,333	1,335	+2	+0.1%	-5	-7
Consultants	42	41	-1	-3%	+4	+2
Registrars	34	35	+1	+4%	-1	-2
SHO/ Interns	38	35	-3	-8%	-5	-3
Medical/ Dental, other				-100%	-1	-1
Medical & Dental	114	111	-3	-2.3%	-3	-4
Nurse/ Midwife Manager	146	147	+0	+0%	-4	-8
Nurse/ Midwife Specialist & AN/MP	77	79	+2	+3%	-1	+3
Staff Nurse/ Staff Midwife	366	365	-1	-0%	+11	+20
<i>Pre-registration Nurse/ Midwife Intern</i>	20	22	+2	+8%	+22	+22
<i>Pre-registration Nurse Intern (COVID-19)</i>	1	1	+1	+140%	+1	-30
<i>Nursing/ Midwifery awaiting registration</i>				-100%	-5	
Nursing/ Midwifery Student	21	23	+2	+12%	+13	-8
Nursing/ Midwifery other	2	2	0		+0	-1
Nursing & Midwifery	611	615	+4	+0.7%	+19	+8
Therapy Professions	52	53	+1	+2%	-2	-1
Social Care	15	15	+0	+0%	-2	+1
Social Workers	39	42	+2	+6%	+0	-1
Psychologists	40	38	-2	-6%	+1	-2
Pharmacy	2	2	+1	+40%	+1	+1
H&SC, Other	3	3	0		-0	+0
Health & Social Care Professionals	151	153	+2	+1.3%	-2	-3
Management (VIII & above)	3	3	+0	+3%	-1	-1
Administrative/ Supervisory (V to VII)	26	26	+0	+1%	-0	+0
Clerical (III & IV)	94	95	+0	+0%	-8	-3
Management & Administrative	123	124	+1	+0.5%	-9	-4
Support	30	29	-1	-3%	-2	-3
Maintenance/ Technical	33	32	-1	-2%	-1	+5
General Support	64	62	-2	-2.7%	-3	+2
Health Care Assistants	206	205	-1	-1%	-6	-4
Care, other	65	65	+1	+1%	-1	-3
Patient & Client Care	271	270	-1	-0.2%	-7	-6

CHO 3

Sep 2021 (Dec 2020 figure: 809)	WTE Aug 2021	WTE Sep 2021	WTE change since Aug 21	% change since Aug 21	WTE change since Dec 20	WTE change since Sep 20
Overall	836	830	-6	-0.7%	+21	+39
Consultants	25	24	-0	-2%	+0	-0
Registrars	20	20	+0	+1%	+5	+4
SHO/ Interns	24	23	-1	-2%	+2	+3
Medical & Dental	68	67	-1	-1.3%	+7	+7
Nurse/ Midwife Manager	91	88	-2	-3%	+1	-0
Nurse/ Midwife Specialist & AN/MP	33	35	+2	+5%	-2	-1
Staff Nurse/ Staff Midwife	269	266	-3	-1%	-6	+11
Pre-registration Nurse/ Midwife Intern	14	13	-0	-0%	+5	+13
Pre-registration Nurse Intern (COVID-19)				-100%		-15
Nursing/ Midwifery Student	14	13	-0	-0%	+10	-2
Nursing & Midwifery	406	402	-4	-1.0%	+2	+7
Therapy Professions	30	30	+1	+2%	+6	+7
Social Care	3	3	-0	-1%	-0	-0
Social Workers	24	24	-0	-0%	-0	-2
Psychologists	89	90	+2	+2%	-1	+13
Pharmacy	3	3	0			
H&SC, Other	11	11	-0	-1%	-1	-3
Health & Social Care Professionals	159	161	+2	+1.3%	+3	+16
Management (VIII & above)	2	2	-0	-1%	-0	+1
Administrative/ Supervisory (V to VII)	17	17	+0	+2%	-1	-1
Clerical (III & IV)	54	53	-1	-2%	+3	+2
Management & Administrative	73	72	-1	-0.9%	+1	+2
Support	32	31	-1	-4%	+1	+0
Maintenance/ Technical	10	9	-1	-6%		-1
General Support	42	40	-2	-4.1%	+1	-0
Health Care Assistants	87	86	-1	-1%	+7	+8
Care, other	1	1	0			
Patient & Client Care	88	87	-1	-0.9%	+7	+8

CHO 4

Sep 2021 (Dec 2020 figure: 1,564)	WTE Aug 2021	WTE Sep 2021	WTE change since Aug 21	% change since Aug 21	WTE change since Dec 20	WTE change since Sep 20
Overall	1,559	1,552	-7	-0.4%	-12	-17
Consultants	55	55	-0	-0%	+0	-1
Registrars	52	53	+1	+2%	+12	+11
SHO/ Interns	42	43	+1	+2%	-0	+3
Medical/ Dental, other	2	2	-0	-9%	+0	-4
Medical & Dental	151	153	+2	+1.1%	+12	+8
Nurse/ Midwife Manager	194	191	-3	-1%	-1	-1
Nurse/ Midwife Specialist & AN/MP	71	71	+0	+0%	+0	+5
Staff Nurse/ Staff Midwife	487	481	-7	-1%	-39	-19
<i>Pre-registration Nurse/ Midwife Intern</i>	27	27	0		+24	+27
<i>Pre-registration Nurse Intern (COVID-19)</i>				-100%		-23
<i>Post-registration Nurse/ Midwife Student</i>				-100%	-1	
<i>Nursing/ Midwifery awaiting registration</i>	1	1	0		-29	-2
Nursing/ Midwifery Student	28	28	0		+24	+2
Nursing & Midwifery	780	771	-9	-1.1%	-15	-13
Therapy Professions	73	79	+6	+8%	+1	-1
Social Care	6	5	-1	-13%	-2	-3
Social Workers	64	62	-2	-3%	-3	-1
Psychologists	89	90	+1	+1%	-4	+7
Pharmacy	2	2	-0	-10%	-1	-1
H&SC, Other	11	11	-1	-5%	-2	-5
Health & Social Care Professionals	245	248	+3	+1.1%	-10	-3
<i>Executive Management</i>	1		-1	-100%		-2
<i>Senior Management (VIII & GM)</i>	1	1	+0	+1%		+1
Management (VIII & above)	2	1	-1	-49%	-2	-1
Administrative/ Supervisory (V to VII)	21	22	+1	+5%	+0	+1
Clerical (III & IV)	93	91	-2	-2%	-4	-1
Management & Administrative	116	114	-2	-1.7%	-5	-1
Support	85	83	-1	-1%	+2	+1
Maintenance/ Technical	5	5	0			+1
General Support	90	89	-1	-1.2%	+2	+1
Health Care Assistants	169	170	+1	+0%	+4	-7
Care, other	7	7	-0	-1%	+1	-3
Patient & Client Care	177	177	+1	+0.3%	+5	-10

CHO 5

Sep 2021 (Dec 2020 figure: 1,188)	WTE Aug 2021	WTE Sep 2021	WTE change since Aug 21	% change since Aug 21	WTE change since Dec 20	WTE change since Sep 20
Overall	1,207	1,215	+8	+0.7%	+27	+11
Consultants	27	28	+1	+3%	+0	+0
Registrars	12	12	+0	+0%	+3	+2
SHO/ Interns	31	31	-0	-1%	-5	-4
Medical/ Dental, other	2	2	0			-1
Medical & Dental	72	73	+0	+0.6%	-2	-3
Nurse/ Midwife Manager	168	169	+1	+0%	+9	+9
Nurse/ Midwife Specialist & AN/MP	55	55	+0	+1%	+1	+5
Staff Nurse/ Staff Midwife	412	411	-0	-0%	+0	+6
<i>Pre-registration Nurse/ Midwife Intern</i>	24	16	-8	-33%	+13	+13
<i>Pre-registration Nurse Intern (COVID-19)</i>	0	1	+0	+59%	+1	-22
<i>Nursing/ Midwifery awaiting registration</i>		15	+15	-100%	+13	+15
Nursing/ Midwifery Student	25	32	+7	+28%	+19	+5
Nursing/ Midwifery other	3	4	+0	+1%	-0	-0
Nursing & Midwifery	663	670	+8	+1.1%	+29	+26
Therapy Professions	33	31	-1	-4%	-7	-6
Social Care	4	5	+0	+4%	-0	+0
Social Workers	25	26	+1	+5%	-2	-1
Psychologists	22	21	-0	-1%	+0	-1
H&SC, Other	20	20	+0	+1%	+12	+9
Health & Social Care Professionals	103	103	+0	+0.2%	+3	+2
Management (VIII & above)	5	5	-0	-0%	-1	-1
Administrative/ Supervisory (V to VII)	26	26	-0	-0%	+6	+3
Clerical (III & IV)	70	72	+2	+3%	+3	+5
Management & Administrative	100	103	+2	+2.2%	+8	+8
Support	169	170	+1	+0%	-9	-11
Maintenance/ Technical	16	16	-0	-0%	-4	-4
General Support	185	186	+1	+0.4%	-12	-15
Health Care Assistants	72	69	-2	-3%	+2	-4
Care, other	12	12	-0	-4%	-1	-2
Patient & Client Care	84	81	-3	-3.5%	+1	-6

CHO 6

Sep 2021 (Dec 2020 figure: 626)	WTE Aug 2021	WTE Sep 2021	WTE change since Aug 21	% change since Aug 21	WTE change since Dec 20	WTE change since Sep 20
Overall	633	639	+6	+0.9%	+12	+29
Consultants	39	38	-1	-2%	-2	+0
Registrars	26	25	-0	-2%	+6	+6
SHO/ Interns	11	10	-1	-7%	-3	-5
Medical & Dental	76	74	-2	-2.5%	+2	+2
Nurse/ Midwife Manager	74	74	+0	+0%	-3	-5
Nurse/ Midwife Specialist & AN/MP	22	22	+1	+3%	+3	+6
Staff Nurse/ Staff Midwife	156	151	-5	-3%	-0	+6
<i>Pre-registration Nurse/ Midwife Intern</i>	4	3	-0	-1%	+3	+3
<i>Nursing/ Midwifery awaiting registration</i>	1	1	0		+1	
Nursing/ Midwifery Student	5	4	-0	-1%	+3	+3
Nursing/ Midwifery other	2	2	0			-1
Nursing & Midwifery	258	254	-4	-1.6%	+3	+10
Therapy Professions	41	44	+3	+6%	+5	+7
Social Care	26	27	+1	+4%	-1	-1
Social Workers	31	33	+3	+9%	+4	+2
Psychologists	32	34	+2	+6%	+2	+6
H&SC, Other	5	5	-1	-16%	-1	+0
Health & Social Care Professionals	135	142	+7	+5.4%	+9	+15
Management (VIII & above)	3	3	-0	-0%	-0	-0
Administrative/ Supervisory (V to VII)	23	26	+3	+12%	+2	-1
Clerical (III & IV)	36	37	+1	+3%	-5	-4
Management & Administrative	62	66	+4	+6.2%	-4	-5
Support	37	37	+0	+1%	-2	+1
Maintenance/ Technical	6	6	0			+0
General Support	43	43	+0	+0.9%	-2	+1
Health Care Assistants	53	53	+0	+0%	+5	+6
Care, other	6	6	-0	-1%	-0	+0
Patient & Client Care	59	59	+0	+0.1%	+5	+6

CHO 7

Sep 2021 (Dec 2020 figure: 861)	WTE Aug 2021	WTE Sep 2021	WTE change since Aug 21	% change since Aug 21	WTE change since Dec 20	WTE change since Sep 20
Overall	882	883	+1	+0.1%	+22	+14
Consultants	55	54	-1	-2%	+1	-0
Registrars	52	53	+1	+2%	-0	-1
SHO/ Interns	22	23	+1	+6%	+3	+1
Medical & Dental	129	130	+1	+1.0%	+3	-1
Nurse/ Midwife Manager	117	116	-1	-1%	-2	-2
Nurse/ Midwife Specialist & AN/MP	52	51	-1	-3%	+4	+6
Staff Nurse/ Staff Midwife	205	208	+2	+1%	+6	+14
Public Health Nurse	1	1	+0	+8%	+1	+1
Public Health Nurse	1	1	+0	+8%	+1	+1
Pre-registration Nurse/ Midwife Intern	15	14	-1	-5%	+13	+14
Pre-registration Nurse Intern (COVID-19)	1	0	-0	-12%	+0	-16
Post-registration Nurse/ Midwife Student				-100%		-0
Nursing/ Midwifery awaiting registration				-100%	-10	-4
Nursing/ Midwifery Student	15	15	-1	-6%	+7	-6
Nursing/ Midwifery other	5	5	+0	+3%	-0	-3
Nursing & Midwifery	396	395	-1	-0.3%	+16	+10
Therapy Professions	46	46	-0	-1%	-8	+1
Social Care	8	8	+1	+7%	+1	+1
Social Workers	40	41	+1	+4%	+3	+5
Psychologists	31	30	-1	-2%	+1	-3
Pharmacy	1	1	0			
Pharmacy	1	1	0			
H&SC, Other	17	17	+0	+1%	-1	-1
Health & Social Care Professionals	142	143	+1	+0.8%	-4	+3
Management (VIII & above)	5	5	-0	-0%	+1	+1
Administrative/ Supervisory (V to VII)	18	18	-0	-1%	+1	-0
Clerical (III & IV)	47	47	+1	+1%	-2	-4
Management & Administrative	70	70	+0	+0.5%	-0	-3
Support	17	18	+1	+5%	+0	+1
Maintenance/ Technical	2	2	0			+0
General Support	19	20	+1	+4.4%	+0	+1
Health Care Assistants	35	34	-1	-1%	-0	-1
Care, other	92	91	-1	-1%	+6	+3
Patient & Client Care	127	125	-2	-1.4%	+6	+3

CHO 8

Sep 2021 (Dec 2020 figure: 1,112)	WTE Aug 2021	WTE Sep 2021	WTE change since Aug 21	% change since Aug 21	WTE change since Dec 20	WTE change since Sep 20
Overall	1,114	1,106	-8	-0.7%	-6	-17
Consultants	37	36	-1	-3%	-0	+2
Registrars	43	43	+1	+1%	+12	+12
SHO/ Interns	19	21	+2	+9%	-5	-9
Medical & Dental	99	100	+1	+1.3%	+7	+4
Nurse/ Midwife Manager	123	124	+1	+1%	+4	+6
Nurse/ Midwife Specialist & AN/MP	62	63	+1	+2%	+4	+4
Staff Nurse/ Staff Midwife	321	315	-7	-2%	-28	-13
<i>Pre-registration Nurse/ Midwife Intern</i>	24	16	-8	-35%	+15	+16
<i>Pre-registration Nurse Intern (COVID-19)</i>				-100%		-29
<i>Nursing/ Midwifery awaiting registration</i>		11	+11	-100%	+9	+11
Nursing/ Midwifery Student	24	27	+2	+10%	+26	-2
Nursing/ Midwifery other	3	3	+0	+0%		
Nursing & Midwifery	534	532	-2	-0.4%	+6	-6
Therapy Professions	42	42	+0	+0%	-0	-2
Social Care	7	7	+1	+8%	+0	-0
Social Workers	47	45	-2	-4%	+1	+2
Psychologists	38	38	+1	+2%	+1	-1
Pharmacy	2	2	0			+1
H&SC, Other	15	14	-1	-4%	-7	-6
Health & Social Care Professionals	149	148	-1	-0.7%	-5	-7
Management (VIII & above)	3	4	+1	+31%	+1	+1
Administrative/ Supervisory (V to VII)	22	21	-1	-5%	+1	-0
Clerical (III & IV)	95	95	-1	-1%	-2	-2
Management & Administrative	120	120	-1	-0.6%	-1	-1
Support	31	31	-0	-1%	-1	-0
Maintenance/ Technical	28	27	-1	-4%	-1	-0
General Support	59	57	-2	-2.7%	-2	-1
Health Care Assistants	149	145	-4	-3%	-11	-6
Care, other	3	3	0		-0	
Patient & Client Care	152	148	-4	-2.6%	-11	-6

CHO 9

Sep 2021 (Dec 2020 figure: 1,331)	WTE Aug 2021	WTE Sep 2021	WTE change since Aug 21	% change since Aug 21	WTE change since Dec 20	WTE change since Sep 20
Overall	1,314	1,310	-5	-0.3%	-21	-7
Consultants	45	47	+2	+4%	+1	-1
Registrars	45	47	+2	+3%	+15	+14
SHO/ Interns	30	30	-0	-0%	-24	-21
Medical & Dental	120	124	+3	+2.6%	-8	-8
Nurse/ Midwife Manager	135	137	+2	+1%	-1	-1
Nurse/ Midwife Specialist & AN/MP	80	81	+0	+1%	+5	+8
Staff Nurse/ Staff Midwife	354	352	-2	-1%	-20	+7
<i>Pre-registration Nurse/ Midwife Intern</i>	27	7	-20	-75%	-3	+6
<i>Pre-registration Nurse Intern (COVID-19)</i>				-100%		-42
<i>Nursing/ Midwifery awaiting registration</i>	1	21	+20	+2029%	+10	+21
Nursing/ Midwifery Student	28	28	+0	+1%	+12	-14
Nursing/ Midwifery other	11	11	-0	-0%	-1	-1
Nursing & Midwifery	609	609	-0	-0.0%	-5	-1
Therapy Professions	62	60	-2	-3%	-1	-2
Social Care	1	1	0			+0
Social Workers	45	45	-1	-1%	+2	+1
Psychologists	53	53	-0	-0%	-0	+1
Pharmacy	9	9	+0	+2%	-0	+0
H&SC, Other	14	14	-0	-0%		+0
Health & Social Care Professionals	184	181	-3	-1.5%	+0	+0
Management (VIII & above)	7	6	-0	-7%	+1	+1
Administrative/ Supervisory (V to VII)	27	26	-0	-1%	-2	-2
Clerical (III & IV)	110	109	-1	-1%	-5	-0
Management & Administrative	144	142	-1	-1.0%	-6	-1
Support	103	101	-2	-2%	-3	-3
Maintenance/ Technical	11	11	0			+0
General Support	114	112	-2	-1.8%	-3	-3
Health Care Assistants	131	130	-1	-1%	+1	+6
Care, other	12	12	-0	-1%	-0	-0
Patient & Client Care	144	142	-1	-0.9%	+1	+5

other Community Services

Sep 2021 (Dec 2020 figure: 494)	WTE Aug 2021	WTE Sep 2021	WTE change since Aug 21	% change since Aug 21	WTE change since Dec 20	WTE change since Sep 20
Overall	516	508	-7	-1.4%	+14	+26
Consultants	17	17	+0	+2%	+1	+1
Registrars	15	15	+0	+2%	+1	+1
SHO/ Interns	3	3	+0	+1%	+3	+3
Medical & Dental	35	36	+1	+1.6%	+5	+5
Nurse/ Midwife Manager	75	76	+1	+2%	+0	-1
Nurse/ Midwife Specialist & AN/MP	10	11	+1	+8%	-1	+1
Staff Nurse/ Staff Midwife	180	171	-8	-5%	+6	+6
Nursing/ Midwifery other	2	1	-1	-42%	-1	
Nursing & Midwifery	267	260	-7	-2.6%	+5	+6
Therapy Professions	12	12	+0	+4%	+1	+1
Social Care	1	1	0		-1	-1
Social Workers	16	15	-1	-7%	-2	-1
Psychologists	9	9	-0	-0%	+3	+3
<i>Pharmacy</i>	2	2	-0	-1%	+2	+1
Pharmacy	2	2	-0	-1%	+1	+1
Health & Social Care Professionals	40	40	-1	-1.7%	+2	+3
Management (VIII & above)	23	23	-0	-2%	-7	-1
Administrative/ Supervisory (V to VII)	39	40	+1	+2%	+3	+5
Clerical (III & IV)	22	21	-0	-1%	+3	+4
Management & Administrative	84	84	+0	+0.2%	-1	+8
Support	18	18	-0	-1%	+2	+2
Maintenance/ Technical	7	7	-0	-1%	-0	+1
General Support	25	25	-0	-0.7%	+2	+3
Health Care Assistants	64	64	-0	-1%	+1	+2
Care, other	1	1	0			
Patient & Client Care	64	64	-0	-0.6%	+1	+2

Mental Health Services Employment by Grade Group: Sep 2021

Sep 2021 (Dec 2020 figure: 10,301)	WTE Aug 2021	WTE Sep 2021	WTE change since Aug 21	% change since Aug 21	WTE change since Dec 20	WTE change since Sep 20
Overall	10,397	10,377	-20	-0.2%	+76	+85
Consultant Medicine	1	1	0			
Consultant Psychiatry	379	377	-2	-0%	+8	+5
Consultants	380	378	-2	-0%	+8	+5
Registrar	205	212	+7	+3%	+44	+41
Senior Registrar	120	119	-0	-0%	+8	+9
Specialist Registrar	4	4	+0	+1%	+2	+2
Registrars	329	335	+6	+2%	+54	+51
Interns	7	7	+0	+5%	+2	+2
Senior House Officer	234	234	-1	-0%	-37	-35
SHO/ Interns	241	240	-0	-0%	-36	-33
Other Medical	4	4	-0	-5%	-1	-6
Medical/ Dental, other	4	4	-0	-5%	-1	-6
Medical & Dental	954	958	+4	+0%	+26	+17
Clinical Nurse/ Midwife Manager	1,047	1,047	-0	-0%	+6	-5
Director Nursing/Midwifery, Assistant	171	172	+1	+0%	+1	-1
Director of Nursing/Midwifery	30	28	-2	-5%	+0	+3
Nurse/ Midwife Manager	1,248	1,247	-1	-0%	+8	-3
Advanced Nurse/ Midwife Practitioner	47	47	-1	-1%	+7	+11
Clinical Nurse/ Midwife Specialist	486	493	+7	+1%	+4	+29
Nurse/ Midwife Specialist & AN/MP	533	539	+6	+1%	+11	+41
Staff Midwives				-100%	-1	-1
Staff Nurse [Intellectual Disability]	3	3	-0	-1%	-1	-1
Staff Nurse [Psychiatric]	2,922	2,896	-26	-1%	-69	+50
Staff Nurses [General/ Children's]	117	114	-3	-2%	+7	-4
Staff Nurse/ Staff Midwife	3,042	3,013	-29	-1%	-63	+44
Public Health Nurse	1	1	+0	+8%	+1	+1
Public Health Nurse	1	1	+0	+8%	+1	+1
Pre-registration Nurse/ Midwife Intern	169	131	-38	-23%	+120	+121
Pre-registration Nurse Intern (COVID-19)	1	2	+1	+62%	-40	-198
Post-registration Nurse/ Midwife Student				-100%	-1	-0
Nursing/ Midwifery awaiting registration	3	49	+46	+1522%	+44	+41
Nursing/ Midwifery Student	174	182	+8	+5%	+123	-36
Nursing Education/Clinical	31	30	-1	-2%	-2	-4
Nursing/ Midwifery other	31	30	-1	-2%	-2	-4
Nursing & Midwifery	5,029	5,013	-16	-0%	+77	+42
Dietitians	18	20	+2	+10%	-0	+2
Occupational Therapists	344	350	+6	+2%	+5	+6
Physiotherapists	2	3	+0	+7%	+0	-0
Podiatrists & Chiropodists	1	1	+0	+13%	+0	-1
Speech & Language Therapists	63	63	-1	-1%	-7	+3
Therapy Professions	429	436	+7	+2%	-3	+9
Social Care	73	75	+2	+2%	-5	-2
Social Workers	372	373	+1	+0%	+1	+6
Psychologists	423	425	+2	+0%	+1	+24
Pharmacy	20	21	+1	+3%	+0	+1
Counsellor Therapists	102	102	-1	-1%	+1	+2
Other Health & Social Care	6	5	-1	-17%	-0	-6
Play Therapists/ Specialists	1	2	+0	+9%	+0	+0
H&SC, Other	110	108	-2	-1%	+0	-4

Sep 2021 (Dec 2020 figure: 10,301)	WTE Aug 2021	WTE Sep 2021	WTE change since Aug 21	% change since Aug 21	WTE change since Dec 20	WTE change since Sep 20
Overall	10,397	10,377	-20	-0.2%	+76	+85
Health & Social Care Professionals	1,428	1,439	+11	+1%	-5	+34
Executive Management	15	14	-1	-7%	-1	+1
Senior Management (VIII & GM)	43	43	+0	+0%	-9	-4
Management (VIII & above)	58	57	-1	-2%	-10	-3
Middle Management (V-VII)	249	252	+4	+1%	+9	+6
Other Administrative	2	2	+0	+1%	-0	-0
Administrative/ Supervisory (V to VII)	250	254	+4	+1%	+9	+6
General Administrative (III & IV)	710	710	+0	+0%	-12	+2
Clerical (III & IV)	710	710	+0	+0%	-12	+2
Management & Administrative	1,018	1,020	+3	+0%	-14	+5
Catering	70	69	-2	-2%	+5	+3
Household Services	424	422	-2	-0%	-20	-14
Other Support	45	42	-4	-8%	-0	-3
Portering	46	47	+1	+1%	-1	-0
Support	585	579	-6	-1%	-16	-15
Maintenance	135	133	-3	-2%	-5	+2
Maintenance/ Technical	135	133	-3	-2%	-5	+2
General Support	721	711	-9	-1%	-20	-12
HCA, Nurse's Aide, etc.	1,029	1,019	-10	-1%	+5	+4
Health & Social Care Assistants	10	9	-1	-10%	+1	+1
Health Care Assistants	1,039	1,028	-11	-1%	+6	+5
Care, other	209	208	-1	-1%	+4	-5
Patient & Client Care	1,248	1,236	-13	-1%	+11	-0

Employment by WTE, Headcount, Gender, Full-Time /Part-Time etc.: Sep 2021

Mental Health Services Staff Group	WTE	Headcount	WTE: no.	% Male	% female	Male WTE: no.	Female WTE: no.	% Total Perm	% Male Perm	% Female Perm	% Total Full Time	% Total Part Time	% Male FT	% Female FT
Overall	10,377	11,507	1.11	27.0%	73.0%	1.06	1.13	82.9%	79.2%	84.2%	85.2%	14.8%	93.0%	82.3%
Consultant Medicine	1	1	1.00	100.0%		1.00		100.0%	100.0%		100.0%	0.0%	100.0%	
Consultant Psychiatry	377	413	1.10	41.6%	58.4%	1.05	1.13	65.9%	65.9%	64.7%	86.4%	13.6%	91.9%	82.6%
Consultants	378	414	1.10	41.8%	58.2%	1.05	1.13	65.9%	67.6%	64.7%	86.5%	13.5%	91.9%	82.6%
Registrar	212	218	1.03	44.0%	56.0%	1.02	1.04	2.8%	2.8%	1.6%	96.8%	3.2%	99.0%	95.1%
Senior Registrar	119	124	1.04	36.3%	63.7%	1.01	1.05	0.8%	0.8%	1.3%	97.6%	2.4%	100.0%	96.2%
Specialist Registrar	4	4	1.00	50.0%	50.0%	1.01	1.00	0.0%	0.0%	0.0%	100.0%	0.0%	100.0%	100.0%
Registrars	335	346	1.03	41.3%	58.7%	1.02	1.04	2.0%	2.8%	1.5%	97.1%	2.9%	99.3%	95.6%
Interns	7	7	1.03	28.6%	71.4%	1.00	1.04	0.0%	0.0%	0.0%	100.0%	0.0%	100.0%	100.0%
Senior House Officer	234	239	1.02	43.9%	56.1%	1.01	1.03	0.0%	0.0%	0.0%	99.6%	0.4%	100.0%	99.3%
SHO/ Interns	240	246	1.02	43.5%	56.5%	1.01	1.03	0.0%	0.0%	0.0%	99.6%	0.4%	100.0%	99.3%
Other Medical	4	8	1.98	62.5%	37.5%	2.02	1.91	50.0%	50.0%	66.7%	87.5%	12.5%	100.0%	66.7%
Medical/ Dental, other	4	8	1.98	62.5%	37.5%	2.02	1.91	50.0%	40.0%	66.7%	87.5%	12.5%	100.0%	66.7%
Medical & Dental	958	1,014	1.06	42.2%	57.8%	1.04	1.08	28.0%	28.7%	27.5%	93.3%	6.7%	96.5%	91.0%
Clinical Nurse/ Midwife Manager	1,047	1,098	1.05	33.8%	66.2%	1.01	1.07	98.9%	98.9%	99.3%	94.0%	6.0%	98.7%	91.6%
Director Nursing/Midwifery, Assistant	172	178	1.04	44.9%	55.1%	1.04	1.03	100.0%	100.0%	100.0%	97.8%	2.2%	98.8%	96.9%
Director of Nursing/Midwifery	28	29	1.02	51.7%	48.3%	1.04	1.01	100.0%	100.0%	100.0%	96.6%	3.4%	100.0%	92.9%
Nurse/ Midwife Manager	1,247	1,305	1.05	35.7%	64.3%	1.02	1.06	99.1%	98.5%	99.4%	94.6%	5.4%	98.7%	92.3%
Advanced Nurse/ Midwife Practitioner	47	50	1.07	18.0%	82.0%	1.01	1.09	98.0%	98.0%	97.6%	92.0%	8.0%	100.0%	90.2%
Clinical Nurse/ Midwife Specialist	493	528	1.07	19.1%	80.9%	1.02	1.08	99.6%	99.6%	99.8%	93.2%	6.8%	98.0%	92.0%
Nurse/ Midwife Specialist & AN/MP	539	578	1.07	19.0%	81.0%	1.02	1.08	99.5%	99.1%	99.6%	93.1%	6.9%	98.2%	91.9%
Staff Nurse [Intellectual Disability]	3	4	1.27	25.0%	75.0%	1.00	1.40	50.0%	50.0%	66.7%	75.0%	25.0%	100.0%	66.7%
Staff Nurse [Psychiatric]	2,896	3,143	1.09	26.2%	73.8%	1.06	1.10	92.8%	92.8%	93.6%	87.3%	12.7%	91.8%	85.7%
Staff Nurses [General/ Children's]	114	126	1.11	23.0%	77.0%	1.10	1.11	78.6%	78.6%	82.5%	81.0%	19.0%	82.8%	80.4%
Staff Nurse/ Staff Midwife	3,013	3,273	1.09	26.0%	74.0%	1.06	1.10	92.2%	89.6%	93.1%	87.1%	12.9%	91.5%	85.5%
Public Health Nurse	1	1	1.00		100.0%		1.00	100.0%	100.0%	100.0%	100.0%	0.0%		100.0%
Public Health Nurse	1	1	1.00		100.0%		1.00	100.0%		100.0%	100.0%	0.0%		100.0%
Pre-registration Nurse/ Midwife Intern	131	267	2.04	18.0%	82.0%	2.11	2.02	0.0%	0.0%	0.0%	93.6%	6.4%	91.7%	94.1%
Pre-registration Nurse Intern (COVID-19)	2	4	1.65	50.0%	50.0%	1.67	1.64	0.0%	0.0%	0.0%	100.0%	0.0%	100.0%	100.0%
Nursing/ Midwifery awaiting registration	49	61	1.25	4.9%	95.1%	1.15	1.26	8.2%	8.2%	8.6%	100.0%	0.0%	100.0%	100.0%

Nursing/ Midwifery Student	182	332	1.82	16.0%	84.0%	2.00	1.79	1.5%	0.0%	1.8%	94.9%	5.1%	92.5%	95.3%
Nursing Education/Clinical	30	33	1.10	15.2%	84.8%	1.00	1.12	100.0%	100.0%	100.0%	87.9%	12.1%	100.0%	85.7%
Nursing/ Midwifery other	30	33	1.10	15.2%	84.8%	1.00	1.12	100.0%	100.0%	100.0%	87.9%	12.1%	100.0%	85.7%
Nursing & Midwifery	5,013	5,522	1.10	26.9%	73.1%	1.06	1.12	89.2%	89.9%	88.9%	89.9%	10.1%	94.3%	88.3%
Health & Social Care	1,439	1,664	1.16	16.7%	83.3%	1.08	1.17	85.3%	82.0%	86.0%	82.8%	17.2%	92.8%	80.7%
Executive Management	14	14	1.01	57.1%	42.9%	1.01	1.01	100.0%	100.0%	100.0%	100.0%	0.0%	100.0%	100.0%
Senior Management (VIII & GM)	43	45	1.05	26.7%	73.3%	1.00	1.07	95.6%	95.6%	97.0%	97.8%	2.2%	100.0%	97.0%
Management (VIII & above)	57	59	1.04	33.9%	66.1%	1.00	1.06	96.6%	95.0%	97.4%	98.3%	1.7%	100.0%	97.4%
Middle Management (V-VII)	252	270	1.07	19.3%	80.7%	1.05	1.08	89.3%	89.3%	90.4%	90.0%	10.0%	96.2%	88.5%
Other Administrative	2	2	1.28		100.0%		1.28	100.0%	100.0%	100.0%	50.0%	50.0%		50.0%
Administrative/ Supervisory (V to VII)	254	272	1.07	19.1%	80.9%	1.05	1.08	89.3%	84.6%	90.5%	89.7%	10.3%	96.2%	88.2%
General Administrative (III & IV)	710	801	1.13	9.0%	91.0%	1.07	1.14	84.0%	84.0%	84.5%	73.8%	26.2%	88.9%	72.3%
Clerical (III & IV)	710	801	1.13	9.0%	91.0%	1.07	1.14	84.0%	79.2%	84.5%	73.8%	26.2%	88.9%	72.3%
Management & Administrative	1,020	1,132	1.11	12.7%	87.3%	1.05	1.12	86.0%	83.3%	86.3%	78.9%	21.1%	93.1%	76.8%
Catering	69	74	1.08	35.1%	64.9%	1.03	1.11	94.6%	94.6%	93.8%	74.3%	25.7%	92.3%	64.6%
Household Services	422	493	1.17	20.7%	79.3%	1.09	1.19	88.2%	88.2%	90.8%	59.4%	40.6%	82.4%	53.5%
Other Support	42	50	1.20	32.0%	68.0%	1.08	1.27	90.0%	90.0%	88.2%	72.0%	28.0%	87.5%	64.7%
Portering	47	49	1.05	93.9%	6.1%	1.05	1.00	87.8%	87.8%	66.7%	89.8%	10.2%	89.1%	100.0%
Support	579	666	1.15	28.5%	71.5%	1.07	1.19	89.0%	84.7%	90.8%	64.3%	35.7%	85.8%	55.7%
Maintenance	133	138	1.04	99.3%	0.7%	1.04	1.00	96.4%	96.4%	100.0%	96.4%	3.6%	96.4%	100.0%
Maintenance/ Technical	133	138	1.04	99.3%	0.7%	1.04	1.00	96.4%	96.4%	100.0%	96.4%	3.6%	96.4%	100.0%
General Support	711	804	1.13	40.7%	59.3%	1.06	1.19	90.3%	89.6%	90.8%	69.8%	30.2%	90.2%	55.8%
Health Care Assistants	1,028	1,125	1.09	29.3%	70.7%	1.06	1.11	89.4%	83.0%	92.1%	78.8%	21.2%	90.6%	73.8%
Care, other	208	246	1.18	46.7%	53.3%	1.12	1.25	81.7%	76.5%	86.3%	69.1%	30.9%	78.3%	61.1%
Patient & Client Care	1,236	1,371	1.11	32.5%	67.5%	1.07	1.13	88.0%	81.3%	91.3%	77.0%	23.0%	87.4%	72.0%

Employment by WTE, Headcount, Gender, Full-Time /Part-Time etc.: Sep 2021

Mental Health Services CHO	WTE	Headcount	WTE: no.	% Male	% female	Male WTE: no.	Female WTE: no.	% Total Perm	% Male Perm	% Female Perm	% Total Full Time	% Total Part Time	% Male FT	% Female FT
Overall	10,377	11,507	1.11	27.0%	73.0%	1.06	1.13	82.9%	79.2%	84.2%	85.2%	14.8%	93.0%	82.3%
CHO 1	999	1,100	1.10	26.7%	73.3%	1.05	1.12	89.0%	89.0%	90.9%	86.5%	13.5%	95.9%	83.1%
CHO 2	1,335	1,462	1.10	28.1%	71.9%	1.06	1.11	85.3%	85.3%	87.3%	84.1%	15.9%	90.0%	81.7%
CHO 3	830	926	1.12	22.8%	77.2%	1.07	1.13	79.5%	79.5%	79.2%	85.3%	14.7%	91.5%	83.5%
CHO 4	1,552	1,742	1.12	25.6%	74.4%	1.08	1.14	71.7%	71.7%	74.2%	84.9%	15.1%	94.2%	81.7%
CHO 5	1,215	1,360	1.12	25.0%	75.0%	1.06	1.14	86.8%	86.8%	87.3%	79.3%	20.7%	90.3%	75.7%
CHO 6	639	707	1.11	31.0%	69.0%	1.10	1.11	82.3%	82.3%	83.2%	86.8%	13.2%	91.8%	84.6%
CHO 7	883	981	1.11	23.8%	76.2%	1.06	1.13	81.1%	81.1%	83.0%	87.8%	12.2%	95.7%	85.3%
CHO 8	1,106	1,230	1.11	24.6%	75.4%	1.03	1.14	85.4%	85.4%	86.1%	86.3%	13.7%	95.4%	83.4%
CHO 9	1,310	1,462	1.12	27.8%	72.2%	1.05	1.14	84.9%	84.9%	86.9%	84.6%	15.4%	94.6%	80.8%
other Community Services	508	537	1.06	45.6%	54.4%	1.06	1.05	88.1%	88.1%	89.7%	92.6%	7.4%	90.6%	94.2%

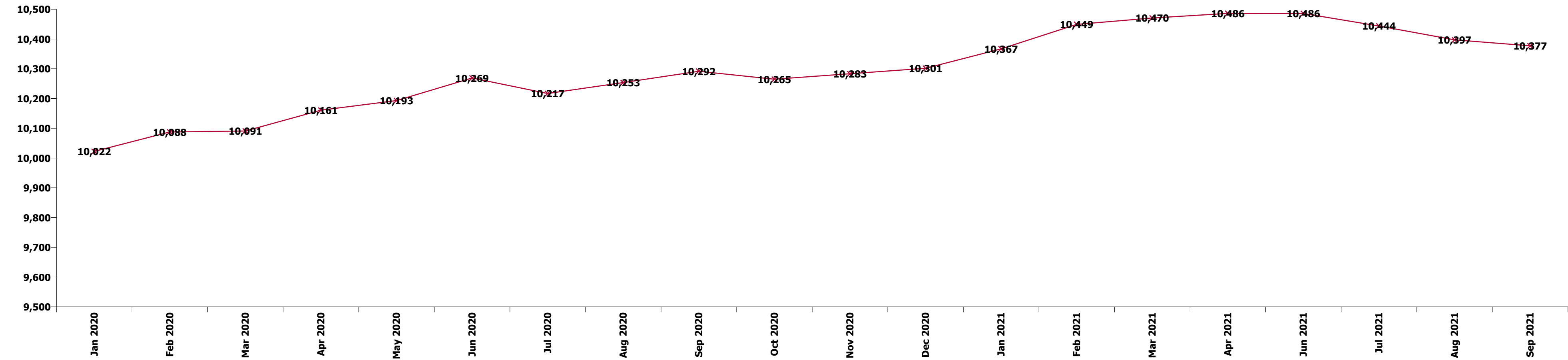
Summary Staff Movement: September 2021

Month-on-month
Summary

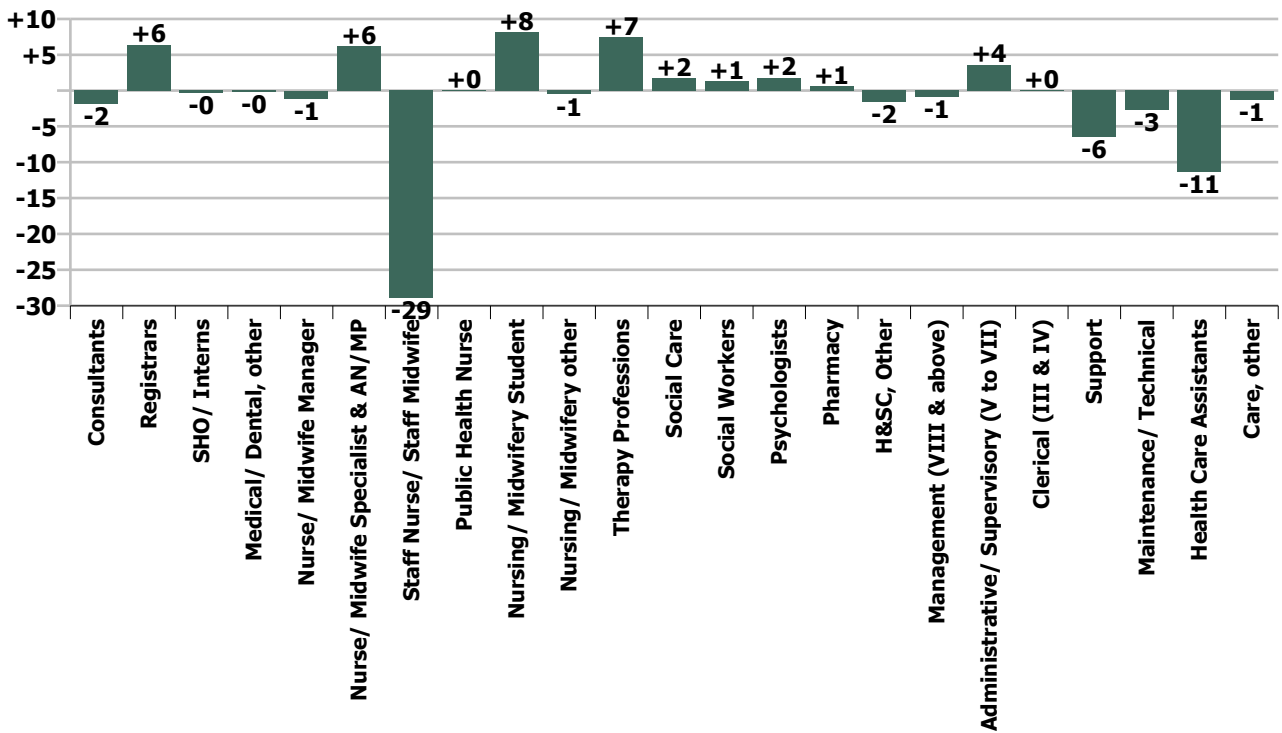
WTE change since Aug 21	% change since Aug 21	overall	Consultants	Registrars	SHO/ Interns	Medical/ Dental, other	Medical & Dental	Nurse/ Midwife Manager	Nurse/ Midwife Specialist & ANMP	Staff Nurse/ Staff Midwife	Public Health Nurse	Nursing/ Midwifery Student	Nursing/ Midwifery other	Nursing & Midwifery	Therapy Professions	Social Care	Social Workers	Psychologists	Pharmacy	H&SC, Other	Health & Social Care Professionals	Management (VIII & above)	Administrative/ Supervisory (V to VII)	Clerical (III & IV)	Management & Administrative	General Support	Health Care Assistants	Care, other	Patient & Client Care
Overall	-0.2%	-20	-2	+6	-0	-0	+4	-1	+6	-29	+0	+8	-1	-16	+7	+2	+1	+2	+1	-2	+11	-1	+4	+0	+3	-9	-11	-1	-13
CHO 1	-0.3%	-3	-0	+1	+1		+1	+0	+0	+2		-3	+0	-0	+0	+0	-1	+0	-0	+0	+0	+0	-0	+1	+0	-3	-2	+0	-1
CHO 2	+0.1%	+2	-1	+1	-3		-3	+0	+2	-1		+2	+1	+4	+1	+0	+2	-2	+1		+2	+0	+0	+0	+1	-2	-1	+1	-1
CHO 3	-0.7%	-6	-0	+0	-1		-1	-2	+2	-3		-0		-4	+1	-0	-0	+2	+2	-0	+2	-0	+0	-1	-1	-2	-1		-1
CHO 4	-0.4%	-7	-0	+1	+1	-0	+2	-3	+0	-7			+7	-9	+6	-1	-2	+1	-0	-1	+3	-1	+1	-2	-2	-1	+1	-0	+1
CHO 5	+0.7%	+8	+1	+0	-0		+0	+1	+0	-0			+0	+8	-1	+0	+1	-0		+0	+0	-0	-0	+2	+2	+1	-2	-0	-3
CHO 6	+0.9%	+6	-1	-0	-1		-2	+0	+1	-5		-0		-4	+3	+1	+3	+2		-1	+7	-0	+3	+1	+4	+0	+0	-0	+0
CHO 7	+0.1%	+1	-1	+1	+1		+1	-1	-1	+2	+0	-1	+0	-1	-0	+1	+1	-1		+0	+1	-0	-0	+1	+0	+1	-1	-1	-2
CHO 8	-0.7%	-8	-1	+1	+2		+1	+1	+1	-7		+2	+0	-2	+0	+1	-2	+1		-1	-1	+1	-1	-1	-1	-2	-4		-4
CHO 9	-0.3%	-5	+2	+2	-0		+3	+2	+0	-2		+0	-0	-0	-2		-1	-0	+0	-0	-3	-0	-0	-1	-1	-2	-1	-0	-1
other Community Services	-1.4%	-7	+0	+0	+0		+1	+1	+1	-8			-1	-7	+0		-1	-0	-0	-0	-1	-0	+1	-0	+0	-0	-0	-0	-0
		-0.2%	-0.5%	+2.0%	-0.1%	-4.9%	+0.4%	-0.1%	+1.2%	-0.9%	+7.5%	+4.7%	-1.7%	-0.3%	+1.7%	+2.3%	+0.3%	+0.4%	+2.8%	-1.5%	+0.8%	-1.5%	+1.4%	+0.0%	+0.3%	-1.3%	-1.1%	-0.6%	-1.0%

Year-on-year Summary

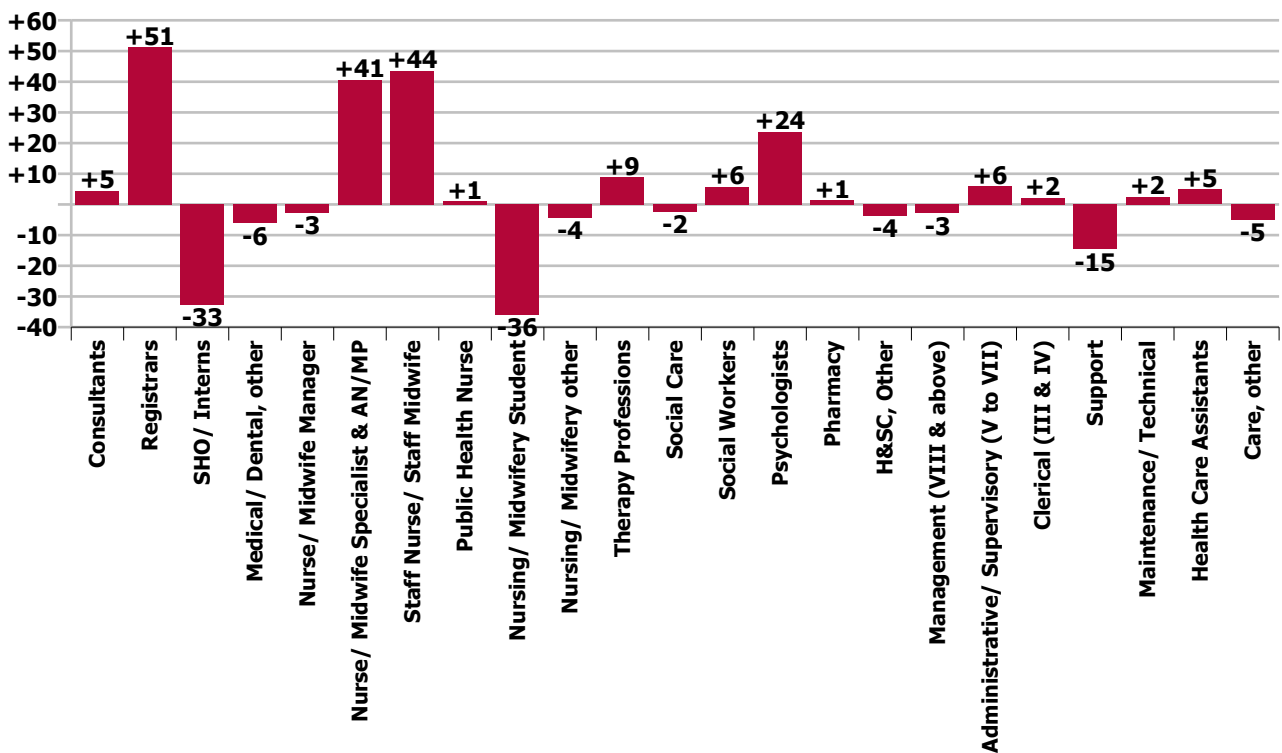
WTE change since Sep 20	% change since Sep 20	overall	Consultants	Registrars	SHO/ Interns	Medical/ Dental, other	Medical & Dental	Nurse/ Midwife Manager	Nurse/ Midwife Specialist & AN/MP	Staff Nurse/ Staff Midwife	Public Health Nurse	Nursing/ Midwifery Student	Nursing/ Midwifery other	Nursing & Midwifery	Therapy Professions	Social Care	Social Workers	Psychologists	Pharmacy	H&SC, Other	Health & Social Care Professionals	Management (VII & above)	Administrative/ Supervisory (V to VI)	Clerical (III & IV)	Management & Administrative	General Support	Health Care Assistants	Care, other	Patient & Client Care
Overall	+0.8%	+85	+5	+51	-33	-6	+17	-3	+41	+44	+1	-36	-4	+42	+9	-2	+6	+24	+1	-4	+34	-3	+6	+2	+5	-12	+5	-5	-0
CHO 1	+1.5%	+15	+2	+4	+0		+6	-0	+3	+5		-14	+1	-5	+5	+1	+2	-1	-0	+1	+8	-3	+0	+6	+3	-2	+5	-0	+5
CHO 2	-0.6%	-7	+2	-2	-3	-1	-4	-8	+3	+20		-8	-1	+8	-1	+1	-1	-2	+1	+0	-3	-1	+0	-3	-4	+2	-4	-3	-6
CHO 3	+5.0%	+39	-0	+4	+3		+7	-0	-1	+11	+4	-2		+7	+7	-0	-2	+13		-3	+16	+1	-1	+2	+2	-0	+8		+8
CHO 4	-1.1%	-17	-1	+11	+3	-4	+8	-1	+5	-19		+2		-13	-1	-3	-1	+7	-1	-5	-3	-1	+1	-1	-1	+1	-7	-3	-10
CHO 5	+0.9%	+11	+0	+2	-4	-1	-3	+9	+5	+6		+5	-0	+26	-6	+0	-1	-1		+9	+2	-1	+3	+5	+8	-15	-4	-2	-6
CHO 6	+4.7%	+29	+0	+6	-5		+2	-5	+6	+6		+3	-1	+10	+7	-1	+2	+6		+0	+15	+7	-1	-4	-5	+1	+6	+0	+6
CHO 7	+1.6%	+14	-0	-1	+1		-1	-2	+6	+14	+1	-6	-3	+10	+1	+1	+5	-3		-1	+3	+1	-0	-4	-3	+1	-1	+3	+3
CHO 8	-1.5%	-17	+2	+12	-9		+4	+6	+4	-13		-2		-6	-2	-0	+2	-1	+1	-6	-7	+1	-0	-2	-1	-1	-6		-6
CHO 9	-0.5%	-7	-1	+14	-21		-8	-1	+8	+7		-14	-1	-1	-2	+0	+1	+1	+0	+0	+1	-2	-0	-1	-3	+6	-0	+5	
other Community Services	+5.5%	+26	+1	+1	+3		+5	-1	+1	+6				+6	+1	-1	-1	+3	+1	+1	+3	-1	+5	+4	+8	+3	+2		+2
		+0.8%	+1.2%	+18.0%	-12.0%	-60.3%	+1.8%	-0.2%	+8.2%	+1.5%	-100.0%	-16.5%	-12.8%	+0.9%	+2.1%	-3.1%	+1.6%	+5.9%	+7.1%	-3.3%	+2.4%	-4.8%	+2.4%	+0.3%	+0.5%	-1.7%	+0.5%	-2.3%	-0.0%



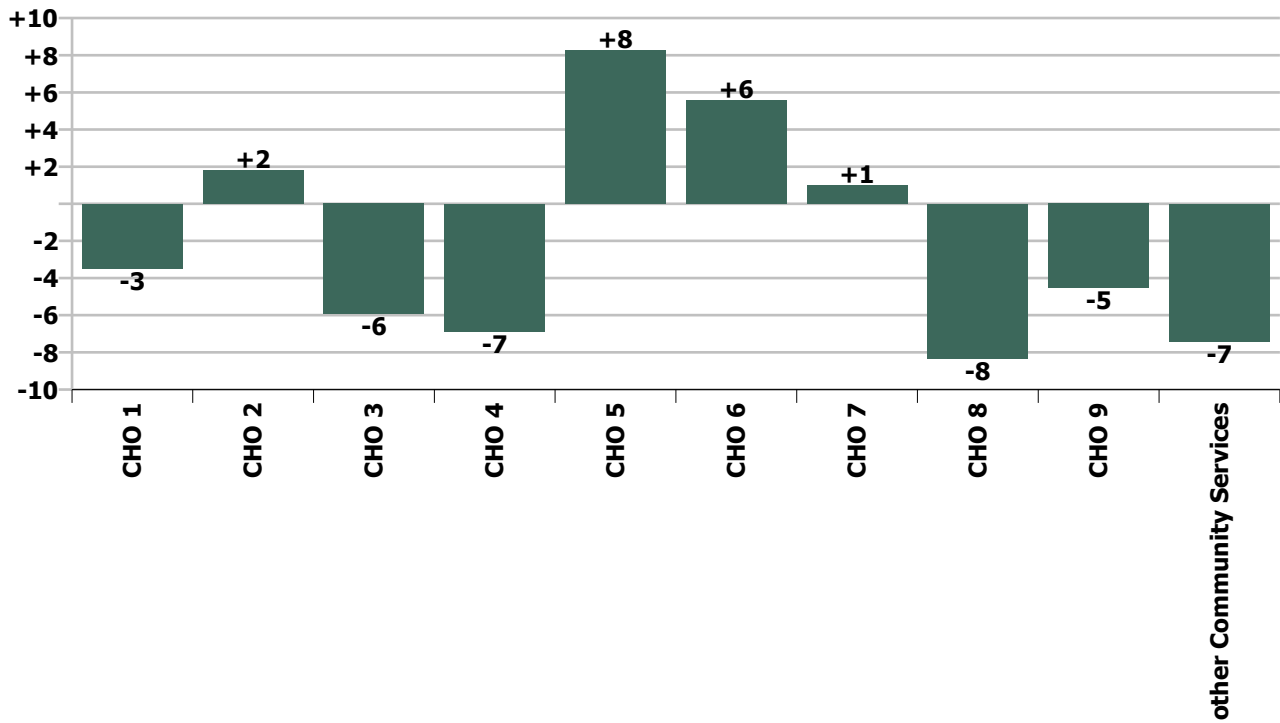
Staff Group change since: Aug 2021



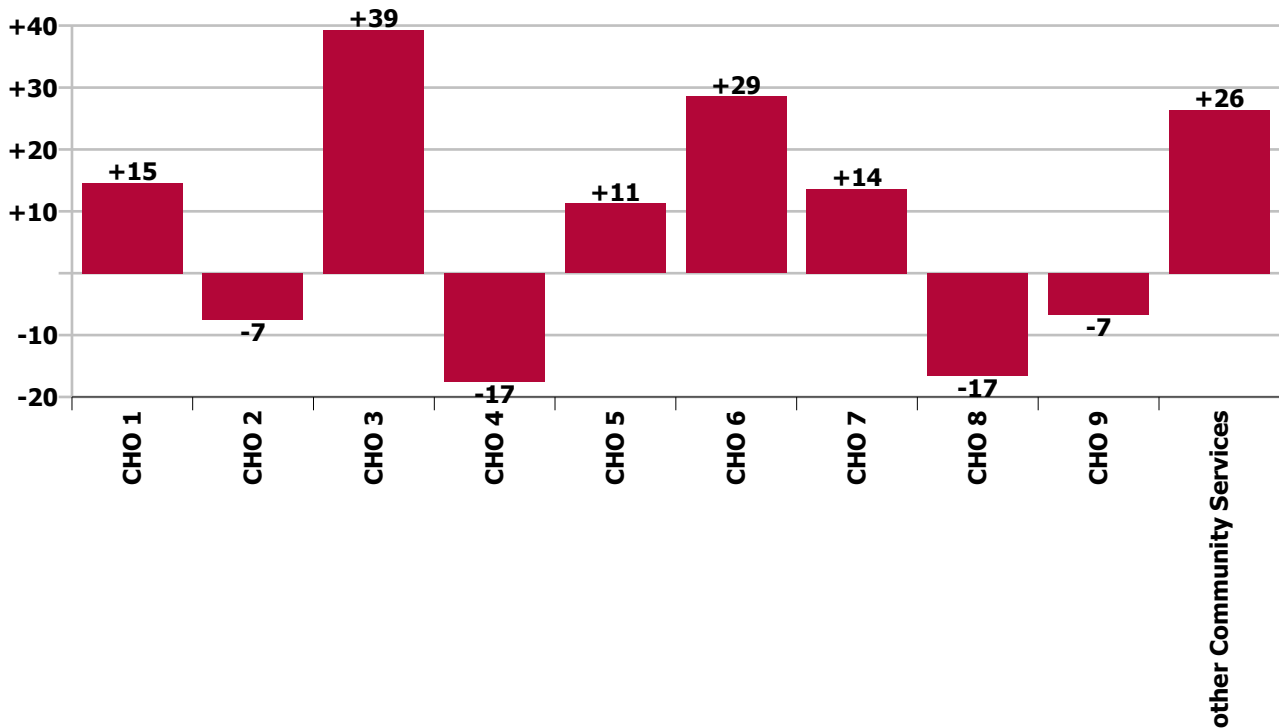
Staff Group change since: Sep 2020



CHO change since: Aug 2021



CHO change since: Sep 2020



Longitudinal Employment Levels by Grade Group - Dec 2016 to Sep 2021

Sep 2021 (Dec 2015 figure: 9,499)	WTE Sep 2021	WTE change since Dec 16	WTE change since Dec 17	WTE change since Dec 18	WTE change since Dec 19	WTE change since Dec 20	WTE change since Apr 21	% change since Dec 16	% change since Dec 17	% change since Dec 18	% change since Dec 19	% change since Dec 20	% change since Apr 21
Overall	10,377	+757	+587	+479	+423	+76	-109	+7.9%	+6.0%	+4.8%	+4.3%	+0.7%	-1.0%
Consultant Medicine	1		-0	-0					-9.1%	-9.1%			
Consultant Psychiatry	377	+62	+65	+47	+25	+8	+1	+19.7%	+20.8%	+14.3%	+7.2%	+2.3%	+0.2%
Consultants	378	+62	+65	+47	+25	+8	+1	+19.7%	+20.7%	+14.2%	+7.2%	+2.3%	+0.2%
Registrar	212	+80	+67	+58	+43	+44	+12	+60.4%	+46.5%	+37.7%	+25.2%	+26.2%	+6.2%
Senior Registrar	119	+52	+53	+33	+22	+8	+11	+77.8%	+81.3%	+38.9%	+22.8%	+7.3%	+9.8%
Specialist Registrar	4	+3	+2	+3	+1	+2	+2	+299.0%	+99.5%	+299.0%	+59.6%	+99.5%	+99.5%
Registrars	335	+135	+123	+94	+66	+54	+25	+67.4%	+57.8%	+39.2%	+24.6%	+19.2%	+8.1%
<i>Intern</i>	7	-5	-3	-1	-1			-43.2%	-31.8%	-14.7%	-14.7%	+36.4%	+36.4%
Interns	7	-5	-3	-1	-1	+2	+2	-43.2%	-31.8%	-14.7%	-14.7%	+36.4%	+41.2%
Senior House Officer	234	-13	-39	-36	-20	-37	-8	-5.4%	-14.3%	-13.3%	-7.7%	-13.8%	-3.1%
SHO/ Interns	240	-19	-42	-37	-21	-36	-6	-7.1%	-14.9%	-13.3%	-7.9%	-12.9%	-2.3%
Dentists			-0	-0				-100.0%	-100.0%	-100.0%	-100.0%	-100.0%	-100.0%
Other Medical	4	-6	-7	-2	-1	-1	-0	-57.9%	-62.7%	-37.6%	-19.0%	-19.0%	-9.2%
Medical/ Dental, other	4	-6	-7	-3	-1	-1	-0	-57.9%	-62.9%	-38.3%	-19.0%	-19.0%	-9.2%
Medical & Dental	958	+173	+139	+102	+70	+26	+20	+22.0%	+16.9%	+11.9%	+7.9%	+2.8%	+2.1%
Clinical Nurse/ Midwife Manager	1,047	+40	+64	+41	+48	+6	+12	+4.0%	+6.5%	+4.1%	+4.8%	+0.6%	+1.2%
Director Nursing/Midwifery, Assistant	172	+17	+10	+8	+7	+1	-5	+10.6%	+6.1%	+4.7%	+4.3%	+0.7%	-2.7%
Director of Nursing/Midwifery	28	-3	-0	+5	-0	+0	+2	-10.4%	-0.3%	+19.7%	-1.7%	+1.7%	+6.1%
Nurse/ Midwife Manager	1,247	+53	+74	+53	+55	+8	+9	+4.5%	+6.3%	+4.5%	+4.6%	+0.6%	+0.7%
Advanced Nurse/ Midwife Practitioner	47	+39	+36	+26	+16	+7	+5	+521.9%	+343.0%	+131.0%	+51.4%	+18.0%	+13.0%
Clinical Nurse/ Midwife Specialist	493	+157	+110	+98	+65	+4	+8	+46.6%	+28.7%	+24.8%	+15.1%	+0.8%	+1.6%
Nurse/ Midwife Specialist & AN/MP	539	+196	+146	+124	+80	+11	+13	+56.9%	+37.1%	+29.9%	+17.5%	+2.1%	+2.5%
Graduate Nursing/ Midwifery								-100.0%	-100.0%	-100.0%	-100.0%	-100.0%	-100.0%
<i>Staff Midwife</i>								-100.0%	-100.0%	-100.0%	-100.0%	-100.0%	-100.0%
Staff Midwives						-1		-100.0%	-100.0%	-100.0%	-100.0%	-100.0%	-100.0%
Staff Nurse [Intellectual Disability]	3	-0	-0	-3	-1	-1	+1	-6.0%	-9.2%	-47.7%	-30.7%	-25.9%	+34.2%
Staff Nurse [Psychiatric]	2,896	-161	-131	-59	+3	-69	-121	-5.3%	-4.3%	-2.0%	+0.1%	-2.3%	-4.0%
Staff Nurses [General/ Children's]	114	-7	-4	-4	+9	+7	+19	-5.7%	-3.2%	-3.2%	+8.6%	+7.0%	+19.7%

Sep 2021 (Dec 2015 figure: 9,499)	WTE Sep 2021	WTE change since Dec 16	WTE change since Dec 17	WTE change since Dec 18	WTE change since Dec 19	WTE change since Dec 20	WTE change since Apr 21	% change since Dec 16	% change since Dec 17	% change since Dec 18	% change since Dec 19	% change since Dec 20	% change since Apr 21
Overall	10,377	+757	+587	+479	+423	+76	-109	+7.9%	+6.0%	+4.8%	+4.3%	+0.7%	-1.0%
Staff Nurse/ Staff Midwife	3,013	-168	-135	-66	+10	-63	-102	-5.3%	-4.3%	-2.1%	+0.3%	-2.1%	-3.3%
Public Health Nurse	1			+1	+1	+1	+1			-100.0%	-100.0%	-100.0%	-100.0%
<i>Student General Nursing Intern (pre-registration)</i>				-1				-100.0%	-100.0%	-100.0%	-100.0%	-100.0%	-100.0%
<i>Student Psychiatric Nursing Intern (pre-registration)</i>	131	+122	+114	+104	+103			+1411.4%	+677.3%	+384.6%	+375.4%	+1122.1%	+1122.1%
Pre-registration Nurse/ Midwife Intern	131	+122	+114	+103	+103	+120	-40	+1411.4%	+677.3%	+369.6%	+375.4%	+1122.1%	-23.5%
<i>Student Psychiatric Nursing Intern (COVID-19 HCA)</i>	2	+2	+2	+2	+2			-100.0%	-100.0%	-100.0%	-100.0%	-94.3%	-94.3%
Pre-registration Nurse Intern (COVID-19)	2	+2	+2	+2	+2	-40	-2	-100.0%	-100.0%	-100.0%	-100.0%	-94.3%	-46.8%
<i>Student Public Health Nursing (post registration)</i>					-1			-100.0%	-100.0%	-100.0%	-100.0%	-100.0%	-100.0%
Post-registration Nurse/ Midwife Student					-1	-1	-1	-100.0%	-100.0%	-100.0%	-100.0%	-100.0%	-100.0%
Nursing/ Midwifery awaiting registration	49	+47	+40	+29	-10	+44	+45	+2333.0%	+462.5%	+145.3%	-17.4%	+903.3%	+1177.2%
Nursing/ Midwifery Student	182	+171	+156	+134	+95	+123	+2	+1607.0%	+613.9%	+281.4%	+108.1%	+208.6%	+0.9%
Nursing Education/Clinical	30	+5	-0	-1	-1	-2	-2	+22.1%	-1.5%	-2.9%	-4.6%	-5.0%	-6.6%
Nursing/ Midwifery other	30	+5	-0	-1	-1	-2	-2	+22.1%	-1.5%	-2.9%	-4.6%	-5.0%	-6.6%
Nursing & Midwifery	5,013	+258	+241	+246	+239	+77	-79	+5.4%	+5.0%	+5.2%	+5.0%	+1.6%	-1.6%
Dietitians	20	+7	+4	+0	+1	-0	-1	+50.0%	+21.2%	+1.3%	+6.2%	-2.3%	-3.4%
Occupational Therapists	350	+50	+24	+11	+12	+5	-8	+16.8%	+7.4%	+3.2%	+3.4%	+1.3%	-2.3%
Physiotherapists	3	+1	+1	+1	+0	+0	+0	+28.4%	+113.2%	+60.2%	+15.7%	+7.1%	+7.1%
Podiatrists & Chiropodists	1	-1	-1	-0	+0	+0	+0	-52.7%	-41.5%	-29.5%	+17.8%	+7.5%	+10.3%
Speech & Language Therapists	63	+3	+1	+1	+1	-7	-7	+5.2%	+1.9%	+1.8%	+1.5%	-10.1%	-9.9%
Therapy Professions	436	+60	+30	+13	+14	-3	-16	+15.9%	+7.3%	+3.0%	+3.3%	-0.6%	-3.5%
Social Care	75	-13	-7	-3	+2	-5	-4	-14.4%	-8.9%	-4.4%	+2.2%	-6.0%	-4.6%
Social Workers	373	+23	+16	+15	+24	+1	-6	+6.6%	+4.5%	+4.1%	+6.8%	+0.2%	-1.7%
Psychologists	425	+82	+55	+36	+31	+1	-4	+24.0%	+14.8%	+9.4%	+7.8%	+0.3%	-1.0%
Pharmacy	21	+2	+2	+2	+3	+0	+1	+8.3%	+8.9%	+9.4%	+13.7%	+1.7%	+7.6%
Counsellor Therapists	102	+17	+16	+17	+7	+1	+5	+19.7%	+19.0%	+19.7%	+7.4%	+0.6%	+4.8%
Other Health & Social Care	5	-3	-4	-4	-7	-0	-0	-40.5%	-41.5%	-41.8%	-57.3%	-7.4%	-0.8%
Play Therapists/ Specialists	2	-1	+0	+0	+0	+0	+0	-35.2%	+7.3%	+9.5%	+11.0%	+9.5%	+9.5%
H&SC, Other	108	+12	+13	+13	+0	+0	+5	+13.0%	+13.4%	+14.0%	+0.4%	+0.3%	+4.6%
Health & Social Care Professionals	1,439	+167	+107	+76	+73	-5	-24	+13.1%	+8.1%	+5.6%	+5.3%	-0.3%	-1.6%

Sep 2021 (Dec 2015 figure: 9,499)	WTE Sep 2021	WTE change since Dec 16	WTE change since Dec 17	WTE change since Dec 18	WTE change since Dec 19	WTE change since Dec 20	WTE change since Apr 21	% change since Dec 16	% change since Dec 17	% change since Dec 18	% change since Dec 19	% change since Dec 20	% change since Apr 21
Overall	10,377	+757	+587	+479	+423	+76	-109	+7.9%	+6.0%	+4.8%	+4.3%	+0.7%	-1.0%
Executive Management	14	+7	+6	+4	+3	-1	-2	+98.9%	+74.0%	+39.2%	+26.5%	-5.5%	-10.0%
Senior Management (VIII & GM)	43	+18	+12	+11	-3	-9	-5	+73.9%	+37.3%	+35.6%	-7.4%	-18.1%	-9.5%
Management (VIII & above)	57	+25	+18	+15	-1	-10	-6	+79.4%	+44.8%	+36.5%	-0.9%	-15.3%	-9.6%
Administrative/ Supervisory (V to VII)	254	+86	+54	+31	+17	+9	+12	+51.2%	+27.3%	+14.0%	+7.1%	+3.7%	+4.8%
Clerical (III & IV)	710	+49	+28	+14	-8	-12	-19	+7.3%	+4.1%	+2.0%	-1.1%	-1.7%	-2.6%
Management & Administrative	1,020	+160	+100	+61	+9	-14	-13	+18.5%	+10.9%	+6.3%	+0.9%	-1.3%	-1.3%
Catering	69	+3	+3	-3	+3	+5	+3	+4.6%	+4.3%	-4.5%	+5.2%	+8.0%	+4.9%
Household Services	422	-71	-55	-24	-3	-20	-13	-14.3%	-11.5%	-5.4%	-0.7%	-4.5%	-3.0%
Other Support	42	-14	-8	-13	-1	-0	-1	-25.7%	-15.8%	-24.5%	-2.5%	-0.6%	-3.2%
Portering	47	-12	-2	-1	-1	-1	-0	-21.1%	-4.4%	-2.6%	-2.8%	-1.2%	-0.3%
Support	579	-94	-62	-42	-2	-16	-11	-14.0%	-9.6%	-6.7%	-0.3%	-2.6%	-1.9%
Maintenance	133	-10	-6	-2	+4	-5	-4	-7.2%	-4.3%	-1.2%	+3.0%	-3.4%	-3.2%
Technical Services		-2	-2	-2	-2			-100.0%	-100.0%	-100.0%	-100.0%	-100.0%	-100.0%
Maintenance/ Technical	133	-12	-8	-4	+2	-5	-4	-8.4%	-5.6%	-2.6%	+1.4%	-3.4%	-3.2%
General Support	711	-107	-70	-45	-0	-20	-16	-13.0%	-8.9%	-6.0%	-0.0%	-2.8%	-2.2%
HCA, Nurse's Aide, etc.	1,019	+90	+70	+45	+40	+5	+0	+9.7%	+7.4%	+4.6%	+4.1%	+0.5%	+0.0%
Health & Social Care Assistants	9	+5	+5	+4	+0	+1	-1	+101.3%	+101.3%	+71.7%	+4.5%	+12.0%	-10.1%
Health Care Assistants	1,028	+94	+75	+48	+40	+6	-1	+10.1%	+7.8%	+4.9%	+4.1%	+0.6%	-0.1%
Other Care Grades	208	+12	-4	-8	-8	+4	+4	+6.0%	-2.1%	-3.7%	-3.7%	+2.2%	+2.1%
Care, other	208	+12	-4	-8	-8	+4	+4	+6.0%	-2.1%	-3.7%	-3.7%	+2.2%	+2.1%
Patient & Client Care	1,236	+106	+70	+40	+32	+11	+4	+9.4%	+6.0%	+3.4%	+2.7%	+0.9%	+0.3%

Source: Health Service Personnel Census

