

# Mental Health Service Employment Report: September 2020

## Employment by Staff Group

Sep 2020 (Dec 2019 figure: 9,954)	WTE Aug 2020	WTE Sep 2020	WTE change since Aug 20	% change since Aug 20	WTE change since Dec 19	WTE change since Sep 19
<b>Overall</b>	<b>10,253</b>	<b>10,292</b>	<b>+38</b>	<b>+0.4%</b>	<b>+338</b>	<b>+363</b>
Consultants	366	373	+8	+2.1%	+21	+33
Registrars	276	284	+8	+2.9%	+15	+17
SHO/ Interns	259	273	+14	+5.3%	+12	+11
Medical/ Dental, other	5	10	+5	+95.4%	+5	+4
<b>Medical &amp; Dental</b>	<b>906</b>	<b>941</b>	<b>+34</b>	<b>+3.8%</b>	<b>+53</b>	<b>+65</b>
Nurse/ Midwife Manager	1,233	1,250	+17	+1.4%	+58	+32
Nurse/ Midwife Specialist & AN/MP	495	499	+4	+0.7%	+40	+59
Staff Nurse/ Staff Midwife	2,981	2,969	-12	-0.4%	-33	-3
<i>Pre-registration Nurse/ Midwife Intern</i>	38	10	-29	-74.8%	-18	-97
<i>Pre-registration Nurse Intern (COVID-19)</i>	171	200	+29	+16.8%	+200	+200
<i>Post-registration Nurse/ Midwife Student</i>		0	+0	-100.0%	+0	+0
<i>Nursing/ Midwifery awaiting registration</i>	8	8	+0	+2.0%	-12	-5
Nursing/ Midwifery Student	217	218	+1	+0.3%	+130	+99
Nursing/ Midwifery other	35	35	-1	-2.5%	+3	+5
<b>Nursing &amp; Midwifery</b>	<b>4,962</b>	<b>4,970</b>	<b>+8</b>	<b>+0.2%</b>	<b>+197</b>	<b>+192</b>
Therapy Professions	428	428	-1	-0.2%	+5	+9
Social Care	78	78	-1	-1.0%	+4	+4
Social Workers	365	367	+3	+0.8%	+18	+22
Psychologists	409	402	-8	-1.9%	+7	+7
Pharmacy	19	20	+1	+5.4%	+1	+1
H&SC, Other	109	112	+3	+2.6%	+4	+9
<b>Health &amp; Social Care Professionals</b>	<b>1,409</b>	<b>1,406</b>	<b>-3</b>	<b>-0.2%</b>	<b>+39</b>	<b>+52</b>
Management (VIII & above)	58	60	+1	+2.5%	+2	+7
Administrative/ Supervisory (V to VII)	245	248	+3	+1.1%	+11	+15
Clerical (III & IV)	715	708	-7	-1.0%	-10	-3
<b>Management &amp; Administrative</b>	<b>1,018</b>	<b>1,015</b>	<b>-3</b>	<b>-0.3%</b>	<b>+4</b>	<b>+18</b>
Support	585	593	+8	+1.4%	+13	+8
Maintenance/ Technical	132	130	-2	-1.3%	-1	-4
<b>General Support</b>	<b>717</b>	<b>724</b>	<b>+6</b>	<b>+0.9%</b>	<b>+12</b>	<b>+4</b>
Health Care Assistants	1,034	1,023	-10	-1.0%	+35	+35
Care, other	208	213	+5	+2.6%	-3	-3
<b>Patient &amp; Client Care</b>	<b>1,241</b>	<b>1,236</b>	<b>-5</b>	<b>-0.4%</b>	<b>+32</b>	<b>+32</b>

## Mental Health Services Employment by Administration (HSE / S38): September 2020

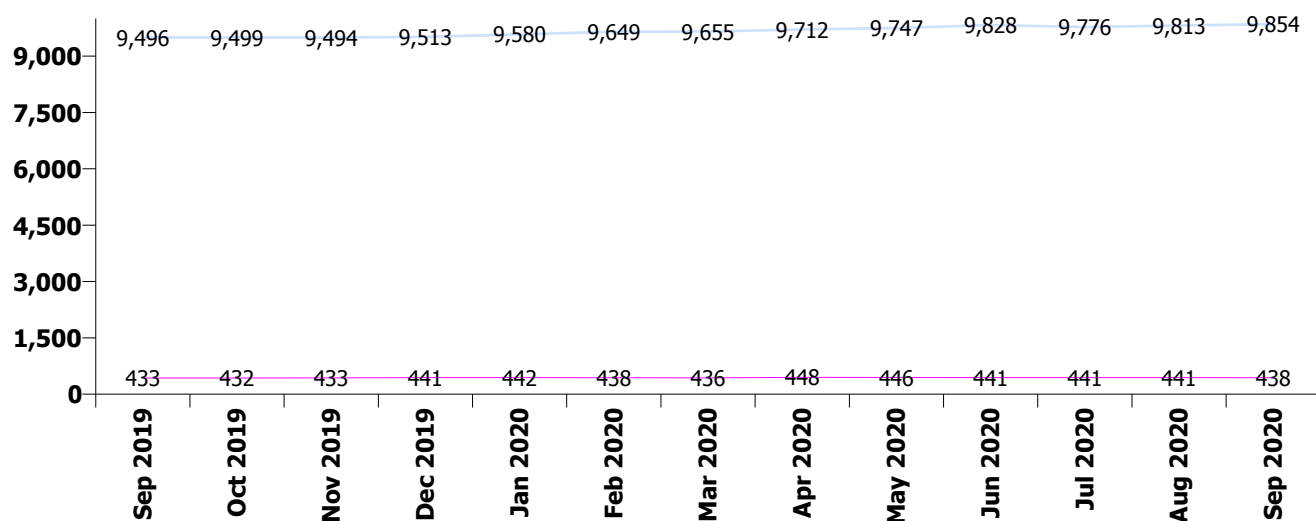
Sep 2020 (Dec 2019 figure: 9,954)	WTE Aug 2020	WTE Sep 2020	WTE change since Aug 20	% change since Aug 20	WTE change since Dec 19	WTE change since Sep 19
<b>Overall</b>	<b>10,253</b>	<b>10,292</b>	<b>+38</b>	<b>+0.4%</b>	<b>+338</b>	<b>+363</b>
<b>HSE</b>	<b>9,813</b>	<b>9,854</b>	<b>+41</b>	<b>+0.4%</b>	<b>+341</b>	<b>+358</b>
<b>Section 38 Voluntary Agencies</b>	<b>441</b>	<b>438</b>	<b>-3</b>	<b>-0.7%</b>	<b>-3</b>	<b>+5</b>

### HSE

Sep 2020 (Dec 2019 figure: 9,513)	WTE Aug 2020	WTE Sep 2020	WTE change since Aug 20	% change since Aug 20	WTE change since Dec 19	WTE change since Sep 19
<b>Overall</b>	<b>9,813</b>	<b>9,854</b>	<b>+41</b>	<b>+0.4%</b>	<b>+341</b>	<b>+358</b>
Consultants	346	354	+8	+2.2%	+21	+33
Registrars	261	269	+8	+2.9%	+19	+20
SHO/ Interns	252	264	+13	+5.0%	+9	+8
Medical/ Dental, other	5	10	+5	+95.4%	+5	+4
<b>Medical &amp; Dental</b>	<b>864</b>	<b>897</b>	<b>+33</b>	<b>+3.8%</b>	<b>+54</b>	<b>+65</b>
Nurse/ Midwife Manager	1,195	1,211	+16	+1.3%	+56	+31
Nurse/ Midwife Specialist & AN/MP	487	491	+4	+0.7%	+38	+57
Staff Nurse/ Staff Midwife	2,860	2,851	-9	-0.3%	-29	-1
Pre-registration Nurse/ Midwife Intern	38	10	-29	-74.8%	-11	-89
Pre-registration Nurse Intern (COVID-19)	158	193	+35	+22.0%	+193	+193
Post-registration Nurse/ Midwife Student		0	+0	-100.0%	+0	+0
Nursing/ Midwifery awaiting registration	8	8	+0	+2.0%	-12	-5
Nursing/ Midwifery Student	204	211	+7	+3.3%	+130	+99
Nursing/ Midwifery other	33	32	-1	-2.7%	+3	+5
<b>Nursing &amp; Midwifery</b>	<b>4,779</b>	<b>4,795</b>	<b>+16</b>	<b>+0.3%</b>	<b>+199</b>	<b>+192</b>
Therapy Professions	402	402	-0	-0.1%	+11	+14
Social Care	50	50	-0	-0.3%	+2	+4
Social Workers	345	348	+3	+0.8%	+18	+21
Psychologists	391	381	-10	-2.5%	+2	+2
Pharmacy	17	18	+1	+6.0%	+1	+1
H&SC, Other	108	111	+3	+2.6%	+8	+9
<b>Health &amp; Social Care Professionals</b>	<b>1,314</b>	<b>1,310</b>	<b>-4</b>	<b>-0.3%</b>	<b>+42</b>	<b>+50</b>
Management (VIII & above)	56	58	+1	+2.6%	+2	+7
Administrative/ Supervisory (V to VII)	224	225	+2	+0.7%	+9	+14
Clerical (III & IV)	672	664	-7	-1.1%	-8	-5
<b>Management &amp; Administrative</b>	<b>951</b>	<b>947</b>	<b>-4</b>	<b>-0.4%</b>	<b>+4</b>	<b>+16</b>
Support	546	554	+9	+1.6%	+12	+7
Maintenance/ Technical	127	124	-3	-2.6%	-1	-4
<b>General Support</b>	<b>673</b>	<b>678</b>	<b>+5</b>	<b>+0.8%</b>	<b>+10</b>	<b>+3</b>
Health Care Assistants	1,028	1,017	-10	-1.0%	+35	+35
Care, other	204	209	+5	+2.6%	-4	-4
<b>Patient &amp; Client Care</b>	<b>1,232</b>	<b>1,227</b>	<b>-5</b>	<b>-0.4%</b>	<b>+32</b>	<b>+31</b>

## Section 38 Voluntary Agencies

Sep 2020 (Dec 2019 figure: 441)	WTE Aug 2020	WTE Sep 2020	WTE change since Aug 20	% change since Aug 20	WTE change since Dec 19	WTE change since Sep 19
<b>Overall</b>	<b>441</b>	<b>438</b>	<b>-3</b>	<b>-0.7%</b>	<b>-3</b>	<b>+5</b>
Consultants	20	20	+0	+0.4%		+0
Registrars	15	15	+0	+2.3%	-4	-3
SHO/ Interns	8	9	+1	+15.1%	+3	+3
<b>Medical &amp; Dental</b>	<b>42</b>	<b>44</b>	<b>+2</b>	<b>+3.7%</b>	<b>-1</b>	<b>+0</b>
Nurse/ Midwife Manager	38	39	+1	+1.6%	+1	+1
Nurse/ Midwife Specialist & AN/MP	8	8			+1	+2
Staff Nurse/ Staff Midwife	121	119	-2	-1.9%	-4	-3
Pre-registration Nurse/ Midwife Intern				-100.0%	-8	-8
Pre-registration Nurse Intern (COVID-19)	13	7	-6	-46.2%	+7	+7
Nursing/ Midwifery Student	13	7	-6	-46.2%		-1
Nursing/ Midwifery other	3	3				
<b>Nursing &amp; Midwifery</b>	<b>183</b>	<b>175</b>	<b>-8</b>	<b>-4.2%</b>	<b>-2</b>	<b>-0</b>
Therapy Professions	26	26	-0	-1.5%	-6	-5
Social Care	28	28	-1	-2.3%	+2	+0
Social Workers	19	19	+0	+0.9%	-0	+1
Psychologists	19	21	+2	+10.0%	+5	+5
Pharmacy	2	2			+0	+0
H&SC, Other	1	1	+0	+3.6%	-4	+0
<b>Health &amp; Social Care Professionals</b>	<b>95</b>	<b>96</b>	<b>+1</b>	<b>+1.1%</b>	<b>-3</b>	<b>+1</b>
Management (VIII & above)	2	2				
Administrative/ Supervisory (V to VII)	22	23	+1	+5.4%	+2	+1
Clerical (III & IV)	43	43	-0	-0.1%	-2	+1
<b>Management &amp; Administrative</b>	<b>67</b>	<b>68</b>	<b>+1</b>	<b>+1.7%</b>	<b>-0</b>	<b>+2</b>
Support	39	39	-1	-1.4%	+1	+1
Maintenance/ Technical	5	7	+2	+32.6%	+1	+1
<b>General Support</b>	<b>44</b>	<b>45</b>	<b>+1</b>	<b>+2.4%</b>	<b>+2</b>	<b>+1</b>
Health Care Assistants	6	6				
Care, other	3	3	+0	+0.9%	+1	+1
<b>Patient &amp; Client Care</b>	<b>9</b>	<b>9</b>	<b>+0</b>	<b>+0.3%</b>	<b>+1</b>	<b>+1</b>



## Mental Health Services Employment by CHO: Sep 2020

Sep 2020 (Dec 2019 figure: 9,954)	WTE Aug 2020	WTE Sep 2020	WTE change since Aug 20	% change since Aug 20	WTE change since Dec 19	WTE change since Sep 19
<b>Overall</b>	<b>10,253</b>	<b>10,292</b>	<b>+38</b>	<b>+0.4%</b>	<b>+338</b>	<b>+363</b>
<b>CHO 1</b>	<b>979</b>	<b>984</b>	<b>+5</b>	<b>+0.5%</b>	<b>+32</b>	<b>+37</b>
<b>CHO 2</b>	<b>1,349</b>	<b>1,343</b>	<b>-6</b>	<b>-0.5%</b>	<b>+34</b>	<b>+31</b>
<b>CHO 3</b>	<b>800</b>	<b>791</b>	<b>-9</b>	<b>-1.2%</b>	<b>-5</b>	<b>-6</b>
<b>CHO 4</b>	<b>1,563</b>	<b>1,569</b>	<b>+6</b>	<b>+0.4%</b>	<b>+84</b>	<b>+82</b>
<b>CHO 5</b>	<b>1,159</b>	<b>1,204</b>	<b>+45</b>	<b>+3.9%</b>	<b>+27</b>	<b>+25</b>
<b>CHO 6</b>	<b>603</b>	<b>610</b>	<b>+7</b>	<b>+1.2%</b>	<b>+18</b>	<b>+31</b>
<b>CHO 7</b>	<b>876</b>	<b>870</b>	<b>-6</b>	<b>-0.7%</b>	<b>+35</b>	<b>+34</b>
<b>CHO 8</b>	<b>1,127</b>	<b>1,122</b>	<b>-5</b>	<b>-0.4%</b>	<b>+24</b>	<b>+14</b>
<b>CHO 9</b>	<b>1,317</b>	<b>1,317</b>	<b>-1</b>	<b>-0.1%</b>	<b>+45</b>	<b>+39</b>
<b>other Community Services</b>	<b>481</b>	<b>482</b>	<b>+1</b>	<b>+0.3%</b>	<b>+45</b>	<b>+77</b>

## Mental Health Services Employment by CHO etc. Sep 2020

### CHO 1

Sep 2020 (Dec 2019 figure: 953)	WTE Aug 2020	WTE Sep 2020	WTE change since Aug 20	% change since Aug 20	WTE change since Dec 19	WTE change since Sep 19
<b>Overall</b>	<b>979</b>	<b>984</b>	<b>+5</b>	<b>+0.5%</b>	<b>+32</b>	<b>+37</b>
Consultants	33	34	+1	+3%	+3	+4
Registrars	22	27	+5	+23%	+3	+1
SHO/ Interns	25	22	-3	-13%	-3	-1
<b>Medical &amp; Dental</b>	<b>81</b>	<b>83</b>	<b>+3</b>	<b>+3.6%</b>	<b>+3</b>	<b>+4</b>
Nurse/ Midwife Manager	124	124	+0	+0%	+7	+4
Nurse/ Midwife Specialist & AN/MP	66	68	+2	+3%	+1	+2
Staff Nurse/ Staff Midwife	286	289	+3	+1%	-8	-5
<i>Pre-registration Nurse/ Midwife Intern</i>		5	+5	-100%	+5	-3
<i>Pre-registration Nurse Intern (COVID-19)</i>	26	21	-6	-21%	+21	+21
<i>Nursing/ Midwifery awaiting registration</i>				-100%	-1	
Nursing/ Midwifery Student	26	26	-0	-1%	+26	+18
Nursing/ Midwifery other	1	1	0		+1	+1
<b>Nursing &amp; Midwifery</b>	<b>503</b>	<b>508</b>	<b>+5</b>	<b>+1.0%</b>	<b>+26</b>	<b>+20</b>
Therapy Professions	36	34	-2	-4%	-1	+3
Social Care	3	3	-0	-4%	-1	-1
Social Workers	38	38	+0	+0%	-1	-1
Psychologists	23	23	+0	+0%	+2	+3
Pharmacy	1	1	+0	+4%	+0	+0
H&SC, Other	13	14	+1	+7%	+1	+1
<b>Health &amp; Social Care Professionals</b>	<b>113</b>	<b>113</b>	<b>-1</b>	<b>-0.5%</b>	<b>-0</b>	<b>+5</b>
Management (VIII & above)	8	8	0		+2	+2
Administrative/ Supervisory (V to VII)	31	30	-0	-0%	+0	+3
Clerical (III & IV)	85	84	-1	-2%	-1	+2
<b>Management &amp; Administrative</b>	<b>124</b>	<b>122</b>	<b>-1</b>	<b>-1.2%</b>	<b>+1</b>	<b>+7</b>
Support	64	64	+0	+0%	+2	+1
Maintenance/ Technical	17	17	-0	-0%	+0	+0
<b>General Support</b>	<b>81</b>	<b>81</b>	<b>+0</b>	<b>+0.1%</b>	<b>+2</b>	<b>+1</b>
Health Care Assistants	67	66	-1	-2%	-0	-1
Care, other	10	11	+1	+7%	+0	-1
<b>Patient &amp; Client Care</b>	<b>78</b>	<b>77</b>	<b>-1</b>	<b>-0.9%</b>	<b>-0</b>	<b>-1</b>

## CHO 2

Sep 2020 (Dec 2019 figure: 1,308)	WTE Aug 2020	WTE Sep 2020	WTE change since Aug 20	% change since Aug 20	WTE change since Dec 19	WTE change since Sep 19
<b>Overall</b>	<b>1,349</b>	<b>1,343</b>	<b>-6</b>	<b>-0.5%</b>	<b>+34</b>	<b>+31</b>
Consultants	41	40	-1	-2%	+2	+6
Registrars	36	37	+0	+1%	+4	+5
SHO/ Interns	39	38	-1	-3%	+3	+3
Medical/ Dental, other	1	1	0			
<b>Medical &amp; Dental</b>	<b>117</b>	<b>115</b>	<b>-2</b>	<b>-1.6%</b>	<b>+8</b>	<b>+13</b>
Nurse/ Midwife Manager	147	154	+8	+5%	+9	+9
Nurse/ Midwife Specialist & AN/MP	75	75	+0	+1%	+8	+9
Staff Nurse/ Staff Midwife	348	345	-3	-1%	-12	-9
<i>Pre-registration Nurse/ Midwife Intern</i>				-100%		-12
<i>Pre-registration Nurse Intern (COVID-19)</i>	31	31	-0	-1%	+31	+31
<i>Nursing/ Midwifery awaiting registration</i>				-100%	-11	
Nursing/ Midwifery Student	31	31	-0	-1%	+26	+19
Nursing/ Midwifery other	3	3	0		+1	+1
<b>Nursing &amp; Midwifery</b>	<b>603</b>	<b>608</b>	<b>+5</b>	<b>+0.8%</b>	<b>+30</b>	<b>+29</b>
Therapy Professions	55	54	-1	-2%	+9	+9
Social Care	15	14	-1	-8%	-1	+1
Social Workers	44	43	-0	-1%	+2	+3
Psychologists	40	40	-0	-0%	+6	+4
Pharmacy	2	2	+0	+2%	-1	-1
H&SC, Other	3	3	0		-1	-1
<b>Health &amp; Social Care Professionals</b>	<b>158</b>	<b>155</b>	<b>-3</b>	<b>-1.8%</b>	<b>+15</b>	<b>+16</b>
Management (VIII & above)	4	4	0		-1	-2
Administrative/ Supervisory (V to VII)	26	26	-0	-0%	+2	+2
Clerical (III & IV)	103	98	-5	-4%	-11	-12
<b>Management &amp; Administrative</b>	<b>132</b>	<b>128</b>	<b>-5</b>	<b>-3.4%</b>	<b>-10</b>	<b>-12</b>
Support	33	32	-1	-3%	-4	-4
Maintenance/ Technical	28	28	-1	-2%	+1	-2
<b>General Support</b>	<b>62</b>	<b>60</b>	<b>-2</b>	<b>-2.8%</b>	<b>-3</b>	<b>-6</b>
Health Care Assistants	210	209	-1	-0%	-6	-6
Care, other	67	68	+1	+1%	-1	-4
<b>Patient &amp; Client Care</b>	<b>277</b>	<b>277</b>	<b>+0</b>	<b>+0.0%</b>	<b>-7</b>	<b>-10</b>

### CHO 3

Sep 2020 (Dec 2019 figure: 795)	WTE Aug 2020	WTE Sep 2020	WTE change since Aug 20	% change since Aug 20	WTE change since Dec 19	WTE change since Sep 19
<b>Overall</b>	<b>800</b>	<b>791</b>	<b>-9</b>	<b>-1.2%</b>	<b>-5</b>	<b>-6</b>
Consultants	24	25	+1	+3%	+1	+1
Registrars	16	16	-0	-3%	-2	-3
SHO/ Interns	20	20	+0	+2%	+1	+1
<b>Medical &amp; Dental</b>	<b>60</b>	<b>61</b>	<b>+1</b>	<b>+1.2%</b>	<b>+1</b>	<b>+0</b>
Nurse/ Midwife Manager	91	89	-2	-2%	+1	+11
Nurse/ Midwife Specialist & AN/MP	32	36	+4	+12%	-4	+5
Staff Nurse/ Staff Midwife	259	255	-4	-1%	+10	-4
<i>Pre-registration Nurse/ Midwife Intern</i>				-100%	-9	-9
<i>Pre-registration Nurse Intern (COVID-19)</i>	12	15	+4	+34%	+15	+15
Nursing/ Midwifery Student	12	15	+4	+34%	+7	+7
<b>Nursing &amp; Midwifery</b>	<b>393</b>	<b>395</b>	<b>+2</b>	<b>+0.5%</b>	<b>+14</b>	<b>+18</b>
Therapy Professions	24	24	-0	-0%	-2	-5
Social Care	3	3	0		+0	+0
Social Workers	26	26	-0	-1%	+0	+1
Psychologists	89	77	-12	-14%	-16	-18
Pharmacy	3	3	0			
H&SC, Other	14	14	-0	-1%	+4	+3
<b>Health &amp; Social Care Professionals</b>	<b>158</b>	<b>146</b>	<b>-13</b>	<b>-8.0%</b>	<b>-13</b>	<b>-18</b>
Management (VIII & above)	1	1	0		-1	-1
Administrative/ Supervisory (V to VII)	19	18	-1	-3%	+1	+0
Clerical (III & IV)	51	51	+0	+0%	-5	-6
<b>Management &amp; Administrative</b>	<b>70</b>	<b>70</b>	<b>-0</b>	<b>-0.7%</b>	<b>-5</b>	<b>-6</b>
Support	31	31	+0	+0%	-2	-2
Maintenance/ Technical	10	10	-0	-3%	-2	-2
<b>General Support</b>	<b>40</b>	<b>40</b>	<b>-0</b>	<b>-0.4%</b>	<b>-3</b>	<b>-4</b>
Health Care Assistants	77	78	+1	+2%	+3	+5
Care, other	1	1	0		-1	-1
<b>Patient &amp; Client Care</b>	<b>78</b>	<b>79</b>	<b>+1</b>	<b>+1.9%</b>	<b>+2</b>	<b>+4</b>

## CHO 4

Sep 2020 (Dec 2019 figure: 1,485)	WTE Aug 2020	WTE Sep 2020	WTE change since Aug 20	% change since Aug 20	WTE change since Dec 19	WTE change since Sep 19
<b>Overall</b>	<b>1,563</b>	<b>1,569</b>	<b>+6</b>	<b>+0.4%</b>	<b>+84</b>	<b>+82</b>
Consultants	52	56	+4	+8%	+6	+8
Registrars	42	42	+0	+1%	-3	-3
SHO/ Interns	30	40	+10	+32%	+9	+11
Medical/ Dental, other	2	6	+4	+179%	+4	+3
<b>Medical &amp; Dental</b>	<b>126</b>	<b>145</b>	<b>+18</b>	<b>+14.3%</b>	<b>+16</b>	<b>+19</b>
Nurse/ Midwife Manager	185	193	+8	+4%	+23	-5
Nurse/ Midwife Specialist & AN/MP	68	67	-2	-2%	+7	+10
Staff Nurse/ Staff Midwife	510	499	-10	-2%	-3	+1
<i>Pre-registration Nurse/ Midwife Intern</i>				-100%	-1	-19
<i>Pre-registration Nurse Intern (COVID-19)</i>	23	23	-0	-2%	+23	+23
<i>Post-registration Nurse/ Midwife Student</i>				-100%		
<i>Nursing/ Midwifery awaiting registration</i>	4	3	-1	-25%	+3	+3
Nursing/ Midwifery Student	27	26	-1	-5%	-8	+7
<b>Nursing &amp; Midwifery</b>	<b>790</b>	<b>784</b>	<b>-6</b>	<b>-0.7%</b>	<b>+19</b>	<b>+13</b>
Therapy Professions	78	80	+2	+2%	+6	+3
Social Care	7	8	+1	+16%	+4	+3
Social Workers	61	63	+1	+2%	+9	+9
Psychologists	83	83	-0	-0%	+0	+6
Pharmacy	3	3	-0	-16%	+0	-0
H&SC, Other	14	16	+2	+12%	+5	+6
<b>Health &amp; Social Care Professionals</b>	<b>246</b>	<b>251</b>	<b>+5</b>	<b>+2.1%</b>	<b>+25</b>	<b>+27</b>
<i>Executive Management</i>	1	2	+1	+111%	+2	+2
<i>Senior Management (VIII &amp; GM)</i>				-100%		
Management (VIII & above)	1	2	+1	+111%	+1	+2
Administrative/ Supervisory (V to VII)	24	21	-2	-10%	-1	-1
Clerical (III & IV)	94	92	-2	-2%	+5	+4
<b>Management &amp; Administrative</b>	<b>118</b>	<b>115</b>	<b>-3</b>	<b>-2.7%</b>	<b>+4</b>	<b>+5</b>
Support	83	83	-0	-0%	+3	+3
Maintenance/ Technical	5	5	-1	-12%	-2	-2
<b>General Support</b>	<b>88</b>	<b>87</b>	<b>-1</b>	<b>-1.0%</b>	<b>+1</b>	<b>+2</b>
Health Care Assistants	188	177	-12	-6%	+16	+13
Care, other	6	10	+4	+69%	+3	+3
<b>Patient &amp; Client Care</b>	<b>194</b>	<b>187</b>	<b>-8</b>	<b>-3.9%</b>	<b>+19</b>	<b>+16</b>



## CHO 5

Sep 2020 (Dec 2019 figure: 1,178)	WTE Aug 2020	WTE Sep 2020	WTE change since Aug 20	% change since Aug 20	WTE change since Dec 19	WTE change since Sep 19
<b>Overall</b>	<b>1,159</b>	<b>1,204</b>	<b>+45</b>	<b>+3.9%</b>	<b>+27</b>	<b>+25</b>
Consultants	27	27	+0	+1%	+1	-1
Registrars	11	10	-1	-8%	-0	-0
SHO/ Interns	32	35	+3	+11%	+3	+2
Medical/ Dental, other	2	3	+1	+50%	+1	+1
<b>Medical &amp; Dental</b>	<b>71</b>	<b>75</b>	<b>+4</b>	<b>+5.7%</b>	<b>+5</b>	<b>+2</b>
Nurse/ Midwife Manager	156	159	+4	+3%	-5	-7
Nurse/ Midwife Specialist & AN/MP	48	50	+2	+3%	+8	+2
Staff Nurse/ Staff Midwife	397	405	+8	+2%	-10	+8
<i>Pre-registration Nurse/ Midwife Intern</i>		4	+4	-100%	+3	-15
<i>Pre-registration Nurse Intern (COVID-19)</i>	7	23	+16	+238%	+23	+23
<i>Nursing/ Midwifery awaiting registration</i>				-100%		-1
Nursing/ Midwifery Student	7	27	+20	+295%	+21	+7
Nursing/ Midwifery other	4	4	0		-0	
<b>Nursing &amp; Midwifery</b>	<b>611</b>	<b>644</b>	<b>+33</b>	<b>+5.4%</b>	<b>+14</b>	<b>+11</b>
Therapy Professions	40	37	-3	-8%	-3	-1
Social Care	4	4	+0	+1%	-0	+0
Social Workers	26	27	+1	+4%	-0	-1
Psychologists	23	22	-1	-3%	+1	+1
H&SC, Other	9	10	+1	+12%	+1	+1
<b>Health &amp; Social Care Professionals</b>	<b>103</b>	<b>101</b>	<b>-2</b>	<b>-1.5%</b>	<b>-2</b>	<b>+0</b>
Management (VIII & above)	5	6	+1	+20%	+3	+3
Administrative/ Supervisory (V to VII)	20	23	+3	+14%	+3	+3
Clerical (III & IV)	68	66	-2	-3%	-7	-5
<b>Management &amp; Administrative</b>	<b>93</b>	<b>95</b>	<b>+2</b>	<b>+2.1%</b>	<b>-2</b>	<b>+0</b>
Support	170	181	+11	+6%	+13	+16
Maintenance/ Technical	24	20	-4	-17%	-3	-2
<b>General Support</b>	<b>195</b>	<b>201</b>	<b>+7</b>	<b>+3.4%</b>	<b>+10</b>	<b>+14</b>
Health Care Assistants	73	73	-1	-1%	+0	-3
Care, other	12	14	+2	+15%	+1	+1
<b>Patient &amp; Client Care</b>	<b>85</b>	<b>87</b>	<b>+1</b>	<b>+1.3%</b>	<b>+1</b>	<b>-2</b>

## CHO 6

Sep 2020 (Dec 2019 figure: 593)	WTE Aug 2020	WTE Sep 2020	WTE change since Aug 20	% change since Aug 20	WTE change since Dec 19	WTE change since Sep 19
<b>Overall</b>	<b>603</b>	<b>610</b>	<b>+7</b>	<b>+1.2%</b>	<b>+18</b>	<b>+31</b>
Consultants	38	38	+0	+0%	+2	+6
Registrars	17	19	+2	+11%	-3	-3
SHO/ Interns	14	15	+1	+10%	+6	+5
Medical/ Dental, other				-100%		
<b>Medical &amp; Dental</b>	<b>69</b>	<b>72</b>	<b>+3</b>	<b>+4.7%</b>	<b>+5</b>	<b>+8</b>
Nurse/ Midwife Manager	77	79	+2	+3%	+3	+2
Nurse/ Midwife Specialist & AN/MP	16	16	+0	+0%	+2	+5
Staff Nurse/ Staff Midwife	149	145	-3	-2%	+6	+8
<i>Nursing/ Midwifery awaiting registration</i>		1	+1	-100%	+1	+1
Nursing/ Midwifery Student		1	+1	-100%	+1	+1
Nursing/ Midwifery other	3	3	0		+1	+1
<b>Nursing &amp; Midwifery</b>	<b>245</b>	<b>244</b>	<b>-0</b>	<b>-0.1%</b>	<b>+13</b>	<b>+16</b>
Therapy Professions	36	37	+0	+1%	-6	-3
Social Care	28	28	-1	-3%	+2	-0
Social Workers	31	31	+0	+1%	+1	+3
Psychologists	26	27	+2	+7%	+5	+6
H&SC, Other	4	4	+0	+0%	-4	-0
<b>Health &amp; Social Care Professionals</b>	<b>125</b>	<b>127</b>	<b>+2</b>	<b>+1.3%</b>	<b>-3</b>	<b>+4</b>
Management (VIII & above)	3	3	0			
Administrative/ Supervisory (V to VII)	26	27	+1	+4%	+1	-0
Clerical (III & IV)	41	41	+0	+0%	-1	+4
<b>Management &amp; Administrative</b>	<b>70</b>	<b>72</b>	<b>+1</b>	<b>+1.7%</b>	<b>-0</b>	<b>+4</b>
Support	37	36	-1	-2%	-0	-3
Maintenance/ Technical	4	6	+2	+41%	-0	-0
<b>General Support</b>	<b>41</b>	<b>42</b>	<b>+1</b>	<b>+1.9%</b>	<b>-1</b>	<b>-3</b>
Health Care Assistants	47	48	+1	+2%	+2	+0
Care, other	6	6	+0	+1%	+1	+1
<b>Patient &amp; Client Care</b>	<b>53</b>	<b>53</b>	<b>+1</b>	<b>+1.6%</b>	<b>+3</b>	<b>+1</b>

## CHO 7

Sep 2020 (Dec 2019 figure: 835)	WTE Aug 2020	WTE Sep 2020	WTE change since Aug 20	% change since Aug 20	WTE change since Dec 19	WTE change since Sep 19
<b>Overall</b>	<b>876</b>	<b>870</b>	<b>-6</b>	<b>-0.7%</b>	<b>+35</b>	<b>+34</b>
Consultants	54	54	+0	+0%	+7	+8
Registrars	55	54	-1	-2%	+8	+7
SHO/ Interns	22	22	+0	+1%	+1	+1
<b>Medical &amp; Dental</b>	<b>131</b>	<b>131</b>	<b>-1</b>	<b>-0.6%</b>	<b>+16</b>	<b>+17</b>
Nurse/ Midwife Manager	116	117	+1	+1%	+1	+4
Nurse/ Midwife Specialist & AN/MP	46	45	-1	-3%	+5	+10
Staff Nurse/ Staff Midwife	193	194	+0	+0%	-1	-14
<i>Pre-registration Nurse/ Midwife Intern</i>				-100%	-6	-13
<i>Pre-registration Nurse Intern (COVID-19)</i>	24	17	-7	-30%	+17	+17
<i>Post-registration Nurse/ Midwife Student</i>		0	+0	-100%	+0	+0
<i>Nursing/ Midwifery awaiting registration</i>	4	4	+0	+4%	-0	+3
Nursing/ Midwifery Student	27	21	-7	-24%	+10	+7
Nursing/ Midwifery other	8	8	+0	+3%	+1	+1
<b>Nursing &amp; Midwifery</b>	<b>391</b>	<b>385</b>	<b>-6</b>	<b>-1.6%</b>	<b>+15</b>	<b>+8</b>
Therapy Professions	43	44	+2	+4%	-3	-2
Social Care	8	7	-0	-1%	-0	+1
Social Workers	37	36	-1	-1%	+2	+4
Psychologists	32	33	+1	+4%	+2	+2
<i>Pharmacy</i>	1	1	0		+1	
Pharmacy	1	1	0			
H&SC, Other	19	18	-1	-3%	+0	+0
<b>Health &amp; Social Care Professionals</b>	<b>138</b>	<b>140</b>	<b>+2</b>	<b>+1.4%</b>	<b>-0</b>	<b>+5</b>
Management (VIII & above)	4	4	0		+1	+1
Administrative/ Supervisory (V to VII)	17	18	+1	+8%	+2	+5
Clerical (III & IV)	52	51	-1	-1%	+4	+2
<b>Management &amp; Administrative</b>	<b>72</b>	<b>73</b>	<b>+1</b>	<b>+0.9%</b>	<b>+8</b>	<b>+8</b>
Support	16	16	+0	+1%	-1	-2
Maintenance/ Technical	2	2	-0	-3%	-0	-0
<b>General Support</b>	<b>18</b>	<b>18</b>	<b>+0</b>	<b>+0.9%</b>	<b>-1</b>	<b>-2</b>
Health Care Assistants	35	35	+0	+0%	+2	-0
Care, other	89	88	-2	-2%	-4	-1
<b>Patient &amp; Client Care</b>	<b>124</b>	<b>123</b>	<b>-2</b>	<b>-1.4%</b>	<b>-3</b>	<b>-1</b>

## CHO 8

Sep 2020 (Dec 2019 figure: 1,098)	WTE Aug 2020	WTE Sep 2020	WTE change since Aug 20	% change since Aug 20	WTE change since Dec 19	WTE change since Sep 19
<b>Overall</b>	<b>1,127</b>	<b>1,122</b>	<b>-5</b>	<b>-0.4%</b>	<b>+24</b>	<b>+14</b>
Consultants	34	35	+1	+2%	-1	+0
Registrars	29	31	+2	+8%	+6	+7
SHO/ Interns	31	30	-0	-1%	-6	-6
<b>Medical &amp; Dental</b>	<b>94</b>	<b>96</b>	<b>+3</b>	<b>+2.8%</b>	<b>-1</b>	<b>+1</b>
Nurse/ Midwife Manager	122	119	-3	-2%	-2	-7
Nurse/ Midwife Specialist & AN/MP	60	60	+0	+0%	+4	+5
Staff Nurse/ Staff Midwife	329	327	-2	-0%	-4	+8
<i>Pre-registration Nurse/ Midwife Intern</i>				-100%		-11
<i>Pre-registration Nurse Intern (COVID-19)</i>	32	29	-3	-9%	+29	+29
<i>Nursing/ Midwifery awaiting registration</i>				-100%	-1	-6
Nursing/ Midwifery Student	32	29	-3	-9%	+26	+12
Nursing/ Midwifery other	4	3	-1	-25%	-1	+1
<b>Nursing &amp; Midwifery</b>	<b>546</b>	<b>538</b>	<b>-8</b>	<b>-1.5%</b>	<b>+23</b>	<b>+20</b>
Therapy Professions	44	44	+0	+0%	+0	-3
Social Care	7	7	+0	+2%	+0	-0
Social Workers	44	43	-0	-1%	+2	+1
Psychologists	37	39	+2	+6%	-0	-3
Pharmacy	1	1	+0	+90%	-0	-0
H&SC, Other	20	20	-0	-1%	-1	-1
<b>Health &amp; Social Care Professionals</b>	<b>152</b>	<b>155</b>	<b>+2</b>	<b>+1.5%</b>	<b>+1</b>	<b>-7</b>
Management (VIII & above)	3	3	0		+0	
Administrative/ Supervisory (V to VII)	20	21	+1	+5%	-1	-1
Clerical (III & IV)	99	97	-2	-2%	+8	+12
<b>Management &amp; Administrative</b>	<b>122</b>	<b>121</b>	<b>-1</b>	<b>-1.0%</b>	<b>+7</b>	<b>+10</b>
Support	32	31	-1	-2%	-2	-3
Maintenance/ Technical	27	27	-0	-1%	+1	-1
<b>General Support</b>	<b>59</b>	<b>58</b>	<b>-1</b>	<b>-1.4%</b>	<b>-0</b>	<b>-3</b>
Health Care Assistants	151	151	+0	+0%	-6	-7
Care, other	3	3	-0	-8%	-1	-1
<b>Patient &amp; Client Care</b>	<b>154</b>	<b>154</b>	<b>+0</b>	<b>+0.1%</b>	<b>-6</b>	<b>-8</b>

## CHO 9

Sep 2020 (Dec 2019 figure: 1,272)	WTE Aug 2020	WTE Sep 2020	WTE change since Aug 20	% change since Aug 20	WTE change since Dec 19	WTE change since Sep 19
<b>Overall</b>	<b>1,317</b>	<b>1,317</b>	<b>-1</b>	<b>-0.1%</b>	<b>+45</b>	<b>+39</b>
Consultants	46	48	+1	+3%	-2	-1
Registrars	33	33	+0	+0%	+2	+4
SHO/ Interns	47	51	+4	+8%	-2	-5
<b>Medical &amp; Dental</b>	<b>127</b>	<b>132</b>	<b>+5</b>	<b>+4.0%</b>	<b>-2</b>	<b>-2</b>
Nurse/ Midwife Manager	139	138	-1	-0%	+6	+5
Nurse/ Midwife Specialist & AN/MP	73	73	-0	-0%	+7	+11
Staff Nurse/ Staff Midwife	346	345	-1	-0%	-7	-12
<i>Pre-registration Nurse/ Midwife Intern</i>	38	0	-38	-99%	-12	-16
<i>Pre-registration Nurse Intern (COVID-19)</i>	17	42	+25	+148%	+42	+42
<i>Nursing/ Midwifery awaiting registration</i>				-100%	-3	-4
Nursing/ Midwifery Student	55	42	-13	-24%	+21	+21
Nursing/ Midwifery other	13	12	-0	-1%	+1	+0
<b>Nursing &amp; Midwifery</b>	<b>624</b>	<b>610</b>	<b>-15</b>	<b>-2.4%</b>	<b>+29</b>	<b>+26</b>
Therapy Professions	60	62	+2	+3%	+7	+6
Social Care	1	1	+0	+6%	+0	
Social Workers	44	44	+0	+1%	+0	+1
Psychologists	51	52	+0	+1%	+6	+5
Pharmacy	8	9	+1	+12%	+1	+1
H&SC, Other	14	14	+0	+0%	-0	+1
<b>Health &amp; Social Care Professionals</b>	<b>178</b>	<b>181</b>	<b>+3</b>	<b>+1.8%</b>	<b>+14</b>	<b>+14</b>
Management (VIII & above)	5	5	0		+0	
Administrative/ Supervisory (V to VII)	27	28	+1	+4%	+0	+1
Clerical (III & IV)	105	110	+5	+5%	+6	+5
<b>Management &amp; Administrative</b>	<b>137</b>	<b>143</b>	<b>+6</b>	<b>+4.5%</b>	<b>+6</b>	<b>+6</b>
Support	104	104	+0	+0%	+1	-3
Maintenance/ Technical	10	11	+0	+5%	-0	-0
<b>General Support</b>	<b>114</b>	<b>115</b>	<b>+1</b>	<b>+0.5%</b>	<b>+1</b>	<b>-3</b>
Health Care Assistants	126	124	-1	-1%	-2	-1
Care, other	12	13	+0	+1%	-0	-1
<b>Patient &amp; Client Care</b>	<b>138</b>	<b>137</b>	<b>-1</b>	<b>-0.7%</b>	<b>-2</b>	<b>-2</b>

## other Community Services

Sep 2020 (Dec 2019 figure: 438)	WTE Aug 2020	WTE Sep 2020	WTE change since Aug 20	% change since Aug 20	WTE change since Dec 19	WTE change since Sep 19
<b>Overall</b>	<b>481</b>	<b>482</b>	<b>+1</b>	<b>+0.3%</b>	<b>+45</b>	<b>+77</b>
Consultants	17	17	+0	+1%	+1	+1
Registrars	14	14	-0	-0%	+1	+1
SHO/ Interns				-100%		
<b>Medical &amp; Dental</b>	<b>31</b>	<b>31</b>	<b>+0</b>	<b>+0.7%</b>	<b>+2</b>	<b>+2</b>
Nurse/ Midwife Manager	78	78	-1	-1%	+15	+16
Nurse/ Midwife Specialist & AN/MP	11	10	-1	-10%	+2	+1
Staff Nurse/ Staff Midwife	165	165	+0	+0%	-3	+14
Nursing/ Midwifery other	1	1	0			
<b>Nursing &amp; Midwifery</b>	<b>256</b>	<b>254</b>	<b>-2</b>	<b>-0.6%</b>	<b>+14</b>	<b>+31</b>
Therapy Professions	12	12	-0	-1%	+1	+2
Social Care	2	2	0		+0	+0
Social Workers	15	16	+1	+8%	+1	+3
Psychologists	7	6	-1	-11%		
<i>Pharmacy</i>	<i>1</i>	<i>1</i>	<i>0</i>		<i>+1</i>	<i>+1</i>
Pharmacy	1	1	0		+1	+1
<b>Health &amp; Social Care Professionals</b>	<b>36</b>	<b>37</b>	<b>+0</b>	<b>+1.0%</b>	<b>+3</b>	<b>+6</b>
Management (VIII & above)	25	24	-1	-2%	-3	+2
Administrative/ Supervisory (V to VII)	36	35	-2	-4%	+4	+4
Clerical (III & IV)	17	17	+0	+1%	-8	-10
<b>Management &amp; Administrative</b>	<b>78</b>	<b>77</b>	<b>-2</b>	<b>-2.3%</b>	<b>-7</b>	<b>-3</b>
Support	16	16	-0	-1%	+3	+3
Maintenance/ Technical	4	6	+2	+50%	+4	+4
<b>General Support</b>	<b>20</b>	<b>22</b>	<b>+2</b>	<b>+8.9%</b>	<b>+7</b>	<b>+7</b>
Health Care Assistants	60	62	+2	+4%	+25	+34
Care, other	1	1	0			
<b>Patient &amp; Client Care</b>	<b>60</b>	<b>62</b>	<b>+2</b>	<b>+3.9%</b>	<b>+25</b>	<b>+34</b>

## Mental Health Services Employment by Grade Group: Sep 2020

Sep 2020 (Dec 2019 figure: 9,954)	WTE Aug 2020	WTE Sep 2020	WTE change since Aug 20	% change since Aug 20	WTE change since Dec 19	WTE change since Sep 19
<b>Overall</b>	<b>10,253</b>	<b>10,292</b>	<b>+38</b>	<b>+0.4%</b>	<b>+338</b>	<b>+363</b>
Consultant Medicine	1	1	0			
Consultant Psychiatry	365	372	+8	+2%	+21	+33
<b>Consultants</b>	<b>366</b>	<b>373</b>	<b>+8</b>	<b>+2%</b>	<b>+21</b>	<b>+33</b>
Registrar	169	171	+2	+1%	+2	+3
Senior Registrar	105	111	+5	+5%	+13	+14
Specialist Registrar	2	2	+1	+33%	-1	-0
<b>Registrars</b>	<b>276</b>	<b>284</b>	<b>+8</b>	<b>+3%</b>	<b>+15</b>	<b>+17</b>
Interns	7	5	-2	-28%	-3	-3
Senior House Officer	253	268	+16	+6%	+15	+14
<b>SHO/ Interns</b>	<b>259</b>	<b>273</b>	<b>+14</b>	<b>+5%</b>	<b>+12</b>	<b>+11</b>
Dentists	0		-0	-100%		-0
Other Medical	5	10	+5	+97%	+5	+4
<b>Medical/ Dental, other</b>	<b>5</b>	<b>10</b>	<b>+5</b>	<b>+95%</b>	<b>+5</b>	<b>+4</b>
<b>Medical &amp; Dental</b>	<b>906</b>	<b>941</b>	<b>+34</b>	<b>+4%</b>	<b>+53</b>	<b>+65</b>
Clinical Nurse/ Midwife Manager	1,030	1,052	+22	+2%	+53	+29
Director Nursing/Midwifery, Assistant	174	172	-2	-1%	+8	+5
Director of Nursing/Midwifery	29	26	-3	-10%	-3	-2
<b>Nurse/ Midwife Manager</b>	<b>1,233</b>	<b>1,250</b>	<b>+17</b>	<b>+1%</b>	<b>+58</b>	<b>+32</b>
Advanced Nurse/ Midwife Practitioner	36	35	-1	-3%	+4	+7
Clinical Nurse/ Midwife Specialist	459	464	+5	+1%	+35	+52
<b>Nurse/ Midwife Specialist &amp; AN/MP</b>	<b>495</b>	<b>499</b>	<b>+4</b>	<b>+1%</b>	<b>+40</b>	<b>+59</b>
Staff Midwives	1	1	0		+1	+1
Staff Nurse [Intellectual Disability]	5	4	-1	-12%	-0	-0
Staff Nurse [Psychiatric]	2,857	2,846	-11	-0%	-47	-13
Staff Nurses [General/ Children's]	118	118	-1	-1%	+13	+9
<b>Staff Nurse/ Staff Midwife</b>	<b>2,981</b>	<b>2,969</b>	<b>-12</b>	<b>-0%</b>	<b>-33</b>	<b>-3</b>
Pre-registration Nurse/ Midwife Intern	38	10	-29	-75%	-18	-97
Pre-registration Nurse Intern (COVID-19)	171	200	+29	+17%	+200	+200
Post-registration Nurse/ Midwife Student		0	+0	-100%	-1	+0
Nursing/ Midwifery awaiting registration	8	8	+0	+2%	-51	-5
<b>Nursing/ Midwifery Student</b>	<b>217</b>	<b>218</b>	<b>+1</b>	<b>+0%</b>	<b>+130</b>	<b>+99</b>
Nursing Education/Clinical	35	35	-1	-3%	+3	+5
<b>Nursing/ Midwifery other</b>	<b>35</b>	<b>35</b>	<b>-1</b>	<b>-3%</b>	<b>+3</b>	<b>+5</b>
<b>Nursing &amp; Midwifery</b>	<b>4,962</b>	<b>4,970</b>	<b>+8</b>	<b>+0%</b>	<b>+197</b>	<b>+192</b>
Dietitians	20	18	-2	-8%	-1	-1
Occupational Therapists	348	345	-3	-1%	+6	+13
Physiotherapists	3	3	0		+0	+1
Podiatrists & Chiropodists	1	2	+1	+173%	+1	+1
Speech & Language Therapists	57	60	+3	+4%	-2	-5
<b>Therapy Professions</b>	<b>428</b>	<b>428</b>	<b>-1</b>	<b>-0%</b>	<b>+5</b>	<b>+9</b>
<b>Social Care</b>	<b>78</b>	<b>78</b>	<b>-1</b>	<b>-1%</b>	<b>+4</b>	<b>+4</b>
<b>Social Workers</b>	<b>365</b>	<b>367</b>	<b>+3</b>	<b>+1%</b>	<b>+18</b>	<b>+22</b>
<b>Psychologists</b>	<b>409</b>	<b>402</b>	<b>-8</b>	<b>-2%</b>	<b>+7</b>	<b>+7</b>
<b>Pharmacy</b>	<b>19</b>	<b>20</b>	<b>+1</b>	<b>+5%</b>	<b>+1</b>	<b>+1</b>
Counsellor Therapists	101	99	-1	-1%	+5	+6
Other Health & Social Care	7	11	+4	+57%	-1	+4
Play Therapists/ Specialists	1	1	0		+0	+0
<b>H&amp;SC, Other</b>	<b>109</b>	<b>112</b>	<b>+3</b>	<b>+3%</b>	<b>+4</b>	<b>+9</b>
<b>Health &amp; Social Care Professionals</b>	<b>1,409</b>	<b>1,406</b>	<b>-3</b>	<b>-0%</b>	<b>+39</b>	<b>+52</b>
Executive Management	12	13	+1	+8%	+2	+3

Sep 2020 (Dec 2019 figure: 9,954)	WTE Aug 2020	WTE Sep 2020	WTE change since Aug 20	% change since Aug 20	WTE change since Dec 19	WTE change since Sep 19
<b>Overall</b>	<b>10,253</b>	<b>10,292</b>	<b>+38</b>	<b>+0.4%</b>	<b>+338</b>	<b>+363</b>
Senior Management (VIII & GM)	46	47	+0	+1%	+0	+4
<b>Management (VIII &amp; above)</b>	<b>58</b>	<b>60</b>	<b>+1</b>	<b>+3%</b>	<b>+2</b>	<b>+7</b>
Middle Management (V-VII)	243	246	+3	+1%	+11	+15
Other Administrative	2	2	0			
<b>Administrative/ Supervisory (V to VII)</b>	<b>245</b>	<b>248</b>	<b>+3</b>	<b>+1%</b>	<b>+11</b>	<b>+15</b>
General Administrative (III & IV)	715	708	-7	-1%	-10	-3
<b>Clerical (III &amp; IV)</b>	<b>715</b>	<b>708</b>	<b>-7</b>	<b>-1%</b>	<b>-10</b>	<b>-3</b>
<b>Management &amp; Administrative</b>	<b>1,018</b>	<b>1,015</b>	<b>-3</b>	<b>-0%</b>	<b>+4</b>	<b>+18</b>
Catering	64	65	+1	+2%	+0	-4
Household Services	434	436	+1	+0%	+11	+8
Other Support	38	45	+7	+17%	+2	+3
Portering	48	47	-1	-2%	-1	+1
<b>Support</b>	<b>585</b>	<b>593</b>	<b>+8</b>	<b>+1%</b>	<b>+13</b>	<b>+8</b>
Maintenance	130	130	+0	+0%	+1	-2
Technical Services	2		-2	-100%	-2	-2
<b>Maintenance/ Technical</b>	<b>132</b>	<b>130</b>	<b>-2</b>	<b>-1%</b>	<b>-1</b>	<b>-4</b>
<b>General Support</b>	<b>717</b>	<b>724</b>	<b>+6</b>	<b>+1%</b>	<b>+12</b>	<b>+4</b>
HCA, Nurse's Aide, etc.	1,025	1,014	-10	-1%	+35	+34
Health & Social Care Assistants	9	9	-0	-3%	-0	+1
<b>Health Care Assistants</b>	<b>1,034</b>	<b>1,023</b>	<b>-10</b>	<b>-1%</b>	<b>+35</b>	<b>+35</b>
<b>Care, other</b>	<b>208</b>	<b>213</b>	<b>+5</b>	<b>+3%</b>	<b>-3</b>	<b>-3</b>
<b>Patient &amp; Client Care</b>	<b>1,241</b>	<b>1,236</b>	<b>-5</b>	<b>-0%</b>	<b>+32</b>	<b>+32</b>



## Employment by WTE, Headcount, Gender, Full-Time /Part-Time etc.: Sep 2020

Mental Health Services Staff Group	WTE	Headcount	WTE: no.	% Male	% female	Male WTE: no.	Female WTE: no.	% Total Perm	% Male Perm	% Female Perm	% Total Full Time	% Total Part Time	% Male FT	% Female FT
<b>Overall</b>	<b>10,292</b>	<b>11,243</b>	<b>1.09</b>	<b>27.1%</b>	<b>72.9%</b>	<b>1.04</b>	<b>1.11</b>	<b>82.7%</b>	<b>78.9%</b>	<b>84.1%</b>	<b>84.3%</b>	<b>15.7%</b>	<b>92.3%</b>	<b>81.3%</b>
Consultant Medicine	1	1	1.00	100.0%		1.00		100.0%	100.0%		100.0%	0.0%	100.0%	
Consultant Psychiatry	372	400	1.07	40.0%	60.0%	1.04	1.10	66.0%	66.0%	65.4%	85.3%	14.8%	91.3%	81.3%
<b>Consultants</b>	<b>373</b>	<b>401</b>	<b>1.07</b>	<b>40.1%</b>	<b>59.9%</b>	<b>1.04</b>	<b>1.10</b>	<b>66.1%</b>	<b>67.1%</b>	<b>65.4%</b>	<b>85.3%</b>	<b>14.7%</b>	<b>91.3%</b>	<b>81.3%</b>
Registrar	171	178	1.04	42.1%	57.9%	1.01	1.06	5.1%	5.1%	3.9%	96.6%	3.4%	100.0%	94.2%
Senior Registrar	111	116	1.05	41.4%	58.6%	1.00	1.08	1.7%	1.7%	2.9%	95.7%	4.3%	100.0%	92.6%
Specialist Registrar	2	2	1.00	50.0%	50.0%	1.00	1.00	0.0%	0.0%	0.0%	100.0%	0.0%	100.0%	100.0%
<b>Registrars</b>	<b>284</b>	<b>296</b>	<b>1.04</b>	<b>41.9%</b>	<b>58.1%</b>	<b>1.01</b>	<b>1.07</b>	<b>3.7%</b>	<b>4.0%</b>	<b>3.5%</b>	<b>96.3%</b>	<b>3.7%</b>	<b>100.0%</b>	<b>93.6%</b>
Interns	5	5	1.01	20.0%	80.0%	1.00	1.01	0.0%	0.0%	0.0%	100.0%	0.0%	100.0%	100.0%
Senior House Officer	268	273	1.02	41.0%	59.0%	1.01	1.02	0.4%	0.4%	0.0%	99.6%	0.4%	100.0%	99.4%
<b>SHO/ Interns</b>	<b>273</b>	<b>278</b>	<b>1.02</b>	<b>40.6%</b>	<b>59.4%</b>	<b>1.01</b>	<b>1.02</b>	<b>0.4%</b>	<b>0.9%</b>	<b>0.0%</b>	<b>99.6%</b>	<b>0.4%</b>	<b>100.0%</b>	<b>99.4%</b>
Other Medical	10	11	1.08	45.5%	54.5%	1.00	1.15	36.4%	36.4%	33.3%	81.8%	18.2%	100.0%	66.7%
<b>Medical/ Dental, other</b>	<b>10</b>	<b>11</b>	<b>1.08</b>	<b>45.5%</b>	<b>54.5%</b>	<b>1.00</b>	<b>1.15</b>	<b>36.4%</b>	<b>40.0%</b>	<b>33.3%</b>	<b>81.8%</b>	<b>18.2%</b>	<b>100.0%</b>	<b>66.7%</b>
<b>Medical &amp; Dental</b>	<b>941</b>	<b>986</b>	<b>1.05</b>	<b>40.9%</b>	<b>59.1%</b>	<b>1.02</b>	<b>1.07</b>	<b>28.5%</b>	<b>28.8%</b>	<b>28.3%</b>	<b>92.6%</b>	<b>7.4%</b>	<b>96.5%</b>	<b>89.9%</b>
Clinical Nurse/ Midwife Manager	1,052	1,103	1.05	33.4%	66.6%	1.01	1.07	98.9%	98.9%	99.5%	93.4%	6.6%	97.8%	91.2%
Director Nursing/Midwifery, Assistant	172	177	1.03	46.9%	53.1%	1.03	1.03	99.4%	99.4%	98.9%	96.6%	3.4%	98.8%	94.7%
Director of Nursing/Midwifery	26	27	1.05	55.6%	44.4%	1.00	1.12	96.3%	96.3%	91.7%	96.3%	3.7%	100.0%	91.7%
<b>Nurse/ Midwife Manager</b>	<b>1,250</b>	<b>1,307</b>	<b>1.05</b>	<b>35.7%</b>	<b>64.3%</b>	<b>1.02</b>	<b>1.06</b>	<b>98.9%</b>	<b>98.3%</b>	<b>99.3%</b>	<b>93.9%</b>	<b>6.1%</b>	<b>98.1%</b>	<b>91.6%</b>
Advanced Nurse/ Midwife Practitioner	35	37	1.05	18.9%	81.1%	1.02	1.06	100.0%	100.0%	100.0%	89.2%	10.8%	100.0%	86.7%
Clinical Nurse/ Midwife Specialist	464	495	1.07	19.2%	80.8%	1.01	1.08	99.4%	99.4%	99.5%	92.3%	7.7%	97.9%	91.0%
<b>Nurse/ Midwife Specialist &amp; AN/MP</b>	<b>499</b>	<b>532</b>	<b>1.07</b>	<b>19.2%</b>	<b>80.8%</b>	<b>1.01</b>	<b>1.08</b>	<b>99.4%</b>	<b>99.0%</b>	<b>99.5%</b>	<b>92.1%</b>	<b>7.9%</b>	<b>98.0%</b>	<b>90.7%</b>
Staff Midwives	1	1	1.00		100.0%		1.00	0.0%	0.0%	0.0%	100.0%	0.0%		100.0%
Staff Nurse [Intellectual Disability]	4	5	1.19		100.0%		1.19	40.0%	40.0%	40.0%	80.0%	20.0%		80.0%
Staff Nurse [Psychiatric]	2,846	3,087	1.08	26.4%	73.6%	1.05	1.10	91.5%	91.5%	92.4%	86.9%	13.1%	91.3%	85.3%
Staff Nurses [General/ Children's]	118	132	1.12	18.9%	81.1%	1.13	1.12	80.3%	80.3%	81.3%	78.8%	21.2%	80.0%	78.5%
<b>Staff Nurse/ Staff Midwife</b>	<b>2,969</b>	<b>3,225</b>	<b>1.09</b>	<b>26.1%</b>	<b>73.9%</b>	<b>1.05</b>	<b>1.10</b>	<b>90.9%</b>	<b>88.7%</b>	<b>91.7%</b>	<b>86.5%</b>	<b>13.5%</b>	<b>91.0%</b>	<b>85.0%</b>
Pre-registration Nurse/ Midwife Intern	10	16	1.66	25.0%	75.0%	1.60	1.68	0.0%	0.0%	0.0%	100.0%	0.0%	100.0%	100.0%
Pre-registration Nurse Intern (COVID-19)	200	226	1.13	22.6%	77.4%	1.14	1.13	0.4%	0.4%	0.6%	99.6%	0.4%	100.0%	99.4%
Post-registration Nurse/ Midwife Student	0	1	4.00		100.0%		4.00	0.0%	0.0%	0.0%	100.0%	0.0%		100.0%
Nursing/ Midwifery awaiting registration	8	8	1.02	25.0%	75.0%	1.00	1.03	100.0%	100.0%	100.0%	100.0%	0.0%	100.0%	100.0%

<b>Nursing/ Midwifery Student</b>	<b>218</b>	<b>251</b>	<b>1.15</b>	<b>22.7%</b>	<b>77.3%</b>	<b>1.16</b>	<b>1.15</b>	<b>3.6%</b>	<b>3.5%</b>	<b>3.6%</b>	<b>99.6%</b>	<b>0.4%</b>	<b>100.0%</b>	<b>99.5%</b>
Nursing Education/Clinical	35	37	1.07	13.5%	86.5%	1.00	1.08	100.0%	100.0%	100.0%	86.5%	13.5%	100.0%	84.4%
<b>Nursing/ Midwifery other</b>	<b>35</b>	<b>37</b>	<b>1.07</b>	<b>13.5%</b>	<b>86.5%</b>	<b>1.00</b>	<b>1.08</b>	<b>100.0%</b>	<b>100.0%</b>	<b>100.0%</b>	<b>86.5%</b>	<b>13.5%</b>	<b>100.0%</b>	<b>84.4%</b>
<b>Nursing &amp; Midwifery</b>	<b>4,970</b>	<b>5,352</b>	<b>1.08</b>	<b>27.5%</b>	<b>72.5%</b>	<b>1.04</b>	<b>1.09</b>	<b>89.7%</b>	<b>89.2%</b>	<b>89.9%</b>	<b>89.5%</b>	<b>10.5%</b>	<b>94.1%</b>	<b>87.8%</b>
<b>Health &amp; Social Care</b>	<b>1,406</b>	<b>1,597</b>	<b>1.14</b>	<b>17.0%</b>	<b>83.0%</b>	<b>1.06</b>	<b>1.15</b>	<b>86.2%</b>	<b>82.7%</b>	<b>86.9%</b>	<b>81.0%</b>	<b>19.0%</b>	<b>90.1%</b>	<b>79.1%</b>
Executive Management	13	13	1.01	61.5%	38.5%	1.00	1.02	100.0%	100.0%	100.0%	100.0%	0.0%	100.0%	100.0%
Senior Management (VIII & GM)	47	48	1.02	29.2%	70.8%	1.03	1.02	93.8%	93.8%	94.1%	95.8%	4.2%	92.9%	97.1%
<b>Management (VIII &amp; above)</b>	<b>60</b>	<b>61</b>	<b>1.02</b>	<b>36.1%</b>	<b>63.9%</b>	<b>1.02</b>	<b>1.02</b>	<b>95.1%</b>	<b>95.5%</b>	<b>94.9%</b>	<b>96.7%</b>	<b>3.3%</b>	<b>95.5%</b>	<b>97.4%</b>
Middle Management (V-VII)	246	265	1.08	19.2%	80.8%	1.06	1.08	85.3%	85.3%	87.4%	86.8%	13.2%	92.2%	85.5%
Other Administrative	2	2	1.27		100.0%		1.27	100.0%	100.0%	100.0%	50.0%	50.0%		50.0%
<b>Administrative/ Supervisory (V to VII)</b>	<b>248</b>	<b>267</b>	<b>1.08</b>	<b>19.1%</b>	<b>80.9%</b>	<b>1.06</b>	<b>1.08</b>	<b>85.4%</b>	<b>76.5%</b>	<b>87.5%</b>	<b>86.5%</b>	<b>13.5%</b>	<b>92.2%</b>	<b>85.2%</b>
General Administrative (III & IV)	708	807	1.14	8.4%	91.6%	1.08	1.15	82.5%	82.5%	82.8%	72.6%	27.4%	86.8%	71.3%
<b>Clerical (III &amp; IV)</b>	<b>708</b>	<b>807</b>	<b>1.14</b>	<b>8.4%</b>	<b>91.6%</b>	<b>1.08</b>	<b>1.15</b>	<b>82.5%</b>	<b>79.4%</b>	<b>82.8%</b>	<b>72.6%</b>	<b>27.4%</b>	<b>86.8%</b>	<b>71.3%</b>
<b>Management &amp; Administrative</b>	<b>1,015</b>	<b>1,135</b>	<b>1.12</b>	<b>12.4%</b>	<b>87.6%</b>	<b>1.06</b>	<b>1.13</b>	<b>83.9%</b>	<b>80.9%</b>	<b>84.3%</b>	<b>77.2%</b>	<b>22.8%</b>	<b>90.1%</b>	<b>75.4%</b>
Catering	65	71	1.09	32.4%	67.6%	1.01	1.12	91.5%	91.5%	89.6%	73.2%	26.8%	91.3%	64.6%
Household Services	436	508	1.17	21.3%	78.7%	1.09	1.19	85.8%	85.8%	88.3%	60.4%	39.6%	81.5%	54.8%
Other Support	45	49	1.09	34.7%	65.3%	1.00	1.15	87.8%	87.8%	87.5%	67.3%	32.7%	82.4%	59.4%
Portering	47	49	1.04	91.8%	8.2%	1.02	1.23	81.6%	81.6%	50.0%	87.8%	12.2%	88.9%	75.0%
<b>Support</b>	<b>593</b>	<b>677</b>	<b>1.14</b>	<b>28.5%</b>	<b>71.5%</b>	<b>1.06</b>	<b>1.18</b>	<b>86.3%</b>	<b>81.9%</b>	<b>88.0%</b>	<b>64.3%</b>	<b>35.7%</b>	<b>84.5%</b>	<b>56.2%</b>
Maintenance	130	136	1.04	99.3%	0.7%	1.04	1.00	95.6%	95.6%	100.0%	95.6%	4.4%	95.6%	100.0%
<b>Maintenance/ Technical</b>	<b>130</b>	<b>136</b>	<b>1.04</b>	<b>99.3%</b>	<b>0.7%</b>	<b>1.04</b>	<b>1.00</b>	<b>95.6%</b>	<b>95.6%</b>	<b>100.0%</b>	<b>95.6%</b>	<b>4.4%</b>	<b>95.6%</b>	<b>100.0%</b>
<b>General Support</b>	<b>724</b>	<b>813</b>	<b>1.12</b>	<b>40.3%</b>	<b>59.7%</b>	<b>1.05</b>	<b>1.18</b>	<b>87.8%</b>	<b>87.5%</b>	<b>88.0%</b>	<b>69.5%</b>	<b>30.5%</b>	<b>89.0%</b>	<b>56.3%</b>
<b>Health Care Assistants</b>	<b>1,023</b>	<b>1,120</b>	<b>1.09</b>	<b>28.6%</b>	<b>71.4%</b>	<b>1.06</b>	<b>1.11</b>	<b>87.8%</b>	<b>83.1%</b>	<b>89.6%</b>	<b>78.1%</b>	<b>21.9%</b>	<b>89.7%</b>	<b>73.5%</b>
<b>Care, other</b>	<b>213</b>	<b>240</b>	<b>1.13</b>	<b>45.0%</b>	<b>55.0%</b>	<b>1.06</b>	<b>1.19</b>	<b>79.6%</b>	<b>75.9%</b>	<b>82.6%</b>	<b>68.3%</b>	<b>31.7%</b>	<b>78.7%</b>	<b>59.8%</b>
<b>Patient &amp; Client Care</b>	<b>1,236</b>	<b>1,360</b>	<b>1.10</b>	<b>31.5%</b>	<b>68.5%</b>	<b>1.06</b>	<b>1.12</b>	<b>86.3%</b>	<b>81.3%</b>	<b>88.6%</b>	<b>76.4%</b>	<b>23.6%</b>	<b>86.9%</b>	<b>71.6%</b>

## Employment by WTE, Headcount, Gender, Full-Time /Part-Time etc.: Sep 2020

Mental Health Services CHO	WTE	Headcount	WTE: no.	% Male	% female	Male WTE: no.	Female WTE: no.	% Total Perm	% Male Perm	% Female Perm	% Total Full Time	% Total Part Time	% Male FT	% Female FT
<b>Overall</b>	<b>10,292</b>	<b>11,243</b>	<b>1.09</b>	<b>27.1%</b>	<b>72.9%</b>	<b>1.04</b>	<b>1.11</b>	<b>82.7%</b>	<b>78.9%</b>	<b>84.1%</b>	<b>84.3%</b>	<b>15.7%</b>	<b>92.3%</b>	<b>81.3%</b>
CHO 1	984	1,060	1.08	27.2%	72.8%	1.03	1.10	88.7%	88.7%	90.0%	87.3%	12.7%	96.5%	83.8%
CHO 2	1,343	1,453	1.08	28.1%	71.9%	1.04	1.10	85.6%	85.6%	87.9%	83.1%	16.9%	90.0%	80.5%
CHO 3	791	873	1.10	22.8%	77.2%	1.06	1.12	82.6%	82.6%	83.1%	84.3%	15.7%	90.5%	82.5%
CHO 4	1,569	1,727	1.10	25.2%	74.8%	1.04	1.12	75.0%	75.0%	77.3%	83.8%	16.2%	93.6%	80.6%
CHO 5	1,204	1,325	1.10	26.2%	73.8%	1.04	1.12	84.3%	84.3%	86.3%	78.9%	21.1%	88.2%	75.6%
CHO 6	610	679	1.11	29.7%	70.3%	1.06	1.14	81.9%	81.9%	82.0%	83.1%	16.9%	90.6%	79.9%
CHO 7	870	958	1.10	22.7%	77.3%	1.05	1.12	81.2%	81.2%	81.4%	87.3%	12.7%	95.4%	84.9%
CHO 8	1,122	1,216	1.08	25.0%	75.0%	1.04	1.10	85.6%	85.6%	86.1%	84.6%	15.4%	93.4%	81.7%
CHO 9	1,317	1,443	1.10	28.0%	72.0%	1.04	1.12	82.0%	82.0%	83.4%	84.5%	15.5%	94.3%	80.8%
other Community Services	482	509	1.06	46.8%	53.2%	1.06	1.06	83.3%	83.3%	86.7%	91.4%	8.6%	90.3%	92.3%

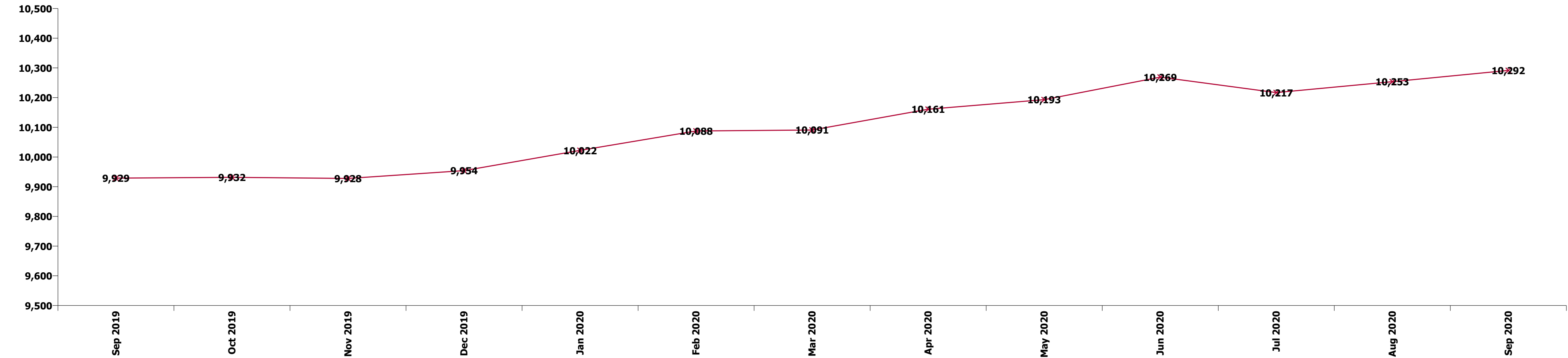
Summary Staff Movement: September 2020

Month-on-month  
Summary

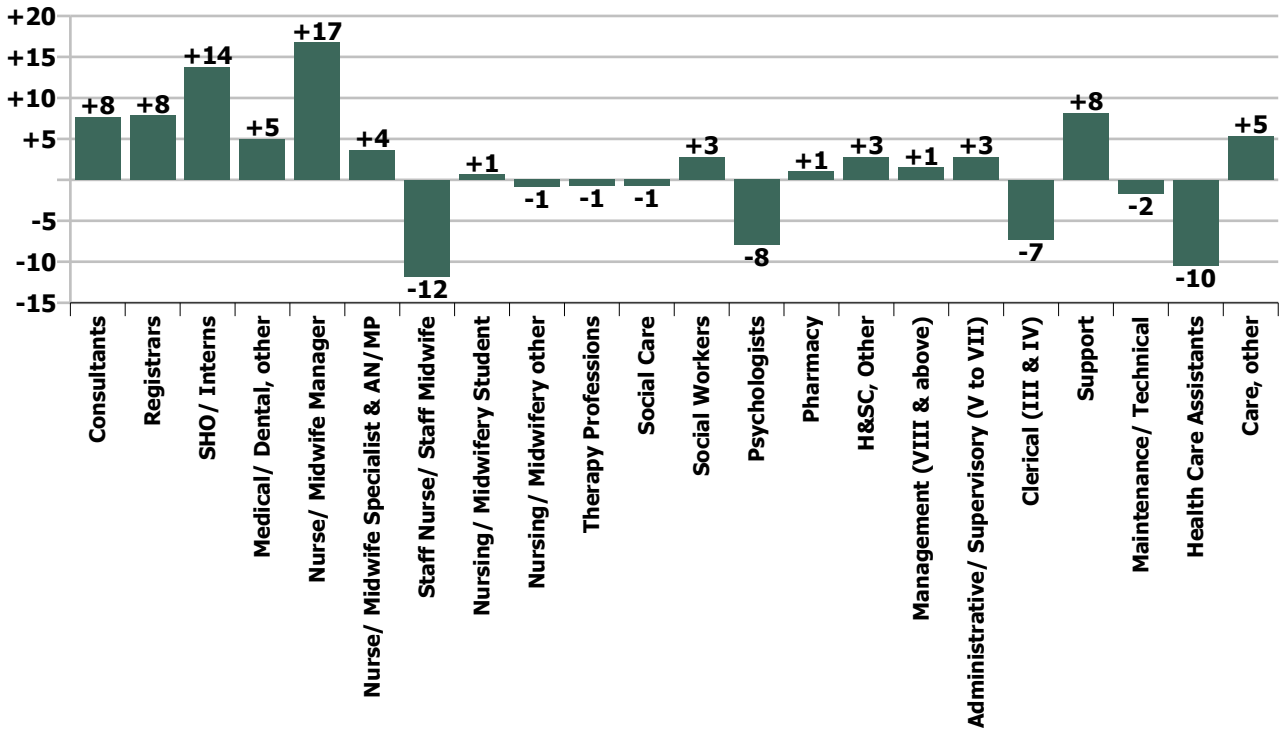
WTE change since Aug 20	% change since Aug 20	overall	Consultants	Registrars	SHO/ Interns	Medical/ Dental, other	Medical & Dental	Nurse/ Midwife Manager	Nurse/ Midwife Specialist & AN/MP	Staff Nurse/ Staff Midwife	Nursing/ Midwifery Student	Nursing/ Midwifery other	Nursing & Midwifery	Therapy Professions	Social Care	Social Workers	Psychologists	Pharmacy	H&SC, Other	Health & Social Care Professionals	Management (VIII & above)	Administrativ e/ Supervisory (V to VII)	Clerical (III & IV)	Management & Administrativ e	General Support	Health Care Assistants	Care, other	Patient & Client Care
Overall	+0.4%	+38	+8	+8	+14	+5	+34	+17	+4	-12	+1	-1	+8	-1	-1	+3	-8	+1	+3	-3	+1	+3	-7	-3	+6	-10	+5	-5
CHO 1	+0.5%	+5	+1	+5	-3		+3	+0	+2	+3	-0		+5	-2	-0	+0	+0	+0	+1	-1		-0	-1	-1	+0	-1	+1	-1
CHO 2	-0.5%	-6	-1	+0	-1		-2	+8	+0	-3	-0		+5	-1	-1	-0	-0	+0		-3		-0	-5	-5	-2	-1	+1	+0
CHO 3	-1.2%	-9	+1	-0	+0		+1	-2	+4	-4	+4		+2	-0		-0	-12		-0	-13		-1	+0	-0	-0	+1		+1
CHO 4	+0.4%	+6	+4	+0	+10	+4	+18	+8	-2	-10	-1		-6	+2	+1	+1	-0	-0	+2	+5	+1	-2	-2	-3	-1	-12	+4	-8
CHO 5	+3.9%	+45	+0	-1	+3	+1	+4	+4	+2	+8	+20		+33	-3	+0	+1	-1		+1	-2	+1	+3	-2	+2	+7	-1	+2	+1
CHO 6	+1.2%	+7	+0	+2	+1		+3	+2	+0	-3	+1		-0	+0	-1	+0	+2		+0	+2		+1	+0	+1	+1	+1	+0	+1
CHO 7	-0.7%	-6	+0	-1	+0		-1	+1	-1	+0	-7	+0	-6	+2	-0	-1	+1		-1	+2		+1	-1	+1	+0	+0	-2	-2
CHO 8	-0.4%	-5	+1	+2	-0		+3	-3	+0	-2	-3	-1	-8	+0	+0	-0	+2	+0	-0	+2		+1	-2	-1	-1	+0	-0	+0
CHO 9	-0.1%	-1	+1	+0	+4		+5	-1	-0	-1	-13	-0	-15	+2	+0	+0	+0	+1	+0	+3		+1	+5	+6	+1	-1	+0	-1
other Community Services	+0.3%	+1	+0	-0			+0	-1	-1	+0			-2	-0		+1	-1			+0	-1	-2	+0	-2	+2	+2		+2
		+0.4%	+2.1%	+2.9%	+5.3%	+95.4%	+3.8%	+1.4%	+0.7%	-0.4%	+0.3%	-2.5%	+0.2%	-0.2%	-1.0%	+0.8%	-1.9%	+5.4%	+2.6%	-0.2%	+2.5%	+1.1%	-1.0%	-0.3%	+0.9%	-1.0%	+2.6%	-0.4%

Year-on-year Summary

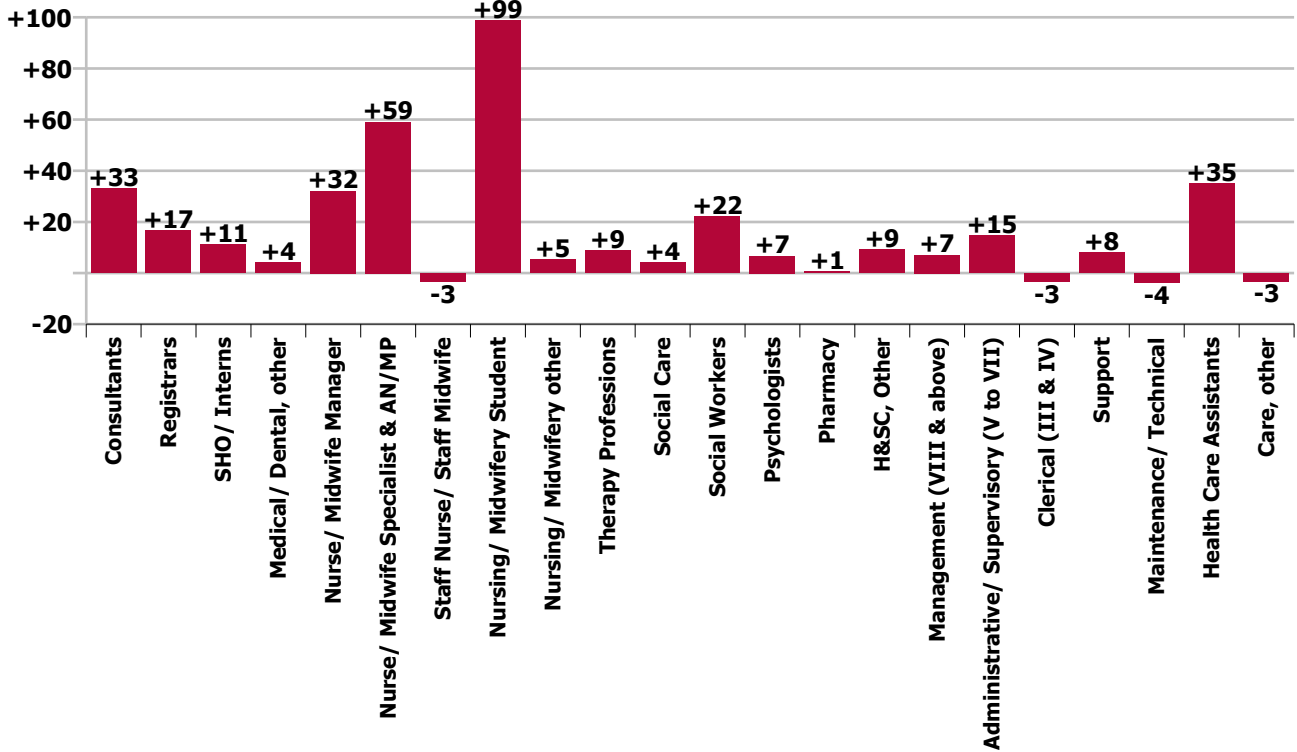
WTE change since Sep 19	% change since Sep 19	overall	Consultants	Registrars	SHO/ Interns	Medical/ Dental, other	Medical & Dental	Nurse/ Midwife Manager	Nurse/ Midwife Specialist & AN/MP	Staff Nurse/ Staff Midwife	Nursing/ Midwifery Student	Nursing/ Midwifery other	Nursing & Midwifery	Therapy Professions	Social Care	Social Workers	Psychologists	Pharmacy	H&SC, Other	Health & Social Care Professionals	Management (VIII & above)	Administrativ e/ Supervisory (V to VII)	Clerical (III & IV)	Management & Administrativ e	General Support	Health Care Assistants	Care, other	Patient & Client Care
Overall	+3.7%	+363	+33	+17	+11	+4	+65	+32	+59	-3	+99	+5	+192	+9	+4	+22	+7	+1	+9	+52	+7	+15	-3	+18	+4	+35	-3	+32
CHO 1	+3.9%	+37	+4	+1	-1		+4	+4	+2	-5	+18	+1	+20	+3	-1	-1	+3	+0	+1	+5	+2	+3	-2	+7	+1	-1	-1	-1
CHO 2	+2.3%	+31	+6	+5	+3		+13	+9	+9	-9	+19	+1	+29	+9	+1	+3	+4	-1	-1	+16	+2	+2	-12	-12	-6	-6	-4	-10
CHO 3	-0.8%	-6	+1	-3	+1		+0	+11	+5	-4	+7		+18	-5	+0	+1	-18		+3	-18	-1	+0	-6	-6	-4	+5	-1	+4
CHO 4	+5.5%	+82	+8	-3	+11	+3	+19	-5	+10	+1	+7		+13	+3	+3	+9	+6	-0	+6	+27	+2	-1	+4	+5	+2	+13	+3	+16
CHO 5	+2.1%	+25	-1	-0	+2	+1	+2	+25	-7	+2	+8	+7	+11	-1	+2	+0	+1	+1	+1	+0	+3	+3	-5	+0	+14	-3	+1	-2
CHO 6	+5.3%	+31	+6	-3	+5		+8	+2	+5	+8	+1	+1	+16	-3	-0	+3	+6		-0	+4		-0	+4	+4	-3	+0	+1	+1
CHO 7	+4.1%	+34	+8	+7	+1		+17	+4	+10	-14	+7	+1	+8	-2	+1	+4	+2		+0	+5	+1	+5	+2	+8	-2	-0	-1	-1
CHO 8	+1.3%	+14	+0	+7	-6		+1	-7	+5	+8	+12	+1	+20	-3	-0	+1	-3	-0	-1	-7		-1	+12	+10	-3	-7	-1	-8
CHO 9	+3.1%	+39	-1	+4	-5		-2	+5	+11	-12	+21	+0	+26	+6	+11		+1	+5	+1	+14		+1	+5	+6	-3	-1	-1	-2
other Community Services	+19.0%	+77	+1	+1			+2	+16	+1	+14			+31	+2	+0	+3		+1		+6	+2	+4	-10	-3	+7	+34		+34
		+3.7%	+9.7%	+6.2%	+4.3%	+70.0%	+7.4%	+2.6%	+13.4%	-0.1%	+82.9%	+17.7%	+4.0%	+2.1%	+5.7%	+6.4%	+1.7%	+3.8%	+9.0%	+3.8%	+13.4%	+6.3%	-0.5%	+1.8%	+0.6%	+3.5%	-1.5%	+2.6%



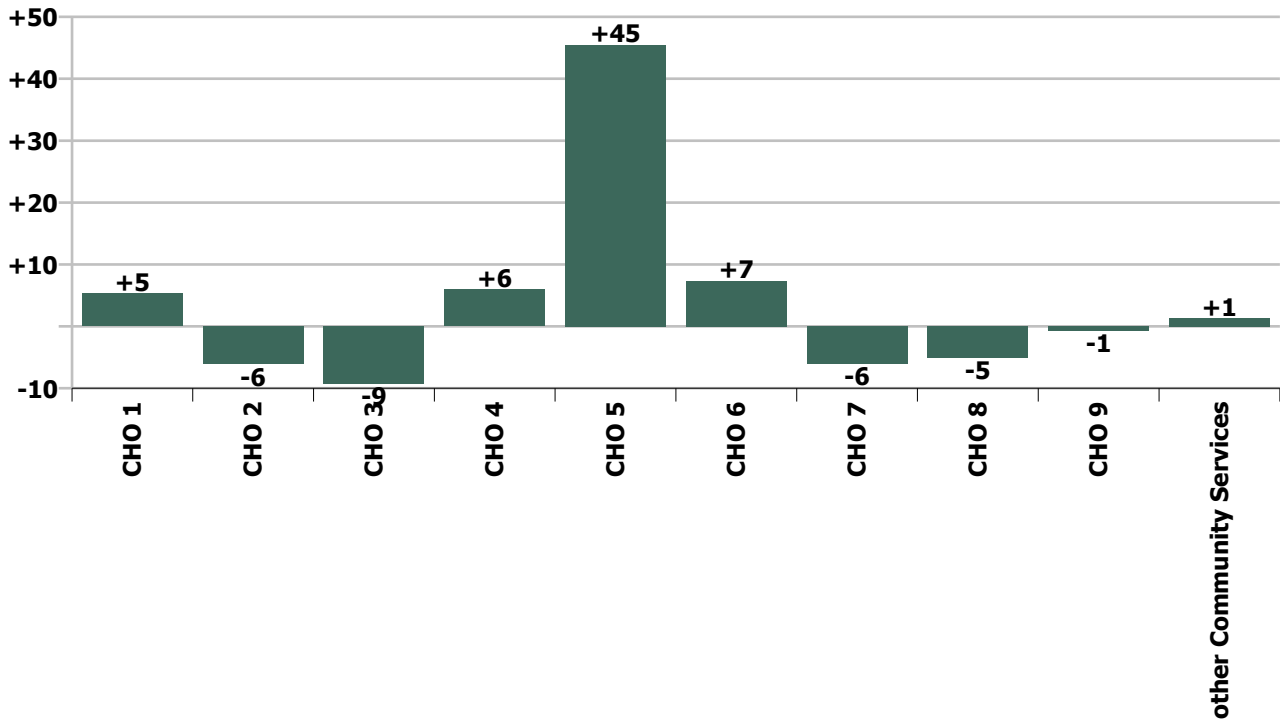
Staff Group change since: Aug 2020



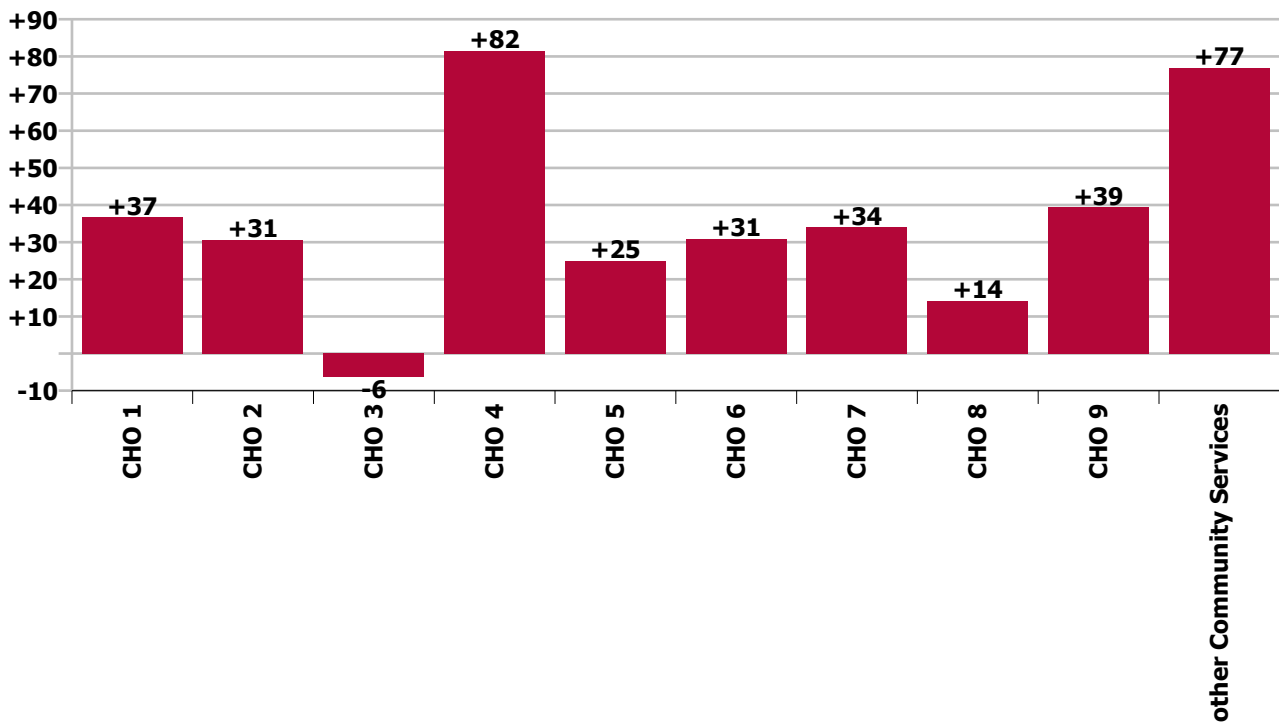
Staff Group change since: Sep 2019



CHO change since: Aug 2020



CHO change since: Sep 2019



## Longitudinal Employment Levels by Grade Group - Oct 2013 to Sep 2020

Sep 2020 (Oct 2013 figure: 9,125)	WTE Sep 2020	WTE change since Oct 13	WTE change since Dec 15	WTE change since Dec 16	WTE change since Dec 17	WTE change since Dec 18	WTE change since Dec 19	% change since Oct 13	% change since Dec 15	% change since Dec 16	% change since Dec 17	% change since Dec 18	% change since Dec 19
<b>Overall</b>	<b>10,292</b>	<b>+1,166</b>	<b>+793</b>	<b>+671</b>	<b>+502</b>	<b>+394</b>	<b>+338</b>	<b>+12.8%</b>	<b>+8.3%</b>	<b>+7.0%</b>	<b>+5.1%</b>	<b>+4.0%</b>	<b>+3.4%</b>
Consultant Medicine	1				-0	-0					-9.1%	-9.1%	
Consultant Psychiatry	372	+84	+58	+58	+60	+43	+21	+29.3%	+18.3%	+18.3%	+19.3%	+12.9%	+5.9%
<b>Consultants</b>	<b>373</b>	<b>+84</b>	<b>+58</b>	<b>+58</b>	<b>+60</b>	<b>+43</b>	<b>+21</b>	<b>+29.2%</b>	<b>+18.3%</b>	<b>+18.2%</b>	<b>+19.2%</b>	<b>+12.8%</b>	<b>+5.9%</b>
Registrar	171	+53	+47	+39	+27	+17	+2	+45.3%	+37.9%	+29.7%	+18.4%	+11.3%	+1.2%
Senior Registrar	111	+47	+53	+44	+45	+25	+13	+74.8%	+93.0%	+64.9%	+68.2%	+28.8%	+13.9%
Specialist Registrar	2	+2	+1	+1		+1	-1	-100.0%	+102.0%	+100.0%		+100.0%	-20.0%
<b>Registrars</b>	<b>284</b>	<b>+103</b>	<b>+101</b>	<b>+84</b>	<b>+72</b>	<b>+43</b>	<b>+15</b>	<b>+56.7%</b>	<b>+55.6%</b>	<b>+41.8%</b>	<b>+33.7%</b>	<b>+17.9%</b>	<b>+5.6%</b>
<i>Intern</i>	5	-4	-8	-7	-5	-3		-44.9%	-61.8%	-58.7%	-50.4%	-38.0%	-38.0%
Interns	5	-4	-8	-7	-5	-3	-3	-44.9%	-61.8%	-58.7%	-50.4%	-38.0%	-38.0%
Senior House Officer	268	+49	+33	+21	-4	-1	+15	+22.1%	+13.8%	+8.6%	-1.5%	-0.4%	+6.0%
<b>SHO/ Interns</b>	<b>273</b>	<b>+45</b>	<b>+25</b>	<b>+14</b>	<b>-9</b>	<b>-4</b>	<b>+12</b>	<b>+19.5%</b>	<b>+9.9%</b>	<b>+5.5%</b>	<b>-3.3%</b>	<b>-1.5%</b>	<b>+4.6%</b>
Dentists					-0	-0		-100.0%	-100.0%	-100.0%	-100.0%	-100.0%	-100.0%
Other Medical	10	-0	+1	+1	-1	+4	+5	-0.6%	+16.6%	+5.9%	-6.0%	+57.2%	+104.0%
<b>Medical/ Dental, other</b>	<b>10</b>	<b>-0</b>	<b>+1</b>	<b>+1</b>	<b>-1</b>	<b>+4</b>	<b>+5</b>	<b>-0.6%</b>	<b>+16.6%</b>	<b>+5.9%</b>	<b>-6.5%</b>	<b>+55.5%</b>	<b>+104.0%</b>
<b>Medical &amp; Dental</b>	<b>941</b>	<b>+232</b>	<b>+185</b>	<b>+156</b>	<b>+122</b>	<b>+85</b>		<b>+32.7%</b>	<b>+24.5%</b>	<b>+19.9%</b>	<b>+14.9%</b>	<b>+10.0%</b>	<b>+6.0%</b>
Clinical Nurse/ Midwife Manager	1,052	+258	+82	+45	+69	+46	+53	+32.6%	+8.5%	+4.5%	+7.0%	+4.5%	+5.3%
Director Nursing/Midwifery, Assistant	172	+67	+26	+17	+10	+8	+8	+64.4%	+17.9%	+11.0%	+6.4%	+5.1%	+4.6%
Director of Nursing/Midwifery	26	-3	-5	-6	-3	+2	-3	-9.3%	-15.9%	-18.8%	-9.6%	+8.5%	-10.9%
<b>Nurse/ Midwife Manager</b>	<b>1,250</b>	<b>+323</b>	<b>+104</b>	<b>+56</b>	<b>+77</b>	<b>+56</b>	<b>+58</b>	<b>+34.9%</b>	<b>+9.1%</b>	<b>+4.7%</b>	<b>+6.5%</b>	<b>+4.7%</b>	<b>+4.8%</b>
Advanced Nurse/ Midwife Practitioner	35	+26	+28	+28	+25	+15	+4	+290.2%	+401.7%	+369.5%	+234.5%	+74.4%	+14.3%
Clinical Nurse/ Midwife Specialist	464	+251	+157	+127	+81	+69	+35	+118.5%	+51.3%	+37.8%	+21.0%	+17.3%	+8.2%
<b>Nurse/ Midwife Specialist &amp; AN/MP</b>	<b>499</b>	<b>+278</b>	<b>+185</b>	<b>+155</b>	<b>+105</b>	<b>+83</b>	<b>+40</b>	<b>+125.5%</b>	<b>+59.1%</b>	<b>+45.1%</b>	<b>+26.7%</b>	<b>+20.1%</b>	<b>+8.6%</b>
Graduate Nursing/ Midwifery		-48	-10					-100.0%	-100.0%	-100.0%	-100.0%	-100.0%	-100.0%
<i>Staff Midwife</i>	1	+1	+1	+1	+1	+1		-100.0%	-100.0%	-100.0%	-100.0%	-100.0%	-100.0%
Staff Midwives	1	+1	+1	+1	+1	+1	+1	-100.0%	-100.0%	-100.0%	-100.0%	-100.0%	-100.0%
Staff Nurse [Intellectual Disability]	4	+2	+2	+1	+1	-2	-0	+67.6%	+86.2%	+25.4%	+21.1%	-30.2%	-7.5%
Staff Nurse [Psychiatric]	2,846	-293	-245	-210	-181	-109	-47	-9.3%	-7.9%	-6.9%	-6.0%	-3.7%	-1.6%
Staff Nurses [General/ Children's]	118	-44	-7	-3	+0	+0	+13	-27.2%	-5.5%	-2.4%	+0.1%	+0.1%	+12.3%



Sep 2020 (Oct 2013 figure: 9,125)	WTE Sep 2020	WTE change since Oct 13	WTE change since Dec 15	WTE change since Dec 16	WTE change since Dec 17	WTE change since Dec 18	WTE change since Dec 19	% change since Oct 13	% change since Dec 15	% change since Dec 16	% change since Dec 17	% change since Dec 18	% change since Dec 19
<b>Overall</b>	<b>10,292</b>	<b>+1,166</b>	<b>+793</b>	<b>+671</b>	<b>+502</b>	<b>+394</b>	<b>+338</b>	<b>+12.8%</b>	<b>+8.3%</b>	<b>+7.0%</b>	<b>+5.1%</b>	<b>+4.0%</b>	<b>+3.4%</b>
<b>Staff Nurse/ Staff Midwife</b>	<b>2,969</b>	<b>-382</b>	<b>-259</b>	<b>-211</b>	<b>-179</b>	<b>-109</b>	<b>-33</b>	<b>-11.4%</b>	<b>-8.0%</b>	<b>-6.6%</b>	<b>-5.7%</b>	<b>-3.6%</b>	<b>-1.1%</b>
<b>Public Health Nurse</b>				<b>-1</b>	<b>-1</b>			<b>-100.0%</b>	<b>-100.0%</b>	<b>-100.0%</b>	<b>-100.0%</b>	<b>-100.0%</b>	<b>-100.0%</b>
<i>Student General Nursing Intern (pre-registration)</i>							-1	-100.0%	-100.0%	-100.0%	-100.0%	-100.0%	-100.0%
<i>Student Psychiatric Nursing Intern (pre-registration)</i>	10	-47	-8	+1	-7	-17		-83.0%	-46.6%	+11.3%	-42.8%	-64.3%	-65.0%
<b>Pre-registration Nurse/ Midwife Intern</b>	<b>10</b>	<b>-47</b>	<b>-8</b>	<b>+1</b>	<b>-7</b>	<b>-18</b>	<b>-18</b>	<b>-83.0%</b>	<b>-46.6%</b>	<b>+11.3%</b>	<b>-42.8%</b>	<b>-65.4%</b>	<b>-65.0%</b>
<i>Student General Nursing Intern (COVID-19 HCA)</i>	1	+1	+1	+1	+1	+1		-100.0%	-100.0%	-100.0%	-100.0%	-100.0%	-100.0%
<i>Student Psychiatric Nursing Intern (COVID-19 HCA)</i>	199	+199	+199	+199	+199	+199		-100.0%	-100.0%	-100.0%	-100.0%	-100.0%	-100.0%
<b>Pre-registration Nurse Intern (COVID-19)</b>	<b>200</b>	<b>+200</b>	<b>+200</b>	<b>+200</b>	<b>+200</b>	<b>+200</b>	<b>+200</b>	<b>-100.0%</b>	<b>-100.0%</b>	<b>-100.0%</b>	<b>-100.0%</b>	<b>-100.0%</b>	<b>-100.0%</b>
<i>Student Public Health Nursing (post registration)</i>	0	+0	+0	+0	+0	+0		-100.0%	-100.0%	-100.0%	-100.0%	-100.0%	-75.0%
<b>Post-registration Nurse/ Midwife Student</b>	<b>0</b>	<b>+0</b>	<b>+0</b>	<b>+0</b>	<b>+0</b>	<b>+0</b>	<b>-1</b>	<b>-100.0%</b>	<b>-100.0%</b>	<b>-100.0%</b>	<b>-100.0%</b>	<b>-100.0%</b>	<b>-75.0%</b>
<b>Nursing/ Midwifery awaiting registration</b>	<b>8</b>	<b>+8</b>	<b>+8</b>	<b>+6</b>	<b>-1</b>	<b>-12</b>	<b>-51</b>	<b>-100.0%</b>	<b>-100.0%</b>	<b>+291.0%</b>	<b>-9.6%</b>	<b>-60.6%</b>	<b>-86.7%</b>
<b>Nursing/ Midwifery Student</b>	<b>218</b>	<b>+161</b>	<b>+200</b>	<b>+207</b>	<b>+192</b>	<b>+170</b>	<b>+130</b>	<b>+283.9%</b>	<b>+1106.8%</b>	<b>+1943.3%</b>	<b>+754.5%</b>	<b>+356.5%</b>	<b>+149.1%</b>
<b>Nursing Education/Clinical</b>	<b>35</b>	<b>+15</b>	<b>+15</b>	<b>+10</b>	<b>+4</b>	<b>+4</b>	<b>+3</b>	<b>+79.6%</b>	<b>+79.9%</b>	<b>+40.0%</b>	<b>+13.0%</b>	<b>+11.4%</b>	<b>+9.4%</b>
<b>Nursing/ Midwifery other</b>	<b>35</b>	<b>+15</b>	<b>+15</b>	<b>+10</b>	<b>+4</b>	<b>+4</b>	<b>+3</b>	<b>+79.6%</b>	<b>+79.9%</b>	<b>+40.0%</b>	<b>+13.0%</b>	<b>+11.4%</b>	<b>+9.4%</b>
<b>Nursing &amp; Midwifery</b>	<b>4,970</b>	<b>+395</b>	<b>+245</b>	<b>+216</b>	<b>+199</b>	<b>+204</b>		<b>+8.6%</b>	<b>+5.2%</b>	<b>+4.5%</b>	<b>+4.2%</b>	<b>+4.3%</b>	<b>+4.1%</b>
<b>Dietitians</b>	<b>18</b>	<b>+18</b>	<b>+13</b>	<b>+5</b>	<b>+2</b>	<b>-2</b>	<b>-1</b>	<b>+2205.0%</b>	<b>+236.5%</b>	<b>+35.9%</b>	<b>+9.8%</b>	<b>-8.3%</b>	<b>-3.8%</b>
<b>Occupational Therapists</b>	<b>345</b>	<b>+90</b>	<b>+51</b>	<b>+45</b>	<b>+18</b>	<b>+5</b>	<b>+6</b>	<b>+35.4%</b>	<b>+17.5%</b>	<b>+15.0%</b>	<b>+5.7%</b>	<b>+1.6%</b>	<b>+1.8%</b>
<b>Physiotherapists</b>	<b>3</b>	<b>+0</b>	<b>+0</b>	<b>+1</b>	<b>+1</b>	<b>+1</b>	<b>+0</b>	<b>+18.1%</b>	<b>+18.1%</b>	<b>+29.9%</b>	<b>+115.7%</b>	<b>+62.1%</b>	<b>+17.0%</b>
<b>Podiatrists &amp; Chiropodists</b>	<b>2</b>	<b>+1</b>	<b>+1</b>	<b>+0</b>	<b>+1</b>	<b>+1</b>	<b>+1</b>	<b>+57.8%</b>	<b>+38.3%</b>	<b>+17.0%</b>	<b>+44.9%</b>	<b>+74.6%</b>	<b>+191.8%</b>
<b>Speech &amp; Language Therapists</b>	<b>60</b>	<b>+11</b>	<b>+7</b>	<b>+0</b>	<b>-2</b>	<b>-2</b>	<b>-2</b>	<b>+23.7%</b>	<b>+13.6%</b>	<b>+0.6%</b>	<b>-2.5%</b>	<b>-2.7%</b>	<b>-2.9%</b>
<b>Therapy Professions</b>	<b>428</b>	<b>+120</b>	<b>+73</b>	<b>+51</b>	<b>+21</b>	<b>+4</b>	<b>+5</b>	<b>+39.1%</b>	<b>+20.4%</b>	<b>+13.5%</b>	<b>+5.1%</b>	<b>+0.9%</b>	<b>+1.2%</b>
<b>Social Care</b>	<b>78</b>	<b>-1</b>	<b>-10</b>	<b>-10</b>	<b>-5</b>	<b>-1</b>	<b>+4</b>	<b>-1.3%</b>	<b>-11.4%</b>	<b>-11.7%</b>	<b>-6.0%</b>	<b>-1.3%</b>	<b>+5.5%</b>
<b>Social Workers</b>	<b>367</b>	<b>+94</b>	<b>+18</b>	<b>+17</b>	<b>+10</b>	<b>+9</b>	<b>+18</b>	<b>+34.2%</b>	<b>+5.3%</b>	<b>+4.9%</b>	<b>+2.9%</b>	<b>+2.5%</b>	<b>+5.1%</b>
<b>Psychologists</b>	<b>402</b>	<b>+151</b>	<b>+79</b>	<b>+59</b>	<b>+31</b>	<b>+13</b>	<b>+7</b>	<b>+60.1%</b>	<b>+24.5%</b>	<b>+17.1%</b>	<b>+8.4%</b>	<b>+3.3%</b>	<b>+1.8%</b>
<b>Pharmacy</b>	<b>20</b>	<b>+0</b>	<b>+2</b>	<b>+0</b>	<b>+0</b>	<b>+0</b>	<b>+1</b>	<b>+2.6%</b>	<b>+14.5%</b>	<b>+1.1%</b>	<b>+1.7%</b>	<b>+2.1%</b>	<b>+6.1%</b>
<b>Counsellor Therapists</b>	<b>99</b>	<b>+24</b>	<b>+12</b>	<b>+14</b>	<b>+14</b>	<b>+14</b>	<b>+5</b>	<b>+31.5%</b>	<b>+13.5%</b>	<b>+16.9%</b>	<b>+16.2%</b>	<b>+16.9%</b>	<b>+4.9%</b>
<b>HSCP Trainees/ Students</b>		<b>-8</b>						<b>-100.0%</b>	<b>-100.0%</b>	<b>-100.0%</b>	<b>-100.0%</b>	<b>-100.0%</b>	<b>-100.0%</b>
<b>Other Health &amp; Social Care</b>	<b>11</b>	<b>+1</b>	<b>+4</b>	<b>+3</b>	<b>+3</b>	<b>+3</b>	<b>-1</b>	<b>+14.4%</b>	<b>+48.9%</b>	<b>+32.7%</b>	<b>+30.5%</b>	<b>+29.9%</b>	<b>-4.7%</b>
<b>Play Therapists/ Specialists</b>	<b>1</b>	<b>-1</b>	<b>-1</b>	<b>-1</b>	<b>-0</b>		<b>+0</b>	<b>-39.8%</b>	<b>-39.8%</b>	<b>-40.8%</b>	<b>-2.0%</b>		<b>+1.4%</b>
<b>H&amp;SC, Other</b>	<b>112</b>	<b>+17</b>	<b>+15</b>	<b>+16</b>	<b>+16</b>	<b>+17</b>	<b>+4</b>	<b>+17.4%</b>	<b>+14.9%</b>	<b>+16.8%</b>	<b>+17.2%</b>	<b>+17.9%</b>	<b>+3.8%</b>



Sep 2020 (Oct 2013 figure: 9,125)	WTE Sep 2020	WTE change since Oct 13	WTE change since Dec 15	WTE change since Dec 16	WTE change since Dec 17	WTE change since Dec 18	WTE change since Dec 19	% change since Oct 13	% change since Dec 15	% change since Dec 16	% change since Dec 17	% change since Dec 18	% change since Dec 19
<b>Overall</b>	<b>10,292</b>	<b>+1,166</b>	<b>+793</b>	<b>+671</b>	<b>+502</b>	<b>+394</b>	<b>+338</b>	<b>+12.8%</b>	<b>+8.3%</b>	<b>+7.0%</b>	<b>+5.1%</b>	<b>+4.0%</b>	<b>+3.4%</b>
<b>Health &amp; Social Care Professionals</b>	<b>1,406</b>	<b>+381</b>	<b>+177</b>	<b>+133</b>	<b>+74</b>	<b>+42</b>		<b>+37.2%</b>	<b>+14.4%</b>	<b>+10.4%</b>	<b>+5.5%</b>	<b>+3.1%</b>	<b>+2.9%</b>
Executive Management	13	+12	+9	+6	+5	+3	+2	+1189.0%	+222.3%	+84.1%	+61.1%	+28.9%	+17.2%
Senior Management (VIII & GM)	47	+28	+18	+22	+16	+15	+0	+146.5%	+64.4%	+89.7%	+49.8%	+47.9%	+1.1%
<b>Management (VIII &amp; above)</b>	<b>60</b>	<b>+40</b>	<b>+27</b>	<b>+28</b>	<b>+20</b>	<b>+18</b>	<b>+2</b>	<b>+198.7%</b>	<b>+83.8%</b>	<b>+88.5%</b>	<b>+52.1%</b>	<b>+43.4%</b>	<b>+4.1%</b>
<b>Administrative/ Supervisory (V to VII)</b>	<b>248</b>	<b>+116</b>	<b>+99</b>	<b>+80</b>	<b>+48</b>	<b>+25</b>	<b>+11</b>	<b>+88.1%</b>	<b>+67.1%</b>	<b>+47.6%</b>	<b>+24.3%</b>	<b>+11.4%</b>	<b>+4.6%</b>
<b>Clerical (III &amp; IV)</b>	<b>708</b>	<b>+96</b>	<b>+62</b>	<b>+46</b>	<b>+26</b>	<b>+12</b>	<b>-10</b>	<b>+15.6%</b>	<b>+9.6%</b>	<b>+7.0%</b>	<b>+3.8%</b>	<b>+1.7%</b>	<b>-1.4%</b>
<b>Management &amp; Administrative</b>	<b>1,015</b>	<b>+251</b>	<b>+189</b>	<b>+154</b>	<b>+95</b>	<b>+55</b>		<b>+32.9%</b>	<b>+22.8%</b>	<b>+17.9%</b>	<b>+10.3%</b>	<b>+5.8%</b>	<b>+0.4%</b>
Catering	65	-8	+3	-0	-0	-6	+0	-11.1%	+4.3%	-0.4%	-0.6%	-8.9%	+0.3%
Household Services	436	-195	-90	-56	-40	-10	+11	-31.0%	-17.1%	-11.5%	-8.5%	-2.2%	+2.6%
Other Support	45	-17	-7	-11	-5	-10	+2	-28.0%	-14.2%	-19.9%	-9.3%	-18.6%	+5.1%
Portering	47	-16	-11	-12	-2	-1	-1	-24.8%	-19.1%	-20.3%	-3.4%	-1.6%	-1.9%
<b>Support</b>	<b>593</b>	<b>-237</b>	<b>-106</b>	<b>-80</b>	<b>-47</b>	<b>-27</b>	<b>+13</b>	<b>-28.5%</b>	<b>-15.1%</b>	<b>-11.9%</b>	<b>-7.4%</b>	<b>-4.4%</b>	<b>+2.2%</b>
Maintenance	130	-38	-13	-13	-8	-4	+1	-22.5%	-8.9%	-8.8%	-6.0%	-2.9%	+1.1%
Technical Services		-2	-2	-2	-2	-2	-2	-100.0%	-100.0%	-100.0%	-100.0%	-100.0%	-100.0%
<b>Maintenance/ Technical</b>	<b>130</b>	<b>-40</b>	<b>-15</b>	<b>-15</b>	<b>-10</b>	<b>-6</b>	<b>-1</b>	<b>-23.4%</b>	<b>-10.1%</b>	<b>-10.1%</b>	<b>-7.3%</b>	<b>-4.4%</b>	<b>-0.4%</b>
<b>General Support</b>	<b>724</b>	<b>-276</b>	<b>-120</b>	<b>-94</b>	<b>-57</b>	<b>-33</b>		<b>-27.6%</b>	<b>-14.2%</b>	<b>-11.5%</b>	<b>-7.4%</b>	<b>-4.4%</b>	<b>+1.7%</b>
HCA, Nurse's Aide, etc.	1,014	+195	+103	+85	+66	+40	+35	+23.9%	+11.3%	+9.2%	+6.9%	+4.1%	+3.6%
Health & Social Care Assistants	9	+5	+5	+4	+4	+3	-0	+125.1%	+145.5%	+87.3%	+87.3%	+59.7%	-2.8%
<b>Health Care Assistants</b>	<b>1,023</b>	<b>+200</b>	<b>+108</b>	<b>+90</b>	<b>+70</b>	<b>+44</b>	<b>+35</b>	<b>+24.3%</b>	<b>+11.8%</b>	<b>+9.6%</b>	<b>+7.3%</b>	<b>+4.4%</b>	<b>+3.6%</b>
Other Care Grades	213	-16	+9	+17	+1	-3	-3	-7.1%	+4.3%	+8.6%	+0.3%	-1.4%	-1.4%
<b>Care, other</b>	<b>213</b>	<b>-16</b>	<b>+9</b>	<b>+17</b>	<b>+1</b>	<b>-3</b>	<b>-3</b>	<b>-7.1%</b>	<b>+4.3%</b>	<b>+8.6%</b>	<b>+0.3%</b>	<b>-1.4%</b>	<b>-1.4%</b>
<b>Patient &amp; Client Care</b>	<b>1,236</b>	<b>+184</b>	<b>+117</b>	<b>+106</b>	<b>+70</b>	<b>+41</b>		<b>+17.5%</b>	<b>+10.4%</b>	<b>+9.4%</b>	<b>+6.0%</b>	<b>+3.4%</b>	<b>+2.7%</b>

Source: Health Service Personnel Census