

## National Ambulance Service Services Employment Report: April 2021

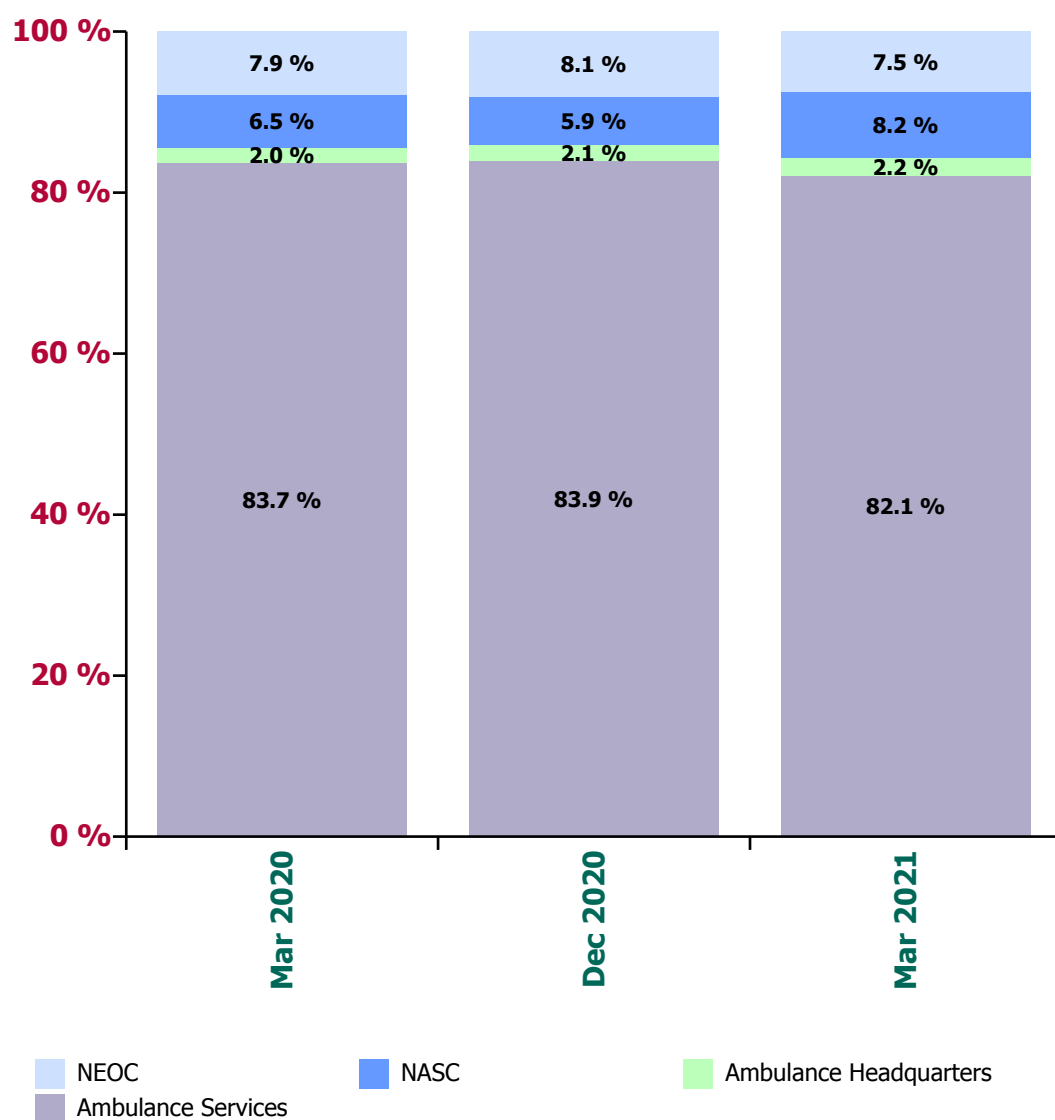
### Employment by Staff Group

Apr 2021 (Dec 2020 figure: 1,990)	WTE Mar 2021	WTE Apr 2021	WTE change since Mar 21	% change since Mar 21	WTE change since Dec 20	WTE change since Apr 20
<b>Overall</b>	<b>2,046</b>	<b>2,044</b>	<b>-2</b>	<b>-0.1%</b>	<b>+54</b>	<b>+94</b>
Consultants	1	1				
Senior House Officer	1.00	1			+1	+1
SHO/ Interns	1	1			+1	+1
Specialist Registrar		1	+1	-100.0%	+1	+1
Registrars		1	+1	-100.0%	+1	+1
<b>Medical &amp; Dental</b>	<b>2</b>	<b>3</b>	<b>+1</b>	<b>+33.5%</b>	<b>+2</b>	<b>+2</b>
Nurse/ Midwife Manager	1	1	-0	-2.0%	-0	-0
Staff Nurse/ Staff Midwife	1	1				
<b>Nursing &amp; Midwifery</b>	<b>2</b>	<b>2</b>	<b>-0</b>	<b>-1.0%</b>	<b>-0</b>	<b>-0</b>
Therapy Professions	1	1				
<b>Health &amp; Social Care Professionals</b>	<b>1</b>	<b>1</b>				
Management (VIII & above)	12	13	+1	+5.0%	-2	-0
Administrative/ Supervisory (V to VII)	38	37	-0	-0.7%	+5	+5
Clerical (III & IV)	41	41	+1	+1.4%	-0	+3
<b>Management &amp; Administrative</b>	<b>90</b>	<b>91</b>	<b>+1</b>	<b>+1.0%</b>	<b>+3</b>	<b>+7</b>
Support	4	3	-1	-19.1%	-1	-1
Maintenance/ Technical	2	2	-0	-0.5%	-0	-0
<b>General Support</b>	<b>6</b>	<b>5</b>	<b>-1</b>	<b>-12.3%</b>	<b>-1</b>	<b>-1</b>
Health Care Assistants	1	1			-1	-1
Ambulance Staff	1,931	1,928	-3	-0.2%	+52	+89
Care, other	13	13	-0	-1.5%	-1	-2
<b>Patient &amp; Client Care</b>	<b>1,945</b>	<b>1,942</b>	<b>-3</b>	<b>-0.2%</b>	<b>+50</b>	<b>+86</b>

## Ambulance Service by Region: Apr 2021

Apr 2021 (Dec 2020 figure: 1,990)	WTE Mar 2021	WTE Apr 2021	WTE change since Mar 21	% change since Mar 21	WTE change since Dec 20	WTE change since Apr 20
<b>Overall</b>	<b>2,046</b>	<b>2,044</b>	<b>-2</b>	<b>-0.1%</b>	<b>+54</b>	<b>+94</b>
North Leinster	606	606	-0	-0.0%	+21	+50
South	485	483	-2	-0.5%	-12	-9
West	589	588	-1	-0.2%	-1	+7
<b>Ambulance Services</b>	<b>1,680</b>	<b>1,677</b>	<b>-3</b>	<b>-0.2%</b>	<b>+8</b>	<b>+48</b>
<b>Ambulance Headquarters</b>	<b>45</b>	<b>45</b>	<b>+0</b>	<b>+1.1%</b>	<b>+3</b>	<b>+7</b>
<b>NASC</b>	<b>167</b>	<b>165</b>	<b>-2</b>	<b>-1.1%</b>	<b>+48</b>	<b>+44</b>
<b>NEOC</b>	<b>154</b>	<b>157</b>	<b>+2</b>	<b>+1.6%</b>	<b>-5</b>	<b>-5</b>

Proportion of total by Service



## National Ambulance Service Services Employment Report: April 2021

### Ambulance Services by staff group

Apr 2021 (Dec 2020 figure: 1,669)	WTE Mar 2021	WTE Apr 2021	WTE change since Mar 21	% change since Mar 21	WTE change since Dec 20	WTE change since Apr 20
<b>Overall</b>	<b>1,680</b>	<b>1,677</b>	<b>-3</b>	<b>-0.2%</b>	<b>+8</b>	<b>+48</b>
Senior House Officer	1	1				+1
SHO/ Interns	1	1			+1	+1
<b>Medical &amp; Dental</b>	<b>1</b>	<b>1</b>			<b>+1</b>	<b>+1</b>
Management (VIII & above)	1	1				
Administrative/ Supervisory (V to VII)	11	12	+1	+8.6%	+2	+2
Clerical (III & IV)	28	28	+1	+2.0%	-0	-2
<b>Management &amp; Administrative</b>	<b>40</b>	<b>41</b>	<b>+2</b>	<b>+3.8%</b>	<b>+1</b>	<b>-0</b>
Support	4	3	-1	-19.1%	-1	-1
Maintenance/ Technical	2	2	-0	-0.5%	-0	-0
<b>General Support</b>	<b>6</b>	<b>5</b>	<b>-1</b>	<b>-12.3%</b>	<b>-1</b>	<b>-1</b>
Health Care Assistants	1	1			-1	-1
Ambulance Staff	1,620	1,616	-4	-0.3%	+8	+51
Care, other	13	13	-0	-1.5%	-1	-2
<b>Patient &amp; Client Care</b>	<b>1,634</b>	<b>1,630</b>	<b>-4</b>	<b>-0.3%</b>	<b>+6</b>	<b>+48</b>

### Ambulance Headquarters by staff group

Apr 2021 (Dec 2020 figure: 42)	WTE Mar 2021	WTE Apr 2021	WTE change since Mar 21	% change since Mar 21	WTE change since Dec 20	WTE change since Apr 20
<b>Overall</b>	<b>45</b>	<b>45</b>	<b>+0</b>	<b>+1.1%</b>	<b>+3</b>	<b>+7</b>
Consultants	1	1				
Specialist Registrar		1	+1	-100.0%	+1	+1
Registrars		1	+1	-100.0%	+1	+1
<b>Medical &amp; Dental</b>	<b>1</b>	<b>2</b>	<b>+1</b>	<b>+67.0%</b>	<b>+1</b>	<b>+1</b>
Therapy Professions	1	1				
<b>Health &amp; Social Care Professionals</b>	<b>1</b>	<b>1</b>				
Management (VIII & above)	8	9	+1	+7.5%	-1	-0
Administrative/ Supervisory (V to VII)	22	20	-1	-5.6%	+2	+2
Clerical (III & IV)	8	8			+1	+4
<b>Management &amp; Administrative</b>	<b>38</b>	<b>37</b>	<b>-1</b>	<b>-1.6%</b>	<b>+2</b>	<b>+6</b>
Ambulance Staff	5	5	+0	+8.2%	+0	+1
<b>Patient &amp; Client Care</b>	<b>5</b>	<b>5</b>	<b>+0</b>	<b>+8.2%</b>	<b>+0</b>	<b>+1</b>

## NASC by staff group

Apr 2021 (Dec 2020 figure: 117)	WTE Mar 2021	WTE Apr 2021	WTE change since Mar 21	% change since Mar 21	WTE change since Dec 20	WTE change since Apr 20
<b>Overall</b>	<b>167</b>	<b>165</b>	<b>-2</b>	<b>-1.1%</b>	<b>+48</b>	<b>+44</b>
Management (VIII & above)	1	1				
Administrative/ Supervisory (V to VII)	4	4			+1	+1
Clerical (III & IV)	3	3	+0	+0.3%	-1	+1
<b>Management &amp; Administrative</b>	<b>8</b>	<b>8</b>	<b>+0</b>	<b>+0.1%</b>	<b>+0</b>	<b>+2</b>
Ambulance Staff	159	157	-2	-1.2%	+48	+42
<b>Patient &amp; Client Care</b>	<b>159</b>	<b>157</b>	<b>-2</b>	<b>-1.2%</b>	<b>+48</b>	<b>+42</b>

## NEOC by staff group

Apr 2021 (Dec 2020 figure: 161)	WTE Mar 2021	WTE Apr 2021	WTE change since Mar 21	% change since Mar 21	WTE change since Dec 20	WTE change since Apr 20
<b>Overall</b>	<b>154</b>	<b>157</b>	<b>+2</b>	<b>+1.6%</b>	<b>-5</b>	<b>-5</b>
Nurse/ Midwife Manager	1	1	-0	-2.0%	-0	-0
Staff Nurse/ Staff Midwife	1	1				
<b>Nursing &amp; Midwifery</b>	<b>2</b>	<b>2</b>	<b>-0</b>	<b>-1.0%</b>	<b>-0</b>	<b>-0</b>
Management (VIII & above)	2	2			-1	
Middle Management (V-VII)	1	1				+0
Administrative/ Supervisory (V to VII)	1	1				+0
Clerical (III & IV)	2	2	+0	+0.6%	+0	-0
<b>Management &amp; Administrative</b>	<b>5</b>	<b>5</b>	<b>+0</b>	<b>+0.2%</b>	<b>-1</b>	<b>-0</b>
Ambulance Staff	148	150	+2	+1.6%	-4	-5
<b>Patient &amp; Client Care</b>	<b>148</b>	<b>150</b>	<b>+2</b>	<b>+1.6%</b>	<b>-4</b>	<b>-5</b>

## Emergency Services: April 2021

### North Leinster by staff group

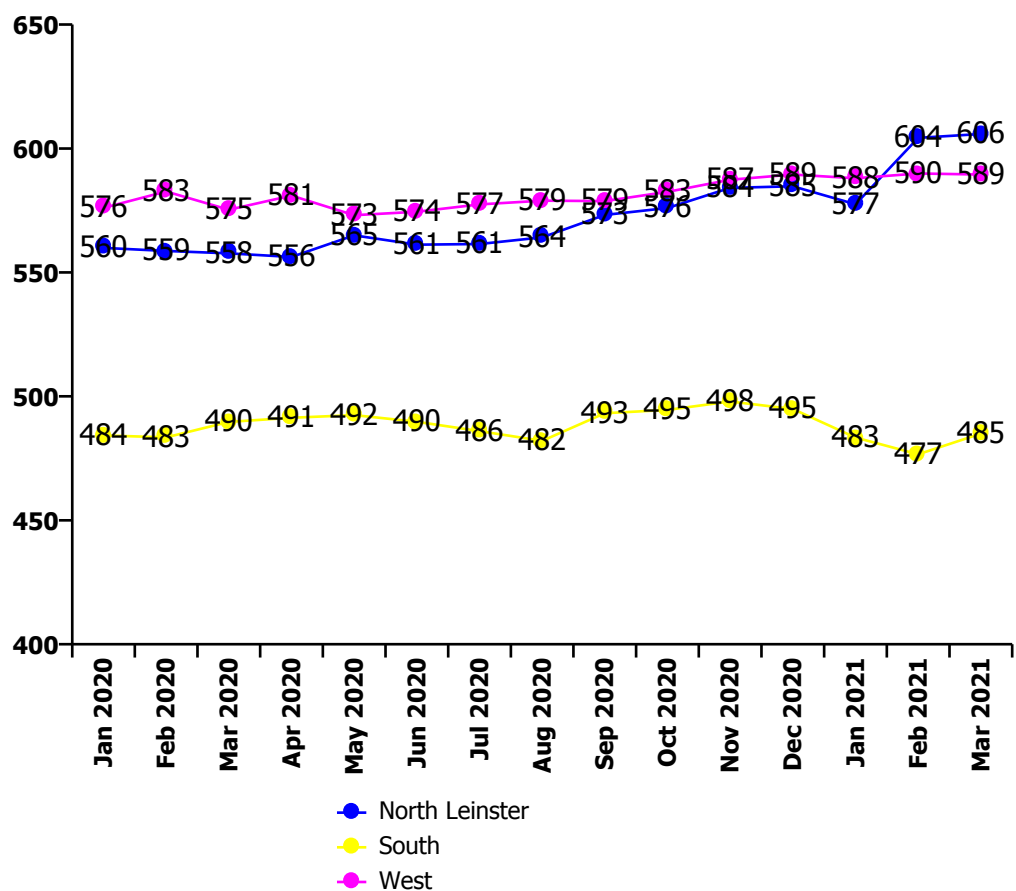
Apr 2021 (Dec 2020 figure: 585)	WTE Mar 2021	WTE Apr 2021	WTE change since Mar 21	% change since Mar 21	WTE change since Dec 20	WTE change since Apr 20
<b>Overall</b>	<b>606</b>	<b>606</b>	<b>-0</b>	<b>-0.0%</b>	<b>+21</b>	<b>+50</b>
Administrative/ Supervisory (V to VII)	4	5	+1	+25.0%	+2	+3
Clerical (III & IV)	5	5			-1	-0
<b>Management &amp; Administrative</b>	<b>9</b>	<b>10</b>	<b>+1</b>	<b>+11.3%</b>	<b>+2</b>	<b>+3</b>
Support	3	2	-1	-26.7%	-1	-1
Maintenance/ Technical	1	1	-0	-1.0%	-0	-0
<b>General Support</b>	<b>4</b>	<b>3</b>	<b>-1</b>	<b>-19.4%</b>	<b>-1</b>	<b>-1</b>
Ambulance Staff	580	580	-0	-0.0%	+21	+49
Care, other	13	13	-0	-1.5%	-1	-2
<b>Patient &amp; Client Care</b>	<b>594</b>	<b>593</b>	<b>-0</b>	<b>-0.1%</b>	<b>+20</b>	<b>+47</b>

### South by staff group

Apr 2021 (Dec 2020 figure: 495)	WTE Mar 2021	WTE Apr 2021	WTE change since Mar 21	% change since Mar 21	WTE change since Dec 20	WTE change since Apr 20
<b>Overall</b>	<b>485</b>	<b>483</b>	<b>-2</b>	<b>-0.5%</b>	<b>-12</b>	<b>-9</b>
Senior House Officer	1	1				+1
SHO/ Interns	1	1			+1	+1
<b>Medical &amp; Dental</b>	<b>1</b>	<b>1</b>			<b>+1</b>	<b>+1</b>
Administrative/ Supervisory (V to VII)	1	1			-1	-2
Clerical (III & IV)	8	9	+1	+13.0%	+1	-0
<b>Management &amp; Administrative</b>	<b>9</b>	<b>10</b>	<b>+1</b>	<b>+11.5%</b>	<b>-0</b>	<b>-2</b>
Support	1	1				
Maintenance/ Technical	1	1				
<b>General Support</b>	<b>2</b>	<b>2</b>				
Ambulance Staff	473	470	-3	-0.7%	-13	-7
<b>Patient &amp; Client Care</b>	<b>473</b>	<b>470</b>	<b>-3</b>	<b>-0.7%</b>	<b>-13</b>	<b>-7</b>

## West by staff group

Apr 2021 (Dec 2020 figure: 589)	WTE Mar 2021	WTE Apr 2021	WTE change since Mar 21	% change since Mar 21	WTE change since Dec 20	WTE change since Apr 20
<b>Overall</b>	<b>589</b>	<b>588</b>	<b>-1</b>	<b>-0.2%</b>	<b>-1</b>	<b>+7</b>
Management (VIII & above)	1	1				
Administrative/ Supervisory (V to VII)	6	6	-0	-0.8%	+1	+1
Clerical (III & IV)	16	15	-0	-2.7%	-1	-2
<b>Management &amp; Administrative</b>	<b>23</b>	<b>22</b>	<b>-0</b>	<b>-2.1%</b>	<b>+0</b>	<b>-1</b>
Health Care Assistants	1	1			-1	-1
Ambulance Staff	566	565	-1	-0.1%	-0	+9
<b>Patient &amp; Client Care</b>	<b>567</b>	<b>566</b>	<b>-1</b>	<b>-0.1%</b>	<b>-1</b>	<b>+8</b>



## Employment by WTE, Headcount, Gender, Full-Time /Part-Time etc.: Apr 2021

National Ambulance Service	WTE	Headcount	WTE: no.	% Male	% female	Male WTE: no.	Female WTE: no.	% Total Perm	% Male Perm	% Female Perm	% Total Full Time	% Total Part Time	% Male FT	% Female FT
<b>Overall</b>	<b>2,044</b>	<b>2,101</b>	<b>1.03</b>	<b>71.1%</b>	<b>28.9%</b>	<b>1.02</b>	<b>1.05</b>	<b>89.7%</b>	<b>90.6%</b>	<b>87.5%</b>	<b>99.0%</b>	<b>1.0%</b>	<b>99.8%</b>	<b>97.0%</b>
<b>Consultants</b>	<b>1</b>	<b>1</b>	<b>1.00</b>	<b>100.0%</b>		<b>1.00</b>		<b>100.0%</b>	<b>100.0%</b>		<b>100.0%</b>	<b>0.0%</b>	<b>100.0%</b>	
Senior House Officer	1	1	1.00	100.0%		1.00		0.0%	0.0%		100.0%	0.0%	100.0%	
<b>SHO/ Interns</b>	<b>1</b>	<b>1</b>	<b>1.00</b>	<b>100.0%</b>		<b>1.00</b>		<b>0.0%</b>	<b>0.0%</b>		<b>100.0%</b>	<b>0.0%</b>	<b>100.0%</b>	
Specialist Registrar	1	1	1.49	100.0%		1.49		0.0%	0.0%		100.0%	0.0%	100.0%	
<b>Registrars</b>	<b>1</b>	<b>1</b>	<b>1.49</b>	<b>100.0%</b>		<b>1.49</b>		<b>0.0%</b>	<b>0.0%</b>		<b>100.0%</b>	<b>0.0%</b>	<b>100.0%</b>	
<b>Medical &amp; Dental</b>	<b>3</b>	<b>3</b>	<b>1.12</b>	<b>100.0%</b>		<b>1.12</b>		<b>33.3%</b>	<b>33.3%</b>		<b>100.0%</b>	<b>0.0%</b>	<b>100.0%</b>	
<b>Nurse/ Midwife Manager</b>	<b>1</b>	<b>1</b>	<b>1.02</b>		<b>100.0%</b>		<b>1.02</b>	<b>100.0%</b>		<b>100.0%</b>	<b>100.0%</b>	<b>0.0%</b>		<b>100.0%</b>
<b>Staff Nurse/ Staff Midwife</b>	<b>1</b>	<b>1</b>	<b>1.00</b>		<b>100.0%</b>		<b>1.00</b>	<b>100.0%</b>		<b>100.0%</b>	<b>100.0%</b>	<b>0.0%</b>		<b>100.0%</b>
<b>Nursing &amp; Midwifery</b>	<b>2</b>	<b>2</b>	<b>1.01</b>		<b>100.0%</b>		<b>1.01</b>	<b>100.0%</b>		<b>100.0%</b>	<b>100.0%</b>	<b>0.0%</b>		<b>100.0%</b>
<b>Therapy Professions</b>	<b>1</b>	<b>1</b>	<b>1.00</b>		<b>100.0%</b>		<b>1.00</b>	<b>100.0%</b>		<b>100.0%</b>	<b>100.0%</b>	<b>0.0%</b>		<b>100.0%</b>
<b>Health &amp; Social Care</b>	<b>1</b>	<b>1</b>	<b>1.00</b>		<b>100.0%</b>		<b>1.00</b>	<b>100.0%</b>		<b>100.0%</b>	<b>100.0%</b>	<b>0.0%</b>		<b>100.0%</b>
<b>Management (VIII &amp; above)</b>	<b>13</b>	<b>13</b>	<b>1.02</b>	<b>61.5%</b>	<b>38.5%</b>	<b>1.00</b>	<b>1.06</b>	<b>92.3%</b>	<b>100.0%</b>	<b>80.0%</b>	<b>92.3%</b>	<b>7.7%</b>	<b>100.0%</b>	<b>80.0%</b>
<b>Administrative/ Supervisory (V to VII)</b>	<b>37</b>	<b>38</b>	<b>1.02</b>	<b>28.9%</b>	<b>71.1%</b>	<b>1.00</b>	<b>1.02</b>	<b>100.0%</b>	<b>100.0%</b>	<b>100.0%</b>	<b>100.0%</b>	<b>0.0%</b>	<b>100.0%</b>	<b>100.0%</b>
<b>Clerical (III &amp; IV)</b>	<b>41</b>	<b>47</b>	<b>1.14</b>	<b>17.0%</b>	<b>83.0%</b>	<b>1.09</b>	<b>1.15</b>	<b>93.6%</b>	<b>87.5%</b>	<b>94.9%</b>	<b>78.7%</b>	<b>21.3%</b>	<b>100.0%</b>	<b>74.4%</b>
<b>Management &amp; Administrative</b>	<b>91</b>	<b>98</b>	<b>1.07</b>	<b>27.6%</b>	<b>72.4%</b>	<b>1.02</b>	<b>1.09</b>	<b>95.9%</b>	<b>96.3%</b>	<b>95.8%</b>	<b>88.8%</b>	<b>11.2%</b>	<b>100.0%</b>	<b>84.5%</b>
<b>Support</b>	<b>3</b>	<b>4</b>	<b>1.41</b>	<b>50.0%</b>	<b>50.0%</b>	<b>2.38</b>	<b>1.00</b>	<b>75.0%</b>	<b>50.0%</b>	<b>100.0%</b>	<b>75.0%</b>	<b>25.0%</b>	<b>50.0%</b>	<b>100.0%</b>
<b>Maintenance/ Technical</b>	<b>2</b>	<b>2</b>	<b>1.01</b>	<b>100.0%</b>		<b>1.01</b>		<b>100.0%</b>	<b>100.0%</b>		<b>100.0%</b>	<b>0.0%</b>	<b>100.0%</b>	
<b>General Support</b>	<b>5</b>	<b>6</b>	<b>1.24</b>	<b>66.7%</b>	<b>33.3%</b>	<b>1.41</b>	<b>1.00</b>	<b>83.3%</b>	<b>75.0%</b>	<b>100.0%</b>	<b>83.3%</b>	<b>16.7%</b>	<b>75.0%</b>	<b>100.0%</b>
<b>Health Care Assistants</b>	<b>1</b>	<b>1</b>	<b>1.00</b>	<b>100.0%</b>		<b>1.00</b>		<b>100.0%</b>	<b>100.0%</b>		<b>100.0%</b>	<b>0.0%</b>	<b>100.0%</b>	
Ambulance Control	175	179	1.02	48.6%	51.4%	1.01	1.04	98.9%	98.9%	98.9%	98.3%	1.7%	100.0%	96.7%
Ambulance Education	201	204	1.02	64.7%	35.3%	1.01	1.02	0.0%	0.0%	0.0%	100.0%	0.0%	100.0%	100.0%
Ambulance Officers	85	86	1.01	86.0%	14.0%	1.01	1.00	97.7%	97.3%	100.0%	100.0%	0.0%	100.0%	100.0%
Pre-Hospital Care (Ambulance)	1,467	1,507	1.03	76.6%	23.4%	1.02	1.06	99.9%	99.9%	100.0%	99.7%	0.3%	99.8%	99.1%
<b>Ambulance Staff</b>	<b>1,928</b>	<b>1,976</b>	<b>1.02</b>	<b>73.3%</b>	<b>26.7%</b>	<b>1.02</b>	<b>1.05</b>	<b>89.4%</b>	<b>90.6%</b>	<b>86.2%</b>	<b>99.6%</b>	<b>0.4%</b>	<b>99.9%</b>	<b>98.9%</b>
<b>Care, other</b>	<b>13</b>	<b>14</b>	<b>1.09</b>	<b>71.4%</b>	<b>28.6%</b>	<b>1.00</b>	<b>1.40</b>	<b>100.0%</b>	<b>100.0%</b>	<b>100.0%</b>	<b>92.9%</b>	<b>7.1%</b>	<b>100.0%</b>	<b>75.0%</b>
<b>Patient &amp; Client Care</b>	<b>1,942</b>	<b>1,991</b>	<b>1.03</b>	<b>73.3%</b>	<b>26.7%</b>	<b>1.02</b>	<b>1.05</b>	<b>89.5%</b>	<b>90.7%</b>	<b>86.3%</b>	<b>99.5%</b>	<b>0.5%</b>	<b>99.9%</b>	<b>98.7%</b>

## Employment by WTE, Headcount, Gender, Full-Time /Part-Time etc.: Apr 2021

National Ambulance Service	WTE	Headcount	WTE: no.	% Male	% female	Male WTE: no.	Female WTE: no.	% Total Perm	% Male Perm	% Female Perm	% Total Full Time	% Total Part Time	% Male FT	% Female FT
<b>Overall</b>	<b>2,044</b>	<b>2,101</b>	<b>1.03</b>	<b>71.1%</b>	<b>28.9%</b>	<b>1.02</b>	<b>1.05</b>	<b>89.7%</b>	<b>90.6%</b>	<b>87.5%</b>	<b>99.0%</b>	<b>1.0%</b>	<b>99.8%</b>	<b>97.0%</b>
North Leinster	606	628	1.04	73.2%	26.8%	1.02	1.07	93.8%	93.8%	94.0%	98.6%	1.4%	99.3%	99.3%
South	483	493	1.02	76.3%	23.7%	1.01	1.04	95.1%	95.1%	94.9%	99.6%	0.4%	100.0%	100.0%
West	588	605	1.03	74.7%	25.3%	1.02	1.06	97.7%	97.7%	96.1%	99.0%	1.0%	100.0%	100.0%
<b>Ambulance Services</b>	<b>1,677</b>	<b>1,726</b>	<b>1.03</b>	<b>74.6%</b>	<b>25.4%</b>	<b>1.02</b>	<b>1.06</b>	<b>95.5%</b>	<b>95.5%</b>	<b>95.0%</b>	<b>99.0%</b>	<b>1.0%</b>	<b>99.8%</b>	<b>99.8%</b>
<b>Ambulance Headquarters</b>	<b>45</b>	<b>47</b>	<b>1.04</b>	<b>40.4%</b>	<b>59.6%</b>	<b>1.05</b>	<b>1.03</b>	<b>91.5%</b>	<b>91.5%</b>	<b>96.4%</b>	<b>97.9%</b>	<b>2.1%</b>	<b>100.0%</b>	<b>100.0%</b>
<b>NASC</b>	<b>165</b>	<b>168</b>	<b>1.02</b>	<b>64.3%</b>	<b>35.7%</b>	<b>1.01</b>	<b>1.04</b>	<b>20.8%</b>	<b>20.8%</b>	<b>13.3%</b>	<b>99.4%</b>	<b>0.6%</b>	<b>100.0%</b>	<b>100.0%</b>
<b>NEOC</b>	<b>157</b>	<b>160</b>	<b>1.02</b>	<b>48.8%</b>	<b>51.2%</b>	<b>1.00</b>	<b>1.04</b>	<b>98.8%</b>	<b>98.8%</b>	<b>98.8%</b>	<b>98.8%</b>	<b>1.3%</b>	<b>100.0%</b>	<b>100.0%</b>



# National Ambulance Service Employment by Grade Group & Staff Category: April 2021

Apr 2021 (Apr 2020 figure: 1,950)	WTE Dec 2015	WTE Dec 2016	WTE Dec 2017	WTE Dec 2018	WTE Dec 2019	WTE Dec 2020	WTE Apr 2021
<b>Overall</b>	<b>1,694</b>	<b>1,734</b>	<b>1,843</b>	<b>1,887</b>	<b>1,932.99</b>	<b>1,989.75</b>	<b>2,044</b>
<b>Consultants</b>	<b>100.0%</b>	<b>100.0%</b>	<b>100.0%</b>	<b>100.0%</b>	<b>100.0%</b>	<b>100.0%</b>	<b>37.5%</b>
Senior House Officer						50.0%	37.5%
<b>SHO/ Interns</b>							<b>37.5%</b>
Specialist Registrar							25.1%
<b>Registrars</b>							<b>25.1%</b>
<b>Medical &amp; Dental</b>	<b>0.1%</b>	<b>0.1%</b>	<b>0.1%</b>	<b>0.1%</b>	<b>0.1%</b>	<b>0.1%</b>	<b>0.1%</b>
<b>Nurse/ Midwife Manager</b>			<b>50.0%</b>	<b>76.3%</b>	<b>50.0%</b>	<b>50.0%</b>	<b>49.5%</b>
<b>Staff Nurse/ Staff Midwife</b>			<b>50.0%</b>	<b>23.7%</b>	<b>50.0%</b>	<b>50.0%</b>	<b>50.5%</b>
<b>Nursing &amp; Midwifery</b>			<b>0.1%</b>	<b>0.1%</b>	<b>0.1%</b>	<b>0.1%</b>	<b>0.1%</b>
<b>Therapy Professions</b>					<b>100.0%</b>	<b>100.0%</b>	<b>100.0%</b>
<b>Health &amp; Social Care Professionals</b>					<b>0.1%</b>	<b>0.1%</b>	<b>0.0%</b>
Executive Management	1.6%	1.5%	1.4%	1.3%		2.2%	3.3%
Senior Management (VIII & GM)	6.3%	6.0%	7.1%	7.6%		11.2%	10.6%
<b>Management (VIII &amp; above)</b>	<b>7.9%</b>	<b>7.5%</b>	<b>8.5%</b>	<b>8.9%</b>	<b>14.9%</b>	<b>16.1%</b>	<b>13.9%</b>
Middle Management (V-VII)	20.3%	23.4%	31.1%	28.8%		41.6%	40.9%
<b>Administrative/ Supervisory (V to VII)</b>	<b>20.3%</b>	<b>23.4%</b>	<b>31.1%</b>	<b>28.8%</b>	<b>34.9%</b>	<b>37.0%</b>	<b>40.9%</b>
<b>Clerical (III &amp; IV)</b>	<b>71.9%</b>	<b>69.1%</b>	<b>60.4%</b>	<b>62.3%</b>	<b>50.3%</b>	<b>46.9%</b>	<b>45.2%</b>
<b>Management &amp; Administrative</b>	<b>3.7%</b>	<b>3.8%</b>	<b>3.8%</b>	<b>4.2%</b>	<b>4.2%</b>	<b>4.5%</b>	<b>4.5%</b>
<b>Support</b>	<b>83.8%</b>	<b>81.3%</b>	<b>86.2%</b>	<b>86.2%</b>	<b>63.6%</b>	<b>63.7%</b>	<b>58.8%</b>
<b>Maintenance/ Technical</b>	<b>16.2%</b>	<b>18.7%</b>	<b>13.8%</b>	<b>13.8%</b>	<b>36.4%</b>	<b>36.3%</b>	<b>41.2%</b>
<b>General Support</b>	<b>1.1%</b>	<b>0.9%</b>	<b>0.8%</b>	<b>0.8%</b>	<b>0.3%</b>	<b>0.3%</b>	<b>0.2%</b>
<b>Health Care Assistants</b>	<b>0.2%</b>	<b>0.2%</b>	<b>0.2%</b>	<b>0.2%</b>	<b>0.1%</b>	<b>0.1%</b>	<b>0.1%</b>
Ambulance Control	10.9%	9.8%	9.5%	8.8%		8.9%	9.0%
Ambulance Education	5.9%	9.7%	10.5%	10.3%		10.6%	10.3%
Ambulance Officers	4.5%	4.3%	4.1%	4.3%		4.4%	4.4%
Pre-Hospital Care (Ambulance)	78.0%	75.6%	75.3%	76.0%		75.4%	75.6%
<b>Ambulance Staff</b>	<b>99.3%</b>	<b>99.4%</b>	<b>99.4%</b>	<b>99.4%</b>	<b>99.1%</b>	<b>99.2%</b>	<b>99.3%</b>
<b>Care, other</b>	<b>0.5%</b>	<b>0.4%</b>	<b>0.4%</b>	<b>0.4%</b>	<b>0.8%</b>	<b>0.7%</b>	<b>0.7%</b>
<b>Patient &amp; Client Care</b>	<b>95.1%</b>	<b>95.2%</b>	<b>95.2%</b>	<b>94.9%</b>	<b>95.3%</b>	<b>95.1%</b>	<b>95.0%</b>
<b>Total</b>	<b>100%</b>	<b>100%</b>	<b>100%</b>	<b>100%</b>	<b>100%</b>	<b>100%</b>	<b>100%</b>

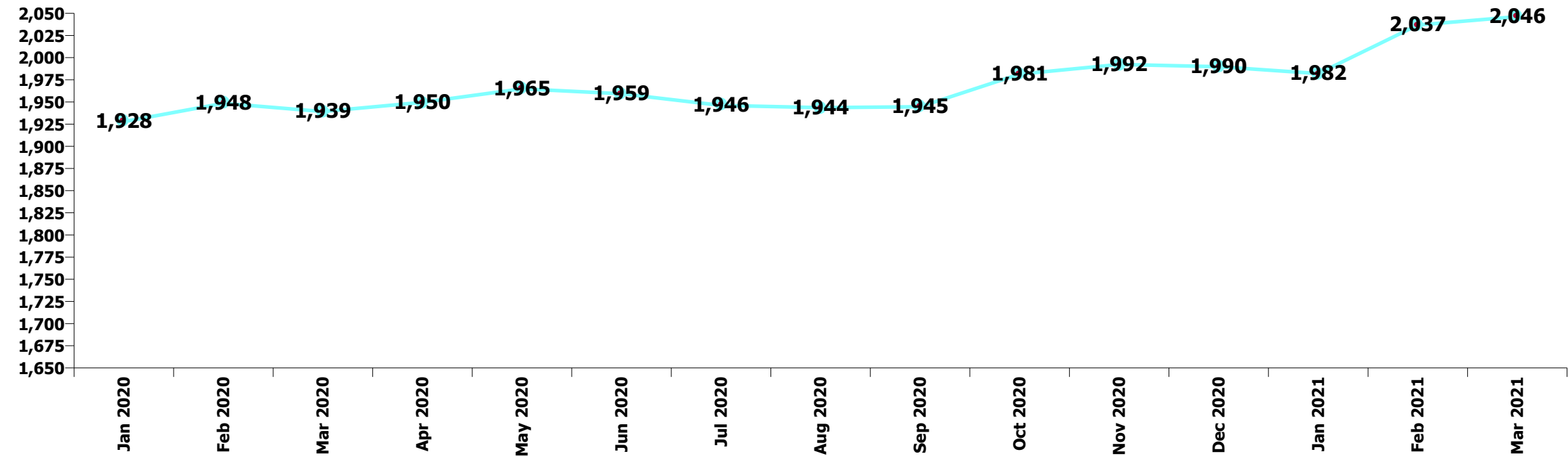
Summary Staff Movement: April 2021

Month-on-month Summary

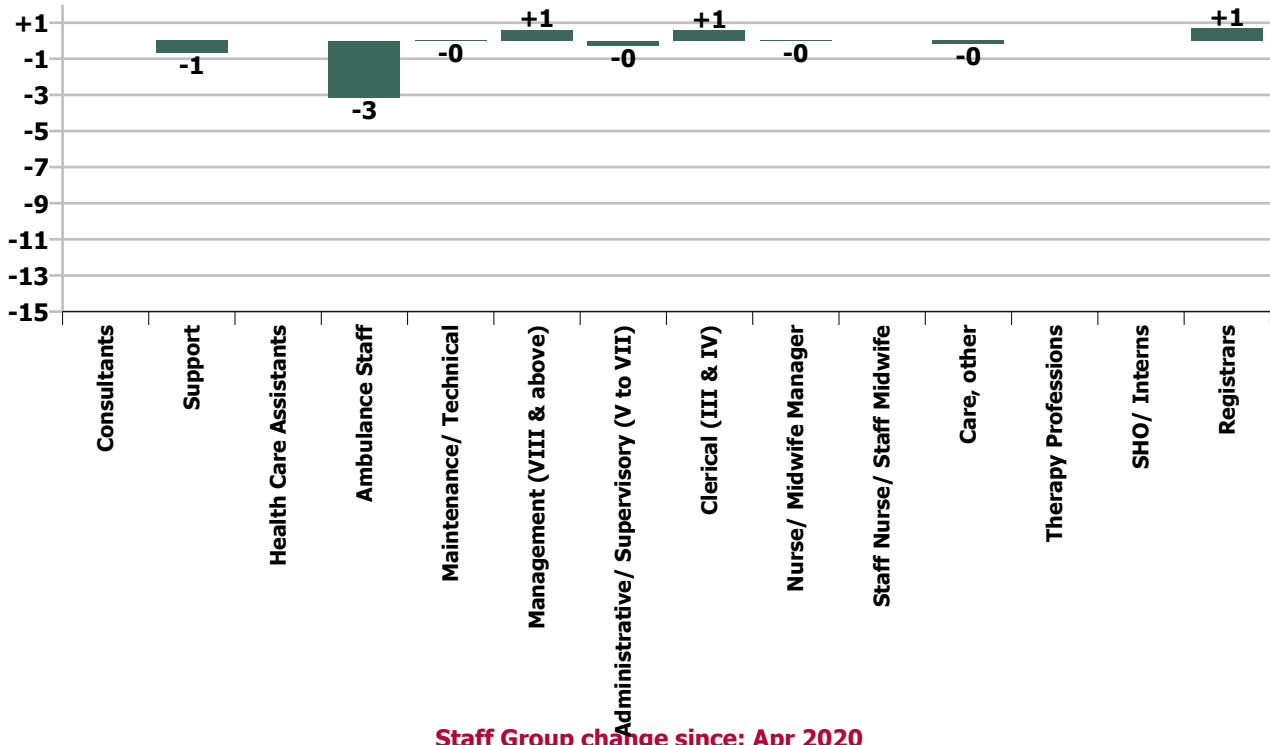
WTE change since Mar 21	% change since Mar 21	overall	Consultants	SHO/ Interns	Registrars	Medical & Dental	Nurse/ Midwife Manager	Staff Nurse/ Staff Midwife	Nursing & Midwifery	Therapy Professions	Health & Social Care Professionals	Management (VIII & above)	Administrative/ Supervisory (V to VII)	Clerical (III & IV)	Management & Administrative	General Support	Health Care Assistants	Ambulance Staff	Care, other	Patient & Client Care
Overall	-0.1%	-2			+1	+1	-0		-0			+1	-0	+1	+1	-1		-3	-0	-3
North Leinster	-0.0%	-0											+1.0	0.0	+1.0	-0.7		-0.2	-0.2	-0.4
South	-0.5%	-2		0.0		0.0							0.0	+1.0	+1.0	0.0		-3.3		-3.3
West	-0.2%	-1										0.0	-0.0	-0.4	-0.5		0.0	-0.6		-0.6
Ambulance Services	-0.2%	-3		0.0		0.0						0.0	+0.9	+0.6	+1.5	-0.7	0.0	-4.1	-0.2	-4.3
Ambulance Headquarters	+1.1%	+0	0.0		+0.7	+0.7				0.0	0.0	+0.6	-1.2	0.0	-0.6			+0.4		+0.4
NASC	-1.1%	-2										0.0	0.0	+0.0	+0.0			-1.9		-1.9
NEOC	+1.6%	+2					-0.0	0.0	-0.0			0.0	0.0	+0.0	+0.0			+2.4		+2.4
					-100.0%	+33.5%	-2.0%		-1.0%			+5.0%	-0.7%	+1.4%	+1.0%	-12.3%		-0.2%	-1.5%	-0.2%

Year-on-year Summary

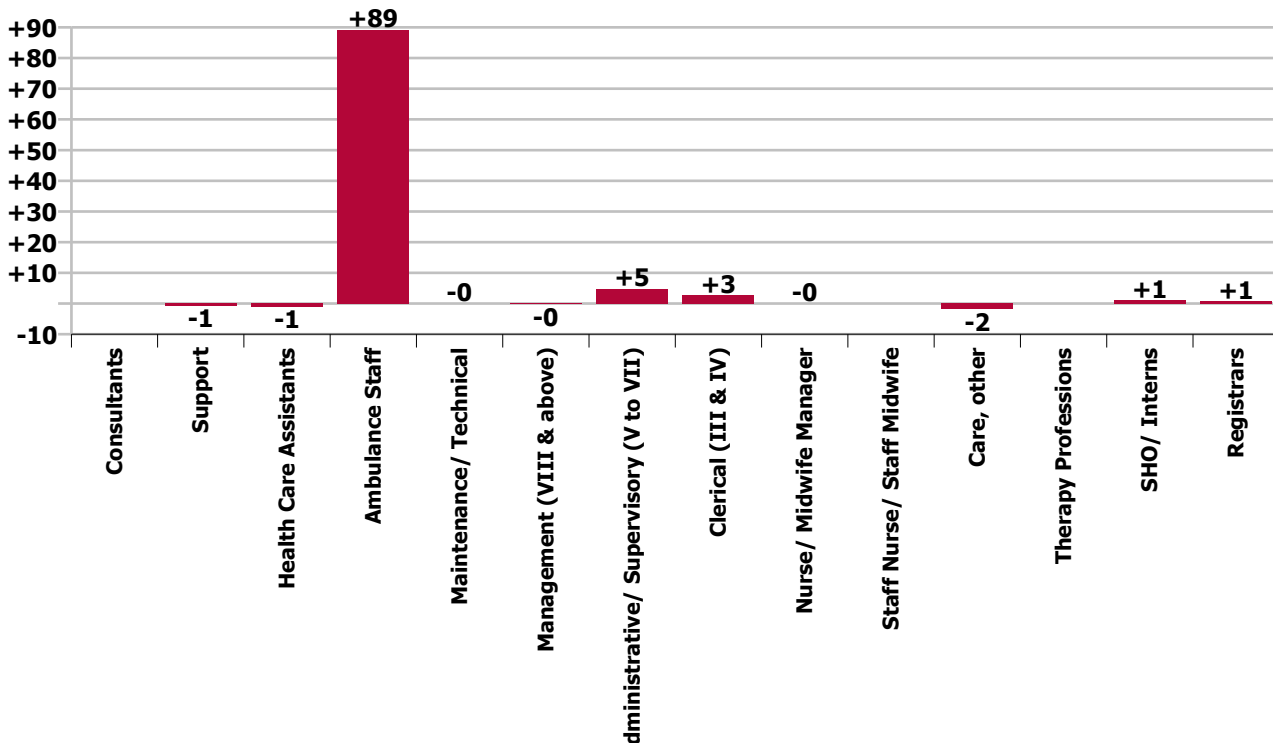
WTE change since Apr 20	% change since Apr 20	overall	Consultants	SHO/ Interns	Registrars	Medical & Dental	Nurse/ Midwife Manager	Staff Nurse/ Staff Midwife	Nursing & Midwifery	Therapy Professions	Health & Social Care Professionals	Management (VIII & above)	Administrative/ Supervisory (V to VII)	Clerical (III & IV)	Management & Administrative	General Support	Health Care Assistants	Ambulance Staff	Care, other	Patient & Client Care
Overall	+4.8%	+94	0.0	+1.0	+0.7	+1.7	-0.0	0.0	-0.0	0.0	0.0	-0.3	+4.7	+2.6	+7.1	-0.7	-1.0	+89.1	-1.9	+86.2
North Leinster	+8.9%	+50											+3.0	-0.2	+2.8	-0.7		+49.3	-1.9	+47.4
South	-1.8%	-9		+1.0		+1.0							-2.0	-0.2	-2.2	0.0		-7.5		-7.5
West	+1.3%	+7										0.0	+1.0	-1.8	-0.8		-1.0	+9.2		+8.2
Ambulance Services	+3.0%	+48		+1.0		+1.0						0.0	+1.9	-2.1	-0.2	-0.7	-1.0	+51.1	-1.9	+48.2
Ambulance Headquarters	+18.4%	+7	0.0		+0.7	+0.7				0.0	0.0	-0.3	+1.8	+4.1	+5.6			+0.7		+0.7
NASC	+36.3%	+44										0.0	+1.0	+0.8	+1.8			+42.2		+42.2
NEOC	-3.1%	-5					-0.0	0.0	-0.0			0.0	+0.0	-0.2	-0.1			-4.9		-4.9
					-100.0%	-100.0%	+167.0%	-2.0%	-1.0%			-2.2%	+14.5%	+6.8%	+8.4%	-12.2%	-50.0%	+4.8%	-12.9%	+4.6%



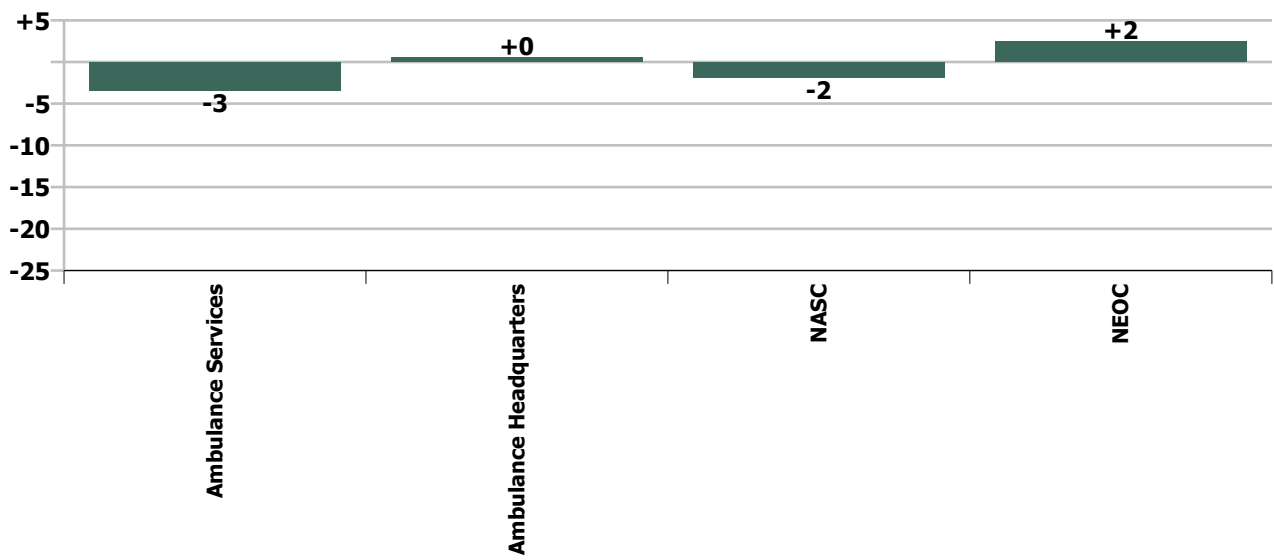
### Staff Group change since: Mar 2021



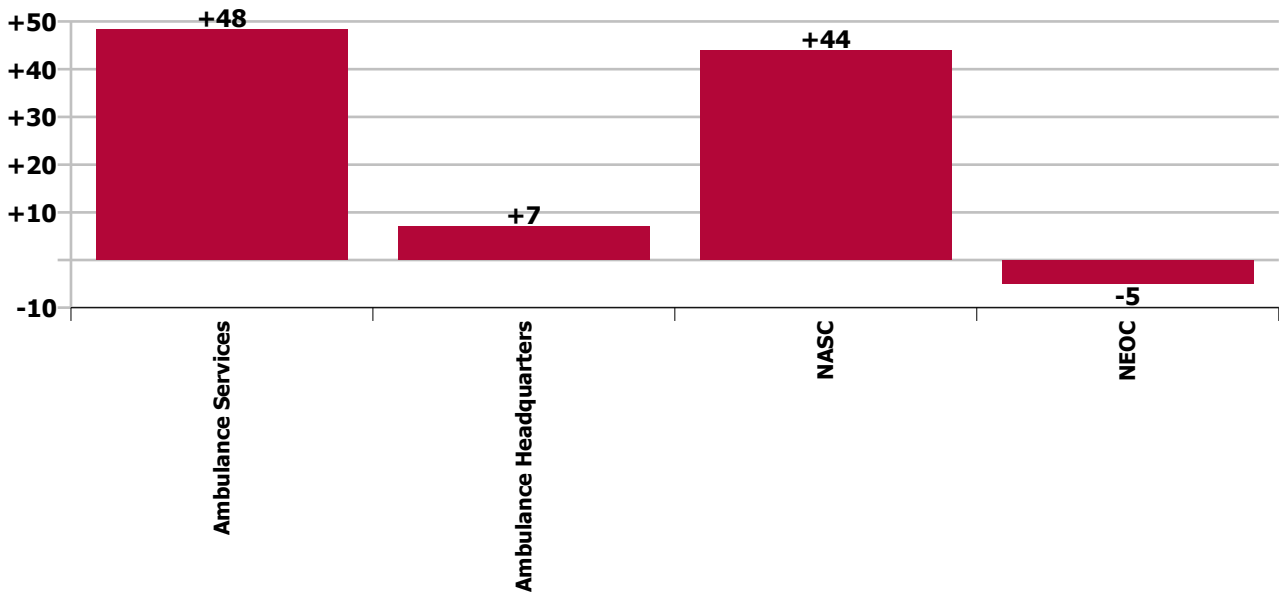
### Staff Group change since: Apr 2020



Programme change since: Mar 2021



Programme change since: Apr 2020



## Longitudinal Employment Levels by Grade Group - Dec 2015 to Apr 2021

Apr 2021 (Dec 2015 figure: 1,694)	WTE Apr 2021	WTE change since Dec 15	WTE change since Dec 16	WTE change since Dec 17	WTE change since Dec 18	WTE change since Dec 19	WTE change since Dec 20	% change since Dec 15	% change since Dec 16	% change since Dec 17	% change since Dec 18	% change since Dec 19	% change since Dec 20
<b>Overall</b>	<b>2,044</b>	<b>+350</b>	<b>+310</b>	<b>+201</b>	<b>+157</b>	<b>+111</b>	<b>+54</b>	<b>+20.6%</b>	<b>+17.9%</b>	<b>+10.9%</b>	<b>+8.3%</b>	<b>+5.7%</b>	<b>+2.7%</b>
<b>Consultants</b>	<b>1</b>												
Senior House Officer	1	+1	+1	+1	+1	+1			-100.0%	-100.0%	-100.0%	-100.0%	-100.0%
<b>SHO/ Interns</b>	<b>1</b>	<b>+1</b>	<b>+1</b>	<b>+1</b>	<b>+1</b>	<b>+1</b>	<b>+1</b>	<b>-100.0%</b>	<b>-100.0%</b>	<b>-100.0%</b>	<b>-100.0%</b>	<b>-100.0%</b>	<b>-100.0%</b>
Specialist Registrar	1	+1	+1	+1	+1	+1		+1	-100.0%	-100.0%	-100.0%	-100.0%	-100.0%
<b>Registrars</b>	<b>1</b>	<b>+1</b>	<b>+1</b>	<b>+1</b>	<b>+1</b>	<b>+1</b>	<b>+1</b>	<b>-100.0%</b>	<b>-100.0%</b>	<b>-100.0%</b>	<b>-100.0%</b>	<b>-100.0%</b>	<b>-100.0%</b>
<b>Medical &amp; Dental</b>	<b>3</b>	<b>+2</b>	<b>+2</b>	<b>+2</b>	<b>+2</b>	<b>+2</b>	<b>+2</b>	<b>+167.0%</b>	<b>+167.0%</b>	<b>+167.0%</b>	<b>+167.0%</b>	<b>+167.0%</b>	<b>+167.0%</b>
<b>Nurse/ Midwife Manager</b>	<b>1</b>	<b>+1</b>	<b>+1</b>	<b>-0</b>	<b>-0</b>	<b>-0</b>	<b>-0</b>	<b>-100.0%</b>	<b>-100.0%</b>	<b>-2.0%</b>	<b>-2.0%</b>	<b>-2.0%</b>	<b>-2.0%</b>
<b>Staff Nurse/ Staff Midwife</b>	<b>1</b>	<b>+1</b>	<b>+1</b>		<b>+1</b>			<b>-100.0%</b>	<b>-100.0%</b>		<b>+222.6%</b>		
<b>Nursing &amp; Midwifery</b>	<b>2</b>	<b>+2</b>	<b>+2</b>	<b>-0</b>	<b>+1</b>	<b>-0</b>	<b>-0</b>	<b>-100.0%</b>	<b>-100.0%</b>	<b>-1.0%</b>	<b>+51.1%</b>	<b>-1.0%</b>	<b>-1.0%</b>
<b>Therapy Professions</b>	<b>1</b>	<b>+1</b>	<b>+1</b>	<b>+1</b>	<b>+1</b>			<b>-100.0%</b>	<b>-100.0%</b>	<b>-100.0%</b>	<b>-100.0%</b>		
<b>Health &amp; Social Care Professionals</b>	<b>1</b>	<b>+1</b>	<b>+1</b>	<b>+1</b>	<b>+1</b>			<b>-100.0%</b>	<b>-100.0%</b>	<b>-100.0%</b>	<b>-100.0%</b>		
Executive Management	3	+2	+2	+2	+2	+1		+1	+200.0%	+200.0%	+200.0%	+50.0%	+50.0%
Senior Management (VIII & GM)	10	+6	+6	+5	+4	-0		-0	+143.0%	+143.0%	+94.4%	-4.8%	-20.6%
<b>Management (VIII &amp; above)</b>	<b>13</b>	<b>+8</b>	<b>+8</b>	<b>+7</b>	<b>+6</b>	<b>+1</b>	<b>-2</b>	<b>+154.4%</b>	<b>+154.4%</b>	<b>+112.0%</b>	<b>+81.7%</b>	<b>+4.2%</b>	<b>-10.7%</b>
<b>Administrative/ Supervisory (V to VII)</b>	<b>37</b>	<b>+25</b>	<b>+22</b>	<b>+15</b>	<b>+15</b>	<b>+9</b>	<b>+5</b>	<b>+191.0%</b>	<b>+139.5%</b>	<b>+70.1%</b>	<b>+64.3%</b>	<b>+30.6%</b>	<b>+13.9%</b>
<b>Clerical (III &amp; IV)</b>	<b>41</b>	<b>-4</b>	<b>-5</b>	<b>-1</b>	<b>-8</b>	<b>+0</b>	<b>-0</b>	<b>-9.3%</b>	<b>-10.4%</b>	<b>-3.3%</b>	<b>-15.9%</b>	<b>+0.1%</b>	<b>-0.7%</b>
<b>Management &amp; Administrative</b>	<b>91</b>	<b>+28</b>	<b>+25</b>	<b>+21</b>	<b>+13</b>	<b>+9</b>	<b>+3</b>	<b>+44.2%</b>	<b>+37.0%</b>	<b>+29.3%</b>	<b>+15.9%</b>	<b>+11.3%</b>	<b>+3.1%</b>
<b>Support</b>	<b>3</b>	<b>-13</b>	<b>-10</b>	<b>-10</b>	<b>-10</b>	<b>-1</b>	<b>-1</b>	<b>-81.6%</b>	<b>-78.2%</b>	<b>-77.2%</b>	<b>-77.3%</b>	<b>-18.9%</b>	<b>-19.1%</b>
<b>Maintenance/ Technical</b>	<b>2</b>	<b>-1</b>	<b>-1</b>	<b>-0</b>	<b>-0</b>	<b>-0</b>	<b>-0</b>	<b>-33.7%</b>	<b>-33.7%</b>	<b>-0.5%</b>	<b>-0.5%</b>	<b>-0.5%</b>	<b>-0.5%</b>
<b>General Support</b>	<b>5</b>	<b>-14</b>	<b>-11</b>	<b>-10</b>	<b>-10</b>	<b>-1</b>	<b>-1</b>	<b>-73.8%</b>	<b>-69.8%</b>	<b>-66.6%</b>	<b>-66.7%</b>	<b>-12.2%</b>	<b>-12.3%</b>
<b>Health Care Assistants</b>	<b>1</b>	<b>-3</b>	<b>-2</b>	<b>-2</b>	<b>-2</b>	<b>-1</b>	<b>-1</b>	<b>-75.0%</b>	<b>-67.2%</b>	<b>-66.7%</b>	<b>-66.7%</b>	<b>-50.0%</b>	<b>-50.0%</b>
Ambulance Control	175	-0	+13	+8	+16	-4		+2	-0.1%	+8.2%	+4.8%	-2.2%	-3.0%
Ambulance Education	201	+106	+41	+16	+16	+39		-5	+111.6%	+26.1%	+8.7%	+24.1%	+45.4%
Ambulance Officers	85	+12	+14	+14	+9	+7		+0	+17.0%	+19.1%	+18.8%	+9.4%	+0.9%
Pre-Hospital Care (Ambulance)	1,467	+211	+219	+146	+105	+61		-0	+16.8%	+17.6%	+11.0%	+4.3%	-0.4%
<b>Ambulance Staff</b>	<b>1,928</b>	<b>+329</b>	<b>+288</b>	<b>+183</b>	<b>+146</b>	<b>+103</b>	<b>+52</b>	<b>+20.6%</b>	<b>+17.5%</b>	<b>+10.5%</b>	<b>+8.2%</b>	<b>+5.7%</b>	<b>+2.8%</b>
<b>Care, other</b>	<b>13</b>	<b>+5</b>	<b>+6</b>	<b>+6</b>	<b>+6</b>	<b>-2</b>	<b>-1</b>	<b>+60.8%</b>	<b>+87.3%</b>	<b>+87.6%</b>	<b>+87.3%</b>	<b>-12.4%</b>	<b>-5.1%</b>
<b>Patient &amp; Client Care</b>	<b>1,942</b>	<b>+331</b>	<b>+292</b>	<b>+187</b>	<b>+150</b>	<b>+101</b>	<b>+50</b>	<b>+20.5%</b>	<b>+17.7%</b>	<b>+10.7%</b>	<b>+8.4%</b>	<b>+5.5%</b>	<b>+2.7%</b>

Source: Health Service Personnel Census

Longitudinal Employment Levels by Service - Dec 2015 to Apr 2021

Apr 2021 (Dec 2015 figure: 1,694)	WTE Apr 2021	WTE change since Dec 15	WTE change since Dec 16	WTE change since Dec 17	WTE change since Dec 18	WTE change since Dec 19	WTE change since Dec 20	% change since Dec 15	% change since Dec 16	% change since Dec 17	% change since Dec 18	% change since Dec 19	% change since Dec 20
Overall	2,044	+350	+310	+201	+157	+111	+54	+20.6%	+17.9%	+10.9%	+8.3%	+5.7%	+2.7%
North Leinster	606	+83	+109	+62	+40	+43	+21	+15.8%	+21.9%	+11.5%	+7.1%	+7.6%	+3.6%
South	483	+58	+37	+13	+9	-4	-12	+13.8%	+8.4%	+2.8%	+2.0%	-0.8%	-2.5%
West	588	+80	+87	+42	+32	+6	-1	+15.8%	+17.3%	+7.8%	+5.7%	+1.1%	-0.2%
Ambulance Services	1,677	+221	+233	+118	+82	+45	+8	+15.2%	+16.1%	+7.6%	+5.1%	+2.8%	+0.5%
Ambulance Headquarters	45	+37	+39	+21	+8	+4	+3	+464.8%	+653.0%	+89.6%	+20.4%	+9.1%	+7.5%
NASC	165	+64	-2	+42	+45	+62	+48	+63.1%	-1.0%	+34.6%	+37.8%	+59.6%	+41.0%
NEOC	157	+27	+39	+19	+22	+0	-5	+21.1%	+33.6%	+13.8%	+16.4%	+0.0%	-2.9%

Source: Health Service Personnel Census