

National Ambulance Service Services Employment Report: April 2022

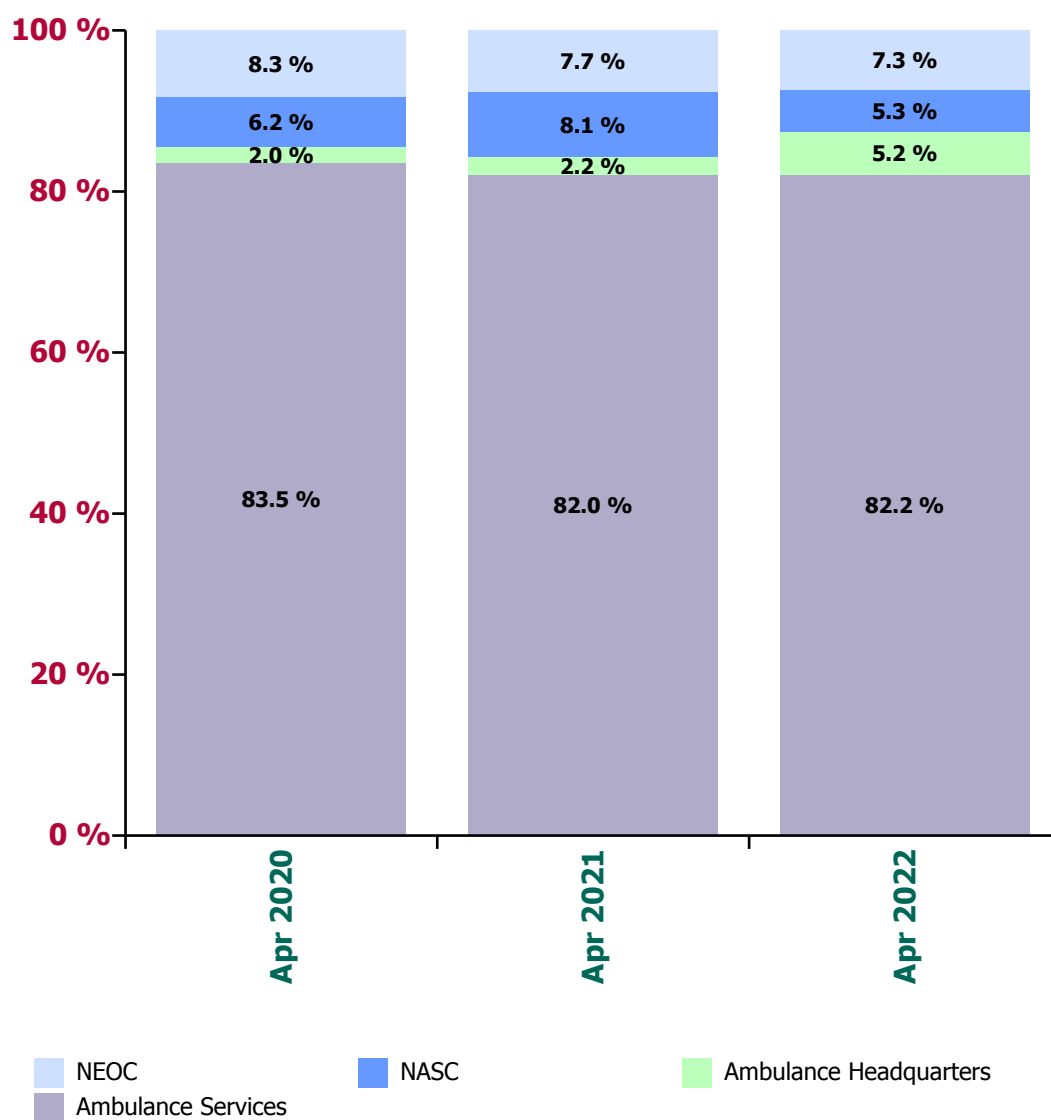
Employment by Staff Group

Apr 2022	WTE Dec 2019	WTE Dec 2020	WTE Mar 2022	WTE Apr 2022	WTE change since Mar 22	WTE change since Dec 20	% change since Dec 20	WTE change since Dec 19	% change since Dec 19	No. Apr 2022
Overall	1,933	1,990	2,043	2,033	-10	+43	2.1 %	+100	5.1 %	2,101
Consultants	1	1	1	1			0.0 %		0.0 %	1
SHO/ Interns							-100.0 %		-100.0 %	
Registrars							-100.0 %		-100.0 %	
Medical & Dental	1	1	1	1			0.0 %		0.0 %	1
Nurse/ Midwife Manager	1	1	2	2		+1	100.0 %	+1	100.0 %	2
Staff Nurse/ Staff Midwife	1	1				-1	-100.0 %	-1	-100.0 %	
Nursing & Midwifery	2	2	2	2			0.0 %		0.0 %	2
Therapy Professions	1	1				-1	-100.0 %	-1	-100.0 %	
Health & Social Care Professionals	1	1				-1	-100.0 %	-1	-100.0 %	
Management (VIII & above)	12	14	14	15	+1	+1	5.3 %	+3	22.9 %	15
Administrative/ Supervisory (V to VII)	29	33	49	49	+0	+17	50.5 %	+21	72.5 %	50
Clerical (III & IV)	41	42	44	46	+2	+4	9.5 %	+4	10.4 %	50
Management & Administrative	82	89	107	110	+3	+21	24.0 %	+28	33.9 %	115
Support	4	4	4	4			0.0 %	+0	0.3 %	4
Maintenance/ Technical	2	2	1	1		-1	-50.0 %	-1	-50.0 %	1
General Support	6	6	5	5		-1	-18.1 %	-1	-18.0 %	5
Health Care Assistants	2	2	1	1	-0	-1	-57.5 %	-1	-57.5 %	1
Ambulance Staff	1,825	1,876	1,915	1,902	-13	+26	1.4 %	+78	4.3 %	1,965
Care, other	15	14	12	12	-0	-2	-12.6 %	-3	-19.4 %	12
Patient & Client Care	1,841	1,892	1,928	1,915	-13	+23	1.2 %	+74	4.0 %	1,978

Ambulance Service by Region: Apr 2022

Apr 2022	WTE Dec 2019	WTE Dec 2020	WTE Mar 2022	WTE Apr 2022	WTE change since Mar 22	WTE change since Dec 20	% change since Dec 20	WTE change since Dec 19	% change since Dec 19	No. Apr 2022
Overall	1,933	1,990	2,043	2,033	-10	+43	2.1 %	+100	5.1 %	2,101
North Leinster	563	585	578	573	-5	-12	-2.1 %	+10	1.7 %	595
South	487	495	479	482	+3	-13	-2.6 %	-5	-0.9 %	498
West	582	589	618	615	-3	+26	4.4 %	+33	5.7 %	636
Ambulance Services	1,631	1,669	1,676	1,670	-6	+1	0.0 %	+38	2.4 %	1,729
Ambulance Headquarters	41	42	109	106	-4	+64	151.9 %	+64	155.7 %	107
NASC	103	117	110	108	-3	-9	-8.1 %	+4	4.1 %	109
NEOC	157	161	147	149	+2	-12	-7.6 %	-8	-4.9 %	156

Proportion of total by Service



National Ambulance Service Services Employment Report: April 2022

Ambulance Services by staff group

Apr 2022	WTE Dec 2019	WTE Dec 2020	WTE Mar 2022	WTE Apr 2022	WTE change since Mar 22	WTE change since Dec 20	% change since Dec 20	WTE change since Dec 19	% change since Dec 19	No. Apr 2022
Overall	1,631	1,669	1,676	1,670	-6	+1	0.0 %	+38	2.4 %	1,729
SHO/ Interns							-100.0 %		-100.0 %	
Medical & Dental							-100.0 %		-100.0 %	
Management (VIII & above)	1	1				-1	-100.0 %	-1	-100.0 %	
Administrative/ Supervisory (V to VII)	10	10	13	14	+1	+4	38.3 %	+4	38.9 %	14
Clerical (III & IV)	26	29	31	32	+1	+3	9.6 %	+6	22.5 %	35
Management & Administrative	37	40	44	46	+2	+6	14.1 %	+9	23.6 %	49
Support	4	4	4	4			0.0 %	+0	0.3 %	4
Maintenance/ Technical	2	2	1	1		-1	-50.0 %	-1	-50.0 %	1
General Support	6	6	5	5		-1	-18.1 %	-1	-18.0 %	5
Health Care Assistants	2	2	1	1	-0	-1	-57.5 %	-1	-57.5 %	1
Ambulance Staff	1,572	1,608	1,615	1,607	-8	-1	-0.1 %	+35	2.2 %	1,662
Care, other	15	14	12	12	-0	-2	-12.6 %	-3	-19.4 %	12
Patient & Client Care	1,589	1,624	1,627	1,620	-8	-4	-0.2 %	+31	1.9 %	1,675

Ambulance Headquarters by staff group

Apr 2022	WTE Dec 2019	WTE Dec 2020	WTE Mar 2022	WTE Apr 2022	WTE change since Mar 22	WTE change since Dec 20	% change since Dec 20	WTE change since Dec 19	% change since Dec 19	No. Apr 2022
Overall	41	42	109	106	-4	+64	151.9 %	+64	155.7 %	107
Consultants	1	1	1	1			0.0 %		0.0 %	1
Registrars							-100.0 %		-100.0 %	
Medical & Dental	1	1	1	1			0.0 %		0.0 %	1
Nurse/ Midwife Manager			1	1		+1	-100.0 %	+1	-100.0 %	1
Nursing & Midwifery			1	1		+1	-100.0 %	+1	-100.0 %	1
Therapy Professions	1	1				-1	-100.0 %	-1	-100.0 %	
Health & Social Care Professionals	1	1				-1	-100.0 %	-1	-100.0 %	
Management (VIII & above)	9	9	11	12	+1	+3	28.9 %	+3	33.3 %	12
Administrative/ Supervisory (V to VII)	16	19	31	30	-0	+12	62.4 %	+15	95.1 %	31
Clerical (III & IV)	10	7	8	9	+1	+2	29.1 %	-1	-8.2 %	9
Management & Administrative	34	35	51	51	+1	+16	46.9 %	+17	49.5 %	52
Ambulance Staff	5	5	57	52	-4	+47	948.0 %	+47	948.0 %	53
Patient & Client Care	5	5	57	52	-4	+47	948.0 %	+47	948.0 %	53

NASC by staff group

Apr 2022	WTE Dec 2019	WTE Dec 2020	WTE Mar 2022	WTE Apr 2022	WTE change since Mar 22	WTE change since Dec 20	% change since Dec 20	WTE change since Dec 19	% change since Dec 19	No. Apr 2022
Overall	103	117	110	108	-3	-9	-8.1 %	+4	4.1 %	109
Management (VIII & above)	1	1	1	1			0.0 %		0.0 %	1
Administrative/ Supervisory (V to VII)	2	3	3	3	+0		0.0 %	+1	50.0 %	3
Clerical (III & IV)	3	4	3	3	+0	-1	-21.3 %	+0	2.9 %	4
Management & Administrative	6	8	7	7	+0	-1	-10.8 %	+1	17.8 %	8
Ambulance Staff	97	109	103	100	-3	-9	-7.9 %	+3	3.3 %	101
Patient & Client Care	97	109	103	100	-3	-9	-7.9 %	+3	3.3 %	101

NEOC by staff group

Apr 2022	WTE Dec 2019	WTE Dec 2020	WTE Mar 2022	WTE Apr 2022	WTE change since Mar 22	WTE change since Dec 20	% change since Dec 20	WTE change since Dec 19	% change since Dec 19	No. Apr 2022
Overall	157	161	147	149	+2	-12	-7.6 %	-8	-4.9 %	156
Nurse/ Midwife Manager	1	1	1	1			0.0 %		0.0 %	1
Staff Nurse/ Staff Midwife	1	1				-1	-100.0 %	-1	-100.0 %	
Nursing & Midwifery	2	2	1	1		-1	-50.0 %	-1	-50.0 %	1
Management (VIII & above)	1	3	2	2		-1	-31.7 %	+1	65.3 %	2
Administrative/ Supervisory (V to VII)	1	1	2	2		+1	100.0 %	+1	100.0 %	2
Clerical (III & IV)	2	2	2	2		+0	0.6 %	-1	-35.0 %	2
Management & Administrative	5	5	6	6	-0	+0	1.5 %	+1	20.6 %	6
Ambulance Staff	150	154	140	143	+2	-11	-7.4 %	-8	-5.0 %	149
Patient & Client Care	150	154	140	143	+2	-11	-7.4 %	-8	-5.0 %	149

Emergency Services: April 2022

North Leinster by staff group

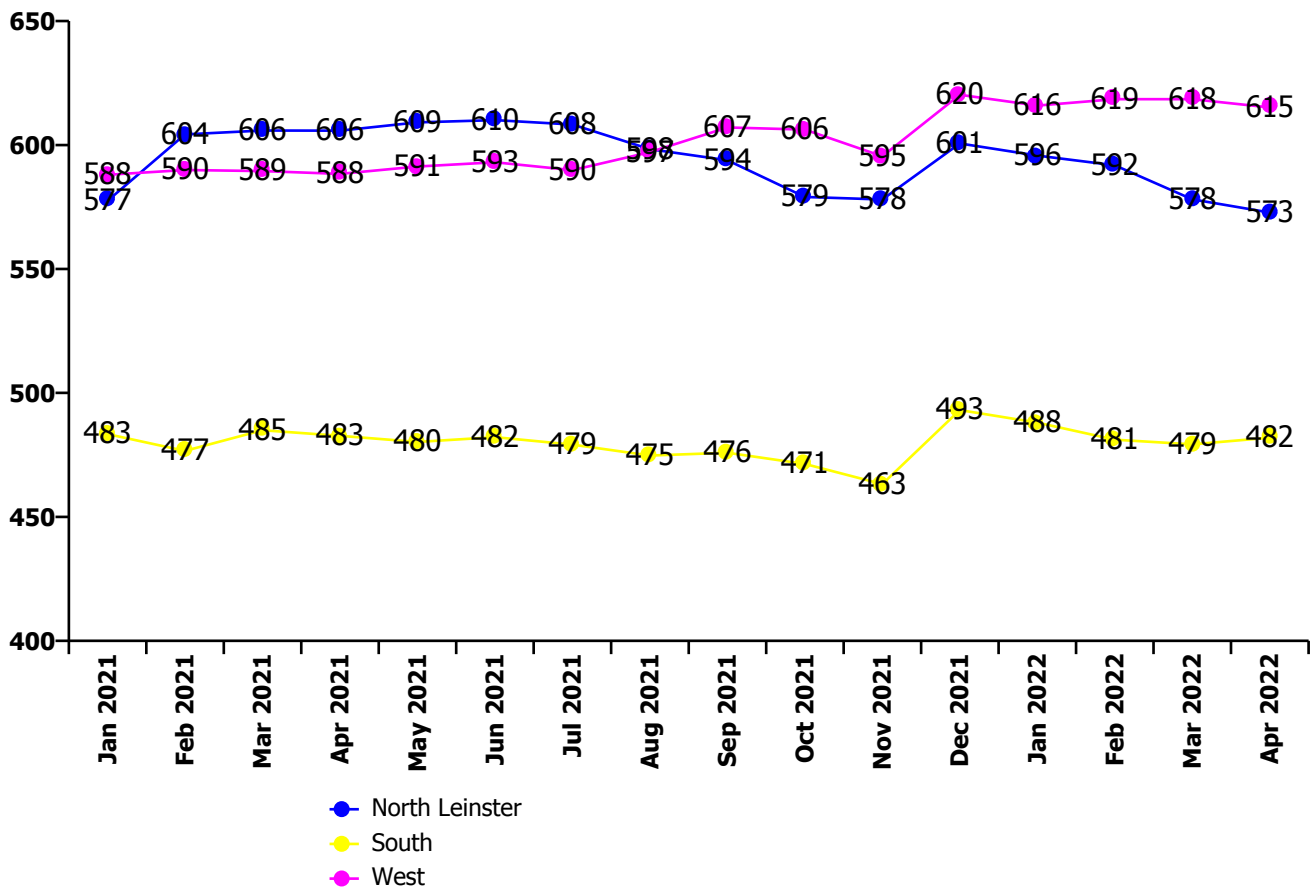
Apr 2022	WTE Dec 2019	WTE Dec 2020	WTE Mar 2022	WTE Apr 2022	WTE change since Mar 22	WTE change since Dec 20	% change since Dec 20	WTE change since Dec 19	% change since Dec 19	No. Apr 2022
Overall	563	585	578	573	-5	-12	-2.1 %	+10	1.7 %	595
Administrative/ Supervisory (V to VII)	2	3	5	5		+2	79.2 %	+3	150.0 %	5
Clerical (III & IV)	5	5	6	7	+0	+1	22.9 %	+2	31.1 %	8
Management & Administrative	7	8	11	12	+0	+3	42.3 %	+5	65.1 %	13
Support	3	3	2	2		-1	-39.8 %	-1	-39.6 %	2
Maintenance/ Technical	1	1				-1	-100.0 %	-1	-100.0 %	
General Support	4	4	2	2		-2	-57.0 %	-2	-56.9 %	2
Ambulance Staff	538	560	553	548	-5	-12	-2.1 %	+10	1.9 %	568
Care, other	15	14	12	12	-0	-2	-12.6 %	-3	-19.4 %	12
Patient & Client Care	552	573	565	560	-6	-13	-2.3 %	+7	1.3 %	580

South by staff group

Apr 2022	WTE Dec 2019	WTE Dec 2020	WTE Mar 2022	WTE Apr 2022	WTE change since Mar 22	WTE change since Dec 20	% change since Dec 20	WTE change since Dec 19	% change since Dec 19	No. Apr 2022
Overall	487	495	479	482	+3	-13	-2.6 %	-5	-0.9 %	498
SHO/ Interns							-100.0 %		-100.0 %	
Medical & Dental							-100.0 %		-100.0 %	
Administrative/ Supervisory (V to VII)	3	2	4	5	+1	+3	117.3 %	+2	63.0 %	5
Clerical (III & IV)	6	8	8	8		-0	-1.3 %	+2	31.0 %	8
Management & Administrative	9	10	12	12	+1	+3	25.5 %	+4	41.9 %	13
Support	1	1	2	2		+1	100.0 %	+1	100.0 %	2
Maintenance/ Technical	1	1	1	1			0.0 %		0.0 %	1
General Support	2	2	3	3		+1	50.0 %	+1	50.0 %	3
Ambulance Staff	476	483	465	466	+2	-17	-3.4 %	-9	-1.9 %	482
Patient & Client Care	476	483	465	466	+2	-17	-3.4 %	-9	-1.9 %	482

West by staff group

Apr 2022	WTE Dec 2019	WTE Dec 2020	WTE Mar 2022	WTE Apr 2022	WTE change since Mar 22	WTE change since Dec 20	% change since Dec 20	WTE change since Dec 19	% change since Dec 19	No. Apr 2022
Overall	582	589	618	615	-3	+26	4.4 %	+33	5.7 %	636
Management (VIII & above)	1	1				-1	-100.0 %	-1	-100.0 %	
Administrative/ Supervisory (V to VII)	5	5	4	4		-1	-20.0 %	-1	-20.0 %	4
Clerical (III & IV)	15	16	17	18	+1	+2	10.5 %	+2	16.4 %	19
Management & Administrative	21	22	21	22	+1	-0	-1.5 %	+0	2.3 %	23
Health Care Assistants	2	2	1	1	-0	-1	-57.5 %	-1	-57.5 %	1
Ambulance Staff	559	566	597	593	-4	+27	4.8 %	+34	6.1 %	612
Patient & Client Care	561	568	598	594	-4	+26	4.6 %	+33	5.8 %	613



Employment by WTE, Headcount, Gender, Full-Time /Part-Time etc.: Apr 2022

National Ambulance Service	WTE	Headcount	WTE: no.	% Male	% female	Male WTE: no.	Female WTE: no.	% Total Perm	% Male Perm	% Female Perm	% Total Full Time	% Total Part Time	% Male FT	% Female FT
Overall	2,033	2,101	1.03	71.2%	28.8%	1.03	1.04	86.1%	87.8%	81.8%	99.2%	0.8%	99.8%	97.7%
<i>Consultants</i>	1	1	1.00	100.0%		1.00		100.0%	100.0%		100.0%	0.0%	100.0%	
Medical & Dental	1	1	1.00	100.0%		1.00		100.0%	100.0%		100.0%	0.0%	100.0%	
<i>Nurse/ Midwife Manager</i>	2	2	1.00	50.0%	50.0%	1.00	1.00	100.0%	100.0%	100.0%	100.0%	0.0%	100.0%	100.0%
Nursing & Midwifery	2	2	1.00	50.0%	50.0%	1.00	1.00	100.0%	100.0%	100.0%	100.0%	0.0%	100.0%	100.0%
<i>Management (VIII & above)</i>	15	15	1.00	66.7%	33.3%	1.00	1.00	100.0%	100.0%	100.0%	100.0%	0.0%	100.0%	100.0%
<i>Administrative/ Supervisory (V to VII)</i>	49	50	1.01	28.0%	72.0%	1.00	1.02	100.0%	100.0%	100.0%	98.0%	2.0%	100.0%	97.2%
<i>Clerical (III & IV)</i>	46	50	1.10	12.0%	88.0%	1.09	1.10	84.0%	83.3%	84.1%	84.0%	16.0%	100.0%	81.8%
Management & Administrative	110	115	1.05	26.1%	73.9%	1.02	1.06	93.0%	96.7%	91.8%	92.2%	7.8%	100.0%	89.4%
<i>Support</i>	4	4	1.14	50.0%	50.0%	1.32	1.00	75.0%	50.0%	100.0%	75.0%	25.0%	50.0%	100.0%
<i>Maintenance/ Technical</i>	1	1	1.00	100.0%		1.00		100.0%	100.0%		100.0%	0.0%	100.0%	
General Support	5	5	1.11	60.0%	40.0%	1.20	1.00	80.0%	66.7%	100.0%	80.0%	20.0%	66.7%	100.0%
Attendant/ Aide	1	1	1.18	100.0%		1.18		100.0%	100.0%		100.0%	0.0%	100.0%	
<i>Health Care Assistants</i>	1	1	1.18	100.0%		1.18		100.0%	100.0%		100.0%	0.0%	100.0%	
Ambulance Control	161	168	1.05	51.2%	48.8%	1.05	1.04	98.8%	98.8%	98.8%	98.8%	1.2%	100.0%	97.6%
Ambulance Education	190	191	1.01	61.3%	38.7%	1.01	1.00	0.0%	0.0%	0.0%	100.0%	0.0%	100.0%	100.0%
Ambulance Officers	97	99	1.02	83.8%	16.2%	1.03	1.01	98.0%	97.6%	100.0%	99.0%	1.0%	98.8%	100.0%
Pre-Hospital Care (Ambulance)	1,455	1,507	1.04	77.3%	22.7%	1.03	1.05	94.1%	94.8%	91.8%	99.7%	0.3%	99.9%	99.1%
Ambulance Staff	1,902	1,965	1.03	73.8%	26.2%	1.03	1.04	85.5%	87.5%	80.0%	99.6%	0.4%	99.9%	99.0%
Other Care Grades	12	12	1.01	75.0%	25.0%	1.00	1.06	100.0%	100.0%	100.0%	100.0%	0.0%	100.0%	100.0%
<i>Care, other</i>	12	12	1.01	75.0%	25.0%	1.00	1.06	100.0%	100.0%	100.0%	100.0%	0.0%	100.0%	100.0%
Patient & Client Care	1,915	1,978	1.03	73.9%	26.1%	1.03	1.04	85.6%	87.6%	80.1%	99.6%	0.4%	99.9%	99.0%

Employment by WTE, Headcount, Gender, Full-Time /Part-Time etc.: Apr 2022

National Ambulance Service	WTE	Headcount	WTE: no.	% Male	% female	Male WTE: no.	Female WTE: no.	% Total Perm	% Male Perm	% Female Perm	% Total Full Time	% Total Part Time	% Male FT	% Female FT
Overall	2,033	2,101	1.03	71.2%	28.8%	1.03	1.04	86.1%	87.8%	81.8%	99.2%	0.8%	99.8%	97.7%
North Leinster	573	595	1.04	72.9%	27.1%	1.03	1.05	89.7%	89.7%	85.7%	99.3%	0.7%	99.5%	99.5%
South	482	498	1.03	76.5%	23.5%	1.03	1.05	88.8%	88.8%	85.5%	99.6%	0.4%	100.0%	100.0%
West	615	636	1.03	74.2%	25.8%	1.03	1.05	88.5%	88.5%	84.1%	99.1%	0.9%	100.0%	100.0%
Ambulance Services	1,670	1,729	1.04	74.4%	25.6%	1.03	1.05	89.0%	89.0%	85.1%	99.3%	0.7%	99.8%	99.8%
Ambulance Headquarters	106	107	1.01	55.1%	44.9%	1.01	1.01	71.0%	71.0%	75.0%	98.1%	1.9%	98.3%	98.3%
NASC	108	109	1.01	63.3%	36.7%	1.01	1.03	35.8%	35.8%	22.5%	99.1%	0.9%	100.0%	100.0%
NEOC	149	156	1.05	51.9%	48.1%	1.05	1.04	98.7%	98.7%	98.7%	98.7%	1.3%	100.0%	100.0%

National Ambulance Service Employment by Grade Group & Staff Category: April 2022

Apr 2022 (Apr 2021 figure: 2,044)	WTE Dec 2015	WTE Dec 2016	WTE Dec 2017	WTE Dec 2018	WTE Dec 2019	WTE Dec 2020	WTE Apr 2022
Overall	1,694	1,734	1,843	1,887	1,933	1,990	2,033
Consultants	100.00 %	100.0%	100.0%	100.0%	100.0%	100.0%	100.0%
SHO/ Interns							
Registrars							
Medical & Dental	0.1%	0.1%	0.1%	0.1%	0.1%	0.1%	0.0%
Nurse/ Midwife Manager			50.0%	76.3%	50.0%	50.0%	100.0%
Staff Nurse/ Staff Midwife			50.0%	23.7%	50.0%	50.0%	
Nursing & Midwifery			0.1%	0.1%	0.1%	0.1%	0.1%
Dietitians							
Therapy Professions					100.0%	100.0%	
Health & Social Care Professionals					0.1%	0.1%	
Management (VIII & above)	7.89 %	7.5%	8.5%	8.9%	14.9%	16.1%	13.7%
Administrative/ Supervisory (V to VII)	20.26 %	23.4%	31.1%	28.8%	34.9%	37.0%	44.9%
Clerical (III & IV)	71.85 %	69.1%	60.4%	62.3%	50.3%	46.9%	41.4%
Management & Administrative	3.7%	3.8%	3.8%	4.2%	4.2%	4.5%	5.4%
Support	83.76 %	81.3%	86.2%	86.2%	63.6%	63.7%	77.8%
Maintenance/ Technical	16.24 %	18.7%	13.8%	13.8%	36.4%	36.3%	22.2%
General Support	1.1%	0.9%	0.8%	0.8%	0.3%	0.3%	0.2%
Health Care Assistants	0.25 %	0.2%	0.2%	0.2%	0.1%	0.1%	0.0%
Ambulance Control	10.9%	9.8%	9.5%	8.8%		8.2%	8.4%
Ambulance Education	5.9%	9.7%	10.5%	10.3%		11.1%	9.9%
Ambulance Officers	4.5%	4.3%	4.1%	4.3%		4.9%	5.0%
Pre-Hospital Care (Ambulance)	78.0%	75.6%	75.3%	76.0%		75.1%	76.0%
Ambulance Staff	99.26 %	99.4%	99.4%	99.4%	99.1%	99.2%	99.3%
Other Care Grades	0.5%	0.4%	0.4%	0.4%		0.6%	0.6%
Care, other	0.50 %	0.4%	0.4%	0.4%	0.8%	0.7%	0.6%
Patient & Client Care	95.1%	95.2%	95.2%	94.9%	95.3%	95.1%	94.2%
Total	100%	100%	100%	100%	100%	100%	100%

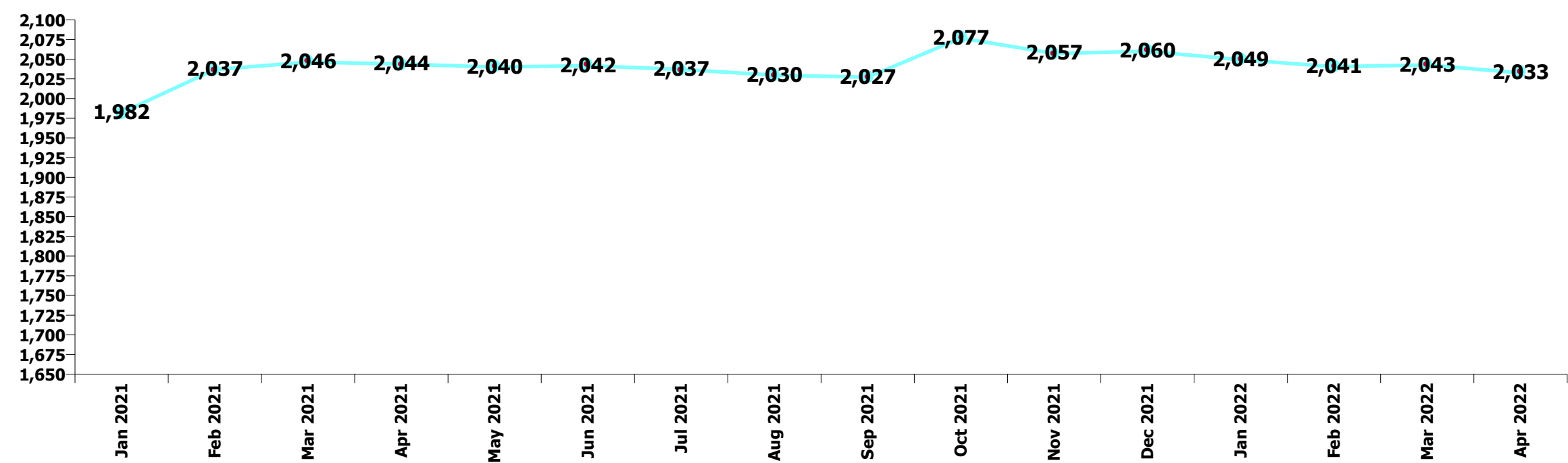
Summary Staff Movement: April 2022

Month-on-month Summary

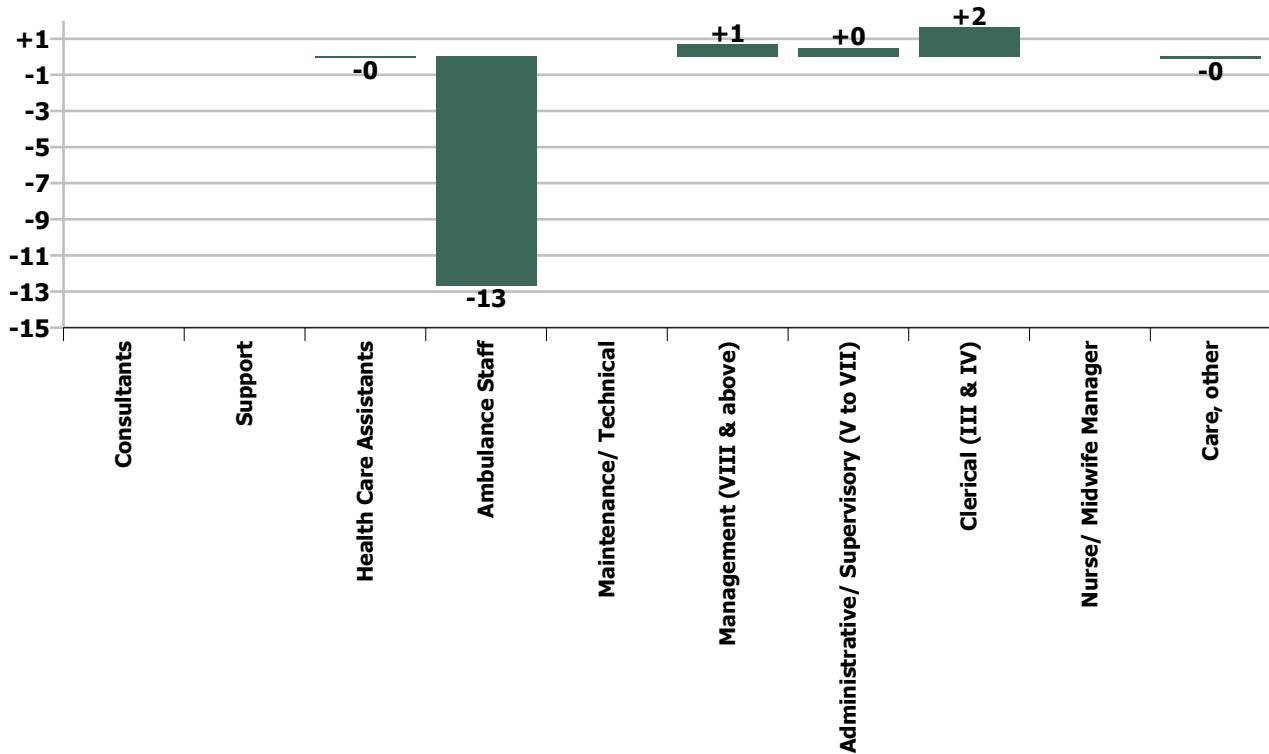
WTE change since Mar 22	% change since Mar 22	overall	Consultants	Medical & Dental	Nurse/ Midwife Manager	Nursing & Midwifery	Management (VIII & above)	Administrativ e/ Supervisory (V to VII)	Clerical (III & IV)	Management & Administrative	General Support	Health Care Assistants	Ambulance Staff	Care, other	Patient & Client Care
Overall	-0.5%	-10					+1	+0	+2	+3		-0	-13	-0	-13
North Leinster	-0.9%	-5						0.0	+0.2	+0.2	0.0		-5.4	-0.1	-5.5
South	+0.6%	+3						+0.9	0.0	+0.9	0.0		+1.8		+1.8
West	-0.5%	-3						0.0	+0.7	+0.7		-0.1	-3.9		-4.0
Ambulance Services	-0.4%	-6						+0.9	+0.9	+1.8	0.0	-0.1	-7.5	-0.1	-7.7
Ambulance Headquarters	-3.2%	-4	0.0	0.0	0.0	0.0	+0.7	-0.5	+0.7	+0.9			-4.4		-4.4
NASC	-2.5%	-3					0.0	+0.1	+0.1	+0.2			-2.9		-2.9
NEOC	+1.4%	+2			0.0	0.0	0.0	0.0	0.0	0.0			+2.1		+2.1
							+4.8%	+1.0%	+3.7%	+2.6%		-8.6%	-0.7%	-1.0%	-0.7%

Year-on-year Summary

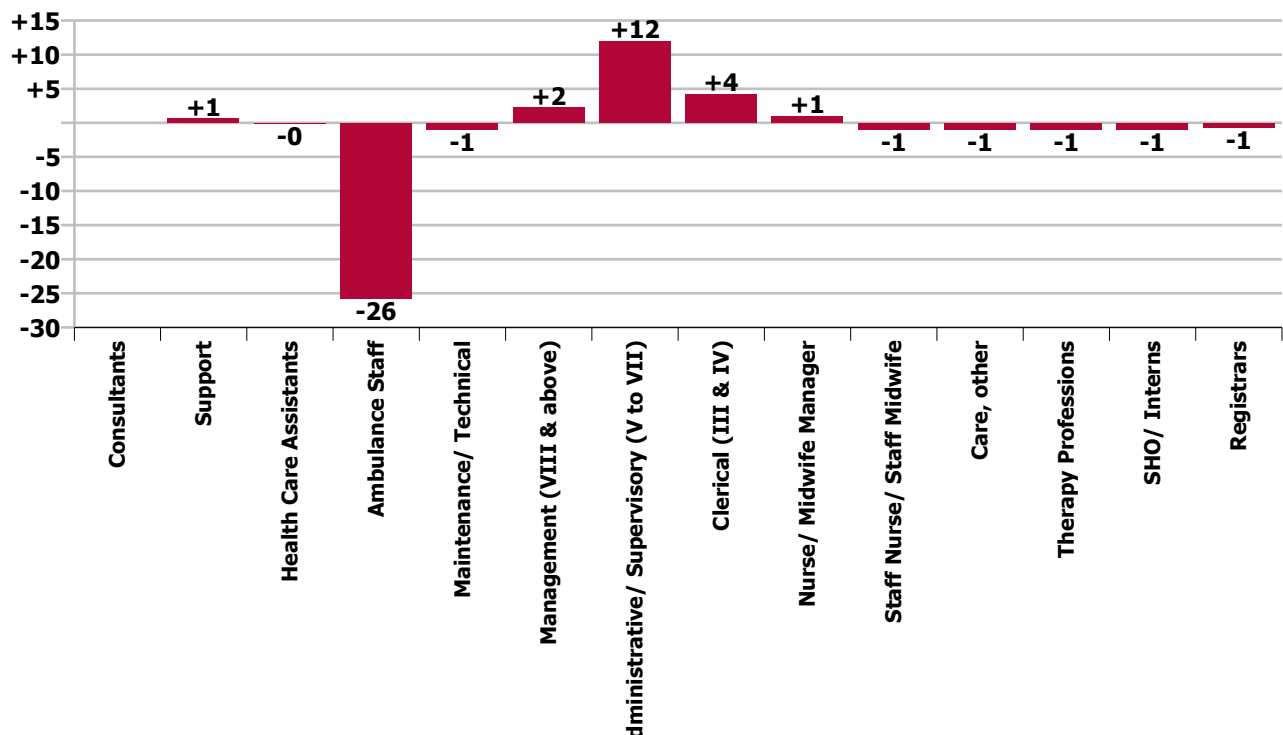
WTE change since Apr 21	% change since Apr 21	overall	Consultants	SHO/ Interns	Registrars	Medical & Dental	Nurse/ Midwife Manager	Staff Nurse/ Staff Midwife	Nursing & Midwifery	Therapy Professions	Health & Social Care Professionals	Management (VIII & above)	Administrative/ Supervisory (V to VII)	Clerical (III & IV)	Management & Administrative	General Support	Health Care Assistants	Ambulance Staff	Care, other	Patient & Client Care
Overall	-0.6%	-11	0.0	-1.0	-0.7	-1.7	+1.0	-1.0	+0.0	-1.0	-1.0	+2.3	+12.0	+4.2	+18.5	-0.3	-0.2	-25.7	-1.0	-26.9
North Leinster	-5.5%	-33											0.0	+1.7	+1.7	-1.3		-32.4	-1.0	-33.4
South	-0.2%	-1		-1.0		-1.0							+3.9	-1.0	+2.9	+1.0		-3.6		-3.6
West	+4.5%	+27										-1.0	-2.0	+2.5	-0.4		-0.2	+27.3		+27.2
Ambulance Services	-0.4%	-7		-1.0		-1.0						-1.0	+1.9	+3.3	+4.2	-0.3	-0.2	-8.7	-1.0	-9.9
Ambulance Headquarters	+134.3%	+61	0.0		-0.7	-0.7	+1.0		+1.0	-1.0	-1.0	+3.3	+10.1	+1.0	+14.3			+47.0		+47.0
NASC	-34.8%	-57										0.0	-1.0	-0.0	-1.0			-56.4		-56.4
NEOC	-4.9%	-8					+0.0	-1.0	-1.0			0.0	+1.0	0.0	+1.0			-7.7		-7.7
						-100.0%			-100.0%			-62.5%			+104.1%			-100.0%		
									+1.0%			-100.0%			-100.0%			+17.9%		
												+32.1%			+10.3%			+20.3%		
																		-6.6%		
																		-15.0%		
																		-1.3%		
																		-7.9%		
																		-1.4%		



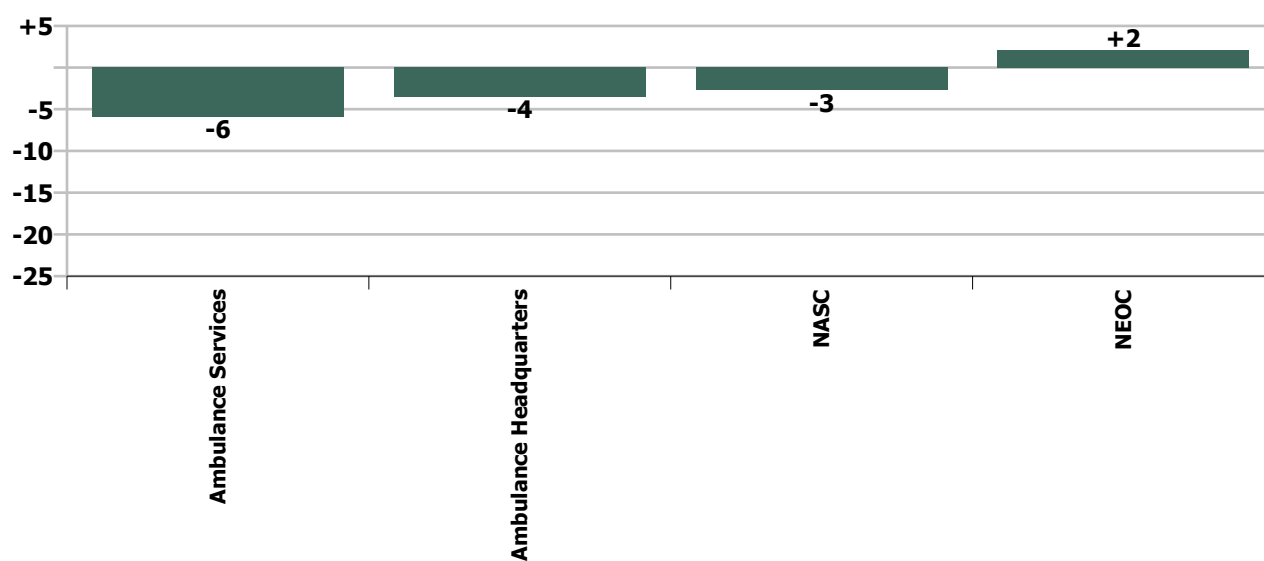
Staff Group change since: Mar 2022



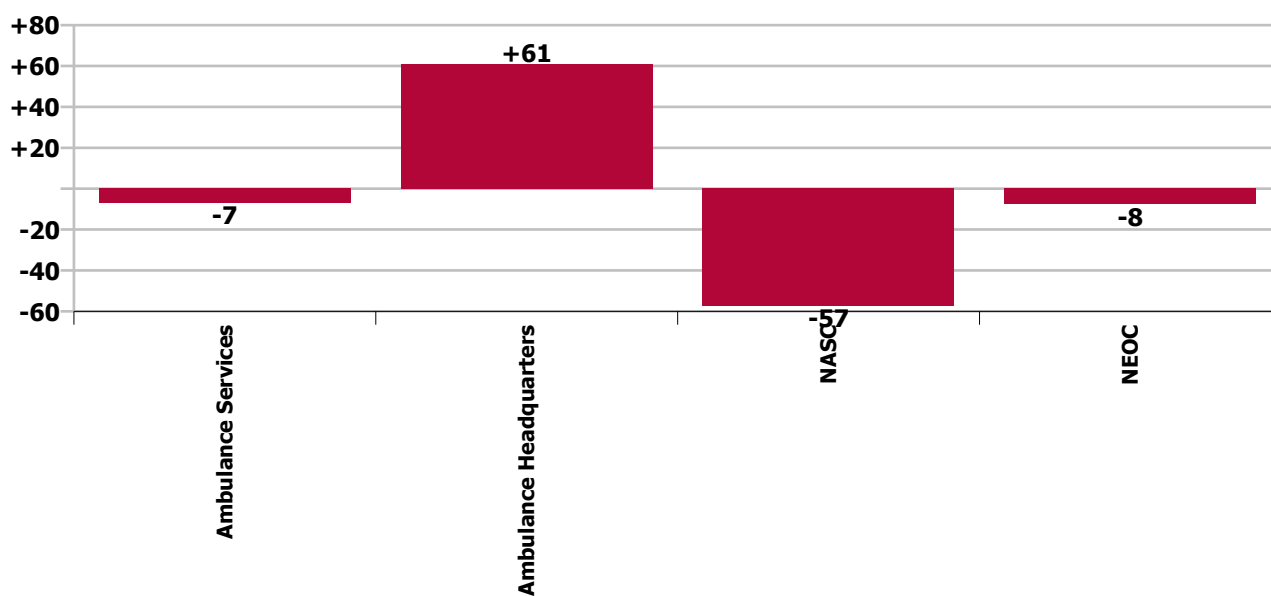
Staff Group change since: Apr 2021



Programme change since: Mar 2022



Programme change since: Apr 2021



Longitudinal Employment Levels by Grade Group - Dec 2016 to Apr 2022

Apr 2022 (Dec 2015 figure: 1,694)	WTE Apr 2022	WTE change since Dec 16	WTE change since Dec 17	WTE change since Dec 18	WTE change since Dec 19	WTE change since Dec 20	WTE change since Mar 22	% change since Dec 16	% change since Dec 17	% change since Dec 18	% change since Dec 19	% change since Dec 20	% change since Mar 22
Overall	2,033	+299	+190	+145	+100	+43	-10	+17.2%	+10.3%	+7.7%	+5.1%	+2.1%	-0.5%
Consultants	1												
Medical & Dental	1												
Nurse/ Midwife Manager	2	+2	+1	+1	+1	+1		-100.0%	+100.0%	+100.0%	+100.0%	+100.0%	
Staff Nurse/ Staff Midwife			-1	-0	-1	-1		-100.0%	-100.0%	-100.0%	-100.0%	-100.0%	-100.0%
Nursing & Midwifery	2	+2		+1				-100.0%		+52.7%			
Dietitians					-1	-1		-100.0%	-100.0%	-100.0%	-100.0%	-100.0%	-100.0%
Therapy Professions					-1	-1		-100.0%	-100.0%	-100.0%	-100.0%	-100.0%	-100.0%
Health & Social Care Professionals					-1	-1		-100.0%	-100.0%	-100.0%	-100.0%	-100.0%	-100.0%
Management (VIII & above)	15	+10	+9	+8	+3	+1	+1	+200.0%	+150.0%	+114.3%	+22.9%	+5.3%	+4.8%
Administrative/ Supervisory (V to VII)	49	+34	+27	+27	+21	+17	+0	+216.4%	+124.7%	+117.1%	+72.5%	+50.5%	+1.0%
Clerical (III & IV)	46	-1	+3	-4	+4	+4	+2	-1.2%	+6.6%	-7.3%	+10.4%	+9.5%	+3.7%
Management & Administrative	110	+43	+39	+31	+28	+21	+3	+64.8%	+55.5%	+39.4%	+33.9%	+24.0%	+2.6%
Support	4	-10	-9	-9	+0			-73.0%	-71.9%	-71.9%	+0.3%		
Maintenance/ Technical	1	-2	-1	-1	-1	-1		-66.7%	-50.0%	-50.0%	-50.0%	-50.0%	
General Support	5	-11	-10	-10	-1	-1		-71.8%	-68.9%	-68.9%	-18.0%	-18.1%	
Health Care Assistants	1	-2	-2	-2	-1	-1	-0	-72.1%	-71.7%	-71.7%	-57.5%	-57.5%	-8.6%
Ambulance Control	161	-1	-6	+2	-18	-20	+2	-8.2%	-0.5%	-3.7%	-10.1%	-10.9%	+1.4%
Ambulance Education	190	+31	+5	+6	+28	+52	-25	+100.3%	+19.3%	+2.9%	+17.5%	+37.6%	-11.5%
Ambulance Officers	97	+25	+25	+20	+19	+12	+2	+32.5%	+34.9%	+34.6%	+23.9%	+14.3%	+2.2%
Pre-Hospital Care (Ambulance)	1,455	+207	+134	+93	+49	-18	+8	+15.8%	+16.6%	+10.1%	+3.5%	-1.2%	+0.5%
Ambulance Staff	1,902	+262	+158	+121	+78	+26	-13	+16.0%	+9.0%	+6.8%	+4.3%	+1.4%	-0.7%
Other Care Grades	12	+5	+5	+5	-3	-2	-0	+48.1%	+72.4%	+72.7%	-19.4%	-12.6%	-1.0%
Care, other	12	+5	+5	+5	-3	-2	-0	+72.4%	+72.7%	+72.4%	-19.4%	-12.6%	-1.0%
Patient & Client Care	1,915	+265	+160	+124	+74	+23	-13	+16.0%	+9.1%	+6.9%	+4.0%	+1.2%	-0.7%

Source: Health Service Personnel Census

Longitudinal Employment Levels by Service - Dec 2016 to Apr 2022

Apr 2022 (Dec 2015 figure: 1,694)	WTE Apr 2022	WTE change since Dec 16	WTE change since Dec 17	WTE change since Dec 18	WTE change since Dec 19	WTE change since Dec 20	WTE change since Apr 21	% change since Dec 16	% change since Dec 17	% change since Dec 18	% change since Dec 19	% change since Dec 20	% change since Apr 21
Overall	2,033	+299	+190	+145	+100	+43	-10	+17.2%	+10.3%	+7.7%	+5.1%	+2.1%	-0.5%
North Leinster	573	+76	+29	+7	+10	-12	-5	+15.2%	+5.4%	+1.3%	+1.7%	-2.1%	-0.9%
South	482	+37	+13	+9	-5	-13	+3	+8.2%	+2.7%	+1.8%	-0.9%	-2.6%	+0.6%
West	615	+114	+69	+59	+33	+26	-3	+22.7%	+12.7%	+10.5%	+5.7%	+4.4%	-0.5%
Ambulance Services	1,670	+226	+111	+75	+38	+1	-6	+15.6%	+7.1%	+4.7%	+2.4%	+0.0%	-0.4%
Ambulance Headquarters	106	+100	+82	+68	+64	+64	-4	+1664.0%	+344.1%	+182.2%	+155.7%	+151.9%	-3.2%
NASC	108	-59	-15	-12	+4	-9	-3	-35.4%	-12.2%	-10.1%	+4.1%	-8.1%	-2.5%
NEOC	149	+32	+11	+14	-8	-12	+2	+27.1%	+8.3%	+10.7%	-4.9%	-7.6%	+1.4%

Source: Health Service Personnel Census